

Motley County Tribune

Voice of the Foothill Country

106 YEARS

THURSDAY, JULY 31, 1997

ISSUE NO. 31

50¢
per copy



A Look back in Time

MARCH 21, 1957

Sailor Talks Home
From South Pole

"First and only Motley County resident known to talk to the South Pole over the telephone is Mrs. Lois Smart, who had the experience last week when her grandson, Gary Dale Whittle placed a call through a Dallas short wave operator.

It was 4:30 in the afternoon at Camp McMurdo where Gary is based in the NCD Special Detachment of the U.S. Navy which is detailed to remain there until September 1958."

APRIL 11, 1957

"Rattlesnake" Bill Slover Winner In
Oklahoma Annual Snake Hunt

"Bill Slover won top place in Okeene, Oklahoma's annual snake hunt festival. Recognition is made by the number of live rattlesnakes caught.

Slover of Whiteflat caught 92 snakes weighing 151 pounds."

MAY 16, 1957

16 Dead, Many Injured
In Silverton Tornado
Dismal Storm Strikes
With Little Warning

"A dismal dawn this morning made it possible for Silverton to survey the devastation left by a tornado that struck at 10:35 last night with at least 16 dead and approximately 70 injured. Several of the injured that crowded hospitals in Tulia, Dimmit, Plainview, and Amarillo were in critical condition.

Last Chance To Buy Chamber Banquet Tickets

Tickets for the 3rd Annual Chamber Board member and at Matador Variety Store, First State Bank, Matador Motor & Implement, Marshall Brothers Electric-Propane, and at Thacker Supply Company in Roaring Springs.

Please get your tickets in advance - as soon as possible - as space is limited and we need to make sure there is adequate food to feed everyone. For further information, please call Chamber President Jeff Thacker at 348-7216 or Chamber Secretary Charles Keith at 347-2283.

Summer Entrepreneurs ...



Emily, Annie, and Amanda Hurt are Summer Entrepreneurs with the establishment of their Lemonade Stand, located at Emily and Annie's house on Main Street in Matador. For only 25¢ a cool glass of lemonade can be purchased, which is quite a treat on these hot Summer days. Emily and Annie are the daughters of Jimmy Don and Sarah Hurt and Amanda is the daughter of Tommy and Kate Hurt.

Back To School Time! Registration Dates Set

Motley County Schools will begin teaching for the fall semester on August 14. All Freshmen, Sophomore, Junior and Senior students are encouraged to pick up their class schedules at Motley County Schools on Tuesday, August 12 in the school cafeteria. Students may pick up their schedules at the following times:
Freshmen and Sophomores, 6:00 to 6:30

Juniors and Seniors, 6:30 to 7:00.
All new families in town are encouraged to begin enrolling their children in school starting August 4. If anyone has any questions please contact the school at 347-2676.

Pre-K & Kindergarten Registratoin

Parents may register their students

in the Pre-K and Kindergarten classes at the school office during the week of August 4-8 from 9:00 a.m. until 3:00 p.m. You must bring your child's birth certificate, immunization record, and social security card to enroll your child in the Motley County Schools.

Any "new to Motley County" Elementary and Jr. High students may also enroll at this time.

Voters To Decide On Property Tax Amendment

College Station -- Texas voters will be able to vote on a school property tax amendment on Aug. 9 that could have an impact on their homestead exemption and the tax freeze for people who are 65 years old or older.

Economist Dr. Judith Stallmann of College Station said House Bill 4, passed at the end of the recent legislative session, increases the residential homestead exemptions from \$5,000 to \$15,000. Additionally, persons who are 65 years old or older will be able to transfer their tax freeze, with adjustments from their current home to a subsequent home.

The homestead exemption applies only to homeowners -- renters and landlords will not see benefits from it, the Texas Agricultural Extension Service economist said.

Increasing the homestead exemption by \$10,000 will lower school property taxes by \$140 for the average Texas homeowner. The actual amount will depend on the tax rate in each district. For example, in a school district with a tax rate of 1.23, the increased exemption will result in a tax savings of \$123. The people who would benefit the most from the increased homestead exemption would be those who live in the highest tax rate districts, she said.

"People are concerned about the property taxes," Stallmann said, "particularly the school property tax because it has doubled in the last 10 years."

If passed, the increase in the homestead exemption will decrease tax revenues for local school districts, affecting school districts with a low tax base more than other districts because it may exempt a larger percentage of their taxable value, she said.

Lower school property tax revenues from this amendment would be offset by about \$1 billion set aside by the state for this purpose over the next biennium. Beyond that, elected officials are not sure how the losses would

be handled.
These lower revenues are "certainly a concern that school districts are going to have to address," she said. Citizens may want to contact their state representative to find out how this is going to be addressed in the future, she suggested.

The proposed amendment also includes a revision of the tax code for senior citizens. Currently, homeowners over 65 years old receive a tax freeze on their home as long as they live in the house and do not make significant improvements. If the person buys and moves to another house, he or she has to requalify for the tax freeze. Approximately 10 percent of the state's population is over 65 years of age.

Under the proposed amendment, the tax freeze is "portable," Stallmann said. If the person moves to another house, the original tax freeze, with some adjustments apply to the new home.

The adjustment is made on a percentage basis. If the tax bill on the original home is 60 percent of what it would be without the freeze, the tax bill for the new home will be 60 per-

cent of what the tax bill would otherwise be.

Stallmann did not foresee this tax freeze change having a big impact on school districts in the immediate future because of the number of people over 65 who change homes in a single year is not significant. Over time, however, the numbers could become significant and the impact on tax revenues may be greater as "baby boomers" begin to age and retire.

Voters should determine several things before voting on this amendment, Stallmann suggested. First of all, they should estimate the impact on their current tax bill and on their tax bill when they turn 65. They also need to consider the impact on local tax revenues and schools in the future. Additionally, they should consider whether the constitutional amendment is preferable to exercising the local options that are available.

Motley County Polling Locations

Voters in Precinct 1, 5 and 6 may cast their votes at the Courthouse; Precinct 2, Flomot Gin Office; Precinct 3, Northfield Church; and Precinct 4, Roaring Springs Depot.

County-wide Men's Breakfast Set For Saturday

The monthly breakfast for all men in the County will be hosted this Saturday at 7:00 a.m. at the Full Gospel Church, Roaring Spings. All men are invited for a great meal and a grand time of fellowship and sharing. The breakfast is regularly scheduled for the first Saturday morning of each month, but was canceled last month for the observance of the Fourth of July.

Charles Johnson and Rodney Williams will be the cooks, with several assistants. Rev. Rickey Lawrence, pastor encourages all men to be present and bring a big appetite.



NEW DPS TROOPER IN MATADOR — Mark Gumaer, 29, is the new DPS Trooper, stationed in Matador. Mark and his wife, Mitzie, recently moved to Matador from Quinlan, Texas. He has six years of Law Enforcement experience, four years with the Military Police and two years in the Quinlan Police Department. His duties began in Motley County Monday, July 28. He will be working with DPS Trooper Karl Holloway of Paducah for six months.

County Youth Attend Salvation Army Camp



ATTEND SALVATION ARMY CAMP — Fernando Martinez, Natasha Ramirez, Bo Long, and Benjamin Martinez (pictured left to right) recently returned from Salvation Army Camp Hoblitzelle in Midlothian.

Four Motley County youth attended The Salvation Army Camp Hoblitzelle in Midlothian, Texas during the period July 17 through July 22. They were Fernando Martinez, Boyd K. (Bo) Long, Jr., Natasha A. Ramirez, and Benjamin Martinez. They had lots of fun swimming, boating, fishing, and riding horses plus participating in many sports such as archery, baseball, volleyball, and soccer. They also spent

time each day in Bible study and worship services.

Charles Keith, Chairman of the Motley County Salvation Army Committee, both delivered them to camp and picked them up on the final day youth would like to thank all the citizens in Motley County who contribute to The Salvation Army each year and make their wonderful camping experience possible.

Boll Weevil Ballots Due August 1

Austin - Agriculture Commissioner Rick Perry reminds cotton producers voting in the Southern High Plains - Caprock Boll Weevil Eradication Zone referendum that their ballots must be postmarked before Friday, Aug. 1, to be counted. Results of the referendum will decide whether a boll weevil suppression program should be initiated for the 19-county Southern High Plains - Caprock zone.

Producers are also asked to correct any inaccurate information on acreage that may appear on their individual ballots before sending them to the Texas Department of Agriculture.

In addition to initiating a suppression program for the zone, other issues in the Aug. 1 election include approving a maximum assessment level; approving an agreement between the Texas Boll Weevil Eradication Foundation Inc. and the Plains Cotton Growers, Inc. whereby Plains Cotton Growers will carry out boll weevil suppression activities in the zone; and electing a board member from the zone to serve on the statewide board of directors for the Foundation.

Those candidates seeking to represent the Southern High Plains - Caprock Zone on the statewide board include: Rodney Criswell (Lubbock County); Wayne Mixon (Gaines County); H.V.

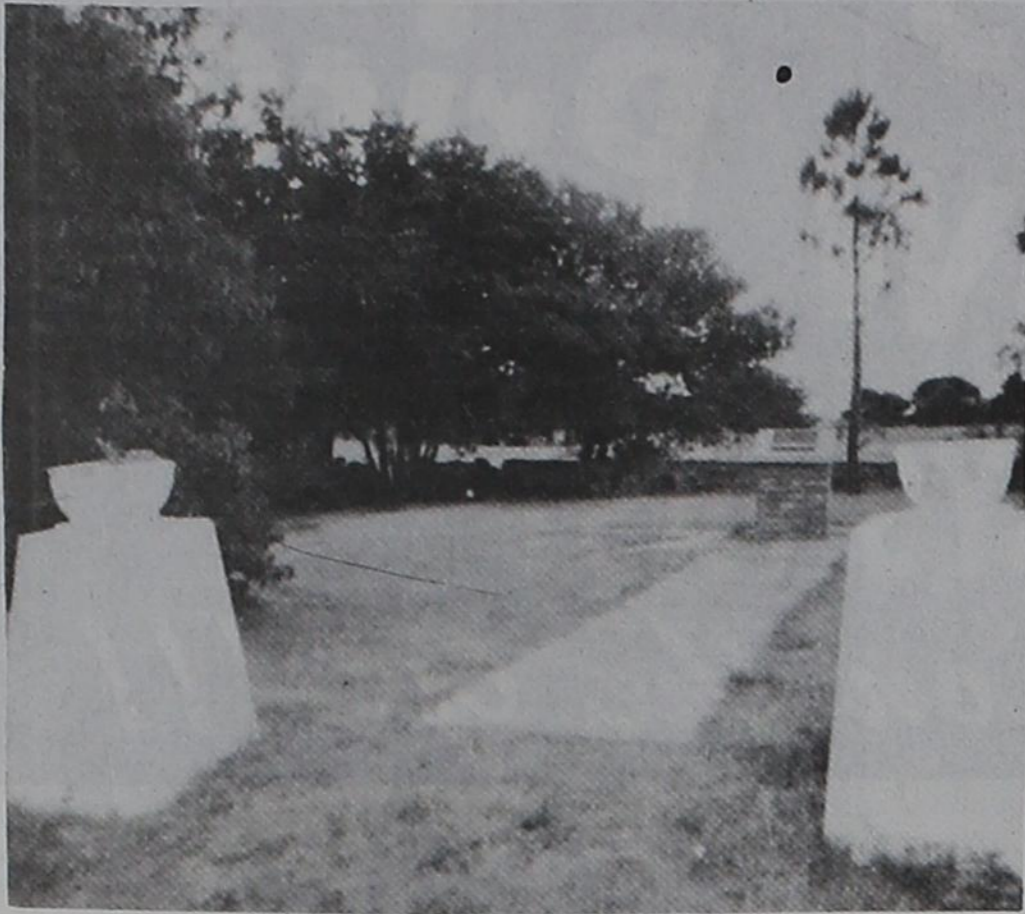
Newman, Jr. (Lubbock County); Don Parrish (Yoakum County); Monty Rodgers (Hockley County); John R. Smith (Hockley County); and Allen Wuen-sche (Lynn County). All seven candidates are cotton producers who farm in the zone and who have grown cotton for at least seven years.

Counties in the Southern High Plains - Caprock Eradication Zone are Andrews, Borden, Cochran, Crosby, Dawson, Dickens, Ector, Gaines, Garza, Hockley, Howard, Kent, Lubbock, Lynn, Martin, Midland, Motley, Terry, and Yoakum.



NEW DONATION FOR MUSEUM — Mrs. Bertha Stearns is pictured next to a rather large framed display of old checks written by members of her family, dating back as early as 1919. Most of the checks were written by Mrs. Stearns or her husband, Alvin. Mrs. Stearns' nephew, Richard Stearns of Temple, framed the checks and will donate the item to the Motley County Museum for display.

Garden Club Members Choose July Yard of the Month



YARD OF THE MONTH—Pioneer Park on Main Street in Matador was chosen as Yard of the Month by Matador Garden Club members. The park is maintained by James (Tootie) Meador.

by Opal Pipkin

Matador Garden Club selected Pioneer Park to salute as Garden of the Month for July. We felt that it was appropriate for our celebration of the 4th of July.

The plaque honoring Douglas Meador was visited quite frequently during the Shannon Davidson Day celebration.

Please join the Garden Club in giving 'a tip of the hat' to James Meador for his upkeep of the Park

during these hot Summer days. He says he does this "for Lila", also thanks to Rodger Evans for pruning the 'suckers' from around the Centennial tree.

Our town has looked so nice, just a succession of blooming flowers. It looks as if it is going to be Crepe Myrtles next.

My word! Have you seen the Hibiscus around the Church of Christ?

Enjoy the birds while you can. *Bird Watchers Magazine* says they heard that Mockingbirds don't sing in August.

Society News

Lana Copp Elected New President For Arts & Crafts

Motley County Arts & Crafts Club met July 7 at the Senior Citizens Center in Matador for its monthly meeting, to elect new officers for the ensuing year and for a workshop, and a luncheon at Main Street.

Lana Copp was elected President; Lorene Lancaster was elected Vice-President; Loys Campbell, Secretary and Treasurer; Bonnie Edmondson, Telephone chairman; and Winifred Darsey, Reporter.

The workshop was taught by Bonnie Edmondson and Winifred Lee. The members enjoyed the classes on making gold and crystal angels, and necklaces of spools of thread, wooden beads, and pendants of wood-shaped hearts. The necklaces used miniature spools of thread of bright and pretty colors. The angels were dazzling in

their gold and crystal and lovely for decorations - watch for these in the fall bazaar.

The club enjoyed a lively luncheon at Main Street Cafe. The bill of fare is varied and each enjoyed her favorite.

Members present were Lana Copp, Loys Campbell, Bonnie Edmondson, Vee Gordon, Geraldine Key, Dorothy Knight, Lorene Lancaster, Winifred Lee, Joyce Meredith, Dora Watson, Marion Woodruff, Una Simpson, and Winifred Darsey.

The August meeting will be held at the Senior Citizens Center on the 4th and program will be pillow case dolls, unless notified otherwise. Business meeting has been changed to 10:00 a.m. The club will dine at Main Street at noon. Membership is enjoying the Summer months, "when the living is easy."

Local Members Attend El Progreso Club Santa Rosa District Workshop

Saturday, July 19, five members of El Progreso Club traveled to Crowell to attend the Santa Rosa District Workshop. Those going were Loys Campbell, JoAnn Dickson, Grace Campbell, Dorothy Day, and Beverly Vinson. Arriving in time to have a second breakfast of juice, coffee and donuts, the meeting was soon called to order by District President, JoAnn Dickson. She asked Grace Campbell, District Chaplain, to offer the invocation after which she read a poem Mrs. Dickson had written in 1982 entitled *Club Clutter*, something very apropos to all club women with folders, boxes, drawers, etc. filled with 'junk' to others, but very precious material to use 'later'. There were members of Santa Rosa District from Seymour, Matador, Crowell, Wichita Falls, Burkburnett and Paducah.

Mrs. Dickson finished old business and read the list of our district awards given in Waco at the 100th Anniversary meeting in May. There are ten clubs in Santa Rosa District with twenty awards going to these ten clubs. It was

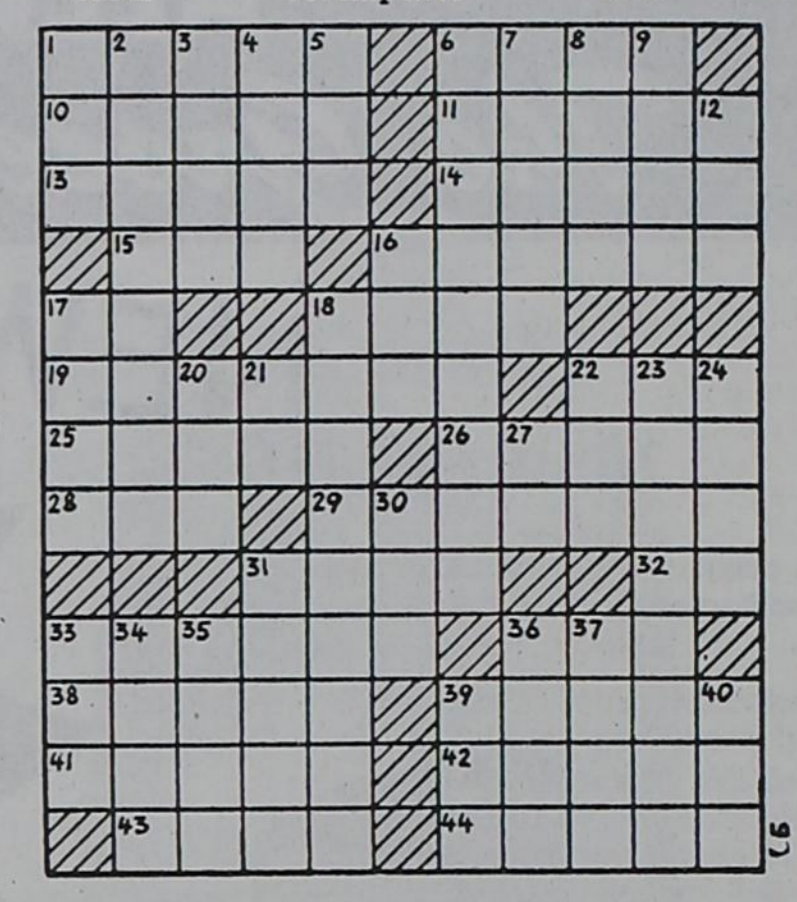
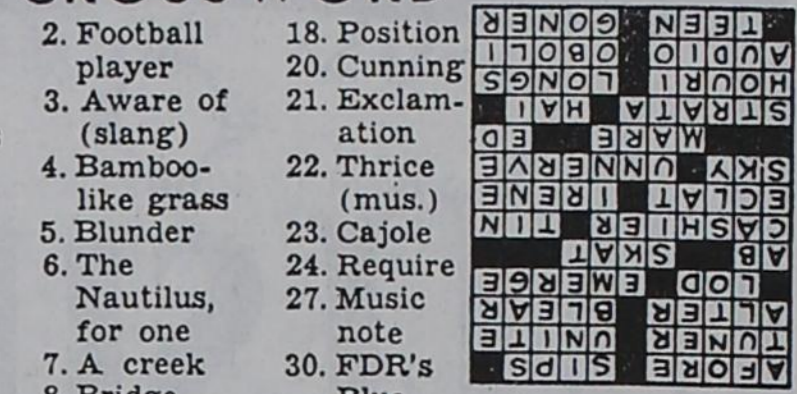
brought to the attention of the group the state convention will be in Amarillo, April 22-25, 1998.

To conclude the morning session a skit was performed by the women from Matador with the title being *THE HYSTERICAL CLUB*. It is a "take-off" on a club meeting held in a private home with Beverly Vinson acting as hostess, Grace Campbell as Mrs. Peevy, the 'old' deaf club woman who sits with her umbrella hiding a little bottle of 'cough syrup' used to bolster her along, the president of the club portrayed by JoAnn Dickson, the secretary was Loys Campbell, who had many flub-lines and confusing business, Dorothy Day as treasurer, who has more numbers on the right side of the decimal point than the left. The "hostess" also gave a paper on *REPORTING*, the bane of all club women across Texas.

Discussion followed about reporting with a delicious lunch served by the women from Crowell, then adjournment.

- ACROSS**
- Before (naut.)
 - Slight tastes
 - Part of hi-fi set
 - Join
 - Change
 - Deceive
 - Weight (Dan.)
 - Come out into view
 - Jewish month
 - Three-handed card game
 - Restaurant employee
 - Metal
 - Acclaim
 - Goddess of peace
 - The firmament
 - Deprive of courage
 - Female horse
 - Boy's nickname
 - Rock layers
 - Hi (var.)
 - Mohammedan nymph
 - Yearns
 - Companion to video
 - Greek weights
 - ager
 - Ruined one (slang)
- DOWN**
- Luzon native
 - Football player
 - Aware of (slang)
 - Bamboo-like grass
 - Blunder
 - The Nautilus, for one
 - A creek
 - Bridge support
 - line, as at a dance
 - Before
 - Piece out
 - One-spot cards
 - Position
 - Cunning
 - Exclamation
 - Thrice (mus.)
 - Cajole
 - Require
 - Music note
 - FDR's Blue Eagle
 - An-toinette
 - Shinto temple
 - Race track tipster
 - Impolite
 - Wandering workman
 - Soon
 - Record of ship's voyage
 - Knight's title

CROSSWORD



Matador Classmates Meet for Reunion

Six Matador friends met July 18-20 at White Bluff on Lake Whitney, celebrating almost 40 years of friendship since graduating from Matador High School, classes 1960-62.

Attending were Carolyn Pohl Limmer, Snyder; Linda Kay Rattan Bailey, Eastland; Carol Campbell Todd, Dallas; Melanie Brown Camp, Jacksboro; Donna Williams Nelson, McMinnville, Oregon; and hosting the event, Cheri Ann Barton Karr, Whitney. Unable to attend was Janie Waybourn Brooks, Austin.

The White Bluff reunion repre-

sented the 30th anniversary of the group. The first reunion of these seven longtime friends was held during the summer of 1967 in the home of Vivian Jacobs, Matador. Since that time, the

group has met in various settings, including Lubbock, Plainview, Salado, Lake Leon, Lake Buchanan, Lake Travis, Junction City, Texas, and Lake of the Pines, Longview.

The group historian reports the extended group family now includes 18 children and 21 grandchildren.

Matador/Motley County Exes Sought

The following is a partial list of Matador/Motley County ISD exes. If you have information and/or addresses for any one of them, please contact Charles or Joan Keith, 347-2283 so they can be included on the mailing list.

- * A member of this class, but did not graduate.
- * Attended school here - class year unknown.
- Dicky Cloyd 1976
- Bobby Coldiron 1952
- Eddie Cook 1976*
- Elsie Cook 1942
- Gladys Cook 1943
- Johnny Cook 1965
- Carroll W. Cooper 1957

- Nancy J. Cooper 1983
- Vernell Cooper 1952*
- Katherine Copeland Rosenthal 1936
- Kathy Couch 1972
- Lucretia Couch 1974*
- W.L. Couch 1958*
- Alice Cox Suddeth 1932
- Jana Crenshaw 1966
- Bobby Cross 1959
- Loretta Cross 1987
- Sue Cross Winn 1962
- Dora Crump 1957*
- Ronald Crump 1958*
- Tanya Cummings 1987
- Teressa Cunningham Price *

List to be continued next week

Clip & Save
Clip & Save
Clip & Save

1997-98 CALENDAR MOTLEY COUNTY ISD

August 14	First Day of School, Buses will run
September 1	Labor Day, First Holiday
September 12	Homecoming
September 23, 24, 25	Six Weeks Text
October 1	Report Cards
October 17	In Service for Teachers/Student Holiday
November 4, 5, 6	Six Weeks Test
November 12	Report Cards
November 26, 27, 28	Thanksgiving Holidays
December 16, 17, 18	Semester Tests
December 19 - Jan. 4	Christmas Holidays
January 5	Second Semester Begins, Students return to school
February 10, 11, 12	Six Weeks Tests
February 13	School Holiday
February 18	Report Cards
March 9 - 13	Spring Break
March 20	In Service/Student Holiday
April 10	Student Holiday
April 13	Snow Day - Holiday unless bad weather day has been used
April 15	Report Card Day
May 8	Snow Day - Holiday unless bad weather day has been used
May 26, 27, 28	Semester Tests
May 28	Last Day of School
May 29	8th Grade Graduation
May 30	High School Graduation

Sponsored By:

Cap Rock Telephone Cooperative, Inc.

Clip & Save
Clip & Save
Clip & Save

Clip & Save
Clip & Save

**NOTICE OF SPECIAL ELECTION
(AVISO DE ELECCION ESPECIAL)**

To the registered voters of the County of Motley, Texas:

(a los votantes registrados del Condado de Motley, Texas:)

Noticia es hereby given that the polling places listed below will be open from 7:00 a.m. to 7:00 p.m., on August 9, 1997, for voting in a special election to adopt or reject the proposed Constitutional Amendment as submitted by the 75th Legislature, Regular Session, of the State of Texas.

(Notifíquese, por las presentes, que las casillas electorales citadas abajo se abrirán desde las 7:00 a.m. hasta las 7:00 p.m. el Aug 9 de 19 97 para votar en la Elección Especial para para adoptar o rechazar la enmienda propuesta constitucional así como fueron sometidas por la 75a Legislatura sesion, de la Estado de Texas.)

**LOCATION(S) OF POLLING PLACES
(DIRECCIONES) DE LAS CASILLAS ELECTORALES)**

- Precincts #1, #5, #6 - - - Motley County Courthouse
- Precinct #2 - - - Flomot Gin Office
- Precinct #3 - - - Northfield Community Center
- Precinct #4 - - - Roaring Springs Depot

Early voting by personal appearance will be conducted each weekday at:
(La votación adelantada en persona se llevará a cabo de lunes a viernes en:)

Motley County Courthouse in County Clerk's Office
(location) (lugar)

If the county clerk is not the early voting clerk, the information in the block is required.

between the hours of 8:30 a.m. and 5:00 p.m. beginning on July 21, 1997 (date)

(entre las 8:30 de la mañana y las 5:00 de la tarde empezando el July 21, 1997 (fecha)

and ending on August 5, 1997 (date) by terminating el August 5, 1997 (fecha)

Applications for ballot by mail shall be mailed to:
(Las solicitudes para boletines que se votarán adelantada por correo deberán enviarse a:)

Lucretia Campbell, County Clerk
(Name of Early Voting Clerk)
(Nombre del Secretario de la Votación Adelantada)

P.O. Box 66
(Address) (Dirección)

Matador, Texas 79244
(City) (Ciudad) (Zip Code) (Código Postal)

Applications for ballots by mail must be received no later than the close of business on:
(Las solicitudes para boletines que se votarán adelantada por correo deberán recibirse para el fin de las horas de negocio en:)

August 1, 1997
(date) (fecha)

Issued this the 18th day of July, 19 97
(Emitted on the 18th day of July, 19 97)

Laverne M. Price
Signature of County Judge (Firma del Jefe del Condado)

Clip & Save
Clip & Save
Clip & Save

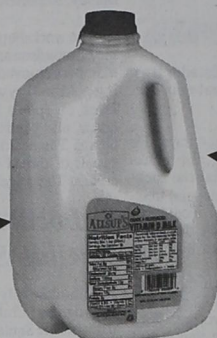
ALLSUP'S ALWAYS Low Prices

ALLWAYS OPEN • ALLWAYS FAST
The Grocery Store for People on the GO!!!



NEW!

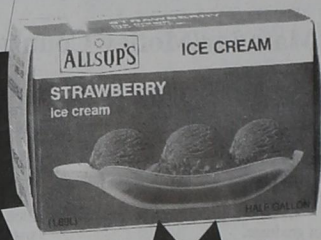
ALLSUP'S 1%
Light Milk
 GALLON
\$1.99



ALLSUP'S
Whole Milk
 GALLON
\$1.99



ALLSUP'S ASSORTED FLAVORS
Ice Cream
 1/2 GALLON
\$1.99



BLUE BERRY VANILLA OR MANGO
Ice Cream Sandwiches
 6 OZ.
2 FOR \$1



DECKER Cooked Ham 10 OZ. PKG. \$2.49	HORMEL Potted Meat 3 OZ. CANS 3 FOR \$1.00	U.S. NO. 1 Russet Potatoes 10 LB. BAG 79¢
DECKER Meat Franks 12 OZ. PKG. 59¢	PLAINS Fruit Drinks GALLON \$1.19	SANTA FE Flour Tortillas 8" 12 CT. PKG. 99¢
24 CT. MED., 18 CT. LARGE Cuddles Diapers EACH \$3.99	WESTERN FAMILY PECAN-A-RIFFIC Cookies 19 OZ. BAG \$2.99	SUPER BUY! Chee-tos® Snacks REG. \$2.19 \$1.69
HORMEL Vienna Sausage 5 OZ. CANS 2 FOR \$1.00	LANCE REG. \$1.39 Potato Chips 6 OZ. BAG 89¢	ALLSUP'S 79¢ EACH OR SANDWICH Bread 1.5 LB. LOAVES 2 FOR \$1.29

Don't miss your final Chance to win 1 of 8 Classic Mustangs!

Enter at 1 of these 3 locations on Sat. Aug. 2nd →
 Check Stores for times of drawings

- 2550 S. Clack Abilene, TX
- 2nd St. & Koogle Clarendon, TX
- 608 Broadway Plainview, TX
- 1305 S. US Hwy 81-287 Decatur, TX
- 2801 Coors, SW Albuquerque, NM
- 1500 Mabry Dr. Clovis, NM
- 2007 Calle Lorca Santa Fe, NM
- 2302 West Texas Carlsbad, NM

ALL FLAVORS
Coca-Cola
 6 PK. 12 OZ. CANS **\$1.59**
 3 LITER **\$1.79**

COMBO MEAL DEAL

Rib-B-Q Sandwich, Potato Wedges & Tallsup
\$1.99

BREAKFAST COMBO

Sausage & Biscuit, Hash Brown w/22 oz. Fountain Drink or 16 oz. Coffee
\$1.59

Shur Fine

- Cottage Cheese .12 OZ. CARTON **\$1.49**
- FRENCH ONION OR **Green Chili Dip** .8 OZ. CARTON **99¢**
- Sour Cream** .8 OZ. CARTON **99¢**
- Chocolate Milk** .QUART **99¢**
- Soft Margarine** .16 OZ. TUB **89¢**
- "NEW IMPROVED" **Orange Juice** .QUART **\$1.29**
- CITRUS OR **Tropical Punch** .16 OZ. 2 FOR **\$1.00**

INDIAN SUMMER 64 OZ. APPLE JUICE \$1.99	6 OZ. NABISCO STRAWBERRY NEWTONS 99¢	20 - 16 OZ. SOLO PARTY CUPS \$1.29
---	--	--

CHECK YOUR FRIENDLY ALLSUP'S STORE FOR ADDITIONAL MARKDOWN SPECIALS!

Hwy 70 — Matador

Prices Effective July 30 - August 2, 1997 • OFFER GOOD WHILE SUPPLIES LAST

Letter to the Editor

South Plains Fair Set For September 20-27

Dear Carla,

We are pleased to read about all of the plans for Homecoming 1997. The Class of '57 is working on a good get together for both Friday and Saturday. We have lost touch with one of our graduates, Betty Lou Matney (she had relatives in Paducah) and several that were in our class but moved away before we finished. If anyone knows anything about the following please have them call Christine Green Davis, 806-745-6890 (Lubbock) or Barbara (Bobi) Waybourn West, 806-359-5038 (Amarillo).
Lena Mae Madewell
Harold Kindle
Wanda Jo Nolan
Lucille Nolan
Jerry Pyle
Betty Smith
Gary Dale Crump
Sandra Follis
Daul Follis
Elzeta Moseley
James Gordon

LUBBOCK (Special) -- Activities in the Livestock Pavilion during the 80th annual Panhandle South Plains Fair, set for Sept. 20-27, have been announced by Steve L. Lewis, fair manager. Activities include an English-style Horse Show, Sheep Dog Trials, Bull Riding and Harness Driving. Other fair events scheduled in the Livestock Pavilion are open and junior cattle shows. The Open Horse Show, sanctioned by the Southwest Hunter - Jumper Association, will begin at 8 a.m. on the opening weekend of the fair. Officials for the show are Jim Coats, show manager, and Beryl Waddell, show secretary. Clyde Waddell serves as general superintendent of equestrian events and Nancy Norstrom, Escandido, CA, is show judge. Horse show entry forms and entry information is available at the fair office, 105 E. Broadway. Early show

entries are encouraged and should be received in the fair office no later than Saturday, Sept. 14. Show winners will be awarded an estimated \$3,000 in prize money. Sheep dogs will test their herding instincts while their owners compete for \$1,000 in prize money during Sheep Dog Trials Monday and Tuesday at 6 p.m. in the Livestock Pavilion. Show officials for the trials are Greg Vance, superintendent, and Connie Vance, show secretary. For information on the trials contact the Vances at 806/885-2392 or by writing Rt. 5 Box 229-W, Lubbock, TX 79407. The trials are conducted according to Texas Sheep Association recommendations. Championship Bull Riding, featuring to pro and semi-pro bull riders from the Southwest competing for added prize money and a championship belt buckle, kicks off at 8 p.m.

Wednesday, 1994 Bull Riding Champion Booger Gleghorn, Lubbock, was a repeat Champion in 1996. Produced by Charley Thompson's C-Bar-C Rodeo Company, contest entry information is available by calling Thompson at 806/794-2317. A Harness Driving competition, featuring drivers in shiny buggies handling high stepping horses, is set for noon Friday. Drivers will compete for cash premiums and advanced entries are encouraged. For Harness Driving entry information contact Ray Thomas, superintendent at 4750 47th St., Lubbock, TX 79414. Judge for the event is Scott Sturgeon from Canyon. The show is supported by the Llano Estacado Driving Society. Livestock Pavilion admission for these events is free. Information concerning these shows or other fair entertainment is available from the fair office or show officials.

Ticket orders by mail for the fair coliseum shows by country music entertainers are being received and processed daily by fair office personnel, according to Lewis. Performers include Grand Ole Opry stars Connie Smith and Stonewall Jackson with guest appearances by Bobby Bare and Stella Parton, Sept. 20; contemporary Christian music group Petra, Sept. 21; Country comedian Bill Engvall, Sept. 23; Tejano music stars Robert and Bobby Pulido, Sept. 24; Diamond Rio, Sept. 26, and Marty Stuart, Sept. 27. Petra tickets are \$8 for general admission to one show only at 7 p.m. All other show tickets remain at \$10. All other shows will be at 7 and 9 p.m. except for the Grand Ole Opry Show which will have 2 hour shows at 4 and 7 p.m.

To order tickets by mail write to SHOW TICKETS, P.O. Box 208, Lubbock, TX 79408. Enclose a check or money order for the tickets requested, \$1 for handling charges, requested performers and show times and a stamped, self-addressed envelope. Persons charging tickets by mail or phone to their MasterCard/Visa credit card must supply the card number, expiration date and card holder signature. Tickets ordered by mail will be sent to customers about August 1. Across the counter ticket sales for fair coliseum entertainment begin Monday at the following locations: Luskey's Western Store, 2431 34th St.; Ralph's Records, 909 University or 3322 82nd St.; Tejas Western Store, 5715 19th St.; and the fair office, 105 E. Broadway.

Supplemental TASP Test Offered At Tech

Title V Clinics To Change Management

We enjoy the paper very much and thanks for your help.
Barbara Waybourn West

Levelland -- For college students who need to take the TASP test prior to the beginning of the fall 1997 semester, a supplemental administration of the exam will be given Aug. 16 at Texas Tech University, one of 11 selected sites around the state. Test time is 8 a.m. The test is open to prospective students of South Plains College as well as prospective students at area colleges and universities, said Gracie Quinonez, SPC testing coordinator. Students can register by contacting the TASP registration phone line at (512) 927-5398 between 8 a.m. and 7

p.m. (CST) July 28-31 and Aug. 1, 4-8 and 11-13. Calls will not be accepted prior to July 28 or after Aug. 13. TASP, which stands for Texas Academic Skills Program, is a test measuring college-level skills in reading, writing and math. All new students entering Texas colleges and universities are required to take the TASP test prior to the end of the semester in which they earn nine or more semester hours of college-level credit. The test indicates if a student possesses adequate basic college-level skills necessary to begin an undergraduate degree.

Full-time and part-time students who have not earned at least three semester hours of college credit prior to the fall of 1989 must take the TASP test with certain exceptions. Students who have obtained certain high scores on the TAAS, ACT or SAT tests are exempt, along with students enrolled in certain certificate programs, veterans who have completed basic training prior to the fall of 1989 and persons 55 and older who are not seeking a college degree or certificate. For more information on the TASP testing procedure, contact the SPC Guidance and Counseling Office at 806-894-9611, ext. 2367.

Title V clinics on the South Plains will come under new management within the next few months, according to a joint announcement today from Texas Department of Health and Texas Tech University Health Sciences Center officials. Under a contract with TDH, Texas Tech has provided services since October 1995 to Muleshoe, Floydada, Matador, Guthrie, Spur, Dickens, Ralls, Post, and Tahoka. But Texas Tech and TDH officials anticipate a change in clinic management by the end of September. "The Department of Health appreciates the effort and funds that Texas Tech has put into operating these clinics over the past two years," said Dr. James Morgan, regional director for TDH. "We will work closely with the

Health Sciences Center to ensure a smooth transition of managing these clinics to another provider." Texas Tech University Health Sciences Center spokesman John Walls said, "With recent changes that decrease reimbursement from Medicaid and other reductions in available state and federal funds, it is no longer financially feasible to continue managing these clinics. As a result, the Health Sciences Center has decided not to seek to renew the contract." The Title V Program uses federal and state funds to provide prenatal, child health, family planning and dysplasia services to low-income mothers and children who do not qualify for Medicaid and cannot afford insurance.



Kenneth Arnold filed the first official flying saucer sighting, June 24, 1947, while flying near Mt. Rainier.

Steakhouse Open
Saturday Night 5 - 9 p.m.
Ask us about our catering!
Nielson's Restaurant & Catering
304 E. Houston, Floydada 983-3464

School News & Notes
Parents of school children who have hay fever won't be too surprised at the "nosing out" of this statistic: Hay fever—also known as allergic rhinitis—accounts for two million lost school days each year.

Symptoms include sneezing; coughing; itching, watering eyes and running nose—all of which can add up to difficulty in concentrating in school. The result can be lower grades. Sometimes, the remedies for hay fever can be just as irritating as the symptoms. Most over-the-counter medications cause drowsiness. This means children who have taken an antihistamine to relieve the symptoms of hay fever may tend to be inattentive during class. This is why many parents are asking their doctors about a prescription antihistamine that doesn't cause drowsiness while it relieves hay fever symptoms. The new medication gets high grades from parents and school children alike.

A taste of irony has kept more hearts from breaking than a sense of humor—for it takes irony to appreciate the joke which is on oneself.
—Jessamyn West

WE'RE OVERSTOCKED!
USED CARS & TRUCKS
94 Chevrolet Crew Cab \$14,500
88 Buick LaSabre \$3,995
91 Chevrolet Astro Van \$5,500
87 Dodge Caravan \$3,950
PROGRAM CARS
96 Olds Cieras 4-Door \$10,500
95 Cadillac Pearl White, 40,000 miles \$20,500
95 Dodge Pickup 4x4, Reg. Cab \$14,500
90 Mazda B2000 Pickup \$2,500
84 Lincoln Continental \$1,750
91 Jeep Wrangler 4x4 Soft top \$7,250
96 Chevy Lumina \$12,400
96 Geo Tracker Convertible 4 x 4 \$10,500
96 Chevy Cavalier-2 in stock Raspberry or Blue, Your Choice \$9,750

New to You
A Quality Clothing Consignment Shop
Located Inside City Grocery - 211 Broadway, Roaring Springs
Annette Hollinsworth - Owner
SUMMER CLEARANCE SALE!
50 - 75% off all Summer merchandise
806-346-7120 or 348-7228 T-S 10:00 - 6:00

New Unit Rebates and Cheap Interest
All 97 2-Wheel Drive C-Series Pickups
5.9% Interest up to 60 months.
Regular cab, Extended cab and crew cab
\$1250 Rebate on Camaros
\$750 Rebate on Luminas
\$750 Rebate on Monte Carlos
\$500 Rebate on Cavaliers
OR 2.9% GMAC for 1-48 months
3.9% GMAC for 49-60 months
\$1250 Rebate on S-10 Pickups
\$1500 Rebates on S-10 Blazers
up to \$2000 Rebate on Astro
OR 2.9% GMAC for 1-48 months
3.9% GMAC for 49-60 months

Luxury Conversions
97 Chevy Astro Vans with full Luxury Conversion
choice of white or light carmine red
List Price \$25,450
Dealer Discount \$2,050
Rebate* \$3,500
Sale Price \$19,900
Oldsmobile
2.9% financing up to 48 months on Achieva, Cutlass Supreme, 88, LSS & Regency
ROBERT HALL
CHEVROLET / OLDSMOBILE
501 Main Street Jayton, Texas
www.roberthall.com (806) 237-2182
*or alternate financing of 2.9% APR for up to 48 month or 3.9% APR for 60 months.

Motley County Chamber of Commerce
THIRD ANNUAL BANQUET
Thursday, August 7, 1997
7:00 p.m. in the School Gymnasium
Featured Speaker: **KENNETH L. CHAMBERS**
"The Cellular Cowboy"
◆ Raised in the Ranch Country of West Texas!
◆ "Special Texas Ranger"
◆ "Field Inspector" Texas & Southwest Cattle Raisers Association
◆ "Customer Satisfaction." Facing the Challenge of Change in the "Nineties"
Presents:
The Funny Side of Catching Cattle Rustlers
or
How NOT to STEAL CATTLE FOR FUN AND PROFIT!
plus . . .
Musical Renditions by the 3M COMPANY
TICKETS: \$10 Each, Available at Local Businesses or from Chamber Members
(Please purchase tickets by August 3. Tickets are required for admission.)
DOOR PRIZES: Two \$100 Bills & Two Pure Silver Dollars. Winners MUST be present!
COMPLETE BARBEQUE SUPPER: Casual or Western Attire
For more information, call President Jeff Thacker, 348-7546 or Secretary Charles Keith, 347-2283

Farm & Ranch News

Lab Finds "Mad Cow" Signs Completely Absent In Texas

College Station -- No signs of "mad cow disease" have been found in Texas by the state's only laboratory which handles bovine autopsies, the laboratory's director said.

"All the work we have done indicates there have been no cases of bovine spongiform encephalopathy, or 'mad cow disease', in Texas," said Dr. Konrad Eugster, executive director of the Texas Veterinary Medical Diagnostic Laboratory.

As part of its work and at the request of ranchers and veterinarians, the laboratory handles autopsies on any Texas cattle whose cause of death is uncertain. Brain lesions characteristic of BSE would be readily noted and the brains sent on to the National Veterinary Services Laboratory, a unit of the U.S. Department of Agriculture, for tests confirm the presence of BSE.

"The lesions are characteristic

enough that any pathologist would at least suspect BSE, and we have not seen these lesions," Eugster said. "We look at every bovine brain, an average of 450 to 500 a year, even if we are already certain of others causes of death."

The laboratory has tracked information for the USDA on bovine brain specimens both examined and sent on for further analysis. Between the 1990-91 and 1994-95 fiscal years, the lab examined 2,354 brains, an average of 471 per year, and none had to be sent on to the USDA.

Those figures are consistent with both previous years and current figures, Eugster said.

"That would be some 5,000 brains in the last 10 years, and I am certain that we have not found any lesions during that time," said Eugster, who has directed the laboratory since 1980 and has been employed there since

1970. "That should be a statistically significant sample."

BSE is one of a category of diseases called transmissible spongiform encephalopathies, of which Creutzfeldt-Jakob disease is the human form. Researchers suspect cases of BSE in England may be related to a new variant of Creutzfeldt-Jakob disease identified in England, although the links have not been confirmed.

Recent news articles have reported incidences of Creutzfeldt-Jakob disease in East Texas. In response, the Texas Department of Health issued a statement in late June saying no evidence of BSE in cattle or the new variant of Creutzfeldt-Jakob disease in humans has been found in the United States.

Creutzfeldt-Jakob disease is usually found in levels of approximately one case per million people in the United States, but the new variant has been found only in England and France.

Clarendon College Offers "Bottom Line Farming" Class

Clarendon College will offer the "Bottom Line Farming" curriculum on Financial Management in Agricultural in Silverton during August. The class will be taught at Silverton High School. The class will start on Tuesday, Aug. 10, 1997 at 6 p.m. and finish at 10:30 p.m. The balance of the class will be taught on the same schedule for every Tuesday and Thursday in

August.

Registration for this class will be conducted the first class meeting. Spouses are encouraged to attend. This class meets the requirements for financial training of the FSA. If you have any questions please call Dr. Don Williams at 806-874-2313, or your local FSA office.

FISH



Now is the time for Pond and Lake Stocking of Hybrid Bluegill, Florida Hybrid Bass, Channel Catfish, Fathead Minnows, Triploid Grass Carp.

Permit required for Triploid Grass Carp.

The Hybrid Bluegill can REACH the weight of 2 1/2 to 3 lbs.

We furnish your Hauling Containers. We guarantee live delivery.

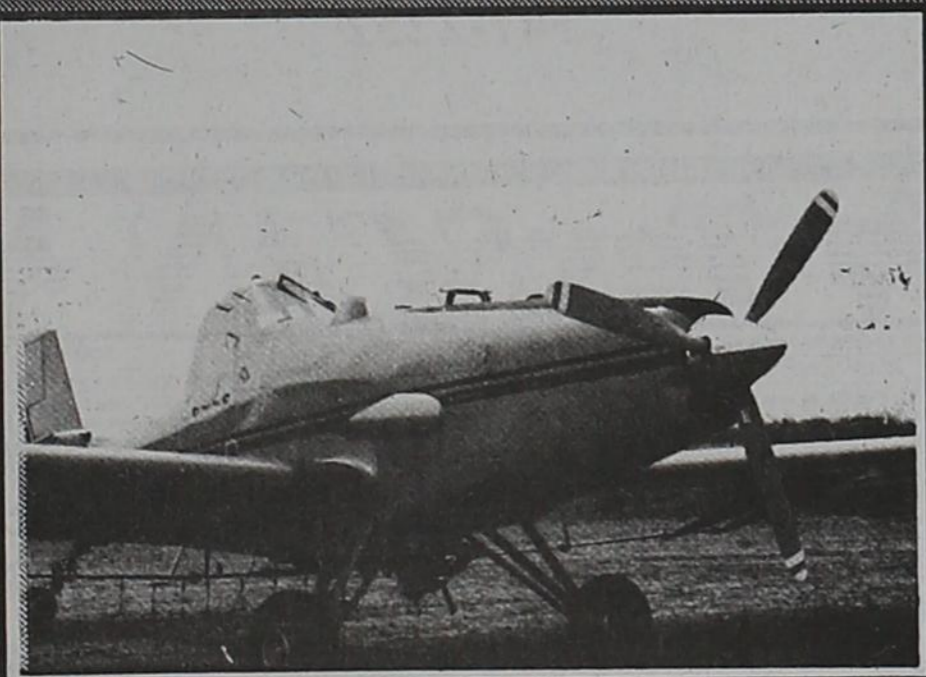
Supplies - Spawning Mats, Turtle Traps, Fish Traps, Liquid Fertilizer, Pond and Lake Surveys, and Gift Certificates. Delivery will be Tuesday, August 5, at the times listed for the following towns and locations.

- Paducah - Farmers Coop Gln, 492-3282, 8 - 9 a.m.
- Roaring Springs - Thacker Supply Co., 348-7216, 10 - 11 a.m.
- Floydada - Producers Coop Elevator, 983-2821, 12 - 1 p.m.
- Ralls - Crosby County Fuel Assoc., 253-2518, 2 - 3 p.m.
- Spur - Farmers Coop Gln & Supply, 271-3391, 4 - 5 p.m.

To Place Your Order Call:
405-777-2202 - Toll Free 1-800-433-2950 - Fax 405-777-2899
Or Contact Your Local Feed Dealer
Fishery consultant available.

Discounts and Free Delivery are available on larger orders.
DUNN'S FISH FARMS, INC.
P.O. BOX 85 FITTSTOWN, OK 74842

AERIAL CROP APPLICATION



- Competitive spraying rates
- Faster service
- Exact chemical measurements & applications through new satellite guidance system

Cone Aerial Spraying

Serving Crosbyton, Dickens, Motley County, Spur, Ralls, Lorenzo

P.O. Box 190 — Ralls, Texas 79357
(806) 657-4679 Home
(806) 657-7972 Mobile
(806) 657-4461 Airport

Marlor Suhr-Owner
Reliability, Honest & Dependable Service

SAMPLE BALLOT

Special Election (Elección Especial)
(Condado de) **MOTLEY**, County, Texas
August 9, 1997 (agosto de 1997)

OFFICIAL BALLOT (BOLETA OFICIAL)

INSTRUCTION NOTE: (NOTA DE INSTRUCCION):

Place an "X" in the square beside the statement indicating the way you wish to vote. (Por favor de marcar con una "X" el cuadro al lado de la frase que indica la manera en que quiere usted votar.)

No. 1

FOR (A FAVOR DE)

AGAINST (EN CONTRA DE)

"The constitutional amendment providing school property tax relief by increasing the residence homestead exemption by \$10,000 and providing for the transfer of the tax limitation to another qualified homestead for persons over 65 and a reduction in taxes on homesteads subject to the limitation." ("Enmienda constitucional que dispone desgravación con respecto al impuesto escolar sobre la propiedad mediante el aumento de \$10,000 con respecto a residencias familiares, disponiéndose también la transferencia de la limitación tributaria concedida a personas de 65 o más años de edad a otra residencia familiar calificada, así como una reducción de impuestos sujeta a dicha limitación.")

AARP Urges Senior Citizens To Vote August 9th

(Austin, TX) -- Texas members of

the American Association of Retired Persons (AARP) and other senior citizens are being urged to vote August 9, 1997 on a number of Constitutional Amendments which will be offered as a result of action taken by the 75th Legislature.

Of particular interest to homeowners will be a proposal for an increase in the school property tax homestead exemption to \$10,000 and limiting the school property tax rate increases to eight cents above the rollback rate and transferring the over 65 tax freeze to a new homestead. If this measure is passed, it will apply to the tax year beginning January 1, 1997.

A related bill, Senate Bill 841, addresses concerns dealing with appraisals. Appraisal procedures are defined and voting is required for rate increases. Tax deferrals or abatements are allowed for the elderly at 8 percent

interest under this measure. An annual appraisal increase may not exceed 10 percent. Public hearings are required if the effective tax rate is increased more than 3 percent, and the appraisal appeal process is simplified.

Another tax measure, SJR 43, to be voted on November 4, 1997, is a Constitutional Amendment to limit increases in appraisals and to make property tax freezes portable.

Property tax reform was a priority for AARP's state legislative committee during the 1997 session. AARP is the nation's leading organization for people age 50 and over. It serves their needs and interests through legislative advocacy, research, informative programs and community services provided by a network of local chapters and experienced volunteers throughout the country. The organization also offers members a wide range of special membership benefits.



Obtaining an unbiased evaluation of the quality of raw cotton fiber is the foundation of every cotton producers marketing efforts.

Present use of High Volume Instrument (HVI) classing technology by the United States Department of Agriculture Cotton Division has proven to be a boon to producers across the Cotton Belt. For cotton growers in the Texas High Plains the move to HVI testing has been a leading factor in the area's recent quality improvement.

HVI doesn't make High Plains cotton better, it simply provides a mechanism to assign a more unbiased quality measurement of the cotton produced in this area. HVI has proven what growers in this area have known for years, that High Plains Cotton was the victim of an underserved, low quality, reputation.

"When the move to adopt HVI technology began here on the High Plains," says PCG President Jackie Burris, "It was felt that any method that would provided a more accurate evaluation of the cotton sample would be a benefit to the cotton producer. The proposed change to an HVI determination of Color is no different."

At the present time only two factors remain the responsibility of the human cotton classer - Color and Trash. The reason for this is simply that early models of the HVI equipment were unable to accurately and reliably determine the color and trash components of a cotton sample.

Recently growers in the Mid-South started an effort to add the Color Grade as an HVI measured quality of the cotton sample. It is felt that, by moving to the HVI determination, samples will no longer be subject to the inherent subjectivity involved with human classing.

In order to study the feasibility of such a change the National Cotton-Council has organized the HVI Task Force. High Plains input on the Task Force was provided by Jerry Harris of Lamesa and bill Quattlebaum of Lubbock.

The HVI Task Force has since issued a recommendation that the NCC support the change to HVI technology for color determination.

In implementing such a change the Task Force has also recommended the following:

- 1) That the USDA-Agricultural Research Service and Cotton, Inc. expedite the development and refinement of HVI technologies for determining lint color.
 - 2) That the USDA-Agricultural Marketing Service Cotton Division and Cotton, Inc. begin a comprehensive Statistical Analysis of the various application methodologies to provide for the most accurate assessment of lint color and bale utility, and to determine the cause of discrepancies between HVI and classer grades.
 - 3) That the Secretary of Agriculture, with consideration of the Universal Standards Agreement protocol, devise a method to allow the use of HVI color measurements as the official grade for use when an agreement is reached by the U.S. cotton industry.
 - 4) A cooperative NCC/USDA assessment of the Commodity Credit Corporation loan schedule of premiums and discounts to determine if the levels between discounts for "white" and "light-spotted" bales are equitable and reflect actual bale utility value.
- Burris concludes that by presenting a more uniform evaluation of the quality of a bale will allow the marketplace to work out the fairest return to the cotton producer."

WORD of GOD

Give unto the Lord the glory due unto his name; worship the Lord in the beauty of holiness.

Psalms 29:2

Get into the swing of school



Back to School Sale Starts Thursday
Prices good July 31-Aug. 12

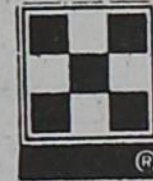
Be sure to see our Sale Circular in this week's Motley County Tribune

Matador Variety

Higginbotham-Bartlett

Farm & Ranch Supplies

Purina Feeds



Hi Pro Vet Supplies

Rentals

- Chop Saw
- Roto Tiller
- Tandem Trailer
- Steam Cleaner
- Roto - Rooter
- Ditch Witch
- Welder

Store Hours - 7 to 5 Monday - Friday & 7 to 12 Saturday
FREE LOCAL DELIVERY

For Your Convenience After Hours Call
Donnie 347-2889 or Fred 347-2304

