

## Health Care Firm Aids Rural Areas In County

By Gerry Burton

(Courtesy Avalanche Journal)

They go at all hours of the day and night—fighting mud, snow, ice and lonely roads—to isolated homes where some elderly person needs a nurse immediately.

They help senior citizens get well and stay that way. But they go further.

They show families how to help an independent pioneer with a last wish, to die at home with dignity.

They teach nutrition, hygiene and sickroom aids for family self-help and offer free blood-pressure clinics.

Sometimes, when government programs and private insurance plans do not cover, their only pay is a smile from the sick, a hug from the bereaved, handmade gifts or homegrown garden produce.

"We're part of the family," said Michelle Bearden and Marie Linson, who started Rolling Plains Health Care seven months ago in Roaring Springs and now have eight employees in eight counties.

A minimum of 1,000 miles a month goes on each vehicle heading out to give health care to homebound patients. That patient could be living alone, miles from the nearest neighbor and many more from the nearest telephone.

Obstacles along the way are multiple—"wire gates that bruise your arm," weather, dogs, herds of cattle, etc. The worst of all is ice on an isolated road with no help available short of a long walk in rough country.

Pickup trucks are standard vehicles of mercy, able to traverse most of the rough roads, but when weather gets really bad, the service has access to four-wheel drive transportation.

Everything they might need along the day's route is carried in the vehicle. Supplies range from standard items like stethoscopes and blood-pressure kits to dressings and medicine a doctor might prescribe by phone.

Two-way radios are a hope for the future, but for now, telephones along the route keep the nurse in the field going on

her way.

"We do a lot of free visits," Mrs. Bearden said. Many of these drop-ins happen as the day's route takes them by a patient under care or just recovered. "We get very attached to our patients. Sometimes we are the only person they see all day."

By knowing their patients personally, they can spot the tell tale signs of approaching problems—color a little off, speech a little slow, handshake a little clammy, eyes a little different.

Other little extras ward off problems if only in the worry and tension line. When their patients want to talk about a new prescription and its side effects or just ease their minds about some everyday something, they call the care office or its founders at home.

"We don't deviate from any regulation," Mrs. Bearden emphasized. Assistance fits the guidelines. The nurses keep in close touch with the patient's physician. Telephone consultations speed help, even when the nurse must drive miles to the nearest phone, relay conditions and receive instructions.

But a lot of needs of rural patients don't fit guidelines "evidently set up for metropolitan areas where a patient can call the doctor and get to the hospital." The gap between needs and allowed assistance recently has widened because of new hospital regulations sending an elderly patient home earlier than before.

"They need a nurse two weeks, and we are only allowed a week," Mrs. Bearden said. That's where a lot of free visits happen, "drop-ins" to keep improvement going.

Many older persons in small towns and in the country live "one to a house" with no one to give them care on any kind. In most cases, the children had to move to metropolitan areas to

make a living. Sometimes, there just isn't anybody. "If they can't get help at home, they have to go to the hospital," said Mrs. Linson.

Home care not only is the cheapest route for medical programs, the care owners insist; it is the humanitarian way to go. This especially is true for rugged individuals who want to die quietly where they have lived, not in a hospital "with tubes running in and out of them" with no privacy. "They want to die at home and their families are afraid to let them."

They also help senior citizens and programs get together wherever possible, but service doesn't wait for paper work and the promise of pay.

Mrs. Bearden and Mrs. Linson were registered nurses working with a metropolitan-based health care service when the idea for the new venture was born. They were in Matador because their husbands were. "We decided a rural area needs a home-based rural health care service." It was approved May 31 and operated out of the old Roaring Springs hotel until a small house in Matador became headquarters.

Their employees grew as word of the service spread from physicians and hospitals, by word-of-mouth from patients and friends. The employees range from registered nurses to health aides and live around the area, gaining rapport with their patients.

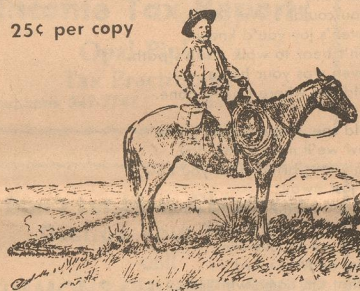
What would ease the entire situation and help both sides of the health care service—patient and nurse—would be programs fitting the needs of rural residents.

Until that time, the Rolling Plains employees will head out much like the pioneer doctor did, ready to help without knowing for sure if payment will come in funds under some program or only in the inner peace of having helped eased suffering.



**KEEPING TRACK**- Michelle Bearden, left, and Marie Linson, who founded a rural health care service in Motley County and now cover eight counties, followed ruts of a dirt road to this home just to check the blood pressure of a patient "not feeling so good today." (Photo courtesy Lubbock Avalanche Journal)

25¢ per copy



# The Matador Tribune

Voice of the Foothill Country

88th year

Thursday, February 16, 1984

Issue Number 7

## John Roberts Buys Summit Savings Assn.

Matador Summit Savings Association has been purchased by John H. Roberts Jr., a San Antonio businessman.

Roberts, chairman of the board and chief executive officer at American Century Corporation, a New York Stock Exchange real estate investment company, purchased the firm from the Texas Savings and Loan Department, which had supervisory control of Summit Savings for the past two years.

State regulators approved the change of control in October, with federal approval coming in November. The sale was completed in December.

Headquartered in Lubbock, Summit Savings has nine other offices, including Plainview, Hale Center, Floydada, Muleshoe, Friona, Littlefield, Farwell and the Dallas suburbs of Plano and Allen.

As of Dec. 31, Summit had assets of \$164 million. Roberts has committed \$17 million in capital to the association.

"Actually we have overcapitalized to show support and strength for this association and our confidence in it," Roberts said. "We have enough capital to grow to about 700 or 800 million," added Mike Holbrook, a director in the association.

Roberts said personnel will remain the same, although

additional staff will be hired as needed to accommodate future branch expansions planned in Plainview, Amarillo, Lubbock and the Dallas-Fort Worth area.

Grady Boyd, Evelyn Mitchell, Myron Morgan and Joe Wilson are vice presidents and will continue to oversee local operations at Summit. Bill Dickenson is the firm's vice president and managing officer but will continue to live in Plano.

"We want to make some commitments to this area and be involved in the general community and the business community," Roberts said. "We want to be very aggressive in the financial services we offer that perhaps have previously only been provided by banks. We want to be strong in business and residential loans."

Roberts also owns Commerce Savings Association, with 14 offices in Dallas, Fort Worth and Houston and intentions of expanding into San Antonio, where corporate offices are located. He said no name change is planned although the name might be changed as the association grows.

Roberts said his American Century Corporation has the highest stock performance of any New York Stock Exchange company in Texas and ranks 22nd in the United States.

## Whiteflat Homecoming Reunion Scheduled

The annual Whiteflat Reunion will be held on Saturday, April 7th, 1984 at the American Legion building in Matador, beginning at 8:00 a.m. Those attending are asked to bring a covered dish for the luncheon.

Pictures are needed for publication in the Matador Tribune. Anyone having pictures

from the 20's, 30's or 40's is asked to send them to Nora Belle Dunning, Box 152, Matador, Texas 79244, by the middle of March. All pictures will be returned to their owners.

All former teachers, students, pastors and residents of Whiteflat are invited to come to the reunion.

## School Board Elections Set For April 7th

Motley County School Board of Trustees elections have been set for the first Saturday in April, April 7.

Positions coming up for elections this year are two three-year terms, held by Roy G. Hobbs and James Taylor, and one two-year term which is the

unexpired term of Donna Sue Thompson.

Last date to file for the school board election is March 7. A person running must declare which seat he is running for.

The City and hospital board elections will be held that same day.

## Newspaper Not Closing Despite All Rumors

Rumors that the Matador Tribune is closing have been flying with the greatest of speed around Motley County but the truth is that subscribers will continue to receive their issues.

Recently the news staff was cut, hours of operation shortened and typesetting equipment moved to Petersburg, but no plans have been made to

stop printing the paper.

Office hours are 9:00 a.m. to 4:00 p.m. on Monday and 9:00 a.m. until noon on Tuesday. News and advertising deadline is noon Tuesday for the following Thursday paper.

Your cooperation in helping us gather news is appreciated. The address is P.O. Box 490, and the phone number is 347-2400.

## Lady Matadors Capture Dist. 7-1A Championship

The Motley County Lady Matadors won the District 7-1A Championship Tuesday in Spur over Patton Springs, 60-51.

Leading the scoring for M.C. was Kim Hand with 30 points and Renee Renfro with 12. The win pushes MC's record to 14-9 and freezes the Patton Springs girls at 15-6.

The Lady Matadors jumped out to a commanding lead early and led 15-6 at the end of the first quarter. MC continued to out-score Patton Springs through the second and third periods, but the Rangerettes staged a do or die comeback in the final stanza, outscoring Motley County 20-13.

The gallant effort, however, was not enough, as the ladies from Motley County had too much of a lead (47-31) going into the last quarter.

In other girls basketball action, Anton beat Whitharral 47-31 for the District 9-1A title, Smyer defeated Wilson 37-36 for the 8-1A crown and Valley won over Silverton 49-43 for 5-1A honors.

The Smyer boys defeated Southland 68-48 to win 8-1A.

## U.S. Bond Sales Up Across State

Sales of U.S. Savings Bonds during the period January through November 1983 in Texas amounted to \$246,681, 983, an increase of 27.6% over the same period a year ago, T.J. Morrow, District Director for the U.S. Savings Bonds Division in Dallas announced. These sales represent 109.8% of the state's 1983 assigned dollar goal of \$224,700,000.

In Motley County, sales of Series EE Bonds amounted to \$1,414 during November 1983,

John Barnhill, Volunteer County Chairman, said. Total eleven-month sales of \$16,915 represent 35% of the County's 1983 assigned dollar goal.

Nationally, January through November 1983 sales of Series EE Bonds totaled \$3.5 billion, an increase of 21% over 1982 sales, representing 102% of the nation's \$3.5 billion goal. Savings Bonds held by the public amounted to \$71 billion as of November 30, 1983, the highest in three years.

# Perspective

Guest Columns  
And Opinions

One Nation Under God

## Why Do Vandals Insist On Fiddling With The Bible

By James Kilpatrick

It probably is a waste of time, energy and indignation to denounce the latest effort to castrate the Holy Bible, but vandalism of this magnitude ought not to go unremarked. The National Council of Churches is out to take the sex out of Scripture. In the name of God, what is the council up to now?

This particular piece of desecration is a 112-page "Inclusive Language Lectionary" intended for use in Episcopal, Methodist, Lutheran, Presbyterian and Roman Catholic churches. A lection is a liturgical lesson for a particular day. Passages come from both the Old and the New Testaments.

The council's purpose is to rewrite these passages so as to eliminate references to gender, or as an alternative, to spread the gender around. Thus Jesus no longer would be identified as the "son" of God, but rather as the "child" of God. In this egalitarian version, it is "God the Father (and Mother)." The word "king" gives way to "ruler," and "kingdom" yields to "realm." No

longer is a promise made "to Abraham and his descendants," but rather "to Abraham (and Sarah) and their descendants."

Up to a point, it is possible to be sympathetic toward the aim of these misguided revisers. In recent years most of us in the writing business have become sensitive to feminist complaints against sexism in the English language. There is something to be said for the argument that such terms as "manpower" and "man-hours" tend to denigrate the value of women's role in the marketplace. When it is possible to avoid offense by eliminating pronouns of gender, it is a fair and prudent thing to do so.

But the rewriting urged by the National Council of Churches is indefensible. One example will suffice. In Matthew's account of the Last Supper, Jesus announces that he is about to be betrayed, and the apostles ask, Lord, is it I? The King James version continues: "And he answered and said, 'He that dippeth his hand with me in the dish, the same shall betray me.

The Son of man goeth as it is written of him; but woe unto that man by whom the Son of man is betrayed!"

The NCC's new lectionary would put it this way: Jesus answered, "The one who has dipped a hand in the dish with me, will betray me. The Human One goes as it is written, but woe to that person by whom the Human One is betrayed!"

The first trouble with that abominable revision may be stated simply: Matthew never wrote it that way. The Gospels were written in Greek. I will not be drawn into an argument about divine inspiration and the word of God; theology is off my beat. But I know something of the art of translation and of the respect that is owed to an original author.

It is patent dishonesty - it is an act of corruption in the most literal sense - to put into the mouth of Matthew words that Matthew did not say. John never wrote that "God so loved the world that God gave God's only Child." The Greek passage cannot possibly be mistranslated

by anyone who sets out to do a faithful job. The words are not "only child." The words are "only son."

The council's recasting is not only dishonest; it is the product of an essentially mistaken notion that "man" is invariably a sexist noun. This is nonsense. Only the most wildly militant feminists believe that "Man does not live by bread alone" applies to males only. Who is so blockheaded as to argue that "mankind" excludes women? The NCC revisers evidently are that blockheaded. Observe the contrived and clumsy translations they have cooked up in this lectionary.

My guess is that most congregations will reject the council's neutering out of hand. The new lectionary is only the most recent of a score of well-intended efforts along the same line. None of the predecessors has caught on, and I doubt that English-speaking Christians are yet ready to address their prayer to God the Father (and Mother), or to God the chairperson either.

### If You Could See Where I Have Gone

If you could see where I have gone,  
The beauty of this place,  
And how it feels to know you're home  
To see the Saviour's face.  
To wake in peace and know no fear,  
Just joy beyond compare,  
While still on earth you miss me yet,  
You wouldn't want me there.  
If you could see where I have gone.

If you could see where I have gone,  
Had made the trip with me  
You'd know I didn't go alone,  
The Saviour came with me.  
When I awoke, He was by my side,  
And reached down His hand,  
Said "Hurry, you're going home  
To a grand and glorious land.  
Don't worry over those you love,  
For I'm not just with you,  
And don't you know with you at home  
They'll long to be here too?

If you could see where I have gone,  
And see what I've been shown,  
You'd never know another fear,  
Or ever feel alone.  
You'd marvel at the care of God  
His hand on every life,  
And realize He really cares,  
And bears with us each strife.  
And that He weeps when one is lost,  
His heart is filled with pain,  
But oh the joy when one comes home,  
A child at home again.

If you could see where I have gone,  
Could stay awhile with me,  
Could share the things that God has made  
To grace eternity.  
But, no, you couldn't ever leave,  
Once heaven's joy you'd known,  
You couldn't bear to walk earth's paths  
Once heaven was your home.  
If you could see where I have gone.

If you could see where I have gone,  
You'd know we'll meet some day,  
And though I'm parted from you now,  
That I am just away.  
'So, thank you Mother, thank you Daddy,  
For living for the Lord,  
For teaching me to love Him,  
To trust Him and His word,  
And now that I'm home with Him,  
Secure in every way,  
I'm waiting here at Heaven's door  
To greet you some sweet day.

—Author Unknown

### Hints

By Catherine Henderson

- 1) People who own land—keep the land if you have to go barefooted. The land from Matador to 50 miles on the other side of Lubbock will produce some of the finest pecans and pecan orchards and grape vineyards and grapes in the world. The Concord Grape vine doesn't bloom until about May. It seldom freezes.
- 2) 1983 people from France were all over Texas trying to buy grapes. The farmers have control of the land. God owns the earth. If you can't give to the church, help a family that is not as prosperous as you are. God is just loaning the land to you.
- 3) On the side of a hill or mountain, or terraces make a good vineyard. Set out grapevines 10 to 12 feet apart. Leave the longest vine. Eventually, it will help support the vine.
- 4) Right under the gull of the grape there is a full substance that kills infections. You can use grapes for many things.

### Commandments For Teenagers

1. Stop and think before you drink.
2. Don't let your parents down, they brought you up.
3. Be humble enough to obey, you will be giving orders yourself some day.
4. At the first moment turn away from unclean thinking.
5. Don't show off when driving—if you want to race, go to Indianapolis.
6. Choose a date who would make a good mate.
7. Go to church faithfully—give Him back at least an hour—He gives us a week.
8. Choose your companions carefully. You are what they are.
9. Avoid following the crowd. Be an engine, not a caboose.
10. Recall the original ten commandments.

—by a teenager.

If you have local news, call 347-2400.

### Matador Tribune

Publication Number 333700

Phone Number 806-347-2400

Published weekly by Tribune Publishing Company, 1001 Main, Matador, TX. 79244. Second Class Postage paid at Matador, Texas 79244.

### Why Business Is Bad

January—people spent all their cash for the holidays.

February—all the best customers have gone South.

March—unseasonably cold, and too rainy.

April—everybody's preoccupied with income taxes.

May—too much rain, farmers distressed.

June—too little rain, farmers distressed.

July—heat has everyone down.

August—everybody away on vacation.

September—everybody is back, broke.

October—customers waiting to see how fall clearance sales turn out.

November—people too upset over elections.

December—customers need their money for the holidays.

### Your Name

You got it from your father, It was all he had to give, So it's yours to use and cherish For as long as you may live.

If you lose the watch he gave you it can always be replaced, But a black mark on your name, son, Can never be erased.

It was clean the day you took it, And a worthy name to bear. When he got it from his father There was no dishonor there.

So make sure you guard it wisely, After all is said and done, You'll be glad your name is spotless When you give it to your son.



We started numbering our highways on a nationwide basis in 1925, adopting the now familiar U.S. shield sign.



Bird banding was first done by John James Audubon in 1803, in Pennsylvania.

## WASHINGTON'S BIRTHDAY SPECIALS

\* PRICES EFFECTIVE FEBRUARY 16-18, 1984 WHILE SUPPLIES LAST



**DIET, LIGHT, & PEPSI FREE**

**PEPSI**

2 Liter  
No Return Btl.

**99¢ each**



**NEW O'GRADYS**

**99¢** THE MORE POTATO POTATO CHIP!

Reg. \$1.49  
Reg. & AuGratin Flavor



**BORDEN'S CHOCOLATE MILK**

**69¢** QT. CTN

**ALLSUP'S FAST CONVENIENT MONEY ORDERS**

**29¢** UP TO \$299.99

EACH

**BORDEN'S ASST. FLAVORS**

**ICE CREAM**

**\$1.79** 1/2 GAL. RND CTN



**BURRITOS**

**2.99¢** FOR

24 OZ.

**Fountain Drink 39¢**

**Scott Towels 69¢**

4-Roll Bathroom Tissue

**Nice & Soft \$1.09**

Shurfine 5 lb. Bag

**Sugar \$1.49**

**Discontinued Items Sale 50% OFF REG. PRICE**



**ALLSUP'S CONVENIENCE STORES**

**"THERE'S ONE NEAR YOU"**



## Branding Iron Restaurant

**Open Daily 10:30 a.m.**

**Friday Special**  
Fish Fry

**Saturday Night Special**  
Mexican Food

**Carry-Out Orders**  
Call 347-2266

## World Wars Remembered By El Progresso Club

It was with mixed emotions that members of El Progresso Club remembered events surrounding both World War I and World War II, when the organization met Thursday, Feb. 9 at Summit Savings Community Room, for a program on Motley County Memories of World War II.

Mrs. W.D. Lipscomb was hostess for the meeting, and Mrs. John Hamilton, president, served as leader after Mrs. Robert Darsey read the yearbook quotation: "There is no atheist in a foxhole," by William Thomas Cummings in a field sermon at Bataan.

Since the program was planned for member participation, every person shared her memories, which ranged from cross-country trips by wives with small children, to join a husband and father, to a rationing of sugar, coffee, cigarettes, nylons, gasoline and tires for those who remained at home. Several remembered the sewing room which was established for those who contributed to the war effort by making garments, rolling

bandages or knitting. Miss Mary Keith recalled that she did similar work during World War I. For a few younger members, World War II was an event remembered only through accounts they had heard their parents relate.

For Inspirational Thought, Mrs. Furman Vinson read a poem, "Be a Winner."

A Valentine motif was used by Mrs. Lipscomb for table decorations as she served coffee and spiced tea with Red Velvet cake, nuts and fudge. The table was covered with a lace cloth, underlaid with red, and centered with a vase of red roses, a birthday gift to Mrs. Lipscomb from her husband.

Assisting with the refreshments were Mrs. Ted Elliott and Mrs. Una Simpson.

Also present were Miss Rachel Patton, and Mesdames R.W. Overstreet, Bill McCaghren, Gus Bird, J.E. Edwards, L.B. Campbell, Joe Campbell, C.D. Garrison, Douglas Meador and E.A. Day.

## Roaring Springs News

By Odessa Mullins

Mr. and Mrs. Polk Cooper visited Mesdames Jessie Freeman, Bennie Wilson, and Ollie Echols at the nursing care center in Floydada Sunday.

Mrs. Amy Harris of Slaton visited here with her brother, M.D. Freeman and her longtime friend Mrs. Lillian Thacker; She spent Friday evening with her brother and was the overnight guest of Mrs. Thacker. The two ladies went to Quanah Saturday for an overnight visit with their friend Mrs. Delma Meacham.

Among those visited by Mr. and Mrs. T.W. Sain of Amarillo and Mr. and Mrs. Hubert Holcomb of Crosbyton Saturday were their sister and husband, Mr. and Mrs. Carroll Pierce and their old friend Mrs. Roxie Lewis. The ladies are the daughters of the late Rev. and Mrs. Bery Watson, long time area residents.

Mr. and Mrs. L.M. Miller dept medical appointments for 3 months checkups in Plainview Tuesday. Saturday they visited Mr. Miller's sister, Mrs. Pearl

Costelow, in Spur.

Mrs. Minnie Dye spent several days last week in the Chet Dye home in Crosbyton, keeping Erica and Crystal company while the other family members were at school. Mrs. Chet Dye was called upon to help out at school because the flu epidemic had stricken so many of the regular teachers.

Mrs. Eliza Kingery was hospitalized for a few days rest at Crosbyton Friday morning. Mrs. Lauree Kingery drove her to Crosbyton.

Bess Furgeson and Alma Sprayberry visited in Floydada Nursing Home Saturday afternoon with Jessie Freeman and other residents from this area.

Lena Cook visited Friday afternoon with Bessie Saulcy and Allie Lawrence.

Mrs. L.A. Mullins accompanied by Bessie Saulcy and Allie Lawrence spent the day in Lubbock Tuesday with Billie Rivenback. Mrs. Mullins attended a S-P-A-G meeting.



**MARRIED 50 YEARS-** Mr. and Mrs. George Clinton Hobbs of Floydada will celebrate their Golden Wedding Anniversary Sunday, Feb. 19, 1984, at the home of their son Roy in Matador. The Hobbs were married Feb. 20, 1934. She was the former Ruby McCleary.

### Library Notes

By Beverly Darsey

We are so very grateful to the many volunteers who are coming to help in the library. We thank Freda Keahy, Edna Ruth Green, Liller Garrison, Evelyn Garrison, Winifred Lee, Marisue Potts, and Sandra Francis for their help during the last 3 weeks.

We appreciate the contribution of a set of cassette tapes entitled **The Holy Bible: King James Version, New Testament** presented by Janelle Jackson Shirley of Odessa in memory of her parents, James Andrew Jackson and Bertha Frances Wideman Jackson. Patrons may listen to these tapes in the library facility (a cassette player is available), or they may be checked out of the library for use on the patron's own cassette player.

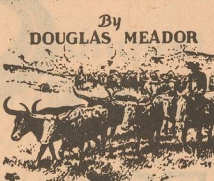
New nonfiction arrivals: **Soft**

**Toys to Stitch and Stuff; Monte Foreman's Horse-Training Science; Weight Watchers Fast Fabulous Cookbook; Betty Crocker's Chinese Cookbook; Collecting American Country; The Navajos; The Cherokees; Last of a Breed** by Martin H. Schreiber; and **Approaching Hoofbeats: The Four Horsemen of the Apocalypse** by Billy Graham.

New fiction arrivals: **Spiral Staircase** by John Wainwright; **Rose White, Rose Red** by Daisy Vivian; **Dream West** by David Nevin; **Coast Highway 1** by Elizabeth Ward; **The Emerald Illusion** by Ronald Bass; **Poker Game** by Fletcher Knebel; **LaBrava** by Elmore Leonard; **Hawaii** by James Michener; and **Passing Through Havana** by Felicia Rosshandler.

NOTE: the library will be closed February 24 and 25.

### TRAIL DUST



By DOUGLAS MEADOR

One of the most tragic mistakes an individual can make is attempting to correct a personal situation which never existed.

First automobile air conditioners in this area were expensive and lacked automatic controls. They were connected by means of the fan belt and operated during the heat season. One owner kept his car heater on to combat the cold during the early spring and late fall periods.

A smile can lift the weight of a heavy heart and a gentle voice can open gates to the verdant pastures of joyful ecstasy.

The old man is gone now, his shuffling feet are silenced and the pain that was in his heart has vanished. His tragic eyes no longer beg for mercy after time had worn blisters on his soul.

Fear is a mighty force which can drive a man to the heights or destroy him like flesh bubbling in a lime pit.

The absence of adequate communication between individuals is probably the greatest source of heartache in the world today. We weigh our own interpretations in the scales that are over-balanced by imagined situations, and held by false facts.

Good merchants know that a well-packaged product properly displayed is half sold. On the other hand, the buyer is torn between emotions and his common sense.

The basic investment in destiny is to be born. Beyond that point every hour of the subsequent days takes part in the finished product. Our only choice in the process is environment.

★



FOR THE SMILE OF HEALTH.



© 1983 Chatterm, Inc.

### Mission Study Begins Tonight

The Women's Missionary Union of Flomot will have a mission study, "We Spell Missions, A-M-E-R-I-C-A," Thursday and Friday, February 16-17 at 7:00 p.m. at the First Baptist Church in Flomot. Mrs. JoAnn Dickson of Matador, Associational WMU director, will conduct the study. The public is extended a cordial invitation to attend.

### LANKART DEALER SINCE 1966

LANKART 611 planting SEED

85% germination Texas Dept. of Agriculture Analysis on each bag

Book Now for **GUARANTEED DELIVERY**

Free Delivery on 20 Bags or More

**BRYANT SEED & DELINTING, INC.**

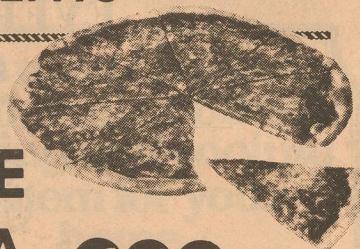


Tahoka, Texas

806-998-4497 - 998-4935 - 745-4192

## Billie Dean's PRESENTS

FRESH HOT  
HOMEMADE  
PIZZA



After 5 p.m. Daily

Sunday Noon Special  
Chicken & Dressing  
Along with our regular lunches, sandwiches and ala carte orders.

Friday Night Special  
Fish Fry \$3.95  
Served with cole slaw, french fries, and hush puppies.



We Still Have Hamburgers  
**Billie Dean's Drive In**

Hours 6 a.m. to 9 p.m. Daily  
Telephone Orders----347-2310

### Invitation

You are invited to attend a reception honoring Mr. & Mrs. George Clinton Hobbs on the occasion of their 50th Wedding Anniversary at the home of their son and family Mr. & Mrs. Roy G. Hobbs, Holly and Heather Sunday, February 19th, 1984 3:00 o'clock until 5:00 o'clock

No gifts please, the honor of your presence is gift enough

YOUR NEAREST  
**H&R Block**  
is located at —  
**106 W. Missouri Floydada, Tex.**  
Call 983-5233



**McADOO HOMECOMING ROYALTY** — Angela Gaskins [center] was crowned McAdoo homecoming queen Friday night during halftime of the Eagles-Patton basketball game. Miss Gaskins, 17-year-old daughter of Mr. and Mrs. Jack Gaskins and a McAdoo

High senior, was crowned by the 1982 queen, Brenda Rodriguez. Princesses were Diana Gonzales [left], daughter of Mrs. Ofilia Gonzales, and Michelle Findling [right], daughter of Mr. and Mrs. Bill Findling.



**KATHARINE J. HARVEY**

**Katherine Harvey Assigned to Air Base in Mississippi**

Airman 1st Class Katharine J. Harvey, daughter of Harvey T. and Mary J. Harvey of McAdoo, has been assigned to Keesler Air Force Base, Miss., after completing Air Force basic training. During the six weeks at Lackland Air Force Base, Tex., the airman studied the Air Force mission, organization and customs and received special training in human relations.

In addition, airmen who complete basic training earn credits toward an associate degree in applied science through the Community College of the Air Force.

The airman will now receive specialized instruction in the administration field. She is a 1983 graduate of West Texas State University, Canyon.

**Whiteflat News**

By Earlyne Jameson

Mr. and Mrs. Henry Schmidt of Mountain Lake, Minnesota visited from Saturday until Monday with Mrs. W.R. Tilson. Mrs. Schmidt and Mrs. Tilson were classmates when attending school in Menahga, Minnesota. This is the first time they have seen one another in 58 years, though they have corresponded through the years. They enjoyed touring the Roaring Springs Ranch, Sunday.

Visiting from Friday until Sunday with Mrs. Janic Dixon were her brother and wife, Mr. and Mrs. Harvey Whitefield of Spearman. They visited in Dickens, Friday with Mr. and Mrs. Pat Garrett and in Spur, Saturday with Mr. and Mrs. Jimmy Whitefield, Paula and Jay, Mr. and Mrs. Harvey Whitefield and Mrs. Dixon were

luncheon guests, Sunday of Mr. and Mrs. Spencer Dixon. Steve Barton and children of Floydada visited Mr. and Mrs. John Barton, Sunday. Mr. and Mrs. Norman Spray of Bedford visited from Friday until Sunday with his parents, Mr. and Mrs. Jack Spray. Other visitors Saturday were Lennie Stan and son, Jonah of Afton.

Mr. and Mrs. Harold Gordon of Post visited the weekend with Mr. and Mrs. Alfred Cooper. The families enjoyed touring the Caprock State Park, Sunday and visited Mr. and Mrs. R.J. Harmon Quitaque.

Mr. and Mrs. Jodie Jameson of Plainview and Mrs. Beulah Jameson of Dougherty visited Mr. and Mrs. H.R. "Skeet" Jameson, Sunday.

**Flomot News**

By Earlyne Jameson

Mrs. James Monk and Mrs. Jeff Sperry met Mr. and Mrs. Elbert Sperry of Idalou and Mrs. Sharon Gabbard and Rebecca of Lubbock at the home of Mr. and Mrs. John Moss of Floydada,

Saturday, Feb. 11. They continued to Booker and attended the wedding ceremony of Miss Leslie Monk and Phillip Ballew held at 7:00 p.m. at First Christian Church.

Kayla Johnson, student at SPC in Levelland and Lucretia Johnson of Vernon visited the weekend with their parents, Mr. and Mrs. Arnold Johnson.

Mr. and Mrs. Jimmy Davidson of Quitaque visited Mrs. Doris Morris, Wednesday.

**CELEBRATES BIRTHDAY**

Mrs. Everett (Nell) Clark was honored on her birthday, Wednesday, Feb. 8 with a party in her home. She received gifts and blew out her candles on a beautiful birthday cake. Hors d'oeuvres, birthday cake, coffee and tea were served.

Those attending were Mesdames Naomi Tilson, Zelma Crump, Catherine Henderson, Elsie Lynn and Lena Cook.

**Birthdays**

- Feb. 16 - J.C. Moss
- Feb. 17 - Ross Bearden
- Feb. 18 - Craig Turner
- Feb. 19 - James Rankin
- Feb. 20 - Arica Cummins, Kody Hardin.
- Feb. 21 - Connie Gragson, Sherry McKelvey.

**Anniversaries**

- Feb. 21 - Bill and Opal Pipkin

**An Open Letter To My Friends**

By Carol McLamb

Don't think me rude if I'm not impressed  
By things that represent worldliness.  
I've learned a few things since my birth  
While rushing round here on this earth.  
Our houses, lands, our furs and cars  
Can in no way compete with stars.  
These are elusive things you see,  
Just loaned awhile to you and me.

Veracity, I do admire,  
To find this is my heart's desire.  
So I have searched and in my quest  
I found that I was most impressed  
By human hearts and what's inside,  
The good within that cannot hide.  
By faith in God and in His word  
By all the truths that I have heard,  
By selflessness and honesty,  
By humbleness and modesty,  
By moral strength and idealism,  
By tolerance and patriotism.

By true love and loyalty,  
And not in the least by royalty.  
These things I find in you,  
In things you say and things you do.  
So, my dear friend, don't be distressed  
If I'm not properly impressed  
By your new car or your new dress,  
For by now you must have guessed  
That it's by YOU that I'm impressed.

**SEMI-ANNUAL SALE**



**ROARING SPRINGS  
SALE STARTS THURSDAY, FEBRUARY 16TH  
THROUGH SATURDAY, MARCH 3RD**

**EVERYTHING IN THE STORE  
50 to 65% OFF**



1.00 ct. DIAMOND DROP  
Retail \$3,600 . . . . . SALE \$1,249

.25 ct. DIAMOND STUDS  
Retail \$420 . . . . . SALE \$147

	Retail	SALE
7 DIAMOND .33 ct. LADIES RING	\$ 980 . . . . .	\$339.
14 DIAMOND 1.38 ct. LADIES DINNER RING	\$ 3,360 . . . . .	\$1,169.
29 DIAMOND 2.25 ct. LADIES DINNER RING	\$ 5,800 . . . . .	\$1,999.
45 DIAMOND 4.51 ct. LADIES DINNER RING	\$10,600 . . . . .	\$3,499.
3 DIAMOND .50 ct. MANS RING	\$ 1,820 . . . . .	\$629.

**14K YELLOW GOLD  
SOLID ROPE**

	Retail	COST
7"	\$70	\$27.95
24"	\$235	\$94.95
30"	\$275	\$114.95

**TWISTER NECKLACES**

DYED FOSSILS . . . . .	\$4.00
MOP & GLASS . . . . .	\$6.00
SEMI-PRECIOUS . . . . .	\$12.00
GOLD-FILLED . . . . .	\$30.00

OPEN 10 A.M. TO 5:30 P.M. MONDAY THRU SATURDAY  
90 DAY LAYAWAY AVAILABLE LOCATED IN BEAUTIFUL DOWNTOWN ROARING SPRINGS 800-692-4249 806-348-3971

## Church and Society

### Local Talent Entertains For Father-Son Banquet

Entertainment for the 47th annual Father-Son Banquet Thursday night, sponsored by the Matador Lions Club, was provided by local talent, a husband and wife team that is becoming in popular demand for similar occasions.

The young minister of the Church of Christ, Tim Ayers and his wife, the former Rosemary Fullingim presented a collection of popular country and western songs, with guitar accompaniment by Mr. Ayers.

The barbecue supper was prepared by a corps of Lions Club members, supervised by Lion Walter Jones, and served in the Motley County High School gymnasium.

Wade Vandiver was Master of Ceremonies for the program, which included Invocation by County Judge Bill Whitaker; group singing of America led by Alan Bingham with Boss Lion Gerald Pipkin at the piano, and introduction of Mr. and Mrs. Ayers by Lion Charlie Johnson. The Scout benediction concluded

the program.

As sponsors of the Boy Scouts, the Matador Lions Club first held a banquet for the troop in 1937. The affair was continued on an annual basis as a father-son-banquet the following year, by the late Paul Eubank, scoutmaster, who was killed in January of 1944 during World War II, in an aircraft carrier crash. A Navy Lieutenant, he was a pilot of an Avenger torpedo diver with Admiral Halsey's fleet. He came here in 1936 and taught in the Matador school system, becoming a community leader. At the time he enlisted in the Navy in February of 1942, he was serving in the Texas Legislature as representative from the 121st district composed of Childress, Hall, Cottle and Motley counties.

Among prominent speakers at the Father-Son-Banquet have been "Dizzy" Dean of baseball fame (1942), former Governor Coke Stevenson (1944) and the late Cal Farley, founder of Cal Farley's Boys Ranch (1946).

### Rev. and Mrs. Willis Host Open House

Rev. and Mrs. Greet Willis were hosts for an open house reception Sunday afternoon at their residence, the parsonage of the First Baptist Church. Rev. Willis recently accepted the pastorate of the church.

Guests were greeted by the couple and conducted on a tour of the newly renovated pastor's home while members of the church assisted with hospitalities. An assortment of fancy

cookies and tea cakes, nuts, mints, punch and coffee were served from the dining table, which was laid with an ecru cutwork cloth and centered with a floral arrangement. Mrs. E.A. Day presided at the silver coffee service and Mrs. James Stanley served the punch.

Approximately 65 people of the community were registered in the guest book.

### Lions Club Plans New Variety Show

For the first time in several years, Matador Lions Club will entertain the public with a variety show, similar to those held annually for many years. Announcement of the forthcoming production, March 29, was made this week by Gerald Pipkin, club president.

Lion Billy Wason has been named general chairman of the show, which will include the customary Lions Queen contest and the popular candy sale, in addition to skits and other stage performances by local talent

groups.

Committees will be appointed to work with Lion Wason in preparing the show, with outside volunteer help of spouses of the club members.

Proceeds of the show will be used by the club for the projects which Lions International sponsors, such as the Eye Bank and aid to the blind, Crippled Children's Camp and other worthwhile causes, in addition to local youth projects, such as Boy Scouts and summer activities.

### Banquet At Church Highlights Love As Theme

An all-church banquet Saturday night at the First Baptist Church featured for a theme, "You Are Loved," with a valentine motif in room and table decorations.

Planned and prepared by a committee composed of Mesdames Glenda Willis, Joann Dickson, Kelly Martin, Rosalee Davis and Miss Loretta Thompson, the decorations included a huge valentine on a white background covering the east wall of the fellowship hall, and proclaiming the banquet theme. A garden scene with a park bench and chairs provided a background for instant pictures which were made of couples and individuals who wished to pose for the photographers, Mary Renfro and Joann Dickson.

Crepe paper runners, cupids, hearts and other emblems in keeping with the occasion decorated the tables, with a round table featuring Cinderella's coach. The

speaker's table was covered with a red lace cloth and decorated with a pair of candle rings in addition to the heart emblems.

Special guests were Rev. and Mrs. Clifton Cooper of Afton and local residents, Mr. and Mrs. Frank Pohl. Rev. Cooper, pastor of the Afton Baptist Church was guest speaker, and his wife, Cheryl sang "If That Isn't Love." Mrs. Pohl provided dinner music with her casio keyboard.

Several "willing volunteers" were called on to perform and included four men who were required to read poems to their wives, and one who sang. The performers were E.A. Day reading "Memory Lane" to Dorothy; James Stanley reading "How Do I Love Thee" to Margaret; Bob Davis reading "To My Wife" to Rosalee; Roger Vinson reading "If I Could Choose" to Doris, and Fred Risser who sang, "Let Me Call You Sweetheart" to Elaine, accompanied by Mrs. Pohl.



MARY ANN WOOSLEY OF LUBBOCK AND MILTON EDWARDS OF TAHOKA announce their engagement and upcoming marriage on April 14, at the First Baptist Church in Tahoka. Miss Woosley is the daughter of Mrs. Vera Tison of Lubbock and the late Arvel Woosley of Seymour. Mr. Edwards is the son of Mr. and Mrs. Robert Edwards of Tahoka. The couple were both graduated from Texas Tech University. Miss Woosley is an associate in Barron Publications in Lubbock. She is a graduate of Matador High School and a former employee at the Matador Tribune. Mr. Edwards is a graduate of Tahoka High School, and farms in that community.

### Social Security News

Terry Clements

University Day at Texas Tech University Feb. 24 will offer prospective students a taste of academic and social aspects of college life.

More than 2,000 are expected to participate, most of them high school students. Registration will begin at 8 a.m. in the University Center Courtyard. A welcome and general assembly will start at 9 a.m. in the University Center Theater.

Afterward, prospective Texas Tech students may receive academic advising, review potential majors and inquire about academic requirements.

Afternoon programs include tours of the campus and individual college facilities.

Thirty-minute bus tours of the campus will also be available.

Texas Tech's six colleges and many academic departments and departmental clubs will operate booths in the University Center Ballroom. Student organizations will have booths in the University Center Courtyard for visitor browsing.

The day's activities will conclude with a two-hour swimming and dance party beginning at 8:30 p.m. at the Texas Tech Aquatic Center.

More than 1,600 visitors, some from as far off as New York and Iowa, participated in the day's activities last year.

For more information, contact the Office of New Student Relations, (806) 742-1480.

## News Of Local Interest

Jewel Landrum celebrated her birthday over the weekend with about 30 guests attending. Helping celebrate were Mr. and Mrs. John Landrum, Mr. and Mrs. Greg Landrum and son Greg, Jr.; Mr. and Mrs. Charles Usery and children, Rachel, Charlie and Matthew; Mrs. Mitchell Hurt and daughter Tamera; and Mr. and Mrs. Albert Landrum and Mark and Leslie Jacobs, all of Red Oak, Texas.

Also visiting were Mrs. Lois Garnett and George Landrum of Dallas; Mr. and Mrs. Jim Jackson of Amarillo; and Mr. and Mrs. Bobby Landrum and daughter Michelle of Odessa.

Others visiting were Mr. and Mrs. Don Jackson and Mr. and Mrs. Jimmy Trammell and daughters Sarah and Rebecca of Abilene.

Local residents helping celebrate the occasion were

Elgie and Roger Evans, Lucille Gaines and Ehtel Jackson.

Mr. and Mrs. B.E. Shaw of Albuquerque, N.M. were visitors last week with her aunt, Mrs. Alvin Stearns. Mrs. Shaw will be remembered here as the former Frances Stearns.

Mr. and Mrs. Bill McCaghen and Mr. and Mrs. J.D. Craven attended the 50th anniversary reception, February 5, for Mr. and Mrs. Lloyd Fulkerson of Odessa, former Matador residents. The Cravens also visited his brother and family, Mr. and Mrs. Arvil Craven of Midland and the McCaghrens visited relatives in Odessa while there.

Mrs. Boyce Hart of Paducah, former Matador resident, visited Sunday afternoon with Mr. and Mrs. J.P. Neighbors and attended open house at the Baptist parsonage.

### NEWS OF SAFETY

A recent survey revealed some cold facts about cold weather accidents. The typical ones involve an ice-covered walkway where someone has made an ineffective attempt at removing ice by chopping it up and shoveling it away. These accidents were serious enough, 85 percent of the time, to result in broken bones or other injuries requiring hospital visits.

Fortunately, there are steps you can take to take the slip out of your steps.

The basics, according to the National Safety Council, involve clearing steps, walks and driveways of snow. After shoveling, don't attempt to chop up the thin undercoating of ice. This does not completely eliminate the hazards; rather, use a fast-acting de-icing agent.

The agent considered most effective is calcium chloride pellets. Used by highway road crews for more than 40 years, calcium chloride pellets will break an ice bond in approximately half the time it takes the same amount of rock salt. At temperatures below



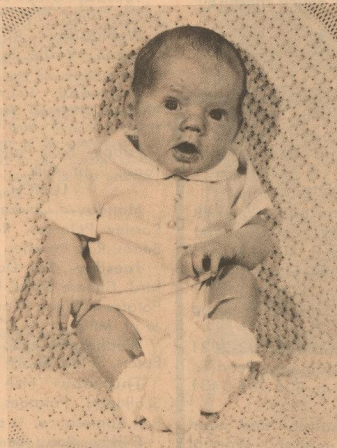
People are less likely to slip on icy walks if calcium chloride pellets are used.

20°F, calcium chloride reacts in minutes, while rock salt is virtually ineffective. Calcium chloride pellets are available under a variety of brand names.

If you do find yourself walking on an icy area, take short steps, with your knees bent, your weight towards the ball of your foot and with your hands at waist level, your arms slightly forward. If you feel yourself falling, bend your knees, tuck your arms close to your body and try to slide after you hit the ground rather than falling flat.

Keeping this advice about ice in mind can help you keep your feet on the ground.

### Editor's Grandparents' Brag Corner



JOHN BARRETT WATSON- Son of Leon and Connie Watson. Grandparents are Mr. and Mrs. Travis Neely of Borger and Mr. and Mrs. C.A. Watson of Muleshoe.

## The most efficient, the most economical heating and cooling system for your home.



### THE Electric heat pump.

It's part of "the plan" — the Energy Saving Plan

THE ELECTRIC HEAT PUMP: It can save you money on your home energy bills. And when it's used along with other WTU-recommended energy conservation measures according to the ENERGY SAVING PLAN, you can save even more. WTU will pay YOU money when your home meets all the E.S.P. requirements that ensure your home to be energy efficient. That's where the ELECTRIC HEAT PUMP comes in — it's part of "the plan" because it's the most efficient system for heating and cooling. During the winter it removes heat from the outside air and pumps it into your home. In the summer it reverses the process and becomes an air conditioner, so you get even comfort year-round. CALL YOUR LOCAL WTU OFFICE OR A FACTORY-TRAINED ELECTRIC HEAT PUMP DEALER TODAY TO FIND OUT MORE ABOUT SAVING ENERGY AND MONEY ON YOUR HOME ELECTRIC BILLS.

WEST TEXAS UTILITIES COMPANY



Remember, REDDY supplies the energy — but only YOU can use it wisely!



The first automobile to cross the United States took fifty-two days to go from San Francisco to New York in 1903.

# Obituaries

## E.G. "Ted" McInroe, 91

Funeral services for E.G. "Ted" McInroe, 91, of Matador and formerly of Afton were conducted Monday at Roaring Springs Assembly of God Church with Rev. Edna Dillard, pastor, officiating. Burial was in Roaring Springs Cemetery under the direction of Seigler Funeral Home of Matador.

Mr. McInroe died Saturday night at his home in Matador, Justice of the Peace Roy Smith ruled death due to natural causes.

He was born December 11, 1892 at Erath County and was the son of the late Patrick and Emma Allen McInroe.

Mr. McInroe had been a resident of the Motley and Dickens county area since 1921. He married the former Grace Harkins at Tolar, Texas on December 24, 1919. He was a retired farmer and a member of the Methodist Church.

Survivors are his wife Grace; a son, Dean McInroe of Roaring Springs; two daughters, Jean Stetson of Yuba City, Ca., and Margie Heinen of San Antonio, five grandchildren and nine great-grandchildren.

Pallbearers were Dean Willmon, Don Baxter, Ira Sullivan, Caldwell Smith, Barney Bridge, and Jimmy Don McInroe.

## Bob Martin, 83

Funeral services for Bob Martin, 83, of Petersburg were at 2 p.m. Wednesday at the First United Methodist Church in Matador, under the direction of Seigler Funeral Home.

Mr. Martin, a native of Motley County, died Monday night at Hi-Plains Hospital in Hale Center. He had been residing at the nursing home there for several months.

Survivors include his wife Ellie Mae, a daughter Elwanda McCaghen of Petersburg, and a son Dwayne Martin of Lubbock.

*John Tower*  
U.S. SENATOR for TEXAS  
WASHINGTON, D.C. 20510



History has shown the strength of a nation is linked to its primary resource -- its people. Citizens are the source of leadership -- military and political -- as well as the foundation for all economic and scientific growth. But only a well educated citizenry can meet the needs of the future.

The American educational system is at a crossroads. We must decide now whether we will allow it to continue to decline or to bring it back into the realm of excellence it once occupied.

To help attain this goal, I am co-sponsoring a resolution to designate 1984 as the "Year of Excellence in Education." This resolution will focus the attention of the nation on strengthening education in America.

As a former educator, I am well aware of the importance of educational excellence. Our future leaders are nurtured in our classrooms. We cannot afford to give our future presidents, generals, scientists and business leaders a second-rate education. Without an excellent public school system, we not only are robbing our children of their future, but also denying our country its continued greatness.

As our nation travels further into the technical age, education will become even more necessary. This is particularly true in the fields of math and science where much of our instruction is lacking. Competent teachers with degrees in these fields are in great demand. However, they can receive higher salaries in private industry than in teaching.

There is plenty of evidence that the need to give our educational system a "shot in the arm" is real. Scholastic Aptitude Test (SAT) scores have declined steadily in the past 20 years. This decline can be blamed on a number of factors, but the result is the same and the problem remains.

Historically, education has always been a prime concern among Texans. The absence of public education was listed as one of the grievances in the Texas Declaration of Independence from Mexico. In 1836, President M.B. Lamar stressed to the Republic of Texas Congress the need for public education. He advocated reserving public lands for schools, a step that was taken with the 1876 State Constitution. Lamar is known as the "Father of Education" in Texas.

Public concern for educational excellence is growing. According to a Gallup Poll, 90 percent of business leaders said the American educational system needs improvement, and 46 percent said education should be a national concern. It's time to thrust America's schools back to the level where they once stood. We must not falter in our duties at a time when the existence of educational excellence could be crucial to the economic future of the United States.

I hope the resolution I have co-sponsored will spur a movement for better schools across America. It should be led by the teachers, principals and parents for they are the front-line soldiers in the education of our children.

The time to act is now. This objective is too important to relax until our schools are the best they can possibly be.

# Applications Accepted For Emergency Loans

Applications for emergency farm loans for losses caused by this summer's drought and extremely high temperatures are being accepted at the Farmers Home Administration (FmHA) offices located in Spur, FmHA county supervisor Larry J. Clements said today.

Motley County is one of 70 in Texas recently named by Secretary of Agriculture John R. Block as eligible for loans to cover part of actual production losses resulting from the drought.

Clements said farmers may be eligible for loans of up to 80 percent of their actual losses, or the operating loan needed to continue in business, or \$500,000 whichever is less. For farmers unable to obtain credit from private commercial lenders, the interest rate on the first \$100,000 borrowed is 5 percent; interest rate is 8 percent on the balance borrowed over that amount. For farmers who can obtain commercial credit but who choose to borrow from FmHA, the interest rate is 13.75 percent.

As a general rule, a farmer must have suffered at least a 30-

percent loss of production to be eligible for an FmHA emergency loan, Mr. Clements said. Farmers participating in the PIK or federal crop insurance programs will have to figure in proceeds from those programs in determining their loss.

Applications for loans under this emergency designation will be accepted till August 1, '84, but farmers should apply as soon as possible. Delays in applying could create backlogs in processing and possibly carry over into the new farming season, Mr. Bivins said.

FmHA is a credit agency of the U.S. Department of Agriculture. It is authorized to provide disaster emergency loans to recognized farmers who work at and rely of farming for a substantial part of their living. Eligibility is extended to individual farmers who are U.S. citizens, and to farming partnerships, corporations or cooperatives in which U.S. citizens hold a majority interest.

The FmHA office in Spur County began February 9, p.m. Monday through Friday.

# County Agent's Corner

By Ray Minkley

We have had a lot of interest lately in the Texas Forest Service windbreak trees. They have available now Austrian Pine and Ponderosa Pine seedlings in containers. They cost \$1.00 each and are sold in lots of 30. The application forms are still available at the Extension office. The pickup date in Lubbock will be March 8.

I called again on Tuesday the 14th and was told they would have the barerooted hardwoods and additional evergreen seedlings available next year. If you need your trees this year I suggest you contact a private nursery. When buying a large number of tree, they may come down on the price.

Follow-up brush control is important to keep brush from regaining a foothold, says a range brush control specialist Tommy Welch with the Texas Agricultural Extension Service, Texas A&M University System. The winter months are a good time for follow-up control measures.

Among these are basal treatment with diesel alone, or in a mixture with 2,4,5-T; 10

percent picloram pellets (Jordan 10K or Grazon 10K) scattered on the soil around the plant; liquid hexazinone (velparl) applied with an exact delivery spot gun; tebuthiuron bullets (Graslan Brush Bullet 250) placed around the plant; and hand or power grubbing.

## 4-H NEWS

The 4-H Rifle Club will be meeting today, Thursday Feb. 16 at 4:30 p.m. in the Summit Savings meeting room.

We will see a slide set on Gun Safety and learn about gun parts, ammunition and how they work, from James Gillespie.

This will be our first meeting this year and we welcome anyone interested to join us. We will be meeting on alternate Thursdays starting in March at the Rifle Club building on Main street in Matador to practice marksmanship.

The 4-H Rifle Club will be for youth ages 12 to senior in high school. The rifles, ammunition and targets are furnished through the Department of the Army, Director of Civilian Marksmanship.

# WTU Customers May Receive Refunds

West Texas Utilities customers who paid interim rates the latter part of 1983 will begin receiving refunds this month.

However, all refunds will be small, and some customers won't get them at all company officials said.

They'll be small because the higher rates were charged for only a short time. Some customers won't be affected, because their rates were not changed during the period.

WTU started changing interim rates on Oct. 22 when it became evident that a requested rate increase filed June 10, 1983 would be delayed indefinitely by the Public Utility Commission of Texas. Interim rates were allowed by state law, subject to refund, if after three months the PUC had not ruled on the company's request.

WTU has asked for an increase of \$26 million annually and the PUC staff recommended \$10 million. The Commission eventually approved \$12

million, with the new rates effective Jan. 6, 1984.

WTU now will pay customers the difference between the interim rates and the new rates, plus 12.83 per cent interest. Refunds are being credited to customer bills, while checks are being mailed to those who have disconnected from the WTU system.

Amounts to residential customers are averaging less than \$5, including interest.

Customers in the following towns, which had denied the rate request and appealed to the Commission, are not affected: Hawley, Tuscola, Lawn, Merkel, Putnam, Clyde, Cross Plains, Santa Anna, Lueders, Aspermont, Jayton, Marfa, Valentine, Presidio, Alpine, Balmorhea, Rankin, Iraan, Estelline, Quitaque, Turkey, Memphis, Dodson, Shamrock, Sonora, Sterling City, Bronte, Menard, Junction and Miles.

# Lunchroom Menu

## FEBRUARY 20-24 BREAKFAST

**Monday-** Orange Juice, Cereal, Toast, 1/2 pt. Milk.

**Tuesday-** Grape Juice, Bacon Biscuits, Jelly, 1/2 pt. Milk.

**Wednesday-** Apple Juice, Sausage, Waffle, Syrup, 1/2 pt. Milk.

**Thursday-** Prune Juice, Scrambled Eggs, Toast, 1/2 pt. Milk.

**Friday-** Fruit Punch, Cereal, Toast, 1/2 pt. Milk.

## LUNCH

**Monday-** Chicken Patties, Parsley Potatoes, Ranch Style Beans, Roll, Peaches, 1/2 pt. Milk.

**Tuesday-** Hot Dog w/Mustard, Cheese Sticks, Hashbrown Potatoes, Green Peas, Pudding, 1/2 pt. Milk.

**Wednesday-** Frito Pie, Green Beans, Salad, Pears, 1/2 pt. Milk.

**Thursday-** Fish Krispies, Scalloped Potatoes, Spinach, Roll Applesauce, 1/2 pt. Milk.

**Friday-** Roast Beef, Mashed Potatoes, Green Salad, Roll, Jello, 1/2 pt. Milk.

"We make our fortunes and call them fate."  
—Benjamin Disraeli

# M.C. Farm And Ranch News

By Scotty M. Abbott  
County Executive Director  
Motley County ASCS

## EMERGENCY FEED ASSISTANCE PROGRAM

Signup for accepting Emergency Feed Assistance Program corn requests from livestock producers in Motley County will begin February 9, 1984. Applications must be filed in the county office where the producers records are maintained or in the county office serving the county where the producers farm or ranch headquarters are located. Applications will require the producer to record losses for all livestock feed crops, number of eligible livestock, and feed on hand.

Corn will be sold to eligible livestock producers at 75 percent of the 1983 crop county loan rate in the county where the corn is stored. Producers will be responsible for the cost of transportation from the point of storage to the farm.

In determining eligibility: 1. The producer must have owned the livestock for more than 6 months prior to the date of application.

2. Eligible livestock are cows, bulls, heifers, or calves retained for replacement; ewes, rams, ewe lambs, nannies, billies, kids retained for replacement; sows, boars, piglets retained for replacement; breeding hens, roosters, pullets retained for replacement; horses and mules.

3. The allowance will be computed on the number of eligible units times the number of days in the feeding period times 10 pounds minus feed on hand. Feed on hand includes grains, hay, silage, grazing from pasture, and any PIK entitlement received.

The cost to the producer per bushel loaded is \$2.05. The corn is stored in Plainview. If you are interested, please contact this office for further details.

## FARM RECONSTITUTIONS AND CHANGES

We need to know as soon as possible of changes in ownership and changes in operators of farms so these corrections and reconstitutions can be completed by February 24, 1984.

## REPORTING DELINQUENT DEBTS

The Motley County ASCS will begin reporting delinquent

debtor information to Dun and Bradstreet, beginning with ASCS and CCC claims outstanding as of December 31, 1983.

## REVISION OF DATES FOR SIGNATURES

Contracts to participate in the 1984 farm program must have the signature of all producers before being approved by the County Committee. All contracts must be signed by all producers by March 9, 1984. Contracts not signed by all producers will not be approved and the farm will not be a participating farm.

## ASCS DISASTER PROGRAM

Under the Agriculture and Food Act of 1981 (95 Stat. 1213) ASCS shall authorize disaster payments for wheat, feed grain, upland cotton, and rice only if Federal crop insurance is not available to producers for their crop acreage. ASCS low yield and prevented planting payments will be available in 1984 only as follows:

1. The producer must furnish a statement signed before the sales closing date for the crop by an FCIC representative. The statement shall certify that crop insurance was not available for the specific acreage. Declining FCIC insurance because of failure to pay prior year's premiums does not establish eligibility for ASCS disaster payment eligibility.

2. FCIC intends that only the Director of the appropriate Field Actuarial Office will sign a statement and that the statement will be issued only after re-examining the acreage's eligibility for crop insurance.

## 1983 CROP-UPLAND COTTON DEFICIENCY RATE

Eligible upland cotton farmers will receive deficiency payments at the rate of 12.1 cents per pound on their 1983 production. The 1983 deficiency payment rate is equal to the difference between the target price of 76 cents per pound and the national average price of 63.9 cents per pound received by farmers during the calendar year 1983. We will be getting these payments to you as soon as we receive them from Kansas City.

## HOLIDAY

The ASCS office will be closed Monday, February 20 1984 in observance of George Washington's Birthday.

# FISH

NOW IS THE TIME

For Pond and Lake Stocking

Hybrid Bluegill, Florida Hybrid Bass, Channel Catfish, Fathead Minnows, Triploid Grass Carp, Black Crappie, The Hybrid Bluegill

will reach the weight of 2 1/2 to 3 lbs. DUNN'S FISH FARM We furnish your hauling containers. All fish are fully guaranteed.

Call your local feed store to place your order or call collect 405-777-2202, Dunn's Fish Farm, P. O. Box 85, Fittstown, Oklahoma 74842



Delivery will be MONDAY, FEB. 23 at the times listed for the following towns and locations.

Post- J.T. Feed & Supply

8-9 a.m. 806-495-3718

Ralls- Crosby County Fuel

Assoc. 10-11 a.m. 806-253-2032

Roaring Springs- Stafford Farm

Store 12-1 p.m. 806-348-3271

Floydada- Producers Coop

Elevator

2-3 p.m. 806-983-2821

Plainview- Plainview Feed &

Supply 4-5 p.m. 806-296-5431

Fishery consultant and pond

renovating available. Special

deliveries on large ponds and

lake orders also.



FOR ANNOYING COUGH AND STUFFY NOSE TRY TRIAMINIC-DM<sup>®</sup> COUGH FORMULA

© 1982 Dorsey Laboratories, Division of Sandox, Inc., Lincoln, Nebraska 68501



# The Trading Post

Classified Section Of Matador Tribune



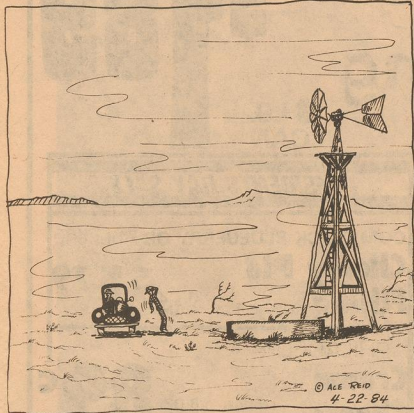
Issue Number 7

## Classified Rates

10¢ Per Word | \$3.00 Minimum  
Card Of Thanks - \$2.50  
DEADLINE FOR ADS  
NOON TUESDAY

### COW POKES

By Ace Reid



"I jst wonder why when the wind blows, my windmill is always broke."

This Feature Sponsored By

## First State Bank

Available For

### Income Tax Reports

Opal Pipkin

Tax Practitioner

Telephone 347-2747 Home 347-2316

### Don't Let Dirty Chimneys Destroy Your Home

Call  
**TIMMONS CHIMNEY SWEEP**  
Clem Timmons  
817-585-4468 Collect

TV DIRECT FROM SPACE TO YOUR HOME

Motley County  
Satellite System

Contact  
Tom Bowman  
Financing Available



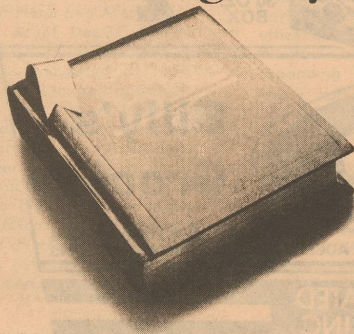
SATELLITE SYSTEM

System includes 10 1/2' Hastings Antenna, 24 channel satellite receiver, low noise amplifier.



One set of triplets is born in about every 9,216 births.

## Why wait for an emergency?



Read The Bible Regularly.  
It's A Message You Can't Ignore.

The Layman's National Bible Committee, Inc., 815 Second Avenue, NY, NY 10017

### FOR SALE

**FOR SALE: Good** used color TV Sets. Some with new picture tubes and new guarantees. **Thacker Supply Company** Roaring Springs. 3-ctfn

**RUMMAGE SALE:** Guadalupana Society is having a Rummage Sale, one day only, on Friday Feb. 17 at the Catholic Church Hall. It will be from 9 a.m. to ? 1tp-7

**I BUY AND SELL** windmill parts. Have 30 good laying hens. Two rear pickup tires. 271-4180 Spur. (18) 6-2tc-7

**10c COPIES** See Ray Zabielski or call June Tilson for more information.

**FOR SALE-** Registered Angus Bulls. Two, four, five and six year-olds. Ready for service. Bigham Angus Ranch, Afton, Texas. (806) 689-2369, 744-6191 or 795-2649. (17) 5-ctfn

**HORSES FOR SALE** Call 689-2312 at night. (17) 6-2tc-7

### FOR RENT

**SMALL FURNISHED** house for rent. Call 347-2785. (21) 7-3tc-9

### HOMES FOR SALE

**HOUSE FOR SALE** Only 5 years old. 2181 square feet. Two BR, 2 1/2 bath. Two car garage, large basement. Sits on 200'x150' lot in Southeast Matador. Call 347-2839. 14 4-ctfn

**HOUSE FOR SALE** Two bedroom, one bath, one car garage. Hal Martin, 347-2359. (16) 5-4tc-8



Benjamin Franklin was the first head of the U.S. Post Office.

### WINTER OVERCOAT.



Don't Go Out Without It. © 1983 A. H. Robins Consumer Products Division, Richmond, Virginia 22220

**SNELL GALLAGHER Power Fencing Systems**  
E.A. Day  
347-2724  
Box 83  
Matador, Texas

**WE DO HOUSE CLEANING-** Call 347-2425. 7-2tp-8

**DON'T LET DIRTY** Chimneys destroy your home. Call Timmons Chimney Sweep, Clem Timmons, 817-585-4468 collect. 7-2tp-8

### HELP WANTED

**NEED TYPIST** with bookkeeping skills. Full time. Applications are available at Rolling Plains Health Care. 509 Main, Matador. 347-2211. (20) 6-2tc-7

**JOBS OVERSEAS-** money fast. \$20,000 to \$50,000 plus per year. Call 1-716-842-6000, ext 22113. 6-2tp-7

### FARMS & ACREAGE

**WANTED -- To** lease or buy large or small acreages around the Roaring Springs or Matador areas. Call 806-348-3021, Box 96 Roaring Springs. 11 4-c6t-9

**FOR LEASE-** 80 acres in north Motley County. 67 cultivation, 13 grass. West of Mrs. Crabel Jones in White Star Community. 1/4 mile off paved road. Call (904) 743-3865. (19) 6-2tc-8

### WHY SKIN?

Here are some interesting facts about your skin that you may not know:

- The skin of the average person, if it were spread out flat, would cover about 1.8 square feet.
- The skin is the largest organ of the human body.
- The skin of an adult weighs about six pounds.
- A piece of skin the size of only a quarter contains a yard of blood vessels, four yards of nerves, 25 nerve ends, 100 sweat glands and more than three million cells.
- It is most important to take care of your skin.

Increasingly, men are adding after shaves and colognes to their regular skin grooming routine. That's one reason after shave gift sets, such as the Skin Brazer® Gift Collection by Mennen, are popular holiday items. The soothing, cooling and stimulating effect of Skin Brazer After Shave is also available in Spice Scent, a product that was recently introduced and is proving popular with men of all ages.

### BUSINESS SERVICE

Representatives For  
**MONUMENTS AND CURBING**  
Seigler Funeral Home  
Phone  
347-2626

**Government Jobs** Thousands of vacancies must be filled immediately. \$17,634 to \$50,112. Call 716-842-6000, Ext. 36930. 4-p2t-5

### ROLLING PLAINS WELL SERVICE

Matador, Tx. We specialize in windmills and submersible pump repair and custom welding. We appreciate your business. Bobby Simpson 347-2324. Kelly Meyer 347-2739. Travis Jameson 347-2473. 35-ctfn

**NEW CARPET Cleaning Machine** now available for rent at Bob Stanley Pharmacy. 56 37-ctfn

**NOW AVAILABLE at Matador Motor & Impl.** Professional windshield installers are at Matador Motor & Implement every two weeks. Guaranteed not to leak. Call 347-2422. 11-ctfn

**LOCKNEY MEAT COMPANY:** USDA Inspected. Kill days, Monday through Friday. Custom Processing. Wholesale and retail meat. One half and quarters, cut, wrapped, frozen and fully guaranteed. Located on corner of U.S. 70 and FM 378 South. 652-3305. Sam and Kelly Fortenberry. 22-ctfn

### SOUVENIR ISSUE

**75th Anniversary** Editions of the Matador Tribune printed in August, 1966. Available at the Tribune office. 50¢ each. One dollar if mailed. Box 490, Matador, Texas 79244.

### Motley County Clinic 347-2641

Charles H. Hudson, III, D.O.  
At Motley Clinic Monday-Wednesday  
Robert M. Brodtkin, D.P.M.  
Pediatric Medicine & surgery  
Roy Tippin, R.N.  
Family Nurse Practitioner  
In Motley Clinic Daily  
Clinic Hours: Monday thru Wednesday 8:00 a.m. to 5:00 p.m. Thursday: 8:00 a.m. to 8:00 p.m. Friday: 8:00 a.m. to 1:00 p.m.

### PUBLIC NOTICE

The County of Motley is soliciting proposals from qualified individuals or firms for architectural services required by the county for implementation of the Texas Community Development Program, funded by Texas Department of Community Affairs.

Proposals will be considered by the County at a meeting to be held at 10:00 a.m. on the 12th day of March, 1984. In order to be considered, proposals must be submitted prior to 10:00 a.m. on the 8th day of March, 1984. The County reserves the right to reject any or all proposals.

Upon receipt, all proposals will be thoroughly evaluated by the County. Once this evaluation has been completed all responsible offerers will be placed in rank order. All offerers will be notified of these results and of the County's intent to initiate negotiations with its first choice. Should negotiations with the County's first choice fail to produce a satisfactory agreement, all negotiations with the first choice will be terminated and the County's second choice will be notified, and so on. These procedures will be followed until a satisfactory agreement and contract has been approved and executed.

It is the County's intention to ultimately contract with the responsible offerer whose proposal and subsequent negotiations are determined to be the most advantageous to the County, all factors considered, including but not limited to a) understanding of the project, b) qualifications of key personnel, c) services proposed, d) prior experience with project of this type, e) County's past experience with the offerer, and f) price.

A complete Request for Proposal outlining services required by the County, submission requirements, and evaluation criteria has been prepared. Interested parties may obtain copies of the Request for Proposals by contacting Billy J. Whitaker, County Judge, Motley County, P.O. Drawer N, Matador, Texas 79244, phone 806-347-2334.

Published in the Matador Tribune on February 16 and February 23, 1984.



If you could drive to the sun at the speed limit (65 miles an hour) you'd get there in about 193 years—if you didn't stop for coffee.

### EX-LAX, "The Family Friend" helps your body help itself.

Ex-Lax helps get your body's own natural rhythm going again. Gently. Dependably. Overnight. That's why more families use Ex-Lax. Chocolate or Pills—than any other brand. Make it your Family Friend.



Read label and follow directions. © Ex-Lax, Inc., 1983.

The Matador Tribune has been authorized to announce the following candidates for public office:

### State Senator

Ray Farabee  
(Re-Election)

### Motley County Sheriff

Alton Marshall  
(Re-Election)  
Frank Williams  
(Pete)

**County Commissioner Precinct 1**  
John M. Russell  
(Sonny)  
(Re-Election)

Luther B. Green

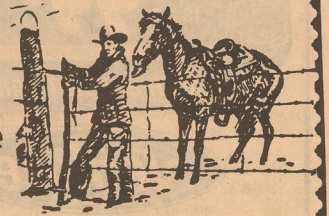
**County Commissioner Precinct 3**  
Bill Jameson  
(Re-Election)  
Joseph Simpson  
(Gid)

### KEEP YOUR SKILL UP TO DATE.

When equipment and technology change, the way you perform your skill changes. A great way to keep your skill fresh and up to date is in the Army Reserve. And earn a good part-time income. For instance, an E-5 with four years' experience can earn \$1,922 a year. You serve one weekend a month (two 8-hour days) and two weeks summer training per year. And keep up with the Army. Call your Army Reserve representative, in the Yellow Pages under "Recruiting".

ARMY RESERVE. BE ALL YOU CAN BE.

## Now Available



## Matador Land And

## Cattle Company

By W.M. Pearce

Hardback .....\$19.95 plus \$1 tax  
Paperback ...\$12.95 plus .65¢ tax

Add \$4 postage & handling on all mail orders  
No charge orders  
(Allow two weeks for delivery)



# HIGH FOOD PRICES AXED

FLAKED COFFEE  
**Folger's**  
13 OZ. CAN \$2<sup>09</sup>

ALL GRINDS  
**Folger's Coffee** \$2<sup>29</sup>  
1 LB. CAN

**Shurfine Shortening** \$1<sup>89</sup>  
3 LB. CAN

HUNT'S  
**Ketchup** 99<sup>c</sup>  
24 OZ. JUG

HEAVY GRAIN FED BEEF  
**Round Steak** \$2<sup>19</sup>  
LB.

**PRESIDENTS DAY SALE**

COMSTOCK BLUEBERRY OR Shurfine  
**Cherry Pie Filling** 21 OZ. CAN \$1<sup>79</sup>

PHILADELPHIA  
**Cream Cheese** 8 OZ. PKG. 89<sup>c</sup>

SHURFINE  
**Whipped Topping** 8 OZ. TUB 69<sup>c</sup>

SKINNER'S THIN  
**Spaghetti** 16 OZ. PKG. 89<sup>c</sup>

KRAFT GRATED  
**Parmesan** 3 OZ. CAN 99<sup>c</sup>

**GROCERY SPECIALS**

SUNLITE  
**Sunflower Oil** \$1<sup>99</sup>  
32 OZ. BTL.

HEAVY GRAIN FED BEEF WHOLE IN THE BAG  
**Packer trim Briskets** 8-12 LB. AVG. \$1<sup>39</sup>  
LB.

**Coca Cola Diet Coke**

6 10 OZ. NO RETURN BTLs \$1.29

HEAVY GRAIN FED BEEF BONELESS  
**Cube Steaks** LB. \$2<sup>89</sup>

HEAVY GRAIN FED BEEF ROUND BONELESS CENTER CUT  
**Steak** LB. \$2<sup>39</sup>

FRESH GUARANTEED 73% LEAN  
**Ground Beef** LB. \$1<sup>29</sup>

SHORT CUT ELBO  
MACARONI \$1<sup>19</sup>

**PRICE FIGHTERS**

- DEL MONTE CHUNKY FRUIT OR COCKTAIL 17 OZ. CAN 79<sup>c</sup>
- FISHER PARTY PEANUTS 12 OZ. PKG. \$1<sup>59</sup>
- SUNSHINE HI-HO SERV PAK CRACKERS 12 OZ. BOX \$1<sup>09</sup>
- COFFEE CRYSTALS FOLGERS 8 OZ. JAR \$3<sup>99</sup>
- SOPAPILLA, CORN, BISKITS MORRISON KITS 4 8 OZ. PKGS. \$1<sup>00</sup>
- FABRIC SOFTENER DOWNY KING 64 OZ. BTL. \$2<sup>59</sup>

30<sup>c</sup> OFF LABEL DISHWASHER  
**Cascade Detergent** \$1<sup>99</sup>  
50 OZ. BOX

**DAIRY & FROZEN FOODS**

JOHNSTON'S  
**Cherry Pie** 37 OZ. BOX \$2<sup>79</sup>

25<sup>c</sup> OFF LABEL  
**Tide Detergent** \$1<sup>99</sup>  
49 OZ. BOX

- MINUTE MAID CONCENTRATED APPLE JUICE 12 OZ. PKG. 89<sup>c</sup>
- PILLSBURY CRESCENT ROLLS 8 CT. PKG. 99<sup>c</sup>
- SQUEEZE PARKAY 1 LB. BOX 99<sup>c</sup>
- KRAFT SHREDDED MOZZARELLA 4 OZ. PKG. 79<sup>c</sup>

White Cloud  
Tissue 4 ROLL PKG. \$1<sup>19</sup>

KRAFT  
**Red Plum Jam** 99<sup>c</sup>  
18 OZ. JAR

WASHINGTON GOLDEN DELICIOUS  
**Apples** 3 \$1  
LBS.

ORVILLE REDENBACHER  
MICROWAVE  
**Popcorn** 10 1/2 OZ. \$1<sup>69</sup>

**Venture FOODS**

**PRODUCE SPECIALS**

ALL PURPOSE RUSSET  
**Potatoes** \$1<sup>49</sup>  
10 LB. BAG

FRESH GREEN BROCCOLI LB. 49<sup>c</sup>

YELLOW ONIONS 3 LBS. \$1<sup>00</sup>

ZUCCHINI SQUASH LB. 55<sup>c</sup>

6<sup>c</sup> OFF LABEL  
**Comet Cleanser** 59<sup>c</sup>  
21 OZ. CAN

SOLID  
**Gillette Right Guard** \$1<sup>99</sup>  
2 OZ. STICK

ALL FABRIC  
**Biz Bleach** \$2<sup>39</sup>  
GIANT 30 OZ. BOX

REG. OR SUPER  
**Miss Breck Hair Spray** \$1<sup>89</sup>  
9 OZ. CAN

We're proud to give you more!

Prices Effective Thurs, Fri, Sat. WE RESERVE THE RIGHT TO LIMIT QUANTITIES

**Venture FOODS**

Billy's Grocery

WE ACCEPT FOOD STAMPS WE ACCEPT MANUFACTURER'S COUPONS

ORIGINAL  
**Old Spice After Shave** \$2<sup>99</sup>  
4 1/2 OZ. BTL.

MUSK  
**Old Spice After Shave** \$2<sup>99</sup>  
3 OZ. BTL.

**MEMBER STORE** **VENTURE FOODS, INC.**