

Sylvan Dunn, Director
Southwest Collection Texas Tech
Lubbock, TX 79409

HAPPY
THANKSGIVING

Motley County Tribune

"VOICE OF THE FOOTHILLS"

50¢

107 YEARS

THURSDAY, NOVEMBER 26, 1998

ISSUE NO. 48



A Look Back

Call

NOVEMBER 27, 1947

Donkey Basketball Game
Coming Soon

"Donkey Basketball, perhaps the most fantastic game played in the US today, will be here in the school gym, Monday night. Under the sponsorship of the Senior Class, Donkeys will be furnished by the Ralph Godfrey Donkey Basketball Company and the Matador fireboys will take on the Matador cowhands in "the funniest game in America."

November 27, 1941

FIRST MARRIED MAN IN
COUNTY CALLED FOR
ARMY TRAINING

"Motley County will send its first married man to military training in the 31st call on December 8th. Talmer Buford Osborn, and Judson Doyle Mitchell of Roaring Springs are scheduled to leave on that date for a year's training at Ft. Bliss, it was announced by Frank Pohl.

The board refused to recognize the claim of Talmer Osborn, a newly registrant by reason of dependency because of the recent date of his marriage."

Around Town

News Briefs of area events

American Legion Post #337 to Meet

All Motley County Legionnaires and their spouses will meet Monday, November 30, at 7 p.m. for a "Covered Dish Dinner" at the American Legion Building in Matador. This is the final meeting of 1998.

All Veterans are invited to become a member of the local Post and are invited to attend this most important meeting.

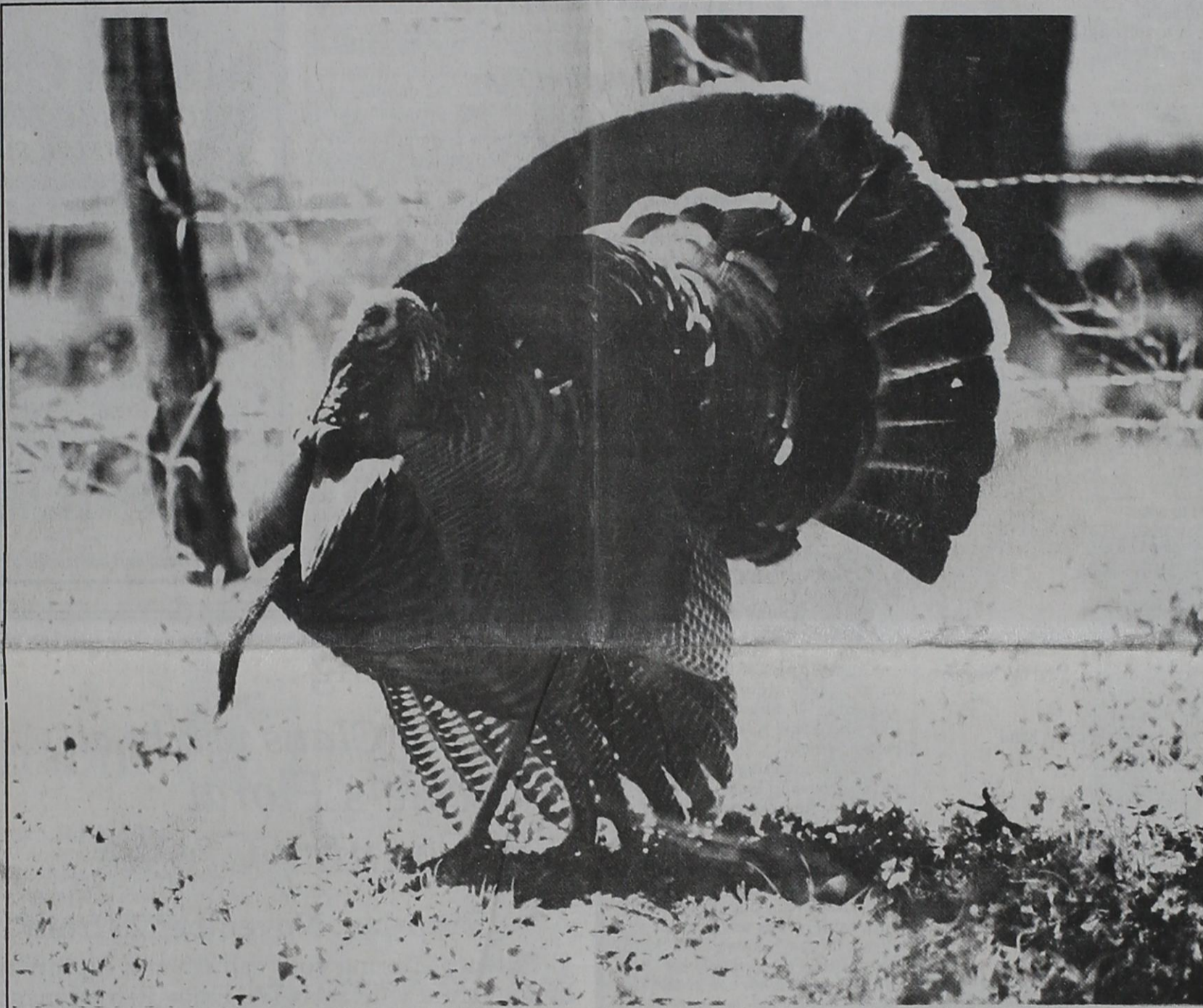
Tribune to receive Letters for Santa

The Motley County Tribune has, once again, been authorized by Santa Claus himself to receive letters at our office. The letters will be printed in the paper and then forwarded on to Santa at the North Pole.

Letters may be dropped off in our mailbox in front of the office, or mailed to:

Motley County Tribune
P.O. Box 490
Matador, TX 79244

All Letters to Santa must be received no later than Monday, December 7, to be printed in our Christmas edition. We understand that this is a very early deadline, but due to printing deadlines, it must be this early. All teachers are reminded to have your students write their letters and have them no later than this date.



Struttin' His Stuff ...

This handsome turkey is struttin' around like he doesn't have a worry in the world, unknowing of what Thursday will bring. Will he be the lucky (or unlucky) Tom who will grace someone's Thanksgiving dinner table? This picture was shot by Game Warden Dee Litteken of Matador.

Motley County ISD goes to Block Schedule for 98-99 school year

by Superintendent Rick Copp
and Mrs. Kay Bingham

After three years of on-site visitations, interviews, research, and stacks of feedback from students, teachers, and community members, Motley County ISD Administration and School Board decided to implement a Modified Block Schedule (MBS) for the 1998-99 school year.

The MBS that Motley County is using this year was chosen due to its flexibility and benefits for the students and is very similar to those of some colleges. We have two classes that meet everyday of the week. These are electives and our athletic/physical education periods that are 55 minutes in length. On Monday and Wednesday there are three periods, 90 minutes in length that meet, and then on Tuesday and Thursday the remaining three periods of 90 minutes each meet. On Friday all 8 periods meet for approximately 45 minutes each.

After 12 weeks or (2) 6 weeks periods, the reports from the teachers and students are overall positive. After a period of readjustment to the longer class times the students appear satisfied with the Block Schedule. This schedule allows students more class time in which to receive extra-personalized help from the teachers and in addition gives the students more time to work on homework assignments. The students have benefited from having more time to complete projects during the period in classes such as shop, science labs, and home economics. In general, most of the comments from students have been, "We like the Block Schedule." As we move forward this schedule will allow the administration to offer more, as well as, different types of classes for the students to choose as electives.

Most of the teachers have commented that the MBS seems to be working well. Although, at first we all found it difficult to keep the day, time, and schedule straight, everyone now seems to have adjusted so that it is no longer necessary to carry our class schedule with us everywhere we go! The teachers have found that this schedule provides them with the time to grade student's assignments and post grades quicker.

One positive point with having all our classes meet on Fridays is that it allows students and teachers an opportunity to wrap things up and discuss plans for the next week. Since we no longer have a HAT period each day Fridays are used for an activity day for class meetings, pep rallies, and other activities that may occur.

However, as with every new change, there are always bugs to be worked out. Not only do our students have to change habits, but our staff also. Now teachers have to be prepared to teach for 90 minutes during class instead of the regular 55 minutes to which we were accustomed.

With the MBS students must realize that even though a particular class doesn't meet except every other day, homework or projects should be done the night assigned and not put off until the day after. Hopefully, this will encourage the students to develop better study habits. There is a small problem with scheduling some of our special programs that has to be corrected, but with the help and patience of our staff, this too is beginning to be worked out.

Change often causes us stress and

a few more headaches, and in general we all tend to be hesitant in accepting something different from our normal routines. However, in order to offer the best program with more choices for our students sometimes we have to go out on a limb and implement some changes. This action needs to be reinforced with understanding that the students come first and that we only want ALL of our students to have the best programs and teachers that are available to us. Block scheduling will allow this to happen.

City Council Meets Business discussed, reports heard

The Matador City Council met November 12 at 7:30 a.m. All Council members were present. Also present were City Secretary, Seven Alexander, and City Water Superintendent, Steve Barton.

The invocation was given by Councilman Rodney Williams. Mayor Gary Lancaster called the meeting to order.

The minutes and bills were approved.

Council discussed an ordinance to annex Louvaine Scaff property. This was authorized.

Council discussed the liability

claim concerning the Thomas Hurt home, for damages occurred in the home from raw sewage in August. The claim is in the process and should be completed soon.

Council discussed receiving lots from ABF Freight. The taxes are current on the vacant lots, and they were accepted by the City.

City Water Superintendent Steve Barton gave Waterworks, Wastewater and Sanitation reports. He also stated that the fence around the water tower will be completed soon.

Meeting adjourned.

Late Night Shopping set for December 3

Matador merchants have set Thursday, December 3 for Late Night Shopping in Matador. Although there is an out-of-town basketball tournament on this date, to find a date without any event, is impossible.

This fun night of late night shopping will give Motley County residents and visitors a chance to get a jump start on their Christmas shopping and to see what great merchandise and values Motley County businesses have to offer, right here at home!

Most businesses will begin their late night shopping specials at 6 p.m. and continue until 9:00 p.m. Each business will offer drawings for discounts, special savings, refreshments, or door prizes.

Businesses planning to be open late are Matador Variety, Rose Garden Floral & Gifts, The Windmill, New To You, Guys & Gals, Motley County Tribune, Main Street, and Jo-Ann's Jewelry.

Community Chest sets \$1,000 goal

Members of the Motley County Community Chest met November 9, 1998 to set up a budget for 1999. This has been lowered to \$1,000.00.

This money is used to support other organizations and people, some in the county, and others in need passing through.

Last year the Ministerial Alliance was added, as a number of people go to the church for assistance.

The members expressed their gratitude for your support in this project. They hope to meet their goal by January 1, 1999.

Donations may be sent to:
Motley County Community Chest
P.O. Box 789
Matador, Texas 79244

Christmas Edition deadlines near

Work will begin on our annual Christmas edition of the paper next week. We hope to be able to make this year's edition very special.

We will again offer our Christmas greeting card ads for sale to businesses and individuals. These very special Christmas greetings give you the opportunity to wish your friends and acquaintances a happy holiday season, without all the fuss of addressing envelopes, and purchasing postage stamps. If you would like more information about these Christmas greetings, please call our office, 347-2400.

The Christmas edition will be published December 17, as our office is closed the week of Christmas. Deadline for Christmas greetings will be Wednesday, December 9, as that section of the paper must be to the printers by December 11. Deadline for Santa letters is December 7. The deadline for any special Christmas story or picture is Tuesday noon, December 15.

Our office will reopen Monday, December 28 and our New Year's edition will be published December 31.



With the Thanksgiving season upon us, it makes me think it's time to stop and smell the roses. Time to pause and think of all the wonderful things we have to be thankful for. We all have so much to be grateful for that we take for granted. My daughter-in-law recently gave me a copy of this poem she received via

Internet. I thought it was something our readers would enjoy, and it makes you stop and think. We all get so busy with our everyday stresses, that we don't realize the things that we really do take for granted.

I hope you all have a very blessed Thanksgiving.

The park bench was deserted as I sat down to read
Beneath the long, straggly branches of an old willow tree.
Disillusioned by life with good reason to frown,
For the world was intent on dragging me down.

And if that weren't enough to ruin my day,
A young boy out of breath approached me, all tired from play.
He stood right before me with his head tilted down
And said with great excitement, "Look what I found!"

In his hand was a flower, and what a pitiful sight,
With its petals all worn - not enough rain, or to little light.
Wanting him to take his dead flower and go off to play,
I faked a small smile and then shifted away.

But instead of retreating he sat next to my side
And placed the flower to his nose and declared with overacted surprise,
"It sure smells pretty and it's beautiful, too."
That's why I picked it. Here, it's for you."
The weed before me was dying or dead.
Not vibrant colors, orange, yellow or red.
But I knew I must take it, or he might never leave.
So I reached for the flower, and replied, "Just what I need."

But instead of him placing the flower in my hand,
He held it mid-air without reason or pain.
It was then that I noticed for the very first time
That weed-toting boy could not see: he was blind.

I heard my voice quiver, tears shone like the sun
As I thanked him for picking the very best one.
You're welcome," he smiled, and then ran off to play,
Unaware of the impact he'd had on my day.

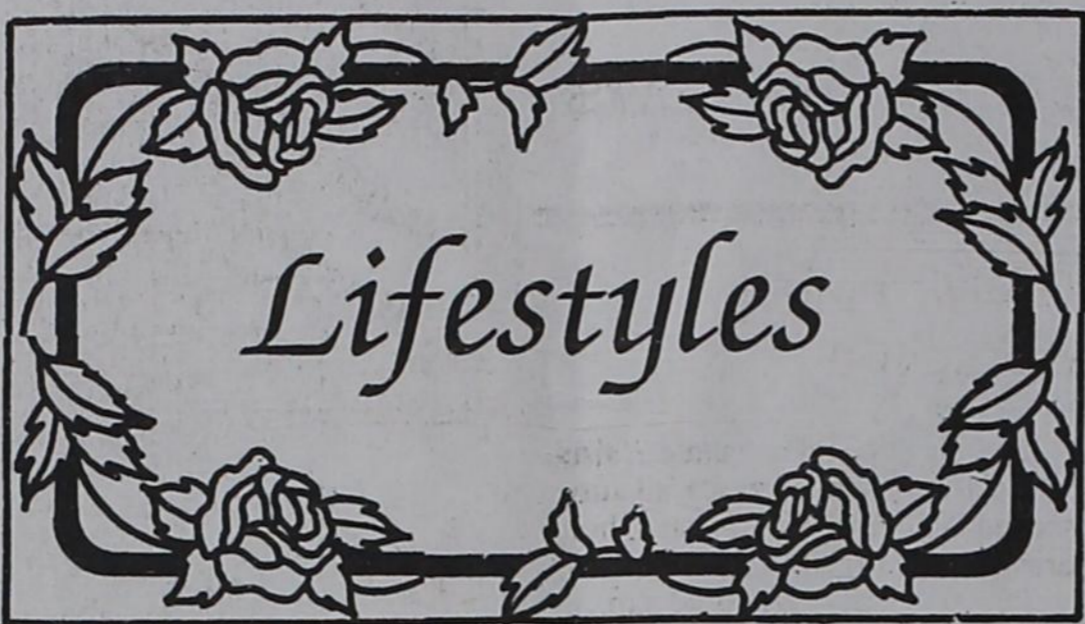
I sat there and wondered how he managed to see
A self-pitying woman beneath an old willow tree.
How did he know of my self-indulged plight?
Perhaps from his heart, he'd been blessed with true sight.

Through the eyes of a blind child, at last I could see
The problem was not with the world; the problem was with me.
And for all those times I myself had been blind,
I vowed to see the beauty in life, and appreciate every second that's mine.
And then I held that wilted flower up to my nose
And breathed in the fragrance of a beautiful rose
And smiled as I watched that young boy, another weed in his hand
About to change the life of an unsuspecting old man.

— Unknown

BOUNTI-FUL THANKSGIVING

We specialize in Gift Baskets
Gift Wrapping Services Fed-Ex
Christmas decorations are in and set up!
Candy, Coffee, Teas,
Cocoa, & Cappuccino
Matador
347-2233
The Windmill



Grannie's Tea Party set for December 6

The Annual Grannie's Tea Party has been set for December 6 at 3:00 p.m. in the home of Joyce Campbell in Matador.

This annual affair is a fund raiser to benefit the Motley County Library. All girls, ages 4 and up are invited to

attend. Dress up in grannie's hats, gloves, and accessories for an afternoon of tea and cakes. A \$5.00 donation and reservations are required. Please call Joyce Campbell, 347-2793, for more information about this fun event.

Holiday Hints Gift Wrapping Tips

(NAPS)—Although a recent survey found that only 39 percent of Americans consider themselves highly skilled at gift wrapping, becoming a gifted wrapper may be a lot easier than you think.

These tips can help you wrap that huge pile of holiday gifts with added quickness, convenience and style:

- Instead of using traditional gift wrap, try wrapping your gifts in plain white or brown craft paper. Then paint, draw or stencil on your own unique designs.

- In a rush and out of gift wrap? More than 60 percent of Americans have used any number of household items as substitutes, including newspapers and comic pages, foil wrap, old maps and calendars, magazine advertisements, yellow pages and even fabric or paper remnants such as wallpaper and bed sheets.

- Design your own antique-looking parchment gift wrap. Fill a spray bottle with coffee or tea and spray a roll of butcher paper (or any plain white paper without a coating) as dark or light as you like and allow to dry thoroughly before using.

- Take advantage of your backyard, a nearby beach or park to look for interesting gift tags like leaves or shells. Or cut out a favorite design or image from old holiday cards or postcards and attach to gifts.

- Tired of sticking pieces of tape onto table edges or on arms and elbows for easy access? Try a Scotch pop-up tape strip dispenser from 3M. A wearable version of this dispenser—which can be worn on the back of the hand, fingers or wrist—delivers pre-cut, 2-inch pieces of tape right to the fingertips. As each strip is removed, the next strip pops up automatically, ready



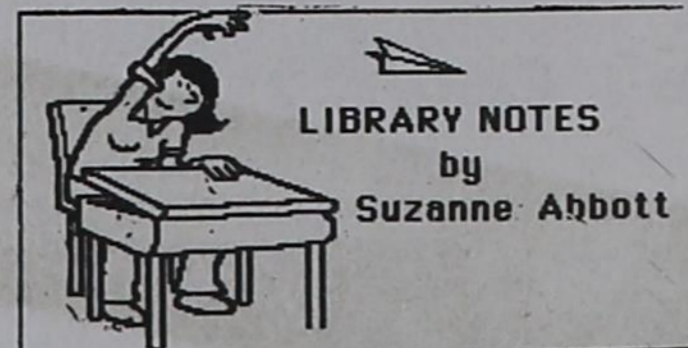
To wrap holiday gifts with added quickness and convenience, try a new Scotch pop-up tape strip dispenser.

WORD of GOD

Train up a child in the way he should go; and when he is old, he will not depart from it.

Proverbs 22:6

All My Downs
Have Been Ups
The Horrible Homemade
Halloween Costume
The Fabulous
Flying Flag Farm
Guidelines for Freelancers
by Nancy Robinson Masters
available at the
Motley County
Tribune



Book Sale! The Friends of the Library annual used-book sale will be from December 2 through December 11 at the Library. The first day of the sale, Wednesday, December 2, is for members of the Friends of the Library who have paid their 1998 dues. The sale will take place during regular library hours which are Monday, 2-5 p.m. and Tuesday-Friday, 1-6 p.m. The one exception to these hours is Matador's Late-Night Shopping on Thursday, December 3. We will be open until 8:30 p.m. that night.

Lots of fun things will be going on in the Library on the Late-Night Shopping night. In addition to the book sale, we will be giving away the beautiful doll by Georgia Witcher and the lovely wooden church by Dee Litteken. The drawing for those two items will take place at 8:30 p.m. Tickets are \$1.00 each or 6 for \$5.00. Proceeds to the Motley County Genealogical and Historical Society.

Also that night, we will have on

sale the Texas Capitol Ornaments. These beautiful items can go on your Christmas tree or they can be displayed in your home all year long. The Friends of the Library will be serving pop corn again during this evening of fun and shopping.

We appreciate the donation to the Library by Charles and Opal Johnson in memory of Burnett Young and Frank Montgomery. We also thank Rosemary Bloodworth Anderson for her donation in memory of Joe Spray, Ann Harp Crump, and Billy Joe Whitaker. We thank Mr. and Mrs. Steve Stevens for their donation in memory of Frank Montgomery. Thanks also go to Mr. and Mrs. Johnny Turner for their donation in memory of Beverly Whitaker and Nelva Morris. These memorial donations are important to the Library and are lasting tributes to the people who have been special in our lives.

Happy Thanksgiving to everyone!

THE
MOTLEY COUNTY TRIBUNE
IS YOUR HOMETOWN SHOPPING PLACE
FOR OFFICE SUPPLIES & BOOKS!
If we don't have what you need for your office, we will get it!
LOTS OF BIBLES & BOOKS TO CHOOSE FROM
Special orders welcome!

T-Shirts On The Go
Just in time for Christmas
YOU ARE INVITED TO A T-SHIRT PARTY
Hosted by Brenda Osborn • December 3, 4:30-6:30 p.m.
601 Lariat, Matador
Sweatshirts, Hooded Sweatshirts, Long Sleeve T-Shirts, Wind Suits, Jogging Suits, Little Kids Clothes to XXX Large Adults, Jewelry, Watches, Caps, Purses, Wallets & Much More!
Bring a Friend and don't miss out on all the Great Christmas Savings!

Announcing

Santa Claus will be at
Vickie's Floral
& Country Crafts



★ Saturday, November 28 from 1:00 until 4:00 p.m.

Parents ... bring your camera and capture these precious moments of your child with SANTA! Enjoy Refreshments and register for many door prizes to be given away throughout the day!

Shop from our Large Selection of Great Gift Items for everyone on your list! Join us from 9 a.m. til 5 p.m. for all your Christmas Shopping needs.

Specials

40 to 50% off a large selection of Christmas merchandise
40% off all Bath and Body Gift Baskets and products

We Appreciate Your Business and Accept all Major Credit Cards

Celebrate The Call-idsays with Caprock Cellular



For a limited time, you get your choice of:

- * Motorola Tote Bag Phone
- or
- * NEC 960MAX Handheld with Drop-In Charger & 36 hour battery and
- Executive fold-over Road Atlas & Travel Guide

Call Free 888-271-3344 or see our local agent:

In Matador, James Gillespie

*Offer ends December 31, 1998. Customer has choice of \$59.95 preferred equipment pricing, \$75.00 airtime credit & minimum \$24.95 plan for 12 month contract, or Free Phone for 12 month contract and \$24.95 monthly minimum calling plan required. See your nearest Caprock Cellular Agent for details. Territorial restrictions may apply. Must have a valid drivers license. Credit check required. New Activations ONLY. Other restrictions may apply.

"Expressing Our Thanks"



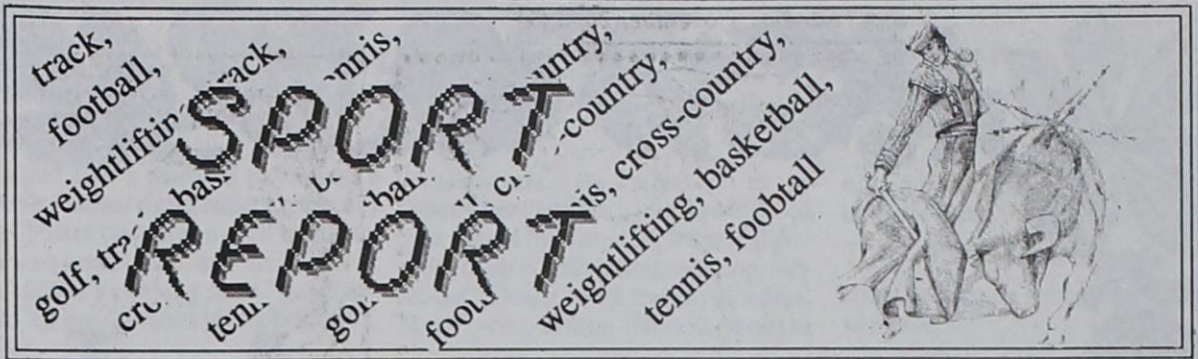
In Matthew 25 Jesus tells a parable concerning three stewards. As stewards these men had been entrusted with something of value they did not own. They merely had the job of seeing that this merchandise was taken care of and used in the best way possible.

The message for us from the parable is that we are all stewards. Various things have been entrusted to our care by our Master. He has given us different degrees of ability, wealth, education, and influence. We are expected to use our blessings to honor God, because they are from God. When he returns we will answer to Him as stewards.

During this season where thankfulness is stressed, let us thank those special people by whom our lives have been blessed. But most importantly, let us thank the One ultimately responsible for every blessing we enjoy. Everything we have belongs to God and we honor Him when we use His blessings to glorify Him rather than ourselves. This Thanksgiving and always, let us remember to thank the actual owner of everything that we call our own. Let us remember to thank God.

Roaring Springs Church of Christ
Michael G. Crowley, Sr.
Bible Study - 10 a.m. Worship - 9 a.m.

Motley County Matadors School News



8TH GRADE CLASS FAVORITES — Brenda Gillespie and Chantry Meyer. Brenda is the daughter of James and Kathy Gillespie and Chantry is the son of Kelly and Diana Meyer and Renee Agnew.

Financial Aid Workshop

There will be a Panhandle Plains Financial Aid workshop for all Juniors and Seniors of MC ISD and their parents in the High School Cafeteria, Tuesday, December 2 at 6:30 p.m. This workshop is being sponsored by Motley County ISD.

Pageant Pictures Available

Pictures of Miss MC South Plains Pageant entrants are available for \$2.00 each for those who did not order the night of the Pageant. Contact Carroll Hays at school if interested.

Attention kids and teachers SANTA LETTER DEADLINE DEC. 7

Kids and Teachers, take note - Letters to Santa need to be to the Tribune office no later than December 7 for publication in our special Christmas Edition. So, don't forget - get your letters ready for Santa. After we print them in the paper, they will be forwarded to Santa at the North Pole!

Have a good week!

MC gets win over Valley

The Motley County JV high school boys team defeated Valley 32-27 November 17.

Leading scorer was Chase Carson with 14. Others scoring were Ryan Moore, 5; Brandon Moore, 5; Scott Jones, 4; Tony Salazar, 2; and Bradley Baxter, 2.

Chase was also leading rebounder with 14. Scott Jones grabbed 13; Bradley Baxter, 3; Brandon Lee, 4; Brandon Moore, 4; and Ryan Moore, 1.

Ryan Moore shot 100% from the FT line. Team defense was outstanding as they shut out the Patriots in the first quarter. Tony Salazar had six steals as did Chase Carson. Tony Salazar and Shawn Marvel led the team in assists.

The Varsity boys also got a big win over Valley, defeating the Patriots 64-41.

Keane Cruse led in scoring with 24 points. Brad Marvel added 11; Jason Barton, 8; Sean Rose, 6; Dayton Grundy, 5; Jermaine Hendrix, 3; Jason Clauser, 3; Brant Donaldson, 2; Matt Easter, 1; and Benjamin Ridgley, 1.

Keane also led in rebounds with 9. Dayton Grundy had 7; Brad Marvel 5; Sean Rose, 4; Jermaine Hendrix, 3; Jason Barton, 3; Brant Donaldson, 2; and Benjamin Ridgley, 1.

Jason Barton shot 100% from the freethrow line. Keane Cruse was 85.7 from FT line. Jason Barton had three steals, Hendrix and Grundy, 2 steals each, and Rose, Ridgley and Easter, 1 steal each. Clauser and Cruse had 3 assists. Grundy, Marvel and Barton, 2 assists each. Ridgley and Casey Lawrence had 1 assists each.

Coach Ridgley stated, "The Matadors played tremendous defense holding Valley to single digits in two quarters. Also no Valley player scored 20 points. Jermaine Hendrix, Sean Rose, Brant Donaldson, Casey Lawrence, Matt Easter, and Benjamin Ridgley did a fine job for their first Varsity game."

MOTLEY COUNTY HIGH SCHOOL BASKETBALL SCHEDULE

DATE	OPONENT	SITE	TIME
Dec. 1	* Floydada	there	5:00
Dec. 3-5	Valley Tournament	there	TBA
Dec. 8	Kress	home	4:00
Dec. 10-12	Lockney Tournament	there	TBA
Dec. 15	Valley	there	6:00
Dec. 18	Memphis	home	4:00
Dec. 19	MC JV Tournament	home	TBA
Dec. 23-27	GYM CLOSED - NO USE OF SCHOOL FACILITIES		
Dec. 28-30	Crosbyton Tournament	there	TBA
Jan. 5	Memphis	there	4:00
Jan. 8	** Silvertown	home	6:30
Jan. 9	Valley JV Tournament	there	TBA
Jan. 12	** Lakeview	there	6:30
Jan. 15	Spur	there	4:00
Jan. 19	** Guthrie	home	6:30
Jan. 22	** Patton Springs	there	6:30
Jan. 26	** Silvertown	there	4:00
Jan. 29	** Lakeview	home	6:30
Feb. 2	OPEN		
Feb. 5	** Guthrie	there	6:30
Feb. 9	** Patton Springs	home	6:30

* JV Girls and Boys will play at the same time in different gyms
** Denotes District games



8TH GRADE CLASS OFFICERS — Clint Cooper, Vice President; Chantry Meyer, President; Chasity Holman, Secretary/Treasurer; and seated is Brenda Gillespie, Reporter.

Improving homework habits



HOUSTON-- A structured environment can turn homework woes into successes.

"If doing homework has been a problem in the past, use the new school year as a time to implement change," said Dr. Florence Eddins, a child psychiatrist at Baylor College of Medicine in Houston. "Work with your child to settle key homework issues of where, when and the surroundings."

One homework essential is adequate study space with good lighting and few distractions.

"Desks in rooms can be fine if they aren't covered with clothes or other belongings," Eddie said. "However, the dining room or kitchen table often works well and makes parental supervision a little easier."

For young children, Eddins encourages parents to sit nearby with work of their own.

However, parents should pull back as soon as possible, so the child can learn to work independently. Check in periodically on older children rather than hovering over them.

To establish a homework time, talk with your children about the time of day that works best for them.

"Many children prefer 'time off' for play or for an after school snack, but others will do best completing assignments before television time or engaging in other activities," she said.

Flexibility is another key ingredient to creating the right homework environment. Eddins cautions parents to remember that what works for them may not be right for their child.

"You may need uninterrupted quiet to get work done, but your child may like music in the background," she said. "The important thing is to experiment and learn what works best for your child."

Homework success also depends on good communication between the parents and teacher. Parents should learn what the school expects of the child and of the parents.

If remembering homework has been a problem in the past, ask the

teacher to send home written notices of homework assignments. This system allows parents to monitor assignments and reward their child for completing assigned work.

"A minimal reward for remembering assignments four nights out of five puts the focus on the positive, not the negative," Eddins said. "Taking time to notice your child's efforts can make a big difference."

Close Outs!

Boots - \$50 off

Ropers - \$25 off

Handmade!



Cowboy Boot Shop

Downtown Matador

Where have these 18 years gone?



A Very Happy Birthday to You!

I love you,
Grandma

FRESH CUT!

Christmas TREES

Christmas just wouldn't be the same without a visit to
ALLSUP'S FOREST!



Hwy. 70 - Matador, TX

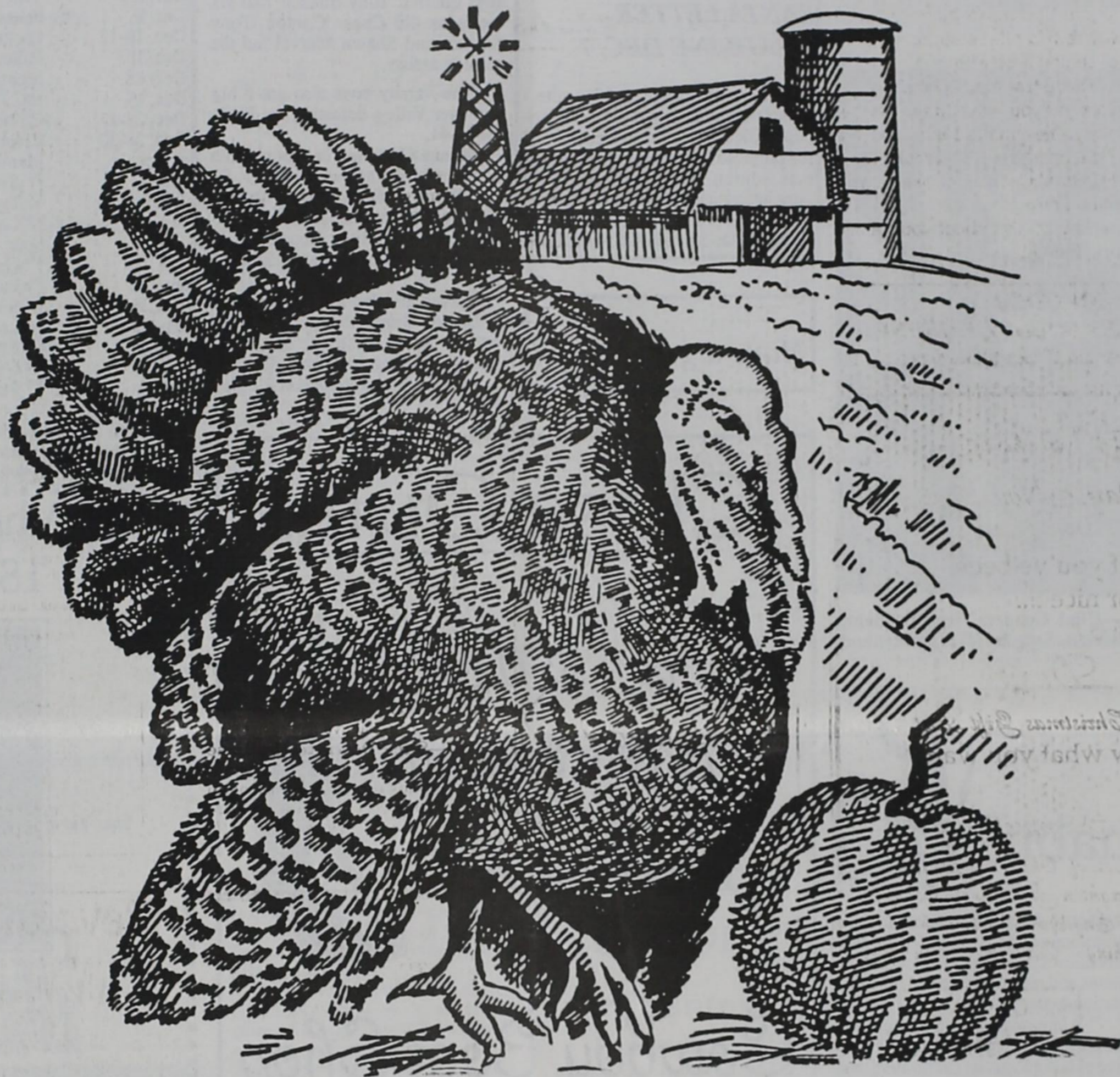
ALLways Available • ALLways Fresh
Allsup's ALLways!

ONLY
\$14.99
EA.

PRICES EFFECTIVE NOVEMBER 25 - DECEMBER 23 • OFFER GOOD WHILE SUPPLIES LAST



A Joyous Thanksgiving to One And All



May you be blessed with the true spirit of Thanksgiving

The following sponsors would like to wish you and yours a very Happy Thanksgiving

Lighthouse Electric

First National Bank
Floydada

New To You

Motley County Tribune

Matador Variety

Guys & Gals

First State Bank

Higginbotham-Bartlett

Matador Implement

Rose Garden Floral & Gifts

Production Credit Association

Meredith Construction
Gas & Supply

The Windmill

Quality Discount Outlet

Cap Rock Telephone

Caprock Cellular

Seigler Funeral Home

Flomot Gin

Vickie's Floral & Country Crafts

Dickens Electric

CSR PolyPipe

Thacker Jewelry

Thacker Supply

Cafe RS

Red Ball Gin

Kathy's

Palmer Service Center

Alexander Fuel

Letter to the Editor

Dear Editor,

I would like to address this letter to the residents and former residents of Motley County:

I am asking for each of you to consider the cemeteries of Motley County. Each of you have family, friends and loved ones buried here. Families bring their loved ones back here for burial.

The cemeteries have to be kept looking nice. This takes mowing, weed eating, some hoeing, spraying for grassburrs, upkeep on equipment and etc. In other words it takes money to keep these cemeteries in a condition that you will want to visit them when you are in Motley County.

Donations and memorials may be sent to:

Northfield Cemetery
c/o Betty Simpson
HCR 5 Box 35

Northfield, TX 79201

Whiteflat Cemetery
c/o Frances Dixon
P.O. Box 180
Matador, TX 79244

Roaring Springs Cemetery
c/o LaVoe Thacker
P.O. Box 360
Roaring Springs, TX 79256

East Mound Cemetery
c/o Loys Campbell
P.O. Box 789
Matador, TX 79244

Thank you for getting me off my soap box. God bless all of you.

Loys Campbell
Wilburn Martin

The search is on for Texas' Outstanding Older Worker

To celebrate the ongoing contributions and accomplishments of older workers, Green Thumb is soliciting nominations from Texas employers in search of 1998's Outstanding Older Worker. Nominees must be at least sixty-five years old, a Texas resident, and work 20 or more hours a week for pay.

To nominate, a supervisor or co-worker must provide a brief narrative covering the older worker's overall contribution to their employer, a description of new/additional skills the nominee has learned since beginning employment, any disabilities the nominee has overcome to perform his/her job, and a description of other community involvement. Official nomination forms may be obtained by calling Green Thumb at 1-800-880-5292. Nominees may be from any occupation. Last year's state honorees included a research physician, a welder, a labor rights attorney, a heavy equipment operator, a civil engineer, a home health aide, and the owner of a children's clothing store. The deadline for nominations is December 21, 1998.

Nominations will be evaluated by a state-wide employer committee and the winner announced the latter part of January, 1999. The winner will attend the national Prime Time Awards in Washington D.C., in March 1999, during Presidentially-proclaimed Employ the Older Worker Week. Their visit will include an evening tour of the city's landmarks, meetings with Congressional representatives, a tour of the White House, and a gala awards dinner at the historic National Building Museum.

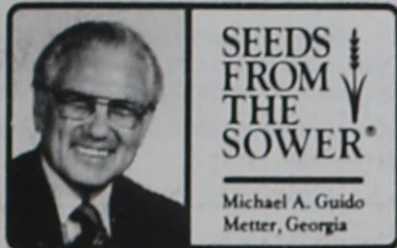
Green Thumb is the country's oldest and largest nonprofit provider of employment and training for older

Americans. Its mission is to strengthen families, communities, and our nation by providing older and disadvantaged individuals with opportunities to learn, work and serve others. Last year, Green Thumb brought

training and employment options to more than 26,000 older Americans. In Texas, Green Thumb operates in 132 counties serving almost 1,000 mature workers.

Shop here for special
Christmas & Holiday outfits

New To You
A Quality Discount Clothing Store
347-2388 ~ Downtown Matador



SEEDS FROM THE SOWER

Michael A. Guido
Metter, Georgia

"Are you a good boy?" asked a lady.

"No, ma'am," he answered, "I'm a bad boy. I'm the kind of a boy my mom won't let me play

with."

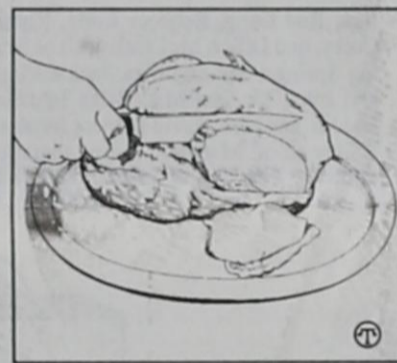
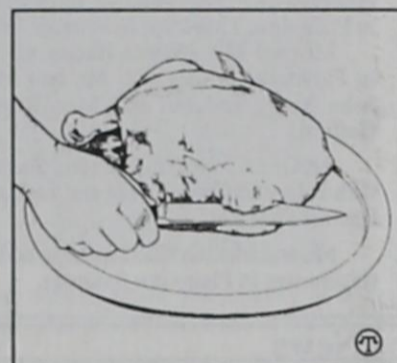
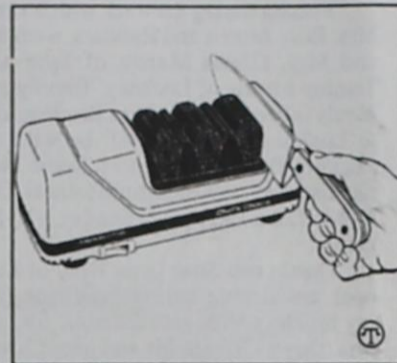
What kind of a person are you? You lift or lower everyone you touch. You make them better or worse. No one is the same after spending time with you.

You draw them closer to the Lord or you drive them farther away. You make them love the Bible or loathe it. You make them like the church or dislike it. You attract or repel.

How do you affect your family and friends?

Talking Turkey

Carving Is As Easy As 1, 2, 3!



(NAPS)—You can carve like a pro with three simple tips:

#1—Use A Good, Sharp Knife

A sharp carving knife cuts thinner, more even slices. A razor sharp knife cuts smoothly and won't shred tender meat. You don't have to be an expert to put a professional edge on your knife. The new, easy to use Chef'sChoice® knife sharpener with a revolutionary stropping/polishing stage gives you razor sharp edges on both fine edge and serrated blades. All Chef'sChoice® knife sharpener models use 100 percent diamond abrasives to quickly and safely sharpen all quality knives. For recommendations on a sharpener that's right for you, call EdgeCraft, (800) 342-3255.

#2—Make a Long, Deep Base Cut

After the turkey is done (meat thermometer should read 180 degrees when inserted into the thickest part of the thigh) cool the roasted turkey for 15 minutes, before carving, to make the meat firmer and easier to slice.

Remove and set aside the turkey legs and the last joint of each wing. Make a long, deep (to the bone) horizontal "base cut" into the breast just above the wing.

#3—Slice Down to the Base Cut

Slice down vertically through the breast to the "base cut" to release perfect, even slices. It's that easy!

WANT THE PERFECT GIFT?

a subscription to the **MOTLEY COUNTY TRIBUNE**
Only \$19.00 a year for Motley County & \$20 a year elsewhere!

Open House

Friday & Saturday, Nov. 27 & 28

We don't care if you've been naughty or nice

Come by

Heart's Desire

and fill out your Christmas Gift List and let Santa know what you want!



So much to see!

Lots of Christmas gift items!
Brighton Jewelry & Colognes
Mary Englebriet - Kim Anderson
Clothing - Cards & so much more!

120 South Main • Lockney
652-2548 • Hours: 10-6

Open until 8 pm on Thursdays!

Fall Decorations
1/2 off



Shop Late Thursday, December 3 and
make your Christmas Wish List at

Rose Garden Floral & Gifts

Beautiful Gold Metal Angels
Unique & Different Santa's
Snowmen & Reindeer

Christmas Ornaments

Potpouri filled Friendship Balls

Christmas Arrangements & other Christmas items

Men's Colognes & Ladies Perfumes

New Cookie Stamps & Molds

Shortbread Pans & Mixes

Paper Casting Craft Kits to use with cookie mold

Christmas t-shirts

Beautiful Laces & much more!

— New Food Items —

Delicious Candies, Bread & Cake Baking Kits in a Flower Pot and other specialty food items

Texas Heat Cook-off Chili Mixes, Hot & Mild Sauces,

Spicy Red Beans ~ Cinnamon Crunches

Honey in a Tea Cup or Coffee Mug - What a great gift idea!

Flavored Honey Sticks

We make beautiful specialty Gift Baskets

To your Specifications - Starting at \$10.00

Lots of other great, unique gift giving ideas

Layaways & Gift Certificates Available

Remember to Shop at Home!

Downtown Matador (806) 347-2711



After Thanksgiving Sale

Christmas
Wrapping Paper
50 sq. ft. Roll - .99¢
100 sq. ft. Flat Fold - \$1.99
All Christmas Lights
20% off
All Poinsettias
25% off
ALSO
ALL WRANGLER
SHIRTS
25% OFF

Matador Variety
347-2820

Revolutionary TRIMMER ON WHEELS!

SO MUCH EASIER to use than hand-held trimmers OR small-wheels mowers! TRIMS plus MOWS everything from whole lawns (even wet, without clogging!) to tough, waist-high grass and weeds with incredible ease! Rocks, roots, stumps, etc., do it no harm because it has no steel blade to bend, break, or dull. Perfect for use with riding mowers for finish-up trimming and mowing... and for ALL trimming and mowing around vacation homes, hunting camps, etc.

"Your machine is all you say it is. 75% quicker than a hand-held trimmer because of the extra power and heavier cord that enables me to wade right thru heavy grass and weeds. There is NO heavy load to swing back and forth tiring your arms and shoulders. It makes weed wacking 'dick soup'!"
— Tom Lawrence, Somerville, New Jersey



Why Do
It The
HARD
WAY?
So, WHY HASSLE
with hand-held trimmers
or small-wheels mowers?
Please mail coupon below
TODAY for FREE
DETAILS about the
Revolutionary DR*
TRIMMER/
MOWER!



YES! Please rush complete FREE DETAILS of the Revolutionary DR* TRIMMER/MOWER* including prices and specifications of Manual and Electric-Starting Models and *Off-Season* Savings now in effect.

Name _____
Address _____
City _____ State _____ Zip _____
To: COUNTRY HOME PRODUCTS*, Dept. 4143T
Meigs Road, P.O. Box 25, Vergennes, VT 05491

New Shipment of Books!

New Mary Englebreit books
Coyote & The Roadrunner by Wyman Meinzer
New Cookbooks
Political History of Texas
Historic Churches of Texas
Inspirational books & Bibles

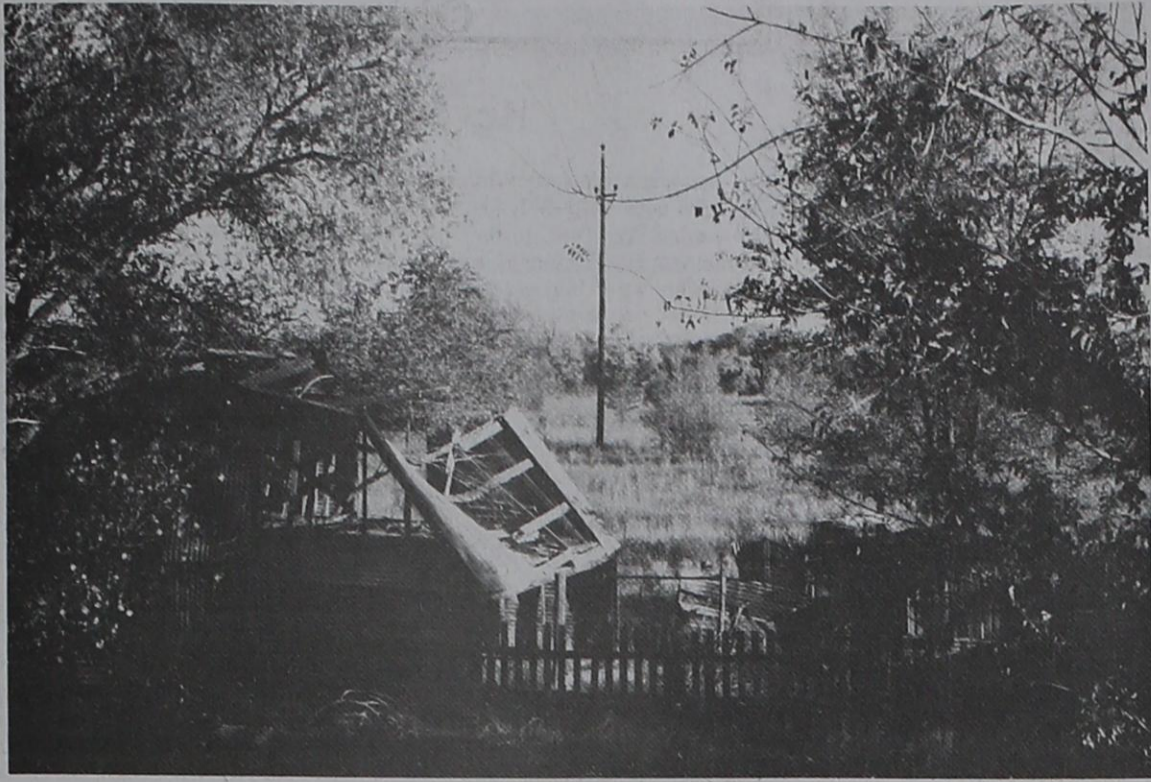


MANY MORE!

BOOKS MAKE GREAT CHRISTMAS GIFTS!

MOTLEY COUNTY TRIBUNE

724 Dundee ~ Matador ~ 806-347-2400



SCENES OF MOTLEY COUNTY — Although it's impossible to see the magnificent colors of the Fall season in these two pictures, just imagine the beauty of yellow, red and brown in these country scenes of Motley County. This picture is of an old hog pen shot outside of Roaring Springs, surrounded by trees in full Fall color.



STILL STANDING — This old windmill, located east of Roaring Springs stands amid the beauty of a vast hue of Fall colors. If you haven't taken the time to drive around the County to see Fall in all its glory, you have surely missed a beautiful site.

Small Business Administration offers new pre-qualification pilot program

The Lubbock District Office of the United States Small Business Administration now has an umbrella Pre-Qualification Pilot Loan (PreQual) Program. In this program SBA provides assistance in the application process to segments of the small business community that may have been under served by the lending community. The PreQual Program replaces the Woman's and Minority Pre-Qualification Loan Programs and expands the definition of qualified borrowers to a wider variety of under served markets.

These markets include women, veteran, and minority owned businesses. Rural areas are also being considered for this program.

To be eligible, a prospective business must be 51 percent or more owned by veterans, women, and/or minorities. Businesses can also qualify if they significantly expand existing export markets or develop

new export markets. Loan requests from these markets are handled by the field office (Lubbock District Office) which is authorized to implement the PreQual Program at its discretion.

The primary factors to be considered are:

1. The borrower's willingness to repay debts, as indicated by a good credit history;
2. The likelihood that expected earnings will be sufficient to repay obligations; and
3. The ability of the business to succeed with requested financing.

The Lubbock District Office is responsible for ensuring that SBA's credit and eligibility standards are observed. Applications are not to be accepted under the PreQual Program if they involve unique, unusual or complex situations or issues, there is an affirmative response to questions on bankruptcy within the past 10 years or on criminal history at any time, or

they do not meet routine credit and eligibility considerations.

The maximum loan amount under the PreQual Program is \$250,000. If a borrower currently has a SBA loan and the combined loans requested as a result of this program are more than \$250,000, the request is to be processed through the regular guaranty program.

The loan processing procedures are as follows:

1. An intermediary works with the applicant to determine the feasibility of the project and complete the loan application package.
2. The intermediary sends the application to SBA for review and if warranted, a letter of commitment is issued.
3. The applicant's lender is presented with the loan application and SBA's letter of commitment.
4. If lender accepts/approves the letter of commitment, the application is then returned to SBA for final review and approval.

For additional details on this program and intermediaries contact the SBA at our toll free number (800) 676-1005 or (806) 472-7462.

FREE! SUBSCRIPTION

to the

CHRISTIAN RANCHMAN

a monthly tabloid newspaper featuring Christian testimonies of cowboys, ranchers, horsemen and people in related industries.

TRACTS also available, written in the language of the contestant or livestock people. Request free sample packet.

Published by

COWBOYS FOR CHRIST

P.O. Box 7557 • Fort Worth, TX 76111

Please include your ZIP code and address in all correspondence.

Let's Give Thanks

Thank you for reading the Motley County Tribune

Future FHA Homes of America



18200 I-27 South
AMARILLO, TEXAS
(806) 656-0095

Cotton



from Plairs Cotton Growers, Inc.

Modification to Step 2 Supported by PCG

Low producer prices for cotton and grain, and a falling Adjusting World Price (AWP) are beginning to create Loan Deficiency Payment/Marketing Loan Gain payment limitation problems for some producers.

The crux of the problem is that producers who reach the \$75,000 payment limit may not be able to stay price competitive because they are ineligible for either an LDP or a marketing loan gain from commodities pledged as collateral in the loan.

There appears to be only one way around this problem; the issuance of generic certificates for Step 2 payments that can be redeemed for cotton in the loan, in lieu of cash, at the Step 2 recipients request.

Cotton redeemed from the loan with certificates would keep producers who are close to their payment limit competitive in the market and would not count against their payment limit.

Cotton redeemed with certificates is not counted against a producers payment limit while the marketing loan gain from cash redemption's is added to the total counted against the LDP payment limit.

The Secretary of Agriculture has the authority to issue certificates instead of cash for Step 2 payments, however, in order for this to be helpful for cotton he would also have to allow the redemption of loans with certificates.

Currently certificates can only be used to purchase CCC-owned commodities, not commodities held as collateral for loans.

Producers who reach their LDP payment limit could be forced, under current rules, to forfeit any available LDP or have their cotton in the loan become ineligible for redemption at the AWP.

PCG and other cotton industry groups are in the process of asking the Secretary of Agriculture to issue Step 2 certificates to those that request them and to allow certificates to be used to take cotton out of the loan

WHP Growers Vote On Boll Weevil Eradication

Ballots have been mailed to cotton producers and landlords in the Western High Plains Boll Weevil Eradication Zone who will now decide whether or not to mount a concerted effort to rid themselves of the boll weevil.

The Western High Plains Eradication Zone consists of five counties: Andrews, Gaines, Yoakum, and parts of Terry and Lynn. Altogether the zone contains an estimated 800,000 acres of boll weevil infested cotton.

Referendum participants will vote on three separate items: establishment of the WHP zone; establishment of a maximum assessment rate of \$6 per land acre - dryland and \$12 per land acre - irrigated; and elect a member

COW POKES By Ace Reid



"Paw, I know I've been wantin' seat belts . . . but I meant the kind with buckles on 'em!"

This Feature Sponsored By

First State Bank

Matador

Your "Hometown" Bank

Member FDIC

to the Texas Boll Weevil Eradication Foundation Board of Directors.

Ballots were mailed by the Texas Department of Agriculture around November 18. The mail referendum concludes December 9. Eligible ballots must be post-marked no later than

December 9.

All producers and landowners are eligible to vote in the referendum. If you feel you should have received a ballot but have not contact the Texas Boll Weevil Eradication Foundation at 1-800-686-1212.



THANKSGIVING DELIGHTS

'97 SKYLARK	\$ 9500	or \$177 month **
'97 SUNFIRE	\$ 9500	or \$177 month **
'97 GRAND PRIX	\$13700	or \$265 month **
'97 LeSABRE	\$13900	or \$269 month **
'97 PARK AVENUE	\$19999	or \$375 month ***
'98 GRAND AM	\$10900	or \$205 month *
'98 CENTURY	\$15600	or \$303 month *
'98 LeSABRE	\$16300	or \$317 month *
'98 REGAL	\$16500	or \$321 month *
'98 BONNEVILLE	\$16700	or \$325 month *
'98 GMC JIMMY 4X4	\$19999	or \$373 month ***
'99 GRAND AM	\$14900	or \$288 month *

MANY MORE TO CHOOSE FROM!

"ALL STILL UNDER FACTORY WARRANTY"

* \$1000 down +TTL-60 months-8.99% APR-WAC

** \$1000 down +TTL-60 months-9.24% APR-WAC

*** \$2000 down +TTL-60 months-9.24% APR-WAC

**** \$2000 down +TTL-60 months-8.99% APR-WAC

CITY AUTO

Floydada, Tx.

806-983-3767

BUICK-PONTIAC-GMC

Higginbotham-Bartlett

We now have Dickies Coveralls & Coats

We have Polo Shirts!

NEW!
TV's, VCR's, & Stereos

— Appliances —
Washers & Dryers,
Stoves,
Freezers, Microwaves

"Leon Valley"

10' Portable Cattle Panels

4' Walk Thru Gates

12' Trough Feeder

4' Trough Feeder

Round Bale Feeder

FARM & RANCH SUPPLIES

PURINA FEEDS • HI-PRO VET SUPPLIES



PORT-A-HUT HOG RAISING SYSTEMS
STORAGE BUILDINGS

RENTALS:

Chop Saw • Roto-Rooter • Ditch Witch • Roto Tiller
Tandem Trailer • Welder • Steam Cleaner

STORE HOURS: 7:00 A.M. - 5:00 P.M. MONDAY - FRIDAY & 7-12 SATURDAY

FREE LOCAL DELIVERY

FOR YOUR CONVENIENCE AFTER HOURS CALL

DONNIE, 347-2889 OR FRED, 347-2304

T H E C L A S S I F I E D S

Motley County Tribune
 Carla M. Meador - Publisher - Editor
 Mary Meason - Contributing Features Writer
 Kathy Blanco - Proofreading, Composition, Circulation
 Amanda Engler - Typing, School News
 Nancy Marshall - Circulation
 The Motley County Tribune, (ISSN: 0897-4322), purchased on September 3, 1996, is published weekly each Thursday, except Christmas week, at Matador, Texas. The office is located at 724 Dundee, telephone number, 806/347-2400. Periodical-class postage paid at Matador, Texas. Postmaster: Send address changes to Motley County Tribune, P.O. Box 490, Matador, TX 79244.
 NOTICE: Any erroneous reflection upon the character, firm, or corporation, which may appear in the columns of the Motley County Tribune will gladly be corrected upon being brought to the attention of the publisher. Only signed letters to the Editor will be considered for publication and should not exceed 250 words in length.
 PUBLICATION NO. 333700
 SUBSCRIPTION RATES: MOTLEY COUNTY, \$19; ALL OTHERS, \$20; 9-MONTH STUDENT, \$18
 Over 60 may deduct \$1.00 P.O. Box 490, Matador, TX 79244



Real Estate
 WILL ACCEPT A REASONABLE OFFER.
 2 bedroom, 2 bath, Living room, dining room, carport and storage. 705 Main, Matador, Call 806-352-2997.

Legal Notice
NOTICE TO CREDITORS
 Notice is hereby given that original Letters Testamentary for the Estate of Elva Rhea Lawrence, Deceased, were issued on September 22, 1998, in Cause No. 2468, pending in the County Court of Motley County, Texas, to: GARY LANCASTER AND CAROLYN LANCASTER.
 The residence of the Independent Executor of Matador, Motley County, Texas; the post office address is:
 c/o Don Ross Malone
 Attorney at Law
 P.O. Box 953
 Vernon, Texas 76385-0000
 All persons having claims against this Estate which is currently being administered are required to present them within the time and in the manner prescribed by law.
 Dated the 18th day of November, 1998.
 Law Offices of Don Ross Malone
 1730 Houston Street
 P.O. Box 953
 Vernon, Texas 76385
 940-552-9946
 Fax - 940-552-9925
 By: Don Ross Malone
 Attorney for the Estate
 State Bar No: 12873500

Bid Notice
 LOCAL LET MAINTENANCE CONTRACT
 COUNTY: Cottle, Briscoe, Hall, King, Childress, Donley, Hardeman, Motley, Wheeler.
 HIGHWAY: US0062
 LENGTH: 2.560 ML
 CONTROL NUMBER: 6034-87-001
 PROJECT NUMBER: RMC - 603487001
 TYPE: Remove, Replace, Upgrade MBGF & Bridge Rail.
 TIME FOR COMPLETION: 115 Working Days
 GUARANTY: 30,000.00
 BIDS RECEIVED UNTIL: 1:00 p.m. December 9, 1998
 EST. COST: 619,116.16
 BIDS WILL BE OPENED: 1:00 p.m. December 9, 1998
 MAIL OR DELIVER BIDS TO:
 Texas Department of Transportation
 200 East Riverside Drive
 Austin, TX 78704
 CONTACT PERSON:
 Bart Sherrill
 P.O. Box 900
 Childress, TX 79201
 (940) 937-7152
 LIMITS FROM: District Wide
 LIMITS TO: District Wide

NOVEMBER Subscriptions Due
 Motley County - \$19.00
 Elsewhere - \$20.00
 Those over 60 may deduct \$1.00

Help Wanted
 URGENTLY need dependable person in MATADOR area. Regardless of training, write W.P. Hopkins, Texas Refinery Corp. Dept. W-79244, Box 711, Ft. Worth, TX 76101-0711.

MOTLEY COUNTY
 Flomot:
 Arnold Johnson
 O.J. Lee
 Seab Washington

Matador:
 Mark Seigler
 The Windmill
 Wayland Moore
 Dortha Grundy
 Bill & Mary Jones
 Truitt Read

Roaring Springs:
 K.D. Abbott
 Joey & Ann Thacker
 City Hall
 D.A. McGuire
 Randy Meredith

At Floydada Ford Mercury
We Make BUYING FUN!!!

<p style="text-align: center; font-weight: bold;">Under \$7,995</p> <p>1990 T-Bird 1993 Ford Taurus 1995 Chrysler Cirrus 1996 Olds Cierra 1992 Chrysler Salon</p>	<p style="text-align: center; font-weight: bold;">Over \$16,995</p> <p>1999 GMC Suburban 1996 Chevrolet Tahoe 1997 Chevrolet Tahoe 1999 GMC Yukon 1997 Ford F-150, Super Cab 1997 Chev. 4x4 Blazer</p>
<p style="text-align: center; font-weight: bold;">Under \$10,995</p> <p>1993 Mercury Cougar 1994 Ford Ranger, Super Cab 1995 Ranger, Reg. Cab 1993 Ford F-150, Super Cab 1995 Ford F-150, Super Cab 1996 Ford Taurus</p>	<p style="text-align: center; font-weight: bold;">Under \$15,995</p> <p>1997 Pontiac Grand Am, V-6 1997 Nissan Altima 1997 Ford Taurus 1997 Ford Mustang 1995 Ford F-150, Super Cab</p>

1-877-983-3761  **806-983-3761**

You make the drive, we'll go the distance!
 Ralls Hwy., Floydada, TX

For Sale
 STEEL BUILDINGS, new, must sell 30x40x12 was \$10,200 now \$6,990; 40x60x12 was \$16,400 now \$9,900; 50x100x16 was \$27,590 now \$19,990; 60x200x16 was \$58,760 now \$39,990. 1-800-406-5126.

DSS 18" DIGITAL SATELLITE SYSTEMS, \$89.00. THACKER SUPPLY CO., INC., Roaring Springs, Texas, 1-800-481-2828.

FOR SALE Used Maytag Washers and Dryers, rebuilt and guaranteed. THACKER SUPPLY, 348-7216.

PRINTER for sale. \$35.00. Call 347-2388.

FOR SALE: Dearborn Propane Heater, used 2 months. Automatic Thermostat. Originally \$460; Now \$275. Algie Groves, 406 3rd, Roaring Springs, 348-7505.

Public Notice
 NO CREDIT NECESSARY to purchase New Manufactured Homes. Call 806-656-0095.

WE RENT CARS
 FLOYDADA FORD-MERCURY 983-3761
 Toll Free - 1-877-983-3761

ELSEWHERE
 Victor Arrington, Spur
 Nell & Glen Martin, Spur
 Todd Washington, Childress
 KEFH-FM 99.3, Clarendon
 Polli Arrington, Dickens
 John Dorsey, Canyon
 Doc Cross, Plainview
 Mrs. Bernard Lyles, Amarillo
 David Rattan, Amarillo
 Sybil Ward, Lubbock
 Kim Hand, Lubbock
 Glenn Woodruff, Lubbock
 Wendy Lancaster, Lubbock
 Ora Stonecipher, Lubbock
 Dan Mitchell, Lubbock
 Jessie Lee Lancaster, Lubbock
 Buddy Davis, Irving
 Peggy James, Arlington
 Frank & Renee Mzyk, Grapevine
 Jeannie Freudennich, Ingleside
 M. Stanley Brooks, Spicewood
 Mabel Harris, Austin
 Mountain Reading Service, Provo, UT
 John R. McKinney, Granite Bay, CA
 Mr. and Mrs. Don Miller, Portland, OR
 Lucille Sundvik, Everett, WA
 Frances T. Morris, Friday Harbor, WA
 Joe Dean Bumgardner, Hutchinson, KS

NOTICE TO CREDITORS
 Notice is hereby given that original Letters Testamentary for the Estate of E.D. Lawrence, Deceased, were issued on September 22, 1998, in Cause No. 2469, pending in the County Court of Motley County, Texas, to: GARY LANCASTER AND CAROLYN LANCASTER.
 The residence of the Independent Executor is Matador, Motley County, Texas; the post office address is:
 c/o Don Ross Malone
 Attorney at Law
 P.O. Box 953
 Vernon, Texas 76385-0000
 All persons having claims against this Estate which is currently being administered are required to present them within the time and in the manner prescribed by law.
 Dated the 18th day of November, 1998.
 Law Offices of Don Ross Malone
 1730 Houston Street
 P.O. Box 953
 Vernon, Texas 76385
 940-552-9946
 Fax - 940-552-9925
 By: Don Ross Malone
 Attorney for the Estate
 State Bar No: 12873500

NOTICE TO CREDITORS
 Notice is hereby given that original Letters Testamentary for the Estate of E.D. Lawrence, Deceased, were issued on September 22, 1998, in Cause No. 2469, pending in the County Court of Motley County, Texas, to: GARY LANCASTER AND CAROLYN LANCASTER.
 The residence of the Independent Executor is Matador, Motley County, Texas; the post office address is:
 c/o Don Ross Malone
 Attorney at Law
 P.O. Box 953
 Vernon, Texas 76385-0000
 All persons having claims against this Estate which is currently being administered are required to present them within the time and in the manner prescribed by law.
 Dated the 18th day of November, 1998.
 Law Offices of Don Ross Malone
 1730 Houston Street
 P.O. Box 953
 Vernon, Texas 76385
 940-552-9946
 Fax - 940-552-9925
 By: Don Ross Malone
 Attorney for the Estate
 State Bar No: 12873500

Farmers & Ranchers
 BEEFMASTER BULL FOR SALE, 5-6 years old. Bill Peacock, 348-7286.

FOR SALE: Blue Stem Hay, Square Bales. 469-5480.

Vehicles for Sale
 1996 FORD RANGER Extended Cab, 38,000 miles. Excellent condition. 748-0613.

B U S I N E S S R E V I E W

Carpet Rolls Remnants Area Rugs
 Wood Floors Vinyl Flooring Ceramic Tile

Stubblefield's Rugs & Remnants

~ Professional Installation ~
 ~ Financing Available ~

(806) 296-7387 Plainview, TX 79072 2804 West 5th.

MEREDITH CONSTRUCTION
 &
 Gas and Supply

New Construction Remodeling, Painting, & Electrical Work
 Complete turnkey work
 Concrete work and all types of roofing

We welcome all new customers
 24-hour service

JOE G. MEREDITH & SONS

(806) 348-7516 269-0095 (local) (806) 348-7528

Payne Pharmacy

200 S. Main - Floydada, Texas 79235
 Ph: 983-5111 or 1-800-345-7961
 Denise Payne, R.Ph.

M-F, 8:30 - 6:00
 Sat., 8:30 - 2:00

We will be happy to mail your prescription!

Authorized Agent of Caprock Cellular

Gillespie Communications

JAMES GILLESPIE - (806) 347-2208

Land Mobile Radio Sales & Service

Fred Thayer & Dianne Washington
 Certified Public Accountants
WE'VE MOVED!
 We are now located at 710 Bailey
 347-2636

Open Monday, Thursday & Friday, 9:00 a.m. - 1:00 p.m.
 Tuesday & Wednesday, 9:00 a.m. - 5:00 p.m.

THIS SPACE IS AVAILABLE FOR A LOW MONTHLY COST

CALL 347-2400 FOR DETAILS

GERMANIA INSURANCE
 Homeowners, Auto, Personal, and Farm Liability and Life

Lee's Insurance Agency

Flomot, Texas 79234 806-469-5370

Palmer Service Center
 Full Service - Farm Delivery
 We are now the dealer of INTERSTATE BATTERIES

OIL CHANGES NEW & USED TIRES
 347-2346 New Tire Spin Balance

WE DO STATE INSPECTIONS!
 MATADOR

CALL DAY OR NIGHT FOR PROPANE & ELECTRICAL SERVICE

MARSHALL BROS.
 347-2290

PROPANE ELECTRIC

This space is available for a small monthly cost

Call 347-2400 for information

DON'S MUFFLER SHOP
 210 W. Calif. - Floydada
 FREE ESTIMATES
 1-800-866-3670

SHAKLEE PRODUCTS
 Peggy Probasco
 983-5246 or 800/536-5246

www.roberthall.com
 (806) 237-2182

ROBERT HALL
 CHEVROLET / OLDSMOBILE

501 Main Street
 Jayton, Texas