

HANSFORD CO. LIBRARY  
120 MAIN  
SPEARMAN, TEXAS 79081

### Lynx open; JV, Frosh, 7th and 8th play

The mighty Lynx will take an extra week preparing for the start of district competition against Dalhart one week from this Friday night.

Coach Tomlin and his Junior Varsity will host the Canadian Junior Varsity here at Lynx Stadium Thursday night. The Lynx JV team is 1-1-0 for the season and is coming off of two consecutive open weeks. They should be ready for Canadian.

7th and 8th grade teams. A scheduling mishap caused the cancellation of all three games. The Freshmen will open things up here Thursday night taking on the visiting Canadian Freshmen. The Lynx Freshmen are also 1-1-0 for the season. The

Freshmen game starts at 5:00. Coach William's 8th graders and Coach Brown's 7th graders will journey to Canadian Thursday to battle with the 7th and 8th grade little Wildcats. Windy's Winners, the 8th graders are still undefeated stand-

ding 2-0-1 on the season, having tied once. Browns Bunch, the 7th graders, are 2-1-9 on the season and will kick things off in Canadian at 5:00.

# New Cars, Tractors Go On Display



Gerald Heinrich, and all of his staff at Excel Chevrolet-Olds, in Spearman, take this opportunity to invite the public to see the new 1978 Chevrolets, and Oldsmobiles this week end, plus the new 1978 Chevy pickups. This will be one of the biggest showings in the history of General Motors and Chevrolet!

Dan Hergert on the left, and Don Hergert on the right, invite the public to stop by this week-end and see the new Pontiacs-Buicks- and GMC's on display at their beautiful showroom, on the Borger Highway. They will be celebrating their 3rd anniversary, so drop by an visit with these fine people, and see the new 1978 cars!

**BAKER & TAYLOR  
WOMEN'S ASSOCIATION  
GARAGE SALE  
10 A.M. - 5 P.M.  
Fri.-Oct. 7 Sat.-Oct. 8  
203 South Hazelwood**

## The Spearman Reporter

VOLUME 68, NO. 47

THE SPEARMAN REPORTER, SPEARMAN, TEXAS 79081

THURSDAY, OCTOBER 6, 1977

### Broom sale will be held October 20th!!

### Beedy Furniture In New Location

Brad and Dodie Beedy have announced that Friday will be the first day to open the doors of their new building for business. The new location is at 723 W. 7th. Beedy Furniture will have two telephone numbers, 459-3044 and 659-3701. The store hours 8:30 a.m. to 5:30 p.m. Monday thru Friday will remain the same.

The new building has 15,000 square feet of space as opposed to the 8,400 square feet at the old location, and that extra space has already been taken up. Part of it is filled with some new lines of furniture the Beedy's have stocked, including Thomassville, Palaski, Brookwood, Burlington Industries.

The Lions Club broom sale for the blind, will be held in Spearman, Thursday, October 20th. This is one of the most important programs of the year for the Lions Club, and is a joint venture between the Lions Club and the Lighthouse for the blind. For more than two decades, the Lighthouse for the Blind of Texas have joined Caravan Sales with Lions Club of Hansford County. These Caravan sales offer community and civic organizations the opportunity of selling quality blind made made products directly from the Caravan Sales Truck to the public. The sale, which lasts one day only, can realize a great deal of money for the clubs as well as the blind.

You help the blind in this exciting venture by selling the products made right here in Texas. Over fifty different household aids are available. Lighthouse in Texas employ blind, deaf-blind, and multi-handicapped individuals who are unable to find work elsewhere. In addition to employment, the Lighthouse offers vocational evaluation, vocational training, social services, counseling, and recreational events for the elderly and homebound blind.

The following schedule is set up for the Spearman Lions Club.

- Work Schedule for Broom Sale  
October 20, 1977**  
Post Office Schedule:  
7:00-8:30  
Dick Elbert •  
Earl Goodhart  
Russell Pogue  
7:30-10:00  
The farmers had also appeared before the equalization board in July to present their case orally to the members.  
The property tax values of the land, if placed under market valuations and not agricultural valuations, is much higher.  
In the restraining order, signed by the Judge Countiss, it was written that "if permitted to stand, (the tax evaluation) would deprive plaintiffs of their property without due process of law."  
Judge Countiss has ordered Mrs. Berry, the county tax assessor/collector to appear before him at 10 a.m. Friday in the district court in Stinnett to show cause why a temporary injunction in favor of the plaintiffs should not be granted.

- Bryon Jones  
Ab Abston  
5:00  
Eugene Yarborough •  
Dick Elbert  
• Denotes team leader. Each team leader will be responsible for contact of other team members.  
The following Lions will have the assignment of contacting the business establishments in their assigned area.  
**Main Street**  
Earl Goodhart •  
Russell Pogue  
Troy Sloan  
**Hwy. 207, Hwy 15 & Kenneth St.**  
James Cunningham •  
Doug Connelly  
Dick Elbert  
Residential Area Schedule:  
At 5:00, everyone be available to begin working their assigned streets until 7:30. All merchandise and proceeds to be returned to Post Office by 7:30.  
Gibner Drive  
Cotter Drive  
Blodgett Drive  
Alton Ellsworth •  
Troy Sloan  
Steele Drive  
Cotter Drive  
Wilmet Drive  
Linn Drive  
Glover Place  
Gerald Heinrich •  
Jack Oakes  
James Cunningham  
Green Acres Addition  
Earl Goodhart •  
John Bishop  
Ken Chapman  
Townsend St.  
Doug Connelly •  
Bryon Jones  
Bartley St.  
C.A. Gibner •  
Ab Abston  
Bernice St.  
Cecil Biggers •  
Dr. Kleeberger  
Dressen St.  
J.W. Gibner •  
Russell Pogue •  
Haney St.  
Doug Steger •  
S.J. Hall  
12th St.  
Dick Hudson •  
Johnnie Lee  
Roland St.  
Evans St.  
Archer St.  
Claude Newell •  
Billy Miller  
Bob Bowell  
Ericcett St.

**Dewey Ball Buried Saturday**  
Dewey H. Ball, 79, of Spearman, a former Olton resident, died Thursday.  
Services were at 2 p.m. Saturday in the First Baptist Church of Olton with the Rev. John Lewis, pastor, and the Rev. Russell Pogue, pastor of the Spearman First Baptist Church, officiating. Burial was in Olton Cemetery by Parsons Funeral Home.  
Mr. Ball, a native of Caddo, Okla., married Myrtle Harper Jan. 16, 1926, in Lindsey, Okla. He was a Baptist.  
Survivors include the widow; two sons, Charles and Gene, both of Spearman; a daughter, Mrs. Ralph Loveliss of Lubbock; four sisters, Mrs. Carmen Alsup of Phoenix, Ariz., Mrs. Beulah Measles of Tulsa, Mrs. Delbert Hyman of Kermit and Mrs. Pauline Alexander of Plainview; four brothers, Jodie of Oklahoma City, J. D. of San Francisco, Lewis of Lubbock and the Rev. Fred Ball of San Antonio; seven grandchildren and five great-grandchildren.

### Poison Pen Predicts



Phillips is tough to beat at home but I believe Gruver can put it together to bring home a victory.  
Perryton shouldn't have any trouble with Woodward, Okla. Boys Ranch will lose one farwell, and River Road will still be looking for their first win after playing Memphis Friday night.  
WTSU should come up with their first win of the season over New Mexico State.  
Texas has a strong offense this year but the Sooners are used to playing in Dallas and

will remain undefeated. Texas Tech will win over Arizona and SMU will lose to Baylor.  
TCU has been looking for a victory for a while and should finally have one after their game with Rice.  
The Cowboys will have their hands full with St. Louis but Dallas will remain undefeated.

### Markets

Corn	\$1.90
Wheat	\$2.25
Milo	\$2.95

### Judge Halts Hutchinson Tax Notices

A temporary restraining order preventing Hutchinson County from issuing any property tax notices has been ordered by 84th District Court Judge Richard Countiss.  
The restraining order is the result of a civil suit filed by approximately 80 Hutchinson County farmers against the four county commissioners, O. C. Holt, Bill Griffin, Bill Shipley, and Murray Jennings; county tax assessor/collector Mrs. Lucy Ann Berry, and County Judge Bob Carp.  
The suit was filed by Ira Harbour, Monty Harbour, Fred Holt, Nolan Holt, Jon Jarvis, Marvin Jones and others.  
The civil suit alleges that at the time the county commissioners convened as a board of equalization, they "failed and refused to establish agricultural use schedule, but instead established only a schedule relating only to the market value of the property."  
The plaintiffs of the suit say they had filed more statements

with the Hutchinson County tax assessor/collector prior to last July's board of equalization meeting, stating that for the past three years their land had been used for agricultural purposes and that agriculture was their primary source of income.  
The farmers had also appeared before the equalization board in July to present their case orally to the members.  
The property tax values of the land, if placed under market valuations and not agricultural valuations, is much higher.  
In the restraining order, signed by the Judge Countiss, it was written that "if permitted to stand, (the tax evaluation) would deprive plaintiffs of their property without due process of law."  
Judge Countiss has ordered Mrs. Berry, the county tax assessor/collector to appear before him at 10 a.m. Friday in the district court in Stinnett to show cause why a temporary injunction in favor of the plaintiffs should not be granted.

### Hospital News

Patients in Hansford Hospital are Frances Sim, Shirlene Dennis, Jarold Garcia, Rae Butler, Ida Wilmet, Diane Bradley, Mary Miesner, and Mandi Lusby.  
Dismissed were Donna Benart and son, Don Morley, R.E. Lee, Christa Urban, Ee. Richeson, Justin Upchurch, Lydia Rodriguez and son, and Lorene Kunselman.



Dave Farmer, John Deere area service manager, Gene Cuijd, center and Bob Klenzendorf, John Deere territorial manager, invite the public to stop by Hansford Implement this week.

I didn't know how to tell Billy about the accident. How can you say to your son that his mother is injured and there seems no hope?

I held him close, but could find no words of comfort. Suddenly I heard Billy start to pray softly. I had always left prayers and that sort of thing up to Mary. I somehow felt it couldn't really help, but I felt myself kneeling with Billy.

Softly he prayed as his mother had taught him. To my surprise I heard no begging plea but rather earnest conversation like that with a trusted and loved friend. "Thy will be done," not hopelessly, but serenely acknowledging the goodness of God's will.

Miraculously, we brought Mary home yesterday, and I plan to spend the rest of my life praising God, not only for her recovery, but also for the faith I have learned from our son.

You can bet that when Mary and Billy go to church next Sunday, I'll be right there with them —singing, praising and believing.

# Thy Will Be Done



Sunday  
James  
5:13-20  
•  
Monday  
Psalms  
34:1-10  
•  
Tuesday  
Psalms  
39:1-13  
•  
Wednesday  
Psalms  
42:1-11  
•  
Thursday  
Psalms  
73:21-28  
•  
Friday  
Psalms  
19:14  
Isaiah  
26:3-4  
•  
Saturday  
II Corinthians  
10:1-5



### Equity Elevators

659-2420  
104 Collard  
Spearman, Texas

### Spartex Grain Co.

659-3711  
514 Collard  
Spearman, Texas

### Consumer Sales Co.

421 W. Kenneth Ave.  
Spearman, Texas

### Jr. Lusby "Cats"

659-3766  
W. Gruver Hwy.  
Spearman, Texas



Gruver Statesman

See you in church  
this Sunday  
The  
Spearman Reporter

Your office supply  
Headquarters  
Hansford  
Plainsman



# WANTED ADS

**Boxwell Bros.**  
Funeral Home and Flower Shop  
FUNERAL HOME - 659-3802  
FLOWER SHOP - 659-2212

## Real Estate For Sale

**FOR SALE OR LEASE:** Wholesale and retail oil business, 501 W. Kenneth, J.W. Davis, owner, phone 659-2778. 465-4tc

320 acres improved irrigation, Good well area, 2 wells, underground pipe-possession, some minerals. \$500 acre. Spragins Real Estate, Guyton. Phone 405-338-7211 or 405-888-4214. 45-9c

120 acres at OPTIMA RESERVOIR, Spragins Real Estate, Guyton, 405-338-2811 or 405-888-4214. 45-9c

**Mayfield Real Estate**  
John Mayfield - Broker  
Ruby Lair - Salesperson  
659-2188

Two bedrooms, 2 bathrooms, single garage, carpet, drapes, central heat and air, fenced yard, 211 S. Bernice. 45-9c

Vintage Mobile Home, 72 x 14, 3 bedroom, 2 bath, furniture, to be moved. 45-9c

Commercial building on Highway 207 on 186 front foot lot. 45-9c

2 1/2 acres or 5 acres, restricted home sites, available for building now. Located on Highway 15. 45-9c

3 bedroom, 1 bath, storm cellar, on lots, 220 East 3rd Ave. 45-9c

1 bedroom, fenced backyard, 521 S. Archer. 45-9c

In Farnsworth, 3 bedroom, bath, screened-in porch, central heat, redecorated inside, new paint outside. 45-9c

New Home in Hansford Hills, all electric, 2,700 sq. ft., 3 bedroom, 1 1/2 baths, utility room, double garage, carpet, drapes, wood burning fireplace, built-in kitchen, central air and heat, well insulated, 8 x 20 ft. storm cellar, 5 acres of land. 45-9c

1963 trailer house, 2 bedroom, 1 1/2 baths, furniture, 66' x 10', \$3,500. Call for appointment. 45-9c

**OFFERED BY:**  
Emmett R. Sanders  
Realtor

Older 3 bedroom house with basement on 2 lots. 45-9c

4 bedroom, 1 1/2 bath home, double garage, 100 ft. fenced lot, fireplace, dishwasher. 45-9c

**EMMETT R. SANDERS**  
REALTOR  
659-2514  
659-2601 (nights)  
345-rtm

Beautiful four bedroom home, four miles north of Spearman, three acres, three baths, Call Bateman Realty, Dumas, Texas 806-935-9038. 445-7c

3 bedroom, carpeted, carpet, fenced back yard, 2 store houses on 100 ft. wide lot. Phone 659-2813 or 659-2302. 455-rtm

**FOR SALE:** High gallonage service station, good volume, TBA, service work. Excellent location, established business. Call 2969 after 6 p.m. 46-6tc

**FOR SALE:** Brick home at 404 South Dresden, 4 bedrooms, 3 baths, Large basement, cedar lined closet, upstairs-all carpeted, sprinkling system, 2,600 sq. ft. plus 1 double car attached garage and 1 single car garage with storage. Call 659-3188 or 659-3173. 45-rtm

**FOR SALE:** 560 acres, Hansford Co. 2 irrigated wells, big tall water pit. Call 806-353-2173. Mrs. Clara Lieb. 45-rtm

**FOR SALE:** 300 acres irrigated farm land, two wells, located close to Graver. 733-2783. 47-rtm

**FOR SALE:** House with 2 bedrooms plus den, fully carpeted, storage in back. Good condition - good price. Phone 659-3354 after 2:30. 47-8tp

**Miscellaneous FOR SALE**

**FOR SALE:** Baited Feed. Call 405-888-4293 or 888-4579. Hardesty, Okla. 45-9c

**FOR SALE:** Used 40 side boards and 12" Tip tops for 22' Midwest Bed, \$300. See at Excel Chev., Okla. 659-2541. 395-rtm

**FOR SALE:** 1971 Olds 98 in good condition. Power windows and seats. Michelin tires, AM/FM Stereo Tape Player. 659-2271. 465-6tc

Try Lite Laweigh's unique weight loss program. Call Janie Kunselman 659-2631 today. 465-2tc

**FOR SALE:** Color TV console. Call 2770 or 3017. 47-3tc

**FOR SALE:** '69 Nova, 2 dr. standard, 733-2357. 47-1tc

**Garage Sale**

**4 FAMILY GARAGE SALE:** 908 S. Bernice, Friday and Saturday, Oct. 7 & 8. Appliances, furniture, clothing, curtains, miscellaneous, 9 to 5. 47-1tc

**GARAGE SALE:** Saturday, October 8, 9:00 to 5:30. 1118 S. Haney. 47-1tp

**GARAGE SALE:** Friday and Saturday from 9 to 6. Baby clothes, baby items, furniture, misc. 1110 S. Barkley. 47-1tc

**Help Wanted**

**WANTED:** Mechanics. Preventative maintenance on bulk equipment and pumping equipment. For further information call 435-4054 or apply at 21 N. Industrial Road. Long term employment, company benefits and advancement opportunities. 40-rtm

**WANTED:** Equipment Operators and men to train for operators on pumping and bulk equipment are now being hired by BJ-Hughes Inc. for placement in Ferris, Texas. 40-rtm

**HELP WANTED:** Lab Technician - Full time, hourly, work involved precise and exacting measurements. Some College chemical lab experience preferred. Send resume to: Dr. Robert Adams, Science Research Center, Box 1095, Gruver. 46-4tc

E.K. Snider will be at BAKER HOTEL in Spearman, for SECOND TUESDAY NIGHT EACH MONTH, with extra day or more as required to see Customers with Questions about Insurance. Ask about my EKS-BMA CHILD LIFE INSURANCE SPECIAL! Easier to buy and keep for GRANDKIDS, than it was for their OWN CHILDREN. As sure as SUN UP to BE NEEDED ONE TIME!! BOUGHT YOUNG, EASY TO OWN! 465-rtm

## WANTED

**WANT to harvest milo in this area.** Three big machines. 24 ft. Call collect W.B. Frisk, Teshoma, Okla. 73949, phone 405-423-7013. 46-8tc

## FOR RENT

**FOR RENT:** Small 2 bedroom trailer. Call 2770 or 3017. 47-3tc

**FOR RENT:** Small 2 bedroom trailer. Call 2770 or 3017. 47-3tc

**GARAGE SALE:** 714 Steele Dr. Spearman, October 8th. 9:00 to 6:00. 47-1tc

**GARAGE SALE:** 27 Archer. Saturday, all day. 47-1tp

**NOTICE**

**Partial Solar Eclipse Oct. 12**

Barring overcast skies, Wednesday October 12 will see a partial solar eclipse taking place for residents of the Panhandle. About 37% of the sun's disk will be covered by the new moon, according to Arthur Schneider, Planetarium Director of the Discovery Center in Amarillo, Texas.

The eclipse will be visible over Eastern Siberia, much of the Pacific, most of North America, Central America and part of South America. It will appear as a total eclipse over the Pacific Ocean and part of Colombia as the sun is setting. The Partial eclipse will begin here at 2:51 p.m. CDT, with the moon's first contact at the sun's edge and end at 4:53 p.m. Mid-eclipse will occur at 3:52 p.m.

To the naked eye, there will be no noticeable change in the daylight illumination, Schneider said. Persons not expecting the event will probably not notice it, although some might see the peculiar shape of "pinhole" images of the sun cast by trees and bushes, he explained.

Observing the sun directly is extremely dangerous, whether

**We are smiling because...**  
**CLASSIFIEDS GET RESULTS**

**ED WHEELER REAL ESTATE**  
Homes - Farms  
Commercial

Large lot with nice two bedroom home in front, nice one bedroom house in the back. Double garage with efficiency in the rear. One year rental one bedroom house paid at time of sale. 465-rtm

28 Hazelwood, 3 bedroom, single bath, frame, nice livable house, priced to sell. 465-rtm

1009 S. Dresden, 2 story, 4 bedroom, 2 bath, fenced yard, carpeted. 465-rtm

160 acres dry land, Ochiltree County. 465-rtm

107 Endicott, Two bedroom nice stucco, single bath, detached garage, fenced. 465-rtm

Avenue C, West of Hoskins, nice 2 bedroom trailer house. 465-rtm

done with the naked eye or with instruments or filters of any kind, and can cause permanent eye damage. Dark glasses, smoked glass or welder's goggles are not safe for observation, either, because none give complete protection against the sun's invisible rays.

The only totally safe method to observe is indirectly, with one method the projection of the sun's image with a telescope onto a white card, with a sunshade over it, being extremely careful not to view the sun through the instrument.

The telescope can be "aimed" at the sun by observing the shadow of the telescope cast on the ground to see when it is pointed at the sun.

Activities which can be safely carried out without direct solar observation include recording the gradual fading and recovery of the sunlight with sensitive photographic exposure meters.

Halee Reed is still at it. Halee participated in the Wheeler High School Rodeo this last week end and did very well, placing second in Break-away Roping. It will be two weeks before there is another rodeo. Congratulations Halee.

The Lutheran Church believes that our faith and our Christian life is something that must continue to grow. We do not come upon it suddenly and receive all of it at one time. As our bodies grow from infancy to adulthood, so our faith and our Christian life also should grow. But it may grow rapidly, slow, never at all, or it may die out. It needs nourishment in order to grow. That is why at Faith we have organizations, Sunday School, instructions, and other study groups in order to provide more opportunities to hear God's Word along with our Sunday Morning Worship Hour. If you do not have a regular worship home, we invite you to come and worship with us and to be a part of the life and happenings at Faith. Sunday worship is at 9:30. Sunday School is at 10:35. The women of the church will meet on Wednesday, October 12, at 7:30. The church council will be meeting on Thursday, October 13, at 8:00.

These can be set to face a wall or white surface placed on the ground. Indoors, closed Venetian blinds in a window facing south may produce rows of "pinhole" images of the sun where sunlight passes through small openings. Also, a small hole pierced in a dark shade will cause a stable eclipse image on a wall, floor or screen. Using these methods, Schneider said, even a person confined indoors can view the event.

By the time Quimby had been notified and arrived at the scene, the pilot had obtained a ride into Amarillo with Roy Jackson.

At 11:30 p.m. Monday, Albert Clark and others from the Spearman area had fueled the airplane and it was flown into Amarillo by representatives of the owner.

done with the naked eye or with instruments or filters of any kind, and can cause permanent eye damage. Dark glasses, smoked glass or welder's goggles are not safe for observation, either, because none give complete protection against the sun's invisible rays.

The only totally safe method to observe is indirectly, with one method the projection of the sun's image with a telescope onto a white card, with a sunshade over it, being extremely careful not to view the sun through the instrument.

The telescope can be "aimed" at the sun by observing the shadow of the telescope cast on the ground to see when it is pointed at the sun.

Activities which can be safely carried out without direct solar observation include recording the gradual fading and recovery of the sunlight with sensitive photographic exposure meters.

Halee Reed is still at it. Halee participated in the Wheeler High School Rodeo this last week end and did very well, placing second in Break-away Roping. It will be two weeks before there is another rodeo. Congratulations Halee.

The Lutheran Church believes that our faith and our Christian life is something that must continue to grow. We do not come upon it suddenly and receive all of it at one time. As our bodies grow from infancy to adulthood, so our faith and our Christian life also should grow. But it may grow rapidly, slow, never at all, or it may die out. It needs nourishment in order to grow. That is why at Faith we have organizations, Sunday School, instructions, and other study groups in order to provide more opportunities to hear God's Word along with our Sunday Morning Worship Hour. If you do not have a regular worship home, we invite you to come and worship with us and to be a part of the life and happenings at Faith. Sunday worship is at 9:30. Sunday School is at 10:35. The women of the church will meet on Wednesday, October 12, at 7:30. The church council will be meeting on Thursday, October 13, at 8:00.

These can be set to face a wall or white surface placed on the ground. Indoors, closed Venetian blinds in a window facing south may produce rows of "pinhole" images of the sun where sunlight passes through small openings. Also, a small hole pierced in a dark shade will cause a stable eclipse image on a wall, floor or screen. Using these methods, Schneider said, even a person confined indoors can view the event.

By the time Quimby had been notified and arrived at the scene, the pilot had obtained a ride into Amarillo with Roy Jackson.

At 11:30 p.m. Monday, Albert Clark and others from the Spearman area had fueled the airplane and it was flown into Amarillo by representatives of the owner.

**TEXAS PRESS**  
MEMBER 1977 ASSOCIATION  
PUBLICATION NO. 509660  
SPEARMAN, TEXAS 79081  
Box 458 659-3434  
Published Weekly at 213 Main Street  
Spearman, Texas 79081  
Owner-Publisher: William M. Miller  
Second Class postage paid at Spearman, Texas

**ANY ERRONEOUS REFLECTION UPON THE CHARACTER OF ANY PERSON OR FIRM APPEARING ON THESE COLUMNS WILL BE GLADLY AND PROMPTLY CORRECTED UPON BEING BROUGHT TO THE ATTENTION OF THE MANAGEMENT.**

SUBSCRIPTION RATE: Hansford, adjoining counties, combination with the Hansford Plainsman, \$16.40.  
Other points, \$14.40.

**FOR THE ULTIMATE IN STORM DOORS**  
CUSTOM BUILT, DESIGNED, AND IN COLORS TO FIT YOUR HOME.....  
CONTACT  
**HOWARD MOYER AT ONLY ALUMINUM INDUSTRIES**  
405-338-6966 or 338-6170  
P. O. BOX 471  
GUYTON, OKLAHOMA 73942

**Pilot, plane unhurt in landing**

Investigation is continuing into the circumstances surrounding the landing of a private airplane on the Carl Archer farm south and east of Spearman Monday afternoon when the pilot escaping unhurt after making a safe landing which left the aircraft undamaged. Hutchinson County authorities are handling the investigation.

According to preliminary investigation up to Tuesday morning, the pilot whose identity has not been confirmed at this time left the vicinity of Des Moines, Iowa, around 5:30 a.m. Monday en route to Amarillo.

South and east of Spearman

**ANOTHER GREAT DISCOVERY**

**We will be CLOSED Monday, October 10th in observance of Columbus Day....**

**FIRST STATE BANK**

**FDIC**

SPEARMAN, TEXAS 79081

**Boxwell Bros.**  
Funeral Home and Flower Shop  
FUNERAL HOME - 659-3802  
FLOWER SHOP - 659-2212

Hansford County  
Planned Parenthood  
26 S. Haney  
659-2483  
Spearman  
Mon. - Fri.  
8 a.m. to 12 noon  
305-rtm

**SERVICES**

**HANSFORD LODGE**  
No. 1640  
A.F. & A.M.

Stated Communications  
2nd & 4th Mondays  
7:30 P.M.  
Visitors Welcome  
Cecil Batton, W.M.  
Jerry E. Gee, Sec'y.

**KIRBY SALES & SERVICE**  
of Spearman, 912 S. Bernice.  
659-2797. 30-rtm

**NEED USED FURNITURE**  
Come to B&J Trading Post. 301 Collard. 435-8tc

**SPECIAL \$7.00 PER DAY**  
EVERY DAY SEPT. 10th. Oct. for Steam Rinsencav Rug Shampooing Call Gordon's Drug 659-2141 or after 7 p.m. & Sundays call Freddie Largent; 659-3437 42-rtm

**YOUR LOCAL USED COW DEALER: SPEARMAN BI-PRODUCTS.** Seven days a week dead stock removal. Please call as soon as possible. 659-3544. 8-rtm

**SERVICE:** Pits cleaned, wet or dry. Draggline or loader. Also, drier, grader, carry-all services. Lee-Roy Mitchell, 806-733-2384, Gruver, Texas, 79040. 9-rtm

There will be an AA meeting every Friday evening at 8:30 at the Home Demonstration Building, 305 North Bernice. The Almon group will meet at the same time, same building, in the back room. For further information call 659-3181.

**PORTABLE DISC ROLLING**  
DAVID McINTYRE  
659-3782  
319 South Endcott,  
Spearman, Texas 79081  
145-rtm

**WANTED:** Water hauling, call Jack Kemper after 5. 659-3475. 45-rtm

**ANNOUNCING**  
John's Hairstyles Headquarters  
Now under new management  
Open Tuesday through Saturday  
659-3833  
Karen Sutton - 112 S. Archer  
46-4tp

**NOTICE**

The Xi Zeta Sorority announced that they are selling stadium bags. They are \$15 apiece. If you would like to purchase one of these stadium bags contact Glenda Guthrie at 3424 or Verma Strawn at 3374.

"Success makes us intolerant of failure, and failure makes us intolerant of success."  
William Faulkner



"Li'l Abner" will be the musical presented by the high school Drama Club and Choir this Saturday evening, under the direction of Mrs. Becky Booth and Mr. Travis Angel.

### Dogpatch, U.S.A. comes to Spearman

If Li'l Abner has his way, he'd rather do without Sadie Hawkins Day. However, the government's proposal is not quite what he or any other Dogpatch bachelor has in mind. At the emergency Cornpone meeting named for the Confederate General, Jubilation T. Cornpone, the citizens learn that Dogpatch has the dubious honor of being considered the most unnecessary spot in America. Consequently, it has been chosen for the relocation of America's atomic bomb tests. When Mammy, as part of Dogpatch's frantic effort to redeem itself, gives the scrawny government man a swig of Yokumberry tonic made from the Yokumberry bush, he sprouts into a one hundred per cent red-blooded perfect American specimen like Abner, who takes the tonic daily. Dogpatch is spared until the tonic can be evaluated, allowing the Sadie Hawkins Day Race to be rescheduled. Abner

donates the tonic to the government, but Washington's other major power, General Bullmoose, is plotting with Dogpatch's notorious Evil Eye Fleagle to steal the formula. On the day of the race Fleagle's whammy allows Bullmoose's sultry secretary, Appassionata, to catch Abner. Now, according to the Code of the Hills, Abner's bachelor hours are numbered. Too late, he declares his love for Daisy Mae.

The cast members are: Stinson Gibber, Marryin' Sam; Twane Friemel, Earthquake McGoon; Elaine Reimer, Daisy Mae; Robin Denham, Pappy Yokum; Gerri Maize, Mammy Yokum; Todd Brock, Li'l Abner; Gary McCalman, Mayor Dawgmeat; Clifton Morrison, Senator Jack S. Phogbound; Kelly Davis, Dr. Rasmussen T. Finsdale; Rhonda Morrison, Government Man; James Pierce, Available Jones; Angela Lesly, Stupefytin' Jones; Zane Newton, General

### Social Security Rep Schedule

Tickets in advance cost \$1.50 for students, and \$2.50 for adults. At the door, tickets are \$2.00 for students and \$3.00 for adults. You may call for reserved tickets at 659-2584. The play will be at 8:00 P.M., October 8.

### Coffee Set For Involved

#### Christian Women

The Lily Hanley group of the First Baptist Church in Spearman will be having a coffee October 12, 1977, at 9:30 a.m. in the Red Room. We will be presenting a program concerning the International Women's Year, a federally funded convention to present legislation women "want", and what we can do about it. Any interested women are invited to attend. A nursery will be provided.

### Social Security Rep Schedule

A field representative of the Social Security Administration will be in Spearman at the courthouse on Thursdays from 10 to 11:30 a.m. on October 13, 27; November 10, 17 and December 8 and 22. He will help you on any matter relating to social security, supplemental security income or Medicare.

You may also obtain service by going to the Social Security Office at 1541 North Hobart Street, Pampa, or by telephoning 669-3381 (area code 806) between the hours of 9 a.m. and 4:45 p.m., Monday thru Friday (except national holidays).

A representative is available to explain the provisions of the Social Security Act and answer questions at meetings of farm groups, unions, and other interested organizations. There are no charges for any of these services of the Social Security Administration.

Taxicabs were introduced in London around 1823.

BAKER & TAYLOR WOMEN'S ASSOCIATION  
GARAGE SALE 10 A.M. - 5 P.M.  
Fri.-Oct. 7 Sat.-Oct. 8 203 South Hazelwood

# Economy of operation

is important to prospective homeowners.



## That's why we developed the Energy Checked Efficiency Home Program.

These days, with budgets tight and spendable income shrinking, the cost of operating a home is as important as the color of the brick or the number of closets! For this reason, we developed the Energy Checked Efficiency Home Program... a program that lets you know that a home displaying the Energy Checked Efficiency Home sign includes many energy-saving features. When you're saving energy in a home, you're saving money! Before a home can qualify as Energy Checked Efficient, it must pass an inspection for features that include proper insulation, weatherstripping around doors and windows, proper size air conditioning and heating units, attic ventilation, hot water system... just to name a few. The Energy Checked Efficiency Home Program is designed to let you know at a glance that a home has been built with economy of operation in mind. A service from your friends at...

COMMUNITY PUBLIC SERVICE  
Your Electric Light & Power Company



E40 77

We Will **Open**

**OUR NEW FURNITURE STORE**

**Friday, October 7th at 9 A.M.**

COME BY AND VISIT OUR NEW FACILITY....

**Beedy Furniture Co.**

SPEARMAN, TEXAS

Please bear with us until we can get all of our merchandise and store in order.

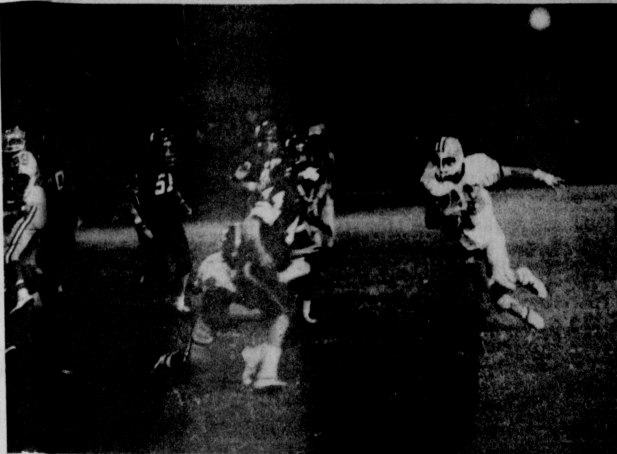
<b>Uptime service SALE</b>	
 1 gal. 596723 RZ <b>\$ 3.20</b> 60 gallons OR MORE <b>\$ 3.10</b>	IH NO. 1 & LOW WASH OIL QI 407340R1 QI 407352R2  <b>71¢</b> SAVE 21¢
IH GAS CANS  <b>\$5.20</b> SAVE \$1.30 <small>2 1/2 Gal. 999305R1 (5 Gal. Can Available)</small>	OIL FILTERS  <b>\$3.43</b> SAVE 66¢ <small>Other filters available at big savings</small>
TRACTOR RADIO  <b>\$66.95</b> SAVE \$17.55 <small>407368R1 Head Set Available</small>	TIRE GAUGE  <b>\$3.50</b> SAVE \$1.05 <small>407368R1</small>

**North Plains International Inc.** RESS  
PRICES GOOD THRU 11-5-77 SPEARMAN, TEXAS





Mike Bodey (No. 40) had a terrific night against Shamrock last week. This photo was taken on one of his touchdown runs. If he ever gets into the defensive secondary, look out! Mike carried the ball 9 times for 116 yards.



Hector Trevino ran around end on this play for a good gain. The Shamrock game gave Coach Sherwood the opportunity to look at some of the younger people under actual game pressure.

**Peggy's Pointers**

Open dating and proper handling—both procedures help to keep perishables fresh. Manufacturers and grocers in recent years have begun Open Code Dating on perishables. This gesture of openness shows a concern for pleasing the consumer. We check for freshness at the grocer's, but keeping perishables top quality from store to table is your responsibility.

To help keep your produce fresh:

1. Stop for groceries last, en route home—especially in summer, when the temperature of foods can be raised quickly in a hot automobile.
2. Place frozen foods in the freezer immediately. The minutes you waste reduce the life of the food.

3. Reveal packages according to the manufacturer's directions to prevent drying and spoilage.
4. Return leftover foods to the refrigerator as soon as possible after a meal is completed. You can't expect lunch meats to stay fresh if they are left unnecessarily long at room temperature.
5. Rotate foods in the pantry to keep check on expiration dates.
6. If you do buy a product that is spoiled when you get it home or shortly thereafter, first consider if you have handled the food properly. If the spoilage is not your fault, return the product to your grocer. He will probably exchange the product or return your money. Grocers want to please customers and you will do yourself and your grocer a favor by returning the product instead of feeling cheated.

**SOFTNESS/GATHERS**

Fashion's mood is soft/gathers. Styles are soft blouses, dirndl skirts, ruffled trims or dress that hand gently from the shoulder. Fabrics are featherweight knits, challis, crepe de chine or flannel.

But gathers are the major structural detail. These tips will help make gathering easier and attractive:

—For even and small folds, use a stitch that is only as long as necessary. Woven or knitted fabrics that are thick and closely constructed usually need longer stitches than do woven or knitted fabrics that are lightweight and loosely constructed.

—When gathering heavy or bulky fabrics, stitch to each seamline, stop and start again on the other side of the seam. Push seam allowances to the opposite side so that the gathering stitches can go all the way to

the seamline.

—To gather a long area, divide into several sections that can be drawn separately.

—Before drawing up the gathers, pin the matching notches or seamlines together. Draw the gathering threads to fit the area. Distribute the fullness evenly.

**TO GATHER WITH A STRAIGHT STITCH.** First slightly loosen the upper tension so bobbin thread will draw easier. Use heavy duty bobbin thread such as silk or nylon to minimize breakage.


Run two rows of stitching for better control and evenness. Stitch from the right side.

If ripped stitches leave their marks in the fabric, stitch along the seamline and again 1/4" within the seam allowance. If ripped stitches don't show, consider making each row of stitches 1/8" on each side of the

seamline.

**TO GATHER WITH A ZIG-ZAG.** Adjust the machine for medium a wide stitch width. Place fabric under pressure foot wrong side up. Take 1 stitch through the fabric so that all zigzagging will be within the fabric. Pull both the bobbin and top threads together to be the length of the area to be gathered. Pull both the bobbin and top threads together to be the length of the area to be gathered. Zigzag over these threads without stitching them in the stitches.

Gatherly pulling the encased threads.



You show your birthday with at least one million others.

**Choir To Sell Magazines**

The choir will sell magazine subscriptions again this year in November. We ask for your help in renewals and in new subscriptions. The money earned in this drive will pay for the choir trip this year. We can match all magazine prices and maybe even be cheaper. Thanks for your cooperation last year. The magazines are guaranteed and we want to know of anyone not receiving their magazines.

Baker-Taylor Women's Sale  
203 S. Hazelwood.

Baker-Taylor Women's sale  
Fri-Sat. Be sure and attend

**HD Clubs Selling Pecans**

Any of the home demonstration club members can pick up the pecans that they will sell for the coming holiday season at the Home Demonstration Office at the Hansford County Court House. They will sell for \$4.00 a lb. Anyone that is interested in buying pecans can contact any home demonstration club member or Miss Peggy Marrs at the County Extension Office.



**THIRD**



**Anniversary!**

And We Would Like To Thank Our Customers Who Have Patronized Us Over the Years!! Without You We Could Not Have Done It!!

**COME ON OUT, OCTOBER 6, 7, & 8th....**

**For Our Anniversary and New 1978 Model Showing!!**

**FREE COFFEE AND DOUGHNUTS**

**TREMENDOUS SAVINGS ON ALL REMAINING '77 MODELS!!**

**WE'LL LOOK FORWARD TO SEEING YOU.**

**Hergert Pontiac, Buick, GMC**

HIWAY 207 S.

SPEARMAN, TEXAS

**THE BEST FOR SALES, SERVICE, & BODY SHOP!!**

**WE ARE YOUR KIND OF DEALERSHIP!!**



**Attends Telephone Training**



Joe D. Montgomery  
Joe D. Montgomery of Spearman, customer service specialist for General Telephone, recently attended a 3-week training

school at the company's training center in San Angelo. The course, Station Practicers, is designed to give employees up-to-date training in how to install, repair and replace the more common types of residential telephones.

**Girl Scout Leaders Needed**

Girl Scout Leaders are needed for the 1st year Brownies -- 3rd grade.  
Anyone interested should contact Mrs. Dorothy Welsh at 659-2334.

Mrs. Margaret Evans, Brownie Coordinator, will be recruiting leaders for the 2nd year Brownies.

Mrs. Welsh will meet with the mothers of the brownies next week. Papers will be sent with the brownies telling the day and time set.

**Adult Basic Education Classes**

The Spearman Independent School District, in cooperation with Region XVI Education Service Center, is sponsoring Adult Basic Education classes. The classes are designed for adults who have not finished high school.

The classes will be offered in instruction to achieve a certificate of high school equivalency. Instruction will also be given in Reading, Writing, English, and Arithmetic.

Name \_\_\_\_\_  
Age \_\_\_\_\_  
What was the last grade in school completed by you? \_\_\_\_\_  
Signature \_\_\_\_\_

There will be no charge of any kind for the courses.

Anyone interested should attend a general meeting and registration at:

Spearman High School  
7:00 p.m.  
October 13, 1977 (Thursday)  
Room 118

If you cannot attend the meeting, please fill out the bottom and return it to school.

**Charmane Crawford Returns From Workshop**

Charmane Crawford of Panhandle has recently returned from a workshop sponsored by the American Institute for Foreign Study (AIFS) in San Francisco. The topic of the workshop was Educational Travel Abroad: The Many Options Available to Students Today. Mrs. Crawford is the Regional Area Administrator for AIFS and has been trained in counselling high school and junior high school students who are interested in travelling abroad.

The possibilities for educational travel abroad are endless for students today. Organized

programs range from one week during the Winter, Spring, and Summer vacation periods to 2 to 6 week study and travel programs during the summer to fall year and semester programs at major European Universities for students completing high school early or for students who want to speed an interim year study-

ing abroad.  
Mrs. Crawford is available to counsel students and parents in this area with information on educational travel. Her own travel experience includes visits to England, France, Italy, Spain, Austria, Holland, Germany, Greece and the Aegean Islands, Turkey and Mexico.

Mrs. Crawford can also supply teachers with information on forming a group of students from their own school on international travel programs.

Mrs. Crawford can be reached at P.O. Box 85, Panhandle, Telephone 537-3056 or through the American Institute for Foreign Study, 102 Greenwich Avenue, Greenwich, Connecticut 06830.

**Fire-Ettes Selling Planners**

The Spearman Volunteer Fire-Ettes are selling Personal Planners for use by the home demonstration club members.

The planners are on sale for \$2.95. In order to buy one, contact: Mrs. Kathy Slater - 659-2844, Mrs. Vicki Bullard - 659-3319, or Mrs. JoDei Tigrett - 659-2868.

**Sherwood Says**



We played well against Shamrock. I was extremely proud of the way Mike Bodey ran the football, and with the line play and their blocking. I was also pleased with the way our younger kids played. They received some valuable experience.

Of course, we'll be open this Friday. We'll spend these next two weeks preparing for Dalhart. They look like they are well, now, and have another great ball team. Dalhart probably has the best running back we'll see this year.

HERE COME THE '78's!  
FRIDAY, OCT. 7

Be our guest as we show you the new, full size Dodges, Chryslers and Dodge trucks!

Presenting — the distinctive  
MAGNUM XE

DODGE'S new speciality car



Dramatic Styling and Flair

COFFEE AND DONUTS WILL BE SERVED ALL DAY

We will be giving away four - \$50 SAVINGS BONDS!

REGISTER FOR DOOR PRIZES



BILL McCLURE  
C. D. FIRMIN  
OWNERS

G & T Automotive

209 E. BRILLHART
PERRYTON, TEXAS

ALLSUP'S CONVENIENCE STORES

PRICES GOOD OCT. 6, 7, 8, 9, 77

OPEN 24 HOURS

OPEN 24 HOURS

BORDEN'S PURE ORANGE JUICE  
49¢  
QT. SIZE

FRESH COOKED BURRITOS  
4 \$1.00 FOR

BORDEN'S CHOCOLATE MILK  
49¢  
QT. SIZE

BORDEN'S BUTTERMILK  
43¢  
QT. SIZE

WILSON 12 OZ. PKG. FRANKS  
59¢

BORDEN'S ICE CREAM  
99¢  
1/2 GAL. CTN.


COKE ADDS LIFE FOUNTAIN COCA COLA  
15¢ CUP  
24 OZ.

SUNSHINE KRISPY CRACKERS  
49¢  
16 OZ. PKG.

HOT COOKED FOODS

- BBQ CHICKEN
- HOT LINKS
- BURRITOS
- GERMAN SAUSAGE
- BBQ RIBS
- MILD LINKS
- CORN DOGS
- BULK BBQ BEEF
- BBQ BEEF SANDWICHES

SHOP THE FRIENDLY, CONVENIENT ALLSUP'S STORE NEAR YOU!



305 W. KENNETH

SPEARMAN SPIRITUAL RENEWAL CRUSADE

Great Free Offer

JESUS IS LORD

Register now to attend the Spearman Spiritual Renewal Crusade and receive the New Testament cassette tape. Take your choice: King James, Afrikaans or Spanish; also Bible correspondence course. The tape a month plan that is going into the homes of families in 14 countries and 40 states in N. America.

Teaching Tapes

(A) Kenneth Hagin, Faith Series, (B) Larry Christenson, The Christian Family, (C) Bob Mumford, the Kingdom Series, (D) Oral Roberts, Holy Spirit in the now.

Cut Out

Complete this form and mail immediately to Lighthouse Ministries P. O., Box 400 Sand Springs, Okla., 74063

Dear Sir,

I wish to attend the Spearman "Spiritual Renewal" Crusade and understand that if I do I can receive my choice of tapes Free with no further obligation.

Name \_\_\_\_\_

No. of person in party \_\_\_\_\_

Address \_\_\_\_\_

City \_\_\_\_\_ State \_\_\_\_\_ Zip \_\_\_\_\_

Invitation To


Pastors, Lay Christian Workers (Men & Women). To Offer Their Services in this crusade as ushers and counselors. Please call these numbers if you would like to attend the next committee meeting.

Ed Freeman 659-2033  
John Trindle 659-2059  
Jack McWhirter 659-2249

Harold Groves 659-3027  
God's Corner 659-2135

Please Pray with us for the furthering of God's Kingdom during this crusade.

Thank you  
Corrie Joubert  
President of Lighthouse Ministries



FOUR Unforgettable Nights

You will always remember  
OCT. 25th, 26th, 27th & 28th  
7:30 P.M.  
Hansford County Showbarn  
All Denominations Welcome



# SPEARMAN LYNX

## 5 wins

## in a row-

Freshmen and B team will play here Thursday at 5 p. m. They will play Canadian 7th and 8th will play at Canadian starts at 5 p. m. there

# FOOTBALL



### Go Lynx beat Dalhart



**Baker Hotel**

420 DAVIS 659-3446

**Anthony Electric**

659-2441

Plains Shopping Center

**A-1 Automotive & Irrigation Serv. Inc.**

GRUVER HWY. 659-3724

"Our Work Is Exhausting"

Baker-Taylor  
Women's Sale  
203 S. Hazel-  
wood.

**L. E. Thomas**

at



**Spearman Electronics**

Whirlpool

RCA

313 Main  
659-3858

**Ag-Air Dusters**

& Sprayers Inc.

**Boxwell Brothers**

Funeral Home 659-3802

Flower Shop 659-2212

**Hi-Plains Conoco**

415 Collard

659-3570

**Hansford  
Implement Co.**

HWY. 207

**Lil' Lynx Shoppe**

312 MAIN

659-2608

**Cates Men &  
Boys Wear**

221 Main

659-3426

**Speartex Grain Co.**

514 Collard

659-3711

**Junior Lusby "Cats"**

W. GRUVER HIGHWAY

659-3766

**Equity Elevator**

104 Collard

659-2420

**Consumers Sales Co.**

421 W. KENNETH AV.

659-2012







# MONEY SAVERS!

STYLE HAIR  
**SPRAY** CAN **79c**

FLEX CREME  
**RINSE** ..... **99c**

SHORT & SHASSY  
**SHAMPOO**..... **99c**  
REG. OR DRY

FINE FARE  
**KETCHUP** 32 OZ. BYL. **69c**

FINE FARE  
**HOMINY** WHITE OR GOLD **5/\$1**

ELLIS  
**CHILI** WITH BEANS AND JALAPENO 15 OZ. CAN **49c**

FINE FARE PEANUT  
**BUTTER** CREAMY OR CRUNCHY 16 OZ. JAR **79c**

NABISCO  
**CRACKERS** 1-LB. **58c**

CAMPBELL'S TOMATO  
**SOUP** 10% OZ. CANS **6 \$1**

FINE FARE  
**CRACKERS** 1 LB. BOX **35c**

MARYLAND CLUB  
**COFFEE** 1 LB. CAN **\$2.98**

LIBBY'S  
**TOMATO SAUCE** 8 OZ. CANS **6 \$1**

49 OZ.  
GIANT BOX  
**TIDE** 10c OFF LABEL **\$1.19**

Tide  
**CLEANER** PINE-SOL 15-OZ. **78c**

FYNTAX BATH  
**TISSUE** 4 ROLL PACK **3/\$1**

NABISCO  
**CHIPS AHOY** 14 1/2 OZ. **88c**

NO. 2 NORGOLD RUSSET  
**POTATOES** 10 LB. BAG **79c**

COLO. RED DELICIOUS  
**APPLES** ..... LB. **39c**

CORN FLORIDA FULL EAR **3 FOR 49c**

**CANTALOUPE** ..... EACH

**CARROTS** 16 OZ. CELLO BAGS **2 FOR**

PEYTON'S RANCH BRAND  
**BACON** SLICED **\$1.19**

"UNITED'S  
TRU-TENDR  
BEEF"  
ROUND  
**STEAK** .....LB. **98c**

TENDER LEAN CUTS  
**CHUCK ROAST** BLADE CUT LB. **58c**

TURKEY DRUM-  
**STICKS** FRESH FROZEN LB. **33c**

LITTLE PIG  
SPARE  
**RIBS** UNDER 3 LB. AVG. LB. **\$1.09**

RIB  
**STEAK** .....LB. **98c**

BONELESS  
**STEW** .....LB. **98c**

CUBED  
**STEAK** WASTE FREE BEEF .....LB. **\$1.68**

"EXTRA LEAN"  
CUBES OF BEEF **98c**

WASTE FREE BEEF **\$1.68**

CUDAHY GOLD COIN  
**PICNICS** BONELESS FULLY COOKED 3 LB CAN **\$3.98**

RUMP  
**ROAST.** .....LB. **98c**

FINE FARE  
**SPINACH** 16 OZ. CANS **4 \$1**

FINE FARE  
**BLACKEYED PEAS** FRESH SHELLED 16 OZ. CAN **4 \$1**

FINE FARE NEW  
**POTATOES** WHOLE OR SLICED 16 OZ. CANS **4 \$1**

DOUBLE LUCK  
**GREEN BEANS** 15 OZ. CANS **6 \$1**

"DAIRY CASE SPECIALS"  
SOLID  
**OLEO** 1 LB. CRTN. **4 \$1**

SOLO ASSORTED  
**YOGURT** 8 OZ. CRTN. **4 88c**

WELCH'S CHILLED GRAPE  
**JUICE** 64 OZ. BYL. **98c**

"FROZEN FOODS"  
JENO'S  
**PIZZA** "HAMBURG" \*CHEESE \*SAUSAGE \*PEPPERONI \*CANADIAN BACON **69c**

FROZEN-GOLD  
**CORN** WHOLE KERNEL 20 OZ. BAG **29c**

FREEZER QUEEN  
**COOK BAG** 5 OZ. PKGS. **4 \$1**  
\*TURKEY \*MEATLOAF \*CHICKEN \*BEEF \*SALIS. STEAK

WE RESERVE THE RIGHT TO LIMIT QUANTITIES

U  
PRICES GOOD THRU OCT. 8TH

**UNITED**  
SUPER MARKETS  
PERRYTON, TEXAS



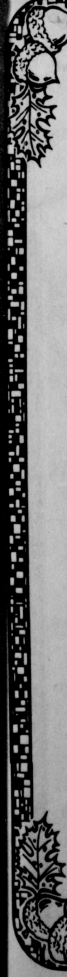
Police Ch...  
Car Crust...  
that the c...

### Pric

Recent cha...  
prices for whe...  
cotton and the...  
wheat set-asi...  
ments to prod...  
ing decisions.

"In making...  
sions, produc...  
size available...  
the new progr...  
expectations...  
duction costs f...  
situations," co...  
Knutson and...  
economists wit...  
cultural Exten...

Under the n...  
assuming th...  
producers will...  
set-aside 20...  
wheat acreag...  
ave the advan...  
support loan...  
lissater paym...  
the bill, poin...  
mists. The lo...  
will be \$2.35 p...  
the wheat targ...







Police Chief Steve Wisniewski and R. L. Hughes stand in front of one of the crushed cars Amarillo Car Crushers have been compacting and hauling off for Smokey Hughes, Chief Wisniewski stated that the city has been instrumental in taking nearly 40 junk automobiles from public view.



Wide Track Doug Connelly and "Big Red" Dick Elbert are shown above as they make plans for the Lions Club annual broom sale for the blind to be held in Spearman. Dick Elbert is in charge of sales this year for the Lions Club.

## Prices, Set-Aside To Affect '78 Plantings

Recent changes in relative prices for wheat, feedgrains and cotton and the newly announced wheat set-aside add new elements to producers' 1978 planting decisions.

"In making cropping decisions, producers should recognize available alternatives under the new program, market price expectations, and relative production costs for their particular situations," contended Dr. Ronald Knutson and Roland Smith, economists with the Texas Agricultural Extension Service.

Under the new farm program assuming final enactment, producers will be required to set-aside 20 per cent of their wheat acreage if they are to have the advantage of the price support loan, target price and disaster payment provisions of the bill, point out the economists. The loan rate for wheat will be \$2.35 per bushel in 1978. The wheat target price will be \$3

per bushel if total U.S. production in 1978 is more than 1.8 billion bushels and \$3.05 if production is less. This year's production is estimated at 2.03 billion bushels.

Knutson and Smith list two options for a producer within the set-aside provisions. One choice is that he can set-aside 20 per cent of his 1977 acreage; then he will be guaranteed a deficiency payment on his planted acreage based on the \$3 or \$3.05 target price. For example, if a producer planted 500 acres of wheat in 1977 and 500 acres of cotton, he could reduce wheat plantings in 1978 to 400 acres, retain cotton at 500 acres and set-aside 100 acres.

A second option is that he can reduce his wheat planting by less than 20 per cent or even increase plantings, but set aside 20 per cent of his 1978 wheat acreage. Again, assuming that a producer planted 500 acres of

wheat and 500 acres of cotton in 1977, he could plant 200 acres of cotton, 640 acres of wheat, and set-aside 160 acres of land in 1978. If this option is chosen, the producer is only assured of receiving a deficiency payment on 80 per cent of his wheat acreage planted for harvest. Of course, the program is voluntary and a set-aside is not mandatory, but the loss of loan, target price and disaster payment provisions would result from non-compliance. Which option should a producer choose in 1978?

"With the announced grain reserve program and the fact that the set-aside program is only expected to reduce wheat production about 10 per cent, we anticipate that, with normal weather, market prices for wheat in 1978 could be at or below the loan level," note Knutson and Smith. "This may be true for feedgrain prices

much of the year. If the cotton crop materializes according to estimates, it will also likely be priced near the loan level—although more uncertainty exists in cotton than in either wheat or feedgrains."

If a producer's production patterns in 1977 were reasonably in line with relative costs of production, a 20 per cent set-aside on the basis of 1977 wheat acreage likely is the best strategy, believe the economists. If, however, a producer planted more cotton than normal in 1977, he may want to increase wheat acreage in 1978 back to normal levels based on the target prices of \$3 per bushel for wheat and \$2 cents per pound of cotton. The advantage here is that in 1979, the producer will be eligible for 100 per cent participation based upon optimal cropping patterns. Winter wheat producers will have until next spring to declare their

actual set-aside intentions for 1978.

"While a USDA set-aside determination is made independently each year, current conditions indicate cropping and set-aside decisions should be based upon the assumption that here will be set-aside requests for the next several years," contended Knutson and Smith. "With target prices based on U.S. average costs of production, wheat land normally should be planted to wheat, cotton land to cotton and sorghum to sorghum even if it means less price protection in 1978. If a feed-grain set-aside is announced at the anticipated 10 per cent level, the same reasoning likely will apply."

Detailed regulations for the set-aside program have not yet been made public. Therefore, producers should check whatever option they choose to be sure it is in compliance with current interpretations of the program.

## Comptroller Officer To Visit Businesses

Comptroller Bob Bullock alerted Texas businessmen Monday to begin looking for a friendly visit from a Comptroller's enforcement officer sometime during the next nine months.

The Comptroller said that the enforcement officers from his 40 field offices will fan out across the state with the goal of offering personal assistance to each and every Texas business.

A testing of the canvassing program in July showed that 19 percent of taxpayers contacted required assistance or needed permits, he said.

"The theme of this project is taxpayer assistance," Bullock said. "We have found that in many instances only personal contact can eliminate errors that eventually prove costly both to the taxpayer and the Comptroller's Office."

He said his employees, armed with smiles and packages of taxpayer information, will be knocking on doors with the hopes of:

- providing education to taxpayers;
  - making sure every business is properly permitted;
  - establishing personal lines of communication between taxpayers and the individual enforcement officer responsible for the area;
  - updating Comptroller's Office records;
  - making certain each taxpayer is filing returns and paying tax properly.
- July's sample of 4,702 businesses showed that 97 were operating without needed permits, 766 had changed address or business name without notifying the Comptroller's Office

and 37 were not paying tax properly, Bullock said. "We hope to take care of every little problem on the spot, before it turns into a big problem," he said.

"Above all," Bullock said, "we want people to believe us when we say 'I'm from the Comptroller's Office and I'm here to help you.'"

**Baker-Taylor Women's sale be sure and attend. 203 S. Hazelwood.**

# Baker & Taylor Women's Association GARAGE SALE

10 A.M. - 5 P.M.  
Fri. - Oct. 7th -- Sat. - Oct. 8th

203 SOUTH HAZELWOOD

Spearman

Canadian

Perryton

Amarillo

Cheyenne, Oklahoma



This advertisement sponsored by



*We don't want to get bigger, we want to get better!*

### NALU--What It Is, What It Means!

Since the organization of The National Association of Life Underwriters in 1890 by 14 local life underwriter associations, the organization has grown to the tremendous membership of 135,000. Of this number, approximately 3,500 are present at the annual convention in Dallas.

Toward its goal of achieving professional competence and higher standards of ethical conduct to fulfill responsibilities of citizen as well as life insurance salesmen, NALU has made vast strides during the past 87 years.

The primary objectives of NALU are and always have been (1) to support and maintain the principles of legal reserve life insurance and public insurance; (2) to advance public knowledge of legal reserve life insurance and health insurance and their uses; (3) to promote the adoption and application of higher standards of ethical conduct in the profession of life underwriting and in the life insurance business.

Also, (4) to increase the knowledge of agents concerning legal reserve life insurance, its uses, and its sale; (5) to provide a medium for rendering community service and for forming enduring friendships; and (6) to create and maintain a sound public opinion, to promote cooperation and good will, and in all other ways to promote the best interest of legal reserve life insurance.

**WORKING TOWARD THESE GOALS:** In achievement of professional competence, the organization started in 1974 to require those becoming members of the locally affiliated associations to meet specified minimum professional educational criteria within a period of four years to maintain continuing active membership. Further implementing the competence, NALU holds sales seminars and conventions to keep its membership informed. Also the monthly *Life Association*

News and printed materials are distributed to further the competence goal.

Further, NALU supports The American College of Life Underwriters and The Life Underwriter Training Council to provide training for the profession.

Constant effort is made toward bringing the integrity that makes life agency a profession rather than a job. NALU enhances the capacity and service of the agent.

**EXTENDING PRESTIGE & RECOGNITION:** Through the association, life insurance agents who go beyond minimum requirements are recognized through the Health Insurance Quality Award and the National Quality Award. Highest award to be achieved is the John Newton Memorial Award presented annually to that person in the profession who has rendered outstanding service to the institution of life insurance.

In 1927, NALU was instrumental in formulating the Million Dollar Round Table. Now a separate membership organization that honors excellence in sales production, MDRT retains close ties with NALU.

**LEGISLATIVE ACTIVITIES INCREASINGLY IMPORTANT!** While not organized and not existing for the purpose of dealing with local, state and federal legislation on insurance matters, NALU plays an active role in influencing or attempting to influence such legislation.

NALU state affiliates and members also work closely with the insurance departments to protect both the business and the policyholders. Only during Texas' past legislative session, ended in May, the Texas Association of Life Underwriters and local associations were instrumental in bringing about stricter licensing requirements and new licensing regulations.

**PUBLIC EDUCATION TO SHAPE A FAVORABLE**

**IMAGE!** Across the nation, concerted efforts are being made to familiarize the general public with the true purpose of the life insurance agent, the service that he can perform for them and his integrity. Again during the coming television season, NALU will sponsor sporting events to provide commensurate messages for this educational goal.

NALU's public relations program is constant and extensive to keep all informed about issues affecting the field, problems and solutions that affect the public and to provide a better overall image.

NALU moves onward to an even better future for the life insurance industry, the life insurance agent and the citizens who buy life and health insurance.

### Annual Art Show Scheduled

The Dahlia Flower Club has scheduled its 8th annual show of arts, crafts, and antiques for November 5 and 6. The show and silver tea will be held in Hansford Library Saturday, Nov. 5th from 1 p.m. to 5 p.m. and Sunday, Nov. 6th from 1 p.m. to 5 p.m.

This will be an excellent opportunity for artists, craftsmen, antique and other collectors to show their hand work and collections. People of the surrounding area are urged to bring their displays.

Rules for the show are listed as follows:

All rules of the Library concerning the use of the building will be observed. One of these rules is that the Library is to receive 10% of the proceeds of any article sold. All sales will be strictly between the buyer and

the seller with the library clerk to collect the 10% of the sale.

Every division committee may put restrictions on the number of exhibits by a dealer, depending on the room available.

Each exhibitor is to furnish his or her bridge table or other accessories, and set up his or her exhibit. No charge will be made for showing.

All articles are to be registered by the division entry committee. Make duplicate copies of all articles, one to give the entry club.

committee, and one to keep. All exhibits must be in place by 11 a.m. Saturday, Nov. 5 and must be removed by 6 p.m., Sunday, Nov. 6. Displays may be set up Friday afternoon from 2 to 6, or Saturday morning from 9 to 11.

The Dahlia Flower Club will not be responsible for any article lost or broken, but extreme care will be used in their handling.

Hollie Riley is president of the club.

### Mexican Dinner Slated

The Sacred Heart Church will sponsor their annual Mexican Dinner October 23 from 12 noon to 5:00 p.m.

Tickets are to be sold \$2.75, adults; \$1.50 children's; and under six years of age, free.

It will be held at the Sacred Heart Parish Hall. Everyone is invited to come!

### OPEN DATE

O ne week for a bread,  
P ut the record to 5-0;  
E liminated those Irish,  
N ow its the district race show.

D alhart, the Ranch, Panhandle,  
A nd River Road and Canadian;  
T he uphill climb now begins,  
E nd the schedule with ten wins.

T his week is for readying,  
H eating up an ache and sore;  
I nstilling the winning way,  
S pearman Lynx will be ready for more.

W eeks pass one game at a time,  
E nter the games with this in mind;  
E xpand the Pride's success, be  
K ings for the fifth straight time.

### Mental Health Pressed With Association Increased Funds

Austin, September 20 -- The Mental Health Association praised most of the recommendations made in a preliminary report by the President's Commission on Mental Health.

Mary Chase Pell, MHA National President, said in a telegram to Rosalynn Carter, honorary chair of the President's Commission: "We are particularly pleased with the Commission's recommendation for an increase in funding for mental health research."

Citizens of Gruver supported the Mental Health Association in May, by contributing to a Bellinger drive organized by Mrs. Tony Shapley.

The Commission urged President Carter to support a federal mental health research budget increase "in the range of 20 percent" over the current appropriation. If realized, research sponsored by the National Institute of Mental Health would receive \$140 million in fiscal year 1979.

The President of the Texas Association for Mental Health, Shirley K. Camfield, said: "This increase is urgently needed. Even though the National Institute of Mental Health's research budget has lagged since 1969, major opportunities for expanding our base of knowledge still exist."

President Carter established the Commission last February to identify the mental health needs of the nation and to recommend ways to meet those needs. The preliminary report is the first from the Commission, with its final report due April 1.

The only reservation expressed by the citizens' group was that it is not clear whether the Commission's recommendation on funding for mental health services would enable the establishment of new community mental health centers in fiscal year 1979. The Mental Health Association pledged to continue working with the First Lady, the Administration, and the Congress to assure that sufficient funds are appropriated for that purpose.

In reporting from the meeting Thursday morning with the President and First Lady, Dr. Thomas E. Bryant, Commission chair, said that Mr. Carter favored increases in research. "He said that we were persuasive and that he would try to accommodate us," Bryant said.

Mrs. Carter said earlier at a news luncheon that "...our commission has found that the discrimination that persists against mental illness is a national disgrace. And we need

the press to help dispel the myths and to create a climate that eliminates this appalling discrimination."

The First Lady indicated that vast amounts of work has yet to be done to "Help bring mental illness out of the closet."

Mrs. Pell said in her telegram to Mrs. Carter that "Mental Health Association officers and members send you, especially, our appreciation for an outstanding beginning."

### Study On Water Plan Extended

AUSTIN--The Texas Department of Water Resources (TDWR) has extended the review and comment period on draft planning documents for updating and ultimately amending the Texas Water Plan into January of next year, it was announced Tuesday.

Last June, the Texas Water Development Board, predecessor agency of the TDWR, released a two-volume draft water planning document titled "Continuing Water Resources Planning and Development for Texas" and set a 90-day period for public review and comment.

During that 90-day period many comments, both written and verbal, have been received. However, numerous requests have been made for an extended time period for more detailed study of the Phase I planning documents, said Charles E. Nenni, Acting Executive Director of the Department.

At the close of the extended review and comment period, a determination will be made regarding public meetings on the draft planning documents. Copies of the documents have been made available to individual documents.

Copies of the documents have been made available to individual citizens, members of the Legislature, river authorities, environmental groups, and organizations involved in water supply and development.

Copies are still available from the Director of Planning, Texas Department of Water Resources, P. O. Box 13087, Austin, Tex. 78711.



## We're the Wheelers' but our Grandpa's Still the Best Dealer in the Panhandle!



Grandpa will have many new cars on display including the new

- Cadillac
- Oldsmobile
- Pontiac
- Buick
- GMC Trucks

See all the new 1978 models

THURSDAY, OCTOBER 6,



Free Gifts  
Coffee & Donuts  
Door Prizes  
To Be Given Away  
Every Hour!  
Don't Forget!  
Thursday, October 6  
Show Date

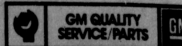
All 1978  
Cadillacs, Pontiacs,  
Buicks,  
Olds,  
GMC's  
are Available For  
Immediate Delivery

Phone 435-5806 or 435-2434

We Trade for Anything - Finance Anything We Sell

## Collingsworth Motor Co.

- CADILLAC
- BUICK
- OLDSMOBILE
- PONTIAC
- GMC TRUCKS



420 South Main

Perryton, Texas

KEEP THAT GREAT GM FEELING WITH GENUINE GM PARTS

by Bob F... Well, it that can Friday's remind m horse. On tion holdi difficult. Shamrock match w mildly. T new kind Lynx. Get you're aln that you tough. O did it wrl cocky, an serious r them very And whi the Sham would be say somet They have lost four. I like that ca The youn





Spearman is still growing as shown here with the construction of another new home.

## The Armchair Quarterback

by Bob Fight

Well, there's not really much that can be said about last Friday's game. The Lynx remind me of a very fine race horse. Once, it smells competition holding it back is very difficult. To say that the Lynx-Shamrock game was a mismatch would be putting it mildly. The game did present a new kind of situation for the Lynx. Getting up for a team that you're almost sure in your mind that you can beat easily is tough. Our Lynx did it. They did it without being carelessly cocky, and they did it with a serious respect that became them very well.

And while we're talking about the Shamrock game I think it would be appropriate here to say something about the Irish. They have won one game and lost four. Experiencing a season like that can certainly be no fun. The young Irish probably felt

like giving it up a long time ago but not once during Friday night's game did they quit trying to come back, even when the score was 43-0. To face such insurmountable odds and still give it everything you can muster is commendable and I think the Shamrock team deserves a word of commendation just for staying on the field.

As for the Lynx, the fun's all over. It's nice to win but up till now it didn't count if they won or not. Spearman will be open this next week, but the week after that they face what will probably be their toughest district challenge this year. The Dalhart Wolves are 4-1-0.

Spearman and Dalhart are probably the two top teams in this district and it's a shame that they have to face each other right off the bat, but that's the way it is, and there's no changing it. This year's district race will most likely be decided

with the Dalhart-Spearman game. The Wolves could turn things completely around with a victory. The Lynx look to have put things together pretty well, but they won't have a second chance. Their next game will be the beginning of what it's all about—district competition and a bid for that climb up the ladder which ends with a state championship.

Looking around the district, Dalhart defeated Tucumcari, New Mexico this week 43-7. Dalhart will be open this week. Boys Ranch was open last week. The Ranchers will play their last non-conference game Friday night hosting Farwell. Panhandle's 10-18 loss to Vega put them 2-3-0 for the season. They will be open this week. River Road is 0-4-0 losing to Lockney 3-21. They will be looking for their first win hosting Memphis in their last non-conference game. Canadian is also coming

off of a loss. Wellington defeated them 33-13 bringing their season record to 2-3-0.

Team	1-AA	Op	W-L-T
1. Spearman	177	40	5-0-0
2. Dalhart	121	35	4-1-0
3. Boys Ranch	64	93	2-2-0
4. Panhandle	90	67	2-3-0
5. Canadian	43	86	2-3-0
6. River Road	17	165	0-4-0

Team	1A	Op	W-L-T
1. Surrency	178	32	4-1-0
2. San-Fritch	105	48	3-1-0
3. Stratford	68	68	2-3-0
4. Gruver	68	53	2-2-0
5. Stinnett	50	83	2-2-0
6. Phillips	70	93	2-3-0
7. White Deer	21	196	0-5-0

District	Team	W-L-T
1. Surrency	1-0	
2. San-Fritch	1-0	
3. Stratford	1-0	
4. Gruver	-0-	
5. Stinnett	0-1	
6. Phillips	0-1	
7. White Deer	0-1	

You Are Cordially Invited to Attend

A Baby Shower

Honoring

Kim Vera

Sunday, October 9, 1977

2 p.m. to 5 p.m.

B&B Farm Industries

Hostesses

Belinda Benavidez Lena Harmon

Terri Womble Frankie Duryee

Laura Mackie Lillian Ralston

Cheryl Blankenship Rieko Joy

You are cordially invited to attend

a bridal shower honoring

Mary Kay Stubblefield

bride-elect of David Harbour

on October 15, 1977

2:30 to 4:00 p.m.

1115 Linn Drive, Spearman

Hostesses: Mmes.

Doyle Jackson Chalmers Porter

Wallace Berner Albert Clark

Elvin Martin Sonny Patterson

W.C. Jackson Joe Trayler

M.D. McLaughlin

47-2tc

## Field Trial To Be Held

THE STATE FIELD TRIAL ASSOCIATION SPEARMAN VOLUNTEER FIRE DEPARTMENT AMATEUR FIELD TRIAL SPEARMAN, TEXAS

Bird Dog Walking Field Trial Date: October 9, 1977

Location: 6 mi. West of Spearman on Highway 15 to Cemetery then 1 mi. North.

Entries Close at 6:00 p.m. on October 8, 1977. Field Trial begins at 8:30 a.m.

Puppy Stake: under 18 months of age Entry Fee \$5.00.

Novice Stake: All Dogs that are not steady to wing and shoot. Entry Fee \$5.00.

Championship Stake: Dogs that are steady to wing and shoot.

Anything that has won (1st place) novice or placed 1st, 2nd, or 3rd place in Championship must be entered in Championship.

1st, 2nd, and 3rd place trophies will be awarded in each event.

The hunting area will be marked. Trial will be run on liberated birds.

Upcoming Field Trials are:

October 16, 1977 Dodge City, Kansas

October 23, 1977 Beaver, Ok.

October 30, 1977 Guymon, Ok.

The trial at Dodge City will be a "Shoot-to-Kill" trial utilizing their own rules.

All other trials will follow the Tri-State Field Trial Association rules.

The trial at Guymon will include a "Powder Puff" class for ladies only.

LUNCH WILL BE SERVED ON FIELD TRIAL GROUNDS.

Stake Dog's name

Owner

Address

Phone

City

Stake Dog's name

Owner

Address

Phone

City

Baker-Taylor Women's Sale 203 S. Hazel-wood.



For over 20 years, the federal government has regulated the price of interstate natural gas at levels below production costs. This has resulted in overstimulated demand for this cheap and clean-burning fuel. And while sparing consumption, the low regulated price of the fuel has also discouraged producers from searching for gas. As a result, our nation's natural gas reserves are being seriously depleted. What can be done to reverse this reserves depletion? One step would be to deregulate natural gas prices.



NEW 90-HP\* 4040



NEW 110-HP\* 4240



NEW 130-HP\* 4440

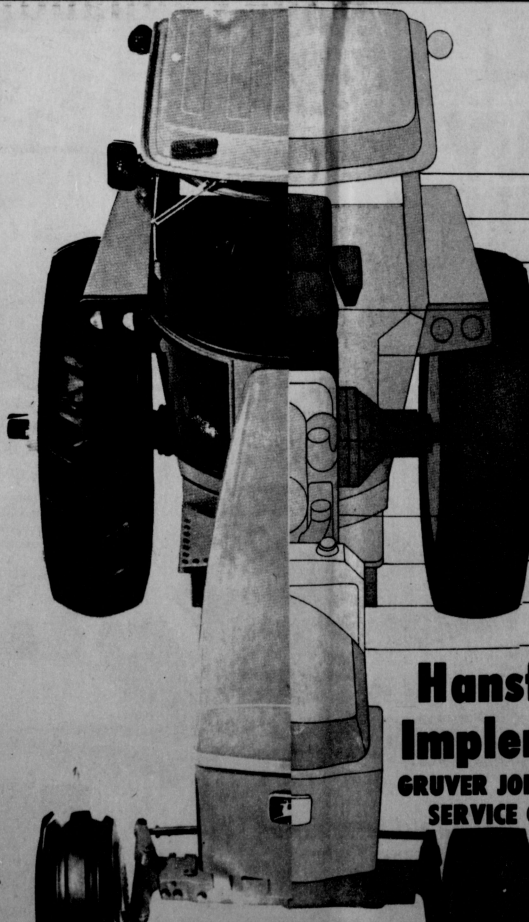


NEW 155-HP\* 4640



NEW 180-HP\* 4840

Come by Wednesday, and have coffee, donuts with us and see the new 1978 John Deeres. IF YOU CAN'T MAKE IT WED. WE WILL HAVE SOME NEW TRACTORS ON DISPLAY ALL WEEK!



- Tough soil is toughest underneath—so are these new tractors
- New pulling power
- Greater hitch lift
- Heavier power trains
- Smoother ride
- Quieter
- Longer wheelbases
- Bigger engines
- More usable hydraulic power
- More weight
- More cooling capacity
- Larger fuel tanks
- Longer warranty

**Hansford Implement**  
GRUVER JOHN DEERE SERVICE CENTER

**THE NEW IRON HORSES**  
MORE HORSES MORE IRON

SPEARMAN  
★  
GRUVER





**Oldsmobile**  
Can we build one for you?

Caprice Classic is an even more refined and still our most comfortable and most distinguished Chevrolet.

# THE NEW CHEVROLET

## 1978 Caprice Classic and Impala

**CAPRICE CLASSIC. STILL THE BEST WAY TO SAY CHEVROLET.**  
Friday and Saturday at our show-room

...are standard. Special Custom... classic's stand... smooth finish... available all- vinyl.



We will see you Thursday...



### WELCOME TO A VERY SPECIAL AUTOMOBILE.

With immense pride we present a trim and timely new edition of Chevrolet's popular personal luxury car. The Third Generation Monte Carlo clearly retains the unique personality of Monte Carlos past. You can see it in the stately stance and sculptured sides. You can feel it in the way a Monte Carlo moves. It is a car beautifully in tune with the times, yet emphatically apart from the crowd. We think you'll be impressed.

# '78 CHEVY PICKUP

**CHOICE OF NEW DIESEL OR GASOLINE POWER.**



The best advantage of Toronado front wheel drive.



Experience a retreat into luxury. For the highways of your mind. Oldsmobile Cutlass Supreme Brougham '78.

- Easier to park
- Full frame
- Frt. bumper bar standard.
- Extensive corrosion-resisting treatments.
- 14 noise isolating body mounts contribute to a quiet ride.
- Double-panel walls in doors, hood and deck lid.

\*Compared to the 1977 Malibu.

Gerald Heinrich's  
**EXCEL CHEVROLET-OLDS, INC.**

"WE'RE IN BUSINESS BECAUSE WE MAKE GOOD DEALS"  
South Highway 207 • Spearman, Texas • Phone (817) 632-8141

Malibu Classic 4-Door Sedan