

Hill Campaign Here Monday



The Spearman Reporter

VOLUME 69, NO. 22

THE SPEARMAN REPORTER - SPEARMAN, TEXAS 79081

THURSDAY, APRIL 13, 1978

New school board members sworn in!

Two members were sworn in to serve with the Spearman School Board at the regular meeting Monday evening. Incumbent Jim Davis and new member, Tommie White, were accepted by the board after they canvassed the votes. Immediately following the swearing in of the new members, the officers were elected; the same officers were re-elected to serve for this year: Kent Guthrie as president, Paul Hazelwood as vice president, and Clark Mires as Secretary-Treasurer.

There were no groups to come before the board for a hearing Tuesday night.

The minutes of the regular meeting March 13 and special meeting March 28th were read. The business manager's report included financial statement, ratification of bills, and tax report.

In the communications department, Choir Director Travis Angel requested an assistant for his choir department and the board is taking it under consideration.

In Old Business to be considered, the board renewed its agreement with the classroom teachers' association. Part of this agreement is that teacher representatives may be present at all of the school meetings.

The board accepted resignations of Jean Moore, Terri Thompson, and George Franklin. Mrs. Moore is going to Plainview with her husband, Coach Moore; Terri Thompson, the speech therapist, is getting married; and Coach Franklin is going to Plainview to head up the track program there.

The school did set up their school calendar for 1978-79. Supt. Cunningham will attend the Fellowship programs in Columbia, Missouri, once again this year. This is a yearly event for the school superintendents in the area.

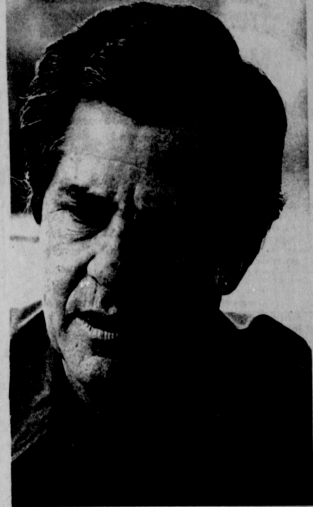
The board hired Linda Smith, to teach the migrant program for this year. James Hester, assistant coach and high school teacher was hired. Charles Carter, assistant coach and Junior high teacher, was hired. Cathy Carter was hired to teach in the elementary. Stephanie Warren was hired to teach in the elementary dept. Demetra Prather was hired to teach in high school.

The board did not consider the salary schedule for 1978-79, but will review this at a later date.

The Superintendent's report stated that the enrollment at this time, was 963, down 6 students from this time last year. Other business from the Superintendent's office, included a discussion on the lunchroom, board breakfast held in March, Workman's Comp report, Texas Municipal report and new library books. The Supt. stated that they need two coaches now, as we have lost a total of five coaches to Plainview this year; one of the vacancies to be filled will be the head boys basketball job and an assistant girls basketball position.

If you want to drink, that's your business. If you want to stop, that's ours.
ALCOHOLICS ANONYMOUS
Phone 659-3181 or 659-3998, or in Gruver 733-2170

WE SALUTE THE MEN IN THE E, M, S, PROGRAM IN SPEARMAN! They are the greatest!



JOHN HILL

Graham Hill, son of John Hill, candidate for Governor of Texas, will bring his father's campaign to Hansford County Monday afternoon, April 17.

Graham will be in Gruver at 9:30 p.m. at Riley Bros. Monday to visit with Gruver residents.

He is scheduled to be in Spearman from 4:45 to 6 p.m. at Riley Bros. Monday to visit with Gruver residents.

He is scheduled to be in Spearman from 4:45 to 6 p.m. Monday afternoon. He will be interviewed by Coy Palmer of KBMF-FM at 4:45 and will visit businesses and individuals in the downtown area the rest of his time here.

John Hill, the current Attorney

General, was also Secretary of State from 1966-68. Some of his proposals needed in the governor's office include cutting utility bills by removing the sales tax on such bills, and to shift our natural gas production tax burden from Texas consumers over to out-of-state buyers of our gas, establishing Texas to its rightful role as the national leader in discussion of energy issues; education should have top priority; and the cornerstones of our booming economy, petroleum and agriculture which are threatened by Federal policies, will have my support for fair price for their products, property tax relief, inheritance tax burdens, and expand markets for Texas agricultural products.

City Emergency Plan Given

Severe Thunderstorm season is upon us and with it comes the threat of Tornadoes. The City of Spearman has recently updated its Emergency Operations Plan, which will be put into effect to observe potential dangerous weather, to provide warning to the citizens of Spearman of impending danger from storms and to provide care for citizens and operation of the city in the event a disaster occurs.

Upon receipt of information that our area has been placed in a tornado watch, the following procedure will be taken:

A. Police Chief, Fire Chief, City Manager, and Civil Preparedness Coordinator will be made aware that a watch has been posted for our area.

B. Police Chief, Fire Chief, City Manager, and Civil Preparedness Coordinator will notify their personnel that they may be called out for weather watch operations.

C. At any time a threatening or dangerous storm cloud is approaching Spearman or conditions are rapidly getting worse, the Civil Preparedness Coordinator may put the weather watch plan into effect.

Once the plan is put into effect, personnel will go to their assigned areas that are located both inside and outside the City limits. These personnel may be members of the Police Department, Fire Department and volunteers.

The Emergency Operations Center (EOC) is located at the Police Station and once the spotters reach their assigned locations, they will report that they are in position and what the storm looks like.

Spotters will give the following information to the EOC:

1. Any change of direction in the storm.
2. Any change of amount of rainfall in the storm.
3. Any hail in the storm -- estimate of size and amount.
4. Wind activity in the storm.
5. Any funnel activity seen in the storm.

D. Should a Tornado be spotted approaching the City, a decision to sound a warning to the public will be made by the Police Chief, based on information received from the spotters, and the National Weather Service. Should it become necessary to sound a warning, the warning will be:

1. A 5 minute steady blast on all the sirens with the high-low yelp on the Civil Defense siren.
2. Local radio (KBMF/FM) and TV(SCA-TV) will carry the warning also. In addition a channel interruption hot line from the EOC to the cable TV transmitter which can be used to override all channels on the cable system is under construction at this time and will be used to announce special warning messages as soon as it is operable.

When the warning is sounded, all citizens should:

1. Take Cover, Immediately!
2. Do not go outside to look around, you may get hit by flying debris.
3. Do not call the Police Department; listen to radio and TV for information.
4. Stay under cover until all danger has passed. If possible, an all clear signal will be sounded on the sirens. It will consist of 4 blasts on the sirens.

It is very important that all citizens know the warning and all clear signals and that they have a place to take cover if threatening conditions approach. It May Save Your Life!

If you live in the county and need an ambulance or to report a fire, call 659-3707 24 hours a day. If you need a law enforcement officer, call 659-2512.

Calling the correct number to report an emergency or to get law enforcement assistance will speed help to you with minimal delay.

DEBATE HELD: R. C. Potter of Spearman and Mr. Thompson, Biology teacher at Frank Phillips College, in Berger, conducted an interesting debate on the farm program at the college auditorium on Tuesday evening. In summarizing the debate,



STORM CLOUDS -- It's that time of the year, and everyone is getting ready to watch the clouds, and prepare for the many storms that will approach the area this year! In the picture above, several warning clouds appear. This was made in Hansford County last year, and as everyone knows, about the only way to escape a tornado, is to be in a safe shelter.

both men agreed that over-production is the main problem facing the American Farmer of today.

Spearman Tri-State Rodeo Scheduled

The annual Spearman Tri-State Rodeo will be held April 14 & 15 at the Oscar Archer Memorial Arena. The first performance will be Friday evening at 7:30 p.m. Saturday performances will be at 2 p.m. and 7:30 p.m.

Billy Cook Saddles will be given for All-Around Boy and Girl. B-Bar-K Buckles will be given for 1st, 2nd and 3rd places. Team trophies and sportsmanship trophies will also be presented.

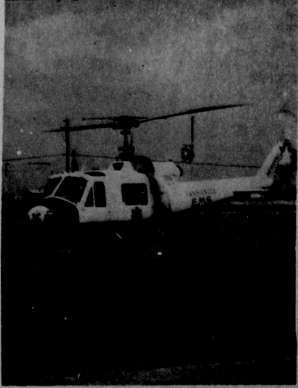
Stock producer for the rodeo will be James Martin of Spearman.

Entries should be mailed to Spearman High School, 5445 Lee Road, 403 East 11th, Spearman, Texas 79081. Books will close on April 4.

The Rodeo Club is asking that you give first and second choices for performances, and if you live close to Spearman try to get up for the Friday night performance.



MIAMI, Fla.--Members of three women's bowling teams from Spearman, Texas, check out sights along Miami's Biscayne Boulevard while in the city for the 1978 Women's International Bowling Congress Tournament, April 6 through June 6. The 15 bowlers, representing Leonard Hardware Drilling, First State Bank and Anthony Electric teams which bowled at Bow-Nize, competed April 7.--MIAMI METRO DEPT. OF TOURISM PROMOTION PHOTO.



AIR LIFT -- When necessary, patients can be transported in a matter of minutes from Spearman to a hospital in Amarillo in this Medavac helicopter operated by Panhandle Emergency Medical Services which was on display here Saturday, April 8, during the observance of Emergency Medical Services Month.

DECK ELBERT, will head or June of this year. Dick is active in Lions Club, and promises to be an outstanding boss Lion!

Health and Safety Tip

From the American Medical Association

Treatment Can Halt Most Asthma Attacks

Asthma is a chronic illness in which the victim has difficulty in breathing. It is not contagious and, fortunately, most attacks of asthma are relatively mild. If neglected, it increases in severity, and endangers health as time goes on.

The American Medical Association points out that most asthma attacks are triggered by an allergen. It could be almost anything - foods, furs, feathers, pollens - that starts the flare-up. Sometimes a bacterial infection of the throat, nose or sinuses can touch off an asthma attack. Nervous tension sometimes is a factor.



Swans communicate with a loud, trumpet-like sound.

In a severe attack, the victim appears to be suffocating. He becomes pale and turns bluish, perspires heavily. He is using all of his strength just to breathe. Fortunately, these attacks can be relieved by medical treatment.

Finding the allergen is the first step in dealing with chronic asthma. Occasionally, it is obvious, but most often a series of tests are required.

If the allergen is something you can avoid, such as a dog or a cat, your problem can be solved with relative simplicity. If it should be pollen in the air or dust particles, the case is more difficult. But it will be kept under control, with proper medical direction.

Occasionally, an asthma patient will be helped by a change of climate, but doctors advise that you proceed with caution in making a cross-country move. You may develop a new allergy to things in the new climate. If you plan to move, try to arrange an extended visit to the proposed new home area to find out for yourself whether you feel better.

Asthma can be controlled in most cases. In almost all cases, a doctor can provide relief from asthmatic attacks, and by careful management reduce the frequency and severity of attacks.

April 1978

Frank Chappell
Science News Editor
AMA

Strokes Affect Brain

An often unsuspected cause of mental and physical incapacity is a series of "little strokes."

A stroke occurs when the blood supply to a part of the brain is reduced or completely cut off, says the American Medical Association. This can be caused by a blood clot, or by hemorrhage - bleeding from an artery in the brain. When the nerve cells of a part of the brain are deprived of their blood supply, the part of the body controlled by these nerve centers cannot function normally.

Little strokes may start when a person is in the 30s or 40s, striking silently at night or passing almost unnoticed as a dizzy spell, a



momentary blackout, or just a few moments of confusion. The stroke itself is not severe enough to compel the patient to seek medical aid, but some permanent brain damage remains just the same.

A formerly kind, gentle person may become highly impatient and irritable. His judgment is often impaired. A strong man may become weak and prone to tears. Suspiciousness is common. A person with a tendency to emotional instability to check heretofore by will power, may suddenly develop a psychosis.

Some become sloppy in dress and befuddled in thought, while others lose a part of their moral sense. Sometimes the victim merely loses interest in his family and friends, and lives secretly, constantly hiding things that through forgetfulness he cannot find later.

When the symptoms are mild, as they often are, the person may get along fairly well. A sufferer from little strokes usually can get along better in slower-going farm and small town areas than in the faster-living city.

The problem of small strokes is one of the most difficult facing medical science. The most hopeful research approach is that of finding ways to prevent stroke. Science seeks to learn more about how to recognize early symptoms so that treatment can be instituted promptly.

April, 1978

Frank Chappell
Science News Editor

Gallstones Demand Aid

In the upper right part of the abdominal cavity is a small pouch called the gallbladder. It is the temporary storage center for bile, and is part of the digestive system.

The American Medical Association reminds that sometimes lumps of solid matter composed of bile pigment and salts form in the gallbladder or in the ducts leading to it. These are called gallstones.

There may be only one gallstone, or there may be hundreds. They can

be so tiny that they look like sand, or they can be as large as a golf ball. Gallstones occur more often in women than in men and more frequently in persons past 40.

Exactly why we get gallstones is still somewhat of a puzzle. They are generally thought to be the result of changes in composition of the bile, or stagnation of the bile, or infection. Gallstones often lie quietly in the gallbladder or bile ducts. But if a large stone starts to move, you'll know immediately that something's wrong. Pain will be severe, and will cause acute agony. The skin over the area of the gallbladder may be sensitive to touch. The attack may last over in a few minutes or it may last

for days. Sometimes it becomes mildly chronic and may be interspersed with acute episodes.

Of course, not all severe pains in the upper part of the abdomen are from gallstones. Only your doctor can tell with proper diagnostic techniques.

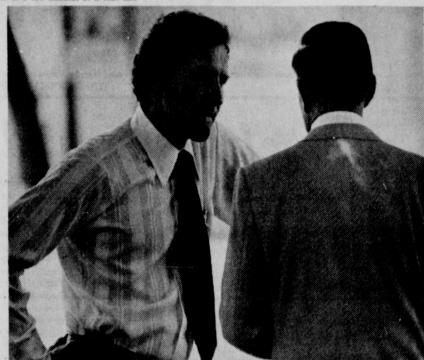
You can't diagnose gallstones yourself. Your abdominal pain may or may not originate in the gallbladder. Let your doctor decide, and recommend treatment.

April, 1978

Frank Chappell
Science News Editor
AMA



Heat is measured in British Thermal Units (BTUs), each unit being equal to the quantity of heat required to raise the temperature of one pound of water at its maximum density one degree Fahrenheit.



HEALTH CARE LOCAL CONCERN—U.S. Rep. Bob Krueger talks with a West Texas hospital administrator about the recently revised guidelines released by the Department of Health, Education and Welfare which affect health services. Krueger, who was honored in January by the Texas Hospital Association for his contributions to and concern about Texas medical care, thinks the HEW guidelines do not fulfill Congress' intent to maximize the efficiency and quality of American health services.

Major & Ruth Lackey announces that "RUTH'S CRAFTS & TOLE PAINTING SHOP" has been purchased by Orville & Martha Latham opening soon.

- Featuring Toile & Decorative Accessories & Custom Wood Specialties.....
- Leading brand Oil & Acrylic Paints & Brushes, .. Books, .. Patterns & Wood Items.....
- Wood Carving Supplies & Special Orders on Wood Products.....
- Crewel, .. Hook Rugs, .. Needlepoint, .. Cross-Stitch & Macramé.....
- Decoupage, .. Prints & Many More Craft Materials, ..

Inquire about Craft & Paint Classes, .. Daytime & Nighttime will be offered.

Martha's
Paint for Kitchen & Pantry

Hours: 9 a.m. - 5 p.m.,
Phone 659-3297 after hours:
903 S. Bernice
Spearmen, Texas 79081

SPRING FASHION CLEARANCE

Begins Thursday, 8 a.m.!

BE HERE!

All Spring Merchandise!

Betty's

211 S. Main 435-4761

DEFEND ON DEKALB GREENBUG RESISTANCE

PARALLEL PARKING

As of Wednesday, April 12, parallel parking was replacing the old angle parking along the south side of Davis between Dillon and Sanders with parallel slots already painted for use.

DEKALB F-67

A South American bird called the hoazin has claws on its wings when young—which helps it climb about in the trees.

Linoleum was patented in 1863 by Frederick Walton, an English rubber manufacturer.

OPEN 24 HOURS

ALLSUP'S CONVENIENCE STORES

OPEN 24 HOURS

PRICES EFFECTIVE APRIL 13, 14, 15, & 16, 1978

APRIL SHOWER OF SAVINGS

- SHURFINE 1 LB. BACON \$1.29
- GOLD MEDAL FLOUR 5 LB. BAG 79¢
- SHURFINE GAL. BLEACH 49¢
- NEW FOLDERS' FLAKED COFFEE \$2.79
- FRITO LAY CORN CHIPS REG. 63¢ BAG 59¢
- SUNSHINE OATMEAL COOKIES 20 OZ. BAG 69¢
- FRITO CHIP-A-ROOS 12 OZ. PKG. 59¢
- NOVELTIES 2 FOR 25¢
- SANDWICHES POPCORNLES FUDGECAKES
- ICE COLD CHERRY CIDER qt. 59¢
- BORDEN'S BUTTERMILK 79¢
- BORDEN'S CHOCOLATE MILK 49¢
- SUNSHINE COOKIES 4 FOR \$1
- SHURFINE SLICED OR WHOLE PEACHES 2 1/2 LB. CAN 37¢
- TOMATO SAUCE SHURFINE 7 FOR \$1
- CARNATION TUNA 59¢

WANTED ADS

Bowxell Bros.
Funeral Home
and
Flower Shop
FUNERAL HOME - 659-3802
FLOWER SHOP - 659-2212

Hansford County Planned Parenthood
26 S. Haney
659-2463
Spearman
Mon. - Fri.
8 a.m. to 11 p.m.
305-rtm

SERVICES
HANSFORD LODGE
No. 1040
A.F. & A.M.


STATED MEETINGS
2nd & 4th MONDAY, 8 p.m.
Members Only To Attend
Valdus Wolschlag
CERIL BAYTON W.C.M.
JERRY Y. GEE SEC. Y.

KIRBY SALES & SERVICE of
Spearman, 912 S. Bernice.
659-2797.
30-rtm

NEW LOW RATES \$6.95 PER DAY
For Steam Rinsevac
Rug Shampooer
Call Gordon's Drug
Call 659-2141 or
after 5 p.m. & Sundays
call FREDDIE LARGENT!
659-3437
17-rtm

YOUR LOCAL USED COW DEALER: SPEARMAN HI-PRODUCTS.
Seven days a week deal stock removal. Please call when possible.
659-3544.
8-rtm

SERVICE: Pits cleaned, wet or dry. Dragline or loader. Also, dozer, grader, carry-all service.
LeRoy Mitchell, 806-733-2394, Gruver, Texas, 79040.
9-rtm

Alcoholic Anonymous Meeting - 8 p.m. Friday, Home Demonstration Club building. 305 N. Bernice. Phone 659-3181 for information.

Al-Anon meetings 8 p.m. Friday Home Demonstration Club building. 305 N. Bernice in back room. Phone 659-3181 for information. Ask for Al-Anon.

NOTICE
Wallace Monument Co. Monuments, Curbing, Grave Covers
Local Representative
LEONARD JAMISON
659-3406
20-rtm

Can Drill Domestic or Irrigation Wells. Deepen domestic and gravel pack. Sell new domestic or irrigation pumps. Call at night, Bill Block, 935-4088.
215-rtm

REAL ESTATE FOR SALE
Pans For Sale Crawford Addition, 659-3510.
165-rtm

FOR SALE BY OWNER: Two, 3 bedroom homes, 2 baths, good location, reasonably priced.
Call 659-2283.
195-rtm

FOR SALE: Small 3 room stucco house on corner lot, near downtown, some used furniture included. Ideal for single person.
Emmett E. Sanders, Realtor 659-2516, nights 659-2601.
22-rtm

Mayfield Real Estate John Mayfield, Broker
435-6520
Roby Laird - Salesperson
659-2188

1109 Townsend, 3 bedroom, 1 1/2 baths, new appliances, single car garage, fenced yard.

Land For Sale: 160 acres, 11 miles northeast of Foltz, windmill water, some machinery, immediate possession, no minerals.

2 Lots in the Shaul Addition zoned trailer houses.
175-rtm

FOR SALE: Large office building in good location near downtown. Use as Store, Offices, Storage etc. Central heat, air conditioning, carpeted. 14 S. Haney, Harold Groves. 659-2647.
125-rtm

LOTS FOR SALE: 82' X 160' located at 319 S. Endicott. Call 658-4990.
8-rtm

FOR SALE: 722 Collier 3 bedroom, 1 3/4 baths, garage, fenced yard, corner lot. CALL 659-3885 weekdays after 5:30, 22-30

MISCELLANEOUS FOR SALE
THREE-DAY GARAGE SALE: Thursday through Saturday, open evenings. Many picture frames, one antique five-shelf book case, one old Singer sewing machine, two sets of hames with some harness parts, lots of collector items, bowls, jelly, jam, and pickle dishes, three old lamps, some old cookware, five cast-iron corn-stick pans, 6" x 14" drum kettle with lid (rare) with handle and legs, 1 1/2 gallon lead press, many other items (no junk), one 1977 Ford, 1/2 ton with camper, all automatic and power, 15,000 miles, like new, 1300 Call St., Pampa, Texas (1/2 block north of Furr's Grocery Store).
22-11p

FOR SALE: 1970 Grand Prix. Good condition. \$700.00.
733-2607, Gruver.
205-rtm

FOR SALE: Firewood. Burton Schubert. Call 659-2667.
5-rtm

FOR SALE: German Millet Seed, makes hay in 45 days. Farmers & Ranchers Supply, 733-2931, Gruver, Texas.
215-rtm

FOR SALE: 1970 Grand Prix. Good condition. \$700.00.
733-2607, Gruver.
205-rtm

FOR SALE: Firewood. Burton Schubert. Call 659-2667.
5-rtm

FOR SALE: German Millet Seed, makes hay in 45 days. Farmers & Ranchers Supply, 733-2931, Gruver, Texas.
215-rtm

ED WHEELER REAL ESTATE HOMES - FARM - COMMERCIAL -

Brick 3 bedroom, 1 1/2 baths, built-in, new carpet, nice drapes, attached single garage, fenced, storage house. ***

3064 under roof, 3 bedroom, 1 1/2 baths, central heat and air, ash paneling and woodwork, extra large double garage, automatic underground lawn sprinkler, large storage building, concrete pad for boat, etc. Cinder block fence, nice patio. Appointment only. ***

3 bedroom brick, 2 full baths, recently redecorated, central heat and refrigerated air, large double garage detached with finished roof & bath, can be used for bedroom or office. Must see to appreciate. ***

416 S. Haney, 2 bedroom, 1 bath, built-in appliances, washer & dryer, completely remodeled, new carpet, drapes, custom made, new roof, freshly painted, storm windows, detached garage made into bedroom. Must see to appreciate. ***

821 S. Barkley, 2 bedroom, 1 1/2 bath, new tile in kitchen, dining area, new carpet in den, storm windows, large lot, fenced storage building, single garage, large trees, sprinkling system. Extra nice home -- can be made into a three bedroom. ***

Ed Wheeler 659-2613, Office
or 659-2551, Home
Jerry Gee 659-3664
195-rtm

Home For Sale
We offer one of the largest and finest homes in Southeast Spearman across from the high school. Five bedrooms, formal living room, den in basement, built-in fireplace. Approximately 4000 square feet with many extras. Includes 12'x20' storage building, fence, sprinkler system, TV and CB towers and antennas, many more features. Call for appointment, 659-2647, Mr. and Mrs. Harold Groves.

LEGAL NOTICE
CITATION BY PUBLICATION
THE STATE OF TEXAS
TO:
C. B. Davis, J. P. Burgess, H. S. Durham, R. E. Sherwood, H. C. Coffey, J. R. Colard, D. E. Holt, Rachel Burgess, A. B. Hunsley, Mary J. Rucker, A. B. Hunsley, Mary J. Rucker, E. W. Pyle and wife, Hattie J. Pyle, W. T. Womble, Morse Independent School District, Willard McCloy, T. A. Fairy, Harriett Eugenia Roberts, James Boardman, Alta Burges, G. D. Lewis, Sidney Knowl or Unknown Heirs, Successors and Assigns, Defendants.

FOR SALE: 1967 Chevrolet Van, 68 Buick Wildcat, 63 Cadillac. 303 Davis St. 175-rtm

FOR SALE: Sybil Millers personal 98 Olds, Call 659-9388 or 9434.

FOR SALE: R. T. Frazier Saddle, custom made 14-inch cantile. Padded seat, good shape. Raymond Kirk, phone 659-3351.
22-3p

FOR SALE: Cowdog puppies and poodle puppy. Call 659-3990.
22-2tc

FOR SALE: Motorcycle. 1976 Kawasaki 500. Call 659-3332.
205-rtm

Going Out of Business: Used N. Spinder, Spearman.
205-6tc

FOR SALE: Metal sink cabinet, new faucet unit, \$25.00, complete. 733-2684, Gruver after 5:00 P.M.
22-1tc

HELP WANTED: Parts Person, Excel Chevrolet-Olds, Spearman.
22-4tc

HELP WANTED: Apply in person, Rogers, Sales & Service, Waka, Texas. Inside shop, manufacturing work.
17-rtm

HELP WANTED: Carpenter Helper needed. Experience helpful. Call 659-3867.
21-rtm

HELP WANTED: From 1 to 6, Monday through Friday, and 9 to 12 on Saturday. Apply at Earls T.V., phone 659-2121.
22-rtm

BUSINESS OPPORTUNITIES
RESPONSIBLE PERSON: Wanted to own and operate candy & confection vending route. Spearman and surrounding area. Pleasant business. High profit items. Can start part time. Age or experience not important. Requires car and \$1495 to \$4995 cash investment. For details write and include your phone number: Eagle Industries, 3938 Meadowbrook Rd., Minneapolis, Minn. 55426.
22-21p

FOR RENT
FOR RENT: One & Two bedroom apartments, 303 Davis St.
165-rtm

POLITICAL ANNOUNCEMENTS
The Hansford Plainman is authorized to announce the candidacy of the following candidates for public office, subject to the action of the voters in the 1978 primary elections.

FOR COUNTY JUDGE R. L. McClellan
FOR COUNTY TREASURER Francis Biles
FOR COUNTY CLERK Verna Gal Keim
FOR COUNTY & DISTRICT CLERK Marie Gould
FOR COMMISSIONER PRC. 2
FOR COMMISSIONER PRC. 4
Joe T. Venneman
FOR STATE REPRESENTATIVE - 64th LEGISLATIVE DISTRICT Bob Close

SAVE MONEY INSULATION DOESN'T COST...IT PAYS!
CELLULOSE INSULATION Blow On
*Walls *Mobile Homes *Attic *Steel Buildings
Free Estimates
12 SEASONS INSULATION
Phone 806-249-2922
22-8tc

JIMMY GREENE
659-3196

BOX'S SPEARMAN
THE LARGEST INSURING FIRM IN KANSAS CITY LIFE INSURANCE COMPANY
SPEARMAN

FOR SALE: 1967 Chevrolet Van, 68 Buick Wildcat, 63 Cadillac. 303 Davis St. 175-rtm

FOR SALE: Sybil Millers personal 98 Olds, Call 659-9388 or 9434.

FOR SALE: R. T. Frazier Saddle, custom made 14-inch cantile. Padded seat, good shape. Raymond Kirk, phone 659-3351.
22-3p

FOR SALE: Cowdog puppies and poodle puppy. Call 659-3990.
22-2tc

FOR SALE: Motorcycle. 1976 Kawasaki 500. Call 659-3332.
205-rtm

Going Out of Business: Used N. Spinder, Spearman.
205-6tc

FOR SALE: Metal sink cabinet, new faucet unit, \$25.00, complete. 733-2684, Gruver after 5:00 P.M.
22-1tc

CARD OF THANKS
In sincere appreciation of all our friends who have helped us so much in their own way in our time of sorrow and grief we want to say, Thank You and may the Good Lord Bless.
Mrs. Gay Fuller
Mr. & Mrs. Bob Fuller
Mr. & Mrs. John Walker
Mr. & Mrs. Carl Anbacher
Mr. and Mrs. J. J. Kelm
Mr. & Mrs. Perry Dixon
Miss & Carlos Dixon
Mr. & Mrs. Tommy Gumsby
Mr. & Mrs. Bud Lowe

FOR SALE: 14 x 86 Solitaire, 2 Baths, 3 Bedrooms, dishwasher, garbage disposal, washer, dryer. Pay Equity and Take up payments. Call 659-3995.
22-21p

FOR MOVING: Moving Homes, Skirting and Leveling. Call Charlie Cook in Canadian. 806-323-5238.
22-rtm

Hundreds View Displays
The local observance of Emergency Medical Services Month didn't pass unnoticed Saturday, April 8, at the Plains Shopping Center where several hundreds of people got a close-up look at fire equipment operated by the Spearman Volunteer Fire Department, ambulances operated by the SVPD and the Gruver Police and Fire Department, an armored personnel carrier converted from military to civilian rescue service and a Medava helicopter operated by Panhandle Emergency Medical Services out of Amarillo.

In addition, in the old furniture store location in the shopping center, displayed were a safety program carried out by Baker and Taylor Drilling Co. of Spearman as well as a display of equipment utilized by firemen and emergency medical services personnel in the performance of fire fighting or rescue operations.

Jerry Moyers and Keith Hunt of the SVPD were in charge of the Saturday activity with Ronnie Antelko, city fire marshal, in charge of the extrication exercise which was conducted at the shopping mall at 2 p.m. The old automobile was provided by Smoky Hughes.

An additional activity directly connected with E.M.S. Month will be a fire extinguishing demonstration on April 29. Time and place will be announced.

Harvard University, founded in 1838, is the oldest college in the United States.

FOR THE ULTIMATE IN STORM DOORS
CUSTOM BUILT, DESIGNED, AND IN COLORS TO FIT YOUR HOME.....
CONTACT
HOWARD MOYER at
ONLY AMALON INDUSTRIES
405-338-6966 or 338-6170
P. O. BOX 471
GUTMONT, OKLAHOMA 73942

FOR RENT: One & Two bedroom apartments, 303 Davis St.
165-rtm

POLITICAL ANNOUNCEMENTS
The Hansford Plainman is authorized to announce the candidacy of the following candidates for public office, subject to the action of the voters in the 1978 primary elections.

FOR COUNTY JUDGE R. L. McClellan
FOR COUNTY TREASURER Francis Biles
FOR COUNTY CLERK Verna Gal Keim
FOR COUNTY & DISTRICT CLERK Marie Gould
FOR COMMISSIONER PRC. 2
FOR COMMISSIONER PRC. 4
Joe T. Venneman
FOR STATE REPRESENTATIVE - 64th LEGISLATIVE DISTRICT Bob Close

SAVE MONEY INSULATION DOESN'T COST...IT PAYS!
CELLULOSE INSULATION Blow On
*Walls *Mobile Homes *Attic *Steel Buildings
Free Estimates
12 SEASONS INSULATION
Phone 806-249-2922
22-8tc

JIMMY GREENE
659-3196

BOX'S SPEARMAN
THE LARGEST INSURING FIRM IN KANSAS CITY LIFE INSURANCE COMPANY
SPEARMAN

FOR SALE: 1967 Chevrolet Van, 68 Buick Wildcat, 63 Cadillac. 303 Davis St. 175-rtm

FOR SALE: Sybil Millers personal 98 Olds, Call 659-9388 or 9434.

FOR SALE: R. T. Frazier Saddle, custom made 14-inch cantile. Padded seat, good shape. Raymond Kirk, phone 659-3351.
22-3p

FOR SALE: Cowdog puppies and poodle puppy. Call 659-3990.
22-2tc

FOR SALE: Motorcycle. 1976 Kawasaki 500. Call 659-3332.
205-rtm

Going Out of Business: Used N. Spinder, Spearman.
205-6tc

FOR SALE: Metal sink cabinet, new faucet unit, \$25.00, complete. 733-2684, Gruver after 5:00 P.M.
22-1tc

FOR SALE: 1967 Chevrolet Van, 68 Buick Wildcat, 63 Cadillac. 303 Davis St. 175-rtm

FOR SALE: Sybil Millers personal 98 Olds, Call 659-9388 or 9434.

FOR SALE: R. T. Frazier Saddle, custom made 14-inch cantile. Padded seat, good shape. Raymond Kirk, phone 659-3351.
22-3p

FOR SALE: Cowdog puppies and poodle puppy. Call 659-3990.
22-2tc

TEXAS PRESS
1977 ASSOCIATION
PUBLICATION NO. 599660
SPEARMAN, TEXAS 79061
213 Main Bldg. 452 659-3434
Published Weekly at 213 Main Street
Spearman, Texas 79061
Owner-Publisher.....William M. Miller
Second Class postage paid at Spearman, Texas

ANY ERRONEOUS REFLECTION UPON THE CHARACTER OF ANY PERSON OR FIRM APPEARING ON THESE COLUMNS WILL BE GLADLY AND PROMPTLY CORRECTED UPON BEING BROUGHT TO THE ATTENTION OF THE MANAGEMENT.

SUBSCRIPTION RATE: Hansford, adjoining counties, combination with the Hansford Plainman, \$10.40.
Other points, \$14.40.

OFFERED BY:
EMMETT R. SANDERS,
REALTOR

PRICED REDUCED on this lovely 3 bedroom brick home, 2 baths, fireplace, carpets, dishwasher, disposal, central heat and air, fenced yard, double garage, choice location, wide lot.

2 bedroom stucco detached double garage is extra large, new carpets, quiet location on 110 ft. lot, owners will accept low.

GROWING WITH SPEARMAN, now under construction in The Delon Kirk Addition, on South Broad. This one is sold. Construction underway on another one. Why not enjoy a brand new 3 bedroom home, prices starting at \$27,500. Today's best buying by quality building. Low move-in cost-insure beats paying rent. Act now for choice of colors, floor plans, etc.

PERITON, TEXAS
This 2 bedroom stucco home is in excellent condition. New carpets throughout. Formal dining room. Detached double garage; located near school on 75 ft. lot. See it now.

Brick home with 4 bedrooms, 2 baths, living room, family room with breakfast bar, large built-in kitchen, utility room, ample storage space, walk-in closets, wall-to-wall carpeting, bookshelves and cabinets, built-in bar, central air conditioning, storm cellar, all this for only on a beautiful fenced 120'x200' corner lot, with boat dock and car port on rear, garage on front. Many extras for comfortable contemporary living. Possession June 15; shown by appointment only.

Older 3 bedroom house on 2 lots, large basement. 128 ft. lot on corner (county road).
308 S. Hopkins - 5 room house, carport, fenced yard, priced to sell.

EMMETT R. SANDERS,
REALTOR®
659-2516 NIGHTS 659-2601

Postal Consumer Protection Week

"Although they are the exception rather than the rule, some mail-order promoters use the mails to get money through misleading or fraudulent claims that prey upon the public's hopes and aspirations." Postmaster Robertson said today.

In an effort to increase public awareness of Postal Service activities, the third annual Postal Consumer Protection Week is being held nationwide and in the Spearman area, April 10-15.

"Most mail-order advertisers are aboveboard in their promotional material, but there are some who, intentionally or unintentionally, make less-than-accurate claims that confuse and raise the hopes of many people," the Postmaster said.

Based on Postal Inspection Service investigations, the Postal Service's Consumer Protection Office takes action to stop schemes involving products and services ranging from weight loss and sexual potency aids to diploma mills and non-existent medical schools.

One recent case involved a school in San Juan, Puerto Rico, that bought advertising in many

major metropolitan newspapers in the U. S. claiming it would open a four year medical school in February of 1978 for English language students.

Acting quickly, Postal Inspectors obtained a mail-stop order as Consumer Protection lawyers filed a formal complaint. They estimated about \$150,000 was collected from about 36 prospective students before inquiries and remittances intended for a school called Borinquen University could be delivered.

A decision against the operators of the school, returned in February, means any remittances will be returned to senders.

A Postal Service administrative law judge ruled that the operators of Borinquen University make a number of false representations, including claims it had physical facilities for a medical school, faculty, financial staff, curriculum, and accreditation or provisional accreditation of the Association of American Medical Colleges and the American Medical Association and the American Medical Colleges and the American Medical Association. On February 1,

U.S. SENATOR JOHN HIGHTOWER

Washington, D.C.—Congressman Jack Hightower today wrote each member of the United States House of Representatives urging them to vote for the Conference Committee Report on the Emergency Farm Bill. Attacks on the "flexible parity" concept have raised inflation as the principle issue.

The following is the Hightower letter:

I urge your support of H.R. 6782, the Conference Report on the emergency farm bill.

The potential impact on inflation has been touted in recent days as the reason it should be defeated. Farmers are the victims of inflation. They are not the cause but it appears that they have been singularly selected to bear the

burden of the battle against it. That is the reason for the bill you will be asked to consider.

Food prices might increase a percentage point if the measure is enacted. Farmers' costs have increased more than 100 percent in only the past few years.

We passed the Humphrey-Hawkins Full Employment Bill to establish a national goal for minimum unemployment. Enforcement of the Emergency Farm Bill would help us achieve that goal.

The alternative would be a distressingly high percentage of America's farmers having to declare bankruptcy and seek jobs that are not available. The newspapers in my district advertise forced farm sales every day and it is not uncommon to see several pages of such advertisements.

There might be a tendency for members to represent non-agricultural constituencies to say that a vote against the bill would have no political or economic impacts on them personally or on their constituents. It would, and the effect would be negative. Every member represents constituents who are employed in restaurants, gro-

cery stores, clothing stores and countless other industries that are dependent upon agriculture. Every person eats farm produce and wears clothing made from fibre the farmer grows. An unstable supply of the farmers' commodities would as surely increase inflation as would payment of a fair price to farmers for their products. Keeping the small farmer in business is the best way to assure an adequate supply of food and fiber.

Farmers represent only about 4 percent of the nation's population, but the agricultural sector is the largest U. S. employer. Approximately 1 out of 4 jobs in the private sector of the economy is related to some phase of agriculture, from the growing of America's farm produce to selling it at the domestic supermarkets or throughout the world. The production, processing and distribution of food and fibre account for one-fifth of the U. S. gross national product. Farming alone provides employment for almost 4.5 million Americans. This is the equivalent of the combined payrolls of the nation's transportation, steel and automobile industries.

These sectors already are feeling the impact of the farm depression.

The average capital investment in agriculture approaches \$100,000 per worker, the highest in the world. On commercial family farms the figure often exceeds \$150,000. For every dollar spent by the American farmer, \$2.10 of additional business activity is stimulated. The town, businesses, and rural banks are equally affected by the farmer's income and his expenditures.

In February the United States recorded its highest international trade deficit in history. Had it not been for agriculture, an additional several billions of dollars would have been added to that deficit. Agricultural exports have been the principal offsetting factor against our massive expenditures for imported oil. Almost one-third of America's farm acreage is devoted to exports.

Each of us has to assess our priorities carefully. I can think of no higher priority than the need to provide some assurance that we will have a dependable

Furniture Stolen

Hanford County Sheriff R. L. McFarlin has reported his department is investigating the burglary of the Laester house several miles north of Spearman in which some antique furniture was stolen.

The furniture, bought approximately 80 years ago, included some bedroom furniture, chairs and couches.

McFarlin said the owner could identify the stolen property.

The old ranchhouse is in an isolated region north of Spearman but in an area of oil and gas production.

No one was living in the house at the time the property was stolen, McFarlin reported.

The furniture was taken sometime between April 6 and April 9 when it was reported to authorities.

Summer Camp For 4-H'ers

Summer is camping time, and for 4-H members, it's time to start thinking about taking advantage of some of the many great experiences in store at the Texas 4-H Center this summer.

The Ce. "v", located near Brownwood in Central Texas, offers a special camping program for 4-H'ers during the period July 9-28, points out Handford County agent with the Texas Agricultural Extension Service, the parent organization of 4-H. Theme of this year's camping program is "Texas Heritage and Horizons."

Summer camp at the Texas 4-H Center can be a unique experience, emphasizes Peggy Winegamer. It provides an opportunity to meet new friends, learn new skills and have a great time. There are nature activities, folk games, folk arts and crafts, outdoor sports and recreation, music and planned social recreation along with many other things.

Instruction relating to Texas' Cultural Heritage will be provided by qualified college-age counselors and resource persons. Adult 4-H leaders and County Extension agents will serve as supervisors.

The camping program will be conducted according to age groups, with the schedule as follows: July 9-12, 15 years and older; July 12-14 and July 26-28, 10-11 years old; July 16-19 and July 23-26, 12-14 years old.

Cost of the camp is \$35 per individual except for the 10-11 year-old groups which is \$30. Parents and leaders who will be providing transportation for 4-H'ers may make reservations to stay at the center at the same fee as for the youth.

Applications for the summer camping program at the Texas 4-H Center are available at the County Extension office, adds Mrs. Winegamer. Reservations will be made on a "first come, first served" basis.



Tool Auction

If you're missing a screw driver, an open end or box wrench or that new set of pliers has turned up missing just when needed most, set your sights on April 18 at 10:30 a.m. at the County Barn on East Avenue D where the annual tool auction sponsored by the Spearman High School Choir will be conducted.

Name brand tools, everything you can imagine (as tools go) plus the added attraction of a variety of done-it-yourselfers takes and pieces which will go to the highest bidder.

There is no admission charge. Proceeds from the auction will be used for the Spearman High School Choir for the trip next month to Galveston and return.

So do yourself a favor; come out and enjoy the fun, acquire what you need and help these prize-winning choir members to have a nice journey next month.

Ideal FOOD STORES

PRICES EFFECTIVE THRU APRIL 15, 1978. QUANTITY DISCOUNTS. NO SALES TO DEALERS.

MON.-SAT. 8 a.m.-9 p.m.
SUN. 10 a.m.-7 p.m.

MEET TWO HAPPY WINNERS!

DON BENNETT WON \$1,000.00
MARTHA FRENCH WON \$1,000.00

\$100 WINNERS
Sue Berry of Hughton
Floyd Kupford of Enid
Earl Brown of Dumas
Joyce Hibbs of Alva
Linda Peters of Guyton

Gruver Trap Shoot Planned

The Gruver Lions Club are sponsoring a Trap Shoot Extra-Ordinaire beginning at 1:00 P.M. Sunday, April 16th, at the Old Airport, one mile southeast of Gruver.

Unusual are the prizes (or trophies) for the Lions Club Trapshoot will feature \$10.00 gift certificates to be used at any business in Gruver—a means of saying "thanks" to the merchants of Gruver who give so much always.

Paramount's Zany "The One And Only" At Lyric Theatre

Paramount Pictures' "The One and Only," a wild and zany love story starring Henry Winkler and Kim Darby directed by Carl Reiner, opened Wednesday, April 12, at the Lyric Theatre in Spearman.

Produced by Steve Gordon and original screenplay by Robert Swink as executive producer, the film centers around a young man, who dreams of stardom and leaves college to pursue fame and fortune, searching for it in the most unlikely of areas.

Gene Saks, who won the Tony Award as Best Director of a Musical last year for Broadway's "Love My Wife," portrays a pathetically cynical wrestling promoter. Co-starring are William Daniels, Harold Gould, Polly Holliday and Harve

The average American TV set is on about six hours a day.

SPRING SPECIAL ONE GROUP BODIN 1/3 OFF

200 Extra Gunn Bros. STAMPS
BY REDEEMING 2 COUPONS RIGHT AT YOUR NEARBY IDEAL...

IDEAL FOOD STORES

HUDSON'S BUDGET PACK
Box-O Chicken 49¢ LB.
5-6 LB. AVG.

WILSON CORN KING
Meat Bologna 99¢ LB.
SLICED ROUND BY THE PIECE \$1.09 LB.

GORTON'S
Franks 79¢ LB.
SKINLESS MEAT 12-02 PKG.

FISH STICKS \$1.99
VALUE PACK 2-LB.

FRESH FRYER GRADE 'A'
Breast \$1.09 ATTACHED LB.
Thighs or Drumsticks 99¢ LB.

RAV CASHING

VALUABLE COUPON

CAMELOT
Fruit Cocktail 27¢
16-OZ. CANS

SUGAR 58¢
LB. BAG WITH THIS COUPON

CAMELOT
Green Beans Golden Corn 41¢
CAMELOT CREAM STYLE OR WHOLE KERNEL
YOUR CHOICE 16-OZ. CANS

ENRICHED
Camelot Flour 548¢
LB. BAG

KRAFT DELUXE DINNER
Mac. & Cheese 73¢
KRAFT LOW CALORIE
Italian Dressing 49¢
DELUXE GRAHAM
Koehler Cookies 89¢
NABISCO
Nutter Butter Cookies 83¢

CAMELOT
Sweet Peas 4\$1.00
16-OZ. CANS

CAMELOT
Apple Sauce 3\$1.00
16-OZ. CANS

CAMELOT
Whole Tomato 3\$1.00
16-OZ. CANS

Kings Ford 10\$1.29
Charcoal... LB.

PREMIUM
Nabisco Crackers 58¢
16-OZ. BOX

CAMELOT "A" MEDIUM
Eggs... 50¢ DOZ.

PARMAK SOFT TWIN TUB
Margarine 64¢
CAMELOT
Cottage Cheese 88¢

CAMELOT
Buttermilk 69¢
CRAFT ALAPENO
Cheese Singles 63¢

FAIRMONT
ICE CREAM \$1.69
VANILLA & MIPLETAN GAL.

Yeh-o's PIZZA 69¢
CHEESE, SAUSAGE, PEPPERONI, HAMBURGER 13-OZ. BOX

PEACH-APPLE
Banquet Pies 64¢
CAMELOT CUT 16-OZ. CANS

CAMELOT
Orange Juice 1\$1.00
CAMELOT CRINKLE CUT 5 GAL. 98¢
Potatoes.....

SHOP DEAL...WHERE THERE'S MORE VALUE IN STORE



April Vows Planned

Miss Sue Roberson, daughter of Mr. and Mrs. James W. Roberson of Hurst, Texas, and Edward D. "Rusty" Scarborough, Jr. of Fort Worth, son of Mr. and Mrs. Edward D. Scarborough, Sr. of Gruver, Texas, are planning their wedding for April 15th in the Christian Temple Assembly, of God Church in Hurst.

The bride-elect is a 1973 graduate of L. D. Bell High School and is employed at Central Soya, Saginaw. The future bridegroom is a 1975 graduate of Gruver High School and is employed by Charles Needham Refrigeration.

Our Heritage of Faith

notes from Faith Lutheran Church

Faith wishes to extend an invitation to anyone who would like to come to the Fun and Games Night that the young people of the church are sponsoring this Sunday night, April 16. This will be an informal time to get to know one another better and to share in some fun. Volleyball will start at 6:00, and around 7:00 we will have some organized games that the young people who worked up. Refreshments of cookies and drinks will be provided. We hope to see you there.

Other events at Faith this week are the Adult Information Class Monday night at 8:00 and a study class on the Gospel of Matthew on Wednesday night at 7:30. These are also open to anyone. The Adult Information Class is a review or study of the teachings of the Christian Church with a Lutheran perspective. The Matthew Class will be looking at chapters 6 and 7 of Matthew this week which is part of Jesus' Sermon on the Mount. From that we will be discussing the implications of Jesus' teachings for our daily lives.

Worship services are at 9:30 each Sunday followed by Sunday School at 10:30. You are most welcome to join us for our worship services or any of our other activities.

The S.S. Savannah was the first steamship to cross the Atlantic. The knot, or sea-mile is about one and one-sixth land miles.

new arrivals

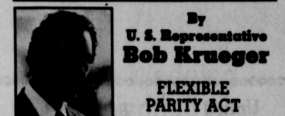
Coch Windy Williams and wife, Nancy, of Spearman announce the arrival of a son, Garrett Wyn, born March 25 and weighing 6 pounds 14 ounces. Grandparents are Mr. and Mrs. Maurice Garner and Mrs. Faye Williams all of Panhandle. Mrs. Martha Sparks of Panhandle is the great-grandmother. The new arrival is welcomed by a 3-year old sister, Lori Allene.

Mr. and Mrs. G. I. "Dude" Brown and Mr. and Mrs. Joe Archer are the proud grandparents of a boy, born April 3, 1978, to their children Kathy and Don Archer. His name is Heath Dolan. He weighed 6 lbs. 13 1/2 oz. and all three are doing well.

university for any major field of study. Payment will be made to the school registrar. Requirement for application will consist of a neat letter written about yourself including, but not limited to, the following information: Full name and address of parent or guardian. Description of yourself. Description of your family (number in family, interests, etc.) Family background. Your school career including activities, honors, grades and class standing. State your ambitions and talents achievements. The medical term for the fear of work is Ergophobia.

future plans including the college or university you plan to attend and when you plan to enroll. Recipient must be enrolled in college for the 1978 Fall Term or the scholarship will go to an alternate. Please submit your letter of application to the American Petroleum Institute, Panhandle Chapter, Attention: API Scholarship Committee, Box 1900, Pampa, Texas 79065 by June 1, 1978.

KRUEGER OF TEXAS



By U.S. Representative Bob Krueger FLEXIBLE PARTLY ACT

WASHINGTON—Farming in our nation has become an uncertain and risky endeavor, complicated by government intervention and depressed by economic factors beyond the control of any individual farmer.

Last week I took definite action to bring about relief for the farming industry, particularly for young farmers and for the American family farm.

The program I endorsed as a co-sponsor of the Flexible Parity Act of 1978 will allow farmers to receive full parity prices for their crops and at the same time actually write their own farm program.

Quick action on this bill—action March 21 passed the U.S. Senate—is essential if a significant number of farmers is to avoid bankruptcy and if we are to reverse the frightening trend toward centralized farming.

In addition to my co-sponsorship of the Flexible Parity Act, I have made a special plea to Cong. Thomas Foley, the chairman of the House Agriculture Committee, and to other members of the House-Senate Conference Committee considering the bill before it will emerge for a floor vote. I have asked these congressmen to act favorably on the Flexible Parity Act, because it will provide the necessary relief for our nation's farmers in the shortest period of time.

This legislation will allow farmers to obtain a higher price for their crops as they reduce their planting, based on a formula permitting a farmer to set aside from 20-50% of his farmland, with the market price of his crops determined by the percentage he chooses not to plant.

The set-aside, in effect, also diminishes the possibility of creating large farm surpluses, an element responsible for keeping prices so low that farmers are not able to meet the cost of production at this time.

But, by following the Flexible Parity Act, a farmer will reduce his harvest and production costs, eliminating needless surpluses and creating an atmosphere which will not only guarantee substantial target prices, but also prevent prices from slipping below a reasonable figure.

Just as important in this legislation is the element of individual freedom it grants the farmer. At a time when the farmer, not unlike so many business people, is overwhelmed with government intervention and regulation, it is important to the collective morale of the farming industry that provisions allowing for more independence work their way back into our agricultural system.

In addition to calling for a flexible parity concept, this legislation increases loan rates for wheat, corn and other feed grains. Increased target prices apply to cotton, wheat, corn, and the feed grains.

Coping with economic complexities of our massive agricultural industry is no simple task, and we will find no solutions acceptable to all, but I firmly believe that support of the Flexible Parity Act will meet problems that have reached crisis proportions, laying a solid foundation for the future.

You save here

...because we check it here

An important feature of the Energy Checkered Efficiency Home program is the heating and cooling equipment it is respected for energy-efficiency by figuring the EER (Energy Efficiency Ratio) on cooling equipment, and the COP (Coefficient of Performance) on heating equipment. When EER or COP indicates the best of the equipment to cool or heat in relation to the amount of energy required for operation. The higher the EER or COP, the less the unit costs to operate. And economy of operation is what the Energy Checkered Efficiency Home program is all about! Before you buy a home, look for the sign that can mean savings to you through years of lower home operating costs.

COMMUNITY PUBLIC SERVICE
Your Electric Light & Power Company

200 BONUS STAMPS

Just Clip and Redeem these Coupons!

No. 12 THIS COUPON IS GOOD FOR 100 FREE GUNN BROS. STAMPS AT YOUR IDEAL FOOD STORE. No Purchase Required. Please fill in your name and city. Only One Coupon Per Customer-Coupon Expires 4-15-78.

No. 13 THIS COUPON IS GOOD FOR 100 FREE GUNN BROS. STAMPS AT YOUR IDEAL FOOD STORE. With the Purchase of \$5.00 or more in Groceries. Please fill in your name and city. Only One Coupon Per Customer-Coupon Expires 4-15-78.

Round Steak \$1.59

REEF ROUND CENTER SLICES U.S.D.A. CHOICE BUTCHER BLOCK BEEF

U.S.D.A. CHOICE BUTCHER BLOCK BEEF Boneless Round Steak \$1.89

BEEF EXCELLENT FOR QUICK MEALS Cube Steaks..... \$1.99

Smoked Hams 89¢ LB.

SHANK PORTION FULLY COOKED 7 TO 9 LB. AVERAGE

RUMP PORTION 5 TO 7 LB. \$1.99

Smoked Hams..... \$1.99

SMOKED CENTER CUTS Ham Slices \$1.99

SMOKEY CANYON ASST. VARIETIES Sliced Meats..... \$1.49

COUNTRY STYLE PORK LOIN Spare Ribs..... \$1.29

RODEO ASSORTED VARIETIES Sliced Bologna..... \$1.09

BLUE MORROW COOKED Steak Fingers..... \$1.29

ASSORTED Pork Chops \$1.39

PORTS OF ENGLAND DINNERWARE

This Week's Feature

Saucer ONLY 69¢

Get This Complete Set

BONUS VALUE THIS WEEK 12" PLATTER \$5.99

SAVE \$1.00 NO PURCHASE NECESSARY. NO LIMIT.

WIN UP TO \$1,000,000

ODDS CHART FOR APRIL 13, 1978

WHEEL	NO. OF	WHEEL	NO. OF	WHEEL	NO. OF	WHEEL	NO. OF
1-10000	10	10000-1	10000	10000-1	10000	10000-1	10000
1-1000	100	10000-1	10000	10000-1	10000	10000-1	10000
1-100	1000	10000-1	10000	10000-1	10000	10000-1	10000
1-10	10000	10000-1	10000	10000-1	10000	10000-1	10000
1-1	100000	10000-1	10000	10000-1	10000	10000-1	10000
TOTAL NO.	100000	10000-1	10000	10000-1	10000	10000-1	10000

ALL VEGETABLE

Camelot Shortening 3 \$1.09

LB. CAN

KRAFT DRESSING

Miracle Whip 88¢

QT. JAR

DOLLY MADISON

Bathroom Tissue 58¢

4 ROLL PKG.

WINTER WASHES

Clorox Bleach 69¢

GAL.

SECRET DEODORANT

Secret Deodorant 88¢

REG. OR ANTI-PERSPIRANT 4-8Z. NET WT.

SHAMPOO 4-8Z. THIS 1.49 7-8Z. LITRES \$1.49

MOUTHWASH \$1.69

SCOPE \$1.69

DIAPERS EXTRA ABSORBENT \$2.29

Pampers

GRAND MARKET

Grapefruit 5 \$1.00

5 LBS. FOR

RUBY RED

Grapefruit 5 \$1.00

5 LBS. FOR

CALIFORNIA LARGE SIZE

Avocados 3 \$1.00

FOR

CALIFORNIA

Navel Oranges 389¢

LB. FOR

FRESH

Crisp Carrots 2 39¢

LB. BAG

NEW RED

Potatoes 5 \$1.00

5 LBS. FOR

MICHIGAN

Peat 1 \$1.59

40-LB. BAG

FOR YOU!.....

Food Stamps Buy More At Ideal..

IDEAL FOOD STORES

You are cordially invited to a reception honoring Mr. and Mrs. J.H. (Chip) Martin on their fiftieth anniversary Wednesday, April 19 from 5 to 9 p.m. Martin's Steak Garden Hwy 207 South Spearman, Texas Hosts-James & Eddie Martin

21S-3tc

United Presbyterian Church News

Women of Pulo Uno Presbyterian will have their annual Spring meeting on Thursday, April 13 at the First Presbyterian Church of Wichita Falls.

There is a Sunday Church School class for everyone every Sunday at 9:45 a.m. with a fascinating Bible lesson that is practical in meeting the needs of everyone who wants to live as a Christian in today's world.

"Shepherds-Lamb: Redeemer-Rastor" will be the subject of Pastor Edward D. Freeman's sermon at the service for the public worship of God on Sunday, April 16 at 11:00 a.m. It is the fourth Sunday in the Easter season and National Christian College Day.

Presbyterian Women of the Church will meet Wednesday, April 19 at 9:30 a.m. Marsha Batton is the hostess. Mary Frances McKemy will lead the program, "A Question of Loyalties." Helen Etter will lead the devotional.

There will be a Senior High Youth Retreat at Ceta Glen April 21-23.

There is a warm welcome at the First Presbyterian Church. If you are new to Spearman or without a church home, you are encouraged to try the warm Christian fellowship at the First Presbyterian Church.

Bridge Clubs

The Friday Night Bridge Club met Friday, March 24 in the home of Mr. and Mrs. Cliff McGarragh of Perryton.

Mr. and Mrs. Dennis Nelson were high couple; Mr. and Mrs. Judy Nelson, low couple; and Mrs. Judy Nelson, the traveling pair.

Refreshments were served to members. Messrs and Mesdames: Jimmy Greene, Albert Clark, Roy Flowers and guests Mr. and Mrs. S. D. Sheets and Mr. and Mrs. Dennis Nelson by the hosts Mr. and Mrs. Cliff McGarragh.

The next meeting will be held in the home of Mr. and Mrs. Albert Clark with the date to be announced at a later time.

Meeting Tuesday, April 4 in the home of Mrs. Tom Etter with the Short Bridge Club.

High score was won by Mrs. Rose Butt; second high, Mrs. Charlotte Pearson; and traveling prize, Mrs. Ruth Skinner.

Those present were members, Mesdames: Woody Gibner, Roy L. McClellan, Bob Skinner, Richard Holton, Herb Butt, Tom Etter, Gertrude Jones, Elsie Mathews, new members Mrs. C. A. Ellison and Mrs. Tom Sutton and guests Mrs. Dan Pearson and Mrs. Oscar Donnell.

The next meeting will be April 18 in the home of Mrs. Gertrude Jones.

"Few people do business well who do nothing else."

Lord Chesterfield

"The Missionaries" At First Baptist Church Sunday

A special event will be held at the First Baptist Church Sunday, April 16 at the 11 o'clock service. "The Missionaries" will be sharing their faith in song and testimony.

The group is sponsored by the Baptist Student Union from Southwestern Oklahoma State University at Weatherford, Okla. They are composed of 25 students of the University. Their ministry is to go to different churches and share in song and testimony.

They will have the entire service Sunday morning with a church-wide luncheon following. Everyone is invited.

Past Masters Night Held

Most Worshipful R. Forman Vinson of Flomet, Grand Master of Masons in Texas, was the featured speaker for Past Masters Night at Hansford Lodge No. 1040, A.F. & A.M., in Spearman, Friday, April 7, during which 25-year service pins were presented to those Master Masons of Hansford Lodge present with those years of service in and to the organization.

There were 26 Past Masters from Hansford and other Lodges in this area in addition to the other Master Masons present.

In his address, Grand Master Vinson stressed the goodness and Americanism inherent in Masonry in America, noting that, during his overseas military service in World War II, he saw signs advertising American products and automatically knew they were good because they were from America.

The Grand Master was introduced by District Deputy Grand Master William R. Knight, Jr., of Dumas and who represents the 102nd Masonic District of Texas.

Five members of Hansford Lodge were present to receive 25-year service pins.

They are L. L. Anthony, James Fowler, James Lair, Buster W. Kirk and Stanley E. (Dick) Hudson.

Cecil Batton, Worshipful Master of Hansford Lodge, announced that pins for other members of the lodge who were not in attendance will be in their hands as soon as possible.

Hansford Lodge Past Masters carried out the work during the meeting. For the occasion, Tommy Russell was Worshipful Master, John R. Colard, Jr., was Senior Warden and Raymond Kirk Junior Warden. Colard, a Past Grand Master of Masons in Texas, was Master of Hansford Lodge in 1953-1954. Russell was Master in 1960.

Jim Jones, bass and John Reneau, drummer.

Baptists Plan Spring Revival

Spring Round-up Revival Services are scheduled at First Baptist Church, April 19-23.

Features of the revival include messages by the veteran Pastor of Sagamore Hills Baptist Church, Fort Worth, Dr. Fred Swank was Pastor there for thirty eight years before his retirement. His wife, "Liz," will speak at each of the noonday luncheons, under the title, "The Big Lies We Face TODAY."

The music for the revival will be led by Dale Harris of Brookston, Texas.

Mexican Dinner Is Planned

The Sacred Heart Parish Hall will sponsor a Mexican Dinner on Sunday, April 16th at the Parish Hall of the Sacred Heart Church. Serving hours will be from 11:30 a.m. to 3:00 p.m.

Advance tickets are being sold and may be obtained from the ladies of the parish. Prices are \$3.50 for adults, \$2.00 for children 7 to 12 years, and under 6 FREE. Tickets will also be sold at the door.

The meals will be prepared by the Spanish-speaking ladies, as only they can prepare it—having that South-of-the-Border flavor.

The menu will consist of Enchiladas, Spanish Rice, Frijoles, Sopapillas with honey, salad, pie or cake, and coffee or tea.

The public is invited.

Bowling News

PIN BENDERS 3-31-78

W L

Brook Insurance 75 29

Farm Bureau 63 41

Cinderella 58 46

Spearman Super Service 58 46

Bowl Mor 54 50

McClellan Grain 39 65

L.M.W. Vernon's	35 69
HIGH TEAM SERIES	
Brook Insurance	1517
L.M.W. Vernon's	1498
Cinderella	1440
HIGH TEAM GAME	
Brook Insurance	558
Brook Insurance	533
Cinderella	520
HIGH IND. SERIES	
Patty Spoonmore	523
Joyce Frost	519
Fam Gray	498
HIGH IND. GAME	
Millie Craig	210
Pam Gray	197
Patty Spoonmore	192

Trip Money To Be Used For Stock

In February at Martin's Steak Garden four men were asked by those present to represent our community in Washington and that the Chamber should bill each business to help pay for their trip. Ralph Blodgett, J. L. Brock, Clay Gibner and Gene Cudd went to Washington to inform the people there of the businessmen's plight due to the farmers situation. They took time from their business and family and represented Spearman well and made an impression on the people they visited with.

These men have requested that the money collected to help pay their expenses be used to purchase stock in the Spearman Industrial Plan, Inc. in the name of the Spearman Chamber of Commerce. These dollars will then be used to help finance our new motel, airport and industry to help Spearman continue to grow.

Mrs. Love's Nephew Killed

Funeral services were held Tuesday afternoon at 4:30 p.m. in the First Baptist Church of Laverne, Okla. for Anthony (Tony) Lenz, 18, of that city. He was the nephew of Mrs. Aaron Love of Spearman. Tony was killed Saturday night, April 8 in a car accident.

He is survived by his parents,

The family of Mr. and Mrs. Robin Giblin cordially invite you to a reception in honor of their 40th Anniversary April 16, from 3 to 5 p.m. Morse Community Building Morse, Texas

No gifts please

21S-2tc

Dr. and Mrs. Anthony Lenz of Laverne, Okla.; three sisters and one brother. Attending the funeral from Spearman were Mr. and Mrs. Aaron Love, Mr. and Mrs. Jack Love and family, Mrs. Shirley Hall and daughters, and Mrs. Eugene Yarbrough.

Land Judging Contest Held

A Land Judging Contest sponsored by the Hansford Soil & Water Conservation District, assisted by the Soil Conservation Service was held Wednesday afternoon, April 5, 1978.

Despite the windy and dusty conditions six schools entered teams in the contest.

The winning team from Darrouzett was Billy Wise, Matthew Mandalek, and Terry Born coached by Lewis Vickery.

Billy Wise was also high individual in the contest and Matthew Mandalek was third high individual.

The second place team was Spearman. Members were Clifton Morrison, Dayton Edwards and Clay Reid coached by Herman Boone.

Dayton Edwards was also second high individual in the contest.

The third place team was from White Deer and team members were Bebo Terry, Bill Mesenak, and Dean Henthouse, coached by Kenneth Kenning.

Other teams entered included McLean, Perryson and Booker schools.

The sites selected for judging were on the Fendorf Schubert farm west of Spearman.

Banners and ribbons were awarded to the three high teams and ribbons were awarded to the 3 high individuals.

HANSFORD COUNTY'S ENTERTAINMENT CENTER LYRIC THEATRE

PHONE 659-2812

THEY MAKE YOU LAUGH ON THE OUTSIDE—AND FEEL GOOD ON THE INSIDE



A Carl Reiner Film
HENRY WINKLER
is
THE ONE AND ONLY

Paramount Pictures Presents A First Artists Production
Henry Winkler is "The One and Only" Kim Darby William Daniels Harold Gould René Villalobos Polly Holliday and Gene Saks
Written by Steve Gordon Executive Producer Robert Halmi
Produced by Steve Gordon and David V. Fisher
Directed by Carl Reiner

APRIL 12 THROUGH APRIL 18

PELICULAS MEXICANAS

CARMINA

SUNDAY MATINEE, 2 P.M., APRIL 16, 1978

ONE SHOW
SUN.-MON.-TUES.
-WED.-THURS.-
7:30 P.M.

TWO SHOWS
FRI.-SAT.
7:00 P.M.
AND 9:00 P.M.

NEXT ATTRACTION

Who will uncover the secret of Candleshoe?



WALT DISNEY PRODUCTIONS
CANDLESHOE
DAVID HEDCOCK JOHN NIVEN HAYES FOSTER LEO MCKERN

APRIL 19 THROUGH APRIL 25

Western Ag Sales Co.



QUONSET

Waiting for a good financing package? With government loan programs or a lease purchase, we can wrap it up for you!

Western Ag... You've known us for a long time.

- Center Pivot Systems
- Metal Farm Buildings
- Underground Plastic Pipe
- Grain Storage Bins

call us 659-2596

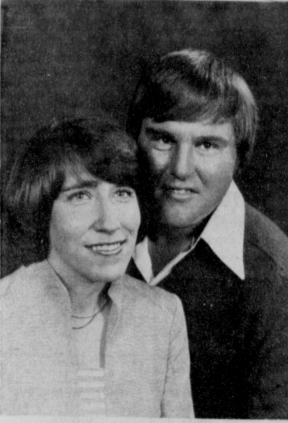
Wilton Green • P.O. Box 67 • Spearman, Texas 79018

The receipts at the Texhoma Livestock Commission Company this week were 4989 cattle & calves. Market somewhat uneven. Buyers more cautious than last week. Stocker steers \$1.00 to \$2.00 higher. Stocker heifers \$1.00 higher. Feeder steers mostly steady to \$1.00 lower. Plainer overall than last week. Feeder heifers mostly steady. Packer cows \$35.00 to \$37.60. Canners & cutters \$32.00 to \$35.00. Bologna bulls \$41.00 to \$43.50.

Steer calves - 300# to 550# - \$37.50 to \$64.25
Heifer calves - 400# to 450# - \$50.00 to \$54.60
Feeder steers - 600# to 800# - \$52.50 to \$55.50
Feeder heifers - 600# to 700# - \$47.50 to \$49.15

For next week, April 13, we are expecting 3500 cattle of all classes.

YOUR DEPENDABLE LIVESTOCK BUY/ON TEXHOMA LIVESTOCK COMMISSION CO., INC., P. O. BOX 70 TEXHOMA, OKLA. 79049
PHONE 405-423-7511 & 423-7512
CATTLE DEPARTMENT - LLOYD GOODNER & RAYMOND CHORTE
GOODNER RESIDENT PHONE - 405-423-7427



Roll Call was answered by "My Favorite Hymn". Mrs. Marvin Jones brought the program entitled "Powdered Sugar Dough Art" and exhibited many lovely pieces.

The hostess, Mrs. Ray Moore, served refreshments to the following members, Mesdames: Verlin Beck, W. D. Berner, Monty Harbour, Fred Holt, Michael Holt, O. C. Holt, Doyle Jackson, Britt Jarvis, Phil Jenkins, Marvin Jones, Randy Kirk, Major Lackey, Rex McCoy, Larry Porter and one guest, Mrs. David Harbour.

The next meeting will be April 18 in the home of Mrs. Trish Cook.

Judy Hergert, 4-H children may speak to the club for practice for the club's program. The children will go to a speaking contest at the end of April.

The Serendipity Home Demonstration Club met Tuesday, April 6 in the home of Mrs. Steve Benton. President Mrs. Gayle Smith presided over the business meeting.

Mrs. Steve Benton gave the devotionals.

Roll Call was answered to "Recipe of A Favorite Quick Meal".

Minutes of the previous meeting were read and approved; treasurer's report was given.

Town and Country Home Demonstration Club met Tuesday, April 14 at the home of Mrs. Phillip Renner. The meeting was called to order by President Mrs. Sherlene Hayes.

Roll Call was answered by "Giving the Name of a Quick Recipe".

Members were reminded to clean the Home Demonstration Club Room on April 24.

The members discussed having a scholarship fund for a Home Economics Major from Spearman. They are to help the Council with the Bake-Off during the Hansford County Round-Up Celebration.

Members were also reminded to meet with the Commissioners on Monday, April 10th. The club is to bring desserts to the Senior Citizens' Club party on April 18 at 6 p.m.

Mrs. Pennyne Ralston gave the program on "Quick Meals". She also handed a book of recipes to each member for their use in their homes and they traded quick recipe cards.

Mrs. Delinda McLaughlin gave a report on the District T.H.D.A. meeting.

After the business meeting, Mrs. Janet Slaughter opened presents for her new baby daughter, Jill, given by the members of the Town and Country Club.

Mrs. Lynn Renner served refreshments to members, Mesdames: Linda Cline, Janie Henton, Janet Slaughter, Sherlene Hayes, Lisa Pipkin, Delinda McLaughlin, Pennyne Ralston and guest Mrs. Dixie Sheppard.

The next meeting will be April 18 in the home of Mrs.

Council report was given by Mrs. Duane Loomis. She reminded the members of the Senior Citizens' Party that they are to help with during the month of April.

Mrs. Loomis also told the members that they would have 4-H students that were doing method demonstrations for a contest giving the club's program. They are going to give some demonstrations to the club's members.

The members were told about the T.H.D.A. state meeting in Dallas on Oct. 3, 4, & 7. The Club will need to have a representative from their club if anyone desires to be.

The luncheon they are going to have was also discussed. It will be open to the public from 11:30 a.m. to 2:00 p.m. on April 27 at the Home Demonstration Club Room. The charge will be \$2.50 for adults; \$1.25, children; and under 5, FREE. After the discussion of the menu, the members volunteered to bring certain items to the luncheon.

The program was given by Mrs. Gayle Smith and Mrs. Linda Brown entitled "Quick Meals". They gave some tips for conserving energy by using the oven and the cook-top stove.

Those present were members, Mesdames: Tim Assiter, Ladd Gafford, Norlin Winegarner, Archie Smith, Rick Riggin, Steve Benton, Bobby Brown, Duane Loomis, George Rex, and Buford Baker.

The next meeting will be April 20 in the home of Mrs. Ladd Gafford.

"Genius is born, not paid."

Sacred Heart Women's Guild Meets

The Sacred Heart Women's Guild met Friday, April 7 at the Parish Hall of the Sacred Heart Church at 7:30 p.m. with President Mrs. Judy Schmehr presiding over the business meeting.

The meeting was opened with prayer of the recitation of the rosary by Father Ray Crosier.

Minutes of the previous meeting were read and approved; the treasurer's report was given.

Mrs. Adella Lopez reported on the "World Day of Prayer".

Mrs. Anita Summer reported on the meals on wheels' project and the progress of the upcoming Mexican dinner for the public. A thorough discussion was held on finalizing plans for the Mexican dinner to be held Sunday, April 16 at the Parish Hall.

Mrs. Joann Farr gave out copies of the revised constitution and by-laws to each of those present.

The sewing circle will meet the 1st and 3rd Saturdays of the Diocese of Amarillo on Friday, April 28.

The Pampa Deanery will hold its Spring Meeting on April 21st at the Parish Hall in St. Francis. The theme is "Hear and Proclaim". Voting delegates to this meeting are Mesdames: Petra Lozano, Anita Summer, Bernice Flores, and Emma Lopez. Others planning to go are Mesdames Lydia Rodriguez, Olivia Renteria, and Clementine Renner.

The nominating committee reported as follows: President, Mrs. Anita Summer; Vice President, Mrs. Celina Stines; Secretary, Mrs. Pam Stork; and Treasurer, Mrs. Lydia Rodriguez.

The meeting was closed by prayer with Father Ray Crosier.

Refreshments were served by Mrs. Joann Farr and Mrs. Anita Summer to members, Mesdames: Maria Alvia, Maria Allen, Francis Ortega, Maria Pachon, Olivia Renteria, Mary Sullins, Pam Stork, Bernice Flores, Petra Lozano, Adella Lopez, Emma Lopez, Clementine Renner, Faye Schmehr, Selina Stines, and Lydia Rodriguez.

The next meeting will be Thursday, April 20 at the County Barn.

Gladioli Flower Club To Meet

Gladioli Flower Club met Thursday, April 6 in the home of Mrs. Jo Hansen. President Mrs. Margaret Evans presided over the business meeting.

Roll Call was answered and the minutes of the previous meeting were read and approved.

A motion was made and seconded to pay the amount that was given to last year's 77 flower winners. They are Mrs. Judy Martin, home-grown; Mrs. Betty Davis, borrowed; Mrs. Estelle Jackson, pot plant; and Mrs. Rose Cummings, specimen.

Mrs. Betty Davis, park chairman, told the members that work day will be set for April 20 (their next meeting).

A motion was made by Mrs. Estelle Jackson, seconded by Mrs. June Jackson, that they pay the bill they owe at White House Lumber Company.

Mrs. Myrna Berner won with her home-grown arrangement of peach blossoms.

The program was a tour of Callaway's "House of Flowers". Cake and coffee were served to members, Mesdames: Billy Baker, Kenneth Evans, Roy Flowers, Ed Haner, Doyle Jackson, Don Kunselman, Claude Newell, Wallace Berner, Gordon Cummings, Irvin Davis, Garland Head, Bill K. Jackson, and Tom Sutton by the hostess Mrs. Marcus Larson. Guests were Mrs. Richard Larson and daughter.

The next meeting will be April 20 in the home of Mrs. Ray Martin at 9:00 a.m.



June Wedding Planned

Melba Oakes and Jerry Floyd are announcing the engagement of their daughter, Stephanie Gay Floyd to Ross Ned Davis, son of Mr. and Mrs. Willard Davis.

The couple plan a June 9th wedding in the First Christian Church of Spearman.

Stephanie will be a 1978 graduate of Spearman High School and Ned is a 1976 Spearman graduate.

The couple plan to reside here in Spearman.

Engagement Announced

Mr. and Mrs. Joe H. Thompson of Dahlart announce the engagement and approaching marriage of their daughter Terri to John Teig. John is the son of Mr. and Mrs. Carl Teig who reside in Sun City, Arizona.

The wedding will be June 3rd in the United Methodist Church in Texline.

Terri is employed by the Spearman School district as the speech and hearing therapist. John is engaged in farming north of Stratford.

Arts and Crafts Guild News

Arts and Crafts Guild met Friday, April 7 in the home of Mrs. F. J. Daily.

Refreshments were enjoyed by members, Mesdames: Garrett Allen, Pope Gibner, Joe Mayler, Clay Gibner, Sada Hoskins, and P. A. Lyon, Sr.

The next meeting will be April 14 in the home of Mrs. Bill Gandy.

"A mountain and a river are good neighbors," George Herbert

HD Club News

The Holt Home Demonstration Club met Tuesday, April 4, 1978 in the home of Mrs. Ray Moore. Mrs. Sue Holt, President, brought the meeting to order.

Minutes of the previous meeting were read and approved.

Mrs. Sue Holt reported that the "42 Party was well attended and that all had a very enjoyable

CORRECTION:

In the front page story on the school personalities, the band favorites are Gerri Maize and Mike Bodey!

Square Dance Club Has Graduation

The Spearman Spinners Square Dance Club met Thursday, April 6 at the County Barn with Paul Lopez calling. It was graduation night for twenty-two grade school mixed children and seven adults who were graduating.

Refreshments were served to several grandparents and many on-lookers.

The next dance will be Thursday, April 20 at the County Barn.

PSU To Have New Program

A new program in Health, Physical Education and Recreation will give Panhandle State University a major in Recreation which is in demand throughout the nation. This will make it possible for a young person to major in this field and qualify for jobs in cities, park systems, and recreation areas.

In Agribusiness, there are many jobs available for students who are interested in the programs which do not demand a highly technical and scientific program of training. This will meet the demands of these students.

The following new programs were conditionally approved for initiation by Oklahoma Pan-

Square Dance Club Has Graduation

The Spearman Spinners Square Dance Club met Thursday, April 6 at the County Barn with Paul Lopez calling. It was graduation night for twenty-two grade school mixed children and seven adults who were graduating.

Refreshments were served to several grandparents and many on-lookers.

The next dance will be Thursday, April 20 at the County Barn.

handle State University in the fall semester of 1978; a B.S. degree in Health, Physical Education and Recreation; and a B.S. degree in Agribusiness.

The new programs conditionally approved by the State Regents will be subject to final disposition in June of 1978, at the time budget allocations are made for the 1978-79 Fiscal Year. If it is determined the sufficient resources are available to allow for the continued operation of existing programs and the initiation of the newly authorized programs, final approval will then be given for implementation of new programs in the 1978 fall semester.

A CARQUEST SAVINGS WITH REAL SHOCK VALUE.

MONROE GRIPPERS \$5.55 EACH

THIS SPECIAL LOW PRICE, PLUS INSTALLATION, ALSO AVAILABLE AT PARTICIPATING CARQUEST SERVICE STATIONS AND GARAGES. LOOK FOR THE CARQUEST BANNER.



Good at CARQUEST Auto Parts Stores and participating dealers thru April 30, 1978.

HI-PLAINS AUTO SUPPLY, INC.

118 N. MAIN SPEARMAN PHONE 659-2506

WE KNOW WHAT YOU MEAN WHEN YOU'RE TALKING PARTS.

WE NEED LISTINGS! CALL ANYTIME WE HAVE BUYERS!

CRUM REAL ESTATE VIRGINIA WHITE

1108 S. BARKLEY SALESPERSON

WE Need Listings! Want to Sell your Home? We have BUYERS.

AFFORDABLE AND CLEAN

814 EARTH

LARGE living room, lots of pretty KITCHEN CABINETS, utility room you will love with plenty of STORAGE and room for washer, dryer, and deep freeze. Also, has TWO hot water heaters—one for kitchen and washing machine and one for bath. There are two bedrooms, one bath, 1080 sq. ft. living area, two refrigerated air-conditioners and tower and UHF antenna are yours with this home. Call us, we'll be glad to visit about this or any of our other listings.

IT'S ALL HERE

712 Collier Dr.

3 bedrooms, 1 1/2 baths, 1323 Sq. Ft. on 130' lot, Utility room, Central heat and Air-conditioning. The sunken living room with fireplace gives this home special warmth and charm. See this one today! Call for appointment.

WHAT A HOUSE!

Nestled on a cul-de-sac, this beautiful home offers 3 large bedrooms, 2 baths, sunken living room with fireplace, utility room, lots of storage, double garage, & large patio. Step-saving kitchen arrangement has continuous cleaning double ovens, cook-top, dishwasher, & disposal. Warm, rich ashwood cabinets complete this "cook's" dream of a kitchen. From the beautiful double doors that grace the entrance, the woodwork and doors throughout are the same rich ashwood. Large master bedroom features two huge walk-in closets and unusually large luxurious ceramic tiled bath. THIS IS THE OPPORTUNITY OF A LIFETIME TO HAVE THE HOME YOU DIDN'T THINK YOU COULD FIND. Quality throughout. By appointment only.

1008 Barkley St.

A QUALITY HOME - one owner. New custom draperies throughout, 3 bedrooms, 1 1/2 baths, kitchen equipped with cook-top, built-in oven, dishwasher, disposal, utility room with washer and dryer, carpeted throughout, central heat, fenced yard, garage door opener. Excellent location. Call today and ask to see this lovely home.

1125 ENDICOTT STARTING OUT

Or, slowing down. This 2 bedroom is for you. One bath, fenced, detached garage. Just needs some clean-up and decorating touches. This home is priced to sell. Owner has retired to N. Mex. Immediate occupancy. MAKE AN OFFER!

911 HANEY

GET A CORNER ON LIFE with this 2 bedroom, 1 bath, garage converted to bedroom. LARGE CORNER LOT, fenced. Needs some painting and fix'n up but has GREAT POTENTIAL, EXCELLENT LOCATION.

34th Annual North Plains Electric Meeting April 17

The 34th Annual meeting of the North Plains Electric Cooperative has been set for Monday evening, April 17th in the Perryton High School cafeteria and auditorium, 1102 South Jefferson, Perryton. Registration for the anticipated event will begin at 6:30 P.M. with a free barbecue catered by Dyers Barbecue of Pampa following. A local musical group will be entertaining in the auditorium from 7:30 to 8:00 P.M. The business meeting will begin at 8:00 P.M. and will conclude no later than 10:00 A.M., according to the Co-Op president Ira Harbour. Lee Young, director from Canadian, will offer the invocation and the reading of the minutes will be given by secretary-treasurer J. Harold Kershaw.

Lyndon Imke, director from Feltwell, will introduce the guest, afterwards will be the drawing for the children's and guests prizes. The financial report will be given by Mr. Kershaw which will be followed by the report of the nominating committee by Mr. Nolan Holt, chairman. The election for three directors will follow.

Highlighting the evening's session will be an address by David A. Hamill, Administrator, Rural Electrification Administration, from Washington, D. C. Mr. Hamill and his brother, Donald, are ranchers in Logan County, Colorado, where their principal business is the fencing of cattle. They also produce sugar beets, alfalfa and corn. Prior to his nomination as Administrator of Rural Electrification, Mr. Hamill was serving as Executive Director, Department of Institutions for the State of Colorado.

The report of the election will follow the evening's address with President Ira Harbour delivering his message immediately following. Drawing for the door prizes will be held just prior to the 10:00 P.M. adjournment.

SVFD Puts Out Fire

The Spearman Volunteer Fire Department Sunday, April 9, put out a fire in a garage at the B. J. Turner residence in Waka, responding to the alarm which was received in Spearman at approximately 9:50 p.m. There were no cars in the garage at the time. No one was hurt. Estimated damage to the two-car garage and some of the contents was set between \$400 and \$1,000, according to first reports from SVFS Fire Chief Steve Slater. He added that the contents of a deep freeze in the garage were not ruined. The garage is not attached to the house.

Perryton Volunteer Fire Department equipment and personnel also responded but the work of the SVFD had the fire out by the time the other unit arrived.

Markets

WHEAT	\$2.95
MELO	\$3.90
CORN	\$2.50
SOYBEANS	\$10.14

Golden Acres BRAND HYBRID GRAIN SORGHUM

UNIVERSALLY POPULAR WIND ENDSPERM GREENBUG RESISTANT

TE-Y-1-R

- Easily Threshed
- Drought Resistant
- Heavy Yield Potential
- Semi-Open Uniform Well Exposed Heads
- Thick, Short, Heavy Stalk, Excellent Standability
- Extensive Root System, Adapts to Varying Soils
- Excellent Greenbug Resistance

WE RECOMMEND TE-Y-101-R

SAM PATTERSON SEED

COME IN NOW FOR YOUR SEED NEEDS

Chip Spreader, Pickup Truck Acquisition Set

An investment in certificates of deposit, purchase of radios for Gruve fire trucks and advertising for bids for a chip spreader and pickup truck were affirmative actions taken by Hansford County Commissioners at the regular meeting of Commissioners Court in the Courthouse in Spearman Monday, April 10.

Commissioners authorized investment of Fund No. 12 from Precinct No. 1 in the amount of \$20,000 in four-month certificates of deposit.

Purchase of radios for Gruve fire trucks was authorized with funding for one from the county general fund and funding for the other from Precinct 4. It was noted that the City of Gruve also will purchase some radios for the community's fire trucks. Existing radio equipment being replaced will be used in weather watch operations in the county.

John L. Mull was confirmed as a deputy with the Hansford County Sheriff's Department. Commissioners canvassed the County School Board ballots and elected Freeman Barkley to be declared from the county-at-large and Charles Brillhart from Precinct 2. Barkley and Brillhart will serve until Dec. 31, 1978, at which time the board terminates its functions.

Bids for a chip spreader for county use and for a pickup truck for Precinct 4 will be sought with bids to be received later this month.

In other agenda action, the Commissioners heard and accepted the minutes of the last meeting, received the treasurer's report for the month and authorized payment of bills as presented.

Hightower Comments

Washington, D.C.—Congressman Jack Hightower expressed mixed emotions today after the House-Senate Conference Committee reported out an emergency farm bill that is similar to the original Hightower bill. "I am pleased that the Conference Committee has approved a form of flexible parity. I am very disappointed the bill is for only one year, and I feel the specified loan rates are very low," stated Hightower.

The bill, H.R. 6782, now provides for loan levels of \$2.55 per bushel for wheat, \$2.25 per bushel for feed grains, and 48 cents per pound for cotton. The targets would start for wheat at \$3.50 per bushel for a minimum 20 percent set-aside, \$4.25 per bushel for a 35 percent set-aside, and \$5.04 per bushel for a 50 percent set-aside.

The targets for corn and feed grains would start at \$2.40 per bushel for a 10 percent set-aside, \$3.05 per bushel, and a 30 percent set-aside, and a 50 percent set-aside would garner a \$3.45 per bushel target price. Cotton levels would start at 60 cents a pound for a minimum 20 percent set-aside, (because there is no mandated set-aside for cotton at this time, producers would still receive 60 cents even though they set-aside zero percent) 72 cents a pound for a 35 percent set-aside, and 84 cents a pound for a 50 percent cutback in acreage.

Hightower went on to comment, "I am urging members of the House to vote for this proposal, weak as it is and I hope everyone will write and urge the President to sign the legislation. It will help producers and people can see the flexible parity concept working. This will make passing a long-term bill easier later this year."

The legislation also encouraged the Secretary of Agriculture to push research to use grains in making fuel, increased the borrowing authority of the Commodity Credit Commission from \$14.5 million to \$25 million

as of October 1, and agreed to the raise in marketing order program in the original House bill.

Hightower expressed hope the House and Senate would adopt the Conference Committee report by the first of next week. The President then would have 10 days to sign or veto the legislation.

mothers and babies

LITTLE KNOWN FACTS
Most babies learn to walk between 12 and 15 months, though it is not uncommon for one to start as young as nine months or as old as a year and a half or more.

Hospital News

Patients in Hansford Hospital are Brody Aylor, Clifford George, Duane Fuller, Thelma Blevins and Jeff Gilbreath. Dismissed were Shirley Barson, Colleen Sheddick, Ruth Garrard, Kevin McNett and Gioa Roberts.

BROADEN YOUR NURSING EXPERIENCE 16 HOURS A MONTH.

As a registered nurse you could work with some of the top professionals in your area in the Army Reserve. You'll receive a direct commission as an officer and earn a good second income. Call your local Reserve unit for details. It's listed in the white pages of the phone book under "U.S. Government."



THE ARMY RESERVE. PART OF WHAT YOU EARN IS PRIDE.

Our first game was such a hit, we decided to do it again!

WIN UP TO \$2000

DOUBLE CASH BINGO SERIES II

ODDS CHART
ODDS EFFECTIVE APRIL 1, 1978

REG. 2000	1	2	3	4	5	6	7	8	9	10	11	12	13	14	15	16	17	18	19	20	21	22	23	24	25	26	27	28	29	30
1000	1	2	3	4	5	6	7	8	9	10	11	12	13	14	15	16	17	18	19	20	21	22	23	24	25	26	27	28	29	30
500	1	2	3	4	5	6	7	8	9	10	11	12	13	14	15	16	17	18	19	20	21	22	23	24	25	26	27	28	29	30
200	1	2	3	4	5	6	7	8	9	10	11	12	13	14	15	16	17	18	19	20	21	22	23	24	25	26	27	28	29	30
100	1	2	3	4	5	6	7	8	9	10	11	12	13	14	15	16	17	18	19	20	21	22	23	24	25	26	27	28	29	30
50	1	2	3	4	5	6	7	8	9	10	11	12	13	14	15	16	17	18	19	20	21	22	23	24	25	26	27	28	29	30
25	1	2	3	4	5	6	7	8	9	10	11	12	13	14	15	16	17	18	19	20	21	22	23	24	25	26	27	28	29	30
10	1	2	3	4	5	6	7	8	9	10	11	12	13	14	15	16	17	18	19	20	21	22	23	24	25	26	27	28	29	30
5	1	2	3	4	5	6	7	8	9	10	11	12	13	14	15	16	17	18	19	20	21	22	23	24	25	26	27	28	29	30
2	1	2	3	4	5	6	7	8	9	10	11	12	13	14	15	16	17	18	19	20	21	22	23	24	25	26	27	28	29	30
1	1	2	3	4	5	6	7	8	9	10	11	12	13	14	15	16	17	18	19	20	21	22	23	24	25	26	27	28	29	30

CALIF. CHOICE NAVAL ORANGES 4 LBS. \$1
US NO. 1 RUSSET POTATOES 5 LB. BAG 59¢
GOLDEN DELICIOUS APPLES 39¢
FIRM GREEN HEAD CABBAGE 15¢
LEAF LETTUCE 3 BUNCHES \$1

MIRACLE WHIP 32-OZ. 97¢
FRITOS CORN CHIPS REG. 31¢ PKG. 69¢
SWIFT CHILI 1 1/2 LBS. CAN 39¢
PIONEER BISCUIT REG. OR BUTTERMILK 2 LB. BOX 89¢
BELL CHOCOLATE BREAK BISCUITS GALLON \$1.29
MEXICO TEXAS STYLE BISCUITS 12 OZ. CANS \$1
JOHNSTON'S YOGURT ASSORTED FLAVORS 8 OZ. CRTNS. \$1

CARNATION TUNA 59¢
CHUNK LIGHT 6 1/2 OZ. CAN
MUSTARD 24 OZ. 49¢
HABISCO CRACKERS 1 LB. 2/\$1
VAN CAMP WHITE HOMINY 1 1/2 LBS. 89¢
SWIFT VINA SAUSAGE 3 SOZ. CANS \$1

HI AND DRY PAPER TOWELS 3 JUMBO \$1 ROLL
BELL SHERBET ASSORTED FLAVORS 1 GAL. \$1.19
MRS. GOOD COOKIE CHOC. CHIP \$UGAR 89¢
PATIO ENCHILADAS BEEF - 16 OZ. 59¢
CHEESE - 15 OZ.

COBED STEAK WASTE FREE BEEF \$1.89
BONELESS STEW "EXTRA LEAN" COBES OF BEEF \$1.39
BONELESS FAMILY STEAK WASTE FREE BEEF \$1.49
ROUND OR RIB STEAK WHITTED TRU-TENDER BEEF \$1.59

WELLSVILLE BEEF 300 CT. \$4.99
RESERVE TEE BEEF TO LIMIT QUANTITIES
PRICES GOOD APRIL 1978

UNITED SUPER MARKETS
BONELESS SHOULDER ROAST \$1.29

VAN CAMP PORK & BEANS 16 OZ. CANS 89¢
CHICKEN PARTS 2 BREAST QTRS. 1 BACK 2 LEG QTRS. 2 WINGS 2 NECKS 2 GIBLETS \$1.49
WILSON'S CERTIFIED SMOKED PICNICS 4 LB. AVG. COOKED \$1.75
SHORT STEAK 1 LB. \$1.29

We Are Happy To Announce The Opening Of "The Hansford Agency"

Selling and servicing all lines of Insurance
Representing St. Paul - Floyd West and Co.
Nationwide Crop Hail - Great National Life

And Allstate Insurance And Finance Companies

Our office is located at 18 S. W. Court St. (adjacent to Dr. Kloborger's office)

Phone 806 659-3888 or 806 659-3914

Burl Buchanan, agent

Mary Davoy, Sec.

Zack B. Fisher, agent

T.G.&Y. HOURS: 9 A.M. TO 9:00 P.M.
PRICES GOOD APRIL 14th & 15th
**low prices to
boost your budget**

GARDEN HOSE
1 1/2" HDPE hose made of 100% vinyl Nylon reinforced for extra strength. A must for lawn care!
4.97

Revolving SPRINKLER
2 Arm aluminum sprinkler with plastic base. Waters up to 30 feet.
1.27

3 Tube SPRINKLER HOSE
50 foot couplers at both ends with end caps. Soak lines thoroughly.
3.97

TURTLE WAX
Liquid Turtle Wax Upholstery Cleaner
1.57

CLEANER DRAIN PAN
2 Arm aluminum sprayer with plastic base. Waters up to 30 feet.
1.17

OIL
Turtle Wax Upholstery Cleaner
.77

COUPON WRIGLEY'S GUM 5 sticks per pak. 10 packs per box. 72 LIMIT 6 WITH COUPON GOOD THRU APRIL 15	COUPON GLEEM TOOTH PASTE 7 OZ. SIZE 92 LIMIT 3 WITH COUPON GOOD THRU APRIL 15	COUPON SARAN WRAP 17.8 OZ. 117W-50-92 N. Total. 47 LIMIT 1 WITH COUPON GOOD THRU APRIL 15	COUPON T.G.&Y. NAPKINS 140 CT. PKG. WHITE 43 LIMIT 6 WITH COUPON GOOD THRU APRIL 15
COUPON BAH BASIC NON-AEROSOL 3 OZ. REGULAR 1.37 WITH COUPON GOOD THRU APRIL 15	COUPON FINAL NET HAIR SPRAY 8 OZ. 1.37 LIMIT 2 WITH COUPON GOOD THRU APRIL 15	COUPON MOTH BALLS 1 LB. BOX WITH COUPON .63 WITH COUPON GOOD THRU APRIL 15	COUPON LITTER GREEN CATBOX FILLER 1 LB. BEEZ WITH COUPON .88 WITH COUPON GOOD THRU APRIL 15

PRICES GOOD ONLY AT T.G.&Y. FAMILY CENTER SPEARMAN 659-3741



SAFETY EFFORTS -- These signs are used by Baker and Taylor Drilling Co. of Spearman to help their employees avoid injury on the job. This display was included in the static display of signs, first aid, rescue and emergency equipment shown Saturday, April 8, in Spearman at the Plains Shopping Center during the observance locally of Emergency Services Month.

E.M.S. - A System To Save A Life

Each year tens of thousands of Americans lose their lives as a result of emergency treatment that is inadequate, inept or simply too late. The old routine of snatch and run just isn't visible anymore!

Life versus death in the Texas Panhandle has improved dramatically since the implementation in 1976 of the Panhandle EMS (Emergency Medical Services), a "system" regionalized for the ultimate in care of emergency patients. Vehicular "deaths-on-arrival" are down 10.62 percent, deaths from M.I. (heart attack) down 7 percent, high-risk infant mortality down 15 percent and deaths from attempted suicide are down 16 percent.

The Panhandle EMS "system" has provided a variety of elements including 31 fully equipped ambulances, specially trained personnel and a unique medical communication network linking physicians at the hospital and Emergency Medical Technicians (EMTs) at the scene and enroute to the hospital.

The regionwide EMS communications network affords you, the witness of an emergency, to

call a single number for emergency care (1-800-692-1331 anywhere in the Panhandle). Once you have stated the problem to the EMS communications dispatcher, the closest available ambulance and fire personnel and law enforcement may be dispatched, as necessitated. In the event of a poison or overdose, you may be dispatched to the Poison Control Center for immediate medical assistance for the patient. A deaf mute communication includes a telewriter for direct access for all emergencies. Future plans call for medical "self help" programs via telephone for the choking or drowning victim, as well as heart attack victim.

Once the EMT has reached the scene, assessed and stabilized the patient, he reports the patient's problem and care enroute to the receiving hospital via EMS communication to allow medical readiness for the patient's arrival. He also receives two-way voice medical direction for care enroute.

Should a patient need specialized personnel or equipment for transport to the trauma hospital, the EMS helicopter is

activated. EMS trained Panhandle citizens number over 1800, mostly volunteer. EMS training courses have certified 700 EMT's, 364 emergency care attendants. Other EMS courses include Cardiopulmonary Resuscitation, Crash Victim Extrication, Coronary Care, Respiratory Care of the High-Risk Infant, and Emergency Department Nursing. The first I.V. segment for Paramedic training will start April 1.

Support your Panhandle Emergency Medical Services and the life they save may be yours.



Jack Dempsey fought only 138 minutes as world champion. During that time he made \$2,137,000—or \$15,000 per minute.

Plains Hereford Sale Results

The 34th Annual Great Plains Hereford Association Sale held recently at Tahoma Livestock Commission Company, Tahoma, OK was considered a success with a good day, a good crowd, and spirited bidding. Eighty-three bulls grossed \$60,015 for an average of \$725; twenty-three females grossed \$11,395 for a 495 average; and twenty-three April to September club calf prospects grossed \$7970 for an average of just under \$347.

Top selling bull was lot 52 - PSU Silver Overland 630, a growly, yellow haired bull consigned by Panhandle State University, Goodwell, OK selling at \$1700 to Virby Conley, Perryton, TX. Second high selling bull was consigned by Harland Herefords, Tahoma, OK selling to E. N. Pack, Spearman, TX at \$1225. Consigners of other top selling bulls were Wayne Maddox, Miami, TX with bulls going to Perkins-Prothro, Kerrick, TX \$1050; Johnny Mueller, Guymon, OK at \$1025; and Kramer Herefords, Hugoton, KS at \$850; Robert Newton, Guymon, TX head going to George T. McDaniel, Tahoma, OK at \$1050; and Johnson Polled Herefords, Balko, KS with bulls going to Paul Caldwell, Balko, OK at \$925, Guy Stewart, Balko, OK at \$875, and Perkins-Prothro at \$870.

Top selling females were Lot 101 - DDF Eileen with calf by side, consigned by Jake Fast, Guymon, OK selling at \$760 to Kirby Clawson, Stateline, KS; Lot 126X a 3-year old cow with calf by side consigned by Cap Williams, Boise City, OK going to Merritt Swainburn, Felt, OK at \$670; Lot 110 a 6-year old cow consigned by Robert Newton going to Eugene Carlson, Sweetwater, OK at \$600. Other top selling females were consigned by Messner Herefords and Panhandle State University going to Delbert McCoy, Sunny, TX; Leonard Messner, Guymon, OK and Bill Wood, Syracuse, KS.

Top selling Hereford Club Steers were: Harland Herefords to Gene Sandusky, Merkle, TX at \$590; Harland Herefords to Earl Corse, Dumas, TX at \$500; and Harland Herefords to Brent Hoover, Perryton, TX at \$490; Delbert McCoy to Ernie Dyess, Stratford, TX at \$460; and Harland Herefords to Brent Hoover at \$450.

Newly elected officers and directors were: Milton Messner, Laverne, OK - President; Paul Barby, Knowles, OK - Vice President; M. W. England, Goodwell - Secretary-Treasurer; and Jake Fast, Guymon, OK and Johnny Summersour and Ken Mathews, Dalhart, TX - Directors. Hold-over directors are: Floyd Coon, Elkhart, KS; Hoover, Perryton, TX at \$490; and Delbert McCoy to Ernie Dyess, Stratford, TX at \$460; and Harland Herefords to Brent Hoover at \$450.

Other consigners were: Barby Herefords, Knowles, OK; Andy and Brannon Berry, Tahoma, OK; Les Campbell & Sons, Elmwood, OK; Kenneth Friemel, Groom, TX; Richard James, Kerrick, TX; Keener Herefords, Stratford, TX; Kramer Herefords, Hugoton, KS; L. M. Patterson, Spearman, TX; PMR Ranch, Dalhart, TX; Proger Brothers, Stratford, TX; Summersour Ranch, Dalhart, TX; Thomas Herefords, Aixa and Red Rock, OK; Bennie B. VanVactor, Carter, OK; Joe Al Warner, Boise City, OK; Floyd Coon Polled Herefords, Elkhart, KS; Littau Polled Herefords, Balko, OK; and Smith Polled Herefords, Richfield, KS.

Wealthy ladies in ancient Rome sometimes mixed themselves in a sugary mixture consisting of 20 pounds of crushed strawberries and two pounds of raspberries.

"A man is known by the company he organizes."
Ambrose Bierce

Ninety percent of the U.S. grape crop is grown in California.

JOHN HILL BELIEVES...

- ★ Texas needs no personal or corporate income tax — he will veto any tax increases.
- ★ Local property taxes should be reduced — he will provide property tax relief by increasing the state's share of public education costs.
- ★ Farmers and ranchers pay more than their share of property taxes — he will work for using agricultural productivity, instead of market value, to set property taxes.

As Attorney General, John Hill has blocked telephone rate increases. Now he wants to help you block tax increases. He can — and will — as your next governor.



SPEARMAN TRI-STATE RODEO



April 14 & 15, 1978

At the Spearman Oscar Archer Memorial Arena

Friday Night
7:30 P.M.



Saturday After.
2:00 P.M.



Saturday Night
7:30 P.M.



AWARDS






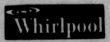



Billy Cook Saddles for All-Around boy and girl.

B-Bar-k Buckles for 1st, 2nd, and 3rd places.

Team Trophies and Sportsmanship Trophies.



STOCK PRODUCER - JAMES MARTIN

<p>Speartex Grain Gruver Highway 514 Collard Street Phone 806/659-3711 - P.O. Box 666 Spearman, Texas 79081</p>	<p>Cates Men & Boys Phone 659-3426 221 N. Main Street Spearman, Texas</p>	<p>BROCK Agency General Insurance Spearman 659-2514 Gruver 733-2981 206 Main Street</p>	<p>R. L. McClellan Grain Co.  <small>Grain, Seeds, Acra Feeds, Purina Ceres</small> Ph: 659-3223 - Box 367 Spearman, Texas 79081</p>
<p>Gordon's Drug 314 Main Spearman, Texas Phone 659-2141 "Reliable Prescription Service"</p>	<p>White House Lumber Co. of Spearman, Texas Phone 806-659-2818 P.O. Box 398 306 Davis Street Spearman, Tex. 79081</p>	<p>Excel Chevrolet-Olds Co. P.O. Box 517 - S. Hwy. 207 Spearman, Texas 79081 Phone 659-2541 <small>"SERVING HANSFORD COUNTY"</small></p>	<p>Spearman Electronics Center, Inc. <small>Where Service is a Policy - Not a Problem</small> 313 Main St. - Spearman - Phone 659-3858</p> <p>  </p>
<p>Western Ag  ★ call us 659-2596 <small>Wilton Green • P.O. Box 67 • Spearman, Texas 79081</small></p>	<p> Hansford Implement Co. Box 518 Spearman, Tex. 79081 Ph: (806) 659-2712</p>	<p>Spearman Redi-Mix Concrete Co. </p>	<p>Jr. Lusby Cats <small>"WE DO EARTH MOVING THINGS"</small> WEST GRUVER HWAY Phone 659-3766</p>