

### Guy Fuller Services Held



Guy Fuller

Funeral services for Guy Fuller, 74, resident of Spearman and vicinity for 67 years, were held Sunday, April 2, at the First Christian Church in Spearman of which he was a member

with the Rev. Don Wirsdorfer officiating at the 3 p.m. service.

Burial was in Holt Cemetery under direction of Boxwell Brothers Funeral Home of Spearman.

A native of Joshua, Texas, Mr. Fuller died Friday, March 31. He came to Spearman from Barstow in 1911. He married Blanche Archer in 1927 at Amarillo. He was a former rancher.

Active in Boy Scout work throughout his life, Mr. Fuller was a recipient of the Silver Beaver award, Scouting's highest honor.

He is survived by his widow; three brothers, R. P. and Gordon of Lubbock and John Walker of Midland; and a sister, Mrs. Lena Hopper of Lubbock.

Casket bearers were Fred Schaefer, John Trimmell, Fred Groves, Stan Hudson, Andy Burleson, Dennis Kern, Dale Jones and Don Smith.

Honorary pallbearers were Irvin Davis, Allen Pierce, Jack Whitson, Frank Massad, Ray Phelps, W. L. Russell, Major Jackson, Harry Stumpf, James White, Joe Trayler, Orvil Brummett, Roy Sheets and all of his other friends.

## Voters Return Incumbents

Incumbent candidates for mayor and two aldermen and for one of two positions on the school board were returned to the city council in Spearman on the basis of the unofficial returns from the April 1 election for city officials and trustees for the Spearman Independent School District.

Mayor C. Ralph Blodgett who was unopposed received 230

Incumbent Aldermen Brad Beedy and Bill Pittman won out in the race for the two seats on the city council in which Edward (Eddie) Limbocker was also a candidate. Beedy received 186 votes and Pittman was tops in that race with 212 votes. Limbocker received 142 votes.

Blodgett, Pittman and Beedy each will serve two year terms. The official canvass is to be conducted at the City Council meeting of next Thursday, April 11, in has been announced.

In the SISD voting, incumbent Jim Davis bested other candidates with 283 votes, second with 160 votes was Tommy White who will replace George Jackson, who did not file for re-election, on the board.

Candidate Larry Porter received 154 votes with Dr. Bob Philips receiving 46 and Linda Helt Jarvis receiving 66 votes in the SISD election.

Davis and White were candidates for three-year terms on the board.

The official canvass will be conducted at the school board meeting next week, it was announced.

## Services For Former Spearman Resident

Funeral services for H. E. Campfield, 89, of Canyon and a former resident of Spearman were held at 3 p.m. Monday, April 3, in the Canyon First United Methodist Church with Dr. Hubert Thomson officiating.

Graveside rites were conducted by Masonic Lodge No. 730 in Dreamland Cemetery. Arrangements were by Schooner-Gordon Funeral Directors of Canyon.

A native of Seneca, Kas., Mr. Campfield had been a resident of Canyon for 40 years, moving to Canyon from Spearman. He was a retired depot agent for the Santa Fe Railroad with 48 years of service.

Mr. Campfield was a member of First United Methodist Church and a World War I veteran. He was a member of American Legion Post 97, Masonic Lodge No. 730 and the Order of Eastern Star No. 105 of Canyon.

He is survived by his widow, Ethel; a son, Harry, of Amarillo; two daughters, Mrs. Eugene S. Bonds of Canyon and Mrs. Leroy J. Krause of Cupertino, Calif.; two brothers, Raymond and Clair T., of Centralia, Kas.; a sister, Mrs. H. F. C. Meyer of Centralia, Kas.; eight grandchildren and four great grandchildren.

## Spring Recital

Students of Mrs. Bill Strawn will present a Spring Recital Sunday, April 9 at 2:30 p.m. in the Fellowship Hall of the First United Methodist Church.

Everyone is invited.

## Mrs. Phillips' Father Dies

George T. Stephens, 79, died Sunday.

Services will be at 2 p.m. in Quail Church of Christ with L. A. Davis, minister, and Alfred White, minister at Stafford, officiating. Burial will be in Quail Cemetery by Guy Owens Funeral Home.

Mr. Stephens, a retired farmer, was born in Bell County. He had lived in the Quail community 71 years. He married Bertha Guinn July 24, 1922 in Memphis. He was a Mason and a member of Church of Christ.

He was instrumental in the 1930's in the consolidation of the Quail school system, and served on the school board. He served two terms as a Collingsworth County Commissioner.

He is survived by his wife; two sons, George of Pattonville and James of Odessa; four daughters, Mrs. Dorothy Miller of Memphis, Mrs. Mary Kathryn of Lubbock, Mrs. Nancy (Mert) Phillips of Spearman and Mrs. Jerri Martin of Lakeview; a brother, John of Hillmar, Calif.; six sisters, Mrs. May Hagler of Albuquerque, N.M., Mrs. W. S. DuBoise and Mrs. Freeman Melton, both of Wellington, Mrs. Herschel Bristol of Melbatta, Calif., Mrs. Ira Brislin of Amarillo and Mrs. Wayne Melton of Borger; 11 grandchildren and three great-grandchildren.

## American Ag, Bake Sale Is Saturday

# The Spearman Reporter

VOLUME 69, NO. 21

THE SPEARMAN REPORTER, SPEARMAN, TEXAS 79081

THURSDAY, APRIL 6, 1978

## Airport Funding Procedure Outlined

### Grand Master of Masons in Texas To Visit

A briefing on procedures to follow in applying for funds through the Texas Aeronautics Commission in Austin to change the recently acquired agricultural property in Section 58 immediately north of the existing airport into an enlargement of airport facilities in Spearman was conducted Monday afternoon, April 3, in Spearman with Gerald Turner, chief engineer of TAC, outlining the requirements.

In attendance at the meeting were Mayor C. Ralph Blodgett, City Council members Brad Beedy, Gene Cudd and Frances Loftin, City Manager Mark Neff, Roy Bulls, an executive representative of Baker and Taylor Drilling Co., Donald Hergert and Junior Lusby of the city airport board, Richard Holm, City Secretary Lenis Simpson Jr., Mary Lou Woyson of the Chamber of Commerce and others.

The mayor initiated the meeting with the statement that the property for the enlargement of the existing airport facilities had been obtained, as previously planned, in Section 58 which is immediately north of the existing airport in Section 67.

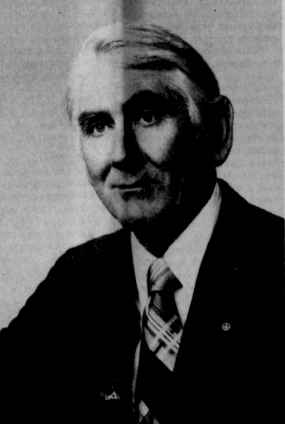
In addition, the mayor pointed out that existing electric power lines along a country road between the two sections will be removed. Community Public Service is to remove its line and North Plains Electric Co-op will bury its line.

The city had acquired the north half of Section 58 and, through a land swap involving 139 acres out of the northeast corner of the section traded for 139 acres out of the southwest corner, has come up with enough land in the proper configuration for a proposed primary runway of at least 5,000 feet in length, situated northeast to southwest.

Turner noted the funding which TAC can provide for such projects on a fiscal year basis and strongly recommended that the city decide what it wants in the way of priorities and then make immediate application to the TAC in Austin. He mentioned that other localities in the state also are applying for TAC funding. TAC has a ceiling of \$75,000 per annual inspection but to date has not made any grant this large.

Prior to his return to Austin later in the day, Turner, accompanied by Neff, Bulls and Lusby, visited the existing airport facility on an inspection tour.

Mayor Blodgett reported that a city application is in the works.



MOST WORSHIPFUL R. FURMAN VINSON

## Track events in high gear!

The 1978 spring sports events at the Spearman schools are in high gear this year and this weekend is no exception. The Lynx and gazette tracksters, golfers, and tennis players will have the following schedule to fulfill. The 7th and 8th grade boys will go to Gruver this weekend to participate in the Gruver track meet. The 7th and 8th grade girls will participate in the Canadian Track Meet. The Varsity girls will compete in the Canadian meet this weekend. The Varsity boys will attend the Dumas relay this Friday and Saturday. On the tennis schedule, the local team will journey to Borger Friday

and Saturday. The golt teams enjoyed a full schedule this week as they played at Dalhart Monday of this week and the girls golf team will journey to Guyton Thursday.

J. J. Jones of Spearman continues to lead in the pole vault with 14 ft. and Green continues to pace the girls in track.

Spearman's new athletic director, Coach Smith with the state championship in football at Wheeler this year, is now on the job at Spearman. Supt. Cunningham and Coach Smith will attend the Dumas relay this Friday and Saturday. Donuts and refreshments will be on the job at Spearman. Supt. Cunningham and Coach Smith will attend the Dumas relay this Friday and Saturday. Donuts and refreshments will be on the job at Spearman. Supt. Cunningham and Coach Smith will attend the Dumas relay this Friday and Saturday. Donuts and refreshments will be on the job at Spearman.

## American Agriculture bake sale is Sat.

The Spearman Spinners Square Dance Club were hosts to the District V Square Dance Association Jamboree held Saturday, April 1 at the Community Building in Spearman.

Twenty-one squares enjoyed square and round dancing. Several area callers filled the evening with delightful entertainment.

The Spearman Spinners will dance Thursday, April 6th at the County Barn at 8:00 P.M. Everyone is urged to attend.

## District V Jamboree Held Here

The Spearman Spinners Square Dance Club were hosts to the District V Square Dance Association Jamboree held Saturday, April 1 at the Community Building in Spearman.

## American Ag, Bake Sale Is Saturday

They are nominations by coaches, athletic directors and the sports media. His selection was based on his accomplishments in local, district or state competition.

Jed is listed as a member of Who's Who and Who's Who in Football, among American High School Students.

He is a member of Spearman Union Church.

## EMS Activities Saturday

The first of three activities connected with the observance of Emergency Services Month in April in Spearman will be held Saturday, April 8, in the old furniture store location in and on the Plains Shopping Mall, it has been announced. The public is invited to any or all of the activities.

Included in the activities for the day will be the arrival of a medic helicopter used for transporting patients between hospitals in this area, particularly to hospitals in Amarillo.

Cardio-pulmonary resuscitation demonstrations will be at 10 a.m. and noon.

The helicopter is scheduled to arrive at 11 a.m. and land at the shopping mall.

Boy Scouts from Troops 578 and 551 will demonstrate safety and first aid techniques at 1 p.m.

An extrication exercise will be given at 2 p.m. Participating in the Saturday activities will be representatives of Spearman Volunteer Fire Department, Police Department, Boy Scouts, Volunteer Fire-Exits, and Emergency Medical Systems personnel from Spearman and Amarillo.

In addition, there will be

booths sponsored by Baker and Taylor Drilling Co., the Red Cross and the police department.

Two ambulances from Spearman and one from Gruver, a personnel carrier and a four-wheel drive ambulance are to be included in the static display, according to information at this time.

Additional activities during Emergency Services Month will include the annual fire department open house April 22 and a fire extinguishing demonstration on April 29.

Additional activities during Emergency Services Month will include the annual fire department open house April 22 and a fire extinguishing demonstration on April 29.

Anyone wishing to bake for this purpose may bring them to either place.

Anyone wishing to bake for this purpose may bring them to either place.

## Markets

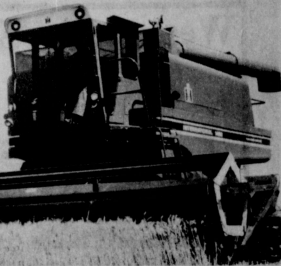
WHEAT	\$2.84
MILK	\$3.65
CORN	\$2.43
SOYBEANS	\$9.68

## American Ag To Have Bake Sale

The American Agriculture is sponsoring a bake sale, Saturday, April 8 beginning at 9 a.m. at Cut Rate Grocery and Gordon's Drug.

Anyone wishing to bake for this purpose may bring them to either place.

Anyone wishing to bake for this purpose may bring them to either place.



LATEST ADVANCEMENT in harvesting technology, International Harvester's new "Axial-Flow Combine," is now on display at North Plains International. The 1460, one of three models available, is powered by a 170-hp diesel engine and has a 180-bushel capacity grain tank.

## North Plains International To Have Open House

North Plains International, Inc. invites everyone to their open house on Thursday, April 6. The open house will be held from 7 a.m. to 5 p.m. with a pancake and sausage meal served for breakfast and lunch. Donuts and refreshments will be served all day.

The latest in farm equipment will be on display for the open house. The highlight of the display will be the new "Axial-Flow Combine," the latest in harvesting technology.

North Plains International, Inc. of Spearman, Texas, is one of the most modern, complete farm equipment dealers in the Texas Panhandle. The firm which is owned by J. L. "Dick" Elbert, recently received the International Harvester XI Award. According to a top IH executive qualify for the company's award.

Elbert assumed ownership in November of 1976 after the retirement of Douglas D. Connelly, due to health and personal reasons. Before acquiring

the dealership here Elbert worked with International Harvester in various capacities, including area sales manager, regional parts manager and marketing manager-agricultural tractor.

Jim Mercer is the accountant for the firm.

International Harvester's new "Axial-Flow Combine," the latest in harvesting technology, is available now at North Plains International, Inc. at Spearman, Texas.

"Featuring a radically new, yet simplified threshing and separating concept," the IH dealer said, "this combine in my opinion will out perform any conventional machine in similar crop and field conditions."

sign rotates the crop repeatedly. This results in a simpler, yet more efficient harvest. The farmer is able to move through his field faster, yet gather more grain with less damage.

Service requirements—another concern for the farmer—are greatly reduced because the single rotor design replaces 16 moving parts, including straw walkers.

The models available at North Plains International, Inc. are: 1460, with 135-hp diesel engine and 145-bushel capacity grain tank; 1460, with 170-hp diesel engine and 180-bushel tank; and 1460, with 190-hp diesel engine and 208-bushel tank.

Along with the single rotor concept, IH also engineered a new Control Center featuring outstanding vision and quiet ride. Inside, too, are electro-hydraulic controls; electronic instrumentation; digital tachometer for engine, rotor and fan rpm; and digital speedometer for ground speed.

The new combine is on display at the dealership now.



JED MIESNER

Jed Miesner signs letter to attend Taft College on a football scholarship in Taft, California. Taft College was the only unaffiliated two-year college in the nation this year. For the past two years, Taft College has been the top offensive and defensive team in the nation.

## Miesner to attend Taft College on Football Scholarship

Their record was 11 and 0 and they are the California State Champions. They are the highest scoring team and have had fewer points scored against them than any team in the nation.

Jed is 5 ft. 10 in., 230 lbs. defensive tackle for the Lynx 1-AA District Championship football team. Jed is the son of Mr. and Mrs. Louis Miesner of Spearman. He has played football in Spearman for six years starting in the seventh grade.

He has been named first-team all-district twice and received the Most Improved Player as a sophomore. He also was picked All-State first team and a member of the Panhandle Area Super team, as well as the Spearman golf team in 1975 which was regional qualifier.

Jed was also selected by the AHSAA Sports Media to be honored as an American High School Athlete for 1977-78. His selection was based on outstanding achievement in athletic performance, sportsmanship and extra-curricular activities.

# Spearman-Gruver Wrestlers Place First



**PLACE IN TOURNEY --** These five wrestlers from K.I.D.S. Inc. of Spearman/Gruver were among the six from the local organization to place at the recent Holly, Colorado, Junior Olympic Tournament. Mark Johnson of Gruver, standing left, Scott Duncan of Gruver, standing right, Slavin Sparks of Gruver, kneeling left, Carl Urban of Spearman, kneeling right, and Lance Sparks, seated, got rewarded for their wrestling prowess. Craig Cooper of Gruver also placed but was not on hand for pictures due to illness.

Two young wrestlers, one from Gruver and the other from Spearman, on the team of 10 representing K.I.D.S. Inc. of Spearman and Gruver, won first places in their weight class at the Holly, Colo., Junior Olympic Wrestling Tournament March 25. Four other wrestlers from Spearman and Gruver placed second, third and fourth in the competition.

Mark Johnson of Gruver placed first in the 69-pound division and Carl Urban of Spearman placed first in the 50-pound classification. Second place winner in the 62-pound category was Craig Cooper of Gruver. Slavin Sparks of Gruver won third in the 46-pound weight. Fourth place winners were Lance Sparks in the 42-pound

weight and Scott Duncan in the 66-pound weight. Both boys are from Gruver. Others from Hansford County making up the team were Cole Ivey of Spearman and Craig Waddell, Steve Duncan and Darren Waddell of Gruver. The Spearman-Gruver representatives were the only ones from Texas and were among the 320 boys in the

competition. Other towns represented were Garden City, Liberal, Tribune and Ulysses, Kan., and Lamar, Pueblo South, Swink, Springfield, Holly, Walsb, Fowler and Las Animas, Colo.

This was the first time for Spearman-Gruver wrestlers to enter the competition in Holly.

## Social Security News

Any state or local government workers who are considering ending their participation in the Social Security program should use caution in such a decision, a Social Security official has warned.

"I am concerned about the number of state and local entities that have expressed a desire to withdraw from the Social Security program due to widespread publicity about increases in the Social Security tax, as well as the decreases in the trust funds," said Social Security Regional Commissioner Martha A. McSteen in Dallas today.

The question of terminating coverage is of concern to individuals who are employed by state and local governments because these groups, unlike other employees, have the option of withdrawing from social security coverage. Once coverage is terminated, however, they are not permitted to re-enter the program.

"Much has been said about how the new law is going to triple taxes in the next ten years," stated Mrs. McSteen. "This may be true, if you are fortunate enough to be in 7 percent of wage earners in this country who earned above the amount on which Social Security taxes are collected. But if you are like most workers, who make a more moderate yearly income, you will not pay as much in taxes as you may think."

The increase amounts to about \$2.50 a week. A worker having average earnings of \$10,800 in 1978 will have estimated average earnings of \$18,600 by 1987, and would have paid under the old law an estimated \$1,201 in taxes. Instead, under the new law, his 1987 tax will be \$1,330, an increase of only \$129 for the year over what he would have paid under the old law.

"But Social Security is family security, protecting workers and their families from loss of earnings because of the young worker's death or disability as well as future retirement. In addition, today's workers are building hospital insurance protection under Medicare for themselves and their spouses."

"However, a section of the 1977 Amendments to the Social Security Act provides that, under certain conditions, some individuals receiving public retirement payments or pensions based upon their own earnings may have their Social Security benefits as auxiliaries off by the amount of their pensions."

"Persons affected by the offset provisions are those beneficiaries who are entitled to Social Security only as fathers, mothers, wives, husbands, widows, divorced wives, surviving divorced wives, and surviving divorced mothers of insured workers. For more detailed information about this provision, individuals should get in touch with their nearest Social Security office."

"Before considering termination of Social Security coverage, state and local government employees should carefully weigh the benefits offered by Social Security and those offered by other insurance plans. Most of these plans are significantly weaker than Social Security, especially in the area of hospital insurance protection, survivor protection and disability protection."

Essential benefit protection must be maintained for state and local government employ-

ees. Otherwise, individuals who become unable to work must rely on savings, relatives, friends, or welfare, which may be a less desirable choice than Social Security's insurance protection while working."

## FPC Offers Course For Judges

The Texas Judicial Council has now accredited a course of instruction at Frank Phillips College for the continuing legal education of municipal court judges. The Continuing Legal Education (CLE) at Frank Phillips College will be the only one offered in the area surrounding Bexar.

The course will be divided into two sessions: those for non-lawyer judges and those for lawyer judges.

CLE for non-lawyer judges will begin April 3 and will be offered from 7:00-10:00 P.M. Mondays and Thursdays for a total of 24 clock hours ending April 27th. Fees for the non-lawyer course is \$25.00.

Senate Bill 387, effective August 29, 1977, permits non-lawyer municipal judges to complete a 24-hour course in the performance of his duties within one year after assuming office and at least eight hours per year thereafter. It permits lawyer municipal judges to complete eight hours the first year and eight hours per year thereafter. All courses, programs, and seminars must be approved by the Texas Judicial Council.

CLE courses at FPC will be taught by John Warner, Pampa attorney. Warner, who has practiced law since 1962, receive

U.S. Retainers, now in the 4th year of an industry-wide fuel conservation program, cut down on fuel needs, mostly natural gas, by 12.2% in 1976. This equals an energy saving equivalent to 2.3 million barrels - 3% of 1976 imports. Twenty-six percent of this retining capacity is in Texas.

Quality child care has three major functions: it serves as an extension for the family, aids children's development, and is a way for society to intervene constructively when families and children need help, says Jenny Rienhardt, family life education specialist with the Texas Agricultural Extension Service, The Texas A&M University System.

A whitensmith is one who works with tin. Wallabys are baby kangaroos.



Three Lynxettes push the leader in the Mile Run at The Greyhound Relays last Thursday.

## \$448,000 Spent Locally

The campaign against cigarette smoking, which has taken on a new intensity recently, brings up the question of cigarette consumption in Hansford County.

How much are local residents smoking these days compared with people in other communities? The new campaign, launched last month by Secretary Joseph Califano of the Department of Health, Education and Welfare, is to combat what he calls "slow motion suicide."

It will include a \$23 million

per year drive, under a new "Office of Smoking and Health," to coordinate anti-smoking efforts. A major public information and education crusade will be launched. Consideration will also be given to an increase in Federal taxes on cigarettes.

To a large degree, the campaign will be aimed at young people - teen-agers especially - to encourage them to quit smoking.

The current level of cigarette consumption in each section of the country is indicated in

figures compiled by the American Cancer Society, the Tobacco Tax Council and others.

In Hansford County, according to a breakdown of these findings, an estimated total of 758,000 packs were smoked in the past year.

This was equivalent to 183 packs in the year for every local resident over age 16.

In some parts of the country the rate was much greater than this and, in other areas, much smaller. Nationally, the average rate for the over-16 population was approximately 204 packs per capita. In the West South Central States it was 194.

Although most health authorities contend that the number of lung cancer deaths has been on the increase because of cigarette smoking, the tobacco industry maintains that the evidence is merely statistical and that there has been no properly documented cause and effect relationship to prove that.

How much does the average Hansford County smoker spend per year for cigarettes? Approximately \$106, it is estimated. The total bill, for the community as a whole, was close to \$448,000 last year. Although the cost of smoking has been going up, it appears to have had little effect on consumption.

An aviator becomes an ace pilot as he destroys five enemy planes.

## Hightower Defends Parity

Washington, D.C. - During debate of the Humphrey-Hawkins full employment bill on the floor of the House of Representatives, Congressman Jack Hightower effectively defended the parity concept for farmers and helped place an amendment to the bill that established as a goal of full parity for farmers by at least 1983 as well as a goal of full employment.

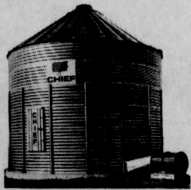
In his remarks to the full House of Representatives, the Texas Congressman stated, "I think that full employment will have a great positive effect for the economy of this nation, but at the same time we cannot have full employment in towns and have people leaving the farms because they cannot make a living."

The amendment by Minnesota Congressman Quie of Minnesota

added to the economic goals of HR 50, the "full employment" bill, the goal of 100 percent of parity of income for farmers at the marketplace by at least 1983. HR 50, weakened from its original concept, now merely establishes priorities for job expansion and mandates by law that top priority must be given to expansion of conventional jobs in the private sector.

Hightower stated following the victory for the rural Congressmen, "I am pleased the majority of the House of Representatives seems to understand that the problems and needs of farmers are the problems and needs of the entire country." Final action on the legislation will come next week.

## Western Ag Sales Co.



**Waiting for a good financing package?**  
With government loan programs or a lease purchase, we can wrap it up for you!

**Western Ag...  
You've known us for a long time.**

- Center Pivot Systems
- Metal Farm Buildings
- Underground Plastic Pipe
- Grain Storage Bins

**\* call us 659-2596**

Wilton Green • P.O. Box 67 • Spearman, Texas 79018

Receipts at the Texhoma Livestock Commission Company this week were 7184 cattle & calves, a good market regardless of the lower future trade. Stocker calves steady. Small pigs of steer calves \$65.00 to \$72.00. Heifer mates steady. Feeder steers steady to 50¢ lower. Feeder heifers steady on the choice kind, Plainer kind 50¢ lower. Packer cows \$2.00 higher selling mostly from \$34.00 to \$38.50, with extreme top of \$38.75. Bologna balls \$40.00 to \$43.00.

- Steer calves - 400# to \$69# - \$57.00 to \$66.75
- Heifer calves - 300# to \$25# - \$40.50 to \$53.40
- Feeder steers - 800# to 900# - \$57.00 to \$51.75
- Feeder heifers - 600# to 750# - \$48.00 to \$50.10

We still have a good market for all classes of cattle. Plan to ship your next cattle to the dependable cattle auction. For next Thurs., April 6, we are expecting 4500 cattle.

**YOUR DEPENDABLE LIVESTOCK AUCTION  
TEXHOMA LIVESTOCK COMMISSION CO., INC.**  
P. O. BOX 70 TEXHOMA, OKLA. 73949  
PHONE 405-423-7611 & 423-7612  
CATTLE DEPARTMENT - LLOYD GOODNER & RAYMOND CHAUTE  
GOODNER RESIDENT PHONE - 405-423-7427

**CRUM REAL ESTATE**

1105 S. BARKLEY

CALL ANYTIME  
NEED LISTINGS  
659-2053

SALESPERSON  
VIRGINIA WHITE

**HOME OF THE WEEK**  
814 HANEY

Why do you feature this older 2 bedroom home? Because there isn't another one LIKE IT on the market! This one is CLEAN, has LARGE living room, lots of pretty KITCHEN CABINETS, utility room you will love with plenty of STORAGE and room for washer, dryer, and deep freeze. Also, has TWO hot water heaters - one for kitchen and washing machine and one for bath. There are two bedrooms, one bath, 1080 sq. ft. living area, two refrigerated air-conditioners and tower and UHF antenna are yours with this home. Call us, we'll be glad to visit about this or any of our other listings.

**IT'S ALL HERE**  
712 Collier Dr.

3 bedrooms, 1 1/2 baths, 1323 Sq. Ft. on 130' lot, Utility room, Central heat and Air-conditioning. The sunning living room with fireplace gives this home special warmth and charm. See this one today! Call for appointment.

**WHAT A HOUSE!**

Nestled on a cul-de-sac, this beautiful home offers 3 large bedrooms, 2 baths, sunken living room with fireplace, utility room, lots of storage, double garage, & large patio. Step-saving kitchen arrangement has continuous cleaning double ovens, cook-top, dishwasher, & disposal. Warm, rich ashwood cabinets complete this cook's dream of a kitchen. From the beautiful double doors that grace the entrance, the woodwork and doors throughout are the same rich ashwood. Large master bedroom features two huge walk-in closets and unusually large luxurious ceramic tiled bath. THIS IS THE OPPORTUNITY OF A LIFETIME TO HAVE THE HOME YOU DIDN'T THINK YOU COULD FIND. Quality throughout. By appointment only.

112 ENDEKOTT STARTING OUT

Or, slowing down. This 2 bedroom is for you. One bath, fenced, detached garage. Just needs some clean-up and decorating touches. This home is priced to sell. Owner has retired to N. Mex. Immediate occupancy. MAKE AN OFFER!

911 HANEY

GET A CORNER ON LIFE with this 2 bedroom, 1 bath, garage converted to bedroom. LARGE CORNER LOT, fenced. Needs some painting and fixin' up but has GREAT POTENTIAL. EXCELLENT LOCATION.



# WANT ADS

**Boxwell Bros.**  
Funeral Home  
and  
Flower Shop

FUNERAL HOME - 659-3802  
FLOWER SHOP - 659-2212

**Hansford County Planned Parenthood**  
26 S. Haney  
659-2463  
Spearman Mon. - Fri. 8 a.m. to 12 noon 305-rt

**HANSFORD LODGE**  
No. 1099  
A.F. & A.M.  
Call Meeting April 7, 7:30 p.m. in Texas Vets Grand Station, W.M. Jerry E. Gee, Sec'y. 165-rt

**KIRBY SALES & SERVICE**  
of Spearman, 912 S. Bernice, 659-2797. 30-rt

**NEW LOW RATES \$6.95 PER DAY**  
For Steam Room/vac  
Bug Shampoo  
Call Gordon's Drug 659-2141 or after 7 p.m. & Sundays call FREDDIE LARGENT: 659-3437 17-rt

**YOUR LOCAL USED COW DEALER, SPEARMAN BI-PRODUCTS.**  
Seven days a week dead stock removal. Please call us soon as possible. 659-3544. 8-rt

**SERVICE:** Pits cleaned, wet or dry. Dragline or loader. Also, dozer, grader, carry-all service. LeRoy Mitchell, 806-733-2304, Gruver, Texas, 79040. 9-rt

**Alcoholic Anonymous Meeting 8 p.m. Friday, Home Demonstration Club building, 305 N. Bernice, 659-3181 for information.**

**Al-Anon meetings 8 p.m. Friday Home Demonstration Club building, 305 N. Bernice in back room. Phone 659-3181 for information. Ask for Al-Anon.**

**Plumbing, heating & appliance repair. Call 659-2811. 165-8c**

**NOTICE**  
Wallace Monument Co. Monuments, Curbing, Grave Covers  
Local Representative LEONARD JAMESON 659-3406 20-rt

**REAL ESTATE FOR SALE**

**LOTS FOR SALE:** 82' x 160' located at 319 S. Endicot. Call 658-4890. 8-rt

**Pens For Sale:** Crawford Addition, 659-3510. 165-rt

**FOR SALE BY OWNER:** Two, 3 bedroom homes, 2 baths, good location, reasonably priced. Call 659-2283. 195-rt

**FOR SALE:** 1013 S. Bernice, 3 Bedroom, 1 Bath, extra built-ins and storage, carpeted, storm windows and doors, fenced-in back yard. After 5:00 for appointment, 659-2872. 155-rt

**Mayfield Real Estate**  
John Mayfield - Broker  
435-6528  
Ruby Lutz-Salomonson  
659-2188

**1109 Townsend, 3 bedroom, 1 1/2 baths, new appliances, garage car garage, fenced yard. \*\*\***

**Land For Sale:** 160 acres, 11 miles northeast of Follett, windmill water, some machinery, immediate possession, no minerals. \*\*\*  
2 Lots in the Shaul Addition, zoned trailer houses. 175-rt

**FOR SALE:** Large office building in good location near downtown. Use as Store, Offices, Storage etc. Central heat, air conditioned, carpeted. 14 S. Haney, Harold Groves. 659-2647. 125-rt

**FOR SALE:** Two bedroom home with large workshop on three lots. House is newly carpeted and painted. Fenced, with large shade trees. 905 S. Main, Gruver, 806-733-2464. 165-rt

**NORTHWEST ARKANSAS LANDS:** Farms - Ranches - Free listing - Undeveloped. Free Listing Brochures Upon Request. Crossbow Real Estate, Huntsville, Alabama 37240. 205-3c

**FOR SALE:** 3 bedroom brick home, 2 1/2 baths, fenced-in back yard. 903 Cluck, 733-2162, Gruver. 21-1c

**MISCELLANEOUS FOR SALE**

**FOR SALE:** 1967 Chevrolet Van, 68 Buick Wildcat, 63 Cadillac. 303 Davis St. 175-rt

**FOR SALE:** Firewood, Burton Schubert. Call 659-2667. 5-rt

**Going Out of Business:** Used fish tanks & fish. 208 N. Snider, Spearman. 205-6c

**FOR SALE:** 1970 Grand Prix. Good condition. \$700.00. 733-2607, Gruver. 205-rt

**FOR SALE:** Good Sears evaporative cooler. Call 659-2787. 205-2c

**FOR SALE:** Poodle puppies. Call 2361. 205-2c

## ED WHEELER REAL ESTATE HOMES-FARM COMMERCIAL.

**Brick 3 bedroom, 1 1/2 baths, built-ins, new carpet, nice drapes, attached single garage, fenced, storage house. \*\*\***

**3064 under roof, 3 bedroom, 1 1/2 baths, central heat and air, ash paneling and woodwork, extra large double garage, automatic underground lawn sprinkler, large storage building, concrete pad for boat, etc. Cinder block fence, nice patio. Appointment only. \*\*\***

**3 bedroom brick, 2 full baths, recently redecorated, fenced, central heat and refrigerated air, large double garage detached with finished room & bath, can be used for bedroom or office. Must see to appreciate. \*\*\***

**416 S. Haney, 2 bedroom, 1 bath, built-in appliances, washer & dryer, completely remodeled, new carpet, drapes, custom made, new roof, freshly painted, storm windows, detached garage made into bedroom. Must see to appreciate. \*\*\***

**821 S. Barkley, 2 bedroom, 1 1/2 bath, new tile in kitchen, dining area, new carpet in den, storm windows, large lot, fenced storage building, single garage, large trees, sprinkling system. Extra nice home - can be made into a three bedroom. \*\*\***

**Ed Wheeler 659-2613, Office or 659-2951, Home Phone Jerry Gee 659-3664 195-rt**

**HELP WANTED:** Apply in person, Rogers, Sales & Service, W. W. W. Texas, side shop, manufacturing work. 17-rt

## CARD OF THANKS

I wish to take this means to thank all my friends, relatives and the pastors for their cards, letters and flowers. I especially thank you for your prayers. Thanks to the doctors and nurses who were at the hospital. May the Lord bless you.  
Irene Janzen

We wish to say "Thank You" for the clothes, household goods, money, etc. sent to help us out when our home burned. We lost everything and the things our Spearman friends sent really helped.  
Charles Lynn & Virginia Martin & Boys

## LEGAL NOTICE

**CITATION BY PUBLICATION**  
THE STATE OF TEXAS TO: C. B. Davis, J. P. Burgess, H. S. Durham, R. R. Sherwood, H. C. Coffee, J. B. Cole, A. B. Hunsley, Mary J. Rucker, A. B. Hunsley, Mary J. Rucker, E. W. Pyle and wife, Minnie J. Pyle, W. T. Womble, Morse Independent School District, Willard McCoy, T. A. Farey, Harriett Eugenia Roberts, James Boardman, Alta Burgess, G. D. Landis, Sidney Board, L. M. Womble, Thelma Knorr or Unknown Heirs, Successors and Assigns, Defendant. Greeting:

YOU (AND EACH OF YOU) ARE HEREBY COMMANDED to appear before the 84th Judicial Court of Hansford County at the Courthouse thereof, in Spearman, Texas, by filing a written answer or after 10 o'clock A.M. of the first Monday next after the expiration of forty-two days from the date of issuance of this citation, same being the 8th day of May A.D. 1978, to Plaintiff's Petition filed in said court on the 20th day of March A.D. 1978, in this cause, number 2501 on the docket of said court and styled Robert Lee Womble and Margaret S. Womble, Plaintiffs, vs. C. B. Davis, et al. Defendants.

A brief statement of the nature of this suit is as follows: to-wit\* Trespass to try Title - pertaining to the following described property: to-wit: All of Lots Nos. 4, 5, 6, 7, 8 and 9, in Block No. 9, Original Town of Black, Hansford County, Texas. If this citation is not served within ninety days after the date of its issuance, it shall be returned unserved. The officer executing this writ shall promptly serve the same according to the requirement hereof, and the mandates hereof, and make due return as the law directs. Witness, Marie H. Gould, Clerk of the District Courts) of Hansford County, Texas. Issued and given under my hand and the seal of said court at Spearman, Texas, this 20th day of March, A. D. 1978. Marie H. Gould, Clerk, District Court Hansford County, Texas. 19-4tonly

**CONTRACTOR'S NOTICE OF TEXAS HIGHWAY CONSTRUCTION**  
Sealed proposals for constructing 11.486 miles of Gr. Str., B.S. & Surf. From SH 136 to Sherman Co. Line From Hansford Co. Line To FM 1089 on Highway No. FM 520, covered by RS 1553(2A) 1) Hansford and Sherman County.

**JIMMY GREENE**  
659-3196

**FOR STATE REPRESENTATIVE - 64th LEGISLATIVE DISTRICT**  
Bob Close

**FOR THE ULTIMATE IN STORM DOORS**  
CUSTOM BUILT, DESIGNED, AND IN COLORS TO FIT YOUR HOME.....  
CONTACT  
HOWARD MOYER at ONLY ALUMINUM INDUSTRIES 405-888-6966 or 338-6170 P. O. BOX 471 GUTUM, OKLAHOMA 73942

**SPEARMAN INSULATION SERVICE**  
is now in operation  
IF YOU WANT THE BEST IN INSULATION CALL  
Fred Mayfield 659-3342 or S.B. Sheets 659-3022

will be received at the State Department of Highways and Public Transportation, Austin, until 9:00 A.M. April 19, 1978, and then publicly opened and read.

The State Department of Highways and Public Transportation, in accordance with the provisions of Title VII of the Civil Rights Act of 1964 (78 Stat. 252) and the Regulations of the U.S. Department of Transportation (15 C.F.R., Part 8), issued pursuant to such Act, hereby notifies all bidders that it will affirmatively insure that the contract entered into pursuant to this advertisement will be awarded to the lowest responsible bidder without discrimination on the ground of race, color, or national origin, and further that it will affirmatively insure that in any contract entered into pursuant to this advertisement, minority business enterprises will be afforded full opportunity to submit bids in response to this invitation and will not be discriminated against on the grounds of race, color, or national origin in consideration for an award. Plans and specifications including minimum wage rates as provided by law are available at the office of Jay L. Hawley, Resident Engineer, Berger, C. B. Davis, J. P. Burgess, H. S. Durham, R. R. Sherwood, H. C. Coffee, J. B. Cole, A. B. Hunsley, Mary J. Rucker, A. B. Hunsley, Mary J. Rucker, E. W. Pyle and wife, Minnie J. Pyle, W. T. Womble, Morse Independent School District, Willard McCoy, T. A. Farey, Harriett Eugenia Roberts, James Boardman, Alta Burgess, G. D. Landis, Sidney Board, L. M. Womble, Thelma Knorr or Unknown Heirs, Successors and Assigns, Defendant. Greeting:

**TOO LATE TO CLASSIFY**

**FOR RENT:** Furnished 2 Bed Room House for bachelor or small family. Bills paid. Call 659-2082. 21-rt

**CARPENTERS HELPER**  
WANTED: Carpenter helper needed! Experience helpful, Call 659-3887.

**BROADEN YOUR NURSING EXPERIENCE 16 HOURS A MONTH.**  
As a registered nurse you could work with some of the top professionals in your area in the Army Reserve. You'll receive a direct commission as an officer and earn a good second income. Call your local Reserve unit for details. It's listed in the white pages of the phone book under "U.S. Government."

**THE ARMY RESERVE**  
PART OF WHAT YOU EARN IS PRIDE

## CARDINAL CHEMICAL, INC.

**NEEDS EQUIPMENT OPERATORS**  
Must have commercial license and telephone. \$975 monthly guaranteed pay. Group insurance, paid vacation, retirement plan, advancement.  
Experience helpful, but not required. PERRYTON, TEXAS  
APPLY IN PERSON - 435-6686. MUST BE AGES 21 AND OVER

## CARDINAL CHEMICAL, INC.

**NEEDS ONE OR TWO GOOD MECHANICS**  
Must have own tools and diesel experience. Group insurance, paid vacation, retirement plan, advancement. Age 21 years or over.  
APPLY IN PERSON - 435-6688

**Political Announcements**  
The Hansford Plainsman is authorized to announce the candidacy of the following candidates for public office, subject to the action of the voters in the 1978 primary elections.

**FOR COUNTY JUDGE**  
E. L. McClellan  
Francis Biles  
**FOR COUNTY TREASURER**  
Verna Gal Keim  
**FOR COUNTY & DISTRICT CLERK**  
Marie Gould  
**FOR COMMISSIONER PREC. 2**  
Joe T. Venneman  
**FOR COMMISSIONER PREC. 4**  
Alvin (Bill) Cator, Jr.  
George C. (Bud) Lowe  
Val Winger  
**FOR STATE REPRESENTATIVE - 64th LEGISLATIVE DISTRICT**  
Bob Close

**TEXAS PRESS**  
1977 ASSOCIATION  
PUBLICATION NO. 509660  
SPEARMAN, TEXAS 79081  
213 Main Box 458 659-3434  
Published Weekly at 213 Main Street Spearman, Texas 79081  
Owner-Publisher: William M. Miller  
Second Class postage paid at Spearman, Texas

**ANY ERONEOUS REFLECTION UPON THE CHARACTER OF ANY PERSON OR FIRM APPEARING IN THESE COLUMNS WILL BE GLADLY AND PROMPTLY CORRECTED UPON BEING BROUGHT TO THE ATTENTION OF THE MANAGEMENT.**

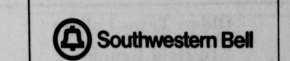
**SUBSCRIPTION RATE:** Hansford, adjoining counties, combination with the Hansford Plainsman, \$10.40.  
Other points, \$14.40.

The Emmy Awards were held at Spearman high school Wednesday morning. Men, more than women, are afflicted with color blindness. Forty out of every thousand men are color blind.

## Public Notice

Southwestern Bell, in accordance with the rules of the Public Utility Commission of Texas, hereby gives notice of the company's intent to implement a new schedule of telephone rates in Texas effective April 14, 1978. It is expected that the requested rate schedule will furnish an increase of 11.4 percent in the company's intrastate revenues.

A complete copy of the new rate schedule is on file with the Public Utility Commission at Austin, Texas, and with each affected municipality, and is available for inspection in each of the Company's public business offices.



619-2053

# You save here

...because we check it here

Before a home can qualify under our Energy Checked Efficiency Home program it is thoroughly inspected by one of our representatives for energy saving features such as proper insulation, attic ventilation and duct insulation. When you see the Energy Checked Efficiency Home sign in front of and throughout a new home, you know the home has our energy saving stamp of approval. An Energy Checked Efficiency Home can save you money on operating costs for all the years you live in it, so look for this sign before you buy a new home.

**ENERGY CHECKED**  
EFC

**COMMUNITY PUBLIC SERVICE**  
Your Electric Light & Power Company

## Home For Sale

We offer one of the largest and finest homes in Southeast Spearman across from the high school. Five bedrooms, formal living room, den in basement with built-in fireplace. Approximately 4000 square feet with many extras. Includes 12'x20' storage building, fence, sprinkler system, TV and CB towers and antennas, many more features. Call for appointment, 659-2647, Mr. and Mrs. Harold Groves. 125-rt



### Open House To Honor Haden's

Mr. and Mrs. James E. (Jim) Haden will be honored on their 50th Wedding Anniversary with an open house Sunday, April 9, from 2 to 4 p.m. in their home at 312 Haney in Spearman.

Hosts of the event will be the couple's children, Billie of Spearman, Mrs. Chester Cunningham of Fritch, and their spouses. Mr. and Mrs. Haden have 4 grandchildren.

The Hadens were married April 12, 1928, in the parsonage of the First Christian Church in Pampa, Texas.

They lived on a farm west of Spearman the first two years of their marriage, and moved to a farm south of Pampa where they lived 16 years. In 1946 they moved to a farm south of Waks, Texas, where they lived until their retirement in 1973. Since retiring from farming, they have made their home at 312 Haney in Spearman.

All the family and friends of the couple are invited to attend the open house, in lieu of announcements.

### Oldest Texas College To Hold Reunion

The Annual Reunion of the Clarendon College Ex-Students Association will be held April 28, 29, 30, on the campus of Clarendon College.

Activities will begin Friday evening, April 28, with a Fine Arts Production in the Harned Sisters Auditorium. Registration will be held at 10:00 A.M. Saturday, April 29, at the College Cafeteria. A Tea will be held in the home of Mrs. Ruby Bromley Saturday afternoon and the annual banquet will be held Saturday night at the cafeteria. An Art Exhibit will be on display in the Fine Arts Building on Sunday and a special Church Service will be held for Ex-Students. The reunion will close with a luncheon meeting on Sunday, April 30, at the College Cafeteria.

The Special Feature of the banquet will be presented by Mr. and Mrs. Lee Nowlin of Plainview. The classes of 1928 and 1953 will be honored this year.

Clarendon College is unique

in one respect. It is the oldest college in the Texas Panhandle, having been established in 1898. It was truly a frontier college; organized nine years before Oklahoma became a state and fourteen years before New Mexico and Arizona became states.

Clarendon College was in operation twelve years before West Texas State Normal of Canyon and Wayland College of Plainview were opened, and twenty-four years before Texas Technological College of Lubbock was established in 1922.

Clarendon College has a rich heritage, and continues in operation as a community college at the present time on a thirty acre campus, with many fine facilities and an excellent staff and student-body.

All Ex-Students are cordially invited to attend. Further information may be obtained by writing: Ex-Students, Clarendon College, Clarendon, Texas 79226.

### Marriage Enrichment Seminar Set

The public is invited to a marriage enrichment seminar at First Christian Church in Spearman beginning on Monday, April 3, and continuing through Thursday, April 6, with Herb Miller, Hi-Plains Area minister for the Christian Church (Disciples of Christ), conducting the seminar with daily sessions beginning at 7:30 p.m.

It is a well known fact that the home and family are in trouble all over the world. Maybe we Christians should strengthen our homes by understanding each other better, really listening to one another and opening doors to happier homes and family life.

Mark your calendars now for this upcoming seminar.

The format will involve lectures and discussions designed to raise the general insights of people (without sharing personal problems) along with some direction as to helpful things partners can do privately to gain greater satisfaction from their relationship.

The object of the seminar is to help participants gain insights into themselves and their relationships with others, especially their spouses; understand the common problems which cause difficulties in marriage; and learn some communication tools which help partners communicate more clearly. No group therapy of any kind will be done.

\*\*\*\*\*

Keep salesmen outside the door unless you're interested in listening to the full talk about their product, says Claudia Kerbel, consumer information specialist with the Texas Agricultural Extension Service, The Texas A&M University System.

### Search Goes On For All American Girls

Do you know a girl with sparkling eyes who thinks jeans are neat? Do you know a girl who knows where she's going, who has her goals aimed high? When she smiles, do you think of fresh air and sunshine? That's the one! She's an All American Girl!

The search for All American Girls returns to Texas June 13-15. The 1978 All American Girl Pageant will be held in Dallas at the Downtown-Holiday Inn. Young ladies from ages 3-26 are invited to compete in the party dress, evening gown for ages 13-26, the sportswear, and the talent categories within the five divisions of the pageant plus each girl has an informal interview with the judges. The All American Girl Pageant includes the following divisions: All American Tot, ages 3-6; All American Little Miss, ages 7-9; All American Teen, ages 10-12; All American Girl, ages 13-17 by August 1, 1978; and All American Girl, ages 17-26. Seventeen year old girls competing in the All American Girl Division must be 1978 high school graduates. All American Tots do not compete in the talent category. Come on, Texas! Help us find the All American Girls.

The All American Girl Pageant staff wants to enlist new members in the brigade of Pageant Scouts. Pageant Scouts recommend girls, ages 3-26, who might be interested in participating in an All American Girl Pageant. No one is under any obligation. The pageant staff will send an invitation to participate to all the girls our Pageant Scouts feel are worthy of this inspiring opportunity. Should anyone a Pageant Scout suggests participate in the exciting activities of the pageant that scout will receive a special plaque in appreciation for his or her endeavors.

This year the star spangled parade of pageants leads to Peoria, Illinois, where the 1978 state All American Girls will assemble to vie for the coveted national titles. Overall talent winners from each division are also given the opportunity to compete in the All American Girl National Pageant as candidates-at-large. Over \$5,000 in scholarships and awards will be presented August 9-13 in the Tot, Little Miss, and Miss divisions of the national pageant and August 16-20 in the Teen and Girl divisions.

Are you an All American Girl? For further information please write: All American Girl Pageant, P.O. Drawer 1630, Dothan, Alabama 36302; or phone (205) 792-4907.

Local organizations looking for an annual fund raising project that gives young ladies in the community the opportunity to benefit from a worthwhile youth development and scholarship program will discover All American Girl Pageants are easy to organize, and fun, too. Send inquiries to the above address.

\*\*\*\*\*

Jai-alai is the swiftest game in the world of sports.

### United Presbyterian Church News

Friday, April 7 is a National Day of Prayer and Fasting. It is a good day to deny the flesh and remember the president, his advisors and cabinet, the Congress, and all who work in government at every level in our prayers.

There is a Sunday Church School class for everyone every Sunday at 9:45 a.m. with a friendly, well informed and well prepared teacher to give you an exciting Bible study geared to the Now.

"He Was Known To Them in the Breaking of the Bread" will be the subject of Pastor Edward D. Freeman's sermon at the service for the public worship of God on Sunday, April 9 at 11:00 a.m.

We recommend your watching the World Evangelism Special on KFDA, TV channel 10, on Tuesday, April 11, from 6:00 to 11:00 p.m.

The Palo Duro Union Presbyterian Women's Council will meet at Wichita Falls on Wednesday, April 12.

The Spring meeting of the Women of Palo Duro Union Presbytery will be held at the First Presbyterian Church of Wichita Falls on Thursday, April 13.

If you are new to Spearman or without a church home, you are invited to try the warm, friendly lines of the First Presbyterian Church.

\*\*\*\*\*

A dechel is a unit for measuring sound.



BOWLING CHAMPS, pictured above, are; front row, left to right, Helen Boyd, Pat Hamilton, Millie Craig, Kate Farris, Judy Everson, Patty Sponemore and Judy Reed. Back row, left to right, Beth Baker, Etta Beck, Sandy Heinrich, Penny Thomas, Rita Reed, Joyce Frost and Brenda Russell. This group is heading for Florida on a bowling tour this week!

### District Rotary Conference Set

The Rotary District 573 Conference will be held April 21-23 in Lubbock, it has been announced by District Governor Albert B. "Duke" Martin of Amarillo. In addition to the program for Rotarians, a slate of activities also has been drawn up for Rotary Anns, according to advance information about the upcoming conference.

The annual Fellowship Dinner will be held April 21 in the banquet hall of Lubbock Memorial Civic Center. The Governor's Banquet will be held April 22 starting at 7:15 p.m.

An added attraction for the 1978 conference will be the presentation of the musical comedy, "Finian's Rainbow," in the Lubbock Memorial Civic Center theater immediately adjacent to the banquet hall and at the conclusion of the Fellowship Dinner. A block of choice tickets has been reserved for that performance for delegates to the conference.



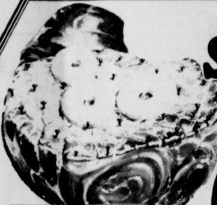
PRICES EFFECTIVE THRU APRIL 8TH, 1978. QUANTITY RIGHTS RESERVED. NO SALES TO DEALERS. MON.-SAT. 8 a.m.-9 p.m. SUN. 10 a.m.-7 p.m.

### MEET TWO NEW HAPPY WINNERS!



### 1000\* WINNERS

Judy Rose of Alva  
George F. Agullion of Garden City



RATH FULLY COOKED  
**Smoked Picnics**

**Boneless Turkey Hams**  
FULLY COOKED BLUE RIBBON 3 TO 5 LBS. AVERAGE  
**\$1.59**  
LB.

Sliced Smoked Picnics  
RATH FULLY COOKED  
6 TO 8 LBS. AVERAGE  
**79¢**  
LB.

BLUE RIBBON  
**Turkey Franks**  
12-OZ. PKG.  
**59¢**

KOUNTY KIST WHOLE KERNEL  
**Golden Corn**  
4 12-OZ. CANS  
**88¢**  
AUNT JERMAN ORIGINAL Pancake Mix... 69¢

KOUNTY KIST  
**Sweet Peas**  
4 17-OZ. CANS  
**1.10**  
HEINZ 57 Steak Sauce... 99¢

ALL GRINDS  
**Folger's Coffee**  
1 LB. CAN  
**2.99**  
CHUN KING Chow Mein Noodles... 57¢

GOLD MEDAL  
**Enriched Flour**  
5 5-LB. BAGS  
**5.64**  
CHUN KING Soy Sauce... 33¢

FAIRMONT  
**ICE CREAM**  
ASSY FLAVORS  
1 GAL. CTA  
**98¢**  
FAIRMONT Ice Cream Bars... 98¢

FRESH DAIRY  
**MIRACLE WHIPPED Margarine**  
16-OZ. TUB  
**64¢**

FROZEN FOODS  
**Fried Chicken**  
BANQUET  
2-LB. BOX  
**\$1.98**

EXTRA DRY Arrid Deodorant... 98¢  
RECH Toothbrushes... 79¢

CAMELOT Half & Half... 29¢  
KRAFT MONTEREY JACK Casino Cheese... 98¢

PILLSBURY BIG COUNTRY Biscuits... 39¢  
WELCH'S Grape Juice... 73¢

BROSSETTE LITTLE EARS Corn-on-the-Cob... 89¢  
PATIO BEEF Enchiladas... 73¢  
PATIO SNACK Beef Tacos... 73¢

**JG HAS STARTED A NEW HOSEIERY CLUB**

**SHOP IDEAL...WHERE THERE'S MORE VALUE IN STORE**





These three pretty ladies, are posing for the camera beside the large coal stove in their store on main street. Left to right, Mrs. Vernon, Mrs. Woodington, and Mrs. Novak.

member's recreational needs. But keeping patterns simple while providing the best possible enjoyment for the family... Landscaping also provides other practical uses. Trees, shrubs or trellised vines can be used to screen work areas from public view.

Land Landscaping - A Good Investment

If you could make a profitable long-term investment for your home, would you? With proper landscaping, you can realize a return of five to six times your original investment within 10 years.

Bridge Club

Blue Monday Bridge Club met Monday, April 3 in the home of Mrs. Vester Hill. High score was won by Mrs. Thelma Scott and second high by Mrs. Kubah Gandy.

Poetry Contest

A grand prize of \$1000 will be awarded in a new poetry competition sponsored by World of Poetry, a bi-monthly newsletter for poets. Also included are 49 other cash and merchandise awards.

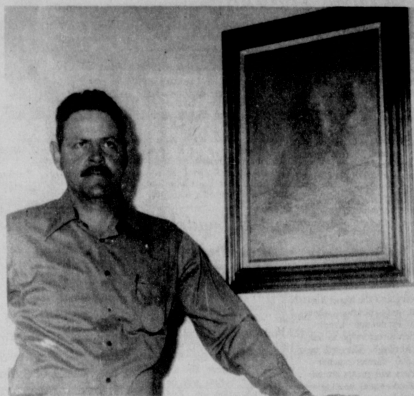
Arts and Crafts

Arts and Crafts Guild met Friday, March 31 in the home of Mrs. Deta Blodgett. Refreshments were enjoyed by members.

Bond Sales Noted

January sales of Series E and H United States Savings Bonds in Hansford County were reported today by County Road Chairman C. A. Gibner.

Artist of The Month



JIM D. BROWN -- Artist of the Month and a display of his leathercraft artistry -- a horse and rider.

while an Arizona Highway Patrolman and has completed several pictures, large and small, which will be on public view. Brown prefers western art and most of his pictures have a western theme.

Missionary Ladies Have Meeting

Union Church Missionary Ladies met Tuesday, March 28 in the church annex of the Union Church. Vice President Mrs. Doris Jean Pickett presided over the business meeting.

Our Heritage of Faith

notes from Faith Lutheran Church

"Oh, God" is a movie that has a good message in it. There are a few things to be disagreed with in the movie. But it does such a good job with expressing a number of truths that it truly is worth seeing and enjoying.

"Oh, God" shows the offensiveness, the unbeliefness of God appearing and coming to man as an ordinary looking man, and the even greater difficulty one has in trying to convince other people of this.

"Oh, God" also calls attention to the fact that religious phariseism is still present today. There are still many who use religion as a means of gain for themselves while they appear to be very pious and devout.

Another reality that "Oh, God" brings across is that it is God who chooses us not we who choose God. God does not come to us or reward us on the basis of how good we are.

If you have no church home here, we invite you to come and worship with us. Faith Lutheran is located on the corner of 11th and Bernice Streets.

Kaye Johnson has joined the staff at RUTHIE'S BEAUTY BAR 623 BRANDT 659-3531

Kaye will be working Monday thru Saturday, and will work at night by appointment.

GERALDINE LOVINGOOD & RUTHIE MCCOY

Box-O-Chicken advertisement featuring various chicken products like Cotto Salami, Chopped Ham, and Smoked Meats with prices.

Meat market advertisement for U.S.A. Choice Butcher Block Beef Rib Steak, Round Steak, and Jumbo Bologna.

PORTS OF ENGLAND Dinnerware advertisement showing a set of plates and bowls.

Win up to 1000.00 advertisement with an odds chart table.

Meadowdale Bleach and Grapefruit Juice advertisement with prices.

Food products advertisement for Golden Corn, Chow Mein, BBQ Sauce, Fig Newtons, Era Detergent, and Ideal products.

Large advertisement for Ideal Food Stores featuring Lettuce, Strawberries, Carrots, Potatoes, and Onions.

Advertisement for Kaye Johnson at Ruthie's Beauty Bar and Geraldine Lovingood & Ruthie McCoy.

# Actionful "Grayeagle" Now Showing

One of the screen's most sweeping and authentic panoramic pictures of Indian drama, American International's "Grayeagle," which opened Wednesday, April 5, at the Lyric Theater in Spearman.

Based on a Cheyenne legend, the picturesque film stars Ben Johnson, Lana Wood, Iron Eyes Cody, Alex Cord and Jack Elam. It was beautifully photographed on location near Helena, Montana, where it was supposed to have occurred in 1848. Charles B. Pierce, who wrote, produced and directed "Grayeagle," is a student of Indian

lore. He was determined to create realistic entertainment, and was greatly aided in this regard by the counsel of Iron Eyes Cody, Cody, who was born near a reservation in Muskogee, Oklahoma, began his film career as advisor on Indian customs to the late great moviemaker Cecil B. DeMille.

Johnson is the keynote of "Grayeagle," as settler Ben Johnson and his friend Iron Eyes try to track down the Indian bravae Alex Cord who has kidnapped Johnson's daughter.

## 4-H Leader Forum Set

What is a "Forum?" The dictionary defines it as "...an assembly for the discussion of Public matters or current questions." Each year, the state's 4-H Adult Volunteer Leaders sponsor their forum at the Texas 4-H Center near Brownwood. "This year, the Texas 4-H Leader Forum will begin w/1 registration on Friday, April 7 at 10:30 a.m. and end with lunch at noon on Sunday, April 9," notes Hansford County Extension Agent, Peggy Winegarner. During this week-end forum 4-H leaders from all parts of the state will participate in assemblies, swap shops, meals, and recreation.

The theme of the forum this year is "Back to the Basics in 4-H," Mrs. Winegarner adds, and the featured speaker is Dr. Pete Williams, Oklahoma Extension Service Assistant Director for 4-H and Special Projects. In addition, 4-H members, leaders, agents, and other resource persons will discuss and demonstrate some of the latest publications, films, and ideas related to adult leadership with 4-H youth. "Registration forms and additional information contact the county Extension office located in the Courthouse or call 659-2030 or 733-2901."

Shakespeare, according to estimates, never made a continuous journey as far as a round trip from Boston to New York.



AMBULANCE INTERIOR -- Mrs. R. L. McFarlin (RN) at right explains some of the items in the interior of the ambulance used by the hospital for the benefit of Spearman kindergartners who toured Hansford Hospital on Thursday, March 30.

## APCA Directors To Meet

Financing and the agricultural world get attention when Amarillo Production Credit Association directors go to San Antonio April 6-8. They will be among 500 farmer-rancher stockholders and guests attending the 22nd annual meeting of the Federal Intermediate Credit Bank of Houston.

Amarillo PCA directors attending include Gaston Wells, chairman of Dumais; George B. Doshier, vice chairman of Vega; Wesley H. Garnett of Spearman; Billy Chesnut of Dalhart and Howard K. Fuqua of Amarillo. PCA officers accompanying them include James Van Pelt, president and Tommy Thompson, vice president.

According to Van Pelt, those attending represent 30 PCAs and 6 agricultural credit corporations in Texas which obtain their loan funds from the FICB of Houston. These organizations last year loaned nearly \$1.6 billion to Texas farmers and ranchers. PCAs of Texas and the Houston credit bank are part of the nationwide Farm Credit System which provided nearly \$40 billion last year to the nation's food and fiber producers.

Amarillo PCA makes agricultural loans to producers in Armstrong, Carson, Dallam, Dear Smith, Hansford, Hartley, Hutchinson, Moore, Oldham, Potter, Randall and Sherman counties.

## Library Footnotes Rita Curtis, Librarian

Happy Library Week! This week, April 2-8 is National Library Week, and the Hansford County Library will celebrate by considering it "Annex Week." No fines will be collected for overdue library materials during this week. So if you have a book that is a day or a year overdue, return it, and all is forgiven.

This will be a good week to get to know your library, if you haven't already done so. What does the Hansford County Library have to offer you? There are approximately 15,500 volumes housed at the library, and any books not owned by the library can be requested through Interlibrary Loan. So think of the library as your information broker.

Mystery, history and info to go at the library. New books on various topics arrive each month. A wealth of new non-fiction is just waiting to be checked out. There are new science

books on everything from space colonization to dinosaurs. Other non-fiction includes books on philosophy, religion, art, sports, politics and current affairs, biography and history. Current fiction and the bestsellers are also available at the library. Some new fiction titles at the library are: "Whistle," "Bi-Outline," "Scraples," "Immigrants," and "The Black Marble". There are also many new children's books.

Kansas, Kiss, and Manlow to go. Records are a favorite at the library and can be checked out for two-week periods. We offer classical, pop, rock, country and instrumental selections.

Manet, Monet, and Van Gogh to go. We have several new framed art reproductions that may be checked out for two months to hang on that bare wall in your home or office. This is a good way to teach your children and yourselves more about great art. The prints

currently available are paintings by Monet, Moran, Manet, Van Gogh, Cezanne, Buffet, Modigliana, and Morisot.

Other services provided at the Hansford County Library include movies and microfilms. Films can be ordered through the library, and a 16mm projector and screen are available for check out. So if you need a film for a club meeting, party, etc., inquire at the library. Are you climbing your family tree? Borrow microfilms through the library, and read them on our new Xerox Microfilm Reader.

Need a little "soul food"? Gather up some culture at the library. Come in and view the beautiful leather-tooled art work by Jim Brown, our Artist of the Month; you'll learn something about China when you examine Mrs. Robert Novak's intricate Chinese carved soapstone collection.

This year the library's Pre-school Storyhour is being conducted by the young women of the Servitor's Club. Films, singing, coloring, and storytelling are some of the happenings



IN THE X-RAY ROOM -- This group of kindergartners are learning all about the equipment in the X-ray room at Hansford Hospital. Students from the kindergartners received an orientation tour of the hospital and facilities Thursday, March 30. This group were taken through the hospital during the afternoon.

## 4-H Leather Project Set

The project you've been waiting for is about to begin! The 4-H Leather craft project will get off to a big start this Saturday April 8 at 9:00 a.m. in the Spearman County Barn, with Larry and Jack Porter as the project leaders.

First year project members will learn what tools and supplies are needed and may order their tools at the meeting. A discount is available. Following a short enrollment and orientation, first year participants will be dismissed.

4-H members who have participated in previous leather craft projects may bring their tools

and supplies to begin work Saturday. They will be dismissed at 12:00 Noon.

This 4-H project is open to all youth between the ages of 9 and 19 without regard to race, sex, or socio-economic level. If you need more information, call the Extension office (659-2030 or 733-2901).

It is sunny, and warm in Spearman Wednesday morning... Slight chance for rain today.

from your neighborhood ASSOCIATED DRUGGISTS

# Rainbow Buys

APRIL 5 - 11, 1978

<b>CHLORASEPTIC</b> Antiseptic 6 oz. w/ Sorelax Mfg. Lot #1-28 <b>\$1.08</b> Larger Lot #1-28 Mfg. Lot #1-28 <b>72¢</b>	<b>PLASTIC SPECIALS!</b> 2 BUSHEL LAUNDRY BASKET or 45 QT. WASTEBASKET Mfg. Lot #1-28 Mfg. Lot #1-28 <b>\$1.99</b>	<b>AYDS REDUCING CANDY</b> Vanilla, Chocolate, Chocolate Mint & Butter Pecan 1 1/2 lb. Mfg. Lot #1-28 <b>\$2.81</b>
<b>RIGHT GUARD DEODORANT</b> Mfg. Lot #1-44 <b>79¢</b>	<b>6 Piece STEAK KNIFE SET</b> Set Shaving Service Mfg. Lot #1-28 <b>\$1.88</b>	<b>OIL OF OLAY</b> Mfg. Lot #1-28 <b>\$2.54</b>
<b>CAREFREE PANTY SHIELDS</b> Mfg. Lot #1-30 <b>59¢</b>	<b>"Multi-Purpose" TOTE BAGS</b> For Shopping, Picnics, Can Be Decorated Mfg. Lot #1-28 <b>76¢</b>	<b>ROLAIDS</b> Mfg. Lot #1-49 <b>96¢</b>
<b>LIQUIPRIN</b> Pain Relief for Insects & Chiggers Mfg. Lot #1-49 <b>88¢</b>	<b>MILK PLUS 6 SHAMPOO</b> By Heaton Normal, Only on Toilet & Bathed in Lot Mfg. Lot #1-28 <b>\$1.36</b>	<b>ROBITUSSIN</b> Mfg. Lot #1-38 <b>76¢</b>
<b>ICY HOT</b> Malgicain 3 1/2 oz. Mfg. Lot #1-28 <b>\$1.85</b>	<b>TRAC II CARTRIDGE</b> By Gillette Co. Mfg. Lot #1-28 <b>\$1.73</b>	<b>ROBITUSSIN DM</b> Mfg. Lot #1-13 <b>\$1.17</b>
<b>COUPON</b> CONCAC CAPSULES Mfg. Lot #1-28 <b>\$1.08</b>	<b>COUPON</b> PEPSODENT TOOTHBRUSH Mfg. Lot #1-28 <b>69¢</b>	<b>COUPON</b> TYLENOL Mfg. Lot #1-28 <b>\$1.49</b>

WE RESERVE THE RIGHT TO LIMIT QUANTITIES AT SALE PRICES

# HANSFORD COUNTY'S ENTERTAINMENT CENTER LYRIC THEATRE

PHONE 659-2812

ANOTHER SCREEN TRIUMPH FROM THE CREATOR OF "WINTERHAWK"

In 1848 he rode across the great plains - One of the greatest Cheyenne warriors who ever lived.



## GRAYEAGLE

BEN JOHNSON - IRON EYES CODY - LANA WOOD JACK ELAM - PAUL FIX - JIMMY GLEN - JACOB DANIELS CRODT BUTLER - CHARLES B. PIERCE as ALEX CORD

APRIL 5 THRU APRIL 11

PELICULAS MEXICANAS

## EL LATIGO

SUNDAY MATINEE, 2 P.M., APRIL 9, 1978

ONE SHOW  
SUN.-MON.-TUES.  
-WED.-THURS.-  
7:30 P.M.

TWO SHOWS  
FRI.-SAT.  
7:00 P.M.  
AND 9:00 P.M.

## NEXT ATTRACTION

THEY MAKE YOU LAUGH ON THE OUTSIDE—AND FEEL GOOD ON THE INSIDE

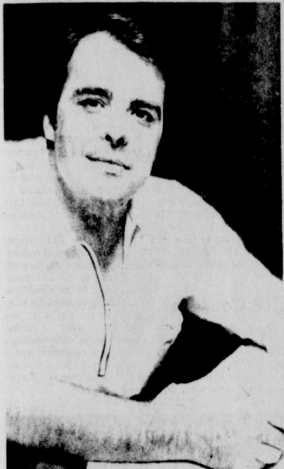


HENRY WINKLER is THE ONE AND ONLY

APRIL 12 THRU APRIL 18



# Dick Elbert Testifies In Washington



D.L. "DICK" ELBERT is the owner and manager of North Plains International, Inc. of Spearman. Prior to purchasing the business, Elbert worked in various capacities for IH throughout the Texas Panhandle.

Dick L. Elbert, president and manager of North Plains International, Inc. Spearman, testified before the Senate Committee on Agriculture on March 10, concerning the farm problems and their effect on businesses and communities in agricultural areas of the nation.

The following is his testimony:

ness and fourteen years experience with International Harvester Company, Inc. including the following positions: Market Planning Manager - Tractors; Instructor of Business Management Courses; Regional Parts Supervisor; Area Sales Manager; Distribution Supervisor; Accountant; Various Administration Assignments.

Although only 36 years of age, I am not a novice to the Farm Equipment business. My fifteen years in the business has exposed me to all facets of the management and internal control of a Farm Equipment Dealership. I was, also, born and raised in a farm family in West Texas and helped with the family farm and custom combining operation until pursuing my own career.

It is not my intent to barrage you with facts and figures about the cost-price squeeze that farmers are faced with. You gentlemen, have heard numerous testimonies to support this fact, as well as many personal contacts by concerned farmers during these past few weeks. My purpose is to make you aware of the economic impact on small business in predominantly agricultural areas.

My business is located in Spearman, Texas. Spearman is located in Hansford County in the Panhandle area of West Texas. My contacts with agricultural businessmen in my area reveals we all have common problems. 1. Reduced gross sales with smaller profit margins. This problem is aggravated by the inflationary spiral of prices on machinery or other goods. Many factors influence these price increases such as labor

union wage increases, steel price increases or fuel source increases. Basically, manufacturers pass on any price increases they receive to the market place. My customers cannot purchase new equipment because they are not permitted to receive a proportionate increase in their commodities as the cost of production increases. We have reached the saturation point where customers and/or dealers can absorb an average 15-20 percent annual price increase.

2. Operating expenses have escalated drastically for all merchants due to this trend. Because of inflation, reasonable cost of living adjustments must be compensated to our employees. This is an alarming expense when combined with necessary benefit plans to stay competitive with other industries. To maintain good people we have to stay competitive in the job market.

Also, a more severe drain on profits is the cost of inventory related expenses. Floor plan interest or financing costs of inventories is the most substantial cost most retailers face. Due to the manner in which we have to order our anticipated needs in advance, (example: tractors and combines approximately six months in advance) reaction time from manufacturers does not allow cancellation of orders if a short market situation occurs. Therefore, when customers cannot buy these cost become even greater due to lack of turnover. Most businesses do not have the capital or the ability to secure capital to pay off floor plan notes if due now. Our only salvation is to sell ourselves out of our inventory problems. The selling environment that now exists will wreck a good percentage of business if not improved immediately.

3. Capital requirement problems develop, not only because of declining profits on which to operate, but continuation and escalation of expenses mentioned earlier. Other drains on capital are poor accounts receivable collections. Many are experiencing considerable difficulty in paying normal bills. This single item was most mentioned as a problem among businessmen in my area.

In some areas repossessions of past sales are necessary because of inability to pay. This is a capital drain on both the businessman and the customer because of equity losses and recourse from lending institutions. Many farm sales or distress sales are further depressing the market values of both dealers and customers used goods.

Some businessmen have expressed to us the inability to secure adequate operating loans. Many are at their borrowing limits and have completely reorganized by refinancing completely, extending their debts, taking on partners or liquidate. In any case there is a severe loss of equities that we have taken several generations to develop.

Even though my exposure is to a limited area, I can see the impact not only on my community but on the whole economy. In order to control expenses, many businesses have had to lay off personnel. I personally am operating with 50 percent of my normal work force. This trend is true throughout the industry. Because of reduced sales, not only have small business forced more unemployed on a limited job market, but many major manufacturers have had layoffs, slow downs and even temporary closings. Imagine the millions of dollars in salaries, lost material sales such as steel, etc., transportation facilities, etc., that are being lost. An example being, my business in 1977 ordered in excess of one and one-half million dollars from one manufacturer. At the present time, a 1978 estimate would be approximately one-third that of current trends hold. I am only a small business, but I feel representative. Multiply my reductions by hundreds of thousands of supporting businesses to agriculture.

The main problems that have created all of agricultural problems has been the inability of the farmers to make a fair return on his investment. The prices for the products he sells has plunged to levels far below the farmers cost of production. While the middlemen recovery of costs has been allowed to increase, farm income has steadily declined. The process

of insuring that everyone else keeps pace with the rate of inflation, has totally ignored that segment of our society which produces the food and fiber to feed and clothe the world. If this process continues the producers our entire economy is the victim also.

The American consumer must be made aware that the supports which the farmers receive do not subsidize farmers' incomes, but subsidizes the consuming public by providing it with cheap food. If changes are not made immediately the day of cheap food in America will cease.

A fine balance must be achieved to provide the farm family with adequate standards of living while providing the consumer with reasonable prices for agricultural products consumed. This can be achieved.

The farmers are not asking for a hand out, they do not want their incomes subsidized, they do not want increases in price supports. They simply want 100 percent of parity, or the opportunity that other segments of our society enjoy, the ability to receive the cost of their production plus a fair return on their investment. They have not enjoyed this privilege due to manipulations and restrictions placed upon them. Contrary to the opinion of many, parity does not insure a profit, it merely allows their skills, management ability and luck with the weather and elements to control their profitability. This is a fair risk that all businessmen must face.

There is very little that I can say to do that will help me directly. I ask that you help the farmers and therefore, help all business, consumers, yourselves and the entire U.S. economy.

I cannot express the urgency which this help is needed. Not many farmers nor businesses can survive the time necessary for the normal course of events to present an item in the opinion of most farmers it is inadequate in drastic need of revision. But many cannot afford the luxury of normal legislation. Emergency help is needed and needed immediately. I implore you in Congress, who are attuned to the problem to do all that is within your power to correct the inequities which confront the American Farmer. You have the facts, the ability, the responsibility, and certainly the motive to help America stay healthy and above all proud of the treatment of all of its people.

## Contest Planned

The George Warner Seed Company of Herford, Texas, has announced that it will conduct a corn growing contest during the 1978 growing season. The 1978 Warner Corn Growing Contest will be open to young people ages 12 through 21 in an area that includes the Oklahoma and Texas Panhandles and the Texas South Plains.

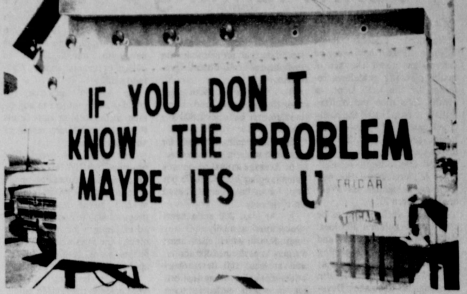
The contest area will be divided into two regions and there will be a winner in each region. The two winners will be the individuals with the largest total yields, corrected to 15.5 percent moisture, and they will be awarded all-expense-paid trips for themselves and their parents to the National Corn Growers Association Annual Meeting in LaCrosse, Wisconsin, July 15-18, 1979.

A Warner Seed Company spokesman said there are several reasons for the company's deciding to hold such a contest. He explained that in these times of economic stress for farmers, good land and crop management practices become increasingly important.

"It is our hope that this contest will offer an incentive for young people to learn more about good farming practices and agricultural economics through actual experience, and for parents to learn more which will help make their farming careers more successful," he said.

Contest details and entry forms may be obtained from Mr. Steve Fambrough, George Warner Seed Company, 120 S. Lawton, P. O. Box 1446, Herford, Texas 79045, or from any Warner Seed Dealer.

Toboggan sleds were invented by American Indians. Women who retain their maiden names after marriage are called Lucy Stoners.



Remember the American Ag. bake sale this Saturday, at Gordon's Drug and Cut Rate Grocery, in Spearman. If you haven't visited the American Ag. headquarters in Spearman, drop by today, and join with this fine group of farmers. Support them for the "good of your community!"

## Price Urges Passage of Ag Emergency Act

PAMPA--Senator Bob Price urged today that every county in the Panhandle, through its emergency board, declare itself a drought disaster county, so that it may apply for Farm and Home Administration (FHA) emergency loans for agricultural producers and businessmen affected by the drought.

Price, who earlier this week had asked Governor Briscoe to petition the Small Business Administration (SBA) to include the Panhandle in its drought loan program, said he was pleased to learn that the Governor made such a request to the SBA for 102 Texas Counties Tuesday.

If the SBA approves the request, the Panhandle counties which will be eligible are: Armstrong, Bailey, Briscoe, Carson, Castro, Childress, Collingsworth, Cottle, Crosby, Dallam, Deaf Smith, Dickens, Don-

ley, Foard, Floyd, Gray, Hale, Hall, Hansford, Hardeman, Hartley, Hemphill, Hockley, Hutchinson, King, Knox, Lamb, Lubbock, Moore, Motley, Oldham, Potter, Randall, Roberts, Sherman, Swisher, and Wheeler counties.

Senator Price was concerned that Ochiltree and Lipscomb counties were not included, and he plans to continue to seek aid for those two counties.

Senator Price said that any SBA loans of up to \$250,000 would be made at three per cent interest up to a 30 year period. After an agricultural producer or businessman becomes eligible for the loan, his property would be appraised, and the loan be based on the evaluation, in accordance with the amount of equity he has in the property.

Price said that so far only three Panhandle counties (Dallam, Knox, and Motley) had

applied for the FHA loans, but he believed that every Panhandle county would be eligible. To apply for the loan, a county must declare itself a disaster county, and then receive approval of this designation from the State Emergency Board, the Governor, and the U.S. Department of Agriculture.

## Veteran's News

The Veterans Administration today announced financial counseling services available without charge to veterans who fall behind in payments on their VA-guaranteed home mortgages.

Jack Coker, Director of the VA Regional Office at Waco, urged all veteran home owners to take advantage of the free financial counseling. "This new emphasis on personal-to-person help could make a difference between successful home ownership and a veteran losing his home," he said.

The agency seeks to help veterans plan family budgets so they can keep current with their home mortgage payments. Counseling services are available in the Waco Regional Office and at field offices located in Dallas and El Paso. Appointments may be arranged by calling 756-6511, ext. 718 in Waco. In Dallas the number is 749-3444. El Paso veterans should call 543-7760.

## What Parity Means To U.S. Economy

Farmers would have received \$72 billion additional dollars if they had received PARITY last year.

Every dollar of this would have been injected back into the economy, turned over 7 times and created an additional tax base of \$54 billion dollars. At minimum rate, (20%), this would generate 100.8 billion tax dollars.

Instead of a \$40 billion deficit, we would have had a \$60.8 billion surplus.

Each of 80 million families in the U.S. would have received a tax refund of \$760.00. Carter & USDA say Dole "Flexible Parity" will increase each family's food bill \$100.00, if they are right-Parity would have NETTED every family in the U.S. -- \$660.00!

## Land Auction

On May 6, 1978, at 10:00 o'clock A.M., the surface estate only of the following described real property shall be sold at public auction, to-wit:

### Tract No. 1

Section 677, Block 43, H&T Ry. Survey in Lipscomb County, Texas. Said tract contains 583.1 acres of grass and 56.9 acres of cultivated land, a good water well and four wire fences.

### Tract No. 2

Section 678, Block 43, H&T Ry. Survey in Lipscomb County, Texas. Said tract is all grass, has live water and four wire fences.

### Tract No. 3

Section 822, Block 43, H&T Ry. Survey in Lipscomb County, Texas. Said tract contains 484.2 acres of grass and 155.8 acres of cultivated land and contains the following improvements:

- (a) a four bedroom house, including central heat, carpet and a small basement.
- (b) one Behlen, 40 ft. x 60 ft. "round-top" building with electric overhead door.
- (c) cattle shed and corrals.
- (d) two submersible pumps, one windmill, one pond, and four wire fence.

Said sale shall be subject to all leases and rights of way of record as well as those apparent on the ground.

Successful bidder shall, on the day of sale, enter into a contract of sale providing for:

- (1) twenty percent (20%) escrow;
- (2) twenty (20) day title examination;
- (3) closing upon proof of marketable title;
- (4) possession of grass shall be delivered upon closing, with possession of cultivated land to be delivered after 1978 wheat harvest; and
- (5) all taxes shall be pro-rated to the date of closing.

The sale shall be held on Tract No. 3, ten (10) miles South of Booker on Highway 23 or sixteen (16) miles North on Highway 22 from the intersection of Highway 23 and Highway 83 (17 miles North of Canadian), Wash for auction signs.

This is an excellent tract. Phone 806-653-4472 for appointment to inspect the premises prior to day of sale.

All announcements made on day of sale shall take precedence over prior advertising, and sellers shall reserve the right to reject any and all bids.

For further information, call 806-653-4472 or 806-323-5412.

Sellers: Ray Peery Heirs

ACTIONEERS—One Spearman, Texas 79061

Joe Hayes, Attorney  
Canadian, Texas 79014

**ALLSUP'S**  
CONVENIENCE STORES

MEMO: CHECK ON SAVINGS  
SHOP ALLSUP'S

BORDEN'S PREMIUM <b>ICE CREAM</b> 1/2 GAL. CTN. <b>\$1.29</b>	SHURFINE <b>PAPER TOWELS</b> <b>33¢</b>
VAN CAMPS <b>PORK 'n BEANS</b> 16 OZ. CAN <b>23¢</b>	BORDEN'S <b>YOGURT</b> 4/\$1.00
BORDEN'S <b>COTTAGE CHEESE</b> 12 OZ. CTN. <b>59¢</b>	SHURFINE <b>CRACKERS</b> 1 LB. BOX <b>39¢</b>
SHURFINE VANILLA <b>WAFERS</b> 10 OZ. PKG. <b>33¢</b>	6 PAK CARTON <b>COCA-COLA</b> 32 OZ. BTL. <b>\$2.39</b> PLUS DEF.
FRESH COOKED <b>HOT LINKS</b> <b>3/\$1</b>	SHURFINE <b>FLOUR</b> 5 LB. BAG <b>59¢</b>
RAW SPANISH <b>PEANUTS</b> 12 OZ. PKG. <b>69¢</b>	COOKED ONLY <b>BURRITOS</b> <b>\$3/\$5</b>

# Health Planning Guidelines Told

Hansford County Judge Johnnie C. Lee has received information about the set of health planning guidelines released by the U.S. Dept. of Health, Education and Welfare (HEW) to help curtail the costly development of unnecessary health services and facilities across the nation.

HEW Sec. Joseph A. Califano, Jr., announced the new planning guidelines on Wednesday, March 22.

The 11 guidelines are to be used by the nation's 205 local Health Systems Agencies and state agencies in developing and reviewing health plans, as required by the National Health Planning and Resources Development Act of 1974.

"This is a major advance in our pursuit of high-quality health care at reasonable prices for all Americans," Califano said.

The guidelines took effect last month and are essentially unchanged from the proposed guidelines offered for public comment on Jan. 20.

Major standards encompassed by the guidelines are the following:

1. A maximum of four hospital beds per 1,000 persons in a health service area.
2. An average annual occupancy rate of at least 80 percent for all hospitals combined in a health service area.
3. At least a 75 percent

capacity in the health care industry -- an excess which has needlessly added billions of dollars to hospital costs," Califano said.

He pointed out that the standards are subject to adjustment at the local or state levels to meet special circumstances and requirements.

The guidelines were first proposed by HEW last Sept. 23. In response to comments made in more than 55,000 letters and in five public hearings, the proposal was revised and offered in January for further comment. Califano said about 900 letters were received in response to the revised proposal.

Several clarifying changes were made in the revised guidelines, but no standards were changed.

"During both comment periods, we listened carefully to the public and to experts in the health care field," Califano said. "The result is a set of guidelines that will be both effective and reasonable."

To ensure that state and local health planning agencies are prepared to conduct the necessary analyses, HEW plans to conduct training programs for health planners through centers for health planning located throughout the country.

Califano said that the "promise of the guidelines rests not only on their content but also on the public awareness they have generated of the planning process established by the National Health Planning Act. The success of that process will depend largely on public support for effective action by local officials."

The guidelines are the first set issued under the National Health Planning Act. Additional guidelines will soon be issued to establish national health-planning goals and to improve the nation's health status, provide better access to health care and promote preventive services.

# Five State Raceway Season Opens

Five State Raceway will open its 1978 season April 2nd with \$280 in prize money up for grabs. An estimated 200 entrants are expected to participate as E.T. bracket racing returns for another exciting season at Five State Raceway.

Bill Couch of Spearman, one of the top ten points leaders in Stock bracket in 1977 and Hal Shufeldt of Spearman, one of top 20 points leaders in modified bracket, are both expected to return to Five State Raceway for the 1978 season.

E.T. categories and prize money breakdown will look like this:

CATEGORY: Pro Comp, E.T. (seconds) 0-10-99 1st Prize \$500, 2nd \$250, 3rd \$125, 4th \$75; 11-10-12-49, 1st Prize \$400, 2nd \$200, 3rd \$100, 4th \$50; Super Stock, 12-50-13-99, 1st Prize \$300, 2nd \$150, 3rd \$75, 4th \$75; Stock 14-00-21-00, 1st Prize \$200, 2nd \$100, 3rd \$50, 4th \$50.

Bracket racing can best be described as "run what you

bring". In addition to dragsters, funny cars, pro-stockers, modifieds and super stockers, participants also raced 4-wheel drive pick-ups, dune buggies, volkswagens, assorted family cars and street rods, a Mazda and a partridge in a pear tree that was disqualified.

Drug racing at Five State Raceway is more than just fast cars and competition. It also preys girls with short skirts and halter tops, a cold drink and a cool breeze under a warm Kansas sun, meeting other racers and making new friends, helping out another racer so they'll have his car ready for eliminations, burnouts, break-downs, breakouts, but most important... good clean American fun and a great way to spend a Sunday afternoon.

The super 78 season at Five State Raceway will also include races scheduled for April 16th and 30th, May 14th, June 4th and 18th, July 2nd and 16th, and August 6th. The highlight of the season will be the Mid-America Bracket Nationals scheduled for September 2nd and 3rd. This event which was previously called the Sunflower Bracket National will offer a purse of \$8,000.

Drug racers will also be competing for points and a chance to participate in the NHRA Division Five finals to be held at Bandimere Dragway in Denver, Colorado on September 15th. The top 10 points leaders in each bracket will represent Five State Raceway.

For the April 2nd race, the gates will open at 7 A.M. and time trials will begin shortly afterwards. Eliminations will begin at 1 P.M.

Entry fee for car, pit pass and driver is \$25. Pit passes are \$3 per person and general admission is \$5.

# CLE Courses Set At FPC

CLE for lawyer judges will be offered one day only, from 8 a.m. to 5 p.m. April 29, for a total of eight clock hours. Fee for the lawyer judge course is \$12.

The CLE courses will be taught by John Warner, Pampa attorney, who was municipal judge in Pampa for five and one-half years, and was Gray County Attorney for eight years.

Warner, who has practiced law since 1962, received his law degree from the University of Texas law school. He is a member of the Gray County Bar Association, the State Bar Association, and the American Bar Association.

He is also a member of the Trial Lawyers' Association of America, of Texas Trial Lawyers, and of Texas Criminal Defense Lawyers.

Fees for the CLE courses must be paid in time of registration. Registration may be made by coming to the FPC registrar's office in the administration building between the hours of 8 a.m. to 11:45 a.m., and 1:00-4:00 p.m., Monday through Friday, or by mailing a request for enrollment and a check to Frank Phillips Continuing Education, Box 311, Borger, Texas 79007.

The guidelines took effect last month and are essentially unchanged from the proposed guidelines offered for public comment on Jan. 20.

Major standards encompassed by the guidelines are the following:

1. A maximum of four hospital beds per 1,000 persons in a health service area.
2. An average annual occupancy rate of at least 80 percent for all hospitals combined in a health service area.
3. At least a 75 percent

# Antique Show Set At Pampa

The Twentieth Century Collation Study Club will hold their sixteenth annual Antique Show the 7th, 8th and 9th of April 1978 at M. K. Brown Auditorium in Pampa, Texas. The show will be open Friday and Saturday from 10:30 A.M. until 9:00 P.M. and Sunday from 1:00 P.M. until 6:00 P.M.

Opportunity Plus Incorporated will receive all proceeds from the sale. OPI is a student loan program which assists students throughout the Panhandle area with financial assistance in continuing their education. Students attend the school of their choice. There are presently over an hundred Post-secondary schools attended by students.

Opportunity Plus, Inc. offices are located in Canyon. OPI President, Mr. Milton (Buff) Morris, states that money used for the operations of OPI are raised apart from money raised for student loans so that every dollar given to assist students goes to the students. As of February 1978 OPI has a capital value of \$811,000 and has assisted approximately 3800 students. At present about 400 students are receiving loans.

The Twentieth Century Collation Division of OPI has a capital value of over \$26,000 and has supported 60 students through the plan amounting to loans of \$132,000.

Tickets to the Antique Show and Sale may be obtained at the cost of \$1.50 donation. Advanced tickets may be obtained for \$1.00 by April 6, 1978 from Citizens Bank, First National Bank and Las Pampas Galleries in Pampa or from any club member.

# Bowling News

Thursday Night Mixed Doubles 3-23-78

W L
Anthony Electric 40% 11 1/2
Elliott Construction 34 18
Ruthie's Beauty Bar 23 29
Hansford Implement 22% 29 1/2
United Grocery 21 31
Excel 21 31
Hi-Plains Auto 10 42

TEAM HIGH SERIES

Dairy Queen 2259
Anthony Electric 2203
Hansford Implement 2164

TEAM HIGH GAME

Elliott Construction 777
Dairy Queen 770
Anthony Electric 752

MEN'S HIGH SERIES

Charlie Greenwood 553
Verlin Behne 513
Tommy Reger 513

MEN'S HIGH GAME

David Lewis 211
Charles Elliott 200
Charlie Greenwood 192

WOMEN'S HIGH SERIES

Joyce Frost 529
Shirley Greenwood 522
Diane Elliott 452

WOMEN'S HIGH GAME

Shirley Greenwood 190
Jenny Jones 187
Joyce Frost 181

# Articles of Daily Features In Magazines

Articles on Cancer have been featured in several recent magazines such as the February issue of "Good Housekeeping" with a special 4-page section on cancer and where we stand today in the fight against it. This contains an excellent chart listing sites, signals, safeguards and survival rates; includes information on laetrile, viruses, treatment and major types of cancer.

The February 3rd issue of "Family Circle" has a major article on how one can reduce risks of developing cancer. In the January "McCall's" there is a column describing home-care for children dying of cancer; "Harper's Bazaar" for January has a piece on cancer rip-offs, which includes information on Laetrile and other cancer "cures"; and "Better Homes & Gardens" for December 1977 had an article on do-it-yourself medical tests for all diseases including cancer and lists the seven warning signals.

Visit the Grover Library and take note of some of the articles and publications concerning the fight against cancer.

# Hospital News

Patients in Hansford Hospital are Colleen Shedd, Gloria Roberts, Patty Moore and daughter, Leonard James, Thelma Blevins, Ivan Vernon and Tammy Shipman.

Dismissed were John Schaffner, Gene Loomis, Pat Patzold, Joyce Shipman, Marie Bratton and Margaret Shedd.

PLAY **DOUBLE CASH BINGO** SERIES II

Our first game was such a hit, we decided to do it again!

UP TO \$2000

MARKET BASKET CUT BEANS 5 15 OZ. CANS

FINE FARE BATHROOM TISSUE 4 ROLL PKG. 69¢

MIX LEONARD WHITE YELLOW DEVIL 49¢

MRS. TUCKER'S SHORTENING PRE-CREAMED 99¢

LIGHT CRUST FLOUR 49¢

MUGNIFICENT HANDPAINTED Stoneware Mugs at magnificent savings!

any regular mug only \$1.49

any jumbo size mug only \$2.99

compare to \$2.99 value

with 10¢-AND EVERY 5th PACKAGE

BEER REG. OR DIET 4 PAK GLASS \$1.09

PORK AND BEANS SHOW BOAT 5 14 1/2 OZ. CANS \$1

KOHNITZ MIX CORN WHOLE KERNEL GOLDEN 4 12 OZ. CANS \$1

FINE FARE WHOLE TOMATOES 3 16 OZ. CANS \$1

SCOTT TOWELS 69¢

HEFTY LAWN & LEAF BAGS \$1.79

FINE FARE BLEACH GALLON 59¢

JENO'S PIZZA CHEESE 'HAMM.' 'SAUSAGE' 'PEP.' 79¢

LUXURY ROUND ASS'T. FLAVORS BELL ICE CREAM 1.09

SUN FRESH FROZEN SLICED STRAW-BERRIES 3 10 OZ. CRTNS. \$1

ROUND STEAK UNITED TRU-TENDR 1.59

RIP STEAK UNITED TRU-TENDR 1.49

CHUCK STEAK WASTE FREE LB. 1.89

BONELESS SKILION UNITED TRU-TENDR 1.89

PORK OTR. LOIN 910 11 CHOPS LB. 1.39

SWIFT VIENNA SAUSAGE 3 5 OZ. CANS \$1

BONELESS STEW EXTRA LEAN CUBES OF BEEF LB. 1.39

BEEF RIBS NAVEL CUTS LB. 59¢

BONELESS SHOULDER ROAST WASTE FREE 1.29

TYSON'S CHICKEN WEINERS LOW IN FAT & CHOLESTEROL 12 OZ. PKG. 59¢

TYSON'S CHICKEN BOLOGNA LOW IN FAT & CHOLESTEROL 12 OZ. PKG. 69¢

TYSON'S CORNISH GAME HENS 22 OZ. EACH \$1.29

MEAT OR BEEF FINE FARE BOLOGNA

OR 'COOKED SALAMI' 'PICKLE & P.M.' 6 OZ. PKG. 59¢

WISCONSIN REBRIND LONGHORN CHEESE 8 LB. \$1.69

FRESH WATER CATFISH STEAKS LB. 98¢

WE GIVE \$2000 TO THE BAKER WHO BAKES THE MOST BREAD APRIL 6TH

CALIF. CHOICE NAVEL ORANGES 4 LBS. \$1

SCHOOLBOY SIZE APPLES 89¢

CHERRY RED RIPS TOMATOES 3 PINTS \$1

CALIF. FRESH BROCCOLI 1 LB. 39¢

BAKER SIZE POTATOES LB. 19¢

LAWREY SUPER TACO SHELLS 10 CT. 69¢

ELLIS 30 OZ. CAN 69¢

TAMALES 69¢

GARDEN CLUB APPLE 20 OZ. JAR 59¢

BUTTER 59¢

JERGEN'S LOTION MILK 5 8 OZ. BARS \$1

WILKINSON STAINLESS STEEL #303 C/S BLADES 69¢

COLGATE TOILET PASTE SHAVE 11 OZ. CREAM 69¢

CREST 16 OZ. TOOTH PASTE 79¢

3K DIF. 31 OZ. SHAMPOO 39¢





JUNIOR CHAMPION -- Buddy Pool, right, son of Mr. and Mrs. W. C. Pool of Morse, is the Junior Division Hansford County Spelling Bee Champion. Edward Cook, son of Mr. and Mrs. Leland Cook of Spearman, is the Alternate Junior Division Champion.



TOP SPELLER -- Tuwana Byrd, right, eighth grader and daughter of Mr. and Mrs. Preston Byrd of Spearman is the Hansford County Spelling Bee Champion. Alternate Champion is Susan Davis, daughter of Mr. and Mrs. Lynn Davis of Morse.

Baseball Registration To Conclude **QUACK IDEAS!**

NOTICE:

Baseball registration will conclude Saturday, April 8th at 5:30 P.M., Cates Men and Boys Wear. Everyone between the ages of 8 and 15 has to register before 5:30 Saturday. Try-outs for Little League will be held Monday and Tuesday, 5 P.M., at the League Ball Park. All players, who previously have played on a team, in the Majors, will not have to try out. For further information contact Little League President, Ronnie Antalek.



RONNIE BURKE

Officers for the Little League include: Ronnie Burke, president; Charlene Bulls, vice president; Nancy Phillips, Secretary-Treasurer; P. A. Lyon, III, player agent; Umpire, Chief, Jerry Brock.

The One And Only Scheduled

To Patrons of the Lyric Theatre in Spearman who might have heard otherwise--The One and Only is booked into the Lyric April 12-18. Alton Ellsworth has announced. The film was cancelled after it had been put on the calendar and on many of the calendars had been marked off but Ellsworth stated that The One and Only has been reinstated and will show in Spearman April 12-18 as planned.



In the 1940s, Dr. William F. Koch claimed he could cure cancer by injecting patients with a substance he called Glyoxylic Acid. Government research revealed his "cure" consisted of nothing more than distilled water.



Now, some people believe Laetrile can cure cancer, but experts at the United States Food and Drug Administration say it is worthless, dangerous and may be contaminated. They recommend that anyone who suspects he has cancer see a doctor immediately and stick with the prescribed treatment.

Mr. and Mrs. Billy Miller spent 4 days in Tyler the past week.

PSU Bull Sales Held

Eighty head of Hereford, Angus and Charolais bulls sold for \$58,500, for an average of \$731.25 at the 26th Annual Performance Test-Bull Sale at Panhandle State University.

The top-selling bull was a Hereford that brought \$3,100 to Richard Sell of Booker, Tx. The purchaser was Travis Hepner of Freedom.

The second high-seller was a Hereford that went for \$2,100. It was consigned by Parcel Herefords of Coldwater, Ks., and was purchased by R & R

Cattle Co. of Coldwater. Other top selling bulls, listed with consigner first and purchaser second, included: Sell Herefords of Booker for \$1,700, to J. R. Wheat of Higgins; Sell Herefords, \$1,150, John Keller

of St. Francis, Ks.; Leven Angus of Panhandle, Tx., \$1,125, to Don Reynolds of Crawford, Ok.; Panhandle State University, an Angus, \$1,025 to John McEachern of Jett, Ok.; Bob Andrews Herefords of Ol-

OFFERED BY: EMMETT R. SANDERS, REALTOR



PRICED REDUCED on this lovely 3 bedroom brick home, 2 baths, fireplace, carpets, dishwasher, disposal, central heat and air, fenced yard, double garage, choice location, wide lot.



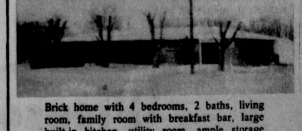
2 bedroom stucco, detached double garage is extra large, new carpets, quiet location on 110 ft. lot, owner will carry loan.



GROWING WITH SPEARMAN, now under construction in The Delon Kirk Addition, on South Brandt. This one is sold. Construction underway on another one.



This 2 bedroom stucco home is in excellent condition. New carpets throughout. Formal dining room. Detached double garage; located near school on 75 ft. lot. See it now.



Brick home with 4 bedrooms, 2 baths, living room, family room with breakfast bar, large built-in kitchen, utility room, ample storage space, walk-in closets, built-in desk, bookcases and cabinets, huge screened sun room, nice storm cellar, all ideally located on excellent fenced 125 foot corner lot, with boat port and car port on rear, garage on front. Many extras for comfortable contemporary living. Possession June 15; shown by appointment only.

Older 3 bedroom house on 2 lots, large basement. 128 ft. lot on 13th street (county road).

EMMETT R. SANDERS, REALTOR 659-2516 NIGHTS 659-2601

this year...right here... you need 'em both



A consistent yielder year after year

Pioneers brand 8311 has proven itself to be a dependable sorghum under many conditions. These bred-in characteristics make it just right for planting in the Texas Panhandle, South Plains and Eastern New Mexico:

- High test weight grain
• Outstanding disease tolerance including MDMV, smut and others
• Good standability with good roots and sturdy stalks
• Outstanding height uniformity with good head exertion



Outstanding yielder with excellent standability

This new sorghum hybrid has a superior yield record in this area. Pioneer brand 8501 produces heavy test-weight grain and has outstanding stress tolerance. Take a look at these other characteristics that make 8501 so dependable:

- Yields well under limited irrigation or dryland
• Excellent seedling vigor and disease tolerance including smut, MDMV and others
• Uniform head height with good exertion
• Beautiful field appearance

Get greenbug tolerance without giving up yield!

New Pioneer brand 8451 delivers top yields in its class of medium maturity sorghum hybrids. And its greenbug tolerance protects 8451 through serious infestations. This hybrid has a lot going for it in '78.

- Outstanding greenbug tolerance without sacrificing yield
• Good seedling vigor
• Good tolerance to MDMV and head smut
• Dries fast for earlier harvest
• An all-around performer, irrigated or non-irrigated



Pioneer Hi-Bred International, Inc. Southwestern Division Plainview, Texas

Pioneer is a brand name; numbers identify varieties. Registered trademark of Pioneer Hi-Bred International, Inc. © PHYB '78

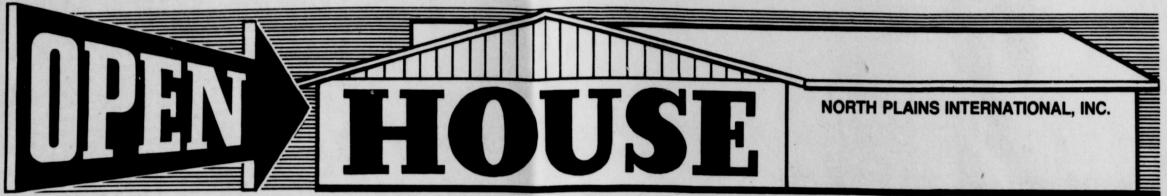
The limitation of warranty and remedy attached to each bag of Pioneer brand seed is a part of the terms and conditions of the sale thereof.

# North Plains International, Inc.

HWY. 207 SOUTH

SPEARMAN

Cordially Invites Your Entire Family To Its



THURSDAY, APRIL 6

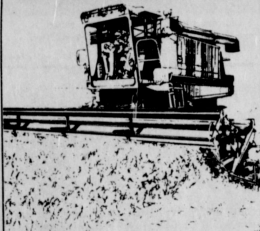
7 A.M. TO 5 P.M.

★ PANCAKE & SAUSAGE MEAL SERVED FOR BREAKFAST & LUNCH

★ DONUTS & REFRESHMENTS ALSO SERVED ALL DAY

Farm Equipment Displays Available Including the Following

**The new IH Axial-Flow combines are here!**



**Harvest more of what you grow.**

These International Axial-Flow combines really are a revolution in combining reliability and productivity. Tests on more than a million acres of crops prove the Axial-Flow harvests more crop than conventional combines.

An IH Axial-Flow combine will also give you better quality crop—with less crackage and Jockage. You can even harvest faster with an Axial-Flow, and still miss less grain. And the simple, rugged new Axial-Flow design will mean far less down-time and easier maintenance. In fact, straw walkers are completely eliminated! Stop in soon and see the revolution in combining—the new International Axial-Flow combine.



1586—161.5 PTO hp

**International® Series 86 Tractors**

... offering power and comfort far beyond anything you've ever experienced

This is the year to go International. Because Series 86 tractors offer operating sophistication that exceeds that of any tractors ever built. Plus maintenance and service ease not previously achieved in farm tractors. Add in many other design advancements that sweep away preconceived ideas about tractors, and you're left with only one decision. What size International to settle on!



1486—145.7 PTO hp



1086—131.4 PTO hp

- **Mid-mount Control Center.** Puts you far forward, so your ride is better, handling is easier, visibility is unexcelled.
- **Clear-view Design.** You look out through large expanses of tinted safety glass. Lighting patterns front and rear are unequalled.
- **Control System.** Armchair consoles, extra-convenient throttle, power-assisted brakes and clutch, modular instrument cluster.
- **World of Quiet.** Interior sound levels are reduced dramatically, as low as 78.5 dB(A) on some models.



986—105.6 PTO hp

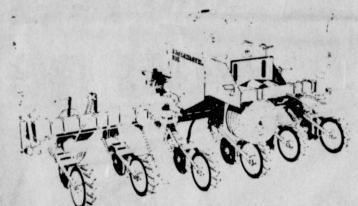


886—86.1 PTO hp



Hydro 186—105 PTO hp

The flexibility of a tool bar... the simplicity of air



**International 500 Cyclo Planter**

Before you decide on a new planter, be sure you check out the convenience and reliability of the Cyclo 500. It combines the speed and simplicity of air-powered seed delivery with the flexibility and maneuverability of tool bar 3-pt. hitch mounting. Ideal for fast transport, for holding narrow headlands, and for odd-shape fields. And it handles a variety of seeds, sized or unsized, all through the same metering system.

- Sizes: 6 and 8-row wide and narrow; 12-row narrow.
- Quick-change seed drums can be switched in just minutes.
- Big 11-bu. centrally seed hoppers carry you a half day without refilling.
- Electronic monitors take the guesswork out of planting.
- Attachments include chemical applicators, assist wheels, plus many others.

**Please come by and register for a IH 21" self propelled Lawn Mower to be given as a door prize**

**WORKING DISPLAY MODEL OF AXIAL FLOW COMBINE ON DISPLAY.**

**IH Series 86 tractors and 4-wheel-drives prove so reliable they're now covered with a COMPLETE TWO-YEAR WARRANTY**

It's an unprecedented two-year warranty from International Harvester. And don't confuse this IH warranty with other tractor warranties that cover only wear parts. This IH warranty covers every part on a new Series 86 tractor. Yes, every single part... for a full two years or 1500 hours, whichever comes first.

The only exceptions are the tires and radio, which are warranted to their own manufacturers. How can IH offer such an all-inclusive warranty?

Because the Series 86 proved reliable when it was first built. In fact, IH has been adding new actual... in reliability ever since.

For example, you'll receive a forged Angler®—which gives you the go speed changes—now comes with a new heavy-duty lube and greatly improved lubrication system.

Even the reliability of the hydraulic system has been improved—with an all-the-factors, 20-minute filtered flush so that both the system and the fluid are absolutely clean and free of particles.

Our aim was to take IH power and comfort and give it even greater simplicity, efficiency, and reliability. And the unmatched IH warranty proves we've done it.

From 86 to 161 (pto horsepower)... plus the 4186, the 4386 and the 4586 4-wheel-drives... IH guarantees you power, comfort, and reliability.

No other tractor warranty plan even comes close. So look over this warranty and the tractor you need... at your IH Dealer soon.