

an electric... proper care... door remains... a state odor... the cabinet

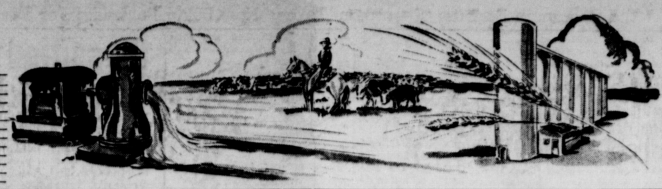
shrine... and garden... the beach; and... seek it in... all plants that... grounds unduly... ting near the

A Clean... was begun... become pop... War II when... began to pu... utility value... plants are als... more widely at... use.

of... of 1948... "popo"-Popo... santeris under... leaves to obtain... use.

meta... of cotton were... United States in... best yards... and the earth 24

ounds... grounds and... use.



HANSFORD COUNTY
The Worlds Finest Certified
Wheat producing Area

The Spearman Reporter

HANSFORD COUNTY
Lowest average temperature
in the state of Texas

VOLUME 46, NO. 22

The Spearman Reporter, Spearman, Texas

THURSDAY MAY 7, 1953

Maj. Reed Continues To Blast Communist Planes



Spearman Flier Gets MIG Kill

SEOUL (AP)—Maj. Roy L. Reed, 814 E. Catalina, Santa Ana, Calif., shot down a MIG plane yesterday, the Fifth Air Force reported.

Major Reed, a Marine Pilot flying with the Air Force, now has a record of two MIGs shot down and one damaged. The Air Force reported that U. S. pilots shot down seven MIGs and probably destroyed an eighth over North Korea Sunday.

Another U. S. pilot, jet ace Capt. Joseph McConnell Jr., of Azusa Valley, Calif., shot down a MIG in the air battle but another MIG's cannon set his plane afire at 49,000 feet.

McConnell, who now has eight MIGs to his credit, managed to glide over the Yellow Sea, where he bled out. He was rescued by 3-Hooters.

Spearman Boy 15 Dragged To Death By Roped Horse

A 15-year-old boy attempting to rope a horse in a pasture near his home was dragged to death late Tuesday afternoon.

John Roy Crain, son of Mr. and Mrs. O. J. Crain, was pronounced dead on arrival at Sanford Hospital at 6:00 P. M. Tuesday, May 6th. Members of his family had found him fatally injured 50 minutes earlier, after he had become entangled in a rope and dragged by a horse.

The accident happened on the farm of the boy's parents 3 miles south of Waka. According to a funeral home attendant, members of his family said young Crain had come into a small pasture, within sight of the farm home to rope a horse. Somehow he became caught in the rope and the horse dragged him over the pasture, injuring him fatally.

Members of the family said they had seen the boy preparing to rope the horse. A few minutes later they looked out again and saw the boy on the ground.

There were no witnesses to the accident. Young Crain was taken to the hospital in a Boxwell Bros. ambulance.

John Ray Crain, a student at Spearman High School, was a member of the Waka, Brothers Branch of the 4-H Club.

Waka 8 years ago from Colby, Okla.

He is survived by his parents, Mr. and Mrs. O. J. Crain, and two sisters, Mary Alice, of the home address, and Mrs. Dan

Vera Wroten Closes Half Of Cemetery

Vera L. Wroten couldn't work at the Hansford Cemetery on the appointed day; so she went over two consecutive days and grubbed cast and bare-grass from five of the ten acres to be cleaned. Then for good measure, she filled it neatly, so the trucks could get to it easily, to be hauled away. That's All! Except Vera apologized to the Cemetery association for not being able to help them out on the day they set aside for the special clean-up of the Hansford cemetery.

NOTICE
The Annual Flower Show, sponsored by Delphinium Flower Club, will be held at the First Methodist Church, Spearman, Texas, May 9, 1953. Exhibits must be in place between the hours of 7:30 a. m. and 10:30 a. m. of May 9.

James Cayton Out Of Service

James Cayton called home Sunday night from Camp Kilmer New Jersey to tell his folks he would soon be out of the army and be home. James has been stationed at Mitz France for the past year.

Mr. and Mrs. L. T. Donsett are the proud parents of a son born April 20th at The Hansford County Hospital.

The little fellow's name is Buddy Ray.

Harold Dean Cooper, who has spent the past 1 month at the Marine Detachment Navy Fuel Annex, San Diego, is spending a 30 day leave with his parents Mr. and Mrs. Bill Cooper. He will return to his base this weekend.

Bake Sale

The Club Class of the Union Church are having a Bake Sale Saturday, May 9, in the Club Dress and Beauty Shop. Proceeds from this sale will go to the Youth Camp. They invite everyone to come in and buy their "sister's" smile of home baked pies, cakes and cookies.

WEATHER

DAYS	MAX.	MIN.	RAIN
25	81	59	0.00
26	82	41	0.00
27	82	59	0.05
28	81	42	0.00
29	82	56	0.00
30	81	54	0.00

POP... had made... mattress and... had automa... mattress and... 616 B. Barkley... 22 24

POP... had made... mattress and... had automa... mattress and... 616 B. Barkley... 22 24

POP... had made... mattress and... had automa... mattress and... 616 B. Barkley... 22 24

ANNUAL FLOWER SHOW

Sponsored By
DELPHINIUM FLOWER CLUB
AT FIRST METHODIST CHURCH
Spearman, Texas, May 9, 1953
MRS. P. A. LYON, GENERAL CHAIRMAN

- ### GENERAL RULES
1. Exhibit must be in place between the hours of 7:30 and 10:30 of May 9, 1953.
 2. Any amateur gardener in this community or surrounding communities may compete.
 3. Only one entry in each class may be made by an exhibitor.
 4. Flowers for arrangements are to be home grown, but not necessarily by exhibitor. Wild flowers will be accepted.
 5. Foliage allowed in all Arrangement Classes.
 6. All entries in Horticultural Classes must be grown by exhibitor and should be labeled as to variety wherever possible.
 7. Pot plants must be in possession of exhibitor for at least three months.
 8. The decision of the Judges will be final.
 9. Containers will be furnished by the Show Committee for Specimens only.
 10. The Delphinium Flower Club assumes no responsibility for damage or loss of property, although care will be exercised.
 11. All exhibits must be removed by 4:00 P. M. May 9, 1953.

- ### SCHEDULE
- #### SECTION A ANNUALS
- Class 1. Corn Flowers, 5 stems
 - Class 2. Phlox, 3 stems
 - Class 3. Poppies, 3 blooms
 - Class 4. Any Annual (not previously listed) 5 blooms
 - Class 5. Collection of Annuals, 1 bloom or spray of each variety.

- #### SECTION B PERENNIALS
- Class 6. Dianthus (hardy garden pink) 10 stems, one or more varieties.
 - Class 7. Aquilegia (Columbine) Specimen Spray
 - Class 8. Aquilegia, 2 sprays one or more varieties.
 - Class 9. Poppy, 3 blooms, Oriental
 - Class 10. Poppy, 3 blooms of any other variety.
 - Class 11. Gaillardia, 5 stems
 - Class 12. Delphinium, 1 spike
 - Class 13. Lillium Candidum (Madonna Lily) 1 stalk.
 - Class 14. Lillium, 1 stalk, any other variety.

- #### SECTION C BIENNIALS
- Class 15. Dianthus Barbatus (sweet William) 5 stem, 1 variety
 - Class 16. Campanula (Cantebury Bells) 1 spike
 - Class 17. Viola, 10 stems, one or more varieties.
 - Class 18. Pansies, 10 stems, one or more varieties.
 - Class 19. Antirrhinum (Snapdragon) 3 spikes, one or more varieties.

- #### SECTION D PEONIES
- Class 20. Specimen bloom, any variety.
 - Class 21. Three blooms, 1 each of 3 varieties, double.
 - Class 22. Three bloom, 1 each of 3 varieties, double.
 - Class 23. Three blooms, 1 variety, single.

- #### SECTION E ROSES (named if possible)
- Class 24. Three blooms of 1 variety.
 - Class 25. Three varieties, 1 bloom each.
 - Class 26. Specimen bloom.
 - Class 27. Polyantha rose, specimen spray.

- #### SECTION F CLIMBING ROSE
- Class 28. Specimen spray, not over 2 feet.
- #### SECTION G IRIS
- Class 29. Specimen stalk
 - Class 30. Collection of three, 1 or more varieties.

- #### SECTION H DWARF IRIS
- Class 31. Specimen stalk.
 - Class 32. Collection of three, 1 or more varieties.
- #### SECTION I FLOWERING SHRUBS
- Class 33. Specimen spray, not to exceed 3 feet.

- #### SECTION J POTTED PLANTS
- Class 34. Specimen, house grown.
 - Class 35. Collection of 3 or more plants either in 1 pot or separate containers.
- #### SECTION K GARDEN PRODUCE
- Class 36. Collection of vegetables or fruit grown by exhibitor.

- #### SECTION L UNSCHEDULED
- Class 37. Any worthy exhibit not provided for in schedule.
- #### SECTION M ARRANGEMENT CLASSES
- Class 38. Arrangement for dining table.
 - Class 39. Arrangement for coffee table.
 - Class 40. Arrangement for console table.
 - Class 41. Arrangement for buffet.
 - Class 42. Arrangement for bedside table.
 - Class 43. Centerpiece for bridal shower.
 - Class 44. Centerpiece for baby shower.
 - Class 45. Table setting for child's birthday party with flowers.
 - Class 46. Basket arrangement, (glass or straw)
 - Class 47. Arrangement of roses in glass.
 - Class 48. Any worthy exhibit not provided for in schedule.

- #### SECTION N PUBLIC ARRANGEMENTS
- Class 49. Arrangement for Church.
 - Class 50. Arrangement for Office.
- #### SECTION O NOVELTY ARRANGEMENTS
- Class 51. Arrangement for picture or teapot.
 - Class 52. Miniature arrangements, not to exceed 3 inches overall dimensions.
 - Class 53. Small Arrangements over 3 inches, not to exceed 8 inches overall dimensions.
 - Class 54. Dish gardens.

- #### SECTION P CORSAGES
- Class 55. Sportswear
 - Class 56. Afternoon
 - Class 57. Evening.
- #### SECTION Q Kindergarten, 1st, 2nd, and 3rd Grades.
- Class 58. An arrangement in my favorite container.
 - Class 59. Breakfast tray for a sick old (must include flower arrangement).

- For Fourth, fifth and Sixth Grades
- Class 60. Miniature arrangement not over 6 inches high.
- Class 61. Flower arrangement using colors of a bird or butterfly. Picture of same to accompany exhibit.
- For Junior High students.
- Class 62. Still life composition suitable for use as the cover of a magazine, must include flower arrangement. Composition not to exceed 20 inches in width, 15 inches in depth and 27 inches in height. Pupil to provide his or her own background.
- Class 63. Girls only.
- A one place table setting for luncheon, including flower arrangement, linen, china and glassware. No silver allowed. To be staged on individual card table.
- Class 64. Boys only.
- Animal made out of vegetables.

McClellans Will Celebrate 30th. Anniversary With Case Day May 8

Announcement is carried in the advertising columns of the Reporter featuring the 30th Anniversary and Case Day to be held at the R. L. McClellan and Sons Sales rooms in Spearman tomorrow (May 8th).

It is a far cry from the small beginning made by R. L. McClellan as Case dealer in Spearman back in 1922 when the farm organization manufactured Case Thrashing machines, steam and gasoline engines, and the present day modern power farming machinery.

Lee McClellan, founder of the R. L. McClellan and Sons organization in Spearman, can recall that after opening the business in 1922 he remembers to have sold 5 combines in 1923. The Case combines were first manufactured and placed on the market in 1923. Lee says he sold only six of the combines in 1924, but the big year of all history was back in 1924 when 30 Case combines and a large number of Case tractors were sold by the Spearman organization.

Lee remembers that Case first introduced the Case Model L tractor in 1925 and that was the year he sold 26 of those tractors.

Of course there have been big years and lots of advancement in power farming machinery during the time the local Case dealers have served the public of this area.

Lee McClellan has placed most of the responsibility of the present organization on the shoulders

of his two sons, Roy Lee and Wilson McClellan and his son-in-law Jimmy Hicks. This younger generation have the responsibility of starting this 30th anniversary party, and have made elaborate plans to entertain their friends of this area of the country.

The party will start with a "coffee" and get-together at 8:30 a. m. at the company home. This will be followed by adjournment to the Lyric Theatre where specially prepared moving pictures will be shown depicting the progress that has been made in farming from the days of the wooden stick plow to the present day of efficient modern power farming machinery.

Following the picture show will be the free noon luncheon to be held at the company sales room.

In the afternoon plans call for a demonstration of the Case Excelsior hitch tractors. This will be followed by a drawing for special prizes to be awarded to some of those who register. The announcement states that door prizes will be given all ladies and children who attend and register.

The Case organization here has added a few lines of machinery that work hand in glove with the fine power farming equipment. These include: demster windmills, demster grain drills, demster pumping equipment, May-rath grain loaders, Briggs and Stratton engines and the full line of Peerless Pump equipment for irrigation plus a complete supply of irrigation needs including the Martin disc and Star-Race Sprinkler system.

Of course there have been big years and lots of advancement in power farming machinery during the time the local Case dealers have served the public of this area.

Lee McClellan has placed most of the responsibility of the present organization on the shoulders

Outstanding Lion Club Ladies Night Held Tuesday May 5th.

One of the largest attendance ever recorded at a Lion Club Ladies Night were present Tuesday evening at the H. D. Club rooms to witness the installation of new officers and to enjoy a well balanced program.

Past President Zack Jagger, was Master of Ceremonies for the Ladies Night Program, and he mixed his jokes at the ladies with quotations from famous writers to compliment the fairer sex.

A high school quart featuring the singing of Georgia Hazard, Mary Nell Chambers, Nancy Overton and the piano accompaniment of Kay Howell provided music.

Lion Virgil Floyd presented the club Sweetheart, Marilyn Crawford with a lovely wrist watch as a gift from the club for her faithful service during the past Lion Year.

Ralph Randel of Panhandle, Texas, Past District Governor of District 27, and present International Committee man from this district, installed the new officers of the club. Randel made an inspiring talk to both the new officers and the membership of the club, and outlined the duties and responsibilities of each new officer. The officers installed were: R. L. Kleeberger, President; Oscar Donnell, First Vice President; R. Y. Jones, Second Vice President; Roy McCormick, Third Vice President; Russell Townsend, Secretary; Treasurer; Wilson Buchanan, Tall Twister and J. D. Floyd, Lion Tamer.

Retiring officials are Virgil Floyd, President and Pete Fisher, Secretary - Treasurer. The other members of the official family were all advanced from offices held during the last Lion year.

Charlie Engholm of Boys Ranch was the guest speaker for the occasion. He was introduced by Lion Bill Miller. Engholm brought a very attractive entertainment program along from the ranch, featuring cow boy songs and stunts by a half dozen of the boys who make their home at Boys Ranch. David Ash was Master of Ceremonies for the program, and the lady kept the

Cemetery Day Committee

Every person interested in the Hansford Cemetery is again reminded of the day set aside for work in the Cemetery-Saturday, May 9th.

His Willhams, President of the Cemetery Association, together with Cliff White, Vice President and Wilson Buchanan, Chairman of the Clean Up Day, are organizing the work in order to save time and effort and still complete all the necessary work.

All interested people are asked to meet at the cemetery at 9:00 a. m. on Saturday morning with hoes, rakes, shovels, wheelbarrows, etc. The Explorer Scouts plan to assist the community in this effort.

Ladies are requested to bring food for the picnic lunch at noon. Any person who is unable to help but want to have a part in the work may send food to the home of Mrs. J. H. Buchanan Saturday morning where it will be picked up and taken to the cemetery at noon. Any inquiries regarding the picnic can be addressed to Mattie Ruth Richardson.

Rev. O. L. Bryant is attending the State Baptist convention in Houston this week. Mrs. Bryant and Timmy are in Henderson, visiting her father who is quite ill there in a hospital.

- President—Mrs. John R. Collard, Jr. Phone 4651
- General Chairman—Mrs. P. A. Lyon, Sr. Phone 2821
- Secretary—Mrs. R. B. Archer Phone 5621
- Schedule Chairman—Mrs. Bob Schell Phone 4674
- Chairman—Mrs. Ray Phelps Phone 5561
- Classification Chairman—Mrs. Vester Hill Phone 8281
- Chairman of Judges—Mrs. E. N. Richardson Phone 5961
- Hospitality Chairman—Mrs. Eld Clark Phone 5961

Share The Fun Festival

Are you entering the Share The Fun Festival? This is a popular question these days among 4-H club members in Texas. In many clubs and community centers young people with talent and originality are busy with this, the recreation phase of the 4-H program.

According to Lucille Moore, recreation specialist for the Texas Agricultural Extension Service, a Share The Fun Festival is designed for just that purpose—to give young persons the opportunity to create fun and entertainment for themselves and their families and friends. Fun Festivals are nationwide and sponsored by the U. S. Rubber Company Tire Division and its affiliated local Tire Dealers.

Miss Moore says the plan provides means for 4-H club members to display musical or other artistic ability and talent in a program with members of the community attending as the audience. Special numbers presented by the 4-H club members are judged by a select committee with standardized score cards and the first place winner will be sent to the Festival held in each of twelve Extension districts in the state. From the district presentations, winners are to be judged to perform at the state Share The Fun Festival to be presented at Tuxedo A. and M. College, June 21.

For example, the specialist says Hoakin county winners were recently selected from fifteen entries at the Fun Festival attended by more than 250 persons at the American Legion Hut in Sulphur Springs. Arranged by Adale Hale, county home demonstration agent, and De Roy Stockard, assistant agricultural agent, the Fun Festival was judged by a committee of Extension agents, Curtis Trent and Berna Jean Taylor, Wood county; Mrs. Patricia Anderson, Lamar, and Arthur Barlemann, Van Zandt.

The winner entry was presented in an original pantomime by 4-H Club: Barbara Bonzier, Mary members of the Sulphur Bluff Sherry Simpson, Mary Davis, Janice Larky, Freddie Lou Bearden, Alice Fielden, Elizabeth Bourland, Lou Wilda Lowright and Shirley Sington.

Livestock Producers Should Watch Range For Poisonous Plants

Danger lurks for livestock on many ranges of the state among the new and tender growth of certain plants that are poisonous to range animals. Death losses can be prevented, says A. H. Walker, range specialist for the Texas Agricultural Extension Service, through the use of good range management practices.

The first job is to determine whether or not poisonous plants are growing on the range and if they are present, Walker says livestock should be removed from the area until the danger period is past.

The buds, leaves and tender shoots of all trees in the oak family contain poisonous substances which cause severe illness in cattle, sheep, goats and horses, says Walker. This condition occurs from the time the buds begin to swell until the leaves become dark green. The low-growing oaks commonly called skin or shinary oak cause the most trouble because livestock can get to them with ease. Cattle are most commonly affected.

The specialist explains that oak poisoning is more common following drought periods because the livestock are hunting for green feed and too, other types of green forage are scarce. Death losses from oak bud poisoning ran extremely high, says Walker and no effort should be made to graze areas where the oaks are growing during this bud period. Either move the cattle to open grasslands or feed them in a small pasture or feed lot, advises Walker.

Poor grass cover in the bitter weed areas of the state has made many ranges ripe for an invasion of bitterweeds. This plant is especially poisonous to sheep and is cumulative poison. One to two pounds of dry plant will kill a grown ewe. Deferred and rotation grazing are recommended control practices for this

plant.

Leaves and peavine are other plants which make a heavy growth in the spring when conditions are favorable and livestock usually graze them only when desirable plants are scarce. Livestock should not be permitted to graze in pastures where these plants are growing until there is sufficient growth of non-poisonous plants to take care of the forage needs of the livestock. The common cocklebur in the seedling stage is very poisonous to hogs and to a lesser degree to cattle.

Good range management, explains Walker, is the key to poisonous plant control. Keep feeding hay or other forage until the good forage plants have time to develop on the range, says Walker. Livestock prefer this good forage and seldom will graze poisonous plants if good grass or legume plants are available.

FOR SALE—Nearly new wash-machine motor. Canadian Truck Line, phone 3951. 21 31-p

FOR SALE—ONE G. E. Refrigerator One Garland table top Gas range and One Divan all in good shape. 215 N. Hestwood.

FOR SALE—By the board of trustees of Gruber Independent School District, 120 Rimhill School house, brick construction. Located 2 1/2 miles NE of Gruber. Total section 10, block 43, H and TR Survey. No land included. Building to be moved. Sealed bids to be opened May 14 at 2:00 p. m. The Board of Trustees reserves the right to reject any and all bids.

FOR SALE—Nearly new Cooper "Chopper" 26 inch lawn mower. In good condition. Reasonable. C. R. Dale, Phone 3761. No. 21 2-2

Gasoline Pete

BY Gene & Sparky

You'll think you are "seeing double" when you watch our fast and complete auto service.

Spearman Super Service
Hwy. 117 Ph. 4061

BUSINESS OPPORTUNITY—**GUARANTEED INCOME**—Members of National Concern has opening in this immediate area for men and women who have 2 to 4 hours a week spare time. Paying up to \$6.00 per hour.

NO SELLING! This work consists of taking care of one and five cent candy merchandising dispensers. Physical condition or education not important.

THIS IS NOT A GET-RICH-QUICK scheme or something for nothing, but hundreds of people in many walks of life are making a steady, sizeable income from this business.

TO QUALIFY for work, you must have car, reference and \$175.00 cash, which is secured by inventory and controlled by your. Liberal financial assistance given on expansion program.

For personal interview, include phone in application. Write P. O. Box 1054, Dallas, Texas.

FOR SALE—One ton Chevrolet Panel truck. New 1952 Motor, Radio Heater.

FOR SALE—One ton 1940 Chevrolet Panel Radio, Heater. See Jay Turner, Corner Drug. No. 8 rtn-c

HELP WANTED FEMALE—**AVON PRODUCTS**—Makers of five cosmetics and Toilettes needs ambitious women over 35 to service customers in Spearman. Opportunity to earn \$1 or more per hour. Write Box 1054 Amarillo. Immediately get started for Mother's Day and Graduation orders. No. 19 r6-c

FARM AND RANCH LOANS, E. C. Greene, Phone 4261, P. O. Box 143, Spearman, Texas. No. 52 rtn-c

We have these OUTING PALS Advertised in **LIFE and POST**

Floodlight LANTERN Folding CAMP STOVE

They go together—everywhere outdoors! Used and endorsed by leading outdoorsmen! Instant lighting—make and burn own gas from gasoline. Camp Stove cooks like a city gas range; folds up and carries like a suitcase! Lantern Floodlights 100-ft. area. Both are windproof, safe. Come in. See them demonstrated.

Spearman Hardware JOHN HISHOP

THE CHRISTIAN SCIENCE MONITOR

Often referred to as "a newspaperman's newspaper" the MONITOR covers the world with a network of News Bureaus and correspondents.

Order a special introductory subscription today—3 months for \$3. You'll find the MONITOR "must reading and necessary as your HOME TOWN PAPER."

The Christian Science Monitor One, Harvard St., Boston 15, Mass., U.S.A. Please send me an introductory Monitor. My subscription is made 1 price \$3.

one mile south and one mile west of the Oelo church, and possession can be rendered to the successful bidder not later than August 1st, 1953. Successful bidder to enter into a contract of sale within five (5) days after the acceptance of bid.

The owners reserve the right to reject and return any and all bids.

Bids to be mailed to E. T. Jensen, Guyton, Oklahoma.

Dated at Spearman, Texas, this the 21st day of April A. D. 1952.

E. T. JENSEN
Agent for Owners.

FOR SALE—2 1/2 year old Commercial Aberdeen Angus heifer. Extremely good quality. 11 calves on ground. Shuler Donelson, Stratford, Texas. 2-2ip

FOR SALE—Tandem horse trailer, all steel construction. Excellent condition. J. H. Brill, 1401 Birch St., Berger, Tex. 31-p

FOR SALE—Reconditioned 3,000 watt Fairbanks Morse light plant. See J. R. Collard Estate, Phone 5281. No. 203-c

FOR SALE—500 gallon butane tank. See J. R. Collard Estate, Phone 5281. No. 203-c

For the life of your car GO GULF!

CHIC DRESS AND BEAUTY SHOP
Name-brand clothing
Expert Hair Styling
Leona Nelson
Phone 6111

WATCH, CLOCK AND JEWELRY REPAIR

JOHN DORTCH
Corner Drug

When You Buy Crime Insurance Buy The Best!

Protect your business home with Great Central Crime Insurance Specialist. One policy for business and home, the greatest "package" of crime insurance in Texas, even covers the following exposures:

- Business money taken by burglary, not in a locked safe.
- Medical payments for the insured, his employee or any member of his family when injured by the criminal.
- Personal property of every description at home and away from the residence premises.

TED VERNON
Your Panhandle Crime Insurance Specialist
3505 Gables Amarillo, Texas

Classified

FOR RENT—Two small furnished houses, for small families. Mrs. Townsend, Phone 2271. No. 12 r-tn

FOR SALE—Liquid cooled, Allison, V-12, 1200 h. p. irrigation motor. Phone 7492, Roy McCarty, Perryton.

FOR SALE—One ton Chevrolet Panel truck. New 1952 Motor, Radio Heater.

FOR SALE—One ton 1940 Chevrolet Panel Radio, Heater. See Jay Turner, Corner Drug. No. 8 rtn-c

HELP WANTED FEMALE—**AVON PRODUCTS**—Makers of five cosmetics and Toilettes needs ambitious women over 35 to service customers in Spearman. Opportunity to earn \$1 or more per hour. Write Box 1054 Amarillo. Immediately get started for Mother's Day and Graduation orders. No. 19 r6-c

FARM AND RANCH LOANS, E. C. Greene, Phone 4261, P. O. Box 143, Spearman, Texas. No. 52 rtn-c

Looking for Service Try Orange Disc Service

FOR RENT—5 room unfurnished apartment, good location. See Mrs. Jones at McClellan Chevrolet. 42 r-tn

FOR RENT—Bedrooms for employed men. Rent \$5.00 week in advance. Mrs. Townsend phone 2271. No. 12-rtn

TEXACO Havolene Motor Oils and MARFAK GREASE and Gear Lubricant WHOLESALE TOM MOTT OLIVER CO.

NATIONAL FARM LOAN ASSOCIATION
FEDERAL LAND BANK LOANS

E. N. Richardson
Secretary - Treasurer
815 Main Street

TRANSFER AND STORAGE
Careful and experienced moving. Special care given your furniture. Plenty of storage space.

BRUCE AND SON, Transfer and Storage, 227 N. Harvey, Pampa, Texas. Phone '92. 21-rtn

Classified

FOR RENT—Two small furnished houses, for small families. Mrs. Townsend, Phone 2271. No. 12 r-tn

FOR SALE—Liquid cooled, Allison, V-12, 1200 h. p. irrigation motor. Phone 7492, Roy McCarty, Perryton.

FOR SALE—One ton Chevrolet Panel truck. New 1952 Motor, Radio Heater.

FOR SALE—One ton 1940 Chevrolet Panel Radio, Heater. See Jay Turner, Corner Drug. No. 8 rtn-c

HELP WANTED FEMALE—**AVON PRODUCTS**—Makers of five cosmetics and Toilettes needs ambitious women over 35 to service customers in Spearman. Opportunity to earn \$1 or more per hour. Write Box 1054 Amarillo. Immediately get started for Mother's Day and Graduation orders. No. 19 r6-c

FARM AND RANCH LOANS, E. C. Greene, Phone 4261, P. O. Box 143, Spearman, Texas. No. 52 rtn-c

Looking for Service Try Orange Disc Service

FOR RENT—5 room unfurnished apartment, good location. See Mrs. Jones at McClellan Chevrolet. 42 r-tn

FOR RENT—Bedrooms for employed men. Rent \$5.00 week in advance. Mrs. Townsend phone 2271. No. 12-rtn

TEXACO Havolene Motor Oils and MARFAK GREASE and Gear Lubricant WHOLESALE TOM MOTT OLIVER CO.

NATIONAL FARM LOAN ASSOCIATION
FEDERAL LAND BANK LOANS

E. N. Richardson
Secretary - Treasurer
815 Main Street

TRANSFER AND STORAGE
Careful and experienced moving. Special care given your furniture. Plenty of storage space.

BRUCE AND SON, Transfer and Storage, 227 N. Harvey, Pampa, Texas. Phone '92. 21-rtn

MONEY TO LOAN

FOR IRRIGATION FOR RANCH FOR WHEAT FARMS

20 YEARS TO PAY

PAY ALL OR PART FIRST YEAR

4 1/2% INTEREST

E. E. McDaniel

Office in Hotel Dale
TEL. 13 or 333 Guyton, Oklahoma

R. L. Kleeberger M. D. Physician and Surgeon

X-RAY and DIATHERMY.
9-12 a. m. — 2 - 5:30 PM
Office Phone 5701
Res. Phone 2161
If no answer, call 2801
304 Main St. Spearman, Tex.

PERRYTON HOSPITAL & CLINIC

DRS. G. L. KENGLER, M. D. Res. Phone 5941

DR. D. B. PEARSON, M. D. Residence Phone 5471

Perryton Hosp. Phone 2154
Clinic Phone 3361

Mrs. Frank Allen

INCOME TAX AND BOOKKEEPING SERVICE

211 Dressen — Phone 1131

Linn & Purser Attorneys-at-Law

Womble Building
Phone 6761, 302 Davis
Spearman, Texas

T. D. Sansing Attorney-at-Law

Spearman, Texas
Office Phone 4061
Residence Phone 2801
308 MAIN STREET

The AMBULANCE FLOWER Number Dial 2751

If no answer Dial 4041

Boxwell Bros Funeral Home and Flower Shop

Spearman, Texas
Day - Night Phone 2761

Dr. Reese Nowlin OPTOMETRIST OFFICE HOURS

Evenings By Appointment 8 to 12 a. m. - 1 to 5 p. m. Saturday 9 - 1
Phone 4261
No. 10 SW 2nd Avenue
Perryton, Texas

Sanford Hospital and Clinic PERRYTON, TEXAS

J. Bluford Johnson, M. D. General Surgery
J. M. Henry, M. D. Internal Medicine
Roy K. Sanford, M. D. Obstetrics & Pediatrics

B. M. A. CHILD'S 86. yearly Junior ACCIDENT POLICY

Pays all medical expenses to \$250. each ACCIDENT!

E. K. SNIDER
Lubbock — Spearman

Dr. David Geffen

OPOMETRIST
New Address: 106 W. 5th (next to the post office)
Berger, Texas
Ph. 780 Hrs: 9:00 - 5:30

Hansford Lodge 1040 A. F. & A. M.

Regular Communication 2nd and 4th, Monday of each month
Freeman Barkley, W. M.
Elmon Jacobs, Sec.

Dr. F. J. Daily

DENTIST - X - RAY

801 Davis Street
WOMBLE BLDG.
Spearman, Texas

Deana May's Beauty Shop

DEANA MAY DOUGLAS, BEAUTICIAN
Phone 6301
Womble Building
Spearman, Texas

E. C. GREENE

Real-Estate Loans Insurance
Phone 4261 — Box 146
Spearman, Texas

Lone Star Trailer Camp

Every Modern Convenience Located on Highway Loop At GRUBER, TEXAS Prices Reasonable
J.F. & R.C. Chase

With all its higher quality...

Chevrolet is lowest priced!

It brings you more new features, more fine-car advantages, more real quality for your money... and it's America's lowest-priced full-size car!

Further ahead than ever in quality... yet the lowest-priced full-size car... with sharply greater economy of operation!

Imagine—the most beautiful car in its field, with new Fashion-First Bodies by Fisher that set the standard of styling, inside and out. The most powerful car in its field, with your choice of a new 115-h.p. "Blue-Flame" high-compression engine* or greatly improved 108-h.p. "Thrifty-King" high-compression engine.

Yet, with all these new and exclusive advantages, there is no increase in Chevrolet prices, and it remains the lowest-priced line in its field!

Yes, indeed, only Chevrolet gives such excellence with such economy. Come in and prove it at your earliest convenience!

*Combination of Powerlike automatic transmission and 115-h.p. "Blue-Flame" engine optional on Bel Air and "Two-Ten" models at extra cost.

See us at **SafetyWay SERVICE** A public service program to promote safer driving.

CHEVROLET

MORE PEOPLE BUY CHEVROLETS THAN ANY OTHER CAR!

McClellan Chevrolet Co. Spearman, Texas

Gruber Motor Co. Gruber, Texas

WATER WELL AND Concrete Gravel

For the best water well gravel and washed sand and gravel that passes the state highway tests for concrete, give us a trial.

3 miles west and 1 mile south of Electric city. PHONE 2618 OR 3097.

DEES & PARKER SAND & GRAVEL COMPANY
BERGER, TEXAS



The Lynx Claw

Special Features

By Mary Nell Chambers

Tuesday morning we were entertained by a show featured Tex and Gene, cousins of Gene Astrey. They sang songs everyone was familiar with and Tex played the piano. Everyone enjoyed the show very much. This is to take the place of the motion picture we usually have.

Wednesday the Perryton choral club was here to entertain us. They sang several different types of songs and several boys and girls sang solos. They had a girls quartet that sang a number which was enjoyed by everyone. Everyone especially enjoyed the four boys that did a couple of novelty numbers.

The program was excellent and showed much work and practice.

Question Of The Week

By Lorene Mundy

WHAT IS A CATHARTIC?

Mr. Dickson - A form of religion. Beiva Sparks - A different kind of baptist than the one here. Dora Kato - Some sort of a church who's members are cats. Nancy Archer - A cat that goes to church.

Beverly Morse - A group of people who just believe in part of the Baptist religion.

Jenny Campbell - A chemical equation something like a cat's tail.

Edith - Cat that belongs to a Baptist.

Jimmy Verono - A cat that's a member of the Baptist Church. Louise Lee - A new member of the Baptist Church.

Mona McLain - A flower.

Elbert Pool - A monkey.

A PERSON WHO DOESN'T BELIEVE IN BAPTISM.

Jokes

By Ann Vaughn

In Bedford, Ind., bank officials took one look at the signature "Mary B. Hooker" on a \$100 check deposited by a local grocer, returned it to the grocer with a note below the signature: "You sure are!"

A policeman who ticked his wife's car for overparking in Lapeer, Mich. confessed that he couldn't resist writing on the back of the ticket, "Who is his boss now?"

"It's the Law" - Carrying in Public places is against the law in Louisiana. It is illegal to drive a car in Oregon while holding someone in your arms.

In California it is illegal to shoot any kind of game bird or animal, except a Whale, from an automobile or airplane.

Boys are prohibited from throwing snowballs at trees within the city limits of Mt. Pleasant, Ill.

Jokes

By Kilroy and his brother Kiljoy

I always nibble when I'm pen-sive.

"You surely don't find this offensive?"

"I never fails

"To trim my nails.

And emery boards are so ex-pensive!"

Please ignore these frant-ic twitches.

Or, else I'll have you all in stitches.

"I'm not on the border

"Of nervous disorder.

"It's just that something, women

"where itches?"

"I'm making noises? Please ex-cuse!"

Gum's such fun for her who

chews.

These snags and pops

Are really top!

"(I'm awful easy to amuse!)"

Dedications

Billy to Norma - "Wedding Bells"

Mary N. to Nick - "Sentimental"

Janie to Bill - "Letters Have no Arms"

Kirlean to Billy - "Love and Devotion"

Marilyn to David - "Let's Build A Bunkalov"

Mary L. to Jimmy Ed - "I wanna Play House With You"

Ann V. to Larry S. - "A year's adorable"

"Full to Jay - "Slow Poke"

Billy to Leslie - "Let the rest of the world go by"

Judy to Ray - "Forever and Ever"

Nancy to Pat - "Every day I love you just a little bit more"

Sherry to Peyton - "A Bushel and A Peck"

Pat to Peggy - "I'm Yours"

Judy D. to Jimmy - "You Belong to Me"

Jenny to Evelyn - "Kiss of fire"

Helen to Ted - "Because"

Dee to Jeanette - "Always"

dust with the band accompaniment. The band also accompanied Joe Mack playing a cornet solo. The seniors of the band presented Mr. Watson with a small gift.

Senior News

By Billie Joanne Greerer

During the rodeo the Seniors had an eating booth down town and we thank everyone who stopped to eat with us. All of the Seniors are getting anxious for the end of the month to roll around so we can take off for New Orleans.

Campus Chatter

By Ann Vaughn

Claudine Jackson won the Hansford County 4-H review with a score of 93. She gets to enter the 4-H dress review in Amarillo on May 6.

All enjoyed the book review.

There was a surprise birthday party for Estelle at Kirlean's home. It was the solo recital last Sunday. bidding? Is love really blind?

It has been a long time since the Junior-Senior banquet, but we still are remembering how nice it was.

Five students and Miss Womble went to Lubbock to represent district 1-B at the regional meet. They entered slide rule, number sense, extemporaneous speaking, and declamation. Billy Jackson won first and a second place with the grade school chorus and High School Swing Band. After that the rooms were visited and we hope everyone enjoyed the exhibit.

Judy Meek and Georgia Bazzard left April 29 for San Antonio to attend the State F. H. A. Meeting.

Know the grade and value of the nuts and sell on grade. And, reminds Miller, clean well-filled nuts bring the most money.

Miller believes that many of the peanut production and marketing problems can be solved through the application and use of the practices recommended under the 7-step program. Fit peanut into balanced farming; take care of the soil; plant good seed properly treated; make labor count; control diseases and insects; harvest and thresh for high grade and sell for grade and variety value.

Late Spring Good Time Farm Planting

Weather conditions is most sections of the state during late spring are favorable for doing the outside painting jobs on the farm. W. S. Allen, agricultural engineer for the Texas Extension Service, says painting farm buildings at regular intervals is a cheap way to keep them in good condition and preserve that smart look around the farmstead.

The engineer describes the preparation of the surface to be painted as one of the most important items connected with the painting job. Three items, he

Ideal Girl

By Jimmy Pickling and Charles Townsend.

Eyes - Mary Nell Chambers

Hair - Annie Riley

Teeth - Janis Blanford

Smile - Estelle Parrish

Handicraft - L. Crawford

Weight - Carolyn Wilmet

Height - Janie Klem

Personality - Helen Taylor

Athletic Ability - Judy Meek

Figure - June Scroggs

Improvements Needed in Peanut Production

Increased yields of high quality nuts can make peanut production in the state a more profitable farm enterprise, says W. S. Miller, agronomist for the Texas Agricultural Extension Service. Acreage allotments are low, therefore, yields must be increased in order to get the most from so limited acreage. But, says Miller, quality must also be improved along with the yield per acre.

Several years ago a 7-step program was outlined by a group of successful peanut growers, processors and research and extension workers. Miller reports that progress has been made but dry weather and unfavorable growing conditions have handicapped the program for the past two or three years. Moisture conditions are generally favorable now in most of the heavy peanut producing counties and the specialist suggests that growers take another look at the 7-step outline.

Peanuts should be grown in combination with other crops, pasture and livestock for balanced farming. Poor distribution and organic matter and increased of labor, depleted soil fertility and erosion result from one crop peanut farming, says Miller.

High yields—they're the profitable ones—are produced from fertile and well managed soils. The use of legume in the rotation,

Happy Birthday

MAY

Earl Archer 20

Ronnie Baker 11

Stan Bollinger 4

John Roy Crain 23

Peggy De Masters 8

Jimmy Pickling 23

Robert Greerer 23

Kygy Howell 5

Kirlean Jaggers 14

Myri Guy Jones 19

Beverly Morse 14

Don McCommond 22

Gilbert Prudley 25

Helen Taylor 28

Beck Packer 28

Betty Whitson 15

Ideal Boy

By Nancy Archer

Hair - Ted Dacus

Teeth - Billy Hill

Eyes - Joe Gos

Hands - Robert D. Greerer

Complexion - Peyton Gihner

Nose - Bobby Nolner

Athletic Ability - Jimmy DeArmond

Personality - Joe Mack Hill

Height - Earl Archer

Weight - Leon Morehead

Smile - Billy Lagkey

Band News

By Lorene Mundy

The band went to Canyon to contest and brought home a rating of 3-3-2.

Larry Hayes was the only soloist to make a first division rating. The other soloists made 2ds and 3ds. Our band led the parade on Saturday morning. After entering Main Street the band played short fan fare. The band halted in front of the old Lyric theatre and did a dance step to "Dark Town Strutter's Ball."

Thursday, April 30, the band gave its annual spring concert. The beginners had made up mostly of fourth and fifth graders played four numbers. Their last number featured solos from the different sections of the band. The high school band played nine numbers. Lester Mundy and Janie Kiems played a clarinet

tion, applying barnyard manure, leaving it plowing under all crop residues, and using commercial fertilizers, points out Miller, are practices which will improve the soil and increase production. Plants only the best seed of the recommended varieties and if the seed nuts have not been chemically treated by the seller, treat them and also home produced seed to get better germination and stands, says Miller. From 33 to 49 pounds of shelled peanuts should be planted per acre, and research done at the Stephenville Experiment Station shows that stands can be improved by as much as 50 percent and yield increased from 7 to 12 bushels an acre by chemically treating the planting seed.

Growers are advised by Miller to consult the local county agent for information on controlling the diseases and insects which attack their crop as well as the amount of labor needed to produce the crop and cut costs.

Peanuts should be harvested as soon as the nuts are mature, especially if southern blight is present. If withered, thresh as soon as the plants are dry enough to reduce splitting of the kernel during the shelling. Cure the nuts in sacks, says Miller, either in racks or artificially. A good threshing job is a must for the grower is docked for the dirt, sticks and trash left in the peanuts.

Paint wrinkling is caused, says Allen, by applying too thick a coat. The surface dries quickly but underneath the paint remains wet and as it dries, and contracts, the surface wrinkles. By using thinner in over-thick places, through the sliding and rolling by using a reliable brand may be delayed or partially con- of paint and by avoiding thick coatings.

Paint wrinkling is caused, says Allen, by applying too thick a coat. The surface dries quickly but underneath the paint remains wet and as it dries, and contracts, the surface wrinkles. By using thinner in over-thick places, through the sliding and rolling by using a reliable brand may be delayed or partially con- of paint and by avoiding thick coatings.

Paint wrinkling is caused, says Allen, by applying too thick a coat. The surface dries quickly but underneath the paint remains wet and as it dries, and contracts, the surface wrinkles. By using thinner in over-thick places, through the sliding and rolling by using a reliable brand may be delayed or partially con- of paint and by avoiding thick coatings.

Paint wrinkling is caused, says Allen, by applying too thick a coat. The surface dries quickly but underneath the paint remains wet and as it dries, and contracts, the surface wrinkles. By using thinner in over-thick places, through the sliding and rolling by using a reliable brand may be delayed or partially con- of paint and by avoiding thick coatings.

ANNOUNCING . . . All dealers of Town talk bread in Hansford county now have TOWN TALK BUTTERMILK BREAD!

Made daily with fresh buttermilk, wrapped in cellophane to insure freshness. Ask for TOWN TALK Buttermilk Bread at your grocery store.



ANNOUNCING . . . All dealers of Town talk bread in Hansford county now have TOWN TALK BUTTERMILK BREAD! Made daily with fresh buttermilk, wrapped in cellophane to insure freshness. Ask for TOWN TALK Buttermilk Bread at your grocery store.

for Faster Starts get a new GULF BATTERY

for Safer Driving Trust the Great GULF TIRE ORANGE DISC SERVICE

ready commenced. And finally, says Allen, don't put the paint job off too long. More frequent paint jobs are usually cheaper in the long run.

Fashions

By Mary Nell Chambers

Kay, your purple and white embroidered cotton skirt looks cute on you.

Billy had on a cute pink and white striped skirt.

Gwen has a pretty powder blue gathered skirt and blouse.

The Anna has a pretty pink wrinkled organdy dress, she also has a cute brown suan dress.

Kirlean had on a cute tan skirt with big round embroidered pocket and an embroidered waistband.

Kay had on a pretty pink skirt and green blouse Thursday.

Patty's blue bell bottom riding pants look nice on her.

Earl has a pretty navy and white nylon shirt.

Junior News

By Mary Nell Chambers

The Juniors are just now getting over the banquet. It was a lot of work but we enjoyed every minute of it.

We had a class meeting last week and planned a party for May 8. It is to be a wicker roast and hayride. We also made a few plans for our end of school picnic. We plan to spend a day and a night in Amarillo and go swimming, bowling, and golfing, etc.

FOR RENT—Furnished apartment, completely redecorated. Phone 4271 Jimmy Sheld-knight. No 217th

A national cotton crop of 12 to 12.5 million bales is the goal set by the USDA for 1953. Such a crop will meet domestic and export demands and will leave a sufficiently large amount for reserves.

FOR RENT—Front bed room, adjoining bath. Close in. Quiet.

NOTICE

Notice is hereby given that the Commissioners Court in and for Hansford County, Texas will convene as a Board of Equalization on May 11th, A. D. 1953 at 10 o'clock a. m. in the office of the County Judge of such county, in the court house in Spearman, Texas, as required by article 7206 R. C. S. for the purpose of receiving the Tax Assessor's lists or books for inspection, correction, equalization and approval. FRED J. HOSKINS County Clerk, Hansford County, Texas. 28-11c

Refrigerators It will not hurt an electric refrigerator to leave it turned off for a few months if proper care is taken. You should turn it off, then remove all food, and leave the door open. If the door remains closed for a long time, a stale odor may develop inside the cabinet.

In the 1953 Mobilgas Economy Run

STUDEBAKER

COMMANDER V-8 WITH OVERDRIVE

finished 1ST in actual miles per gallon

among all competing 8 cylinder cars

Makes sensational 24.508 actual miles per gallon

STUDEBAKER ALSO WINS AUTOMATIC DRIVE CHAMPIONSHIP

Land Cruiser V-8 winner in Class D with 49.3476 ton miles per gallon.

Tops all other entrants equipped with automatic transmission, including Sixes, in actual miles per gallon. The Land Cruiser averaged 22.88 actual miles per gallon!

Studebaker Champion with overdrive scores amazing **26.86** actual miles per gallon

Over a rugged, mountainous 1206-mile course from Los Angeles to Sun Valley, new 1953 Studebakers, piloted by experienced drivers under A. A. A. Contest Board rules, made amazing gasoline mileage in the 1953 Mobilgas Economy Run. Studebaker overdrive or automatic drive, optional at extra cost, was used. See your nearby Studebaker dealer right away and try out a thrifty 1953 Studebaker—the exciting new American car with the long, low European look.

WOMBLE IMPLEMENT CO.

102 W. KENNETH PHONE 2411 SPEARMAN, TEXAS

"Go-togethers"

Newlyweds and the electric freezer-refrigerator combination are perfect go-togethers.

The small family finds ample storage space in the freezer compartment of the combination, and gains the economy that the big family finds in the home freezer.

Roasts, steams chickens, ham, and other economy meats can be stored and made into individual meals which are both economical and attractive. Thus you end the usual "cooking for two" expense, which usually means expensive "one time" meat cuts.

When there are two, and the marriage is new, it's the freezer-refrigerator for you.

WHEN BUYING ELECTRIC APPLIANCES - SEE YOUR REDDY KILOWATT DEALER

SOUTHWESTERN PUBLIC SERVICE COMPANY

The Spearman Reporter
 Successor to the Hansford Headlight, Published Thursday of each week in Hansford County, at Spearman Texas.

WILL J. MILLER, Editor and Publisher
 Elected as second class matter Nov. 21, 1919, at the postoffice at Spearman, Texas, under the Act of March 3, 1879

In Hansford and adjoining counties, One Year \$2.50
 Out of Hansford and adjoining counties, One Year \$3.00

CLASSIFIED ADVERTISING
 First insertion, 4c per word; 2c a word for every issue thereafter; Card of Thanks, 4c per word Display Rates on Request.

NOTICE TO THE PUBLIC: Any erroneous reflection upon the reputation or standing of any individual, firm or corporation that may appear in the columns of The Spearman Reporter will be corrected when called to the attention of the management.

**Your Senator Reports
 By LYNDON B. JOHNSON**

PEACE PROGRAM: A program for real peace was presented to the world by President Eisenhower in his recent address before American newspaper editors. The President spoke as the leader of the nation—not as the leader of a political party. He looked for ways of getting out of our difficulties—not for pointless arguments about how we got into them. He stressed the principles that unite Americans—not the partisan differences that divide them.

As your Senator—as an American—I support that kind of program. I am ready at any time to do whatever I can to help the President carry it out.

FLOOD CONTROL: Texas flood control projects are threatened with drastic stretch-outs. Heavy cuts in appropriations are suggested in the revised budget for flood control and rivers and harbors, presented to Congress last week.

Suggested appropriation for the Dallas floodway is slashed from \$2,500,000 to \$750,000, that for the Fort Worth floodway from \$1,550,000 to \$1,000,000. These projects are designed to prevent flooding of the Fort Worth-Dallas area by the Trinity River. The cuts, if put into effect, will simply delay completion of the overall project. That delay could be disastrous. Who knows when the Trinity will flood again?

The revised budget cuts out altogether \$975,000 for the Galveston seawall. It would reduce the appropriation for the Garza-Little Elm Reservoir from \$4,535,000 to \$3,635,000. It proposes an appropriation of \$7,265,000 for the Texasians Reservoir, compared with \$8,565,000 in the original budget.

POSTMASTERS EXAMS: Postmaster vacancies in 80 Texas towns and cities have been announced. There may be more to come. All eligible registers were terminated when the Civil Service Commission, at the request of the new Postmaster General, "raised standards" for postmasters.

I wrote the Postmaster General to ask (1) if postmasterships are to be denied because of political affiliations to persons who have passed Civil Service examinations recently but whose appointments have yet to be confirmed, and (2) if postal appointments are to be removed from Civil Service.

The Deputy Postmaster General replied that "No one is being denied opportunity to compete for a postmastership because of political affiliations." He said standards had been raised because "The position of postmaster is much more important than

importance of postmasters until they started making the appointments. He also wrote: "There is no intention of removing from office any of the postmasters appointed during the previous administration if they are now performing and continue to perform satisfactory service."

TEXAS STATE SOCIETY: President and Mrs. Eisenhower were honor guests at a Texas State Society "brunch" last Sunday. We felt it highly appropriate that our first native Texan President should attend this post-san Jacinto celebration.

Nearly a thousand Texans now living in Washington were on hand. QUICKIES: John C. White, able young Texas Commissioner of Agriculture, was here on official business—So was Harry Ullom, Chief of Diometric Service for the State Hospital Board—W. W. Cardwell of Bandra visited my office and presented me with an invitation to attend Band-

dera's mammoth Centennial Celebration June 11-13. Woody Edmiston is General Centennial Chairman.

Want a good cookbook? I'll send you the Agriculture Department's "Family Fare" on request—A number of fine Texas ladies were here last week for the national meeting of the D. A. R. Several paid us a visit, among them Mrs. Hampton Robinson, Sr. of Missouri City, Mrs. E. A. Riggs of Graham, Mrs. W. M. Murphy, Sr. of Victoria, and Mrs. Emmett Wallace of Bryan.

—Some live wires from the Texas League of Women Voters also came by to see me. They were Mrs. William Penn of Midland, Mrs. John L. Brewster of Dallas, and Mrs. Elmer Richards of Waco—Basic principle for any sound farm program: Remember—the man on the street depends on the man in the fields.

Jimmie Linn and Bill Russell Jr. were going at Berger Sunday. Their wives joined them later for dinner.

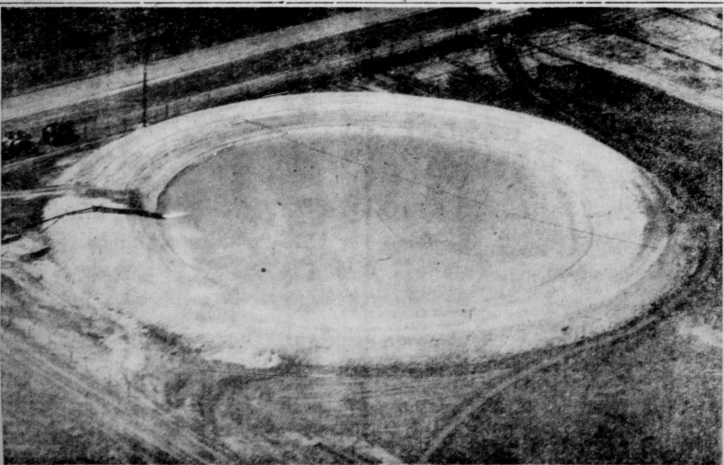


**We Have A Large Assortment of Gift
 Wrapped Mothers Day Candy**

We also carry a complete line of appropriate gifts for "Mothers Day". Come in and allow us to show you some of the items that would gladden the heart of the most wonderful mother on earth—and will properly reflect your love and devotion to your mother.

SPEARMAN DRUG

Your Rexall Store



"IRRIGATION TANKS OUR SPECIALTY"

TERRACING - LEVELING - GENERAL DIRT MOVING
 Call Us For Free Estimate

M. W. BEAKLEY

Phone 510 or 3656 Box 11, Berger, Texas

**ANNOUNCING The 30th Anniversary
 OPEN HOUSE CASE DAY**

**At R. L. McClellans and Sons Spearman,
 Texas, Friday May 8th. . . .**

The Public is cordially invited to attend the 30th anniversary party and program of the R. L. McClellan and Sons Case Organization to be held at our Sales Rooms and Shop in Spearman.

OFFICIAL PROGRAM

8:30 a. m. Coffee and get acquainted meeting at the Sales Rooms.

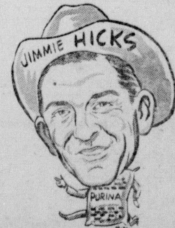
9:30 a. m. Adjournment to the LYRIC Theater for Educational Pictures. These pictures prepared by Agricultural Specialists will depict the progress made in farming from the days of Babylon and the wooden stick plow to the present day of power farming with the Hydraulic lifts and most modern farm equipment. One picture will be of special interest to irrigation farmers and those interested in the use of farm machinery and tools making for efficiency of irrigation, and grass land irrigation.

12:00 noon Free lunch at the sales room of R. L. McClellan and Sons 1:00 to 2:00 P. M. Demonstration of Case Eagle Hitch Tractors 2:30 P. M. Drawing for those who register for special prizes.

**THERE WILL BE DOOR PRIZES FOR ALL LADIES
 AND CHILDREN WHO REGISTER.**

Representatives from the Case National Organization will be present to aid in the entertainment of the public on this occasion. Also representatives from the Perless Pump Company, as well as special displays of Demster Drills; Dempster Wind Mills; Dempster pump Equipment; Mayrath Grain Loaders and Briggs and Stratton Engines; In the Irrigation department the Martin Ditcher will be on Display.

**Come In Friday And Help Us Celebrate
 Our Thirtieth Birthday As Case Dealers In
 Hansford County.**



R. L. McCLELLAN AND SONS

County Council Installs Officers

Officers and local delegates of the Hansford County Council of Parents and Teachers met in the dining room of the Gruver High School Cafeteria Friday afternoon, May 1st, 1953.

With Mrs. R. E. Vaughn, president, presiding, Mrs. Sid Board of Morse, gave the invocation. Mrs. W. Jarvis, Spearman, Secretary-Treasurer, read the minutes of the last meeting and gave the treasurer's report showing a balance of \$29.60.

Mrs. J. C. Harris, Gruver, gave an interesting report of the district P. T. A. conference in Tulsa the last week in April which she attended.

Mrs. Carlie Knight, Gruver, Council Reporter, spoke of the progress being made on securing a county school nurse.

Mrs. R. C. Womble of Morse reported thirteen Procedure courses taken and completed. The Morse P. T. A. yearbook received Second place at the District Convention in Tulsa.

Spearman reported the purchase of an audiometer for testing the hearing and also the Massachusetts Testing Machine for testing defects of vision for school children.

The president stressed the importance of taking the P. T. A. procedure Course and Parliamentary course.

Mrs. M. W. McClay of Morse presided at the installation of the new officers. After the installation she called on each of the new officers for a pep talk on Parent Teachers work.

The following officers were elected: President-Mrs. J. C. Harris, Gruver; Secretary-Treasurer-Mrs. Ralph Reynolds, Gruver; 1st Vice-President-Mrs. Wesley Garnett, Spearman; 2nd Vice-President-Mrs. Ellis Pittman, Morse; 3rd Vice-President-Mrs. Oscar Archer, Spearman; 4th Vice-President-Mrs. Warren Jeffries, Morse; 5th Vice-President-Mrs. Ed Vernon, Gruver; parliamentarian-Mrs. Sid Board, Morse; Publicity-Mrs. J. H. Buchanan, Spearman; Historian-Mrs. Ralph Bort, Gruver.

The new president took the chair and made a short talk on a few things she would like to see accomplished in the near future. The meeting closed with a heart warming prayer by Mrs. R. E. Vaughn. Mrs. M. W. McClay presided at the District Convention in Tulsa.

A delicious salad and cold drink was served to the following: Mesdames Sid Board, M. W. McClay, R. C. Womble, Ellis Pittman, J. D. Hatfield, J. A. Boney, Oliver Levertson, J. M. Hart, Harry Barkley, L. W. Ayres, Jr. E. A. Williams, Roy Edwards, Ed Vernon, J. C. Harris, Ralph Bort, Carlie Knight, Rue Sanders, Wesley Garnett, Olin Sheets, Woodville Jarvis, R. E. Vaughn, J. H. Buchanan, Leo Crowder, and Clarence Pettitt, Mr. and Mrs. Bernard Barnes and Mr. and Mrs. Joe Edwards, were Spearman Pilots who attended the Pilots Breakfast at the Guyton celebration early Saturday a.m.

Gene Gathier is doing Navy duty now in Korea.

Pic. Bob Lamb Fire Team Leader

3rd Marine Division (Camp) Pendleton, Calif.—Taking part in SEA JUMP, the largest Navy and Marine Corps training exercise ever staged on the West Coast, April 20 to May 17, in Private First Class Bobbie B. Lamb, 22, of Spearman, Texas. PFC Lamb, a fire team leader, is the son of Mr. and Mrs. Jake Lamb of Spearman. He resides with his wife, the former Noreen Sue Cates of Spearman, and infant daughter, Connie Sue, at 215-B-S. Freeman St. in Oceanide, Calif.

Serving in the 4th Marine Regiment, a unit of the 3rd Marine Division, the local Leatherneck amphibious assault on Aliso Beach will join 24,000 Marines in an area some four years, and has been of great deal service to the ranchers and farmers of the area.

SEAJUMP, a graduation exercise for the Division, completes a 14-month curriculum of basic, desert, snow and atomic training.

Infantry, artillery and other supporting elements board ship April 29. Supported by simulated atomic weapons, behind-the-line helicopter developments and Marine air units, the Leathernecks will land and attack inland against an aggressor force, theoretically in control of California.

"All the experience gained by more than 177 years of devoted service to our country will be put to use in this exercise," Major General Robert H. Pepper, Division Commander, observed.

"Now more than ever in our country's history we need men who are trained and ready to do the job if they are called upon. I feel sure the new 3rd Marine Division will measure up to our highest standards in that regard," he concluded.

Leo Crowder, and Clarence Pettitt, Mr. and Mrs. Bernard Barnes and Mr. and Mrs. Joe Edwards, were Spearman Pilots who attended the Pilots Breakfast at the Guyton celebration early Saturday a.m.

Gene Gathier is doing Navy duty now in Korea.

Government Trapper Hits Jack-Pot In Getting Mother Coyote & Pups

Ben Alsop, Government trapper, hit the Jack-pot the past week when he caught a mother coyote, with 14 pups on the Gwinley Lackey Ranch, West of Spearman. Ben stated that this was the largest number of pups he had ever found in one den, and the first time he had ever caught the mother coyote with all of the pups. The ranchers in the area were very interested in the results Ben had been getting. Ben killed a bob-cat two weeks ago, and some of the old timers thought it was a Lynx because of the spots on the ears of the animal. Ben has been in the area some four years, and has been of great deal service to the ranchers and farmers of the area.

Report From Your Local Draft Board

Ten registrants from this Local Board will be inducted May 15, 1953. They are: Billy Frank Johnson, Canadian, Texas, 20 years of age; Kenneth Earl Davis, Perryton, Texas, 23 years of age; Billy Gene White, Canadian, Texas, 21 years of age; Harold Wayne Carey, Booker, Texas, 20 years of age; Vernon Oscar Brown, Perryton, Texas, 20 years of age; Robert Wayne Stewart, Spearman, Texas, 20 years of age; Stephen Earl Wolfman, Perryton, Texas, 20 years of age; Leroy Ronald Ulrich, Perryton, Texas, 20 years of age; Calvin Ray Wainright, Canadian, Texas, 20 years of age; Richard Harry Bort, Darrouzett, Texas, 20 years of age.

Twenty registrants will be forwarded for Physical Examination. This call can include registrants 19 years of age on May 15, 1953. Applications for this test must be postmarked no later than midnight May 11, 1953. Applications for the test may be secured from any draft board.

To be eligible to take the test, applicant (1) must be a draft registrant who intends to request a student deferment, (2) must be satisfactorily pursuing full-time college work leading to a degree, and (3) must not previously have taken the test.

Criteria for student deferment at present are either (1) score of 70 or better on the test, or (2) class standing among male members in the upper half of the freshman, upper two-thirds of the sophomore or upper three-fourths of the junior classes.

These criteria are guides for local boards. The draft boards are not under compulsion to follow them, but any local board classification is subject to appeal. Any appeal must be filed in writing with the local board within 10 days of the date the local board mails a notice of 1-A classification.

PLACE

Thursday May 7, Susan Hayward-Charlton Heston "THE PRESIDENT'S LADY" Branded "Adults" Before the Eyes of the World!

Friday Saturday May 8 - 9 Laurence Olivier - Jennifer Jones "CARRIE"

Sunday and Monday May 10 - 11 "THE CLONE" starring Red Skelton - Jane Greer With Tim CONSIDINE

Tuesday and Wed. May 12 - 13 "THE CLONE" starring Red Skelton - Jane Greer With Tim CONSIDINE

Thursday and Friday May 7 - 8 "LORETTA YOUNG IN PAULA" Kent Smith - Alexander Knox

Saturday May 9, "MEET ME AT THE FAIR" Technicolor! Don Dailey

PLUS "WINNING OF THE WEST" Gene Autry

Sunday and Monday May 10 - 11 Jennifer Jones - Charlton Heston "RUBY GENTRY" With Karl MALDEN

Tuesday & Wednesday May 12-13 "THE CLONE" starring Red Skelton - Jane Greer With Tim CONSIDINE

This 'N That Around Gruver

We have not yet heard anything about Clean Up Day for Gruver, nor anything about putting some sort of covers on trash cans to keep trash from blowing all over town. We hope that some one will take the hint and begin to promote something along these lines. Yesterday it looked as though we might get some rain. Keep on showering, but not enough to be of much help. This is sure funny weather for May.

We are glad to tell you that Mrs. Pete Barnes is out of the hospital and at home convalescing. Hope she will soon be o. k.

Jimmy Eiling came home from the hospital the other day and feeling much better. Now he has the measles. Jimmy sure deserves some sympathy.

The Charles Daviss have moved from the home on Palo Duro creek, and are now living on the old Paul Higgs farm north of Gruver. Mrs. Daviss' mother and father and brother from Monte Vista Colo. are visiting her.

Mr. and Mrs. Ray Thompson were in Amarillo on business this last week. They have moved into the Alfred Henderson's old home.

Mr. and Mrs. Howard Cline of Gruver, and Mrs. Edw. Cline of Amarillo are spending some time in Truth or Consequences. N. M. Eldon and his wife were former residents here.

Mr. and Mrs. Buddy Lowe spent the week-end with Buddy's parents, Mr. and Mrs. Curt Lowe.

Mrs. O. V. Walker spent several days with her sister in Borger. Mr. and Mrs. Orville was visiting their son O. V. in Colorado.

Mr. and Mrs. Guy Cooper, and their daughter Betty Ann visited several days with their daughter and son-in-law Mr. and Mrs. Durwood Bell in Bovina, Texas.

Mr. and Mrs. I. T. Spivey were called to Albuquerque N. M. last week to attend funeral services for Jessie's brother, who passed away suddenly. We sympathize with them in their sorrow.

Mr. and Mrs. Claud Cosper of Hartley are visiting Mr. and Mrs. R. C. Lowe. Mrs. Cosper is a sister of Mrs. Lowe.

Mr. and Mrs. Jack Black of Breckenridge Texas are visiting her sister Mrs. Ed Rafferty Jr.

Mrs. Johnnie Ireland and her baby son are visiting her Aunt, Mrs. Charlie Black of Liberal Kansas.

Mr. and Mrs. Raymond Jeffries and two friends of Oceanide, Tex. are visiting with Mrs. Warren and Raymond are brothers.

Mr. and Mrs. Buddy Murrell and children returned from Vernon after visiting Buddy's parents and attending the Rodeo.

In telling you of the travel of Mr. and Mrs. Frank Fleck last week, we overlooked the fact that they also visited Bonnie Ruth and her family. They are living near Bill in the Port Arthur area.

The Gruver P. T. A. held their final meeting for this year at the High School last night. The new officers were inducted, and several groups of youngsters under the direction of Mrs. Dick Goodall and Mrs. Winkler put on a very interesting program. It seems to be the consensus of opinion that this was the best program of the year.

Rube Huterhardt is a busman these days getting ready for the annual rodeo. We hope to have some particulars for you next week.

Mr. and Mrs. Joe Edwards, Miss June Reese and Miss Mary Edwards flew to Guyton Saturday morning for the Pilots breakfast.

Mr. and Mrs. Chester Martin of Amarillo had lunch with her mother and sister Mrs. Tower and Mrs. Overton Sunday. Later they drove on to Columbia, Missouri.

Mrs. and Mrs. Bill Weston and Mrs. Sidney Reese spent Sunday with her sister Mrs. L. Ray Morehead in Balco, Okla.

OSLO NEWS

Sunday School next Sunday at 10:00 a. m., but there will be the Bible Class at that hour as the pastor will be registering communicants in the sacristy from 10:15 to 10:55. Communion Service at 11 a. m.

Vacation Bible School begins in the parish hall on Monday, June 1.

Constitutional picnic in the Stedje Park on Sunday, June 7. Miss Ella Mae Clawson spent the weekend with Miss Bonnie McFadin.

Mr. Harold Collier and Mr. R. V. Converse are going to Abilene, Texas on business for the Farm Bureau.

Mr. and Mrs. Glenn Mischeke and family of North Platt, Neb. were guests of Mr. and Mrs. Gordon Stedje and family for the Pioneer Day Celebration. Mrs. Mischeke and Mrs. Stedje are college friends.

Members of the Lutho League were given at the League Meeting Sunday night and Mrs. James Stedje and family of their trip.

Mr. and Mrs. Oscar Olson and Daughter visited at the John O. Dahl home on Monday night. Mr. and Mrs. Ray Converse of Amarillo spent Sunday with his parents. Ray's mother returned to Amarillo with them for a visit.

Harold Collier, Farm Bureau President, and R. V. Converse went to Abilene Monday to attend a district PB meeting.

Willie Mathis is able to get around after spending two weeks in bed with a sprained back. Dwayne Stewart, son of Mr. and Mrs. Bob Stewart, has had his call for Army service.

Mr. and Mrs. Earl Riley, Anna and Bart were among the Spearman visitors at Guyton Saturday.

Word was received early this week that Mrs. Molly Womble of Stinkett was very ill and had been taken to Amarillo for treatment.

Mrs. Olin Womble is much improved this week after a recent confinement illness.

Gates Grocery

- ROUND Steak lb. 69c
- Hamburger lb 39c
- Tomatoes lb. 19c
- Cabbage lb. 3c
- STRAWBERRY Preserves qt. 53c
- PEACHES 2 1/2 Size 24c
- APPLE Butter quart 22c
- DILL Pickles quart 25c
- PEARS 2 1/2 Size 29c
- LUX Flakes Box 19c
- P. & G. Soap 2 For 13
- POTATOES 25 pound bag 75c
- MAXWELL HOUSE 1/4 lb. pkg. 19c
- MODART Shampoo 29c


Spearman Drug

QUALITY and DEPENDABILITY YEAR AFTER YEAR
14-15-16 foot 50-70 Poultry
Over 25,000 satisfied Glaxo owners have been receiving dependable Glaxo since 1907. Glaxo is the only baby food that is so long lasting in its freshness and so easy to prepare. Compare it and you will see the difference in your baby!

McClellan Kraus Company

Just a good place To Trade.

"Mile After Mile You'll Prefer Shamrock"



A registered nurse drives a lot at night... in good weather and bad. She needs a gasoline she's dependable, quick and sure to start. SHAMROCK gasoline is fast firing, quick starting. Try it, you'll find that MILE AFTER MILE YOU'LL PREFER SHAMROCK.

SHAMROCK Gasolines • Lubricants

REMEMBER? SCORCHING HEAT COMING! Mercury Tops 100 for Fourth Straight Year!

Get Reddy now to beat the heat with an ELECTRIC ROOM AIR CONDITIONER



See the new Electric Room Air Conditioners at your electric appliance dealer's or our office today!

COMMUNITY PUBLIC SERVICE

YOUR FRIENDLY ELECTRIC COMPANY

Shurfine
MAY 6-16
Daisy Days
 10 DAY PAGEANT of SPRING FOOD SPECIALS

CORN	SHURFINE GOLDEN—TALL CAN	6 for \$1
PEAS	SHURFINE SWEET—TALL CAN	6 for \$1
PEACHES	SHURFINE HALVES—SHURFINE SLICED—LARGE CAN	4 FOR \$1
PRESERVES	SHURFINE APRICOT—TUMBLER	4 For \$1.00
PRESERVES	SHURFINE PEACH—TUMBLER	4 For \$1.00
GRAPEFRUIT JUICE	SHURFINE—16 OZ. CAN	3 FOR \$1.00
Charlotte Freeze	1/2 Gal.	49c
Milk	SHURFINE—TALL CAN	8 for \$1.00
PORK & BEANS	SHURFINE—TALL CAN	9 For \$1.00
CATSUP	SHURFINE	5 for 1.00
ORANGE JUICE	SHURFINE—46 OZ. CAN	3 FOR \$1.00
PEARS	SHURFINE BARTLETT—TALL CAN	4 For \$1.00

CARTON	COCACOLAS	19c
MARYLAND CLUB	COFFEE	Lb. 87c
GERBERS	BABY FOOD	3 Cans 25c
KRISPY	CRACKERS	Lb. 24c
SUNSHINE HONEY	GRAHAMS	Lb. 33c
BESTYETT COMB	HONEY	Lb. 39c
WORTH MAPLE	SYRUP	Quart 37c
QUART SIZE	MIRACLE WHIP	49c
LITTON	TEA	1/2 Lb. 63c

SHURFINE 28 OZ.	APPLE BUTTER	4 For \$1.00
SHURFINE	SHORTENING	3 LB. 73

Cured Ham

BUFFT PORTION	SHANK PORTION	CENTER SLICES	WHOLE
— LB. —	— LB. —	— LB. —	— LB. —
59c	55c	89c	57c
CORN FED BEEF CHUCK ROAST lb. 43c			
CORN FED BEEF ARM ROAST lb. 47c			

Fresh Fryers and Hens

ST-CROP WHITE
Onions
 2 lbs. **23c**

FRESH CRISP
LETTUCE
 2 heads **27c**

RUBY RED NEW
POTATOES
 2 lbs. **17c**

FRESH TEXAS
GREEN BEANS
 lb. **25c**

GOLDEN YELLOW
SQUASH
 lb. **15c**

SHURFINE—TALL CAN	APPLE SAUCE	5 For \$1.00
SHURFINE—TALL CAN	HOMINY	11 For \$1.00
SHURFINE—TALL CAN	SPINACH	8 For \$1.00
SHURFINE DILL—22 OZ.	PICKLES	3 For \$1.00
SHURFINE-SOUR—22 OZ.	PICKLES	3 For \$1.00
SHURFINE WHOLE—TALL CAN	POTATOES	7 For \$1.00
SHURFINE—25 LB. BAG	Flour	\$1.69

SHURFINE
OLEO
 5 LBS. \$1.00

SHURFINE—TALL CAN
FRUIT COCKTAIL
 4 For \$1.00

SHURFINE FROZEN
ORANGE JUICE
 6 For \$1.00

SHURFINE PIE
CHERRIES
 4 Cans \$1.00

Cut Rate **SPEAR MAN**
 Grocery Market

FREE PARKING

SHURFINE
Daisy Days

LARGE PRG. WHITE KING . . . 27c
 GIANT PRG. WHITE KING . . . 53c
 WHITE KINK GIANT Water Softner . . . 49c



Service In Our Repair DEPARTMENT

We are organized to give our customers **PROMPT service on Repair Work in our SHOPS**

McClellan Chevrolet Company



With prompt and efficient cleaning and pressing. Our many years of experience gives us the opportunity to assure you of the best results available.

READY TO SERVE U

Let us Measure you for Tailor made Suits or Extra Pants.

Campbell Tailor Shop



Your Rexall Store

FEATURES

Your Spring And Summer Needs Candy And Gift Items

FOR MOTHERS DAY

Spearman Drug

Spearman, Texas



ALL TYPES OF BULK GARDEN SEED AVAILABLE AT

Equity Exchange



CAR LOANS

Your local Bank makes loans for purchase of New and Used cars. Talk it over with us when you purchase your next car.

FIRST STATE BANK



YOU ARE INVITED TO ATTEND THE 30TH ANNIVERSARY PARTY AND CASE DAY TO BE HELD FRIDAY MAY 8TH AT OUR HOME IN SPEARMAN

—There will be a full program of entertainment, Free lunch at noon—demonstrations and displays of modern farm equipment. Many door prizes will be awarded some of those who register for the Anniversary party.

WATCH this space regularly for up-to-the minute information from R. L. McClellan Grain Company and your Case Power Farming Dealer.

R. L. McClellan & Sons Grain Co.

YOUR NEIGHBORS on their JOBS

CARICATURES by HUT HUTSON COPYRIGHT H. H. HUTSON

B. AND C. EQUIPMENT COMPANY
Of Spearman

Features Sales and Service of **MCCORMICK - DEERING - INTERNATIONAL FARMING EQUIPMENT**

NATIONALLY KNOWN LINE OF LAYNE AND BOWLER IRRIGATION Pumps and Irrigation Supplies including land planes, ditchers, irrigation tubes and other supplies.

A LIMITED LINE OF SHELF HARDWARE. INTERNATIONAL DEEP FREEZE UNITS

A complete Shop Service for repair and replacement parts for International and all other power farming equipment.

We can assure you prompt and efficient service.



B. AND C. EQUIPMENT COMPANY

THE CONSTITUTION of TEXAS

WE NOW OPERATE UNDER WAS DRAWN-UP in 1876

Contains APPROXIMATELY 35,000 WORDS and IS 5 TIMES AS LONG AS the CONSTITUTION of the United States

Very POSSIBLE SAFE-GUARD NEEDED FOR A TRULY DEMOCRATIC GOVERNMENT, LIMITING POWERS and PRESCRIBING DUTIES of IT'S OFFICIALS to GUARANTEE Your FREEDOM AS LONG AS YOU LIVE in TEXAS. TEXAS HAS HAD 4 CONSTITUTIONS.

MORE than 2,000 TEXANS SERVED in WORLD WAR I and 750,000 in WORLD WAR II Including MEN and WOMEN

★ THINGS YOU SHOULD KNOW about TEXAS and YOUR HOMETOWN NEIGHBORS ★

★ YOU ARE Invited to SUBMIT FACTS on TEXAS FOR USE in THIS FEATURE to YOUR NEWSPAPER - CREDIT LINE WILL BE GIVEN ★

★ NEIGHBORS ARE VERY EASY to DEAL with. You'll AGREE ★

1950 POPULATION of TEXAS **7,711,194**

HUT HUTSON 9

Three Of A Kind At Cates Store

Three of a kind with a full hand backing them in the back shop, is the finest way to introduce the Neighbors on the job for this weeks newspaper. The three of a kind represent Floyd "Slim" Cates, J. C. Cates, and Pat Cates who ride herd on the front end of the B. and C. Equipment Company, when they are not out drinking coffee or talking about a recent fishing trip or planning a coming fishing trip.

The full hand in the shop at the B. and C. Equipment Company is represented by Carl Tucker, Millard Tucker, Lefe DeArmond, Marion Close and Bill Dillow.

And if it's repairing any type of power farming equipment, you sure do not have to draw to this hand, because the boys in the back end of the business are well trained, and they have access to the very best and most modern replacement parts in McCormick-Deering and other power farming repair parts.

The organization started back when Slim Cates decided it was entirely too hard work to lift sacks of flour and other heavy material in a Grocery store and sold out his Cates Grocery, and later figured he had located an easy way to make a living and purchased the old Spearman Hardware McCormick-Deering, International agency. Course Slim found out that the light end of a cultivator was as heavy as any groceries he ever did handle, but he stuck with the new job and concluded that there was not any easy way to make money, except to work hard.

The B. and C. Equipment company has enjoyed a very liberal share of business during the time Mr. Cates and his associates have owned the business. They sure try mighty hard to keep well stocked bins of supplies for the International line of machinery, and they keep lots of recent modeled tractors and other power farming equipment. As a result they have been quoted quite often as leading the area in sales—of course that was back when we had a little moisture.

Slim and his wife came to Spearman back in 1932, moving to our city from Quitaque, Texas. He first entered the grocery business with his father. The Cates Grocery built up in volume, and after changing hands several times is now the Cut Rate Grocery and Market. J. C. Cates has farmed most of the years he has lived in Hansford country. He moved to Spearman in 1941 and came here from Quitaque. Pat Cates has been associated with Slim in the grocery business when he came here in 1935. He is a cousin of J. C. and Floyd Cates.

The local organization is a natural. All the Cates are very cordial, and while they enjoy visiting and discussing most any of the activities of our area, they are all business men, and if you are not mighty careful you will buy something from the boys, when you just plan a little chat with them.

Sure the back end shop runs without much supervision. But there is a lot of experience, and the workmen take a good deal of pride in doing first class repair work.

In addition to the regular line of McCormick-Deering Farming machinery, the B. and C. Equipment company handle a limited line of shelf hardware. They also are the Dealers for the Nationally known LAYNE AND BOWLER Irrigation supplies, and handle everything in this line from irrigation tubes to a turn key job with installing pump and motors.

Guess we folk of Hansford county are fortunate that these old country boys came our way from the cotton country and never have learned any better than to work hard and try to please their friends and customers.

GRADUATION Headquarters

— For Boys
— For Girls
Shop at Jims
For The Newest



Jim Neely's Mens Wear

GROUP ONE BATTERY

12 Months Guarantee

\$9.95

EXCHANGE

Consumers Sales Company



Mother's Day Gifts

We have a complete line of Mothers Day Candies — and we suggest costume Jewelry—Nylon Hose and a wealth of other appropriate gifts at our store.



The Corner Drug Store

DRY GOODS and GROCERIES Plus Exceptional SERVICE at

W. L. Russell, Jr.



Mother's Day Gifts

—Lazay Susans
—Pottery
—Magnetite Ware
—Reverse Ware
—Electric Coffee Makers and electric appliances.



It's Almost Fishing Time

SPEARMAN HARDWARE

Watch This Newspaper Each Week For Outstanding Bargains In Food.

There is some interesting items of news to shoppers in the advertisement of



Cut Rate Grocery And Market

Highlights And Sidelights

AUSTIN, TEX.—The House of Representatives wrangled this week over whether to adjourn quickly or pass a tax to pay teachers more money.

The bill to increase teachers salaries \$100 per year passed both Senate and House.

But Comptroller Robert S. Calvert says there is not enough money to pay the cost of the bill, estimated at \$13 million or more per year.

Therefore, it is necessary for the Legislature to pass a tax bill if the teachers are to get a salary increase.

Meanwhile there was a delay in consideration of tax bills. At the same time, there was pressure for adjournment of the Legislature next Tuesday.

That put the House in the middle of a squeeze play: if they quit so early the chances to get a tax bill passed were remote.

To quit without a tax bill would deny the teachers a raise; to continue in session might be hard to do inasmuch as Representative John Crosswait of Dallas claimed majority support of his resolution to adjourn.

What would be the answer to the \$13 million question?

Both Governor Allan Shivers and Speaker Reuben Senterfitt thought they knew. Both predicted that no new tax measure would pass.

Senterfitt yielded the gavel in order to vote for the teacher pay bill, but he commented that "it will gain the teachers nothing unless we pass the biggest tax bill in the history of Texas."

He added that in his judgment the people of Texas would not tolerate a tax of that size.

An \$84 million omnibus levy, sponsored by Representative George Berry of Lubbock, was being considered to raise additional revenue.

If the Legislature adjourns on schedule—that is, at the end of its regular 120 day session next Tuesday—House members may be on a political hot seat.

They would be asked why they voted a pay raise for teachers, then failed to provide funds for it.

Sensors would have the reply that the House did not give them a tax bill to consider. (Tax bills must originate in the House.)

One alternative to passing a tax bill is to wait and see if the courts uphold a natural gas tax law, passed by the last Legislature, that would put \$45 million into the treasury.

If the law is held valid after this session adjourns, there would doubtless be demands for a special session to appropriate the money.

The teachers would see the funds as merely going for an increase in their salaries, in view of the Legislature's approval of that course.

Sensors heard charges of official misconduct against District Judge C. Woodrow Laughlin and recommended passage of a resolution calling for a legislative investigation.

Approval of the House is required to authorize a probe of the South Texas political figure.

Laughlin was elected 79th district judge last year with the help of Daval County political boss George Parr.

Among other things, the judge is charged with dismissing without authority about 60 Starr County indictments involving election irregularities.

The House passed and sent to the senate a bill intended to ban books containing Communist propaganda from school, college and public libraries.

The bill requires removal of books if they contain Red propa-

ganda, ridicule the home, religion, the Constitution, or Texas history.

Representative Marshall O. Hill of San Antonio accepted a change which exempts from the ban any books which the governing boards of schools consider "useful" for comparative work, or constructive purposes.

Opponents of the bill said the change left the ban to local school officials, who already have such authority.

Another change calls for a big red stamp in books written by members or former members of a Communist or front organization.

Opponents argued that labeling some books as subversive might make them more tempting to youngsters.

There was continuous skirmishing over small loan legislation. Opponents won a round last week by delaying a bill by Representative Reagan Huffman of Marshall.

Among other things, the bill proposes jail sentence for any lender whose charges exceed 36 per cent a year. Supporters of the bill say this, along with other proposed legislation, would eliminate loan sharks.

Most Texas finance companies disagree by saying that the loan sharks would only drive loan sharks underground and would give a foreign corporation unfair advantages over reputable Texas lending institutions.

Texas business will suffer unless an adequate road program is provided by this legislature, says J. H. Kuitgen of Texas Good Roads Association.

Kuitgen commented here that more than 20 groups had recently appeared before the highway commission seeking funds for road improvements. They were told the money was not available.

Kuitgen asked support for a legislative remedy.

The Texas Liquor Control Board reports an increase in revenue.

Administrator Cuke R. Stevenson Jr. reported that state liquor collections in March of this year were nearly \$1.5 million, greater than the same month a year ago.

These revenues go mainly to the state "clearance" fund, and thence to schools, farm-market roads, needy blind, dependent children, teachers retirement, old age assistance, and other state purposes.

Call me 'Sniffles'

Yes, that name really fits me when I get a "cold." My nostrils clog-up, my head starts spinning, and I feel awful. But thanks to Dr. Salsbury's Ar-Sulfa, I've found a way to lick "colds." Ar-Sulfa in the drinking-water stops infectious coryza ("colds") fast! Ar-Sulfa, that's for me!

When you need poultry medicines ask for...

DR. SALSBUARY'S

SPEARMAN DRUG

Your Retail Store

Home Sunshine

Sunshine in homes and gardens is as valuable as on the beach, and a surprising amount of it is available to those who seek it. Avoid overlapping with tall plants that shade the home grounds unduly, especially in planting near the house.

Not Spot

Into the yawning crater of Mexico's then-active "Popo"—Popocatepetl volcano—the Spaniards under Cortes sent Indian slaves to obtain sulphur for gunpowder.

SHORT SNORTS: Two "deans of the House" were among legislators who received engraved tie clasps as emblems of 10 years' service—They were Representatives S. J. Isaacks, 84, of El Paso, and Henry G. Lehman, 48, of Giddings—GOP National Committee Alvin Lane has invited Wright Morrow, Governor Allan Shivers, and Senator Price Daniel to join forces permanently with Texas Republicans—The "clean competition" bill to prohibit grocers from selling goods below cost is buried in a committee.

Cotton Quota

How many yards of cotton were produced in the United States in 1952? 5,567,244,500 linear yards... enough to go around the earth 224 times!

Hansford VFW

Post 6207

Meets 2nd and 4th

Wednesdays

7:30 P. M. Every Month

Cmndr. C. W. Weaver
Sr. Vice, J. P. Vernon
Jr. Vice, Irvin Davis
Qtr. Mast., Don Smith

PHILCO

T. V. SETS

Sales & Service

Refrigerators

Electric Ranges

FREEZERS

Air Conditioners

RADIOS

For Graduation

Give a Philco

PORTABLE

McCLELLAN

KRAUSE CO.

ALL THE ACTION, EXCITEMENT, BEAUTY AND ROMANCE THE SCREEN CAN GIVE!

THE QUIET MAN

TECHNICOLOR

starring **JOHN WAYNE**
MAUREEN O'HARA
BARRY FITZGERALD

WARD BOND - VICTOR MCGLAGLEN

BREAKING THE SOUND BARRIER

Distributed thru United Artists

Thur. & Fri.

LONE STAR

CLAY GABLE VIA GARDNER

Saturday

THE QUIET MAN

JOHN WAYNE
MAUREEN O'HARA
BARRY FITZGERALD

Sun. & Mon.

LAST of the WILD HORSES

CLAUDE RAINS

Tues. & Wed.

Wagon Wheel

DRIVE IN - FLY IN THEATRE

FLOWERS FOR MOTHER

Flatter Mother With Dewy-Fresh Flowers on Her Day

Potted Plants for long-lasting loveliness

Fragrant Bouquets fresh-cut, artistically arranged

Lovely Corsages for shoulder or waist

All Copper and Pottery items on sale at 1-3 off

Boxwell Brothers Flower Shop

Phone 2751

Spearman, Texas

Rev. Sidney Reese made a trip to Webb City Mo. over the week-end to visit his brother Gayron Reese. His mother Mrs. Lucy Reese accompanied him for a longer visit with her son. Mrs. Lulu Newcomb was their guest for the trip. She visited her son Robert Newcomb who is Manager of a Variety store in Webb City.

Lee Jenkins returned home last week from an extended stay in an Oklahoma City hospital.

Mrs. Leona Nelson made a business trip to Amarillo Monday.

The H. L. Wilbanks family have moved to Stinetz where he will operate a domino parlor.

Mr. and Mrs. Cecil Crawford spent Wednesday morning in Borger.

Wally Cayton writes home he is getting tired of camp Scott, but sees no chance of being sent out of Illinois any way soon.

Miss Nadine Sparks, daughter of Mr. and Mrs. Raymond Sparks, plans to enter Frank Phillips college at Borger the first of June.

Mrs. Albert Mackie drove over to Perryton Wednesday.

Mr. and Mrs. Tip Collinsworth of Perryton visited her parents Mr. and Mrs. Jake Lamb to check on her father who is recovering at home from a recent illness.

Mrs. Mable Edwards and son Wayne entertained with a turkey casserole dinner Sunday at their lovely farm home. Those seated were her mother Mrs. J. P. Berner, Messers and Mesdames Joe Edwards, Cap Richardson, James White and girls, Billy Went and children and Miss Hugo Scroggs.

Mr. and Mrs. J. R. Allison and baby spent a long week-end visiting in Amarillo and Sarre, Okla.

Mrs. Ervin Davis and Mrs. E. C. Clement made a trip to Shattuck, Oklahoma Monday.

Mrs. and Mrs. Clyde Gaither and family with her uncle and aunt the Bill Mathies of Clarendon. They made their home in Spearman for many years.

Mr. and Mrs. Walter Wilmet and Mr. and Mrs. Sonny Windom of Ft. Worth are on a two weeks vacation of the deep south. They visited Kentucky too.

Mr. and Mrs. Albert Mackie were Borger visitors Saturday.

Mrs. George See returned to her home in Lindsay Oklahoma Sunday after visiting relatives in Spearman and Texhoma.

Mrs. Henry Redford Morse, was a Spearman visitor Tuesday.

Mrs. Bessie Womble made a business trip to Amarillo Thursday.

Lee McClellan attended the grain dealers convention in Amarillo this week.

Elizabeth Seaman made a trip around the world in 72 days, 6 hours and 11 minutes, to better the record of the character created by Jules Verne.

Only persons who have been dead for ten years can qualify for election to the Hall of Fame.

The piccolo is the highest pitched of all musical instruments.

So called "closet dramas" are given in title of Emporer.

Plaster of Paris was originally manufactured near Paris, France.

John Adams, who died at 90, lived longer than any other U. S. President.

Here's An Unprecedented Offer!

FREE PIANO LESSONS FOR SIX MONTHS

CHOOSE YOUR OWN TEACHER

WITH EVERY NEW PIANO PURCHASED THIS WEEK!

With the purchase of every new piano during May 11th to May 16th we will give you six months of piano lessons FREE. You May Pick Your Own Teacher; However your teacher must be recognized locally as a competent teacher.

Piano lessons as we enter the summer vacation period will give your youngster something constructive to do.

MEGERT MUSIC CO 415 N. MAIN BORGER, TEXAS

NAME _____

ADDRESS _____

Please send a representative so I may take advantage of this offer

CITY _____ STATE _____

MAIL AT ONCE

This offer good with any new piano purchase. Every one a terrific value & one to fit Every Pocketbook. \$675.00 and up

MEGERT MUSIC COMPANY

415 N. MAIN - "Home of Everything Musical" Phone 750

Announcing

This Will Inform The Public That

Joe Barkley **Jesse Peck**

Have purchased the LANE BODY SHOP. This business will be known as

J & I. BODY SHOP

We solicit your business and Good Will. Come in and see us about under-coating. We will give you a top-notch under-coat for only \$22.50. We also do expert Painting and Body Work.

JOE BARKLEY and JESSE PECK

IRRIGATION LOANS

Irrigation well and Farm Improvement

Loans available through our Agency

SIBLEY JINES and SON

Perryton, Texas

FARM AND RANCH LOANS

Low Interest Rates

Long Term Financing

Frank F. Fata, Representing

The Equitable Life Assurance Society

Phone 5000 Pampa, Texas