

# The Spearman Reporter

THE SPEARMAN REPORTER, Hansford County, Thursday, May 5, 1955

## Fertility Day To May 11th

Irrigation Club meeting will be held on May 11 Thursday which is the regular date, May 11 first Annual Farm Fertility Day. The Texas Extension officers of the Irrigation Club worked this program possible, and they feel certain that to you.

**FARM FERTILITY DAY**  
May 11, 3:00 p.m. to 9:30 p.m.  
at the Courthouse for the field trip to Robert farm.  
Extension Irrigation Specialist, College Station.  
Irrigation, Rate of intake, Soil capacity, etc.  
Extension Soils Spec. College Station, Tex.  
Structure and Capabilities.

Streak House Dining Room.  
Extension Agronomist College Station, Tex.  
Shums.

Grain Sorghums.  
Chemist, Mathison Chemical Company — Fertil-

Very Truly Yours  
Bill Goldstein  
County Agent

## and Rainfall Over County Saturday, And Sunday!

Rains over the celebration week-end certainly will insure picture in news up.

Late weather forecast for today calls for possibility of some rain Thursday, Friday and Sat. for Hansford County. If the wind will lay out of the East or Southwest for another twenty four hours, we may get some more moisture for sure.

Secretary of Agriculture Benson reports there will be no cotton export subsidy during the 1954-55 marketing season which ends July 31, 1955.

### Jury Summoned For Rape Case

The 80 panel jury of the 84th District court has been summoned to appear at the court house in Spearman at 10:00 a. m. Monday morning May 9th. A criminal case on the docket of the court will be tried, according to information from the court house. Charles A. Embry is charged with rape, and a jury for trial of the case will be selected from the 80 panel, and jury.

### Home Demonstration Work

Home Demonstration work is that part of the Agricultural Extension program concerned with the home and family. The newest research information in all phases of homemaking is brought to homemakers through specialists, home demonstration agents and local leaders. Programs and demonstrations in foods and nutrition, housing and home improvement home management, health and safety, family life, clothing consumer buying and public affairs are developed to fit local needs and interests.

During the week, more than 40,000 members of 1,985 Texas Home Demonstration Clubs will highlight their activities in various ways. Special educational exhibits and programs, feature stories, radio and television programs and tours of result demonstrations are planned to interpret the objectives of home demonstration work and show

## Mystery Farm of County



This is the second of a series of 52 Mystery homes to be printed in the Reporter. Rules are changed this week. Instead of the first person to identify the mystery home, all the names of those who correctly identify this home, will be placed in a hat, and then the name drawn from the hat will be given a years subscription to the Spearman Reporter. Since we finally had 41 people who correctly identified the H. L. Wilbanks home last week, we feel that it is unfair to give the subscribers as late as Tuesday of next week, you will have a chance to earn the free subscription to The Reporter.

### New Telephone Rates June 6, 1955

The city council and representatives of General Telephone Company of the Southwest have agreed on a schedule of rates for telephone service in Spearman. Negotiations between the council and the Company were completed at a meeting of the city council on April 19.

Inadequate earnings was the reason given by the Company for requesting an adjustment in rates. According to a Company spokesman, the low earnings situation is the result of the constantly rising cost of operation and various other factors.

Business	Present Rates	New Rates
One Party Service	\$6.75	\$8.50
Two Party Service	5.00	6.75
Extension	1.50	1.50
Residence:		
One Party Service	\$3.50	\$4.50
Two Party Service	3.25	3.75
Extension	.75	.75

### Thanks Ford Co.

The Twentieth Century Club thanks Joe Traylor Ford County party, and his personnel, for the use of the building for Old Timers headquarters during the Celebration week end. Their courtesy was outstanding, and all club women wish to thank them.

### President: Mrs. Vernon Crooks

Sec.: Mrs. Dwight Hutchinson  
V. Pres.: Mrs. Wayne Bryan  
Treas.: Mrs. Claude Stowe

### NEW HOPE CLUB

Pres.: Mrs. Una Marshall  
Sec. & Treas.: Mrs. Ed. Pappay  
V. Pres.: Mrs. Bill Lugsdon

### MORSE CLUB

Pres.: Mrs. Jim Womble  
Sec. & Treas.: Mrs. Joe Reising  
V. Pres.: Mrs. A. L. Parks

### HAPPY HOMES CLUB

Pres.: Mrs. Kenneth Bailey  
Sec. & Treas.: Mrs. Alton Ellsworth  
V. Pres.: Albert Mackie

### STATE LINE CLUB

Pres.: Mrs. J. Fred Jordan  
Sec. & Treas.: Mrs. Bob Berry  
V. Pres.: Mrs. Johnny Wells

### McBRIDE CLUB

President: Mrs. L. J. Cator  
Sec. & Treas.: Mrs. B. W. Renner  
V. Pres.: Mrs. Odell Jackson

### BETTER HOMES CLUB

### NATIONAL H. D. CONVENTION

The National Home Demonstration Convention will be held in the Conrad Hotel in Chicago, Ill. August 24-28-1955. All those interested in going should contact your County THDA Chairman or your District Vice President.

## Roy Chase Reports Hail

Roy Chase reports that he has received 4.20 inches of moisture on his place since the last of March. Roy reports that Monday evening of this week a severe hail storm and 1.25 inches of moisture fell in the vicinity of his place. Roy thought a cyclone had hit, when the storm came in. The hail and rain was so hard, and the wind so violent, it shook the car they were in. Roy said it was five minutes after the hail-storm before they could see, because of the steam coming up from the ground.

There was some terrific damage to the wheat in the hail storm, but it is hoped that it will sucker out and still make wheat.

Texas King Ranch is so large that there is a month's difference in the growing season between the north and south ends.

### Revival in Progress At Assembly Church

Pastors W. V. and Aloha Bentley, of the Assembly of God church announce that a Salvation and Healing Revival is now in progress at the church which is located at 403 N. Bernice street.

### Gospel Meeting At Gruver Church

First Floyd was chairman of the committee that prepared 2070 pounds of choice beef to feed the 1800 people at noon, Saturday. This was the best barbecue ever served in the state of Texas.

### RODEO RESULTS

**Friday EVENTS**  
SADDLE BRONC — Charles Barton, Stratford, Tommy Ryan, Almo, N. M.; Wild Horse Norrell, Silverton.  
BAREBACK BRONC — Bud Coffey, Morse, Ed Harland, Goodwell, Okla.; Rose Coffey, Sayre, Okla.  
BULL DOGGING — Tobey Alley, Laverne, Okla.; time 9.5. Bud Coffey, Morse, Tex.; time 18. Nick LeCompt, Dalhart, Tex.; time 12.2.

### IN Borger Hosp.

Howard Huffman, manager of Spearman Steak House is in the North Plains Hospital, Borger, this week where he is recuperating from a heart ailment. Mr. Huffman became ill, and was rushed to the hospital Monday of this week, where doctors stated he was suffering from blood clot near his heart.

## Celebration Is One Of Best In History

The Spearman Celebration, which started off slow Friday morning, gained momentum by parade time Saturday morning, and was in full swing for the rodeo and barbecue Saturday afternoon.

The celebration opened Friday afternoon with a rodeo, and announcer Buck Buchanan, and the officials of the rodeo, including the committee, and secretary, braved a rain squall along with the riders to finish out the first day of the rodeo. In fact, the cowboys would climb aboard their big brabams bulls, with the dirt, rain, and wind hampering them, and of course the bulls, too.

The younger generation gathered at the Community Building to dance to the music of the West Texas Collegians, from WISC in Canyon, which included some musicians from Spearman. On Saturday Early day residents of Hansford County were in the spotlight, as Spearman's celebration came to a close with a street parade, barbecue, rodeo, and dance.

The streets were lined with spectators at 10 a. m. when the VFW color guard and the Spearman High School band marched down the main street, the vanguard for a colorful parade marked by well decorated floats sprinkled between old cars, and the 1955 model automobiles.

The 20th Century Club registered and welcomed the pioneers Mrs. F. V. Converse was chairman of the committee and Mrs. P. A. Inman and Mrs. Hazel Martin were at the great book. By noon almost 100 had gathered to greet old friends and new members. At 1:30 p. m. Mr. and Mrs. Walter Wilmoth of Colorado Springs, Colo., had the distinction of traveling the greatest distance to attend the reunion. The oldest resident to register was Mrs. J. M. Hodge, who came to Hansford County in 1894.

The event was staged under the general supervision of a steering committee composed of H. Hester, Mary Chambers, Dr. R. L. Kleeberger, and Joe Dav.

Third place went to the Rainbow Girls who had a table symbolizing the national motto. In God We Trust.

Oscar Archer and his daughter Cathy were judged the best costumed riders, followed by Dickie Lawrence and Charles Lynn Martin.

Mary Ellen Barkleys entry was tops in the decorated bicycle section. Second and third prizes went to Joan Hakley and Perry Allen Washington. Myr Ward and Ed Harland, Sunray High School bands, and the Spearman Jr. band, were Irvin Buchanan and Delbert Timmons of Perryton.

All in all, the Saturday performance was one of the outstanding days of the celebration. A rain had laid the dust, and the wind also didn't blow, which made the day ideal for the big events.

The Bible is the world's best seller every year.



W. E. Bratton Mrs. Chamberlain R. L. Bowen

## 25-Year Employee

Mrs. Mildred Chamberlain, who has rounded out a quarter century as cashier in the Spearman office of Community Public Service Company, is shown here as she receives a gold watch in commemoration of her long service. R. L. Bowen of Fort Worth, president and general manager of the power company, is shown presenting the watch and his congratulations to Mrs. Chamberlain, while Spearman Manager W. E. Bratton looks on. The presentation was made at a dinner which followed a one-day business session for Panhandle employees of Community, held at the Borger Hotel in Borger recently.

## Polio Vaccinations

As there has been a good deal of radio and newspaper publicity given to the unfortunate coincidence of new Polio cases following the Polio injections in some parts of the country, I feel that it is necessary to reassure the people of Hansford County in connection with our Polio inoculation program here.

We have not used any vaccine in this county from the Cutter Laboratories of Berkeley, California. All of our vaccine has been manufactured by Eli Lilly & Co., of Indianapolis, Indiana. All future vaccine will also be from this company or from Parke-Davis & Co. of Detroit, Michigan.

Also, as we do not know at this time just when we will receive the vaccine for the second injections for the first and second grade school children, may I assure you that it will be given within the effective period of immunization. This can extend up to four weeks from the time of the first injection. If possible, you will be informed of this date through this paper as soon as any further information is received by your County Health Officer. We should have the vaccine within the next 10 days for the school children.

As far as the availability of vaccine for other children of preschool age and for those above the second grade, the latest information I have is that private physicians cannot hope to have vaccine for their own use in their offices much before the 1st or 15th of July. Short supply and the length of time needed to process the vaccine, and the demand by the National Foundation make it impossible for the various manufacturers to supply physicians with vaccine before these dates. Since Hansford County does not have a significant Polio rate of incidence, we do not need to become alarmed or impatient at the unavoidable delays in this matter. If anyone will bear with us, we will be certain to have enough vaccine for everyone by August or September of this year.

R. L. Kleeberger M. D. Hansford County Health Officer

## New Texaco Station Open

One of the most modern and well equipped service stations on the high plains opened this week in Spearman. The new station will be managed by Don Smith and Louis Seegid and will feature a complete line of Texaco and B. F. Goodrich products.

The boys welcome your business, and you are urged to drive in today and see this fine new addition to the City of Spearman.

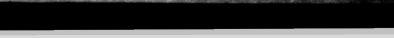
The famous "Robber Barons" were Andrew Carnegie, Jai Gould, James Fiske, John D. Rockefeller, Cornelius Vanderbilt and J. Pierpont Morgan.

I like the silent pictures the best. Their return I would greet with a shout.

To see a woman open her mouth.

And not a sound come out.

Belgium and the Netherland separated by treaties signed 1839.



PRETTY AS A PICTURE are two lovely Spearman lassie who "floated" down Main Street in Spearman Saturday during the annual celebration parade. Patsy George and Charlot Martin, seated back to back, seem to mirror themselves in one of the most colorful entries in the program. The two-day civic festival also featured a rodeo and a pit barbecue. (Photos by ...)

### Congress Of The United States

To The People of the 18th District  
**THE FARM SITUATION  
 CONTINUES TROUBLESOME**  
 Let no one be misled about the effects of the farm situation on the general economy. The plight of the farmer is beginning to be felt in many other segments of American life. In our particular section of the country the farmer has been fighting drought conditions for four years. In many instances it is a miracle he has survived. Yet, with full knowledge of the plight of the people, in the drought area, the Department of Agriculture has placed three additional heavy burdens on his back:

**FIRST:** The rug was jerked out from under him when the grain sorghum price supports were reduced by 15 percent, the greatest reduction ever visited upon these people. Grain sorghum has been the cash crop of the Panhandle, and in addition has kept much of the land from blowing.

**SECOND:** The interest rates of particular government loans were increased from 3 percent to 5 percent. These were interest rates on money that was being borrowed by farmers to keep their operations going, to keep their children fed and housed, and to remain on the farm when they were raised. It might be noted that many big businesses are being allowed to finance themselves through the government at considerably less than 5 percent. I ask why a man in distress should be further distressed by such an unconscionable policy.

**THIRD:** The Farmers Home Administration is being "re-organized." Many here in Washington feel that this is a shabby political action done for the purpose of creating jobs for party faithfuls and kicking out present employees. It certainly has not been done for economy as was reported by some in the Department. The cost of operation in Texas alone will be an additional \$40,000 a year, according to a conservative estimate by an official of the Farmers Home Administration. Men who have been with that department in the field for a long time and who are in position to expedite the administration of the loans are being downgraded, both in position and salary. There are several other ways to make a man quit in some departments, one being to move him to Alaska; that is, give him his choice of going to Alaska or quitting. The opinion has been voiced here that the so-called "re-organization" is a sordid attempt to gain economic control of many of the small farmers for political reasons. My mail indicates that the farmers generally are very much upset about the situation.

And to add to these blights, nature again punishes us for misuse of the soil by visiting dust storms upon us. These are problems that cannot be answered by funny pictures of a man with an open umbrella leaving Washington for the drought area. The situation has ceased to be humorous, and it is time that the farmers of this section received more beneficial action and less talk.

**THE GAS HEARINGS**  
 The gas hearings are drawing to a close this week and will be history when you receive this letter. They have been most enlightening from many standpoints, especially as to separating the sheep from the goats on the question of free enterprise. As I said in a former newsletter, I was completely astounded at some of the groups of individuals who appeared before our committee and supported federal bureaucratic control. In most instances, it came out that the position of these people was being prompted by the feeling that their particular situation or business would be better protected if federal bureaucratic control was involved. I certainly respect the sincerity of these people, but I, of course, question their judgment, because it is a good example of the reason for the old saying: "It all depends on whose ox is being gored." Whether it is gas business, the peanut business, or any other business, from a hamburger stand to a giant corporation, the tragic price of federal bureaucratic control and price fixing for protection, real or fictitious, is a complete capitulation to policies of socialism and, in my opinion, cannot be otherwise construed.

As serious as these hearings have been, there have been humorous situations. One witness was pointing up the fact that our state of confusion had actually come from a commingling of interstate (federal jurisdiction) transactions with intra-state (state jurisdiction) transactions. He was arguing that the federal government was trying to take over everything by simply referring to each transaction as an interstate transaction. He said that it had gotten to the place where regardless of a man's business, if he took a drink of water in New York and suit in West Virginia, he was in interstate commerce. Another witness who appeared in behalf of a large city for federal control was being questioned at length by me as to his conclusions. He finally said that he didn't want to argue the point but did want to say if I had come from the same city he had, I would probably be making the same statement he was making. Which proves that we all try to represent our own people and our philosophies as best we can.

WALTER ROGERS  
 Member of Congress

GLADIOLA  
**CAKE MIX 88**

Mazola - Quart  
**SALAD OIL 59**

FROZEN QUICKEE COOKIES Pkg. 27¢

Lanes 1-2 Gallon  
**ICE CREAM 69**

Pasco 6 Oz. Frozen

**ORANGE JUICE 15**



**HIT VALUES**  
 that Score at Home Plate!

SPECIALS  
 THURSDAY P.M.  
 FRIDAY and SATURDAY



Just look at this lineup of high-scoring foods! Every one is a HIT VALUE that wins cheers at the home plate! Every price is a LOW PRICE that goes to bat for your budget. . . gives you a high savings average every shopping trip. And you'll find Big League values like these in every department of our market because Quality and Economy are always "teammates" at CUT RATE.

We have a Complete Assortment of—

- ARMOUR Sliced Luncheon Meats
- ARMOUR Bologna
- ARMOUR Olive Loaf
- ARMOUR Spiced Luncheon Meat
- ARMOUR Cooked Salami
- ARMOUR Kubet Loaf
- ARMOUR Pickle & Pimiento Loaf

PKG.  
**25**



- CRISPY-RED RADISHES
- LONG GREEN SLICERS CUCUMBERS
- MARSH SEEDLESS GRAPEFRUIT
- ARMOURS BANNER SQUARES Bacon

**TOMATOES 19c**  
 Pkg.  
 2 For 5¢  
**Lb. 10c**  
 2 Lbs. 17¢  
**lb. 25c**

Our Favorite 303 Butter  
**BEANS 10 for \$1**

VAN CAMP TALL CAN  
**PORK and BEANS 2 For 27¢**

Dole Tall Can Pineapple  
**JUICE 9 for \$1**

### Coffee Dept.

- LB. CAN MARYLAND CLUB 89¢
- 2 OZ. INSTANT MARYLAND CLUB 55¢
- 8 OZ. INSTANT CHOCOLATE NESTLES QUIK 25¢
- 300 COUNT KLEENEX 2 For 39¢
- BATHROOM TISSUES DELSEY 3 For 35¢

**Cut Rate Grocery Market**  
 SPEARMAN  
 FREE PARKING

- READY TO BAKE - ZIP OPEN CAN  
**PUFFIN BISCUITS**
- SOUIX BEE 12 OZ.  
**HONEY SPREAD**
- SUPREME PERFECT DINNER BISCUIT  
**CLUB CRACKERS Lb. 3**
- SUNMAID SEEDLESS NECTAR  
**RAISINS 15 Oz. Pkg. 2**
- KRAFT SALAD DRESSING  
**MIRACLE WHIP Pint 2**
- ZEEETEE 20 OZ. DEC. TUMBLER APPLE  
**BUTTER 4 For \$1**
- TUXEDO  
**TUNA FISH 2 For 3**
- 7 OZ. MACARONI OR SPAGHETTI  
**SKINNERS 2 For 2**
- FRISKIES TALL CAN  
**DOG FOOD 3 For 3**



Valuable Round-Up Thrift Stamp  
 You can redeem them in Special  
**DOUBLE STAMPS EVERY WEEK DAY**—with each \$2.50 or more Purchase.  
 MARGARINE 1 LB. FREE WITH EACH LB.  
**MEADOWLAKE Lb. 2**  
 SHURFINE 25 LB.  
**FLOUR \$1**  
 KRAFT 8 OZ. FRENCH DRESSING  
 SUNSHINE 7 OZ. CHOCOLATE  
**HYDROX 2**

CUT RATE GROCERY  
**Weekly GOLD STAR Feature**  
**FLUFF 89**  
 3 Lb. Tin  
 The New Wonder Shortening  
**FOR THE BEST BUYS IN THE**  
 Watch this Space Each Week

READER  
 IDENTIFYING  
 THE OWNER  
 OPERATOR  
 THE FARM  
 ON PAGE 1  
 L. WILBANKS IS  
 HOME OF HANSF  
 HOME 30 people corn  
 Mystery home of H  
 at west after we ha  
 orte.  
 re is the picture as  
 e of last weeks m  
 ystery Farm" for th  
 front page of this  
 a brief story on the  
 be carried in this  
 ehaps we were fe  
 of the outstanding  
 area in present  
 m.  
 Ir. and Mrs. Wilbc  
 s of this county ar  
 extra. This lovely i  
 FOREVI  
 ROUN  
 CUT R  
 ROTARY I  
 If you have wh  
 NOW for the rotc  
 a chance to bre  
 opportunity to  
 ROTARY HOES.  
 ALWAYS ANXI  
 HANSFORD  
 John  
 Spec  
 AFTEI  
 We have a  
 fied seed av  
 FEED  
 Depend on  
 feed  
 PRICE

**WILL RECEIVE  
ONE YEAR'S  
SUBSCRIPTION  
TO THE  
REPORTER  
FREE**



**THE OWNER  
OR OPERATOR  
OF THE FARM  
ON PAGE 1  
IS ASKED TO  
CALL AT THE  
REPORTER  
AND RECEIVE**

**A BEAUTIFUL  
FULL PHOTO-  
MOUNTED  
FREE  
OF  
CHARGE**

**L. WILBANKS IS FIRST MYSTERY HOME OF HANSFORD COUNTY**  
Some 30 people correctly identified the Mystery home of Hansford county, the week after we had published it in the reporter.  
Here is the picture as printed on the front page of this weeks newspaper, a brief story on the owner and the farm is carried in this space next week. Perhaps we were fortunate in selecting of the outstanding homes and farms of area in presenting the first Mystery Farm.  
Mr. and Mrs. Wilbanks are pioneer citizens of this county and of the Panhandle Texas. This lovely modern home is a far

cry from the start that was made by the young farmer-rancher. Soon after he had—in his own words—picked the prettiest and most pleasing bride in Texas, the Mr. and Mrs. Wilbanks started housekeeping in the loft of a large barn which appears in the mystery farm picture. From this modest beginning, the young couple moved up a step in society when they moved into their dug-out home, just west of the present home. Their next advancement was a 2 room residence, and their rating in social standing was mighty high at the time the new home was established. Just prior to construction of their present modern ranch-style home, the Wilbanks had lived for many years in their five room country home, which is still standing at the farm.

Hix and Mrs. Wilbanks started cultivating their farm just about 44 years ago. They used a couple of ponies and a walking plow to put in their first agricultural crop.

During all these years Mr. Wilbanks has divided his time between ranching farming and sherifing. He was sheriff of this county for 20 years, the longest term ever recorded for the county, and perhaps for any other county.

The Wilbanks farm is largely a family affair. With 2700 cultivated acres, 2300 ranch land, the farming-ranching operations supervised by Mr. Wilbanks is carried on by Ray Phelps, Jo Dan Bryan and Marcus Larson. Ray Phelps and Jo Dan Bryan are son-in-laws of Trixy and Hix Wilbanks, and Marcus Larson has been with the Wilbanks family for 20 years. He was never adopted,

but was raised just like a son.

The original family consisted of Mary, Beth and Ruth twins, and Julia Wilbanks, who are now: Mrs. Mary Hazelwood, Dublin, Texas; Mrs. Ray (Beth) Phelps, Mrs. Ruth (Jo Dan) Bryan, Mrs. Julia Billingsley, Lubbock, Texas.

The new home of the Wilbanks family is a show place for rural homes of this area. It is a 3 bedroom, dining room, kitchen, breakfast room, office and den and utility room home. There is an attached garage and two bath rooms. It is ideally arranged and carries out the plan of comfort and pleasure both in appearance and furnishings.

**FOR EVERY DAY BARGAINS IN GROCERIES  
PLUS THE VALUABLE  
ROUND UP THRIFT STAMPS TRADE AT  
CUT RATE GROCERY & MARKET**

**DEPENDABLE BANKING  
FRIENDLY RELATIONSHIP  
Is our sincere desire for the customers of the  
FIRST STATE BANK**



**ROTARY HOE TIME . . .**

If you have wheat left, it's sure time now for the rotary hoe. Give your land a chance to breath and your plants an opportunity to GROW. SEE US FOR ROTARY HOES. ANY SIZE - ANY TIME ALWAYS ANXIOUS TO SERVE YOU

**HANSFORD IMPLEMENT CO.**

John Deere Dealers  
Spearman, Texas

With the spotted rains of the past few days, there will be a lot of work necessary for land owners and farm operators of this area. We are prepared to make prompt and efficient repair work on any make of power farming machinery.

**ALL WORK GUARANTEED**

We carry a full line of IHC farm machinery as well as kindred lines for farm homes and ranches.  
Eversman Land Levelers And Ditchers

**B. AND C. EQUIPMENT CO.**

Spearman, Texas

**MOTHER'S DAY SUNDAY**

**May 8th**

We feature a large variety in both sizes and prices of the famous

**Mothers Day Pangburn Candy**

A wealth of appropriate gifts for mother including a full line of MOTHER DAY CARDS

**SPEARMAN DRUG STORE**

Your Rexall Store

**Seed**

**Seed**

Certified Texas Martin Milo, Arizona Martin Milo, 7078 Milo, Westland Milo, Texas Hegari. Select Texas Martin Milo, Norghum, Atlas Sargo, African Millet, Common Sudan, Sweet Sudan, Red Top Cane, Blackeyed Peas, Verta-Green Plant Food for lawns and gardens.

**R. L. McCLELLAN GRAIN CO.**

**AFTER THE RAINS**

We have a large stock of Certified seed available for Planting.  
**FEED FEED**  
Depend on Equity to solve your feeding problems.  
**PRICES REASONABLE**

**EQUITY**

**GARDENING TIME . . .**

See your Spearman Hardware for your needs in garden and lawn equipment. Kill your weeds as you feed your grass with **SCOTT LAWN FERTILIZER**  
Mr. and Mrs. John Bishop

**SPEARMAN HARDWARE**

**NOW IS THE TIME TO PREPARE FOR THE SUMMER WEATHER**

New Tires, Perhaps A New Battery For Your Car . . .  
**YOU CAN FIND MANY OF YOUR** needs for farm, ranch and home at your farmer owned

**CONSUMER SALES CO.**

Spearman, Texas

**FRIGIDAIRE APPLIANCES  
FURNITURE AND GIFTS  
Home Furnishings  
Home of Round-Up Thrift Stamps**



**Panhandle Furniture Mart**

THIS and THAT



Around Gruver

Last year we planned to have a clean up week, just about this time, but it rained and rained until our clean up got a clean up this week, but again it rained. Well, we like the rain, so we have postponed it until May 16th. The new dates are May 16th to May 20th. Next week we will tell you the names of all those who will have charge of it. We will try again to have a committee of ladies to survey the town and report on what they find. So remember the dates, MAY 16th - 20th.

We missed our column last week, so this news will be a little old to many of you. Right around Gruver we have had a good share of it. Over two inches all told. Jewel Ward, who lives just east of town on the home place, received over three inches last Friday. Amounts have varied over this end of the county from half an inch to over three inches. It was one of the most welcome rains we have had in a long time.

Last week Mr. and Mrs. C. H. Winger were called to Lubbock their daughter Marguerite was in the hospital with slight case of pneumonia. She is making a good recovery.

Mr. and Mrs. Harley Alexander recently went to El Paso to visit David and Maxine. David is in the armed services and is stationed at El Paso.

Mr. and Mrs. Buddy Wells are the proud parents of a brand new daughter. The young lady arrived by way of Burger. They are employed on the F. J. Boran farm. Congratulations to the new parents.

Mrs. Paretha Janette of Parkersburg has been visiting her sister Mrs. Minnie Eiling for the past two weeks. She was joined by her husband and daughter last weekend. Mrs. Minnie Eiling is still far from home.

Mr. and Mrs. A. C. Bort recently went to Oklahoma to visit with their son and his family.

We regret to report that J. C. Harris is in a Dallas hospital where he recently underwent surgery for a serious back ailment. He may be home by the time you read this. He had been there some time, before we even knew about it. Hence this late report.

Mr. and Mrs. T. J. Bergin and her two daughters went to Fort Smith, Ark., with her parents this last weekend. Her parents are Mr. and Mrs. Frank Stephens of Shamrock.

Most of you old timers will remember Mr. and Mrs. Claud Ellis. Back in 1926 Mr. Ellis was postmaster in Spearman. Then when Bill McRee was postmaster in Gruver, Mrs. Ellis was in the post office here. Recently

Mr. Darrel Cooper received a call from Mrs. Ellis who is now living in California. Mr. Ellis is in a very serious condition. Mr. and Mrs. Darrel Cooper and Darlene, and Mrs. J. H. Cooper left at once for California. We have not yet heard from them.

Miss Glenda Green, daughter of Mr. and Mrs. K. C. Green was recently honored by her school at Abilene. Glenda was presented as Aggie Club Sweetheart, at a chicken fry held at the A. C. C. farm recently. It was a blue jean party and held for the purpose of initiating the new officers. Glenda, a secretary in the agricultural office, was presented by Jimmy Wright, the outgoing president. This is quite an honor for Glenda and her parents and friends are all very proud of her.

General Telephone Plans Expansion Program For City

V. S. Reynolds, District Manager of the General Telephone Company of this city, announces this week that plans call for some seventeen thousand dollars in an expansion program for the Spearman system. The company plans to install new cables and equipment, so that new telephone subscribers can be placed on the local switch board without delay. Reynolds stated that more than 50 new subscribers had been added during the past year, and with the rapid growth of this area, the company anticipates more additions needed in the near future. The new expansion program will take care of a great many new subscribers, and make it possible for telephone service to grow with population growth of Spearman.

Weather - Mkt.

Table with columns: RAINFALL PAST WEEK, Date, Rain. Rows for 4-28, 4-27, 4-26, 4-25, 4-24, 4-23, 4-22, 4-21, 4-20, 4-19, 4-18, 4-17, 4-16, 4-15, 4-14, 4-13, 4-12, 4-11, 4-10, 4-9, 4-8, 4-7, 4-6, 4-5, 4-4, 4-3, 4-2, 4-1.

Total rain in April, 2.14 AS OF TUESDAY NOON

FAMILY RECREATION IS PHASE OF CLUB WORK

Family recreation a preeminent phase of the club organization, has been important to members of the Happy Homes H. D. club, members bring the whole family

together, the association of the members and the exchange of ideas is worth a great deal.

The Happy Homes club has been holding a Family Night ever third Thursday of the month. Whether it is covered dish or an elaborate Enchilada supper, it is enjoyed by all.

Notary Publics May Qualify

Secretary of State A. M. Muldrow has announced that he will reappoint all persons who now hold Notary Public Commissions and that all such persons must qualify by filing an oath and bond with the County Clerk of their residence between June 1, 1955 and June 10, 1955. The law specifically requires County Clerks to approve Notary bonds and individuals should not send money or requests for commissions direct to the Secretary of State. All Notary matters can only be received by the Secretary of State after the County Clerk acts thereon.

Any person who has not heretofore applied to his County Clerk between May 1, 1955 and May 23, 1955, if he desires to have this application given prompt attention in the State Department, as the rush of reappointing all individuals should not send money or requests for commissions direct to the Secretary of State. All Notary matters can only be received by the Secretary of State after the County Clerk acts thereon.

Secretary of State Muldrow said, "Each person applying for a commission as a Notary Public must be at least 21 years of age and a resident of the County for which he is appointed; exact names and permanent addresses should be given to the County Clerk in applying for a commission, as location of the Notary may be necessary long after he has notarized a particular instrument."

Meeting Held At Gruver April 25th

The Gruver Chapter of the Future Homemakers of America held their April meeting in the home economics department at 7:00 p. m. on April 25.

The meeting opened with the opening ceremony. Then the business meeting was held. It was decided to plant flowers around the school buildings for a school project. The girls show was planned for Monday, May 2.

The meeting was turned over to Suelien Hawkins, Boston Ave., Gail Wells, and Janet Eddleman. They talked about their trip to Houston for the State F. H. A. Meeting.

Songs were led by Rachel Harris. Refreshments of homemade and cookies were served by Gwen Arthur, Rosalee Allen, Wanda

Ayres, Gloria Delano, Bonnie Drake, Janet Eddleman, Jolene George, Alice Harris, Rachel Harris, Suelien Hawkins, Sue Lowry, Margaret Lee, Rita Luttrill, Deanna Shagley, Gail Wells, Barbara Wright, Chapter Adviser, Miss Jo Hollingsworth, and our guests, Mrs. Lee, Mrs. Morris, Mrs. Wells and Mrs. Harris.

Dahlia Flower Club Report Two Meetings

On April 18 at 3:00 p. m. Mrs. O. L. Williams was hostess to the meeting of the Dahlia Flower Club. Mrs. Baggerly gave an interesting lesson on Tuberosus Begonias, and Mrs. E. R. Hester gave an article on Mums and their growth, and ways of caring for them.

On May 2, the club met in the home of Mrs. Ralph Blodgett with Mrs. Deta Blodgett as hostess. Mrs. I. P. Baggerly gave a most interesting topic on Soil conservation and fertilizers and how to use them. She also gave a program on compost and how to make and mix with the soil.

Mr. Blodgett analyzed samples of our yard soils and found what was missing, and gave us information on fertilizers we should use to bring our soil up to par.

The hostess served iced lemonade, while we watched the demonstration of yard soils.

Local Girls Win Clown Contest

Eight-year-old Marilyn Sue McGuire of 1926 Charles, Pampa, is the grand prize winner of the Kaycee Clown contest on KGNCTV.

Other winners announced at a special party Saturday at Mead's Bakery in Amarillo are MARGOT KILGORE, 11, and KATE KILGORE, 10, of Spearman, second place; Joyce Gilmer, 11, Amarillo; Freddie Wayne Waiden, 8, of 215 E. Jefferson, Borger; and Mary Neen, Amarillo.

First prize in the contest is a three-day vacation trip with all expenses paid for the winner and one adult anywhere in the U. S. A.

Marilyn Sue said she probably will take a trip to Wheeling, W.

Va. to visit her grandmother. Second prize was a Philco television set, third prize an English bicycle, fourth prize a Philco three-speed photograph and fifth prize a Philco portable radio.

The contest opened April 4 and closed April 23. There were more than 2,000 entries from which three judges selected the winners.

More than 500 children attended the party at Mead's Saturday. The party sponsored the contest.

Films taken at the party were shown on the "For Kids Only" TV show on KGNCTV Monday at 5:00 p. m.

Sudagrass ... Best For Summer Grazing

COLLEGE STATION — Sudagrass is an old standby but still the livestockman's best bet for temporary summer grazing.

Seeded now, Sudan will provide green grazing in six to eight weeks, says Ben R. Spears, extension agronomist. And it is staggeringly easy to plant.

Moisture conditions are generally favorable for planting in the eastern part of the state, Spears points out. In addition to providing lush summer grazing for livestock, temporary pastures give permanent type pastures a much needed rest.

Spears suggests planting one acre of Sudan for each animal unit on the farm.

Research shows that row plantings of Sudan — 36 to 42 inch rows — produce the best grazing. Use seven to 10 pounds to an acre. The same studies show that broadcast or close drilled Sudan, seeded at rates of 20 to 25 pounds per acre, yields the most hay if harvested only once. No advantage was gained by planting cowpeas with Sudan.

Common and Sweet are the popular varieties of Sudan for Texas. In tests at the Beeville Experiment Station, steers gained an average of 1.54 pounds each daily on Common and 1.56 pounds daily when fed Sweet. Steers fed Tit, another variety sometimes used, registered 1.45 pounds of daily gain.

The sorghums, mainly hegar, also are used for temporary pasture. The quality of sorghum grazing, however, often is inferior to Sudan, and there is danger of prussic acid poisoning under certain conditions.

The French Embassy in Austin, Texas, is the only building ever constructed on American soil by a foreign government.

"The Chocolate Soldier" is a musical version of the play, "Arms and the Man" by George Bernard Shaw.

THE MOST AMAZING SAVINGS-PLUS-PROTECTION PLAN IN AMERICA!

FOR YOU: Provides cash retirement fund if you live. FOR YOUR FAMILY: Returns every dollar you have deposited PLUS the face amount of the plan if you die.

Illustration showing a person and a table with financial data. Table includes: Annual premium deposit, Total premium deposit (20 years), CASH TO YOU, AGE 50, CASH TO YOU, AGE 60, CASH TO YOU, AGE 65. Also includes 'IF YOU LIVE' and 'IF YOU DIE' sections with details on benefits and dividends.



The largest legal reserve stock life insurance company in the United States devoted exclusively to the underwriting of Ordinary and Annuity plans.

Advertisement for 'NEW SECRET' featuring a portrait of a man and text about insurance or financial services.



This is the second place winner in the Celebration Parade held Saturday April 30th. The float was entered by the Delphinus Flower Club of Spearman.



The Unstrung Gruverettes of Gruver won first 30. They will go to College Station June 8-10 to win there they will receive an invitation to Chicago, place in the District contest held in Canyon. April complete there in the State contest. If they should Leaders of the Gruver girls are Mrs. Bill Eiling and Mrs. Ted McClellan. The girls are from Gruver Senior 4-H Club and are: Peggy Carter, Janice Eiling, Betty Heath, Linda Kay McClellan, Jeanette Williams, Rita Henderson, Totie Pierce and Francis Morris.

Large advertisement for Oldsmobile featuring a car, the slogan 'Go Ahead... Drive It Yourself!', and the Oldsmobile logo. Text includes 'One Way to Find Out What The Shouting's All About...', 'A ROCKET FOR EVERY POCKET!', and 'OLDSMOBILE'. At the bottom, it says 'Corry Motor Co.' and 'DON'T MISS SIGMUND ROMBERG'S HIT MUSICAL "DREAM SONG"'. On the right edge, there is a vertical list of car features: Leg room, Head room, Shoulder r, Maximum Floor cover, Foam-rubbed Two-stage Center-Fill Suspende, clutch p Horsepow Torque, m Compress 18-mm. sq Dual exh 4-barrel Ball-joint Brake lin.

Vertical advertisement on the right edge of the page, containing various notices and classified ads. Includes 'Legal holiday wo', 'CLASSIFIED', 'FOR RENT', 'REAL ESTATE', 'FOUND', 'FOR SALE', 'The largest ran', 'Araname Colle', 'able women to', 'Artist Church-3 I', 'Wednesday. Co', 'FEAT', 'Leg room, Head room, Shoulder r, Maximum Floor cover, Foam-rubbed Two-stage Center-Fill Suspende, clutch p Horsepow Torque, m Compress 18-mm. sq Dual exh 4-barrel Ball-joint Brake lin.', 'for more value from your car, look no more. Ford bri', 'feature', 'D exceeds', 'ice', 'for feature... price for pri', 'better than Ford.', 'ly Ford Dealer.'

# WE WANT ADS

YOUR AGENT TO...BUY...  
SELL...RENT...HIRE...

Legal holiday work shall be paid for at the regular governing rates.  
Plans and specifications available at the office of J. G. DeWald, Resident Engineer, Amarillo, Texas, and Texas Highway Department, Austin, Usual rights reserved. 22-2tc

**CLASSIFIED ADS**  
**FOR RENT** — 2 bedroom apartment, nicely furnished. Clean. Large fenced yard. all grass. \$50 month, bills paid. See John Daeres at Grocery store in Farnsworth. 22-2tc

**REAL ESTATE** — If you have decided to move, come to Western Missouri, Grain, Dairy, Live Stock, Diversified Farming. We have your needs. I can show you many good farms, any size. Located at Hiway 71, North and Allison St. Nevada, Mo. 20 miles east from Ft. Scott on 54. C. L. Eager. 22-2tc

**FOUND** — Clarinet Horn in case. Identify and pay for at Mrs. Rube Faus, 115 N. Bernice St. Phone 5741. 22-2tc

**FOR SALE** — House to be moved, located 6 miles North of Perryton. Size 24 x 36 feet, 3 bedroom, modern, lights, heat and water, hardwood floors. Price 3,000.00. Phone 8881, 417 S. Drake, Perryton. Harry Evans. 22-2tc

**FOR RENT** — Nice bedroom. Phone 4296. 22-1tp

The largest ranch in the United States is the King Ranch, in Texas, with 970,000 acres.  
Aransas College at Galid, Texas, closed its doors when the entire student body enlisted in the Confederate army.

**FOR SERVICE** — New Dump Truck. Will handle any kind of hauling. Also a new ditcher with front end loader. Call

**WANTED** — Salesman. Name plates job for man and woman — \$10 daily booking orders for Scotch-lite Name Plates that Shine at Night for top of rural mail boxes, also house numbers and door plates. Unlimited field. No sales experience or investment required. Pleasant, interesting work that pays big profits. Ideal for retired persons on pension or fund raising organizations. Free sales outfit. Illuminated Sign Co., 3004-1st Ave., S., Minneapolis, Minn. 20-3tc

**SIAMESE KITTENS FOR SALE** — See Mrs. W. M. Miller at Spearman Reporter or at home after 5:00. 810 Bernice St. South Phone 5591.

**FOR SALE** — A 653 acre section of good sandy loam land suitable for wheat or row crop, all can be irrigated, on paved highway, school bus and mail route, in Sherman county, 15 miles from Gruver and 15 miles from Sunray. King Fike, attorney for L. F. Dixon Estate, P. O. Box 1189, Dalhart, (Texas). No. 21-4tc

**FOR SALE** — Brahma Roping calves, at \$42.50 each. Delivered in quantities. Contact Joe H. Baker, Dalhart, Texas. No. 21-1tc

cultural Marketing Service, Cotton Division, can supply application blanks.  
The U. S. Marine Corps was founded in 1775.

The Statue of Liberty weighs 225 tons.  
Francis Scott Key wrote "The Star-spangled Banner" in 1814.  
"Chill" originated in Texas.

**SEVERAL GIRLS** — to address, mail postcards. Spare time every week. Write box 161. Belmont, Mass. No. 10-4tp

**WALLPAPER SALE** — One special group of 30 patterns on sale at 5c to 49c per bolt or double roll.  
Several other patterns also on sale at reduced prices. We also have new patterns at regular prices.  
**DALEY'S**  
Perryton, Texas. No. 17 rtn

**ALCOHOLIC** — If liquor is your problem and you sincerely want help to quit write Alcoholic Anonymous, Box 251, Spearman. No fees, no pledges, no pills. No. 36 rtn

**Boxwell Bros'**  
Funeral Home  
and  
Flower Shop  
Day — Night Phone 2751  
SPEARMAN, TEXAS

BY  
**'Gene & Sparky'**



Getting down to "bare facts", we'll hunt down the trouble and make you pleased at your choice of service.

**Spearman Super Service**  
Hwy. 117 Ph. 4061

**Dr. F. J. Daily**  
DENTIST — X-RAY  
801 Davis Street  
Spearman, Texas

**E. C. GREENE**  
• Real Estate  
• Loans  
• Insurance  
Phone 4261 — Box 145  
SPEARMAN, TEXAS

**PERRYTON HOSPITAL AND CLINIC**  
Drs. G. L. Kengle, M. D.  
Res. Phone 5041  
Dr. D. B. Pearson, M. D.  
Res. Phone 5471

Perryton Hospital Phone 2171  
CLINIC PHONE 3361  
**SANFORD HOSPITAL AND CLINIC**  
• Perryton, Texas  
• Phone 2821 or 2881  
**ROY K. SANFORD, M. D.**  
Pediatrics  
• J. BLUFORD JOHNSON, M.D.  
General Surgery  
• C. U. MONROE, M. D.  
Obstetrics - General Practice  
• J. M. HENRY, M. D.  
Internal Medicine

**WE ARE** — Experts in installing lineoleums. Let us figure your next job. Free estimates. We do cabinet tops, floor lineoleums, congowalls. We stock lineoleums up to 12' wide, sink frames, metal trims and etc.  
**DALEY'S IN PERRYTON**  
No. 27 rtn

**WE ARE** — Experts in installing lineoleums. Let us figure your next job. Free estimates. We do cabinet tops, floor lineoleums, congowalls. We stock lineoleums up to 12' wide, sink frames, metal trims and etc.  
**DALEY'S IN PERRYTON**  
No. 27 rtn



**Looking for Service Try Orange Disc Service!**  
ALTON Phone 2301 WAYNB



Here comes stinky!  
Come on chicks, let's run for the range. We won't be able to breathe in this place for awhile. I just saw the boss mixing some more of his disinfectant. He thinks the stronger the odor, the better it kills germs. Why doesn't the boss wise up? That strong smelling, irritating stuff is old fashioned. If he'd switch to Germex he could do a better job with out the disagreeable part. Germex is made by...  
**Dr. Salsbury's**

**Spearman Drug**  
Hansford Lodge 1040  
A. F. & A. M.  
Regular Communication 2nd and 4th Monday of each month  
J. K. Hicks, W. M.  
A. L. Wilson, Jr Secretary

**Hansford VFW**  
Post 6207  
Meets 2nd 4th Tuesdays  
7:30 P. M. Each Meeting  
Commander, J. P. Vernon  
Sr. Vice Cmdr., Warren Jefferies  
Jr. Vice Cmdr.,

Quartermaster, Johnnie Lee  
Chaplain, Dick Kilgore

**Radiator Cleaning and Repairs**  
GLASS REPLACEMENT  
Body Shop and Painting  
**R. L. (Smoky) Huse**  
Spearman, Texas

**R. L. Kleeberger**  
M. D.  
Physician and Surgeon  
Medicine, Surgery and Obstetrics  
Hours: 9-12 a. m. — 5-5 p. m.  
**CLOSER THURSDAYS**  
Phone: Res. 2161 OFFICE 6781  
204 Main St — Spearman

For Life Insurance, Call  
**Billy C. Ray**  
REPRESENTING  
**SOUTHWESTERN LIFE INSURANCE COMPANY**

**COLLARD & RAY**  
Real Estate - Loans - Insurance  
Low interest real estate loans for irrigation, improvements, or expansion  
**John R. Collard Jr.** — **Billy C. Ray**  
Phone 5281 — 407 Davis

**ANTHONY ELECTRIC**  
For the life of your car GO GULF!  
Dr. Reese Nowlin  
OPTOMETRIST  
OFFICE HOURS  
9 to 12 a. m. — 1 to 5 p. m.  
Saturday 9 — 1  
Phone 5481  
No. 10 SW 2nd Avenue  
Perryton, Texas

• Industrial  
• Commercial  
• House Wiring  
Contracting and Repairs  
Electric Motors and controls sold and serviced  
**L. L. Anthony**  
Phone 2361 Box 727  
Spearman, Texas

The **AMBULANCE FLOWER**  
Number Dial 2751  
SPEARMAN, TEXAS

**AIR CONDITIONERS SALES & SERVICE**  
For service or reconditioning of any brand of air conditioner, see Bill Shelby at Dub's TV Lab or Phone 4526. We are dealers for Vernado refrigeration units and Thompson evaporative coolers.  
Any Kind of Weather ALLAN BEASLEY LONE STAR SUPER SERVICE  
Gruver, Texas

**Dr. D. E. Hackley**  
OSTEOPATHIC PHYSICIAN AND SURGEON  
McLain Bldg.  
9:00 — 12:00  
1:30 — 5:30  
Office Phone — Residence Phone 4851 5181

Make Your Idle Money Work  
Where It Earns The Most.  
**3%**  
Insured Savings.. Federal Savings  
& Loan Insurance Corp.  
First Savings & Loan Association  
**707 N. Main**  
Borger, Texas

able women to keep nur-  
tist Church—3 hours Sun-  
Wednesday. Call 5543.

Now is the time to enjoy an **ECONOMICAL PACKAGE PLAN**

**SPECIAL OFFER:**

- A comfortable room with Twin Beds or a Double Bed.
- A leisurely breakfast each morning, served in your room, or in our Coffee Shop.
- An invigorating health bath and massage, daily. (They make you feel years younger).
- Plenty of health-giving mineral water.
- Sun Bathing in the beautiful Baker Gardens.
- A social hostess to plan your Bridge and Canasta games in our Game Room.
- Golfing at the Mineral Wells Golf and Country Club.

**TWO PEOPLE — \$50**  
FIVE DAYS for as little as

**BAKER HOTEL**  
and Bath  
**MINERAL WELLS**  
Texas

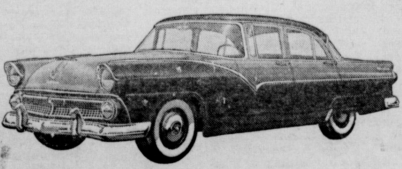
**DR. FRANK BROWN**  
OPTOMETRIST  
THURSDAYS  
Room 210 — McLain Bldg.  
FOR APPOINTMENT  
Call Dr. D. E. Hackley  
Phone 4831  
Spearman, Texas

Special arrangements can be made for one person.  
WRITE FOR INFORMATION OR RESERVATION

You can pay more  
but you can't buy better

FEATURES	FORD Fairlane Town Sedan with Special V-8	Medium-priced CAR P	Medium-priced CAR B	Medium-priced CAR O	Medium-priced CAR D
Leg room, front (in.)	44.3	42.7	42.3	42.9	44.5
rear (in.)	41.9	41.8	41.8	43.8	45.0
Head room, front (in.)	35.1	35.6	35.6	35.6	35.5
rear (in.)	34.2	35.9	34.0	34.6	34.9
Shoulder room, front (in.)	57.0	56.6	58.2	58.2	58.0
rear (in.)	56.8	56.4	56.7	56.7	57.8
Maximum trunk depth (in.)	48.9	48.4	46.0	46.0	55.0
Carpet	YES	Rubber	Rubber	Rubber	Rubber
Floor covering, front	Carpet	Carpet	Rubber	Rubber	Rubber
Floor covering, rear	Carpet	Carpet	Rubber	Rubber	Rubber
Foam-rubber seat cushions	YES	NO	NO	NO	NO
Two-stage front door checks	YES	NO	NO	NO	NO
Center-Fill Fueling	YES	NO	NO	NO	NO
Suspended brake and clutch pedals	YES	NO	NO	NO	YES
Horsepower, maximum (V-8)	182	180	188	185	175
Torque, maximum (lbs.-ft.)	268	264	256	320	240
Compression ratio (to 1)	8.5	8.0	8.4	8.5	7.6
18-mm. spark plugs	YES	NO	NO	NO	NO
Dual exhaust	YES	NO	NO	NO	NO
4-barrel carburetor	YES	NO	NO	NO	NO
Ball-joint front suspension	YES	NO	NO	NO	NO
Brake lining area (sq. in.)	192	178	185	192	174

Can you see, steer, stop safely? ... Check your car ... check accidents



VACATION IDEA ... VISIT FORD ROTUNDA, SHOW PLACE OF THE AUTO INDUSTRY, DEARBORN, MICHIGAN

**Ford** SELLS MORE BECAUSE IT'S WORTH MORE ... F.C.A.  
**DE TRAYLER UNIVERSAL MOTORS**  
Sole Ford Dealer, Spearman, Tex. Your Friendly Ford Dealer, Gruver, Texas

The Spearman Reporter

Successor to the Hansford Headlight, Published Thursday of each week in Hansford County, Spearman, Texas. WILL J. MILLER, Editor and Publisher

Entered as second class matter Nov. 21, 1919 at the Post Office at Spearman, Texas, under the Act of March 3, 1879. In Hansford and adjoining counties, One Year \$1.50 Out of Hansford and adjoining counties, One Year \$3.00

CLASSIFIED ADVERTISING First insertion, 4c per word; 2c a word for every issue thereafter. Card of Thanks, 4c per word. Display Rates on Request. NOTICE TO THE PUBLIC: Any erroneous reflection upon the reputation or standing of any individual, firm or corporation that may appear in the columns of The Spearman Reporter will be corrected when called to the attention of the management.

Legals NOTICE OF SALE OF COUNTY PROPERTY State of Texas County of Hansford Know all men by these presents: That I, J. W. Gibben, having been fully appointed and authorized by the Commissioners Court of Hansford County, Texas, will sell the following property...

THE STATE OF TEXAS COUNTY OF HANSFORD NOTICE TO DEBTORS AND CREDITORS TO THOSE INDEBTED TO OR HOLDING CLAIMS AGAINST THE ESTATE OF MARY MILLER HERALSON, DECEASED.

STERLING P. MILLER, JOE C. MILLER, Executors of the Estate of Mary Miller Herselson, deceased.

NOTICE OF SALE OF COUNTY PROPERTY State of Texas County of Hansford Know all men by these presents: That I, Kenneth Irwin, having been fully appointed and authorized by the Commissioners Court of Hansford County, Texas, will sell the following property...

Stinnett High School Rodeo Slated May 7-8 The Third Annual High School Rodeo sponsored by the Seniors is to be held in Stinnett May 7-8.

Meeting Starts McMillan Mission Rev. Calvin Sprague, Pastor of the Union church of this city, will start a Revival in the McMillan Church this Sunday night.

of such County in the Court House in Spearman, Texas, as required by Article 7206 R.C.S. for the purpose of receiving the assessment lists or books of the Tax Assessor's lists or books for inspection, correction, equalization and approval.

Notice of Meeting of Board of Equalization of Spearman Independent School District. Notice is hereby given that Vernon Crooks, Ray Moore and Rue Sanders, appointed as a Board of Equalization, by the Spearman Independent School District, Hansford County, Texas, will convene as a board of equalization on Saturday, May 14, 1955 at the High School Building in Spearman, Texas as required by Article 7206, supplemented by Article

Don't Name It

192 Lbs. and 5 Ounces The saddest words of man or pen "It Could Have Been..." In other words I could have been ready for round one of fish...

Really, there is not much use of my fishing in May. We have a good start in moisture carried over from April, and there will be more and more moisture during May regardless of whether I fish or stay home.

Wants take time out to compliment every committee and every person that worked towards the success of the 17th Annual Celebration and Rodeo held last Friday and Saturday. It was wonderful, and the folk that were responsible deserve MUCH CREDIT.

Our good friend Floyd Close sure deserves a lot of credit for the work he did and the folk he secured to help him stage a REAL fast moving Rodeo.

Next Sunday is Mothers Day. Begin NOW thinking how you can make this day more pleasant and pleasing to Mother.

We would like to quote some very important comments made by our State Agricultural Commissioner, John C. White, here they are.

One of the great injustices against Texas farmers is the widespread theory that present "dust bowl" conditions on the Plains is the result of poor farming practices.

In a few cases, this is true. But during my recent tour of West Texas, I found that only a small proportion of the land was

blowing due to deliberate or unthinking misuse. Some of the plains country should never have been touched by the plow. Eventually this land must be put back to pastureland.

One of the immediate steps the federal and state governments should take in the Texas drought disaster area is the setting up of a realistic long-term loan program. It takes money to practice those measures which would prevent it.

The federal government does not have a loan program in operation under the FHA. But farmers everywhere tell the same story. The requirements are so strict that few can qualify. Those few — about one in a hundred — who do qualify for loans soon find it is not an "Emergency Loan" program at all. There is little difference, if any, between what is offered by the government and what can be had at the local bank.

The emergency loan program of the U. S. Department of Agriculture was originally set up to offer money at a low interest rate of 3 percent. Three months ago, without making it a matter of public record — the government increased the interest to 5 percent, completely disqualifying the program as an emergency measure.

Our Texas banks have performed a real service to drought-stricken farmers. But banks can carry the load only so far — and many of them have already reached those limits.

In my discussions with Texas farmers, the feeling is that a government loan is needed to clear up 12-month notes at the bank. It is a matter of record, from 20 years experience in F.H.A. loans, that the government cannot make a better investment than lending to farmers. These loans are paid with interest.

When the time comes that a government loan means the difference between staying on the land or starving the farmer out, then these loans are an investment in the future security of our farm economy. That time is now!

FIRST METHODOIST CHURCH MOTHER'S DAY Sunday May 8th is Mother's Day and people throughout our world will honor Motherhood.

The subject of the Minister sermon for the 11:00 a. m. Service will be "The Fine Art of Motherhood." At the close of this service a corsage will be presented to the oldest and the youngest Mother present.

Everyone is invited to be present to honor Motherhood. 11:00 a. m. Sermon: "The Fine Art of Motherhood." 7:30 p. m. Sermon: "Reverence For Mother."

CELEBRATES BIRTHDAY Last week little Terry Douglas celebrated his 5th birthday with



MAKING READY for the gigantic Spearman celebration barbecue is a volunteer cook, while E. S. Upgrave, far left, and P. A. Lyon, with a ton of barbecued beef, Delbert Allen, Don Floyd and Jerry Floyd.

a party for his friends, friends for the afternoon of fun was for cream and cake was served to Marilyn and Glen Edgett, Steven Hicks, Melinda and Randy Pearson, Cloetta Fullbright, Eddie Martin Randy Weston, Darrell Douglas, Bruce Bailey and Richard Pipkin.

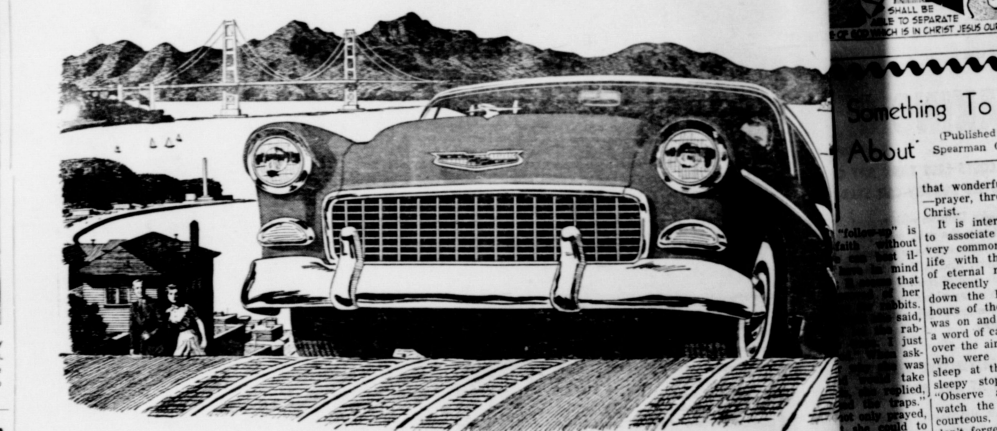
Stateline HD Club The Stateline Home Demonstration club met Wednesday April 27 at the Michigan-Wisconsin Plant community Hall for a social.

Guests for the social were Mesdames: Maud Alexander, Virginia Renner, Nadine Brandvik, Bea Roper, Lola Mae Cator, Leona Harris, Katherine Ward, all of the McBryde Club.

Members present, Mesdames: Buel Jordan, Jean Maupin, Wilma Montgomery, Marie Morton, Mae Watson, Edith Beamer and Mary Berry.

Hostesses were: Mrs. Bulah Wells, Mrs. Fern Bell, Mrs. Laura Ann Browning and Mrs. Rachel Adkins.

Advertisement for 'Something To Write About' featuring a cartoon illustration of a man and a woman. Text includes: 'I CAN'T BE SEVERED FROM YOUR LOVE', 'I SHALL BE ABLE TO SEPARATE FROM YOU WHICH IS IN CHRIST JESUS OUR...'



Advertisement for Chevrolet Turbo-Fire V8. Text includes: 'Punch-line to the year's hottest power story - Chevrolet "Turbo-Fire V8"', 'This is the engine that's writing a whole new chapter in the book of automobile performance records.', 'Chevrolet beat all other low-priced cars — and every higher-priced car except one!'

Meeting Starts McMillan Mission Rev. Calvin Sprague, Pastor of the Union church of this city, will start a Revival in the McMillan Church this Sunday night.

Advertisement for AD-WATE medicine. Text includes: 'STOP LOOK SAVE with these low Prices!', 'WE GIVE ROUND-UP STAMPS', 'Don't Be SKINNY NEW DISCOVERY for THIN FOLKS'

Advertisement for Turners Corner Drug. Text includes: 'TURNERS CORNER DRUG FOUNTAIN SERVICE, DRUGS, JEWELRY, GIFTS', 'MILLER TRAILER COURT Open For Business Water — Electricity — Gas Southwest, On Borger Highway Curve'

Advertisement for McClellan Chevrolet Co. Text includes: 'McClellan Chevrolet Co. Spearman, Texas'

Advertisement for Gruver Motor Co. Text includes: 'Gruver Motor Co. Gruver, Texas'

**Graver Music Club**  
April 26, 1955

Musical Program presented by the students of Mrs. Dan Shradner. Collect for Club Women read in union, led by Mrs. Cator, Pres. Kings Review Piano Duet Katherine Peddy & Mrs. Shrader Beautiful Savior Piano Solo Daynell Williams Descriptive Piece of Two Little Kittens Chasing Their Tails. Piano Solo Katherine Miller Lieberstrum Piano Solo Carlita Knight Marching Song, The Drum Major Piano Solo Connie Cunningham Polonaise Chopin Stars and Stripes March Piano Duet Mona Hale and Judy Ottinger Meditation by Mrs. Frank Reece, read by Mrs. Robert Alexander. Guests were Mr. and Mrs. George

Cunningham, Mrs. Carl Knight, Rev. Ottinger, Mrs. Connie Cunningham, Mona Hale, Carlita Knight, Judy Ottinger, Katherine Peddy, Katherine Miller, Daynell Williams. Members present were Medames Harley Alexander, Robert Alexander, Ralph Bort J. F. Cator, Darrell Cooper, S. B. Hale, K. E. Irwin, E. M. McClellan, Wm. Murrell, C. E. Ottinger, Aubrey Peddy, E. T. Rafferty, Dan Shradner, R. L. Thom, Claude Watkins, Eugene Wood. Hostesses were Mrs. Wm. Murrell and Mrs. K. E. Irwin.

**Golden Spread Company For U.S.N.**  
Daryl G. Ford, Boilerman First Class, U. S. Navy Recruiter, from the U. S. Navy Recruiting Substation, Pampa, Texas, announced today that he was now accepting applications for enlistment in the Golden Spread Company now be-

ing formed to leave Pampa & Amarillo on approximately the 28 of June 1955.

The Golden Spread Company will be made up of 75 to 80 men from Pampa, Amarillo and the surrounding area. These men will depart from Amarillo on approximately the 28 of June 1955 for Albuquerque, New Mexico where they will be sworn in the U. S. Navy and from there to one of the three U. S. Naval Training Centers in the United States. All men enlisting in this Company will be assured that they will leave together, train together and return home on leave together for the first time. At the present time Recruit Training is nine weeks long at the end of which each man will be granted leave.

Petty Officer Ford would also like to point out that the High School Graduate Training Program is still open and any high school graduate found mentally

and physically qualified may now enlist in the career field of his choice. Such as Electronics Technician, Radarman, Hospital Corpsman, Engineman, Torpedoman and some 60 other Major Job Fields in the U. S. Navy.

See YOUR NAVY RECRUITER today for more information concerning Your Navy and the Golden Spread Company. Petty Officer Ford is located in the Post Office Building Room No. 8, Pampa, Texas.

Daryl G. Ford, Btl. U. S. Navy U. S. Navy Recruiter

**Spearman HD Club**

The Spearman Home Demonstration club boasts proudly of its large membership, and good attendance record. The members, although they vary in ages from 20 to 70, represent a happy group working together for better homes and health. They find their interests are different, but the Home demonstration program provides sufficient studies, hobbies and recreation to keep all members interested.

Perhaps the one phase of club work that has held the most interest for all members is the study of nutrition, with particular emphasis on the place of Milk in the diet. They learned first, all the importance of milk. They learned also, that milk is needed for everyone, regardless of age. A nutrition authority said: "liberal use of milk is the most important step toward insuring an all around good diet."

**McBryde HD Club**

The McBryde Home Demonstration club met April 20 with Mrs. G. J. Brandvik. The business meeting was conducted, and roll call was answered by giving a danger spot around the home. Mrs. T. W. Bayless gave some interesting hints on Safety around the farm. Mrs. Charlie Davis gave some high lights on her airplane trip to and from Alaska.

Mrs. Brandvik served lemonade and cookies to the above mentioned and also Mrs. H. H. Roper and Mrs. Anson Ward.

Mrs. L. J. Cator will have the next meeting on May 4.

Mr. and Mrs. J. P. Vernon are proud parents of a new son. Scott Preston was born Saturday April 30 in Hansford County Hospital and weighed 7 lbs.

Columbus discovered the island of Cuba in 1492.



...D CAGE is Sharon Sue Cannedy, ...ns in Spearman's giant Saturday ...hlight of the town's annual two- ...and pit barbecue drew record ...days of merry-making.

# BUDDY'S

Pay Less Save More

on your favorite foods!

## White Swan Coffee 85c

ANGEL FOOD CAKE	Regular	39c	FLOUR Buddy's Best Unconditionally Guaranteed 25 Lb. Bag <b>\$1.69</b>
WAPCO TUNA	No. 1 Flat Can	27c	
CONCHO TOMATOES	303 Can 2 For	25c	
WAPCO SPINACH	303 Can	10c	
BLACKEYED PEAS	WAPCO FRESH SHILLED 300 Can 2 For	25c	
CONCHO PEAS	CONCHO 303 Can 2 For	25c	Shortening FLUFFO 3 Lb. Can With 35c Coupon <b>54c</b>
CUT GREEN BEANS	CONCHO 303 Can	10c	
CREAM STYLE CORN	White or Golden 303 Can	10c	
GREEN BEANS	TEXAS TENDER Lb.	12c	
CORN	Golden Bantam 3 Ears	19c	Northern Tissue 3 rolls <b>23c</b>
ORANGES	CALIF. SUNKIST 2 Lbs.	19c	
LETTUCE	LARGE FIRM HEADS Each	10c	
GREEN ONIONS	AND RADISHES 3 BUNCHES FRESH TEXAS	10c	Biscuits BORDENS 3 Cans <b>29c</b>
<b>Prime Meats</b>			
Fryers	GRADE A (Chubby Chicks)	Lb 49c	
Bacon	RANCHO BRAND Family Style 2 Lb.	79c	
Hams	BUTT END	Lb. 47c	
	SHANK END	Lb. 43c	
	CENTER CUTS	Lb. 79c	
	See Us For All Your Home Freezer Meats		
Catsup	WAPCO 12 Oz. Bottle	2 for 29c	Biscuits BORDENS 3 Cans <b>29c</b>
Pickles	CONCHO Sour or Dill quart	23c	
Peaches	DEL MONTE Sliced or Halves 21 Can	Can 29c	
Fruit Cocktail	DEL MONTE 303 Can	23c	
Rolls	BROWN N SERVE Pkg. of 12 Per Pkg.	<b>17c</b>	Biscuits BORDENS 3 Cans <b>29c</b>
Blackberries	CONCHO 303 Can	19c	

**Something To Think About**

Published weekly by the Spearman Church of Christ

that wonderful contact with God—prayer, through our Lord Jesus Christ.

It is interesting and inspiring to associate what we consider very common-place things of this life with those things that are of eternal nature.

Recently we were traveling down the highway in the early hours of the morning. The radio was on and at frequent intervals a word of caution would beam out over the air waves to those of us who were driving. "Don't go to sleep at the wheel, if you are sleepy stop for a little nap."

"Observe all traffic laws, and watch the highway signs." "Be courteous, give way if necessary; don't forget to dim your lights—remember, the life you save may be your own." These warnings we heard at regular intervals all through the night.

As we listened to these very timely warnings, we could not help but be reminded of a host of scripture that was given to guide us along the dark and hazardous of the many dangers that lurk along the way. Such passages as these: "Watch and pray, that ye enter not into temptation; the spirit indeed is willing, but the flesh is weak."

"Watch ye, stand fast in the faith, quit ye like men, be sober."

"Therefore all things whatsoever ye would that men should do to you even so do to them."

"Beware of false prophets, which come to you in sheep's clothing, but inwardly they are ravening wolves."

These, and a host of others, are given by the wisdom of God to guide and keep those who fear him and keep his commandments.

How thankful we ought to be that the way is so perfectly marked.

It is interesting to note that the traveler who is continually in trouble, the one who loses his way, the one who is generally at the expense of other lives, is the one who disregards the warnings that were given for his benefit.

So it is with the Christian life—so it is with the warnings of God who gets into the spiritual trouble. It is the one who ignores the law of God that will be held accountable in the day of judgement. Our objective, therefore, should be to live our lives in such a way that we will be held accountable in the day of judgement.

"Fear God then, should be this; 'Fear God, and keep his commandments, for this is the whole duty of man.'"

Paul Smith, Minister

### Report On Gruber Girls FHA Trip

Four girls and their advisor from the F. H. A. chapter in Gruber were privileged to get to attend the State FHA meeting held at Galveston April 23-33. These girls were: Susie Hawkins, Gail Wells, Rosalyn Ayres, Janet Edelman and Miss Jo Alice Hollingsworth, chapter advisor.

They saw the Governor's home, State Capitol and the school for the deaf. Sunday morning the campus of Texas U. was visited. Abilene was the goal for lunch. They arrived there about 2:00 p. m. and saw Abilene Christian Col-

lege and Hardin - Simmons. A very tired, but happy group of girls arrived in Gruber Sunday night at 9:30 p. m. The trip was educational and a lot of fun.

### Holt Home Demonstration Club

Mrs. Melvin Patterson was hostess to the Holt Home Demonstration Club on Tuesday, April 19th. Holt Call was answered by each club member giving a simple exercise.

Mrs. Raymond Kirk, president, presided over the short business session. The club members completed filling in their year books. The program, "Look Your-

best," was given by Mrs. Raymond Kirk. Lovely refreshments were served to the following members: Mesdames Fred Holt, Marvin Jones, Wayne Hutchinson, Nolan Holt, Raymond Kirk, O. C. Holt and the hostess, Mrs. Melvin Pat-

terson. The next meeting will be on 6th with Mrs. Wayne Hutchinson as hostess. There are only four perceptible tastes, sweet, salt, bitter and sour.



This is third place winner in the Celebration Parade held on Main street in Spearman Saturday April 30th. The attractive float was entered by the Rainbow organization of Spearman and features the national motto "In God We Trust."



### Service

The kind of service you get on something you buy is important and often measures its value to you.

There is much to be considered about the Services rendered on "Land Bank Loans" such as lending abstracts, releasing parts of the security, and agreeing to oil and gas leases. These services and many others to member borrowers of our association have proved most important.

E. N. Richardson  
Secretary - Treasurer  
Wombles Building  
SPEARMAN, TEXAS

We would like to tell you more about them.

### PERRYTON EQUITY EXCHANGE Perryton, Texas FINANCIAL STATEMENT April 1, 1954 - March 31, 1955

ASSETS	
Current	
Cash on Hand	\$ 5,471.15
Cash in Banks	12,256.68
Accounts Receivable - Trade	59,566.61
Advances Receivable - Grain	23,593.09
Kansas Corporation Commission Deposit	269.99
Notes Receivable - Trade	56,298.86
Open Sales Contracts Receivable	1,563.70
Mortgage Receivable	2,708.33
Accrued Interest Receivable	5,354.27
Dividend Receivable - Union Equity Exchange	26,398.88
Accrued Storage Receivable	64,127.41
Drowth Certificates Receivable	1,285.15
Inventories	221,146.59
	\$ 479,918.11
Other Assets	
Prepaid Insurance Premiums	\$ 6,545.28
Prepaid Expense	3,185.50
Investment - Union Equity Exchange	613,531.98
Investment - Producers Grain Corporation	42,968.15
Stock - Wichita Bank for Cooperatives	27,700.00
Stock - Farmers Cooperative of Perryton	1,092.50
Security Deposits	123.00
	\$ 695,176.41
Permanent	
Real Estate	\$ 32,596.60
Concrete Elevator - Twitchell	287,500.00
Buildings & Equipment	\$1,811,682.76
Less: Res. for Dep.	395,235.94
	1,416,446.82
Automotive Equipment	14,341.07
Less: Res. for Dep.	7,996.83
	6,344.24
Furniture & Fixtures	30,512.59
Less: Res. for Dep.	8,527.05
	21,985.54
	\$1,784,873.30
	\$2,959,967.82
LIABILITIES	
Current	
Bank Overdraft	\$ 2,165.24
Accounts Receivable - Credit Balances	11,754.69
Grain & Miscellaneous Check Payable	14,088.22
Advances Payable	50,000.00
Open Purchase Contracts Payable	3,855.00
Notes Payable - Wichita Bank for Cooperatives	190,000.00
	\$ 271,863.15
Accruals & Reserves	
Accrued Interest Payable	\$ 10,596.64
Accrued Oklahoma Sales Tax	524.94
Accrued F. I. C. A. Tax	646.52
Accrued Texas U. I. Tax	54.23
Accrued Oklahoma U. I. Tax	8.23
Reserve for Withholding Tax	1,022.50
Reserve for Employees' Pension Plan	337.80
Reserve for Employees' Insurance	12.60
Reserve for Oklahoma Income Tax	425.44
Reserve for Federal Income Tax	54,384.01
	\$ 68,012.91
Loans and Notes Payable	
Wichita Bank for Cooperatives	\$ 250,000.00
Five Year Bonds	8,700.00
Seven Year Bonds	68,200.00
Nine Year Bonds	88,100.00
	\$ 415,000.00
Member Equities	
Interest on Stock Payable	\$ 33,859.72
Patronage Refunds Payable	208,339.47
Old Dividend Check Payable	2,540.03
	\$ 244,739.22
Capital	
Capital Stock Outstanding	\$1,542,585.00
Capital Stock Payments	150,400.83
Surplus Reserve Fund	287,306.71
	\$1,980,292.54
	\$2,959,967.82

ANNUAL STOCK HOLDERS MEETING  
V. F. W. BLDG. PERRYTON, MAY 12th 1955  
Door Prizes

## Mom deserves the



## GIVE HER SOMETHING ELECTRICAL ON HER DAY, MAY 8

Nothing will please her more than a lastingly useful electrical gift. Whether it's something for her personal use like a hair dryer, radio or reading lamp, or something for the home like a food mixer, coffee maker or waffle iron, it's sure to make a hit if it's something ELECTRICAL. Make your selection now at your appliance dealer's or our office.



## 5 BASIC REASONS FOR PONTIAC'S RECORD-BREAKING

- PONTIAC COSTS LESS THAN ANY CAR EQUALLYING ITS 200 HORSEPOWER**  
If you delight in flashing performance, here's all the reason you need to join the record-breaking thousands who are swinging to Pontiac. The 200 horsepower delivered by the economical Strato-Streak V-8 with the four-barrel carburetor, optional at extra cost, is the highest power ever delivered by a car at Pontiac's price - higher than that of cars costing considerably more. For thrift and thrills it's Pontiac all the way!
- PONTIAC COSTS LESS THAN ANY CAR EQUALLYING ITS LONG WHEELBASE**  
Model for model, Pontiac has a longer wheelbase than any car at its price, or any car delivering 200 horsepower... 122" or 124", depending on the Pontiac you select. That's a size where it really counts - and it's important because a long wheelbase is the reason for Pontiac's smooth, road-leveling ride and the roomy comfort of Pontiac's large, luxurious Body by Fisher - advantages that put Pontiac on a level with far costlier cars for sheer riding pleasure.
- PONTIAC COSTS LESS THAN ANY CAR EQUALLYING ITS LUXURY-LOOKING APPEARANCE**  
The big, husky Pontiac with its frame gives you the safe, solid speeds that motorists have long prized to enjoy. And it links in comfort with ease of control in sports cars. You travel in superior Pontiac for the lowest price ever big-car stability.
- PONTIAC'S DISTINCTIVE BEAUTY UNMATCHED AT ANY PRICE**  
Pontiac's style and beauty are for its colorful performance. Power lines, Vogue Two-Toning and hood provide dash and glamour any other car at any price.
- You can buy a big, powerful car less than many models of other cars and much less than other models of higher-priced makes.**



CAN YOU SEE, STEER, STOP SAFELY!  
CHECK YOUR CAR - CHECK ACCIDENTS

# Bruce Pontiac

206 HANCOCK PHONE. 4331

Opening Of  
Co Station

ing of the ar  
so station in  
held on Satur-  
don station  
New Station  
The public is

ent  
reck

Pro  
Arti  
pervis  
Admin  
the S  
was  
Northeast

admitted to  
Hospital at  
atment of 3  
daughter were  
These  
conm  
The  
occurred when  
driving on a  
heat of Gru-  
struction super-  
work. On the  
rever, she failed  
30, 1  
on, h  
a peric  
curse  
ostensibly was completely

Smith, Home  
in the Spearm  
teaching her  
Pupils from  
omic class are  
soms, which vio  
day  
not  
the  
like  
ed  
two  
yes  
mu  
tio  
an

is  
his  
a  
to  
the  
invited to go  
there and see  
these girls  
which the variou  
s' statements used.

the Graduate  
WI  
T

COMMENCEM  
OF  
EARMAN HI  
May 15 - 1  
BACCALAUREATE - Fil  
COMMENCEMENT - Sch  
M

COMME  
PERSONAL  
OF PROGRAM  
"LECT DAY"  
ONY  
ION OF GRADUATES  
OF DIPLOMAS  
THE WORD

BACCALA  
Mr  
PERSONAL  
GATION  
"THE KING"  
ALABURATE SERMON  
MADE THE POWER OF JES  
SUNTON  
PERSONAL  
Mrs.

ON ESCORTS  
FOR UMBERS

1955 Sen  
Burl Buchanan  
Johnny Campbell  
Sherry Lou Cates  
Judy Davis  
Georgia Buzzard Ho  
Pat Jackson  
Judy Meek

HONOR  
Shelia Sparks  
Helen Taylor  
Nancy Mott  
Sherry Lou C  
Georgia B. M