

Don't Name It

Get a kick out of watching our Spearman school kids beat the stuff out of Hereford school kids at the Quindown over television Sunday afternoon. We have carried a news story of the event in this paper just as it appeared in the big regional newspaper. However, the results were not announced correctly in the news story. We beat em 300 points. We were ahead 250 points at the half time period.

Confidentially I could not have answered more than 3 questions out of the entire batch served the kids. This crop of children must be much smarter than past generations . . . and they should be. Have more opportunities.

Was given a lot of kiddie for not having any oil and gas news in the paper last week. I am a breach of some kind, but this country editor runs his newspaper just as he desires. If the news aint good we ignore it. If it is good we use BIG HEADLINES. . . and if you readers don't like that kind of a policy, buy a newspaper and print it. . . BUT I warn you you will get into a lot of grief if you do.

Wonder if the rest of the folk are learning how and when to prepare for dust storms. Eddie Faye has laid down rules and regulations that keep ole Stevie inside the house until the air is cleared of dust, since he has a bad cold. As results he was kept under lock and key all last week—and he is plum unruly. Here at our office we hate to oil our machinery when a dust storm is predicted—it just runs up the working parts until we have to wash out the machinery

with Tetrachloride (it's a cleaning fluid) and start all over again. There are approximately 40,000 working parts to a standard Linotype, and when the dust comes forging into the shop, all the parts corrode and stick up. It really is a task to keep the machine functioning.

It's public school week this week, and if you have not visited the school so far this week, we urge you to go today or tomorrow in the opinion of this writer the schools of this area and Texas are making good progress. If you want to know how much you will have to visit the schools, not only during public school week, but at intervals during the school year.

We are in hope that Billy Jr. will get over his disappointments in time to begin watering his alfalfa and do a little work at the newspaper office. Junior was positive that the Basketball team would go to state, and the rest of us were hoping that he was right. Fact is we had already arranged how we would take over Billy's work while he accompanied the team to Austin. This writer believes we just had some bad streaks. The idea of Follett making a better record than Spearman is hard to take. Believe that if we had only won the region . . . but saddest words of pens and act . . . IT MIGHT HAVE BEEN.

A great many of our readers will regret to learn that the father of R. E. Lee underwent a second amputation Monday of this week. The operation was at a Wichita Falls hospital. Mr. Lee recently underwent an operation removing a part of his left foot. It was hoped that this would suffice, but it was found that the operation was unsuccessful, and the leg must be removed. We sincerely hope that our good friend will sustain the shock of the operation and return to good health again. Eck was with his father.

If the snow that is scheduled to follow the dust storm this afternoon (Monday) is deep enough the regular Prosperity issue of the Reporter will be kept on having dust storms we will publish the Prosperity 1959 issue after all the first and original issue of the Prosperity Reporter was published primarily to keep the Reporter out of the red. The time has come for another year.

Mrs. Chambers Club Hostess

The Home Science Department of the Twentieth century club met Feb. 25 with Mrs. Olin Chambers. The meeting was opened with prayer by Mrs. R. L. McClellan. The Chairman Mrs. Dwight Hutchison presided over the general business session.

"Social conditions and Life in Canada" was given by Mrs. N. P. Renner. "Remarkable Industrial Growth of Canada" was given by Mrs. G. R. Kligore. The hostess served delicious refreshment plate to the following members: Mesdames: O. C. Holt, Grace Hale, Tom Sutton, J. R. Keim, G. R. Kligore, Dwight Hutchison, Raymond Kirk and Joe Traylor.

As The County Agent See's It

BY BILL GOLDSTON
Looks like Hansford County has the "blow" fairly well under control on wheat land. Probably less than 25 per cent is being held with the rotary hoe and the chisel.

Why Pay MORE?



THE NEW REMINGTON Office riter

Handles your correspondence and reports. Full 10 2/10 inch writing line. Handles paper up to 11 inches wide! Compact! Full featured! Budget terms! Try it, today!

THE SPEARMAN REPORTER

Plans are in the making for 4-H Week, March 6th through 14th. Tentative plans call for appearances on KKEY, Membership at the church, and a tour of Amarillo Air Force Base on the 13th.

Why have Hansford County farmers quit raising hoes? Prices are expected to remain up for another year.

Archa Morse recuperating at his home - appears to be about able to be back on a plow soon.

If Roger Pearson can make silage pay off, well. I caught Jack Whitson flooding the other day, with his irrigation pump solving full force to get sub-soil moisture for summer crops. Jack highly favors fertilizing irrigated land.

Interest is going up in regard to 4-H boys buying calves for club projects. The boys want to thank Cut Rate, Equity Spearman First State Bank, Wall Wilmet, B. & C. Equipment, Cates Grocery, and R. L. McClellan for buying their calves in the recent Auction Sale.

Kim, Frank and Robert, the first, second and third place winners Sure did appreciate the prize money furnished by the Local Chamber of Commerce.

Melvin Ross is hunting the best remedy for ear ticks since he dug 26 of them out of one old cow's itching ears. Contrary to public opinion, all cattle don't

drop an ear and walk in circles. Comes natter being "ticks" when an animal walks tender and their rear end trails peculiarly.

Lots of angles to the poultry business—what about the broiler business? A farm woman is hunting a capon market.

If you have farm or animal problems and don't know the answer—Call me, 4171. I might not know the answer either but I'll find out for you.

Gruver W. S. C. S.

The Gruver WSCS met in the church Feb 25 with Mrs. Barkley in charge. The meeting was opened with a song, and prayer, followed by a miscellaneous program. Those taking part in the program included: Charlene McClellan, Josie Evans, Pauline Harris, Nellie Winder, Devona McClellan, James Wilmet, Houston Bert, Nellie Sluder, Carrie Neilson, Ethel Ottinger, A. Bort, and Margie Barkley.

Guest Day Party

The Spearman HD Club was host to the Hansford HD Club in the home of Mrs. B. J. Garnett Friday Feb. 26.

Washington's birthday was celebrated with flags and games appropriate for the occasion. Unusual interest was centered in the attractive dainty garters presented to members and guest members attending were Mesdames: Finis Maize, W. A. Ellsworth, A. F. Barkley, R. C. Birdwell, Leo Campbell, J. L. Bryan, I. P. Haggerty, Carl Hughes, T. D.

Sanning, and the hostess. After the social hour members of Spearman club voted to sponsor a bake sale Saturday morning March 6 in Owens Sales Co. building.

Sheriff Cooke In Austin This Week

Sheriff J. B. Cooke left early this week for Austin, Texas, where he carried a prisoner, suspected of burglary to submit the prisoner to the lie detector test. The prisoner was picked up at Amarillo, Texas.

Cooke will remain in Austin all this week where he will attend a special school teaching new procedures in criminal investigations. The school is sponsored by the Texas Department of Public Safety with Colonel Garrison, head of the department making the arrangements and giving Texas peace officers the opportunity to keep abreast of the latest methods of criminal investigation.

This is a good time to start saving for a 1954 Christmas bonus.

Parking regulations, in the opinion of some automobile drivers, are made for fun.

SIMPLIFIED BOOKKEEPING TAX RECORD BOOKS

For All Types of Business EASY TO KEEP—LOSS-LEAF BOOKS
Prices \$2.50 - \$3.25 - \$5.25 - \$6.50
* Household & Personal Budget Books 75c, \$1.50
(Insert your name and address here)

THE SPEARMAN REPORTER

The person who thinks he thinks is dangerous when among those who do not think.

The sporadic advertiser is like the man who took his medicine for three days and then proceeded to forget about it.

DEFINED
An abstract noun is one that cannot be heard, seen, touched or smelt—USS Trojan Seahorse.

NOW! 2 NEW GROWTH

GOOCH Chick

NEW VARIO-SIZE

can "pick and choose" and get a complete starter at how much better.

Plus Growth

ural growth factors in products are combined new growth-boosting gain factor.

ASK US Ask Us For The Whole New 1954 GOOCH Chick Starter and Valuable GOOCH Circles.

R. L. McClellan

ANNOUNCING THE FORMAL OPENING OF

Chambers Dry Goods & Groceries

CHAMBERS DRY GOODS & GROCERY STORE

NOW GIVING THOSE VALUABLE

Another

THRIFTY

Save

TOP VALUABLE GIFTS

GUNN BR

STAMPS

Celebrating this special occasion we

DOUBLE STAMP

On Cash Purchases March 5th & FRIDAY AND SATURDAY MARCH

Regular stamps given on charge acct's Due.

\$50.00 FREE

GROCERIES

REGISTER Friday and Saturday, March 5 - 6

DRAWING 4:00 P. M. Saturday 10 - \$5.00 BASKETS

Chambers

Dry Goods & Groceries

They're here!

FORD TRIPLE ECONOMY TRUCKS FOR '54

Low Friction, High Compression

Overhead Valve, Gas-Saving power now in every model!

ONLY FORD gives you so much in all 3 essentials of lower-cost trucking!

1. NOW! Mightiest concentration of power per cubic inch ever in any truck engine line! Every cubic inch of displacement in an engine demands gas. That's why 1954 Ford Truck engines are built with less displacement, for the high power they develop.

2. NEW Power Steering, new Power Brakes, Fordomatic Drive! New Power Steering* for most Ford Bio Jones cuts steering effort as much as 75%! **New Power Braking*** on 1/2-tonners! **Fordomatic Drive!** for all light-duty models. (*Extra cost.)

3. NEW Factory-Built "6-3" Wheel" Tandem-Axle Bio Jones increase gross weight capacity up to 48%! They haul big loads up to legal limits in all states! Priced with the lowest, Ford-built for 6-wheel service. **New Ford Cals Forward Bio Jones**, rated up to 55,000 lbs. GCW, to haul 35-ft. legal-limit trailers in every state.

SEE THEM TODAY! MORE TRUCK FOR YOUR MONEY!

JOE TRAYLER

YOUR FRIENDLY FORD DEALER

321 Main — Phone 2451 Spearman, Texas

CHURCH CALENDAR
FIRST BAPTIST CHURCH — GRUVER
 Bro. Geo. W. Massingale, Pastor

Sunday School 9:45 a. m.
 Preaching Service 11:00 a. m.
 Training Union 6:30 p. m.
 Preaching Service 7:30 p. m.
 Wednesday Prayer Service 7:30 p. m.

FIRST CHRISTIAN CHURCH — SPEARMAN
 Pastor Os HIN

Sunday School 9:45 a. m.
 Preaching Service 11:00 a. m.
 Young Peoples Service 6:00 p. m.
 Preaching Service 7:30 p. m.
 Tuesday: Ladies Prayer Service 5:00 p. m.
 Wednesday: Womens Circle Meeting 2:30 p. m.
 Wednesday: Choir Practice 7:00 p. m.
 Wednesday: Prayer Meeting 8:00 p. m.

MORSE METHODIST CHURCH — MORSE
 Rev. O. C. Evans, Pastor

Sunday School 10:00 a. m.
 Morning Services 11:00 a. m.
 M. Y. F. 6:30 p. m.
 Evening Services 7:00 p. m.

ASSEMBLY OF GOD — SPEARMAN
 John K. Pratt, Pastor

Sunday School 10:00 a. m.
 Morning Worship 11:00 a. m.
 Evening Worship 7:45 p. m.
 Mid Week Services, Friday 7:45 p. m.

FIRST CHRISTIAN CHURCH — GRUVER
 Bro. Frank Reese, Pastor

Sunday School 9:45 a. m.
 Morning Worship 11:00 a. m.
 Evening Worship 7:00 p. m.
 1st Weds. Monthly Fellowship 7:30 p. m.

FIRST METHODIST CHURCH — SPEARMAN
 Bro. J. B. Stewart, Pastor

Church School 9:45 a. m.
 Morning Worship 11:00 a. m.
 Methodist Youth Fellowship 6:00 p. m.
 Evening Worship 9:00 a. m.
 Bible Study, Tuesday 9:00 a. m.
 Mid Week Services, Wed. 7:00 p. m.

CHURCH OF CHRIST — SPEARMAN
 R. Paul Smith, Preacher

Bible Class 10:00 a. m.
 Preaching 11:00 a. m.
 Communion 11:45 a. m.
 Young People Classes 6:00 p. m.
 Monday, Mens Training Class 7:30 p. m.
 Wed. Ladies Bible Class 9:30 a. m.
 Wed. Mid Week Services 7:00 p. m.

MORSE BAPTIST CHURCH — MORSE
 Bro. Ralph Renfro, Pastor

Sunday School 9:45 a. m.
 Worship 11:00 a. m.
 Training Union 7:00 p. m.
 Worship 8:00 p. m.
 Mid Week Service Wednesday 7:00 p. m.

CHURCH OF CHRIST — GRUVER
 James O. Wilburn, Minister

Bible School 10:00 a. m.
 Morning Worship 10:50 a. m.
 Communion 11:45 a. m.
 Song Drill 6:30 p. m.
 Evening Worship 7:30 p. m.
 Mid Week Services, Wed. 7:30 p. m.
 Women Bible Study Thursday 2:30 p. m.

GRUVER METHODIST CHURCH — GRUVER
 Rev. Cecil Outinger, Pastor

Sunday School 9:45 a. m.
 Morning Services 11:00 a. m.
 Methodist Youth Fellowship 6:45 p. m.
 Evening Services 7:30 p. m.
 Wednesday Prayer Service 7:30 p. m.
 Wednesday Choir Practice 8:30 p. m.
 Thursday W. S. C. S. 2:30 p. m.
 Wesley Circle, Thursday 10:00 a. m.

SACRED HEART CATHOLIC CHURCH — SPEARMAN
 Father Bernard J. Blaviersie, Pastor

Mass (1st and 2nd Sundays) 9:00 a. m.
 3rd, 4th and 5th Sundays 11:00 a. m.
 All other Services announced at Masses.

UNION CHURCH — SPEARMAN
 Rev. Calvin Springer, Pastor

Sunday School 10:00 a. m.
 Morning Worship 11:00 a. m.
 Bible Classes, Sunday 6:30 p. m.
 Evening Worship 7:30 p. m.
 Wednesday Bible Study 7:30 p. m.

FIRST BAPTIST CHURCH — SPEARMAN
 Bro. O. L. Bryant, Pastor

Sunday School 9:45 a. m.
 Morning Worship 10:55 a. m.
 Youth Training Services 6:30 p. m.
 Evening Worship 7:30 p. m.
 Wednesday Teachers and Officers Meeting 7:00 p. m.
 Wednesday Mid-Week Services 7:45 p. m.

OSLO LUTHERAN CHURCH
 J. P. Knudson, Pastor

Sunday Worship at 11:00 a. m.
 Ladies Aid every last Thursday afternoon of each month
 Luther League on Sunday evening every three weeks.

Presenting
Churches & Ministers
 of HANSFORD COUNTY

BRO. GEORGE W. MASSINGALE, PASTOR
 THE FIRST BAPTIST CHURCH
GRUVER, TEXAS

CAME TO GRUVER, as PASTOR AUG. 20, 1952
 BORN LOTT (WHITLEY COUNTY) KY. OCT. 14, 1914 *SCHOoled BLACK STAR HIGH in 1935 *WAYLAND at PLAINVIEW UNIVERSITY of NEW MEXICO *GRADUATED in 1948 from HARDIN-SIMMONS at ABILENE, TEXAS *MARRIED DORIS BEBOUT at PADUCAH, KY. NOV. 23, 1942 in ROSWELL, N.M. *CHILDREN RICHARD and RUTH *ENTERED MINISTRY and PASTORED FIRST CHURCH in 1940 at BLACKMOUNT, KY. *HIS FAVORITE NEW TESTAMENT SCRIPTURE is ROMANS 8th CHAPTER



THE WORD BIBLE is COMPARATIVELY NEW and BELIEVED FIRST to BE USED ABOUT the 13th CENTURY, BEING DERIVED from THE GREEK and LATIN BIBILIA, Meaning THE BOOK * THE KING JAMES VERSION of THE BIBLE CONTAINS A TOTAL of 31,173 VERSES * THERE ARE 7,959 in NEW TESTAMENT

PRESENTING

REV. GEORGE W. MASSINGALE

Pastor Of

Gruver Baptist Church

In Introducing this very popular young Minister who has been serving the membership of the First Baptist church of Gruver since August of 1952, we also bid our friend farewell. Wednesday of this week Rev. Massingale moved to his new home and new pastorate at Riverton, Wyoming.

It required some 6 weeks to assemble the information and the pictures that appear in this series of 28 church pages for Hansford county, and between the time the information and pictures were prepared covering Brother Massingale, our good friend was called by the Lord to accept work at the Wyoming Mission church.

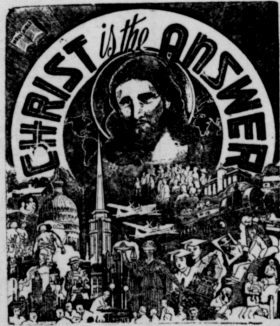
Since it cost approximately \$25.00 to prepare this study, we are presenting this information this week while Brother Massingale is still pastor at the Bptist church.

The church plans to replace their well loved pastor as soon as possible. A pulpit committee has been appointed, composed of five of the deacons of the church.

We present the following brief comments or notes about Brother Massingale:

Bro. George W. Massingale, pastor, First Baptist Church, Gruver, Texas, was called to this pastorate August 20, 1945. Born in Lott, Whitley Co. Kentucky, Oct. 14, 1914. Attended grade schools in the hills of Kentucky and Virginia. His Father was a coal miner which necessitated lots of moves. Graduated from Black Star High School, Alva, Ky. 1935. Worked in coal mines off and on and also as school janitor while in school and got some job because he was a good football player. Attended Wayland College, Plainview 1942-43; U of New Mexico 1945 and was grad. from Hardin Simmons, Abilene, 1948. Married Doris Evelyn Bebout of Paducah, Ky. Nov. 23, 1942, where she was secretary to the Post Chaplain at Walker air force base. Roswell. Early jobs included work in coal mines at 15, clerk in grocery store and work in a furniture factory in Louisville. Two children, Richard 3, and Ruth 6 mos. Member of Gruver C. of C. and serves on housing committee of the Chamber of Commerce. First pastorate at Blackmont, Ky. in 1940 for 18 mos. and at other Ky. points anr came to N. M. in 1941, because he had a sister who was ill there and came there for her health. Was pastor of the East 5th St. Mission which is now Emmanuel Bap. Church. First pastorate in Texas was at Akin, near Plainview and Lums Chapel near Littlefield, served them both on a part time basis, (at the same time on alternating Sundays) while in school at Plainview, both now have full time pastors. Went to Abilene and served churches in and around there to 1942.

Go to the church of your choice this Sunday.



This advertisement made possible by the following

Heath Food Market

Phillips Service Station

Morse Supply Co. A. C. McCloy

Gruver Chamber of Commerce

Southwestern Public Service Co.

Gruver Hotel Coffee Shop

Gruver Farm Machine Service

Texaco Wholesale Oil Co.

Sluder - Evans Oil Co.

Gruver Motor Company

Gruver Lumber Company

Byrd & Shook

Ward Brothers

Cutter Food Market

Universal Oil Company

Kimbell Milling Co.

Peddy Butane and Oil Co.

Morse Implement Co. Mack Dortch

Morse Equity (E. J. Copeland



Engagement And Coming Of Miss Jerry Harbour

Miss Jerry Harbour is engaged to be married to...

Your Senator Reports By Lyndon B. Johnson

GREAT TEXAS: Republican Congressman T. M. Polley of Seattle, Wash. had this to say on the House floor the other day...

Stateline H. D. Club Meeting Held

The Stateline Home Demonstration club meeting met Wednesday February 24th at the Phillips community hall with members of the Morse H. D. club as guests...

Neighbors Jobs

Neighbors Jobs... CURTIS A. CRYER SUPERINTENDENT OF SCHOOLS AND PRESIDENT OF BORGER, TEXAS

Brief History Of Spearman Public School

This brief history of Spearman Public Schools was made as a part of our Public Schools Week, and also to commemorate 100 years of Public Schools in Texas...

Home Help: Have school children in your family?

HOME HELP: Have school children in your family? A helpful Agriculture Department Bulletin, "Food for Families with School Children," might be of interest to you...

New Fashioned Washday

Machines are responsible for this latest trend, but even washday is going modern. Many high-protein foods will be in larger supply during the month, namely, soap, eggs and such dairy products as milk, butter and cheese...

Dahlia Flower Club Meeting

The Dahlia Flower Club met at the home of Mrs. Flossie Crooks Feb. 22 for the first meeting of 1934. With twelve members present, the meeting was called to order by the president, Mrs. Crooks...

Music Club

Music Club met in the Church, Tuesday night with the president, Luddy presiding...

March's Plentiful Foods List

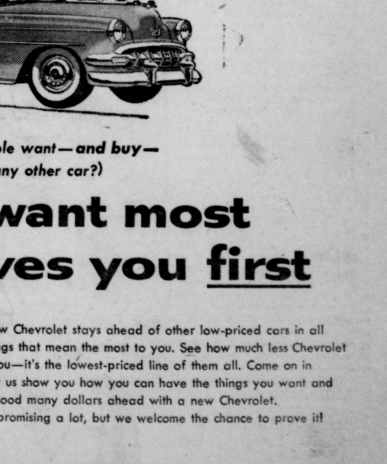
Grapefruit, potatoes and onions will earn a position on the U.S.D.'s March plentiful foods list because supplies are heavy in the Southwest...

Delphunium Club Holds Meeting

The Delphunium Club held its first meeting at her home in Spearman Monday February 22. This was the first meeting of the year...

Dead on Your Feet?

IF YOU SUFFER FROM Fatigue, Nervousness, Poor appetite, Digestive upsets, Insomnia, Constipation...



See your doctor. The basic cause of your trouble may be iron-and-vitamin starvation over a prolonged period. BEXEL, the Special High-Potency Formula supplies supplementary quantities of iron for rich red blood to start new strength and energy pouring through your entire body...

Fly peaker

Fly of Amarillo speaker at the March 9th at 7:30 at schools...

Meeting

Meeting of the Board of Trustees...

Meeting

Meeting of the Board of Trustees...

Meeting

Meeting of the Board of Trustees...

Meeting

Meeting of the Board of Trustees...

Meeting

Meeting of the Board of Trustees...

Meeting

Meeting of the Board of Trustees...

Meeting

Meeting of the Board of Trustees...

Meeting

Meeting of the Board of Trustees...

Meeting

Meeting of the Board of Trustees...

Meeting

Meeting of the Board of Trustees...

Meeting

Meeting of the Board of Trustees...

Meeting

Meeting of the Board of Trustees...

Meeting

Meeting of the Board of Trustees...

Meeting

Meeting of the Board of Trustees...

Meeting

Meeting of the Board of Trustees...

Meeting

Meeting of the Board of Trustees...

Meeting

Meeting of the Board of Trustees...

Meeting

Meeting of the Board of Trustees...

Meeting

Meeting of the Board of Trustees...

McClellan Chevrolet Co. and Gruver Motor Co. Spearman, Texas and Gruber, Texas

The Spearman Reporter

Successor to the Hansford Herald. Published Thursday of each week in Hansford County, at Spearman, Texas.

WILL J. MILLER, Editor and Publisher

Entered as second class matter Nov. 21, 1919, at the postoffice at Spearman, Texas, under the Act of March 3, 1879. \$2.50 in Hansford and adjoining counties, One Year \$3.00 Out of Hansford and adjoining counties, One Year \$3.00

CLASSIFIED ADVERTISING

First insertion, 4c per word; 2c a word for every issue thereafter. Card of Thanks, 4c per word. Display Rates on Request. NOTICE TO THE PUBLIC: Any erroneous reflection upon the reputation or standing of any individual, firm or corporation that may appear in the columns of The Spearman Reporter will be corrected when called to the attention of the management.

Nitrogen Needed In Burr Compositing

Nitrogen, supplied in substantial quantities, has substantially speeded cotton burr decomposition in recent tests at the Temple Experiment Station.

The studies were made to rate the significance of water, nitrogen and commercial bacterial cultures upon the compositing process.

Anhydrous ammonia, water alone, water and bacterial culture were added respectively to 5,000 pound burr piles.

Station scientists report that microbial numbers and nitrogen content of the composted burrs after incubation for 15, 18 and 27 days indicate the commercial culture does not increase the speed of decomposition in either the presence or absence of nitrogen.

Nitrogen treatments, however, played a big role in stepping up reaction time. Cotton burrs with water added composted for 27 days contained 1.4 percent nitrogen while burrs treated with nitrogen had 2.5 percent nitrogen content. Comparative bacterial populations after 10 days 3.5 billion per gram against 37.00 billion per gram respectively.

Anhydrous ammonia, the scientists found, reduced microbial numbers below that of the water-treated compost.

To commence and sustain proper decomposition levels, composts must have a high moisture content, but this means that the cotton burr tissue resists the absorption of moisture. Of nine commercial detergents tested at the station, the scientists found that the detergent "Vel" was the only one at 0.1 percent concentration that showed favorable wetting action over water.

Fertilizer Now Recommended For Plum, Peach Trees

Fertilizer applied to peach and plum trees early in the year will give them the plant food needed for a fast start.

According to J. F. Roeborn, extension horticultural market specialist, most tests show that a bearing orchard of 70 trees an acre will need at least 40 pounds of phosphorus, 40-100 pounds of potassium each year. He says an application of 200-400 pounds of an 12-12-12 fertilizer mixture in February or March followed in April with a 300 pound application of 8-10-10 will do the job.

He recommends, from four to six pounds of the 12-12-12 mixture on each tree in February and the same amount of the second application in March for April application. The fertilizer should be scattered over an area around the tree from about the end of the tree branches to within three or four feet of the trunk. It should be disked into the soil to a depth of three to four inches immediately after it is applied, he says. The trees need and can utilize large quantities of nitrogen during the early season, but heavy applications made later in the season may cause excessive terminal growth, increased framework suckering and delaying ripening of the fruit. Ample supplies of phosphorus and potassium at all times are important, especially during the period of seed and pit development and fruit bud formation. The specialist points out that peach and plum trees perform the double task of developing the fruit crop and next year's fruit buds at the time and this takes place between late May and early July.

More Laying Hens, More Turkeys In '54

Poultry raisers can expect more laying hens and more turkeys on Texas farms in 1954. John G. McInaney, assistant extension economist, says in a forecast materialized this year for a five to eight percent increase in the number of laying hens, egg producers may experience less favorable egg-feeds. It depends upon the intensity of the increase and the price producers must pay for feed, he says.

Other factors could effect marketing trends, McInaney continues, but a layer increase now would influence the number of eggs marketed until late this year.

Egg prices during 1953 remained strong, prices for feed showed a slight decline and the number of layers were about the same as the year previous. There's a good possibility the turkey crop in '54 will top the record 48,500,000 birds raised in 1952, the economist reports, and

POLITICAL ANNOUNCEMENTS

For Sheriff, Tax Assessor and Collector: A. L. WILSON, J. B. COOKE, For County Commissioner

JOE DAY, For County Commissioner President No. 2

ED VERNON, For County Judge and Ex-Officio County Superintendent

JOHNNY LEE, For Historic and County Clerk

FRED J. HOSKINS, For County Treasurer

MRS. MERLE WASHINGTON, WILL DO—Sewing in my home, 310 S. Bernice St. Mrs. Karl Morstain.

Portable Disc Rolling Roll Disc on Onaway, M. L. Tedder 406 E. Kenneth, Spearman. No. 10 44-rt

FOR SALE—4 room house with bath, Cheap 212 S. Townsend St. Lucian Cates. No. 10 10-rt

FOR SALE—Baby BUREY, in excellent Condition Phone 4721. No. 13 10-rt

FOR SALE 4 room house and bath With three lots. Reasonably priced. Write Leona Nelson Box 214 Odem, Texas. No. 13, 10-rt

LOST—White face Bull, Wt. 500 lbs. Strayed from Wayman Edward farm. No. 13, 10-rt

conducted recently by the Texas Agricultural Experiment Station, Choice white grade tallow and special grade tallow was incorporated into the rations of three groups of fattening lambs at levels of five, 10 and 15 percent.

Other feeds in the rations were sorghum, cottonseed meal, molasses and alfalfa hay.

Lambs on a ration containing five percent rendered fats made the highest, most efficient and cheapest gains, had the highest dressing percentage and the highest carcass grades.

At the 10 percent level, lambs made more efficient gains than the control group which received no fats but were about equal to the control in rate of gain and dressing percentage.

Although this group had slightly higher carcass grades, the cost of gain was increased slightly.

The lowest, least efficient and most control gains were produced by the lambs fed 15 percent animal fats. Their dressing percentages were lowest and carcasses poorest.

Rendered animal fats at levels of five to 10 percent are satisfactory sources of energy in lamb fattening rations.

In a 108-day feeding trial

Classified

FOR RENT—Furnished house, Bills paid. L. W. Mathews, Phone 2871. No. 7 10-rt

WILL DO IRONING—And Quilting in my home. Mrs. Lora Langston, 1 blk. East Leroy Cabinet Shop. No. 12, 5-10

FOR RENT—Furnished Duplex, 3 rooms and bath. Bills paid. L. W. Mathews, Phone 2971. No. 49 10-rt

FOR SALE—Lester Plano, 2 years old, excellent condition. Very reasonable. Call 6186, or 2071, or See Dub Davis. No. 1-10-rt

NOTICE—If you want to drink that's your business. But if you want to stop drinking that's our business. Alcoholic Anonymous, Box 251, Spearman, Texas. No. 2, 10-rt

FOR SALE—Bright leafy Alfalfa and bright prairie hay in wired tied bales, also Atlas Sorgo bundles, all priced competitively. Henry C. Hitch Ranch, Phone 90672 or 943. Gaydon, Okla. No. 10, 6-10

FOR RENT—Small furnished house. Will only accommodate two mature people. Mrs. Townsend, Phone 2271. No. 12 3-10

FOR RENT—25 x 80 Brick building, the floor. Graver, Texas. Contact Howard T. Cline, Phone 50W No. 12 3-10

FOR RENT—Furnished apartment at Graver. See Jack Caro at Graver Motor Co. or Call 4191, Spearman, Texas. No. 12 1-10

Symptoms of Distress Arising from STOMACH ULCERS DUE TO EXCESS ACID QUICK RELIEF OR NO COST Ask About 15-Day Trial Offer!

ANTHONY ELECTRIC

Industrial Commercial House Wiring Contracting and Repairs Electric Motors and Appliances Repaired L. L. Anthony

Phone 3361 Box 727 Spearman, Texas

BY 'Gene & Sparky'

Getting down to "bare facts", we'll hunt down the trouble and make you pleased at your choice of service.

John F. Lackey REAL ESTATE FARM & RANCH LOANS PHONE 4531 SPEARMAN, TEXAS

IT'S FUN To Be Alive RIDE ON Firestone Tires And Be Safe Sold In Spearman by CONSUMERS SALES CO. Phone 2921 SPEARMAN, TEXAS

R. L. Kleeberger M. D. Physician and Surgeon Medicine, Surgery and Obstetrics Hours: 9-12 a. m. — 2-5 p. m. FRAMED THURSDAYS Phone: Res. 2161 Office 5781 204 Main St. — Spearman

T. D. Sansing Attorney-at-Law Office Phone 4081 Residence Phone 2901 306 MAIN STREET SPEARMAN, TEXAS

Boxwell Brothers Funeral Home and Flower Shop Day — Night Phone 3751 SPEARMAN, TEXAS

No more washday weather worries



The sun always shines in my ELECTRIC DRYER

You can wash any time you choose — even at night — when Reddy Kilowatt does the drying in an Electric Clothes Dryer. No more weather worries, no more postponed washdays, no more clothesline calisthenics. You simply put wet clothes in the Dryer, set the timer and Reddy does the rest. It's as easy as that — and electrically-dried clothes are cleaner, sweeter, fluffier, with no deep-set, hard-to-iron-out wrinkles.

See the new Electric Clothes Dryers of your choice at our office, for a demonstration

COMMUNITY PUBLIC SERVICE

FOR RENT—Furnished house, Bills paid. L. W. Mathews, Phone 2871. No. 7 10-rt

WILL DO IRONING—And Quilting in my home. Mrs. Lora Langston, 1 blk. East Leroy Cabinet Shop. No. 12, 5-10

FOR RENT—Furnished Duplex, 3 rooms and bath. Bills paid. L. W. Mathews, Phone 2971. No. 49 10-rt

FOR SALE—Lester Plano, 2 years old, excellent condition. Very reasonable. Call 6186, or 2071, or See Dub Davis. No. 1-10-rt

NOTICE—If you want to drink that's your business. But if you want to stop drinking that's our business. Alcoholic Anonymous, Box 251, Spearman, Texas. No. 2, 10-rt

FOR SALE—Bright leafy Alfalfa and bright prairie hay in wired tied bales, also Atlas Sorgo bundles, all priced competitively. Henry C. Hitch Ranch, Phone 90672 or 943. Gaydon, Okla. No. 10, 6-10

FOR RENT—Small furnished house. Will only accommodate two mature people. Mrs. Townsend, Phone 2271. No. 12 3-10

FOR RENT—25 x 80 Brick building, the floor. Graver, Texas. Contact Howard T. Cline, Phone 50W No. 12 3-10

FOR RENT—Furnished apartment at Graver. See Jack Caro at Graver Motor Co. or Call 4191, Spearman, Texas. No. 12 1-10

Symptoms of Distress Arising from STOMACH ULCERS DUE TO EXCESS ACID QUICK RELIEF OR NO COST Ask About 15-Day Trial Offer!

Over five million packages of the WELLEN THERAPEUTIC have been sold for relief of symptoms of distress arising from Stomach and Duodenal Ulcers due to Excess Acid—Poor Digestion, Sour or Spasmodic Stomach, Gasiness, Heartburn, Sleeplessness, etc. due to Excess Acid, Ask for "Weller's Bismage" which fully explains this remarkable home treatment—free at

SPEARMAN DRUG CO. GRUVER DRUG CO.

FOR SALE—Three bed-room house, 2 baths. Bill Russell Jr. No. 42 1-10

BARBAIN—Two Pool tables owned by the American Legion. If interested contact Bubble Graver at McClellan Chevrolet in Graver or A. L. Wilson, Jr., at the courthouse in Spearman. No. 8 10-rt

SECRETARY - Treasurer 315 Main Street SPEARMAN, TEXAS

TRANSFER AND STORAGE Careful and experienced moving. Special care given your furniture. Plenty of storage space.

BRUCE and SON Transfer and Storage, 237 N. Harvey, Pampa, Texas, Ph. 192 21-10-rt

John F. Lackey REAL ESTATE FARM & RANCH LOANS PHONE 4531 SPEARMAN, TEXAS

IT'S FUN To Be Alive RIDE ON Firestone Tires And Be Safe Sold In Spearman by CONSUMERS SALES CO. Phone 2921 SPEARMAN, TEXAS

R. L. Kleeberger M. D. Physician and Surgeon Medicine, Surgery and Obstetrics Hours: 9-12 a. m. — 2-5 p. m. FRAMED THURSDAYS Phone: Res. 2161 Office 5781 204 Main St. — Spearman

T. D. Sansing Attorney-at-Law Office Phone 4081 Residence Phone 2901 306 MAIN STREET SPEARMAN, TEXAS

Boxwell Brothers Funeral Home and Flower Shop Day — Night Phone 3751 SPEARMAN, TEXAS

Making Poultry Pay THE DR. SALSBUARY WAY Use of a good flock worm treatment can solve many poultry difficulties. Yes, even, poultry worms cause intestinal damage. They also lower disease resistance and open the way for disease outbreaks. So play safe. Control worm infestations by using Dr. Salsbury's Worm. It's capsule tapeworms, I. roundworms, and cecal worms!

BE ON THE ALERT! Use The New Flocking Reddy Kilowatt DR. SALSBUARY'S SPEARMAN DRUG Your Retail Store

FOR RENT—Furnished house, Bills paid. L. W. Mathews, Phone 2871. No. 7 10-rt

WILL DO IRONING—And Quilting in my home. Mrs. Lora Langston, 1 blk. East Leroy Cabinet Shop. No. 12, 5-10

FOR RENT—Furnished Duplex, 3 rooms and bath. Bills paid. L. W. Mathews, Phone 2971. No. 49 10-rt

FOR SALE—Lester Plano, 2 years old, excellent condition. Very reasonable. Call 6186, or 2071, or See Dub Davis. No. 1-10-rt

NOTICE—If you want to drink that's your business. But if you want to stop drinking that's our business. Alcoholic Anonymous, Box 251, Spearman, Texas. No. 2, 10-rt

FOR SALE—Bright leafy Alfalfa and bright prairie hay in wired tied bales, also Atlas Sorgo bundles, all priced competitively. Henry C. Hitch Ranch, Phone 90672 or 943. Gaydon, Okla. No. 10, 6-10

FOR RENT—Small furnished house. Will only accommodate two mature people. Mrs. Townsend, Phone 2271. No. 12 3-10

FOR RENT—25 x 80 Brick building, the floor. Graver, Texas. Contact Howard T. Cline, Phone 50W No. 12 3-10

FOR RENT—Furnished apartment at Graver. See Jack Caro at Graver Motor Co. or Call 4191, Spearman, Texas. No. 12 1-10

Symptoms of Distress Arising from STOMACH ULCERS DUE TO EXCESS ACID QUICK RELIEF OR NO COST Ask About 15-Day Trial Offer!

Over five million packages of the WELLEN THERAPEUTIC have been sold for relief of symptoms of distress arising from Stomach and Duodenal Ulcers due to Excess Acid—Poor Digestion, Sour or Spasmodic Stomach, Gasiness, Heartburn, Sleeplessness, etc. due to Excess Acid, Ask for "Weller's Bismage" which fully explains this remarkable home treatment—free at

SPEARMAN DRUG CO. GRUVER DRUG CO.

FOR SALE—Three bed-room house, 2 baths. Bill Russell Jr. No. 42 1-10

BARBAIN—Two Pool tables owned by the American Legion. If interested contact Bubble Graver at McClellan Chevrolet in Graver or A. L. Wilson, Jr., at the courthouse in Spearman. No. 8 10-rt

SECRETARY - Treasurer 315 Main Street SPEARMAN, TEXAS

TRANSFER AND STORAGE Careful and experienced moving. Special care given your furniture. Plenty of storage space.

BRUCE and SON Transfer and Storage, 237 N. Harvey, Pampa, Texas, Ph. 192 21-10-rt

John F. Lackey REAL ESTATE FARM & RANCH LOANS PHONE 4531 SPEARMAN, TEXAS

IT'S FUN To Be Alive RIDE ON Firestone Tires And Be Safe Sold In Spearman by CONSUMERS SALES CO. Phone 2921 SPEARMAN, TEXAS

R. L. Kleeberger M. D. Physician and Surgeon Medicine, Surgery and Obstetrics Hours: 9-12 a. m. — 2-5 p. m. FRAMED THURSDAYS Phone: Res. 2161 Office 5781 204 Main St. — Spearman

T. D. Sansing Attorney-at-Law Office Phone 4081 Residence Phone 2901 306 MAIN STREET SPEARMAN, TEXAS

Boxwell Brothers Funeral Home and Flower Shop Day — Night Phone 3751 SPEARMAN, TEXAS

Looking for Service Try Orange Disc Service!

ALTON Phone 2301 WAYNE

Lone Star Trailer Camp

Every Modern Convenience Located on Highway Loop AT GRUVER, TEXAS Prices Reasonable

J. F. & R. C. Chase

Hansford VFW Post 6207

Meets 2nd and 4th Tuesdays

7:30 P. M. Each meeting Commander C. W. Weaver Senior, Vice Cmdr., J. P. Vernon Jr. Vice Cmdr., Irvin Davis Quartermaster, Dos Smith

Radiator Cleaning and Repairs

GLASS REPLACEMENT Body Shop and Painting R. L. (Smoky) Huse

Spearman, Texas

NATIONAL FARM LOAN ASSOCIATION

FEDERAL LAND BANK LOANS

E. N. Richardson Secretary - Treasurer 315 Main Street SPEARMAN, TEXAS

TRANSFER AND STORAGE Careful and experienced moving. Special care given your furniture. Plenty of storage space.

BRUCE and SON Transfer and Storage, 237 N. Harvey, Pampa, Texas, Ph. 192 21-10-rt

John F. Lackey REAL ESTATE FARM & RANCH LOANS PHONE 4531 SPEARMAN, TEXAS

IT'S FUN To Be Alive RIDE ON Firestone Tires And Be Safe Sold In Spearman by CONSUMERS SALES CO. Phone 2921 SPEARMAN, TEXAS

R. L. Kleeberger M. D. Physician and Surgeon Medicine, Surgery and Obstetrics Hours: 9-12 a. m. — 2-5 p. m. FRAMED THURSDAYS Phone: Res. 2161 Office 5781 204 Main St. — Spearman

T. D. Sansing Attorney-at-Law Office Phone 4081 Residence Phone 2901 306 MAIN STREET SPEARMAN, TEXAS

Boxwell Brothers Funeral Home and Flower Shop Day — Night Phone 3751 SPEARMAN, TEXAS

Making Poultry Pay THE DR. SALSBUARY WAY Use of a good flock worm treatment can solve many poultry difficulties. Yes, even, poultry worms cause intestinal damage. They also lower disease resistance and open the way for disease outbreaks. So play safe. Control worm infestations by using Dr. Salsbury's Worm. It's capsule tapeworms, I. roundworms, and cecal worms!

BE ON THE ALERT! Use The New Flocking Reddy Kilowatt DR. SALSBUARY'S SPEARMAN DRUG Your Retail Store

FOR RENT—Furnished house, Bills paid. L. W. Mathews, Phone 2871. No. 7 10-rt

WILL DO IRONING—And Quilting in my home. Mrs. Lora Langston, 1 blk. East Leroy Cabinet Shop. No. 12, 5-10

FOR RENT—Furnished Duplex, 3 rooms and bath. Bills paid. L. W. Mathews, Phone 2971. No. 49 10-rt

FOR SALE—Lester Plano, 2 years old, excellent condition. Very reasonable. Call 6186, or 2071, or See Dub Davis. No. 1-10-rt

NOTICE—If you want to drink that's your business. But if you want to stop drinking that's our business. Alcoholic Anonymous, Box 251, Spearman, Texas. No. 2, 10-rt

FOR SALE—Bright leafy Alfalfa and bright prairie hay in wired tied bales, also Atlas Sorgo bundles, all priced competitively. Henry C. Hitch Ranch, Phone 90672 or 943. Gaydon, Okla. No. 10, 6-10

FOR RENT—Small furnished house. Will only accommodate two mature people. Mrs. Townsend, Phone 2271. No. 12 3-10

FOR RENT—25 x 80 Brick building, the floor. Graver, Texas. Contact Howard T. Cline, Phone 50W No. 12 3-10

FOR RENT—Furnished apartment at Graver. See Jack Caro at Graver Motor Co. or Call 4191, Spearman, Texas. No. 12 1-10

Symptoms of Distress Arising from STOMACH ULCERS DUE TO EXCESS ACID QUICK RELIEF OR NO COST Ask About 15-Day Trial Offer!

Over five million packages of the WELLEN THERAPEUTIC have been sold for relief of symptoms of distress arising from Stomach and Duodenal Ulcers due to Excess Acid—Poor Digestion, Sour or Spasmodic Stomach, Gasiness, Heartburn, Sleeplessness, etc. due to Excess Acid, Ask for "Weller's Bismage" which fully explains this remarkable home treatment—free at

SPEARMAN DRUG CO. GRUVER DRUG CO.

FOR SALE—Three bed-room house, 2 baths. Bill Russell Jr. No. 42 1-10

BARBAIN—Two Pool tables owned by the American Legion. If interested contact Bubble Graver at McClellan Chevrolet in Graver or A. L. Wilson, Jr., at the courthouse in Spearman. No. 8 10-rt

SECRETARY - Treasurer 315 Main Street SPEARMAN, TEXAS

TRANSFER AND STORAGE Careful and experienced moving. Special care given your furniture. Plenty of storage space.

BRUCE and SON Transfer and Storage, 237 N. Harvey, Pampa, Texas, Ph. 192 21-10-rt

John F. Lackey REAL ESTATE FARM & RANCH LOANS PHONE 4531 SPEARMAN, TEXAS

IT'S FUN To Be Alive RIDE ON Firestone Tires And Be Safe Sold In Spearman by CONSUMERS SALES CO. Phone 2921 SPEARMAN, TEXAS

R. L. Kleeberger M. D. Physician and Surgeon Medicine, Surgery and Obstetrics Hours: 9-12 a. m. — 2-5 p. m. FRAMED THURSDAYS Phone: Res. 2161 Office 5781 204 Main St. — Spearman

T. D. Sansing Attorney-at-Law Office Phone 4081 Residence Phone 2901 306 MAIN STREET SPEARMAN, TEXAS

Boxwell Brothers Funeral Home and Flower Shop Day — Night Phone 3751 SPEARMAN, TEXAS

