

Gruver Music Club Entertained By High School Choir

The Gruver Music Club met Tuesday, February 8, 1955, at the Methodist Church.

The Gruver High School Choir, composed of 44 members, under the direction of Mr. Glen Truax, presented the program.

Federation Collect: Music Club Thanks Be To Thee Handel, Choir and Organ

I Have Lifted Up My Voice, Abner, Cherubim Song

Near The World I Be Staying, J. S. Bach, (The Entire) Campus Choir

God Be In My Head Gilliam (Chene (1530 A. D.) David's Lamentation, Regular Choir of 18 voices.

Lift Up Mine Eyes, from Elijah Mendelssohn, Girls Choir

Twinkle, Twinkle, Little Star, Blue Bells of Scotland, Fourth Grade Tonette Band

Tonette Solo—The Caissons Go Rolling Along—Pamela Cooksey

Tonette Solo—Gunn Bros. Stamp Song—Butch Barnes

Tonette Solo—The Bell Song, Howard Riggs

Tonette Solo—The Cuckoo, Ray Gamill

Tonette Solo—Sacred Song—Eva Cator

Tonette Solo—Whispering Hope Charlotte Arnold

Long, Long Ago America—Tonette Band

Give to Our God Immortal Praise, Melchior

In Heavenly Love Abiding, Mendelssohn, Double Quartet

Incline Thine Ear To Me—Choir and Piano

Give Thanks Unto the Lord, The Heavens Resound—Beethoven Choir and Organ

Meditation—Mrs. Don Hart

Guests were Mr. Truax and the fortyfour members of his High School Choir, the Fourth Grade Tonette Band and their Teachers

Mrs. Ralph Eddins, Mrs. J. C. Harris, May Lyn Cator, Van Etling, and Rinnie McClellan

Members present: Mesdames Robert Alexander, Ralph Bort, L. O. Brooks, J. F. Cator, Darrell Cooper, Merle Delano, W. J. Edelman, G. H. Eling, Wm. Eling, Kelly Garrett, S. B. Hale, Jr. Don Hart, Kenneth Irwin, W. L. Maupin, E. M. McClellan, Jr. E. M. McClellan, Sr. Cecil Ottinger, Ernest Sluder, Claude Watkins

The Hostesses, Mesdames: G. H. Eling, Chairman, W. J. Edelman, Darrell Cooper, and L. O. Brooks served doughnuts and Cocoa Cola

Two sets of plans for economic controls, designed for use if and when necessary, are being prepared by the Administration.

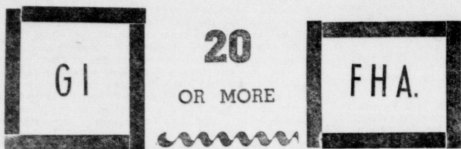
Pan Ama-Homes Inc.

DISTRIBUTOR

Munday-Cooper HOMES

ANNOUNCING

The Starting Of A Building Program Of



2 and 3 Bedroom Homes

In The 900 Block On Townsend and Dressen

Just a Few Of The Many Features

Choice Of Color - In and Outside

- Formica Cabinet Tops
- Built In Dressing Table
- Tiled Bath and Kitchen
- Inlaid Linoleum Bath and Kitchen
- Gilding Doors Bed and Bathroom
- Mahogany Closet With Gilding Doors
- Large Medicine Cabinet 58" x 32 1/2" Mirror
- Lenox Central Heating
- Fully Insulated
- No. 1 Oak Flooring
- Steel Truss Floor Supports
- Brick Trim

Sample House Being Built At 901 S. Dressen St. (Come By and Watch It Go Up)

Home Office: Pan Ama Homes Inc., 100 Harrison St., Phone Drake 4-1617, Amarillo, Texas, Chas. Botes - Pres.

Dumas, Texas; Office: 1005 N. E. 2nd, Phone 2-2022, By-Clairence A. Willamerling and Wayne Hutson

SPEARMAN OFFICE: Temporary: 601 S. Hancey, Phone 4581

It's Here Again... Another Big JOHN DEERE DAY

FRI FEBRUARY 18th



This scene from the John Deere Day feature picture, "Miss Mattie," shows dramatically the many popular Hollywood players who are featured in the film which highlights the forthcoming John Deere Day program.



The miracle of American agriculture strikes home in the film, "Freedom for Eric," one of several to be shown on John Deere Day.



Franklin Pangborn, familiar to many as one of Hollywood comedians, plays a prominent role in the John Deere Day feature picture, "Miss Mattie."



Prickley pear farming in San Diego is one of the unusual farming practices shown in "Oddities in Farming" which will be shown to John Deere Day audiences.



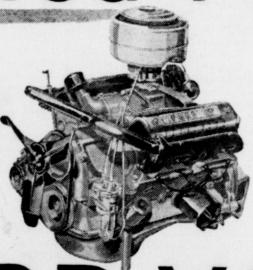
The new John Deere "45" Combine, shown here, is among the many new machines John Deere Day guests will see in the film, "What's New for 1955."



Vivian Zillman, favorite character actress, contributed smiles to the film, "Miss Mattie," the John Deere Day feature picture.

Get a proved V-8

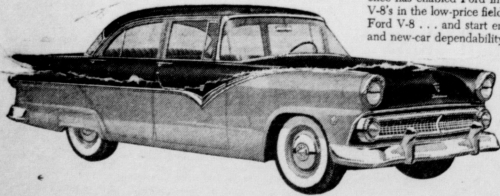
NOW



...a FORD V-8

Built by the world's greatest builder of V-8's

Ford has built more V-8 engines than all other manufacturers combined... over 14,000,000! And this tremendous V-8 experience has enabled Ford in '55 to turn out in quantity the finest V-8's in the low-price field. So why wait? You can get a proved Ford V-8... and start enjoying its brilliant new performance, and new-car dependability right now!



Enjoy Ford's new

Trigger-Torque Power

For '55, Ford offers the brilliant-performing new Y-block V-8 and the even more powerful Y-block Special V-8. Both deliver Trigger-Torque power, which means you get the power you want when you want it, throughout the entire driving range of your car. With new Trigger-Torque Power you can have split-second starts... faster passing ability for a greater feeling of security... top-notch response at all speeds. And with Ford's high-compression, low-friction design and

deep-block construction, you can enjoy smooth performance and long engine life.

Relax in the smooth comfort of new Angle-Poised Ride

Ball-joint Front Suspension, which Ford introduced in its field last year, has proved itself over billions of miles. For '55 it's still better. Springs are set at an angle to absorb shock from the front as well as straight up. This provides delicate

responsiveness to cushion tiny bumps as well as husky "muscle" to flatten big bumps.

Take your pick from 16 brilliant new Ford Models

This year, you get Thunderbird-inspired styling in any Ford you choose. And there's a variety of exciting new single and two-tone body colors with charmingly color-keyed Luxury Lounge Interiors.

Come in for a Trigger-Torque Test Drive!

UNIVERSAL MOTORS JOE TRAYLER
Gruver, Texas Your Friendly Ford Dealer, Spearman, Texas

We're Expecting You on JOHN DEERE DAY

FRIDAY FEBRUARY 18th

Time 10:00 A. M.

SHOW: Lyric, Theatre
1:30 P. M.

Lunch: 11:45 A. M.

Hansford Implement Co.

CHRISTIAN C...
Spearman, Texas
School 9:00
Worship 11:00
Meeting at 6:30
Hour 7:30
CH OF CHR...
ney Paul Smith,
...
Boys Training
...
7:30
...
Bible Class 9:30
Bible Classes 7
METHODIST CH...
Spearman, Texas
...
Church School
For You
M. Morning W
...
M. Methodist
Services
M. Evening W

Som
Ab

Imagine, if you can, the terrible feeling that the men of Noah they observed for the black and muds that were app the sickening terror quified their whole se entire sky beca when the lightning lash, and the thun imagine the panic t the first great t fell from heaven forty day deluge began faster they fell, heaven were open the mountain of the de the water rush reared a round t e. Plains and hills we t, even the mountains w merged and the earth w washed—waves swept up over and ocean witho one. His was blotted out ar elements were eternally los s result of this great floo made a covenant with h don, a covenant that was broken until the end of tim that contained a promise, and a constant reminder to the wages of sin. the name God made another pact with his people. This was instituted through and

Beauty
DEDICATED TO
week
Keep regular app
Bely upon the ar
enhance your partic
for your date with
entirely the new
Whi-gr
and on reg
SAL
For appointment, tel

na May's
WOMBLE B
6301 — S

A Warm Welcome Awaits You



"SUNDAY

9:45 a. m. Bible Study
10:55 a. m. Morning Worship
6:30 p. m. Training Union
7:30 p. m. Evening Worship
O. L. Bryant, Pastor

FIRST BAPTIST CHURCH

CHRISTIAN CHURCH
Spearman, Texas
Sunday School 9:45 a. m.
Worship 11:00 a. m.
Meeting at 6:30 p. m.
Prayer Hour 7:30 p. m.

CHURCH OF CHRIST
Pastor Paul Smith, Preach-

10:00 A. M.
11:00 A. M.
11:45 A. M.
Bible Classes 6:00 P. M.
Worship 7:00 P. M.

BOYS TRAINING

7:30 P. M.

BIBLE CLASSES

9:30 P. M.

METHODIST CHURCH

Spearman, Texas

Church School There For You.

M. Morning Worship

M. Methodist Youth Services.

M. Evening Worship

Service.
Wednesday:
3:00 P. M. The Woman's Society Of Christian Service Meeting.
7:00 P. M. Mid-Week Service.
Prayer Meeting in Church Parlor.

7:30 P. M. Choir Rehearsal.
You are cordially invited to worship God in all our services, and to bring your friends.
Aubrey C. Haynes, Minister.
Don't miss these sermons. Bring a friend.

FIRST METHODIST CHURCH

Spearman, Texas

9:45 A. M. Church School

11:00 A. M. Morning Worship

Service - Subject of sermon: "Divine Guidance"

6:00 P. M. Methodist Youth Fellowship Services.

7:00 P. M. Evening Worship

Services - Subject of sermon: "The Right Way"

Set the right example attend Sunday School and the Preaching

Services. A Cordial, sincere Welcome awaits you at this Church.

Come, worship God with us.

Aubrey C. Haynes, Minister

THANKS

We wish to thank you for the patronage which made our opening a big success. We hope you will make Buddy's YOUR store—your suggestions will be appreciated—Every purchase is guaranteed.



What a WHALE of a SAVING!

you can make on food bills here!

- JESSIE JEWELL FRESH FROZEN
- CHICKEN POT PIE each **31¢**
 - GULF STREAM 10 OZ. PKG. **55¢**
 - BREADED SHRIMP **55¢**
 - STOKLEY'S CHOPPED 10 OZ. PKG. **33¢**
 - BROCCOLI 2 For **33¢**

OUR SINCERE THANKS FOR FLOWERS FOR OUR OPENING

West Texas Wholesale
Spearman Motor Co.
Cut Rate Grocery and Mkt.
Allen's Gro. and Market
Chambers Dry Goods
Cory Motor Co.
Calif. Packing Co.

Ligon Produce
Taystee Bread
Meads Bakery
Western Auto
Boxwell Bros.
Spearman Drug
General Mills

- PECAN VALLEY CUT 303 CAN
- GREEN BEANS 2 for **15¢**
 - REGULAR SIZE BABO Can **9¢**
 - CAMPBELL'S TOMATO SOUP 2 for **19¢**
 - JELLO Pkg. **5¢**

Kimbell's Chilli No. 2 Can 39c

- POTTED MEAT 3 Cans **10¢**
- CELLO PKG. CARROTS each **5¢**
- DEL MONTE NO. 1 FLAT CANS CRUSHED PINEAPPLE 2 for **25¢**
- GIANT TIDE **69¢**
- FIRM GREEN HEADS CABBAGE lb. **3¢**

Pinto Beans, Bulk Lb. 7c

- TEXAS ORANGES 5 lb. bag **23¢**
- GREEN ONIONS each **5¢**
- WHITE - 1 1/2 LB. KARO SYRUP bottle **19¢**
- LARGE BUNCHES CHUCK ROAST lb. **29¢**
- Turnips and Tops each **5¢**
- HI - C ORANGE DRINK 46 oz. Can **25¢**

Concho Tomatoes 303 Can each 10c

- IT'S TENDER CHUCK STEAK lb. **39¢**
- BONELESS STEW MEAT lb. **29¢**
- ARM ROUND ROAST lb. **37¢**

Folgers Coffee, all Grinds, Lb. Can 99c

- Supreme Coconut Chocolate Drop COOKIES, lb. bag **49¢**
- WHITE SWAN Pork and Beans, 300 size can, 2 for **17¢**
- WHITE SWAN 300 SIZE CAN Black Eyed Peas With Bacon **9¢**
- 20 oz. Jar. Tex-O-Maid Apricot Preserves - 20 oz. jar **33¢**
- BONELESS (CUT THICK) CLUB STEAK lb. **69¢**
- Shedds 24 oz. jar Peanut Butter **65¢**
- Shedds Qt. Salad Dressing **39¢**
- Velveeta Cheese, 2 lb. **75¢**
- Honey Boy Salmon, tall can **33¢**
- PINKNEY'S PURE PORK SAUSAGE lb. **29¢**
- Chuck Time Vienna Sausage, 2 for **15¢**
- Sunshine Hi-Mo Crackers, lb. box **33¢**
- Kimbell's Waffle Syrup, 24 oz bottle **31¢**
- Betty Crocker Cake Mix, pkg. **29¢**

Something To Think About

(Published weekly by the Spearman Church of Christ)

by His only begotten Son. This covenant points to another day in the future when mortal man shall witness a destruction so great, that when compared to the flood the former will sink into nothingness. In that day the Lord will descend from heaven with his mighty angels, in flaming fire, to take vengeance on them that know not God. . . . In that day the heavens shall be on fire and the elements shall melt with a fervent heat, and the earth shall be destroyed and all sin and evil with it. A comparative few witnessed the flood, but all men will be called upon to face God in judgement to give an account for their deeds. Some will welcome that great day and will be privileged to enter into that home of the soul. Others will cry out for the rocks and the hills to fall on them and to hide them from the face of God. Theirs shall be an eternity in the lake that burns with fire and brimstone. Words cannot describe that dreadful day—but words, God's words, can describe to us the strait and narrow way that will lead us to eternal life. It reveals to us the facts, the commands, and the promises of the glorious gospel of Christ. If we will but learn the facts, and obey the commands, we can anticipate the wonderful promises. My friend, where will you spend eternity?

Paul Smith, Minister



...with professional beauty care during **National Beauty Salon Week**

DEDICATED TO MORE BEAUTIFUL WOMEN week of February 20th

Keep regular appointments with greater loveliness! Rely upon the artistry of professional beauty care to enhance your particular grace and charm. Please today for your date with beauty—for an individually styled coiffure—the newest trend—"THE AMERICAN!"

Well-groomed women everywhere find on regular professional beauty care!

SALON NAME _____
ADDRESS _____
For appointment, telephone _____

Ma May's Beauty Shop
WOMBLE BUILDING
6301 — Spearman, Texas

Buddy's Super Market

The Spearman Reporter
Successor to the Hansford Headlight, Published Thursday of each week in Hansford County, at Spearman, Texas.

WILL J. MILLER, Editor and Publisher
Entered as second class matter Nov. 21, 1919, at the Post Office at Spearman, Texas, under the Act of March 3, 1879.

First insertion, 4c per word. Second word for every issue thereafter. Card of Thanks, 4c per word. Display Rates on Request.

NOTICE TO THE PUBLIC: Any erroneous reflection upon the reputation or standing of any individual, firm or corporation that may appear in the columns of The Spearman Reporter will be corrected when called to the attention of the management.

Don't Name It
Just as I started to write this column Monday morning I read the news of the death of Coy Holt. I was really shocked.

Visited with Billy Lackey Sunday and learned he plans to go back to college at Denton, Texas this week. He looked fine, but of course is still not able to walk without crutches.

Spearman Host To 500 T. H. D. A. Women
The Hansford County Home Demonstration women are busy getting ready for the big District meeting here in Hansford County Tuesday April 12.

Mother-Daughter F. H. A. Banquet
The Gruver F. H. A. held their Mother-Daughter Tea in the Home Economics department at the high school February 14 at 7:30.

Service
The kind of service you get on something you buy is important and often measures its value to you.

There is much to be considered about the Services rendered on "Land Bank Loans" such as lending abstracts, releasing parts of the security, and agreeing to oil and gas leases.

E. N. Richardson
Secretary - Treasurer
315 Main Street
SPEARMAN, TEXAS

Demonstration Association.
The local Chamber of Commerce manager, Wilson Buchanan, has a group of men all ready to prepare a large bar-b-que for the women.

Hospital News
Mrs. John Sell Jr. was admitted the 9th with second and third degree burns received when her smock caught fire while she was ironing at her home.

Know Your Neighbor Campaign
The "Know Your Neighbor" Campaign was a great success in Hansford County last week-end. Sixty-six Home Demonstration women worked under the supervision of Mrs. Paul Smith.

County-Wide 4-H Party
Attention all Hansford County 4-H members. A big party is under way and the plans are being made by our presidents of the Gruver 4-H Clubs.

Spring T. H. D. A. Meeting
Spearman, Texas
April 12 10:00 A. M.
First Baptist Church
Invocation, Mrs. Biggers, Potter County.

Heart hung from the lights. A large red and white heart was in front of the room. Soft recorded music was played throughout the evening.

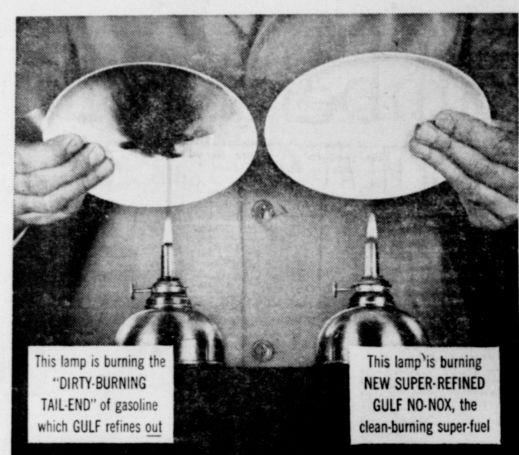
Esther Kaufman, Mistress of Ceremony, welcomed the guests and announced the program. Kathryn Knutson gave a poem, "My Home" by Mrs. I. W. Ayres Jr.

Barbara Ann Coates, two-year-old daughter of Mr. and Mrs. W. D. Coates, was admitted the 14. She is a medical patient and is improving.

the 12 cooperating grocerymen and the General Mills people. Our thanks goes to these people and their work.

Col. H. N. Jackson crossed U. S. by auto and died at 82. Seeing America is a big job for Americans to spend the money.

No gasoline-no, not a single one has higher octane than New 1955 GULF NO-NOX



Always remember: Octane alone is not enough. Only a gasoline that burns clean can make its full octane power really work for you mile after mile.

This is GULF'S PLEDGE to the motoring public
We at Gulf make this promise to America's motorists. We will not permit a single competitor—no, not a single one—to offer a gasoline superior to our own superb No-Nox.

New 1955 GULF NO-NOX
It's super-refined... to burn clean!
The '55 gasoline for all high-compression engines

WHEN YOU GO — GO GULF
ORANGE DISC SERVICE
NEW 1955 GULF NO-NOX
It's super octane!
It's super-refined!
THE '55 GASOLINE FOR ALL HIGH-COMPRESSION ENGINES

Here is Gulf's unprecedented pledge to the motoring public:
We at Gulf make this promise to America's motorist. We will not permit a single competitor—no, not a single one—to offer a gasoline superior to our own superb No-Nox.

24 HOURS a Day... 720 HOURS a MONTH!!
Community Public Service
Reddy Kilowatt
Your Servant of the Century

Resu
SAXTON
Sports Et
school sci
the woyal
means. Cha
a semifi
tournaments
14 to 30
Tigers at
into the
Sunday,
array up
while Mot
over Ch
ipped by
champs
alone's ty
ing as 6
at will;
that had
of a tea
the final
the Tig
showed in
on the bas
to catch u
ers.
bars starte
ing up a 51
the first r
am" entere
part of the s
for a slow
points to
18 lead a
half. The re
the third qu
and Stannet
end of the
and fort
ed in the
st Rawsey l
in 17 feet o
on their 96th
end of the
that Sti
ored any
did had Mi
in for the e
is not that
ven the first
field goals
blers, 26 of w
the second
arded only
the second
one of which
in the high
Cassidy and
scored by the
got into the
11 players ch
Cassidy was
to dump one
ad several
d goals were s
wo were made
by Allen Mitc
er not one in
Wheeler's fi
throw by P
only three poi
ey in the fi
scored the fi
the ball game o
up but Mitc
4 set shot to
2. Tony Athert
in front of t
Rinnett a 4-2 le
one from the s
out in front t
assed a free th
is there to get
Innett was out
throws by Dav
Rattler's lead
as close as Ha
of the night.
RALLY WINS
iller of the fo
Friday was Str
ver the Spearm
by the phenor
Bobby Nolline
the contest. Noll
field goals and 1
throws to cop to
for the tourn
points. Most e
were from
the basket.
Stratford attac
with 26 point
with 21. Both
hitting from nea
most of Ingham'
set shots.
deep into the
rman enjoyed
6 lead over th
int, Ingham an
scored 12 point
allied only thre
at the end of the
ed only 1:10 o
to take a 54-56
two jump shot
Glenn Wakefield
knew what had
ran took a one
4-22 left in the
hind again se
CHANNING
over Channing
one sided than
shows. The Mus
19 point edge
of the first period
and to 39 to 21
Channing cut that
end of the fourth
ended 51 to 35.
three minutes left in the
Routt, Morse
his second team
the Mustangs were
front. A full court
Channing and the
the Mustangs sub
in the ball game.
weak Eagle defen
layups and
that saved them
meantime, Cha
crack the Morse
de in the game
rom outside, with
the 21 points
Hardaway, the
daway for high
Jim Skelton
his shots from

Results

SAXTON
Sports Editor
shoot scoring re-
the way side Sat.
Stinnett Rattlers
the semi-finals of
tournament with
4 to 30 victory
to have
Tigers at Spear-



STOP NUMBER 2 of a guided our showing Rep. Guy Hazelett, Rep. Dugan Jr., and Rep. H. B. Hardeman irrigation farms in Sherman and Hansford county was made Friday afternoon at the Buzzard Well No. 1, near Gruver. Shown with Rep. Hazelett, (dark suit) are Hansford and Sherman county irrigation farmers, explaining that leases of natural gas rights would not sell gas in which to operate irrigation pumps even though the gas wells were on their lands. The Friday afternoon tours were divided into 12 groups where 24 legislators made an intensive survey of farms in Moore, Hansford, Dallam, Sherman, and Hutchinson County.

into the night's
Sunray, Morse
Sunray upset Tex-
while Morse was
over Channing
ipped by Spear-
ing champs, 69 to
Malone's two pla-
ing as good as
at will against
that had all the
of a team five
the final minute.
the Tigers with
in high school
on the basketball
to catch up with
Sars started the
ing up a 31 to 10
the first period.
mi entered the
rt of the second
er a slow start
points to give
18 lead at the
half. The regulars
the third quarter
and Stinnett led
end of the last

and forty-five
ed in the ball
Rawsey hit a
17 feet out to
their 99th and
al that Stinnett
scored any more
did had Malone
an for the entire
was not that much
seen the first and
field goals were
tlers, 30 of which
the second half
warded only four
the second half
one of which only
It was made by
Cassidy and was
scored by the Rat-

got into the scor-
11 players chalk-
Cassidy was the
to dump one in
had several that
d goals were scor-
two were made in
by Allen Mitchell
got one in the
Wheeler's field
throw by Pete
only three points
key in the third

scored the first
ball game on a
up but Mitchell
a set shot to tie
2. Tony Atherton
in front of the
Stinnett a 4-2 lead
one from the side
out in front 6-2
ssed a free throw
was there to get the
Stinnett was out in

throws by David
Rattler's lead to
as close as Hart-
of the night.
RALLY WINS
Miller of the four
Friday was Strat-
over the Spearman

by the phenom-
Bobby Nollner,
the contest. Noll-
field goals and 11
throws to cop top
for the tourna-
points. Most of
were from 20
the basket.
Stratford attack
with 26 points
with 21. Both of
hitting from near
most of Ingham's
set shots.

deep into the
man enjoyed a
6 lead over the
Ingham and
scored 12 points
allied only three
at the end of the
ed only 1-10 of
to take a 54-52
two jump shots
Glenn Wakefield
knew what had
man took a one
-22 left in the
behind again se-

CHANNING
over Channing
one sided than
shows. The Mus-
19 point edge
first period and
lead to 39 to 21
Channing cut that
end of the fourth
and 51 to 35.
minutes left in the
Routt, Morse
his second team
the Mustangs were
front. A full court
Channing and the
Mustangs sub-

the ball game.
weak Eagle defen-
ing layups and
that saved them
meaning. Char-
crack the Morse
te in the game
om outside, with
the 21 points
Hardaway, the
daway for high
Jim Skelton
of his shots from

SUNRAY NIPS TEXLINE

Sunray started slow but finished fast in winning their first round game from Coach Joe Means' Tornados. The Bobcats were held to only six points in the first period and did not catch fire until late in the second period.

Texline, on the other hand, was hot in the opening stanza with Gary Herber hitting from outside and Mac Wohoc, high point man for the game, getting most of the rebounds.

Texline went into the second period on the long end of a 14-6 count and with four minutes left in the second period still enjoyed a nine point, 19 to 10 bulge.

At this point, however, the Bobcats started hitting with a layup in the last second of play by Bob Bryson, putting Sunray ahead for the first time. The bucket gave the Bobcats a 22-21 half time lead.

Although they never again regained the lead, Texline stayed within three points of Sunray until three minutes deep in the third period when the Bobcats started hitting from all angles and built up a 40 to 31 lead at the end of the third quarter.

SATURDAY'S PAIRING
There will be four more games played in the tourney today. The semi-finals of the consolation bracket were to be played this afternoon with Texline going against Channing and Hartley against Spearman. In the championship bracket, Sunray meets Morse at 7 p. m. tonight and Stinnett battles Stratford at 8:30 p. m.

In the only meeting of the two teams this year, Stinnett defeated Stratford in the finals of the Gruver tournament, 59 to 37.

STINNETT (114)	fg	ft	pf	tp
Jack Prichard	4	2	2	10
Tony Atherton	6	2	1	14
Fred Thompson	3	0	3	3
Glenn Smith	7	1	1	15
Travis Reger	9	0	2	18
Roy Hedgecoke	1	0	2	2
Bill Womble	9	0	3	18
Don Parker	5	2	1	12
Larry Dawson	1	0	2	2
James Sassy	0	1	1	1
Clint Ramsey	5	2	4	12
Dale Keadle	2	0	1	4

TOTALS	52	10	23	114
HARTLEY (30)	fg	ft	pf	tp
Pete Vision	0	4	2	4
Alten Mitchell	0	2	2	2
David Douglas	2	5	5	9
Mc Simmons	0	1	1	1
Alten Mitchell	0	1	1	1
Rex Wheeler	2	0	1	4
Malcom Bryant	0	0	0	0
Bob Thompson	0	0	0	0
Dale Wheatberford	0	0	0	0

TOTALS	4	22	14	30
Free throws missed: Albertson	2	2	4	10
3. Thompson 2, Smith 2, Cassidy, Keadle, Vincent 2, McDougal 7, Mitchell 2, Cimms 8, Wheeler 2.				
Score by Quarters:	53	85	114	
Stinnett	21	18	21	30
Hartley	10	18	21	30

MORSE (63)	fg	ft	pf	tp
David Richardson	2	2	4	10
Bill Stator	5	0	4	10
Fat Blakenship	6	2	3	14
David Reid	3	2	4	8
Charlie Reid	9	3	2	21
Ken Swink	0	0	0	0
David Pruett	0	0	0	0
Derald Chisum	0	0	0	0
Jim Helms	0	0	0	0

TOTALS	27	9	20	63
CHANNING (60)	fg	ft	pf	tp
Jim Skelton	6	3	2	15
John Allison	4	2	10	21
Boyer Hardaway	6	9	4	21
Tom Mason	3	4	3	10
Joe Bill Brown	0	0	2	7
Chucky Blackburn	0	0	0	0
Jim Turner	2	0	4	4
Bob Nollner	13	11	13	43
Elbert Pool	0	1	3	1
Bob Greover	0	3	3	4
Lester McLain	0	0	1	0

TOTALS	21	19	13	60
Free throws missed: Richardson	3	D. Reid 3, C. Reid 2, Blakenship, Skelton 5, Allison 3, R. Hardaway 3, Mason 4, Brown.		
Score by quarter:	19	39	51	63
Morse	13	21	35	60
Channing	13	21	35	60

SUNRAY (57)	fg	ft	pf	tp
Bob Bryson	8	0	3	16
Jim Reid	5	3	5	13
Ken Riddle	5	1	4	11
Clyde Reynolds	2	3	2	7
Rice Corse	2	5	4	9
Noel Barnett	0	1	3	1

Weather

DATE	MAX.	MIN.	RAIN
8	54	12	0.00
9	69	24	0.00
10	72	12	0.00
11	28	6	0.03
12	46	11	0.00
13	45	15	0.00
14	62	24	0.00

Two New Locations Made In Field

Oil news this week features a 250 barrel oil well brought in by Humble on the Harold Collier land, section 41, blk. 1, WCR survey. Also two new locations were made by a new organization, Producers Chemical Service of Borger staked location 10 miles North of Spearman on the Steele ranch. The No. 1, Steele is in section 56, block 45, H and TC survey. The No. 2, location was staked in section 63, block 45, H and TC survey.

ADVERTISEMENT FOR BIDS

Notice is hereby given that on March 10th 1955, at 10:00 A. M., at the offices of the District in Dumas, Texas, the Board of Directors of Ground Water District No. 2, North of the Canadian River, will receive sealed bids for the District Depository. Information and details of the same may be secured by addressing all communications to Box 128, Perryton, Texas. Gaston Wells, President. ATTEST: AND SEAL: R. V. Converse, Secretary No. 11 34-p

See our Quaker Oats Company ad in this issue, and come in and see us about the wonderful Ful-o-Pep oatmeal starter. We can get you the best of baby chicks if you will let us have your order in time. This year prices are lower. Fresh stock of Northrup-King garden seeds.

R. L. Porter Grain & Seed Co. Phone 3751
West German export set new high in December.
Paris spring hats are smaller more colorful.
Sinclair Oil Corp. has its first billion (gross) year.
U. S. defeats Canada to keep Hopkins golf trophy.

TOTALS	22	13	22	57
TEXLINE (43)	fg	ft	pf	tp
Warren Meek	1	2	4	4
Mac Kehoc	4	12	4	20
George Hamilton	2	0	3	4
Gary Herber	4	2	2	10
Bill McClellan	0	0	3	0
J. W. McClellan	2	1	5	5
Jim Pool	0	0	0	0

TOTALS	13	17	15	43
STRATFORD (69)	fg	ft	pf	tp
Glenn Wakefield	5	4	5	14
Jim Ingham	9	8	5	26
Mike Neal	6	9	3	24
John Wilson	1	1	1	3
Emery Hamilton	0	0	4	0
Carroll Wisdom	0	1	3	1
Wayne Cuuings	1	0	2	2
Ray Grimes	1	0	0	2

TOTALS	23	23	24	69
SPEARMAN (65)	fg	ft	pf	tp
Tom Rowls	4	0	2	8
Chucky Blackburn	1	1	2	3
Jim Turner	4	5	5	13
Bob Nollner	13	11	13	43
Elbert Pool	0	1	3	1
Bob Greover	0	3	3	4
Lester McLain	0	0	1	0

TOTALS	22	21	24	65
Free throws missed: Neal 3, Wilson 4, Wakefield, Hamilton, Wisdom, Blackburn 4, Turner 3, Nollner 6, Pool 2, McLain 2, Greover.				
Score by quarter:	17	32	48	69
Stratford	22	41	52	65
Spearman	17	32	48	69

Now is the time you can buy goods exactly like those you bought last month for half the price.

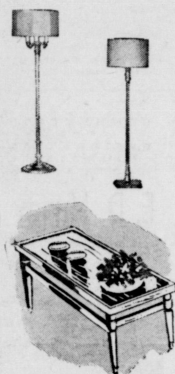
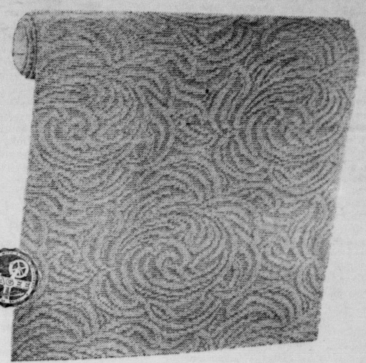
Feather your nest With a Little Down!

Now is the time to save on your 9 x 12 Wool and Rayon Rugs

Only four 50% wool, 50% Rayon Kathy Rugs by Magee. Beige - Grey - Green Grey-Green.

REGULAR \$69.95 SAVE \$20.00 now \$49.95.

One Only 100% Wool Belgrave Rug by Magee Regular \$89.95 for \$69.95



FLOOR and TABLE LAMPS 1/3 OFF

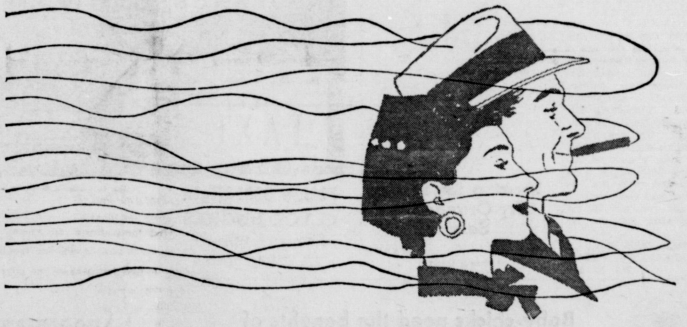
from \$1.95 to \$13.25 YOUR Choice

Coffee Tables - Step Tables Corner Tables one third OFF Regular Price \$12.00 to 21.30



Save and Redeem Your Round-Up Thrift Stamps on any Merchandise in our store.

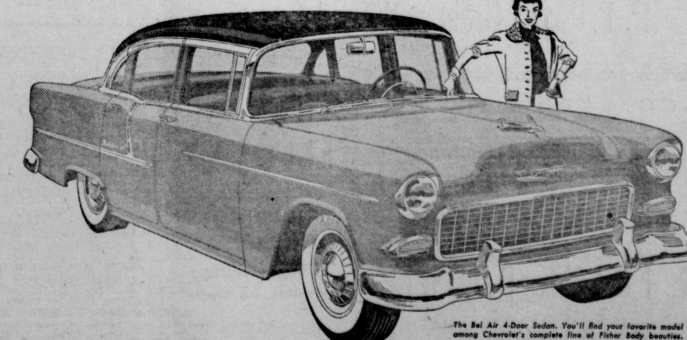
Panhandle Furniture Mart



Even the air you breathe is better!

Chevrolet's new High-Level ventilation system gives you cleaner, fresher air, and all you want of it!

Only Chevrolet and higher-priced cars give you a ventilation system like this! A special chamber under the ventilation louvers keeps rain out of the car and supplies you with a more even flow of air. And it also acts as a girder, making the car stronger and safer. This is just one of the exciting discoveries you'll make when you drive the Motoramic Chevrolet! Come in and see.



The Bel Air 4-Door Sedan. You'll find your favorite model among Chevrolet's complete line of Fisher Body beauties.

Chevrolet's stealing the thunder from the high-priced cars with all these comforts and conveniences, too!

New Anti-Dive braking control (exclusive with Chevrolet) for "heads up" stop! New Four-Fender visibility! New Ball-Race steering! An entirely new ride! And you can have any or all of the automatic power features* you could wish for!

1 New Linkage-Type Power Steering. Does up to 80 per cent of the work for you! Cushions road shock, too!

2 New Automatic Window and Seat Controls. Raise and lower windows in front and rear... position the seat... at a finger touch.

3 Improved Power Brakes. Stop you with up to one-third less pedal pressure, for extra ease and safety.

4 New Air Conditioning. A single compact unit heats or cools the air to your liking. Takes up no trunk space.

*Optional at extra cost. Automatic Window and Seat Controls available on Bel Air and "Two-Ten" models. Air Conditioning on V8 models only.

Everything's new in the motoramic Chevrolet



McClellan Chevrolet Co. Gruver Motor Co. Spearman, Texas Gruver, Texas

CITATION

THE STATE OF TEXAS

TO: L. W. Chadwick, and if L. W. Chadwick, was ever married Mrs. L. W. Chadwick.

Chadwick, whose first name is unknown but who was the wife of L. W. Chadwick; Edward F. Rollins, and if Edward F. Rollins was ever married Mrs. Edward F. Rollins.

Article 5509, 5510, 5511, 5512 and 5513(a) Texas Statutes, respectively, that the defendants actually own no interest therein and any apparent interest should be removed as a cloud upon plaintiff's title, and seeking recovery of the title and possession of the land and premises above described, together with the removal of any apparent cloud upon the title of the plaintiff, costs of court and general relief.

Notice To Contractors

Sealed proposals will be received at the office of the City Secretary, Spearman, Texas, until 7:30 P. M. February 23, 1955, for constructing Waterworks Improvements consisting of 250,000 Gallon Elevated Tank and approximately 25,000 feet of 6", 8" & 10" & 10" VC Pipe Sewer System Extensions and appurtenances, and for constructing approximately 17,000 feet of 6", 8" & 10" VC Pipe Sewer System Extensions and appurtenances.

You and each of you are hereby commanded to appear before the Honorable 84th Judicial District Court of Hansford County, Texas at the Courthouse in Spearman, Texas, at or before 10:00 a. m. of the first Monday, after the expiration of forty-two days from the issuance hereof, same being Monday, the 7th day of March 1955, and answer the petition of plaintiff, George W. M. Stewart, filed in said court on the 22nd day of January, 1955, said suit being Cause No. 767, in which suit George W. M. Stewart is plaintiff, L. W. Chadwick, and if L. W. Chadwick was ever married Mrs. L. W. Chadwick.

Chadwick, whose first name is unknown but who was the wife of L. W. Chadwick; Edward F. Rollins, and if Edward F. Rollins was ever married Mrs. Edward F. Rollins, whose first name is unknown but who was the wife of Edward F. Rollins; Leotis Rollins, Rita Rollins, J. G. Rollins, Jr., Junior Rollins, C. J. Crawford, Tom Ivey, Lyla B. Bisbing, Charles Bisbing, Leotis Rollins, Monnie Jones, J. M. Chadwick, Betty Fortuen, L. M. Chadwick, L. A. Yearwood, J. M. Chadwick, George F. Brunfield, W. C. Brunfield, Walter B. Brunfield, W. B. Rollins, Amanda Taylor, Arminta Collins, et vir A. R. Collins, Mollie Baker, Lyla B. Bisbing, Walker Rollins, Ed Rollins, Annie Rich and husband A. L. Rich, Will Rollins, Lena Shaddock, Cleve Daniels, sometimes identified as Cleve Daniel, and husband Jeff Daniels, sometimes identified as Jeff Daniel, Earl Rollins, Edna Rollins, Guy C. Hibbs, Edna Rollins Stanford and husband W. C. Stanford, W. F. Miller; The heirs and unknown heirs and legal representatives of each of the above named persons and the legal representatives of each of the above named heirs; all persons, other than plaintiff, claiming any title or interest in Section Six (6), and the East Half (E-2) of Section Nine (9), all in Block One (1), Cherokee Furnace Company, Original Grantee, Survey, in Hansford County, Texas, under deed given by Albert C. Witt and wife Katie Witt, as grantors, to L. W. Chadwick, as grantee, dated August 17, 1928, recorded in Volume 32, page 631, Deed Records of Hansford County, Texas, defendants in the hereinabove styled and numbered cause; GREETING:

Said suit is an action in trespass to try title as defined by the statutes of the State of Texas, and prescribed by the Rules of Civil Procedure, alleging the ownership in fee simple by plaintiff, George W. M. Stewart, of the following described land and premises located in Hansford County, Texas, to-wit: All of the North One-half (N-1/2) of the Northeast One-quarter (NE-1/4) of Section One (1), Block Two (2), S&M&G RR Co., Original Grantee; all of Section Six (6) and the East One-half (E-1/2) of Section Nine (9), Block One (1), Cherokee Furnace Company, Original Grantee, containing 560 acres, more or less, in Hansford County, Texas, alleging additionally that plaintiff have title under the Five, Ten and Twenty-five Year Statutes of limitation prescribed by

Article 5509, 5510, 5511, 5512 and 5513(a) Texas Statutes, respectively, that the defendants actually own no interest therein and any apparent interest should be removed as a cloud upon plaintiff's title, and seeking recovery of the title and possession of the land and premises above described, together with the removal of any apparent cloud upon the title of the plaintiff, costs of court and general relief.

WITNESS FRED J. HOSKINS, Clerk of the District Court of Hansford County, Texas.

ISSUED AND GIVEN UNDER MY HAND AND THE SEAL OF SAID COURT at its office in the City of Spearman, Hansford County, Texas, this 22nd day of January, 1955.

Announcing

We proudly announce that Mrs. John Berry has been appointed as our representative in Spearman, Texas. She is a pianist and Hammond organist. Phone 4631.

F. W. MAIZE

Real Estate

Land - Houses - Lots - Acreage

120 So. Haney - Phone 5306

The City reserves the right to reject any bids or all bids, and to waive all formalities; except that no bid received after the closing hour above mentioned will be considered. The attention of bidders is called to the special provisions concerning minimum wage rates and hours of employment included in the specifications to insure compliance with House Bill No. 115 of the Forty-fourth Legislature of the State of Texas. Plans, specifications and contract documents are on file and may be inspected at the office of the City Secretary at Spearman, Texas; and are available upon deposit of Twenty-five Dollars (\$25.00) at the office of Hatfield Engineering Co., Consulting Engineers, Amarillo, Texas, deposit will be refunded to each actual bidder submitting a bona-fide bid, immediately upon return of the plans and specifications in good condition. Refund will not be made on plans and specifications which are not returned within five (5) days after date for receiving bids.

C. A. GIBNER, MAYOR CITY OF SPEARMAN, TEXAS No. 10 24c

Baby chicks need the benefits of Body-Building Oatmeal... supplied by Ful-O-Pep Chick Starter. Give your baby chicks the extra food values they need for growing strong bones and sound bodies. Start them on nutritious Ful-O-Pep Chick Starter, built around wholesome oatmeal, prize cereal grain for energy and growth. Two pounds of Ful-O-Pep per chick is all you need... and it'll grow your birds fit-not fat.

Stop and see us soon. We stock only the best 22% protein Broiler Mash. We have a large number of famous Ful-O-Pep-type chicks available at reasonable cost. Please call and place your order early. Try the famous Ful-O-Pep Laying Mash pellets, for healthy hens and deliciously flavored eggs.

R. L. Porter Grain and Seed Co. Phone 3751

COLLARD & RAY Real Estate - Loans - Insurance

Low interest real estate loans for irrigation, improvements, or expansion. John R. Collard Jr. - Billy C. Ray Phone 5281 - 407 Davis

DR. FRANK BROWN OPTOMETRIST THURSDAYS Room 216 - McLain Bldg.

FOR APPOINTMENT Call Dr. D. E. Hackley Phone 4851

Twentieth Century Club A program on "Texas Indians" was given at the meeting Thursday afternoon of the Twentieth Century Club, Home Science Dept., held in the home of Mrs. Dwight Hutchison.

Refreshments were served to Mesdames I. R. Kiem, G. R. Kilpore, Ralph Blodgett, Diana Hubbard, Joe Traylor, Paul Smith, Tom Sutton, Fred Holt, Nolan Holt, Raymond Kirk, Ralph Maglaughlin and Mrs. Dwight Hutchison.

The next meeting will be Feb. 24th at 3 o'clock with Mrs. Fred Holt.

Refreshments were served to Mesdames I. R. Kiem, G. R. Kilpore, Ralph Blodgett, Diana Hubbard, Joe Traylor, Paul Smith, Tom Sutton, Fred Holt, Nolan Holt, Raymond Kirk, Ralph Maglaughlin and Mrs. Dwight Hutchison.

The cones of dormant rosebuds should number three or more. At least two cones of the floribundas should be fifteen inches long; eighteen inches for hybrid-teas and twenty-four for climbers.

The low buds should be plumped and unscarred. Buds should be dormant with some growth showing late in the spring. The bark should be green to the tips, unshriveled and show no signs of rough treatment.

FOR RENT—25 x 80 foot brick building, located on Main street Gruver. Tile floors, air conditioned, heating unit, with or without store fixtures. Phone Howard Cline, Phone 50-W, Gruver. No. 7, r-t-n

Retailers foresee 21-2 to 31-2 per cent sales this year. Weather asks guaranteed wage to balance economy.

Hostesses were: Mrs. Bob Maupin and Mrs. Wilson Montgomery, who served lovely salads with the Pizza Pie, which was demonstrated and baked by Miss June Gibbs.

Four guests: Mrs. Crouch, Mrs. Crawford of the Michigan-Wisconsin, Mrs. Lester Bell of Texas, and Miss Gibbs and members, Mesdames: Carl Watson, Lester Beamer, Edith Mathis, Trudy TeBeest, Rachel Adkins, Myron Morton, Wilson Montgomery, J. C. Wells, Bob Maupin, Bob Berry and J. Fred Jordan. We were present for the meeting.

Statineline H. D. Club The Stateline Home Club of the Michigan-Wisconsin met at the Michigan-Wisconsin Hall on Feb. 9.

Mrs. J. Fred Jordan, the club president, presided. Roll Call was "My family's favorite dairy food."

Mrs. Bob Berry read the minutes, and the business session was closed.

Hostesses were: Mrs. Bob Maupin and Mrs. Wilson Montgomery, who served lovely salads with the Pizza Pie, which was demonstrated and baked by Miss June Gibbs.

Four guests: Mrs. Crouch, Mrs. Crawford of the Michigan-Wisconsin, Mrs. Lester Bell of Texas, and Miss Gibbs and members, Mesdames: Carl Watson, Lester Beamer, Edith Mathis, Trudy TeBeest, Rachel Adkins, Myron Morton, Wilson Montgomery, J. C. Wells, Bob Maupin, Bob Berry and J. Fred Jordan. We were present for the meeting.

Announcing We proudly announce that Mrs. John Berry has been appointed as our representative in Spearman, Texas. She is a pianist and Hammond organist. Phone 4631.

F. W. MAIZE Real Estate

Land - Houses - Lots - Acreage

120 So. Haney - Phone 5306

The City reserves the right to reject any bids or all bids, and to waive all formalities; except that no bid received after the closing hour above mentioned will be considered. The attention of bidders is called to the special provisions concerning minimum wage rates and hours of employment included in the specifications to insure compliance with House Bill No. 115 of the Forty-fourth Legislature of the State of Texas.

Plans, specifications and contract documents are on file and may be inspected at the office of the City Secretary at Spearman, Texas; and are available upon deposit of Twenty-five Dollars (\$25.00) at the office of Hatfield Engineering Co., Consulting Engineers, Amarillo, Texas, deposit will be refunded to each actual bidder submitting a bona-fide bid, immediately upon return of the plans and specifications in good condition. Refund will not be made on plans and specifications which are not returned within five (5) days after date for receiving bids.

C. A. GIBNER, MAYOR CITY OF SPEARMAN, TEXAS No. 10 24c

Baby chicks need the benefits of Body-Building Oatmeal... supplied by Ful-O-Pep Chick Starter. Give your baby chicks the extra food values they need for growing strong bones and sound bodies. Start them on nutritious Ful-O-Pep Chick Starter, built around wholesome oatmeal, prize cereal grain for energy and growth. Two pounds of Ful-O-Pep per chick is all you need... and it'll grow your birds fit-not fat.

Stop and see us soon. We stock only the best 22% protein Broiler Mash. We have a large number of famous Ful-O-Pep-type chicks available at reasonable cost. Please call and place your order early. Try the famous Ful-O-Pep Laying Mash pellets, for healthy hens and deliciously flavored eggs.

R. L. Porter Grain and Seed Co. Phone 3751

COLLARD & RAY Real Estate - Loans - Insurance

Low interest real estate loans for irrigation, improvements, or expansion. John R. Collard Jr. - Billy C. Ray Phone 5281 - 407 Davis

DR. FRANK BROWN OPTOMETRIST THURSDAYS Room 216 - McLain Bldg.

FOR APPOINTMENT Call Dr. D. E. Hackley Phone 4851

The next gathering will be Feb. 23, at the Phillips Plant community hall. Mrs. Adkins and Mrs. Mathis will be hostesses.

About Your Home It is time again in most sections of the country, to start thinking about roses. Roses are not hard to grow if you choose healthy plants and stick to the varieties that are blight and bug resistant. Plant only those type that do well in your part of the country.

Do not look for bargain plants. Buy only the best grade plants from a reliable dealer.

The cones of dormant rosebuds should number three or more. At least two cones of the floribundas should be fifteen inches long; eighteen inches for hybrid-teas and twenty-four for climbers.

The low buds should be plumped and unscarred. Buds should be dormant with some growth showing late in the spring. The bark should be green to the tips, unshriveled and show no signs of rough treatment.

FOR RENT—25 x 80 foot brick building, located on Main street Gruver. Tile floors, air conditioned, heating unit, with or without store fixtures. Phone Howard Cline, Phone 50-W, Gruver. No. 7, r-t-n

Retailers foresee 21-2 to 31-2 per cent sales this year. Weather asks guaranteed wage to balance economy.

Hostesses were: Mrs. Bob Maupin and Mrs. Wilson Montgomery, who served lovely salads with the Pizza Pie, which was demonstrated and baked by Miss June Gibbs.

Four guests: Mrs. Crouch, Mrs. Crawford of the Michigan-Wisconsin, Mrs. Lester Bell of Texas, and Miss Gibbs and members, Mesdames: Carl Watson, Lester Beamer, Edith Mathis, Trudy TeBeest, Rachel Adkins, Myron Morton, Wilson Montgomery, J. C. Wells, Bob Maupin, Bob Berry and J. Fred Jordan. We were present for the meeting.

Statineline H. D. Club The Stateline Home Club of the Michigan-Wisconsin met at the Michigan-Wisconsin Hall on Feb. 9.

Mrs. J. Fred Jordan, the club president, presided. Roll Call was "My family's favorite dairy food."

Mrs. Bob Berry read the minutes, and the business session was closed.

Hostesses were: Mrs. Bob Maupin and Mrs. Wilson Montgomery, who served lovely salads with the Pizza Pie, which was demonstrated and baked by Miss June Gibbs.

Four guests: Mrs. Crouch, Mrs. Crawford of the Michigan-Wisconsin, Mrs. Lester Bell of Texas, and Miss Gibbs and members, Mesdames: Carl Watson, Lester Beamer, Edith Mathis, Trudy TeBeest, Rachel Adkins, Myron Morton, Wilson Montgomery, J. C. Wells, Bob Maupin, Bob Berry and J. Fred Jordan. We were present for the meeting.

Announcing We proudly announce that Mrs. John Berry has been appointed as our representative in Spearman, Texas. She is a pianist and Hammond organist. Phone 4631.

F. W. MAIZE Real Estate

Land - Houses - Lots - Acreage

120 So. Haney - Phone 5306

The City reserves the right to reject any bids or all bids, and to waive all formalities; except that no bid received after the closing hour above mentioned will be considered. The attention of bidders is called to the special provisions concerning minimum wage rates and hours of employment included in the specifications to insure compliance with House Bill No. 115 of the Forty-fourth Legislature of the State of Texas.

Plans, specifications and contract documents are on file and may be inspected at the office of the City Secretary at Spearman, Texas; and are available upon deposit of Twenty-five Dollars (\$25.00) at the office of Hatfield Engineering Co., Consulting Engineers, Amarillo, Texas, deposit will be refunded to each actual bidder submitting a bona-fide bid, immediately upon return of the plans and specifications in good condition. Refund will not be made on plans and specifications which are not returned within five (5) days after date for receiving bids.

C. A. GIBNER, MAYOR CITY OF SPEARMAN, TEXAS No. 10 24c

Baby chicks need the benefits of Body-Building Oatmeal... supplied by Ful-O-Pep Chick Starter. Give your baby chicks the extra food values they need for growing strong bones and sound bodies. Start them on nutritious Ful-O-Pep Chick Starter, built around wholesome oatmeal, prize cereal grain for energy and growth. Two pounds of Ful-O-Pep per chick is all you need... and it'll grow your birds fit-not fat.

Stop and see us soon. We stock only the best 22% protein Broiler Mash. We have a large number of famous Ful-O-Pep-type chicks available at reasonable cost. Please call and place your order early. Try the famous Ful-O-Pep Laying Mash pellets, for healthy hens and deliciously flavored eggs.

R. L. Porter Grain and Seed Co. Phone 3751

COLLARD & RAY Real Estate - Loans - Insurance

Low interest real estate loans for irrigation, improvements, or expansion. John R. Collard Jr. - Billy C. Ray Phone 5281 - 407 Davis

DR. FRANK BROWN OPTOMETRIST THURSDAYS Room 216 - McLain Bldg.

FOR APPOINTMENT Call Dr. D. E. Hackley Phone 4851

Dr. D. E. Hackley OSTEOPATHIC PHYSICIAN AND SURGEON McLain Bldg. 9:00 - 12:00 1:30 - 5:30 Office Phone - Residence Phone 4851 5181

Ditching Service Sewer, Water and Foundations Willard McLarty PHONE 2421 Perryton, Texas

For the life of your car GO GULFI

The AMBULANCE FLOWER Number Dial 2751 SPEARMAN, TEXAS

Boxwell Bros' Funeral Home and Flower Shop Day - Night Phone 2751 SPEARMAN, TEXAS

BY 'Gene & Sparky'

Getting down to "bare facts", we'll hunt down the trouble and make you pleased at your choice of service.

Spearman Super Service Hwy. 117 Ph. 4061

Dr. F. J. Daily DENTIST - X-RAY 891 Davis Street WOMBLE BUILDING Spearman, Texas

E. C. GREENE Real Estate Losses Insurance Phone 4261 - Box 146 SPEARMAN, TEXAS

PERRYTON HOSPITAL AND CLINIC Drs. G. L. Keagle, M. D. Res. Phone 6041 Dr. D. B. Pearson, M. D. Res. Phone 5471 Perryton Hospital Phone 2171 CLINIC PHONE 5351

SANFORD HOSPITAL AND CLINIC Perryton, Texas Phone 2821 or 2881 ROY K. SANFORD, M. D. Pediatrics J. BLUFORD JOHNSON, M.D. General Surgery C. U. MONROE, M. D. Obstetrics - General Practice J. M. HENRY, M. D. Internal Medicine

R. L. (Smoky) Huson Spearman, Texas

R. L. Kleeberger M. D. Physician Surgeon Medicine, Surgery and Obstetrics Hours: 9-12 a. m. - 2-5 p. m. CLOSED THURSDAYS Phone: Res. 2161 Office 5781 304 Main St - Spearman

ALCOHOLIC—If liquor is your problem and you sincerely want help to quit write Alcoholic Anonymous, Box 231, Spearman. No fees, no pledges, no pills. No. 36 r-t-n

WENTY YEAR FARM AND RANCH LOANS, to irrigate, purchase or refinance. Call 4261 or write Box 145. E. C. Greene, Spearman, Texas. No. 23 r-t-n

WE ARE—Experts in installing tile floors. Let us figure your next job. Free estimates. We do cabinet tops, floor linoleums, congowalls. We stock linoleums up to 12" wide, sink frames, metal trims and etc. DALEY'S IN PERRYTON No. 27 r-t-n

FOR SALE—400 bales of kaffir with grain price \$22.00 per ton. Wayne Bryan, Spearman. No. 8 45-p

HOUSE FOR SALE—5 rooms and bath, 321 South Bernice. Contact Bob Heard, 1403 B. Nancy, Amarillo, Texas. Phone Dr. 4-8882. No. 6 r-t-n-c

CONTACT Olin Sheeps for Listing or churning. Good 4 row rig. Phone 2631. No. 10 24p

FOR SALE—2 old style, 8 hole demper drills, price, \$100.00 each. Wayne Bryan, Spearman. No. 10 r-t-n

FOR SALE—2 year-old Registered Angus Bull. See Wayne Bryan. No. 10, r-t-n

For Rent—One bed room 501 Barkley. Call 4636 Mrs. G. C. Hamilton. No. 9, r-t-n

HAVE YOUR—Drivers license—Social Security cards, pictures, and other valuables, up to 5 x 7 - Permanently sealed in plastic. See Jerry Sheets at the Spearman Hardware. No. 7 r-t-n

A. L. Wilson, Jr. Life, Accident, Health POLICY BOX 521 SPEARMAN, TEXAS

CALL US FOR YOUR BUILDING WE OFFER..... 1 x 8's, 2 x 4's, 2 x 6's, Economy Fir

Beautiful Basketweave Red Fences Installed At The Following Prices With No Money Down 100 Ft. long - 4 Ft. high \$16.16 100 Ft. long - 5 Ft. high \$16.85 100 Ft. long - 6 Ft. high \$7.54

WES-TEX LUMBER COMPANY Phone 29 - P. O. Box 29 Borger, Texas

Make Your Idle Money Work It Earns The Most. 3% Insured Savings, Federal Loan Insurance Corp. First Savings & Loan Association 707 N. Main Borger, Texas

GUITAR And ACCORDION LESSONS will be teaching every Thursday here in Spearman. For rent. For more information, Call: Therman 3671. 12 to 2 p. m. Mon. thru Fri.

Ask For Darrell Reeves

16 1/2" x 2" SEAMLESS LINE Panhandle Pipe & Supply Borger, Texas

HAVE YOUR—Drivers license—Social Security cards, pictures, and other valuables, up to 5 x 7 - Permanently sealed in plastic. See Jerry Sheets at the Spearman Hardware. No. 7 r-t-n

A. L. Wilson, Jr. Life, Accident, Health POLICY BOX 521 SPEARMAN, TEXAS

CALL US FOR YOUR BUILDING WE OFFER..... 1 x 8's, 2 x 4's, 2 x 6's, Economy Fir

Beautiful Basketweave Red Fences Installed At The Following Prices With No Money Down 100 Ft. long - 4 Ft. high \$16.16 100 Ft. long - 5 Ft. high \$16.85 100 Ft. long - 6 Ft. high \$7.54

WES-TEX LUMBER COMPANY Phone 29 - P. O. Box 29 Borger, Texas

Make Your Idle Money Work It Earns The Most. 3% Insured Savings, Federal Loan Insurance Corp. First Savings & Loan Association 707 N. Main Borger, Texas

HAT

grieved at the death of his dear friend... this writer... For many years... been close friends... to help us... best sympathy... and the children... will comfort... these trying

also able to see Mr. David Alexander at... David has been... and homecoming... of Alva... Mrs. Frank... and the... school to... morning the... Methodist Church... experiences as a

also able to see Coy... a few days... and homecoming... of Alva... Mrs. Frank... and the... school to... morning the... Methodist Church... experiences as a

also able to see Coy... a few days... and homecoming... of Alva... Mrs. Frank... and the... school to... morning the... Methodist Church... experiences as a

also able to see Coy... a few days... and homecoming... of Alva... Mrs. Frank... and the... school to... morning the... Methodist Church... experiences as a

also able to see Coy... a few days... and homecoming... of Alva... Mrs. Frank... and the... school to... morning the... Methodist Church... experiences as a

also able to see Coy... a few days... and homecoming... of Alva... Mrs. Frank... and the... school to... morning the... Methodist Church... experiences as a

also able to see Coy... a few days... and homecoming... of Alva... Mrs. Frank... and the... school to... morning the... Methodist Church... experiences as a

also able to see Coy... a few days... and homecoming... of Alva... Mrs. Frank... and the... school to... morning the... Methodist Church... experiences as a

also able to see Coy... a few days... and homecoming... of Alva... Mrs. Frank... and the... school to... morning the... Methodist Church... experiences as a

also able to see Coy... a few days... and homecoming... of Alva... Mrs. Frank... and the... school to... morning the... Methodist Church... experiences as a

also able to see Coy... a few days... and homecoming... of Alva... Mrs. Frank... and the... school to... morning the... Methodist Church... experiences as a

also able to see Coy... a few days... and homecoming... of Alva... Mrs. Frank... and the... school to... morning the... Methodist Church... experiences as a

also able to see Coy... a few days... and homecoming... of Alva... Mrs. Frank... and the... school to... morning the... Methodist Church... experiences as a

also able to see Coy... a few days... and homecoming... of Alva... Mrs. Frank... and the... school to... morning the... Methodist Church... experiences as a

also able to see Coy... a few days... and homecoming... of Alva... Mrs. Frank... and the... school to... morning the... Methodist Church... experiences as a

also able to see Coy... a few days... and homecoming... of Alva... Mrs. Frank... and the... school to... morning the... Methodist Church... experiences as a

also able to see Coy... a few days... and homecoming... of Alva... Mrs. Frank... and the... school to... morning the... Methodist Church... experiences as a

also able to see Coy... a few days... and homecoming... of Alva... Mrs. Frank... and the... school to... morning the... Methodist Church... experiences as a

also able to see Coy... a few days... and homecoming... of Alva... Mrs. Frank... and the... school to... morning the... Methodist Church... experiences as a

also able to see Coy... a few days... and homecoming... of Alva... Mrs. Frank... and the... school to... morning the... Methodist Church... experiences as a

also able to see Coy... a few days... and homecoming... of Alva... Mrs. Frank... and the... school to... morning the... Methodist Church... experiences as a

also able to see Coy... a few days... and homecoming... of Alva... Mrs. Frank... and the... school to... morning the... Methodist Church... experiences as a

also able to see Coy... a few days... and homecoming... of Alva... Mrs. Frank... and the... school to... morning the... Methodist Church... experiences as a

also able to see Coy... a few days... and homecoming... of Alva... Mrs. Frank... and the... school to... morning the... Methodist Church... experiences as a

also able to see Coy... a few days... and homecoming... of Alva... Mrs. Frank... and the... school to... morning the... Methodist Church... experiences as a

also able to see Coy... a few days... and homecoming... of Alva... Mrs. Frank... and the... school to... morning the... Methodist Church... experiences as a

also able to see Coy... a few days... and homecoming... of Alva... Mrs. Frank... and the... school to... morning the... Methodist Church... experiences as a

gave "Magic Arts and Crafts" Mrs. Olin Sheets gave "The Law of the Land."
 Mesdames present included: Fred Hoskins, Rex Sanders, J. H. Buchanan, R. W. Morton, F. J. Daily, W. Jarvis, W. H. Gandy, T. D. Sansing, Della Blodgett, G. C. Brillhart Jr. Pete Fisher, Olin Sheets, P. A. Lyon, and the hostess Mrs. Womble.

Mrs. Lackey Is Club Hostess

Mrs. Wesley Lackey was hostess to the Budd-to-Blossom Flower Club on Feb. 11.
 During the business session, plans were completed for the year books.
 Three officers were elected: Secretary: Mrs. Don Floyd, Fine Collector: Mrs. Elvis Pool and Historian: Mrs. Jerry Floyd.
 Roll call was to bring a baby picture of yourself.
 A program on Valentine arrangements, was given by Mrs. Curtis Spearman.
 The hostess served lovely refreshments, carrying out the Valentine theme, to Mesdames: Bob Lamb, Elvis Pool, Ernest Markel, J. L. Pierce and Curtis Spearman.
 The next meeting will be with Mrs. Elvis Pool on Feb. 25.

New Type Of Home Demonstration Program
 The Home Demonstration Clubs were asked to select any program that they cared to for the 2nd meeting in February. The Year-book planned this just to see how the clubs would choose an educational handicraft demonstration. This was the selection made by the nine clubs.
 Spearman Club - Hat Making demonstration Mrs. Trayler, Mrs. Branch Sheets.
 McBride Club - Lamp Shade Making Mrs. Trayler.
 Morse Club - Laquer Painting Mrs. H. B. Parks.
 New Hope Club - Cooper Tooling Mrs. Hart.
 Better Homes - Hat Making Happy Homes - Rug Making Mrs. Virgil Hull.
 State Line - Ceramics.
 Medlin Club - Basket Weaving.
 Hansford Club - Copper Tooling Hart.

This two week period will involve 7 handicrafts for the 137 women involved in the Home Demonstration Program.

OSLO NEWS
 Miss Janice Rasmussen of Shreveport, Iowa, and Mrs. Hans Rasmussen of Hampton, Iowa, were afternoon coffee guests in the Emil Knutson home on Tuesday.
 Miss Janice Rasmussen of Shreveport, Iowa, Mr. Chris Rasmussen and Mr. and Mrs. Hans Rasmussen of Hampton, Iowa, were supper guests Tuesday in the Sherman Schibler home.
 The above mentioned Rasmussens are relatives of the John O. Dahl family and had been

houseguests in the John O. Dahl home for a few days. They left on Wednesday for a vacation trip into the Rio Grande Valley and into Southern Texas.

Mr. and Mrs. Sherman Schibler and children had supper on Thursday evening in the Jewell Ward home.
 Bobby McFadin had an operation on his shoulder in Oklahoma City. He is doing well and is expected back at home some time this week.
 Mr. and Mrs. Clifford Stedje and children had Sunday dinner in the Jack Christofferson home.

Mrs. Mary Brandvik is spending a few days in the Harvey Shapley home in Amarillo. Miss Ruth TeBeest and Ernest Hull were married on Wednesday afternoon in the Oslo Lutheran Church. A reception was held immediately after the ceremony in the Oscar Dahl home. Felicitations:
 And congratulations to Mr. and Mrs. O. J. Hoel Jr. and children on the arrival of Andrew Calvert who, from all appearances, means to take up his abode with them. He was born in Perryton on Wednesday afternoon.

THE NEW RONSON 15⁹⁵
ELECTRIC RAZOR
 REGULAR \$28.50 VALUE

PHILLIPS
MILK OF MAGNESIA
 Regular 55c SIZE
43c

BAYERS ASPIRIN
 BOTTLE OF 100
62c

LISTERINE
 7 OZ.
49c

VICKS VAPOR RUB
38c

FASTEST KNOWN PAIN RELIEF FOR ARTHRITIC, RHEUMATIC VICTIMS—NOW AVAILABLE
 Seven "Film-Coated" Ingredients Offer Positive Relief

The crippling, torturing, twisting pain of Arthritis and Rheumatism may soon be forgotten, thanks to an exciting new laboratory discovery named Ar-Pan-Ex. Ar-Pan-Ex was perfected by a noted scientist of a world-famed university, working with all known facts about these crippling ailments. The result is a safe, easy to take tablet that promotes the fastest relief known from that troubling agony.
 Ar-Pan-Ex is compounded of seven active ingredients including a special new medicine to help provide longer lasting relief. Ar-Pan-Ex is scientifically perfected to curb chronic, dejected pain.
 Why AR-PAN-EX Helps
 Ar-Pan-Ex does not dissolve readily in the stomach—avoids stomach distress. Ar-Pan-Ex is scientifically "Film-Coated" so that all

TURNERS CORNER DRUG
 FOUNTAIN SERVICE, DRUGS, JEWELRY, GIFTS
 STOCKMENS NEEDS - FREE DELIVERY - Ph. 3231

NEW AVIATION PERFORMANCE for YOUR Car!



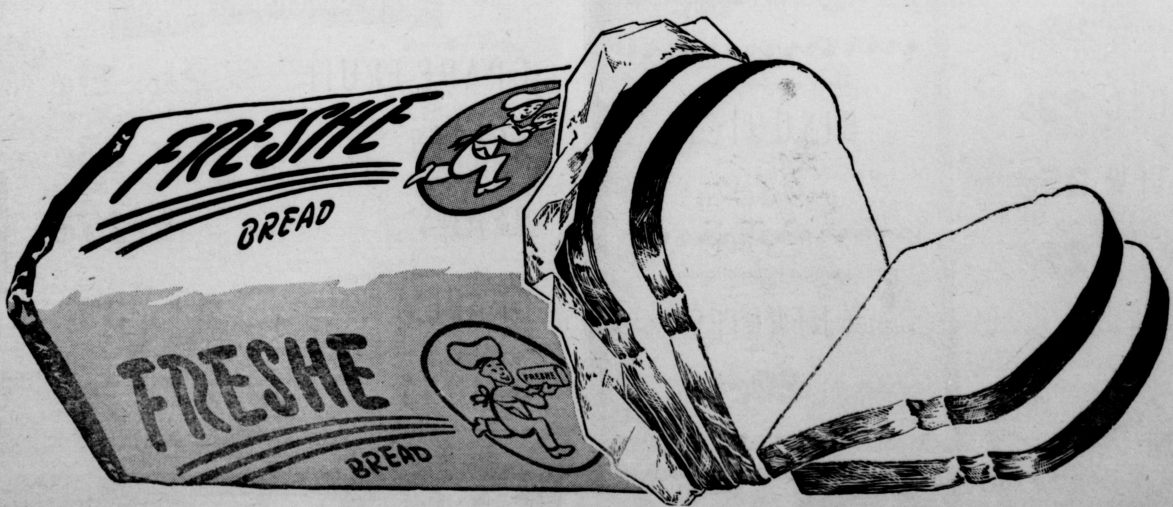
Shamrock's New CLOUD MASTER Premium Gasoline

Fast, smooth and powerful... that's the performance you can expect from your car with Shamrock's new Cloud Master gasoline for 1955. New Cloud Master is blended with aviation components heretofore restricted to military aviation fuel. These new, clean burning components raise the octane of Shamrock Cloud Master to well above the requirements of your car. For new speed, new power, for all around top performance from your car, try Shamrock's new Cloud Master gasoline for 1955.

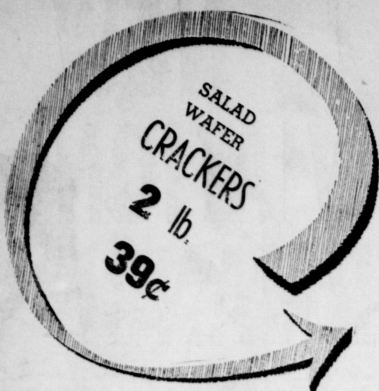
Nothing like AR-PAN-EX
 Nothing ever offered before can bring results faster, more effectively or with longer lasting benefits than Ar-Pan-Ex. It may mean a renewed life of usefulness and pleasure to millions.
 Ask for genuine Ar-Pan-Ex today at any drug store for the kind of relief no other product can claim to equal. If your druggist is not of it, he will be glad to order it for you.

New Cloud Master gasoline, like all Shamrock products...
QUALITY You Can Measure By Your Car's Performance

HOWDY FOLKS! Something New! FRESHE BREAD NOW! IN-SPEARMAN



Any Time - Always Fresh - Ask For Bread at Your Favorite Grocery in The Blue And White Wrapper
Try It TODAY YOU WILL LIKE IT!



- TREET 37¢
- VAL VITA NO. 2 1/2 CAN PEACHES 3 For 69¢
- DEL MONTE TALL CAN SPINACH 2 For 25¢
- WOLF NO. 2 CAN CHILI 43¢
- SHURFINE OZ. SWEET RELISH 22¢
- SHURFINE 7 OZ. PITTED DATES 19¢



- White 1 1/2 LB. KARO 22¢
- GLADIOLA 10 LB. PRINT FLOUR 89¢
- PINT WESSON OIL 29¢
- CAMPBELL FRESH OYSTER STEW 35¢
- LIBBYS WHOLE FROZEN BABY OKRA 25¢



FEAST YOUR EYES on what a QUARTER BUYS



In what better way could we SELLERbrate the birthday of Washington—whose image is on the quarter—than by featuring tremendous 25c values in every department of our store? And, by George!—That's just what we've done! It's the truth—a quarter is mighty big money at YOUR CUT RATE GROCERY AND MARKET—and here's the proof! Just feast your eyes on what a quarter buys—then come to YOUR CUT RATE GROCERY AND MARKET and chop down your food bill!

- SUNRAYS TENDERIZED HAMS
- BUTT PORTION lb. 39¢
- SHANK PORTION lb. 35¢
- CENTER SLICES lb. 79¢

- CHOICE BABY BEEF SIRLOIN STEAK lb. 53¢
- CHOICE BABY BEEF ROUND STEAK lb. 65¢
- KRAFTS PIMENTO SLICED CHEESE 1/2 lb. 29¢



- SHURFINE TALL CAN RSP PIE
- CHERRIES 2 For 49¢
- BETTY CROCKER LARGE BISQUICK 43¢
- SHURFINE 8 OZ. MARASCHINO CHERRIES 29¢

Libbys 6 oz. Frozen Orange

Juice 2 for 25

Puffin Ovenready

Biscuits 3 for 25c

Oleomargarine

MEADOWLAKE

1b 25c

Betsy Ross 24 oz.

GRAPE JUICE 25c

Campfire Tall Can

PORK and BEANS 4 For 25c

Self-Service Produce

- FLORIDA RUBY RED GRAPE FRUIT 2 lbs. 21¢
- WASHINGTON - EXTRA FANCY WINESAP APPLES 2 lbs. 33¢
- FLORIDA K. Y. BEANS lb. 27¢
- CALIFORNIA - FRESH - EMPEROR GRAPES 2 lbs. 39¢
- YELLOW DANVER ONIONS 2 lbs. 15¢

GOOD SUPPLY ONION SETS & ONION PLANTS

FRIENDLIEST STORE IN THE PANHANDLE

CUT-RATE GROCERY MARKET

FAMOUS FOR SERVICE

MAIN STREET SPEARMAN TEXAS

OLD BATH ROOM TILES 3 For 80 CENTS SOFT NAPKINS 2 For WEARABLE ALUMINUM FOIL 25c 14 OZ. RED SKINNE SPAGHETTI 23c SUNSHINE 7 LB. HYDRON Cello Pkg. PETER PAN 12 OZ. PEANUT BUTTER 38c PLUS VALUE ROUND-UP THRIFT STORE

At no extra cost

Round up Thrift Stamp

DOUBLE ROUND THRIFT STORE EVERY WEDNESDAY Tune KEYE every Tuesday Wednesday Double Stamp Deals.

Hill Roll College

White King Soap

White King Softener

White King Liquid

White King