

The Spearman Reporter

HANSFORD COUNTY
150 producing gas wells
producing world's best
gas for U. S.
THURSDAY, JULY 22, 1954

THE SPEARMAN REPORTER, SPEARMAN, TEXAS

Brother Of R. V. Converse Died At Kansas City, Kan.

R. V. Converse returned home early this week from attending funeral services held in Kansas City, Mo. for his brother Harold L. Converse, age 61. Funeral services were held Wednesday July 14th.

All Ten Voting Boxes Open For Demo. Primaries

All ten voting boxes of Hansford county will be available for voting in the Democratic Primary election to be held this Saturday July 24th.

10c Reduction In Rate On Sinking Fund To Hansford Co.

Hansford County has received a 10c reduction in the sinking fund of the county. The rate was 80c and has been lowered to 70c, according to the Commissioners Court. The court met on July 13th to take action on this tax reduction.

Refrigerated Air Installed At The Hansford Court House

Work installing refrigeration type air conditioning is under way at the Hansford county court house. Brown and Hinkle Electrical Company of Pampa received the contract to sell and install the air conditioning. The Pampa company made the lowest sealed bid for this type of air conditioning. Only the main floor of the building will be air conditioned at this time. Connections are being installed so other floors of the court house can be air conditioned later if deemed necessary.

Notice To Parents Of This County

Transfers before September 1st. A pupil residing in the district whose name does not appear on the roll may be transferred on the basis of parental request to the county board at any time before September 1st. Confirmation by the Commissioner of Education is required. This section also applies to children on census who failed to transfer by June 1st.

Wheat Growers To Vote Friday On Allotments

County wheat growers will have the opportunity to vote next Friday on the referendum to determine whether or not marketing quotas, with penalties for overplanting acreage allotments, will be in effect for the 1955 crop.

Republican Primary Election To Be Held In County For First Time

For the first time in the history of Hansford county a Republican primary election will be held next Saturday July 24th. According to County Republican Chairman, Claude Smith, the election this year will be limited to Precinct No. 10. The election will be held in the East Grade school building at Spearman. This enables the election booth to be 150 feet away from the Democratic primary election which will be held for Precinct No. 10 in the high school building.

Notice To Parents Of This County

Transfers before September 1st. A pupil residing in the district whose name does not appear on the roll may be transferred on the basis of parental request to the county board at any time before September 1st. Confirmation by the Commissioner of Education is required. This section also applies to children on census who failed to transfer by June 1st.

Wheat Growers To Vote Friday On Allotments

County wheat growers will have the opportunity to vote next Friday on the referendum to determine whether or not marketing quotas, with penalties for overplanting acreage allotments, will be in effect for the 1955 crop.

Wheat Growers To Vote Friday On Allotments

County wheat growers will have the opportunity to vote next Friday on the referendum to determine whether or not marketing quotas, with penalties for overplanting acreage allotments, will be in effect for the 1955 crop.

Youth Ball Games Locate Stolen Irrigation Motors

According to an announcement from Sheriff J. B. Cooke made Wednesday of this week, the two irrigation motors stolen from the C. D. Alexander Ranch North of Spearman on the night of February 19th, have been recovered and returned to the owner.

OSLO NEWS

Visitors in the John O. Dahl home on Sunday were: Mr. and Mrs. J. W. Ward and children and the Misses Kathryn Knutson, Joyce Wayne Cooksey and Eloise Johnson.

Wheat Growers To Vote Friday On Allotments

County wheat growers will have the opportunity to vote next Friday on the referendum to determine whether or not marketing quotas, with penalties for overplanting acreage allotments, will be in effect for the 1955 crop.

Wheat Growers To Vote Friday On Allotments

County wheat growers will have the opportunity to vote next Friday on the referendum to determine whether or not marketing quotas, with penalties for overplanting acreage allotments, will be in effect for the 1955 crop.

Rev. Matthew Doyle Is Seriously Ill

We learn as we go to press that Rev. Matthew Doyle, former pastor of the Baptist church of Spearman is seriously ill at his home in Nara Vista, N. M. We were unable to check with W. M. Glover for details as he did not answer the phone at his residence. However, we understand Matthew suffered a stroke about 10 days ago and another stroke Tuesday of this week.

OSLO NEWS

Visitors in the John O. Dahl home on Sunday were: Mr. and Mrs. J. W. Ward and children and the Misses Kathryn Knutson, Joyce Wayne Cooksey and Eloise Johnson.

Wheat Growers To Vote Friday On Allotments

County wheat growers will have the opportunity to vote next Friday on the referendum to determine whether or not marketing quotas, with penalties for overplanting acreage allotments, will be in effect for the 1955 crop.

Wheat Growers To Vote Friday On Allotments

County wheat growers will have the opportunity to vote next Friday on the referendum to determine whether or not marketing quotas, with penalties for overplanting acreage allotments, will be in effect for the 1955 crop.

Rev. Matthew Doyle Is Seriously Ill

We learn as we go to press that Rev. Matthew Doyle, former pastor of the Baptist church of Spearman is seriously ill at his home in Nara Vista, N. M. We were unable to check with W. M. Glover for details as he did not answer the phone at his residence. However, we understand Matthew suffered a stroke about 10 days ago and another stroke Tuesday of this week.

OSLO NEWS

Visitors in the John O. Dahl home on Sunday were: Mr. and Mrs. J. W. Ward and children and the Misses Kathryn Knutson, Joyce Wayne Cooksey and Eloise Johnson.

Wheat Growers To Vote Friday On Allotments

County wheat growers will have the opportunity to vote next Friday on the referendum to determine whether or not marketing quotas, with penalties for overplanting acreage allotments, will be in effect for the 1955 crop.

Wheat Growers To Vote Friday On Allotments

County wheat growers will have the opportunity to vote next Friday on the referendum to determine whether or not marketing quotas, with penalties for overplanting acreage allotments, will be in effect for the 1955 crop.

Rev. Matthew Doyle Is Seriously Ill

We learn as we go to press that Rev. Matthew Doyle, former pastor of the Baptist church of Spearman is seriously ill at his home in Nara Vista, N. M. We were unable to check with W. M. Glover for details as he did not answer the phone at his residence. However, we understand Matthew suffered a stroke about 10 days ago and another stroke Tuesday of this week.

PHILCO

PHILCO

PHILCO

PHILCO

Farm To Live And Live To Farm

College Station, July — In a recent proclamation, President Eisenhower designated the week of July 23 as National Farm Safety Week. He said, "I urgently request all farm residents to make every effort to develop safe work habits and skills, so they may 'farm' to live and live to farm." I also request all persons and organizations interested in farm life and welfare to join in a campaign to free as many farm homes as possible from the tragedies and losses caused by needless accidents.

In their endorsement of the observance, the Texas Farm and Ranch Safety Committee, pointed out that no better time could be

selected for launching community and county safety programs than during Safety Week. A current undertaking of the committee is the "Lite-Farm Equipment" program and they suggest that plans be made now for commencing the actual job of applying reflector tape to all farm equipment which is used on the road after dark.

The committee points with pride to work done in Guadalupe county. A report from County Agent Henry New states that and FFA 4-H members have applied reflective tape to more than half of all the farm equipment in the county. They plan to complete the job during National Farm Safety Week. The county was selected by the National Safety Council last January as

the one county in the nation where the program would be tried. The results speak for the interest that local farmers took in the program.

New says, "I like the program because it has made every one safety conscious and has given our leaders the opportunity they needed for building an overall safety program."

The state committee believes the "Lite-Farm Equipment" program is a logical starting point for the community and county safety work. Much farm equipment will be on the highways during the next few months and needless accidents can be prevented if this machinery is properly lighted.

Research Comes Up With Another Time And Labor Saver For Producers

College Station, July — Producers who must apply insecticides to their crops, and most are included, should be interested in the results of a three-year study made by Texas Agricultural Experiment Station workers.

The studies were conducted to compare the effectiveness of insect control obtained by using low, medium and high rates of spray per acre to apply equal amounts of the insecticide. Yields and insect infestation records were used by the research workers E. C. Brown, Jr., of the department of agricultural engineering and R. L. Hanna, department of entomology, both of Texas A. and M. College, to measure the effectiveness of controlling boll weevils and bollworms. These did not include pink bollworm control which may require a higher volume of spray.

Results of the 1950-53 tests show that spraying cotton plants at the rate of two gallons per acre is more economical than applying spray at higher rates because of the time and labor saved in handling a smaller quantity of water. The research workers also found that the two gallons of spray per acre controlled the boll weevils and bollworms as well as 6 and 14 gallons when measured in terms of yield and insect infestation. They emphasize that the amount of the insecticides used on an acre of cotton must remain the same whether in 2, 6 or 14 gallons of water.

They do point out that the sprayer operator must use extra care in mixing the insecticide to exclude all trash and solid particles which could clog the smaller nozzle orifice openings and the finer mesh screens. The three nozzles per row, one directly above the row and one to each side, must function properly in order to insure a good application job.

Details of the tests are available in Progress Report 1687 which may be obtained from the Agricultural Information Office, College Station, Texas.

Program For Annual Pecan Growers Meeting Announced

College Station, July — The program for the 33rd annual convention of the Texas Pecan Growers' Association to be held in Fredericksburg on July 13-14 is complete. According to J. E. Hutchison, extension horticulturist and secretary of the association, outstanding speaker will discuss just about every major problem of the industry.

President Barney Sullivan of San Saba will call the first session to order at 10 a. m. on Tuesday and until adjournment on

Wednesday afternoon pecans will hold the spotlight. Out of state speakers include A. O. Alben, soil scientist, USDA, Shreveport, La.; Frank B. Cross, head, horticulture department, Oklahoma A. and M. College; John R. Cole, USDA, Albany, Georgia; W. C. Pierce, entomologist, USDA, Shreveport, and President I. H. Bass of the Southern Pecan Growers' Association of Lumberton, Mississippi.

Other speakers will include teaching, research and extension personnel of the Texas A. and M. College System, pecan growers, a representative of the State Department of Agriculture, R. T. Williams of Austin and L. V. Ellis of the Ellis Pecan Company of Fort Worth. Brush eradication in the pecan grove; irrigation for pecans; soil management; pecan rosette; local pecan shows; spray machinery; insect and disease research; are among the subjects to be discussed. Special emphasis is being given to a discussion on "Big, Little or medium Size Pecans."

O. S. Gray, Sr. of Arlington will be the speaker for the annual banquet on Tuesday evening. He will outline from his many years of experience why many have succeeded and others failed as pecan producers. Winners in the pecan pie baking contest will be announced during the evening and life members recognized.



An honest, fearless lawyer, former district judge and assistant attorney general of Texas; an ex-serviceman and school teacher; a home owner, church and civic worker; and a family man.

IT'S THE RANGE BUY OF THE YEAR



Look What You Get!

- Bigger-than-ever All-Calrod Super Oven
- Six-quart Deep Well Thrift Cooker
- Pushbutton Oven Controls
- Reversible Roto-switches
- Automatic Oven-Temperature Control
- Calrod Golden Broil Unit
- Automatic Oven Signal Light
- Electric Appliance Outlet
- Three Roomy Storage Drawers

INSTALLED IN YOUR KITCHEN FOR AS LITTLE AS

\$800 DOWN
\$8.00 per month for 24 months

Never before has Hotpoint offered many deluxe features in an economical priced range! And it's installed in your kitchen if your home is on our lines. Come in and get our liberal trade-in allowance for your range... today!



* Lamp and Timer Optional at Extra Cost

VOTERS...

LET'S GET OUR SIGNALS RIGHT



STOP the candidate who would let the radical out-of-state CIO-PAC, ABA and NAACP leaders run Texas.

STOP the candidate who would hand Duval County back to George Parr.

STOP the candidate who will end segregation in our Texas public schools, and who is willing to give the Texas tidelands away.

STOP the candidate who, as an ex-judge, puts judges' pensions ahead of old age pensions.

STOP the twice-beaten, mud-slinging candidate who has no program and refuses to come out in the open and answer questions about the issues.

GO with Allan Shivers who believes Texas should be run by Texans for Texans.

GO with Allan Shivers who will continue to fight Fascism and all other types of bossism, including Communism.

GO with Allan Shivers who won the tidelands fight and who will keep segregation in our public schools.

GO with Allan Shivers who favors a full parity for farmers and adequate pensions for all eligible aged citizens.

GO with Allan Shivers who has a constructive program for all Texans and who takes a solid stand on all issues.

Texas COMES FIRST WITH ALLAN SHIVERS

HEAR ALLAN SHIVERS ON YOUR FAVORITE RADIO STATION — 9:30 P.M. FRIDAY, JULY 23.

Dear Friend:

I am writing this letter in the hope that I might obtain your help in the coming election. As you know I am running for Sheriff, Tax-Assessor and Collector of Hansford County.

I am 28 years of age, married to a local girl, and have two children; I have lived in Hansford County most of my life except for time out in the service and in college; I studied Business Administration and Accounting in college.

I served 30 months with the Marine Corps of the United States during World War II, 24 months of which I was overseas with the Second Marine Division.

What I am asking of you now is a chance to prove that I can make you a good sheriff and enforce the law with fairness and without any partiality to any person or group of persons.

Sincerely,
A. L. Wilson, Jr.

NOTE: All voters on the poll-tax list have received a copy of this letter, but eligible voters over 60 years, have not received a copy, and this is printed for their consideration . . .

NOW IS THE TIME TO

KILL

BINDWEED

WITH

CONCENTRATE BORASCU

POLYBOR-CHLORATE

Easy to apply . . . dry application takes only 16 pounds per square rod . . . May be applied at any time of the year for the destruction of weeds . . . Is most effective when applied before rainfall when it is carried into the soil where it can start its destroying action.

A most effective spray against weed . . . Merely mix 2 lbs. bor-Chlorate with a gallon of water . . . Destroys all weeds . . . Economical . . . Easy to Apply . . . Completely . . . Fast-Acting . . . Non-Fireous . . . Toxic to All Vegetation . . . Apply Wet or Dry.

AVAILABLE AT ALL STATIONS

EQUITY

CHURCH CALENDAR

FIRST BAPTIST CHURCH - GRUVER

Bro. Bill Burton, Pastor
Sunday School 9:45 a. m.
Praying Service 11:00 a. m.
Training Union 7:00 p. m.
Praying Service 8:00 p. m.
Wednesday Prayer Service 8:00 p. m.

FIRST CHRISTIAN CHURCH - SPEARMAN

Rev. C. N. Van Dyke, Pastor
Sunday School 9:45 a. m.
Praying Service 11:00 a. m.
Young Peoples Service 6:00 p. m.
Praying Service 7:30 p. m.
Tuesday Ladies Prayer Service 5:00 p. m.
Wednesday Womens Circle Meeting 2:30 p. m.
Wednesday Choir Practice 7:30 p. m.
Wednesday Prayer Meeting 8:00 p. m.

MORSE METHODIST CHURCH - MORSE

Rev. O. C. Evans, Pastor
Sunday School 10:00 a. m.
Morning Services 11:00 a. m.
M. Y. F. 6:30 p. m.
Evening Services 7:00 p. m.

ASSEMBLY OF GOD - SPEARMAN

John K. Pratt, Pastor
Sunday School 10:00 a. m.
Morning Worship 11:00 a. m.
Evening Worship 7:45 p. m.
Mid Week Services, Friday 7:45 p. m.

FIRST CHRISTIAN CHURCH - GRUVER

Bro. Frank Reese, Pastor
Sunday School 9:45 a. m.
Morning Worship 11:00 a. m.
Evening Worship 7:00 p. m.
1st Weds. Monthly Fellowship 7:30 p. m.

FIRST METHODIST CHURCH - SPEARMAN

Aubrey C. Haynes, Minister
Church School 9:45 a. m.
Morning Worship 11:00 a. m.
Methodist Youth Fellowship 6:00 p. m.
Evening Worship 8:00 a. m.
Bible Study, Tuesday 9:00 a. m.
Mid Week Services, Wed. 7:00 p. m.

CHURCH OF CHRIST - SPEARMAN

R. Paul Smith, Preacher
Bible Class 10:00 a. m.
Praying Service 11:00 a. m.
Communion 11:45 a. m.
Young Peoples Classes 7:00 p. m.
Evening Worship 8:00 p. m.
Monday, Mens Training Class 8:00 a. m.
Wed. Ladies Bible Class 9:30 a. m.
Wed. Mid Week Service 8:00 p. m.

MORSE BAPTIST CHURCH - MORSE

Bro. Ralph Renfro, Pastor
Sunday School 9:45 a. m.
Worship 11:00 a. m.
Training Union 7:00 p. m.
Worship 8:00 p. m.
Mid Week Service Wednesday 7:00 p. m.

CHURCH OF CHRIST - GRUVER

James O. Wilburn, Minister
Bible School 10:00 a. m.
Morning Worship 10:50 a. m.
Communion 11:45 a. m.
Song Drill 6:30 p. m.
Evening Worship 7:30 p. m.
Mid Week Services, Wed. 7:30 p. m.
Women Bible Study Thursday 2:30 p. m.

GRUVER METHODIST CHURCH - GRUVER

Rev. Cecil Ottinger, Pastor
Sunday School 9:45 a. m.
Morning Services 11:00 a. m.
Methodist Youth Fellowship 6:45 p. m.
Evening Services 7:30 p. m.
Wednesday Prayer Service 7:30 p. m.
Wednesday Choir Practice 8:30 p. m.
Thursday W. S. C. S. 2:30 p. m.
Wesley Circle, Thursday 10:00 a. m.

SACRED HEART CATHOLIC CHURCH - SPEARMAN

Father Bernard J. Biversie, Pastor
Mass (1st and 2nd Sundays) 9:00 a. m.
2nd, 4th and 6th Sundays 11:00 a. m.
All other Services announced at Masses.

UNION CHURCH - SPEARMAN

Rev. Calvin Springer, Pastor
Sunday School 10:00 a. m.
Morning Worship 11:00 a. m.
Bible Classes, Sunday 6:30 p. m.
Evening Worship 7:30 p. m.
Wednesday Bible Study 7:30 p. m.

FIRST BAPTIST CHURCH - SPEARMAN

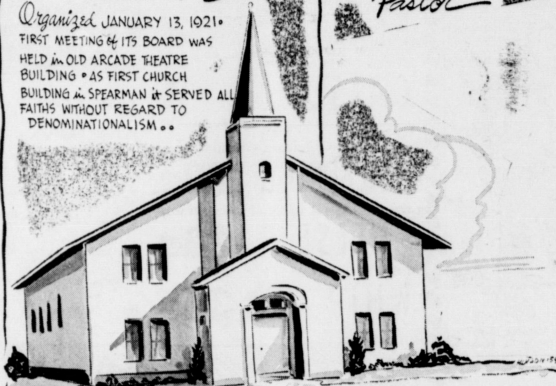
Bro. O. L. Bryant, Pastor
Sunday School 9:45 a. m.
Morning Worship 10:55 a. m.
Youth Training Services 6:30 p. m.
Evening Worship 7:30 p. m.
Wednesday Teachers and Officers Meeting 7:00 p. m.
Wednesday Mid-Week Services 7:45 p. m.

OSLO LUTHERAN CHURCH

J. P. Knudson, Pastor
Sunday Worship at 11:00 a. m.
Ladies Aid every last Thursday afternoon of each month
Luther League on Sunday evening every three weeks.

Presenting Churches & Ministers of HANSFORD COUNTY. Includes an illustration of a Bible and the name O. H. HUTSON.

The UNION CHURCH Spearman, Texas. REV. CALVIN SPRINGER Pastor.



Organized JANUARY 13, 1921. FIRST MEETING OF ITS BOARD WAS HELD IN OLD ARCADE THEATRE BUILDING * AS FIRST CHURCH BUILDING IN SPEARMAN IT SERVED ALL FAITHS WITHOUT REGARD TO DENOMINATIONALISM. TEMPORARILY SERVED AS SCHOOL HOUSE WHEN THE SPEARMAN SCHOOL BUILDING WAS DESTROYED BY FIRE... THE PRESENT BUILDING WAS COMPLETED MAY 12, 1921. NO TWO CHAPTERS OF THE BIBLE ARE EXACTLY ALIKE, AN OFTEN SUPPOSED THERE IS VERY LITTLE DIFFERENCE BETWEEN ISAIAH 57 AND II KINGS 19, FREQUENTLY SAID TO BE THE SAME.

HISTORY OF THE UNION CHURCH.

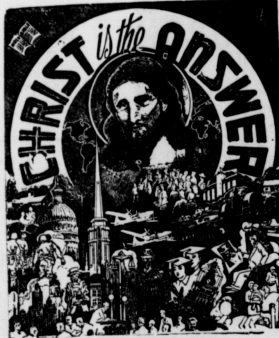
Spearman, Texas. REV. CALVIN SPRINGER, PASTOR.

Organized January 13, 1921, first meeting of its Board was in old Arcada Theater building on Main street. Organization followed a series of revival meetings held by The Morton Sisters, Bessie, Eva and May. Contract for building awarded March 8, 1921, Building completed May 12, 1921. Building served as temporary school house after fire destroyed Spearman School house. As first church building in Spearman it was financed by the townspeople and served all faiths without regard to denominationalism. In early beginning different lay members of congregation conducted services except in case of revival meetings when out of town pastors would come in.

OTHER NOTES:

Morton Sisters, three girls, Eva the preacher, Bessie who preached some and May. First arrived in this area 1918, (Winter flu was so bad Mr. Greever said) and held meetings in Old Hansford and Ochiltree. Then to Spearman in 1920. On 1-13 or 19, 1921, (records themselves which I read in possession of Mr. Greever are not clear). A meeting held in theater and a board elected. Set up constitution and by-laws to keep the deal free from denominationalism and adopt name of UNION CHURCH ASSOCIATION. Early preachers are Paul Bailey, Leonard Turner, Johnny Modrick, Sidney B. Reese, Albert Durham, and Charles Dale, according to Mrs. Greever.

Go to the church of your choice this Sunday.



This advertisement made possible by the following

- Campbell Tailor Shop
Spearman Hardware
Floyd's Grocery and Market
Dr. R. L. Kleeberger
R. L. McClellan Sons - Case Dealers
Hansford Implement Co.
Cates Grocery and Market
McClellan Chevrolet Co.
R. L. McClellan Grain Co.
Consumers Sales Co.
Corner Drug Store
White Auto Store
Owens Sales Co.
Western Auto Associate Store
E. C. Greene and Sons Agency
B. and B. Grain Co.
Berry's Cleaners
Crawford Implement Co.
Spearman Drug
B. and C. Equipment Co.
Chambers Dry Goods and Groceries
Ed Mundy, Contractor
Spearman Steak House
Stanley Garnett Implement Co.
Lyons Insurance Agency
McClellan Krause Company
Bill's Radio and Television
Foxworth-Galbraith Lumber Co.
Orange Disc Service Station
Spearman Super Service Station
Equity
Wardrobe Cleaners
White House Properties
First State Bank
Cory Motor Company

THIS and THAT

Early Morning Breakfast Held At The Gibner Home



Mrs. C. A. Gibner and Mrs. Bill Russell were hostesses to an early morning breakfast last Saturday. The ladies cooked and served the meal in the back yard of the Gibner home.

Honored guests were: Mrs. Danaway of Waxahachie. She is a sister of Mrs. R. E. Lee; and Mrs. Smith of Clovis, New Mexico who is a sister of Mrs. John Berry. Other guests were Mesdames: Guy Fuller, Freeman Barkley, Vernie Rossom, Bob Schnell, Bill Hutton, R. E. Lee and John Berry.

Mr. and Mrs. Earl Riley spent the long weekend in Denton visiting their daughter, Anne and Pete Brown, Mrs. Riley's nephew. Both are students at North Texas College. Pete has almost enough hours for his Master's Degree.

Mr. and Mrs. Ben Upchurch and family returned home Monday after a two week's visit in East Texas with relatives.

Mrs. Lois Pearson and children visited her daughter, Mrs. Jack Reed, in Stratford one day this week.

Burney Sparks of Morse was transacting business in Spearman, Thursday.

It would not be amiss to find out from your County Agent where to get information on a new cattle disease, red water. It seems this blood disease has no cure. The control is in vaccination against it.

Raton and La Mesa Park are affording week end vacation for quite a number of Spearmanites.

Margaret Krik attended the Panhandle Pen Women's quarterly meeting, Tuesday at the Country Club in Amarillo.

Mr. and Mrs. Bill Brown and son and Miss Janice Vernon were at Raton for the week-end.

Mrs. Carrol J. Richards returned home after a week's visit with Mr. and Mrs. J. W. Jenkins, her parents-in-law.

TRAIN FIREMAN RESCUES CHILD.
Omaha, Neb. — Seeing a 2-year-old child standing by the railroad, Fireman Otto Gibson of Fall City, Neb., dropped from the cab of his locomotive and scrambled ahead to the footboard as the train slowing down. Leaping to the right of the rail, Gibson tucked the child under his arm and the two rolled to safety. The child's father, who saw the rescue, profusely thanked Gibson, but left without telling the child's name.

"Ain't it So? Get to be so worrisome," said Uncle Eben, "dat it looks like a man eisen us populace a real favor, even to try to hold a Government job."



The Dolls Are Coming To The Wagon Wheel Drive In Theatre.

AROUND GRUVER

The hot weather is about to get us down. Seems like it is hotter than it ever was. We had a little shower last Sunday, and it cooled things off a little. Then Monday morning it was showery, but the mercury soon climbed back up. But when we hear of temperatures elsewhere we almost think we are cool.

There is some good looking maize around the country, but unless it rains or at least cools off a lot, it will not be nice looking much longer. Maybe if more of us took an interest in the Lord's business, He might take more interest in ours. Why don't we give it a try. There are always more people out of church on the Lord's day than there are in church. It ought not to be.

Mrs. Sam Cluck and Delano recently returned from Waco. They made the trip to take Patsy to Baylor for summer school.

Mr. and Mrs. McMillan spent most of last week in Dallas shopping for the store. Mac assured us that it was really hot down there. They were sure glad to get back to Gruver.

Mr. and Mrs. Don Hudson have gone to Sarcelo Mo. to attend a family reunion. Also to help celebrate Grandma Turk's 90th birthday. It is really hot up there. But we understand they had an air conditioned car to travel in. That meant a lot to the children.

Mr. and Mrs. James Allen Ayres are visiting Mrs. Ayres relatives in Zenia Cal. Do not know when they will return.

Mr. and Mrs. Johnny Cagle and children are here from Houston. They are visiting Mrs. Cagle's parents Mr. and Mrs. Eave McClellan.

That reminds us, that Mrs. Eave McClellan had a very happy birthday last Monday. It was her birthday, and Mrs. Randolph McClellan lured her to her house. Then all during the afternoon friends coming to wish her a happy birthday, and all of them brought a gift of some kind. It was a very nice occasion, and Jewel made a gracious hostess.

The Herbert McClellans are in Highmore S. D. cutting wheat for T. C. Harvey Jr.

Mr. and Mrs. Marvin Shapley left for Gunnison Colo. to join Uncle Joe and Lawrence. Then they will go on to visit relatives in Washington State.

The Billy Lee McClellan's have just returned from a fishing trip to La Vita, Colo. They had a nice time in the hills.

Mrs. Buster Cator recently underwent a throat operation in Amarillo. It was a rather severe operation, but we understand that she is doing just fine and is back at home. This all happened so fast that it was all over before we knew about it.

The Evert Sillins family have returned from a short vacation at Gunnison, Colo.

Mrs. Ed Rafferty has been confined to her bed with a severe foot infection. She told us this morning that it is much better and she can now put her weight on it. Hopes to be O. K. in a few days.

Mrs. Opal McQuinn came safely through her operation in Peryton last Saturday. At last report she was doing just fine.

Mr. and Mrs. Tony Pina and children of Chicago, Ill. are visiting in the home of Mrs. Pina's mother, Mrs. Mattie Layton. Mattie is on her vacation from the Post Office.

Mr. and Mrs. Robert Alexander are entertaining two fine little boys in their home. We had their names, but have mislaid them. The youngest gentlemen are from the Christian Church children's home, in Fort Worth. We had the pleasure of meeting them. They are having a wonderful time.

Little Miss Judy Brooks is visiting her Grandparents Mr. and Mrs. Bob Brooks. Judy is the daughter of Mr. and Mrs. Piny Brooks of Tulsa. She was so excited about coming that she forgot to bring her shoes with her.

Mrs. Earl Riley reports Ann is enjoying her summer schedule at North Texas College at Denton. By the grapevine we hear Ann make an A on a theme recently.

No Passing Scene by Cavalli



Refusal to Grant Right-of-Way Killed 2,400 in 1953.

The Passing Scene by Chon Day



There's more to be learned wrong with it. It keeps hitting things.

"Libbys Dollar Day"

- TALL CAN . . . 6 FOR SPINACH . . . \$1
- TALL CAN STEWED 3 FOR TOMATOES . . . \$1
- 153 OZ. SWEET 5 FOR PICKLES . . . \$1
- 46 OZ. TOMATO 4 FOR JUICE . . . \$1
- TALL CAN HALVES — 4 FOR APRICOTS . . . \$1
- 46 OZ. PINEAPPLE 3 FOR JUICE . . . \$1
- TALL CAN GARDEN 5 FOR PEAS . . . \$1
- 14 OZ. TOMATO 5 FOR CATSUP . . . \$1
- 303 HOUSE OF GEORGE CRUSHED PINEAPPLE can 23¢
- BORDEN'S 12 OZ. FARM STYLE COTTAGE CHEESE . . . 24¢
- KRAFT'S MIRACLE WHIP . . . pint 34¢

LOW PRICES

ARE OUR "STOCK IN TRADE!"

Special 11¢

19

33

9

Not now and then . . . or here and there—but **LOW PRICES** EVERY DAY . . . EVERYWHERE—that's what you get when you shop at **THE CUT RATE GROCERY AND MARKET!** They're on every package . . . on every shelf and table . . . because **LOW PRICES** are our "stock-in-trade". We don't like high prices any more than you do. They're bad for our business. And so we make certain that quality for quality, brand for brand—All our prices are **RIGHT** to the penny . . . down-right **LOW** every day of the week.

FRIONOR FROZEN FILLET COD FISH . . . lb.

DOTIE QUICKIE COOKIES . . . pkg.

PET RITZ FRUIT PIES . . . each

LIBBY'S 6 OZ. FROZEN LEMONADE . . .

Self-Service Meats

- CUDAHY'S PURITAN SLICED BACON . . . lb. 67¢
- CUDAHY'S READY TO EAT PICNIC HAMS . . . lb. 45¢
- CUDAHY'S PURITAN ALL MEAT FRANKS . . . lb. 49¢
- CUDAHY'S BACON SQUARES . . . lb. 39¢
- FRESH GROUND BEEF . . . lb. 33¢
- FRESH FRYERS & HENS
- HUNTS NO. 2 1/2 CAN FRUIT COCKTAIL . . . 33¢
- HUNTS NEW WHOLE POTATOES . . . Tall Can 10¢

Fruits & Vegetables

- LETTUCE . . . 2 lbs. 29¢
- CANTALOUPE 2 lbs. 17¢
- CABBAGE . . . lb. 5¢
- BELL PEPPER . . . lb. 23¢
- VAN CAMP'S — TALL CAN PORK & BEANS 2 for 27¢
- ARMOURS LUNCHEON MEAT TREET . . . can 43¢
- SUNSHINE KRISPY 2 LBS. CRACKERS . . . 39¢
- DEER BRAND TALL CAN TOMATOES . . . 2 for 23¢

JELLO

ALL FLAVORS

2 pkgs. 13¢

ICE CREAM

BORDEN'S — ONE - HALF GALLON

CLOVERBLOOM BUTTER . . . lb. 6

CINCH WAFFLE MIX . . . pkg. 2

GOD MEDAL 25 LBS FLOUR . . . \$1.8

RAISIN BRAN SKINNERS . . . pkg. 1

CUT-RATE GROCERY MARKET

FRIENDLIEST STORE IN THE PANHANDLE

MAIN STREET SPEARMAN, TEXAS

HERSHEY'S LB. CAN CHOCOLATE SYRUP . . . 22¢

ALL FLAVORS WRIGLEYS GUM 3 pkgs. 10¢

65¢ SIZE ALKA Seltzer . . . 39¢

52.10 REGULAR SIZE CIGARETTES . . . Carton \$1.99

Patricia Ann Christensen Wins Title Of Miss South Plains

Christensen, daughter of Mrs. E. A. Lubbock and Mrs. J. M. Christensen, is the winner of the title of Miss South Plains for 1954. She will compete in the state contest July 27 at Lubbock, Texas at the Junior Chamber contest.

Church Picnic

Members of Christian Church enjoyed an all church picnic at N. T. N. Park last Friday evening, July 16th. There was lots of fried chicken, salads, pies and cakes to eat. Games of baseball, Volley ball, Croquet for those who cared to participate and also plenty of good old fashion visiting.

Attention To June Brides

June brides are urged by J. R. Sanderson, Manager of the Amarillo Social Security Office, to include his office among those getting wedding announcements. This announcement, he explains, should be a change of name form so that a duplicate social security card can be issued in the new name.

Sanderson points out that failure to file this record cause considerable extra expense to the Government and a possibility that earnings won't be posted properly. If the name and number on the employer's tax return agree with those on the social security card, the posting of wages to the proper account is done by machinery. But if the June bride continues to work without advising about the change in her name, he said, her account cannot be posted by machinery.

"With her last name different from that in our records," he said, "any typographical or spelling error in her first name may make it impossible to give proper credit for wages earned and reported."

Posting of a change of record form takes just a few minutes, Sanderson says, and will save the Government expense, may save the employer needless correspondence, and will help insure that the employee gets proper credit for his wages. So, if your name is different from that shown on your card, write or telephone the Amarillo Social Security office for a change of name form.

Mrs. Gwyn Visits Parents

Mrs. Tommy Gwyn of Dallas visited her parents, Mr. and Mrs. Vester Hill, recently on her way to New York where her husband Tommy Gwyn is playing with Tommy Dorsey's band.

Tommy is on the Tommy Dorsey Stage Show each Saturday on the C. B. S. T. V. channel at 6 p. m. He has a 13 weeks contract.

Mr. and Mrs. Gwyn have played with the symphony orchestra for the past four seasons and will return to Dallas in September.

Wodtie Beck is home after a stay in an Enid hospital for several days. Mrs. Beck accompanied her husband to Enid and remained at his bedside.

Bridal Shower

Christine Williams, pretty daughter of Mr. and Mrs. Henry Wyatt of Gruver, and bride-elect Ray Brandvik, son of Mrs. Nadine Brandvik, also of Gruver, was honored with a lovely home of Mrs. J. A. Morris, Fri. afternoon, July 9, with Mrs. Bob Bolton, Mrs. Roy Bronder and Mrs. Frank Blanks as co-hostesses.

Laid with a pink cloth, with green lace covered center panel, the serving table was centered with a pink carnation arrangement flanked by green tapers. Francis Morris poured the linens and Royce Faye Boney served the white rose decorated cake.

Fresh garden flower arrangement added to the beauty of the rooms.

Those registering were: Mrs. Masgie King of Stratford, Mesdames: Nadine Brandvik, Mary Brandvik, Harley Alexander, Oscar Lee and daughter, Gail and Mararet, Roy Edwards and Evelyn, Gene Clark, Bernie Sparks, B. W. Ranner and Wanda Jo, L. J. Cator and Miss Elizabeth Spivy, Mrs. George Spivy of Roy, New Mexico, Mesdames: Jack Dempsey, Lester Wells, Floydson Shook, Ed Vernon and Winnell, Sydney Park, D. G. Clark, V. C. Powell and Clara, James Craig, M. J. Upton and Wood Craig to Plainview, Mrs. Kling Fike and Madeline of Dalhart, Mesdames Clarence Kaufman and Esther, John Boney and Royce Faye, Vance Morris, Bob Bolton, Roy Browder, Mrs. J. R. Morris and Francis.

Many others sent useful and beautiful gifts.

PHING of a change of record form takes just a few minutes, Sanderson says, and will save the Government expense, may save the employer needless correspondence, and will help insure that the employee gets proper credit for his wages. So, if your name is different from that shown on your card, write or telephone the Amarillo Social Security office for a change of name form.

Swimming Pool Hours are:

Week days from 2:00 to 5:00 p. m.
Evenings from 7:00 to 9:00 p. m.
Price Adult 50c, Children 25c
Sunday from 2:00 to 5:00 p. m.
Season tickets: adults \$18.00 children, \$12.00
Sam Watson, Manager - Larry Reed, Life guard.

Gladiola Flower Club Met Thursday

The members of the Gladiola Flower Club met Thursday, July 15, at the home of Mrs. Lloyd Buzzard. Co-hostess was Mrs. Marcus Larson.

Mrs. W. C. Davis exhibited the winning specimen and the home grown flowers. Mrs. Marcus Larson exhibited the winning arrangement composed of borrowed flowers.

A lesson on mass Arrangements was given by Mrs. W. C. Davis. Mrs. Irvin Davis gave a lesson on Borrowed Arrangements. Mrs. Vernon Crooks was welcomed as a new member.

Those present were Mesdames: Lew Schnell, W. C. Davis, Erving Lamb, Harold Crooks, Irvin Davis, Rex Sanders, Jr., Johnnie Lee, Vernon Crooks, Don Knox, George Collard and the hostesses.

Recent Bride Showered Thursday

Mrs. Chalmers Porter was honored with a bridal shower Thursday July 15 in the H. D. Club Room.

Hostesses were Mesdames: J. H. Martin, Billy Miller, Calvin Springer, and Bill Weston. Entertaining hours were from 3-5 p. m.

Hostesses alternated in presiding at the serving table. The chosen colors of white and blue were used throughout the decorations. Both the serving table and gift table were draped with white cloths. A lovely arrangement of blue shag daisies grouped around a large silver wedding ring, centered the serving table. Crystal and silver were the appointments. Guests helped themselves to individual white Bride's cake trimmed in blue.

The gift table was centered with a wedding scene. The miniature bride and groom stood on a white tier amid blue net, flanked by tall blue tapers.

Appropriate piano selections were rendered during the afternoon by Mrs. Rue Sanders and Mrs. Tom Sutton.

Mrs. Porter was presented

Marriage Announced

Mr. and Mrs. C. M. Blandford wish to announce the marriage of their daughter, Janis to Curtis Spearman, son of Mr. Spearman. They were married April 12 and plan to make their home at Fort Worth.

FOR RENT—Four furnished Apartments, Phone 4756. No. 33 rtn

Mr. and Mrs. Everett Clement attended the Clement family reunion last week end at Denison.

Mrs. Gwenford Lackey make a business trip to Guymon Tuesday.

Mrs. Ted Berry of Texhoma attended the funeral service of P. M. Maize Thursday. She returned to visit with Jerry who was visiting her parents, Mr. and Mrs. Fred Brandt.

Stanley Garnett, Farm Bureau Director of District 1, spent two days of this week in Waco attending a board meeting of the Texas Farm Bureau Federation.

Mrs. Leo Crowder and son, David are vacationing in the mountains of Canada with Mr. Crowder who is employed in that region.



NEEDLEPOINT EXPERT—In these busy pre-election weeks, Opal Warren Yarborough snatches moments of relaxation with the needlepoint which has been her chief hobby for years. The writing cabinet behind her chair is the treasured trophy of a recent antique-hunting spree, the unusual flowers on the mantle are from her own garden.

Stop Taking Harsh Drugs for Constipation

Avoid Intestinal Upset! Get Relief This Gentle Vegetable Laxative Way!

For constipation, never take harsh drugs. They cause brutal cramps and griping, disrupt normal bowel action, make repeated doses seem needed.

When you are temporarily constipated, get relief but gentle relief—without harsh drugs. Take Dr. Caldwell's Senna Laxative contained in Senna Pepsin. The extract of Senna in Senna Pepsin is one of the finest natural laxatives known to medicine.

Dr. Caldwell's Senna Laxative tastes good, gives gentle, comfortable, satisfying relief of temporary constipation for every member of the family. Helps you get "on schedule" without repeated doses. Even relieves stomach sourness that constipation often brings.

Buy Dr. Caldwell's Senna Laxative if not satisfied. Mail bottle to Box 284, New York 18, N. Y.

Spearman Drug

Appreciation Sale

In appreciation of the fine reception the people of this area have given us during our first 6 months in business we offer drastically reduced prices on all Summer Merchandise, and several staple items. This Sale will run for the next 10 days - Ending Saturday July 31st.

CLOSE OUT OF LADIES SUMMER DRESSES

Regularly Priced \$7.95 - 8.95 - 9.95 - 10.95 - 14.95
SALE PRICE ONLY \$5.45 - 6.45 - 6.95 - 7.45 - 9.45

LADIES & MISSES SKIRTS, regular price \$6.95 - 10.95
AVAILABLE DURING THIS SALE AT \$4.95 - 7.45

HOUSE DRESSES REGULARLY PRICED AT . . . \$3.95
GO ON SALE DURING THE NEXT 10 DAYS AT . . . 2.45

SHIP N SHORE BLOUSES REG \$2.95 value for . . . 2.45

GIRLS & LADIES SHORTS & PEDDLE PUSHERS
During This 10 day sale are priced at ONE THIRD OFF

ALL SANDAL SIZES ARE NOT COMPLETE

Regular price \$2.45 - \$3.95 - \$4.95
SALE PRICE \$2.45 - \$2.95 - \$3.45
 (All Childrens Sandals Reduced Accordingly)

LADIES & GIRLS SUMMERETTES - BY BALL BAND

Regular Price \$2.95 - 3.25 - 3.95 - 4.50
SALE PRICE \$2.15 - 2.45 - 2.95 - 3.45

ALL SUMMER PIECE GOODS REDUCED 20 PER CT.

I Lot Mens Dress Shoes - Not all Sizes - Values to \$10.95
Go on Sale During The Next ten day for only . . . \$6.00
OTHER Regular priced shoes \$5.95 and \$6.95
Go on Sale For Only \$3.65 and \$4.25

I LOT MENS STRAW HATS, Regular prices up to \$3.50
SALE PRICE FOR NEXT TEN DAYS only \$1.95

BOYS SPORT SHIRTS ON SALE AT 20 PER CENT OFF

Close Out Mens Arrow Dress Shirts at 25 per cent off
MENS SPORT SHIRTS VALUES TO \$4.95
CLOSE OUT DURING SALE AT ONLY \$2.95

NEW SHIPMENT MENS HIGH GRADE WHITE SHIRTS
 Regularly priced for \$3.95 on special at only . . . \$3.45

SEVERAL ITEMS NOT MENTIONED WILL BE REDUCED DURING THIS SALE, INCLUDING HATS & SHOES AND ETC.

GUNN BROTHERS STAMPS GIVEN WITH PURCHASES

CHAMBERS

Dry Goods

the car you buy NOW its value NEXT YEAR?

Only Ford has the modern features today that other low-priced cars may have next year!

Score Sheet	Score Sheet	Score Sheet
LOW PRICED CAR 'A'	LOW PRICED CAR 'B'	LOW PRICED CAR 'C'
Five-cyl V-8 engine	NO	NO
Advanced Styling	NO	NO
Ball-Joint Suspension	NO	NO
Highest Trade-In Value	NO	NO

NOT YET!

WHO KNOWS?

FORD

Worth more when you buy it . . . Worth more when you sell it

Joe Trayler

Your friendly Ford Dealer

Spearman, Texas Phone 2451

Here comes stinky

Come on chicks, let's run for the range. We won't be able to breathe in this place for awhile. I just saw the boss mixing some more of his distinctive and He thinks the stronger the odor, the better it kills germs. Why doesn't the boss wise up? That strong smelling, irritating stuff is old fashioned. If he'd switch to Germex he could do a better job without the disagreeable part. Germex is made by...

Dr. Salsbury's

Spearman Drug

Why Pay MORE?

THE NEW REMINGTON Office Riter

Handles your correspondence and reports. Full 10 3/10 inch writing line. Handles paper up to 11 inches wide! Complete Full Featured Budget Term! Try it, today!

THE SPEARMAN REPORTER

Washington News Letter

By Lyndon B. Johnson

My Dear Friend:

The future of American foreign policy—the issues of war and peace—are being shaped by two separate events.

One is the visit of Prime Minister Winston Churchill to America. The other is the Soviet Aggression against the Western Hemisphere which has exploded into civil war in Guatemala.

At the time this is being written, we are still waiting for Churchill's visit and the civil war is still under way. But regardless of the outcome of either event, there are certain background considerations which must be taken into account in deciding our destiny.

Prime Minister Churchill is coming to the United States at a time when Anglo-American relations are under the greatest strain in decades. Prime Minister Churchill is a man of great charm and personality. But the American people are properly concerned about the actions of his government in the past few years.

Why the British government has persisted in recognizing Red China despite the contemptuous treatment of British diplomats by the communists?

Why the British government has persisted in keeping open certain trade channels to the Iron Curtain nations?

Why the British government has persisted in keeping the Geneva talks going even when they obviously had reached the point of futility?

The American government has built up its system of post-World War II alliances for one reason and one reason only—to halt the pattern of communist conquest in the post war world, there can be no other objective that deserves such a high priority.

These alliances must be a two-way street. If Prime Minister Churchill is well advised, he will bring with him assurances that he personally has that understanding and that his government will act accordingly.

The immediate issue which will be discussed by American and British officials is, of course, Indo-China. But the more basic cannot be avoided. They must be faced and faced squarely.

Shortly before Prime Minister Churchill's arrival I attended a conference at the White House at President Eisenhower's request. It included Democratic and Republican leaders of Congress and ranking members of the Foreign Relations Committee. It was the second such conference called by President Eisenhower since we came back.

I attended that conference in full determination of approaching the issues in a non-partisan spirit. The issues before us are issues of life and death for all

Americans. We should judge them as Americans and not as partisans.

The Guatemala situation involves questions more "localized" than Indo-China war but equally important. The basic issue is communist military penetration of the Western Hemisphere.

There can be no doubt that such penetration is taking place. The communists have shipped arms to the leftist government of Guatemala. The communist United Nations Security Council refused to permit the Organization of American States to consider the Civil War in Guatemala.

These two factors taken together represent a clear notice of communist plan. But we want to see the Americans off from the Hemisphere conquest. These plans endanger us all—the United States and our neighbors to the South.

There are 21 nations numbered among the members of the Organization of American States. The Soviet veto action does not prevent them from taking joint action to halt shipments of red arms into the United States.

It is understood that the overwhelming majority of these nations are ready to take joint action to halt shipments of red arms into the United States.

Under any circumstances, the United States must will prevent communist arms from entering our Hemisphere. But we want as much help from our neighbors as we can possibly get.

The fires of communism must be put out in the New World as rapidly as possible.

A saddening note! One of the greatest tragedies of recent years was the suicide of my good friend Senator Lester C. Hunt, of Wyoming. He is the sixth Senator to pass away in this Congress.

Lester Hunt was one of the quiet men. He was able hard-working and utterly devoted to his country. Those of us who were close to him have been disturbed for several months at the evident concern over his health which cast a pall of gloom over the usually cheerful disposition.

He has gone to his maker and the hearts and the prayers of all of us are with him.

The future of American foreign policy—the issues of war and peace—are being shaped by two separate events.

One is the visit of Prime Minister Winston Churchill to America. The other is the Soviet Aggression against the Western Hemisphere which has exploded into civil war in Guatemala.

By Lyndon B. Johnson
ten, we are still waiting for Churchill's visit and the civil war is still under way. But regardless of the outcome of either event, there are certain background considerations which must be taken into account in deciding our destiny.

C. T. JOHNSON
A DEMOCRAT FOR U. S. GOV.
CUT HIGH PHONE RATES
\$100 MO. PENSION AT 65
\$500 BONUS FOR ALL VETS
SAVE WATER—SAVE FARE!

The Fleet
Answers
YOUR
QUESTIONS
Q. What remedy is most necessary for fall and winter?
A. Since a variety of diseases attack poultry in the cold months, it isn't easy to single out a medicine. However, Dr. Salisbury's Salquin, Ar-Sulic, for coccidiosis and cholera, and Ar-Sulic, for infectious coryza, are two products which should certainly be in your cabinet. Both can save you many dollars in controlling disease. Get 'em now! Salquin, Ar-Sulic, on the alert!

DR. SALSBURY'S
Spearman Drug

NEWT SECRET
Your Franklin Life Representative says if you don't know Life Insurance—K NOW your Life Insurance Man. Office SPEARMAN DRUG, Phone 2121.

NEWT SECRET

Mrs. Fannie Jordan of Nacona, is visiting her sister-in-law, Mrs. Carrie Wright and Mr. and Mrs. J. D. Hester this week. The Jordan family lived in Spearman for many years.

Mrs. John Berry and Mike are visiting her mother in Arkansas.

Bill Barkley just returned from a week's visit with Dr. and Mrs. Hackley at Estancia, New Mexico.

Charles O'Laughlin and Mrs. Ella Carmody of Santa Monica, California are here looking after business.

Mr. and Mrs. Hall Jones attended the Phillips Rodeo Saturday night.

Mrs. Bessie Womble is in Alamogordo, New Mexico for an extended visit with her daughter and family, the Art Lynches.

Classified

FOR RENT—Four room modern house, unfurnished \$40. Dial 8891. o. 32 4-1p

MAN WANTED
For Raleigh business in Moore County Real opportunity. No exp. needed to start. See Milton Brown, Spearman, Texas, or write Raleigh's Dept. TXG-30-105 Memphis, Tenn.

FOR SALE
Complete rotary drilling rig for irrigation purposes with 3 trucks, light plant, welding equipment, all in good condition. See C. M. Gates, 711 Florida, or write box 388, Borger, Texas. No. 31 7c

FOR RENT—Furnished 4 room modern house on pavement Carl E. Hutchison. No. 32 7rn

RESPONSIBLE—person to service Soap dispenser accounts in this and surrounding counties. This non-competitive business can be operated on part or full time basis.

NO SELLING
Immediate Income
If you can qualify you will have the opportunity earn \$100 monthly. Small investment of \$597 required, secured one character reference, address, age, and phone number for personal interview with factory representative to Soap Dept. 3196 Monroe Street, Fort Wayne 5, Ind. No. 33 1-1c

FOR RENT: Three room apartment air conditioned call 2131. No. 33 7rn

POLITICAL ANNOUNCEMENTS
The Spearman Reporter is authorized to announce the following candidates for the office under which their names appear, subject to the action of the Democratic Primary to be held on July 24, 1954.

For Sheriff, Tax Assessor and Collector:
A. L. WILSON
J. R. COOKE
Precinct No. 1

For County Judge and Ex-Officio County Superintendent:
JOHNNY LEE
For District and County Clerk:
FRED J. HOSKINS
For County Treasurer:
MRS. MERLE WASHINGTON
For State Representative, 95th Legislative District:
SAM E. WOHLFORD
For County Commissioner:
Precinct No. 3
B. W. BENNETT
ELMO MCCLELLAN, Sr.
For County Commissioner:
Precinct No. 4.
WELDON GREENE
LEON CHESLER
For School Trustee, Graver Independent School District:
ROY (SKEES) RILEY
For County Attorney:
JAMES P. LYNN

BY

'Gene & Sparky'

Gettin' down to "bare facts", we'll hunt down the trouble and make you pleased at your choice of service.

Spearman Super Service
Hwy. 117 Ph. 4061

ANTHONY COLLARD ELECTRIC APPLIANCE

• Industrial
• Commercial
• House Wiring
Contracting and Repairs

Electric Motors and controls sold and serviced

L. L. Anthony
Phone 3861 Box 727
Spearman, Texas

G. C. COLLARD
Phone 2331 Box 518
Spearman, Texas

WANTED TO BUY—Three, eight hole old style feed, Dempster Drills See or Phone George Collard, 2331, Spearman, Tex. No. 25 7rn

ORGANIC FOODS—Food supplement. \$100.00, 31 Days supply. Also have Ceramic Supplies. Mrs. Edgar Fite 232 South Dresden, st. No. 23 7-rn

TWENTY YEAR FARM AND RANCH LOANS, to irrigate, purchase or refinance. Call 4261 or write Box 145. E. C. Greene, Spearman, Texas. No. 23 7-rn

SPINET PIANO FOR SALE—We have an almost new spinet piano in perfect condition for resale at considerable discount. Equity of previous owner substantial. Small amount of down payment will be handled. Special price available for cash. Write credit manager, Clark-Shaw Music Co., 499 North 8th, Garden City, Kansas. Clark-Shaw Music Store Elson E. Clark. No. 33 7-2tc

NOTICE
If you want to drink that your business. But if you want to stop drinking that our business. Alcoholics Anonymous, Box 251, Spearman, Texas. No. 2, 7rn

WE ARE EXPERTS in installing linoleum. Let us figure your next job. Free estimates. We do cabinet tops, floor linoleum, gongowalls. We stock linoleum up to 12" wide, sink frames, metal trims and etc.
DALEY'S IN PERRYTON No. 27 7rn

"COLOR IS OUR BUSINESS"
It's Jackson's for all your decorating needs—Paint, Wallpaper, Fabrics (slip-covers, draperies, curtains, etc.) JACKSON'S PAINT STORE, 719 N. Main, Borger, Texas, Phone 27. No. 27 7rn

FOR SALE—Ring-necked Pheasant Eggs. 25 cents each. Jim Highsmith, Morse, Texas. No. 18 7rn

Symptoms of Distress Arising from STOMACH ULCERS DUE TO EXCESS ACID QUICK RELIEF OR NO COST
Ask About 15 Day Trial Offer!

Over five million packages of the WILLARD TREATMENT have been sold for relief of symptoms of distress arising from Stomach and Duodenal Ulcers due to Excess Acid—Poor Digestion, Sour or Bitter Stomach, Gasiness, Heartburn, Sleeplessness, etc.—due to Excess Acid. Ask for "Willard's Message" which fully explains this remarkable home treatment—free!

SPEARMAN DRUG CO. GRUVER DRUG CO.

TRANSFER AND STORAGE
Careful and experienced moving. Special care given your furniture. Plenty of storage space.

BRUCE AND SON
Transfer and Storage, 227 N. Harvey, Pampa, Texas, Ph. 193 21-7ra

John F. Lackey
REAL ESTATE
FARM & RANCH LOANS
PHONE 4531
SPEARMAN, TEXAS

IT'S FUN
To Be Alive
RIDE ON
Firestone Tires
And Be Safe
Sold in Spearman by
CONSUMERS SALES CO.
Phone 2921
SPEARMAN, TEXAS

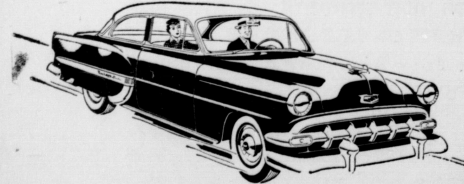
R. L. Kleeberger
M. D.
Physician
and
Surgeon
Medicine, Surgery
and
Obstetrics
Hours: 9-12 A. M. 2-5 P. M.
CLOSED THURSDAYS
Phones: Res. 2161 Office 5781
304 Main St — Spearman

T. D. Sansing
Attorney-at-Law
Office Phone 4051
Residence Phone 2901
306 MAIN STREET
SPEARMAN, TEXAS

Boxwell Brothers
Funeral Home
and
Flower Shop
Day — Night Phone 2751
SPEARMAN, TEXAS

Smarter looking! Sweeter running! Smother riding!

... that's what you'll say about this lowest-priced line of cars



In '54, as for years before... MORE PEOPLE ARE BUYING CHEVROLETS THAN ANY OTHER CAR!

HERE'S THE MOST—AND THE BEST—FOR YOUR MONEY!

Appearance! Performance! Comfort! Price! Weigh all these factors when you buy a new car, and you'll find Chevrolet the outstanding buy in its field. It alone brings you Body by Fisher beauty, highest-compression power, Knee-Action riding-smoothness—and it's the lowest-priced line of all. Come in; compare these facts; and choose this better buy!

No Other Low-Priced Car Can Match All These Advantages—HIGHEST COMPRESSION POWER • BIGGEST BRAKES • FULL-LENGTH BOX-GIRDER FRAME • FISHER BODY QUALITY • SAFETY PLATE GLASS • FAMED KNEE-ACTION RIDE

CHEVROLET

Now's the time to buy! Get our BIG DEAL! Enjoy a New Chevrolet!

McClellan Chevrolet Co. Gruver Motor Co.
Spearman, Texas Gruver, Texas

GULF
Looking for Service Try Orange Disc Service!
ALTON Phone 2301 WAYNE
Lone Star Trailer Camp
Every Modern Convenience Located on Highway Loop AT GRUVER, TEXAS
J. F. & R. C. CHASE
Prices Reasonable
Hansford VFW Post 6207
Meets 2nd 4th Tuesdays
7:30 P. M. Each Meeting
Commander, J. P. Vernon
Sr. Vice Cmr., Warren Jerfries
Jr. Vice Cmr., Joe B. Jackson
Quartermaster, Johnnie Lee Chaplain, Dick Kilgore
Radiator Cleaning and Repairs
GLASS REPLACEMENT
Body Shop and Painting
R. L. (Smoky) Husz
Spearman, Texas
NATIONAL FARM LOAN ASSOCIATION
FEDERAL LAND BANK LOANS
E. N. Richardson
Secretary - Treasurer
315 Main Street
SPEARMAN, TEXAS
TRANSFER AND STORAGE
Careful and experienced moving. Special care given your furniture. Plenty of storage space.
BRUCE AND SON
Transfer and Storage, 227 N. Harvey, Pampa, Texas, Ph. 193 21-7ra
John F. Lackey
REAL ESTATE
FARM & RANCH LOANS
PHONE 4531
SPEARMAN, TEXAS
IT'S FUN
To Be Alive
RIDE ON
Firestone Tires
And Be Safe
Sold in Spearman by
CONSUMERS SALES CO.
Phone 2921
SPEARMAN, TEXAS
R. L. Kleeberger
M. D.
Physician
and
Surgeon
Medicine, Surgery
and
Obstetrics
Hours: 9-12 A. M. 2-5 P. M.
CLOSED THURSDAYS
Phones: Res. 2161 Office 5781
304 Main St — Spearman
T. D. Sansing
Attorney-at-Law
Office Phone 4051
Residence Phone 2901
306 MAIN STREET
SPEARMAN, TEXAS
Boxwell Brothers
Funeral Home
and
Flower Shop
Day — Night Phone 2751
SPEARMAN, TEXAS

the 1955 crop Wheat Quota Referendum

FRIDAY, JULY 23, 1955

MORE Important than POLITICS

Your vote in the Hansford County Wheat Quota Referendum Friday July 23rd The Economy of our County is involved in the plans for wheat in this area for the future.

This Advertisement is sponsored by

- Hansford Abstract Co.
- Bruce Pontiac
- Sid Clark Barber Shop
- Orange Disc Service Station
- R. L. McClellan and Sons
- Floyd's Grocery and Market
- Floyd's Locker
- Corner Drug Store
- Campbell Taylor Shop
- Western Auto Associate Store
- Spearman Steak House
- McClellan Krause Company
- Owens Sales Company
- Spearman Chamber of Commerce
- City of Spearman
- Equity Exchange
- B. and C. Equipment Company
- Crawford Implement Company
- Sid Clark Barber Shop
- Hansford Implement Company
- First State Bank
- R. L. McClellan Grain Co.
- Consumers Sales Company
- Wardrobe Cleaners
- Berrys Cleaners
- Spearman Drug
- Spearman Super Service
- Stanley Garnett Implement Co.
- Wardrobe Cleaners
- Chambers Dry Goods and Groceries
- R. L. McClellan And Sons
- White House Properties

On July 23 wheat growers will vote for or against a marketing quota program for the 1955 crop

As required by law, the Secretary of Agriculture has proclaimed wheat quotas—subject to a grower referendum. At least two-thirds of the eligible farmers who vote must approve quotas before they can be put into effect.

The final decision on whether or not quota controls will apply to 1955 wheat production will therefore be made by farmers themselves.

If the vote is "YES"

Marketing quotas will be in effect for all farms where the wheat acreage maturing for grain is more than 15 acres.

Marketing penalties will apply to all "excess" wheat produced on individual farms.

Price support at the effective level will be available to all farmers who comply with their wheat acreage allotments—if they also comply with any other crop allotments and total acreage allotments established for their farms.

If the Vote is "NO"

There will be no marketing quotas and no marketing penalties on "excess" wheat.

Price support under legislative provisions, will be 50 per cent of parity.

Any producers who fail to comply with their wheat or other crop allotment, or with a total acreage allotment if one is established for their farms, will not be eligible for price supports.

What's the Supply Situation?

The controlling legislation requires a quota proclamation whenever the total supply of wheat is more than 20 percent above the "normal supply", as determined under the formula of the law. Actually the total supply available for the 1954-55 marketing year is estimated to be 1 billion 900 million bushels—an all-time record, and about 79 percent more than the "normal supply" figure of 1 billion 63 million bushels.

How does the Program Work?

Acreage allotments are the basis for quota administration. This is the way the program works.

The national wheat acreage allotment for 1955 is 55 million acres—the level specified by current legislation under present supply conditions.

The national acreage allotment is apportioned among the States, and the State allotments among the counties, on the basis of the acreage seeded to wheat in the preceding 10 years.

Each individual farm allotment is a share of the county allotment, with consideration in each case for past acreage of wheat, tillable acres in the farm, crop rotation practices, type of soil, and slope and lay of the land.

In general, each farm where wheat was grown in 1952, 1953, or 1954 will be assigned an acreage allotment.

If the marketing quotas are approved in the July 23 referendum, they will apply to all farms with more than 15 acres of wheat to be harvested as grain. The marketing quota for the individual farm to which quotas apply will be the wheat actually produced in 1955 from the farm allotment.

If wheat acreage on the farm is within the acreage allotment, the producer can market all of his 1955-crop wheat as he wishes—and he is also eligible for the full price support which is in effect (if he is in compliance with other allotments on his farm).

If the wheat acreage is greater than the farm's acreage allotment, a marketing penalty (45 percent of parity price) will be assessed against the normal yield of wheat grown on acres in excess of the allotment. When the penalty is paid, the producer is then free to market his wheat in any way he chooses—but he is not eligible for price support.

Allotments without Quotas?

Marketing quotas cannot be in effect without acreage allotments. Acreage allotments, however, can be in effect without quotas, and the controlling legislation provides that wheat acreage allotments are to be established every year unless suspended because of emergency situations.

Acreage allotments, therefore, will be in effect for the 1955 wheat crop, even if marketing quotas should be disapproved but there would be no quota penalties.

How about Diverted Acres?

In order to prevent the shifting of surpluses from one crop to another, wheat and other producers will be required to comply with all acreage allotments established for their farms in 1955 in order to be eligible for price support on any crop. In addition, if more than 10 acres on the farm are diverted from allotment crops, the producer will have to stay within a "total acreage allotment" for his farm as a condition of price support eligibility. All crops on the farm except hay, cover crops, green manure crops, pasture, idle cropland, and summer fallow will be included in this total acreage allotment.

The cross-compliance requirement is still in effect when the wheat-allotment is less than 15 acres. The 15 acre "breacking point" applies to marketing quotas, but not acreage allotment.

Price Support Levels?

The specific price support level for the 1955 wheat crop had not yet been established at the time this leaflet was prepared. The level will apparently be within a range of from 90 to 75 percent of the parity price, depending on possible Congressional action and administrative decisions.

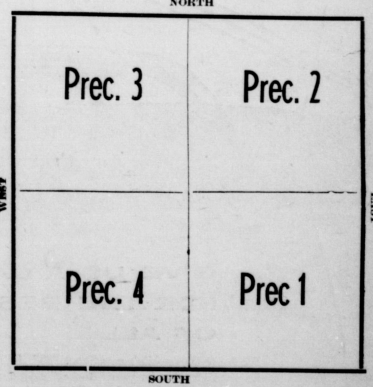
As soon as the price support level is determined, every effort will be made to get the information to wheat producers promptly through all available channels of communication.

Who can Vote?

Any wheat producer who will have in excess of 15 acres of wheat for harvest as grain in 1955 is eligible to vote in the referendum.

Wheat quota referendum date—July 23, 1954.

Hansford County Wheat Voting Map



Polls open 7 A. M. till 9 P. M.

PRECINCT 1 - South East Hansford County will vote at Schoolhouse, Spearman

PRECINCT 2 - North East Hansford County will vote at T. C. Harvey Home.

PRECINCT 3 - North West Hansford County will vote at Gruver Elevators, Inc. - Gruver

PRECINCT 4 - South West Hansford County will vote at Gruver School House, Gruver

The Spearman Reporter

Successor to the Hansford Headlight, Published Thursday of each week in Hansford County, at Spearman, Texas.

WILL J. MILLER, Editor and Publisher

Entered as second class matter Nov. 21, 1919, at the postoffice at Spearman, Texas, under the Act of March 3, 1879.
 In Hansford and adjoining counties, One Year \$2.50
 Out of Hansford and adjoining counties, One Year \$3.00

CLASSIFIED ADVERTISING

First insertion, 4c per word; 2c a word for every issue thereafter. Card of Thanks, 4c per word. Display Rates on Request. **NOTICE TO THE PUBLIC:** Any erroneous reflection upon the reputation or standing of any individual, firm or corporation that may appear in the columns of The Spearman Reporter will be corrected when called to the attention of the management.

NOTES AND COMMENTS

After all, it would be rather tough to have to live forever.

There is quite a difference between being present and doing work.

Business Tycoon's dream: No taxes, higher profits and no competition.

Football, it seems, is the major enterprise of some educational institutions.

Friendly criticism may be extremely helpful though it is not pleasant to the ear.

Never worry about a competitor; attend to your business and let him do the worrying.

The "good old days" are gone but there are people who think they would like to have them back.

Civil rights were never intended to give anybody the right to force themselves upon other persons.

A budget is a good thing for any family if the family will carry it out, but it won't work miracles by itself.

Financial advice for Uncertain Economic Weather: Buy what you must have but otherwise save your money.

Everybody depends upon the farmer for food but not many seek to ascertain what the farmer can depend upon.

What has become of the old fashioned man who believed that great wisdom was to be found in the nation's capital?

The parents who expect to discover how to raise a child successfully by reading books, have lots to learn.

A boy becomes something of a man when he understands that every boy cannot be President of the U. S. A.

One of the surest methods of making yourself disliked is to get the idea that you have to speak the truth all the time.

Every boy should have the opportunity of playing baseball in his youth but the game cannot be played in public streets.

What the nation needs is more statesmen who want to know what is right before trying to ascertain the number of voters involved.

Nothing is to be gained by denouncing the Russians for taking care of their interests; let our statesmen take care of our interests.

Every fifteen minutes an American dies on the highways of the nation, which means that somebody continues to drive carelessly.

Human nature, like a mule, can only make progress at a limited rate of speed. No economy should destroy any necessary governmental function.

The popular idea of a tax reduction bill is one that reduces taxes in our income-bracket and increases them if necessary, in others if necessary.

Benson Plan

The close 7-8 vote in the senate Agriculture Committee recently in favor of a continuation of ninety per cent parity price support on the six basic crops is in direct opposition to the wishes of Secretary of Agriculture Ezra Taft Benson. The action by the Senate Agriculture com-

mittee following a similar action taken by the House Committee (the House Committee's vote was much more conclusive) and indicates that the Administration is in for trouble in its effort to get a flexible parity price support program enacted.

Of course, the Administration does not have to get a new flexible price support program on the books this year to enable Secretary Benson to lower support percent ages next year. The fixed higher parity price support law expires at the end of this year and Benson will automatically get authority to lower these supports at its expiration, because his Department will once again be run under the provisions of the Aiken Act if the high price support law is not extended this year.

The Aiken Act allows flexible supports ranging from sixty per cent of parity. The Administration has asked for a flexible support program ranging from seventy-five per cent of parity.

The vote of the Senate Agricultural Committee was a major victory for opponents of the Administration program. Nevertheless, proponents of the Administration's flexible support program believe they have the strength in the Senate to defeat a bill which would extend the high price supports another twelve months. Members of the House Agriculture Committee believe they have the strength in the House to extend these supports.

The Churchill Visit

The recent visit of Prime Minister Sir Winston Churchill of Great Britain with President Dwight D. Eisenhower in Washington is of genuine significance to every American, and to most citizens of the world.

It is no secret that in recent weeks and months British-U. S. relations have become strained to a degree not experienced since the end of World War II. It is also no secret that the Communist have steadily gained political and military decisions over

the Western World since the end of World War II, largely as a result of the inability of the Western world to unite on a course of action. This is the trouble in Asia since 1947.

There is another significant fact: Churchill-Eisenhower meeting, signify the decline of France. Members of the former Big Three being considered one of the major powers of the world. This is a tragic fact but one in line with the facts of demonstrated inability of France to reflect either stability or consistent effective opposition to the Communists.

Sir Winston is probably the greatest living statesman. Certain elements are unexcelled by anyone else today. On many occasions over six decades he has demonstrated vision and leadership which have profited by, and in the past he has probably done as much for the world as any other man.

One can never tell about a man but we would assume that this is Sir Winston's last visit to the States—since it was only revealed that he suffered a stroke in 1951 which partly paralyzed him and confined him to a wheelchair for some time. A warrior, however, made a recovery and is back at the helm today.

Nevertheless, Sir Winston is in his eightieth year, and there is reason to believe that he will not be able to cross the Atlantic to attend the meeting in Washington.

BRIEFS, VERY BRIEF

Sixty-five A. F. L. Affiliates and twenty-nine from the C. I. O. signed a no-raiding agreement which is hailed as a major step toward merger of the two parent unions.

Scientists at Rutgers' new institute of Microbiology reported evidence that life, being composed of material objects, follows the same pattern as life.

An Air Force plane crashed in the desert near the Nevada-California border.

The new building for the University of Texas at Austin is expected to be completed in the next few months.

Pre-Fall SALE

Clearance of Summer Merchandise
VALUES — VALUES — VALUES

MENS STRAW HATS

\$10.00 value	Sale Price	\$6.95
\$7.95 value	Sale price	5.25
\$5.00 value	Sale price	3.98
\$3.95 value	Sale price	2.79
\$2.98 value	Sale price	1.89

CHILDS KEDETTES SHOES
 Sizes 1 to 2 1/2 ONLY
\$3.49 and \$3.98 SHOES, only.

LADIES SUMMER DRESSES

\$22.50 values	for only
\$16.75 values	for only
\$14.95 values	for only
\$13.95 values	for only
\$12.95 values	for only
\$11.95 values	for only
\$10.50 values	for only

98c Value Tissue Gingham
 —Tissue Chambray—
SALE PRICE 79c

\$1.00 Broadcloth Shorts	69c
ONE LOT (ODD LOT) MENS DRESS SOCKS	
65c to \$1.00 values ONLY	49c
79c CONES SPORT DENIM	59c

BOYS SUMMER SHIRTS

\$2.98 value	Sale price	1.99
\$2.59 value	Sale price	1.79
\$2.29 value	Sale price	1.48
\$1.98 value	Sale price	1.39
\$1.79 value	Sale price	1.29

LADIES PLISSE PETTICOATS
 With Shadow Panel for only . . . \$1.49
LADIES SUMMER SHOES
ON SALE AT ONE THIRD OFF
LADIES SKIRTS AND SLACKS ARE ALSO INCLUDED IN THIS SALE

LADIES CREPE GOWNS
\$4.98 QUALITY for only
LADIES RAYON SHORTY PAJAMA
Go On Sale For Only

BOYS PLISSE PAJAMAS
 Available in this sale for 1.49

CARTER FROCKS FOR THE COUNTRY

\$8.95 values	on sale at
7.95 values	on sale at
\$6.95 values	on sale at
\$5.95 values	on sale at
\$4.95 values	on sale at
\$3.98 values	on sale at
\$2.98 values	on sale at

This Sale Closes July 31st — NOW AND SAVE

Spearman Dry Goods

ROY RUSSEL



RING FOR A RIDE IN A 'ROCKET'

GIVE US A CALL FOR THE BEST DEAL OF ALL

We figure Oldsmobile's new Super "88" Holiday is its own best salesman. So when you ring for your "Rocket" ride, don't expect a high-pressure sales talk. We'll let the Super "88" speak for itself—with performance! The smooth, whispering power of its mighty "Rocket" Engine! You'll whisk away at the lights—cruise over the hills, down the open road! And power features do the work while you have all the fun. All this and Oldsmobile styling leadership, too! It's easy to see why Oldsmobile sales are way up . . . and why we can give you the top trade in town! So ring us soon for your "Rocket" ride!

OLDSMOBILE'S RIDIN' HIGH! AND WE'RE TRADIN' HIGH!

"ROCKET" ENGINE OLDSMOBILE
 RING FOR A RIDE IN A "ROCKET"!

Coury Motor Co.

Hwy. 147

Spearman, Texas

Phone 5621