



Barbara McClellan (left), wife of Judge R. L. McClellan and Linda Venneman, wife of Commissioner Joe T. Venneman, both of Spearman, were among those accompanying husbands at the 21st Annual County Judges and Commissioners Conference. Sponsored by the Texas Agricultural Extension Service and the County Judges and Commissioners Association of Texas, the conference theme was improving county government. Keynote speakers were Texas Governor Bill Clements, Reagan Brown, Texas Commissioner of Agriculture, and Mark White, Texas Attorney General—along with Judge W. E. Davis, Texas Court of Criminal Appeals. Conference topics included local government, federal highway funding, taxation, law enforcement and jail standards. More than 650 persons attended the statewide conference in College Station.

A wives luncheon during the conference featured presentations on coronary-pulmonary resuscitation training and weight control. Home Economics specialists with the Texas Agricultural Extension Service made the presentations and hosted the luncheon.



A fire at 428 South Townsend Friday, sent Mrs. Hutchison scurrying from her home. Fireman Ron Burke is shown above as he prepares for action at the residence. A skillet of grease was the culprit and little damage done.

# The Spearman Reporter



VOLUME 70, NO. 14

THE SPEARMAN REPORTER, SPEARMAN, TEXAS 79081

THURSDAY, FEBRUARY 15, 1979

## Policy manual

Spearman School Board members are currently studying a voluminous newly proposed Policy manual.

The proposed document has been in the preparation stages for some months and has been completed. It was distributed to each member of the Spearman

School Board Monday night with instructions for them to study it carefully and then to take action possible at a later board meeting.

Board members were asked to give particular attention to a section pertaining to Policy affecting married students.



John Deere entertained local farmers with a breakfast at Martins Steak Garden this week. The John Deere film was one of the finest ever presented to farmers in the area.

# 296,000 Acre Feet Palo Duro Dam By 1996?

"We're Ten Years ahead of time" according to Palo Duro Dam Authority Manager Johnny Lee, quoting State water officials.

Lee, appearing Tuesday before the Spearman Lion's Club said that the Palo River Dam project was in the 1979 Presidential Budget. Lee noted that there was \$170,000.00 in the current Budget for continued planning of the Dam prospects for this area.

Noting the \$700,000.00 already had been spent on the potential Economy saving project, Lee said that the paper work that has already been accomplished on the Canadian River Basin study was voluminous. He added "It occupies a space 3 feet high, 4 feet wide and 16 feet long!"

The local Manager and Former Hansford County Judge said that the State Water officials were urging the building of a 296,000 acre feet dam, as opposed to the earlier proposal involving a 60,900 acre feet dam.

The U.S. Corps of Engineers apparently concurs with the larger concept proposal according to Mr. Lee.

He told the Lions "we can actually close the gates of the dam by 1996! The proposed Dam would cost \$26,000,000.00 and would be financed through customer usage. Lee said that there were already more customers than the water that would be available.

Lee noted that the Fish and Wildlife Service had caused some recent concern, suggesting that the project, if completed, would cause harm to "endangered species". Those elements that would be endangered according to the Commission were The Black Footed Ferret, The Falcon and The Bald Eagle. Lee added that very few, if any, had ever seen the so called "endangered species" in this area.

Lee emphasized again that the Ogallala Aquifer, the major source of municipal and irrigation water in the High Plains is fast being depleted. This source, he added could be exhausted completely within 40 years.

The proposed reservoir would encompass a 19 mile shore area and would not only provide urgent water needs but would enhance recreation in the area.

The Spearman Lynxettes will travel to Pollett February 16th for a 7 p.m. game, against the Pantherettes.

The Spearman Independent School District has been asked to consider assisting in a possible daily lunch program for Spearman's Senior Citizens.

A delegation of representatives from the Senior Citizen's Board asked the School Board Monday night to consider the preparation of food in sufficient quantity to enable the Senior Citizen's Board members to enter into such a daily feeding program.

Coleen Brummett, spokesperson for the three person delegation, said that a representative of the Governor's Office of the Aging had visited Spearman recently and had proposed the feeding program.

Under the program, the Senior High School cafeteria would prepare the necessary quantity of food daily when school was in session, and the food would then be taken by the Senior Citizen's people to the Center for distribution to the Senior Citizens of Spearman at the Center. Mrs. Brummett explained that other communities were already involved in the program and the idea was to "get people involved and outside of their homes."

The Senior Citizens Board is contemplating applying for a grant to cover the cost of the program. The Senior Citizens Board would pay the school for the food used, and would ask a donation from those who were fed. They cannot under law charge for the meals.

The delegation, consisting of Orville Brummett, Colleen Brummett and the Rev. Mr. Ed Freeman stated that the program as suggested hinged directly on whether the Center could secure the services of a professional Director. They estimated that as many as thirty meals would be prepared daily.

The School Board indicated it would probably approve the suggestion and took it under consideration for action at a later meeting.

## Present Staff Recommendations

The Spearman Independent School District Board went into Executive Session for approximately ninety minutes Monday evening to hear and study the recommendations from the District's Principals and those of the Athletic Director for staff positions in the 1979-80 School Year.

The School Board will take appropriate action on those recommendations at its March meeting.

School Superintendent James Cunningham reported that

school enrollment had increased by 8 since Christmas, and Board Members heard a report from Tax Assessor Collector Orville Latham that 98.6 % of what had been budgeted had now been collected in Taxes.

J. L. Brock was selected as an Election Judge for the April 7th election. The terms of Board member Kent Guthrie and Jim Evans expire.

The School Board discussed briefly a report from High School Principal Eddie Clemmons concerning graduation re-

quirements at the local educational facility. Clemmons noted that basic requirements were for the student to have completed successfully 55 Quarter Units of study for graduation. The Board noted that the average for this years graduating class was approximately 70 units. The Board was advised that students in Grades 9, 10 and 11 were required to take a minimum of 6 Units per quarter while students in Grade 12 were required to take a minimum of 5 units per quarter.

## Permanent director needed

The Board of Directors of the Golden Spread Senior Citizen's Center in Spearman are actively searching for a permanent Director.

Orville Brummett, President of the Board told the Reporter and Statesman today that applications are now being received by him at his place of Business, Spearman Rexall Drugs, Main Street, Spearman.

He noted that the Director should be a person with a genuine interest in Senior Citizen's Activities, a good or-

ganizer, a person of integrity, and a person who can work with people effectively.

The Director would be responsible for the planning and coordinating activities with the approval of the Board of Directors. The person selected will also attend all functions of the Center occurring in the building.

He or she will also supervise those responsible for the maintenance of the building.

The Director will meet with the various Senior Citizens groups at the times scheduled

Monday through Friday. This may include some evening participation, noted the Board - President.

The Director would also be responsible for the scheduling of trips by the Center's Van, and would also secure necessary drivers for those activities.

Another area of responsibility will be to remind Hosts and Hostesses of their respective responsibilities, keeping the bathroom facilities supplied and meeting regularly with the Board of Directors.

## New Chief Deputy Named

Hansford County Commissioners appointed a New Chief Deputy Sheriff for Hansford County in their regular meeting Monday. He is Billy "Jeff" Hawkins, a member of the Hansford County Sheriff's office for the past several months. He replaces John Mull who has resigned. The Commissioners also approved the deposition of Tim Fisher as a new Deputy.

The commissioners also approved a resolution to advertise for bids for two new autos for the Sheriff's department. Two used autos will serve as Trade In's.

Brock Insurance Agency for Liability Insurance was also approved.

The Commissioners Monday took time out to review the County Extension Program and heard a report from Peggy Winegarner, County Extension Agent for Home Economics.

The Group also approved officially the First State Bank of Spearman and the Gruber State Bank as Official Monetary depositaries for the County.

"Little minds are wounded by the smallest things." La Rochefoucauld

## Indicts Trio

The Hansford County Grand Jury returned three indictments Friday and no billed a fourth party.

Leslie F. White was true billed in an indictment accusing him of theft by Check involving property. John Michael Evans of Missouri was indicted for unauthorized use of a motor vehicle, and Larry Delano, 17, was also indicted for unauthorized use of motor vehicle. Delano is also from Missouri.

## AAM raffle



"Bein' Neighborly," by Tulia artist Kenneth Wyatt, will be given away by members of the American Agriculture Movement in Gruber at a drawing at 3 p.m. Thursday. Members of the AAM commissioned the painting, valued at \$1,100. It depicts a farmer and a rancher meeting over the

fence. Donations of \$5 each will be used to help defray costs of the tractorcade to Washington. Tickets for the drawing have been bought by persons from as far away as California and Illinois. (Staff photo by Jerry McGill)



**Spearman Chapter O.E.S. Met**

Spearman Chapter O.E.S. #721 met February 5th for its general meeting. Mary Arnold, Worthy Matron, & Don Hendricks, Worthy Patron, presided over the meeting. Esther Mills from Berger Adobe Walls #1059 Deputy Grand Matron was introduced. She gave the greetings and message from the Worthy Grand Matron and Worthy Grand Patron. This was thoroughly enjoyed.

Angela Craig, Virus & Lawrence Wilbanks were reported to be ill. Earl Taylors father, "Hoss" Yates and J. Victor Jones have deceased during the month.

**Ruth Sunday School**

The Ruth Sunday School Class met Tuesday afternoon, Feb. 6 for their regular monthly meeting in the home of Mrs. Woodville Jarvis. The devotion was given by Mrs. Arthur Adkinson.

Those attending were one guest, Mrs. Mabel Lawrence of Perryton and members Mmes. Addie Novak, Mabel Edwards, Ed Hutton, Fred Hoskins, Bill Russell, J. W. Brown, Rex Sanders, Sr., Bill Gandy, D. H. Ball, Arthur Adkinson and hostess Woodville Jarvis.

**Hospital News**

Patients in the Hansford Hospital this week include: Ernestine Emmerett, Clark Winkler, Mark Parker, Karen Goodman and daughter, Vance Collier, Dan Jackson, Orville Walker, Edith Roper, Randy Wilson, Marie Findley, Elwyn Donoho. Dismissed are, Evelyn Kingsley, Sherry Wiley, Rosemary Tarter, Teresa Barber, Angele Scott, Virginia Crowley, Lydia Spardlin, Kimberly Slater, and Angela Rosales.

"An old man in a house is a good sign."  
Benjamin Franklin

**Preceptor Epsilon Met**

Preceptor Epsilon met Thursday, Feb. 8 at Martin's Steak Garden for their monthly business meeting and lunch. An executive Board meeting preceded the regular meeting.

The Club will be responsible for Meal on Wheels and the Service committee will be in charge of this.

Program committee announced that there will be a Jewelry Show at Duncan and Boyd's in Amarillo Feb. 24. The club will attend and have lunch at the Amarillo Club.

The club was also reminded of the Symphony on March 25 in Amarillo.

Social committee discussed the Valentine Dance Feb. 10 at the Perryton Country Club.

A nominating committee was appointed which included Linda Davis, Marva Hohertz and Glenda Guthrie.

The meeting adjourned.

Those attending were: Anne Archer, Dodie Beedy, Karen Countiss, Linda Davis, Pat Dear, Pat Donnell, Helen Etter, Marti Garnett, Lois Gibner, Glenda Guthrie, Marva Hohertz, Scarlett Jackson, Jo Ella Jones, Ruby Lair, Barbara Schnell, Altha Townsend, Mona Beth Windom and Deta Blodgett.

The next meeting will be the Jewelry Show in Amarillo Feb. 24.

**Extension Clubs**

The Spearman Home Extension Club met Friday, Feb. 9 in the home of Mrs. W. H. Tarbor. The meeting was called to order with the T.H.D.A. prayer. The president, Mrs. B. J. Garnett, read the council recommendations for 1979 and the members approved them.

The program was given by Julie Farr, a 4-H member, on 4-H and her experiences and projects in 4-H. Included in Julie's program was a display of her note book she has kept throughout her membership in 4-H, which included some very interesting items.

Refreshments were served by hostess Mrs. Tarbor to Mmes. B. J. Garnett, Ethel Cookston, Viola Hutton and Mrs. A. D. Reed.

The next meeting will be Friday, Feb. 23, with the time changed to 2:00 p.m., in the home of Mrs. W. V. Hull.

**History Book Committee**

The Hansford County Historical Survey Committee, Inc. met in regular session Friday, Feb. 9 at 1:30 in the Hansford County Library. The meeting was brought to order by president Fred Groves and the minutes read by Jaunita Pierce and approved. Clementine Renner gave the Treasury Report which was accepted.

A report was given by Fred Groves on the History Book with several questions answered.

Mr. and Mrs. Irvin Boyd donated the money for memorial cards and stationary for the museum.

The History Book Committee hopes to have all out of town addresses in time to have letters mailed out to each person by March 1st. If you have names and addresses of out of town people who are to receive a letter concerning the History Book, please bring them to the Museum.

The Commission hopes to compile a list of persons buried in all of the county cemeteries to be put in the library for Geneology research.

The next meeting will be a History Book meeting at the Library at 2:00 P.M. Feb. 23.

Those attending the meeting were Clementine Renner, Helen Boyd, Joyce Johnson, June Stedje, Georgia Holt, Grace Lyon, Roy McClellan, Johnny Lee, S. J. Hall, Helen Etter, Francis Kilgore, Dixie Tracy, Joyce Lackey, Christine Brandvik, Jennie Blankenship, Beth Dortch, Fred Groves and Jaunita Pierce.

**Spearman Ministerial Alliance Met**

The Spearman Ministerial Alliance met February 6 at the First Presbyterian Church. The morning Devotion was presented by Rev. Ed Freeman who said, "varsity and surprise is a Gift From God."

Members discussed the good Friday Service to be held at the First Baptist Church in Spearman. Any ideas for activities for our teen-age young men and young women should be brought to the attention of the Alliance.

The ministerial Alliance will meet again on March 6. Members present were Carter McKenny, Ed Freeman, David Nuckels, Herb Hoff and Franklin Horne.

**Presbyterian Church News**

Menual Presbyterian Mission High School Choir from Albuquerque, New Mexico will give a sacred concert on Friday, February 16 at 8:00 p.m.

Sunday Church School teachers and all interested in the Christian Education nurture program of our church are urged to attend the Leadership Development Seminar at First Presbyterian Church in Amarillo on Saturday, February 17 beginning at 9:30 a.m.

There is a Sunday Church School class for everyone every Sunday at 9:45 a.m. with an intensely interesting, practical Bible study.

"All Out Effort" will be the subject of Pastor Edward D. Freeman's sermon at the service for the public worship of God on Sunday, February 18 at 11:00 a.m.

Presbyterian Women's Association will meet on Wednesday, February 21 at 9:30 a.m. Alice Turnbull is the hostess. Betty Freeman will lead the Bible study in the Gospel of Mark.

New members in the First Presbyterian Church are adopted into the family history. The new member absorbs the values of the church, just as the church absorbs the new members. Interesting characters, like patriarchs and gatekeepers, make adoption happen more easily.

**Club News**

Girl Scout Troop #42 met Friday, Feb. 9 at the Girl Scout Hut. The girls worked with embroidery paints. Angela Gaitner served refreshments to Shelia Brand, Mary Evans, and Kathy Love. The next meeting will be Friday, Feb. 16 at the Hut with Kathy Love serving refreshments.

**Hospital Auxiliary**

The Hansford Hospital Auxiliary met at Martin's Steak Garden Monday, Feb. 12 with Judy Nelson presiding. The minutes were read and approved. The Auxiliary is going to buy a Castle Light for the Hospital.

A discussion was held concerning the Gruber Bloodmobile to be held Feb. 21. Some of the members of the Auxiliary are going to help with it. Mrs. Hazel Stumpf is taking names of Spearman donors.

A nominating committee made up of Barbara McClellan, Beuna Lyon and Betty Jean Davis was appointed and are to make a report at the next meeting.

Three new members, Adalyn Barnes, Francis Cudd and Carole Hall were shown the hospital schedule and had it explained to them.

The Auxiliary is to host the Senior Citizens Tuesday, Feb. 20. Meeting adjourned.

Those attending were Edith Smith, Evelyn Mackie, Maria Avila, Rosa Lee Butt, Judy Nelson, Adalyn Barnes, Susan Deik, Mary Brown, Carole Hall, Beuna Lyon, Betty Davis, Maylynn Schubert, Barbara McClellan, Doris Ellison, Francis Cudd, Lorene Kunselman and Clementine Renner.

The next meeting will be Monday, March 12 at Martin's Steak Garden.

**Xi Zeta Upsilon Meets**

Xi Zeta met Thursday, Feb. 8 in the home of Joan Vernon. President Sharon Cooks called the meeting to order. The minutes were read and approved and the treasury report given.

Mary Lou Matshews gave a report on the Valentine Dance.

The Club received an official communication from West Texas State University in regard to the Distinguished Service Award to Women. They are going to submit a name for this award.

They voted on programs for next year and decided on Original Programs.

Preceptor Epsilon Chapter donated money to help with the family Xi Zeta sponsored at Christmas.

Hazel Shieldknight was responsible for the program "You & Technology" and Billy Giles presented a program on Microwave Ovens.

The next meeting will be Thursday, Feb. 22 in the home of Verna Strawn.

Those attending were Linda Latta, Sheryl Meek, Phyllis Collins, Lynna Renner, Mary Lou Mathews, Verna Strawn, Sharon Cook, Mary Ann Lasater, Joan Vernon, Cindy Schneider, Linda Butt, Donita Lusby, Hazel Shieldknight and Kari Lou Schuman.

**Rotary Club News**

Eddie Limbocker gave a classification talk at the Spearman Rotary Club Monday noon at Martin's Steak Garden. Eddie was graduated from Perryton high school. He worked as a meat cutter until he lost a hand. Later he got the other hand caught but it was saved and rebuilt. In 1969, he went to work for Interstate Savings and Loan, and they began a branch in Spearman in a trailer house. In 1972 they built their present office. Today we are in a tight money situation and their company can only make loans on homes. The growth response and acceptance in Spearman has been greater than anticipated. Growth has not been phenomenal in any year but has been steady and strong.

Visitors present on Monday were Rotarians Leslie Lee and Edward Crall of Perryton, John McClendon and Charles Denman of Houston, and Jim Benson, new executive director of the Spearman YMCA.

Members present were Carrie Marie Berry, Eschol Blankenship, J. L. Brock, Kim Brock, Archie Burress, John R. Colard, Jr., Robert Elliott, Pete Fisher, Ed Freeman, Ed Garner, Kerry Henton, John Hutchison, Ed Limbocker, Junior Lusby, Jim McLain, Jack McWhirter, Larry Murphy, Frank Oglesby, Coy Palmer, Lenis Simpson, Gary Sims, Vance Snider, Jerry Taylor, Don Wirsdorfer, and Tim Woodington.

Members absent were Roy Bulls and Jim Shirley.

Rotarians will have a Sweetheart Dinner for their Rotary-Anns on Thursday, February 15 at 7:00 p.m. at the First United Methodist Church. Don Markham of the South West Amarillo Rotary Club will speak on the Porter's Wheel.

**Shower Held**

Mary Fullerton Davey was honored with a Baby Shower Saturday, Feb. 10 in the Red Room of the First Baptist Church.

The Table, decorated in the Valentine theme, included an arrangement of red and white carnation, and heart shaped cake, nuts and mints served with fruit punch.

The honoree was presented with a red and white sock corsage and a baby gift of a high chair by the hostesses. They were Sharon Black, Edith Chandler, Audene Beck, Fern Newton, Donnie Mitchell, Cindy Reger, Lillie Palmer and Trish Cook.

**Cub Scout Father & Son Bake Sale Set**

The Cub Scout Father and Son Cake Bake will be Thursday, Feb. 15 at the County Barn. The theme this year will be "Sports" and the judging will start at 7:00 and the auction at 7:30 with Ed Dear as auctioneer.

In Anglo-Saxon times, a "silly" person was one who was "blessed" or "innocent."



Potatoes refrigerated for a week may develop a sweet taste because some of their starch changes to sugar. To improve flavor, store them at a higher temperature for one or two weeks before using.

People once believed that if their palms itched they would receive money.

**ALLSUP'S**  
CONVENIENCE STORES

PRICES EFFECTIVE  
FEBRUARY 15-16-17-1979

SHOP AND SAVE AT ALLSUP'S

**PILLSBURY BISCUITS**

10c CAN

**HUNTS TOMATO SAUCE**

10c CAN

**FOOD SPECIALS**

**FOLGER'S FLAKED COFFEE**

13 OZ. CAN **\$1.89**

FROM \$0.00 TO \$200.00

**MONEY ORDERS**

**19c EA.**

**HOT COOKED FOODS**

**BEEF AND BEAN BURRITOS**

**FRESH COOKED BUY TWO GET ONE FREE**

**SPECIAL OF THE WEEK!**

SNOW DRIFT **SHORTING \$1.19**

3 LB. CAN

HUNTS **CATSUP 69c**

32 OZ. BOTTLE

BORDEN'S **ICE CREAM \$1.39**

1/2 GAL ROUND CTN.

BORDEN'S **YOGURT 69c**

2 8 OZ. CTN.

BORDEN'S **BUTTERMILK 49c**

QT.

**MIRACLE WHIP SALAD DRESSING 99c QT.**

**Legal Holiday**

**We will be closed Monday, February 19, 1979, in observance of George Washington's birthday**

**FIRST STATE BANK**

SPEARMAN, TEXAS 79081



# WANTED ADS

**CAPROCK MONUMENT CO.**  
Dealers of Georgia Granite, Georgia Marble, Colored Granite, & Drums.  
represented by  
**BOXWELL BROS. FUNERAL HOME**  
519 S. EVANS  
659-3802

Hansford County Planned Parenthood  
26S. Haney  
659-2483  
Spearman Mon.-Fri.  
8 a.m. to 12 noon  
30S-rtm

### SERVICES

**SERVICE:** Pits cleaned, wet or dry. Dragline or loader. Also, dozer, grader, carry-all service. Loc. Roy Mitchell, 806-733-2384, Grover, Texas, 79040.

Pee Wee's Plumbing Service. Roto-rooter, Acoustical Ceilings. 659-2811 or 659-3781.  
12-rtm

**KIRBY SALES & SERVICE** of Spearman, 912 S. Bernice. 659-2797.  
30-rtm

**WINTER RATES**  
Jan. thru March  
Steam Rinsevac Shampooer \$4.95 per day  
Call Gordon's Drug, 2141. After 7 p.m. & Sunday call 3437. 716 Cotter Drive

**NOTICE**  
Wallace Monument Co. Monuments, Curbing, Grave Covers  
Local Representative **LEONARD JAMESON**  
659-3406  
20-rtm

Alcoholic Anonymous meeting 8 p.m. Friday, Home Demonstration Club building, 305 N. Bernice. Phone 659-3181 for information.

Al-Anon meetings 8 p.m. Friday, Home Demonstration Club building, 305 N. Bernice in back room. Phone 659-3181 for information. Ask for Al-Anon.

**CARPET SHAMPOOING:** Dry foam method. Vinyl Repairs. Free estimates. Call 435-4305 after 5 p.m.  
**LESTER LEATHERMAN**  
Perryton, Texas 52-rtm

**CATTLE HAULING**  
Call Fred Van Buskirk - 2680 or Willis Randall - 2041.

Need a carpenter? Call Tommy Reger, Jr., 659-2174.  
12-rtm

### MISCELLANEOUS FOR SALE

**FOR SALE:** 60 large round bales of sudan hay. Lynn Davis, Morse, 733-2164.  
13S-2tc

**FOR SALE:** 1972 Ford Torino. 659-3966.  
13S-3tp

**FOR SALE:** 1975 Mazda Pickup, rotary, mag wheels, air, roll bar, stereo. Phone 733-2330.  
11-8tp

**FOR SALE:** 1972 Chrysler 4 door. Loaded. Also 1965 Ford Falcon 2 Door. Call 659-3684 after 5:00 P.M.  
8-rtm

**FOR SALE:** Stand By Electric Generators. Call Charles D. Smith, Perryton. 435-3781. 9S-rtm

Reduce safe & fast with GoBese capsules & E-Vap "water pills" Spearman Drug.  
12-5tp

**FOR SALE:** 3 Bed Room Double Wide Mobile Home. 1 1/2 Bath. Utility Room. Call 659-3292.  
8S-rtm

Reposessed Piano--Excellent Condition--Write Credit Manager Brier & Hale Music 424 N. Kansas Liberal, Kansas 67901. 13S-2tc

**FOR SALE:** A Photostat copy machine, now located in the office of Hansford County and District Clerk. Sealed bids will be accepted until 1:00 P.M., February 23, 1979. Bids should be sent to office of the County Auditor or County Judge. The right is reserved to accept or reject any or all bids.  
13S-2tc

**466 Acres**  
366 acres in cultivation, 1 good irrigation well, pump and motor. Good domestic well, and 40 x 60 ft steel building. 1/2 mineral rights on farm. Owner will finance. This farm is located 15 mi. N.W. of Spearman, Texas Call 806-935-4683, Harvey Real Estate, Dumas, Tex.  
14-2tc

### REAL ESTATE FOR SALE

**FOR SALE:** 3 bedroom house, new central heat and air, fully carpeted. New carpet in kitchen, dining room, living room and hall. Fenced backyard. Detached 15' x 40' garage with gas, water and electricity. \$27,000. Call 659-3631.  
12S-rtm

**FOR SALE:** Nice 4 bedroom brick home with basement, Corner lot. 910 Cluck, Gruver. 733-2520.  
13-4tc

**FOR SALE:**—Only 3 Residential Lots left. Extra deep. Excellent neighborhood. No flood problems. 1100 South Archer. All utilities in. Now is the time to buy. Sold separately or together. Call 659-3021 or write Box 522, Spearman.  
12S-rtm

**FOR SALE:** 6 lots needed for mobilhomes, on paved streets, good location south of Kenneth Street. Call Emmett R. Sanders, Realtor, 659-2516, night 659-2601.  
11-rtm

**FOR SALE:** Small tract just west of Spearman, surface only, contains 31.7 acres. Call for details. Emmett R. Sanders, Realtor, 659-2516, night 659-2601.  
11-rtm

**FOR SALE:** Brick 3 bedroom house with garage, central heat & air & storage, 1010 S. Barkley, call 659-2390.

**FOR SALE:** Quality throughout with room to roam in this delightful four bedroom home, choice location, large den-game room, formal living room with beautiful fireplace, two baths, storage space galore, plus basement-strom shelter, many other choice amenities for gracious living. Loan assumption available, quick closing. By appointment only. **EXCLUSIVELY with EMMETT R. SANDERS, REALTOR, 659-2516, nights 659-2601.**  
12S-rtm

**FOR SALE:** Extra extra nice 3 bedroom, 2 bath brick home, choice location on wide lot, large toolhouse, fenced yard, covered patio. This home is tastefully decorated, has nice carpet, and the curtains and drapes go with the sale. You must see this home to appreciate its fine condition, and this one you CAN AFFORD!!! Shown by appointment only, exclusively with Emmett R. Sanders, Realtor, 659-2516, nights 659-2601.  
14-rtm

**FOR SALE:** 1972 Ford Torino. 659-3966.  
13S-3tp

**FOR SALE:** 1975 Mazda Pickup, rotary, mag wheels, air, roll bar, stereo. Phone 733-2330.  
11-8tp

**FOR SALE:** Stand By Electric Generators. Call Charles D. Smith, Perryton. 435-3781. 9S-rtm

Reduce safe & fast with GoBese capsules & E-Vap "water pills" Spearman Drug.  
12-5tp

**FOR SALE:** 3 Bed Room Double Wide Mobile Home. 1 1/2 Bath. Utility Room. Call 659-3292.  
8S-rtm

**FOR SALE** approximately 1 1/2 acres on corner of Kenneth & FM 760. Property has partially framed 25 x 30 shop, now has sewer, and is reduced in price Call 659-3867 or 659-3880.  
49S-rtm

### HELP WANTED

**PART-TIME CLERK**  
Perryton  
Experienced in customer contact, cash transactions, posting, filing and reports necessary. Call Mr. Riggins at 435-4077 for appointment.  
13-2tc

An Equal Opportunity Employer.  
13-2tc

**CUSTOMER SERVICES REPRESENTATIVE**  
14-1tc

Seeking applicants with college degree experienced in customer contact. Should be able to work with construction and air conditioning contractors. Call Community Public Service Company at 435-4051.  
An Equal Opportunity Employer  
13S-2tc

**LADY** needed for church nursery during Sunday School, morning and evening services. Call 3220 weekdays from 9 to 4, evenings, 3054.  
13S-3tc

**NEEDED:** Full time director for Golden Spread Center. Apply to Orville Brummett, Spearman Drug. An Equal Opportunity Employer.  
13S-rtm

### LOST

**LOST:** Cat, gray & white, long hair 4 months old strayed from 901 Dressen. Call 3598.  
14-1tc

### CARD OF THANKS

The family of Jim Haden wishes to convey to friends and relatives their deep and sincere appreciation for the many expressions of love and concern during the passing of our husband, father, and grandpa. The calls, visits, food, flowers, prayers, and many other acts of kindness meant more than words can express. May the Lord bless and keep each one of you.  
Mrs. J. E. Haden  
Mr. & Mrs. B. E. Haden & Family  
Mr. & Mrs. C. L. Cunningham & Family  
14-2t

### LEGAL NOTICE

The Texas Department of Health has established, in accordance with the Federal Public Health Act, the current annual level of uncompensated services for Hansford Hospital, Spearman, Texas

to be that the facility does not intend to deny anyone admission to the facility or any of its services because of an inability to pay. The documents upon which the determination was based are available for public inspection at the Texas Department of Health, 1100 West 49th Street, Austin, Texas from 9:00 a.m. to 4:30 p.m. on regular business days. The level of services set out meets the presumptive compliance guidelines of the Federal regulation.  
14-1tc

**FOR SALE**  
Quality throughout with room to roam in this delightful four bedroom home, choice location, large den-game room, formal living room with beautiful fireplace, two baths, storage space galore, plus basement storm shelter, many other choice amenities for gracious living. Loan assumption available, quick closing. By appointment only. **EXCLUSIVELY with EMMETT R. SANDERS, REALTOR, 659-2516, nights 659-2601.**  
12S-rtm

**NOTICE TO ALL PERSONS HAVING CLAIMS AGAINST THE ESTATE OF PEARL W. CAYTON, DECEASED**

Notice is hereby given that Letters of Administration for the Estate of Pearl W. Cayton, were issued on the 12th day of February, 1979, in Cause No. 1572, pending in the County Court of Hansford County, Texas, to Martha Haden. The residence of such independent administratrix is Hansford County, Texas. Her post office address is 620 S. Endicott, Spearman, Texas 79081.

All persons having claims against this Estate which is currently being administered are required to present them within the time and in the manner prescribed by law. DATED This 12th day of February, 1979.

John L. Hutchison  
Box 506  
Spearman, Texas 79081

ATTORNEY FOR ESTATE  
14-1tc

### NOTICE

Feb. 14th thru Feb. 17th I will be open 4:30 P.M. to 6:30 P.M. Spearman Barber Shop  
13S-rtm

**OFFERED BY:**  
Emmett R. Sanders  
REALTOR  
REALTOR®  
111

Dwelling and store building, small detached apartment, on wide lot, ideal for professional office-dwelling combined.

150' x 140' commercial, zoned heavy retail, with 2 bedroom home and detached garage, terms available.

Lovely brick home on 11 acres only 5 minutes from Spearman shown by appointment only.

240 acre farm, one 6' well, on pavement 15 miles southwest of town, one-fourth minerals, owner will carry paper.

**EMMETT R. SANDERS**  
REALTOR  
659-2516  
659-2601 [nights] - 34S-rtm

### REAL ESTATE ED WHEELER

**HOMES-FARM COMMERCIAL**

906 King, Gruver, 3 bedroom, 1 bath, detached garage, fenced yard.

1006 S. Evans, 3 bedroom, 1 bath, new insulation and steel siding.

706 Steele Drive, 3 bedroom, den, 1 1/2 baths, fenced backyard.

1114 S. Haney - 3 bedroom, 1 bath with garage and fenced yard. Priced to sell.

Jerry Gee 659-3664  
Doris Beck 659-2618  
659-2074

### MISCELLANEOUS FOR SALE

**SOFA -SLEEPER** for sale - \$50.00 Call 659-2217 or 659-3110.  
14-2tc

**FOR SALE:** 1977 Chev. Camero, Type LT -Loaded excellent condition call 659-2000  
Chuck Eaton  
2t

**FOR SALE:** 1974 Chevrolet Impala Power Steering & Air conditioning Vinyl top Cruise Control Excellent Condition, Call 733-2180  
2t

**FOR SALE:** Nicely decorated 2 bedroom, 1 bath home. Corner lot. Fenced back yard. Quiet neighborhood. Appliances optional. Call 3802.  
14-2tc

**DIRECT FACTORY DEALER STOCKING OR NONSTOCKING**

**NATIONAL MANUFACTURER OF RECORD SEEKS PROGRESSIVE DEALER FOR YOUR AREA TO HANDLE SALES AND OR INSTALLATION OF PREFABRICATED ALL STEEL BUILDING- GRAIN STORAGE SYSTEM-COMLETE HOG AND CALF CONFINEMENT BUILDING**  
WE HAVE TOP QUALITY ASSURE (SMALL PRINT) COMPETITIVE PRICES PLUS (SMALL PRINT) SIX PLANTS GUARANTEE DELIVERY

SALES AND CONSTRUCTION EXPERIENCE NOT NECESSARY. OUR ENGINEERS PLUS DEALER TRAINING PROGRAM COVER TECHNICAL KNOWLEDGE NEEDED.

**COOP ADVERTISING PROGRAM PROVIDE (SMALL PRINT) CONTINUOUS BUSINESS AND PROFITS EARNINGS POTENTIAL EXCEEDS \$25,000.00/YEAR**

CALL MR JACKSON 1-800-255-2408 OR SEND RESUME INCLUDING TELEPHONE NUMBER.

BERRY BUILDING AND GRAIN SYSTEMS  
PO BOX 8304  
TOPEKA KS 66608

WE WILL SELL DIRECT UNTIL DEALER IS ESTABLISHED IN YOUR AREA

### FOR SALE




**FOR SALE:** Extra extra nice 3 bedroom, 2 bath brick home, choice location on wide lot, large toolhouse, fenced yard, covered patio. This home is tastefully decorated, has nice carpe, and the curtains and drapes go with the sale. You must see this home to appreciate its fine condition, and this one you CAN AFFORD!!! Shown by appointment only, exclusively with Emmett R. Sanders, Realtor, 659-2516, nights 659-2601.  
14-rtm

**TEXAS PRESS ASSOCIATION**  
PUBLICATION (USPS 509-660)  
SPEARMAN, TEXAS 79081  
213 Main Box 458 659-3434  
Published Weekly at 213 Main Street  
Spearman, Texas 79081  
Owner-Publisher.....William M. Miller  
Second Class postage paid at Spearman, Texas  
ANY ERRONEOUS REFLECTION UPON THE CHARACTER OF ANY PERSON OR FIRM APPEARING ON THESE COLUMNS WILL BE GLADLY AND PROMPTLY CORRECTED UPON BEING BROUGHT TO THE ATTENTION OF THE MANAGEMENT.  
SUBSCRIPTION RATE: Hansford, adjoining counties, combination with the Hansford Plainsman, \$16.40.  
Other points, \$14.40.

**For The Ultimate In STORM DOORS**  
Custom Built, Designed, And In Colors To Fit Your Home....  
Contact Howard Moyer at  
**Only Aluminum Industries**  
Gaymon, Okla. 114 W. 1st 405-338-6966 or 73942 338-6170

**Sell Herefords**  
Annual Production Sale  
12:30 P.M. Saturday  
March 3, 1979  
Selling 55 Bulls  
35 Bred and Open Heifers  
Call or Write  
For Total Performance Catalog  
**Sell Herefords**  
Booker, Texas  
Route 1, Phone 806/658/2253 Located 1 1/2 miles north on Highway 23

**SPIRITUAL LIFE WEEKEND**  
Gruver, Texas  
Sponsored By The  
**First United Methodist Church**  
Feb. 16 - 18  
The Rev. Dr. Ed Robb, Evangelist  
Gabriel, Music Group



**SCHEDULE:**

12 noon - Ladies' luncheon with Martha Robb (Church of Christ fellowship hall)	12 noon - Ladies' luncheon with Martha Robb (Church of Christ fellowship hall)
<b>Friday, February 16:</b>	
5:30pm - Covered dish supper (First Baptist fellowship hall)	7:00pm - SERVICE, Ed Robb preaching
7:00pm - SERVICE, Ed Robb (Church of Christ fellowship hall)	
7:00pm - SERVICE, Ed Robb preaching (First Baptist sanctuary)	
<b>Saturday, February 17:</b>	
7:00am - Men's breakfast with Ed Robb (First Christian Church fellowship hall)	6:00pm - "Gabriel" concert (First Baptist sanctuary)
	7:00pm - SERVICE, Ed Robb preaching (First Baptist sanctuary)

**A Christian Welcome To All!**



# Regional basketball information

Editors Note: This information is printed strictly for the local basketball fans, and does not in any way imply that either the Lynettes or the Gr-uver girls will be in the regional play-offs. They both have a long way to go, as well as the boys 1-AA winners the Perryton Rangers. But, it is dedicated to all of our basketball players and fans who have had such a splendid year.

We welcome you and your team to Lubbock, and if there is anything that we can do to make your stay more enjoyable, do not hesitate to let us know.

**1. WE SINCERELY REGRET THAT WORKOUT FACILITIES ARE NOT AVAILABLE, EITHER ON THE TEXAS TECH UNIVERSITY CAMPUS OR AT THE LUBBOCK MUNICIPAL COLISEUM.**  
This year our gymnasiums are completely scheduled for organized student activity and/or instruction classes and it simply is not possible to accommodate anyone for pre-tournament workouts.

**2. The clock in the Coliseum will be considered the official tournament time and all games will begin according to schedule.**

**3. No player will be permitted to begin a series with jerseys whose numbers are not on the program, unless advance arrangements have been made with the official scorer and the tournament manager. Players should not wear metal clips in their hair, rings, bracelets, or the like. EACH TEAM SHOULD BRING THEIR OWN PRACTICE BALLS.**

**4. The team listed on the top of each game will be considered the home team and will wear white jerseys. The team listed on the bottom will be the visiting team and will wear dark colors. Please observe this procedure, as it will be enforced rigidly. The "Home" team will sit on the north side of the official's table and the "Visiting" team will sit on the south side of the official's table.**

**5. A place will be reserved at each end of the scoring table for the participating teams. This arrangement is made for the convenience of the game officials, scorer, and coach. Throughout the tournament only players, coaches, and officials will be permitted on the gym floor. Please inform your local followers of this rule.**

**6. Teams will dress in those rooms as designated by a sign on the door with their town or school name. PLEASE DO NOT LOCK DRESSING ROOMS. HAVE A MANAGER SECURE ALL VALUABLES FOR YOUR TEAM.**

**7. If you know that your game is to be broadcast for you by one of your local radio stations or if they contact you about this, please advise them that no broadcast will be permitted unless that station signs a contract granting permission to broadcast by the University Interscholastic League. These contracts are available through the tournament directors. We repeat, no broadcast whatsoever will be permitted without signed contracts.**

**8. Please note that school bands cannot play at the Regional Tournament.**

**9. "Home" team fans are encouraged to sit on the west side and "Visiting" team fans are encouraged to sit on the east side. If cheerleaders are to be present, they should confer with the tournament director regarding policies related to their official behavior and floor area location. NO SIGNS ARE TO BE POSTED WITHOUT PERMISSION.**

If you follow these instructions, it will help us to make the tournament run smoother. Please do not hesitate to make any suggestions you have to the Tournament Director.  
James Teague, Director 742-3351 or 797-1417  
Ronnie Smith, Manager 742-3351

## Bowling News

TUESDAY NIGHT MIXED 2-6-79

Schneider Wld.	26	6
A-1 Automotive	22 1/2	9 1/2
Ideal	18	14
Baker & Taylor	17	15
Graves Wld.	16	16
Hansford Imp.	15	17
Channel 6	7	25
North Plains	6 1/2	25 1/2

**HIGH TEAM SERIES:**  
A-1 Automotive 2019  
Schneider Wld. 1913  
Ideal 1912

**HIGH TEAM GAME:**  
A-1 Automotive 719  
Schneider Wld. 717  
A-1 Auto

**HIGH MEN'S SERIES:**  
Ken Schneider 536  
Charles Elliott 530  
Jim Mercerq 503

**HIGH WOMEN'S SERIES:**  
Shirley Greenwood 572  
Diane Elliott 505  
Jewel McCalman 473

**HIGH MEN'S GAME:**  
Ken Schneider 223  
Charles Elliott 222  
Tommy, Reger, Jr. 200

**HIGH WOMEN'S GAME:**  
Shirley Greenwood 235  
Shirley Greenwood 193  
Diane Elliott 188

**PIN BINDUS 2-2-79** Millie Craig Secty

4-Tex Grain	51 1/2	28 1/2	26678
Cinderella	48 1/2	31 1/2	28920
Brock Imp.	46	34	26375
Super Service	44 1/2	35 1/2	27788
McClellan Grain	33	47	25346
L. M. W.	21	59	25509
Bowl Mor	37	43	26096
Vernon's	36 1/2	43 1/2	24594

**HI IND. GAME**  
Pat Hamilton 212  
Millie Craig 199  
Shirley Greenwood 189

**HI TEAM GAME**  
Super Service 554  
Super Service 508  
Cinderella 483

**HI IND. SERIES**  
Pat Hamilton 561  
Shirley Greenwood 528  
Patty Spoonmoe 492  
Penny Thomas 509

**HI TEAM SERIES**  
Super Service 1536  
Cinderella 1384  
Bowl Mor 1383



John Bishop is pictured above with Mrs. Billy Miller, as he presents Mrs. Miller with an old lamp top. Mrs. Miller collects all types of antiques (including husbands!)

**Certification of District Champions:** The last dates for certifying the district champions to the League Office are as follows:  
Boys' Basketball—all conferences February 17  
Girls' basketball—all conferences February 24

**TEAM INFORMATION BLANK:** TEAMS WINNING THE DISTRICT CHAMPIONSHIP MUST COMPLETE THE TWO ENCLOSED INFORMATION BLANKS AND MAIL ONE TO THE LEAGUE OFFICE AND ONE TO THE REGIONAL TOURNAMENT DIRECTOR (SEE REVERSE SIDE) BEFORE ADVANCING TO THE NEXT PLAYOFF ROUND. FAILURE TO SUBMIT THIS INFORMATION MAY RESULT IN SOME INCONVENIENCE TO YOUR TEAM.

**Regional Playoffs—Boys' and Girls' Conferences AAAA, AA, and B:** There will be a one game playoff on Monday or Tuesday following the district champion certification date. For example, in Region 1, District 1 plays District 2, 3 plays 4, 5 plays 6, and 7 plays 8. The winners will advance to the regional tournament on Friday or Saturday.

**Region III Conference AAAA Girls:** Will play one game on Monday or Tuesday and one game on Friday or Saturday to determine the Region III girls' champion. If three of the district winners agree, they may play a tournament on Friday or Saturday. The sites are to be selected by the teams involved.

**Regional Playoffs—Boys' and Girls' Conference AAA:** A regional committee composed of the regional director (see reverse side) and superintendents from the four winning teams will decide the playoff procedure. One of two procedures may be selected. First, a regional tournament may be held. Second, a playoff series may be scheduled (e.g., District 1 plays 2, 3 plays 4) and winners of these games play each other for the championship. In the case of a tie vote, a coin should be flipped. The committee may decide date and time if the tournament procedure is used. If a playoff series is used, the first round game must be played on Monday or Tuesday after the district champion certification date, with winning teams playing on Friday or Saturday. The sites are to be selected by the teams involved.

**Certification of Regional Champions:** The last dates for certifying the regional champions to the League Office are as follows:  
Boys' Basketball—all conferences February 24  
Girls' Basketball—all conferences March 3

A representative of each winning team should contact Bill Farney, League Athletic Director, or Bonnie Northcutt, Assistant Athletic Director, at (512) 471-5883 Monday morning prior to the state tournament for housing and workout arrangements.

**Police Protection:** Adequate police protection should be available regardless of whether the game is played on a neutral site or on the home court of one of the teams.

**Officials:** In Conferences AAAA, AA, A, and B, the officials for the first round games are to be secured by the two schools involved. The regional director will secure officials for the regional tournament. In Conference AAA, the regional committee may select the officials if the tournament procedure is used. The League Office will assign officials if an agreement cannot be reached.

# Now...7-Days



PRICES EFFECTIVE THRU FEB. 21, 1979. QUANTITY RIGHTS RESERVED. NO SALES TO DEALERS.

MON. -SAT.  
8a.m. -9p.m.  
SUNDAY  
10a.m. -7p.m.

**PRICES GOOD 7-DAYS**  
The special prices in our major food ad are good for 7 full days... so you save, no matter when you shop!

**PLAY TRIPLE PLAY WIN UP TO**

**CUDARY ROUND-UP**  
**Boneless Ham**  
**\$1.99**  
L.B. FULLY COOKED HALVES 3 TO 5 LBS. AVG.

**FRESH Pork Roast**  
**\$1.59**  
L.B. PORK SHOULDER BLADE CUTS

**FRESH FRYER THIGHS OR Drumsticks** 99¢  
**FRESH FRYER — GRADE 'A' Breasts** \$1.09  
**HEREFORD (40-CT. PKGS. 73") Corn Tortillas** 21¢  
**HEREFORD FLOUR Tortillas** 69¢

**COSTELLO'S SICILIAN Pizza** \$1.99  
**COSTELLO'S CHEESE Pizza** 89¢  
**COSTELLO'S PEPPERONI Pizza** \$1.69  
**GORTON'S PERCH OR Cod Fillets** \$1.89

**SLAB Sliced Bacon** \$1.09  
HICKORY SMOKED RANDOM WEIGHTS

**Boneless Chuck Roast**  
**\$1.79**  
L.B. U.S.D.A. CHOICE BUTCHER BLOCK BEEF

**BONELESS EXTRA LEAN Beef Stew** \$1.89 L.B.

REFRESHING — 32-OZ. BOTTLES  
**Coca Cola** 6 \$1.99 PLUS DEPOSIT  
PACK CARTON

ALL FLAVORS FRITOS OR CHEE-TOS  
**Corn Chips** 89¢ 68¢  
SIZE

**"MEXICAN FOOD FIESTA"**  
DEL MONTE MILD OR HOT **Taco Sauce** 2 7.25-OZ. CANS 89¢  
DEL MONTE **Refried Beans** 2 16-OZ. CANS 69¢  
DEL MONTE **Enchilada Sauce** 2 15-OZ. CANS \$1.00  
DEL MONTE SLICED OR WHOLE **Jalapenos** 7-OZ. CAN 59¢

**Charmin**  
BATH TISSUE  
**486¢**  
ROLL PKG.

**HEINZ Keg-O Ketchup**  
32-OZ. BTL.  
**93¢**

**DURKEE Chili Powder** 4-OZ. BOX \$1.09  
**ASSORTED Cookies** 13-OZ. BAG 98¢

**MEET THE WINNERS**  
**MAUDIE COOLEY WON \$100**  
**CAROLL JOHNSON WON \$100**

**SHOP IDEAL...WHERE THERE'S MORE VALUE IN**



# \$5000.00 Homestead Exemption Affidavits Due By April 30th

A \$5000.00 Residential Homestead Exemption is available to County Residents, according to Orville Latham, Spearman Independent School District Tax Assessor Collector.

Affidavits for the exemption will be distributed to each homeowner in the area, and are available at the Tax Assessors Office in the High School.

The Affidavit must be returned to the Tax Assessor Collector by April 30th, 1979. Latham told the Reporter and Plainsman that the deduction will be deducted from the appraised value of the homestead. It must, he said, be one's residential homestead.

Latham warned that any false affidavit would result in the application of the perjury laws of the State of Texas.

The School Tax official added "The Homestead Exemption is in addition to the over 65 exemption and disabled veteran exemption."

Mr. and Mrs. Gary Faries announce the arrival of a son Clinton Joe, wt 7 lb. 14 oz., length 20 inches, born February 8, 1979 at 7:30 p.m. Grandparents are Mr. and Mrs. Daniel Faries, Spearman, and Mr. and Mrs. Don Bybee, Lockney.



## City Seeking Chief

Policy that will lead to the appointment of a new City of Spearman Police Chief, with concomitant approval by the Council was agreed on at Tuesday's Council meeting.

Noting that he had already received three or four applications to date which actually merited consideration, City Manager Lenis Simpson was given the green light to continue advertising for the vacant position and then soon to select the most desirable candidates for an interview with Council members.

Simpson stated he would like to appoint a Chief as soon as possible, noting that without a strong leader improvements al-

ready made would be negated. The City Manager noted that he was anxious to secure the most qualified applicants as soon as possible, but assured the Council he would not act in haste.

Simpson noted that he had already advertised in some Panhandle city newspapers for the vacancy.

Police Sergeant Jimmy Jackson was named as Acting Police Chief following the recent resignation of Steve Wisniewski. It is believed that Jackson is a current applicant for the permanent chief's position.

The drawing for the Kenneth Wyatt painting will be held in the Gruber AAM office Thursday, Feb. 15 at 3 p.m.

# Residential homestead exemption

As a result of the passage of the Constitutional Amendment in November, 1978, a residential homestead exemption is now available to every homeowner for school tax purposes only. The exemption will apply on all single family residences that are owner-occupied. However, to receive the exemption, the homeowner must apply to the school tax office each year before April 30th. The exemption will be up to \$5,000. off the appraised value. This exemption is over and above the exemption given for over 65 years of age, and disabled veterans, and must be filed for on a different form.

tax office will be attempting to get the application to all homeowners in the district by mail in the very near future. This does not alter the fact that it is the property owners responsibility to make application, and the exemption cannot be granted without an exemption on file at the school tax office. The application may be filed either by personal appearance at the tax office or by mail on the form provided by the tax office.

"It is always with the best intentions that the worst work is done." Oscar Wilde

# Volunteers Working On History Book Mailing

A mailing list of several thousand names is being compiled by volunteer workers for the Hansford County History Book. Names on the book project mailing list will receive a letter in a few weeks explaining the book and how to submit the family story. Addresses include all present and former residents of the county known to the group from several list sources.

The mailing list is currently open to public inspection at the Stationmaster's House Museum. All interested are invited (and urged) to check the file to see if the group has missed anyone who should be included in the county's history.

Names may also be mailed to the Stationmaster's House Museum, 30 S. Townsend St., Spearman, TX, and volunteers will check to make sure those names are included and addresses are correct.

Because the Historical Society believes the history of Hansford County is to a great extent the history of the people who have lived and worked here, a primary section of the book will include family histories. Each family unit is entitled to a space of 500 words to tell their stories without any charge.

Whether you have lived in the county for a month or 60 years, your family story is wanted and needed. Just write it as if you were telling the story to a friend or relative.

Each family unit may submit up to three black and white photographs with the story. Every effort will be made to use at least one photo per family.

and more will be used if space allows.

The society expects there will be some confusion as to the "family unit" which qualifies for the free 500 words of history. Mom, dad and all the kids are a family unit. However, if one of the kids has gone off and started a family on their own, that is another family unit.

Generally speaking it would be safe to assume that members of the same immediate family who do not reside under the same roof are each a "family unit." The deadline has not been set for the receiving of the letters but it is expected to be within six weeks after the mailing has gone out.

Arrival of a letter is not necessary for submission of stories. They should be typed and double spaced if possible.

For more information, contact Ruby Saltness at the museum or any field representative working on the book.



Only one variety of mushroom is grown commercially in the U.S. It can range from dark brown to pure white. Differences are negligible, but the darker ones are firmer, better for skewering, less easily bruised and—some believe—more flavorful.

## W.I.F.E. Encourages Membership

W.I.F.E. met Tuesday morning, Feb. 6 at Martin's Steak Garden with Vice President, Molly Turner, presiding.

A report was given on the Wheat Producers meeting which was held to encourage and increase membership. The importance of The Wheat Producers and Wheat Producers Board was discussed including their influence of export of commodities and lobbying.

The Gasohol Plant at Hereford was also discussed. The members were urged to write Mr. Whitney Newton, III, Vice President of Holly Sugar Beet Co., Box 1052, Colorado Springs, Colorado to express their opinion and reasons to have a gasohol plant in this area. Included in these reasons are feasibility of having a plant near the many feed lots in this area that can use the protein rich gasohol waste. Also because of the grain producing capabilities in this area.

A tentative date to lobby in Washington, D.C. was set for Feb. 19-26. This will be a state organized trip. State W.I.F.E. President, June Saylor is working out the details and ask that anyone interested in joining them send word to her.

They discussed a trip to Austin to work with the State Ag Committee sometime in Feb. or March.

W.I.F.E. State President has ask each member to start a letter writing campaign to all U. S. Senators and Representatives. Each member was assigned a Congressman to which they are to write at least one letter a week.

The members have agreed to start meeting twice monthly with the next meeting being a

salad luncheon, Tuesday, Feb. 20 at 11:00 a.m. at the Home Extension Club Room. It is hoped that the luncheon will encourage and promote agriculture in the Hansford area. All farm wives and business people are invited and urged to attend.

There will be a brief meeting preceding the luncheon in which the W.I.F.E. members will update those attending on the purpose and progress of their organization.

## Brummett Makes Dean's Honor Roll

Terril Brummett, son of Mr. and Mrs. Orville Brummett of Spearman, has been named to the Dean's Honor Roll at Oklahoma State University, Oklahoma, for the 1978 fall semester.

To be listed on the Dean's Honor Roll, students must carry at least 12 credit hours, make a 3.0 grade point (B average) or better, and have no grade below C and no incomplete courses.

MARKETS	
Wheat	3.05
Mklo	3.65
Corn	2.45
Soy Beans	6.55
Barley	1.76
Anyhdrous	
Ammonia ton	\$135.00

# of Saving At Ideal FOOD STORES

**DOUBLE PAY AND BINGO**

**\$2,000**

**80,000 IN CASH TO BE WON!**

**DOUBLE PAY COVER 4 CORNERS & WIN DOUBLE THE AMOUNT**

ODDS FOR VALUE	ODDS FOR PRICE	ODDS FOR TICKET	ODDS FOR PRIZES
\$1.00	1	100	100
\$2.00	1	50	50
\$5.00	1	20	20
\$10.00	1	10	10
\$20.00	1	5	5
\$50.00	1	2	2
\$100.00	1	1	1

**REAL KRAFT Mayonnaise ..... 32-OZ. JAR \$1.13**

**ALL GRINDS Folger's Coffee ... 2 LB. CAN \$4.88**

**LAWRY Taco Shells. 20-CT. PKG. 89¢**

**DUNCAN HINES Brownies ..... FAMILY SIZE 23-OZ. BOX \$1.28**

**ELLIS GREAT WHITE NORTHERN OR BABY LIMA BEANS Beans ..... 3 15-OZ. CANS 89¢**

**HORMEL Chili w/Beans. 15-OZ. CAN 63¢**

**GREEN MARKET STREET**

**COLORADO ALL PURPOSE Russet Potatoes 10 LB. BAG 89¢**

**FANCY MEDIUM SIZE White Onions 3 LBS. FOR \$1**

**FANCY VINE RIPE Salad Tomatoes ..... 4-CT. PKG. 49¢**

**LARGE SIZE California Avocados ..... 3 FOR \$1**

**EXTRA Fancy Cucumbers ..... 3 FOR \$1**

**FAIRMONT Heath Bars 85¢**

**MEADOWDALE ALL FLAVORS Ice Cream. 1/2-GAL. CTN. \$1.09**

**FROZEN FOOD**

**ASSORTED Patio Dinners 58¢**

**Corn Tortillas ..... 2 9-OZ. PKGS. 69¢**

**Snack Tacos ..... 6-OZ. PKG. 83¢**

**Grape Juice ..... 16-OZ. CAN \$1.09**

**Cherry Pie ..... 48-OZ. BOX \$2.99**

**FRESH DAIRY**

**TASTY LOAF Cheese Spread 2-LB. BOX \$2.09**

**Colby or Cheddar ..... 10-OZ. PKG. \$1.48**

**Cheese Whiz. ..... 8-OZ. JAR 89¢**

**Sour Cream ..... 8-OZ. CTN. 89¢**

**Cottage Cheese ..... 12-OZ. CTN. 59¢**

**CALIFORNIA LARGE SWEET NAVELS Oranges 3 LBS. \$1**

**HEALTH & BEAUTY AID SPECIAL...**

**REGULAR, SUPER, SUPER PLUS O.B. Tampons \$1.53**

**CONCENTRATE OR LIQUID Prell Shampoo 5-OZ. TUBE OR 11-OZ. LIQUID \$1.73**

**EDYTHE POTEET WON \$500**

**ANN LEWIS OF ENID \$1,000 WINNER**

**STORE FOR YOU!... Ideal FOOD STORES**

**Food Stamps Buy More At Ideal...**

**We're having a STOREWIDE SALE**

**30% off on all ski clothing**

**10% off on all ski equipment**

**Olin, K2 Ski equipment**

**Clothing brands, Anada, White Stag, Sportscaster and Slalom**

**Pro Sports Center**

**319 N. Main Stratford, Texas**



# TO FILE OR NOT TO FILE...

Three incumbent City Council members whose terms expire this year are not ready yet to indicate completely whether or not they plan to refile for their Council position.

Each of the three told the Reporter Tuesday night that they had not as yet "completely made up their minds".

Incumbent Alderperson Gene Cudd did say that he "probably would refile for the April 7th Election date. Alderperson Frances Loftin and Alderperson Jim Nicholson each stated that

they had not as yet arrived at a firm decision.

Last day for filing for this year's City elections is March 7th.

City Council established the April 7th Election Date in keeping with the Texas Election Statutes Tuesday night and named Troy Sloan as Election Judge, and Helen Etter as Alternate. The election judge will have the privilege of selecting up to three Clerks to assist with the election duties.



Billions of bacteria may be formed from a single parent in 24 hours.



Abraham Lincoln snored.

## Eclipse

Texans should not look directly at the sun February 26, according to the Texas Society to Prevent Blindness. Although Texans will notice no visible difference in the day's brightness, a total solar eclipse will occur in a path from the Pacific Ocean crossing the northwestern United States. The eclipse will occur partially in virtually all the rest of the continental United States.

The solar eclipse will begin in Houston at 9:11 a.m. as the moon first touches the sun's upper right corner. The moon will hide 57.8 percent of the solar disk at 10:23 a.m. when the eclipse reaches its midpoint. The eastward moving moon will slowly pull away from the sun after mid-eclipse. At 11:41 a.m., the dark new moon will leave the sun's upper left corner.

Prevent Blindness recommends indirect watching as the only safe way to view the solar eclipse. The simplest indirect way is the "pinhole" method. Take two pieces of white cardboard, make a small hole in one, and with the sun at the back, focus the eclipse through the pinhole onto the second board. The size of the image can be changed by altering the distance between the cardboards. One may use the binoculars or a telescope as the projector, replacing the pinhole cardboard. With the sunlight at his back, a person should position the instrument over his shoulder with the eyepiece down so that the light passing through it focuses on the white cardboard.

Using either method, the circle of light on the cardboard will show the sun being slowly obscured by the moon as it passes between the earth and the sun. NEVER LOOK AT THE ECLIPSE THROUGH THE PINHOLE OR THROUGH THE BINOCULARS OR TELESCOPE. Photographers should also remember not to look at the sun through their camera viewfinder.

Houston area sun watchers can view the eclipse by means of closed circuit televisions at the Houston Museum of Natural Science. As part of the museum's free observing program, the Margaret Root Brown Solar Telescope will capture the sun's image and send it to monitors while staff members explain eclipse events.

Following the last total eclipse seen in the U.S. (March 7, 1970), 145 cases of eye injury were reported in a Prevent Blindness survey, 121 of them eclipse burns. Sixty percent of the casualties had looked at the sun directly with the naked eye. The remainder had tried to protect their eyes with various devices--sunglasses, totally exposed photographic negatives, smoked glass and welder's goggles.

Prevent Blindness is the only voluntary health agency solely concerned with preventing blindness through community service programs, public and professional education and research.

WED, MORNING GLORIES  
Judy Everson 1-24-79

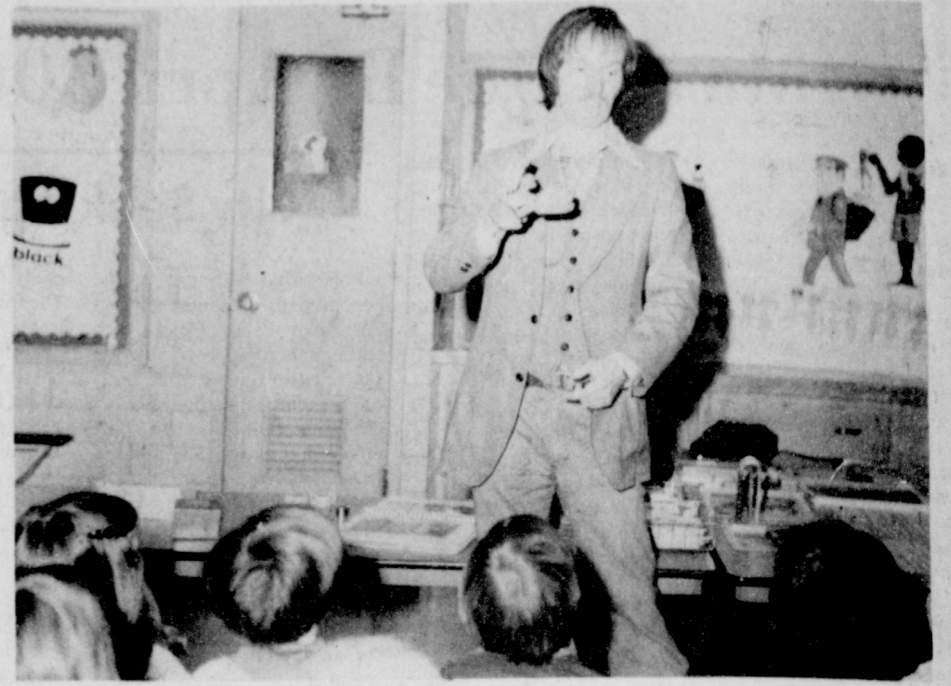
Gordons	50	26
1st State Bank	49 1/2	26 1/2
J.G.'s	46	30
Bunkhouse	44	32
Bakers Inc.	34	42
"N" Place	30 1/2	45 1/2
Dew Drop Inn	26	50
York Electric	24	52

IND. GAME		
Cindy Schneider	222	
Pat Hamilton	210	
Millie Craig	204	

IND SERIES		
Millie Craig	592	
Pat Hamilton	521	
Cindy Schneider	502	

TEAM GAME		
1st State Bank	518	
Dew Drop Inn	514	
Bunkhouse	510	

Eagles mate for life and return to the same nest every year.

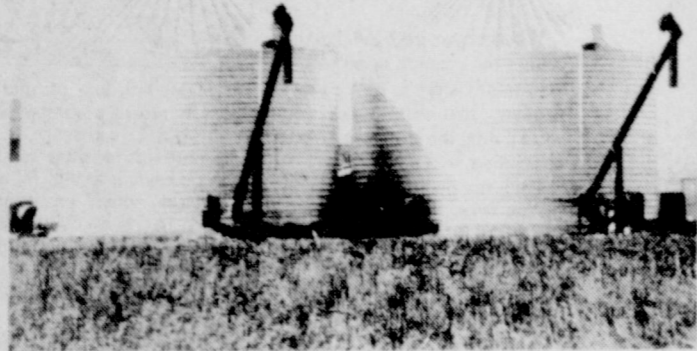


Dr. Baker D.D.S., of Spearman talks to Kindergarten students about Dental Hygiene. Anyone for painless dentistry ?



Some of the 36 Trainee Emergency Medical Technicians currently undergoing 140 Hours of Intensive Training !

# A system to grow with.



Whatever your present needs or future plans, we'll build you the system to start with and stay with. Behlen.

And we can show you how to take advantage of 7% simple interest, low down payment, investment credit, 8 year payback and 1 year's grace period to give you increased market flexibility.

See us for professional design and construction services. We wouldn't stake our reputation on any other system.

Do it right. Call Hallmark Builders collect at 806-355-9223.

HALLMARK

BUILDERS, INC.

8222 CANYON DRIVE AMARILLO, TEXAS



## Behlen builders do it right.

\*\*\*\*\*

**ONE SHOW**  
SUNDAY, MONDAY, TUESDAY,  
WEDNESDAY, AND THURSDAY  
AT 7:30 P.M.

**LYRIC THEATRE**  
PHONE 806-659-2812

**TWO SHOWS**  
FRIDAY AND SATURDAY  
AT 7:00 P.M.  
AND 9:00 P.M.

\*\*\*\*\*

\*\*\*\*\*

**NOW SHOWING**

a MASTERPIECE of ANIMATION...  
a BURST of FUN and ADVENTURE

Walt Disney's  
**Pinocchio**

TECHNICOLOR®

and a NEW animation featurette destined to become a DISNEY HOLIDAY CLASSIC

**THE SMALL ONE**

Presented by BUENA VISTA DISTRIBUTION CO., INC.

**FEB. 14 THROUGH FEB. 20**

**NEXT ATTRACTION**

The West was won by men and challenged by a woman.

**"Comes a Horseman"**  
A story of love and freedom.

A ROBERT CHARTOFF-IRVIN WINKLER Production  
An ALAN J. PAKULA Film

JAMES CAAN JANE FONDA JASON ROBARDS  
"COMES A HORSEMAN"

MUSIC BY MICHAEL SMALL Director of Photography GORDON C. WILLIS, A.S.C.  
Written by DENNIS LYNTON CLARK  
Produced by GENE KIRKWOOD and DAN PAULSON  
Executive Producers IRVIN WINKLER and ROBERT CHARTOFF  
Directed by ALAN J. PAKULA

READ THE DELL BOOK

**FEB. 21 THROUGH FEB. 27**

\*\*\*\*\*

**PELICULAS MEXICANAS**

RODOLFO DE ANDA

PELEONERO...

**EL BUSCABULLAS**  
A COLORES

AZTECA FILMS, Inc.

**SUNDAY FEB. 18 AT 2 P.M.**

\*\*\*\*\*

**Jabulous February Sale**

**JERRY'S C. B. SALES**

1206 S. Main Perryton, Tex. 435-3851

OPEN MON. - FRI. 1-6 P.M.

**ROYCE C. B. REG. '69' NOW \$59.95**

**MIDLAND C. B. REG. '69' NOW \$59.95**

**COBRA BASE REG. '139' NOW \$99.95**  
**DYNAMIKE XLR**

**WHISTLER RADAR DETECTORS REG. '179' NOW \$124.95**

**LIMITED SUPPLIES! WHILE THEY LAST!**



## Dentist visits kids

Dr. Baker and his assistant, Laura Mackie, visited the Kindergarten classes of Patty Harris and Cindy Sweeny, Tuesday Feb. 13th. They gave a program on Dental health care. They talked about what decay was and how the teeth can be taken care of by brushings and dental checkups.

By visiting the Dentist, who will remove the decay for a filling, his assistant demonstrated to the children how the filling material was mixed and Dr. Baker then filled a model tooth. He also showed pictures of badly decayed teeth so the children would know the importance of brushing and taking care of their teeth. Dr. Baker displayed bridges, partials, and dentures that people need from not brushing and keeping their teeth clean. Dr. Baker is at 712 S. Roland with Dr. E.E. Novak. This is a follow up of National Denture Health Week observed the previous week.

"Old friends are best."  
John Selden



## Jamie's Jabber

by Jamie Casdorff  
I understand that we have had a lot of cooperation in support of the DECA donation and I am glad that people care enough to support this really super organization and I'm proud to be a part of the organization! I'll repeat myself to the reason of this drive for funds: The club is working really hard so that they may send four members to Fort Worth to State Contest, so your donation is going to a real worthy cause! First prize: Sound Design Stereo sporting am/fm radio, 8-track recorder, 8-track player, turntable, 2-20" speakers, and bass, treble, and volume controls; it really is a super stereo and well worth

your donation. Second prize: 2 WILLIE NELSON tickets to his concert; this is also a worthy prize or your donation! So I hope that you help DECA earn money for their trip, it's well worth your while! Tickets are \$1 and you may obtain them from any DECA members!  
Due to personal conflicts I have quit my job here at the reporter so this is my last column!! THANKS FOR BEING READERS!!!!

## Wedding Announced

Debi Daniel will marry Craig Bryant April 21 at 1 p.m. in Littlefield, Texas at the First United Methodist Church.

Debi, daughter of Rev. and Mrs. Wesley Daniel formerly of Spearman, is a 1972 graduate of Spearman High School, and a 1976 graduate of West Texas State University. She is presently employed for the Wyatt Company, an actuarial consultant firm in Dallas.

The prospective groom of Waco, is a 1973 graduate of Sam Houston State University, presently works as production manager of Meisel Photochrome Corporation in Dallas.

The couple will reside in Dallas after the wedding.

## Bridge Clubs

The Saturday Night Bridge Club met Saturday, February 10 in the Albert Clark home. Those present were members Mr. and Mrs. Albert Clar, Mr. and Mrs. Jimmy Greene, Mr. and Mrs. Roy Flowers and guests Mr. and Mrs. S. B. Sheets.

Hi was won by Mr. and Mrs. Roy Flowers, low by Mr. and Mrs. Jimmy Greene and traveling by Donna Sheets.

The next meeting will be Friday, March 9 in the Roy Flowers Home.

The Short Bridge Club met Tuesday, Feb. 6 in the home of Mrs. Tom Sutton. Those attending included members Rosa Lee Butts, Helen Etter, Elizabeth Holton, Doris Ellison, Gene Cudd and guests Estelle Jackson and Betty Davis.

High was won by Mrs. Tom Sutton and second high by Estelle Jackson.

The next meeting will be Tuesday, Feb. 20 in the home of Helen Etter.

## Baptist News

The Marsha Key and Lilly Hunley Study Groups met together in general session at the First Baptist Church, Wednesday, Feb. 7. Cheri Jarvis presided and the prayer calendar was given by Mary Baker with Mrs. Arthur Adkinson leading in the prayer for the missionaries.

The program was given by Cheri Jarvis on "My Life, My Witness" with a round table discussion following in which all participated. The closing prayer was led by Cheri Jarvis.

The next meeting of the Lilly Hunley will be Feb. 21 at the church where they will continue their Bible study.

Those attending were: Mary Baker, Cheri Jarvis, Mabel Edwards, Sada Hoskins, Viola Hutton, Arthur Adkinson, Adie Novak and Edra Jones.

"Never injure a friend, even in jest."  
Cicero

## Golden Spread Club Meets

Golden Spread Club had a sumptuous pot-luck dinner on Tuesday, February 6 at 6:30 p.m. at the Golden Spread Center. Naturally, there were a number of eager beavers who arrived as early as 5:30 p.m. and there were three tables of games going before dinner began. The Hansford County Hospital Auxiliary were hostesses for the meal and served forty-one people.

Ed and Betty Freeman and Pearl Giddens were host and hostesses for the evening's activities. Nine tables of dominoes, forty-two, eighty-four, pitch and skip-bo completed the evening's entertainment.

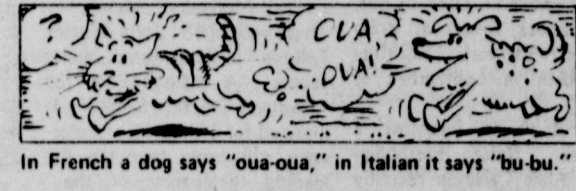
Golden Spread Club is an organization open to anyone who is fifty-five years of age or older without discrimination as to sex, race, ethnic background, religion, denominational preference, color, or political affiliation.

**YOU ARE INVITED TO A wedding shower honoring Mrs. Chris Randall (nee, Karen Barber) Friday, Feb. 16, 1979 7:00 - 8:30 P.M. 403 S. Bernice**

**HOSTESSES**

Mrs. Clois Baker Mrs. Roy Nollner, Jr. Mrs. Tommy Barber Mrs. Cecil Fryrear	Mrs. James G. Cook Mrs. Pete Vera, Jr. Mrs. Rob Barber Mrs. Floyd Dry
--	--

135-2tp



## Notice

The Spearman Post Office will be closed Monday, February 19, in observance of Washington's Birthday. No deliveries will be made on city or rural routes.

## LEGAL NOTICE

Hansford County Commissioners Court will receive bids until 1:00 P.M., Friday, February 23, 1979, on 2 new 1979 automobiles with trade-in of one 1975 Ford Granada, one 1977 Pontiac, and one 1978 Dodge. Bids will be opened February 26, 1979, at the regular Commissioners Court meeting.

Specifications are available at the County Judge's office or the County Auditor's office in Hansford County Court-house.

The Court reserves the right to accept or reject any or all bids.

*Roy L. McClellan*  
Roy L. McClellan  
Hansford County Judge



Performance proves...

# The top 8 corn hybrids on the Irrigated Plains are all from Pioneer.

That's a pretty bold claim, we admit. But in farmer's fields, county agent test plots, wherever they're grown, these Pioneer brand corn hybrids consistently out-perform competitive hybrids year after year. Each hybrid has its own particular strong points that make it especially well suited for certain environmental and management conditions. When thoughtfully selected and properly managed to meet the conditions, each of these

hybrids delivers top performance... winning performance that's head and shoulders above the competition.

Don't take our word for it. Ask your Pioneer dealer about yield data in your area for the last several years and see for yourself. The consistent performers... the top 8 performers are all from Pioneer!

**Short Supply!**  
**3195**

High-yielding, full-season powerhouse! 3195 gets off to a good start with high seedling vigor, then makes the most of High Plains growing conditions. High test weight grain is hard textured and dries down fast. Ideal for grain or silage.

**NEW**  
**3183**

Contest winning yield potential with excellent disease tolerance makes 3183 an ideal companion for 3184. It also has excellent seedling vigor plus good standability and stay-green qualities.

**3305**

A silage grower's dream come true (even if your plans change mid-season)! Tall with good standability and a high grain-to-stover ratio. Adapts well to the high plant populations required for top silage yields. And if your plans change, excellent grain yields make it a profitable grain crop, too.

**Short Supply!**  
**3184**

Steady corn maker, popular for excellent yields and consistent performance. Strong stalks, good roots provide outstanding standability.

**3780**

The corn you can manage almost like sorghum. Total fertilizer, water and insecticide requirements similar to sorghum. Maximum water use period makes it an ideal companion crop to cotton. Yield average of more than 7,800 lbs./A in four years of High Plains production at 96 locations.

**NEW**  
**3311**

A new hybrid you can trust like an old friend! It delivers top yields and is an outstanding companion for 3195. It silks earlier than 3195 and performs better under stress.

**3541**

Vary early silking, a long kernel fill period, and fast drydown help 3541 produce extremely high yields for its maturity. Give 3541 the management it needs, and it could easily be your top income producer. Excellent standability, ear retention and head smut tolerance.

**3360**

Plant this one for your banker! It has the consistency to be the high-yielding workhorse hybrid you can rely on. Outstanding early season vigor. Excellent for silage on the Irrigated Plains.

Ask your Pioneer dealer about them **NOW.**



PIONEER HI-BRED INTERNATIONAL, INC.  
Southwestern Division  
Plainview, Texas

The limitation of warranty and remedy attached to each bag of Pioneer brand seed is part of the terms and conditions of the sale thereof.

Registered trademark of Pioneer Hi-Bred International, Inc. Pioneer is a brand name, numbers identify varieties. P1979-79

Here's Just One Example:

## 1979 JEEP CJ-5 RENEGADE

- ★ Arrowhead Silver
- ★ Denim Seats
- ★ 258 Straight 6 engine
- ★ Wide tires & wheels
- ★ 3-Speed
- ★ Free-wheeling hubs
- ★ Draw Bar
- ★ Radio
- ★ Heavy duty cooling
- ★ Steering damper
- ★ Removable carpet
- ★ Blue denim soft top



Stock No. 1158

OUR SALE PRICE **\$6803<sup>24</sup>** YOU SAVE **\$785**

# JIM MOORE BUICK, AMC/JEEP

"The Panhandle's Newest Volume Dealer"

223 W. 5th GUYMON, OK. 338-8411



# Ed Robb Crusade

The Gruver United Methodist Church, in cooperation with the First Baptist Church of Gruver, is sponsoring a Spiritual Life Weekend, with Dr. Ed Robb, nationally-known Methodist evangelist, and the newly-formed and highly sought-after musical group "Gabriel," from Arlington, Texas. (see enclosed biographies)

Everyone is invited to attend any or all of the Spiritual Life Weekend this February 16-18.

Edmund W. Robb is an evangelist in the United Methodist Church. After almost three years as pastor of the 2,200 member St. Luke's Church of Lubbock, Texas, Mr. Robb returned to the work of full-time evangelism in September of 1976.

Mr. Robb is foremost a preacher. United Methodist Bishop Alsie Carleton recently declared, "As pastor of St. Luke's, Dr. Robb demonstrated the fact that people today are hungry for positive, Biblical preaching."

"There is no substitute for preaching," according to Mr. Robb. "One reason for our nation's moral breakdown," he insists, "is our current lack of vital, prophetic preaching."

Mr. Robb's preaching ministry has carried him to 40 states and 39 countries. He has frequently traveled abroad preaching the Good News of Jesus Christ in such countries as Brazil, Chile, India, Japan and Indonesia. Asked why he bothers to preach in dirty villages in India or freezing outdoor weather in southern Chile, Mr. Robb quickly answers, "Why should any person be privileged to hear the gospel more than once, until all have heard it?"

Since the beginning of his ministry in 1946, Mr. Robb has had keen interest in "the church beyond the local church." In 1966 he participated in the World Congress on Evangelism (Berlin, West Germany); and in 1974 he was an official participant in the International Congress on World Evangelization (Lausanne, Switzerland). He has served on the Executive Committee of the Council on Evangelism of the United Methodist Church. In 1977 he was an official participant of "The Consultation on Evangelical Concerns in Atlanta, Georgia."

But Mr. Robb has never neglected the local "body of Christ." He effectively pastored churches for over 20 years. And according to Bishop Alsie Carleton, "During the two years and eight months of his pastoral leadership at St. Luke's, more than 800 members were received, attendance at worship and Church School increased dramatically, and financial support of all the causes of Methodism was generous..."

Mr. Robb is past chairman of Good News - a national organization of United Methodists for Scriptural Christianity - which Billy Graham says, "...represents one of the encouraging signs for the church fulfilling its evangelistic mission, under the Bible's authority and the leadership of the Holy Spirit..."

Journalism is a primary interest to Mr. Robb. As executive secretary of the Ed Robb Evangelistic Association, he

publishes "Challenge to Evangelism Today," a quarterly religious publication with a circulation of 20,000. He has also authorized three books and had articles appear in several national magazines, including "Christianity Today," "Good News" and "The Herald."

One of the ministries of the Ed Robb Evangelistic Association is A Fund For Theological Education of which Mr. Robb serves as chairman. This organization is dedicated to theological renewal within The United Methodist Church. It now sponsors ten Ph.D. candidates who plan to teach in United Methodist schools. There will be 15 "John Wesley Fellows" in the program in two years. A colloquy on the "Recovery of the Sacred" is planned for 1979. This conference will bring together the leading theologians of the Western World.

In 1972 Asbury Theological Seminary conferred an honorary doctor of divinity degree on Mr. Robb.

Mr. Robb is the father of five children, with a son and son-in-law in the United Methodist ministry. He lives a simple lifestyle with his wife on their family farm near Marshall, in the piney woods of East Texas.

"It is time we evangelical Christians set an example by the simplicity of our lifestyles," Mr. Robb stated.

"We must become aware of our responsibilities toward this planet and its people. Our consumer-mad society is quickly depleting earth's resources. We are polluting our streams. We are poisoning our air. We are disfiguring our environment."

"In the name of commercialism we may be destroying God's earth!" Mr. Robb warns. Preacher...journalist...church leader...farmer. But, most of all, Mr. Robb wants to be known simply as "a sinner saved by grace."

## Christian music

Two young men, Jeff Walter and Robin Lyle, comprise the group, performing an innovative, contemporary brand of Christian music. Their song, "Time," was selected the winner of the 1978 national song writing contest sponsored by Word Music, Inc. This, and other compositions by Robin Lyle, are helping attract more and more attention to Gabriel in the world of Christian music.

"We don't want to be known as mere 'entertainers'," Lyle comments. "We'd like our music to have a genuine, lasting effect on the lives of our listeners. The message is the most important thing."

From a strictly musical standpoint, Gabriel is certainly qualified to be in "the business." The duo can be compared favorably with any of the better popular groups on the contemporary scene. With a tight vocal blend and unique piano stylings, Gabriel has provided musical presentations for church meetings, revivals, camps and retreats, as well as in the

## Wheat and feed grain program

Intentions to participate in the 1979 wheat and feed grain program may be filed at the Hansford County Agricultural Stabilization and Conservation Service (ASCS) beginning Feb. 15.

"Gabriel's music is intended to announce the good news of God's love," adds Walter. We selected the name because the angel, Gabriel, was sent to announce (to Mary) the coming of the Messiah to the world. We want to do that too -- tell people, through our music, that Christ can still come to them. And we have a good time doing it!"

Jeff and Robin live in Arlington, Texas, with their wives, Teri and Jill.



The electric stove was invented by William S. Hadaway in 1896.

## Rho Rho Sorority Meets

Rho Rho Sorority met Thursday, Feb. 8 in the home of Penny Ralston. The Valentine Dance was discussed. It was decided to sponsor the Senior Citizen any month available.

The program given by Marilyn Cline, was "Teaching Others." Those attending were Jackie Pearson, Penny Ralston, Ka-

grain for harvest in 1979 are eligible to participate.

The program requires that participants set aside acres from production to be eligible for loans on any crop other than sugar, deficiency and disaster payments and participation in the reserve. A 20 percent set-aside requirement is contained in the wheat and barley program. The corn and sorghum program contains 10 percent set-aside and a 10 percent diversion. According to Chan-

dler, participating farmers will receive voluntary diversion payments on corn and sorghum.

"By participating in the set-aside program, producers help prevent an excessive buildup of wheat and feed grain stocks which causes low market prices," the ASCS official said. Details of the 1979 program may be obtained from the local ASCS office. The sign-up period ends April 16.5

TEAM SERIES	
1st State Bank	1499
Dew Drop Inn	1386
Bunkhouse	1389

Gordon's WED, MORNING GLORIES	
Judy Everson	1-31-79

Gordons Drug	53	27
1st State Bank	51 1/2	28 1/2
J.G.'s	49	31
Bunkhouse	46	34
Bakets Inc.	36	44
"N" Place	31 1/2	48 1/2
Dew Drop Inn	27	53
York Elect.	26	54

TEAM GAME	
Gordon	509
J.G.'s	492
"N" Place	485

TEAM SERIES	
1st State Bank	1332
Gordon	1332
Bakets Inc.	1330

IND. GAME	
Judy Everson	244
Sheryl Meek	191
Cindy Holton	190

IND. SERIES	
Judy Everson	523
Sheryl Meek	510
Cindy Holton	462

## Display of the Month

Marina Gauder's cross collection is the Display of the Month at the Hansford County Library.

Marina's interest in starting a collection of crosses began when she found a mother-of-pearl cross while arrowhead hunting in the Taos, N.Mex. area.

Her collection includes a great variety of crosses made from silver, oqld, abalone, wood, copper, mother-of-pearl, opal, agate, and blown glass. They originated in many places, including Peru, Greece, Africa, Spain, Jerusalem, Mexico, and the Indian Southwest.

Marina is originally from Taos, where her great grandfather was a priest. She now resides in Spearman.

**WIN YOUR SHARE OF 25 MILLION S&H GREEN STAMPS**

**\$135,554 IN CASH**

LUPE MONTALVO WON \$1,000 CASH!

**STA-BINGO DELIVERS**

**MARYLAND CLUB COFFEE**

2 LB. CAN \$3.97

1 LB. CAN \$2.29

**KLEENEX DISPOSABLE DIAPERS**

12 CT. TODDLER'S \$1.59

**STAYFREE MAXI PADS**

SUPER 12 CT. BOX 89c

**COFFEE MATE CREAMER**

16 OZ. \$1.29

**FINE FARE FABRIC SOFTENER**

40 CT. SHEETS \$1.39

**NESTLE COOKIE MIX**

89c

**KOUNTY KIST WHOLE KERNEL GOLDEN CORN**

12 OZ. \$4.11

FOR

**CASSEROLE PINTO BEANS**

2 LB. BAG 49c

**RANCH STYLE CHILI**

WITH BEANS 15 OZ. CAN 59c

**STA-BINGO DELIVERS**

**KOUNTY KIST PEAS**

3 17 OZ. CANS 89c

**UNITED GRADE "A" EGGS**

LARGE 69c

**SUNSHINE COOKIES**

VIENNA FINGERS 19 OZ. 89c

**TOWN HOUSE CRACKERS**

1 LB. BOX 93c

**COMSTOCK PIE FILLING**

APPLE 69c

**GLADIOLA POUCH MIX**

6 1/2 OZ. 5 \$ 1

**HUNT'S TOMATO JUICE**

46 OZ. CAN 2 \$ 1

**PRODUCE**

**WINEAP APPLES**

3 LB. BAG \$1

**VALENCIA ORANGES**

4 LB. BAG

**CUCUMBERS**

LONG GREEN SLICERS 2 FOR 49c

**RUSSET ALL PURPOSE POTATOES**

10 LB. BAG 89c

**SQUASH**

YELLOW OR ZUCCHINI LB. 49c

**NEW AT**

**CLIFFHANGERS RESTAURANT**

**CATFISH FRY \$3.50**

Hush Puppies Cole Slaw  
Pinto Beans Hot Rolls  
Coffee & Tea

From 6:00 p.m.-9:00 p.m.  
**EVERY FRIDAY NIGHT**

ENCHILADAS Salads  
Pinto Beans Tostados & Hot Sauce \$2.85  
Coffee & Tea

From 11:00 a.m.-2:00 p.m.  
**EVERY WEDNESDAY**

**MANAGER - JOYCE KEETCH**  
**COOK - CHARLENE HAMILTON**



**Peggy's Pointers**

Peggy Winegarner  
Co. Extension Agent

Wood floors need special care to retain their natural beauty. For patches of dirt that cannot be removed by dry mopping or rubber burns from friction between rubber footwear and the floor, rub the spot lightly with fine steel wool moistened with turpentine or paint thinner. Always work in the same direction as the wood grain when using steel wool. For stained or very dirty wood floors, apply a heavy layer of liquid, solvent-based wax to a small area. Allow it to soak for five minutes, then rub thoroughly with No. 00 steel wool. Then wipe dry to remove all dirt. Repeat this process if necessary.

T.E.H.A. -- Texas Extension Homemakers' Association held a District Meeting Tuesday, February 6, at Borger. Local TEHA Chairman, Mrs. B. A. Byers and Council Chairman Mrs. Dan Ralston, accompanied

me to Borger. We planned the workshops for the District I TEHA meeting to be held March 22 in Wellington. They will be on Safety and Family Life topics. Also we received training for county responsibilities.

Sutphen's was a nice meeting place as we all enjoyed their tasty buffet lunch!

\*\*\*\*\*  
4-H PARENT - LEADER'S ASSOCIATION met Monday, February 5 in the Spearman Clubroom. Officers Mike Garnett and Linda Jarvis presided. The group made decisions concerning County 4-H Camp, fund-raising for award trips, and Stock Show concession stand responsibilities.

A countywide 4-H camp was set for August 13-15 at Ceta Canyon, Texas. 4-H families will be invited to attend.

Hansford County 4-H will sponsor a bake sale in April and May with funds used for 4-H Special Awards trips.

Parents and leaders attending were: Mr. & Mrs. Lewis Henderson, Mrs. Bob Farr, Mrs. Dee Allen, Mrs. Duane Loomis, Mrs. Lloyd McWhirter,

Fred Groves, Mr. & Mrs. Burt Williams, Mr. & Mrs. Britt Jarvis, Mr. & Mrs. Mike Garnett, Dr. & Mrs. Tom Latta, Mrs. Bob Hohertz and Mrs. Burl Buchanan.

**4-H Leather Project Set**

Hansford County 4-H will offer a basic leatherscraft project for any interested youth age 9-12.

Meetings will be held 9:00 a.m. to 12:00 Noon at the Spearman County Barn, February 17, 24 and March 3, 1979.

Larry Porter of Spearman will be the project leader. He is requesting all previous project participants bring the project they want to make this year (belt, billfold, etc.) to the first meeting. For beginners, Mr. Porter said they may want to purchase the beginners leatherscraft kit in Guymon or Amarillo. He will be happy to answer any question you have concerning tools or project materials. Call

him at 659-2308. You may also direct questions to Peggy Winegarner, County Extension Agent -- 659-2030 or 733-2901.

4-H projects are open to all youth age 9-19 regardless of race, sex, religion, economic level or national origin.

**Girl Scout News**

Brownie Troop #129 met Thursday, Feb. 8 at the Girl Scout Hut. The girls made Valentines for their parents. Lisa Love served refreshments to Pam Ring, Pam Dean, Cindy Elliot, Trica Shedeck and leaders Carolyn Ring and Betty Love.

The next meeting will be Wednesday, Feb. 15 with Pam Ring furnishing refreshments.

Brownie Troop #99 met Monday, Feb. 5 at the Girl Scout Hut. The girls made Valentines and planned a Valentine party for the next meeting.

Refreshments were served by Melissa Beck to Melissa Bullard, Julie Coultiss, Sherry Hall, Vickie Hamilton, Misha

Lesly, Jan Crawford, Beatrice Lozano, Jennifer Reimer, Kathy Vanlandingham, Patti Younger and leaders Vicky Bullard and Lynda Hendricks.

**Arts & Crafts Guild News**

The Arts and Crafts Guild met Friday, Feb. 9 in the home of Mrs. Fred Hoskins. Those present were Mmes. Bill Gandy, P. A. Lyon, Sr., Bill Russell, Clay Gibner, Joe Traylor, Nolan Holt, Ned Turner, Deta Blodgett and hostess Fred Hoskins. The next meeting will be in the home of Mrs. Deta Blodgett Friday, Feb. 16.

**Ramblin rodeo revues**

Larry Mahan, 6 times world champion all-around cowboy, will appear at the Panhandle State University annual Spring Banquet on February 22. Mahan will speak at the dinner, to be held at the Guymon Elks Club at 7:00 p.m. After the

dinner, Mahan's five man group, the Ramblin' Rodeo Review, will play for dancing and listening enjoyment.

Tickets for the dinner and dance will be \$12.50 per person and will be at the On West Western Wear store in Guymon, or can be reserved by calling the PSU Chemistry Department, 405-349-2611, Extension 254. Deadline for purchasing tickets is noon, Wednesday, February 21.

"Life is a jigsaw puzzle with most of the pieces missing."  
Anonymous

**Bridge Club**

Mrs. Faye Lynch was hostess for Hi-Lo Bridge Club Thursday evening in her home.

Mrs. Bill Gandy had high score and Mrs. Thelma Scott had low.

Enjoying dinner and bridge were members, Mmes. Gertrude Archer, Leonard Jameson, Vi Whitson, Thelma Scott, Carrie Marie Berry, Bill Gandy, and a guest, Verna Gail Keim.

**You name it**

I attended the American Agriculture meeting held at the YMCA Building Monday night. The program was given by those who had attended the Tractorcade in Washington, and Dwight Hutchison, who stayed in Spearman and kept the office open, acted as "Master of Ceremonies" for the occasion.

All of those who drove tractors through from Amarillo to Washington spoke at the meeting. Roy Dale Underwood stated that they all got through "safe and sound" and this of course is a miracle in itself. The public did not start coming out to meet the Tractorcade in large groups until they got to Tennessee. From Tennessee on, people encouraged the farmers to "give em hell!" Also, it was mentioned that several "free feeds" were held for the farmers, including two in Oklahoma, one in El Reno and one in Sallisaw.

Kurt Shedeck said he wouldn't sell his experiences as a tractorcade driver for a million dollars. Kurt made mention of the fine food that was prepared by local people, and sent along on the tractorcade in deep freeze units. Kurt was impressed with the way that the tractorcade was surrounded as soon as it hit the mall in Washington. Actually the damage to the parks in D. C. are exaggerated by the press, according to the tractorcade members. Actually some 15 tractors were used to help clean the snow off of the streets during the heavy snows. One tractorcade member stated that he felt that the farmers and policemen were getting ready to have a terrible conflict when the heavy snow began falling, and this seemed to "cool" tempers down.

It was also mentioned that Iranian students rioted on several occasions in Washington, and this hardly made the "headlines" in the paper, whereas the farmers received much unfavorable publicity everytime they would start a tractor. Roy Dale Underwood and T. O. Leslie were the fuel "samplers" for the Tractorcade, and they spent most of their time hunting fuel for the Spearman-Gruver-Perryton tractors. They would get "lost" at different towns, and would make all kinds of deals for fuel! It was also rumored that Jesse Frances and Chalmers Porter broke a fire hydrant while "racing" their tractors on the mall in Washington, but of course this isn't true!

Many of the farmers at the meeting Monday night in Spearman, testified that they were proud to have been a member of the Tractorcade and it was a moving experience to be a part of history.

On behalf of this newspaper and all of the people of Spearman, we would like to thank this brave band of farmers who made the Tractorcade to Washington. Many businessmen

tend to forget that when the farmers quit, the main street in Spearman will also quit! The Chamber of Commerce and every organization in Spearman is warned that when these wells in the Ogallala formation shut off for good, every businessman, every property owner, and every person in the area will suffer. Let's all get behind these farmers. Not necessarily to save the farmer, but to save "our business" in the Ogallala area. This is still the greatest place in the world, but as soon as Chicago quits using our gas, and we run out of water, our area will be in a jam; but if we join in helping the farmer make a decent living, our town will prosper!

Editors note: The local editor spent a couple of days in the Hansford Hospital last week, and he would like to take this time to thank all of the pretty nurses, the entire staff at the hospital, and Dr. R.L. Kleeberger, M.D. for their wonderful treatment while in the hospital. The only way you can realize that Hansford Hospital is the best hospital in the U.S. is to spend a few days in any hospital in the U.S. and compare it with Hansford Hospital. It is the best.

The Editor, W.M. Miller

**Notice**

Texas taxpayers had another \$45 million added to their "savings account" last week when State Land Commissioner Bob Armstrong and the School Land Board concluded the most productive sale of mineral leases to oil and gas companies in the state's history.

The \$45 million was the cash in bonuses paid by companies for the right to drill for oil and gas on state-owned land--much of it in coastal waters. The previous high was \$39.2 million in 1965.

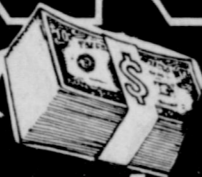
The bidding also produced another record--for the largest single bid. Houston Oil & Minerals Corp. set that record by paying \$4,166,294 in premiums to obtain a lease on a Gulf of Mexico tract off Matagorda County. In all, about one-third of the 1.2 million acres offered for lease by the state attracted successful bidders.

"This record-high total of bonuses is more evidence that oil and gas exploration in Texas is hot and heavy," Armstrong said.

"The people who benefit most are our taxpayers, because they will have this \$45 million in a 'savings account' during the years to come. These funds will be added to the nearly \$2 billion we have in our Permanent School Fund, where they will immediately begin drawing interest and producing revenue to finance public schools in Texas. Every dollar in revenue produced by the Permanent School Fund is a dollar we don't have to raise from taxes."

**BINGO**

52 WAYS TO WIN  
Play 4 games at the same time!  
WIN \$1000, \$100, \$25, \$5, \$2!



**\$135,554**  
in cash prizes

THOUSANDS OF INSTANT WINNERS

WIN UP TO 5 BOOKS STAMPS

**CHUCK STEAK** BLADE CUTS OF BEEF **\$1.19** LB.

**CUBED STEAK** WASTE FREE BEEF **\$2.39** LB.

**BONELESS STEW** EXTRA LEAN CUBES OF BEEF **\$1.79** LB.

**PLAINSMAN FRANKS** 2 LB. BAG **\$2.49**

**SMOKED SAUSAGE** 12 OZ. **\$1.39**

**STA-BINGO WINNERS**

**E. R. Robinson**

**Louise McLain**

**David Dodson**

**GROUND BEEF** FRESH FAMILY PACK **\$1.19** LB.

**TYSON'S CHICKEN LIVERS** 8 OZ. PKG. **39c**

**BLUE BONNET HENS** 5-7 LB. AVG. **69c** LB.

**HEINZ HOME STYLE GRAVY** BROWN, ONION, CHICKEN, MUSHROOM 2 12 OZ. JARS **89c**

**KRAFT DINNER** MAC. & CHEESE 14 OZ. **79c**

**FINE FARE TOMATO SAUCE** 8 OZ. CAN 5 FOR **\$1**

**LIQUID 12 OZ. JOY SALAD OIL** 48 OZ. BTL. **\$1.69**

**FINE FARE MAYONNAISE** QT. JAR **\$1.09**

**BELL WHIPPING CREAM** 8 OZ. 2 FOR **89c**

**BELL HALF & HALF** 16 OZ. 2 FOR **89c**

**BELL COTTAGE CHEESE** 24 OZ. **\$1.09**

**FINE FARE OLEO** PURE CORN OIL 1 LB. **59c**

**MR. G CRINKLE CUT POTATOES** 2 LB. **49c**

**FISHER BOY FISH STICKS** 2 2 LB. **89c**

**PATIO MEXICAN DINNER** **59c**

\*FIESTA \*COMBO \*MEXICAN

**MANAGER'S SPECIAL**

Borden's ICE CREAM or SHERBERT 1/2 gal. **\$1.39**

GLEEM II HEALTH & BEAUTY AIDS TOOTH PASTE 7 OZ. **98c**

5-DAY ROLL ON REG. DEODORANT 1 1/2 OZ. **98c**

HEAD & SHOULDERS SHAMPOO 15 OZ. **\$2.39**

**STA-BINGO DELIVERS**

WE RESERVE THE RIGHT TO LIMIT QUANTITIES

**UNITED Supermarkets**

Perryton, Texas

PRICES GOOD THRU FEB. 17th

**R-19**

**R-19**

**R-19**

It's the "R" value that counts.

No matter what type of insulation you choose for your home -- batts, loose fill, or foam -- it is the "R" value that tells you the effectiveness of the insulation. "R" value means resistance to heat loss, and as long as the "R" value is the same, the type of insulation you choose makes no difference. Three inches of one type of insulation may have an "R" value equal to four inches of another type of insulation, and equal to five inches of still another type of insulation. Remember, it is the "R" value that counts in insulating your home. Start saving money on your utility bills by practicing wise home energy management. Call us today and find out the "R" value of insulation needed for your area.

**COMMUNITY PUBLIC SERVICE**  
Your Electric Light & Power Company



Help Sponsor your local DECA club by your donation of \$1 dollar. With this \$1 you could win a Super Stereo OR for second Prize 2 Willie Nelson Concert tickets.

You can see any of these DECA students for YOUR ticket.

This donation will help DECA get to state contest.

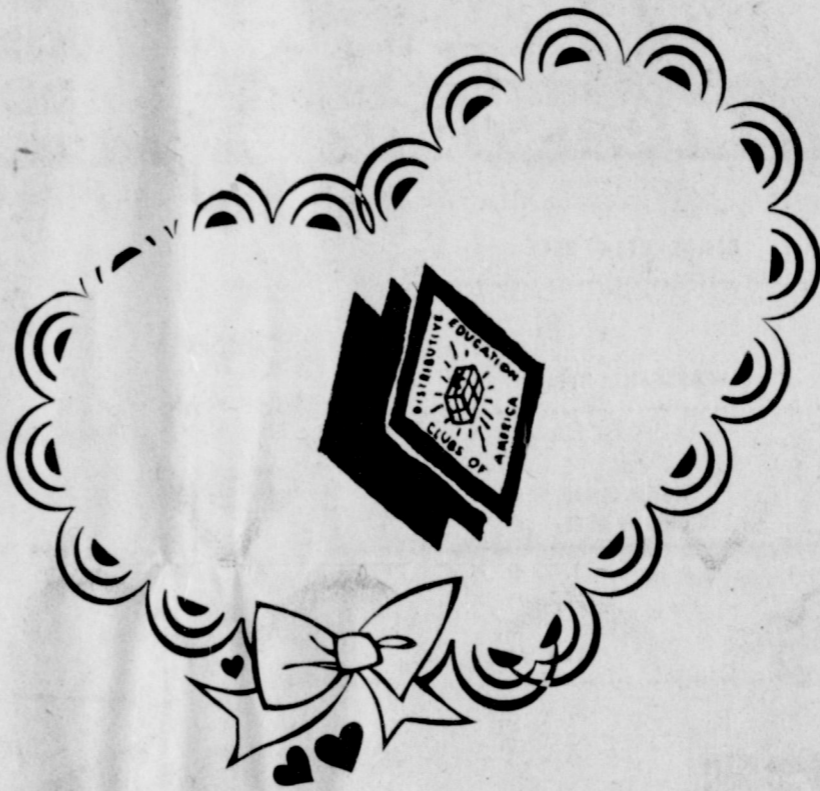
**Drawing**

Place: Court House Lawn

Time: 5:00 p.m.

Feb. 17th

Need not be present to win!



**OUR  
DECA**

**TOP OF**

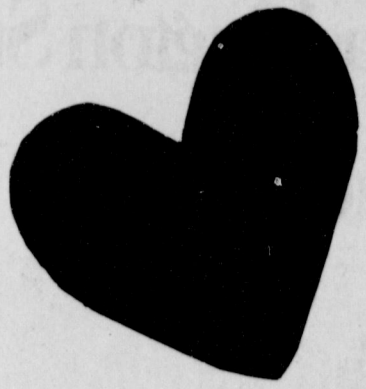
**TEXAS**

DISTRIBUTIVE EDUCATION

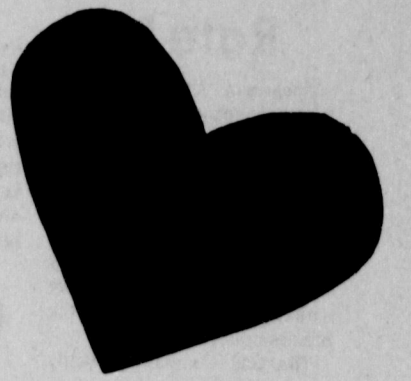
CLUBS OF AMERICA

<b>Evelyn's Merle Norman Studio</b>  110 Main                      659-2813	<b>Brock Insurance Agency</b>  206 Main                      659-2514
<b>Equity Elevator</b>  104 Collard                      659-2420	<b>Excel Chevrolet - Olds</b>  Hwy 207 S.                      659-2841
<b>Gordon's Drug</b>  314 Main                      659-2141	<b>Hi Plains Auto &amp; Hi Plains Conoco</b>  659-2806 & 659-3555
<b>Spearman Reporter</b>  659-3434	<b>Louis Schnell Electric</b>  208 Hancock                      659-3433





# WE JOIN IN SALUTING OUR 1979 DECA STUDENTS.



Brenda  
Fanning

Tim  
Spoonemore

Leslie  
Piatt

Lori  
Short

JoLynn  
Burch

Barbara  
Oltman

Debra  
Owens

Arthur  
Cantu

Steve  
Goff

Sue  
Close

Jamie  
Butler

Alfred  
Avila

Jamie  
Morley  
Casdorff

Joann  
Reed

Billy  
Snider

John  
Reneau

Beth  
English

Gloria  
Arjona

Cassie  
Baker

Sandy  
Dry

Richard  
Montgomery

Darla  
Moyer

David  
Oakley

Tylan  
Pierce

Donna  
Willis

Albert  
Avila

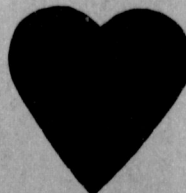
Anselmo Vela

Jeanne Close

Tammie Jackson

Calvin Pond

WORLEY SMITH  
-TEACHER





## Rate Hike... UNLESS!

Spearman City Manager Lenis Simpson told Council members that because the Texas Railroad Commission had not acted in response to a request from High Plains Natural Gas Co., for a Gas Rate increase, that the City Utility was planning, in accordance with law, of proceeding with the increase on its own.

The Gas Company actually has the legal authority to place the rate increase into effect immediately. This rate increase could be approximately Twenty Cents per One Thousand Cubic Feet of gas. The city anticipating either this decision on the part of High Plains or an alternative decision granting approval by the Railroad Commission placed a FIVE cents additional charge on gas bills after January 1st.

Simpson stated that the possible action on the part of High Plains could be stopped by the attorney for the City in Austin

asking the Courts to impose an interim order stopping the increase Attorney Bob Wilson has reportedly told City Manager Lenis Simpson that he plans to obtain such an order within the next ten years.

## Commission Nixes Park

A second grant application sent by the City to the Texas Parks and Wildlife Commission has been returned to the City Manager's Office.

An initial application for funds to develop another park in the City's northern area was rejected earlier.

Simpson told the Council Tuesday that the return of the application was tantamount to complete rejection... possibly because the Commission believed that the City had sufficient

Park areas currently. Alderperson Frances Loftin had endorsed the idea of a park in the Northern area of the City and expressed disappointment for the apparent rejection by the Texas State Body.

## CREDIT CHECK

City Council members Tuesday night instructed City Manager Lenis Simpson to initiate a credit check on all applicants for any City Position in the future. Councilman Brad Beedy noted that he believed such an ordinance had been passed several years ago by the Council.

Councilman Bill Pittman noted that such a credit check would "prevent the city from hiring deadbeats who would be potential customers for local city businesses."

The matter came to light when Simpson reported that he had employed a new City patrolman, Ward Osborne, 44, a former Chicago, Illinois native, who had worked as a correctional officer in a penal institution, and who most recently had worked as a truck driver in Amarillo. Osborne joins Gary Taylor who recently joined the local force following the resignation of Patrolman Eddie Garcia.

Incidentally.... City Council members were told that the City's \$1800.00 Radar gun is in operation and is proving to be a versatile deterrent to speeders in the city!

## Dist. Playoffs

Twirl my turbine, man alive, the Lynettes have won the "S on 5! And, in spite of not winning the district 1-AA championship this year, the Lynx have had a great season also! And, to add a little spice to the basketball excitement, the Gruver girls are still in the 1-A race, and there is a strong possibility that the Greyhound girls will also win their district championship. But, they must defeat Phillips in a play-off this week.

In the game at Perryton last night, the Lynettes won 66-36 with Greene leading all scoring with 14 points. Keetch, Comegys, and Shaver had 8 points. Shields had 7, Vernon 6, Hagerman, Flowers and Short all hit 4 points. The Lynettes will have a practice game at Follett Friday night, 7 p.m. Of course, fans are invited to attend this game between two championship teams.

Senior Zane Newton lead all scoring for the Lynx Tuesday night, at Perryton, with another fabulous 22 point performance. The Lynx have had a tremendous year, and are defending 1978 district 1-AA champions. All of us at the newspaper join in congratulating both the Lynx and Lynettes for an outstanding basketball season.

## Texas Cowbelle Beef Cook-Off Set

The second annual Texas Cowbelle Beef Cook-Off will be held on Tuesday, March 13th during the Texas & Southwestern Cattle Raisers Convention in Houston. The event will be held at the Albert Thomas Convention Center.

The purpose of the cook-off is to feature beef recipes, understanding the various cuts of beef, their proper preparation, and for promoting the beef cattle industry.

Contestants must be 18 years or older, with a non-professional food status, and a resident of Texas. Deadline for entry is February 15th.

Ten finalist will be selected from recipes submitted by the deadline. The ten finalist will be given an expense-free trip to Houston for the cook-off.

A Texas beef cook-off champion will be selected at the annual event and will then get to represent the Lone Star State at the National Beef Cook-Off in Omaha, Nebraska on September 26-28, 1979.

Prizes for the Texas Cook-Off will be \$300 for first place, \$200 for second place, and \$100 for third place.

Entry forms may be obtained by contacting Mrs. C. T. Duke of Booker or Mrs. James Schell of Spearman.

# The Washington Star

## Letters to the editor

### How these farmers feel

I'm one of those farmers you spoke of in your "Winters of discontent" editorial (Feb. 3). I was sitting out there in Bull Run Regional Park, waiting to drive my tractor 25 more miles into D.C. the next morning, after having driven it 1,700 miles already at 14 mph. It has no springs, no shock absorbers, and in no way could this punishing trip be considered a lark or vacation. I am deadly serious about what I came here to say to Congress and to you and the rest of the country.

It's a simple message: I'm going bankrupt. If it were only me, you'd be right to ignore it. But look around you at the thousands like me who are here — each representative of dozens more at home (I'm able to be here because merchants, working people and other farmers from my community gave hard cash to help pay my expenses.)

I inherited a farm virtually free of debt 16 years ago. I have lost equity in it at the rate of 3 percent a year, on the average, because of having to constantly increase debt against my land in order to be able to continue to operate. I've bought no additional land.

There was not so much equity loss at any one time that I couldn't convince myself that "it'll get better." But finally I've come to the bitter realization that it's not going to get better as long as government policy continues to be to encourage price-depressing surpluses and cheap food. Now, though it has been a long time coming, I own only half my farm. I will finally have lost it all if I don't try, by whatever means that come to hand, to save it.

"And who cares?" I can hear you say. But consider who will take my place eventually. It will not be a young, independent farmer. On a 3 1/2 percent return on investment, he could not pay off land and machinery mortgages carrying a 10 or 11 1/2 percent rate of interest. No, it will be



corporate farms, many bought with foreign oil money. They'll be few, very large, and more efficient than I am, because their employees won't care what happens after they put in their eight hours a day — unlike me and my family who must bear the consequences of any unwise decision or action. Yes, they'll be more efficient and they'll not operate at a loss. And you'll see your cost of living rise even more sharply than it does now.

What percentage of your disposable income will you then spend for food? Will it be 25 percent as it is in France? Will it be 52 percent as it is in Russia? Or 67 percent as in India? Certainly not that high, but rest assured that it will be more than the 16 percent you pay now, or the 19 percent you'd pay if farmers got back their costs of production plus a profit similar to that which industry and business expect — and require — to survive.

Our economy is in desperate trouble, as even the most dense among us must realize. All the farmers you see around you in Washington these days believe that agricultural prices that will cover costs and return a fair profit are essential to their survival as farmers. But of more immediate concern to the nation is

the survival of the whole economic system to which agriculture is basic. There's hardly a city or state that is not involved in supplying at least some goods and services to agriculture.

We contend that healthy agriculture equals healthy economy, and there is a historical demonstration of the truth of this contention available to all for study: the 10-year period when parity in agriculture was required by law (1943-1953). During that time, we had an unbelievably robust and vigorous economy. We fought and won two major wars while supplying the sinews of war to our allies as well. When those wars were over, we set a shattered world back on its feet — both our exhausted allies and our defeated enemies. I am convinced that this amazing economic capacity was fueled by parity in agriculture, which is by far the largest industry in the United States.

We plead with you to consider that restoring health and vitality to agriculture will again work such a miracle in our faltering economy. Can we learn from history? Isn't it worth a try?

R. C. Porter

Spearman, Texas

Wayne and Darlene Harlan of Lubbock, Texas, will be ministering at Believer's Cottage, 2.7 miles west of Spearman, on Highway 15. The meetings will be held Thursday, Feb. 15, at 7:30 P.M., and Friday and Saturday, Feb. 16 & 17, at 1:30 and 7:30 P.M.

Mrs. Harlan is an evangelist who has served in various areas of the United States. He has also served as a missionary to Haiti, India, Mexico and Africa.

Wayne has pastored churches in Portland, Oregon and Abbotford, B.C.

He will be bringing out the powerful truths of God's Word as he ministers here in the Name of Jesus Christ.

Mrs. Harlan has a real ministry of anointed singing that will bless all who hear her. Everyone welcome!

For more information call: George Collard, 806-659-3334 or Robert Janzen, 806-659-2167.



There is a Nut Museum in Old Lyme, Conn. where admission is one nut, regardless of variety.

Mr. Billy Miller  
The Spearman Reporter  
P. O. Box 458  
Spearman, Texas 79081

Dear Billy:

The Spearman Lions Club would like to thank you for the free advertisement that you published in your paper prior to our pancake supper held on January 26, 1979, and also for the pictures and full coverage that you so graciously provided.

Due to your efforts, we feel that your help enabled us to have a successful pancake supper.

Sincerely yours,  
SPEARMAN LIONS CLUB

*Ray Ingle*  
Ray Ingle  
Chairman of Pancake Supper

RI:amn

### CRUM REAL ESTATE

CALL ANYTIME 659-2053  
1105 S. BARKLEY

NADINE CRUM BROKER  
VIRGINIA WHITE BROKER

#18 James - 2 types available for quality. (Selling, Conventional (90% Financing).)

NEW HOME Financing, G.I. - 100% loan

We Need Listings! Want to Sell your Home? We have BUYERS.

**SNUG AS A BUG IN A RUG**  
When you move into this almost new 3 bedroom, 1 1/2 bath home at 1118 Linn Drive. Warm your "tootsies" by the FIREPLACE in large FAMILY ROOM. Also has SEPARATE FORMAL LIVING-DINING ROOM and great built-in kitchen, utility room and double car wood paneled attached garage. DELIGHTFUL PATIO AREA. Call today.

**QUALITY PLUS**  
This lovely Ranch style home is located in excellent location on large corner. The home features 4 bdrms., 1 1/2 baths, large living room with woodburning fireplace, lots of cabinets and all the kitchen builtins. This is truly a fine home value and one that will offer years of enjoyment. Call for an appointment.

**LOVE QUALITY? NEED SPACE?**  
Like your money's worth? It's all included in this beautiful, spacious, older home with 4 bedrooms, 3 baths, kitchen built-ins, formal living, dining, den, large basement, storage galore, 2-car attached garage and a 1-car detached garage, sprinkler system front and back, fence, and much more. Call for an appointment.

**START HERE - 706 COLLIER**  
With this 3 bdr., 1 1/2 BATHS at a very reasonable price. Perfect for the young family just starting out. GOOD LOCATION, FENCED. CALL TODAY for an appointment.

**ROOM TO ROAM - 402 HANEY ST.** - You'll enjoy the comfortable lifestyle offered by this large older 3 bdr., 2 bath home, Has formal living-dining room, FAMILY ROOM, kitchen built-ins, utility room, CENTRAL HEAT AND AIR AND MUCH MORE. Call today

## Have you got the winter blues with your old car or truck??

Well, we're playing cupid, and you are going to **LOVE** the **DEALS** we're making on those new Pontiacs, Buicks, & GMC'S !!

We've got a fabulous inventory of Pontiacs, Buicks, & GMC'S and more are coming in every day, too!! **WE NEED TO MOVE THEM!!**

And we have one of the finest & largest selections of Used Cars & Trucks that we've ever traded for.

Come on out today, We're going to do our best to get you over the winter blues!!

# HERGERT

## Pontiac, Buick, GMC

"The Best For Sales, Service & Body Shop"

WE APPRECIATE YOUR PATRONAGE!!!  
So. Hwy. 207 Spearman, Texas