



PAM LARGENT



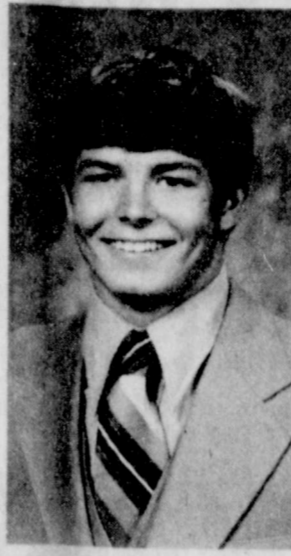
TINA COCHRAN



BECKY LUSBY



JENNIFER UMPHRESS



CAREY BRIDGES



MARIETTA
DAVIS



JIM
MORLEY



TWANA
BYRD



WAYNE
MEEK

Members of the 5-state band concert group, from Spearman are pictured above. These fine group will also perform at the Band and Choir concert tonite, (Thursday) at the varsity gymnasium. This will be one of the finest performances of the year, and you are urged to attend.

YOU NAME IT FROM THE DEN OF POISON PEN

I did enjoy what I saw of the Miami tournament! The Gruver boys won the championship, and the Follett girls won over the Spearman girls 54-53! I came home from the tournament Thursday night in a blizzard, and somehow managed to "throw my back out of place" and couldn't make it back for the finals Saturday. The Miami tournament is a dandy! If you missed the games this year, you really were the loser! The games were close, and the Miami schools even furnished a band to play during intermission.

The Five states honor band held Saturday, at Guyton High School, was a big success. Both directors and students from Spearman and Gruver participated in the event. Gruver High School director is Damon Ladd, and Spearman High School director is Larry Prather. I want to congratulate the Guyton schools for sponsoring the 5-state concert. These kids had only one day of practice and played like real professionals. The director of the 5-state band was Dr. Gary Garner. He is a graduate of Amarillo High School and received his BS at Texas Tech University. His teaching experience included the positions of band director at Hutchinson Junior High, and Monterey H. S. in Lubbock; Director of the University of Southern California Marching Band, where he received both his M.M. and his D.M.A. He is presently Professor of Music and Director of Bands at West Texas State University where he has been since 1964. Dr. Garner is the one who is responsible for the fine half-time music at the WT football games!

I attended the First Christian Church Sunday morning to hear Mercer Shaw. His ministry is mostly in song about Jesus Christ. The entire service Sunday morning was excellent, and I have seldom seen or heard a man so dedicated to the cause

It's Twentieth Anniversary time at Hi Plains Auto and Hi Plains Conoco Saturday Dec. 16th.

of Christ! Guests at the Sunday morning services included Mr. and Mrs. David Warren of Borger. I am real sorry that I didn't get to visit with the Warrens, but maybe will get to the next time they are in Spearman. And, a reminder to my readers, Mercer will be back at the First Christian January 11 to the 14th with his singing ministry! Plan to attend.

There is so much building going on in Spearman, I can't keep up with it. Next to Beedy's Furniture in the shopping center, a new jewelry store is just being finished; and on down a lot or two from the jewelry store is a new sporting goods store going in! Also, in back of Beedy's furniture Store is a new home being constructed by Roscoe Nelson. It is a beauty! Other building is going on in town! It is getting to be a "boom town" and it is about time! We have the best town in the world and don't forget it!

I see where Childress is still in the playoffs and will meet their old rival Wylie at Vernon Friday night! I think Wylie will beat Childress, but I am the only sports writer in the state that thinks so! Wylie is the defending state champion, and they upset Childress last year! I am going with Wylie. Also, I am picking Plano to beat Odesa Permian! Nobody but a fool would pick those two games! And, I don't have to pick them! I hope that I am wrong, cause I sure want Childress to win the state, as Spearman has come closer to beating them than any other team! In district 1-A, of course, the black and blue division of Texas school-boy and school girl competition, Stratford did a fine job in representing the Panhandle! And their 1-A district will be wild in basketball this year. The Gruver fans are already saying that Stratford has a big tall bunch of basketball players! The word is out in the district that the Perryton Rangers of 1-AA have the team to beat in the district!

The Spearman Reporter

THE SPEARMAN REPORTER, SPEARMAN, TEXAS 79081

THURSDAY, DECEMBER 14, 1978

SISD Under 900

Spearman School Superintendent James Cunningham told School Board members that enrollment figures have dropped below the 900 mark. No specific reasons were provided for the continuing decline...except that School Districts such as Canadian were increasing as a result of the location of specific industries in those locations. One Board member (with tongue in cheek) suggested that if the decline continued then Spearman might eventually play in the same football district classification as Wheel-

County Officials Nix Increase!

Hansford County Commissioners unanimously nixed an increase in their personal County compensation, Monday but did O. K. an across the Board hike of 8% Cost of Living Increase for other County employees.

Hansford County Judge Roy McClellan explained that the 8% increase fell below the actual noted increase in the real Cost of Living. The Cost of Living increase goes into effect January 1st.

The County Commissioners also voted to trade in a 1955 Model Crawler Dozer Tractor and to accept trade in Bid of \$80,507 from West Texas Equipment of Amarillo for a new Crawler Dozer tractor for precinct 4. County Judge McClellan said that the 23 Year old Crawler Dozer had served the County an exceptionally long period of time.

The Hansford County Court House will close for the Christmas Holiday at noon on Friday, December 22nd, and would reopen on December 26th. However the Court House will remain open on Friday December 29th for regular business hours and would be closed only on New Year's day Jan. 1.

Hospital News

Patients in Hansford Hospital are Annetta Coleman, Sybil Cruse, Mearl Beck, Neva Pope, Glenn Mackie, Amanda Bryant, Ray Gressett, Charles Croyle, Jamie Pierce, Wilford Haworth, Ricky Bennett, Chris Woodington and Zane Hamilton. Dismissed were Mike Evans, Barbara Collier, Lena May Jones, Aloha Bentley, Cecil Tucker, W. E. Sparks, and Nancy Young.

Garland Nichols passed away Monday, Dec. 11 at 8:15 p.m.

Burglars Visit Church

Spearman Police are investigating a weekend break in at the Seventh Day Adventists Church. There are reports of some vandalism and a small tool set is reportedly missing.

The burglary apparently took place during the weekend and was reported to local police on Sunday, December 10th.

School Lunch Costs To Increase?

Spearman Independent School Board Trustees face the possibility of having to reluctantly increase the cost of School lunches by as much as ten cents per lunch.

Board members noted Monday evening an almost unprecedented increase in food costs resulting in a monthly loss as far as school cafeteria services were concerned. Losses are running around \$600.00 monthly.

Currently the school board is studying the problem and more than likely will suggest a ten cent per meal increase after the Christmas recess.

Nichols Services

Services are pending with Boxwell Brothers for G. M. (Monroe) Nichols, 65, of Spearman, who died Monday evening at Hansford Hospital after a brief illness.

Mr. Nichols was born August 7, 1913 in Paris, Arkansas. He was a Navy veteran of World War II.

He was a painter and had lived here for 19 years, moving here from Dumas. He had lived in Perryton prior to living in Dumas.

He married Cora Porter, Sept. 18, 1937 in Perryton.

He was a member of the American Legion.

Survivors include his wife, two daughters, Mrs. Ruth Kiziar, and Mrs. Nancy Kelly of Spearman, a son, Garland, Jr. of Stuttgart, Germany, three sisters, and 11 grandchildren.

34% Seniors Make Honor Roll

Spearman High School Senior Class members have received the plaudits of Principal Eddy Clemmons...the official telling the School Trustees that 34% of those in the Senior Class have been named to the current honor roll. Clemmons also noted that the Senior Class also led the way in attendance.

The Board breakfast has been cancelled for December according to School Board President Kent Guthrie. Board members were also provided the State approved List of Text books. Text Book committee members along with faculty will select from the list provided.

Superintendent James Cunningham noted that the School Band or the School Choir would be eligible for trips only if the band or choir received a ONE rating in any UIL-APPROVED CONTEST the previous year.

Alert school board members also saved the taxpayers in excess of \$1300 in Bank interest by voting to borrow \$26,000 from its own maintenance fund. Board officials noted that this fund usually reflected a surplus and that the transaction would not impair school operations. Otherwise the Board would have been forced to borrow the funds to pay the Interest and Sinking Fund obligation, from a Commercial lender. School Board members prudently took the alternative step.

Your reporter's face was

red...incidentally...he arrived at the school board meeting in keeping with the posted time in the public notice section of the Hansford County Court house...that read 8 P.M. We have since learned from "sympathetic???" board members that during the winter the Board meets at 7 P.M....not to keep the media guessing...but to allow the media time to get back home to watch the Monday nite football game!!!! We suspect!

Susie Allen Services Held

Rosary for Mrs. Susie D. Allen, 74, of 1601 Kirkland was read at 7:30 p.m. Monday in Schooler-Gordon Colonial Chapel. Services were held at 10 a.m. Tuesday at the Chapel. The Rev. Al Bednorz and the Rev. Norbert G. Kuehler, both of St. Laurence Cathedral, officiated. Burial was in Memorial Park Cemetery.

Mrs. Allen died Friday. She was a former resident of Spearman.

She is survived by a daughter, Mary Lee Crew of Kingwood, Texas; a brother, Allen Pierce of Spearman; a sister Vici Compton of Corpus Christi; one grandchild and three great grandchildren.

Police Using Hypnosis

Spearman Police Chief Steve Wisniewski is now a Certified Investigative Hypnosis Expert. The local Police and law enforcement official has just returned from an intensive five day Law Enforcement Hypnosis Institute in Los Angeles, California. While at the Nationally recognized Institute, the Local Chief underwent extensive hypnosis himself and studied the various aspects of the hypnosis skill in his role as a law enforcement specialist.

Chief Wisniewski was sent to the Hypnosis Institute by the Panhandle Regional Planning Commission. The Chief told the Reporter that he would serve as a member of an Investigative team in the Panhandle utilizing the hypnosis techniques in criminal cases.

The Chief is currently working with Gruver Police Chief Jimmy Ratliff in an investigation and is using the ideas gathered while at the Hypnosis program on the West Coast.



The Spearman JV girls are pictured above, won the Gruver tournament over the weekend. Pictured are; Bynum, Bridges, Morris, Wilson, Reed, Kenney, Maize, McCoy, Robertson, Baker, Cook, Tucker, McCloy, Ivey, Elliott, Eller, Ford, and Cudd. This JV team is rated in the tops in Texas. Coach Hamilton is real proud of their win over Dalhart in the Gruver JV tourney Sat. nite.



The Lynettes did it! This fine group of lady Lynx, won the runner-up spot in the Miami tourney Sat. nite, losing 54-53 to Follett. Tuesday night, they defeated the Stratford girls 44-39 in Spearman. The Lynx lost a close one to Stratford 57-52 here Friday night. Both teams will travel to Channing Friday night.



 Main Office
 514 Collard
 Phone 659-3711
**Speartex
 Grain
 Co.**

**Cates Men
 and Boys
 Store**
 Spearman, Texas

**Brock
 Insurance
 Agency**
 Phone 659-2514
 206 Main

**North
 Plains
 International
 Inc.**
 659 - 2421

**Consumers
 Sales Co.**

 421 W Kenneth Ave
 Phone 659-2021



**Choir and
 Band
 Concert**
 7:30 P. M. Varsity
 Gymn Featuring
 the students
 of Spearman school system
**Thursday night
 Dec. 14th**
You are invited

Gordons
 For The Best In Prescription Service !
 659 - 2141

**Hansford
 Impl. Co.**

 SALES & SERVICE
 Hwy. 207 Spearman
 Phone 659-2712

**Baker &
 Taylor
 Drilling Co.**
 659-2503
 Spearman, Texas



**White
 House
 Lumber
 Co.** 659 - 2818
 Where Even Old Santa Shops !

**Cinderella
 Beauty
 Salon**
 Home Of "The Man"
 659 - 3413
 Spearman, Texas


**Hi Plains Auto
 & Conoco**

 118 N. Main
 Phone 659-2506
 415 Collard
 Phone 659-3555


 It is the star of Hope, shining brightly for all to see. Rejoice! Welcome Christmas in your heart.


**Jr. Lusby
 Cats**

 W. Gruver Hwy
 Phone 659-3766

WANT ADS

CAPROCK MONUMENT CO. Dealers of Georgia Granite, Georgia Marble, Colored Granite, & Drums. represented by BOXWELL BROS. FUNERAL HOME 519 S. EVANS 659-3802

GOLD Buyers & Sellers AFFILIATED SUPPLY, INC. #165 Mellie Esperson Bldg. Houston, Texas 77002 713-225-4646 Buyers/Sellers - Licensed

MISCELLANEOUS FOR SALE FOR SALE: Hall Tree. 2 Walkie-talkies. Call 659-3351. 5-2tp

FOR SALE-Firewood, Burton Schubert 659-2667. 47S-rtm

SAVE!! \$300.00 to \$1,000.00 on your Cedar Shingles or Shakes. No Delivery Charge. Write Lakeside Wholesalers, Drawer L, Fritch, Texas 79035 or Call 806-857-2411. 2S-10c

FOR SALE: 1976 - 350 Honda. Good condition. Call 2327 anytime. Reasonable. See at 103 S. Barkley. 2S-rtm

FOR SALE: Lady Nordica Ski Boots, size 7 narrow, like new. 659-2319. 5-1tc

Hansford County Planned Parenthood 265, Haney 659-2483 Spearman Mon.-Fri. 8 a.m. to 12 noon 30S-rtm

SERVICES

SERVICE: Pits cleaned, wet or dry. Dragline or loader. Also, dozer, grader, carry-all service. LeeRoy Mitchell, 806-733-2384, ver, Texas, 79040.

PEE WEE'S PLUMBING & Appliance Service. Roto-rooter. 659-2811 or 659-3781. 26-rtm

KIRBY SALES & SERVICE of Spearman, 912 S. Bernice. 659-2797. 30-rtm

HAPPY HOLIDAYS from Gordon's Drug & Largent Rentals Specials Dec. Thru Jan. Steam Rinsevac \$4.95 per day Call 2141 Gordon's Drug after 7 p.m. & Sunday, 716 Cotter Drive, 3437.

NOTICE Wallace Monument Co. Monuments, Curbings, Grave Covers Local Representative LEONARD JAMESON 659-3406 20-rtm

Alcoholic Anonymous meeting 8 p.m. Friday, Home Demonstration Club building, 305 N. Bernice. Phone 659-3181 for information. ***

Al-Anon meetings 8 p.m. Friday, Home Demonstration Club building, 305 N. Bernice in back room. Phone 659-3181 for information. Ask for Al-Anon.

CUSTOM BAY BALING, Jerry D. Virden, Gruver, Texas. Call 733-2236. 29-rtm

Now Hauling Manure from Caprock Pens #1 & 2. Check my low Prices before you trade with anyone. Call or see Clois (Billy) Baker. 659-3642. 51S-rtm

H & H HEATING & SERVICE CO.

Heating, Air Conditioning & Refrigeration Work. Complete Central Heating & Air Conditioning Installation & Service Work, 24 hour. 659-3579 or Hwy 207 South, Spearman, Texas. 52-rtm

CATTLE HAULING Call Fred Van Buskirk - 2680 or Willis Randall - 2041.

CARPET SHAMPOOING: Dry foam method. Vinyl Repairs. Free estimates. Call 435-4305 after 5 p.m.

LESTER LEATHERMAN Perryton, Texas 52-rtm

FARM & RANCH LOANS contact Hugo Riemer 878-2287

JAMES F. HAYES & CO. Clarendon, Texas 874-2361 3-rtm

REAL ESTATE FOR SALE

3 Bdrm. Brick For Sale by Owner. 714 Steele. Call 8 am to 5 pm. 323-5201. W. C. Crouch Jr. 3-4tc

FOR SALE approximately 1 1/2 acres on corner of Kenneth & FM 760. Property has partially framed 25 x 30 shop, now has sewer, and is reduced in price Call 659-3867 or 659-3880. 49S-rtm

FOR SALE: Residential Lots, 115 ft. wide. Extra deep. Excellent neighborhood. 1100 Block S. Archer. All utilities available. Too good to pass up. Call 659-3021 or write Box 522, Spearman. 50-rtm

HELP WANTED

WANTED: Auto Mechanic. New car dealership. Top pay plan. Call Jim Moore Buick, Guymon, Okla., 405-338-8411. 456tc

UTILITY MAN-TRUCK DRIVER

Perryton, Tx. Applicants experienced in hole digger, aerial basket truck and hydraulic boom truck operation are needed. Call Mr. Parker at 435-4051 for appointment.

Community Public Service Co. An Equal Opportunity Employer 5-1tc

FOR RENT

FOR RENT: LBL Trailer Space. 659-3627. 39S-rtm

FOR RENT: 1 Bedroom House. furnished. Deposit. You pay utilities. 659-2082. 5-rtm

FOR RENT: Furnished apartment. Call 2274. 3S-rtm

TOO LATE TO CLASSIFY

Rummage Sale, 303 Davis St. Are looking for 2 suitcases. Will be sign on door. 5-1tp

MARKETS table with columns: WHEAT \$2.96, MILO \$3.70, CORN \$2.42, SOYBEANS \$6.12, BARLEY \$1.75

OFFERED BY: Emmett R. Sanders Realtor REALTOR

Dwelling and store building, small detached apartment, on wide lot, ideal for professional office-dwelling combined.

2 1/2 section ranch-farm, 400 acres, cultivated, 1200 acres grass, irrigation wells, 8 bedroom ranch house, owner will carry paper.

150' x 140' commercial, zoned heavy retail, with 2 bedroom home and detached garage, terms available.

308 S. Hoskins, 5 room house, carpet, fenced yard.

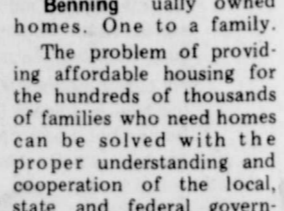
Lovely brick home on 11 acres only 5 minutes from Spearman shown by appointment only.

240 acre farm, one 6" well, on pavement 15 miles southwest of town, one-fourth minerals, owner will carry paper.

EMMETT R. SANDERS REALTOR 659-2516 659-2601 (night) 34S-rtm

NEWS

In this article, a housing spokesman discusses steps our Government should take to fill America's acute need for affordable housing. By Walter L. Benning America has many problems. One of the most pressing is the lack of housing that is both readily available and affordable. Not tall towers of institutional brick, but individual ually owned homes. One to a family. The problem of providing affordable housing for the hundreds of thousands of families who need homes can be solved with the proper understanding and cooperation of the local, state and federal governments. Our nation has the resources to build all the homes we need. But the lack of affordable housing is real. First, these governments must adopt a sensible policy that encourages an orderly development of our land—for recreation, industrial growth and for housing. This country has space on which to build without disrupting the areas that should be left in their natural state. The mobile home industry provided almost 275,000 homes to meet housing needs last year and the capacity of the existing factories is such that 300,000 additional units could be manufactured annually. This safe, available, affordable, housing is being denied to many Americans because local, state and federal governments do not take the initiative in modernizing zoning laws. Antiquated zoning laws fail to recognize the dramatic changes that have occurred in the mobile home industry. Most mobile homes are moved only once—from factory dealership to a permanent site. Mobile homes are made in factories by expert craftsmen, are safe, meet or exceed all local housing codes and in fact, are the only homes which meet a Federal code established by the Department of Housing and Urban Development. The second thing that can be done to bring housing to the lending institutions to allow a more realistic repayment period on the purchase of a mobile home. Twelve to 15 years is the average term or repayment for mobile loans while the national average for site-built homes is 25 to 35 years. The government must get serious about breaking the housing logjam. Millions of Americans who need homes cannot afford the average cost of \$64,000 for a site-built home. The government can help. It should enact realistic, conducive zoning policies and codes that address themselves to the needs of Americans. Government must encourage lending institutions, through government mortgage guarantees, to offer prospective mobile home buyers mortgage terms which recognize these homes as the permanent dwellings they are. Assisting Americans in obtaining the attractive, livable homes they need—at a price they can afford—should be high on the government's priority list. The mobile home industry is probably the best answer to America's urgent need for housing. Walter L. Benning is President of the Manufactured Housing Institute. MHI represents the mobile home manufacturers and suppliers throughout the U.S.



Benning ually owned homes. One to a family. The problem of providing affordable housing for the hundreds of thousands of families who need homes can be solved with the proper understanding and cooperation of the local, state and federal governments. Our nation has the resources to build all the homes we need. But the lack of affordable housing is real. First, these governments must adopt a sensible policy that encourages an orderly development of our land—for recreation, industrial growth and for housing. This country has space on which to build without disrupting the areas that should be left in their natural state. The mobile home industry provided almost 275,000 homes to meet housing needs last year and the capacity of the existing factories is such that 300,000 additional units could be manufactured annually. This safe, available, affordable, housing is being denied to many Americans because local, state and federal governments do not take the initiative in modernizing zoning laws. Antiquated zoning laws fail to recognize the dramatic changes that have occurred in the mobile home industry. Most mobile homes are moved only once—from factory dealership to a permanent site. Mobile homes are made in factories by expert craftsmen, are safe, meet or exceed all local housing codes and in fact, are the only homes which meet a Federal code established by the Department of Housing and Urban Development. The second thing that can be done to bring housing to the lending institutions to allow a more realistic repayment period on the purchase of a mobile home. Twelve to 15 years is the average term or repayment for mobile loans while the national average for site-built homes is 25 to 35 years. The government must get serious about breaking the housing logjam. Millions of Americans who need homes cannot afford the average cost of \$64,000 for a site-built home. The government can help. It should enact realistic, conducive zoning policies and codes that address themselves to the needs of Americans. Government must encourage lending institutions, through government mortgage guarantees, to offer prospective mobile home buyers mortgage terms which recognize these homes as the permanent dwellings they are. Assisting Americans in obtaining the attractive, livable homes they need—at a price they can afford—should be high on the government's priority list. The mobile home industry is probably the best answer to America's urgent need for housing. Walter L. Benning is President of the Manufactured Housing Institute. MHI represents the mobile home manufacturers and suppliers throughout the U.S.

ED WHEELER REAL ESTATE

HOMES-FARM COMMERCIAL

- 905 Haney St. 2 bedroom, 1 bath, attached garage, fenced backyard. 906 King, Gruver, 3 bedroom, 1 bath, detached garage, fenced yard. 1121 S. Dressen, 3 bedroom, 2 bath, corner lot, fenced backyard. 706 Steele Drive, 3 bedroom, den, 1 1/2 baths, fenced backyard. 1114 S. Haney - 3 bedroom, 1 bath with garage and fenced yard. Priced to sell.

Jerry Gee 659-3664 Doris Beck 659-2618 659-2074

TEXAS PRESS MEMBER 1977 ASSOCIATION

PUBLICATION NO. 509660 SPEARMAN, TEXAS 79081 213 Main Box 458 659-3434 Published Weekly at 213 Main Street Spearman, Texas 79081 Owner-Publisher.....William M. Miller Second Class postage paid at Spearman, Texas ANY ERRONEOUS REFLECTION UPON THE CHARACTER OF ANY PERSON OR FIRM APPEARING ON THESE COLUMNS WILL BE GLADLY AND PROMPTLY CORRECTED UPON BEING BROUGHT TO THE ATTENTION OF THE MANAGEMENT. SUBSCRIPTION RATE: Hansford, adjoining counties, combination with the Hansford Plainsman, \$10.40. Other points, \$14.40.

Golden Spread Club Sustaining Membership Name Address Telephone Mail to: Golden Spread Club Box 817 Spearman, Texas 79081

Sustaining memberships are \$25.00 for individuals, and \$50.00 for businesses. Members of the Golden Spread Club sustaining membership committee are Frances Loftin. Chairperson, Bob Boxwell and Lenis Simpson. Persons or businesses wishing to become sustaining members are asked to mail the information to Box 817, Spearman.

ULYSSES IRRIGATION PIPE CO. A U.S. INDUSTRIES COMPANY. And that makes a world of difference.

North Dumas Avenue Box 562 Dumas, Texas 79029 TOMMY ARMSTRONG Sales Engineer Office 806-935-6411 Home 806-935-3865 LOCKWOOD SPRINKLERS

Get Ready For Winter

Use storm windows to insulate your windows. Double glass resists heat loss almost twice as well as single glass. By doing this, you keep warm air in, & cold air out. When buying new storm windows or doors, buy the best that you can buy in order to get the best savings on your fuel bills. For the ultimate in quality storm windows & doors, Contact Howard Moyer at

ONLY ALUMINUM INDUSTRIES 114 W. 1st Guymon, Okla. 338-6966 or 338-6170

Help prevent LOW BIRTHWEIGHT The most common birth defect MARCH OF DIMES

campaign for Good Hosts Eye Safety Boys Ranch

The annual drive to provide the 370 boys at Cal Farley's Boys Ranch with a new suit or clothing package began today. Providing new clothing for the boys through the Christmas Suit Fund has become a favorite way of Christmas giving for friends of the boys who contribute \$45.00 for this purpose. Special discounts by Amarillo merchants and differences in price of clothing for younger and older boys make the average cost of \$45.00 possible. The suits replace those that have been worn out or outgrown, and, in many cases, they are the first new suits some boys have ever owned. "The boys get to select their own clothing in Amarillo stores, and the suits will be worn by graduating seniors next spring," Virgil Patterson, Ranch President, said. "A new suit is the best Christmas gift a boy can receive because it is a year-round reminder of those who really care. Contributions to the Boys Ranch Christmas Suit Fund may be mailed to the Boys Ranch Office, P.O. Box 1890, Amarillo, Texas, 79174, or taken to the offices at 600 West 11th Street in Amarillo.

Beginning January 8, 1979, you will have the opportunity of life. You could begin training to be an emergency medical technician. Instruction will be given in cardio-pulmonary resuscitation (CPR), airway management, bandaging, splinting, and how to save a choking person by the Heimlich Maneuver, and childbirth.

This course is offered to all 18 years of age and older for \$20.00. The course is 120 hours of which; 16 hours are in the Northwest Texas Hospital Emergency Room and 24 hours in local hospitals. The remaining 80 hours are classroom instruction in everything stated earlier and much, much more. The classes will begin, Monday, January 8 and will be every Monday and Wednesday nights beginning at 7 p.m. If you would like to sign up for this course, contact: Ronnie Antalek 659-3598 or 3363, Steven Slater 659-2844, or Vicky Bullard 569-3319. LEARN THE WAYS TO SAVE LIVES THROUGH BASIC LIFE SUPPORT.

EMT Course To Be Offered

Beginning January 8, 1979, you will have the opportunity of life. You could begin training to be an emergency medical technician. Instruction will be given in cardio-pulmonary resuscitation (CPR), airway management, bandaging, splinting, and how to save a choking person by the Heimlich Maneuver, and childbirth.

This course is offered to all 18 years of age and older for \$20.00. The course is 120 hours of which; 16 hours are in the Northwest Texas Hospital Emergency Room and 24 hours in local hospitals. The remaining 80 hours are classroom instruction in everything stated earlier and much, much more. The classes will begin, Monday, January 8 and will be every Monday and Wednesday nights beginning at 7 p.m. If you would like to sign up for this course, contact: Ronnie Antalek 659-3598 or 3363, Steven Slater 659-2844, or Vicky Bullard 569-3319. LEARN THE WAYS TO SAVE LIVES THROUGH BASIC LIFE SUPPORT.

This course is offered to all 18 years of age and older for \$20.00. The course is 120 hours of which; 16 hours are in the Northwest Texas Hospital Emergency Room and 24 hours in local hospitals. The remaining 80 hours are classroom instruction in everything stated earlier and much, much more. The classes will begin, Monday, January 8 and will be every Monday and Wednesday nights beginning at 7 p.m. If you would like to sign up for this course, contact: Ronnie Antalek 659-3598 or 3363, Steven Slater 659-2844, or Vicky Bullard 569-3319. LEARN THE WAYS TO SAVE LIVES THROUGH BASIC LIFE SUPPORT.

The English walnut tree is a native of Iran, not England.

Complete Farm & Ranch Irrigation Center

- * Grain Bins * Steel Blds * Steel Bldgs * Aeration Systems * Grain Augers * Dryers * Underground pipe * Underground Leaks Repaired - Maintenance * Sprinklers * Tail Water Systems * Brock Feed & wet holding Tanks * Work on Aluminium Pipe * Lay underground pipe

Western - Ag. Sales Co., Inc. Gruver Hwy

phone 659-2596 Spearman, Texas



Warning: The Surgeon General Has Determined That Cigarette Smoking is Dangerous to Your Health.

Box Less than 0.5 mg. "tar", 0.05 mg. nicotine, Soft Pack and Menthol 1 mg. "tar", 0.1 mg. nicotine av. per cigarette. FTC Report May '78.

Goats do not eat trash, but if they are hungry enough they will lick the labels off cans to obtain the glue on the backs.

Texas Travel Facts & Oddities

Texas offers a series of ten Travel Trails specifically designed as pleasure-driving Texas offers a series of ten Travel Trails specifically designed as pleasure-driving routes. They avoid major Interstate and U.S. Highways wherever possible, rambling over less-used state and farm roads (all paved) for close-up, personal views of ten different regions of the state. The driving routes follow the state's most scenic rural highways and lead to each area's foremost sites of recreational, historical and visitor interest. Texas Travel Trails are signed on the highways and interpreted by free folders from state tourist bureaus. --Texas Highways Magazine

Every Sunday from December through April is "live steam day" at The Engine Room Steam Museum in Alamo, Texas. The museum is among a host of attractions in Texas' subtropical southern tip, a popular haven for winter visitors from throughout the nation. --Texas Highways Magazine

The world's most famous source of beautiful red-plum agate, as well as a dazzling array of other gem and mineral varieties, is the Woodard Agate Ranch on State Highway 118 South of Alpine, Texas. Rock hunters probe the ranch's 4,000 acres of rugged mountain-desert landscapes and carry home their finds for a modest 35 cents per pound. Ranch lapidary experts offer amateurs free help in grading specimens. There are also RV sites with hookups. --Texas Highways Magazine

The world's largest equine registry is the American Quarter Horse Association headquartered in Amarillo, Texas. Still the favorite mount of Texas cowboys, Quarter Horses enjoy worldwide popularity, with more than 615,000 registered in the U.S. and 40 foreign countries. --Texas Highways Magazine

The world's largest livestock auction, serving an immense

ranch and feed-lot region, is headquartered in Amarillo, Texas. Auctions are held two or three days a week year round, and more than 600,000 cattle move through the auction ring each year, bringing more than \$100 million in sales. --Texas Highways Magazine

Among prominent sculptors of the 19th Century was Elizabeth Ney of Germany, who moved to Texas in 1872. Her self-willed, unconventional behavior scandalized both European and American society. Although married to a British physician and the mother of two children, she refused to acknowledge the marriage, insisted on being called Miss Ney, often wore pants (a more practical sculptor's garb than floor-length dresses of the period), and had an early telephone installed that would function only for outgoing calls. Her works stand in European palaces and the Texas and U. S. Capitols, and her Austin studio is now a museum. -- Texas Highways Magazine

The only foreign legation ever established in the Continental United States outside of Washington, D.C., was built by the French charge d'affaires to the Republic of Texas in 1840. Today it is a museum in Austin, Texas. -- Texas Highways Magazine

The oldest weekly newspaper in Texas still being published in the Bastrop Advertiser, established in 1853. --Texas Highways Magazine

Bastrop State Park covers 2,100 scenic acres shaded by the strange "Lost Pines" of Central Texas, an isolated, inexplicable pocket of native pine trees more than a hundred miles from the vast "Piney Woods" forests of East Texas. --Texas Highways Magazine.

Texas offers seven commercial caverns that are open regularly to the public: Cascade Caverns and Cave Without a Name near Boerne, the Caverns of Sonora near Sonora, Inner Space Cavern at Georgetown, Longhorn Cavern (state park) near Burnet, Natural Bridge Caverns near New Braunfels, and Wonder World Cavern in San Marcos. --Texas Highways

LIGHTS

Christmas tree lights and other decorations set the theme for the Christmas holidays. Here are some very important points to remember when using them.

- Use only lights that have been tested for safety. Identify these by the UL Label from Underwriters Laboratories.
- Check each set of lights for broken or cracked sockets, frayed or bare wires, loose connections. Discard any of this equipment that you deem unsafe.
- Check labels of lights to be used outdoors to see that they are suitable for outdoor use. Never use indoor lights outside. Fasten outdoor lights securely to trees, walls, or other firm support to protect them from wind damage.
- Use no more than three sets of lights per single extension. Read manufacturer's instructions carefully and do not use more than the recommended number of lights in one circuit.
- Always turn off lights on trees and other decorations when you retire or leave your home. A short circuit in any of this equipment could cause a fire.
- Never use electric lights on a metallic tree. Damaged insulation in lighting on a metallic tree could cause the entire tree to be charged with electricity. To avoid this danger, use colored spotlights above or beside a metal tree, never fastened onto it.
- Keep children away from light sets and electrical decorations. All lights present the problem of shock and casualty hazards for curious kids.

PAPER

The opening of Christmas presents is always a special time during the holidays. Take special precautions when disposing of the wrappings.

- Always dispose of wrappings immediately after opening.
- Place trash in a metal container. DON'T burn wrappings in the fireplace, they may ignite suddenly, and cause a flash fire.

Magazine

The Sam Rayburn Library in Bonham, Texas, features an exact duplicate of Rayburn's U. S. Capitol office, from the pattern of the tile floor to the barrel-vaulted ceiling and a century-old crystal chandelier that hung both in the White House and the Capitol. Rayburn served as Speaker of the U.S. House of Representatives longer than any man in history. --Texas Highways Magazine

Alamo Village is not in San Antonio, but in the small town of Brackettville, Texas. Adobe craftsmen from Mexico built the Alamo replica, then moviemakers blew it apart for filming John Wayne's "The Alamo." A complete frontier village operates as a family recreation center from January through September. --Texas Highways Magazine

Dating from the frontier era is a cemetery for Seminole Indians

in Brackettville, Texas. The Seminoles were hired as U. S. Army scouts, and their descendants still live around Brackettville as farmers and ranchers. --Texas Highways Magazine

The major annual event in Brady, Texas, is the World's Championship Barbecued Goat Cook-off held each Labor Day weekend. --Texas Highways Magazine

Breckenridge, Texas, is the

TREES

Artificial trees (plastic) should bear the UL Label. Some unlabeled plastic trees burn with extreme vigor. Do not rely on chemical coatings or sprays to make your live evergreen flame-resistant. Follow the safety rules below when shopping for a natural tree.

A fresh tree will stay green longer and be less of a fire hazard than a dry tree. To check for freshness, remember:

- Check for color and scent. A fresh tree is deep green in color and has a strong scent of pine.
- Be sure that the needles do not readily fall from the tree.
- The trunk butt of a fresh tree should be sticky with sap. Place your Christmas tree in a location away from fireplaces, radiators, or other heat sources. Be sure that it is out of the traffic pattern and does not block doorways.

Cut off about 2-inches of the trunk. Mount tree in a sturdy, water-holding stand with wide-spread legs. Be sure that the tree is stable.

Fill base holder with water. Keep it full of water while the tree is indoors (as you would fresh flowers). Remember, heated rooms dry trees out rapidly; and a dry tree is a fire hazard.

FIRES

Your fireplace is a source of warmth and heat. Before starting your fire, be sure to remove all paper decorations and boughs from the immediate area. BE SURE THE FLUE IS OPEN. NEVER set up your Christmas tree near the fireplace, this is a potential fire hazard.

Use a screen to enclose the front of your fireplace to confine live embers and sparks to the fire box.

Use care with "fire salts" which produce colored flames when thrown on a wood fire. They contain heavy metals, and can cause intense gastrointestinal irritation or vomiting if eaten. Keep away from children.

site of the official Texas High School Football Hall of Fame. An annual December banquet honors young gridiron greats from high school squads throughout Texas. --Texas Highways Magazine

"Super Vroomer," by Northern J. Calloway, Doubleday and Co., Inc. "David" from "Sesame Street" is the author. He writes about a black boy interested in homemade cars, racing and being a winner.

"Grandpa Had a Windmill, Grandma Had a Churn," by Louise A. Jackson, Parent's Magazine Press.

A wonderful experience in growing up in rural Texas in the 1940's.

This is a collector's must. "The Most Welcome Visitor," by Robert Quackenbush, Windmill Book and E.P. Dutton.

A horned toad's story--and how he celebrated holidays through the year.

"The Year at Maple Hill Farm," by Alice and Martin

CANDLES

Never use lighted candles on a tree or near other evergreens. Always use non-flammable holders. Keep away from other decorations, wrapping paper. Place candles where they cannot be knocked down or blown over.

TRIMMINGS

The trimming of your Christmas tree is a very important part of your holiday festivities. Keep the safety of your family in mind when selecting trimmings, and decorating your tree.

When choosing the finishing touches for the tree, purchase tinsel or artificial icicles of a non-leaded material. Leaded materials may be hazardous if eaten by children or pets.

If youngsters are a part of your family, take special care to:

- Avoid any decorations that tend to break easily, or have sharp edges.
- Keep tree trimmings that are small, or have removable parts, out of the reach of your child. These pieces may be swallowed.
- Don't purchase ornaments that resemble candy or foods. A small child may try to eat them.

PLAN AHEAD

An emergency could strike your home at any time. Here are a few simple rules to follow to help your family through a crisis.

- Keep fire department, police, ambulance, doctor, and other emergency service numbers posted on your near your telephone.
- Keep a UL Listed multi-purpose fire extinguisher in your kitchen when preparing holiday meals--and know how to use it.
- Many fire departments are now offering first aid classes for their communities. At least one member of the family should be familiar with simple first aid procedures.



The word "booze" is believed to come from the Dutch *buizen*, meaning "to drink to excess."



Hickerson Jewelers
Main St. Spearman
Open till 7:30 P.M.
For your Merry Christmas

Receipts at the Texhoma Livestock Comm. Co., this week were 3,276 cattle and calves. A very active to higher market. Stocker calves steady to strong. Quality of the feeder steers and heifers down from a week ago but were selling \$1.00 to \$2.00 higher than last week. Packer cows steady to higher selling from \$38.00 to \$46.25. A package of cows selling to go back to the country for \$55.00 cwt, Bologna Bulls \$44.00 to \$52.00.

Steer Calves 300# to 535# \$70.00 to \$93.00
Heifer Calves 300# to 550# \$65.00 to \$77.30
Feeder Steers 600# to 800# \$65.00 to \$72.80
Feeder Heifers 600# to 700# \$60.00 to \$63.30

For next Thursday, December 14, we are expecting 3,000 cattle and calves of all classes.

YOUR DEPENDABLE LIVESTOCK AUCTION
TEXHOMA LIVESTOCK COMM., CO., INC.
P. O. BOX 70 TEXHOMA, OKLA., 7334
PHONE 405-423-7511 & 423-7512

CATTLE DEPARTMENT--LLOYD GOODNER & RAYMOND CHOA TE
GOODNER RESIDENT PHONE--405-423-7427

SANTA SAYS....

COME TO LIL' LYNX

Dec. 14th, 15th, & 16th.

It's A Real "Ole Fashioned"

Pre Christmas Sale

30% Off All Dresses & Coats

The Lil' Lynx "Mini-Sale"

Saturday only

10% Off On All Other Purchases

(excluding dresses & coats)

Make This A Merry.. Lil' Lynx Holiday!

QUANTITY RIGHTS RESERVED

Perryton, Texas

PRICES GOOD THRU DEC. 16th

DEC. 16th FINAL DAY TO BUY FEATURED PIECES OF.....

Charmcraft STONEWARE

MILITTA COFFEE DISK	100 CT.	59¢
CARNATION HOT COCOA MIX	20 OZ.	\$1.69
VLASIC SWEET PICKLES	16 OZ. JAR	79¢
PACE PICANTE SAUCE	8 OZ. JAR	49¢
KRAFT MAYONNAISE	QT. JAR	\$1.29
CLOVER CLUB POTATO CHIPS	PLAIN & KRINKLE CUT 9 OZ.	59¢
KEEBLER SNACK CRACKERS	ASST. FLAVORS	75¢
COMSTOCK MINCEMEAT PIE FILLING	22 OZ.	79¢
CAMPFIRE MINIATURE MARSH-MALLOWS	10 OZ. BAG	19¢
FINE FARE IN NATURAL JUICES PINEAPPLE	16 OZ. BAG	29¢
	*CRUSHED *CHUNK *SLICED	15 1/4 OZ. CAN 89¢

TOWELS 49¢

COCA-COLA \$1.49

JELLO 39¢

TRAC II SHAVE CREAM 11 OZ. \$1.29

TRAC II RAZOR BLADES 9 CT. \$1.98

GILLETTE DRY IDEA DEODORANT 1 1/2 OZ. \$1.29

AVOCADOES 4 FOR \$1

TEXAS RUBY RED GRAPEFRUIT 4 FOR \$1

RUSSET ALL PURPOSE POTATOES 10 LB. BAG 89¢

LONG GREEN SLICERS CUCUMBER 5 FOR \$1

LARGE PODS BELL PEPPERS 5 FOR \$1

Letters To Santa



Dear Santa Claus,
I love you Saint Nick. I have been good. I would like earrings, Baby Alive and a stretch worm and Barbie Super Star. Also a big tiger. Have a Merry Christmas.
Love,
Meli Floyd
Age 7
Spearman, Tx.

511 South Townsend
Spearman, Texas 79081
December 12, 1978

Dear Santa,
For Christmas I would like a trampoline and a bike, and a coat and a Baby Alive and a Baby that blows bubbles, and a lite bright?
Your friend,
Rhonda Ross
3rd Grade

511 South Townsend
Spearman, Texas 79081
December 12, 1978

Dear Santa,
I want a baby this and that, and calculator, trampoline. Big wheele, rub-
A dub dolly tugboat float musical doll, Miss ginny, bobby in a basket, floppy legs softinaar, skating board, basket ball, Holly Hobbie bake oven Holly Hobbie cake and cookie set, angelove umbrella, Holly Hobbie jewelry set, Holly Hobbie Dial typewriter Raggedy Ann and Andy phono.
Your friend,
Wendy Hill
3rd Grade

Dear Santa,
I want a Barbie doll.
Love,
Nora Garcia

Dear Santa,
I want a Barbie doll.
Love,
Rhonda Stumpf

Dear Santa,
I want a football.
Love,
Ramon Rosales

Dear Santa,
I want a Baby Burp.
April Graham

511 South Townsend
Spearman, Texas 79081
December 12, 1978

Dear Santa,
How are you I have been good thisis what I want. A Light Saber and a Viper space fighter and a cylon-raider and the Star Wars Space Station and a lypnow
Your friend,
Junior Ochoa
3 grade

511 South Townsend
Spearman, Texas 79081
December 12, 1978

Dear Santa,
I would like a football and a toy gun for Christmas and I am in the 3rd grade I can't wait for Christmas I hope you are doing good I want to know what is like in the north pole
Your friend
Mike Countiss

511 South Townsend
Spearman, Texas 79081
December 12, 1978

Dear Santa,
I want a football suit of the Dallas cowboys. And I want a Dallas trash can. And the long sleeve shirt with the Dallas helmet on it and on the bottom of the helmet it post to say Dallas cowboys, and the mouse trap. And I want a trampoline, and I want a poster of the Oakland Raidier, and I want the Dallas cowboys lamps. And the Dallas cowboys penny bank
Your friend,
Lane Loomis
3rd Grade

511 South Townsend
Spearman, Texas 79081
December 12, 1978

Dear Santa,
I would like a record player, of course, and a record. I think I have written all I want in the other letter.
Your friend,
Jeneane Bynum
third grade

Dear Santa,
I would like a be be gun and super jock football and TV. I have been good all of this year.
Merry Christmas.
Your friend,
Jeff Williamson
3rd grade

511 South Townsend
Spearman, Texas 79081
December 12, 1978

Dear Santa,
I wanted this and I wanted that, but when I saw a doll at TG&Y I new that it was the one I wanted. You are probably wondering what the name is her name is Baby Bath a lot. I also want a fluid fantasy. I don't want anything else.
Your friend
Amy Hester

511 South Townsend
Spearman, Texas 79081
December 12, 1978

Dear Santa,
For Christmas I would like a stereo, a greas tape 8 track please. My stocking filled to. I'll leave you a candycane to. And I want baby alive. And a Baby this and that. And a kiss from you.
Your friend,
Cindy Dowdy

511 South Townsend
Spearman, Texas 79081
December 12, 1978

Dear Santa,
I have already written. Mommy is getting the pair of boots I wanted. I would like to have lots of things.
I would like a record player, of course, and a record. I think I have written all I want in the other letter.
Your friend,
Jeneane Bynum
third grade

511 South Townsend
Spearman, Texas 79081
December 12, 1978

Dear Santa,
I once had a story about you, and it's a good story too. My sister wants Christmas to come and so she can open the big gift that she got. And when Christmas is over we will go on a trip for my birthday. And when we get back from our trip, we will go to camp.
Your friend,
Karen Cook
3rd Grade

511 South Townsend
Spearman, Texas 79081
December 12, 1978

Dear Santa,
I love you Santa. Want do you look like? I hop I can get a bike. I hop I can have a Raido or maybe a ball or maybe a now toy.
Your friend
Melody Donoho
3rd Grade

511 South Townsend
Spearman, Texas 79081
December 12, 1978

Dear Santa,
I have ben wishing for a gocar a spas blaster and a set of trucks a taprekorder and a shotut in spas I want a outrider that is all that I want for Christmas
Your friend,
Ray Dunaway
3rd Grad

511 South Townsend
Spearman, Texas 79081
December 12, 1978

Dear Santa,
I want a trampoline a Shon Castd jakia tap playr a storyoe I want a pichr of Rudof.
Your friend
Gina Bartz
3rd Grade

511 South Townsend
Spearman, Texas 79081
December 12, 1978

Dear Santa,
I want woopsie doll, and a Wall stationery organizer and also doll food and daipers and boddle and so on.
Mama's making cookies for us and you get some. I'm in third grade.
Yours Truly
Lori Dean

511 South Townsend
Spearman, Texas 79081
December 12, 1978

Dear Santa,
I want a doll a pretty doll. I will have some Christmas cookies for you. I want a game I want a fashion Photo Barbie.
Love,
Jane Wirsdorfer
3rd Grade

511 South Townsend
Spearman, Texas 79081
December 12, 1978

Dear Santa,
This year I would like to have a baby alive and a curling iorn. And maybe I will put some cake out for you. And a chalk brord.
Your frind
Angela Dennis
3rd Grade

511 South Townsend
Spearman, Texas 79081
December 12, 1978

Dear Santa,
I would like to have a bike and tramping for Christmas so that I could play with. I have been trying to be real good. And I want something else for Christmas and it is a record player. And I hope you will not get a cold so that you could take all the toys to us children.
Your frind
Angula Sintas
3rd Grade

511 South Townsend
Spearman, Texas 79081
December 12, 1978

Dear Santa,
I would like a T.V. and a bike a doll house and a doll to go with it and a fancy doll too. Santa, last time you came you brought me a bike but it had a hole in it. There is some thing else I would like it is a tea set. Santa what would you like for Christmas. Would you like a cup of coca when you come. I would like to stay up for you. But I can't.
Your frind
Camey Jines
3rd Grade

511 South Townsend
Spearman, Texas 79081
December 12, 1978

Dear Santa,
This Christmas I want a trampoline, baby wet and care, lightbrite, barber shop, jaw game, Mr. mouth game, bubbel doll, spirograph, Bubbel gum doll, storebird and and a godsil-la.
Your friend,
Mary Lou Baker
3rd Grade

511 South Townsend
Spearman, Texas 79081
December 12, 1978

Dear Santa,
I love you very much and I hope you are nice and cozy down there. I am in the 3rd grade. I will have you a present you on the fire place. be sure not to step on it. I want a Bible, if you can bring a Sarah Brown dall and her horse. Jiggles and don't for get the present.
Your friend,
Deana Turner

511 South Townsend
Spearman, Texas 79081
December 12, 1978

Dear Santa,
Hi! I'm nine years old and I'm in the third grade. I have been good all year and I would like these things. Work bench with tool set, army men, NFL Super bowl electric football game, Bonkers game, Tyco night-glow race car set, Santa Fe train set, Remote control airplane, Dallas Cowboys watch, Dallas Cowboys Uniform, Dallas Cowboys Bank, Dallas Cowboys trash can, NFL bed-spread, Dallas Cowboys Action Figure, Dallas Cowboys football bag, Lable maker, Dallas Cowboys bean bag, tool set, 5 pive drum set, walkie talkie set, Dallas Cowboys lamp, B.B. gun NFL Pennant set. I will have a cookie on the table for you on Christmas Eve!
Your friend,
Norman Scroggs

Try It!

Next time you're in a Chinese restaurant take a wack at ordering in Chinese. Here's what some common Chinese menu terms mean: "shu" means roasted; "ding" is diced, "gai" stands for chicken and "kew" or "kow" means with Chinese vegetables. Once you've mastered ordering in Chinese try mastering the art of eating with chopsticks.



To feel as rich as a big wheel get behind the wheel of an expensive car. You don't buy it, you just go to the car showroom, sit in the driver's seat and perhaps even ask for a test drive. This way you'll know what car to buy if you inherit money from a distant relative.

YOU WILL HAVE TIL' DEC. 30th TO COMPLETE YOUR CHARMCRAFT STONWARE SET !!

SAVE \$1 Charmcraft Stoneware **SAVE \$1**

BATTERY CLOCK

SAVE WITH THIS COUPON **SAVE \$1** **EXPIRES DEC. 16th**

DEC. 16th IS FINAL DAY TO PLAY BLACKOUT BINGO

YOU HAVE TIL' DEC. 30th TO REDEEM

GREEN STAMPS

Support Your Local Lion's Club!!!

Gala Drawing for Color TV or Micro-Wave Oven Dec. 19!

Donation.....\$1.50 (50¢ to Bruce Stinson Fund)

For Tickets.... Call Billy Miller or John Davey 659-3434

(or see any member of Spearman Lions)

DEEF RIBS NAVAL CUT LB. **59¢**

BONELESS STEW "EXTRA LEAN" CUBES OF BEEF LB. **\$1.49**

BONELESS SHOULDER ROAST WASTE FREE BEEF LB. **\$1.49**

HOT LINKS GLOVER'S LB. **98¢**

GROUND BEEF FAMILY PACK LB. **98¢**

SWIFT'S SPARE RIBS TENDER LEAN PORK UNDER 3 LB. AVG. LB. **\$1.29**

FRANKS FINE FARE 12 OZ. PKG. MEAT OR BEEF **89¢**

FARMLAND BONELESS HAMS FULLY COOKED 3 LB. CAN **\$5.98** 5 LB. CAN **\$9.98**

SMUCKER'S MARSHMALLOW CREAM 7 OZ. JAR **39¢**

BROMEDARY CHOPPED DATES 8 OZ. **79¢**

BAKER'S ANGEL FLAKE COCONUT 20' OFF 14 OZ. **\$1.09**

BAKER'S CHOC. CHIPS 12 OZ. PKG. **98¢**

SHOP 'N SAVE

Wanted

Experienced Book-keeper,

that knows how to do

double entry book-

keeping on posting

machine. Interested

applicants come by

Palo Duro

Feeders

10 Miles South of Gruver

Phone 733-2416

"DAIRY"

BELL EGG NOG QT. **69¢**

KRAFT DIPS 8 OZ. **49¢**

BELL COTTAGE CHEESE 24 OZ. **\$1.09**

"FROZEN FOODS"

FISHER BOY FISHSTICKS 2 8 OZ. PKG. **\$1**

ORE IDA TATERTOTS REG. WITH ONION WITH BACON 2 LB. **79¢**

CHEESE ENCH. BEEF ENCH. COMB. MEX. FIESTA **55¢**

QUANTITY RIGHTS RESERVED

UNITED Supermarkets

Perryton, Texas

PRICES GOOD THRU' DEC. 16th

Yes, Virginia, there is a Santa Claus



One of the most famous newspaper editorials of all time has to do with Christmas. It first appeared September 21, 1897, in the pages of a leading newspaper of the day, the New York Sun.

Virginia O'Hanlon, eight years old, was torn between the doubts placed in her mind by playmates and her own sincere belief that each Christmas a jolly old man came to help spread joy through the world. To settle the matter, she posed the question to the editor of the Sun.

Francis Pharcellus Church replied as follows:



"Is there a Santa Claus?"

"We take pleasure in answering at once and thus prominently the communication below, expressing at the same time our great gratification that its faithful author is numbered among the friends of the Sun:

"Dear editor:

"I am 8 years old.

Some of my little friends say there is no Santa Claus.

Papa says 'If you see it in the Sun it's so.'

Please tell me the truth, is there a Santa Claus?"

Virginia O'Hanlon

115 West 95th Street



"Virginia, your little friends are wrong. They have been affected by the skepticism of a skeptical age. They do not believe except what they see. They think that nothing can be which is not comprehensible by their little minds. All minds, Virginia, whether they be men's or children's, are little. In this great universe of ours man is a mere insect, an ant, in his intellect, as compared with the boundless world about him, as measured by the intelligence capable of grasping the whole of truth and knowledge.

"Yes, Virginia, there is a Santa Claus. He exists as certainly as love and generosity and devotion exist, and you know that they abound and give to your life its highest beauty and joy. Alas! how dreary would be the world if there were no Santa Claus! It would be as dreary as if there were no Virginias. There would be no childlike faith then, no poetry, no romance to make tolerable their existence. We should have no enjoyment, except in sense and sight. The eternal light with which childhood fills the world would be extinguished.

Not believe in Santa Claus! You might as well not believe in fairies! You might get your Papa to hire men to watch in all the chimneys on Christmas Eve to catch Santa Claus, but even if they did not see Santa Claus coming down, what would that prove? Nobody sees Santa Claus, but that is no sign that there is no Santa Claus. The most real things in the world are those that neither children nor men can see. Did you ever see fairies dancing on the lawn? Of course not, but that's no proof that they are not there. Nobody can conceive or imagine all the wonders there are unseen and unseeable in the world.

"You tear apart the baby's rattle and see what makes the noise inside, but there is a veil covering the unseen world which not the strongest man, not even the united strength of all the strongest men that ever lived, could tear apart. Only faith, fancy, poetry, love, romance, can push aside the curtain and view and picture the supernatural beauty and glory beyond. Is it all real? Ah, Virginia, in all this world there is nothing else real and abiding.

"No Santa Claus! Thank God he lives, and he lives forever. A thousand years from now, Virginia, nay, ten times ten thousand years from now, he will continue to make glad the heart of childhood."



This is your invitation to attend Fantasyland

each evening at the Little League park

in Spearman - Now open.

This page compliments of

**DRILLING
BAKER & TAYLOR
COMPANY**

CHRISTMAS GREETINGS-1978

We wish all our friends a very Merry Christmas and a Happy New Year. Instead of sending cards this year, we have donated to the Hospital Auxiliary Fund for the Hansford County Hospital.

- Emmett R. Sanders
- Gertrude B. Archer
- Dr. R. L. Kleeberger
- Glen & Evelyn Hiller
- Gwenfred Lackey
- L. W. & Tot Rosenbaum
- Mr. & Mrs. Joel Lee Lackey
- Mr. & Mrs. Deacon Clement
- Margaret Shedeck
- Pat & Virginia Cates
- Woodville & Verna Jarvis
- Mrs. Walter Wilmetth
- Agnes Windom
- Juanita Logan
- Raymond & Grace Kirk
- Dick & Frances Kilgore
- Phil & Marguerite Jenkins
- Floye & Eddie Largent
- Jack & Dolly McWhirter
- Mary Fern Terry
- Mrs. C. A. Kleeberger
- Mrs. Fred J. Hoskins
- Wesley & Dot Jenkins
- Mr. & Mrs. Bruce Sheets
- W. E. & Loydell Sparks
- Faye Lynch
- Owen & Babe Pendergraft
- Marvin & Ruth Ann Jones
- Mr. & Mrs. Lee Roy Mitchell
- Mr. & Mrs. Wayne Shook
- Jim & Linda Beeson
- Condee & Doris Ellison
- Maylynn Schubert
- Gus & Clementine Renner
- Buena & Perren Lyon
- Mr. & Mrs. Preston Smith
- Carl & Peggy Archer
- The Roy Lee McClellan Family
- The Dennis Nelson Family
- Betty & Irvin Davis
- Mr. & Mrs. R. E. Lee
- Mr. & Mrs. Thomas H. Etter
- Judge & Mrs. Richard N. Countiss
- Jeff, Mike & Julie Countiss
- Ed & Alva Garner
- James, Nell & David Cummings
- Lois & Woody Gibner
- Bernice V. Brown
- Sparks Laundry
- Merrel & Grace Johnson



Jamie's Jabber

by Jamie Casdorff
I don't have much school news this week. The only thing good to say is that our basketball teams are really doing a great job!! I haven't said too much about basketball in my column, and it is because I don't get to go to the games and because there are so many of them all the time! I promise that I will try to get such material in here for you readers! Another good bit of news this week is the CHOIR AND BAND CONCERT THIS THURSDAY, DECEMBER 14TH. GOOD LUCK BAND AND CHOIR STUDENTS!

I have just recently joined the life of the 'ole married folks! It really is kinda neat! I have been living in the dark though! I discovered how much it costs just to buy a little bit of groceries! The first time I checked out I just about fainted! I hadn't bought anything but groceries for one week and it cost me \$37.66! Mom thought that that was good! I DIDN'T!! I have to pay for such nonsense!

But even that sounded good compared to this weeks! Just to get out of the stupid grocery store!

I have even discovered that my husband can do a little bit of house cleaning! The other day I came home from work to find that the dishes had been done, the floor swept, and mopped!

Now, my mother mentioned that I had better let him do that little bit of cleaning until he got tired of it because it won't last long! I hope that it lasts forever, he's got more time than I have!!

Christmas shopping this year is murder!! I bought my little cousin a cute doll and it cost me \$15.00 for a bunch of rubber and plastic to be put into a mold shaped like a baby!

For an exciting and challenging card game, be game for Rook, the most popular "special deck" card game ever published. Sixty million Americans have bought this Parker Brothers creation since its introduction in 1906. Twenty different games can be played with the 56-card, four suit, numerical deck. The game's popularity has spawned hundreds of Rook clubs and tournaments, including a national championship.



MARCH OF DIMES

Hansford Hospital

Offer You A Quick and Economical Means of Preparing For A Pleasant And Profitable Career As A

Vocational Nurse

A Vocational Nurse...

A Vocational Nurse is a person trained to care for sub-acute, convalescent and chronic patients requiring nursing service at home or in institutions, who works under the direction of a licensed physician or a registered nurse. A Vocational Nurse may be employed by a physician, hospital, the lay public health agencies, industries, and custodial homes.

Entrance Requirements:

1. Between the ages of 18 and 55
2. Earned a high school diploma or its equivalent
3. Physical examination
4. Definite interest in nursing
5. Personal interview
6. References
7. Satisfactory tests scores
8. Approval by Admissions Committee

Join other students from the Northern Panhandle at the superbly equipped and expertly staffed classroom facilities of Frank Phillips College, Borger, and your clinical training at the outstanding Hansford Hospital.

Apply Now!

Application Deadline Is Jan. 15th.

- Student Loans
- Students Grants
- Scholarships

All Available Through Frank Phillips College

To Apply Contact: Kaye McFarlin
Hansford Hospital 659-2535 or
Frank Phillips College, Borger 274-5311 Ext. 55

Golden Spread Directors Meet

Golden Spread Center Board met Monday, December 11 at 5:00 p.m. at the Center. The meeting was called to order by president Orvil Brummett and led in prayer by the Rev. Edward D. Freeman.

Those in attendance were Bob Boxwell, Colene and Orvil Brummett, Rosa Lee Butt, Pete Fisher, Ed Freeman, Alva Garner, Frances Loftin, Marsha Murphy, and Thelma Scott.

The minutes of the November 9th meeting were read and approved and the financial report was read and approved, all bills were ordered paid.

Dishes and the finishing of the kitchen cabinets were discussed.

Activities reported were a van-bus trip to Bishop Hills on Tuesday, December 12 with the Rev. and Mrs. Russell Pogue as bus drivers.

On Tuesday, December 19, there will be a pot-luck supper at 6:30 p.m. with Baker & Taylor Women serving as hostesses. Spearman Music Club will also be there to give a program of Christmas music.

Hostesses to greet people and to get people involved in activities and janitor service were discussed.

The employment of a director for the center was discussed and the committee to draw up a job description was instructed to get with it. Also the committee to get a sign on the center's bus-van was told to get with it.

The new "Thank You" notes with a picture of the center were there and are in use.

Liability insurance has been taken care of.

It was ordered to purchase a doormat for the front door and to get a window fixed. Yard work and the parking lot were discussed.

The meeting adjourned a few minutes after 6:00 p.m.

Spearman Music Club Meets

The Spearman Music Club met Monday, December 11th at the lovely country home of Mrs. Rue Sanders. Mrs. Ronnie Schaefer was the co-hostess.

Mrs. Dean Leighnor, President, presided at the business meeting, and plans were discussed for presenting the Musical Christmas program for the Rotary Club, Monday, December 18th, at Martin's Steak Garden at 12:15 and for the Golden Spread Senior Citizen dinner on Tuesday December 19th, at 6:30 p.m. at their building.

Mrs. Franklin Horne gave the history of the Hymn-of-the-month "Angels from the Realm of Glory."

"A Journey Into Peace" was the theme of the program which included selections from the Club Chorus: "Because it's Christmas," "White Christmas," "A Christmas Fantasy," and "I Cannot Understand."

A Piano Duet, "It Came Upon a Midnight Clear" by Mrs. Paul Reimer and Mrs. Carl Kunselman. A Flute solo "Ave Maria" by Mrs. Franklin Horne, accompanied by Mrs. Carl Kunselman. "Silent Night" was played by Mrs. Rue Sanders on the pump organ. A Violin solo "O Holy Night" was given by Mrs. Charles Steele accompanied by Mrs. Rue Sanders.

Mrs. Bill Baker presented Accordion numbers "Up on the Housetop" and "Jingle Bells" before the 17 members exchanged Christmas gifts of "Home-made Creations."

Delicious refreshments were served to the members: Mesdames Bill Baker, Richard Booth, J. L. Brock, Kim Brock, Edward Freeman, Mike Glass, Franklin Horne, Carl Kunselman, Floye Largent, Dean Leighnor, Paul Reimer, Rue Sanders, Ronnie Schaefer, Charles Steele, Russell Townsend and Cindy Sweeney.

Roger A. & Beth (Sheets) Ayres of Tucson, Arizona, a Baby Boy, Born November 30, 1978. Roger grew up in Gruver, Texas and Beth is a native of Spearman, Texas.

Proud grandparents are: Ms. Jeannie Ayres, Spearman & James A. Ayres of Amarillo. Great Grandparents are: Mr. & Mrs. J. M. Ayres, Amarillo and Mr. & Mrs. Johnny Grummett, Quitaque.

Elaine Janzen will be teaching at the Believers' Cottage on Friday, December 15 at 8:00 p.m.

Notice

The Spearman Ministerial Alliance will entertain their wives in a Christmas dinner on Tuesday, December 19 at Martin's Steak Garden.

Station Master Museum News

The Hansford County Historical Survey Committee, Inc. met in regular session December 8 at the Stationmaster's House Museum. The meeting was opened by Helen Boyd acting as president. After the treasury report by Clementine Renner and the reading of the minutes of the previous meeting, Helen Boyd gave a report on the sign that the highway department will erect. The sign will be across the street from Cates Car Wash giving directions to the museum.

Ruby Saltness reported on the museum activities during the month of November. Sixty-one people and one Brownie troop toured the museum.

A report was also given on the Grants which at this time does not look very favorable.

A discussion was opened on the history book. The commission chose a red cover with gold lettering. There will be a meeting on the History Book December 29 at 1:30 p.m. at the Court House. Everyone is invited to attend this meeting.

The committee is getting into full swing on the History Book and need everyone's help. It is a county wide project and they need YOU. The Chairman for the book committee is R. L. McClellan. Persons wishing to help on the book will meet once a week at the museum. The meeting was closed by R. L. McClellan.

Those attending were Helen Boyd, Clementine Renner, Mary Lou Wysong, Juanita Pierce, R. L. McClellan, and Johnny Lee.

Birth's

Roger A. & Beth (Sheets) Ayres of Tucson, Arizona, a Baby Boy, Born November 30, 1978. Roger grew up in Gruver, Texas and Beth is a native of Spearman, Texas.

Proud grandparents are: Ms. Jeannie Ayres, Spearman & James A. Ayres of Amarillo. Great Grandparents are: Mr. & Mrs. J. M. Ayres, Amarillo and Mr. & Mrs. Johnny Grummett, Quitaque.

Thank you so very much for your concern, visits, calls, flowers, and your prayers after my accident and during my recent hospital stay. A special thanks to Dr. Manese, the nurses and aides for their excellent care. It all means so much to me and my family. May you all be blessed in doing good.

Love to all,
Ethel Pittman

CPR Course Set For Dec. 16

The Serendipity Home Demonstration Club met Tuesday, December 8 in the home of Kathy Gafford. They had a Christmas Luncheon with the installation of officers for the 1979 year. Agent Peggy Winegarner installed the new officers: President - Debbie Benton; Vice president - Kay Loomis; and Secretary-Treasurer - Kathy Gafford.

Those attending the luncheon and installation were Mmes. Linda Winegarner, Linda Brown, Debbie Benton, Kay Loomis, Gayle Smith, Kathy Gafford and Aent Peggy Winegarner. The January meeting will be in the home of Debbie Benton.

REMIND CHILDREN that they should not play on an escalator.

Sacred Heart Bake Sale Set

The Sacred Heart Catholic Church will be having a bake sale on December 20 from 8:30 till they are sold out at Thriftway.

LYRIC THEATRE

PHONE 806-659-2812

ONE SHOW AT 7:30 P.M.
SUNDAY, MONDAY, TUESDAY,
WEDNESDAY, AND THURSDAY

TWO SHOWS AT 7:00 P.M.
AND 9:00
FRIDAY AND SATURDAY.

NEXT ATTRACTION

NOW SHOWING

The only thing that could follow "Murder" is "Death."
First, AGATHA CHRISTIE'S
"MURDER ON THE ORIENT EXPRESS"
Now, "DEATH ON THE NILE."



AGATHA CHRISTIE'S DEATH ON THE NILE

PARAMOUNT PICTURES PRESENTS AN EMI FILM PRESENTATION
A JOHN DRABOURNE AND RICHARD GOODWIN PRODUCTION A JOHN GUILLERMIN FILM
PETER USTONOV ANNE DRYEN LOIS CHILES BETTE DAVIS TINA TURNER
JON FINCH OLIVIA HUSSET GEORGE KENNEDY
ANGELA LANSBURY SIFON MAK GORDONVILLE
DAVID NYLEN FRANCES SHUTIN JACK WARDEN IN AGATHA CHRISTIE'S
"DEATH ON THE NILE"
WITH HARRY ANDREWS I.S. JONAS MUSIC COMPOSED BY HINO NOTA
SCREENPLAY BY ANTHONY SHAFER
PRODUCED BY JOHN DRABOURNE AND RICHARD GOODWIN
DIRECTED BY JOHN GUILLERMIN A PARAMOUNT/EMI PICTURE
PG PARENTAL STRONG CAUTIONED
SOME MATERIAL MAY BE OFFENSIVE TO CHILDREN

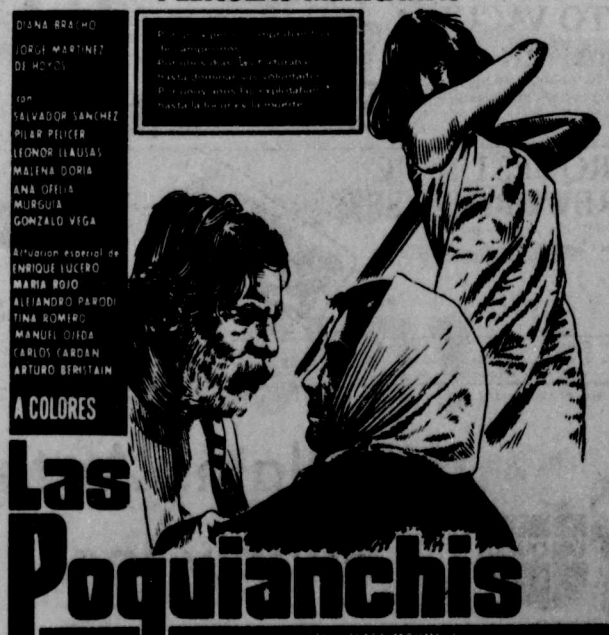
DEC. 13 THRU DEC. 19



JACK WRATHEN presents
THE MAGIC OF LASSIE
Color by CFI. Released by The International Picture Show Company
DOLBY STEREO ©1978 Laser Productions, Inc.

DEC. 20 THRU DEC. 26

PELKULAS MEXIKANAS



A COLORES

Las Poquianchis
CLARA MOLINA

SUNDAY DEC. 17 - 2 P.M.

History Book 3 Generations Complete WOW

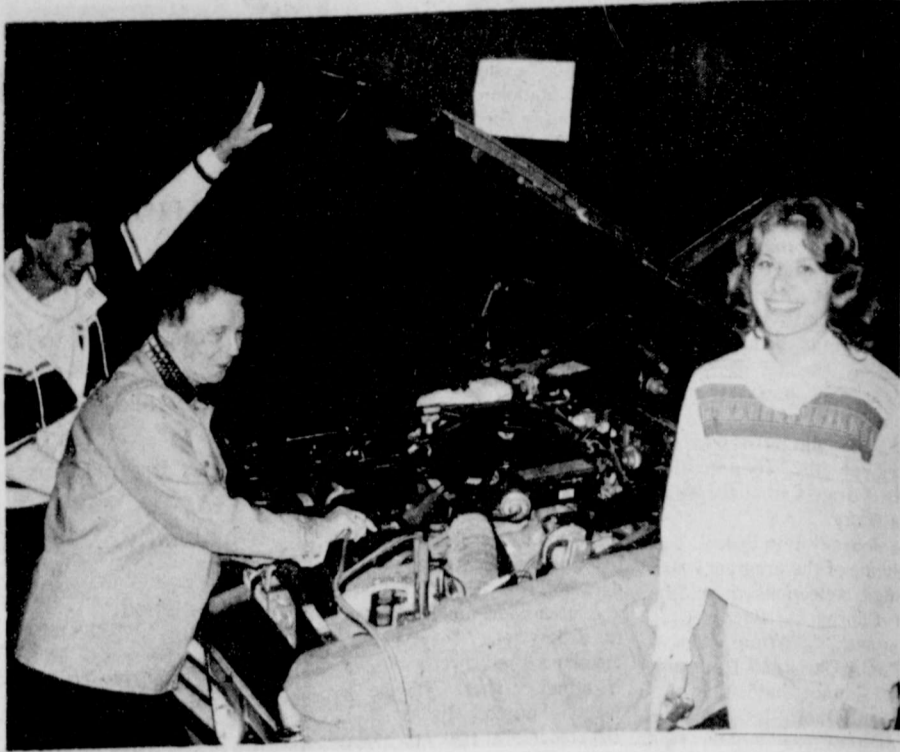
Meeting Set

THE PUBLIC IS INVITED TO A MEETING FOR THE ORGANIZATION OF THE HANSFORD COUNTY HISTORY BOOK. The meeting will be held December 29 at 1:30 p.m. at the Court House. This is a county project and the help of any and all of the citizens of Hansford would be greatly appreciated. Everyone interested in having a book on the history of Hansford County are urged to attend this meeting.

Library Board Meets

The Library Board met in regular session on Monday, December 11 at the Hansford County Library. The minutes of the previous meeting were read and the treasury report given and approved. The librarian reported a total of 1,725 books circulated for the month of November. There were 1,303 adult books and 422 children books. Seven new cards were issued and 52 new books processed.

Those present at the meeting were Chairman-James Cunningham, Mrs. R. E. Lee, Mrs. J. R. Stump, Mrs. Larry Murphy, Mrs. G. R. Kilgore and the librarian, Mrs. Terry Curtis.



Three Generations Complete Course, Guymon-Three women from Goodwell, Oklahoma, (L-R) Mother Mrs. JoAnne Taggart, Grandmother Mrs. Mildred Bentley and Daughter Mrs. Jan Clift were among the 39 to complete the WOW, "women on wheels" free course offered by Ed Smith, new owner, of Miller Motors, Chrysler-Plymouth Dealer in Guymon. This 6 hour educational course was developed to familiarize women with their car, how it operates, how to keep it operating and what to do in case of an emergency.

21 Honor Roll Students

Spearman High School students with ALL quarter grades above 90 are: 9th grade: Dawn Baker, Becky Byers, James Farmer, Shelley Friemel, Jimmy Haden, Pam Porter, Rory Sheppard and Sherry Womble; 10th grade: Eadie Clemmons, Marietta Davis, April Pearcey, Tamara Scroggs, and Lisa Sheets; 11th grade: Brenda Boyd and Connie Shields; 12th grade: Tina Cochran, Christy Collier, Kelly Davis, Stinson Gibner, Mike Ladd and Paige Mitchell.

Honorable Mention Spearman High School students with quarter grade average above 90 are: 9th grade: Denise Blackburn, Scott Bullard, Kyle Brack, Tuwana Byrd, Lois Cook, Curtis Davis, Johnnie Eaton, Monte George, Dee Green, Marla Harmond, Jose Hermosillo, Karen Kenney, Mary Martin, Mary McIntyre, Shelley Mitchell and James Morley; 10th grade: Dawn Bridges, Kenda Burke, Kenneth Brown, Terry Bynum, Jeanne Close, Stacey Cook, Bill Cope, Stacey DeWitt, Charlotte Elliott, Cammy Gee, Sherry Greene, David Hall, Jimmy Ladd, Becky Lusby, Tammi Maize, Bonnie McCloy, Jana McCoy, Kim Reed, Margaret Reed, Sharon Sheets, Steve Shields, and Shelly Strawn; 11th grade: Deanne Baker, Karen Berry, Kyle Beedy, Jay Comegys, Beth English, Kindra Ivey, Sabre McCoy, Ray Ortega, James Pierce, Halee Reed, Kelly Ryland, Dean Schaffer, Margie Schubert, Kelly

Shaver, Lynn Vernon and Brent Ware; 12th grade: Carey Bridges, Jana Buchanan, Todd Brock, JoNell Comegys, Susan Cope, Beth Ann Flowers, Steve Goff, Mark Green, Debbie Greene, Kirby Hargis, Sherry Johnson, Tracie Keetch, Pam Largent, Scot Martin, John Reineau, Lori Short, Jennifer Umphress and Criselda Vela.

Presbyterian Church News

There will be a rehearsal for the Sunday Church School Christmas Program on Saturday, December 16 at 10:30 a.m.

There is a Sunday Church School class for everyone every Sunday at 9:45 a.m. with a concerned, friendly teacher with a well-prepared Bible lesson designed to meet your spiritual need.

"To Bear Witness to the Light" is the subject of Pastor Edward D. Freeman's sermon at the service for the public worship of God on Sunday, December 17 at 11:00 a.m. The David Burnett family will light the Advent candles.

The Children's Christmas Program will be on Sunday, December 17 at 5:00 p.m. This will be followed by a family pot-luck Christmas dinner.

Our church is a growing church. If growth is measured by the impact of the church upon the relationships of its

members, we are much larger than many other churches. More people in our church know more people, and know more about more people. Our church has good relationships among people. When church size is measured by human relationships, the First Presbyterian Church is the largest expression of the Christian faith! Come and share our family Christmas activities and find out what real love and caring is all about.

Artist Of The Month



A Spearman native, Mrs. Vera Beth (Hoskins) Thompson of Friona is the artist of the month at Hansford Library in December. Mrs. Thompson paints in oils and acrylics and also does rosemailing and tote painting. She is a graduate of Spearman High School, West Texas University and has studied art from several teachers in the

past few years. Mrs. Thompson is on the city commission in Friona, active in the Progressive Study Club, a member of the Baptist church choir, teaches Sunday School, and is active in many other community affairs.

She is the mother of three sons, James Glenn Hodges of Anchorage, Alaska, Craig Hodges of Fort Worth and Bobby Hodges of Friona. She also has two grandsons, and a granddaughter.

She is the daughter of Mrs. Fred Hoskins of Spearman and the late Mr. Fred Hoskins.

Bridge Club

The Blue Monday Bridge Club met Monday, December 11 in the home of Mrs. Pope Gibner.

The club members voted to make a donation to the Girl Scouts of America for their Christmas project.

Mrs. Major Lackey won the high score and Mrs. Gwenfred Lackey won the second high score. There were two guests present, Mrs. Leonard Jameson and Mrs. Viola Whitson. Members present were Mmes. Mildred Daily, Vester Hill, W. H. Gandy, Major Lackey, Gwenfred Lackey, Deta Blodgett, Bill Seitz and Pope Gibner. The January meeting will be in the home of Mrs. Gwenfred Lackey.

Hickerson Jewelers
Main St. Spearman
Open till 7:30 P. M.
For your Merry Christmas

CARQUEST AUTO PARTS STORES



MERRY CHRISTMAS

Tonka CARQUEST HOT PICKUP TRUCK



SPECIAL \$1.00 OFF!

7.49 LIMITED QUANTITIES

CARQUEST STOCKING CAP



2.29

1979 CHILTON AUTO REPAIR MANUAL



8.99

WILTON 3 1/2" HOME VISE



12.88

TURNER SOLIDOX HOME WELDING TORCH



27.88 LIMITED QUANTITIES

QUARTZ HALOGEN DRIVING LIGHTS



13.98 EA.

HOLLYWOOD AUTO VACUUM CLEANER



10.99

CARQUEST 10-PC. SCREWDRIVER SET



6.49 LIMITED QUANTITIES

CARQUEST RAIN-HECK PROTECTANT. Even CARQUEST Special is a bona fide offer. Please see our ad or advertisement in the store. Rain-heck is not applicable to items stated as being in limited supply. We reserve the right to substitute items of equal or better value in the event that our stock is depleted or items are discontinued.

Sale prices good at participating CARQUEST Auto Parts Stores through December 31, 1978.

Hi-Plains Auto Supply Inc.

118 N. Main 659-2506

SF555-2 WE KNOW WHAT YOU MEAN WHEN YOU'RE TALKING PARTS. AT MOST LOCATIONS



ALLSUP'S CONVENIENCE STORES

SHOP ALLSUP'S AND SAVE

PRICES EFFECTIVE DECEMBER 14 THRU DECEMBER 16, 1978

FILL YOUR STOCKING with SAVINGS DURING OUR DEL MONTE SALE!

DEL MONTE CREAM STYLE CORN 3 16 OZ. CANS 89¢

DEL MONTE CUT GREEN BEANS 3 16 OZ. CANS 89¢

DEL MONTE FRUIT COCKTAIL 3 17 OZ. CANS \$1
DEL MONTE SLICED YC PEACHES 3 16 OZ. CANS \$1
DEL MONTE HALVES PEARS 3 16 OZ. CANS \$1
DEL MONTE CRU. SLI. PINEAPPLE 3 5 1/2 OZ. CANS \$1

DEL MONTE Tomato Juice 46 OZ. CAN 59¢
Sams Sugary YAMS 24 oz. 49¢
DEL MONTE TOMATO SAUCE 8 OZ. CAN 10¢

DEL MONTE SWEET PICKLES 12 OZ. JAN 59¢
DEL MONTE TINY DILL PICKLES 15 OZ. JAN 39¢
DEL MONTE CATSUP 32 OZ. BTL. 49¢

RATH'S PURE PORK SAUSAGE 1 LB. PKG. 79¢

BRIGHT & EARLY IMITATION ORANGE JUICE 8 OZ. CANS 4 89¢

CAMPFIRE MINIATURE MARSHMALLOWS BAG 29¢
FIRESIDE CRACKERS 1 LB. BOX 49¢
PILLSBURY SN OR BM BISCUITS 10 FOR \$1.00

BORDEN'S CHOCOLATE MILK QT. SIZE 59¢
BORDEN'S PREMIUM ICE CREAM 1/2 GAL. HD. CTR. \$1.39
FARWAY QUARTERS OLEO LB. 39¢
BORDEN'S HI PROTEIN MILK 1/2 GAL. 79¢

THRIFT KING PAPER TOWELS 2 JUMBO ROLLS 79¢
THRIFT KING BATHROOM TISSUE 4 ROLL PKG. 59¢
10-18 LB. AVG. TURKEYS LB. 69¢



FILL OUR SANTA GLASS WITH YOUR FAVORITE SOFT DRINK ONLY 39¢

DISCOUNT CHRISTMAS TREES!

LARGE SELECTION NORTHERN NEW MEXICO BLUE SPRUCE - FIRS - BALSAM \$7.99 YOUR CHOICE

FARM GROWN IN MICHIGAN SCOTCH PINE
PURPLE TAG 4 TO 5 FOOT \$10.00
BRANDY TAG 3 TO 4 FOOT \$12.00
GREEN OR WHITE TAG 4 FOOT AND UP \$14.00

NEW SHIPMENT - JUST ARRIVED



**NEW SHIPMENT!!!!
JUST IN TIME FOR
CHRISTMAS!!!**

Beautiful Fire Place Sets....\$39⁹⁹

Fire Starter.....\$1⁶⁹

Log Racks.....\$13⁹⁹

While The Supply Lasts!!!

12 x 24 Cork...Ideal for walls... \$2⁵⁹

24 x 36 Bulletin Boards..... \$7⁹⁹

Clear, Gold & Green Vinyl Runner \$1⁰⁰ a foot

**Happy
Holidays**

White House Lumber

306 Davis

Spearman

**Initial gas rate
increase ok d!**

City gas users can expect a 5 cent rate increase on their January billing for gas. Spearman City Council members, anticipating an unspecified rate hike to be approved by the Railroad Commission on or before January 18th, took this action Tuesday night. Mayor Ralph Blodgett explained that such action was timely and prudent in as much as the Commission could possibly make their approval of the gas rate hike retroactive for at least sixty days and legally could even back up the increase to last August.

City Attorney Blackburn told the Council that a sixty day retroactive period was very possible. The mayor was joined by the other council members in regretting the action but with the recognition that any further delay by the city would probably cause "shock" and hardship when the actual rate increase does come.

High Plains Gas Co. has actually requested a rate increase that could amount to over 25 percent for the average consumer if the Railroad Commission were to approve the entire package.

City Manager Lenis Simpson explained that the actual increase in local gas consumer's bills would amount to approximately \$1.50 monthly, expecting approval by the Texas Railroad Commission for a moderate increase.

Mayor Blodgett told the Council that he was convinced that some sort of an increase would be approved by the State Commission...pointing out however that he did not believe that the entire package would be 'o.k.'d.

City officials warned however that the city might be faced with an additional rate increase later, once the State Authority had made it's ruling.

Noted Mayor Ralph Blodgett, "we are only trying to keep the city solvent!"

**City airport grant
largest made**

Spearman Mayor Ralph Blodgett revealed Tuesday night that he been advised by Texas Aeronautical Commission members that the \$75,000 recently approved for the City's planned airport expansion and rejuvenation was the largest awarded to any Texas city...and in reality the largest allowed by law.

The next highest grant was one of \$55,000.

Texas Aeronautical Commission officials will be in the city next week to meet with the Mayor and members of the Airport Board to outline procedures for the three step plan for City Airport development. Mayor Blodgett commented that it was quite probable that the city would again be in line for an additional \$75,000 grant next fiscal year.

**City to
purchase
mower**

Unlike last summer the city of Spearman will not be borrowing a mower to mow the various alleys and lots...rather it will probably have it's own brand new machine. Soon.

City Manager Lenis Simpson asked for and received approval to advertise for bids to purchase a new mower..funds for which were approved for the City Budget already.

The new mower is expected to cost between \$6000 and \$7500.

**Who reads
city hall meters**

Keen eyed City Council members Tuesday night asked the question "who reads the meters at City Hall?" when it was revealed that the city's entire gas bill for one month's operational activities at City Hall... plus the water bill amounted to just over \$40.00!!!

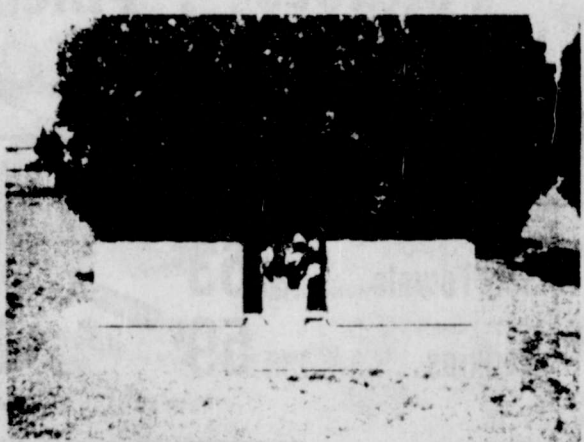
Noted one council member... can the same meter reader read my meter!!!

City manager Lenis Simpson promised to investigate the city's low readings...noting that

the low charges were a "bit unusual".

**COME TO THE 20TH
ANNIVERSARY SAT.
DECEMBER 16 AT HI
PLAINS AUTO & CONOCO**

**Hickerson Jewelers
Main St. Spearman
Open till 7:30 P. M.
For your Merry
Christmas**



This is one of several beautiful monuments being offered this month by

JONES MONUMENT CO.

It is 72" long and 18" tall in Blue Gray Granite. Regular Price \$867 -- now only \$495. This includes installation on cement foundation. All work guaranteed.

JONES MONUMENT CO.

Office
Phone
624-4711

810 N. Kansas
Liberal, Kansas

Home
Phone
624-4504

The 25-year-old actor has already established his reputation on British television with his performances in such productions as "I Claudius," "The Life and Times of Shakespeare," "Just William," "Romeo and Juliet," "Within These Walls" and Franco Zeffirelli's internationally networked "Jesus of Nazareth." Simon began his acting career playing Shakespeare in "The Dark Lady of the Sonnets" for the Shaw Festival at Avon St. Lawrence and went straight from there to the Belgrade Theatre, Coventry, for a season. Other recent theatre appearances include the Diana Rigg-Alec McCowan "Pygmalion" on London's West End stage, and Terence Rattigan's "French Without Tears" at Leatherhead.

He married actress Fiona Fullerton at St. Paul's Cathedral in 1976. Together they have formed their own company, Pendant, and presented their first production "The Importance of Being Oscar" at the Cambridge Festival.

DAVID NIVEN, one of the most durable, popular and accomplished of all screen stars, plays a Colonel engaged in a matter of private investigation — a role which duplicates his actual military rank during his own wartime service, when Peter Ustinov acted briefly as his batman.

After more than 60 films, including the memorable "Separate Tables," for which he won an Oscar in 1959, Niven remains at the peak of his career.

After a public school education at Stowe, Niven was first a professional soldier, lumberjack, bridge construction worker and journalist before becoming an extra in Hollywood where he was listed as "Anglo-Saxon Type 2008." Sam Goldwyn put him under contract and within three years he made 23 films, becoming one of the most popular British actors in such successes as "Dawn Patrol," "The Prisoner of Zenda" and "Wuthering Heights."

Niven has been married for 23 years to a beautiful Swedish model, Hjordis Torsmeden and they have two adopted daughters, Kristina and Fiona.

He has written two best-selling autobiographies, "The Moon's a Balloon" and "Bring on the Empty Horses." A great sportsman, he spends his leisure time, yachting, riding, fishing and skiing, but apart from his acting talent, his greatest skill is undoubtedly as a raconteur.

MAGGIE SMITH — playing Miss Bowers, a rich woman's resentful companion with a sharp edge to her tongue—shares a number of scenes with Bette Davis in "Death on the Nile."

Born in Ilford, Essex, Maggie was brought up in Oxford, and trained at the Oxford Playhouse School of Drama before graduating to that theatre's repertory company. After playing there in Shakespeare and the classics, she made a complete break by appearing in an Edinburgh Festival revue and then in a New York show called "New Faces of 1956."

She joined the Old Vic Company in 1959 to play a wide range of parts, then starred in Anouilh's "The Rehearsal," Peter Shaffer's

**The Buick Holiday
Get-Together.**

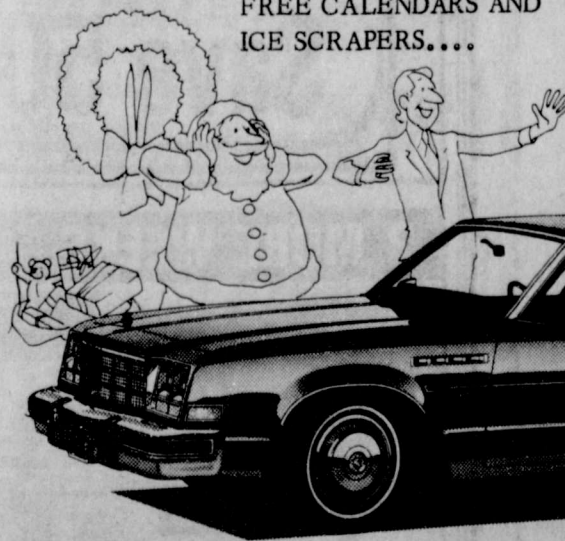
During this especially glad time of Christmas - We extend our best wishes to you and yours.

We hope you have the happiest of holidays. Thanks for your most valued patronage.

Our entire staff wishes you and your family a joyous and happy holiday. We invite you to stop in and share the spirit of the season with us during our Buick Holiday Get-Together. We think you'll be pleased with the Buick values we have.

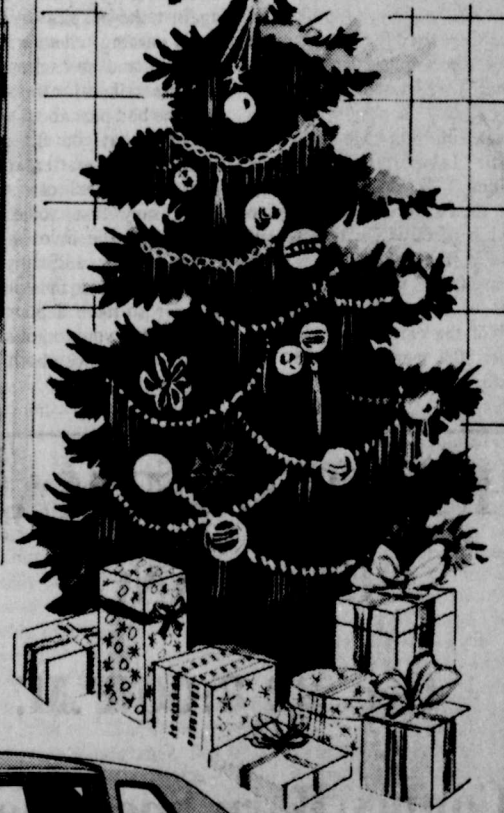
And you'll like the values on our Pontiacs, GMC's, and Used cars & Trucks, Too!! Now wouldn't a new car from Hergert Pontiac, Buick, GMC make a great Christmas for you??

**AFTER ALL, LIFE
IS TO ENJOY!
FREE CALENDARS AND
ICE SCRAPERS....**



1979 Buick Electra.

Merry Christmas



Touch Calling now available in most areas.

© Walt Disney Productions



**Looking for a Christmas gift
idea with a special ring to it?**

This Christmas, why not surprise someone you love with a very special phone of his or her very own. We have so many different ones to choose from. Each with its own unique style and character to express the person (and personality) you have in mind. You'll be dazzled by the choice of colors too. So if you're searching for a Christmas gift that says something special, call your General Telephone business office soon and we'll help you find just what you're looking for.

GTE
GENERAL TELEPHONE



"The Best For Sales,
Service & Body Shop"

**HERGERT
Pontiac, Buick, GMC**

WE APPRECIATE YOUR PATRONAGE!!!

So. Hwy. 207

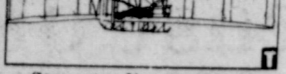
Spearman, Tex.

Pogue elected to Children's Home board

Russell Pogue, pastor of First Baptist Church, Spearman, Texas, and a member of the 182 member Executive Board of the Baptist General Convention of Texas, was elected to the board of trustees of Baptist Children's Home, Round Rock, Texas for a three year term.

Texas Baptist Children's Home is one of the child care institutions operated by the Baptist of Texas, and offers child care from infancy through High School and follows the residents of the home on through their college days. The fifteen member board of the home has the responsibility of assisting the administrator in the operation of the home and securing the interest of people from all over the state of Texas in supporting the home and also in seeing that it provides service to the entire state of Texas. Rev. Pogue has been on the administrative finance committee of the institution for the last two years.

A Day To Fly Christmas Comfort



Seventy-five years ago, Dayton, Ohio's famed Wright Brothers launched man's first powered aircraft. Daytonians, justly proud of their aviation heritage, are inviting all flying and Americana buffs to celebrate their city's Diamond Jubilee Anniversary of First Flight. Among special visitor attractions: the famed Air Force Museum, Aviation Hall of Fame, Hawthorn Hill (home of the Wright Brothers), the brothers' bicycle shop, Wright Memorial and Huffman Prairie, site of experiments with the world's first maneuverable aircraft. For free visitor information write: "Aviation," Suite 2100, 733 Third Ave., N.Y.C. 10017.

The earth is 7,926 miles in diameter.

space in front of toes. Heels should be snug and the instep comfortable.



FOOT GEAR can be comfortable and great

looking to boot.

1. Insoles should be made of lightweight, even-grained-leather.
2. Stitching should be small and even. Look for one to two rows of stitching, suggest the shoe experts at Kinney, the Great American Shoe Store.
3. Leather should be pliant and show no cracking when the shoe is bent.
4. If the shoes are a correct fit, they are comfortable from the start and do not require "breaking in." New shoes should be as comfortable as the proverbial old shoe.
5. Even on a shoestring

budget, you can probably foot the bill for shoes, slippers, hiking shoes, boots or stockings. After wearing out your feet Christmas shopping, you may even want to put yourself in your gift recipients' shoes and treat yourself to a new pair of shoes.

"Peace is our final good." St. Augustine

More than half the cranberries grown in the U.S. come from Massachusetts, around Cape Cod.

it's the LOWEST!

On Aug. 24, 1960, it was so cold in Antarctica the penguins almost froze their tuxedos off. That day, a world record low temperature of -126° F. was set at Vostok, 11,500 feet above sea level. A special "air-stream filter" helps lower the tar in Carlton cigarettes to the lowest levels among all cigarettes. The filter system is comprised of over 22,500 cellulose acetate fibers bundled in a highly specialized porous paper and overlapped with tipping paper perforated by a laser beam to contain precise rows of air vents.



REGULAR MONTHLY MEETING OF BOARD OF DIRECTORS OF HANSFORD COUNTY HOSPITAL DISTRICT

Thursday, December 14, 1978 - 7:00 PM
Hansford Hospital Library

AGENDA:

- Call to Order
- Reading of Minutes
- Financial Report and Payment of Bills

OLD BUSINESS

1. Pending Litigation--Dr. Abrams
2. Building Committee Report
3. Finance Committee Report--a purchase--Hackley Clinic

ADMINISTRATORS REPORT

1. Clinic Operations
2. Physician Recruitment
3. Appointment of Medical Staff

Max Baggerly
President

Shipping fever

Texas ranchers and feedlots operators lost cattle valued between \$30 and \$50 million each year to an old enemy--shipping fever.

"Shipping fever is the cattle feeding industry's number one problem," commented Dr. David Bechtol, Canyon, feedlot consultant and president-elect of The Texas Veterinary Medical Association. "Between 10 and 20% of all cattle shipped in to feedlots are affected by shipping fever. This gets to be a pretty substantial number when you remember that Texas feedlots finished over 4 million head during 1977."

Shipping fever is a complex respiratory disease that affects young cattle. Extensive research is underway to more accurately define the cause of shipping fever through three bacterial pathogens and several influenza-like viral infections, accentuated by stress, are the generally accepted causes.

"The number of animals affected in any shipment is directly related to the amount of stress the animals have undergone," explained Dr. Lelve Gayle, case supervisor at the Texas Veterinary Medical Diagnostic Laboratory at College Station. "In some shipments I've seen a low of 1% affected to a high of 60%. In one recent case, a feedlot received a shipment from the southeastern part of the country in which 20% of the cattle died and the other 80% were affected to some degree by shipping fever."

For ranchers buying stock for winter pasture, Dr. Gayle suggested that purchases be made within the rancher's general area. "Stock shipped long distances have usually been subjected to more stress and, therefore, are more likely candidates for shipping fever," Dr. Gayle explained. "If you're buying from an order buyer, insist on seeing the invoice so you'll know where the cattle came from and how far they've traveled. The kind of weather during shipment can make a difference, too, in the incidents of shipping fever."

Dr. Gayle also suggested that, when practical, each calf's temperature be taken as it is taken off the truck. Besides high temperature, other shipping fever symptoms are dehydration, dropped ears, nasal discharge, listless, and eye inflammation. A veterinarian should advise the owner about antibiotic treatment since some antibiotics are not effective against the respiratory illness. Good nursing, clean water, the best hay and no excitement are also prescribed for the sick calf.

"The bad part about shipping fever is that you can get hurt financially no matter what happens," Dr. Bechtol continued. "You may lose some of the calves and the investment you have in them, and those which are infected may not completely recover so have a poor weight gain. When you've got shipping fever, you can lose both ways."

IDEAL FOOD STORES

PRICES EFFECTIVE THRU DEC. 20, 1978. QUANTITY RIGHTS RESERVED. NO SALES TO DEALERS.

MON. - SAT.
8a. m. - 9p. m.

SUNDAY
10a. m. - 7p. m.

NOW WIN 1000 GUNN BROS. STAMPS When You Play Gunn-Ho

HERE'S HOW IT WORKS:
With each purchase from us in the amount of \$10.00 to \$19.99 you will receive one (1) Gunn-Ho sticker, with a \$20.00 to \$29.99 purchase you receive two (2) stickers, \$30.00 to \$39.99, three (3) stickers, and so on. In addition, you will receive extra stickers with the purchase of "Gunn-Ho Specials" in our newspaper ads.

Place the Gunn-Ho stickers on the squares on the opposite side of the sheet. When all 24 of the empty squares are filled, we will redeem the sheet and give you 1,000 Gunn Bros. Stamps. The center square is free -- no sticker required. You may fill as many sheets as desired during the term of this promotion. Only Gunn-Ho stickers issued by this store will be accepted.

Should you have a partially filled sheet at the conclusion of the promotion, you will receive 10 stamps for each Gunn-Ho sticker on the sheet if presented within two weeks after the conclusion of the promotion is announced.

Presenting the **IDEAL CULTURE COLLECTION**

A stunning selection of casual and formal jewelry.

WIDE COLORED JEWELRY \$4.99

OUR STOCK

Save 50%

2 MORE WEEKS TO COMPLETE YOUR HAVILAND CHINA SET!

THIS WEEK'S FEATURED ITEM \$4.00 off WITH COUPON

VALUABLE COUPON WORTH \$4.00 (TOWARD THE PURCHASE OF THE WEEK'S FEATURED ITEM)

CASSEROLE WITH COVER \$15.99

IN THE PATTERNS OF YOUR CHOICE COUPON 50202 THRU 12/18/78

HEALTH & BEAUTY AID SPECIALS...

AIM Toothpaste 6.4-OZ. TUBE \$1.19

EXTRA STRENGTH LIQUID Tylenol 8-OZ. BTL \$1.89

Pre-Holiday

DEL MONTE CUT

Green Beans..... 3 89¢
16-OZ. CANS

DEL MONTE WHOLE OR CREAM STYLE

Golden Corn..... 3 \$ 1
17-OZ. CANS

DEL MONTE

Sweet Peas..... 2 79¢
17-OZ. CANS

DEL MONTE NEW

Potatoes 3 \$ 1
16-OZ. CANS

Camelot Pineapple 2 for 20 Oz. 99¢
can

CLEAR Glad Wrap..... 100-FT. ROLL 45¢

GLAD Trash Bags..... 10-CT. BOX 99¢

CRYSTAL WHITE LEMON OR REGULAR LIQUID DISH 44 OZ. 16L. 92¢

LADY SCOTT ASSORTED Bathroom Tissue 2-ROLL PKG. 43¢

DECORATOR ROLL ScotTowels..... JUMBO ROLL 63¢

SCOTT FAMILY Napkins..... 160-CT. PKG. 59¢

DEL MONTE ALUMINUM FOIL Reynolds Wrap 12" x 35' ROLL 34¢

FRESH DAIRY

KRAFT PHILADELPHIA Cream Cheese 8-OZ. BOX 58¢

MAXI CUP Parkay 16-OZ. CUP 62¢

Slice 'N' Bake Cookies..... 1/2 GAL. ALL VARIETIES 98¢

Half & Half..... 1/2 GAL. 3 \$ 1

Buttermilk..... 1/2 GAL. 63¢

Cottage Cheese..... 1/2 GAL. 89¢

Egg Nog..... 1/2 GAL. 78¢

FROZEN FOOD

BIRDSEYE Cool Whip 13 1/2-OZ. CTN. 68¢

RHODES White Bread 16-OZ. LOA VES. 2 48¢

FIELDS Pecan Pie 32-OZ. PIE \$2.39

RHODES Rolls..... 1/2 GAL. 48¢

CAMELOT Corn 'n' Cob..... 1/2 GAL. 78¢

GREEN GIANT MIX VEG. OR Niblets Corn 2 10 OZ. PKG. 1.00

CA MELOT SLICED Strawberries 10 OZ. PKGS. 43¢

MEADOWDALE Orange Juice 12-OZ. CAN 68¢

Ice Cream

FAIRMONT COUNTRY SIDE

Ice Cream GALLON 2 09 VANILLA

100% GUARANTEED OF ALL MEAT (FRESH)

CENTER SLICES • BEEF LOIN

Sirloin Steaks

\$1.99

U.S.D.A. CHOICE BUTCHER BLOCK BEEF LB.

FULL CENTER SLICES BEEF ROUND

Round Steak..... \$1.69

U.S.D.A. CHOICE BUTCHER BLOCK BEEF LB.

BEEF LOIN T-Bone Steak..... \$2.49

LARGE END BEEF RIB U.S.D.A. CHOICE BUTCHER BLOCK BEEF LB. \$1.99

RIB ROAST..... \$1.09

RODEO MEAT OR BEEF Sliced Bologna..... 12-OZ. Pkg. \$1.39

RODEO MEAT OR BEEF Sliced Bologna..... 1-LB. Pkg. \$1.79

WISCONSIN LONGHORN RANDOM WEIGHTS Cheese..... LB. \$1.79

PRE-CHRISTMAS DISCO DANCE

Dec. 22 8:00 P.M.

County Barn Spearman

All Ages

Music by "Disco Tex, Inc."

Disco----Lights----Fog--

--Fun----Excitement

2.00 Single 3.00 Couple

SHOP IDEAL WHERE YOU GET GUNN BROS.

Bowling News

TUESDAY NIGHT
MIXED End of First
Rounds 12-5-78

A-1 Auto,	42	14
Schneider Wd,	37	19
Hansford Imp,	33	23
Baker & Ta,	291/2261/2	
Channel 6	28	28
North Plains	191/2361/2	
Ideal	19	37
Graves Wd,	16	40
HIGH TEAM SERIES:		
A-1 Automotive	1988	

Channel 6	1978
Graves Welding	1899
HIGH TEAM GAME:	
Channel 6	708
A-1 Automotive	705
A-1 Automotive	658
HIGH MEN'S SERIES	
Millard Tucker	544
Tommy Reger, Sr.	528
Charles Elliott	519
HIGH WOMEN'S GAME	
HIGH WOMEN'S SERIES:	
Diane Elliott	515
Joyce Keetch	498
Rita Reed	438
HIGH MEN'S GAME:	

Millard Tucker	206
Claude Aylor	195
Tommy Rogers, Sr.	191
HIGH WOMEN'S GAME:	
Diane Elliott	194
Joyce Keetch (sub)	181
Schneider Wd,	1834
HIGH TEAM GAME:	
North Plains	715
A-1 Automotive	679
Ideal	638
HIGH MEN'S SERIES:	
Charles Elliott	578
Tommy Reger, Sr.	512
Wayne Biggs	490
HIGH WOMEN'S SERIES:	

A-1 Auto,	40	12
Schneider Wd,	36	16
Hansford Imp,	30	22
Baker & Tay,	261/2251/2	
Channel 6	26	26

North Plains	181/2331/2	
Ideal	18	34
Graves Wd,	13	39
HIGH TEAM SERIES:		
A-1 Auto,	1894	
North Plains	1852	
Schneider Wd,	1834	
HIGH TEAM GAME:		
North Plains	715	
A-1 Automotive	679	
Ideal	638	
HIGH MEN'S SERIES:		
Charles Elliott	578	
Tommy Reger, Sr.	512	
Wayne Biggs	490	
HIGH WOMEN'S SERIES:		

Jewel McCalman	542
Sheryl Mee (sub)	516
Diane Elliott	492
HIGH MEN'S GAME:	
Charles Elliott	215
Tommy Reger, Sr.	204
Charles Elliott	202
HIGH WOMEN'S GAME:	
Sheryl Mee (sub)	239
Shiley Greenwood	194
Jewel McCalman	188

Golden Spread Circle Meeting

Baker & Taylor Women were hostesses to the Golden Spread Club Tuesday, December 5 at 6:30 p.m. at the Golden Spread Center. They served sixty-three people and three ministers, making a total of sixty-six bodies. The meal began with a prayer by the Rev. Ed Freeman, who then told everybody to go around through the billiard room, while he rushed straight to the table to get in line first. Turkey, ham, and all the trim-

ings were served. Everybody ate too much, then threw their plates away. The garbage then had teeth in it.

The piano itself was a moving experience—all the way from one room to the next. Bonita Reimer played the piano and Mary Brock led in the singing of Christmas carols.

Fourteen tables of dominoes, forty-two, eighty-four, pitch, bridge, and pool completed the evening's entertainment. Everyone was having so much fun, no one wanted to go home.

Golden Spread Club is an educational, philanthropic, and social organization for all people, fifty-five years of age and older, without discrimination as to race, religion, sex, national origin, ethnic background, or political affiliation.

Mrs. Janzen and son honored

Mrs. Tammy Janzen and new son, Phillip Ray were honored with a baby shower on Saturday, December 9 in the Parish Hall of the Sacred Heart Catholic Church.

The guests called between the hours of four and six p.m. The table was decorated with a centerpiece of baby blocks, rattlers and toys. Refreshments of percolator punch, coffee and party cookies were served. The honoree was presented a corsage of carnations and baby decorations. Assisting Mrs. Janzen in the opening of her gifts was Mrs. Dwight Sumner. Also attending were the new proud grandmothers, Mrs. Bob Farr and Mrs. Elaine Janzen. Hostesses for the shower were Mmes. Nan Nicholson, Anita Sumner, Bessie Huntsman and Sandy Heinrich.

Brad Pope On Winning Football Team



Brad Pope, a former student of Spearman Schools, is a member of the Turpin, Okla. football team that captured its fifth Class C (eight-man) football crown since Oklahoma opened eight-man play in 1960 with a 42-14 victory over Covington-Douglas Dec. 9 in Alva, Okla.

Brad is 15 years old and a sophomore at Turpin High School. He is the son of Kenneth Pope of Spearman and Alice Cone of Amarillo. His grandparents are Mr. and Mrs. I. L. Harris of Gruver and Mrs. Fern Pope of Spearman.

With Christmas mail now hitting its peak, the Postmaster today expressed appreciation for the fine cooperation on the SHOP EARLY and MAIL EARLY for Christmas "campaign."

"Time means everything now," the Postmaster warns, "mail now all Christmas cards and gifts so it will be possible for us to process and deliver all mail before Christmas." You are urged to be sure and use correct Zip Codes on all mail to speed delivery.

To date, over five (5) million pieces of Christmas mail have already been mailed and delivered in the Amarillo area which is less than one-third of the Christmas mail expected. The post office faces a critical situation during the next few days. Every postal employee is digging in for the final big rush.

They urge that Christmas mailings must be done now. A delay of a few hours may mean they cannot get everything delivered by Saturday, December 23rd as Christmas comes on Monday this year.

Make this the merriest Christmas ever by mailing NOW.

HOLIDAY gift ideas

SHOPPING FOR WOMEN

"What does a woman want?" is a question that men have been trying to answer for a long time. If you're trying to choose a Christmas gift for a woman in your life, these hints will help. Make sure you know her size and tastes before you select clothes. Select quality. Choose something always in fashion-like jewelry.

Living With Change-Estate Planning

"Estate planning is more than deciding which heir will receive each of your assets," says Peggy Winegarner, County Extension Agent.

Every family and individual, young and old alike, faces many changes when a death occurs in their family. "Controlling Change" is a new Extension letter series available to Hansford County families who want to plan for and decide what many of these changes will be.

Estate planning information on wills, Texas probate law, estate inventory, federal estate and state inheritance taxes and other important planning pointers will be covered in this four-part letter series.

Mrs. Larry Holt, chairman of the Extension Family Living Committee reported, "We are offering this free letter series because we realize that every family wants to do everything possible to make life for heirs as stable as possible after a death occurs."

Anyone may enroll to receive the letter series by calling 659-2030 or 733-2901 or writing to Peggy Winegarner, Box 997, Spearman, Texas 79081.



One attractive gift is a magnetic necklace imported from the Orient. Available in 18K solid gold, sterling silver, and other finishes, the necklace is a delicate chain linking nine, small elegant cylinders containing rare earth cobalt, the most powerful magnetic material known. This fashion accessory is available by mail order and comes with a 30-day money-back guarantee. For free information write to: TDK Magnetics Corp., 9465 Wilshire Blvd., Dept. H, Beverly Hills, Calif. 90212, or call toll-free 800-421-4553 (in California 800-252-0636).

Hickerson Jewelers
Your Christmas Gift Headquarters
Open till 7:30 P.M.
Now To Christmas
Make This Season The Happiest With Gifts from

Hickerson Jewelers
Main St. Spearman

WATCHES, RINGS, DIAMONDS, ACCESSORIES

Food Stock-Up Sale...

 Sugar C&H BROWN OR POWDERED 2 68¢ LB. BAG	 Crisco SHORTENING 3 178¢ LB. CAN	 Milk BORDEN'S EAGLE BRAND 14-OZ. CAN 68¢
Cranberry Sauce OCEAN SPRAY... 38¢ Pumpkin LIBBY... 29 oz. can... 43¢	Marshmallow KRAFT... 43¢ Marshmallow KRAFT... 3... \$1.00	Cake Mixes BETTY CROCKER... 65¢ Frosting Mix BETTY CROCKER... 79¢
Flour GOLD MEDAL... 5 68¢ LB. BAG	Coffee FOLGER'S... \$2.58 1-LB. CAN	Sugar ALL BRANDS... 5 96¢ LB. BAG
Preserves CAMELOT... 73¢ Mayonnaise KRAFT... \$1.26	Jell-O ALL FLAVORS... 5 89¢ Karo Syrup RED LABEL... 53¢	Pie Crust Mix BETTY CROCKER... 89¢ Chocolate Chips HERSHEY'S... \$1.09

HOLIDAY DAY POULTRY
Now available at your Ideal Food Store. Quality turkeys available. Also, a large selection of ducks, geese, capons. Turkey roast, smoked turkeys and baking hens.
SHOP IDEAL TODAY...

100% GUARANTEE OF ALL MEAT PRODUCTS!

Boneless Ham \$2.79
FULLY COOKED WHOLE 5 TO 10 LB. AVG. LB.

CUDAHY CHUCKWAGON Boneless Ham \$1.99
FULLY COOKED HALVES - 3 TO 5 LBS. AVERAGE

JIMMY DEAN Pork Sausage \$1.49
1-LB. PKG. (2-LB. PKG. '2.97)

Pork Chops \$1.59
ASSORTED

Pork Roast \$1.99
CENTER RIB CUTS LOIN

Franks 89¢
RODEO SKINLESS MEAT 12-OZ. PKG.

Bacon \$1.49
RATH KORNLAND SLICED HICKORY SMOKED 1-LB. PKG.

STAMPS...

Golden Ripe Bananas 4 \$1
10 LBS.

Potatoes 69¢
COLORADO ALL PURPOSE RUSSET 10 LB. BAG

Navel Oranges 39¢
CALIFORNIA

New Crop Walnuts \$1.59
CALIFORNIA

Christmas Poinsettias \$3.98
BEAUTIFUL 6-IN. POT

Apples 4 \$1.29
EXTRA FANCY RED OR GOLDEN DELICIOUS 1-LB. BAG

Food Stamps Buy More At Ideal...





A light year is not a measurement of time but of distance. It is the distance a ray of light would travel in one year, about six trillion miles!

DON'T BE IN A HURRY TO END THE HOLIDAYS



Driving at excessive speeds is one of the two largest causes of fatal accidents during the holidays. Keep your family safe in Christmas traffic. Don't be in a hurry to end the holidays on the highways.



Pip Squeak's

by Pip Craig

Well fans, Childress keeps right on rolling as they beat Kermit by the score of 9-2. They will play Wiley Friday night in state AA semi-finals at Vernon at 8:00 p.m.

Fans the Cowboys continued their winning ways with a 31-13 smashing of the Philadelphia Eagles. This gives the Cowboys a 11-4 record, with five wins in a row. Since the Cowboys have clinched the NFC Eastern Division, you probably know that the Cowboys will now take a week off in between the playoff games due to the two wild card teams playoffs to decide who will go into the playoffs. I don't know if I agree with this because the Cowboys may get rusty with a week off. Here's hoping that this won't happen. One good side of this is that Roger Staubach and Bob Newhouse will have a chance to recover.

In other high school action, Wheeler will advance to the I-B State Finals.

Well fans the Houston Oilers, for the first time in their history, are in the playoffs. Other teams in the AFC playoffs will be Denver, Pittsburg and New England.

Now for some predictions. It will be Dallas over the New York Jets by 7. Los Angeles over Cincinnati by 3. I'll take New Orleans over Tampa Bay by 10.



helps prevent birth defects

March of Dimes

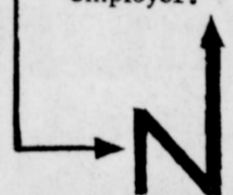


The word "booze" is believed to come from the Dutch buizen, meaning "to drink to excess."

Maintenance Person Regular Full Time Employee

Northern Natural Gas Company will take application on Friday, December 15, 1978, between the hours of 9 A.M. and 3:30 P.M. for regular full time maintenance person. Apply at the Sunray office, 3 miles south of Sunray, Texas. Typical job duties are; assisting with overhauls of large internal combustion gas compressor engine, maintenance of vessels and towers, all phases of pipeline repair, and some rotating shift work relieving regular operating crew during vacations or illness, etc. Pre-employment test will be given for the maintenance person job on Friday, December 22, 1978 at 7 P.M. and Saturday, December 23, 1978 at 9:00 A.M. at the Spearman High School in Spearman, Texas for all persons that have completed an application. Northern Natural Gas Company is a major diversified energy company offering an attractive salary, and has an excellent benefit program. Equal opportunity employer.

In certain African tribes a woman may not use words appearing in the names of her in-laws.



MARRS GALLERY FRAME & ART SUPPLY

I-40 and Georgia, Wellington Square
Amarillo, Texas, 806-359-3541

PRE-CHRISTMAS SALE

20% off on all paintings, bronze, frames and art supplies art supplies. Many original paintings by well known artists.

SALE HELD DEC. 15 thru Dec. 22

CRUM REAL ESTATE

1105 S. BARKLEY

CALL ANYTIME 659-2053

NADINE CRUM BROKER VIRGINIA WHITE SALESPERSON

We Need Listings! Want to Sell your Home? We have BUYERS.

Veterans

Use your G.I. Loan and **START OWNING YOUR OWN HOME.** We have two beautiful NEW homes listed that can be bought on 100% V.A. LOAN or conventional loan. These **AFFORDABLE** homes offer 3 bedrooms, 1 1/4 baths, beautiful kitchens with stove, dishwasher & disposal. Also, utility room, attached garage, central heat and air-conditioning, carpeted, **WELL INSULATED. YARDS FENCED.** One of these two homes is pictured. Call today!

SUPER FAMILY LIVING

Spacious 5 **BEDROOMS**, formal living room, 1 1/4 baths, **LARGE FAMILY ROOM** in basement with floor to ceiling **BRICK FIREPLACE.** Fenced, **UNDERGROUND SPRINKLER SYSTEM, NEAR SCHOOL.** too many features to list all. Call today!

JUST LISTED - 706 COLLIER

This **THREE BEDROOM** brick home with **ATTACHED GARAGE** is in **GOOD LOCATION.** Has 3 baths, carpet, central heat, utility room, fenced. **DON'T MISS THIS ONE! CALL TODAY FOR AN APPOINTMENT.**

HOME OF DISTINCTION

Wouldn't it be lovely to have a really **DISTINCTIVE HOME.** This beautiful, spacious, older home has all the amenities for comfortable living including living room, dining room, den, four bedrooms, 3 baths, built-in ovens and cooktop in sunny kitchen, double car attached garage with electric door opener, and detached single car garage, fenced, and much more. Call for an appointment.

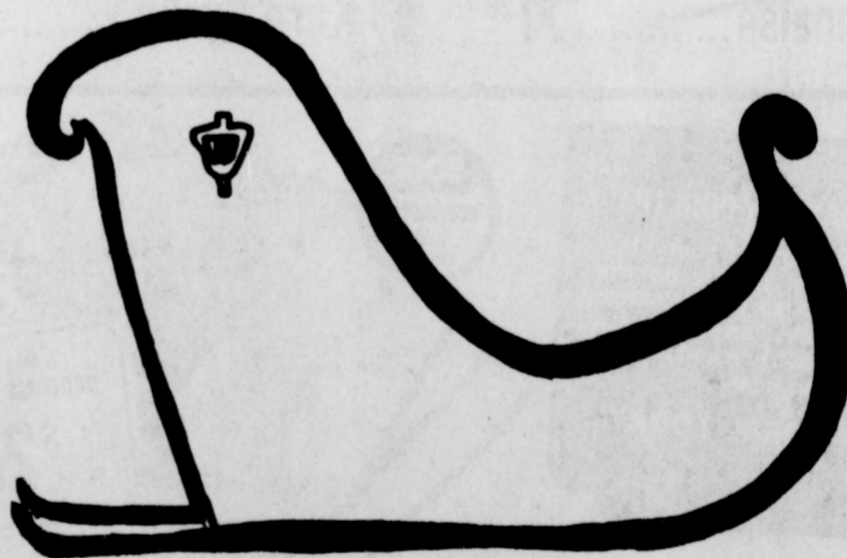
TRUE COMFORT

You'll enjoy the comfortable lifestyle offered by this charming older home on a tree-lined street, **NEAR SCHOOL,** 3 bedrooms, living room, family room, kitchen has beautiful coppertone built-ins including side-by-side refrigerator. Lots of cabinets, Carpeted, 2 baths, 2 water heaters, central heat and air, extra large detached double garage with room and bath in back, fenced, beautifully landscaped yard. Buy now-be settled in before the holidays.

SPRUCE ME UPI

and you will have two value packed houses on 6 lots near Elementary School, Each with 3 bedrooms and two baths. Will sell separately. Good **RENTAL PROPERTY** or **GOOD FAMILY HOMES,** Call for an appointment.

It's Christmas Time at The Bull's Inn.....



**BEGINNING NOW
THRU DEC. 20th**

**Save All Your Bull's Inn Merchants
Receipts.... For Every \$5.00 Purchase**

**There's a FREE
GIANT SLEIGH RIDE**

Dec. 21st & 22nd, 5-7 P.M.



Walk Through Winters Gone By



Christmas of the Past.
The term conjures up many different images throughout the country. No nation has such a wide variety of holiday traditions as the United States. As a means of catching the many moods of America's by-gone days, Greenfield Village in Dearborn, Mich., offers visitors a chance to drop in on a number of historic homes during December and experience the holiday mood as it was through 300 changing years.

Our journey into the past is signaled at the Village entrance where a kissing bell begins the time trip. Kissing bells were popular in the 19th century and earlier. Tradition tells us that girls kissed under the boxwood and mistletoe decorated bell are destined to be married within the year.

The first stop on this winter walk is at picturesque Cotswold Rose Cottage. A 1620 stone home from the Cotswold hills of Britain, its sparse decorations of holly, ivy and boxwood shine in the cheery firelight from the fireplace which provided heat, light and a cooking spot. Resting in front of the house is a massive Yule log, to be burned at Christmas to ensure luck for the next year.

Not far away is a simple one-room dwelling known as the Plympton House. Inside, the 1640s abode reflects the joy of a colonial Dutch Christmas. A pot of white beans, hedging against future famine, and wooden shoes filled with carrots and hay for Sinterklaas's horses sit by the fireplace. The table is laden with white bread baked into the first initial of each family member's name.

Adjacent to the austere yet cheery Plympton house sits the 1650s Susquehanna plantation house from Maryland. Its kitchen table groaning under a wonderful burden of meat pies, fresh bread and winter vegetables. A colorful wild turkey

hangs on the wall, waiting to take its place in the celebration of the season.

Not all of Greenfield Village falls into the Colonial atmosphere. Noah Webster's home, a stately 1840s Georgian house, offers laurel leaves mixed with pine swags throughout the house. The dining room table is adorned with fruits and nuts, while the newfangled Christmas tree is laden with sweetmeats, carved birds, gilded nuts and tin candleholders.

A horse-drawn sleigh swings by the 1850s Ann Arbor House, with its table prepared for a traditional New Year's Day round of visitors.

Elsewhere in the Village the Wright brothers' home presents a Christmas tree with early electric colored lights and Town Hall offers free hot cider to visitors chilled by the weather and warmed by the spirit of Christmas past.

There is much to see in the Village with more than 85 historic structures, a cheery 1832 Inn, horse-drawn sleighs and carolers, but now the Kissing Bell beckons, indicating the doorway to the present looms ahead. Outside the traditions of plastic trees and store-bought cookies await their turn to enter the hallowed past.

Greenfield Village and adjacent Henry Ford Museum are open every day of the year except Thanksgiving, Christmas and New Year's days. Village and Museum admissions are separate, each being \$3.50 for adults and \$1.50 for children 6-12. Children under 6 are admitted free.

Joy and laughter take over these holiday enenings at Amarillo's Country Squire Dinner Theatre, I-40 and Grand. "Don't Drink the Water," a comedy every member of the family will find as merry as a sleigh bell, will be on stage Tuesdays through Saturdays through New Year's Eve. Dennis Sullivan as a temperamental chef and Gare Brundidge as Father Drobney with magical tricks up his flowing sleeves, add to the hilarious confusion of an American-tourist family suspected of being spies "behind the Iron Curtain." Buffet dinner service at Country Squire begins at 6:30 p.m., Country Rogue pre-show entertainment is scheduled for 8 p.m. with comedy time at 8:30 p.m. Opening early in January, 1979, at the theater will be the all-time favorite play "The Odd Couple."

Do-It-Yourself Christmas

If there were two Christmases every year, we'd probably find time for only one of them. It's hard to manage all the shopping, decorating and gift-wrapping.

Here are some ways to save time, money and energy—and help you enjoy your holiday season more.



A magic wand for modern magicians: Aerosol Spray! Your holiday genie may

be your wonderful array of aerosol spray products.

- You can play Jack Frost on your Christmas tree and window panes by dusting them with aerosol "snow."

- Fashion a wreath by weaving artificial fruit on a wire frame; tuck in holly or evergreen. Spray-paint it gold or silver for a dramatic effect, and add a large bow. For safe, effective use of aerosols always follow label instructions.

- You'll really get the scent of Yule by spraying the woody aroma of pine air freshener throughout your home.

- Create a gallery for your Christmas cards: spray-glue each card to a heavy cardboard backing.

- And to share the warm glow of holiday cheer with friends, serve special Irish coffee—topped with aerosol whipped cream.



Give every NEWBORN the advantage March of Dimes

QUALITIES In Sound Little Known Facts

Played with wooden mallets like a xylophone, the pantaleon was the largest stringed instrument constructed for a single player. Played by George Noel in England in 1767, the instrument consisted of 276 gut and metal strings stretched over a horizontal soundboard 11 feet long by five feet wide.



Hickerson Jewelers Main St. Spearman Open till 7:30 P.M. For your Merry Christmas

Cake For Conversation

Talk about a versatile cake. Bake it in a variety of pans—tube pan, loaf or square pans. No frosting needed for this moist pound cake, just a sprinkling of confectioners sugar over a cake which combines Baker's German's sweet chocolate and flaked coconut in a taste to remember. Ideal to bake in a loaf pan and wrap as a gift from your kitchen.

Chocolate-Coconut Pound Cake
2 cups unsifted cake flour
1 teaspoon double-acting baking powder
1/2 teaspoon salt
1 teaspoon vinegar
1/4 cup milk
1 cup butter or margarine
1-1/4 cups sugar
1-1/4 teaspoons vanilla
4 eggs
1 package (4 oz.) sweet cooking chocolate, chopped
3/4 cup flaked coconut
1/4 cup raisins*

*Or use 2 tablespoons finely chopped maraschino cherries.

Mix flour with baking powder and salt. Add vinegar to milk, set aside. Cream butter until very light and fluffy. Gradually add sugar, beating thoroughly after each addition; add vanilla. Add eggs one at a time, beating after each until thoroughly blended. Add flour mixture alternately with milk, beating



after each addition until smooth. Stir in chocolate, coconut and raisins.

Pour into a 9x5-inch loaf pan which has been lined on bottom with paper. Bake at 325° for 1 hour and 30 minutes or until cake tester inserted in center comes out

clean. Cool in pan 15 minutes; then remove from pan and finish cooling on rack.

Note: Cake may be baked in a 9-inch tube pan for 1 hour and 15 minutes, two 8x4-inch loaf pans for 65 minutes or two 8-inch square pans for 50 minutes.

SUPER-SLICK SKILLET MAKES A SUPER GIFT

She may have heard about it from friends—but it's not until she actually uses it herself that she'll realize it's just what she wanted!



It's the made-in-France nonstick pan called T-Fal—a wonderful gift for any woman, whether she's a new bride or the best cook in town. The super-slick surface of mechanically bonded 100 percent pure PTFE is the miracle ingredient that makes all the difference in both food preparation and clean-up. No food sticks—not even protein foods such as eggs, or sugary foods such as candy or syrupy sauces. And this remarkable surface is responsible for the ultimate boon—no messy clean-up. Just a swish of a soapy cloth or sponge is all it ever takes.

It's a great gift—one she'll love, and one that'll be used from Christmas day on!

America's Tallest Christmas Tree

The tallest Christmas tree in America, a giant 111-foot Douglas Fir from Oregon, is the focus of a spectacular Yuletide display created by The NATIONAL ENQUIRER at the publication's headquarters in Lantana, Florida, December 4th through January 1st.

A special linking of two railroad flatcars was needed to transport the tree through three changes of rail systems. For its 3,600-mile transcontinental trek to southern Florida, the tree was sprayed with a preservative and wrapped in polyethylene before being crated in a huge, temperature-controlled box.

The majestic fir, which rises 11 stories above The ENQUIRER's landscaped gardens, has a spread of bottom branches reaching 42 feet in diameter. The tree was donated by the International Paper Co. from the Vernonia Tree Farm in the mountains of Oregon.

Tree decorations include more than 14,000 lights, over 2,500 feet of garlands, 1,000 colored balls, hundreds of red bows and three-foot candy canes, and more than 100 snowflakes. The enormous tree is crowned with an illuminated six-foot silver star.

The largest portable model railroad ever built is also an integral part of The ENQUIRER's Yule presentation. Its 16 trains, operating constantly over 1,500 feet of track, travel through meticulously hand-crafted sections depicting scenes from around the country. The model features 400 railroad cars, 310 build-

Spearman, High School Basketball Schedule

- (Girls)
- AB Nov. 20-Gruver, H
 - AB Nov. 21-Dumas, T
 - AB Nov. 27-Gruver, T
 - AB Nov. 28-Stratford, T
 - A Nov. 30-Dec. 2-Sunray Tournament
 - AB Dec. 5-Clarendon, T
 - AB Dec. 7-9-Miami Tournament
 - AB Dec. 12-Stratford, H
 - AB Dec. 15-Channing, T
 - AB Dec. 19-Sunray, H
 - AB Dec. 21-Sanford-Fritch, H
 - AB Dec. 30-Clarendon, H
 - AB Jan. 2-Sanford-Fritch, T
 - AB Jan. 4-6-Stratford Tourn.
 - AB Jan. 9-Sunray, T
 - AB Jan. 16-River Road, H
 - AB Jan. 19-Dalhart, T
 - AB Jan. 23-Canadian, T
 - B Jan. 25-27-SPEARMAN TOURN.
 - A Jan. 26-Perryton, H
 - AB Feb. 2-River Road, T
 - AB Feb. 6-Dalhart, H
 - AB Feb. 9-Canadian, H
 - AB Feb. 13-Perryton, T



Lynx and Lynxettes

- AB Nov. 27-Gruver, T
- AB Nov. 28-Stratford, T
- A Nov. 30-Dec. 2-Sunray Tourn.
- AB Dec. 5-Clarendon, T
- A Dec. 7-9-Miami Tourn.
- AB Dec. 12-Stratford, H
- AB Dec. 15-Channing, T
- AB Dec. 19-Sunray, H
- AB Dec. 21-Sanford-Fritch, H
- AB Dec. 30-Clarendon, H
- AB Jan. 2-Sanford-Fritch, T
- AB Jan. 4-6-Stratford Tourn.
- AB Jan. 9-Sunray, T
- AB Jan. 12-Boys Ranch, H
- AB Jan. 16-River Road, H
- AB Jan. 19-Dalhart, T
- AB Jan. 23-Canadian, T
- B Jan. 25-27-Spearman Tourn.
- A Jan. 26-Perryton, H
- AB Jan. 30-Boys Ranch, T
- AB Feb. 2-River Road, T
- AB Feb. 6-Dalhart, H
- AB Feb. 9-Canadian, H
- AB Feb. 13-Perryton, T

Automatic Outdoor Lighting

... the efficient use of energy for your home or business

NITE-LITER for your home, the mercury vapor Nite-Liter will be installed on a tall pole, maintained and furnished with electricity... no investment required. The Nite-Liter turns on at dusk, off at dawn and covers an area up to 100 yards in diameter.



LEASED FLOODLIGHTING around your business property can provide added safety and security. The mercury vapor or Metal Halide floodlight can be directed at any area around your business that needs extra light. Leased floodlighting is maintained and furnished with electricity making it convenient and trouble free for you.



Community Public Service Company offers these wide area outdoor lighting programs at very reasonable rates. Both are convenient, economical and efficient. To find out about having them installed for you, call Community Public Service Company today!

COMMUNITY PUBLIC SERVICE
Your Electric Light & Power Company



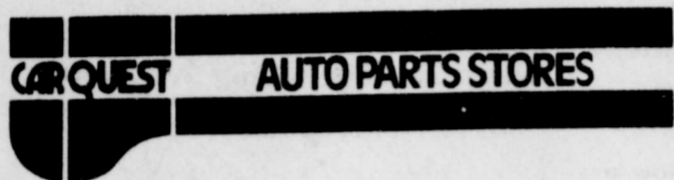
CATTLE COVERAGE
Cover your cattle against Blowing Snow. Blizzards

Brock Insurance Agency
Spearman 659-2514 Gruver 733-2981



It's Our Twentieth Anniversary!!!!
20 Wonderful Years Of Service
Saturday December 16th
HI PLAINS AUTO SUPPLY INC.
HI PLAINS CONOCO

Spearman, Texas



Refreshments....Gifts....
Prizes....bargains

Special Discounts On Hand Tools
And Hi-Performance Parts

All Day Saturday December 16th!!

Free with \$20 Purchase Carquest Sports Cap	Spark Plugs Reg. 85¢ Resistors \$1.01 Limit 2 Sets
Hastings Oil Filters \$1.99 With purchase of an air filter at half price	Valvoline Oil Multigrade 59¢ Limit 1 Case 69¢
Booster Cable \$4.95	Valvoline Anti-Freeze \$2.99 Gallon Limit One Case
Carquest Mechanics Creeper \$7.95	Dupont Gas Line Anti-Freeze 59¢

Register For The Three 50 Boxes of Steaks!!!

Drawing every hour...Nothing to buy!!!

Free Donuts...Cokes...Candy...Coffee...prizes..

It's Twentieth Anniversary Time...

HI PLAINS AUTO AND
HI PLAINS CONOCO

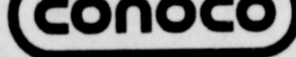
Saturday December 16th

Free with \$10 purchase of those famous Conoco Products
TWO POUNDS OF SUGAR

Come By Hi Plains Conoco
For the for the Finest in

CONOCO Products
and Service...



Batteries!!! 
NEW GENERATION...All Season Motor Oil

Famous Conoco Tires....



Register For Some Fabulous Free Gifts Courtesy Your Friends at
Hi Plains Conoco

A Drawing Every Hour ...
Why Not Make This A Conoco Christmas???

Gifts!!! Refreshments!!! Drawings!!!

Don't Forget the Free 150 Pounds of Steaks!!!

