

NOTICE. The electricity will be cut off in Spearman at 1 a. m. Friday morning. A new transformer is being installed by Community Public Service at their station near B. and B. Farm Industries site, in Spearman. The power should be out no more than 3 hours.

The Spearman Reporter

VOLUME 70, NO. 28

THE SPEARMAN REPORTER, SPEARMAN, TEXAS 79081

THURSDAY, MAY 24, 1979

Roundup Plans Being Finalized

The annual Hansford Roundup will be held in Spearman beginning Friday, June 1. Hansford County will be celebrating its 100th Birthday.

Festivities will begin with the Miss Hansford County Pageant at 8 p.m. Friday evening in the Spearman High School Auditorium. Miss Kelly Harper, reigning Miss Hansford County, will crown the new 1979 Miss Hansford County. The finalist and 1st and 2nd runners-up will ride on the Lion's Club float in the parade Saturday morning.

Another feature for Friday evening is a Disco Dance with Rick Kirk to be held in the YMCA Building following the pageant. The dance is sponsored by the YMCA.

On Saturday, June 2, the big day will get underway with the Old Timers Reunion at Joe Traylor Ford.

The Bake-Off will be held on the courthouse lawn at 9 a.m.

The parade will begin at 10:30 a.m. with lots of pretty floats, decorated bicycles, antique cars from Amarillo, a unit from the Khiva Shrine Temple, horses, plus other entries. Mrs. Jessie Tompkins, pioneer resident of this area, and resident of Spearman since 1925, will be the parade marshal.

A fiddlers contest and a talent contest will be held around the courthouse square with games, lost art demonstrations.

The barbecue will be served at noon and two local clubs will have plenty of homemade ice cream prepared. The American Ag will serve the barbecue.

Sidewalk sales will be held

downtown and the shopping center and the Golden Spread Center will have a bazaar in their new building just one block from the courthouse.

A big western dance will be held at 9 p.m. in the YMCA building at 5th and Hazelwood with "Country Cookin'" playing your favorite songs.

Make your plans to attend this 100th birthday celebration of Hansford County.

To Close Memorial Day

The Hansford County Commissioners Court met Monday, May 14 in regular session.

They received the treasurer's report, paid bills, approved the treasurer's quarterly report.

They organized the board of equalization which will meet July 9.

They approved the county treasurer's notary public bond.

They approved a contract with Panhandle Telephone Co-operative for the laying of new phone lines in the North part of the county.

May 28 was designated as official Memorial Day. Court-house offices will be closed Monday, May 28.

They accepted a report from Mack Hoel on an independent audit of county finances.

15 Girls Enter Pageant

The Miss Hansford County Pageant will be held Friday, June 1 in the Spearman High School Auditorium. Miss Kelly Harper, 1978 Miss Hansford County will crown the winner in the ceremony which will begin at 8 p.m.

Contestants in the beauty pageant include Deanna Baker, Stacey Cook, Debbie Eller, Jane Flowers, Valerie Hagerman, Sabre McCoy, Jennifer McLain, Joann Reed, Shelly Strawn, Kelly Trout, Carla Tucker, all of Spearman and Leslyn McLain, Rona Riley, Candy Thoreson and Deborah Wilson, all of Gruver.

Xi Zeta Epsilon is sponsoring the beauty pageant and Laquita Evans will be the emcee.

Contestants will be judged in sportswear and formals.

There will be a five finalists who will be asked one question by the judges. The girls will vote on Miss Congeniality just before the contest begins.

Teresa Hargis, local dance instructor, will be working with the contestants on the opening number.

A gift certificate of \$100 will go to the winner. This is being given by Lady Fair. Each contestant will receive a \$5.00 gift certificate from JG's and Baker's.

Miss Hansford County 1979 and 1st and 2nd runners up will ride on the Lion's Club float in the parade on Saturday, June 2.

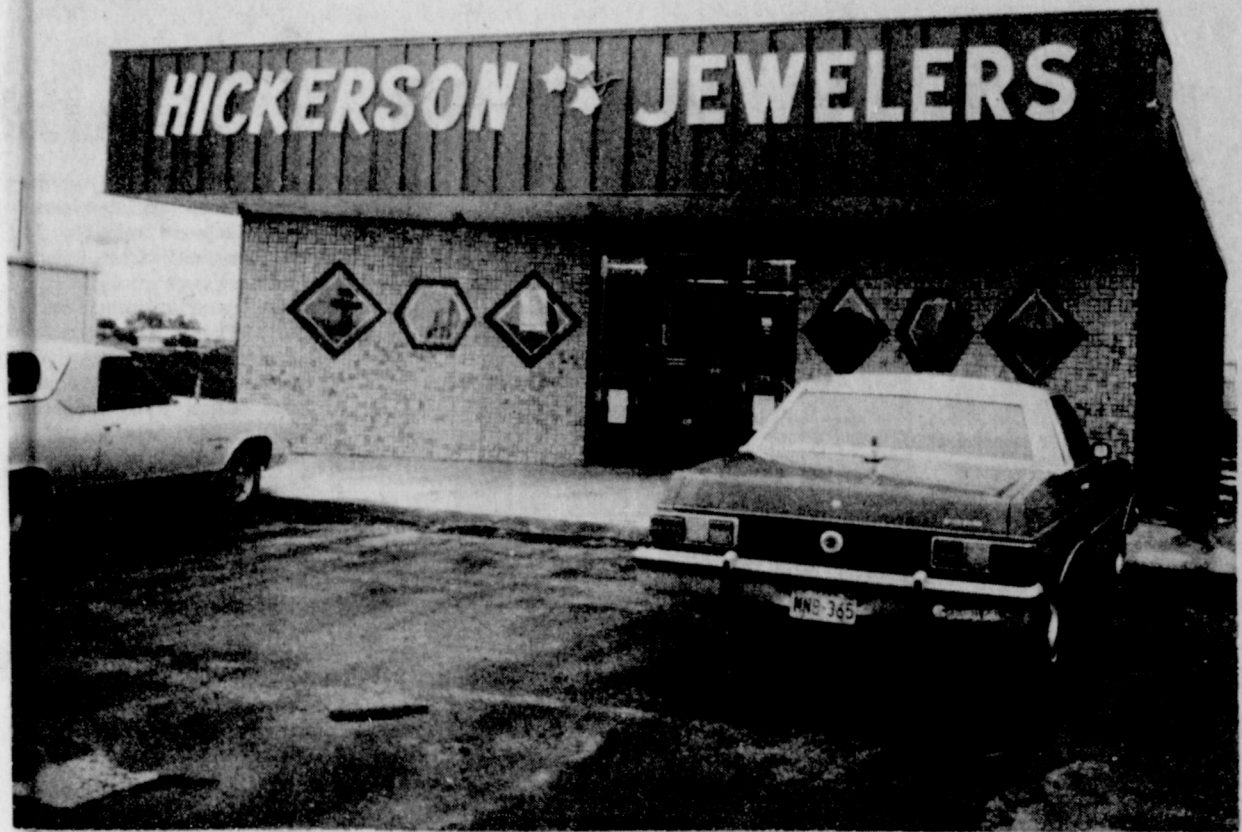
A luncheon for the contestants will be held May 25 at 12:30 p.m. in the home of Linda Venneman, 1114 S. Bernice.

A tea is scheduled from 3 to 5 p.m. June 1 in the home of Mary Ann Lassater, 1109 Linn Drive. The judges will visit with the girls informally, to get better acquainted with the contestants.

Drawing Set For La-Z-Boy Recliner

The Hansford County Extension Homemakers will give away a La-Z-Boy Recliner from Beedy Furniture Company in a drawing scheduled for Saturday June 2 at 2 p.m. on the courthouse lawn.

Anyone wishing tickets may call Delinda McLaughlin at 659-2800 or the Extension office, 659-2030.



The beautiful new Hickerson Jewelers will have Grand Opening this Friday and Saturday May 25-26. Grace, Micki, Faye, Frosty, Million the parrot, and J.C. will all be there to greet you! Be sure and sign the guest register. After you sign the guest register, you will be eligible to win some of the following prizes; a 14 karat white gold blue diamond, hope stone, pendant. Also, 14 karat diamond stick pin, 1/4 karat diamond dinner ring. 1, \$500.00 diamond solitaire, 1 roson lighter, 1 Longines Wittanauer quartz date watch, 1, 14 karat gold choker chain; 1 Kreislser pen and pencial set, or 1, 14 karat gold ruby earrings.

Annual Bake-Off Scheduled

The Hansford County Extension Homemakers will be sponsoring their annual Bake-Off during Hansford Roundup June 1 and 2.

The Bake-Off is set for Saturday morning June 2 at 9 a.m. on the courthouse lawn. Judging will be by the county commissioners.

Anyone in the county wishing to participate in the Bake-Off is welcome to do so. Categories include pies, cakes, sweet breads, yeast breads, bar cookies and drop cookies.

Items for the Bake-Off should be in place on the courthouse lawn by 8 a.m. Saturday morning.

After the judging, all baked goods will be sold.



Local firemen put out this fire at 5th and Roland Tuesday morning. A Chevrolet coupe was badly damaged, but no-one was injured in the fire.

Mr. and Miss SHS



Scot Martin

Christy Collier



A first for the Spearman school system? We think so. Mrs. Peyton Gibner, and her two children were named valedictorians of the Spearman schools. Lee Ann Gibner was named as 8th grade Valedictorian, and Stinson Gibner set an all-time school high record as valedictorian of the 1979 graduating class.



The First State Bank Will Be CLOSED

MONDAY, MAY 28

In Observance Of

MEMORIAL DAY



IH Employees Complete Training Course

An extensive two-day service training school on International Harvester's new Series 88, "2 + 2" four-wheel drive tractors (pictures), was recently completed by service technicians of North Plains International, Spearman, local International Harvester Agricultural Equipment dealer. The Series 88 Tractors have been termed a "breakthrough" in row-crop tractor design, offering farmers the versatility, adaptability and maneuverability of two-wheel drive, plus the stability, performance and traction of four-wheel drive tractors. Held at IH's Southwest Agricultural Equipment Dallas Regional Headquarters, the comprehensive course covered the new tractor's servicing and maintenance requirements.

Dallas - Stephen Poole of North Plains International, Spearman, local International Harvester Agricultural Equipment dealer, recently completed an extensive two-day service training course on IH's new Series 88, "2 + 2" four-wheel drive tractors. They took part in the special service school conducted for a tractor that has

been termed a "Breakthrough" in row-crop tractor design by International Harvester. The new series has two articulated, four-wheel drive models of 130 and 150 horsepower, a range smaller than most existing four-wheel drive tractors which are 200 h.p. or more.

The "2 + 2" combines the strength and traction of four-wheel drive and the mobility of two-wheel drive, enabling farmers to get in their field earlier and stay longer despite adverse weather conditions in critical planting and harvesting seasons.

The service training course, held at IH's Southwest Agricultural Equipment Regional Headquarters at Dallas, was

conducted by IH technical specialists. Comprehensive sessions were held on the tractor's exclusive design features, resulting in improved stability, weight distribution and efficiency which means the tractors can be used in virtually every type of farming operation and climatic condition, according to an IH technical specialist.

Areas of technical training their course covered on the new tractor series that took four years to develop and that has resulted in 15 IH patent applications included:

* Detailed sessions on the tractor's pressure flow compensating hydraulic system that operates the 3-point hitch and as many as four auxiliary valves

with minimum drain on engine power. Each valve's hydraulic flow can be adjusted individually within the Control Center (cab), and control levers and outlets are color-coded to assure proper hookup of remote cylinders.

* Training on IH's 400 Series "B" engines that features a new "balanced pressure" piston, resulting in longer life oil every 200 hours rather than the usual 100 hours of most manufacturers.

* In-depth schooling on the standard-equipped "Power Shift Torque Amplifier" transmission that allows on-the-go shifting. Of the transmission's 16 forward and eight reverse speeds, its three mile-per-hour is ideal for proper pto use with trailing equipment such as forage harvesters and round and square balers.

* Service training on the tractor's hydrostatic power steering - when coupled with the articulation (two sections joined in the middle) of the tractor results in a tight turning radius of 15-feet, 9-inches for easy maneuverability.

Other features of the new tractor covered in their service training that also are unique to the industry include the mounting of the Control Center rear of the articulation joint which significantly improves the operator's ability to handle the tractor and its trailing implements. And servicing of the only fully enclosed tractor engine on the U.S. market to deaden sound. The engine is covered with a roll-back hood to permit easy access.

IH developed the new tractor series because its farm industry surveys indicated high-horsepower, two-wheel drive tractors had reached their limit in useable pulling power due to traction and stability limitations.

"With large two-wheel drive tractors, excessive front-end weights were required to compensate for the loads of today's large implements, and this resulted in extreme soil compaction which reduced yields," according to the IH technical specialist.

"More than 3,000 hours of tests under varied weather conditions in varied geographical areas of the U.S. indicated the Series 88, '2+2' solved these problems," the IH specialist noted.

Kandy Gressett Receives Degree

Kandy Martin Gressett of Amarillo, a 1975 graduate of Spearman High school received a BBA degree in General Business at commencement exercises for West Texas State University at the Amarillo Civic Center Coliseum on Saturday May 12 at 4:30 in the afternoon.

While enrolled she was a member of Alpha Kappa Psi Professional Business Fraternity and Omicron Delta Epsilon, Economics Honor Society in recognition of high scholastic achievement in the field of Economics.

Mrs. Gressett was also on the Deans list her Junior and Senior years. She was employed by the City of Canyon for the past three years.

She is the daughter of Mrs. Nancy Kirk Martin and granddaughter of Grace and Herbert Kirk who reside south of Spearman in the Holt community. Mrs. Martin and the Kirks attended graduation exercises.

"Exuberance is beauty."
William Blake

Congratulations grads

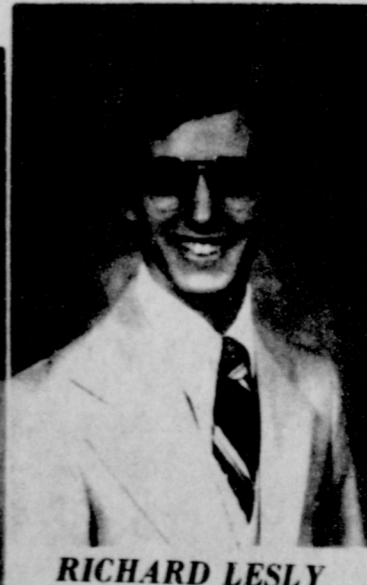


CHRISTIE COLLIER

We Are
Proud
Of
You...



ZANE NEWTON



RICHARD LESLY



CONNIE VERNON

Nursanickel Motel

Hiway 207 S. Spearman

We plan to open June 1st - Our swimming pool should be here soon.

We have some new and used cars that would make Ideal Graduation Gifts.



Get ready for summer with a new Stationwagon! We have the best supply of new wagons in our history!

We have a lot of new cars and trucks coming in every day.

HERGERT "The Best For Sales,
Service & Body Shop
Pontiac, Buick, GMC

"WE APPRECIATE YOUR PATRONAGE!!!"

So. Hwy. 207 Spearman, Texas

Phone 806-699-3721

WANTED

ADS

CAPROCK MONUMENT CO.
Dealers of George Gosselin, George Smith, Calver Gosselin & Brown.
represented by
BOXWELL BROS. FUNERAL HOME
519 S. EVANS
659-3802

Hansford County Planned Parenthood
26S. Haney
659-2483
Spearman
Mon.-Fri.
8 a.m. to 12 noon
30S-rtn

SERVICES
SERVICES: Pits cleaned, wet or dry, Dragline or loader. Also, dozer, grader, carry-all service.
Let Roy Mitchell, 806-733-2384, Over, Texas, 79040.

WILL DO ALL TYPES OF CARPENTRY WORK:
Repairs, Remodels, Additions, Floors, Ceilings, Walls & Roofs
Satisfaction Guaranteed.
Call Tommy Reger
659-3425
659-2174

NEW STEAM SHAMPOOER
with brushes
Rental \$8.95 per day.
Available at 716 Cotter Drive after 4:00 p.m. and Saturdays and Sundays.
Regular Steam Rinse & Vac Shampooer, \$5.95 per day at Gordon's Drug and after 4:00 p.m. and Saturdays and Sundays at 716 Cotter Drive.

NOTICE
Wallace Monument Co., Monuments, Curbing, Grave Covers
Local Representative
LEONARD JAMESON
659-3466
20-rtn

Alcoholic Anonymous meeting 8 p.m. Friday, Home Demonstration Club building, 305 N. Bernice. Phone 659-3181 for information.
Al-Anon meetings 8 p.m. Friday, Home Demonstration Club building, 305 N. Bernice in back room. Phone 659-3181 for information. Ask for Al-Anon.

Fee Wee's Plumbing Service
Roto-rooter, Acoustical Ceilings, Blown Insulation in walls and ceilings. Appliance Services, used appliances for sale. 659-2811 or 659-3781.
20-rtn

KIRBY SALES & SERVICE
New & reconditioned vacuum cleaners. 912 S. Bernice. 659-2797.
19-rtn

Will swath, bale, haul and hand stack hay. 659-3930. 26S-4tc
Custom Swathing, baling and hand hauling call 659-3342 for Fred Mayfield. If no answer call Harvey Whitfield 659-3332 or Jim Suras 659-2774.
26-9tc

CUSTOM HAY BALING-16 x 18 bale. Jerry D. Virden, Box 595, Gruver, Texas. 733-2236.
27-rtn

MUZZANOLIS FOR SALE
FOR SALE: 31 ft. Travel Trailer good for travel, guest house, or a bunkhouse. Lovely condition call 733-2600 or 2743.
28-1tc

FOR SALE 14 X 84 Solitaire mobil home. 3 bedroom, 2 bath, fenced yard, storage building. 812 Garrett. 733-2874
25S-rtn
FOR SALE-77 Silverado Chevrolet Suburban. 659-2453.
24S-rtn

FOR SALE: 3 Bed Room Double Wide Mobile Home. 1 1/2 Bath, Utility Room. Call 659-3292.
8S-rtn

FOR SALE: Columbus soybean seed. \$11.00 per bushel. Cleaned and bagged. Call 659-3134 evenings.
26-rtn

FOR SALE: King Sized bed headboard, covered with red velvet, spread to match. Call 3410, 418 Townsend.
28-1tc

FOR SALE: Matching Hard Rock Maple loose cushion sofa and swivel rocker. Call 2692 or see at 515 S. Archer.
28-2tp

FOR SALE: 1967 Ford 2 1/2 ton grain truck with hoist; 18 ft. bed; 330 heavy duty motor; good truck. 733-2564.
28-1tc

FOR SALE: 1967 oldsmobile in good condition, has new starter, will make a good working car. Call 659-3051 or can be seen at 30 S. Drensen after 5 p.m.
rtn

FOR SALE: 3 self propelled Lawn mowers. All in good condition. Chuck Steel 523 West 3rd. 659-3510.
28-3tc

FOR SALE: Shaklee Products phone 2016 after 6.
26S-4tc

FOR SALE: 1960 Ford Ranchero pickup see At 15N. Hoskins - 659-3879.
28-1tp

WATERLESS COOKWARE. Stainless Steel, Multi-ply. Home demonstration kind. Never opened. Normally, \$400 to \$500. Selling for \$175. 1-303-591-1331
27-6tp

FOR SALE-'77 Ford Supercab with fiber glass topper. Phone 733-2444.
27S-2tc

FOR SALE: M. P. Haines Plan o. Call 659-3337. Asking only \$300.00.
27S-2tc

FOR SALE 400 Yamaha Enduro Dirt bike 659-2214
27S-2tp

REAL ESTATE FOR SALE

BRICK HOUSE FOR SALE: 3 bedrooms, 1 1/2 tile baths, dining room, utility room, central heat, additional insulation, new water heater, fence, storage house, garage. \$30's. 403 12th, 659-2264.
27-rtn

FOR SALE-3 bedroom brick home, 2 baths, den, in excellent condition, choice Southwest location, nice carpets and drapes, refrigerated air, fenced yard. For appointment call Emmett R. Sanders, Realtor, 659-2516, nights 659-2601.
26-Tonly

FOR SALE: Two bedroom home wood burner, fenced-in Back Yard; New front lawn, half furnished. 706 Cotter Drive. Call 659-2132.
27-rtn

Completely carpeted three bedroom house, 1 1/2 baths, living room, combination den, dining area, and kitchen with fireplace, and built-ins in kitchen, utility room with lots of storage, double car garage with electric door, fenced back yard with patio and attached store room. House is located at 1112 Wilmeth, across from high school. Call 659-2360 after 3:30 during week or any time on weekends.
24-rtn

FOR SALE: Brick apartment house in top condition; 100% occupancy with waiting list; has four furnished units; great investment. Shown by appointment only, do not disturb occupants. Emmett R. Sanders, Realtor, 659-2516, nights 659-2601.
23-T only

FOR SALE: Custom-built brick home south of junior high and elementary school, 100 foot corner lot, impressive concrete block yard fence, huge patio covered plus double carport and toolhouse, refrigerated air of course, country kitchen with all the built-ins, carpet throughout main floor, all the amenities, PLUS a full basement (tornado season is here!!), 2 baths with provision for third. Shown by APPOINTMENT ONLY, exclusively with Emmett R. Sanders, Realtor, 659-2516, nights 659-2601.
27 T-RTN

WANTED

WILL DO lawn mowing and edging Darren or Damon Goodheart. 659-2121 or 659-2871.
24S-rtn

WILL BABYSIT in my home, weekdays. Call 3268. 27-4tc

WANTED- 2 or 3 bedroom house to rent. Call Roy McClellan, 659-2156.
28-5t-only

Addressers Wanted Immediately! Work at home -- no experience necessary -- excellent pay. Write American Service, 8350 Park Lane, Suite 127, Dallas, TX 75231
28-8tp

HELP WANTED

TRY A CLASSIFIED AD- THEY GET RESULTS

OUTSIDE WORKERS NEEDED
The City of Spearman is accepting applications. Apply at City Hall.
24S-rtn

HELP WANTED: For 6 - 8 weeks. To aid partially disabled (post-surgical) elderly lady light Housework, some meal preparation. Daytime only - No Sundays contact Dr. R.L. Kleeberger 659-2804.
28-rtn

The City of Spearman needs a dispatcher. Some night work involved. Apply at City Hall.
28-rtn

NEEDED
Responsible high school girl to baby sit 2 children in my home. Call 659-2349
27S-3tc

NOTICE
May 23 thur May 25 I will be open 4:30 to 6:30 p.m. Saturday May 26 - 8 a.m. to 5 p.m.
Spearman Barber Shop

LEGAL NOTICE

NOTICE TO ALL PERSONS HAVING CLAIMS AGAINST THE ESTATE OF Carl E. HUTCHISON, DECEASED

Notice is hereby given that original Letters Testamentary for the Estate of CARL E. HUTCHISON were issued on the 17th day of May, 1979, in Cause No. 1578 in the County Court of Hansford County, Texas, to:

MARVIN L. JONES
The residence of such Executor is Route 1, Box 35 in Spearman, Hansford County, Texas. The post office address is:

c/o John W. Warner Warner & Finney, Attorneys Box 645 Pampa, Texas 79065

All persons having claims against this Estate which is currently being administered are required to present them within the time and in the manner prescribed by law.

DATED the 17th day of May, 1979.
MARVIN L. JONES
Independent Executor
By **JOHN W. WARNER**
Attorney for the Estate

NOTICE TO ALL PERSONS HAVING CLAIMS AGAINST THE ESTATE OF Carl E. HUTCHISON, DECEASED

TOO LATE TO CLASSIFY
FOR SALE-30 x 50 house to be moved. In good shape, central heat & air, \$15,000, Call before 9 a.m. and after 5 p.m., 435-4215.
28-3tc

REAL ESTATE ED WHEELER

HOMES-FARM COMMERCIAL

1006 S. Evans, 3 bedroom, 1 bath, new insulation and steel siding.

706 Steele Drive, 3 bedroom, den, 1 1/2 baths, fenced backyard.

1114 S. Haney - 3 bedroom, 1 bath with garage and fenced yard. Priced to sell.
Jerry Gee 659-3664
Doris Beck 659-2618
659-2074

Gasohol Legislation

WASHINGTON, May 15--Deputy Secretary of Agriculture Jim Williams said today the U.S. Department of Agriculture (USDA) will take action to help make land and feedstocks available to support fuel alcohol production.

But he said it is important to make sure in considering ways to develop gasohol that we do not make changes in agricultural policy that "might prove counterproductive to farm producers or other segments of the economy."

Williams remarks were in testimony today before Joint Subcommittees of the House Agriculture Committee considering gasohol legislation.

He said the department also intends to use the authority provided under the Emergency Agricultural Act of 1978 to make available set-aside acreage for alcohol fuel feedstock, provided there is a "demonstrated market demand" by distilleries.

"We will take this need for alcohol fuels into account in all decisions that are made on set-aside acreage," Williams said.

He said that USDA will also take into account the feedstock requirements of fuel alcohol distilleries in determining and maintaining the proper level of grain reserves.

"We recognize that fluctuations in grain supplies and prices will be a problem for alcohol distillers. Our grain reserve policy can accommodate grain production for fuels by providing a measure of year-to-year stabilization of grain feedstock supplies and costs," Williams said.

He said USDA will take "constructive action to try to make sure that land and feedstocks are available to support fuel alcohol production. We believe that sufficient authority now exists for USDA to meet these responsibilities."

Williams reiterated the President's commitment to support gasohol, pointing out that USDA has tentatively agreed to assist two pilot projects for fuel-grade ethanol production under the Food and Agriculture Act of 1977. The department will commit loans guarantees of \$30 million to the projects.

"USDA is also greatly expanding its research and development on alcohol fuels," he said. "In fiscal year 1980, we are programming almost \$6 million for this work, including almost \$4 million for field testing of new crop varieties suitable for use of ethanol feedstocks and for the development of more efficient methods to convert agricultural materials into ethanol. The other \$2 million is programmed for the design of small-scale, on-farm technologies for producing fuel and combustible methane," Williams said.

ON SOCIAL SECURITY

The nation's 35 million Social Security beneficiaries will get a 9.9 percent cost-of-living increase in July. The hike will boost the typical retired worker's monthly check to \$283, a \$25 increase.

For The Ultimate In
STORM DOORS
Custom Built, Designed, And In Colors To Fit Your Home....
Contact Howard Moyer at
Only Aluminum Industries
Gaymon, Okla. 114 W. 1st 405-338-0966 or 73942 338-6170

Offered Exclusively By
EMMETT R. SANDERS, REALTOR
R REALTOR

FOR SALE: Tastefully decorated almost new three bedroom and two bath brick home near high school. Fireplace, den formal living room, dream kitchen, double garage with both street & alley entry and exit, pickup parking space, Morgan 10 ft. by 14 ft. toolhouse. This home has all the amenities for gracious living at an affordable price. Exclusively with Emmett R. Sanders, Realtor, 659-2516, nights 659-2601, phone for your appointment.

FOR SALE: 3 Residential Lots, choice southwest location, each 115 ft. wide.

Small tract just west of Spearman, surface only, contains 31.7 acres. Call for details.

Dwelling and store building small detached apartment on wide lot, ideal for professional office-dwelling combined.

Brick and hollow tile building. 1500 square feet on Main Street Corner. Central heat and refrigerated air. High traffic count, ideal for office, retail, or financial operations.

3 Bedroom home on 100 ft. lot, nice southwest location, new quality carpet throughout, neat and clean, central heat and refrigerated air. Look this one over, attractive price and ready for you to move in.

Member
FLI FARM AND LAND INSTITUTE
R REALTOR
EMMETT R. SANDERS REALTORS
659-2516
659-2601 (nights)
34S-rtn

Top Cinematographer

The late British cinematographer Geoffrey Unsworth came as Director of Photography to "The Great Train Robbery" directly from nearly a year's work, which involved much pioneering trick photography, on "Superman," "The Great Train Robbery," a United Artists release, will open May 23 at the Lyric Theatre.

Unsworth had focused the lights on many of Britain's proudest films in his 46 years behind the camera, winning in his native land four British Academy Awards for Best Photography, and in the U.S. a coveted Hollywood Academy "Oscar." Several years ago he was decorated by Queen Elizabeth with the Order of the British Empire.

KING'S TAXIDERMY SHOP LIQUIDATION SALE
302 E. Broadway Stinnett, Texas

Everything must go: Mounted game, forms, tanned hides, deer horns, shop accessories, tools, equip., furniture, supplies.

May 25-26, 8 to 5 both days

TEXAS PRESS ASSOCIATION 1977 ASSOCIATION
PUBLICATION (USPS 509-660)
SPEARMAN, TEXAS 79081
213 Main Box 458 659-3484
Published Weekly at 213 Main Street Spearman, Texas 79081
Owner-Publisher.....William M. Miller
Second Class postage paid at Spearman, Texas
ANY ERRONEOUS REFLECTION UPON THE CHARACTER OF ANY PERSON OR APPEARING ON THESE COLUMNS WILL BE GLADLY AND PROMPTLY CORRECTED UPON BEING BROUGHT TO THE ATTENTION OF THE MANAGEMENT.
SUBSCRIPTION RATE: Hansford County, combination with the Hansford Pioneer, \$16.40.
Other states, \$14.40.



Shil GTR-7 Mat 2E
Lovely Lesley-Anne Down, of "Upstairs, Downstairs" fame, has the leading feminine role in "The Great Train Robbery," opposite Sean Connery. The picture, a United Artists release, will open May 23 at the Lyric Theatre.

Experienced Bookkeeper Needed Part Time Begin Immediately Apply in person The Spearman Reporter
213 Main Spearman, Texas

MAINTENANCE PERSON REGULAR FULL TIME EMPLOYEE
Northern Natural Gas Company will take applications on Wednesday, May 23, 1979 and Thursday, May 24, 1979 between the hours of 9 A.M. and 3 P.M. for regular full time maintenance person - one for the Sunray Plant - apply at the Sunray office located 3 miles south of Sunray, Texas and one for the Spearman Plant apply at the Spearman District Office 8 miles south and 7 miles east of Spearman, Texas. Typical job duties are: assisting with overhauls of large internal combustion gas compressor engines, maintenance of vessels and towers, all phases of pipeline repair, and some rotating shift work relieving regular operating crew during vacations or illness, etc. Pre-employment test will be given for the maintenance person jobs on Friday, May 25, 1979 at 7:00 P.M. and Saturday, May 26, 1979 at 9:00 A.M. at the Spearman High School for all persons that have completed an application. Northern Natural Gas Company is a major diversified energy company offering an attractive salary, and has an excellent benefit program. Equal opportunity employer.

Northern Natural Gas Company

VIRGINIA WHITE REAL ESTATE 659-3841

1103 Drennon-3BR, 1 1/2 baths, NEW carpet, kitchen built in, Cen. Heat, fence, Excellent condition. **SOLD**

301 S. Haney-Beautifully decorated and in perfect condition. 1 1/2 bath, carpet, Cen. Heat & Air/Cond., patio, fence. **SOLD**

1116 Townsend-Exceptional quality, 3 BR 1 1/2 baths, fireplace w/builtins, cen. heat & air cond., fenced, gorgeous lawn.

121 S. Endicott 2 BR house, 2 mobilhomes, storage bldg., 1 mobilhome rental space all on 3 lots. Good investment property.

EXCLUSIVELY WITH VIRGINIA WHITE REALTOR 659-3841

HEY, GRADS- you're terrific!



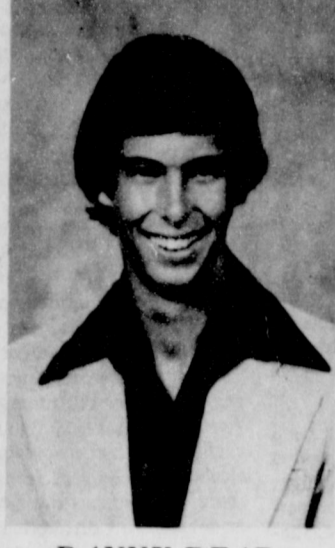
DEBRA OWENS



ARTHUR CANTU



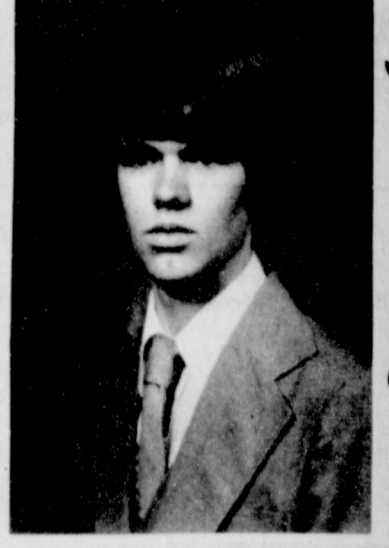
CHRISTY WEST



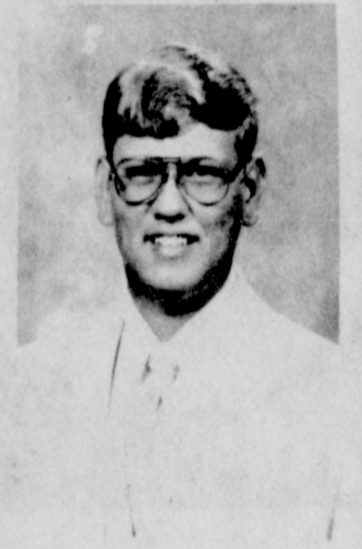
DANNY DEAR



PAM LARGENT



KELLY DAVIS



VIRGIL JONES



SHARI FOX



LUCIO VELA



DEANNA OCHOA



DEBBIE GREENE



LAURA NELSON



JAN OAKS



TED WHITEFIELD



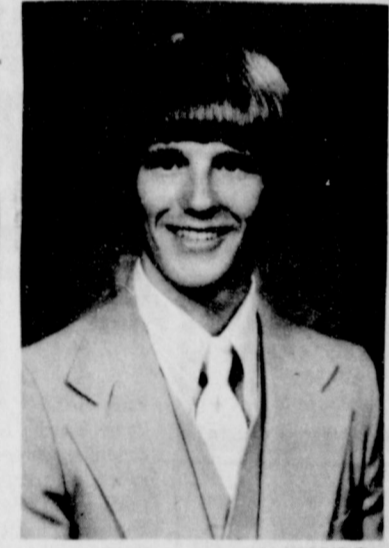
JAMIE CASDORPH



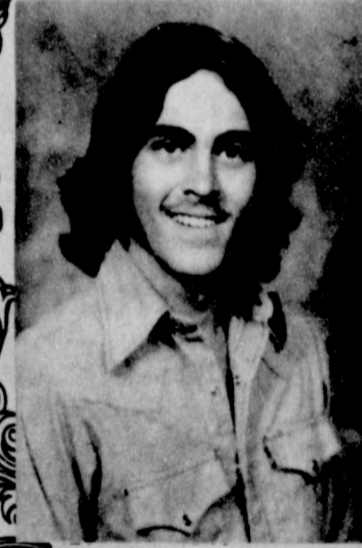
STEVE GOFF



SHERRY JOHNSON



DAVID CUMMINGS



MITCHEL SMITH



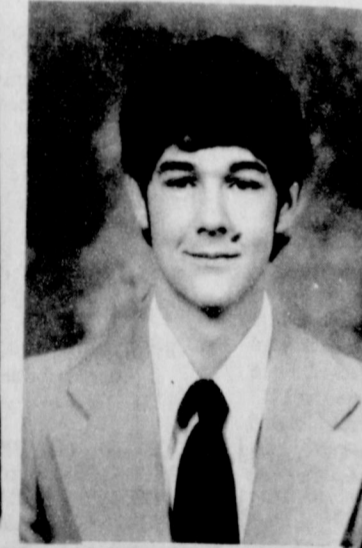
SUE CLOSE



JOHN RENEAU



BRENDA FANNING



JEFF GATLIN



SUSAN COPE

Carwford Implement Co.
Hwy 207
659-3060

Berry Cleaners
207 S. Main
659-3122

Anthony Electric
Plains Shopping Center
659-2441

Nelson's Builders Supply
309 S. Main
659-3668

Hi-Plains Auto Supply Inc.
118 N. Main
659-2506

Hi-Plains Conoco
415 Collard
659-3555

Sandy's Beauty Salon
30 S. Haney
659-3791

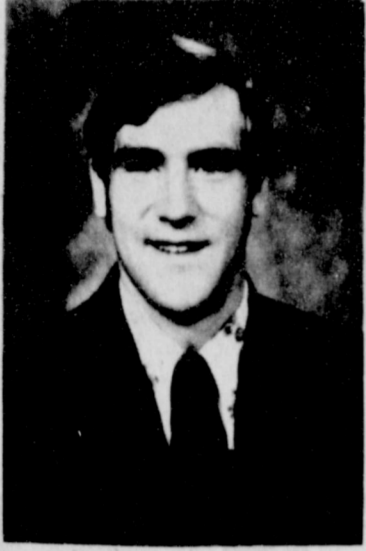
Blackburn's Flowers
659-3329 659-3509
322 S. Dressen

The B & J Supply Co.
102 West Kenneth
659-3781
Bob Felder
659-3484

John Trimmell
659-2491

Congratulations

grads



SAM BOONE



CRISELDA VELA



MARK GREEN



WANDA JONES



JOHNNY KENNEY



BETH ANN FLOWERS



TINA COCHRAN



KENNETH WEAKLEY



KELLY HARPER



TOMMY LIMBOCKER



JO LYNN BURCH



BILLY SNIDER



PAUL WELCH



ESMERALDA VELA



TROY THOMPSON



RHONDA MORRISON



DAVID ORTEGA



YOLANDA DE LUNA



JAMIE THOMAS



TODD BROCK



LORI SHORT



CAREY BRIDGES



BARBARA OLTMAN



JOYCE CUMMINGS

Brock Insurance Agency

206 Main
659-2514

The Bunkhouse

210 S. Main
659-2476

Gift Box

212 Main
659-3125

Massads

214 Main
659-2616

Bakers Dept. Store

216 Main
659-3213

Baker Hotel

Continental Trailways
By Mrs. Sam Graves
420 Davis
659-3446

White House Lumber Co.

306 Davis
659-3792

Farm Bureau

307 W. Davis
659-3133

CLASS OFFICERS 1979 CLASS SPONSORS

Junior



Mrs. Jones, Mr. Benton, Mrs. Morris.

Freshmen



Mrs. Mitchell, Mr. Angel, Mrs. Weaver.

Senior



Mr. Schneider, Mrs. McMullan, Mr. Freniks.

Sophomore



Mrs. Hudson, Mrs. Prather, Mrs. Booth.

Freshmen



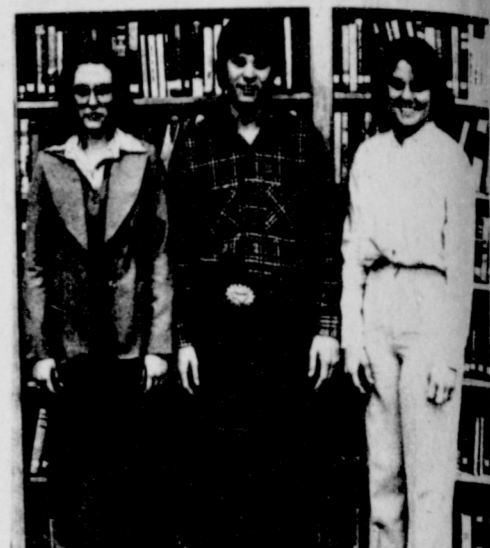
Rory Sheppard, President; Mary Ann Martin, Secretary; Jimmy Haden, Vice-President.

Sophomore

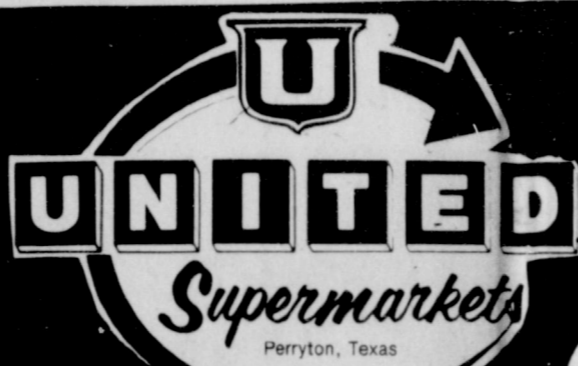


Tammy Maize, Secretary; Jamie Bulls, President; Jana McCoy, Vice-President.

Junior



Kelly Shaver, President; Dayton Edwards, Vice-President; Halee Reed, Secretary.



PRICES GOOD THRU
MAY 26TH

QUANTITY RIGHTS RESERVED

LET'S DO IT AGAIN **STAMP** **30 MILLION** STAMP GIVE AWAYS! INSTANT WINNERS!

KRAFT BARBECUE SAUCE
18 OZ. JAR **49¢**

FINE FARE **PORK N' BEANS**
15 OZ. CANS FOR **4 \$1**



- MR. COFFEE **FILTERS** 100 CT. BOX **79¢**
- JOHNNY CAT **CAT LITTER** 25 LB. BAG **\$2.59**
- FINE FARE **KITCHEN BAGS** 20 CT. **99¢**
- FINE FARE **ALUMINUM FOIL** 25' ROLL **43¢**
- MORTON **ICE CREAM SALT** 4 LB. **33¢**
- FINE FARE WHOLE **TOMATOES** 16 OZ. CAN **3 for \$1**

COCA-COLA
32 OZ. 6 BTL. CRTN. **\$1.79** PLUS DEPOSIT



UNITED **HAMBURGER OR HOT DOG BUNS**
8 CT. PKG. FOR **\$1**



UNITED **POTATO CHIPS**
8 OZ. PKG. **59¢**

— Manager's Special —
WYLER'S LEMONADE CRYSTALS
24-OZ. CAN **98¢**



- SWIFT VIENNA **SAUSAGE** 5 OZ. CAN **3 for \$1**
- SWIFT **POTTED MEAT** 3 OZ. CAN **4 for 89¢**
- FINE FARE **MUSHROOMS** STEMS & PIECES 2 4 OZ. CANS **\$1**
- FINE FARE **MUSTARD** 24 OZ. JAR **49¢**
- HOLSUM **OLIVES** THROWN STUFFED MANZ 5 OZ. JAR **79¢**

WIEJSKE WYROBY **POLISH HAMBURGER SLICED DILL PICKLES** 32 OZ. **89¢**



ADMIRATION COFFEE
ALL GRINDS **\$1.89**
1 LB. CAN

DELICIOUS WASHINGTON **APPLES** EXTRA FANCY LB. **39¢**
CALIF. **ORANGES** LARGE SIZE LB. **39¢**



CORN LARGE FULL EARS **\$1**
CARROTS 16 OZ. CELLO BAG **\$1**
POTATOES NO. 1 RUSSET BAKERS SIZE LB. **19¢**





Stinson Gibner, Vice-President; Pam Largent, Secretary; Scot Martin, President.

Senior

"A HOUSE IS ALWAYS A HOME"

Have you ever watched
A home burn to the ground
Or did you search the rubble
For what else might be found

Did you ever wonder
When it wasn't yours
What it must be like
And what you must endure

Has curiosity
Ever led you to the scene
Did you ever ponder on
What the after effects mean

From behind the eyes
Of the man behind the hose
He's probably seen the
Tragedies
And all the effects he surely
knows

To a firefighter
A house is always a home
For there is no greater horror
Than those that fires have
shown

Stand and give them a hand
Fate is something you never
expect

They're on call night and day
And your home could be next
Dan R. Hendricks
5-15-79

"HOUSE CALLS"

The timeless task
These few men take
Many, many hours of training
All for people's sake

Many think of them not
Unless should the need arise
Our job is to risk our lives
To save property and other lives

Please don't take us
Lightly or with little heed
We're still only people too
But we're doing for other's
needs

Think of us
When you pass by city hall
Cause we're up there practicing
Firefighters still make house
calls
Dan R. Hendricks
5-15-79

Some 600 Soviet Jewish immigrants
arrive in New York.

Gloria Flores Explains New Food Stamps Program

Gloria Flores, State Department of Human Resources field person from the Lubbock office, was in Spearman Friday, May 18 to explain the new food stamps program to interested citizens. The meeting was held at 6:00 p.m. at the Golden Spread Center.

First, she showed a filmstrip, "Food Stamps" and then answered questions from those assembled.

Who can get food stamps? Any household with income below levels set by the federal government and changed twice a year as costs of living change. A "household" is any individual or group of people who buy and prepare food together. Most households are families, but other groups of people who are not related to each other can also be a household. There can be more than one household in the same house. Residents of federally-funded housing and

alcoholic and drug treatment centers also are eligible. Students living away from home are not eligible if they can be claimed as tax dependents by an ineligible household.

How much income can you have and still qualify?

That depends on the size of your household and the amount of your NET income—that is, what you have left after certain deductions. The net income limits are adjusted every six months as costs of living change.

What deductions are allowed?

These figures are in effect as of March 1, 1979 and can be changed every six months by the federal government as costs of living change. All households can deduct \$65 a month. In addition, people who earn money can deduct 20 percent of their total earnings. Also,

households can deduct up to \$80 a month to cover both dependent care and high shelter costs, such as rent or house payments.

What are resources and what can you have?

"Resources" are the things you own, and money you have on hand and in checking and savings accounts. Some resources are not counted. For example, your house, personal belongings, household goods, life insurance policies, and pension funds are not counted. Special requirements apply to car ownership. Other resources will be counted at their fair market value less what you owe on them.

A household can have up to \$1,750 in resources, and still qualify for food stamps. Households with two or more people can have \$3,000 in resources if at least one of the people is at least 60 years old.

Is there a work requirement?

Most able-bodied persons between ages 18 and 60 must register for work, must look for a job, and may not refuse or quit a job without a good reason. Some students are required to register for at least 20 hours of work weekly depending on their circumstances.

Who is exempt from the work requirement?

Persons in the Work Incentive (WIN) program and certain persons caring for dependent children, or persons caring for adults who cannot take care of themselves are exempt from the work requirement.

How many food stamps will you get?

That depends on the size of your household and the amount of your income.

How much will you pay for your stamps?

Food stamps are free. No money is needed to buy food stamps, but you will have to spend some of the household's money on groceries to have a nutritious diet.

How do you apply?

You must fill out an application and be interviewed. You can get an application by calling or going to a Texas Department of Human Resources Food Stamp office in your area, or by calling the toll-free food stamp hotline: 1-800-252-9330.

You will be given or sent an application as soon as you ask for it, and you may submit the application by mail or in person the same day you get it. Office hours are 8 a.m. to 5 p.m. Monday thru Friday. Someone who knows you well can help you fill out the application, can apply for you, and can pick up your stamps.

Within 30 days of receiving your application, you will be interviewed and issued a card authorizing you to participate if you qualify. Special cases may be interviewed by telephone. When you come for the interview, bring with you proof of your household's income (pay stubs, bank statements, etc.)

What if you think the Food Stamp office made a mistake?

If you think an error was made, or if it takes longer than 30 days to decide on your application, you can ask for a fair hearing or talk to your worker's supervisor. You can tell your side of the story or point out the mistake. If an error was made and you didn't get the food stamps you were supposed to get, you will get back the benefits you lost. You can get an application for a fair hearing at any food stamp office.

What happens if you give wrong information?

Giving information you know is wrong is fraud. If you are found guilty of fraud by an administrative hearing, you can be dropped from the program for three months. If you are found guilty by a court of law, you can be dropped for six to 24 months.

The Food Stamp program is open to all low-income persons without regard to age, sex, race, religion, color, national origin, political affiliation, or handicap. If you feel you have been treated unfairly, you may file a complaint or request a hearing.

Hearing requests must be made within 90 days of the date your benefits were denied or reduced.

Food Stamps Toll-Free Hotline telephone number is 1-800-252-9330.

Senate defeats amendment to balance budget.

Senate defeats amendment to balance budget.

Senate defeats amendment to balance budget.

Senate defeats amendment to balance budget.

Senate defeats amendment to balance budget.

Senate defeats amendment to balance budget.

Senate defeats amendment to balance budget.

Senate defeats amendment to balance budget.

Senate defeats amendment to balance budget.

Senate defeats amendment to balance budget.

Senate defeats amendment to balance budget.

Senate defeats amendment to balance budget.

Senate defeats amendment to balance budget.

Senate defeats amendment to balance budget.

Senate defeats amendment to balance budget.

Senate defeats amendment to balance budget.

Senate defeats amendment to balance budget.

Senate defeats amendment to balance budget.

Senate defeats amendment to balance budget.

Senate defeats amendment to balance budget.

Senate defeats amendment to balance budget.

Senate defeats amendment to balance budget.

Senate defeats amendment to balance budget.

Senate defeats amendment to balance budget.

Senate defeats amendment to balance budget.

Senate defeats amendment to balance budget.

Senate defeats amendment to balance budget.

Senate defeats amendment to balance budget.

Senate defeats amendment to balance budget.

Senate defeats amendment to balance budget.

Senate defeats amendment to balance budget.

Senate defeats amendment to balance budget.

Senate defeats amendment to balance budget.

Senate defeats amendment to balance budget.

Senate defeats amendment to balance budget.

Senate defeats amendment to balance budget.

Senate defeats amendment to balance budget.

Senate defeats amendment to balance budget.

Senate defeats amendment to balance budget.

Senate defeats amendment to balance budget.

Senate defeats amendment to balance budget.

Senate defeats amendment to balance budget.

Senate defeats amendment to balance budget.

Senate defeats amendment to balance budget.

Senate defeats amendment to balance budget.

Senate defeats amendment to balance budget.

Senate defeats amendment to balance budget.

Senate defeats amendment to balance budget.

Senate defeats amendment to balance budget.

Senate defeats amendment to balance budget.

Senate defeats amendment to balance budget.

Senate defeats amendment to balance budget.

Senate defeats amendment to balance budget.

Senate defeats amendment to balance budget.

Senate defeats amendment to balance budget.

Senate defeats amendment to balance budget.

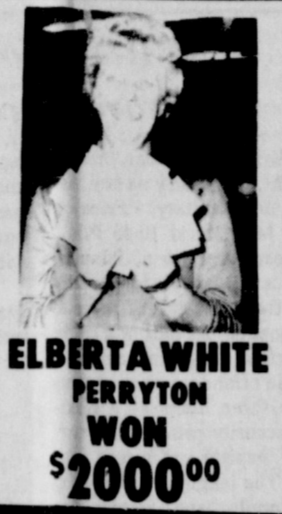
Senate defeats amendment to balance budget.

Senate defeats amendment to balance budget.

Senate defeats amendment to balance budget.

BINGO

\$172,816 IN CASH GIVE AWAYS • INSTANT WINNERS



ELBERTA WHITE PERRYTON WON \$2000.00

ODDS CHART			
Prize	Number of	Draws for	Draws for
		1 Draw	20 Draws
\$2,000	10	136,024 to 1	10,444 to 1
1,000	10	89,021 to 1	5,965 to 1
500	10	18,825 to 1	1,432 to 1
250	10	12,945 to 1	977 to 1
100	10	6,447 to 1	496 to 1
50	10	3,203 to 1	248 to 1
25	10	1,601 to 1	124 to 1
10	10	800 to 1	62 to 1
5	10	400 to 1	31 to 1
2	10	200 to 1	15 to 1
1	10	100 to 1	7 to 1
5-Stamp	10	1,000 to 1	100 to 1
10-Stamp	10	1,000 to 1	100 to 1
15-Stamp	10	1,000 to 1	100 to 1
20-Stamp	10	1,000 to 1	100 to 1
Total	23,497	58 to 1	4 to 1



T.J. WARDLOW PLAINVIEW WON \$1000.00

STA - BINGO WINNERS

PERRYTON AREA WINNERS

- LAURA WHITMAN
- JANICE JACKSON
- JOE ROBINSON
- LETA PAUL
- C. HALE

GROUND BEEF "LEAN" CHUCK QUALITY LB. \$1.89

CATFISH STEAK \$1.59
FRESH WATER CROSS CUT LB.

PORK CHOPS \$1.39
SWIFT TENDER LEAN FAMILY PACK LB.

DAIRY CASE

BELL WHIPPING CREAM 8 OZ. **3 FOR \$1**

BELL DIPS 8 OZ. **39c**

BELL SOUR CREAM 8 OZ. **39c**

UNITED LOW FAT MILK GAL. WITH HANDLE **\$1.49**

UNITED Supermarkets
Perryton, Texas
QUANTITY RIGHTS RESERVED

STEAK SAUCE 10 OZ. BTL. \$1.19

MARSHMALLOWS 10 OZ. PKG. 2 FOR 39c

LUNCHEON PLATES 8 3/4 IN. 40 CT. \$1.39

TACO SAUCE 10 OZ. CAN 3 FOR \$1

LIGHTER FLUID 89c

CHARCOAL 10 LB. BAG \$1.29

HORMEL LITTLE SIZZLERS 12 OZ. PKG. \$1.09

COUNTRY PRIDE GRADE "A" FRYERS PICK-O-CHICK 3 THIGNS 3 DRUMSTICKS 3 BREAST WITH RIBS LB. 98

FRESH BABY BEEF LIVER SKINNED & DEVEINED LB. 89c

WHITING WHOLE FISH LB. 69c

SWIFT SPARE RIBS TENDER LEAN PORK UNDER 3 LB. AVG. \$1.49

RIB STEAK UNITED TRU-TENDR BEEF \$1.98

CHUCK STEAK UNITED TRU-TENDR BEEF BLADE CUTS LB. \$1.39

HEALTH & BEAUTY AIDS

SHAMPOO "OILY" DRY-NORMAL 12 OZ. \$1.49

CONDITIONER "EX-BODY" "REG." 6 OZ. 89c

MAALOX LIQUID PLUS 12 OZ. \$1.89

FROZEN FOODS

COLE BUTTERED GARLIC BREAD 16 OZ. LOAF 79c

JENO'S BREAD PIZZA "ITALIAN" "PEPPERONNI" \$1.19

CARNATION CRINKLE FRIED POTATOES 2 LB. BAG 69c

ENERGY CHECKED

COMMUNITY PUBLIC SERVICE CO.

Save energy dollars year after year with an Energy Checked Efficiency Home.

When you build, buy or remodel, make sure your home qualifies as an Energy Checked Efficiency Home. For savings on utility bills, the Energy Checked home features insulation, caulking and weatherstripping, to keep your home cool in the summer, and warm in the winter. Energy efficient appliances, and properly sized heating and air conditioning equipment are other Energy Checked features. The location of the water heater, attic ventilation, and weather protective eaves can make a difference in energy use, so they must meet certain Energy Checked qualifications also. The Energy Checked plan can make a difference in your future utility bills. If you'd like to learn more about the Energy Checked Plan, just give us a call.

You are cordially invited to a
bridal shower honoring
Sue Ann Burress
bride-elect of Danny Fiel
May 29, 1979
7:30 to 9 p.m.
Hospitality Room
First State Bank

Hostesses:
Jessie Schubert Adalyn Barnes
Doris Jean Pipkin Mae Floyd
Ella Garnett Wanda Burke
Helen Dry Sheri Shields
Willella Martin Laura Ann Mackie
Margarette Nelson Carole Dickens
28-2tp

Our Heritage of Faith
notes from Faith Lutheran Church

Jesus said in John 15 that he was the vine and we are the branches. The Father is the vinedresser and he does the work on the vine and branches. We are told that the branches that produce no fruit he will cut off and destroy. But the branches that do produce fruit he will prune so they will produce more fruit.

As we look at our lives we can see various things that happen to us that are not fun and seem almost to be punishment for something. Often times these are not punishment but are rather times of pruning. If you are producing fruit for Jesus, you can expect that there will be times of pruning in your life.

We don't have to welcome these times of trouble, but we can know that while we are going through them and after they are done we have experien-

ced a time of pruning.

We have the promise in Romans 8:28 that everything will work for good for those who love God and are called according to his purpose. We do not have to thank God for the trials and troubles we are going through, but we can know that He is working his will in us.

If you have no church home you are welcome to worship with the People of Faith Lutheran Church at 11th and Bernice. Morning worship is at 9:00 and the Christian Education Hour is at 10:00. All are welcome to come learn and grow with us.

Spearman Ministerial Alliance
Spearman Ministerial Alliance will meet on Friday, May 25 at 9:30 a.m. at the First Baptist Church.

Golden Spread Center News

Golden Spread Center is a beehive of activity these days and is open every day for people to drop in and just visit, sit quietly and read magazines or watch TV, shoot the breeze or pool, or to engage in the round of ceaseless activity.

Ruth Phelps is conducting Rosemaking classes on Thursdays with one class at 9:00 a.m. and the other at 1:00 p.m.

There will be an Arts and Crafts workshop on Friday, May 25 at 1:30 p.m. to try to finish up all the projects for the bazaar.

An evening of table games will be held on Tuesday, May 29 at 6:30 p.m.

People are needed to help clean-up the Center on Wednesday, May 30; Thursday, May 31; and Friday, June 1 and to help set up the place for the Annual Bazaar.

The Bazaar will be held on Hansford Day, Saturday, June 2 all day. Beautiful gift items for birthdays, anniversaries, Christmas and other occasions, all the products and hard work of senior citizens will be on sale.

Pearl Pierce is the genial, full-time director of the Center, who is a fountain of information about all geriatrics programs and a good listener and counselor.

Golden Spread Center also operates a bus-van. It is available for people sixty years of age or older who need transportation within town to see the doctor, dentist, to go pay bills, to the beauty parlor, go shopping, or whatever your need is. On occasions it may take trips out of town if a whole load can be lined up to have doctor's appointments on the same day in Amarillo or for special trips to places and events of interest. If you have a need for transportation call 659-3521.

Golden Spread Club is an organization open to all people fifty-five years of age or older without regard to sex, race, religion, color, national origin, ethnic background, denominational preference, political affiliation, or handicap.

"Truth is rarely pure and never simple."
Oscar Wilde

Delta Kappa Gamma Celebrates 50th Anniversary

The 50th Anniversary of the Delta Kappa Gamma Society International was celebrated at a Saturday noon luncheon at the Perryton Club.

Francis Watkins, Area Coordinator for Delta Kappa Gamma, was the honored guest for the anniversary celebration. In a brief message, Mrs. Watkins challenged the members present to be interested in the future because "We are the sum total of the fifty years that are past."

The recipients of the "Grants in Aid" Scholarships for Teacher Education Majors were named: Dinah Wilson, Booker, Krista Robertson, Darrouzett, and Laurie Richardson, Follett.

A beautiful ceremony entitled "We've Only Just Begun" was presented by Mrs. Fred Gustin, Mrs. Allison Unruh, Mrs. Boyce Scott, Mrs. Doug Fiskin, Miss Karen Bennett, Mrs. Ray Robinson, Ms. Sandra Branch and Mrs. Irene Hollister. Symbolic "gifts" were offered representing the goals of Delta Kappa Gamma: Service, Talents,

Leadership, Awareness, and Friendship.

Members present for the anniversary celebration were: Ms. Sandra Branch, Mrs. Fred Gustin, Mrs. Florence Hance, Mrs. Irene Hollister, Mrs. A. M. Lemons, and Mrs. Ray Robinson from Booker; Mrs. Clifford Beck and Mrs. Jerry Robertson from Darrouzett; Mrs. Thomas Bergin and Mrs. Carlie Knight from Gruver; Mrs. Dick Hudson from Spearman; Mrs. Jess Brownlee, Miss Karen Bennett, Mrs. Ray Castle, Mrs. Joe Champion, Mrs. Norman Crum, Miss Darlene Day, Mrs. Doug Fiskin, Mrs. E. N. Flathers, Mrs. Bob Fleming, Mrs. John Hannon, Mr. Violet Ogou, Mrs. Nellie Knox, Mrs. James Love, Mrs. Robert Langford, Mrs. O. W. Nowlin, Mrs. Boyce Scott, Mrs. Allison Unruh, Mrs. Duggan Wilson, Mrs. Violeta Mahood, and Mrs. Henry Bechthold from Perryton.

The next meeting of the Delta Kappa Gamma will be Saturday, August 18 at the Perryton High School.

KVII-TV To Present "Scared Straight"

KVII-TV will present "Scared Straight," academy award-winning documentary, Friday night, May 25, at 10:45 P.M. This controversial 60-minute show is designed to literally scare the crime out of juvenile delinquents. As part of a crime prevention program, chronic juvenile offenders were sentenced to three hours in a maximum security prison with murderers, rapists and armed robbers. The language is explicit, often crude, and graphic descriptions will offend some, but "Scared Straight" does reveal one means of dealing with juvenile crime.

A cross-section of the local community attended two special showings of "Scared Straight" in the KVII-TV studios--among them, ministers, lawyers, judges, teachers, probation officers, and students--and found in the show an "earthly reality"; "they (the prisoners) tell it like it is."

Will it deter crime? Reactions were mixed, but most

agreed that is a show that should be seen, and that the program itself is one possible option in the attempt to cope with juvenile crime.

"Scared Straight" will be presented without commercial interruption--Friday, May 25, 10:45 P.M., on KVII-TV.

Arts & Crafts Guild News

The Arts and Crafts Guild met Friday, May 18 in the home of Mrs. Joe Traylor. Those attending were Mmes. Deta Blodgett, Ned Turner, Fred Hoskins, C. A. Gibner, W. L. Russell, Bruce Sheets, P. A. Lyon, Sr., F. J. Daily, Bill Gandy and Garrett Allen.

The next meeting will be Friday, May 25 in the home of Mrs. Garrett Allen.

Extension Clubs

The Serendipity Home Extension Club met Tuesday, May 15 in the home of Debbie Benton, with Debbie calling the meeting to order. Roll call was answered with "Something I Like to Collect."

The program, given by Agent Peggy Winegarner, was "Redo,

Renovate and Restore" and included slides about refinishing furniture.

A discussion was held on their Summer recreation. It was decided to go to Frenchy Mc Cormack's Dinner Theater either June 9 or 16.

Those attending were Mary Baker, Debbie Benton, Kay Loomis, Linda Sanders, Gail Smith and Cathy Gafford.

This was the club's last meeting until September.

Disco Dance This Friday

The Weekend Warriors will have a disco dance this Friday evening, May 26th at the Hansford County YMCA building (501 S. Hazelwood) Spearman from 8:00 to 12:00 Midnight. Admission is \$3.00 per person. Come celebrate at the carnival, disco and live a little, school's out.

We Will Be Closed Monday May 28

For

MEMORIAL DAY

Interstate Savings & Loan Assn.

322 Main

659-2344

SHOP ALLSUP'S AND SAVE!!

ALLSUP'S
CONVENIENCE STORES

PRICES EFFECTIVE
MAY 24-26, 1979

OPEN ALL DAY MEMORIAL DAY

<p>BORDEN'S BUTTER MILK 1/2 GAL. CTN. 89¢</p> <p>WE TAKE FOOD STAMPS!</p> <p>WE RESERVE THE RIGHT TO LIMIT!</p>	<p style="text-align: center; font-weight: bold;">HOT COOKED FOOD MENU</p> <p>FRESH BURRITOS . . . EA. 59¢</p> <p>CORN DOGS EA. 49¢</p> <p>HOT LINKS EA. 69¢</p> <p>MILD LINKS EA. 69¢</p> <p>BBQ SANDWICH . EA. 99¢</p> <p>BRISKET SANDWICH . EA. \$1.25</p> <p>BBQ CHICKEN EA. \$2.99</p> <p>BBQ RIBS LB. \$3.49</p> <p>TACO ROLLS EA. 59¢</p>	<p style="text-align: center;">DELICIOUS BORDEN'S SHERBET</p> <p>1/2 GAL. RD. CTN. 99¢</p> <p>SPECIALS GOOD WHILE SUPPLY LAST'S! LIMITED SUPPLY!!</p> <p>SELF-SERVE GASOLINE AT COMPETITIVE PRICES</p> <p style="text-align: center; font-weight: bold; font-size: 1.2em;">ALLSUP'S MONEY ORDERS 19¢</p>
<p>FOLGER'S FLAKED COFFEE 13 OZ. CAN \$1.99</p>		

SHOP ALLSUP'S FOR ICE, PICNIC SUPPLIES, COOLERS, POP, ICE CREAM, MILK AND BREAD, FRESH PRODUCE, HOT DOGS AND HAMBURGER BUNS, CHIPS AND DIPS!!

Help Keep Our City Weed-Free

We urge you to join with your city officials in keeping the weeds on your property mowed and, or sprayed. Each land-owner is responsible for the control of weeds on his or her property.

The City of Spearman

Rotary Club News

John R. Collard, Jr. gave a report on the district convention in Odessa at the Spearman Rotary Club meeting Monday noon at the Cattlemen's Restaurant in the Garden Room. There

were 397 registered for the district convention. There will be no meeting on Memorial Day, Monday, May 28, but instead the Rotary Installation banquet to be held jointly with the Perryton Rotary Club will be held on Tuesday, May 29 at 7:30 p.m. at the First United Methodist Church Fellowship Hall. This is a Ladies' Night.

Members present Monday noon were Jim Benson, J.L. Brock, John R. Collard, Jr., Robert Elliott, Pete Fisher, Tim Fisher, Ed Freeman, Ed Garner, Kerry Henton, John Hutchison, Junior Lusby, Jim McLain, Jack McWhirter, Larry Murphy, Frank Oglesby, Coy Palmer, Michael Schnell, Jim Shirley, Lenis Simpson, Gary Sims, Vance Snider, and Jerry Traylor.

Members absent were Eschol Blankenship, Kim Brock, Roy Bulls, Archie Burress, Eddy Limbocker, Brice Palmer, Don Wirsdorfer, and Tim Woodington. Visitors present were Kenneth McKay and Richard Tabor of Perryton, and Durane Castleberry, manager of the Nursnickel Motel.

GUYMON, OKLAHOMA-CATTLE AUCTION MARKET - NEWS - LETTER

GREETINGS TO ALL FRIENDS AND CATTLEMEN

Friday, May the 18th, was the regular auction day in Guymon, Okla. 836 cattle and calves were sold through the auction. A very good attendance was here to view a stronger and active market on most all classes, except packer cows.

Packer cows sold \$2.00 to \$4.00 lower than the previous week. Steer and heifer calves sold \$2.00 to \$4.00 higher and feeder steers and heifers sold \$2.00 to \$4.00 higher.

Friday, May 25th and Friday, June 1st, we will have special feeder sales on each of these dates. These special sales are requested by customers pulling cattle off of graze out wheat pasture. We are doing some extra advertising and promoting for these sales. Several consignments are already made and more are expected, so get your cattle consigned for a good turn in the auction. For more details on these sales give me a call here at the Guymon yards and aks for Bill Blackburn.

Your dependable cattle auction with action

PH: (405) 338-3378

P.O. BOX 879

NIGHT:(405) 349-2254

GUYMON, OKLAHOMA- 73942

The Cattle Auction With Action.

PANHANDLE LIVESTOCK COMMISSION CO.

Guymon, Okla. 73942 • 405-338-3378 • P.O. Box 879 73942
Nights 405-349-2254

Gladiola Flower Club Met

A surprise "Come As You Are" breakfast was the scene of the Gladiola Flower Club meeting Thursday, May 17. Members were gathered up at 6:30 a.m. and had breakfast.

Mrs. Garland Head presided over a short business meeting. It was announced that Work Days for the Float for the parade will be Tuesday and Wednesday, May 29 and 30.

Flower arrangement judging was held with Wanda Brown winning the borrowed category with a potted plant and Estelle Jackson winning the Specimen Category.

Those attending were Mmes. Wallace Berner, John Brown, Lloyd Buzzard, Gordon Cummings, Kenneth Evans, Bill Jackson, Doyle Jackson, Don Kunselman, Marcus Larson, Ray Martin, Claude Newell and Tom Sutton and two honorary members Mrs. Don Smith and Mrs. Bill Stackhouse.

The next regular meeting will be Thursday, June 7 in the home of Mrs. Ray Martin.

Bridge Club

The Grand Slam Bridge Club met Thursday, May 17 in the home of Linda Venneman. Those attending were Irene Baker, Linda Blackman, Anne

W.I.F.E. Meeting Held

Spearman W.I.F.E. met Tuesday, May 15 at 10:00 a.m. in the Library Room with Barbara McClellan presiding. The minutes of the last meeting were read and approved.

A discussion was held about projects for the Hansford Celebration. They decided to have a booth to sell Snack 'N Wheat.

Georgie Holt reported on a letter she received from Elbert Harp concerning the State Grain Sorghum deficiency. Payments were not going to be raised as expected because of a loophole in a farm bill.

Discussions were also held concerning the water proposal, gasohol and the Grain Compact. The organization will participate in the National Convention in Lubbock in November.

Meeting was adjourned. Those attending were: Patty Spoonemore, Georgie Holt, Barbara McClellan, Ginger Turner, Sonya Godfrey, Molly Turner and Jean West.

The next meeting will be Tuesday, June 5 at the County Barn at 7:30 p.m.

Women's Division of C of C Meets

The Women's Division of the Chamber of Commerce met Wednesday, May 15 at the Cattlemen's for a regular business meeting and luncheon with Emma Lou Collins presiding.

The float for the parade was discussed. There were 25 members and one guest Phyllis Kirk attending.

The next meeting will be Wednesday, June 20 at the Cattlemans.

Baptist Bible School Planned

Vacation Bible School at First Baptist Church features the theme, "Helpers of Jesus." Meeting each morning June 4-8 from 8:30 to 11:30 AM. The school will provide teaching for all children age 3-16.

Departmental leaders are Mrs. Rick Riggins, Mrs. Lillie Palmer, Mrs. Preston Graham, Mrs. Buford Baker, Mrs. Billy Phelps, Mrs. Wayne Cope, Mrs. R.L. Uptergrove, Mrs. Boyd Dean, Mrs. Jim Davis, and Mrs. Mike Holt. Mrs. Glen Hiller will provide refreshments for the students and faculty. A nursery will be provided for the children of workers.

A School-Wide Picnic will be held Friday noon June 8 in Womble Park and parents of all children are invited to attend the picnic. Parents Night will be held Sunday evening June 10 at 7 p.m.

Russell Pogue, Pastor and general director, issues a cordial invitation to parents to enroll their children in this school. Featured in each of the teaching sessions for children will be a fluorescent chalk picture.

Presbyterian Church News

Presbyterian Men will have their monthly prayer breakfast on Thursday, May 24 at 6:30 a.m.

There is a Sunday Church School class for everyone every Sunday at 9:45 a.m.

"Confidence" will be the subject of Pastor Edward D. Freeman's sermon at the service for the public worship of God on Sunday, May 27 at 11:00 a.m. This is Ascension Sunday and General Assembly Sunday and both will get some emphasis in the service.

There is a warm, Christian welcome awaiting you at the First Presbyterian Church.

Square Dance Club News

The Spearman Spinners Square Dance Club met Thursday evening, May 17 at the County Barn with Paul Lopez calling. There were two squares in attendance.

Guests present were Hoot and Mary Arnold and Howard and Verna Barkley.

Refreshments were served by

You are cordially invited to a baby shower honoring Beth Lesly Thursday, May 31, 1979 7:30 to 9 p.m. Church of Christ Fellowship Room 28-2tc

Savings Bond Sales Noted

February sales of Series E & H United States Savings Bonds in Hansford County were reported today by County Bond Chairman C. A. Gibner to be \$28,633. Sales for the second month period totaled \$35,681 for 51% of the 1979 sales goal of \$70,000.

Texas sales during the month amounted to \$24,863,855, while sales for the first two months of 1979 totaled \$45,930,650 with 15% of the yearly sales goal of 297.2 million achieved.

MARKETS

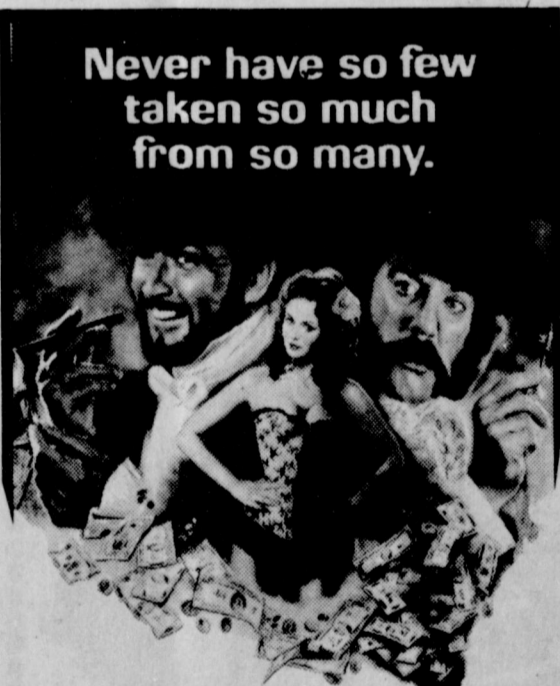
Table with 2 columns: Commodity and Price. Wheat 3.00, Milo 3.75, Corn 2.65, Soybeans 6.49

"He who listens understands." African Proverb

LYRIC THEATRE

Phone 806-659-2812 ONE SHOW AT 7:30 P.M. SUNDAY, MONDAY, TUESDAY, WEDNESDAY, AND THURSDAY TWO SHOWS AT 7:00 P.M. AND 9:00 P.M. FRIDAY & SATURDAY

NOW SHOWING



DINO DE LAURENTIIS presents A MICHAEL CRICHTON FILM starring SEAN CONNERY DONALD SUTHERLAND and LESLEY-ANNE DOWN

A JOHN FOREMAN PRODUCTION Screenplay by MICHAEL CRICHTON based on his novel Music by JERRY GOLDSMITH • Produced by JOHN FOREMAN Directed by MICHAEL CRICHTON • A Famous Films N.V. Production PANAVISION® • TECHNICOLOR® (READ THE BANTAM BOOK) DOLBY STEREO

MAY 23 THROUGH MAY 29

HOLIDAY DRIVE-IN

PHONE 806-659-3922 One Show Only Each Evening Show Starts At Dusk

NOW SHOWING



SILVER STREAK

May 23 through May 29

PELIKULAS MEXIKANAS

'ACAPULCO

12-22

Sunday May 27

at 2 p. m.

Congratulations and best wishes

TO ALL MEMBERS OF THE CLASS OF 1979



CHUCK EATON



JO NELL COMEGYS

GOLDEN SPREAD

SALES CO

412 COLLARD

659-3776

Tractor Operation School Scheduled

A 4-H Tractor Operation will be held Thursday, May 31 starting at 9:00 a.m. at the County Barn in Spearman. The school will be held to qualify 14 and 15 year olds to operate a tractor as listed in subparagraph (1) of paragraph 1500.71 (a) of the Federal Register, Volume 35, Number 4, dated 7 of January 1970.

For completion of the 4-H Tractor Operation Program the following requirements must be met:

- a. Be a 4-H member at least 14 years of age.
- b. Be familiar with the normal working hazards in agriculture.
- c. Complete a classroom training program.

d. Pass a written exam on tractor safety.

e. Demonstrate the ability to operate a tractor with a two-wheel trailed implement.

f. And receive a certificate stating that the youth has satisfied all requirements.

Educational programs conducted by the Texas Agricultural Extension Service serves all people of all ages regardless of socio-economic levels, race, color, sex, religion or national origin.

For more information concerning the 4-H Tractor School call the Extension office at 659-2136 or 733-2901.

U.S. Postal Service Saves Energy

Energy savings of 16 percent are projected for 260 major Postal Service facilities in an \$11.8 million capital improvement program approved today by its Board of Governors.

Francis X. Biglin, Senior Assistant Postmaster General for Administration, said the program calls for surveying the heating, cooling and electrical systems in these owned and leased facilities and retrofitting them to make them more energy efficient.

In another energy conservation move, the Board also approved purchase of 750 electric vehicles at a cost not to exceed \$7 million. The procurement, when completed, will bring to 1,133 the total of electric vehicles in the Postal Service delivery fleet.

In June of 1977, the Governors approved an \$11 million plan to upgrade the energy efficiency of the 100 largest postal owned facilities.

These investments are part of a Postal Service program which calls for overall energy reductions of more than 20 percent by 1985.

Biglin outlined energy reduction targets in the following areas:

--A 20 percent savings in energy use in 18,000 existing buildings;

--A 45 percent increase in energy efficiency in new buildings;

--A 20 percent reduction in gasoline and diesel fuel consumption in a fleet of more than 120,000 vehicles.

Plans for new facilities provide for better insulation, improved electrical systems, higher efficiency for heating and cooling systems, and solar design features.

Greater gasoline and diesel efficiencies may be achieved by more efficient use and increased maintenance of vehicles and reductions in vehicle weights and engine sizes.

In presenting the program to the Governors, Biglin said the Postal Service has already achieved significant energy economies.

Since 1973 energy consumption in Postal Service buildings has been reduced by 11 percent, and the annual fuel consumption has been reduced from 927 gallons a year per postal vehicle to 762 gallons -- a reduction of 17.8 percent per vehicle.

Wheat Research Field Tour Planned

A dryland small grain nursery will be described by Gary Peterson, wheat researcher from Bushland.

Amarillo, Texas - There will be a field tour of wheat research at the USDA Research Center at Bushland, Texas on May 24, at 1:00 p.m. Dr. B.A. Stewart, USDA Director of the facility, invites all people interested in wheat to attend. The tour will feature several new wheat varieties from Texas and surrounding states.

The 1.5 hour tour will start at 1:00 p.m. and at 15 minute intervals as required according to Dr. G. B. Thompson, Research Director for the Texas A&M Research Center at Amarillo.

Development of new wheat varieties will be described by Dr. K. B. Porter, wheat breeder with the Texas Agricultural Experiment Station.

Growers will be able to get a first hand look at TAM 105 and TAM 106, new wheat varieties that will be distributed to certified seed growers in 1979.

"We are excited about TAM 105 and we believe it will produce more grain than wheat presently grown under irrigation in the High Plains," Porter said.

In addition, plots of triticale, oats, barley and hybrid wheat will be shown by Dr. Earl Gilmore from the Texas A&M Center at Vernon. New wheat varieties from other states and commercial companies that can be observed are Newton, Bennett, Cheyney, Rocky, Payne, Wings, Centurk 78, Vona, Lindon, Tex Red and Rall. Advantages and disadvantages of these varieties will be discussed by Dr. Frank Petr, Texas Agricultural Extension Service Agronomist at Amarillo.

Other stops on the tour will include an irrigated wheat experiment described by Jack Musick, USDA Agricultural Engineer, and an irrigated wheat-sunflower rotation being tested by Dr. Paul Unger, USDA Soil Scientist.

Furrow diking and conservation bench experiments will also be observed.

Dr. Nolan Clark, USDA Agricultural Engineer will discuss research on wind energy at the end of the tour.

The event will be sponsored by the Texas Agricultural Experiment Station; Agricultural Research, Science and Education Administration, USDA; the Texas Agricultural Extension Service; and Texas Wheat Producers Association.

Research News Report 79-14 For additional information contact Dr. K. B. Porter, Texas A&M Research and Extension Center, 6500 Amarillo Blvd. West, Amarillo Texas 79106.



Indians in British Columbia used to try to encourage fish to come to a local stream by putting carved wooden images of the fish in the stream.

PRICE PLANS TO INTRODUCE WATER IMPORT AUTHORITY BILL

AUSTIN - Senator Bob Price plans to introduce legislation in the Texas Senate that will hopefully head off the water shortage facing West Texas. Senator Price is carrying a bill creating the Ogallala Water Import Authority. The Import Authority would include most of the counties sitting on the Ogallala water formation. According to Senator Price, years of research have gone into this legislation.

"This is an important long range step in insuring adequate supplies of water for West Texas in the future. Water is our most important commodity to maintain the growth in industry and agricultural development that West Texas has seen over the past two decades," commented the Pampa Senator.

The duties of the Import Authority would be to obtain supplemental supplies of imported water and sell such water for municipal, industrial

and agricultural use. The Water Import Authority would have the power of eminent domain and the power to contract for imported water and distribution of it. Additionally, the Authority will have the power to store water and prevent the waste of imported water.

Senator Price said that this is a similar water import bill passed by the House last week but incorporates a number of changes suggested by various members of water boards throughout the Panhandle.

"This by no means is the last word regarding a perfected importation bill but is a vehicle to start with. If proper hearings are held in the Senate and knowledgeable people testify, and if the State Legislature has enough forethought to address this vital subject, then it can be a forerunner for a comprehensive water plan for the state," said Senator Price.

"I see no evidence at this point that either body has had

the time nor a plan that will come to grips for the water needs of the future. Hopefully, this will be a start but I feel the Governor and the Legislature should appoint a commission to study a comprehensive plan for the entire state," said Senator Price.

Some counties have asked to be exempt from this legislation because they fear that as the bill is written, certain underground waters could be pumped from a county with a surplus of water to a county without. Senator Price agrees with their feelings that this should not be done.

"I am requesting that every county inform me of their position on the matter and be prepared to testify for or against the bill. Also, I would request that they prepare any amendments they would like to see in the bill. Time is of the essence as we approach the end of this legislative session," concluded Senator Price.



PRICES EFFECTIVE THRU MAY 26, 1979. QUANTITY RIGHTS RESERVED. NO SALES TO DEALERS.

(STORE HOURS)

IDEAL IS OPEN MEMORIAL DAY...



CV POCHOP \$2,000 WINNER

PLAY TRIPLE PLAY

WIN UP TO

CAMELOT HOT DOG OR
Hamburger Buns
LIMIT 3
PKG. OF 8
34¢



KRAFT
Miracle Whip
LIMIT 1
32-OZ. JAR
\$1.08



RICH AND FLAVORFUL
Hunt's Ketchup
24-OZ. BTL.
64¢



SOFT & PRETTY ASSORTED
Bath Tissue
ROLL PKG.
489¢

HUNT'S ALL FLAVORS
Snack Pack
PUDDING PACK
78¢

DEL MONTE SLICED - CHUNK - IN CRUSHED PINEAPPLE JUICE
15 1/2-OZ. CANS
89¢

HERSHEY CHOCOLATE SYRUP
16-OZ. CAN
69¢

GLAD SANDWICH BAGS
150-CT. BOX
79¢

EAGLE BRAND MILK
14-OZ. CAN
74¢

ALL FLAVORS DRINK MIX
33-OZ. CAN
\$1.68

WESTERN MAID HAMBURGER SLICED DILLS
32-OZ. JAR
79¢

Farmer Owned Wheat Reserve Released

WASHINGTON, May 16 - Wheat in the Farmer-owned reserve was released for redemption, effective immediately, by Ray Fitzgerald, executive vice president of the Commodity Credit Corporation (CCC). Farmers may sell their reserve wheat after repaying their CCC price support loans.

Release of the reserve does not require farmers to redeem or sell their grain at this time.

Fitzgerald said the national average market price for wheat is \$3.31 per bushel. The price level at which the commodity is released from the reserve is 140 percent of the \$2.35 national loan rate or \$3.29 per bushel. More than 400 million bushels of wheat are in the reserve.

Farmers with grain in the reserve receive storage payments annually in advance from the U.S. Department of Agriculture. Upon repayment of the loan, farmers can keep the storage payments earned through the date of repayment.

On June 30, the department will review the average price for wheat to determine if the release authorization should remain in effect. If release continues, storage earnings will stop in those where the picture remains above the release level.

Data used by CCC in determining the release level include five-day average prices as reported by the department's Agricultural Marketing Service which show prices bid by buyers at selected markets and a month-end report of prices received by farmers issued by the department's Economics, Statistics and Cooperatives Service. This report shows the previous month's average price and the current mid-month price.

Chicago, Portland, Kansas City and Minneapolis are the daily markets reviewed by CCC for wheat. The five-day average of these market prices, adjusted to reflect prices received by farmers, was the basis for today's action.

This is the fifth time the department has released a commodity from the farmer-owned reserve since its inception in 1977.



Coral was once given for teething troubles.

For all your
AsGrow Seed Needs
Contact
Roy Kauffman
Rt. 3
Gruver, Texas
733-2366

RODEO BUCKBOARD
Boneless Hams
FULLY COOKED WHOLE 7 TO 9-LB. AVERAGE LB. **\$1.89** WATER ADDED

Cook-Out Special!
COUNTRY STYLE
Pork Ribs
PORK LOIN LB. **\$1.29**

CHUCK STEAK BONELESS 7-BONE CUTS U.S.D.A. CHOICE BUTCHER BLOCK BEEF LB. **\$1.79**

GROUND CHUCK FRESH EXTRA LEAN 1.75 5 LB. PKG. LB. **\$1.79**

SKINLESS FRANKS RODEO MEAT 12-OZ. PKG. **89¢**

SMOKED SAUSAGE WILSON'S WESTERN BRAND U.S.D.A. CHOICE BUTCHER BLOCK BEEF LB. **\$1.99**

SLICED BACON HICKORY SMOKED SLAB LB. **88¢**

BREAST FRYER RIBS ATTACHED FRESH 5-LB. FROZEN BOX LB. **98¢**

DRUMSTICKS FRYER FRESH FROZEN 5-LB. FROZEN BOX LB. **89¢**

HAM Center Slices 12-OZ. PKG. LB. **\$1.98**

SHOP IDEAL WHERE YOU GET GUNN BROS.

B SPEARMAN
659-2514
GRUVER
733-2981

**BROCK
AGENCY**

H'S
**HAIL
INSURANCE
TIME**

Mrs. Phillips' Brother Dies

Mr. George W. Stephens of Pattonville, passed away May 19 in Presbyterian Hospital in Dallas. He was the principal of Prairieland High School and the brother of Mrs. Lee Phillips of Spearman.

Quail, Texas, the son of Georgia T. and Bertha Guinn Stephens. His father is deceased. He married Monday Montgomery, March 5, 1955 in Fort Worth. He was a member of the Church of Christ at Pattonville, Texas Coaches Association, Texas State Teachers Association and the National Education Agency. He was a former superintendent at Slidell, Texas. He was the recipient of the distinguished service award from the Texas Vocational-Agricultural Association. He is survived by his wife, Monday, his mother, Mrs. Ber-

tha Stephens of Quail, a son Trent Stephens of Pattonville, and a daughter, Mrs. Sherry Wilson of Cooper, Tx.; a brother, James Stephens of Odessa; and four sisters, Mrs. J.O. Miller of Memphis, Mrs. Freddy Poteet of Lubbock, Mrs. Lee Phillips of Spearman, and Mrs. Tommy Martin of Lakeview.

4-H Link

In Texas, 4-H volunteer leaders "link" young people with program -- and efforts with success. Leaders are asked to do

strong things -- to volunteer and to lead youth in learning. They are uniquely strong at both, says Peggy Winegarner, county Agent with the Texas Agricultural Extension Service, Texas A&M University System. Before joining 4-H programs, volunteer leaders must pass two tests: They should like young people and they must be genuinely interested in them. In Texas today, nearly 23,000 4-H volunteer leaders have passed those tests -- and more than 6,000 are youth themselves, notes Peggy. Still, Texas 4-H programs need more volunteer leaders. Choices of programs to lead are limitless -- as

are leaders styles, schedules and situations. Leaders tailor their own programs to a great extent, Peggy explains. Today's 4-H clubs come in every size and arrangement -- with needs to fit any leader's talents, time and skills. Some larger clubs require several leaders, and tasks are divided according to leaders' preferences. Other 4-H clubs have special-interest leaders, while some clubs need resource people who can share expertise in certain subjects. Generally, leaders start off choosing one of three types of jobs: organization, project work or activity work.

ORGANIZATIONAL LEADER -- This leader works with other leaders to coordinate a club's program, enroll members, assist in the overall club program, and counsel officers in their jobs. **PROJECT LEADER** -- This leader works in a project area, guiding members in a project, such as foods, pet care, wood-working or some 70 other 4-H projects. Project leaders help members improve their skills and increase their knowledge and interests. **ACTIVITY LEADER** -- This leader joins club members in tours, safety talks, games, demonstrations and other activi-

ties dictated by members' interests. Also, an activity leader can serve as a liaison person between the club and the community -- on safety campaigns, health programs, special events window displays, fair exhibits and other community projects. Resource persons are wanted -- and needed, too, says Peggy. For people who feel their special talents are centered in one area, serving as a resource person can make a great impact in a special way. Resource persons can share a special interest or a hobby with one club or many clubs in their county, or they can work on special events, such as parades or community-service projects.

would be the state in which the medicare claim is handled. If the state in which you received medical treatment is not listed above, and you wish to inquire about a medicare claim, telephone your local social security office. The personnel there will assist you in obtaining your information.

Two EMS Courses

The Panhandle EMS announces two new training in-service courses, "EMERGENCY BURN CARE", a three (3) hour workshop and "HANDLING HAZARDOUS MATERIALS", a twenty four (24) hour course.

Keep Blood Pressure Checked

COLLEGE STATION--Every one should have their blood pressure taken at regular intervals and learn what the numbers mean, advises Carla Shearer, a health education specialist.

High blood pressure is a disease for which there are no reliable symptoms. Regular blood pressure checks are the only accurate way of diagnosing high blood pressure, the specialist points out.

Ms. Shearer is with the Texas Agricultural Extension Service, The Texas A&M University System.

When your blood pressure is taken, ask what your blood pressure reading is and obtain a clear understanding of what the numbers mean.

Below are three examples of blood pressure readings and some information about these readings:

1) 120/80--this is about average for most adults, although a lower reading is also good.

2) 140/90--this higher reading presents a different situation. There are a few things a physician may do for a person with this reading.

He may continue to closely monitor the person to see if there is an increase.

He may begin a mild non-drug treatment including recommendations for losing weight, lowering salt intake and more physical exercise.

Or, if there are other risk factors present, a physician may

Handling Hazardous Materials instructors include, Chief Glen Welch (Amarillo Fire Dept.), Tom Siocum (Amarillo Fire Dept.), Joe Rice (Canyon Fire Dept.), and Elbert Barch (Amarillo Fire Dept.). Total charge for the course is \$12.00 per student for lecture and books. This course provides the knowledge, training and planning assistance to help achieve and maintain a state of readiness for all transportation emergencies involving hazardous materials.

Both courses are structured to meet the needs of industrial safety personnel, ambulances, and fire department personnel.

Emergency Burn Care is also available for hospital in-service for nursing staffs. There is no charge for this course; however, we do ask for a minimum of 15 participants per class. Faculty includes, Kathy Oslar, E.N., and Deborah Daveport, E.N., both consultants for the FEMS burn demonstration project.

These courses in addition to the ones already offered through FEMS including ECA, EMT, Paramedic, Newborn and Maternal Stabilization and Transport, CPR, Respiratory Therapy, Emergency Department, and Crash Management Extrication are in keeping with the EMS slogan "A System To Save A Life".

To set up any of these courses in your community, contact Panhandle EMS Joyce Cheek, 806/376-4431 ext. 541 or 544.

The Panhandle EMS (a non-profit corporation providing pre-hospital care training and communications coordination).

Shot in Ireland

"The Great Train Robbery," United Artists release opening May 23 at the Lyric Theatre, was filmed entirely on locations in Ireland, where the Georgian brick of the cities and the green of the countryside have remained largely unchanged in the past century.

The Victorian train of the title, a coal-burning steam engine pulling its three classes of wooden coaches and a luggage van, rolled over the green hills from Athlone to Mullingar in County Westmeath, starting its presumed journey from the old London Bridge Station (in actuality Dublin's Heuston Station), ending its ride at the channel port of Folkestone, (for which Kent Station in Cork was the double.)

A gracious and elegant way to serve bottled mineral water is to keep the bottle at the table in a wine cooler. For particular sophistication, use a floor-stand ice bucket wine cooler or a small silver, table top ice bucket.

DOUBLE PAY AND \$2,000

BINGO

Memorial Day Cookout Specials!



ODDS CHART AS OF MAY 10, 1979

1	2	3	4	5	6	7	8	9	10
11	12	13	14	15	16	17	18	19	20
21	22	23	24	25	26	27	28	29	30
31	32	33	34	35	36	37	38	39	40
41	42	43	44	45	46	47	48	49	50

FAST LIGHTING LIMIT 1
Kingsford Charcoal 20 \$2.68

LIMIT 2
Coca Cola \$1.99

VAN CAMP
Pork & Beans 26¢

WESTERN MAID OR CAMELOT
Mustard 49¢
DIXIE OR SWEETHEART®
Paper Plates 99¢

TOOTH PASTE
9-OZ. TUBE CREST REG. OR MINT \$1.39
SHAMPOO
16-OZ. BTL. PHEL LIQUID \$2.59

Tomatoes 39¢
Memorial Day Wreaths
Mums \$3.89
Sweet Corn 6 EARS FOR 89¢
Red Ripe Strawberries 79¢
Texas Cantaloupe 49¢
Russet Potatoes 10 89¢

FRESH DAIRY
CAMELOT MILD LONGHORN Cheese 16-OZ. PKG. \$1.69
FAIRMONT REG. OR CHIVE Sour Cream 8-OZ. CTN. 97¢
CAMELOT Cottage Cheese 24-OZ. CTN. \$1.09
KRAFT ALL FLAVOR Squeeze-A-Snack 6-OZ. PKG. 68¢

FROZEN FOOD
COUNTRY TIME REG. OR PINK Lemonade 4 CANS 99¢
WHIPPED TOPPING Cool Whip 12-OZ. TUB 73¢
MEADOWDALE French Fries 5 LB. BAG \$1.33
SWANSON TAKE OUT Chicken 28-OZ. BOX \$2.59

MEADOWDALE ALL FLAVORS
Ice Cream 1/2-GAL. \$1.29
FARMONT POPS, FUDGE ICE MILK BARS 24-PK. CTN. \$1.68

Toll Free No. For Medicare
Singles \$1.18
JENO'S Pizza 76¢

STAMPS ... Ideal FOOD STORES
Food Stamps Buy More At Ideal...
The picture frame truck will be in Gruver on Thursday, May 24, 1979 at the County Barn from 10:00 A.M. to 6:00 P.M.

GRAND OPENING

HICKERSON JEWELERS

FRIDAY AND SATURDAY - MAY 25 - 26

PLAINS SHOPPING CENTER

Spearman, Texas

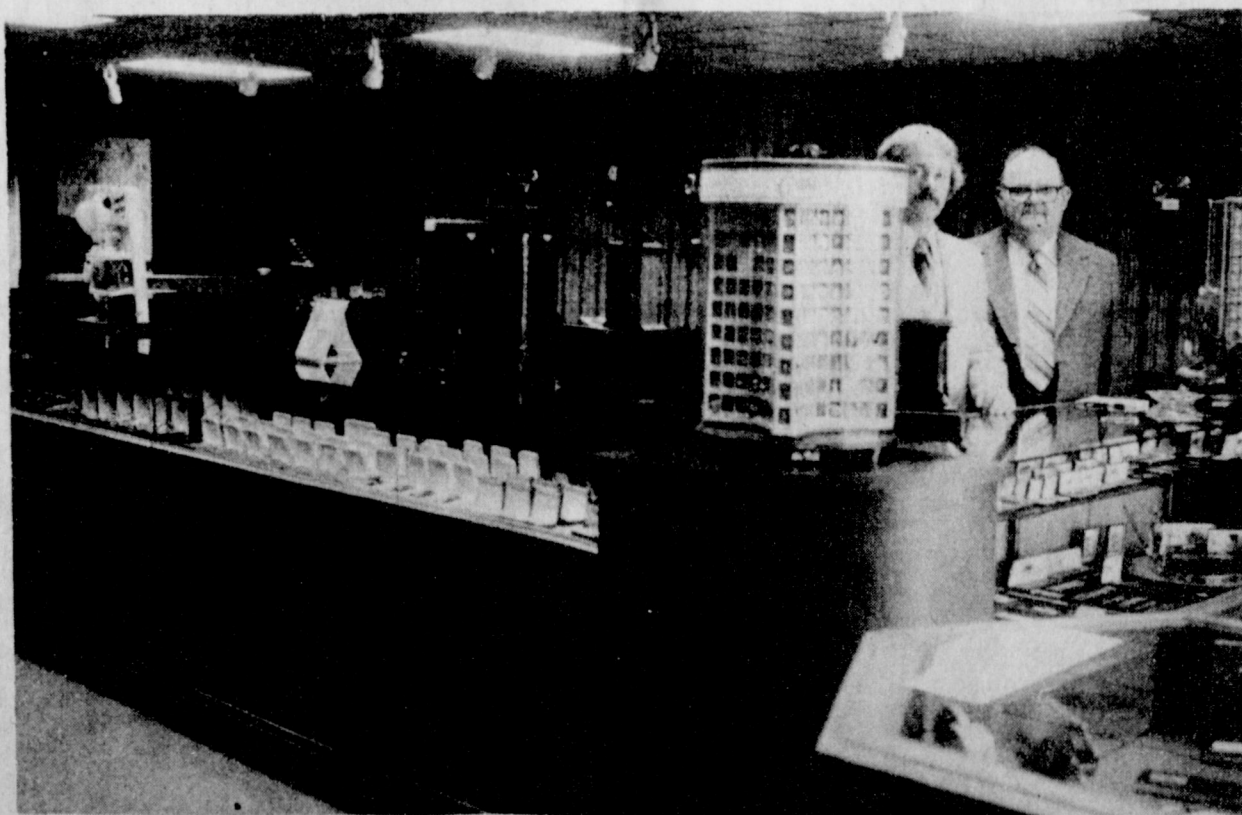
Be sure and
Register Friday
or Saturday

After you
Register,
you will be
Eligible for

The Big
Grand Opening
Drawing
To be held on
Saturday



Ready for Grand Opening this week-end is Grace, Micki, Faye, Frosty, Million and J.C.



An interior view of the new and beautiful Hickerson Jewelry Store, in Spearman.

We are going
All - Out For our
Grand Opening
This Friday
and Saturday!

We are
giving away

OVER
\$1,000 in
PRIZES
DIAMOND
RINGS
WATCHES
and many other
EXPENSIVE
PRIZES

HICKERSON JEWELERS

Plains Shopping Center - Spearman, Texas