



YOU NAME IT, and it is in the picture above, Jimmie Dale Raridon, 19 years old of Spearman and Albert Duane Bureson, 19 years old of Spearman allegedly stole this entire group of "goods" from CB's to tools. Raridon and Bureson are out on \$3000,00 bond. Both are expected to be arraigned later on additional theft and burglary charges.



Crystal, Marijuana, Speed, Whiskey, and the "works" are pictured above. This was part of the haul allegedly owned by Raridon and Bureson of Spearman. Also in the picture is a pan full of growing marijuana plants.



The Spearman Reporter

VOLUME 70, NO. 22

THE SPEARMAN REPORTER, SPEARMAN, TEXAS 79081

THURSDAY, APRIL 12, 1979

Tracksters to Guymon Thursday!

The Spearman boys and girls team will journey to Guymon Thursday, to enter a mid-week track meet. The meet will begin at 1 p.m. and will feature the top Spearman boys and girls track. In other track news, the boys district meet will be held at Boys Ranch, next Tuesday, and the elementary track meet planned for Spearman April 20th is in full gear. We will have more details from Coach Collingsworth on the elementary track meet for Spearman in our next paper.

Qualifying for the regional track meet in Lubbock April 20th and 21st are: Sherry Greene 100 yard dash, long jump, triple jump and 440 yard relay; Debbie Greene, long jump; Becky Byers, 440 yard relay; Kenda Burke, 440 relay, and 80 yard hurdles; Arceli Nava 440 yard relay; Nancy Wilson, high jump; Juanita Martinez mile run. Coach Newton had a total of 7 girls qualify in 11 events for the Regional meet!

The girls golf team from

Two Million Plus Budget

Noting that the school budget had risen to near Two Million Dollars for 1979-80, Board members went about the task Monday night of putting the "Pruning Shears to Many areas of initial request.

The Budget as originally proposed would see an increase of \$232,896 over last year. \$99,995 of that figure is reflected in salary hikes for personnel.

Services would be hiked 3%, Supplies 21%, and Capital outlay would jump 55% if the present figures remain.

The school Board left little doubt that the original figures as requested would remain untouched!

Spearman has done well this year. This year's district team from Spearman, includes the following: Jana Buchanan, De Anne Baker, Becky Lusby, Sharon Sheets and Eadie Clemmons.

New President For Golf Club!

Banker Horace Curlee was named to head the Hansford Golf Club, at the clubs regular meeting held in the courthouse last week. The new president will be assisted by directors Gordon Stedje and Jean Holland of Gruver, and Lewis Collins, Don Smith, and Danny Womble of Spearman. Treasurer for the Hansford Golf Club is Jim Mercer of Spearman, and Monty Blackmon is Secretary.

The beautiful Hansford golf course is located mid-way between Spearman and Gruver, is one of the finest in the state. Boasting an 18 hole course and

modern club house, the club affords fans an excellent putting green also.

If you are interested in joining the Hansford Golf Club, contact any of these above officers or any members and they will give you the latest information concerning membership in the club.

RICHARD KINGSLEY UNDERGOES SURGERY

Richard Kingsley underwent surgery Monday at Newman Memorial Hospital in Shattuck, Okla. He is reported doing well and is expected to be home in about a week.

Holy Week Service

Today, Thursday, April 12, on the church calendar is Maundy Thursday, Maundy Thursday is often called "the birthday of the chalice (cup)." On this day Christians remember especially the institution of the Lord's Supper. The word "maundy" comes from the Latin "I command."

Maundy Thursday became known as the "Day of the Commandment." The church thought about what Jesus had said when He washed the feet of His disciples (John 13:14). On this day the church also thought about Jesus' command: "A new commandment I give unto you, that you love one another" (John 13:34). The church remembrance of Me." (1 Corinthians 11:24, 25)

The Sacrament of Holy Communion is celebrated in Christian churches on this day. The Rev. Edward D. Freeman will give the communion meditation at a union Maundy Thursday communion service, April 12, at 7:30 p.m. at the First Presbyterian Church.

Sacred Heart Catholic Church will have a Maundy Thursday Mass of the Lord's Supper and foot washing on Maundy Thursday at 8:30 p.m.

On Good Friday, April 13, the Christian Church remembers especially the crucifixion and death of Jesus. Often the cross on the altar is covered with a black veil in memory of Christ's death. Good Friday comes from "God's Friday," the first English name for this day.

Spearman Ministerial Alliance will have a union Good Friday service on April 13 at 1:00 p.m. at the Assembly of God. Marilyn Groves and Bonita Reimer will be organist and pianist for the service and the Rev. Edward D. Freeman will be the song leader. The Good Friday sermon will be given by the Rev. Frank Oglesby. All clergy attending will have a part in the service. Most businesses in Spearman will be closed from 1:00 to 2:00 p.m. on Good Friday to enable working people to attend this service.

Sacred Heart Catholic Church on Good Friday at 6:45 p.m. will have the Passion with homily, veneration of the Cross, and a communion service.

There will be another union Good Friday service at 7:30 p.m. at Faith Lutheran Church. Herb Hoff will preach the sermon.

Holy Saturday is the last day in Lent. It is a day on which we look forward to the joy of Easter. On this day the early church baptized who had been taking instructions. Sacred Heart Catholic Church at 6:45 p.m. will have the Easter vigil, lighting of the new lights, and the mass of the resurrection.

Easter is the high point of the church year. It is the festival of festivals, for on this day Jesus rose from the dead as the King of kings and Lord of lords. God's promise of a Savior from sin has been fulfilled in Jesus' resurrection, the greatest event in history.

Sacred Heart Catholic Church will have the mass of the resurrection at dawn on Easter Sunday.

Baptist youth of the Spearman and Gruver Baptist churches will have an Easter sunrise service on old Hansford Hill at dawn.

"Breakfast in Galilee" by Sonny Salisbury, an Easter cantata, will be presented by the choir of the First Christian Church, under the direction of Mary Brock, on Easter Sunday at 6:30 a.m. Costumed disciples will complete the drama of the occasion.

Every church in Spearman will be celebrating the Easter event at all their regularly scheduled services of the Lord's day. "He is risen, Hallelujah!" These familiar words guarantee that Jesus has defeated sin and death. The apostle Paul writes: "Death is destroyed in victory. Where, death, is your victory? Where, death, is your sting? Sin gives death its power, and the law gives sin its power. But thank God! He gives us the victory through our Lord Jesus Christ." (1 Corinthians 15:54-57)

Resignations

Letters of resignation were read at the school Board meeting in Spearman Monday night from Head Football Coach and Athletic Director Preston Smith and Junior High Band Director Mike Newsome.

Smith, completing his first year as Head Coach will reportedly join his Father in Law's Ranching operations in Wheeler when school is over.

Newsome reportedly will take a position as Band Director of the Phillips High School.

Cafeteria Costs Spiral

Head Spearman School Cafeteria Worker Doris Wilde has told the School Board that in spite of the recent increase in school lunch fees, the local school cafeteria is in the red... financially.

The school Board has consequently had to subsidize the program with \$1850.00 to meet bills due and payable 30 days ago.

School Board members appearing concerned about the deficit asked if the recent Lunch fee increase was not intended to offset such a deficit. The Board

controlled substance, 500.00 on possession of marijuana, and 500.00 on the DWI.

Sheriff McFarlin wanted to thank Don Johnson, with the highway patrol out of Borger, for his assistance in clearing up the burglaries and thefts in Spearman, and the DWI arrests.

prepared food item costs as studied by the cafeteria official... noting that some items had increased as much as 127% in cost since September. Fish was the only food item that had remained at the same cost level. Lettuce was the culprit showing the highest rise.

An average of 663 students were fed daily during March in the Program.

School Board members were adamant in declining to even consider an additional increase in lunch costs... at least for this semester.

Board Considers Applications

Three staff members of the Spearman Independent School District were reported Monday night to be under consideration initially for the Head Football Coaching Job as well as the Athletic Directors position at Spearman High School.

The three, named by Superintendent James Cunningham were Ken Friemel, Jim Collingsworth and Chuck Steele.

The Board went into Executive Session to study the applications and qualifications of the trio.

In addition at least nine other applications or inquiries have

been received to date. These have come from schools as far away as Central Oklahoma and Mesquite Texas.

Board members were anxious to replace Smith as Head Coach and said they hoped to have a replacement by May 1st, if that replacement were to be chosen from outside the ranks of the local staff.

School Principal Eddie Clemmons noted that the primary consideration in the search would be to find a man of good morals... who had the respect of the students.

Music Students In Who's Who



The 78-79 Who's Who in Music will carry the names of 12 students from Spearman High School, Spearman, Texas who have been selected as being among the country's most outstanding high school music

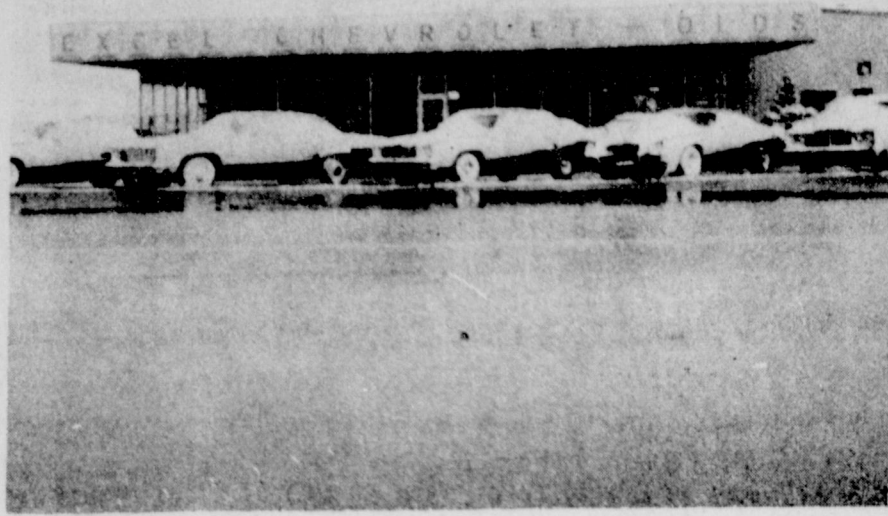
students. Travis Angel, Choral Director, head of the school's nominating committee and the editors of the annual directory have included the names of these students based on their music

ability, academic achievement, service to the community, leadership in extracurricular activities and future potential. Students named this year from Spearman High School, Spearman, Texas are Jay Comegys,

Debbie Greene, Sabre McCoy, Kelly Shaver, James Pierce, Lynn Vernon, JoNell Comegys, Pam Largent, Kelly Rylant, Stinson Gibner, John Reneau and Kelly Davis.



This high flying Lynxette will be in action at Guymon today (Thursday)!



Excel Chevrolet - Olds was snowed under last week!

YMCA Taking Over Youth Baseball

The Hansford County YMCA will be taking over the youth baseball program beginning in 1979. Signups are now under way at Cates Boys and Men's Wear in Spearman.

We encourage each parent to take the children to Cates and sign him/her up.

It was decided that for divi-

ding teams for this season, a committee would select, on an equitable basis, those to be placed on each team for the younger and older baseball program.

Also, there will be an overall Baseball Commissioner and an Umpire Commissioner relating to the program.

Answers To Bible Verse

1. Jesus Christ.
 2. To John the Apostle in a vision.
 3. John was a prisoner on the Isle of Patmos.
 4. Revelation 1:18.
- ****
- Why is it that people who can't speak, speak--and are invited to speak?

Farm Loans Interest Rates Increased

The U.S. Department of Agriculture (USDA) has announced that interest rates will be increased on farm loans made by the Farmers Home Administration (FmHA). The higher rates will be effective March 28, 1979.

Insured loans for farm real estate purposes will be made at 9 percent. These loans include disaster emergency and economic emergency loans for real estate purposes and farm ownership, individual soil and water, individual recreation, grazing association, irrigation and drainage, and Indian land acquisition loans.

Insured operating loans, including emergency and economic emergency loans for operating purposes will be made at 9 1/2 percent. These loans are used to pay for livestock, equipment, feed, seed, fertilizer, and to make minor improvements to buildings and real estate.

FmHA's disaster emergency loss loans will continue to be made at the 5 or 3 percent rate already established.

Loans to limited resource farmers also will continue to be made at rates already established. Initial farm ownership loans under this program will be made at 3 percent and operating loans will be made at 5 percent.

Texas Tech Housing Status

LUBBOCK--The Housing Office at Texas Tech University expects residence halls to be full for the fall semester and students wanting to live on campus should reserve rooms immediately, according to Bill D. Haynes, assistant director of Housing.

Applications for housing from prospective students have been accepted since October, but rooms will not be assigned until current dormitory residents have made their reservations.

Students who want to live on campus next fall but have not sent in applications should contact the Housing Office at Texas Tech by next week.

Students unable to reserve a room for the fall at this time will be placed on a waiting list in the Housing Office. Officials will notify students of availabilities as they occur from cancellations. If there are students still awaiting room assignments at the beginning of the semester, temporary housing will be provided for them.

For summer school housing on campus, students currently living in Stangel-Murdough residence hall can sign up on April 16-17 to keep their rooms for the summer sessions. On April 19-20 all other students living on campus will be able to reserve rooms in Stangel-Murdough, the only residence hall open during summer terms.

Deadline for cancellations with a return of the \$100 deposit is June 30.

The deadline to reserve rooms for the fall semester is also June 30.

WHO KNOWS?

1. What is the state flower of New Hampshire?
2. What is the diamond a symbol of?
3. When did the Civil War begin?
4. When was Lincoln fatally wounded?
5. What was the Kennedy Administration slogan?
6. When did the Doolittle raids take place over Tokyo?
7. What is a mandamus, in legal terminology?
8. Name the fifth President of the U.S.
9. To what party did he belong?
10. Where is the Petrified Forest to be found?

Answers To Who Knows

1. The purple lilac.
2. Innocence.
3. April 12, 1861.
4. April 14, 1865.
5. The New Frontier.
6. April 17, 1942.
7. A writ issued to enforce performance of a public duty.
8. James Monroe.
9. Republican.
10. Arizona.

The Carter White House is beginning to understand more about Watergate.

MARKETS

Wheat	\$3.00
Milo	3.65
Corn	2.45
Soybeans	6.66

Few clever talkers are equally good listeners.

Accuracy--in speaking and listening--is the rarest of traits.

Fundamentalism faith can be a mixture of hope, fear, perhaps gullibility.

People rarely get mad with anyone who says good things about them.

In Fashion

The shirtdress is top success in spring. An attractive one-button shirtdress features a front and back yoke with a gathered waist at yoke. The front skirt features a deep inverted pleat.

Gold filled chains, in varying lengths from pop-

ular. Matching chain bracelets are also seen in shops.

Fashion designers haven't forgotten the tiny tots. Shops are showing embroidered pinafores and smocked dresses with lace trim. Little boys' suits are of washable cotton blends with detailed stitching and trim.

Callaghan's British labor government falls.

For Sale on Bid Basis

- 1 - 2 Bed Room Stucco House
- 1 - All Steel Windmill Tower & Motor with Storage Tank
- 1 - Frame 1 Car Garage
- 1 - 2 1 - 500 gal Butane Tank
- 1 - 60' Rhone T.V. Tower
- 2 - All Steel Grainaries

All items are to be moved from property - 90 days after sale

All bids are accepted on single items or a total over-all bid.

Bids Mailed To: J.L. Brock
Spearman Industrial Plan, Inc.
206 Main St.
Spearman, Texas 79081

Dead Line For
Bids - 5-1-79

Located 1 1/2 miles N/E Spearman on N. side of New Air Port - Known as Otto Waker Farm House.

The top 2 sorghum hybrids on the High Plains are both from Pioneer.

Even in a rough sorghum year like 1978, farmers all over the High Plains brought in good yields with 8501 and 8451 from Pioneer. Both of these hybrids have outstanding qualities that make them ideal for High Plains growing conditions. Talk to your Pioneer dealer soon about one . . . or both of these hybrids for your place.

8451

High Yielding Greenbug Tolerant

Greenbug tolerance without sacrificing yield! Even in marginal conditions this outstanding hybrid makes a good stand. Extremely good early-season vigor coupled with outstanding stress tolerance makes 8451 the kind of sorghum you'd choose even if it weren't tolerant to greenbugs. In side-by-side yield comparisons over a three-year period, 8451 has proven its performance potential by out-yielding later maturing hybrids by almost 350 lbs. per acre. If you need greenbug tolerance, but don't want to give up yield, plant 8451 from Pioneer.

8501

Drought tolerance with high yield potential. In 56 tests over the last three years 8501 has shown a yield advantage of 339 pounds per acre over competitive varieties. A strong stalk and root system give 8501 excellent standability and add to its exceptional drought tolerance. 8501 has good tolerance to smut and MDMV. Very uniform head height, excellent head exertion and beautiful, bronze grain help make its field appearance outstanding.

See your Pioneer dealer NOW!

PIONEER HI-BRED INTERNATIONAL, INC.
Southwestern Division
Plainview, Texas



The limitation of warranty and remedy appearing on the label is part of the terms of sale.

* Registered trademark of Pioneer Hi-Bred International, Inc. Pioneer is a brand name, numbers identify varieties.

A carpet sale you'll fall in love with!



Romantic singing star **Jack Jones** spotlights the new **Romantic Carpets** by **Bigelow** at low introductory sale prices!

Featuring:

- warm, warm colors
- touchable textures
- smash-hit prices

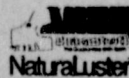
Come fall in love with Bigelow's Mark of Performance™ and Scotchgard® Carpet Protector during our Spring Fashion Fair and save, save, save! It's beauty you can believe in.



Nuances
A subtle variation of a classic carpet style. Of heatset continuous filament nylon, Bigelow's Chromatuff dyeing provides rich colors and sensuous texture. In 14 colors like Burgundy, Chinese Peach, Jade Green.

Sahara Sands
This lush saxony carpet echoes patterns in the sand. Made of heatset, staple nylon. In the 15 colorations used by Egyptian artisans.

Hawaiian Vista
A multi-hued cut-and-loop saxony carpet. Sensuous underfoot, with lusters that simulate satins and velours. Made of 100% continuous filament nylon. In 12 colors.



Above prices include foam pad & installation

Beedy Furniture Company

725 W. 7th

659-3701

WANT

ADS

CAPROCK MONUMENT CO.
Dealers of Georgia Granite, Georgia Marble, Colored Granite, & Drives.

represented by
BOXWELL BROS. FUNERAL HOME
519 S. EVANS
659-3802

Hansford County Planned Parenthood
26S. Haney
659-2483
Spearman Mon.-Fri.
8 a.m. to 12 noon
305-rtm

SERVICES
SERVICE: Pits cleaned, wet or dry. Dragline or loader. Also, dozer, grader, carry-all service. Call Roy Mitchell, 806-733-2384, Grover, Texas, 79040.

WILL DO ALL TYPES OF CARPENTRY WORK: Repairs, Remodels, Additions. Floors, Ceilings, Walls & Roofs. Satisfaction Guaranteed. Call Tommy Reger 659-3425 659-2174

NEW STEAM SHAMPOOER with brushes. Rental \$8.95 per day. Available at 716 Cotter Drive after 4:00 p.m. and Saturdays and Sundays. Regular Steam Rinse & Vac Shampooer, \$5.95 per day at Gordon's Drug and after 4:00 p.m. and Saturdays and Sundays at 716 Cotter Drive.

NOTICE
Wallace Monument Co. Monuments, Curbing, Grave Covers. Local Representative LEONARD JAMESON 659-3406 20-rtm

Alcoholic Anonymous meeting 8 p.m. Friday, Home Demonstration Club building. 305 N. Bernice. Phone 659-3181 for information.

Al-Anon meetings 8 p.m. Friday, Home Demonstration Club building. 305 N. Bernice in back room. Phone 659-3181 for information. Ask for Al-Anon.

Pee Wee's Plumbing Service Roto-rooter, Acoustical Ceilings. Blown Insulation in walls and ceilings. Appliance Service, used appliances for sale. 659-2811 or 659-3781. 20-rtm

KIRBY SALES & SERVICE* New & reconditioned vacuum cleaners. 912 S. Bernice. 659-2797. 19-rtm
Horse Shoeing, Dave Campbell 733-2720 Gruver. 19-

MISCELLANEOUS FOR SALE
FOR SALE: 3 Bed Room Double Wide Mobile Home. 1 1/2 Bath. Utility Room. Call 659-3292. 8S-rtm

FOR SALE: Stand By Electric Generators. Call Charles D. Smith, Perryton. 435-3781. 9S-rtm
1977 Honda 750K. Only 8,000 miles. Custom pipes, carbs, King & Queen saddle. Like new. To see call 2697 after 5:00 p.m. 22-2tp

FOR SALE: 77 Suburban Silverado. 28,000 miles. 454 Engine, stereo tape player, 40 channel CB, Top Racks, new tires. Just like new. No trades. Call 659-2453. 21S-2tc

Reduce safe & fast with GoBese capsules & E-Vap "water pills" Spearman Drug. 22-3tp

WATERLESS COOKWARE. Stainless Steel, Multi-ply. Home demonstration kind. Never opened. Normally, \$400 to \$500. Selling for \$175. 1-303-591-1331 22-6tp

FOR SALE: 1974 100 Yamaha Enduro, good condition, \$300. 1971 Lincoln, good condition, Michelin tires, \$1000.00. Electric John Deere 90 riding mower, \$300. Call 659-2764. 21-4tc

ORGAN IN STORAGE - 1978 Home Model Organ stored locally. Reported like new. Responsible party can assume low balance. Automatic Rhythm, Walking Boogie Bass, Single Finger Chords, Banjo, etc. Call Person-to-Person Collect; Mr. Roberts, 512-459-8660. National Keyboard Inc. Austin, TX. 18S-8tp

FOR SALE: Like new, Kenmore Washer-Dryer; General Electric Refrigerator; Dinette Set. Call 659-2820 before 3:30. 21S-2tp

FOR SALE-1976 Buick Riviera, red with white landau roof. Fully loaded. Call 659-2678. 21S-7tp

FOR SALE: 1977 Chev. Short wide Mag. wheels; New motor and Trans. 733-2598. 21S-2tc

FOR SALE: 1975 AMC Matador. Power & Air. New Tires.. \$1400.00. 1966 Datsun Pickup, \$750.00.. Clean. 2-175 Honda Motorcycles; 1-75 Yamaha Trail; 1 Motorcycle Trailer, whole set up, \$1200.00. 60 HP Johnson Mtr.. Locator & Trolling Mtr. \$2500.00. Call 806-733-2129 or see J.W. Whitaker in Gruver. 22-rtm

REAL ESTATE FOR SALE

FOR SALE: Nicely decorated 2 bedroom, 1 bath home, corner lot. Fenced backyard. Quiet neighborhood. Appliances optional. Call 3802. 16-rtm

FOR SALE- Nice 3 BR home new central air & heat extra large corner lot. Fenced backyard. Reasonable. 301 Hazelwood. 659-2800. 17S-rtm

Three bedroom, 1 bath home FOR SALE. Family room, patio, fruit trees, horse pen or large lot edge of town. Call 659-3027. 17-rtm

HOUSE FOR SALE BY OWNER: 3000 square feet, full basement, 3 bedrooms, large kitchen, game room with pool table, pantry, laundry room and storage galore on 2 full lots. Rent house on other lot. Reasonably priced. Call 659-2460 after 1 p.m. 21-8tc

REAL ESTATE ED WHEELER

HOMES-FARM COMMERCIAL

906 King, Gruver, 3 bedroom, 1 bath, detached garage, fenced yard. ***

1006 S. Evans, 3 bedroom, 1 bath, new insulation and steel siding. ***

706 Steele Drive, 3 bedroom, den, 1 1/2 baths, fenced backyard. ***

1114 S. Haney - 3 bedroom, 1 bath with garage and fenced yard. Priced to sell.

Jerry Gee 659-3664
Doris Beck 659-2618 659-2074

WHOLESALE BUSINESS IN WAKA. Gas Station-Grocery Store, Warner seed Business. 2 B.R., 1 Bath Home. Cent. H & A. 2 car garage plus 2 car detached garage, 2 car Carport. 20x40 ft. Shop. Owner Bud Heath. Call Golden Spread Realty in Perryton. (806)435-5444 ask for Bud Aylett. Res. (806)435-2109. 20S-rtm

FOR RENT

FOR RENT: LBL Trailer Space. 659-2176. 21-rtm-T only

HELP WANTED

NEEDED IMMEDIATELY: RN's, LVN's, and nurses aides for 11-7 shift at fully accredited 99 bed hospital. Good salary and benefits. Full or part time. Call personnel office, North Plains Hospital, Borger, Texas. 806-273-2851. 21-4tc

BABYSITTER NEEDED-Call 2023. 21S-4tc

WANTED-Fulltime employee, dependable, permanent, Spearman Equity 659-2420. 21-2tc

WANTED-City of Spearman is taking applications for a dog-catcher 40 hour week. Apply at Police Dept. 23-2tc

LOST

LOST: 3-month old, male, cocker spaniel puppy. Light brown, almost white. Last seen near 12th & Dressen. If found call 2524 or call 2052 after 5 p.m. Reward Offered. 22-2tc

NOTICE

FARMERS UNION is planning a 1st Annual Consignment Auction. If you have any machinery that you would like to sell, please call: 659-2229; 659-3875; 659-2667; 659-3664. 21-rtm

April 4th thru April 7th Closed for VACATION April 11 thru April 15 I will be open 4:30 p.m. to 6:30 p.m.
SPEARMAN BARBER SHOP

CARD OF THANKS

I wish to express my sincere thanks and deep appreciation to my friends and neighbors for their calls, prayers, gifts, cards and other acts of kindness shown me during my stay in the hospital. I thank Dr. Manese and the nurses for their watchful care and concern. I can't speak too highly of our hospital and its staff.
God bless each and every one.
Mildred Chamberlain

Agricultural News

"It's not too late to have soil samples tests," says Layton Barton, County Agent with the Texas Agriculture Extension Service.

The Extension Service Soil Testing Laboratory at Lubbock is processing samples promptly and reporting the results about a week after receiving samples. Recent cold weather and wet soils delayed sampling in some areas but the soil testing laboratory is now over the soil testing rush period.

"The level of available nutrients in a soil is especially important for the efficient and profitable use of fertilizers for cotton and pastures," Barton states. "Soil tests have been developed to provide information about soil nutrients as a basis for determining if the soil level is adequate (high) or deficient (low)."

Soils low in a nutrient have a high probability of producing increased yields when the deficient nutrient is added by the fertilizer; while a soil high in the nutrient, will benefit little from adding more of the same fertilizer. A costly error is fertilization is to add fertilizers containing nutrients already present in adequate amounts. This does not contribute to increased yields and drives production costs up, something farmers can still afford during this period of economic stress.

"A good evaluation of soil nutrient levels greatly improves the chances for profitable returns from fertilization," believes Barton. "So soil testing should be a regular standard procedure in every farming operation."

More information about soil tests can be obtained from the County Extension office.

The quarrels of friends in the latter part of life are never truly reconciled.
-William Shenstone.
None but cats and dogs are allowed to quarrel in my house.
-H.G. Bohn.

LEGAL NOTICE

Hansford County Commissioners Court will receive bids until 4:00 P.M., Friday, April 20, 1979, on one new, 1979 truck chassis. Bids will be opened April 23, 1979 at the regular Commissioners Court meeting.

Specifications are available at the County Judge's office or the County Auditor's office in Hansford County Courthouse. The Court reserves the right to accept or reject any or all bids.

Roy L. McCellan
Hansford County Judge

We would like to know where the statisticians get their comparisons.

Offered Exclusively By
EMMETT R. SANDERS, REALTOR



Dwelling and store building small detached apartment on wide lot, ideal for professional office-dwelling combined. ****

3 bedroom home on 100 ft. lot, nice southwest location, new quality throughout, neat and clean, central heat and refrigerated air. Look this one over, attractive price and ready for you to move in. ****

150' x 140' commercial, zoned, heavy retail, with 2 bedroom home and detached garage, terms available. ****

Small tract just west of Spearman, surface only, contains 31.7 acres. Call for details. ****

Half section 11 miles west and 2 miles south of Gruver; about 240 acres irrigated, 80 acres grass. Custom built three bedroom brick home with 2500 square feet enclosed and amenities galore, free gas for household use. Supporting corral, loading chute, outbuilding, eight inch irrigation well, half mile underground pipe, and tail-water pit. Farm lease on good adjacent irrigated section negotiable for purchaser of this property. Owner will carry paper on the 240 acres farm land with low down payment; purchaser is to obtain his own loan on the 80 acres grass, dwelling and appurtenances. ****

Three bedroom home near high school, features central heat and refrigerated air, carpet throughout, tasteful interior decor with nice curtains and drapes that stay, ideal for the young family or retired couple. Just paint the exterior trim and have an attractive and charming home at a most reasonable price. Shown by appointment only. ****

Brick and hollow tile building. 1500 square feet on Main Street Corner. Central heat and refrigerated air. High traffic count, ideal for office, retail, or financial operations. ****

3 Bedroom home on 100 ft. lot, nice southwest location, new quality carpet throughout, neat and clean, central heat and refrigerated air. Look this one over, attractive price and ready for you to move in.

Member
FLI
FARM AND LAND INSTITUTE
EMMETT R. SANDERS REALTOR
659-2516
659-2601 [nights]
34S-rtm

Good Friday

For Christians Good Friday is an especially nostalgic, or sad, day. It is the day Jesus was crucified, according to the records. And whether one belongs to this or that church, or any church, it is one of the major days of history.

Even for those who doubt the miracles, the life of Jesus is greatly admired, and his teachings generally respected and admired. For those millions of faithful, Good Friday, or Holy Friday (which seems a better name for it), is a painful day of faithful observance.

It is shortly followed by the glorious Christian Easter, of course, when Jesus, according to St. Matthew's gospel, rose from his grave.

That gives Good Friday (the Anglo-Saxons called it long Friday) a happy outcome, one upon which the world of Christians has long based its faith. The Easter weekend is, therefore, a logical, appropriate time to recall and study the life and teachings of Jesus.

Easter, 1979

Easter, the principal ecclesiastical event of the year, gets its name from Eostre, a Teutonic goddess, whose festival was celebrated in the spring. Her name was given to the Christian festival, as it was she, according to legend, who opened the portals of Valhalla to receive the White God and Sun God, representing purity and light.

The Christian observance, this year on the 15th, is a symbol of the Resurrection, and intertwined with many religious customs and observances, some dating back hundreds of years before the time of Jesus Christ.

The Easter egg became associated with Easter because eggs were forbidden to be eaten during Lent and on Easter Sunday they were traditionally served. The Easter egg, though, dates back to the Egyptians and Persians, and also the Greeks and Romans, who ate eggs annually in spring festivals.

In any event, it's appropriate that Easter comes in the spring, when the renewal of life is so apparent. Sunrise services in our churches symbolize the Resurrection at sunrise. This practice is observed in practically all churches today as a symbol of hope, inspiration and faith.

For The Ultimate In
STORM DOORS
Custom Built, Designed, And In Colors To Fit Your Home....
Contact Howard Moyer at
Only Aluminum Industries
Guyton, Okla. 114 W. 1st 405-338-6966 or 73942 338-6170

TEXAS PRESS
MEMBER 1977 ASSOCIATION
PUBLICATION (USPS 509-660)
SPEARMAN, TEXAS 79081
213 Main Box 458 659-3434
Published Weekly at 213 Main Street
Spearman, Texas 79081
Owner-Publisher.....William M. Miller
Second Class postage paid at Spearman, Texas
ANY ERRONEOUS REFLECTION UPON THE CHARACTER OF ANY PERSON OR FIRM APPEARING ON THESE COLUMNS WILL BE GLADLY AND PROMPTLY CORRECTED UPON BEING BROUGHT TO THE ATTENTION OF THE MANAGEMENT.
SUBSCRIPTION RATE: Hansford, adjoining counties, combination with the Hansford Plainsman, \$10.40.
Other points, \$14.40.

FOR SALE

LARGE, COMFORTABLE, IMPRESSIVE, all describe this new home located in Glover Place.
3 bedroom with walk closets, 2 full baths, Fireplace, 3 skylight. Double insulation and finished patio. Approximately 1950 sq. ft.
THIS HOME MUST BE SEEN TO APPRECIATE THE FULL VALUE OFFERED. A lot of extras that most contractors do not put in a home.
JERRY GEE 659-3664
DORIS BECK 659-2618 659-2074

Fish Story
Yeah, the fish was too small to bother with, so I got a couple of guys to help me throw it back in the lake.
-Bluejacket, Memphis.

Fair Question
Small fry to father.. "How come soda pop will spoil my dinner and martinis give you an appetite?"
-Sea Blade, Toledo.

Spring Has Finally Arrived!
And do we have that spring fever!! We have one of the best selections of **BONNEVILLES** and **LIMITEDS** in the country.
And what we sell now will determine our build-out allocation for **Pontiac, Buick, & GMC.**
WE ARE GOING TO DO SOME TRADING, AND AT A PRICE YOU ARE GOING TO LIKE!!
Drop on over and check out this fabulous inventory-
10-Limiteds **10-Bonnevilles**
4-GMC Rally Vans **2-Trans Ams**
2-Tandem Grain Trucks
These are just a few, we have lots more coming in. We also have a lot of real nice used cars & trucks to move too.
We Have 50 NEW and 30 USED to sell!!!
HERGERT
Pontiac, Buick, GMC
"WE APPRECIATE YOUR PATRONAGE!!"
Phone 806-659-3721 So. Hwy. 207 Spearman, Texas



Postmaster Ray Robertson views a picture of a Pony Express rider that was recently put in his office at the Postoffice in Spearman.

Teacher's Concurs With Board Policies

Spearman Classroom Teacher's Association President Frances Hudson, told the Board members at their regular meeting Monday night that the Spearman association was 100% in agreement with the

professional agreement between the association and the school Board.

Mrs. Hudson told the Board that the Association represented 90% of the teachers in Spearman. The Association has 61 members.

House voted against \$2.5 million U.S. aid for Panama.

Asbestos in hair dryers feared cancer risk.

Officers Named By Board

Kent Guthrie, current School Board President has been elected to another one year term as President of the Spearman School District Board. Jim Davis will serve as Vice President while Clark Mires will serve as Secretary.

The elections... conforming with School Board policy was conducted Monday evening.

Vance says U.S. won't put troops in Sinai.

Tennis Results

VARSITY SINGLES
1st Place—Connie Vernon defeated Paris Close of Perryton 7-5, 6-2
Semi-Finals
Vernon defeated Rodgers of Canadian 6-2, 6-0
Quarterfinals
Vernon defeated Cook of River Road 6-2, 6-0
Beth Ann Flowers was defeated by Pickens of Canadian 1-6, 6-4, 3-6

VARSITY DOUBLES
1st Place—Pam Largent and Christy Collier were defeated by Waterfield & Bruce of Canadian 6-2, 6-1
Semi-Finals
Largent and Collier defeated Albin and Rodgers of Canadian by a score of 6-4, 1-6, 7-5
Susan Cope & Kelly Shaver were defeated by waterfield and Bruce of Canadian 6-3, 6-2

3rd Place
Cope and Shaver were defeated by Albin & Rodgers by a score of 6-4, 6-2
Quarterfinals
Cope and Shaver defeated Stoddard & Horn of River Road 6-2, 5-7, 6-4
Largent and Collier defeated Herndon & Hummer of Perryton 6-1, 6-4

JUNIOR VARSITY DOUBLES
1st Place
Suzy Steele and Jane Flowers defeated Kindra Ivey & Bennie McCloy 6-3, 6-4 Both teams from Spearman

Semi-Finals
Steele & Flowers defeated West and Artho of Dalhart 6-0, 6-1
Ivey and McCloy defeated George & Richey of Dalhart 7-6, 6-1
Quarterfinals
Steele and Flowers defeated Hollard and Schneider of Perryton 6-4, 6-1
Ivey and McCloy defeated Rodgers and Beasley of Perryton 6-4, 4-6, 6-1

JUNIOR VARSITY SINGLES
3rd Place
Carla Tucker won 3rd Place over Simpson of Perryton 6-3, 6-1
Semi-Finals
Tucker was defeated by McEver of Dalhart 6-4, 6-3
Quarterfinals
Tucker defeated Clark of Perryton 6-4, 6-3
Leslie Platt was defeated by McDaniels of Canadian 6-3, 6-2

FRESHMAN SINGLES
Johnny Eaton won by default over Farr of Perryton for 3rd Place
Semi-Finals
Eaton was defeated by Kiser of Canadian 2-6, 6-4, 6-3

FRESHMAN DOUBLES
Championship
Denice Blackburn and Tuwana Byrd were defeated by Schaffer and Adkins of Canadian 6-4, 6-3
Semi-Finals
Blackburn and Byrd defeated Hughes and Corley of Perryton 6-3, 6-2
Sherry Wombie and Stacey Thomas were defeated by Schaffer and Adkins of Canadian 6-1, 6-2

End Of An Era!
He may be just a little boy at heart, but you can't amuse him with lollipops and marbles.
-Gosport, Pensacola.

Lynxettes Golfers 2nd In District Play

The Spearman High School girl's golf team finished second in district to qualify for regional tournament. Jana Buchanan was also the second place medalist after winning the first hole of a playoff.

"A" team members were Jana Buchanan, Deanne Baker, Becky Lusby, Sharon Sheets and Eddie Clemmons.
The "A" team finished 2nd

Junior Golf Tour Planned

From: West Texas Chapter, Professional Golfers Assn. of America
Re: West Texas Junior Golf Tour, Summer 1979
Date: May 1, 1979

The West Texas Chapter of the Professional Golfers Association of America will sponsor the West Texas Junior Golf Tour this summer. Boys and Girls ages 12-18 will be participating in the keenest competition to be found in West Texas junior golf. The Tour will start the first week in June and wind up at the Tournament of Champions to be played the second week in August. In addition to the 45-50 tournaments to be played during the first two months of the summer, there will be 2 "major tournaments". In the last week of June, the

and the "B" team finished 4th. Other Lynxette golfers were April Percy, Brenda Boyd, Jeanie McClellan, D'Ann Green, Shelley Strawn, Shelley Friemel, Denae Baker, Angie Frances, Dawn Bridges, Karen Berry, Jennifer McLain and Tamera Scroggs.
The regional tournament is set for April 18, 19 and 20 in Lubbock.

West Texas Junior Masters will be the premier event of the Tour, and in July, the West Texas Junior Memorial will be the showcase event. The Memorial event will be named each year in honor of a person who has been instrumental in West Texas Golf. The winners in each age division will be eligible to play in the Tournament of Champions in August. This tournament will be a 36 hole affair over 2 days at an outstanding golf course in West Texas.

Participants will be put in 3 age brackets: 12-13, 14-15, 16-18 (18 year olds not to have completed their high school eligibility) and plaques will be awarded the top three finishers in each age group. Ties will be broken in the top three places by sudden death play-off after completion of the 18 hole events. The events will start promptly at 9:00 AM with registration starting at 8:00 AM. Entry fee for each regular

event is \$4.00, to be paid the morning of the tournament.

Eligible junior golfers (remember girls, you too) are urged to consult their local golf shops for the tournament schedule to be released shortly. Only residents of the West Texas area are eligible to receive awards in these tournaments though outside residents are welcome to compete.

The West Texas Junior Tour is entering its 11th season and has served as a training ground for many high school, collegiate, and professional champions. In addition to the tournament awards, a sportsmanship award will be given to the player deemed to have exemplified the character and conduct in keeping with the traditions of the game of golf. This award has been named in honor of Hardy Loudermilk, a revered Professional in both West Texas and the United States.

YMCA Dance Scheduled

The Hansford County YMCA will sponsor a dance following the High School Rodeo in Spearman on Saturday, April 14 from 9:00 p.m. - 1:00 a.m. The YMCA is located at 501 South Hazelwood. Music provided by the Cool Water Band of Lubbock. A concession stand will be available. Cost for the dance is \$3.00 per person.

Carter criticizes excessive prices and profits.

USS Steel Siding	Fight the Rising Cost of Utility Bills	Carpports
T-Loc Vinyl Siding	Insulate and Beautify your Home & Never Paint Again	Patios
Styrofoam Insulation	Ron's Exteriors Of Okla. - Texas Panhandle	Room Addition
Welded Steel Buildings		Garages
Commercial & Farm	A.C. 806-659-2227 Local Calls Patton Motel or Call Collect A.C. 405-344-6211	Storm Door & Windows

Attention Area Corn Growers

Frontier Feedyard Is Now Contracting Newcrop Hi-Moisture Corn

For more information call Jack Rhoades or Carol Oakes Collect at 806-882-4251

TG & Y FABRIC SHOPS

Items Available In TG&Y Fabric Shops Only.

THIS WEEK'S Fabric SPECIALS!

fabric to make the cut for Spring . . .

100% Polyester DOUBLEKNIT

100% Polyester Doubleknit is one of the most practical and useful fabrics ever! Make dresses, pants, jackets and more! Stock up now for all of your Spring sewing needs. 58/60" wide. Solids or prints.

1.97

Reg. 2⁴⁷ Yd.

Bright Cloud Qiana® Plains

You'll look and feel great in stunning dresses, blouses, and lingerie made of 100% Qiana® plains, 63/65" wide. It lends a certain elegance to anything you make of it. And it's easy to take care of too!

*Qiana® is a Registered Trademark of DuPont.

Reg. 3.98 **3.47** Yd.

Dancheck Woven Gingham Checks

Bright and cheerful Gingham Checks made of 65% Polyester and 35% Cotton is a woven blend to give you extra durability. This teams up with a popular and perky pattern to give you a fantastic look for your creations. 44/45" wide.

Reg. 1.49 **1.27** Yd.

Laundered Gauze Prints

For today's look in tops, select yards and yards from this collection of 44/45" wide Gauze material. It's ideal for Spring and Summer fashions, and comes in beautiful array of colors and patterns. 50% Fortrel® Polyester/50% Cotton.

Reg. 1.98 **1.77** Yd.

Permanent Press Unbleached Muslin

This fabric gives you the natural look you want for everything from curtains to dresses and blouses. It's 100% Cotton, 44/45" wide. And it's permanent press, really easy to care for! The most natural choice for clothes, and for the home!

Reg. 1.37 **1.17** Yd.

TG&Y'S ADVERTISED MERCHANDISE POLICY—TG&Y's policy is to always have advertised merchandise in adequate supply in our stores. In the event the advertised merchandise is not available due to unforeseen reasons, TG&Y will provide a Rain Check, upon request, in order that the merchandise may be purchased at the sale price when it becomes available, or you may purchase similar quality merchandise at a similar price reduction. We will be happy to refund your money if you are not satisfied with your purchase. It is the policy of TG&Y to see that you are happy with your purchase. It is TG&Y's policy to be priced competitively in the market. Regular Sale Prices may vary market by market, but the sale price will always be as advertised.

Prices Good April 8-14

Your best buy is at TG&Y!

PRICES GOOD ONLY AT T. G. & Y. FAMILY CENTER
521 HWY. 207 SOUTH SPEARMAN, TEXAS 659-3742

Girl Scout News

Girl Scout Troop #42 met Friday, April 6 at the Girl Scout Hut. The girls discussed the Scout O Rama. Refreshments were served by Mary Ann Evans to Sheila Brand, Tammy Goodson, Angela Gaither, Kathy Love and leader Georgia Gaither.

The next meeting will be Friday, April 20 at the Girl Scout Hut.

Brownie Troop #129 met Thursday, April 5 at the Girl Scout Hut. The girls discussed their upcoming Easter Hunt which is to be at the next meeting Thursday April 12 at the home of Carolyn Ring at 18 N. James.

Refreshments were served by Pam Dean to Pam Ring, Joy Kizziar, Lisa Love, Trica Shedeck, Lori Bynum, and leaders Carolyn Ring, Ruth Kizziar and Betty Love.

The Neighbor Meeting of the Girl Scouts met in regular session Friday, April 6 at the Girl Scout Hut. The minutes of the previous meeting were read and approved. A report was given on the activities during Scout Week including the Window Display and Family Supper.

They planned participation in Scout O Rama with the Boy Scouts at the county barn which was to include a display of all this year's work.

A Thank you note was sent to the Methodist Church for allowing the Girl Scout to have their Family Supper there. Leader also sent Thank You notes to "Celebrate" choir that entertained at the Supper.

Troop #42 will be in charge of decorating the hut and cleaning it for the month of April.

Leaders are to meet Wednesday, April 11 at 1:00 p.m. to clean the Scout Hut yard.

Leaders were urged to order girls badges and year pins. The Awards Ceremony will be Friday, May 11 at the First

Christian Church at 7:00 p.m. All girls and their parents are urged to attend. Each girl will be responsible for bringing one dozen cookies. Troops assignment for the night will be as follows: Flag Ceremony-Troop #101, Tea and Coffee-Troop #129, and Table Decorations-Troop #99. The girls acting as hostesses will be Troop #42 and Cadet Troop #120. The girls will receive their pins and badges that night.

The next meeting will be Friday, March 4 for the leaders. The regular meeting will be at 9:00 a.m. followed by cookout for lunch. All leaders are urged to attend.

Spearman Music Club

SPEARMAN MUSIC CLUB will give a sacred concert for the Twentieth Century Club on Thursday, April 12 at 2:30 p.m. at the First United Methodist Church.

Eastern Star Has Meeting

Spearman Chapter #721 Order Of The Eastern Star met April 2nd for regular meeting.

The meeting was called to order by Mary Arnold W.M. & Don Hendricks W.P. with 13 Officers, 2 Pro-Tems, 5 members & 1 visitor.

12 Get Well cards & 1 Sympathy cards was sent.

Reported sick was Mildred Chamberlain, Louie Sampsons 2 sisters, & Frances Hudsons father had passed away.

May 12th is Past Masters night for the Spearman Masons, & the Eastern Star will serve them.

Nomination of Officers was held & the following was nominated: Mary Arnold W.M., John R. Colliard, Jr. W.P., Mona Slater A.M., Don Hendricks A.P., Myrna Biggers Conductress, Nina Hendricks Assoc. Conductress, Thelma Scott Secretary, Lynanne Matze Treasurer.

Refreshments was served in the dining hall.

Pam Dean Celebrates Birthday

Pam Dean was honored with a birthday party to celebrate her 7th birthday Saturday, April 7 in her home. She had a Raggedy Ann Cake which was served along with cupcakes and punch to the children attending. The boys and girls also enjoyed favors of balloons and yo-yos. They played Spin the Bottle and had an "Act Like Elvis Contest" which ended in a tie.

Those attending were: Brooks and Barry Beck, John and Jeff Stienert, Lisa Love, Lisa Collins, Joy Kizziar, Pam Ring, Cindy Elliott, Trica Shedeck, Tiffany and Genne Womble, Rhonda Hall, Melody and Cokie Donaho, Mechelle and April Graham, Kathy Vanlandingham and her brothers and sister Jeff, Lori and Josh Dean.

COMING TO YOUR AREA



DAYBREAK

DATE: April 12
TIME: 7:00
PLACE: Union Church

GUYMON, OKLAHOMA - CATTLE AUCTION MARKET - NEWS - LETTER

GREETINGS TO ALL FRIENDS AND CATTLEMEN

Last Friday, April 6th, a total of 812 cattle and calves changed ownership through the arena. A very active and much lighter market prevailed throughout the entire auction.

Packer cows sold steady to \$2,00 higher. Blood and preg tested cows sold \$50.00 per head higher than the previous week.

Not nearly enough cattle of any one class was here to supply the demand.

If you have cattle you would like to sell or if you are in need of some replacement cattle give us a call here at the Panhandle Livestock Comm. Co., in Guymon, Oklahoma. Phone: (405) 338-3378, or my home phone: (405) 349-2254.

The Cattle Auction With Action.

PANHANDLE LIVESTOCK COMMISSION CO.
Guymon, Okla. 73642 • 405-338-3378 • P. O. Box 879
Nights 405-349-2254 • 73942

Paymaster

"POWER-EMERGE" SORGHUM HYBRIDS
Powerful starts. Big yields.

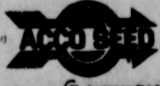
UC 9451

- *Full Season Yield Leader
- *Excellent Adaptation to Wide and Narrow Rows
- *Heavy Stalks and Root System
- *Long, Girthy, Well-Filled Ears
- *Consistent Performance

See Your Paymaster Seed Dealer:
B&B Farm Industries Spearman
659-2551
Davy Gurley Waka 435-2998



For a powerful start this year, plant these "power-emerge" hybrids...



OPEN ALL DAY EASTER!!

ALLSUP'S
CONVENIENCE STORES

PRICES EFFECTIVE APRIL 12-14, 1979

EASTER SAVINGS

<p>BORDEN'S COTTAGE CHEESE 12 OZ. CTN. 69¢</p>	<p>HICKORY OR SMOKED RATH'S BACON 1 LB. \$1.29</p>	<p>BORDEN'S FUDGE OR FROSTY POPS 24 PKG. \$1.29</p>	<p>FOLGER'S FLAKED COFFEE 13 OZ. CAN \$1.99</p>
<p>VAL VITA PEACHES 29 OZ. CAN 59¢</p>	<p>HUNT'S KETCHUP 32 OZ. BTL. 89¢</p>		
<p>BORDEN'S BUTTERMILK 2 QTS. 98¢</p>	<p>HUNT'S WHOLE PEELED TOMATOES 2 14 1/2 OZ. CANS 79¢</p>	<p>HUNT'S TOMATO JUICE 48 OZ. CAN 59¢</p>	
<p>HUNT'S TOMATO SAUCE 4 OZ. CANS 69¢</p>	<p>WE HAVE A LARGE SELECTION OF EASTER BASKETS, EASTER EGG DYE AND EASTER EGGS</p>		<p>PURE SNOWDRIFT SHORTENING CAN \$1.49</p>

VISA
DAY!



Congressman and Mrs. Jack Hightower with their daughter Alison, the 1979 Cherry Blossom Princess for Texas at a Congressional Reception for princesses held Tuesday night in Washington.

Alison Hightower In Cherry Blossom Festival

(Washington, D.C.) Texas Cherry Blossom Princess Alison Hightower, daughter of Congressman and Mrs. Jack Hightower of Vernon, joined her parents in Washington for the week long Cherry Blossom Festival activities which began with the lighting of the ancient Japanese Lantern at the Tidal Basin Monday evening and ended Saturday night with the 1979 National Cherry Blossom Ball.

The Japanese cherry trees, 3,000 of them donated to this country in 1912, were in full bloom providing a fragile and fragrant setting of pastel pink for the opening ceremony and the presentation of Princesses, representing the 50 State Societies which have organizations in the nation's Capitol.

The first night ceremonies were followed by a reception for Princesses and their families at the Japanese Embassy. During other mid-week activities the princesses were presented at a Congressional reception and Luncheon Fashion Show at the Shoreham Americana Hotel. They enjoyed a private tour of the White House where Presi-

dent and Mrs. Carter greeted them, a tour of the Washington National Cathedral, the Smithsonian, the State Department, and other points of interest in Washington.

Each Cherry Blossom Princess exchanged gifts representative of their state. Miss Hightower's gifts to the other princesses were a miniature bale of cotton and a Texas-manufactured game.

Miss Hightower, a Baylor University freshman, was honored Thursday night at a reception in Capitol Hill, hosted by her parents, Congressman and Mrs. Jack Hightower.

About 125 Washington area friends were served Cherry Blossom Cheese Cakes, pecan tarts, cheese ball, assorted finger sandwiches, fresh vegetables and dip, and pineapple boats filled with pineapple chunks and strawberries, coffee and punch.

- CHERRY BLOSSOM CHEESE CAKES**
- 1 lb. pkg. Vanilla Wafers
 - 2-8 oz. pkgs. cream cheese
 - 3/4 cup granulated sugar
 - 2 beaten eggs

1 teaspoon vanilla
1 can prepared cherry pie filling

Mix cream cheese, sugar and eggs until smooth and add vanilla. Crumble vanilla wafers and spoon some into each cupcake paper. Fill 3/4 full with cheese mixture. Bake at 375 for about 15-18 minutes or until some of the cakes begin to crack on top. They should still look white-not brown. Cool. (They can be frozen) When serving spoon on a cherry or two and a small amount of filling on each cheese cake. Makes 55 miniature or 25 muffin size.

Not New

Still, the idea of getting something for nothing isn't new. That's what discovered and settled our country.

-News, Buffalo.

Inherited

Some people seem to have opinions that have been in their families for generations.

-W.O.W. Magazine.

35th Annual Meeting Of Cooperative Set

The Annual Membership meeting of North Plains Electric Cooperative, Inc. will be held in the Perryton High School cafeteria and auditorium 1102 South Jefferson Street, Perryton, Monday evening, April 16th. Registration for members and guests will begin at 6:30 P.M. Dyer's Barbecue of Pampa will cater a barbecue dinner beginning at 6:30 P.M., also. If you will go immediately to the cafeteria after you register, you will be served and this should eliminate any waiting in line.

A local musical group will be entertaining in the auditorium from 7:30 to 8:00 P.M. As soon as you have finished eating, please move into the auditorium and enjoy the fine music of Jim and Larry.

Many prizes will be on hand for the Lucky members. Guests of the Cooperative will also be

eligible for special prizes to be awarded.

The business meeting will begin promptly at 8:00 P.M. and will conclude no later than 10:00 P.M., so that those who have a long drive home will not be too late.

The tentative program for the evening is as follows:

- 6:30 to 8:00-----Registration and free barbecue (cafeteria)
- 7:30 to 8:00-----Musical Entertainment (auditorium)
- 8:00 P.M.-----Meeting Call to Order by President, Ira Harbor
- Invocation-----Director, Lyndon Imke
- Reading of Minutes-----Secretary-Treasurer, J. Harold Kershaw
- Introduction of Guests-----Executive Assistant, Carroll Mallet

Guests Prizes. Financial Report-----Secretary-Treasurer, J. Harold Kershaw

Report of Nominating Committee-----Mr. Alvin Buscham, Chairman

Election of Three (3) Directors

Introduction of Guest Speaker General Manager, Vesta Orr

Guest Speaker-----General Manager, Jim Morris

Texas Electric Cooperative, Inc. (Statewide Association) Austin, Texas

President's Message-----Ira Harbour

Drawing for Door Prizes 10:00 P.M.-----Adjourn

House, Senate approve compromise relations with Taiwan.



PRICES EFFECTIVE THRU APRIL 14, 1979. QUANTITY RIGHTS RESERVED. NO SALES TO DEALERS.
Weekdays 8 a. m. to 9 p. m.
Sundays 10 a. m. to 7 p. m.



CUSTOMER CHOICE...
PICK THE MOST COURTEOUS EMPLOYEE LAST WEEK.



Ideal...the friendly food store!

Ideal is proud to be known as "The Friendly Food Store" and we would like to acknowledge the employees that help give Ideal the friendly store image. Please take a minute and let us know who is the most courteous employee in the Ideal store where you shop. Each week, we will count the votes and announce the winner of the week in each store. Winners will receive a special prize from the management of Ideal.

BONELESS Hams

THRIFTY OR CHUCK WAGON FULLY COOKED
\$1.99
LB.

BAR-S BONELESS Hams **\$2.49**
FULLY COOKED HALVES

EMPIRE OR RED DIAMOND
Young Turkeys
69¢
LB.

U.S.D.A. GRADE "A"
Honeysuckle Turkeys ..LB. **98¢**

WISCONSIN RANDOM WEIGHT
Longhorn CheeseLB. **\$2.19**

FRESH EXTRA LEAN
Ground Chuck FAMILY PACK ... LB. **\$1.89**

BONELESS EXTRA LEAN
Beef StewLB. **\$1.99**

BONELESS
Chuck Roast..... LB. **\$1.89**

LARGE END - U.S.D.A. CHOICE
Rib Roast
\$2.29
LB. BUTCHER BLOCK

BAR-S HICKORY SMOKED
Sliced Bacon
\$1.39
1-LB. PKG.

JIMMY DEAN
Pork Sausage .. 1-LB. PKG. **\$1.89**

JIMMY DEAN
Pork Sausage .. 3/4-LB. PKG. **\$3.77**

OSCAR MAYER SKINLESS
Franks 1-LB. PKG. **\$1.89**

FRESH CENTER CUT RIBS
Pork Roast
\$1.39
LB.

FRESH PORK LOIN
Country Style Ribs LB. **\$1.19**

SIRLOIN END CUT
Pork Chops ..LB. **\$1.19**



PURE VEGETABLE
Crisco
3 \$1.88
LB. CAN LIMIT 1



C&H OR IMPERIAL POWDER OR BROWN
Sugar
264¢
LB. BAG

DURKEE FLAKE
Coconut 14-OZ. BAG **\$1.28**

DEL MONTE
Fruit Cocktail ..2 17-OZ. CANS **95¢**

KRAFT MINIATURE
Marshmallow 16-OZ. PKG. **45¢**

DEL MONTE HALVES OR SLICES
Pears 16-OZ. CAN **53¢**

Easter

FRESH DAIRY

CAMELOT
Eggs
66¢ LIMIT 2
GRADE A MEDIUM DOZ.

Butter CAMELOT 1-LB. PKG. **\$1.49**

Crescent Rolls PILLSBURY 6-ST. PKG. **58¢**

Margarine PARKAY SOFT 1-LB. PKG. **63¢**

Whipping Cream FAIRMONT 1-LB. PKG. **39¢**

Sour Cream FAIRMONT REGULAR OR CHIVE 8-OZ. CTR. **39¢**

Cottage Cheese CAMELOT 24-OZ. CTR. **98¢**

FROZEN FOOD

NON-DAIRY TOPPING
Cool Whip
53¢ LIMIT 2
8-OZ. CTR.

Brussel Sprouts CAMELOT 16-OZ. BAG **79¢**

Broccoli Spears CAMELOT 2 10-OZ. PKGS. **89¢**

Strawberries CAMELOT 16-OZ. BAG **86¢**

Cob Corn CAMELOT WHOLE KERNEL LITTLE EARS 8.5-OZ. PKG. **83¢**

Corn or Peas CAMELOT WHOLE KERNEL 2 16-OZ. PKGS. **99¢**

KRAFT PHILADELPHIA Cream Cheese

58¢
8-OZ. CTR.

FROZEN Rhodes Rolls

49¢
24-CT. PKG.

Thurs. April 19

9.99¢

KING SIZE WALLET CREATIVE COLOR PORTRAITS FOR ONLY

Kodak paper. For a Good Look at the Times of Your Life.

GET 1 FREE WALLET WHEN YOU BUY 9 FOR 99¢

Extra Charge for GROUPS

WE USE SOBER PAPER

GET PICTURES MADE OF GRANDPA, GRANDMA, DAD, MOM AND ALL THE LITTLE ONES AT THESE SAME LOW PRICES!

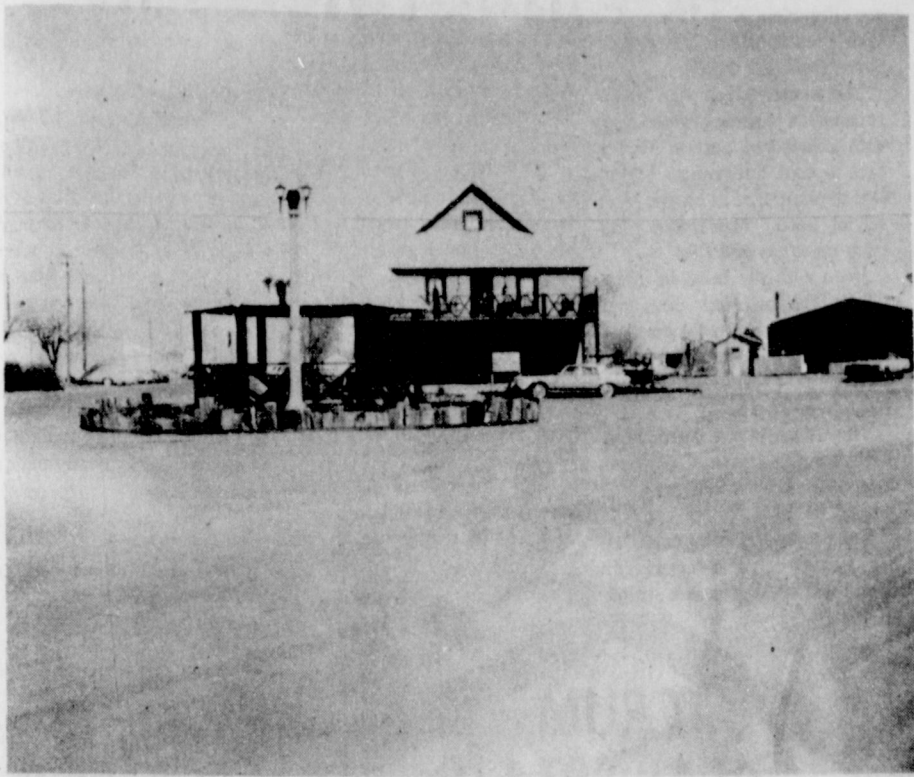
SHUGART COLOR PHOTOS

ASK About Our FREE 8 x 10 OFFER

Baker's Dept

216 Main Store

SHOP IDEAL...WHERE THERE'S MORE VALUE IN



The beautiful Bulls Inn one of finest attractions in Spearman!

Peggy's Pointers

Teach children thrift--preschool age isn't too soon to begin.

From a child's point of view, all money has the same value--it buys things. Begin teaching the child about thrift at ages 3 or 4 by allowing her to have several "money exchanging" experiences.

Take the child shopping. Let her engage in some simple choice-making. Consider two or three inexpensive items and let the child make the final choice. Then, let her give the sales clerk the money.

This may seem insignificant to the parent, but this direct human contact between child and seller, including the latter's smile and "thank you" and the physical exchange of money for an object, is the most effective way of learning that money buys things.

The preschooler can also learn that money buys services. Allow her to buy a stamp and place it on a letter and mail it. Also, parents can teach thrift

without introducing the idea of a savings account or a piggy bank.

Teach her to take care of her things, to be careful with toys, to handle books carefully, and to hang up her clothes.

There's more to thrift than putting money in the bank--it's conserving personal possessions so they last longer.

So, teach the preschooler about lending and borrowing--not with money, but with possessions. Help the child learn that when she borrows a book she must take care of it and return it promptly.

In another area of thrift, teach the 3- or 4-year-old about earning money. She may find earning money an interesting but difficult thing to understand.

One of the easiest ways to start teaching this principle is to explain why one or both of her parents work outside the home.

Very early in life, the child accepts the fact that parents go to work everyday. However, she may have questions about where the parent goes and what he does. Tell her as much as she

can understand. Explain that someone must work so that she and other family members can have the house, food and clothes they need.

If possible, take the child to the place of work and explain in very simple terms about the work.

Young children themselves can learn to work. They're often eager for a chance. Give the preschooler a demonstration and she can dry the silverware and store it properly. There are other tasks suitable for the child's abilities.

Enriching parenting skills is the main purpose of next week's workshop - "Coping With Those Curtain Climbers."

Positive guidance, learning through play and making homes safe for children are the main topics.

A special part of the workshop will be Marsha Murphy's discussion of recognizing learning, language and speech disabilities.

Baby sitting will be provided for participants April 17 in Spearman Methodist Church

Fellowship Hall and April 18 in Gruver Church of Christ Fellowship Hall. Sessions are 9:30 a.m. - Noon. Packets of information will be presented to each participant. Registration fee is 50 cents.

Eggs become an important holiday food with Easter just around the corner. In ancient times, eggs were sacred symbols and, later, were glorified in paintings and sculpture.

Today, eggs are honored around Easter and can be dyed, painted and trimmed.

Be imaginative--use paper, lace, buttons, even ribbons--there is no end to the fun of decorating. Before decorating, cook the eggs properly following these steps:

- 1) First, select top-quality eggs--Grade A or AA
- 2) Place selected eggs (not too many) in a medium size saucepan. Add enough cold water to come at least one inch above the eggs, and heat to boiling.
- 3) Remove from heat, cover and let stand 15 to 20 minutes.

TIP: To prevent an egg from cracking while cooking, add a few drops of vinegar or lemon juice to the water.

Cool immediately in cold water for about 20 minutes.

To properly dye Easter eggs, follow these steps:

- 1) Prepare the egg dye as directed on the package.
- 2) Or, use a few drops of food coloring in custard cups or muffin tins.
- 3) Dye only uncracked eggs.
- 4) Cover the eggs fully with hot water while dyeing, and spoon dye over eggs with a tablespoon.
- 5) Let stand, turning occasionally, until evenly colored.
- 6) Spoon out eggs, and place on paper towels.

For some economical variations in dyeing eggs, cut designs from cellophane or adhesive tape. Paste on eggs before dyeing. Remove tape when dry for white designs.

Refrigerate Easter eggs promptly after dyeing--use the eggs within a few days. Discard all cracked eggs after the Easter egg hunt or use immediately--exposure to harmful bacteria can be dangerous.

When two quarrel, both are to blame.
-Dutch Proverb.

Quarreling is the weapon of the weak.
-Hebrew Proverb.

School Election Canvassed

Spearman School Board members Monday night canvassed the results of Saturday's uncontested election of Trustees.

There was no change in the results as earlier reported. Mike Garnet and incumbent Board member Kent Guthrie received 84 Votes each. Frances Hudson, Home economics instructor received a write in vote.

Garnet and Guthrie were then sworn into office by Business Manager Latham. Former Board member Jim Evans chose not to run for reelection.

Easter Holidays for Spearman begin at 2:30 Thursday. Students will return to class Tuesday, April 17th.

YMCA DIRECTORS MEETING MONDAY

The YMCA directors meeting for the city of Spearman will be held Monday night, April 16th at 7:30 at the YMCA building.

Little League will be held under the direction of the YMCA and action on this will be taken Monday night.

NEW ZONING BOARD MEMBER APPOINTED

Alva Garner was appointed to the zoning board for the city of Spearman, at the regular city meeting Tuesday night. The minutes of the last meeting were approved. The pledge was given by Bill Pittman, and the invocation by Mayor Blodgett. Bills were reviewed and paid.

WIN UP TO 2,000

PLAYING TRIPLE PLAY — DOUBLE PAY BINGO

ODDS AS OF — MARCH 24, 1979

PRIZE	NO. OF WINNERS	ODDS	AMOUNT
1st Prize	1	1 to 1,000,000	\$2,000.00
2nd Prize	1	1 to 100,000	\$1,000.00
3rd Prize	1	1 to 10,000	\$500.00
4th Prize	1	1 to 1,000	\$100.00
5th Prize	1	1 to 100	\$20.00
6th Prize	1	1 to 10	\$5.00
7th Prize	1	1 to 1	\$1.00
TOTAL NO. OF PRIZES	7		\$2,725.00

THIS MAN WON!

WINNER
CY POCHOP
SCOTT CITY

ANN LEWIS
WON
\$1,000.00

Brown & Serve Rolls

38¢

CAMELOT PKG. OF 12 LIMIT 3

Jell-O Gelatin

585¢

ALL FLAVORS 3-OZ. BOXES LIMIT 1

Green Beans

34¢

16-OZ. CAN

Flour

578¢

LB. BAG LIMIT 1

DEL MONTE SLICED OR CRUSHED

Pineapple

53¢

20-OZ. CAN

LINDSAY SMALL PITTED RIPE

Olives

67¢

15-OZ. CAN

DEL MONTE

Sweet Peas

69¢

17-OZ. CANS

GREEN GIANT WHOLE OR CREAM STYLE

Golden Corn

65¢

17-OZ. CANS

Sale

SHOP EARLY IDEAL WILL BE CLOSED EASTER SUNDAY APRIL 14, 1979

Coffee

\$233

1-LB. CAN LIMIT 1

Charmin

86¢

4-ROLL PKG. LIMIT 2

NABISCO NILLA

Waters

74¢

12-OZ. BOX

KRAFT REAL

Mayonnaise

\$128

32-OZ. JAR

MEADOWDALE — ALL FLAVORS

Ice Cream

96¢

1/4-GAL. CTR.

HEALTH & BEAUTY AID SPECIALS

NO-NOSENSE SHEER

Panty Hose

99¢

KODAK 126 Film

\$189

KODAK C-110 Film

\$118

SYLVANIA Magicubes

\$178

SUPER 10's

\$158

PAIR Flip Flash

\$158

Thank You

The 1979 Lynx yearbook staff wishes to Thank all advertisers who bought advertising in the 1979 Lynx. The 1979 Lynx will be here about May 5, 1979.

1979 Lynx Yearbook Staff SHS

ENERGY CHECK NOW

ENERGY CHECKED

COMMUNITY PUBLIC SERVICE CO.

WRITE SMALLER CHECKS LATER.

CENTRAL HEATING AND COOLING UNITS . . .

Nearly 70 percent of residential energy is used for heating and cooling, so it's important to make sure you're getting maximum efficiency from your central unit. To qualify as Energy Checked, air conditioning should have at least a 7 EER (Energy Efficiency Ratio), and the heating system at least a 3.1 COP (Coefficient of Performance). Wrapping duct work in insulation also provides increased energy efficiency. And make sure filters are clean to allow free air flow. An efficient air conditioning and heating system is only one way a home qualifies under the Energy Checked Efficiency Program. For more information on saving on utility bills with the Energy Checked program, just give us a call.

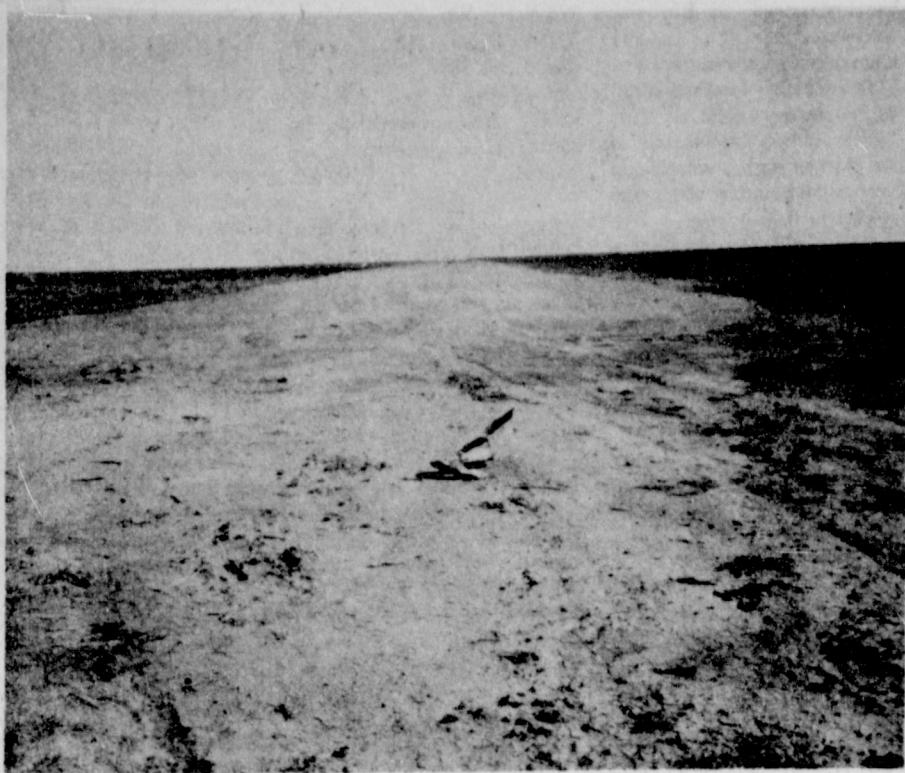
COMMUNITY PUBLIC SERVICE

STORE FOR YOU! . . .

Ideal

FOOD STORES

Food Stamps Buy More At Ideal..



The new airport in Spearman will receive a new topping and other work in the new future. One of the new airport members is Ben Woodington who has so graciously agreed to serve on the board. Ben is an accomplished pilot!

Pringle-Morse Bond Issue Fails

W.C. Womble, Allen McCloy were elected to three-year terms in the election for trustees of the Pringle-Morse Consolidated School District. Womble received 90 votes, Allen McCloy 84; Lynn Davis 67, Frank Pittman, 8, Elaine Rogers 9, Charles Johnson, 12, Willard McCloy, 24, Donny Jones, Jack Johnson Jr. and Howard Johnson, each one vote. Ron Cook was elected for a two year term with 86 votes. Charles Reid, his opponent received 75. The school maintenance tax referendum passed with 94 votes for and 78 against. The bond issue which proposed \$650,000 for school building purposes failed by a vote of 84 for and 88 against.

Board OK's Senior Project

Spearman Independent School District Trustees gave their approval Monday night to The Senior Class and it's offer of a gift to the School. The Gift... or gifts will total approximately \$600.00 in value. Scott Martin, Senior Class Representative told the Board that the Seniors wanted to provide funds for the "backdropping" of the Stage area of the auditorium. In addition the Class will provide funds to purchase at least four Maple or Ash trees as part of landscaping project of the school grounds. The Board expressed appreciation to the Class in accepting the offer of the gifts.

U.S. gasoline consumption can be halved if average miles, per gallon, doubled.

The test of the Egyptian-Israeli peace accord is whether it brings peace or war-and whether a war would involve the U.S.

School Board Meeting

from Classroom Teachers - The school board met in regular session Monday, April 9, 1979 at 7:00 P.M. with Kent Guthrie, president, in charge. Present were board members Jim Davis, Chalmers Porter, Clark Mires, Tommy White, newly elected member Mike Garnett, and retiring member Jim Evans. Also present were principals Eddy Clemmons, G.W. Robinson, and Allen Alford, and business manager Orville Latham. Senior class representatives present were Scot Martin and sponsor Terry Schneider. John Davey represented the newspaper, and Classroom Teachers' representatives were Cindy Sweeney and Frances Hudson. New board officers elected

are President-Kent Guthrie, Vice President-Jim Davis, and Secretary-Clark Mires. The senior class was given premission to present the school with a backdrop curtain for the high school auditorium stage, and to plant 4 trees on the high school lawn. These are gifts from the class of 1979. Even with the raise in lunch tickets the cafeteria does not have enough money to complete the year. \$1850 was allowed. A letter was presented showing the rise in food costs. The Consultation Agreement with the Spearman Classroom Teachers Association was renewed for 1979-80. The proposed school calendar for next yer was approved. There will be a one week spring

Hospital News

break immediately preceding Easter. Two of the eight In-service days will be March 21, on the day of the county stock show, and another on Saturday, April 12. District 16 TSTA will be a holiday, not an In-service day. The budget was given a first reading. Salaries were discussed. Final figures cannot be set until the state legislature sets the base pay. We may be asked to sign contracts with a certain amount, to be determined by the board, above state schedule. We have done this before. Resignations were accepted from Preston Smith and Mike Newsome. After daylight-saving time goes into effect, the board will meet at 8:00 p.m.

Patients in Hansford Hospital are William Powell, L.V. Haney, Glen Mackie, Vida Jones, Ruth Garner, Devona McClellan, Larry Lackey, Maryha Donahue, Patricia Bayless, Penny Thomas, Dennis Brooks, Aubrey Rasor, Dickie Holdeman, John Cotter, Dwight Sumner, Michael Cook, Hazel Martin, and Max Reyes. Dismissed were Hattie Mackie, Margaret Hoggatt, Anson Ward, Chris Wiley, Debbie Schmehr, Joseph Schmehr, Patsy Griggs and baby daughter, Nancy Donoho and baby daughter and Clinton Sims.

U.S. trade deficit smallest in 21 months.

Some Americans still don't grin widely on every occasion--despite television.

U.S. commits itself to support Israeli independence.

Serious crime said up first time since 1975.

Congress begins work on \$50-a-day tax break for self.

CARQUEST AUTO PARTS STORES

MONROE GRIPPERS

5.99 EACH

The full size shock that equals or exceeds original equipment specifications. Fits most U.S. cars and pickups and many imports. A terrific value at a shockingly low price.

THIS SPECIAL LOW PRICE, PLUS INSTALLATION, ALSO AVAILABLE AT PARTICIPATING CARQUEST SERVICE STATIONS AND GARAGES. LOOK FOR THE CARQUEST BANNER.

SHOCK CENTER

MONROE

SPECIAL SALE!

How to tell when your need shocks

Good at CARQUEST Auto Parts Stores and participating dealers thru April 30, 1979.

Hi-Plains Auto Supply, Inc.

118 N. Main 659-2506 Spearman

AT MOST LOCATIONS

WE KNOW WHAT YOU MEAN WHEN YOU'RE TALKING PARTS.

CRUM REAL ESTATE

CALL ANYTIME 659-2054

1105 S. BARKLEY

NADINE CRUM BROKER

VIRGINIA WHITE BROKER

We Need Listings! Want to Sell your Home? We have BUYERS.

SNUG AS A BUG IN A RUG

When you move into this almost new 3 bedroom, 1 1/4 bath home at 1118 Linn Drive. FIREPLACE in large FAMILY ROOM; SEPARATE FORMAL LIVING-DINING ROOM and great built-in kitchen and double car attached garage. DELIGHTFUL PATIO AREA & much more. By appointment only. Offered EXCLUSIVELY by Crum Real Estate.

QUALITY PLUS

This lovely Ranch style home is located in excellent location on large corner. The home features 4 bdms., 1 1/4 baths, large living room with woodburning fireplace, lots of cabinets and all the kitchen builtins. This is truly a fine home value and one that will offer years of enjoyment. Shown only by appointment. EXCLUSIVELY with Crum Real Estate.

LOVE QUALITY? NEED SPACE?

Like your money's worth? It's all included in this spacious, older home with 4 bdms., 3 baths, kitchen built-ins, formal living, dining, den basement, storage galore, sprinkler system front and back, fence, and much more. Call for an appointment. EXCLUSIVELY with Crum Real Estate.

THREE WISHES

1010 Barkley. If peace, comfort and location are important to you... better look this over. 3 bedrooms, 1 bath, large kitchen-den area, living room, good storage, fenced yard, covered patio. EXCLUSIVELY with Crum Real Estate. Call for an appointment.

LYRIC THEATRE

PHONE 806-659-2812

ONE SHOW SUNDAY, MONDAY, TUESDAY, WEDNESDAY, AND THURSDAY AT 7:30 P.M.

TWO SHOWS FRIDAY AND SATURDAY AT 7:00 P.M. AND 9:00 P.M.

NOW SHOWING

From deep space...

Invasion of the Body Snatchers

The seed is planted... terror grows.

A Robert H. Solo Production of A Philip Kaufman Film "Invasion of the Body Snatchers" Donald Sutherland · Brooke Adams · Leonard Nimoy Jeff Goldblum · Veronica Cartwright Screenplay by W.D. Richter. Based on the novel "The Body Snatchers" by Jack Finney Produced by Robert H. Solo · Directed by Philip Kaufman

APRIL 11 THROUGH APRIL 17

NEXT ATTRACTION

THE SCARIEST COMEDY OF ALL TIME IS BACK.

YOUNG FRANKENSTEIN

APRIL 18 THROUGH APRIL 24

PELICULAS MEXICANAS

YOLANDA DEL RIO

LA VOZ BRAVIA Y APASIONADA DE LA NUEVA REINA DE LA CANCION RANCHERA en UNA PELICULA QUE NOS EMOCIONARA COMO NUNCA!

JAIMÉ MORENO ANA LUISA PELUFFO FEDERICO VILLA y PEPE LOZA en

LA HIJA DE NADIE

EL CONJUNTO MUSICAL QUE ESTA CAUSANDO SENSACION

SUNDA Y A PRIL 15 AT 2 P.M.



Engagement Announced

Mrs. Olen Chambers of Dalhart wishes to announce the engagement and approaching marriage of her daughter Olene, to Stephen Forcey of Dallas. Stephen is the son of Pastor and Mrs. Herschell Forcey of Sprucedale, Ontario, Canada.

Olene, a Dalhart High School graduate received a Bachelor of Business Administration Degree in Marketing from the University of Texas in Austin and is currently working as a secretary for Mrs. Peter O'Donnell of Dallas.

Stephen was salutatorian of his senior class of Bassett High School, Los Angeles, Calif., and graduated Cum Laude from Le Tourneau College, Longview, Texas, with a degree in Mechanical Engineering. He is presently in his second year at Dallas Theological Seminary pursuing his Master of Theology Degree.

The young couple plan to be married June 2 in Central United Methodist Church in Dalhart with Pastor Hershel Forcey performing the ceremony.

You are cordially invited to a
bridal shower honoring
Marsha Fairbanks
bride-elect of Toby Kuehl
Thursday, April 12
7:30 p.m.
in the home of Mrs. Jimmy Shieldknight
724 Gibner, Spearman
Hostesses

Rotary Club News

"Red Fez of Hope", a film about the Shriner burns hospital, was shown to the Spearman Rotary Club Monday noon at Cliffhangers Cafe by John R. Collard, Jr.

Visiting Rotarians were Kenneth McKay and Rollie D. Rinker of Perryton.

There will be no Rotary Club meeting on Monday noon, April 16, but the Box Supper on Tuesday, April 17 will take its place. The Box Supper will be held at 7:00 p.m. in the First United Methodist Church Fellowship Hall. This is for all Rotarians and their Rotary Ann's. All checks made out to pay for the boxes should be made out to the Rotary Foundation.

Those in attendance were Jim Benson, Carrie Marie Berry, Eschol Blankenship, Roy Bulls, John R. Collard, Jr., Robert Elliott, Ed Freeman, Ed Garner, Kerry Henton, John Hutchison, Eddy Limbocker, Junior Lusby, Jim McLain, Jack McWhirter, Larry Murphy, Frank Oglesby, Coy Palmer, Michael Schnell, Jim Shirley, Lenis Simpson, Gary Sims, Vance Srider, Jerry Taylor, Don Wirsdorfer, and Tim Woodington.

Those absent were J.L. Brock Kim Brock, Archie Burress, Pete Fisher, and Brice Palmer. Michael Schnell will give a classification talk at the Box Supper on Tuesday, April 17.

How True
Never question your wife's judgment-look who she married.
-Tribune, Oakland.

Close-Widener Engagement Announced

Mr. and Mrs. Floyd Close are announcing the engagement of their daughter D'Anda Lynne to Larry Ted Widener. Parents of the prospective bridegroom are Mr. and Mrs. Ted Widener. An April 21st Wedding is planned in the First Baptist

Church of Spearman. D'Anda is presently employed by Spearman Rexall Drug and Larry is employed by Mulliniks Construction Co. of Dustin, Okla. where the couple will make their home.

Awards Presented At Scout-O-Rama

The Scout O Rama was held Saturday, April 7 at the county barn from 1:30 to 3:00 p.m. Awards were presented to the following Troops:

Boy Scout Troop #551- Nako Patrol received a First in proficiency-model building. Wolf Patrol received a First Blue Ribbon and President Award for Cooking. Bob Cat Patrol received a First Blue Ribbon and President Award in First Aid.

Boy Scout Troop #578- Lynx Patrol- 1st Blue Ribbon in Prestige (Leather) Cobra Patrol-2nd Woodworking The Cub Scouts received a First Blue Ribbon.

The Spearman Neighbor Girl Scouts received a First Blue Ribbon and a President Award for their display on crafts and activities toward earning their

badges throughout the year. The Scout would like to extend a special thanks to Eugene Yarbrough for donating the tickets for The Scout O Rama.

Arts & Crafts Guild News

The Arts and Crafts Guild met Friday, April 6 at Martin's Steak Garden with Mrs. Nolan Holt as hostess. Those attending were Mmes. Deta Blodgett, Guy Fuller, Clay Gibner, Pope Gibner, Ned Turner, P.A. Lyon, Sr., F.J. Daily, and Joe Traylor.

Due to Good Friday there will be no meeting next week. The next meeting will be Friday, April 20 in the home of P.A. Lyon, Sr.

Mr. and Mrs. Raymond Fairbanks request the honor of your presence at the marriage of their daughter

Marsha Gay

to

Mr. Tobin Lynn Kuehl

on Saturday, April 14, 1979

5:00 p.m.

First Christian Church

Gruver, Texas

Reception following

Damaged Pennsylvania reactor leaks radiation.

Administration opposes balanced budget bill.

Energy secretary says rationing gas unlikely.

Arab League rejects economic action against America.

Altar Society Meeting Held

The Sacred Heart Altar Society met Thursday, April 5 in the Parish Hall for their monthly meeting with Anita Sumner, president, presiding.

Under old business, the Mexican Dinner proceeds were announced with the total being added to the building fund.

A report was given by Mary Allen of the Spring Deaneary Meeting held March 19 in Borger, Texas.

Under new business, the upcoming Tamale sale was discussed. The date was set for Friday, April 20th with the cost per dozen set at \$3.50. Anyone wishing to place an order please call Mrs. N.F. Renner at 2335 or Mrs. Frank Lozano at 2610.

Also the Altar Society will have their annual Easter Bake Sale April 11th at the Cut-Rate Thriftway grocery store. Anyone wishing to place an order for any special item of baked good please call Mary Allen at

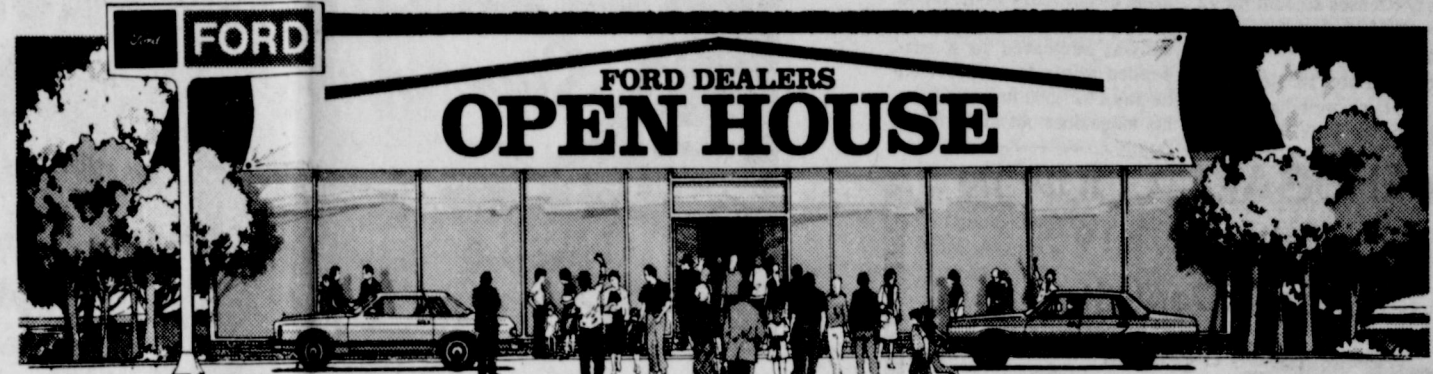
2066 or Francis Ortega at 3688, Chairman of this event.

A plea was made by the president for women to drive for the Meals on Wheels program to the elderly and shut-ins during a two week period of May 14 thru June 1st.

A nominating committee was appointed, Maria Pacheco, Lila West and Francis Ortega, to select a slate of officers for the upcoming election at the May 3rd meeting. Also at this meeting, the ladies will have their annual Salad Supper.

A report was given by Mrs. Clementine Renner of the History books being made of Hansford County and asking the ladies to put in the history of the Church and Altar Society. A motion was made and passed.

The Altar Society had accepted the invitation to hold the Pampa Deaneary Meeting in Spearman next year. Pam Stork presented an interesting talk on canning. Refreshments were served and enjoyed by all.



FIVE 1979 FORDS UNDER \$4,400.

COME IN NOW DURING OUR OPEN HOUSE.

TOP PRICES FOR TRADE-INS NOW.

LONG-TERM FINANCING AVAILABLE WITH VERY COMPETITIVE RATES.

FORD PINTO PONY. NEW DESIGN FOR '79.

This year's Pinto Pony is new up front, new in back and new inside. It may be the best small car buy in America today.

\$3233*



FORD FUTURA. THE NOW CAR.

It's sporty, stylish and NOW. Futura is a personal car in the tradition of Thunderbird. (White sidewalls \$43.00 extra cost option.)

\$4131*



FORD MUSTANG. A NEW BREED FOR '79.

Aerodynamic styling and great choice of models make the '79 Mustang one of the most exciting Mustangs ever. (White sidewalls \$43.00 extra cost option.)

\$4187*



FORD FAIRMONT. MOST ROOM FOR THE MONEY OF ANY CAR.

(Based on EPA volume index and sticker prices.) Plus the lowest sticker price of any mid-size car.

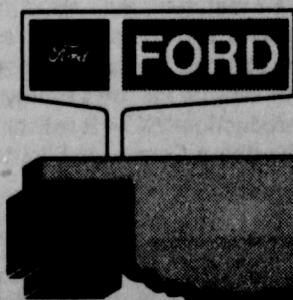
\$3770* (White sidewalls \$43.00 extra cost option.)



FORD FIESTA. WUNDERCAR FROM GERMANY.

Front-wheel drive and rack and pinion steering help Fiesta tame the road. And it's sold and serviced at over 5,000 Ford Dealers from coast to coast.

\$4389*



OKLAHOMA/TEXAS PANHANDLE FORD DEALERS

Joe Trayler Ford

321 Main

Spearman

659-2829

Paymaster

"POWER-EMERGE" CORN HYBRIDS
Powerful starts. Big yields.

UC 8951

- *Upright Leaves
- *Stalk Strength Plus
- *Full Season Yield Potential
- *Head Smut Resistant
- *Food Processor Accepted

See Your Paymaster Seed Dealer
B&B Farm Industries Spearman
658
659-2551
Davy Gurley Waka 435-2998

For a powerful start this year, plant these "power-emerge" hybrids...

ACCO BEED

Crime Rate Up 2.7 Per Cent

AUSTIN--Figures released today by the Texas Department of Public Safety show the state's crime rate rose 2.7 per cent in 1978.

There were an estimated 721,581 major criminal offenses in Texas last year, compared to 692,450 major crimes in 1977.

Colonel Wilson E. Speir, director of the Department of Public Safety, said the largest increases occurred in the rape and motor vehicle theft categories. Both offenses posted crime rate increases of 11.5 per cent.

Speir said robbery was up 7.9 per cent, and murder up 6.8 per cent. Aggravated assault rose 4.8 per cent, larceny-theft was up 2.4 per cent, and burglary increased 0.3 per cent.

Of the 721,581 estimated crimes, at least 648,704 occurred in urban areas. Rural counties accounted for 72,877 major offenses.

Statewide, only 22 per cent of the reported crimes were cleared by an arrest. Texas law enforcement agencies, however, cleared 79 per cent of the murders, 68 per cent of the aggravated assaults, and 54 per cent of the rapes. At least 36 per cent of the known robberies were cleared.

Lower clearance rates were posted for crimes against property including burglary, theft, and motor vehicle theft. These property offenses account for 92 per cent of the state's total criminal activity.

Speir said the incidence of crime was fairly well distributed throughout the year, but noted

increases in the summer months. The lowest numbers of crimes were reported in January and February.

Overall in Texas last year, there was one major crime every 44 seconds. Property valued at over \$417.8 million was stolen, with property recovered valued at just over \$158.9 million.

Firearms were used as the murder weapon in 71.3 per cent of the 1,839 murders, and white males accounted for 51.9 per cent of the victims. In nearly 40 per cent of the murder cases the killer was acquainted with the victim, and was a family member in 18.9 per cent of the cases.

DPS reports show that eight Texas law enforcement officers were killed in line of duty by felonious criminal action in 1978, compared to four in 1977. In addition, four officers died in duty-related accidents.

CLOWN CREATOR DEAD
SARASOTA, FLA.-- Emmett Kelly, 80, whose sad-sack clown "weary Willie" delighted audiences for half a century, died recently. In his last years, he lived a quiet life outside show business, preferring newspapers, television, or even his orange trees to outsiders.

FLYNT'S SENTENCE
ATLANTA -- Hustler magazine owner Larry Flynt found guilty of distributing obscenity was sentenced to a suspended prison term, provided he pay a \$27,500 fine and keep his magazines out of Georgia.

GED Tests At Frank Phillips

The General Educational Development Test (GED) will be given in the James W. Dillard Library on the main campus of Frank Phillips College beginning at 7 a.m. Saturday, April 28th.

The requirements for taking the test are you must be a resident of Texas and 19 years of age or older. If you are 18 years old, you must have written proof from your high school principal stating you have been out of school for one calendar year.

There will be a \$10 fee for the test. For further information contact the office of the Director of Student Services at 274-5311 ext. 39.

Anwar Sadat may be living on borrowed time, paid for by U.S. dollars.

President Carter seeks more underground "N" tests.

Art Meeting Scheduled

The future of the arts in Texas will be the focus of a regional meeting Friday, April 20, 1979 at the Amarillo Art Center in Amarillo.

Area residents are invited to participate in the meeting which is one of six scheduled throughout the state by the Texas Commission on the Arts and Humanities to review the draft of the Commission's state arts plan. A discussion of federal regulation relating to accessibility for handicapped persons (Section 504 regulations) is also

included on the agenda.

Copies of the state plan will be mailed upon request prior to the meeting at no charge. Requests for mail orders must be received by April 13. Copies of the plan will also be available at the meeting.

For additional information, write the Texas Commission on the Arts and Humanities, P.O. Box 13406, Capitol Station, Austin, TX 78711 or phone 512-475-6593. Persons ordering copies should clearly state their mailing address.

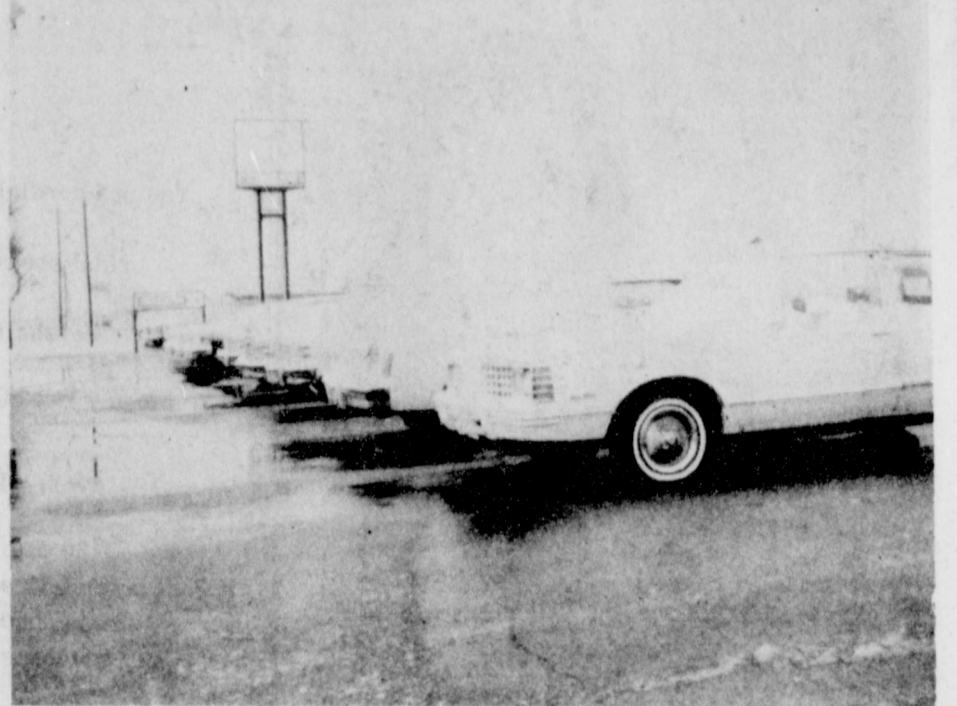
General Telephone Group Wins Award

A Service Operations group from General Telephone Company in Perryton has recently won another company wide award according to O'Neal Phillely, Customer Service Manager.

The Dispatch, Assignment, Repair and Testing section has

been judged to be "Most Improved" in the Southwest Company, which operates in four states.

The evaluation, made through observations, involves the overall treatment of customers and coordinating excellence, throughout the year.



Snow fell on these cars at Hergerts last week! Another storm is brewing for the area today, Wednesday!

SHUGART COUPON
Thurs. April 19
Baker's Dept. Store
216 Main

9
WALLET SIZE
COLOR PORTRAITS
99¢

ASK
How Do
FREE
8 x 10
OFFER

Extra charge
for
GROUPS

Superstar PX 74

**National Irrigated
Yield Champion**

This is the one for you this year. PX 74 is Northrup King's hottest hybrid, and NCGA yield champion in more states than any other hybrid entered. It was the National Irrigated Winner with a yield of 253.14 bu./acre. And, in the Iowa Masters, PX 74 has the highest 2-year average yield of any variety. Proven in competition... that's PX 74.

Big yielder with big benefits

PX 74 features top yield potential, strong stalks and roots, and is adapted to high populations. This single cross has erect leaves to capture the sun's energy for maximum production. PX 74 is resistant to head smut, Northern Corn Leaf Blight and stalk rot.

NK
NORTHROP
KING

See me today
and order your
supply of the
Superstar... PX 74.

Morris Bros. Seed Company
Rt 3 Gruver, Texas
733-2132 733-2203

PRICES GOOD
APRIL 14TH

U
UNITED
Supermarkets
Perryton, Texas

LET'S
DO IT
AGAIN

PHASE II

STA

GREEN STAMPS

QUANTITY RIGHTS RESERVED

30 MILLION

MORE CASH! MORE STAMPS!

STAMP
GIVE AWAYS!
INSTANT
WINNERS!

UNITED WILL BE CLOSED
EASTER SUNDAY!

**FOLGER'S FLAKED
COFFEE**
13 OZ. CAN **\$1.89**

**A&W
ROOT BEER**
REG. OR
SUGAR FREE **\$1.19**
6 PK.

SHOP UNITED FOR

BORDEN'S EAGLE BRAND MILK	Can	59¢
CLOVER CLUB POTATO CHIPS	REG. 8 OZ. BAG CRINKLE CUT 7 1/2 OZ. BAG	69¢
WELCH'S GRAPE JUICE	64 OZ. BTL.	\$1.79
GREEN GIANT WHOLE GREEN BEANS	16 OZ. CAN	3 FOR \$1
SUGARY SAM CUT YAMS	30 OZ. CAN	69¢
PUNCH LAUNDRY DETERGENT	49 OZ. BOX	99¢
GLAD TRASH BAGS	FAMILY PACK 20 CT.	\$1.89

DELTA PAPER TOWELS 2 LARGE ROLLS 89¢	DEL MONTE 16 OZ. HALVES PEARS 16 OZ. FRUIT COCKTAIL YELLOW CLING 16 OZ. SLICED PEACHES MIX OR MATCH 2 FOR \$1	UNITED BROWN N' SERVE ROLLS 12 CT. PKGS. 39¢
---	--	---

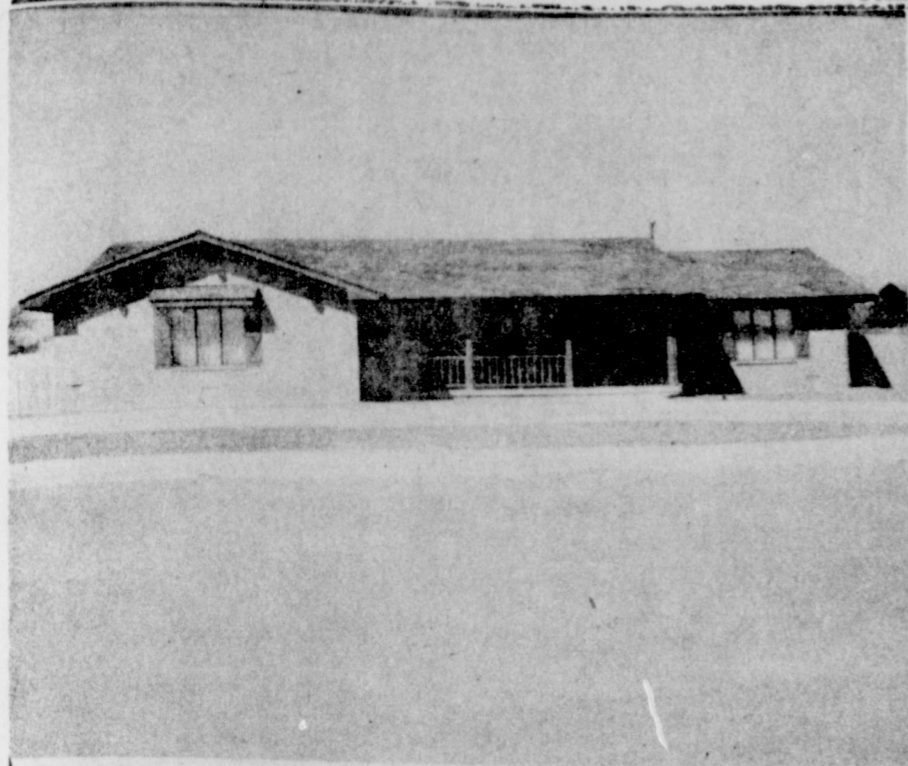
MANAGER'S SPECIAL
County Kist Whole Kernel
CORN
12 oz. can **4/\$1**

PURINA DOG CHOW	25 LB. BAG	\$5.49
PURINA SPECIAL DINNERS	DAIRY • TUNA • SHRIMP • SEANIP 18 OZ. BOX	59¢
FINE FARE GARDEN SWEET PEAS	17 OZ. CAN	39¢
FRENCH'S MUSTARD	24 OZ. JAR	59¢
HOLSUM THROWN OLIVES	STUFFED MANZ 5 OZ. JAR	79¢
DEL MONTE IN NATURAL JUICES OR SYRUP PACKED PINEAPPLES	20 OZ. Sliced • Chunks • Crushed	59¢
SCILLING VANILLA EXTRACT	1 OZ. BTL.	49¢

BAKER'S CHOC. FLAVORED CHIPS
12 OZ. **98¢**

DREAM WHIP
6 OZ. BOX **85¢**

HEINZ WHITE VINEGAR QT. BTL. 49¢	RUBY RED GRAPEFRUIT 4 FOR \$1	CALIF NAVEL LARGE ORANGES 3 LBS. \$1
UNITED EX-LARGE EGGS DOZEN 75¢	RUSSET POTATOES 10 LB. BAG 69¢	SALAD RED & GREEN LETTUCE 3 BUNCHES \$1
SCHILLINGS ASST. FOOD COLORING 1 oz. 59¢		GREEN ONIONS OR CELLO RADISHES 2 OZ. 29¢



Another new home for Spearman. They are springing up all over town!

Price's Bill On Gasohol Passes

AUSTIN. . . The Texas Senate passed Senate Bill No. 643 Wednesday, introduced by Senator Bob Price, R-Pampa, giving a tax exemption on grain alcohol blended fuels.

"This is only one phase of my comprehensive gasohol development package," said the Pampa Senator. "Hearings are scheduled to begin next week on the other bills in the gasohol legislation package."

"This tax exemption will promote both production and consumption of gasohol in the State of Texas," said Senator Price. "Texas is already behind several other states in both production and consumption of gasohol. This is an important step in Texas taking its place as a leader in the gasohol field," Price commented.

"The events of the past week when the near nuclear catastrophe which faced this nation clearly points out the urgent

need for developing our alternate energy sources. Gasohol is only one area where we can make a difference and Texas, particularly West Texas, can play a significant role," concluded Senator Price.

The bill passed Wednesday in the Senate on a 25-5 vote.

BIBLE VERSE

"I am he that liveth, and was dead; behold I am Alive for evermore. . . and have the keys of hell and death."

1. Who made the above statement?
2. To whom was he speaking?
3. Where was the author at the time?
4. Where may this statement be found?

Participants In Food Stamp Program Increase

Preliminary estimates show that 17.8 million people participated in the food stamp program in January, an increase of 1.7 million people over the previous month, Assistant Secretary of Agriculture Carol Tucker Foreman said today.

Program participants in January received an average monthly food stamp bonus of \$30.40 per person of 33 cents per meal.

The average monthly bonus cost increased from December because of food price inflation. The larger than seasonal increase represents low income people who were able to participate for the first time due to implementation of a provision of the 1977 Food Stamp Act which ended the requirement that low income families put up lump sums of cash to buy their food stamps. A family that formerly paid \$60 for \$100 worth of stamps, for instance, now receives \$40 in stamps without

charge. Various studies found that many poor families did not receive food stamps in the past because they could not afford to buy them. The 1977 Food Stamp Act was designed in part to remedy this problem and to simplify administration by eliminating the purchase requirement.

The 1977 Food Stamp Act also contained provisions to tighten the program, lower income limits, eliminate households with luxury cars, impose restrictions on student participation and disqualify people found to have committed fraud. These provisions took effect March 1. The new rules lower net income limits for a family of four from \$7,680 to \$6,500 a year.

"States are required to convert their entire caseloads to the new more restrictive eligibility rules between March 1 and July

1," Foreman said. "We expect states to remove up to 1 million people -- those participants with the highest incomes -- from the program during this period."

"The department predicted when the 1977 bill was enacted that 3 to 4 million new people would enter the program," Foreman said. "This is now occurring."

Foreman said the increase was occurring at a faster pace than expected. "Both the department and the Congressional Budget Office had estimated that the new participants would enter the program fairly evenly over six to 12 months. Our data now indicates that most of the new participants will enter the program over the first several months instead. Preliminary data indicates that growth rates are slowing significantly by the third month under the new procedures."

New Test For Leukemia Being Completed

DALLAS, (4/6) -- A test to measure enzyme activity that occurs more frequently in children with acute leukemia is being completed at the University of Texas Southwest Medical School here and will be used to follow recovery or predict relapse of patients under treatment.

The technique was devised by Dr. R. Graham Smith, Assistant Professor of Internal Medicine, with support of a research grant from the American Cancer Society. The test depends on reaction of an enzyme TdT (terminal deoxynucleotidyl transferase) with "T" cells, a type related to those active in the body's natural immune system against disease.

TdT derives from a cell that was "descended" from a primitive one which may have been the ancestor of the leukemia cell, Dr. Smith said. The enzyme reaction is not exclusive to leukemia cells. Normal thymus gland and bone marrow cells also produce TdT, however in smaller amounts than in leukemia patients.

The test, when completed, will be used to measure TdT reactions in acute lymphatic leukemia, the type that strikes children most frequently. A decrease in TdT or a return to normal levels would indicate that treatment was becoming effective. Also, a child successfully treated with chemotherapy, could be tested with the TdT method to forewarn of any relapse.

Dr. Smith expects to use the test eventually in combination with two methods already developed in other laboratories, which by themselves are not always entirely conclusive. These tests measure the quantity of leukemic cells in the blood and the activity of a protein found on the surface of cells in the immune system. The three methods together will provide a complex that gives an extremely accurate profile of the course or presence of leukemia, Dr. Smith predicted.

BINGO

• WIN UP TO \$2000 IN CASH!

• WIN UP TO 5 BOOKS STAMPS

• INSTANT WINNERS!

UNITED WILL BE CLOSED EASTER SUNDAY!

\$172,816 IN CASH GIVE AWAYS!

MORE CASH! MORE STAMPS!

ODDS CHART

Draw	Winning	Draw	Winning
1-14	1-14	1-14	1-14
15-28	15-28	15-28	15-28
29-42	29-42	29-42	29-42
43-56	43-56	43-56	43-56
57-70	57-70	57-70	57-70
71-84	71-84	71-84	71-84
85-98	85-98	85-98	85-98
99-112	99-112	99-112	99-112
113-126	113-126	113-126	113-126
127-140	127-140	127-140	127-140
141-154	141-154	141-154	141-154
155-168	155-168	155-168	155-168
169-182	169-182	169-182	169-182
183-196	183-196	183-196	183-196
197-210	197-210	197-210	197-210
211-224	211-224	211-224	211-224
225-238	225-238	225-238	225-238
239-252	239-252	239-252	239-252
253-266	253-266	253-266	253-266
267-280	267-280	267-280	267-280
281-294	281-294	281-294	281-294
295-308	295-308	295-308	295-308
309-322	309-322	309-322	309-322
323-336	323-336	323-336	323-336
337-350	337-350	337-350	337-350
351-364	351-364	351-364	351-364
365-378	365-378	365-378	365-378
379-392	379-392	379-392	379-392
393-406	393-406	393-406	393-406
407-420	407-420	407-420	407-420
421-434	421-434	421-434	421-434
435-448	435-448	435-448	435-448
449-462	449-462	449-462	449-462
463-476	463-476	463-476	463-476
477-490	477-490	477-490	477-490
491-504	491-504	491-504	491-504
505-518	505-518	505-518	505-518
519-532	519-532	519-532	519-532
533-546	533-546	533-546	533-546
547-560	547-560	547-560	547-560
561-574	561-574	561-574	561-574
575-588	575-588	575-588	575-588
589-602	589-602	589-602	589-602
603-616	603-616	603-616	603-616
617-630	617-630	617-630	617-630
631-644	631-644	631-644	631-644
645-658	645-658	645-658	645-658
659-672	659-672	659-672	659-672
673-686	673-686	673-686	673-686
687-700	687-700	687-700	687-700
701-714	701-714	701-714	701-714
715-728	715-728	715-728	715-728
729-742	729-742	729-742	729-742
743-756	743-756	743-756	743-756
757-770	757-770	757-770	757-770
771-784	771-784	771-784	771-784
785-798	785-798	785-798	785-798
799-812	799-812	799-812	799-812
813-826	813-826	813-826	813-826
827-840	827-840	827-840	827-840
841-854	841-854	841-854	841-854
855-868	855-868	855-868	855-868
869-882	869-882	869-882	869-882
883-896	883-896	883-896	883-896
897-910	897-910	897-910	897-910
911-924	911-924	911-924	911-924
925-938	925-938	925-938	925-938
939-952	939-952	939-952	939-952
953-966	953-966	953-966	953-966
967-980	967-980	967-980	967-980
981-994	981-994	981-994	981-994
995-1008	995-1008	995-1008	995-1008

"EASTER FEASTIN'S"

BAKER'S ANGEL FLAKE 20% OFF 14 OZ. PKG. **\$1.09** 3 1/2 OZ. CAN **59c**

HUNT'S TOMATO SAUCE 8 OZ. CAN **5 FOR \$1**

CAMPFIRE MARSHMALLOW 10 OZ. BAG **2 FOR 39c**

HABISCO COOKIES NUTTY BUTTER 13 1/2 OZ. **79c** HILLA WAFERS 12 OZ. **69c**

MINUTE MAID CRYSTALS LEMONADE REG. OR PINK 30.7 OZ. CAN **\$1.79**

KRAFT MAYONNAISE 32 OZ. JAR **\$1.29**

FINE FARE TOMATO KETCHUP 32 OZ. BTL. **69c**

SWIFT'S TENDER LEAN PORK CHOPS

\$1.29 LB.

FAMILY PACK

BONELESS HAM

WILSON'S CERTIFIED FULLY COOKED WATER ADDED

\$1.98 LB.

FINE FARE FRANKS

MEAT

89c

12 OZ. PKG.

FINE FARE TURKEY

GRADE "A" SELF BASTING

79c

ANY SIZE LB.

PORK ROAST SWIFT'S TENDER LEAN BOSTON BUTTS **\$1.29 LB.**

SPARE RIBS SWIFT'S TENDER LEAN PORK UNDER 3 LBS. **\$1.49 LB.**

BONELESS STEW "EXTRA LEAN" CUBES OF BEEF **\$1.98 LB.**

RANCH STEAK UNITED TRU TENDR BEEF 7-BONE CENTER CUT **\$1.79 LB.**

SIRLOIN STEAK UNITED TRU-TENDR BEEF **\$2.39 LB.**

RIB STEAKS UNITED TRU-TENDR BEEF **\$1.98 LB.**

CHUCK STEAK UNITED TRU-TENDR BEEF BLADE CUTS **\$1.59 LB.**

UNITED'S TruTendr BEEF

BONELESS FAMILY STEAK WASTE FREE BEEF **\$1.98 LB.**

HEALTH & BEAUTY AIDS

SUAVE BABY SHAMPOO 16 OZ. **98c**

MISS BRECK HAIR SPRAY 9 OZ. **\$1.19**

ULTIMATE *REG *SUPER *UNSCENTED REG. *UNSCENTED SUPER HOLD

CAPRI BATH OIL 32 OZ. **89c**

"DAIRY"

BELL WHIPPING CREAM 8 OZ. CRTN. **3 FOR \$1**

BELL COTTAGE CHEESE 24 OZ. **99c**

BELL BUTTERMILK 1/2 GAL. **79c**

FINE BUTTER QTRS. LB. **39c**

"FROZEN FOODS"

FINE FARE WHIPPING TOPPING 9 OZ. CRTN. **49c**

STILWELL WHOLE STRAWBERRIES 16 OZ. BAG **98c**

UNITED ASST. FLAVORS ICE CREAM 1/2 GAL. **98c**

MRS. SMITH'S MEAL MAKER PIE SHELLS 8" 2 CT. PKG. **49c**

PRICES GOOD THRU APRIL 14TH

UNITED Supermarkets

Perryton, Texas

QUANTITY RIGHTS RESERVED

.....NOW OPEN.....

BOB MARRS SADDLE SHOP & ART GALLERY

207 East 6th Street
Borger, Texas

Phone 1-806-273-3511

Open Mon. thru Fri.
8:30 Am to 5:30 Pm

Sat.
8:30 Am to 12:00 Noon

Specializing in cowboys custom made saddles and all kinds of saddle repairs and riding equipment. Chaps, rope, saddle blankets, pads, bits, spurs, bridles and reins and other ranch supplies.

In the Art department we will be carrying ready made frames, Oils, Acrylics, Watercolors, art books, canvases and ect.

Also many paintings and bronze in our Gallery.

After many years in the saddle business in Amarillo, Bob and Betty Marrs welcome their old friends and customers and new customers to come by to see us or call us.

NK SuperSilage Hybrids

High tonnage and TDN

Northrup King has several SuperSilage corn hybrids that are just the right maturity for this area. They provide tops in ton-per-acre for feed economy and the high TDN content ensures maximum beef and dairy production. NK SuperSilage hybrids can give you extra pounds of protein per acre too!

See me today! I've got an NK SuperSilage hybrid for you.

Morris Bros. Seed Company

Rt 3 Gruver, Texas
733-2132 733-2203