

Five Make All District



AWAY SHE GOES...Christmas shopping with mom gives a fella time to try out some of the wonderful toys and games Santa just might leave under the tree.

Five Spearman Lynx made the all district 1-AA team either on offense, or defense this year! During the Christmas season, we would like to pause and honor these five seniors along with their team-mates and coach'es for such a fine football

SPORTS BULLETIN: The Lynx lost a 68-70 heart-breaker to Sunray here Tuesday nite, and the Lynxettes lost 40-38! Spearman will host the Sanford Fritch teams this Thursday night at Lynx gymnasium in a pre-Christmas game! Come out and back the local teams!

season this year. Making the all-district 1-AA team on defense from Spearman, are: Todd Brock, David Ortega, and Zane Newton. On offense are: Scott Martin, and Kirby Hargis along with Newton who also made the offense team!

The Lynx lost in the play-offs to Childress 21-14, in a real thriller. They won the district out-right, for the 6th straight year, having never lost a district contest, including this year! Coach Smith and his Lynx have done a great job! Merry Christmas and Happy New Year to all of our Lynx, and Lynxettes, from your local newspaper!



TODD BROCK, 5' 10"
180 lb. Senior - Line



David Ortega, 5' 11"
185 lb. Sr. - Line



Zane Newton, 5' 10"
175 lb. Sr -Secondary



Scott Martin, 5' 11"
165 lb. Senior - End



Kirby Hargis, 5' 9"
180 lb. Sr. - Guard

We wish everyone a Merry Xmas, from the Thrift Shop Personnel. We will be closed Sat. Dec. 23rd. Will be open Sat. Dec. 30th.

The Spearman Reporter

VOLUME 70, NO. 6
THE SPEARMAN REPORTER, SPEARMAN, TEXAS 79081
THURSDAY, DECEMBER 21, 1978



IT'S WONDERFUL...If you've been searching for a share in the Christmas spirit and have not found it, find Santa. Where Santa is, the children come. They bring hopes and dreams, smiles and laughter, and one can read their emotions like the pages of an open book. It's all there — the joy and happiness, the anticipation that comes so strongly

once each year and, above it all, the evident atmosphere of peace and good will. Wondrous it must be, for all these same emotions are well known to those of any age who accept and share the true meaning of the Christmas celebration. Yes, there is a Santa; there is a spirit of Christmas. And, those who seek shall find.



The most beautiful "out-house" in the world, will be given away in Spearman soon. Tickets and complete details on how you can own this beautiful, heated, most modern out-house, are available from any fireman or "firette!"



Spearman's Sacred Heart Church parishioners will soon be using their new educational facilities. Father Raymond Crozier, Parish priest led an enthusiastic group of parishioners and Civic officials in Ground breaking ceremonies last Friday. The \$ 35,000 Twenty five hundred square foot facility, being built by Plains builders of Amarillo will be ready Feb. 1,



Honored For Years Of Service--Robert Elliott, district manager, and Carolyn English, clerk, both employees of Community Public Service Company received their five-year service pins at a dinner in Perryton December 1. Panhandle Division Manager Joe Cook right, presented the awards.

Hansford County Ranks Second In State In Farm Program Payments

Hansford County Farmers received the second highest dollar amount of payments of any County in Texas in 1977. This information has just been released by Department of Agriculture officials. The total amount received in Hansford County for all farm programs amounted to \$7,100,986.00... an amount second only to that received by producers in Deaf Smith County... where the amount was just under Ten Million dollars.

In spite of the second highest ranking in payments received Hansford County administrative costs for that year were listed as approximately fortieth in the State.

It is estimated that Hansford County will rank among the top counties for funds received for Farm programs in 1978.

Nut Cake

- 1 1/2 sticks butter
- 1 1/4 cup sugar
- 6 eggs, beaten separately
- 4 cups sifted flour
- 2 teaspoons nutmeg
- 1/2 cup whiskey
- 4 cups pecans, chopped
- 3 cups raisins

Soak nutmeg in whiskey for at least an hour prior to mixing. Cream butter and sugar and add egg yolks gradually. Dust pecans and raisins with 1/2 cup of flour and add to mixture alternating with the remaining flour and nutmeg-whiskey solution.

Bake 2 hours at 275 degrees in cake pan lined with buttered brown paper. Store in air-tight container.

Germany Gave Us Christmas Tree

We probably inherited the Christmas tree from Germany Long before the birth of Christ, the people of Germany put evergreen trees in their houses during the winter as a promise that life would return to the land. In the Middle Ages, a feast of Adam and Eve was celebrated on December 24th. Plays were given as part of the celebration, and in the center of the stage stood a fir tree, hung with apples. The plays were forgotten in time, but the peasants loved the bright trees and kept them in their houses. The oldest record, it seems of a Christmas tree is a written account dated 1603, of a tree in Strasbourg.

Girlstown, U.S.A., Borger Asks For Your Help

During the Christmas season, Girlstown, U.S.A. at Borger tries to reach all of her friends and supporters and establish new friends through newspapers.

Robert E. Wilson, Superintendent, of Girlstown, U.S.A., Borger, wishes to thank friends and supporters of the past and ask that if possible that you continue your support of this organization.

The following is general history which typifies the circumstances most of the girls come from to the home:

Winnie A. is a 14 year old and 3 month white female. She is currently living with her mother and third step-father. Their average yearly income over the past three years is \$4,171.36.

Greeting Cards Keep Traditions

Such expressions as "A Ryghte Merrie Christmase To You" have now become archaic and the spelling quaint. But the con-

tinued exchange of Christmas cards over the years has been a strong influence in preserving the traditional words, or greetings, associated with the season. Great writers of every age since medieval times have made contributions to the various expressions and phrases that are associated with Christmas.

From the very beginning of greeting cards, importance was placed on the message itself. Some of the earliest cards were simply greetings with sprigs of holly as a border on an otherwise plain card.

As early as the 1880's in England and also in America, verses appropriate to the season and composed by famous authors, were proving popular on Christmas cards.

They live in a two bedroom home located in what is generally considered the "wrong" part of town. Of their \$347.60 a month average income, \$210.00 is spent on rent and utilities. \$90.00 per month is spent on food. This leaves \$47.60 for all other needs of the family. The mother is a heavy drinker and smoker, and the step-father is an alcoholic.

Winnie is in the sixth grade and has attended 22 days of the 59 days school has been in session. She is currently making Ds and Fs and is running around with those whom the school considers undesirable. Agency representatives that the father has possibly molested Winnie. The mother and step-father do not exercise any control over Winnie and she often stays out all night to escape the home.

Girlstown, U.S.A. at Borger has helped many young ladies such as Winnie A. during the past 11 years. Help made possible through generous contributions from concerned and interested individuals, civic clubs, and sororities.

The help made possible through your donations has enabled many young ladies, such as Winnie A. to have happy normal lives. They have learned how to be productive citizens living at Girlstown, U.S.A. at Borger.

The mailing address is Girlstown, U.S.A., P.O. Box 1, Borger, Tex. 79007.

MICHAEL SHARRETT BRINGS YOUTHFUL TALENT TO "THE MAGIC OF LASSIE"

"The Magic of Lassie" marks Michael Sharrett's first major role in a full-length motion picture, and his winning performance is more than equal to the challenge. James Stewart, Mickey Rooney, Alice Faye and Stephanie Zimbalist also star in the picture, which was produced by Bonita Granville Wrather and William Beaudine, Jr.

At twelve-years-old, young Michael Sharrett has already had five years' acting experience and is considered a total professional.

During his early school days in Ventura,

California, he showed an interest in acting at the age of seven and played in a local youth theatre company, Peanut Gallery Productions, appearing in "Pinocchio," "Hansel and Gretel" and "Oliver!"

He then appeared in a professional company of "Jesus Christ, Superstar," directed by Gary Goddard, who was struck with the boy's talent and became his manager. Michael has since done commercials and has appeared on television in "Our Town" and Walt Disney's "Hot Lead & Cold Feet."

THE OTHER SIDE OF THE CAMERA -- WITH BONITA GRANVILLE WRATHER

Bonita Granville Wrather, co-producer of "The Magic of Lassie," is a stylish and energetic woman with a glamorous past and an industrious present. She was a film actress at the age of seven, and at the age of 12 had won an Academy Award nomination for her performance in Lillian Hellman's "These Three."

Although she retired from the screen in 1947 when she married Jack Wrather, a Texas oilman and motion picture and TV producer, she soon returned to an active career as associate producer and then producer of the Lassie television series - a position she maintained during highly successful years of the Lassie TV series.

Somehow, she also managed to find time to become one of the leading spokeswomen for the preservation of the national environment, stressing the importance of wholesomeness in entertainment. During this period, she also began a distinguished involvement in other outside activities. Among them: a member of the Board of

Directors of the Wrather Corporation; Board of Directors of the Los Angeles Orphanage Guild (for which she served as President for two years); a founder-member of the Los Angeles Music Center and a member of the Blue Ribbon 400; and a member of Les Dames de Champagne of Los Angeles. In 1972, she received a Presidential appointment to serve on the Board of Trustees of the John F. Kennedy Center for the Performing Arts.

During her film acting career, she appeared in 55 films including "Cavalcade," "Ah, Wilderness," "H.M. Pulham, Esq.," "Now, Voyager," "Escape," and "The Plough and the Stars." With "Hitler's Children" she made her step from ingenue to acclaimed dramatic actress.

Partnered with co-producer William Beaudine, Jr., she is now responsible for welcoming Lassie back to the big screen in "The Magic of Lassie," the all-new Lassie adventure that offers wholesome entertainment for the entire family.

There will be no Rotary Club Meeting Monday or Lions Club Meeting Tuesday.

CARQUEST AUTO PARTS STORES

MERRY CHRISTMAS

Tonka CARQUEST HOT PICKUP TRUCK

Famous Tonka quality and durability. Special introductory offer.

SPECIAL \$1.00 OFF!

Sug. price of \$8.49

7.49

LIMITED QUANTITIES

CARQUEST STOCKING CAP

Colorful red, white and blue knit cap. Ideal for winter weather. Let CARQUEST keep you warm.

2.29

1979 CHILTON AUTO REPAIR MANUAL

How to repair any U.S. car since 1972. Over 1,000 pages, illustrated. Deluxe hard cover.

8.99

Sug. list \$14.95

WILTON 3 1/2" HOME VISE

Survives on base 16" and locks in position. Built-in pipe grip.

12.88

TURNER SOLIDOX HOME WELDING TORCH

Safe. Simple to operate. Uses solid oxygen pellets, no propane. Kit includes torch, propane, pellets, rods, glasses, lighter, instructions.

27.88

LIMITED QUANTITIES

QUARTZ HALOGEN DRIVING LIGHTS

Intense beam cuts thru fog, sleet, rain, dust. Rectangular. Amber or clear.

13.98

E.A.

HOLLYWOOD AUTO VACUUM CLEANER

15' cord plugs into cigarette lighter. Powerful suction with wide mouth attachment, crevice tool.

10.99

CARQUEST 10-PC. SCREWDRIVER SET

All popular sizes, Phillips and flat blade. Homopack handles.

6.49

LIMITED QUANTITIES

CARQUEST RAINCHECK POLICY: Even CARQUEST Special is a best value offer. If we run out of an advertised item or fail to receive the merchandise, we will issue a Raincheck - entitling you to the sale price. Rainchecks do not apply to items not in stock or items in limited supply. We reserve the right to substitute items of equal or better value in the event that our stocks of advertised goods are depleted.

Sale prices good at participating CARQUEST Auto Parts Stores through December 31, 1978.

Hi- Plains Auto Supply Inc.

118 N. Main 659-2506

SF/555-2 WE KNOW WHAT YOU MEAN WHEN YOU'RE TALKING PARTS AT MOST LOCATIONS

ALLSUP'S CONVENIENCE STORES

ALLSUP'S HAS A LAST MINUTE SUPPLY OF GIFT ITEMS!

PRICES EFFECTIVE DECEMBER 21 - 23 1978

OPEN CHRISTMAS DAY!

<p>Shurfresh Franks 12oz. Pkg. 59¢</p> <p>PILLSBURY BM OR SM BISCUITS 10 FOR \$1.00</p> <p>BORDEN'S EGG NOG QUART 79¢</p> <p>12-14 LB. AVG. TURKEYS LB. 59¢</p>	<p style="text-align: center;">MERRY CHRISTMAS</p> <p>Campbells 1 can Soup 20¢</p> <p>Shurfine Tomato Soup 1 can 15¢</p> <p>MARSHMALLOWS 4 FOR \$1.00</p> <p>Shurfresh Quarters OLEO 1 LB. 39¢</p> <p>WHIPPING CREAM 1/2 PINT 39¢</p> <p>BUTTERMILK 1/2 GAL. 79¢</p> <p>SOUR CREAM 8 OZ. 2 FOR 79¢</p> <p>POPS 24 COUNT \$1.19</p> <p>ICE CREAM 1/2 GAL. 129¢</p> <p>BEANS 2 LB. BAG 59¢</p> <p>SOUP 10 1/2 OZ. CAN 4 FOR 99¢</p> <p>PRESERVES 16 OZ. JAR 69¢</p> <p>PRESERVES 10 OZ. JAR 59¢</p> <p>SYRUP 22 OZ. JAR 79¢</p> <p>Del Monte 12 oz. Jar Sweet Midgets 59¢</p>	<p>Fire Side Crackers 1 Lb. Box 39¢</p> <p>SHURFINE CANNED ASSTD. FLAVORS POP 6 FOR 99¢</p> <p>SHURFINE FLOUR 5 LB. BAG 69¢</p> <p>SHURFINE CRANBERRY SAUCE 16 OZ. CAN 2 FOR 79¢</p>
---	---	--

Icicles 29¢ Pkg.

LARGE SELECTION NORTHERN NEW MEXICO BLUE SPRUCE - FIRS - BALSAM

\$7.99

DISCOUNT CHRISTMAS TREES!

FARM GROWN IN MICHIGAN SCOTCH PINE

PEOPLE TAD 4 TO 6 FOOT \$10.00

ORANGE TAD 5 TO 6 FOOT \$12.00

GREEN OR WHITE TAD 6 FOOT AND UP \$14.00

Lights 5 to Pkg. **65¢**

NEW SHIPMENT - JUST ARRIVED

HO! HO! HO!

SANTA GLASSES FOR COCA-COLA

CHRISTMAS SANTA CLAUS GLASSES

39¢

FILL THEM WITH YOUR FAVORITE SOFT DRINK WHILE SUPPLY LAST'S!

Sacred Heart Women's Guild Meets

The Sacred Heart Alter Society held their monthly meeting Dec. 14th in the Parish Hall beginning with their annual Salad Supper.

Following the meal the business meeting was held with Anita Sumner, President presiding.

Under old business a report was made by Faye Schmehr that the cook books were in and there were only 50 left.

The yearly collection of home-made goodies were to be brought to Mrs. Clementine Renner's home who will take them to the Panhandle Children's Home for Christmas.

Christmas Bake sale plans has been finalized for the 20th of Dec. at Cut-Rate. There will be a few Christmas gifts on sale at this time also. Tickets will be sold again at this time for an afghan made and donated by Clementine Renner.

Jan. 15th Father Roll will make a return visit to the Alter Society, speaking on the importance of the woman and mother. Father Roll is the head of the Arch-confraternity of Christian Mothers.

Under new business plans were made to fill and distribute Christmas baskets to needy shut in. Bernice Flores and Betty Morris are chairman of this project.

Family Affairs chairman, Jan Farr gave a report on the past national election, and up coming events on the Right to life calendar.

Jan. 4th at 7:30 will be the next monthly meeting date with Esmarelda Renteria. Lila West and Maria Pacheco as hostesses.

Father Ray Crosier closed the meeting with a brief Christmas message.

Meeting was adjourned. A gift exchange was held followed by bingo.

Bowling

12-15-78 PIN BNDUS	MILLIE CRAIG SIEZ	4-Tx, -G.	371/2	181/2	18478
Brock	35	21	187111	20340	28
Cinderella	33	23	18350	17399	29
Bowl Mor	28	28	19277	301/2	33
Vernon's	27	29	17695	17695	43
Super Ser.	251/2	301/2	16950		
McCGrain	23	33			
L.M.W.	13	43			

HI IND. GAME	Virgna Head	215
	Sandra Henrick	182
	Jo Larsen	184
HI TEAM GAME		
4-Tx, Grain	528	
4-Tx, Grain	502	
Cinderella	499	
HI IND. SERIES		
Shirley Greenwood	539	
Virginia Head	518	
Millie Craig	502	
HI TEAM SERIES		
4-Tx, Grain	1492	
Cinderella	1465	
McClellan Grain	1311	

Girl Scout News

Troop #42 met Friday, December 15 in the Brownie Hut for a Christmas party. The theme of the party was "International Holiday." The girls broke a pinata, played games and sang songs. Those present were Angelia Gaither, Mary Ann Evans, Sheila Brand, Kathy Love and the leader, Georgie Gaither.

Assault Charges Filed

A Spearman resident Jammie Pierce pleaded guilty Monday to Assault charges in Spearman Municipal court.

Police records indicate she was assessed a fine of \$200.00 plus court costs.

Deck The House With Greenery

Try decorating the plants that live at your house all year round for Christmas.

Tie a few featherweight red Christmas-tree balls, a few tiny red bows or lacy paper snowflakes and starflakes onto houseplant branches.

If you have a flourishing hanging plant, wrap the hanging wires with tinsel or strings of small Christmas-tree balls. You can swag drape strung popcorn or cranberries around the outside of the pot, and tuck a Christmas-tree ball or two in among the foliage leaves.

Cluster small, or large, potted plants beside a sofa, on a deep window sill, or at the end of an entrance hall. Remember too, a group of plants reflected in a mirror yields double the pleasure and double the money's worth.

A potted miniature boxwood tree can quickly be converted to a "jewel" tree when you decorate it with bright rings and earrings — not precious, but the kind of cheap and cheerful baubles and bangles that might well play dual decorative roles.

Arts & Crafts Guild News

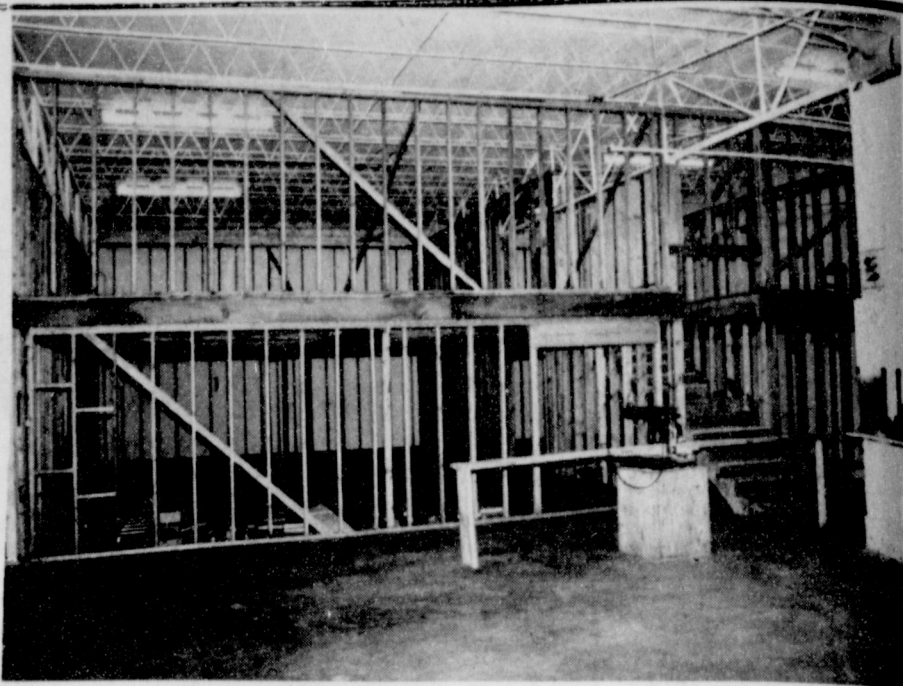
The Arts and Crafts Guild met Friday, December 15 in the home of Mrs. F. J. Hoskins. Each member exchanged a dinnere side plate for Christmas. Mrs. Garrett Allen and Mrs. Bill Gandy were co-hostesses.

The next meeting will be Friday, January 5 in the home of Mrs. Nolan Holt.

Those attending were Mmes. Garrett Allen, Deta Blodgett, Fred Daily, Guy Fuller, Bill Gandy, Clay Gibner, Nolan Holt, Fred Hoskins, P. A. Lyon, Sr., Bill Russell, Bruce Sheets, Joe Trayler, Ned Turner, Ed Hutton, and Kiff White.

Pinata Comes From Mexico

In Mexico the street vendors display their hand-carved religious figures, and beautiful tapestries are used as banners. Mexico is rich with tradition, and during Christmas the shepherds dress in colorful but grotesque outfits and dance and sing through the streets from house to house. The "pinata" is the children's favorite toy. The "pinata" is a gaily colored earthenware bowl in the shape of a face or an animal, filled with goodies such as fruit, candy, good-luck charms and peanuts. One after another each child is blindfolded and attempts to break the "pinata" with a stick. It is eventually broken, and the children dash to the ground to collect the goodies.



Construction continues on target as the new YMCA in Hansford County takes shape. The new recreational family facility will be of great service to all County residents. Board of Director's members hope to employ an Executive Director soon!

Rajan Martin Selected For Membership

Rajan Martin has recently been selected for membership in Omicron Delta Kappa at Texas Tech University, which is an organization composed of outstanding university students and faculty.

Omicron Delta Kappa was founded on Dec. 3, 1914 at Washington and Lee University, and at Texas Tech in January 1972. The threefold purpose of Omicron Delta Kappa is, firstly, to recognize men and women who have attained a high standard of excellence in collegiate achievement; secondly, to inspire others to strive for conspicuous attainments a-

long similar lines; and thirdly, to bring together the most outstanding men and women in all phases of collegiate life.

Omicron Delta Kappa recognizes and encourages achievement in five major areas of campus life; scholarship, athletics; student government; social and religious affairs; and speech; music, drama and other arts.

Selection to this circle is in recognition of Rajan's contributions to the university and to academic excellence.

She is the daughter of Mr. and Mrs. Ray Martin of Spearman.

Hansford Implement Christmas Party

The employees of Hansford Implement enjoyed a lovely Christmas party Friday, December 15 at the county barn. The meal was catered by Sutters of Borger.

After dinner, volleyball and dancing was enjoyed by all attending.

Those attending were Messrs

& Mmes. John Sutterfield, W. T. McAdams, Louis Miesner, Galen Coates, Frank Edwards, Vernon Witt, Mark Schoenhals, Jim McLain, William King, Gene Cudd, Mike Cudd, Nolan Winegarner, Charles Bartz, Joe Cage, Gordon Collins, Arlan Winegarner, Odell Fanning, Mr. Bill Whitson and Mr. Doug Brown.

GTE Employees Christmas Party

The GTE Christmas party was held Friday, Dec. 15 at 7 p.m. in the First Christian Church of Perryton. Employees from Spearman attending were the Del Baskin family, Joe Montgomery family, and the Tony Martin family. Other employees and families attended from Perryton, Stratford, Dalhart and Guymon.

"Going Away" gifts were presented to Paul Farrar, Customer Service Manager, Perryton, who is going to Oklahoma City; Bill Philley, Customer Service Specialist, Perryton, who is going to Purcell, Okla.; and Joe Montgomery, Customer Service Specialist, Spearman, who is going to Wheeler.

Santa Claus was present and handed out sacks of candy to the children. Each family brought a covered dish.

DOUBLESTAMPS!

UNITED SUPERMARKETS WILL

QUANTITY RIGHTS RESERVED

UNITED
Super Markets
Perryton, Texas

ELLIS 6 OZ. PKG. **\$1.29**

PECANS

OCEAN SPRAY CRANBERRY SAUCE	• WHOLE 16 OZ.	39¢
FINE FARE PEARS	HALVES 16 OZ.	2 FOR \$1
HUNT'S PEACHES	SPICED NO. 2 1/2 CAN	59¢
FINE FARE GREEN BEANS	WHOLE 16 OZ. CANS	3 FOR \$1
SMUCKERS MARSHMALLOW CREAM	7 OZ.	39¢
FISHER SPANISH RAW PEANUTS	12 OZ.	69¢
BLACKBURN'S CRYSTAL WHITE SYRUP	32 OZ.	69¢
TOM SCOTT MIXED NUTS	13 1/2 OZ.	\$1.09

WRIGHT'S DRY CURED SMOKED HAMS

WHILE SUPPLY LASTS

16 TO 20 LB. AVG. **\$1.49**

WHOLE LB.

32 OZ. BOTTLES
6 BOTTLE CRTN.

COKE

\$1.49

PLUS DEPOSIT

ADMIRATION

COFFEE

\$1.89

1 LB. CAN

MIRACLE

WHIP

16 OZ. JAR

69¢

DREAM WHIP TOPPING MIX 3 OZ. **69¢**

"HOLIDAY PAPER ITEMS"

DIXIE BIG ONE PAPER CUPS 18 CT. **69¢**

CHINET 10-3/8" PLATES 15 CT. **89¢**

CHINET LUNCH PLATES 40 CT. **\$1.29**

FINE FARE ALUMINUM FOIL 25' ROLL **39¢**

FINE FARE GOLDEN CORN WHOLE OR CREAM STYLE 3 17 OZ. CANS **89¢**

FINE FARE VEGETABLES MIXED 3 16 OZ. CANS

FINE FARE PEAS GARDEN SWEET 3 17 OZ. CANS

FINE FARE MUSHROOMS • WHOLE • PIECES 4 4 OZ.

FINE FARE SOUP CREAM CHICKEN 4 10 1/2 OZ. CANS

"TEXAS" Search For Talent To Begin

Canyon, Texas, December 15, 1978: The directors of "TEXAS" will begin their annual search for talent on January 6, 1979. The first audition is scheduled for the Christmas Holidays so that artists vacationing in the area will be able to attend.

The hearing will be at the Branding Iron Theatre on the campus of West Texas State University from 1 until 5 P.M. Dancers will be auditioned at 4 P.M.

The audition on Saturday the sixth of January will be the first of six dates when applicants for places in the famed musical drama will be heard. The others will take place between January 27 and March 4 and will take place in Dallas, El Paso, Austin, Lubbock and Canyon.

For information concerning the auditions for the show itself, call 806-655-2182 or write "TEXAS" Auditions, Box 268, Canyon, Texas 79015.

"PRODUCE"

CALF. NAVEL SIZE	ORANGES	LB.	39¢
WASH. EXTRA FANCY DELICIOUS	APPLES	LB.	39¢
GREEN PASCAL	CELERY	STALK	39¢
YELLOW	ONIONS	LB.	12¢

GOLDEN RIPE BANANAS 4 \$1

ZIPPER SKIN TANGERINES 3 \$1

POTATOES NO. 1 SWEET LB. 29¢

The Class of '58 cordially invites friends and families to attend a reception in their honor Saturday, December 23, 1978 2 to 5 p.m. Home Demonstration Clubroom 305 N. Bernice 6-1tc

Surprise Party Held For Mrs. Brandt

The TEL Sunday School class of the First Baptist Church had a special Christmas party Saturday afternoon. What made the annual affair so special was that they all helped celebrate with Mrs. F. W. Brandt on her 93rd birthday. The social was held in Mrs. Brandt's home. Class members and friends arrived at 2:00 p.m. surprising her with gifts and birthday greetings. Pastor and Mrs. Russell Pogue were special guests. He led in the reading of the Christmas story, taken from the book of Luke. Class members presented Mrs. Brandt with a new dress, fashioned by Mrs. Hazel Loftin. Mrs. Brandt is the oldest member of the Spearman church. Jewel Calvin Justice Brandt and her husband Fred Brandt operated a General Store at Old Hansford. The house she presently resides in was built at Old Hansford in 1915 and was moved to Spearman when the townsite moved. The old store building on Spearman's main street is in its original condition and is now occupied by Sack's 3rd Avenue. Refreshments of cake, punch and coffee were served by the class teacher, Mrs. Billy Miller. An exchange of Christmas gifts was enjoyed by: Ellen Hamilton, Esther Stewart, Eleanor Reed, Hattie Mackie, Verna Hutchison, Hazel Loftin, Alma Kizziar, Jewel Brandt, Pastor & Mrs. Pogue and Sybil Miller.

Letter To The Editor

Dear Friends in Spearman, Once again it is time to wish you a Merry Christmas and a happy new year! We didn't get to see you as often this year, since our boy was gone, but we felt we had many other boys & girls their to claim a part of. We have watched for your activities in the Amarillo paper and the Spearman paper. You could never realize how many clippings we've cut from the papers and tucked safely away. We feel you're a part of us, and in return, we hope you feel that way toward us. We saw our boys play Perryton and Childress. We saw our girls and boys play at Clarendon also, a little secret - we saw West Texas State University play Mississippi State, Arlington, and the home games. We shall ever be grateful to the coaches and wives who have invited us into their homes-plus the wonderful time we had eating hot rolls and homemade preserves at the Pogue's home. When Mr. Sherwood played in Amarillo we found ourselves there. We just had to be there when he was playing a game. Maybe you all aren't aware that Mr. Porter flew his plane to Kansas City to bring Mr. Newton home, after knee surgery. To Mr. Porter we shall ever be grateful. Well, we're just elated that you saw fit to let our two children, the Friemels, work in your wonderful school system. Our other two children, the Turners, are so graciously treated in so many ways. Molly has been in Washington two times with the W.I.F.E. organization. Phillip is so fine. Recently we just couldn't stand it longer, so I made cookies for "our" Jim, Mike, a Groom boy, Twane, and his roommate. That little old cute Ricky Collingsworth got to see Mr. Newton hide to grab Twane, and when he got one of the big colored boys instead. This happened at W.T. You've just all been so nice to us it brings tears of joy. There's gold in them "thar" hills, so will be back. We have 4

wonderful granddaughters and a host of friends. Love to All in Spearman. The Newtons

Presbyterian Church News

The Christmas story will come alive to you when you attend one of the Sunday Church School classes at the First Presbyterian Church at 9:45 a.m. You will find a friendly, well-prepared, enthusiastic teacher anxious to tell you all you wanted to know about Christmas.

"The Lord Is With You" will be the subject of Pastor Edward D. Freeman's sermon at the service for the public worship of God on Sunday, December 24 at 11:00 a.m.

"The Word of God Became a Human Being" will be the subject of Pastor Freeman's sermon at the candlelight communion service on Sunday, December 24 at 7:00 p.m.

In Christ, members of the First Presbyterian Church love and show concern for all the earth and every living creature on it.

The First Presbyterian Church wishes all the readers of the Spearman Reporter a blessed Christmas season and God's blessing on all family fellowships.

Rho Rho Sorority Meets

Rho Rho met Thursday, November 21 in the home of Candy Boxwell. The Christmas Luncheon and the raffle ticket sales were discussed. The members were reminded that Rho Rho is in charge of "Meals on Wheels" for the month of December. The group decided to sponsor a family for their Christmas Service Project.

Sherry Moore gave the program entitled "The Full Life."

Those attending were Mmes. Jackie Pearson, Penny Ralston, Marilyn Cline, Linda Blackman, Susan Pearson, Debbie Clement, Janie Henton, Delinda McLaughlin, Sherry Moore, Lisa Pipkin, Ginger Pittman, Jody Rex, Joan Brown, Linda Brown, Linda Sanders, Brenda Shieldknight, Dixie Smith, Gayle Smith and Candy Boxwell.

Rho Rho met December 14 in the home of Karen Blodgett for their Christmas Luncheon. The committee for the Valentine Ball was discussed. The Moyer girls will be their Christmas Project. Candy Boxwell asked for volunteers to take donations for the Salvation Army.

Joan Hill gave the program on "Health."

A secret sister gift exchange was then held.

The next meeting will be January 11 in the home of Linda Blackman.

Those attending the luncheon were Mmes. Karen Blodgett, Karen Schnell, Jackie Pearson, Penny Ralston, Marilyn Cline, Linda Blackman, Susan Pearson, Debbie Clement, Janie Henton, Delinda McLaughlin, Sherry Moore, Lisa Pipkin, Ginger Pittman, Jody Rex, Joan Brown, Linda Sanders, Brenda Shieldknight, Dixie Smith, Gayle Smith, Candy Boxwell, and a guest, Joan Hill.

Edna Parks Rites Held

Services for Mrs. Edna Parks, 60, were held at 4 p.m. Tuesday in First Baptist Church of Borger. Dr. Charles Thrasher, pastor, officiated. Burial was in Westlawn Memorial Gardens Cemetery by Ed Brown & Sons Funeral Directors.

Mrs. Parks died Saturday. She was born in Casper, Wyo., and had lived in Spearman prior to moving to Borger in 1952. The Parks' had a plumbing business in Spearman for several years.

She was a member of First Baptist Church. Survivors include her husband, Gordon; two sons, Gerald of Plano and Stephen of Laguna Beach, Calif.; two daughters, Mrs. Kitty Gaiser of San Antonio and Mrs. Dolores Dorsett of Denver; a brother, Phil Berg of Fall Brook, Calif.; and six grandchildren.

Spearman Music Club Meets

Spearman Music Club entertained with Christmas music at the meeting of the Spearman Rotary Club on Monday noon at Martin's Steak Garden. Under the direction of Mary Brock they sang "Because Its Christmas," "The Christmas Candy Calendar," "White Christmas" and "I Cannot Understand God's Love."

New officers for 1979-80, to take office on July 1, 1979 elected Monday are John R. Collard, Jr., president; Larry Murphy, vice-president; Don Wirsdorfer, secretary-treasurer; Robert Elliott, Jack McWhirter, Coy Palmer, and Gary Sims, directors.

There will be no Rotary on Christmas Day or New Year's Day. The next meeting will be Monday, January 8.

Members present were Carrie Marie Berry, Eschol Blankenship, J. L. Brock, Kim Brock, John R. Collard, Jr., Pete Fisher, Ed Freeman, Ed Garner, Kerry Henton, John Hutchison, Edwin Limbocker, Junior Lusby, Jack McWhirter, Jim McLain, Larry Murphy, Frank Oglesby, Coy Palmer, Jim Shirley, Lenis Simpson, Gary Sims, Vance Snider, Jerry Taylor, Don Wirsdorfer, Steve Wisniewski, and Tim Woodington.

Members absent were Roy Bulls, Archie Burgess, E. J. Copeland, Robert Elliott, Mario Manese.

Guests present were Rotarian Kenneth McKay of Perryton and L. S. McLain of Spearman.

Girl Scout News

The Girl Scout Neighborhood party was held Friday, December 15 at the Brownie Hut from 6:00 til 8:30 p.m. Each leader brought a gift for each girl in their troop. Each girl and leader brought socks to be sent to Girlstown. Refreshments of cookies and punch were served. Girl Scout Troop #42 served at the refreshment table. The Cadets handed out the Christmas gifts to those attending. Jennifer Umphress played the guitar and led the group in the singing of Christmas Carols.

Each troop was represented and all of the leaders attended. Leaders present were Mmes. Sandra Eaton, Carolyn Ring, George Gaither, Betty Love, Joy Hanson, Margaret Evans, Vicky Bullard and Hester Crawford.

Troop #99 met Monday, December 18 in the Brownie Hut. The girls learned the third Brownie Law - "To Be Cheerful."

They wrapped their Christmas presents for their parents.

This will be their last meeting until after the Christmas and New Year holidays. Each girl was presented a Santa Claus glass filled with candy from their leader and her assistants, Vicky Bullard, Hester Crawford and Lynda Hendricks.

Girls attending the meeting were Melissa Beck, Melissa Bullard, Jennifer Reiner, Misha Lesley, Jan Crawford, Kathy Vanlandingham, Sherry Hall, Beatrice Lozano, Vicky Hamilton, Colleen McCormick and Patty Younger. Jennifer Reiner served refreshments.

Post Office To Close Christmas

The Spearman Post Office will be closed Monday, December 25, in observance of Christmas Day.

To afford all employees the opportunity to spend Christmas Day with their families, there will be no in-coming or outgoing mail service.

T. Ray Robertson Postmaster

Tax Up 16% Over 1977

The City of Spearman's sales tax check for December will be \$16,439.98 compared to 1977's \$12,780.15, according to a release from State Comptroller Bob Bullock.

Total payments for 1978 to date are \$110,584.77 compared to \$94,639.37 for the same period last year, up some 16%.

Our neighboring city of Gruver will receive a check for \$4,244.25 for this period compared to \$3,980.87 for the same period last year. 1978 payments to Gruver are \$21,649.47 compared to \$23,212.79 for the same period last year, down 6%.

THURS. THRU SUNDAY! DOUBLE THRU' SUNDAY DEC. 24TH BE CLOSED DEC. 25TH (MON.) SHOP 'N SAVE!

"SHOP UNITED FOR THOSE HOLIDAY MEATS"

ROAST BONELESS SHOULDER	WASTE FREE BEEF	LB.	\$1.49
STEW BONELESS	"EXTRA LEAN" CUBES OF BEEF	LB.	\$1.49
STEAK BONELESS SIRLOIN	TRU-TENDR BEEF	LB.	\$1.98
STEAK BONELESS CUBED	WASTE FREE BEEF	LB.	\$1.98
SAUSAGE UNITED'S PORK	LEAN COUNTRY STYLE	LB.	98c
ROAST FRESH PORK	SWIFT'S TENDER LEAN BOSTON BUTTS	LB.	\$1.29
STEAK SWISS ARM CUTS	UNITED'S TRU-TENDR BEEF	LB.	\$1.49
GROUND BEEF	FAMILY PACK	LB.	98c
HENS BLUE BONNET BAKING	5 TO 7 LB. AVG.	LB.	69c
TURKEYS SMOKED	COUNTRY PRIDE 8 TO 10 LB. AVG.	LB.	\$1.29

UNITED HAS A WIDE SELECTION OF BUTTERBALL TURKEYS, COUNTRY PRIDE TURKEY BREAST, COUNTRY PRIDE DUCKS & GESE, FRESH OYSTERS

FARMLAND CANNED HAMS BONELESS-FULLY COOKED 3 LB. CAN \$5.98 5 LB. CAN \$9.98

UNITED'S TRU-TENDR BEEF

BONELESS HAMS WILSON'S CERTIFIED
WHOLE 8 TO 10 LB. \$1.98 LB. AVG. HALVES 4 TO 5 LB. \$2.19 LB.

KRAFT PHILADELPHIA CREAM CHEESE
8 OZ. PKG. 59c

FINE FARE GRADE "A" SELF BASTING TURKEYS
10 TO 22 LB. WHILE SUPPLY LASTS 79c

SCHILLING BLACK PEPPER 4 OZ. 89c

SCHILLING SPICES SEASONING 7.5 OZ. 59c *SAGE 3.4 OZ. 69c

CAMPFIRE MARSHMALLOWS MINIATURE 16 OZ. 29c

COMSTOCK PIE FILLING MINCEMEAT 79c

FINE FARE APPLE SAUCE 16 OZ. 39c

FINE FARE PINEAPPLE JUICE 46 OZ. 79c

LIBBY'S PUMPKIN PIE MIX 29 OZ. 59c

"FROZEN" JOHNSTON PIE SHELLS 2 CT. 49c

JOHNSTON PIES PUMPKIN 26 OZ. 69c APPLE 26 OZ. 89c

FINE FARE WHIPPING TOPPING 9 OZ. 49c

BELL ROUND 1/2 GAL. ICE CREAM \$1.29

STILLWELL SLICED STRAWBERRIES 16 OZ. \$1.09

"DAIRY" BELL EGG NOG QT. 69c QUANTITY RIGHTS RESERVED

BELL WHIPPING CREAM

BELL SOUR CREAM

BELL DIPS

3 for \$1 8 OZ. CRTNS.

UNITED Supermarkets Perryton, Texas PRICES GOOD THRU DEC. 24TH

Tax Up 16% Over 1977

The City of Spearman's sales tax check for December will be \$16,439.98 compared to 1977's \$12,780.15, according to a release from State Comptroller Bob Bullock.

Total payments for 1978 to date are \$110,584.77 compared to \$94,639.37 for the same period last year, up some 16%.

Our neighboring city of Gruver will receive a check for \$4,244.25 for this period compared to \$3,980.87 for the same period last year. 1978 payments to Gruver are \$21,649.47 compared to \$23,212.79 for the same period last year, down 6%.

Y Open House Success

Scores of Hansford County residents toured the new Y facilities at the site of the former Spearman Community Building this past Sunday afternoon. Y President Jim McLain said that he was pleased with the response on the part of the community. McLain and his corps of Directors were on hand to greet visitors and to explain the future functions of the Y.M.C.A. in the County. Many of the visitors were excited about the new equipment that had been purchased to serve the planned sauna and spa to be part of the facility. McLain stated that some fifteen applications had been received from prospective Executive Director applicants. It is hoped that a decision will soon be made on a successful applicant for the post. The YMCA target date for completion of the facility is April 1.

Away In A Manger:

Although scholars dispute the point, many believe that this carol was written by Martin Luther for his children, and it is often called LUTHER'S CRADLE HYMN. There are several different melodies for the lyrics.

It's Christmas Count Down Time ...

At LIL' LYNX !!!

Dec. 21st., 22nd., 23rd.

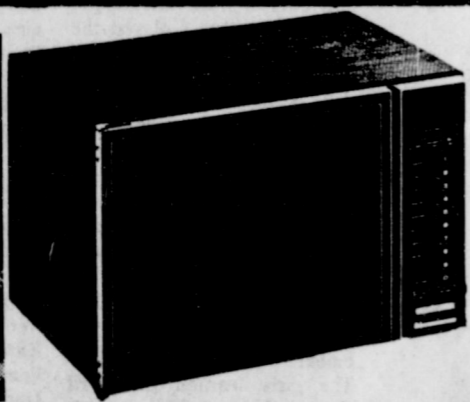
The "Ole Fashioned"

Christmas Sale Continues !!!

30% Off All Dresses And Coats

MAKE THIS A MERRY
MERRY LIL' LYNX
HOLIDAY

★ ATARI ★ Video Games



May the true meaning of Christmas be made known to all mankind.

Litton & Whirlpool

Microwave Ovens Cost ↓ 10%

Now Thru Dec. 23

LITTON	WHIRLPOOL
419 Reg. '449 ⁹⁵ - '359 ⁹⁵	7200 Reg. 399 ⁹⁵ - 299 ⁹⁵
425 Reg. '399 ⁹⁵ - 319 ⁹⁵	7400 Reg. 459 ⁹⁵ - 429 ⁹⁵
445 Reg. 459 ⁹⁵ - 379 ⁹⁵	7600 Reg. 529 ⁹⁵ - 429 ⁹⁵
455 Reg. 489 ⁹⁵ - 399 ⁹⁵	7800 Reg. 639 ⁹⁵ - 499 ⁹⁵

SDF 3700
Reg. 319⁹⁵
Sale 259⁹⁵

Save Whirlpool Portable Dishwashers

Ideal Xmas Gift For Mom

SDF 7800
Reg. 399⁹⁵
Sale 329⁹⁵

Console Stereo's AM-FM-Phone-FM Stereo 8 Track Player-Recorder

Only '279⁹⁵

A Few 1978 RCA Color Televisions At Close-out Price

HAPPY HOLIDAYS TO ONE AND ALL
SPEARMAN ELECTRONICS
313 Main 659-3858

Not Where, But...

When Was Christ Really Born

Christmas in medieval England was called "CHRISTES MASSE," until it acquired its present spelling. The day is still known in many European countries as "CHRIST'S BIRTHDAY" and is called NOEL by the French, NATALE by the Italians, WEIHNACHT by the Germans, and YULEN JUL by the Scandinavians. Most scholars agree that December 25th is most certainly not the anniversary of the Savior, and that He was not born in what we now measure as 1 A.D. The custom of celebrating Christ's birthday on December 25th originated in Rome in the fourth century of the Christian Era, some say in 354 A.D. The Roman monk Dionysius Exiguus, who made the calendar in the sixth century, probably misplaced A.D. 1 by at least six years. Herod the Great, according to the current Gregorian calendar, died in 4 B.C. He is said to have put to death the boy babies in Bethlehem who were two years old and younger. The first Christmas may have been as early as 6 B.C. H.W. van der Varr Smit, the evangelical minister who was converted to Catholicism, in his "Born in Bethlehem; Christmas as It Really Was" notes that there was a conjunction of the planets Saturn and Jupiter in 7 B.C. This could have been the "Star of Bethlehem." In finally choosing December 25th for Christmas, the early church fathers probably were not unmindful that the Roman feast week of the Saturnalia ended on December 24th, after which some purification of the soul would be in order. Worshippers of the Persian god Mithras celebrated December 25th as the advent of the sun. The place of Christ's birth is much better established than the time. If you went to Bethlehem this Christmas and asked to see where Jesus Christ was born, the inhabitants would direct you to a small grotto, or cave, beneath the Church of the Nativity. A history sponsored by the United Nations Educational, Scientific, and Cultural Organization fixes the year of the Savior's birth at 6 B.C.

Shopping Plan Cuts Hassle

If Christmas has become that time of year when it is more painful to give than receive, it's time to change your shopping habits. You could be frantic over what to give, frustrated by the crowded stores and traffic jams, and filled with indecision, panic and exhaustion.

Some ideas follow that may make your shopping more simplified, and keep you more relaxed.

—Shop on weekday mornings. Be there when the store opens and leave before the lunchtime crowd hordes in at noon. If you work, try and arrange to take an early lunch hour. Wednesday is supposed to be the least crowded day, and in general, all nights are very bad.

—Instead of torturing yourself by wondering whether the selection is better at another store, choose one good store and buy everything there.

—Take along your personal gift cards when you go shopping and let the store do your mailing. The store is better equipped than you to mail out-of-town packages. The extra cost is a bargain considering wrapping paper, string, insurance and time. As well as, you escape standing in long lines at the post office.

—The quality of mail-order shopping is higher than previous years and it is time saving to shop by mail.

—How about giving something fresh and new? Something unexpected like tickets to a concert, tennis or bridge lessons or an artistic effort of your own?

Don't Let Those Christmas Blues Ruin Holiday

A common seasonal syndrome is characterized by feelings of grumpiness, depression and unhappiness before, during and particularly after the holiday season. Psychologists say there can be many reasons for the "Christmas blues."

One simple explanation is that people are just busier at Christmastime and the increased activity causes stress. Another theory holds that Christmas is traditionally the major family gathering time.

We are together more and there are more opportunities for conflict as much as there are opportunities for relationships to improve. The family gathering reactivates not only old pleasant memories but old unpleasant memories as well.

There is also reactivation of griefs, losses and broken attachments. A recent divorce, for example, disturbs established rituals. Memories of deceased loved ones are rekindled. This can make Christmas a time of sadness.

People often unrealistically expect the holiday season to change things in their lives and when the expectations don't materialize there is disappointment and depression.

To combat the Christmas blues and let-down feelings we basically have to recognize reality and realize that things don't change that much because of the season of the year.

The Ultimate Christmas Gift

In our era of spiraling costs, we can easily buy gifts beyond our budgetary limits. Perhaps we all overspend at Christmas, unaware of the preciousness of gifts money cannot buy.

There are some things we would like to give but cannot afford. But all of us can give friendship to those who need it; loyalty to those who depend on us; courage to all those with whom we come in contact; kindness to those whose this may cross ours; understanding to those whose views may not be exactly in accord with our own opinions.

Great Songs of Christmas And How They Came To Us

O Come, All Ye Faithful (Adeste Fideles):

This is one of the oldest hymns in the Christmas service, the first manuscript known to scholars dating from 1751, although the melody is in fact much older. The translation of the Latin words now used in English-speaking countries was made in 1852.

The First Noel:

This carol is believed to be of French origin, probably about 1500, although no one is really certain. Sometimes "Noel" is used, sometimes "Nowell" in the old English usage. Europe knew the song in the seventeenth century, but it made its first known appearance in print in 1883.

Joy To The World:

Lowell Mason arranged the music for this carol in 1830, using a theme from the "Antioch" portion of Handel's Messiah. The words were written in 1719 by Isaac Watts, who did not intend them to apply to any special part of the church calendar.

Holiday Lights Should Be Safe

When you buy lights, look for the Underwriters Laboratories certification that they have been checked for safety.

Any outdoor lights should be weather-proof and clearly designed for outdoor use; even these lights are not designed to withstand prolonged exposure. Unplug all lights before you go to bed or leave the house.

Don't put more than three sets of lights on any extension cord. Keep connection joints away from any water.

Check all old sets of lights before you use them. Look for frayed wires, loose connections, broken or cracked sockets and spots where bare wire is exposed. Any set that is damaged should be thrown out if it can't be repaired.

Merry Christmas

THE BROCK INSURANCE AGENCY

We wish for you a happy holiday. May Christmas bring all good things to you.

SPEARMAN SAYS

HAPPY HOLIDAYS TO ONE AND ALL

Come And Join Our Staff

Friday Dec. 22, 10 - 2 P.M.

For Some Holiday Refreshments

Sharing The Meaning Of

This Festive Season

With You

CAPROCK INDUSTRIES

MERRY Christmas

GRUVER, TEX.



SERVING AGRICULTURE IN THE GOLDEN SPREAD

THANKS IT'S Clients

for Their

Continued Patronage in 1978

As We Share Together In The Opportunities And

Challenges In The Year Ahead

May Our Success Be Mutually Shared

SEASONS GREETINGS



Happy Holidays

Caprock Industries



Rejoice, for Christ is born, unto all men God's precious gift of love.



Make the holiday season even more special this year with festive treats made in the microwave oven. Tested by Whirlpool home economists, these easy recipes are a great addition to a buffet table. Or place them in a decorated gift box for that personal touch. They take only minutes to make, so you can spend your precious holiday time with family and friends.



CRYSTALLIZED ORANGE NUTS
total cooking time: 14 minutes
1 c. orange juice
1 c. sugar
2 c. pecan halves

Combine sugar and orange juice in a 2-qt. (12x7) glass baking dish and mix well. Stir in pecans. Cook on MEDIUM HIGH for 6 minutes. Stir and continue cooking for 8 minutes until syrup crystallizes. Spread and separate glazed nuts on buttered cookie sheet. Cool.

CHRISTMAS WREATH COOKIES
total cooking time: 3 minutes
20 large marshmallows
1/2 c. margarine
1 t. green food coloring
6 c. corn flakes
Red cinnamon candies

In a 3-qt. glass mixing bowl, melt butter and marshmallows on HIGH for 3 minutes or until marshmallows are melted. Add food coloring and mix well. Add corn flakes and mix until all flakes are coated with syrup. Form cookie into a ball the size of a golf ball, then shape into a wreath. Place on waxed paper and decorate with cinnamon candies while still warm. If mixture cools before all wreaths are made, put back into the oven and heat for 30 seconds on HIGH.

CRANBERRY BREAD
total cooking time: 13 minutes
2 c. all-purpose flour
1/2 t. salt
1/2 t. baking powder
1 egg
1/2 c. white sugar
1/2 c. brown sugar
1 c. buttermilk
1 c. chopped cranberries
1/2 c. chopped nuts
1 t. cinnamon
1 T. sugar
topping:
2 t. sugar
1 t. cinnamon
1 T. chopped nuts

Chop cranberries; add 1 T. sugar and 1 t. cinnamon. Set aside. Sift flour, salt, and baking powder together. Beat egg and sugar until light and fluffy. Slowly add dry ingredients, alternating with buttermilk. Add cranberry mixture and nuts. Pour into an 8" greased glass tube pan. Combine topping ingredients and sprinkle on top. Cook on MEDIUM for 12 min., rotating dish 1/2 turn twice. Cook on HIGH for 1 min. or until bread tests done. Cool for 10 min. Invert on plate, then turn bread "topping side" up.

MICRO TIP: What's quick, easy and gets a smile? Whirlpool home economists think it's caramelized apples made in the microwave oven. Just place unwrapped caramels from a 14-oz. package into a deep 1-qt. bowl. Warm, uncovered, at HIGH for 2 1/2 minutes, stirring often after 1 minute. Insert sticks into 6 apples; dip into hot melted caramel to coat. Place on buttered waxed paper to cool. Sprinkle the paper first with chopped nuts or coconut if desired.

KV-26

TG&Y® Merry

CHRISTMAS ONE GROUP OF TOYS 25 to 50% OFF



<p>3 roll Foil Wrap 26" wide, 24 Sq. ft. 77¢</p>	<p>Jumbo Gift Wrap 24" wide, 45 Sq. ft. .83</p>	<p>25 ct. Star Bows 3/4" ribbon stickon bows. Many colors. .43</p>
<p>3 roll Gift Wrap 26" wide, 30 Sq. ft. 77¢</p>	<p>Jumbo Foil Wrap 26" wide, 30 Sq. ft. .83</p>	

<p>TG&Y Family Napkins 1401 ply Napkins (13in. x 12.25in) 159 sq.in. 2/1.00</p>	<p>China Foam Platter 8 divided platter 11 1/2in x 8 3/4in Soak proof. Cut resistant 77¢</p>	<p>HI-DRY paper towels 85SQ. FT. 102 2-ply Paper towels 2/1.00</p>	<p>STYRO cup 51 ct. 6.4 oz. cups 47¢</p>
---	--	--	--

<p>TG&Y Professional Hair Dryer 1200 watt professional type hair dryer with directional piece. 3 settings, 2 speeds.</p>	<p>CONAIR No. EHK/R88 Hair Dryer Powerful 1000 watts with 2 settings.</p>	<p>Dry Curling Wand No. 2321 Creates lasting curls with gentle heat. Insulated cool tip. Slim design. Heel rest.</p>	<p>MIST Curling Wand Instant steam, cool tip & swivel cord.</p>
YOUR CHOICE \$8.00		\$3.99	\$5.99

<p>MIDLAND 77-101B 39.97</p>	<p>AM Mobile Transceiver Features plug-in DC power cord for easy removal, and more.</p>	<p>SIDEKICK #3T50 4" AC/DC Black & White TV 117.00 Has built-in handle, and telescoping antenna. Includes earphone and AC adapter.</p>	<p>Floor Model Speakers 9" Cable with connector. REG. 117.00 Removable foam front. 25" Pr. Wall. \$99 Pr.</p>
--	--	--	---

STEREO PHONOGRAPH
Featuring an AM/FM radio, dust cover, turntable, rotary controls and two matching speakers.
Reg. 88.99 **68.00** Set

SOUNDESIGN®
Music Box Console
A 20" Mediterranean style cabinet, with AM/FM radio, stereo record changer and side-firing 5" wide range speakers.
99.00

<p>POLAROID SX - 70 \$5.57</p>	<p>POLAROID TYPE 108 \$5.09</p>	<p>POLAROID TYPE 88 \$4.27</p>	<p>POLAROID TYPE 88 2 pks \$8.44</p>	<p>POLAROID ONE STEP \$26.88</p>	<p>POLAROID MINUTE MAKER 9.99</p>
--	---	--	--	--	---

TG&Y'S ADVERTISED MERCHANDISE POLICY—TG&Y's policy is to always have advertised merchandise in adequate supply in our stores. In the event the advertised merchandise is not available due to unforeseen reasons, TG&Y will provide a Rain Check, upon request, in order that the merchandise may be purchased at the sale price when it becomes available, or you may purchase similar quality merchandise at a similar price reduction. We will be happy to refund your money if you are not satisfied with your purchase. It is the policy of TG&Y to see that you are happy with your purchases.

PRE-CHRISTMAS CLEARANCE

at your Spearman

TG&Y®

family centers

521 HWY. 207 S. SPEARMAN OPEN: 9 A.M. - 9 P.M.

Selected GROUP Christmas Decorations at 1/2 Price

Lights
Garlands
Christmas Cards
etc...

PRICES GOOD THRU DEC. 23rd Your best buy is at TG&Y!

Moose Lodge Burglars Get Cash And Liquor!

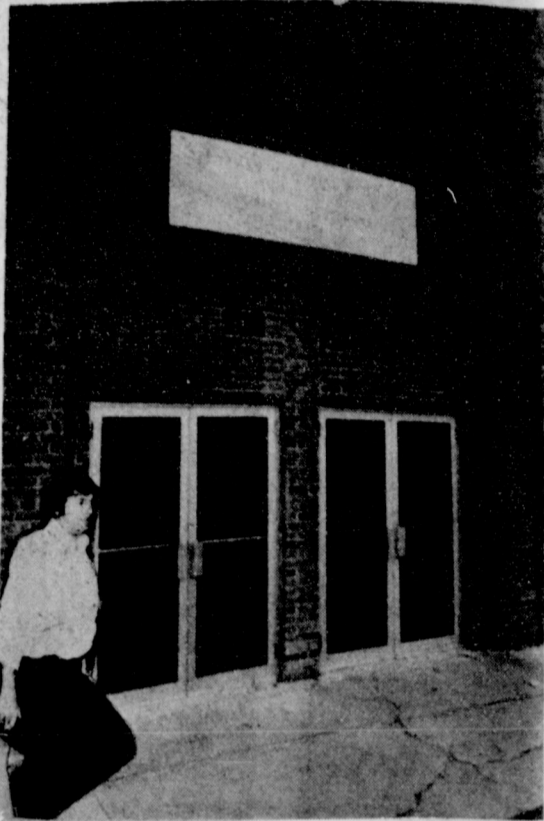
Spearman Police are investigating an early Sunday morning burglary of the Moose Lodge. The Burglary reportedly took place according to Police Chief Steve Wisniewski between 2 A.M. and 11:30 A.M., Sunday.

The burglars gained entrance by prying open a door. A large amount of Cash was taken along with a quantity of liquor from the private club.

The thieves also broke into the cigarette machine and the filing cabinet taking some records from the Lodge.

Police Chief Wisniewski said that some fingerprints have been lifted from the burglary and that there was "other evidence" that is being checked.

According to the Police official "suspects are being eliminated."



Scores of area residents visited the new Hansford County YMCA facility Sunday. Jim McLain, Board President shows off the new doors. The "Y" Should open April 1.

One Color Scheme Gift Wrap Idea

Organize the task of gift-wrapping and save your nerves and your pocketbook. If you choose one color scheme and stick to it, your packages will look more individual as well as escape ribbons and papers that don't match each other.

A large size roll of plastic tape in a heavy dispenser is a good investment. It is much less expensive and less troublesome to buy one large roll of paper than to invest in costly packaged papers. Often the two square sheets in a package turn out to be too small or too large for your packages.

Large yardage belts of ribbon are more satisfactory and cheaper than ribbon measured in feet.

IRISH LEGEND

The term "Bacchanalian Revelry" often applies to holiday celebrations. Ivy is intertwined in the history of Bacchus, for ivy was the Wine God's crown.

Legend tells us how it was introduced into Ireland. When Bacchus was traveling through the western lands he visited Ireland, and fell in love with its lush, green, charm and beauty. When the time came for him to leave the country, he decided to plant the ivy as a living souvenir of his affection for the Emerald Isle.

Basket Your Gift For Extra Touch

Everybody likes baskets and most department stores as well as dime stores feature a variety of baskets, all sizes and shapes.

Choose baskets to accommodate the sizes of your gifts. Put your present, unwrapped except for plastic protection, inside the basket and then decorate the basket.

Almost any kind of decoration can be wired to a basket, they look very festive and don't fall apart when being delivered.

Tie baskets with red ribbons, which can be run through the wicker like beading and finished with bows. Wire small sprays of holly, mistletoe, pine or other greens into the basket with fine wire.

ORANGE SHERBET SALAD

- 2 (3-ounce) packages orange gelatin
- 1 (3-ounce) package lemon gelatin
- 3 cups boiling water
- 1 pint orange sherbet
- 1 large can mandarin orange slices, drained
- 1 large can crushed pineapple, drained

Dissolve orange and lemon gelatin in the 3 cups boiling water. Add the drained mandarin oranges, pineapple and the orange sherbet. Stir until sherbet melts. Chill until firm.

Merry Christmas

Try "Clusters" This Holiday

Remember the "cluster" theory for highly effective decorations. This means that multiples, or clusters, of almost anything are far more dramatic than a single object, or even two. Cluster candles of all shapes and sizes to get optimum effect. Cluster tiny potted poinsettias or mums on a big platter or a low ceramic bowl for a centerpiece. Mass pots of flowers under a glass-topped dining or console coffee table or fill an untreated window with a whole blizzard of snow-white chrysanthemum plants, or red tulips.

Buyer Beware

Watch out for last-minute Christmas sales — an overstocked merchant will announce a "madness Type sale" to clear his shelves. Shoppers buy "bargains" that turn out to be junk.

Hurried and harried shoppers caught in the Christmas crunch are easy prey for merchandising gimmicks and dishonest salesmen. Often the products they peddle are an example of crass commercialization. Our only real defense for discriminating consumers: BUYER BEWARE!

Helpful Hints For Christmas

1. Empty egg cartons make excellent storage boxes for your small tree ornaments.
2. Before children play with new games they receive for Christmas, tape directions inside the lid.
3. Save plastic dry cleaning bags for packing things to be mailed.

Control rats and mice without poisons.

And many other insects. Get the Eliminator 500

Kiff E. White

Box 483

Phone 659-2092

Spearman, Texas



BURGLAR TIME

December is one of the favorite months for burglars. Burglars are attracted not only by homes loaded with gifts, but the added hours of darkness when they can work unnoticed.

When you go out, leave a light inside. Don't close your draperies completely; they make a good screen for a burglar's activities. Make sure all doors, especially those leading into the house from patios are well lighted after dark and locked at all times. An open garage door is a sure sign that no one is home — the door or doors should be down and locked.

Matthew 2: 1-12: The Three Kings

When they had heard the King, they departed, and, lo, the star, which they saw in the east, went before them, till it came and stood over where the young child was. When they saw the star, they rejoiced with exceeding great joy. And when they were come into the house, they saw the young child with Mary his mother, and fell down, and worshipped him: and when they had opened their treasures, they presented unto him gifts; gold, and frankincense, and myrrh. And being warned of God in a dream that they should not return to Herod, they departed into their own country another way.

Receipts at the Texhoma Livestock Comm, Co, this week was 4,301-cattle and calves. Buyers very aggressive throughout the auction. Good to choice calves steady to strong. Plainer kind would be some lower. Feeder steers 600# to 750# \$2,00 higher. Steers over 800# steady with last week. Feeder heifers \$1,00 to \$1,50 higher. Packer cows 38,00 to 45,00. Mostly 40,00 and up. Bologna Bulls 48,00 to 55,00. Steer calves 300# to 500# 70,00 to 96,00. Heifer calves 300# to 550# 62,00 to 75,30. Feeder steers 600# to 750# 68,00 to 70,30. Feeder heifers 600# to 700# 59,00 to 63,90. For next Thursday, December 21, we are expecting 3000 cattle of all classes.

YOUR DEPENDABLE LIVESTOCK AUCTION
TEXHOMA LIVESTOCK COMM., CO, INC.
P. O. BOX 70 TEXHOMA, OKLA. 73949
PHONE 405-423-7511 & 423-7512

CATTLE DEPARTMENT -- LLOYD GOODNER & RAYMOND CHOATE
GOODNER RESIDENT PHONE--405-423-7427

American Agriculture

Tractorcade

Informational Meeting

Fri. Dec. 22, 8:00 P.M.

YMCA (Old Community Bldg)

Spearman

Gerald McCathern

Speaker

"Y'all Come!"

Refreshments Served

We wish to friends and patrons the blessings and joy of this great holiday.



MERRY CHRISTMAS

TG & Y

family centers

521 HWY. 207 S. SPEARMAN OPEN: 9 A.M. - 9 P.M.

AAM Leader To Speak In Spearman

The local office of the American Agriculture Movement (AAM) announced today that Gerald McCathern, of Hereford, Texas, will be in Spearman to speak at the YMCA (Old Community Bldg.); at 8:00 p.m. Friday night, Dec. 22.

Mr. McCathern has been a very active, articulate spokesman for AAM, both on the state and national level. By common consensus, he is recognized as "Mr. AAM" in Texas, and is the Texas representative in the National Delegate Assembly of AAM.

He is a very mild-mannered, but determined, spokesman for agriculture, who knows what he thinks and why he thinks it. If you have wondered what the American Agriculture Movement is really all about, this will be an excellent opportunity to find out. Your friends and neighbors in AAM cordially invite you to come hear Gerald next Friday night.

Cakes Take The Spotlight

APPLESAUCE CAKE

- 1/2 cup shortening
- 1 cup sugar
- 1 egg
- 1 cup thick strained unsweetened applesauce
- 2 cups sifted cake flour
- 1 tsp. salt
- 1 tsp. soda
- 1 tsp. baking powder
- 1 tsp. cinnamon
- 1/2 tsp. allspice
- 1/2 tsp. nutmeg
- 1/4 tsp. cloves
- 1 cup light or dark raisins
- 3/4 cup chopped nuts
- Whipped cream
- Grated orange rind



Cream the shortening and sugar together thoroughly. Add egg, and beat well. Blend in applesauce. Sift together cake flour, salt, soda, baking powder, cinnamon, allspice, nutmeg, and cloves. Blend dry ingredients into the creamed mixture gradually. Stir in raisins and chopped nuts. Turn batter into a greased 8-inch square pan. Bake in a moderate oven (350 degrees F.) for 50 to 60 minutes. Let cool in pan. Then cut cake in squares, and serve topped with sweetened whipped cream flavored with a bit of grated orange rind.

Christmas Cooky Jar Recipes

OATMEAL 'FRIDGE COOKY

- 1/2 cup soft shortening
- 1/2 cup sugar
- 1/2 cup brown sugar (packed)
- 1 egg
- 1/2 Tbsp. grated lemon rind
- 1 1/2 Tbsp. molasses
- 1/2 tsp. vanilla
- 1/2 cup (3/4 cup plus 2 Tbsp.) sifted enriched flour
- 1/2 tsp. soda
- 1/2 tsp. salt
- 1 1/2 cups rolled oats, quick or regular (uncooked)

Combine shortening, sugar, brown sugar, egg, grated lemon rind, molasses, and vanilla, and mix together thoroughly. Sift together and stir in flour, soda, and salt; then stir in rolled oats. Shape mixture into a roll about 5 inches long and 2 1/2 inches thick. Chill thoroughly for several hours or over night. Slice thin (about 1/8-inch), using a sharp knife, and arrange on lightly-greased baking sheets. Bake in a moderately hot oven (400 degrees F.) for 8 to 10 minutes. Makes 2 1/2 to 3 dozen.

Tangy Corn Salad

- 1/2 cup white corn syrup
- 1 1/2 cups sugar
- 1 cup vinegar
- 1 quart sauerkraut, drained
- 1 (1-pound) can whole-kernel yellow corn
- 1 green pepper, chopped
- 1 canned pimiento, chopped
- 1 small onion, chopped
- 1 1/2 cups chopped celery

Mix syrup, sugar and vinegar. Add vegetables and let stand in refrigerator 24 hours - or overnight. Serves 10-12.

hang over sides slightly; butter lightly.

2. In top of double boiler, over hot, not boiling, water, melt chocolate. Add condensed milk, nuts and cherries; mix well.

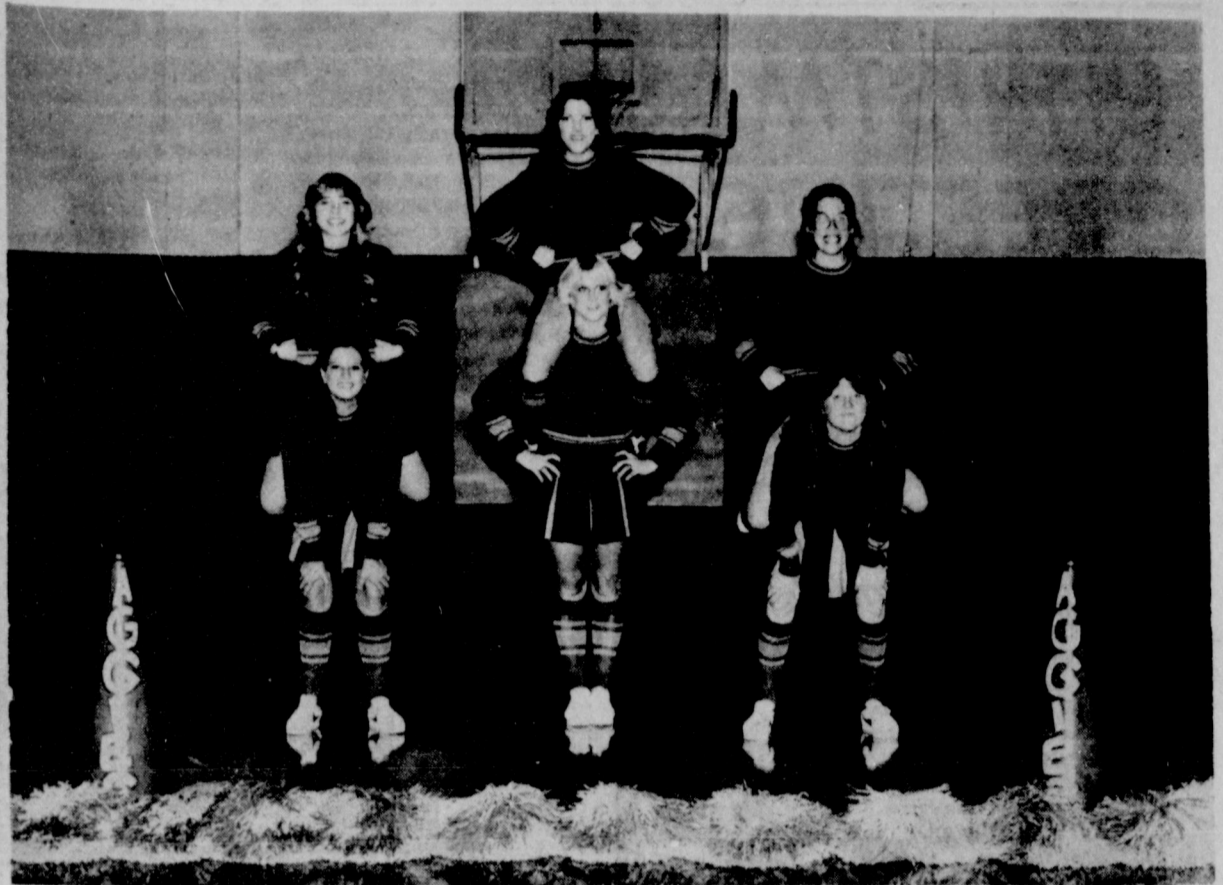
3. Turn into prepared pan. Refrigerate several hours, or until firm. To turn out of pan, grasp paper and remove fudge in one block. Cut into squares. Makes 2 pounds.

YULETIME CANDY RECIPES

Holiday Chocolate Fudge

- 2 pkg (6-oz size) semisweet chocolate pieces or 1 pkg (12 oz) semisweet-chocolate-flavor pieces
- 1 can (14 oz) sweetened condensed milk
- 1 cup walnuts, coarsely chopped
- 1/4 cup candied cherries, coarsely chopped

1. Line a 9-by-5-by-3-inch loaf pan with waxed paper. Let paper



These six Panhandle State University cheerleaders were elected for the 1978-79 basketball season. Cheering for the Aggies are: Front row (l-r) Kathy Kletcha, Guymon; Kelie Patee, Beaver; Nancy Taylor, Goodland, KS.

Sunray, TX; Karen Dennis, Spearman, TX. Back row (l-r) Kathy Kletcha, Guymon; Kelie Patee, Beaver; Nancy Taylor, Goodland, KS.



For on this night, Christ is born. Let the world rejoice.

Spearman Jewelry

310 Main

659-2841

WE NEED LISTINGS **CALL ANYTIME** **WE NEED LISTINGS**

CRUM REAL ESTATE **659-2053**

NADINE CRUM **VIRGINIA WHITE**
 BROKER SALESPERSON

1105 S. BARKLEY

We Need Listings! Want to Sell your Home? We have BUYERS.

Veterans
 Use your G.I. Loan and START OWNING YOUR OWN HOME. We have two beautiful NEW home listings that can be bought on 0% V.A. Loans or conventional loans. These AFFORDABLE homes offer 3 bedrooms, 1 1/2 baths, beautiful kitchens with new dishwashers, central heat and air-conditioning, carpeted, WELL INSULATED, YARDS FENCED. One of these two homes is pictured. Call today!

ONE AVAILABLE

SUPER FAMILY LIVING
 Spacious 5 BEDROOMS, formal living room, 1 1/2 baths, LARGE FAMILY ROOM, basement with floor to ceiling BRICK FIREPLACE. Fenced, UNDERGROUND SPRINKLER SYSTEM, NEAR SCHOOL. too many features to list all. Call today!

JUST LISTED - 706 COLLIER
 This THREE BEDROOM brick home with ATTACHED GARAGE is in GOOD LOCATION. Has 1 1/2 baths, carpet, central heat, utility room, fenced. DON'T MISS THIS ONE! CALL TODAY FOR AN APPOINTMENT.

HOME OF DISTINCTION
 Wouldn't it be lovely to have a really DISTINCTIVE HOME. This beautiful, spacious, older home has all the amenities for comfortable living including living room, dining room, den, four bedrooms, 3 baths, built-in ovens and cooktop in sunny kitchen, double car attached garage with electric door opener, and detached single car garage, fenced, and much more. Call for an appointment.

TRUE COMFORT
 You'll enjoy the comfortable lifestyle offered by this charming older home on a tree-lined street, NEAR SCHOOL, 3 bedrooms, living room, family room, kitchen has beautiful coppertone built-ins including side-by-side refrigerator. Lots of cabinets, Carpeted, 2 baths, 2 water heaters, central heat and air, extra large detached double garage with room and bath in back, fenced, beautifully landscaped yard. Buy now-be settled in before the holidays.

SPRUCE ME UP!
 and you will have two value packed houses on 6 lots near Elementary School. Each with 3 bedrooms and two baths. Will sell separately, Good RENTAL PROPERTY or GOOD FAMILY HOMES. Call for an appointment.

The Buick Holiday Get-Together.

FREE CALENDARS AND ICE SCRAPERS....

Our entire staff wishes you and your family a joyous and happy holiday. We invite you to stop in and share the spirit of the season with us during our Buick Holiday Get-Together. We think you'll be pleased with the Buick values we have.

And you'll like the values on our Pontiacs, GMC's, and Used cars & Trucks, Too!! Now wouldn't a new car from Hergert Pontiac, Buick, GMC make a great Christmas for you??

AFTER ALL LIFE IS TO ENJOY!

1979 Buick Electra.

HERGERT
Pontiac, Buick, GMC

"The Best For Sales, Service & Body Shop"

WE APPRECIATE YOUR PATRONAGE!!!
 So. Hwy. 207 Spearman, Texas

CHRISTMAS GREETINGS-

1978

We wish all our friends a very Merry Christmas and a Happy New Year. Instead of sending cards this year, we have donated to the Hospital Auxiliary Fund for the Hansford County Hospital.

- Emmett R. Sanders
- Gertrude B. Archer
- Dr. R. L. Kleeberger
- Glen & Evelyn Hiller
- Gwenfred Lackey
- L. W. & Tot Rosenbaum
- Mr. & Mrs. Joel Lee Lackey
- Mr. & Mrs. Deacon Clement
- Margaret Shedeck
- Pat & Virginia Cates
- Woodville & Verna Jarvis
- Mrs. Walter Wilmeth
- Agnes Windom
- Juanita Logan
- Raymond & Grace Kirk
- Dick & Frances Kilgore
- Phil & Marguerite Jenkins
- Floye & Eddie Largent
- Jack & Dolly McWhirter
- Mary Fern Terry
- Mrs. C. A. Kleeberger
- Mrs. Fred J. Hoskins
- Wesley & Dot Jenkins
- Mr. & Mrs. Bruce Sheets
- W. E. & Loydell Sparks
- Faye Lynch
- Owen & Babe Pendergraft
- Marvin & Ruth Ann Jones
- Mr. & Mrs. Lee Roy Mitchell
- Mr. & Mrs. Wayne Shook
- Jim & Linda Beeson
- Condee & Doris Ellison
- Maylynn Schubert
- Gus & Clementine Renner
- Buena & Perren Lyon
- Mr. & Mrs. Preston Smith
- Carl & Peggy Archer
- The Roy Lee McClellan Family
- The Dennis Nelson Family
- Betty & Irvin Davis
- Mr. & Mrs. R. E. Lee
- Mr. & Mrs. Thomas H. Etter
- Judge & Mrs. Richard N. Countiss
- Jeff, Mike & Julie Countiss
- Ed & Alva Garner
- James, Nell & David Cummings
- Lois & Woody Gibner
- Bernice V. Brown
- Sperks Laundry
- Merrel & Grace Johnson
- Gertrude Jones
- Bob & Mary Kathryn Parris
- Mrs. R. D. Chamberlain
- Leroy & May Lee Smith
- Junior & Dorothy Lusby
- Lonnie, Linda & Amanda Hiller
- Mr. & Mrs. Robin Giblin
- Freeman & Elva Lee Barkley
- Bill & Lemmie Russell
- Rosa Lee Butt
- Mr. & Mrs. Gene Cudd
- Ted, Sonya Godfrey & children
- Ralph & Johanne Blodgett
- Mr. & Mrs. Robert H. Novak
- Ed & Betty Freeman
- Jerry & Sandra Taylor
- Lynn & Sharon Cook
- Kent & Glenda Guthrie
- Mr. & Mrs. J. B. Buchanan
- Mr. & Mrs. John Venneman
- Deta Blodgett
- R. L. McClellan
- Rue & Anne Sanders
- J. D. & Rubyjo Wilbanks
- Evelyn Guthrie
- Mrs. Pearl M. Dixon
- Elvogene Dixon
- Ronnie, Colleen & Butch Schaefer

Dear Santa Claus,
I have been fair, I want a truck that can change a wheel, and a star-bird and a building set and an international airport and an erector set and shoulder pads and a Dallas cowboy football suit and a football.
Love, Peyton Ellsworth

Dear Santa Claus
I have been a good boy and I love you. I want a riding car.
Love Dennis

Dear Santa
I want a Baby Alive and a Baby Burp and All so I want a Kitty Kitty.
I will have some cookies waiting for you.
I Love You
Kelly Harper
1015 Bernice St.

Dear Santa Claus,
I want a Baby cradle and a Bed that swings for a baby and a Bunk bed for a baby and a baby high chair and a baby this and that and milking the cow and I have been good.
Love Christina

Dear Santa,
I like a stove. I have been good. I want a doll also.
Thank you,
Love Melissa

Dear Santa
I want a mickey mouse record and apuppy dog
Love, Sara

Dear Santa,
I wold like a show ring and jump and the Medicine hat stallion a lifelike baby.
Love, Kristin Dunninghoo

Dear Santa, I have been a good boy. I want a bike.
Love, Pete.

Dear Santa Claus
I want a watch and a ring and boots and a dress and I been a nice little girl. Love Diana R

Dear Santa
Math
Charlie's Angels
Connect Four
Monopoly
Love Tina

Dear Santa,
I love you. I want a bebe gun and a bike and a radio and a tape player with speaker and a tent and a tape recorder and a sleeping bag and a ten speed and a speedometer. Love Matt.

Dear Santa-Claus,
I want a china doll and a snoopy doll and I love you.
Patty

Dear Santa
I want a bike I was nice.
Love, Ruben

Dear Santa Claus
I love your elves and Sant Claus I want a B.B. gun
Love Rob

Dear Santa,
I want a baby "Boo-Hoo," a baby care set. A Christmas tree, a real one. I want a Mickey Mouse that will walk with me. How is the weather down there? I want a Perfection game. How's Rudolph the Rednose Reindeer? I've been a very good girl.
Merry Christmas, love,
Cynthia Winn

Now...7-Days



PRICES EFFECTIVE THRU WED. DEC. 27, 1978. QUANTITY RIGHTS RESERVED. NO SALES TO DEALERS

Ideal's 7 Days

	DEL MONTE CUT Green Beans 16-OZ. CANS	389¢
	DEL MONTE WHOLE OR CREAM STYLE Golden Corn 17-OZ. CANS	3\$1
	DEL MONTE Sweet Peas 17-OZ. CANS	279¢
	DEL MONTE NEW Potatoes .. 16-OZ. CANS	3\$1⁰⁰
	CAMELOT SLICED CRUSHED CHUNK Pineapple .. 20-OZ. IN JUICE	299¢

NOW WIN 1000 Gunn Bros. Stamps When You Play

DOUBLE GUNN BROS. STAMPS

ON ALL PURCHASES NOW THRU CHRISTMAS EVE AT IDEAL STORES

Presenting the **CULTURAL COLLECTION**
A stunning selection of casual and formal jewelry.

Save 50%

Glad Wrap100-FT. ROLL	45¢	LADY SCOTT ASSORTED Bathroom Tissue 2-ROLL PKG	43¢	ALUMINUM FOIL Reynolds Wrap	34¢
Glad Trash Bags10-CT. BOX	99¢	DECORATOR ROLL ScotTowelsJUMBO ROLL	63¢	SCOTT FAMILY Napkins160-CT. PKG.	59¢
CRYSTAL WHITE DetergentREGULAR LIQUID DISH 44-OZ. RTL.	92¢	CRYSTAL WHITE DetergentLEMON OR REGULAR LIQUID DISH 44-OZ. RTL.	92¢		

FRESH DAIRY

	8-OZ. BOX	58¢
	DOZEN	74¢
Parkay Maxi-CupKRAFT	18.25	62¢
Half & HalfCAMELOT	3 PINT '1	1\$33
ButterCAMELOT	1/2 LB.	89¢
Cottage CheeseCAMELOT	1/2 LB.	78¢
Egg NogFAIRMONT	1/2 QT.	78¢

FROZEN FOOD

	BIRDSEYE	1 1/2-OZ. CTN.	68¢
	RHODES	2-16 OZ.	48¢
Pecan PieFIELDS	RHODES	PIE	48¢
Corn CobsCAMELOT	RHODES	1/2 HR	78¢
NibletsCAMELOT	MEADOWDALE	2/1, 00	68¢
StrawberriesCAMELOT	MEADOWDALE	12-OZ. CAN	43¢

MEAT GIFT BASKETS
NOW AVAILABLE AT YOUR IDEAL FOOD STORE
ASK STORE MANAGER FOR DETAILS

Turkey lb. 73¢

Now available at your Ideal Food Store. Quality turkeys available. Also, a large selection of ducks, geese, capons, turkey roast, smoked turkeys and baking hens.

SHOP IDEAL TODAY...

Beef StewROSELEAF EXTRA LEAN	1\$59
Ground ChuckROSELEAF	1\$49
Skinless FranksROSELEAF	89¢
Sliced BolognaROSELEAF	1\$09
BraunschweigerROSELEAF	79¢

Ice Cream

209¢

GALLON VANILLA



LETTERS TO SANTA

- Dear Santa, I have been a bad girl I want a new bike and I want games and a new bean bag medium siz bear style.
Love Patti B. P.S. I've been prite good.
- Dear Santa Claus,
I would like a trapalen and I also want a new Christmas tree and I've been a good gril. But that isin all I want
Love Shannon
- Dear Santa Claus,
My mother lost her siutbag and she wants a new one and I woud like a trapalen and I've been a good gril.
Love, Jennifer
- Dear Santa,
I love you very much. I want a swang set and a bicycle. Love, Carty
- Dear Santa Claus,
I want a record player thats all I want and I hope my sister gets well. Love, Diana C.
- Dear Santa
I want a Novelty Label I want a record player
Love Kevin
- Dear Santa I want soum earrings and a waterbed and a traplin and a baby alive and a stretch warm
Anny.
- From Meil
- Dear Santa Claus, 14,1978
I wat a Bikes and a remotcar. Love, Greg.
- Dear Santa Claus,
I want a sang along, and sum skates. I have been good. Love Sherri

SHOP IDEAL...WHERE THERE'S MORE VALUE IN

Sue Wooley Wins Lion's Drawing!

Sue Wooley's name was drawn from the almost 1000 tickets sold by Spearman Lion's Club members for the Color TV or Micro Wave Oven Prize. The long awaited drawing was held Tuesday at the regular Lion's Club meeting at Martin's Steak Gardens...the name being drawn by Hansford County Queen Kelly Harper. Lion's Club Project Chairman Earl Goodheart announced that

almost 1000 tickets had been sold. One third of the proceeds from the sale of the tickets goes to the Bruce Stinson Fund. Lion Ray Ingle was named Pancake Day Chairman the date to be established in January. Tuesday's Program was presented by Dr. Kenneth Chapman D.D.S. who has just returned from a seven month Missionary tour of Liberia. The former Lion's Club member went to

Liberia under an Interdenominational Missionary endeavor called Missionary-Dentists. The former Spearman Dentist showed pictures of his work in the heartland of Liberia...where the average rainfall exceeds 180 inches. Chapman says he plans to continue in Missionary activity for at least two more years but is not sure yet of his next assignment.

Lion's club members will meet again on Tuesday, January 2. Dear Santa Claus. I love you. I want something for Christmas. I want a Barbie. I will be at Grandma's house in Amarillo. I have been very nice in school. Your friend, Angie Rivera

GIFT CERTIFICATES

Anyone likes to get a "paid" gift certificate and there are more than the conventional department store type to consider.

Almost any establishment with specialized goods and services to sell should be willing to make up a "paid" slip for you in the name and amount you choose. You can custom-tailor your certificate-giving at a hobby or pet shop, yarn or fabric store, record or book store, beauty shop, service station, cheese store or most any type gift your shopping for.

Safety In Mind

Metal trees present no fire hazard in themselves. They can, however, be a source of serious shock hazard if you use electric lights on them. Sharp metal edges may cut the cord insulation or the metal needles might touch an electrically charged component. In either case, the whole tree will become electrically charged. The safest way to illuminate a metal tree is to use colored floodlights placed in different spots around the room. These floodlights can become quite hot too, so take care where you put them. If you purchase a plastic tree, pick one that is made of fire resistant material.

George Washington Loved Mount Vernon Christmas

The Congress of the United States was in session at Annapolis, December 22, 1783. A dinner and ball was being staged in honor of the retiring Commander-in-Chief of the forces that had gained independence for the nation.

General George Washington departed the Maryland capital as quickly as he could politely do so, to insure his being at Mount Vernon the eve of the 25th, to enjoy the Christmas festivities surrounded by his family. He desired to spend all subsequent Christmases in the place he loved above all.

Diaries Washington kept document his annual preparations. For example, Monday December 17th, 1786, an entry repetitive of similar notations in 1784 and

later years, said "Brought in some carts and cutters from my plantations to assist in laying in a stock of firewood for Christmas."

Mount Vernon not only had to be heated but lighted up brightly for the season, and elaborated chandeliers required many dozen candles. Washington recorded in his diary an experiment to determine whether spermaceti (whale blubber) candles were more expensive than tallow candles. "A tallow candle weighing 3 Oz 11 PW (penny-worth) weight burned 5 hours 48 minutes. A spermaceti candle weighing the same burned 7 hours and 28 minutes. Hence reckoning tallow at 1 shilling per pound, and spermaceti at 3 shillings per pound, the latter is dearer..."

Realism In Toys Makes Your Gift Appreciated

Realism best describes the trend in new toys.

Playthings on the market are inspired by popular media figures, especially TV heroes and heroines — as well as people and places in the news and current social trends. Many new toys, games and dolls are based on TV programs, movies and comic books.

In additions to dolls modeled after famous athletes and superstar characters from TV shows, other dolls include action figures, career dolls, and a variety of fashion and traditional dolls.

With the large number and variety of toys on the market today, the following suggestions may help select the right items for children of various ages and interests.

— Don't buy toys impulsively but consider types of toys that capture your child's interest, not

the kind that you enjoyed as a child.

— Choose playthings with some degree of realism. Today's children are aware of and stimulated by the world around them. Psychologists say that playthings that are scaled-down models of real-life objects help children become inventive and imaginative in their play.

— Consider a child's age, interests and abilities before shopping for toys. Take note of the age guidelines printed on most toy packages and select playthings that will help children learn new skills and discover new interests, such as arts or sciences or sports.

— Don't overwhelm children with too many new toys at once. Spread your toy budget throughout the year but use birthdays and other occasions to introduce new toys.

"Ain't The Gift" That Makes You Happy And Glad

It ain't the gift a feller gits, It ain't the shape or size, That sets the heart to beating An' puts sunshine in yer eyes.

It ain't the value of the thing, Ner how it's wrapped, ner tied; It's something else aside from this That makes you glad inside.

It's knowin' that it represents A love, both deep an' true, That someone carries in his heart An' wants to slip to you.

It's knowin' that some folks love you, An' tell you in this way... Jes' sorter actin' out the things They really long to say.

So, tain't the gift a feller gits, Ner how it's wrapped ner tied, It's knowin' that yer folks like you, That makes you glad inside.

Author Unknown

Christmas Tree Ship Awaited

A Matson freighter, nicknamed the "Christmas Tree Ship", delivers a stock of fir trees to Hawaii from the U.S. Northwest each year. Hawaii has its own natural Christmas decorations like poinsettia and red, waxy anthuriums bloom on byways and decorate homes.

The most striking difference between Christmas in Hawaii and Christmas in New York is that in Hawaii in December is like New York in June. Arriving about the same time, in Waikiki, as the Christmas Ship is Santa. Children marvel at his lengthy trip from the North Pole. Santa comes by boat, for there is water all around them. They look for him as eagerly as do the boys and girls in the land of snow and ice.

Before the missionaries and the American settlements went to Hawaii, the natives knew nothing about Christmas, but now they celebrate the day as much as do the Americans who live there.

Some Hazards Of Christmas

Because of the excitement and commotion at Christmastime, children's curiosity is stimulated even more than usual. Parents are distracted and busy with what is sometimes a hectic time. Dangerous items may be left in the reach of children or normal precautions may be forgotten for a moment that can turn into a disaster.

For Parents; A few things to remember— Leave winter car care products such as de-icer and antifreeze above the reach of children and always capped.

Don't leave cleaning agents in the reach of children. There could be potentially dangerous items in gift Chemistry sets — keep away from younger brothers and sisters.

Spun glass is used in angel hair decoration, and may look like cotton candy to a child. If you use it, place it in high spots.

Holly berries can cause vomiting and depression of the central nervous system. Mistletoe and Jerusalem cherries are also harmful if taken internally.

Spirit Stays After Holiday

The Christmas spirit keeps burning long after the festive candles are snuffed out. All year long we can continue to care and share.

We can share our fun and laughter, we can share our happiness and joy, we can share our love and our affections, we can share our strength and our vitality. To those whose lives lack all or some of these elements, there are no greater gifts to give.

We can share a helping hand, a sense of beauty, a gift of song, a kindly phrase. All of these should be part of every man's living experience, and where they are absent we must make them present. Each one in a special way can give of talent and ability, even when these appear to be of a humble sort. It is not the size of the gift that counts, it is the willingness of the giver. We must share with others not just in proportion to what we have, but rather in proportion to the other's need.

Nostalgia Cards Are Popular This Year

Greeting card manufacturers say the slick, mod look of previous years in Christmas cards is being replaced by Jolly Saint Nick and more traditional, old fashioned cards. They are keeping pace with the current nostalgia trend.

People are buying cards that reflect their feelings, and nostalgia is a reflection of their seriousness.

Designs have moved away from the loud and splashy colors of the 1960's and messages have become more simple, and heartfelt. The biggest sellers are traditional: The Nativity, old-fashioned ice skating scenes, holiday table settings and little children of every description.

In Denmark Children Anticipate "JUL-NISSE"

The splendor of Christmas in Denmark for many is the benevolent little man called "JUL-NISSE". Seen by no one except the cat, this little man lives in the attic and tends to the farm animals. Before retiring on Christmas Eve, the children place a bowl of porridge and a pitcher of milk before the door of the attic. As you might expect, the food is mysteriously gone come Christmas morning. Even the birds are remembered. Every year a sheaf of grain is saved from the harvest, and on Christmas morning every door gate and gable is decorated with this bundle of grain. It is the birds Christmas dinner.

Of Savings At Ideal

FOOD STORES

Of Savings

SHOP FOR THE EXTRA DAY... IDEAL WILL BE CLOSED ALL DAY CHRISTMAS. WE WILL CLOSE AT 6 A.M. CHRISTMAS EVE.

C&H BROWN OR POWDERED Sugar 2 68¢	SHORTENING Crisco 3 178	CAMELOT BROWN & SERVE Rolls 32¢
Cranberry Sauce 38¢	Marshmallow 43¢	Cake Mixes 65¢
Pumpkin 2 79¢	Marshmallow 3 100	Frosting Mix 79¢
GOLD MEDAL Flour 5 68¢	FOLGER'S Coffee 2 48	ALL BRANDS Sugar 5 88¢
Preserves 73¢	Jell-O 5 89¢	Pie Crust 89¢
Mayonnaise 1 26	Karo Syrup 5 53¢	Chocolate Chips 1 39

CHUCK WAGON

Boneless Hams \$1 99

FULLY COOKED HALVES 3 TO 5 LBS. AVG. LB.

Boneless Ham \$2 79

BAR-S FULLY COOKED WHOLE 5 TO 8 LBS. AVG. LB.

Sliced Bacon 99¢

SLAB HICKORY SMOKED BULK PACK

Hams \$6 99

FULLY COOKED 3-LB CAN

Canned Ham \$10 99

WILSON FULLY COOKED

Fruit Baskets THE PERFECT GIFT FOR CHRISTMAS

ASK STORE MANAGER FOR DETAIL

Sausage \$1 49

PURE PORK 1-LB PKG.

Sausage \$2 97

JIMMY DEAN PURE PORK 2-LB PKG.

Rib Roast \$1 99

BEEF RIB — LARGE END U.S.D.A. CHOICE BUTCHER BLOCK BEEF

Loin Roast \$1 99

PORK CENTER — RIB CUT U.S.D.A. CHOICE BUTCHER BLOCK BEEF

Chuck Roast \$1 39

BONELESS U.S.D.A. CHOICE BUTCHER BLOCK BEEF

Oranges 39¢

CALIFORNIA NAVEL LARGE SWEET

Apples \$1 29

RED OR GOLDEN DELICIOUS 4 LB BAG

Potatoes 10 79¢

COLORADO RUSSET 10 LB BAG

Tangerines 39¢

U.S. FANCY ALL PURPOSE 10 LB BAG

Yams 29¢

SWEET POTATOES 29¢

Onions 2 33¢

YELLOW U.S. #1 SWEET SPANISH 2 LBS

Walnuts 1 59

NEW CROP CALIFORNIA 1-LB BAG

Christmas Poinsettias \$3 98

BEAUTIFUL 6-INCH POT

STORE FOR YOU!... Ideal FOOD STORES Buy More At Ideal...

SPEARMAN POLICE CHIEF LEAVING!

Spearman Chief of Police Steve Wisniewski will resign his local position to take over the duties as Chief of the Forty man Force at Portales, New Mexico.

Chief Wisniewski told the Reporter that he had struggled with the decision for some time and was sorry to leave Spearman, but the professional opportunity was one that could not be turned down.

The local police official came to Spearman from a New Mexico position in June of 1977 and has effected several administrative changes in the activities and performance of the local department. He recently returned from Los Angeles where he underwent Criminal Investigative Hypnosis Training under the auspices of the Panhandle Regional Planning Commission.

Portales is a city of over 15,000 residents and is the home of Eastern New Mexico University.

Chief Wisniewski will assume his new duties probably around January 8th.

It is presumed that the Spearman City Council will initiate an immediate search for a successor to Chief Wisniewski.

Auld Lang Syne: Long Ago Days

Old times, especially times fondly remembered — Old or long friendships — Old long ago days.

SHOULD AULD ACQUAINTANCE BE FORGOT AND NEVER BROUGHT TO MIND? SHOULD AULD ACQUAINTANCE BE FORGOT AND DAYS OF AULD LANG SYNE? FOR AULD LANG SYNE, MY DEAR, FOR AULD LANG SYNE, WE'LL TAKE A CUP OF KINDNESS YET FOR AULD LANG SYNE.

END OF ANOTHER

Another year is ended, and it is time to discard any unpleasant memories and to save only the happy ones to take out and enjoy at quiet moments. And then to hope we may help bring more happiness to others during the years to come.

Festive Day In Scotland

The most elaborate festivities in Scotland are saved for HOGMANAY, or NEW YEAR'S. In some parts of Angus the old year is burned out with enormous bonfires around which the people dance. And at Stovehaven processions are held in which balls of flaming rope are swung about the ends of long cords. In Edinburgh, outside the Tron church crowds gather to wait for midnight. When the hour strikes, those in Highland dresses toss their bonnets into the air and dance reels to the wild music of bagpipes.

Happy, happy New Year, Till next year, till eternity. Corn on the cornstalk. Grapes in the vineyard. Yellow grain in the bin. Red apples in the garden. Silkworms in the house. Happiness and health Until next year.

Swedish Glogg Mix Seasonal

In a bowl combine 1/4 cup golden raisins, 1/3 cup sugar, 1/4 cup blanched almonds, 12 cloves, 6 cardamom pods, and 2 sticks of cinnamon. Transfer the mixture to a glass canister or wrap it in clear plastic with festive ribboning.

To make Swedish glogg: In a large heavy enamel saucepan combine Swedish glogg mix with 1-1.3 cups water and 2 long strips of orange peel. Bring the water to a boil over moderate heat, washing down any sugar crystals clinging to the sides of the pan with a brush dipped in cold water, and simmer the mixture for 5 minutes.

Add 3 cups each of dry red wine and Tawny Port and bring the mixture to a boil over high heat. Remove the pan from the heat and let the mixture steep, covered, for at least 2 hours. Bring the mixture to a simmer, add 1 1/2 cups Cognac, and heat the glogg for 1 minute. Transfer the glogg to a warmed silver punch bowl, ignite the spirits, and ladle the flaming glogg into heated mugs. Makes about 12 servings.

Take Camera To New Year Party

When you head for the party — take your camera. Festivity provides endless picture-taking possibilities.

The best party pictures are ones that capture an instant without interrupting the situation, snapshots that look natural and spontaneous.

When you take pictures at a party, circulate among the guests and observe the scene first. Study facial expressions, gestures and the interplay between conversationalists. When the right moment comes, press the shutter button.

"Teng Chieh"

In ancient China New Year's was a 15 day holiday. Celebrations began on the first day of the first moon and ended on "Teng Chieh", The Feast of the Lanterns.

Bourbon Punch

1 fifth Bourbon
1 (6 ounce) can frozen orange juice concentrate
1 (6 ounce) can frozen lemonade concentrate
3/4 cup fresh lemon juice
3 quarts lemon-lime flavored soft drink

Chill ingredients. When ready to serve, combine all ingredients in a 5 or 6 quart punch bowl, adding the soft drink last. Float a block of ice in bowl and garnish punch with orange and lemon slices, if desired. Serves 32.

Quick Apple Punch

2 quarts chilled apple cider
2 cups cranberry juice cocktail
2 teaspoons lemon juice
4 cups ginger ale
Crushed ice

In large pitcher combine cider and juices. Add chilled ginger ale just before serving. Add crushed ice to tall glasses. Fill with punch. Serve immediately. Serves 15 tall glasses.

Spiced Milk Punch

4 cups milk
2 inches stick cinnamon
4 whole cloves
Dash ground mace
Dash ground saffron (optional)
1/3 cup sugar
1 tablespoon cornstarch

In medium saucepan, combine milk, cinnamon, cloves, mace, and saffron. Bring almost to boiling. Reduce heat. Cover and simmer on very low heat 15 minutes; remove cinnamon and cloves with slotted spoon. Combine sugar and cornstarch; stir into milk mixture. Heat and stir till bubbly; cook 2 minutes more. If desired, beat with rotary beater till foamy. Ladle into mugs. Serve with cinnamon stick stirrers. Makes 4 cups.

IT'S TRADITION!

Ring in the new year with friends in as traditional as the times square crowd counting down the minutes to midnight.

Libations To Help Welcome A New Year

Fill the cups that cheer with distinctive libations. Top off an evening on the town with a cordial nightcap. Use your imagination for flavored coffees — or try one of the following:

Calypto

Add a jigger of rum to a cup of chocolate-flavored coffee. Top with whipped cream and curls of unsweetened chocolate. Or sprinkle with a little cocoa.

Gold Cup

To a cup of orange-and-spice flavored coffee, add a jigger of Galliano. Garnish with whipped cream and a sliver of orange peel.

Cafe' Royale

Stir a jigger of Grand Marnier or curacao into a demitasse cup three quarters full of Cafe' Apicot.

Dandy Brandy

Fill cup three-quarters full with hot-cinnamon flavored coffee. Add a jigger of cognac. Top with whipped cream and a sprinkle of powdered cinnamon or use a cinnamon stick for stirrer.

Thought For A New Year

"Don't keep forever on the public road, going only where others have gone. Leave the beaten track occasionally and dive into the woods. You will be certain to find something you have never seen before. Of course, it will be a little thing, but do not ignore it. Follow it up, explore all around it; one discovery will lead to another, and before you know it you will have something worth thinking about to occupy your mind. All really big discoveries are the results of thought."

(Alexander Graham Bell)

Holiday Humor Or, Have You Heard This?

If you don't think money grows on trees, price one at Christmas.

A neighbor asked the little girl what she was going to give her brother for Christmas.

"I don't know," said the little girl. "Well, what did you give him last year?" "The chicken pox!"

At this time of year, most teenagers clean their rooms weekly — very weakly!

Christmas-decorated sign outside a dog kennel specializing in dachshunds: "Git a long little doggie."

A woman was getting the house fixed up for the holidays and called a Venetian-blind repairman to come pick up a broken blind for repair. That evening the doorbell rang and the husband answered the door.

"I'm here for the blind," said the visitor. The husband took a bill from his pocket, gave it to the man and shut the door.

Old Beliefs About Things of Christmas

Holly hung on the door at Christmastime was once believed to repel evil spirits and protect the house from lightning.

In old England sprays of holly were placed on the hives to wish the bees a Merry Christmas. The bees were said to hum a carol in honor of the Christ Child.

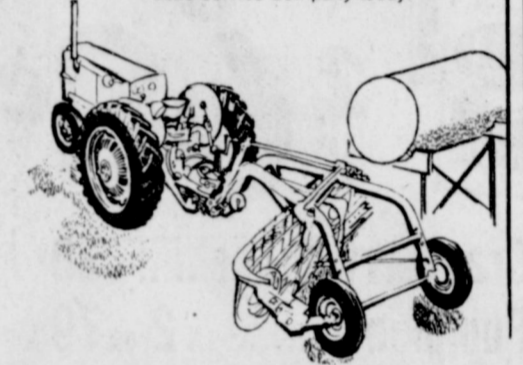
Don't wash and press a Christmas present before giving it, or you will wash out the good luck and press in the bad.

If you let a fire go out on Christmas morning, spirits will come to you then and later in the season.

Leave a loaf of bread on the table after Christmas Eve supper and you will have a full supply until the next Christmas.

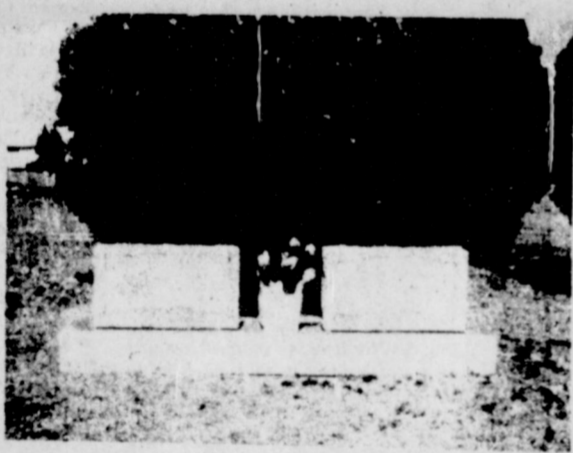
The Nite-Liter for convenience, security

Winter is here with longer nights. Nite-Liter wide area outdoor lighting can provide added safety and security around your home or farmyard for only pennies a night. The mercury vapor Nite-Liter automatically turns on at dusk and off at dawn and spreads light in an area up to 100 yards in diameter. The Nite-Liter is installed on a tall pole, maintained and furnished with electricity... no investment required. For more information about having a Nite-Liter installed for you, call Community Public Service Company today!



COMMUNITY PUBLIC SERVICE

ESL 78



This is one of several beautiful monuments being offered this month by

JONES MONUMENT CO.

It is 72" long and 18" tall in Blue Gray Granite. Regular Price \$867 -- now only \$495. This includes installation on cement foundation. All work guaranteed.

JONES MONUMENT CO.

Office Phone 624-4711 810 N. Kansas Liberal, Kansas Home Phone 624-4504

Complete Farm & Ranch Irrigation Center

Sales and Service on ALL Brands

- * Grain Bins
- * Steel Bldgs
- * Steel Bldgs
- * Aeration Systems
- * Grain Augers
- * Dryers
- * Underground pipe
- * Underground Leaks
- * Repaired - Maintenance
- * Sprinklers
- * Tail Water Systems
- * Brock Feed & wet holding Tanks
- * Work on Aluminium Pipe
- * Lay underground pipe

Western - Ag. Sales Co., Inc.

Gruver Hwy

phone 659-2596 Spearman, Texas

LYRIC THEATRE
PHONE 806-659-2812

ONE SHOW AT 7:30 P.M. SUNDAY, MONDAY, TUESDAY, WEDNESDAY, AND THURSDAY

TWO SHOWS AT 7:00 P.M. AND 9:00 FRIDAY AND SATURDAY

NOW SHOWING

WELCOME LASSIE HOME... AND PUT THE MAGIC BACK INTO MOVIE-GOING!

Soon, families everywhere will Welcome Lassie Home to the big screen in the brightest, happiest new motion picture of the year!

The Magic of Lassie

an entertainment event that puts the magic back into movie-going.

- ★ A MAGNIFICENT CAST with James Stewart in his most memorable role...
- ★ UNFORGETTABLE ADVENTURE in the breath-taking Western Wilderness...
- ★ FUN-FILLED ACTION AND SUSPENSE that will delight all the young at heart...
- ★ HIT SONGS sung by Pat Boone and Debby Boone in full Dolby Stereo Sound.
- ★ That's The Magic of Lassie.

Join your friends to WELCOME LASSIE HOME and share the Magic with everyone in your family!

Dec. 20 Thru Dec. 26

NEXT ATTRACTION

The cure for "Saturday Night Fever" is to see it again.

SATURDAY NIGHT FEVER

...Catch it

Dec. 27 Thru Jan. 2

PELKULAS MEXIKANAS

Una Realizacion De Ruben Galindo

Los Desarraigados Mario Almado

Sunday Dec. 24 - 2P.M.

Dept. Of Ag. Bars Future Advance Payments

A.S.C.S. Hansford County Executive Martin Chandler has been advised by Department of Agriculture officials that there can be no advance payments in 1979 as there were in previous years. Last year local farmers could have received one half of their payments ahead of time. This coming year the new regulations call for the total payment all at one time.

In addition, Chandler stated that the sign-up for 1979 Farm programs had been set between Feb. 15 and April 16th.

Would Knowing What Future Holds Be Very Helpful?

We think of the future at New Year's and resolve to do better than we have done in the past. However, maybe we are fortunate not to be able to perceive what the future holds for us. Nearly 2000 years ago Cicero expressed this thought — "For my part, I think that a knowledge of the future would be a disadvantage. Undoubtedly, ignorance of future ills is more useful than

knowledge of them."

This does not mean we shouldn't plan for the future, but foreknowledge could become a burden if we anticipated the sorrows as well as the happiness that lie ahead for us each year.

There is no reason, of course, why we should not reflect on the year that is ending and make plans for the future.

Year's Pay Made Great Holiday

For a long time New Year's was of little significance in Norway, but eventually became a festive occasion, and for a rather curious reason. Persons employed by the year, such as hired hands, received their year's pay on the last day of December. The first day with a year's pay in their pockets became a day of festivity — regardless of the day of the week on which it might fall.

Champagne Punch

- 1 1/2 cups sugar
- 1 cup strong black tea
- 1 1/2 cups orange juice
- Rind of 2 lemons, thinly sliced
- 1/2 cup lemon juice
- 1 cup light or dark rum
- 1 fifth (26 oz.) champagne, chilled
- Fresh orange slices and mint sprigs (optional)

Dissolve sugar in tea. Add orange juice, lemon rind and juice, and rum. Chill.

Just before serving, pour rum mixture and champagne over ice in a punch bowl. Garnish with fresh orange slices and mint sprigs, if desired. Makes 2 quarts or 16 (4 oz.) drinks.

Fish House Punch

- 1 quart water
- 3/4 cup light brown sugar
- 10 lemons
- 1 fifth (26.5 oz.) dark rum
- 2 cups unsweetened pineapple juice
- 1/2 cup brandy
- 1/4 cup peach brandy
- Lemon slices (optional)

Combine water and sugar in a saucepan. Boil for 5 minutes.

Remove rind from lemons and cut in very thin strips. Squeeze juice from lemons. Add rind and juice to hot sugar syrup. Cover and let stand overnight at room temperature.

Just before serving, pour lemon syrup, rum, pineapple juice, brandy and peach brandy over a block of ice in a punch bowl. Garnish with lemon slices if desired. Makes 2 quarts or 16 (4-oz.) servings.

Resolve Now For Next Year

Thinking ahead throughout the year can earn time for you to enjoy the holidays as well as save money.

Carry a little Christmas notebook and jot down the wishes you hear family or friends speak of wanting. Usually these wishes are forgotten by Christmas time, yet those gifts are the ones that say you remembered.

Start a box marked "Christmas 1979" — and once you get one item in it you'll feel the satisfaction of a gift in hand and be reminded to add to it.

With your budget in mind, watch the sales throughout the year and don't overlook the sales on Christmas cards and wrappings that start the day after Christmas. They are often half price or less — this will save you time as well as money. Cards can be addressed and packages wrapped early. You spend much more if you do all of your buying at the last minute so avoid pre-holiday rush and panic.

Old Tradition

In Italy on New Year's Eve some Italians pitch almost anything they can get their hands on out the window. This is at midnight and they toss out dishes, furniture, kitchenware and old glassware. They are "cleaning out the old and beginning the New Year."

AFTER CHRISTMAS

Practice safety during the New Year Holidays; Be careful with candles, electric lights, overloaded circuits and other decorations. Be sure to extinguish all candles and disconnect lights when you leave your house. When traveling, give yourself enough time to drive slowly and carefully. Schedule enough rest stops to keep you alert.

Eggnog Will Please All

- 6 eggs, separated
- 3/4 cup sugar, divided
- 2 cups each milk and heavy cream
- 1 cup blended whiskey, bourbon or brandy
- 2 tablespoons dark rum
- Nutmeg

In large bowl of mixer beat egg yolks until very thick and lemon-colored. Beat in 1/2 cup sugar until dissolved. Beat in milk and cream. Stir in liquors. Refrigerate 4 hours or overnight to allow liquors to "cook" eggs. Just before serving, beat egg whites until stiff. Gradually beat in remaining 1/4 cup sugar. Fold into egg-yolk mixture. Pour into punch or large serving bowl. Sprinkle lightly with nutmeg. Makes 12 servings.

A TOAST TO YOU: Chilling And Serving Wine

If wine is on your menu for holiday entertaining remember that:

White wines should be chilled three to four hours before serving; champagne needs four to five hours. Still or sparkling wines can be chilled in an ice bucket filled with ice and water; allow 45 minutes per bottle and rotate the bottles several times to chill evenly.

Figure on six 4-ounce servings per 4-5 quart bottle of dry table wines; slightly more servings from dessert and appetizer wines, for which a single serving is 2 1/2 to 3 ounces.

A 9-ounce capacity all purpose wine glass is appropriate for all kinds of still or sparkling wines. It should have a thin stem and a tulip-shaped bowl. Fill just over the halfway mark with table and sparkling wines; just under half with appetizer and dessert wines.

Leftover wines should be stored in the refrigerator and used within a few days, either for drinking or cooking.

Keep a wine rack out of direct sunlight, away from heat and sharp temperature changes. Store corked bottles on their sides to keep the corks moist. Capped bottles can stand upright.

Box 355
Gruber, TX 79040
December 6, 1978

Dear Santa Claus,
I want a robe, Tv for my mother, and a tent, a Barbie Doll.

Oh and before I go. Don't forget about the Orphanage. They really need something. Your friend, Kristi King



WE WILL BE CLOSED MONDAY DEC. 25th
Interstate Savings & Loan Assn
322 Main Spearman 659-2344

PRE-CHRISTMAS DISCO DANCE

Dec. 22 8:00 P.M.

County Barn Spearman

All Ages

Music by

"Disco Tex, Inc."

Disco----Lights----Fog--

--Fun----Excitement

2.00 Single 3.00 Couple

"Sponsored By Hansford Explorer Post Richard Kirk, Post Advisor."



We wish you a Merry Christmas

It has been our pleasure to serve the fine people of this community. We pledge every effort to merit your continued support and confidence.

R. L. McClellan Grain Co.

659-3223

SPEARMAN, TEXAS

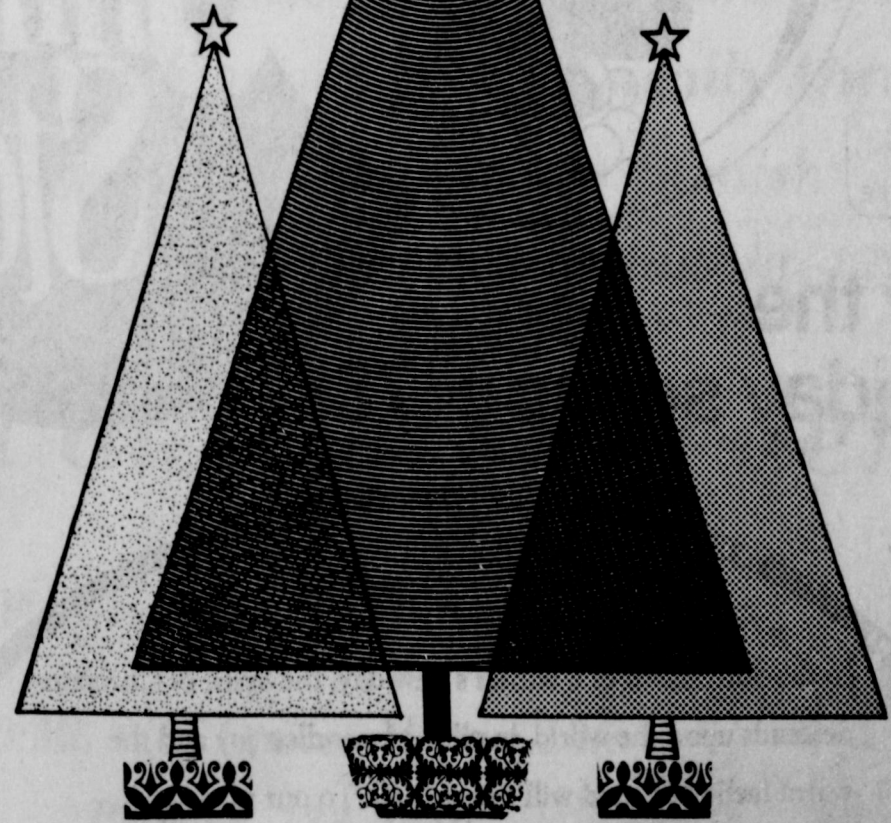
228 Collard

CHRISTMAS



And peace on earth to all mankind.

Warmest greetings to our friends.



WE WILL BE CLOSED CHRISTMAS DAY

Consumers Sales Co.

421 W. Kenneth Av.

Spearman

Phone 659-2012

\$1.6 Million To Hansford Producers

A total of One Million, Six Hundred and Fifty Five thousand, One hundred and Nineteen Dollars and Thirty Seven cents is being mailed to Hansford Agricultural producers before January 1st.

Martin Chandler, Hansford County A.S.C.S. Executive says that this represents a total of 1244 Owners and Operators of Hansford County

Farms...a total of 626 farms in all.

Chandler said that the payment of over One and one Half Million Dollars represented 95% of the wheat deficiency checks being distributed to County producers. The balance of the payments will be sent out locally after they are processed in the Kansas City, Missouri Computer Center.

Swedish Christmas Is Filled With Customs

The Swedish Christmas is warm, cozy and filled with tantalizing odors of all kinds of special cakes, cookies, and potent, hot spiced brew called GLOGG. However, its customs carry echoes of the days of the Vikings, when the long winter was a dark and frightening time, and it seemed as if the sun might leave the earth to endless darkness and snow. The elf-like Tomten, who brings gifts to Swedish children, harks from that dark past. Here, he rides the Julbok, the goat of the old Norse God, Thor. The word "Yule" or Jul, may come from an old word "hjul", meaning wheel, for at this season, the wheel of the old year turns over to the new.

Natural Trim Adds Spirit

The spirit of the holidays can be enriched for you, your family and guests with sights and scents of nature's green, growing gifts all through the house.

In our world of too much plastic, glass and asphalt, the beauty and warmth that nature can add to the holiday season seems more enjoyable than ever. Sprigs of holly, boughs of evergreens, berries, fruits, nuts — arranged in different decorative ways around the home can help create a more natural festive air.

Start preparing for a "natural" holiday season early. Materials are easily at hand and a walk through the woods can reward you with many treasures.

A wreath of fir or spruce boughs or holly is a good beginning. You can mount the greenery on a styrofoam circle, using

florists wire or tape to hold the pieces together. Attach a cluster of nuts, fruit or berries to add a bit of color — then a ribbon bow and your wreath is ready.

Centerpieces for the table are easy and the greenery is an effective addition. Evergreen around a candlestick or holly arranged in a bowl are perfect for the holidays.

By adding some growing things to your own garden you could have a source for future holiday decorations. With little planning now the living plants can be right outside your door to enjoy the year round.

Nut Custom

It was a European custom to paint nuts silver or gold and hang them on the Christmas tree. Sometimes a verse or tiny manger scene would be put in a hollowed-out walnut that had been broken in half and hinged on one side so that it would open and close.

Most Christmas Plants Have Symbolic Meaning

- The plants and greens we use to decorate our homes at Christmas often have symbolic meaning. During the Roman Saturnalia, the pagan festival in tribute to Saturn, the custom of decorating with evergreens was established. Then, as now, evergreens symbolized immortality because they remain green throughout the winter.
- The commonly used holly plant, with its bright red fruit, was originally sacred to the ancient Druids. They believed it protected them from witches and severe weather. To Christians, the sharp leaves came to symbolize Christ's thorns, the red berries His blood.
- One of the most popular

evergreens, the fir tree, was regarded as King of the forest and a sacred tree. This was before the Christian era in France, Germany and northern Europe, and they believed that spirits in the woods chose the fir tree as their home. The custom of using the tree as part of the Christmas celebration began only after Christianity took hold.

Christmas Brings The Shoplifter

With another Christmas season under way, stores across the nation have hired armed guards, chained down merchandise, and put to use microwave detectors, silent alarms, television cameras and two-way dressing room mirrors.

Many cities and states are mounting publicity campaigns against shoplifting and tightening laws and courtroom procedures.

Christmas time is the busy season for shoplifters, when stores do thirty percent of their annual business. A commerce Department official says that stores across the country spend four billion a year for guards and security systems. The FBI calls shoplifting the fastest larceny in the country. It used to be mostly poor people, but the spreading problem of shoplifting has spread among doctors, lawyers, children, ministers and these as well as four million like them are caught each year stealing millions of dollars worth of goods.

Kings' Cakes

On Epiphany, Kings' cakes are baked in France to honor the Magi. These are round and plentifully dabbled with almond paste. Each contains a coin, a bean or a small favor. The person who finds the prize in his piece is

given a paper crown and named King or Queen for the day. Everyone must obey the new ruler's commands during the games and dances that follow.

Paper Sack Luminarias From Spain

The Southwest desert city of Albuquerque, New Mexico lights up a unique Christmas pattern each year employing paper sacks and candles. Neighboring states pour in by the busload to see the spectacular sights.

During the holidays, Albuquerque is called the Luminaria City. Millions of paper sacks are lit by a single candle inside. They are called Luminarias or Farolitos after the Spanish who originated the custom.

Entire neighborhoods go together to "light the way for the lost Christ Child," as the Spanish tradition has it. The lights give the appearance of golden lanterns when placed about three feet apart. They are often placed on the edges of sidewalks, beside steps and on flat roofs.

New Mexicans have decorated with luminarias at Christmas for about 300 years.

Originally New Mexicans used little bonfires of bright burning pinon and pine to light the paths of processions and festivities, also small lanterns from Mexico were used. But finally lacking lantern paper sacks and candles were used at the fiestas.

About two inches of sand or dirt is placed in the bottom of each sack and the top of the sacks are folded down one time. Inside the sack goes a small votive candle which burns about 2 hours.

Fireplace Safety Rules Important

The Holidays, for many families would be incomplete without a fire in the fireplace. However, a small fire is just as cheerful as a roaring one — and much safer.

Hardwoods make the best wood fire. Softwood produces too hot a fire. Scrap lumber, as well, produces too hot a fire and can cause sparks to fly out the chimney. This may be a fire hazard to the roof or nearby trees.

If a fire is not out before you go to bed, push the logs in to the rear of the fireplace or stand them securely on end in either corner. Be sure the fireplace

screen is in place and closed. DO NOT burn wrappings from presents in the fireplace, as flames may flare into the room.

The First Lady's Christmas Cake

Martha's Great Cake begins "Take the whites of 40 eggs, whip and blend with 4 lbs. butter and 4 lbs. sugar." The cake was an important part of her family's Christmas feast.

The quantity of the ingredients, which also include 5 pounds each of flour and fruit, and a half-pint of brandy, gives us an idea of the tremendous amount of food that must have been prepared for

Colonial holiday dinners.

Mrs. Washington set a heavily laden table, which meant she was following the age-old custom of "eat, drink, and be merry" at Christmas time. The dishes she served were traditional Virginia foods such as baked fowl, oyster pies, yams, ham, preserves and cornbread. And always the Great Cake.

Box 856
Gruver, Tex. 79040
December 11, 1978

Dear Santa Claus,
I want a Silver Streak train track and don't for get the rest of my family.
Thank you,
Dale Red



May you and yours share fully in the wonderful blessings of the Christmas season.

Spearman Family

Practice Clinic

R. L. Kleberger M.D.

Merry Christmas



During this especially glad time of Christmas - We extend our best wishes to you and yours.

And A Happy New Year

North Plains Electric Cooperative, Inc.

Perryton, Texas

For the holiday season '78:

In the quiet dawn of a winter's new day, the Spirit of Christmas descends upon the world, instilling boundless joy and the warm feeling of good will towards all. To our many friends, old and new, we're wishing that this will be the happiest of Christmases, bright and shining with the fulfillment of long-cherished dreams. It is our good fortune to have so many kind friends and patrons their friendship is one of our most prized possessions.

Hansford Implement Co.

659-2712 Hwy. 207

Merry Christmas

May your hearth be warm and your heart filled with joy and peace.

STOCKING STUFFERS QUALITY JOHN DEERE TOOLS

SEE OUR CHRISTMAS CLOSET QUALITY CLOTHING JOHN DEERE CLOTHING

Two Minor Accidents Investigated

Spearman police investigated two minor vehicle accidents over the past weekend. However there were no reported injuries.

Joe Avila was involved in a two vehicle mishap at the end of main street Friday evening when, according to Police, he lost control of his car and ran into the back of a gas truck. There was considerable property damage.

In the second mishap, Police records state that a car driven by Billy Riardon of Spearman failed to yield the right of way at 3rd and Archer on Sunday afternoon and ran into a car driven by Zane Newton. Both cars sustained damage.

Greetings To You In Many Languages

HAPPY NEW YEAR (English)
GLUECKLICHES NEU JAHR (German)
ONNELISTA UUTTA VUOTTA (Finnish)
GODT NYTT AR (Norwegian)
A GLICKLUCH NIE YUOR (Yiddish)
FELIZ ANO NUEVO (Spanish)
SZCZESLIWEGO NOWEGO ROKU (Polish)
BONNE eHEUREUSE ANNEE (French)
BUON CAPO d'ANNO (Italian)
T-not-SI a tu ala u rit (Eskimo)
GELUKKIG NIEUW JAAR (Dutch)
SHIN NEN O-ME DE TO (Japanese)
BLAIDHAN NUA FE MHAISE DHUIT (Irish Gaelic)
ANNUM NOVUM FAUSTUM FELICEM (Latin)
GLEDLI NYT AR (Icelandic)
GOON HO SINN SHEE (Chinese)
GLAELDELIGT NYT AAR (Danish)
STATNY NOVY ROK (Czech)
BLYDDYN NEWYDD DDA (Welsh)
BLAIDHNA MHATH UR (Scottish Gaelic)

Black-Eyed Peas And Superstition

Though the reason is obscure, it is a tradition in the South to eat black-eyed peas and rice on New Year's Day — for good luck. One source says the Romans associated the spots, or eyes, with death and used the beans as a sacrifice. The origin of the superstition hardly explains the name given to the dish in the South — Hopping John. You may not believe in Hopp-

ing John's ability to bring luck but it's ability to satisfy hungry families or guests make it worth a try at any time of the year. A recipe for HOPPING JOHN follows:

- 1 cup dried black-eyed peas
 - 1/4 pound smoked bacon or salt pork, diced
 - 1 red pepper pod, crumbled
 - 3 cups cooked rice
 - 1 onion, chopped
 - Salt and pepper to taste
- Cover peas with water; soak overnight. Next day, add more water along with the onion, salt pork or bacon and red pepper and simmer until tender, about 1 1/2 hours. Stir in rice, heat thoroughly and serve.

Symbolic Wishes At New Year

In Scotland, when friends come to call on New Year's Eve — it is known as Hogmanay or "first-footing." Wishes are symbolized in their offerings, such as a piece of coal wishing "a warm house." A loaf of bread expresses the wish for "a full larder" and an evergreen bough wishes "may you have a long life."

Next Leap Year Comes In 1980

Leap years come every four years except for the years which number a century, as 2000 will be.

Leap years are necessary to keep the Gregorian calendar in tune with the solar year. The solar year consists of 365 days, 5 hours, 48 minutes and 46 seconds. Leap years use up those extra hours and keeps the Gregorian calendar accurate. The Gregorian calendar will remain accurate until 2500 A.D.

Friendship Tea

- 2 cups instant tea
- 2 cups powdered orange mix

- 2 cups sugar
 - 2 pkg. (3 oz. each) powdered lemonade mix
 - 2 tsp. cinnamon
 - 2 tsp. ground cloves
- Mix ingredients thoroughly. To serve, use 2 tsp. of mixture in each cup of hot water.

Hanging Stockings
Legend says that St. Nicholas secretly gave gifts of gold for the dowries of poor spinsters. He tossed the gold down a chimney on Christmas Eve, and on one occasion the gift landed in a stocking hung by the fireplace to dry.

The tangerine or orange in the toe of a stocking has come to be symbolic of the gifts of gold.



Jamie's Jabber

I toured the local businesses for the latest fashions. Everything a girl needs for school, dates, and parties can be found in the local businesses! If I missed a store you'll be sure to find it featured next week. Also next week look for boy's fashions. Here is what I found. Read on Homecoming is coming up!

BUNKHOUSE has Wrangler straight leg jeans. They feature the wing pocket with inserts of Red & Blue. The jeans are milhouse indigo blue. They also have the star and tab pocket both of indigo blue.

Lady Wrangler tops will coordinate with the jeans. They have a red, blue, and creme V-neck tops with the drawstring shoulder.

HEIGH HO, THE HOLLY!

(William Shakespeare)
Blow, blow, thou winter wind,
Thou art not so unkind
As man's ingratitude; Thy
tooth is not so keen, Because thou
art not seen,
Although thy breath be rude.
Heigh ho, sing heigh ho, unto the
green holly; Most friendship is
feigning, most loving mere folly:
Then, heigh ho, the holly!
This life is most jolly.

Freeze, freeze, thou bitter sky,
That dost not bite so nigh
As benefits forgot. Though
thou the waters warp, Thy sting
is not so sharp.
As friend remember'd not,
Heigh ho, sing heigh ho, unto the
green holly; Most friendship is
feigning, most loving mere folly:
Then, heigh ho, the holly!
This life is most jolly.

Another Lady Wrangler has a elastic waist with a keyhole tie neckline. The top also features embroidery across the front.

For a dressier you. They feature Lady Wrangler corduroy suits with cowl neck sweater to coordinate.

They also have straight leg dress pants with tie waist and coordinating shirt and vest.

The vest has draw string shoulders with ruffle collared blouse to go underneath.

Older ladies would like to spruce up in Miss Pioneer Western cut suits with suede inserts. Many shirts featured to coordinate.

MASSAD'S features many junior brands one is Janzen who features army cut pants in blue and creme with coordinating tops in striped velour.

Another popular brand is Youth Beat who has T-shirts with satin inserts. Shirts have straight leg jeans with matching inserts on the back pockets.

The shirts come in both blue and pink.

Youth Beat has a peach shirt with peasant neckline with 3 blue fleas across the front with banded waist. They have jeans with matching trim on front pockets.

Trio of Dallas carries a dressier line of polyester dress suits

with coordinating shirts.
The jacket is short waisted with 2 button pockets.
The pants are high waisted with elastic inserts on sides to insure a good fit.
The top is a floral print with a matching scarf.
Suit also has a choice of skirt.
The skirt is belted with a V-shaped insert.
Youth Beat has a sweater with Keyhole neckline in sky blue with matching blue polyester pants.
Mr. Fine of Dallas has the fashionable purple sued vested suit.
The jacket is short waisted.
The pants have the gathered waistline.
The vest is purple lined with lavender.
The top is lavender with floral print and features a tie neck.
The suit has choice of skirt with skinny tie sash.
Backgammon of California has a line of gauze floral print tie keyhole tops.
They also carry the gauze floral big top.
Youth Beat has the fashionable frilly blouse with ribbon tie.
Ship and Shore sports all types of dress suits for a night on the town with polyester skirts, pants, jackets, and vests all with coordinating tops.
BAKER'S carries Bobbie Brooks with all different coordinates.
Baker's also has the most popular SATIN DISCO PANTS. They also have satin tops and tops to coordinate with Bobbie Brooks pants By Sweet Baby Jane. You can also find disco purses and tie belts all which are really nice to have. They also have chain belts that look super with the big tops.
J.G.'s fashions for the juniors and misses. They feature polyester vested suits with coordinating print tops with ribbon tie suits have choice of skirt or pant.
Skirt is belted with pleat in bottom center. The pleat unbuts also for slit.
The vest is pocketed and lined with satin.

The jacket has pocket for displaying handkerchief. Lapel sports a boutineer slit. Jacket has two pockets with flap and is also lined with satin. These suits are made by PANTHER.
Garland has a vested suit with a belted plaid skirt of wool and polyester with satin coordinating tops.
The pants are plaid with tailored waist line, has short waisted jacket and double pocketed vest.
J.G.'s also has terry cloth warm up suits with racing stripe down legs and arms perfect for lounging, jogging, exercising, or just for messing about in.
T.G.&Y has straight leg jeans by V'est-CePas which are the new french cut jeans. These jeans are made especially to fit your derriere!
They also have the plain straight leg jean. The jean is indigo blue with orange stitching. Another straight leg jean they have is black with gold stitching. All these Jeans are ready for action.
They have T-shirts by Ms. Ronnie in all colors and designs to coordinate with kуст about anything!
TG also gotten in a new shipment of gauze big tops. The big tops sport the tab roll up sleeve with the grandfather night shirt collar.
They have polyester dress pants in many colors and styles. To match these pants TH carries all sorts of sweaters and dress shirts to dress up in.
For your straight leg jeans they have western cut tops by Mais Oui. These tops can either be worn with the sleeves rolled up and buttoned with the tab fastener. These tops are plaid with silver threads running through the fabric which is also the vert latest!
GOOD LUCK IN YOUR SHOPPING WITH ALL THESE CHOICES TO CHOOSE FROM YOUR REALLY GOING TO BE ABLE TO BUILD UP YOUR WARDROBE. THANKS TO ALL THE LOCAL BUSINESS!

like this: 1, 2, 4, 5, 6, & 3. All students are to attend or will count as unexcused absentee.
Monday Bruce Stinson visited our school. He is really looking good and I am personally glad to see him! Hope he can make it to school real soon! GOOD LUCK BRUCE!! I sure am glad that things are working out for him.

The everlasting beauty of Christmas sparks the spirit of mankind; it is with thanks that we wish you a beautiful season.

Automotive
209 E. Brillhart
PERRYTON, TEXAS

Christmas
Open House
This is your invitation to join the Hospitality People at the **FIRST STATE BANK** for a cup of cheer and a sweet-- Join us anytime on Thursday Dec. 21st & Friday Dec. 22nd at the refreshment table in the Lobby WE WILL BE CLOSED MONDAY DECEMBER 25th

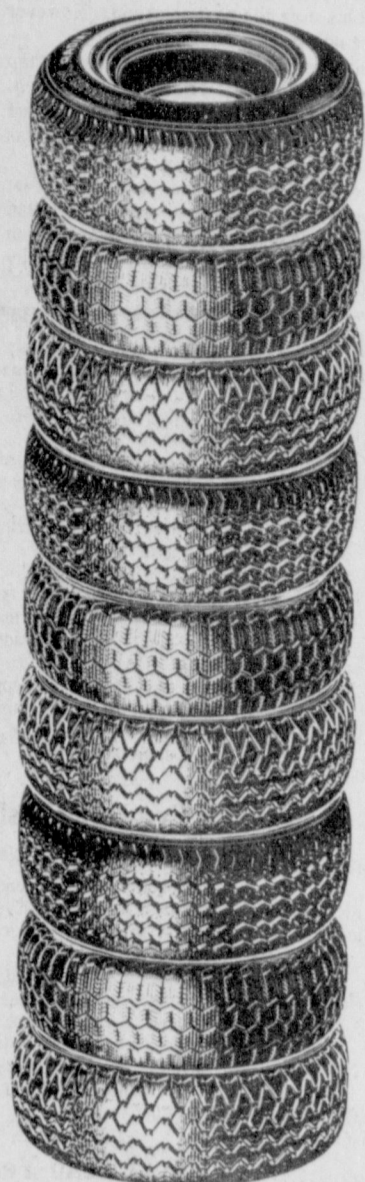
FIRST STATE BANK
SPEARMAN, TEXAS 79081

★ Feeder Cattle ★ Custom Cattle Feeding
★ Feed Financing ★ Locally Owned
★ Our objective is to furnish the best service available

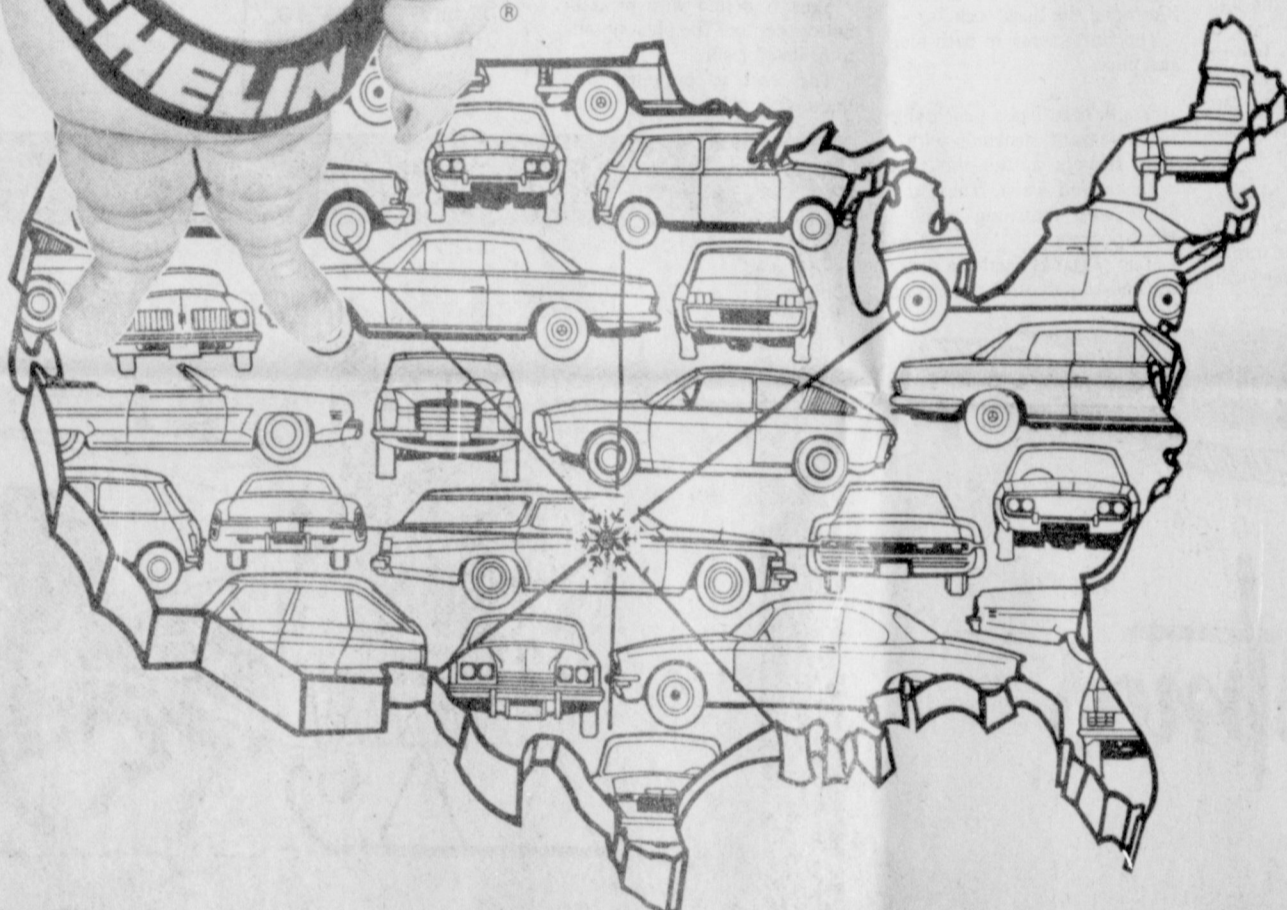
Palo Duro Feeders

Penny Brooks, Manager
10 Mi. S. of Gruver Hiway 136
PHONE 733-2416 and 733-2417
A Very Very Happy Holiday Season To Each Friend And Client

TIME TO GET READY...



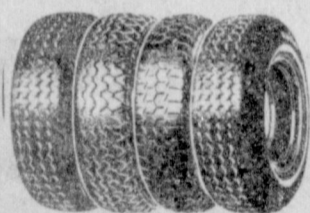
Join The Move To MICHELIN Wherever You Drive In The U.S.A.!



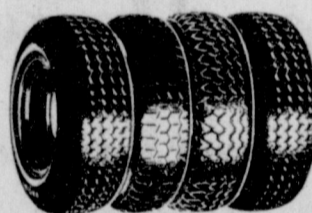
★ PERFORMANCE

★ LONG TREAD MILEAGE

★ FUEL ECONOMY
COMPARED TO BIAS-PLY TIRES.



WHEREVER YOU LIVE IN THE U.S.A. THERE'S A MICHELIN RADIAL SPECIALIST READY TO RECOMMEND THE RIGHT SET OF MICHELIN STEEL-BELTED RADIALS FOR YOUR CAR.



30 YEARS OF RADIAL TIRE INNOVATION
MAKE MICHELIN THE TOP VALUE
FOR YOUR TIRE DOLLAR!!

FOR TIRES YOU CAN DEPEND ON ...
JOIN THE MOVE TO
MICHELIN

Gruver Farm Supply

Phone 733-2427

P. O. Box 652

Gruver, Texas 79040

