

Pigskin prevue for Spearman Lynx



The Spearman Reporter

VOLUME 69, NO. 39

THE SPEARMAN REPORTER, SPEARMAN, TEXAS 79081

THURSDAY, AUGUST 10, 1978

Bulls' Inn opens Saturday

Take three stories of time-worn wood; mix with liberal dashes of vision, feeling, and adaptability; add one ultra-talented Charlene Bulls with her magical "savoir-flair"; and by spontaneous alchemy (and heaps of elbow grease, foresight, and abilities plus patience--voila! The Bulls' Inn, circa 1978, (give or take a 100 years more or less)--a NM (Nieman-Marcusite) enterprise right in the middle of Spearman, Texas, U. S. A.

Red letter Saturday, August 12th for the Grand Opening of The Bulls' Inn at 502 Davis Street from 9:00 A.M. to 5:00 P.M. a the landmark of the Spearman Hotel built in 1909 by Bert F. Cator, J. H. Wright, S. B. Hale, and other community-minded people.

Lose yourself in a daydream of fantasy with the directory to the left of the entrance pointing the way to the shops and stops inside:

- The 'N' Place 101
 - The General Store 102
 - Queen's Cupboard 201
 - Etc. Shop 202
 - Chambers' Accessories 203
 - R.L. and E.C. Bulls, Inc. 300
- Ere you leave the porch and entrance note the Central Park wrought iron and wooden slatted benches for 'easy sittin' and restin'. Also note the Bulls' Inn

sign, a replica of the Spearman Hotel sign as well as the carriage two-candle lamp-and be certain to cast your orbs at the wooden gazebo, a replica of the nostalgic summer house, located in the center of the greensward at the intersection of Davis, Dillon, and Bernice.

Enter into The General Store staffed by Charlene Bulls, Gina (Bulls) Davis, Marilee Bulls, and Tracy Bulls along with Bobby Novak, Kay Vernon, and Peggy Woodington (the latter three from Sacks 3rd Avenue) who will help you peruse the treasures, both gourmet and antique, along with replicas from the past, present, and future.

Include enough time to see the wooden counter (grooved from many a year's usage) fronted by bins of beans, peas, rice, flours, etc; the wooden chicken coop to the west--a genuine from Ireland which was used in the 'good old days' in lieu of refrigeration (talk about your fresh produce!); a treasure trove of brass, copper, and wooden kitchen accessories along with gourmet foods from as many places as you can imagine including caviar from Denmark; herrings from Germany; Norwegian flatbread; pate from France; clams from Korea; Poupon mustard from

deJon, France; English teas; Holland Droste cocoa; and rice from Italy along with a fabulous cheese wheel center.

Note, too, in The General Store, the framed painted picture, an original from the walls of the Spearman Hotel, the history of which is fascinating for it is said a man who stayed at the hotel paid for his night's lodging by doing this piece of art.

Also first floor to the left is The 'N' Place, a beauty emporium owned and operated by Noreen Sutton and including, besides the whole gamut of beauty aids and operations, a sauna bath and whirlpool parlor!

Take a 'trip' to the second floor up the foot-worn steps and find a whole new world of shops and fun including, to the right, "The Queen's Cupboard" complete with eight round oak pedestal tables and antique ice cream chairs and other decorative accessories from England, Ireland, Poland, Germany, France, and Czechoslovakia--all for sale or 'sitting and admiring'. Here will be served cafeteria-style from 11:00 A.M. to 2:00 P.M. salads, soups, and sandwiches for the gourmand and the gourmet--and just plain Panhandle folks. Carol Queen and Pat Parker are the owners

of this far-out-and-into-the-past eatery. Even the dishes are for sale and they are something else again for they come in several shades, freezer-to-dish-washer-proof, and beautiful shapes along with flatware to match!

Diane Elliott and Jenny Jines have taken delight in conjuring up the Etc., Shop with all its bright and collectible home decor items from Poland, Peru, India, and woven furniture from the Philippines and Taiwan. The shop is further enhanced by the Tiffany-inspired window treatment by Marva Hendrickson which includes upon the window panes, a pert turtle, owl, eagle, and butterfly--she, of the superb artistic talent, also is responsible for the charming pastels on the French-windowed door to the Etc. Shop.

Enterprising entrepreneur Earline Chambers owns the Chambers' Home Accessories featuring all sorts of things extra-ordinaire for home and hearth including candles and here also can be found gift wrapping with imagination and a superb gift wrapping service.

Snatch your perspective back to near normal and revitalize yourself at this point with a delightful interlude on the balcony veranda on the second floor front--complete with

wrought iron tables and cast iron buckets brimful of posies.

Remaining on this fairyland tour is the third floor loft reached by a stair-well opening in the middle of the 13 X 29 area which is to be used as an office and lounge. The loft is finished with the original wood stained a rich brown; fluorescent lighting has been added; and a delightful alcove balcony providing breeze as well as an escape hatch if necessary (though the entire building has been re-wired, re-plumbed, and re-piped to come up and exceed all State safety regulations concerning this building which had at one time been condemned).

There you have it--a thumbnail sketch of a "place to spend the day, not the night"--at the Bulls' Inn, the former Spearman Hotel, an official historical Texas Landmark, offered for your pleasure and enjoyment by Roy and Charlene Bulls and their children--a family affair which offers you the best of the past for "now" people who have a love for the future.

Be sure to attend the Grand Opening of the Bulls' Inn--a building with a "past"--re-modeled for the future--and what a future!

Lora Vernon Services Held

Funeral services were held Wednesday morning, August 9, 1978 at 10:00 a.m. in the First Christian Church here for Mrs. Lora Ellen Vernon, a longtime Spearman resident. Mrs. Vernon died Monday at Newman Memorial Hospital in Shattuck, Okla. The Rev. Don Wirsdorfer officiated. Arrangements were under the direction of Borwell Bros. of Spearman.

Interment was in the Holt Cemetery.

She was born January 19, 1887, in Holland, Texas and had been a resident of Spearman since 1927.

She was a member of the First Christian Church and Order of Eastern Star.

Surviving are four sons, Ike, Jake and J. P. of Spearman, and Dick of Springville, Calif.; two daughters, Bernice Brown and Buezy Lyon of Spearman; one brother, Cecil Vernon of Springville, Calif.; two sisters, Buena Hays and Grace Archer, both of Spearman; 13 grandchildren and 12 great-grandchildren.

Spearman will have one of only six coaches in the state of Texas who won a state football championship in 1977-78. Preston Smith, former coach of the State Champion Wheeler Mustangs, will head the Lynx coaching staff this year, and he has an outstanding group of coaches to assist him. Jim Hester, former coach at Wheeler will coach the backs; Ken Friemel, local coach, will handle the offensive line; Bill Hamilton, Spearman, will coach the defensive secondary; James Collingsworth, new coach from Childress will handle the line backers; Herb Hager, line-backer and Jr. High coach from Texline will be on the staff this year; Larry Morris, boys varsity basketball coach, will handle the 9th graders. Larry moved to Spearman from Crosbyton. Terry Crocker, recent McMurry graduate, will handle the 9th graders and assist with girls basketball. Ralph Newton will handle the girls basketball program, and Chuck Steele will head-up the tennis program for the Spearman school system.

Shoes will be issued Wednesday, August 9th for players, and a 2-day work-outs will begin August 14th at 8 a.m. Practice in pads will begin at 8 a.m. August 18th.

Coach Smith boasts 18 returning lettermen from last year's district 1-AA champions. They are Zane Newton who will be used as quarterback this year. Zane is a 175 pound senior. Billy Sellers, 155 lb. running back, was an outstanding player on last year's Lynx team. John Reneau, 175 lb. returning starter, will be used as full back. Billy Snider, 140 lb. full back, Sam Boone, 165 lb. full back, James Whittaker, 165 lb. end, David Ortega, 175 lb. tackle, Kirby Hargis, 170 lb. center, Carey Bridges, 190 lb. guard, John Kenny, 155 lb. guard, Todd Brock, 160 lb. tackle, Scott Martin, 155 lb.

end, David Cummings, 175 lb. tackle, Steve Goff, 170 lb. guard, Brent Ware, 175 lb. tackle, Jimmy Ladd, 180 lb. center, Florence Martinez, center, 180 lb., Chris Bodey, 180 lb. end.

Besides these 18 returning letter-men and starters, Coach Smith hopes to have a fine group of new prospects from the B team to look at.

The Lynx open at Stratford September 8th. Stratford has a new coach and had a 5-5 season last year. Friendship has their coach returning. They won 8 games and lost only 2 last year. Friendship will play at Spearman September 15th. Elk City, Oklahoma, will play at Spearman September 22nd, and they have a new coach, but we do not have their last years record. Spearman will play at Tulia September 29th. Tulia had a 5-5 season last year, and they have a new coach this year. Spearman will travel to Guymon October 13th. Guymon was a district winner in Oklahoma football last year, and should have a fine team. River Road will open conference play at Spearman October 20th. They won only one game last year, and will have a new coach. Spearman will journey to Perryton October 27th, and play the AAA finalists, who had a 10-1 season in AAA football last year. Most observers believe they would have been the state AAA champions except for injuries to Brad Beck. They also have a new coach at Perryton this year. Canadian will play at Spearman November 3, this year. They won 2 games and lost 8 last year. They also have a new coach this year. Spearman will play at Boys Ranch November 10th; they won 6 games and lost 4 last year. Dalhart will play at Spearman this year, November 17th. Dalhart won 7 games and lost 3 last year. They also have a new coach.

Radio station open house Sun!

Radio station KBMF/KRDF, Spearman and Gruver, will have open house Sunday, Aug. 13 from 1 to 5 p.m. at their location at 605 E. Kenneth. Everyone is invited to attend and visit with the new owners.

New owners of the radio station is Cardiff Broadcasting Co., Inc. The station was purchased from Coy Palmer, longtime owner and operator of the station.

The station will be affiliated with the Mutual Broadcasting System and broadcast hours will be from 6 a.m. until midnight. They plan to broadcast the Dallas Cowboys football games, Southwest Conference games, and last but not least, Lynx football games.

There will be national and state news on the hour, Wall Street Reports Monday through Friday, at 11:35 a.m. and 3:35 p.m.

Other features will be 37 Sportscasts on weekend; "Ask Tex Schramm" a live telephone talk show on Mondays at 7:05 p.m.

The Cowboy report will be aired at 6:40 a.m. Monday thru Saturday.

All of these features, plus Golden Country Music, always, plus your favorite Gospel Programming.

The station is stereo FM broadcasting on 98 megacycles.

Patrick T. Pogue is the president of Cardiff Industries, Inc. and Cardiff Broadcasting, Inc. John Douglas Davey is the vice

president of the parent firm and vice president and general manager of the broadcasting operation of Cardiff Industries. Davey has been a resident of Spearman for some months now, along with his charming wife, Mary.

Other staff members are Friday Wise, program director and administrative assistant; Dwayne Smith, news and sports director and production manager; Reggie White, chief engineer; Debbie Thompson, general sales manager; Geraldine Weekley, account executive; Ronnie Burke, air personality and sportscaster; Mark Green, air personality.

Davey, general manager, invites everyone in Spearman and Gruver to come out and visit with the staff Sunday.

The SACRED HEART CATHOLIC CHURCH in Spearman will celebrate the Mass of the Resurrection for the repose of the soul of POPE PAUL VI, Thursday evening at 7 p. m.

Sale For Season Tickets Set

Season football tickets will go on sale to previous holders Monday, August 21 at the business office of Spearman High School.

Previous ticket holders have until Friday, Sept. 1 to pick up their tickets. After that, these will be available to others, beginning Tuesday, Sept. 5.

The tickets this year are \$12.50 for a 5 ticket package. Tickets for reserved seats at individual games will be \$3.00.

The Spearman Lynx open their football season Sept. 8 at Stratford. The first home game will be Friendship here on Sept. 15.

Welcome Rain

A thundershower late Monday evening brought much welcome moisture to the Spearman area. Reports were received of 1.40 inches officially, with other reports as much as 1.60 in the city.

And west of Gruver, 1.25 was reported received at the Maupin farm.

Cool temperatures prevailed Tuesday, with a high at noon of 78, with a promise of more moisture in the offing.

Hospital News

Patients in Hansford Hospital are Quinn Underwood, Viola Fite, Willie Radford, and Eivita Domenezquez and son.

Dismissed were W. O. Groves, Carl Gidley and Everett States.

Union Church Schedules Singers

Gayland Collins and The Day Break Singers from Dallas, Texas will be at Union Church Sunday morning August 13. They will be singing in the 11 O'clock service. Gayland was voted one of the best musicians and singers in the Dallas, Fort Worth area this past year. You'll enjoy this fine group of Gospel singers as they sing under the anointing of the Holy Spirit and lead people in Praise to God. Come hear them at Spearman Union Church Sunday morning at 11 O'clock. Pastor Burress and congregation extend an invitation to all.

Small Girl To Burn Center

Kakie Coates, daughter of Pat Harris of Canyon and Kenny Coates of Spearman was transferred to the Children's Burn Center at Galveston August 9 from High Plains Baptist Hospital.

The five year old girl suffered burns over 30 percent of her body August 3 at her home in Canyon.

She will undergo extensive skin grafts for approximately 6 to 8 weeks in Galveston.

School Begins August 28

Students in the Spearman Independent School District have until Monday, August 28 to finish all their summertime activities, before getting back into the swing of school this year.

All elementary students, grades kindergarten thru 4 are to register, Friday, Aug. 25 from 8:30 to 10:30 a.m., according to Allen Alford, elementary school principal. Also, any new students moving into the district will enroll Aug. 21, 22, and 24 from 9 to 2. These new students must have their immunization record before they can be enrolled.

Junior High Principal G. W. Robinson announced that all

students in junior high are to register at 8:20 a.m. Monday, August 28. There will be a general assembly in the junior high auditorium. Classes will be run on a short period on the first day, will dismiss at 2:30 and buses will run at that time.

Any new junior high students will register from 9 to 2 on Aug. 21, 22, and 24, with their immunization record.

All high school students will pre-register Friday, August 25 at Spearman High School, with classes scheduled to begin on Aug. 28 at 8:20 a.m.

New high school students to the district should register at the high school August 14 thru 18.

The first holiday will be on Labor Day, Sept. 4. Thanksgiving holidays will be Nov. 22, 23, and 24. Christmas holidays for school children will be Dec. 25 thru Jan. 1.

The Easter Holiday will be April 13, April 16.

Other holidays for students will be In-Service Days for teachers. They are Nov. 3, Nov. 22, Feb. 23, April 7 and May 18.

There are 175 student days on the 1978-79 calendar, 8 In-Service days, and 11 days of holidays.

Be sure and visit the Bulls Inn and the radio station.

Local boys attend Camp!



Mr. Garner, president of the local Rotary Club, is pictured on the left with John R. Collard, Todd, Billy, and James who gave the program at Rotary Club last Monday.

Three local boys attended the Rotary Sponsored camp in New Mexico the past week. They were accompanied on the outing by John R. Collard of Spearman. The three local young men were Todd Brock, Billy Snider and James Whittaker. Camp Ryla is located near Taos, N. M., and teaches young men

how to be successful in business, how to handle guns when on hunting trips, and also discussed the stock market. Also, the comparison of life in Russia and the United States was very interesting to the young men. Fishing, canoeing and other activities highlighted the outing. The three young

men and John R. Collard spent five days at the camp and all returned to give a report at the regular Rotary meeting last Monday.

Mr. and Mrs. Vance Snider, Mr. and Mrs. J. L. Brock and Mrs. Whittaker were guests of the Rotary Club Monday.

Antique Machinery Show Planned

The Golden Spread Antique Machinery Association will present their first annual show, Saturday and Sunday, Aug. 19-20 at the Donald Sell Farm, located 10 miles east of Perryton on FM 377 and 5 miles south on FM 2711.

The show will begin at noon Saturday and will be all day Sunday.

Plans are for a threshing bee, slow races, demonstrations by steam engines, gas tractors, stationary engines and antique cars.

There will be church services on Sunday. Camping space and food will be available on the grounds. Admission is \$2.00 for anyone 12 and older, children under 12 admitted free.

The association is made up of members from Spearman, Perryton and Booker. Spearman members are Qua Crum, Preston Graham, Jim McLain and J. D. Wilbanks.



Dr. Mario V. Manese, M. D. will open practice in Spearman this week, at the Hansford Clinic. Dr. Manese is a surgeon, and obstetrician. We join in welcoming him to the Hansford Hospital, and Clinic in Spearman.

Markets

WHEAT	\$2.69
MILK	\$3.55
CORN	\$2.30
SOYBEANS	\$9.00
BARLEY	\$1.70



Spearman Lynx 1939 - 40

In the late 30's this was the entire Spearman foot ball team. Many of the members still live in Spearman, including your editor and did play on the team. KBMF and "The Bulls" family were not in Spearman at this time, but they are here now! Both will celebrate their grand openings this week end! And, KBMF will carry the play by play of the Lynx this year! Members of this team, included, our star, Roy Reed, No. 77! No 97, all stater Chalmers Porter! Marcus Larson, No. 87 No. 95. Newell Allen picture), Joe Harmon, now of Gruver No. 71. Cecil Reynolds, No. 78! J. L. Pierce, No. 85. This team had a perfect season, they lost about all of their games! They really had some wonderful fans however! Most notable ones were Slim Cates, who stayed with us, even "when we lost all of our games" and Noel Womble! So, when you tune in to KBMF this fall, and hear the Cowboys and Lynx in action, remember the late 30's, when the Lynx as well as Spearman, were grooving, and still going despite no rain etc. Incidentally, the editor is No. 8! Notice, that the team did not have any socks, and had to play in whatever they could scrape up! Remember, to attend the grand opening of KBMF this week-end, and also The Bull's Inn this Saturday!



When the Bulls Inn has open house this Saturday, it will bring back fond memories to many of the band members pictured above. All of them helped dedicated the band stand, which one was reposed in front of the old Spearman Motel! Today, Charlene Bulls is re-building a Gazebo, in the exact spot that the old band stand stood on, in front of the Bull's Inn! Members of this late 30's band, include: Top row, Mary Horn, Dean Church, Adelaide Shedeck, Kid Lackey, Jane Womble, Wayne Hutchison, Mr. Ratten, Howard Perry, Elsa Porter, a Troud Branon, R. L. McClellan, Edward Bradford, Vernon Crooks, Verna Gail Allen; MIDDLE ROW Merrilyn Snider, Veda Hatchison, Marge Gerber, Anona Hull, Martha Delon Kirk, Jim Winters, Everett Green, Virginia Buchanan, A. L. Jackson, Pat Snider, Ola Jean Rosson, J. E. Gerber; Bottom row, Kathleen Greever, Bill Jackson, Vera B. Hoskins, Arnold Richardson, Cliff Douglass, Colleen Kelly, Anta Clea Reed, Philip Snider, Mary A. Sparks, Billy Miller, Chalmers Porter, Dennis Kern. Absent from the picture taking, was Bruce Douglas and C. P. Archer, both active members of the prize winning band. KBMF will play some pretty music, but in the late 30's, the sweetest music this side of "heaven" was rendered by Guy Lombardo, and the Spearman high school band! And, many of these band members will be present this Saturday when Charlene Bulls has her grand opening! Plan to attend this Saturday, and Sunday attend KBMF's grand opening!

EAT WITH MABEL REED AT-

LONG - TIME GRUVER RANCH COOK

MARTIN'S STEAK GARDEN

---every evening!

SPECIAL EVENING MENU:

MON.	TUES.	WED.	THURS.	Reg. Menu
SPAGHETTI with Mabel's Meat Sauce Home-made Italian Bread	CHICKEN and Dumplings	HAM HOCK and Beans Corn Souffle and Corn Bread	LASAGNA Home made Italian Bread	Each Night



ESSIE BURKHART

EAT ESSIE'S

BLUE RIBBON PIES...

We have found the fountain of youth in
Essie's Pies!

Call in advance for whole pies to go.

EAT WITH GEORGIA PIATT AT NOON-- MONDAY
THRU SUNDAY - LUNCH 2.95, includes dessert &
Coffee or Tea

MARTIN'S STEAK GARDEN

Spearman, Texas

Phone: 659-2664


BORGER HIWAY.

WANTED ADS

CAPROCK MONUMENT CO.
Dealers of Georgia Granite, Georgia Marble, Colored Granite, & Bronze.
represented by
BOXWELL BROS. FUNERAL HOME
519 S. EVANS
659-3802

Hansford County Planned Parenthood
265. Haney
659-2483
Spearman
Mon.-Fri.
8 a.m. to 12 noon
30S-rtm

SERVICES

HANSFORD LODGE
No. 1040
A.F. & A.M.

Stated Meeting
Aug. 14 8:00 p.m.
Dwayne L. Smith, W.M.
Ceryl Batton, Sec'y.

KIRBY SALES & SERVICE of
Spearman, 912 S. Bernice.
659-2797.
30-rtm

STEAM RINSEVAC RUG SHAMPOOER
\$6.95 PER DAY
with Upholstery Attachment
\$8.95 PER DAY
Call Gordon's Drug
659-2141 or
after 7 p.m. & Sundays
call **FREDDIE LARGENT:**
659-3437
24-rtm

YOUR LOCAL USED COW DEALER: SPEARMAN BI-PRODUCTS. Seven days a week dead stock removal. Please call as soon as possible. 659-3544.
8-rtm

SERVICE: Pits cleaned, wet or dryer. Dragline or loader. Also dozer, grader, carry-all service. LeeRoy Mitchell, 806-733-2384, Gruver, Texas, 79040.
9-rtm

Alcoholic Anonymous meeting 8 p.m. Friday, Home Demonstration Club building. 305 N. Bernice. Phone 659-3181 for information.

Al-Anon meetings 8 p.m. Friday, Home Demonstration Club building. 305 N. Bernice in back room. Phone 659-3181 for information. Ask for Al-Anon.

NOTICE
Wallace Monument Co.
Monuments, Curbings,
Grave Covers
Local Representative
LEONARD JAMESON
659-3406
20-rtm

CUSTOM HAY BALING. Jerry D. Viriden, Gruver, Texas. Call 733-2236.
29-rtm

PEE WEE'S PLUMBING & Appliance Service. Roto-rooter. 659-2811 or 659-3781.
26-rtm

Will Do Lawn Mowing, etc. Call 659-3839 or 659-2541.
25-rtm

IS YOUR CREDIT MESSED UP? For small down payment, we will finance you a car. Bulldog Auto Sales, 200 E. 10th, Berger, Texas. Phone 273-3422.
32S-12tp

ATTENTION WORKING LADIES: Boyd's Beauty Salon is now taking appointments evenings and nights. Call Winnie Carol for your beauty needs, 3017 or 3591.
37S-4tc

REAL ESTATE FOR SALE

FOR SALE: Three Bedroom two bath home on large lot. Excellent location, close to schools. Shown by appointment only. Call 3716 or 2524.
27S-rtm

NEW LISTING: 1001 So. Dresden, three bedroom home, 1 1/2 baths, central air and heat, storage house, corner lot, top condition, attached garage. 659-3042.
33S-rtm

FOR SALE: Three bedroom two bath home on large lot. Excellent location, close to schools. Shown by appointment only. Call 3450 or 3802.
32-rtm

FOR SALE: 2 Crawford addition lots with improvements. Call Dean Groves, 918-299-6251.
31S-rtm

FOR SALE: In Gruver, 3 bedroom house, partially furnished. Call 733-2315.
30-rtm

Mayfield Real Estate
John Mayfield - Broker
435-6528
Ruby Lair - Salesperson
659-2188

714 Steel Drive, 3 bedrooms, single bath, utility room, den living room, carpet, drapes, has many decorative features.

710 Steel Drive, 3 bedroom, 1 1/2 baths, utility room, single garage, central heat.

2 lots for sale in Shaull addition.
33S-rtm

OFFERED BY:
Emmett R. Sanders
Realtor

REALTOR®
†††

Combination dwelling and store building at 5th & Dresden, on 90' x 140' lot with small detached apartment and storage shed. Main building has about 1650 square feet enclosed, 2 bedrooms, 1 bath, living room, dining room, kitchen, utility room, store room with extra room which could be another bedroom.
†††

Growing with Spearman! Two new 3 bedroom, 2 bath homes now under construction on South James St. in Delon Kirk Addition. Refrigerated air, carpets, nice master bedroom, utility room, attached garages.
†††

Two bedroom stucco home in excellent condition with new carpets throughout; has formal dining room, utility room, detached double garage, near school on 75 ft. lot.
†††

308 S. Hoskins, 5 room house, carport, fenced yard.
†††

14'x70' Mobile Home with 60 foot fenced lot and large garage. 76'x70' in excellent condition, never been moved. Has 3 bedrooms, 1 1/2 baths, refrigerated air, central heat, curtains, range and refrigerator included.
†††

Excellent ranch-farm combination 5 miles west of Spearman, total 2 1/2 sections, no minerals, about 400 acres cultivated, balance choice Palo Duro Valley and upland grass, 2 irrigation wells. Good stucco 3 bedroom ranch home with basement, 3 car garage, shop, etc. Ideal stockman-farmer set-up. Owner will carry paper.
†††

150'x140' prime commercial tract, zoned heavy retail, includes immaculate 2 bedroom home and detached garage with storeroom. This is the best location presently available for business or office development. Terms available.
†††

5 room stucco house on 110 foot lot; room for a mobile home; owner will carry paper.
†††

EMMETT R. SANDERS
REALTOR
659-2516
659-2681 (nights)
34S-rtm

FOR SALE: 60 ft. lot, fence, and garage. Zoned for mobile-home. Emmett R. Sanders, Realtor, 659-2516, nights 659-2601.
38-rtm

MISCELLANEOUS FOR SALE

FOR SALE: Folding Ping Pong table. Like new. To give away, Collie-Sheppard cross. 6 mos. old, spayed, female. Call 659-2891.
39-1tp

FOR SALE: Wonder One-head garage door with windows. Electric opener. 12 ft. x 12 ft. Phone 659-3802.
35-rtm

-STEREO-
Marantz-1060-60W Amp.
Sony - Stereo Tuner
Sony-8-TR recorder
Garrard-95-B Turntable
Vanco 16-Speakers
2-Mobile Linears
Pal-150 W & 350 W
Call 659-2794.
37-4tp

FOR SALE: 1977 Chevrolet Caprice 4-door. Red with C.B. call 659-3434 or 659-2338. Car is only 10 months old. Will sell for \$5200, cost over \$7000 today!
35-rtm

FOR SALE: 1969 Buick Electra 225. Loaded. Phone 659-3802.
35-rtm

FOR SALE: 1976 1/2 Ton Black Chevy, Crager Mags, AM-FM Stereo.
1974 1/2 Ton Chevy 4-Wheel Drive. White spoked wheels, 12.00 x 16.5 tires, rough country suspension, headers, and AM-FM Stereo-Tape deck. Call 733-2539 after 7:00 p.m.
39-1tp

Used G. E. dishwasher and refrigerator, Copertone. Call 733-2539 after 7:00 p.m.
39-1tp

PIANO IN STORAGE - Beautiful spinet piano stored locally. Responsible party can assume low payment balance. Write: National Keyboard Inc. 6720 1/2 Shirley, Austin TX 78752.
39-4tp

MOVING-MUST SELL: 14x72 LANCER Mobile Home. Two bedrooms, two baths, central heat and air. Phone 733-2142, Gruver, Texas. Call anytime but Friday.
39-8tp

GARAGE SALE

FOUR NEIGHBOR GARAGE SALE: At 111 Etling, Fred Meyer residence in Gruver, Texas. Doris Cluck, Delphene Etling, Faye Gillespie and Doris Meyer. Sale will begin Friday, August 11th and continue through Saturday, August 12th. Sale begins at 8:30 a.m. and runs till????? Something for everybody. A bit of everything! "Have one box" of surprise drawing on the hour every hour. All must go!
39-1tc

LARGE YARD SALE: Friday Aug. 11th, 9-5; Saturday Aug. 12th, 9-12 at 118 N. James.
We have a lot of nice things that we can't use in the house anymore because we are remodeling. We also have a lot of nice school clothes and shoes and some furniture.
39-1tc

PACK RAT SALE: Combine school and Christmas shopping. Toys, dolls, infants thru women's size 20 clothing, large and small appliances. Trixie Holt's garage, 1 mi. west of Gruver on 10th St. Saturday, Aug. 12, 10 to 6, Sunday, Aug. 13, 2 to 6. No phone calls.
39-1tc

RUMMAGE SALE: Aug. 11 & 12, 9 to 6 at Sacred Heart Catholic Church Parish Hall.
39-1tc

WANTED

WANTED: Corn and milo harvesting. Have two 1978 Gleaner Combines and 6 row 30 inch corn heads. Call Collect: 913/675-3475. Pat Haffner, Hoxie, Kansas.
39-8tp

BUSINESS OPPORTUNITIES

Wanted: dealer or salesman for solar hot water heaters. Fast moving product - good profit margin. Call 255-3150 for more information.
38S-2tc

FOR RENT

FOR RENT: Furnished Apt. Call 2774.
38S-2tc

FOR RENT: 3 Trailer Spaces, \$25 each. Located at 219 N. Hoskins and 220 N. Brandt. Call 383-9886.
32S-rtm

FOR RENT: Extra large one bedroom house. Plumbed for washer and dryer. Also Apartment for rent. Call 2082.
39-rtm

HELP WANTED

WANTED: Someone to live in with elderly person. Time off. 733-2423 or write Box 520, Gruver, Texas, 79040.
39-6tc

TRUCK DRIVER NEEDED. Local hauling. Must have commercial license. Call 659-3642.
35-rtm

HELP WANTED: Apply in person, Rogers, Sales & Service, Waka, Texas. Inside shop, manufacturing work.
25S-rtm

HELP WANTED: Full time. Coryell's Drive Inn, Gruver. Apply in person.
39-2tc

HELP WANTED: Permanent position for adult, as presser trainee. No experience necessary. Apply in person at Berry Cleaner's, 207 Main.
39-2tc

LEGAL NOTICE

NOTICE TO BIDDERS:

The City of Spearman, Texas will accept sealed bids until August 29, 1978 at 5:00 p.m. in the office of the City Manager, for the sale of the following property:

1. Lot 9, Block 2, O.T.
The City reserves the right to accept or reject any or all bids.
POSTED THIS THE 28th DAY OF JULY, 1978.
Mary Lou DeArmond
City Secretary
38-2T-1 only

CARD OF THANKS

I would like to express my sincere appreciation for the flowers, cards, gifts, calls and other kindnesses shown to me while I was in St. Anthony's Hospital in Amarillo.
May God richly bless each of you.
Agnes Windom

According to the United States Department of Agriculture, an American family with two children, 6 to 11 years old, in 1974 spent on the average \$58.10 a week on food. In 1965, the same sort of family spent \$34.

It has been estimated that only 21 percent of the world's land surface can be cultivated and that only two-fifths of this is currently under cultivation.



The leaning tower of Pisa increases its inclination by one foot each 100 years.

ED WHEELER REAL ESTATE

HOMES - FARM - COMMERCIAL

1006 Barkley, 3 bedroom, 1 1/2 bath, large den, fireplace, fenced, a nice home.

900 Haney, 3 bedrooms, single bath, fenced, storage, cover for camper, corner lot, extra nice.

1010 Haney, 3 bedrooms, single bath, recently redone, built-ins, fenced, attached garage, vacant.

34 N. Snider, 3 bedrooms, 1 1/2 bath, living room, den, nice kitchen and dining area, large utility room, living room can be fourth bedroom, attached garage, metal siding, a lot of square feet, recently remodeled.

Ed Wheeler
Jerry Gee
659-2613, Office
or 659-2951, Home
659-3664
35S-rtm

CONSUMERReport

Cars get recalled and you can take your TV or stereo back to the store. But imagine recalling a house!
Until four years ago, if the house you bought didn't measure up, you could be stuck. Getting a peeling door repaired depended on whether your builder cared about his reputation enough to send a painter over.
Professional builders decided the consumer needed some protection. And the Home Owners Warranty was born. Called HOW, it is the first 10-year warranty/insurance package for new homes in the country.
Unlike ordinary insurance, you can't go out and buy a HOW policy. The builder builds the HOW protection right in, and passes the protection on to you when you buy.
The program consists of a first year builder warranty covering defects in workmanship and materials; a second year builder warranty that covers defective performance of the major systems (plumbing, heating/cooling, electrical). The house is covered for major structural defects for 10 years by warranty or direct insurance.
It's no longer necessary to get stuck when you buy a new house or condominium. The HOW plan is available in 44 states and 70% of the metropolitan areas with populations over 100,000.

FACTS & FIGURES

Between 1960 and 1970, the amount of taxes paid to local, state and federal governments by each American nearly doubled. It went from an annual average of \$628—to \$1,146.



NEWS OF NUTRITION

LITTLE KNOWN FACTS ABOUT CANDY
Hundreds of different ingredients are used in making candy, but those used in the greatest quantity are sugar, corn syrup, milk and chocolate.

The carbohydrate content of candy makes it a concentrated source of energy. Many of the important functions of the body require carbohydrates as their only, or main, fuel. The brain, for example, uses sugar glucose as its primary source of energy.

NEWS OF SPORTS

Tennis Fever: Highly Contagious
Americans are making a racket over tennis: The number of tennis players increased by a smashing 45 percent between 1973 and 1977, a boom unmatched by any other sports activity.



ONE OUT OF every seven Americans plays tennis.

Tennis was considered to be a rich man's sport, but today, with courts springing up in communities all over the country and the availability of quality equipment at accessible prices, more and more people of every age are getting out on the court.

The United States Tennis Association (USTA), a not for profit membership organization, has been supporting the growth of tennis as a sport for everyone: amateurs,

TEXAS PRESS
MEMBER 1977 ASSOCIATION
PUBLICATION NO. 509660
SPEARMAN, TEXAS 79061
213 Main Box 458 659-3434
Published Weekly at 213 Main Street
Spearman, Texas 79061
Owner-Publisher.....William M. Miller
Second Class postage paid at Spearman, Texas

ANY ERRONEOUS REFLECTION UPON THE CHARACTER OF ANY PERSON OR FIRM APPEARING ON THESE COLUMNS WILL BE GLADLY AND PROMPTLY CORRECTED UPON BEING BROUGHT TO THE ATTENTION OF THE MANAGEMENT.

SUBSCRIPTION RATE: Hansford, adjoining counties, combination with the Hansford Plainsman, \$10.40.
Other points, \$14.40.

Services are pending with Boxwell Bros. Funeral Home in Spearman for Mrs. Buster (Lola Mae) Gator, one of the area's loveliest matrons who died at her home 15 miles north of Gruver at 7:00 P. M., Tuesday following a courageous fight against the ravages of cancer.
Memorials may be made to the Heart Fund, the American Cancer Society, or any favorite charity

If the Summer Heat is coming through your windows & doors, and into your house - - - your Air-Conditioner has to work more

Insulate them with Storm Windows, & Doors - Shade them with Awnings or Shade Screens
For Free Estimate Call: **HOWARD MOYER** at
Only Aluminum Industries
114 W. 1st
338-6966 or
Gaymes, Okla.
338-6170

BERNINA SEWING MACHINES
MADE IN SWITZERLAND
• Quality Built for Long Life & Dependability
• A Choice of Stitches for Today's Modern Stretch Fabrics
• The Perfect Machine for Modern Stretch Sewing

See the all-new Bernina at these dealers

Bernina Sewing Studio
2617 Wolfen Village
353-4543
Open 10-6 Mon.-Sat. Terms Available

Contact
Launa Pearson 714 Baylor
806 435-2274
Perryton, Texas

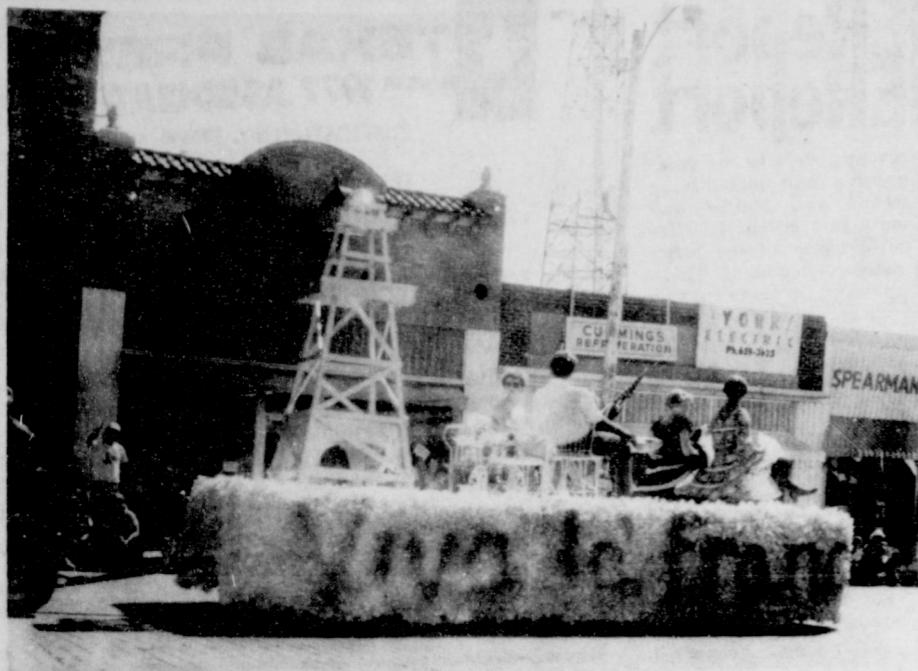
SUPPORT AMERICAN AGRICULTURE
LOCAL AMERICAN AG OFFICE IN
SPEARMAN IS LOCATED ON
BORGER HWY - PH. 2229
Adv. Pd. for by Don Allen

Home For Sale

We offer one of the largest and finest homes in Southeast Spearman across from the high school. Five bedrooms, formal living room, den in basement with built-in fireplace. Approximately 1000 square feet with many extras. Includes 12'x20' storage building, fence, sprinkler system, TV and CB towers and antennas, many more features.

Call for appointment
659-2617

If no answer call 918-299-6251, Tulsa
Mr. and Mrs. Harold Groves



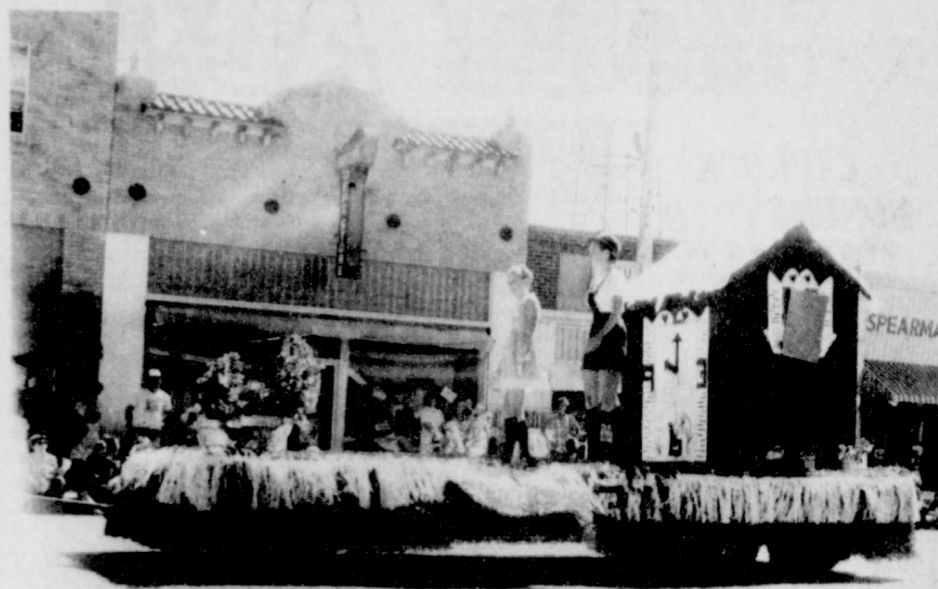
viva La France! As this float depicted real live can-can girls, and the French touch! A feature of the Hansford Round-up parade!

Work progressing on runway

Work on the new airport in Spearman is progressing, as Jr. Lusby and his efficient crew have filled in the North end of the strip now used for landing, and officials are moving the high-lines on the North of the Runway. Pilots should have a clean landing area in the near future. There is still one set of high-lines on the North, but they should be removed in the near future.

Plans call for a tremendous air strip in the near future for Spearman. The present strip will be used for taxiing, etc. in the future. The new strip is very attractive to the area and will make a much safer landing area for larger planes.

Gruber has recently completed their new jet strip and work on black-topping the strip at Gruber should be completed at this time. Hangars and other equipment will be moved into the Gruber area in the near future.



Another prize winning float in the Spearman parade this year, a feature of the Hansford Roundup!

Cancer unit qualifies for award of merit

The Hansford Unit of the American Cancer Society has received word from the Texas Division that they have qualified for the Award of Merit Unit exceeding the per capita goal of the Texas Division during the Cancer Crusade drive this year.

Recognition should be made of those who so ably served during the Crusade including the Hansford Unit Crusade Chairman, Mrs. James Stejda and the Spearman area Chairman, Mrs. Grady McCormick

with special appreciation going to each of the volunteers who served during the Crusade.

Important progress is being made in Cancer control in Texas. The Reach to Recovery program; the Blood for Cancer program; and the Quit Smoking Clinics are areas where progress has been made in recent years. There is now a new Youth Against Cancer program that is vital and exciting. The monies which are raised during the Crusade are helping to pay for this and other progress.

Junior Shorthorn Show Planned

Exhibitors must not have passed their 19th birthday before January 1, 1978 and must live in one of the following states: Colorado, Kansas, Oklahoma, Texas or New Mexico. A \$15.00 entry fee must accompany each entry. All entry monies will be returned in premiums to the exhibitors. Deadline for entries is August 15, 1978.

The Five State Shorthorn Association is sponsoring a Junior Shorthorn Show to be held August 18-19, 1978 at the Texas County Fairgrounds, Guyton, Oklahoma.

There will be divisions for Registered Shorthorn heifers; purebred Shorthorn steers; and crossbred steers that are 50% or more Shorthorn.

The Grand Champion and Reserve Grand Champion steers and heifers will receive trophies and \$100 and \$50 certificates respectively, towards the purchase of an animal in the 1979 Five State Shorthorn Sale.

There will be a judging contest open to all 4-H and FFA judging teams on Friday, August 18 beginning at 6:00 p.m. For additional information and entry forms contact Mrs. Robert Dahl, Star Rt., Gruber, Texas 79040, phone 806-733-2612; or contact Ronald Gooch, Box D, Clarendon, Texas 79226, phone 806-874-2141 or 874-3619.

Mr. and Mrs. Jimmy Shearer of Mobile, Ala., and children visited Sunday in the home of his aunt and uncle, Mr. and Mrs. Bill Giles. They were on their way to Colorado and Wyoming on a vacation.

JG's first year celebration

'Twas a "big blowout" Friday and Saturday at the corner of Main and Davis in Spearman as JGs celebrated their first anniversary with owners Judy Nelson and Glenda Guthrie assisted by Judy Martin offering coffee and tea and fabulous buys during the two day event.

Winners of the drawings included Mrs. John (Carrie Marie) Berry and Mrs. Buck (June) Tucker, both of Spearman, the Trifari earrings; Mrs. Bob (Marva) Hohertz, Spearman, the Koret drawing; Miss Lee Westerfield, Gruber, the Rhodes fall merchandise; and

Mrs. Lester (Darlene) Howell, Spearman, the Catalina new Fall Merchandise; and Mrs. Stan (Patti Holland) Hudson, Spearman, the \$100.00 Julia de Roma coat.

Congratulations to each of the winners and special thanks from the owners of JGs (who incidentally are recovering from the birthday blowout with a trip to the mountains of cool Colorado--well deserved, we might add!)

OPEN 24 HOURS

ALLSUP'S

CONVENIENCE STORES

PRICES GOOD AUG. 7-12, 1978

SCHOOL DAYS

78c SHOP ALLSUP'S FOR SCHOOL SUPPLIES!

300 CT PKG. **78c**

SHURFINE IRISH POTATOES 3 1/2 OZ CANS	78c	AFFILIATED TYPING PAPER 100 CT. PKG.	59c
SHURFINE WHOLE TOMATOES 3 1/2 OZ CANS	\$1.00	4 IN 1 SUBJECT BOOK EACH	69c
SHURFINE GRAPE JELLY 18 OZ JAR	59c	SUNSHINE CHIP-A-ROOS 12 OZ PKG.	78c
SHURFINE VEGETABLE OIL 48 OZ BTL	\$1.79	SHURFINE CATSUP 2 1/4 OZ BTL	78c

WE'VE GOT LUNCH BOX SPECIALS TOO!

SHURFINE CRUNCHY OR SMOOTH Peanut Butter 12 OZ JAR **59c**

SHURFRESH HALFMOON CHEESE 10 OZ. PKG.	\$1.00	SHURFINE PORK & BEANS 3 CANS	78c
SHURFINE CRACKERS 2 1 LB. BOX	78c	SHURFRESH MARGARINE QUARTERS 2 1 LB. PKGS.	78c

SHURFINE ASSORTED FLAVORS **POPS 7 1/2 OZ. CANS \$1.00**

SHOP ALLSUP'S FOR ALL SAVINGS!

SHURFINE MAC & CHEESE 3 7/8 OZ. BOXES	78c	BORDEN'S PREMIUM ICE CREAM 1/2 GAL. NO. CTR.	\$1.29
SHURFINE EARLY PEAS 3 1/2 OZ. CANS	\$1.00	BORDEN'S ASSORTED FLAVORS FRUIT DRINKS 6AL. JUG	69c
SHURFINE FISH FILLETS 12 OZ. PKG.	99c	BORDEN'S YOGURT 3 OZ. CTR.	99c
SHURFRESH SOFT MARGARINE 1 LB. TUB	59c		

SHURFRESH BUTTERMILK/SWEETMILK **BISCUITS 6 OZ. CANS 78c**

SCHOOL DAYS ARE HERE AGAIN!

LYRIC THEATRE

Phone 806-659-2812
ONE SHOW AT 7:30 P.M.
SUNDAY, MONDAY, TUESDAY,

TWO SHOWS AT
7:00 P.M. AND 9:00
FRIDAY & SATURDAY

It's the amazing story of a young boy's courage... and the horse he called **Three Warriors**

FANTASY FILMS PRESENTS
SAUL ZAENTZ
Three Warriors

CHARLES WHITE EAGLE - LOIS RED ELK
CHRISTOPHER LLOYD - RANDY QUARD
MUSIC BY MERRILL JENSON
PRODUCTION DESIGNER SAUL ZAENTZ
DIRECTOR OF PHOTOGRAPHY BRUCE SURTEES
EXECUTIVE PRODUCERS TERRY MORSE, JR. PRODUCED BY SY GOMBERG
CAST BY UNITED ARTISTS

Aug. 9 thru Aug. 12th

SYLVESTER "ROCKY" STALLONE

F. I. S. T.

Aug. 13 thru Aug. 15

PELICULAS MEXICANAS

VICENTE FERNANDEZ
LORENZO DE MONTECLARO

DIOS LOS CRIA

AZTECA FILMS Inc. a colores

Sunday Matinee, 2 p.m. Aug. 13

HOLIDAY DRIVE-IN

PHONE 806-659-3922

One Show Only Each Evening
Show Starts At Dusk

FREAKY FRIDAY

WALT DISNEY PRODUCTIONS

Barbara HARRIS, Jodie FOSTER, John ASTIN
Technicolor

Aug. 9- thru Aug. 12

American Graffiti is back!

With additional original scenes never shown before!

CRUISIN

A UNIVERSAL RE-RELEASE • TECHNICO. 70 • PG

Aug. 13 thru Aug. 17

Evangelistic Meetings Continental Singers To Perform



CHARLES ROGERS

Charles Rogers, President of Evangelism In Action, is an ordained Southern Baptist with a Charismatic Ministry. He has pastored churches in Texas, evangelized throughout the United States, and taken 40 missionary journeys overseas. Presently, he leads a team of ministers and laymen from America and Europe to the West Coast of Africa to celebrate Jesus' birthday each December. Last December alone, over 66,000 Africans attended the celebration. Of this number, 13,080 received Christ as Saviour, 23,292 were healed and 14,397 were baptized in the Holy Spirit. Here is a story that reads like a chapter from the Book of Acts, i.e., 5,000 people saved in one service, 9,000 people healed in one service, 10,250 people baptized in the Holy Spirit in one single service, 10,250 people baptized in the Holy Spirit in one single service. In his words, "The Book of Acts is still being written."

Charles Rogers will be ministering and teaching the Word of God at Believer's Cottage, 2.7 miles west of Spearman on Highway 15. Meetings will be held Thursday, Aug. 24, and Friday Aug. 25, at 1:30 and 7:30 p.m. A luncheon will be held at 1:00 p.m. Sat. Aug. 26 at Martin's Steak Garden. The evening meeting Saturday will be in Believer's Cottage at 7:30 p.m.

Everyone welcome.

Nursery-school-age children enjoy such fruits as orange sections, cantaloup, citrus juices, pared or unpared apples and dried fruits for snacks, reports a foods and nutrition specialist.

They enjoy raw vegetables like carrot sticks, turnip sticks and green pepper slices, says Frances Reasonover with the Texas Agricultural Extension Service. The Texas A&M University System.

Other favorites are graham crackers, toast sticks and plain or hard whole wheat crackers, she adds.

The 40-member "Continental Singers and Orchestra" will perform a live concert of contemporary Christian music in person on Thursday, August 17, at 7:30 P.M. at the First United Methodist Church.

Blending contemporary gospel music, spirituals, anthems, and hymn arrangements, this year's program, "Sing It With Love," will feature many of the most popular Christian songs being heard around the country today.

The 24 vocalists and 10-piece orchestra are completely self-contained, including their own sound and lighting equipment.

Performers are selected for the yearly 75-day summer tour by auditions from thousands of high school and college-age young people across the United States and in foreign countries. Auditions are held after each concert for future talent.

From their start in 1967, various editions of the "Continental Singers and Orchestra" have made more than 4,000 live appearances domestically and over 1,000 foreign appearances, before more than 2.5 million people.

This year, the "Continental Singers and Orchestra" will visit Russia for the first time. In addition to performing in every section of the United States, the summer tour includes Canada, 11 western European countries, and Great Britain, plus Poland, Yugoslavia, Israel, Fiji, Tahiti, Samoa, New Zealand and Bermuda.

They have recorded 13 record albums on the Word, Light, and New Life labels, plus their newest, "Sing It With Love," also on New Life Records.

"Continental Singers and Orchestra" are a presentation of Continental Ministries of Thousand Oaks, CA, with Cam Florida, president.

Back To School Rally Planned

The Fellowship of Christian Athletes will sponsor a Back To School Rally August 19 at Spearman High School. All high school students are invited.

There will be two programs. Mr. Ed Mooney, former All American football player at Texas Tech, will speak at the 4 p.m. Assembly.

Following this program, there will be a hamburger supper served in the cafeteria.

At seven p.m. Coach Don Cortez from Panhandle State University will be the main speaker.

Music for both program will be provided by Debra Martin and Jan Jeter from Altus, Okla.

In making the announcement, director Ralph Newton, urges all high school students to attend the 4 p.m. session and the supper, and all interested persons are invited to the 7 p.m.

session, this includes junior high students, parents, etc. He stated that there is no charge.

Watch this paper for more information on this Back To School Rally.

Local Men Support Clements

Coy Palmer, C. Ralph Blodgett, and J. L. Brock of Spearman have added their names to a list of more than 200 citizens on the Statewide Steering Committee of Democrats and Independents supporting Bill Clements for Governor of Texas. Also on the committee are Rex McAnelly, of Pampa; E. R. Bell and Walter Lasley Sr. of Stratford; Owen Lafferty, of White Deer, and George W. Arrington of Canadian.

In making the announcement, Clements said, "They see in me a proven businessman who will manage the State efficiently and in the best interests of all Texans, regardless of their traditional party ties."

David Dean, former campaign treasurer and legal counsel for gov. Dolph Briscoe, is the director of Democrats and Independents for Clements.

Dean said, "The early groundswell of support Bill is finding among Democrats and Independents in this state is absolutely unprecedented for a Republican gubernatorial candidate in the history of Texas politics."

He also said, "It evidences the strong dissatisfaction and distrust that traditional Democrats and Independents sense in the Democratic gubernatorial nominee. In the past, many of these democrats and Independents have locked arms and rallied behind the Democrats and Independents have locked arms and rallied behind the Democratic nominee. But this time, when they see a Democratic nominee, so out of step with their traditional conservative philosophy, they will vote for the best candidate on the ballot and this year that man is Bill Clements."

The statewide committee includes former key campaign workers for Gov. Dolph Briscoe; Mayors from several Texas cities and town; members of the boards of regents of the University of Texas at Austin, Texas A & M University, Texas Tech University, Stephen F. Austin State University, West Texas State University and Midwestern University; and, members of the boards of directors of numerous river authorities.

Also included on the committee are members from the State Board of Control, the State Finance Commission, the Texas Aeronautics Commission, the Texas Air Control Board, the State Board of Pharmacy, the State Board of Barber Examiners, the State Board of Law Enforcement Standards, the Amusement Machine Commission, the Texas Conservation Foundation, the State Board of Registration of Professional Engineers, the Good Neighbor Commission, the Texas School Land Board, the Texas Board for Lease of University Lands, the Metric System Advisory Council, the Advisory Council on Small Business Assistance and the Teacher Retirement System of Texas.

Consumer Food News

COLLEGE STATION -- Best buys at Texas grocery markets this week include eggs, bananas, some fresh vegetables, store "features" and dry milk products.

Also, fryer chicken features offer low-cost meat choices, according to Mrs. Gwendolyn Clyatt, a consumer marketing information specialist with the Texas Agricultural Extension Service, The Texas A&M University System.

This week's price-quality trends are the following:

FRESH FRUIT--Along with bananas, watermelons have reasonable prices. Peaches have moderate prices. Lower prices appear on Thompson seedless grapes and nectarines.

FRESH VEGETABLES--Most economical choices are carrots, cabbage, corn, cucumbers, squash and dry yellow onions. Onions from the Texas High Plains have excellent quality.

Lettuce supplies are reported back to normal levels.

GROCERY MARKET AISLES

--Features include peanut butter, catsup, tuna, pasta products, dry milk products--and jelly making and canning supplies.

BEEF--Although specials are few and far between, there are some on chuck cuts, sirloin steak, ground beef and liver.

In general, for the most value from a "meat dollar," buy chuck cuts, liver and sirloin tip roasts. Ground beef and T-bone steaks are also suggested.

PORK--Good values are available on some smoked and canned hams.

Features include hames, bacon and frankfurters for smoked items.

Fresh pork specials focus on Boston butts, end chops, rib-end and loin-end roasts and liver.

DAIRY--Thrifty buys appear on a variety of milk and mild and sharp cheeses.

CONSUMER WATCH-WORDS: Eggs offer high-quality protein at less than 45 cents per pound--when a dozen of large eggs costs 68 cents.

Back-To-School Clothes

COLLEGE STATION -- Separates and layering are in vogue for back-to-school clothes, says a clothing specialist.

Mix and match separates for a versatile, easy-care wardrobe, Marlene Odle-Kemp suggests. Skirts and pants team with sweaters, blouses and vests for girls.

Boys like jeans or corduroy pants with shirts and vests.

Ms. Odle-Kemp is with the Texas Agricultural Extension Service, The Texas A&M University System.

Layering of separates provide the warm or cool comfort necessary for those fall-changing school day temperatures.

Lightweight absorbent fabrics--challis, gauze, chintz, gabardine and gingham checks--are favorites in cotton and cotton blends, the specialist continues.

Corduroy or look-like corduroy give denim a run for popularity in boys pants, she adds.

Multi-use small appliances, such as counter top ovens, use about one-half the energy of a conventional oven, reports Linda McCormack, family resource management specialist with the Texas Agricultural Extension Service, The Texas A&M University System.

People in the U.S. consume eleven billion bananas annually, according to The World Book Encyclopedia. Most of them are eaten as snacks or in cereal, fruit cocktails, and salads.

BOWLING Handyman Service
IS BACK TO STAY
SPECIALIZING IN
★ Plumbing & Heating
★ Faucets ★ Washers, Dryers
★ Floor Furnaces ★ Dishwashers
★ Water Coolers ★ Disposal

You can't starve us out or run us away.

224 N. Snider
PHONE
Home 659-3852
Office 659-3952

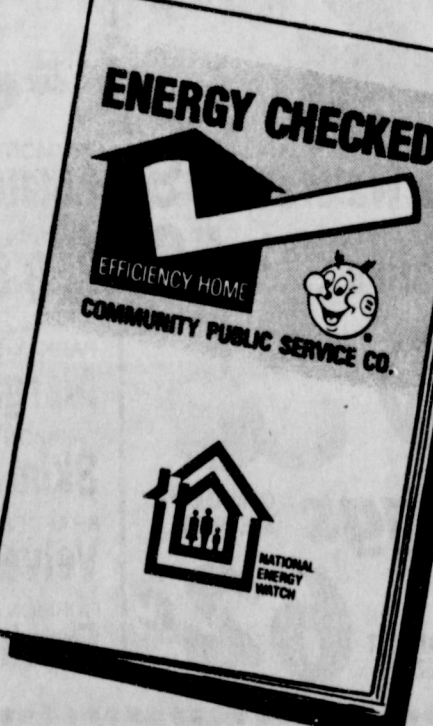
Now buying U. S. Silver coins
1964 or older Paying
3.80 per 1.00 face value

Silver Dollar 1935 or older
Paying 5.00 each

Spearman Auto Supply
Phone 659-2588 Spearman

Is the home you're about to buy energy-efficient?

Ask for this book and find out!



ENERGY CHECKED
EFFICIENCY HOME
COMMUNITY PUBLIC SERVICE CO.

Buy a home after you're sure it has been constructed with economy of operation in mind! The Energy Checked Efficiency Home program was designed to let you, the prospective homeowner, know at a glance that a home has been built to save money on operating costs. Proper insulation, energy efficient water heating, high-efficiency cooling and heating systems, weatherstripping around doors and windows are some of the important features included in the Energy Checked program. For details, ask for our booklet outlining this program, or look for the Energy Checked Efficiency Home sign before you buy a home.

COMMUNITY PUBLIC SERVICE

Gray County 4-H Youth Rodeo Set

The Gray County 4-H Youth Rodeo will be held August 18 & 19 at the Top O' Texas Rodeo Arena in Pampa at 7:30 p.m. each evening. The rodeo is for all youth age 9-18.

Stock producer for the rodeo is James Martin, Spearman. B Bar K belt buckles will be awarded the top three winners in each event. Entries are due in the Gray County Extension Office, Star Route 2, Box 33, Pampa, Texas, by 5:00 p.m. August 10.

The events include a heading and healing to be held Saturday, August 19, at 2:00 p.m. with an entry fee of \$12.00 per team. Other events include pole bending, barrel racing and goat tying for all ages of girls. In addition, the older age girls, age 15-18 will have steer riding.

The boys events include: (age 9-11) breakaway roping, barrel racing and calf riding; (age 12-14) ribbon roping, steer riding, and breakaway roping; (age 15-18) bareback bronc riding, bull riding, calf roping, ribbon roping.

For ages 9-11, the entry fee is \$6.00 per event. The 12-14 year old age group will have an entry fee of \$8.00 per event. The older age group of 15-18 will have \$12.00 entry fee per event.

Information and entry blanks can be obtained at your County Extension Office or you may call 669-7429.

To sew with corduroy fabrics, use a size 11 (75) or 14 (190) needle and 8 to 10 stitches per inch.

Reduce pressure on the presser foot to prevent fabric layers from shifting, advises Beverly Rhoades, clothing specialist with the Texas Agricultural Extension Service, The Texas A&M University System.

While most older people prefer baths to showers, a shower stall is safer than a tub.

Getting in and out of a tub can be hazardous for some older people, warns Sue Young, housing and home furnishings specialist with the Texas Agricultural Extension Service, The Texas A&M University System.

CARQUEST AUTO PARTS STORES



TURTLE EXTRA
New from Turtle Wax. Extra hard finish, easy application, extra brilliance. #T-1

3.76



AUTO COMMUTER CUP
Push button, spill proof, hot or cold beverage holder. Fully insulated. 12 oz. #167

3.15



AC SPARK PLUGS
Just one misfiring spark plug wastes gas, reduces performance. Replace now, and save.

REGULAR OR RESISTOR BUY 7 AND GET 1 FREE



CHAMP WEDGE AND TIE
Tie-down bolt for pickups. No holes to drill. Just drop into stake holes. Two per card. #7-253

4.27 pair



ANTI-THEFT DOOR LOCK KNOBS
Protect car and contents by replacing door lock knobs with anti-theft knobs. Chrome finished. 2 per card. #428C, 430C

45¢ pair



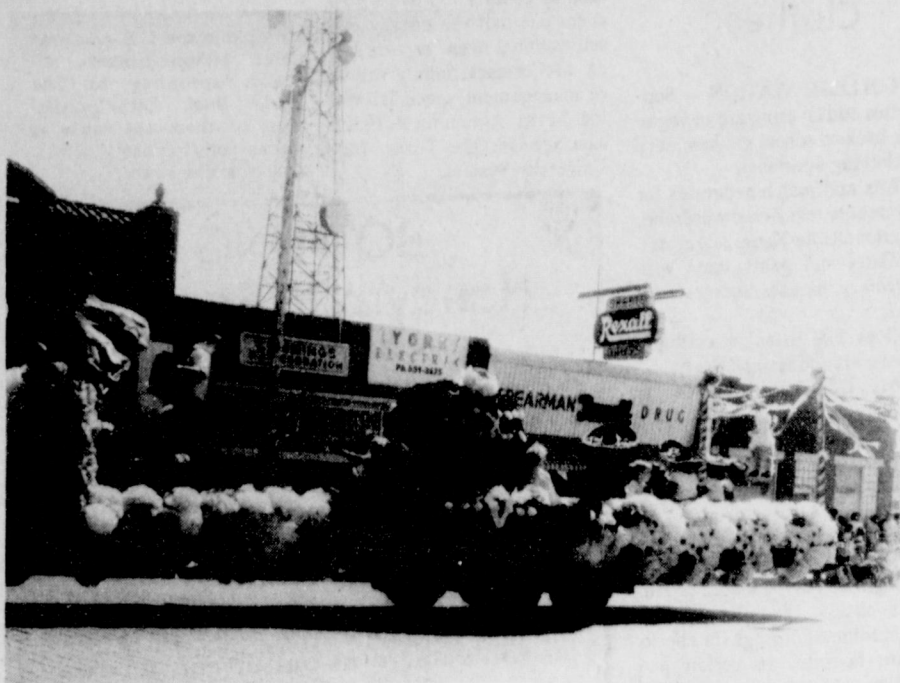
EMERGENCY FUSE KIT WITH PULLER
Assortment of most frequently used fuses with handy puller. A must for every glove compartment. #094102

1.54

Good at CARQUEST Auto Parts Stores and participating dealers thru Aug. 20, 1978

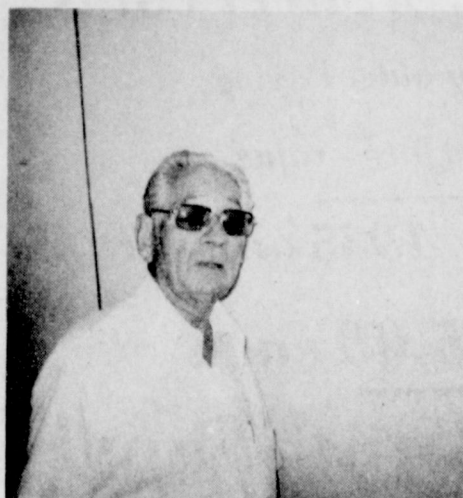
HI-PLAINS AUTO SUPPLY, INC.
118 N. MAIN SPEARMAN 659-2506

WE KNOW WHAT YOU MEAN WHEN YOU'RE TALKING PARTS.



FIRST PLACE in the Hansford Roundup parade, was the Baker and Taylor float. Depicting Mexico, the float was complete with a real live band, and plenty of beautiful scenery from South of the border.

Ideal Has Several Winners



JESSE DAVIS



MARIA SALDIVAK



VIRGINIA MARTIN

Ideal officials in Spearman, announced this week, that several people in the Spearman-Gruver area have won \$100.00 playing Cash King at the Ideal Store in Spearman. Recent \$100 winners include Virginia Martin, Maria Saldivak, Jesse Davis, Mike Adams and Grace Bruner.

Local store officials announce that you can win up to \$1000 with over 20,000 in instant prizes and over 80,000 in cash prizes. Some of the winners are pictured above.

Rotary Club News

The Spearman Rotary Club met at Martin's Steak Garden at noon on Monday, August 7th. Guests of the club were the parents of three young men who attended a Rotary Youth Leadership Awards Program for Junior and Seniors in High School at Camp Summer Life in northeastern New Mexico.

This camp was sponsored by District 573 of Rotary International.

The purpose is to "help young men gain an understanding of how a better way of life may be achieved, to increase their knowledge of their American heritage, to inform them concerning the essentials and benefits of the free enterprise system and to give emphasis to sportsmanship and competition, physical fitness, spirituality and character."

The three young men from our community who went were: Todd Brock, Billy Snider and James Whitaker. Also going on the trip as a sponsor and worker in the camp was John R. Collard, Jr. Each gave a report of what they received from the camp. One could tell that they received a better understanding of life and what America means to them in their own personal lives.

The local Rotary Club is proud to have been a part in this program and is planning next year to again sponsor some young men from our community. We want to promote growth in our youth and this is one way for them to better see and understand life and the land they live in.

Symptoms produced by botulism poisoning are difficulty in swallowing, speech and respiration, double vision, and death if paralysis of the respiration muscles occurs.

This year, the second largest outbreak of botulism reported in the United States since recording began in 1899 occurred in New Mexico. Thirty-two people eating in a country club restaurant became ill. To date, one of those affected died. A study of the foods served revealed that two items—potato salad and three-bean salad—were responsible for the spread of the disease.

This incident caused much discussion at the Home Food Preservation Clinic last month, indicating a need for the following information.

The food causing the outbreak of botulism was canned or processed by an inadequate method which permitted spore survival and toxin formation. Conditions after processing permitted the spore to grow and produce toxin. The food was not heated enough to inactivate the toxin.

To prevent botulism contamination in foods preserved at home, always follow the USDA recommended canning procedures.

Never use any food from a bulging or swollen can. Discard any food with a bad odor or foamy appearance.

Boil all home-processed foods 10 to 20 minutes before serving to inactivate any toxins that are present. This means boil commercially or home canned beans before making three-salad.

FOOD SAFETY LEADER

TRAINING Food safety plays a vital part in each meal you prepare. Those little touches of stomach virus may very well be caused from something you ate—something you could have prevented. A leader training will be held for two leaders from each H.D. Club on Tuesday, August 29 at 1:30 p.m. in the H.D. Clubroom. If two leaders from your club or organization would like to attend please let me know.

TRAVELING THESE DAYS

Before traveling, check tire pressure on the car—under-inflated tires increase gas consumption. Also, travel as light as possible, because the lighter the car, the less gas you'll buy.

OVEN CLEANING

Follow safety rules for oven cleaning. Do not spray oven cleaner on the oven light bulb if the bulb is still hot from the pre-heating. It could explode!

LONGER LIFE FOR CUT FLOWERS

Whether homegrown or from your local florist, the following tips will help give longer life to your cut flowers:

- 1. Make sure the container is washed clean with soap and water before using.
2. Cut stems at a slant, using a sharp knife or shears.
3. Before cutting, select flowers that are not fully open; avoid cutting old flowers.
4. Remove foliage from the lower third of the stem; also remove all broken and bruised parts of the stem.
5. Cut flowers in early morning or late afternoon.
6. Wash flowers and foliage to remove dirt, sprays or dust if possible.
7. Store flowers in a cool area or refrigerate until arranged.

8. On receiving bulk flowers from the florist, cut about one inch off the stem ends.

9. Do not place the arrangement in direct sun, near gas fires or oil burners. Whenever possible, place the flowers in a cool area during the night but away from drafts.

10. Recutting the stems and changing the water every other day gives longer life to cut flowers.

SAVE WATER

To save water, install a flow restrictor in the shower. This device limits the flow to four gallons per minute—plenty adequate for showering!

RECIPE CORNER

A new treat for these hot summer days to satisfy your sweet tooth and cool your inards! From Michele Davis. TUTTIE FRUITIE ICE CREAM 2 cans sweetened condensed milk

- 1 large carton whipped topping
2 pints coffee rich
Red cake coloring (optional)
2 bananas, chopped
1 cup frozen strawberries
1 small can crushed pineapple
1/2 cup marachino cherries
Mix condensed milk, whipped topping and coffee rich. Blend fruits and juices for a second in blender. Mix all ingredients together and pour in freezer. Add milk to fill freezer 2 inches from top. Freeze following instructions for freezing and let ice cream ripen 1 1/2 to 2 hours. Yield: 1 1/2 gallons.

"We know nothing of tomorrow... our business is to be good and happy today."

You are cordially invited to a wedding & lingerie shower honoring

Mrs. Steve Alders

(nee Willetta Shelton)

on Wednesday, August 16, 1978

7:30 p.m.

Home Demonstration Club Room

Hostesses:

- Twila Davis
Kim Vera
Stephanie Reed
Sharron Swan
Pat Randall
Bessie Swan

Notice-All HS Band Members

Summer band practices will start August 14th from 7:00-10:00 P.M. Everyone is expected to be there.

Band uniforms will be issued twice a day from 10:00 a.m.-12:00 p.m. and from 4:00-6:00 p.m. August 14th will be for Seniors, the 15th will be Juniors, the 16th will be Sophomores, the 17th will be Freshman and the 18th will be for

everybody who couldn't make it on the day assigned for your class.

Everyone needs to contact Becky Lusby at 3306 or Jamie Morley at 2411 as soon as possible and give them your initials for your uniform bags that you will need to buy.

School horns will be issued Monday the 14th.



PRICES EFFECTIVE THRU AUG. 12TH, 1978. QUANTITY RIGHTS RESERVED. NO SALES TO DEALERS. MON.-SAT. 8 a.m.-9 p.m. SUN. 10 a.m.-7 p.m.

ALL NEW ALL NEW PRIZES... GAME... CASH KING

Meat products: Boneless Chuck Roast \$1.49, Round Steak \$1.89, Sliced Bacon \$1.09, Turkey Drumsticks 49c, etc.

Household products: Maxwell House Coffee \$2.68, Van Camp's Beans 36c, Nilla Wafers 59c, etc.

SHOP IDEAL WHERE YOU GET GUNN BROS.

Class of '57 Has Reunion



The class of 1957 had their class reunion on July 22, 1978. The class met at Martin Steak House and ate. The following class mates were there: Bernard Dossett and wife; J. E. (Chunky) Blackburn; Patsy George Isham and husband; Jo Lynn Copeland Leland; Charlotte Martin Ford and husband; Dale Jones; Diana Witcher Mason and husband; Jackie Birdwell Fickling and husband; David Stavlo; George Jackson and wife; and Dallasene Reynolds.

After the class ate, they retired to the B & B Farm Industries Meeting room. They talked over old times and the present over coffee, cake and punch.

It was good to see old class mates and hope we can do this again in the near future.

Martha Steele Receives Masters Degree

Martha Steele, teacher in the Spearman Elementary School, received her Masters Degree at commencement exercises held July 23rd at Central State University in Edmond, Oklahoma. Mrs. Steele attended the eight week summer session completing her degree in Special Education with an emphasis in Learning Disabilities.

Mrs. Steele graduated with highest honors, Summa Cum Laude, with a 4 point grade average.

Eastern Star meeting held

Spearman Chapter #721 OES met at the Masonic Hall August 7th for their regular meeting. Mary Arnold Worthy Matron & Don Hendricks Worthy Patron presided. Meeting was opened in regular form. Pledge Of Allegiance and singing of the Patriotic ode was led by the Worthy Patron.

There was 4 visitors: Vi Dillard, Mary Margaret Faylor, Esther Mills and Velma Boyd all from the Berger Chapters. Velma Boyd is on the State Committee of Time & Talent. She gave a short report on her Committee.

Millie Craig said the kitchen needs 2 large Coffee Pots and different ones are going to bring stamp books in order for the Chapter to get them.

Nina Hendricks reported she had sent 11 Get Well and Sympathy cards. Judy Black and Don Hendricks was escorted to the Altar where they signed the Bible for their year 1976-77, then Marjorie and John R. Collard, Jr. were presented where they also signed the Bible then they were taken to the East where they were presented their Past Matron and Past Patron certificates.

Meeting closed in regular form, then everyone went to the dining room for home made ice cream and cake furnished by Lynanne Maize and Millie Craig.

Births

Hail the arrival of 7 lb. 15 oz. Matthew Thomas Beasley at 2:00 A.M. August 1, via Northwest Texas Hospital in Amarillo to be the center of attention for Mr. and Mrs. Tom (Teresa Oakes) Beasley of Amarillo.

Include as VIGs (Very Important Grandparents) Mr. and Mrs. Jack Oakes of Spearman; Mrs. Winell Oakes of Amarillo; and Mr. and Mrs. Allen Beasley of Gruver. And to the great group of VIGGs (Very Important Great Grandparents) Mrs. Margie Barkley, Mrs. Lessie Beasley, and Mrs. Winnie Vernon, all of Gruver; Mrs. Rena Oakes of Spearman.

Include a very important member of the VIGGGs (Very Important Great Grandparents) Mrs. Juliet Boyd of Gruver.

Jerry and Sherlene Hayes of Amarillo are the proud parents of twins born August 3, 1978 in High Plains Baptist Hospital. Austin Dale weighed 8 lbs. 6 1/2 oz. and Amber Lois weighed 7 lbs. 7 oz.

Stephanie and Lisa are the proud sisters of the twins.

Double Ring Ceremony Unites Couple



Mrs. Brent Edd Wheeler

Nuptial vows were exchanged by Miss Rhonda Gayle Jones, daughter of Mr. and Mrs. Hershel Lee Jones of Spearman, Texas, and Brent Edd Wheeler, son of Mr. and Mrs. Edward Ray Wheeler, of Spearman, Texas, in a doubling ceremony held August 4th in the First Baptist Church of Spearman.

The vows were read by Reverend Russell Pogue, pastor.

Decorating the chancel were arrangements of yellow and white daisies accented with gladiolus and greenery flanked by branched gold candelabras. The aisle of the church was decorated with candelabras with hurricane globes. They were entwined with greenery and tied with yellow bows.

Mrs. Carol Pack played the traditional wedding marches and accompanied Miss Pattison Talley, cousin of the bride, who sang, "Never My Love," "Sunshine on my Shoulders," and "The Lord's Prayer."

Candlelighters were Roger and Jim Jones, brothers of the bride.

The maid of honor, Eleanor Gittinger, of Taft, Texas, and bridesmaids, Gail Wall of Dumas, Texas, Becky Beedy of Houston, Texas, Nikki Jones of Spearman, Texas, wore identical floor-length pale yellow formal with chiffon capes falling softly to a point at the waist. Each carried a nosegay of yellow and white daisies tied with white ribbon.

Best man was Mike Floyd of Brian, Texas, and groomsmen were Joey Woolley of Spearman, Texas, Billy Pettitt of Stillwater, Oklahoma and Scott Beedy of Houston, Texas. Ushers were Jim Jones, Roger Jones, brothers of the bride, and Jerry Hart of Gruver.

Groom and groomsmen wore matching yellow tuxedos with dark trousers. Cappie Wall, of Dumas, Texas, registered the guests.

Jennifer Hart of Gruver, Texas, niece of the groom, preceded the bride. She wore a yellow embroidery eyelet ankle-length dress, and carried a basket filled with yellow rose petals. Given in marriage by her father, Hershel Jones, the bride was attired in a formal gown of candlelight chiffonette over bridal taffeta designed with a Queen Anne neckline of scalloped Alencon lace and seed pearls. Her long full sleeves were appliqued in lace and seed pearls and were caught up at the wrists by deep cuffs of lace and seed pearls which satin bows enhanced by a full mantilla of bridal illusion appliqued and bordered in Alencon lace. Her wedding bouquet of white and yellow roses was mounted on a white bible, given to her by her grandmother, Mrs. Jewel Robason, of Siloam Springs, Arkansas.

The mother of the bride selected a soft blue formal with white accessories. The groom's mother chose a pink chiffon formal with white accessories. Their corsages were of white roses tied with yellow ribbon.

Special guests at the wedding were the bride's grandmothers, Mrs. Jewel Robason of Siloam Springs, Arkansas and Mrs. May Leverton of Spearman, Texas, and the groom's grand-

mother, Mrs. Alta Wheeler. Following the ceremony, the reception was held in the Fellowship Hall of the First Baptist Church. Robin Denham, of Spearman, Texas, Janeth Lackey of Spearman, Texas, and Betsy Floyd, Brian, Texas, served the tiered wedding cake, topped with daisies and baby's breath, punch and coffee to friends and relatives assisted by June Day, Dorothy Woolley, Frances Newell, Mary Connley and Bette Uptergrove.

For going away, the bride chose a rust and beige striped mid-length dress with rust accessories. After the honeymoon in Lake City, Colorado, the couple will be at home at Tyler, Texas.

Both bride and groom are 1978 graduates of Texas Tech University, where Mrs. Wheeler was a member of Zeta Tau Alpha and Mr. Wheeler was a member of Sigma Nu Fraternity.

Mr. Wheeler is employed by Texas Power and Light in Tyler.

Anticipation Shower Held

The B & B Friendship Room was where Teresa Villines was honored with a Baby Shower on Monday July 31, 1978 from seven p.m. til nine p.m.

The shower was come and go and the guest played games and had refreshments.

The colors for the shower were yellow and green. The refreshment table was decorated with a centerpiece of a stork.

The hostesses were Gladys Mitchum, Sharon Mach, Kay Skinner, and Lori Short.

shower held

Mrs. Rodney Farber and daughter Haley Michelle were honored with a baby shower at the First State Bank in the Hospitality Room on Thursday August third from seven til nine p.m.

As the guests came they registered and were served refreshments. The centerpiece for the refreshment table was a Teddy Bear. The refreshments served were cake, punch, and coffee.

The shower was a come and go affair with the colors of pink and white being used. Hostesses for the shower were Penny Thomas, Judy Everson, Nikki Jones, Carolyn Close, Carole Stump, Noreen Sutton, Brenda Russell, Helen Boyd, and Carolyn Hahn.

Arts & Crafts Guild News

The Arts and Crafts Guild met at Mrs. Pope Gibner's home on Friday August 4, 1978.

Those members present were Annie Allen, Deta Blodgett, Grace Lyon, Sada Hoskins, Georgia Holt, Freda Sheets, Ailene White, Athalie Traylor and Mrs. Traylor's grand daughter Michelle Traylor.

The next meeting will be held at Athalie Traylor's home on Friday August 11, 1978.

Mr. and Mrs. Floyd Dry
and
Mr. and Mrs. Irven L. Barber
request the honour of your presence
at the marriage of their children

Pamela Jo
and
Tommy Scott

Saturday, the twelfth of August
Nineteen hundred and seventy-eight
at two o'clock in the afternoon

Spearman Union Church
21 South Endicott
Spearman, Texas

Reception following ceremony

I am the Father of the Bride

Nobody's paying much attention to me today, but I can assure you that I am getting my share of attention; for the banks and several business firms are watching me very closely.

WIN UP TO \$1,000

ODDS CHART as of July 28, 1978

10000	23	84,328	11,788	1,827	1
1000	180	15,200	1,800	493	11
100	240	5,827	741	228	11
500	832	2,827	281	80	11
200	20,822	789	89	36	11
100	18,892	118	18	11	4,418
TOTAL	22,873	84,101	11,710	3,518	11

Each ticket termination date of this promotion is October 17, 1978.

Golden Corn
389¢

Sweet Peas
389¢

Del Monte Catsup
69¢

Fruit Cocktail
279¢

Kraft Mayonnaise \$1.29
Clorox 2 Bleach \$1.59
Dog Food \$1.00
Chun King 54¢
Instant Tea \$1.49
Cookies 89¢

Lettuce 39¢
Onions 239¢

Watermelon 9¢
Plums 49¢

Nectarines 59¢
Grapefruit 389¢

Ice Cream \$1.19
Shampoo 78¢
Toothpaste 79¢
Tampax \$1.40

Food Stamps Buy More At Ideal

Open House

KBMF/KRDF-Spearman - Gruver - Stereo 98

will hold open house 1 to 5 p.m. Sunday, Aug. 13th

Cardiff Broadcasting Co., Inc. takes this opportunity to invite you to our open house. Patrick T. Pogue, President of Cardiff will be on hand to meet each and everyone of you this week-end, along with John Douglas Davey, Vice President of Broadcasting Operations, Cardiff Industries! KRDF is one of 14 planned Radio acquisitions for Cardiff Industries, and we are all extremely proud of our Spearman - Gruver Station.

"Stereo 98"



mutual broadcasting system

**3,000
Watts of**

fall Xcitement!

- ★ Mutual Broadcasting System
- ★ Cowboy Football as Scheduled
- ★ Southwest Conf. Football as Scheduled
- ★ Lynx Football as Scheduled
- ★ National and State news on the hour
- ★ Wall Street Reports Mon.-Fri. 11:35 am & 3:35 pm
- ★ "Ask Tex Schramm" Mon. 7:05 pm
- ★ Cowboy Report- Mon.-Sat. 6:40 am

"Plus your favorite Gospel Programming"

KBMF/KRDF Cardiff Broadcasting Co., Inc.

Stereo 98 - 6 A.M. Til Midnight

Beef Cattle Price Outlook

Producers and consumers have watched cattle prices decline sharply and the market react violently during the past several weeks, notes Dr. Edward Uvacek, Jr., livestock marketing specialist with the Texas Agricultural Extension Service.

Uvacek points out that fed cattle prices dropped from the \$62 per hundredweight level of early June to the \$50 level by mid-month. Feeder prices showed a similar drop. "The sharp decline resulted from simultaneous reaction to several distinct factors; consumer resistance to high retail beef prices, weakness in the commodity futures market, increases in beef supplies, and the psychological effect of the government's announcement of increased allowable beef imports for the year," Uvacek explains.

Although some price recovery occurred in July, many producers are still concerned about the outlook for the remainder of 1978, Uvacek, also an associate professor in Texas A&M University's Department of Agricultural Economics, adds.

He points out that some forecasts, including that of the U.S. Department of Agriculture, look for further improvement in the third quarter of the year, with some weakness in the fourth quarter. The real key to their forecasts, however, is an estimated 7 percent decrease in beef production for the second half of the year. The USDA analysis places the average price of U.S. choice fed steers in Omaha during the July-September period at \$55-\$57 per hundredweight. Price predictions for similar cattle in the fourth quarter are \$54-\$56.

Uvacek's view of third quarter beef supplies is not quite as encouraging. He expects only 2 percent less beef production and larger pork, broiler and turkey supplies.

"Total red meat and poultry production could be up 1 1/2 to 2 percent from a year ago. That would be the largest production of the year and undoubtedly would limit price recovery," he contends.

Fourth quarter estimates point toward a somewhat improved supply situation, Uvacek says. "Recovery during that period seems highly likely," he believes.

The specialist's cattle price outlook includes these specific forecasts.

Amarillo choice fed cattle—price recovery foreseen during the early part of the July-September quarter. Increased pressure as the August-September period is approached. Lowest prices expected during either

September or October, with recovery beyond that point on into 1979. The July-September price average should be about \$49.50-\$51.50 per hundredweight, and the October-December average is expected to be from \$50-\$52.

Amarillo choice feeder cattle—prices should follow almost exactly the same seasonal pattern as fed cattle. Larger marketings of feeder animals are likely just when feedlot losses are probable. Some price weakness is expected into the September-October period, with recovery after that. Choice 600 to 700-pound feeder steers should average \$50-\$52 per hundredweight in July-September, and \$50.50-\$52.50 per hundredweight in the final quarter of 1978.

Texas Participating In Ag Marketing Conference

Attorney General John Hill said today Texas is one of 12 states participating in an agricultural grain marketing conference called by the Kansas legislature to investigate the possibility of forming an interstate compact of grain producing states.

Hill sent a representative to the initial meeting last month. A second meeting will be held in Topeka in October.

"Texas was one of 12 states represented at this conference to explore the problems in grain marketing practices," Hill said.

"My representative, who was the only Texan at the meeting reported to me that the conference is exploring the possibility of joining the grain-producing states together in an interstate

compact to give the states additional powers to solve grain marketing problems.

"The participants in the meeting expressed concern that their chances of relief from Congress do not appear good, and that individual states are powerless to address these marketing problems which extend across a number of states.

"The early discussions centered on transportation problems, such as railroad freight car shortages, and inspection regulations, which have sometimes proved inadequate to maintain a high reputation for American grain in the world market.

"There also is strong resentment against the speculation in the futures market, and a feeling that farmers should be

able to create a mechanism to allow them to set an asking price for their crops in order to combat the effects of futures speculation.

"I will continue to take part in these very important discussions on behalf of the grain farmers of Texas."

Shut off the lawn mower when cleaning, adjusting or emptying the grass catcher, and never refuel when the motor is hot, advises Claudia Kerbel, consumer information specialist with the Texas Agricultural Extension Service, The Texas A&M University System.

GET PAID TO LEARN A SKILL.

The Army Reserve will pay you to learn a skill and give you a good part-time job, too. Call your local unit for details. It's listed in the white pages of the phone book under "U.S. Government"



THE ARMY RESERVE. PART OF WHAT YOU EARN IS PRIDE.



ALFRED BINET, A FRENCH PSYCHOLOGIST, INVENTED THE FIRST INTELLIGENCE TEST IN 1905. IT WAS THE BEGINNING OF THOUSANDS OF TESTS NOW GIVEN WHICH HELP PREDICT INDIVIDUAL SUCCESS IN MANY FIELDS!



SYAB (ARMY SERVICES VOCATIONAL APTITUDE BATTERY) IS A SERIES OF TESTS TAKEN BY ABOUT A MILLION HIGH SCHOOL STUDENTS EVERY YEAR WHO WANT TO FIND OUT HOW THEIR ABILITIES RELATE TO SUCCESS IN HUNDREDS OF DIFFERENT CAREERS IN THE U.S. ARMY.

Faith City Mission Needs Help

More than a year ago the city fathers of Amarillo, Texas informed Faith City Mission that the City intended to purchase the building and land where the Mission is situated that they (the City) might make a parking lot for the new Convention Center which the City is building. So for more than a year Faith City Mission has been looking for a building in which to house their facilities. It has been a long and tiring situation and for a time seemed to be an impossibility. We even bought two lots expecting to have to build something new, but the cost of a brand new building was so terribly much that we continued looking, making several attempts to purchase without any success.

The Lord knew all about our problem and was taking care of it, although at times our faith was weak. Sure enough, He opened the way and we now have signed contracts to purchase a building which we believe will be ideal for our ministry.

The building is located on the Northeast corner of South Pierce and 2nd St. It was built in 1962 and is about as near fire-proof as can be built. There is 30,000 sq. ft. of floor space which will give us enough room so that we won't have to curtail any of our services.

There will be room for a chapel, a dormitory for men, a dormitory or rooms for families and single women, a kitchen, dining room, men's clothing room, ladies and children clothing room, separate shower and toilet facilities for men and for women, reading and recreation room, our offices, an apartment for Mr. and Mrs. Jack Swan (Faith City Mission Managers), storage space, and whatever else is needed.

God never takes His children backwards. If we follow Him, each move is forward and for the better, but all is not smooth sailing yet. We are having to pay for these facilities. The building as it stands is costing \$210,000.00 and we must remodel it to suit our purpose. That will take at least \$150,000.00. It will cost at least several thousand to move, so you see the problem is we must raise the money to pay for what we are getting. The City is not offering near enough to take care of our expenses of having to make this move even though it is their idea. So -- we are relying on our Heavenly Father to provide the necessary funds. We believe He will do that through you who know about our plight. He always has in the

past and we believe He will now. We thank Him for providing our need and we thank you for being the instrument God uses to make His provision.

If you want to know more, or if you want to help and have a share in this ministry for our Lord and the souls of men, get in touch with us at 415 East 5th in Amarillo, or write to us c/o Box 804, Amarillo, or call us on the phone, 806-373-6402. We covet your prayers and your help.

Another Cancer Risk

COLLEGE STATION -- Pan-frying hamburger meat may increase the risk of cancer for those who eat the meat, says Frances Reasonover, foods and nutrition specialist with the Texas Agricultural Extension Service, The Texas A&M University System.

However, the potential risk is reduced by 90 percent if meat is cooked only to the rare stage, broiled under a heat source or cooked in a microwave oven, she points out.

Ground beef hamburgers cooked on a hot metal surface at temperatures above 300 degrees F. is the cause of this increased cancer risk, a Washington University team of research scientists has concluded. Chemical substances called mutagens that may represent a risk of cancer in people tend to form at this high temperature—a mutagen is a substance that causes genetic change, Miss Reasonover explains.

In experimental animals, 90 percent of the mutagens tested caused cancer in test animals. Beef bouillon cubes, beef broth and seasoning bases as well as beef-flavored sauce concentrates also contain these same mutagens.

Charcoal grilled meats are likely to produce the same mutagens, the specialist adds.

The browned fringe as is seen around the edge of pan-broiled hamburger is the source of the mutagen in the cooked meat, she says.



Handel composed "The Messiah" in 25 days.

T.G. & Y. shop our family centers

PRICES GOOD WEDNESDAY THRU FRIDAY
At all T.G.&Y. Family Centers.

9:00 a.m. - 9:00 p.m.

blockbusters

lower prices on quality products

4.97

69.88

<p>.37</p>	<p>1.37</p>	<p>.47</p>	<p>1.97</p>
<p>.57</p>	<p>3 PKGS. FOR .25</p>	<p>.61</p>	<p>1.43</p>
		<p>2 BOXES FOR 1.00</p>	<p>.99</p>

T.G.&Y.'S ADVERTISED MERCHANDISE POLICY—T.G.&Y.'s policy is to always have advertised merchandise in adequate supply in our stores. In the event the advertised merchandise is not available due to unforeseen reasons, T.G.&Y. will provide a Rain Check, upon request, in order that the merchandise may be purchased at the sale price when it becomes available, or you may purchase similar quality merchandise at a similar price reduction. We will be happy to refund your money if you are not satisfied with your purchase. It is the policy of T.G.&Y. to see that you are happy with your purchases.

521 Hwy. 207 South Spearman, Texas 659-3742

Prices good only at T.G. & Y. Family Center

THURSDAY, AUGUST 10, 1978

NEWS Of Education

STUDENT ASSISTANCE

With tuition costs averaging \$3,000 a year in public colleges and \$5,000 at private colleges, an increasing number of families are hard-pressed to send their children to college.

Concerned congressmen are currently considering a middle-income student assistance bill that could greatly increase the financial aid offered to an

increased number of students. Most students would receive far higher benefits from this bill than from the tax-credit bills that are also being debated.

Under the Middle Income Student Assistance Act, a family of four earning \$12,000 a year could receive around \$1,300 in aid and be eligible for a loan with an annual interest subsidy of \$400. Greater family income would mean a lower

grant, till it disappeared for people earning over \$27,000, but the subsidy would stay the same. Under the Tuition Credit plan: Millions of students would receive either no tax credit or a very small credit since the credit may be only 25 percent of tuition; part-time students may receive no credit; and student aid would be deducted.

President Carter and responsible members of Congress say they recognize that our present higher education financing policies have created a situation where college attendance of lower- and middle-income people—

the ones who pay most of the taxes—has actually gone down. Studies show that a family of four with an income of about \$16,000 (around the national median) often has to spend \$15,366 for basic expenses, such as food, shelter, clothing, transportation, insurance, medical care and taxes. That doesn't leave a lot for college costs, and many families have more than one college-age child.

The solution to this prob-

lem, according to Allan W. Ostar, the executive director of the American Association of State Colleges and Universities, is for Congress to pass and fund the Middle Income Assistance Act and for rising tuition charges to be kept down through increased appropriations by state legislators.

To learn where your congressman stands on this issue, you can write to the House of Representatives, Washington, D.C. 20515.



ANNOUNCING
Dr. Mario V. Manese, M. D.
WILL PRACTICE AT
THE HANSFORD CLINIC
721 EVANS
SPEARMAN, TEXAS
Surgery and
Obstetrics
Phone 659- 2532

Our Heritage of Faith

notes from Faith Lutheran Church

Faith Lutheran will have a farewell for the intern and his wife, Mark and Claudia Ziemer, on Sunday, August 13, beginning at 5:30 at the swimming pool park. Bread and tea will be provided. Each family is to bring one of the following: baked beans, potato salad, cole slaw, relish tray, or salad. Everyone who comes should bring fried chicken and desert for themselves.

Mark and Claudia have really enjoyed their year here. They will miss the panhandle and the people here just as they too will be missed. One of the sad parts of the internship program at Faith is the shortness of the stay of each intern. That year goes by so quickly. They hardly become acquainted here and they leave again.

Herb Hoff will be the new intern. He and his wife, Gail, and their two children will be arriving in about two weeks. The good part of the internship program is that Faith gets to see many different approaches to ministry and different insights

Don't miss the grand opening of The Bull's Inn and KBMF this week-end! See you there!

as well as to watch the growth and development of each intern. The internship program at Faith is in collaboration with the Oslo Lutheran Church north of Gruver. The Lutheran Church requires one year of in the field called internship experience along with three years of study in a seminary after college, for the training of its pastors. The internship year is spent learning from an experienced Pastor and trying to apply all that is learned in seminary. Here the interns learn from Rev. Victor Andersen, the pastor of Faith and Oslo. Pastor Andersen lives at the Oslo Lutheran Church while the intern lives in Spearman.

Mark and Claudia wish to express their deepest appreciation and thanks to all the people of Faith, Oslo, Spearman, and Hansford County who have made their year here truly a memorable and enjoyable experience. Their address for the next ten months will be: Wartburg Seminary, 333 Wartburg Place, Dubuque, Iowa.



The first dining cars were in service on the Wilmington and Baltimore Railroad in 1863. They had no seats; passengers ate standing up or took their food back to their seats.



The Golden Spread Senior Citizens building was dedicated during the recent Spearman celebration. Pictured, left to right, Coy Palmer, the golden voice of KBMF; Orvil Brummett, local druggist; Mayor Ralph Blodgett, and Banker C. A. Gibner. They are cutting the ribbon for the new Senior Citizens building. This is one of the finest programs ever undertaken in Spearman. KBMF, was responsible for several thousand dollars being donated in a radiothon, under the guidance of Coy Palmer, former Spearman Mayor. The building is dedicated to the pioneers of the county.

Receipts at the Texhoma Livestock Comm. Co., Inc. this week were 3427 cattle & calves. Market about steady on all classes except steers weighing 700# and up would be \$3.00 lower. Some small packages of steer calves up to \$80.00. Heifer mates up to \$79.00, Packer cows \$35.00 to \$35.00, Cannors & cutters \$32.00 to \$35.00, Bologna bulls; \$40.00 to \$44.00, 1 Brangus bull @ \$51.25, Steer Calves-Avg. 350# to 550# @ \$61.50 to \$72.50, Heifer Calves-Avg. 300# to 550# @ \$54.80 to \$65.00, Feeder Steers-Avg. 600# to 800# @ \$55.00 to \$64.75, Feeder Heifers-Avg. 600# to 750# @ \$54.00 to \$57.00

YOUR DEPENDABLE LIVESTOCK AUCTION
 TEXHOMA LIVESTOCK COMMISSION CO., INC.
 P.O. BOX 70 TEXHOMA, OKLA. 73949
 PHONE 405-423-7511 & 423-7512

CATTLE DEPARTMENT -- LLOYD GOODNER & RAYMOND CHOA TE
 GOODNER RESIDENT PHONE -- 405-423-7427

WE NEED LISTINGS **CALL ANYTIME** **WE NEED LISTINGS**
CRUM REAL ESTATE **659-2053**
 1105 S. BARKLEY
NADINE CRUM **VIRGINIA WHITE**
 BROKER SALES PERSON
 We Need Listings! Want to Sell your Home? We have BUYERS.

1104 Haney St.
 NOW REDUCED Two bedrooms, 1 bath, kitchen built-ins include cook-top, oven, disposal, and lots of cabinets. Has panelled family room with fireplace, carpeted throughout and in an excellent location. This one is immaculate. Call today for an appointment.

REDUCED - OWNER SAYS SELL
719 Steele
 GOOD LOCATION. 3 bedrooms, 1 bath, storage bldg., large lot, carpeted, CLEAN, excellent condition. SEE THIS ONE TODAY. PRICED IN 20's.

727 Wilbanks
SUNNY ATMOSPHERE is the highlight of this 3 bedroom, study, LARGE living room, 1 1/2 baths, fenced yard, central air, and air, cellar. Excellent location. Call us today for an appointment.

WHAT A HOUSE!
 Nestled on a cul-de-sac, this beautiful home offers 3 large bedrooms, 2 baths, sunken living room with fireplace, utility room, lots of storage, double garage, & large patio. Step-saving kitchen arrangement has continuous cleaning double ovens, cook-top, dishwasher, & disposal. Warm, rich ashwood cabinets complete this 'cook's' dream of a kitchen. From the beautiful double doors that grace the entrance, the woodwork and doors throughout are the same rich ashwood. Large master bedroom features bath. THIS IS THE OPPORTUNITY OF A LIFE-TIME TO HAVE THE HOME YOU DIDN'T THINK YOU COULD FIND. Quality throughout. By appointment only.

CHARM AND GRACE
404 S. DRESSEN
 Charm and grace pervade this spacious older home which offers 3 bedrooms (one bedroom equipped with Murphy bed), 3 baths, den, full basement, 2-car attached garage with electric door opener, 1-car detached garage, underground sprinkler system, central air-conditioning, curtains throughout and new cedar fence, dust-stopper windows. Lots of storage throughout the house, basement, and garages.

A RARE FIND, 426 S. Haney. This completely remodeled older home is LIKE NEW. Has LARGE LIVING room, LARGE KITCHEN, 3 bedrooms, 2 BATHS, utility room, beautiful carpet and draperies, CENTRAL HEAT and AIR CONDITIONING, 2-car carport, heavy HAND-BUILT METAL storage building, fenced, CALL US TODAY.

NOW IS THE TIME
 to see and buy this 3 bedroom brick home at 1010 Dressen St. WHETHER YOU RENT OR WHETHER YOU BUY, YOU PAY FOR THE HOME YOU OCCUPY. THINK FAST! This one is clean, neat, fenced, near school and OWNER SAYS SELL! Call today and see this one.

-INTRODUCING-
The Ultimate in Carpet Cleaning
-never before in this area-

IT'S THE

ROGERS STEAM WAY
 Carpet & Upholstery Cleaning

M. L. ROGERS 405-338-7926
 616 N. CRUMLEY GUYMON, OKLA. 73942

*10 to 30 Times More Power than Portable Carpet Cleaning Machines.
 *Truck Mount Unit - nothing goes in your house but the cleaning head and hose.
 *Ten yrs. Personalized Experience
 *Removes Allergies from Carpets

Housewives, Businessmen, Churches, Hospitals, Clinics, & Schools across the country are amazed with the Results of this Equipment.

ROGERS STEAM WAY
 Carpet & Upholstery Cleaning

CALL NOW FOR
 -FREE ESTIMATES-

M. L. ROGERS 405-338-7926
 616 N. CRUMLEY GUYMON, OKLA. 73942



BIG 3 MEETING! You may say that this was a summit meeting in Spearman during the recent celebration, as Bob Krueger on the left, Mayor Blodgett center, and Carl Archer have a dish of ice cream during "Hansford Round-up Days" in Spearman!



The Sock Hop on a small town high school's gymnasium floor is a key scene in the nostalgic comedy, "American Graffiti."



RONNY HOWARD and CINDY WILLIAMS star as highschool sweethearts unable to face separation, in Universal's, "American Graffiti."



A dubious Curt (RICHARD DREYFUSS) listens to Joe (BO HOPKINS) explain a risky assignment in "American Graffiti."

STARDOM SET IN MOTION BY "AMERICAN GRAFFITI"

While preparing to film Universal's "American Graffiti," director George Lucas interviewed and auditioned literally thousands of actors to obtain "the most talented and charismatic people to be in the movie because I really wanted to get the best."

Francis Coppola and Gary Kurtz, and casting director Fred Roos. Extensive interviews were conducted over a period of five months in the San Francisco Bay area, particularly in the local high schools, as well as in Los Angeles.

Virtually all of the stars — and even some of the minor players —

have gone on to become highly successful in both feature films and television. Richard Dreyfuss (Curt) has starred in "Jaws," "The Goodbye Girl," (for which he received the Academy Award as Best Actor) and "Close Encounters of The Third Kind." He is one of the most in-demand actors of the 70s.

Ron Howard (Steve) went on to star in the successful TV series "Happy Days" and to pursue his dream of directing feature films, beginning with "Grand Theft Auto."

Cindy Williams (Laurie) stars in TV's "Laverne and Shirley" and has appeared in several other film and TV projects. She portrayed the pivotal character in Francis Coppola's "The Conversation."



RONNY HOWARD stars as a young man coming of age in Universal's, "American Graffiti."

Candy Clark (Debbie) starred with rock singer David Bowie in "The Man Who Fell To Earth" and rejoined "American Graffiti" co-star Paul Le Mat in "Handle With Care."

Harrison Ford (Bob Falfa) worked with director George Lucas again on his blockbuster "Star Wars" as Han Solo. He has had major roles in "Heroes," "Apocalypse Now," directed by Francis Coppola, "Force Ten from Navarone," and "Hanover Street."

Mackenzie Phillips (Carol) appears in the hit TV series "One Day At A Time." She also portrayed the young Eleanor Roosevelt in the Emmy Award-winning "Eleanor and Franklin" and was featured in the movie "Rafferty and the Gold Dust Twins."

Suzanne Somers (the blonde in the T-Bird) stars in TV's "Three's Company" and has appeared in "Bullitt" and "Magnum Force."

Paul Le Mat (John) starred in the popular "Aloha, Bobby and Rose" and the previously-mentioned "Handle With Care." Charlie Martin Smith has done considerable TV work and has just completed the "Buddy Holly Story."

Even some people who had very minor parts in "American Graffiti" are now in great demand. Debralee Scott, Kay Lenz and Kathleen Quinlan all have very busy careers.

Universal's "American Graffiti" is a Lucasfilm Ltd./Coppola Co. production, produced by Francis Coppola and Gary Kurtz, directed by George Lucas and written by Lucas, Gloria Katz & Willard Huyck. It stars Richard Dreyfuss, Ron Howard, Paul Le Mat, Charlie Martin Smith, Candy Clark, Mackenzie Phillips, Cindy Williams, Harrison Ford and Wolfman Jack.

The effect of Universal's "American Graffiti" upon popular culture at the time of its release was wide-ranging. The country began to wax nostalgic; Madison Avenue and the television networks saw "Graffiti" as writing on the wall. The hot-rod-ding Fifties were fashionable — and they sold products.

Even today, some of the top-rated network TV series are firmly rooted in those days of proms, poodle skirts, bomb shelters, and "Rock Around The Clock." Week after week, America tunes in to return to television's version of the "good old days," when life was simpler, and maybe better.

The popularity of "American Graffiti's" soundtrack album, an unsurpassed chronicle of hits from 1955 to 1962 released by MCA Records, brought forth a tidal wave of "golden oldie" packages, hawked on daytime and late-night television by the songbirds of that era, who informed us time and time again that "they just don't write songs like that anymore." And who's going to argue with that?

Lucas and written by Lucas, Gloria Katz & Willard Huyck. It stars Richard Dreyfuss, Ron Howard, Paul Le Mat, Charlie Martin Smith, Candy Clark, Mackenzie Phillips, Cindy Williams, Harrison Ford and Wolfman Jack.

Academy Award-winner Richard Dreyfuss is now firmly established as one of the most sought-after and finest young actors on the screen and on the stage. His portrayal of Curt, the class intellectual in Universal's "American Graffiti," directed by George Lucas, propelled the newcomer to stardom in 1973.

He has the distinction of having starred in two of the most successful films in the history of motion pictures, "Jaws" and "American Graffiti," as well as in the top box office hits, "Close Encounters Of The Third Kind" and "The Goodbye Girl." His performance in the latter won him his Oscar as Best Actor in 1977.

His portrayal in "The Apprenticeship of Duddy Kravitz" added another dimension to the dramatic talents he displayed in "American Graffiti." Dreyfuss first attracted critical attention at the Mark Taper in Los Angeles in the stage production of "Major Barbara." His performance in the Shaw play led to his signing by Lucas for "American Graffiti."

Universal's "American Graffiti" is a Lucasfilm Ltd./Coppola Co. production, produced by Francis Coppola and Gary Kurtz, directed by George Lucas, and written by Lucas, Gloria Katz & Willard Huyck.

The success of "American Graffiti" has had a profound effect upon the careers of its cast, which includes Ron Howard, Richard Dreyfuss, Candy Clark, Charlie Martin Smith, Cindy Williams, Mackenzie Phillips, Paul Le Mat, Harrison Ford, and Suzanne Somers, virtually all of whom have become major personalities. Even the heretofore elusive and shadowy figure of the legendary Wolfman Jack was brought into focus through "American Graffiti."

Probably the most notable success story of all must be that of the film's director, George Lucas, of course, went on to write and direct "Star Wars," which he says "is 'American Graffiti' in outer space." It is possible, then, that without "Graffiti," there may never have been a "Star Wars."

Universal's "American Graffiti" is a Lucasfilm Ltd./Coppola Co. production, produced by Francis Coppola and Gary Kurtz, directed by George

SAVINGS-GOOD TASTE!

QUANTITY DISCOUNTS RESERVED

U PRICE GOOD THRU AUG. 12

UNITED SUPER MARKETS

"FROZEN FOOD"

JENO'S FLAT PIZZA... 79¢
SAUSAGE • CHEESE • PEPPERONI • HAMB.

MORTON GLAZED 9 OZ. DONUTS... 59¢
JELLY & CHOCOLATE

FINE FARE ORANGE JUICE... 69¢
12 OZ.

"DAIRY"

BELL HALF & HALF 16 OZ. 49¢

KRAFT PARKAY MARGARINE QUARTERS LB. 49¢

BELL COTTAGE CHEESE 24 OZ. 98¢

CASSEROLE PINTO BEANS 2 LB. BAG 49¢

FRONTIER PAPER TOWELS JUMBO ROLL EVERYDAY LOW PRICE 3 FOR \$1

FINE FARE BISCUITS REGULAR OR BUTTERMILK 8 TO COUNT CANS \$1

KRAFT GRAPE JELLY OR JAM 2 LB. 89¢

ARM & HAMMER LAUNDRY DETERGENT 70 OZ. BOX \$1.29

TEXIZE FANTASTIK BATHROOM CLEANER 16 OZ. 69¢

FINE FARE FABRIC SOFTENER SHEETS 40 CT. BOX \$1.49

IVORY LIQUID SOAP 22 OZ. 19' OFF LABEL 89¢

GROUND BEEF FRESH FAMILY PACK LB. 98¢

CUBED STEAK WASTE FREE BEEF LB. \$1.98

RIB STEAK CHARCOAL BROIL LB. \$1.69

RANCH STEAK CENTER CUT 7-BONE LB. \$1.19

FISH FILLETS BONELESS FLOUNDER LB. \$1.19

HORMEL LITTLE SIZZLERS 12 OZ. PKG. \$1.09

CHUCK ROAST BLADE CUTS LB. 89¢

KRAFT VELVEETA 2 LB. BOX \$2.09

FINE FARE FRANKS MEAT OR BEEF 12 OZ. PKG. 98¢

FREE RIPE PEACHES 39¢ LB.

LG. HEADS LETTUCE 3 \$1

LG. PODS PEPPERS EA. 5¢

CALIF. FRESH BROCCOLI LB. 39¢

GREEN LG. BUNCHES ONIONS EA. 2.39¢

HI-C FRUIT DRINKS ALL FLAVORS 10-OZ. 2/99¢

FOLGERS INSTANT COFFEE 10-OZ. 43¢

PIONEER CORNBREAD MIX WHITE OR YELLOW 24 OZ. 49¢

KRAFT FRENCH DRESSING 8 OZ. BTL. 49¢

PAMPERS DISPOSABLE DIAPERS EXTRA ABSORBENT 24 CT. \$2.59

"DRUGS" EXTRA STRENGTH LIQUID TYLENOL 8 OZ. BTL. \$1.49

BODY ON TAP SHAMPOO 7 OZ. NORMAL • OILY • DRY \$1.25

FINE FARE RUBBING ALCOHOL PT. 29¢

COCA COLA 6 BTL. CRTM. 32 OZ. \$1.49

UNITED POTATO CHIPS REG. OR WAVES 8 OZ. BAG 69¢

YAN CAMP PORK & BEANS NO. 2 CAN 38¢

FINE FARE CRACKERS BOX 16 OZ. 38¢

SWIFT'S POTTED MEAT 5 OZ. CANS \$1

SWIFT'S VIENNA SAUSAGE 3 OZ. CAN 3 \$1

SHOP UNITED AND SAVE!

WE RESERVE THE RIGHT TO LIMIT QUANTITIES

U PRICES GOOD THRU AUG. 12TH

UNITED SUPER MARKETS
Perryton, Texas

FILL A CARD GET EXTRA S&W GREEN 1000 STAMPS PLAY BLACK-OUT BINGO

TO BE GIVEN AWAY

Brand New 1978 1/2 ton

Chevy Silverado (\$8200 value)

to be given away Aug. 22.

Tickets are \$5.00 and will be sold at the American Agriculture office.

The Bulls' Inn

502 Davis Street

Spearman, Texas

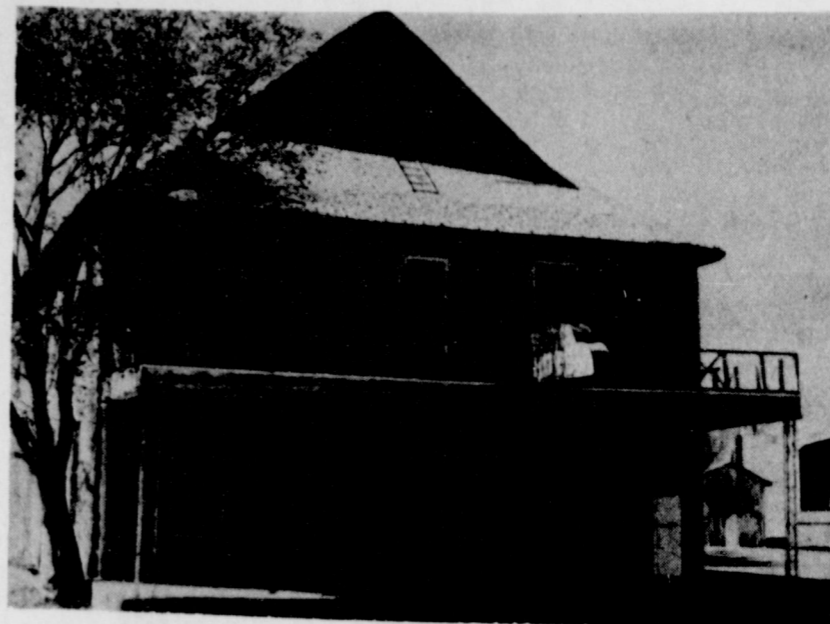
(Landmark of Spearman, Tx.)

Grand Opening

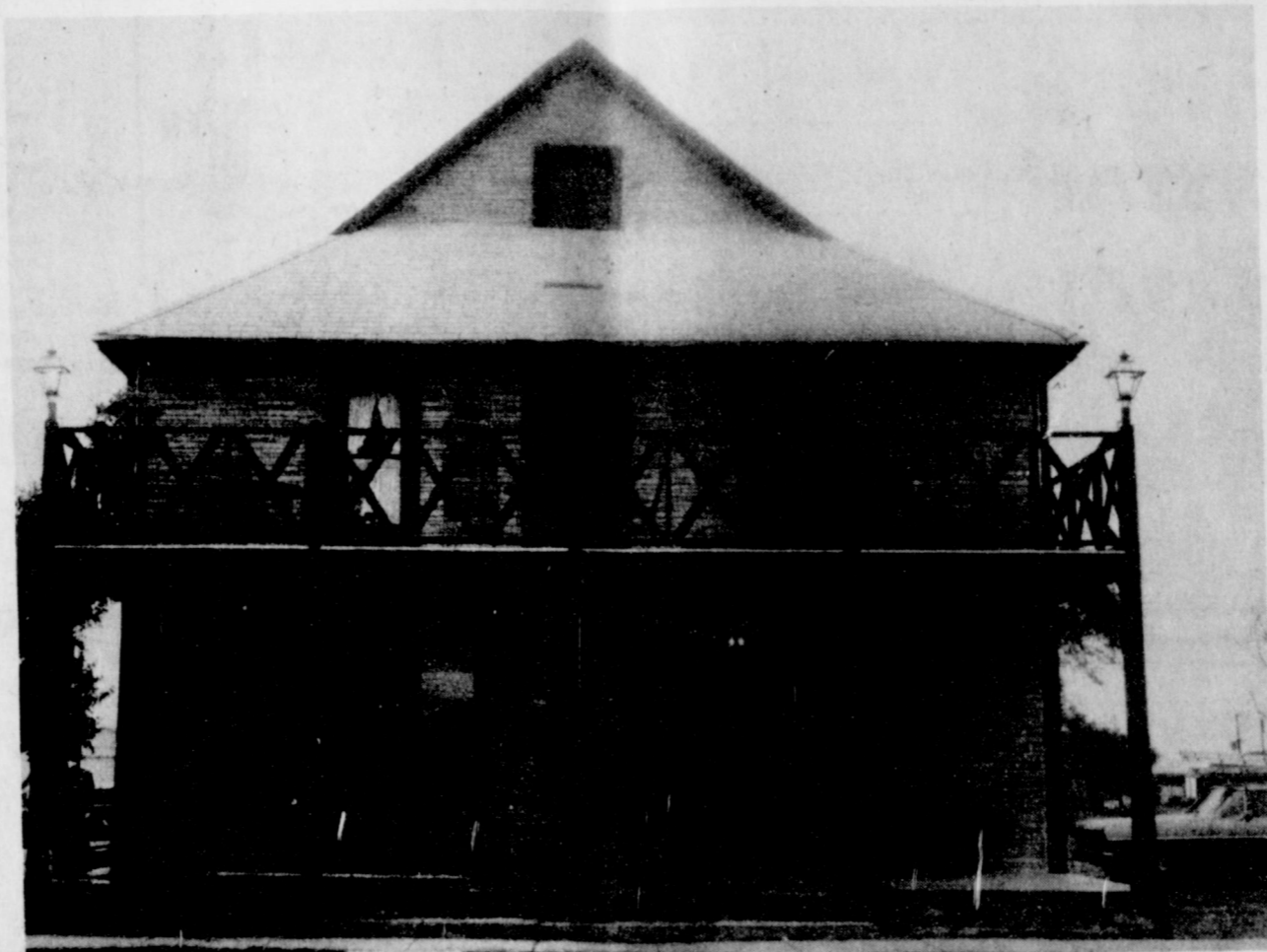
9 a.m. - 5 p.m. Saturday

August 12, 1978

"A place to spend the day, not the nite"



Before



After

The "N" Place

Suite 101

"WE'VE SHOPPED THE WORLD FOR YOU."

Noreen Sutton, owner

Beauty Salon
Swedish Sauna
Whirlpool
Cosmetics

The General Store

Suite 102

"WE'VE SHOPPED THE WORLD FOR YOU."

BKP Corp. & Bulls, Inc., owners
Gourmet Foods and Kitchen Gallery
Baskin - Robbins Ice Cream Parlor

Queen's Cupboard

Suite 201

"WE SHOPPED THE WORLD FOR YOU."

Carol Queen & Pat Parker, Owners
Sandwich & Soup - Serving Lunch
11:00 a.m. - 2:00 p.m.

The Etc. Shop

Suite 202

"WE SHOPPED THE WORLD FOR YOU."

Diane Elliott & Jenny Jines,
Owners.
Baskets from Poland
Rugs from Peru
Teakwood from India
Furniture from the Phillipines and
Taiwan

Chambers Home Accessories

Suite 203

Earline Chambers, Owner
Home accessories and candles!
Giftwrapping Service & Supplies

Roy Bulls and family

Suite 300

"WE SHOPPED FOR YOU
AT SPEARMAN, TEXAS."