

The Spearman Reporter

THE SPEARMAN REPORTER, HANSFORD COUNTY, THURSDAY OCT. 6, 1955

School Buildings Program Planned Here

School Bond Election Date Set For Saturday Oct. 15th.

Members of the Spearman Independent School District's School Board met in Special Session Monday night and were presented with a petition by patrons of the school district asking the School Board to submit to the voters of the district an election for school bonds in the amount of \$210,000.

Buy unanimous vote of the Board, patrons of Spearman I. S. D. will be given the opportunity to vote on a bond issue to build a 6 room primary building, a new cafeteria building capable of seating 150 students, and a new vocational agriculture building, housing a farm shop and vocational ag classroom.

The election will be held October 15th. The sharp increase in enrollment has necessitated these buildings which will cost approximately \$210,000.

Subject to the election passing the Board has sold the bonds at an average interest rate of 2.45%. The bonds are to mature over a period of 10 years.

In order to secure the low 2.45% and to mature the bonds in a period of 10 years, the patrons of the school district are being asked to vote on the proposition of accepting the newly created law, Senate Bill No. 116, passed by the Legislature this year. This bill provides that a School District may levy the usual \$1.50 tax rate for school maintenance, and also authorize the school district to vote bonds and levy additional tax for payment of these bonds. This will prove a savings of thousands of dollars in interest on bonds. When the bonds have been retired, the tax levy automatically ceases.

JACK POT WINNER IS MRS. COY HOLT.

The jack pot winner of last week's Mystery Farm is Mrs. Coy Holt of Gruver.

We say "Jack Pot" because not only does she win a years subscription, but also \$100. The ten dollars is for the mistake we made of running the Fred Cooper farm picture again. At the beginning of this series, we promised if we ever ran the same farm picture again, we would give the weeks winner a bonus award for identifying the farm home. Turn to the farm page in this weeks paper for further information and explanation.

FIDELLIS CLASS MEETING

The Fidellis Sunday school class of the First Baptist Church met Monday night in the home of Mrs. Maude Mathews for a business meeting and a social. Cake and coffee was served by the hostess to Mesdames: A. F. Loftin, Fred Hoskins, Jimmie Cooke, Hall Jones, T. O. Spiler, A. M. Putman, Maude Mathews, A. M. Putman, Roy Jones, Rex Sanders, A. W. Putman, Mrs. Tip-ton and Altha Groves.

SATELLITES

From Six to ten artificial earth satellites will be launched by the United States by the end of 1958, the Conference of International Geophysical Year was recently told. The operation would be for scientific observance purposes and all forty countries participating in the International Geophysical Year program would be free to observe the working of the satellites after they are aloft.

City To Be Cleaned Up During Week

The Spearman Council of Garden Clubs, in conjunction with the City Commission, has announced that the week of October 9th through 15th is CITY CLEAN UP WEEK. Everyone is asked to clean up your front and back yards, as well as your alleys. Cut all weeds, rake up all trash, do a general cleaning up.

This is the initial step in a long range program which the Council of Garden Clubs is promoting to make Spearman more attractive as well as a cleaner little City. The club will award first, second and third place prizes. These will go to the home owner with the cleanest front and back yard, and alley. Prizes will be attractive garden and yard plants and shrubbery.

Mayor C. A. Gibner stated that the City is furnishing trucks to haul off all trash that is piled in the alleys. These trucks will operate on Wednesday and Thursday, Oct. 12 and 13. They ask you to pile all junk in a neat pile, and tie all magazines and papers in bundles, for easier handling.

This is one of the first city-wide clean up campaigns to take place in some time, so every resident in the City is asked to cooperate. Also, the buildings along the highway approaches into Spearman will need to clean up around their place of business. Owners of vacant lots throughout the city, are asked to have them mowed of weeds and tall grass, and cleared of junk. This goes for vacant lots on main street also.

Lets everyone, clean up our city, and help make it one of the most attractive little towns on the North Plains.

Lynx Jinxed By Claude Mustangs

The Lynx football team backed by a large number of fans and perhaps a bit too anxious to win, suffered their most severe defeat Friday when the Claude Mustangs scored 26 points to blank the jinxing Lynx.

Nothing seemed to work correctly on defense or on offense with the anxious Lynx players. The reverse was true of the very talented Claude Mustangs Fullback Paul Rutherford was responsible for three of the four touchdowns, and scored a point after touchdown to account for 20 of the 26 score. Royald Byard annexed the other 6 points.

The scoring:
Scoreless

FIRST QUARTER

C - S
6 0 Rutherford, 16 yards
7 0 Rutherford, rushed
13 0 Rutherford, three 5-yard plunges
14 0 Wendell Goin, rushed
20 0 Ronald Byard, 17 yards around right end
THIRD QUARTER
26 0 Rutherford, 18-yard run
FOURTH QUARTER
Scoreless

New Building Is Completed

Spearman's newest and most modern office building, located on S W Court Street, is now completed, and is being occupied this week end.

Dr. F. J. Daily is owner of the tan brick, modern building. His Dental offices will occupy the five rooms on the West side of the building. Dr. Daily's reception room, office room and operating rooms are all decorated in deep, oil-paint colors which blend with the tile floors and window drapes. Reception room furniture as well as light fixtures carry out the modern trend.

The Medical offices of Dr. R. L. Kleeberger are located across the hall from Dr. Daily. Dr. Kleeberger has the seven center rooms of the large spacious building. His office, located at the rear of the hall, is done in subdued pastel colors, as is all his rooms. The drapes and carpeting blend. Dr. has a very lovely selection of office and reception room furniture. It is a soft brown wood, and matches the trim throughout the building. His part of the building includes operating rooms, X-ray rooms, laboratory and scrub room, and various others.

The East side of the building will house the Law offices of T. D. Sansing. Mr. Sansing's side of the building is very light and airy, with large East windows. His offices consist of three large rooms, all decorated in colors of tan and brown.

The interior decorating throughout the entire building is very pleasing. There are two entrances, the one on the East being the law office, and the door in the center opening into a hall from which the two doctor's offices are located.

Citizens of Spearman and community are very proud of this Medical and law center for our city. Not only is it a very nice attraction to our town, but it affords these three professional men with badly needed office space. Parking around the building will be no problem, as the long front is curbed, and the wide street is the South side of the court house square, which affords ample parking space.

The Calloway Construction Co., E. J. Calloway, owner, was the contractor for the building, and is to be complimented for a wonderful job. Mr. Calloway also built homes in the Southern part of Spearman.

Gruver Play Claude Team October 7th

In what may be the deciding game of the District play, the Galloping Gruver Hounds will play the Claude Mustangs at Gruver this Friday Evening, game time 7:30 p. m.

Early in the season the Regional Newspaper indicated that the team who could and would defeat Gruver would likely become the District champions. From comparative scoring, and barring unexpected upsets, Either Claude or Gruver can complete their 1-B schedule without suffering any defeat. Both Claude and Gruver have turned in outstanding victories in conference play. The average fan will expect the winner of the Friday night game to win in conference play the remainder of the schedule. After the Claude game this Friday evening, Gruver plays, Textline Groom, Stratford, Darrouzett and Spearman.

Hansford County Oil News

R. H. Fulton No. 1, O'Loughlin, sec. 12, blk. 2, WCR, drilling below 3850.

Sharples Oil No. 1, Lowe, sec. 13, blk. 45, H&Tc sur., dually completed, flowed 8,000 CF gas 7090-16; flowed 8,000 MCF gas 7184-7203.

The Texas Co. No. 1 Porter-A sec. 102, blk. 4-T, T&NO sur. drilling below 7592 in shale.

Honolulu Oil No. 1, Nusbaum, sec. 39, blk. 4-T, T&NO sur. location 3 mi. NE Spearman, PD 82000.

Gulf Oil No. 1, McCarty, sec. 6 blk. 2, SA&MG sur. perforated 5311-57, gas volume 5,328 CF, perforated 4870-90, acidized, swabbed, gas volume 143,000 feet testing.

Gulf Oil No. 1, Ogle Gas Unit, sec. 11, blk. 2, SA&MG sur. to clean out, frac. and test, previously flowed 417,000 feet gas.

Humble Oil & Refining No. 3, Oil Development, sec. 85, blk. 45, H&Tc sur. perforated 7684-90, swabbed, gas volume 10,000 feet to acidize.

service. They worshiped in song, prayer and meditation.

Dr. Peale has left most of the service in the hands of the people. Seeing them in active worship makes one understand how a little church has become so great a religious force.

Eliss on this earth is surely cruising down the Hudson when the water is calm and the breeze counteracts the heat of early September.

China town is hard to understand. Their temple is pretty, in an ornamental way.

MORE MORE MORE

Why the sight seeing buses make sky row is even more so. Seeing men and women living in such sordid conditions is heart breaking.

The mechanics of a television show is astounding. The personnel to put on a 15 to 30 minute show includes somewhere around 25 to 30.

It's a long story what goes on before we see a contestant on the air for 3 minutes.

The producers, Master of Ceremonies and directors are just such wonderful people; very much like a crew of news paper men and women or writers and editors in other literary fields.

With them, the show is the thing just like getting a paper out.

We saw three women in slacks on the streets. No shorts.

Food, especially coffee is universally good in New York. Well, it should be at 10 to 20 cents per cup. That caused a decline in my coffee addiction. Two cups at breakfast! The rest of the time, I drank milk. Yes, it was the same price, but got more calories for my money!

There was lots of free things to be seen in New York, but Julia and I never got around to seeing them. We didn't have time after we had seen the things we went to see, in the first place. The Statue of Liberty, the Marble Collegiate Church, good shows and a cruise on the Hudson.

It was a wonderful trip. But the best part of it was when we rolled into Amarillo and I saw a good looking man wearing a Stetson and boots, coming to welcome us home and help carry the 16 pounds of detergent I won on a TV show.

Spearman Is High Point Of Trip

BY MARGARET KIRK
We had a short course of sight seeing in New York, Julia, my sister, and I. The best part of the trip, first and last, was getting back home.

A trip within itself is never as exciting as the planning and anticipation. But for those who like to go places, finally become addicts to moving on.

A trip can be a challenge: especially if it takes 15 years to prove to one's self that they can take a trip that isn't exactly reasonable in distance. Which also means the consideration of dollars and cents. But once we got on our way we were grateful for reaching our goal.

Arriving Saturday the most natural thing was to find a good place to eat and a good show, which in this case was at the famous Roxy Theatre. Saturday morning we instinctively wanted to do the things we were accustomed to doing at church first.

At nine-thirty Julia ask me what time it was. It was so cloudy, smoky and dark, one could not tell by looking out the blackened buildings I looked at what I saw. 9:30 a. m. I said: "My watch has stopped, but it must be about 6:30, so lets sleep some more." Julia wouldn't buy that, so she called the office. My watch was running. We would have to go to church in Times Square area if we went. The Hotel listed a Union Methodist church, 3 blocks from there. With copied address, we started.

12 blocks later, 3 in each direction, we had not found it. We asked a peace officer. He didn't find it either. So he called another one to help us. All four of us didn't find it. The officers called headquarters. Off we went right back to the block Julia and I went to in the first place. We didn't find the church, but the officer said "right there" was where it should have been!

And that was that. It was 12:55 so we climbed on a sight seeing bus and went to see the sight of sights, statue of Liberty.

But we kept trying to find that church in the yellow pages of the Manhattan telephone directory. We didn't find them though for about a week. The yellow pages are in a binding all their own; about the size of two Sears and Roebuck catalogues!

Tickets were sold out so far in advance for Tennessee Williams, "Cat on a Hot Tin Roof".

Did we see two Broadway hits, "Teahouse Under the August Moon" and "Anniversary Waltz".

Probably the playbill at Radio City play house was the best show. With a stage show afterward billing "The Ballet Russe", "The Rockettes", a character performance with a cast of about 25 and a "Monkey Show".

The orchestra defies description, being about a 100 piece band with a portable stage that gave it four positions during the performance. The part that fascinated me most was having all the breaks carried by a guitarist. I didn't know till then a guitar player ever got beyond a hill billy western band.

So that was a point I marked up education; I had learned something! There is about any kind of a show anyone would want to see in the Times Square area—and some, I'm sure, no one would want to see.

All the churches, eating places, streets and theatres seemed to be full to the brim, all the time. Very few children were on the streets or in the stores. Sunday morning more showed up in the earlier hours, going to church services.

We heard Dr. Puling, editor of Christian Herald, and former pastor of the Marble Collegiate Church, the last Sunday we were there. We saw only one child in the church, but presumed there was a junior church service else where.

Dr. Norman Vincent Peale was still away on leave. Twice the congregation were asked to pray for him. The spirit is felt keenly in this unpretentious church. The congregation was intent on grasping more of the spiritual. On the whole, it was not a fashion crowd. There were a few in Mink wraps. There were also a few in those attending looked like plain, sincere people; clean, neat neither in style nor particularly out of it either. Oddly, a great many were bare headed.

The Sermon was simple, straight forward without once having a deviation from the scripture. There was no choir.

The people sang: all old hymns. The people were active in the

Lynx Play Sunray Here October 7th

Spearman Lynx will be digging for their first conference win when they play the Sunray football team here Friday evening, October 7th. The Lynx have suffered two conference defeats in the season so far. Textline won from Spearman in the last two seconds of the game to register the first defeat. The Lynx had the advantage on penetration if they had been able to ward off that last touchdown toss. In the second last week end, Claude gave the Jinxing Lynx a crushing defeat with a score of 26 to 0. Game time is 7:30 p. m.

China Exhibit Rules For Fair

CHINA SCHEDULE & GENERAL RULES

Mrs. Bill Hutton, Mrs. Clay Gibner and Mrs. Bill Russell, Sr. 1. All necessary holders and stands must be furnished by the exhibitor.

2. All china must be entered not later than 5:00 P. M. Thurs. 3. All china must stay in place until 8:00 P. M. Saturday, October 8.

4. China will be judged on applicability and artistic value and not one piece against another. 5. All pieces of china must have been done during this fair year.

2 B Coup Plate Picture

1. Chop plate, floral
2. Chop plate, fruit
3. Compot, floral
4. Compot, fruit
5. Cake plate, floral
6. Cake plate, fruit
7. Covered dish, fruit
8. Covered plate, floral
9. Platter, floral
10. Platter, fruit
11. Dinner plate, floral
12. A Dinner plate, fruit
13. Dessert plate, floral
14. Dessert plate, fruit
15. Cup and saucer, floral
16. Cup and saucer, fruit
17. Bowl, floral
18. Bowl, fruit
19. Candy jar, floral
20. Candy jar, fruit
21. Pitcher, floral
22. Vases, floral
23. Vases, fruit
24. Wine jug, floral
25. Wine jug, fruit
26. Place setting, floral
27. Place setting, fruit
28. Coffee service, floral
29. Coffee service, fruit
30. Tea service, floral
31. Tea service, fruit
32. Chocolate service, floral
33. Chocolate service, fruit
34. Cream and sugar, floral
35. Cream and sugar, fruit
36. Novelties
37. Picture, floral
38. Tray floral
39. Sandwich tray

FLOWER SHOW

Mrs. Johnny Luckey and Mrs. Johnnie Lee

RULES:

1. Each club participating is required to have an educational exhibit.
2. Any amateur gardener in this community or surrounding communities may compete.
3. All materials exhibited in Specimen classes must be grown by the exhibitor.
4. An exhibitor may have only one exhibit in each class.
5. Flowers for arrangements to be grown. Wild flowers will not be accepted.
6. Pot plants must be in possession of exhibitor for at least three months.
7. The decision of the Judges will be final. Judge horticulture against perfection and arrangements against each other.
8. All entries will be received from 8:00 A. M. until 9:30 A. M. Friday, October 8. Flowers must be in place for judging by 10:00 A. M.
9. If flowers are entered later than 10:00 A. M. they will not be judged but will be entered for exhibit only.
10. Containers will not be furnished for arrangements. Specimen must be in a milk bottle or can.
11. The show Committee will not be responsible for containers. Although care will be exercised, Mark all items with owner's name.
12. All exhibits must not be removed until 1:00 P. M. Saturday, October 9.

Not every religious person understands religion, and religions.

Not everything that happens is published in the newspapers, for which everyone can be thankful.

Kirby Clawson Council President

GOODWELL, OCT. 5 (Special) Kirby Clawson, Gruver, Texas, senior was named vice-president of the Student Council at Panhandle A. & M. College at a recent election.

Other officers include: Victor Terbush, Buffalo senior, president (Terbush was elected president last April in an all-college election), Jo Anna Gardner, Quinlan sophomore, secretary, Janelle Harland, Texhoma junior, treasurer, Duane Schafer, Texhoma junior, homecoming chairman, Dr. Jack Coghill, professor of speech, was named faculty sponsor.

Other members of the Council are: Seniors Bob Brown, Delhi; Louis Sims, Hobart, and Calton Barby, Beaver Juniors Lynn Gardner, Logan, Sophomores: Karl West, Taloga; and Charles Shaw, Vici Freshmen: Pat Higgins, Guyman, and Hubert Kidd, Hearyetta.

County May Get \$80,000.00 Road

1955-56 State Farm Road Program Hansford County Honorable Johnnie C. Lee, County Judge Hansford County Spearman, Texas Dear Judge Lee:

We are quoting below Minute Number 38846, dated September 21, 1955, which designates a Farm-to-Market Road in Hansford County subject to conditions more fully set out in the Minute.

"WHEREAS, IN HANSFORD COUNTY, a study of the most needed road improvements has been made and consultations have been held with the appropriate County officials relative to the road needs of the County;

NOW, THEREFORE, IT IS ORDERED that a FARM-TO-MARKET ROAD be designated, extending from end of F. M. Road 520 at McKibben Switch, West to F. M. Road 278, a distance of approximately 5.8 miles, subject to the availability of funds in the Farm-to-Market Road fund as established by Senate Bill 287, 51st Legislature, and subject to the further condition that Hansford County will furnish all required right-of-way free of cost to the State.

At such time as the County shall accept the provisions of this Order and agree to the furnishing of the required right-of-way, the state highway engineer is directed to proceed with the engineering development and construction of the project in the most feasible and economical manner, at an estimated cost of \$80,000.00, and to assume the cost of State maintenance upon completion of the construction herein authorized.

In case right-of-way agreement by the County is not executed within 120 days of the date of this Order, the action herein contained shall be automatically canceled.

We would appreciate your furnishing this office 2 certified copies of an order of your Commissioners Court accepting the terms of this Minute, at the earliest possible date, in order that our preliminary work may proceed on this road.

James G. Lott

Galloping Greyhounds Scheduled Sunray 26 to 0 Sept 30th

Marine Recruiter Will Be In Spearman Oct 13th.



Glenn H. Smith, SSGT Glenn H. Smith

SSgt. Glenn H. Smith NCO in charge of the Marine Corps Recruiting Station in Amarillo will be in Spearman on Thursday 13 October to interview applicants for enlistment in the U. S. Marines. Young men between the ages of seventeen through twenty-eight, unmarried and who are physically & mentally fit may be eligible.

For the first time in over two years men may enlist in the Marines for three years instead of the old four year minimum in effect until 19 Sept 55. There is no waiting list at this time, if a man wishes he may leave for recruit training the day after application.

SSgt Smith will be in the Post Office here the 13th from 10: A. M. Till 1: P. M. A Marine Corps Recruiter will continue to visit Spearman on the second Thursday of each month 1955.

Hansford HD Club To Have Review

The Hansford Home demonstration club met in their regular semi-monthly meeting in the home of Mrs. Branch Sheets.

During the business session, Mrs. Sheets resigned as president of the club and Mrs. Daniel Sheets was elected to serve for the remainder of this term of office. Plans were completed for the booth for the Fair.

The book review to be October 24 at 7:30 p. m. was discussed. Mrs. Luther Roberts of Berger will review "Autumn Liberty", a book recommended by the Texas Home Demonstration Association. This event will be open to the public and all HD Club members of all clubs are urged to attend.

The next meeting will be Oct. 10 with Mrs. Paul Smith. This will be a 12:30 luncheon. The menu will emphasize the use of Powdered milk, a means of adding more calcium to the family diet.

Mystery Farm of County



THE MYSTERY Farm THIS WEEK. We urge to phone or identification of

the owner of this farm to the Reporter. The owner of this farm is requested to get in touch with the Reporter office

at his earliest convenience, so we may get information for a write up to appear in next weeks Spearman Reporter.

Not everything that happens is published in the newspapers, for which everyone can be thankful.

No Better MEAT BUYS at ANY PRICE



RANCHO PURE PORK SAUSAGE
2 lb. Roll **39¢**
FRESH FRYERS

PINKNEY'S
Hickory Smoked
HAMS
WHOLE HAM
8 to 10 Pounds
LB. **47¢**

BUTT PORTION LB. 49¢
CENTER SLICES LB. 89¢
SHANK PORTION LB. 39¢

You can pay more—but you can't buy better meat. For here at YOUR CUT RATE GROCERY AND MARKET, you get the top grades of quality meat—cut to your taste and close-trimmed to give you more tender, tempting meat per pound... more juicy, good-eating meat for your money. Choose one of these family will enjoy its top quality flavor. Your budget will enjoy the economy—for there are no better meat buys at any price.

Coca Colas Carton of 6 **19c**
Pop Corn Georgia Porgie lb. Bag **18c**

ROSEDALE GREEN BEANS **6 For \$1.00**
BLUE LAKE PORK & BEANS **2 For 23¢**
VAN CAMP TALL CAN TOMATO JUICE **4 For \$1.00**
HUNT'S 46 OZ. CAN SPICED PEACHES **4 For \$1.00**
HEMET NO. 23 CAN

KLEENEX More for your money... color too 400 COUNT **29¢**
PABLUM Your baby deserves the best **20¢**

Hixon lb. Can
COFFEE lb. 77¢

GERBERS STRAINED BABY FOOD 3 for 23c
HERSHEYS LB. CAN CHOCOLATE SYRUP .. 19c
SWANSDOWN INSTANT CAKE MIX 4 pkg. \$1.00
MINUTE MAN INSTANT FROSTING pkg. 23c

Fruits & Vegetables
FRESH - CRISP - CELLO - PKG.
CELERY HEARTE pkg. 27¢
CALIFORNIA - TOKAY
GRAPES lb. 10¢
LARGE - FIRM - HEADS
CABBAGE lb. 5¢
NO. 1 - IDAHO - RUSSETTS
POTATOES 10 lb. bag 49¢

SHURFINE FROZEN 6 OZ. **ORANGE JUICE ... 2 For 29¢**
CAPE ANN WHITING **FISH ... lb. 18¢**
DOWNEY FLAKE 1-MINUTE **WAFFLES ... Pkg. of 6 - 18¢**

Bordens - One-Half Gallon
CHARLOTTE FREEZE ... 49¢

Flour Gold Medal 10 lbs. **75c**
CUT-RATE FAMOUS FOR SERVICE
GROCERY MARKET SPEARMAN TEXAS

NORTHERN COLORED NAPKINS pkg. 10c
NORTHERN BATHROOM TISSUE 6 Rolls 49c
TREND LIQUID 12 OZ. DETERGENT 2 For 53c
QUART BLEACH PUREX 15c

Col. and Mrs. Lee Hester Here For Visit Oct. 5-6th

Col. and Mrs. Lee Hester were guests in the home of his brother, Mr. and Mrs. Dave Hester Wednesday and Thursday of this week. Colonel Hester has been a patient in the Veterans Hospital at Denver, Colorado, and was enroute from Denver to San Antonio, Texas.

Mary Nell Chambers Zeta Tau Alpha Pledge At N. T. S. C.

DENTON, Oct. — Mary Nell Chambers of Spearman has been named to pledge Zeta Tau Alpha, national social sorority at North Texas State College, this semester. Dean of Women Imogene Bentley has announced the names of 112 girls who were chosen to become pledges in the six Greek-letter groups after several days of rushing activities on the campus.

Jim Neely Is Patient At Hansford Hosp.

Jim Neely underwent Major Surgery at the Hansford Hospital Monday of this week. He is doing fine and making good progress according to a report received Wednesday of this week.

F. J. DAILY, D. D. S.
Announces the Removal of his
Dental Office
To
16 S. W. Court Street
Spearman, Texas

R. L. KLEEBERGER, M. D.
Physician & Surgeon
General Practice
Medicine, Surgery, Obstetrics
Announces the Removal of his office
To
No. 16 S. W. Court St.
Spearman, Texas
Telephones: Office 5781
Res. 2161

BIGGER 'N ME! COME SEE
STATE FAIR OF TEXAS
OCT. 7-23
DALLAS
BIGGEST STATE FAIR IN THE WORLD

It got its lightning from the Thunderbird



The beautiful new styling of the '56 Ford makes it a dead ringer for the fabulous Thunderbird. And in power, too, Ford is mighty like the Thunderbird.

Another exciting advance in Ford's Lifeguard Design... including a new center steering wheel, new double-gate latches, new optional seat belts and padding for instrument panel and sun visors.

The fine car at half the fine-car price!

Your Friendly **JOE TRAYLER**
Spearman, Texas
UNIVERSAL MOTOR COMPANY
Gruver, Texas

NEW... Powr-Range Transmission
with 8 FORWARD SPEEDS including
Two Creeper Speed
CASE for Tough PTO Work
America's Finest Tractor in the 50 h.p. class...
When you run into a crop too rank and tough PTO combine or chopper to handle in ordinary you'll appreciate the creeper speeds of the CASE Tractor. You can just crawl along while keeping the PTO machine up to steady normal speed. Creeper speeds come handy, too, for spraying, digging, moving portable buildings, and other jobs you want to move slowly. Come in—try out the lapping forward speeds, plus two reverse speeds of the Powr-Range transmission of the Case "400"

R. L. McClellan & Son

STATEMENT OF THE ACT AS AMEN OF MARC 2, 1946 (Code Section OWNERSH AND CIR Spearman weekly at County, Te 1. The n the publi editor, and Publisher man, Texas Editor: V Texas. Business ler, Spear 2. The o corporation must be st ately there addresses o or holdin total am ed by a and addre owners mu by a part corporation celebration this to the years to come as though we do not all over. We do not responsible, but it is that such a nice glad to report that Harris is back from You will recall that had a stroke. Now the home of her daugh- ter Mrs. I. W. Ayres sister Betty from New California and Glen Mexico have also been understand that she safety and her dau- Warren Jeffers went to visit Mrs. who is seriously Bert and Mrs. Claud a Amarillo visiting has recently un- der surgery. Fred Hintergardt and wife are spending in Dallas. They are with State Fair and tak- ing. Fred Womble are the arrival of a new man arrived by Spearman Hospital. 3 lbs. and 6 ozs. and Brant. Mother doing just fine. Louie Reynolds of are here visiting Mrs. E. G. Garrett. their way to Calif- onia. Atra Ward have a nice vacation. Seattle by way of Spokane they visited Ward's kinfok. they went by plane Alaska. It was four- ty miles and they five hours. they visited with family. wonderful time. They Davis On the way their son Leslie a the Navy. They Emerston, Wash. they came home down into New Santa Fe, then and then home. trip but they home. They liked said it is no your man, as living Tommy has a fine hardware dept of a firm. something you will be The Order of East- preparing a "Birth- Mrs. Dan Shrader of the project and tell you how you will be a very B. Franki 9-13-55 Oil Corp 9-7-55 The Nort ML W-2 Bk. 2, G 8-17-55 Baker & sign Sec. 9-9-55 Lamar H ment E-2 SW-4; W H&C 55 9-15-55 Lamar H ment Pt Sec. 59, P Pt. Sec. 7-27-55 B. Franki E-2 Sec. 2 8-25-55 James Corp OG 10, Pt. S \$8.20 5-27-55 at Stanoli ML 4 Yrs 1-7, T&N 7-19-55 2&K OG 8-32-55 avc 823.0 8-11-55 Ca. Assig 2-4 Sec. 5-10-55 3-28-55 3, H&C 8-29-55 "Meriton Sec. 165, The ed that these in journa The gr the tend spouse in

STATEMENT REQUIRED BY THE ACT OF AUGUST 24, 1912, AS AMENDED BY THE ACTS OF MARCH 3, 1933, AND JULY 2, 1946 (Title 39, UNITED STATES CODE SECTION 233) SHOWING THE OWNERSHIP, MANAGEMENT, AND CIRCULATION OF THE Spearman Reporter published weekly at Spearman, Hansford County, Texas for October, 1955.

1. The names and addresses of the publisher, editor, managing editor, and business manager are: Publisher W. J. Miller, Spearman, Texas. Editor: W. J. Miller, Spearman, Texas. Business manager: W. M. Miller, Spearman, Texas.

2. The owner is: If owned by a corporation, its name and address must be stated and also immediately thereunder the names and addresses of stockholders owning or holding 1 percent or more of total amount of stock. If not owned by a corporation, the names and addresses of the individual owners must be given. If owned by a partnership or other unincorporated firm, its name and address, as well as that of each individual member, must be given.

3. The known bondholders, mortgagees, and other security holders owning or holding 1 percent or more of total amount of bonds, mortgages, or other securities are: (If there are none, so state.) David M. Warren, Panhandle, Texas.

4. Paragraphs 2 and 3 include, in cases where the stockholder or security holder appears upon the books of the company as trustee or in any other fiduciary relation, the name of the person or corporation for whom such trustee is acting; also the statements in the two paragraphs show the affiant's full knowledge and belief as to the circumstances and conditions under which stockholders and security holders who do not appear upon the books of the company as trustees, hold stock and securities in a capacity other than that of a bona fide owner.

5. The average number of copies of each issue of this publication sold or distributed, through the mails or otherwise, to paid subscribers during the 12 months preceding the date shown above was: (This information is required from daily weekly, semi-weekly, and tri-weekly newspapers only.) 1170.

W. J. Miller, Publisher. Sworn and subscribed before me this 4 day of October, 1955. (SEAL) P. A. Lyon, Jr. (My commission expires 6-1, 1957)

Lease And Contract Record Take-Off

8-12-55 T. E. Jones et ux P. A. Lyon Jr. OG&ML Yrs 640 Sec. 272 Blk. 2, GH&H \$14.30.
 8-12-55 P. A. Lyon Jr. Gulf Oil Corp. Assignment 640 Sec. 272 Blk. 2, GH&H \$14.85.
 6-27-55 O. J. Hoel Jr. et ux James B. Franklin OG&ML 10 Yrs. 3B0 SE-4 Sec. 185, & NW-4 Sec. 200, Blk. 2, GH&H \$4.40.
 6-27-55 Frank H. Liermann et ux James B. Franklin OG&ML 10 Yrs. SE-4 Sec. 185 & NW-4 Sec. 200 Blk. 2, GH&H \$4.40.
 8-12-55 Lemma K. Bone et al David D. Reed OG&ML 10 Yrs. 7499 Sec. 1, W.80 of Sec. 2, Blk. 1, PFS Secs. 94-96-E-2 Sec. 95, Blk. 2, GH&H in Hansford & Sherman Counties Secs. 46-47-50-51-52, Blk. 2, GH&H.
 8-12-55 M. H. Freeman et al David D. Reed OG&ML 10 Yrs. 6939 Sec. 1, & W.80 A Sec. 2, Blk. 1, PFS Secs. 94-96-E-2 95 Blk. 2, GH&H in Hansford & Sherman Counties Secs. 46-47-50-51-52 Blk. 2, GH&H.
 8-16-55 Gwenfred Lackey P. A. Lyon Jr. OG&ML 5 Yrs. 460.35 N-2 Sec. 4, Blk. 3, PFS; S-2 Sec. 3, Blk. 3, PFS. Ex. Mrs. J. W. Jones Sub-Div to Gruver, Texas \$13.20.
 (Same Land)
 9-13-55 P. A. Lyon, Jr. Gulf Oil Corp. Assign.
 9-7-55 Phillips Petroleum Co. The Norton Properties Rel. OG&ML W-2 Sec. 259; W-2 Sec. 211, Blk. 2, GH&H.
 8-17-55 The Sharples Oil Corp. Baker & Taylor Drilling Co. Assign Sec. 122, Blk. 45, H&TC.
 9-9-55 Cities Service Oil Co. Lamar Hunt Trust Est. Assignment E-2 NW-4; E-2 NE-4; W-2 SW-4; W-2 SE-4 Sec. 59, Blk. 45 H&TC 55c.
 9-15-55 Cities Service Oil Co. Lamar Hunt Trust Est. Assignment Pt. Sec. 6, Blk. 2, WC; Pt. Sec. 59, Pt. Sec. 46; Blk. 45 H&TC Pt. Sec. 3, Blk. 2, WC \$1.65.
 7-27-55 D. C. Dilley et ux James B. Franklin, OG&ML 7 Yrs. 320 E-2 Sec. 249, Blk. 2, GH&H \$8.80.
 8-25-55 Elizabeth Cox Lynn Tr. James K. Cox Est. Gulf Oil Corp. OG&ML 5 Yrs. 641.70 Sec. 10, Pt. Sec. 9, Blk. 4-T, T&NO \$7.20.
 6-27-55 Walter W. Wilmoth et al Stanolind Oil & Gas Co. OG&ML 4 Yrs. 320 N-2 Sec. 123, Blk. 1-T, T&NO \$12.65.
 7-19-55 Jimmie C. Ellis Ben D. Beck OG&ML 5 Yrs. 1130 Sec. 17 & S-2 & NW-4 Sec. 16, Blk. 1, W.C. \$28.00.
 8-16-55 Ben D. Beck Shell Oil Co. Assign 1130 Sec. 17 & S-2 & NW-4 Sec. 16, Blk. 1, W.C. \$28.00.
 8-10-55 Baker & Taylor Drilling Co. The Shamrock O & G Corp. Assign. S-2 & NW-4 Sec. 73, Blk. 3, H&TC.
 8-29-55 Ward G. Spivey Phillips Petroleum Co. Est. OG&L 1 Yr. Sec. 165, Blk. 2, GH&H \$3.85.

FIRST METHODIST CHURCH
 Spearman, Texas
 Sunday:
 9-45 A. M. Church School - Bring The Family. There IS A Class For Each Member Of The Family.
 11-00 A. M. Morning Worship Service - Sermon: "Why Love Is The Greatest"
 6-30 P. M. Methodist Youth Fellowship Meetings
 7-00 P. M. Evening Worship Service - "The Foe, The Fight, The Flight"
 Monday:
 10-00 A. M. District Meeting Of The Women's Society Of Christ An Service.
 Wednesday:
 3-00 P. M. The Women's Society Of Christian Service meets at The Church.
 7-30 P. M. Mid-Week Service -

Prayer Meeting
 Give God A Chance With Your Life. Attend Church Regularly. Come, worship God With us.
 Aubrey C. Haynes, Minister

Gruver Music Club
 The Gruver Music Club met at the Methodist Church, September 27, 1955, with the president, Mrs. J. F. Cator, presiding.
 Federation Collect Music Club. Musical Note, Mrs. Jack Hart. American Poular Music, McKinney, Anderson, Mrs. Ralph Bort. "Rose Marie", Friml. Flute Solo, Mona Hale. Accompanist Kathryn Knutson. "Sentimental Journey", Brown, Green, Homer Girls Quartette. Georgia Bratton, Gloria Delano, Janet Eddleman, Kathy Truax. "Just Like Old Times" Times Mrs. Paul Gumfory

The Syncopated Clock Anderson
 Piano - Marlene Gruver
 Hostess, Mrs. E. T. Rafferty, Sr.
 Guests present, Georgia Bratton, Gloria Delano, Janet Eddleman, Marlene Gruver, Mona Hale, Kathryn Knutson, Kathy Truax.
 Members present, Mesdames, Harley Alexander, Robert Alexander, Chas. C. Beck, Ralph Bort, J. F. Cator, J. W. Duke, Homer Cluek, Darrell Coper, W. J. Eddleman, Glendon Etling, Wm. Etling, Paul Gumfory, Don Hart, Jack Hart, K. E. Irwin, W. L. Maupin, E. M. McClellan, Sr. Wm. R. Murrell, Aubrey Peddy, E. T. Rafferty, Sr. J. E. Sluder, E. L. Thom, A. L. Thoreson, Claude Watkins.

PTA Leadership And Training Meeting At Canyon October 10th
 Mrs. Ella Dell Beiler, field worker for the National Congress of Parents and Teachers, will be featured speaker in a leadership training institute on the campus of West Texas State College on Monday, October 10. The institute is a cooperative effort of educators and Parent Teacher Associations in the area. All PTA units in Districts 8 and 19 (formerly District 8) are urged to send delegations to the meeting, which will be held in the Branding Iron Theater.
 The day's activities will open with registration from 9-30 to 10 o'clock. Mrs. Beiler will speak at 10 on "The Philosophy, Object,

Policies, and Program of the Parent-Teacher Movement." Her address will be followed by a question and answer period which will occupy the rest of the morning.
 Luncheon will be served in the Blue Room of the college cafeteria from 12:15 to 1:15. The afternoon's activities include a school of instruction from 1:30-2:30 and a panel discussion on cooperation between home, school, and community from 2:30 to 3:45. Panel members will be Mrs. Crews Henry, Mrs. Margaret Harper, Miss Louise Orr, Dr. Charles Nester, and Mr. Bill Baxter.
 When Mrs. Beiler joined the staff of the National Congress of Parents and Teachers, she had acquired a rich background of Parent Teacher experience as an active member and leader in local

relations. Always interested in human psychology and philosophy at Teachers College, Columbia University, and received a master's degree in human development at the University of Chicago. She is experienced in teaching and as a counselor in children's camps. In her home town, Western Springs, Ill., she has been active in civic affairs and has served as a member of the library board and the recreation commission.
 The Spearman Reporter welcomes your suggestions. Let us hear from you.
 All people have good inside, although finding the hiding place is often difficult.
 The duration of a trademark registration is 20 years.

YOUR FOOD DOLLARS HAVE MORE VALUE

FLOUR 75
 GOLD MEDAL - 10 Lb. BAG CENTS

Miracle Whip KRAFTS QUART **49c**

CATSUP	STOCKTON 12 OZ. BOTTLE 2 FOR	29c	Jellies And Preserves	20 OZ. TEA GARDEN Apricot, Peach, Grape PLUM, PINE-COT	3 For 99c
COCOA	HERSHEY'S 1 LB. BOX	32c	CHEESE	VELVEETA	2 lb. Loaf 79c
Corn And Peppers	DELMONTE 12 OZ. CAN	2 For 29c	NAPKINS	NORTHERN 80 COUNT	Box 10c

MELORINE Bordens 1/2 Gal. **49c** Supreme Butterscotchy Cookies 1 Lb. Bag **43c**

CHOCOLATE SYRUP HERSEY'S 1 LB. CAN **19c** | **KRAFT OIL** QUART BOTTLE **63c**

Kimbell's OLEO Colored And Quartered, lb. **19c**

FROZEN FOODS

RICH'S WHIP TOPPING Reg. Can	39c
SHRIMP BREADED FANTAIL 10 oz. pkg.	49c
GRAPE JUICE Weich's 6 oz. Can	22c
MEXICAN DINNERS 12 oz. pkg.	43c
CHERRIES WAPCO R. S. P. 303 CAN	19c
GREEN BEANS WAPCO WHOLE 303 CAN	2 For 27
PEACHES PACIFIC GOLD NO. 21 CAN	27c
BEETS WAPCO WHOLE 303 CAN	10c
SPINACH WAPCO 303 CAN	10c
MUSTARD GREENS WAPCO 303 CAN	10c

Produce

LEMONS CALIFORNIA SUNKIST	10c
PEACHES LARGE FANCY 2 POUNDS	25c
TOMATOES CALIFORNIA BEAUTIES	lb. 15c
BANANAS GOLDEN RIPE 2 POUNDS	25c
POTATOES COLORADO REDS 25 LB. BAG	59c

MEATS

BACON PINKNEY'S FAMILY STYLE 2 LB. PKG.	\$1.19
LIVER BABY BEF	lb. 19c
WEINERS PINKNEY'S 3 LB. BAG	89c
LOIN STEAK GRAIN FED	lb. 49c
PORK CHOPS CENTER CUTS	lb. 59c END CUTS 49c

BUDDY'S

TURNIP GREENS WAPCO 303 CAN **10c**

The editor is under no delusion that these shots are the supreme in journalistic endeavor.
 The great failing of many is the tendency to make over the spouse in one's own image.

and THAT
 Daily, D. D. S.
 Removal of his
 Office
 To
 Court Street
BERGER, M. D.
 Surgeon
 Practice
 Surgery, Obstetrics
 Removal of his office
 To
 S. W. Court St.
 rman, Texas
 Office 5781
 2161
 Res. 2161
ME! COME S
PAIR OF TE
7-23
LLAS
IR IN THE WC
ing
erbird
ts Y-8 "GO" to be
ing advance in Ford fo
n... including a new
wheel, new double-c
optional seat belts and
instrument panel and su
to-for a thrilling test
-inspired '56 Ford.
For
AYLER
an, Texas
TOR COM
Texas
mission
Including
Spee
PTO W
up too rank and toug
to handle in ordinary
eper speeds of the C
awl along while keepi
up to steady normal
ly, too, for spraying,
dings, and other jobs
me in-try out the
plus two reverse spe
ion of the Case "400
& S

MAKE THE

ADS

YOUR AGENT TO..BUY...
SELL...RENT...HIRE...

GLASS REPLACEMENT
Body Shop and Painting
R. L. (Smoky) Huse
Spearman, Texas



Looking for Service
Try Orange Disc
Service!

ALTON Phone 2301 WATNB

ANTHONY ELECTRIC

• Industrial
• Commercial
• House Wiring
Contracting and Repairs
Electric Motors and
controls sold and
serviced
L. L. Anthony
Phone 3361 Box 727
Spearman, Texas

The
AMBULANCE
FLOWER
Number
Dial 2751
SPEARMAN, TEXAS

B. M. A.
INSURANCE
ACCIDENT - HEALTH
HOSPITAL & LIFE
For Each Member
of the Family
E. K. SNIDER
Lubbock - Spearman

LAKE PATTON
ELECTROLUX CLEANERS
Adler Matic Sewing Machine
Repairs
524 E. 9th Phone 5891
Perryton, Texas.

For the life of your car
GO GULF!
Dr. Reese Nowlin
OPTOMETRIST
OFFICE HOURS
9 to 12 a. m. - 1 to 5 p. m.
Saturday 9 - 1
Phone 5481
No. 16 SW 2nd Avenue
Perryton Texas

COMMERCIAL
AND
RESIDENTIAL
BUILDING
CONTRACTOR
E. D. Mundy
115 DRESSEN STREET
PHONE 4596

Dr. D. E. Hackley
OSTEOPATHIC PHYSICIAN
AND SURGEON
McLain Bldg.
9:00 - 12:00
1:30 - 5:30
Office Phone - Residence Phone
4851 5181

FOR RENT—Apartment on pavement, furnished. Phone Carl Hutchison, 3211. No. 42-rtn.

FOR RENT—Sleeping rooms for men. Mrs. A. E. Townsend 122 S. Endicott St. No. 41 4-t-c

HOUSE FOR RENT—Mrs. George Rook, Phone 5321. No. 41 rtn nc.

BY
'Gene & Sparky'



Getting down to "bare facts", we'll hunt down the trouble and make you pleased at your choice of service.

Spearman Super Service
Hwy. 117 Ph. 4061

Here comes stinky!
Come on chicks, let's run for the range. We won't be able to breathe in this place for awhile. I just saw the boss mixing some more of his disinfectant. He thinks the stronger the odor, the better it kills germs. Why doesn't the boss wise up? That strong smelling, irritating stuff is old fashioned. If he'd switch to Germex he could do a better job without the disagreeable part. Germex is made by...
Dr. Salsbury's

Hansford Lodge 1040
A. F. & A. M.
Regular Communication
2nd. and 4th Monday
of each month
Clarence R. Blodgett, W. M.
J. K. Hicks, Secretary

Dr. F. J. Daily
DENTIST - X-RAY
801 Davis Street
WOMBLE BUILDING
Spearman, Texas

E. C. GREENE
• Real Estate
• Loans
• Insurance
Phone 4261 - Box 145
SPEARMAN, TEXAS

PERRYTON HOSPITAL AND CLINIC
Dr. G. L. Kengle, M. D.
Res. Phone 5041
Dr. D. B. Pearson, M. D.
Res. Phone 5471
Perryton Hospital Phone 2171
CLINIC PHONE 3282

WANTED—Person to help in Beauty Shop and home. Ivan Vernon Phone 5631. No. 38 r-t-n

FRYERS FOR SALE—85c EACH. Mrs. Jack Taylor. No. 42, 2-t-p

CERTIFIED EARLY TRIUMPH and Cheyenne. Cheyenne is a turkey selection from the North, and is a beautiful milling wheat and extremely hardy. We also have a limited amount of Comanche seed, and Ward winter barley.

R. L. PORTER GRAIN & SEED COMPANY - Phone 3751

WE ARE—Experts in installing linoleums. Let us figure your next job. Free estimates. We do cabinet tops, floor linoleums, covegwalls. We stock linoleums up to 12' wide, sink frames, metal trims and etc.
DALEY'S IN PERRYTON
No. 27 rtn

FOR SALE—1949 L. A. Case Tractor. Good rubber—good mechanical condition. Best offer takes. L. J. Balzer, Hooker, Oklahoma. No. 41 3-t-p

NOTICE TO CREDITORS AND DEBTORS OF THE ESTATE OF DALLAS O. REYNOLDS, DECEASED.
Notice is hereby given that Letters Testamentary upon the Estate of Dallas O. Reynolds, deceased, were granted to me on the 12th day of September, 1955, by the County Court of Hansford County Texas. All persons having claims against said estate are hereby required to present the same to me within the time prescribed by law. All persons owing said estate are hereby notified to make payment to me. My residence and post office address are Spearman, Hansford County, Texas.
Mattie A. Reynolds
Independent Executrix of the Estate of Dallas O. Reynolds, Deceased.
No. 41 4-t

BABY SITTING—wanted. Mrs. George Rook, Spearman, Phone 5321. No. 41 rtn nc

NEED FEMALE INSURANCE—clerk. Minimum of two years Texas experience in general insurance. Must be able to rate dwellings and automobiles and keep books. Must be fast typist. Must be intelligent enough to assume responsibility. Excellent possibilities for right person. Apply at Vance Employment Service, 920 Barfield Building, Amarillo. No. 43 2-t-c

WANTED — Hemstitching. Mrs. Milton Brown, 901 Haney. No. 40 6-t-c

NEW AND OLD TRAILERS—Completely Modern. Up to 5 year Financing. Best Trailer Sales. 916 Wilks. Phone 423250 Pampa, Texas. No. 40 r-t-n

ALCOHOLIC—doctor is your friend and you sincerely want help to quit write Alcohol Anonymous, Box 251, Spearman. No fees, no pledges, no pills. No. 36 rtn

RANCH LOANS, to irrigate, purchase or refinance. Call 4261 or write Box 145. E. C. Greene, Spearman, Texas. No. 23 r-t-n

SANFORD HOSPITAL AND CLINIC
Perryton, Texas
Phones 2821 or 2881
ROY K. SANFORD, M. D.
Pediatrics
J. BLUFORD JOHNSON, M.D.
General Surgery
C. U. MONROE, M. D.
Obstetrics - General Practice

DAY OR NIGHT
H. & H. IRRIGATION
Well Service
Complete Cleanout
GOOD EQUIPMENT
and Service
Sanding
SETTING AND ULLING
PUMPS
JIMMY HESTER
RICHARD HOLTON
Phone Day or Night
4006

R. L. Kleeberger
M. D.
Physician
and
Surgeon
Medicine, Surgery
and
Obstetrics
Hours: 9-12 a. m. - 2-5 p. m.
CLEANED THURSDAYS
Phone: Res. 3161 Office 5781
206 Main St. - Spearman
No. 41 4-t-c

DID YOU KNOW—that you could Replace your present 30 inch sweeps up to 40 inches on special order at Charley's Welding Shop. Farnsworth, Texas. No. 41 4-t-p

FOR SALE—3 Room House to be moved. Se Mrs. J. R. Collard. No. 42, r-t-n.

FOR SALE—1 1953 model Dodge Pick-up. This Pick-up is extra clean, one owner and low mileage. Will sell reasonable. Call 3761. No. 42, 3-t-p

Hansford County,
V. F. W. POST NO. 6207
Regular Meeting Nights
2nd and 4th Tuesday
of each Month
A. L. McElhany, Commander
Clyde Longley, Sr. Vice
C. S. Mitchell, Jr. Vice
J. P. Vernon Q. M. C.
All members are urged to attend these meetings.

FOR SALE RECAPS
ADD MANY MILES TO YOUR OLD TIRES
COMPLETE TIRE Guarantee 12 Months.
We Buy Capable Tires
ORANGE DISC SERVICE STATION

Boxwell Bros'
Funeral Home
113
Flower Shop
Day - Night Phone 2751
SPEARMAN, TEXAS

Mr. Farmer-Rancher
FOR
Swathing
MOWING RAKING
BAILING
WITH
NEW HOLLAND
WIRE-TIE BALER
SEE
Claude Sheets, Jr.
Phone 5331 - Box 302
SPEARMAN, TEXAS

SIAMESE KITTENS FOR SALE—See Mrs. W. M. Miller at Spearman Reporter or at home after 5:00. 810 Bernice St. South Phone 5591.

FOR SALE — Nursery Stock, Evergreens, Shade Trees, Shrubs, Grasses, African and U3 Bermuda Sod. First Quality, Prices Reasonable. Perryton Nursery, 610 SE First Avenue. 24-rtn

WANTED — New Laundry and Dry Cleaning customers. Satisfaction Guaranteed. We make Spearman Mondays, Wednesdays and Fridays. Write or phone Roy McCartney, Perryton. 24-rtn

NOTICE TO CREDITORS AND DEBTORS OF THE ESTATE OF CELIA SIM, DECEASED.
Notice is hereby given that I was appointed Independent Executrix of the Estate of Celia Sim, Deceased by the County Court of Hansford County, Texas, on July 25, 1955. All persons holding claims against said Estate are hereby notified to present the same to me within the time prescribed by law. All persons owing said estate are hereby notified to make payment to me. My address is Perryton, Texas and my residence is Perryton, Texas.
Dene Wildhagen,
Independent Executrix of the Estate of Celia Sim, Deceased.
No. 40-4-t-c

NOTICE TO CREDITORS AND DEBTORS OF THE ESTATE OF BONNIE FLECK, DECEASED.
Notice is hereby given that Letters Testamentary upon the Estate of Bonnie Fleck, deceased, were granted to me on the 12th day of September, 1955, by the County Court of Hansford County, Texas. All persons having claims against said estate are hereby required to present the same to me within the time prescribed by law. All persons owing said estate are hereby notified to make payment to me. My residence and post office address are Gruber, Hansford County, Texas.
Frank Fleck
Independent Executrix of the Estate of Bonnie Fleck, Deceased.
No. 41 4-t-c

FOR RENT — Furnished Apartment in Gruber. F. A. Shapley Sr. Phone 9006-F3. No. 43 rtn

LAND OPEN—for Oil Lease: Ochiltree County. East half of section 1017 and east half of section 58. North half of section 12. Contact Ida O. Rifenberg and Verna Stephens. Phone 6642 Perryton, Texas. No. 43 2-t-p

WANTED — Middle aged lady would like to have house work, or baby sitting. Call 10 North Hoskins St. No. 43, 2-t-p

WANTED—Job on farm. Experience irrigating. Am married, no children. Write James L. Taylor, 705 Star Tr. Quanah, Texas. No. 43, 2-t-c

NOTICE TO CREDITORS
I C. A. Gibner whose residence is Spearman, Texas, having on the 22nd day of August, A. D. 1955 been duly granted Letters of Administration of the Estate of J. I. Steele, Deceased, and having qualified according to law as such, NOW GIVE NOTICE TO ALL PERSONS HAVING CLAIMS AGAINST SAID ESTATE, requiring them to present the same, properly authenticated, to the undersigned within TWELVE MONTHS from the date of said appointment, for allowance.
C. A. Gibner, Executor
Postoffice Spearman, Texas.
No. 41 4-t-c

SPINET PIANO FOR SALE—Repossession. Available for balance due. Save nearly \$150.00. Piano like new; guaranteed like new. Clark Music Company, 409 North 8th St., Garden City, Kansas. No. 42 3-t-p

FOR SALE—1952 Model 55 John Deere Combine. Ready to cut. Also 1948 Chevrolet Cab Over. See S. A. Slaughter, Phone 6411. No. 43 2-t-p

STRAYED—From pasture 4 mi. East Gruber, 400 lb. white face steer. Probably branded O above O on right hip. Had pink eye. Bob Cox, Gruber, Box 733. No. 44 rtn

GENUINE BARGAIN
DUE TO THE FACE—that Hansford county located a lost grader Judge Johnny C. Lee will sell some one in this area a virtually NEW Husky No. 22 pull type grader for \$400.00. The machine retails for \$750.00 and this is really a genuine bargain. No. 43 no c.

FOR SALE—Good used Servel Refrigerator 4-years-old. 2—Good used Maytag Washers. Good used occasional chair, Divan. Panhandle Furniture Mart. No. 43 2-t-c

FOR RENT—Furnished houses or Apartments. Mrs. L. W. Matthews, Phone 2971. No. 43, 3-t-c

FOR SALE—Upright Gulbranson piano. Mrs. Bert Briley. No. 44 1-t-p

No. 135
IN THE COUNTY COURT
IN AND FOR
HANSFORD COUNTY, TEXAS
IN RE GUARDIANSHIP
ROBERTA A. HUDSON
A Person of Unsound Mind
TO ALL PERSONS INTERESTED
IN THE ABOVE PERSON OF UN-
SOUND MIND OR HER ESTATE:
You are hereby notified that I have on the 3rd day of October 1955 filed with the County Clerk of Hansford County, Texas, an application under oath for authority to make an oil, gas and mineral lease on that certain real estate belonging to such person of unsound mind described as follows:
Section 121, Block 2, GH&H R. R. Co. Survey Hansford County, Texas; That Johnnie C. Lee, Judge of the County Court of Hansford County, Texas, on the 3rd day of October, 1955, duly entered his Order designating the 14 day of October, 1955, at 10 o'clock a. m. in the County Courtroom in the Court House of such County, as the time and place when and where such Application would be heard and that such Application will be heard at such time and place.
SANDERS, SCOTT, SAUNDERS & SMITH,
Amarillo Building
Amarillo, Texas
By E. R. Finney Of Counsel
Attorneys of Records for Guardian of Roberta A. Hudson, a Person of Unsound Mind. No. 44 1-t

PTA Meeting To Be Held October 10th.
Highlights of the Spearman P. T. A. meeting to be held Monday night, October 10th, in the school auditorium, will be Supt. H. R. Hartman's discussion of the building program.

Happy Hearts
The Happy Hearts met Thursday, Sept. 29, at the home of Anita Holt, Secretary. Kay Lackey, Treasurer, presided over the meeting to order. Members of the club were: Anita Holt, Kay Lackey, Mrs. O. C. Holt and Jackson, leaders were Miss June Gibbs, Treasurer Agent of club. Miss Mary N. guest.

Officers for the were elected as follows: Anita Holt, Vice P. Lackey, Secretary; Treasurer Kay MacLinda Holt, and Song Leader. The meeting was to Anita Holt, the and the club members have at least ten Happy Hearts Club. Hansford County P. T. A. Miss Gibbs announced a 4-H member who has one or more achievements invited to the Achievement November 12. The next meeting will be at the home of Anita Holt.

School Cafeteria Menus

October 10
Coney Island
Mixed Vegetables
Pickles and Onions
Cherry Cobbler
Milk

October 11
Meat Balls with Cheese
Buttered Rice
Green Beans
Sliced Tomatoes
Green Gage Plums
Milk
Perch Fillet

October 12
Buttered Potatoes
Buttered Broccoli
Cabbage Slaw
Ice Cream
Milk

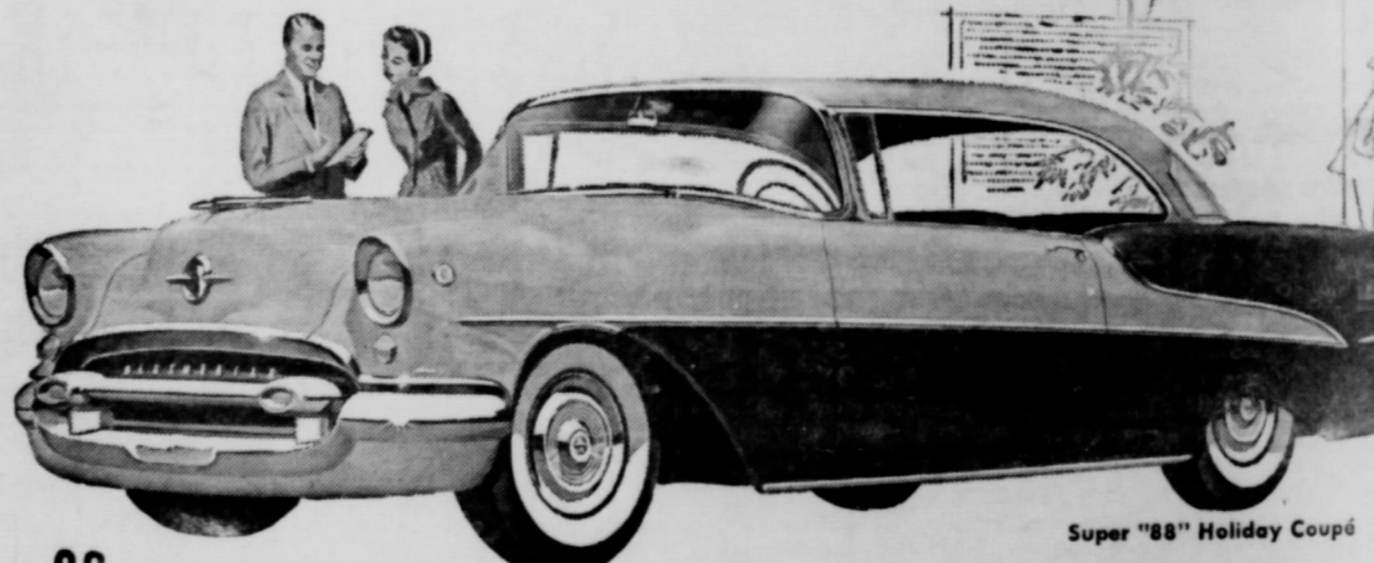
October 13
Meat Loaf
Buttered Carrots
Combination Cabbage Salad
Apple Cobbler
Milk

October 14
Roast and Gravy
Cauliflower and Cheese Sauce
Green Peas
Lettuce and Tomato Salad
Peanut Butter Cookies
Milk

DR. FRANK BROWN
OPTOMETRIST
THURSDAYS
Room 216 McLain Bldg.
FOR APPOINTMENT
Call Dr. D. E. Hackley
Phone 4851
Spearman, Texas

COLLARD & RAY
Real Estate - Loans - Insurance
Low interest real estate loans
for irrigation, improvements,
or expansion
John R. Collard Jr. - **Billy**
Phone 5281 - 407 Davis

Top Trade-ins Today! Top Resale Tomorrow!



Super "88" Holiday Coupé

**OCTOBER DEALING DAYS ARE HERE...
AND WE'LL MEET YOU MORE THAN HALFWAY!**

Over to Olds in October... that's the smartest move you could make! And it's smart in three big ways! First, you get the "Rocket" Engine Oldsmobile that has set an all-time popularity record. Secondly, you'll find that our "October Offer" on your present car is terrific! And finally, the Oldsmobile you buy today will hold its value. Any way you look at it, this is a time for action. So come in! There's a "Rocket" for every pocket... a deal that's right for you!

OLDSMOBILE
VISIT THE "ROCKET ROOM" AT YOUR OLDSMOBILE DEALER'S!
COURY MOTOR COMPANY
SPEARMAN, TEXAS
HIGHWAY 117
PHONE

Light Bulbs create dark places in your home. Fill 'em up now with 100-watt bulbs... an extra carton or more. At your light dealer's or our office.

COMMUNITY PUBLIC SERVICE

Dr. Livingstone

Don't make clients or locate your listing. An EXTRA LISTING is easy to find... a BOI... or your company's a... Call our B...

GENERAL T OF TI
A Member of One of d...

Films Enjoyed At Club Party Monday

The Delphinium Flower Club entertained members of the Dahlia Club in the Fellowship Hall of the First Christian Church October 3 at 3:00 o'clock.

Mrs. Joe Dan Bryan and Mrs. P. A. Lyon were hostesses. Mrs. Pope Gibner welcomed the guests.

The program was a showing of color films of the beautiful gardens, flowers and interesting sights Mrs. C. A. Gibner had taken on her trip to Havana Cuba, Florida and other Southern States this summer. This was very enjoyable, and the pictures were lovely.

Lovely refreshments were served to guests. Mesdames: Howard Huffman, Johnny Lackey, O. L. Williams, Garrett Allen, P. V. Jones, A. F. Barkley, Homer Allen, Erwin Hester, Finis Maize, J. O. Nocholson, F. J. Daily, H. H. Crooks, Jess Womble, H. M. Shedeck, Fred Hoskins, L. P. Baggerly, and Joe Novak.

Members of Delphinium present were Mesdames: John Bishop, Jo Dan Bryan, Sid Clark, John R. Collard, Pope Gibner, Vester Hill, P. A. Lyon, W. B. Seitz, J. A. Tipton, and C. A. Gibner.

Lone Star 4-H Club

The Lone Star 4-H club met October 3 in the Club Room. The business meeting was completely taken in making Fair plans and also planning for the Halloween Masquerade party Oct. 22 at which our club will be hostess to all County 4-H boys and girls.

We were happy to have some club members from the older Busy Bees join our club.

Those present: Judy Stump, Kathryn Brillhart, Edith Entekin, Sharon Novak, Monet Washington, Bertha June Entekin, Thelma Groves, Mattie Archer, Shirley Tucker, Myra Smith, Mary Sue Mrs. Stump and Mrs. Brillhart and Agent, Miss Gibbs.

Mr. and Mrs. Bill Martin, Mr. and Mrs. Carl Toliver visited relatives in Oklahoma over the weekend.

Rev. and Mrs. Calvin Springer, Pastor of the Union Church, left Sunday for Gause, Texas where he will conduct a two week revival.

Friend is someone who doesn't expect any favors.

Ladies To Resume Noon Lunch Meeting

All women in the Spearman area, and especially new comers are hereby notified that the Fellowship meeting will begin this Friday in the Spearman Steak House Dining Room. These gatherings were very much enjoyed all last fall and winter, and will meet from now on, every Friday at noon.

This is a group of business women, house wives, Pastor's wives, anyone who is interested and would enjoy Christian Fellowship. They meet over lunch each Friday noon, and enjoy a Devotional given by some one present.

All new comers to Spearman are especially invited to attend and get acquainted. There are no dues, no membership, and everyone is welcome, regardless of creed.

Mrs. Jackson Is Club Hostess

The Rose Garden club met Sept. 30 with Mrs. Doyle Jackson. President, Mrs. Kiff White presided over the business session, during which plans were made for the Fair booth.

The program was given by Mrs. Jimmy Crawford, and the Mystery box was won by Mrs. Mackie. Mrs. Jackson won the vase.

The hostess served refreshments to Mesdames: Sonny Nollner, Kiff White, Glenn Mackie, Sonny Windom, Don McLain, Jimmy Crawford, Tom Brown, A. L. Wilson, Wilson McClellan.

Morse 4-H Club

The Morse Maidens met Sept. 27 in the lunch room, with Miss June Gibbs presiding.

Officers were elected as follows: President, Jean Lilly, Vice President, Janice Jefferies, Secty, Linda Gillispie, Reporter, Sue Leverton.

Other members are: Cheryl Jordan, Evelyn Jones and Carroll Motts.

Meetings will be every first Tuesday of each month from 8:45 to 9:45 a. m.

Miss Gibbs told us about the Hansford County Fair. Any girl over 9 can enter dresses, candy, cookies, cakes and anything she has made.

Our club plans to cook, sew and probably do some copper work.

Mrs. D. M. Womble is our leader.

Weather

DATE	MAX.	MIN.	RAIN
27	60	44	0.05
28	71	56	0.00
29	85	62	0.00
30	76	50	0.00
1	72	51	0.00
2	72	56	0.00
3	72	60	0.03

The Right Oil for Right Now is Right Here

IT'S GUARANTEED! Change to TROP-ARTIC All-Weather Motor Oil and use it for ten days or up to 1,000 miles. If you aren't completely satisfied that TROP-ARTIC lives up to all the claims made for it, go to any Phillips 66 Dealer and he will drain and refill your crankcase with any other available oil you prefer. That's how sure we are that you'll be delighted with the performance you get from TROP-ARTIC All-Weather Motor Oil. We guarantee it!

IT'S PERFORMANCE THAT COUNTS!

- EASIER STARTING
- UP TO 45% LESS OIL CONSUMPTION
- 40% LESS ENGINE WEAR
- LONGER GASOLINE MILEAGE

At this time of year your motor may be quite cold when you start it, but moments later burning gasoline creates high engine heat. It takes a special kind of motor oil to protect your engine at such opposite extremes.

TROP-ARTIC All-Weather Motor Oil gives this full range protection. It's a winter and summer oil in one. It resists thickening when it's cold... resists thinning when it's hot. It lets you start easily, always... and compared to older types of oils it can even double engine life!

PHILLIPS PETROLEUM COMPANY

Save plenty of LIGHT on longer nights!

Stock up now on LIGHT BULBS

ockets create dark, cheerless places in your home. Fill 'em up now with light-colored bulbs... an extra carton or more spares. At your light dealer's or our office.

Buy 'em by the carton!

- 60 watt 25¢ ea.
- 100 watt 27¢ ea.
- 150 watt 31¢ ea.

All prices include tax.

20% DISCOUNT ON PURCHASES OF \$5.00 OR MORE

COMMUNITY PUBLIC SERVICE

ockets create dark, cheerless places in your home. Fill 'em up now with light-colored bulbs... an extra carton or more spares. At your light dealer's or our office.

Buy 'em by the carton!

- 60 watt 25¢ ea.
- 100 watt 27¢ ea.
- 150 watt 31¢ ea.

All prices include tax.

20% DISCOUNT ON PURCHASES OF \$5.00 OR MORE

COMMUNITY PUBLIC SERVICE

Dr. Livingstone, I presume?

Don't make clients or customers organize an expedition to locate you after business hours.

An EXTRA LISTING in the telephone directory makes you easy to find... a BOLD FACE LISTING makes your name or your company's a standout. The cost? Trivial.

Call our Business Office now.

GENERAL TELEPHONE COMPANY OF THE SOUTHWEST

A Member of One of the Great Telephone Systems Serving America

321 Main Street

Why THE BIG M makes the big news for 1956

NEW DISTINCTIVE FLO-TONE COLOR STYLING plus pleasing two-tones and solids for every taste! Greatest horsepower in Mercury's history—with a new high in usable power! A brand-new group of ten Safety-Engineered features for your greater safety and security! New improvements in famous Merc-O-Matic Drive and ball-joint front suspension. New wider-than-ever choice of models!

NEW RICHNESS AND LUXURY—THE BIG M is a car that makes you whistle twice—once outside, once inside. The colors, fabrics, and patterns rival the finest custom job's can give dramatic impact. They are exclusively Mercury's.

NEW MERCURY SAFETY-ENGINEERED FEATURES—Mercury leads its field with ten new features including impact-absorbing safety steering wheel, safety door locks, and optional safety seat belts and a padded instrument panel.

12 STUNNING MODELS, NEW FLEET OF HARDTOPS—Now Mercury's distinctive low-silhouette styling is available in every price range in the Mercury line. New low-silhouette hardtops in every series—only 58½ inches high. See THE BIG M in our showroom—now!

For 1956 — the big move is to THE BIG MERCURY
JOE TRAYLER Your Friendly Mercury Dealer
 Spearman, Texas

A WILL RECEIVE
 READER ONE YEAR'S
 IDENTIFYING SUBSCRIPTION
 THE OWNER TO THE
 OR OPERATOR REPORTER
 OF THE FARM FREE
 ON PAGE 1



THE OWNER
 OR OPERATOR
 OF THE FARM
 ON PAGE 1
 IS ASKED TO
 CALL AT THE
 REPORTER
 AND RECEIVE

A BEA
 FULL P
 MOUN
 FR
 OF
 CHA

COUNTRY EDITOR PAYS OFF ON REPEAT PICTURE THIS WEEK HOME OF MR. AND MRS. Freddy COOPER

How it happened we do not know . . . but we reprinted the home of Mr. and Mrs. Freddie Cooper this week as the Mystery Farm of the week. We plan to ask our national organization that made the pictures for the \$10.00 we are paying the winning subscriber this week.

If you remember, the country editor informed the world that we had our pictures straight and accounted for, and that if we ever printed a repeat picture again we would pay a ten dollar prize to the subscriber who won the contest for the week. At the time this is being written, we don't know who the winner is, but the winner who will receive a years subscription FREE, will also receive a ten dollar check. It will be announced on the first page of this paper.

Since this picture was originally printed May 19th, we believe you will be interested in some of the facts about the Cooper Home and family.

At the time the farm was purchased in 1940, there were very little improvements on the place. Mr. and Mrs. Cooper have added 4 rooms to the four room home, making it quite an attractive modern 8 room farm home. Fred has added three large granaries, 3 chicken houses, a garage and bunk house since he has owned the farm.

Mr. and Mrs. Cooper have two children, Carl a 15 year old son, who is in the 9th grade at school, and Carolyn, a 13 year old daughter who is in the 7th grade at school.

Mr. and Mrs. Cooper attend the Church of Christ church and the children attend the Sunday school. Fred is a member of the Gruver Masonic order.

Mrs. Cooper is the former Elva Monroe, of Dalhart, Texas. She has spent most of her life in the West and dearly loves her home and the folk of this area of Texas.

In addition to the home section pictured in last weeks newspaper, Fred operates a section farm in Moore county. He has an irrigation well on the home

place and usually divides the 1300 acres he farms into 900 acres of maize. He is like all folk of this area, he handles cat wheat and maize, and has about 100 head at this time. His her to weather conditions and grazing conditions.

The Cooper family is a well respected and liked family in those Hansfordites who have irrigation wells know what he handles 400 acres of maize by irrigation does not have much.

Mrs. J. H. Cooper, mother of the three fine Hansford boys in Gruver, and is available for advice to be given any of her take advantage of the opportunity to consult with her. She is in the Gruver area, but all over the North Plains where she has



YOUR FOOD DOLLARS HAVE MORE VALUE

CUT RATE GROCERY & MARKET



BANKING HOURS
 9 A. M. - 3 P. M.

FIRST STATE BANK

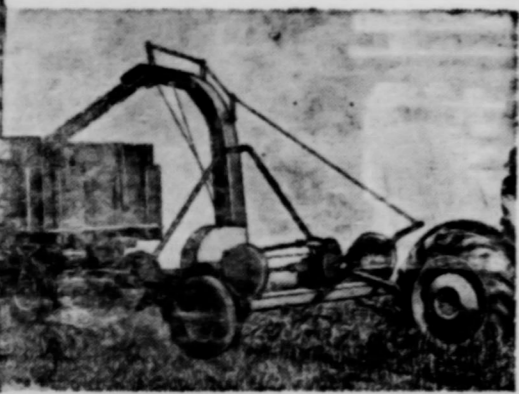
SPEARMAN, TEXAS

TO A GOOD
 Your best start
 success is to
 with us and save
 your money ear
 Insured? Certai
 are insured up
 not get off to
 NOW?

LYNX

7:30 P. 1

Enthusiastic Farmer Reports . . . LUNDELL Hay Chopper Cuts 'Best Feed Ever' for Stock

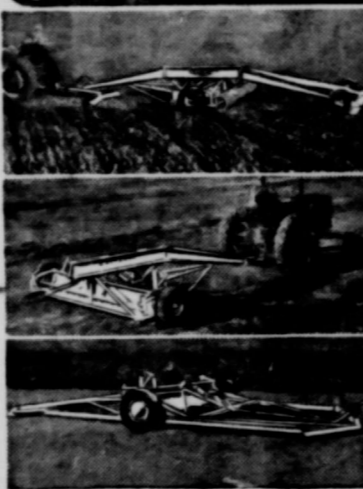


A SMALL Investment! A BIG Return!

ONE OPERATION!
 The LUNDELL Hay Chopper cuts through hay, corn stalks, weeds, straw—chops or shreds it thoroughly, places it in auger and blows it into your wagon. Easy maintenance—only 14 parts. Time saved! Labor saved!

HANSFORD IMPLEMENT CO.

Eversman AUTOMATIC LAND LEVELER AND HYDRAULIC SCRAPER



Eversman precision smoothed automatically leveled fields save water, lower production costs and SUBSTANTIALLY INCREASE crop yields on irrigated fields. Only Eversman patented crank axle takes off the high places and fills in the low ones automatically producing a firm well packed seed bed as the machine moves along. The Eversman doubles as an efficient dirt mover or scraper for filling pot holes, healing gullies, and producing the proper grade on fields for efficient farming.

Announcing New Eversman Hydraulic Models 9H & 12H
 Six Models . . . 9H, 12H, 20H, and 40H with Hydraulic Controls . . . 9H and 12H with Mechanical Controls. Spring-tooth attachment available.

Eversman Land Levelers and Ditchers For Sale and For Rent

B. AND C. EQUIPMENT CO.

SPEARMAN, TEXAS



SPEARMAN DRUG STORE

Your Rexall Store
 We're in Business For Your Health!

R. L. McCLELLAN GRAIN

The Month of October is so the best time to apply CONCENTRATED BORASCU on Bindweed permanent kill. A sure way to farm of these noxious weeds. Heptachlor for treating weeds to prevent damage by wire worms



Plenty of storage space for your

MAIZE

We have a fresh shipment of sodium Chlorate, for Johnson grass and weeds.

We have plenty of Builder and Bailer Twine

EQUITY

PERFECTION

Heating Stoves

Get Ready For

WINTER NOW!

SPEARMAN HARDWARE

Mr. and Mrs. John Bishop



GIVE ME JUST ENOUGH GAS TO GET TO LOVER'S LANE

No purchase too small to get our prompt, courteous attention. No job too big for us to take in stride. Drive in . . . if it's only for free air or water . . . get acquainted with our aimed-to-please service!

CONSUMER SALES CO.

IT'S HOME Fashion

YOUR FURNISHINGS ARE THE HEART OF YOUR HOME

NEW FURNITURE ARRIVING

Panhandle Furniture

ADVERTISE FOLLOWING BOOSTING

Chevrolet Co. Cream 66 Service Station McClellan and Sons Spearman Implement Co. Furniture Ma Service Station Garnett Implement Bank Sales Compa Brothers-Irrigation

A BEAU
FULL P
MOUN
FR
OF
CHA

FOOTBALL

Conference Tilt

LYNX

VS

SUNRAY



LYNX LIGHTED FIELD

7:30 P.M. FRIDAY EVENING

OCT. 7TH

THIS ADVERTISEMENT MADE POSSIBLE BY
THE FOLLOWING BUSINESS MEN WHO
ARE BOOSTING ATHLETICS AT SPEARMAN

Chevrolet Co.
Kream
66 Service Station
McClellan and Sons
Spearman
Implement Company
Furniture Mart
Service Station
Garnett Implement Co.
Bank
Sales Company
Brothers-Irrigation Supplies

Allen Grocery and Market
Chambers Dry Goods
Foxworth - Galbraith Lumber Co.
Buddy's Super Market
R. L. McClellan Grain Co.
Crawford Implement Company
Baker Hotel
Owens Sales Co.
Campbell Tailor Shop
B. and C. Equipment Co.
McClellan Krause Company
Corner Service Station
Bruce Pontiac

Spearman Hardware
Chamber of Commerce
White Auto Store
Wardrobe Cleaners
Floyd's Locker
Equity Exchange
White House Lumber Co.
Spearman Drug
Spearman Steak House
Berry's Cleaners
Orange Disc Service Station
Western Auto Store

ie farms into 900 acres
s area, he handles ca
l at this time. His he
ons.
ed and liked family i
Cooper farm and o
eat operators.
es that irrigation is b
rells know what he m
does not have much
ree fine Hansford boy
be given any of her b
sult with her. She is
1 Plains where she has

TO A GOOD S
Your best start
success is to
with us and sav
your money eas
Insured? Certai
are insured up
not get off to
NOW?

LLAN GRAIN
of October is sa
apply CONCE
on Bindweed
A sure way to
xious weeds.
for treating wh
age by wire w

Fashion
FURNISHINGS
THE HEART
YOUR HOME
TURE
ARRIVING
DA
Furniture

A WILL RECEIVE
 READER ONE YEAR'S
 IDENTIFYING SUBSCRIPTION
 THE OWNER TO THE
 OR OPERATOR REPORTER
 OF THE FARM FREE
 ON PAGE 1



THE OWNER
 OR OPERATOR
 OF THE FARM
 ON PAGE 1
 IS ASKED TO
 CALL AT THE
 REPORTER
 AND RECEIVE

A BEAU
 FULL PH
 MOUN
 FRE
 OF
 CHA R

COUNTRY EDITOR PAYS OFF ON REPEAT PICTURE THIS WEEK HOME OF MR. AND MRS. Freddy COOPER

How it happened we do not know . . . but we reprinted the home of Mr. and Mrs. Freddie Cooper this week as the Mystery Farm of the week. We plan to ask our national organization that made the pictures for the \$10.00 we are paying the winning subscriber this week.

If you remember, the country editor informed the world that we had our pictures straight and accounted for, and that if we ever printed a repeat picture again we would pay a ten dollar prize to the subscriber who won the contest for the week. At the time this is being written, we don't know who the winner is, but the winner who will receive a years subscription FREE, will also receive a ten dollar check. It will be announced on the first page of this paper.

Since this picture was originally printed May 19th, we believe you will be interested in some of the facts about the Cooper Home and family.

At the time the farm was purchased in 1940, there were very little improvements on the place. Mr. and Mrs. Cooper have added 4 rooms to the four room home, making it quite an attractive modern 8 room farm home. Fred has added three large granaries, 3 chicken houses, a garage and bunk house since he has owned the farm.

Mr. and Mrs. Cooper have two children, Carl a 15 year old son, who is in the 9th grade at school, and Carolyn, a 13 year old daughter who is in the 7th grade at school.

Mr. and Mrs. Cooper attend the Church of Christ church and the children attend the Sunday school. Fred is a member of the Gruver Masonic order.

Mrs. Cooper is the former Elva Monroe, of Dalhart, Texas. She has spent most of her life in the West and dearly loves her home and the folk of this area of Texas.

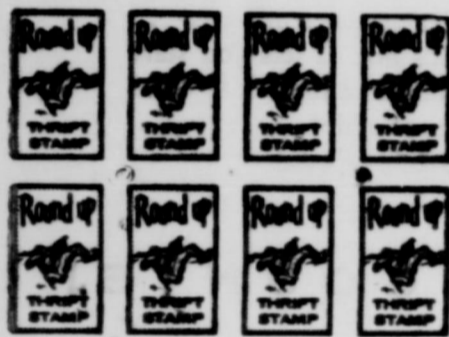
In addition to the home section pictured in last weeks newspaper, Fred operates a section farm in Moore county. He has an irrigation well on the home

place and usually divides the 1300 acres he farms into 900 acres of acres of maize. He is like all folk of this area, he handles cattle, wheat and maize, and has about 100 head at this time. His herd is to weather conditions and grazing conditions.

The Cooper family is a well respected and liked family in the Two brothers of Fred, Guy and Derrell Cooper farm and operate Estate, and are quite successful cattle-wheat operators.

Fred says he loves to fish, but guesses that irrigation is his those Hansfordites who have irrigation wells know what he means handles 400 acres of maize by irrigation does not have much time

Mrs. J. H. Cooper, mother of the three fine Hansford boys, is in Gruver, and is available for advice to be given any of her boys take advantage of the opportunity to consult with her. She is well in the Gruver area, but all over the North Plains where she has a



YOUR FOOD DOLLARS HAVE MORE VALUE

CUT RATE GROCERY & MARKET

BANKING HOURS
 9 A. M. - 3 P. M.

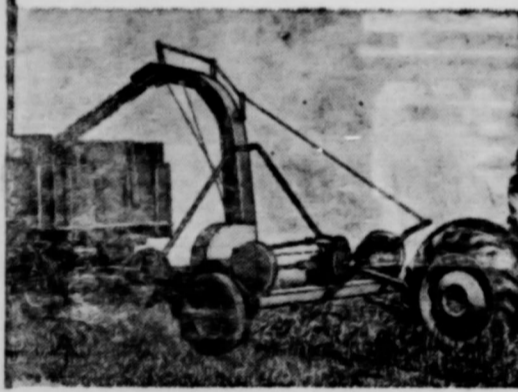
FIRST STATE BANK

SPEARMAN, TEXAS

TO A GOOD START

Your best start to success is to open with us and save your money earned. Insured? Certainly are insured up to not get off to the NOW?

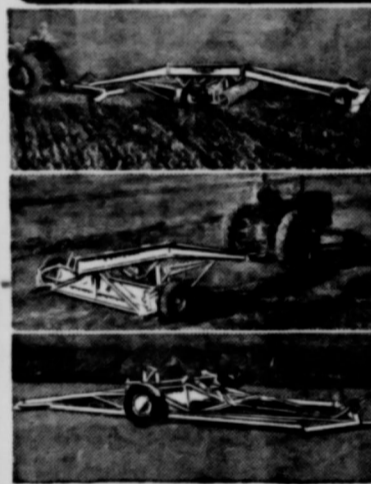
Enthusiastic Farmer Reports . . .
LUNDELL Hay Chopper Cuts 'Best Feed Ever' for Stock



A SMALL Investment!
A BIG Return!
ONE OPERATION!
 The LUNDELL Hay Chopper cuts through hay, corn stalks, weeds, straw—chops or shreds it thoroughly, places it in sugar and blows it into your wagon. Easy maintenance—only 14 parts. Time saved! Labor saved!

HANSFORD IMPLEMENT CO.

Eversman AUTOMATIC LAND LEVELER AND HYDRAULIC SCRAPER



Eversman precision smoothed automatically leveled fields save water, lower production costs and SUBSTANTIALLY INCREASE crop yields on irrigated fields. Only Eversman patented crank axle takes off the high places and fills in the low ones automatically producing a firm well packed seed bed as the machine moves along. The Eversman doubles as an efficient dirt mover or scraper for filling pot holes, healing gullies, and producing the proper grade on fields for efficient farming.

Eversman Land Levelers and Ditchers For Sale and For Rent

B. AND C. EQUIPMENT CO.

SPEARMAN, TEXAS

SAVE ON DRUG NEEDS

SPEARMAN DRUG STORE

Your Rexall Store
 We're in Business For Your Health!

R. L. McCLELLAN GRAIN

The Month of October is said the best time to apply CONCENTRATED BORASCU on Bindweeds permanent kill. A sure way to rid farm of these noxious weeds. Heptachlor for treating wheat to prevent damage by wire worms



Plenty of storage space for your

MAIZE

We have a fresh shipment of sodium Chlorate, for Johnson grass and weeds.

We have plenty of Builder and Bailer Twine

EQUITY

PERFECTION

Heating Stoves

Get Ready For

WINTER NOW!

SPEARMAN HARDWARE

Mr. and Mrs. John Bishop



GIVE ME JUST ENOUGH GAS TO GET TO LOVER'S LANE

No purchase too small to get our prompt, courteous attention. No job too big for us to take in stride. Drive in . . . if it's only for free air or water . . . get acquainted with our aimed-to-please service.

CONSUMER SALES CO.

IT'S HOME Fashion

YOUR FURNISHINGS ARE THE HEART OF YOUR HOME

NEW FURNITURE ARRIVING DAILY

Panhandle Furniture M

THIS ARE THE FO BO

eson Chew
 y Cream
 Phillips 66 Ser
 L. McClellan
 y of Spearm
 nsford Impl
 handle Fu
 per Service
 ley Game
 t State Ban
 ssumers Sa
 es Brothers

FOOTBALL

Conference Tilt

LYNX

VS

SUNRAY



LYNX LIGHTED FIELD

7:30 P.M. FRIDAY EVENING

OCT. 7TH

THIS ADVERTISEMENT MADE POSSIBLE BY THE FOLLOWING BUSINESS MEN WHO ARE BOOSTING ATHLETICS AT SPEARMAN

Meson Chevrolet Co.
 Kream
 Phillips 66 Service Station
 L. McClellan and Sons
 of Spearman
 nsford Implement Company
 handle Furniture Mart
 per Service Station
 ley Garnett Implement Co.
 State Bank
 ssumers Sales Company
 es Brothers-Irrigation Supplies

Allen Grocery and Market
 Chambers Dry Goods
 Foxworth - Galbraith Lumber Co.
 Buddy's Super Market
 R. L. McClellan Grain Co.
 Crawford Implement Company
 Baker Hotel
 Owens Sales Co.
 Campbell Tailor Shop
 B. and C. Equipment Co.
 McClellan Krause Company
 Corner Service Station
 Bruce Pontiac

Spearman Hardware
 Chamber of Commerce
 White Auto Store
 Wardrobe Cleaners
 Floyd's Locker
 Equity Exchange
 White House Lumber Co.
 Spearman Drug
 Spearman Steak House
 Berry's Cleaners
 Orange Disc Service Station
 Western Auto Store

A BEAU
 FULL PH
 MOUN
 FRE
 OF
 CHAR

acres he farms into 900 acres of
 k of this area, he handles cattle
 100 head at this time. His herd
 conditions.
 respected and liked family in
 Derrell Cooper farm and oper
 cattle-wheat operators.
 ut guesses that irrigation is his
 ation wells know what he mean
 rigation does not have much to
 the three fine Hansford boys,
 vice to be given any of her boy
 to consult with her. She is well
 he North Plains where she has a

ANK TO A GOOD STA
 Your best start
 success is to ope
 with us and save
 your money earn
 Insured? Certainl
 are insured up to
 not get off to th
 NOW?

CLELLAN GRAIN
 nth of October is said
 e to apply CONCENT
 CU- on Bindweeds
 kill. A sure way to rid
 se noxious weeds.
 hlor for treating whea
 damage by wire wor

ME Fashion T

YOUR FURNISHINGS
 ARE THE HEART
 OF YOUR HOME

NITURE
 ARRIVING
 DAILY

ndle Furniture M

We Need Greater Churches And Greater Faith

to give us POWER for LIVING and to COMBAT ATHEISTIC "ISMS"



every hour

... should be everybody's theme song. Time is a graph or chart which measures what we are. We have no time to kill. "Whatever thy hand findeth to do, do it with thy might," Eccl. 9:10. Constantly strive to be a better father, mother, husband, wife, son, daughter... a better church member. There is always a friend or neighbor less fortunate than you. "He that knoweth to do good and doeth it not, to him it is sin. James 4:17. If you have had a kindness shown, pass it on; 'twas not meant for you alone... pass it on.

ABOVE ALL, "every hour" is God's gift. Wasting time is wasting God's Bounty. Keep on killing time and time will kill you. "Every man must give an account of himself to God," Romans 14:12. Spend your spare time at home, at Church or on errands of mercy... "I Need Thee Every Hour."

MAY THIS PAGE BE A BLESSING TO MANY IS THE SINCERE WISH OF HANSFORD COUNTY MINISTERS
This religious service is paid for by the public spirited firms 100% interested in the spiritual life of Hansford County. They urge regular church attendance and support.

Western Auto Associate Store
• Floyd and Lucy

Dr. R. L. Kleeberger M. D.

Spearmen Drug Co.
• Bruce Sheets

Equity Exchange
• E. J. Copeland

R. L. McClellan Grain Co.
• Lee, Roy Lee and Wilson McClellan and J. K. Hicks

Orange Disc Service
• Alton and Wayne Ellsworth

Hansford Implement Co.
• Gene Cudd

White Auto Store
• Mr. and Mrs. I. P. Baggerly

Campbell Tailors
• C. E. Campbell

First State Bank
• City Branch

Peddy's Butane & Oil Co.
• Mr. and Mrs. Aubrey Peddy

Gruver Lumber Co.
• Jack Thomas

Gruver Motor Company
• Ted McClellan

North Plains Electric Co-op
• Earl Waide, Manager

Kirkland Pump Co.
• J. D., Jeral, and J. D. Kirkland, Jr.

Cates Bros. Irrigation Supplies
• J. C. and Slim Cates

Buddy's Super Market
• Cliff Sheppard, Mgr.

Super Service Station
• Gene Cline & W. E. Sparks

Gruver Cafe and Fountain
• G. G. Wright

Farm Machine Service
• Roy Murray & Elvin Wright

Riley Bros., Gruver
• Your Conoco Man

Spearmen Hardware
• Mr. and Mrs. John Bishop

Spearmen Steak House
• Mr. and Mrs. Howard Huffman

White House Lumber Co.
• Ed Hutton

Boxwell Brothers
• Mrs. C. E. Blackburn

Byrd and Shook Texaco
• Leroy Byrd & Wayne Shook

Gruver State Bank
• Bob Thom

Gruver Drug
• Don Gross

Universal Oil & Universal Motors
• Gruver

Morse Supply Co.
• Willard McCloy

Gruver Elevators, Inc.



FIRST BAPTIST CHURCH —
Bro. Bill Burton, Pastor

Sunday School
Preaching Service
Training Union
Preaching Service
Wednesday Prayer Service

UNION CHURCH — SPEAR
Rev. Calvin Springer, Pa

Sunday School
Morning Worship
Bible Classes, Sunday
Evening Worship
Wednesday Bible Study

FIRST CHRISTIAN CHURCH —
Rev. C. N. Van Dyke, Pa

Sunday School
Morning Worship
Youth Meetings
Evening Worship
Wednesday: Choir Practice

MORSE METHODIST CHURCH —
Rev. A. N. Motes, Pa

Sunday School
Morning Services
M. Y. F.
Evening Worship

ASSEMBLY OF GOD — SP
Rev. W. V. Bentley, Pa

Sunday School
Morning Worship
Evening Worship
Mid Week Services, Friday

FIRST CHRISTIAN CHURCH —
J. W. Doks, Pastor

Sunday School
Morning Worship
Evening Worship
1st Weds. Monthly Fellowship

FIRST METHODIST CHURCH —
Bro. Aubrey C. Haynes

Church School
Morning Worship
Methodist Youth Fellowship
Evening Worship
Womens Christian Society Wednesday
Mid Week Services, Wed.
Choir Rehearsal

CHURCH OF CHRIST —
R. Paul Smith, Pastor

Bible Class
Preaching
Communion
Young Peoples Classes
Worship
Ladies Bible Class
Wed. Mid. Week Services

MORSE BAPTIST CHURCH —
Bro. H. G. Verner

Sunday School
Worship
Training Union
Worship
Mid Week Service Wednesday

CHURCH OF CHRIST —
North of City
Gruver, Tex.
James O. Wilburn, Pastor

Lord's Days:
Bible Study
Worship
Training Class
Worship
Week Days:
Bible Study, Wednesday
Ladies Classes, Thursdays
Juniors
(Small Children Cared For)
Senior Ladies

GRUVER METHODIST CHURCH —
Rev. Cecil Otinger

Sunday School
Morning Services
Methodist Youth Fellowship
Evening Services
Wednesday Prayer Service
Wednesday Choir Practice
Thursday W. S. C. S.
Wesley Circle, Thursday

SACRED HEART CATHOLIC CHURCH —
Father M. J. Matthei

Mass 1st and 2nd Sundays
3rd, 4th and 6th Sundays
All other Services announced at Mass

FIRST BAPTIST CHURCH —
Bro. O. L. Bryson

Sunday School
Morning Worship
Training Union
Evening Worship
Wednesday Mid-Week Services
Choir Rehearsal

OSLO LUTHERAN CHURCH —
J. P. Knudsen

Sunday Worship
Ladies Aid every 1st Thursday after
Luther League on Sunday evening

FOOTBALL

(Undefeated In Conference Play)

GRUVER GALLOPING HOUNDS

VS

CLAUDE, TEXAS MUSTANGS

GRUVER LIGHTED STADIUM



Conference Tilt

FRIDAY EVENING

OCT. 7TH

This Advertisement Made Possible By The

Following Business Men of Gruver, Who Are

Boosting The Gruver School Athletics.

- Gruver Motor Company
- Continental Oil Co. - Riley Bros.
- Gruver Elevators, Inc.
- Sluder Evans Oil Co.
- Peddy's Butane and Oil Co.
- The Texas Company
- Texaco Byrd and Shook Station
- Universal Oil Company
- Gruver Lumber Company
- Gruver Hotel Coffee Shop
- Gruver State Bank
- Heath Food Store
- Gulf Service Station

DON'T BE
GOD / A
WALT
VEST
HE SONG
LASTING

FIRST BAPTIST CHURCH —
Bro. Bill Burton, Pastor

Union Church — SPEAR
Rev. Calvin Springer, Pastor

FIRST CHRISTIAN CHURCH —
Rev. C. N. Van Dyke, Pastor

MORSE METHODIST CHURCH —
Rev. A. N. Motes, Pastor

ASSEMBLY OF GOD —
Rev. W. V. Bentley, Pastor

FIRST CHRISTIAN CHURCH —
J. W. Dake, Pastor

FIRST METHODIST CHURCH —
Bro. Aubrey C. Haynes, Pastor

CHURCH OF CHRIST —
R. Paul Smith, Pastor

MORSE BAPTIST CHURCH —
Bro. H. G. Verner, Pastor

CHURCH OF CHRIST —
North of City
Gruver, Tex.
James O. Wilburn, Pastor

GRUVER METHODIST CHURCH —
Rev. Cecil Oring, Pastor

SACRED HEART CATHOLIC CHURCH —
Father M. J. Mathias, Pastor

FIRST BAPTIST CHURCH —
Bro. O. L. Bryson, Pastor

OSLO LUTHERAN CHURCH —
J. P. Knudsen, Pastor

The Spearman Reporter
 Successor to the Hansford Headlight, Published Thursday of each week in Hansford County, at Spearman, Texas
WILL J. MILLER, Editor and Publisher
 Entered as second class matter Nov. 21, 1919 at the Post Office at Spearman, Texas, under the Act of March 3, 1879.
 In Hansford and adjoining counties, One Year \$2.50
 Out of Hansford and adjoining counties, One Year \$3.00
CLASSIFIED ADVERTISING
 First insertion, 4c per word; 2c a word for every issue thereafter.
 Card of Thanks, 4c per word
 Display Rates on Request
NOTICE TO THE PUBLIC: Any erroneous reflection upon the reputation or standing of any individual, firm or corporation that may appear in the columns of The Spearman Reporter will be corrected when called to the attention of the management.

Don't Name It

THANK Godness for an alibi Column.
 This writer is evidently getting to old to run a newspaper. Some three and a half weeks ago, a blessed event occurred in Spearman rather at the Sanford Hospital in Perryton. First thing this writer knew about this wonderful news item was when Grandma Hazelwood phoned me after the paper was out, and informed me that I was slipping cause she was a Grandma again. Well, I shore was happy about the whole affair, cause Grandma Hazelwood and Clyde Hazelwood were two of my finest friends when I first moved to Spearman, and have remained so ever since. When I found out the new citizen was a boy, the son of Mr. and Mrs. Paul Hazelwood, I figured it couldn't have happened to finer folk, cause Mr. and Mrs. Paul Hazelwood had two fine girls, and all they needed to make life really interesting, was a tow headed boy to pull the hair of their two fine girls and mess up the house so the young folk would have to keep busy and out of mischief. I took notes and told Eddie Faye about the news, and there was where I made a mistake. Eddie Faye thinks as much of the Hazelwoods as I do, and she says I should turn these notes over to Margaret Kirk who could write up the news event according to the Queensberry rule of society writing. To this very minute I do not know whether or not I turned over the notes to Mrs. Kirk, but if I did, she was unavoidably kept from writing, since her daughter went to the hospital for a minor operation, and Mrs. Kirk did not write any items for the paper last week, what I'm trying to say NOW is that I'm wanting to tell the world about this news event, just before it's time for me to write up a story about the new citizen winning a football game. Just keep in mind, I aim to write up a story about this new citizen many times as he progresses in life. In case you do not know the citizen weighed in at seven pounds 15 ounces and is named Billy Paul.

Hope you are ready for the big Hansford fair which opens tomorrow October 7th and continues thru October 8th. I know we will enjoy this show. The Ladies have really gone to town in making attractive displays, and even the men folk have not done so badly.
SEE YOU AT THE FAIR.
 And speaking of fairs, we hate to miss the Press day at the State Fair at Dallas Saturday of this week. Some 3 weeks ago we put in for tickets for the Texas Oklahoma football game with intentions of taking in the Press day at Dallas. We have the tickets, but cannot go this week... offered to give the football tickets and a pass to the fair grounds, plus other courtesies shown newspaper men on press day, to Bruce Sheets. He seemed interested until I told him he would have to be Bill Miller to use the passes. He said in substance that he would not assume the name of Bill Miller even for a day, for a thousand dollars... so I gave em to another man that is not so particular.
 Hope that Slim Cates et al are taking over the Lynx team and giving them a shot in the arm. I was not disappointed about the Claude game, because they have a real team at Claude. About the only chance for Claude to lose a game in Class B is this Friday night when they play the Gruber Hounds at Gruver. I'm betting on the Hounds and believe the Hounds will be the District winners. Course they MIGHT be upset by the Lynx on November 11th. Spearman might lose most of their games and still give the Hounds a real FIGHT... and of course by the same token, Gruver will put up their best fight to win when they play at Spearman November 11th.
 Mr. and Mrs. Fred Wombie of Gruver, son-in-law and daughter of Mrs. W. L. Mackey, 104 South Haney, welcome the arrival of a son named Bernie Brent about 9:30 Saturday morning. Hansford Hospital, weight 8 pounds and 6 ounces.
 Mr. and Mrs. Dewey Rink, Hickory, N. C. are visiting in the home of Mrs. W. L. Mackey, 104 South Haney. Mrs. Rink is a niece of Mrs. Mackey's.
 Khrushchev says Communism is on the rise and capitalism on the wane, but the fellow in eastern Europe would never suspect it, on visiting the West.

Hansford County Free Fair

OCTOBER 7 - 8 1955
 Announcements:

The purpose of the Hansford County Free Fair is to hold an annual exposition which will truly reflect the agricultural and industrial development of the county, its resources and possibilities; an institution of much educational value and, to a certain degree, pointing the way to further development.
 Much thought and attention has been given to the making of this premium list, and while it is not all the Committee would like to have, yet we feel the objectives are such that we can ask and expect your support. Join with us and help make this a successful and annual event.
 Each Chairman will be responsible for all judging in his respective division.
Rule 1 - Entry Requirements
 Section 1. All entries to the Hansford County Free Fair are free, but no unworthy entry will be received.
 Section 2. All entries to the Fair must be made and in place not later than 9:00 A. M. October 7 and shall remain in place until 8:00 P. M. of the last day of the Fair, but to facilitate the work of arranging exhibits, the exhibitors are advised to place them on the afternoon of the day preceding the opening of the Fair. All exhibits not removed before noon of the day following the Fair will be donated to charity.
 Section 3. All property of every character entered at the Fair for any purpose shall be subject to the control of the Secretary or Superintendent in charge.
 Section 4. All booths will be of the same size-3 x 8 x 8 and will be consistent and in order.
Rule 2 - Exhibitor's Duties and Privileges.
 Section 1. All exhibits of crops must have been raised by the exhibitor during the year October 1954 to October 1955.
 Section 2. The decision of the judges shall be final and no appeal will be considered except in cases of protest.
RULE 3 - Powers and Liabilities of Committee
 Section 1. No Claim for injury to any person or property shall ever be asserted or suit instituted or maintained against the Fair Committee, its officers or their agents, on behalf of any persons, firm or corporation of their agencies, representatives, servants or employees, having a license or a privilege to exhibit on the Fair grounds or occupy space thereon.
 Each superintendent is responsible for the originality, entries, and stalls for his division of the fair.
 These are as follows:
 General Fair Chairman - Robert Novak
 General Fair Vice-Chairman - Frank Davis
 General Fair Secretary - June Gibbs
 Agriculture Chairman - Bill Goldston
 Agriculture Co-Chairman - Robert Strain
 Live stock Chairman - Sonny Patterson, G. C. Brillhart and Charles Patton
 Poultry and Rabbits - Medlin Patterson and Dwight Hutchison
 General Agriculture Product Exhibits - Art Evans and A. L. Wilson
 FFA and FHA Chairman - Clyde Barber
 General Youth Division - Ray Phelps and Mrs. Bob Vaughn
 Grade School Exhibits - Mr. R. H. Bowman
 High School Exhibits - Mr. A. Dooley
 General Superintendent of Women's Division - Mrs. Vernon Crooks and Mrs. John Trindle
 Bake Foods - Mrs. Harry Shedd and Mrs. J. C. Harris
 Canned Foods - Mrs. Virgil Hull
 Candies - Mrs. Kenneth Evans
 Home Sewing - Mrs. A. L. Parks, Mrs. K. K. Bailey and Mrs. Joe Traylor
 Handwork - Mrs. Bernard Barnes
 Flowers - Mrs. Johnnie Lee
 Fine Arts - Mrs. Hintergardt
 Mrs. Clay Gibner and Mrs. Bill Russell, Sr.
 Ceramics - Mrs. Walter Davis
 Antiques - Mrs. Hix Wilbanks
 Girls 4-H Work - Mrs. J. R. Stump, Mrs. James Brillhart, Mrs. Gene Cluck, and Mrs. Robert Novak.
 Commercial and Industrial - Wilson McClellan and Gene Cudd.
 Entertainment - Spearman and Gruver Lyons Clubs.

Building Committee - Joe Day, A. L. Wilson, Billy C. Ray, and Bill Goldston.
Ribbons and Banners - Hansford County Commissioner's Court
 The highlights of each fall fair is the wonderful display of produce products made by each Community. This will again be the main attraction of the fair.
 Community Booth General Chairman - Claude Stowe.
 The Community Chairman are as follows:
 Spearman - Dee Jackson.
 McBride - Jay Brandvik
 Kimbell - R. D. Tomlinson
 Medlin - John Trindle
 Oslo - Gordon Stedje.
 Gruver - J. C. Harris
 Morse - Mike Balentine.
 McCue - Claude Stowe.
 Hitchland - Johnny Venneman.
 New Hope - E. J. Johnson.
 Phillips - George Allison.
 Michigan Wisconsin - Harry Crouch.
 Panhandle Station No. 2 - Cecil Van Buren.
 Hansford - Aroha Morse.
 Blodgett - Lawrence Wilbanks.

Community Exhibits
 Booths will be provided and all Communities in Hansford County may enter. Exhibits shall consist of a variety of farm crops, vegetables, and fruits arranged and shown in an attractive manner. As near as practicable, specimens quantities as required in individual exhibits and such exhibits may compete as individual exhibits.

YOUTH ORGANIZATION
 The Hansford County Youth Program is one of the main goals of the Hansford County Free Fair Committee. The V. F. W. has given permission for the exhibits. Any product grown, canned, or made in the County is eligible for entry.
 Community Exhibits shall be judged according to the following score card:
 product shown 25 points
 Arrangements and attractiveness 25 points
 Quality of produce shown 25 points
 Number and variety youth organization to use their Educational Value 25 points

should be shown in numbers and portion of the Community Building for their exhibits. Each and every youth organization in Hansford County has an invitation to participate in the Hansford County Free Fair.

4-H CLUB EXHIBITS
 The 10 4-H Clubs of Hansford County will be given 8 x 8 foot spaces each for educational booths. These booths will be to promote educational work that the clubs have been working on during 1955. These exhibits will be judged against each other and the winning booths will be given a banner.

GENERAL EXHIBITS
 The various articles listed in the general exhibits of the catalog are to include the Juniors, too. Any product that is entered by a Junior will be marked as a Junior entry and will not compete against any other division except Juniors. Last year 1500 Junior entries were made. Let's top that this year! Ribbons will be Blue, Red and White for the Junior Division.

SCOUT EXHIBITS
 Any Scout Troop in Hansford County will be given an 8 x 8 space for an educational exhibit in Hansford County Free Fair. The booths will be judged against each other and a 9 x 13 inch banner will be awarded the outstanding scout booth.

FFA AND FHA ORGANIZATION
 The FFA and FHA organizations of Hansford County are asked to put up an educational booth in the Hansford County Free Fair. An 8 x 8 foot space will be given to them and they can put up any phase of work studied in 1955. These booths will be judged against each other and the winning booth will be awarded a banner.

Score Card For Booths
 Attractiveness 25
 Quality of production booth 25
 Originality 25
 Educational Value 25

Each product can be judged in the booth on its own merits and this will not effect the booth score in any way.

SCHOOL EXHIBITS
 The Hansford County Free Fair Committee has set aside a portion of the available fair building space for educational exhibits.

An invitation is given to the schools of the County to set up a booth of their work for the Hansford County Free Fair. These Schools will be given a 8 x 8 space as listed below:

Oslo School
 New Hope School
 Spearman Grade School
 Spearman High School
 Morse Grade School
 Morse High School
 Gruver Grade School
 Gruver High School
 The exhibit area is to be used in any way that the school sees fit for an educational booth.
 The school booths will be judged against each other and the winning booth will be given a banner. If the schools want the individual articles within the booths to be judged against each other this will be arranged. The ribbon will be Blue, Red and White.
 Mr. H. H. Bowman, of New Hope is Chairman of the Grade School Division.
 Mr. A. Dooley of Gruver is Chairman of the High School Division.
 The Schools are asked to notify the fair Committee if they plan to use their area for an exhibit or not.

COLLECTS STAMPS 11 YEARS
 Norfolk, Neb. - For the last eighteen years, Marvin Jones has been collecting stamps. At the last count, Jones had more than 50,000 stamps in his bound albums. Among them are 25 one-cent Benjamin Franklin stamps issued many decades ago.
VISITS ENDS IN DEATH.
 Sarasota, Fla. - Mrs. Frank Smith was bathing her nine-month old son, Mark Thomas, when the doorbell rang. Leaving the child in the tub, Mrs. Smith went to the door. Before she got back a maid found the child's body floating lifelessly in the tub.



The funniest movie idea in a decade brings you the story of "Baby Sam," left on a U.S. Embassy doorstep... somewhere abroad... and about an hour and a half of romance and laughter!

COLUMBIA PICTURES presents
SPECIAL DELIVERY
 starring EVA COTTEN and BARTOK
 with Maudslayi, Deltey, Cunningham, Hamner, Richards, and Leonard
 Screen Play by FRED MISHKIN, Jr. and DONALD CRISP
 Directed by STUART ROSS
 Distributed by COLUMBIA PICTURES
 In Association with PETER RAYSON Production

Coming Soon TO DRIVE-IN

DEL MONTE ROUND-UP SALE OF VALUES ON ALLEN'S 1st A

THANKS for the patronage of our many Friends and customers during the past year.

4-303 CANS	Whoee GREEN BEANS	\$1.00
5-No. 303 cans	CORN-Golden Cream Style	\$1.00
7-No. 303 cans	SPINACH	\$1.00
5-No. 303 cans	SUGAR PEAS	\$1.00
4-No. 303 cans	FRUIT COCKTAIL	\$1.00
4-No. 2 cans	CRUSHED PINEAPPLE	\$1.00
Regular Size	CHUNK STYLE TUNA	29c
3-Buffer Size	TOMATO SAUCE	25c

FLOUR Gold Medal 10 Lb. Bag **77c**
SHORTENING 3 Lb. Tin Kimbell's **67c**
OLEO Kimbell's 1 Lb. Carton **18c**
 BLACKEYE PEAS AND BACON, DIAMOND BRAND, 300 SIZE CAN FOR ONLY **10c**

TIDE GIANT BOX 69c
FRESH PRODUCE
 Maryland Sweet Yams, Lb. **8c**
 Tokay Grapes, Lb. **10c**
 Firm Head Cabbage, Lb. **4c**

Allen's GROCERY

LOOK AT ALL THE CHECKERED FLAG CHEVROLET'S COLLECTED!

Drive with care... EVERYWHERE!



Great Features back up Chevrolet Performance: Body by Fisher - Ball-Race Steering - Outrigger Rear Springs - Anti-Dive Braking - 12-Volt Electrical System - Nine Engine-Drive Choices.

Every checkered flag signals a Chevrolet victory in official 1955 stock car competition—not only against its own field but against many American and foreign high-priced cars, too!

Let's translate these Chevrolet victories into your kind of driving. You've got to have faster acceleration to win on the tracks. And that means safer passing on the highways. You've got to have better springing and suspension. Again, safer and happier motoring for you. You've got to have big brakes that act fast and smooth... and easy, accurate steering. More things that make your driving safer.

But it's more fun to try these things out than just to talk about them. So come in and let's take a ride.

MCCLELLAN CHEVROLET CO. GRUVER MOTOR COMPANY
 Spearman, Texas
 Gruver, Texas

FREE
 \$100.00 GUNN BROTHERS STAMPS AND SACK OF GROCERIES EVERY HOUR SATURDAY OCTOBER 8TH. BEGINNING AT 9:00 A.M. THRU 5:00 P.M.—YOU MUST BE PRESENT TO WIN—Register Friday and Saturday. One winner only to a family.

FRESH MEAT
 BACON, Cudahy's, Lb.
 BEEF ROAST, Chuck, Lb.
 BEEF ROAST, ARM, Lb.
 BEEF RIBS, Lean lb.
 Fresh Dressed FRYERS,
 HEINZ BABY FOOD
 11 FOR \$1.00
 Lady Borden Ice Cream,
 FLASH - Johnny Linn and Weldon Bright from radio and TV will be our Special Guests Saturday. Don't Miss The FUN.

Friday
 DAYTONA BEACH, FLA.
 FAYETTEVILLE, N.C.
 COLUMBIA, S.C.
 YOUNGSTOWN, OHIO
 ATLANTA, GEORGIA
 JERSEY CITY, N.J.
 CHICAGO, ILLINOIS
 PITTSBURGH, PA.
 TORONTO, CANADA
 BELMAR, N.J.
 CEDAR RAPIDS, IOWA
 BALTIMORE, MD.
 FLOYD, VA.
 WINSTON-SALEM, N.C.
 GRAND FORKS, N.D.
 MINOT, N.D.
 LYNCHBURG, VA.
 CANFIELD, OHIO
 MILWAUKEE, WIS.
 CINCINNATI, OHIO
 FLAT ROCK, MICH.
 FERSONVILLE, MISS.
 DARLINGTON, S.C.
 HAMMOND, IND.
 DETROIT, MICH.

The safer car wins and Chevrolet's the winning car.

NOW'S THE TIME TO BUY LOW PRICES - BIG DEAL ENJOY A NEW CHEVROLET