



# We Need Greater Churches And Greater Faith

to give us POWER for LIVING and to COMBAT ATHEISTIC "ISMS"



A big old-fashioned water wheel! Round and round it turns and oh, how slowly! Sure, water below the wheel has gone but water above the wheel still possesses potential power that may influence the lives of millions. It is that way with human life, too. The gigantic wheel keeps turning while life keeps passing. "The wheels of the gods grind slowly but they grind exceedingly well." One generation comes while another goes... 3,600 souls go over the wheel every hour... 86,000 every day. Stop right where you are! Think of your opportunity! Act immediately! You have only a little moment to make your contribution to the sum total of human goodness. Just what are you going to do about it, sir? Perhaps you should join the increasing millions who are finding solution to their problems through regular church attendance. You may also find a better way to spend your money for good.

MAY THIS PAGE BE A BLESSING TO MANY IS THE SINCERE WISH OF HANSFORD COUNTY MINISTERS  
This religious service is paid for by the public spirited firms 100% interested in the spiritual life of Hansford County. They urge regular church attendance and support.



**YOU IN THE CHURCH  
THE CHURCH IN YOU**

Character is a by-product of the church. It is here that the young and old alike are showered with benedictions stronger democracy. In the church the ministerial are molding religious character. Statesmen today declare that the church alone can furnish leadership to handle with our children should go to the church of our choice on Sunday. "You in the Church and the Church in you" form a combination for good. Be a regular CHURCH GOER and a daily BIBLE READER.

WILLIAMS NEWSPAPER FEATURES  
Four Weeks Free

- Morse Supply Co.**  
Willard McCloy
- R. L. Kleeberger, M.D.**  
of Spearman
- Spearman Drug Co.**  
Bruce Sheets
- Equity Exchange**  
E. J. Copeland
- R. L. McClellan Grain Co.**  
Lee, Roy Lee, Wilson McClellan & Jimmie Hicks
- Orange Disc Service**  
Alton and Wayne Ellsworth
- Hansford Implement Company**  
Gene Cudd
- White Auto Store**  
Mr. and Mrs. I. P. Baggerly
- First State Bank**  
Clay Gibner

- North Plains Electric Coop**  
Earl Waide, Manager
- Cates Super Market**  
J. C., Slim, Lucian, Pat
- Super Service Station**  
Gene Cline & W. E. Sparks
- Spearman Steak House**  
Mr. and Mrs. Howard Huffman
- White House Lumber Co.**  
Ed Hutton
- Boxwell Brothers**  
Mrs. C. E. Blackburn
- Universal Oil Co.**  
Gruver — Grover Taylor, Mgr.

- Consumers Sales Co.**  
Of Spearman

- Deana May's Beauty Shop**  
Deana May Douglas

- Tom Mott Oliver**  
Machine Shop

- Panhandle Furniture Mart**  
Bud King

- Stanley Garnett Implement Co.**  
Continental Irrigation Engines

- Gruver Motor Company**  
Ted McClellan

- Wardrobe Cleaners**  
Oscar Donnell

- Jameson Chevrolet Company**  
Of Spearman



- FIRST BAPTIST CHURCH** —  
Bro. Bill Burton, Pastor
- Sunday School
- Preaching Service
- Training Union
- Preaching Service
- Wednesday Prayer Service
- UNION CHURCH** — SPEARMAN  
Rev. Calvin Springer, Pastor
- Sunday School
- Morning Worship
- Bible Classes, Sunday
- Evening Worship
- Wednesday Bible Study
- FIRST CHRISTIAN CHURCH** —  
Rev. C. N. Van Dyke, Pastor
- Sunday School
- Morning Worship
- Youth Meetings
- Evening Worship
- Wednesday: Choir Practice
- MORSE METHODIST CHURCH** —  
Rev. A. N. Motes, Pastor
- Sunday School
- Morning Services
- M. Y. F.
- Evening Worship
- ASSEMBLY OF GOD** — SPEARMAN  
Rev. M. C. Cox, Pastor
- Sunday School
- Morning Worship
- Evening Worship
- Mid Week Services, Wednesday

- FIRST CHRISTIAN CHURCH** —  
J. W. Duke, Pastor
- Sunday School
- Morning Worship
- Evening Worship
- 1st Weds. Monthly Fellowship
- FIRST METHODIST CHURCH** —  
Bro. J. Waid Griffin, Pastor
- Church School
- Morning Worship
- Methodist Youth Fellowship
- Evening Worship
- Womens Society of Christian Service, Wednesday
- Mid Week Services, Wed.
- Choir Rehearsal
- CHURCH OF CHRIST** — SPEARMAN  
David E. Parker, Pastor
- Bible Class
- Communion
- Preaching
- Worship
- Monday: Mens Training Class
- Wednesday, Ladies Bible Class
- Wednesday, Midweek Bible Classes
- MORSE BAPTIST CHURCH** —  
Rev. Geo. M. Rickles, Pastor
- Sunday School
- Worship
- Training Union
- Worship
- Mid Week Service Wednesday

- CHURCH OF CHRIST** —  
North of City Park  
Gruver, Texas  
Jesse Kelly, Evangelist
- Lord's Days
- Bible Study
- Bible Study
- Worship
- Week Days:
- Bible Study, Wednesday
- Ladies Classes, Thursdays
- Juniors
- (Small Children Cared For)
- Senior Ladies
- GRUVER METHODIST CHURCH** —  
Rev. R. H. Campbell
- Sunday School
- Morning Services
- Methodist Youth Fellowship
- Evening Services
- Wednesday Prayer Service
- Wednesday Choir Practice
- Thursday W. S. C. S.
- Wesley Circle, Thursday
- SACRED HEART CATHOLIC CHURCH** —  
Father M. J. Mathias, Pastor  
MASSES
- Sundays
- Weekdays (Mon. Tues. Fri. Sat.)
- First Friday of Month
- Holy Days of Obligation
- FIRST BAPTIST CHURCH** —  
Bro. O. L. Bryant, Pastor
- Sunday School
- Morning Worship
- Training Union
- Evening Worship
- Wednesday Mid-Week Services: Prayer Hour
- Wednesday Choir Rehearsal
- OSLO LUTHERAN CHURCH** —  
J. P. Knudsen, Pastor
- Sunday Worship
- Ladies Aid every last Thursday afternoon of month
- Luther League on Sunday evening every month

pesticides  
dangerous  
Feb. — Failure  
injury  
through  
take  
insect  
regard  
suit

NEVROLET TI

DELE

in a series of ar  
New York newspap  
series exclusively for

of Duval Di  
blicity With

RICK HODGSON  
O. Tex.—What was  
/ pulled the props  
George Parr's politi-  
p? The people? The  
ederal Government?  
rs?  
a hand in it!  
also the Texas Ran-  
of freedom-hungry  
is both "Anglo" and  
nd there were some  
apers and newspa-  
rked life or libel.

tem, former Atty.  
Shopper's assault  
ad county of Duval  
been a grand  
He knew that when

ed out, the news-  
enger to print the  
George B. Parr, if  
some facts to print.  
ad the facts, they  
stops. That's when  
egan to come apart.  
a spunky newspaper  
ere that had been  
y at the foundation  
in the bounds of le-  
sation.

Daily Echo wasn't  
Bost. And when the  
o emerge the Echo's  
a little woman  
Brown, turned re-  
on herself a Pulitzer  
t without having her  
that of her teen-age  
entered.

also Santos de la Paz  
us Christi. He ran a  
al weekly called La  
ruth, and that's just  
ied to print about  
Before it was over  
holding a giant libel  
going to jail for  
-eager and printing  
ouldn't prove about  
r's friends. The libel  
ut to be a legal trick  
e to reveal what he  
urt hearing. The suit  
pped.

t all the newspapers  
re as eager to get the  
of Duval County as  
to the scene, and  
id to print it.

of spotlight withers a  
the way a hot wind  
chid. And that, com-  
ore than 400 separate  
is all over Texas, is  
George Parr's empire  
old empire it used

l to deliver 100-to-1  
t the polls. That's why  
is county. The district  
district attorney, the  
s, the sheriff—every-  
their orders from the  
not any more. There's  
of officeholders, men  
uke did not choose.  
dreds of gun-toting  
re gone. The Commis-  
urt and the school  
nger take orders from  
ean't sign the checks  
er keep the records  
more easy money, ne  
o payoffs.

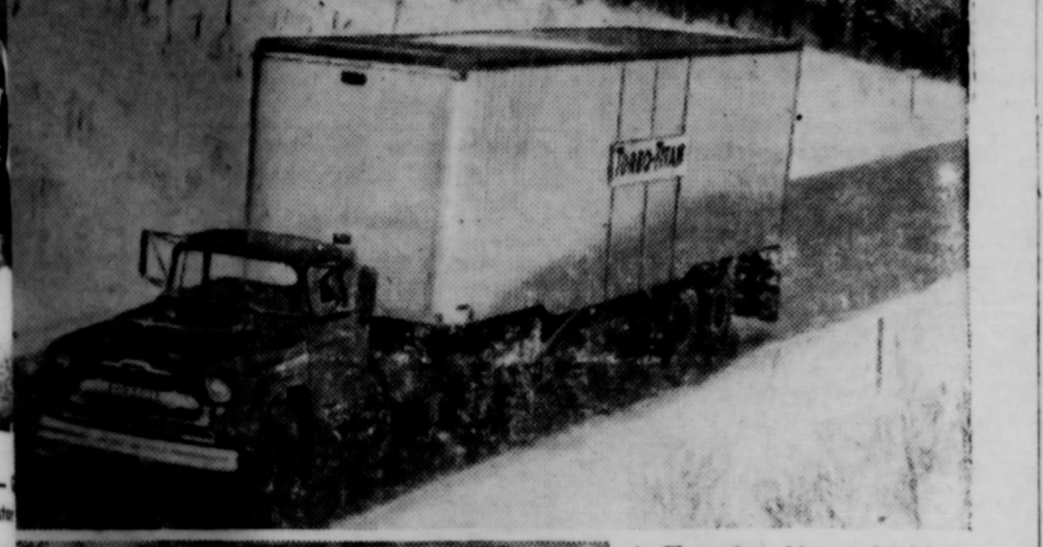
officials don't charge  
al household expenses  
is or gasoline to the  
more. They don't eat  
ighters on the payroll  
while they're away s  
y don't get their dea-  
ntly expense, or charge  
ough an medicine an  
to the school district  
different in Duval.  
ifferent for the Duke  
o banks, dormitorie  
ind school funds, lon



Church listings including: FIRST BAPTIST CHURCH, UNION CHURCH, FIRST CHRISTIAN CHURCH, MORSE METHODIST CHURCH, ASSEMBLY OF GOD, FIRST CHRISTIAN CHURCH, FIRST METHODIST CHURCH, CHURCH OF CHRIST, GRUVER METHODIST CHURCH, SACRED HEART CATHOLIC CHURCH, FIRST BAPTIST CHURCH.

**Insecticides** preparing insecticide solutions or emulsions, they add, are inflammable and most of them poisonous to humans. The specialists say insecticide injury to man is most common through oral and respiratory intake or by skin absorption.

**CHEVROLET TESTS GAS TURBINE TRUCK**



Chevrolet Motor Division has unveiled an experimental gas turbine truck which it has been road testing for six months. Developed cooperatively with the General Motors Research Staff, the Turbo-Titan contains an experimental 230-horsepower engine, examined here by Chevrolet's Chief Engineer H. F. Barr, left, and W. A. Turunen, head of GM's gas turbine research.

**of Duval Dukedom Shows Publicity Withers Dictators**

**RICK HODGSON**, O. Tex.—What was pulled the props of George Parr's political empire? The federal government? A hand in it? Also the Texas Rangers? "Anglo" and "Negro" there were some papers and newspapers, a former ally, Shoppers' assistant of Duval being a grand and he knew that when he was taken out of his hands, closed down by the state his 55,000-acre ranch, bought with county funds, has gone back to the county, and another 4,000-acre hacienda was auctioned off by the authorities to satisfy tax claims against the Duke.

to warm-blooded animals than most other chemicals used for insect control. Since phosphorous insecticides tend to reduce the cholinesterase enzyme, entomologists advise regular handlers of such chemicals to have cholinesterase tests at 10-day intervals while working with the material.

It's a good idea to bathe and change clothing immediately following a highly toxic job and not enter a field for two or three days after it has been treated, the specialists point out. Always wear gloves and freshly laundered protective clothing during handling, and stop working if a toxic insecticide is spilled on skin or clothing for a thorough bath and a change of clothes, they advise.

**Steps To Better Family Health . . .**

Every family can take steps to insure better physical and mental health in 1957, according to Mrs. Eloise Johnson, extension family life specialist. It will mean financial savings as well as happier living.

**FOR SALE**

- N D45, 1955 Model Allis Chalmers Tractor with listers, planters and Middle busters. Super W6 1955 Model International Wheat land Tractor. 1-4 section John Deere drag-harrow. 1-27 Ft. Mayrath loader. 2-8 hole Dempster drills with hitch and marker. 1-2 ton Studebaker truck, Wheat King bed, stock racks and 10 ton Hoist. 1-Dodge one-half ton Pick-up with stock racks. 1-Old Scratch Cattle Oiler 1-Broad cast Binder 1-Baldwin Combine 1-Skill Saw 1-Wheelbarrow 2-Gentle, reliable Saddle Horses. 2-Good stock saddles. Wind brake for stock—Carpenter and Machinery tools, Hog, Chicken and Garden Wire

**Mrs. Charles Rosson**  
Spearman, Texas, Rt. A

**BAPTISTS BELIEVE THE BIBLE IS GOD'S WORD TO MAN**

Baptists believe in a supreme Book, one that presents the laws of God for man to follow. They believe that this Book is from God, and that it remains the same from one century to another. Though written long ago, it is just as supreme as when recorded.

**Oslo News**  
Anson Ward and Bob Crawford are fishing at Possum Kingdom Dam. It was good to see Mr. and Mrs. Henry Nasset of Bagley, Minn. in church here again. They are visiting their daughters, Mesdames: Coy Gibson and Bob Jackson of Guymon. They have a new grandson in the infant son born recently to Mr. and Mrs. Bob Jackson.

**Grass Program Extended**  
Conservation long term contract with the soil bank for re-seeding grass, has been extended from March 15th to April 15th. This means that anyone interested in putting their grass under long term contract, can talk with the ASC office today.

**LET US BE YOUR MILKMAN**

More children grow up drinking Borden's milk than any other brand. Buy Borden's at your favorite grocery.

"If it's Borden's It's Got To Be Good"

**Carpet Your Home Completely**  
No Money Down  
36 Months To Pay  
**FAMOUS MCGEE AND FRITH CARPET**  
Wool, Cotton, Viscose.  
Your Choice of Colors.

**Panhandle Furniture Mart**  
Spearman Phone OL 93871

**"HANDLING EASE TEST"**

Trucks for every job, from the world's most complete truck line—1/2-ton pickups to 90,000 lb. models.

There's only one way to find out if an INTERNATIONAL handles the way you want a truck to handle—and that's to drive one yourself.

That's why we extend this invitation to you: Take an INTERNATIONAL out on the road. See how it handles. Try it on rough stretches. Back it, maneuver it, jockey it into tight spots. Compare it point for point with your present truck.

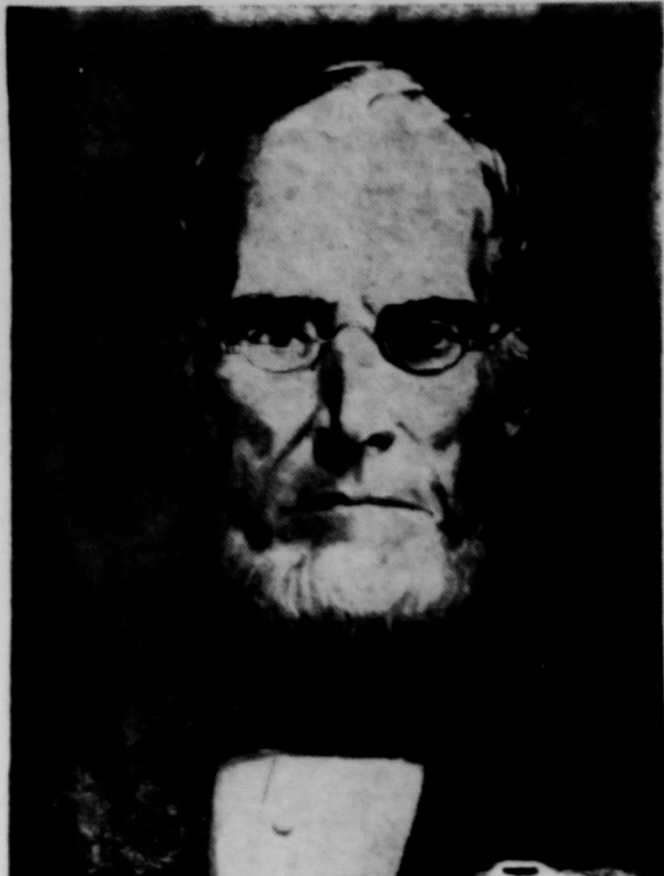
We are confident you will find INTERNATIONAL the sweetest-handling truck you've ever driven (even sweeter with optional Power Steering!)

Make us prove that we're right! Come in and take our IH "handling ease test." It's a real convincer!

**Over the years INTERNATIONAL TRUCKS cost least to own!** (and owners' cost records prove it)

**B. & C. EQUIPMENT COMPANY**  
200 Main Phone OLIVE 9-235  
Spearman, Texas

# Borden's Celebrates 100th Anniversary



*This early G. Borden  
having retreated from the clouds  
— it has become necessary to  
remove one piece. I shall  
endeavor to put it over the  
to day — If the government  
can find a way for it or will  
do it up — Hansford  
will require a large stamp &  
tax — I have none —  
I had the pleasure to inform  
you — If no other comes, it  
must lie in the bottom.  
Our army consists of about  
of one thousand.  
Yours H. B. Borden*

Gail Borden to President Borden of Texas  
in early April, 1835

The 5 employees of The Borden Branch in the "High Plains" area are now celebrating the Company's Centennial in a year-long program. Joe Burge, Branch manager in this one, stated that the Borden Company was founded in 1857 by Gail Borden. In his youth, Borden was in vanguard of the southwestern movement. He wandered over much of the frontier, married a Mississippi girl and became a leading citizen of Mexican-held Texas.

As a friend of Stephen F. Austin and Sam Houston, Borden was plunged into the thick of the struggle for Texas' independence. However, it was as a newspaperman, rather than a soldier, that Borden was to serve, and he founded the first permanent newspaper in Texas. This newspaper became the official organ of the revolutionary government.

An intensely religious man, Borden was a trustee of the Baptist Educational Society. He and his wife are considered the first persons baptized in the Gulf of Mexico. Borden served two terms as the first Collector of Customs at Galveston. He also began his food experiments in the port city, perfecting a process for dehydrating meat.

Gail Borden had over fifty years of accomplishment behind him when he finally began working with milk. Even after his great discovery of condensed milk, he twice failed before succeeding in opening a plant for its manufacture.

It was in this field — the condensing of milk — that Borden was to found an industry. He also pioneered in another industry — that of modern dairying. He showed American farmers the possibilities of quality milk production, and his instance on sanitation brought about a completely new understanding of the value of milk cleanliness. The suggestions Gail Borden made to the farmers of his day form the basis of most modern health department regulations.

"Locally," Mr. Burge said, "Borden's has been distributing milk and ice cream since 1950. The Borden Company spends over \$219,000 annually in the area, for such items as salaries, milk, taxes, etc.

"Of this amount, approximately \$190,000 goes to dairy farmers for their raw milk each year. Mr. Burge stated that Gail Borden's pioneering with fresh milk greatly expanded the farmer's market, bringing about a variety of special products. The problem is relatively simple today, fluid milk is used in

the manufacture of evaporated milk, condensed milk, ice cream, a variety of cheese and many other products. The dairy industry, still operating upon many of Gail Borden's precepts, has grown into a huge enterprise. The cash value of products from dairy farms far exceeds the produce of any other type farm.

A recent report by a noted university professor covers 446 dairy operations in 362 cities and towns in more than 40 states. This report points up the efficiency of modern milk distribution methods. It shows that in 1955 the milk companies paid out to the average dairy farmer 47 and 6/10 cents from each dollar of sales — or about a half a cent more than the previous year. The dairy's own profit dropped to about 2 and 2/10 cents on a dollar's worth of milk or approximately half a cent on a quart.

Mr. Burge said that people in Spearman and other parts of the country have come to know The Borden Company best through Elsie the Cow. Yearly surveys show that seven out of ten persons recognize Elsie and relate her to The Borden Company. She is known as "Dairyland's greatest Saleslady", and is always hard at work justifying the title. Elsie is featured in much of the Company's advertising, and actually travels 20,000 miles a year with her six-ton boudoir and personal staff which consists of a tour manager and two herdsmen. Elsie's visits include fairs, plant openings and other affairs arranged in her honor.

**Citizens' Ideas Asked On Official State Dog**  
If this state were to select an "official" dog, as has been done with the state flower and state bird, what type of breed of dog would it be?  
In anticipation of such possible action the Gaines Dog Research Center, 250 Park Avenue, New York 17, N. Y., is seeking an expression of opinion on the matter from residents in every part of the state. Interested persons are asked to drop a postcard to the Center, giving not only their preference of a breed for the state but also the reasons back of their choice.

Adoption of an official state dog, it is said, can be accomplished either by action on the part of the state Legislature, by a proclamation of the governor, or by a popular vote.

The problem is relatively simple today, fluid milk is used in

## Soil Conservation Notes

Erosion on the Great Plains has become, during the drought years, more serious. Water and wind erosion have increased in proportion to the decrease of cover. Cover on our rangeland and farmland will resist the erosive forces of wind and water. Cover and the decaying plant material increase the amount of water taken into our soils and reduce the amount of run-off water from our soils.

Vegetative cover on our soil will reduce the erosion of wind. The speed of wind is reduced by cover. Cover lies between the soil and the wind. Cover is sufficient amounts will reduce wind erosion. As cover increases in density, water forces become weaker. As custodians of soils, we must combat all harm to this soil.

It is our responsibility to get cover on the soil. Use the agencies, experiment results and agriculture knowledge to increase your ability to protect all of your soil.

Contact your local soil conservation district office to receive help to plan a conservation program on your farm.

Hansford Soil Conservation District office is located in the basement of the courthouse, in Spearman.

FOR SALE—5 room modern home with 100 ft. frontage, textone decorated throughout, large kitchen with dish washer and disposal built-in; extensive cabinets, formica tops. Attached garage 18 x 38 with apartment in back. Inquire at Reporter office.  
No. 12 rtn

PERRYTON HATCHERY—Baby chicks, Turkey Poults, Custom Hatch, Poultry Supplies. Phone GE 5-8661, Perryton, Texas.  
No. 12 64-c

FREE—48 Cup Electric Coffee Urn to Women's clubs or groups for selling 96 bottles Rawleighs Vanilla, also Electric roaster, banquet table or 48 place setting of stainless steel Tableware. Milton Brown Phone OLive 9-4396.  
No. 11 3-tp

FOR SALE—by owner: Apartment house with 9 apts. 8 of them furnished. They have private baths. Each has 2 rooms plus a 6 x 6 kitchen and 6 x 6 bath. The building is 107 x 28. It is 6 years old. It is not a barrack building. J. D. Beach, 417 Powell, Dumas, Texas. Phone 5-2362 after 5:30 p. m.  
No. 11 4-t-c

FOR SALE—two bed room home on 2 lots. \$5000. Phone 5311 or 5261, Spearman.  
No. 11 rtn

FOR SALE—Five room Modern Ranch Style Brick home, practically new. See D. B. Keim, Phone OLive 9-6116.  
No. 10 34-p

For the life of your car  
GO GULF!



Looking for Service  
Try Orange Disc Service!

ALTON WAYNE  
Phone 2301

**B. M. A.**  
INSURANCE  
ACCIDENT - HEALTH  
HOSPITAL & LIFE  
For Each Member  
of the Family

**E. K. SNIDER**  
Lubbock - Spearman

WE ARE—Experts in installing linoleums. Let us figure your next job. Free estimates. We do cabinet tops, floor linoleums, covegwalls. We stock linoleums up to 12' wide, sink frames, metal trims and etc.  
DALEY'S IN PERRYTON  
No. 27 rtx

ALCOHOLIC—If liquor is your problem and you sincerely want help to quit write Alcoholic Anonymous, Box 251, Spearman. No fees, no pledges, no pills.  
No. 36 rtn

**BARGAINS**  
in house trailers. New Trailers up to 51 feet. Five year financing, bank rates. Some used ones. Best Trailer Sales, Pampa and Perryton, Texas.  
No. 4 rtn

**GLASS REPLACEMENT**  
Body Shop and Painting  
**R. L. (Smoky) HUBB**  
Spearman, Texas

**COMMUNITY PUBLIC SERVICE**

**PER**

**with an E**

snap your fingers because every day's day or night, you dryer, set the co ically. Your clothes ready to iron or f

ing a dial

# FAMOUS Esso Extra GASOLINE

prevents the  
"knock you cannot hear!"

Engineers call it "trace knock," and only the trained ear can hear it.

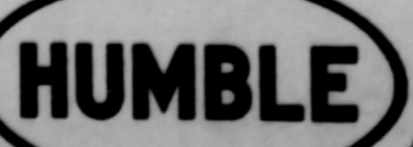
But trace knock, like any knock, robs your engine of its power, forecasts engine damage.

If yours is a modern car in any price class—especially if it's a 1957 model—prevent trace knock with Humble's famous Esso Extra, the gasoline that gives you extra anti-knock performance.

And that's not all! Esso Extra delivers full power output from modern engines. It gives maximum mileage and extra protection against vapor lock. It gives extra quick starting and warm-up.

HUMBLE OIL  
& REFINING  
COMPANY

Fill up with Esso Extra gasoline under your neighbor's Humble sign—it's famous for performance.



**Here comes stinky!**

Come on chicks, let's run for the range. We won't be able to breathe in this place for awhile. I just saw the boss mixing some more of his disinfectant. He thinks the stronger the odor, the better it kills germs. Why doesn't the boss wise up? That strong smelling, irritating stuff is old fashioned. I had a talk with Gorman. He could do a better job without the disinfectant. Gorman is made by—  
Dr. Salisbury's

**Spearman Drug**

**GAS-TOONS**

BY  
**DON AND LOUIS**



"No one has to WAIT at Spearman Texaco."  
We take pride in offering you clean rest rooms.

**SPEARMAN**  
Texaco Service  
Phone: OL 9-2391  
B. F. Goodrich Tires

merican housewife...  
 chamb, extension pool...  
 eting specialist, can be...  
 for the improved appear...  
 gales offered on today's...  
 Store sales showed that...  
 prefer a ready-dressed...  
 rd with yellow skin and...  
 feathers that eliminate...  
 us job that formerly was...  
 of getting a chicken or...  
 eady for cooking. Breed...  
 these requirements and...  
 outry is the result.

ndle bed is one which...  
 from under a larger bed.

hvania has no sea-out...  
 a navy yard.

i is the smallest country...  
 America.

LE—Baby bassonet \$5.00...  
 Phone 5651, after 4:00

No. 12 rth

D—Small frame building...  
 ve Approximately 150 sq...  
 ert Cox, Gruver, Tex...  
 Fireside 7-2262.

No. 12 14p

LE—GE Filter Flow auic...  
 washer. Like new \$395...  
 Trade for pick-up of...  
 value. Call OLive 9-6546.  
 No. 12 rth

ENT—For men only One...  
 light housekeeping quar...  
 122 S. Endcott St.  
 No. 3 8to

**Observer Sheet**  
 Ground Observer Corps is organized in 1951, in an outbreak of the Korean war. The Chinese organization that was organized in 1952, during the Battle of the Chosin Reservoir, was also organized in 1951.

ten times their actual number. We had an organized aircraft spotting system in this country during World War II but fortunately it was never put to the test. Now the Ground Observer Corps has been expanded to include every state in the union.

There are presently 73 Filter Centers in the United States where reports on aircraft are received, plotted and relayed to radar control stations, and approximately 25,400 Ground Corps Observers posts requiring 1,500,000 volunteers. With the requirement at a million and a half, the present

ent strength is about 400,000 volunteers; about one fourth of our actual need.

Observation posts are being set up throughout this area every 8 miles, insofar as population and communication facilities permit. It will require approximately 1000 Ground Observer Corps volunteers to fully man and operate the Oklahoma City Filter Center, and for every observation post, operation around the clock will require approximately 84 civilian volunteers. With this number of volunteers, no single observer or Filter Center volunteer would be

called upon to serve more than 4 hours per week.

**ORGANIZATIONAL** The Ground Observer Corps, or GOC, is a part of Civil Defense. The Corps is organized under the Air Defense Command, which has the mission of defending the United States against attack from the air. In its role of assisting the Air Defense Command, the GOC, though manned by civilian volunteers, is a co-partner with the three other members of the Air Defense Team, namely jet fighter-interceptor squadrons, anti-aircraft artillery, and radar. Along with radar, the GOC provides the early warning and continuous tracking information which in an emergency would send fighter-interceptors aloft, and alert the civilian population. The role of the Air Force in the GOC program is to train the volunteers and to supervise operation of the Corps.

**COMMUNICATIONS** Communications between observation posts and Filter Centers are normally by commercial telephone, using toll calls for reports of aircraft observations. Each phone is individually cleared with the local telephone company, so that each operator on any switchboard is instantly alerted by the key words, "Aircraft Flash". In many cases, the connection is made to the filter center and the message completely given with the final "Check, Thank You," within a period of 20 seconds.

**THE "WHY" OF THE GROUND OBSERVER CORPS** The members of the GOC supplement our radar capabilities and in many cases enable the fighter-interceptors to intercept unidentified aircraft. Our radar, with all its amazing power of detection, is most effective only at altitudes above 5,000 feet. It is this limitation of radar which, together with the following, makes the GOC necessary as an augmentation force.

- Radar is subject to mechanical breakdown. Periodically, operations must halt while technicians perform routine preventive maintenance, or necessary replacement of parts or repair.
- Our radar sites could be sabotaged. Although a 24 hour security guard is maintained, this possibility must not be overlooked.
- Radar can be jammed. Two different methods are:
  - Mechanical: The penetrating aircraft could release many thousands of different sized strips of tin foil high in the air, and ahead of the main aggressor force. The foil called "window," creates a mealy or dapple effect on the radar screen.
  - Electronically: High powered transmitters located in penetrating aggressor aircraft transmitting on the same frequency as the radar station cans wash out the radar picture.
  - Radar is adversely affected by severe weather conditions.
  - Radar, like television, operates on a line of sight principle. Because of earth curvature, high structures, mountains, rough terrain, will permit penetrating aircraft at low altitudes to accomplish their penetration often times without detection.

It is this last weakness of radar that is perhaps the most important. The Air Force has officially stated that radar is unreliable below 5,000 feet. To provide especially for low-altitude surveillance, then the Ground Observer Corps is a must.

**FUNCTIONS** The basic unit of the Ground Observer Corps is an observation post consisting of an observer and a telephone. These elements may be in an elaborate observation tower; they may be in a store or filling station; or they may be in a farm house.

When the observer sees or hears an airplane, or she telephones the information to a filter center, where other volunteers plot and analyze the report. If they cannot identify the plane as one that belongs in that area at that time, they pass the information along to the radar station. Heavily armed fighter-interceptor aircraft are ready to take off to intercept the unidentified aircraft in less than five minutes.

A man isn't henpecked as long as he had a roof over his head and is able to raise it occasionally.

**BUYS POPULARITY**  
 A man with money can be a bad egg and still be mighty popular until he is broke.

Figures may not lie, but some get snarled up in statistics.

**ONE IN A MILLION**  
 A diplomatic husband is a man with a gifted mind who can take the limp out a lame excuse.

More Texas radio and television stations than ever before regularly broadcast or telecast market news on farm commodities. This fact was established by a recent USDA survey which showed 118 radio and 14 TV stations in Texas carried market news information. One hundred forty one radio and 21 TV stations in Texas answered the survey questionnaire.

Habits are either bobbers or sinkers on the sea of life — they either hold you up or hold you down.

**Beef Cattle And Cash Crops Make Good Combination On Central Texas Farms**  
 College Station — Blackland Prairie and Grand Prairie farms, primarily cotton and corn growing areas of the state, may be profitably supplemented with a carefully-planned beef cattle enterprise, says A. C. Magee, Professor, Dept. of Agricultural Economics and Sociology, Texas A&M College.

Control of excess water in reducing soil losses through erosion in central Texas can best be accomplished by establishing permanent pastures and putting close-seeded grains, legumes and grasses in the cropping system, according to Magee. This offers a well-balanced land use program and a cattle operating plan designed to supplement each other. It increased earnings on central Texas test farms by \$200 to \$1200.

Sound planning is the key to co-ordinating such a venture, warns Magee and an adequate stock water supply is a must as are ample feed reserves. Silage fed in the observations produced economical gains, but farmers with lowest costs used grazing most of the year obtained from permanent pastures, sudangrass, oats or stalk fields.

Blackland pastures furnished 40 percent more grazing days per acre than Grand Prairie pastures. An acre of sudangrass usually furnished 3 to 4 times the number of grazing days as an acre of permanent grasses.

Magee said it took almost as much time to feed and care for 12 cows as it did for 24 and that one bull was needed whether the herd consisted of 10 cows or 30. Supplemental feeding was done during the winter when crop work was slack with Blackland farms averaging about 35 minutes per day looking after their beef enterprise for the entire year. With

larger herds, Grand Prairie farmers averaged about 50 minutes a day.

Generally, steer herds were operated more flexibly in central Texas tests than cows and gave most profitable returns when kept for a long grazing period.

Calves on feed usually were marketed when they would grade Good or Low Choice. Demand for this quality beef prevailed at markets where most farm cattle were sold. Fall calves were old enough to utilize considerable grazing during lush spring season and brought relatively high butcher calf prices. Price trends were important factors in buying and selling.

Complete details of the tests are available in Bulletin 840 from the Agricultural Information Office, College Station, Texas.

**Freshmen Boys Win 2nd Place**  
 Coach Shelby took seven boys to Texhoma last weekend to their annual Freshman Tournament. They played Texhoma and won 35 to 30; won from Plainview 30-25, and lost to Gruver 40-18 in the finals.

The boys making the trip were: Bob Meek, Mike Holt, Benny George, Perry Sheets, Kim Copeland, Lary Kingsley, Howard Garnett and Jerry Mitts as manager.

Coach Shelby said there were only nine Freshmen who made the season with the "B" team, losing two of the nine through sickness and injury. They were: Jerry Parrish and Wesley Garnett.

This week-end they will go to Gruver for another Freshman Tournament.

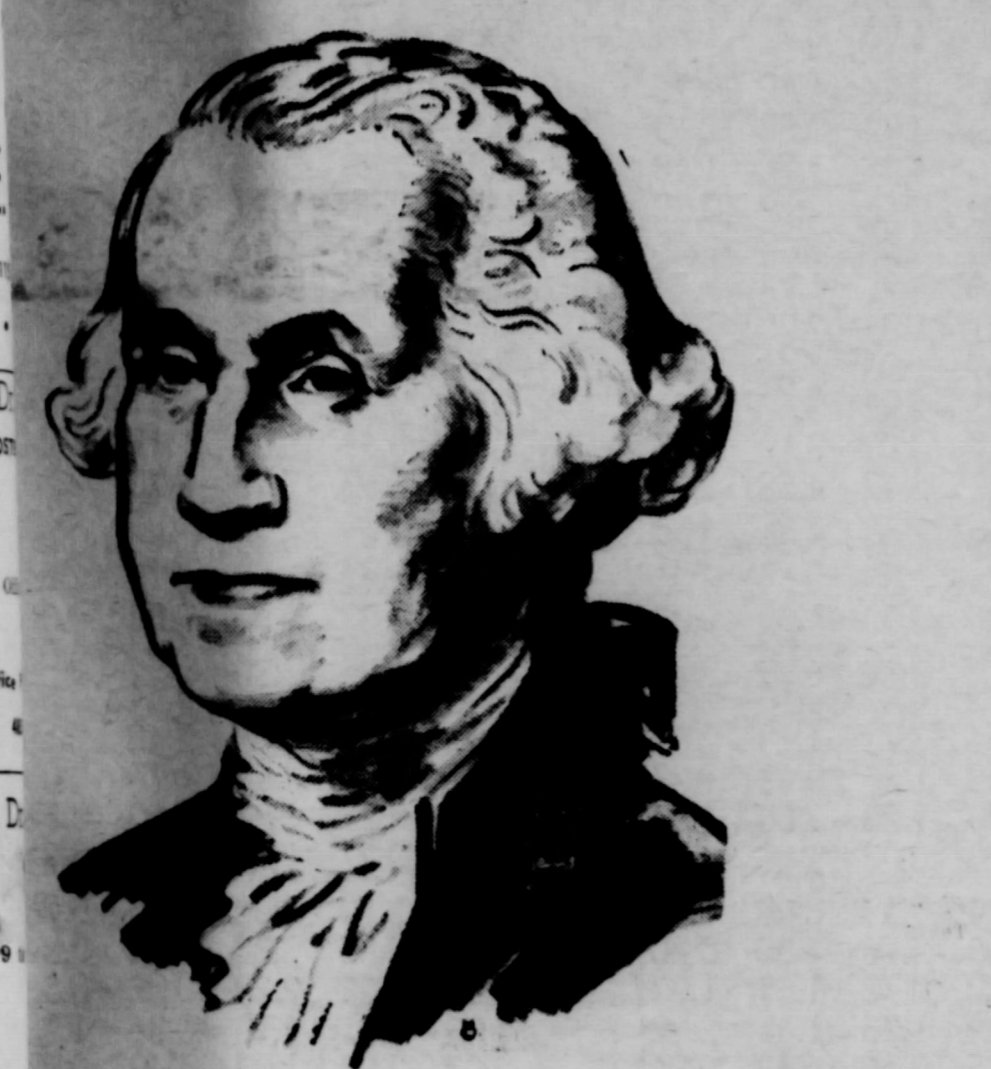
By Verlin behne

**Lynxettes Lose To Quail**  
 The Lynxettes traveled to Quail Tuesday night to play a practice game in order to keep in shape. It was a very good game but we lost 58-50. The girls scoring ran like this: Pearson 24; Martin 6; George 20. Others playing were: Copeland, Vernon, Holt, Tackett, Pool and Snowden.

The girls go to Happy tonight, and will play the winner of District 2-B next week for Bi-district. The place of play has not been decided yet. The winner of this game will go to Canyon the following week for Regional.

Lets all get out and back the Lynxettes all the way. Best of luck to the girls, from the staff of the Spearman Reporter.

By Verlin behne



We will be closed all day  
**WEDNESDAY FEBRUARY 22nd.**  
 George Washington's Birthday.  
**FIRST STATE BANK**  
 Spearman, Texas

**SUNBRELLE WEATHER RESISTANT**

PERFECT DRYING WEATHER

**With an ELECTRIC clothes dryer**

snap your fingers at rain or dust storms when you own an Electric clothes dryer because every day's a perfect drying day . . . electrically. Rain or shine, day or night, you just pop freshly-washed clothes in your electric clothes dryer, set the controls and your dryer does the rest.

Electrically, your clothes come out soft, fluffy and sweet-smelling, ready to iron or fold and put away. And just dial a dial.

See your Electric Appliance Dealer

**COMMUNITY SERVICE**

**4-H Dairy Foods Demonstrators**

Cinda Ellis

Karan Prechel

Outstanding ability to use and demonstrate dairy food products brought individual state honors in the 4-H Dairy Foods Demonstration program to Cinda Ellis, 16, of Lancaster, and Karan Prechel, 17, of Iowa Park. Each girl was awarded a beautiful inscribed wrist watch by the Carnation Company.

Cinda's demonstration was called "Cheese Pie," and Karan's was entitled "A Dip to Delight a Teen-age Appetite."

The Extension Service of the College of Agriculture, University of Texas, directs the program with the U. S. Dept. of Agriculture cooperating.

**Plant Disease Diagnostic Lab in Operation**  
 College Station. — After a year of trial operation, the Plant Disease Diagnostic Laboratory at College Station is now operating on a permanent basis. Director G. G. Gibson of the Texas Agricultural Extension Service in announcing the new status for the lab, said it offers a new service to the people of Texas.

Dr. Harlan E. Smith, extension plant pathologist, is in charge of the laboratory but will receive assistance from members of the Department of Plant Physiology and Pathology and others of the A & M College System.

During the trial year, Gibson said 1,205 plant disease specimens were handled by the lab. Most specimens were submitted by the State's county agents.

Primarily function of the lab, explained Director Gibson, is to lend assistance to county extension agents in their local programs which involve plants, either in the field, in the garden or about the home.

Here are suggestions from Dr. Smith on how this free service may be utilized by Texans. First, he says, the local county extension agent should be contacted concerning the plant disease problem. If the desired assistance is not available locally, the agent may send or suggest that a specimen be sent to the laboratory. Before collecting, packaging and shipping plant disease specimens, secure a copy of D-418 from the local extension agent and follow the suggestions listed. This form will be returned to the local agent along with disease control recommendations for delivery to the interested person.

Ordinarily, Smith says at least seven days are required to process a plant disease specimen and get the results of the laboratory tests back to the county agent. The time lapse may be longer depending upon the type of disease, the number of specimens being sent to the lab and information available regarding the disease. The heaviest receipts at the lab last year came during the months of April, May and June and reports on specimens were displayed as much as four to five weeks.

Harlan E. Smith, extension plant pathologist, offers suggestions for halting these losses. First, he says, when the soil temperature, at about 7 a.m., is 68 to 70 degrees F. at a depth of 3 to 6 inches over a 3-day period. Treating the planting seed is good insurance especially against seed-borne diseases but once the plant is growing, the protective period is over, says Smith.

**Wesco DRAPERIES**

Choose from the new and smart in fine drapery fabrics...decorator-approved textures, colors and designs. They'll be custom made into draperies to dramatize your home...expert workmanship to be proud of.

**PANHANDLE FURNITURE MART**  
 Phone OLive 3-4444  
 SPEARMAN, TEXAS

Buy Your New Home Now. Best for your present living comfort. Your Best Investment for the future.

You can now buy one of the new Homes under construction in Spearman with small cash down payment and monthly payments that are less than rent. See our representatives at the locations or Call Perryton collect at GGeneral 5-5431 or GGeneral 5-6962. Ask for A. R. Macias or Wesley Spencer.

**MACIAS CONSTRUCTION CO.**  
 Perryton, Texas

**DeSoto...prices now start just above the lowest**

Yes, the sharpest looking car on the road can be parked in your driveway for just a few dollars more than you'd expect to pay for a low-priced car. Make it a point to drive and price a De Soto before you decide. Truly, it's the most exciting car in the world today!

**THREE GREAT LINES TO CHOOSE FROM:**

**FIRESWEEP** • **FIREHOME** • **FIREFLITE**

245 hp • 270 hp • 295 hp

Big-value new owner for '57—priced just above the crowd. Medium-priced pace-maker in '57—exciting new beauty. High-powered luxury for '57 the best word in driving and driving.

YOUR DE SOTO DEALER PRESENTS GROUCHO MARK IN "YOU BET YOUR LIFE" ON RADIO AND TELEVISION...NBC NETWORKS.

**SPEARMAN MOTOR COMPANY**

316 W. Kenneth Phone OLive 9-3781  
 Spearman, Texas



WEATHER CHART

Table with 4 columns: Month (Aug, Sept, Oct), and 4 rows of weather data (11, 28, 56, 87, 29, 62, 50, 92, 55, 88, 88, 150, 85, 205, 82, 706, 216, 388, 596, 156, 3.21, 1.45, 3.88, 3.76, 2.48, 2.90, 1.49, 5.40, 3.63, 4.57, 3.85, 1.88, 3.07, 4.14, 0.94, 2.68, 2.23, 1.75, 1.58, 3.11, 1.00, 0.60, 3.67, 3.55, 3.23, 2.95, 1.22, 3.40, 1.50, 2.66, 1.36, 0.37, 0.00, 0.28, 0.35, 1.28, 1.26, 1.77, 0.96, 5.26, 1.88, 309, 5.25, 3.47, 0.94, 2.01, 1.82, 5.60, 12.11, 0.61, 1.36, 1.81, 0.55, 3.35, 2.82).

PRESS ASSOCIATION 1957

Spearman Reporter
Hansford Headlight, Published Thursday of each week in Hansford County, at Spearman, Texas
Publisher: WALTER ROGERS
Editor and Publisher: WALTER ROGERS
Address: Spearman, Texas
Subscription Rates: Single copy 5c, 12 copies \$0.50, 1 year \$5.00, 2 years \$9.00.

News Letter From Congressman Walter Rogers

Washington looked at him with such fear and trembling that he had replaced his Texas Stetson with an Ike Homburg. Texas has been in the publicity spotlight for a long time. Any state with all of the good features with which Texas is blessed, is bound to be in the spotlight now and then.

low in Virginia called me on the telephone and I had a good conversation with Frank by talking over my telephone through the Virginia man's radio to Frank. Then Frank would talk over his radio to the Virginia radio and his voice would come over the phone wire to me about 10 miles away.

Winter Is The Time To Kill Worthless Brush In Pastures
College Station, Feb. — A dead mesquite tree is worth more in economic value than a live one, declares G. O. Hoffman, Extension Range Specialist.

White Rust Hits Spinach In Gulf Area
College Station, Feb. — Weather conditions over the past few days have been favorable for the development of white rust disease on spinach, especially in the Gulf Coast area.

Mercury for '57 is bigger in every important dimension
This year's Big M is not only bigger in every dimension, but way up in power, beauty, performance, comfort, and luxury. Yet the price is still competitive with many models in the low-price field.

Hog Prices Up In 1957, Little Change For Cattle And Sheep
College Station, Feb. — Hog prices in 1957 will be well above early 1956 lows and will probably continue higher than last year's prices.

How Does Your Soil Rate?
College Station, Feb. — A farmer has to "know his soil" as well as a politician "knows his voters" if he expects profitable response from management principles.

How Does Your Soil Rate? (continued)
College Station, Feb. — A farmer has to "know his soil" as well as a politician "knows his voters" if he expects profitable response from management principles.

How Does Your Soil Rate? (continued)
College Station, Feb. — A farmer has to "know his soil" as well as a politician "knows his voters" if he expects profitable response from management principles.

How Does Your Soil Rate? (continued)
College Station, Feb. — A farmer has to "know his soil" as well as a politician "knows his voters" if he expects profitable response from management principles.

How Does Your Soil Rate? (continued)
College Station, Feb. — A farmer has to "know his soil" as well as a politician "knows his voters" if he expects profitable response from management principles.

How Does Your Soil Rate? (continued)
College Station, Feb. — A farmer has to "know his soil" as well as a politician "knows his voters" if he expects profitable response from management principles.

How Does Your Soil Rate? (continued)
College Station, Feb. — A farmer has to "know his soil" as well as a politician "knows his voters" if he expects profitable response from management principles.

How Does Your Soil Rate? (continued)
College Station, Feb. — A farmer has to "know his soil" as well as a politician "knows his voters" if he expects profitable response from management principles.

How Does Your Soil Rate? (continued)
College Station, Feb. — A farmer has to "know his soil" as well as a politician "knows his voters" if he expects profitable response from management principles.

THE AMERICAN WAY



RECONCILIATION WITH DEPOSITORY BANK

Table with 4 columns: FUND, Balance, Outstandig Checks, Book Balance. Lists various funds like Jury, General, Courthouse & Jail, etc.

FINANCIAL STATEMENT

Table with 5 columns: FUND, Balance Nov. 1, Receipts, Disbursements, Balance Feb. 1. Summary of Receipts and Disbursements.

OUTSTANDING BONDED INDEBTEDNESS

Table with 2 columns: Description of bonds and amount. Lists various bonds issued by Hansford County.

COME IN! SEE HOW THE BIG M HAS GROWN! IT'S 1957's

Biggest size increase
Biggest value increase too! Only car with Dream-Car Design, Turnpike Cruiser V-8 engine, Floating Ride



Mercury for '57 with DREAM-CAR DESIGN
JOE TRAYLER Your Friendly Mercury Dealer
211 Main Street — Phone OL 9-2451 — Spearman, Tex.



OWENS SALE \$50. on any washer
LYRIC THEATRE \$5. ticket coupon
SPEARMAN \$2.50 Steak to win
SPEARMAN Free Hair Cut
DUB'S T. V. Apply \$10 on any TV

