

January 21, 1965, Volume 56, Number 5

Learning scheduled with Highway Commission

The request will include re-routing of Highway 15 from Spearman, Texas from Spearman, Gruber and Stratford Dalhart. This proposal may more than two years on the part of the representatives from Stratford, Gruber, Perryton, Booker, Darr, Follett will compose a delegation. Representatives Woodward and Enid, have also invited to

A group representing for a new north-south highway designation present at this meeting, headed by representatives from Borger and near will ask for a new replace Highway 15 through Big Springs.

Hansford County residents will include John Don Floyd, and Charles



The Spearman Reporter

January 28, 1965, Volume 56, Number 9

THE SPEARMAN REPORTER, Spearman, Texas, Hansford County



ASTRODOME

The Astrodome Stadium in Houston is the world's first air-conditioned, domed all-purpose stadium, it will be used by the Houston Sports Association, the Houston Livestock Show & Rodeo & Dr. Billy Graham's religious revival. The stadium covers 91 acres of land, and has 41,000 cushioned seats and 4,000 pavilion seats. There is paved parking for 30,000 cars. April 9, will be the first baseball game of the 1965 season between the Houston Astros and the New York Yankees and will be played in the new stadium.

March of Dimes Drive Hits All Time High of \$3,548.77 For '65

Hansford county hit an all time high in their March of Dimes drive this year, according to the Chairman, Mrs. Virgil Matthews. The collection of \$3,548.77 for the drive will probably be augmented by additional donations to be made before the final report is made next week.

The largest source of income came from the Radiothon held over the local radio Sunday and with some sales being made on Monday. This program brought in \$1,967.25. This nearly doubled the successful radio program last year for the March of Dimes.

Next largest income for the county came from the Mothers March held last Sunday. These ladies brought in \$635.26. The Mothers March at Gruber accounted for \$746.40. All other sources of the drive brought in \$139.85. This included a youth dance, a kidnap coffee and rolls program, business men's donations and the school donations.

A great deal of credit is due most of the ladies organizations of Spearman, who worked diligently all during the March of Dimes Drive. A number of local artists donated painting that brought in quite a large sum of money. They are due special thanks for their unselfish contribution Drive.



Professional Artist and teacher, of his art class, Mrs. Bob Skinner and Mr. Dord Fitz and two members of his art class, Mrs. Willis Sheets, are holding one of the paintings that was donated for the March of Dimes Telethon.

Irrigation Farmers Hear Plan For Sugar Beet Plant At Etter, Texas

More than eighty irrigation farmers were present at the court house in Spearman last Friday afternoon to hear Don Anthony, President of the North Plains Sugar Cooperative, explain the prospects for establishing a twenty million dollar sugar plant at Etter, Texas.

The speaker outlined that the Houston Bank Cooperative would loan ten million of the needed money to establish a plant and place 22,500 acres of land in a seven county area into the sugar beet production with a government allotment.

The speaker explained that the North American Sugar Company would build and operate the plant under a five year contract, whereby they would have the privilege of buying all the assets of the corporation. This leaves the prospective irrigation farmer-producer to raise a little more than 6 million dollars.

Present plans call for any producer who receives a government allotment of sugar beet acreage to provide 20 per cent of the initial loan fund in cash. The basis of establishing the liability is \$280.00 per allotted acre. Thus if a producer plans an allotment of 59 acres, he would provide 20 per cent of \$14,000.00. However there is a plan of payments from a Loan source where by the producers pays his indebtedness at the rate of \$2.07 per

ton for a period of 8 years, or \$1.50 per ton for a period of 10 years. This collection will automatically be collected when sugar beets are marketed. The estimate of production is 20 tons per acre on irrigated land. The present price is \$16.00 per ton, thus an acre production would be marketed at \$320.00 an acre & the deduction of \$2.07 would be collected at the time of marketing. As matters stand at this time, little progress has been made, since officials of the Association are seeking the financial loan that will be needed to build and place in operation the twenty million dollar plant.

It appears certain that with the government allotment of acreage, the cost of building and placing in operation of a sugar plant in the seven county area of the North Plains, can and will pay itself without too much hardship to producers. It is anticipated that the resources of the plant will be purchased by the North American Sugar Company at the end of five years operation, thus producer who provide 20 per cent in cash will be repaid for their investment plus interest.

The seven counties in the North Plains Sugar Beet Growers Association are Moore, Ochiltree, Hansford, Sherman, Dalhart, Hartley and Hutchinson.

It is recommended that each producer accept not less than 20 acres of the allotted acreage, nor more than 75 acres of the allotment.

BOND ISSUE TO BE VOTED ON SATURDAY FEB. 20

Spearman voters will go to the polls once again, Saturday, February 20th, to vote on a \$389,000.00 bond issue, that the Spearman school board members feel is almost a must for our school.

The bond issue will be divided up into three parts this time, with the voters having the privilege of voting for, or against any or all of the bond issue.

Proposition No. 1 will be \$186,000.00 for the Junior High and Elementary school improvements.

Proposition No. 2 will be \$62,000.00 for the High school improvements, including paving, grass, and watering system for the new grass.

Proposition No. 3 will be \$118,000.00 for the football track, and field house, which will be located near the new high school.

Postal Business Shows Some Loss

Postal business in the Spearman post office during 1964 was off \$558.51 from 1963, and Postmaster Donald Smith attributes this decrease to the fact that people just aren't mailing as many Christmas cards. The December total receipts in 1964 amounted to \$9,734.28 as compared to the December 1963 \$11,091.06.

Mr. Smith said his office ordered 30,000 five cent stamps above their normal stock to take care of extra Christmas mailing this year, and the stamps were never opened. This hasn't happened in the 11 years he has been Postmaster.

The local post office did \$59,549.25 worth of business in 1964. In 1963 the total was \$51,497.75, and this figure included the increase of postal rates for that year.

Taking into consideration that the 1963 totals were higher, it was in part due to the postal rate increase, so Mr. Smith stated that actually, this past year's business was basically the same.

Attend Gov's Inauguration

J. L. Brock, Peyton Gibner, J. D. Helms, & Ted Collier attended the Governor's Inauguration Monday and Tuesday of this week.

The victory dinner was held Monday Night, in the Municipal Auditorium, with entertainment by Boss Cartwright, and Edie Adams. Swearing in ceremonies were held at noon Tuesday.

The reception was held at the Governor's Mansion at 3:00 p.m., Tuesday. All of the men attending reported have an excellent time.

A Look At Spearman's Growth And Improvements For 1964

A look of the overall growth expansion in the City of Spearman at the close of 1964 is quite an interesting picture. Building permits issued in 1964 for 40 homes were built for a total of \$473,730.00 value. On Feb. 25, 1965, 8 business firms, 7,750. City construction (water, sewer and paving) amount to \$46,000.00. This gives an overall total of \$892,470.00 value within the city limits during the year.

This does not include Horizon and Gas building and expansion at the cost of \$35,000.00, the new Machine Shop, Ed Mundy Paint Shop, R. L. Uptegrove's paint shop, office extension at the Northern Natural's Company, and several Cattle dealing lots which have all been constructed outside the City limits. Also not included in this is the new Clinic now for construction by Dr. Earl Vak, and Baker-Taylor Company's office and yard expansion in 1964 the total number of residential units was 48 at the

cost of \$641,320. One church, \$46,500. 14 business \$177,370, one-half the cost of the school which was begun in 1962 was \$500,000. City expansion projects totaled \$48,000. Summing this up makes \$913,190. and in comparing the years one can see where the differences were.

In 1964 General Telephone Company installed 125 more telephones in Spearman, spent \$23,109.00 within the city limits on aerial and additional facilities. Toll improvement (long distance service, additional and improved) amounted to \$19,160.00. Rural expenditures within the county covered by this Company amounted to \$56,891.00.

National Educator Is Guest Speaker At C. of C. Banquet Monday Feb. 1

Announcement was made this week by Chamber of Commerce Manager, Don Floyd that the annual membership banquet for the Spearman organization would be held next Monday evening, February 1st beginning at 7:30 p.m. The banquet will be held at the Junior high school cafeteria and the public is invited to attend. Members and their wives are urged to attend and anyone interested in the public work being accomplished by the Chamber are cordially invited.

Guest speaker for the Banquet is Dr. Floyd D. Golden of Amarillo, one of the outstanding educators of the nation. Dr. Golden is Educational Consultant for Rittenberry and Rittenberry Architect firm of Amarillo. He is immediate past president of Eastern New Mexico State University. He is one of the Thirty educators of the United States of America selected to go to Russia to study their educational program. He is in authority on woman suffrage and Russian educational system.

Dr. Golden is a very entertaining speaker, and will make you enjoy this annual membership meeting.

While the complete program for the Banquet has not been completed as of noon Wednesday of this week, Manager Don Floyd informs that the annual organizational award will be made as a feature of the program. Highlights of the past years C. of C. activities will be given by the outgoing (also the incoming) president, James Bramlett. A report from the Industrial foundation of the Chamber will be made by Chairman, J. L. Brock. Much of the music for the program will be presented by Lewis Tilford, choir director of the First Methodist church. Per-

haps a preview of the program of work for the Chamber for 1965 will be given as part of the program.

Tickets for the banquet can be obtained by phoning the Chamber of Commerce, phone no. 3330. The price is \$2.50 each. In case you fail to secure tickets, they can be obtained at the entrance of the banquet hall Monday evening February 1st, when you attend.

Farm Labor Office Invites Applicants

Richard L. Curtis, in charge of the Farm Labor Office in the Spearman Court House, announced today that the office has set aside Monday of each week as the day when farmers and ranchers and applicants can meet to gether in his office.

Although Mr. Curtis invites farmers and applicants to come to his office any day, this special day has been set aside for a general meeting.

Farmers in Hansford, Lipscomb, Ochiltree and Hutchinson (north of the river) counties are served from the Spearman office.

Although this office is primarily a farm labor office, Mr. Curtis will take applications for work of any sort.

This farm labor DAY (Mondays from 8-5) will be held during January, February and March in the Spearman Farm Labor Office.

- Weather

January 20	53	23
January 21	60	28
January 22	55	31
January 23	36	24
January 24	65	16 .04
January 25	59	13

Temperature: January 12 — 18
Hi. 54 53 58 53 48 70 60
Lo 18 17 21 35 25 23 20

Snowfall Brings Little Moisture In Hansford Area

Snowfall that fell Friday night and early Saturday morning of last week brought a little more than an inch of snow and .02 inches of moisture, according to the report of Mrs. Pat Cates, official weather observer at Spearman.

High winds up to 40 miles an hour Saturday drifted the snow and made driving over the Gold en Spread area hazardous. So far as we can learn there were not any serious accidents in Hansford county.

HOSPITAL NEWS

Hansford Hospital patients this week are: Edmond Cotton, Pearl Keith, W.C. Blevins, Kay Steddum, Verma Jean Bonne, Alma Kizzir, Jeff Stubbiefield, Mary Garcia, Bob Hays and Darlene Bursell.

Patients dismissed were: Anna Mae Hash, Alfred Lemons, Orlarla Balderas, Danny Sheppard, Paul Hays, Geneva Hearron, Mike Close, Este Kenneti, Frances Ramirez, Ray Grisham, Eva Hale, Betty Mitchell, Linda Bush, Sharon, Park, Travis Reger, Ansel Lock, Thelma Scott, William Wilkerson, Cliff Overton, Paul Hazelwood, Kathy Nelson, Cheryl Nelson, Don McLain, Nora Cowert, Dean Hassler, Orlena Riley and Kyra Crum.

Lynx Win At Tyrone, Okla. Friday Night

Spearman Lynx basketball team won a hard fought victory from Tyrone, Oklahoma with a score of 68 to 50. Jimmie Kirkland was high scorer for the Lynx with a total of 18 points.

Reversing the results of many contests this year, the Lynxettes lost to Tyrone 83-41.

FORM W-2 REMINDER TO EMPLOYERS

Employers are required to furnish Form W-2, showing income and social security tax information, to all their employees on or before February 1, according to Hubert B. Hamill, Administrative Officer of the Internal Revenue Service in Amarillo.

At Amarillo Stock Show

Perhaps one of the largest entry lists of FFA members ever to leave Spearman for the Amarillo Stock Show carried 29 head of livestock to this year's show. Chapter members carried 14 bar rows, one steer and five lamb to the show.

Those taking barrows to the show were: Phillip Renner, Glen Blodgett, James Schnell, Terry Pattison, Charles Gilliam, Kenneth Banks, Ronnie Willis, Clay Schnell, Ricky Hovetter, Monty Lusby and Ricky Butler.

Glen Blodgett entered the only steer for FFA boys in the show. Showing lambs were: Rick Hendrix, Monte Black, Johnny Holland, Ronnie Beck and Danny Robertson.

In the barrow division the following Spearman FFA members placed as follows: Glen Blodgett, 4th for light Durock; James Schnell, 5th for Chester White; Clay Schnell, 12th for heavy Cross Breeds; Phillip Renner, 10th for light weight Hampshires.

In the lamb division Montie Buck placed 6th in the light weight Hampshire lambs.

Danny Robertson placed 13th in the heavy cross breed division.

Local Farmer Wins Tractor



Pictured above is John Cole on the contest at Crawford Implement Company, and was very surprised when it was learned that he had won the new tractor. Ronnie Schaefer, and Mrs. Cole are shown with John as he mounts his new M & M tractor for the first time.

PRICES EFFECTIVE THRU SAT., JAN. 23-LIMIT RIGHTS RESERVED

HEAT & SERVE

HAMS

BUTT PORTION
MORE CENTER SLICING

49¢

Fully Cooked lb. **89¢**

PREMIUM BACON

59¢

BREADED STICKS

65¢

NOT MED. SIZE YELLOW ONIONS

3 lbs **19¢**

YAMS

2 lbs. **25¢**

14-oz. can (Tax Incl.) **89¢**

5-oz. **98¢**

1-lb. **29¢**

1-lb. **39¢**

1-lb. **35¢**

1-lb. **45¢**

MINA-1000 ISLAND

8-oz. **1.00**

8-oz. **39¢**

8-oz. **29¢**

16-oz. **59¢**

16-oz. **49¢**

PKG. **65¢**

5-oz. **19¢**

Noodles 3oz Can **15¢**



THE SPEARMAN REPORTER

Will J. Miller, Editor & Publisher

213 Main Street, Spearman, Texas

Successor to The Hansford Headlight, Published Thursday of each week in Hansford County, at Spearman, Texas
Second Class Postage Paid at Spearman, Texas

CLASSIFIED ADVERTISING

SUBSCRIPTION RATES:
In Hansford and adjoining counties, One Year \$3.50
Out of Hansford and adjoining counties, One Year \$4.00
Classified Advertising Rates, 4 cents a word.

Card of Thanks, 4 cents per word. Display rates on request.
NOTICE TO THE PUBLIC: Any erroneous reflection upon the reputation or standing of any individual, firm or corporation that may appear in the columns of THE SPEARMAN REPORTER will be corrected when called to the attention of the management.

Retail Credit Association Annual Meeting To Be Held February 3rd.

Stockholders of the Spearman Retail Credit Association will hold their annual meeting at the Farm Bureau guest room, February 3, beginning at 7:30 p.m. Business to be transacted at the meeting will include the election of officers and directors of the organization. All stockholders are urged to attend the meeting, but if they find it impossible to attend, please fill out the proxy form mailed you this week and designate Charles Gilliam, Claude Owens or Brad Beedy to cast your vote. The present officers and directors are: Jimmy Shielknight, president; Frank Massad, vice president; Charles Gilliam, secretary-treasurer. Directors are: Claude Owens, Brad Beedy, Vance Snider and L. L. Anthony.

C. of C. Board Meeting Jan. 29

Announcement was made this week by Chamber of Commerce Manager, Don Floyd that the regular Board of Directors meeting for the Chamber had been changed from Thursday to Friday morning. The change was made so members of the Chamber can join the board in their planning meetings. This week Friday January 29 the meeting will be held at the Chamber of Commerce office at 9:30 a.m. Members are urged to attend since the schedule calls for discussion of the budget for 1965, program of work for 1965, report from industrial prospects, and the annual membership banquet. The Chamber of Commerce board of directors meeting in the future will be held on the 2nd and 4th Tuesdays of each month. Members of the C. of C. are urged to attend when possible. Their attendance will give them opportunity to find out what the organization is doing, and give individual members the opportunity to give their advice to board members. These meetings are ideal for members to make suggestions as to what they would like the organization to do. Coffee will be served.

AGENT IS HONORED

Paul Gumfory, of Gruver, representative of the South Coast Life Insurance Company has been advised that he has qualified for Membership in the President's Cabinet, the Company's highest honor for its representatives. The announcement was made by Art Lara, Agency Manager, for the Company in the Panhandle Plains area. Mr. Lara said that Mr. Gumfory has qualified for this award since it was first offered in 1950. Paul Gumfory has been in the life insurance business since 1957 and has qualified for his company's top honors since his first full year in the business.

BERRY CLEANERS

Will Continue To Serve You

Kathryn, Mary, Floydcan, and Don offer to you the quality service to which you have been accustomed. We invite your continued patronage.

BERRY CLEANERS

Spearman HD Club Met January 22

Mrs. W. A. Schubert was hostess to the Spearman Home Demonstration Club January 22. Mrs. H. H. Crooks, vice-president conducted the business meeting. Year books were passed out and secret pal names drawn. Mrs. Jackson and Mrs. Garnett are to take training on meat cookery for the January program. The old age home project was a club discussion. A subscription to Reader's Digest was sent to Pioneer Manor.

Attending were Mesdames E. W. Fielding, Carl Hughes, Claude Jackson, H. H. Crooks, B. J. Garnett, Richard Reimund, Richard Shedeck, W. A. Ellsworth, John Kenney, a guest, Mrs. E. S. Uptergrove and the hostess.

Robbie Yates of Stratford and Deta Blodgett enjoyed the past weekend in Dallas.

Mr. and Mrs. Melvin Perry and Children of Bovina are guests in the home of Mr. and Mrs. Garland Head.

Mrs. Lee Presents B and PW Program

The Business and Professional Women's Club met in the hospitality room of the First State Bank Thursday evening, January 21 for a guests night program. The serving table was covered with a white cloth and centered with an arrangement of yellow tropical flowers and greenery. A silver coffee service and crystal appointments completed the table setting.

Mrs. V. N. King presided at the coffee service. Mrs. R. E. Lee, dressed in a native African costume presented the program by showing and narrating slides made on a seeing safari in Nairobi, Africa last year.

The flower arrangement was presented Mrs. Lee in appreciation of her having given the program.

Attending were Messrs. and Mesdames Harold Howertel, Virgil Floyd, John Bishop, Russell Welch, J. W. Walker, Rex Sanders and P. A. Lyon Sr. and Mesdames Sada Hoskins, Viola Graves, Mahle Edwards, Deta Blodgett, Jennie Massad, Lura Belle Crawford, Rhoda Overton, Carol Serog's, Ola Mae Henry, Penny Pearson, Gladys Richardson, Jessie Bratton, Lucille Lewis, Muriel Fryer, Eleanor Sanders, Mae Bretz, Leona King, Miss Vera Campbell and guest speaker, Mrs. R. E. Lee.

R. C. Porters' Host Bridge Party

Mrs. Chalmers Porter entertained with a bridge party Saturday evening.

Mrs. Knox and Mr. Miller held high scores. Enjoying the evening, were guests, Mr. and Mrs. Richard Holton and Mr. and Mrs. J. R. Keim and members Messrs and Mesdames Billy Miller, Don Knox, Garland Head and Chalmers Porter.

Mrs. Blodgett Hosts Fine Arts Department

Mrs. Deta Blodgett was hostess to members of the Fine Arts Department of the Twentieth Century Club January 21.

Mrs. R. C. Fisher, in charge of the program introduced Mrs. Roy Bull, an interior decorator who gave the program. Mrs. Bull used an abstract painting by Mrs. Nelda Sheets to demonstrate how one object can be used in selecting colors and materials for decorating a room or an entire home. The program was interesting and informative.

Attending were Mesdames Tom Sutton, T. D. Sansing, R. C. Porter, John Allen, P. A. Lyon, Sr., George Buzzard, D. E. Spooone more, V. N. King, R. C. Fisher, Bill Massie, C. U. Pope, Olin Sheets, the guest speaker, Mrs. Bulls and the hostess.

Saturday evening dinner guests of Mr. and Mrs. Sonny Nollner were Dr. and Mrs. D. E. Hackley and Mr. and Mrs. James Lair.

Wagon Train Members Will Meet

Members of the Rolling Plains Wagon Train will meet at 7 p.m. February 4 in the hospitality room of the Farm Bureau Building. Mrs. Crooks ask that members bring cookies and donuts to the meeting.

Mrs. Head Honored

Mrs. Troy Sloan entertained with a surprise birthday party for her sister, Mrs. Garland Head Wednesday morning.

Coffee and cake and a morning of visiting was enjoyed by the honoree and Mrs. Kiff White, Mrs. John Trindle, Mrs. James K. Hicks, Mrs. Chalmers Porter and the hostess.

Mr. and Mrs. George Buzzard transacted business and visited Mr. and Mrs. Joel Wright in Amarillo last week.

Mr. R. E. Lee is in Wichita Falls on business.

Happy Homes HD Club Met January 21

The Happy Homes Demonstration Club met January 21. Marie Sparks as hostess.

Nell Cummings called the meeting to order. The devotionals read by Dorothy Groves, Catherine Patterson was elected mentarian.

The project for the day "Pioneer Manor", Dorothy Groves was appointed to look into Valentine needs at Pioneer Manor.

The auction was brought Connie Vardell and was presided by Marilyn Groves. Attending were Mesdames alyn Barnes, Connie Vardell, Gailther, Louise Mullins, Marie ette Evans, Marilyn Groves, Wanda Schubert, Margaret A. sions, Dorothy Groves, Rose nings, Veye West, Catherine terson, Nell Cummings, an hostess, Marie Sparks.

Rev. and Mrs. George Bull were dinner guests of Mr. Mrs. R. E. Martin Wednesday evening.



PIILLSBURY FROSTING MIXES
White, Choc. Fudge, Lemon Cream, Double Dutch, Swiss Chocolate
REG. PKGS. 2 For 69c

PIILLSBURY LAYER CAKE MIXES
WHITE CHOC. FUDGE LEMON CREAM DOUBLE DUTCH SWISS CHOC. 3 43c Pkgs. 1.00

FOOD CLUB UNSWEETENED GRAPEFRUIT JUICE
46-oz. Cans 39c

FOOD CLUB FANCY FRUIT COCKTAIL
303 Cans 5 1.00

LIQUID TOPCO BLEACH
1/2-Gal. Plastic 29c

REG. DRIP OR FINE GRIND FOLGER'S COFFEE
1-Lb. Can 79c

REGULAR OR DRIP GRIND FOOD CLUB COFFEE
1-Lb. Can 69c

U.S. NO. 1 GOLD RED POTATOES
10 89c



GREEN GOLD HEADS CABBAGE
5c

PURPLE TOP TURNIPS
10c

IDEAL TASTY ASSORTED FLAVORS ICE CREAM
1 GAL CARTON 39c

With \$5.00 Or More Purchase Without Other Purchase 49c

DONALD DUCK FROZEN ORANGE JUICE 12-oz. Can 49c
SARA LEE BUTTER BAKED PECAN ROLLS 11-oz. Pkg. 79c
SARA LEE DANISH APPLE CAKE 14-oz. Pkg. 79c
DARTMOUTH FROZEN WHOLE POTATOES 2-lb. Pkg. 39c
WHOLE Food Club Tomatoes 5 303 Cans \$1.00
SANTA ROSA PINEAPPLE JUICE 3 46-oz. \$1.00
WAGNER ORANGE DRINK 4 32-oz. Cans \$1.00

BREER RABBIT SPECIAL LABEL WAFFLE SYRUP 32-oz. Bil. 43c
GOLD STANDARD SALMON Tall Can 49c
CHUNK STYLE LIGHT MEAT STAR-KIST TUNA 3 6 1/2-oz. Cans \$1.00
BUDGET PACK Macaroni or Spaghetti 2-lb. Pkg. 39c
NABISCO OREO Creme Sandwich 2 1-lb. Pkgs. 89c
IDEAL HOLLAND Dutch Style Bread 1-lb. Loaf 19c
IDEAL RASPBERRY TWISTS Pkg. of 6 33c

BETTER FOODS FOR LESS

Come let Ideal's "Big Store" variety open up a wonderful new world of interesting menu possibilities... Take advantage of our Everyday Low Price Policy that holds prices down day after day, week after week. It's the modern way to save on your important food budget!

SWIFT PROTEN BEEF ROUND STEAKS
WHOLE SLICES Lb. 89c

SWIFT PROTEN BEEF SIRLOIN STEAK 89c

SWIFT PROTEN BEEF SIRLOIN TIPS 98c

FRESH LEAN GROUND BEEF 49c

CHUCK WAGON BRAND SLICED BACON 55c

WELSON'S CERTIFIED SLICED BACON 2-lb. Pkg. \$1.09

GORTON'S BREADED CATFISH STICKS 8-oz. Pkg. 45c

WELCH'S Grape Jelly 4 10-oz. Jars \$1 20-oz. Jar 39c

WELCH'S Grape Juice 4 10-oz. Jars \$1 3 20-oz. Jars \$1

WELCH'S Fruit of the Vine 20-oz. Jar 39c

QUICK RELIEF Excedrin Tablets 81. 88c

MILD Jergen's Lotion 6 1/2-oz. Size Tax Includ. 59c

GIANT SIZE TIDE DETERGENT Box 79c

GIANT SIZE BLUE CHEER Box 79c

LIQUID CLEANER TOP JOB WITH AMMONIA 28-oz. Bil. 47c

PERSONAL SIZE IVORY SOAP 4 Bars 29c

LARGE SIZE IVORY SOAP Bar 17c

BATH SIZE CAMAY SOAP 2 Bars 25c

BATH SIZE ZEST SOAP 2 Bars 43c

LARGE SIZE LAVA SOAP 2 Bars 35c

IDEAL DAIRY FOODS KRAFT PHILADELPHIA BRAND CREAM CHEESE
3 8-oz. Pkgs. \$1.00

KRAFT-PIMENTO-PINEAPPLE, OLIVE-PIMENTO JAR CHEESE 5-oz. Jar 29c

BLUE BONNET MARGARINE 1-lb. Pkg. 29c

HOUSEHOLD CLEANER SPIC And SPAN Giant Size 89c

WITH BLEACH Comet Cleanser 2 14-oz. Cans 29c

FOR DISHWASHING LIQUID JOY 12-oz. Can 37c

FOR DISHWASHING LIQUID THRILL 12-oz. Plastic 39c

WITH BLEACH Oxydel Detergent Giant Size

DETERGENT PREMIUM DUZ Large Box 59c

OTTERBONT SALVO TABLETS Giant Size 64c

CONTROLLED SUDS DASH DETERGENT Giant Size 79c

FOR ELECTRIC DISHWASHERS CASCADE Pkg. 47c

LIQUID CLEANER MR. CLEAN Quart 69c

DOWNY Fabric Softener 17-oz. Bil. 49c

Happy Homes HD Club Met January 21

The Happy Homes Demonstration Club met January 21, with Marie Sparks as hostess. Nell Cummings called the meeting to order. The devotionals were read by Dorothy Groves. Catherine Patterson was elected secretary.

The project for the day was "Pioneer Manor". Dorothy Groves was appointed to look into the Valentine needs at Pioneer Manor. The auction was brought by Connie Vardell and was presided over by Marilyn Groves.

Attending were Mesdames: Evelyn Barnes, Connie Vardell, Gaither, Louise Mullins, Marieette Evans, Marilyn Groves, Wanda Schubert, Margaret Anderson, Dorothy Groves, Rose Cummings, Veye West, Catherine Patterson, Nell Cummings, and hostess, Marie Sparks.

Rev. and Mrs. George Boll were dinner guests of Mrs. R. E. Martin Wednesday evening.

SERVE LESS

new world of in-
expensive Low Price Pe-
it's the modern

PEAKS
89¢

89¢

98¢

49¢

55¢

SE 6-oz. 39¢

SE 24-lb. \$1.19

DAIRY GOODS
ADELPHIA BRAND
CHEESE
\$1.00

APPLE, OLIVE-PIMENTO
5-oz. Jar 29¢

14-lb. Pkg. 29¢

GIANT SIZE 89¢

2 14-oz. Cans 29¢

12-oz. Can 37¢

12-oz. Plastic 39¢

GIANT SIZE 59¢

GIANT SIZE 64¢

GIANT SIZE 79¢

Fig. 47¢

Quart 69¢

17-oz. Jar 49¢



The Spearman Reporter

"Art As An Investment"

"Art As An Investment" was the program topic at a recent meeting of the Home Science Department of the Twentieth Century Club in the home of Mrs. Carl Archer.

Mrs. Nolan Holt talked of art in the home and told how to select objects of art that would please individual collectors.

Mrs. Guy Fuller discussed various artists and told how in earlier days their creations went undiscovered and could be bought, but, now their values are beyond imagination. She showed

part of the Dord Fitz collection including such artists as Matisse, Modigliani, Franz Kline, Elaine de Kooning, a sculpture that Vera Beth Hicks created under study with Louis Nevelson and also some of her collection of Calages by Jim Simmons of Taos and paintings by Charlie Brummell of Colorado Springs. She also showed a Brummell belonging to Ruth Skinner and an Elaine de Kooning of Beth Phelps.

Attending were Mesdames Frank Davis, Guy Fuller, Fred Holt, J. R. Keim, O. C. Holt, G. R. Kilmore, C. A. Kleeberger, Nolan Holt, Johnnie Lee, C. J. Renuer, J. R. Stump, Joe Trayler, Everett Tracey, H. H. Chevalier and the hostess.

Mr. Howard Goodrich of Gruver spent Saturday evening visiting Mr. and Mrs. R. E. Martin

Charlene Bulls

INTERIOR DECORATOR
659-3202 1102 Townsend
Spearman, Texas

REG. HEREFORD SALE

**60 BULLS - HORNED & POLLED
26 FEMALES**

Yearlings & Over - Not highly fitted but in sound condition ready to work for you!

FRIDAY, FEBRUARY 12, 1965

Guymon, Oklahoma

FIRST ANNIVERSARY

Special Stocker And Feeder Sale

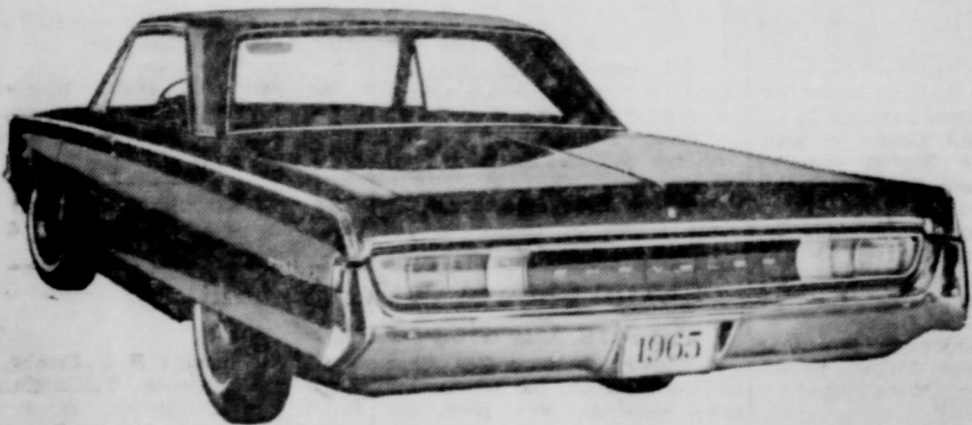
February 10, 1965, 12:30 P. M. (CST)
AT GUYMON, OKLAHOMA

We already have a large number of consignments. List your consignments early. Call us collect and let us know what you have coming.

Panhandle Livestock Commission Co.

Phone (405) 338-3378 Guymon, Oklahoma

See us. We deliver:
**5 years or 50,000 miles
of protection,
not promises.
CHRYSLER '65**



*Only Chrysler in its class gives you 5 years or 50,000 miles of warranty protection like this: Chrysler Corporation warrants, for 5 years or 50,000 miles, whichever comes first, against defects in materials and workmanship and will replace or repair at a Chrysler Motors Corporation Authorized Dealer's place of business, the engine block, head and internal parts, intake manifold, water pump, transmission case and internal parts (excluding manual clutch), torque converter, drive shaft, universal joints, rear axle and differential, and rear wheel bearings of its 1965 automobiles, provided the owner has the engine oil changed every 3 months or 4,000 miles, whichever comes first, the oil filter replaced every second oil change and the carburetor air filter cleaned every 6 months and replaced every 2 years, and every 6 months furnishes to such a dealer evidence of performance of the required service, and requests the dealer to certify (1) receipt of such evidence and (2) the car's then current mileage.

**SPEARMAN MOTOR CO.
316 West Kenneth**

**Texas Congress of Parents and Teachers
Certificate of
Superior Achievement**

Awarded to WAKA Parent-Teacher Association for

superior membership enrollment that included both parents (or guardians)

of each child in school, all school faculty members, and other adults for

the 1964-1965 membership year.

Dated this 11 day of November 1964

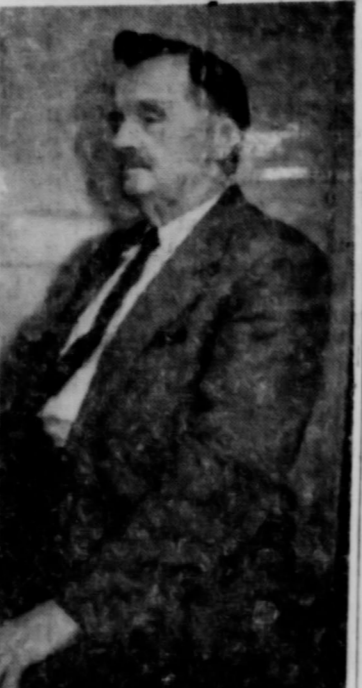
**Certificate
Awarded
Waka P. T. A.**

Waka P.T.A. is one of two Parent-Teacher Associations in

District 19 with 100% membership in the local association.

The parents of all the school children are members, and enough interested people in the community with no children in school are members to swell the membership to a total of 62.

This is the third consecutive year that Waka has been awarded this Superior Achievement Certificate.



Some of the most thrilling stories ever told were by a bunch of cowboys around a campfire. Camped by the chuck wagons. They were experiences. The cowboys had to be as hard as nails, and as fearless as a lion to live the rough rugged life of a pioneer and a cowboy. To face the rugged

west in the early days, when the country was open, and the winch-ester was the only law of protection man had against man or beast. When they had to face life alone-out on an open prairie, they had to be men who were neither afraid of man nor beast to survive at that, many of them are buried in unmarked graves. Some had close calls to even come out and tell their own stories. Only a very few cowboys who lived around the turn of the century are living today, see?

There is an old man in our town in his eighties and he was brought up on a ranch, and traveled or worked cattle all over west Texas and N. M. He was a Bronk Rider he always rode into camp if the horse broke into bucking without a moments notice. He is as straight as an Indian. Active as a boy. Goes to his business everyday. When I drop by to see him, and he is not busy, he is always glad to talk about fast horses and bucking bronks, and fine Registered cattle. He is not only a judge of what horses and cattle are, but he is a judge of what they will make when they are grown. One of the tragedies he told me about was a registered bull calf. He was a breed of Domino Hereford strain. A young bull was brought up as a pet & he was exercising him to get him ready for the bull sale. In a playful mood the animal threw up his head and hit the rammer on the chin and broke his jaw. This was a serious accident.

One of his stories was most thrilling to me, around the turn of the century ten cowboys were moving three thousand head of cattle out of the brush to the market. They bed them down for the night. The next morning as they were rounding them up out of the Mosquite bushes out come two timber wolves, or some call them lobos. They are a menace to the ranches for they kill cattle and sheep. The dog came out first he weighed 260 lbs. And he threw a lasso over his neck, with his sharp teeth he cut that rope like a knife. He made another loop and this powerful wolf cut his rope the second time. By that time two other cowboys threw a rope over his head at the same time and the horses pulled back and strung this vicious animal out. The other cowboys jumped down and cut a stick and put it in his mouth, one held him by his ears, and the other took a cord and tied his mouth hard and fast by wrapping the cord around on each side of the stick in his mouth he was disarmed and no more danger in him. The other cowboys caught the female, (she weighed 135 lbs.) and there were ten cowboys putting on the greatest shows ever staged on the range by roping the most destructive animal the cowmen had to put up with on the open range. The state gave a twenty-five dollar bounty on these lobo wolves. Which was quite a bounty for a cowboy to catch one.

The two wolves are now on their way for a fifty-mile hike for the country offered a bounty for their scalps. These cowboys started towards the wagons to hitch their prey to the wagon. They would fall over on their side and the cowboy would drag them with his horse, when he stood this rough rocky ride as long as they could they would jump up and lead. Then they would balk again and fall on the other side, and they soon found out it was as rough on one side as it was on the other. Then they followed like a pack horse and they found out it was easier to trot and keep up than it was to be dragged by cowhoses.

This thrill of cowboys and the excitement of the cattle scattered them over four sections of land. The owner of the cattle was as mad as a wet hen. He soon got over his being disturbed by the cattle being scattered over four sections of land. Ten top cowboys soon rounded up the cattle on fast horses and they were on their way. This herd was driven fifty miles to market. They camped over night and they tied out the wolves. They made this trip without opening their mouth.

The stick in their mouth held he rope and the rope shut their mouth, and they followed the cowboys horse without a whimper!

When they reached the county seat and the county judge gave he fifty dollars for their catch and delivery. I ask him did you people divide the money equally? He said, "I don't aim to tell you." He had not forgotten the divide in sixty-five years. This could have been five dollars each, as much as a weeks work as a mow hand. He said those were he greatest days and the great thrill of his life. I ask him did cowmen or boys ever have olds sleeping out on the ground under a tarp all winter? He said I never did have a cold.

These old cow boys never run out of thrilling experiences. He went to new Mexico. He was riding the range and there was a small clearing fenced in. He saw a black bear he shot him with a thirty-three, he said he jumped straight up and made it for the fence and jumped a three wire fence and never touched it. He had to ride around the fence to get where he went into the woods. He said the bear had broken down bushes as large as his arm, and wound them up and it looked like it would have been impossible for him to have done that. He traced this crippled bear over the mountain by the blood for two miles. To bear canyon where the sun never reached the bottom and no man had ever dared to go down in there. There were Grizzlies, Black and Brown Bears who hibernated in there for the winter season. This is a true story, told me.

BY J. H. NICHOLS

**First Anti
Poverty Loan**

The first loan to help a Texas low-income rural family raise their income and attain a better standard of living under President Johnson's War on Poverty Program was explained today by Lester J. Cappelman, State Director for the Farmers Home Administration.

Mr. Cappelman gave details on a loan being made to a family who operates a small farm near Long Branch, Panola County, which Secretary of Agriculture Orville L. Freeman today announced as one of eleven such loans being made throughout the country.

The loan was made to a 57 year old farmer and his wife, parents of 8 children, living near Long Branch, Panola County, Texas, \$2,500 for 15 years to refinance a mortgage which is overdue against his small 25-acre farm, purchase a milk cow and a mule, carry out some land development work and pay operating expenses on his 1965 truck crop which will consist of 2 1/2 acres of tomatoes and cucumbers. The family of ten also will raise a large garden and some pigs to meet their family food needs. Improvements made with the loan will enable this family to make a 50 percent increase in their gross income which last year totaled \$1,540.

Cappelman said approximately 75 applications for economic opportunity loans have been received.

The loans are authorized by the Economic Opportunity Act of 1964, which includes a rural credit service involving \$35 million in Federal funds.

In addition, three other loans have been approved in Texas; one to a 51 year old farmer who lives in Harrison County near Marshall, Texas.

well so that she and her family will have a sanitary water supply for domestic purposes.

The Farmers Home Administration County Supervisor for Washington and Waller Counties, Temple Evans, has developed a farming program on the small acreage which should result in an increased gross income of approximately \$400 per year.

The fourth loan was made to a couple living in Bell County who operate a small farm. The loan funds will be used to enable them to add an additional source of income through the construction and equipping of a small tractor and farm implement repair shop. With this additional source of income, the family will be able to raise their level of living from \$1,200 per year to approximately \$2,000 per year after the business is in operation. This will amount to a 50 percent increase in their gross income from all sources.

The State Director of the Farmers Home Administration in Texas stated that all personnel are enlisting the assistance of rural agricultural and business leaders, school teachers, ministers, welfare workers, charitable organizations and others to assist this agency in informing low-income rural families of the opportunities available to them in the Economic Opportunity Act of 1964.

According to Mr. Cappelman the 1960 Agricultural Census showed approximately 375,000 rural families, both farm and non-farm, living in the country and in communities of less than 2,500 population, receive a gross income of \$2,000 a year or less from all sources. This means we have a real challenge in Texas in providing opportunities for these families to improve their level of living.

All of the loans bear a 4 1/4 percent interest. Economic Opportunity Loans may be made in amounts up to \$2,500 to finance small family businesses, trades, services, and farming enterprises.

The rural families eligible for anti-poverty loans are confronted with such problems as limited resources; low incomes; indebtedness beyond their present ability to repay; lack of management skills, and an unsatisfactory level of living. To help overcome these problems and assure success of the new businesses or farming enterprises, borrowers will be provided with intensive and continuing management aid by local county supervisors of the Farmers Home Administration.

To be eligible for the new rural credit program, an individual applicant must:

1. Live in a rural area which includes towns up to 2,500 population.
2. Have an income so low it does not cover basic family necessities.
3. Be unable to obtain credit from other sources, including the regular loan programs of the Farmers Home Administration.
4. Show a reasonable promise of succeeding in the enterprise to be financed by the loan.

Holt News

Mr. and Mrs. Wesley Jenkins were Thursday night guests of Mr. and Mrs. Pate Grisby of Amarillo.

Mr. and Mrs. Herbert Kirk and Kandy, spent the week-end transacting business and visiting relatives in Lubbock.

Mr. and Mrs. Mike Holt of Texas Tech at Lubbock and her parents, Mr. and Mrs. Frederick of Houston were Saturday night guests of the Fred Holts.

A meeting of the Hutchinson County Farm Bureau was held Thursday night January 21 in the Pringle school gym. President Herbert Kirk presided and the minutes were read by David Hutto.

Betty and Jim Bergner, talented children of Mr. and Mrs. John C. Bergner of Stinnett were recent winners of the Texas Farm Bureau at the National convention in Philadelphia, Penn. So Betty Jim and their younger sister entertained Thursday night.

Moody Womble and John C. Bergner were delegates to the Farm Bureau National convention in Philadelphia. Bill Campbell was a delegate to the convention at Austin, the three gave reports on the conventions.

A social hour followed, coffee and doughnuts were served. Mr. and Mrs. Frank Reger of Stinnett were Saturday afternoon callers of their son, Mr. and Mrs. Travis Reger.

Linda Holt of Texas Tech spent the week-end with her parents, Mr. and Mrs. Nolan Holt and Larry.

Mr. and Mrs. Doyle Jackson & family recently visited her parents, Mr. and Mrs. J. C. Gallaway at Kress, Texas and the Oliver Levontons at Odessa, Texas.

Mr. and Mrs. Dan Jackson are spending a week visiting relatives in Levelland, Odessa and Lubbock.

SCATTER PIN LEAGUE

Equity	56 1/2	113
Miller's	47	21
Anthony Electric	45 1/2	22
G & G Foodliner	35 1/2	32 1/2
Floyd Locker	25	4
Gruver Agency	24	4
Gruenwald	23	4
Bowl Mor	15 1/2	52 1/2
HIGH TEAM SERIES		
Equity	172	
Anthony Electric	165	
Floyd Locker	163	
HIGH IND. SERIES		
Jane Meek	48	
Tommie Arbsland	47	
Kate Farris	46	
HIGH TEAM GAME		
Equity	62	
Anthony Electric	61	
Gruver Agency	61	
HIGH IND. GAME		
Kate Farris	19	
Jane Meek	18	
Ellen Reynolds	17	

Mr. and Mrs. R. E. Lee visited in Groom Sunday with Mr. and Mrs. Van Earl Steed.

ANTHON ELECTRIC
Commercial
Wiring
Refrigerators & Air Conditioning
Household Light Fixtures
Small Appliances
INSURED and BONDED
L. L. ANTHON
Phone Shopping Center
Box 727
Phone 659-2841
Spearman, Texas

B. M. A. INSURANCE
E. K. Snider
Canyon, Texas

Mansford Lodge
1940
A.F. & A.M.
Regular Communication
2nd and 4th Mondays
of each Month
Dues \$1.00
Dr. Hendricks, W.
Ray Lee Uptergrove, So

AMBULANCE
FLOWERS
Number
Dial 659-2212
SPEARMAN, TEXAS

For Your INSURANCE NEEDS
See Your FARM BUREAU AGENTS
Tommy Gooch
Bank B. Fisher
Phone 659-3131
Spearman, Tex

Maxwell Bro
Funeral Home
and
Flower Shop
Phone 659-2587-Box 14
Spearman, Texas

E. C. GREENE
Real Estate
Loans
Insurance
Phone 659-2587-Box 14
Spearman, Texas

Dr. D. E. Hackle
ORTHOPAEDIC, PHYSICIAN
AND SURGEON
701 S. Roland Street
Office Hours: Week Days
9-12 and 1-5
Saturday: 9-12
Phone 659-2587
Box 14

GENERAL HOSPITAL AND CLINIC
Spearman
Phone 659-2100
8:00 a. m. to 5:00 p. m.
EXCEPT SATURDAY
E. S. RINKER, D.V.M.

Dr. F. J. Daily
DENTIST
10 S.W. Court St.
Phone 659-2622
Spearman, Texas

Now Buy Them At Your Own Prices

Good Year Firestone U. S. Royal B. F. Goodrich Dunlop

FREE a popular Size

Passenger Tire Each Hour

Another Jesse Scott Auction

There is a reason

Garden City Kansas
812 N. Main Ph. 316-276-0282

ANTIQUE AUCTION

**FRIDAY, JANUARY 29, 6:30 P. M.
SATURDAY, JANUARY 30, 11:00 A. M.
AT THE DOME BORGER, TEXAS
Preview: Friday, January 29 1:00 - 6:00**

Brass and iron footed colored glass and banquet lamps, vases, art glass, carnival (northwood, dark, rare red, white) cut glass, pattern glass, spinning wheel, sterling porcelain spoons, hand painted plates, German and French clocks, spice cabinet, bronze Karatee wrestlers, rockers, walnut wishbone dresser, marble top credenza, marble top commodes, hanging lamps, picture flames, picture frames, picture and bowls, music box, Poly phone 14 records, Lithophone Spode tea pot, collectors items, etc. Contents of estate and private collection.

WYATT'S ANTIQUE AUCTION

COW POKES

By Ace Reid



"I don't need no coat, Maw. These cheap cattle, high feed bills and tight bankers are gonna keep me in a sweat all winter."

Plains Stockman Supply
PHONE 659-3022

AUCTION
1600
NEW TIRES
DISTRESS
MERCHANDISE
DEALER
OVERSTOCKED

Now Buy Them At Your Own Prices

Good Year
Firestone
U. S. Royal
B. F. Goodrich
Dunlop

THE COUNTY ROUND TOP BUILDING ACROSS THE STREET EAST OF THE COURT HOUSE

Perryton, Texas
FREE
passenger Tire Each Hour
another
esse Scott Auction

There is a reason
Garden City Kansas
2 N. Main Ph. 314-276-8282

AUCTION
29, 6:30 P. M.
Y 30, 11:00 A. M.
BORGER, TEXAS
ary 29 1:00 - 6:00

and banquet lamps, vases, art red, white) cut glass, pattern in spoons, hand painted plates, net, bronze Karatee wrestlers, irble top credenza, marble top ames, picture frames, picture records, Lithophane Spode tea estate and private collection.

ONE AUCTION
By Ace Reid

Boxwell Bros.
Funeral Home and Flower Shop
Night Phone 659-2212
Spearman, Texas

E. C. GREENE
Real Estate
Loans
Insurance
Phone 659-2587 - Box 143
Spearman, Texas
(No. 36 RTN c)

Dr. D. E. Hackley
ORTHOPATHIC, PHYSICIAN AND SURGEON
201 S. Roland Street
Office Hours: Week Days 9-12 and 1-5
Saturday 9-12
Phone Home 659-2385

GENERAL HOSPITAL AND CLINIC
Southwest of Spearman
Phone 659-2100
9:00 a. m. to 5:00 p. m.
RECEIPT SATURDAY
M. S. RINKER, D.V.M.

Dr. F. J. Daily
DENTIST
10 S.W. Court St.
Phone 659-2622
Spearman, Texas

Supply

ANTHONY ELECTRIC
Commercial and Residential Wiring.
Heating & Air Conditioning
Automatic Light Fixtures and small appliances.
REPAIRED and BONDED
L. L. ANTHONY
Phone Shopping Center
Box 727
Phone 659-2841
Spearman, Texas

B. M. A. INSURANCE
E. K. Snider
Canyon, Texas
Hospital A-H
Junior Accident

Hansford Lodge 1040
A.F. & A.M.
Regular Communication
2nd and 4th Monday
of each Month
Dues: Hendricks, W. M.
Roy Lee Uptergrove, Secy.

AMBULANCE FLOWERS
Number
Dial 659-2212
SPEARMAN, TEXAS

For Your INSURANCE NEEDS
See Your **FARM BUREAU AGENTS**
Tommy Gooch
Jack B. Fisher
Phone 659-3131
Spearman, Texas

For Sale
FOR SALE: New lake pump and aluminum pipe. Pat Westerfield, Gruver, Tex Ph. Fireside 7-2700. 44-1st

FOR SALE: Tracts for sale. joining Spearman, with water, electricity etc. Also lots in town, 2 lots near grade school. Cecil Crawford, Box 96.

FOR SALE: A motorcycle type black leather coat size 12. Only slightly used, as it proved too small. Will sell for \$3.00. Steve Hicks Phone 659-2272.

FOR SALE: Four bedroom house in Amarillo, 2 baths, carpeted, large family kitchen with built-in oven and range, corner lot, fenced, low equity, will take trade in, preferably house in Spearman. Inquire at 1107 Dresden. 9-27C

FOR SALE: 3 bedroom home with 1 1/2 Baths. 1117 South Haney. 9-47T

Mrs. A. D. Sparks visited Fluvanna with Mr. and Mrs. Lester Mundy and children the past week end.

CLASSIFIED ADV. RATES EFFECTIVE MAY 1, 1964.
Classified ads 4 cents per word for each insertion with minimum charge of 40 cents. Minimum of 75c for classified ads that are charged. Blind ads, double rates.

CUMMINGS
Refrigeration
And Air Conditioning
Phone 659-2441
Phone 659-2721
Gordon Cummings

WILCOX FLOWERS
AND GREENHOUSE
SEEDING & POTTED PLANTS
911 S. Haney St.
Phone 659-3038
Spearman, Texas

The WHOLE TOWN IS TALKING!
About Extended Coverage Insurance! Not only will your home be financially protected against everyday dangers, but also destructive cyclones, tornadoes and aircraft. Phone John R. Collard, today for further information.

Collard
INSURANCE
REAL ESTATE
MORTGAGE
407 DAVIS ST
P.O. BOX 470
Spearman, Texas

Services
FREE REMOVAL OF DEAD STOCK
Call 659-2420 in Spearman or DR9-2291 in Amarillo Collect AMARILLO RENEWING CO. No 21-rt-c

PORTABLE DISC ROLLING on your farm. Prices to suit you. Satisfaction guaranteed. Phone 659-3474. Harold Shaver 41-rtm

FOR SALE: 1953 Tri-Pacer \$3100.00. Total Time 1417. 650 hours since top overhaul. New periodic inspection, date of sale. Call collect, 659-3135, Spearman or 435-3871. 7-37T

FOR SALE: 1953 Tri-Pacer \$3100.00. Total Time 1417. 650 hours since top overhaul. New periodic inspection, date of sale. Call collect, 659-3135, Spearman or 435-3871. 7-37T

FOR SALE: 1953 Tri-Pacer \$3100.00. Total Time 1417. 650 hours since top overhaul. New periodic inspection, date of sale. Call collect, 659-3135, Spearman or 435-3871. 7-37T

FOR SALE: 1953 Tri-Pacer \$3100.00. Total Time 1417. 650 hours since top overhaul. New periodic inspection, date of sale. Call collect, 659-3135, Spearman or 435-3871. 7-37T

FOR SALE: 1953 Tri-Pacer \$3100.00. Total Time 1417. 650 hours since top overhaul. New periodic inspection, date of sale. Call collect, 659-3135, Spearman or 435-3871. 7-37T

FOR SALE: 1953 Tri-Pacer \$3100.00. Total Time 1417. 650 hours since top overhaul. New periodic inspection, date of sale. Call collect, 659-3135, Spearman or 435-3871. 7-37T

FOR SALE - Equity in 1962 model, 10 x 55, 2 bedroom mobile home. Consider trading for furniture or something of value. Phone 659-3463. 9-27C

FOR SALE - Marlotte Mobile Home (one week old) 12 x 58. Early American 30 gal. hot water heater. FULLY FURNISHED. G. E. Washer. Storm Windows. Beautiful White Deer 883-5441. 9-37P

Wanted
WANTED: To buy low equity in 3 bedroom home in Spearman. Need possession about May 1 to June 1, 1965. Call or write Jim Fowler, Minneola, Kansas. 9-27C

Wanted
WANTED: Will do sewing, no alterations. Mrs. Thomas Chitwood, Phone 659-2253. 9-27C

Person over 25 to supply Rawleigh products to families in Sherman and W. Moore Cos. If interested in a good income with security for the future see Milton T. Brown Box 385, Spearman or write Rawleigh, TX L 30 1126, Memphis, Tenn.

Hansford Lodge No. 1040 A.F. and A.M., will accept bids on old Lodge building and lot until February 8. We will reserve the right to reject any and all bids. Hansford Lodge No. 1040 A.F. and A.M.
Roy Lee Uptergrove. (Sec.) No. 8-27C

IF YOU KNOW PARTY PLAN, we have an exceptional ground floor opportunity waiting for you. Cathie Jewels, Inc., Phone 435-3751 or write Dorothy Griffey 110 N. Jefferson, Perryton, Tex. No. 8-27c

MOVED
I am not at North Plains Truck Co. any more. I am at my house now and able to do your work there, or in the country. If you want repair work on your tractors and or other vehicles, call me at 2967.
MARION CLOSE. 8-27P

Person over 25 to supply Rawleigh products to families in Sherman and W. Moore Cos. If interested in a good income with security for the future see Milton T. Brown Box 385, Spearman, or write Rawleigh, TX L 30 1126, Memphis, Tenn. 9-17P

Mr. and Mrs. Ray Skinner and Mr. and Mrs. Bob Skinner were called to Fairfax, Oklahoma last week by the death of Mrs. Ray Skinner's brother, John Danford. 9-27P

Recent guests in the home of Mrs. A. L. Jackson were Mr. and Mrs. Olin Anderson of Galt, Calif. Mr. and Mrs. Roy Judd of Stratford, Mr. and Mrs. W. L. Anderson of Ardmore, Okla., Mrs. S. B. Jackson of Wellington, Mrs. C. Wagoner of Ridgefield, Washington, Mrs. Laura Griffin of Van Couver, Washington, Mrs. Johnnie Devers of Dalhart and Miss Linda Webb, Hansford Co. Home Demonstration Agent.

Donna Nelson, daughter of Mr. and Mrs. Roscoe Nelson left Tuesday for Canyon. Donna will attend W.T.S.U. this semester.

Recent guests in the home of Mrs. A. L. Jackson were Mr. and Mrs. Olin Anderson of Galt, Calif. Mr. and Mrs. Roy Judd of Stratford, Mr. and Mrs. W. L. Anderson of Ardmore, Okla., Mrs. S. B. Jackson of Wellington, Mrs. C. Wagoner of Ridgefield, Washington, Mrs. Laura Griffin of Van Couver, Washington, Mrs. Johnnie Devers of Dalhart and Miss Linda Webb, Hansford Co. Home Demonstration Agent.

"Music In The Home"
Theme Of Spearman Music Club
Mullins, Russell Townsend, Will Douglas, George Warren, Miss Linda Webb and hostesses for the occasion were Mrs. Charles Gates and Mrs. George Warren.

Crusaders Class
Show Slides Of The Holy Land
The Crusaders Sunday School Class met in fellowship hall of the Methodist church recently. Mrs. R. E. Lee entertained the group by showing and narrating slides she made while on a trip to the Holy Land. A group discussion followed Mrs. Lee's talk.

Card of Thanks
There are no words with which we can adequately express our deep heartfelt thanks and gratitude to our friends for their many kindnesses and thoughtfulness to us and the memory of our loved one. So we simply say thank you, from the depths of our hearts, and may God bless each and every one of you.
The family of John Berry

Town & Country HD Club Met
With Mrs. White
Mrs. Tommy White was hostess to Town and Country Home Demonstration Club January 20. Members worked on the constitution and discussed things they could do for patients of Pioneer Manor.

Motorcycle Club Members Met
The IV Fast Texans M.C. held their regular meeting Thursday evening with 21 in attendance. Several were visitors and we were glad to have them meet with us.

Joel Lackey's Host Bridge Club
Mr. and Mrs. Joel Lackey host their Friday night bridge club January 22. Nelda Sheets and Don DeArmond held high scores.

Mrs. Daily Hosts Blue Monday Bridge Club
Mrs. F. J. Daily was hostess to the Blue Monday Bridge club on January 25. Scores honors went to Mrs. Hill. Refreshments were served to Mesdames Viola Graves, Ruth Hill, Norma Gandy, Faye Miller, Hazel Morton, Margaret Gibber, Lula Womble, Dets Blodgett, Ada McLain, guests, Ruth Lackey and Barbara McLellan by the hostess, Mrs. Daily.

Church Social News
Mrs. Granville Boyd was hostess to the Aletha Fuller Circle of the W.M.U. of the First Baptist Church Monday evening. Mrs. Walter Woolley, assisted by Mrs. Glen Day, Mrs. F. J. Hoskins, Miss Altha Groves and Mrs. Boyd presented the program "Christ for the Cubans".

Benefit Square Dance
LIBERAL, Kan.—The Liberal Do Si Do Square Dance Club will host a benefit dance for the Amelia Durbin fund at 8 p.m. Saturday, January 30 in the National Guard Armory. Jewel Misgrave, Liberal will be the caller. Spectators are welcome and will be given an opportunity to contribute to the fund.

Anderson Irrigation Drilling
Doc Anderson and Employees

Anderson Irrigation Drilling
Doc Anderson and Employees

Anderson Irrigation Drilling
Doc Anderson and Employees

Anderson Irrigation Drilling
Doc Anderson and Employees

Anderson Irrigation Drilling
Doc Anderson and Employees

Spearman Group
Back Home
From Austin

Judge Johnny Lee, Commissioners' Joe Day, Ed Vernon, B. W. Renner and C. of C. Maragor Don Floyd returned Tuesday afternoon from Austin, where they met with some 50 other county and C. of C. officials presenting to the Highway commission their appeal to designate Highway 15 North and South and East and West.

Farm Bureau Hold Meeting At Morse
Due to weather conditions, only a small attendance was registered at the Hansford Farm Bureau meeting Monday evening at Morse, Texas. The program was presented by Davis Johnson, who attended the citizenship seminar last year, and gave a review of the seminar.

Shrine Members Hold Busy Meeting Thurs.
Four members of the Borger Shrine club were visitors at the regular meeting of the Hansford Shrine club last Thursday evening January 21. Visitors were Leonard Riley, new vice president of the Borger club; Red Ogleyby, new President of the Borger club; L. V. Lively, past president of the Borger club and Weldon Warren, past president of the Borger club.

James Lair was appointed to head the committee which will provide the program and orchestra for the annual Spring and Christmas dance.

Mrs. Daily Hosts Blue Monday Bridge Club
Mrs. F. J. Daily was hostess to the Blue Monday Bridge club on January 25. Scores honors went to Mrs. Hill. Refreshments were served to Mesdames Viola Graves, Ruth Hill, Norma Gandy, Faye Miller, Hazel Morton, Margaret Gibber, Lula Womble, Dets Blodgett, Ada McLain, guests, Ruth Lackey and Barbara McLellan by the hostess, Mrs. Daily.

Members of the Mary Nell Giles Training Circle enjoyed a tour of the Baptist Goodwill Center in Amarillo and the Baptist Student Union in Canyon January 20. The Goodwill Center is sponsored by the Baptist churches of Amarillo and the co-operative program and is used by Spanish speaking people of Amarillo. Circle members observed the kindergarten in session and were lead in a tour of the center by the manager, Mrs. Denny.

Members enjoying the tour were Mesdames Donna Helms Betty Fancher, Wanda McIver Dorlean Burrell and Omer Chisum.

The Betty Morris Circle of the First Baptist church W.M.U. met in the home of Mrs. Bryce Steele January 20 for Bible study. Mrs. Golightly conducted the study on "Jacob". Attending were Mesdames Roena Dav. Gowand Golightly, Herbert Howe, Woodville Jarvis, Abbe Ownbe, Durland Sheets and the hostess.

White frosted cakes decorated with pink rose buds, coffee and punch were served. Mrs. Ames Scroggs presided at the punch bowl and Mrs. James Martin poured coffee. The hostesses alternated at the guest register.

THE BLUE MONDAY BRIDGE
The Blue Monday Bridge Club met in the home of Margaret Kirk. Members attending were, Mildred Daily, Norma Gandy, Gwendred Lackey, Hazel Murton, Margaret Gibber, Ruth Hill, Lula Womble, Fae Miller, Dets Blodgett, Viola Graves and a guest, Emma Seitz.

THE BLUE MONDAY BRIDGE
The Blue Monday Bridge Club met in the home of Margaret Kirk. Members attending were, Mildred Daily, Norma Gandy, Gwendred Lackey, Hazel Murton, Margaret Gibber, Ruth Hill, Lula Womble, Fae Miller, Dets Blodgett, Viola Graves and a guest, Emma Seitz.

THE BLUE MONDAY BRIDGE
The Blue Monday Bridge Club met in the home of Margaret Kirk. Members attending were, Mildred Daily, Norma Gandy, Gwendred Lackey, Hazel Murton, Margaret Gibber, Ruth Hill, Lula Womble, Fae Miller, Dets Blodgett, Viola Graves and a guest, Emma Seitz.

THE BLUE MONDAY BRIDGE
The Blue Monday Bridge Club met in the home of Margaret Kirk. Members attending were, Mildred Daily, Norma Gandy, Gwendred Lackey, Hazel Murton, Margaret Gibber, Ruth Hill, Lula Womble, Fae Miller, Dets Blodgett, Viola Graves and a guest, Emma Seitz.

STRIKES 'N SPARES

SCATTER PIN
January 14, 1965

Standing's	W	I
Equity	53 1/2	101
Miller's	46	18
Anthony Electric	42	21
G & G Foodliner	31	32 1/2
Floyd Locker's	24	40
Gruenwald	23	41
Gruver Agency	21	43
Bowl Mor	14 1/2	49 1/2

HIGH TEAM SERIES:
Equity 1775
Miller's 1630
Anthony Electric 1544

HIGH IND. SERIES:
Tubby Hays 497
Gertrude Archer 445
Kate Farris 441

HIGH TEAM GAME:
Equity 621
Equity 596
Miller's 575

HIGH IND. GAME:
Tubby Hays 171
Tubby Hays 170
Gertrude Archer 169

PINBENDERS LEAGUE
January 15, 1965

Myrt Bohanan - Secretary	Team	Won	Lost
Lyon Insurance	46	22	
McClellan Grain	37 1/2	30 1/2	
Lee Oil Co.	37	31	
First State Bank	34 1/2	33 1/2	
Bowl Mor	32 1/2	35 1/2	
Gruver Motors	29 1/2	38 1/2	
The Malls	29	39	
Holiday Drive In	26	42	

HIGH TEAM SERIES:
Lyon Insurance 1285
First State Bank 1257
Lee Oil 1238

HIGH IND. SERIES:
Virginia Head 460
Mary Cornelius 458
Anne Sanders 453

HIGH TEAM GAME:
First State and Lyon Ins. 458
Lee Oil 450
McClellan Grain 442

HIGH IND. GAME:
Head 180
Gwen Smith 172
Gwen Reed 166

BALL AND CHAIN MIXED DOUBLES
Wednesday night, January 20, 1965

Dixie Sparks, Secretary	W	L
Spearman Grain	3	1
Gordon's Drug	3	1
Duds	3	1
Cates Mens wear	1	3
Gruver-Texaco	1	3
Taylor-Evans	1	3

HIGH TEAM 3 GAMES:
Spearman Grain 1758
Cates Mens wear 1625
Gordon's Drug 1567

HIGH TEAM GAME:
Spearman Grain 589
Spearman Grain 585
Cates Mens Wear 559

HIGH INDIVIDUAL 3 GAMES:
Juanita Arrington 552
Tito Ramirez 506
Bob Pieratt 485

HIGH INDIVIDUAL GAME:
Tito Ramirez 210
Juanita Arrington 196
Juanita Arrington 189

WAKA PTA NEWS
The Waka P-TA met in regular session, January 18 at 7:30 with the president, Bob Mosier, presiding.

During the business meeting, the president appointed a nominating committee with Mrs. Eldon Gurley, chairman, Harley Elledge and Glen Truax, the others on the committee. Stage curtains was selected to be the project for the local unit, this being carried over for next year.

The program, under the direction of the men, was a variety of songs directed by Glen Truax. A group sing-song, and school children participated in the program.

Punch, coffee, and doughnuts were served by the social and gym supervisors for the month.

WAKA PTA NEWS
The Waka P-TA met in regular session, January 18 at 7:30 with the president, Bob Mosier, presiding.

During the business meeting, the president appointed a nominating committee with Mrs. Eldon Gurley, chairman, Harley Elledge and Glen Truax, the others on the committee. Stage curtains was selected to be the project for the local unit, this being carried over for next year.

The program, under the direction of the men, was a variety of songs directed by Glen Truax. A group sing-song, and school children participated in the program.

Punch, coffee, and doughnuts were served by the social and gym supervisors for the month.

WAKA PTA NEWS
The Waka P-TA met in regular session, January 18 at 7:30 with the president, Bob Mosier, presiding.

During the business meeting, the president appointed a nominating committee with Mrs. Eldon Gurley, chairman, Harley Elledge and Glen Truax, the others on the committee. Stage curtains was selected to be the project for the local unit, this being carried over for next year.

The program, under the direction of the men, was a variety of songs directed by Glen Truax. A group sing-song, and school children participated in the program.

Punch, coffee, and doughnuts were served by the social and gym supervisors for the month.

WAKA PTA NEWS
The Waka P-TA met in regular session, January 18 at 7:30 with the president, Bob Mosier, presiding.

During the business meeting, the president appointed a nominating committee with Mrs. Eldon Gurley, chairman, Harley Elledge and Glen Truax, the others on the committee. Stage curtains was selected to be the project for the local unit, this being carried over for next year.

The program, under the direction of the men, was a variety of songs directed by Glen Truax. A group sing-song, and school children participated in the program.

Punch, coffee, and doughnuts were served by the social and gym supervisors for the month.

WAKA PTA NEWS
The Waka P-TA met in regular session, January 18 at 7:30 with the president, Bob Mosier, presiding.

During the business meeting, the president appointed a nominating committee with Mrs. Eldon Gurley, chairman, Harley Elledge and Glen Truax, the others on the committee. Stage curtains was selected to be the project for the local unit, this being carried over for next year.

The program, under the direction of the men, was a variety of songs directed by Glen Truax. A group sing-song, and school children participated in the program.

Punch, coffee, and doughnuts were served by the social and gym supervisors for the month.

WAKA PTA NEWS
The Waka P-TA met in regular session, January 18 at 7:30 with the president, Bob Mosier, presiding.

During the business meeting, the president appointed a nominating committee with Mrs. Eldon Gurley, chairman, Harley Elledge and Glen Truax, the others on the committee. Stage curtains was selected to be the project for the local unit, this being carried over for next year.

The program, under the direction of the men, was a variety of songs directed by Glen Truax. A group sing-song, and school children participated in the program.

Punch, coffee, and doughnuts were served by the social and gym supervisors for the month.

WAKA PTA NEWS
The Waka P-TA met in regular session, January 18 at 7:30 with the president, Bob Mosier, presiding.

During the business meeting, the president appointed a nominating committee with Mrs. Eldon Gurley, chairman, Harley Elledge and Glen Truax, the others on the committee. Stage curtains was selected to be the project for the local unit, this being carried over for next year.

The program, under the direction of the men, was a variety of songs directed by Glen Truax. A group sing-song, and school children participated in the program.

Punch, coffee, and doughnuts were served by the social and gym supervisors for the month.

WAKA PTA NEWS
The Waka P-TA met in regular session, January 18 at 7:30 with the president, Bob Mosier, presiding.

During the business meeting, the president appointed a nominating committee with Mrs. Eldon Gurley, chairman, Harley Elledge and Glen Truax, the others on the committee. Stage curtains was selected to be the project for the local unit, this being carried over for next year.

The program, under the direction of the men, was a variety of songs directed by Glen Truax. A group sing-song, and school children participated in the program.

Punch, coffee, and doughnuts were served by the social and gym supervisors for the month.

WAKA PTA NEWS
The Waka P-TA met in regular session, January 18 at 7:30 with the president, Bob Mosier, presiding.

During the business meeting, the president appointed a nominating committee with Mrs. Eldon Gurley, chairman, Harley Elledge and Glen Truax, the others on the committee. Stage curtains was selected to be the project for the local unit, this being carried over for next year.

The program, under the direction of the men, was a variety of songs directed by Glen Truax. A group sing-song, and school children participated in the program.

Punch, coffee, and doughnuts were served by the social and gym supervisors for the month.

WAKA PTA NEWS
The Waka P-TA met in regular session, January 18 at 7:30 with the president, Bob Mosier, presiding.

During the business meeting, the president appointed a nominating committee with Mrs. Eldon Gurley, chairman, Harley Elledge and Glen Truax, the others on the committee. Stage curtains was selected to be the project for the local unit, this being carried over for next year.

The program, under the direction of the men, was a variety of songs directed by Glen Truax. A group sing-song, and school children participated in the program.

Punch, coffee, and doughnuts were served by the social and gym supervisors for the month.

Women Schedule
Bowling Tourney
For Feb. 12 - 14

The Hansford County Woman's Bowling Association will hold their fifth annual Bowling Tournament February 12, 13 & 14 at the Bowl-Mor Lanes in Spearman.

Entry blanks are now available at the bowling alley. The deadline for returning these entries is midnight, January 29. The city association secretary is Joyce Jones, and she asks that you enter early and get your blanks in to her soon.

PIN BENDERS LEAGUE
January 15, 1965

Myrt Bohanan - Secretary	Team	Won	Lost
Lyon Insurance	46	22	
McClellan Grain	37 1/2	30 1/2	
Lee Oil Co.	37	31	
First State Bank	34 1/2	33 1/2	
Bowl Mor	32 1/2	35 1/2	
Gruver Motors	29 1/2	38 1/2	
The Malls	29	39	
Holiday Drive In	26	42	

HIGH TEAM SERIES:
Lyon Insurance 1285
First State Bank 1257
Lee Oil 1238

HIGH IND. SERIES:
Virginia Head 460
Mary Cornelius 458
Anne Sanders 453

HIGH TEAM GAME:
First State and Lyon Ins. 458
Lee Oil 450
McClellan Grain 442

HIGH IND. GAME:
Head 180
Gwen Smith 172
Gwen Reed 166

BALL AND CHAIN MIXED DOUBLES
Wednesday night, January 20, 1965

Dixie Sparks, Secretary	W	L
Spearman Grain	3	1
Gordon's Drug	3	1
Duds	3	1
Cates Mens wear	1	3
Gruver-Texaco	1	3
Taylor-Evans	1	3

HIGH TEAM 3 GAMES:
Spearman Grain 1758
Cates Mens wear 1625
Gordon's Drug 1567

HIGH TEAM GAME:
Spearman Grain 589
Spearman Grain 585
Cates Mens Wear 559

HIGH INDIVIDUAL 3 GAMES:
Juanita Arrington 552
Tito Ramirez 506
Bob Pieratt 485

HIGH INDIVIDUAL GAME:
Tito Ramirez 210
Juanita Arrington 196
Juanita Arrington 189

WAKA PTA NEWS
The Waka P-TA met in regular session, January 18 at 7:30 with the president, Bob Mosier, presiding.

During the business meeting, the president appointed a nominating committee with Mrs. Eldon Gurley, chairman, Harley Elledge and Glen Truax, the others on the committee. Stage curtains was selected to be the project for the local unit, this being carried over for next year.

The program, under the direction of the men, was a variety of songs directed by Glen Truax. A group sing-song, and school children participated in the program.

Punch, coffee, and doughnuts were served by the social and gym supervisors for the month.

WAKA PTA NEWS
The Waka P-TA met in regular session, January 18 at 7:30 with

THANK YOU ...

WE AT CRAWFORD IMPLEMENT CO., INC., WOULD LIKE TO TAKE THIS OPPORTUNITY TO CONGRATULATE MR. JOHN COLE, WHO IS A FIRST PRIZE WINNER IN OUR M&M SIZZLER CONTEST MR. COLE IS PICTURED BELOW AS MR. MERLE DILLON, M&M DIVISION MANAGER PRESENTS HIM THE KEYS TO HIS NEW TRACTOR!



Pictured, left to right: Ronnie Schaefer, Manager of Crawford Implement Co., Inc., Jack Drew, Moline Salesman; Ott Crawford, Spearman, Merle Dillon, M & M Division Manager; John Cole, on tractor and Mrs. John Cole

CRAWFORD IMPLEMENT Co., Inc.

"YOUR IRRIGATION HEADQUARTES"

SPEARMAN, TEXAS

Turn - Over Plows

Phone 659-3060

M & M Irrigation Motods

Magento Service

Highway 15

M & M Tractors

Anywh
PLU

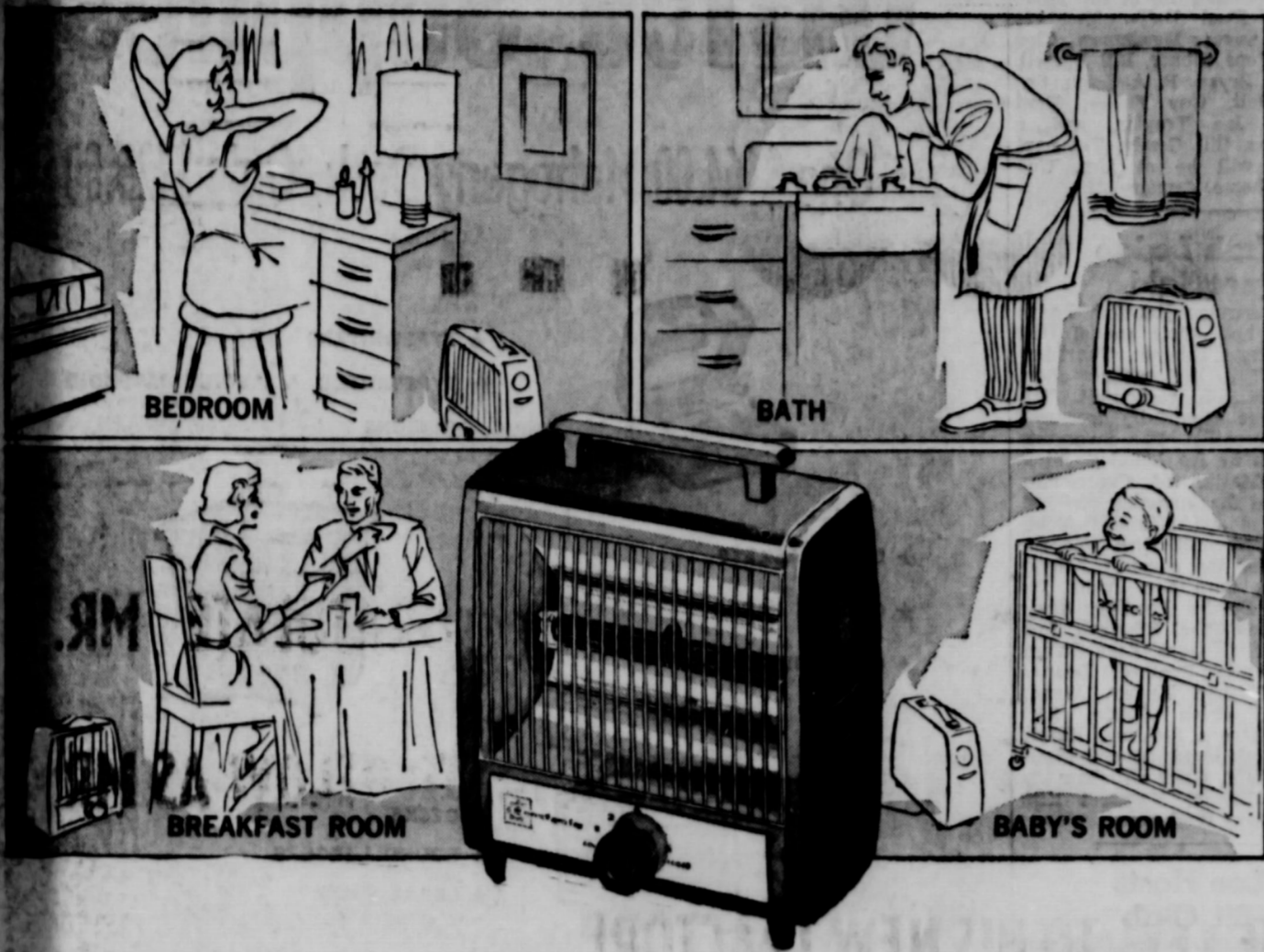
It's the han
heat areas
heater and i
for supplm
a garage w
mind warm
Have extra
electric hea

NATIONAL A
GOOD ANY P
FAR MORE P
ORIGINAL

QUALITY
MUFFLERS

100% N
Rea
Tractor
15.5 x 38
\$92
Including

202 MA



Anywhere in the house extra warmth is needed
PLUG IN A PORTABLE ELECTRIC HEATER

It's the handy way to chase the chill from hard-to-heat or slow-to-heat areas around your home. Just plug in your portable electric heater and instantly soothing, sun-like warmth surrounds you. Ideal for supplementary heat on extra cold days, for warming places like a garage workshop where other heat is not available, for peace-of-mind warmth in baby's room. Clean, quick, convenient, portable. Have extra warmth when you need it this winter. Get a portable electric heater from your appliance dealer now.



E5-65



Pictured above is Mrs. Virgil Mathews, Mrs. Clay Gibner, Mrs. Ray Phelps and Mrs. W. L. Russell, displaying some of the paintings that were donated for the March of Dimes auction last Sunday.

THANKS FOR HELPING

Lunch Room Menus

- Monday, February 1
Corn Dogs-Mustard
Seasoned Green Beans
Macaroni and Cheese
Lettuce and Tomato Salad
Fruit Salad with Coconut
Hot Rolls-Butter
Chocolate or White Milk
- Tuesday, February 2
Wimpy Burger or
Ham Salad Sandwich
Western Beans
Cabbage Pickle Relish Slaw
Citrus Gelatin with Fruit
Applesauce Cake
Chocolate or White Milk
- Wednesday, February 3
Baked Turkey in Barbecue Sauce
Mashed Potatoes
Seasoned Green Peas
Combination Tossed Salad
Spicy Apple Butter
Hot Rolls-Butter
Chocolate or White Milk
- Thursday, February 4
Char-Broiled Beef Patties
Lyonnaise carrot Rounds
Seasoned Blackeyed Peas

- Mixed Fruit Cup with Pineapple
Date Cake
Bread
Chocolate or White Milk
- Friday, February 5
Hamburger-Mustard
or Fish Sticks-Tartar Sauce
Buttered Corn
Baked Beans
Dill Pickle Slices
Tomato Slices
Spicy Gingerbread
Chocolate or White Milk

HOMEMAKING NOTES

January 25, 1965
by LINDA WEBB
The Simplicity fashion lecture given by Helen Wright January 19, was a great success. I want to publicly thank each and every person who helped with the program. Mrs. Wayman Edwards, who provided the fabric from her shop for stage decorations. Mrs. B. J. Garnett; Miss Edith Wilson, the District Home Demonstration Agent; Gloria Knox who acted as ramrod in my absence; and, all the models who did such

a nice job with the costumes. Prettiness and soft detail are emphasized by the '65 spring fashions. They present a general air of femininity, from sportswear to evening wear.
Groups of colors are again more significant than any single shade. Graduations of tones from misty pales to snappy brights will be offered.
Delicate face powder tints are exceptionally lovely in soft woolens, crepes and slubbed silks (these shades include pink ivory alabaster, blush, flesh and cream).
Corals are strongly favored for spring prominence, and fresh greens are receiving a good deal of attention. Navy blue, paired with white, neutrals or other colors will often be seen too.
Fabric designs have gone wild in a flurry of pattern-with-pattern, lots of dots, carnival strips, checks, abstract plaids, and modern abstract styled prints.
Sculptured and dimensioned fabrics, offering top fashion news lace is a leading fashion high light, too, and lavish embroidery and applique work further enhance many fabrics.
Sheer fabrics such as chiffon, voile, georgette, chambray, dotted swiss, and others have a


romantic, fragile look in new, of so fragile, polyester blends. Supple crepe is a highlight starting in cotton, silk, miracle lends, and sheer wools. Subtle surfaced textures will stay on as classic fabric notes. Novelty knits a variety of new stitches and low fiber mixtures create unusual surface effects.
Stretch is the fabric for active people. It allows maximum comfort, better fit and increased wrinkle resistance, among its many attributes.
Mock leather is one of the newest textile developments, which lets you wipe off stains, and away wrinkles. It can be washed or dry cleaned. You will see plenty of this.
In a thumb, this is fashion news for spring. Sounds great to me-how about you?
The last note: I sometimes wonder if something doesn't go out of romance when a girl nestles her head on a boy's shoulder and her hair spray cracks.

Area Entertainers To Appear On KVII-TV

An 15 1/2 hour program, the last major event in the Amarillo March of Dimes campaign for 1965, will be staged in the city Auditorium beginning Saturday January 30 at 9:30 p.m.
Entertainment will continue through the night and until 4:00 a.m. Sunday, being carried to homes throughout the Panhandle area by KVII-TV.
Starring in the live performances will be Bruce Yarnell, singer star of "The Happiest Girl in the World". Also appearing will be Mary Ann Mohley, Television and movie personality who was Miss America of 1959. There will be various amateur entertainers from the Panhandle area, included in this group will be Sherrel Stephens, Guymon, Miss Teen-Age Oklahoma and Quack the Storybook Clown.
Entertainers from our area will include "The Spinners" & Bruce Ayers, from Gruber, Louis Tilford, High School Choir director from Spearman and Coy Palmer from Spearman.
There will be no admission charge at the auditorium for anyone who wishes to see any or all of the program.
Nan Sheets and her roommate at Abilene Christian College, Miss Dwanna Jennings of Cleburne are spending their vacation with Nan's parents, Mr. and Mrs. Olin Sheets.

Cordovan Batteries

NATIONAL ADVERTISED WITH A GUARANTEE GOOD ANY PLACE IN THE UNITED STATES—WITH FAR MORE POWER AND STAYING POWER THAN ORIGINAL EQUIPMENT—GUARANTEE AND PRICE UNSURPASSED!



300% GREATER RESISTANCE TO OVER-CHARGE WITH SILVER COBALT BATTERIES

12 Volt
65 Amp
3 year Warranty
\$16.95

* All Batteries Adjusted by us on Fleet Prices, not regular list!

Inc.


QUALITY MUFFLERS **\$8.95**
Chev. 54-63

100% NYLON
Rear Tractor Tire
15.5 x 38 6 ply
\$92.50
Including Tax



GENERATORS

BUY NOW AND SAVE!
For Auto, Truck & Tractor
\$12.95



Front Tractor Tires
CHECK OUR LOW, LOW FLEET PRICES



Portable Heaters

With Wheels
L. P. GAS OR KEROSENE
\$110.00



Tractor Cabs

*For Rear Mount.
*Deluxe Models at Utility Prices!
*Lay-Down Windshields!
*Made by Hinson.

LIST FLEET
\$24.88

Cabs Available for Most Any Tractor Make. We stock most popular models. LESS WINDSHIELD



CABMASTER TRACTOR CABS

\$395.00

for most popular makes of tractors



B. & B. SALES COMPANY

Automotive Parts and Farm Supplies
SPEARMAN, TEXAS
PHONE 659-2662

202 MAIN

Honor Roll

In grades 1 through 3 an honor roll is composed of students making all "Es". An honor roll in grades 4 through 12 will be those students making 90 or above on all subjects, plus citizenship. The honorable mentioned will be those whose composite work in all subjects, plus citizenship, will average 90 or above.

FIRST GRADE
 Kelly Davis, Steve Donnell, Bradley Jackson, Scott Pipkin, Johnny Thomas, Nancy Francis, Rajan Martin, Linda Pearson, Janyth Wyson, Janice Stewart, Roger Jones, Lanita Johnson.

SECOND GRADE
 William Porter, Ted Harbour, Carl Dean Robinson, Linda Jordan, Darlene Sutton, Debbie Sheppard, Rhonda Nelson, Mike Tucker, Amy Brillhart, Pam Conner, Sheryl McCalman, Linda Hamilton, Gina Bulls.

THIRD GRADE
 Ricky Tredway, Robert Cockran, Billy Paul Hazelwood, Peggy Floyd, Jayne Massie, De Ann Reed, Dixie Sheppard, Brenda Thomas.

FORTH GRADE
 Steven Reed, Scott Beedy, Steve George, David Harbour Doug Porter, Teresa Beck, Kendra Brack, Cathy Dear, Becky Farris, Linda Ricketts, Roxana Sparks, Valerie Uptergrove.

4th Grade Honorable Mention
 Kerry Evans, Billy Giles, Jim Linn, David Pond, Jeanie Porter, Phyllis Randall, Janna Robinson, Susie Sell, Leann Shieldknight.

Students that made the Honor Roll each Six Weeks during the first Semester.
 Kelly Davis, Nancy Francis, Bradley Jackson, Rajan Martin, Scott Pipkin, Roger Jones, Mike Tucker, Amy Brillhart, Pam Conner, Linda Hamilton, Gina Bulls, Ted Harbour, Robert Cockran, Billy Paul Hazelwood, Dixie Sheppard, De Ann Reed, Scott Beedy, David Harbour, Steve George, Kendra Brack, Cathy Dear, Linda Ricketts, Roxana Sparks.

Junior High

FIFTH GRADE
 Pat Schnell, Camille Baggerly, Lee Watson, Linda Reneau, Jody Healer, Danny McLaughlin, Amy Renner.

SIXTH GRADE
 Susan Brillhart, Dalyn Brummett, Danny Carroll, Bonnie Seymour, Kandy Vaughn, Steven Benton, Ernest Wimeth.

SEVENTH GRADE
 Naven Baggerly, Randy Weston, Jan Jones.

EIGHTH GRADE
 Toni Hudson, Randy Collard.

HONORABLE MENTION
FIFTH GRADE
 Dennis Cockrell, Charles Cates, Deborah Smith, Billy Brown, Bobby DeArmond, Lisa Hutchison, Lezie Nollner, Cynthia Kopke, Jay Holland, Kim Brock, Sharon Seroges, Sheila Patterson, Larry Fryer, Diana Robinson, Elizabeth Hohertz, Karon Kunselman, Ricky Driscoll, Marla McWhirter.

SIXTH GRADE
 Beverly Bohanan, Roy Don Chick, Sheryl Curry, Tony Harper, De- vorah Jackson, Deonne Dortch, Rhonda Linn, Karen Matthews, Jane Ownbey, Kelly Rosenbaum, Becky Sheppard, Anita Smith, Richard Tracy, Rosemary Burk hart, James Conroy, Wanda Greene, Mary Hazelwood, Jim Jen kins, Jolinda Lee, Mark Massie, Betty Nixon, Roy Pipkin, Mike Schnell, Pat Sloan, Denise Sparks, Karen Waggoner.

SEVENTH GRADE
 Linda Willis, Danny Hendricks, David Holland, Paula Higgins, Jo Ellen Kirkland, Sandra Shy feldt, Glynnia Sanders, Steve Spoonemore, DeAnna Sheets, Richard Larson, Joe Bill Cochran.

EIGHTH GRADE
 Connie Trindle, Marcia Shiald knight, James Lemons, Barbara Bramlett, Linnie Bollinger, Penny Sanders.

High School
3rd Six Weeks
 D. Dee Collard, Karen Gibson, Margot Kilgore, Debbie Hazel wood, Darlene Waggoner, Susan Hutchison, Vicki Wilde, Sandra

Kitchens, Vicki Kunkel, Phyllis Patterson, Kate Kilgore, Gwen Janners, Frances Whitson, Nelda Vanderburg, David McClellan, Gloria Ricketts.

HONOR ROLL - SEMESTER
 Linda Spoonemore, Dorothy Smith, Kay Jackson, Gladly Hopper, D'dee Collard, Margot Kilgore, Debbie Hazelwood, Darlene Waggoner, Sandra Kitchens, Vicki Wilde, Vicki Kunkel, Kate Kilgore, Lloyd McWhirter, Frances Whitson, Gwen Janners, David McClellan, Mart Brillhart, Susan Uptergrove, Gloria Ricketts.

HONORABLE MENTION
3rd Six Weeks
 Barbara Wilde, Jean Harbour, Linda Spoonemore, Donna Ownbey, Jennifer Patton, Doris Slaughter, Stephanie Patton, Dorothy Smith, Genie Warren, Kay Jackson, Gladly Hopper, Kathryn Smith, Debbie Standerfer, Cheryl Bollinger, Kathi Pattison, Gail Upchurch, Leslie Crooks, Bethany Donnell, Lynn Garnett, Lloyd McWhirter, Nelda Vanderburg, Janice Trindle, Barbara Kitchens, Susan Uptergrove, Patty Barker, Tony Hester, Gary Cates, Nina Shelby, Janice Gilbert, Mart Brillhart, Norma Stowe.

HONORABLE MENTION SEMESTER
 Barbara Wilde, Jean Harbour, Donna Ownbey, Jennifer Patton, Doris Slaughter, Genie Warren, Boobie Grayson, Kathryn Smith, Debbie Standerfer, Cheryl Bollinger, Kathi Pattison, Karen Gibson, Janice Trindle, Barbara Kitchens, Norma Stowe, Gary Cates, Nina Shelby, Tony Hester.

Arts And Crafts Guild Met Jan. 21
 Mrs. Guy Fuller was hostess to the Arts and Crafts Guild January 21.

Members enjoyed the afternoon china painting. Attending were Mesdames W. W. Russell, P. A. Lyon Sr., Bruce Sheets, C. A. Gibner, Joe Traylor, Deta Blodgett and the hostess, Mrs. F. J. Hoskins will be hostess for the January 29 meeting.

WCS Ground Hog Supper January 30
 Members of the Woman's Society of Christian Service of the First Methodist Church will serve their annual Ground Hog supper from 5 until 8 p.m. January 30 in fellowship hall of the church. Tickets will be \$1.00 for adults and .75 for children 10 years of age or younger. Advance tickets are available from any member if desired.

Rebeka Lodge Installation Thursday Jan. 14
 The Spearman Rebekah Lodge No. 290, met Thursday, January 14, for installation of officers. The meeting was called to order by the Noble Grand, Caro Lee Franz, and the devotion given by Silvia Wilcox. They are, Noble Grand, Thelma Kenny. Vice Grand, Deanna Kenny. Recording Secretary, Inez Holland. Financial Secretary, Ina Mae Hughes. Treasurer, Thelma Scott.

The following officers were appointed by the Noble Grand, Warden, Lou Ethel Ellsworth, Conductor, Juanita Boxford, Chaplin, Jackie Hall, Color Bearer, Zina Longley, Team Captain, Sil via Wilcox, Right Supporter to the Noble Grand, Gladys Richardson, Left Supporter to the Noble Grand, Silvia Wilcox, Right Supporter to the Vice Grand, Margaret Kirk, Left Supporter to the Vice Grand, Barbara Fickling, Inside Guardian, Gowanda Go lightly, Outside Guardian, Ruth Caro, Right Support to the Chap lin, Mildred Chamberlain, Left Support to the Chaplin, Rose Cummings, Right Scene Support, Dorothy Longley, Left Scene Support, Helen Condo, Right Support to past Noble Grand, Iva Longley, Left Support to past Noble Grand, Lois Gaither.

A salad supper and social hour followed the installation of officers.

Mrs. Welch Hosts Lutheran Women's Circle
 The Faith Lutheran Church Women's Circle met Wednesday, January 13 in the home of Mrs. Bud Welch. After a short business meeting, the program, "If God So Loved Us", taken from First John, was given by Mrs. Jewel Ward. Attending were Mesdames, Harold Kopke, Jack Barker, Ronnie Schaefer, Jewel Ward, Bud Welch and Jack Oakes.

Fidelis Class Social
 The Fidelis Sunday School Class of the First Baptist Church held their class social in the home of Mrs. Johnny Miller. The devotional was given by Mrs. Ray Devers. Members present were Mesdames, Paul Conner, A. F. Loftin, Joe Entekin, Clea Sims, Dee Deere, J. R. Stump, R. E. Bradford, W. W. Smith, Charlie West, C. E. Blackburn, Roy Devers, Carl Hutchison, J. C. Cates, Wesley Jenkins, Johnny Miller & a guest, Miss Crystal Carson.

Presbyterian Women Met Wed.
 The United Presbyterian Women met Wednesday, January 13 at the Presbyterian Church. Mrs. Jimmy Davis presided over the business meeting, and Mr. Cair presented the program "Full Full Your Ministry" from the latter part of Colossians and Philippians. Mrs. Ken Conroy was presented with a going away gift. Attending were Mesdames, W. H. Neilson, Wiles Burgess, Glen Bohanan, Walter Spoonemore, Ken Conroy, Everett Cain, Jimmy Davis, R. C. Porter, the hostess, Mrs. Nelson Turnbul and Mr. Cain.

Luther League Meeting At Jewel Ward Home
 The Luther League of the Faith Lutheran Church held their meeting at the Jewel Ward home Sunday, January 18. The business meeting was conducted by Johr Knutson and the devotional given by Janice Knutson. Pastor Cordes gave the program from First Peter, on "Peter's Faith in Christ". Refreshments were served to Jene Welch, Ginger Snider, Willie Reneau, Janice Knutson, J. W. Ward, Judy Knutson, Ker Snider, John Cooksey, Arbeds Tackitt, John Knutson, Karen Knutson, Pastor Cordes and the counselors, Mr. and Mrs. Bud Welch. The next meeting will be a progressive dinner which will start at the home of Mr. and Mrs. Pete Cooksey in Gruver.

NIGHT STUDY HALL ATTENDANCE

Jr. High
 January 23, 1965
 January 25, 1965, Ronnie Howerter, DeAnna Sheets, Richard Booth, Bobby Smith, George Warren, Donlane Whitefield, Denny Hendricks, Keith Hutton, Carol Booth, Marie Chitwood.

January 26, 1965, Jerry West, Randy Weston, Danny Hendrick, Joe Clement, DeAnna Sheets, Hazel Lesley, Steve Holton, P. A. Lyon, Glenda Upchurch, George Warren, Marsha White, Ronald Howerter, Tom Henderson, Wesley Jenkins, Lee Shaver, Donnie Mach, Richard Booth, Bobby Smith, Kandy Collard, Brendi Lemons.

WCS Ground Hog Supper January 30

Members of the Woman's Society of Christian Service of the First Methodist Church will serve their annual Ground Hog supper from 5 until 8 p.m. January 30 in fellowship hall of the church. Tickets will be \$1.00 for adults and .75 for children 10 years of age or younger. Advance tickets are available from any member if desired.

Rebeka Lodge Installation Thursday Jan. 14

The Spearman Rebekah Lodge No. 290, met Thursday, January 14, for installation of officers. The meeting was called to order by the Noble Grand, Caro Lee Franz, and the devotion given by Silvia Wilcox. They are, Noble Grand, Thelma Kenny. Vice Grand, Deanna Kenny. Recording Secretary, Inez Holland. Financial Secretary, Ina Mae Hughes. Treasurer, Thelma Scott.

The following officers were appointed by the Noble Grand, Warden, Lou Ethel Ellsworth, Conductor, Juanita Boxford, Chaplin, Jackie Hall, Color Bearer, Zina Longley, Team Captain, Silvia Wilcox, Right Supporter to the Noble Grand, Gladys Richardson, Left Supporter to the Noble Grand, Silvia Wilcox, Right Supporter to the Vice Grand, Margaret Kirk, Left Supporter to the Vice Grand, Barbara Fickling, Inside Guardian, Gowanda Go lightly, Outside Guardian, Ruth Caro, Right Support to the Chap lin, Mildred Chamberlain, Left Support to the Chaplin, Rose Cummings, Right Scene Support, Dorothy Longley, Left Scene Support, Helen Condo, Right Support to past Noble Grand, Iva Longley, Left Support to past Noble Grand, Lois Gaither.

A salad supper and social hour followed the installation of officers.

Mrs. Welch Hosts Lutheran Women's Circle

Fidelis Class Social

Presbyterian Women Met Wed.

Luther League Meeting At Jewel Ward Home

Mrs. Daily Hosts Arts And Crafts Guild

The Arts and Crafts Guild met Friday, January 15, in the home of Mrs. Fred Daily. Members present were: Mesdames, Clay Gibner, Pope Gibner, Bill Russell, Joe Dan Bryan, P. A. Lyon, Sr., Nolon Holt, Guy Fuller, Fred Hoskins, Joe Traylor, and a guest, Mrs. Bill Gandy. The next meeting will be at Mrs. Guy Fuller's home, January 22.

Rebekah Lodge Banquet Held

The Spearman Rebekah Lodge No. 290, held their annual Past Noble Grand banquet, Thursday January 7 in the banquet room of Gruenwald's restaurant. The tables were beautifully decorated for the occasion. The invocation was given by Iva Longley, Silvia Wilcox, Master of Ceremonies introduced the incoming and outgoing past and affiliated Noble Grands, Margaret Kirk was the speaker for the evening. Attend ing were, Caro Lee Franz, Iva Longley, Dorothy Longley, Silvia Wilcox, Lou Ethel Ellsworth, Inez Holland, Ruth Caro, Rose Cummings, Juanita Boxford, Deanna Kenny, Thelma Kenny, Wanda Gellighly, Helen Condo, Sam Condo, Barbara Fickling, Harold Fickling, Mildred Chamberlain, Thelma Scott, Gladys Richardson, Frankie Duryee, Margaret Kirk and Ina Mae Hughes.

Mrs. Lee Hosts Bid-A-Bit Club

The Bid-A-Bit Bridge Club met in the home of Mary Lee. Mem bers attending were, Lemmie Russell, Gwnefred Lackey, Ruth Hutton, Joanne Blodgett, Carrie Marie Berry, Vi Whitson and Mable Jameson.

Hi - Lo Bridge Club Met

The Hi-Lo Bridge Club met at the home of Faye Lynch. Mem bers present were, Carrie Marie Berry, Freda Sheets, Kuhah Gandy, Ruth Bryan and Mabel Jameson. Guests were, Barbara McClellan, Vi Whitson and Deta Blodgett.

Freda Sheets won high and Barbara McClellan low.

HOSPITAL NEWS FOR WEEK OF JANUARY 21

Patients in Hansford County Hospital: Ray Grisham, Oralie Dalcias, Frances Ramirez, Thelma Scott, Danny Shepherd, Este Kennett, Cliff Overton, Mike Close, Eva Hale, Mary Garcia Bob Hays, Paul Hays, Leland Close.

Patients dismissed from hospital: George Stone, Reba Hunter, Earl Archer, Cleo Walker, Inel Warren, James Owenby, Samuel Artego, Steve Mayhall, Mel Frame, Kate Gray, Nick Nems- gern, Jesse Tompkins, Mary Davis and daughter, Margaret Johnston and daughter, Colleen Coats and daughter, Hartley Simons, Lorrain Davidson, Marie McCowan, Lola Sutton, Ella Cy- pert, Sandra Collier, Anabelle Pearson, Charles Erikson, Paul ine McCarty, John Hutchison, Jeannie Kerbo and daughter, Kevin Koper Lariece George, Brenda Vaughn, Joanne Carriger, Elizabeth Ruark, P. H. Jameson, Newel Allen, Bud Beeson, Jerald Vitt, Jean Peary and son, Ber. Upchurch, Marie Coates, Roy Halford, Paul Owen, Lottie Nold er, Leslie Dial.

Farmers Annual Report Due February 1st.

Farmers in this area were re- minded today that annual re- ports of the earnings of their farm workers are due in the office of the District Director of Internal Revenue by February 1, 1965.

Farm employers who fail to file a yearly report on the earnings of their farm employees and to pay the social security taxes due are subject to penalties and in- terest charges on the unpaid taxes.

Hal Geldon, Amarillo social security district manager, and Ellis Campbell, District Director of Internal Revenue at Dallas noted that the earnings of most farm workers are covered under social security. A farm employee, to be covered, must be paid at least \$150 in cash wages by his employer, or work for the em- ployer on 20 or more days dur- ing the year for cash wages fig- ured on a time basis (rather than on a piece-rate basis).

For 1964, the social security tax rate is 3.58 percent each for employer and employee on cash wages up to \$4,830. The tax a- mount must be entered on Form 942 (Employer's Annual Tax Re- turn for Agricultural Employees) together with the total amount of cash wages paid to each farm worker.

The completed form must be filed with the District Director of Internal Revenue at Dallas, on or before February 1, 1965.

Office Supplies

One \$164.00 Mahogany Desk, Only \$125.00

- ★ TYPEWRITERS
- ★ TYPEWRITER & ADDING MACHINE
- ★ RIBBONS
- ★ DESK BASKETS
- ★ CARBON PAPER
- ★ CARD INDEXES
- ★ DESKS
- ★ BOUND LEDGERS
- ★ LEGAL PADS
- ★ OFFICE CHAIRS
- ★ CLIP BOARDS
- ★ BOX FILES
- ★ NOTE BOOKS
- ★ LEDGER BINDERS
- ★ LEDGER AND JOURNAL SHEETS
- ★ SCOTCH TAPE
- ★ MIMEOGRAPHY PAPER
- ★ MIMEO STENCILS
- ★ PENCILS
- ★ PENCIL AND TYPEWRITER ERASERS
- ★ FILING INDEX CARDS
- ★ EXPANSION FILES
- ★ PENCIL SHARPENERS
- ★ FILE FOLDERS
- ★ TIME BOOKS
- ★ FILE CABINETS
- ★ CASH BOXES
- ★ STAPLERS AND STAPLES
- ★ SALES BOOKS
- ★ MAGIC MARKERS
- ★ STAMP PADS AND INK
- ★ CUSTOM MADE RUBBER STAMPS
- ★ PENCIL CLIPS
- ★ RECEIPT BOOKS
- ★ SCRATCH PADS
- ★ 4 TO 30 COLUMN COLUMNAR PADS
- ★ PAPER CLIPS
- ★ RUBBER BANDS
- ★ ...AND MORE!

C. Banquet Huge Success

The principal speaker at Annual Chamber of Comu Membership Banquet, Me night was Dr. Floyd Golde native of West Texas an teacher and administrator in Texas and New Mexico se and colleges for 40 years.

The Annual Membership was held at 7:30 p.m. Dr. Golden, now Educa Consultant for Rittenberry Rittenberry Architects in Dallas is President Emeritus Eastern New Mexico Univ a Portales, serving as hea of school from 1941 to 1960 was Dean of the college 1954 until he was elated president. He has served principal and superintendent public schools in Miami, V Beer, Elyona and Portales, Texas.

Dr. Golden was introduced by G. McClellan who of the same 30 different or

Thursday, February 4, 1965,

License Plates Now On Sale

Monday was the day to ning up for license plates a sales started Monday and pril 1 throughout the state Texas Highway Depart officials say that a good r sople rush to buy plates st week of sales, but the st flurry falls during the ek of March.

Current registration rec rificiate of title - and in ough to pay for the pla s needed to complete the t ion.

Last receipts of owner pers may be replaced e ough by sending 25 cents ch duplicate desired to Department's Motor Vehicle n in Austin (40th and Jac reets). But remember - to duplicate the Department n ur license number, make hich identification number, file may also be obtained e county in which the ve is registered, by the way. Texas license plates have ew look" this year. Each er plate has a three-let s followed by two or i metals. (Commercial and aneous vehicles retain i special registration syst e new passenger regisr stem enables the Depart cope with the increasing r registration.

Since World War II, app ically a quarter-million i cles have been regist arily in the state. This t ould continue, but the stem should provide suffi mbers for at least the e years.

Texas tags this year have l ters on white. Convinced ack and white provide the adable combination under y and night conditions, ghway Department alter e color pattern. In odd ates have black lettering hite; in even years, it's just istic. It's also more ec e Department has decid ed. Speaking of economy, p provide a revenue source, ilding and maintaining rity also have another pri rpose: identification. Becau e latter, Department strives mlicity in plate design. T re, plates in Texas contain e necessary information: lic mber, state, and year.

The simplicity in design i real value to the Texas p he Texas Police Association nounced that an automobi volved in 90 per cent of n times committed in the s is most important that p e readable from a reaso stance.

Texas tags are. When you buy yours, incl by you might want to e our last Official State Hig age in Texas. The man is rdinary for free worldwide ings. To make it easy on elling the Highway Depart s from each Texas county e collector's office a su e. Postcards for convey ing your tags - the sooner, the e.



UNION CHURCH

7:30 Saturday Night
 11:00 A. M. Service Sunday
 2:30 P. M. Sunday Afternoon
 7:00 Sunday Night

Will give his lifes testimony Satur- day Night.

One of Texas Leading Lay Speak- ers

Andrew C. Sorelle Jr.

1. Petroleum and Mechanical Engineer - Graduate of Texas A & M University Class '42
2. Fighter Pilot - World War II - Holder of Silver Starr, Distinguished Flying Cross, Air Medal (17 oak leaf clusters), and Presidential Unit Citation.
3. President of Houston Chapter Full Gospel Businessmens Fellowship. Board member of several schools, religious organizations, etc.

The Board of Trustees of the Spearman Independent School District, Spearman, Texas, offers for sale by sealed bid the following building, to be moved from its present site:

One metal building with approximately 5500 square feet of floor space, located adjacent to the Panhandle Eastern Pipeline Company compressor station 24 miles north of Spearman, Texas. Building consists of 3 classrooms, gymnasium and rest rooms, known as the New Hope School.

Bids are to be submitted to Orville Latham, Business Manager, Spearman School District, 403 East 11th Avenue, Spearman, Texas, to be received not later than 5:00 PM, Monday, February 8, 1965. For further information contact Orville Latham, Business Manager or James Bramlett, Superintendent, Spearman School District, Spearman, Texas. The Spearman School Board of Trustees reserves the right to refuse any or all bids.

THE SPEARMAN REPORTER

Dayton Phillips Tries For Week
 Dayton Phillips, Spearman, Texas, employee spent week in Wellington, Florida Taylor, Mr. Taylor de of the new Weather Ser vice on Cable T. V. Phillips was striving for placement under Mr. T. Phillips would be better able to, of this community