

The Spearman Reporter

THE SPEARMAN REPORTER, HANSFORD COUNTY, THURSDAY DEC. 18, 1958

Vol. 1, No. 2

Important County Hospital Election

County Hospital Bonds To Be Voted On January 10th, 1959

December 16th, the county court met and election to be held for the purpose of issuing bonds for a new county hospital, Spearman, and a new building. The court re-elected signed by more than 50 percent of the qualified voters of the county, requesting a bond election be called for the new hospital and building.

Two new boys that probably will see a lot of action on the Austin bound Lynx team this year are: Jim Archer, six ft. one inch, and Bobby Webster, five ft. eleven inches tall. These two became eligible as of Monday, December 16th.

Coach Stephens, who has never lost a ball game with his Lynx team, is ready for the big Gruver tournament. In an interview, he stated that Dalhart, a team highly under-rated, could win the tournament, as well as some of the other top seeded teams. However, we at the newspaper think that the Greyhounds would be harder to handle than the Dalhart boys, and so did Coach Stephens. Anyway, the big Gruver tournament opens today, Thursday and it will be one of the finest in the history of the school.

almighty dollar commands of respect. But doesn't go as politeness.

Outstanding Basketball Tournament Opens At Gruver

Probably the finest basketball tournament in Texas, will begin today, Thursday at Gruver. The tournament will feature many champions in it, among them are years District 1-B Spearman, and many other contenders for district champions in other districts.

The boys bracket, Sunray, Dalhart, Samnorwood, Stinnett, Spearman, Morse, Booker, Vega, Dalhart, Gruver and Texline will play teams to the fine tournament.

In the girls bracket, Spearman, Booker, Hartley, Gruver, Dalhart, Samnorwood, Stinnett, Vega, Texline and Sunray will have teams. For the many readers in the Spearman area, who plan to watch the Lynx team, they will play at 9:00 a. m. Friday morning. First game will be Spearman vs. Morse boys, and following this game our girls will play Booker at 10:15.

Should the Spearman team win their first games, they will play Friday night at 7:15 and 8:30. Be sure and plan to attend the big Gruver tournament and back the Spearman Lynx all the way.

The Dew drops from Heaven Fall as gently upon the Thistle and the cactus, as they do upon the Lilly and the Rose. (J. H. Nichols.)

Eugene Keith Hurt

While loading a barrel of oil at the Consumers Sales, Eugene Keith caught his hand between an empty oil barrel and the barrel he was loading. Two fingers were cut off and he was rushed to the hospital. At last report he was doing fine.



GORDON'S CORNER DRUG recently finished this beautiful gift corner addition to the Corner Drug, here in Spearman. Gordon Parrish, owner of the Corner Drug, is also President of the Spearman Quarterback Club. Besides the fine gift room pictured above he has an outstanding fountain service.

Seven Spearman Students Make All Regional Band.

Seven Spearman Band students made the all regional band, held in Pampa recently. Students making the band were: Ohoe, Teddy Sparks; Clarinet, Jerry Sparks; Clarinet, Richard Kirk; Alto Saxophone, Anita Holt; Cornet, Roy Westerbrook; Baritone, Charles Traylor; Bass, Larry Kingsley.

Two Outstanding Boys Eligible For Lynx Team

Two new boys that probably will see a lot of action on the Austin bound Lynx team this year are: Jim Archer, six ft. one inch, and Bobby Webster, five ft. eleven inches tall. These two became eligible as of Monday, December 16th.

Coach Stephens, who has never lost a ball game with his Lynx team, is ready for the big Gruver tournament. In an interview, he stated that Dalhart, a team highly under-rated, could win the tournament, as well as some of the other top seeded teams. However, we at the newspaper think that the Greyhounds would be harder to handle than the Dalhart boys, and so did Coach Stephens. Anyway, the big Gruver tournament opens today, Thursday and it will be one of the finest in the history of the school.

Blodgett & Linn Addition To Spearman Approved By City Commission

Another move has been made which indicates the potential growth of the City of Spearman. The first unit of the Blodgett-Linn Addition has been approved by the City Commission and the dedication and plat has been filed of record by the owners, C. Ralph Blodgett and James P. Linn. This first unit consists of seventy-six choice residential lots and is located east of the home of Ralph Blodgett and south of East Seventh Avenue. At the present time utilities are being installed, and in the near future the streets will be paved. All streets will be paved at one time and East Seventh Avenue will be paved in order to connect the Addition with now existing pavement.

This first unit is only a small portion of the overall plans for the Blodgett-Linn Addition. A great deal of work and planning has been put into this project in order that future expansion can be accomplished in an organized and planned manner. Features of the overall plan include a proposed park, school site, and shopping center. Watch this paper for all future development on these features and this area of the city.

Weather

Date	Max	Min	Rain
9	32	14	0
10	23	13	0
11	51	20	0
12	58	23	0
13	25	04	0.15
14	34	09	0
15	49	20	0
16	57	22	0

Court House Decorations For Christmas Are Beautiful

Despite the cold weather, and the lack of help available, the crew at the court house has put up one of the finest Christmas displays that we have ever had. The lights are strung throughout the trees, and all over the building itself. On top of the court house, the beautiful star of the east is displayed, and it can be seen for miles.

Virgil Floyd, Chamber of Commerce secretary has decorated main street with gay Christmas scenes, of snow-men, and they are hung from the street lights on main street.

One of the finest displays in town, is at Massard's in the show window. If you haven't seen this manger scene, see it today.

Wilson Buchanan Speaks At Lions Club Tuesday Dec. 16th.

Wilson Buchanan, state representative, and former Spearman citizen, brought the program at the Lions Club on Tuesday. Buchanan is known in this area, will make his first trip to the Legislature this month, and promises to give us a report about the meeting, as soon as he returns. He outlined about a dozen bills for the Legislature, and it was a very interesting talk.

Buck introduced an engineer from Guatemala, who is studying irrigation in this area, and he gave an interesting talk, about how he is trying to study irrigation in America, and then help develop the unlimited opportunities that irrigation affords in Guatemala.

He also invited Hansford fishermen and hunters to drive down there, and do their hunting and fishing. It is only 2,000 miles from Houston, and the beautiful new Pan-American highway was completed last week, so it is now possible to drive through without having to put your car on a train part of the way.

Middle age is when our tripping becomes less light and more fantastic.

Christ and Christmas THEY FOUND HIM

For thousands of years the world had been looking for Him. The prophets said he would come. Isaiah 6-14. Therefore the Lord Himself shall give you a sign. Behold a virgin shall conceive and bear a son, and shall call His name Immanuel. Isa. 9:6. For unto us a son is born. Micah 5:2 "About thou Bethlehem etc." (you can read these scriptures) Then they found Him, the shepherds, the wise men, the people of other days, and then you and I found Him.

Then they lost Him. He read this story in the Gospel in the second chapter of Luke. Even his parents lost Him. They all thought he was with someone else. So as long as someone had Him it was all right.

Now we have lost Him again. We have banished Him from our schools. We have banished Him from some of our so-called churches. Some of these have now come into the open, and decided not to call themselves Christians any more. We have banished Him from the councils of the world. Too many of our homes have lost Him. We are more interested in gifts of government, than of the gift of Christ.

My dear friend of the U. S. A. is to survive, we must once again give Christ His rightful place in our lives and in the council of government.

May you have the brightest and happiest Christmas you have ever known. You will have if you put Christ in the center of it all. Remember "the Babe of Bethlehem" is also the Christ of the cross, and the Christ of the resurrection. Here is the last verse of a beautiful poem titled "She lost her Christmas".

Lite Snow - Down To 4 Degrees

A light snow, 15 inches of moisture, and about 2 inches of snow, fell in Spearman Friday. The chilly snow hit Friday evening, and by 8:00 p. m. Friday, it was down to 13 degrees above 0. The low during the storm period was four degrees above zero, and brought in the coldest day of the winter so far.

METHODIST HOME OFFERING

Each year at Christmas time there is an offering taken in the Methodist churches of Texas for the support of the Methodist orphanage. This home is the orphanage that is supported by the Methodist people and is a home for something over 400 boys and girls. This Sunday we will take this offering in the morning worship service and send it in so these boys and girls will have it in time for Christmas. Those who would like to take part in this offering, and who will not be at church Sunday, can send your contribution to P. A. Lyon, Treasurer, and he will include it in the contribution to the home.



PANHANDLE FURNITURE MART'S fine store, is widely known throughout the entire Panhandle, as the place to do your Christmas shopping. Pictured above is Mrs. King, wife of the owner, Bud King, waiting on customer, Mrs. Sam Cluck

Four Gruver Students On Regional Band

Director Sam Watson of Spearman, informed us at the newspaper this week, that besides his seven Spearman players who made the all-regional band at Pampa, there were also four Gruver students who made it. One of them was Mona Hale, who is a flute player. Maybe Bro-Hughes can get the names of these players for next weeks Gruver news. We are proud of all of these fine students.

SERVICES TO BE HELD

Mrs. Gus McLain received word Tuesday at noon that her brother-in-law, Harry W. Wilson from Panama City, Panama, had died rather suddenly of a Cerebral hemorrhage.

Gruver Schools To Dismiss December 23

Gruver schools will dismiss for Christmas holidays on Tuesday, December 23. Students will be dismissed after Christmas parties on Tuesday afternoon and school will be resumed on Monday, January 5th, 1959.

OSLO NEWS

A light snow covered the Panhandle on Friday of last week. We have been having rather cold weather now for some time but little moisture. Christmas tree will be held Sunday night December 21. The program will be held Sunday night December 21. The program will be presented by the children. The title is "And Into The Darkness Came Light." This is the Christmas Story in Silhouette. Everyone is invited. Also on Christmas night December 25 a candlelight service will be held.

OFF THE BLOTTER

- (EDITOR'S Note) The following arrest and statistical report furnished by the Hansford County Sheriff's Department, Highway Patrol and City Fire and Police Departments covers the period from last week to Thursday noon. Events of journalistic consequence will appear in detail elsewhere in this edition.)
- | SHERIFF'S DEPARTMENT | |
|----------------------|---|
| Drunks | 8 |
| D. W. I. | 1 |
| Burglary arrest | 1 |
| Fugitive arrest | 1 |
| Theft investigation | 2 |
| Wreck investigation | 3 |
| Civil papers served | 4 |
| Indiscent exposure | 1 |
- | CITY POLICE | |
|-----------------|----|
| Traffic tickets | 21 |
| Drunks | 2 |
| No Fires | 1 |
| No Wrecks | 1 |

AWARD WINNER - W. E. Bratton, Spearman Manager for Community Public Service Company (left), is shown as he receives a check as first place winner in the company's "President's Trophy Contest" from Division Manager, C. E. Whippo of Perryton. The contest is based on five objectives relating to operating efficiency. Presentation was made at a recent dinner in Perryton honoring CPS Panhandle Division employees, who won the annual competition for the second consecutive year.



Mr. R. H. Holton Buried Recently

Funeral services for an old-time former Spearman resident, Mr. R. H. Holton, age 88, were held in Carthage, Missouri December 3 in the Ulmer funeral home with the Methodist Church Pastor officiating.

Christmas Program To Be Staged On Main Street Saturday Dec. 20.

The Chamber of Commerce is sponsoring a Christmas program to be staged Dec. 20. Santa Claus will be on main street all day Saturday giving candy to every little boy or girl he sees. At 3:00 o'clock in front of the Court House, a drawing for prizes will be held. The drawing is just for children from ages three through twelve years. Children must register at Cut Rate, Ideal, Allens or Cates Grocery stores in order to have their names in the drawing cage. Register any time between now and Saturday at 3:00. Several prizes will be given away at this time.

NEW OFFICERS ARE ELECTED

Supervisors of the Hansford Soil Conservation District elected officers at a special meeting last week. The officers elected will serve during the year 1959. W. L. Johnson from the Oslo Community north of Gruver, was elected Chairman. Johnson has served as supervisor since the Hansford Soil Conservation District was organized in 1950. Prior to that time he served on the Wind Erosion District.

It's hard to believe that America was founded to avoid taxation. You've got to hand it to the income tax people-or they will come after it.

The man who thought nothing of walking ten miles a day now has a grandson who doesn't think so much of it either.

PRESS...
ord Headlight, published...
unity, at Spearman...
LER...
PEARMAN REPORTER...
lass matter Nov. 21, 1958...
as, under the act of...
counties, One Year...
ning counties, One Year...
ADVERTISING...
d; 2c a word for every...
rd. Display Rates on Request...
: Any erroneous ref...
ny individual, firm or...
is of The Spearman...
attention of the man...

ST...
UC...
AL...
istory...
QUIP...
Spearman...
L 9-2351...
ATIONAL...
S...
er mink...
bedroom...
gift for your...
venience of...
on her van...
hat matches...
r-size Santa...
n, too!...
ce for the...
day of the...
now!

HE...
ONE

NEWS

County Home
Demonstration Agent
Texas A. & M. College
Extension Service

Wondering how long, and at what temperature to cook that Christmas turkey? The bulletin "Let's Eat Turkey," has all of your answers. It is available free of charge upon request.

FAMILY TRADITIONS AND CUSTOMS ENRICH CHRISTMAS SEASON
Family traditions and customs strengthen the family, says Mrs. Eloise Johnson, extension family life specialist. American families have inherited a rich blend of traditions from many lands.

Christmas is a wonderful time to let your own heritage be reflected in the decorations, the foods, and the hospitality of your home. If possible, start early and let the children help select a tree, gather holiday greenery, wrap gifts and make some of the decorations for the tree and the family dinner table.

The climate of Christmas in most homes can be enriched spiritually, too. Reserve a place in your home for some representation of the real reason for Christmas. A simple, very natural arrangement of the nativity scene gives real meaning to the most important of birthdays.

NEW BULLETINS
"Helping Rural Youth Choose Careers"
"Fertilizer Conversion Tables for Lawns, Gardens, and Flower Beds"
"Soil and Water Conservation Projects and Activities"

EAT SOME CITRUS FRUIT EVERYDAY
Citrus fruit is an easy, pleasant way to meet daily requirements for vitamin C—the vitamin that is not stored in the body. It must be supplied each day, remind extension foods and nutrition specialists.

Fresh, canned or frozen citrus fruits and juices are rich in vitamin C. They are quickly and easily served as appetizers, desserts, salads, garnishes, with main dishes, as the fruit course for breakfast and as between meal snacks.

Recent surveys show that many Texans are not getting enough vitamin C foods in their diet—How about you and other members of your family?

HOUSEHOLD HINT
Broken light bulbs remaining in a socket may be screwed out by pushing a large cork into the light base—the cork removes the danger of cutting the hands.

NATIONAL 4-H CLUB CONGRESS
Every 4-H club girl dreams of a trip to National 4-H Club Congress in Chicago. Sandra Stump, Lone Star 4-H Club girl of Hansford County, recently achieved this top goal, and her story of 4-H Club Congress appears in a special article in this issue of the Reporter. Sandra says, "There wasn't a dull moment!"

She has compiled a scrapbook that she will proudly be showing which will help her tell the Club Congress story adequately. If everyone works hard, we will be looking forward to having more State winners next year.

RECIPE OF THE WEEK
Mrs. H. H. Chevalier, Spearman, Texas gives us her favorite Cranberry Salad recipe. It is delicious and so easy to make. Remember to make some for Christmas.

CRANBERRY SALAD
1 package cranberries, ground
2 oranges, peeled and diced
1/2 cup miniature marshmallows
1/2 cup chopped pecans
3 cups sugar
Stir and let set.
CORRECTION
In the December 11 issue of the Reporter, the "Recipe of the Week" was PINEAPPLE ICE BOX CAKE. The recipe should include 1/2 cup chopped nuts.

Nancy Ownbey Honored At Recent Birthday Party

Gold basketballs and miniature goal-post place-cards decorated the pink-iced cakes used as the theme for the surprise birthday party given Nancy Ownbey Saturday morning by her mother, Mrs. Robert J. Ownbey of 1009 S. Haney.

The serving table was laid with Christmas place mats, and candy canes topped each Christmas napkin. Fourteen multi-colored cakes sprinkled with glitter were adorned with miniature bells and a referee whistle tied to small

Christmas wreaths. Christmas trimming decorated the entire house and the family Christmas tree. Games were played, and gifts were presented by Coach Oden, and members of the girl's eighth grade basketball team: Joyce McGuire, Janice Phelan, Janice Wilmet, Patti Archer, Dixie Melton, Florence Entekin, Mickey Die, Cathy Cates, Linda Bellamie, Diane Renner, Marily Schubert and Delia Davis.

Gruver Music Club Christmas Party

The Gruver Music Club, a member of the State and National Federation of Music Clubs, entertained their husbands at the annual Christmas Party December 9, 1958, at the Memorial Building in Gruver.

The hall was gaily decorated in the Christmas Motif, a large tree covered with blue lights centered the stage, and a long table complete with candies, cookies, breads, nuts, and dips of various kinds occupied the center of the room.

Bridge and "42" were enjoyed by all those in attendance and the evening closed with a very humorous gift exchange.

The Hospitality committee included Mesdames Pauline Winger, Alfred Henderson, Robert Alexander, Jr., J. C. Cluck, and Robert Alexander, Sr., were hostesses.

Guest present were Messrs. and Mesdames: Bob Cheek, Elmer Adcock, and Robert Cordes; and Mesdames Sammie and Mary Cluck. Members present were Messrs. and Mesdames E. H. Tabor, Elmo McClellan, Sr., Elmo McClellan, Jr., Robert Alexander, Jr., Del Cluck, Glendon Etling, A. C. Bort, Ralph Mathis, Gene Wook, Arnold Bayless, Ken Irwin, Harley Alexander, James Stejda, Jim Eddie, S. R. Cluck, Jim Cator, Ralph Bort, and E. T. Rafferty, Sr., and Mesdames Homer Cluck, Pauline Winger, and Alfred Henderson.

Patricia Lou Cator Weds. John Patterson

Mr. and Mrs. Pete Cator of Morse announce the marriage of their daughter Patricia Lou to John Bailey Patterson, son of Mr. and Mrs. L. M. Patterson of Spearman.

The marriage was solemnized November 18, in the First Methodist Church in Las Vegas, Nevada. Rev. Don O'Conner officiated.

The couple are making their home south of Spearman where Mr. Patterson is engaged in farming and ranching.

TEXAS PRESS
Member

Successor to The Hansford Headlight, published each week in Hansford County, at Spearman, Texas. WILL J. MILLER, Editor. **THE SPEARMAN REPORTER** is published weekly in Hansford and adjoining counties, One Year \$3.00. **CLASSIFIED ADVERTISING**—First insertion, 4c per word; 2c a word for each succeeding insertion. **NOTICE TO THE PUBLIC:** Any erroneous statement or advertisement appearing in this paper will appear in the columns of the Spearman Reporter corrected when called to the attention of the manager.

SANDRA STUMP ATTENDS 4-H CLUB

By Sandra Stump
The 37th Annual National 4-H Club Congress was held in Chicago on November 30 through December 4 with every state and territory well represented.

The Texas delegation was made up of thirty-one state winners, two sectional winners and five sponsors. We boarded the train at Dallas and for some, this was their first train ride, which was really an experience to remember.

While in Chicago at the Congress, it was just one big whirlwind exciting thing happening after another. The whole Congress delegation, 1300 people, were the guests of the Conrad Hilton Hotel, the largest in the world, during the Congress. The Congress was mainly held in this one building.

During the Congress, we attended Church Services in the hotel, the Sunday Evening Club Radio Service, a Pop Concert, the Museum of Natural History, the Museum of Science and Industry, the National 4-H Club Dress Review, Cinema "South Seas Adventure", International Live Stock Show, the 4-H Parade at the Live Stock Show, toured Chicago, and many parties of all types.

The Congress delegation were the guests to approximately nine different banquets given by large companies. At each banquet, we received some gift from the sponsor giving the banquet. We received a free one year subscription to the National 4-H News magazine, a cook book, a model car, tape measure, jar of dates, scrap book, pictures of the tables at which we ate, a pocket flashlight, and for the state clothing winners — a silver thimble, sewing kit, and a corsage.

The entertainment provided by the sponsors was very outstanding. We saw such celebrities as the Purdue Glee Club, Glenn Miller's Orchestra, Roger Williams, the Four Lads, Arthur Godfrey and his horse, Goldie, and the Reverend Billy Graham.

We arrived in good ole' Texas Saturday morning following a week none of the delegates will ever forget. I think there are two things the delegates will remember — how much fun was had by all and how dirty Chicago was.

The National Congress is an achievement all 4-Hers should work for because it is a week a person will never forget and they will have "the time of their lives."

Ownbey Family Add SPEARMAN, Dec. 12, 1958 special: Seven little red Christmas stockings hang in the window at the Robert J. Ownbey home at 1809 S. Haney.



AD GOOD FRIDAY-WEDNESDAY AND FRIDAY AND FRIDAY 26TH FOR CHRIST

TUR
Lb. To 12 Lb. 12 lb
HENS
Lb. 55¢ Lb

WHOLE P
8 Lb. TO 12 Lb.
Lb. 63¢
CHRISTMAS W

FRESH DRESSED HENS

CAME HIT PA KOOL GIFT Priced

Sealtest - 8 oz. Whipping CREAM
Grade A Large - Dozen EGGS
Food King OLEO 2 Lb
Scot Napkins SKOTKINS
Folgers 1lb. Can COFFEE
Shurline Instant 6 oz. COFFEE



Our Christmas Gift to You
The Perfect Gift AN IDEAL GIFT CERTIFICATE Available in Any Amount

SHOP IDEAL FOR CHRISTMAS CANDIES & NUTS
BIG VARIETY - LOW PRICES

PRICES IN THIS AD GOOD NOW 'TIL CHRISTMAS EVE.

Better Food For Less
IDEAL FOOD STORES

IDEAL'S RICH DELICIOUS FRUIT CAKES 2 Lb. \$1.49
IDEAL'S BROWN 'N' SIRE ROLLS 2 Doz. 29¢
IDEAL'S READY BAKED DINNER ROLLS Doz. 16¢
STUFFING BREAD Lb. 19¢

DEL MONTE PUMPKIN 2 300 Cans 23¢

IDEAL CRANBERRY SHERBET 1/2 Gal. 69¢
IDEAL TASTY ICE CREAM 1/2 Gal. 59¢
BORDO PITTED DATES 1-Lb. Pkg. 35¢

KURER'S PUMPKIN PIE MIX 20-Oz. Can. 23¢
NON SICH MINCE MEAT 1-1/2 Pkg. 27¢
RADIANT DICED FRUITS & PEELS 1-1/2 Pkg. 49¢
TOWNE STUFFED OLIVES 7-1/2 Jar. 39¢
IDEAL EGG NOG MIX 1-1/2 Qt. 59¢
IDEAL WHOLE DILL PICKLES 1-1/2 Jar. 25¢
Marshmallow Creme 1-1/2 Jar. 39¢
ANGEL FLAKE COCOANUT 7-Oz. Pkg. 35¢ 1-1/2 Pkg. 63¢

STOKELY'S WHOLE KERNEL CORN 2 300 29¢
STOKELY'S FRUIT COCKTAIL 2 300 49¢
CAL FAME JUICE DRINK ORANGE-PINEAPPLE 6-1/2 Can. 29¢
10 DELICIOUS FLAVORS JELLO 3 Pkg. 23¢
SUNDINE HYDRO COOKIES 12-Oz. Pkg. 39¢
NABISCO BITE OR TRIANGLE THINS 8oz. 31¢
SUPREME CLUB CRACKERS 1-1/2 Doz. 33¢
TOWNE HOUSE CRACKERS 1-1/2 Doz. 29¢

WESTERN MAID PURE PRESERVES
Strawberry - Cherry Seedless
BLACK RASPBERRY OR BLACKBERRY
3 18-Oz. \$1.00 Jars

ILLUSTRATED HOME LIBRARY ENCYCLOPEDIA
VOLUME 16
NOW ON SALE 99¢

FREE HAIR BRUSH WITH PEPSEODENT PUSH BUTTON TOOTH PASTE 98¢

SAVE 27¢
Pepsodent ANTISEPTIC
2 large size reg. \$1.10 value
NOW ONLY 83¢
KEEPS ON WORKING - TIMES LONGER THAN ANY LEADING TOOTH PASTE

TURKEYS
SWIFT PREMIUM BUTTER BALL 20-24 POUNDS 35¢ LB

SLICED BACON IDEAL THICK 2 LBS. 89¢

HAMS HAMS HAMS
SWIFT PREMIUM FULLY COOKED SHANK END 49¢ LB
SWIFT PREMIUM FULLY COOKED BUTT END 55¢ LB
ARMOUR STAR XMAS WRAPPED 5 LB. CAN \$4.89

FOLGER'S INSTANT COFFEE 6-Oz. Jar 98¢

HAWAIIAN PUNCH 3 46-Oz. 5.00 Cans

OCEAN SPRAY CRANBERRY SAUCE 2 300 Cans 39¢

FRESH FOR XMAS: TANGERINES, TANGELOS, PEAS, COCOANUTS, CHESTNUTS, PERSIMMONS, CORN, CHIVES, BRUSSEL SPROUTS, BROCCOLI, KUMQUATS, HOLLY, MISTLETOE, FRUIT BASKETS

CELERY CRISP-TENDER PASCAL 10¢
YAMS U.S. No. 1 PORTO RICAN 2 LBS. 19¢
CRANBERRIES FRESH OCEAN SPRAY 2 1-LB. BAGS 39¢

Cherry Queen Marschino
CHERRIES 8 1/2 11 oz. Jar 33¢

Selective All Green
ASPARAGUS 2 No. 300 Can 37¢

Folgers Coffee
2Lb. Can \$1.45
(10c Off Deal)

BAKE - RITE 3 Lb. Can 69¢

CHARMING NAPKINS 60 Count Package 10¢

WHIPPING CHEAM Borden's Sealtest, Fairmont 1/2 Pint 39¢

B & C EQUIPMENT
Main St. Spearman.
Texas OL 9-2351
INTERNATIONAL TRUCKS

Santa Says
SAVE with



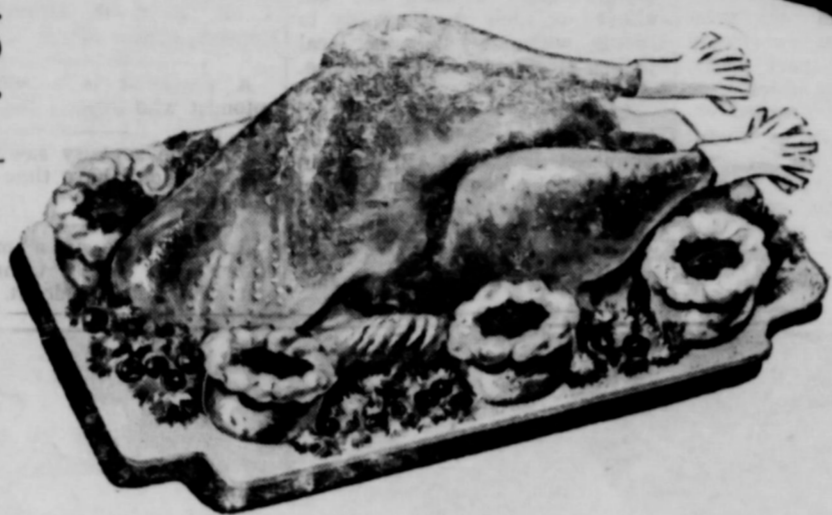
FINE VALUES
in **FESTIVE FOODS**



**AD GOOD FRIDAY-SATURDAY-MONDAY-
DAY-WEDNESDAY. WE WILL BE CLOSED
SDAY AND FRIDAY DECEMBER 25th.
26TH FOR CHRISTMAS**

TURKEYS

Lb. To 12 Lb.	12 lb. to 16 lb.	16 lb. to 20 lb.
HENS	HENS	TOMS
Lb. 55¢	Lb. 49¢	Lb. 43¢



Reynolds Aluminum - 25 foot
FOILWRAP **29¢**

Bonds Mix 8 oz.
STUFFING **25¢**

Supreme Money Graham - Lb.
CRACKERS **33¢**

Libbys Mammoth - Tall Can
RIPE OLIVES ... **29¢**

Shurfine Peach or Apricot - 20 oz.
PRESERVES **33¢**

Enjoy the merriest Christmas feast. Get all the festive foods and beverages at YOUR CUT RATE GROCERY AND MARKET. Our big selections of fine quality holiday favorites make it easy to gather the whole meal in one fast tour of our value packed display. Everything is here—everything from tender turkeys as plump as Santa to delicious desserts—and everything is low-priced to save you money. This is our way of saying Merry Christmas to all—and to all, fine feasting!

HAMS

WHOLE PANHANDLE BRAND

8 Lb. TO 12 Lb.	12 LB. TO 16LB.
Lb. 63¢	Lb. 59¢

CHRISTMAS WRAPPED - PERFECT FOR GIFTS

Sunkist ORANGES
Eat whole oranges... Drink whole fresh orange juice

BORDEN'S VANILLA, CHOCOLATE & STRAWBERRY Ice Cream
Extra good because it's made with extra cream
One Half Gallon **69¢**

Seven-Up
Have Sparkling
37¢ PLUS DEPOSIT

Kraft 10 oz.
JET PUFFED MARSHMALLOWS **19¢**

Maryland - Sweet
YAMS
Lb. **10¢**



Large - Honduras
COCANUTS 2 for **29¢**

Tender - Crisp
CELERY Stalk **15¢**

CHECK OUR SPECIAL PRICE ON CHRISTMAS FRUIT BY THE BOX

Large - Golden - Ripe
BANANAS 2lbs. **33¢**

Banquet Frozen 24 oz. - Apple or Cherry
PIES Each **35¢**

Libbys Frozen Golden 10 oz.
WHOLE KERNAL CORN Pkg. **15¢**

Libbys Cut 10 oz. Pkg.
ASPARAGUS **35¢**

Libbys Fancy 10 oz. Sliced
STRAWBERRIES **19¢**

Shurfine Syrup Pac. - Small Whole - No. 2 Can
SWEET POTATOES **23¢**

Shurfine Whole Red - 303 Can
BEETS .. 2 for **23¢**

Del Monte Sweet - 303 Can
PEAS **19¢**

Dole No. 2 can Crushed
PINEAPPLE **27¢**

Food King Shortcake - No. 2 1/2 Can
PEACHES ... **25¢**

Welch 24 oz. Grape
JUICE **35¢**

Shurfine Fancy - 303 Can
APPLE SAUCE 2 for **29¢**

FRESH DRESSED
HENS Lb. **39¢**

Register your Kiddo here—Pre school age for Chamber of Commerce Christmas drawing.

CIGARETTES
—Always a Welcome Gift!

CAMEL PALL MALL HIT PARADE L & M KOOL TAREYTON

GIFT WRAPPED
Priced Competitive

Sealtest - 8 oz. Whipping CREAM 39¢	Sealtest - 8 oz. Pkg. SOUR CREAM 29¢
Grade A Large - Dozen EGGS 49¢	Bordens 1/2 Gallon SHERBERT 69¢
Food King OLEO .. 2 Lbs. 29¢	Bakers Angel Flake 3 1/2 oz. COCANUT 19¢
Scot Napkins SKOTKINS 19¢	All Flavor Gelatin JELLO 3 for 23¢
Folgers 1lb. Can COFFEE 77¢	Scot Paper TOWELS 19¢
Shurfine Instant 6 oz. COFFEE 69¢	Lipton 1/2 lb. Pkg. TEA 39¢
	Starkist Chunk Style TUNA 29¢

Puritan Fresh
ORANGE SLICES
2 Lb. Bag **29¢**

Tendercrust
Brown-n-Serve
ROLLS
12 to Pkg. **15¢**

Favoite King Size Loaf
BREAD
2 for **29¢**

DOUBLE ROUND-UP STAMPS WEDNESDAY

FRIENDLIEST STORE IN THE PANHANDLE
CUT-RATE
MAIN STREET
GROCERY MARKET
SPEARMAN TEXAS

FAMOUS FOR SERVICE

WE GIVE VALUABLE ROUND-UP THRIFT STAMPS
SPEARMAN'S MOST VALUABLE STAMPS





Will Marry In January

Miss Shirley Loftin and Darrell D. McCoy will exchange wedding vows on January 27, 1937, at the Assembly of God Church in Spearman. Announcement of their daughter's engagement and approaching marriage is being made by Mr. and Mrs. T. H. Loftin, 222 West Second, Spearman. Parents of the prospective bridegroom are Mr. and Mrs. Leon McCoy, Keyes, Okla.

H. Eugene Reeves Given Outstanding Judging Honors

GOODWELL, DEC. —(SPECIAL). H. Eugene Reeves, assistant professor of agronomy at Panhandle A. & M. College was recently named president of the "National Collegiate Crops Judging Coaches Association". Reeves replaced Dr. John Goodling of Nebraska University as presy of the coaches organization. Secretary of the group is Dr. Steve Raleigh of Pennsylvania State University. Reeves' Judging team recently competed in the National Crops Judging Contests at Kansas City and the International Contests at Chicago, placing eighth at Kansas City and ninth at Chicago. Members of the Aggie Team were: Morris Alexander, Boise City; Wayne Webber, Pratt, Kansas; and Ronald Leatherman, Perryton, Texas.

Cranberry Sauce
Buttered Peas
Cole Slaw
Ginger Bread with Applesauce
Hot Rolls — Butter
Milk

TUESDAY, Dec. 23
Beef Vegetable Soup — Crackers
Peanutbutter Sandwich
Relish plate (Celery & Carrot Sticks)
Ice Cream
Chocolate Milk

James P. Garrett To Arrive In States From Overseas Duty

James P. Garrett, Aviation electronics technician third class, USN, son of Mr. and Mrs. Lee G. Garrett of Spearman is scheduled to arrive in Alameda, Calif. Dec. 18 with Attack Squadron 215 aboard the attack aircraft carrier USS Lexington after a tour of duty in the Far East.

The squadron, flying the Ad-6 "Skyraider", operated as a unit of the U. S. Seventh fleet, conducting flight patrols in and around the Formosa Straights.

Gruver School Lunch Menu For Week

June Kindy, Supervisor
MONDAY, Dec. 15,
Enchiladas Chopped Onions
Tossed Salad
Brown Beans
Lime Gelatin Special
Buttered Bread Sticks
Milk

TUESDAY, Dec. 16,
Frankfurter
Cream of Potato Soup
Relish Plate
Apricot Upsidedown Cake
Toasted Cheese Sandwich
Milk

WEDNESDAY, Dec. 17,
Steak Gravy
Baked Potato
Green Beans
Sliced Peaches
Hot Rolls Butter
Milk

THURSDAY, Dec. 18,
Chicken Pie
Buttered Peas
Cabbage Pineapple Salad
Blue Plums
Biscuit — Butter
Milk

FRIDAY, Dec. 19,
Hamburgers — Buttered Buns
Buttered Corn
Broccoli
Relishes (Lettuce pickles onion-beets)
Ice Cream
Milk

MONDAY, Dec. 22,
Baked Ham

Washington News Letter From Your Congressman Walter Rogers

TO THE PEOPLE OF THE 18TH DISTRICT:

Rocket Traffic Signals

It is likely that nothing in our lifetime has caught the imagination of all the people of the world as has the world's entry into the space age. This imagination as usual has manifested itself in many ways in every age group of our society and, inevitably, in the building, testing and firing of rockets by amateur and professional scientists. This is a wonderful thing, I believe, and is a demonstration of the old adage, "we learn by doing". Like everything else, however, there are certain hazards in these practices, and it is recognized that precautions must be taken to protect life and limb.

For this reason the Civil Aeronautic Board is considering proposed regulations for the operation of rockets and missiles. It is pointed out that these proposals stem from the increasing number of instances of potential hazards to aircraft in flight rather than any determination to destroy or unduly suppress any scientific endeavor, since the educational benefits to be derived from an organized experimental rocketry program are of great importance to all the nation. CAB points out that launchings of missiles have been conducted within the confines of airport traffic patterns, civil airways, and in such manner that they have penetrated other controlled air space areas. They have occurred at times when weather conditions prevented observation of aircraft in flight, thus creating a hazard to planes operating under instrument conditions. Certainly, the continued and ever increasing use of air space will dictate extremely efficient, and precise use of this

space. The Board's concern with these potential dangers has been shared by state and municipal authorities who have, in many instances, enacted ordinances providing that no rocket, other than for military or industrial purposes, shall be fired without areas of their authority without prior approval and issuance of a permit. This recent large scale production of rockets which are available to the general public through hobby shops and department stores.

I point out that these regulations are not final and that they may be amended or altered after consideration of views and opinions of citizens all over the country. The initial proposals are, however, these: That no rocket or missile shall be fired so as to be at any time at an altitude of more than 500 feet above the surface, unless the site utilized and the firing are approved by the administration of the Civil Aeronautics Board.

That, no rocket or missile shall be fired from within or into any control zone, or so as to be at any time within five miles of any airport.

It is also pointed out that, in event these proposed regulations are adopted, holders of or applicants for a permit issued by the Administrator of CAB are not relieved of their responsibility to comply with any state or local (police, fire, aviation) ordinance, law or regulation.

The hearing to consider the adoption of these regulations will be conducted by the CAB here in Washington, probably sometime in February. As in all such proposals, interested persons may submit their views so as to reach the CAB Bureau of Safety by January 27, 1937.

VISITORS
It was good to see Mr. and Mrs. Sam Cluck, Mr. and Mrs. Del Cluck, Mary and Sammie Cluck, all of Gruver. They were in Washington for the Thanksgiving Holidays to visit Mr. and Mrs. Sam Cluck's daughter and son-in-law, Private and Mrs. Andy Burleson, Private Burleson, whose home is Amarillo, is currently serving on active duty with the Army in the Pentagon.
WALTER ROGERS
Member of Congress
18th District of Texas

Gruver W.S.C.S Has Christmas Program

Mrs. Kenneth Irwin gave the lesson on "Christmas With Our World Neighbors" before the regular meeting of the Gruver Womens Society of Christian Service in the Methodist church in Gruver. Assisting her were Mrs. J. V. Patterson, Mrs. Jack Henson, Mrs. Etter, Mrs. Wood and Mrs. Del Cluck.

Mrs. Etter sang a solo "Christ to the World we Sing."
Mrs. Irwin showed a film of Christmas in Norway and England which was enjoyed very much.

Messdames present: C. H. Winder, Kenneth Irwin, E. Wood, A. Bort, J. V. Patterson, Ted Evans, W. L. Harris, Carrie Neilson, W. H. Willoughby, Art Evans, M. F. Barkley, W. J. Eddleman, Ernest Sluder, D. L. McClellan, Del Cluck, L. K. Garrett, Ted McClellan, Art Bernstein, Etter, A. R. Bort, R. Murrell, Jack Henson, Ernest Sluder.

A pessimist is a sentimental optimist who expects too much

Don't be so busy sawing wood that you don't have time to sharpen the saw.

An executive is a man who knows how to get things done, and who gets to do it.



OLD-FASHIONED Christmas Wishes

We're old-fashioned enough to get sentimental about Christmas... to conjure up visions of happy reunions, stockings hung by the hearth, and a single angel on the tree. In this hearty spirit, we wish you the season's best!

SPEARMAN REPORTER



Best Wishes for CHRISTMAS



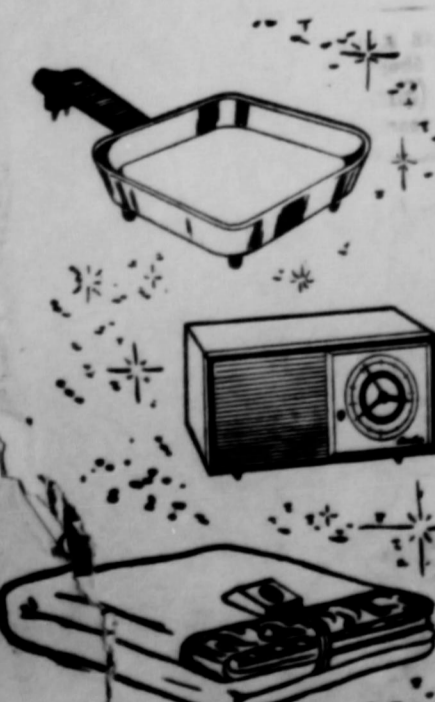
Glad Christmas greetings and good wishes, friends and neighbors! It is our sincere hope that the joyous spirit of this happiest of all holidays will light up your home and your heart with peace and good will. May you ever be blessed by the rich rewards of having friends and loved ones around you. As you observe Christmas with those near and dear to you, may you rejoice anew at the true meaning and eternal glory of this Holy time. May it bring you inspiration for every day of a more abundant life.

OWENS SALES COMPANY
Spearman, Texas



Give year-round better living

GIVE BETTER...Electrically



You give happier tomorrows when you give electrical gifts. They speed work around the house... add to the fun of living... help every member of the family every day. Choose lastingly useful electric appliances... and give better... electrically!

SEE YOUR ELECTRIC APPLIANCE DEALER
COMMUNITY PUBLIC SERVICE
LIGHT
POWER

atterson
Cator of
Lou, to
son of
Patterson
The marriage
November 18,
thodist Church
vada, Rev. D.
ciated.
The couple
home south of
Mr. Patterson is
ing and ranch

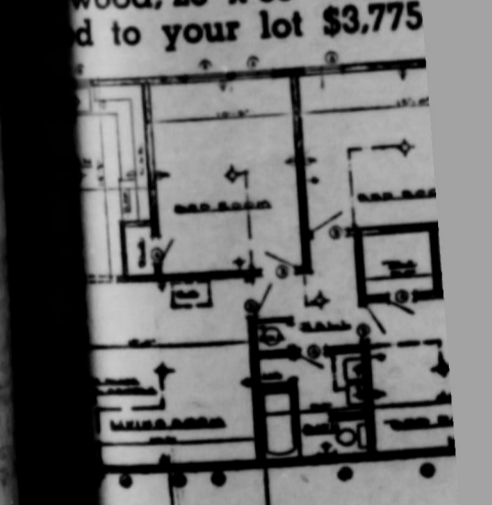
These calves
the feed lot so
Sept. 15, and Oc
The starting
calves varied
pounds. All of
stock show will
only.
Each 4-H men
complete record
will submit a re
time the calves
the stock show.

ing calves
have fed
The two
son from
who is feed-
garrett from
one calf.
who have
are: Char-
Spearman,
es. Charles
Champion
ford Coun-
ddie Martin,
feeding one

Lunch Roo
Hold Party
& Members of
Ochiltree chapter
School Food Set
held their Christ
day evening Dec
Spearman school
The evening m
salads, crackers,
Several games
then the Nativity
acted by the Gr
Gifts were excha
ose of the meeti
Attending wer
bers from Gruver
Perryton, and fi

feeders are
of calf feed-
lows: Lynn
man, who is
Novak,
feeding one
north
2 calves.

wood, 28' x 38' - 3 Bed
d to your lot \$3,775



floor plan of The NORWOOD,
of distinction, will give you
comfort and beauty of this fine
er, low price!
LAINS READY - BUIL
kas Doc Alexander B

MONDS PLACED
TH US ARE:

Protected—Each Account has
10,000.00
% per Annum
When Needed

received by the 10th Will Receive
Dividends for the Full Month

Investment insured up to \$10,000
and Loan Insurance Corporate
Agency of the United States Govern
Annual Dividend Rate 3 1/2 %
your account by mail

DETAILS regarding an account with you.
SPEARMAN SAVINGS & LOAN ASSOCIATION
Spearman, Texas



SHIONED as Wishes...
 ional enough to get...
 Christmas... to...
 of happy reunions...
 by the hearth...
 tree. In this hurry...
 the season's best!

MAN
TER

Club mem-
club calves
and County
will be held



wood, 28' x 38' - 3 Bedroom
to your lot \$3,775.00

AINS READY - BUILT CO.
as Doc Alexander ER 3-7971

ND S PLACED
TH US ARE:

Protected—Each Account Insured \$10,000.00

2% per Annum When Needed

received by the 16th Will Receive Dividends for the Full Month

Investment insured up to \$10,000 by the Life and Loan Insurance Corporation, a member of the United States Government.

Annual Dividend Rate 3 1/2%

your account by mail

INSURANCE & LOAN ASSOCIATION

Details regarding an account with pm.

Phone 664-8922

man. Guests were: Four girls from Gruver and one from Spearman.

Spearman Music Club Meeting Held

The Spearman Music Club, a member of the State and National Federation of Music Clubs, met in the home of Mrs. Billy Miller December 10, 1958 at 3:00 o'clock. Mrs. Tom Sutton was co-hostess.

After a short business session presided over by Vice president Mrs. Billy Miller, a very interesting program was presented on American Folk Music.

The program opened with the entire group singing the Hymn of the month, "Angels From the Realms of Glory." Mrs. Perrin Lyon gave the story of this hymn.

Mrs. Joel Lackey gave a very informative lesson on "Our Folk Music" discussing in detail music and tunes of the Indians, Negro people, and cowboys.

Miss Mary Nelms sang a Negro folk song, "Old Man River." Miss Susan Sheets played an Indian tune piano solo, "Indian Love Call."

Mrs. J. L. Brock sang a Negro spiritual "Sweet Little Jesus Boy." Mrs. Rue Sanders accompanied the vocal soloists.

The choral group from the Music club sang a Cowboy folk song, "Tumblin Tumble Weed".

Favors of small painted China Christmas bells were presented to members upon being served. Those present included Mesdames: Rue Sanders, Perrin Lyon, Olen Chambers, Russell Townsend, Don Knox, J. L. Brock, Sam Watson, Chalmers Porter, Jimmie Crawford, Joel Lackey, and Miss Mary Nelms, the hostess. Mrs. Miller and co-hostess Mrs. Sutton.

The next meeting will be January 14. This will be a special program; a piano concert played by Marjorie Urban of Perryton. This will be at 2:00 p. m. in the First Baptist Church with the public being invited.

Letter To Santa:

Dear Santa:
 I am a little girl of 3 years old. My little sister and I want one for their help and kindness they gave us while Eddie was in the hospital.

Mrs. Eddie Pool and children.
 No. 2 1-4-p

FOR RENT—Trailer house, good location. Call Orville Fullbright, 6536.
 No. 2, rtn

WANTED: Ironing \$1.50 mixed bundles. 1006 S. Haney or phone 5626 50-6TP

PRE CHRISTMAS DANCE

MEMORIAL BUILDING PERRYTON, TEXAS
DECEMBER 18TH.— 9:00 P. M.

MERYL LINDSEY
 And His
JUBILEE BAND

DANCE SATURDAY NIGHT DEC. 20TH

News about the New Rockets!



1959 OLDSMOBILE NINETY-EIGHT HOLIDAY SCENICOUPE—Rear seat passengers ride under a sky of pure Safety Plate Glass, especially processed and tinted to block out the sun's rays! Front seat passengers share the beauty of Oldsmobile's new Vista-Panoramic windshield. All share the smooth, serene "Glide" Ride—behind the quiet and economical Rocket Engine! The Scenicoupe is available at your local authorized Oldsmobile Quality Dealer's in all three series—Dynamic 88, Super 88 and Ninety-Eight.

C. and H. MOTOR COMPANY
 Highway 15
 Spearman, Texas
 Phone OL 9-5251

WANTED—Good used piano. See Loy Hiller at Pringle.
 No. 2, -2-t-p.

FOR SALE—In good condition: one 1955 Gleaner-Baldwin Combine. Raddle type. One 1956 Gleaner Combine, Raddle type.
 Jack Pierson, Lavern, Okla.

CARD OF THANKS
 May we extend our heartfelt thanks to all for your many expressions of sympathy during the loss of our Father. We are truly grateful. May God bless each of you.
 Mr. and Mrs. Richard Holton
 Mr. and Mrs. Dale Davidson.
 No. 2 1-t-p

FOR SALE—boys 20" Bicycle.
 \$15.00 Willis Sheets, 225 Snide St.
 No. 2 1-t-p

FOR SALE—Female Pomeranian puppy.
 \$35. 113 West 2nd.
 No. 2, 2-t-p

WANTED—Man for profitable Raleigh business in Lipscomb County. Products well known. Real opportunity. See Milton Brown, Spearman or write Raleigh's Dept. TXL-30-119 Memphis, Tenn.
 No. 2 1-t-p

FOR RENT—Trailer space. B. A. Byers, OL 9-6101, 512 Hazlewood
 No. 2-2-t-p

LOST—A red female Dachshound puppy. If found contact Bobby Nolmer or call 2781 before 6:00 p. m.
 No. 2 1-t-p

WANTED TO RENT—Irrigated farm land. Twelve years experience in irrigation farming.
 Harold Saltzman, Box 529, Gruver, Texas.
 No. 52 8-t-p

FOR SALE: Hegari bundles. Heavy grain excellent for feeding on wheat pasture, or during snow storm. See Vernon Crooks, East of Spearman.
 No. 51 rtn

FOR SALE—Three bicycles, 20", 24", 26". Call Ernest Wilmeth.
 No. 1, 2-t-p

BULBS. PLANT THEM NOW. SPEARMAN HARDWARE!

WANTED—Water hauling, see Perry Sheets or Olin Sheets.
 No. 1 2-t-p

BULBS. PLANT THEM NOW. SPEARMAN HARDWARE!

CYCLOGY SEZ

A TURKEY STUFFED WITH SAGE IS GOOD FOR THE INNER MAN - A SAGE STUFFED WITH TURKEY IS BETTER FOR THE INTELLECT

INSURANCE
 Appeals to the Intelligence of all modern Citizens. It has become as essential as any other element of modern living. Let us handle your INSURANCE.

Collard Jr.
 INSURANCE REAL ESTATE FARM LOANS
 407 DAVIS ST
 PO BOX 476
 SPEARMAN TEXAS

BULBS. PLANT THEM NOW. SPEARMAN HARDWARE!
 Perryton Berger Pampa
 GE 5-5401 BR 4-2229 NO 4-4487

Landscaping supplies

For trees, Shrubbery, Flowers. Anything in the Nursery line. I have the Stark Brothers Agency
 Phone OL 9-4731

E. E. Williams

A. L. Wilson, Jr. REPRESENTING

South Coast Life Life, Health, Accident
 SAVINGS PLANS
 MORTGAGE CANCELLATION
 PHONE OLIVE 9-5631
 SPEARMAN, TEXAS

WANTED

Custom Plowing Good Equipment Call "Doc" OL 9-5736
Leo "Doc" Campbell

ANTHONY ELECTRIC

★ Industrial and Oil Field Wiring
 ★ Commercial and House Wiring
 ★ Contracting And Repairs
L. L. ANTHONY
 Phone OL 9-3361
 413 S. Barkley St.
 Box 727
 Spearman, Texas

MACIAS Construction Co.

Homes under construction in South Spearman.

G. I., FHA Loans

See Us For Your Building Needs
ALEC MACIAS
 1629 DRESSIN
 PHONE OL 9-5846
 Spearman, Texas
 TRACTOR WITH SCOOP AND FRONT-END LOADER AND DUMP TRUCK
 1602 SOUTH MAIN PERRYTON, TEXAS
 Phone GE 5-4531

MOTOR WISE

Boxwell Bros.
 Funeral Home and Flower Shop
 Day - Night Phone 2781
 SPEARMAN, TEXAS

C. and J. Drilling Company

SLIM CATES... BUD JACKSON
 Featuring irrigation well drilling and domestic wells for windmills and small pumps.
 TELEPHONES
 OLIVE 9-4735 OL 9-896

A. & G. Humble Service

WYATT ADKINS RAYMOND GILLEY
 For the life of your car GO GULF!

GLASS REPLACEMENT

Body Shop and Painting
R. L. (Smoky) Huse
 Spearman, Texas

Hansford Lodge

1040
 A. F. & A. M.
 Regular Communication 2nd and 4th Monday of each Month
 Raymond Kirk, W. M.
 A. L. Wilson, Secretary

Jim's

SERVICE AND APPLIANCE
 Appliances, Service, Wash - Dry Appliances
JIM SOUTHWELL
 1006 S. W. 2nd
 Spearman, Texas

MEDICINE

Dr. D. E. Hackley
 OSTEOPATHIC PHYSICIAN AND SURGEON
 304 MAIN ST.
 Office Hours: Week Days 9-12 and 1-5
 Saturday: 9-12
 Office Phone - Residence Phone 4581 3691

Dr. Reese Nowlin
 OPTOMETRIST
 OFFICE HOURS
 9 to 12 a. m. 1 to 5 p. m.
 Saturday 9-11
 Phone 5481
 No. 10 SW 2nd Avenue
 Perryton, Texas

R. L. Kleeberger
 M. D.
 Physician and Surgeon
 Medicine, Surgery and Obstetrics
 Hours: 9-12 a. m. 2-5 p. m.
 CLOSED ALL DAY THURSDAY AND SATURDAY AFTERNOON
 Phones: office 5781
 Res. 2161
 16 S. W. Court St.
 Daily Bldg.
 Spearman, Texas

Dr. F. J. Dally
 DENTIST
 No. 16 S. W. Court St.
 Phone 3561
 Spearman, Texas

SANFORD HOSPITAL AND CLINIC
 Perryton, Texas
 Phones 2821 or 2831
ROY K. SANFORD, M. D.
 Pediatrics
J. BLUFORD JOHNSON, M. D.
 General Surgery
O. U. MONROE, M. D.
 Obstetrics - General Practice

INSURANCE

E. C. GREENE
 ★ Real Estate
 ★ Loans
 ★ Insurance
 Phone 4261 - Box 148
 Spearman, Texas

B. M. A. INSURANCE

E. K. SNIDER
 Spearman, Texas

AMBULANCE FLOWER

Number
 Dial 2751
 SPEARMAN, TEXAS

Outdoor Life

Some of the minnows were less than an inch in length while some went over three inches. The Canadian minnow is a very shy specie. These minnows will go in schools of different sizes. Even though they refuse to intermingle and integrate, they are found in large numbers of usually the same size. The fry type is in the shallow waters while the larger schools are in the deeper holes.

It is interesting to observe this fish that has so many characteristics of the high planes antelope. There are miles of water in the river but most of it is shy of fish life until one spots a school of the Silver Dace specie. Ray Cornelson, Borger, said about one place in the river, "I'll bet there were fifty gallons of minnows."

Another thing about the Canadian River minnows is that they will swim ahead of a person walking along the water's edge much like a herd of antelope drifting across the horizon. However, the watcher can soon spot the fleeting school if he will pick up enough speed, but only to notice the minnows using up every ounce of their strength to outdistance the observer along the trickles of the river.

The wide Canadian goes dry at different times throughout the summers with scarcely a pot-hole here and there, but the indestructible minnow seems to thrive through these ordeals.

A way up the river from Highway 17, only found by co whoys, riverbuggy enthusiasts, together with marathon-type fellows who like to hike, are these minnows. Sometimes they reach the length of more than ten inches. In the same holes on the isolated parts of the Canadian is found a pure specie of channel cat that hasn't been tampered with by man. These catfish will weigh up to at least six pounds in some of the holes that are found between the halfway mark in the Panhandle, north and south, to the New Mexico line. Silver Dace minnows and channel catfish make up the largest part of aquatic life in this stream.

Someday I would like to do as the boys in the river buggies can do and tour the reaches of the Canadian, from the time it enters the Lone Star State until it flows into Indian Territory.

THE WAY I SEE IT!

By Robert Cordes, Pastor
OSLO LUTHERAN CHURCH

Swirling snow driven by merciless winds are not as familiar in the Panhandle area as further north but we realize their viciousness. One evening shortly before Christmas a young boy hurried home from school so he could go to grandmother's house about a half mile away. He was to trim her Christmas tree.

The pleasant task made time disappear like ice cream before a hungry child. Already late, the boy started for home. The snow was coming in confusion, driven into the boys eyes and face with snow cold punches. Visibility began to get poor and footing deep under piling drifts. The boy kept walking and stumbling, now off the regular path usually taken. He kept moving, hoping to discover some familiar landmark. Cold seeped into his body. And stumbling he hurt his knee on a rock. He could only sit bruised in his cold snow chair.

It seemed like hours that he prayed to God and called for help.

He couldn't walk. Then it was that a neighbor came toward him on a horse. He had heard the cry for help from the small boy and came to lift him from his helpless situation. In the storm the boy had mixed his directions and was walking away from his home.

Confused humans are found in the same condition. Satan has made us so confused we follow our own wills and evil desires. We wallow in earthly pleasures called sin. We stumble onward with our minds darkened to God's holy way. Too smart to say we are lost, we hasten on like the boy, relying on our own will we can grope our way into freedom.

James 2:10 "For whoever keeps the whole law but fails in one point has become guilty of all of it." God sees us as separated from Him because of our unholiness, our anger, self righteousness, our general sinful condition. Man, as he reads the bible, only finds he is lost. Romans 3:10-12 reads "None is righteous, no, not one; no one understands, no one seeks for God. All have turned aside, together they have gone wrong; no one does good, not even one." God must first show us our lost condition. Why must we become desperate before we will admit our way is not God's way? Or that we are separated from God through man's rebellion against God?

But this last paragraph is the important one—after one finds himself, as the boy—lost in sin. God sent his son Jesus Christ into this world at Christmas time to rescue each of us. Until we feel lost we don't cry for help. But when sin convicts, the Savior, Jesus Christ hears our prayers. After all He came into this world, born of a human mother but fathered by the Holy Spirit, for one purpose—that He could be true God in the form of true man—live on this earth free from sin and die on a cross as a perfect sacrifice for our sins. This is God's Christmas gift to each of us.

Many will reject this gift. Many will trust their own ingenuity. Many will blindly struggle onward. "For the word of the cross is folly to those who are perishing, but to us who are being saved it is the power of God." I Cor. 1:18.

Christmas—May each of you have Christ as your redeemer from your sins. You need do nothing but claim Him. Come as you are—in your rags of filth. It is only in Jesus that I can wish you a Merry Christmas. Don't lose your precious gift in the wrappings of living. Claim Him.

Attend Concert In Amarillo

Spearman people who attended the performance of "The Infant Jesus" at the Municipal Auditorium at Amarillo on Sunday December 7, were Mr. and Mrs. Cecil Crawford, Mr. and Mrs. L. Porter, and Mr. and Mrs. Chalmers Porter.

The concert, a highlight of the musical season in Amarillo, combined the talents of the Amarillo Symphony, the Amarillo Ballet Company and the Civic Choir. The beautiful and authentic biblical costumes, the settings and stage direction were furnished by the Amarillo Little Theatre.

Miss Elsie Ruth Porter very ably portrayed the part of Mary in the pageant, which was a story of the flight into Egypt. Donna Crawford Cruce, formerly of Spearman, is also a member of the Civic Choir.

Christmas Greetings



Here's to you, valued friends and customers... good wishes by the sleigh full, plus hearty thanks for your patronage throughout the year. May you all enjoy a Holiday rich in love, warm with friendship and abounding in good health, good cheer and good fellowship.

PANHANDLE STATE BANK
BORGER, TEXAS

GORDONS CORNER DRUG
WE SUGGEST YOU MAKE OUR STORE YOUR
GIFT HEADQUARTERS

—We have a full line of childrens gifts as well as appropriate and valuable gifts for the adults.
—We have owned the CORNER DRUG STORE for 3 years and your patronage and friendship has made it possible for us to grow each year. We sincerely thank you for this cooperation and we hope we can continue to serve you with choice merchandise of your choice with the very best possible SERVICE.

MR. AND MRS. GORDON PARRISH

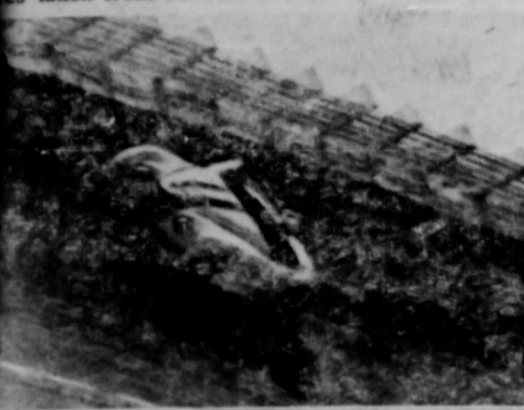
The Spearman Reporter

THE SPEARMAN REPORTER, HANSFORD COUNTY, THURSDAY DEC. 18, 1958

Vol. 51, No. 1

Fun On The Bank

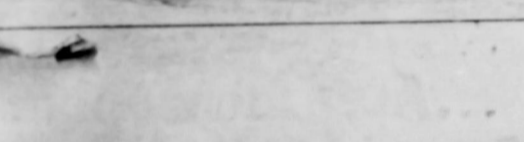
BEST RACING CURVE, the "Monza Wall," is a Meadowdale Raceways at Carpentersville, Ill. degree angle, curve can be negotiated without 140 mph., say track engineers. Pulls of gravity force equalize each other at such speeds. A 37-degree sharply twisting and dipping asphalt, Meadows taken from the best tracks around the world.



RACING officials at the speedway. Drivers in feature day were Chuck and Lance Reventlow and "Scarab," an International Traveler. Tailgate platform held cameramen. The antique cars toured the track just for fun between the regular races.



RECORDING EVENTS at the opening were photographers transported by the official camera vehicle, an International Traveler. Tailgate platform held cameramen. The antique cars toured the track just for fun between the regular races.



MOTOR MAIDS



Alcohol And Accidents Go Hand In Hand

By Jeanne Smith, Dodge Safety Consultant

ESPECIALLY TIMELY at the holiday season are some statistics on the relationship of alcohol and accidents released by the National Safety Council.

Urging drivers and pedestrians alike not to mix alcoholic spirits with the Christmas spirit, the Council points out that more than 25 percent of traffic fatalities are the result of drinking.

In Delaware, where special attention has been given to the problem of the drinking driver, blood tests, police reports and intoximeter tests show that 40.6 percent of all drivers involved in traffic fatalities had been drinking.

A test of 50 volunteers, reported by the Council, revealed that drinking seriously impairs both judgment and reaction time. After the 35 men and 15 women volunteers had first been tested for driving ability, each drank an ounce of whiskey for every 30 pounds of body weight. (In other words, a 150 pound man consumed five drinks.)

Forty-five minutes later, the volunteers were retested with these results: Nearly all suffered loss of visual sharpness. Thirty percent showed a significant drop in depth perception. More than half were unable to judge distances well and over 50 percent were affected adversely by headlight glare.

When quick thinking is vital, Council officials stress, the drinking driver is severely handicapped.



Christmas Cards Promote Safety

By Jeanne Smith, Dodge Safety Consultant

MOTORISTS and pedestrians in many communities will receive unique Christmas cards again this year from local police, civic and safety officials.

Bearing traffic safety messages, the greetings, during past holiday seasons, have helped reduce the tragic accident toll. Here's what some cities did last year.

Dayton, Ohio, police, cooperating with the Automobile Club, Chamber of Commerce, safety council and various auto dealers, distributed thousands of attractive cards with the message: "We wish you a happy holiday—Beware of Day's 'A'." A pointer directed the driver to unfold the card, where an illustration of a car was shown with the words "Beware of Day's 'A'—Don't Drink and Drive."

Overland Parkers in Pleasantville, N. J., received, instead of the usual Christmas cards from the police, which read: "We know you are doing your Christmas shopping and this violation is an oversight on your part. We shall appreciate your cooperation in the future. Best wishes for a Merry Christmas." The Chamber of Commerce and a local manufacturer combined with state police in the distribution of a Christmas card which read: "We wish you a safe and enjoyable holiday. Remember, don't drink and drive. It's the only way to stay safe. We all wish you a Merry Christmas."

Gruver, Texas, December 5, 1958

Dear Santa:
I have been a pretty good boy and I would like for you to bring me the following toys:
Rifle fanner 50 and Bandallier Cowboy hat
Little ele tric blanket
Chaps, pistol, dump truck and boots.
This is all for this year. Thank you very much.
Davy Barkley

Dear Mr. Claus:
I want a gun with rifle, cowboy hat and an electric blanket. That is all for this year. Thank you very much.
Sincerely,
Ricky Barkley

Merry Christmas



*R*e verently,
joyfully, the glory
of Christmas is sung and
celebrated. As we
lift our voices in those beloved
Christmas carols, may
our hearts be filled anew with
the wondrous spirit that
came to earth on the
Holy Night when
He was born and the
angels sang. May we find fresh
inspiration in the message
of "Peace on Earth,
Good Will toward Men," to guide
us at the Christmas season, and always.

EXCEL CHEVROLET COMPANY
Spearman, Texas

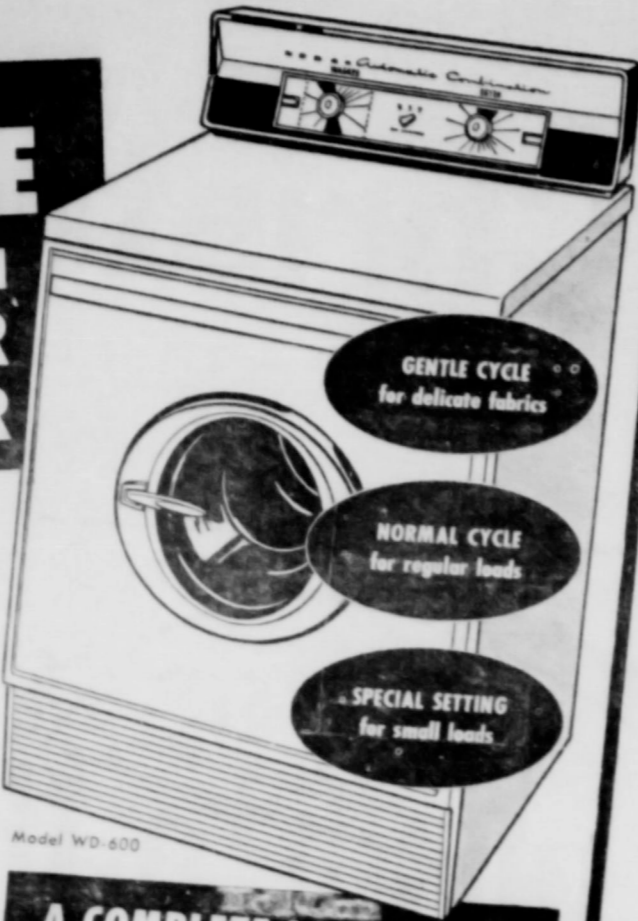
SEASON'S GREETINGS

We'd like to set the air ringing with our best wishes to you and your family for an abundance of love, friendship and good cheer all through the holidays.

A. & G. HUMBLE STATION
Spearman, Texas

First Combination Designed to Handle Every Type Fabric ... Every Size Load!

BRAND NEW NORGE COMBINATION WASHER & DRYER



Only Norge gives you choice of 2 distinct wash cycles, 3 water temperatures, 5 different drying cycles, plus a special dryer setting for small loads. Lets you meet special demands of wash 'n wears, synthetics, dainty things, automatically. Plus—

3 SIMPLE DIALS. Just set 'em to suit the load, and your washday is over!

LARGEST CYLINDER of any combination. Assures better washing and rinsing ... more wrinkle-free drying.

BETTER RINSING. 5 separate rinses rout every trace of soap and silt!

- GENTLE CYCLE for delicate fabrics
- NORMAL CYCLE for regular loads
- SPECIAL SETTING for small loads

A COMPLETE LAUNDRY IN 1 COMPACT CABINET!

- Can be pre-set for WASH ONLY or DRY ONLY
- Easily installed. No outside vent required
- Operates on 115/230 volts, 60 cycle AC

Only \$3.98 per week

BIG BONUS TRADES IF YOU ACT NOW!

BEST GIFT VALUE



ROYAL 300 ALL TRANSISTOR POCKET RADIO

OUTSTANDING PERSONAL GIFT
Plays where others fail! Up to 400 hours of listening with 4 Mercury batteries or up to 100 hours with 4 penlite batteries. Non-Breakable Cabinet. Provision for earphone attachment.

Antenna in Ebony, Pine Frost Green, Maroon colors with Roman Gold trim.

SPECIAL HOLIDAY GIFT OFFER!



Buy the Zenith Royal 300 Pocket Radio, get these Deluxe Accessories:

CARRY CASE
EARPHONE ATTACHMENT
in attractive gift carton for only \$59.95

ALL PACKAGED - READY FOR GIVING - EASY TERMS

BUY FOR LESS ON APPLIANCES AND T. V. TRADE AT B. AND C.

PAY LESS FOR THIS Hotpoint



...less than for many ranges without these top features!

- PUSHBUTTON CONVENIENCE
- "AIR-CUSHION" OVEN INSTALLATION
- RAISABLE THRIFT COOKER
- AUTOMATIC TIMING—TOP AND UNIT
- EXTRA-FAST CALROD™ SPEED UNIT
- EXTRA WIDE SUPER OVEN
- TOUCH-OPEN STORAGE DRAWER
- CHOICE OF COLORS OR WHITE

1959 ELECTRIC RANGE \$349.95

ON EASY TERMS

LOOK FOR THAT HOTPOINT DIFFERENCE

Quality means MORE OPERATING DEPENDABILITY LESS SERVICE HEADACHES BETTER TV PERFORMANCE

SEE NEW 1959 ZENITH America's Most Quality TV



LESS SERVICE HEADACHES

PLUS Zenith Extra Features

- 13,000 Volts of Picture Power
- Sunshine Picture Tube
- Cinemascope Face Glass (82218 only)
- Sunshine Dial (82218 only)
- Easy Out Face Glass
- Push-On/Off Control
- Sunshine Dial

249.95

NEW ZENITH PORTABLE AC TV



EASY TO CARRY

159.95

NEW 1959 ZENITH TABLE TV



WORLD'S FINEST QUALITY

21" overall diag. meas. 262 sq. in. rectangular picture area.

- Handcrafted horizontal chassis with no printed circuits
- 13,000 Volts of Picture Power
- Cinemascope Face Glass (82218 only)
- Sunshine Dial (82218 only)
- Easy Out Face Glass
- Push-On/Off Control
- Tone Control

189.95

392 lb. FREEZER with "Built-In" Look



NORGE "Safety-First" FOOD FREEZER

EXCLUSIVE "Safety-First" FOOD FREEZING

Assures constant zero cold with JET-FREEZE SHELVES with open-cell design for peak circulation. "POWER KING" COMPRESSOR for dependable operation. CUSTOM-FORMED INSULATION to lock in cold, save current.

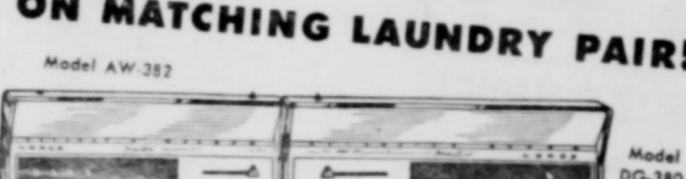
PERMITS PERFECT LINEUP WITH STORAGE CABINETS! Beautiful, functional "built-in" design, without all the fuss and extra cost of building in. Flatters any kitchen scheme!

- Plus
- Full Handicraft Storage
 - Swing-Away Guards
 - Safety-Latch Door
 - Color-styled interior
 - 5-Year Food Protection Warranty

WHILE THEY LAST \$269.95

EASY TERMS!

Save \$170.00 ON MATCHING LAUNDRY PAIR!



NORGE TWO SPEED WASHER

- 2 wash and spin speeds
- 2 automatic time cycles
- 3-way filtering action
- Wash water selector
- Rinse water selector
- 5-year warranty on transmission components

REGULARLY \$349.95
YOU PAY \$459.90 ONLY For Washer and Dryer

NORGE 4-WAY DRYER

- 4 drying methods
- 4 different heat settings
- Automatic Wrinkle-Out
- Giant lint screen
- Exclusive 5-way venting
- Gas or electric models

REGULARLY \$279.95 For Gas Model.

Pay As Little As \$3.75 Per Week NOTHING DOWN! ... YEARS TO PAY! ... ACT NOW!



only 219.95 WITH TRADE New 1959 KELVINATOR Style-Mark Design

- 70 LB. FROZEN STORAGE
- TWIN DAIRY CHESTS
- TALL BOTTLE STORAGE
- REMOVABLE SHELF FOR STORING BULKY ITEMS

NEW STORAGE DRAWER ANOTHER KELVINATOR EXCLUSIVE

Dependable For 45 Years

BUY NEW 1959 ZENITH NOW!

WORLD'S FINEST HIGH FIDELITY ... ADD Stereophonic Sound NOW or LATER!



This magnificent Zenith High Fidelity Instrument PLAYS ALL YOUR PRESENT RECORDS plus the NEW STEREOGRAPHIC RECORDS

- ZENITH QUALITY FEATURES:**
- COBRA-MATIC** 4-Speed Record Changer plays twelve 10", ten 12", four ten 7" records—automatically. Features Zenith feather-light Cobra Tone Arm. Has Automatic Shutoff. Assures Some Speed Record Intermix. Dual Needle Cartridge.
 - Powerful 20-WATT undistorted power AMPLIFIER** with 40-watt peak power output. Essentially flat response of 20 to 20,000 cycles per second.
 - 2 SPEAKERS** with Cross-Over Network one 12" woofer, one 5" cone type tweeter with cross-over network to channel frequencies to proper speakers.

ADD this Zenith Stereophonic Remote Speaker System NOW or LATER for thrilling STEREOGRAPHIC SOUND

Not just a Remote Speaker—it's a Remote Stereophonic Speaker System! This Zenith unit has its own separate amplifier, speaker system, controls.

- 20-WATT undistorted power AMPLIFIER** with 40-watt peak power output.
- Speakers with Cross-Over Network**—one 12" woofer, one 5" cone-type tweeter—over network channels frequencies to proper speakers.

Plus, Table and Presence Controls to operate with Stereophonic Transmission Cord.

Model 58518—\$119.95. 14 1/2" x 11" x 11" Deep in Grained Walnut, Mahogany, Ford Oak or Cherry color.

LOW DOWN PAYMENTS

B & C EQUIPMENT Co.

ADVERTISEMENT

ate Bank

man Drug

Rexall Store

andle Furnit

Furnishing Co

man Hardw

nd Mrs. John Bi

Auto Store

Baggerly

arman Super

ne and Sparky

L. Kleiberger,

awford Implem

and M. Dealer

and H. Motor

dsmobile Agency

and G. Humb

Expert, Prompt Servic

Bexwell Bro

Flower Sh

Spearman Equity

E. J. Copeland

Consumers Sales

Vester Hill

Orange Disc Se

Good Gulf Products

White House Lum

Ed Hutton

Deana May's Bea

Cosmetologist — Dec

Gordon's Corner

Gordon Parrish

R. L. McClellan a

Case Dealers

D. E. Hackley, D.

Hansford Imple

Gene Cudd, Manag

Ideal Grocery

Bill Stone, Manager

ADVERTISEMENT SPONSORED BY

State Bank

Man Drug
Rexall Store

Handle Furniture Mart.
Furnishing Complete

Man Hardware
and Mrs. John Bishop

Auto Store
Baggerly

Man Super Service
and Sparky

L. Kleeberger, M. D.

awford Implement Company
and M. Dealer

and H. Motor Company
dsmobile Agencv

and G. Humble Service
Expert, Prompt Service

Boxwell Bros. Funeral Home
Flower Shop — Spearman

Spearman Equity Exchange
E. J. Copeland

Consumers Sales Company
Vester Hill

Orange Disc Service Station
Good Gulf Products

White House Lumber Co.
Ed Hutton

Deana May's Beauty Shop
Cosmetologist — Deana May Douglas

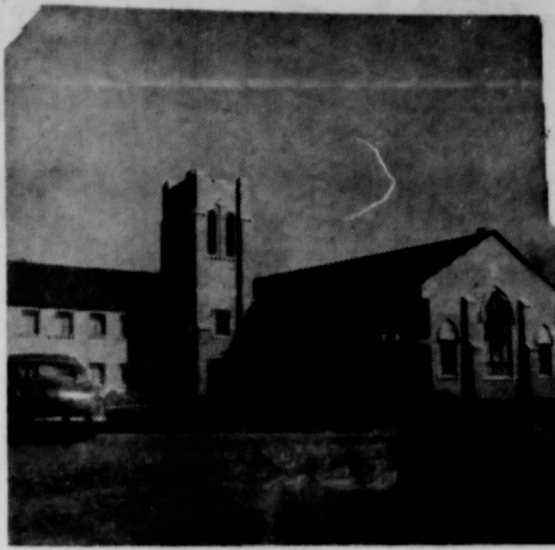
Gordon's Corner Drug
Gordon Parrish

R. L. McClellan and Sons
Case Dealers

D. E. Hackley, D. O.

Hansford Implement Company
Gene Cudd, Manager

Ideal Grocery
Bill Stone, Manager



First Christian Church
COUNTY CHURCH DIRECTORY
FIRST BAPTIST CHURCH — GRUVER
Rev. E. G. Purvis, Pastor

Sunday School	9:45 a. m.
Preaching Service	11:00 a. m.
Training Union	7:00 p. m.
Preaching Service	8:00 p. m.
Wednesday Prayer Service	8:00 p. m.

UNION FULL GOSPEL CHURCH — SPEARMAN
Rev. Calvin Springer, Pastor

Sunday School	10:00 a. m.
Morning Worship	11:00 a. m.
Bible Classes, Sunday	6:45 p. m.
Evening Worship	7:30 p. m.
Wednesday Bible Study	7:30 p. m.

FIRST CHRISTIAN CHURCH — SPEARMAN
Rev. J. Donald Cox, Pastor

Sunday School	9:45 a. m.
Morning Worship	11:00 a. m.
Youth Meetings	6:00 p. m.
Evening Worship	7:30 p. m.
Wednesday: Choir Practice	7:30 p. m.

MORSE METHODIST CHURCH — MORSE

Sunday School	10:00 a. m.
Morning Services	11:00 a. m.
M. Y. F.	6:30 p. m.
Evening Worship	7:30 p. m.

ASSEMBLY OF GOD — SPEARMAN
Rev. E. W. Way

Sunday School	10:00 a. m.
Morning Worship	11:00 a. m.
Evening Worship	8:00 p. m.
Mid Week Services, Wednesday	8:00 p. m.

FIRST CHRISTIAN CHURCH — GRUVER
Rev. Weston, Pastor

Sunday School	9:45 a. m.
Morning Worship	11:00 a. m.
Evening Worship	7:00 p. m.
1st Weds. Monthly Fellowship	7:30 p. m.

FIRST METHODIST CHURCH — SPEARMAN
Bro. J. Wald Griffin, Minister

Church School	9:45 a. m.
Morning Worship	11:00 a. m.
Methodist Youth Fellowship	6:30 p. m.
Evening Worship	7:30 p. m.
Womens Society of Christian Service, Wednesday	3:00 p. m.
Mid Week Services Wed.	7:00 p. m.
Choir Rehearsal	7:30 p. m.

CHURCH OF CHRIST — SPEARMAN
David E. Parker, Preacher

Bible Class	10:00 a. m.
Communion	11:00 a. m.
Preaching	11:15 a. m.
Worship	7:00 p. m.
Monday: Mens Training Class	7:30 p. m.
Wednesday, Ladies Bible Class	9:30 a. m.
Wednesday, Midweek Bible Classes	8:00 p. m.

MORSE BAPTIST CHURCH — MORSE
Rev. Herbert Hughes, Supply Pastor

Sunday School	9:45 a. m.
Worship	11:00 a. m.
Training Union	7:30 p. m.
Worship	8:00 a. m.
Mid Week Service Wednesday	7:00 p. m.

CHURCH OF CHRIST
North of City Park
Gruver, Texas
R. Elmer Adcock, Evangelist

Lords Days:	
Bible Study	10:00 a. m.
Worship	10:50 a. m.
Worship	7:00 p. m.
Week Days:	
Bible Study, Wednesday	8:00 p. m.
Ladies Classes, Thursdays	
Senior Ladies	2:15 p. m.
(Small Children Cared For)	
Junior Ladies	3:00 p. m.

GRUVER METHODIST CHURCH — GRUVER
Rev. Patterson

Sunday School	9:45 a. m.
Morning Services	11:00 a. m.
Methodist Youth Fellowship	6:45 p. m.
Evening Services	7:30 p. m.
Wednesday Prayer Service	7:30 p. m.
Wednesday Choir Practice	8:30 p. m.
Thursday W. S. C. S.	2:30 p. m.
Wesley Circle, Thursday	10:00 a. m.

SACRED HEART CATHOLIC CHURCH — SPEARMAN
Father M. J. Matthieson, Pastor
MASSES

Sundays	10:00 a. m.
Weekdays (Mon. Tues. Fri. Sat.)	7:00 a. m.
First Friday of Month	8:00 a. m.
Holy Days of Obligation	8:00 a. m.

FIRST BAPTIST CHURCH — SPEARMAN
Bro. O. L. Bryant, Pastor

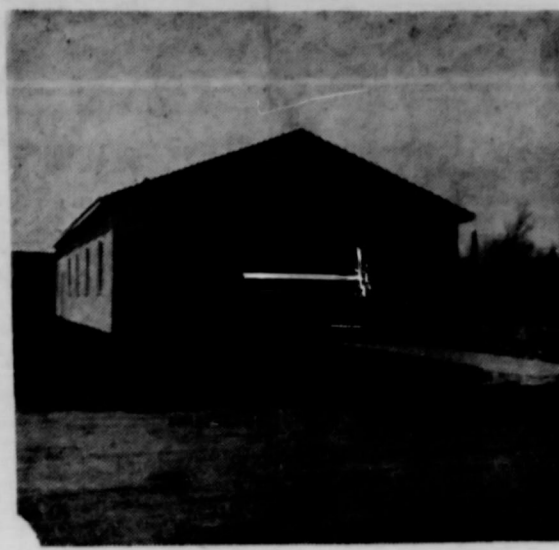
Sunday School	9:45 a. m.
Morning Worship	10:55 a. m.
Training Union	6:30 p. m.
Evening Worship	7:30 p. m.
Wednesday Mid-Week Prayer Hour	6:00 p. m.
Wednesday Choir Rehearsal	8:45 p. m.
Officers, Teachers Inter. GA & RA	7:00 p. m.

OSLO LUTHERN CHURCH
(18 miles NW of Gruver)
Robert Cordes, Pastor

Sunday School	9:45 a. m.
Adult Bible Class	9:45 a. m.
Worship Service	11:00 a. m.
Brotherhood 1st and 3rd Thursday, 7:30 p. m.	
Ladies Aid last Thursday of month 2:00 p. m.	

APOSTOLIC FAITH CHURCH — SPEARMAN
Mrs. E. A. Groover, Pastor

Sunday School	10:00 a. m.
Preaching Service	11:00 a. m.
Sunday Evening Service	7:30 p. m.
Thurs. Fast and Prayer Service	8:00 a. m. to 3:00 p. m.
Thursday Evening Prayer Meeting	7:30 p. m.



Apostolic Faith Church



First Methodist Church

Christmas

Christmas is many things: snow and sleds; sunshine and palm trees; a holiday from work; the light in children's eyes; the laughter of friends; the joy of a feast; a time of sadness for some who remember seasons past.

Christmas is even more: a time for prayer and worship; a time of meditation about the story of the birth of a child in a distant land we are unlikely ever to see.

Christmas is a combination of all these things, but we feel that everyone, regardless of religious beliefs, should celebrate the occasion in some way or another manifesting love for our fellowmen.

St. Francis expressed this Christmas spirit in his prayer: "I may not so much seek to be consoled as to console; to be understood, as to understand; to be loved, as to love. For it is in giving that we receive, it is in pardoning that we are pardoned; it is in dying that we are born to eternal life."

With these thoughts in mind, let us take the time to give thanks unto Him for His many blessings; let us reaffirm our faith; let us ask for His guidance.

As individuals, and as a nation, let us on Christmas day pray for the less fortunate people of the world that they may find new hope; let us pray for peace and that the nations of the earth may dwell in harmony.

Pray that we may find this Christmas new vision, courage and inspiration to face each tomorrow.

Henry Van Dyke wrot einspiringly on keeping Christmas: "It is a good thing to observe Christmas Day. The mere marking of times and seasons, when men agree to stop work and make merry together is a wise and wholesome custom. It helps one to feel the supremacy of the common life over the individual life.

"Are you willing to stoop down and consider the needs and desires of little children; to remember the weakness and loneliness of people who are growing old; to stop asking how much your friends love you and ask yourself whether you love them enough; to bear in mind the things that other people have to bear on their hearts; to make a grave for your ugly thoughts and a garden for your kindly feelings, with the gate open—are you willing to do these things even for a day Then you can keep Christmas.

We leave you with these thoughts and our very best wishes for a Merry Christmas and a Happy New Year.



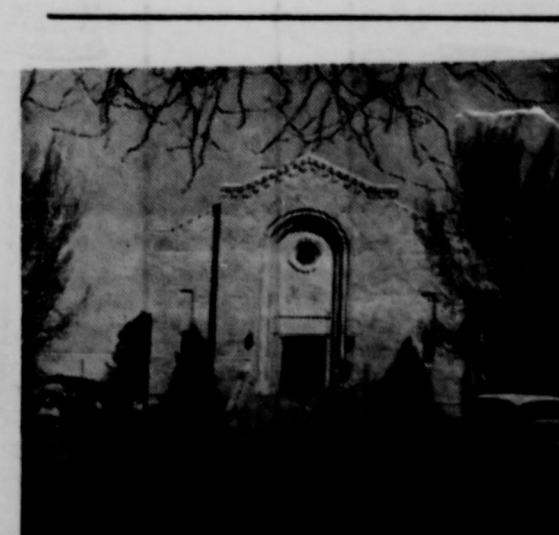
Assembly of God Church



Church of Christ



Sacred Heart Catholic Church



First Baptist Church



Union Full Gospel Church

THE WAYWARD SON

By Joyce Madison

EARL STEPPED OFF the m... lift and took a deep breath... chill December air. Guess a fell... raised on a farm never gets o... hankering for fresh air. ... thought. He lighted a cigarette a... looked out over the city below... sprawled like a huge Christ... tree, a thing of beauty by night... drab and colorless by day... Butte, Montana,—the richest... on earth—and that hill hono... combed by men carrying away... riches.

Earl started down Excelsior Street and then took a short cut toward his rooming house. Tonight was New Year's Eve and he had a date with Min. His pay envelope was in his pocket. He would pay his room and board and with Min's help would throw the remainder. They would start with a steak dinner and end up somewhere when the dough was gone. That was the way they had spent Christmas Eve, and Christmas day in bed with a headache.

Mom wouldn't approve of throwing the wad the first night. Mom would say Min was not a lady. But Min was a pleasant relief from the mine and the rooming house.

He shared one large room with some dozen other miners, whose silicosis coughs racked the night. The mine, the bar, the bunk—that was his life. Better than the ranch though. The ranch furnished endless drudgery from sun up to sun down. The mine was only for forty hours.

It was a dry winter and he was making good time on the short cut. The gravel path was lost in darkness. His miner's helmet sat cockily on the back of his head as he hurried along, sliding sometimes on the down grade.

Suddenly the path gave way under him and he was falling through space. An old mine shaft! There were plenty of them in Butte. He spread-eagled his arms and they caught solid ground in front, leaving him suspended over the pit. His toes fought for a hold, but the ground was frozen and he could make no impression. He failed against the wall, his shoes slipping like a spinning tire.

His whole life flashed before him. Happy carefree days of childhood. They seemed carefree now. Perhaps chores were a necessary evil.

Eternal milking, swilling, pitching manure. Chopping holes in the ice for the stock, hauling feed. Never start for town but some of the stock were out and had to be caught. Always something.

SO HE RAN AWAY and came to Butte. Never been back. Three years now. He was a hard rock miner. Friendly Butte? Not to a boy away from home. Forty hours in the mine. Forty in the bars. Forty in the rooming house. What'd he do with the rest of his



Suddenly the path gave way under him and he was falling through space.

time? Always had plenty 'til now. It was running out pretty fast. His arms were getting numb. He would have to let go and then...

St. John's bells chimed out the hour. One! Two! Three! Great booming tones. Four! Five! Six! Six o'clock was winter supper time on the ranch. He could picture his parents sitting at the table. Evening devotions.

A calm settled over his strained nerves and he could think clearly. Since he fell toward into the pit and his arms were resting on the far side, it must be narrow. He kicked behind with one foot and struck earth. He braced himself with both feet, and with a mighty push scrambled over the edge.

Sick from the ordeal, he lay quietly for a long time. Finally he sat up, lighted his miner's lamp and threw the beam into the bow. Then whistled softly and looked about, recognizing the site of a burned gas station. He had been dangling over the grease pit, his feet only a few inches from the bottom.

Suddenly a longing for the ranch and family possessed him. He jumped to his feet and ran down the hill. If he hurried he could catch the bus and be home for New Year.

DAHLIA FLOWER CLUB
The Dahlia Flower Club will have their Christmas party Dec. 15, 1938 at 7:00 P. M. in Maude Mathews home. Exchange of gifts will be at that time.

THE SON OF GOD 14
Isaiah 61:1—"The spirit of the Lord is upon me; because the Lord hath anointed me to preach good tidings unto the meek; he hath sent me to bind up the brokenhearted, to proclaim liberty to the captives, and the opening of the prison to them that are bound."

Matthew 1:18-21—"Now the birth of Jesus Christ was on this wise: When as his mother Mary was espoused to Joseph, before they came together, she was found with child of the Holy Ghost. Then Joseph her husband, being a just man, and not willing to make her a public example, was minded to put her away privately. But while he thought on these things, behold the angel of the Lord appeared unto him in a dream, saying, Joseph, thou son of David, fear not to take unto thee thy wife; for that which is conceived in her is of the Holy Ghost. And she shall bring forth a son, and thou shalt call his name JESUS: for he shall save his people from their sins."

Thus was born the son of God. Born of a virgin, who wrapped him in swaddling clothes and laid him in a manger, because there was no room in the inn. Mary his mother named him "Jesus".

Never in the history of man had a birth been announced by angels, as God gave a great light in his heavens to lend the shepherds who had heard the glad tidings. "Be not afraid, for behold, I bring you good news of a great joy, which will come to all the people. For to you is born this day in the city of David a savior who is Christ the Lord."

The son of the Most High God, though just a baby, was acknowledged by wise men, prophets, and Kings. Never would the world be the same. For the son of God was to grow to manhood and bring to mankind his wonderful truths.

Living as a man in this world, he taught as one having authority; he had compassion on all who came to him; he cured the sick; he healed the cripple; he gave hearing to the deaf; he gave sight to the blind; he raised the dead. Thus in this world, God gave peace to body and soul, through his son. His great gift of love.

Adventures in ADVERTISING

Vash Young and the 52 PHONE CALLS

In his book "The Go Giver" Vash Young tells of making a telephone call to one prospect for 52 consecutive weeks before he got results.

Vash Young is one of the all time great insurance salesmen. He used tact, diplomacy, intelligent presentation and persistency. In this particular instance he telephoned a prospect for an appointment. The prospect put him off until the next week. And then he put him off another week and another and another until the telephone calls got to be sort of a game.

Vash Young kept right on calling every week without ever getting an appointment. On the 52nd call he was startled when the prospect told him of another man who wanted to buy a substantial amount of insurance. Vash Young followed the lead and took an order for the largest policy he had ever sold.

If Vash Young had given up after the second or third call he would never have sold the big order. And so it is with newspaper advertising. It takes more than one or two "calls" to the potential customers to get the best results. It is the consistent, persistent advertiser who eventually gets the "big order."

Texas Press Association
1716 SAN ANTONIO ST. AUSTIN, TEXAS

GREETINGS

To you—the merriment that comes with the hanging of the wreaths and the trimming of the tree. To you—the cheer of friends and relatives gathered together in glad spirits. To you—a holiday season bright as the sparkle of happiness in children's eyes. And to you, our warmest wishes, our sincerest thanks for your loyal patronage and good will.



EQUITY

Greetings of the Season

In the spirit of a good old-fashioned Yuletide, we wish for you and your family all of the traditional joys of the season.

May your days be bright and your hearts light, as you store up a rich treasure of happy memories.

CONSUMERS SALES CO
Spearman, Texas

...tal west nced
...nation's most ed diagnostic al, this \$10,000-... et has been an-... ard of the Scott... orial Hospital of... It will provide... facilities for 50,000... tional patients an... novation for care of... ill will be a special... nit on each hospital... ing station will be... a circle of 12 pri... where all patients... constant observation... steps of the nurses... said, will improve... any of the critically

...ital bed floors in the... cross (A) and two... (B) rise above the... floors and basement... in diagnostic and re... gatories, surgical and... tments, rehabilitation... and other jointly used... Nurses Residence (C)... meet the shortage of... the Southwest by in... stituent nurse enrollment... 85. The structure... is a future building... al purposes... iting architects. El... Company of St. Paul,... desired the new... and specialize in... combined diagnostic... hospital facilities... working plans will... by Wyatt C. Hedrick... Phillips, of Houston... of the Scott and White... Trustees, said that the... for starting construc... 1, 1930. "We already... ed of \$1,000,000 and are... mising the advance... next year and a half... profit institution. 8 ott... vious patients from... of the South-west. This... will be of some make... people of... a great number of diag... treatments at a reason...

...opping... ys Utill... Christmas

...THE I... Shining across the ages, the Star of Bethlehem is ever a beacon of hope and joy, guiding all to fulfillment of the divine promise... "Peace on Earth, Good to Men." Let us be glad of heart as we greet the holy Christmas seas

...66 SERVI... MR. AND MR... RY EVANS, LOUIS

SIMPLY DELICIOUS!



A simple, yet delicious version of a fall favorite is this hot Mincemeat Crumble Pie.

Here's a dessert you can have ready for company or family in less than 10 minutes! Quick prepared mincemeat and pie crust mix are quickly ready for this tempting pie. . . which is broiled and then topped with a swirl of whipped cream. Here's the recipe:

MINCEMEAT CRUMBLE PIE

- 1 lb. 12-oz. jar Burden's None Such Mince Meat
- 1 stick Betty Crocker Instant Mixing Pie Crust Mix
- 1/2 cup brown sugar (packed)
- 1 tsp. cinnamon

Turn mincemeat into 9" pie pan and heat under broiler about 5 minutes or until bubbly. Combine pie crust mix, brown sugar, and cinnamon; mix until crumbly. Sprinkle over mincemeat. Broil about 10' from heat (electric oven) or 5 to 6" (gas oven) for 2 to 4 minutes, or until golden brown. Spoon into serving dishes. Serve warm with cream. 6 servings.

PANHANDLE OUTDOOR LIFE

Reports coming in from every direction indicate that quail hunters are having little difficulty in bagging twelve quail every day. It seems that the quail crop this year is somewhat larger than expected, especially since the hunter success is so high.

Not all hunters are successful for several reasons. The usual reason would be not being able to hit the birds. Birds on the wing are not a cinch shot for most of the hunters, including myself. I once shot 17 straight times at quail, on the Lester Urschel Ranch, without getting a bird. The average hunter probably will get a dozen quail with about thirty shells, while some expert marksmen can get their limit with less than 15 shots.

Most common fault that I have noticed with hunters is shooting at birds that aren't in gun range. This spells overanxious to me. The same hunter could shoot at birds within reasonable gunshot range and probably greatly increase his score between number of hits and misses.

The legal shooting hours for quail are thirty minutes before

sunrise until sunset. The daily bag limit is 12. The possession limit is 36 and no hunter can kill over 36 birds in any seven-day period.

There will be tens of thousands of quail killed in the Panhandle and lower plains this year but it is my guess that when the quail population gets so low that the hunters will stop their hunting there will still be adequate brood stock for next year. Of course, if there wasn't a bird killed in the top part of Texas this fall we possibly might have a larger crop of quail next year, but then again we might not have as many birds then as we will have when this season comes to a close.

At the beginning of the nesting season this year the quail population was near nil. Now we have a large population of birds. The secret of the matter lies with Mother Nature. The summer was damp and wet enough for the birds to reproduce. If we do have a few wet summers for the next few years, the quail population could be so great that the game technicians would possibly up the

possession and bag limits to maybe 20 per day and 60 in possession. If the game species can ever stand up to the hunting pressure, the game officials would be the first to recommend that the hunters harvest the surplus.

QUAIL WINGS NEEDED

Each year the Game Wardens throughout the state pass out large envelopes to hunters and ask for the aid of the hunters in submitting quail wings so that the wildlife Biologists can analyze the feathers and determine a vast amount of knowledge from the analysis. A Wildlife Biologist can examine the wings of quail and tell within a few days when the bird was hatched, whether or not it was adult or juvenile quail, together with much other needed information.

Attention, Mr. Quail Hunter: please give the outer one-half of one wing to the State Game and Fish Commission. If you do not have the proper envelopes, contact your District Game Warden. He will be happy to supply them.

OFF SEASON SPORT

In the dead of winter no average fisherman would think of wetting a hook, especially when ice would freeze it in a mat-

ter of minutes. Strange thing about fishing is that from now until April is the best time of the year for the black bass, in my opinion. In fact, the fishing should improve until April. It seems to me that only the larger ones are hooked in the winter months, while in the hot part of the year the smaller fish, the non-keepers usually strike before the whoppers have a chance.

When ducks, goose and quail season are open, many outdoorsmen think of nothing else for outdoor pleasure. It is my guess that if any fisherman would set a trotline on Buffalo, Rita Blanca, Fryer or McClelland Lake, baited with large vigours minnows, the line would be swarming in the brink the next morning with some large channel cat, mud cat, and some whopper black bass.

The other day I noticed veteran Game Warden G. P. "Slim" Davis test fish a lake with few plugs. Nothing struck until Slim put on a large artificial earthworm with a spinner attached. M. r. Davis cast the bait near some brush in the lake, pulled it he bait to where it sank gradually, and then moved it slowly for a foot or so when he set the hook and the water began to boil. He

hooked a prize bass. From the motion of the water, however the fish got into the moss and, consequently, got away.

I can't wait until time permits a bit of dead-winter fishing. To prove this point I will run between now and the first of March a string of bass that will weigh not less than 20 pounds and have not less than six fish on the string, I hope.

Gruver Chapter Team Wins First

The Gruver Junior Chapter Conducting Team recently won first in the Amarillo District contest and as a result advanced to the Area contest held in Plainview last week end, Dec. 4. At the Area 1 Contest the Gruver team placed second, highest a Gruver team has ever placed in the area contest. The team members were: Rodger Venon, Ronnie Riley, Gary Evans, Jim Etling, Anthony Holland, D. A. Cator, and Curtis Harris.

We of the Gruver FFA Chapter are proud of the way the freshman boys are taking part. Revenge may give some satisfaction, but try and collect on it.

IN THIS WORLD

NO ACHIEVEMENT OF MAN EQUALS HIS CONQUEST OF THE AIR.

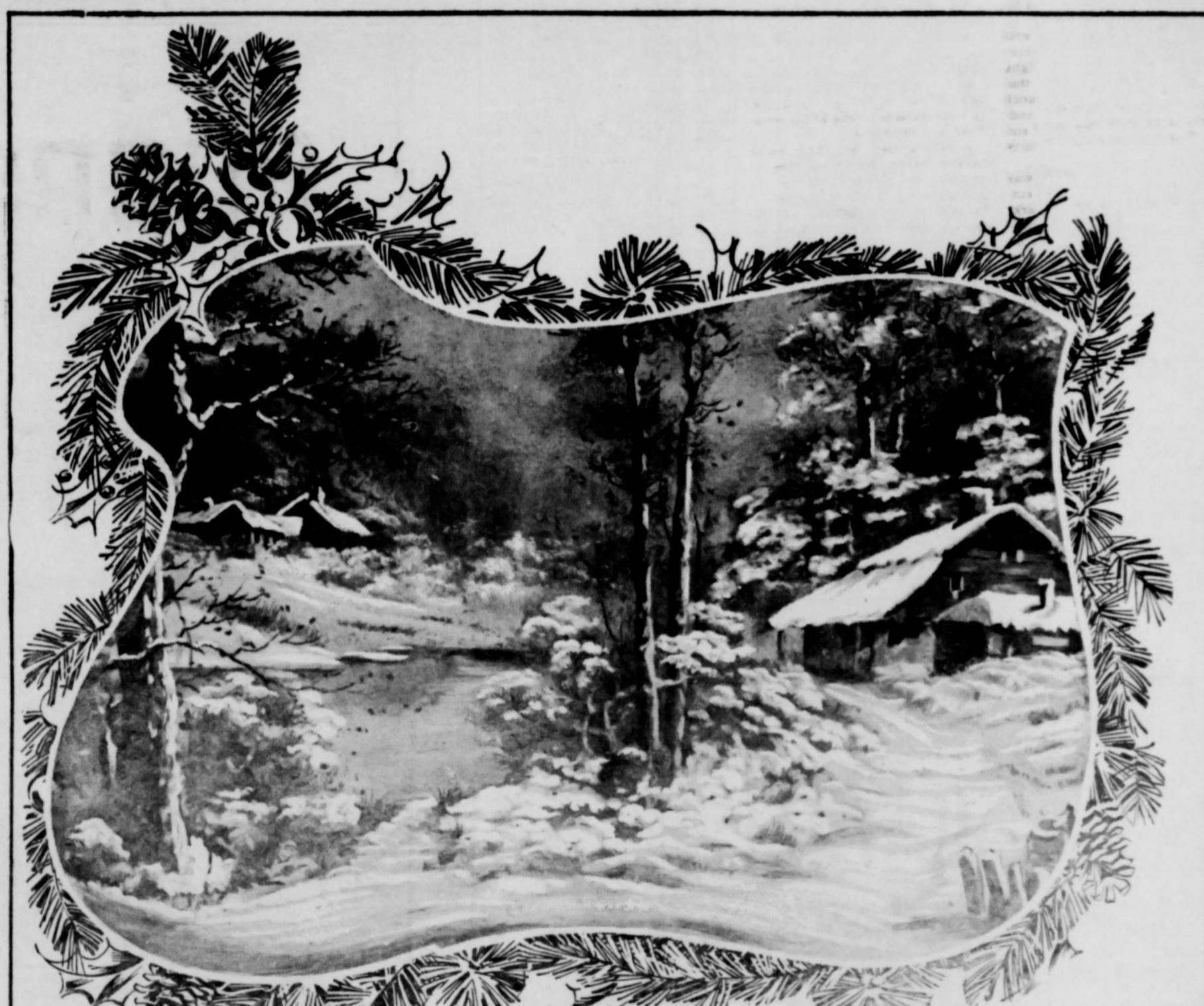
AIR AGE BEGAN IN 1783 WHEN TWO MEN IN HOT-AIR BALLOON ROSE 3,000 FEET FOR 5-MILE FLIGHT OVER PARIS.

IN FIRST CONTROLLED, SUSTAINED FLIGHT AT PITTY HAWK, N.C. (1903), WRIGHT BROTHERS COVERED 120 FT. IN 12 SECS. AT 7 A.M.P.M.

IN FIRST ATLANTIC CROSSING, JUNE 1919, CAPT. ALCOCK AND LT. BROWN OF ENGLAND SPANNED OCEAN FROM NEWFOUNDLAND TO IRELAND IN 16 HRS., 27 MINS AT 116 M.P.H.

JET FLIGHTS FROM NEW YORK TO LONDON NOW TAKE 6 1/2 HRS. AT 575 M.P.H.

AMERICAN EXPRESS AND PAN AM HAVE JET TOURS TO EUROPE VISITING 4 COUNTRIES IN 2 WEEKS... THREE-WEEK AMERICAN EXPRESS JET TOURS COVER LONDON, PARIS, ROME, MADRID, NICE, LISBON FOR LESS THAN 1,000 DOLLARS.



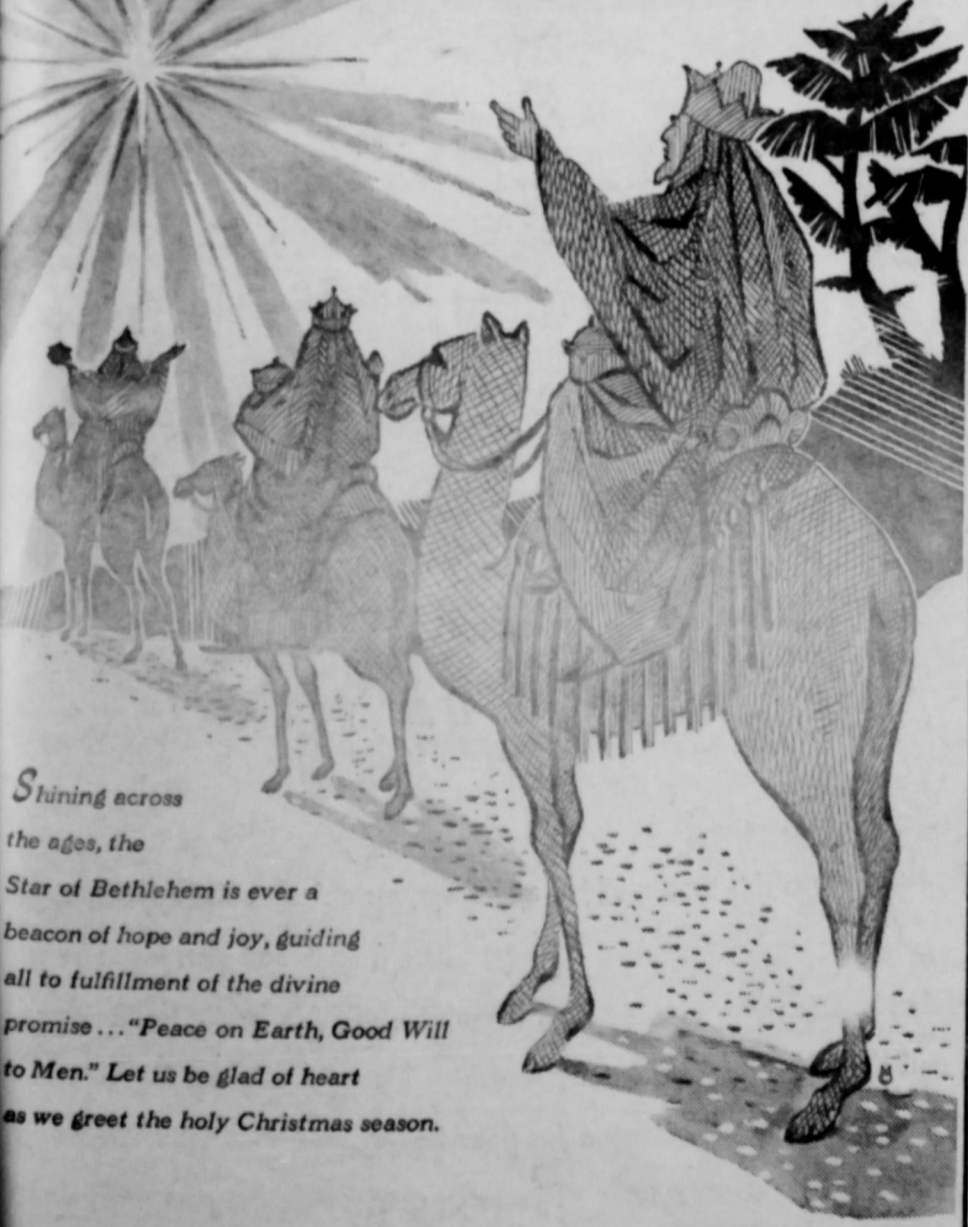
Season's Greetings

The holidays bring happy hours... and may they bring many to you. The holidays abound in love and good fellowship... may you have a plentiful share. The holidays bring old friends together... may this pleasure be joyously yours. The holidays are always happier for the glad warmth of greetings given and received... we extend ours to you, most sincerely.

J. C. HARRIS GRAIN

Gruver, Texas

THE BRIGHTEST STAR



Shining across the ages, the Star of Bethlehem is ever a beacon of hope and joy, guiding all to fulfillment of the divine promise... "Peace on Earth, Good Will to Men." Let us be glad of heart as we greet the holy Christmas season.

66 SERVICE STATION

MR. AND MRS. JAMES SPARKS

GARY EVANS, LOUIS SEEDIG AND WILLIE KURTZ

tal west need
nation's most
diagnostic
\$10,000-
has been an-
board of the Scott
Hospital of
It will provide
facilities for 50,000
hospital patients an-
novation for care of
will be a special
on each hospital
ing station will be
a circle of 12 pri-
where all patients
constant observation
steps of the nurses.
said, will improve
many of the critically
ital bed floors in the
cross (A) and two
(B) rise above the
floors and basement.
ain diagnostic and re-
gnatories, surgical an-
gements, rehabilitation
and other jointly used
Nurses Residence (C)
meet the shortage of
the Southwest by in-
dent nurse enrollment
85. The structure
is a future building
anal purposes.
giting architects. El-
Company of St. Paul,
destined the new
le and specialize in
combined diagnostic
hospital facilities.
al working plans will
d by Wyatt C. Hedrick
Phillips, of Houston,
of the Scott and White
Trustees, said that the
for starting construc-
1, 1960. "We already
nd of \$1,000,000 and are
rossing the distance
est year and a half.
gnit institutions. Scott
serves patients from
of the South-west. This
will be of tremendous
people of
high quality of diag-
treatment at a reason-

shopping
ys Util
Christmas

Christmas Game

Snapdragon was a favorite Christmas game in England more than 200 years ago; it is still played in modified form in England and America.

The original game called for a quantity of raisins to be deposited in a large bowl or dish. Brandy or some other spirit was poured over the fruit and ignited. The bystanders then endeavored to grasp a raisin, by plunging their hands through the flames. A carol, called "The Song of Snapdragon," accompanied the game.

God Bless Christmas

"There are many things from which I might have derived good by which I have not profited, I dare say," returned the nephew. "Christmas among the rest. But I am sure I have always thought of Christmas time, when it has come around, as a good time; a kind, forgiving, charitable, pleasant time; and therefore, uncle, though it had never put a scrap of gold or silver in my pocket, I say, God bless it!"—Charles Dickens, "A Christmas Carol."

The Prophecy

Isaiah 9:6

For unto us a child is born, unto us a son is given, and the government shall be upon his shoulder; and his name shall be called Wonderful, Counsellor, the mighty God, the everlasting Father, the Prince of Peace.

Serving of Boar's Head One of Old Christmas Customs

Of the customs that grew up around the Christmas festival in Merrie England, the serving of the boar's head was one of the most stirring. It endures to this day at Queen's college, Oxford, where the 50-pound tusked head—a lemon in



its grinning jaws—is borne in on a great silver dish, escorted by trumpeters and candle bearers. In the olden days there was an appropriate chant, half carol and half ritual, that the guests used to bellow at the moment the dish touched the board.

Then set down the carverard, Let the boar's head be served, Let the boar's head be served, Stand for his, gone and carried, And in so are welcome all.

SURLY SAM

By Virginia W. Struble

IT WAS SNOWING when Carrie Stanton and her grandfather waded from the large Overland such at Virginia City, Montana territory, to the jerky, which was take them north.

The driver, standing beside the ox-like coach, was a middle-aged man, dressed in buffalo coat and mittens. A hide-wrapped package as pressed under his elbow.

Carrie approached the coach and asked, "Will we get to Helena for New Year's?"

"The schedule says so," he replied without looking at her. "Are the roads very rough?" Her

"trembled as she spoke.

"Enough enough," he snapped. "Don't take it so hard, Miss Stanton," said the young man on the seat facing her. "That driver's called Surly Sam."

About noon they changed to a hobbled. Its bottom was full of straw and there was a pile of buffalo robes for cover.

Carrie found the familiar sled preferable to the rocking chair motion of the coach but the wind stung her face. The passengers were soon covered with snow as hard and dry as salt.

"Shall we try singing?" one of the young men suggested with a grin. "It might warm us up." He started "Home Sweet Home" and Carrie joined in with a will.

"Shut up!" yelled the driver. "Ye think this's a singing school?"

The young people grimaced and one of the men called, "Hey Sam. Where we goin' ter spend the night?"

"At Cedar Breaks."

"It's New Year's eve, Sam. Why stand us in the country?"

"I said Cedar Breaks."

The cold penetrated their wraps and Mr. Stanton called, "Driver, you have an extra hide around your treasure chest. Let us use it, the treasure won't suffer."

"It's my hide and I'm keeping it."

THE PASSENGERS crouched low in the box and were silent. Darkness settled down as the storm grew worse.

"Where is Cedar Breaks," asked Grandfather Stanton.

"It's a way station 'tother side' Whitehall, over a high range of mountains. God forsaken place."

LETTERS TO SANTA

Dear Santa:— I want a doll and a buggy. My sister wants a doll too. Come to our school December 23. How are you Santa?

Your Friend,
Paula Diggs

Dear Santa:— Please bring me a 16 inch lady doll with lots of clothes, a pogo stick, some dishes, also a bingo game, skates, a stuffed animal, jewelry box and a ring I have been a good girl.

With lots of love
Judy Reising

Dear Santa Claus:— I have been pretty good this year. I am nine years old. If you would, please bring me a pair of shoulder pads to play football, a speedometer, a basket for my bike and a bicycle light.

Thanks a lot, Yours truly
Don Kelly, Morse, Texas

Dear Santa:— I would like an electric train. Also I would like a tent that has a screen door. It would be 7 feet long and 6 feet wide. Monte would like a football suit and a new cattle set.

Cherry and Katina would like two baby buggies and a lot of clothes.

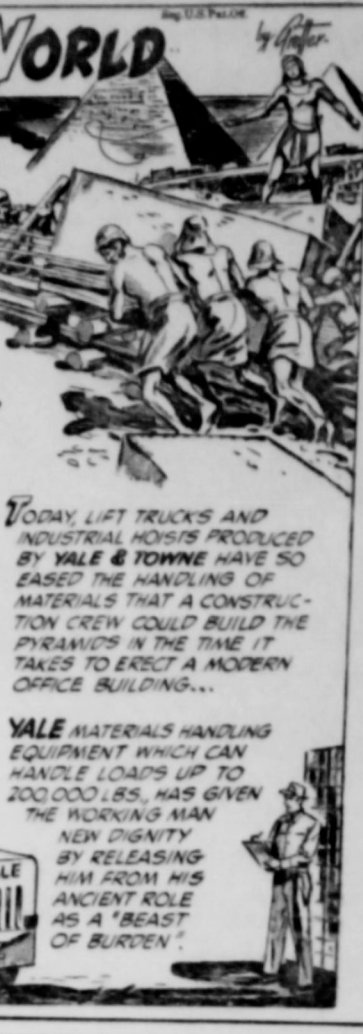
Your Friend,
Delbert McCloy

IN THIS WORLD

5,000 YEARS AGO, IN ANCIENT EGYPT, 100,000 MEN HAD TO PERFORM BACKBREAKING LABOR FOR 20 YEARS TO BUILD THE GREAT PYRAMIDS. THE EFFORT REQUIRED TO MOVE THE HUGE ROCKS WAS SO GREAT THAT HUNDREDS OF MEN WERE LITERALLY WORKED TO DEATH EVERY DAY...

TODAY LIFT TRUCKS AND INDUSTRIAL MOTORS PRODUCED BY YALE & TOWNE HAVE SO EASED THE HANDLING OF MATERIALS THAT A CONSTRUCTION CREW COULD BUILD THE PYRAMIDS IN THE TIME IT TAKES TO ERECT A MODERN OFFICE BUILDING...

YALE MATERIALS HANDLING EQUIPMENT WHICH CAN HANDLE LOADS UP TO 20,000 LBS., HAS GIVEN THE WORKING MAN NEW DIGNITY BY RELEASING HIM FROM HIS ANCIENT ROLE AS A "BEAST OF BURDEN."



IN THIS WORLD

FIRST MANNER SPEED WILL RE-ENTER WATER AT SPEEDS THAT WILL CAUSE LEADING EDGES FROM AIR FRICTION. ITS SKIN IS MADE OF HIGH TENSILE STRENGTH NICKEL INCOEL T. A STITCH IN THE SKIN LIBERATES 45,000 MORE COPPER ALLOYS TO BE USED IN THE FUTURE.

UNDERWATER TV CAMERAS, EQUIPPED WITH SPECIAL ALUMINUM NICKEL ALLOY SHIELDS TO BLOCK OUT STRAY MAGNETIC FIELDS, NOW "SEE" DIM OCEAN BOTTOM SCENES AS CLEAR AS DAY.



Christmas is a tree with bright lights and twinkling stars. It is a time of joy and peace, a time when the heart is warmed by the love of family and friends. It is the time when the spirit of giving is kindled, and the light of hope is kindled. It is the time when the heart is warmed by the love of family and friends. It is the time when the spirit of giving is kindled, and the light of hope is kindled.

MERRY CHRISTMAS TO ALL!



Remember Christmas calls for Cartons of KING SIZE COKE!



All during the Christmas fun... for a party or a pause, enjoy the cold crisp taste, the cheerful lift of Coca-Cola. Have plenty on hand.

Bottled under authority of The Coca-Cola Company by

PERRYTON COCA COLA BOTTLING WORKS
Perryton, Texas



Greetings

In this season of joy and cheer, we welcome the opportunity you, our friends and patrons, a very merry Yuletide. May you ever enjoy an abundance of life's best gifts... peace, health and happiness, and the blessings of love and friendship. We especially want to express our grateful appreciation for your loyalty and good will. We have greatly enjoyed the pleasure and privilege of serving you during the past year, and we hope that we may continue to do so for many a year to come.

STANLEY, ANITA AND ROBERT

Your Massey Ferguson and Continental Dealer

VALUE NO. 1
A sofa that really goes everything, and at a price goes easy on your budget.

VALUE NO. 3
Beauty Buy for You
For you who prefer the friendly charm of maple... bedroom furniture well styled and crafted.

VALUE NO. 5
Color Now Priced for Import
Colonial charm and contemporary convenience unite in this 3 piece maple bedroom set.

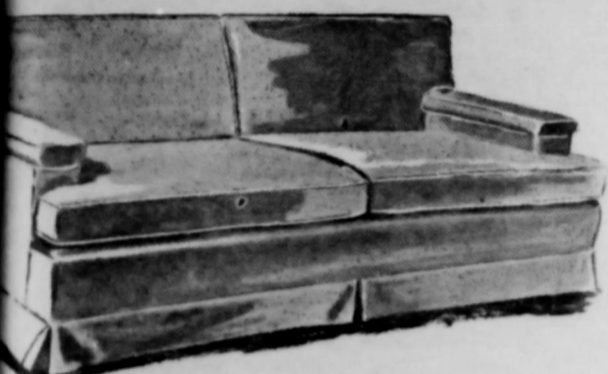
VALUE NO. 8
Living Room Sofa & Matching Chairs
Handsome set includes loose-cushion sofa, two chairs. Form rubber with matching fabric covers, for just

Double Round-up Thrift Stamps
Buy and Saturday
Bud King

Furniture Sale

CHRISTMAS GIFT GUIDE

the VALUES are outstanding --- the STYLES new



VALUE NO. 1 Sofa
It's a sofa that really goes for everything, and at a price that goes easy on your budget. **\$135.95 up**



VALUE NO. 2 Dining Group
Expandable Table, Chairs, Buffet
Give your dining area inviting new beauty and convenience. Get important savings, too! **\$71.90 up**

Better
BUY FURNITURE NOW
Values

\$50.00 TRADE IN ON ALL LIVING ROOM FURNITURE SUITS

\$40.00 TRADE IN ON ALL BED ROOM SUITS.

\$40.00 TRADE IN ON ALL DINETTE SUITS.



VALUE NO. 3 Mellow Maple
Beauty Buy for Your Bedroom
For you who prefer the friendly charm of maple... bedroom furniture well styled and crafted. **\$99.50 up**



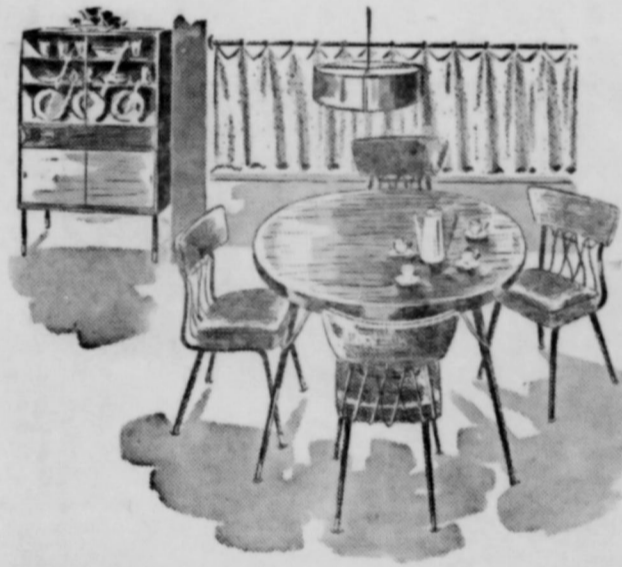
VALUE NO. 4 Magnificent Modern
Best Design... Budget-Wise Price
Modern bedroom group features clean uncluttered lines and a newly graceful look. Only **\$119.95**



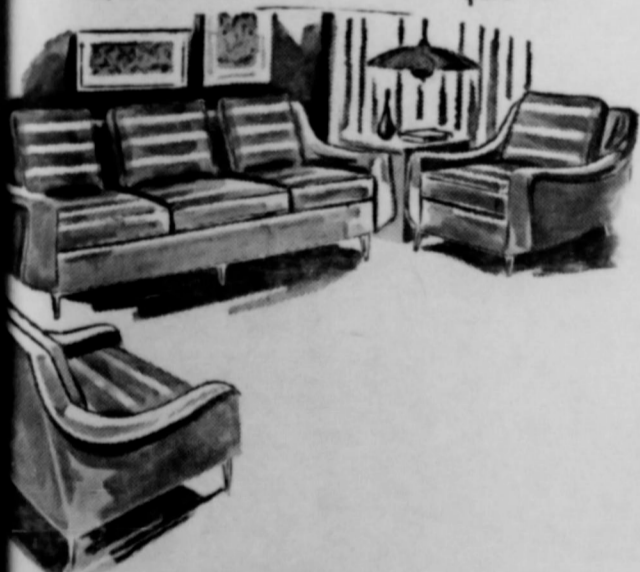
VALUE NO. 5 Colonial Bedroom
Now Priced for Important Savings
Colonial charm and contemporary convenience unite in this 3 piece maple bedroom set. **\$254.95**



VALUE NO. 6 Dining Delight
8 Lovely Pieces, Designed in Maple
Get the expandable oval table, chairs, hutch cabinet and buffet, at one thrifty price **\$359.95**



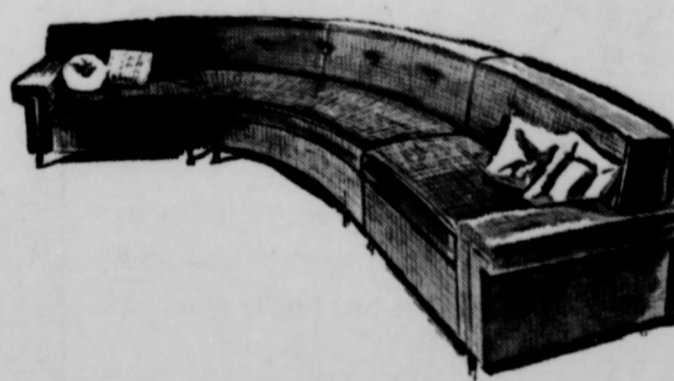
VALUE NO. 7 The Modern View
Of Dining Comfort and Thrift, Too
Does modern suit you taste? This dining group is for you, is priced to suit your budget. **\$139.95**



VALUE NO. 8 Living Room Sofa & Matching Chairs
Handsome set includes loose-cushion sofa, two chairs. Form rubber with matching fabric covers, for just **\$199.50**



VALUE NO. 9 Now Get All Three
Innerspring Mattres, Box Spring Headboard
The tops in quality in sleeping comfort... at new low price. Hurry in, get this outstanding buy. **\$89.95**



VALUE NO. 10 Top Quality Buy!
Sectional Sofa
3 sections. Gives your living room that well-decorated look; only **\$253.95**



Double Round-up
Thrift
Stamps
Friday and Saturday
Bud King

PANHANDLE Furniture Mart

Phone OL 9-3871

Double Round-up
Thrift
Stamps
Friday and Saturday
Spearman, Texas

Christmas Eve's

The Spearman Reporter

THE SPEARMAN REPORTER, HANSFORD COUNTY, THURSDAY DEC. 18, 1958

Vol. 51, No. 1

Foot Christmas Tree to Greet Rockefeller Plaza Visitors



The tree, in its natural habitat is a 44-ft. white spruce from East Maine which will precede the Christmas festival at famed Rockefeller Plaza in New York City. The tree has a branch spread of 26-feet, trunk diameter, is estimated to be 80 years old and weighs 3 tons.

On the right are two of the 54 hand-crafted creatures of the foot-shaped tree, which are illuminated with a thousand twinkling lights reflecting on shimmering spangles which adorn the great tree and the surrounding area. More than two-and-a-half miles of copper wiring will be used to illuminate 1,000 plastic globes on the tree. The little creatures of the foot-shaped tree are: foxes, rabbits, squirrels, mice, chipmunks, field mice and birds were sculptured by Miss Gerie Clarebout, (lower right) English born artist and sculptor now living in New York.

WORLD'S STEEPEST RACING CURVE, the "Monza Wall," is a feature of new Meadowdale Raceways at Carpentersville, Ill. The curve can be negotiated without banking at a 45-degree angle, curve can be negotiated without banking at 130 to 140 mph, say track engineers. Pulls of gravity and centrifugal force equalize each other at such speeds. A 3.7-mile stretch of sharply twisting and dipping asphalt, Meadowdale has features taken from the best tracks around the world.

SPORTS CAR RACING officially opened the speedway. One-two finishers in feature race were Chuck and Dick Reventlow. Reventlow's "Scarab" an American sports car made by a company that Reventlow owns.

CARS LINE UP ON "GRID" in front of the track "pagoda" or tower for a standing start. A crowd estimated at 150,000 was on hand for the opening day.

RECORDING EVENTS at the opening were photographers transported by the official camera vehicle, an International Travelall. Tailgate platform held cameramen. The antique cars toured the track just for fun between the regular races.



Always welcome, easy to prepare and simplicity itself to serve from this smart-looking copper chafing dish, Christmas Chicken is the kind of a holiday treat that housewives can make and allow to simmer while they get on with the rest of the gay business of entertaining. Garnish with paprika and parsley, of course, for the festive colors.

A Recipe for 4-6 Servings
 4-pound roasting chicken
 2 in serving pieces
 2 tablespoons butter or margarine
 4 tablespoons olive oil
 1/2 cup chopped carrot
 2 medium-size onions, sliced
 1 tablespoon minced parsley
 salt and pepper
 1 tablespoon tomato paste
 1/2 cup cherry or marsala wine

This Christmas chicken favorite requires long, slow cooking. Brown the chicken in the hot butter and oil in a large chafing dish over direct heat, about ten minutes. Add the vegetables and parsley. Season with about one and one-half teaspoons salt and a little pepper. Cover the pan, let cook fifteen minutes or till the vegetables are almost tender. Add the tomato paste mixed with a little of the wine; then the remaining wine gradually during the next five minutes of cooking. Cover the pan; let cook till the chicken is tender, about thirty minutes. Stir occasionally to prevent burning. If more liquid is needed add a little hot water from time to time.

'The Way I See It'

ONLY ONE TRUE RELIGION
 Eph 4:4,5 reads "There is one body and one spirit, just as you were called to the one hope that belongs to your call, one Lord, one faith, one baptism, one God and Father of us all." Why then all the churches? Why not only one? Why not get together and make our witness felt as a unit instead of in dozens of the church bodies?

Church bodies formed for a variety of reasons. Nationalistic backgrounds formed separate Lutheran synods, although each taught basically the same Catechism. Some protestant bodies formed over dispute of doctrine, church government, policies, or failure of agreement that let tempers rise and two bodies emerging.

Let us unite in one church is the modern cry. This would be fine. But on what basis shall we unite? We need common ground. We just cannot get together for joint services and overlook basic doctrinal differences. I propose the only way we can get unity among the Christian churches is on the interpretation of scripture and teaching. Until we do, we cannot become one visible body. Man will have to agree on how to interpret the Bible literally or figuratively, using reason to interpret or accept on faith, agree on original sin or baptism, or Lord's Supper, or just what is faith. It would surprise you to know how interpretation of the word faith sets up whole theological systems. Unity without the agreement of Scriptural interpretation will not make us strong. Large numbers without the Word means nothing.

I propose if unity is desired that we learn to understand one another's teachings and compare with scripture. Now this can be done by laymen—or pastoral groups—or public discussions. True, we will find open controversies—seemingly unsurmountable but if we desire unity in the Christian church outwardly it must begin inwardly where only unity can begin—with a study carefully of God's word.

Meanwhile we are united in the one true church—the church of true believers in Jesus Christ. And members of this true church are found in any church body that teaches Jesus Christ as the sole Savior of man's sins. And no one church dare claim they are the only church. Some are closer to scripture though than others.

Will there ever be one earthly organized church? Or would we become too complacent? How can we become more closely unified? Can this be done apart from the scripture? This is our dilemma today. Man cries for unity. Fine—but let us begin where unity alone begins—around the word of God. Can there be opposite interpretations of the Scripture say on Baptism and both be true? Frank open bible study is the answer.

Unity? Then let us launch out with some open bible studies together and see where we stand. I invite your comment.
PASTOR ROBERT CORDES
 Oslo Lutheran Church

MAIL EARLY

With the expectation that the Christmas mail load will hit its peak within the next few days, Postmaster Smith expressed his appreciation today for your cooperation thus far on his annual "Mail Early For Christmas" Campaign.

The Postmaster said, "It's too late to talk about early mailing of Christmas gifts and cards, because time means everything now—even a few hours delay in getting your cards and gifts mailed may mean disappointment to your friends and loved ones on Christmas Day." He suggested that last minute mailers use Air Mail for their Christmas cards or gifts that are going out of town. There's still time for local deliveries, but all Christmas cards should be sent by First Class mail. Be sure to include your return address on all Christmas card envelopes and package labels.

Dear Santa:—
 I have been a good girl. I would like to get a toni doll with curly brown hair and high heels too. My little brother would like a bike. My big sister would like a whole bunch of clothes. And my big brother would like a new wrist watch.
 Your Friend,
 Judy Gillispie

Dear Santa:—
 I have been a very good boy this year. I would like a football, a pair of shoulder pads to play football in. Also a light, a horn, a speedometer, and a basket for my bike.
 Your Friend,
 Don Kelly



Christmas Greetings

One of the deepest pleasures of the holiday season is the friendly tradition of exchanging cheery greetings. This pleasure is most happily ours, as we extend to you, friends and patrons, our warm appreciation for your good will and patronage, and our personal best wishes for your happiness, health and good fortune. May you have everything you're wishing for, to enrich your days and bring you joy.

FIRST STATE BANK

Spearman, Texas
 Member
 Federal Deposit
 Insurance Corporation
 Federal Reserve System

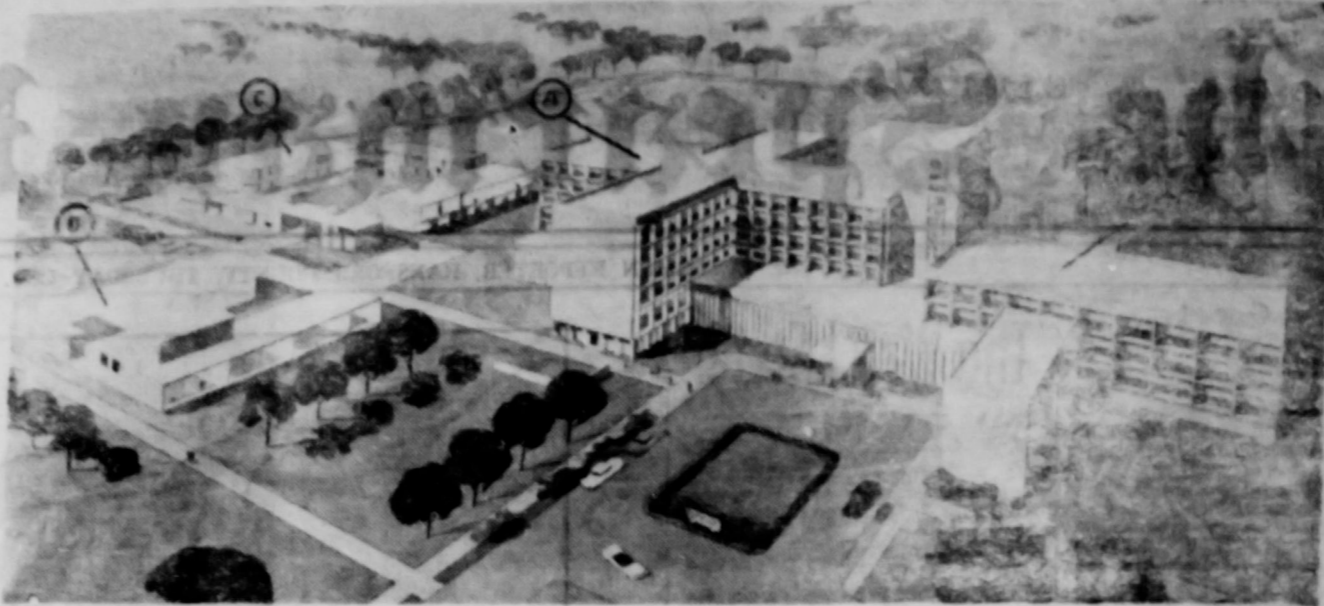
- | | |
|------------------------------|------------------------------|
| C. A. Gibner, President | Charlotte Martin, Bookkeeper |
| J. W. Gibner, Vice President | Felma Evans, Bookkeeper |
| Wilma Spearman, Bookkeeper | Zelma Denison, Secretary |
| Wanda Widener, Bookkeeper | H. B. Hart, Director |
| Robert O. Schnell, Teller | Hazel Lowe Gibner, Director |
| Paul Hazelwood, Teller | Rex Sanders, Director |
| Freeman Barkley, Cashier | |

Greetings

What a melody it would make, if we could put our good wishes to you into song! Every happiness of the Yuletide season... plenty of mirth and merriment... all the joys of exchanging gifts and greetings... all of the pleasures of discovering anew what a heart-warming time of the year this is... these are our wishes for you!

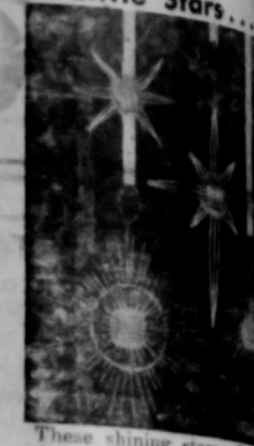


CLOSED DEC. 22 — DEC. 28, So that our Employees may enjoy the holiday season.
JOHNSON DAIRY KREEM
O. L. AND LAVETTA



HOSPITAL AND CLINIC—Pictured here is the artist's conception of the new \$10-million Scott and White hospital and clinic which will be constructed in Temple, Tex. Announcement of the new hospital and clinic came at a meeting attended by more than 50 outstanding medical and business leaders from 7 and four other Southwestern states. Scott and White is profit institution serving the Southwest.

Twinkle, Twinkle Little Stars...



These shining stars of copper and brass wire, elegantly hand-crafted, are the very latest in Christmas tree ornaments. Made with as many as eight points, they have been designed to reflect to shimmering advantage the gay colored lights with which you trim your tree, and say Merry Christmas in a special way.

Christmas Greetings

"And the angel said unto them, Fear not: for, behold, I bring you good tidings of great joy, which shall be to all people. For unto you is born this day in the city of David a Saviour, which is Christ the Lord." Let the glorious Christmas story be heard again... And as you celebrate this day, may you know in your heart all of the happiness that comes from the feeling of peace and good will to all.



GRUVER LUMBER COMPANY

Jack Thomas, Manager . . . Gruver, Texas

Round up



THRIFT STAMP

PANHANDLE FURNITURE MART
CUT RATE GROCERY
ORANGE DISC SERVICE

Twinkle, Twinkle Little Stars...
 In show millo
 These shining stars of...
 d brass wire, elegantly...
 fted, are the very latest...
 r. Made as stellar bursts...
 h as many as eight points...
 y have been designed to...
 it to shimmering advance...
 gay colored lights with...
 trim your tree, and see...
 rry Christmas in a special...



WILL HUTCHINS

Four of Television's most popular western stars will come to Amarillo in person, December 13 and 14 for the MS Roundup of stars, a variety show sponsored by the Panhandle Chapter of the National Multiple Sclerosis Society.

James Garner of "Maverick", Will Hutchins of "Sugarfoot", Wayde Preston of "Colts 45" and Peter Brown of "The Lawman", will appear in the eight-hour MS Roundup of stars in the Amarillo municipal auditorium on these dates.

In addition to these four TV stars, the show will feature group and individual talent from Texas and New Mexico, with numerous humorous and variety acts. The eighteen hour show, which will be in nine two hour segments, will be televised by KVII-TV channel 7 in Amarillo, from 10:00 p. m. December 13 until sign off at 4 p. m. December 14.

Advance tickets will be sold to the show, and tickets which are priced at \$1 will benefit the Multiple Sclerosis patients in this area. Mrs. Irene Coan, director of the Panhandle chapter points out that there are fourteen known MS patients in Bogert.

Tickets will be handled at Boxwell Bros. Florists in Spearman. Each ticket holder is eligible for a chance on a 1959 Imperial Chevrolet and other prizes which will be awarded every hour throughout the nine shows.

The purpose of this benefit program is to raise money for patients care and service, education and research of MS. Our chapter covers a district of 77 counties in Texas, New Mexico and Oklahoma, and 60 per cent of the funds will remain in the area to be applied toward patients care and educational work. The remainder of the contribution will go to national

MS headquarters in N. Y.

Letters To Santa:

Dear Santa:—
 I have missed you since last Christmas. Hope you have had a good year. Are your Elves working good? This year if you have plenty, I would love to have a doll, a cooking set, play dishes, and a billfold. Be sure and remember all the other little boys and girls. They are sweet.
 Love
 Suzzan Rattan

Dear Santa:—
 I have been a good boy. I would like a football suit, a passenger train, a football pony, a pair of guns, a pair of skates, and a sack of candy.
 Your Friend,
 Bobby Womble

Dear Santa:—
 I have been a good girl. Will you bring me a real live pony and a baby dog? I want a suitcase.
 I want a ring and a necklace.
 Your Friend,
 Mry Lanners



SURLY SAM

By Virginia W. Struble
T WAS SNOWING when Carrie Stanton and her grandfather slogged through the large Overland ranch at Virginia City, Montana territory, to the jerky, which was take them north.

The driver, standing beside the ox-like coach, was a middle-aged man, dressed in buffalo coat and mittens. A hide-wrapped package as pressed under his elbow.

Carrie approached the coach and asked, "Will we get to Helena for New Year's?"

"The schedule says so," he replied without looking at her. "Are the roads very rough?" Her lip trembled as she spoke.

"Rough enough," he snapped. "Don't take it so hard, Miss Stanton," said the young man on the seat facing her. "That driver's called 'Surly Sam.'"

About noon they changed to a tobssled. Its bottom was full of straw and there was a pile of buffalo robes for cover.

Carrie found the familiar sled preferable to the rocking chair motion of the coach but the wind stung her face. The passengers were soon covered with snow as hard and dry as salt.

"Shall we try singing?" one of the young men suggested with a grin. "It might warm us up." He started "Home Sweet Home" and Carrie joined in with a will.

"Shut up!" yelled the driver. "Ye think this's a singing school?"

The young people grimaced and one of the men called, "Hey Sam. Where we goin' ter spend the night?"

"At Cedar Breaks,"

"It's New Year's eve, Sam. Why strand us in the country?"

"I said Cedar Breaks."

The cold penetrated their wraps and Mr. Stanton called, "Driver, you have an extra hide around your treasure chest. Let us use it. The treasure won't suffer."

"It's my hide and I'm keeping it."

THE PASSENGERS crouched low in the box and were silent. Darkness settled down as the storm grew worse.

"Where is Cedar Breaks," asked Grandfather Stanton.

"It's a way station 'tother side' Whitehall, over a high range of mountains. God forsaken place."

Letters To Santa

Dear Santa:—
 My sister is writing this because I can't write yet. I would like to have a yummy doll and a cooking set. Thank you. I love you. I will have some pie and milk on the table.
 Mary Gail McMillan,
 Gruver, Texas.

Dear Santa:—
 I would like a Betsywetsy doll and a big blue nurse kit. Thank you,
 Vickie McMillan
 Gruver, Texas.



Dear Santa:—
 As I am a little boy 5 years old I'm having my mother write this letter. I have tried to be a good boy. Please bring me a cement truck, a desk and some guns. I go to kindergarten so please bring the children what they ask for, also Mrs. Womble.
 Love you,
 Buddy Dossett.

Dear Santa:—
 I wish you would bring me a dinosaur set and a B B gun. I thank you for the cowboy set I got last year. I played with it all year. I had very much fun playing with the cannon. After Christmas I got a canoe to go with the cowboy set. I named the set Fort Apache. Would you like to get me a few other toys that do not cost too much?
 Your Friend,
 Tom Ed Rattan

Dear Santa:—
 I have been a good boy Santa would you bring me a cowboy suit, cap guns and a bow and arrow for Christmas.
 David Hale

I would like a jewel box for Christmas with jewelry in it. Also I would like some perfume and a pogo stick.
 My little brother Lynn would like some cars and candy. And don't forget Sharon and Wade.
 With Love
 Sylvi Parks

Greetings of the Season

Merriest holiday wishes to you, friends and neighbors, and a full measure of the best things in life for now and always.

GRUVER DRUG
 Gruver, Texas

CHRISTMAS GREETINGS

To you, from us...
 Merry Christmas and a happy Holiday Season.
 May your blessings multiply and your days be full of the wonder and joy of living!

Gregory Grocery & Market
 Gruver, Texas

LETTER TO SANTA CLAUS

Dear Santa:—
 Please bring me a doll and a suitcase and a nurse set for this Christmas.
 I have been a good girl
 Carlene Crowl

Dear Santa:—
 I have been a good boy. Come to my house Christmas night. I want a Shetland pony.
 Your Friend,
 Danny Womble

Merry Christmas

Christmas is for everybody... let every heart be young and joyful. We join Santa in sending to you the cheeriest greetings of the holiday season. Here's hoping you'll have a generous share of all the things that belong to Christmas... lots of laughter and singing, gifts and good wishes, fun and feasting, love and fellowship, peace and good will.

SLUDER-EVANS OIL COMPANY
 Gruver, Texas

R. L. McCLELLAN AND SONS

Season's Greetings

A special delight of the holiday season is the opportunity it brings to exchange greetings and good wishes with all our friends. We thoroughly enjoy the friendly relationship we have with you, our customers, and we'd like to express our gratitude for your valued patronage. A very Merry Christmas and a Happy New Year to all.

BYRD & SHOOK TEXACO STATION
 Gruver, Texas

CHERRIES AND CHOCOLATE—FOR YOU!



Cherries with chocolate have a charm all their own, especially in this cake creation with a cherry preserve filling. Made from a new cocoa chiffon mix, this cake has a texture like "chiffon velvet," and a delicate chocolate flavor.

The unusually high volume cake is sliced horizontally into three generous layers. Cherry preserves are spread between each layer, and the top and sides are then frosted with whipped cream. And for fun and flavor, maraschino cherries decorate the edge of the cake.

You'll be proud to cut into this chiffon creation because of the surprise filling and wonderful texture. The cake itself is easily made from the new mix, taking the guesswork out of chiffon cake baking. Here's the recipe as developed in the Betty Crocker kitchen:

Cocoa Chiffon Cake With Cherry Preserve Filling

1 pkg. Betty Crocker Cocoa Chiffon Cake Mix
1 cup cherry preserves
Heat oven to 350° (moderate). Make cake as directed on package. When cool, remove cake from pan and slice horizontally into three layers. Spread 1/3 cup cherry preserves between each layer. Frost top and sides with whipped cream sweetened with confectioners' sugar. Chill 3 to 4 hours.

Good Hardware A MUST For Home



Tinkling brass bells among the bells on this door add a festive air for Christmas.

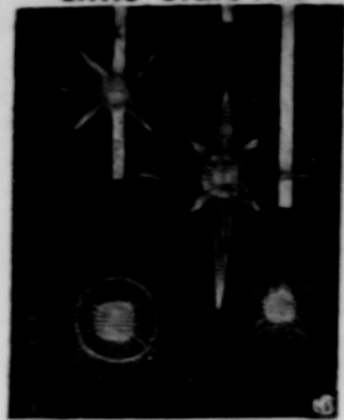
It isn't until a lock sticks, a knob tarnishes or comes off in your hand, or a burglar breaks into your home, that the importance of good hardware makes itself felt.

Good hardware should last as long as your home itself and should give you trouble-free service. It should harmonize with the architecture of your home and should provide you with the necessary protection against intruders. In addition to its serviceability, hardware provides touches of beauty to a house.

The best hardware traditionally has been made of solid brass. Brass hardware that George Washington installed in his home at Mt. Vernon in 1790 has been in continuous service ever since and still has its original beauty and serviceability.

Of the finishes suitable for the home, the most durable are those produced on solid brass. These include satin, polished and aged finishes. Moist air, smoke and acid from one's hands cause metal to tarnish, therefore satin and polished finishes are generally lacquered to delay corrosion.

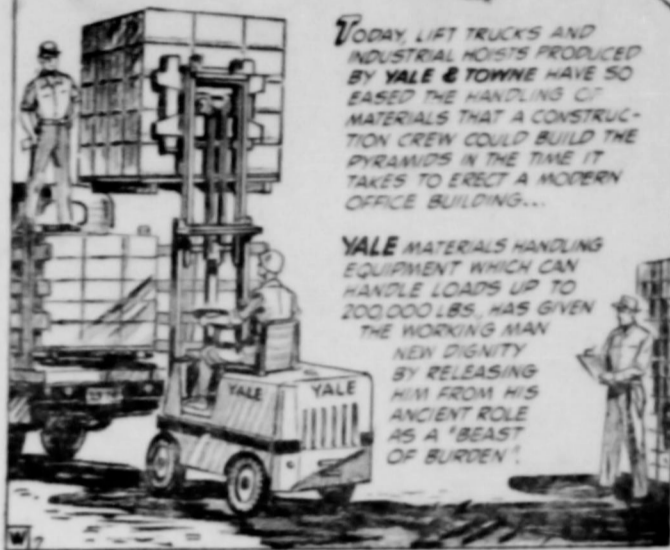
Twinkle, Twinkle Little Stars...



These shining stars of copper and brass wire, elegantly hand-crafted, are the very latest in Christmas tree ornaments this year. Made as stellar bursts or with as many as eight points, they have been designed to reflect to shimmering advantage the gay colored lights with which you trim your tree, and say a Merry Christmas in a special way.

IN THIS WORLD

5,000 YEARS AGO, IN ANCIENT EGYPT, 100,000 MEN HAD TO PERFORM BACKBREAKING LABOR FOR 20 YEARS TO BUILD THE GREAT PYRAMIDS. THE EFFORT REQUIRED TO MOVE THE HUGE ROCKS WAS SO GREAT THAT HUNDREDS OF MEN WERE LITERALLY WORKED TO DEATH EVERY DAY...



TODAY LIFT TRUCKS AND INDUSTRIAL HOSTS PRODUCED BY YALE & TOWNE HAVE SO EASED THE HANDLING OF MATERIALS THAT A CONSTRUCTION CREW COULD BUILD THE PYRAMIDS IN THE TIME IT TAKES TO ERECT A MODERN OFFICE BUILDING...

YALE MATERIALS HANDLING EQUIPMENT WHICH CAN HANDLE LOADS UP TO 200,000 LBS. HAS GIVEN THE WORKING MAN NEW DIGNITY BY RELIEVING HIM FROM HIS ANCIENT ROLE AS A 'BEAST OF BURDEN'!

IN THIS WORLD

WAR CLOUDS... WITH A SILVER LINING! COLLAPSIBLE MOTOR SCOOTERS DROPPED WITH THE U.S. PARATROOPERS FOR THEIR USE DURING WORLD WAR II (ITALYAN THE POPULACE AS A MEANS OF TRANSPORTATION FOLLOWING THE WAR...)



SEEING THEIR USEFULNESS, ITALIAN INDUSTRIALIST REEDWARD INNOCENTI BEGAN MASS PRODUCTION MOTOR SCOOTERS CALLED LAMBRETTAS IN 1947. FOLLOWING YEARS SAW MILLIONS OF THESE SCOOTERS SOLD THROUGHOUT EUROPE WHERE THEY BECAME A BASIC FAMILY VEHICLE.

IN 1952 INNOCENTI INTRODUCED LAMBRETTAS TO THE UNITED STATES TODAY THESE ECONOMICAL MOTOR SCOOTERS (THEY GIVE US NEARLY 50 MILES PER GALLON) ARE AROUND STREETS, COUNTRY HIGHWAYS OR MOUNTAIN TRAILS.

MOTOR MAIDS



Safety Council Plays Games To Save Lives

By Jeanne Smith, Dodge Safety Consultant

SPECIAL CHRISTMAS courses, extended to motorists and pedestrians by the Los Angeles Safety Council, help make the holidays both happier and safer for thousands of the West Coast city.

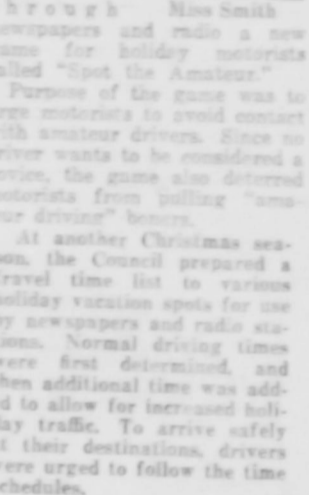
One year the safety group published a list of "crucial" driving habits. Then they succeeded through newspaper and radio a new game for holiday motorists called "Road the Amateurs."

Purpose of the game was to urge motorists to avoid contact with amateur drivers. Since no driver wants to be considered a novice, the game also diverted motorists from pulling "one-four drivers" behavior.

At another Christmas season, the Council prepared a travel time list to various holiday vacation spots for use by newspapers and radio stations. Normal driving times were first determined, and then additional time was added to allow for increased holiday traffic. To arrive safely at their destinations, drivers were urged to follow the time schedule.

Another Christmas project of the Los Angeles safety experts is to place on every restaurant table and counter a sign reading "For Holiday Safety—make that 'one for the road' coffee."

Through these special Christmas safety programs, the Los Angeles Safety Council spreads good common sense as well as good cheer.



Miss Smith, who is reluctant to pull off the road, says Institute officials. They fear getting stuck in banked snow or soft shoulders.

What they forget, when they stop in traffic lanes, is that visibility is now at its worst and slippery road surfaces make it nearly impossible for oncoming traffic to make emergency stops or quick shifts in direction.

If you must stop, the Institute's safety advice is wait until you can pull entirely off the road, out of the line of traffic.

Then be sure to use only the right hand door for getting in and out of your car and, at night, always leave your headlights on!

MOTOR MAIDS



Get Stuck--Not Struck

By Jeanne Smith, Dodge Safety Consultant

USE CARE and caution when you stop your car along the highway during winter—or else you'll invite a year-end collision.

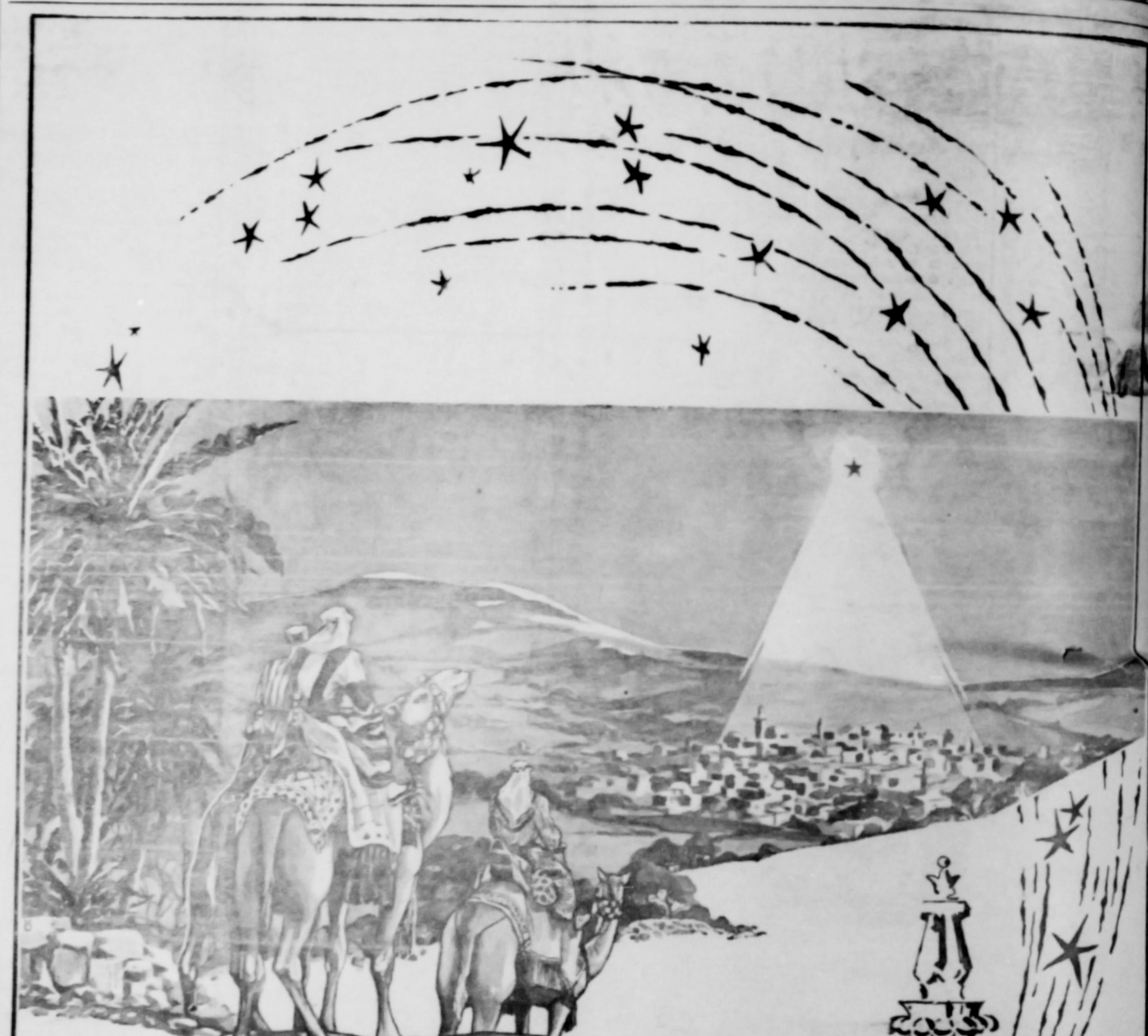
This warning comes from the Institute for Safer Living which suggests "ask getting stuck instead of struck!"

Many motorists, who must stop to change a tire, clean windshield or adjust a tire chain, are reluctant to pull off the road, say Institute officials. They fear getting stuck in banked snow or soft shoulders.

What they forget, when they stop in traffic lanes, is that visibility is now at its worst and slippery road surfaces make it nearly impossible for oncoming traffic to make emergency stops or quick shifts in direction.

If you must stop, the Institute's safety advice is wait until you can pull entirely off the road, out of the line of traffic.

Then be sure to use only the right hand door for getting in and out of your car and, at night, always leave your headlights on!



Greetings for Christmas

Let us rejoice in spirit...let us be glad of heart, for Christmas is here...Christmas, rich in the enduring gifts of hope and faith, peace and good will, brought to all men by the Christ Child on that holy night long ago. May this season of joy and wonder bring to you a sustaining sense of serenity and uplifting happiness to glorify all the days of the coming year.

R. L. McCLELLAN GRAIN CO.
Case Dealers... Spearman, Texas
R. L. McCLELLAN AND SONS



"A whole week—for my very own!" This is Beef Week in Texas, the climax of 1938 Texas Beef Council activities, and the fifth annual tribute to the cattle industry, producers of our most complete protein food.



"Can't you just picture it, Nick? ... it's Christmas Eve ... you send ... pull the little lever and gently swirl out on the roof."

Copper Christmas Glow



Hostesses everywhere are decorating their holiday tables this month with some of the most exciting new copper and brass items American designers have come up with in years, according to a survey just completed by comparison shoppers for the Copper and Brass Research Association. Some of the more handsome pieces using these gleaming metals to stylish advantage are shown here.

Heading downward, as it were, we find brass cipher trivets, a copper double boiler, a brass candlestick in a hurricane shade, a complete with sugar, creamer and tray, a copper coffee server, brass saucers for the coffee cups, and a brass cake tray.

The lustrous golden hues added to this festive table by this year, is matched, of course, by the sturdy usefulness of solid copper and brass, they say. In this case, certainly, "handmade is an handsome does."

THE Christmas Story



◆
◆
◆ **And it came to pass,** as the angels were gone away from them into heaven, the shepherds said one to another, Let us now go even unto Bethlehem, and see this thing which is come to pass, which the Lord hath made known unto us.

And they came with haste, and found Mary, and Joseph, and the babe lying in a manger.

And when they had seen it, they made known abroad the saying which was told them concerning this child.

And all they that heard it wondered at those things which were told them by the shepherds.

C. AND H. MOTOR COMPANY
OLDSMOBILE GMC

A. J. Sculley
Don DeArmond
W. H. McCullough

Mr. and Mrs. Olin Chambers
Mr. and Mrs. J. C. Harris

Since Baker and Taylor Drilling Company moved from West Texas to the Panhandle about Six years ago their eight rigs have drilled 375 wells for 30 different oil companies and Independent operators.

These extensive operations have carried Baker and Taylor into 17 counties of the Texas and Oklahoma Panhandle; digging over 2,000,000 feet of hole in the search for oil and gas.

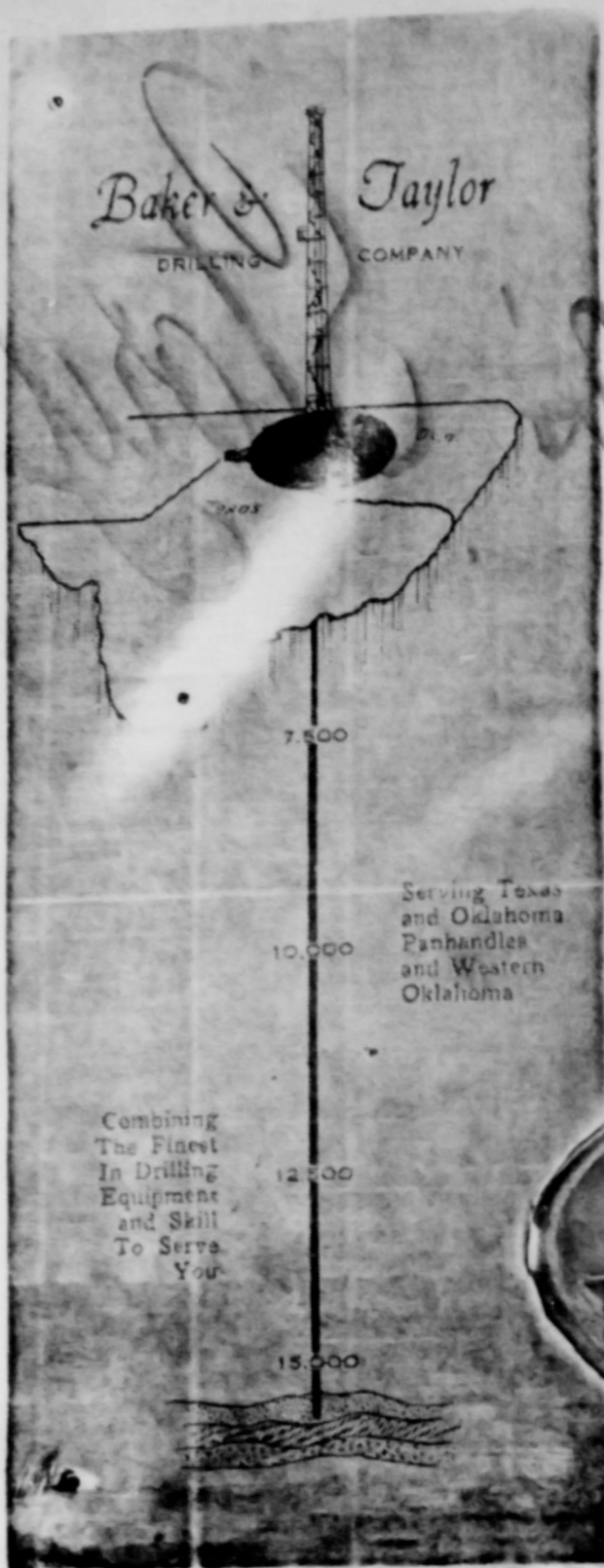
All of Baker and Taylor rigs are capable of drilling 7,000 feet or deeper. Each rig is equipped with steel mud pits, mud houses, mud mixers and standby pumps to combat loss of circulation — the paramount Panhandle drilling problem. The full cooperation of our personnel with the Operator's representatives and mud engineers has resulted in lower costs and faster hole penetration.

Three mechanics keep all equipment in first class condition for safe operation and top performance. The Company's trucks provide fast movement of equipment throughout the field.

The extensive personnel program maintained by Baker and Taylor resulted in one of the best safety records in the industry. All employees also enjoy extra benefits such as life insurance, hospital care and paid vacations.

The following men and their crews have pushed Baker and Taylor to the forefront of the field of service. They are striving every day to make a good record better, thus maintaining leadership by offering a safe, efficient drilling performance that is second to none in equipment, experience, and drilling know how.

- RIG NO. 1 A. M. PUTMAN, Spearman, Texas
- RIG NO. 2 T. H. HOWE, Spearman, Texas
- RIG NO. 3 W. S. GABLE, Spearman, Texas
- RIG NO. 4 D. E. SPOONEMORE Spearman, Texas
- RIG NO. 5 J. C. JACKSON, Canadian, Texas
- RIG NO 6 JACK SIMMONS Perryton, Texas
- RIG NO. 7 H. H. CHEVALIER Spearman, Texas
- RIG NO. 8 J. W. PRITCHETT Spearman, Texas
- FRED JONES Mtc. Foreman, Odessa, Texas
- R. J. SHEPPARD Spearman, Texas
- ELMER DELOZIER Welding Foreman
- L. C. OWENS Truck Foreman, Spearman, Texas
- J. H. HARRIS Relief Pusher, Spearman, Texas



GENERAL OFFICES
AMARILLO, TEXAS
SHOPS AND YARDS
ODESSA, TEXAS
SPEARMAN, TEXAS



712 FIRST NATIONAL BANK BUILDING
Phone DRake 3-8307
AMARILLO, TEXAS

JAY TAYLOR, President
W. H. BAKER, Vice President
W. W. CARTER, V-Pres. Treas.
E. B. JOHNSON, Secretary
MAX E. BANKS, V. Pres. Drill Supt.
ROY BULLS, Purchasing Agent
DON BOWIE, Accountant
CHARLES GILMORE, Draftsman

- 150 employees
- LIGHT ROTARY RIGS
- MILLION DOLLAR PER YEAR PAYROLL
- 5 TRUCKS
- FULL TIME MECHANICS
- 30 AUTOMOBILES
- 1 AIR PLANE
- INTEREST IN PANHANDLE GAS PRODUCTION
- ALL RIGS EQUIPPED WITH BOBLE TELEPHONES
- SKELLYTOWN OR PERRYTON MOBILE SERVICE

Pre-Holiday
CH

If you need a
one on your
Shop Lindsey
Traditional
scheduled to

RECLINER
CHAIR

This Chair
\$119.50 LO
\$89.50 PLA
\$129.50 B

ay Next
Year!

Before
CARE

Shop

We say this because you
where you shop... Amarillo
... you'll find the Carpet
your place AT LINDSEY'S.

Don't let the price \$3.95 per
Yard lead you to believe it
is the usual \$3.95 Quality.
WAS A SPECIAL CASH
CHASE FROM A FAMOUS
UFACTURER. The saving
passed along to you. See this
you'll agree that it is an ast
value.

OTHER
NOW IN D
TO GO IN T

453 5
Sq. Yd.

SPECIAL
9x12 BROADLO
RUGS

L

Lindsey's

FURNITURE COMPANY
910-12-14 NORTH MAIN

Pre-Holiday Sale CHAIRS

If you need a chair or two, or... if there is some one on your list that needs one BY-ALL-MEANS Shop Lindsey's right now for BIG savings. Modern. Traditional. Beautifully upholstered. Hundreds scheduled to go.

RECLINER CHAIRS Beautifully Upholstered A Nice Gift **\$49⁸⁸**
This Chair with Vibrator is just \$59.88

\$119.50 LOUNGE CHAIR now \$79.50
\$89.50 PLATFORM ROCKERS now \$49.50
\$129.50 BEDROOM CHAIRS now \$89.50



ay Next Year!

FREE DELIVERY
ANY PLACE in the PANHANDLE

WAREHOUSE Clearance SAVINGS

Lindsey's is determined to sell all Warehouse Stock . . . to do this, prices are cut to the bottom. MAKE US PROVE THIS STATEMENT.

Ready Made, Ready to Hang **DRAPES** Regular 8.50 pr. to go at **\$4⁸⁸**

Philco Electric **BLANKETS**, Twin, Reg. 29.50 now \$14.50
16-Piece Starter **SET DISHES**, actual value 7.95, while they last \$2.95
2 Quart Electric **COOKER** with heat gauge on handle, actual 19.50 now \$9.50
Hundreds of fine PICTURES, sacrificed to clear, note these reductions.

\$3.98 PICTURES now \$2.50
\$8.50 PICTURES now \$6.00
\$24.50 PICTURES now \$14.95
\$34.50 PICTURES now \$22.50
\$39.50 PICTURES now \$25.00

BUY THAT GAS RANGE

Now! Look at these Values

If you need a good Gas Range . . . the very latest styles with all the new gadgets . . . select from over 150 at LINDSEY'S.

\$229.50 R. C. A. Range now **\$179.50**
\$399.50 Universal Range now **\$229.50**
\$599.50 Caloric Range now **\$499.50**
Apartment Size "Welbilt" 4-burner Range to go at **\$89.50**
\$159.00 "Welbilt" Range now **\$119.50**
\$269.50 Tappan Range now **\$219.50**
\$399.50 Tappan Deluxe now **\$349.50**
Chrome Top . . . Center Grill
PRICES WITH TRADE



Sale of Fine Tables

LESS THAN 1/2 PRICE

TABLES

VALS. TO 16.95 NOW **6⁸⁸** VALS. TO 24.95 NOW **9⁸⁸** VALS. TO 39.95 NOW **15⁸⁸**

Save on Simmons MATTRESSES

MATTRESS Values To \$39.50 now **\$29⁵⁰**
MATTRESS Values To \$59.50 now **\$39⁵⁰**
MATTRESS Values To \$69.50 now **\$49⁵⁰**
MATTRESS Values To \$89.50 now **\$59⁵⁰**

Furniture Gift Sale

LARGEST SELECTIONS FINEST QUALITY BIGGEST VALUES

Before You Buy CARPETING

Shop Lindsey's

We say this because you WILL SAVE MONEY. Regardless of where you shop . . . Amarillo, or any of the larger cities of Texas . . . you'll find the Carpeting you want . . . at the price that fits your budget AT LINDSEY'S. Make us prove this statement.

Don't let the price \$3.95 per Square Yard lead you to believe that this is the usual \$3.95 Quality. THIS WAS A SPECIAL CASH PURCHASE FROM A FAMOUS MANUFACTURER. The savings are passed along to you. See this Carpet, you'll agree that it is an astounding value.

3⁹⁵ SQ. YD.

OTHER GROUPS AVAILABLE NOW IN OUR CARPET BUILDING TO GO IN THIS PRE-CHRISTMAS SALE

4⁵⁰ Sq. Yd. 5⁵⁰ Sq. Yd. 6⁹⁵ Sq. Yd. 7⁹⁵ Sq. Yd.

SPECIAL EVENT! 9x12 BROADLOOM WOOL BLEND \$79.50 VALUE FREE RUG PAD \$5 Down Delivers **\$59⁸⁸**

Lindsey's
FURNITURE COMPANY
910-12-14 NORTH MAIN

WAREHOUSE CLEARANCE DINETTE



IF YOU NEED A DINETTE SET BUY NOW — \$5.00 DELIVERS

DELUXE 5-PC. **DINETTE** REG. \$98.00 NOW **\$39⁵⁰**
NOW 5-PC. **DINETTE** REG. \$149.50 NOW **\$79⁵⁰**
NOW 5-PC. **DINETTE** REG. 259.50 NOW **\$229⁵⁰**
ALL DINETTES SUBJECT TO PRIOR SALE

HURRY! FOR THESE BUYS!
ONE GROUP DECORATOR Pillows **\$1⁰⁰**
ALL COLORS! CORDUROY RAYONS

HURRY! FOR THESE BUYS!
COSCO CARD TABLES **\$6.88**
10.95 Reg. Folding CHAIRS **6⁸⁸**

HURRY! FOR THESE BUYS!
FREE MINIATURE CEDAR CHEST With Each LANE CHEST SOLD

BED ROOM SUITE

REGULAR 219.50 BED-CHEST DRESSER Now **\$169.50**

BED ROOM SUITE

REGULAR \$129.50 BED-CHEST DRESSER NOW **\$74⁸⁸**

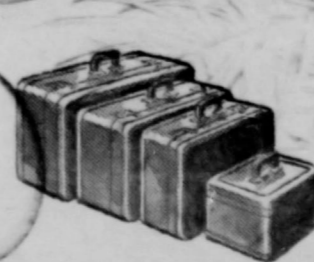
BED ROOM SUITE

REGULAR \$389.50 BED, CHEST DRESSER NOW **\$349⁵⁰**

LIVING ROOM SUITE

REGULAR \$149.50 NOW **\$99⁵⁰**

OVER 100 LIVING ROOM SUITES TO BE SOLD IN THIS WAREHOUSE SALE

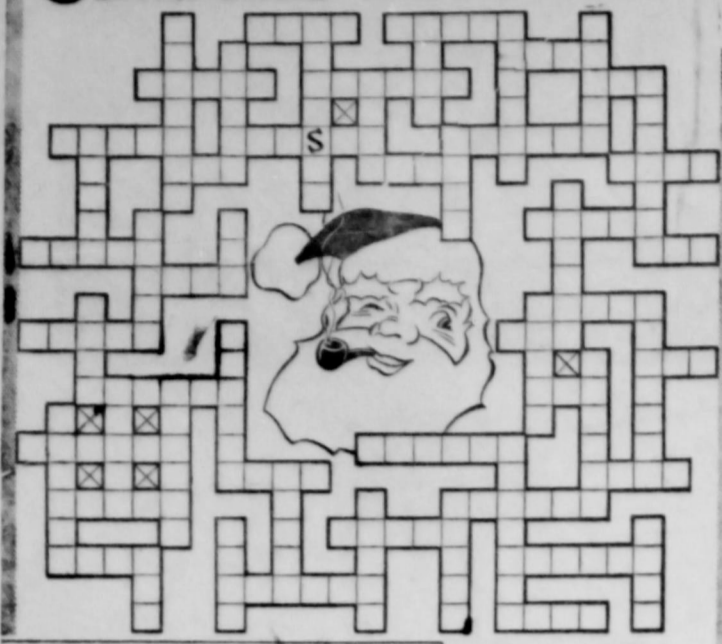


GIVE Samsonite LUGGAGE

FRESH NEW . . . CLEAN STOCK AT BIG REDUCTIONS

\$10 Ladies' WARDROBE CASE By Samsonite, Now **\$30⁰⁰**
\$13 Round Style HAT BOX By Samsonite, Now **\$11²⁵**
\$25 HANG-IT-ALL CASE By Samsonite, Now **\$18⁷⁵**
\$34 Ladies' WARDROBE By Samsonite, Now **\$26²⁵**
\$18.50 Ladies' O'NITE CASE By Samsonite **\$14⁶³**
Plus Federal Tax

Christmas criss-cross



Here is a Christmas puzzle that will be fun for all of us. Ready to work? It is simple. To the words across the right across. The number of squares in a starting point. The completed puzzle is at the back page.

Answer

ALL DON	LOVE	CHILD	SMELL	HEAVY
THE	NOEL	COWLEY	TRAIN	MANAGER
FUN	KAPT	CURIO	WHITE	SILENT
DAY	WING	SOLY	WINE	WINE
BY	SOUP	HOTEL	ANGELS	THAT
AND	BLIND	LONG	TRUCK	TRUCK
AND	SHOW	WELSH	GARLAND	TRUCK
AND	WELSH	CRACK	TRUCK	TRUCK
AND	TALK	MEAN	CRACK	TRUCK
AND	CANDY	WELSH	CRACK	TRUCK
AND	WELSH	CRACK	TRUCK	TRUCK

CHRISTMAS CHEER

Dorothy Boys Kilian
JAN RAYMOND, seated in white starched loneliness at the hall desk of Ridgedale's tened community hospital, stared desolately at the tiny table on which she had just finished "trimming."
 "Would it be just too much to ask you to take Christmas Eve duty for me, Nan?" Grace, the other night nurse, had asked her some days ago. "I know you aren't going to be able to get on for the holidays anyway, and my family is right here in town."
 The urgent ringing of a bell woke in on her lonely dream—se handbell of the patient in room 20.
 "Old Smithers. I wonder what mg-winded complaint she'll have now," Nan groaned.
 She opened the door. "Mrs. Smith, every grey hair in place, as sitting bolt upright in bed. I'm expecting a visitor tonight. Where is he?" the old lady snapped.

herself up in the middle of a sentence and chuckled. "Thank you for listening to an old bore, my dear. Now you just go see if that isn't Algernon."
 A young man, bare headed, with coat collar turned up to meet a tousel of sandy hair, smiled at her through the gloom. "Are you the unfortunate gal who's taking care of my Granny Smith?"
 An imperious voice called from upstairs. "Is that you, Algernon?"
 The young man grinned at Nan. "I'm expecting a visitor tonight. Where is he?" the old lady snapped.
 "Awful, isn't it, but it does help shorten it to 'AL'."
 Nan led the way upstairs. As they entered room two Mrs. Smith held out her arms affectionately to the visitor, saying at the same time "You look startled, Mr Raymond. I'll wager you never dreamed an old fuddy-duddy like me could have such a person as relative."

Dear Santa:—
 I would like you to bring me black and white horse. Bring my horse hay, water and bed, barn, a saddle, bridle and blanket.
 Your Friend,
 Suzanne Dixon

Dear Santa:—
 I have been a good boy. Would you bring me a woodburning set and a model race car? And one more thing I want is a battery for the race car. I hope I am not asking for too much.
 Your Friend,
 Alva Henderson

Dear Santa:—
 I have been a good boy. Santa please bring me a football and a cowboy suit. Bring me some guns and a cowboy game. I am in the 3rd grade. We hope to see you at school December 23.
 Your Friend,
 Terry Hale

Dear Santa:—
 I have been a good girl. Will you bring me a pogo stick, a American Beauty, a Toodle doll, a real beautiful dress, and a dress for my revlon doll. I want some blue dishes, a pair of skates and a doll buggy too.
 Your Friend,
 Peggy Giblin

Gruver, Texas
 December 6, 1938
 Dear Santa:—
 I would like a bicycle and a football.
 Your Friend,
 Chuck Clawson

The Mystery of God's Firmament

THE "STAR" which signaled the First Christmas may be interpreted in many ways. In all such interpretations we must put ourselves as nearly as possible in the social and psychological frame of mind of those whom we try to understand. The astronomer knows that through the ages the word "star" has been used to indicate almost any celestial phenomenon. We still speak of "falling stars" or "shooting stars" which we know quite well are not stars at all. In more ancient times comet was called a "hairy star" and was derived from the Latin word coma, meaning hair. The planets were the "wandering stars" as opposed to the "fixed stars," and from the Greek word wanderer we derive our word "planets."

The Star of Bethlehem could have been any of these. It could even have been a "new star" or nova which suddenly burst forth with a many-thousand-fold increase in brilliance, due to some great stellar catastrophe. These are all explanations of what the "star" could have been. Had it been any of the above, it would have been seen by many peoples, and in literature would have been found references to the appearance of the object which attracted attention. But nowhere in the literature of in the folklore of any of the peoples noted as astute observers of celestial phenomena do these references exist.

From this we are forced to conclude the appearance of the star was a sight given only to the Wise Men to see.

Silent Night

Heard in song, told in story, the Christmas message comes anew to lift our spirits, warm our hearts. At this happy time, we extend friendly greetings to all.

WILSON FOX GRAIN

H. E. Wilson, J. W. Fox, Sr. J. W. Fox, Jr.
 Gruver, Texas

...ores Will
 ed
 er 25-26
 ...business houses of
 be closed both
 Friday, Dec. 25th
 observance of the
 There will be
 to this rule, ac-
 Floyd, C. of C.
 most of the stores
 th days.

...Reports
 ogram A
 ccess
 ...of Commerce of-
 to say thanks to all
 everyone else who
 Saturday's Christ-
 success. Spearman
 mated money toward
 Santa Claus was on
 all day giving away
 goodies to little folks
 afternoon a drawing
 children between the
 and 12. Over 700 child-
 ed for this. 35 prizes
 away before a large
 lookers.

...ng Family
 ng Here
 ...Mrs. CY King, their
 and his bride-elect
 La'elgine, all from
 Florida, are here visit-
 for the holidays.
 visiting in the home of
 mother, Mrs. Mamie
 as well as her
 Mr. and Mrs. Jimmie

...Mrs. Calvin Springer,
 of the Union Church, left
 evening following the
 program at the church
 the holidays in Rockdale,
 with their relatives.

...rt House
 Annual Banquet
 d Dec. 18th.
 ...school cafeteria was the
 for the court house em-
 annual Christmas ban-
 December 18, 1938. A very
 Christmas dinner church
 by the Methodist church
 Robert Adamson was ma-
 ceremonies and he also
 very interesting puppet
 Each employee brought his
 and they had as guests
 Mrs. A. T. Stewart and
 R. L. Kleeburger.
 dinner they sang Christ
 carols and played 42. There
 about 55 present.

...e Oil Company
 Christmas Party
 joyed Dec. 17.
 ...employees and wives of
 Lee Oil Company enjoy
 Christmas dinner in the dini-
 at Son's Cafe Wednesd
 17. Those present bein
 and Mrs. R. E. Lee includ
 and Mrs. Mack Dorch
 Mr. and Mrs. Jan
 Mr. and Mrs. Marvin J
 Mr. and Mrs. Rues
 send, Mr. and Mrs. Joh
 in, Mr. and Mrs. Ray Mar
 and Mrs. Don McCamme
 and Mrs. Jerald Scrib
 and Mrs. Dennis McIn
 Mr. and Mrs. Bud Bee

Season's Greetings

With all the warmth of the Yuletide spirit, we extend to everyone our very best wishes for a holiday as bright and glowing as a Christmas candle... as joyously beautiful as the sound of church bells ringing across the land. May the happiness of the season remain forever in your heart.

UNIVERSAL OIL COMPANY

Gruver, Texas

Holiday Greetings

We gladly join in the spirit of the season, and heartily extend our very best wishes, our warmest greetings to all our many friends. May the holidays hold for you the riches of friendship...the treasures of happy hours with loved ones...the priceless joys of good health and contentment.

GRUVER MOTOR COMPANY

Gruver, Texas

WEATHER

Max	Min
57	22
72	17
55	24
61	28
58	26
58	26
62	28