

THE SPEARMAN REPORTER

Thursday, March 3, 1966 Vol. 57, No. 14 Spearman Hansford County Texas. 79081

WIND STORM STRIKES

Spearman enjoyed one of the finest rains and snows in history Sunday, totaling from .50 in Spearman to nearly an inch in parts of the county. However, high wind warnings were issued by the weather bureau for Tuesday, Wednesday and Thursday. Gales up to 40 & 50 miles per hour hammered the county Tuesday and Wednesday but very little local dust was blowing. Weather Bureau officials were issuing cold-wave and blowing light snow warnings for the county for Thursday. Everyone hopes this system will slide to the East of us, but it looks like we will be in for a windy bad day Thursday!

The rain and snow Sunday helped the cattle and wheat prospects immensely. Farmers are all smiling this week!

WEATHER	February 24	50	20
February 21	40	19	22
February 22	35	12	33
February 23	43	19	37

NOTICE — Applications for a caretaker, for the Hansford Cemetery are now being taken. If you are interested in this job, please contact Jimmy Linn or Floyd Hull, Spearman, Texas.

Girl Scout Week Is Celebrated Across Nation



All across the United States this week, important promises are being made by a group of young ladies who take promises very seriously — the more than three million Brownies, Juniors, and Senior members of Girl Scouts of the U. S. A. The promises they are making in their own communities form a nationwide Promise of Service — their way of celebrating Girl Scout Week and the 54th anniversary of Girl Scouting.

National Girl Scout Week is March 7-12. Local scout troops are participating by decorating windows downtown.

Pictured above are: front row, Rhonda Nelson troop 80; Debra Shelton, Troop 82; Brenda Davis, troop 131; Justize Ann Frost, troop 136; back row — Kelly Laws, troop 253; Rita Simmons, troop 180; Leslie Crooks, Senior; Cheryl Evans, troop 54.

Donny Floyd To Take Job With Los Angeles Company

Donny Floyd, Spearman's fine Chamber of Commerce Manager, announced this week that he is resigning to take a job with a Los Angeles firm, which manufactures medical equipment. Donny and his family will live in Spearman, and he will be available to help the Chamber to pick a new man, as well as assist the Chamber in every way possible. Much progress has been made in Spearman since Mr. Floyd has been the Chamber of Commerce manager, and Donny will be greatly missed, in this capacity. However, he reminds the public that he is not leaving Spearman, and will help the Chamber of Commerce in every way possible in the future.

Mr. and Mrs. Pete Fisher, Timmy and Carla Archer enjoyed a week end of Skiing at Red River. Commander Howard Garnett will spend this week end with his parents, Mr. and Mrs. B. J. Garnett. Com Garnett will be enroute from Seattle Washington to Washington D. C. on official business.

Mr. and Mrs. E. A. Greever and Mrs. Tom Sutton visited in Amarillo Saturday with Omar Sutton.

The Rev. W. S. Herring, pastor of the Fellowship Baptist Church in Spearman is an agent to sell subscriptions to THE SPEARMAN REPORTER.

If Rev. Herring calls on you in the near future, we invite you to place your subscription with him. He has a real deal to offer NEW subscribers.

Mrs. Hughes To Be Guest Speaker At First Christian

Mrs. Barbara Hughes of Fort Worth will be guest speaker at the First Christian Church Friday morning, March 4, at 10:00. Mrs. Hughes, a dynamic and well qualified speaker is a member of the Methodist Church.

The meeting will be followed by a salad luncheon and the public is invited to attend. Friday night at 6:30 there will be a sandwich supper for the young people followed by services at 7:30 at which Mrs. Hughes will be speaking.

Following the evening services a discussion period will be held for the young people. Mrs. Hughes whose husband is head of the Fine Arts Department at TU will be speaking at the Sunday morning services. Everyone is invited to any and all of these meetings.

Lynxettes Down ELECTRA PLAY Floydada Saturday

Spearman's Jynxing Lynxettes will meet the Floydada Whirlwinds at 11:00 A. M. Saturday morning in the Regional tournament at Lubbock's Municipal gym on the campus of Texas Tech. This will be one of the best matched games in the tourney, with the Lynxettes slightly favored in past games against the Whirlwinds.

City Police List Minor Accidents

Last Friday, City Police were called to investigate an accident involving two vehicles at the intersection of Kenneth and Davis streets. The accident resulted in moderate damage to the car driven by Vera Longley. The car driven by Charles Dawson received no damage.

Editor Bill Miller Returned Home Fri.

W. J. Miller, Editor and Publisher of the Spearman Reporter, returned home last Friday from a 6 weeks stay at Veterans hospital in Amarillo. Bill is feeling much better & with warm weather coming on, will probably be "off" again (to some fishin' hole). However, employees who have been holding down the fort here at the Reporter office have been receiving many requests for Bill's "Don't Name It" to frequent the paper once again, so now that he's home, CALE HEM, do not call us! No one here at the office can write like Bill, and we don't intend to show our ignorance by trying.

Post-Mortem Shows Alcohol Cause Of Death

City Police were called Saturday evening to investigate a disturbance at a downtown apartment building and found one man near death due to an over-excessive use of alcohol. Raymond M. Coleman, age 45, died enroute to Hansford Hospital. He had lived in Spearman about a week. His home was listed as Weleeka, Okla.

Travis C. Castleman was hospitalized for two days in Hansford Hospital. He was released to the custody of city Police Monday of this week.

Visit Sons At Military Academy

Mr. and Mrs. Boh Skinner and Mr. and Mrs. Marcus Larson flew to Lexington, Missouri over the week end to visit their sons, Bill Skinner and Mike Larson who are attending Wentworth Military Academy. They attended the Wentworth Show in Kansas City February 18.

Joe Novak Had Heart Surgery

Joe Novak underwent heart surgery in St. Anthony Hospital Tuesday morning of this week. Physicians performed an aorta transplant.

Mr. Novak will be in intensive care for quite some time listed as critical.

The Rev. Luther Berry who was there for the surgery reported Tuesday afternoon, that Mr. Novak stood the operation fine.

Play by play: The Lynxettes controlled the ball on the tip-off but were unable to score. Barbara Wilde was charged for foul charging. Lynxettes threw ball in, made free throw, for first score. Barbara Wilde then scored first field goal, then another, for 5 Ounbey passes to Wilde, on tip control. Wilde hits 3rd straight field goal making it 7-0. Marsha drives under for shot, makes 2 points and is fouled, score 9-0. Marsha misses free throw, Wilde gets ball, scores 4th straight field goal, making it 11-0. Wilde shoots again, making it 13-0. The Spearman guards are intercepting the ball every time the Electra girls throw it in. Lynxettes lead 13-0 with 4 minutes left in first quarter — Electra is stunned! R. McCullough for Electra hits free throw for their first score 13-1. Davis fouls Marsha, makes it 14-1. Tigerettes throw in ball. Ounbey fouls Pierce. Pierce misses free throw; Ounbey throws in ball and is fouled by Pierce. Sharon Gibson misses free throw. Wilde ties up ball, tips to Marsha, passes to Wilde, lose ball.

Tigerettes take ball, pass to Pierce, shoots, Ounbey ties up ball. Tigerettes get tip, rebound by Nancy McCullough, to Gibson, to Wilde, Davis fouls Wilde. This is Davis 3rd foul; Wilde hits first free throw, and also makes bonus shot—16-1. Richardson scores for Electra their 1st field goal. Shieldknight scores on pass from Wilde 18-3. Lynxettes grab ball, pass to Wilde who hits lay-up 20-3, with 1:29 seconds left. Roberts fouls Wilde who misses free throw; First quarter ends with Lynxettes ahead 20-3. Spearman guards are terrific in first quarter!

Beginning April 2 Membership In Golf Club Will Be Raised

Membership in the Hansford Golf Club, Inc. will be \$250.00 effective April 2, 1966. However, interested parties may still join the club for only \$172.00 before that date. All monies due club on original commitment must be paid before above date.

County Treasure Asks Re-election

Merle Washington is the daughter of Mr. and Mrs. I. P. Baggerly who moved to Spearman in 1929. They operated a grocery store until about fifteen years ago when they bought the White's Auto Store.

Merle attended high school in Spearman where she was fifth in her graduation class. She holds a Bachelor of Science degree from West Texas University, Canyon.

During the war she worked in the shipyard, where her duties consisted of writing all the checks for the employees. She alone, was wholly responsible; she was given a very high recommendation by them, when she left.

Hospital Report

Patients in Hansford Hospital are: Sarah Townsend, Linda Webb, Roscoe Crawford, June Deits, Judy Wilmet, Lena Stephenson, William Hutton, Betty Howell, Robert Greene, Jo Ann Weaver, Lola Stuck.

Revival Starts March 6th

The First Methodist Church of Spearman will begin a Revival March 6th. Pastor Wesley Daniel announced that these special services are scheduled to close March 10.

Rev. and Mrs. N. S. Daniel of Merkel will be doing the preaching for the revival services.

Tip controlled by Wilde, who passes to Gibson, who hits 15 footer, 22-3. Tigers lose ball, Wilde hits from left side of basket to make it 24-3. Tigers get ball, but Lynxette guards again steal ball, pass to Shieldknight, who hits jump shot, 26-3. With 4 minutes 15 seconds left in 2nd period, Lynx lead 26-3. Wilde fouls Blakey, and Tigers score a free throw, their first score in 2nd quarter. Richardson adds another 2 free throws, 28-6. Richardson makes another free 2 free throws, Tigers 28-8. 1 left in 1st half. Wilde, hits 2 for Lynxettes 28-8. Wilde hits another 2 points, 30-8. Tigers hit two free throws, with half-time score, 30-10. Tigers were able to score only one field goal in entire first half but made eight of 11 free throws. Lynxettes also had eleven free throws the 1st half, but made only 4 of the 11!

With a 30 to 10 lead the Lynx girls were able to play their entire team against the stunned Tigers in the last half.

In the third quarter, Wilde gets ball on jump, by Lynxettes foul and Richardson makes free toss, score 36-11. Lynxettes throw in to Gibson, who hits a 15 footer for two score 32-11. Tigers pass to McCullough who makes 2nd field goal of game for Electra, 32-13. Tigers score two free throws, and Robinson makes a 2 pointer for Spearman 34-13. Wilde back in game, makes 2 score 36-15. Tigers lose a ball, Nancy McCullough throws in to Marsha, Lyon in for Ounbey — Tigers get ball, R. McCullough fouls, Gibson gets free throw, misses — Lynxettes missing all or most of free tosses; Wilde makes 2, rolling left hander score 38-15. Wilson in for Gibson; McCullough makes 2 pts for Tigers, is fouled, makes extra free throw, 38-18; Marsha shoots long shot as buzzer ends third qtr.

County Residents Contribute Grand Sum Of \$4776.21 To March of Dimes

With the final tabulations in for January's fund drive for the March of Dimes, results show that Hansford County residents dug down deep and contributed a sum of \$4776.21. This is an all time high for March of Dimes collections.

Salad Luncheon And Millinery Show Scheduled March 8 In H. D. Club Room

Members of the Town and Country Home Demonstration Club are announcing a special style show of new spring hats for March 8, in the HD rooms on North Bernice Street.

In conjunction with the millinery showing, a salad luncheon will be served, beginning at 11 a. m. until 1:30.

County Residents Contribute Grand Sum Of \$4776.21 To March of Dimes

With the final tabulations in for January's fund drive for the March of Dimes, results show that Hansford County residents dug down deep and contributed a sum of \$4776.21. This is an all time high for March of Dimes collections.

County Residents Contribute Grand Sum Of \$4776.21 To March of Dimes

With the final tabulations in for January's fund drive for the March of Dimes, results show that Hansford County residents dug down deep and contributed a sum of \$4776.21. This is an all time high for March of Dimes collections.

Tip controlled by Wilde, who passes to Gibson, who hits 15 footer, 22-3. Tigers lose ball, Wilde hits from left side of basket to make it 24-3. Tigers get ball, but Lynxette guards again steal ball, pass to Shieldknight, who hits jump shot, 26-3. With 4 minutes 15 seconds left in 2nd period, Lynx lead 26-3. Wilde fouls Blakey, and Tigers score a free throw, their first score in 2nd quarter. Richardson adds another 2 free throws, 28-6. Richardson makes another free 2 free throws, Tigers 28-8. 1 left in 1st half. Wilde, hits 2 for Lynxettes 28-8. Wilde hits another 2 points, 30-8. Tigers hit two free throws, with half-time score, 30-10. Tigers were able to score only one field goal in entire first half but made eight of 11 free throws. Lynxettes also had eleven free throws the 1st half, but made only 4 of the 11!

With a 30 to 10 lead the Lynx girls were able to play their entire team against the stunned Tigers in the last half.

In the third quarter, Wilde gets ball on jump, by Lynxettes foul and Richardson makes free toss, score 36-11. Lynxettes throw in to Gibson, who hits a 15 footer for two score 32-11. Tigers pass to McCullough who makes 2nd field goal of game for Electra, 32-13. Tigers score two free throws, and Robinson makes a 2 pointer for Spearman 34-13. Wilde back in game, makes 2 score 36-15. Tigers lose a ball, Nancy McCullough throws in to Marsha, Lyon in for Ounbey — Tigers get ball, R. McCullough fouls, Gibson gets free throw, misses — Lynxettes missing all or most of free tosses; Wilde makes 2, rolling left hander score 38-15. Wilson in for Gibson; McCullough makes 2 pts for Tigers, is fouled, makes extra free throw, 38-18; Marsha shoots long shot as buzzer ends third qtr.

County Residents Contribute Grand Sum Of \$4776.21 To March of Dimes

With the final tabulations in for January's fund drive for the March of Dimes, results show that Hansford County residents dug down deep and contributed a sum of \$4776.21. This is an all time high for March of Dimes collections.

County Residents Contribute Grand Sum Of \$4776.21 To March of Dimes

With the final tabulations in for January's fund drive for the March of Dimes, results show that Hansford County residents dug down deep and contributed a sum of \$4776.21. This is an all time high for March of Dimes collections.

With the final tabulations in for January's fund drive for the March of Dimes, results show that Hansford County residents dug down deep and contributed a sum of \$4776.21. This is an all time high for March of Dimes collections.

County Residents Contribute Grand Sum Of \$4776.21 To March of Dimes

With the final tabulations in for January's fund drive for the March of Dimes, results show that Hansford County residents dug down deep and contributed a sum of \$4776.21. This is an all time high for March of Dimes collections.

County Residents Contribute Grand Sum Of \$4776.21 To March of Dimes

With the final tabulations in for January's fund drive for the March of Dimes, results show that Hansford County residents dug down deep and contributed a sum of \$4776.21. This is an all time high for March of Dimes collections.

Coin Thief Gets \$22 In Quarters

City Police have found no clues as yet in the burglary at Sparks Laundry which occurred sometime during the night of February 29.

Chief Wayne Pierce said thieves did not damage the coin machine in any way, but emptied it of \$22.00. The coin machine is used to make change for customers needing quarters to plug washers and dryers at the automatic laundry.

Forger Draws 3 Yr. Sentence

Incarcer Robert Jesters, who has been held in Hansford County Jail since December waiting action of the Grand Jury on a forgery charge, plead guilty in Judge Max Boyer's district court Wednesday Feb. 23.

Jesters was sentenced to three years in the state prison at Huntsville, Texas. He was charged with forging a check on Rex Jones and is facing charges in other states after he completes his term in the Texas Prison.

Future Square Dancers Met For Lessons Saturday

Approximately 40 people were present Saturday night for the salad supper hosted by the local square dance club. The Do-Si-Do club gave the supper to introduce square dance lessons to be taught by Robert Adamson.

New Directors

Stockholders of the Spearman Retail Credit Corporation recently elected three new directors to serve during 1966. They are Ralph Blodgett, Dr. D.E. Hackley and Orville Brummett.

Other directors now serving include: Claude Owens, Dr. R. L. Kleeberger, Vester P. Hill, Brad Beedy, Bill Turner and Charles Gilliam. Jimmy Shieldknight is President.

Salad Luncheon And Millinery Show Scheduled March 8 In H. D. Club Room

Members of the Town and Country Home Demonstration Club are announcing a special style show of new spring hats for March 8, in the HD rooms on North Bernice Street.

County Residents Contribute Grand Sum Of \$4776.21 To March of Dimes

With the final tabulations in for January's fund drive for the March of Dimes, results show that Hansford County residents dug down deep and contributed a sum of \$4776.21. This is an all time high for March of Dimes collections.

County Residents Contribute Grand Sum Of \$4776.21 To March of Dimes

With the final tabulations in for January's fund drive for the March of Dimes, results show that Hansford County residents dug down deep and contributed a sum of \$4776.21. This is an all time high for March of Dimes collections.

County Residents Contribute Grand Sum Of \$4776.21 To March of Dimes

With the final tabulations in for January's fund drive for the March of Dimes, results show that Hansford County residents dug down deep and contributed a sum of \$4776.21. This is an all time high for March of Dimes collections.

Auction	\$2,371.75
Teen-agers	230.26
Morse Mothers	107.83
Gruver Mothers	697.83
Spearman Mothers	827.87
Donations	540.69
GRAND TOTAL	4,776.21



THE SPEARMAN REPORTER

P. O. Box 458, 213 Main Street, Spearman, Texas 79081
Will J. Miller, Editor & Publisher

Successor to The Hansford Headlight, Published Thursday of each week in Spearman, Texas 79081
 Second Class Postage Paid at Spearman, Texas 79081
 Please send change of addresses to Box 458, Spearman, Texas 79081
SUBSCRIPTION RATES:
 In Hansford and adjoining counties, One Year \$3.50
 Out of Hansford and adjoining counties, One Year \$4.00

CLASSIFIED ADVERTISING

Classified Advertising Rates, 4 cents a word.
 Minimum charge on all classified paid in cash \$0.60
 Minimum charge on all charged classifieds \$0.75
 Card of Thanks, 4 cents per word — Display rates on REQUEST
NOTICE TO THE PUBLIC: Any erroneous reflection upon the reputation or standing of any individual, firm or corporation that may appear in the columns of THE SPEARMAN REPORTER will be corrected when called to the attention of the MANAGEMENT.

GUEST EDITORIAL

**The Democratic Discourse
 Congressmen Need Four-Year Terms**

By **Eleanor P. Sanders**

(each week the Spearman Reporter will submit a "guest editorial" in this column. If you wish to contribute to this column, or to air your views on some subject, you are welcome to do so, but must sign your name).

— GUEST EDITORIAL —
 Hearings are underway in the House of Representatives in committee, on a bill (HJR 807) to double the House term. The proposed four-year term is being debated less, however, than the term should run concurrently with the President's.

Doubling the House term is a good plan, but staggering the elections two years apart is a more logical idea than that proposed.

It is a fact that the Senate is the more powerful half of Congress. The most important reason is that the Senate is a continuing body because of the longer term and election in groups. The Senate never dies, the House lives for only two years.

New House members learning their business are often doomed to be dismissed by the voters when the lessons are at best half learned. This coupled with the almost constant process of campaigning robs the voters back home, as well as the nation, of the best government that democratic representation can bring about.

The job security of a four-year term would help attract the higher quality men for political life. The work that a representative could do in a longer term would be more indicative of his caliber and promise than is possible with the too frequent elections.

Usually in the first half of the President's term, the Congress is sympathetic to executive programs. This is rightly so, for the elected President has been given a mandate from the voters. By staggering the elections of Representatives every two years, the nation still has the chance to approve

or disapprove, in midterm, of the programs of the President.
 The America people want local representation by local men. The strengthened position of the House brought about by the lengthened term would prompt the best candidates to seek office. There must be no restriction on our choice of the best of the local talent.

**B. & P. W. Club
 Has Meeting**

President Mary Lou Wysong presided over the meeting of the Business and Profession Women's Club February 24 in the Home Demonstration Club Room.

This was a regular business meeting. Ladies of the Assembly of God church served the luncheon.
 Attending were guests Mrs. Mickey McDonald of Woodward and Mrs. Mary Tanner, members Mesdames Belle Crawford, Jennetta Montgomery, Muriel Fryer, Ola Mae Henry, Ludie Lovett, Dorothy Quinn, May Floyd, Mable Edwards, Mavis Bybee, Evelyn Mackie, Hazel Jackson, Rhoda Overton, Lou Howerter, Mary Lou Wysong and Mildred Rolfs.

**Busy Bee 4-H Club
 Met February 25th.**

Foods 1 group of the Busy Bee 4-H Club met February 25, with their Foods leader, Rebecca Hutchison in the home of Mrs. Frank Davis for a cooking lesson.

Each girl learned to prepare broiled weiners, cheese and tomato sandwiches and cocoa.
 Members present were: Donna Reed, Katherine Reeves, Susie Sell and Gloria Lopez.

The hard-boiled sales manager demanded, "You show me a single order that advertising ever put on our books." "I will," said the Mrg. "just as soon as you show me one load of hay that was ever put in the barn by the sun."

**H D COUNCIL
 MEETING**

The Home Demonstration County Council met Tuesday, February 22 in the club room for their monthly meeting with Mrs. F. S. Ayers presiding.

The 1966 recommendations was approved. The District meeting is to be held in Dalhart April 28. Delegates elected were Mesdames Larry Hays, Rose Cummings, L.W. Rosenbaum and alternate, Mrs. W. H. Tarbox.
 The Happy Homes H. D. Club will sponsor the April Time for Fun party and the Spearman Club will bring the 'Surprise Package' for March.

Attending were Mesdames F.S. Ayers, Tommie White, Gordon Cummings, Bernard Barnes, L.W. Rosenbaum, Robert Adamson, Frank Davis, Hartley Simmons, B. J. Garnett, Daniel Sheets, Herb Howe, H. B. Parks, Larry Hays, Jack Johnson, W. H. Tarbox and Miss Linda Webb.

**Judge Lee Has
 Program**

Mrs. Gene Sparks was hostess February 24 when Rho Rho Chapter of Beta Sigma Phi met in her home at 1:00.

Sixteen members were present for the meeting presided over by Kay Nollner.

The program was presented by guest speaker Judge Lee. Civil Defense was the title of the program and Judge Lee explained how to protect yourself against fall out.

Attending were Mesdames Toni Archer, Peggy West, Delores Guthrie, Linda Davis, Verna Strawn, Judy Martin, Sarah Gooch, Ola Mae Henry, Kay Nollner, Beth Fox, Jeanette Allan, Thessa Dollar, Charlene Tiltford, Dody Reed, Mary Kathryn Parris and the hostess and Judge Lee.

**Spearmanites
 Enjoy Concert**

Some of the Spearman Music Club members attended the sixth subscription concert of the Amarillo Symphony Orchestra February 22. Among those attending were Mrs. Max Baggerly, Mrs. Don Knox, Mrs. Billy Miller and Mrs. Chalmers Porter.

Mr. and Mrs. Cecil Crawford were there also. Two of their daughters, Mrs. Donna Cruce of Tulia and Mrs. Marilyn Hogan of Canyon, are members of the Symphony Chorus Marilyn is a Soprano and Donna is an Alto.

The featured artist for the evening was Hugo Loewenstern Jr., saxophonist. Mr. Loewenstern played a World Premiere performance "The Magic of Abaris", a Tone Poem for Alto Saxophone and orchestra. The number was written especially for the artist by Johnny Richards, who directed the symphony for this number. Richards, well known for such hit songs as "Young At Heart", has penned extensively for motion pictures and television. The two have collaborated in a recent record album of pop standards and originals entitled, "Who Said Good Music Is Dead?"

Loewenstern, as a child and Sandy Bandsman in Amarillo, won many contests, including the national interscholastic competition. He has long been respected in professional musical circles as a master craftsman and consummate artist. He has been on the national scene for many years as a saxophonist with many of the leading orchestras.

Mrs. Bruce Sheets was recently in Woodward visiting her father. Returning home with her was her sister, Mrs. Floyd Hays of Ontario, California for a short visit. Mrs. Del Taylor, Lyndel, Peggy and Janet of Lakin, Kansas were also able to join them.

Scouting News

Troop 131 met at the scout house February 28. Jennifer Read served refreshments to Donna Boatwright, Kathy Born, Brenda Davis, Gina Hutchison, Darrie Owens, Darlita Pierce, Jammie Pierce, Jennifer Read, Judy Ann Reed, Christie Sparks, Janyth Lee Wysong, Lanita Johnson, Suzanna Gatlin, and leaders Mrs. Peggy Boatwright, Darlene Pierce and Betty Davis.

Troop 252 met February 22 at the Girl Scout house, the girls are studying to learn the Morse code.

Pam Fry served refreshments to Debra Davis, Dixie Sheppard, Linda Sutton, Donna Day, Karol Stafford, Brenda Thomas, Mary Lou Dearmond, Peggy Floyd, Nancy Lair, Rhonda Jones, Marcia Larson, Kelly Laws, Jane Massie, DeAnn Reed, Dedra Johnson and leader Mrs. Jo Larson.

**Mrs. Grayson Host
 To Class Social**

Mrs. Bobby Joe Grayson was hostess for the regular meeting of the Charity Sunday School Class of the First Baptist Church Monday evening.

The meeting was opened with prayer by Mrs. Hazelwood and Mrs. Woodley, president, conducted the business meeting.

The program on Baptist beliefs was given by Mrs. Crawford.
 Attending were Mesdames, Geneie Claus, Wanda Brown, Dorothy Woolley, Betty Hazelwood, Mary Faith Nollner, Pat Dear, Jo Ann Crawford and the hostess, Jo Nell Grayson.

**Recent Arrival
 Receives Shower**

A baby shower honoring Master Zachary Wayne Cox, who was born January 27 to Mr. and Mrs. Wayne Cox, was held Monday night in the Hospitality Room of the First State Bank.

Mrs. Cox was presented with a white carnation corsage trimmed with miniature blue socks. The serving table was centered with the punch bowl and a double-layer cake decorated in blue. Favors of nuts and mints were also served.

Many little "blue" gifts were presented to the new arrival and his mother.

Hostesses were Miss Phyllis Cook, Mrs. Laird Locke, Mrs. Ted Scrogges and Mrs. Bill Brandtetter.

**Debate Teams
 To Amarillo**

Thursday, February 24, debate teams from Spearman School went to Amarillo for rounds of debate with the High Debaters going from man were Lennie Bollinger, D'dee Collard, Thel Daniels, Lisa Curry, Doug Lacker, Gary Benge, Hal Sanders and Beth Faries. The teams did well and made a fine show. The debaters wish to express their appreciation to Mr. and Frank Porter and Mrs. Collard for transportation to Amarillo.

**MR. & MRS. TURNER
 VISIT HOUSTON**

Mr. and Mrs. Ned Turner to Houston last week for Turner's annual medical. While there they took the Rodeo and Fat Stock Show in the fabulous Astro Dome. professional Rodeo was the one to be held in the and was a first-class show according to Mr. and Mrs. Turner who were among the 2500 sons attending.

Visiting in the home of Mr. Perry Coursey, is his Mr. and Mrs. Charles Hill three children.

DEL MONTE CANNED FOODS SALE!

SHOP TODAY FOR FAMOUS DEL MONTE QUALITY FOODS AT IDEAL SPECIAL SALE PRICES. STOCK UP AND SAVE.

DEL MONTE LIGHT MEAT
CHUNK STYLE
TUNA
4 6 1/2-oz. Cans **\$1.**

DEL MONTE VACCUM PACKED
GOLDEN
CORN
5 12-oz. Cans **\$1.**

DEL MONTE
CATSUP
4 20-oz. Btts. **\$1.**

PRICES EFFECTIVE THRU SAT. MAR. 5, 1966. LIMIT RIGHTS RESERVED

DEL MONTE SUGAR PEAS	5 303 Cans	\$1.00
DEL MONTE PINEAPPLE GRAPEFRUIT Drink	2 46-oz. Cans	69¢
DEL MONTE CRUSHED PINEAPPLE	3 No. 2 Cans	\$1.00
DEL MONTE SLICED SWEET Pickled Beets	4 303 Cans	\$1.00
PINEAPPLE-GRAPEFRUIT Del Monte Drink	4 29-oz. Cans	\$1.00
DEL MONTE Prune Juice	2 Qt. Btts.	89¢
DEL MONTE HAWAIIAN Pineapple Juice	8 291 Cans	\$1.00
DEL MONTE FANCY Fruit Cocktail	4 303 Cans	\$1.00
DEL MONTE CHUNK OR SLICED Del Monte Pineapple	No. 2 Can	39¢

HEALTH & BEAUTY AIDS

Bayer Aspirin	100-Ct. Btl.	59¢
REGULAR \$1.45 LOTION SHAMPOO	6-oz. Btl.	99¢
REGULAR 98¢ Listerine Antiseptic	14-oz. Btl.	77¢

FRESH DAIRY FOODS

FAIRMONT CHERRY-PINEAPPLE Cottage Cheese	12-oz. Ctn.	29¢
KRAFT HALF MOON Sliced Cheese	10-oz. Pkg.	49¢
KRAFT SLICED Mozzarella Cheese	6-oz. Pkg.	39¢
SWEET MILK OR BUTTERMILK Food Club Biscuits	4 8-oz. Pkgs.	29¢
SWIFT'S ALLSWEET Margarine	1-lb. Ctn.	33¢

OVEN FRESH FROM IDEAL

IDEAL OLD FASHIONED Sack Bread	1 1/2-lb. Loaf	25¢
IDEAL FRUIT FILLED AND ICED Breakfast Rolls	159 of 4	35¢

SOUP 'N' CRACKER SPECIAL!

HEINZ TOMATO SOUP	8 10-oz. Cans	\$1.00
Vista Pack Saltines	1-lb. Box	23¢
Sur Good Saltines	1-lb. Box	21¢

POTATOES
10 3-lb. Bg. **39¢**

AVOCADOS
2 LARGE SIZE **29¢**

CIDER
GRAPE FLAVOR 1/2 GAL. Btl. **39¢**

TOP FROST U.S.D.A. GRADE "A" Hen Turkeys
8 To 10-Lb. AVERAGE POUND **39¢**

ASSORTED FLAVORS IDEAL ICE MILK
1/2-Gal. Ctn. **39¢**

IDEAL Apple Butter
28-oz. Jar **25¢**

FOOD CLUB Instant Milk
3-Qt. Pkg. **25¢**

HERSHEY SPECIAL LABEL Instant Chocolate
2-lb. Ctn. **79¢**

FRISKIES Cat Food
2-lb. Pkg. **27¢**

FRISKIES-5 VARIETIES Cat Food Treats
8 6 1/2-oz. Cans **\$1.00**

SPECIAL LABEL Ad Detergent
10-lb. Box **\$1.98**

SPECIAL LABEL Fab Detergent
Giant Size **69¢**

FOR THE KIDDIES Soaky Fun Bath
Large Size **69¢**

SPECIAL LABEL Liquid Vel
22-oz. Plastic **49¢**

CUDAHY VIRGINIA REEL Pork Sausage
2-lb. Pkg. **\$1.49**

COUNTRY KITCHEN Baked Beans
PINT Ctn. **39¢**

GORTON'S Fish Sticks
1-lb. Pkg. **69¢**

Jamboree SPECIALS

BAR-5 FULLY COOKED Canned Hams	5-lb. Can \$3.49	BAR-5 BY THE PRICE Bologna	1-lb. Pkg. 49¢
BAR-5 WASTE FREE Boneless Ham	5-lb. Can \$5.99	BAR-5 BY THE PRICE A.C. Braunschweiger	1-lb. Pkg. 59¢
BAR-5 SLICED Bacon	1-lb. Pkg. 89¢	BAR-5 SKINLESS Sausages	12-oz. Pkg. 59¢
BAR-5 ALL MEAT Skinless Franks	1-lb. Pkg. 59¢	BAR-5 VACUUM PACK Lunch Meats	6-oz. Pkg. 33¢

CHEF BOY AR DEE PIZZA MIXES

With Cheese	15-oz. Pkg. 49¢	With Sausage	17-oz. Pkg. 59¢	With Pepperoni	17-oz. Pkg. 69¢
--------------------	------------------------	---------------------	------------------------	-----------------------	------------------------

POWDERED Vel Detergent
Giant Size **89¢**

AJAX Liquid Cleaner
28-oz. Btl. **67¢**

SPECIAL LABEL Ajax Cleanser
Large Cans **15¢**

FLORIENT Air Freshener
Cans **69¢**

LAUNDRY Detergent
Giant Size **85¢**

LIQUID DETERGENT Cold Power
64-oz. Plastic **\$1.59**

AJAX Floor & Wall Cleaner
Pkg. **29¢**

SPECIAL LABEL Action Bleach
Giant Size **89¢**

CARNATION COFFEE MATE

3-oz. Jar	6-oz. Jar	11-oz. Jar
29¢	49¢	79¢



This is when your insurance agent has to go to work for you

Suppose your house caught on fire tonight. Could you count on your insurance agent for prompt assistance? The way to make sure you can, is to make sure ahead of time that he's an independent agent. That means he's free to pick and choose among several fine insurance companies, and represent your interests in dealing with them. His job is to serve you first when you need help most. If he displays this seal, he's your man.

We're independent insurance agents. As such, we'll be happy to give you continuing, personal attention—The Big Difference in car, home, and business insurance. We'll help keep your coverage up-to-date... and inform you about new policies. Call on us for all the facts on complete insurance protection. We'll prove an independent agent gives you service beyond the call of duty.



P. A. Lyon, Ins. Agency



Eddie Jenkins Enrolls At LCC

A Spearman student is enrolled for the spring semester at Lubbock Christian College as a part of the 730-member student body this term.

Eddie Jenkins, son of Mr. & Mrs. H.E. Jenkins, 305 S. Haney is a freshman at LCC. He is a speech major. While in Spearman High School, Jenkins was active in band, debate, football, track and basketball.

LCC's large student body this spring has set an all-time record for spring enrollment. There are 28 foreign students & 21 states represented.

The young college was founded in 1957. It is fully accredited, offering degrees in 12 fields.

County Agent's Report

SOIL TEST

Snow cover and frozen ground have greatly reduced the number of soil samples coming into the soil testing laboratory at the South Plains Research and Extension Center near Lubbock, report lab officials.

Extension Soil Chemist Jim Valentine, who heads the lab, is concerned that area farmers may put off soil sampling even after the weather returns to normal.

"It is impossible to collect a good soil sample while the ground is frozen or covered with snow," Valentine said. "But as soon as the weather clears up, I hope we are again flooded with samples."

He said that they had been receiving a record number of samples in early January before the bad weather arrived. The major soil testing time in the High Plains is January, February and March.

The soil chemist reports that farmers have been doing an exceptional job of furnishing background information on samples submitted in recent months.

"Information on crop history, fertilizers applied, past yields, and expected yields of the planned crop are just as important as a representative soil sample when we make our recommendations," Valentine said.

Research at numerous off-station locations throughout the area indicates that a field's cultural history can drastically affect fertilizer response, Valentine said.

There are four steps to submitting a good sample, he said. One, contact your county agricultural agent for a sample bag,

information sheet and instructions.

Two, make sure that someone who is highly familiar with the field takes the sample. The best man to do the job is usually the land owner or renter.

Three, follow the instructions on the information sheet for getting a representative sample of a field.

Four, fill-out the information sheet thoroughly and carefully. The soil testing laboratory at the South Plains Research and Extension Center is one of three operated by Texas A&M University. It was established in 1969 to give faster, better service to High Plains and West Texas farmers.

Valentine said a few area farmers continue to send samples to Texas A&M University.

All producers in the Panhandle and South Plains area and east to Hardeman, Knox, Taylor and Coleman Counties; and south to Andrews, Midland, Sterling, Tom Green and Concho Counties are urged to send their soil samples to the South Plains lab.

The address is Soil Testing Laboratory, Agricultural Extension Service, Route 3, Lubbock.

BULL SALE
A performance-tested Bull Sale will be held at Panhandle A&M College Farm Monday, March 7, 1966. They will be selling 75 head selected from 95 head on test. The majority will be Herefords but some Angus bulls will sell. The sale begins at 1:30 p.m.

25 Years Ago In Spearman

HANSFORD COUNTY MADE ONE WEATHER RECORD DURING 1940

Spearman chalked up the coldest weather of any location in the state of Texas during 1940. A low of 8 degrees below zero was recorded on Jan. 7. The high temperature for the year was 105 on July 16.

Rainfall for the year totaled 20.53.

Bill Gandy Back Home
Mr. and Mrs. Bill Gandy returned home last week end after a visit to Mineral Wells where Mr. Gandy had a medical check-up.

NOTICE, RED CROSS WORKERS

A new shipment of sweater yarn has been received by the Local Chapter of the American Red Cross.

Those interested in knitting will please call at the home of Mrs. P. A. Lyon, Spearman and

FATHER OF MRS. GEORGE BUZZARD DIES

Word was received in Spearman this week that Mr. S. P. Koechel, father of Mrs. George Buzzard died at his home in Enid Sunday morning February 16.

Mr. and Mrs. Buzzard were in Enid at the time of the death.

Two Hansford Students Make West Texas State Honor Roll
A letter received by Mr. and Mrs. Garrett Allen this week from President Hill of West Texas State stated that Verna Gail had made the honor roll for the fall semester. In explaining the honors thus conferred President Hill stated "The honor roll represents the highest ranking five per cent of the student body. Competition was especially keen during the fall semester and due to this fact it means more than it would otherwise. It is a pleasure to have these students of high scholastic standing with us and we wish to express our appreciation of the high character of work that has been done by Verna Gail."

We learned that Robert Satter white also made the honor roll for the fall semester.

BLODGETT NEWS

Ab Jackson was a caller in the John Kenney home Tuesday.

Kathleen Kenney, Janelle Jackson, Elora Close and Joyce Lamb attended a party at the Holt school Saturday.

Harvey Morse and Lonnie Ray Kenney went to the picture show Saturday night.

Mearl Beck thrashed barley and oats for Calvin Flowers and Fred Terbox Saturday.

Margaret Reed spent the week end with her grandmother, Mrs. James Reed.

The Way I 'C' It!

WE NEED HELP TO SEE STRAIGHT!

Imagine how awkward it would be to walk, if suddenly down were up and up were down! The human eye actually does see everything upside down; it is the optic nerve and the brain that straighten it all out for us. When people are fitted with glasses which invert (or turn) the image of what was seen before the lens of the eye gets its turn, all the world appears inverted or up side down. In time we could adjust to this upside-down way in which we see things so it would seem right and everything else wrong.

Here is where our human nature has been perverted, twisted that we call right and good living. We have twisted the Truth of God until humans want to

live "our way" instead of God's way. And the human race has so adjusted to this perverted twisted view that we often accept sin and evil as normal and acceptable . . . until the way of God and Christ is foreign and rejected.

The only one ever on earth who understood the situation and who could really see things right side up was Jesus Christ because He was God in human flesh.

For the dentist it is recommended we go twice a year. For the oculist at least every two years. The time could well be now for your checkup on Christian eyesight. Most of us have been operating with a kind of bifocal approach to living. We look at the world through the top of our glasses, and shift to a different kind of lens when we read the Word of God.

Does what seems right side up in your life, really be upside down in the sight of the Holy God? Are your moral values, your set of standards really mixed up and incorrect? It is the Gospel which gives not only clear example and definition of our sinful walk in life - the Gospel is the corrective power which is able to change upside down to the right side up. Don't belittle your church or the Gospel. Allow Christ to change you into His pure way of living - and thus open heaven for you!

Homemaking Notes

Even though our "winter time" has been fairly short, considering that it didn't begin until Christmas, I am more than ready to see signs of spring. I've seen all I want of cold weather, and the "sniffles".

A new article across my desk this week pronounced tangerines as sniffle-chasers. Researchers have found that tangerines contain the decongestant synephrine in an abundant amount. Now, having heard this news, I would rather eat a tangerine or sip its juice than take a pill to relieve a runny nose.

Prior to its discovery in nature synephrine was made in the laboratory and medically prescribed as a stimulant and decongestant for the relief of colds. Since 1927, it has been recommended for children and adults in minimum doses of 100 milligrams. An equivalent amount is contained in only 8 to 12 ounces of tangerine juice.

Although citrus fruits have long been recommended for warding off colds, there is the new possibility that eating tangerines can give relief from sniffles after you catch a cold.

Speaking of citrus fruits, did you know that you can cut salad dressing calories almost in half and still use your favorite dressings? Just blend equal parts of dressing and fresh lemon juice & add a bit of freshly grated rind for extra zest. It adds a flavor and important vitamin C to your salads, while drastically cutting calories (there are only 4 calories per tablespoon of lemon juice).

Try this half and half salad dressing - equal parts of your favorite dressing and fresh lemon juice on tossed crisp vegetable salads, colorful fruit salad plates or on seafood salad combinations.

A record-breaking onion crop this year is an encouragement to you to use more onions in cooking seasoning.

In buying onions, they should be clean, well-shaped, and have dry skins. If you like a strong flavor, buy globe onions, which are medium in size and globular in shape.

The flavor of this type of onion keeps very well when stored in a cool, dry place. Globe onions are available throughout the year.

For a milder onion, choose the Bermuda or Spanish onion. The Bermuda is large and flat with a yellow, buff or red skin. Look for Bermudas in the stores from March to June. The Spanish onion is large and elongated, with a light yellow or tan color. Spanish onions are available from August to April.

To enhance the flavor of boiled, baked or creamed onions, add caraway seed, mustard seed, nutmeg, sage or thyme. Final touches in seasoning mark you as a cook and hostess who knows and cares about food at its best.

THE LAST NOTE: Let us be thankful for the moon. If it weren't there, who knows what people might be shooting rockets at.

Southwestern Life Insurance Company had a record year of growth in 1965, with new insurance issued up 34 per cent total insurance in force gaining 13 per cent to reach \$3.7 billion according to Don R. Knox, Spearman representative.

A special report on the company's 1965 business results just received from company president W. Dawson Sterling shows new record highs achieved last year for new insurance sales, insurance in force, gain in insurance in force, benefit payments and new investments.

Mr. Sterling advised Mr. Knox that new business produced by Southwestern Life Representatives in this area contributed significantly to the company's record year.

Good Luck Lynxettes

WIN REGIONAL!



Compliments Of

R. L. McClellan
Grain Co., Inc.

Phone 659-3223

Spearman

Horizon Oil and Gas Company
Everett Tracy

CU In Austin

After the Big Regional Tournament In Lubbock This Saturday

You Can't Stop Spearman's "JINXING LYNXETTES"

This Page Is Sponsored By The Following

- | | |
|-------------------------------|------------------------------------|
| B. and B. Grain Co., Inc. | Chambers - Downtown |
| J. L. Brock, Insurance Agency | Lady Fair - Plains Shopping Center |
| Cates Men and Boys Store | Bobs Sales and Service |
| Cates Grocery | Spearman Hardware |
| H. and H. Water Well Service | EQUITY |
| Spearman Super Service | Crawford Implement Co., |

3RD. TIME IS CHARMED!

And We Think Our LYNXETTE'S
ARE CHARMING

GOOD LUCK LYNXETTES

**WIN REGIONAL
This SATURDAY**

This Page Is Sponsored By The Following

Foxworth Galbraith Lumber Co.

Junior Lusby Cats

The Spearman Reporter

Hansford Grain Co., Inc.

Spearman Motor Co.

Spearman Redi-Mix

Thompson Flying Service

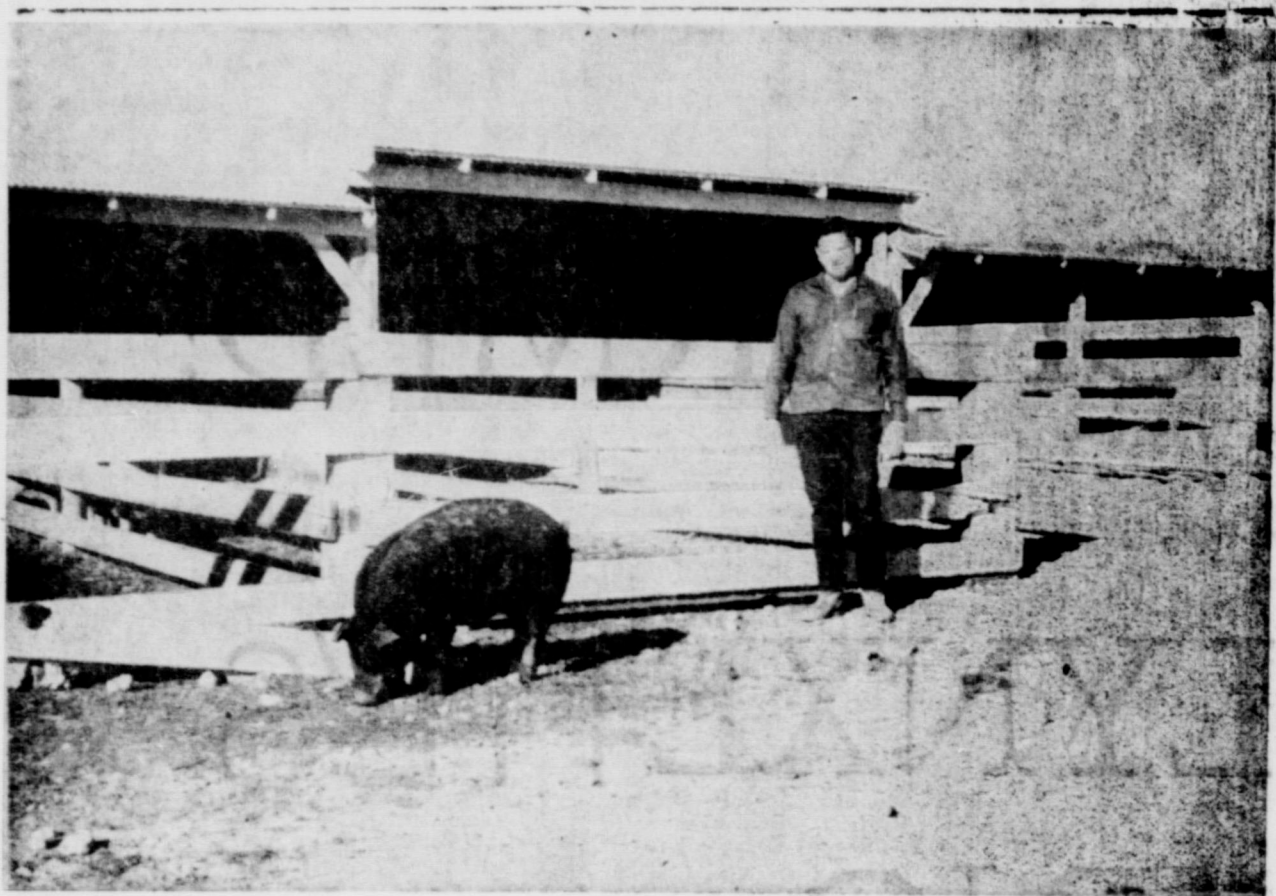
Wardrobe Cleaners

Spearman Barber Shop

Cattleman's Resturant

DON'T FORGET

Big junior Livestock Show



Friday March 11th. In the Community Building



Texhoma Livestock Auction

Texhoma, Okla.

Hugh Ford

"Auction every Friday"

If you like to cook
but hate to clean...



You'll love the cleanliness
of electric cooking

When you cook electrically, you'll have fewer tedious clean-up chores. Electric heat is flameless and produces no fuel grime. And because the electric oven requires no oxygen to support combustion, there's no flow of air into and out of it, carrying greasy cooking vapors into your kitchen. Woodwork, walls and curtains stay fresh-looking longer... need cleaning less often. Pots and pans stay shiny with less scouring, too. See the new flameless electric ranges at your dealer's soon. You'll love 'em!

COMMUNITY PUBLIC SERVICE

Your Electric Light & Power Company



Open House

DEKALB'S

NEWEST SEED PROCESSING PLANT

DUMAS, TEXAS

Located on West Edge of Dumas, on the Dalhart Hiway

Darrel Reynolds, Manager, and Your Dekalb Dealer Invite You to come in and inspect this ultra modern grain sorghum processing facility. See first hand why and how this station will be a big asset in service and quality for all grain sorghum producers on the high plains.

FRIDAY, MARCH 4

Come At A Time Most Convenient For You
2:00 To 5:00 P.M. OR 7:00 To 9:00 P.M.

- Door Prizes For Farmers
- Free Refreshments
- Favors For All
- Guided Tours
- 5-Point Profit Tips

A Facility in Which the Whole North Plains Can Take Pride

TROY SLOAN

RAY MOORE

What's Trumps?

BLUE MONDAY

Mrs. E. D. Clement was hostess February 28 for the Blue Monday Bridge Club.

Higher scorer for the afternoon was Mrs. Jess Womble. Mrs. Clement served an assortment of snacks to Mesdames Bill Gandy, Deta Blodgett, R. W. Morton, Lester McLain, Gwenfred Lackey, Jess Womble and F. J. Daily.

Mr. and Mrs. Bob Parris hosted the Wednesday evening couples bridge club February 23 in their home.

Prizes were given according to total couple points. High couple was Mr. and Mrs. Bobby Archer and second high was Mr. and Mrs. Tommie White. Travelling prizes went to Nelva White and Lawton Guthrie.

Attending were Messers and Mesdames Bobby Archer, Tommie White, Lawton Guthrie, Bobby Nollner, Bill Douglas, guest Gertrude Jones and the hosts.

Mr. and Mrs. Johnny White recently entertained their bridge club for its regular monthly meeting.

Mr. and Mrs. J. D. Helms went home with prizes for men's and women's high scores.

Attending were Messers and Mesdames J. D. Helms, Troy Sloan, Willis Sheets, Wilson McClellan, guests James Pendergraft and the host and hostess.

LADIES BRIDGE

The Thursday evening ladies bridge club met in the Farm Bureau Building on February 24 with the hostess Mrs. Perry Coursey.

High score went to Sherry Meek and low went to Martha Latham. Frankie Sloan won the travelling prize.

Attending were Mesdames Frankie Sloan, Dickie Robinson, Lois Hill, Martha Latham, Betty Hazelwood, Barbara Pendergraft, guest Sherry Meek and the hostess HI LO.

Mrs. Joe Dan Bryan was hostess February 24 for the HI Lo Bridge Club.

Faye Lynch won high score for the evening.

Attending were Mesdames, R.E. Lee, John Berry, Bill Gandy and Faye Lynch.

Interest Rate Up

On Savings Bonds

President Johnson recently announced a new and higher interest rate to be paid holders of all U. S. Savings Bonds. The new rate is 4.15 per cent.

In announcing the interest hike President Johnson emphasized that it will benefit holders of all bonds.

The interest rate is effective as of December 1, 1965, and it applies to all Series E and H Savings Bonds outstanding for their remaining period to maturity, as well as those to be purchased in the future.

The new rate will reduce the maturity period for Series E Bonds (those most frequently purchased) to seven years. Under the old 3 three quarter per cent rate a bond purchased for \$75, for example, could be redeemed at \$100 at maturity—seven years and nine months. For Series H Bonds, which are bought at face value, the interest is paid semi-annually, and those payments will simply be increased to the 4.15 percent rate.

Mr. Johnson noted that between 30 and 40 million Americans who hold more than \$49 billion in Savings Bonds will automatically enjoy the rise in interest.

The President pointed out that this year marks the 25th Anniversary of the Savings Bonds program. It was May 1, 1941, when President Franklin D. Roosevelt bought the first Series E Bond from Secretary of the Treasury Henry Morgenthau.

Nadine Brewer Circle

The Nadine Brewer Circle of the W. M. U. met in the home of Frankie Brandt February 23.

Mrs. Widener called the meeting to order and presided. Mrs. Brandt gave the prayer calendar and led in prayer.

Mrs. Reger conducted the Bible study with each member participating.

Attending were Mesdames Barbara Reger, Joan Chisum, Teresa Dollar, Wanda Widener and the hostess.

WSCS MEETING

Members of the Womans Society of Christian Service met in the Methodist church on February 23.

Mrs. Grimes, president presided at the business meeting.

Mrs. Linda McLain reviewed the book "In My Fathers House".

Attending were Mesdames Gail Brown, Kenneth Williams, Ray Messer, Marie Beck, Virginia Sell, Minnie Jones, Frances Rhodes, Patty Sheppard, Myra Grimes, Donna Baxter, Linda Umphries, Mary Sansing, Virginia Strawn, Grace Lyon, Dorcas Collard, Virginia Trindle, Lucille Lewis, Linda McLain and hostesses Virginia Head, Pat Reeves & Beth Daniel.

Training Circle

Donna Helms was hostess February 23 in Fellowship Hall for the Louise Mitchell training circle.

After Mrs. Helms opened the meeting, Louise Hawkins read the prayer calendar and Garry Jones told about the book display Jane Moyer reported on an article about work in Rhodesia.

WMS Stewardship Chairman, Mrs. Major Lackey, brought the program on stewardship, stressing the use of our time, talents and money in Christianity.

Attending were Mesdames, Donna Helms, Mary Lovett, Garry Jones, Eleanor Douglas, Louise Hawkins, Vicki Adkinson, Jane Moyer, and guest Mrs. Lackey.

Betty Morris Circle Meeting

The Betty Morris Circle of the W. M. U. met in the home of Mrs. Woodville Jarvis February 23 for Bible study.

The meeting was opened with prayer by Mrs. Garnett.

Mrs. Golightly led the study with other members taking parts. Mrs. Howe gave the prayer calendar and Mrs. Jarvis dismissed the group with prayer.

Mrs. Jarvis served cookies and coffee to Mesdames Peggy Archer, Magda Garnett, Alma Kizzlar, Eva Adkinson, Abbe Ownby, Barbara Howe and Gwanda Golightly.

Mrs. Berry Is Hostess, 23rd.

The Alma Reid Circle of the W. M. U. met in the home of Mrs. Luther Berry February 23.

Mrs. Jones conducted the business session. Mrs. Gray gave the prayer calendar and Mrs. Brown led in prayer.

Attending were Mesdames Fred Holt, A. F. Loftin, Don Jones, R. H. Gray, John Brown, Don Denham and the hostess.

Ruby Barkley's Father Is Ill

Mr. and Mrs. Freeman Barkley were called to Sayre, Okla. Tuesday of last week because of the serious illness of her father, Mr. L. O. Moss. Mr. Barkley returned home, then he and Mary Ellen went to Sayre for the week end. Mrs. Barkley returned home with them Sunday. She will return to Sayre to be with her father whose condition is somewhat improved as of Tuesday of this week.

Mrs. A. W. Mobley H D Hostess

Mrs. A. W. Mobley was hostess for the February 23 meeting of the Hansford Home Demonstration Club.

Mrs. Howe, president, presided at the business meeting.

Mrs. Skinner, in charge of the program gave a talk on Heart Diseases.

Attending were Mesdames Flavil Ayers, Herb Howe, Roscoe Nelson, Hartley Simmons, Stella White, L. W. Rosenbaum, H. M. Shedeck, Daniel Sheets, Ray Skinner, Co-hostess, Mrs. Elzey Vanderburg and the hostess, Mrs. Mobley.

Youth Party At Desimone Home

Daniel Desimone, Jr. and Linda Schaefer had a party Saturday night in the Desimone home on Steele Drive.

The young people gathered in the garage, which was decorated with crepe paper and balloons, for an evening of fun and refreshments.

Attending were Dianne Gregg, Sheryl Curry, Jan Ownby, Rhonda Linn, Fats Buzzard, Cindy Dear, Kathy White, Bonnie Seymour, Karen Waggoner, Rodney Schroder, Freddy Schieldknight, Rodney Simms, Tony Harper, Larry Laws, Edgar Womble, Phil Windom, Ernest Wilmet, James Ray Lyon, Ronald Conners, Terry Butts, Mark Massie and Matt Laur. The party was chaperoned by Mr. and Mrs. Schaefer and Mr. and Mrs. Desimone.

Helen Collard In Tau Beta Sigma

Helen Collard of Spearman recently initiated into Tau Beta Sigma, national honorary fraternity for bandwomen, at West Texas State University.

Miss Collard, daughter of Mr. and Mrs. John Collard, Jr. is a freshman music major.

ETA ALPHA MEETS

Eta Alpha Chapter of Delta Kappa Gamma met Saturday, February 19 at 2:00 in Booker, Texas at Booker State Bank.

Thelma Vaughn, president, presided at the business session. Annie Love, program chairman, presented the program entitled Creativity of Children.

The program was presented in three parts showing the creativity of children in different age groups. Maurine Flathers of Perryton showed the creativity of pre-school and primary children in the form of original drawings, stories and poems. Cula Nowlin, Home Demonstration Agent for Ochiltree County had posters, scrapbooks and dresses on display made by 4 H groups ages 9 through 19. The Perryton librarian Flora Champion, displayed the creative designs of high school students in the form

of drawings and original sculpture and poems.

Attending from Spearman were Thelma Vaughn and Nicki Cotter.

Membership Drive Rainbow Meeting

Worthy Advisor, Debbie Standerfer, opened the meeting in regular form when the Rainbow Girls met February 24 in the Masonic Lodge at 5:30.

Plans were discussed for the School of Instruction to be held March 12. Sherry Messer was elected to fill the office of Faith and she will be installed at their next meeting.

Each girl brought a sack lunch, and after the meeting, went to Fellowship Hall to eat.

Attending were Preston Scott, Elsie Mathew, Debbie Standerfer, Linda Hall, Penny Gaither, DeAnn Sheets, Susan Uptergrove, Carol Booth, Becky McClellan, Susan Barnes, Karen Mathews, Gayle Hopper, Lynne Hohertz, Toni Hudon and Sherry Messer.

FEED LOT GAIN IS HIGHEST IN 13 YRS. AT PANHANDLE A&M

Ninety-four Hereford and Angus bulls, recently completing their 140-day feed lot gain test at Panhandle A and M College, gained an average of 2.96 lbs. per day, the highest in the 13 year history of the test station. Eight bulls gained 500 lbs. or more during the feeding period, the highest gaining bull a December 1965 Hereford yearling bull, gaining a 545 lbs. for an average daily gain of 3.89 lbs. Second high gaining bull was an October yearling Hereford, with a total of 541 lbs. for an average daily gain of 3.86 lbs.

Eighty head of the 94 bulls on test made the 2.6 average daily gain or better as required for certification under Performance Registry International regulations.

Seventy-five head of the 94 bulls on test will sell March 7 at the test pens at Panhandle A. and M. College.

Week-end guests in the Ronald Schaefer home were Mr. and Mrs. Wayne Walden and Kevin from Amarillo.

News Flash

Lynettes Favored To Win Girls Regional

Gruver Boys Win Regional

Junior Livestock Show To be held in Community

Building Friday, March 11 th.

And don't Forget . . .

Farmers - get your FREE TICKETS here for the

BIG Tri-State FARM SHOW - March 18 - 19

Lubbock Municipal Coliseum

R L McCLELLAN and SONS

CASE Farming Equipment

CLASSIFIED ADV. RATES EFFECTIVE MAY 1, 1964. Classified ads 4 cents per word for each insertion with minimum charge of 60 cents. Minimum of 75c for classified ads that are charged. Blind ads, double rates.



... that insurance figures in every practical person's life. Your financial security demands the protection that only complete insurance coverage can give.



SERVICES

FREE REMOVAL OF DEAD STOCK. AMARILLO RENDERING CO. Call 659-2194 in Spearman. DI 9-9211 in Amarillo Collect No. 21-rtn-c

PORTABLE DISC. ROLLING on your farm. Prices to suit you. Satisfaction guaranteed. Phone 659-3474 Harold Shaver. 41-RTN

STOCK WATER HAULING - Dependable service. Contact Olin Sheets. 659-3167 49-rtn

FOR SALE: Tracts for sale, joining Spearman, with water, electricity, etc. Cecil Crawford, Box 96. No. 36 RTNC

LAND WANTED. We have buyers interested in this area, who want raw land or cultivated land with good water. Please contact CHAS. S. MIDDLETON & SON 1706 14th Lubbock, Texas. Phone: PO Box 3-5331

FOR SALE: General Electric Washer, Maytag Dryer, New early American Dining Room suit. Reasonable. Call 659-2831. 13-rtn-c

SALE. 75 Bulls-Selling Monday, March 7 - Performance Tested Panhandle A. & M. College Farm - Goodwell, Oklahoma Yearlings-weighing up to 1400 lbs. - Guaranteed Fertilizer. Sound and ready for summer service. P. R. I. Certificates on most. 140 day performance data on all. Write for catalog M. W. Ensland - A. H. Dept - Goodwell, Oklahoma Sale 1:00 p.m. 13-2TC

WANTED: Person for profitable Rawleigh business in Sherman and Moore Cos. Products sold here ever 40 years. See Milton T. Brown, Box 385, Spearman or write Rawleigh TX C 30 101, Memphis, Tenn. 14-1TP

payments - 1st payment in April 1966 Write "CREDIT MANAGER" Lubbock Music Center, 1722 Broadway Lubbock Texas 79401. 12-2TC

NOTICE

Tole painting classes to begin next week. Ruth Bryan and Beth Phelps. Call 659-2337 or 659-2172.

FOR RENT: Furnished apartment, 606 S. Bernice, telephone 659-2652. No. 2 ETN

Louis Schnell Electric

COMMERCIAL AND RESIDENTIAL WIRING

HEATING AND AIR CONDITIONING INSTALLATION AND REPAIRS

208 Hancock Street Phone 659-3433 Spearman

NOTICE TO CREDITORS OF THE ESTATE OF W. A. ELLSWORTH, DECEASED

Notice is hereby given that original Letters Testamentary upon the estate of W. A. Ellsworth deceased, were granted to me on the 7th day of February, 1966 by the County Court of Hansford County, Texas. All persons having claims against said estate are hereby required to present the same to me within the time prescribed by law. My residence and Post office address are Spearman, Hansford County, Texas.

Ethel Ellsworth Independent Executrix of the Estate of W. A. Ellsworth, Deceased. 1TC

FOR RENT: 2 bedroom house, carpeted, stockade fence in back 615 S. Evans. First and last months rent in advance. 14-2TP

CARD OF THANKS. I want to take this opportunity to thank you for your prayers, visits, cards and letters during my recent illness. They all mean so much to me and your kindness will not be forgotten. Mrs. Stanley Garnett 14-1TC

NOTICE. The Rolling Plains Mule Train will have their regular monthly meeting, Thursday, March 3rd, at 7:30 p. m. in the Home Demonstration Club Room. Everyone urged to attend. Ladies are asked to bring pies. 14-1TP

Political Announcements

DEMOCRAT TICKET. The Spearman Reporter is authorized to announce the candidacy of the following persons seeking office subject to the action of the voters in the Democratic Primary on May 7, 1966:

For County Clerk: KEESEE RICHARDSON DONALD HEATH

For State Rep. 83 Dist: A. C. (Shorty) HALLMARK

For County Treasurer: MRS. JUANITA KEMPER SELMA DAHL RENEAU MERLE WASHINGTON

Justice of the Peace: JOHNNY P. VERNON

REPUBLICAN TICKET. For State Rep. 83 Dist: JACK HART

See... Ray McCammond or call... 659-3393 for - pit digging - back filling of ditches - dozier work Contract - or by the hour

Do you need \$25 to \$50 more per week working in your spare time? Positions for city and rural men and women. No experience necessary, income commensurate with time spent. For details write to Earl Reynolds, Rt. 2, box 94, Canyon, Texas. 13-3tc

ATTENTION: We will be picking up a spinet piano in your area, small monthly payments. 1st payment in April. Write Credit Mgr., JENT'S HOUSE OF MUSIC 2640 - 34th, Lubbock, Texas. 11-3tc

CARD OF THANKS. We the family of Joe H. Smith wish to express our appreciation to our many kind friends and neighbors who extended assistance and comfort through the hours of our deepest sorrow from the loss of our loved one. The family of Joe H. Smith 1TP

Will build you a home at 815 South Archer, if you are 65 or over you are eligible for a 4 1/2 percent retirement loan with no down payment required. Will sell you the lot if you desire to build your own home. Make Me an Offer. Beckwith Enterprises Inc. 1130 Hedgecoke, Borger, Tex. Phone BR 44795 ITP

Dahlia Flower Club will Meet. The Dahlia Flower Club will have a coffee to welcome two new members to their club, Monday, March 7 at 9:30 a.m. in the home of Mrs. Olin Sheets. This will be the first meeting for the year and all members are urged to be present.

ARTS & CRAFTS WILL MEET THIS FRIDAY. China painters, members of the Arts and Crafts Guild, met last week with Mrs. Joe Dan Bryan with Mesdames: Bruce Sheets, Clay Gibner, Ned Turner, Guy Fuller, Bill Russell, Deta Blodgett and Ray Phelps present. This Friday the group will meet with Mrs. Fuller.

PIN BENDERS. McClellan Grain 56 32 Nancy's Cafe 55 33 Lee Oil 50 38 Bowl-Mor 49 39 Brock Insurance 46 42 Independents 39 49 Crawford Implement 28 59 Hans. Co. Motor Pts. 28 59 HIGH TEAM SERIES McClellan Grain 1461 Lee Oil 1391 Crawford Implement 1265 HIGH INDIVIDUAL SERIES Gwen Smith 408 Ann Sanders 480 Barbara Cook 474 HIGH TEAM GAME McClellan Grain 499 Lee Oil 497 HIGH INDIVIDUAL GAME Ann Sanders 186 Gwen Smith 180 Lou Harvey 172

TUESDAY MIXED DOUBLES. Behne Electric 50 26 Eling Grain 49 27 NO. 5 46 30 NO. 3 39 37 Snyder Texaco 31 45 Spearman Floral 13 63 HIGH TEAM SERIES Eling Grain 1913 NO. 5 1874 Behne Electric 1869 HIGH INDIVIDUAL SERIES

Shorty Hamlett 554 Buck Behne 584 Bill Sparks 560 HIGH TEAM GAME 695 Eling Grain 678 NO. 5 669 Behne Electric HIGH INDIVIDUAL GAME 266-223 Shorty Hamlett 220 Bill Sparks 212 Buck Behne, Ed Vernon

G A's Meet. The Gladys Hopewell GA's met in the First Baptist church February 23.

Rita Simmons read the prayer calendar, Ann Lackey gave the scripture reading, Kathy Brown lead in prayer. The group stood and repeated the GA allegiance.

A nominating committee composed of Karen Waggoner, Debra Smith, Cheryl Craig, Kathy Brown and Mrs. Widener presented names to the class to be voted on. Sheila Reed was elected president; Rita Simmons, secretary; Kathy Brown, treasurer; Debra Smith, program chairman; Ann Lackey, assistant program chair; Donna Walls, mission study; Nancy Anderson, community missions; Cheryl Craig, prayer chairman; Pat Walls, forward steps; Karen Waggoner, social chairman; Kathy Brown and Tina Boise, refreshment committee.

Mrs. Wanda Melver lead in the closing prayer. Ann Lackey served refreshments to the group.

School Lunchroom. MONDAY MARCH 7, Ham Sandwiches, Mashed Potatoes, Barbecued Green Beans, Celery Sticks, Strawberry Shortcake, Chocolate or Plain Milk. TUESDAY, MARCH 8, Salisbury Steak, Buttered Corn, Seasoned Blackeye Peas, Carrot Sticks, Banana Pudding Bread, Chocolate or Plain Milk. WEDNESDAY, MARCH 9, Hamburger-Mustard, French Fries-Catsup, Lettuce-Tomato Salad, Dill Pickle Slices Lemon Gelatin-Fruit, Chocolate Chip Cookie Bars, Chocolate or Plain Milk. THURSDAY, MARCH 10, Chili-Crackers, Buttered Pinto Beans, Combination Green Salad, Peach Halves, Cinnamon Rolls, Bread, Chocolate or Plain Milk. FRIDAY, MARCH 11, T. S. T. A. MEETING.

Hansford County 4-H Stock Show Scheduled For Friday March

Hansford County 4-H members are busy getting their show animals ready for the Stock Show which will be held Friday, March 11 at the Community building in Spearman, according to County Agent Robert Adamson. 4-H Beef Calf feeders are: Bill Monte, Steve Delbert McCloy, Cloy, Wade Parks, Rex McCloy, Monte McCloy, Delbert McCloy, and Cheryl McCloy from Morse. Sherilee Maupin, Wes Maupin, Tommy Boone, Marie Gruver, Green, Marty Rasor, Patrice, Ginger Hart, Patricia, Davy Barkley and Dwight, pie from Gruver, Scott, Bonnie Vernon, Roy Clay of Spearman. 4-H Swine Feeders are: Rosenbaum and John W. Spearman; Donald Rhea, Stanley Gruver, Andy Hart, Murrell and Walter Morse of Gruver. 4-H Lamb feeders are: Tommy Boone from Gruver.

ROCK and GEORGIA cordially invite Mrs. Maretta Martin Mrs. Lilly Bowling To Be Their Honored Guests For Sunday Luncheon (on the house) Served in the Spacious Dining Room At THE CATTLEMAN'S CAFE We cater to after-church diners!

ANTHONY ELECTRIC - Industrial, Commercial and House Wiring - Heating & Air Conditioning - Wholesale Light fixtures and small appliances - INSURED & BONDED L. L. ANTHONY Plains Shopping Center - Phone 659-2441 - Spearman

B. M. A. INSURANCE E. K. Snider Canyon, Texas Life, Hospital A.H. Junior Accident

Hansford Lodge 1040 A. F. & A. M. Regular Communication 2nd and 4th Monday of each Month Jimmie Hester, W. M. Cecil Batton, Secy.

For Your INSURANCE NEEDS See Your FARM BUREAU AGENTS Tommy Gooch Phone 659-3131 Spearman, Texas

Boxwell Bros. Funeral Home and Flower Shop Day-Night Phone 659-2212 Spearman, Texas

E. C. GREENE - Real Estate - Loans - Insurance Phone 659-2587 - Box 143 Spearman, Texas

Animal Hospital AND CLINIC Southwest of Spearman Phone 659-2100 8:30 a.m. to 5:00 p.m. EXCEPT SATURDAY H. B. RINKER, D. V. M.

Dr. F. J. Daily DENTIST No. 16 S. W. Court St. Phone 659-2622 Spearman, Texas

CUMMINGS Refrigeration And Air Conditioning Phone 659-2141 Phone 659-2721 Gordon Cummings

Attend Church Sunday



THIS ADVERTISEMENT SPONSORED BY:

- Boxwell Bros. Funeral Home Flower Shop - Spearman
- First State Bank Federal Deposit Insurance Corporation Members
- Spearman Rexall Drug Orville Brumett
- Spearman Equity Exchange E. J. Copeland
- R. L. Kleeberger, M. D. 16 S. W. Court
- R. L. McClellan And Sons Case Dealers

DON'T FORGET... The BIG HANSFORD COUNTY JR. "Livestock Show" Friday, March 11th. - Community Bldg, Spearman. Anthony Electric - Cumming Refrigeration - L. L. Anthony - Gordon Cummings Plains Shopping Center - Spearman. Image of a cowboy with a horse.

APPLICATI... TO: J. B. Registration by this ins... I have not... either state... Age... I have res... I fill in... (town.)... I was born... I am a... I reside in... My home a... (Street ad... Mail my re... I underst... felony. THIS AP... OF TAXES DO NOT... SEEN ISS... Persons hol... need to re...