

MERRY CHRISTMAS

The Spearman Reporter

VOLUME 59, NO. 4 THE SPEARMAN REPORTER, Hansford County, Texas, 79081 THURSDAY, DECEMBER 21, 1967

"Christ Is Born"



FAITHFUL TO THE SPIRIT OF THE FIRST CHRISTMAS is "The Nativity," by the Florentine painter Mariotto Albertinelli (1474-1515). The simple scene presents the Christ Child, with Mary and Joseph, in a realistic setting, and background detail suggests a hillside manger, typical of the rock caves which were used for stables in Bethlehem. Painting is in the Uffizi Gallery, in Florence, Italy.

Christians Celebrate Holiday With Joy and Prayer

"And suddenly there was with the angel a multitude of the heavenly host praising God and saying, Glory to God in the highest, and on earth peace, good will toward men." — Luke 2:13-14

In church services this Christmas season, Christians everywhere gather to commemorate the miracle of a holy night nearly 2,000 years ago. The message of Christmas lives on—in candlelight and carols, in pageants and prayers.

Joyfully, the happiness of Christmas finds expression in music and song. Choirs sing the praises of the Babe of Bethlehem, and sacred hymns and carols reflect the spirit of rejoicing. As the herald angels sang to shepherds long ago, so now exultant voices join in proclaiming the Birth of Christ, with "on earth peace, good will toward men."

"And it came to pass, as the angels were gone away from them into heaven, the shepherds said one to another, Let us go even unto Bethlehem, and see this thing which is come to pass, which the Lord hath made known unto us."

"And they came with haste, and found Mary and Joseph, and the Babe lying in a manger." — Luke 2:15-16

Along with the joyous exultation, there is a spirit of thankfulness in celebration of this holy Day. In both church and private devotions, Christians ponder anew the word of the Christmas story, as it was told by two of His disciples, Matthew and Luke. It is read and re-read, remembered and acted upon. And it is beheld, symbolically, in Nativity scenes and by treasured tradition, recreate the manger of His birth. Prayerfully, each congregation and each individual celebrates Christmas, keeping always in memory that the glory of His coming was first revealed to humble shepherds, and that the Holy Child was born in a simple manger. Worshipers give thanks to God, for the Miracle and its meaning.

"And when they were come into the house, they saw the young Child with Mary His mother, and fell down, and worshipped Him: and when they had opened their treasures, they presented unto him gifts, gold, and frankincense, and myrrh." — Matthew 2:11

The Wise Men, says St. Matthew, followed a Star to seek and find the Babe of Bethlehem. Their joy at beholding Him, and their precious gifts in homage, express much of the wonder and majesty of the Christmas story, as it is envisioned today. Yet in those gifts was a prophecy, a poignant reminder of the sacred solemnity, the highest meaning of Christmas. Gold was a precious treasure, fitting gift for the newborn King. Frankincense, an ingredient of incense, expressed the ancient belief that "incense owns a deity nigh."

The third gift was in sad token of great sorrow to come. Myrrh, used by the ancients in funeral rites, symbolized Christ's own supreme gift of life and foretold His death upon the Cross.

At the manger, there was the shadow of Calvary. Thus Christmas is celebrated, joyfully, prayerfully, solemnly, in dedication to its sacred meaning: The Child born in a manger was the Son of God, destined to take up the burdens of mankind and bear them to the Cross, where He died that the spirit of man might live forever.

More and Legend Express Happy Mood of Season

From home to home, from country to country, Yule celebrations abound. The happy traditions of gift giving, home decorating, carol singing, card sending, candle lighting and trimming express the spirit of the season.

Popular folk customs of nations after nation have been absorbed into the international legend and lore of the Yule. Yet virtually every nation and every home and family, has its special way of celebrating Christmas, and its own memories of Christmas past.

Carrying in Straw
Carrying in straw is a traditional part of Christmas celebrations in Sweden—in probable remembrance of the first Christmas when there was straw in the manger.

Carrying in the Manger
"Carrying in the manger" is a tradition rather than a modern custom. Swedish people still make straw and wooden figures to hang on their Christmas trees.

San Tan Lou Yin
In Hong Kong, Santa Claus is known by the name of "San Tan Lou Yin."

The Hong Kong department

Spirit of Christmas Spreads Good Will and Good Cheer

They Go Together—Feasting and Festivity

During the Christmas season, merry sounds ring out, pleasing sights greet the eye—and tantalizing aromas fill the air. Good food is as much a part of holiday tradition as bells and carols, greens and gifts.

At this festive time, people delight in serving their families and friends an abundance of choice foods. The custom probably began with the ancient winter festivals. In the course of time, naturally each nation developed its own treasured customs in connection with the Christmas dinner, say the editors of *The New Book of Knowledge*.

On American tables, the center of attraction is usually the turkey. This custom has its origin in the English "Christmas bird"—usually a goose, capon or chicken, rather than a turkey.

In medieval times, a large bird was standard fare at English Christmas dinners among the common people. In castle and manor, however, a "bird" wasn't always the main dish.

To the tune of the old carol, "The Boar's Head in Hand I Bear," the boar's head was borne to the table in solemn procession. Then followed other courses—and what courses! The most lavish of dinners usually featured a boar's head.

For a medieval feast, a typical menu included 17 main dishes—everything from roasted swan to a kid with a pudding in its belly!

Baking the Pie
The devil dares not show himself in Cornwall at Christmas time lest he should be baked in a pie. This old English saying takes its humorous inspiration from the wide variety of ingredients actually used in the mince pies and other Christmas pies of early England, according to the editors of *The New Book of Knowledge*.

One 14th-century recipe for a Christmas pie included: a pheasant, a hare, a capon, two partridges, two pigeons, two rabbits, beef meat balls, eggs, pickled mushrooms, seasonings and spices, all in a pastry crust.

Breaking Bread
Everywhere, a widespread use of breads and pastries is customary for the Christmas feast. This has its origin in pre-Christian and early-Christian

In churches and homes, in city streets and stores, across the countryside—the spirit of Christmas spreads its joy and its contentment. Soon now, the last-minute hustle and bustle will give way to the highest moments of holiday celebration. It's a time for fun and feasting, a time for light-hearted laughter and heartfelt prayer, a time when friendships are renewed and family ties are strengthened.

Throughout this community, and indeed throughout all the communities where Christmas is celebrated, the spirit of the season finds expression in innumerable ways—among them, the gladness of gift-giving, the merriment of parties, the happiness of hearth and home and, above all, the solemn hush of midnight, traditionally the symbolic time for heralding the Birth of Christ.

From the holy wreath on the door to the packages under the tree, from the gaily decorated windows of stores to the manger scenes in the churches, the customs of Christmas contribute to the meaning of the Day—just as early Christian leaders meant that holiday customs should.

When Christmas first began to be observed on December 25th, churchmen welcomed the idea of incorporating ceremonies and traditions from earlier beliefs into the celebration. They thought that people would feel closer to the new religion if former ways and rituals were not abolished, but instead united with the new rites to honor the birth of Christ.

Today, nearly everyone celebrates Christmas because Christmas belongs to everyone. For the Christian believer, Christmas is cherished as a religious holiday of paramount importance, and as a time meant for joy and festivity, too.

For people of many different faiths, Christmas is beloved as a happy holiday, a secular celebration that gives meaningful expression to universal good will and good cheer.

Giving Gifts
Since the Wise Men gave of their treasures to the Christ Child, giving has been part of the tradition of Christmas.

The idea of gifts as homage dates from even earlier times, when kings demanded special tribute from their subjects during holiday seasons. Thus the Wise Men, in offering precious gifts of gold, frankincense and myrrh, expressed their reverence for the newborn King of mankind.

Giving to celebrate a happy time was a familiar part of many pagan festivals. The Romans honored Saturn, their god of agriculture, with a winter festival called the Saturnalia. During this joyous feast, they exchanged gifts—wax candles, clay dolls and various trinkets.

When these pagan customs of exchanging gifts were transferred to the celebration of the birth of Christ, church leaders added a new idea: selfless giving. Through the ages, giving to help the less fortunate has been a special tradition of Christmas.

Sending Greetings
Perhaps even more than the giving of gifts, the sending of Christmas greetings symbolizes the seasonal spirit of good will.

The personal exchange of good wishes at holiday time is a custom that's older, probably, than Christmas itself. In ancient winter festivals the renewal of the earth at the coming of spring was linked with the renewal of friendships.

Though greetings and Christmas have long been associated, the printed greeting card is a relative newcomer to the Yule scene—introduced little more than a century ago. Nowadays, Christmas greeting cards go out by the billions, carrying their messages of "happy holiday" and "best wishes."

In the glad tradition of sending greetings, today's edition of this newspaper presents the special greetings of local merchants, as they express their good wishes and gratitude to customers and friends.

Burning the Log
From a miraculous Star to a tiny candle, gleaming lights have cast a glow over holiday festivities for centuries.

Pagan sun-worshippers lit candles and kindled fires at winter festivals to help the returning sun gain strength.

Traditional for both light and warmth is the blazing Yule log. Like all "Christmas lights," it has both a religious and a festive significance in holiday lore.

Because legend says that the Christ Child was washed and dressed beside an ash wood fire, the people of early England always had Yule logs of ash wood. Ash had a practical aspect, too, because it was the only green wood which would burn.

The Yule log of England and continental Europe was often believed to have mystical powers to protect the home. To give this protection, the Yule log had to be kept burning all through the 12 days of Christmas.

Later, the "blazing Yule" was primarily associated with the feasting and festivity of the winter holidays.

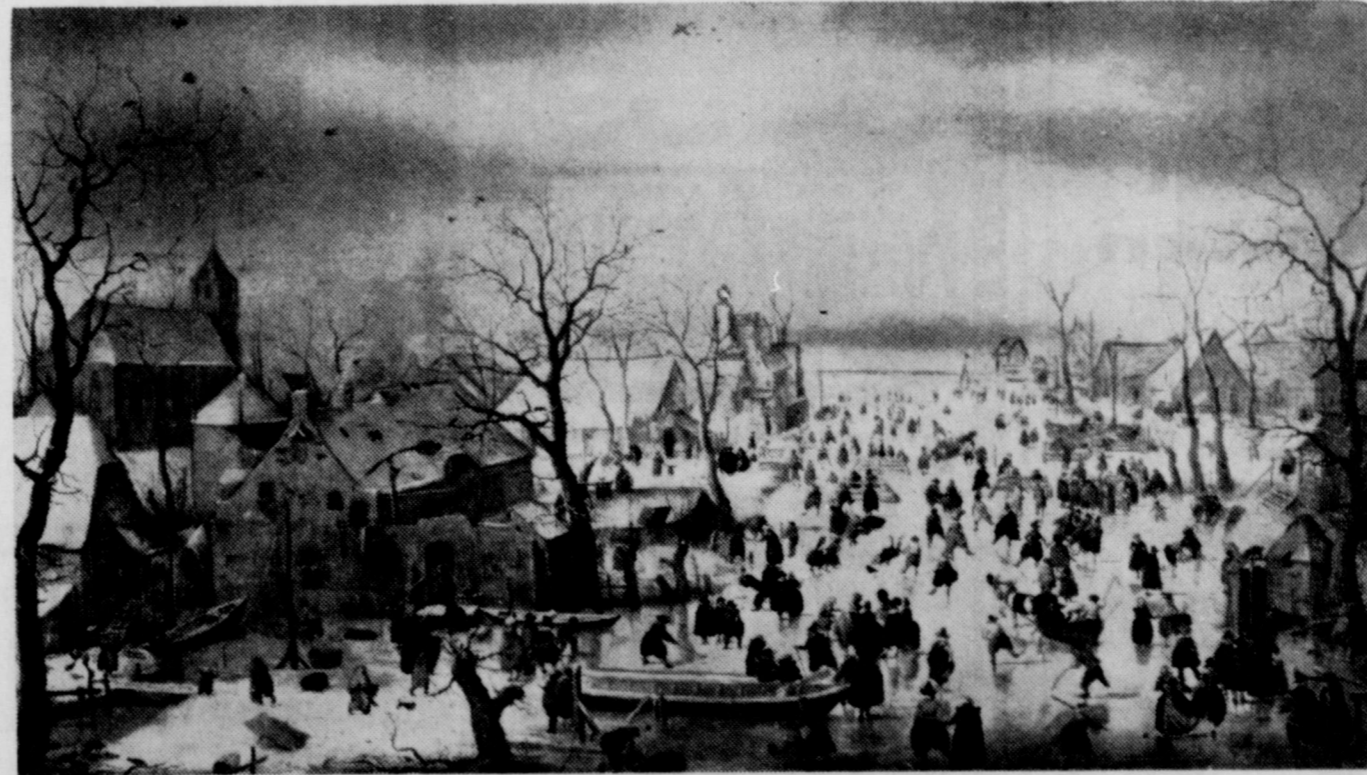
Ringling Bells
Among the merry sights and sounds of Christmas, none is merrier than the ringing of bells.

Since earliest times, the pealing of bells has announced important events, both happy and sad. The first use of bells to call Christians to worship took place, it's believed, at Christmas in Italy, about 400 A.D.

Tradition once held that Christ was born exactly at midnight. In medieval Britain, church bells tolled sadly during the hour before midnight on Christmas Eve. On the stroke of 12, a joyous pealing announced the Miracle of Christmas.

Today, church-spire bells and carillons ring out the glad tidings of Christmas.

Artistic Views Reflect 'Winter Wonderland'



BECAUSE CHRISTMAS IS TRADITIONALLY A WINTER WONDERLAND, paintings such as "Winter Scene" by the Flemish artist Hendrik Avercamp seem to capture the mood and reflect the spirit of the holiday season. Avercamp devoted his talents to depicting the winter landscapes of Holland. This painting, which is in the Rijks Museum, Amsterdam, appears in the Grolier Book of Art, a 10-volume encyclopedia.

For admirers of art and winter Christmases alike, one of the definitive painters of winter scenes is Hendrik Avercamp.

Perhaps because he devoted his artistic talents exclusively to the winter landscape, Avercamp's paintings capture to perfection both the beauties and pleasures of winter. Bare branches of trees etch their patterns against expanses of ice, in contrast with the cozy cottages and, on the ice, the

merry skaters, for an ideal blending of the cold weather and warm spirit of a winter holiday.

Of Avercamp's personal history, little is known. Records show that he was baptized in Amsterdam in January 1585, and buried at Kampen in 1634. His painting was influenced by the Flemish landscape tradition and particularly by Pieter Bruegel the Elder—a painter whose fascination with the winter scene did much to

shape his landscape style. The snow-covered hillsides seen in the work of the elder Pieter Bruegel contrast strangely with the flat, icy terrain of his native Holland. The explanation is to be found in travels which took him to mountainous lands.

Bruegel became a master in the Antwerp painters' guild in 1551, and shortly afterward journeyed to France and Italy, says the Grolier Book of Art.

In 1554 he returned from Rome to the Netherlands, re-crossing the Alps on his way. The mountains and scenery of Italy made an immense impression on him, as reflected in the drawings he made at the time.

More than the "contemporary" Italian art, those mountainous vistas influenced his landscape style—and ultimately inspired Avercamp and other Flemish painters of the ever-wonderful winter scene.

67-MAT PAGE 27

67-MAT PAGE 27

67-MAT PAGE 27



THE SPEARMAN REPORTER
P. O. Box 458, 213 Main Street, Spearman, Texas 79081
William M. Miller, Editor & Publisher

Successor to the Hansford Headlight, Published Thursday of each week in Spearman, Texas 79081

Second Class Postage Paid at Spearman, Texas 79081

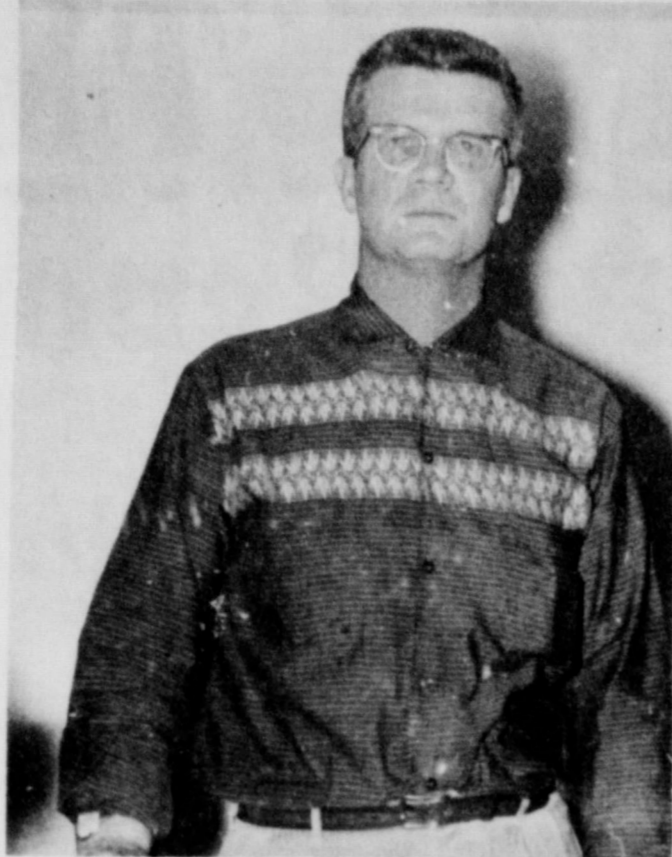
Please send change of address to Box 458, Spearman, Texas 79081

SUBSCRIPTION RATES:
In Hansford and adjoining counties, One Year \$3.50
Out of Hansford and adjoining counties, One Year .. \$4.00

CLASSIFIED ADVERTISING
Classified Advertising Rates, 4 cents a word.
Minimum charge on all classifieds paid in cash 60c
Minimum charge on all charged classifieds 75c
Display rates ON REQUEST

NOTICE TO THE PUBLIC: Any erroneous reflection upon the reputation or standing of any individual, firm or corporation that may appear in the columns of THE SPEARMAN REPORTER will be corrected when called to the attention of the management.

the Reporter's PERSONALITY OF THE WEEK



It is said that a great deal of a man's happiness depends upon working at something he enjoys. That is probably the reason for the ever friendly demeanor of our personality of the week, because if there is a single business man in Spearman who thoroughly enjoys his vocation that person is Slim Cates. He's known to everybody, young and old alike, as just plain "Slim." Should the day ever come when he tips the scales above the two hundred mark, I'm sure the name will stick. Slim's success in the mens' and boys' field, can be attributed to many things, but probably one of the most outstanding reasons, is the fact that he naturally likes people and especially youngsters. Just stand

around the store for a while, after school hours and you'll see more than one or two boys enter the place. You'll also note that Slim greets them by name and spends maybe a little more time waiting on them, than he would their dads. He constantly stocks the very best in name brand clothing for men and boys and this stock changes with the styles and the seasons. Slim Cates hates carry overs and discontinued merchandise, like a case of mumps and he never hesitates to reduce the prices on such items to the extent that they simply have to move out. His love for youngsters is exemplified in his support of all local sports. He's an avid Lynx fan and never hesitates to boost the teams. The operation of a store like Cates Mens' and Boys' Wear requires a lot of knowledge, from the standpoint of buying and he has constantly shown that he has his finger on the pulse of the public, as far as mens' and boys' clothing is concerned. He believes in the very best brands for work or dress. No matter how busy he may be, you'll always find him ready and willing to take time off for a friendly chat, or maybe, once in a while, he can be induced into a quick coffee break. To get a fully appreciation of Slim's diplomatic talent, you should be in the store some day when a mother is trying to persuade her young son to buy a particular pair of shoes. I'm talking about a case where the youngster is dead set on a different style. You'll agree that a situation of that sort requires a bit of diplomacy, but by the time the purchase is complete, both mother and son are happy. If you like sincere, friendly people, you'll surely like Slim Cates.

Happy Homes Annual Party Held Dec. 16

The annual Christmas dinner of the Happy Homes Home Demonstration Club was held December 16 in the Clubroom. Large, fresh arrangements of holly decorated the banquet table as members and guests enjoyed the traditional turkey dinner. Those enjoying the dinner and gift exchange were the families of Robert Adamson, Bernard Barnes, Gordon Cummings, Earl Goodheart, Harold Groves, Lloyd Gilley, Jim Nicholson, J. W. Pipkin, Fendorf Schubert and Burton Schubert.

Holiday Party For Sheriff's Employees

A holiday party was enjoyed December 17 in the home of Mr. and Mrs. Craig Hutchison by employees of the Sheriff's Office and Tax office. The party began with a dinner served in the beautifully decorated home. A centerpiece of red ornaments, red velvet bows and candles decorated the buffet table. Red candles and garlands of greenery highlighted the long banquet table. Hanging from the ceiling over the banquet table was a Christmas wreath candleabra holding red candles and greenery.



ICE SLEDDING... White, frozen roads provided opportunity for these boys to drag out their sled Friday for some winter fun! Stanley Pendergraft and Dennis DeArmond found it difficult to get enough traction to push their younger brothers Kevin Pendergraft and James DeArmond, but the boys had a slippery-sliding good time.

After dinner Sheriff Cooke was presented a gift from his employees. Cake, pie and coffee were served during the evening while guests played a variety of games. Attending were Messrs. and Mrs. J. B. Cooke, R. L. McFarlin, Jr. and Gregg, Lee Phillips, Lindell Warren, Orville Walker, Glen Red, John Brown and Bobby, Miss Linda Thompson, Miss Peggy Robinson, the host couple and Lisa and Joe Hutchison.

Darrell Longley is in St. Anthony's Hospital in Oklahoma City. He is taking physical therapy and expects to be home another week. He had knee surgery in October and this is a follow up treatment. His room no is 2009.

Use a stepladder--don't climb on substitute items such as chairs and boxes.



NEW CITY PATROLMAN... George Cannon went to work for the City Police Department Thursday of this week. Cannon, his wife Jewel and twins Bret & Bridgett, age 6, reside at 718 Bernice st. He replaces Tommy Messer who resigned from the Police force Nov. 22. Cannon has been employed with the Plainview Police Dept. for the past three years.

Disciple Class Has Party

The Disciple Class of the Union Church was honored with a seasonal party last Sunday evening in the home of Rev. and Mrs. George Bollinger. Mrs. Bollinger, who is the teacher, was assisted with hostess duties by Mrs. W. B. Barnes and Mrs. Jesse Francis.

The home was all decked out with the Christmas motif featuring a huge decorated tree in the living room. Guests were served spiced tea, coffee, cake, cookies, candies and dips. Attending were Messrs. and Mrs. Robert Graves, Jesse Francis, W. B. Barnes, Orville Fullbright, J. W. Pipkin, James Turner, Carl Scroggs, Mrs. Shirley Fike and Mr. and Mrs. Paul Allen Pletcher who are missionaries home from Puebla, Mexico.

WELCOME THEM HOME FOR THE HOLIDAYS WITH A TEMPTING SELECTION OF FESTIVE FOODS FROM IDEAL



Choose your needs from our outstanding variety of holiday favorites and everyday foods that will add so much pleasure to the occasion! Save a pretty penny too... You can always count on Ideal for the lowest food prices!



Shop Ahead For The Holiday. Ideal Will Be Closed Mon., Dec. 25 For Christmas

FOR SALADS OR COOKING **KRAFT OIL** 8-Qt. **69c**

BETTY CROCKER--WITH WALNUTS **BROWNIE MIX** 22-Oz. Pkg. **59c**

LIBBY'S **PUMPKIN PIE MIX** No. 2 1/2 Can **39c**

COMSTOCK **SLICED PIE APPLES** No. 2 Can **29c**

MUSSELMAN'S **APPLESAUCE** 35-Oz. Glass **43c**

DELICIOUS WELCHADE **GRAPE DRINK** 3 46-Oz. Cans **\$1.00**

RUBY RED **HAWAIIAN PUNCH** 46-Oz. Can **39c**

RECONSTITUTED **REAL LEMON JUICE** 24-Oz. Btl. **49c**

HIGHLY UNSATURATED VEGETABLE SHORTENING **CRISCO** FOR YOUR HAPPY HOLIDAY BAKING 3-Lb. Can **69c**

MAXWELL HOUSE **INSTANT COFFEE** 10-Oz. Jar **\$1.00**

DAISEYS, **WHISTLES or BUGLES** Box **32c**

NABISCO ASSORTED **SNACK CRACKERS** Box **39c**

PARTY FAVORITE **FRITOS BEAN DIP** 10-Oz. Can **29c**

ALL GRINDS... MOUNTAIN GROWN **FOLGER'S COFFEE** 1-Lb. Can **67c**

ALL GELATIN FLAVORS **JELL-O DESSERT** 6 3-Oz. Pkgs. **59c**

FOR YOUR HOLIDAY BAKING **POWDERED Or BROWN SUGAR** 2 1-Lb. Boxes **29c**

FAMOUS **KARO RED LABEL SYRUP** Quart Bottle **59c**

8 VARIETIES **PILLSBURY COOKIE LOGS** IN OUR DAIRY DEPT. 2 For **98c**

IDEAL'S **TASTY ICE CREAM** ALL FLAVORS 1/2-Gal. Ctn. **49c**

NAVEL ORANGES LARGE LUSCIOUS CALIFORNIA BEAUTIES! PERFECT FOR CHRISTMAS STOCKING! 4 lbs. **89c**

FANCY **RED DELICIOUS APPLES** 5 lbs. **\$1.00**

RUBY RED **FLORIDA GRAPEFRUIT** 6 lbs. **\$1.00**

FRESH CRISP **PASCAL CELERY** 10c

SOUTHERN **CANDY YAMS** 2 lbs. **29c**

ZIPPER SKIN **TANGERINES** 5 lbs. **99c**

FRESH DAIRY DELIGHTS AT IDEAL LOW PRICES!

KRAFT PHILADELPHIA CREAM CHEESE 8-Oz. Pkg. **29c**

KRAFT WHIPPED CREAM CHEESE All Flavors 4-Oz. Ctn. **29c**

FAIRMONT WHIPPING CREAM FRESH CREAM Full Pint **59c**

FAIRMONT CREAMERY BUTTER 1-Lb. Quarters **79c**

IDEAL EGG NOG MIX Quart Carton **49c**

IDEAL COTTAGE CHEESE LARGE OR SMALL CURD 2-Lb. Ctn. **49c**

BETTY CROCKER **LAYER CAKE MIX** ASSORTED VARIETIES WITH COUPON BELOW 3 18-Oz. Pkgs. **79c** WITHOUT COUPON 3 For

FRESH FROM IDEAL'S MODERN OVENS!

Meyers Brown's Serve Ideal's Delicious Christmas

DINNER ROLLS Pkg. Of 12 **29c**

STUFFIN' BREAD 1-Lb. Loaf **23c**

STOLLENS Large Size **59c**

VALUABLE COUPON BETTY CROCKER ASSORTED **LAYER CAKE MIXES** WITH THIS COUPON 3 18-Oz. Pkgs. **79c** WITHOUT COUPON 3 For \$1.00 COUPON GOOD WEEK OF DEC. 18 TO 23, 1967 GOOD ONLY AT YOUR IDEAL FOOD STORE

Peace, Good Will Toward Men

At the season which symbolizes peace and good will, it seems especially fitting to say "Thank you" to our fine patrons. Merry Christmas.

General Telephone

Holiday Coffee In Helms Home

Mrs. J.D. Helms entertained a neighborhood coffee morning last week. Mrs. Pearson was co-hostess of the holiday get-together. Visiting and refreshments of cake, pumpkin bread, coffee and spiced tea were served.

Attending were Mmes. L.M. Wornble, F.W. Thomas, Wesley Daniel, Mac Mauldin, Eldon Boese, Frank Massad, Herb Butt, Jimmy Shield-knight, Jack Reed, Deta Blodgett, J.L. Brock, Don Denham and Ted Widener.

Overnights guests last Sunday in the home of Mr. and Mrs. Jack Reed was his brother and wife, Mr. and Mrs. Carroll Reed of Huntsville, Ala.

Brownies Met Thursday

The second grade Brownies met Dec. 14 at the Scout House for their last meeting of the year.

During the meeting the 26 girls made ornaments for their Christmas trees. Leaders were Mmes. Arlie West, Jerry Floyd, Donald Bowen and Carroll Thompson.

In Salvation Army

Born on Christmas Day in 1865, Evangeline Booth was the fourth daughter of the Salvation Army founder, William Booth. By the age of 23, she was head of the Salvation Army in London, and in 1904 she took over operations for

WHAT "NOEL" MEANS

"Noel," the French word for Christmas, means "birthday," "news," or "a shout of joy."



Letters To SANTA

1109 S. Haney Dec. 9, 1967

Dear Santa Claus,

My name is Jeffery Hohertz. I have tried to be a good boy. I would like a Troop Carrier for my Johnny Express and Cold Feet and last of all Major Matt Mason. And Doug and I want one Walkie Talkie each. My brother Doug wants a Johnny West and buffaloes with him. Ka-Boom and last Doug wants a Spotfisherman, Boat-erfic Boat. Remember my sister and Mother and Father.

With Love,

Jeffery

Dear Santa Claus,

Please bring me a buzz bike and some of Mrs. Santa Clause's cookies.

Thank you,

Charles Ray Partridge

Dear Santa Claus,

Please bring me a Pussy Cat baby doll, a Liddle Kiddle in a bathtub, and a doll house.

Thank you,

Melanie Partridge

P.S. I would also like some Christmas cookies please.

Dear Santa,

I am 6 years old. I would like a Tubsy doll. I also want an Easy-Bake oven and a washing machine. My little brother and I want a record player. Todd is 4 years old and he wants a train.

Todd and I have been pretty nice kids. Please come see us.

Love,

DeAnn and Todd Weese.

Dear Santa Claus,

Please bring me a girl doll with long brown hair, a Liddle Kiddle doll that is Little Miss Muffet, cookies, and a doll house.

Thank you,

Sherisse Partridge

To Santa Claus

I wish you to bring a doll and a carner and a toy house-boat.

From Leslie Groves, age 7

Dear Santa,

Please bring me an "Easy Bake Oven", a coke machine and "Giggles."

I would also like a scary sweeper.

I wish you a Merry Christmas!

Love,

Johnnie Eaton

Dear Santa,

Please bring me a Creepy Crawler set and scissors that cut paper. Also please stop at the Buccaner store to get the watch I picked out.

Please bring Fluffy a basket.

Merry Christmas

Chuck Eaton



It's that joyous and gladsome time of year when we open our hearts and homes to one and all, sharing our blessings large and small. May yours be the rich delight that comes with partaking of the spirit of Christmas.

Spearman Hardware

JOHN AND SAMMY

"Better Food For Less" WHOLE OR STRAINED
IDEAL FOOD STORES **CRANBERRY SAUCE**
 OCEAN SPRAY 2 300 Cans **49¢** CAMELOT BRAND 2 300 Cans **43¢**

BILOXI BAY SMALL AND CUT OYSTERS
 8-Oz. Can **49¢**

CAMELOT BRAND U.S.D.A. GRADE "A"
TOM TURKEYS
 OVEN-READY 18 To 22-Lb. Average **35¢** Lb.

CAMELOT BRAND-U.S.D.A. GRADE "A"
HEN TURKEYS 10 TO 14-LB. AVERAGE **43¢** Lb.

CAMELOT U.S.D.A. GRADE "A" BELTSVILLE TURKEYS 4 To 8-Lb. Average 49¢ Lb.	U.S.D.A. GRADE "A" HONEYSUCKLE WHITE TURKEYS 10 To 20-Lb. Average 49¢ Lb.	SWIFT'S PREMIUM BUTTERBALL TURKEYS GRADE "A" 10 TO 18-LB. AVERAGE 49¢ Lb.	U.S.D.A. GRADE "A" BAKING HENS 4 To 6-Lb. AVG. 39¢ Lb.	VIRGINIA REEL PORK SAUSAGE 2-Lb. \$ 1.39 Pkg.	MEADOWDALE SLICED BACON 1-Lb. Pkg. 59¢
					SWIFT'S PREMIUM SKINLESS FRANKS 1-Lb. Pkg. 59¢
					COUNTRY KITCHEN CRANBERRY-APPLE SALAD Pt. Crn. 39¢ Qt. Crn. 69¢

BAR-5... READY TO HEAT AND SERVE

COOKED HAMS
 Shank Portion **49¢** Lb.
 Butt Portion **55¢** Lb.

Give A Gift Ham This Year!

BAR-5 WHOLE FULLY COOKED **BONELESS HAMS** **99¢** Lb.

BAR-5 FULLY COOKED **Canned Hams**
 3-Lb. \$2.98 Can **2** 5-Lb. \$4.79 Can **4**

Swifts Proten Beef **ROUND STEAKS**
 Whole SLICES **89¢** Lb.

Swifts Proten Beef **Center Cut Sirloin Steaks** **89¢** Lb.
 Swifts Proten Boneless Beef **Sirloin Tip Steaks** **1.09** Lb.

Merry Christmas! From All The Folks At Ideal

RICHES WHIPPED TOPPING 10-Oz. Can 39¢	6 ASSORTED FLAVORS HI-C FRUIT DRINKS 3 46-Oz. Cans 89¢	ELLIS CAN-VENIENCE FOODS For Instant Holiday Entertaining
TOWIE Maraschino Cherries 8-Oz. Jar 49¢	BRACH'S CHRISTMAS CANDIES	ELLIS BRICK CHILI No. 300 Can 49¢
TOWIE MANZANILLA STUFFED OLIVES 6-Oz. Jar 49¢	VILLA CHOCOLATE CHERRIES 12-Oz. Box 59¢	ELLIS CHILE With BEANS 3 300 Cans \$1
IDEAL Whole Dill Pickles Qt. Jar 39¢	VILLA CHOCOLATE CRISPIES 16-Oz. Box 59¢	ELLIS BEEF TAMALES No. 300 Can 27¢
SWANSON'S CHICKEN BROTH 13-Oz. Can 19¢	TOASTED COCOANUT STARS 16-Oz. Box 59¢	Spaghetti & Meat Balls No. 300 Can 29¢
CAMPBELL'S MUSHROOM SOUP 2 No. 1 Cans 39¢	For Holiday Roasting And Baking REYNOLDS WRAP Heavy Duty 18-In. Roll 59¢	White Beans and Ham No. 300 Can 39¢
LARSEN'S VEG-ALL PEAS And CARROTS 303 Can 25¢		Ellis Vienna Sausage 5 6 1/2-Oz. Cans \$1
SPICED LUNCHEON MEAT HORMEL SPAM 12-Oz. Can 59¢		ELLIS BEEF STEW No. 300 Can 39¢
"TRIBE SIZE" DEL MONTE CATSUP 46-Oz. Btl. 39¢		ELLIS BEEF RAVIOLI No. 300 Can 29¢
FOR DISHWASHING CHIFFON LIQUID 32-Oz. Plastic 59¢		ELLIS NOODLES 'N BEEF No. 300 Can 37¢
		Ellis Lima Beans 'N Ham No. 300 Can 39¢



SIMMONS-CLOSE Vows Read

A double ring ceremony performed at one o'clock December 16 united in marriage Miss Jenny Simmons and Mr. Carl Close.

Flavil Ayers read the vows in the home of the bridegroom's parents, Mr. and Mrs. Lelan Close, 403 S. Bernice St., Spearman. The bride is the daughter of Mr. and Mrs. Hugh Simmons, 412 Dresden Street.

The ceremony was performed before members of the immediate family and close friends. The bridal party stood before the mantel which was draped with garlands of greenery and caught with a large red bow. Other mantel decorations included a centerpiece of Christmas angels flanked on either side with candelabra holding burning red tapers. The Close home was decorated throughout in the traditional Christmas scheme.

Miss Janice Gilbert, maid of honor, wore a red sheath dress pinned at the shoulder with red roses and white carnations. Mike Close served his brother as best man.

The bride was attired in a white wool street length dress fashioned with long fitted sleeves and a scooped neckline. She wore a white pill-box hat with a short veil attached, and carried a white Bible topped with an arrangement of red roses, white carnations and stephanotis. The Bible was a gift from the bridegroom.

For her daughter's wedding, Mrs. Simmons chose a light blue suit with black accessories. Mrs. Close was dressed in a royal blue two piece dress with black accessories. Both mothers wore shoulder corsages of white carnations.

For a wedding trip to the mountains of New Mexico, the bride traveled in a red wool dress with gold accessories. She wore the flowers from her wedding bouquet.

Following the honeymoon, the couple will be at home at 723 Haney St., Spearman. The groom is employed with White House Lbr. Co. The bride is a senior in Spearman High School. The bridegroom is a 1967 graduate of Spearman High School.

Founder of Red Cross
 Clara Barton, Civil War nurse, was born on Christmas Day in 1821. It was her warm thoughts of Christmas that led her, when she set off to visit her brother, a prisoner during the Civil War, to offer to take presents not only to him but to the prisoner relatives of all her Oxford, Mass., neighbors.

Subsequently, Clara Barton was instrumental in founding the American Red Cross and served as its president for many years.



A JOYOUS CHRISTMAS

As the peace and joy of the first Christmas shines across the years, we wish bountiful blessings for you and yours. And to you, our sincere thanks for your patronage and good will.

Russell's
 "Down-Town Spearman"



PIERRE GETS ALL FIXED UP FOR CHRISTMAS. . . . This black Poodle has just been groomed in a Royal Dutch clip by Mrs. Richard Burke who completes Pierre's beauty treatment by pinning red ribbons in his black coat and spraying him with cologne! The dog's owner is Bill Logsdon who drove down from Hitchland Friday with his two prize Poodles so Mrs. Burke could get the pets ready for the up-coming holidays. Between now and Christmas Marva Burke will groom some 36 Poodles in her Dog Beauty Parlor located in the basement of the Burke home, 322 Barkley street, Spearman.



THE BRIGHT-EYED TWINKLE OF CHILDREN enjoying a Christmas party was evident in the face of each pupil of Mrs J. E. Womble's Kindergarten Class Friday morning. After exchanging gifts around the Christmas tree, the class was dismissed for the holiday season.

Residents Asked To Hold Trash For Tuesday Pick Up

Since there will be no city trash pick-up over the weekend nor Christmas day, all city residents are asked to hold their extra accumulation of boxes and trash for a Tuesday morning pick up.

If your trash can will not hold all your trash, please don't put in the alleys where

it can be scattered. Hold it until Tuesday morning, put it out by the can, and crews will pick it up then.

The city has hired extra pick up crews for Tuesday so that the extra accumulation of holiday boxes, etc. can be dispensed with quickly.

Bid-A-Bit Club Christmas Party

Mrs. W. L. Russell was hostess December 18 for the Bid-A-Bit Club Christmas party. Dessert was served and a gift exchange was enjoyed before members began their evening of bridge. Mrs. Leonard Jamison won high score and Mrs. Carrie Marie Berry had second high. Others attending were Mmes. R. E. Lee, Omar Cotter, Vi Whitson, Gwenfred Lackey and Iva Burnham.

T.G.&Y. Come As You Are And Save . . .

5 TO 10 STORES **MANAGER'S**

Moonlight Sale!

Tonight Only - December 21

5 P.M. TO 8 P.M. Hundreds Of Timely Items

Fantastic Reductions On Hundreds Of Items. Marked To Save You Money TONIGHT ONLY. Shop Each Department For Tremendous Savings

Save Up To 50% **1/4 OFF**

Selected Groups Include . . .

- LARGE DOLLS - PLUSH TOYS - CHRISTMAS CANDLES - CHRISTMAS CARDS - CHRISTMAS DECORATIONS - CHRISTMAS FLOWERS - TREE LIGHT SETS - LADIES' TOILETRY SETS - CHRISTMAS TREES - COSTUME JEWELRY - and MANY MORE!

Merchandise Assortment and Prices Will Vary By Stores. Not All Items Available In All Stores.

Many Selected Items Reduced To 1/2 OFF

Discontinued Numbers . . . All Good Merchandise 1/3 OFF

NO LAY-AWAYS EXCHANGES OR REFUNDS - PLEASE



SEASON'S GREETINGS

With all the tranquility of a snow-covered landscape, the spirit of Christmas comes to bless and brighten every heart and home. It is our wish that you may enjoy thrice fold this Yule all the wonderful things that go into making the Christmas season such a special time: the joyful hours, the happy memories, the cheerful gatherings with family and friends. And may we, too, continue in your friendship, serving the needs of you and your family, always in a better way. We know how much it means to have the trust and good will of folks like you, and we are truly grateful.

J. L. Brock Agency

206 MAIN 659-2514 Spearman

Joy at CHRISTMAS

As you and your loved ones gather together to share the blessings of this great holiday season, we extend, to you and yours, our warmest wishes for a bright and happy future.

Riley Bros Radio and TV
Gruver, Texas

Horizon Oil Has Annual Christmas Party

The annual Christmas party for Horizon Oil and Gas Co. was held Dec. 12.

Mr. and Mrs. Everett Tracy entertained with snacks in their home and then the group went on to Guymon for dinner and dancing at Lindy's.

Attending were Messrs. and Mmes. Curtis Calder from New York City, John Wilde, Dan Faries, Eddie Healer, Dudley Smith, Chris Besecker, Ernest Stump, Don Reed, Tommy Osborn of Walsh, Colo., Everett Tracy, Mr. Bruce Calder of Dallas, and Darrel Ammons of Elkhart.

BOYS and GIRLS INVITED TO HOLIDAY READING PROGRAM

Boys and girls in the first through the 6th grades are reminded of the holiday reading program which begins at the Library (in the basement of the courthouse) on December 26.

Each day from 2:30 to 3:45 p. m. members of the Twentieth Century Study Club will be reading from the book ROBERT THE QUAIL. This is a very intriguing book for youngsters about the "little quail who wouldn't be a quail." Be sure and don't miss any of the chapters!

Members of the club will be assisted in the holiday reading program by girls from the

speech department, Spearman High School.

The program will end after December 29th reading session.

The Twentieth Century Study Club has named Hansford County Library as it's project for the year. This reading program is another one of the club's efforts toward civic improvement.

Guests last weekend in the home of Mr. and Mrs. Albert Mackie was their daughter and family from Borger, Mr. and Mrs. John Allen and Shannon.

All Day Meeting Held Dec. 12

Thirteen were present for the all day meeting of the Ladies Missionary Union at the Union Church December 12.

Gifts were prepared for Pioneer Manor and were then delivered. Mrs. J. H. Martin read the Christmas story to residents of the manor and carols were sung.

A covered dish luncheon was served at noon followed by a business session conducted by Mrs. Carl Croggs. During the afternoon secret sisters exchanged gifts.

Sgt. Larry Babbs and his wife Nancy, are here on Christmas leave from Camp Polk, La. visiting with his parents, Mr. and Mrs. Eddie Babbs and her mother, Mrs. Ruby McCullough.

Candlelight Communion Service

The traditional Candlelight Communion Service will be held in the First Presbyterian Church on Christmas Eve at 7 p. m. All confessing Christians are invited to participate.

1957 Class To Have Reunion

There is to be a reunion of the class that graduated from Spearman High School in May 1957. The date of the reunion is Sunday, Dec. 24, 1967. The reunion will be in the Hospitality Room of the First State Bank from 2 until 5 p. m.

New Arrival

Mr. and Mrs. James Evans are the proud new parents of a baby girl born December 16 at Hansford Hospital. Linda Lee, weighing 8 pounds and 12 ounces, joins one other child in the home, David Lee, age 7.

Maternal grandparents are Mr. and Mrs. Earl Shuss of Ponca City, Okla. Paternal grandparents are Mr. Tommy Evans of Amarillo and Mrs. Blaine Parent of Henderson, Kentucky.

Guests during the weekend in the home of Mr. and Mrs. Jim Evans were her parents, Mr. and Mrs. Earl Shuss of Ponca City and Jerry Evans of Pampa. Jim's mother, Mrs. Blaine Parent returned home to Pampa with Jerry for a visit before her return trip to Kentucky.



WEDDING NEARS

Mr. and Mrs. W. D. Coates announce the engagement and approaching marriage of their daughter Carolyn to Jimmy McLeod, son of Mr. and Mrs. Rock McLeod. The wedding will be solemnized Dec. 28.

News

From The Pioneer Manor



Rho Rho Chapter Has Luncheon

Members of Beta Sigma Phi enjoyed a holiday luncheon December 14 in the home of Mrs. Ray Martin. The executive board were hostesses.

The luncheon was followed by a gift exchange.

Ramah Besecker presented the program "Voice and Vocabulary Reflect the Inner You" assisted by Jean Stewart. Karen Countiss and Ramah Besecker sang a duet, followed by the group singing carols. Verna Strawn accompanied on the piano.

Mrs. Martin conducted the business session and read from the book of Beta Sigma Phi. Plans were discussed for a new project and also for decorating Pioneer Manor.

Attending were honorary member Jane Meek and guest, Verna Strawn, members, Jeanette Allen, Ann Archer, Ramah Besecker, Karen Countiss, Marti Garnett, Deloris Guthrie, Glenda Guthrie, Juanita Kemper, Judy Martin, Linda McLain, Jean Stewart, Peggy West, Judy Wilmetts and DeAnna Kenney.

Club Members Enjoy Christmas Musical Program

Gladiola Flower Club members enjoyed a musical program at their annual holiday dinner Dec. 14 in the home of Mrs. Max Baggerly.

Tall candles surrounded the greenery highlighted the serving table for the buffet dinner. Quartet tables were laid in white and gaily decorated with red place mats and centerpieces of candles with greenery and Christmas ornaments.

Mrs. Baggerly played an after dinner of carols at the piano. Mrs. Lelan Wood sang "O Little Town of Bethlehem" and also sang with Mmes. Robert Adamson and Ray Robertson as they sang "Silent Night."

A gift exchange around the tree was enjoyed by Mmes. Irvin Davis, Lloyds Buzzard, Kenneth McKay, Darce Foshue, Bill K. Jackson, Craig Hutchison, Don E. Smith, Leland Wood, Robert Adamson, Ray Robertson, Walter Spoomore, Edward Hanery, Bill Partridge, Marcus Larson, Herman Boone, John Brown and the hostess.

Rebekahs Have Salad Supper

Rebekah Lodge No. 290 marked the holiday season with a salad supper last Thursday evening in the IOOF Hall.

Inez Holland, Noble Grand and Frankie Duryee, Vice Grand conducted the December 14 meeting. Elections were held by acclamation. Frankie Duryee, Noble Grand, Ina Mae Hughes, Vice Grand, Ann Shelton, recording secretary and Joyce Morse, financial secretary. Dorothy Lolley was elected treasurer.

The Christmas party was enjoyed with a gift exchange around the decorated tree. Lighted candles were placed on the piano and the oil lamps were also burning at vantage points in the hall.

A Christmas cloth covered the serving table which was centered with a huge red candle surrounded by greenery. The salad supper was served to eight members.

Birthday Dinner For Carl Archer

Mrs. Carl Archer entertained Saturday evening with a dinner honoring Carl on his birthday.

A Mexican dinner was served to Mr. and Mrs. Bill Massie and Dr. and Mrs. D. E. Hackley, and the Archers.

Mr. and Mrs. Johnny Crawford visited here from Lubbock in the home of Mr. and Mrs. F. O. Crawford.



It's the merry arrival of the holiday season, bringing with it our cheeriest good wishes to all our valued customers. Serving you has been our pleasure and we sincerely thank you for your friendship and trust in us.

R. L. McClellan Grain Co., Inc.

Spearman, Texas

Holt HD Club Enjoys Dinner

The Holt Home Demonstration Club enjoyed a holiday dinner December 15 in the home of Mr. and Mrs. Nolan with their husbands as special guests.

The turkey dinner was served buffet style. Candles were lighted on the quartet tables. After dinner the evening was spent visiting in the gaily decorated home.

Attending were Messrs. and Mrs. Fred Holt, Doyle Jackson, Mike Holt, Phil Jenkins, Raymond Kirk, O. C. Holt, W. C. Jackson, Major Lackey, Ray Moore, Medlin Patterson and the hosts.

Fishers Host Annual Party

Mr. and Mrs. Pete Fisher hosted a Christmas dinner party for employees of Cut Rate Grocery Saturday evening at 8 p.m. in their home.

The dinner was served buffet style. Quartet tables were covered in red cloths and centered with candles.

After dinner everyone gathered around the beautiful tree for the gift exchange. Games of ping pong, pool, dominoes and cards were enjoyed after the gift exchange.

Attending were Messrs. and Mmes. Ernest Butler, Ray Gibson, Bill Porter, V. P. Hill, Floyd Lopez, Paul Lopez, Mmes. Ruby McCullough, Ethel Black, Miss Ginger Schneider, Harold Harris, Gary Bengie, Bill Goodrich, Lyn Kemper, Bill Skinner, Miss Brenda Robertson, Tim Fisher and the hosts.

Contributions Being Made To Hansford Co. Library

LIBRARY HONOR ROLL OF CONTRIBUTORS:

Mr. and Mrs. P.A. Lyon
Mr. and Mrs. Frank Davis
Mr. and Mrs. L.F. Batson
Mr. and Mrs. Emmett R. Sanders
Mrs. R.W. Morton
Happy Homes HD Club
Dahlia Flower Club
Jonquil Flower Club
Mrs. Pearl Reed
Mr. and Mrs. Claude Sheets, Jr.
Mr. and Mrs. B.J. Grayson
Linn and Helms, Attorneys
Hansford Abstract Company
Mr. and Mrs. Tom Etter
Mrs. Mildred Chamberlain
Mr. and Mrs. J.B. Buchanan
Dorothy's Novelities, Mr. and Mrs. Harold Groves
Mrs. Rose C. Porter
Hansford Implement Co.
Mr. and Mrs. Nolan C. Holt
Mrs. R.D. Tomlinson
Rev. and Mrs. Wesley N. Daniel
Mr. and Mrs. Ray Phelps
Mr. Byron Jones
Mr. and Mrs. W.L. Russell
Mr. and Mrs. H.H. Crooks
Mrs. Joe Novak
Mr. and Mrs. N.F. Renner
Mr. and Mrs. John Trindle
Mrs. Keese C. Richardson
Mrs. B.J. Garnett
Mr. and Mrs. Wesley Garnett
Mrs. J.E. Womble
Mr. and Mrs. Joe Trayler
Mr. and Mrs. Britt Jarvis
Mr. and Mrs. Willard McCloy
Mr. and Mrs. H.M. Shedeck
Spearman Cable TV System
Dr. R.L. Kleeberger
Mr. and Mrs. Eddie Healer
Mr. and Mrs. H.R. Bowen
Mr. and Mrs. Raymond Sparks
Mr. and Mrs. C.A. Gibner

Annual Dinner For Boys Scouts Held Dec. 14

A number of area scouters from Hansford, Cimmaron, and Texas counties braved inclement weather to attend the Pioneer District, Boy Scouts of America, annual recognition dinner. The dinner was held on Thursday, Dec. 14, in the ballroom of the Panhandle State College, Goodwell, Okla.

Dr. Royal Bowers, master of ceremonies for the evening, opened the program by introducing The Plainsmen, a men's vocal group from the college, conducted by Milton Bradley, Professor of Music. The Plainsmen entertained the scouters and their wives with several selections.

Scouter training and performance awards were presented to Karl Shenold, cubmaster of Pack 42, Goodwell, and Forrest Cole, scoutmaster of Troop 100, Tyrone, by John Haliburton, District Commissioner.

Dr. Don Roach of Guymon presented an inspirational talk on the theme of the dinner, "How Scouting Rounds A Guy Out."

Several unit leaders were presented with round up awards for reaching goals in recruiting new boys. Ora DeSpain presented the awards to the following: Darrel Parker, Pack 46, Boise City; Betty Cotter,

Pack 50, Gruver; Jerry Floyd, Pack 51, Spearman; Johnny Elston, Pack 102, Guymon; Kenneth Killon, Troop 56, Boise City; B. B. Mikles, Troop 54, Adams; and Dud Smith, Troop 61, Guymon.

Glen Bries, chairman of the district nomination committee, submitted the committee's nominations and conducted the election of district officers for 1968. The officers will be as follows: Jack Griffin, Tyrone, District Chairman; Ed Mundy, Spearman, Vice-Chairman; and John Haliburton, Guymon, District Commissioner. Members at large elected were the following: Grady McCullough, Goodwell; Ora DeSpain, Straight; Elma McClellan, Gruver; Leon Newman, Guymon; Glen Bries, Adams; Bill Pope, Guymon; and Karl Shenold, Goodwell.

Jack Griffin presented Dr. Royal Bowers, out-going district chairman, a wall plaque in appreciation for his services. John Haliburton was presented a billfold by Dr. Bowers in recognition of the fine job he has done as district commissioner.

The program was concluded with the singing of the Scout Vesper Hymn and a closing thought by the Reverend Robert Cooke of Texhoma.

Mrs. Dwight Hutchison was called to Torrington, Wyoming last week to stay with her father who is seriously ill.

Contest To End Friday, 6 P. M.

The Spearman Rexall Drug will count votes Friday at 6 p.m. in the boys and girls contest which has been in progress for the past four weeks.

For 4-weeks standing Tammy Ford, daughter of Mr. and Mrs. Jerry Ford, and James DeArmond, son of Mr. and Mrs. Don DeArmond, have been holding on to Grand Prize positions. If they continue to hold this spot, the two youngsters will be awarded bicycles.

Fourth week standings for other prizes are: Girls: 1st-electric organ, D'Anda Close; 2nd-portable record player, Zante Talley; 3rd-typewriter, Denise Ferguson; 4th-Radio cuddle bear, Janyth Lackey; 5th-Mad Fad button machine, Kelly Simpson. Boys: 1st-electric guitar, Jerry Tope; 2nd-Road Race Set, Terry Latham; 3rd-Trap Drum Set, Roy Allen Uptergrove; 4th-Baseball glove and ball, Ray Partridge; 5th Carpenter Chest, Kevin Russell.

Prizes will be awarded Saturday morning at 9 a.m.

Empty Streets Only Greeting For Santa Claus

Santa came to Spearman Dec. 16 riding on the fire truck... but he badly needed ice skates... The icy roads and very bad weather kept many boys and girls from greeting the grand old man of Christmas personally. He threw candy to those shoppers brave enough to be out in such weather, but he was greeted mostly by empty streets and freezing temperatures.

However, for the children who did not get to greet Santa Claus and tell him their Christmas "wishes"... he will be at the Plains Shopping Center from 6:30 to 8 p.m. this Friday night.

Cheryl Bollinger is home for the holidays from Oral Roberts University in Tulsa visiting her parents and family, Rev. and Mrs. George Bollinger.

Mrs. J.D. Helms and sons visited one evening last week with her sister in Canyon, Mr. and Mrs. Willis Harrison.

GREENS FORBIDDEN
Until about 5:65 A.D., the use of evergreens for decorations at Christmas was forbidden by church authorities.



To wish you Merry Christmas!

Just like jolly old St. Nick, we want to bring you a bag-full of best wishes for a happy, hearty holiday season. May the gifts of good health and good cheer be yours.

Miller's Cafe & Steakhouse Will Be Closed Christmas Day
Open Tuesday, Dec. 26th, 5:00 A.M.
C.C. & RUTH MILLER

Name _____
Address _____
City and State _____

We live in an area of great abundance; re-invest a small portion of your benefits with Hansford County Library. Make your contribution now by clipping this coupon and sending it with your check to: Hansford County Library, Box 685, Spearman, Tex., 79081

Sure I'll help pay for the new library quarters. Here is my contribution for \$ _____



MERRY CHRISTMAS

Throughout the years, the Miracle of Christmas has enriched our lives with an ever-present warmth, radiating the hope and promise of peace and good will for all mankind. As we count our blessings this Christmas season, let us not forget that Silent Night, long ago, when the Christ Child was born. His message of life eternal is the true gift of the season. Let us pray that the spirit of the Nativity live with us, now and always.

Daco Lease & Well Service



Greetings

We've come a-caroling to bring you all the joy, happiness and gladness of heart that goes with Christmas. To our song of good cheer, we add a special note of thanks for your kind patronage throughout the year. We are deeply appreciative. May our warm friendship continue for many more years.

Golden Spread Sales Co.

Mrs. Edwards Has B&PW Party

The home of Mrs. Mabel Edwards was all dressed in Christmas attire for the Business and Professional Women's party held Monday evening.

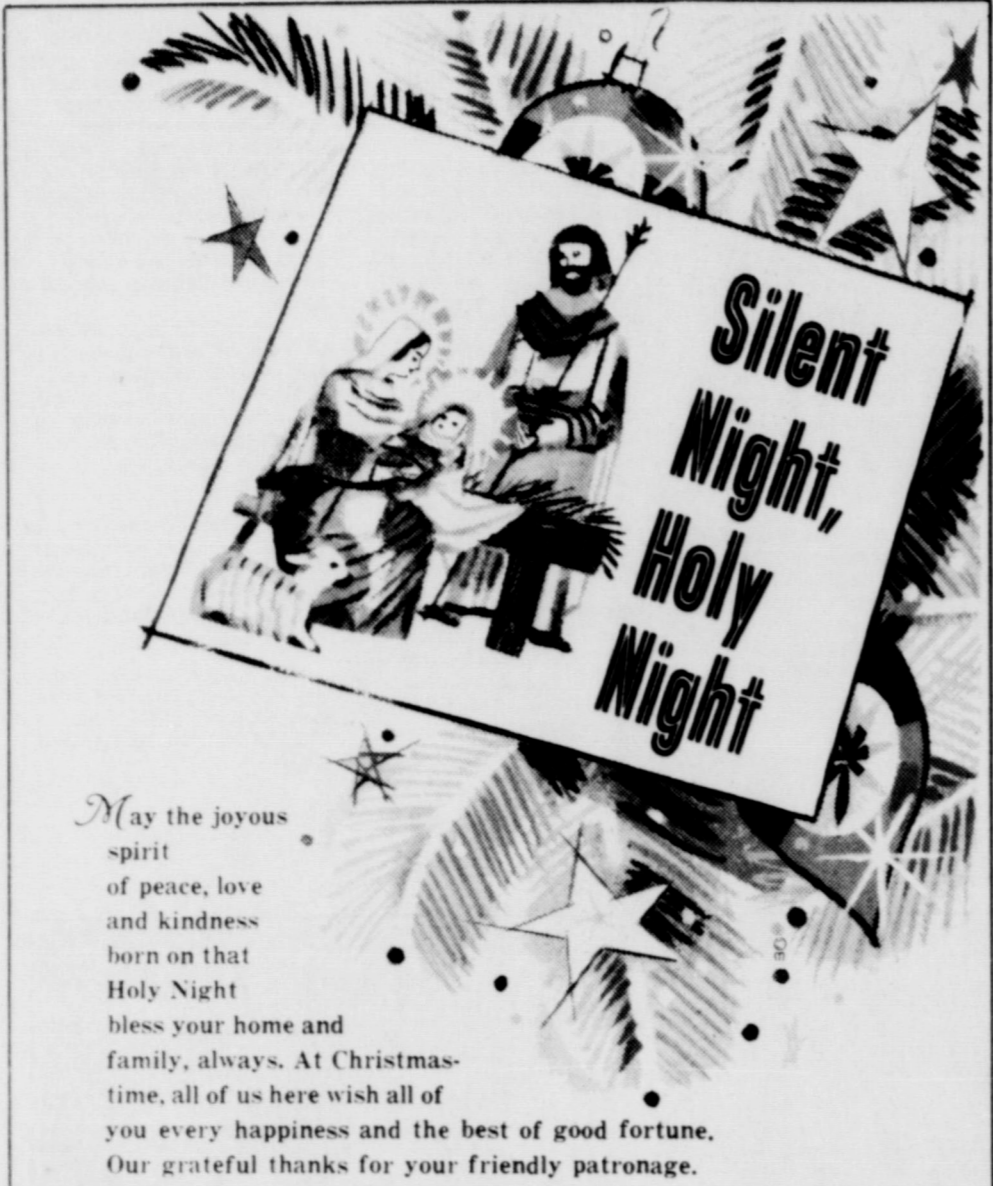
The dinner was served at two dining tables each decorated with a Christmas centerpiece and candles. Santa

Claus favors were at each place setting.

After dinner, members exchanged gifts and Mrs. Noel Quinn conducted a short business meeting.

Attending were Meses. Hazel Jackson, Mabel Edwards, John Henry, John Bishop, Albert Mackie, Noah Quinn, Virgil Floyd, Rhoda Overton, Jack Kemper and Linda Thompson.

Mr. and Mrs. Hugh Banks left Spearman Wednesday after being called to the bedside of her mother in Mayo Clinic, Rochester, Minn. Mr. and Mrs. Banks ran into the ice storm plaguing the Northeastern states and had to park their car and catch a plant at Wichita, Kansas.



May the joyous spirit of peace, love and kindness born on that Holy Night bless your home and family, always. At Christmas-time, all of us here wish all of you every happiness and the best of good fortune. Our grateful thanks for your friendly patronage.

Thomas Cleaners



RESIDENTS OF PIONEER MANOR watched with interest the activity of Rho Rho Sorority members as they decorated the lobby and dining hall at the rest home Monday afternoon. The IC's furnished the Christmas tree and before the afternoon was over, the women had made the place gay and beautiful for the patients to enjoy throughout the holidays. Pictured above, Mrs. Bill West hangs a ceiling decoration as Mrs. Mike Garnett holds ropes of tinsel.

Reed Home Scene For Dinner

The Monday evening ladies bridge club entertained their husbands with a Christmas dinner in the home of Mr. and Mrs. Jack Reed.

Men's high scorer was Bill Douglas, who also won the travelling prize. Ladies high was won by Mrs. Sid Evans. Winning second high were Glen Mackie and Mrs. Bill Douglas. Mrs. Tommie White won the travelling prize.

Those enjoying the turkey dinner were Messrs. and Meses. James Lair, Don McGammond, Glen Mackie, Tommie White, Don DeArmond, Sid Evans, Bill Douglas and the host and hostess.

Hansford Club Has Holiday Social Dec. 18

Members of Hansford Home Demonstration Club entertained their husbands with a holiday social Monday evening in the Home Demonstration Clubroom.

Sandwiches, dips, pie, cake and drinks were served from a table draped with a beautiful Christmas cloth centered with a Christmas arrangement.

Those enjoying 42 after eating were Messrs. and Meses. Roscoe Nelson and Rhonda, Herb Howe, Gordon Parrish, H. M. Shedeck, Daniel Sheets, Major Lackey and Mrs. Stella White.

Presbyterians Have Supper And Program

Sunday evening, December 17, the First Presbyterian Church marked the holiday season with a program and pot luck supper.

Mrs. Leland Wood presented the program with Mrs. Max Baggerly accompanying at the organ. Children of the church school from kindergarten through junior high had parts in the program. Carols and readings carried out the theme "How God's Promise Was Fulfilled."

A huge attendance was on hand for the pot luck supper.

THE PEABODY LETTER
HIWAY CAFE **CHESTER L. PEABODY III**
SERVING **ROOSTERBURGERS**
GRUVER COUNTY

Dere Bob and John:
 Me and Mag has final got the ranch all decorated up for the yooltide.
 Mag has bought a bagful of layin mash for the old Red Rooster but I perdict that he ain't goin to eat it if he finds out what it is.
 I got him a fresh bottle of Rooster Booster pills. He likes to take a couple of them when he begins to feel kind of down and out or when he's trainin for a fite.
 We have shelled a bushel of Indian corn and I'm goin to dress up like Sandy Claws on Christmas mornin when I go out and scatter it around the chicken lot.
 I have got a surprise present for Mag. It's a new choppin axe. She'd got the old one pretty well dulled up on that batch of railroad ties which she has been splittin up for stove wood.
 Mag has made herself a Christmas mini skirt by cuttin up a red horse blanket. She has trimmed the bottom of the skirt with a bunch of silver bells. She is talkin about taking the bells off on account of she can't sneak up on nuthin or nobody.
 We plan to git a new milk bucket for the cow, "Magnesia" and Mag is making halters out of tinsel for "Ned" the horse and "Jim" the mule.
 We couldn't afford a turkey but I shot a big hawk which we aim to stuff with collard greens and black eye peas. Mag is also makin up a pot of poke salad soup.
 Mag found a pair of iron clad toe protector shoes for Bob and for you, John. She got a book on Artistic Gift Wrapping.
 I bought a box of nuts and a box of candy for Ben and Sammie.
 We found out later that Sammie don't care much about nuts so I guess it is going to be the candy to Sammie and nuts to Ben. Me and Mag wishes ever body a Merry New Year and a Happy Christmas.
 Chester L. Peabody the third-Holiday Spert

BOBS SALES AND SERVICE
WE HAVE GOT A REAL PRETTY DISH WASHER ALL DRESSED UP IN BRIGHT RED RIBBONS. IT SHORE WOOD LOOK PRETTY UNDER SOMEBODYS CHRISTMAS TREE.

SPEARMAN HARDWARE
WHEN IT COMES TO THOSE HARD TO GET CHRISTMAS GIFTS - SHOP FROM OUR LARGE SELECTION OF NAME-BRAND SMALL ELECTRIC APPLIANCES. PRICES ON REQUEST.

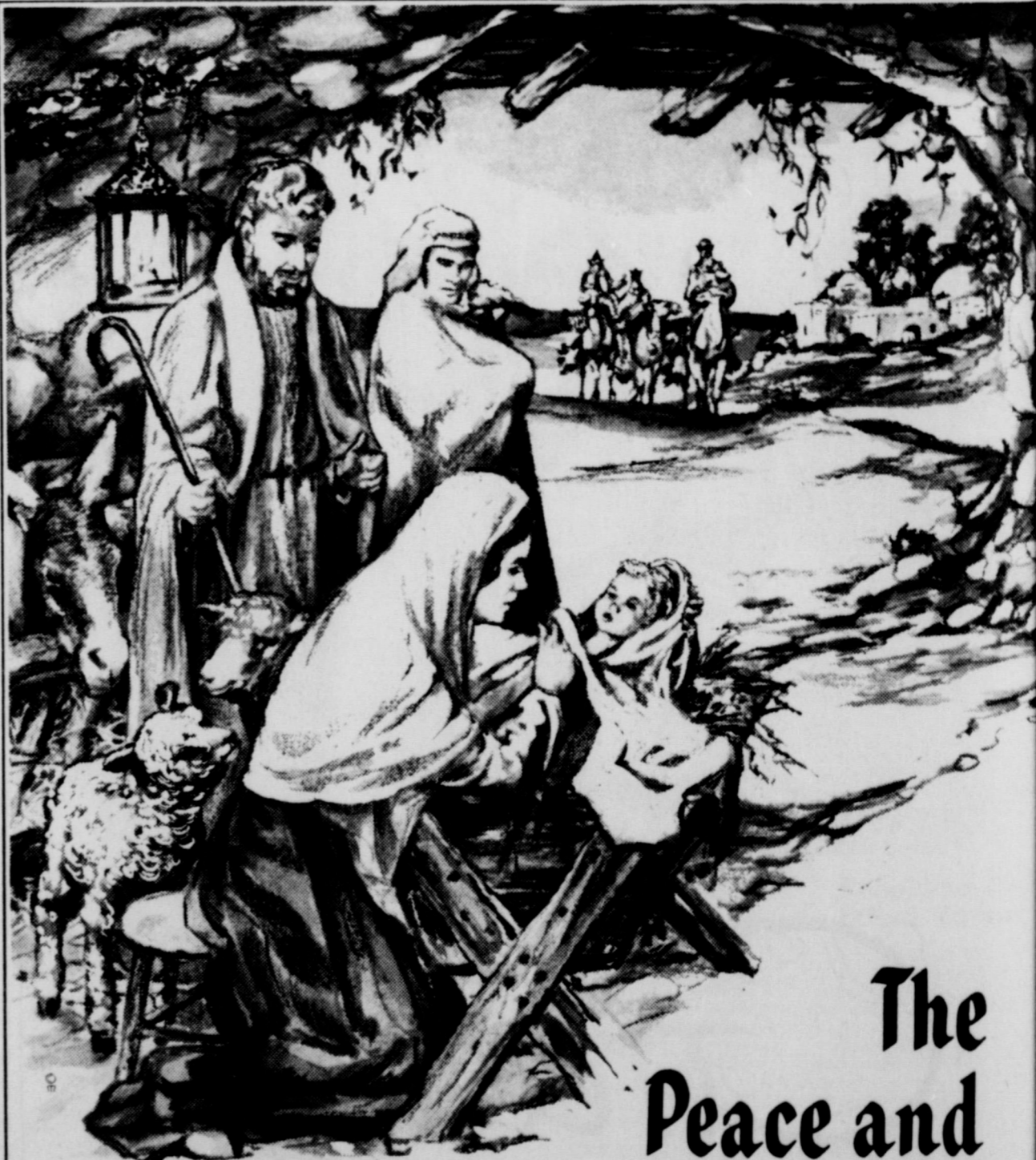


GREETINGS

At the Yuletide, we especially rejoice in the opportunity to turn from the routine of everyday business and in real sincerity convey our appreciation to our many valued friends. Your favors and good will have made "everyday business" a very special pleasure for us. To all, our wishes for a happy, hearty holiday rich in good old-fashioned joys.

Chambers

DOWN TOWN SPEARMAN
 PARKING LOT IS NOW OPEN



The Peace and Promise of Christmas

Humble shepherds and mighty kings gave witness to the wondrous event of the birth of the Christ Child, and knew the great joy and peace that fills every heart on Christmas Day. May this gladness and contentment remain with you and those near and dear to you, enriching your lives in fullest measure.

Anthony Electric



Peace, good will toward men

At this joyful season, may there come to every heart a glad renewal of the warming spirit of peace and good will. May we all be richly blessed, as we rededicate ourselves to the glorious message of the first Christmas.

Owens Sales & Service

For Family's Christmas Fun

Little Prune People Bring Good Luck

From the South of Germany comes a centuries-old custom of making "Little Prune People" for Christmas decorating and eating.

Legend has it that the appearance of these "little people" in the home during the holiday season will bring good luck and good harvest during the coming year. They take on characterizations of people of all ages and occupations, including St. Nicholas himself.

If Dad has some heavy wire and some scraps of plywood in his workshop, and if fruits and nuts are on hand (as they usually are at Christmas), almost any family could make some "lucky little prune people" this Yuletide. For groups large or small, planned or impromptu parties, the creation of prune people could be an enjoyable Christmas Day pastime.

Most people will quickly come up with their own ideas for prune characters they would like to create. The characterizations are limited only by the imagination and the materials that can be used.

Traditional materials used to create "prune people" are: heavy picture wire, prunes, dried figs and raisins, unshelled nuts, quarter-inch plywood scraps or wood scraps from crates, pliers, hammer, small awl, foil, scraps of Christmas wrapping, glue and a little imagination.

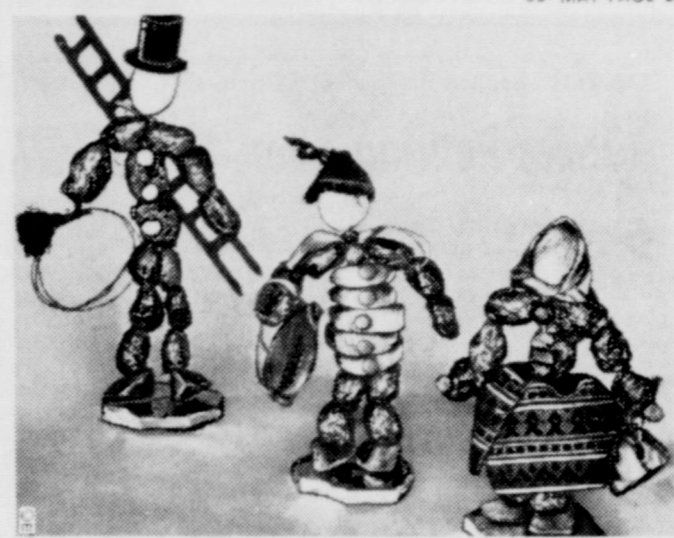
To make prune people, follow these steps:

1. Cut a three-inch square wooden base. Make two holes one inch apart in center of base and cover with paper or foil.
2. Cut wire 30" long and put each end through holes in bottom of base. The base will now stand with wire perpendicular and ready to string on nuts or prunes.
3. Punch hole through two Brazil nuts and string wire through holes to form feet and glue nuts to wooden base.
4. String two or three prunes on each wire for legs. Then twist two strands of wire around each other to form one



PRUNE PEOPLE BRING luck during the coming year, legend says. They are easy to make with ingredients most families have on hand at Christmas time — prunes, figs, Brazil nuts, together with plywood scraps, picture wire and scraps of such decorative materials as foil and gift wrapping paper.

SOME CHARACTERS that might be created from prunes and other ingredients are shown at right. The chimney sweep is prune from neck to toe. His ladder and hat are made from shiny black construction paper. He and his companions, the Tyrolean prune couple, stand on a three-inch wooden base covered with foil. Each has Brazil nuts glued to the base for feet, and a walnut



strand so that body can be made from prunes or figs (five or six figs or two or three prunes).

6. For the head, make small hole in end of walnut and insert short piece of wire in walnut — just far enough to hold head in place, using balance of wire to wrap around wire that forms body of figure.

7. With scraps of cloth, thumb tacks, small balls of foil or raisins and a little creative thought, dress the little prune figures.

To All Our Friends, We Wish a
MERRY CHRISTMAS
and a Happy, Healthy New Year



From the lowliest shepherd who worshipped at the Manger to the littlest angel with tinsel crown and starry-eyes, the spirit of Christmas reaches out to fill the world with Love and Peace. Busy with mistletoe, holly, gaily wrapped packages and holiday treats, every home and heart pauses to join in wondrous adoration.

As we review the many joys of Christmastide, we call to mind the loyal patronage and good will of all our many friends. To them go our thanks and our heartiest best wishes of the holiday season!

FIRST STATE BANK



Early Roman Had 'Practical' View On Gift Giving

"Christmas is getting too commercial!" This modern complaint, while it may have force, is somewhat lacking in originality.

"I hate the crafty arts of giving presents," said the witty Roman poet Martial, who lived and wrote from about 40 to 104 A.D. "Gifts are like hooks."

His complaint was expressed in a series of poems written for a wealthy patron, at the time of the Saturnalia, the pagan festival from which came many Christmas customs. Martial, however, was not always averse to presents. After listing a large number of small gifts, such as toothpicks, figs, napkins, which had been delivered to him, he pointed out that it would have been much easier for the messenger to bring him "five pounds of silver plate."

Dale Carnegie Chapter Has Banquet Dec. 18

A banquet was held December 18 in the Plains Restaurant by the alumni of the Dale Carnegie Chapter.

After enjoying a sumptuous holiday meal, a program was presented by chairman Junior Lusby.

A two minute talk was given by each member telling of some exciting adventure in his or her life. The prize winning talks were those of Mrs. Dave Hand and Gus Birdwell.

Talks were also given by Mrs. Belle Crawford and Mrs. George Bollinger. The talks were on the memorized highlights of the first twenty pages of a recent Life Magazine. In doing this, they demonstrated how to use the Dale Carnegie helps.

After the program, Everett Tracy conducted a short business meeting.



ROY JONES, left will retire January 1st after 42 years with Foxworth Galbraith Lbr. Co. Bill Weatherly, left has been named manager of the local firm.

Jones Retiring After 42 Years With Lbr. Co.

Roy Jones, manager of Foxworth Galbraith Lumber Company in Spearman for the past 30 years, will retire from this position on January 1.

Bill Weatherly has been named to replace Jones. Mr. and Mrs. Weatherly moved here the first of the month from Clarendon where he had managed the lumber company there for 7 years.

The Foxworth Galbraith Company has been doing business in Spearman for 40

years. Mr. Vern Main was manager of the company before Jones took over. Main relinquished his position to go into the furniture business in Spearman and passed away shortly after making the business move.

Jones retires after 42 years service in the lumber business. He spent 12 years with the Pampa firm before moving to Spearman 30 years ago.

Christmas Greetings



Church bells ring out across the land on Christmas Day, proclaiming to all the world the coming of the Holy Child and the glory of His birth. And to our fine customers, we wish to proclaim a warm holiday "thank you" for your faithful patronage.

NORTH PLAINS ELECTRIC COOPERATIVE, INC.

Greetings



We're wishing you joy and happiness during this beautiful season. May the true spirit of the Yuletide bring us peace and contentment, with thankfulness for our many blessings, as we celebrate with family and friends.

BOXWELL'S



Peace, good will toward men

At this joyful season, may there come to every heart a glad renewal of the warming spirit of peace and good will. May we all be richly blessed, as we rededicate ourselves to the glorious message of the first Christmas.

**P. A. LYON INSURANCE
HANSFORD ABSTRACT CO.**

Miss Nancy Burke Is Bride Of Jerry Long



Miss Nancy Carol Burke became the bride of Jerry Long on December 17 in a double ring ceremony at the First Methodist Church in Spearman.

The bride is the daughter of Mr. and Mrs. Clarence Baker, 514 S. Barkley St., Spearman. The bridegroom is the son of Mr. and Mrs. Jesse Long of Balco, Okla.

The Reverend Wesley Daniel performed the ceremony at 10 o'clock before an altar adorned with seven branched candles and large baskets of white glads and orchids adorned with large orchid bows and ropes of smiles. Pewes were marked with the same orchid bows and strings of greenery.

Nuptial music was provided by Gary Pribble of Perryton. The organist played traditional wedding marches and accompanied Miss Debbie Brock, choir. Miss Brock sang "More" preceding the ceremony and "The Wedding Prayer" for the benediction as the couple melted at the white satin altar.

Given in marriage by her father, the bride wore a formal wedding gown of champagne lace which featured a full chapel train. The fitted bodice designed with an open collar neckline, had long sleeves. Her veil of illusion fell from a pearl tiara. She carried a white Bouquet topped with a crescent bouquet of white roses tied with long white satin streamers and stephanotis. Her only jewelry was a single strand of pearls.

The bride was attended by Petra Barfield, maid of honor. Bridesmaids were Kathy Rayworth, Ruth Riley, Elaine Langley and Carolyn Schell. Layleen Cooper was flower girl. Attendants wore identical gowns of interchangeable tulle and white satin embroidered with a floral design. Each carried a long stemmed white mum tied with purple streamers.

Yvonne White and Bonnie Frasier served as candle lighters.

Best man was Jed Monroe. Groomsmen included Danny Nelson, Dale Naylor, Donald Harkie, and Eldon Albright.

Ringbearers were Billy Cooper and Jon Iverson, cousins of the groom. They carried the rings atop white satin pillows.

Immediately following the ceremony reception guests were received in the fellowship hall of the church. The serving table was covered with a white linen cut-work cloth and centered with the large four tiered wedding cake decorated with purple icing. Punch and cake was served by Barbara Mitchell, Vera McMillan and Carol Hale, sister-in-law of the bride. Robbie Jackson, Texas, Okla., registered guests.

For the wedding trip to points of interests in New Mexico and Colorado, the bride traveled in a green bubble 2 piece dress. Black accessories and the roses from her bridal bouquet completed her ensemble.

For her daughter's wedding, Mrs. Burke chose to wear a white wool suit with brown wide accessories. Mrs. Long wore a white suit. Both brides wore a white orchid arrangement.

On December 23, the couple will be at home at 118 Colgate Street, Perryton. Miss Long is engaged in farming.

The bride, who has attended Spearman schools all her life, is a senior this year.

The bridegroom attended Perryton and Balco high school and is a sophomore at Oklahoma State.

Additional Funds For Highways Approved

AUSTIN--The Texas Highway Commission today approved a \$362-million, two-year Consolidated Highway Program which will mean better highway facilities throughout the state.

The program calls for construction or reconstruction of US- and State-numbered highways.

In all, a total of 1,667.6 miles of non-interstate highways will be built or reconstructed under the program. Estimated cost of the construction work is \$335 million.

According to District Engineer Charles W. Smith of Amarillo the following work is authorized in your County: Hansford County, State Highway 282 and FM 289, from Spearman to Gruver, a distance of 13.4 miles, reconstruct grading structures and surface to a modern section. This project was previously authorized and the present program allots \$570,500 as additional finance.

The program also covers the State's portion of right of way acquisition on 557 miles of US- and State-numbered highways at an estimated cost of \$27 million. On such highways, the State shares right of way cost 50-50 with local governments.

Approval of the program earmarks funds for badly needed improvement on many routes on the State-maintained highway system. This permits the orderly development of plans for construction.

The program places emphasis on the State's "bread and butter" highway routes.

"These highways of the primary system are the transportation lifelines for a vast number of Texans," the Commission said. "Our people and commerce are deeply involved in these routes, yet many are outmoded."

Work under the program also will make a significant contribution to highway safety.

"Obviously, modern, high-type highways are significantly safer than obsolete facilities. Therefore, construction of new highways is in a real sense an investment in highway safety," the Commission said.

Employees Enjoy Turkey Dinner

County employees and their families enjoyed a turkey dinner December 12 in the Home Demonstration Club-room.

Candles, greenery and pinecones decorated the banquet tables where some 100 guests ate their turkey dinner with all the trimmings.

Christmas carols were sung afterward and 42 was played. Children entertained themselves with games and received sacks of Christmas candy.

Traffic Picture Looks Grim For Holidays

The Texas Highway Patrol investigated two accidents on rural highways in Hansford County during the month of November, according to Sergeant Ben A. Neel, Highway Patrol Supervisor of this area.

These crashes resulted in three persons injured, and an estimated property damage of \$1,075.00.

The rural accident summary for this county during the first eleven months of 1967 shows a total of 16 accidents resulting in no persons killed, 18 persons injured, and an estimated property damage of \$19,410.00.

What does the traffic picture look like for this Christmas--New Year holiday season? Past records have proven December to be the most deadly month of the year. December, 1966 recorded 351 traffic fatalities.

The Sergeant stated, "It is estimated that 100 persons will be killed in traffic accidents during the Christmas and New Year holidays." The Sergeant also added, "If we are going to be satisfied for a repeat performance of past records set during the month of December, then this holiday season is going to be a very sad one for many people."

Christmas, with the deepest spiritual significance, is the deadliest holiday of all, according to Major Luther C. Moore, commanding the Northwest Region of the Texas Department of Public Safety. "Ironically, Christmas achieves this terrible distinction precisely because we want it to be such a wonderful occasion," Major Moore says.

"It is a sentimental holiday. People will drive long distances for the traditional family reunion, undaunted by bad weather and road conditions. More travel--especially winter travel at highway speeds--means more accidents," the Major adds.

"It would be interesting to discover, in this era of jets and computers, what the word holiday means to most people. What is the first thing that flashes to mind when the word is mentioned? Time off from work?--A trip?--An excuse to celebrate?--Or a tragic accident toll?" Major Moore asks.

"Unfortunately, truthful answers probably would place all of those higher on the list than the true meaning of the holiday. And it's especially unfortunate that holidays must have an association with high accident tolls," the Major says.

"The joyous spirit of Christmas is too often sought in the liquid form. This deadly combination of the throttle and bottle many times turns re-joicing into deepest sorrow. Last year in Texas 38% of all rural fatal accidents involved a drinking driver," warns the Major.

Major Moore reported that the four most frequent violations in all rural fatal accidents are: (1) Speed too fast for conditions, (2) Driving while drinking, (3) Wrong side of road, and (4) Did not have right-of-way.

"We feel it is important to point out these facts as the Christmas holidays approach, in the hope that our fellow citizens will heed them as warning against doing the things that have caused fatal accidents all over the state," Major Moore said.

WILL PURCHASE SCHOOL BUSES

The Spearman school board conducted routine business matters in the regular monthly meeting held Tuesday Dec. 12.

The board heard a cost estimate and proposal for purchasing two new school buses for next year to replace two which are nearly worn out. The proposal was approved by the board.

The board accepted the resignation of Mrs. Burl McClellan, elementary teacher, effective at mid term. No one has been hired to fill Mrs. McClellan's vacancy at this time. The McClellans are moving to Arlington, Texas.

A lengthy discussion was held as school officials and board members talked over tax problems for the coming year. No decisions were reached.

20th Century Has Christmas Party Dec. 14

Members of both departments of Twentieth Century Club had a general meeting and Christmas party December 14 in the home of Mrs. L. S. McLain.

Mrs. Frank Davis, president, conducted the afternoon meeting with Mrs. O. C. Holt reading the minutes of two previous meetings. Those appointed to the nominating committee to elect officers

for the new year were Mmes. George Buzzard, Wesley Garnett, P. A. Lyon, J. R. Keim, Wayne Hutchison.

Mrs. Davis welcomed three new members into the club, Mmes. Mike Holt, Jack Vanderburg and A. D. Parsons.

Mrs. Porter reported on the library including a summary of the recent sale to raise proceeds. Mrs. Kirk reported on the reading program which is set up for Christmas week for interested children.

Mrs. Wesley Garnett opened the program with the reading of the Christmas story from Luke 2. Mrs. O. C. Holt recited "A Certain Small Shepherd" by Rebecca Caudill.

A gift exchange was held after the reading of the club collect.

Hostesses Mrs. Fred Holt and Mrs. Johnnie Lee served refreshments to Mmes. John Allen, Deta Blodgett, George Buzzard, Wesley Garnett, Woodville Jarvis, P. A. Lyon, R. C. Porter, T. D. Sansing, Tom Sutton, A. D. Parsons, H. H. Chevalier, Frank Davis, Guy Fuller, Wayne Hutchison, Nolan Holt, J. R. Keim, Raymond Kirk, Jack Vanderburg, Mike Holt, C. A. Kleeberger, J. R. Stump, Joe Trayler, and O. C. Holt.

That was the beginning. The Seals came across the sea to people in America. The American Red Cross sponsored the first campaigns and the Christmas Seal sported a single red cross. In 1910 the NTA joined forces with the Red Cross. A decade later, the TB Association had grown so that it could carry on the crusade alone. The Seal became a bright red double-barred cross. Soon it was a familiar part of the Christmas scene as well as an honored American tradition.

Today, a half-century later, the crusade goes on. The work of Christmas Seals through the years has helped to reduce TB drastically. But the crusade isn't over. About 30 million Americans are infected with TB germs, and nearly 100,000 persons have known, active TB. Christmas Seals still play a part in the struggle. But today they support more than the campaign against respiratory disease and the special noxious effects of air pollution and smoking. The National Tuberculosis Association slogan sums up the struggle:

Christmas Seal Crusade Goes On

Instead of a White Christmas, millions of people not so long ago had the White Plague. The White Plague was TB.

To combat this devastating illness, the National Tuberculosis Association was formed in this country at the turn of the century. In the same year--1904--the first Christmas Seal was created by a Danish postal clerk. Why not, he thought, urge people to buy a special stamp while their holiday spirit was soaring? The Danish postmaster liked the idea, and the King of Denmark asked his people to use the stamps on their Christmas cards and packages. The generous Danes responded with tremendous enthusiasm. Soon there was enough money to construct a children's tuberculosis hospital.

Open Evenings Until 8:00 Till Christmas

T.G.&Y.

5¢ TO 10¢ STORES

Prices Good Thru Saturday While Quantities Last

SHOPPER'S LAST MINUTE

Open This Saturday Nite Only Until 9:00 P. M. For Your Last Minute Shopping Convenience

Gift Buys

Mens "YU" Aftershave Lotion

6 oz. \$1.13

Cologne

6 oz. \$1.77

6 Transistor RADIO

A "Golden T" Product

\$388

9 Transistor Pocket RADIO

A "Golden T" Product

\$1088

"OLD SPICE" 2 Piece Gift Set

Always a favorite with the men... includes 4 1/2 oz. cologne and 4 1/2 oz. after shave. Boxed.

Compare At \$3.25

\$247

"OLD SPICE" TRAVEL SET

Includes 2 1/2 oz. after shave and 1 1/2 oz. spray deodorant.

\$1.25 BUY 88¢

"OLD SPICE" AFTER SHAVE Lotion

4 1/2 Oz. Size

\$1.27

2 Pc. BATH MAT and LID SET

Great For Giving...

100% Cotton Chenille with Dungeness backing. Hand knotted fringe... machine washable and dryable.

\$377

"CANDLE GLOW" Assorted CHOCOLATES

Delicious light and dark chocolates... great for gifts.

\$1.29 & \$2.98 Buys

3 lb. **\$199** and 1 1/2 lb. **97¢** BOX

Welch's Cortina Chocolate Covered Cherries

10 oz. Box **34c**

SCRAP BOOK

12 1/2" x 12 1/2" padded cover. Includes 22 sheets of heavy paper.

T.G.&Y.'s Low Price **\$177**

PHOTO ALBUM

14" x 11" Size. Padded cover. 22 Sheets.

\$177

Re-Usable STATIONERY BOX

Includes 28 sheets of paper. 22 envelopes. Assorted colors.

\$100

Blessings at Christmas



As we look back upon the scene of His Birth at this holy time, may the glorious message that blessed the world at the Nativity be rekindled in your heart to brighten your life with happiness and understanding. Best wishes for a Christmas rich in the joys of the season.

B. AND B. GRAIN CO., INC.

WE WILL BE CLOSED SATURDAY, SUNDAY, MONDAY AND TUESDAY.

THIS IS SPEARMAN



through the eyes
of
chet wise

Christmas being close at hand, I am going to deviate a bit from my usual ramblings about people I saw during the past few days. I want to recall a certain Christmas that many of you will remember. The particular Christmas I have in mind, was when I was living in Philadelphia. I remember walking down Market and Chestnut Streets, during the shopping days prior to that



MERRY Christmas

Sleighloads of thanks to you loyal patrons. We hope Santa fulfills your wishes.

STYLIST BEAUTY SHOP
Rhoda Overton

Christmas. There were the usual throngs of people along the way, but something was different from past holiday seasons. The bright, happy faces of the shoppers had turned to grim masks. The Salvation Army Santa Clauses stood on their respective corners and rang their little dinner bells. It seemed that people were contributing over generously to the Christmas pots and some of them even said "Merry Christmas" but smiles were few and far between. The store windows were as brightly decorated as ever before and Christmas wares were very much in evidence. The usual street decorations were all along the way and little tots could be seen rubbing their noses up against windows with animated toy displays, until parents pulled them away. Everyone seemed to be in an unusual hurry, but nobody seemed to really know where he or she wanted to go. I suddenly took note that people were not buying the usual type of gifts. There were no takers for little frilly and useless gifts that many people just can't resist, during a gift buying spree. Most folks were buying gifts of a more useful nature. A lot of people were actually buying staple food stuffs to make into gift boxes. Such things as shoes and clothing were selling uncommonly well. A couple of days before Christmas, a few drops of snow began to fall, but even the prospects of a white Christmas failed to create a happy holiday mood. Church attendance on the Sunday before Christmas reached a record high. One of the most popular gifts was a radio and one of the most popular habits of the day was listening to the radio and reading the newspapers as fast as they rolled off the presses. When Christmas finally rolled around, more people went to church. After church, family groups and neighborhood groups got together. Gifts were exchanged and greetings were passed back and forth, but a Merry Christmas it was not. This Christmas I have been talking about was the Christmas of "1941". At 1:50 on the sleepy Sunday afternoon of December Seventh, the Japs had bombed Pearl Harbor and in a matter of two hours our navy had lost about three times as many men as in the Spanish-American war and World War One combined. Yes, That was the Christmas that Santa Claus forgot. May he never forget another one. You're middle-aged when the girl you whistle at thinks you must be calling a dog. Merry Christmas.

Business Firms To Be Closed December 26th

These businesses will be closed on Tuesday, December 26, SPEARMAN TV REPAIR BURTON'S TV CHAMBERS DEPT. STORE GATES MENS WEAR MASSADS NEELY'S HARPS JEWELRY WESTERN AUTO RUSSELLS LADY FAIR GIFT BOX SPEARMAN FLORAL C & B STUDIO BLACKBURN FLOWER SHOP JOE TRAYLER FORD BOXWELL BROS. FLOWER SHOP

Guests one evening last week in the John Trindle home were Mr. and Mrs. Frank Davis, Mr. and Mrs. Loyd Batson of Pampa and Mrs. A. J. Curtis of Denver.

Lingerie Shower For Miss Burke

Miss Nancy Burke was honored with a lingerie shower in the Hospitality Room of the First State Bank December 14. Pink punch and assorted cookies were served guests as they arrived by the hostess. The honoree was assisted with her gifts by Debbie Barfield and Janice Gilbert. Hostesses were Debbie Barfield, YaVonne White, Ruth Riley, Reva McMillan, Elaine Longley, Donna Byrd, Kathy Hayworth, Linda Roberts, Janice Gilbert Carolyn Schell and Jenny Simmons.

Mrs. V. N. King and Mrs. Pete Fisher went to Cache, Okla. Monday to bring their mother, Mrs. M. S. Sexson home with them for the holidays.



Let Me See ... by Sybil

Lest we forget, at this season we are not celebrating the birthday of a little fat man with white whiskers who tries to pull a bundle of gifts down chimneys to waiting children, nor of a tycoon of trade who instigates this month long buying binge each year for merchants to clear their shelves of unwanted goods before tax time. We are celebrating the birthday of a man named Jesus Christ who was born in a cold stable at the rear of a hotel. He was not a renowned scholar. He was a poor carpenter. He died young after three years of ministry with a ragged band of 12 followers, who listened to him but were not always convinced. He was defamed, reviled and executed as a traitor, yet the entire Christian World dates the calendar from the year of his birth. In his brief period of ministry he taught men how to live with each other and the nations who followed his teachings have become great.

Isaiah prophesied that the Messiah's name would be Prince of Peace. The craving and desire for peace is universal. It is part and parcel of our nature to want to live in tranquility, free from confusion, discord and strife.

Peace will come to the world only when individuals are at peace with God.

Our men in Vietnam have a right to know that we are dedicated to the principles of a God who said "My peace I leave with you." They are prepared to die and some are making the same sacrifice as the man who suffered on the cross in order that mankind could learn to live and share without dominating. Billy Graham said, in recalling Christmas 15 years ago when he was ministering to the troops on the front lines during the Korean War:

"On that Christmas eve a young lad lay dying on Heartbreak Ridge. My chaplain friend climbed up the slope and stooped over the soldier's form and whispered, 'may I help you son?'
"No, it's all right," he answered.
The chaplain marveled at the boy's complacency in such an hour. Then glancing down he noticed a New Testament clutched in his bloody hand. The reason for the soldier's tranquility was found

on the page where his finger was inserted: "My peace I give unto you."

This is the message of Christmas.

Have you ever wondered why Jesus' picture was not painted during his days on earth? Perhaps one reason was that he carried out his earthly ministry among a people who believed that painting or sculpting a person's features could be considered idolatry. The Jews held God in such awe they would not even say or write his full name, so it is not surprising THEY would not make "a graven image" of a man who claimed to be God's son.

It is hard to understand why the writers of the Gospels did not attempt a physical description of Jesus, but they simply did not.

Down through the centuries artists have had to form his image out of their own understanding of man's relationship to God.

Chinese artists have given him almond eyes, African artists, a black skin. The work of Europe's old masters were so familiar with portray the events of the Lord's life in scenes that are like Italy, Germany, or Holland, but not at all like Palestine.

Artists are acted upon by, and react to, the world that surrounds them. They are, in fact, its most sensitive observers and prophetic interpreters. If the artists of today give us suffering Christs, Christs alone and in agony, Christs broken and distorted, it is because they are reflecting the anguish and aloneness of contemporary man.

The many images of Christ that artists have given us through nearly 2000 years, tell us that the Son of God, our Savior, our Brother, our Lord, is for each man in his own time. And he comes to us each in our own way... perhaps in a blinding flash of light... perhaps as a still small voice, but always in the way that will drive us to exclaim in surprise and delight: "Yes, this is my Lord."

For unto us a child is born, unto us a son is given; and the government shall be upon his shoulder; and his name shall be called Wonderful, Counselor, Mighty God, Everlasting Father... Prince of Peace. Though Christ a thousand times

In Bethlehem be born, If he's not born in thee Thy soul is still forlorn. Angelus Silesius. Merry CHRISTMAS to you all.

After the Christmas cantata last Sunday evening in the First Baptist Church guests gathered in the J.D. Helms home for coffee and cake. Those joining in fellowship were the families of Roy Flowers, Barton Riley, L.M. Patterson, Jr., Hershel Jones, Jim Burks, R.L. Uptergrove, F.W. Thomas and Walter Woolley.

Mr. C. M. Norman is here from College Place, Washington visiting in the home of his sister, Mr. and Mrs. Bill Gady.

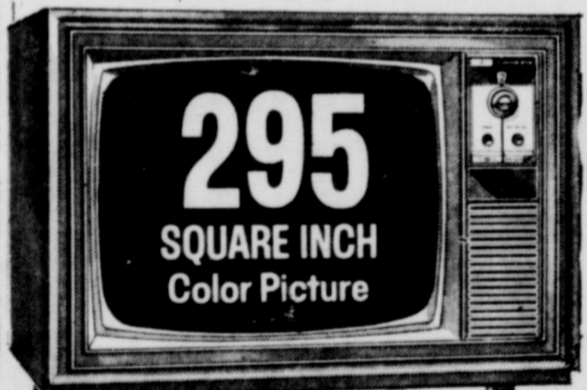
PHILCO - FORD

Presents **Christmas** In **Color**

On or off, it's a pleasure to own!

Philco AFFORDABLE BIG SCREEN Color TV

with amazing **COLOR TUNING EYE**
Narrow line color tuning (down to seconds) when shadow on tuning eye is exposed, your TV is properly tuned for sharpest picture and color.



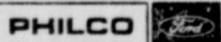
295
SQUARE INCH
Color Picture

Affordable at only

\$499.95
W.T.

Finest features in Color TV today! • Transistorized solid state signal system—no tubes to burn out in the signal-receiving circuits • 26,000 volts of picture power • Illuminated 82-channel VHF/UHF indicators • Color Pilot Cool Chassis • Big front-mounted 6" oval speaker.

Model 5508WA—Distinctive CONTEMPORARY styling finished in warm Walnut tones.

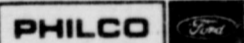


Proper color tuning every time, in seconds!

Philco COLOR TV

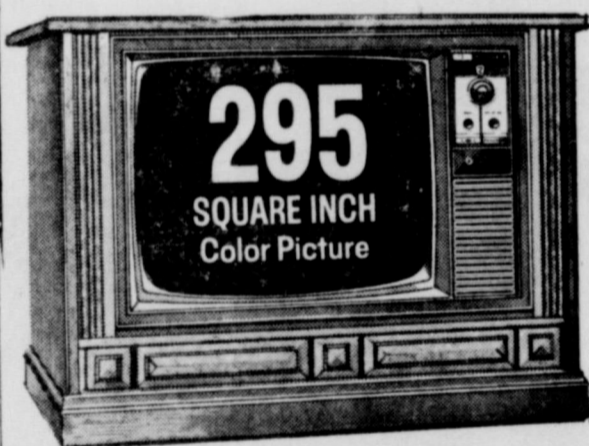
with amazing **COLOR TUNING EYE**

Tunes in seconds! Illuminated tuning eye allows you to select the sharpest picture and finest color, quickly and easily, on all 82 VHF/UHF channels.



Compare features, picture quality, cabinetry

PHILCO Color TV is your best buy



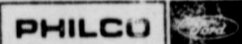
295
SQUARE INCH
Color Picture

Spanish credenza styling, luxuriously finished in genuine Pecan veneers and matching hardwood solids. Model 6536 PC

Amazing **COLOR TUNING EYE** makes Philco Color TV easier to tune

Tunes in seconds! Just turn one knob until the shadow in illuminated tuning eye narrows and you're tuned to the finest color picture. Then adjust tint just the way you like it best. It's that simple.

AS LOW AS **659.95**
W.T.



Finest color TV features—compare! Philco Simplified Color Controls • Transistorized Solid State Signal System • 26,000 volts of picture power • Color Pilot Cool Chassis • Illuminated 82-channel VHF/UHF Indicators • Big Front 6" oval Speaker



Italian Provincial styling, handsomely finished in genuine Pecan veneers and matching hardwood solids. Model 6532 PC



Early American styling, carefully finished in genuine Maple veneers and matching hardwood solids. Model 6530 MA

227
SQUARE INCH
Color Picture

Model 5609WA Finished in match Walnut furniture

\$459.95
W.T.

Burton's
TV 659-2121
106 E. Kenneth

267
SQUARE INCH
Color Picture

Trim Compact Styling blends smartly with Traditional or Contemporary decor. Finished to match Walnut furniture—Model 5544WA

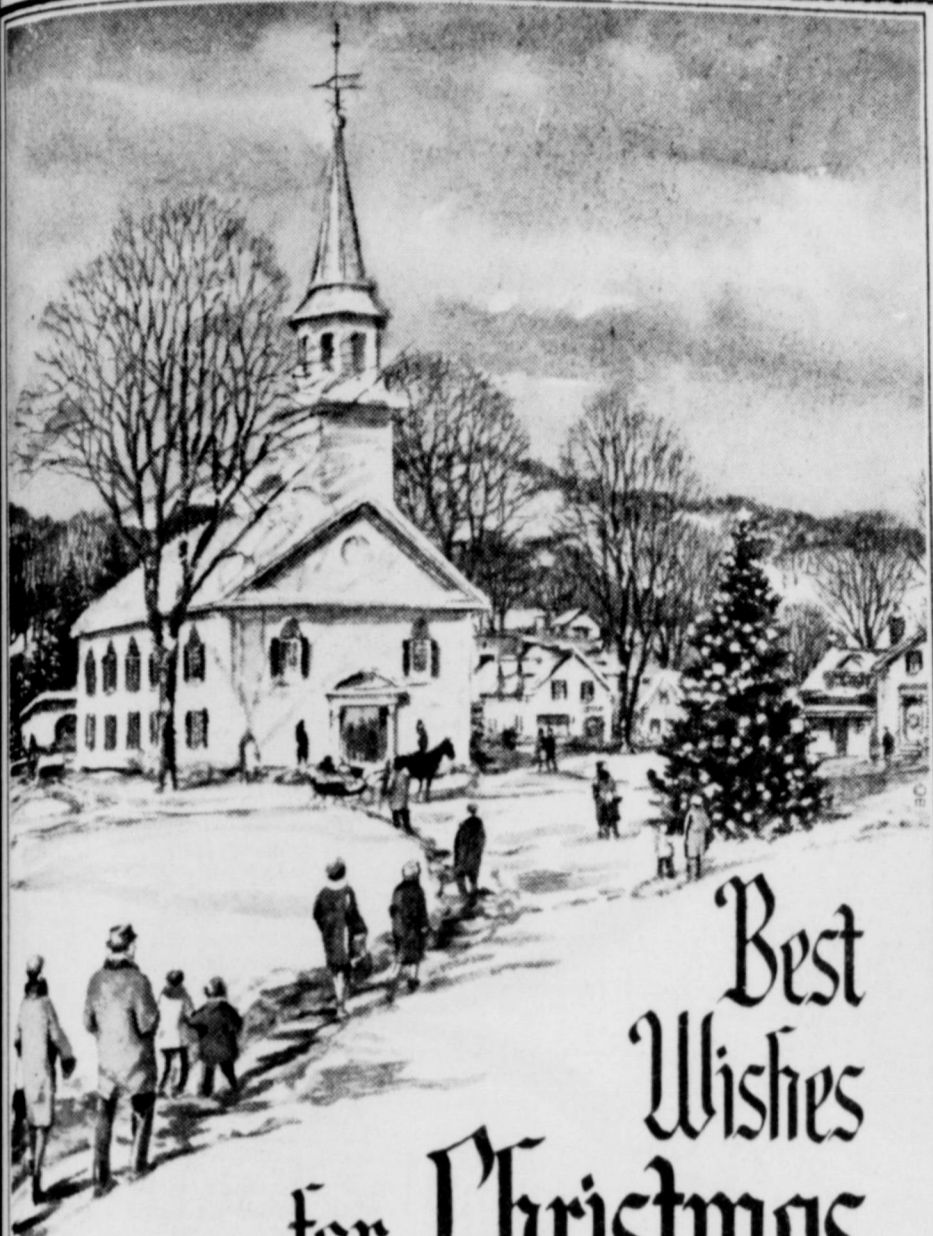
Affordable at only **\$439.95**
W.T.

Season's Greetings



Reddy Kilowatt joins with all the folks at Community Public Service Company in wishing you the merriest of Christmases. Reddy will be on the job throughout the Yuletide season... making your home glow with cheery light and lending a hand with your many household chores. And throughout the coming year, all of us wish for you the very best of everything.

COMMUNITY PUBLIC SERVICE
Your Electric Light & Power Company



Best Wishes for Christmas

As we celebrate this joyous occasion of the birth of the Christ Child, let us remember especially the hope that was born anew and the love that filled the world on that first Christmas. May their light shine today, so that peace and understanding will prevail among men.

Foxworth - Galbraith Lumber Co.



Mr & Mrs Jerry Evans

Davis-Evans Vow Exchanged

Miss Sharon Kay Davis became the bride of Jerry Evans of Gruver in a ceremony Thursday, November 23 at 5 p. m. in the Home Demonstration Building in Spearman. The ceremony was performed by Elder T. J. Pittman. The bride is the daughter of Mr. and Mrs. J. E. Davis of Uvalde, Texas and Jerry is the son of Mr. and Mrs. Joe B. Evans of Gruver. Presiding as maid of honor was Donna Fryrear of Spearman. The best man was Gerald Evans, brother of the groom. The bride wore a white lace street length dress and wore white accessories. For her daughter's wedding Mrs. Davis wore a navy blue suit and accented her attire with black accessories. Mrs. Evans wore a pink suit and black accessories.

Sharon Kay has attended Spearman Schools. Jerry is a graduate of Gruver High School and attended Amarillo Junior College. He is presently employed with his father. The couple are at home at 507 Richardson in Gruver.

Mrs. Harold Frost and her Junior Girl Scout Troop No. 136 had a Christmas tea for the mothers December 13 at the scout house.

The girls decorated the house especially for this annual occasion. They also made cookies which they served their mothers with punch.

An investment candlelight ceremony highlighted the program along with Christmas carols.

Mothers attending were Mmes. Joel Lee Lackey, Gene Sparks, Ray Martin, Jack Reed, Gary Davis, Kenneth Pope and I. V. Pierce.



JOY at CHRISTMAS

"And they came with haste, and found Mary, Joseph and the Babe lying in a manger." As the sacred story of that Holy Night is told once again, let us rejoice in awe and wonder, for the glory of that moment, for the Miracle of Christmas.

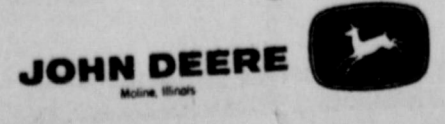
BERRY CLEANERS

In spite of everything . . . Christmas endures

In spite of foreign troubles and domestic distress . . . Christmas endures.
In spite of personal problems and individual anxieties . . . Christmas endures.
In spite of everything some men have done to blunt its message . . . Christmas endures.
Why?
Because mankind needs Christmas. Not for the revelry, the gift-giving, the outward displays.
Mankind needs Christmas for inner solace.
For far more than a thousand years, Christmas has fulfilled man's yearning for a season of sanity, love, and peace. Open your heart to the real meaning of Christmas. Christmas can endure only with your help.



Hansford Implement Co.



May CHRISTMAS

bring to you and yours the gifts of peace, joy and lasting contentment. With this wish, we greet our friends and neighbors and extend our heartfelt thanks for your many kindnesses. We are privileged to serve you.

Consumers Sales Co.

WILL BE CLOSED CHRISTMAS

A JOYOUS CHRISTMAS



*"Unto you is born this day
in the city of David a Saviour,
which is Christ the Lord"*

While humble shepherds watched their flocks, a heavenly glory shone upon them, as herald angels sang of a Holy Child. Far to the East a Star shone, guiding the wise men in their search for Him. Across the years the sacred message shines for us today, ever renewing in our hearts all the joy and wonder, the hope and promise of that Holy Night, so long ago.

As we worship in spirit at the blessed manger, we wish for all a truly joyous Christmas, rich in meaning, with faith ever deeper... with inspiration ever greater.

North Plains Truck & Imp. Inc.

BUICK - PONTIAC - INTERNATIONAL - G.M.C.

"Serving All Of Hansford County"



LIBRARY FUND GROWS---Sparks Laundry took in \$100 on the cold and wintry Saturday of last week and Raymond watched this \$100 with another \$100 and turned it over to the library. Miller's Cafe at 108 Main was the first business to take up the challenge Raymond issued last week and will turn over all coffee proceeds Saturday, Dec. 23 to the library. Contributions have amounted to \$6470 since the library board announce the purchase of the new building.

MRS. MARY ALLEN

Stratford School Named for Teacher

The Stratford Independent School District has named its new school in honor of a pioneer Panhandle teacher who is well known in this area. She is Mrs. Mary Allen, 95, who started teaching at the age of 16 and continued in that capacity until she was 73. She was a resident of Lillian's rest home in Amarillo. Stratford's new 16 classroom building complete with cafeteria, gymnasium and refrigerated air conditioning is far removed from the humble country facilities where Mrs. Allen began her career. She was born Dec. 6, 1872 in Adams, Tenn., the daughter of a pioneer doctor of that state. She spent her childhood in Tennessee until her parents came to Texas. Her first teaching job was at McKinney at the age of 16. Mrs. Allen moved to Sherman County in 1902 because of her husband's health and taught grades at the Spurlock country school, 16 miles south of Stratford. The climate there had a healing effect on her tuberculosis afflicted husband because he lived to 89. Mrs. Allen took a respite from her teaching career in 1906 and reared five children, but resumed teaching again in 1910. She taught for the next 27 years in the Hansford and Sherman County schools. The pioneer educator made her home in Stratford after retirement in 1946 until her husband died in 1959 and then moved to Gruver to be near one of her daughter's Mrs. Estelle Alexander. Other living children include Mrs. Estelle Billington of 2219 Wichita in Amarillo, and John & William Allen of Los Angeles. Mrs. Billington said her mother was in good health until a year ago when she was stricken with pneumonia.

Friends at the rest home said Mrs. Allen was most pleased to hear the school had been named for her.

Christmas Plants Prove Poisonous

AUSTIN, Dec. 19--A sprig of mistletoe tacked above the doorway at Christmastime is a good excuse for stealing a kiss, the Texas Safety Association noted today, but warned homemakers that there's a potential danger in having mistletoe and some other Christmas plants around the home. Although it is not commonly known, the waxy-white, sticky mistletoe berry is highly poisonous and fatal if swallowed, the Safety Association pointed out. Adults as well as children have died from tasting these harmless-looking berries. But mistletoe is not the only poisonous Christmas plant. The leaves of the poinsettia can also be deadly if eaten and one leaf can be enough to kill a child. Yew branches, too, can be lethal if either the berries or foliage is eaten. Placing mistletoe overhead is probably the safest place in the house for it, the safety group advised. However, homemakers should keep a check for berries dropping to the floor which could be picked up and eaten by small children. Place other poisonous Christmas plants out of the reach of children and warn other members of the household of their hazards. If someone should swallow parts of a dangerous plant, call a physician immediately or contact the nearest poison control center. It is not always advisable to induce vomiting, because some plants contain corrosive juices that could severely damage tissue of the digestive tract during vomiting.



GREETINGS

of the Christmas Season



In the quiet dawn of a winter's new day, the Spirit of Christmas descends upon the world, instilling boundless joy and the warm feeling of good will towards all. To our many friends, old and new, we're wishing that this will be the happiest of Christmases, bright and shining with the fulfillment of long-cherished dreams. It is our good fortune to have so many kind friends and patrons ... their friendship is one of our most prized possessions.

First National Bank

Perryton Texas

Pioneer Manor Resident Is 98 Years Old

Joseph Hardy, resident of Pioneer Manor Nursing Home, celebrated his 98th birthday December 16. Born in Kentucky in 1869, he came to Schultree County in 1925 and has been a resident of that area since. At the age of 18 years Mr. Hardy became a Primitive Baptist Preacher and continued in this occupation until he retired at the age of 89 years. Elder Hardy's wife and three of their four sons have passed away. One son, Herman Hardy, resides in Amarillo. He has been a resident of Pioneer Manor for the past three years, moving here from the Amarillo Nursing Home. The 98-year old man has over 60 grandchildren and great grandchildren. Nine great-grandchildren live in Perryton and are well known to area citizens. They are: Mrs. Frank Gipson, Mrs. Earl Schwalk, Mrs. Virtle Faries, Mrs. Clyde Herrington, Mrs. Ella Mathews, John Hardy, Paul Hardy, Burk Hardy and Dr. Ernest Hardy.

Elder Hardy's health has been very good up until the past few months. He was hospitalized last week, but was released and returned to Pioneer Manor Dec. 14.

HOSPITAL NEWS

Hansford Hospital patients December 19: Charlie Langston, Vernie Caldwell, A.B. Willingham, Jackie Graham, Laquita Evans and daughter, Conrado Nava, Betty Janzen, Willis Sheets, Betsy Stavlo, Darrel Hollar, Jessie Tompkins, Harold Collier, Larry Apple, Mary Jo George, Goldie Bowling, Hattie Booker and Rita Lovato. Dismissals during the week: Eva Baca, Joseph Felty, Carol Brown and daughter, Martha Allison, J.B. Hardy, Daniel Hollar, Emma Esparza, Frances Ring and daughter, Kay McFarlin, Corinne Buschman, Leticia Flores, Ruth Skinner, James McClendon, L.D. Pierce and Lloyd Pool.

Our Best to You and Savings, too



Tendercrust Brown-N-Serve Dinner
ROLLS Pkg. of 12's **4 For \$1.00**

Shurfresh Creamy Rich Half Pint-
Whipping Cream **23c**

ICE CREAM Lanes Regular Half Gallon **59c**

Shurfine Fresh Strained Tall Can
Cranberry Sauce **19c**

PEACHES
Shurfine "Tattered Toms" Elbertas Sliced or Halves
no. 2 1/2 can **37c**

"We will be closed Christmas Day"



Turkey

Swifts Butterball 7 to 9 lb. **49c**

Hen Turkeys 10 to 16 lb. **43c**

Tom Turkeys 16 to 24 lb. **35c**

Swifts Baking Hens 6 to 7 lb. **39c**

Canned Hams SWIFTS FULLY COOKED 5 lb. Can **\$4.29**

Hams BAR-S-FULLY COOKED 9 to 11 lb.-lb. **99c**

Bacon SHURFRESH Sugar Cured lb. **59c**

Fresh Oysters, Ducks and Geese

Green Beans	Shurfine Small Whole Bluelake 303 size can	25c
ORANGES	Geisha Mandarin 11 oz. Can	25c
Grapes	Ballcrest White Seedless Tall Can	27c
BROTH	College Inn Chicken-Tall Can	15c

NEW STORE HOURS
Week Days 8:30 to 6:00
Saturdays 8:30 to 8:00

CORN	Shurfine Frozen Cut 10 oz. Pkg.	2 for 33c
PEAS	Shurfine Frozen Fresh 10 oz. Box	2 for 39c
ASPARAGUS	Shurfine Frozen Whole Spear 10 oz. Box	49c
GRAPE JUICE	Welch's Frozen Fresh 8 oz. Can	19c

SHERBET
Lanes Tangy Citrus Flavors Half Gallon **59c**

COCONUT	Bakers Premium 4 oz. Box	19c
Marshmallows	Krafts Miniature 6 1/2 oz. Bag	17c
SUGAR	Imperial Powd. or Brown lb. Box	17c
MILK	Borden's Eagle Brand 15 oz.	35c
MUSHROOMS	Shurfine Pieces -4 oz.	29c

PRODUCE



FRESH ZIPPER SKIN
Tangerines

LARGE GOLDEN RIPE
Bananas

lb. **19c**

lb. **10c**

VIRGINIA EXTRA FANCY YORK
Apples lb. **15c**

LARGE TENDER CRISP STALKS
Celery Stalk **15c**

MEXICO CANDEE
Sweet Potatoes lb. **15c**

No 1 IDAHO MEDIUM YELLOW
Onions 3 lb. **19c**

DREAM WHIP
Dessert Topping 4 oz. Box **43c**

VALUES GALORE

Stuffing Mix	Bonds 8 oz. Bag	25c
Poultry Seasoning	Schillings	15c
Reynolds Wrap	Aluminum Foil Heavy Duty 24" x 18"	59c
NAPKINS	Kleenex Fancy Dinner	25c



Cut Rate
GROCERY



Shurfine

MERRY MAKERS FESTIVAL

MARGARINE	Shurfresh Soft	Pound	33c
COFFEE CAKE	Frozen Danish Shurfine Apple or Cherry	14 Oz.	59c
STRAWBERRIES	Shurfine Frozen Halves	16 Oz.	35c
SALAD DRESSING	Shurfine	16 Oz.	25c
PRESERVES	Shurfine Strawberry	18 Oz.	39c
BLACKEYED PEAS	Shurfine Fresh Shelled	# 300 can	15c
PINEAPPLE	Shurfine Crushed	2 for #1 can	29c
CRANBERRY SAUCE	Shurfine Strained or Whole	#300 can	19c
SWEET PICKLES	Shurfine Whole	16 Oz.	39c
TOMATO JUICE	Shurfine	46 Oz.	29c
OLIVES	Shurfine Thrown Stuff Manz.	3 Oz.	29c
COFFEE	Shurfine Regular or Drip	Pound	59c
CINNAMON ROLLS	Shurfine	9 1/2 Oz.	15c

DAIRY Favorites

Butter	Cloverbloom-8 oz. Pattie	43c
Cream Cheese	Philadelphia 8 oz.	33c
Cheese	Wisconsin Longhorn Cheddar lb.	lb. 65c
Egg Nog MIX	Shurfresh Creamy Rich Qt.	49c

"Holiday Values for Thursday, Friday & Saturday"