

Boys Ranch here Friday

STORY ON PAGE 9

Baptist Groundbreaking Ceremonies Held

Members of First Baptist church and the Spanish Speaking Mission sponsored by the church joined in the groundbreaking ceremonies for a new building to house the Spanish speaking congregation.

The Service Sunday November 4 at 2 pm was opened by prayer led by Glen Day, chairman of the Building Committee.

Following Bi-lingual music, Ray Ingle and R. L. Uptergrove spoke of the plans for the building. Rev. Lucio Moreno, Pastor of the Spanish Speaking Congregation, spoke concerning the present work and the future prospects.

Russell Pogue, Pastor First Baptist Church, read Psalm 127:1, Except the Lord build the house they labor in vain that

build it. Following the Prayer of Dedication, a large number of those attending had brought their own shovels, and members of the two congregations joined in turning first shovels of dirt for the building.

The Spanish Speaking Congregation has been meeting in the Fellowship Hall and in a Sunday School Department since October 1975. Rev. Lucio Moreno, Pastor, has served since Jan. 1, 1978. In addition to the Sunday morning services, the ladies meet on Monday afternoon and the congregation meets Wednesday evening for Prayer and Bible Study. on Sunday evening the group meets in the First Baptist Church, Gruver.

PLAN 149

CAPACITY

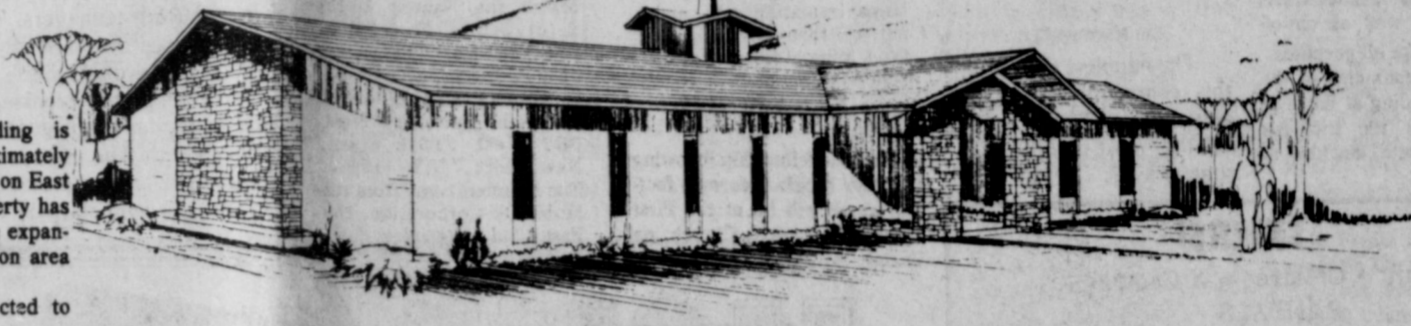
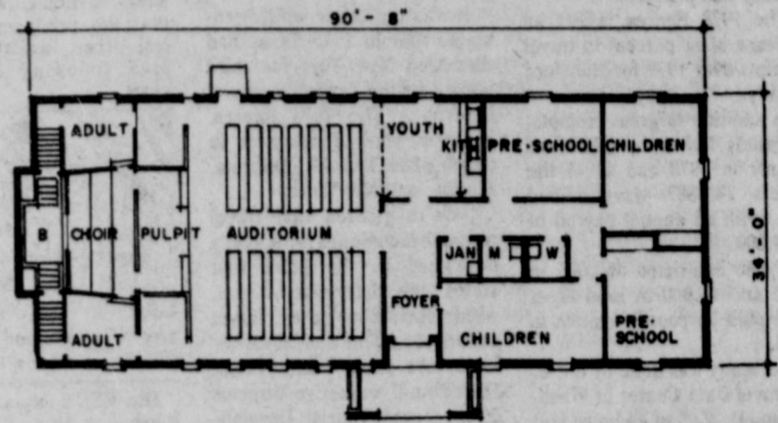
AUDITORIUM

PEWS	112
CHOIR	24
CLASSROOM	13
TOTAL	149

EDUCATIONAL

PRE-SCHOOL	18
CHILDREN	38
YOUTH	26
ADULT	46
TOTAL	128

BUILDING AREA	3094 sq. ft.
PORCH AREA	90 sq. ft.



The proposed building is expected to cost approximately \$94,000. The location is on East 7th St. Adequate property has been secured for future expansion. Parking, recreation area and a Pastor's home. Construction is expected to begin within 30 days.



The Spearman Reporter

VOL. 70, NO. 52

THE SPEARMAN REPORTER, SPEARMAN, TEXAS 79081

THURSDAY, NOVEMBER 8, 1979.

Bankers give support to fuel-alcohol co-op



FARMER FINANCING for a fuel alcohol plant is explained to area bankers by Tommy Harbert (right) president of the proposed Northwest Texas Grain Products cooperative and Dumas attorney Mike Met-

calf (right). Representing the banking association are, l-r, Kenneth Irwin of Gruver, president; Mike Koehler of Dalhart, and Gerald Loughlin of Pampa.

NEWS-PRESS STAFF PHOTO

The North Canadian Bankers Association will give its support to an effort by North Plains grain growers to form a fuel-alcohol cooperative and build a \$30-million plant in the area.

Support for the venture came Thursday following a meeting between members of the banking association, which represents 15 area banks, and the board for Northwest Texas Grain Products Cooperative.

"I am impressed with what you have told me," declared Kenneth Irwin of Gruver, association president. "I would venture to say that area bankers will be behind you in the effort."

The meeting was held in Dumas at the First State Bank. Its purpose was to detail the financing grain growers will need to set up the cooperative and build the fuel alcohol plants.

Mike Metcalf, Dumas attorney, was the spokesman for the proposed cooperative. Also present were members of the temporary board of directors, Tommy Harbert, Jimmy Wells, Art Noack, Jim Dowdy and Marion Garland.

Metcalf explained the financing grain producers will need to get into the cooperative. It figures out to a little more than \$10,000 per 10,000 bushel grain contract.

The financing will be required in stages beginning with a \$500 cash payment for each 10,000 bushel contract to provide front money for the venture.

The proposed coop is presently in a campaign to write 700 grain contracts to provide \$325,000 of base financing. This money will be needed for a feasibility study to determine if a 20-million gallon a year, or larger, fuel-alcohol plant is practical on the North Plains.

If cooperative members get a favorable report and decide to go ahead with the plant, its members will be required to make an additional \$1,500 payment per contract.

Farmer-members will also put up equity money for plant construction of \$8,751 per 10,000 bushel grain contract.

Metcalf explained that since Oct. 4, some 60 contracts for 600,000 bushels of grain have been pledged by Dumas and Sunray area growers. He added that grain producers in other North Plains counties would be contacted following grain harvest.

The effort to secure 700 contracts, he reported, has been slowed because of harvest.

"We anticipate that the cooperative will be fully subscribed within 30 days," he declared.

Beedy Furniture 17th Anniversary

Beedy Furniture Company, 725 W. 7th, Spearman will be celebrating its seventeenth anniversary with a storewide sale beginning Thursday, Nov. 8 and running through Wednesday, Nov. 21.

The furniture company, owned by Brad and Dodie Beedy, opened for business in 1962 at their location in Plains Shopping Center. In 1977 the furniture store was moved to their beautiful new building at 727 W. 7th. The Beedy's have offered quality furniture, accessories, etc. to residents of our area at reasonable prices during this time.

Customers are invited to register during the two week sale for two La-Z-Boy Recliners. The drawing for the lucky person who will win the recliners will be held Wednesday, Nov. 21 at 5 p.m.

Brad and Dodie have been active in community affairs since their arrival in Spearman. They have three sons, Scott, Jeff, and Kyle.

Scott is a CPA and lives in Amarillo. Jeff has been associated with his parents in the furniture store for the past two years and Kyle is a senior in Spearman High School.

Olga Gafford has been employed by Beedy's for the past 5 1/2 years as saleswoman and Kent Sparks is employed as deliveryman.

Beedy's issue a cordial invitation to everyone to come in and visit with them during their anniversary sale and register for the La-Z-Boy recliners that will be given away Wednesday, Nov. 21.



Stop by during the Anniversary Sale and register for the La-Z-Boy's to be given away Nov. 21.



A view inside of the beautiful Beedy Furniture Company.

Ugliest LEG CONTEST



Jim McLain and Tim Woodington brought the Lions Club program Tuesday, and discussed the coming "Ugliest Legs Contest" which is now underway in the area. Six men will volunteer to have their legs photographed by the local newspaper, in the very strictest secret circumstances. You can vote for your choice of the ugliest legs at 50¢ per vote. Jars will be placed all over town for your vote money, and all six sets of legs will be run in the local paper and a picture of the legs will be at each fruit jar so that you may vote for the ugliest legs!

Meet the director

Everyone in Spearman is invited to the "Meet the Director" party on Tuesday, November 13 at 7:30 p.m. in Bob Skinner's building in the North Plains Shopping Center, commonly known as the Old Beedy furniture store building.

Refreshments will be served by the Xi Zeta and Epsilon Sororities. There will be a real fun style show and much surprise entertainment.

The director comes from the Jerome Cargill agency in New York and needs to meet most, if not all, of Spearman, to get a real good feel of the community, so that he and the local commit-

tee, can plan a smashing, fun-filled, good clean family fun Fruitcake Review. Jerome discover hidden talent in the community. He began his theatrical agency because he was interested in bringing culture to small communities where theater was not available. The Fruitcake Review will only be a successful venture for Spearman and the Chamber of Commerce and Y.M.C.A. if the whole community works together on this venture.

Fruitcake Review will feature assorted local nuts in two evenings of fun and frolic for the whole family on Friday, November 30 and Saturday, December 1 at 8:00 p.m. in the Spearman High School auditorium.

With the coming of the director, all committees will be activated. Daily rehearsals will begin in the Bob Skinner building. Not all acts will practice every day, but will be scheduled throughout the day in order to conform with people's schedules.

It is important for the success of the Fruitcake Review that you be at the "Meet the Director" party on Tuesday, November 13 at 7:30 p.m.

Farmers Invited To Gasohol Meet

Farmers in the Hansford County area are invited to a free meal Nov. 13 at 6 p.m. at the County Barn in Spearman, and an explanation of how they can tie their market for grain to the U.S. energy program—through converting it to gasohol.

The link will be through a gasohol plant for which an area farmer group have developed a plan, and financing, and that can use up to 7-14 million bushels of North Plains grain a

year—wheat, milo and corn. "The bright feature of this project is that grain growers will have an assured market for their crop at a price geared to the price of motor fuel," points out Mike Metcalf, Dumas attorney representing the farmers cooperative group. "It's a way to keep grain prices in step with energy costs, to provide a long range market at a top price."

Metcalf and key members of the Northwest Texas Grain Pro-

ducts Cooperative will present a concise outline of the proposed cooperative gasohol plant at the Nov. 13 meeting. All area farmers are invited.

The Spearman meeting is one of seven being held over the North Plains.

GO LYNXI
BEAT Boys
Ranch!!!!

American Ag Meet Saturday

District 1 American Agriculture Meeting will be held at the Annex Building in Pampa, Saturday, Nov. 10 at 7 p.m.

Rain is in the
forecast.

Hansford County Shares Texas Travel Dollars

AUSTIN--Hansford County received \$1,545,000 of the State's \$7,032,369,000 travel receipts in 1978, a national study commissioned by the Texas Tourist Development Agency has disclosed.

The 1978 figures reflect an increase of 11 percent in travel receipts over 1977 for Hansford County.

In addition to gross receipts, the study found that Hansford County in 1978 had 63 of the state's 243,887 travel-related jobs, with an annual payroll of \$374,000.

It also estimated \$62,000 in state and \$8,000 in local taxes were paid by county visitors in 1978.

The study was done by the U. S. Travel Data Center in Washington, D. C., an independent travel research organization funded jointly by public and private sectors.

It was based on the Center's Travel Economic Impact Model which breaks out a state's share of the national travel market on a county-by-county basis.

The model measures the economic impact of all travel involving overnight trips away from home, and day trips at least 100 miles or more from home. Thus it includes travel by Texans as well as out-of-state visitors, for all purposes.

It includes estimates of the traveler's spending at home in preparation for the trip, his spending en route, and that at his destination.

Basic data for the model comes from the National Travel Survey, conducted every five years by the U. S. Census Bureau, and from the Center's own National Travel Expenditure Model.

It was the latter which estimated that in 1975 Texas had dislodged New York for third place in the nation's travel industry. The 1978 figures, however, show Texas back in fourth place behind California, Florida, and New York.

"We're pleased that travel research techniques have finally developed to the point that states can determine where, within their boundaries, travel dollars are spent and travel-related jobs exist," said Frank Hildebrand, executive director of the Texas Tourist Development Agency.

"Now we can trace travel's considerable economic impact on a county-by-county basis, observe changing patterns annually, and help direct the rapid growth of this burgeoning industry."

Whenever teaching degenerates into a money-making profession, the cause of education will be lost.

The happiest person in this community is probably the one who has helped the most people, in some way.

NEWS OF ENERGY

"R" You Properly Insulated?

The Federal Trade Commission recently adopted a regulation requiring all manufacturers of home insulation to label their products with R-values, a practice that the producers of mineral fiber insulation have been following for many years.



Look at the label on any insulation before you install it.

The FTC's explanation of R-value is this: "R means resistance to heat flow. The higher the R-value, the greater the insulating power."

Heat flow can be either the loss of heat from a house during the winter or heat gained from the outdoors during the summer.

Both fiber glass and rock wool are mineral fiber materials. The U.S. Department of Commerce has estimated that mineral fiber accounts for about 70 per cent of all home insulation sold, making it the most popular type. Mineral fiber batts and blankets are rated at R-11, R-13, R-19, R-22, R-30, or R-38.

After the fellowship following the Boys Ranch-Spearman football game will be at the First United Methodist Church on Friday, November 9.

MAKE A MATCH

Match the Names

Can you tell which first name goes with which last name?
1. Michelangelo (a) Picasso
2. Rembrandt (b) Buonarroti
3. Pablo (c) van Rijn

Match the Numbers

Can you tell which number belongs with which statement?
Numbers
(a) two million gallons of gasoline and distillate a day.
(b) 200,000 barrels of oil a day.
(c) 8.4 million more gallons of gasoline a day.

Statements

1. If power plants capable of switching to coal were encouraged to do so, it would save



2. If the federal government continues to allow the use of current volumes of lead in the production of leaded gasoline beyond next fall, or rescinds the impending limit on lead, the result could be

3. An end to government ordered crude sales from major oil companies to small refiners could mean an extra

ANSWERS:

Match the Names: 1. (b) 2. (c) 3. (a)

SOURCES: The names came from the *New Columbia Encyclopedia*, Columbia University Press, 562 West 113th Street, New York, N.Y. 10025. The numbers came from the Mobil Oil Corporation, 150 East 42nd Street, New York, N.Y. 10017.

A Harsh Winter?

The National Weather Service, in response to a query from the Department of Energy, says the coming winter will likely be severe. That would mean, for much of the eastern United States, a fourth consecutive harsh winter.

California and the west coast in general enjoy the prospects of a mild winter, according to the Bureau, but most of the states east of the Rockies can expect bitter winter weather. There's a good chance, however, some in the northern Great Plains, New England, and along the Middle Atlantic Coast will be spared. And, of course, the Weather Service can seldom predict the pattern for southern Florida--since that depends on exactly how far southward cold systems push.

This is the time to prepare for sub-freezing spells of several days or weeks, to stock emergency heating fuel (perhaps wood) where possible, and insulate--if this is indicated. Sealing windows better, with corking and outside storm windows with more screws, can save fuel and increase heat retention. Weather-stripped doors contain heat. Some homeowners are using plastic or other clear products to make large or picture windows thermal, in effect--the plastic being fitted to the inside of the window frame and sealed all round.

A Youth Wage?

Every country in industrialized western Europe has a special wage scale for young people. In West Germany youths enter employment at wages from 60 percent to 90 percent of the adult wage rate, for example.

In most western countries, this system is accepted as a sensible one. Young people entering into employment are usually less experienced and less productive--thus the lower wage, which takes into account that they are learning.

In the United States today there are some 1,500,000 unemployed teenagers. The teenage unemployment rate is twice the national average. For minority teenagers it is even higher.

The respected Brookings Institute estimates that as the minimum wage goes up, teenage unemployment also goes up. The minimum will soon rise from \$2.90 to \$3.10. The answer is not to lower the minimum wage, or even to void its next increase.

Part of the answer is a special youth wage, for a period of one year, lower than the adult minimum wage. Congressman Carroll Campbell (R-SC) and others have proposed such an innovation in minimum wage laws. Estimates are that the coming rise in the minimum wage (January) will push up youth unemployment by three to six percent.

With a recession also expected, it makes sense to enable the nation's young people to get work--for the first year only--at a lower minimum, if that's the only work they can get, or if that's all they're worth, or if that's all some businesses can pay. That beats unemployment--and this system works well elsewhere.

Wood Stoves

Again this year more and more people are turning to wood stoves. They are the answer to soaring fuel costs for many--but not all. While recommending the idea, we nevertheless call attention to the humorous experience of one new owner.

After the first year's use, he totaled up pluses and minuses like this: Cost of stove and installation--\$458., Chain saw--\$149., Gas and maintenance for chain saw--\$44., 4-wheel-drive pickup--\$8,379., Maintenance for pickup--\$438.

Replace rear window of pickup--\$300., Fine for cutting unmarked trees--\$500., 14 cases Michelob--\$126., Littering fine--\$50., Tow Charge from creek--\$50., Doctor's fee, removing splinter from eye--\$45., Safety glasses--\$49., Safety shoes--\$49., New living room carpet--\$800., Paint, walls and ceiling--\$110., Chimney brush and rods--\$45., Log splitter--\$150., Fifteen acre woodlot--\$9,000., Divorce settlement--\$33,000. Total first year's cost--\$50,000 plus. Savings in conventional fuel, first year--\$62.!!

"Liars when they speak the truth are not believed." Aristotle
Tooth decay is the most universal of human diseases. "A friend is, as it were, a second self." Cicero



Dean Martin signed TV's largest contract ever with NBC in 1968. The amount involved: \$34 million.

SKIERS!
Adult - Children - X Country
RENTALS
Skis - Equipment & Clothing
NEW! Ski Tuner
To Shop by phone or For Prices
Call (405) 338-6687
Bills Ski Shop
706 E. 4th Guymon, Okla.

Grand Opening
VANCE HALL
Sporting Goods At Pampa Mall!!!
November 7 Thur Nov. 10
Win Ski Boots, Ski Ensembles
and Many Valuable Prizes!
Special Reduced Prices on Ski Packages!
Visit our Complete Sporting Goods Store
VANCE HALL
SPORTING GOODS
At Pampa Mall Open 10 AM to 9 PM

Outdoor Lighting Can Be an Overnight Solution.
Outdoor lighting can solve the world's problems, but it can solve some of yours. Outdoor lighting can give you the added security that comes from well lighted property. And if you've ever stumbled over unseen objects in the dark, or tumbled for keys, outdoor lighting can make your life a lot easier. Leased Floodlighting for businesses, and the Nite-Lite, for residential or rural areas, cost just pennies per night which includes installation, maintenance, and electricity. Leased Floodlighting directs a beam of light on parking lots, store fronts, and other areas. The Nite-Lite encircles your home with a 100 yard diameter of light. To get the added safety and security of outdoor lighting for your home or business, just give us a call.

COMMUNITY PUBLIC SERVICE
Your Electric Light & Power Company

IDEAL FOOD STORES
ANOTHER FIRST FROM IDEAL
Coupon Exchange!
BECAUSE WE REALLY WANT TO HELP YOU SAVE MORE...
Bring any manufacturer's coupon you may not wish to use and drop them in our coupon exchange box... Then help yourself to the coupons you want to use. Take as many as you like to save as much as you can.

PRICES EFFECTIVE THRU NOVEMBER 14, 1979. QUANTITY RIGHTS RESERVED. NO SALES TO DEALERS.

(STORE HOURS)

Fritos or Cheetos
REGULAR OR SEASONED
99¢ SIZE
68¢ LIMIT 2

Green Beans
COLUMBINE SHORT CUT 16-OZ. CAN
23¢ LIMIT 4

Folger's Coffee
FOLGER'S FLAKE
100% Pure Coffee for automatic drip coffee makers
\$2.53 13-OZ. CAN LIMIT 1

White Cloud Bath Tissue
WHITE CLOUD ASSORTED
4 85¢ ROLL PKG. LIMIT 2 PKG.

FRESH DAIRY!
Velveeta 2-LB. BOX **\$2.48** LIMIT 1

MARGARINE PARKAY SOFT CORN OIL TWIN TUBS... 1-LB. PKG. **87¢**

COTTAGE CHEESE CAMELOT 24-OZ. CTN. **\$1.19**

SOUR CREAM FAIRMONT 16-OZ. CTN. **79¢**

TURKEY Drumsticks RANDOM WEIGHTS FRESH FROZEN LB. **39¢**

Round Steak CENTER SLICED BEEF ROUND U.S.D.A. CHOICE BUTCHER BLOCK BEEF LB. **\$1.98**

Sliced Bacon BAR-S HICKORY SMOKED 1-LB. PKG. **98¢**

Pork Roast FRESH PORK SHOULDER PICNIC LB. **69¢**

Shoulder Roast PORK ANNU CUTS LB. **88¢**

FRESH ARM SLICES Pork Steaks **98¢**

Round Steaks BONELESS 12-OZ. PKG. **\$2.19**

Ground Steaks FRESH DIET LEAN 1-LB. **\$1.98**

Franks BAR-S-SKINLESS MEAT 12-OZ. PKG. **79¢**

Bologna RODEO JUMBO MEAT BY THE PIECE 1-LB. **\$1.19**

Bologna RODEO SLICED MEAT 1-LB. **\$1.69**

Sliced Bacon RANCH 'N RAIL 1-LB. PKG. **\$1.09**

Sliced Bacon RODEO SKINLESS MEAT 12-OZ. PKG. **89¢**

SHOP IDEAL...WHERE THERE'S MORE VALUE IN

Spearman Men Elected To Major Baptist Positions

LUBBOCK--Two Spearman residents were elected to major positions on Texas Baptist boards during the annual meeting of the 2.1-million-member Baptist General Convention of Texas (BGCT) here Oct. 30-Nov. 1.

Everett E. Vanderburg, owner, farm-ranch, will be a trustee of High Plains Baptist Hospital. Russell L. Pogue, pastor, First Baptist Church, Spearman, was re-elected to the 192-member Executive Board. The Executive Board, composed of laymen and ordained church leaders, conducts the business of the BGCT between

annual sessions. The BGCT owns and operates eight colleges and universities, an academy, eight hospitals and four children's homes. This work is supported by the Convention's 4,400 churches and missions, which will give more than \$31 million this year through the Cooperative Program to help share Christ's love throughout the world. Besides the institutions, the Convention helps support the work of more than 5,000 missionaries in the United States and 94 foreign countries.

4-H Projects--Where The Learning Is

New 4-H projects are now being organized, and this is where the "real" learning takes place, says Peggy Winegarner, County 4-H program coordinator with the Texas Agricultural Extension Service, Texas A&M University System. The Extension Service is the parent organization of 4-H.

4-H offers exciting projects and activities for every young person between the ages of 9 and 19 who has a curious desire to learn.

4-H encourages "learning-by-doing" and provides citizenship and leadership skills. 4-H wants to involve all youth--rural, urban, suburban, teens and from all races, creeds, ethnic and economic backgrounds.

4-H youth learn, work and play together. In 4-H, young people can learn how to make things, grow things, take care of things, repair things in a wide variety of projects, explains Mrs. Winegarner.

And the great part about the whole program is that 4-H youth can select what they want to do. Projects include things such as nature study, wildlife, entomology, animal science, beef cattle, horse and pony, dog care, plant science, gardening, field crops, home economics, foods and nutrition, clothing, automotive, bicycle, small engines, mechanics, electricity, personal development, citizenship, leadership and public speaking.

4-H has a lot to offer. So if you have a desire to learn and want to get involved in an action-oriented program, contact the county Extension office, suggests Mrs. Winegarner.

Hospital News

Patients in Hansford Hospital are Jason Holton, Bertha Nava, Olivia Renteria and son, Kathy Bowen, Margie Barkley, Jerald Scribner, Cleo Denman, Phyllis Gordon, Flossie Boyd, Pauline Harris, Jeannie Nollner, Carol Kelly and Smokey Huse.

Dismissed were Jackie Smith, Shirley Buzzard, Idella Randall, Misty Price, Valeta Bowen, Jason Atchley, Amy Grubbs, Kyle Deeds, Fred White, Terri Thomas, Marie Crawford, Dixie Burch and daughter, Norma Cole, Ronie Hutton, Carla Riggins, Marilyn Scroggs and Louis Nalley.

Penalty For Sorghum Drawn From Reserve

WASHINGTON--Sorghum may no longer be withdrawn from the farmer-owned grain reserve without penalty since the national average market price is \$4.03 per hundred weight, 21 cents below the \$4.24 reserve release level, according to Ray Fitzgerald, executive vice president of Commodity Credit Corporation (CCC).

Fitzgerald said this decision was made following a review by CCC of the U.S. Department of Agriculture's Agricultural Prices report released here at 3 p.m. today.

Fitzgerald said reserve barley remains in call status and release will continue through Nov. 30 for wheat, corn, oats

and rice. On Nov. 30 the national average market prices of these commodities will again be reviewed to determine their reserve status.

Fitzgerald said the national average market prices for the commodities remaining in release status (with the reserve release levels in parentheses) are: Oats \$1.30 per bushel (\$1.29); rice \$10.20 per hundred weight (\$8.96); wheat \$3.90 per bushel (\$3.29). Corn was released in October and therefore is not subject to review until November 30.

Storage earnings will continue uninterrupted for sorghum. No storage payments will be made for barley, rice or wheat. For oats, storage will

continue to be earned in Michigan, Nebraska, New York, North Carolina, North Dakota, Pennsylvania, South Dakota and Wisconsin where the market price is below the release level.

Data used by CCC is determining the release and call levels include five-day average prices as reported by the department's Agricultural Marketing Service which show prices as reported by the department's Economics, Statistics and Cooperatives Service. This end-of-month report shows the previous month's average price and the current mid-month price.

Revival Planned Services

Revival services will begin Nov. 11 at the Apostolic Faith Church, 9th & Drensen, with Rev. Lealand Grimmer of Gray, Okla. as the evangelist with Debbie Grimmer in charge of the singing.

Services will begin at 6:30 p.m. Sunday night and 7 p.m. each night during the week. Everyone is invited to attend any or all of these services.

Harry Coffee Buried Here

Harry M. Coffee, Jr., 54, a former Sunray resident was killed Saturday in a one-car accident near Hartsville, Mo.

Mr. Coffee had lived in Falcon, Mo. for several years. He was born in Miami, Texas and was a World War II veteran.

Services were held at 2 p.m. Tuesday in First United Methodist Church of Sunray with Rev. Todd Dyess, pastor, officiating. Burial was in Hansford Cemetery by Morrison Funeral Directors.

Survivors include a daughter, Elizabeth Ann Coffee of Big Bear Lake, Calif.; a brother, Bud Coffee of Caboll, Mo.; a sister, Mrs. Josie Argollo of Glendale, Ariz., and a halfbrother, John Edgar Clifton of Amarillo.

Girl Scout Leaders Meet

The Neighborhood Meeting of the Girl Scouts was held Friday, Nov. 2 at the Girl Scout hut.

There was a discussion held about having a rummage sale of some other money raising project to supplement the Girl Scout Hut fund some time in January or February. This fund is for utilities and general upkeep of the building.

The lack of interest by girls and leaders was also discussed and a membership drive is being planned for the near future. Any girls interested in joining can contact Margarette Evans at 2165.

Jo Biddle reviewed the program for the Brownie leaders. It was announced that the Annual Council Meeting will be Nov. 11.

The nut order was turned in an will be delivered in December.

Those attending were Jo Biddle of Guymon, Nina Hendricks, Georgie Gaither and Margarette Evans.

The next meeting will be Friday, December 7 at the Girl Scout Hut.

GOSPEL MEETING

CHURCH OF CHRIST
SPEARMAN, TEXAS
NOVEMBER 12-18



MAXIE B. BOREN
Corsicana, Texas

Sunday Services:
9:45 a. m.
10:35 a. m.
6:00 p. m.

Weekday Services:
7:30 p. m.

Everyone Welcome



Male monkeys lose the hair on their heads the same way as humans.

PLAY **Gunn Bros. Stamp** **And Get 1,000**
Gunn-Ho EXTRA GUNN BROS. STAMPS. FOR DETAILS SHOP YOUR NEAREST IDEAL FOOD STORE.

KRAFT
Miracle Whip
Salad Dressing
\$1.06
32-OZ. JAR
LIMIT 1

THE TIMELESS BEAUTY OF FINE STAINLESS TABLEWARE
ELEGANTLY FORMAL. YET COMPLETELY PRACTICAL.
SAVE OVER 40%
HERE'S OUR OFFER: During the sale period you may buy any piece of stainless tableware for \$1.00 with a purchase of \$3.00 or more. Minimum purchase of \$3.00 must be in the same piece. Limit one per customer.
OUTSTANDING FEATURES: This stainless tableware is made of the finest quality stainless steel. It is dishwasher safe and will last for years.
MATCHING SERVICE PIECES: All pieces of matching service pieces are available in the same sale.
ONE OF THE WORLD'S FINEST QUALITY FLATWARES NOW AT A PRICE YOU CAN AFFORD
ONLY AT IDEAL

THIS WEEK'S FEATURED ITEM
DINNER FORK
ONLY **49¢** EACH
WITH EACH \$100 PURCHASE DURING SALE PERIOD
CHOOSE EITHER RHINELAND® OR VALHALLA® PATTERN

WELCH'S
Jelly or Jam
83¢
LIMIT 2

FROZEN FOODS
BANQUET
Fried Chicken
\$2.09
2-LB. BOX
LIMIT 1

MINUTEMAID
Orange Juice 12-OZ. CAN **83¢**
MRS. SMITHS GOLDEN DELUXE 28-OZ. SIZE **\$1.89**
WELCHES Grape Juice 2 9-OZ. CANS **77¢**

COUNTRYSIDE
Ice Cream
ALL FLAVORS
\$1.19
1/2-GAL. CTN.
LIMIT 2

GREEN MARKET STREET
TEXAS SWEET
Grapefruit
29¢
LB.

Bananas
GOLDEN RIPE
3\$1
LBS.

HEALTH & BEAUTY AIDS...
REGULAR OR SUPER NAPKINS
Modess
\$1.79
24-CT. BOX
LIQUID COLD FORMULA 10-OZ. BOTTLE **\$3.39**
J & J BABY Shampoo 11-OZ. BOTTLE **\$1.89**

Apples RED DELICIOUS EXTRA FANCY WASHINGTON **39¢**
Grapes RED **49¢**
Potatoes SWEET **2.49¢**
Celery FRESH CRISP **19¢**

STORE FOR YOU!... Ideal Food Stamps Buy More At Ideal...

BORN HEREFORDS SALE
Tuesday, November 13, 1979
Selling 80 bulls, mostly coming 2 year olds Most sired by SR Mark Domino K166
25 heifers, bred and open
Performance tested
At the ranch 8 miles west and 2 miles south of Follett, Texas on highway 305.
Sale time: 12:30 PM
Lunch available
Phones 806/624-2028 and 624-3331

Donna Jones Fallwell has joined the staff of Cinderella Beauty Salon
511 C Plains Shopping Center
659-3413
Open at 8:30 Monday thru Friday
Open late Tuesday and Thursday

50 TRILLION!
The average human body consists of about 50 trillion cells.

WANT ADS

CAPROCK MONUMENT CO.
Dealers of Georgia Granite, Georgia Marble, Colored Granite, & Bronze.
represented by
BOXWELL BROS. FUNERAL HOME
519 S. EVANS
659-3802

MISCELLANEOUS FOR SALE

FOR SALE-12 x 60 Mobilhome, central heat and air. Call 659-3314 after 4 p.m.
51-rtm

FOR SALE: Miscellaneous store fixtures, shelving, counters and display racks. 659-2226 or 659-3221.
44-rtm

FOR SALE-Men's ski boots, size 7 & 11. Call 733-2555.
51S-2tc

FOR SALE-1 set Lynch 7 row harvester for 24 ft., 7700 John Deere Combine. 806-435-3716 or 435-4346, Perryton.
46S-rtm

FOR SALE: Good used Richardson Milo. Pickup guards. Cheap. 806-435-3716 and 435-4346.
52-rtm

FOR SALE: 1973 Olds Delta 88 Royale. Phone 733-2669, Gruver.
52-1tc

REAL ESTATE FOR SALE

MAYFIELD REAL ESTATE
22 West 3rd two story house, 2 bedrooms, utility room, furniture, two 50 ft. lots.
Commercial building for sale or lease, approx. 1800 sq. feet on Stinnett highway.
John Mayfield-Broker
435-6528 Salesperson Ruby Lair 659-3436 or 659-2188.
FOR SALE: Clean 3 bedroom home, 1 1/2 baths, attached garage, located near high school. Call 2620 after 4:00 p.m.
43S-rtm

FOR SALE One-half section irrigated land on pavement, Hansford County, some improvements, producing royalty, good buy.
TO BE MOVED 3 bedroom home.
Bob Holloway
435-5771 or 435-4131

TEXAS COUNTY INVESTMENTS
140 acres farm land adjacent to Hardesty.
320 acres excellent wheat land Southeast Texas County Hotel Dale in Guyton
3 acre commercial at Optima Reservoir
SPRAGINS REAL ESTATE
Guyton, Okla.
405-338-7211 or 338-8289
52-4tc

Offered Exclusively By
EMMETT R. SANDERS, REALTOR

Brick apartment house in top condition; 100% occupancy with waiting list; has four furnished units; great investment. Shown by appointment only, do not disturb occupants.
Small tract just west of Spearman, surface only, contains 31.7 acres. Call for details.
Immaculate 3 bedroom brick home, nice southeast location, bath and half, carpeted, fenced yard, attached garage, by appointment.
Reduced in Price, Dwelling and store building, small detached apartment on wide lot, ideal for professional office dwelling combined.
Near new 3 bedroom brick home, 2 baths, luxury carpet, nice drapes, energy-saver fireplace, dishwasher, disposal, self-cleaning oven, refrigerated air, fenced yard, double garage with opener- all this and nice SE location too. By appointment, exclusively.
EMMETT R. SANDERS
REALTOR
659-2516
659-2601 [nights]
34S-rtm

FOR SALE: 4 bedroom, 1 1/2 story stucco home, nice condition, near grade school; storm shelter basement; large corner lot. Ideal for large family, low budget. Shown by appointment, exclusively, Emmett R. Sanders, Realtor, 659-2516, nights 659-2601.
51-rtm tonly

FOR SALE: 4 bedroom, 1 1/2 story stucco home, nice condition, near grade school; storm shelter basement; large corner lot. Ideal for large family, low budget. Shown by appointment, exclusively, Emmett R. Sanders, Realtor, 659-2516, nights 659-2601.
51-rtm tonly

FOR SALE: 4 bedroom, 1 1/2 story stucco home, nice condition, near grade school; storm shelter basement; large corner lot. Ideal for large family, low budget. Shown by appointment, exclusively, Emmett R. Sanders, Realtor, 659-2516, nights 659-2601.
51-rtm tonly

FOR SALE: 4 bedroom, 1 1/2 story stucco home, nice condition, near grade school; storm shelter basement; large corner lot. Ideal for large family, low budget. Shown by appointment, exclusively, Emmett R. Sanders, Realtor, 659-2516, nights 659-2601.
51-rtm tonly

FOR SALE: 4 bedroom, 1 1/2 story stucco home, nice condition, near grade school; storm shelter basement; large corner lot. Ideal for large family, low budget. Shown by appointment, exclusively, Emmett R. Sanders, Realtor, 659-2516, nights 659-2601.
51-rtm tonly

FOR SALE: 4 bedroom, 1 1/2 story stucco home, nice condition, near grade school; storm shelter basement; large corner lot. Ideal for large family, low budget. Shown by appointment, exclusively, Emmett R. Sanders, Realtor, 659-2516, nights 659-2601.
51-rtm tonly

FOR SALE: 4 bedroom, 1 1/2 story stucco home, nice condition, near grade school; storm shelter basement; large corner lot. Ideal for large family, low budget. Shown by appointment, exclusively, Emmett R. Sanders, Realtor, 659-2516, nights 659-2601.
51-rtm tonly

FOR SALE: 4 bedroom, 1 1/2 story stucco home, nice condition, near grade school; storm shelter basement; large corner lot. Ideal for large family, low budget. Shown by appointment, exclusively, Emmett R. Sanders, Realtor, 659-2516, nights 659-2601.
51-rtm tonly

FOR SALE: 4 bedroom, 1 1/2 story stucco home, nice condition, near grade school; storm shelter basement; large corner lot. Ideal for large family, low budget. Shown by appointment, exclusively, Emmett R. Sanders, Realtor, 659-2516, nights 659-2601.
51-rtm tonly

FOR SALE: 4 bedroom, 1 1/2 story stucco home, nice condition, near grade school; storm shelter basement; large corner lot. Ideal for large family, low budget. Shown by appointment, exclusively, Emmett R. Sanders, Realtor, 659-2516, nights 659-2601.
51-rtm tonly

FOR SALE: 4 bedroom, 1 1/2 story stucco home, nice condition, near grade school; storm shelter basement; large corner lot. Ideal for large family, low budget. Shown by appointment, exclusively, Emmett R. Sanders, Realtor, 659-2516, nights 659-2601.
51-rtm tonly

FOR SALE: 4 bedroom, 1 1/2 story stucco home, nice condition, near grade school; storm shelter basement; large corner lot. Ideal for large family, low budget. Shown by appointment, exclusively, Emmett R. Sanders, Realtor, 659-2516, nights 659-2601.
51-rtm tonly

FOR SALE: 4 bedroom, 1 1/2 story stucco home, nice condition, near grade school; storm shelter basement; large corner lot. Ideal for large family, low budget. Shown by appointment, exclusively, Emmett R. Sanders, Realtor, 659-2516, nights 659-2601.
51-rtm tonly

FOR SALE: 4 bedroom, 1 1/2 story stucco home, nice condition, near grade school; storm shelter basement; large corner lot. Ideal for large family, low budget. Shown by appointment, exclusively, Emmett R. Sanders, Realtor, 659-2516, nights 659-2601.
51-rtm tonly

FOR SALE: 4 bedroom, 1 1/2 story stucco home, nice condition, near grade school; storm shelter basement; large corner lot. Ideal for large family, low budget. Shown by appointment, exclusively, Emmett R. Sanders, Realtor, 659-2516, nights 659-2601.
51-rtm tonly

FOR SALE: 4 bedroom, 1 1/2 story stucco home, nice condition, near grade school; storm shelter basement; large corner lot. Ideal for large family, low budget. Shown by appointment, exclusively, Emmett R. Sanders, Realtor, 659-2516, nights 659-2601.
51-rtm tonly

FOR SALE: 4 bedroom, 1 1/2 story stucco home, nice condition, near grade school; storm shelter basement; large corner lot. Ideal for large family, low budget. Shown by appointment, exclusively, Emmett R. Sanders, Realtor, 659-2516, nights 659-2601.
51-rtm tonly

FOR SALE: 4 bedroom, 1 1/2 story stucco home, nice condition, near grade school; storm shelter basement; large corner lot. Ideal for large family, low budget. Shown by appointment, exclusively, Emmett R. Sanders, Realtor, 659-2516, nights 659-2601.
51-rtm tonly

FOR SALE: 4 bedroom, 1 1/2 story stucco home, nice condition, near grade school; storm shelter basement; large corner lot. Ideal for large family, low budget. Shown by appointment, exclusively, Emmett R. Sanders, Realtor, 659-2516, nights 659-2601.
51-rtm tonly

FOR SALE: 4 bedroom, 1 1/2 story stucco home, nice condition, near grade school; storm shelter basement; large corner lot. Ideal for large family, low budget. Shown by appointment, exclusively, Emmett R. Sanders, Realtor, 659-2516, nights 659-2601.
51-rtm tonly

FOR SALE: 4 bedroom, 1 1/2 story stucco home, nice condition, near grade school; storm shelter basement; large corner lot. Ideal for large family, low budget. Shown by appointment, exclusively, Emmett R. Sanders, Realtor, 659-2516, nights 659-2601.
51-rtm tonly

For The Ultimate In
STORM DOORS
Custom Built, Designed, And In
Colors To Fit Your Home....
Contact Howard Meyer at
Only Aluminum Industries
Guyton, Okla. 114 W. 1st 405-338-0966 or 73942 338-6178

LEGAL NOTICE

For Sale by Sealed Bid: The Spearman Independent School District will accept sealed bids for the sale of one -1974 Chevrolet 9 passenger station wagon and one 1973 Chevrolet 1/2 ton pickup. These vehicles may be inspected at the school bus yard at the high school campus. Bids must be submitted to the School Business Office not later than 5:00 PM, Monday, November 12, 1979. The Board of Trustees of the Spearman Independent School District reserves the right to accept and/or reject any or all bids received.
51S-3tc

Century 21
JUST BUILT-3 bedrooms; 2 baths, with large living room for entertaining. Priced to sell!
3 Bedrooms with large back yard. Close to Elementary.
Excellent income property, 2 bedroom home, with 3 trailer hook-ups on lot.
Commercial Lots on Highway 20.
Residential Lots Zoned for Mobile Homes.
14 x 80 Mobilehome, 3 bedroom.
Double Wide 24' x 53' carpet throughout, 1 1/2 bath.
GOLDEN SPREAD REALTY 659-2557
Ronnie Hoover, Sales Associate, 659-3696
Daryl Wynn, Broker, 658-4528
42S-rtm

LEGAL NOTICE
Pursuant to TEX. REV. CIV. STAT. ANN. art. 1446c, Section 43, High Plains Natural Gas Company hereby gives notice of its intention to raise residential and commercial rates in the unincorporated portions of Ochiltree and Hansford Counties, effective November 29, 1979 to:

CARD OF THANKS
We would like to deeply and sincerely thank all the wonderful people who helped us when we took the two children that belonged to a relation of ours. Without all the wonderful help we received it would have been very hard. The little girl received so many nice clothes from different people. A very warm thanks goes to my Sorority, Rho Rho, for helping us with money to outfit them. Also a special thanks to Mrs. Depee and Mrs. Orr, their teachers and everyone who touched these two lovely children's lives while we had them. Our hearts are very heavy in having lost them, but we feel we and all of you helped make a lasting impression on their lives.
Sherry & Terry Moore
Billie Jo & Shawn
TO GIVE A WAY: 8 mo, old female Irish Setter, AKC registered. Call 659-3097 after 6 p. m., or 435-4140

WANTED
Make Pastries, etc. Beverly Wagner 659-3529 49S-6tc
Will do baby sitting in my home. 659-2927. 42S-rtm

WANTED IMMEDIATELY
Production Foreman
Production Clerk
Transpetco 1 needs a first class Production Foreman and Production Clerk for its Spearman office.
Duties will be in conjunction with a CO2 enhanced oil recovery project initially involving 65 wells.
Call 659-2790 or 659-2016 for an appointment.
52-rtm

LOST
LOST: 2 Heifers, weighed 3301, 13 miles East of Spearman. Red marks on left hip. 659-2786 or 2367.
50-rtm
LOST: 7 head mixed steers and heifers, 600 lbs. Laying down H on left hip, green ear tag in left ear. Call 659-2100 or 659-3227.
52-rtm
LOST: Small calico kitten. Lost on Cotter Dr. Call 2189.
52-rtm

GARAGE SALE
Five family garage sale, Saturday, November 10 from 10 A.M. to 4 P.M. at the Home Demonstration Bldg. on North Bernice Street.
52-1tp

ATTENTION
Derrick Hands
Now Paying
15¢
For Cotton-Seed
Hull SACKS
Wrapped in bundles of 25
Call 659-3696 or 659-2557

PUBLIC NOTICE

Pursuant to TEX. REV. CIV. STAT. ANN. art. 1446c, Section 43, High Plains Natural Gas Company hereby gives notice of its intention to raise residential and commercial rates in the unincorporated portions of Ochiltree and Hansford Counties, effective November 29, 1979 to:

MONTHLY USE
0-1 MCF \$3.50
2-1200 MCF 77.4¢ mcf plus intracompany charge
over 1200 MCF 72.4¢ mcf plus intracompany charge

The intracompany charge is established for High Plains transmission system by the Railroad Commission of Texas. It is currently \$1.3255/mcf plus 95% or less 100% of the amount by which High Plains' weighted average cost of gas is more or less than \$1.045/mcf.

Information concerning the proposed change can be obtained from the High Plains Natural Gas Company office at 109 South Main Street, Canadian, Texas phone (806) 323-6464 or by contacting the Director of Gas Utilities Division, Railroad Commission of Texas, P.O. Drawer 12967, Austin, Texas, 78711, (512) 445-1146.

HIGH PLAINS NATURAL GAS COMPANY

TEXAS PRESS
MEMBER 1979 ASSOCIATION
PUBLICATION (USPS 509-660)
SPEARMAN, TEXAS 79081
213 Main Box 458 659-3434
Published Weekly at 213 Main Street
Spearman, Texas 79081
Owner-Publisher William M. Miller
Editor Faye Lynch
Second Class postage paid at Spearman, Texas
ANY ERRONEOUS REFLECTION UPON THE CHARACTER OF ANY PERSON OR FIRM APPEARING ON THESE COLUMNS WILL BE GLADLY AND PROMPTLY CORRECTED UPON BEING BROUGHT TO THE ATTENTION OF THE MANAGEMENT.
SUBSCRIPTION RATE: Hansford, adjoining counties, combination with the Hansford Plainsman, \$10.40.
Other points, \$14.40.

ATLANTIC CITY, N.J.--Annie Sacoo and her fellow workers at the Penthouse Boardwalk Hotel were laid off in style, when more than 300 bellboys, chambermaids, cooks and waitresses dined, drank and danced in a "close-off party" to mark the closing of the Boardwalk hotel.

VIRGINIA WHITE
Realtor
Big T Training Stable
Introducing 1975 AQHA
Chestnut Stallion
Height 15'2", wt. 1200 lbs.
Also gentle break & train horses. Call 405-888-4295, or 806-822-4295 43-8tc

GOOD EQUITY BUY-3 bdrms., 1 bath. OWNER PRIDE STANDS OUT-EXCELLENT CONDITION 9% Interest Rate on assumption. Mid 20's. Call for appointment.
GOOD GRIEF CHARLIE BROWN! all this for so little! 3 huge bdrms., 2 baths, 2 living areas. NEAR ELEMENTARY SCHOOL. Mid 30's. Assumption possible. By appointment only.

FAMILY SIZE! 2 large living areas with woodburners. Gourmet kitchen, 4 huge bedrooms, 3 baths. CONVENIENT TO SCHOOLS. PRESTIGIOUS LOCATION.

WHY RENT? Buy this 4 room house on Endicott and let the two rental mobilhomes included make your payments. On 150' corner lot, storage bldgs., big garden area, much more. See today.

OLDER HOME WITH LOTS OF SPACE on corner lot. 4 bedrooms, 2 baths, fenced, large storage house, Mid 20's. Great possibilities. Call for appointment.

COMMERCIAL BUILDING-MAIN ST. Did house a barbershop (furnishings go with sale) on one side and a beauty shop on one side. SPACIOUS. PRICED TO SELL. CALL!

EXCLUSIVELY WITH VIRGINIA WHITE REALTOR 659-3841



Century 21
Golden Spread Realty
Spearman (806) 659-2557
Perryton (806) 435-5444
Booker (806) 658-4528
Ronnie Hoover 659-3696 Bud Aylett 435-2109
Rex Hoover 658-4883 Christine Aylett 435-2109
Barbara (B.J.) Hoover 658-4868 Violet Igoy 435-5775
Daryl E. Wynn, Broker - 688-4775

JUST BUILT:
3 bedrooms, 2 baths, with large living room for entertaining. Priced to sell!

3-BEDROOMS
with large back yard. Close to Elementary!

Call Us
WE'RE THE NEIGHBORHOOD PROFESSIONALS.
© 1978 Century 21 Real Estate Corporation. Licensed Trademark of Century 21 Real Estate Corporation. Printed USA. Each office is independently owned and operated. Equal Housing Opportunity.
CENTURY 21 "21 Reasons Why" brochure at participating offices.

KIRBY SALES & SERVICE
New & reconditioned vacuum cleaners. 912 S. Bernice. 659-2797.
19-rtm

CUSTOM HAY BALING-16 x 18 bale. Jerry D. Virden, Box 595, Gruver, Texas. 733-2236.
27-rtm

Make your car upholstery and carpet look like new with our commercial size steam cleaner.
Let us clean it or rent our cleaner.
FREE ESTIMATE for steam cleaning, call 435-5289 or 659-2952.
Willis Friesen
39S-rtm

SNOOPY'S DAY SCHOOL
Open 7 a.m. to 7 p.m. Mon-Fri. Sat 8 a.m. to 5 p.m. Phone 659-3328.
48-rtm

BILL BURGER'S BARBER SHOP
New Open
Tuesday thru Saturday
Hours 8:30 - 6:00
On Mondays & After Hours
Call 2915

MONUMENTS
Save 20% to 30%
Agents and Undertakers
Commission
ALVA MONUMENT CO.
Alva, Okla.
51-rtm tonly

Will mend or build barb wire or electric fence. Call 659-3868.
52-4tp

CUSTOM SWATHING & BALING, Fred Mayfield, 659-3342, Harvey Whitefield, 659-3332 or 659-2315.
52-8tc

Decorator cakes & cookies for parties, special or just at home. Call Debbie at 3986 or call 3328.
48S-rtm

Decorative cakes & cookies for parties, special or just at home. Call Debbie at 3986 or call 3328.
48S-rtm

Decorative cakes & cookies for parties, special or just at home. Call Debbie at 3986 or call 3328.
48S-rtm

Decorative cakes & cookies for parties, special or just at home. Call Debbie at 3986 or call 3328.
48S-rtm

Decorative cakes & cookies for parties, special or just at home. Call Debbie at 3986 or call 3328.
48S-rtm

Fruitcake Review Support Committee Named

Jim Benson is chairman of a special committee for the Fruitcake Review featuring assorted local nuts in two evenings of good clean fun and frolic for the whole family sponsored by the Chamber of Commerce and the Y.M.C.A. Members of the special committee are representatives from those two organizations and besides Jim Benson consist of Dick Elbert, Kim Brock, and Allen Alford.

Benson says that the special committee is a support committee for the general chairperson Joy McCormack, and it is a special sounding board committee for the director from Cargill Agency in New York. It will help the chairpersons and the director make decisions and iron out problems that might possibly arise. They are to help take any flack off the director and the co-chairpersons.

Because people have responded so beautifully in Spearman, thus far the committee has had no problems to do anything about.

Fruitcake Review is a project to increase community awareness and togetherness. It is meant to benefit financially the Chamber of Commerce and the Y.M.C.A. The Chamber's share of the proceeds will go toward a four color brochure for Spearman. The Y's portion will go to purchase additional needs at the Y.

Joy McCormack and Mary Lou Wyson are co-chairpersons for the Fruitcake Review.

Program committee who have been busy selling ads are Bobbie Novak and Dana Schnell, co-chairpersons, Gina Davis and Nancy Graves.

Ticket committee consists of Robert Elliott, chairman, Robert Queener and Edwin Limbocker.

Jim McLain and Tim Woodington are co-chairmen of the Extra Revenue committee.

Mary Brock is the Talent chairperson; Judy Nelson and Glenda Guthrie are co-chairpersons, and other committee members are Eddy Gale Martin, Sherry McWhirter, and Mary and Perry Dixon.

Costume committee consists of Cynthia Floyd, chairperson, Carol Hall, Sherry McWhirter and Dorothy Buzzard.

Make-up committee consists of Frances Scroggs, chairperson, and Helen Melton.

Scenery and Props Committee chairperson is Teresa Hargis, and Kari Schumann, Byrnie Callaway, Maxine Little, and Rosa Baker.

Frances Loftin is chairperson for the publicity committee and she has Regina Gordon, Bryce Palmer, and Ed Freeman working with her.

Bill Pittman is the finance committee chairman.

Ralph Blodgett and Nancy McIntyre are co-chairpersons for the Patron committee.

Buck Tucker is chairman of the Usher committee.

All of these committees are going to need lots of people to help them carry out their jobs. People in the community are invited to pick out their niche and call the particular chairperson and volunteer your services.

The Best
One of the best face-saving ideas is to keep the lower half of it shut.
-W.O.W. Magazine.



See SANTA in person

Sears
10% Off On Display Items Saturday, Nov. 17 only. Free gift with each \$35 order.
Saturday, Nov. 17 2 p.m. to 5 p.m.
GIFTS FOR THE KIDDIES

Time To Control Cattle Lice

Lice cost U.S. cattlemen about \$67 million last year, so it's important to control them, says Layton Barton, County Agent with the Texas Agricultural Extension Service, Texas A&M University System.

Lice begin to reproduce rapidly with the onset of cool weather, so peak populations on cattle occur in late winter and early spring. Uncontrolled lice can soon infest a whole herd because with cold weather, cattle tend to bunch up more so that the pests can move easily from one animal to another. Heavy hair coats on animals during cold weather also afford protection for the parasites and allow for increased reproduction.

Both types of lice—bloodsucking and biting—infest cattle. Sucking lice pierce the animal's skin and suck blood while biting lice feed on particles of hair, scale, scab and skin exudation, explains Barton.

Lice infestations irritate animals, causing itching, scratching and rubbing on fences or anything else available. This produces denuded areas, bruises and lacerations on the affected animal. Heavily infested animals will have an unthrifty appearance and will suffer weight reduction, decreased milk production, anemia or even death. Lice infested animals may also be more subject to infectious diseases. Heavy lice infestations often stunt calves.

Spraying or dipping infested animals with the proper insecticide is the most effective means of controlling lice, says Barton. However, properly placed and maintained dust bags offer effective control and save both time and labor. Position dust bags prior to lice buildup so that cattle can become accustomed to using the bags. A dust bag station should serve about 30 head. Depending on cattle size, place the bags so that they are placed so that cattle must pass under them to get feed or water, begin to control lice sooner than those used free-choice. By allowing a two-to-three week adjustment period, free-choice bags can be about as effective as forced-use types.

In spraying or dipping program an animal must receive a thorough soaking in each of two applications 14-18 days apart to effectively control lice, contends Barton. The second spray or dip will kill any lice hatching from eggs that were laid prior to the first spraying. When spraying, use a high pressure (250 pounds per square inch) and thoroughly wet animals to the skin.

For a list of effective insecticides for controlling lice, Barton suggests that cattlemen

obtain a copy of "Suggestions for Controlling External Parasites on Livestock and Poultry" at the County Extension office.

Checks the label on the insecticide container and pay particular attention to warnings, restrictions and waiting periods, especially if some of the cattle are being prepared for slaughter, cautions Barton.

In Fashion

The coat sweater in 100 percent acrylic and natural color is smart with skirts and pants. Cable and chain stitch designs combine for style.

The "Carrousel" quilted nylon airplane jacket provides warmth for youngsters against cold, winter winds. The quilted jacket is piled in.

USDA Proposes Regulations

WASHINGTON--Proposed penalties and procedures the U.S. Department of Agriculture will use to handle violations of the Agricultural Foreign Investment Disclosure Act were announced today by Ray Fitzgerald, administrator of the department's Agricultural Stabilization and Conservation Service (ASCS).

The Act requires foreign owners of U.S. agricultural land to report their holdings to ASCS and provides for penalties of up to 25 percent of the fair market value of the owner's interest in the land, Fitzgerald said. The proposed regulations spell out the procedures ASCS will use in determining if there was a violation of the law and in assessing penalties as well as provide an outline of the appeal procedure for individuals who wish to challenge ASCS findings, he said.

Under the proposals, individuals who file a late report may be fined one-tenth of one percent of the fair market value of

the land for every week the report is late, not to exceed 25 percent of the land's value. Individuals who fail to report or who file an incomplete or misleading report may be fined the entire 25 percent.

Fitzgerald said the public is invited to comment on the proposals which are scheduled to appear in the Oct. 26 Federal Register. Deadline for submitting written comments is Dec. 26.

Comments should be addressed to the administrator, ASCS-USDA, room 218-W, P. O. Box 2415, Washington, D.C., 20013.



According to a legend of the Guatemalan Mayans, the first four men created were made of corn paste.

LOCAL NEWS

Best Of Press

Mark of Success
The successful man of today is one who can borrow enough money to get out of debt.
-Republican, Toronto.

FOR SALE: Honda street Motorcycle, 1,400 miles-180 CC Automatic starter, Turn signal lights, priced right. Ask for Mr. Salazar at TG&T
TG&Y, or phone 659-3741 or home phone 659-3501.

For sale: 24 inch boys 10 speed bicycle. Excellent condition must see to appreciate. Call 659-3741, Mr. Salazar, home after 6 p. m., 659-3501.



Bamboo, actually a giant of the grass family, grows 100 or more feet tall in the tropics.

AUCTION
Every Sunday
2:30 P.M.
Consignments Welcome - accepted until 11 a.m. Sunday

Open daily 9:30 to 6 p.m.

SUVASTA PUBLICA
Cada Domingo 2:30 de la tarde
Mercancia, bien benida - acptamos
Hasta las 11:00 de la Mahia el domingo
Abrimos diariamente a las 9:30 de la mahia asta las 6 de la tarde.

If you want us to pick up an item for you, call 659-2343

Trading Post

SPEARMAN TRADING POST
203 Collard 659-2343
SPEARMAN, TEXAS

WANTED GRAIN FARMERS

- ★ Who want a larger return on their investment
- ★ Who want to tie their grain production to the energy supply
- ★ Who want a marketing alternative for their grain

IF YOU ARE INTERESTED . . .

- In the grain future in our area
- In managing your own affairs
- In helping build a fuel-alcohol plant to process YOUR grain --- wheat, corn and milo

Then attend this meeting

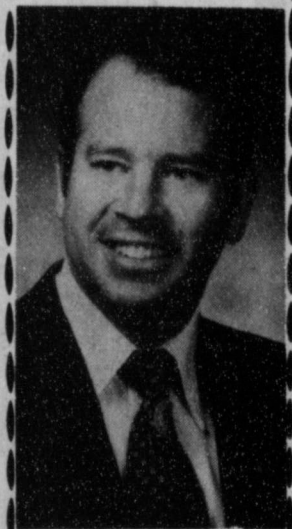
Tuesday **6:30 p.m.** **County Barn**
November 13 **In Spearman**

Free Meal Will Be Served

Northwest Texas Grain Products Cooperative

Energy Through Agriculture

HEAR



Bob Miller

PREACH

Nov. 11-14
7 AM - 12 Noon
7 PM

FIRST BAPTIST CHURCH

Nursery OPEN

Peggy's Pointers

PEGGY'S POINTERS
Peggy Winegarner
Co. Extension Agent (H.E.)

Learn and practice sound feeding habits for infants. The idea that a fat baby is a healthy baby is a misconception.

The American Board of Pediatrics advocates the following infant feeding practices:

Infants should stop eating when they indicate they are ready to stop eating—not when the bottle or bowl is empty.

The infant should be breast fed or bottle fed the first six months. Breast-fed infants should receive daily supplements of seven mg. of ferrous sulfate or other high-bioavailable iron supplement, vitamin D (400 I.U.) and fluoride (0.25 mg).

Feed bottle-fed infants commercially prepared, iron-fortified formulas. These require no supplements except for fluoride if the local drinking water contains none.

Evaporate milk formulas are satisfactory substitutes if daily feedings are supplemented with

20 mg. of ascorbic acid and seven mg. of iron.

Foods other than milk or formula are not recommended until the infant is five or six months of age. Use more frequent feedings of formula as the infant requires more calories instead of introducing cereal or other foods to help the infant sleep through the night.

Allergic disorders have been linked to introducing foods too early in the infant's diet.

During the fifth or sixth months, introduce and feed iron-fortified dry cereals until the child is eighteen months of age to assure adequate iron intakes.

After cereal is well accepted, introduce other foods, commercially or home prepared, one at a time.

Introduce only one or two foods in the same week. Fruits or vegetables can be introduced interchangeably.

No evidence exists that supports the misconception that fruits before vegetables influences the acceptance of the taste of vegetables.

During this time, the milk or formula still supplies the protein.

The mother may continue

breast feeding as long as 18-24 months, but she should include other foods by five or six months. Partially breast-or-formulated infants need some foods high in protein.

As the intake of foods other than formula amounts to 200 mg. (seven and one-half to eight ounces) daily, homogenized, vitamin D-fortified whole milk may replace the formula. The amount of milk should not exceed 900 ml. (30 ounces) a day.

Low-fat and skimmed milk are not recommended.

When milk replaces formula, include a source of ascorbic acid or vitamin C (strained juices with vitamin C added or fresh or frozen orange juice -- 1.5 ounce), (strained juices with vitamin C added or fresh or frozen orange juice -- 1.5 ounces).

Never feed juice by bottle. Feeding sweet juices by bottle can lead to dental problems.

Teaching At Believers Cottage

Dorcas Collard will be teaching at the Believers Cottage on Friday, November 9 at 8:00 p.m.

Yucca Council Installs President



Patricia Kelly (Left) accepts a silver bowl symbolizing the gratitude of the Yucca Girl Scout Council for her years of service as President from Margaret Duckworth (Right) who succeeds her in office.

The Yucca Girl Scout Council has recently installed as President of the Board of Directors Margaret Duckworth of Elkhart. Mrs. Duckworth, formerly First Vice-President, assumed the presidency after the resignation of Patricia Kelly of Liberal, who has moved with her family to Oklahoma City. Mrs. Duckworth will complete the current term and will be presented to the membership as nominee for a full term at the Annual Meeting of the Council on November 11 in Guymon.

The Board expressed the appreciation of the Council to Mrs. Kelly for her loyal and untiring volunteer service and presented her with a silver bowl engraved with the Girl Scout emblem and the dates of her

term in office.

Other officers to be nominated at the Annual Meeting are Gaynelle Riffe, First Vice-President; Margarette Evans, Second Vice-President; Alice Bird, Third Vice-President; Janice Sladek, Secretary; and DeLores Kinsey, Treasurer. Nominees for positions of Member-at-Large on the Council Board are Nancy Allen, Jeannie Daffern, Glen Fogo, Gaynelle Henderson, Aleta Kingen, Tommie Jean Ogston and Serafin Ramon. District Chairman nominees are Linda Davis, Corinne Foss, and Waunita Ferguson.

"He who has his thumb on the purse has the power."
Bismarck

Golden Gleams

Necessity never made a good bargain.

-Benjamin Franklin.

Necessity is the last and strongest weapon.

-Livy.

Necessity is the mother of courage, as of invention.

-Walter Scott.

Whatever necessity lays upon thee, endure; whatever she commands, do.

-J.W. Goethe.

Miss Texas Teen USA

Pageant Set

Young ladies of this area between the ages of 14 and 18 years of age are invited to enter the MISS TEXAS USA PAGEANT. The 1980 State Finals will be held at the Sheraton Dallas Hotel, April 4, 5, & 6, 1980, Dallas, Texas. The Texas Pageant is the Official State Preliminary for the MISS TEXAS USA PAGEANT to be held in November of 1980.

Contestants will be judged on: Scholastic Achievements, Civic Involvement, Beauty, Poise, Personality and Patriotic Speech or Talent. No swimsuit competition is involved.

Each Contestant accepted will be required to participate in the VOLUNTEER SERVICE PROGRAM of the MISS TEXAS USA PAGEANT and must maintain a "B" or better grade average in school. This Volunteer Service program teaches teenagers to share and participate in Community, School, and

Church activities by contributing at least 12 hours of their time to some worthwhile Civic or Volunteer work to benefit the community.

The Winner of the Texas Pageant will receive an ALL-EXPENSE PAID TRIP to compete in the National Finals of the MISS TEXAS USA PAGEANT, a \$500 Cash Scholarship, and other prizes. Among the prizes that will be awarded at the National Pageant in 1980 is \$15,000 in Scholarships and Awards, a new Automobile for the reigning year, \$2,000 Personal Appearance Contract, and a \$2,000 Wardrobe.

Those interested in entering the MISS TEXAS USA PAGEANT may write for information to Cappy M. Smith, State Director, 4605 S. Hope Springs Road, Stone Mountain, Georgia, 30083, or call (404) 292-1025 292-0963.



Swell Smell!

Glamour girl to clerk at perfume counter: "Do you have something that will bring out the mink in a man without disturbing the wolf?"

Prognosis

Mom--Susan, do you know what happens to little girls that lie?

Daughter--Yes; they grow up to be mothers who tell their children to eat their spinach because it makes their hair pretty and curly.

Signs of the Weather

"Think it will rain this afternoon?"

"I wouldn't be surprised. I've got a new hat, a fresh shoeshine, and I've just had my car washed."

Help Still Wanted

Boy--I've called about the job for a smart message boy: Manager--Sorry, my lad, the vacancy was filled yesterday.

Boy--Then it's a smart manager you need, to take the notice out of the window.

Cramped Quarters

Boss: "You want a raise? Why don't you live within your means?"

Employee: "I do sir; but you don't realize how I am crowded for space."

Sad Case

"Now, what do you do in a case like that?"

"Like what?"

"They tell me to strike and my wife orders me to keep on working."

FIRST REALTY
315 Main, Perryton, Texas 435-4064

I.L. Paul, Broker Sales, Charlotte Beasley
John Beasley
Janette George

QUALIFIED BUYERS

Perryton Spearman

LOW DOWN PAYMENT
LOW INTEREST
NEW 2 & 3 BEDROOM HOMES
CALL OR COME BY FOR DETAILS

CARQUEST AUTO PARTS STORES

ANNUAL TOOL SALE... NOW!

CARQUEST is proud to offer at substantially reduced prices, these hand tools from Proto -- a company in business for nearly 75 years -- providing the American working man with quality products with a reputation for dependability and performance.

Johnny Rutherford says, "Go with the Pros! See your CARQUEST Auto Parts Stores!"

CHALLENGER 3/8" DRIVE-20 PIECE SOCKET SET Sug. List \$78.35 NOW 39.95 SAVE 49% 9 standard sockets 3/8" to 7/8" 7 deep sockets 3/8" to 3/4" 5/8" spark plug socket 3/4" and 6" extensions Ratchet. Steel box.	CARQUEST HEAVY DUTY HACK SAW PLUS 10 FREE BLADES Sug. List \$14.28 ONLY 6.79 SAVE 52% #7229FP Rigid flat frame pistol grip handle. Accepts 10" and 12" blades at 4 angles w/out flexing. 12" 24-tooth blades.	MULTI-GROOVE PLIERS Sug. List \$6.47 JUST 4.49 SAVE 30% #52-42 Chrome plated, all-purpose tool handles nuts and bolts up to 13/16" square or hexagonal. Pipes up to 3/4".
KEY RING SCREWDRIVER Sug. List \$1.16 NOW 75¢ SAVE 35% #100 One of the handiest tools you'll ever own. Hundreds of daily uses.	CHALLENGER 7-PIECE HEXAGONAL BIT SET Sug. List \$28.31 ONLY 17.99 SAVE 36% #1490A 3/8" drive includes steel organizer box.	CHALLENGER 5-PIECE PUNCH & CHISEL SET Sug. List \$12.78 JUST 9.49 SAVE 25% #99A Drives pins, shears rivets and bolts. Score for drilling. Vinyl roll-up kit.
12-PIECE METRIC SOCKET SET Sug. List \$30.66 NOW 14.80 SAVE 51% #2400MA 3/8" drive 8 mm to 19 mm sockets. Handy steel tray.	CHALLENGER 6-PIECE SCREWDRIVER SET Sug. List \$19.79 ONLY 9.04 SAVE 54% #7505FP 3 standard blades and 3 Phillips blades in vinyl pouch.	LEVER-WRENCH PLIERS Sug. List \$6.97 ONLY 5.49 SAVE 21% #3093 Four tools in one. Powerful hand vise. Clamp. Pipe wrench. Pliers. Straight jaws. Apples holding pressure up to one ton.
12" ADJUSTABLE WRENCH Sug. List \$14.65 NOW 10.69 SAVE 27% #4012 Rugged I-beam construction. Jaw capacity 1-5/16".	6" COMBINATION SLIP-JOINT PLIERS Sug. List \$4.35 JUST 2.99 SAVE 31% #5126G Heavy chrome plate. Combines wire cutter and dual range gripping of fasteners, wires and tubing up to 1-1/2" diameter. Plastic grip.	

Good at all participating CARQUEST Auto Parts Stores through Nov. 30, 1979.

Hi-Plains Auto Supply, Inc.
118 N. Main 659-2506
Spearman

WE KNOW WHAT YOU MEAN WHEN YOU'RE TALKING PARTS

U UNITED Supermarkets

QUANTITY RIGHTS RESERVED
PRICES GOOD THRU NOV. 10TH

CHIFFON SPILL-MATE TOWELS JUMBO ROLL 59¢	PURR CAT ALL FLAVORS 6 1/2 OZ. 4.89	Tide GIANT SIZE 1.59
BOUNCE FABRIC SOFTENER 25' OFF LABEL 60 CT. 2.49	PINE-SOL LIQUID 28 OZ. BTL. 1.39	
TIDY CAT CAT BOX FILLER 25 LB. BAG 1.98	KRAFT FLOUR 5 LB. BAG 69¢	MIRACLE WHIP 32 OZ. JAR 1.09
MANAGER'S SPECIAL BORDEN'S ICE CREAM 1/2-GAL. 1.69	GLADIOLA COMPLETE CORNBREAD MIX 6.5 OZ. PKG. 4 FOR \$1	MINUTE RICE 25' OFF LABEL 28 OZ. 1.49
HEINZ STRAINED BABY FOOD MR. COFFEE 5 JARS 1.39	PRODUCE	VALENCIA LARGE SIZE ORANGES 4 LBS. \$1
	CALIF. ICEBERG LETTUCE LB. 33¢	CRISP GREEN CABBAGE LB. 12¢
	NO. 1 RUSSET POTATOES 5 LB. BAG 59¢	DELICIOUS APPLES 3 LB. BAG \$1

Rho Rho Sorority Meets

Rho Rho Sorority met on Oct. 25th in the home of Candy Boxwell. Our opening ritual was led by Vice President Janie Henton in absence of our President Karen Blodgett. A business meeting was then held. Plans for our next ways and means project was discussed. It was decided we would sell chances on \$200.00 worth of free groceries at \$2.00 a chance, with the drawing to be Nov. 14th at Thriftway. With the holidays coming up we felt anyone could use groceries. The program was given by Marilyn Cline on Quilting. She brought several beautiful quilts and things she had made. It was a most delightful and interesting program. Afterwards all joined in the closing ritual and prayer. Refreshments of pumpkin squares and tea were then served to: Candy Boxwell, Joan Brown, Linda Sanders, Marilyn Cline, Janie Henton, Delinda McLaughlin, Jackie Pearson, Susan Pearson, Lisa Pipkin, Jody Rex, Linda Sanders, Karen Schnell, Brenda Shield-knight, Dixie Smith JoLinda Hutchison, Gayle Smith, Kim Vanderburg, Sherri McWhirter, Shelly Beedy, Gina Davis Gaye Woolley, Judy Hutchison and Cathy McClellan.

Rho Rho Sorority had their first party of the season and their Halloween Costume party on Oct. 20th. Monte & Linda Blackman hosted the delightful party in their newly remodeled home. Some of the costumes that were devised were very unique to say the least. Doug & Kathy McClellan won the decorated pumpkin for having the best costume. They came as Chimney? Chimney Sweep! The food was delicious, games were played and it was a very

fun filled evening. Those able to attend were: Linda & Monte Blackman; Delinda & Danny McLaughlin; Dixie & Bobby Smity; Karen & Glen Blodgett; Linda & Bobby Brown; Lisa & Richard Pipkin; Gayle & Archie Smith; Linda & Phil Sanders; Janie Henton; Shelly & Jeff Beedy; Kim & Stephanie Brock; Gina & Pat Davis; Judy & Joe Hutchison; Kathy & Doug McClellan; Sherry McWhirter; Kim & Joe Vanderburg and Gaye & Joey Woolley.

Several of us were unable to attend but will make the next one!

Mrs. Armes Is Honoree

A bridal shower honoring Mrs. David Armes, nee Kelly Harper, was held Saturday, November 3 in the Fellowship Hall of the United Methodist Church.

The table was covered with an ecru table cloth and was centered with a fall floral arrangement. The cake, also decorated in fall colors, was served to the guests along with banana punch, coffee, nuts and mints.

The registry table was covered with an ecru tablecloth and held a daisy in a bud vase along with the Bride's book.

Kelly was presented a daisy corsage and a Hoover vacuum as the hostess gift.

Special guests were Kelly's mother Mrs. Carroll Harper and David's step-mother, Mrs. John Armes.

There were out of town guests from Gruver.

Hostesses for the shower were: Mary Schumann, Jeanette Allen, Beth Lesly, Mary Brock, Dixie Smith, Pat Dear, Michelle Beedy, Sharon Hamilton, Patty Sheppard and Betty Jo Vernon.

"Love that's wise will not say all it means." Edwin Arlington Robinson

Presbyterian Church News

There is a Sunday Church School class for everyone every Sunday at 9:45 a.m. and a warm, friendly teacher with an interesting, well prepared, practical Bible lesson.

"Christ Our High Priest" is the subject of Pastor Edward D. Freeman's sermon at the service for the public worship of God on Sunday, November 11 at 11:00 a.m.

Presbyterian Women will meet on Wednesday, November 14 at 9:30 a.m. Martha Batton will teach the lesson from the Gospel of Mark.

There is a warm Christian welcome awaiting anyone who attends any of the services and activities of the First Presbyterian Church.

Betty Freeman will be speaking on "Poverty" to the Women of Westminster Presbyterian Church on Wednesday, November 14 at 10:30 a.m. at the Amarillo Presbyterian Children's Home.



Bob and Debra Dennis of Elkhart, Kansas are proud to announce the arrival of a baby girl born November 2, 1979 at 1:52 a.m. Name! Amanda Rene she weighed 8 lbs. 2 oz. and was 22 inches long.

Grandparents are Mr. and Mrs. Gary O. Davis of Spearman and Mr. and Mrs. Robert F. Dennis of Frith.

Great-Grandparents are Mr. and Mrs. Oliver Davis and Mrs. Dot Brown of Sun City, Kansas. And Mr. and Mrs. E.C. Dennis of Guymon, Okla.

Great, Great Grandmother is Mrs. Gertrude Beck of Bartlesville, Okla.

Thanksgiving Dinner

The annual Union Church Thanksgiving dinner will be served Thursday, Nov. 15 in the church annex. Serving will be from 11:30

a.m. to 1:30 p.m. The cost of the meal this year will be \$4.00 for adults, and children from 6 to 12 \$2.50.

Tami Janzen Wins FHA Quilt

Tami Janzen of Spearman was the winner of the queen size handmade Log Cabin pattern quilt made by members of FHA and given away at the Halloween Carnival Oct. 27.

Tami is a former president of FHA. Mrs. Frances Hudson, home economics teacher at Spearman High School, said that the Future Homemakers made enough from the donations to send three delegates to Houston for the state meeting in April and for the secret grandparent party scheduled for December.

Shower Honors Mrs. Messer

Mrs. Loyd Messer, nee Leslie Alexander, was honored with a wedding shower Saturday, November 3 at the B&B Friendship Room.

The table, covered with a white lace cloth, was decorated with the bridal bouquet, a blue and white silk nosegay, with blue candles on either side. Also on the table were assorted cookies, fruit punch and nuts. Blue napkins accented the table.

The guests registered in the Bride's book at a table covered

Beta Beta Sigma Phi

Beta Sigma Phi is selling chances for \$200.00 worth of free groceries. The \$200.00 worth will be of your choice in groceries if won. Chances are \$2.00 apiece and may be purchased from any member of Rho Rho. The drawing will be Nov. 4th.

Please buy a ticket, you may be the lucky winner! So contact a member now; if someone hasn't already seen you.

with a white cloth. Leslie's corsage was blue carnations and she received a General Electric Coffeemaker from the hostesses.

Special guests were Leslie's mother, Mrs. Gretchen Alexander and her sister, Becky Alexander.

Hostesses for the courtesy were: Lori Scroggs, Jody Robertson, Jan Beasley, Helen Gibson, Mary Lou Wysong, Gina McLain, Sonya Godfrey, Maudene Patterson and Carol Short.

Arts & Crafts Guild News

The Arts and Craft Guild met Friday, November 2 at Bull's Inn with Mrs. Nolan Holt as hostess. Those attending were: Mmes. F. J. Hoskins, P. A. Lyon, Sr., Ned Turner, C. A. Gibner, Pope Gibner, Guy Fuller, Joe Traylor, Bill Russell and Deta Blodgett.

The next meeting will be Friday, November 9 in the home of Mrs. F. J. Hoskins.



Mr. and Mrs. Earl Waide

Waides celebrate 50th Anniversary

The children and grandchildren of Mr. and Mrs. Earl Waide honored the couple on their 50th Wedding Anniversary with a reception in the Methodist Church Fellowship Hall on Oct. 14.

It was on Oct. 8, 1929 that Earl Waide took Rosie French, daughter of Mr. and Mrs. C. C. French of Farnsworth, as his wife. The couple lived on the Waide farm south of Perryton until 1944 when they moved into town. They raised three sons, Earl Eugene, R. E. and Ronnie Lee.

At the reception, the serving table was covered with a white cutwork cloth belonging to Mrs. Earl Waide. It featured a yellow underlay and was decorated with fall flowers. A

three-tiered cake was served with punch or coffee, nuts and mints. The mints were made by Rosie Waide and her granddaughter, Rhonda Artho.

The granddaughters served the guests and the grandsons collected plates and visited with the guests. Mrs. Joanne Parker and Mrs. Janelle Street helped the grandchildren with the serving.

A display of cards sent by friends was one particular item of interest at the reception. Another item of interest were two books filled with memory letters from many of Rosie and Earl's friends.

Family members present at the reception included Dr. and Mrs. Ronnie Waide of Canyon, Rebecca, a senior at Canyon

High School, and Robin, a sophomore at West Texas State University; Mr. and Mrs. Mike Artho and Rachel of Dumas; Mr. and Mrs. R. E. Waide from La Pointe, Wis.; Courtney Waide and Carter Waide, both students at Kansas State University; and Mr. and Mrs. Danny Paetzold and Matthew of Hereford.

One of Mrs. Waide's sisters able to be with her for the celebration, was Mrs. Alta Reehl and her granddaughter Julie Reehl of Crete, Neb. Mr. and Mrs. Jesse French, Mrs. Waide's brother and his wife from Spearman, were also present, in addition to a nephew, Billy French of Oklahoma City.

WIN 1000

EXTRA S&W GREEN STAMPS

CHEESE 12 OZ. PKG.	\$1.39
CHUCK ROAST UNITED TRUTENDR BEEF BLADE CUTS LB.	\$1.19
ROAST PORK SWIFT'S TENDER LEAN BOSTON BUTTS LB.	98¢
BONELESS STEW EXTRA LEAN CUBES OF BEEF LB.	\$1.89

FRYER PARTS

CONTAINS *2 BREAST QTRS. *2 LEG QTRS. *3 GIBLETS *2NECKS *1 BACK

39¢

WHOLE WHITING FISH	WILSON'S CERTIFIED BACON SLICED	PORK CHOPS SWIFT'S TENDER LEAN FAMILY PACK
<h1>49¢</h1> LB.	<h1>\$1.19</h1> LB.	<h1>98¢</h1> LB.

HUNT'S TOMATO SAUCE 8 OZ. CAN	HEALTH & BEAUTY
LONGHORN CHILI W/BEANS 15 OZ. CAN	COLGATE INSTANT SHAVE CREAM 11 OZ. 69¢
PACE PICANTE SAUCE 16 OZ. JAR	PERSONNA DLB. II CARTRIDGE RAZOR BLADES 5 CT. 98¢
BAMA STRAWBERRY PRESERVES 16 OZ. JAR	SUAVE 16 OZ. BTL. 98¢

8" FRY PAN (uses Casserole Cover)

Beautiful **COOPER** cookware at savings up to 60%!

\$5.99

only with minimum \$10 purchase REG. \$10.99

CARNATION CRINKLE FRIED POTATOES 2 LB. 79¢	"DAIRY" WHITE SWAN TEXAS STYLE BISCUITS 12 OZ. CAN 3 FOR 1
JENO'S MINI PIZZA 7 OZ. 69¢	BELL 24 OZ. COTTAGE CHEESE \$1.05
FINE FARE ORANGE JUICE 6 OZ. CAN 39¢	COUNTRY STYLE OLEO 1 LB. SOLID 3 \$1

UNITED Supermarkets

PRICES GOOD THROUGH NOV. 10TH

QUANTITY RIGHTS RESERVED

All you avid walkers come walk on November 11, 1979 at 2:00 P.M. We will start at the Shopping Center. Just contact Stephany Brock, Donna Thomas, Holly Simpson, Shelia Watley, Debbie Benton for forms. Forms can also be obtained from different businesses in town.

Anyone having total pledges of \$50.00 or more will receive a turkey. The person with the largest dollar amount in pledges will win \$100.00. There is no age limit. You can run, walk, ride bikes, etc...

All proceeds will go to the American Heart Association.

Mason's Night Planned

All Masons and their families are invited to "Mason's Night", Saturday, Nov. 10 at 6:30 p.m. in the Masonic Hall in Spearman.

Guayule, a dusty-looking shrub, contains the same latex as rubber trees and can be used to make rubber.

GUYMON, OKLAHOMA-CATTLE AUCTION MARKET - NEWS - LETTER

GREETINGS TO ALL CATTLE PRODUCERS

LAST FRIDAY A LIGHT RUN OF CATTLE WAS OFFERED FOR THE REGULAR AUCTION IN GUYMON, OKLAHOMA, DUE TO THE SEVERE WEATHER CONDITIONS IN OUR TRADE AREA.

ALL CLASSES OF CATTLE SOLD ON A STEADY TO STRONG MARKET. PACKER COWS SOLD FROM \$40.00 TO \$47.00 PER CWT. PREG AND BLOOD TESTED COWS SOLD FROM \$450.00 TO \$600.00 PER HEAD. STEER AND HEIFER CALVES SOLD ON A STEADY TO STRONG MARKET.

FOR NEXT FRIDAY, NOVEMBER 9TH, WE ARE EXPECTING SEVERAL GOOD CONSIGNMENTS OF NATIVE CALVES, SEVERAL CONSIGNMENTS OF PREG AND BLOOD TESTED COWS, AND SEVERAL CONSIGNMENTS OF FEEDER CATTLE. FOR MORE INFORMATION OR DETAILS GIVE US A CALL HERE IN GUYMON AT THE PANHANDLE LIVESTOCK COMMISSION COMPANY. OUR NUMBER IS 405-338-3378.

PANHANDLE LIVESTOCK COMMISSION CO.

Guymon, Okla. • 405-338-3378 • P.O. Box 879



ALLSUP'S

CONVENIENCE STORES

The **ULTIMATE**
FALL FOOD SALE
a new high in food savings!

WE RESERVE THE RIGHT TO LIMIT PRICES EFFECTIVE NOV. 4 - NOV. 10, 1979. SPECIALS GOOD WHILE SUPPLY LASTS! LIMITED SUPPLY!

Some of these items many not be available in the Gruver store...

FRESH

RATH'S BOLOGNA

99¢

12 OZ. PKG.

RATH'S

HICKORY LEAN

\$1.19

12 OZ. PKG.

SHURFRESH SLICED BACON 1 LB. PKG. 99¢	SHURFRESH MEAT FRANKS 12 OZ. PKG. 89¢
SHURFRESH MEAT BOLOGNA 12 OZ. PKG. 99¢	SHURFRESH DM OR SM BISCUITS 8 OZ. CANS 45¢
THRIFTING TISSUE 4 Roll Pkg. 69¢	
SHURFINE BLEACH GAL. JUG 59¢	ROKEY RATION DOG FOOD 15 1/2 OZ. CANS \$1.00
SHURFINE CRANBERRY SAUCE 16 OZ. CANS 27¢	SHURFINE YC SLICED PEACHES 16 OZ. CANS 28¢

SELF-BASTING TENDER-TIMER
18-22 LB. AVG.

SHURFRESH TURKEYS

69¢

1 LB.

ENRICHED

SHURFINE FLOUR

69¢

5 LB. BAG

SHURFINE PINEAPPLE 15 1/2 OZ. CANS 28¢	SHURFINE CUT GREEN BEANS 16 OZ. CANS \$1.00
SHURFINE WHOLE PEELLED TOMATOES 16 OZ. CANS \$1.00	SHURFINE PINK SALMON 15 OZ. CAN \$1.69

BORDEN'S ICE CREAM SANDWICHES 6 CT. PKG. **79¢**

BORDEN'S BUTTER MILK 1/2 GAL. CTN. **89¢**

BORDEN'S CHOCOLATE MILK 1/2 GAL. CTN. **59¢**

BORDEN'S PREM. ASSTD. ICE CREAM 1/2 GAL. CTN. **\$1.39**

BORDEN'S MUTTY BUDDIES 6 CT. PKG. **79¢**

GRANULATED

SHURFINE SUGAR

\$1.09

5 LB. BAG

SHURFINE CS OR WK

GOLDEN CORN

4 \$1.00

17 OZ. CANS

"Selznick couldn't believe my decision. It was the first time an unknown with no acting experience had turned down a contract with him. I could not become a world star without coming to America. I made the choice to remain French."

During the past 20 years, Delon has made almost 60 motion pictures, some of them international such as "Rocco And His Brothers," "The Leopard," "The Yellow Rolls-Royce," "The Centurians," "Is Paris Burning?," "Red Sun," and "Scorpio."

The French actor starred in two Hollywood pictures, "Once a Thief" with Ann-Margret and Van Heflin in 1964, and "Texas Across The River" with Dean Martin in 1966.

He has worked with such feminine stars as Brigitte Bardot, Jane Fonda, Shirley MacLaine, Monica Vitti, Virna Lisi, Simone Signoret, Romy Schneider, Jeanne Moreau, and such male stars as Burt Lancaster, Jean Gabin, Anthony Quinn, Richard Burton, Toshiro Mifune, and Charles Bronson.

"The Concorde - Airport '79," A Jennings Lang Production for Universal, stars Alain Delon, Susan Blakely, Robert Wagner, Sylvia Kristel, and guest stars Eddie Albert, Bibi Anderson, Charo, John Davidson, Andrea Marcovici, Martha Raye, Cicely Tyson, Jimmie Walker, David Warner, and George Kennedy as Patroni. Produced by Jennings Lang and directed by David Lowell Rich, the screenplay was written by Eric Roth from a story by Jennings Lang, inspired by the movie "Airport," based on the novel by Arthur Hailey.

Life for little people is a struggle to secure power.

WHO KNOWS?

1. What is a gazebo?
2. What is a beafalo?
3. In what year was sacchrin discovered?
4. Who was the first black elected to Congress?
5. Name the "Corn-husker State."
6. How many U.S. Presidents were born in Nov.?
7. Name them.
8. When was Standard Time introduced in the U.S.?
9. What was the former name of the Hawaiian Islands?
10. What is another word for spasmophemia?

Answers To Who Knows

1. A turret, windowed balcony, or summerhouse for gazing at scenery.
2. A crossbreed of bison and bovine.
3. 1879.
4. Edward Brooke (R-Mass).
5. Nebraska.
6. Five.
7. Polk, Taylor, Pierce, Garfield and Harding.
8. November 18, 1883.
9. Sandwich Islands.
10. Stuttering.

There are no rules that apply to every human being, and no human being that obeys all the rules.

NEWS VIEWS

David A. Clanton, FTC Commissioner, on doctor ads?

"Consumers lack access to fee and other information necessary to make an informed choice of a physician."

Thomas P. O'Neill, House Speaker: "To me fuel assistance for the poor is a national priority."

Charles L. Schultze, Economic Adviser: "The nation's inflation rate is likely to be stuck between 8 and 9 percent even after the impact of higher energy and housing prices wear off."

Robert C. Byrd, Senate Majority Leader: "I support the SALT II treaty. Without it we face a more costly, more uncertain and more dangerous futures."

Paul A. Volcker, Federal Reserve Board Chairman: "I have no hesitation in saying that the kinds of policies we are following will bring interest rates down..."

BIBLE VERSE

"Man looketh on the outward appearance, but the Lord looketh on the heart."

1. To whom was this verse spoken?
2. By whom was it spoken?
3. In connection with what incident?
4. Where may the verse be found?

Answers To Bible Verse

1. To the Prophet Samuel.
2. By Jehovah.
3. The anointing of David, the son of Jesse.
4. I Samuel 16:7b.

Les Aspin, Congressman (D-Wis): "I now feel quite confident that no U.S. intelligence agency was violating the law and keeping a watch on Andy Young."

Necessity is the constant scourage of the lower orders; ennui that of the higher classes. -Arthur Schopenhauer.

Pain and pleasure, good and evil join. To do the will of strong necessity. -P.B. Shelley.

LYRIC THEATRE

Phone 806-659-2812

ONE SHOW AT 7:30 P.M.
SUNDAY, MONDAY, TUESDAY,
WEDNESDAY, AND THURSDAY

TWO SHOWS AT
7:00 P.M. AND 9:00 P.M.
FRIDAY & SATURDAY

NOW SHOWING



At twice the speed of sound,
can the Concorde evade attack?

THE CONCORDE AIRPORT '79

A JENNINGS LANG PRODUCTION

ALAIN DELON SUSAN BLAKELY ROBERT WAGNER SYLVIA KRISTEL EDDIE ALBERT BIBI ANDERSSON CHARO SYBIL DANNING
JOHN DAVIDSON MONICA LEWIS ANDREA MARCOVICCI MERCEDES McCAMBRIDGE MARTHA RAYE AVERY SCHREIBER CICELY TYSON
JIMMIE WALKER DAVID WARNER GEORGE KENNEDY
Directed by ERIC ROTH JENNINGS LANG LAUD SCHIFFRIN JENNINGS LANG DAVID LOWELL RICH

November 7th through November 13

PELECULAS MEXICANAS



VIBORA CALIENTE

ERIC del CASTILLO
CHRISTA LINDER
CARLOS EAST
RICARDO NORTICA
NOE MURAYAMA
JORGE RUSSEL
MONICA MIGUEL

A COLORES



A COLORES

Sunday November 11 at 2 p. m.

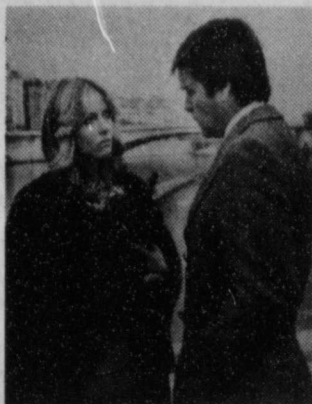
Boys Ranch here Fri.

The Spearman Lynx will take on the role of "spoilers" for the rest of this season, as they could determine the actual district winner, by defeating Boys Ranch, or Dalhart, or both! The Lynx will host the Ranchers here Friday night in a 7:30 p. m. conference game at Lynx stadium! Although the Lynx are not in the race for the district championship, this is possibly the favorite team of all fans in the area! Coach Duncan and his Lynx are just "fabulous" and all of the fans are looking forward to their contest here Friday night with Boys Ranch! The district is still up for grabs, and fans in Spearman are extremely proud of their Lynx, who have come close to winning all but one of their games this season! See you at Lynx stadium this Friday night!

Dutch beauty Sylvia Kristel stars in Universal's new air adventure spectacular, "THE CONCORDE - AIRPORT '79," which opens at the Theatre.



Susan Blakely and Robert Wagner star in "THE CONCORDE - AIRPORT '79," Universal's spectacular new air adventure drama which opens at the Theatre.



7th Grade & 8th Grade Lynx

Nov. 8 BOYS RANCH H 5:00--6:30
Nov. 15 DALHART T 5:00--6:30

9th Grade

Nov. 8
Nov. 15 DALHART H 5:00

Jr. Varsity

Nov. 8 BOYS RANCH T 7:00
Nov. 15 DALHART H 7:00

SING WITH



Among the earliest broadcasters on AM radio were educational institutions.

On Being Poor

Former New York Mayor John Lindsay told reporters recently he hadn't yet made up his mind whether to run for the Senate in New York. The Republican-turned-Democrat added he hadn't decided yet whether he wanted to be poor again.

It was Lindsay's weakness in failing to resist impossible demands from organized groups in New York City, including municipal employe unions which, in effect, led to bankruptcy for the city. That made many poor, and others unemployed. Thus Lindsay knows quite a bit about the subject.

Hot Air

Reputation is a large bubble which will burst when you blow it up yourself.

-Globe, Atchison, Kan.

Wisdom

When we discuss, we show our intelligence, when we argue, we display our ignorance.

-Grit.



Concorde crew members David Warner, George Kennedy and Alain Delon (left to right) survey the damage to their supersonic craft in this scene from "THE CONCORDE - AIRPORT '79," Universal's new air adventure drama opening at the Theatre.



Passengers aboard the Concorde are startled - and upheaved as the supersonic plane does some spectacular maneuvering to avoid disaster in Universal's new air adventure drama, "THE CONCORDE - AIRPORT '79," which opens at the Theatre.

The C.O.F.C. AND Y.M.C.A. PRESENTS

FUN & FROLIC for the WHOLE FAMILY!!!!

featuring: assorted LOCAL PUZZLES

FRUITCAKE REVUE

Meet The Director Party November 13, 7:30 p.m.

Old Beedy Bldg.

Plains Shopping Center

EVERYONE INVITED

Glen Mize
Nov. 11-14
FIRST BAPTIST CHURCH
7 AM 12 Noon
7 PM
Nursery Provided

26 WEEK MONEY MARKET

(182 Day Maturity)

CERTIFICATES OF DEPOSIT

RATE **12.086%**

Thursday, Nov. 8 through Wednesday, Nov. 14, 1979

Minimum deposit \$10,000 Federal regulations require substantial Interest Penalty for early withdrawals

NATIONAL BANK
OF PERRYTON, TEXAS

FDIC A FULL SERVICE BANK

Mr. Farmer:
We hope you get top yields and prices for your Milo! To aid you in your harvest needs, we have the following grain trucks in stock - rigged and ready to work for you!

We have approximately 40 new GMC pickups in stock. Call or drop by today.

Free Ice Scrapers

FREE 1980 CALENDARS by Lex Graham

Two 1980 GMC Tandems

Hendrickson Suspension, 366, 5 and 2, 22 ft. beds, gallon hoists.

Two 1980 - One 1979 GMC Bobtails

18 foot Midwest beds, 9.00 rubber, 366, 5 and 2

One 1980 - Two 1979 GMC Bobtails

16 Foot Midwest beds, 350, 4 and 2

We also have six cab-chassis GMC trucks that we can rig to your specifications.

WE HAVE JUST TRADED FOR 3 Very Nice Used Tandem Trucks

HERGERT
Pontiac, Buick, GMC
"The Best For Sales, Service & Body Shop"
WE APPRECIATE YOUR PATRONAGE!!

S. Hwy. 207 806-659-3721 Spearman, TX

Rotary Club News

"Bread for the World", a filmstrip on world hunger, was shown to the Spearman Rotary Club Monday noon by Ed Freeman as part of Rotary International's 3-H program—Health, Hunger, and Humanity. Each Rotarian contributed \$15 to this fund.

James Martin was the only visitor Monday noon.

Members present were Jim Benson, Eschol Blankenship, Roy Bull, Archie Burress, Durane Castleberry, John R. Collard, Jr., Robert Elliott, Pete Fisher, Ed Freeman, Ed Garner, Ron Hoover, Edwin Limbocker, Junior Lusby, David McClellan, Jack McWhirter, Jim Murray, Frank Oglesby, Brice Palmer, Michael Schnell, Jim Shirley, Lenis Simpson, Gary Sims, Vance Snider, Don Wirsdorfer, and Tim Woodington.

Members absent were J.L. Brock, Kim Brock, Kerry Henton, John Hutchison, Jim McLain, and Jerry Taylor.

District Governor Davis Armistead of Lubbock will meet with president John R. Collard, Jr., vice-president Eschol Blankenship, and secretary-treasurer Don Wirsdorfer Sunday, November 11 at 4:00 p.m. at the First State Bank hospitality room.

There will be a club assembly of all members on Sunday, November 11 at 6:00 p.m. in the hospitality room at the First State Bank.

Rotarians and their Rotary Anns will gather with Mr. and Mrs. Davis Armistead on Sunday, November 11 at 7:00 p.m. at the Golden Spread Center for a covered-dish dinner and social evening.

District Governor Davis Armistead will be speaking to the noon meeting of the Spearman Rotary Club on Monday, November 12 in the garden room of the Cattleman's Restaurant.

Rotarians voted to give \$500 to the Girl Scouts.

The Board of Directors and members of Golden Spread Center, want to thank the following for the sustaining membership dues and donations we received during our recent membership drive.

The money you donated will be used for operating expense.

Due to your continued support, Spearman has one of the nicest Senior Citizens Centers in the Pan handle!

Thank You Again

- Mrs. J. R. Collard
- Ellsworth oil Co.
- Excel Chevrolet, Olds, Inc.
- Cates Men & Boys
- Berry Cleaners
- B & B Sales
- Spearman Reporter
- Interstate Savings & Loan
- Consumers Sales Co.
- Brown & Graham Co.
- B & B Farm Industries, Inc.
- The General Store
- H & H Water Well Service
- J. G. 's
- Douglas Steger, O.D.
- Carl & Peggy Archer
- Mason & Henton
- Spearman Super Service
- Everett Tracy
- Baker & Taylor Drilling, Co.
- Junior Lusby "Cats"
- Jim Shirley
- Emmett Sanders
- H. P. Cates
- J. W. Gibner
- Elsie Mathews
- Lloyd Buzzard
- Mrs. Eldon Carroll
- Elmer Delosier
- W. R. Grever
- Farm Bureau Ladies Committee
- Boxwell Bros. Flower Shop
- Buster's Aerial Dusters, Inc.
- G. M. Head
- R. D. O'Loughlin
- Pittman & Shieldknight
- Nursanickel Motel
- Erwin & Betty Davis
- Spearman Redi-Mix

- Louis Schnell Electric Co.
- Walter Wilmeth Estate
- Troy Sloan
- John L. Hutchison
- Orville & Colean Brummett
- The Bunkhouse
- Brock Insurance Agency
- First State Bank
- Spearman Auto Supply
- P. A. Lyon Estate
- Joe Trayler Ford
- R.L. McClellan Grain, Co.
- Jarvis & Biggers
- Hergert Pontiac, Buick
- Gordon's Drug
- Tucker Water Well Service
- National Hardfacing
- North Plains International
- Hi-Plains Auto Supply
- Kenith & Frances Loftin
- Beady Furniture Co.
- Mrs. Rosalee Butts
- R. C. Porter
- J. E. Blackburn
- John Bishop
- Ray Ingle
- Altha Groves
- John Sutterfield
- Mrs. C. E. Reed
- C. A. Gibner
- The Gift Box
- Hansford Implement Co.
- Joe Trayler Ford
- Ed Garner
- Dairy Queen
- Mr. & Mrs. Raymond Sparks
- White House Lumber Co.
- Mr. & Mrs. Roy Russell
- Deacon & Willie Clements



On the left Mrs. Glenn Hiller, Mrs. Lucio Moreno, Rev. Lucio Moreno Verlin Beck and son, and Ray Ingle break ground for the new Spanish Baptist Church in Spearman last Sunday evening.



The First Baptist Church family broke ground for their new Spanish church in Spearman last Sunday evening at 2:00 p. m. Rev. Pogue was master of ceremonies for the gala affair!

Revival

The First Baptist Church of Spearman will be in revival November 11 - 14, led by Rev. Bob Miller of Happy, Texas and Glen Mize of Amarillo, Texas.

Rev. Bob Miller pastor of the First Baptist Church in Happy, Texas is recognized as Amarillo's Association outstanding evangelist. He's been strong in leading First Baptist Church in Happy to receive a great number of people into this church during his tenure there of seven months. Glen Mize has had outstanding ability in leading youth and young adults in Second Baptist Church, Amarillo, Texas. Before the revival we will be featuring three services a day at 7:00 AM, 7:00 PM, and 12:00 Noon. On Sunday evening at 6:00, the church is featuring a church-wide singing program that will be provided by the people of the church with the many music talents that is their's. First Baptist Church is happy to present to the community in Spearman, these two outstanding young leaders for these four days of revival.

You are invited to come to First Baptist Church for each of these services. The church will provide nursery facilities at each of these services.

Golden Spread Center News

Fifteen Golden Spread Club members will be leaving this morning, Thursday, November 8 at 8:00 a.m. to go to visit the Senior Citizens Center at Lawverne, Oklahoma and share a covered-dish luncheon. They will be traveling in the Golden Spread Center's Van-bus.

Arts and Crafts people will be making gifts for the hospital on Friday, November 9 from 10:00 a.m. to 2:00 p.m. There will be a lunch break at noon when they sit down to a covered dish luncheon.

Table games and pool will be featured Friday, November 9 from 2:00 to 5:00 p.m. at the Golden Spread Center.

Fifteen Golden Spread Club members will leave the Center on Monday, November 12 at 6:00 p.m. in the Golden Spread Center's Van-bus to go to eat at the Cattleman's Restaurant.

All those fifty-five years of age and older who have birthdays in November will be honored at a birthday party on Tuesday, November 13 at 6:30 p.m.

Another fifteen Golden Spread Club members will be leaving the Center on Wednesday, November 14 at 7:00 a.m. on the Center's van-bus for a trip to the Cowboy Hall of Fame in Oklahoma City and to the Oklahoma City Zoo. They will stay over night and return on Thursday, November 15.

Rosa Lee Butt will be picking up the sixty plus bunch in her car on Wednesday, November 14 from 9:00 a.m. to 12:00 noon to take them shopping, on errands, and to meet appointments. People needing such transportation should call the Golden Spread Center (3521) on Tuesday and get their name on the list.

Golden Spread Center is open every day Monday through Friday from 8:00 a.m. to 6:00 p.m. It is open to everyone fifty-five years of age or older without discrimination as to sex, race, color, national origin, ethnic background, religion, church membership, denominational preference, political party, or handicap.

sale Best Buys

TG&Y familycenters



Wisk Liquid laundry detergent. 64 oz. bottle. Limit 2 **1.99**
 Mop & Glow Super shine floor polish. 32 oz. Limit 2 **1.57**
 Suave Shampoo Clean Hair and Full Body. Reg., Oily, etc. 28 oz. Limit 3 **1.17**



Boys' Briefs 100% Cotton briefs. All White. 2 pair per package. Irregulars. S-M-L. **1.44** Pkg.



you'll just love the savings on tops and bottoms for "baby"...

Just Love® Tops & Bottoms Lap shoulder tops and terry pants in new designs. Infants' and toddlers' sizes. **2 For 3.00**



Jr. Fashion T-Shirt Mod in assorted stripes with Lurex thread. Polyester/Cotton blend. Sizes S-M-L. **3.97**
 Ladies' Knit Tops Choose Ottoman knit, diagonal terry, or Panne velvet. 6 styles in assorted colors and fabric contents. S-M-L. **6.97** Ea.



Jr. Shadow Stripe Blouse Solid color tops in 3 styles. Your choice of short-sleeve, 3/4-sleeve or long-sleeve. S-M-L. **6.99**
 Young Men's Chamol and Velour Shirt Long-sleeve, in assorted styles and colors. Sizes S-XL. **6.88**



Jr. Fashion Pant Designed of 100% woven Polyester. These neatly tailored pants are in a variety of fall colors. Sizes 5-13. **7.99** Pr.
 Jr. Fashion Jeans 100% Cotton Denim. Blue with Lurex trim on pockets in Gold or Silver. Sizes 3-13. **9.99** Pr.
 "Big Sweep" Nylon Gown Beautifully designed with 14" sweep. One size fits all. Assorted colors. **5.00**

TG&Y'S ADVERTISED MERCHANDISE POLICY—TG&Y's policy is to always have advertised merchandise in adequate supply in our stores. In the event the advertised merchandise is not available due to unforeseen reasons, TG&Y will provide a Rain Check, upon request, in order that the merchandise may be purchased at the sale price when it becomes available, or you may purchase similar quality merchandise at a similar price reduction. * We will be happy to refund your money if you are not satisfied with your purchase. It is the policy of TG&Y to see that you are happy with your purchases.



Your best buy is at TG&Y!
PRICES GOOD ONLY AT T.G. & Y. FAMILY CENTER
521 HWY. 207 SOUTH SPEARMAN, TEXAS 659-3742

First Round Sports Leagues End

FIRST ROUND SPORTS LEAGUES END

The Men's Basketball League finished the first session of play last Thursday night and Gruver was the victor. The final standings of the league were: Gruver 7-3, Agco 4-3, Sports Tally 3-7 and House's Team 3-7. Those playing for the Gruver team were: Tommy Henson, Jim Davis, Danny Henson, Vic Schumann, Wesley Maupin, Mike McLain, Kim Cluck, J. L. Griffin, Walter Murrell and J. Adams. Congratulations. The next session will be following high school and junior high basketball season.

The A League Women's Volleyball finished on Monday last, with Buster's Dusters winning by one game over First State Bank. The league ended with 1st to Buster's Dusters, 2nd to First State Bank, 3rd to Thriftway and 4th to J.G.'s. A well played and hard fought league.

The B League Women's Volleyball finishes this week. The standings are incomplete at this time, but those in the Y office find: Junior Lusby Cats 13-4, Speartex Bottoms Up 12-3, John Deere Does 7-9, Sacks 6-10,

North Plains International 3-7 and Bulls Inn 0-14.

The first round of the Men's Flag Football League has been completed. Five games have been played by each team. The first round was won by the team representing Perryton with a 5-0 record, others finished with Dairy Queen, Gruver and Davis Oil tied with 3-2 records, Sports Tally has a 1-4 record and Spearman Electronics who joined the league late finished with an 0-5 record. There will be five more games from which to decide the overall championship.

We hope, with an extra week's rest, some of the players who encountered warmup injuries, injuries from collisions with their own men, etc. have had time to heal a bit. An unbelievable six injuries took place at the last game, either as the team was warming up or as two defenders on the same team collided. Heal up David Lesley, Steve Holton, Bobby Snider, Ben Woodington, Billy Giles, Glenn Ray Mackie. Two injuries to David and Bobby will sideline them for the remainder of the season. Too bad.

FITNESS CENTER HOURS FOR NOVEMBER

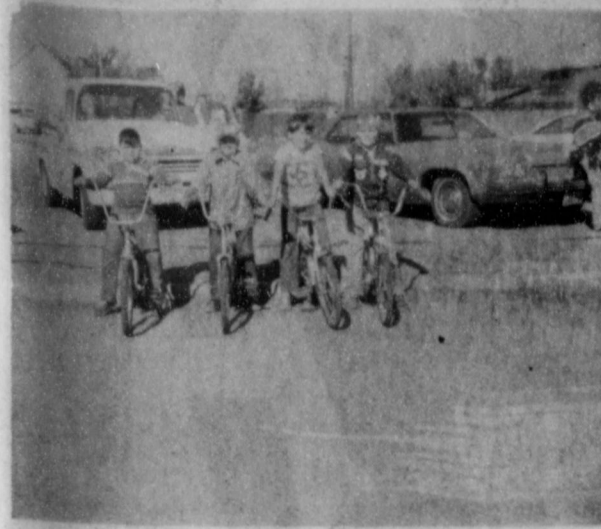
Women's Exercise: Monday, Wednesday, Friday mornings from 9:00 - 1:00; Tuesday and Thursday evenings from 7:00 - 9:30 p.m.; Saturday November 10 & 24 between 12:00-6:00 p.m.
Men's Workouts: Monday, Wednesday, Friday evenings from 7:00-9:30 p.m.; Saturdays, November 3 and 17 from 12:00-6:00 p.m.
Additional Times: For other times not scheduled call the YMCA. Other times will be added as the center is fully completed.

Williamson, Donnie Hamilton, Monte Ross, Jim Everson, Timmy Yarborough, Ray Dunaway, Chance Jackson, Dennis Monk, David Welch, Kevin Tindell, Richard Castillo, Shawn Cook, Tony Pacheco, Lance Swann, James Tindell, Danin Irlbeck, Lance Harnish, Pete Mauk, Mickel Hargrove, Keith Clark, Steve Hamilton, and Scott Swann. They were supported very well in this endeavor with their Cub Master Jim Beeson and leaders: Linda Beeson, Judy Nelson, Charlotte Jackson, Marie Pacheco, Judy Tindell, Jody Harnish, Judy Irlbeck and Sharon Swann and numerous parents going along with them to cheer them on.

Though the boys didn't place in the event, the leaders were very proud of them. They competed against boys from all over the Panhandle including Canadian, Wheeler, Borger, Guymon, Perryton and Pampa. Their excellent behavior, enthusiasm and good sportsmanship made them real winners in their leader's eyes and contributed to what turned out to be a very worthwhile and enjoyable experience for all of those that attended.

Cub Scouts Races

The Spearman Cub Scouts were well represented at the Adobe Walls Council Pushmobile Races in Pampa Sunday, Nov. 4. The Pack entered 3 pushmobiles in the races with all four Dens participating. The boys that went were: Alan Beeson, Kevin Nelson, Jeff



CUB SCOUT BICYCLE RACERS SHOWN ABOVE, ARE Scott Swann, Lance Swann, Kevin Nelson, and Donnie Hamilton. They are heavy weight contenders.



Cub Scouts who participated in the Middle wt. bicycle riding class were; Monte Ross, Jeff Williamson and Shawn Cook.

Need An Ice Scraper?

Markets

Wheat	3.91
Milo	4.10
Corn	2.74
Soybeans	5.44

Hergert Pontiac, Buick, GMC is giving away ice scrapers. Anyone wishing one of these is welcome to go by the motor company on Highway 207 South and they will be happy to give you one. Ice scraping time has arrived in the Texas Panhandle.



Light weight cub scout bicycle riders shown above are; Alan Beeson, Michael Hargrove, David Welch, Keith Clark, Chance Jackson, Dennis Monk, and Mr. Arthur Monk.

Top Hand Award

AMARILLO--The Amarillo Chamber of Commerce will join Tepee Western Wear and county extension agents in naming the fourth Top Hand of the Year at the Annual Golden Spread Agri-Business Seminar November 16.

The "Top Hand Award" was sculpted by Canyon artist Garland Weeks in 1976. It represents outstanding accomplishment in the production of food and fiber here in the Golden Spread.

The statuette depicting a ranch hand extending his coiled lasso is not an easy award to attain. Just to be named a County Top Hand is a major distinction, and each person nominated will receive a Chamber of Commerce certificate stating the fact, according to Bill Davis, Top Hand Award Sponsor.

Criterion for nomination in the Top Hand of the Year honors is nearly a lifetime of work and dedication to farming and ranching and to the communities that surround these endeavors.

The Top Hand will be named at the Amarillo Chamber of Commerce Agri-Business seminar noon luncheon in the Villa Inn. The seminar is entitled "Challenge of Change." Featured speaker will be congressman Jack Hightower. Seminar session leaders will be Frank J. Hemmen, manager of Cargill Commodity Marketing Division, Houston; T. B. Pickens, Jr., president and chairman of the board of Mesa Petroleum Co., Amarillo; Earl S. Merritt, vice president of the Earth Satellite Corp., Washington, D. C.; and W. M. "Bill" Brown, owner of W. M. Brown Farm and Feed Lot, Atmore, Ala.

The seminar will begin at 8:30 a.m. and end around 4:45 p.m. Bob Carthel, is chairman of the Amarillo Chamber of Commerce Agri-Business Committee which sponsors the seminar. Royce Bodiford will moderate the seminar.

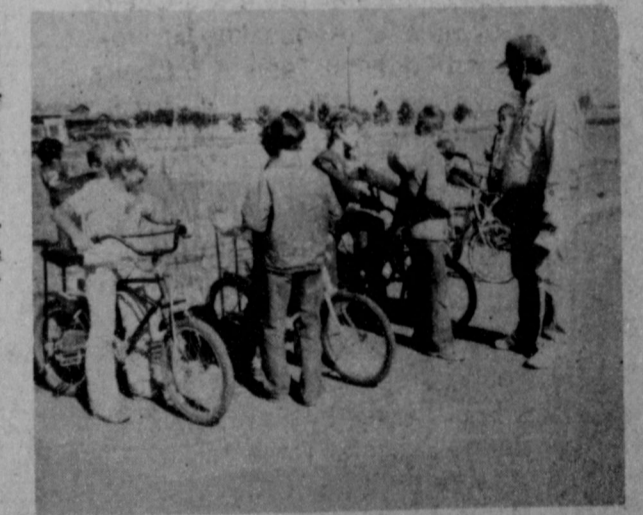
Reservations are \$15 per person and may be made at the Amarillo Chamber of Commerce Offices, 301 S. Polk.



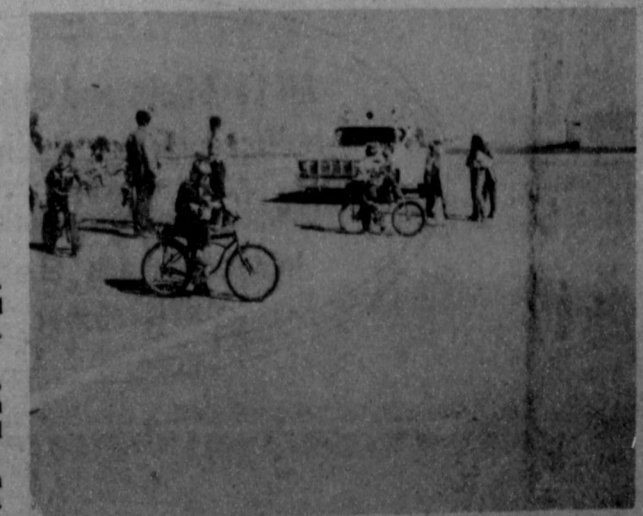
Cub scouts receiving participation ribbons



Lining up for the big Cub Scout bike race!



Keith Martin lines up the Cub scouts for races.



Your guest is as good as ours!

TG&Y fabric shops

do you want quality, versatility, minimum care? then, you'll want 100% Polyester...

Sheer Elegance SCREEN PRINTS

100% Dacron Polyester Machine Wash, Warm; Tumble Dry; Remove Promptly - 60/62" wide Reg. 2.98

2.47 Yd.

save 1.01 yd. on this soft, flowing fabric

Bright Cloud Qiana® Knit Solids A soft, classical fabric of 100% Qiana® Nylon. Resists water spotting and wrinkles. An ideal easy-care and stunning fabric for dresses, blouses, lingerie and holiday "go-togethers". Full bolts, 63/65" wide. *DuPont® Registered Trademark.

Reg. 3.98 **2.97** Yard

check off a savings of 21%...

Dan River® Woven Gingham Checks Eye-catching checks at a super low price! 44/45" wide. 65% Polyester/35% Cotton. Ideal for curtains, blouses and dresses. Several to choose from. Full bolts.

Reg. 1.49 **1.17** Yard

the ultimate touch for the well-tailored look

Sheer Mist Sheath Lining Add that finishing touch to your outfit with sheath lining of 65% Kodol® Polyester/35% Combed Cotton. Machine washable, crease resistant and static free. 44/45" wide. Full bolts.

Reg. 1.29 **1.17** Yard

NORTHSTAR Flannel Plaids

50% Fortrel Polyester 50% cotton Machine Wash, Warm; Tumble Dry; Remove Promptly 44/45" wide

Reg. 1.69 **1.27** Yard

Only female and young gorillas sleep in trees, mature males sleep on the ground at the base of the tree.

A.J. Green Services Held

Services were held at 4 p.m. Monday in the First United Methodist Church for A. J. Green, 66, who died Saturday. The Rev. Frank Oglesby, pastor, officiated. Burial was in Hansford Cemetery by Boxwell Brothers Funeral Directors. Mr. Green was a retired farm laborer and a resident of Spearman for 30 years, moving here from Pampa. Survivors include an aunt.

Fabrics Available in TG&Y Fabric Shops Nov. 4-10

TG&Y'S ADVERTISED MERCHANDISE POLICY--TG&Y's policy is to always have advertised merchandise in adequate supply in our stores. In the event the advertised merchandise is not available due to unforeseen reasons, TG&Y will provide a Rain Check, upon request, in order that the merchandise may be purchased at the sale price when it becomes available, or you may purchase similar quality merchandise at a similar price reduction. *We will be happy to refund your money if you are not satisfied with your purchase. It is the policy of TG&Y to see that you are happy with your purchases. *It is TG&Y's policy to be priced competitively in the market. Regular Sale Prices may vary market by market, but the sale price will always be as advertised.

PRICES GOOD ONLY AT T.G. & Y. FAMILY CENTER
521 HWY. 207 SOUTH SPEARMAN, TEXAS 659-3742



Our 17TH Anniversary SALE

Register for pair of matching La-Z-Boy Reclina-Rockers to be given away Wednesday, November 21 at 5 p.m. You do not have to be present to win. See the chairs when you register. They are covered in beige herculon with walnut trim. Total retail value — \$559.90. Help us celebrate our Anniversary!

2 BIG WEEKS!
Beginning November 8 through November 21 ...
at Beedy Furniture,
Spearman, Texas

LIVING ROOM

	REG.	SALE
Early American Print Sofa by Maxwell Royal.....	\$ 798.50	\$549.50
1 Pair Modern Print Swivel Chairs by International — Each.....	\$ 309.50	\$198.50
8 Piece Beige Velvet Circular Modular Group by Stratford.....	\$1760.00	\$1295.00
Brown Vinyl Chair & Ottoman by International.....	\$ 289.50	\$179.50
1 Pair Brown Swivel Rockers by La-Z-Boy — Each.....	\$ 249.50	\$179.50
Gold Vinyl Swivel Rocker by La-Z-Boy.....	\$ 229.50	\$149.50
Oak Frame, Loose Print Cushion Sofa & Loveseat by Ayers.....	\$1450.00	\$995.00
Oak Frame, Loose Cushion Chair & Ottoman by Ayers.....	\$ 398.50	\$269.50
Oak Frame, Loose Cushion Chair & Ottoman by Ayers.....	\$ 298.50	\$179.50
Brown Vinyl Sofa by Stylehome.....	\$ 498.50	\$339.50
Modern Brown Velvet Chair by Ennis.....	\$ 298.50	\$150.00
Rust or Brown Leather Chair & Ottoman by Jackson — Each.....	\$ 998.50	\$675.00
Haitian Cotton Loose Cushion Sofa by Brookwood.....	\$ 598.50	\$398.50
Brown & Blue Quilted Print Sofa & Loveseat by Brookwood.....	\$ 849.50	\$575.00
1 Pair Bamboo Chairs by Thomasville Imports — Each.....	\$ 199.95	\$129.50

DINING ROOM

Sideboard with Mirror by Pulaski (Keepsakes Group).....	\$ 539.50	\$369.50
Round Pedestal Table & 6 Chairs by Pulaski (Keepsakes Group).....	\$ 996.90	\$669.50
Round Pedestal Table & 6 Chairs by Riverside (Great Hill Road Collection).....	\$1086.50	\$729.50
3 Piece Etagere by Ayers.....	\$ 698.50	\$469.50
Server by Pulaski (Apothecary Group).....	\$ 599.50	\$398.50
Round Maple Table & 4 Hand Decorated Chairs by Nichols & Stone.....	\$ 819.50	\$598.50
Round Drop Leaf Table with Four Leaves by Tell City.....	\$ 519.50	\$398.50
Round Pedestal Table by Tell City.....	\$ 498.50	\$375.00
Maple Buffet & China by Tell City.....	\$ 995.00	\$750.00

BEDROOM

	REG.	SALE
Oak Dresser with Hutch Mirror by Harrison.....	\$ 519.95	\$275.00
Brass & White Queen Size Bed by Pulaski.....	\$ 739.50	\$495.00
Dresser, Mirror, Dresser Deck & Queen Size Poster Bed by Pulaski (Apothecary Group).....	\$1502.50	\$995.00
Wash Stand by Pulaski (Keepsakes Group).....	\$ 309.50	\$229.50
Nite Stand by Pulaski (Keepsakes Group).....	\$ 149.50	\$99.95
Triple Dresser, Twin Mirrors, Queen Headboard & 2 Nite Stands by Thomasville (New Country).....	\$1098.90	\$739.50
Man's Chest by Thomasville (New Country).....	\$ 559.50	\$379.50
Lingerie Chest by Thomasville (New Country).....	\$ 339.50	\$229.50
Baby Crib with Canopy by Lullabye.....	\$ 359.50	\$249.50
Baby Chest by Lullabye.....	\$ 289.50	\$198.50
White Baby Crib by Lullabye.....	\$ 239.50	\$159.95

MISCELLANEOUS

Harvest Brown Secretary by Jasper.....	\$ 659.50	\$475.00
Red & White Secretary by Jasper.....	\$ 509.50	\$375.00
Maple Settle Bench by Tell City.....	\$ 149.50	\$98.00
Brass Top Tea Table by Habersham.....	\$ 279.50	\$150.00
Oak Two-Drawer Locking File Cabinet by Riverside.....	\$ 309.50	\$229.50
Oak Hall Tree by Riverside.....	\$ 264.50	\$179.50
Oak Hall Tree with Seat by Pulaski.....	\$ 176.50	\$109.50
Roll Top Desk & Swivel Chair by Jasper.....	\$1350.00	\$1080.00
Globe with Bar by Thomasville Imports.....	\$ 259.95	\$198.50
Oriental Truck by Thomasville Imports.....	\$ 599.50	\$498.50
Fruitwood Curio by Butler.....	\$ 298.50	\$229.50
French Provincial Secretary by Jasper.....	\$ 609.50	\$398.50
Brass & Walnut Burl Backgammon Table & 2 Brass/Velvet Chairs by Thomasville Imports.....	\$1050.00	\$795.00
Floor Chairs by Janie Lou — Each.....	\$ 40.00	\$19.95
White Birdcage Etagere by Kessler.....	\$ 89.95	\$49.95

All La-Z-Boys and Stratoloungers reduced for our Anniversary Sale!

Compare our reduced prices on Simmons International and Stratford Sleeper Sofas.

BEEDY FURNITURE CO.

723 W. 7TH

• SPEARMAN, TEXAS •

PH. 659-3701