

Want to See the Big Krause Plow and Other Exhibits

This Friday and Saturday

September 23 and 24

Memorial Building Spearman, Texas

SURE-I'M TAKING THE FAMILY TO THE-



KRAUSE One-Way

means more plowing with less power

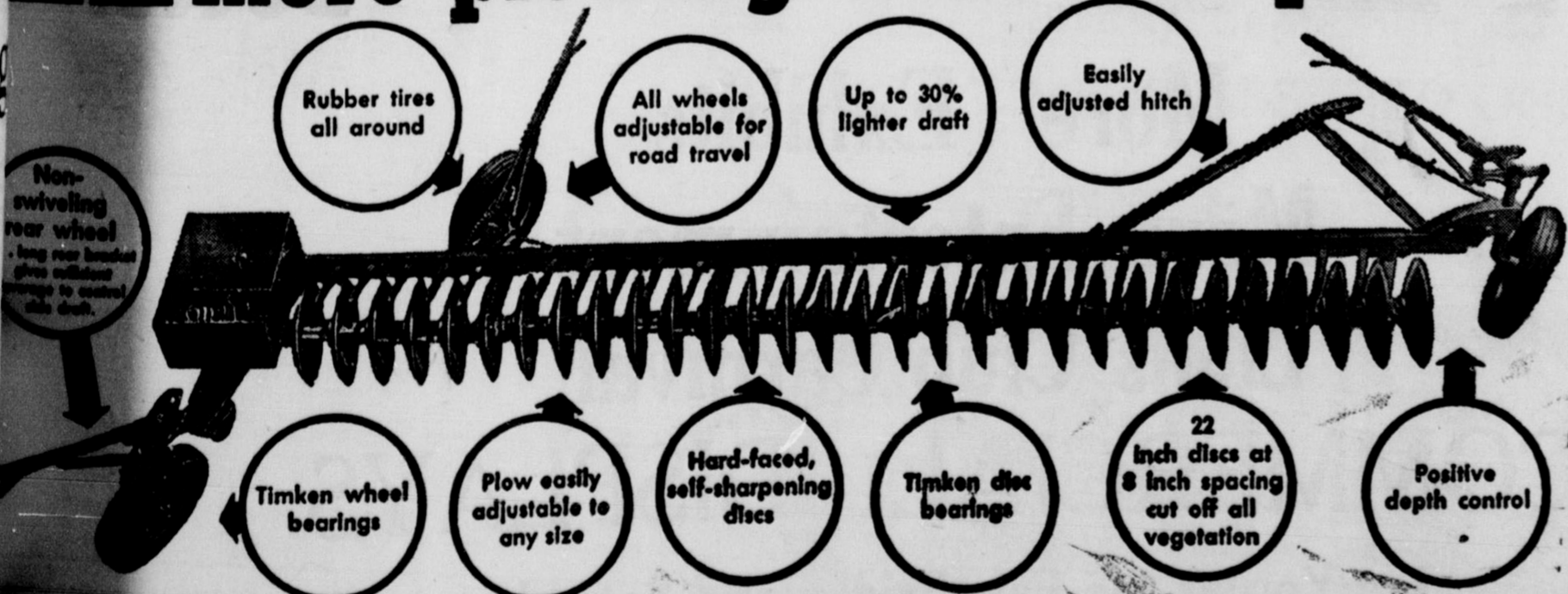
A Krause One-Way, by actual field test, has up to 30% less draft than other plows. That means you can cover a lot of ground... up to 100 acres a day is no trick at all with a Krause... with a saving in time and money.

through thick stubble, tall weeds, and cornstalks—leaves a chopped up mulch to protect your topsoil. The Krause plows deep or shallow... is a perfect tool for summer fallowing. It destroys every weed, yet does not disturb your seedbed. Plowing virgin sod, usually a tough job, becomes markedly easier. Hard ground, soft ground, ground heavy with vegetation—it's all the same to a Krause.

Yes, one man and a Krause One-Way can do a lot more plowing... and do it with less power, less cost. You gain many other advantages, too, with a Krause. Stop in today and see this all around one-way. Check all the Krause features. Compare. Talk to your neighbors who use Krause plows. If you do, it'll be Krause for you.

America's First Choice One-Way Plow

11 reasons why KRAUSE gives you more plowing with less power



Ask your neighbor about KRAUSE Performance... He has one or more plows. Proven by more than 20 years of experience as the best light draft plow made.

McClellan Krause Co.

ABOUT THE TEXAS STATE FAIR

The nation's biggest display of farm implements is scheduled for the State Fair of Texas, Oct. 8-23. In 1946, 30,000 4-H Club members, Future Farmers and Future Homemakers attended Rural Youth Day at the State Fair of Texas. This year, at least 75,000 are expected on Oct. 15.

Youth will have its fling at the 1949 State Fair of Texas with a Junior Livestock Show, Junior Market Turkey Show, Junior Market Broiler Show and Junior Grass Judging Contest in the cards.

More sensational free Midway acts than ever will be featured at the State Fair of Texas.

Livestock breeders are offered \$65,225 in premiums at the State Fair of Texas.

The unusual type of Poultry Show at the 1949 State Fair of Texas will do away with competitive classes and instead will show poultry under simulated farm and backyard conditions.

The music of 29 bands, 10 choruses and five orchestras will thrill visitors to the State Fair of Texas as top-flight high school musicians present a gigantic "Marchiesta" in the Cotton Bowl.

Both Belgium and Great Britain are planning elaborate exhibits of merchandise at the 1949 State Fair of Texas.

Spike Jones and his "Musical Depreciation Revue of 1950" will present the wackiest show ever presented at the State Fair of Texas. The "City Slickers" are expected to rock the Fair Park Auditorium to its foundations.

One of the world's premier ice extravaganzas—Ice Cycles of 1949—will journey all the way from London to appear at the Fair of Texas.

Hurry Midway patrons at the State Fair of Texas are expected to consume 2,250,000 hot dogs and hamburgers, 1,000,000 snow cones, 1,500,000 sacks of popcorn, 50,000 cones of cotton candy and 10,000,000 bottled drinks.

The Cotton Bowl has been enlarged again to a capacity of more than 75,000 for the exciting program of grid warfare mapped for the 1949 State Fair of Texas.

A Foods Show unsurpassed in the Southwest will furnish many new ideas for homemakers at the 1949 State Fair of Texas. The South's largest Automobile Show at the 1949 State Fair of Texas will show the latest achievements in car making.

Entries from 16 states have been received for the National Aberdeen-Angus Cattle Show at the State Fair of Texas.

The world's biggest cake baking contest will be held at the State Fair of Texas, with more than 1,000 entries expected.

The Dairy Cattle Show of the State Fair of Texas will show Holstein - Friesians, Jerseys, Guernseys and Milking Shorthorns in one of the more outstanding livestock exhibits of the year.

World's Supply of Pepper Grown in Confined Region

Columbus discovered America while searching for pepper and other spices. Today the United States of America is the world's greatest importer and consumer of the pepper Columbus never found.

The United States alone consumes about 33 million pounds of pepper a year. Although all the world's pepper is grown in a confined area in the Far East, the center of the trade is New York City, where the Pepper exchange has been located since 1937.

We rarely connect pepper with American history, yet it helped save the young United States from bankruptcy and started us on the road to sea power and international commerce. It all came about in the cloak and dagger tradition of the romantic novel. The handsome young Yankee skipper, Captain Johnathan Carnes of Salem, Mass., sailed his schooner *Rajah* to the Spice Islands in 1791 and found a way to pierce the tight blockade and bring back a cargo of pepper. Records show that by 1895 we were re-exporting more than 7,500,000 pounds of pepper a year.

In the Middle Ages pepper's preservative effect on foods made possible long caravan treks and the exploration of far-off places. Today pepper is just as important for its use in commercial food processing, and as the homemaker's essential tool in making bland foods more palatable.

Raindrops not Tear-Shape, Special Study Discloses

Contrary to popular conception, raindrops are not tear-shaped, and for that matter neither would be tears if they fell very far, according to General Electric weather scientists.

Instead of being symmetrically streamlined like a tear, large raindrops can change into a "new look" as often as 50 times per second and can resemble a variety of things, including pancakes, gourds, peanuts, telephone receivers, ducks, jelly beans, dumb bells, hot dogs, caterpillars, and even human feet. Smaller raindrops on the other hand often assume the shape of marbles and footballs. These resemblances are only a few of the marked deformations from the traditional tear shape that raindrops undergo periodically as they fall, the scientists said.

In a special study simulating raindrop behavior, the G-E scientists developed an instrument known as a "drop controller" in which air resistance was produced similar to that falling raindrops encounter.

Reversing the natural order, however, the instrument caused a rush of air to move upward against a drop of water, instead of the drop falling against the air.

Wind Pressure
A 40-mile wind exerts a pressure of approximately seven pounds per square foot on the side of an automobile. An automobile might have an area on the side of about 39 square feet, so the total pressure of such a wind would be about 210 pounds.

Shipping Fever Strikes in Changeable Weather

The changeable weather of early spring is a danger season for shipping fever in livestock, veterinarians warn. And when bad weather is coupled with crowded feeding conditions, interrupted feeding schedules and mishandling, heavy losses are likely to result.

Purchasers of replacement stock as well as those who handle lot shipments are urged to be on constant guard against this disease, which causes respiratory trouble and blood poisoning. Pneumonia and paralysis develop in severe cases and death is likely to follow if diagnosis and treatment are delayed.

An unfortunate feature of this disease is that symptoms may not appear until a day or more after the animal arrives at its destination. In the meantime the animal is allowed to mingle with healthy stock, the others may become infected. Still another danger is the recovered animal, since those which have had shipping fever may remain as carriers.

Control measures call for vaccination with bacterins at least two weeks prior to shipment. Serum treatment both before shipment and immediately after arrival is an alternative safeguard. Proper shelter from bad weather en route, along with regular feeding and watering, also helps to prevent outbreaks. Quarantine of all shipped animals at destination is a final and highly important precaution, since this keeps them from spreading infection to stock already on the premises.

Edison's Modesty

Thomas A. Edison's capacity for concentration and hard work was exceeded only by his modesty. Once, upon being complimented as an inventive genius, he replied: "I'm a good sponge. I absorb ideas and put them to use. Most of my ideas belonged first to other people who didn't bother to develop them."

Woodchuck Nuisance

Woodchucks are nuisances on any farm or pasture. Many a head of livestock has broken its leg by stepping into one of these holes. The mounds of dirt around the holes interfere with farm machinery. These animals destroy a certain amount of grain but their main damage is done in their burrowing.

Famous Leatherneck

U.S. Marine Dan Daly had the rare distinction of twice winning the Congressional Medal of Honor, the nation's highest award. He received the first award for service in China in 1900 and 15 years later won the medal again for action against Haitian bandits. The famed Leatherneck died in 1937.

Summer Sauce

It's a tasty sauce for fresh green beans. Just prepare cooked diced bacon, drain, add minced onion, and one-half cup tomato juice. Simmer for a few minutes. Pour the sauce over cooked beans.

Highlight and Eyclight with Certified Lamps



Eyes are rationed... only two to a lifetime! Good lighting provides maximum protection in all seeing tasks.

Certified Lamps are designed and constructed under 105 rigid specifications. These requirements control lighting performance... insure more light where and when you need it... protect precious eyesight from uncomfortable glare... avoid shadows on shades... in short, give you the best possible lighting for all home uses.

Let your Public Service representative or electrical dealer help in your selection. In addition to superior lighting performance, you'll find Certified Lamps styled to blend with any decorative scheme.



See "HYMNS OF THE WORLD" each Sunday at 12:45 P.M. on YOUR PUBLIC SERVICE COMPANY NETWORK

SOUTHWESTERN PUBLIC SERVICE COMPANY

25 YEARS OF GOOD CITIZENSHIP AND PUBLIC SERVICE

HANSFORD COUNTY

2nd ANNUAL

Free Fall Fair



ENTER YOUR SPECIALTIES
in the
HOME EXHIBITS
at the **FAIR**



MEMORIAL
BUILDING
Spearman,
Texas

Friday and
Saturday

Meet You At The Fair

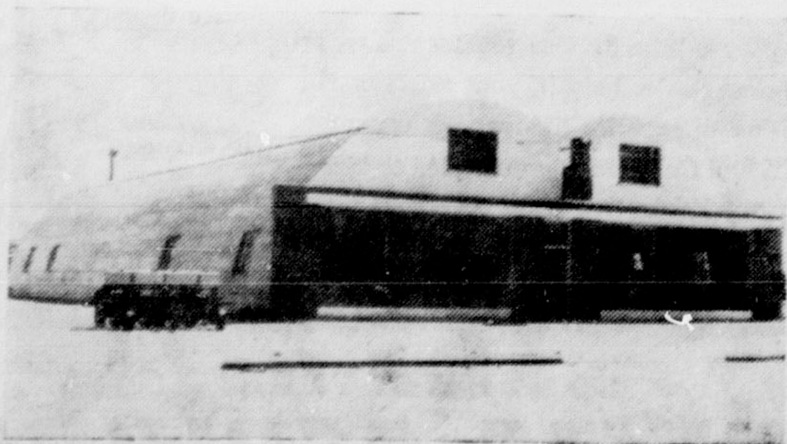
Doors Open 9:30 A.M. to 11:30 P.M. Both Days

MORE ENTERTAINMENT

MORE EXHIBITS

Visit us at our new . . .

J. I. CASE HOME



More Exhibits
More Entertainment
Lions Club Carnival
COMMERCIAL DISPLAYS

See You at the Fair Friday and Saturday

R. L. McClellan & Sons
R. L. McClellan Grain Co.

Friday
and
Saturday

Sept.
23 and
24

Bigger
and
Better

And That
nd Gruver

an important election
in a few weeks. It con-
sider of amendments to
stitution. We do not
about it because we
what we should all do,
study them. They may
ed or they may be very
of the bad signs of the
at more and more we
ng willing to let some-
o our thinking for us.
ving in an age differ-
y age that man has
re. We have studied
our life and cannot
omparison. There have
en tumultuous times.
a man has been striv-
e himself. Today, we
sed the trend, we are
other way. The most
word today is "securi-
time to put freedom
e throne.
...
morning, if you ha-
business to attend to
care of it in the beauti-
ank building. The hotel
nce more a hotel lobby
bank is the bank. We
esitate to say that n-
n the size of Gruver ha-
as nice. That go-
larger towns. Much
for getting the job done
Ralph Bort who h-
ong and hard. He h-
assisted by Bob Tho-
Simms. We have not
Anderson helping arou-
Ralph was first. The
course, he plenty of
on it later. We co-
the board of directo-
e officials on a job w-
...
two items belong in
column and will no do
here. But we wanted
ord or two of our o-

Cooperation

And That



nd Gruver

An important election in a few weeks. It consists of amendments to the constitution. We do not know about it because we do not know what we should all do about it. They may be very bad signs of the times. We are willing to let someone else think for us. We are in an age of difference. We have studied our life and cannot compare it with any other. There have been many times when a man has been striving for himself. Today we are striving for the other way. The most important word today is "security". We are trying to put freedom in the hands of the people.

morning, if you had business to attend to, you would go to the bank building. The hotel is more a hotel lobby than a hotel. We do not like to say that the size of Gruver has increased. That goes for getting the job done. Ralph Bort who has been here for some time, assisted by Bob Thom Blams. We have noted Anderson helping around. Ralph was first. There are plenty of instances in the past. We can't blame the officials on a job well done.

two items belong in the column and will no doubt be of interest to you. But we wanted to get two of our own. Well, the Gruver Greyhounds won

Two of our Gruver young people were married this week. Both of them last Sunday afternoon.

We were privileged to be present at the wedding of Miss Fern Cooper, daughter of Mr. and Mrs. Guy Cooper. It was a lovely wedding and Fern made a beautiful bride.

We were not able to attend the wedding of Mr. Glen Ray Harris as it took place at Plainview. Glen is the son of Mr. and Mrs. Ben Harris, and it too was a lovely wedding. We just want to take the opportunity to wish these two young people all the happiness possible. We have watched them grow through the years of childhood to young man and womanhood. They have been fine every step of the way.

Mr. and Mrs. Everett Sullins and Mrs. Ted McClellan took off last Sunday to visit their old home in Missouri. They will attend the state fair, we think. At any rate, it is a big fair. By the time you read this they will be back home but here is wishing them a nice trip.

We had hoped to give you the names of Gruver young people who are away in college. But there are so many of them that we will have to have your help. Please let us know where your children are in school, then we can write a story about them. They are scattered from north to south, east to west.

Congratulations to Mr. and Mrs. Lester Wells. They are the proud parents of a new baby daughter, Miss Vicki Lester Wells arrived recently in an Amarillo hospital and both are doing just fine. Lester also looks pretty good.

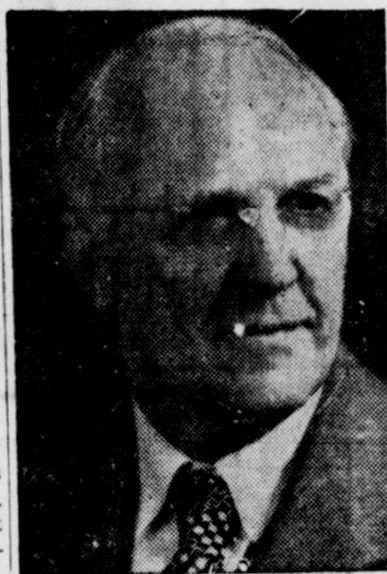
Our good friend Mart Hart was compelled to leave us recently. His health is such that he must go south as the weather gets colder. He is at Aransas Pass. I wonder if he goes fishing.

Recently the writer, with Roy Murrah, Bob Stayton and Douglas Beck made a trip to Ulysses, Kansas. While there we met two men who at once began to ask about many of you. Lewis Higginbotham asked us if we knew Robert and Harley Alexander and the Holt boys. Then he wanted to know if the Gruver Men's Quartet was still singing. The quartet referred to Hugh Fraser, Ben Harris, Ernest Spivey and Frank Fleck. We had to admit they had broken down. Another fellow interested in Gruver people was A. N. Henderson who now lives at Johnson, Kansas. Any of you remember these fellows?

Well, the Gruver Greyhounds won

their first football game of the season. They looked fine to all of us in their bright red uniforms. They played a fast, scrappy game and the Miami boys just couldn't do a thing about it. The final score was 22 to 0. Gruver was offside in one play and that made a Miami tally possible. Their second one came in the closing seconds of the game. Don Ward pulled out the entire first string and Miami had just time enough to take advantage of the reserves to stage a long run and score. But we are proud of them because the same Miami boys gave us an unmerciful beating last year. Coach Don Ward and Mr. Brotherton are to be congratulated.

Baptist Hour On The Air October 2



The first Year-Round Baptist Hour will go on the air over a convention-wide network of 132 stations on October 2 with Dr. Robert G. Lee, of Memphis, president of the Southern Baptist Convention, as the speaker. Dr. Lee's theme will be "The Way From Want to Wealth" and his first subject—"Sin and the Sinner's Saviour."

Dr. Lee, who is pastor of the Bellevue Baptist Church in Memphis, will be the speaker during October, November and December. S. F. Lowe, director of the Radio Commission of the Southern Baptist Convention in Atlanta, announced.

Other subjects in Dr. Lee's series of sermons will be:

- 16 "Muddled World"
- 17 "Do You Have the Blood Mark?"
- 23 "Is It Nothing to You?"
- 30 "Which Way are You Headed?"

November
6 "Man in Conference with God"

13 "The Debt Christ Paid for You"

20 "Be Ye Thankful!"

27 "Does Your Influence Count for God?"

December
4 "Are You Ready to Meet God?"

11 "Are You Counting on Tomorrow?"

18 "The Meaning of Christmas"

25 "Who is This Christ?"

The Baptist Hour will be broadcast every Sunday from 2:30 to 3:00 P.M. CST, and will be financed wholly through individual voluntary contributions.

Stations in Texas carrying the program will be: KPFA, Amarillo; KFDM, Beaumont; KVAL, Brownsville; WTAW, College Station; KSIX, Corpus Christi; WBAP-WFAA, Ft. Worth and Dallas; KXYZ, Houston; KFYO, Lubbock; and KFDX, Wichita Falls.

THE FIRST BAPTIST CHURCH

Ray Stephens, Pastor
September 18, 1949
Sunday School 9:45
Morning Worship 10:55
Training Union 6:45
Evening Service 8:00

Tuesday
Brotherhood 7:30
Thursday
W.M.S. 3:00
G.A. 4:00

LETTER FROM BOYS RANCH MANAGER

September 15, 1949
William J. Miller
The Reporter
Spearman, Texas
Dear Mr. Miller:

The Boy's Ranch 5th Annual Rodeo was the biggest and best yet thanks to your help and cooperation in carrying our publicity in your newspaper.

Over four hundred boys have passed through Boy's Ranch in the past eleven years and are making fine citizens over the country simply because folks like yourself have taken an interest in them. I'm writing you for the Board of Directors when I say we, too, thank you for your help.

Sincerely yours,
Carl Farley

FOR LATE TO CLASSIFY
FOR SALE—House, priced cheap. Corner East C Avenue and North Hazlewood Street.

No. 42-2t-p
FOR SALE—Seed wheat, Temarq and Triumph. Carl Hutchinson.

No. 42-2t-p



Hansford County Second Annual Free Fall Fair

Friday and Saturday, Sept. 23 and 24

Visit With Us While Attending the County Fair

CLUB CAFE

STEAKS ARE OUR SPECIALTY

Mrs. and Mrs. Bill Gould

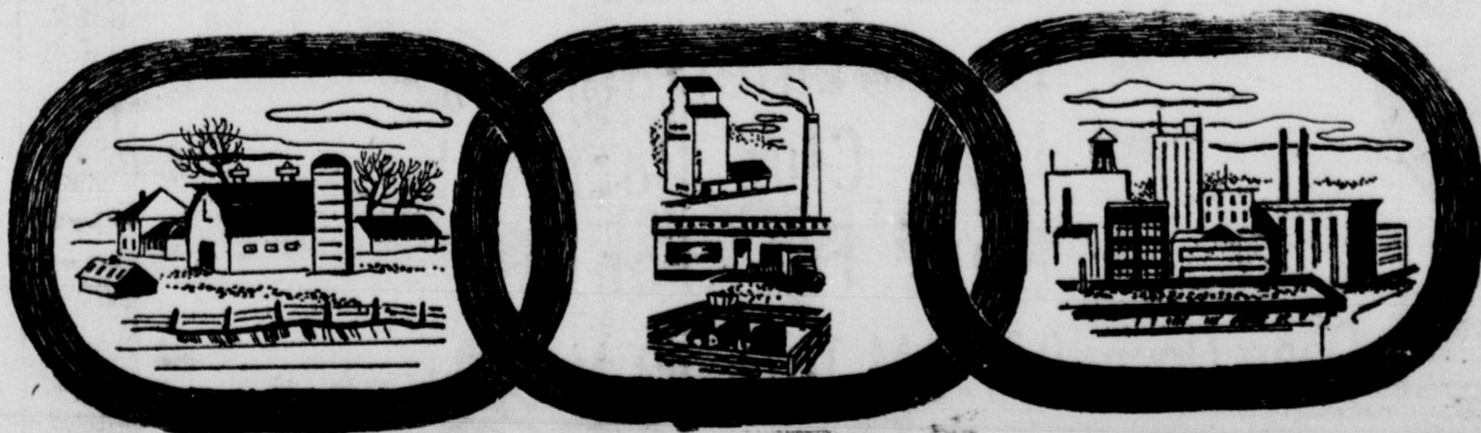
Attend the Second Annual Hansford County Free Fair



To be Held at the Memorial Building in Spearman Friday and Saturday, September 23-24

A GOOD TIME IS ASSURED ONE AND ALL

form a LINK between FARM and



Consumers Sales Co.

Spearman, Texas

Cooperation

Cooperation

Friday and Saturday
September 23 and 24
Biggest and better

COME to the
FAIR.



ANNOUNCING

SURE-IM
TAKING THE
FAMILY
TO THE-



Hansford County

2nd Annual

Free Fall

FAIR

Friday and Saturday

September 23rd-24th

TO BE HELD
At The Memorial Building



4H CLUB

Achievements
HARVEST



- More Exhibits
- More Entertainment
- Lion Club Carnival
- More Fun For All

Doors Open - 9:30 A. M. To 11:30 P. M. Daily

Festival

Memorial Building, Spearman

B. & C. EQUIPMENT COMPANY

Slim Cates

THURSDAY

Spearm

to the Hansford Headlig
in HANSFORD County

WILL J. MILLER, EDITOR

second class matter on No
Spearman, Texas, under t

and adjoining counti
Hansford and adjoining c

CLASSIFIED A
lon, 4c per word, 2c
anks, 4c per word.

THE PUBLIC—Any e
standing of any individ
columns of The Spea
to the attention of

Don't M
y "Honest

time of the year for
editor to ask you for
subscriptions to the
News-Globe. The bar
re here again, and you
full years subscription
unday, for \$10.95. The
itor has a list of all
scribers and the dates
piration. If you want
you get the special bar
ust see, write or phone
y editor and we will
ur subscription before
tion date and bill you
of the month after th
n has become due
have expiration date
ne from September 2
25 can settle the que
now. For example, w
our good friend Ger
the paper paid for unt
Day, December 25.
ene, he will be shove
aseline and oil so fa
he month of Decemb
ight forget to save th
one dollar hat he
o by taking advant
gain rate. Now, all th
to do, or you, or yo
to the phone when y
article and phone t
ditor and tell him
of your subscription.
nes the country edi
re his money and for
matter, and on Janu
be billed for \$10.

Spearman Reporter

Published Thursday of each week in HANSFORD County at SPEARMAN, TEXAS

Second class matter on November 21, 1919, at the postoffice at Spearman, Texas, under the Act of March 3, 1879.

Subscription rates: One Year \$2.50, Six Months \$1.50, Three Months \$1.00, Single Copies 5c.

CLASSIFIED ADVERTISING: 4c per word, 2c per line for every issue thereafter. Display rates on request.

THE PUBLIC—Any erroneous reflection upon any individual, firm or corporation that may appear in the columns of The Spearman Reporter will be corrected to the attention of the management!

Don't Name It!

"Honest" Bill Miller

Just phoned my good friend Floyd Close and found out that I was a week late and failed to save him any money cause he had already renewed his subscription at the regular rate. So, just bear in mind that you don't have to give the renewal any thought other than just phoning or writing the country editor. Say your paper expires January 29. You will have to renew the paper in December to take advantage of the bargain rate. But you can renew it right now and forget it by phoning or writing the country editor. He will guarantee you protection and collect only at the end of the month after the paper has been marked up... and you are receiving it with money paid by the country editor.

Slim Cates just dropped in and said he wanted his subscription to the News-Globe changed from carrier basis to mail basis. W fixed him up and if there is anyone else wanting to change back to mail basis, just phone the country editor. The carrier paper comes without the Dagwood comics and OLD TACK. I'd just as soon wear a pair of shoes without socks as to try to read the News-Globe with out OLD TACK... not, you understand, that I am referring to Mr. Howe as a heel... fact is, I'm trying to compliment him.

Candidly, I'm all a-twitter. I'm sure afraid that our instructor Archa Morse ain't gonna select me to help put on the square dance demonstration at the Hansford Fair this weekend. I know darn well he will weed me out when it comes to dancing the military schottish. I'm confessing that a feller has to remember the difference between the heel and toe when he demonstrates a military schottish... Edie Faye says I ain't got no coordination when it comes to balancing and heel and toeing. She is always mumbering, "hel and toe, and one, two, three, cross and back and one, two, three" and dad-burned if I can remember whether to jump straight up or go blind. I aimed to practice a lot last Saturday afternoon so's I could show Archa Morse how much I had improved... but right now I'm afraid it will be next year before I can rate as a "Little Foller," "Heel and Toer," or "Spraddin' Legger." Fact is, if I was smart enough to remember all the things you gotta know if you are a good folk dancer, I'd be rich. Anyway... you folks come out to the Fair... you can leave when I get on the floor to dance... and you will really enjoy looking at the onions after you see me demonstrate a square dance routine.

Legal Notices

Citation by Publication of Final Account THE STATE OF TEXAS. To any Sheriff or any Constable within the State of Texas— GREETING:

You are hereby commanded to cause to be published, ONCE, not less than ten days before the return day thereof, in a newspaper printed in Hansford County, Texas, the accompanying citation, of which the herein below following is a true copy —

THE STATE OF TEXAS CITATION BY PUBLICATION To all persons interested in the Account for Final Settlement of the Estate of P. J. Files Deceased, No. 591, Julia Files, Administratrix thereof, filed in the County Court of Hansford County, Texas, on the 13th day of September, A. D. 1949, her Final Account of the condition of the Estate of said P. J. Files, deceased together with an Application to be discharged as such administratrix which will be heard

at the first Monday, next after the expiration of ten days from date of publication the same being the 26 day of September A. D. 1949 at the Courthouse of said County in the City of Spearman, at which time and place all parties interested in the Account for final settlement of said Estate are hereby notified to appear and contest said Account and Application of the said Julia Files if they see proper to do so.

Witness, Fred J. Hoskins, Clerk of the County Court of Hansford County, Texas and the seal of said Court attached, this the 13th day of September A. D. 1949.

F. J. HOSKINS Clerk County Court, Hansford County, Texas

By, Deputy Herein fall not, and have you then and there before said court this writ with your return thereon endorsed showing how you have executed the same.

Given under my hand and the seal of said Court, at office in Spearman, Texas, this the 13th day of September A. D. 1949

FRED J. HOSKINS Clerk County Court, Hansford County, Texas

Need of Good Roads Good roads are a primary necessity to connect military installations with main arteries of travel whether they be highways, railroads, ports or airfields.

\$40,000 Duck In 1904 two men were arrested at Jackson, Miss., and charged with having nearly 3,000 ducks in their possession. The case came before Judge James H. Quinn who fined each of them \$20,000.

Hypocrite The praying mantis has hooks on its front legs which close on its prey like the jaws of a trap. Despite the praying position it takes while at rest, the mantis is among the most vicious and greediest of all insects.

Cold Siberia Temperature in Siberia falls even lower than it does at the North Pole.

"Good Queen Vic" Queen Victoria of England was one of the first women to undergo anesthesia in childbirth.

Here's what's underneath Advance-Design value



You're looking at the "backbone" of a Chevrolet Advance-Design truck... the source of Chevrolet's massive strength and durability. Run your eyes over that rugged frame and those sturdy springs. Here's the rock-solid foundation that keeps Chevrolet trucks hauling at peak efficiency mile after mile, year after year! Add Chevrolet's power-packed Valve-in-Head engine, Synchro-Mesh transmission and Hypoid rear axle, and you've a combination that's built for the load... powered for the pull! Come see these great trucks today!

Featuring VALVE-IN-HEAD ENGINES—Greater power per gallon, lower cost per load. DIAPHRAGM SPRING CLUTCH—Smooth engagement. SYNCHRO-MESH TRANSMISSIONS—Quick, smooth shifting. HYPOID REAR AXLES—5 times stronger than spiral bevel type. DOUBLE-ARTICULATED BRAKES—Complete driver control. WIDE-BASE WHEELS—Increased tire mileage. ADVANCE-DESIGN STYLING—With the cab that "Breathes". BALL-TYPE STEERING—Easier handling. UNIT-DESIGN BODIES—Precision built. PREFERRED BY MORE USERS THAN THE NEXT TWO MAKES COMBINED!

ADVANCE-DESIGN



TRUCKS

McClellan Chevrolet Co. Spearman, Texas

Gruver Motor Company Gruver, Texas

Welcome TO THE FAIR



FUN FOR ALL AT THE FAIR

ATTEND HANSFORD COUNTY

Free Fall Fair

FRIDAY AND SATURDAY

September 23 and 24

MEMORIAL BUILDING

SPEARMAN, TEXAS

Visit Our Store When You Attend The Fair

McClellan Oliver Company

Spearman, Texas

Directory

WHERE TO FIND AND BUY IT FROM

RESPONSIBLE **BORGER** CONCERNS

The Diamond Shop "Home Of Bonded Diamonds" THE PANHANDLE'S LEADING JEWELERS 521 North Main Phone 57		B. R. ANDERSON Company Since 1926 Norge Refrigerators and Freezers, Washers, Gas and Electric Ranges, Ironrite Ironers Hamilton Clothes Dryers, Furniture and Sewing Machines 219 North Main Phone 562	
The Hub Clothiers LEADING STORE FOR MEN AND BOYS 515 N. Main Phone 202	 506 North Main	 Est. 1928 502 N. Main Phone 597	Mollye's Babyland Exclusive Children's Wear. Infants To Twelve 616 N. Main Phone 1474
Jackson's Paint and Wallpaper Store Complete line of the famous PRATT & LAMBERT PAINTS 200 patterns of the latest wallpaper. 513 N. Main Phone 27	Cox And Son ELECTRICAL SUPPLIES "Your Electrical Wants, Any where, Any time" Wholesale, Retail, Industrial, Commercial and Residential Electrical work. Manufacturers Agents for Lighting Fixtures and Air Conditioners. 612 Weatherby F. L. Cox L. L. Cox Ph. 687		Robert J. Benson DOCTOR OF OPTOMETRY 707 1/2 North Main Ph. 47
Western Cafe Where Everyone Is Welcome. Sea Foods, Finest Steaks And Dinners COME AS YOU ARE 525 Deahl St. Phone 2307	NEON SALES SERVICE COMMERCIAL SIGNS And Out Door Advertising 210 N. Main Ph. 2372 TRI-STATE OF BORGER	Borger Electric Motor Service 3 Phase and Single Phase Motors Repairing and Rewinding 103 S. Harvey St., Phone 1312	Dr. D. T. Thrower CHIROPRACTOR X-RAY - COLON THERAPY 431 Deahl Phone 211
Borger Glass Co. Window Glass, Auto Glass Plate Glass, Mirrors Store Fronts, Resilvering Furniture Tops 618 Deahl St. Ph. 409	Spores Furniture Company 806 N. Weatherby St. Home of Hotpoint Appliances, Caphart Radios Phone 1150		Borger Bedding Co. New mattresses & box springs. Old ones made into inner springs. We Pick-up and deliv- er. Special attention to out of town customers. 2nd, at Whittenburg - P. 1063
Jeff Wilson Bear Safety Service PAINT and BODY SHOP Wheel Alignment Cars STUDEBAKER Trucks 117 East 7th St. Phone 802	Rentrow Motor Company LINCOLN - MERCURY DEALER NO TRADE IN REQUIRED IMMEDIATE DELIVERY 611 South Main Phone 2400	JERRIE KEITH COMPANY, INC. PLUMBING, HEATING, AIR CONDITIONING 200 South Main - P. O. Box 224 Phone 227	
City Plumbing Company Plumbing, Air Conditioning Fixtures and Supplies Estimates Free 800 N. Main Ph. 787	Bradshaw Motor Company DODGE and PLYMOUTH DODGE JOB RATED TRUCKS DEPENDABLE USED CARS Phone 2434 520 North Main	E. D. Baker, Contractor GRADING, EXCAVATING PAVING, BLACK TOP 522 South Main Phone 873	
Radio - Phono Shop We Rent Public Address Systems For Parties and Picnics Radio Service Guaranteed 90 Days, We come and get 'em. 112 1/2 East 5th Ph. 1966	Robinson Glass And Supply Company Auto Glass Installed While U Wait 601 S. Main St. Ph. 1194	The Grand Hardware Scott - Atwaters out Board Motors 618 N. Main Phone 2450	Newman Bros. KAISER - FRAZER DEALERS Immediate Delivery 730 N. Main Ph. 1695

Joy-Youts Motor Co.

CHRYSLER, PLYMOUTH
 Sales and Service

515 South Main St. Phone 1155

Western Chemical And Supply Co. CHEMICALS Sanitary Industrial & Agric. Weekly deliveries to Spearman Box 1331 Phone 745	SHEPMON'S Builders Supply Company Wall paper - Paint and Floor Covering Harold Orman-Orville Shepherd 708 N. Main Phone 971	Hatcher Carburetor And Electric Service STARTERS, GENERATORS, FARM AND OILFIELD MAG- NETO SERVICE. 114 West 7TH ST., PH. 1254	R and R Sheetmetal AND MACHINE SHOP If it's made of sheetmetal we make it. 110 East Grand Phone 444
--	---	--	--

Finger Motor Company

BUICK, PONTIAC, INTERNATIONAL TRUCK
 SALES and SERVICE
 "We Specialize in Heavy Duty Truck Repairs"

115 South Main Phone 1856

CLASSIFIED ADDS

Notice, classified display advertising and news columns close at noon every Tuesday. Please arrange for advertising early, also bring in your news items promptly.

WANTED - Experienced stenographer for permanent position in law office. Good salary where ability is proven. Write or call Eyer, McConnell and Hankins, Perryton, Texas.
 No. 42-21-c

POLIO STRIKES OUR COMMUNITY
 A man, 47 years of age, was taken to Plainview from Perryton this week, making 27 patients there. At this time a year ago, there were only 5 cases under treatment there.
 Do you have the protection of polio insurance on you and your family?
 I can write a polio policy at the total yearly cost of only \$6.00 per family, with \$5,000 maximum coverage. Call me today and let me explain this wonderful protection to you.
WESTERN NATIONAL LIFE INSURANCE COMPANY
 Mrs. Lottie Bastion
 Special Representative
 Phone 125
 No. 33 - rth-c

FOR SALE - 1948 Tudor Ford V8. New casings, good radio and heater. See or call W. L. Porterfield, Methodist pastor, Gruver, Texas.
 No. 41-21-p

FOR SALE - Seven-hole Dempster Drill Good Condition. Also Trailer House. Paul Taylor, Ph. 61W.
 40-31-p

FOR SALE - Apples 1.00 per bushel. Lee Black, Wheeler, Texas.
 40-41-P

FOR SALE - Three-room house to be moved 17 mi. S.W. of Spearman. C. W. (Jake) Kirk.
 No. 41-11-p

FOR SALE: Good used Bicycle, priced cheap. Call 249W.
 41-11-pd

LOST: Wheel and tire off pick-up between town and 6 miles Northwest of town. Six-fifty, six ply. Dee Jackson. Leave at Spearman Reporter or B. and C. Equipment Co. 41-21-P

FOR SALE: 4 new U. S. Air Ride tires, radio, heater, genuine Ford rebuilt motor. A very clean 42 Ford coupe. See Kenneth Dowdy at Roy Murrah Garage, Gruver, Texas. 41-21-P

FOR SALE: Small Art Canvases, suitable for oils. E. Miller, Spearman Reporter.

PIANO FOR SALE: A repossessed spinet piano to be sold immediately in this community for balance due on contract. For details write Clark Shaw Music Store, 204 N. Main, Garden City Kansas. 41-31-c

FOR SALE - 2,000 acres, located in Hutchinson County - 500 acres in cultivation. Fair improvements - plenty of water. Contact J. C. Matney, Stinnet, Texas.
 No. 41-31-c

FOR SALE: Seven room modern home, 2 blocks east of school, 1 block North of school. Phone 164 or see L. P. Baggerly.
 No. 41, 31-C

LARGE MIDWESTERN FEED COMPANY
 Needs salesmen in Hansford County. Good pay, work route system, hospitalization, group insurance, social security. Training given. Must have car. Ages 25 to 50. Sales experience and farm background helpful. Write Box 2, Spearman, Texas.
 No. 42-21-p

FOR RENT: Bed rooms for men, Call 27 RTN

Pianos
 New Spinet Pianos
MEGERT MUSIC CO.
 415 N. Main
 Borger, Texas
 27-41-c

ALL TYPE LOANS

AUTO APPLIANCE

Everett E. Greene Mgr.

Lanier Finance Co. Greene Bldg

Phone 226 Box 145
 Spearman, Texas

PIPE FOR SALE

All sizes 1-2 inch through 2 inches. Both black and galvanized. Prepaid freight on quantity orders.

TRI CITY PLUMBING COMPANY

Phone 2210, Borger, Texas

AUCTION LIVESTOCK

FEEDER SHOW AND SALE SEPT. 26
 98 Carloads already Consigned, Expecting 125 carloads
 PROGRAM
 Sunday, Sept. 25
 Quarterly meet of the Northwestern Oklahoma Cattle-men Association. To be held at American Legion Building.
 Prominent livestock and cattle rancher speaker.
 Everyone is invited.
 Monday, Sept. 26 at 7:00 A.M.
 Judging starts on carlots of cattle.
 11:00 to 12:00; Free Barbecue.
 12:30; Opening of sale and selling of all car lots.
 9:00 P. M.; American Legion Dance at American Legion Bldg.
 The Public is Invited
 Tuesday, Sept. 27 at 1:00 P.M.
 Our regular mixed sale of all classes of livestock. Bring in any livestock you wish to sell, whether hogs, cattle, horses or sheep. And they will be sold at that time.
 Free Barbecue at 11:00 A.M.

Augustine Livestock Commission Co.
 Texhoma, Oklahoma

Why SUFFER WITH YOUR FEET Buy HEALTH SPOT SHOES

HEALTH SPOT SHOES
 111 East 6th Avenue
 AMARILLO, TEXAS

TRANSFER AND STORAGE
 Careful and experienced moving. Special care given your furniture. Plenty of storage space.
BRUCE AND SON, Transfer and Storage, 227 N. Harvey, Pampa Texas. Phone 192 No. 21 rtn

FOR SALE - Bedroom suite. In good condition. Cheap. Call 1993 or see Sybil Miller.
 rth

B.M.A. INSURANCE
 For each member of your family. Life, Accident, and Health Hospitalization
BUSINESS MEN'S ASSURANCE CO.
 E. K. SWIDER
 Spearman Lubbock

HANSFORD HOSPITAL AND CLINIC
 R. L. Kleeberger, M.D.
 Physician and Surgeon
 Member
 American Academy of General Practice
 Complete Laboratory
 X-Ray and Basal Metabolism Services
 Phones: Hospital 60
 Office 60
 Residence 16
SPEARMAN, TEXAS

Dr. F. J. Daily
 Dentist - XRay
McLain Building
 Spearman, Texas

Dr. D. E. Hackley
 Osteopathic Physician
 and Surgeon
 -X-Ray-
 Womble Building

SANFORD HOSPITAL and CLINIC
 PERRYTON, TEXAS
 Telephone 480
 H. M. Sanford, M. D.
 Physician and Surgeon
 Roy E. Sanford, M. D.
 Physician and Surgeon
 M. C. Maley, M. D.
 Pediatrics

Doye & McConnell
 Attorneys-At-Law
 309 1/2 S. Main
 Perryton Texas

T. D. SANSING
 Attorney
 At Law
SPEARMAN TEXAS

HANSFORD LODGE 1040
 A. F. & A. M.
 Regular communications
 2nd and 4th
 Monday of each
 Month.
 Ray Phelps, W. M.
 L. L. Jameson, Secty.

A COMPLETE SUPPLY OF MONUMENTS AND IN STOCK
OSGOOD MONUMENT Company
 2701 Buchanan St.
 AMARILLO, TEXAS
 Dependable Service Since
 CERTIFIED "ROCK OF AGES" DEALER

Vertical text on the far right edge, partially cut off and overlapping with other advertisements. Includes words like 'BROWN SWEET PECAN TURNO', 'APPLE', 'Str', 'Ro', 'Co', 'Fr', 'Br', 'Or', 'Joel E. W.', 'Greene Bldg.', 'Telephone'.



Like falling leaves, prices tumble down for our annual FALL FESTIVAL—a gala event featuring a vast variety of delicious foods to satisfy the biggest appetites that come with the new season. Check the super values. Compare them brand for brand . . . size for size . . . price for price. Then join the party of thrifty folks who will fill their shopping baskets with savings at Cut Rate Grocery and Market's store wide FALL FOOD FESTIVAL.

- Oxydol-Tide-Duz-Dreft 25c
- Baby Food GERBERS 3 cans 19c
- Tamales CASA GRANDE 2 tall cans 29c
- Tissue NORTHERN 3 rolls 25c
- Pumpkin BRIMFULL 2 large cans 25c
- Jello All Flavors Pkg. 5c

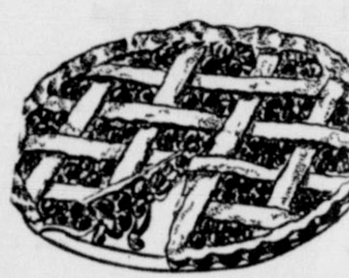


Here's a bumper crop of values—the 1949 pack of the finest fruits and vegetables . . . picked at their flavor peak on sun-drenched farms and orchards . . . packed with all their good-tasting goodness by the nation's leading canneries—AND PRICED DOWNRIGHT LOW by us to give you bigger savings. So fill your pantry now. Buy by the can . . . by the dozen . . . by the case. A pantry stocked with these canned foods is like money in the bank—and they'll add interest to your menus for months to come.

- Treet Armours 37c
- CORN Kounty Kist Vac. Pac. - 2 cans 25c, Case \$2.89
- PEACHES Hunts - 2 cans 47c, Case For Only \$5.65
- BLACKEYED PEAS Dormans - 2 cans 19c, Case \$2.25
- APRICOTS Hunts - 2 cans 45c, Case \$5.15
- PEAS Trellis Early Variety - 2 cans 25c, Case \$2.85
- MILK Surefine - 2 tall cans 21c C \$5.20
- TOMATOES Rotel - 2 cans 28c, Case \$2.65
- HOMINY Surefine - No. 2 can 10c

Bakery Treats

- BROWNIES Chocolate doz. 49c
- SWEET ROLLS Fruit fill doz. 45c
- PECAN BRITTLES 2 for 15c
- TURNOVERS Apple or Cherry 2 15c
- APPLE PIES Each 43c



- Flour PURASNOW 25 Lb. \$1.39
- Sugar 10 Lbs. 89c
- Crisco 3 lb. can 79c
- Oleo ADMIRAL Colored Lb. 35c

- Strawberries Pint 45
- Rolls Parker House Pkg. 27
- Corn Whole Kernel 27
- Fryers Armour's Cut Up Lb. 69
- Broccoli Pkg. 37
- Orange Juice Concentrated 29

Self-Service Produce

- Maryland Sweet YAMS 3 Lbs. 29c
- Pick-O-Morn TOMATOES Lb. 17c
- Green Pascal CELERY 2 Lbs. 25c
- Fancy Yellow SQUASH 3 Lbs. 25c
- Jonathan APPLES 2 Lbs. 23c
- W. N. 1st ORANGES 2 Lbs. 33c



See You At The Fair

SPECIALS FOR FRIDAY and SAT.

Cut Rate Grocery & Market
SPEARMAN, TEXAS

Quality Meats

- KRAFTS Velveeta 2 Lb. 69c
- Salad Waters 2 Lb. 43c
- LITTLE BILL Mug Peanut Butter 35c
- Miracle Whip Pint 29c
- Beans Pintos 2 Lb. 27c
- Sunray Cello Franks Lb. WEINIES 39c
- Pinkney Cloth Bag SAUSAGE Lb. 33c
- Nice-Lean PORK CHOPS Lb. 65c
- Armour Star DRIED BEEF 4 Oz. 29c
- Bricks CHILI Lb. 49c



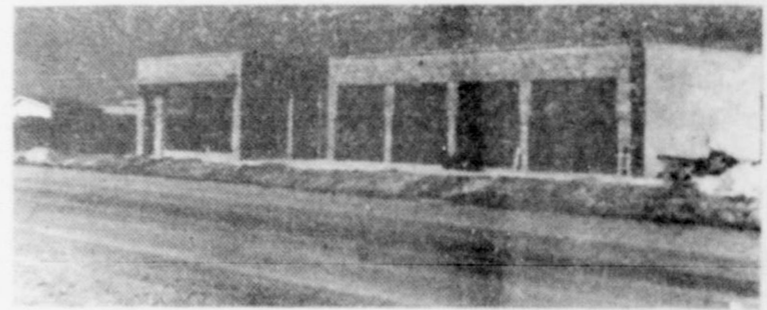
Grade A Beef CHUCK ROAST Lb. 48c

CIGARETTES
Carton \$1.75



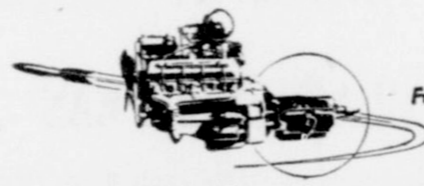
THE NEW HOME FOR OLDSMOBILE

Now Open To The Public

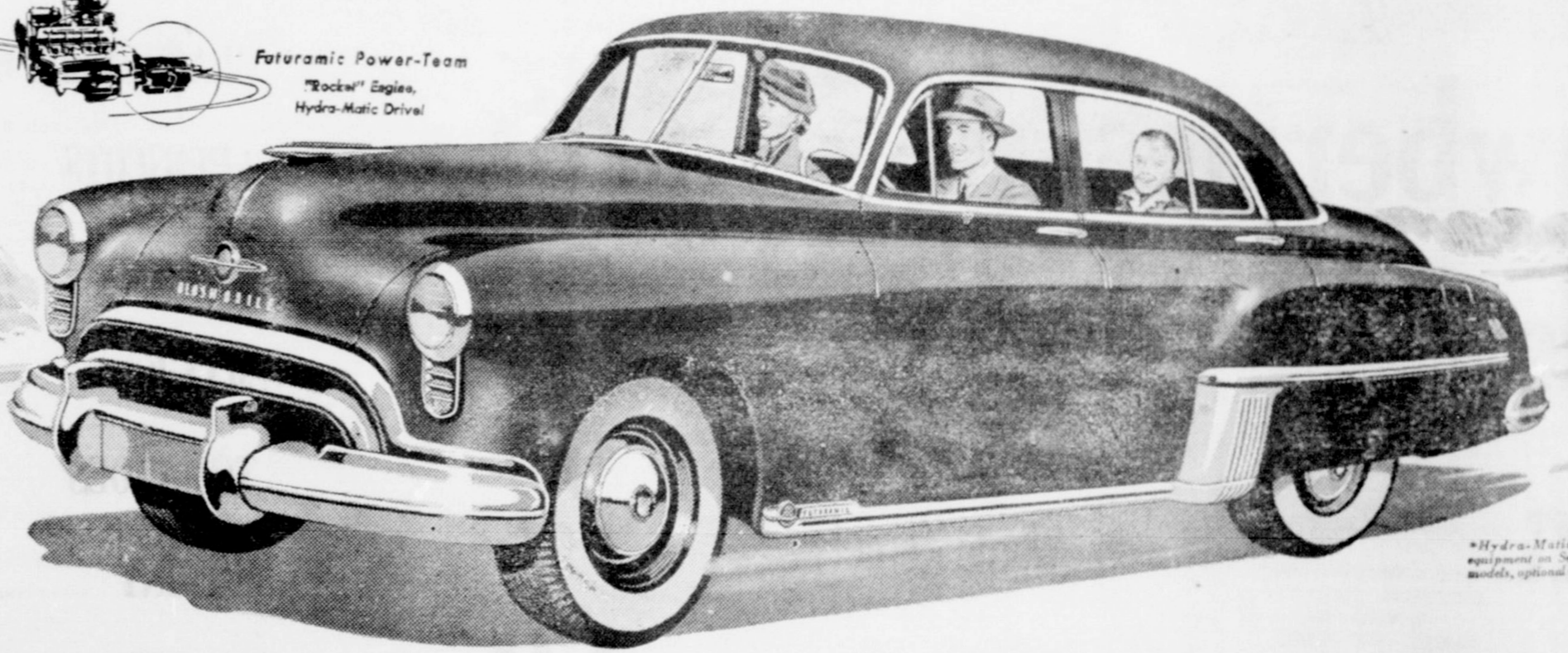


Located On Highway 117 Southwest

Of Big Equity Elevator.



Futuramic Power-Team
"Rockin'" Engines,
Hydra-Matic Drive!



*Hydra-Matic Drive available
equipment on Series '49 and '50
models, optional on series '48 '49



We give you a special invitation to visit your new Oldsmobile home and check with us on our plans for the future. While we do not have all our equipment installed at this time . . . we do feel that we have one of the representative automobile agency homes in this area and we want you to depend on this business to take care of your service and repair work on Oldsmobile or any other make passenger cars.

W. M. GLOVER

Phone 37

Spearman, Texas



RD. ANNU
FALL FAIR
SE