

Chamber stages annual banquet

"PRIDE" will be the theme when members of the Spearman business community and the Chamber of Commerce -- citizens of the city and friends from neighboring areas sit down to the Chamber's annual banquet Saturday night, 7 p.m. at the high school cafeteria.

"It is both appropriate and the easy way out," commented Chamber Manager Mary Lou Wysong. "Pride has always been a part of the personality of Spearman and with the accomplishments of the past year and the promise efforts underway hold for the future, we just could not think of a theme that better expressed the state of mind and the state of progress at this point in the life of our city."

Accomplishments bear her out.

The new municipal airport and fire station were sort of tandem projects with the fire station manned and in operation. By its very nature, the airport has a slower completion process but city leaders feel it must be operational no later than October.

With Hansford County's grain-producing record--second-largest wheat-producing county in the nation--several visionaries began exploring the possibility of an alcohol production plant related to the energy shortage. It was Spearman businessman Carl Archer and associates that reached a favorable stance and potential at the federal investment level and another wave of pride swept the community as it cheered them on.

Spearman, with nearby Gruver, at the heart of Hansford County, has been heavily involved with energy exploration and development along with its record grain production. Spearman is the home base of Baker and Taylor Drilling Company. So promising is the hope for energy sources in the area, this company does not have a man nor a machine idle for want of a task.

--And there are other progressive signs such as new businesses in the city but to press the progress report further would be stealing the "thunder" of Dr. Earl Novak who will be Master of Ceremonies for the banquet and brimming with points of pride.

The annual report of the Chamber will be full of points for emphasis.

Incoming Chamber President Dick Elbert--also 1980 chairman of the Chamber Agriculture Committee, reports the "Goat Share" Sale netted some \$4,775 distributed among 71 boys and girls.

Despite misunderstandings along the way, Junior Lusby, chairman of the Airport Com-

mittee calls the new municipal airport "a dream come true."

The Ambassadors with J.L. Brock, chairman, were kept busy cutting ribbons for new openings and breaking ground for new buildings. The Ambassadors also staged the second annual reception at Amarillo to thank those companies having branches in Spearman and the general area for their continued business efforts in the community.

The Economic Development Committee chaired by Ray Ingle did much spade work toward a gasahol plant for the community and it would seem all efforts expended on this project are going to move to fruition.

Robert Elliott and David McClellan, co-chairman of the Community Development Committee report a highly successful "Take Pride in Spearman" month and an equally successful community clean-up. Winners of a poster contest among second, third and fourth grade students were treated at the ice cream store.

The Water Committee co-chaired by Johnnie C. Lee and Bobbie Novak has the Palo Duro Dam project as its "number one push" and regular progress reports are made.

Chairman Irene Baker of the Retail Merchants Committee reports two very successful special promotions this past year plus the excitement of closing the year with the city decked out in new Christmas decorations. One Moonlight Madness promotion fell the same evening of a special city council meeting that filled the old fire station and still stores were filled and there was double-parking on Main St.

The Membership Committee under Chairman Robert Queener has structured new dues and presented recommendation to the membership.

Main feature of the Free Enterprise Committee chaired by John R. Collard Jr., was the Spearman High School Career Day with free enterprise films from Phillips Petroleum Co. and the Amway Corp. shown to students, the Lions and Rotary Clubs and the Women's Division of the Chamber.

Fireworks for the glorious Fourth were the main project of Ray Ingle's Special Projects Committee. They were a part of a Fourth of July celebration in conjunction with the YMCA.

Bobbie Novak's Fun Breakfast Committee has lived up to its name.

Cathy Gafford, chairman, Hansford Roundup Committee, reports continuing growth and better and better entertainment each time.

The Legislative Committee chaired by Jim Shirley was highly lauded by the public for

The Spearman Reporter

VOL. 72, NO. 11

THE SPEARMAN REPORTER, SPEARMAN, TEXAS 79081

THURSDAY, JANUARY 22, 1981

PROGRAM

- Entertainment..... The Celebrate Singers
Spearman High School
- Master of Ceremonies..... E. E. Novak, D.D.S.
- Invocation..... Robert Queener
- Rotary Employer of the Year..... Ed Freeman
- Introduction of out of town Guest..... The Ambassadors
- Women Division..... Sandy Heinrich
- Chamber of Commerce President, 1980
- Women Division..... Altha Townsend
- Members of the Year Award
- 1980 President..... L. E. Thomas, Jr.
- 1981 President..... Dick Elbert
- Entertainment..... Booker Bank Notes
- Citizen of the Year Award..... Jim McLain
- Miss Hansford County..... Eadie Clemmons
Doris Wilde and the
Spearman High School
- Meal..... Cafeteria Staff
- Serving..... Spearman High School-FHA Girls
- Decorations..... Womens Division
- Custodian..... Jesse Burke

The following have steers entered at the Amarillo Stock Show January 21 through the 25th:

- RONNIE CLARK--2 steers
- TRACY VERNON--2 steers
- SCOTT STRAWN--2 steers
- GREGG ODEGAARD--1 steer
- TAL JACKSON--1 steer
- EADIE CLEMMONS--1 steer

MISS HANSFORD, Eadie Clemmons will show her steer at the Amarillo Stock Show this week!

the pre-primary "Meet the Candidate" night it conducted. This panel is being urged to make it a regular election year event.

The feeling of committee members and their chairmen and the Chamber membership as a whole is that it will have to be impossible to partake of a sumptuous banquet meal and listen to the fuller accounts of 1980 accomplishments and not feel pride in Spearman and confidence in the Chamber.

John Schubert, well known Spearman farmer, passed away at midnight Tues. He was at Ft. Lyons Vet hospital, Colo. No details as we go to press!

Services Held

Charles F. Hoggatt, 92, died Sunday.

Graveside services were at 2:30 p.m. Tuesday in Memory Gardens Cemetery at Pampa with the Rev. Russell Pogue, pastor of the First Baptist Church in Spearman, officiated. Arrangements were by Boxwell Brothers Funeral Home of Spearman.

Mr. Hoggatt, born in Weir City, Kansas, married Margaret Bowman in 1930 at Enid, Okla. They moved to Spearman in 1968 from Beaumont, Calif.

Survivors include his wife; three daughters, Charlotte Baruch of Stevens Point, Wis., Betty Ellis of Houston and Irene Kuehl of Spearman; seven grandchildren and six great-grandchildren; and one sister Mrs. Pearl Cox of Pampa, Texas.

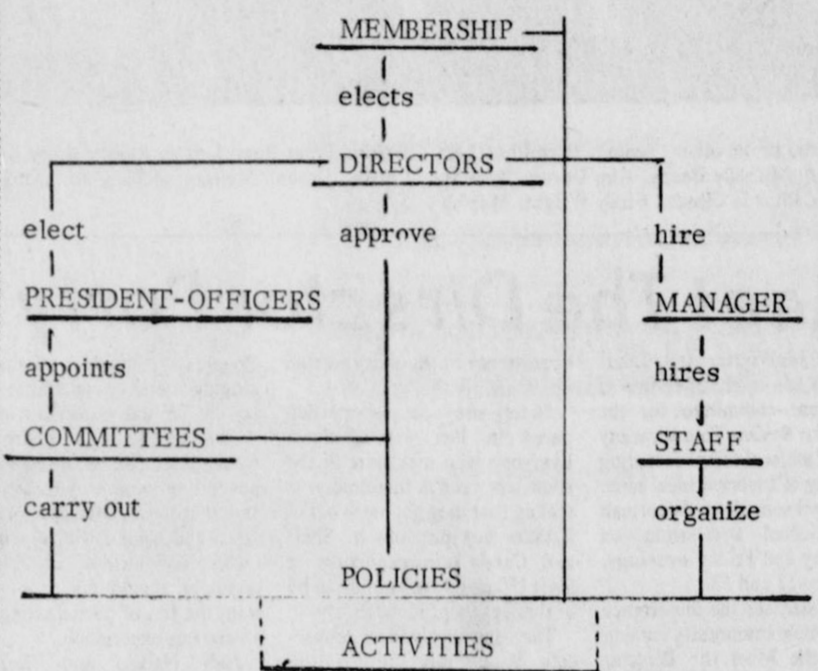
Hospital news

Patients in Hansford Hospital are Lee Roy Watson, Lola Melton, Cheryl Bayless, Cathy Odom, Cathline Gorman, Edith Roper, Verna Hutchison, Leo Cummings, Evelyn Burch, Grace Lyon, Rhonda Bynum Aloha Bentley, Arthur Adkinson, Alfredo Ramirez, Jeff Melton, and Onita Stewart.

Dismissed were Jerry Scheets, Mark Sardick, Rodney Barber, Roy Wilmeth, Amy Gillispie, James Kenney, Phillip Stumpf, Lois Miller, Wardell Volden, Ofelia Vela, Ernestine Gray, Mandy Lusby, Jerry Ross, Jo Ann Burch, Ina Martin, and Doris Pinkerton.

KENDRA BURKE lead the Lynxettes to victory last night at Lynx gym, beating Riverroad 56-46! The Lynx lost a heartbreaker in overtime 61-59 with Steve Shields hitting 28 big points! The Lynx travel to Dalhart Friday!

Your Chamber of Commerce



Why join the ...

CHAMBER OF COMMERCE?

- BECAUSE** ...you are a citizen doing business in this city and sharing in its prosperity. The obligations of business citizenship challenge every man and institution to subscribe actively to the advancement of the community of which he is a part.
- BECAUSE** ...you prosper as our city prospers. By helping to build a thriving community your investment is strengthened and your opportunities are broadened. You have a personal interest in these objectives.
- BECAUSE** ... progress and prosperity depend on the development of a sound economic and social structure. These result from vigilant aggressiveness and a continuing program of activities designed to cultivate opportunities and capitalize on advantages.
- BECAUSE** ... the support of all business and professional men is necessary to bring about the economic improvement of our city and the civic and business development demanded by our modern standards of living.
- BECAUSE** ... these goals can be reached only by united effort through an organization equipped to study and conduct a sound program of community progress.
- BECAUSE** ... the Chamber of Commerce is the only organization consistently and exclusively engaged in promoting the civic and economic development of YOUR community.

Pictures Returned

The pictures used in the Hansford County History Book may be picked up at the Stationmaster's House Muse-

um, 30 S. Townsend, on Wednesday, January 28, from 1 until 5 p.m. or on Tuesday, February 3, from 1 until 4 p.m.

MARKETS

Wheat	\$4.13
Soybean	5.90
Corn	3.57
Milo	5.50

8th Lynx Win 1st Place

Would the 8th grade Lynx be able to "reign as Tournament Kings"? The 8th Lynx had played in one other tournament at Gruver and had brought home the 1st Place Trophy. Their opponents in the finals was none other than the Dalhart Wolves 8th grade team. The 8th Lynx had played them before, but Dalhart had come out a "big" winner. Now, the question was could the 8th Lynx avenge their defeat or could the Wolves defeat the 8th Lynx in this tournament?

Coach Duncan's "Determined" Lynx were on the court and fired-up and ready to go. They had been fired up since they defeated the Canadian Wildcats in their opening game. The 8th Lynx had also defeated their other opponents on Friday, January 16, and were ready for the State Champs themselves--but the 8th Lynx didn't play against the "State Champs", they played like State Champs! During the first few minutes of the game, neither team scored, until halfway thru the quarter and the Wolves got on the board first. If someone didn't make it, then you missed a GREAT GAME. And one thing for sure, the 8th Lynx had lots of supporters. There was only a spot or two that was vacant, but other than that it was "plum full"! The 8th Lynx remembered, I'm sure, the game that they played in Dalhart against these very same fellows. The 8th grade Lynx already had a 1st Place Trophy, but that was at the

Gruver Tourney which was held on December 18-20, 1980; the 8th Lynx wanted another 1st Place Trophy that had January 15-17, 1981!! The Lynx had Ross Donahue and Jerry Garcia taking care of the ball with great ball control and Brian Paul helped some also in the front, while Mark Pearson and Steve Burke muscled their way up to the basket and had great shots! Mack McLain came in for Brian Paul. The 8th Lynx had about a 2 point lead or so going into halftime.

Not to many people went to the concession to get something to eat, but instead to get something to drink, because there was lots of screaming and yelling for the 8th Lynx. Whenever a Lynx player would go up to the freethrow line to shoot a freethrow, everybody was so quiet that, you could hear a feather hit the court! But when a Wolves player was at the line to shoot a freethrow, you could almost feel the roof go 2 inches higher than it was! It was so noisy that those Wolves couldn't get very many points off the freethrow line. The 8th grade Lynx and Coach Duncan and, of course, the 8th Lynx fans--all Spearman folks--knew that this game would go down to the wire! Could the 8th Lynx hold on to their lead? The 2nd half was gonna be tougher than the first half!!

The Dalhart Coach must have said something encouraging to his Wolves, because when the 3rd quarter started, the Wolves got the tip-off and had the ball a

pretty long time on their side of the court. They pressured the ball and stole it once and scored. When Coach Duncan talked to his Lynx, they calmed down and started to work on the clock as well as getting the good shot to go in! Jerry, Ross and Brian or Mack have great hands and control the ball as good as "Curly" from the Harlem Globetrotters--he is the best ball-handler that I've seen. With Mark and Steve in the inside, the 8th Lynx knew that they had a great chance to win, their devoted fans thought so too. The 8th Lynx started to control the big #50 from Dalhart and after that they started scoring from the inside and from the outside also. It wasn't luck that the 8th grade Lynx were controlling everything that got in their way, it was pure skill. I knew that the home-crowd had something to do with winning, but after that game I found out that the players are doing it for the homecrowd, so that their fans can have confidence in them and that they--the fans can go to all their games and encourage them on. All fans--from 99 to 3 years of age--were there to cheer on the 8th Lynx and they all know how well the 8th Lynx are doing this year. Why, I even heard a little 4th grade girl say after the game which the 8th Lynx won by the score of 31-22, "Now, the Lynx get to go to the District Championship and the State!"

The 8th Lynx had a 10 point lead with 10 seconds left; big #50 was on the freethrow line to shoot his freeshots, and Teddy Vela, Kenny Bullard, and the other 3 Lynx that got to go in were ready for the big boy to shoot. He missed his shots and the 8th Lynx were in the lane to get the rebound, big #50, knew he missed his freeshot and went right thru the wedge the 8th Lynx had like a spear going thru a melon; he got the rebound and got two points. There was no foul called, I truly believe there should have been, but the Lynx got the ball in bounds and the buzzer rang showing everybody that the 8th Grade Lynx were still Kings of the Tournaments. They won the 1st Place Trophy over a power-house!! WAY TO GO COACH DUNCAN AND ALL THE 8th GRADE LYNX FOR DOING AN OUTSTANDING JOB!!

The next game the 8th Lynx will play will be today, Monday, January 19, here in the Little Gym of the Jr. High against the Perryton 8th grade boys. The game should start at 6:30 p.m. The Perryton boys had already beaten the 8th Lynx by a 1 point margin. Tonight everyone will find out if the win over the Dalhart Wolves was too much for the 8th Lynx or not enough! The 8th Lynx are now 5-0 in 1981!! They want to be undefeated for the whole 1981 end of their basketball season as 8th graders, and I believe they have an excellent chance to be undefeated for the remainder of their schedule with 3 more games excluding this game against Perryton.



TOURNAMENT CHAMPS -- Winning Spearman cagers are, kneeling from the left: Mack McLain, Bryan Paul, Bob Cooke, Cole Ivey and Ross Donahue. Standing, from the left, Teddy Vela, Steve Burke, Mark Pearson, Bryan Williams and Jerry Garcia.

YMCA Basketball News



Pictured in the other "team". Back Row (Left to Right): Michelle Beedy, Kim Devers, Tammy Thomas, Rhonda Gibson, Cindy Wright, Marsha Pipkin. Front Row (Left to Right): Stacy Swan, Christa Urban, Melissa McLain and Michelle Savage.

The Hansford County YMCA Youth Basketball program officially got under way Saturday. The basketball program is for boys and girls in the 3rd, 4th, 5th, and 6th grades. Girls play Saturday mornings; 3rd and 4th grades at 9:30 a.m. and 5th and 6th grades immediately following. Boys play at 1:30 p.m. Saturday afternoons.

Pictured are girls playing in the 5th and 6th grade program. A bit different approach is being used, to benefit the basketball knowledge and skills for the youth. Practices for the girls are enmass and the collective knowledge of the coaches is used to teach good basketball fundamentals to the girls. Coaches of the 5th and 6th grade girls are: Shariion Cook and Carolyn Gressett, Michelle Beedy, Cindy Wright and Marsha Pipkin. These ladies are helping the girls learn the basic skills of the sport, rules and fair play. Instead of the "team" concept and organization, the coaches decided to work toward the individual skills growth of each player, by dividing the players into teams just before each game. The girls will not play on a team, which is the same, any week of the series. The games are divided into quarters, giving breaks which

will allow each girl to play every game on an equal basis.

There will also be "Competition" on free throws, layups

and the like to let each girl see how she is improving.



Pictured is one "team" which competed in the first game. Back row (Left to right): Denise Rojas, Jennifer Yarbrough and Carolyn Gressett. Front Row (Left to Right): Melissa Kelley, Laura Carrie Ann Guthrie, Jill McLain, Shari Sexton, Umpress and Jan Allen.

Sign Of Spring

Though winter is just getting underway, the first of spring has reached news desks all over the country. Various Major League baseball clubs have mailed out spring exhibition game schedules.

One, that of the Detroit Tigers, explains the Tigers will play more exhibition games this year than ever--thirty-five games, between March 7 and April 7.

They'll be played in Florida, of course, beginning March 7 in Orlando. And training will begin--for pitchers and catchers--on February 17, in Lakeland. That's only a month from now, less than a month after the Superbowl, and before the basketball season ends! Does that make the weather seem slightly warmer?

GM AUTO SALES OFF

DETROIT -- General Motors Corp. sold 22 percent fewer cars last month than in December 1979, and domestic sales for Volkswagen of America Inc. were off 17 percent, the two companies reported recently. Winding up its worst year since 1975, GM said it sold 272,004 cars during the month to bring the 1980 total to 4,116,482.

In Fashion

Signature sportswear continues to be popular with the school and college crowd. Designer separates with fashion details give that up-to-the-minute look.

Meet The Director Party Planned

Sheri McWhirter and Candy Boxwell are co-chairpersons of the talent committee for the Fruitcake Review Too, a variety show of all local talent featuring a variety of assorted local acts, to be presented at Spearman High School auditorium on Thursday and Friday evenings, February 12 and 13.

Sheri stressed the importance of the whole community coming out to the Meet the Director party on Monday, January 26, at 7:30 p.m. in what is commonly referred to as the Old Beedy Furniture Store Building. This is where rehearsals will take place. The director who comes from Cargill in New York will arrive in Spearman on Sunday, January 25. It is important for the whole town to meet him that he might get a feel of what Spearman is. Coming to the party is not a commitment to be in the show. But everyone who would like to be in the review will have an

opportunity at the party to sign up.

Ninety-two people participated in last year's show. Everyone who took part in the show last year is unanimous in feeling that they got more out of it than they put into it. Sheri and Candy are expecting at least 150 people to sign up to be in this year's production.

The time involved in rehearsals is entirely up to the participant. If a person only signs up to be in one skit, that one would probably only be involved for an hour or two a week. You can participate in as many or as few as you want. The show will have enough variety to suit every taste.

You don't have to have a specific talent to participate in the Fruitcake Review Too.

People with specific talents in singing, dancing, or drama can try out for solo parts. But all a person needs is a desire to participate. Lots of people are needed to people chorus lines and routines. There are lots of skits and walk-on bits which involve very little talent. A lack of talent should not stop you from the fun of participating in a very fun experience.

Judy Nelson and Glenda Guthrie are a sub-committee under talent planning the Meet the Director party. It will be a fun evening with lots of surprise entertainment. It will also include a slide show on last year's review. And, of course, there will be an abundance of refreshments.

Fruitcake Review Too is a joint project of the Chamber of

Commerce and the YMCA to raise funds for important projects of both civic organizations which cannot be funded in any other way. Fruitcake Review Too will be two evenings of hilarious family type entertainment. People who would be willing to sell tickets are asked to pick up packets of tickets at the Meet the Director party. Joy McCormack, Mary Lou Wy-song, and Jim Benson are the co-chairpersons for Fruitcake Review Too.

All participants must be adults. No school children will be used. But anyone eighteen years of age who has been graduated from high school up to 125 years of age is invited to participate. If you want to take part, the director will find a spot for you to appear in the show.

Citizen of the Year Award

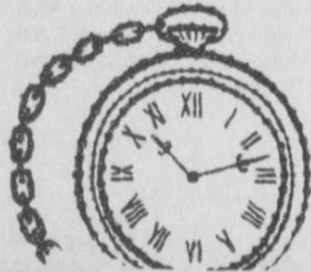
- 1956 Mrs. R.B. Archer, Sr.
- 1957 E.J. Copeland
- 1958 Oscar Donnell
- 1961 Frank Massad
- 1963 John R. Collard, Jr.
- 1965 Sam Watson, Jr.
- 1967 J.B. Cooke
- 1969 Mrs. E.A. Greever & Jesse Davis
- 1970 Mrs. Frank Davis & Bruce Sheets
- 1971 Harry Stumpf
- 1972 Dean Weese
- 1973 Charlene Bulls
- 1974 L.L. Anthony
- 1975 J.L. Brock
- 1976 Dee Jackson
- 1977 Frances Loftin
- 1978 C. Ralph Blodgett
- 1979 Jim A. McLain

PEST MANAGEMENT CONFAB SET--A look at what's going on in the area of integrated pest management (IPM) for a host of crops will highlight a conference at Texas A&M University Feb. 5-6. Discussions during the Texas Integrated Pest Management Conference will center on such commodities as sorghum, cotton, citrus, peanuts, pecans, rice, soybeans and livestock and will also concern programs in urban areas, notes the coordinator of IPM programs for the Texas Agricultural Extension Service, Texas A&M University System.

The business bargain...
Leased floodlighting
can save you:



money



time



accidents



worry

Leased outdoor floodlighting can be a definite advantage for your business. Leased floodlighting is automatic, on-at-dusk, off-at-dawn, so it doesn't waste energy. In fact, leased floodlighting gives more light per watt than incandescent lighting, so it uses less energy for the same amount of light. Nighttime jobs can be done more efficiently with proper lighting, so you save time. Bright outdoor lighting can help put an end to accidents caused by poor visibility. And, well lighted property is less subject to vandalism. You'll feel more secure, worry less. To get leased floodlighting, just give us a call.

COMMUNITY PUBLIC SERVICE

Your Electric Light & Power Company



Doctor Talk

By Dr. Harold B. Ligon

Lately, we have been talking about high blood pressure; its definition, its significance, and its incidence of occurrence. There remains much to be said about it. Let's continue a general discussion.

The circulatory system of the body has as its main objective the transportation of blood containing oxygen and nutrient to all the organs and other parts of the body. The arteries carry blood to the parts. The veins return blood from these parts for reoxygenation in the lungs and recycling by the heart pump.

The damaging effects of high blood pressure are brought about through this same circulatory system. The long term target organs affected by hypertension through the circulatory system are the eyes, kidneys, brain, heart and major blood vessels.

Generally, the kidneys, brain, and eyes are affected on a circulatory basis, each organ requiring blood supply in its most efficient form. Over the years, if the circulation is not up to par, slow and gradual deterioration takes place because of the arteriosclerosis encouraged by hypertension. Ultimately, that organ can fail!

Damage to the heart takes place in two ways. Heart muscle strain occurs secondary to the increased work load. The heart simply has to work harder and gets less rest as a result of the higher resistance to the pumping action. The other damaging way is again circulatory; the development of arteriosclerosis in the coronary arteries (the arteries that supply the heart). Hypertensive damage can lead to coronary artery disease and ultimate heart failure and other conditions of the heart.

Price fixing is wonderful when it doesn't affect what you have to sell.

E3-81

Baker & Taylor Drilling Co.

GRUVER HWY.
659-2503

Buster's Dusters

PLAINS SHPG. CNTR.
659-3648

1980 SPEARMAN 1981 LYNX & LYNXETTES

NOVEMBER 15	FOLLETT CLINIC	A Girls	
NOVEMBER 18	STINNETT	A & B Boys and Girls	THERE
NOVEMBER 20	SUNRAY	A & B Boys and Girls	THERE
NOVEMBER 24	STINNETT	A & B Boys and Girls	HERE
NOVEMBER 25	STRAFORD	A & B Boys and Girls	THERE
DECEMBER 2	GRUVER	A & B Boys and Girls	HERE
DECEMBER 4-6	SPEARMAN VARSITY TOURNAMENT	Boys and Girls	
DECEMBER 4-6	GRUVER JV TOURNAMENT	Boys and Girls	
DECEMBER 9	STRAFORD	A & B Boys and Girls	HERE
DECEMBER 11-13	FRITCH TOURNAMENT	A Boys and Girls	
DECEMBER 16	SUNRAY	A & B Boys and Girls	HERE
DECEMBER 19	CANADIAN	A & B Boys and Girls	THERE
DECEMBER 22	GRUVER	A & B Boys and Girls	THERE
JANUARY 2	PHILLIPS	A & B Boys	THERE
JANUARY 6	FOLLETT	A & B Boys and Girls	HERE
JANUARY 8-10	CANADIAN TOURNAMENT	A Boys and Girls	
JANUARY 13	PERRYTON	A Boys and Girls	THERE
JANUARY 16	CHANNING	A Girls	HERE
JANUARY 16	BOYS RANCH	A & B Boys	HERE
JANUARY 20	RIVER ROAD	A Boys and Girls	HERE
JANUARY 23	DALHART	A & B Boys and Girls	THERE
JANUARY 27	HIGGINS	A Boys and Girls	THERE
JANUARY 27-31	PERRYTON TOURNAMENT	Boys and Girls	
JANUARY 30	PERRYTON	A Boys and Girls	HERE
FEBRUARY 3	BOYS RANCH	A & B Boys	THERE
FEBRUARY 3	MIAMI	A B Girls	THERE
FEBRUARY 6	RIVER ROAD	A & B Boys and Girls	THERE
FEBRUARY 10	DALHART	A Boys and Girls	HERE
FEBRUARY 13	DARROUZETT	Boys and Girls	THERE
FEBRUARY 19-21	DISTRICT ONE TOURNAMENT	Boys and Girls	

*Denotes District Games

Junior Lusby Cats

W. GRUVER HWY.
659-3766

Speartex Grain Co.

514 COLLARD
659-3711

W
si
ca
51
Cu
Re
40
5s
Ta
&
pir
set
yer
Ho
Mc
out
10s
FOR
stat
sout
659-
405-
FOR
Sout
bedr
utilit
price
appo
Sand
night
40-ru
FOR
Ram
4 BB
Staff
No. 6
for S
9s-rt

WANTED ADS

BUSINESS OPPORTUNITIES

Dealer Inquiries Welcome! 10% over cost. Pre-Fab ready to erect custom steel buildings for commercial, farm or homes! Matrex (24 hrs.) 512/231-2079, 9-8ct only

Own your own Jean Shop; go direct--no middle man, no salesman's fee. Offering all the nationally known brands such as Jordache, Vanderbilt, Calvin Klein, Sedgefield, Levi and over 70 other brands. \$15,500.00 includes beginning inventory, airfare for 1 to our national warehouse, training, fixtures and Grand Opening Promotions. Call Mr. Loughlin at Mademoiselle Fashions 612-835-1304. 11-2tp

Open your own retail apparel shop. Offer the latest in jeans, denim and sportswear. \$14,850.00 includes inventory, fixtures, etc. Complete Sotrel! Open in as little as 2 weeks anywhere in U.S.A. (Also infants and childrens shop). Call SUE, TOLL FREE 1-800-874-4780. 11-1tp

FOR RENT

OFFICE SPACE FOR RENT
11 West Kenneth - West side two offices, file and storage area receptionist's office and lounge. Call J.E. Blackburn (806) 659-2766 or 659-2719. 10s-rt

CARD OF THANKS

We would like to express our appreciation to each one for the prayers, calls, cards, flowers, and visits while Lester was in the hospital at Amarillo and Spearman.
May God bless and keep each and every one of you.
Lester and Darlene Howell

Actor Richard Boone dead at age 63.
Polish chief toughens party stance.

Offered Exclusively By
EMMETT R. SANDERS, REALTOR

Brick home in Southwest Spearman, near hospital. 2 bedrooms, 1 1/2 baths, garage has been converted to beauty shop with outside entrance, utility room, carpet, drapes, storm windows.
Three bedroom, 2 bath, nice older home with fireplace, large kitchen, storm cellar, attached garage with opener, greenhouse, toolhouse, other outbuildings, plus rental unit at rear, near churches and downtown, shown by appointment.
Stucco home near junior high, 4 bedrooms, 2 baths, den, carpets, corner lot.
Choice commercial location fronting 140 ft. on West Kenneth Street.

EMMETT R. SANDERS, REALTOR
659-2516
659-2601 [nights]
34e-rt

ELECTRICAL WORK
Service calls and TROUBLE-SHOOTING
No **BILL LAIRD** Delays **659-2409**
Quick Service **Spearman**

JEEPS CARS TRUCKS
Available through government agencies. Many sell under \$200. Call: 602-941-8014 Ext: 518 for your directory on how to purchase.

Highway Litter Pick-up Tops \$10 Million Mark

AUSTIN—Picking up litter along Texas roadways cost over a million dollars more in fiscal 1980 than in 1979. "Litter pick-up by our maintenance crews cost \$10.3 million from September 1, 1979, through August 31, 1980," said Mark Goode, engineer-director of the State Department of Highways and Public Transportation. "During fiscal 1979, the price tag for cleaning up highway rights-of-way was \$9.2 million. That was a larger cost figure than ever before, but it has been surpassed handily this year."

"Litter costs are spiraling and we want Texas taxpayers to know about it," Goode said. "Littering is an irresponsible, illegal and thoughtless action. It's unbelievable what some of our maintenance crews find lying alongside the roads—old furniture, auto parts, diapers and household garbage."

The department does its best to keep Texas roadways clear of rubbish, but it is a frustrating and costly task. The agency is in the business of keeping Texas traffic

moving, yet its crews must spend many thousands of valuable man-hours picking up motorists' trash. Litter picked up one day is often replaced by more the next. "It's a disgrace—and littering is so unnecessary," he said.

Highways are just one area where litter presents problems in Texas. Trash along beaches, lakeshores, in parks and other public places upsets tourists and locals alike. City streets share in the litter problem, too.

What's to be done about it? Mark Goode says his department believes education is the key. "With the help of the media, newspapers, television and radio, and through our own offices, we are trying more intensively than ever before to educate youngsters and adults alike about the costliness, ugliness and needlessness of littering," Goode said.

During 1980, the department sent out several news releases to the press concerning the litter problem. It also produced four film public service announcements for television which have been provided periodically to all Texas TV stations.

A total of 56,000 colorful folders have been distributed to remind Texans that littering costs everyone hard-earned tax dollars and mars the beauty and grandeur of the state. "Our 16mm motion picture, 'A Litter MESSage,' has been viewed by over 300,000 Texans and is the most popular film in our free loan film library, particularly with schools," Goode said.

Litter bags are available at the department's 12 Texas Tourist Bureaus around the state and several thousand roadside litter barrels are maintained for convenient use by travelers. "We hope Texans take heed of our anti-litter program," Goode said. "After all, being a Texan isn't just a state of mind; it's the privilege of preserving our heritage and taking pride in our state's progressiveness. We must all take care to keep Texas clean and attractive, for ourselves and for future generations. Preventing litter is a good way of saying, 'I'm a Texan and proud of it,' and an excellent way of freeing millions of tax dollars for a more productive purpose," he said.



A highway maintenance crew picks up costly litter along a highway near Austin. Statewide, litter pick up expenses amounted to \$10.3 million during fiscal 1980, a record high.

Drive Defensively

Recent studies indicate there is more reason to cultivate the art of driving defensively than has been realized. These studies indicate some alcoholics and drug addicts are bent on self destruction, and are inclined to destroy others in the process.

There are other indications some seek sympathy and attention in automobile accidents. Another large percentage of accidents is caused, of course, by stupid or careless driving. Whatever the cause or motivation of the driver at fault, it is becoming clear that drivers who wish to avoid accidents must practice the art of defensive driving--seeking to avoid situations in which another driver can involve them in an accident.

It's not possible to avoid all such situations. But an alert defensive attitude, foresight, and precaution can avoid a good percentage of these situations--and perhaps save your life.

Circle Steel Corp.
Buildings Slant Wall Straight wall
Grain Bins 15'-60'
on-Farm & Commercial Turnkey
Concrete & erection call
Jerry Hill 806-226-2291

ATTENTION DERRICK HANDS!
Will pay 20¢ for clean cottonseed hull sacks in good condition.
Wrap in bundles of 25.
Call 659-3491 after 6.

PUBLIC NOTICE

In accordance with the requirements of the Public Utility Act, Community Public Service Company announces the Company's intent to change rates by altering the Company's extension policy. This proposed change is anticipated to have no effect upon the gross revenues of the Company.

A copy of the requested tariff change is on file with the affected cities served by Community Public Service Company and is available in each business office of Community Public Service Company.

COMMUNITY PUBLIC SERVICE
An investor-owned, tax paying Electric Light & Power Company

TEXAS PRESS ASSOCIATION
MEMBER 1981
PUBLICATION (USPS 509-660)
SPEARMAN, TEXAS 79081
213 Main Box 458 659-3434
Published Weekly at 213 Main Street
Spearman, Texas 79081
Owner-Publisher William M. Miller
Editor Faye Lynch
Second Class postage paid at Spearman, Texas
ANY ERRONEOUS REFLECTION ON THE CHARACTER OF ANY PERSON OR FIRM APPEARING ON THESE COLUMNS WILL BE GLADLY AND PROMPTLY CORRECTED UPON BEING BROUGHT TO THE ATTENTION OF THE MANAGEMENT.
SUBSCRIPTION RATE: Hansford, adjoining counties, combination with the Hansford Plainsman \$15.00.
Other points, \$20.00.

For The Ultimate In STORM DOORS
Custom Built, Designed, And In Colors To Fit Your Home....
Contact Howard Moyer at
Only Aluminum Industries
Guyton, Okla. 114 W. 1st 405-338-6966 or 73942 338-6170

CHILDREN'S MATINEES
Every Saturday - 2 P.M.
LYRIC THEATRE
-SPEARMAN-

An old folk belief is that a woman will dream of what her future husband looks like if she sleeps with a mirror under her pillow.

VIRGINIA WHITE
Realtor 659-3841

3 bdrm, 1 bath, C/H & A/C, fenced. Call to see.
3 bdrm, 1 1/2 bath, C/H, fenced. Much more.
Spacious & Lovely--4 bdrm, 2 1/2 baths, almost new carpet & draperies. Too much to tell about here. Call! Will show to qualified buyers.
Extremely nice; 4-bdrm, 2-baths, living room, family room, kitchen built-ins. Call 111
LOT FOR SALE--Corner Lot in Biodgett Add

CAPROCK MONUMENT CO.
Dealers of Georgia Granite, Georgia Marble, Colored Granite, & Bronze.
represented by
BOXWELL BROS. FUNERAL HOME
519 S. EVANS
659-3802

Hansford County Planned Parenthood
26 S. Haney
659-2483
Spearman
Mon.-Fri.
Call for an appointment.
30S-rt

SERVICES
SERVICE: Pits cleaned, wet or dry. Dragline or loader. Also, dozer, grader, carry-all service. Lee Roy Mitchell. 806-733-2384, Gruver, Texas 79040.
KIRBY SALES & SERVICE.
New & reconditioned vacuum cleaners. Claude Newell, 912 S. Bernice.
8-rt

Plumbing Service
Roto-roter, Acoustical Ceilings. Blown Insulation in walls and ceilings. Appliance Service, used appliances for sale. 659-2811 or 659-3781.
20-rt

MONUMENTS
Save 20% to 30%
Agents and Undertakers
Commission
ALVA MONUMENT CO.
Alva, Okla.
51-rtn only

NOTICE
Wallace Monument Co.
Monuments, Curbing, Grave Covers
Local Representative
LEONARD JAMESON
Spearman, Texas
20-rt

WINTER RATES
The Winter rates are \$6.95 per day for Stem Rinse & Vae shampoo. Available at Gordon's Drug. Also available at Freddie Largent's; 716 Cotter Drive; after 4:00 p.m. and Saturday and Sunday.

GAS LEAK DETECTION
Call: 659-3519 anytime
659-3019 after 5 p.m.

Will decorate cakes all occasions. Also cookies and cupcakes. Call Nelda 659-3984. 51-rt

Carpet & upholstery cleaning
Rogers Steam Way, Guyton, 405-338-7926
5s-rt

Taylor Springs Service, Termite & Pest control, tree spraying, pine tree service especially serving the Panhandle for 17 years with personalized service. Home Industry Business. Monthly service available without contract. 669-9992, Pampa. 10s-rt

MISCELLANEOUS FOR SALE
FOR SALE OR LEASE--Service station, cafe & house. 21 miles south of Perryton. Phone 806-659-3414.
40S-rt

FOR SALE: Brick home, nice Southwest location, corner lot, 3 bedrooms, bath and half, den, utility room, carpet throughout, priced under \$40,000. Shown by appointment only. Emmett R. Sanders, Realtor. 659-2516, nights 659-2601.
40-rt

FOR SALE: Weiland Tunnel Ram for Small Bk Chevy single 4 BBI. "New" contact: David Stafford 310 S. Hoskins, Phone No. 659-2021. New \$350.00 sell for \$350.00.
9s-rt

FOR SALE: Rebuilt: 454 Chev V-9 pickup motor. 428 V-8 Ford truck motor. 396 V-8 Chev pickup motor. 702 GMC irrigation motor V-12.
Hi-Plains Auto Supply Phone 659-2506, Spearman.

ANTIQUe FOR SALE: Small walnut comode brown marble top and splash board. All original excellent condition. \$250.00. Sybil Miller-659-2338. NC

HOUSE FOR SALE: 3 bedroom, 1 bath, fully carpeted, lots of storage, mid 20's. For more information call 659-2309. 11-rt

FOR SALE: Black chow puppies will be ready for Valentine. Call 659-2041 after 6 p.m. 11-2c

FOR SALE: 30 choice registered Brangus Bulls if quality is what you want 806-823-2445 after 6 p.m. 11-4c

FOR SALE: 1-3' X 6' tank with 2" connections--on top & bottom. Call 806-859-3912 Fritch, Texas. 11-2c

Two bedroom, 2 bath, central heat & air, fireplace, sundeck, extra lot, fenced patio, & built-ins! Call 659-2117. 41S-rt

FOR SALE: 30A Hesstonstack-hand new dry belts only 3 years old and in A-1 condition. See at New Holland Farm in Perryton or call 435-5534. 47s-rt

CASH SALE: Save 20% on United States Steel Siding and installation. Offer good during January only! 405-888-4402 Days, 405-888-4510 after 5. 10s-3tp

FOR SALE: 3 bedroom house - large den & living room combination - central air & heat woodburning fireplace - Shown by Appointment only. Call 659-3327. 1-rt

FOR SALE 1980 Chevy 4 X 4 1/2 ton, 1977 1 ton crew cab Chevy dooley, 1978 W-W 20 ft. flatbed gooseneck trailer, 14 ft. Hale stock trailer, 1973 Chevy 20 ft. tandem axel truck, 1977 Malibu classic, 1 sorrel green broke guilden 4 yr. old gentle, 1 gruelia dunn guilden, 14 yr. old good roping horse, 1 dark bay 20 mo. old filley can be papered, broke and gentle. Call Gary Breland 733-2539
15-2tp

HELP WANTED

HELP WANTED: Territorial sales in Petroleum Industry--Need someone in this area to assist part time or full time in my business.

A position that could increase your annual income by 10,000 part time or more.
Responsible person, married, over 30 with reliable transportation to service established industrial, oil field and farm accounts.
Call 800-355-4161, or mail resume to DON LONGHOFER, 6500 Oakhurst, Amarillo, Tx. 79109, 10-10c

HELP WANTED: Retired? Supplement your income selling AVON. Call collect 806-274-3606. 10-6c

HELP WANTED: Pringle-Morse School District is looking for Bus Drivers. Both regular and substitute. Would be interested in someone to do light mechanic work and drive routes. Opportunity for retired person or couple to earn extra money. If interested contact Superintendent Roy Harris at Pringle-Morse School, Morse, Tx. Phone 733-2507. 10s-3c

HELP WANTED: Afternoon part-time help needed at Snoopy's Day School. Apply at 620 1/2 Bernice. 10s-rt

WANTED
Want to buy 12 or 14 ft wide house trailer. Will take up payments or will trade in 8 x 47 ft. Spartan. Call 659-2008. 9s-rt

NOTICE
YMCA ACCEPTING INSURANCE BIDS
The Hansford County YMCA will accept bids, from local insurance agencies on its property liability, workmen's comprehensive and vehicles for 1981. Interested agents please contact Jim Benson at the YMCA, 659-2591. The YMCA is located at 501 South Hazelwood Spearman.

Howell-Gaither Wed In Candlelight Ceremony



MR. & MRS. MELVIN GAITHER

A candlelight ceremony, December 6, 1980, at Kingswood United Methodist Church, Clovis, with Rev. James Tidenberg officiating, united Debra Howell and Melvin Gaither in marriage. Debbie is the daughter of Mr. and Mrs. Ed. Howell of Clovis, New Mexico, and Buddy is the son of Mr. and Mrs. John Gaither of Spearman, Texas.

Marjorie Pena, friend of the bride, played a selection of pre-nuptial music while Matt Gammill, nephew of the bridegroom, attired in a light blue tuxedo with a white ruffled shirt matching the ushers attire lit the candles. Mrs. Pena also played the processional and recessional on the organ.

Edyth Way, cousin of the bride, registered guests as they entered the church, and handed out the traditional wedding scrolls.

The altar was decorated with a half moon and two spiral candelabras, flanked with two-nine branch candelabras. Altar flowers included a beautiful bouquet of gladiolas, mums and carnations in blue and white. The railing encircling the altar was graced with garlands of blue and white carnations, baby's breath and plumos fern. Blue satin bows were attached to the garlands at three foot intervals. The center aisle was highlighted with pew bows in light blue satin. The Mother's pews were adorned with blue and white carnations, baby's breath, and blue satin bows.

Dottie DeValois accompanied on the piano by Joyce Waldin, both friends of the bride, sang "If", and "Sunrise, Sunset", during the wedding service. She also sang "The Lords Prayer" as the couple knelt in prayer at the satin covered prayer bench.

As the Mother's of the couple entered the church they lit a candle on each side of the Unity candle.

Escorted to the altar by her father and given in marriage by her parents, the bride was lovely in a gown of white qiana knit with an empire fitted bodice, high neckline and long fitted sleeves, all decorated with French Alencon lace appliques embroidered with seed pearls. The long A-line skirt with satin buttons in the back flowed into a chapel length train. The bride's two tier veil and blusher of sheer illusions was trimmed with matching lace appliques and seed pearls. The bridal veil was made by her mother and a friend. She carried a nosegay bridal bouquet of blue and white miniature carnations, white roses, baby's breath and white lace ribbon.

For something old, the bride wore a gold heart shaped diamond pendant, which belonged to her maternal grandmother. Something new was a gold watch given to her by the bridegroom, and her bridal gown. For something borrowed, she carried a white linen handkerchief, which belonged to her cousin, and for something blue, she wore the traditional blue garter. The bride carried a white satin covered bible, gift from her parents, beneath her bridal bouquet, and wore pennies in her shoes minted in the years of the couple's birth.

Attending the bride as Matron of honor was her best friend, Nina Allen of Friona, Texas. Penny Gammill, of Brownwood, Texas, sister of the groom, and Dottie DeValois, Denver, Colorado, friend of the bride, served as bridesmaid. They wore identical dresses of steel blue crepe deChine with empire fitted bodice, high neckline, and long fitted sleeves, trimmed in lace. They each wore baby's breath in their hair, and carried long-stemmed carnations in blue and white, one white rose, and baby's breath, accented with a blue satin bow and streamer.

Kari Baker, friend of the couple, was flower girl. She wore a steel blue crepe deChine dress trimmed in lace and carried a light blue basket of white rose petals.

The bridegroom was attired in an all white linen tuxedo with cut-a-way coat and tails. His boutonniere was a light blue carnation, with a white rose in the center.

Dennis Fite, Clovis, best friend of the groom, served as best man. Groomsmen were Bill Howell, Clovis, brother of the bride, and O.E. Gammill, Jr., Brownwood, Texas, brother-in-law of the groom. They wore identical light blue tuxedos with white ruffled shirts trimmed in blue. Their boutonnières were white carnations tipped in blue.

Seth Gammill, nephew of the groom, served as ring bearer. His blue tuxedo and ruffled shirt matched the groomsmen's attire. He carried a white satin heart shaped pillow with the couple's wedding rings.

The ushers were Willie Williams, and Dale Fite, of Clovis, friends of the groom. They wore tuxedos of light blue coats and steel blue trousers and vests, with white ruffled shirts, and white carnation boutonnières.

The bride's mother wore a formal gown of light blue qiana, complimented by a corsage of white rosebuds, miniature blue carnations and baby's breath. The bridegroom's mother wore a formal gown of navy blue. Her corsage was also white rosebuds, miniature blue carnations and baby's breath.

Father's of the couple wore dress suits with white carnation boutonnières.

The rehearsal dinner was hosted by the bridegroom's parents at a local Steak house on Friday, December 5.

On the morning of the wedding, the bride honored her attendants with a bridesmaid's brunch.

The bride was honored with a bridal shower on November 23rd, in the home of Eva Claire Whitmore. Hostesses for the occasion were Jan Parker, Maurine Winkles, Viva Davis, Jerry Williams, Maurine Reiser, Margaret Adams and Eva Whitmore. She was also honored with a shower on December 14th, in the First Federal Savings and Loan, Prince Street Branch Community Room. Hostesses were Joyce Waldin, Nina Allen, Connie Backoff, Karen Mouser and Kay Kelley. The couple was honored with a shower of gifts given by friends of the groom in Spearman.

As the couple left the Church, rice bags were handed out by Kim Wester to all the guests.

Following a honeymoon trip to Colorado and Texas, the couple are making their home in Clovis, where the bride is employed with First Federal Savings and Loan Association, and the bridegroom is employed with the Santa Fe Railroad.

Out of town guests attending the wedding were Mrs. Florence Galey of Denver, Colorado. Mr. & Mrs. Ray Lewis, Amarillo, Texas. Mr. and Mrs. Don Hendricks and Danny, Spearman, Texas. Mr. and Mrs. C.W. Howell, Borger, Texas. Mr. Scott Bullard, Spearman,

Texas. Mr. and Mrs. Kyle Parker, Kerry and Jeff of Logan, New Mexico.

Presbyterian Church News

Palo Duro Union Presbytery will meet on Friday and Saturday, January 23-24 at LaMesa.

There is a Sunday Church School class for everyone every Sunday at 9:45 a.m. with a practical, interesting, well prepared Bible lesson.

"The Importance of Spiritual Unity" will be the subject of Pastor Edward D. Freeman's sermon at the service for the public worship of God on Sunday, January 25, at 11:00 a.m.

The Session will meet on Wednesday, January 28, at 7:30 p.m.

There is a warm, Christian welcome awaiting everyone who attends any of the services and activities of the First Presbyterian Church.

La Leche League

"The Advantages of Breast-feeding" will be the topic at the January meeting of La Leche League. The meeting will be held on Tuesday, January 27, at 10:00 at 222 S. Hazelwood. This is the first in a series of four discussion meetings which offer both encouragement & breast-feeding information to interested mothers. For further information call 659-2794.

Golden Spread Center News

Beth Phelps is teaching Rose-maling at the Golden Spread Center on Thursdays from 10:00 a.m. to 5:00 p.m. There is a break at noon for a covered dish luncheon.

There will be an afternoon of table games of all kinds on Friday, January 23, and Monday, January 26, from 2:00 to 5:00 p.m. There will also be a game evening on Tuesday, January 27, beginning at 6:30 p.m.

Nina Hendricks will be driving the Golden Spread Center's van-bus on Wednesday, January 28, from 9:00 a.m. to noon, picking up the sixty-plus bunch and taking them shopping, on errands, and to meet appointments. This service is furnished free by the Golden Spread Center for all persons who are sixty years of age or older without discrimination as to sex, color, race, religion, politics, or handicap. Anyone needing this service should call the Golden Spread Center (659-3521) on Tuesday and get your name on the list.

Through the years of its existence, the Golden Spread Center has produced a philoso-

phy that has become its basic foundation, an atmosphere that recognizes the value of human life. It affirms the older adult with dignity and self-worth as continuing to make a valuable contribution of the social process of Spearman and Hansford County. Such an atmosphere demands the reaffirmation of creative potential, power of decision making, the skills of coping and defending, and the warmth of caring, sharing, giving, and supporting not only the individual but also to the broader community.

Golden Spread Center is located at 14 S. Haney and is open Monday through Friday from 9:00 a.m. to 5:00 p.m. It is open to all persons fifty-five years of age or older. It has a full-time paid director, Pearl Pierce, who is knowledgeable in all programs concerning the aging. Edna Hays is the reassurance worker under the Farmers Union Green Thumb program who calls over thirty people each day who are homebound and checks on their needs. Margie Davis is the youth custodial assistant under the CETA program.

Bookkeeping Course Offered

Fundamental Bookkeeping Course sponsored by Frank Phillips College.

The course will be taught by Andrea Bayless. Beginning February 5 and lasting for 10 weeks at Gruver High School. Call 733-2655.

Refrigerate turkey or other poultry leftovers immediately. Remove all bones and all stuffing from the poultry and store separately, advises Mary K. Sweeten, a foods and nutrition specialist.

Mrs. Sweeten is on the home economics staff of the Texas Agricultural Extension Service, The Texas A&M University System.

You are cordially invited to a bridal shower honoring

Cherly Ann Albracht
bride-elect of Jeffery Dan Hohertz

Saturday, January 24th

Home of Gwen McLain
707 S. Barkley

2-4 p.m.

Selections at:

Bulls Inn
Gift Box
J.G.'s
Sacks

10s-20c

Extension Club

The Happy Home Extension Club met on January 15 with Patti Sheppard as the Hostess, with Vice-president Nan Nicolson presiding.

After Devotions roll call was answered by "The best way to get acquainted with someone new."

A letter from Nancy Ingle who is resigning as Club President was read. Joyce Byers was nominated and elected to serve as President for 1981.

After concluding several items of business, Peggy Winegarner demonstrated use of a

food processor and gave useful information to consider before purchasing one.

Refreshments were served to Peggy Winegarner, Joyce Byers, Rose Cummings, Grace Johnson, Lorene Kunselman, Nan Nicolson, Patti Sheppard, & Wanda Reed.

Joyce will host the next meeting--February 5 at 1:00 p.m.

Stock holders should take advantage of "rights offering". Either buy the rights, or sell them--but take action, says Linda McCormack, a family resource management specialist with the Texas Agricultural Extension Service, The Texas A&M University System.

Ideal

FOOD STORES

PRICES EFFECTIVE THRU JAN. 24, 1981. QUANTITY RIGHTS RESERVED.

MON. - SAT. 8 a.m. - 9 p.m.
SUNDAY 10 a.m. - 7 p.m.

Win Up To

\$300,000. CASH TO BE WON!

Folgers Coffee

ALL GRINDS

\$2.24

1-LB. CAN WITH \$10.00 PURCHASE LIMIT 2

Facial Tissue

ASSORTED KLEENEX

62¢

200-CT. BOX LIMIT 3

Purina Dog Chow

PURINA DOG CHOW

\$6.44

25-LB. BAG LIMIT 2

Welch's Jelly Or Jam

WELCH GRAPE

\$1.28

32-OZ. JAR

Parkay Margarine

FRESH DAIRY

53¢

16-OZ. PKG. LIMIT 3

Sliced Slab Bacon

RANDOM WEIGHTS RODEO - HICKORY SMOKED

\$1.29

1-LB.

Pork Chops

FRESH PORK LOIN ASSORTED

\$1.49

1-LB.

Fried Chicken

FROZEN FOODS BANQUET

\$2.18

2-LB. BOX LIMIT 2

U.S.A. CHOICE BEEF BUNDLE

2-LBS. SIRLOIN STEAK
3-LBS. CHUCK ROAST
4-LBS. GROUND BEEF
2-LBS. ROUND STEAK
2-LBS. BNLS. STEW
2-LBS. BEEF SHORT RIBS

\$24.95

ALL FOR

Boneless Pork Chops.. \$1.98

ALL FLAVORS

Steffen's Trim Ice Milk

\$1.33

1/2-GAL. CTN. STEFFEN'S Ice Cream Sandwich \$1.86 1/2 CT. PKG.

SHOP IDEAL...WHERE THERE'S MORE VALUE IN

You are cordially invited to a come and go Wedding Shower honoring Mr. and Mrs. Billy Dave Hand (nee Stacey DeWitt) from 7 to 8:30 p.m. January 28, 1981 at the B&B Industries Building in Spearman, Texas. Given by hostesses Lorene Burke, Pat Hamilton, Rita Reed, Joyce Frost, Judy Reed, Jeanette Allen, Shirley Greenwood, Kate Farris, Sara Dossett, Avo Tope

11-2tp

Bridge Club

Verna Strawn was hostess to the Monday Monthly Bridge Club, January 19. Members enjoying duplicate play were Rose Butt, Betty Porter, Sheryl Meek, Carolyn Gressett, Judy Nelson, Glenda Guthrie, Charlotte Pearson and Helen Etter. Guests playing were Zetha Blackburn, Virginia Head and Kathleen Sutton. High score was won by Sheryl Meek, and second high by Rosalie Butt, third went to Glenda while Charlotte Pearson and Helen Etter tied for fourth place. The next meeting will be February 16th in the home of Irene Baker.

BIBLE VERSE

"By this my Father glorified, that you bear much fruit, and so prove to be my disciples."

1. Who is the author of this statement?
2. To whom was he speaking?
3. What was the occasion of the statement?
4. Where may this verse be found?

Answers to Bible Verse

1. Jesus.
2. To the eleven disciples.
3. After the Last Supper, while Jesus and the eleven were en route to the Garden of Gethsemane.
4. John 15:8.

Annual C of C Banquet

The Bank Notes of Booker, Texas will provide the entertainment for the Annual Banquet of the Spearman Chamber of Commerce.

The Bank Notes originated with 24 members in the Spring of 1969 and made their first appearance in Booker, Texas, July 4, 1969. Since that time, they have made 273 appearances in (six states) Texas, New Mexico, Colorado, Kansas, Oklahoma and Iowa. Their repertoire includes more than 200 selections, consisting of popular, patriotic, western and religious music.

The Bank Notes consist of officers, directors, development board members and employees (and members of their families) of First Bank & Trust Co., Booker, Texas.

Principle soloist for the group is Sharon Garrison Ellzey, a former Miss Amarillo and runner-up to Miss Texas, and recognized as one of the region's most talented and professional vocalists.

Other soloists are Ralph Maxfield, Toni Good, Candy McComb, John Good, and Helen Vines.

Highlights of the evening will be the naming of the Citizen of the Year. Tickets are now on sale at the chamber of Commerce.

2 Local Churches to Present Family Films

America's newest Family film series will be presented in two of Spearman's local churches. The seven films will be presented on seven successive Sunday evenings beginning Feb. 1, and concluding March 15.

"Focus on the Family" by Dr. James C. Dobson features such topics as:

The Strong Willed Child Feb. 1

Shaping the Will Without Breaking the Spirit Feb. 8

Christian Fathering Feb. 15

Preparing for Adolescence; The Origins of Doubt Feb. 22

Preparing for Adolescence Peer Pressure and Sexuality Mar. 1

What Wives Wish Their Husbands Knew About Women; The Lonely Housewife Mar. 8

What Wives Wish Their Husbands Knew About Women; Money, Sex and Children Mar. 15

These films are being presented jointly by First Baptist Church at 6 p.m. and First United Methodist Church at 7 p.m. An invitation to attend either of the churches and give help concerning better homes is

extended by the Pastors Russell Pogue and Frank Oglesby. There will be no offerings. Workbooks for families are available at each of the churches.

Golden Gleams

Every wise man loves the wife he has chosen.

The Lord God said, It is not good that the man should be alone; I will make him a help meet for him.

Wives are young men's mistresses, companions for middle age, and old men's nurses.

A good wife and health are man's best wealth.

Two things doth prolong thy life: A quiet heart and a loving wife.

An astute politician can see an opportunity four years ahead of time.

Smartness, rather than sincerity, ruins many speeches.

Oglesby Speaks at Rotary Club

Frank Oglesby gave a classification talk at the Spearman Rotary Club Monday noon in the garden room of the Cattleman's Restaurant. Ed Freeman led in community singing. Robert Elliott led in the Pledge of Allegiance and Don Wirsdorfer gave the prayer of invocation.

Oglesby said that he was born in 1923 at Westbrook, Texas, where he was graduated from high school. He went on to T.C.U. until he was drafted into the service during World War II. After the war he worked in the oil fields. In 1954 he heard God's call to the ministry. He was graduated from Perkins Seminary in 1960, which is a kind of two year probationary period. Then he was ordained an elder in 1962, which meant that he was now in full connection, and the conference guarantees that he will always have a church.

Oglesby said that he has found the gospel ministry a very rewarding vocation but that it is getting harder and harder to be a pastor. He said that he has enjoyed his pastorate in Spearman more than any other pastorate he has ever served

and hoped he could stay here until he retired.

Visitors at Rotary were Rotarian C.D. Riggins of Perryton and Pastor Bruno Gaskamp of Faith Lutheran Church.

Members present were Jim Benson, Carrie Marie Berry, Eschol Blankenship, Roy Bells, Durane Castleberry, John R. Collard, Jr., Robert Elliott, Ed Freeman, Ed Garner, Kerry Henton, John Hutchison, Eddy Limbocker, Junior Lusby, David McClellan, Jack McWhirter, Frank Oglesby, Coy Palmer, Steve Rogers, Mike Schnell, Jim Shirley, and Don Wirsdorfer.

Members absent were Pete Fisher, Jim Murray and Gary Sims for an attendance percentage of 86.66%.

Next Monday Coy Palmer will show a film on the accomplishments of Governor Clements.

Rotary Board of Directors will meet Thursday, January 22, at 7:30 p.m. at the home of Eschol Blankenship. There will be a Club Assembly at the Blankenship residence that same evening at 8:00 p.m. This is for all Rotarians.

On Exhibit

Opening with a reception from 1:30 p.m. to 5 p.m., Sunday, January 25, a one-man show of paintings by Malcolm Hughes of Amarillo, Texas will be on exhibit at the Art Center Galleries, 100 West 7th, Dumas, Texas. Through the first week of February.

The reception hosted by the Moore County Arts Association is open to the public.

Malcolm Hughes, a native of Amarillo, Texas, has grown up in the Panhandle of Texas where he lives at present. From early childhood Malcolm has shown unusual ability in artistic creativity. His painting during junior high and high school won him honors and prizes in local and national shows. His work first began to appear in art shows and galleries in the Southwest in the early part of his high school years. Since then he has completed a degree in Commercial Art along with his development as a fine art painter. In 1976 Malcolm spent a year working in Europe and studying art, religion and philosophy. Working in both watercolor and oils, Malcolm has become a master realist in landscape and still-life. His work has been exhibited in prominent galleries and shows throughout Texas, New Mexico, Oklahoma, Colorado, and Kansas. In his search for truth in creative expression, the Christian world-view has had its effect on Malcolm's attitude that art is creative communication.

He believes that he is responsible to communicate skillfully and accurately about the reality that exists; the beauty, order, harmony, and hope in life, without romanticizing about the brokenness of the present world.

Malcolm and his wife Anne make their home in Amarillo where he continues to study and paint what interests him, be it the favorite Texas landscape, often confused with the work of such masters as Salinas or Robert Wood, or still-life, building, or person.

Copy--Hughes Oil Painting Class

Malcolm Hughes has accepted an invitation to teach an eight weeks course in oil painting--stressing traditional

and basic values in pictorial expression. Malcolm is a master realist in landscape and still life.

This class will be held each Tuesday evening from 7 p.m. until 9:30 p.m., beginning February 3rd and ending March 24th. The class will meet in the Studio class-room at the Art Center, 100 West 7th, Dumas, Tex.

Registration for the Hughes Class is scheduled for: Friday, January 23rd at 10:30 a.m. to 1:00 p.m. and again Saturday, January 24th, from 1:00 p.m. to 3:00 p.m.

Another opportunity to register will be offered during the show and reception for Mr. Hughes on Sunday, Jan. 25th, from 1:30 p.m. to 5 p.m. Tuition for the eight weeks course will be \$80.00. A list of materials will be given to the students during registration. Out of town

Additional news item

The Moore County Arts Assoc. will hold its first general membership of the year on January 26th, 7:30 p.m. at the Art Center, 100 West 7th, in Dumas, Texas. The Association will present a special program by Carolyn Stallwitz a well known wild-life artist and naturalist. Mrs. Stallwitz will give a program on birds and wild flowers of the area, illustrating her remarks with a slide presentation. The public is invited.

Best Of Press

Sound Off
Bores won't bother you if you monopolize the conversation yourself.
-Courant, Hartford.

A Thought
Maybe you can't take money with you, but where can you go without it?
-U.S. Coast Guard.

Badge Of Office
A lot of the wrinkles in a business man's face are trade marks.
-World, Tulsa.

But Different
Marriage is like a violin. After the beautiful music is over, the strings are still attached.
-Record, Columbia, S.C.

Irate Husband
"Light bill, water bill, gas bill, milk bill--you've got to quit this wild spending!"
-Anchor, Key West.

A Tattle Tale
When a man says money can do anything, that settles it, he hasn't any.
-Enterprise, Lisbon, Me.

CHALLENGE FOR NEW AG SECRETARY--The greatest challenge likely facing the new Secretary of Agriculture is winning support for his producer-oriented policy proposals within other agencies of government, believes an economist with the Texas Agricultural Extension Service, Texas A&M University System. Agricultural issues where conflicts are likely to occur among agencies of government include lifting of the Soviet grain embargo, increases in food prices, and proposals to increase price and income supports that have the potential for adding to government outlays. With the new administration, USDA policy proposals and decisions will be more market and producer oriented.

PLAY Market Basket Bingo

ODDS CHART as of January 14, 1981

PRIZE VALUE	NO. OF PRIZES	ODDS FOR ONE STORE PRIZE	ODDS FOR 13 STORE PRIZE	ODDS FOR 26 STORE PRIZE
\$1000.00	1	140,000:1	10,000:1	1,000:1
\$500.00	2	70,000:1	5,000:1	500:1
\$250.00	4	35,000:1	2,500:1	250:1
\$100.00	16	14,000:1	1,000:1	100:1
\$50.00	64	3,500:1	250:1	25:1
\$25.00	256	875:1	63:1	7:1
\$10.00	1,024	219:1	16:1	2:1
\$5.00	4,096	55:1	4:1	1:1
\$2.00	16,384	14:1	1:1	1:1
\$1.00	65,536	3:1	1:1	1:1
TOTAL NO. OF PRIZES	78,720			

INSTANT 1 & 2 DOLLAR WINNERS

COLLECT \$5-10-100 AND \$1,000 CASH GAME WINNERS

COLLECT \$25-\$50 & \$100 GROCERY CERTIFICATES



Pinto Beans 76c
CAMELOT OR BROWN BEAUTY
2-LB. BAG
LIMIT 2

Frito Tostitos 76c
ALL FLAVORS
REG. \$1.00 PKG.

Chocolate Syrup \$1.18
TWO AS FRESH
Air ALL FRAGRANCES Freshner 89c
LIQUID HAND SOAP
Soft Soap \$1.23
STA-PUFF CONCENTRATE
Fabric Softner \$1.96

Quick Oats 79c
18-oz. box
Aunt Jemima Syrup \$1.44
24-oz. BTL

Round Steaks \$1.98
U.S.D.A. CHOICE BUTCHER BLOCK BEEF FULL CENTER SLICES
LB.

Round Steaks \$2.19
U.S.D.A. CHOICE BEEF BONELESS
Round Steaks \$2.29
U.S.D.A. CHOICE BEEF BOTTOM
Round Steaks \$2.39
U.S.D.A. CHOICE BEEF - TOP
Ground Steak \$2.19
FRESH DIET LEAN
Pork Loin Roast \$1.39
SIRLOIN END
Country Style Ribs \$1.39
PORK LOIN
Sliced Bacon \$1.69
HORMEL BLACK LABEL
Little Sizzlers \$1.29
HORMEL
Meat Bologna \$1.29
RODEO - BY THE PIECE
SLICED \$1.39

Russet Potatoes \$2.99
20 LB. BAG
GREEN MARKET STREET
U.S. NO. 2
Oranges \$1.00
CALIFORNIA NAVELS 3 LB.
Cucumbers 39c
FRESH CRISP 1 LB.
Onions 39c
U.S. NO. 1 WHITES 1 LB.
Grapefruit \$1.00
RUBY RED 4 LB.

Catfish Steaks \$1.39
FRESH WATER
.....LB.

Pert Shampoo \$1.59
OILY OR DRY
11-oz. BTL.
Sure Solid Deodorant \$2.09
REG. OR UNSCENTED
2-oz. SIZE

Red Rome Apples 499c
Delicious FRESH CRISP
LB. BAG

STORE FOR YOU!...

Ideal FOOD STORES

Food Stamps Buy More At Ideal...

8th Lynx Win Big

The 8th grade Lynx had come off of a big victory over the Dalhart Wolves in the Spearman Jr. High Tourney and had won the 1st Place trophy. Their season record--meaning November of 1980 to January 1981--was 8-2 and for the 1981 part of the Basketball season was 5-0 and the 8th Lynx wanted to keep up their unbeaten record for the rest of their 8th grade basketball "careers". Their opponent were the Perryton 8th graders. The game was played at the Little Gym yesterday, January 19--Monday. Could the 8th Lynx keep the record for 1981 unmarked? They were gonna try their hardest!

The game started out and was a very defensive 1st quarter. Both teams had great pressure on the ball and lots of turnovers were being committed. When the 1st quarter came to an end, the 8th Lynx lead by the score of 6-4. That kind of score is typical when two teams like Spearman and Perryton collide. Well, the 8th Lynx just had an explosive 2nd quarter. They had 12 points and let Perryton get only 6 in the 2nd quarter and when the buzzer rang to indicate the end of the first half, the score was 8th Lynx 18 and Perryton 10.

Those who are 8th grade Lynx are starters--Mark Pearson, Jerry Garcia, Steve Burke, Ross Donahue and Brian Paul--Mack McLain goes in for Brian every time Coach Duncan tells him to. The rest of the 8th grade Lynx are Teddy Vela, Brian Williams, Cole Ivey, Nick Wirsdorfer, Bob Cook, Rudy Saldivar, Jeff Graves, Jeff Gressett, and Carl Bynum. Their coach is Coach Jimmy Duncan. All the 8th Lynx have great hands that they can steal the ball without trying too hard.

When the 3rd quarter began, the 8th Lynx' Mark Pearson started shooting from anywhere and everywhere. Ross Donahue started his routine of making all kinds of shots. It was a whole of a game for both teams, yet Coach Duncan used all 15 of his boys. They all did a tremendous job against a fine team from Perryton! The 8th Lynx outscored Perryton once again in the 3rd period--14-8 and had a 32-18 point lead. The 8th Lynx had a 14 point lead at the end of the 3rd quarter--the biggest lead they had all evening. The 4th quarter was a workout for Teddy Vela, Brian Williams, Cole Ivey, Nick Wirsdorfer, Bob Cook, Jeff Graves, Carl Bynum, Rudy Saldivar, and Jeff Gressett--it had been sort of like a resting time for Mark Pearson,

Steve Burke, Ross Donahue, Jerry Garcia, Brian Paul and Mack McLain. Perryton did outscore the 8th Lynx 13-8 but didn't outscore them enough to get close to touch the 8th Lynx. The final score was 40-31--Lynx favor, of course. Way to go guys. Mark Pearson was the leading 8th Lynx scorer with 20 big points, followed by Ross Donahue with 10 points, Steve Burke had 8 points and Jerry Garcia had 2 points to end the scoring for the 8th Lynx. The final two quarters were completely dominated by the 8th grade Lynx. The 8th Lynx are now 9-2 for the season and 6-0 for 1981! Their unbeaten streak is still alive. The 8th Lynx will travel to Perryton to meet up with these very same Perryton boys. The series for the season is 1-1 and this should decide any doubt in anyone's mind that the 8th Lynx are the better team by a long shot!! The game should begin at 6:00 p.m. and it is gonna be a "dandy", so go on over to Perryton--it isn't that far--and cheer on the 8th Lynx to victory once again!!

Today's shirt fashions feature single-needle or double-needle tailoring.

Double-needle tailoring means that seams are sewn once with a double row of stitching, Beverly Rhoades, a clothing specialist explains.

In single-needle tailoring, seams are first stitched on the inside, then on the outside, resulting in a flatter, reinforced seam that makes a shirt conform more naturally to the body for a better fit.

However, the single-needle process takes additional construction time and generally causes a shirt to cost more, she says.

Miss Rhoades is on the home economics staff of the Texas Agricultural Extension Service, The Texas A&M System.

SEMINAR FOR ESTATE PLANNERS--Professionals in estate planning will be briefed on current issues at an Estate Planning Seminar at Texas A&M University Feb. 2-3, notes an economist with the Texas Agricultural Extension Service, Texas A&M University System. Key discussions will deal with advantages and disadvantages of incorporating a business, Amendment 9 regarding separate and community property, gifts to minors, and special use valuation for farms and ranches.

8th Lynxettes Beat Perryton by 8

The 8th Lynxettes traveled to Perryton to go and play the 8th grade Perryton girls. The game was as close as they all come and the 8th Lynxettes came out victorious and after the game they knew that they had played a great game.

Perryton is a tough town to win in, but the 8th Lynxettes proved everyone wrong. They played a great game by playing all the girls on the squad. They all had something to do with the win over Perryton. The 8th Lynxettes had just come off of a loss to the Gruver 8th Lady Greyhounds and no one knew how that would effect their play for the remainder of the season.

Tiki Jackson got a hot hand and shot from where-ever she was--the side, the front, under the basket and even from the freethrow line. The 8th Lady Lynx had great pressure and stole the ball every once in a while. The final score was 37-29--the 8th Lynxettes winning by 8 points. The next game for the 8th Lynxettes will be this coming Monday, January 26, in the Little Gym starting time will be 6:00 p.m. or whenever the 7th grade game is finished. So if you can't make it to Spearman to cheer on the 7th and 8th grade Lynx, then go on out to the Little Gym and cheer on the 7th and 8th grade Lynxettes!! The games are all gonna be great, so you won't be wasting your time at all!!

When the 3rd quarter started Perryton came out and got the 1st points in the 3rd quarter and when the 7th Lynx tried to bring the ball down court, Perryton fouled real quick-like. The 7th Lynx brought the ball in bounds and Brent Depee got the 7th Lynx rolling by scoring 2 points.

7th Lynx Bow to Perryton

The 7th grade Lynx were hosting the Perryton 7th grade boys. The game was played this past Monday, January 19, at the Little Gym.

Those participating for the Lynx were starters--Dean Greene, Brent Depee, Monte Morris, Jeff Vanlandingham, and Damon Goodheart. Those other Lynx are; Nabor Cabrera, Julio Garcia, Michael Lopez, Chad Guthrie, Lenard Garrad, Shannon Scroggs, Curt Porter, Timmy Willis, Terry Phillips and Carl Kizziar. Coach Shaver sure is proud of his Lynx.

Damon Goodheart started off the second quarter by scoring 2 points. The Lynx had perfect pressure against Perryton and made them turnover the ball. With 1:39 left in the first half, Brent Depee made 2 points and tied the game at 10. The Perryton 7th graders came back and scored and got the ball back and shot at the buzzer making the score at halftime 14-10 in favor of Perryton. The Lynx had great defense and only let Perryton get 4 points and Perryton had a good defense too, letting the Lynx get only 4 points in the 2nd quarter.

When the 3rd quarter started Perryton came out and got the 1st points in the 3rd quarter and when the 7th Lynx tried to bring the ball down court, Perryton fouled real quick-like. The 7th Lynx brought the ball in bounds and Brent Depee got the 7th Lynx rolling by scoring 2 points.

The 7th Lynx could not score anymore points after that and when the 3rd quarter ended, Perryton was ahead 20-12. The 7th Lynx had scored 2 points and had let Perryton get 6 points. The 7th Lynx knew that they had enough speed to come back against a team like Perryton. Brent started the 7th Lynx to steal the ball and go down the court and score. The 7th Lynx had great defense and Jeff Vanlandingham blocked the ball right back onto this guys face! The guys face looked pretty "flatten" out like and ironing board when that blocked shot hit him in the face!! The 7th Lynx put up 5 points and just about made a spectacular comeback. They scared the "living life" out of the Perryton 7th grade boys and almost kept them scoreless in the final quarter. The 7th Lynx had 5 points to the 1 point Perryton had. The final score was 21-17, Perryton winning, but barely!!

The next game the 7th grade Lynx will be against these very same Perryton boys but the game will be at Perryton, that is not very far away. The 7th Lynx want support of their fans, so that they can beat this team, and they just might beat them at home and return the favor. The game will be next Monday, January 26, and begin at 4:30 p.m.

Harlem Globe Trotters at Civic Center

Amarillo Civic Center will see a flurry of activity the weekend of January 30th through February 1st. West Texas State and Wichita State clash in a Missouri Valley Conference Basketball game on Saturday night, then the world famous Harlem Globe-Trotters take to the court on Sunday night. During the entire three-day period, the Panhandle boat and ski club's 26th Annual show and sale will be in progress, and persons holding tickets to either the W.T.S.U. or Globe-Trotters games will be able to attend the boat and ski club's show and sale at half price. One of the most unusual exhibits at this year's show will be the "Mariah"...The car that runs on air. Everything that's new in recreation vehicles, boats, sports equipment, and accessories will be displayed at this year's show and sale...and an added feature

is that all items on display may be purchased at the site. The Panhandle Boat and Ski Club has organized this year's event to appeal to family groups with entertainment by the Khiva Klowns, a variety of gifts and treats, and nominal admission charge of two dollars for adults and one dollar for students and children under twelve free. Anyone holding tickets to either the West Texas State or Harlem Globe-Trotters basketball games scheduled for that weekend will be admitted to the Boat and Ski Club show and sale at half price, by arriving a little early on Saturday and Sunday nights, visitors will be able to enjoy the boat, sport, and travel show and the basketball games. The dates are January 30th, 31st, and february 1st at the Amarillo Civic Center.

Those wishing to participate in the Parade should contact Genny Brown in the Special Events Department at the Stock Show, said C.L. Chuck Shytlers, parade chairman.

"Everyone is welcome to be in the parade," Shytlers said, "However, our parade is all western and does not allow motorized vehicles."

Already scheduled for 1981 are the Owens Country Sausage Eight-Horse Belgian Hitch, the Budweiser Clydesdale Hitch, and the Swingin' S. Ranch Trail Riders from Carrollton, plus 10 floats, 10 bands and 25 riding clubs.

"We have room for plenty more," Shytlers said. "Interested participants are urged to contact the Stock Show Office immediately. We are looking forward to an even better parade than last year."

He said the parade last year was one of the best on record. More than 65,000 people lined downtown Fort Worth streets to watch more than 4,000 participants. The two-hour parade was formed by 2,000 horses, 53 riding clubs, 43 merchant sponsored horse-drawn floats and 16 marching bands.

SEMINAR FOR GAMEFOWL BREEDERS--A special seminar for gamefowl breeders will be held at Texas A&M University Jan. 31, announces the head of A&M's Department of Poultry Science. Discussions will deal with fertility and hatchability in small populations of birds, nutritional needs of breeders and young birds, artificial insemination in chickens, blood testing to control salmonellas, and vaccination, medicants and pest control programs.

All Western Parade

FORT WORTH (Spl) - Planning is underway for the annual All Western Parade, scheduled at 2 p.m. Friday, January 30, in conjunction with the 85th Southwestern Exposition and Fat Stock Show, reports W.R. Watt Jr., president-manager.

Tickets for the Worlds Original Indoor Rodeo are on sale at the Will Rogers Coliseum box office daily, including Sunday, from 9 a.m. until 6 p.m. Mail orders should be sent to P.O. Box 150, Fort Worth, Texas 76101. Tickets are \$6 for all nights and \$5 for 2 p.m. matinees on February 2 through 6. When ordering by mail, include \$1 extra for return postage and handling.

This year's Stock Show will begin its 12-day run on Wednesday, January 28, and concludes Sunday, February 8.

Union Church News

Sunday morning, January 25th, Pastor Steve Rogers will be ministering the Word of God. Sunday School starts at 9:45 and morning worship at 10:45.

Sunday night, we'll be showing a special film entitled "The Prize". This film is set on the ski slopes of Nevada with lots of action for those who enjoy the sport of skiing. The plot involves a young man who is torn between living a Christian life and doing his own thing. The service starts at 6:30 p.m. A warm Christian welcome is awaiting you. Nursery provided.

Menuchem Begin, Prime Minister of Israel: "I have decided to step down if my government is further weakened."

LOOKING AHEAD...

A brighter tomorrow.

It's possible because of today's accomplishments.

The great potential of concerned individuals and the Chamber has kept the wheels of progress in motion. Business, industry, technology, and the people of our fine community assure our future.

"It Takes Two - Your Chamber and You"

DRILLING BAKER & TAYLOR COMPANY

HAS THE HIGH COST OF FERTILIZER GOT YOU WORRIED?

There are farmers right here in the Gruver and Spearman area who have the problem solved by using Agri-formulated Compost at a fraction of the cost of fertilizer. They are saving water too! No job is too small or too large, but time is limited, so give us a call to schedule your application now. Free soil sampling is available.

OFFICE: 727 Wilbanks, Spearman
PLANT LOCATION: Gruver, Texas

HANSFORD CO. COMPOST

SPEARMAN, TEXAS

727 WILBANKS
806/859-3970
ANDY WATLEY, OWNER

Parallel Terraces



A terrace is an earth embankment, a channel, or a combination ridge and channel constructed across the slope.

The purpose is to reduce slope length, erosion and reduce sediment content in runoff water. Also to intercept and conduct surface runoff at a non-erosive velocity to a suit-

able outlet. Parallel terraces retain runoff for moisture conservation, prevent gulley development and reduce flooding.

A parallel terrace system is fitted to the topography of the land so that the terraces are equal distance apart throughout their lengths. The spacing between terraces is selected to

fit the type of equipment used and allows for an even number of rows between terraces.

With a system of parallel terraces point rows are reduced or eliminated.

For additional information concerning terraces contact your local Soil Conservation Service.



Pledged to Progress in... '81

It takes the right kind of people ...
It takes people with ambition and get-up-and-go ...

It takes goal directed people with a talent for working together ...

It Takes The Chamber of Commerce To Make Things Happen!

COLOR TV · AIR CONDITIONING
· CONFERENCE ROOM

Durane Castleberry
Manager

over 2000 motels, hotels and resorts
For our list of hotels and resorts, call 1-800-368-2262 or see your travel agent.

Best Western Nursanickel Motel

659-3737

Hwy. 207 S. Spearman, Texas



Food for Thought

by Ed Curran
U. S. Department of Agriculture

The economists tell us that the average American spends less than 15 percent of his pre-tax income for food. This compared to 15 1/2 percent of it eight years ago. But, let's be fair. How much does the average low-income American spend for food compared to the average high-income American?

The new survey compared food expenditures for family groups in five categories over-all: Lowest (\$2,468 per

capita), Lower Middle (\$3,817 per capita), Middle (\$4,877), Upper Middle (\$6,511), and Highest (\$9,994). The average was \$5,956 per capita.

It showed per capita expenditures for food at home was \$622 for the lowest income family, only \$486 for the highest. The over-all average was \$629 per person.

Character is what makes individuals do more than the law required.

Prices, it appears, have heard that there's more room at the top.

How's this for a definition? College-bred--a four-year loaf on father's dough.

Most critics are more concerned with their criticism than the subject considered.

The proper method of reforming the world is by reforming yourself, not your neighbors.

Most schemes for making money revolve themselves into the intelligent application of perspiration.

KALEIDOSCOPE 715 West Seventh (806) 659-2080
SPEARMAN, TEXAS

Fashion Fabrics & Notions

New Spring Fabrics arriving daily

We must make room. Our loss your Gain

- SPECIALS -

Logantex & Primatex Imported Crepe	Reg. 7. ⁵⁰	3. ⁰⁰ yd.
Coupe deville Stripe	Reg. 4. ⁷⁵	2. ⁰⁰ yd.
Coupe deville Dobby Stripe	Reg. 4. ⁷⁵	2. ⁰⁰ yd.
Silquessa Prints	Reg. 4. ⁹⁹	2. ⁰⁰ yd.
Razor Poodle Cloth	Reg. 8. ⁵⁰	3. ⁰⁰ yd.
Vissoni Velour Stripe or Solid	Reg. 9. ⁹⁸	3. ⁰⁰ yd.
Luresse Velour	Reg. 11. ⁹⁸	5. ⁰⁰ yd.
Soft Suede by Pellon	Reg. 11. ⁹⁸	7. ⁰⁰ yd.

Many Many More Closeout
-Prices-

MAINTENANCE PERSON
REGULAR FULL TIME EMPLOYEE

Northern Natural Gas Company will take applications on Thursday, January 29, 1981, between the hours of 9 A.M. and 3 P.M. for regular full time maintenance person. Apply at the Canadian Office on Highway 83 & 60 South of Canadian, Texas. Typical job duties are: facility clean up, assisting with overhauls of large internal combustion gas compressor engines, maintenance of vessels and towers, all phases of pipeline repair and relieving regular operating crew during vacation or illness, etc. Pre-employment test will be given for the Maintenance Person job on Saturday, January 31, 1981 at 9:00 A.M. at the Canadian Office on Highway 83 & 60 South, for all persons that have completed an application. Northern Natural Gas Company is a major diversified energy company offering an attractive salary, and has an excellent benefit program. Equal Opportunity Employer.

Northern
Natural
Gas Company

PILLSBURY BUTTERMILK/SWEETMILK
BISCUITS 8 \$1.00
8 OZ. CANS

RATH BACON 1 LB. PKG. **\$1.39**

SHURFINE SALAD DRESSING 1 Qt. JAR **39¢**

BORDEN'S BUTTERMILK 1/2 GAL. CTN. **\$1.59**

CLOVER CLUB MEX./NACHO/TACO REG. \$1.00
TORTILLA CHIPS 7 OZ. PKG. **99¢**

KRAFT SLICED AMERICAN CHEESE 8 OZ. PKG. **99¢**

DELICIOUS KRAFT VELVEETA 1 LB. BOX **\$1.79**

KRAFT PARKAY MARGARINE 1 LB. QTRS. **39¢**

KRAFT GRAPE JELLY 2 LB. JAR **\$1.29**

SHURFINE COFFEE 1 LB. CAN **\$1.99**

BORDEN'S PREMIUM ASSORTED FLAVORS ICE CREAM 1/2 GAL. RD. CTN. **\$1.59**

DELICIOUS RATH FRANKS 12 OZ. PKG. **\$1.39**

SHURFINE SHORTENING 3 LB. CAN **\$1.29**

PRICES EFFECTIVE
JANUARY 22-24, 1981
SUPPLIES LIMITED



"THERE'S ONE NEAR YOU"
OPEN 24 HOURS A DAY
OPEN 365 DAYS A YEAR
WE ACCEPT FOOD STAMPS

Lynxettes Plucked Eaglettes

Longhorn Football Awards Banquet

The Lynxettes wanted to keep adding numbers to the win column so that they could have a better win than loss column. They came in into the game against the Channing Eaglettes with a 9-10 record for the year. The Lynxettes had come off a great win over the Perryton Rangerettes Tuesday night. Lea Ann Gibner, a Sophomore, had a great game and was the person to pull off the win by being aggressive and scoring at crucial times. The Lynxettes were ready to play against the Channing Eaglettes on Friday, January 16. The Eaglettes were ready for anything that the Lynxettes would throw at them.

The game began real close-if one team would shoot, the other would go down the court and shoot and score. They kept that up with both defenses doing a pretty good job. When the quarter ended, the game was tied 8 - 8. The Eaglettes had only won two games and lost the others-but the way they were playing the Lynxettes, it looked as if they had an unbeaten record and didn't want to get a "mark" on their streak! The Lynxettes would have great shots, except the ball didn't cooperate and would almost fall thru the hole but then would jump back out in the hands of the Channing Eaglettes. The Eaglettes fouled the Lynxettes lots and lots of times in the 2nd quarter, the Lynxettes would get up to the freethrow line and miss-the ball just didn't want to go thru the hole for the Lynxettes! The Lynxettes did not foul too many times. When the 2nd quarter buzzer rang to end the quarter and start the half, the board showed that the Eaglettes had a 22-17 lead over the Lynxettes. The Eaglettes had 14 points to the 9 of the Lynxettes. The Lynxettes missed 8 freethrows in the 2nd quarter and made 7 of 19 freethrows for the first whole half! The Channing Eaglettes made 4 of 7 freethrows in the first half. They had a good percentage.

Coach Newton had 4 Jr. Varsity girls playing on the varsity squad on Friday night. He had let the "Jr. Varsity" Lynxettes to play a lot in the first half. That doesn't mean that that was why the score was the way it was, no sir. What it means is that Coach Newton wants his younger players to get some experience for the post season. The Jr. Varsity Lady Lynx that were on the Varsity Lynxettes squad for Friday night's game against the Channing Eaglettes were Johnnie Eaton, a Junior, who was the leading scorer at halftime with 4 points, Janet Reed, a Sophomore, who had 3 points at the halfway mark, Mary McIntyre, a Junior, who had 2 points and Cindy Young, a Sophomore, who had a great defensive and assisting first half. None of the Lynxettes were in foul trouble-Bonnie McCloy, a Senior, and Janet Reed both had 2 fouls, and Tammi Maize, a Senior, Cindy Young all had 1 foul each.

Would the Lynxettes still be bothered in the 2nd half? I figured that they wouldn't have that much trouble as they had been having in the second half, because this broke the streak-the Lynxettes would be ahead in the first half and somehow they would slip and have lots of trouble in the second half, but Friday night, the Lynxettes were behind Channing by 5 points; the Lynxettes knew they had to get going and win this game. The second half promised to be a very exciting half.

As the second half of play started, the Lynxettes had new fire in them. They seemed to be in control of the game in the 3rd quarter. Nancy Wilson, a Senior, and Mary Ann Martin, a Junior, started rebounding from both boards, Lea Ann Gibner, a Sophomore, Tammi Maize and Susan Davis, another Sophomore, would steal the ball and either drive all the way down the court and score or assist one of their teammates to score. The Lynxettes had great ballhandling in the 3rd quarter. The Channing Eaglettes got into foul trouble in the 3rd period, and now the question was, would the Lynxettes be able to make those freethrows? Well, Nancy Wilson made 2 of her 5 freethrows, those were very crucial points! There was one aggressive Lynxette-Mary Ann Martin-who hadn't scored from the field and hadn't been fouled so she hadn't scored from the line either. Well, an Eaglette fouled Mary Ann as she was trying for a shot. Mary Ann had 2 shots. She eyed the basket and shot but missed the first freethrow. That ball was just

against the Lynxettes. Well, Mary Ann bounced the ball, eyed the ball and then shot and she made her second freethrow. Well, I figure, the Eaglettes were just pressing their luck, because Mary Ann (Martin) stole the ball and was fouled immediately after. This was a 1 and 1 situation, since the Channing Eaglettes were already over their 5 foul limit. Mary Ann again eyed the basket and shot and she made the front end of the 1 and 1; she had the bonus coming, she eyed the basket and shot and again she made it! The buzzer went off to end the 3rd quarter. The Lynxettes had outscored the Eaglettes in the 3rd 13 - 8; the score was tied after 3 quarters of play-30-30. The 4th quarter started fast and with lots of points on the board for both sides. At first it looked like this game would go into overtime-because when one team would score the other would do the same. The 4th quarter had lots of turnovers, fouls from both sides and points from the freethrow line for the Channing Eaglettes and from the field and the freethrow line, also. The Eaglettes had 2 points in the 4th quarter until the Lynxettes started fouling them and they started making all their freethrows. The Eaglettes were playing conservative, because they didn't foul not one Lady Lynx until the final 5 seconds of the game, which would be the difference. Bonnie McCloy fouled out of the game. Bonnie left the game with 2 points and some rebounds and assists to her credit. The score was tied at 44, Miss Fulgum fouled Nancy Wilson with 5 seconds left. This was a 1 and 1 situation for Nancy. Nancy eyed the basket and shot; the ball hit the rim and bounced up in the air. Mary Ann Martin jumped real high to grab the rebound, and she got the rebound and went right back up to shoot but was clobbered by Miss Price. With all this action only 2 seconds had gone off of the clock and now there were 3 seconds left. This was "biting nails" time for most folks. Mary Ann eyed the basket real good, concentrated and shot and Mary Ann made

the freethrow. The score was 45-44 with 3 seconds left and all the Lynxettes patted Mary Ann on the back to give her encouragement; Coach Newton called time-out-why-well, to get some of that tension off of Mary Ann and tell the Lynxettes to pressure the Eaglettes when they in bounded the ball. The Lynxettes walked on the court as calm as anything-Mary Ann looked the calmest-from the outside anyways. Mary Ann eyed the basket again, concentrated and shot the ball and the ball cooperated again and "swoosh" it went in. The score was now 46-44 with 3 seconds left-plenty of time. Well, the Eaglettes in bounds the ball, and the Lynxettes pressured the ball 'til the buzzer rang to end the game 46-44, the Lynxettes victorious once again!! The

Lynxettes have a 10-10 record for the year and a 1-0 in District play. The after the game stats proved to be outstanding. The Eaglettes made 12 of 12 freethrows in the 4th quarter and made 1 field goal-meaning that the Eaglettes had 14 points and the Lynxettes sneaked behind the Eaglettes and scored 16 points-2 freethrows from Mary Ann Martin and 9 points for Susan Davis in the final quarter. Both these Lynxettes had been scoreless in the first half. Nancy Wilson had 8 rebounds in the 2nd half and stole the ball 2 times and had 10 points for the game. Mary Ann Martin had 7 rebounds in the 2nd half and stole the ball 1 time and scored and had 5 points-all from the freethrow line. Susan Davis rebounded the ball 5 times in

the 2nd half, stole the ball once and scored 9 points-all in the 4th quarter! Tammi Maize had 1 rebound in the 2nd half, stole the ball 2 times and had 3 points for the game. Lea Ann Gibner rebounded the ball 1 time, had 3 steals in the 2nd half, and scored 4 points all in the 2nd half. Johnnie Eaton had 4 points, Janet Reed rebounded the ball 1 time and had 3 points. Bonnie McCloy had 2 points and assisted her teammates plenty of times! The ball was tied up 5 times in the 2nd half. Mary Ann Martin pulled off this win in the final seconds for the Lynxettes, last Tuesday night. Lea Ann Gibner had pulled off the win by her aggressive style-stealing the ball, rebounding, assisting her teammates and scoring plenty of times to beat the Perryton Rangerettes in District

play. **WE CONGRATULATE YOU BOTH--MARY ANN MARTIN AND LEA ANN GIBNER.** The next game for the Lynxettes is tonight-Tuesday, January 20-against the River Road Wildcats. The game will begin at 6:00 p.m. The game will be played at Lynx Varsity Gym. Go on out and cheer the Lynxettes to victory!! Then on Friday, January 23, the Lady Lynx will travel to Dalhart to meet up with the angry Dalhart Wolves. The game should start at 7:00 p.m. or after the JV Lynx/Wolves finish battling it out. That will be a District game as was the River Road game played Tuesday. The Lynxettes have a great chance to reign as District Champs and advance to post season games. So **GOOD LUCK LYNXETTES!!**

The presentation of the 1980 Longhorn football lettermen and the announcement of the season's most valuable player will highlight the Longhorn Football Awards Banquet, 7:00 p.m., Friday, January 30, at the Special Events Center.

This special event is sponsored annually by The University of Texas Ex-Students' Association. The UT Cheerleaders and Longhorn Band will open the program and former UT football player, Charles L. "Sonny" Sowell will serve as Master of Ceremonies.

Fred Akers, head football coach, will present the lettermen and announce the recipients of the Most Valuable Player Award, the Longhorn Club Sportsmanship Award, the D.X. Bible Team Spirit Award, the D. Harold Byrd Leadership Award, and the Most Valuable Player Award.

Other awards to be presented are the Travis County Scholarship Award, the Ed Olle Scholarship, the Clyde Littlefield Fellowship, and the Earl Campbell Scholarship.

A multi-media slide presentation will be presented, showing the Longhorn's season highlights. For ticket information contact The Ex-Students' Association, P.O. Box 7278, Austin, Texas, 78712; 512/476-6271.

Bill Brock reportedly in line for trade envoy post.

Bomb explodes at RAF base, major damage.

Iran drops \$24 billion condition to free hostages.

Percy subpoenas Nixon-Haig tapes.





UNBEATABLE PRICES... S&H GREEN STAMPS PLUS FRIENDLY SERVICE

HUNT'S TOMATO SAUCE 15 OZ. \$1.39	DIAL DEODORANT BATH SOAP ALL COLORS 10' OFF LABEL 2BAR PACK 79c	DOWNY FABRIC SOFTENER 33 OZ. 15' OFF LABEL 89c
3 FOR \$1	TY-D-BOWL TOILET BOWL CLEANER REG. OR PINE SCENT 12 OZ. 89c	GLAD TRASH BAGS 50 OZ. BOX \$1.19
SPAM 7 OZ. 79c	CRISCO OIL 48 OZ. \$2.39	
MELLORINE 1/2 GAL. 99c	WHITE CLOUD BATHROOM TISSUE 4 ROLL PKG. 99c	FOLGER'S COFFEE 1 LB. CAN \$2.19
SHAMPOO AND COND. ALL VAR. 16 OZ. \$1.29	MUSHROOMS WHOLE OR SLICED 2 1/2 OZ. 49c	DINTY MOORE BEEF STEW 24 OZ. CAN \$1.29
MENHEN BABY MAGIC LOTION 16 OZ. \$2.19	PEPPER FINE FARE BLACK 4 OZ. 79c	LIPTON INSTANT TEA 3.6 OZ. Decanter Jar \$1.98
ALKA SELTZER 20 CT. \$1.29	TAMALES WOLF 15 OZ. 59c	
	SPAGHETTI CHEF BOY-AR-DEE AND MEATBALLS 15 OZ. 65c	
	DRESSING KRAFT LOW-CALORIE SALAD *FRENCH *ITALIAN *RUSSIAN *1000 ISLAND 8 OZ. 69c	
POTATOES NO. 1 RUSSET 5 LB. BAG 98c	CARROTS CELLO 16 OZ. \$1.39	GREEN PASCAL CELERY 2 STALKS \$1
	ORANGES SUNKIST NAVEL 4 LBS. \$1	APPLES RED DELICIOUS 3 LB. BAG 98c

WHO KNOWS?

1. Name the three branches of government.
2. What is the duty of the Executive Branch?
3. What is the duty of the Legislative Branch?
4. What is the duty of the Judicial Branch?
5. Name the Majority Leader of the Senate.
6. What does the word "Pravda" mean?
7. Where would you find the Black Forest?
8. What does loquacious mean?
9. Through how many countries does the Danube River flow?
10. What is the rule for finding the area of a rectangle?

Answers To Who Knows

1. Executive, Legislative and Judicial branches.
2. To carry out the laws.
3. To make the laws.
4. To make certain that the laws are enforced.
5. Howard H. Baker Jr. (R-Tenn).
6. Russian for "truth."
7. In southwestern Germany.
8. Talkative or fond of chatting.
9. Seven.
10. Multiply the base by the altitude.

Fashions are not to be explained by the ordinary processes of the brain.

It is always easy to find an excuse for delaying hard work.

Mental vacations are more necessary than physical rest.

Anyone can be friendly with an individual who is friendly.

The effort to make money often prevents the making of a man.

You can look back to 1980, but we prefer to look forward to 1981.

Lynx Bury Roughriders

The Boys Ranch Roughriders came to Lynx Varsity Gym to play the Spearman Lynx who had lost gracefully to Perryton in the Lynx' District opener. The game was set with the Lynx having more of an advantage with the homecrowd and when a team loses to the #1 ranked team in the State, that makes the team that lost have more determination for the rest of their remaining games.

This was the second District game for the Lynx who had lost to the #1 ranked team in the State--Perryton. The Roughriders were a pretty tough team, and the Lynx were just as tough. Steve Shields and his teammates came out shooting and making just about all the shots they tried. The Lynx had everything goin' their way in the 1st quarter and when the quarter ended, the Lynx had jumped out to an early 15-9 lead. The 2nd quarter was more explosive for both sides. The Lynx could shoot from the outside and the inside as could

the Boys Ranch Roughriders. This game was going to be a very high scoring game. When the 2nd quarter ended, the Lynx took the halftime lead with them into their locker rooms--34-28. Both teams had 19 points in the 2nd quarter!!

The Lynx were 0-1 in District play and knew if they lost any more District games that they couldn't be in the running for District Champs. Boys Ranch had plenty of fellas that could shoot from the outside as well as the inside, and so did the Lynx. It seemed that the teams were so much alike, but one team would lose and the other wouldn't.

The Lynx were ready for a shoot-out with the Roughriders. The Roughriders came out shooting and at the end of the 3rd quarter, the Roughriders had outscored the Lynx 14-12--making the score on the board 46-42 in favor of the Lynx. The Lynx had had a 6 point lead during the first 2 quarters and now the Boys Ranch Roughriders

finally had broken that 6 point deficit. Steve Shields and Monte George got their hand hotter in the final quarter. With 1:10 left in the game Steve Shields, the leading scorer, fouled out. Was that trouble for the Lynx? Well, the Lynx are not a "one man" team--they have others that are experienced to take on where guys like Steve Shields and Jimmy Ladd might leave if the happen to foul out. The Lynx were up by 2 points, Monte George, a Junior, was fouled and had a chance to get 2 points. Monte eyed the basket, concentrated and let the ball go and "rip" the ball went thru the hole for 1 point. Monte had another freethrow coming. He eyed the basket once again and let the ball go and the ball went "rip" once again putting another point for the Lynx who now lead by 4 points. With 12 or 10 seconds left that wasn't too much of a lead, not in basketball. A team could get another 2 or 3 baskets off and Boys Ranch was capable of doing that. The

Lynx had the fullcourt pressure against the scrappy Roughriders. Jimmy Ladd has got great hands and can control the ball real well, in this case his terrific hands helped him steal the ball and assist Monte on the lay-up. Monte laced the ball up which went thru at the buzzer. The Lynx won by the score of 66-60. The Lynx have a 10-10 record and a 1-1 for District.

Steve Shields was the leading scorer with 29 points. Monte George had 11 points, while Jay Pack had 9 points, Jimmy Ladd had 6 points and Jamie Bulls, Carey Bodey, Buddy Pool and Wayne Meek all had 2 points a piece.

The Lynx will host the River Road Wildcats tonight, Tuesday-January 20, starting at 7:30 or after the Lynxettes finish with the Wildcat girls. On Friday, January 23, the Lynx will go down to Dalhart to meet up with the Dalhart Wolves. These games are gonna be real good for two reasons: 1. To see if the Lynxettes can be undefeated and 2. If the Lynx can be 1 game behind the Perryton Rangers.

Fashion Review

An expanded 10th annual Natural Fibers Fashion Review is being planned for the 1981 Southwest Farm Show. The fashion contest and show will be held on March 7 in Fort Worth.

The contest is open to any homemaker from the Southwest Farm Show states of Texas, Oklahoma, and New Mexico who is involved in agricultural production or an agriculture-related business.

The Fashion Review is designed to promote the use of natural fibers produced in the Southwest and to emphasize excellence in garment construction and fashion in home sewing.

Garments entered in the show must be made of a minimum blend of 50% cotton or 50% wool and/or mohair.

The competition will have four divisions: day wear, evening wear, mother and child, and former grand award winners. The mother and child division and former grand award winners division are new this year.

The contest is being expanded to provide a better showcase for exhibiting designs made from natural fibers and to attract more contestants.

Prizes will be awarded to first, second, and third place winners in each division. The Grand Award winner will be selected from the winners of the mother and child, day wear, and evening wear divisions.

Sponsors of the event include the Southwest Hardware & Implement Association and Progressive Farmer. The Texas Agricultural Extension Service is coordinating and managing the contest and review with assistance from the Oklahoma and New Mexico Cooperative Extension Services.

Entries must be submitted by February 20, 1981. Contest rules and entry blanks may be obtained from county Extension offices, young homemaker organizations, and local tractor pulling associations.

The Natural Fibers Fashion Review will be presented at 4

p.m. on Saturday, March 7, at the Southwest Farm Show in Fort Worth.



STATE CAPITAL HIGHLIGHTS
By Lyndell Williams
TEXAS PRESS ASSOCIATION

AUSTIN—When the Legislature convened last week, the Senate quickly wrapped up its early business, then sat back to watch activities in the House, or "The Billy Clayton Show."

Clayton, who has been eyed for signs of weakness following the Brilab scandal, has never been stronger. He gathered 120 votes in his reelection as House Speaker for an unprecedented fourth term, and led his forces in passing his version of the House rules.

Nevertheless, there remains an element of revolt in the House which came out fighting on opening day. Guessing the strength of that faction will be one of this session's primary guessing games.

Surprisingly, the last week's drama opened with the Clayton's old nemesis, Rep. John Bryant, D-Dallas, withdrawing his name from nomination for Speaker, leaving Clayton as the lone candidate.

The race for speaker was virtually over when Clayton was acquitted of Brilab charges last October, and Bryant knew he had no chance of winning. He apparently withdrew to spare his soldiers from the retribution they feared for voting against Clayton, and to keep his strength hidden.

Nevertheless, 21 Bryant supporters voted against Clayton on the record, and a bloc of some 40 members was put together in a losing effort on the rules fight.

Clayton may well hold his coalition tightly for the duration of the session. Regarded as a master politician who doesn't like to spend state dollars, he is highly respected by his supporters. He has already said he might seek a fifth term as speaker, overturning a previous statement that the present term would be his last.

Despite the obvious rumblings prompted by that statement, Clayton's tenure is appreciated by many, especially those who believe he is the one Democrat tough enough to challenge Republican Gov. Bill Clements in the '82 gubernatorial election. It's the same toughness which often leads his opponents to consider him tyrannical.

fraud were sufficient to warrant a new election. Schoolcraft narrowly won in November over incumbent Democrat Al Brown, who filed a protest.

By contrast the Texas Senate was serene, with Lt. Gov. Bill Hobby announcing committee chairman after a quiet establishment of Senate rules. Senator John Traeger of Seguin was elected president pro tem.

New chairman of some of the more powerful committees include Sen. Roy Blake, Administration; Ray Farrabee, State Affairs; Ike Harris, Economic Development; Traeger, Intergovernmental Relations; and Pete Snelson, Education.

Six Months Deadline
The U.S. Dept of Education has told Texas it has six months to comply with federal civil rights statutes and provide minorities with better college opportunities or lose \$300 million in federal funds.

The feds said they found racial imbalance in enrollments in most Texas schools and a lack of minority members on university governing boards and academic jobs. Officials cited "vestiges" of dual education systems, particularly the Texas A&M University system which includes the predominantly black Prairie View A&M.

Texas Atty Gen. Mark White apparently stopped the feds from launching a lawsuit against the state by working out a compromise which includes the Legislature providing additional funding for mostly black schools this session.

Baylor Bears
One university which fared better than the others in the Legislature last week was Baylor University, whose football team won the 1980 Southwest Conference title.

The House full of UT and Texas A&M alumni began to boo when Betty Denton of Waco announced her resolution, but Clayton banged the measure on through, saying "The chair hears no objections from Aggies and Teasips."

However, when Bill Heatly of Paducah, a former Baylor football player, asked the speaker whether he was aware the Bears were leading the SWC basketball standings with UT and A&M in the cellar, Clayton, an Aggie, fired back, "Mr. Heatly, I'm here to inform you the season's just begun."

Election Voted
For the first time in the history of the Texas Legislature, the house voted to void the election of one of its San Antonio members and order a new election to fill the seat.

Despite a 5-to-4 committee recommendation to seat District 57-C winner Alan Schoolcraft, a Republican, the House decided that charges of absentee balloting

Ranking CIA agent sentenced for spying.

Wall Street adviser subject of scrutiny.

Ranking CIA agent sentenced for spying.
Wall Street adviser subject of scrutiny.

Your **WRANGLER** headquarters
The **BUNKHOUSE**
210 N. Main
Spearman

Taylor Spraying Service
Termites - Pest Control
Tree Spraying - pine trees a speciality
Serving the Panhandle 17 years with personalized service
HOME - BUSINESS - INDUSTRY
Monthly service available without a contract
669-9992 Pampa

SAVIN'S!

PLUS GREEN STAMPS

UNITED TRUTENDR RIB STEAK	BONELESS STEW	UNITED TRUTENDR LEAN CUBES OF BEEF	\$1.98
UNITED'S RIB STEAK	BONELESS FAMILY STEAK	UNITED TRUTENDR	\$1.59
UNITED'S RIB STEAK	BLADE CUT CHUCK STEAK	UNITED TRUTENDR	\$1.19
PLAINSMAN BRAND FRANKS	HORMEL HAM PATTIES	12 OZ. CAN	\$1.49
FINE FARE BACON	WISCONSIN RED RIND LONGHORN CHEDDAR CHEESE	GARY'S CORN DOGS	\$1.98
FINE FARE APPLESAUCE	COMSTOCK SLICED APPLES	POST GRAPE NUTS FLAKES	\$1.19
FINE FARE COCKTAIL	FINE FARE SLICED PEACHES	CARNATION COFFEE MATE	\$1.39
SUNBEAM COOKIES	MINUTE MAID CHILLED ORANGE JUICE	UNITED SUPERMARKETS	PRICES GOOD THRU JAN. 24TH
MORTON POT PIES	SNOWCROP 5-ALIVE FRUIT JUICE	KRAFT LIGHT SPREAD PARKAY	\$1.79

DOUBLE STAMPS WED. & SAT. WITH A \$2.50 PURCHASE OR MORE EXCLUDING CIGARETTES

Taylor Spraying Service
Termites - Pest Control
Tree Spraying - pine trees a speciality
Serving the Panhandle 17 years with personalized service
HOME - BUSINESS - INDUSTRY
Monthly service available without a contract
669-9992 Pampa



People ... working together!

1010101010101010101010101

Go
With
The
Chamber!



Supporting the Chamber, and assisting it any way possible will keep the wheels turning for a long time, and insure a more prosperous future.

HANSFORD COUNTY...is the second largest WHEAT-PRODUCING county in the NATION!

WE at LAWRENCE WARD TRUCKING, INC., feel we have the trucks and services to help make HANSFORD county the No. 1 LIVESTOCK and GRAIN producing county in TEXAS!

At the same time, we are supporting our Chamber whose staff and membership are working to put ideas into action, hopes into achievement...people concerned enough about the future to work for a better one. In this most promising spot in the nation, we promise to do our best!

1981

PROGRESS THROUGH PEOPLE



☒ This advertisement compliments of . . . ☒

Lawrence Ward Trucking, Inc.

Phone 733-5025

Permitted and Insured (call collect)
Gruver, Tx.

364-1171
Hereford, Tx.

Livestock and Grain Hauling

Contact us for all of your

Hauling Needs —

We are located in the

John Deere Building

West Hwy. 15

Gruver, Tx.

