

# The Spearman Reporter

VOL. 73 NO. 36

THE SPEARMAN REPORTER, SPEARMAN, TEXAS 79081

THURSDAY, JULY 15, 1982

## Death claims longtime local physician



DR. R.L. KLEEBERGER, M.D.

This community is saddened at the death of longtime physician Dr. R.L. Kleeberger.

Dr. Kleeberger, 62, died Monday night, July 12 at Hansford Hospital following an illness of several weeks.

Rosary services were held at 8:30 p.m. Wednesday at the Boxwell Brothers Funeral Home in Spearman.

Funeral services are set for 10 a.m. Thursday morning at the Sacred Heart Catholic Church here. Father Anthony Manochio will conduct the service.

Burial will be at St. Mary Magdalene Cemetery in Omaha, Nebraska.

Honorary pallbearers will be the Lions Club members.

He was born January 9, 1920, in Omaha, Nebraska and was a 1943 graduate of Creighton University School of Medicine.

Dr. Kleeberger came here in 1948 and began his practice.

He was a member of the Sacred Heart Catholic Church of Spearman. He was an active member of the Spearman Lions

Club and was named outstanding member of the club. He was also a member of the Knights of Columbus.

Dr. Kleeberger was recognized by the Texas Division of the American Cancer Society at their annual meeting in Sept. 29, 1981, for 30 years of service to the society. He was among ten people to receive this recognition.

He was a dedicated doctor and devoted his life to his patients. He was also an active civic worker in this community.

He will be sorely missed in this community by his patients, and friends.

Survivors include three uncles, George Schneider, Omaha, Nebraska, James Schneider and Arthur Schneider of San Diego, Calif., two aunts, Clara Archer and Mildred Anderson of San Diego, Calif.

His mother, Mrs. Johanna Kleeberger, who made her home with the doctor, died earlier this year.

## Patterson is star greenhand of Tex.

Travis Patterson of Spearman was named Star Greenhand of Texas for 1982 at the Texas State 54th Annual FFA Convention held July 14-16 at the Tarrant County Convention Center at Fort Worth.

Patterson is the 15 year old son of Pat and Cathy Patterson.

His chapter advisor's are Bert Williams and Herman Boone. Travis was president of the Spearman chapter conducting team that placed second at the district level. He also won the all-around award in the Hansford County Horse Show last summer.

Travis' supervised occupational experience program consisted of 69 stocker cattle, four horses and two show hogs.

A calf roper and coin collector, Travis plans to farm and ranch after graduation.

The Star Greenhand Award is presented to the most outstanding first year agriculture student. Each of the 10 areas of vocational agriculture selects a Star Greenhand nominee to compete for the Star Greenhand of the Texas Association of the Future Farmers of America. Selection is based on scholarship, leadership, supervised occupational experience program, and community and school activities.

Six thousand Texas Future Farmers of America and guests attended the convention.

The convention participants heard some outstanding speakers and participated in business sessions as well as recreational activities. Voting delegates selected new State Officers and recognized many award winners.

Educational scholarships valued at more than \$300,000.00, plaques and other awards were presented to FFA members and supporters during the convention.

The convention's theme was "Vocational Agriculture - Growing for America". The FFA organization continues to play an outstanding role in assuring the future progress and prosperity of our State and Nation. Texas now has more than 900 chapters with over 60,000 active members and more than 500,000 former members.

The FFA is composed of students who are studying vocational agriculture in the public schools in preparation for a variety of careers in Agriculture and Agribusiness. In studying the science of Agriculture, these FFA members are striving to improve this great industry for the welfare of all citizens.

### Hospital News

Patients at Hansford Hospital are Roy Seitz, John Brown, Rosa Baker and son, June Tucker, JoAnn De La Cruz, Faye Hickerson, Clint Graves.

Linda Lujan and Ethel Robertson.

Dismissed were Jerry Wilson and Gloria Vargas.

### Markets

CORN	\$3.05
WHEAT	3.11
MILO	4.95

## Tax rate lowered two cents per hundred

# \$1.5-million county budget adopted

At the regular session of commissioners court, Monday, Hansford County commissioners named election officials, discussed precinct priorities, set a tax rate for the coming fiscal year and adopted the operating budget for 1982-83.

In round figures, the budget is a projected \$1,581,650.

The tax rate will be 26 cents per hundred -- down from 28 cents the previous fiscal year. IMPORTANT NOTE: This is the county tax rate. It does not include the hospital district, the two independent school districts within the county nor the cities of Spearman and Gruver.

Initially, county government leaders had thought they would be able to watch county coffers swell from an expanded tax base. This was at the outset of budget planning discussions. Commissioners were looking at a tax base of \$550-million.

Then, on top of the regular

senior citizens' tax exemptions came the 40 percent to be allowed the next fiscal year to all county property owners as a "cushion" leading up to 100 percent valuation.

When all these considerations were translated into budget figures, the realistic tax base used to build the forthcoming budget was \$370-million. Fortunately, careful planning of the budget every step of the way made it possible to formulate the revised budget and still maintain the two-cent tax rate reduction.

One of the salient features -- one that directly affects the economy of the county -- is a \$75 a month across-the-board wage raise for county employees.

There are three significant exceptions to this: it does not include county commissioners; it does not include new employees in the sheriff's department who had salaries set this same

session and it does not include departments with designated budgets such as district court, the district attorney's office and the probation officers department.

These latter three have a budget designated on a "pro-rata" basis from the counties within the district they serve. Hansford County meets its share and the administrators of the different departments set the salaries.

Still on fiscal affairs, commissioners set the salary of Sara Shufeldt at \$1,119 and Bill Close at \$718.63. In the case of Shufeldt, this designated salary is less \$100 per month apartment allowance.

The following election officials were named for the forthcoming year (the official listed first, then the alternate in each precinct):

In voter precinct one: Joe Dan Bryan - Altha Townsend.

Voter precinct two: Etta Beck - Howard Barkley.

Voter precinct three: Faye Dahl - Mrs. Beulah Harris.

Voter precinct four: Merle Delano - Elizabeth Spivey.

Voter precinct five: J.L. Brock - Coleen Schaefer.

Voter precinct six: Melba Oakes - Marva Hohertz.

Voter precinct seven: Janie Stedje - Burton Olsen.

Voter precinct eight: Merle Boyd - Johnnie Lee.

Voter precinct nine: Willard McCloy - Mrs. H.B. Parks - Mrs. R.C. Wombie.

NOTE: There are two alternates in voter precinct nine.

Presently, plans are to publish the first priority in each commissioner's precinct at a later date. While these priorities have been decided, there are details to be worked out so that they are fully understood upon publication.

Once again, Commissioner

Buddy Lowe presided over the court session, Monday, in the absence of County Judge R.L. McClellan who is still recovering from surgery.

The next regular session of commissioners court will be July 26.

### Hergert injured in car mishap

Don Hergert, the owner of Don Hergert Motors in Perryton, suffered minor injuries Friday morning when he collided with a pickup truck 12 miles east of Perryton.

According to highway patrolman David Baker, Hergert was westbound on Highway 15 in a 1980 Cadillac when he attempted to pass a pickup truck which was also westbound, being driven by Peter Wall of Spearman.

Wall was attempting to turn left onto a lease road when the two vehicles collided. Wall was uninjured, but Hergert was taken to Hansford Hospital by private car, where he was treated and released for cuts and bruises.

Both vehicles suffered heavy damage, said Baker.

## Ideal to give S&H Stamps

Seven additional Ideal Stores in Oklahoma and Texas will start giving S&H Green Stamps July 15, Bob Billman, Vice President and General Manager, announced today.

"We selected S&H Green Stamps for our stores located in Beaver, Boise City and Hooker, Oklahoma, as well as three stores in Pampa and one in Spearman, Texas. These new locations are in addition to existing locations that have a proven record of offering the customer the best 'little extra' available. Those already giving S&H are in Fairview, Laverne, Alva and Woodward, Oklahoma," Billman said.

"The trading stamps promotional service has proved to offer extra value to our customers at no additional cost," stated Billman.

The Sperry and Hutchinson Company, Inc. is the oldest and largest of the trading stamp companies and the only nationwide plan. They operate more than 500 redemption centers across the nation.

### Masonic Lodges

The Hansford Masonic Lodge #1040 and Gruver Masonic Lodge #1326 will have a joint installation of Officers for the coming year.

R.L. Uptergrove of Spearman and H.M. Frazier of Gruver will be installed as Worshipful Master of their Lodge and extend an invitation to all Masons, Eastern Stars, family & friends of these to attend July 17 at the Hansford Lodge 406 E. 11 in Spearman at 8 p.m.

Masons are asked to open the Lodge at 7:30 p.m.

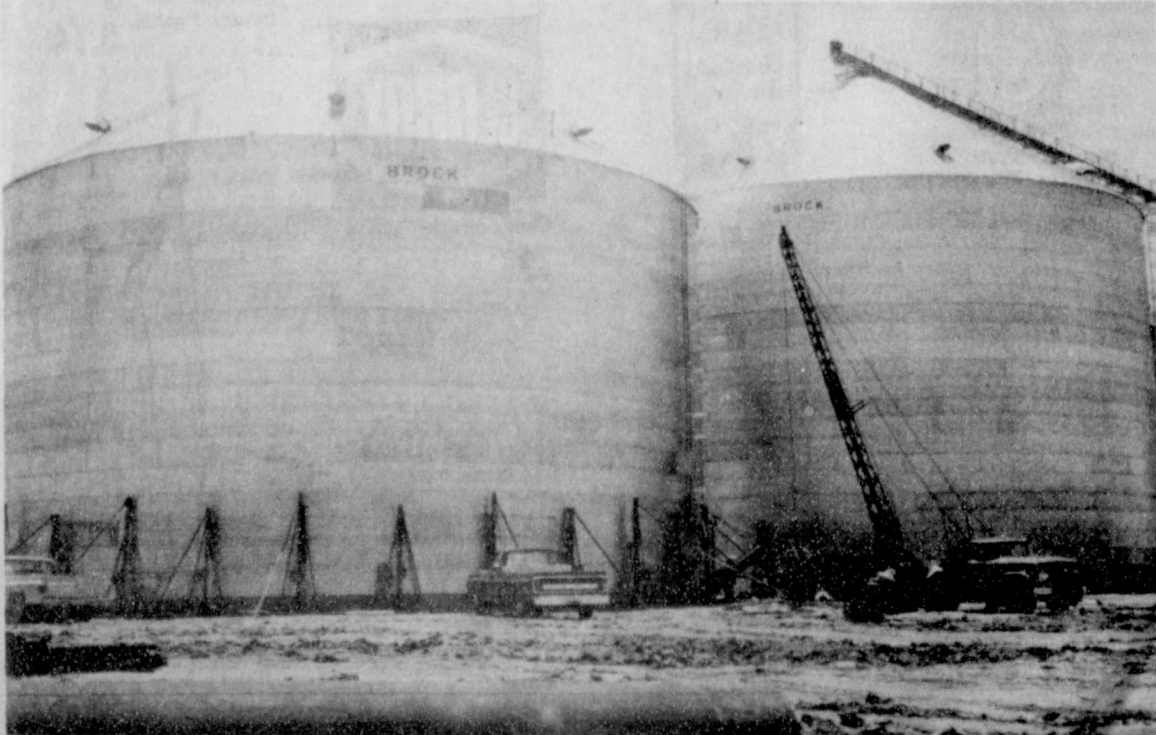
A cordial invitation is extended to all members and their families and friends.

### James Hoy Services Held

Memorial services were held at 10:30 a.m. Monday, July 12, 1982 at Gruver United Methodist Church for James Turner Hoy, 74, of Gruver, who died Friday in Spearman. The Rev. Tom Fuller, Pastor, officiated. Burial was in Gruver Cemetery by Henson's Funeral Home of Guymon.

Mr. Hoy was born in Buffalo, Okla. He had been a resident of Gruver for 30 years and was a member of Gruver United Methodist Church. He married Jeffie Mae O'Neal in 1936 in Salt Lake City, Utah. He was a World War II veteran and elementary principal of the Gruver School System for 20 years until his retirement in 1972. He was a member of the Gruver Masonic Lodge.

Survivors include his wife of the home; a daughter, Mrs. Jane Thompson of Dayton, Ohio; a son, James Hoy of Canyon; three sisters, Mrs. Lucille Edwards and Mrs. Nellie Draggeth, both of Orlando, Calif., and Mrs. Evelyn Cockerell of Esperia, Calif., and three grandchildren.



Pictured above are the two new Brock grain storage bins being constructed for Speartex Grain. These bins will have "the largest capacity of any other Brock

bins in the world", holding over 400,000 bushels each, bringing total Speartex capacity up to 4,000,000 bushels.

### Speartex:

## Biggest Brock bins here

When the present expansion at Speartex Grain Company's elevator location number one--one bin completed; one bin almost there--is finished, they will offer the largest grain storage capacity of any Brock bins in the world.

While Speartex Grain Company was growing with the production output of this area, Brock Manufacturing Company was growing, too--a growth based on their theory and practice that a grain storage bin is something more than just cubic space.

When Speartex decided to go with the promised prosperity of this area on down the turnrow, the company's years of

experience led to Brock bins. Soon, Hallmark Agric--the firm that puts Brock bins where the grain grows--had completed one unit with another bin in the advanced stages of construction.

When this construction is ready for grain storage, Speartex Grain Company will have the largest Brock grain storage bins in the world!

--Not only that but...these units will bring the total grain storage capacity at Speartex to approximately four million bushels!

That is faith in the great High Plains and its people who live by the land.

# Survey reveals cost of education in county

(Editor's Note: The information contained in this article has been supplied to the Reporter by the Texas Research League, a private, non-profit Austin-based corporation engaged in government research. The figures come from the latest issue of Bench Marks for School District Budgets in Texas, an annual publication of the league. The statistics quantitatively show what County residents close to education already know—that Spearman, Gruver and Pringle-Morse spend more for education than do the average Texas towns and that these school districts show favorably in departments such as pupil-teacher ratio, cost per student, etc. It should be noted that Pringle-Morse School only has 8 grades and then the district has to pay for their high school age students to go to another district as well as provide transportation for them, which is the reason for such a high expenditure for that district per student.)

The Spearman school district budgeted \$3008.36 per student for current operation expenses in 1981-82. The latest issue of the league's "Bench marks for School District Budgets in Texas" lists the state average as \$2,176 per student.

The Gruver school district budgeted \$3232.85 per student, and the Pringle-Morse school budgeted \$6490.31 per student.

The report lists 813 students for Spearman school district.

The amount per student is broken down to \$360.94 for general administration and \$164.27 for instructional administration.

Costs for instruction at Spearman is \$1549.92 plus \$69.80 for related expenditures.

Pupil service is listed at \$282.65, transportation \$116.17, plant maintenance and operation \$466.20.

Classroom teachers salary for Spearman per student is \$511.97 which is a 20.3% increase over last year and is 16.5% above the state average.

Gruver school spends \$3232.85 per student for 480 students. General administration is \$398.97 and \$177.99 for instructional administration. Pupil service is \$114.07, transportation is \$162.66 and plant maintenance is \$459.19.

Costs for instruction at Gruver is \$730.97 which is 14.3% increase over last year and is 15.1% above the state average.

Pringle-Morse School with 75 pupils spends \$6490.31 per student. General administration at Pringle-Morse is \$1339.80 cost for instruction is \$3531.78 up 15.9% over last year. Pringle-Morse pays 16.7 percent above state average. Pupil service is listed at \$318.02, transportation, \$751.16, and plant maintenance is listed at \$833.89.

In neighboring Ochiltree County, Perryton ISD lists 1680 students with \$2929.78 budgeted per student.

## Scramble Set At Golf Club

Next weekend, July 17 & 18 the Hansford Golf Club will sponsor a 4 man-scramble, according to Doug Burke, head pro for the club.

The first 30 paid teams will be accepted for competition.

Entry fee of \$125 should be sent to Doug Burke, Box 335, Spearman, Texas 79081 or if you need further information call Burke at 806-659-2233.

Tee-off time will begin at 8 a.m. and 1 p.m. for 18 holes each day. There will be 3 flights which will be flighted after the first round.

Prizes will be given for the longest drive, closest to the pin and the most accurate drive. A gift certification of \$1000 will also be awarded for each flight.

A Saturday evening meal will be served topping off the weekend activities.

## 122 residents receive surplus cheese

Some 122 residents of Hansford County received 5 lb. loaves of cheese which was distributed at the Golden Spread Center last Wednesday, Thursday and Friday.

The surplus cheese is being distributed by the U.S. Department of Agriculture through the Texas Panhandle Community

Action Corporation. Pearl Pierce, director of the center, said that they had plenty of cheese left. The cheese will be distributed again next month.

The cheese was distributed to low-income families, the disabled and the elderly in Hansford County.

## STAMPS AND STORIES



By Stanley James

A 10-cent denomination stamp depicting a 19th century hansom cab was issued March 20, 1982. Designed by David Stone of Port Washington, N.Y., the stamp is based on a picture of a hansom cab which originally appeared in a 1892 edition of *The Hub* magazine.

The cab, built by Brewster and Co. of New York City, had a blue body with black moldings bearing light blue stripes with wheels 56 inches in diameter.

The hansom cab was a two-wheeled, one-horse public transport vehicle designed in 1834 by Joseph Aloysius Hansom and was in wide use during the last half of the 19th century. It superseded numerous types of "hackney carriages"—car-

riages for hire—which first appeared in London in 1605.

The term "cab" was derived from the French "cabriolet," a light two-wheeled, one-horse carriage with a folding leather hood, a large apron, and upward curving shafts.

The popular form of the name, "cab," eventually came to denote all forms of horse-drawn and motor vehicles carrying passengers for hire. The cabbie sat high atop the hansom cab behind the forward-facing passenger seat. He could communicate and transact business with the customer through a small trap door in the roof.

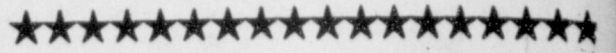
\*\*\*\*  
An emotional jag is almost as dangerous as a bender.

\*\*\*\*  
If you don't know the answer, don't answer the question.

\*\*\*\*  
Worry is the most overworked part of some people's make-up.

\*\*\*\*  
Too much flattery is like too much sugar. Both are artificial.

\*\*\*\*  
There are people who always have a good excuse for whatever they fail to do.



The second session of swim lessons will be held July 12 thru July 23 at 5:30 p.m. each evening, Monday thru Friday.

The cost is \$8.00 per person. Registration for the classes will be Friday, July 9 from 10 to 11:30 a.m. at the swimming pool park.



## BEEFaTHON television auction for MS

The 10th Annual BEEFaTHON Television Auction will be Sunday, July 25 from noon until 5:30 on Channel 10 (Cable 9).

A large variety of items will be sold to the highest bidder. There will be something for everyone—a \$5500 mink coat and a \$2850 diamond and sapphire ring are at the top of the list that includes lamps, sporting goods, ceiling fans, watches, household items and beef which is sold by the quarter.

This is your opportunity to buy something you were planning to buy anyway and help in the fight against MS.

Multiple Sclerosis attacks the central nervous system, generally crippling and frequently leaving its victim with total loss of coordination. MS is unpredictable—it's not thought to be hereditary and it strikes its victim without warning. Even worse, MS generally affects young adults in the prime years of their lives, making its blow particularly devastating emotionally and financially as well as physically.

There's no cure for MS so far, but researchers are working unrelentingly on finding one. You can help in this fight by purchasing an item from the BEEFaTHON on Sunday, July 25th.

### Your best buy is at TG&Y!

# JULY SPECIALS

PRICES GOOD THRU SATURDAY, JULY 17



**Cardboard Storage**  
Box 30" x 16 1/2" x 16" or 24" x 13 x 10"  
**1.00**



**Ortho Liquid Fence & Grass Edger** 1 Gallon  
Reg. \$9.97 Now **7.46**



**Sayelle Yarn** 4 oz. Skein  
**.93**



**Stren or Tri-Line XL** Fishing Line All Tests Weights  
**4.47**



**M&M's (Plain or Peanut)** 1 lb. pkg. **1.78**



**Cracker Jack Twin Pack** Crunchy candied popcorn and peanuts. Two 6 oz. packs per box.  
**1.47**



**Hi-Dri Paper Towels** 3 Rolls for **1.00**



**Little Playmate Cooler**  
**6.92**



**Solo Plastic Cold Drink Cups** Great for picnic or patio use. 16 oz. size. 20 ct. Reg. 1.06  
**.76** save 28%



**Nestea Instant Tea** 3 oz. **1.86**



**MR. COFFEE FILTERS** .50  
Mr. Coffee Filters For Mr. Coffee and other basket brewers. 100 count box. Limit 4

### PRICES GOOD ONLY AT TG&Y

#### FAMILY CENTER

521 HWY 207 SOUTH  
SPEARMAN, TEXAS  
659-3742



**Coleman Lantern** Model 220 **19.96**



**5 PAIR PACK TUBE SOCKS** OVER THE CALF  
Men's Tube Socks (5 pair per pkg.) **4.44**



**Prestone II** Antifreeze 1 gallon **3.74**



**Clorox Bleach** 1 gallon **.96**



**MR. COFFEE FILTERS** 81-27-099-344  
**Rod Rlot One Group Fishing Rods** **8.96**

## Wardrobe Cleaners closing for vacation

### July 19 thru July 24

Wardrobe Cleaners  
302 Main

# GIANT 32oz. Cup

# Coke

Trade-mark

# 59¢

This Monday, July 19 thru Sunday, July 25.



© Copyright 1982 Tex. D. O. Co. Council. All Rights Reserved.  
TM Trademark of the Tex. D. O. Co. Council.  
® Registered Trademark Am. D. O. Co.

TG&Y'S ADVERTISED MERCHANDISE POLICY—TG&Y's policy is to always have advertised merchandise in adequate supply in our stores. In the event the advertised merchandise is not available due to unforeseen reasons, TG&Y will provide a Rain Check, upon request, in order that the merchandise may be purchased at the sale price when it becomes available, or you may purchase similar quality merchandise at a similar price reduction. \*We will be happy to refund your money if you are not satisfied with your purchase. It is the policy of TG&Y to see that you are happy with your purchases.



# BUY, SELL, TRADE OR RENT THROUGH THE CLASSIFIED ADS

# 659-3434

**OSGOOD MONUMENT CO.**  
 Amarillo, Texas  
 Dealers of Rock of Ages Granite, as well as all colored granites, marble and bronze memorials.

represented by  
**BOXWELL BROS. FUNERAL HOME**  
 519 S. EVANS  
 659-3802

Hansford County Planned Parenthood  
 26 S. Haney  
 659-2483  
 Spearman  
 Mon.-Fri. 8:30-12:30

**NOTICE**  
 Wallace Monument Co.  
 Monuments, Curbings, Grave Covers  
 Local Representative  
**LEONARD JAMESON**  
 Spearman, Texas  
 355-rtm

**STEAM RINSE & VAC**  
 Steam Rinse-and-Vac Shampooers; \$10.95 for up to 24 hrs. available at Gordon's Drug; also at Freddie Largent's 716 Cotter, Dr. after 4 p.m. and Saturdays and Sundays.

**SERVICE:** Pits cleaned, wet or dry. Dragline or loader. Also, dozer, grader, carry-all service.  
 Lee Roy Mitchell, 806-733-2384, Gruver, Texas 79040. 12-rtm

**SNOOPY'S DAY SCHOOL**  
 Open Mon. through Fri. from 7:00 a.m. to 6:00 p.m. Call 659-3328 or come by 620 1/2 Bernice for further information. 23-rtm

**MONUMENTS**  
 Save Agents and Undertakers Profits  
 If it is inconvenient for you to visit our large display, please phone collect (405) 327-0628 or write and we will call on you.

**ALVA MONUMENT WORKS, INC.**  
 Alva OK 73717

New to area? Give us a try. Call your local **USED COW DEALER**. As soon as possible. 659-3544 659-3545 1-800-692-4043 175-rtm

Your new Kirby Sales & Serviceman, John Schaffer. 410 S. Hoskins, Ph. 9-2415, Spearman, Texas. 115-rtm

**S&H ROOFING CO:** Residential Only. SHAKES - CEDAR - COMP., Spanish Tile Repair, Skylights. 5 year warranty on Mobile Homes, we give S&H Green Stamps. Area Code (806) 383-9672, Amarillo. 33s-8tp

**PERRYTON ROOFING**  
 Shingling Shakes Hot tar Cedar Shingles Roof repair  
 Bill Little 435-4824 34s-6tp

**WE WILL FIX** your hail damaged vehicle. Don's Paint & Body. 396-2389, Stratford. 33s-4tc

### Garage Sales

Garage Sale-802 S. Drensen, Friday, July 16, 1:00-6:00 p.m. Saturday, July 17, 9:00 a.m.-3:00 p.m. Furniture, clothing, linens, and lots more. 36-1tp

### Real Estate

**HOUSE FOR SALE:** 3 bedroom, two bathrooms, fully carpeted, basement, formal dining room, detached garage, sprinkler system, corner lot in nice neighborhood. Owner will finance. Reasonable down payment and interest rate. Call Cynthia Floyd 659-3308 or 659-3123 for appointment. 28s-rtm

**FOR SALE BY OWNER:** 2 1/2 year old, 3 bedroom, 2 bathrooms, 2 car garage. Bricked and fenced. Low interest rate! 659-3518 by appointment. 32s-rtm

**FOR SALE:** Nearly new builder's home, 4 bedrooms, 2 1/2 baths, basement, double garage, fenced yard, large toolhouse, numerous amenities; shown by appointment only. Emmett R. Sanders, Realtor. 659-2516, nights 659-2601. 33-rtm T ONLY

**HOUSE FOR SALE:** Nice 3 bedroom, 1 bath, with Ben Franklin Fireplace, fenced in backyard. 1 1/2 lots. \$34,500.00 or Buy Equity and Assume Loan. Shown by Appointment only. 512 S. Haney. Phone 9-2463. 28-rtm T only

**FOR SALE:** 2 bedroom home, immaculate interior, fenced yard, detached garage, loan assumption with \$4,000.00 down payment. New furniture optional. Shown by appointment. Emmett R. Sanders, Realtor. 659-2516, nights 659-2601. 36-rtm T ONLY

### Miscellaneous

**SAVE! SAVE! SAVE!**  
 Free Delivery. Cedar Shakes \$55.00 to \$69.00 pr. square. Cedar Shingles, Composition Shingles, all types felt. Cedar Beams, Wood and Fencing. Call Lakeside Wholesalers 857-2411. 32s-8tp

For Sale: If interested in buying fresh vegetables or canning on the halves. Call Joy Henderson, 733-2517. RTN-NC

Reposessed console piano. Oak finish, excellent condition. Write or call Piano Credit Dept., Brier and Hale Music. 424 N. Kansas, Liberal, Kansas 67901, 316-624-8421. 35S-2tc

**DEALER REPO**  
 Two bedroom mobile home, excellent condition, wood siding, storm windows, garden tub, etc. Assume payments of \$259.86 with approved credit.

**FIRST QUALITY MOBILE HOMES**  
 Pampa, Texas 665-0715  
 32S-8tc  
**FOR SALE:** Frigidaire deluxe electric range, gold color, good condition. Call 733-2434. 36-3tp

### Mobile Homes For Sale

**FOR SALE:** 1981 Riviera 14' x 80' Mobilhome, 3 bedrooms, 2 baths, unfurnished. \$2500 equity and take over payments. Call 659-3673. 36-1tc

**FOR SALE:** 72 ft. Mobile Home, 2 bedroom - 2 baths. Call Milton Moore at 659-2417, or late 659-5067. 34s-rtm

For Sale: Trailer home- 2 bedroom. Call 733-2517 or 733-5214. RTN-NC

### Automobiles For Sale

Jeeps, Cars, Trucks under \$100 available at local gov't sales in your area. Call (refundable) 1-714-569-0214 ext. 5693 for directory on how to purchase. 24 hrs. 35-3tp T ONLY

**MUST SELL:** Chevy Pick-up, only 15,000 miles, \$2900. Call-659-2884 or 1-647-3478. 36-1tc

**FOR SALE:** 1977 Celica GT, AM-FM radio, factory 8 track and air. Call 659-2625. 36-2tc

**FOR SALE:** 1979 Ford Mustang, good condition. Call Angie Francis, 659-2454. 31-rtm

### Help Wanted

**HELP WANTED:** Avon representative, usual average earning \$6 to \$10 per hr.  
 Learn while you earn. Good benefits. Set your own hours. Call collect, 274-3606. 34s-12tc

**HELP WANTED:** Experienced man to manage irrigated farm must have good work record and mechanical experience. Call 405-338-5506 405-338-7307 35S-4tc

**INFORMATION ON** Cruise Ship Jobs. Great income potential. All Occupations. Call 602-998-0426 Dept. 0518 Call Refundable. 9-2463. 36-2tp T ONLY

### For Rent

**FOR RENT:** Composition shingle staple gun plus air compressor. Refundable deposit required. Call 659-3440 before 9:00 a.m. 34s-rtm

3 bedroom, 1 bath, 1 car garage, large fenced back yard for rent at 1114 S. Haney. Long-term lease preferred. Call 214-867-1339 collect, or 405-361-2246, or 806-435-2323. 35S-rtm

### Business Opportunities

Own your own Jean-Sports-wear, Infant-Preteen or Ladies Apparel Store. Offering all nationally known brands such as Jordache, Chic, Lee, Levi, Vanderbilt, Calvin Klein, Wrangler over 200 other brands. \$7,900 to \$16,500 includes beginning inventory, airfare for one to Fashion Center, training, fixtures, grand opening promotions. Call Mr. Loughlin (612) 835-1304. 36-1tp

### Wanted

**Will Do Housework.** Personal references available. Jolynn McLeod. 435-6652. 34-4tc

**WANT TO BUY:** Shell for Wide-bed pick-up. John Gibson at 733-2376 or 733-2709. 36-1tc

**PREACHER AND FAMILY NEED TO RENT:** 3 bedroom home in Spearman or Gruver area. Call collect Brother Charles Killingsworth 1-373-3944. 36-2tc

In Fashion  
 The "in" thing for summer is the anklet. The older women wore anklets years ago with oxfords for comfort. Today's young miss is in high fashion when she wears anklets and flat shoes with her fashionable short skirt. These summer socks come in solids, polka dots, plaids, stripes and argyles.

### NOTICE

On the front page of TG&Y Circular #29, the copy dimensions for the Vinyl Garden Hose reads: "1/2 inch x 50 yards." This should read: "1/2 inch x 50 feet." We regret any inconvenience caused by this error.

**TG&Y family centers**

### ACE ROOFING COMPANY

COMMERCIAL - RESIDENTIAL  
 Wayne & Kenneth



Phone 659-3570  
 GUTTERING & DOWNSPOUTS  
 ALL TYPES OF ROOFING - SHINGLE  
 BUILT UP ROOFS - LEAK REPAIRS  
 "WE COVER FROM CARPORTS TO WAREHOUSES"  
 NO JOB TOO SMALL  
 FREE ESTIMATES

### PORTS OF CALL

... FOR TRAVEL AND ADVENTURE

By Bente Christensen

**COPENHAGEN, DENMARK** -- Readers will be interested to know about Icelandair's flightbound service to Europe--in view of its lower fares.

On my flight to Denmark, we departed at 8:30 from Kennedy International. Shortly after being seated, a stewardess brought two young boys sitting near a matchbox car.

She asked the mother whether the children should be fed early. They were, and the stewardess then helped find empty seats where they could sleep.

Meanwhile, everyone aboard had been offered a drink, and something over an hour after takeoff we were served dinner. I thought it excellent.

It included a shrimp salad with Russian dressing (and caviar), boneless baked chicken, rice, peas and carrots, roll and butter, cakes and coffee and, of course, rose wine with dinner and cognac or cointreau afterward. There was no extra charge for the wine or after-dinner alcoholic beverages.

Personal service on Icelandair is still most attentive. The stewardesses--Scandinavian in appearance (Iceland was settled by Danes and until recently was under Danish administration)--are attentive, willing and pleasant.

Their uniforms, light blue with white stripes, with white collar navy blue belt and shoes, are more attractive than those of most airlines. All wore pearl necklaces and a navy and light blue scarf. They wore navy blue blazers and gloves and a navy blue pillbox hats.

In their desire to please, manner and general appearance, Icelandair's stewardesses are one of the airlines' major assets, one of its superior attractions.

Landing in Iceland, after something over five hours of

flight, we walked through the new and enlarged tax-free shopping center, where chocolates, tobacco, alcohol and woollens are popular and inexpensive.

Then we resumed flights--some to London, some to central Europe and our flight to Denmark. The flight to Copenhagen is short--about three hours. We were fed a lavish breakfast before landing. It consisted of scrambled eggs, hash-brown potatoes, ham, hot rolls, butter and jams, coffee, tea, milk or orange juice--or several.

Not long after, we were over Denmark, descending to Kastrup Airport--where it was already after noon there, because of a six-hour time differential.

Going through customs and immigration in Denmark is a snap. No one asked to see passports. No one checked luggage. So we were free only twenty minutes after touchdown--when bags arrived downstairs from Icelandair Flight 204 (Icelandair 614 from New York).

NBA favors mandatory drug tests.

Sex charges lead to inquiries into Congress.

Reagan seeks changes in insanity proof.

**Offered Exclusively By EMMETT R. SANDERS, REALTOR**

• 100' by 140' commercial zoned with 26' by 32' concrete block shop building, close to downtown on Drensen Street.

• PRICE REDUCED ON New 3 bedroom, 2 bath home, attached double garage, energy efficient fireplace, must see to appreciate. Shown by appointment ONLY.

• Choice commercial location fronting 140 ft. on West Kenneth Street.

• Attractive 3 bedroom brick home, near Elementary School on Drensen St. Call for appointment.

• EMMETT R. SANDERS REALTOR 659-2516 659-2601 (nights) 18-rtm T ONLY

### PARENTHOOD GUIDEBOOK

By Nancy Moore Thurmond (author, Mother's Medicine, Pub. by Wm. Morrow, N.Y.)

The Smithsonian, the most wondrous museum in the world, you and your children can marvel at the first telegraph, sewing machine, and cotton gin. You can literally spend weeks delving into America's past, present, and future with the fine collection of 17,000 American works of art, 30 million fossils, 24 million insects, 1,000 historical likenesses, and 12 million postage stamps.

There are eleven separate Smithsonian halls in Washington, the newest of which is the three-block-long National Air and Space Museum. Visitors to this spanking new museum can sit in the Spaceairium and watch lunar and solar eclipses, the Milky Way, and other far-off galaxies.

There is also a movie called "To Fly", and a documented assortment of all types of aircraft from colonial balloons to space modules.

There are plenty of bugs in Washington (not the mechanical variety) at the Insect Zoo in the Museum of Natural History, which houses such oddities as Sheba the tarantula and a 2 1/2-inch cockroach.

There are also excellent exhibits of birds and other animals. You animal lovers can even walk under a 92-foot model of a blue whale.

(cont'd.)

**VIRGINIA WHITE**  
 Realtor

DRESEN ST. - Walking distance to school. 3 bedroom home priced in mid 40's.

JAMES ST. - 3 bedrooms, custom built cabinets, cen/heat & air/cond. By appointment only.

ROLAND ST. - 2 bedroom stucco house with Cen/Heat Double garage with apartment. Reduced to low \$30's. WILL SHOW TO QUALIFIED BUYERS.

RESIDENTIAL LOTS FOR SALE - southwest location.

659-3841 REALTOR

### TEXAS PRESS ASSOCIATION

MEMBER 1982

### The Spearman Reporter

PUBLICATION [USPS 509-660]  
 SPEARMAN, TEXAS 79081  
 213 Main Box 458 659-3434  
 Published Weekly at 213 Main Street  
 Spearman, Texas 79081  
 Owner-Publisher.....William M. Miller  
 Editor.....Faye Lynch  
 Second Class postage paid at Spearman, Texas 79081

Any erroneous reflection upon the character of any person or firm appearing in these columns will be gladly and promptly corrected upon being brought to the attention of the management.

POSTMASTER: Send address changes to Spearman Reporter, Box 458, Spearman, Tx. 79081.

SUBSCRIPTION RATE: Hansford, adjoining counties, combination with the Hansford Plainsman \$15.00. Other points, \$20.00.

#### Political Announcements DEMOCRATIC PARTY

For U.S. Congressman  
 13th District  
**JACK HIGHTOWER**

State Representative  
 88th District  
**J.W. "BUCK" BUCHANAN**

REPUBLICAN PARTY

State Representative  
 88th District  
**R.C. PORTER**

Court makes changes in elections systems easier.

Bignone new Argentine president.

#### KOEHN

Mobile Homes  
 508 East Pancake  
 Liberal, Kansas 67901  
 Phone: 316-624-0338  
 "Specializing in more QUALITY AND VALUE for your dollar!"  
**CHAMPION MHMC**  
**OPEN SUNDAY AT 2 P.M. 24-rtm**

Spaceship Columbia makes perfect landing.

Jobless rate 9.5 percent during June.

Argentina capable of building nuclear weapons.

**For The Ultimate In STORM DOORS & WINDOWS**  
 Custom Built, Designed, And In Colors To Fit Your Home...  
 Contact Howard Moyer at  
**Only Aluminum Industries**  
 Guymon, Okla. 405-338-6966 or 73942 114 W. 1st 405-338-6170  
**AFTER 6 P.M.**

Specializing in Roofing of all Types Residential & Commercial  
 Cedar Shingles Hand-Split Shakes Composition  
 Tile Slate Builtup Roofing Tar & Gravel Rigid Asbestos Pitch  
**NORTH PLAINS ROOFING & SIDING CO.**  
 806-352-7754  
 Licensed Bonded Insured  
 Call collect for free estimate 806-352-7754  
 Amarillo, Texas

**PABLO'S 24 hr. TIRE SERVICE**  
 P.O. BOX 872  
 GRUVER, TEXAS 79040  
 Res. 733-5219 Bus. 733-2280  
 501 Main  
 PEREZ TEXACO

**BEACH HOUSE FOR RENT**-Sea Isle, Galveston.  
 Sleeps 5, tennis court, boat launch, bait house, 80 ft. lighted fishing pier, access to Galveston Country Club for golf, access to Galveston County Airport. Across the street from beach, 5 miles from the San Luis Pass bridge and 17 miles from downtown Galveston. Call 808-659-5037. 33s-20m

**TRAILWAYS**  
 1982 Tours  
 World's Fair & Others  
 Information at  
 Bus Station  
 Baker Hotel  
 659-5009  
 659-3446

# Society Features

## Lubbock Ceremony Unites Couple



MRS. MICHAEL NOEL PRITCHARD

Miss Tiffany Michelle Vaughn, daughter of Mr. and Mrs. James L. Vaughn of Lubbock, and Michael Noel Pritchard, son of Mr. and Mrs. Johnny Pritchard, also of Lubbock, exchanged wedding vows Friday, July 9, 1982 in Highland Baptist Church at 7:30 p.m.

Brother Richard Waters read the double ring ceremony. Mrs. Jane Ann McCartor, aunt of the bridegroom, played the traditional marches.

The bridegroom sang, "Lady", to his bride while accompanied by pianist, Mark Philbrick.

Matron-of-honor and Bridesmaid Miss Tami Dawn Davis, good friend, and Miss Laurie Ann Vaughn, sister of the bride, both of Lubbock, wore a full length royal blue gown with a sheer pastel baby blue cape.

Lighting the candles were Gary James Vaughn, brother of the bride, and Jeffery Larance Dossset, cousin of the bride.

Flower girl was Heather Ann Pritchard, daughter of the bridegroom and ring-bearer

## Bride-Elect Is Honored

Jean Marie Rhein, bride-elect of Stephen Bort was honored with a bridal shower in the home of the C.A. Davis. The shower took place on June 26 with guests calling between the hours of 2:00 p.m. and 3:30.

The bride-to-be, the mother and grandmother of the prospective groom were presented silk flower corsages.

Miss Rheins' chosen colors of peach and baby blue were carried out in the centerpiece of silk flowers and cookies were served from a table covered with ecri lace cloth over baby blue liner.

Guests were served by Barbara Stavlo and Eiko Bort, sister-in-law of the groom-to-be.

The wedding will take place August 7th, 1982, at 10:00 a.m. at the Christ on the Mountain Catholic Church in Lakewood, Colorado.

Hostesses for the shower included: Mary TeBeest, Margaret Ralston, Charlotte Bergin, Blanch Taber, Ruby Lea Mitchell, Gerry Davis, Fran Maupin and Mary Sullins.

Members present were Annie Allen, Louise Archer, Martha Batton, Myrna Biggers, Deta Blodgett, Cleo Denman, Nelle Evans, Sada Hoskins, Hazel Loftin, Hollie Riley, Ora Sanders, Cora Smith, Ruth Mary Whitson and Sammie Bishop.

The misery of miseries is to seek a place in the social whirl out of relation to one's income. \*\*\*\*\*

Non-essentials take up too much time in life but why be different from those about you? \*\*\*\*\*

## Shorthorn auxiliary plans year

Texas Shorthorn Lasses, auxiliary of the Texas Shorthorn Association, held their 25th annual meeting June 19, 1982, in Weatherford, Texas, with Kathleen Tillman, president, conducting.

Mrs. Dona Brewer, Parker County Extension Agent--Home Economics, presented a program on Color and You. Mrs. L.M. Haupt, a charter member of the organization, gave a brief speech on past activities of the auxiliary.

Carla Williams, Wylie, was introduced as the 23rd Texas Shorthorn Lassie Queen. Princesses for 1982-83 will be Emilie Oevermann, Houston, and Caron Williams Wylie. The auxiliary sponsors good-will ambassadors of the breed who present awards at livestock shows, sales and field days.

The auxiliary voted to host a hospitality hour before the 1983 Cowtown Classic Shorthorn Sale, and to serve a meal at the 1983 Spring Sale, May 7. The group will also man the breed booth during the Southwestern Exposition & Fat Stock Show and Houston Livestock Show.

Officers elected include: Mrs. Richmond Williams, 1805 Stone Rd., Wylie, Tex.--President; Mrs. Robert Dahl, Star Rt. 3, Box 160, Gruver, Tex.--Vice-President; Mrs. James McAnear, Brice Rt., Clarendon, Tex.--Sec.-Treas.; Mrs. J.O. Bass III, Olton Rt., Painview, Tex.-- Publicity.

Directors include: Mrs. E.T. Criddle, Caldwell; Mrs. Edwin Oevermann, Houston; Mrs. James Maxey, Chilton; Mrs. Cecil Hoelscher, Lett; Mrs. J.W. Holmes, Tolar; and Mrs. Dan Tillman, immediate past president.

Membership in the Lasses is open to any wife or daughter of a Shorthorn breeder, or any woman interested in promoting Shorthorn cattle. Annual dues of \$5.00 may be mailed to Mrs. James McAnear, Brice Rt., Clarendon, Texas 79226.

The fear of competition explains much that happens in business, politics and life in general.

## Dahlia Flower Club Meets

The Dahlia Flower Club met July 12 in the Ranch home of Nelle Evans.

The program was given by Cora Smith on Plant Hunger Signs.

A lack of nitrogen, phosphorous and potash in the soil will adversely affect the growth and quality of plants in your vegetable garden. Watch for the following indications to detect a deficiency of these soil elements:

Lack of Nitrogen: A sickly yellowish - green color; A dwarfed growth; a drying up of leaves.

Lack of Phosphorous: Purplish leaves, slow growth and low yield.

Lack of Potash: Mottling, spotting curling of leaves, premature loss of leaves, plants falling down before maturity due to poor root development.

Members present were Annie Allen, Louise Archer, Martha Batton, Myrna Biggers, Deta Blodgett, Cleo Denman, Nelle Evans, Sada Hoskins, Hazel Loftin, Hollie Riley, Ora Sanders, Cora Smith, Ruth Mary Whitson and Sammie Bishop.

Verlin and Lucile Hagerman  
and  
David and Robbie Reid  
invite you to share in the joy of  
the marriage uniting their children  
Kathryn Ann  
and  
Rex Alan  
This celebration of love will be  
on Saturday, the twenty-fourth of July  
Nineteen hundred and eighty-two  
at two o'clock in the afternoon  
First United Methodist Church  
Spearman, Texas  
36-3tc

## La Leche League Meeting Set

If you have considered breastfeeding your baby, but have questions about this womanly art, contact the Spearman La Leche League. This month's meeting will be held on Tuesday, July 27, 10:00 a.m., at the home of Teresa Kirk of rural Spearman. The discussion will include encouragement and information on how to establish a happy nursing relationship.

For further information and directions call 659-2794. Copies of "The Womanly Art of Breastfeeding" are available for sale at the meetings along with other free reprints and information.

## Square Dance Club Summer Meetings Set

The "Rainbows & Ranglers", the Spearman Square Dance Club, will have their club dances on the 2nd & 4th Fridays during July and August. The next dance will be at the "Y" on July 9th. All square dancers are invited to attend and join the fun!!

## Karen's Kozy Korner

*Karen Hatruff  
Hansford County Extension Agent  
Home Economics*

### CONSIDER USED CLOTHING FOR 'FASHION BUDGET' STRETCH

Used clothing can be a great fashion buy if the shopper knows what to look for.

Many Texas families are finding this an economical way to get needed items and get rid of garments they can't wear anymore.

USED-CLOTHING SOURCES  
Sources of used clothing include neighborhood swaps conducted by civic clubs, schools or churches, garage or yard sales, rummage sales and used-clothing stores.

Some stores take used clothing on "consignment" from you -- they receive a percentage of the sale price when the garment is sold, and so do you.

FASHIONS FOR SALE  
Fashions for sale at bargain prices in used-clothing markets include winter coats and jackets, skirts, long pants, shirts and sweaters.

Children's used play clothes are especially thrifty buys, since children outgrow items so fast.

For adults, there are coats, suits, trousers, dresses, skirts and jackets. These may be added to the wardrobe for very little money, as compared to the cost of new readymade garments.

Also sold at used-clothing stores are accessories such as scarves, jewelry and handbags.

BE A WISE SHOPPER  
When shopping for clothing to wear "as is" without extensive alterations, choose items currently in style so you won't feel uncomfortable wearing them.

To select garments that fit, take along an accurate list of body measurements (bust, chest, waist, hip and length of pants or skirts) for each family member -- and be sure to take a tape measure.

In choosing, make sure:

- 1) Fabric is in good condition,
- 2) Stitching is durable and intact,
- 3) Elastic has good stretch,
- 4) Zippers are in good working order,
- 5) All buttons are sewed on securely,
- 6) Buttonholes are not raveling,
- 7) Garments don't have faded areas,
- 8) Clothes are clean and pressed, and
- 9) Belts are attached to the garments.

Also, compare prices of used garments to the costs of new ones.

Consider the use each garment will get.

Sometimes an entire season's wardrobe can be purchased at used-clothing sales for less than the cost of one new major clothing item.

For families with a limited clothing budget, the used-clothing idea is certainly worth considering.

EDUCATIONAL PROGRAMS CONDUCTED BY THE TEXAS AGRICULTURAL EXTENSION SERVICE SERVE PEOPLE OF ALL AGES REGARDLESS OF SOCIO-ECONOMIC LEVEL, RACE, COLOR, SEX, RELIGION OR NATIONAL ORIGIN.

### Arts & Craft Guild Meets

The Arts & Craft Guild met Friday, July 9, in the home of Sada Hoskins.

Attending were Meses Annie Allen, Aileen White, Mildred Daily, Deta Blodgett, Athalee Traylor, Lemmie Russell, Freda Sheets, Georgia Holt and Margaret Gibber.

Georgia Holt will be the hostess for the Friday, July 16, meeting.

When shopping for clothing to wear "as is" without extensive alterations, choose items currently in style so you won't feel uncomfortable wearing them.

To select garments that fit, take along an accurate list of body measurements (bust, chest, waist, hip and length of pants or skirts) for each family member -- and be sure to take a tape measure.

In choosing, make sure:

- 1) Fabric is in good condition,
- 2) Stitching is durable and intact,
- 3) Elastic has good stretch,
- 4) Zippers are in good working order,
- 5) All buttons are sewed on securely,
- 6) Buttonholes are not raveling,
- 7) Garments don't have faded areas,
- 8) Clothes are clean and pressed, and
- 9) Belts are attached to the garments.

Also, compare prices of used garments to the costs of new ones.

Consider the use each garment will get.

Sometimes an entire season's wardrobe can be purchased at used-clothing sales for less than the cost of one new major clothing item.

EDUCATIONAL PROGRAMS CONDUCTED BY THE TEXAS AGRICULTURAL EXTENSION SERVICE SERVE PEOPLE OF ALL AGES REGARDLESS OF SOCIO-ECONOMIC LEVEL, RACE, COLOR, SEX, RELIGION OR NATIONAL ORIGIN.

## Make your county history complete

## Buy Volume 2

Hansford County History Book Volume 2 is still on sale. If you have Volume 1 you certainly need Volume 2 so that your family may have a complete history of our County. There will be 550 new family stories in the book plus other general history that there was not room for in the first Volume. So do not think that you have a complete history if you own only the first volume.

You may purchase the second volume of the book from Sjl Robertson, 515 S. Archer, Spearman, or from Ada Joyce Stedje, Gruver, at the Gruver Drug Store, Hansford Library and Station Master's Museum.

The cost of the book is \$46.20 including tax or \$49.20 if you desire to have the book mailed to you or mailed to someone else as a gift.

Debra Ware receives degree

ABILENE, Texas--Debra Denise Ware, daughter of Mr. and Mrs. Wayne Ware of Box 141, was one of 688 students who graduated from Abilene Christian University during spring commencement ceremonies.

Miss Ware received the bachelor of science in business education, composition.

She is a 1978 graduate of Spearman High.

Abilene Christian University's four colleges offer bachelor's degrees from 22 departments and master's degrees from 10 departments to more than 4,500 students from 43 states and 17 foreign countries.

THIS FORM MUST BE COMPLETED AND RETURNED TO THE BANKING DEPARTMENT WITHIN 20 DAYS OF THE DATE OF THE ENCLOSED COVER LETTER

### CONSOLIDATED REPORT OF CONDITION (Including Domestic Subsidiaries)

LEGAL TITLE OF BANK		FIRST STATE BANK	
CITY	COUNTY	STATE	ZIP CODE
SPEARMAN	HANSFORD	TEXAS	19081
STATE BANK NO.	FEDERAL RESERVE DIST NO.	CLOSE OF BUSINESS DATE	
1107	11	June 30, 1982	

ASSETS		Mill	Thou	
1. Cash and due from banks		4	184	1
2. Due from other depositories and all cash items in the process of collection		NONE		2
3. U.S. Treasury securities		6	949	3
4. Obligations of other U.S. Government agencies and corporations		5	516	4
5. Obligations of States and political subdivisions in the United States		7	915	5
6. All other securities		NONE		6
7. Federal funds sold and securities purchased under agreements to resell		2	300	7
8. Total loans (including overdrafts totaling \$ 42,004.83 ) (From Schedule A, Item 8)		23	532	8
9. Lease financing receivables		NONE		9
10. Bank premises, furniture and fixtures, and other assets representing bank premises			171	10
11. Real estate owned other than bank premises		NONE		11
12. Letters of credit and customers' liability on acceptances outstanding		NONE		12
13. All other assets		1	593	13
14. TOTAL ASSETS (sum of items 1 thru 13)		48	162	14
LIABILITIES				
15. Demand deposits of individuals, partnerships, and corporations		11	767	15
16. Time and savings deposits of individuals, partnerships, and corporations		25	361	16
17. Deposits of United States Government		2	811	17
18. Deposits of States and political subdivisions in the United States	ASBM		2	18
19. Due to banks		NONE		19
20. All other deposits		NONE		20
21. Certified and officers' checks			147	21
22. Total Deposits (sum of items 15 thru 21)		40	205	22
a. Total demand deposits		12	615	22a
b. Time and savings deposits		27	590	22b
23. Federal funds purchased and securities sold under agreements to repurchase		NONE		23
24. Interest-bearing demand notes issued to the U.S. Treasury and other liabilities for borrowed money			541	24
25. Mortgage indebtedness for which the bank is directly liable		NONE		25
26. Unearned discount on loans			236	26
27. Letters of credit and acceptances outstanding		NONE		27
28. All other liabilities			332	28
29. TOTAL LIABILITIES (excluding subordinated notes and debentures) (sum of items 22 thru 28)		41	814	29
30. Subordinated notes and debentures		NONE		30
31. Allowance for possible loan and investment losses			226	31
EQUITY CAPITAL				
32. Common stock (No. of shares outstanding 200,000)		1	000	32
33. Certified surplus		1	000	33
34. Undivided profits		1	622	34
35. Uncertified surplus, reserve for contingencies, and other capital reserves		2	500	35
36. TOTAL EQUITY CAPITAL (sum of items 32 thru 35)		5	122	36
37. TOTAL LIABILITIES AND EQUITY CAPITAL (sum of items 29, 30, 31 and 36)		48	162	37

NOTE: This report must be signed by an authorized officer and attested by not less than three directors other than the officer signing the report.

I, the undersigned officer, do hereby declare that this Report of Condition (including the supporting schedules) has been prepared in conformance with the instructions and is true to the best of my knowledge and belief.

SIGNATURE OF OFFICER AUTHORIZED TO SIGN REPORT: *Lynanne Maize*  
NAME AND TITLE OF OFFICER AUTHORIZED TO SIGN REPORT: Lynanne Maize - Asst. Cashier  
AREA CODE/TELEPHONE NO.: 806-659-2526  
DATE SIGNED: 7-13-82

Signature of Director: *[Signature]*  
Signature of Director: *[Signature]*  
Signature of Director: *[Signature]*

State of Texas  
Sworn to and subscribed before me this 13th day of July 1982  
My commission expires 7-10-84  
Notary Public

Clearance Sale

**Ladies Summer Shoes**  
2 for 1

**Ladies Summer Handbags**  
½ price

**Men's Shoes Select group**  
\$20<sup>00</sup>

**Men's Tennis Shoes**  
\$4<sup>99</sup>

**Children's Summer Sandles**  
½ price

Sale starts July 10 1982

**Boyd's Family Shoes**  
209 Main Spearman, Texas

# KFDA-TV to broadcast Labor Day Telethon

KFDA-TV, Channel 10 will broadcast the Jerry Lewis Extra Special Special, the Labor Day Telethon to benefit the Muscular Dystrophy Association (MDA), announced MDA National Chairman Jerry Lewis. The program will air Sunday, September 5th, at 8:00 p.m. and continue to 6:30 p.m., Monday, September 6th.

"I'm delighted to welcome KFDA back to our 'Love Network,'" said Lewis. "Not many people realize the crucial job that our 'Love Network' stations and hosts like Mark Robertson-Baker and Debra Lane do in terms of fund raising. We provide a whole season's worth of entertainment in our 2 1/2 hours on the air, but if it weren't for the tremendous efforts of stations like Channel 10, we couldn't possibly accomplish our goal of raising the funds necessary to continue the battle against neuromuscular diseases."

This year's show, the 17th annual Labor Day Telethon for MDA, will be broadcast live from Caesars Palace in Las Vegas with anchorman Ed McMahon and will be carried by some 200 local stations around the country. Each station provides its own local programming at 41 different intervals throughout the 2 1/2-hour telecast.

Lewis noted that the local stations also serve an educational function, showing members of their communities just how money donated is put to use locally. MDA maintains 240 clinics around the country and more than 600 individual research projects world-wide. In the Panhandle area, the MDA clinic is staffed by two neurologists, Dr. Rush Snyder and Dr. Michael Ryan. Local MDA research projects are being conducted at Texas Tech University. MDA also operates a local

summer camp at the Episcopal Church Conference Center.

Last year's Telethon raised over \$31 million in pledges and garnered an audience of more than 93 million viewers, second only to the Superbowl in audience ratings.

Volunteers wishing to assist with the telethon, should call the MDA office at 359-3141.

## Dahl Chairs Texas Shorthorn Meet

Robert Dahl, Gruver, Texas, vice-president of the Texas Shorthorn Association, chaired the annual meeting June 19, 1982, in Weatherford, Texas.

The membership approved payment for junior show heifer premiums at the 1982 State Fair of Texas, the 1983 Southwestern Exposition and Fat Stock Show, 1983 San Antonio Livestock Exposition, and the 1983 Houston Livestock Show. Approval was also given for premiums to be paid the junior steer exhibitors at the 1983 Ft. Worth and Houston shows.

Members on the 1982-83 junior premium fund committee will be Richmond Williams, Wylie, J.W. Holmes, Tolar; and Ronald Gooch, Clarendon. The committee will be working on a long-range plan for fund raising for these premiums.

Obe Lionberger, Weatherford, reported on the 1982 meeting of the American Shorthorn Association a proposed constitutional amendment that each region of the United States should elect their director for the board of the American Shorthorn Association. Officers elected for the 1982-83 year include: President--Robert Dahl, Star Rt. 3, Box

160, Gruver, Texas; Vice-President--Daniel L. Heath, Rt. 1, Box 31, Whitney, Texas; Sec-Treas--Mary Bass (Mrs. J.O. Bass III), Olton Route, Plainview, Texas 79072.

Directors include: 1980-83--Garth Priddy, Desdemona; E.E. Chumley, San Augustine; Cecil Hoelscher, Lott; H.O. Johnson, Eddy.

1981-84--Gary Buchholz, Duncanville; Odis A. Lowe, Jr., Rockwall; Dan Tillman, Weatherford; C.R. Williams, Rockwall.

1982-85--Jim Cato, Whitney; James McAnear, Clarendon; J.W. Holmes, Tolar; Obe Lionberger, Weatherford.

Information on Shorthorn/Polled Shorthorn cattle, or a listing of breeders in Texas may be obtained from Texas Shorthorn Association, Mary Bass, Secretary, Olton Route, Plainview, Texas 79072.

Sales scheduled are: Cowtown Classic Shorthorn Sale, January 30, 1983, Southwestern Exposition & Fat Stock Show Grounds, Ft. Worth, Texas. Five-State Shorthorn Sale, April 2, 1983, Texas Co. Fairgrounds, Guymon, Oklahoma. Texas Spring Shorthorn Sale, May 7, 1983.

Members to serve on the T.S.A. sifting committee for 1982-83 will be Freddie Eubank, Whitney; Larry Eubank, Houston; Obe Lionberger, Weatherford; Robert Dahl, Gruver; M.W. Bowman, Weatherford; and E.T. Criddle, Caldwell.

Six straws of semen and breeding certificates on Deepark Improver 2 (Guinness) and 6 straws and certificates on Highfield Higher 204 (Culhane), donated to the state association by Mike Dugdale, Dugdales Polled Shorthorns, Omaha, Nebraska, will be auctioned at the 1983 Cowtown Classic Sale, with proceeds to the T.S.A. junior premium fund.

J.W. Holmes reported that a Shorthorn steer division had been added for the 1983 Wichita Falls Regional Show. This show is limited to certain counties in north central Texas and a few counties in Oklahoma. This show is not supported by the Texas Shorthorn Association, and Steer Verification Forms will not be required.

The Texas Association will present to the 1983 annual meeting of the American Shorthorn Association a proposed constitutional amendment that each region of the United States should elect their director for the board of the American Shorthorn Association.

Officers elected for the 1982-83 year include: President--Robert Dahl, Star Rt. 3, Box

160, Gruver, Texas; Vice-President--Daniel L. Heath, Rt. 1, Box 31, Whitney, Texas; Sec-Treas--Mary Bass (Mrs. J.O. Bass III), Olton Route, Plainview, Texas 79072.

Directors include: 1980-83--Garth Priddy, Desdemona; E.E. Chumley, San Augustine; Cecil Hoelscher, Lott; H.O. Johnson, Eddy.

1981-84--Gary Buchholz, Duncanville; Odis A. Lowe, Jr., Rockwall; Dan Tillman, Weatherford; C.R. Williams, Rockwall.

1982-85--Jim Cato, Whitney; James McAnear, Clarendon; J.W. Holmes, Tolar; Obe Lionberger, Weatherford.

Information on Shorthorn/Polled Shorthorn cattle, or a listing of breeders in Texas may be obtained from Texas Shorthorn Association, Mary Bass, Secretary, Olton Route, Plainview, Texas 79072.

Sales scheduled are: Cowtown Classic Shorthorn Sale, January 30, 1983, Southwestern Exposition & Fat Stock Show Grounds, Ft. Worth, Texas. Five-State Shorthorn Sale, April 2, 1983, Texas Co. Fairgrounds, Guymon, Oklahoma. Texas Spring Shorthorn Sale, May 7, 1983.

Members to serve on the T.S.A. sifting committee for 1982-83 will be Freddie Eubank, Whitney; Larry Eubank, Houston; Obe Lionberger, Weatherford; Robert Dahl, Gruver; M.W. Bowman, Weatherford; and E.T. Criddle, Caldwell.

Six straws of semen and breeding certificates on Deepark Improver 2 (Guinness) and 6 straws and certificates on Highfield Higher 204 (Culhane), donated to the state association by Mike Dugdale, Dugdales Polled Shorthorns, Omaha, Nebraska, will be auctioned at the 1983 Cowtown Classic Sale, with proceeds to the T.S.A. junior premium fund.

J.W. Holmes reported that a Shorthorn steer division had been added for the 1983 Wichita Falls Regional Show. This show is limited to certain counties in north central Texas and a few counties in Oklahoma. This show is not supported by the Texas Shorthorn Association, and Steer Verification Forms will not be required.

The Texas Association will present to the 1983 annual meeting of the American Shorthorn Association a proposed constitutional amendment that each region of the United States should elect their director for the board of the American Shorthorn Association.

Officers elected for the 1982-83 year include: President--Robert Dahl, Star Rt. 3, Box

## Tri-State Fair Coliseum Shows

Get ready for a generous sampling of the finest musical entertainment on the stage today. The Amarillo Tri-State Fair has again booked a combination of the well-known and the brand-new, but always the best; the awards winners and young hopefuls, a musical selection sure to delight any audience.

The show begins Monday, September 20, and with the exception of Monday, 2 headliners will be featured each day at both shows 5:30 and 8:30 p.m. Tickets are priced at \$7, \$8, and \$9. They are available by mail only now until they go on sale at Sun Set Center in Amarillo on August 30th.

Fair officials suggest that tickets be ordered early, and that date and time desired be clearly marked. Tickets will be available at the door as well, unless the show is a sell out. This year's headliners are Alabama, Monday, September 20; Merle Haggard and Leona Williams, Tuesday, September 21; Don Williams and Lee Greenwood, Wednesday, September 22; Charley Pride, Thursday, September 23; Ronnie Milsap and Sue Powell, Friday, September 24; and Crystal Gayle on Saturday, September 25. Tickets may be ordered from Tri State Fair, P.O. Box 31087, Amarillo, Texas, 79120. Please add \$1 for postage and handling.

When the world entirely fits your notions, you will be the only person in it.

Poor work, completed, is usually better than brilliant performance postponed.

The people of this community would probably enjoy life more if they tried living slower.

# Pay for pleasure; planning is free!

It's that time of year--and it has been that KIND of a year that makes you want to get away from it all...

You have many options but the top choices are to run in the bedroom and pull a pillow over your head, or--Call Wheatheart Travel, Inc., 435-9646.

Now, hear this: folks in Hansford County can call collect and...Wheatheart Travel's help with your trip--whether you go by air, land or sea--is FREE!

More about that a little further on... Right now, think "Hawaiian!"

Think of Oahu, the brightest jewel in this diadem of the Pacific. It includes fabled Honolulu, Diamond Head, some of the most fabulous surfing in the world and--a stretch of sun-drenched, white sandy beach with all the sights and sounds of the Royal Hawaiian Hotel in the background!

Many people do not know how the blessing of the free service of Wheatheart Travel service works...but it DOES! You see, you can contact them--did we say call

1-435-9649 collect if you live in Hansford County?--and talk travel. When your trip plan is complete, you pay only travel fare and lodgings.

The travel people and the resorts and vacation spots at the other end of their lines know the importance of having Wheatheart Travel, Inc. help you and they bear the expense.

There have been a few tightwads who were going to beat that system. They made their own calls to airlines, ships' agents and the like and set up their own vacation, but...they didn't save a penny! In fact, the phone calls were added expense.

So, it is true when we say the services of Wheatheart Travel, Inc. are FREE! Don't worry about the cost of the planning. Pay only the cost of the pleasure! So, think "Hawaiian"--and ask them for details.

Oh, yes. If you take the other route, you have to furnish your own lonely bedroom and suffocating pillow.

## Maintaining A Medicine Chest

Many people store medicine in the bathroom. They shouldn't.

That warning comes from the Texas Medical Association, which cites two reasons why:

--The bathroom cabinet generally is above the sink, making the medicine more accessible to children.

--A bathroom's dampness can cause some drugs to deteriorate.

A better place for medicine is a high shelf in a hall or bedroom. Some experts suggest a box that locks, perhaps a tackle box.

Another problem with many medicine chests is that they resemble small drugstores. Overstocking drugs in the home should be avoided. Some products lose their potency or change consistency over a period of time. Buying the "family size" of a product is not a better deal in the long run if it goes bad before being used.

Supplies in a medicine chest should be checked annually. Items to get rid of include tablets that have become crumbly and medicines that have changed color, odor or consistency, or are outdated. That also goes for drug products that no longer have labels.

The medicine should not be thrown into a trash can, where a child could find it. Rather, empty the bottles of medicine into the toilet and flush it. Rinse out the bottles before throwing them away.

Contents of a family's medicine chest depend on the age and health of its members. Here is a general list:

Non-drug products: adhesive bandages of assorted sizes, sterile gauze, cotton, adhesive tape, elastic bandage, blunt-end scissors, tweezers, thermometer, hot-water bottle, heating pad, eye cup, ice bag, dosage spoon and first-aid manual.

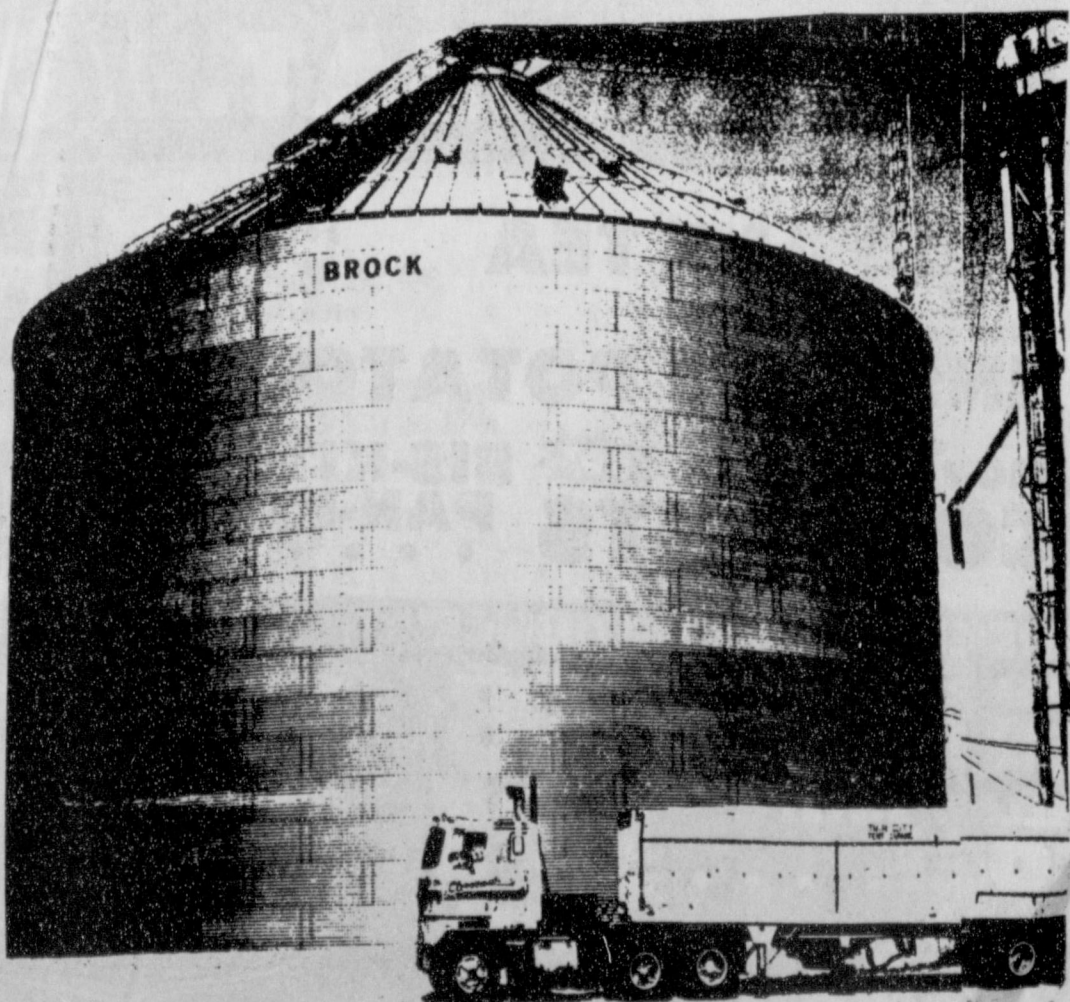
Drug items: Aspirin, emetic (causes vomiting), antacid, antiseptic solution, hydrocortisone creams for skin problems, calamine for poison ivy, petroleum jelly, anti-diarrhetic, non-suppressant cough syrup, decongestant and burn ointment.

ANCIENT MUSIC PEKING -- In the race against time to save Chinese folk songs from oblivion, the Shanghai Conservatory of Music is seeking out aging artists to tape them before they die.

OPENS NEW ERA EDWARDS AIR FORCE BASE, CALIF. -- The shuttle astronauts flew Columbia home to a picture-perfect touchdown recently for President Reagan and more than half a million Fourth of July celebrants--finishing its shakedown phase and opening a new American era in space.

# SPEARTEX GRAIN COMPANY No. 1

Largest Capacity BROCK Bins In The World



- ★ HALLMARK AGRICO has completed construction of the 1st of two BROCK grain storage bins for Speartex Grain
- ★ The bins being constructed by HALLMARK AGRICO will have the "largest capacity of any other BROCK bins in the world."
- ★ This is the latest in a series of expansions to better serve area grain producers.
- ★ These new Speartex storage bins hold over 400,000 bushels each bringing total Speartex capacity up to approximately 4,000,000 bushels.

**BROCK MFG. CO. and HALLMARK**  
invite area grain producers to store their grain at the

**SPEARTEX GRAIN COMPANY ELEVATOR**

**HALLMARK**

**AGRICO, INC.**

249-6616

622-2412

# CAPITOL UPDATE

John Tower

U.S. SENATOR FOR TEXAS  
142 RUSSELL OFFICE BUILDING  
WASHINGTON, D.C. 20510



The 1980s for farmers in Texas have meant high interest rates, rising costs and falling prices. These factors have combined to push many farmers to the brink of insolvency.

And this spring, nature has dealt another serious blow to our farmers, particularly those in West Texas. The damage caused by recent hail storms is almost incomprehensible. Preliminary estimates indicate that 75 percent of the 4.2 million acres planted in cotton was damaged. That means the loss of about a million bales of cotton. Figures still are being compiled on other crop losses, but it is clear that wheat production has been affected substantially, and the corn crop also suffered significant damage.

The impact of this loss of food and fiber will be felt throughout the economy of the region. But the real tragedy is the plight of the individual farmers, who face imminent bankruptcy if assistance cannot be provided.

I spent enough time as a boy chopping cotton on my grandfather's farm to understand the heartbreak of seeing a crop destroyed by a whim of nature. I know that farming is more than a business. It is a way of life deeply cherished by those who cultivate the land and feed and clothe the rest of us.

In any year, crop damage of this severity would be a serious blow to farmers. But this year could be far worse because of the economic factors which have left many farmers facing this natural disaster with their credit resources exhausted.

For this reason, I have asked Secretary of Agriculture John R. Block to use every resource available to him to help Texas farmers survive this crisis.

It is clear that implementation of the crop insurance program enacted as part of 1981 farm legislation is insufficient as yet to alleviate the economic pressure.

I have asked the Secretary to consider invoking a special provision of the 1981 legislation which provides for direct disaster payments to producers. A high-level disaster task force sent by Secretary Block is compiling the necessary information and local officials are marshalling supporting data to forward to the department. And Secretary Block has promised me that he will give this situation his careful personal attention. I will continue to press vigorously for a prompt and favorable ruling.

In a larger sense, however, I hope that this disaster will help focus attention on the broader problems that face farmers throughout the nation.

We need to remind officials throughout the Administration, and in Congress, of the absolute necessity of maintaining a viable agricultural economy. The solutions to the many problems plaguing farmers will not be easy. Some solutions will come naturally as we improve the overall economy.

However, we must examine and deal with the problems unique to agriculture. It is my hope and expectation that we will be able to refine our domestic farm policies and expand export markets. If we can accomplish these two major goals, the innovation and hard work of our farmers will carry them through these trying times.

### BABY PRINCE NAMED

LONDON -- Prince Charles and Princess Diana have decided on a name for their son. Buckingham Palace said that the blue-eyed future king will be called William Arthur Philip Louis. He is second in line to the throne behind his father.

High court denies passing low home loans.

Labor Secretary cleared of charges.

Royal couple names baby Prince William.

U.S. official: talks may end Soviet edge.

Senate panel agrees on how to raise taxes.

Reagan signs Voting Rights Act.

ERA fails in fight for ratification.

Special help for handicapped at school denied.

Armed Forces easily fill quotas.

## Applying Pressure Can Stop Bleeding

Nothing may be more unpleasant than encountering a person bleeding severely. Nothing can be more important than knowing what to do when this happens.

The Texas Medical Association says the basic rule is simple: Apply pressure directly on the bleeding area with the cleanest material available. A sterile pad or dressing is ideal, but even a towel or clothing will do in an emergency.

Use even pressure with the heel of the hand for a minimum of 10 minutes. Most bleeding will stop in that time. If bleeding resumes when the pressure is released, press for another 10 minutes.

If direct pressure does not work, apply it an inch or so away from the wound—between the wound and the heart. This can control the vessel bringing blood from the heart into the wound area. When the bleeding stops, tie the pad or dressing in place as securely as possible but not so tight that all circulation is cut off.

Here are other things to remember during treatment:

--If the bleeding person is not breathing, restore it first with cardiopulmonary resuscitation (CPR).

--While the person is lying down, elevate the bleeding area above heart level, if possible.

--Keep the victim as warm and calm as possible.

--Do not use a tourniquet except as a last resort. A tourniquet can block all blood to a part and cause permanent damage. If you must use one, loosen it for a few seconds every 15 minutes.

--Bleeding from the ear usually indicates a skull fracture. If a bleeding head wound looks indented, apply a dressing without pressure. An underlying injury could be worsened with pressure.

--After the dressing is applied to the wound, it is generally better not to remove the material that blood has soaked through. Just add more. Check the dressing frequently to make sure swelling has not tightened

the wrap too much. --As soon as an initial attempt is made to control bleeding, a person should be taken to a medical facility. Treatment also can take place on the way.

## Summer accompanied by heat disorders

The body has an effective if uncomfortable way of dealing with excessive heat. It sweats.

But the body has its limits, warns the Texas Medical Association. Summer's high temperatures can overtax the system and cause heat disorders such as cramps, exhaustion and stroke. All are caused by inadequate levels of body fluids, commonly resulting from perspiring heavily.

Sweat acts as the body's cooling system. When exposed to excessive heat, the body

perspires. As the sweat evaporates from the skin's surface, the excess heat is drawn away. This lowers the body's temperature.

Loss of water and salt through excessive sweating, however, reduces overall blood volume. This can cause fainting and dizziness. Drinking plenty of fluids, slightly increasing the amount of salt in food, and staying out of the mid-day sun usually will prevent these problems.

Heat disorders fall into three overlapping categories:

--Heat Cramps: This most common heat disorder usually occurs in early summer when people are out of shape and unaccustomed to warm-weather workouts. The loss of salt and water through perspiration causes the muscles to cramp involuntarily.

--Heat Exhaustion (or Prostration): The main type is a fainting spell accompanied by heavy sweating. Other symptoms are a headache, nausea and tiredness. Victims continue to sweat, indicating their cooling systems are working. They can be revived by elevating their feet slightly while lying in

a cool place. --Heat Stroke: Usually occurring in the very young or the elderly, this disorder demands immediate treatment to prevent death. The body is so dehydrated that it can no longer sweat, so the victim's temperature can skyrocket to a life-threatening 100 degrees.

Prior symptoms are dizziness, faintness, confusion and an upset stomach. After collapse occurs, delirium, seizures or unconsciousness are common. The victim should be rushed to an emergency room. If possible, douse the person with cold water or ice on the way.

### SAVINGS REPORTED

BOSTON -- Hospitals across the nation could save more than \$30 million annually without harming patients by changing tubes on most breathing support machines every 48 hours instead of every 24, a study said recently.



Why does high humidity in the summer make us uncomfortable?

The relative humidity (percentage of moisture in the air) has a noticeable effect on us because the body perspires constantly, the amount varying on activity and other factors.

On days when a high pressure system is above us, with its usual dry, cool air, we feel good. The drier air causes rapid evaporation of perspiration, and clothes do not become wet or sticky.

In addition, low pressure (which often accompanies high humidity) acts on our blood vessels with what is sometimes a depressing effect. Thus physically and psychologically high humidity directly affects our comfort.

PRICES GOOD THROUGH JULY 17TH

# UNITED Supermarkets

QUANTITY RIGHTS RESERVED

## THIS WEEK IS YOUR LAST CHANCE TO

GAME 2 IS SCHEDULED TO END JULY 17TH OR WHEN ALL TICKETS ARE GIVEN OUT.

**GLEN PARK PORK & BEANS** 16 OZ. **51¢**

**TAN COKE** 6 PK. 32 OZ. PLUS DEPOSIT **\$1.89**

**UNITED TORTILLA CHIPS** ALL FLAVORS **69¢**

**PLAY UNITED'S CASINO BINGO**

**FLYING "W" MESQUITE & HICKORY CHIPS** 6 LB. BAG. **\$1.19**

**HI-C FRUIT DRINKS** 12 OZ. CAN **3 FOR \$1**

**NABISCO SNACK CRACKERS** ALL FLAVORS **98¢**

**GLEN PARK CUT GREEN BEANS** 16 OZ. **41¢**

**GLEN PARK CORN** WHOLE KERNEL & CREAM STYLE 17 OZ. **41¢**

**GLEN PARK SWEET PEAS** 17 OZ. **41¢**

**DOUBLE STAMPS** WITH A \$2.50 PURCHASE OR MORE EXCLUDING CIGARETTES **SAT.!**

**FINE FARE INSTANT TEA** 3 OZ. **\$1.39**

**FINE FARE INSTANT POTATOES** 15 OZ. **89¢**

**MORRISON CORN-KITS** **60¢** **BIS-KITS & PAN-KITS** **51¢**

**"GARDEN FRESH PRODUCE"**

**4 PK. CARTON TOMATOES** **68¢**

**THOMPSON SEEDLESS GRAPES** **98¢**

**YELLOW SWEET CORN** **51¢**

**YELLOW & ZUCCHINI SQUASH** **48¢**

**LARGE SIZE CANTALOUPE** **28¢**

**The Nite-Liter Lends A Helping Hand**

**Down on the Farm**

Since chores don't end when the sun goes down, the Nite-Liter can be one of the farmer's best friends. You can benefit from the extra time, safety, and security provided by automatic, dusk-to-dawn lighting. The Nite-Liter helps you see better and can help prevent accidents. The farmyard is more secure because lighted property discourages unwanted intruders. Mounted on a tall pole, the Nite-Liter spreads light up to 100 yards in diameter. Plus, it produces more light per watt than conventional incandescent bulbs, so it's more efficient, and that can save money. Call our office today to see how your home or farm can benefit from the Nite-Liter's helping hand.



# 1982 Lynx

The Spearman Lynx Football squad has 10 returning Varsity players. They are Jan Hartsell, Billy Pat Underwood, Byron Sutterfield, Steven Francis, Mark Guthrie, Charlie Salgado, Dennis Randall, Clint Graves, Scott Dunlap and Ricky Torres. Those listed above were the varsity football members that played last year. Their Head Coach for this year, Larry Lanier, will check out last year's Jr. Varsity players and Freshman players--some of these will be chosen to play also.

The ones on last year's Jr. Varsity Squad are: Israel De La Rosa, Julio Vasquez, Paul Lopez, Ross Bulls, Randy Farmer, Kevin Slaten, Johnny Rodgers, Gary Thomas, Davy Turner, Billy Rae Haden, Joe Gomez, Jeff Laird, Dell Brandt, Scott Strawn, Luis Nava, Brian Watley, James Potter, Jeff Pool, Pat Tucker and Brian Jenkins. This JV Squad had an

excellent team last year. This year in August, these JV players will be trying for positions on the Varsity squad. Maybe all will be on the Varsity squad for 1982, they have the talent.

Coach Lanier will also be looking at last year's freshman players. They had a great season last year. Those that do not make the varsity will surely be on the Jr. Varsity Squad. The members of last year's Freshman squad are: Teddy Vela, Ricky DeLuna, Mark Pearson, Steve Burke, Edward Cantu, Cole Ivey, Peach Boutista, Karl Bynum, Danny Close, Rudy Saldivar, Kenny Bullard, Ross Donahue, Jeff Gressett, Damon Herndon, Jeff Graves, Bob Cook, Brian Davis, Mike Ross, Brian Paul and Mack McLain. Some of these will be chosen to play on the Varsity squad, and the others will be on the Jr. Varsity working their way up to

the varsity squad.

Coach Lanier and his staff will be very busy looking at all the football players and seeing which ones are to be on the Varsity squad. There are even some of last year's eighth graders that could be on the varsity as Freshman. Last year's 8th grade squad includes: Jeff Vanlandingham, Shane Swenn, Monte Morris, Dean Greene, Bart Baker, Chad Guthrie, James Smith, John Sullivan, Damon Goodheart, Steve Womble, Timmy Willis, Martin Lopez, Carl Kizziar, Charles Godfrey, James Davis, Michael Lopez, Jamie Heinrich, Terry Phillips, Greg Reimer, Robbie Taylor, Ruben Gomez, Trevor Pool, Julio Garcia, Curt Porter, Shannon Scorggs, Clinton Tindell and Leonard Garrard. Some of these guys could make it on the Varsity squad, some on the Jr. Varsity and others will make the Freshmen team up.

The Lynx will have a few new faces, and will be trying to regain their District Crown from favored Perryton and Dalhart.

# Men's Softball Games Set

The men are coming down to the wire with their final games being played. The first game will be between North Plains and the Union Church--this game will be played at 7 p.m. at the Jaycee Ballpark. North Plains have a good ballpark. They have players that can hit anywhere at anytime of a given day. The Union Church has a lot of talent. They also can hit where they feel is necessary and when it is necessary. This will be a good game to watch. The other 7 p.m. game will be between Tico and Hi Plains at the east of the Y field. Tico is, so far, the #2 team in League, has a lot of talent. They have been having a fine year. Hi Plains has a lot of "raw" talent. They have good hitters and so forth. They played a good game

against Tico the first time these two teams met. This will be yet another good game to watch.

One of the 8:30 games will be between Baker & Taylor and Hergerts. Baker & Taylor is the #1 team, so far, in the League. They have guys from Spearman and Gruver that have teamed up to play and so far, to win. They have excellent hitters, base runners and D-fensive guys. Hergerts have a lot of talent, too. They have hitters, base runners, Defensive guys. Both teams make spectacular catches and sometime spectacular throws for fabulous plays. If any team can de-throne Baker & Taylor it has to be one of the remaining 8 teams, with Hergerts right up there doing what they can to defeat this team. Each team has its weak-

nesses, and by Thursday, July 15, the day these games are scheduled for, Hergerts will know the weaknesses of Baker & Taylor and vice-versa. This should be a very good and interesting game to watch. The other game to be played will be between Super Service and Ago. Super Service's Mean Green have been having a fabulous year. They have talent to hit, run the bases, throw and catch. They can defeat any team if they play with the intensity they played with against Tico. Ago has players that can hit anywhere on that field, they can throw and catch great, they can also run the bases. This should be a good game to watch, also.

The games have been set for Thursday, July 15, so don't ya'll miss them!!

# Women's Softball Games Set

The women's games have been set for Friday, July 16. The women will now be playing on Monday's and Friday's with one new team entering. It is a team that has been successful this past year. They have great ability in many fields. Their sponsor is Thriftway and should be known as the Thriftway "Hustle"--because if any team hustles this is one team that does. We all would like to say, "Welcome into our League and Good Luck."

One of the 7 p.m. games will be between J&J Enterprises and Jr. Lusby Cats. Jr. Lusby Cats defeated First State Bank Red Hots in a very tough game. They won the game that was played Monday night, July 12, and are still undefeated. They have alot of talent, and so far have proven worthy of regaining their crown that they lost last year--the Women's League Championship Title. J&J Enterprises has talent. They can do alot if they get into the motions of the game. This should be a good game to watch. J&J lost to the tough team of the Sororities. This game will be played at the Jaycee Ballpark. The other 7 p.m. game will be between Sports Tally and Holt & Stavlo. Sports Tally has a lot of talent, they are improving as the season goes on. They lost in Monday nights game against Thriftway. Now they will be going up against a tough team as Holt & Stavlo. This should be a good game. Holt & Stavlo are gonna try and come back from their defeat of Monday night--A&L Printing winning the game.

The first 8:30 game will be between A&L Printing and the Sororities. A&L are in 2nd Place so far, second to only Jr. Lusby Cats. A&L have alot of talent and could retain their Title this year. The Sororities have proven to be a worthy team in this League. They will have to prove to A&L just how worthy they feel like being. This game will be played at the Jaycee Ballpark. The other 8:30 game, to be played east of the Y, will be between Thriftway and First State Bank. Thriftway won their first game of the season--which was their first game--by defeating Sports Tally. They will try to defeat First State Bank, but First State Bank is a very tough team. They have talent to hit to right, to left and even to center. This will be a good game to watch, also.

# Doctor Talk

Harold B. Ligon, MD

In the last week or so, we've discussed some of the properties of fluid balance in the body. We've discussed the electrolytes, i.e., sodium, potassium, chlorides, and carbon dioxide.

Our latest discussion consisted of a few lines about too much sodium in the body; its effect on blood pressure and the cardiovascular system; and the need to be cautious in excessive sodium intake. We also pointed out that during hot summer months, there are conditions (heat prostration, sweating, weakness, etc.) wherein sodium should not be restricted, but indeed administered!

Enough about sodium. Another interesting electrolyte is potassium. People who take diuretics for blood pressure control (that's the first step therapy) generally have been cautioned that many diuretics can cause potassium depletion. (Some don't.) Consequently, physicians either prescribe oral potassium pills or suggest that their patients take in plenty of orange juice or bananas--or other potassium-rich foods, so that these deficiencies may be warded off.

What many patients fail to learn is that there is such a thing as too much potassium in the system. This is called hyperkalemia and can be just as serious as too little!

The point of today's talk is to urge diuretic patients--those who take fluid pills--and would be "potassium adjusters" to allow their physicians to monitor their potassium levels by blood testing and bona fide medication adjustment--and not to decide they feel bad, need some potassium, and take some of their sister's or neighbor's prescribed potassium pills.

...or any other pills, for that matter!

### Her Guide

Mrs. Williams had just returned from abroad. "Did you go to Rome?" asked a friend. "I really don't know, my dear," replied the traveler. "You see, my husband always bought the tickets."

### No Wonder

Driving up to the house to deliver the family's seventh baby, the doctor almost ran over a duck. "Is that your duck out front?" the MD asked. "It's ours all right, but it ain't no duck. It's a stork with his legs worn off from making so many calls."

### Starts

### Fall

### Registration

Amarillo College advance fall registration starts July 12 thru August 6th for day and evening classes. Advance registration gives students the opportunity to guarantee class times and schedules and additional time to consult with advisors and counselors on career options.

Currently enrolled students--spring or summer 1982--should report to the Registrar's Office for registration forms. Allied Health, Nursing and Industrial Education students report to the Registrar's Office on the West Campus, 6222 West 9th. All other students report to the Registrar's Office on the Washington Street Campus.

Students not currently enrolled report to the Registrar's Office on the Washington Street Campus between the hours of 8:00 a.m. - 6:00 p.m. Monday thru Thursday, and 8:00 a.m. - 3:00 p.m., Friday.

If tuition and fees are paid by August 13, classes will be reserved. If not paid by this date, registration will be cancelled, and students will be required to report according to the schedule under regular registration on August 25.

The first day of fall classes is August 30.

### POLITICAL AD



\*Prohibition was not the answer to misuse of alcohol:

\*And banning handguns is not the answer to misuse of guns, either:

\*The answer in each case is laws with TEETH in them -- for the tough, swift, certain punishment of repeated DWI offenses, or crimes committed with a gun, especially if someone is hurt or killed.

R.C. PORTER

\*Republican Candidate for State Representative, 88th District.

(Pol ads paid for by R.C. Porter Campaign Fund, R.C. Porter, Texas, Rt. 2, Box 5, Spearman, Texas 79081)

**YOUR TO WIN!**

**CASINO BINGO**

**LUBBOCK WINNERS!**

J. WOOD \$100, NEFFINGTON \$100, C. BIGGS \$100, ALEXANDER \$100

M. LUNA \$100, R. MARTINEZ \$100, P. WILLEY \$100, G. CARLE \$100, D. BURCH \$100

YOU HAVE UNTIL JULY 31ST TO REDEEM WINNING TICKETS AND CARDS

**ODDS CHART**

ODDS CHART as of July 4th

Price	Number of Prizes	Odds With 1 Ticket	Odds With 13 Tickets	Odds With 26 Tickets
\$2,000	6	37,182 to 1	2,844 to 1	1,282 to 1
\$1,000	30	10,000 to 1	796 to 1	385 to 1
\$500	37	5,405 to 1	416 to 1	208 to 1
\$300	162	1,235 to 1	95 to 1	48 to 1
\$100	330	606 to 1	47 to 1	23 to 1
\$50	1,215	165 to 1	13 to 1	6 to 1
\$25	2,645	76 to 1	6 to 1	3 to 1
\$1 Instant	36,704	5.5 to 1	4 to 1	2 to 1
5 Stamp Books	574	348 to 1	27 to 1	13 to 1
3 Stamp Books	1,424	131 to 1	11 to 1	5.8 to 1
2 Stamp Books	2,878	96 to 1	7.4 to 1	3.7 to 1
1 Stamp Book	5,640	35 to 1	2.7 to 1	1.4 to 1
Total	50,855	4 to 1	2 to 1	1.5 to 1

Your Odds of winning with 26 Tickets... **.15 to 1!**

**OSCAR MAYER COOKED HAM** 6 OZ. PKG. \$1.59

**DECKER CANNED HAM** 3 LB. CAN. \$5.98

**FINE FARE AMERICAN SINGLES** 12 OZ. PKG. \$1.49

**OSCAR MAYER VARIETY PAK** MEAT OR BEEF 12 OZ. PKG. \$1.98

**OSCAR MAYER HAM & CHEESE** 8 OZ. PKG. \$1.59

**OSCAR MAYER CHOPPED HAM** 8 OZ. PKG. \$1.59

**OSCAR MAYER FRANKS** 1 LB. PKG. \$1.69

**FINE FARE PIMENTO SPREAD** 7 1/2 OZ. PKG. 89¢

**WILSON SMOKED SAUSAGE** 1 LB. \$1.98

**DOUBLE STAMPS WED.!**

**COUNTRY STYLE SOLID OLEO** 1 LB. 3 FOR \$1

**UNITED BUTTERMILK** 1/2 GAL. 98¢

**FINE FARE BUTTER** 1 LB. QTRS. \$1.89

**FINE FARE BISCUITS** 8 OZ. SWEETMILK & BUTTERMILK 71¢ FOR

**UNITED Supermarkets**

**'FROZEN FOOD'**

**MINUTI MAID ORANGE JUICE** 10 OZ. \$1.29

**KING'S HAWAIIAN ROLLS** 10 OZ. 79¢

**ORE-IDA TATER TOTS** \$1.09

**SWANSON'S ENTREES** 79¢

### THURSDAY

CABLE PM	[3] OETA Oklahoma City	[4] KAMR CH.4 Amarillo	[5] TMC Movie Channel	[7] KVII CH.7 Amarillo	[8] CBN Christian Network	[9] WGN CH.9 Chicago	[10] KFDA CH.10 Amarillo	[11] WTBS CH.17 Atlanta	[12] CNN Cable News Nbr
6:00	MacNeil-Lehrer Report	News	Movie: 'Prime Time'	News: 'You Asked For It'	Bull's Eye	Andy Griffith Carol Burnett and Friends	News: 'Entertainment Tonight'	Green Acres	Moneyline
7:00	All Creatures Great and Small	Fame	Movie: 'Kramer vs. Kramer'	Darkroom	Nowhere to Turn	Movie: 'Sleuth'	Magnum, P.I.	Movie: 'Ike'	Primer/120
8:00	Sneak Previews Ageless Auto	Diff'rent Strokes Gimme A Break	Kramer	Barbers Walters Special	700 Club	Simon & Simon			
9:00	Take Down & Pin	Hill Street Blues	Movie: 'Going Ape'	ABC News Closeup: Vets in Prison	Sing Out America	Knots Landing	TBS Evening News	Crossfire	
10:00	MacNeil-Lehrer Business Report	News: 'Tonight Show'		News: 'Rockford Files'	Nashville RFD	News: 'Another Life'	News: 'Quincy'	All in the Family Movie: 'Gunfight at'	Sports Tonight Newswsk
11:00	Sign Off	Late Night with David	Movie: 'Prime Time'	Nightline	Burns & Allen	Saturday Night	Movie: 'McMillan'	Comanche Creek	West Coast Report
12:00	Letterman	NBC News Overnight	Movie:	Vegas	I Married Joan My Little Margie	Movie: 'To Hell and Back'	& Wife: 'Requiem for a Bride'	Movie:	People Now

### FRIDAY

CABLE PM	[3] OETA Oklahoma City	[4] KAMR CH.4 Amarillo	[5] TMC Movie Channel	[7] KVII CH.7 Amarillo	[8] CBN Christian Network	[9] WGN CH.9 Chicago	[10] KFDA CH.10 Amarillo	[11] WTBS CH.17 Atlanta	[12] CNN Cable News Nbr
6:00	MacNeil-Lehrer Report	News	Movie: 'Rude Boy'	News: 'You Asked For It'	Bull's Eye	Andy Griffith Carol Burnett and Friends	News: 'Entertainment Tonight'	Winners	Moneyline
7:00	Washington Week/Review Wall Street Week	Lewis and Clark Chicago Story		Benson	National Geographic Special	Movie: 'The Incredible Rocky Mountain'	Dukes of Hazzard	Movie: 'Ike: The War Years' Part 3	Primer/120
8:00	Oklahoma Week in Review Lawmakers		Movie: 'Gloria'	Friday Night Edition: Teams to Be Announced	700 Club	Races	Dallas		
9:00	Arts Chronicle Tony Brown's Journal	McClain's Law			News	Falcon Crest	TBS Evening News	Crossfire	
10:00	MacNeil-Lehrer Report Masterpiece Theatre	News: 'Tonight Show'	Movie: 'History of the World' Part 1	News: 'Rockford Files'	Nashville RFD	Twilight Zone	News: 'Movie: 'Islands in the Stream''	All in the Family Movie: 'Day of the'	Sports Tonight Newswsk
11:00	Sign Off	SCTV Network		Nightline	Burns & Allen	Jack Benny Show	Movie: 'Desperate'		West Coast Report
12:00			Movie: 'Rude Boy'	Fridays	I Married Joan My Little Margie	Journey	Sign Off	Movie:	People Now

### SATURDAY

CABLE AM	[3] OETA Oklahoma City	[4] KAMR CH.4 Amarillo	[5] TMC Movie Channel	[7] KVII CH.7 Amarillo	[8] CBN Christian Network	[9] WGN CH.9 Chicago	[10] KFDA CH.10 Amarillo	[11] WTBS CH.17 Atlanta	[12] CNN Cable News Nbr
7:00		Flintstone Comedy Show Smurfs	Prog Cont'd	Super Friends	Contact	U.S. Farm Report World Tomorrow	Popeye/Olive Comedy Show Tarzan/Lone Ranger/Zorro	Baseball Bunch Partridge Family	News/Sports/Weather Inside Business
8:00		Magic of Oil	Kid Super Power Hour	Again'	Action Jack Comedy Hour Laverne & Shirley	Financial Inquiry Weekend Gardener	Issues Unlimited	War and Peace	Money Week
9:00		Julia Child and Company This Old House	Spider-Man and Friends	Movie: 'Paradise'	Richie Rich/ Scooby & Scrappy Doo Show	Jimmy Houston	Charlanso	Show	Movie: 'Zulu'
10:00		Mystery!	Space Stars	Alley'	Fontz/Happy Days Heathcliff/ Marmaduke	Fresh Idea	Superman		News
11:00		Alfred Hitchcock Victory Garden	Daffy-Speedy Show Bullwinkle	Movie: 'For Your Eyes'	British Open	Westemers	the Sea	Trollkins	Sports Week

## Tennis Tourney July 18-20

ENTRY DEADLINE: Juniors: July 18 Adults: July 20.

LOCATION: SPEARMAN HIGH SCHOOL COURTS

TIMES: Juniors: Singles events begin at 9:00 a.m. Thursday. Doubles events begin at 10:00 a.m. Saturday.

Adults: Singles events begin at 9:00 a.m. Saturday. Doubles events begin at 10:00 a.m. Saturday.

MATCHES: 2 out of 3 sets with 12 point tiebreaker at 6 all.

DEFAULTS: 15 minutes after posted time. Players displaying poor sportsmanship will be defaulted or penalized points.

ENTRY LIMIT: Juniors-3 Junior events and 1 Adults-3 total events

ENTRY FEE: Singles: \$7.00 Doubles: \$12.00 Make checks payable to Lori Franklin. No entries accepted without entry fee. A NAME and

EVENTS ENTERED must accompany each fee. Send entries to: Lori Franklin, 112 Wanda, Spearman, Texas 79081.

An event may be cancelled at the discretion of the tournament director, depending on the number of entries.

TOURNAMENT DIRECTOR: Lori Franklin

NAME \_\_\_\_\_  
ADDRESS \_\_\_\_\_  
CITY \_\_\_\_\_  
PHONE \_\_\_\_\_  
DATE OF BIRTH (For Juniors) \_\_\_\_\_

- Check events you are entering
- Men's 'A' Div. Singles
  - Men's 'A' Div. Doubles
  - Men's 'B' Div. Singles
  - Men's 'B' Div. Doubles
  - Men's 35 Singles
  - Men's 35 Doubles
  - Women's 'A' Div. Singles
  - Women's 'A' Div. Doubles
  - Women's 'B' Div. Singles
  - Women's 'B' Div. Doubles
  - Women's 35 Doubles
  - 'A' Div. Mixed Doubles
  - 'B' Div. Mixed Doubles
  - 18 Boy's Singles
  - 18 Boy's Doubles
  - 16 Boy's Singles
  - 16 Boy's Doubles
  - 14 Boy's Singles
  - 14 Boy's Doubles
  - 12 Boy's Singles
  - 12 Boy's Doubles
  - 18 Girl's Singles
  - 18 Girl's Doubles
  - 16 Girl's Singles
  - 16 Girl's Doubles
  - 14 Girl's Singles
  - 14 Girl's Doubles
  - 12 Girl's Singles

PLEASE LIST PARTNER IN EACH DOUBLES EVENT

EVENT \_\_\_\_\_  
PARTNER \_\_\_\_\_  
EVENT \_\_\_\_\_  
PARTNER \_\_\_\_\_  
EVENT \_\_\_\_\_  
PARTNER \_\_\_\_\_

ENTRY IN ALL A OR B DIVISIONS WILL BE LEFT TO THE DISCRETION OF THE TOURNAMENT DIRECTOR. Each player may play in either A or B Div., but not both. Exception: 'B' player may play into A Div.

**COFFIN MONITOR**  
NEW YORK -- A coffin monitor that beeps if the deceased comes back to life is among the items displayed at the International Inventors Expo, a gathering where tinkerers hope to strike it rich.

**WINS LIBEL SUIT**  
CLEVELAND -- A jury recently ruled in favor of ABC-TV in a multimillion-dollar libel suit brought by an Akron woman who contended she was defamed in a broadcast of the network's 20-20 program.

# First Money Market Report

A Concise Report Of Rates Currently Paid On Money Market Investments At First National Bank

#### Tax Saver Certificates

TERM	RATE
12 Months (1 year)	9.99%

Invest \$500 or more.  
Date Effective: June 13, 1982  
Interest earned is tax deductible  
Compounding interest prohibited by law.

#### Money Market Certificates

TERM	RATE
91 Days (3 Months)	11.547%

Invest \$7500  
Date Effective: July 13, 1982 Through July 19, 1982  
Compounding interest prohibited by law.

TERM	RATE
182 Days (6 Months)	13.098%

Invest \$10,000  
Date Effective: July 13, 1982 Through July 19, 1982  
Rate based on average of Money Market Certificates for preceding four weeks.  
Compounding interest prohibited by law.

#### 30 Month Certificates

TERM	RATE	ANNUAL YIELD
30 Months	14.55%	15.658%

Invest \$500 or more.  
Date Effective: July 3, 1982 Through July 19, 1982  
Annual yield based on daily compounding.

#### \$100,000 Certificates of Deposit

TERM	RATE	ANNUAL YIELD
30 Days	13.50%	14.450%
90 Days	13.50%	14.450%
120 Days	13.75%	14.737%
180 Days	13.75%	14.737%
1 Year	13.00%	13.880%

Invest \$100,000.  
Date Effective: July 13, 1982 Through July 19, 1982  
Annual yield based on daily compounding.

#### Individual Retirement Accounts

TYPE	TERM	RATE	ANNUAL YIELD
Fixed Rate IRA	18 Months	13.098%	13.991%
Variable Rate IRA	18 Months	13.098%	Changes Weekly

Invest up to \$2000.  
Date Effective: July 13, 1982 Through July 19, 1982  
Annual yield based on daily compounding.



All deposits insured to \$100,000. Substantial interest penalties for early withdrawal on all certificates.

**When You're Ready To Invest, Call The Money Market Advisor At 435-3676.**

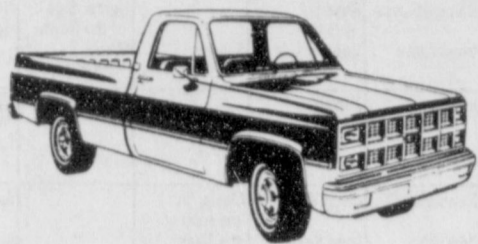




**GMC**

**TRUCKS ARE WHAT WE'RE ALL ABOUT.**

**1982 1/2-TON SIERRA CLASSIC**



- Light Blue/White. No. 212.
- Dark Blue/White. No. 253.
- Bronze/White. No. 255.
- Candy Red/White. No. 152.
- Candy Red/White. No. 213.
- Candy Red/White. No. 255.
- Light Blue/White. No. 275.

**1982 3/4-TON HIGH SIERRA CREW CAB**

- 3 - 454's. Automatic, Air. White. No. 220/ No. 221/ No. 228.
- 1 - Diesel. Automatic, Air. White. No. 227.
- 1 - Diesel. Automatic, Air. Red. No. 262.



**1982 1/2-TON SIERRA**



- Diesel. Automatic, Air. Light Blue/White. No. 133.
- 305. Automatic, Air. White. No. 235.
- 305. Automatic, Air. Light Blue. No. 277.
- 305. Automatic, Air. White. No. 283.
- 4X4. Diesel. Silver. No. 1134.

**1982 1/2-TON SUBURBAN HIGH SIERRA**

4X4. Diesel.

**1982 1/2-TON JIMMY SIERRA CLASSIC**

4X4. Diesel.

**1982 3/4-TON SIERRA CLASSIC**

- 454. Automatic, Air. Candy Red/White. No. 251.
- 454. Automatic, Air. Bronze/Tan. No. 276.



**1982 1/2-TON HIGH SIERRA**

- White/Candy Red. No. 151.
- Diesel. Blue/White. No. 187.
- Silver/Dark Blue. No. 153.

**1982 3/4-TON HIGH SIERRA.**

- 454. Automatic, Air. White. No. 249.
- 305. Automatic, Air. Bronze/Tan. No. 17.
- 454. Automatic, Air. White. No. 268.

**1982 3/4-TON SIERRA**

350. Automatic, Air. Bronze/Tan. No. 181.

**1982 1-TON CAB & CHASSIS**

- Diesel. Automatic, Air. Red. No. 85.
- 454. 4-Speed, Air. Red. No. 92.
- 454. 4-Speed, Air. Tan. No. 109.
- Diesel, Automatic, Air. White. No. 110.



**1982 1-TON DUALY SIERRA CLASSIC**

454. 4-Speed. Air. Blue/Silver. No. P191.

**1982 GMC 7,000**

8.2 Detroit Diesel Turbo. White. No. 280 No. 290.



**DON HERGERT MOTORS, INC.**

435-3686

420 S. Main

Perryton, Texas



**TRUCKS ARE WHAT WE'RE ALL ABOUT**

**SATURDAY CONT.**

CABLE	[3]	[4]	[5]	[7]	[8]	[9]	[10]	[11]	[12]
PM	OETA	KAMR	TMC	KVII	CBN	WGN	KFDA	WTBS	CNN
	Oklahoma City	Amarillo	Movie Channel	Amarillo	Christian Network	Chicago	Amarillo	Atlanta	Cable News Ntwr
12 00	Oklahoma Gardening Market to Market	Emergency	Only		Movie: 'The Peacemaker'	America's Top Ten This Week in Baseball	Kwicky Koala	Mission Impossible	News/Sports/Weather
1 30	Over Easy	Major League Baseball: Kansas City at Boston/or		That Nashville Music Kung Fu		Lead Off Man Major League Baseball: Atlanta at		On-Deck Cir. Major League Baseball: Atlanta at	People Now
2 00	Austin City Limits	Cincinnati at St. Louis	Movie: 'Amarcord'	Guns of Navarone	Movie: 'Rangers Step In'	Chicago Cubs	Six Million Dollar Man	Chicago Cubs	News/Sports/Weather Style
3 00	Sneak Previews				Wyatt Earp		All in the Family CBS Sports Saturday		Best of Take Three
4 00	Soccer Made in Germany	Dance Fever	Movie: 'Paradise Alley'	Wide World of Sports		Soul Train		News Motorweek Illustrated	News/Sports/Weather
5 30	Matinee at the Bijou	Shopping Smart News		News	Traveler's World Pro Celebrity Golf Series	Computers Are People Too	Championship Wrestling	Championship Wrestling	Week in Review
6 00	Prog Cont'd	Lawrence Walk	Movie: 'Gas'	Hee Haw	Judy Lynn Show American Trail	Hogan's Heroes Carol Burnett and Friends	Observer	Prog Cont'd	Sports Saturday
6 30	Outdoor Oklahoma						Look at Us		
7 00	Marx Brothers in a Nutshell	Television: Saint Jude's	Movie: 'For Your Eyes Only'	Today's FBI	Movie: 'The Stars Look Down'	Movie: 'Two Lane Blacktop'	Walt Disney	Kristofferson Special	News/Sports/Weather
8 00			Only	Love Boat			Walt Disney	Georgia Area Emmy Awards	News/Sports/Weather
9 00	In Performance at the White House			Fantasy Island		News			News/Sports/Weather
9 30					Rock Church Proclaims				
10 00	Dr. Who		Movie: 'Amarcord'	News		Solid Gold	News		Sports
10 30				ABC News Movie: To Be	Heritage Singers			TBS Evening News	Press Box
11 00	Sign Off			Announced	American Trail Weekend Gardener	Backstage Pass Movie: 'Morituri'	Lou Rawls Special	Movie: 'The Iceless Sea'	Freeman Reports
12 00		Solid Gold	Movie: 'Kill and Kill Again'		Lesson To Be Announced			File	News/Sports/Weather Best of Fred Saxon

**Quality Quest, 'Economy' Spurs Homesewing**

COLLEGE STATION--A growing quest for quality and economy is spurring many Americans to try their hands at sewing outerwear--jackets and coats, for example, says Alma Fonseca, a clothing specialist. "As the national recession continues, so does the search for value and durable goods," she says. "Investment dressing is key this year." Fonseca is on the home economics staff of the Texas Agricultural Extension Service, The Texas A&M University System. "People are looking for long-

lasting good looks and quality that may be lacking in ready-to-wear," the specialist explains. "Prices are up and workmanship is down in some ready-to-wear, and that means we will see an upswing in homesewing for the coming year." Financial savings in outerwear are significant for homesewers--they save 40-50 percent over the cost of ready-to-wear, Fonseca says. "Homesewers want good looks and endurance from their garments," she continues. "They don't mind spending for the higher-priced materials if it means they will have a high-quality finished product," Fonseca says.

**Public Notice**

Southwestern Bell, in accordance with the rules of the Public Utility Commission of Texas, hereby gives notice of the company's intent to implement a new schedule of telephone rates in Texas, effective July 27, 1982, unless otherwise determined by the Commission.

It is expected that the requested rate schedule will furnish a 13.4 percent increase in the company's intrastate revenues.

A complete copy of the new rate schedule is on file with the Public Utility Commission at Austin, Texas, and with each affected municipality served by Southwestern Bell, and is available for inspection in each of the company's public business offices in Texas. The Commission staff has contended in the past that all rates are subject to change as a result of Southwestern Bell's rate application.

**Notice to El Paso Area Customers**

Effective January 1, 1982, Southwestern Bell adopted the Mountain States tariffs in effect for El Paso County. Southwestern Bell proposes to merge the separate El Paso tariffs with its tariffs applicable to the rest of Texas. The resulting new rate schedule is on file with the PUC and the El Paso area municipalities served by Southwestern Bell, and is available for inspection at our El Paso business office.

**Notice to Customers of Other Telephone Companies**

The filing includes, but is not limited to, proposals to increase rates for interexchange private line and foreign exchange (FX) service. Changes in such rates would also affect customers of other telephone companies because such companies provide interexchange private line and foreign exchange service in accordance with rates specified in Southwestern Bell's tariffs. While Southwestern Bell has proposed no increase in long distance rates, any change in those rates would also affect customers of other telephone companies.

**Aviso Público**

Southwestern Bell, en conformidad a las reglas del Public Utility Commission (Comisión de Servicios Públicos) de Texas, por la presente hace saber su intención de establecer un nuevo arancel para servicio de teléfono en Texas con vigencia a partir del 27 de julio, 1982, a menos que la Comisión haga otra determinación.

Se espera que el nuevo arancel que se ha solicitado reducirá un aumento de 13.4 por ciento en los ingresos intraestatales de la compañía.

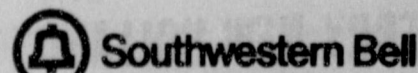
Una copia completa del nuevo arancel se ha archvado en las oficinas del Public Utility Commission en Austin, Texas, al igual que en cada municipalidad afectada y servida por Southwestern Bell, y cada una de las oficinas de la compañía para negocios con el público en Texas tiene una copia para lectura pública. En el pasado, la Comisión ha sostenido que toda tarifa está sujeta a cambios que resulten de la manera en la cual Southwestern Bell aplique sus tarifas.

**Aviso a Clientes en la Región de El Paso**

Con vigencia a partir del 1o de enero de 1982, Southwestern Bell ha adoptado las tarifas de Mountain States efectivas en el condado de El Paso. Southwestern Bell propone unir las tarifas de El Paso con sus otras tarifas que se aplican al resto de Texas. El nuevo arancel que resulta de ésta union se ha archvado en la Comisión de Servicios Públicos (Public Utility Commission), al igual que en las municipalidades de la región de El Paso servidas por Southwestern Bell, y está disponible para inspección pública en nuestras oficinas de El Paso.

**Aviso a los Clientes de Otras Compañías de Teléfono**

El registro incluye, pero no se limita a, propuestas para aumentar las tarifas para servicio de línea privada entre centrales telefónicas (interexchange private line) y servicio de central telefónica extranjera (foreign exchange FX). Cambios en dichas tarifas de servicio también afectarían a clientes de otras compañías de teléfono porque dichas compañías proveen los servicios ya mencionados en conformidad a tarifas especificadas por Southwestern Bell. Aunque Southwestern Bell no ha propuesto un aumento en las tarifas para larga distancia, cualquier cambio en las mismas también afectarían a los clientes de otras compañías de teléfono.



### SUNDAY

CABLE	[3]	[4]	[5]	[7]	[8]	[9]	[10]	[11]	[12]
PM	OETA	KAMR	TMC	KVII	CBN	WGN	KFDA	WTBS	CNN
	Oklahoma City	CH.4 Amarillo	Movie Channel	CH.7 Amarillo	Christian Network	CH.9 Chicago	CH.10 Amarillo	CH.17 Atlanta	Cable News Netw
6:00	Austin City Limits	Willard Scott's Sensational Magic Hat Circus	Prog Cont'd	Code Red	Priority One Internet! Larry Jones Ministry	Prog Cont'd / Wild Kingdom	60 Minutes	Best of Georgia Championship Wrestling	Sports Sunday
7:00	Nova	CHiPs	Movie: 'Airplane'	Movie: 'Marilyn the Untold Story'	In Touch	In Search of... People to People	Archie's Place One Day At A Time	Nashville Alive	News/Sports/Weather
8:00	Masterpiece Theatre	Movie: 'Legacy'	Movie: 'The Music Lovers'	Transformed	Lawrence Welk	Alice	Week in Review	News/Sports/Weather	News/Sports/Weather
9:00	Leonard Bernstein Conducts	Lovers	Search	John Ankerberg	News	Trapper John, M.D.	TBS Evening News	News/Sports/Weather	News/Sports/Weather
10:00	War and Peace	News	Movie: 'Five Days From'	Movie: 'The Hunter'	ABC News	Sports Scene Kung Fu	700 Club	Jerry Falwell	Sports
11:00	Sign Off	Home	Trapeze	Larry Jones Ministry More Than Music	Movie: 'Action in the North Atlantic'	the North Atlantic	Movie: 'Ghost Goes West'	Open Up	Best of Take Three
12:00	Sign Off	Movie: 'Choices'	Movie: 'Choices'	Movie: 'Choices'	Sign Off	Sign Off	Sign Off	Sign Off	News/Sports/Weather

Reagan unveils policy: defense in space.

W. Germany's Schmidt speaks out on armament.

Supreme Court ruling on schooling favors aliens.

Solar-powered airplane on display.

Reagan Admin. unveils lenient merger guidelines.

Southern wages up 7.9 percent.

### YMCA News

#### YOUTH SUMMER BALL PROGRAM ABOUT OVER

Except for a make-up game in the boys' baseball program and practices and games for the All-Stars, the summer baseball, tee-ball and softball programs for the youth is complete.

The rain soaked fields and postponement of games made this a mixed up season for keeping accurate records of win-loss which really showed the standings of the various teams competing. Even at this writing the outcome of the boys' baseball standings is incomplete, as the last makeup game will have been played after this article was submitted to the media.

No program offered by community agencies could be successful if it were not for the participants, coaches, sponsors and parents. This has been a good year with participants growing each week in skills, sportsmanship and fair play, due to a great extent by the coaching volunteered. Each team looked well attired because of the sponsors who provided the shirts and accessories for the teams and to them the youth, parents and the YMCA say "thank you".

Girls T-Ball had three teams from Spearman, with Spearman Redi-Mix, coached by David & Judy Martin and Dale Moyer winning First Place. Second Place went to the Bunkhouse Babes, coached by Cindy Schneider and Mary Ann Brown. Third Place in the girls' T-Ball went to Berry Cleaners coached by Terry & Linda Butt together with Craig Schumann. The girls really matured as ball players and provided some excellent games for the many who cheered them on.

Girls Softball had two teams from Spearman. The one winning the most games was the team sponsored by Kid's Stuff and coached by Sharon Whitefield. The Second Place team was sponsored by Anthony Electric and coached by Kathy Beck. These two teams had mostly younger players and it seems only will lose one player for next year's softball program. It was a growing season for the girls and a good one.

Boys' T-Ball too, had an exciting season. Teams showed increased defensive and offensive skills as the season progressed. First Place honors went to Dunigan Pirates coached by Ronnie and Kathy Beck and Allen Varnon. Second Place honors were determined in the final makeup game played Monday, between John Deere and Spearman Super Service. Second Place was a tie between John Deere, coached by Reagan Baker and Mike Cudd and Spearman Super Service Little Green Machine coached by Rory Sheppard and David James. This was one of the best T-ball seasons of record. Teams showed tremendous offensive and defensive improvement and the boys were having to change strategies, as more and more of the youth were hitting the ball with greater accuracy and into the outfield. A great season, boys.

At this writing the final standings of the boys' baseball season is still a toss-up. A game on Tuesday will have determined the standings. As of the Friday night game the standings were: Dairy Queen, coached Leo Padron at 4-4 season, Tucker Water Well Cobras coached by Curtis Davis at 4-3 and the Lions Club Astros at 3-4. The Astros are coached by Monty Black. It could, as you

### SUNDAY CONT.

CABLE	[3]	[4]	[5]	[7]	[8]	[9]	[10]	[11]	[12]
AM	OETA	KAMR	TMC	KVII	CBN	WGN	KFDA	WTBS	CNN
	Oklahoma City	CH.4 Amarillo	Movie Channel	CH.7 Amarillo	Christian Network	CH.9 Chicago	CH.10 Amarillo	CH.17 Atlanta	Cable News Netw
7:00	James Robison Amazing Grace Bible Class	Movie: 'The Mysterious'	Gospel Jubilee	Lesson	Day of Discovery 3-Score What's New?	Faith for Today Dr. Robert Schuler	James Robison Cartoon Carnival	News/Sports/Weather Style	
8:00	Day of Discovery Larry Jones Ministry	Stranger	Kidsworld	Kenneth Copeland	Mass for Shut-Ins Chicago/Land Church Hour	Religious Townhall First Baptist Church	Lost in Space	People Now	
8:30	Outdoor Oklahoma	Rex Hubbard	Movie: 'Kramer vs. Kramer'	Big Blue Marble Kids Are People Too	Changed Lives	Robert Schuler Outdoor Life	Lighter Side of the News Movie: 'One Eyed'	News/Sports/Weather	
9:00	Odyssey	Baptist Church	British Open	In Touch	Tarzan	Jacks	News/Sports/Weather Special Report		
10:00	Sun Digger	Jimmy Swaggart	Movie: 'The Music Lovers'	Newsight '82	Cisco Kid Lone Ranger	Movie: 'In the Heat of the Night'	Sports Week		
11:00	Nova	Washington Week/Review	Wall Street Week	Jewish Voice	Movie: 'Strike Up the Band'	News Undersea World of	Press Box Inside Business		
12:00	Over Easy	Texas at Toronto	Movie: 'Airplane'	It Takes a Thief	Words of Hope	Lead Off Man Major League Baseball Atlanta at	On-Deck Cir. Major League Baseball Atlanta at	People Now	
1:00	Over Easy	Texas at Toronto	Movie: 'Airplane'	It Takes a Thief	Words of Hope	Lead Off Man Major League Baseball Atlanta at	On-Deck Cir. Major League Baseball Atlanta at	People Now	
2:00	Nixon Interviews	Movie: 'Blood Beach'	Dayan's Israel	Chris Panos	Chicago Cubs	Bionic Woman	Chicago Cubs	News/Sports/Weather Best of Fred Saxton	
3:00	Hidden Places	Sportsworld JIP	They Run for Their Lives	CBS Sports Sunday				Freeman Reports	
4:00	French Chef	Movie: 'The Mysterious Stranger'	Sportsbeat	Jimmie Houston	News Undersea World of	Press Box Inside Business			
4:30	Oklahoma Diamond Jubilee	News	ABC News	Blackwood Brothers George	Barney Miller	Jacques Cousteau Nice People			
5:00	Firing Line	NBC News	Movie: 'Choices'	News	CBS News				

can see, end in a three-way tie after the final make-up game. GUYMON KIDS, INC TOURNAMENT SET

The Spearman All-Stars will be competing in the Guymon Kids, Inc. Tournament beginning with a game at 5:30 p.m. on Monday, July 19, against the Guymon Blue All-Star Team. If the boys win that game their next game will be Thursday, July 22, at 5:30 and if lost (Heaven forbid) they will compete again on Tuesday, July 20, at 7:15 p.m. We urge all who can, to attend those games.

The boys chosen as all stars by the coaches include: Dairy Queen team choices are: Reggie Padron, Tim Woolley, Kiley Cooms, Alan Beason and Kevin Nelson. Astros choices are Will Black, Jeff Williamson, Shawn Cook, Jimmy Yarbrough and Danny Lopez. Cobras include Carl Urban, Brett Davis, Steve Moore, Scott Swan, Lance Swan NOTE FROM SPORTS DESK: Lance Swan was placed on the All-Stars because Matt Tucker will not be available for the games.]


**No Equality**  
There is talk about the sexes being equal, but who ever heard of a housewife retiring?  
-Gazette, Mason City, Ia.

**Average**  
If at first you don't succeed you're like most other people.  
-Spotlight, San Diego.

**Right**  
A statesman is made out of the right kind of timber when he can lead the people out of the woods.  
-Herald, Greensboro.

**Definition**  
Sophistication: The art of admitting that the unexpected is just what you anticipated.  
-News, Indianapolis.

## FISH



It's time for stocking ponds & lakes. Channel Catfish, Florida Hybrid Large Mouth Bass, A Hybrid Blue Gill, and fathead minnows. The Hybrid Blue Gill will reach the weight of 2 1/2 to 3 lbs. We furnish your hauling containers. Delivery is Saturday, July 24, at the following towns and locations.

- Spearman, Perryton Equity Exchange (Spearman Branch) 806-659-2420, 8 a.m. to 9 a.m.
- Canadian, Canadian Grain Co-op, 806-323-6428 10:30 to 11:30 a.m.
- Briscoe, Briscoe Grain Co. 806-375-2385, 12:30 to 1:30 p.m.
- Shamrock, C&H Supply, 806-256-2124, 2:30 to 3 p.m.
- Erick, Oklahoma, Farmers Co-Op Association, 405-526-3255, 4:30 to 5:30 p.m.

**Call your local feed store to place your order or call Dunn's Fish Farm Collect 405-777-4480 or 777-2855. P.O. Box 85 Fittstown, Okla. 74842**

## On Sale NOW

Special Reg. Price \$80,286  
Sale Price - \$65,000

IN STOCK ONLY!

★ (Free financing until January 1, 1983.)



These have the new 24' headers

**FIRST COME FIRST SERVED**

**WE HAVE THE PARTS!**

We've been authorized to stock a 100% supply of parts for all twin rotor combines we sell! If we don't have a needed part, or can't supply it within 24 hours, (during cutting season), that part is free of charge, if your combine was purchased from us!

**PLUS...** On any breakdown that can't be repaired immediately, (on combines we sell) we'll furnish a replacement while repairs are being made!

**NEW HOLLAND**  
SPERRY NEW HOLLAND  
Loop 143 N. - Perryton - 435-5473

## Get a line on SAVINGS



**Tostitos TRADITIONAL FLAVOR TOSTITOS CHIPS**  
99¢  
REG. \$1.29

**DRIP GRIND FOLGER'S COFFEE**  
\$2.19  
1 LB. CAN

**RATH BOLOGNA/SALAMI/LUNCHEON/PICKLE LOAF 6 OZ. PKG.** 69¢

**BORDEN'S ASSORTED DIPS 8 OZ. CTN.** 69¢

**CUT GREEN BEANS, WHOLE KERNEL CORN OR ENGLISH PEAS** 4-\$1

**MARYLAND CLUB COFFEE**  
\$1.99  
13 OZ. CAN

**LADY BORDEN PREMIUM ICE CREAM**  
\$2.39  
1/2 GAL. RD. CTN.

**STYRO FOAM COOL CUP HOLDERS 5c EACH**

**ALLSUP'S CONVENIENCE STORES**  
"THERE'S ONE NEAR YOU"

PRICES EFFECTIVE JULY 15-17, 1982  
WHILE SUPPLIES LAST LIMITED SUPPLY!

# MONDAY

CABLE	(3)	(4)	(5)	(7)	(8)	(9)	(10)	(11)	(12)
PM	OETA	KAMR	TMC	KVII	CBN	WGN	KFDA	WTBS	CNN
	Oklahoma City	Amarillo	Movie Channel	Amarillo	Christian Network	Chicago	Amarillo	Atlanta	Cable News Ntwr
6:30	MacNeil-Lehrer Report	News	Movie: 'Mystery Island'	News	Bull's Eye	Andy Griffith Carol Burnett and Friends	News	Green Acres	Moneyline
7:00	Evening At Pops	Little House On The Prairie	Movie: 'Raging'	Best of the West Major League Baseball	National Geographic Special	Kung Fu	Private Benjamin WKRP in Cincinnati	Movie: 'G.I. Blues'	Primenevs/120
8:00	Great Performances	Movie: 'The Flame Is Love'	Bull'	Teams To Be Announced	700 Club	Solid Gold	M*A*S*H House Calls		
9:00	Ansel Adams: Photographer					News	Lou Grant	TBS Evening News	Crossfire
10:00	MacNeil-Lehrer Report	News	Movie: 'Prime Time'	News	Nashville RFD	Twilight Zone	News	All in the Family Movie	Sports Tonight
11:30	Sign Off	Late Night with David	Movie: 'How I Won the War'	Nightline	Burns & Allen	Jack Benny Show	Movie: 'The Way'	Movie: 'Columbo'	West Coast Report
12:30	Letterman	NBC News Overnight		Movie: 'The Possession of Joel Delaney'	I Married Joan My Little Margie	West'	Troubled Waters		People Now

# TUESDAY

CABLE	(3)	(4)	(5)	(7)	(8)	(9)	(10)	(11)	(12)
PM	OETA	KAMR	TMC	KVII	CBN	WGN	KFDA	WTBS	CNN
	Oklahoma City	Amarillo	Movie Channel	Amarillo	Christian Network	Chicago	Amarillo	Atlanta	Cable News Ntwr
6:30	MacNeil-Lehrer Report	News	Movie: 'Kill and Kill Again'	News	Bull's Eye	Andy Griffith Carol Burnett and Friends	News	Green Acres	Moneyline
7:00	Danger UXB From Masterpiece Theatre	Father Murphy		Happy Days	National Geographic Special	Movie: 'Vendetta For The Saint'	Cronkite's Universe Two of Us	All in the Family Major League Baseball	Primenevs/120
8:30	Mystery!	Bret Maverick	Movie: 'History of the World' Part 1	Three's Company Too Close For Comfort	700 Club		Movie: 'The Choice'	Atlanta at St. Louis	
9:30	With Ossie and Ruby Were You There?	McClain's Law		Hart to Hart		News			Crossfire
10:00	MacNeil-Lehrer Report	News	Movie: 'It's My Turn'	News	Nashville RFD	Twilight Zone	News		Sports Tonight
11:00	Sign Off	Late Night with David	Movie: 'Falling in'	Nightline	Burns & Allen	Jack Benny Show	Movie: 'Shane'	Movie: 'The D.I.'	West Coast Report
12:30	Letterman	NBC News Overnight		Love Again'	Fantasy Island	I Married Joan My Little Margie		This Must Be The Alamo'	People Now

# WEDNESDAY

CABLE	(3)	(4)	(5)	(7)	(8)	(9)	(10)	(11)	(12)
PM	OETA	KAMR	TMC	KVII	CBN	WGN	KFDA	WTBS	CNN
	Oklahoma City	Amarillo	Movie Channel	Amarillo	Christian Network	Chicago	Amarillo	Atlanta	Cable News Ntwr
6:30	MacNeil-Lehrer Report	News	Prog Cont'd	News	Bull's Eye	Andy Griffith Carol Burnett and Friends	News	Green Acres	Moneyline
7:30	Survival	Real People		Greatest American Hero	National Geographic Special	Movie: 'The Long Goodbye'	Mr. Martin	All in the Family Major League Baseball	Primenevs/120
8:30	Cousteau Odyssey	Facts of Life		The Fall Guy	700 Club		Movie: 'Rape and Marriage: The Rideout'	Atlanta at St. Louis	
9:30	Non-Fiction Television	Quincy		Dynasty		News	Cass		Crossfire
10:30	MacNeil-Lehrer Report	News		News	Nashville RFD	Twilight Zone	News		Sports Tonight
11:30	Sign Off	Late Night with David	Movie: 'Amarcord'	Nightline	Jack Benny Show	Movie: 'Two Mules for'		Movie: 'Too Much.'	West Coast Report
12:30	Letterman	NBC News Overnight		The Love Boat	I Married Joan My Little Margie	Sister Sara'		Too Soon'	People Now

## City Basketball Programs 'Rolling Smoothly'

The City Basketball Program has begun--it began this past Monday, July 5--and although the first day's response was something else--not that many showing up--the program seems to be getting more successful as the days go along. The coach teaching the 7th and 8th grade girls is Coach Terry Coffee. Coach Coffee knows that there are a lot of girls out there that, when they find out about the basketball program, they will indeed show up and learn more about basketball than they already do.

Don't forget, there is a schedule to go by, and this program will be a two-week course. This program is not just for those basketball players that feel they don't understand the

basics or what-have-you. BUT it is especially for all those that, first of all, want to learn more, and second of all, for those that want to "polish" up on their skills and be ready for the school year--which is just one month away, don't forget that either. The schedule is as follows:

7th and 8th GRADE [Boys and Girls], from 12:30 to 2:00 p.m.

4th, 5th and 6th grade [Boys and Girls] to begin at 2:00 and complete their program at 3:00 p.m.

So everyone willing to either learn more about basketball, its skills, polish up on your basketball talents, go on over to the high school cafeteria and the program will be waiting just

### ON RAISING TAXES

Sen. Bob Dole, chairman of the Senate Finance Committee, said the panel is in general agreement on how to raise about \$15 billion in taxes for the 1983 budget year. He gave no specifics at this time.

### ONE MINUTE SPORTS QUIZ

1. Who won the men's singles at Wimbledon?
2. Who won the women's singles at Wimbledon?
3. Who won the Western Open golf tournament?
4. How many shutouts has Nolan Ryan pitched?
5. Who won the LPGA Jackson Classic?

### Answers To Sport Quiz

1. Jimmy Connors over John
2. Martina Navratilova.
3. Tom Weiskopf.
4. He recently won his 48th.
5. Sandra Haynie.

### PERSONAL INCOME

Armed with new figures showing sizable gains in personal income and outlays, Secretary of Commerce Malcolm Baldrige predicted recently that consumers would lead the economy out of the recession next month.



## LVN Classes Start August 23

Study to be an LVN --- Licensed Vocational Nurse --- through Hansford Hospital and Frank Phillips College.

Classes start August 23.

All students must be at least 18 years old and be a high school graduate, or have completed GED requirements.

The entrance exam, needed for enrollment, will be offered July 27 at Frank Phillips College.

Contact: Kay McFarlin, RN, Director of Nurses at Hansford Hospital.

ACADEMIC COURSES WILL BE HELD AT HANSFORD HOSPITAL AND FRANK PHILLIPS COLLEGE

## Hobby announces \$10 million increase in highway funding

AUSTIN (JULY 9)--The State Department of Highways and Public Transportation will receive an estimated \$130 million in additional funding for highway construction and maintenance. The committee, comprised of Gov. Bill Clements, Hobby and State Comptroller Bob Bullock, adjusted its calculations to include a change in the process by which contractors bid on highway jobs and to give more stress to highway maintenance.

During the committee meeting, Hobby pinpointed a flaw in the Highway Department's method of calculating the Highway Cost Index and suggested an alternative that will provide an additional \$12 million for

## July, 118 Years Ago

One of the overlooked campaigns of the Civil War often was the last Confederate advance to Washington. Its climax came in the second week of July, a hundred and eighteen years ago.

Although by then the situation of the South was practically hopeless, with Grant at the gates of Richmond, General Jubal Early began a counter-attack against General David Hunter (controversial because of his burning and wanton destruction in the Shenandoah Valley) in June.

With 12,000 men, Early won a series of battles and moved from Lynchburg north through the Valley, through Lexington, Staunton, Harrisonburg, Woodstock, Winchester and Martinsburg into Maryland. In Maryland he turned right toward the national capital, through Frederick, Rockville, and Silver Spring.

During that advance Gen. Early sent a party of troops to burn Chambersburg, Pennsylvania, in retaliation for Gen. Hunter's destructive campaign in the Valley (if money were not donated to compensate for valley losses and it wasn't). This was costly strategy. That fall, Gen. Phil Sheridan literally devastated the whole valley, a massive retaliation.

Early reached Fort Stevens and Washington's outskirts on July 11, 1864, but not with all his troops. Heavy Union reinforcements were then arriving. On the 12th the Confederate Army was in view of the city, at full strength, in line, one day too late.

Early realized he was now heavily outnumbered, that the fortifications were quite strong; the timely arrival of the Sixth Corps, the troops of Generals H.G. Wright and W.H. Emory, prevented a Confederate attack. Union forces instead attacked on the 12th and were repulsed--though it was not an all-out effort.

That night Early decided to withdraw, and remarked: "We haven't taken Washington but we've scared Abe Lincoln like Hell." One of his officers answered: "Yes, but when the Yankee line moved against us this afternoon I think some other people were scared blue..." He referred to Confederate weakness in numbers. "That's true," Early laughed, "but it won't appear in history!"

So the last Confederate army to cross the Potomac withdrew over that river on the 14th and encamped at Leesburg. Less than a year later the war was over. Only months later, Gen. Sheridan decisively defeated Gen. Early in the Valley, after replacing Hunter. Histories seldom describe that terrible burn-out campaign in the valley, which left women and children helpless and starving that last winter of the war. Perhaps it's just as well.

### HIGH COURT ON BIAS

The Supreme Court has made it more difficult for blacks and other minorities to win lawsuits against employers under a federal anti-discrimination law.

The hardest job we know is trying to be impartial.

### U.S. SHIPS FIRED ON

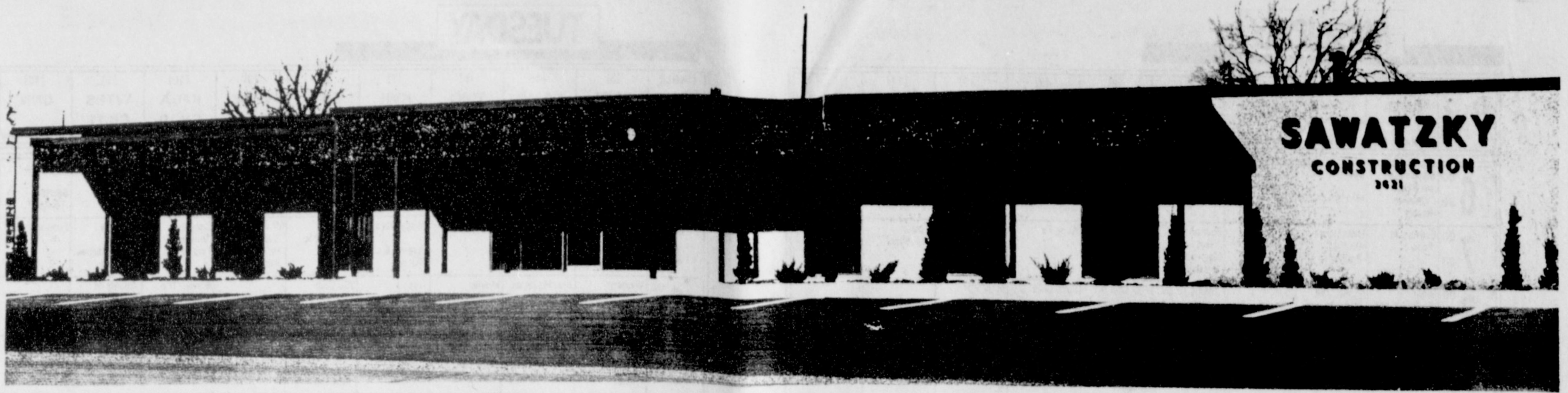
Vessels believed to have been Vietnamese fishing boats opened machine gun fire recently on three U.S. warships--one of them a destroyer that was involved in the 1964 Gulf of Tonkin incident--in the South China Sea 70 miles south of Vietnam, the Pentagon said.

### ON NAMING SPIES

President Reagan, calling CIA agents the "heroes of a grim twilight" signed into law recently a bill making it a crime to disclose the names of American spies.

Freedom is too often taken for granted by Americans.

People must learn to get along with less than perfect persons.



SAWATZKY CONCRETE BUILDING COMPANY OPEN HOUSE AT PAMPA A SUCCESS! -- For a number of years, Sawatzky of Weatherford, Okla., has been a major contributor to the rapid growth of Western Oklahoma and the Texas Panhandle -- so much so that a new facility closer to much of the growth had to be opened at

Pampa. So widely known has the Sawatzky system of poured concrete panel construction become that more than 1,000 persons registered at the Open House, Saturday. When the ceremonial ribbon-cutting came at 10 a.m., so did the crowds until 600 were on hand to eat a noon meal of barbeque and the "trimmin's." Still they

came. --And almost to a person they were interested in one thing: did the Sawatzky concrete building system truly offer strength superior to metal buildings while construction time between the two was highly competitive? More than one thousand persons found this to be true while the Sawatzky system offered a number of added

bonuses -- among them a wide selection of decor in addition to the engineering excellence. The Open House is over but Pampa's Sawatzky management says "...our house is always open." Where most show brochures, they show buildings!

**July Days**

The later half of July contains many anniversaries worthy of mention.

Florida was ceded to the United States on the 17th in 1819, to become a state in 1845 (the Seminole Indians having been defeated in the meantime). The state had first been settled by French Presbyterians but the Spanish drove them out in 1565 and held the territory almost two hundred years until the English gave Spain Cuba in exchange for Florida.

The Spanish regained Florida eighteen years later and held it until the United States obtained possession peacefully thirty-eight years later.

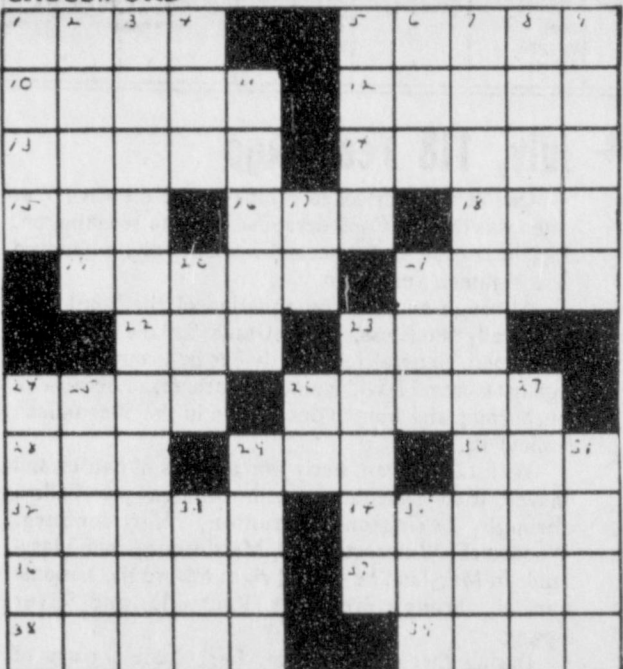
The third week in July has long been noted as the time of the ripening of cherries and the Cherry Festival in the Traverse City area, Michigan, dating from 1905, when B. J. Morgan planted the first cherries in the region.

John Rutledge, second Chief Justice of the United States, died July 23, 1800--he was born in Charleston, S. C., but the date is unknown. The 24th is Pioneer Day in Utah; it is Mormon Pioneer Day in Idaho. (Frontier Day is also observed in Cheyenne, Wyoming.)

Some still observe the anniversary of Crater Day in Virginia (Petersburg), dating from the battle of July 30, 1864, when defenders repulsed a Union assault touched off by a spectacular underground explosion which devastated Confederate lines.

The powerful Jesuit movement is remembered on the 31st, the anniversary of the death in 1556 in Rome of Inigo Lopez de Recalde, who founded the militant order to restore the authority of Catholicism and counter the Protestant Reformation.

**CROSSWORD**



ACROSS: 1-Missing; 5-Founded; 10-Senseless; 12-Knowing; 13-Candy pieces; 14-Ruthless Russian; 15-Shoot; 16-Foot part; 18-Tennis bout; 19-Important person; 21-Food fish; 22-Do cleaning work; 23-Scale note; 24-Obstruct; 26-Heating device; 28-Barbarian; 29-Oahu fare; 30-Great boxer; 32-Join; 34-Detective device; 36-Silent; 37-Young pig; 38-Wipe out; 39-Greek war-god; DOWN: 1-Lacking stiffness; 2-Vegetable; 3-City near Los Angeles; 4-Strong stuff; 5-Big bundle; 6-Impress deeply; 7-Island where Columbus landed; 8-Eastern Indians; 9-Hollows; 11-Plug up; 17-Asian river; 20-Swamp; 21-Contemptuous shout; 23-Agitates; 24-Inclined trough; 25-Of a planet; 26-Thus; 27-Delight; 29-Mr. Fountain; 31-Angers; 33-Verbal contraction; 35-Exclamation;

**TV COMMENTARY**

By Bente Christensen

DAVID Brinkley's *This Week* has become the best news program on commercial network television. It's equalled only by the PBS award-winning news program *Washington Week In Review*.

FOR most viewers, seeing Brinkley's ABC news summary will make up, to a large degree, if one misses Friday night's PBS news review. The Paul Duke show can also be seen on some stations Saturdays and Sundays.

LOUIS Rukyser's *Wall Street Week* on PBS Fridays at 8:30 offers the best-written script, by far, of any news or financial program. Rukyser is among the best talk-show hosts in the business with lightning fast wit and the ability to produce good-natured, amusing educational viewing.

IT'S a mistake to permit commercials on public television. The sooner this experiment is ended the better. The bright boys who thought this up are about to make PBS another commercial network.

**YOUTH CHARGED**

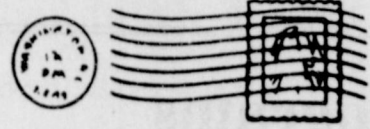
A Southern California youth has been indicted as the first man charged with failure to register for the standby military draft. The one-count indictment was returned in U.S. District Court in San Diego against Benjamin H. Sasway.

**REAGAN & DONOVAN**

After reviewing the results of a six-month investigation, President Reagan plans to keep Labor Secretary Raymond Donovan in his job "as long as he wants," an administration source said.

Spearman received .90 rain last nite (about mid-nite the rain began falling and fell into the early morning hours. The rain came in from the West... It is wet.

**LOUISA'S LETTER**



Dear Louisa,

I have a wife who is a sucker for sales. Whenever she hears of a sale with articles marked down below their original cost she can't get to the store quick enough to get these bargains. Now, I would not object to this if the things she buys were things we needed or could afford but we have "bargains" stacked up in a closet which we have never used. She imagines she is saving money but I say she is throwing money away. We have two pressure cookers, two coffee percolators, etc., etc. What can I do with a wife like this?  
No Sale--Mich.

Answer: You would be surprised how many people--men and women--are fascinated by

A pretty girl need not rush into matrimony.  
\*\*\*\*

the idea of buying something they consider a bargain. As a matter of fact, nothing is a bargain that is not needed or cannot be used and I agree with the husband that such purchases are a waste of money.

Now I do not disapprove of buying at sales. The person who knows the quality of what she is buying and cannot afford to pay the original price is smart to watch for sales and take advantage of the reduced prices.

Why not give the extra utensils you own to some young couple as wedding presents?  
Louisa.

Address: Louisa, Box 532, Orangeburg, S. C. 29115

Advertising makes any good business larger.

**SMILES**

**Goodness Sake!**

A disgusted parent wrote a note of complaint to the teachers, and wound it up with this: "If all Herbert learns in school is to swear, I'll keep him home and teach him myself."

**Reasonable**

Policeman: "If his wife shot him, it must have been at close range."  
Detective: "Then there's powder marks on him."  
Policeman: "Sure. That's why she shot him."

**Calm And Dumb**

Dimchuck--"He's one man who keeps his head when all around him are losing theirs."  
Bungwit--"Yes, he's so dumb he has no idea what the excitement's all about."

**Dad Knows**

Son: What is executive ability, Father?  
Father: "Executive ability, my son, is the art of getting the credit for all the hard work someone else does."

**ANSWERS ACROSS**

- 1-Lost
- 5-Based
- 10-Inane
- 12-Aware
- 13-Mints
- 14-Lenin
- 15-Pot
- 16-Toe
- 18-Set
- 19-Nabob
- 21-Bass
- 22-Mop
- 23-Sol
- 24-Clog
- 26-Stove
- 28-Hun
- 29-Poi
- 30-Ali
- 32-Unite
- 34-Radar
- 36-Tacit
- 37-Shote
- 38-Erase
- 39-Ares

**ANSWERS DOWN**

- 1-Limp
- 2-Onion
- 3-Santa
- Monica
- 4-TNT
- 5-Bale
- 6-Awe
- 7-San Salvador
- 8-Eries
- 9-Dents
- 11-Estop
- 17-Ob
- 20-Bog
- 21-Boo
- 23-Stirs
- 24-Chute
- 25-Lunar
- 26-So
- 27-Elate
- 29-Pete
- 31-Ires
- 33-Tis
- 35-Aha

**SPECIAL**  
**GENUINE NOBLE BLADES**  
Top or Bottom Hard Surface

	5'	5 1/2'	6'	7'
THF:	\$98	\$101	\$108	\$124
BHF:	\$107	\$111	\$120	\$133

**Sperry New Holland**  
VERSATILE Farm Equipment  
NOBLE Loop 143 N - Perryton

**Little Tiffanies**  
416 Main  
Gruver, Texas  
Lee Bradford & Rita Williams  
Invite You to Our Special  
**Grand Opening Sale**  
Thursday, July 22 - Saturday, July 24  
All Diamond and Precious Stone Jewelry  
and  
All 14K Gold Jewelry and Chains  
**65% Off**  
Sale Specials

- 4mm 14K Add-A-Beads - Reg. 2.40 - Sale 1.00
- 4mm 14K Ball Earrings - Reg. 21.00 - Sale 8.50
- 7" 14K Twisted Serpentine Bracelet - Reg. 22.00 - Sale 8.95
- 15" 14K Serpentine Necklace - Reg. 34.00 - Sale 13.95
- 20 Ct. Yellow Gold Diamond Studs - Reg. 425.00 - Sale 148.00
- 15 Ct. Yellow Gold Diamond Studs - Reg. 300.00 - Sale 99.95

Many other specials too numerous to list  
So Come See Us In  
Bustling Metropolitan Gruver  
Register for 1/4 Ct. Diamond to be given away  
90 Day Lay-A-Way Available