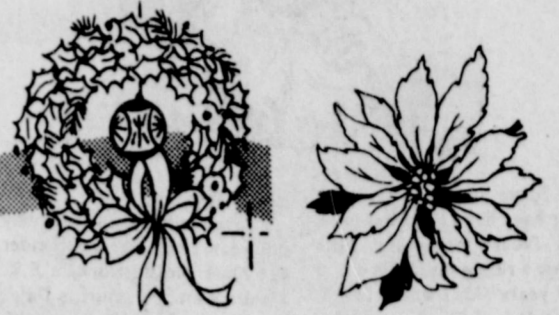


MERRY CHRISTMAS



The Spearman Reporter

VOL. 74 NO. 7

THE SPEARMAN REPORTER, SPEARMAN, TEXAS 79081

THURSDAY, DECEMBER 23, 1982



Rev. Bruce Chesser of the First Baptist Church is shown above receiving his \$100 Spearman Bucks from Gary Wy-song, manager of the Pizza Hut. Bruce was Tuesday's drawing winner.



Candy Boxwell on the left and Regan Boxwell, is presented her \$100. from Joanne Eaton at Nelson Builders Supply.



Betty Davis of Spearman is presented \$100. from Criselda Vela, sports writer for the Spearman Reporter.



Kenneth Brown is presented \$100. from Johnny Crawford, Crawford Motor Co.

POLICE

INCIDENT REPORT
On Monday, December 13, 1982, at approximately 3:00 p.m., this office received a telephone request for an officer in reference to a shoplifting incident. Two officers were dispatched to the business. The officers arrived at the scene and spoke with the store manager and an employee. The manager and employee identified a suspect and the officers took the subject into custody and notified the subject's parents. The case was referred to the Juvenile Officer.

On Tuesday, December 14, 1982, a city utility employee reported that a gas meter connection had been struck by an unknown source, possibly a vehicle. An officer was sent to investigate. There is no further information at this time.

On December 15, 1982, Wednesday at approximately 9:00 a.m., the manager of the Pizza Hut on Highway 207 South telephoned this office to report that the business had been burglarized. An officer was dispatched. The investigation is continuing at this time.

On Wednesday, December 15, 1982, at approximately 3:20 p.m., an officer was on routine patrol and stopped a vehicle for a traffic violation. The officer requested driving record information on the driver and by using local law enforcement information, it was determined that the Hansford Sheriff's Office held three (3) warrants for the individual. The subject was transported to the Police Department and processed (advised of rights, interviewed, finger-printed and photographed.) The subject was then taken before Judge R.L. McClellan and arraigned.

On Thursday, December 16, 1982, at approximately 7:00 p.m., an officer was on routine patrol and observed a subject this office held warrants for. The subject was advised of the warrants and paid the fines associated with a citation and the warrant.

At approximately 1:14 p.m., December 16, 1982, a city utility employee reported that an officer needed to investigate the damaging of a gas meter. An officer was dispatched and ascertained the details from the individual that had damaged the meter. The individual was advised of the amount of restitution for repairs.

On December 18, 1982, at approximately 2:12 a.m., an officer was advised to return to the office. Upon arrival, the officer was advised that a Spearman resident wanted to sign a complaint against another Spearman resident for assault and criminal mischief. The criminal mischief was referred to the County Attorney and the assault was filed in Municipal Court.

On Saturday, December 18, 1982, a Spearman resident reported that property from her rent house had been removed. An officer was dispatched to investigate, and was advised by the owner that the former renter had left the residence and apparently took some of the furniture with him. The owner advised the officer no charges would be filed. Investigation is pending at this time.

On Saturday, December 18, 1982, an officer was dispatched to investigate an attempted burglary. The complainant advised that during the night someone had tried to break into the residence. The complainant advised that the door to the residence was open that morning, but nothing was taken from the residence. The investigation is continuing at this time.

ACCIDENT REPORT
We are pleased to report that no accidents have been reported since 12-11-82.

D.J. Alberts
Chief of Police

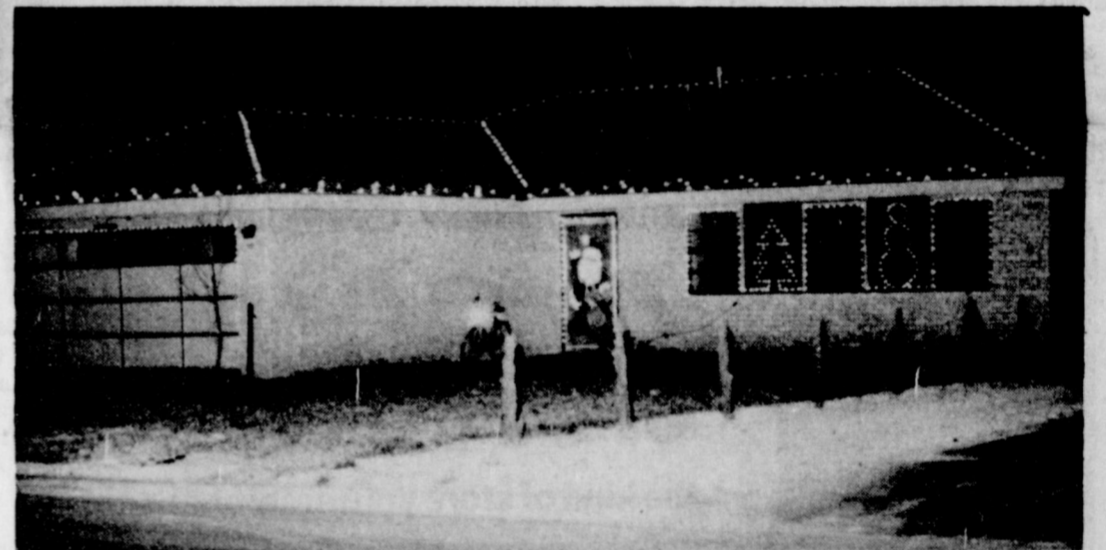
P.O. Christmas Schedule

Christmas Eve, December 24—Normal window and boxing of mail. All city and rural deliveries will be made.

Christmas Day, December 25—All post offices will be closed. No window or boxing of mail. No delivery of business, residential, rural or parcel post mail.

All special delivery and express mail will be delivered on schedule.

Monday, December 27—Normal window, boxing and delivery of mail will be resumed.



For an evening of real enjoyment take time to drive thru Spearman and see the many beautiful Christmas scenes.

Typical are the two above.

YMCA Boxers travel to Guymon

The Spearman YMCA Boxing team traveled to Guymon, Okla Saturday, Dec. 18 for a one night tournament.

Clubs represented were from Hugoton, Liberal, Cimarron, Lakin, Dodge City, Garden City, Spearman and Guymon.

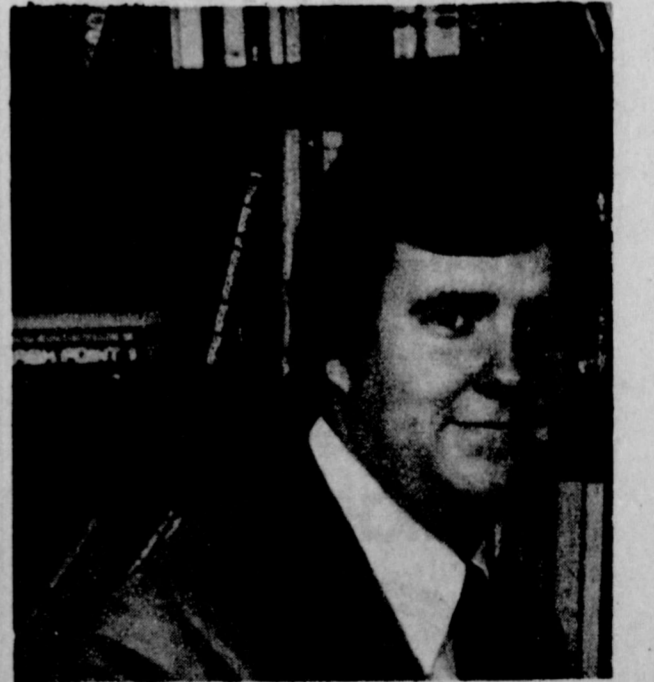
First place trophies were presented to the winner of each match.

Results were: Schane Schneider, of Spearman, 37 lb., defeated Nicolas Ebers of Guymon; Will Black of Spearman,

78 lb., was defeated by Richard Calderon of Lakin; Jason Riggs of Spearman, 87 lb., was defeated by Juan Rubalcaba of Garden City; Mark Eakin of Spearman, 80 lb., was defeated by Johnny Calderon of Lakin; Matt Archer of Spearman, 40 lb., was defeated by Maricio Pondo of Hugoton; Mac Sheppard of Spearman, 80 lb., defeated Sebastian Rieman of Dodge City; Brian Beck of Spearman 57 lb., defeated Nolan Brewer of Liberal; Tomp

Sheppard of Spearman, 80 lb., was defeated by Albert Astoraga of Garden City; Edward Mayfield of Spearman, 75 lb., defeated Carlos Urias of Guymon; Shawn Tanner of Spearman, 60 lb., was defeated, BSC.

by Roman Hsehn of Hugoton; Matt Eakin of Spearman, 50 lb., was defeated by Jay Allen of Cimarron; and Tony Herndon of Spearman, 90 lb., won by RSC over Anthony Rodriguez of Dodge City.



BECOMES FULL PARTNER—Recently the Law Firm of Namau, Howell, Smith & Lee, a professional corporation announced that Richard M. Tracy has been made a full partner in their firm.

Richard, son of Mr. and Mrs. Everett Tracy of Spearman, had been an associate member. The Law Firm has offices in Waco and Austin.

Attorney and Mrs. Tracy reside in Waco. She is the daughter of Mr. and Mrs. Charles Brillhart of Spearman.



Mrs. Donnie Hergert receives \$100. from Jeff Beedy at Betty Furniture.



Ray Phelps is presented \$100. from Mrs. Dan Desimone at Berry Cleaners.

Santa Letters



Dear Santa,
We have been good boys this year. Please bring my little brother a riding toy, he is one. I am 4 years old, I would like to have a U.S. 1 Truck set and a punch bag. Thank you Santa. We'll leave you some cookies and milk.
Love,
Mark Alan & David Parker

Dear Santa,
I have really been a good boy this year, I wud like a ruff rider 4x4 black pickup truck, a E.T. T-shirt, a stuffed smurf, a Dalas Cowboys jactik and a see-and-say for my sister, Monica.
Love,
Jesus De La Rosa, Jr.

Santa,
I want a stereo, a new bike and a toy truck.
Love,
Lyn Garrard

Dear Santa,
I would like some cowboy shirts and some jeans and a ruff rider 4x4 and bridge for ruff riders.
Love,
Teresa Vela

Dear Santa,
I want a doll, a game, and I would like a bike.
Love,
Lorena Rosales

Dear Santa,
I would like an arari, a cabbet player, a Lynx & Lynxettes shirt, a stuffed animal, some new jeans, a basketball, a green dress and an E.T. doll.
Love your friend,
Maria Vela

Dear Santa,
I want a bow and arrow. I want a book. I want a E.T. P.J's.
Love,
Sarah

Dear Santa,
I have been a good litle boy. Sow I wud like a big Teddy Bear, a E.T. t-shirt and pants to matc, red P.J's.
Love,
Juan Reza

Dear Santa,
I want a doll.
I want a book.
I want a card game.
Love,
Michelle Nickels

Dear Santa,
I have been a grate litle girl, and I wud like a pink panter, a red niece, a E.T. t-shirt with pants to fit.
Love,
Luisa Vela

Dear Santa,
I would a little car and a nice record player.
Love,
Armando Munoz

Dear Santa,
I have been a good boy, so I would like a Dallas Cowboy football outfit with pads and helmet, I would like a cowboy hat with six-shuter. We wil have milk and chocolate chips wating for you.
Love,
Ramon Vela, III

Dear Santa,
I want a tent, and frogger, and donkykong.
I'm in Secondgrade
Love,
Mary Cook

Dear Santa,
I want you too bring me a gun and a bat and a toy jeep.
Love,
Sammy Graham

Dear Santa,
I would like a motorcycle and a train that runs on a railroad track.
Love,
Jesus Holquín

Dear Santa,
I wud like a talk and say, a butifull dres becuz I hav bin a good litle girl.
Luv ya,
Rachel Vela

Dear Santa,
I have been a good boy. I would like an E.T. outfit, a western outfit, a Dallas Cow-boys futbal jursy, and if possible, a ticket to one of their games.
Love, your friend,
Jose Angel Vela

Dear Santa,
I want atri and a bike. I want a truck.
Love,
Mark Love

Dear Santa,
All I want for Christmas Santa. Is a watch and a doll and especially my Dad!
Love,
Tay dawn Elliott

Dear Santa,
I want a Stero a toy gun and a bike.
Love,
Russell Shaver

Dear Santa,
I wish you could bring me a tipitos doll and a cry doll.
Love,
Maria Torres

Dear Santa,
I want a new bike and clothes and atari.
Love,
Mike Hager

Dear Santa,
I want my very oun tree and a dollhouse.
Thank you.
Love,
Amber Cates

Dear Santa,
I have been very good
I want a atri
I want a football
I want a gocart
Love,
Roman Arnold

Dear Santa,
I want a organ, a ring and record player.
Love,
Diana Brewer

Dear Santa,
I want a purse and I will want a doll with a bag of clothes and I wish you A merry christmas.
Love,
Mona Sandoval

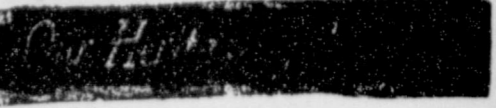
Dear Santa,
I wish my motorcicle was fix.
I wish I could have Atari for Christmas.
Love,
Kory Brown

Dear Santa,
I want you too bring me a gun and a bat and a toy jeep.
Love,
Sammy Graham

Dear Santa,
I want you too bring me a Atari and fill up me and Cacy stocking and get me a toy Jeep.
Love,
Curtis McGill

Christmas is...

Christmas is the light that burns eternally. It is a glow that warms the hearts of people wherever the message of "Peace on earth to men of good will" is believed. Christmas is peace in a world where people have been alienated from each other by hatred and jealousy. Christmas is love that flows from one heart to another. Christmas is the joy of brotherhood, of giving, of sharing, of lifting, of caring and of being what Christ want us to be. Christmas is forgiveness, the time for fresh beginnings, a time to right the wrongs of yesterday. Christmas is giving to those who cannot give us. It is visiting the neglected, lifting the fallen, giving hope to the hopeless, assuring victory to the defeated, living the spirit of good will to all mankind. Christmas is surrender of one's life to Christ in renewed dedication, making Christ the Lord of our lives.



The Christmas Eve Candlelight worship with Holy Communion will be celebrated at 6:30 p.m. at Faith Lutheran Church in Spearman. Sunday's schedule is Sunday School at 9:45 a.m. and worship in at 10:45 a.m. The sermon theme will consist of singing Christmas Carols, as selected by the congregation. The public is cordially invited.
Bruno Gaskamp, Pastor

Christmas Concert Presented Sunday

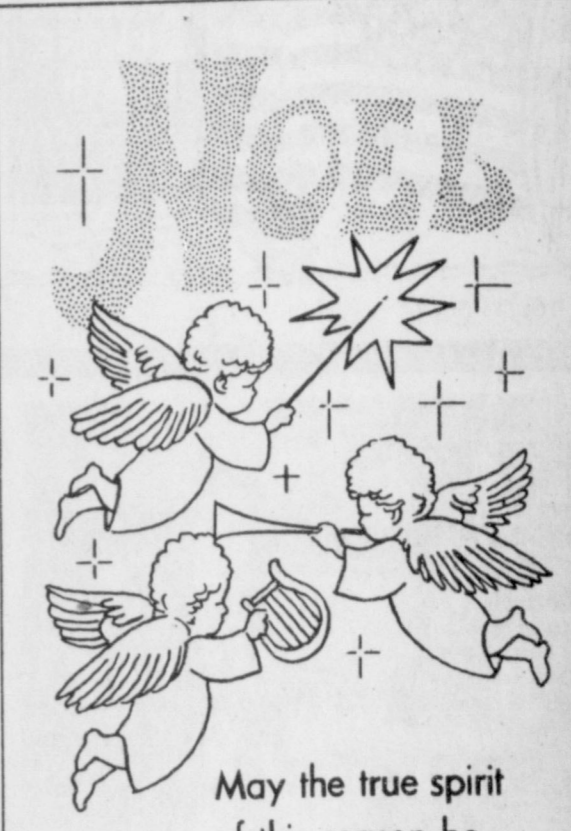
The Spearman High School and Junior High Band and Choirs presented their annual Christmas Program in front of a very large crowd. The Concert took place at the High School Auditorium, it was a beautiful and touching Concert was a big success!!
The directors of the Band and Choir are Charlotte Angel, Junior High Choirs, Pat Daniel, Jr. High and High School Bands and Travis Angel, High School Choir and CELEBRATE. Those that sang or played, included the Beginning Band, the 5th Grade Theory, the 6th grade "Singsation", the Junior High Band, the High School Handbells, the Jr. High Girls Choir, CELEBRATE, the High School Band and the High School Choir.
To start of the Concert, the Beginning Band played to the tune of "O Come All Ye Faithful" and "Jingle Bells". The 5th Grade Theory played the "Good King Wenceslas" and "Christmas is Coming". The 6th grade Choir, better known as the "Singsation" sang, "Welcome Dearest Jesus", "Here Comes Santa Claus", "Sleigh Ride", and "The Gift Most Treasured". While the Junior High Band was getting ready for their numbers, the 5th Grade Theory played "Jingle Bells" and "Upon the Housetop". The Junior High Band—directed by Pat Daniel—by the way, the 5th grade Theory and the "Singsation" are both directed by Charlotte Angel, got

ready to do their numbers. Their first number was "Prairie Winds", a "Trilogy of Cards", sort of like a medley of "Hark! The Herald Angels Sing", "O Little Town of Bethlehem" and "Adeste Fidelis"; then "A Holly Jolly Christmas" and finally the theme from the "William Tell Overture".
The High School Handbells played to the tunes of "Joy To The World", "Away in a Manger" and "Silent Night". The Junior High Choir sang "Jingle Bell Rock", and "The 12 Days After Christmas". The Jr. High Girls Choir sang "Sing Gloria", and "Do You Hear What I Hear".
So that the High School Band could get all their instruments together and so forth, the group CELEBRATE sang Christmas Carols.
Then Mr. Daniel had his band ready. They played to "Wheatland", "Windstar", "Silent Movie Music", and "Yuletide Sketches".
Once again, CELEBRATE, directed by Travis Angel, sang "Christmas Carols", while the High School Choir got ready for their feature numbers.
The High School Choir, it is a very large and very, very good choir indeed, is also directed by Travis Angel, sang, "Jubilate Deo", "Alma Redemptoris Mater", "On This Day Earth Shall Ring", "What Is A Heart", "God Rest Ye Merry, Gentlemen", and "The Holly and The Ivy".

For the finale, the Bands and Choirs all performed the so called, "Christmas Music For Voices", songs like, "Adeste Fidelis", "Silent Night", "Jolly Old St. Nicholas", "O Little Town Of Bethlehem", "Away In a Manger", "The 12 Das of Christmas", and "Angels We Have Heard On High".
All in all the Bands and Choirs, with the 5th Grade Theory, the 6th grade "Singsation", the High School Handbells, and CELEBRATE, all did a fantastic job.

Midnight Mass Scheduled

The Spearman Sacred Heart Catholic Church will have their annual Christmas Midnight Mass.
The Mass will begin at 12:00 Midnight Sharp, no later, or earlier. One of the most beautiful Masses that the Catholics celebrate. But IF a family cannot make it to the Christmas Midnight Mass, then the Christmas Day Mass will begin at 8:00 a.m.
So either you can begin Christmas day after the Midnight Mass, early in the morning, or you can begin your day after the Christmas Day Mass to take place at 8:00 a.m. Both Masses are beautiful, but the most beautiful of both is the Midnight Mass!!



May the true spirit of this season be yours.

ELROY E. WISIAN
LIFE-HEALTH-AUTO-HOME-FARM
CROP INSURANCE
Plains Shopping Center Spearman



GEBO'S

... the kind of store you remember.

NORTHERN ELECTRIC BLANKETS



Blend of 45% Polyester, 30% Acrylic, 25% Nylon. Popular control with night light. Machine wash and tumble dry. Moist-proof and non-allergic. 100% Nylon binding. 2 year guarantee. Available in Blue, Gold, Green and Pink.

Warmcrest Twin Bed, single control 666-002	Regular \$19.95	\$28.95
Double Bed, single control 666-004	Regular \$24.95	\$31.50
Double Bed, dual control 666-006	Regular \$29.95	\$36.95

CORNING WARE French White

ROUND & OVAL INDIVIDUAL CASSEROLES



(set of 2) 253-131-132

New elegant looking cooking and serving vessels individually sized for everything from soups to salads. Great for conventional and microwave ovens.

Oval or Round Set
Reg. \$11.59 **\$5.99**

BRACH'S CANDY

Chocolate Covered Peanut Clusters
Chocolate Covered Peanuts
Chocolate Stars
12 oz. **\$1.59**

Medallion Cherries
9 1/2 oz. **\$1.19**


5-FUNCTION STICK-UP CLOCKS



REG. \$5.99 **\$3.99**

Limited to stock on hand

Prices Good Thru December 24th



Merry Christmas

Season's best to each and every one. It is always a pleasure to serve you.

Consumer Sales Co.

Spearman, Texas

We will be closed at 3:30 Friday for Christmas.
Re-open Monday at 7:30

Store Hours: Mon - Fri 7:30 - 6:00 Sat. 7:30 - 5:00

MON
A
Dealers
Granite,
colored
bronze
rep
BOX
FUNI
519
6

Ha
Plan
2

Walla
Monu
C
Local
LEON
Spe

STEA
Steam Ri
poors; 1
hrs. ava
Drug; al
gent's 71
p.m. an
Sundays.

SERVICE:
dry, Dragl
dozer, grad
Lee Roy Mi
Graver, Te
12-rtn

SNOOPY
Open Mon
7:00 a.m.
659-3328 c
Bernice for
23-rtn

MC
Saw
Unde

If it is in
to visit c
please /ph
327-0626 c
call on yo
ALVA
WC

Alv

N
C
USED
As se

1-1
175-rtn

Misc

FOR SALE:
Wagon, \$80
45-rtn nc

PIAN
Wanted: Re
assume sm
ments on sp
Can be ser
(include pho
Manager, P.
hart, TX 786
6S-2tp.

FOR SALE:
goneer, low
condition, 34
659-3846 or 1
at 1018 Evan
5-rtn

FOR SALE
Man's "Dy
boots. Like
Size 10 m. \$1
45-RTN

FOR SALE:
full baja kit,
shocks on bi
on front, s
around. \$94
405-254-2660
6S-3tc

BUY, SELL, TRADE OR RENT THROUGH THE
CLASSIFIED ADS

659-3434

OSGOOD MONUMENT CO.
Amarillo, Texas
Dealers of Rock of Ages Granite, as well as all colored granites, marble and bronze memorials.
represented by
BOXWELL BROS. FUNERAL HOME
519 S. EVANS
659-3802

Hansford County Planned Parenthood
26 S. Haney
659-2483
Spearman
Mon.-Fri.
8:30-12:30

NOTICE
Wallace Monument Co.
Monuments, Curbing, Grave Covers
Local Representative
LEONARD JAMESON
Spearman, Texas
355-rtm

STEAM RINSE & VAC
Steam Rinse-and-vac Shampooers; \$10.95 for up to 24 hrs. available at Gordon's Drug; also at Freddie Largent's 716 Cotter Dr. after 4 p.m. and Saturdays and Sundays.

SERVICE: Pits cleaned, wet or dry. Dragline or loader. Also, dozer, grader, carry-all service. Lee Roy Mitchell, 806-733-2384, Grainger, Texas 79040. 12-rtm

SNOOPY'S DAY SCHOOL
Open Mon. through Fri. from 7:00 a.m. to 6:00 p.m. Call 659-3328 or come by 620 1/2 Bernice for further information. 23-rtm

MONUMENTS
Save Agents and Undertakers Profits
If it is inconvenient for you to visit our large display, please phone collect (405) 327-0626 or write and we will call on you.
ALVA MONUMENT WORKS, INC.
Alva OK 73717

New to area? Give us a try
Call your local USED COW DEALER
As soon as Possible.
659-3544
659-3545
1-800-692-4043
17S-rtm

Miscellaneous
FOR SALE: '74 Olds Station Wagon, \$800. 659-3526. 4s-rtm nc

PIANO FOR SALE
Wanted: Responsible party to assume small monthly payments on spinet/console piano. Can be seen locally. Write: (include phone number) Credit Manager, P.O. Box 478 Lockhart, TX 78644-0478. 6S-2tp

FOR SALE: 1979 Jeep Wagoneer, low mileage, excellent condition, 360 engine. Phone 659-3846 or 2012. Can be seen at 1018 Evans, Spearman. 5-rtm

FOR SALE: Call 659-2156. Man's "Dynafit" flow ski boots. Like new. Worn once. Size 10 m. \$75.00. 4S-RTN

FOR SALE: '63 Volkswagen, full baja kit, 1600 engine, air shocks on back, load levelers on front, spoke wheels all around. \$900. 659-3541 or 405-254-2660. 6S-3tc

Real Estate For Sale
FOR SALE: To settle estate, good section 2 miles south and 5 1/2 miles west of Morse; 265 acres irrigated, 8 inch well; balance good grass land. No minerals. Emmett R. Sanders, Realtor, 659-2516; nights 659-2601. 3-rtm T only

FOR SALE: 3 bedroom home near high school, attached garage, fenced yard, central heat & air, carpets, drapes, storm windows, ammaculate condition. Shown by appointment only. Emmett R. Sanders, Realtor, 659-2516, nights 659-2601. 4-rtm T only

FOR SALE BY OWNER: 3 Bedroom, 1 1/2 bath brick home located at 1121 S. Dressen. Many extras including central air and heat, new carpet, and custom drapes. Low Equity with low interest assumable loan. Call 659-2052 after 5:00. 6-rtm

Mobile Homes For Sale
\$1,000 FACTORY REBATE
Name brand 2 or 3 bedroom northern built mobile homes. If down payment has been your problem we can help. Easy bank rate terms, large selections. **FIRST QUALITY MOBILE HOMES** Hwy. 60 West 665-0715, Pampa, Texas 6S-8tc

FOR SALE: 3 bedroom, 2 bath, contemporary style double wide mobile home. Assumable loan. Call 659-2287. 4S-8tc

DEALER REPO
3 bedroom mobile home excellent condition. Wood siding, storm windows, air, etc. Assume payments of \$267.57 with approved credit. **FIRST QUALITY MOBILE HOMES** Hwy. 60 West 665-0715, Pampa, Texas. 6S-8tc

Help Wanted
PROCESS MAIL AT HOME! \$30.00 per hundred! No experience. Part or full time. Start immediately. Details, send self-addressed, stamped envelope. Haiku Distributors, 115 Waipalani Rd., Haiku, HI 96708. 3s-rtm

HELP WANTED: Station Attendants at Consumer Sales Co., Spearman, Texas. Apply in person. 6S-2tc

Wanted
Custom Farming Wanted - Eddie Papay, Morse, Texas 733-2797. 6S-8tp

WOULD LIKE TO keep children in my home any age. Have references. 659-3959. 6-3tp

HUNTERS & TRAPPERS-Fur buyer here every Monday, 3:45 to 4:30 p.m. at Ray McCammond's house 217 Highway 207 S. Spearman. Pay cash for all furs, carcass or dry skins. 806-995-2100. 5-8tp

To Give Away
TO GIVE AWAY-puppies, will be short haired small dogs. Call 3436. 6S-RTN

Automobiles For Sale

FOR SALE: Price reduced \$500.. 1977 Camero, \$4,000 excellent condition, loaded, black and gold metal flake paint, black interior. See at 21 S. Brandt or call 659-2404. 6-8tc

One advantage women enjoy is being permitted by law to retire three years earlier than men. And women live longer.

CARD OF THANKS

With grateful appreciation and sincere thanks to friends for the many acts of kindness and Christian love expressed while Junior was hospitalized and at the time of his death. We appreciate your prayers, cards, flowers, food and many other thoughtful acts.
The Junior Lusby Family

Catholic News

Dear Friend:
As we are told in the Book of Ecclesiastes, there is a time to every purpose under heaven. This is a time for serious and prayerful reflection on the precarious defense postures taken by the global super-powers. With that in mind, I have invited Rev. Jim Gowers of the Pax Christi organization to lead a workshop aimed at providing information and creating dialogue on these crucial matters. I invite you to take part in that seminar. We must address the moral implications of this subject...or risk the fate of the lukewarm so graphically described by Our Lord in Revelations. Regardless of your stance on the issue, please make a determined effort to participate. This is not an attempt at bringing you into any "peace movement." It is simply, an occasion for learning from, and communicating with, one another. Please make your reservations with my administrative assistant, Deacon Leroy Behnke (Box 5644, Amarillo, TX 79107; 383-2243), before January 14, 1983.

God bless you and grant you the happiest and holiest Christmas season ever...
Sincerely yours in Christ:
L.T. Matthiesen
Bishop of Amarillo
* Friday, January 21 (7:00 p.m.) to Saturday, January 22 (9:00 p.m.)
* DeFalco Retreat Center, 21st and Spring, Amarillo TX.
* \$35.00 per participant room, board and fees.
Partial scholarships available; indicate need with reservation.

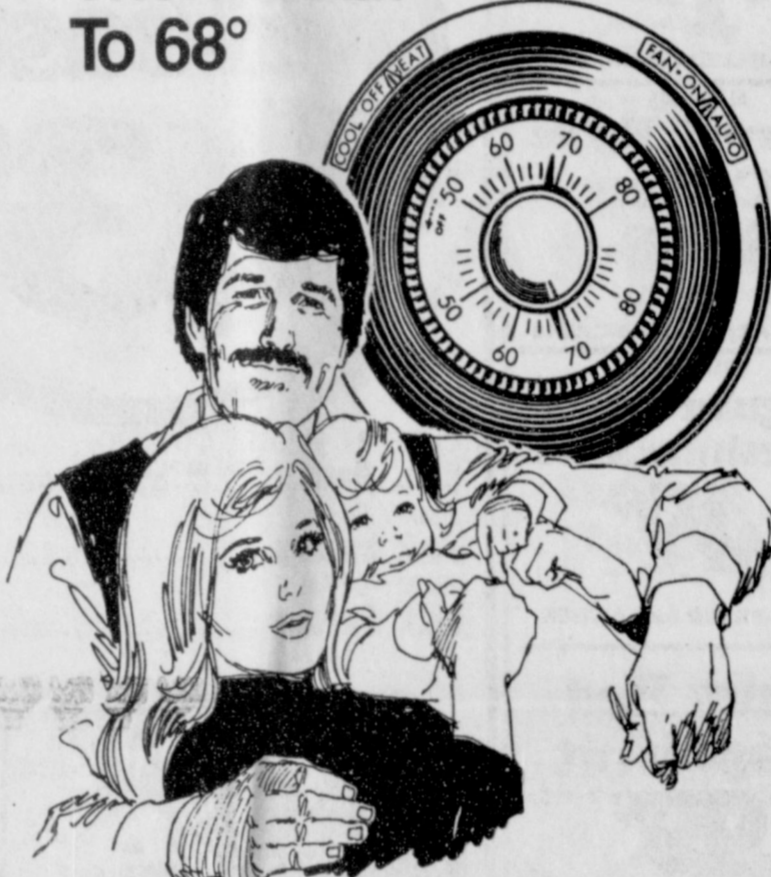
MARKETS
CORN \$2.82
WHEAT 3.45
MILO 4.35

For The Ultimate In STORM DOORS & WINDOWS
Custom Built, Designed And In Colors To Fit Your Home
Contact Howard Moyer at
Only Aluminum Industries
405-338-6966 or 405-338-6170
Guymon, Okla. 114 W. 1st. 73942 AFTER 6 P.M.

REPORT OIL FIELD THIEVES CALL 1-800-OIL-COPS TOLL FREE EARN UP TO \$5000 REWARD
PETROLEUM INDUSTRY SECURITY COUNCIL
Baker & Taylor Drilling Company

HERGERT PONTIAC, BUICK & GMC, INC.
SPEARMAN, TEXAS 79081
JERALD SCRIBNER
NEW & USED CAR SALES
RES. PHONE 659-3449 BUS. PHONE (806) 659-3721

Want To Stay Comfortable And Use Less Energy?—You Can! Just Lower Your Thermostat To 68°



You and your family can enjoy a more comfortable and energy-saving home this winter if you lower your thermostat to 68° Each degree you lower your thermostat helps your home use 6 to 8% less energy. And your home stays comfortable at the 68° setting. So start enjoying energy-savings and comfort by lowering your thermostat to 68° today. For more ideas about how you can save energy this winter, give us a call today.

Texas-New Mexico Power Company
E51-82

Dear Santa, I have bin a good little girl. I wud like a dol with purpl dres and hat with yelow hair, blu eyes, I wud like a nice warm cudly blanket to keep warm, a little purple nitie wud be nice, and bring my broter a Dalas Cowboy cap, Chuito wud like it.
Love,
Monica De La Rosa

Dear Santa, I would like a ruff rider 4 x 4 pickup truck, I would like a dump truck, a Dalas Cowboy's josing sut. I have bin a very good boy.
Love,
Rafael Vela

Instead of Flowers send balloons from...
"Balloons Galore"
For parties, birthdays, anniversaries or "just because" 733-5154 WE DELIVER
We now have Christmas and New Year's Balloons Order Now!

VIRGINIA-WHITE Realtor 659-3841
BEAUTIFUL 3 bdrm., one bath, storm windows, new roof.
NICE 2 bdrm., with cen/heat Double garage with apartment. New roofs.
TWO ROOM House with bath and big closet. Nice for bachelor. PRICE REDUCED.
CORNER LOT completely fenced with double car garage AND oversized single car garage AND storm cellar.
Southwest location—RESIDENTIAL LOTS FOR SALE

TEXAS PRESS ASSOCIATION
The Spearman Reporter
PUBLICATION [USPS 5096-6000] SPEARMAN, TEXAS 79081
213 Main Box 458 659-3434
Published Weekly at 213 Main Street, Spearman, Texas 79081
Owner-Publisher.....William M. Miller
Editor.....Faye Lynch
Second Class postage paid at Spearman, Texas 79081
Any erroneous reflection upon the character of any person or firm appearing in these columns will be gladly and promptly corrected upon being brought to the attention of the management.
POSTMASTER: Send address changes to Spearman Reporter, Box 458, Spearman, Tx. 79081.
SUBSCRIPTION RATE: Hansford, adjoining counties, combination with the Hansford Plainsman \$15.00.
Other points, \$20.00

Dear Santa, I have been extra good this year. I have found all the things I want. I want a fur coat I want a magical musical thing.
Love,
Michell Garnett

Dear Santa, I want a brook shields barbe doll, and a pink and pretty barbe and a barbe bubble bath.
Love,
Kim Slater

The Stylist Beauty Shop
Rhoda Overton
Licensed Operator

Offered Exclusively By
EMMETT R. SANDERS, REALTOR
EXTRA NICE 3 bedroom, 2 bath brick home, choice southwest location, fenced yard, toolhouse, central heat and air, carpets, drapes, ceiling fans, extra nice condition inside and outside, shown by appointment only.
3 bedroom, bath & half, brick home; wide lot; fireplace, built-in range and dishwasher, gas air conditioner; assumable \$23,000 loan. Shown by appointment only.
3 bedroom, 1 bath, home with attached garage, good location, built-in oven and cook top, carpets, curtains & drapes. Shown by appointment only.
Estate settlement, 2 bedroom home on wide lot near elementary school, plus one room & bath office building, house has central heat and air, basement, large living and dining area.
Nearly new builder's home, 4 bedrooms, 2 1/2 baths, basement, double garage, fenced yard, large toolhouse, numerous amenities; shown by appointment only.
EMMETT R. SANDERS, REALTOR 659-2516 659-2601 [nights] 52-rtm T ONLY

11.25% Tax-Free* Bonds
To Maturity
"I like them because they give me an effective taxable yield of 16.3%."
*I have the added features of:
• Stability
• Marketability
• Excellent payment record
• High yield
• Insurance protection
My Edward D. Jones & Co. broker introduced me to them. Maybe you should call him!
ED Jones & Co.
Box 1000
Guymon, Okla. 73042
(405) 338-8444
Edward D. Jones & Co.
Member New York Stock Exchange, Inc.
*Member Securities Investor Protection Corporation.
*Interest may be subject to state and local taxes.



Ideal
FOOD STORES

PRICES EFFECTIVE THRU DEC. 28, 1982. QUANTITY RIGHTS RESERVED.

A Wonderland

SAV-A-CHEK SPECIALS OF THE WEEK

<p>CAMELOT Grade "AA" Large Eggs DOZ. 24¢ WITH 1-FILLED SAV-A-CHEK</p>	<p>CAMELOT Grade "A" Butter 1-LB. PKG. \$1.38 WITH 2-FILLED SAV-A-CHEKS</p>
<p>CHARMIN Bath Tissue 4 ROLL PKG. 88¢ WITH 1-FILLED SAV-A-CHEK</p>	<p>ALL GRINDS Maxwell House Coffee 1-LB. CAN \$1.58 WITH 2-FILLED SAV-A-CHEKS</p>
<p>STARKIST IN OIL/WATER Chunk Light Tuna 6 1/2 OZ. CAN 78¢ WITH 1-FILLED SAV-A-CHEK</p>	<p>KRAFT BRAND Regular or Jet Marshmallows 10-OZ. PKG. 49¢ WITH 1-FILLED SAV-A-CHEK</p>
<p>Refreshing Coca Cola 2 LITRE BTL. \$1.00 WITH 1-FILLED SAV-A-CHEK</p>	<p>Ruby Red Grapefruit 5-LB. BAG 99¢ WITH 1-FILLED SAV-A-CHEK</p>



SAVE 16¢ PER LB.

YOUNG HINDQUARTERS
Turkey Roast
3 TO 5-LB. AVG.
LB. **43¢**



SAVE 90¢ PER LB.

BUTCHER BLOCK BEEF
Boneless Chuck Roast
LB. **\$1.49**

BUTCHER BLOCK BEEF
Boneless Chuck Steaks
LB. **\$1.59**

CURE '81 - FULLY COOKED Bnls. Hams... WHOLE OR HALVES	3.98	BAR-S - FULLY COOKED - WATER ADDED Bnls. Hams HALVES 3 TO 4 LB. AVG.	2.49
JIMMY DEAN Pork Sausage...	2.29	MORRELL - FULLY COOKED Canned Hams...	7.59
JIMMY DEAN Pork Sausage...	4.57	MORRELL - FULLY COOKED Canned Hams...	11.59



SAVE 41¢

IMPERIAL SUGAR
brown



SAVE 20¢

JELLO JELLO
DIETARY DESSERT



SAVE 43¢

Folgers coffee

POWDERED OR BROWN Imperial Sugar 2 LB. BAG 88¢ LIMIT 2	ALL FLAVORS Jell-O Gelatin 3 3-OZ. BOXES 85¢ LIMIT 6	ALL GRINDS Folgers Coffee 1 LB. CAN 2.16 LIMIT 1
NESTLE Chocolate Chips... 12-OZ. BAG \$1.68	CAMELOT Sweet Pickles... 22-OZ. JAR \$1.39	CAMELOT Yams... 16-OZ. CAN 73¢
MARIO - LARGE PITTED Ripe Olives... 4-OZ. CAN \$1.28		

Frozen Foods

MEADOWDALE Whipped Topping 8 OZ. CTN. 48¢ LIMIT 3	MRS. SMITH'S DELUXE CUSTARD Pumpkin Pies 40 OZ. PIE \$2.18
CAMELOT WHOLE KERNEL GOLDEN Corn or Sweet Peas... 16-OZ. BAG 73¢	READY TO BAKE Rhodes Rolls... 24-CT. PKG. 64¢
PET RITZ 9" Pie Shells... PKG. OF 2 68¢	

Fresh Dairy Foods

KRAFT Philadelphia Cream Cheese 8 OZ. PKG. 68¢ LIMIT 3	CAMELOT - GRADE 'AA' Large Eggs DOZ. 66¢ LIMIT 2
PARKAY Margarine ... 1-LB. PKG. 45¢ LIMIT-3	CAMELOT Cottage Cheese ... 24-OZ. CTN. \$1.18
CAMELOT - GRADE 'A' Butter ... 16-OZ. CTN. \$1.84	

GREEN MARKET STREET

Fresh Produce ...

California New Crop
Navel Oranges
5-LB. BAG **\$1.69**



FRESH CRISP Tender Celery... 1 LB.	23¢
U.S. NO. 1 Yellow Onions... 2 LBS.	25¢

SHOP IDEAL... WHERE THERE'S MORE VALUE IN

of Christmas Foods

SAVE \$1.11 PER LB.



FULLY COOKED
WATER ADDED - 7 TO 9 LB. AVG.

**Rodeo Buckboard
Boneless
Whole Hams**

\$1.78
LB.

SAVE 10¢ PER LB.



U.S.D.A. GRADE "A"
16 TO 22 LB. AVG.

**Honeysuckle
Turkeys**

79¢
LB.

SHOULDER CUTS

**Fresh
Pork
Roast**

\$1.59
LB.

CHUCK WAGON

**Sliced
Bacon**

\$1.69
1 LB. PKG.

Ideal Will Close at 6 p.m. on Christmas Eve and remain **CLOSED** Christmas Day!!!

- | | | | | | | | |
|---|--|---|----------------------------|--|----------------------------|--------------------------------------|--------|
| RODEO - BUCKBOARD
Bnls. Hams.....
FULLY COOKED - WATER ADDED
Smoked Hams.....
BAR-S - FULLY COOKED - WATER ADDED
Bnls. Hams..... | WATER ADDED - FULLY COOKED - 3 TO 4 LB. AVG.
5 TO 7 LB. AVG.
5 TO 7 LB. AVG. | HALVES LB.
RUMP PORTION LB.
WHOLE LB. | \$1.88
\$1.29
\$2.39 | BUTCHER BLOCK BEEF
Bnls. Shoulder Steaks.....
BUTCHER BLOCK BEEF - EXTRA LEAN
Bnls. Beef Stew.....
BUTCHER BLOCK BEEF
Bnls. Shoulder Roast..... | \$1.98
\$1.98
\$1.89 | ALL FLAVORS
Steffen's
Prestige | \$2.86 |
|---|--|---|----------------------------|--|----------------------------|--------------------------------------|--------|

<p>SAVE 13¢</p>  <p>DEL MONTE WHOLE OR CREAM</p> <p>Golden Corn</p> <p>42¢</p> <p>17 OZ. CAN LIMIT 4</p>	<p>SAVE 15¢</p>  <p>DEL MONTE CUT OR FRENCH</p> <p>Green Beans</p> <p>38¢</p> <p>16 OZ. CAN LIMIT 4</p>	<p>SAVE 22¢</p>  <p>DEL MONTE SLICED, CHUNK, CRUSHED</p> <p>Pineapple In Juice</p> <p>53¢</p> <p>15 1/2 OZ. CAN LIMIT 4</p>	<p>SAVE 16¢</p>  <p>KRAFT BRAND</p> <p>Marshmallow Creme</p> <p>53¢</p> <p>7 OZ. JAR LIMIT 3</p>	<p>SAVE 51¢</p>  <p>WALDORF - ASST.</p> <p>Bath Tissue</p> <p>88¢</p> <p>4 ROLL PKG. LIMIT 2</p>
---	--	---	---	---

BAKER'S ANGEL FLAKE Coconut..... PIECES OR HALVES Ellis Pecans.....	14-OZ. PKG. 8-OZ. PKG.	\$1.69 \$1.47	KEEBLER TOASTED Snack Crackers..... BETTY CROCKER - ALL FLAVORS Layer Cake Mix.....	9-OZ. BOX LIMIT 4 18 1/2-OZ. BOX	88¢ 78¢	BAKE-RITE Whipped Shortening..... OCEAN SPRAY - STRAINED OR WHOLE Cranberry Sauce.....	42-OZ. CAN 15-OZ. CAN	\$1.43 49¢
--	---------------------------	------------------	--	--	------------	---	--------------------------	---------------

**FROM . . . GREEN
MARKET STREET**

WASHINGTON NEW CROP
RED OR GOLDEN

**Delicious
Apples**

\$1.19

4-LB. BAG

U.S. NO. 1 TEXAS
Sweet Potatoes.....
NEW CROP
Walnuts.....

29¢
\$1.19

**Christmas
Fruit Baskets
MADE TO ORDER**

Beautiful
Christmas
Poinsettias

\$4.99

5 INCH POT

Health and Beauty Aids

REGULAR OR GEL
**Colgate
Toothpaste**

\$1.66

9 OZ. TUBE

MILK-N-HONEY
Shampoo or Conditioner.....
EXTRA STRENGTH
Sinutab Tablets.....

16-OZ. BTL.
24-CY. PKG.

\$1.99
\$2.79

STORE FOR YOU!... **Ideal** **FOOD STORES** **Food Stamps Buy More At Ideal...**

Nita Baker plays in first game of season...

Lynxettes 'Breeze Past' Stinnett

The Spearman Lynxettes completely "beheaded" the Stinnett Rattlerettes. The Rattlerettes were never really in the game except maybe at the tip-off, but then it was, as it has been so far this season, Lady Lynx all the way, no looking back!! Coach Ralph Newton was really proud of his Lynxettes. NOTE FROM SPORTS DESK: Nita Baker, a Lynxette that has not seen any action due to an early-in-the-season-injury, played for the first time this year and did a fine job. Nita got a big hand from the crowd, which probably made her feel GREAT!! Nita didn't score, but she played a fine game. She feels ready to play, but after the Christmas Holidays, Nita Baker will be one of the Lynxettes, that all the other teams will have to try and contend with, Nita is a tough customer, and if she doesn't re-injure herself, will have a great season!! Nita,

we are all glad that you are back!! The final score was 72 to 21, it was a great game Offensively, with Seniors Lea Ann Gibner and Janet Reed leading the way. NOTE FROM SPORTS DESK: One Lynxette did not play in the game, that being Susan Davis. Susan is #33, a playmaker, a great Defensive player and an exceptional Offensive player. Susan has been sick the last couple of games, she was sick Friday night, and didn't get to play against the Rattlerettes. Other than that the Lynxettes played a whale of a game. The Lynxettes never had less than 11 points in a quarter, while the Lynxettes Defense only "let-up" once and let the Rattlerettes to score 10 points. It was a great Defensive show. NOTE FROM SPORTS DESK: Sofia DeLuna, one of Stinnett Rattlerettes, played a very good Defensive game, although she

didn't score. Sofia is an "ex-Lynxette", since the movement of schools. Sofia played a fine Defensive game, not bad against her former teammates. The first quarter, showed the Stinnett Rattlerettes and all the Lynxettes' fans that the Lady Lynx meant business, they are serious of all their games, since the season opening loss!! The first quarter score was an unbelievable 22 to 4 score. Coach Newton played everyone of his Lynxettes, who in turn scored, with an exception to Nita, who just happened to have played a fine Defensive game, and to Susan who was sick. The Lynxettes outscored the Rattlerettes 15 to 10 in the second quarter to take the halftime lead of 23 points, the score being 37 to 14. At the half, Coach Newton kept telling his Lynxettes that they had to keep scoring, because Stinnett had "scared"

the Perryton Rangerettes, until the Rangerettes rallied to win by 10 in the final 6 minutes of the game, meaning that that the Rattlerettes were tough. The Stinnett coach was telling his team to try and score on the Lynxette Defense. It was going to be tough, that was for sure. Well, the Lynxettes came out shooting from all corners and everywhere on their side of the court, barely missed, while the Lynxettes Defense, had become "stingy" and was not going to let the Rattlerettes score more than 5 points in the 3rd quarter. The score after 3 quarters of play, the score was 61 to 19. The game was surely out of reach. But in the final quarter, the Lynxettes scored 11 more points to "secure" the win, while the Lynxettes Defense became even more "stingy" and allowed the Rattlerettes 2 points for the final quarter.

The leading scorer was Lea Ann Gibner with 16 points, Janet Reed scored 14 points, while Juniors Kelli Crawford and Andrea Mires both scored 8, Senior Jean Davis scored 6 points and Junior Robbie Heinrich scored 6 more. Seniors Lana Paul scored 7 points, and Jan Davis and Cindy Young--both Seniors--scored 4 points, while Tiki Jackson, Sophomore, scored 1. The Lynxettes will face the Stratford Elkettes tonight, Monday, December 20, beginning at 6:30 or 7:00 p.m. Then tomorrow night, Tuesday, December 21, the Lynxettes will take on their rivals, the Gruver Lady Greyhounds at Greyhound Gym beginning at about 6:30 to 7:00 p.m.--these will be the last two games before Christmas Holidays, and in 1982. Then the Lynxettes will begin their New

Year, 1983 part of their season, against the Gruver Lady Greyhounds at Lynx Varsity Gym, with the hopes of being the same strong Offensive and Defensive teams they were in 1982. So y'all be getting ready for a great second half from the Lynxettes in 1983!!

Misa De Navidad

Los Catolicos de la Iglesia Catolica del Sagrado Corazon de Jesus van a tener una Misa que se comienza a las 12 de la noche, media-noche. Esta Misa es una de las mas bellas que los Catolicos celebran. Si no pueden ir para la Misa a la media-noche, este Viernes el 24 de Diciembre, pues pueden ir para la Misa de Navidad por el dia. Esta Misa va ser a las 8 de la mana en el dia de Navidad, el 25 de Diciembre. Estas Misas son muy bellas.

Cake Decorating Course Set

Cake Decorating will be taught at Spearman High School by Cindy Davenport of Frank Phillips College. The course will begin January 3, 1983 and run through February 3, 1983. The class will meet from 7:00 to 10:00 p.m. on Mondays and Thursdays in the home economics room. To register contact the Superintendent's Office at Spearman ISD. The cost of this course is \$45.00 per student. This includes a supply kit. Enrollment is limited to 16 students.

A Christmas Wish

May Christmas time mean more to you
Than gifts on Christmas morn;
May you feel the peace the whole world knew
When Christ the Lord was born!!
May you know the special gladness
And hope that came to men;
And may it thrill your heart just know
As Christmas comes again.

THE ACTION AUCTION

ALWAYS AN ABUNDANCE OF BUYING POWER
TEXHOMA LIVESTOCK COMMISSION CO. INC.
BOX 449 TEXHOMA, OKLA.
THURSDAY

PACKER COWS	- \$30.00-\$37.00
PACKER BULLS	- \$39.00-\$46.00
STOCKER COWS	- \$425.00-\$440.00
PAIRS	- \$400.00-\$480.00
STEER CALVES 300-400#	\$67.00-\$74.50
400-500#	\$64.00-\$72.50
HEIFER CALVES 300-400#	\$56.00-\$60.00
400-500#	\$55.00-\$59.50
FEEDER STEERS 525-600#	\$63.00-\$67.00
600-700#	\$62.00-\$64.00
700-800#	\$60.00-\$64.00
800-900#	\$58.50-\$61.50
FEEDER JFRS. 525-600#	\$55.00-\$57.00
600-700#	\$54.00-\$57.75

405-423-7511 Sale Every Thursday
KEITH LAUER, MGR. 405-423-7009
FIELD REPRESENTATIVES
JIM NICHOLS
TEXHOMA, OKLA.
405-423-7011

JV Lynxettes Win Thriller

The Spearman JV Lynxettes played the greatest game of their short career so far. They defeated the Stinnett JV Rattlerettes 29 to 28, and started off a clean-sweep of the Stinnett teams!! It was the greatest game so far, and a foreshadow of more great games to come!! Coach John Roller, the JV Lynxettes coach, saw that his 6 JV Lynxettes--NOTE FROM SPORTS DESK: Due to the fact that the Freshman on the JV Lynxette team, had to play in the Dumas Tourney, which in fact brought home the 7th Place Trophy by defeating Perryton, which includes Carlee Dixon, Julie Jones, Traci White, Dana Irlbeck, Shelly Dummihoo, Mary Anne Evans, Linda Evans and Heather McRee--these are the Freshman on the JV team that could not play because of the Freshman Tourney at Dumas.

The JV Lynxettes that played included Junior Denise Brewer, Sophomores, Ciria Vela, Lee Barnes, Genne Womble, Andi Hager and Stacey Poole. They all knew they could not afford to foul out, none did, none got hurt, and so the JV Lynxettes Junior and Sophomores, played an excellent game, defeated the Stinnett JV Rattlerettes, who had earlier "smeared" the JV Lynxettes. The JV Lynxettes played a great game, Coach Roller was very proud, as were the fans. They all knew that the JV Lynxettes had great talent, but could not get that talent out of the hat, until it was close against Sunray on Tuesday, but for sure on Friday night, when they defeated the Stinnett team!! JOY was the word that expressed the JV Lynxettes Happiness for the winning

of the one of their tougher games. The JV Lynxettes will be trying to start another clean-sweep of teams--by the way this was the first "Clean-sweep" of any team in 1982. The JV Lynxettes will face the JV Stratford Elkettes at Stratford tonight--Monday, December 20, and tomorrow night, the JV Lynxettes will try to defeat the Gruver JV Lady Hounds at Gruver--this game is scheduled for Tuesday, December 21. These two games will be the last in 1982, to begin the New Year, the JV Lynxettes will face their arch rivals, the Gruver Lady JV Hounds on Tuesday, January 4, 1983. The JV Lynxettes will try to turn their 1983 year into the winning part of the 1982-83 season.

JV Lynx Defeat Stinnett

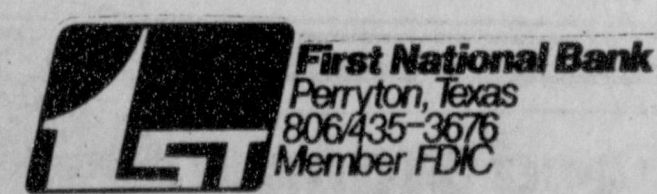
The JV Lynx, coached by Gary Rambo, played an excellent game, by defeating the tough Stinnett JV Rattlers by the score of 45 to 20. The JV Rattlers never had a chance as the JV Lynx had a hot-hand all during the contest. The Juniors include Billy Ray Haden, Johnny Rodgers, Pat Tucker, Sophomores Teddy Vela, Mack McLain, Jeff Graves, Jerry Garcia, Bob Cook and Ernie Bowen. All these fellows did a great job. They went ahead and never looked back for a minute. The JV Lynx will face the Stratford JV Elks tonight--Monday, December 20, and tomorrow night, Tuesday--December 21, will face the Gruver JV

Greyhounds at Gruver Gym. This game, the one against Gruver, will be the last in 1982. The 1983 part of the season will begin with a game against the Gruver JV Hounds at the Lynx Varsity Gym. Y'all plan to be there!!

REPORT OIL FIELD THIEVES
CALL
1-800-OIL-COPS
1-800-645-2677
TOLL FREE.....REWARD
Baker & Taylor Drilling Company

First Money Market Report

7 Day Certificate \$20,000 Minimum	7.857% Thru December 27, 1982		
3 Month Certificate \$7500 Minimum for 91 Days	7.857% Thru December 27, 1982		
6 Month Certificate \$10,000 Minimum for 182 Days	8.518% Thru December 27, 1982		
12 Month Tax Saver \$500 Minimum	6.49% Date Effective: November 28, 1982		
30 Month Certificate \$500 Minimum	9.45% Thru January 3, 1982		
\$100,000 Certificates	Rate	Yield*	
	30 Days	8.75%	9.143%
	90 Days	8.75%	9.143%
	180 Days	9.00%	9.416%
	1 Year	9.00%	9.416%
Thru December 27, 1982 *Annual Yield Based on Daily Compounding			
IRA'S	Fixed Rate and Variable Rate		
Money Market Fund	Daily Rate		



Call the Money Market Advisor at 435-3676

All Deposits Insured to \$100,000. Substantial Penalty for Early Withdrawal.

WE HAVE ICE, MILK, BREAD, SNACKS, SOFT DRINKS, CHIPS & DIPS, BROWN 'N SERVE ROLLS, PRODUCE, A COMPLETE LINE OF FILM AND FLASH CUBES AND BATTERIES!

OPEN CHRISTMAS DAY

REFRESHING COCA-COLA 2 LITER BTL. 1.09

ASSORTED FLAVORS ALLSUP'S ICE CREAM 1/2 GAL. RD. CTN. \$1.49

BORDEN'S WHIPPING CREAM 1/2 PINT CTNS. 2.99¢

SHURFRESH WAFFLE SYRUP 32 OZ. 99¢

We wish all our customers a very Merry Christmas

SHURFRESH POPUP TURKEYS LB. 69¢

BORDEN'S BUTTERMILK 1/2 GAL. \$1.09

DELICIOUS BORDEN EGG NOG 99¢ QT.

BUTTERMILK/COUNTRY STYLE SHURFRESH BISCUITS 5 CT. CAN 5¢

PRICES EFFECTIVE DECEMBER 23-25, 1982 WHILE SUPPLIES LAST WE ACCEPT FOOD STAMPS

OPEN 24 HOURS 365 DAYS A YEAR LIMITED SUPPLY! WE HAVE SELF-SERVE GAS

ALLSUP'S CONVENIENCE STORES

"THERE'S ONE NEAR YOU"

THUR
The 5
their 16
Ralph P
about 1
really p
score w
excellen
SPORT:
did pla
better a
her team
great ga
two. Th
playing
so forth,
team to
The L
Davis, J
Janet R
Paul--al
Robbie
Kelli Cr
all Junic
Jackson
The L
a big O
20 poin
Defense
not lett
ettes so
in that
quarter,
or at lea
the Lyn
them so
themsel
Lynxette
to 23.
The 7th
Lynxettes
Dumas 7t
They wer
not one
come out
The gar
Lynx Vat
grade girl
coached b
Coach Tr
coach, at
tremendou
Lynxettes,
not won t
bly thoug
girls that
are Mary
Sandoval,
Schneider
Sandy Hil
Wanda
Nitsacke,
Breedem,
Bartz, St
Pittman, E
Wolley, J
Godfrey, S
Blackburn
Dennis an
these girl
time or an
plan to ha
half of the
last game
1982-83 se
the Christ
Holidays,
travel to S
7th Elket
p.m.
The 8th
second ga
was a very
since the t
to have a b
than last
Lynxettes
second g
Ronda Gi
both foule
didn't mat
grade Den
player in
tall, very
could sto
fantastic
Lynxettes,
her commi
fouls, but
players an
of the gar
ballhandl
Lynx team
Yarbrough
mendous j
stole the b
so forth. J
Jennifer p
game whe
game!! Sh
better 8th
the Distr
another fir
8th Lynxet
with 4 foul
to foul out
playing w
girls that
include Mi
Ann Gutl
Leticia V
Jennifer Y
Holt, Don
non, Tam
Shields, C
Stumpf, E
Medley,
Rocio Ros
Jennifer S

Lynxettes 'Devour' Stratford

The Spearman Lynxettes won their 10 game in-a-row. Coach Ralph Newton is really excited about how his Lynxettes are really playing great!! The final score was 54 to 46. It was an excellent game. **NOTE FROM SPORTS DESK:** Susan Davis did play in the game, she got better and scored 10 points for her teammates!! Susan played a great game, after being sick for two. The Lynxettes are really playing with a lot of pride, and so forth, the kind that can take a team to the State Playoffs!!

The Lynxette members include Lea Ann Gibner, Susan Davis, Jean Davis, Jan Davis, Janet Reed, Cindy Young, Lana Paul—all Seniors; Andrea Mires, Robbie Heinrich, Nita Baker, Kelli Crawford, Denise Brewer, all Juniors; and Sophomore Tiki Jackson.

The Lynxettes started off with a big Offensive quarter scoring 20 points, and the Lynxettes Defense were really "stingy" not letting the Stratford Elkettes score more than 10 points in that quarter. In the second quarter, the Elkettes put a stop, or at least a temporary stop, to the Lynxettes Offense, letting them score 9 points, while they themselves scored 13. But the Lynxettes had a 6 point lead, 29 to 23.

Coach Newton was telling his Lynxettes to find the open player, take the good shot, don't foul unless you need too. The coach for the Elkettes, was telling his players, that they were playing a very well organized and coached team, but maybe they could come from behind and upset the super Lynxettes. There was one person they had to stop and that was Lea Ann Gibner, Lea Ann was having a superb night on the Offensive side of the boards.

Both clubs came back, in the third quarter, and scored bucket to bucket, after one would score, the other would do the same. As a matter of fact, both teams scored 12 points in the 3rd quarter, to keep the slim lead at 6. The Elkettes came into the 4th and final quarter, determined to defeat the mighty Lynxettes, they even scored 11 points to try and defeat them, but the Lynxettes, with Lea Ann, Janet (Reed) and Susan (Davis) leading the charge, the Lynxettes scored 13 points and won the game by 8 points, 54 to 46. The Lynxettes record is now 10 - 1, Phillips was lucky in the first game—the only loss the Lynxettes have suffered all year long.

The leading scorer of all players, from both teams, was Lynxette Senior, Lea Ann Gibner, who scored 20 points, Janet Reed was right behind her with 11 and Susan Davis had 10 points for the night.

Tonight, Tuesday—December 21, the Lynxettes will take on their arch-rivals, the Gruver Lady Greyhounds at Greyhound Gym, beginning at 7:00 or so. This will be the last game in 1982.

Then to start off the brand New Year, the second part of the 1982-83 season, the Lynxettes will host the Gruver Lady Greyhounds at Lynx Varsity Gym beginning at 7:00 or so on Tuesday, January 4, 1983. This should be a great way to start the 1983 half of the basketball season!!

REPORT OIL FIELD THIEVES CALL
1-800-OIL-COPS
1-800-645-2677
TOLL FREE.....REWARD

Baker & Taylor
Drilling Company

JV Lynx 'Nab' Victory From Stratford

The Spearman Jr. Varsity Lynx are on a "roll", folks might say. They have lost their last few games by plenty of points to spare. The JV Lynx are coached by Gary Rambo. Coach Rambo has done a fantastic job with his JV Lynx. The latest victims of the JV Lynx "Claw" are the Stratford JV Elks. The final score was 33 to 29. It was a tough victory, but the JV Lynx pulled together, they did miss, however, the power of Teddy Vela, was missed, he did not play because he was sick.

The JV Lynx members include Juniors Billy Ray Haden, Johnny Rodgers and Pat Tucker, the Sophomores include

Jerry Garcia, Jeff Graves, Bob Cook, Ernie Bowen, Mack McLain, and Teddy Vela, who was sick and did not play in the game.

The game against Stratford was tough, the JV Elks have always been tough, but the JV Lynx managed to maneuver past those sly Stratford JV Elks. The JV Lynx will meet the Gruver JV Hounds tonight—Tuesday, December 21—at Gruver, this should be a very good game. It will be the last game for 1982. The first game in 1983 will be on Tuesday, January 3, 1983, against Gruver. This game will be at Lynx Varsity Gym.

Hospital News

Patients at Hansford Hospital are Ada Deakin, Jessica Hernandez, Willie Wilkerson, Ben Birdwell and Bertha Byrd. Dismissed were Richard Prescott, Elodia Luciano and son, Leona Harris, Johnny King, Maxine Riggsby, Howard Nash and Gerdie Archer.

MISTLETOE

The "kissing plant" is really a parasite. The mistletoe that we know as a symbol of peace and good will actually is a parasite which attaches itself to a host tree and sometimes saps the life out of a healthy, sturdy tree. Mistletoe is most commonly found on oak trees.

Schools in Spearman will resume after the Christmas and New Years Holidays, January 3, 1983.

Moonlight Sale!

No Rainchecks One night only! Super! Super low prices on Thursday From 6 p.m. to 10 p.m. No lay-A-Ways

Prices good from 6 P.M. to 7 P.M. only

KODAK DISC 4000 CAMERA — FOR UNIQUE PICTURE TAKING REG. 46.77 39.97	ALL 14 KARAT GOLD JEWELRY 50% off PRETICKETED PRICE Neck Chains, Earrings, Bracelets, Charms, Pendants, Charm Holders	DAWN SAYELLE YARN ASSORTED COLORS CLOSE OUT 4 OZ. REG. .78 2/1.00
---	--	--

Prices good from 7 P.M. to 8 P.M. only

RIVAL CROCK POT STONEWARE SLOW COOKER 3 1/2 QT MODEL 3100 REG. 11.77 8.00	JUNIORS FASHION BLAZERS WOOLBLEND REG. 49.97 NOW 25.00	CLAIROL FOOT FIXER REG. 34.88 NOW 25.00 LESS FACTORY REBATE 5.00 YOUR FINAL COST 20.00
--	---	---

Prices good from 8 P.M. to 9 P.M. Only

MR. COFFEE AUTOMATIC COFFEE BREWING SYSTEM MODEL CMIZ REG. 22.96 15.96	ST. MARY'S TWIN SIZE BEDSPREADS "JUVENILE" ASST. STYLES REG. 17.96 12.00	SIMON GAME REG. 28.96 NOW 19.96
---	--	--

Prices good from 9 P.M. to 10 P.M. Only

PROCTOR-SILEX STEAM SPRAY IRON 29 STEAM VENTS, LIGHTWEIGHT DESIGN FULL ONE YEAR WARRANTY REG. 13.64 9.99	"TAG ALONG" JUVENILE THROW BLANKETS REG. 7.97 3.97	REGINA 2 SPEED ELECTRIK BROOM VACUUM CLEANER REG. 37.46 25.00
--	---	--

TG&Y

STORE HOURS 9 a.m. to 10 p.m.
Now thru Dec. 23rd Monday thru Saturday

TG&Y's policy is to always have advertised merchandise in adequate supply in our stores. In the event the advertised merchandise is not available due to unforeseen reasons, TG&Y will provide a Rain Check, upon request, in order that the merchandise may be purchased at the sale price when it becomes available, or you may purchase similar quality merchandise at a similar price reduction. It is the policy of TG&Y to see that you are happy with your purchases. It is TG&Y's policy to be priced competitively in the market. Regular Sale Prices may vary market by market, but the sale price will always be as advertised. We will be happy to refund your money if you are not satisfied with your purchase. VISA and MasterCard accepted.

7th, 8th & 9th Lynxettes 'Defeated' by Dumas

The 7th, 8th and 9th grade Lynxettes lost to the tough Dumas 7th, 8th and 9th teams. They were all tough games, but not one Lynxette team could come out on top.

The games were played at the Lynx Varsity Gym. The 7th grade girls played first, they are coached by Richard Trantham. Coach Trantham is a very fine coach, and he has done a tremendous job with the 7th Lynxettes, although they have not won the games they probably thought they should. The girls that have played in 1982 are Mary Lou Baker, Michelle Sandoval, Beverly Ruiz, Kari Schneider, Michelle Sumner, Sandy Hill, Lynette Williams, Wanda Wagner, Stacey Nitscke, Kim Jenkins, Tina Breeden, Deana Turner, Gina Bartz, Sherri Sexton, Paige Pittman, Earla Spencer, Connie Wolley, Angula Sintas, Julie Godfrey, Shannon Graves, Sara Blackburn, Lori Eaton, Adrian Dennis and Cindy Dowdy. All these girls have played at one time or another this season, and plan to have an excellent 1983 half of the season. This was the last game of the 1982 part of the 1982-83 season. Then following the Christmas and New Years Holidays, the 7th Lynxettes will travel to Stratford and meet the 7th Elkettes beginning at 4:30 p.m.

The 8th Lynxettes lost their second game of the season. It was a very tough loss especially since the 8th Lynxettes wanted to have a better win/loss record than last year, but the 8th Lynxettes already lost their second game of the season. Ronda Gibson and Jill McLain both fouled out, but that really didn't matter, as the Dumas 8th grade Demonettes had a great player in #44. She was a very tall, very athletic player, no one could stop her. She did a fantastic job against the 8th Lynxettes, who tried to make her commit Offensive Charging fouls, but she outsmarted the players and made them foul out of the game. One of the best ballhandlers on the 8th Lady Lynx team has been Jennifer Yarbrough. Jennifer did a tremendous job, just fabulous. She stole the ball a few times, and so forth. As a matter of fact, Jennifer played a whale of a game when she entered the game!! She has to be one of the better 8th grade ballhandlers in the District. Michele Savage, another fine ball player for the 8th Lynxettes finished the game with 4 fouls, she did not intend to foul out, and did a fine job playing with four fouls!! The girls that are 8th Lynxettes include Michele Savage, Carrie Ann Guthrie, Cayla Eaton, Leticia Vela, Stacie Swan, Jennifer Yarbrough, Kerri Ann Holt, Donda Pool, Shari Vernon, Tammy Nollner, Tammy Shields, Charlotte Brandt, Pam Stumpf, Kristi Wright, Cindy Medley, Kelli McWhirter, Rocio Rosales, Denise Rojas, Jennifer Sintas, Vicci Elbert,

Sandi McLeod, Neta Burger, Diane Sorgi, Julie Latta, Rhonda Matthews, Lynette Dunaway, Jana Pittman, April Abston, Stephanie Baxter, Liz Sumner, Tammy Goodson, Diana Arjona, Crista Urban, Jan Allen, Ronda Gibson, Jill McLain and Melissa McClain. These girls, when they have played, have done a fine job. Although, the 8th Lynxettes lost their final game of 1982, they will be prepared to defeat all their opponents in 1983, as a matter of fact, the 8th Lynxettes can defeat any team, once they get their mind set to it—that they will win.

The 9th Lynxettes played a fine game against Dumas. They did a tremendous job. Those that played include Carlee Dixon, Shelly Dunning, Traci White, Mary Anne Evans, Julie Jones, Heather McRee, Linda

Evans, Dana Irlbeck, Alicia Langston, Carol Taylor, Kim Younger and Nancy Queen. The Freshman Lynxettes are coached by Richard Trantham, as a matter of fact, the 8th Lynxettes are coached by John Roller. Now, the Freshman Lynxettes have good talent, they just haven't been winning the games they feel they should have won. This is the last game in 1982 for them. They will travel to Stratford, as will the 7th and 8th Lynxettes, to meet up with the Elkettes team. **NOTE FROM SPORTS DESK:** The Freshman Lynxettes brought home the 7th Place Trophy from the Dumas Tourney they were participating in, they defeated the Perryton team. All in all, the Freshman Lynxettes have had a fine 1st half of a very tough basketball season.

ATTENTION LIVESTOCK PRODUCERS: CATTLEMAN'S LIVESTOCK COMMISSION CO

Box 50, Dalhart, TX 79022
Phone (806) 249-5505
4 miles West of Dalhart on HWY 54
• Hog Sale every Wednesday
• Starts at 10:00 a.m.
• Cattle Sale every Friday at NOON
MARKET REPORT
HOG MARKET
WEDNESDAY, DECEMBER 15

Sold 323 Hogs
Top Hogs \$53 to \$54.50
Sows \$38 to \$42.50
Boars \$37 to \$40

CATTLE MARKET
FRIDAY, DECEMBER 17
Sold 3615 Cattle
Butcher Cows \$25 to \$36
Butcher Bulls \$40 to \$46
Heiferettes \$35 to \$45
Cutting Bulls \$45 to \$52
Feeder Steers 600 to 700 lbs. \$62 to \$65
700 to 800 lbs. \$61 to \$64
800 to 900 lbs. \$58 to \$62
Feeder Heifers 500 to 700 lbs. \$53 to \$57
Steer Calves 300 to 400 lbs. \$65 to \$75
400 to 500 lbs. \$5 to \$70
Heifer Calves 300 to 400 lbs. \$54 to \$60
400 to 500 lbs. \$53 to \$57

CATTLEMAN'S LIVESTOCK COMMISSION CO. WILL NOT HAVE ANY SALES THE WEEK OF CHRISTMAS, WEDNESDAY, DEC. 22 OR FRIDAY, DEC. 24. EVERYONE HAVE A MERRY CHRISTMAS AND WE WILL SEE YOU AT THE HOG SALE DEC. 29 AND AT THE CATTLE SALE, DEC. 31.

FOR SALE: 1 USED HANOVER TRAILER, 16 FT. X 6 FT.

WE NEED YOUR COWS & BULLS IN THE DAY BEFORE THE AUCTION IN ORDER TO COMPLY WITH FEDERAL AND STATE REGULATIONS AS TO BLOOD TESTING. THE STATE OF TEXAS PAYS FOR THIS TESTING.

WE ARE NOW OFFERING A SELL & BUY BACK PLAN FOR CATTLE.

WE ARE THE DEALERS FOR THE NECK-OVER TRAILERS.

LARRY WING, MANAGER, RES. 806-249-2402
Kenneth Knight, Asst. Manager 806-384-2136
Craig Lawrence, Yd. Foreman 806-384-2153

FIELD REPRESENTATIVES:
George Wall, Clayton, N.M. 505-274-9550
Greg Wade, Canyon, TX 806-655-3318

Schools in Spearman will resume after the Christmas and New Years Holidays, January 3, 1983.

7th, 8th & 9th Lynx 'Downed' by Dumas

The 7th, 8th and Freshman Lynx traveled to Dumas and came back empty-handed. All the games were tough, but not one Lynx team came home with a victory.

The 7th Lynx are coached by Dan Shaver. Coach Shaver has done a fantastic job with his 7th Lynx this year. They haven't won all the games they planned, but other than that the 7th Lynx look like a fine team for the future. Those that have played this year include Justin Ooley, Alan Beeson, Brett Davis, Kevin Nelson, Timmy Woolley, Carl Urban, Tony Herndon, Jesse Herndon, Will Black, Steve Moore, Junior Ochoa, Chris Lopez, Norman Scroggs and these fine young boys have played marvelously well. The 7th Lynx will host the Stratford 7th Elks on Monday, January 3rd, beginning at 4:30 p.m. at the Lynx Little Gym. This will be the first game of the second half of the basketball season, the basketball season is for 1982-83, so the 7th Lynx will want to have a great 1983 season.

The 8th Lynx have been playing really well, losing a few games by 1 or 2 points in the

final seconds of play. Those 8th Lynx that have played include Allen Mires, Mark Garnett, Scott Taylor, Jesse Logano, Dusty Hill, Ray Saldivar, Daniel De La Rosa, Wade Burgess, J.W. Hardy, Monte Beck, Trevor English and Allen Gardner. The 8th Lynx coach is Ken Rutherford. Coach Rutherford has done a fine job with his 8th Lynx, but they have lost lots of games in the final seconds of the game, as a matter of fact, in the last 10 to 15 seconds to go in the game. The 8th Lynx will face their 1983 opponents with great new style and so forth. The game is scheduled for January 3, 1983 at the Lynx Little Gym, beginning at about 5:30 or 6:00 p.m. Go on over to the Lynx Little Gym and cheer them on.

The Freshman Lynx, coached by Rickey Smith, have had a fine year, they haven't won all the games they figured they would, but they are now getting ready for the 1983 part of the 1982-83 season. This first game in 1983 will be against Stratford on January 3rd. The game is scheduled for a 7:00 or 7:30 start, on Monday January 3rd, don't forget, mark it down on your calendar.

Lynx 'Blast' Stratford

The Spearman Lynx played an outstanding game against the Stratford Elks. The Elks probably figured that the Lynx would be "worn out" due to the fact that they won and played a very hard and tough game against the Stinnett Rattlers last Friday night, boy were they wrong!! The Lynx won the game 53 to 47.

The Lynx started off slow, but after a while, there was no stopping the Lynx Express, with Sophomore Ross Donahue leading the way.

The Lynx members include Darren Goodheart, Jay pack, Steven Francis, Mike Caldwell, Scott Dunlap--all Seniors, Buddy Pool, Byron Sutterfield, both Juniors and Mark Pearson, Steve Burke and Ross Donahue--all Sophomores.

The first quarter action showed that the Lynx probably were still remembering about the Stinnett game, but then in the second quarter there was no doubt as to which team wanted the win more badly. The Lynx scored 18 points, while the Elks scored 13. The score at the half was 28 to 25, in favor of the Lynx.

At the half, Coach F.G. Crofford was telling his Lynx to keep up the good work, find the open man, take a good, clean shot, rebound, and take as many fast-breaks as possible. In the first quarter, the Lynx could not break the full-court press, but before the half-ended, the Lynx had the Stratford Full-court press down-pat. The Elks' coach was telling his team to watch out for the Sophomore, outside shooter known as Donahue. He was killing the Elks, from outside, while Buddy Pool, was doing a lot of damage from the inside.

Neither team could break into the double-figure numbers in the third quarter, because both teams' defenses were working great!! The Lynx scored 9 points, the Elks had 7, but the Lynx added 2 more points to their 3 point lead, so now the Lynx lead by 5 points. Going into the final quarter of play, the Lynx would shoot from anywhere they felt the ball would fall in, and sure enough, the ball cooperated. The Lynx outscored the Elks for the 3rd time that evening, 16 to 15, winning the game 53 to 47. It was a tough game, but the Lynx came out in fine style. The leading scorer, once again, was

Stratford Defeats JV Lynxettes

The Spearman JV Lynxettes played a very tough game, but came up empty-handed. They lost to Stratford, 37 to 23. It was a tough loss, but the JV Lynxettes can take it out on the JV Lady Hounds tonight at Greyhound Gym. The Junior Varsity Lynxettes are coached by John Roller. Coach Roller has done a fine job with the JV Lynxettes, who in turn have done a fine job for Coach Roller.

NOTE FROM SPORTS DESK: Since the game was played on Monday night, December 20, the Freshman that are usually on the team were not able to play due to the fact that they had a game to play against the Dumas Freshman. The JV Lynxettes played as tough as any team can play, but the Stratford JV Elkettes still defeated the fine JV Lynxettes team.

Those that played Monday night include Denise Brewer, Junior; Ciria Vela, Genne Womble, Stacey Poole, Lee Barnes and Andi Hager--all Sophomores, the Freshman that play on the JV Lynxette team include Carlee Dixon, Julie Jones, Shelly Dunning, Mary Anne Evans, Traci White, Linda Evans and Heather McRee. The JV Lynxettes played a fantastic game.

The JV Lynxettes will face the Gruver JV Lady Hounds tonight at Gruver Gym--tonight, of course, being Tuesday, December 21. The JV Lynxettes have an excellent chance of defeating their arch-rivals.

Then on January 4, 1983, the JV Lynxettes will host the Gruver JV Lady Hounds beginning at 4 p.m. This should be a great re-match, sort of speak, because the loser of Tuesday's game, will want to win the game for the New Year!!

JANUS
January took its name from Janus, the two-faced god. The ancient Romans believed Janus had the power to look back over the past and forward the future.

**REPORT OIL FIELD THEVES
1-800-OIL-COPS
TOLL FREE • REWARD**

**Baker & Taylor
Drilling
Company**

THURSDAY		12/23/82	
CABLE (2) PM	ESPN Sports Network	OETA Oklahoma City	KAMR CH.4 Amarillo
6:00	NFL Story: Line By Line	MacNeil/Lehrer Report	News: M*A*S*H
6:30	ESPN SportsCenter	Sneak Preview: Christmas w/ Gov. Nigh	Fame
7:00	NCAA Basketball: UCLA at Maryland	All Creatures Great and Small	Cher's
7:30	ESPN SportsCenter	Top Rank from Las Vegas	Hill Street Blues
8:00	ESPN SportsCenter	MacNeil/Lehrer Report	News: Tonight Show
8:30	ESPN SportsCenter	Sign Off	Late Night with David Letterman
9:00	ESPN SportsCenter	Sign Off	NBC News Overnight
10:00	ESPN SportsCenter	Sign Off	Sign Off
11:00	ESPN SportsCenter	Sign Off	Sign Off
12:00	ESPN SportsCenter	Sign Off	Sign Off
(9)	WGN CH.9 Chicago	(10)	KFDA CH.10 Amarillo
News	Magnum, P.I.	News	Entertainment Tonight
(11)	WTBS CH.17 Atlanta	(12)	CNN Cable News Now
Movie: Mr. Magoo's Christmas Carol	News	Moneyline Sports Tonight	Prime News
News	News	Prime News	Prime News

FRIDAY		12/24/82	
CABLE (2) PM	ESPN Sports Network	OETA Oklahoma City	KAMR CH.4 Amarillo
6:00	NCAA Basketball: UCLA at Maryland	MacNeil/Lehrer Report	News: M*A*S*H
6:30	ESPN SportsCenter	Washington Week: Review	Proverbs of Matthew Star
7:00	ESPN SportsCenter	Washington Week: Review	Proverbs of Matthew Star
7:30	ESPN SportsCenter	Washington Week: Review	Proverbs of Matthew Star
8:00	ESPN SportsCenter	Washington Week: Review	Proverbs of Matthew Star
8:30	ESPN SportsCenter	Washington Week: Review	Proverbs of Matthew Star
9:00	ESPN SportsCenter	Washington Week: Review	Proverbs of Matthew Star
9:30	ESPN SportsCenter	Washington Week: Review	Proverbs of Matthew Star
10:00	ESPN SportsCenter	Washington Week: Review	Proverbs of Matthew Star
10:30	ESPN SportsCenter	Washington Week: Review	Proverbs of Matthew Star
11:00	ESPN SportsCenter	Washington Week: Review	Proverbs of Matthew Star
11:30	ESPN SportsCenter	Washington Week: Review	Proverbs of Matthew Star
12:00	ESPN SportsCenter	Washington Week: Review	Proverbs of Matthew Star
(9)	WGN CH.9 Chicago	(10)	KFDA CH.10 Amarillo
News	Magnum, P.I.	News	Entertainment Tonight
(11)	WTBS CH.17 Atlanta	(12)	CNN Cable News Now
Movie: Mr. Magoo's Christmas Carol	News	Moneyline Sports Tonight	Prime News
News	News	Prime News	Prime News

Karen's cozy corner
By Karen Haruff
Hansford County Extension Agent
Home Economics

Hansford Hospital Auxillary Meets

The Hansford Hospital Auxillary met Dec. 13th, in the Fellowship Hall of the Christian Church for their annual luncheon.

Betty Jean Davis presided over a short business meeting. In the absence of the Secretary, Ruth Crawford, read the minutes of the previous meeting, which were approved as read. Virginia Trindle gave the Treasurer's Report.

A report on the Auxillary's activities at the Manor was given with members volunteering for birthday parties.

The President appointed a Nominating Committee for office for the next two years.

Edith Smith handed out new work schedules and all went to the hospital to decorate for Christmas.

How To Tell

How are leap years determined? Years divisible by four are leap years, except the years numbering the centuries. They are leap years only if divisible by four after the ciphers have been removed.

Dear Santa,
I want an organ please.
I want a doll please.
I want a B.B. doll please.

Love,
Sonya Tindell

PART TWO--DETECTING HOME THIEVES
OLDER TEXANS: SAVE ENERGY FOR YOUR HEALTH
Older adults, even if your home is mortgage free, it may be a "robber baron" home, stealing and wasting energy—a problem you can solve by finding energy leaks and fixing them.

First, be an "energy detective" and find the air leaks.

"Robber baron" homes were built when energy costs were low, and energy efficiency was rarely considered.

These houses are not "energy savers." They can "rob" savings and "break into" basic living expenses needed to maintain good health.

Few older homes and apartments have enough insulation, storm windows or doors. Few have weatherstripping and caulking to stop air leaks.

USE ENERGY CHECKLIST
To determine if your home is a "robber baron" home, take an "energy-saving" look around.

Evaluate your home with this energy checklist:

- 1) Check for drafts around windows and doors by blowing air at inside cracks with a hair dryer. Have someone stand on the other side to feel if the air is escaping.
- 2) Check for drafts where pipes go through floors, walls and ceilings.
- 3) Check attic ceilings for air leaks. They cause draft around the attic door.
- 4) Check to see if windows fog with water or frost. Such fog indicates heat loss.


Remember, windows can be big energy thieves costing many energy dollars and stealing much warmth from the home.

ASK FOR AGENCY HELP
A number of local agencies may be able to help with the home evaluation.

They include: The Area Agency on Aging, The County Extension Office, The County Community Action Energy Office and your local utility company.

Some of these offices can provide "how to" publications that show how to remedy energy problems.

NEXT: STOPPING ENERGY THIEVES.
EDUCATIONAL PROGRAMS CONDUCTED BY TEXAS AGRICULTURAL EXTENSION SERVICE SERVE PEOPLE OF ALL AGES REGARDLESS OF SOCIO-ECONOMIC LEVEL, COLOR, SEX, RELIGION OR NATIONAL ORIGIN.



... the kind of store you remember.



Wrangler
MEN'S
Flannel Or Dress
Western Shirts

\$3⁰⁰ off

Largest selection in town!

Coats, Jackets
& Vests

25% off

Entire Stock

Wrangler Boys Knit Or Dress Western Shirts

Sizes 7 - 20

25% off

Wrangler Boyswear Fashion & Boot Cut Corduroy Jeans

Boys & Student Sizes

25% off

PRICES GOOD THRU DECEMBER 24

Give A Gift Certificate

Those present were: Ethel Byers, Reba Hunter, Dorothy Haner, Virginia Head, Virginia Trindle, Clementine Renner, Maria Avila, Jettie L. Davis, Adalyn Barnes, Maylyn Schubert, June Jackson, Lorene Kunselman, Doris Ellison, Ruth Crawford, Hazel Stumpf, Betty Jean Davis, Edith Smith and many Cornelius.

A Merry Christmas to All

We wish all of you and your loved ones the most wonderful Christmas ever and in this coming year of 1983, it is our hope that you may have

- Enough happiness to keep you sweet
- Enough trials to keep you strong
- Enough sorrow to keep you human
- Enough failure to keep you humble
- Enough hope to keep you happy
- Enough Success to keep you eager
- Enough friends to give you comfort
- Enough wealth to meet your needs
- Enough enthusiasm to look forward
- Enough faith to banish depression
- Enough determination to make each day a better day than yesterday.



When Was Christ's Real Birth Day?

Most Bible scholars conclude that December 25 is most certainly not the time when the Saviour was born. The tradition of celebrating Christ's birth on December 25 seems to have come from Rome in the 4th century of the Christian era.

Though the actual day of Christ's birth is not known, the Town of Bethlehem still sits on a hill just outside the City of Jerusalem. If we were to go to Bethlehem today, we would stoop low to enter an opening said to be the place where the Baby Jesus was born. The Church of Nativity is built over this site and beautiful Christmas bells hang in its belfry.

The most important point about the Christmas celebration is not necessarily the day, but the fact that He was born, and lived among us making this world a better place for us as we reflect upon His love and pass it on to others, and prepare for the place He has gone to prepare for us where peace and love will reign.

Christmas Cone-Cups

Kids love to eat cupcakes and they love to bake them, too. For a fun, delicious treat, let them help you place flat-bottomed ice cream cones on a cookie sheet and spoon cake batter into them until they are half full. Bake them in a slow oven.

The cone cakes can be eaten plain or ice them; stick a cherry on top, make designs with silver cake decorating balls, or sprinkle them with colored sugar.

Cone-cakes are great for taking on car trips, also, because there will be no litter from cupcake liners.

Holiday Mail Bundles

Remember when you used to see all mailed packages wrapped in brown paper? Well, those packages can be any color now, as long as the package is wrapped well and won't fall apart. If the paper is printed, of course a special label should be made for the address and return address to be read clearly. The package should be large enough for the address and stamps to be on the same side.

Although a cord, fastened securely, is a help—a good, strong tape is sometimes better. This tape, however, isn't the cellophane tape we use to wrap Christmas gifts; it's the nylon reinforced tape.

We are told that most packages should reach any destination on the continental U.S.A. in three days. But if it's getting too close to the deadline of when you want your packages to reach its destination in the Christmas rush, ask your postman about Express mail, or Special Delivery mail.

"Kissing Ball"

For as many years as you probably can remember, mistletoe has been used as not only a lovely Christmas decoration, but as one with a special note of affection. If you're caught under the mistletoe, you might just expect a sweet kiss.

Mistletoe, though lovely, is a parasite that grows on trees, probably dropped by birds that pass through the trees. It can be a challenge to get the mistletoe clusters from the tiptop branches of tall trees.

We derived the practice of hanging mistletoe, from the British, it seems. Their custom of the "Kissing Ball" was a special ornament made from evergreen branches, which was hung in a doorway. Each time a kiss was exchanged, a berry was removed. When the berries were all gone, the kissing had to halt; hence, the bigger the "Kissing Ball" the better!

Holiday Red Punch

- 1 cup sugar
- 1 cup water
- 4 cups (32 oz.) chilled cranberry juice cocktail
- 1 qt. reconstituted orange juice
- 1/4 cup (6 oz.) frozen lemon-limeade concentrate, thawed and undiluted
- 1-2 qts. chilled ginger ale

Red food coloring if desired
Combine the water and sugar in a small saucepan. Stir sugar until dissolved, as you bring it to a boil. Chill until serving time. Combine the sugar-water mixture with the juices. Mix well. Add ginger ale. Mix well. Serve with chunk of ice.

Animals In Christmas Lore

The Norwegians honor all animals, even fish, during the Christmas season. Birds, fish, and animals are particularly protected during the time known as the Peace of Christmas.

No traps are set, and the farmer's cattle are fed salt from a cowbell, because of the belief that this will help the cattle to find their way home at night.

A curious ceremony often took place in Italy in the farmer's barn. Candles were lit and carried into every corner of the shelter by the farmer and his shepherd. The tapers were held high so that every dark corner received light.

It is said that when some of the American Indians learned of the Christ Child, they believed in the beautiful scene that the deer knelt at midnight on Christmas Eve. Bees even entered Christmas lore. Long ago, in England, it was thought that the bees sang to the Baby Jesus at midnight on Christmas Eve. Even today, some beekeepers place a bit of holly on their beehives.

Christmas Caroling

Our English forefathers brought the beautiful tradition of caroling on Christmas Eve to America. The word "carol" means "to sing joyously," and indeed when you are out with a group of friends on a crisp, clear night, amid the twinkling Christmas lights and perhaps a dash of crunching snow, it is a joyous time.

Our most familiar carols seem to have come from the 19th century. Francis Scott Key, author of "The Star Spangled Banner," wrote carols, and it may be interesting for you to know that the comedian Harpo Marx was the author of a popular Christmas carol!

Enjoy those beautiful carols and carolers this season!

Add a special "Noel" decoration to your office or home by cutting out the letters N-O-E-L from styrofoam blocks. Now punch holes in the letters and insert sprigs of holly into the holes. Hang the letters on a door or mantel for a happy Christmas greeting.

Hark! The Herald Angels Sing

This carol was put together over many years. The words were written by Charles Wesley (brother of the founder of the Methodist Church). The melody appeared one hundred and one years later in a cantata by Felix Mendelssohn. Fifteen years later, Dr. W.H. Cummings, who was then organist of Waltham Abbey in England, joined the words and the music.

Christmas Sled

Spray a child's outgrown sled a bright color, and the runners a contrasting color. Pile brightly wrapped gifts on the sled.

Place evergreen branches between the packages, here and there. Stick a big, bright bow on the front of the sled, and sprinkle "snow" over the gifts and sled.

This could take the place of a Christmas tree if you prefer, or just be an added attraction.

A Happy "Noel" Greeting

Swedish Decorations

For a different decoration this Christmas, why not try a Swedish Christmas tree!

Cut a tree from unfinished pine board. Decorate the tree with gingerbread cookies, red apples, small flat toys, small wrapped packages, or clay figurines.

Fasten the tree to a door or over the mantel, etc. A stone crock can be placed on either side of the tree—each filled with pine branches to complete the Swedish flair!

Say, "Merry Christmas" With Kitchen Goodies

Besides the old favorites of Brownies and Snowball Cookies, you might like to try giving your friends a different kind of treat by making chocolate-covered and Almond-covered Pretzels. They make a lovely gift placed on a lace doily in a foil-wrapped gift box.

CHOCOLATE-COVERED PRETZELS

- 1 can Chocolate Fudge Frosting
- 1 lb. pkg. pretzels

1. Place the frosting in a small saucepan and stir constantly, over

low heat, until it's just melted.
2. Line a cookie sheet with waxed paper and place a cooling rack over it.

3. Dip pretzels into the heated frosting, with a fork, allowing the excess frosting to drip off.

4. Place the covered pretzels on the cooling rack.

5. Immediately sprinkle the pretzels with either candies, coconut, finely chopped nuts, or colored sugar, etc.

6. Let pretzels dry at room temperature, about 6 hours.

ALMOND COVERED PRETZELS

1. Follow the recipe for Chocolate-covered Pretzels, using vanilla frosting instead of the chocolate.

2. Add 1/4 teaspoon of almond flavoring to the frosting.

3. Immediately sprinkle the frosted pretzels with chopped almonds. M-m-m-m-m! Your friends will love your special gift!

CHRISTMAS IS:

A special holiday on which neither the past nor the future is of so much interest as the PRESENT!!!!!!

Following The Star

Midnight wraps the hills around Bethlehem in stillness. Woolly sheep lie on shadowed hillsides. Shepherds cluster together, talking quietly of the main topic of the day — the ironclad Roman rule over their country. In subdued tones they talk of how the prophets have foretold the birth of a Deliverer, and pray earnestly that it may be very soon.

An even as they talk, suddenly a bright halo of light envelopes them — so bright that they are frozen with fear. Then an angel calms their fears with the glad news, "Behold, unto you is born this day in the city of David a Savior, which is Christ the Lord."

While the shepherds watch — still spellbound, the light slowly fades and once again the stars shine down on sleeping Bethlehem. Looking at each other with wonder, the shepherds are filled with the greatest happiness they have ever known.

Midnight brings starlight to ancient Persia. Soft breezes stir the palm fronds and gently ripple through an open window, lightly touching the rolls of parchment on the table. Three men are intently studying the scrolls — scientists they are, who have included the Scriptures in their research. Suddenly they catch a glimpse of a strange flow through the open window, and watch as it seems to become one glowing star that hovers just above the far horizon.

Following the Star, the Wise Men are led to the greatest Star on Earth. Happiness glows on their faces.

Midnight enfolds the hills and vales, towns and cities of Christmas 1982. Christ looks down upon the birthday celebration planned in His honor; His heart is made glad as His children follow the Star, giving Him the gift of their hearts, and sharing the gift of His love with one another.

If you haven't tried having some lonely person to join your family for Christmas—bet you, too, would receive an extra glow

of joy from doing so. May this be your happiest Christmas as you reach out to make another happy!

Be Our Guest for the First Christmas



Lana and Brady Yeary Decorating the First National Christmas Tree.

You are invited to a holiday celebration, "The First Christmas" at First National Bank. Every day from December 20 through December 23, a festive spirit awaits when you come to the lobbies of the bank. Holiday hostesses welcome you. Hospitality tables are filled with special treats to eat and drink.

Our First Place Employees Welcome You.

The hosts and hostesses at our hospitality tables are friends of yours. Many are bank employees. Others were employees in Christmases past. Some hostesses are

associated with the Board of Directors or serve on the First Women's Advisory Council. The First hostesses are in the main lobby each day from 9:00 a.m. till 3:00 p.m.

The First Christmas means good things to sample.

You'll find lots of holiday treats. We invite you to fill a plate and sample the goodies. Taste a hot cup of punch or have a cup of fresh coffee.

So come see us. Sample the goodies. Hear our music. Share in the celebration of a very special season with friends at First National.



First National Bank
Perryton, Texas
806/435-3676
Member FDIC

illness. Woolly
together, talking
and Roman rule
the prophets
earnestly that it
ght envelopes
Then an angel
to you is born
at the Lord."
the light slowly
Bethlehem.
are filled with
reezes stir the
ndow, lightly
en are intently
included the
glimpse of a
as it seems to
far horizon.
greatest Star

ies of Christ-
ation planned
en follow the
g the gift of

so.
your happiest
u reach out to
copy!

UNITED Supermarkets

HOLIDAY SAVINGS

NO SALES TO DEALERS
QUANTITY RIGHTS RESERVED

UNITED SUPERMARKETS WILL BE CLOSED SATURDAY & SUNDAY DEC. 25 & 26

DOUBLE S & N GREEN STAMPS W/ID-1 SAT WITH A 2.50 OR MORE PURCHASE EXCLUDING CIGARETTES

UNITED BROWN 'N SERVE ROLLS

28c

LIMIT 3 PLEASE

BREAKFAST FIXIN' FINE FARE ORANGE JUICE 12 OZ.

68c

UNITED PREMIUM QUALITY BACON 1 LB. PKG.

\$1.49

UNITED PREMIUM QUALITY BONELESS HAMS

\$1.78 LB.

WATER ADDED

HALF HAM \$1.98 LB.

PLAIN WHIPPING CREAM 1/2 PT.

28c

LIMIT 4 PLEASE

ROMAN MEAL 1 1/2 LB. LOAF

88c

DECKER QUALITY PORK LEAN SAUSAGE 8 OZ. PKG.

69c

FINE FARE CREAM CHEESE 8 OZ.

58c

UNITED EGGS 18 CT. EXTRA LARGE

98c

BORDEN ICE CREAM REG. ROUND 1/2 GAL.

\$1.28

UNITED TRU TENDER OR CHOICE BONELESS SHOULDER ROAST

\$1.48 LB.

BONELESS ARM \$1.78 LB.

FINE FARE BISCUITS 8 OZ.

68c

PEPPERIDGE FARM STUFFING MIX 8 OZ.

68c

FINE FARE VEGETABLES CUT GREEN BEANS CORN PEAS (303 CAN)

41c FOR

COFFEE FOLGER'S 1 LB. CAN

\$1.98

LESUEUR SMALL SWEET PEAS 17 OZ.

21c FOR

FINE FARE FRUITS PINEAPPLE 15 OZ. FRUIT COCKTAIL PEACHES PEARS 14 OZ.

21c FOR

OCEAN SPRAY CRANBERRY SAUCE 16 OZ. WHOLE & JELLED

38c

GLADIOLA CORNBREAD MIX 6 OZ.

18c

SWANSON CHICKEN BROTH 14 1/2 OZ.

28c

REYNOLDS WRAP 25 SQ. FT.

59c

DEL MONTE MANDARIN ORANGES 11 OZ.

69c

BORDEN EGG NOG QT.

78c

WASHINGTON EXTRA FANCY RED DELICIOUS APPLES SUNKIST NAVAL ORANGES

38c LB.

GOLDEN RIPE BANANAS

389c

COKE 6 PK. 32 OZ.

\$1.88

PLUS DEPOSIT

PARTY PLANNING POINTS

If you don't have a special centerpiece in mind, or just don't have room for one on your table, set the kids to folding brightly colored napkins in triangle shapes to stand up in the glasses.

Colorful, permanent press sheets can become lovely holiday tablecloths.

If you think you can't have a large crowd because of not enough matching tableware, the patterns can be mixed to have a festive look. Or plan a buffet meal where each goes his own way, not paying particular attention as to whether his utensils happen to match someone else's or not.

It's the comfortable, happy atmosphere you have at your party that will cause others to have a great time, rather than the finery you could exhibit.

Happy partying!

Have Safe Holidays

Keep your holidays merry by following some safety tips:

1. The milky substance from

poisettias is said to be toxic if swallowed. Also, some decorative berries may be harmful if swallowed. If you have small children or pets, you will want to keep these Christmas plants out of reach.

2. It's not wise to put cotton or paper around the base of a Christmas tree. These Christmas tree skirts should be inflammable.

3. Keep your live Christmas tree's stand filled with water. Dried out Christmas trees catch fire quickly.

4. Unplug the tree when you leave the house. Be sure its stand is stable so that it won't topple easily.

5. Keep breakable ornaments, angel hair or other glass filaments up high out of baby's reach.

6. Secure all extension cords into their sockets to prevent getting shocked when you turn on your electric decorations. Keep these cords away from doors and hallways or other places they may be easily tripped over.

HAPPY HOLIDAYS—THE SAFE WAY!



Make Ahead Dessert

You can make this frozen mousee-like delight ahead of time and seal it right in a half gallon, plastic container that's designed for keeping ice cream. Then, when you're ready to serve this delicious dessert to your guests, it can easily be unmolded, ready for frosting and slicing. Any leftovers can go right back into their original, sealed keeper and stored again.

Holiday Nesselrode Loaf

1. In a small saucepan combine: 1/2 cup raisins, 1/2 cup orange juice. Simmer 2-3 minutes to plump the raisins. Set aside to cool.
2. In a small mixing bowl, beat with your electric mixer until it's very thick and falls off the beaters in sheets:

- 3 egg yolks, 1/2 cup sugar. Gradually stir in 1 cup scalded milk.
3. Return the mixture to the top of the double boiler, cooking over boiling water and stirring constantly until the mixture thickens and coats a metal spoon. Cool to room temperature.
4. Stir in: 1 teaspoon vanilla, 1 teaspoon grated orange peel.
5. Place the 3 egg whites in a small bowl and beat until frothy. Gradually add 1/4 cup sugar and beat until stiff but not dry.
6. Fold the egg whites. Add the 1 cup heavy cream that has been whipped; the raisin mixture; the 1/2 cup chopped nuts; and the 1/2 cup mixed candied fruits into the egg yolk mixture.
7. Line the 1/2-gallon plastic container with ladyfingers. Spoon in the custard mixture. Seal and store in freezer.
8. When you are ready to serve your dessert, let the container stand at room temperature 10 minutes. Run a knife around the inside. Turn out into a serving platter.
9. Whip 1/2 cup heavy cream with a bit of sugar. Smoothly

frost the loaf, then spoon whipped cream into a pastry tube. Use the star tip to pipe the cream around the base and around the top. Decorate with whole red maraschino cherries. Split green maraschino cherries and spread them open for leaves.



Fringed Centerpiece Tree

For a pretty little tree to use as a table's centerpiece, cut a large piece of paper into a half circle, making it two times longer than it is wide. Roll this circle into a cone and tape the cone together. Trim the base of the cone to make an even circle.

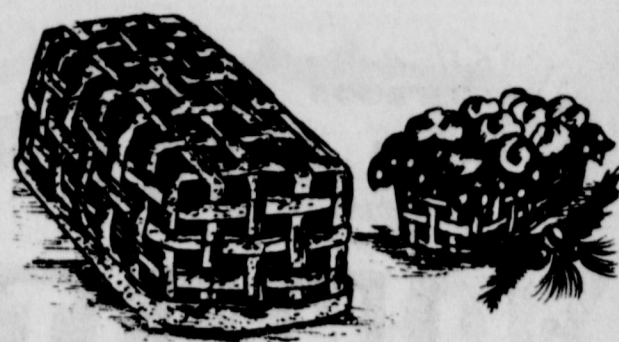
Cut a package of green crepe paper into strips while still folded. (You may wish to use tin foil for a silver tree or green florists' cellophane paper.) While the strips are still folded, slit them halfway up for fringes. Now open the strips.

Start at the bottom of the cone and glue on the paper strips overlapping the rows and continuing to the top.

Cut out a gold star for the top of your tree. Stick on gummed stars.

If the tree is small enough, you may wish to place the cone on a paper towel tube and paint the tube brown for the trunk.

Set the tree in a blanket of cotton snow. Wrap tiny gifts to place under the tree.



Holiday Bread Basket

Something to really whet appetites for a holiday meal is a bread basket woven from real dough! It's just for looks, however, and not edible because varnish is an important ingredient to make the basket beautiful and durable.

To make your bread basket, follow these easy steps:

- MIXING**
1. In a large mixing bowl mix 6 cups of flour and 1 1/2 cups of salt with 2 1/2 cups of water.
 2. Dump the dough onto a lightly floured counter or board.
 3. Knead the dough for about 5 minutes.
 4. Using a lightly floured rolling pin, roll the dough to 1/4 inch thickness.

CUTTING:

1. Cut dough into long strips about 1/4 inch wide, using a pastry cutter or paring knife.
2. Cover the strips with a damp cloth until you are ready to start weaving.

WEAVING:

1. Turn an oven-proof dish upside down on a cookie tin.
2. Place strips of dough parallel over the dish, making sure the strips are long enough to touch the cookie tin on all sides

HANDY ORNAMENT BOX

Have you lost that special box that had those neat little partitions in which you kept your Christmas ornaments, or has it disintegrated with the passing of time?

Try using an egg carton! It already has nice little cups to fit your ornaments and keep them safely stored for another merry Christmas!

Giving Beyond Christmas

You've already reached into that billfold for gifts for many relatives and friends—and yet there's your party at work that is still to come. It wouldn't seem like Christmas unless you exchanged gifts.

Here's one idea that has turned out to be a money-saver at Christmastime and is a heap of fun.

At the party, each guest is given a pencil and a card on which he or she will write some special gift to be given sometime in the next few months. At the top of the paper the guest indicates whether it is a gift to a guy or a gal. The giver's name is written at the bottom of the paper.

The gift is a **HAND and HEART** gift; it may be:

- A free car wash,
- Three dozen cookies,
- A piece of ceramic (from the one who make ceramics),
- A small oil painting from the artist,
- A lemon pie,
- So many hours of helping to cut firewood,
- A free shampoo and set,
- A chocolate cake,
- A free automobile tune-up,
- or many other things one would have fun making or doing for another.

The guys' "gifts" are placed in a box, while the gals' "gifts" are placed in another. Each guest draws a card from the respective box, and there's a lot of merriment, thinking of the special, personalized gifts to be received after the other Christmas gifts have been forgotten about!

Edible Santa



Edible Santa

Find a firm, red apple. Stick a toothpick in each of four big marshmallows. Two will be Santa's arms and two his feet. Insert them, with the other end of the toothpicks, into the apple in the proper places.

Place a large marshmallow (lollipop-fashion) on a toothpick for Santa's head.

Break a toothpick in half. Impale a raisin on each toothpick half and stick the toothpick in place for Santa's eyes.

Put a large red gumdrop on top of Santa's head to be his hat, and a red cranberry for his nose. Use cotton for Santa's beard and around his hat, using toothpicks to hold it on as necessary.

Baubles or Diamonds?

To some of us no jewel, not even a diamond, is more beautiful than a cheap Christmas bauble.

Going up into the attic with your cousins and discovering a whole box full and overflowing with delicate, sparkling, translucent Christmas baubles—some round, some teardrop-shaped, interspersed with strings of glittering beads and shining tinsel—you wonder, "Could a king's treasures be any more splendid?"

At the same time those baubles are so full of splendor—there's hardly anything that can shatter more easily. Here's where the true beauty of the diamond comes in. It holds fast while the gaudy, cheap trinkets burst asunder!

Diamonds sparkle in the eyes of those who take selfishness out of Christmas by putting each other first. May the joy that your family receives this season be the kind of joy that will last a lot longer than it takes to pay off the Christmas bills!

Living Up The Day!

All dressed up in his best suit he was, and mighty glad to have a break to get out in a world of kids and family fun. A little smile played around his lips as he sat in the rocker and watched the gifts being opened, and he seemed surprised that he, too, would be remembered by gifts.

A trac-ball set was given to one young person and after the gifts were "o-o-hed" and "a-a-hed" over, and kisses and hugs of thanks had been given—the kids dashed out to try out that trac-ball set.

The old gentleman watched for awhile, then slowly slid open the glass patio door, and soon, with racquet in hand, he, too, was bending to catch the gently thrown balls and beaming as if to say, "Eat your hearts out, nursing home occupants, I'm going to really live up this day!"

Afterwards he munched up Christmas dinner with real gusto! Hearts of the kids and the adults were warmed to see the fun the guest was enjoying.

THE FIRST PLACE FUND

Insured Money Market Investment Account

First National Bank offers an Insured Money Market Investment Account. The Account is available to individuals and businesses.

First Place Fund features:

INSURED SAFETY. Every dollar is insured by the F.D.I.C. up to \$100,000.

HIGH INTEREST RATES. Money Market interest rates are paid to investors in the First Place Fund.

ACCESS TO YOUR MONEY. First Place Fund gives customers daily access to their money. The qualifying deposit is \$2500 to earn full interest.

COMMUNITY INVESTED MONEY. The First Place Fund keeps the investment dollars right here in the area, helping our communities economy.

For more information, and for today's rate on the First Place Fund, contact the Money Market Advisor.



First National Bank
Perryton, Texas
806/435-3676
Member FDIC