



The Spearman Reporter



VOL. 73 NO. 19

THE SPEARMAN REPORTER, SPEARMAN, TEXAS 79081

THURSDAY, MARCH 18, 1982

HANSFORD COUNTY

JUNIOR LIVESTOCK SHOW

Gruver, Texas -- March 19 - 20th



PROGRAM

FRIDAY
March 19, 1982

Weighing will begin on the following schedule:

8:00 a.m. - 10:00 a.m. Swine and Sheep
10:00 a.m. - 12:00 noon Steers

SHOW SCHEDULE

Friday - March 19, 1982

1:45 p.m. Grand Opening of Show
All Directors, Ag Teachers, County Agents, FFA Chapter Presidents, 4-H Club Chairman and FFA Sweetheart report to arena
2:00 p.m. Lamb Show Starts
Swine Show will follow completion of Lamb Show

From approximately 10:00 p.m. until 7:00 a.m. Saturday, barn will be locked with no one in barn beside night watchman.

SATURDAY

March 20, 1982

8:30 a.m. Pens and stalls must be clean and rubbish removed
8:30 a.m. Judging of Steers
11:00 a.m. Registration of Livestock Judging Contest
11:30 a.m. Livestock Judging Contest
6:00 p.m. Floor prices will be auctioned
Presentation of Livestock Judging Awards
Showmanship Trophies and
Top Gaining Award

Immediately following presentation of awards the auction sale of lambs, swine and steers. Sell in order: 1 lamb, 1 swine, 1 steer, etc.

GRAND CHAMPIONS

1981

Todd Williams, Gruver 4-H Steer
Curt Porter, Spearman 4-H Barrow
Tracy Logsdon, Gruver 4-H Lamb

RESERVE GRAND CHAMPIONS

1981

Roy Don Gammon, Gruver 4-H Steer
Susan Davis, Morse 4-H Barrow
Ron Clark, Spearman FFA Lamb

1982 BOOKKEEPERS & AUCTIONEERS

Jimmy Greene Spearman
Mack Hoel Gruver
Orville Latham Spearman
W. B. Dickenson Olton
Melvin Bradley Gruver

1982 DEPARTMENT SUPERINTENDENTS

STEERS John Armes, Larry Porter, D.A. Cator
SHEEP Charles Reid, Carl Kunselman, Bill Strawn
SWINE Glen Ray Mackie, Charles Eaton, Raymond Walker

1982 JUDGES

SHEEP Joe Ed Wise, Lamesa
SWINE Jim McManagal, Happy
STEERS Joe Ed Wise, Lamesa

Clubs and Chapters Participating in the Show

Gruver FFA **Spearman FFA**
Gruver 4-H **Spearman 4-H**
Morse 4-H

BOARD OF DIRECTORS

Officers

Chairman Bobby Nollner
Vice Chairman John Armes
Secretary Jim Smith
Treasurer Buddy Lowe, Jr.
Assistant Treasurer Norma Jean Mackie

Directors

John Armes, Gruver
D. A. Cator, Gruver
Carl Cooper, Gruver
Lynn Davis, Morse
Charles Eaton, Spearman
Jimmy Greene, Spearman
J. C. Harris, Gruver
Carl Kunselman, Spearman
George C. Lowe, Jr., Gruver
Glen Ray Mackie, Spearman
Buddy Murrell, Gruver
Bobby Nollner, Spearman
Larry Porter, Spearman
Charles Reid, Morse
Bill Strawn, Spearman
Raymond Walker, Gruver
Jerry Williams, Gruver

Buyers of Grand Champions

1981

Gruver State Bank, Gruver Steer
H & H Water Well, Spearman Barrow
Hansford Implement, Spearman Lamb

Buyers of Reserve Grand Champions

B & B Farm Industries, Spearman Steer
Jim Shields, Morse Barrow
Spearman Equity Lamb

POINTING OUT

The Future of Agriculture Is
In Their Hands. We Salute the
Participants in the Junior
Livestock Show.



Vocational Agriculture Teachers

Herman Boone Spearman
Craig Soloman Gruver
Burt Williams Spearman

Extension Service

Jim Smith Spearman

you're
INVITED
TO THE
JUNIOR LIVESTOCK SHOW



PRIZES AND PREMIUM SALES

For Lambs, Swine, and Steers

Placing for each class: Presented to all animals that sell
IN SALE AUCTION Ribbons
CHAMPIONS Rosette
RESERVE CHAMPIONS Rosette
GRAND CHAMPIONS Trophy
RESERVE GRAND CHAMPIONS Trophy
These placings apply to all steer, lamb, and swine classes.

1982 Donor of Grand Champion Trophy — Steer
Gruver State Bank Gruver, Texas
1982 Donor of Reserve Champion Trophy — Steer
Gruver Ford Gruver, Texas
1982 Donor of Grand Champion Trophy — Swine
Hansford Co. Parts & Supply Gruver, Texas
1982 Donor of Reserve Champion Trophy — Swine
Nelson's Builders Supply Spearman, Texas
1982 Donor of Grand Champion Trophy — Lamb
Dairy Queen Gruver & Spearman, Texas
1982 Donor of Reserve Champion Trophy — Lamb
J. L. Brock Insurance Agency Spearman, Texas
1982 Donor of High Gaining Steer Award
Sparks Bros. Spraying Gruver & Spearman, Texas
1982 Donor of Animal Husbandry Award
Hansford County Farm Bureau Spearman, Texas
1982 Donor of Steer Showmanship Award
First State Bank Spearman, Texas
1982 Donor of Lamb Showmanship Award
Double D Ag Center Gruver, Texas
1982 Donor of Swine Showmanship Award
Gruver Lumber Co. Gruver, Texas

Losing campaigns fail to deter Duncan



'It just really bothers you to lose. I think maybe when you've won a lot, you don't really think it can happen to you. Then all of a sudden, you wake up to the fact that it can. It's sure a different feeling than anything I've ever had. It's very humbling.'

Spearman coach Jimmy Duncan

Jimmy Duncan has aged a great deal during the last three years, but he hasn't outgrown his professional calling.

Duncan this week resigned as Spearman High School's head football coach after coaching the Lynx for three seasons, three uncharacteristically long seasons.

The former Amarillo High School griddier always has been a winner as a coach. He's a winner as a person. His teams just didn't happen to reflect that (winning) while at Spearman.

Those three years at Spearman didn't produce the results come to be expected from Lynx football teams of Duncan.

During the mid-70s, Greg Sherwood's Spearman teams didn't lose a district football game in five years. Preston Smith guided the Lynx into the playoffs just before Duncan was hired away from Vega, where he'd spent 15 years, 12 as head coach.

But under Duncan, Spearman posted records of 0-10, 5-5 and 3-7.

A combination of a small enrollment (reportedly the smallest among District 1-3A schools), injuries to key people at key times and the inevitable waning of talent contributed to Spearman's plunge from the perch of superiority.

It happened to a guy whose 12 teams at Vega as head coach posted only one losing season. His teams won six district titles, and the 1973 outfit reached the state-championship finals before bowing to Troup. That team posted a 14-1 record.

After so many winning seasons, after lining up Friday night after Friday night knowing his teams had a chance to win, Duncan has been humbled by the Spearman experience, but not turned off to coaching.

'I will stay in coaching if I can,' he said this week.

'I love to work with the kids, and I still like to line up over on that sideline and play in a big ball game.'

There have been few big ballgames for Duncan the last three seasons. Mostly, it's been an attempt at salvaging respectability. Only eight wins in three years.

Duncan was affected.

Garet von Netzer

Globe-News Sports Editor



Any winner would be. Losing gnaws at a winner's insides, it sears the spirit, it humbles, oh how it humbles.

'Sure we'd like to have won more games here, but we weren't able to do it. I felt like maybe if I could have the opportunity (to win) somewhere else, I might have a better chance of winning.'

Some say you can get used to losing after a while, that it doesn't hurt so much after a while.

Not Duncan.

'If just really bothers you to lose.

'I think maybe when you've won a lot, you don't really think that it can happen to you. Then all of a sudden, you wake up to the fact that it can.'

'It's sure a different feeling than anything I've ever had. It's very humbling.'

Has a period of sparring with defeats instead of victories on Friday nights affected Duncan's philosophy toward coaching?

'It's about the same as far as coaching is concerned. I still have as much enthusiasm as I ever had. Winning is still important to me. Losing, I just couldn't ever get used to losing.'

'There's no doubt about me wanting to continue in coaching, I'm not through doing it. I'd like to be a head coach somewhere, I may change my mind by May if I don't have a job.'

'My resignation is effective at the end of the school year. If I found a job that I wanted, and they wanted me there this spring, I could go.'

Look for Duncan to spend more time on the sidelines on Friday nights...that's where he belongs.

YMCA Youth Soccer Registration

Youth Soccer will be offered this spring by the Hansford County YMCA, beginning with clinics on Saturday, April 3. Boys and girls in the 1, 2, 3, 4, 5 and 6th grades are eligible to play. Teams will be co-ed in the 1 & 2 league, 3 & 4 league and if enough participate from the 5 & 6th grades separate boys and girls teams will be organized.

Soccer is one of the fastest growing sports in America and our YMCA will be joining more than a quarter of a million boys and girls who will be participating in YMCA Youth Soccer programs throughout the United States. Soccer is the most popular sport on earth. People in more than 150 countries play and follow the sport throughout the world.

The great thing about soccer is that everybody can play, every player is in the action, soccer is a good sport for fitness and cardiovascular health and one the whole family can participate in.

Most everyone will be starting on an equal plain, as no one has played that much soccer. The coaches will be new to the sport and the Program Committee asks anyone in the community who has had experience playing or coaching soccer to call the YMCA and volunteer your expertise. Games will be played on Saturdays. Practices after school or when it is convenient for the coaches.

Cost for the Youth Soccer is Free to Y Members and \$10.00 per child for non-Y Members.

Homestead Exemptions Available

Tax relief for property tax purposes is available to Texas homeowners. Alice Peddy, chief appraiser for the Hansford County Appraisal District, announced the availability of several residence homestead exemptions which can reduce the tax burden for homeowners who qualify. Beginning in 1982, a one-time application is required, and homesteads must meet the following qualifications:

*As of January 1, 1982, the home must be owned by the person(s) claiming the exemption;

*The home must be designed or adapted for human residence;

*The home must actually be used as a residence; and

*The home must be occupied as the principal residence of an owner who qualified for the exemption.

A residence homestead is a structure, together with the land and improvements, which are used for residential purposes.

Mobile homes, if they meet the qualifications, can be claimed as a homestead even if they are on leased land.

'A taxpayer can still qualify for the exemptions even if a portion of his residence is used for other purposes, such as a business in the home,' Mrs. Peddy said. 'Additionally, a homeowner will not lose the exemption if he temporarily moves away, provided he intends to return and does not claim a homestead elsewhere.'

Various types of homestead exemptions exist. Applications for any must be filed with chief appraiser after January 1 and before May 1.

School districts grant a \$5,000 general homestead exemption to all qualified homeowners. A \$10,000 school homestead exemption is offered to citizens 65 years or older and to disabled persons.

An advantage associated with the over-65 exemption is that senior citizens receive a "tax freeze or tax ceiling" on the school taxes they are assessed in the first year of qualification. Although the appraised value of their homesteads are free to fluctuate with the market, the school taxes will not increase.

An exception to this would be the addition of an improvement, excluding repairs or general

maintenance. In that case, the value of the new improvement would be taxed at the current rate and added to the previous tax ceiling to create a new ceiling.

Counties offer a \$3,000 general homestead exemption to all taxpayers. This exemption can be granted only on the portion of the county tax levied for farm-to-market roads/flood control.

Many taxing units, in addition, may offer the new local-option homestead exemption based on a percentage of the home's value. Due to a constitutional amendment passed in last November's general election, any taxing unit may exempt up to 40 percent of the value of all homesteads. No matter the percentages, the exemption must be at least \$5,000. This exemption is granted at the option of each taxing unit's governing body.

For more information, homeowners should contact Hansford County Appraisal District at 13 W. Kenneth, Spearman, Phone 659-5575 or 733-5139.

Arthur L. Adkison

Services Held

Memorial services were held at 2 p.m. Monday for Arthur L. Adkison, 73, who died Friday.

The Rev. Bruce Chesser, pastor, officiated at the service held in the First Baptist Church. Burial was in Hansford Cemetery by Boxwell Brothers Funeral Home.

Mr. Adkison, born in Cushing, Okla., moved to Spearman from Shadler, Okla. 23 years ago. He retired in 1968 after 31 years of service with Skelly Oil. He was a member of the First Baptist Church. He married Eva Simon in 1928 at Yale, Okla.

Survivors include his wife; five daughters, Velora Farrar of Albuquerque, Eva Lee of Hobbs, N.M., Freida Pearce of Durant, Okla., Daria Kay Barnes of Raytown, Mo., and Glenda Woods of Odessa; four sons, Fred of Yukon, Okla., Charles of Odessa, Okla., Darrell of Odessa and Harrell of Mansfield; three sisters, Beatrice Ludwick and Ethel Simon of Tulsa and Essie Springer of California; a brother, R. G. Adkison of Cushing; 26 grandchildren and nine great-grandchildren.

Now that's First Convenience

1 Mini Bank Like a bank within a bank. Choose the convenience of our Motor Bank, 24 hour depository, or indoor walk-up teller windows. You may open new accounts or transact other banking business quickly and easily.

2 Motor Bank Six lanes of fast, easy banking. Easy in, easy out access, and you never have to leave the comfort of your car. Open Monday through Thursday from 9 a.m. to 3 p.m., Friday until 6 p.m.

3 Extended Hours Of Motor Bank Open 33 hours a week for your convenience. Open Fridays until 6 p.m. to help you handle those last minute banking details before the weekend. Plus our after hours depository gives you 24 hour access, seven days a week.

4 Automatic Savings & Automatic Payments Make payments or deposits to your savings without ever lifting a finger. We do it for you — automatically. You may authorize us to transfer money from checking or savings regularly to pay loans or to build a savings nestegg.

5 Location We're located in the heart of downtown Perryton, convenient to the entire northeast Texas Panhandle. You can get to us easily and quickly from just about anywhere.

6 Convenience Of A Full-Service Bank We offer added convenience by allowing you complete "one stop" banking. From checking to savings. Loans for business, personal or real estate use, trust services to NOW accounts, we can do it all for you.



First National Bank
Perryton, Texas
806/435-3676
Member FDIC

We're The Bank You Call "First"

WATER AIDS

CAPROCK MONUMENT CO.

Dealers of Georgia Granite, Georgia Marble, Colored Granite, & Bronze.

BOXWELL BROS. FUNERAL HOME

519 S. EVANS
659-3802

Hansford County Planned Parenthood
26 S. Haney
659-2483
Spearman
Mon.-Fri.
8:30-12:30

NOTICE
Wallace Monument Co.
Monuments, Curbing, Grave Covers
Local Representative
LEONARD JAMESON
Spearman, Texas
20-rt

STEAM RINSE & VAC
Steam Rinse-and-Vac Shampooers; \$10.95 for up to 24 hrs, available at Gordon's Drug; also at Freddie Largent's 716 Cotter Dr. after 4 p.m. and Saturdays and Sundays.

Monuments
Save Agents and Undertakers Profits
If it is inconvenient for you to visit our large display, please phone collect (405) 327-0626 or write and we will call on you.
Alva Monument Works, Inc.
Alva, OK 73717

SERVICE: Pits cleaned, wet or dry. Dragline or loader. Also, dozer, grader, carry-all service. Lee Roy Mitchell, 806-733-2384, Gruver, Texas 79040. 12-rt

SNOOPY'S DAY SCHOOL
Open from 7:00 A.M. to 6:00 P.M. We serve morning snack, hot lunch, and afternoon snacks. Van runs to and from school, dancing, piano, etc.
Call 659-3328 or Come by 680½ S. Bernice for more information.
Receive (W)estern gift stamps for your bill -- and double on Friday.
Licensed for ages 18 months to 12 years.

Your new Kirby Sales & Serviceman, John Schaffer. 410 S. Hoskins, Ph. 9-2415, Spearman, Texas. 11S-rt

For your Painting, Remodeling and small carpentry jobs, Call:
AARON LOVE
659-3471
Over 20 years experience. 13s-rt

New to area? Give us a try Call your local USED COW DEALER As soon as Possible.
659-3544
659-3545
1-800-692-4043
17S-rt

Hefley Cattle Co.
A Market for your Feeder Cattle and Calves
Rick Hefley
806-435-6743
16-8c

Trees & Shrubs Trimmed or Removed. Yard Work, except mowing. Exterior Painting. Call after 5:00 p.m. - 659-2787. 18-rt

FOR SALE

FOR SALE: Sears Washer. White. Good condition, \$125.00. Call after 6 p.m. weekdays 733-2889. 19-1c

FOR SALE: Man's Dynafit Ski Boots with flow lining. Size 10M Worn one time. \$100.00 Call 659-2156. 18S-rt

80 BULLS--(14 Polled) 20 Heifers
Reg. Herefords...
Sat., March 27, 1982
Texhoma, Ok...1 p.m. CST.
38th Annual Sale Sponsored by Great Plains Heref. Asso.
For Catalogs: M.W. England call...405-349-2611 Ext 228
Write...Box 186 Goodwell, Ok.

PRICE REDUCED
3 Bedroom, 2 Bath, Brick Home. Close to Schools - Excellent Condition. Blankship Real Estate 659-3052. 17-T only

FOR SALE: 217 North Brandt. Features include: new refrigerator a/c window unit, new carpet throughout, tailor made drapes, detached garage with new hot water heater for utility room, Fenced-in Back Yard. Has assumable loan of 9¼% interest. Low monthly payments. Call 659-3806 or 659-3818 after 5 p.m. 11S-rt

FOR SALE BY OWNER: 2½ year old, 3 bedroom, 2 bathrooms, 2 car-garage. Bricked and fenced. Low interest Rate! 659-3518 by appointment. 13s-rt

FOR SALE: Faith Lutheran Parsonage, 205 Lonita Drive. Call: Cecil Biggers - 659-3505; Steve Krug - 659-3901; or Charles Elliott - 659-3854. 49S-rt

HOUSE FOR SALE: 1117 Dresen, 3 bedroom, 1½ bath, carpeted, paneled, fireplace, basement. Unfinished room above basement. Storage building and fenced backyard. For appointment call 659-2944. 12s-rt

HOUSE FOR SALE (BY OWNER): 3 Bedroom Brick home, 1½ baths, large lot, in Spearman, under \$40,000. Call 659-2647 for the key or call 405-225-8473. 17-7c

AUTOMOBILES FOR SALE
SURPLUS JEEPS \$65, CARS \$89, TRUCK \$100. Similar, bargains available. Call for your directory on how to purchase. 602-998-0575 EXT. 0518 Call Refundable. 19-2tp t only

BUSINESS OPPORTUNITIES
Own your own Jean-Sportswear or Infant-Preteen Store, Jean Program (ALSO SHOE, ATHLETIC SHOE STORE). Offering all Nationally Known Brands such as Jordache, Chic, Lee, Levi, Vanderbilt, Calvin Klein, Wrangler over 100 other brands. \$7,900.00 to \$19,500.00 includes beginning inventory, airfare for 1 to Fashion Center, training, fixtures, Grand Opening Promotions. Call Mr. Loughlin (612) 835-1304. 19-1tp

MOBILE HOMES FOR SALE
FOR SALE: 1965 12' x 67' Trailer House on 80' x 200' lot in Crawford Addition. Call 659-2288 or 733-2293. 1S-rt

FOR RENT
FOR RENT: Available now, 3 bedroom mobile home. 659-2289. 18S-rt

WANTED
TO CLEAN HOUSE: Call 659-5054, any day of the week. 16s-6tp

HELP WANTED
ELECTRIC LINEMAN
Need a qualified electric lineman to work in the Perryton area. Call (806) 435-4051 for interview appointment.

FOR SALE
Texas-New Mexico Power Co. An Equal Opportunity Employer. 19-2c

Hansford Manor needs LVN's. All shifts. Base salary - \$7.15 - hr. Experience differential, shift differential, benefits. 707 S. Roland, Spearman, Texas. 659-2535 - Ray Wasil. 18S-4c

LEGAL NOTICE

Hansford County will receive bids until 4:00 p.m., Friday, April 9, 1982 on one, used tractor. Bids will be opened April 12, 1982 at the regular meeting of the Commissioners' Court. Specifications are available at the County Judge's office or the County Auditor's office in Hansford County Courthouse. The Court reserves the right to accept or reject any or all bids.
Roy L. McClellan
County Judge

NOTICE TO BIDDERS
Sealed proposals for janitorial services on City Hall will be received by the City of Spearman, Texas, at the office of the City Manager up until 2:00 p.m., April 6, 1982, and then publicly opened and read. The City reserves the right to reject any or all bids, to waive informalities and to accept the bid deemed to be the most advantageous to the City. All bids received after the above closing hour will be returned unopened. Specifications and bidding documents may be secured from the office of the City Manager, P.O. Box 37, Spearman, Texas 79081. 19-2tc T ONLY

CARD OF THANKS
I wish to take this means of expressing my sincere appreciation to all my friends and neighbors in Spearman and Hansford County for all your kindness during the recent illness and death of my beloved mother. You were all a tremendous help to me by your Prayers, messages of sympathy and encouragement. I want you to know how much I appreciated the cards, flowers, food and other acts of consideration & kindness. A special "Thank You" to Dr. McClellan, Dr. Gunasekera, and the entire Staff of Hansford Hospital, especially the Nursing Staff. Your tender and loving care will always be remembered.
R.L. Kleeberger, M.D.

Thanks so much for the prayers, food, flowers, cards and the many other acts of kindness during this time. The family of Vicky George Fletcher
Ed, Shaun & Nicole
Mr. and Mrs. Jerry George
Mr. and Mrs. Steve George
Monte George
Mr. and Mrs. D.O. George
Mrs. Lera Langston

EMMETT R. SANDERS
REALTOR
18-rt T ONLY

1982 YMCA WOMEN'S VOLLEYBALL SCHEDULE

- March 15 *7:00 Sparks Bros. vs Agco
 - 7:45 Bulls Inn vs. First State Bank
 - 8:30 Busters vs. J.G.'s
 - 9:15 Agco vs. Thriftway
 - March 22 7:00 Bulls Inn vs. Agco
 - 7:45 First State Bank vs. J.G.'s
 - 8:30 Sparks Bros. vs. Busters
 - *9:15 Thriftway vs. J.G.'s
 - March 29 *7:00 Bulls Inn vs. Sparks Bro.
 - 7:45 Agco vs. Sparks Bros.
 - 8:30 Busters vs. First State Bank
 - 9:15 J.G.'s vs. Thriftway
 - April 5 *7:00 Agco vs. First State Bank
 - 7:45 Busters vs. Bulls Inn
 - 8:30 Thriftway vs. First State Bank
 - 9:15 J.G.'s vs. Sparks Bros.
- *Instead of a BYE--Game will not count!!!
- Must have 2 players to call the net/lines after your team plays.
 - If your team plays at 9:15, you will call at 7:00
 - If your team plays at 7:00, you will call at 7:45
 - If your team plays at 7:45, you will call at 8:30.
 - If your team plays at 8:30, you will call at 9:15.
 - Best two out of three SETS determines winner of the GAME. Must win by 2 points.
 - Two time outs per SET
 - Sponsor fee: \$50.00
If there are any problems let's discuss them, but most of all let's have FUN!!!

7th, 8th & VARSITY LYNXETTES TRACK SCHEDULE

- 7th, 8th & V March 12 at Sunray
- 7th, 8th & V March 19 at Stratford
- Varsity March 20 at Canyon
- 7th, 8th & V March 26 & 27 Spearman Meet
- 7th, 8th & V April 2&3 at Stinnett
- April 6 District Meet at Spearman

LYNX GOLF SCHEDULE

- April 11 at River Road
- April 5 at Dalhart
- April 17 at Spearman
- April 24 at Perryton

LYNXETTES GOLF SCHEDULE

- March 22 at Booker
- March 30 At Spearman
- April 2 & 3 at Amarillo Relays
- April 5 at Dalhart

7th, 8th & VARSITY LYNX TRACK SCHEDULE

- 7th, 8th & V March 13 at Gruver
- Varsity March 20 at Whitdeer
- 7th, 8th & V March 26 & 27 Spearman Meet
- 7th, 8th & V April 2 & 3 at Stinnett
- Varsity April 16 at Stratford
- April 24 District Meet at Perryton

TRAILWAYS 1982 Tours World's Fair & Others Information at Bus Station Baker Hotel 659-5009 659-3446

LAND OWNERS

If you own the minerals to your land, and wish to lease it for oil and gas production. Call 214-363-6680. Kodiak Oil and Gas Co. 4601 Greenville Ave. Dallas, Texas 75206 17-T-ONLY

NEVER SIGN A NOTE unless you are prepared to pay off.

Chamber of Commerce new telephone number - 659-5555.

Services

Will do carpenter, plumbing or any kind of work inside and out. Call Steve Lopez, 659-2845. 19-1tp

Political Announcements

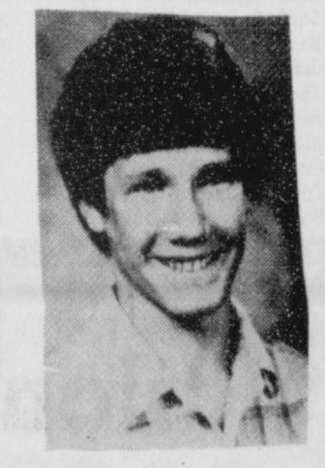
DEMOCRATIC PARTY
For U.S. Congressman 13th District
JACK HIGHTOWER

State Representative 88th District
J.W. "BUCK" BUCHANAN

For County Treasurer
VERNA GAIL KEIM
NORMA JEAN MACKIE

Little League Baseball Summer Camp Program

Little League Baseball takes pride in announcing the opening date for its tenth Annual Summer Camp Program on the beautiful and historic Baylor University Campus. The first of three two-week sessions begins on June 20. Applicants will be accepted for all three sessions on a first come basis until they are full. Each camp offers a variety of activities including swimming, boating and volleyball; but with special emphasis on baseball. All of the latest equipment and techniques for training in the skills of baseball will be used, including daily use of batting cages, pitching machines and other items approved by the Research Department of Little League. Basic and advanced training is given in all baseball skills, for boys ages 9 through 15 years, in Junior and Senior Divisions. Little League membership is not required. Additional information can be obtained by calling 817-756-1816, or by writing Little League Baseball, 1612 South University-Parks Drive, Waco, Texas 76706, for brochures/applications.



GARY THOMAS Exhibitor of a Lamb and a Hog

TEXAS PRESS ASSOCIATION MEMBER 1982

The Spearman Reporter
PUBLICATION (USPS 509-660)
SPEARMAN, TEXAS 79081
213 Main Box 458 659-3434
Published Weekly at 213 Main Street
Spearman, Texas 79081
Owner-Publisher.....William M. Miller
Editor.....Faye Lynch
Second Class postage paid at Spearman, Texas 79081
Any erroneous reflection upon the character of any person or firm appearing in these columns will be gladly and promptly corrected upon being brought to the attention of the management.
POSTMASTER: Send address changes to Spearman Reporter, Box 458, Spearman, Tx. 79081.
SUBSCRIPTION RATE: Hansford, adjoining counties, combination with the Hansford Plainsman \$15.00.
Other points, \$20.00.

For The Ultimate In STORM DOORS & WINDOWS Custom Built, Designed, And In Colors To Fit Your Home...

Contact Howard Moyer at
Only Aluminum Industries
Guyton, Okla. 114 W. 1st 405-338-3966 or 338-6170 73942 AFTER 6 P.M.

REWARD

LOST: Miniature Collie (2 yrs. old) NAME: BO DESCRIPTION: Medium Reddish Brown with White Face, Neck and Feet Markings. Light Black on Ears, Head and Tail. Has Black Collar with Turquoise Sets and Current Perryton Rabies Tags. Has White Flea Collar. Looks like a small "LASSIE". Approximately 14" tall and 24" long. This dog is a 5 year old boys' pet.

PLEASE CALL:
659-3381 HOME
659-2440 RAE
659-2522 BUTCH
COLLECT:
624-4701 CINDY
624-2701 CINDY
435-2789 ED

NOTICE OF TAX RELIEF AVAILABLE TO CERTAIN HOMEOWNERS OVER 65

Homeowners who were 65 years of age or older on January 1, 1979, and failed to receive their school district homestead exemptions in 1979 have until April 1 of this year to do so. In this way, elderly homeowners will be able to take advantage of the school tax freeze associated with the \$10,000 homestead exemption. According to a law passed by the 67th Legislature, over-65 homeowners who were qualified for the school homestead "tax freeze" in 1979, but who did not apply for or receive their homestead exemption, may file an application with the chief appraiser of the county appraisal district in which the homestead is located. Eligible over-65 homeowners in Hansford County must make application to the Hansford County Appraisal District, 13 W. Kenneth St., Spearman, Texas, before April 1, 1982. To qualify for this tax relief, a homeowner must have satisfied these requirements on January 1, 1979:

- * Been 65 years of age or older
- * Owned his home
- * Used that home as his residence homestead

The chief appraiser of the Hansford County Appraisal District will consider all applications and notify each applicant before April 15, 1982. If the application is approved, the chief appraiser will make an entry on the appropriate school district's 1982 appraisal records. This entry will indicate the amount of school tax the over-65 taxpayer should have paid in 1979, had he applied for and been granted the \$5,000 general homestead exemption and the \$10,000 over-65 homestead exemption. No refunds of taxes paid may be given for 1979, 1980 or 1981. For 1982, the taxpayer's school taxes on his homestead may not exceed the amount of taxes the school district would have imposed on the homestead for 1979, had the taxpayer received his homestead exemptions. This frozen tax amount will remain the same as long as the homestead remains the same. For applications contact Alice Pedy, chief appraiser at the Hansford County Appraisal District, 13 W. Kenneth St., Spearman, Texas or call 659-5575 or 733-5139.

JAMES H. PERKINS AND ASSOCIATES AUCTIONEERS
The Professional Auctioneers
Call us for "Full Service" of your Auction Sale...
Moving - Cleaning - Arrangement & Line-up of your Equipment is just part of this "Full Service".
Call us before you make a decision as to who handles your Auction

IF WE CAN BE OF SERVICE TO YOU - CALL OUR IN TEXAS TOLL FREE NUMBER:
1-800-792-0027
DANNY J. PERKINS-806-935-4210 Dumas, Texas, 79029
MAYES H. PERKINS-804-249-4366 Dalhart, Texas 79022
OR OUT OF STATE CALL OUR REGULAR NUMBERS

Junior Livestock Show & Sale

The annual Hansford County Junior Livestock Show and Sale will be held at the Ag Building in Gruver March 19 and 20. Clubs and Chanters participating in the show will be the Spearman FFA, Spearman 4-H, Gruver FFA, Gruver 4-H and Morse 4-H.

Judges for the 1982 show will be Joe Ed Wise of Lamesa for the sheep and steers, and Jim McManagal, Happy for the swine.

Department superintendents are Steers, John Armes, Larry Porter and D.A. Cator; Sheep, Charles Reid, Carl Kunselman, and Bill Strawn, Swine, Glen Ray Mackie, Charles Eaton and Raymond Walker.

Bookkeepers & Auctioneers will be Jimmy Greene and Orville Latham of Spearman; Mack Hoel and Melvin Bradley of Gruver and W.B. Dickenson of Olton.

The Board of Directors officers are Chairman, Bobby Nollner; Vice Chairman, John Armes; Secretary, Jim Smith; Treasurer, Buddy Lowe, Jr.; Assistant Treasurer, Norma Jean Mackie. Other directors are D.A. Cator, Carl Cooper, J.C. Harris, Buddy Murrell, Raymond Walker and Jerry Williams of Gruver; Charles Eaton, Jimmy Greene, Glen Ray Mackie, Larry Porter and Bill Strawn of Spearman; Lynn Davis and Charles Reid of Morse.

The show schedule for Friday, March 19 is for the Lamb Show to begin at 2 p.m. The Swine Show will follow completion of Lamb Show.

Saturday, March 20, the Steer Show will begin at 8:30 a.m. and at 11 a.m. the Registration Livestock Judging Contest will be held.

The auction sale will begin at 6 p.m.

Buyers of Grand Champions for 1981 was Gruver State Bank, Gruver, Steer; H&H Water Well, Spearman, Barrow, and Hansford Implement, Spearman, Lamb.

Reserve Grand Champions Buyers of 1981 were B&B Farm Industries, Spearman, Steer;

Jim Shields, Morse, Barrow; and Spearman Equity, Lamb.

The following firms and individuals purchased one or more animals at the 1981 Junior Livestock Auction, promoting our most important crop-youth: Hansford Implement, H&H Water Well Service, Gruver State Bank, Equity, Jim Shields, B&B Farm Industries, North Plains International, Leon Hobbs, First State Bank, Billy Logsdon, Baker & Taylor, Out-house, Continental Grain, Gruver Farm Supply, Wayne Shook, Spearman Super Service, Caprock Industries, Sparks Brothers Drilling, Pat Holt, Berry Grain, Crawford Implement, Hitchland Grain, George Lowe, Agco, Perry Dixon, Boots Williams, James Stedje, B&B Sales, Morse Implement, Texas County Feedlot, Bill Logsdon, Sr., Frontier Feedyard, Mrs. Nolan Holt, Shirley Lowe, Mrs. Jerry Williams, Sparks Spraying, Spearman Bi-Products, Dr. Tom Latta, Preston Smith, Sheets Enterprises, Hergert Pontiac-Buick-GMC, J.D. McCoy, Louis Schnell, Johnny Venneman, Clark Bridges Spraying, Anthony Electric, Buddy Etling, Punk Jackson, Pringle-Morse Bank, Nollner Brothers, Dennis Nelson, Brown, Graham & Co., Zack Fisher, Holt & Stavlo, Britt Jarvis, Joe T. Venneman, Southwestern Public Service, Roscoe Nelson, Panhandle Training Center, Leon Red, Roy Byrd, Hansford Vet Clinic, Mary Dixon, Doug Ferguson, Bunkhouse and Nolan Holt.

1981 Non-Sale Supporters were North Plains International, Hi Plains Conoco, Spearman Co-Op, Sheets Enterprises, Jim Shirley, Holt & Stavlo Trucking, Roy Nollner, Willard McCloy, E.V. Lackey, Britt Jarvis, Mr. and Mrs. A.A. Lieb, George Jackson, Sheets Baling, Ron Pingle, Pauline Winger, Tommie White, Joe T. Venneman, Mike Stedje, Lynn Stedje, Mrs. Mike Stedje, Karl Smith, Wayne & Floyd Shook, Lynn Davis, Fred Groves, Mrs. Alma Gruver, Mr. and Mrs. Bill Haden, Aline B. Henderson,

Wayne Garrett, F&G Farms, E-Z Products, Garland Dahl, Mr. and Mrs. Floyd Dry, H&H Water Well Service, Al Tucker, John Venneman, The Hansford Agency, Gene Ball, Mr. and Mrs. Glen Lesly, Flying M Cattle Co., Morris Brothers Seed Co., Hansford Implement, Ron Cook, Golden Spread Sales Co., Fronye Close, Vana Morris, Glendon Etling, Billy Logsdon, Jr., Mr. and Mrs. Verlin Beck, Mr. and Mrs. Don Smith, Gruver Ford, Oran Burton, Crawford Implement Co., Nolan Holt, Jack Oakes, Dennis Nelson, John Sutterfield, Pat Sutterfield, Terry Butts, Charlotte Bergin, Joe Close, T.J. Bergin, Kermit Boone, Melvin Bradley, Ins., Albert & Claudine Clark, Logsdon Farms, Alvin Cator, Jr., Donnie Mach, Doug Ferguson, Dennis Stedje, Sparks Brothers Drilling Co., Richard Wagner, Medford DeCamp, Rasor Farms, R&R Seed Co., Rochelle Smith, Kenneth Irwin, J.G.'s, James Cunningham, Roger Odegard, Jack & Glenna McMullan, Mr. and Mrs. Don Hartranft, Busters's Dusters, Frances Scroggs, Dallas & Paul Trosper.

Vocational Agriculture Teachers are Herman Boone and Burt Williams of Spearman and Craig Solomon of Gruver. Jim Smith is County Agent in charge of 4-H.

Following is a list of 4-H exhibitors:

Steers - Trevor Williams, Ty Williams, Gregg Haight, Bret Hobbs, Clay Hobbs, Rex Shook, Clint Venneman, Steve Hamilton, Becky Hamilton, Michael Whitefield, Jan Allen, Chad Clawson, Roy Don Gammon, Dean Greene, Donnie Hartranft, and Christa Urban.

Sheep - Shawn Cook, Brian DeCamp, Raquel Mathews, Lance Sparks, Slavin Sparks, Shelly Logsdon, Wayne Groves, Shannon Groves, Tracy Logsdon, Wayne Thomas, Alicia Thomas, Brooks Beck, Monte Beck, Edward Beck, Melanie Morris, Chris Morris, Dale Red, Connie Red, Rae Lynn Barber, Tommy Barber, Rhonda Jo Boone, Brent Wagner, Justin

Armes, Brian Hoel, Jason Haefnes, Theron Park, Jean Ann Heikes, Shiloh Finney, Tina Cator, Tamra Stedje, Shelley Stedje, Tim Stedje, Brent Stedje, Krista Stedje, Lucinda Burnam, Loyd Cator, Davonna Cator, Clint Venneman, Karla Latta, Julie Latta, Todd Martin, Michael Whitefield, Michelle Cook, Anne Marie Jarvis, Bonnie Jarvis, Scot Pingle, Kevin Nelson, Kyla Nelson, Kim Nelson, Lynette Williams, Carl Urban, Christa Urban and Christie Burton.

Hogs - James Tindell, Scott Wilkerson, Rodney Dale Clawson, Slavin Sparks, Lance Sparks, Tammy Nollner, Tessa Knudson, Jose August Vargas, Monte Beck, Brooks Beck, Barry Beck, Chris Morris, Melanie Morris, Edward Mayfield, Loneida Burnam, Trevor Williams, Ty Williams, John Podolak, Rachel Pololak, Clay Hobbs, Marva Winger, Manda Winger, Tommy Barber, Rhonda Jo Boone, Amy Sparks, Tina Cator, Loyd Cator, Davonna Cator, Curt Porter, Clint Patterson, Michael Whitefield, Temp Sheppard, Lynette Williams, Cayla Eaton, Johnnie Eaton, Susan Davis, Ricky White, Christie Burton, Roy Don Gammon, and Donnie Hartranft.

Spearman FFA Exhibitors are:

Lams - Kevin Slaten, Danny Close, Kim Nelson, Bob Cook, Jeff Graves, Cole Ivy, Bob Jarvis, Paul Hjerpe, Tracy Vernon, Gary Thomas, Joann Odegard, Ricky Torres, Roger Close, Alex Vela, Scott Strawn, Felix Sandavol, Shane Sumner and Shelly Cook.

Steers - Jerry Crowl, Tiki Jackson, Shelly Friemel, Stephanie Friemel, James Lieb, Jan Hamilton, Roger Buchanan, Lee Schubert, Tracy Vernon, Scott Strawn, Joann Odegard and Shelly Cook.

Hogs - Steve Burke, Karl Bynum, Edward Cantu, Ross Donahue, Mack McLain, Mark Pearson, Mike Ross, Teddy Vela, Mark Guthrie, Jeff Hand, James Lieb, Angie Francis, Betsy Jones, Pam Porter, Paul

Moore, Byron Sutterfield, Joe Gomez, Ernest Bowen, Bob Cook, Brian Davis, Travis Patterson, Roger Buchanan, Mike Dixon, Greg Meisner, Rory Sheppard, Ladd Sheets, Ed Whitefield, Stephen Tindell, Tracy Vernon, Billy Haden, Johnny Rogers, Jay Pack, Gary Thomas, Larry Hagerman, Scott Strawn, Pat Tucker, Toby Phillips, Sam Nitschke, Steven Francis and Will Jarvis.

Gruver FFA members exhibiting swine are Kyle Williams, Don Dillow, Raymond Barber, Quint Finney, Carlton Collier, Terry Clingman, Marshall Cator, Durward Cator, Mike Burnam, Lonnie Burnam, Chris Tomlinson, Jackie Sparks, Bart Shapley, Ron Riley, Chad Logsdon, Debbie Burton and Jeff Bonham.

Gruver FFA members exhibiting lambs are Kyle Williams, Robert Renteria, Marshall Cator, Durward Cator, Chad Logsdon and Debbie Burton.

Gruver FFA members exhibiting steers are Durward Cator and Chad Logsdon.

A missionary to foreign lands deserves the greatest respect.

Ag Committee of C of C Selling Goat Shares For Livestock Show

Spearman Chamber of Commerce
Agriculture Committee
NON SALES SUPPORTER

Name _____
Mailing Address _____
Number of Shares @ \$10.00 Each _____

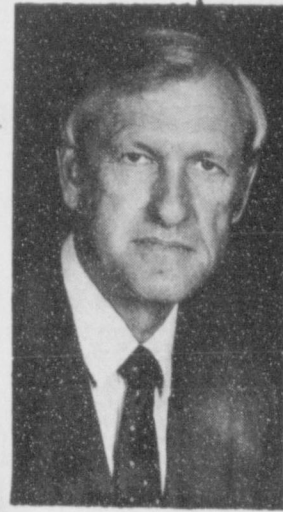
The Agriculture Committee of the Spearman Chamber of Commerce will sell goat shares at the Hansford County Livestock Show, again this year. If you would like to be a non-sales supporter, you may purchase

shares for \$10.00 a share. The money goes to help the boys and girls that do not have an animal to make the sale. Make your check to the Agriculture Committee, Chamber of Commerce and mail to Box 161 or

bring it by the Chamber office at 211 Main.

This money is used only for the boys and girls that do not have an animal to make the show.

R.C. Porter Files For State Representative



R.C. Porter, Spearman farmer, announced this week that he is a Republican candidate for State Representative of the 88th District.

Porter, 58, has been a resident of Spearman and Hansford County all of his life.

He was on the local school board for 12 years, is on the board of the local Presbyterian Church and the Panhandle Educational Service Center, and is a member of several farm organizations.

He is running against J.W. (Buck) Buchanan of Dumas who is seeking a second term a state representative.

The newly created 88th district includes the counties of Lipscomb, Ochiltree, Hansford,

Jacob Hazelwood Loses Battle

Little Jacob Hazelwood, son of Mr. and Mrs. Bill Hazelwood of Amarillo and grandson of Mr. and Mrs. Paul Hazelwood of Spearman, lost his battle and passed away Monday night in Amarillo. Jacob had a deformed heart at birth, and had surgery. Services were pending at press time.

Sherman, Dallam, Hartley, Moore, Hutchinson, Roberts, Hemphill, Wheeler, Carson and Oldham.

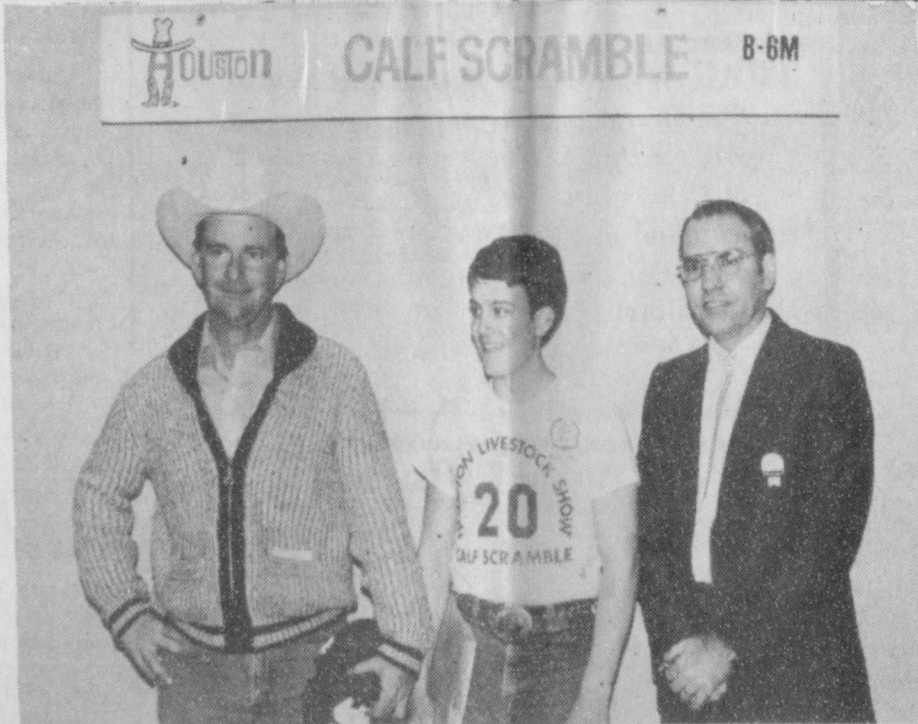
Ribbon Cutting For Boot Shop

There will be a ribbon cutting ceremony and open house at Manross Boot & Repair Shop in Plains Shopping Center Thursday, March 18 at 1 p.m.

Everyone is invited to come out and enjoy doughnuts and coffee and get acquainted with Mr. and Mrs. Manross and see their new shop.

Congratulations to a New Businessman.

He's learning the Free Enterprise System isn't free.



A Hard-Earned Salute

We congratulate every young man and woman who will take part in the County Livestock Show. They're learning important business lessons, like how to buy, what to feed, when to sell, and how to compete.

We salute their hard work, and we're proud to have helped many of them get started.

The Spirit of America is Free Enterprise

These young businessmen and businesswomen are the real spirit of America. They are proud and free to start a business from the ground up. The whole Free Enterprise System depends on people willing to risk time and money to deliver a product, in return for a fair profit.

The System Isn't Free

The price we pay to compete in this economy comes high. It takes lots of dollars to start a business. It demands years of effort and much courage to make a business grow. The only thing that's free is the freedom to succeed and the freedom to fail. We owe the opportunity to young men and women to become as successful as they are able.

You're the Boss

In a free enterprise economy you have a voice and a choice. Business must work hard for you because you're the customer — ultimately you're the boss. Support and encourage every business to prosper — whether it's a first-time livestock raiser or the biggest bank in the area. That way we'll both be here when you need us.

First National Bank
Perryton, Texas
806/435-3676
Member FDIC

You are cordially invited
To a Bridal Shower
Honoring
JAMIE THOMAS
Bride-elect of Jim Shope of Houston
March 20, 1982
7:00 - 8:30 P.M.
Come and Go
Home of Mrs. Rodney Farber
1 1/4 miles S. of High School on FM 760

Hostesses
Joyce Frost
Karon Farber
Janice Mayfield
Holly Riley
18s-2tp

Pat Hamilton
LaRue Whitefield
Crocket Giles
Beth Baker

**April 25--YMCA-
Rotary Auction Date**

The Annual YMCA-ROTARY Auction date has been set by the two organizations. Sunday, April 25 is the date. The Auction is the annual fund raising event for the Spearman Rotary Club to raise money for designated projects for the Hansford County Community, including the Boy Scouts, Girl Scouts, Golden Spread Center, YMCA, Career Day, Camp RYLA, Extended Nursing Care facility, plus other needs each year in the county. The YMCA as partner in the Auction is able to offer youth sports throughout the year for the boys and girls of Hansford County at a nominal cost to each participant.

Chairmen for the YMCA-ROTARY Auction are: Roy Bulls and Jim Benson for Rotary and Larry Trosper from the YMCA. Marva Hohertz from the YMCA will be in charge of the concession and bake sale which will be a part of the Sunday event.

HOSPITAL

Patients in Hansford Hospital are Ann Thom, Keesee Richardson, Jerry Boatwright, George Richards, Debra Sharp, Lynna Renner and son, Clara Jackson, Scott Duncan, Gwendred Lackey, Lanore Boese, Emma Lopez, David Stewart, W.O. Groves, Bob Thom, Goldie Killingsworth and Hector Hermosillo, Jr.

Dismissed were Doris Delarosa, Daria Moyer, Becky Porter, Maurine Eiting, Jesse Tompkins, Edith Roper, Kathy Bowen, L.E. Hendrick, Harold Frost, David Cole, Ophelia Vela and George Ford.

The ads from the beaches will soon begin to be highly disturbing.

It's a poor brain that has to be fired by alcohol before it can function.

Most of us would be better off if we worked less, made less, and spent less.

Elders seldom approve of the new habits of the rising generation.

FROM THE DESK OF C. RALPH BLODGETT:

This memo is written for the purpose of explaining how the consumer's cost of gas is computed each month in an effort to dispell all rumors of excess charges by the City.

It is true the cost of gas fluctuates on a monthly basis, however this is due to the change in the average weighted cost of gas which High Plains Natural Gas Company sells to the City. The City of Spearman then adds to this, a cost of service which is set by Ordinance #477. The City's charge for cost of service does not change on a monthly basis. The City's cost of service as set by Ordinance #477 is \$3.09 for the first 3 mcf and \$0.92 for each additional mcf.

As an example, the following is how the cost of gas was computed for the March 1, 1982 billing:

Item 1	Average weighted cost of gas to High Plains Natural Gas Co.	\$2.4237
Item 2	High Plains gross receipts conversion factor (2.4237 ÷ .9975)	\$2.4298
Item 3	Plus "High Plains" cost of service .3849 per mcf	\$2.8147
Item 4	Plus correcting surcharge by High Plains .05 per mcf	\$2.8647
Item 5	Plus correcting surcharge by City for cost of gas .02 per mcf	\$2.8847
TOTAL COST OF GAS TO CITY		\$2.89
	City's cost of service	1st 3 mcf \$3.09 each additional mcf \$.92
	Cost from High Plains (3 X 2.89)	\$8.67 \$2.89
	Charge to consumer	\$11.76 \$3.81

Item 1 is the cost High Plains must pay for gas. The City obviously has no control over this price. Item 2 through Item 5 are all charges and adjustments as ordered by the Railroad Commission of Texas in Dockets #2620 Order and Docket #1650 Order.

Complete records are kept at City Hall which indicates the status of account for the correcting surcharges as ordered by the Railroad Commission.

If you have any questions concerning these charges, please do not hesitate to call.

**Church Of Christ
Gospel Meeting**

The Spearman Church of Christ has announced a Gospel Meeting during the week of March 21-25. Services will be conducted at 121 S. Haney on Sunday at the regular meeting times of the church. These services include Bible Study at 9:45 a.m., Morning Worship at 10:35 a.m. and Evening Worship at 6:00 p.m. Weekday services will begin each evening at 7:15 p.m. with the showing of color slides of Palestine. Preaching services will be at 8:00 p.m. each evening.

Speaker for this series will be Harvey Porter of Albuquerque, N.M. Mr. Porter is Minister of the Montgomery Boulevard Church of Christ in Albuquerque. He has been with this church for the past 25 years. During that time the membership of the church has increased from 30 to 1,045.

Brother Porter graduated in 1952 from Abilene Christian College, later receiving his M.A. from Pepperdine University and has just completed work for his Doctor of Ministry Degree from McCormick Theological Seminary. He is married to the former Sue Gibson of Abilene, Tx. and they have four children.

The slide presentations each evening will be made from slides made during 13 trips to the Biblical world over the past 17 years. Porter has specialized in Biblical Archaeology for many years and has photographed Biblical artifacts in such well-known museums as Edingburg, Oxford, the British Museum in London, the Louvre in Paris, the Pergamum in East Berlin, the Vatican in Rome, the Egyptian Museum in Cairo, the Palestinian Museum of Archaeology in Jerusalem, the Israeli Museum in Jerusalem, the Teheran Museum in Iran and numerous smaller museums and archaeological sites.

The speaker's multi-ranged background includes a member of the Advisory Board of Abilene Christian University and the Chancellor's Counsel for Pepperdine University. He writes for FIRM FOUNDATION, POWER FOR TODAY, and 20TH CENTURY CHRIST-

IAN magazines. He has a regular program on New Mexico Education TV called **The Bible and Archaeology**.

All services of the Gospel Meeting are open to everyone and are without charge of any kind. No collection will be taken except at the regular Sunday Morning Worship service. The members of the Spearman Church of Christ extend an invitation to the community to share with them in these studies.

**Arts And Craft
Guild Meets**

Arts & Craft Guild met Friday, March 12 in the home of Mrs. Jewel Turner.

Attending were Deta Blodgett, Georgia Holt, Sada Hoskins, Aileen White, Blanche Fuller and Athalie Trayler.

The next meeting will be March 19 in the home of Athalie Trayler.



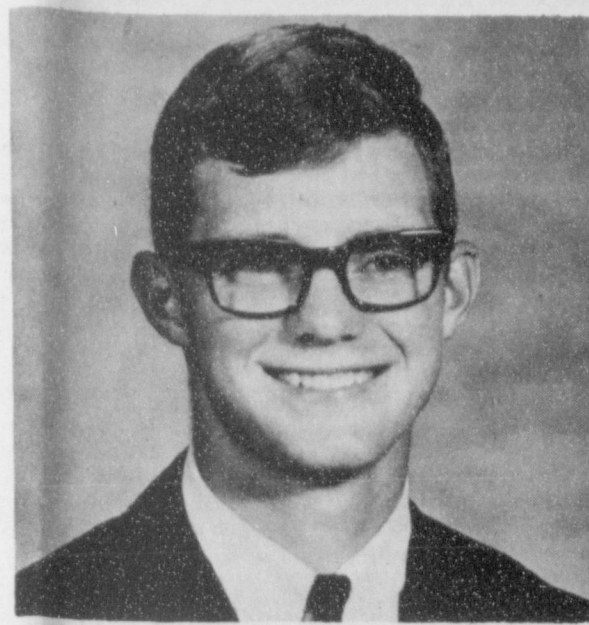
EDWARD CANTU
Exhibitor of a Hog

If people do not understand your motives, you are failing to express your thoughts properly.

You have to take people like you find them if you expect people to take you like you are.

Nothing delights a worker like an advance in pay without additional work.

**Our Tribute To Our
Loved One Bruce**



Those we hold most dear never truly leave us.

They live on.

In kindness they showed The comfort they shared And the Love they brought To our Lives

Bruce Lee Brown, 33, of Rogers, Arkansas died Monday at Rogers Memorial Hospital. He was born December 30, 1948 in Spearville, Kansas. He was a member of the Church of Christ in Rogers, Arkansas. He was a welder. He also served in the U.S. Air Force in 1968-1970, serving time in Africa and Turkey.

Survivors include his wife Joyce, son Michael Wayne Ewing and daughter Daphne Dawn of the home, also a son Ryan Lee Schierenberg of Perryton, Texas. His parents, Mr. and Mrs. G.I. Brown of Spearman, a brother, James Gayle Brown of Panhandle, Texas, and three sisters, Mrs. Jerry Taylor of Stamford, Texas, Mrs. Finis Bailey, Jr. of Memphis, Tenn. and Mrs. Don Archer of Spearman, Texas.

Services were held Friday, March 12 at the Church of Christ of 5th and Persimmons in Rogers, Arkansas.

Burial was in McDaniel Cemetery with Delmer Lee officiating. Burial was under the direction of Callison-Lough Funeral Home.

Bruce leaves us with many loving memories.

Everyone agrees upon general principles, but no one gets together on details.

Honest
An honest tax collector is one who pays the income tax on his own graft.
-News, Washington.

You are invited to a baby shower
Honoring
"LACEY RENE" MIESNER"
Daughter of Jed and Lesa Miesner
March 20, 1982
2:00 - 3:30 P.M.
First Baptist Church
Fellowship Hall
HOSTESSES
Sharon Black
Mary Baker
Pam Edwards
Beverly Vinson
Sharon Harris
18S-2tc

Teresa Pipkin
Sherry Greene
Audene Beck
Mickey Fanning
Cora Queener
Susan Rodriguez

**20th Century Tumbling Classes
Club Meets Begin March 22**

Twentieth Century Club met at 2:30 p.m. on Thursday, March 11, 1982 in the home of Mrs. Jane Meek.

The meeting was opened by Vice President Mrs. Jane Meek. Mrs. Cecil Biggers, Mrs. L.L. Anthony and Mrs. Frank Hefner were elected as delegates to the top of Texas District Spring Convention to be held in Amarillo on April 2 and 3. Mrs. C.U. Pope read the report to be sent to Mrs. J.R. Stump for the West Texas State Women of the Year, Civic Division.

The Collect was led by Mrs. O.C. Holt.

Mrs. O.C. Holt gave the program on "Panhandle Ranching Empires." She recalled the development of ranching in the Panhandle.

The Roll Call was answered with the "Origin of the Name of a Texas Place."

Hostesses Mrs. Jane Meek and Mrs. Cecil Biggers served refreshments to Mesdames: J.R. Stump, C.U. Pope, D.E. Spoonemore, John Brown, O.C. Holt, L.L. Anthony, Woodville Jarvis and Frank Hefner.

Tumbling Classes will begin Monday, March 22, at 303 Main Street in Spearman (the old Chamber of Commerce Building). Tumbling skills will be taught from simple to difficult movements on the mats only. No apparatus or dance will be taught. Each class will meet once a week for six weeks. Both boys and girls ages 3 and up may sign up.

There will be a 45 minute class for ages three thru the third grade and a one-hour class for fourth grade and up and all advanced classes.

No semi-private or private classes will be offered at this time.

Cost will be \$15.00 and \$20.00 for the six weeks. There will be a limited number of students.

Mollie Holton will be teaching ALL classes.

For more information or to sign up, call 659-3973.

The Spearman High School Band will be going to a U.I.L. Contest on Thursday, March 18, at Panhandle High School. Be sure to attend and support the Band.

BIG

HOMETOWN AUTO PARTS
48 VILLAGE PLAZA PHONE: (316) 624-4946 LIBERAL, KANSAS 67901
PHONE: 733-2428

Dale Gable
Representative Gruver, Texas

SPECIAL OFFER !!

Bower/BCA Bearings 50% off

Shock Absorbers
Trail Blazer—Reg. \$16.75
Now \$9.87 Each
Husky—Reg. \$23.50
Now \$13.87
Save 41%

For appointments for installation notify Rocky's Automotive, Gruver.

Wagner Super Heavy Duty Brake Fluid
Now \$13.25
1 gal. can
FC-9314

Sale Good Thru April 15th

Dale Gable Representative 733-2428 Gruver, Texas
Dale Gable Representative 733-2428 Gruver, Texas

Choir Takes Sweepstakes

On Wednesday, March 10, the Spearman High School Chorale participated in the U.L.L. Concert and Sightreading Contest. The contest was held at West Texas State University with the performance in Mary Moody Northern Hall. The choirs participating include Class C to CCC Junior Highs and Class A to AAAAA High Schools. The High School was represented by three choirs: Boys' Choir, Girls' Choir and Mixed Choir or the Chorale. The Judges were Nick Boltz from Killeen High School, Jack Glover from Corpus Christi High School and Kenneth Baxter from Vernon High School. They are responsible for judging the choirs on notes, rhythms, words, pronunciation, interpretation, emotion, stage presence and vocal quality. They then rate each choir from I to V with a I Division being SUPERIOR, a II Division being EXCELLENT, a III Division being GOOD, a IV Division being FAIR and a V Division being POOR. The three scores are averaged and the choir receives that for the rating.

The Boys' Choir sang "Glory Be To God On High", "The Pasture" and "Sam Was a Man". They were accompanied by Denise Blackburn. They received 1st Divisions from all three judges.

The Girls' Choir sang "Regina Coeli", "Moon Song" from Three Spanish Ballads, and "Wisdom and Understanding". They were accompanied by Charlotte Angel. They received 1st Divisions from all three judges.

The Chorale sang "Victimae Paschali Laudes", "I Will Lay Me Down In Peace" and "Sing Unto God". They also received 1st Divisions from all 3 Judges.

After Concert competition, all choirs compete in Sightreading Contest. The judge for sight-reading was Milton Pullen who is from Abilene Christian Uni-

versity. Sightreading is where the choir is given a new piece of music for the first time. After a brief study period in silence the choir can sign it with the piano and then without the piano. The choir is judged on how well it corrects mistakes from the first time to the second time. Also, they are judged on how musically they sing the music. Sightreading points out the musically training the choir has or has not received and is a test of skill and ability. All three choirs received 1st Divisions in Sightreading.

This OUTSTANDING showing at contest this year is due to teaching and training the students are receiving in the Elementary and especially Junior High music departments. A high school program is only as good as its feeder programs are. **Charlotte Angel**

at Spearman Middle School and **Carol Pack** at Pringle-Morse School are largely responsible for the fine talent in the High School Choirs. That plus the student's great desire to be the best they can be, helps to breed excellence. Our schools' music program is developing into becoming one of the best and well-balanced programs in the State. Each year shows improvements and gains made in the education and involvement of more students in music.

Because the choirs received both a 1st Division in Concert and in Sightreading, they were awarded the U.L.L. SWEEPSTAKES TROPHY.

Support the high school program and be proud of it but also remember that it is only an outgrowth of the junior high and elementary music programs and training.

The next opportunity to hear the Chorale will be at the SPRING VARIETY SHOW on March 30 at the High School Auditorium. Become involved in the school's music program and even at church. Music is

one of the few things that can give enjoyment all of your life. There is truth in music. The Chorale wishes to express its thanks to Mr. Russell Hughes for who took time out to help drive the buses. Also, thanks to the parents for providing a good

audience and to the MUSIC BOOSTERS for the cupcakes. The band will be going to contest on Thursday, March 18, at Panhandle High School. Be sure to attend and support the band.



Karen Harruff, County Extension Agent and Judge R. L. McClellan are shown here with a Texas Agriculture brochure in observance of Texas Agriculture Day, March 18, 1982. Agriculture - It's Your Heartbeat, Texas.

N.H.S. Inducts 8 New Members



THESE ARE THE NEW MEMBERS, INDUCTED TO SPEARMAN'S NHS--National Honor Society. Top Row--L to R--Mike Caldwell, Mary Ann Kenney, Chris Christy

and Susan Davis. Bottom Row--L to R--Oralia Ochoa, Denise Blackburn, Johnnie Eaton and Marla Harmond.

The Spearman High School was on the Alternate Bell Plan with two 2nd hours. The reason was because on Monday, March 15, beginning at 10 a.m., the SHS National Honor Society had their annual installation of new members. This is determined or students are chosen by a Faculty Committee. These honored students are chosen in 4 areas--Character, Scholarship, Leadership and Service. Those chosen must maintain a 90 point grade average in order to maintain membership.

The sponsor is Miss Dorothy Roden. Miss Roden and her N.H.S. students have special activities to raise money so that they can go to educational trips

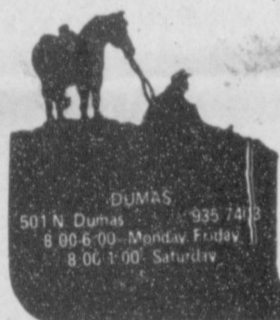
and such. The National Honor Society members include Seniors--this year--Mary Ann Martin, Denae Baker, Becky Byers, James Farmer, Shelly Friemel, Jimmy Haden, Karen Kenney, Shelly Mitchell, Pam Porter and Sherry Womble, Juniors--also, of this year--Lea Ann Gibner, Phyliss Lindley, Lana Paul, Nikki Rylant and Scott Strawn. Rory Sheppard is a Senior, a Member and also, the Spearman High School's NHS' President.

The new members were installed Monday, March 15, at 10 a.m. Those installed include Seniors--Marla Harmond, Denise Blackburn and Johnnie

Eaton. The Juniors included Susan Davis, Oralia Ochoa and Mike Caldwell. There were two Sophomores--Mary Ann Kenney and Chris Christy. There are a total of 24 NHS members for 1982--2 more than last year's bunch.

**** Parents can often prevent accidents in the home and save their children by thinking ahead and removing attractive, dangerous gadgets.


Tumbling Classes will begin Monday, March 22, in the old Chamber of Commerce Building--303 Main Street. The classes will meet once a week for six weeks. Both boys and girls from ages 3 on up can join. For those that are 3 years old up to 3rd graders, the classes will last 45 minutes. For the more advanced--4th grade on up--the classes will be an hour long. The cost will be \$15. and \$20. for the six weeks. **MOLLIE HOLTON** will teach ALL the classes. For more information or to sign up, call 659-3973.



GEBO'S

... the kind of store you remember.

Congratulations



OUR SINCERE
BEST WISHES

TO ALL 4-H AND FFA EXHIBITORS
IN THE JUNIOR LIVESTOCK SHOW!

We salute the
4-H & FFA
Boys and Girls
on the occasion of
the
Jr. Livestock
Show

SHOW SCHEDULE
Friday - March 19, 1982 **Gruver**

1:45 p.m. Grand Opening of Show
All Directors, Ag Teachers, County Agents, FFA Chapter Presidents, 4-H Club Chairman and FFA Sweetheart report to arena

2:00 p.m. Lamb Show Starts
Swine Show will follow completion of Lamb Show

From approximately 10:00 p.m. until 7:00 a.m. Saturday, barn will be locked with no one in barn beside night watchman.

SATURDAY
March 20, 1982

8:30 a.m. Pens and stalls must be clean and rubbish removed

8:30 a.m. Judging of Steers

11:00 a.m. Registration of Livestock Judging Contest

11:30 a.m. Livestock Judging Contest

6:00 p.m. Floor prices will be auctioned
Presentation of Livestock Judging Awards
Showmanship Trophies and
Top Gaining Award

GEBO'S

14th Annual NWIT Set

AMARILLO--Tickets went on sale today for the 14th Annual National Women's Invitational Tournament held in Amarillo, Texas.

The tournament will host eight of the top American Collegiate Women's basketball teams March 25-27 in the Amarillo Civic Center at Third and Buchanan Streets. The Amarillo Chamber of Commerce Sports Committee sponsors the tournament which is billed the NIT of women's basketball. Collegiate teams will be chosen and invitations extended during the week of March 14. In the past colleges and universities like UCLA, Wayland, Oregon State, Drake, Texas and Illinois have vied for the oldest and most prestigious crown in Women's basketball, according to John Heetland, C of C sports committee chairman.

Special attraction of the NWIT is the Golden Spread Girls All-Star Game Saturday night at 7 p.m. Invitations to all-star girl basketball players from throughout the Panhandle were sent out the week of March 7.

The All-Star Game bestows recognition of 30 girls who represent the cream of female players here on the High Plains, Evelyn Shelton tournament director and vice chairman of the Sports Committee, said.

NWIT tickets are available at the Chamber of Commerce offices, 1000 S. Polk. Each ticket is good for all games played for the date purchased. There will be four games each on Thursday and Friday at 2, 4, 7, and 9 p.m. On Saturday five games will be played beginning at 1 p.m. Other games will be played at 3, 5, 7 and 9 p.m. Saturday. The 7 p.m. game is the All-Star Game which will be followed at 9 p.m. by the Tournament Crown Game.

Adults will be admitted for \$3.50 per day. Students will be \$2.50. Children under 12 and accompanied by an adult will be admitted free.

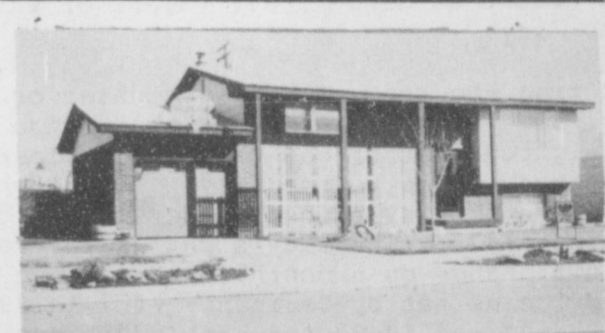
In Fashion

Fashion today starts with linen, cotton and silk. Clothes in these fabrics are seen in the better shops. Summer city clothes feature skirts and blazers in a rayon-linen blend.

OPEN HOUSE

Sunday, March 21st

2:00 to 5:00 p.m.



1111 Townsend

Beautiful three bedroom bi-level home in excellent condition. Two living areas, fireplace and lots of extras. Assumable loan with 9.25% interest.



211 Lonita

Extremely nice three bedroom home. New carpet. Lots of fruit trees. Immaculately clean home located on corner lot.



Hoover & Hoover
REALTY

601 S. Main • Perryton — 435-6873

"CARING FOR YOU IS WHAT WE DO."

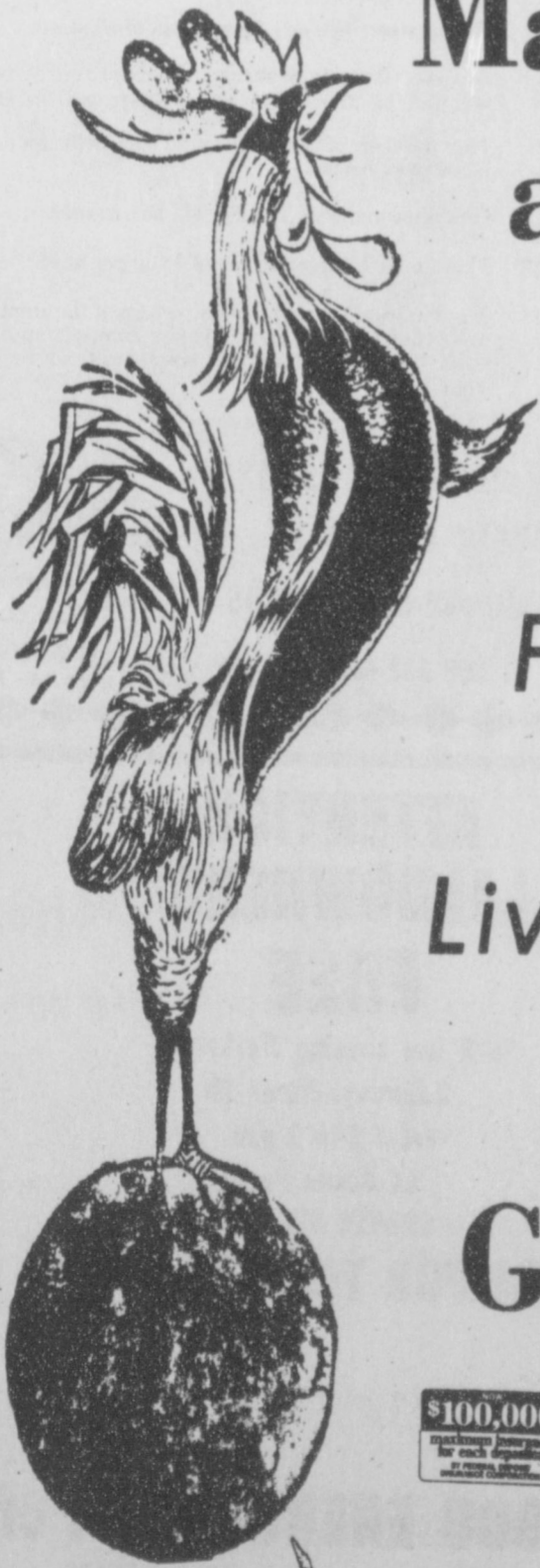
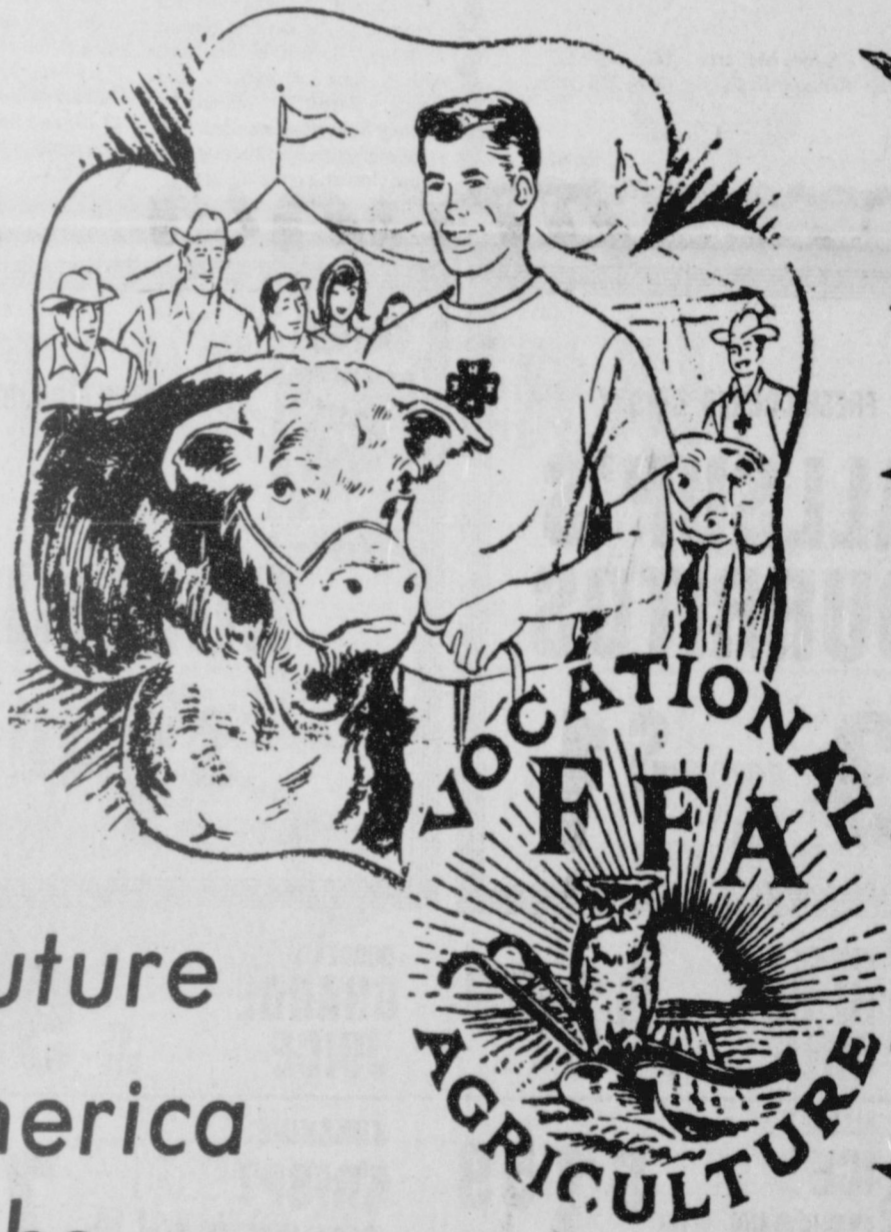
David Frank 658-4459 Margie Dermanelian 435-6023 Blanche Clark 435-6684 Rex Hoover 658-4683 B.J. Hoover 658-4683

HANSFORD COUNTY STOCK SHOW

SOMETHING... TO Crow About!

At The
County
Show Barn
Gruver, Texas

Fri & Sat
March 19th
and 20th



*Support the Future
Farmers of America
and 4-H Clubs
Livestock Show and Sale*

GRUVER STATE BANK

\$100,000
Insured by
Farmers Group
of America

Gruver, Texas

Member F. D. I. C.

Lynx Win 3rd At Gruver Track Meet

The Varsity Lynx tracksters traveled to near-by Gruver to compete in the Greyhound Relays. The Lynx did a superb job being second only to Dalhart and Perryton--being behind Perryton by 30 points. There are 15 events that any team or team members can qualify and they are--the 400 RELAY, 3200, 110 HIGH HURDLES, 800, 100, 400, 300 INTERMEDIATE HURDLES, the 200, the 1600, 1600 RELAY, the SHOT, DISCUS, VAULT, HIGH JUMP, and the LONG JUMP. Of course, not in that order particularly. The Lynx scored either 1st, 2nd or 3rd in 5 Events--not bad!!

Right off the bat, the Lynx ran in the 400 SPRINT RELAY and did an excellent job, coming short of Perryton, by a hair. The Lynx time was 46.12. Perryton's time was 44.84. Dalhart

won the event with a time of 44.16--beating Perryton by a short hair.

Kyle Brack seems to be one of those guys that could leap tall buildings in a single bound, he has been placing, and usually first, in the Hurdle Events. Kyle went to State last year in the hurdles, surely his plans are to go back to STATE and win it all or just 2nd place. Scott Martin, a 1979 graduate of SHS, went to STATE his Senior year--Kyle is a SENIOR this year--and he won 3rd overall in the Hurdles. I'm sure, Kyle will want to either tie or top that outstanding record. Kyle was the first and only Lynx trackster that 1 of the 15 events--but yet he was 1st in 2 of the 15 events--both the Hurdle Events. Kyle won the 110 HIGH HURDLES in fine style. His time was 14.99, defeating his closest counter-

part, Homfield of Dalhart who's time was 15.36. In 3rd Place was Kevin Stanley of Stratford with a 16.61.

The Lynx didn't place in the top three until, Kyle Brack went into action. Kyle was participating in the 300 INTERMEDIATE HURDLES. He broke a few records last year, plans to shatter a few more this year, maybe even his own. Once again, Kyle went home in First Place in record-breaking time, this time--39.59. In 2nd Place was Buddy Schertler of Stratford with a time of 40.25 and then in 3rd Place was Dod Noland of Dalhart with a time of 40.7.

After all the running events were completed, it was the field events to follow. No one was in the top three in the SHOT competition, of the Lynx. Jimmy Haden did his job as he won 3rd Place in the DISCUS event, with a throw of 126.0. Todd Pearson of Perryton won First Place with a throw of 148.5%. Steve Phillips of Stratford came in second with a throw of 129.4.

Scott Dunlap did his job as he tied with Todd Washington of Sanford-Fritch at 6-4 in the HIGH JUMP. Todd was awarded First Place and the record holder, while Scott had to settle for 2nd Place at the same height--6-4. Danny Smith of Perryton, also jumped 6-4, and he was awarded 3rd Place. Scott is a good leaper.

In the remaining events that the Lynx were not in the top 3, these are the winners--in the 3200, Jose Cano of Perryton won the event with a time of 10:58.66; in 2nd Place was Will Corbin of Sunray with a time of 11:07.26; and finally it was Roy Pain of Sanford-Fritch with a time of 11:11.88.

In the 800, the winner was Trent Sharp of Dalhart with a time of 2:05.25; 2nd Place went to Danny Barrett of Stratford with a time of 2:05.27, and finally Barrett's teammate, Rodney Robertson was 3rd with a time of 2:05.30--this was one of the closest events all day.

In one of the fastest runs--the 100 sprint--the winner was Alex Burkhalter of Dalhart with a time of 11.38, 2nd in command was Burkhalter's teammate, Mike Nelson of Dalhart with a time of 11.59. And rounding out the top three, was Robert O'Quinn of Perryton with a time of 11.70.

In the 400 the winner was Randy Rockhold of Sanford-Fritch with a time of 52.33. Steve Day of the Dalhart Wolves was 2nd with a time of 52.99 and Carlton Collier was third with a time of 53.69--this was one of those close races.

In the 200, Robert O'Quinn set a new record with a time of 22.8 in the preliminaries, he couldn't surpass that mark in the finals but still won the event with a time of 22.94. Randy Rockhold of Sanford-Fritch came in 2nd with a time of 23.06. And Alex Burkhalter of the Dalhart Wolves, was 3rd with a tie of 23.16.

It seemed like in every event there was either 1 or 2 Dalhart Wolf placing in an event--as a matter of fact, they placed in 12 of the 15 events--that is very impressive. In the 1600, it was a "Wolf to the rescue". This time it was Andy Bertaglot of Dalhart winning the event with a time of 4:54.0. Danny Watson of Phillips came in second with a time of 4:56.9; and finally it was Barry Durham of Stratford with a time of 4:59.4.

In the 1600 RELAY, the winners were--you guessed it--the Dalhart Wolves with a time of 3:34.54. The Gruver Greyhounds, had been having bad luck, and finally started breaking the ice and as a team came in and won 2nd place in the 1600 Relay with a time of 3:37.9. And in the final position of the top three positions, was Perryton with a time of 3:38.4.

The SHOT was dominated by Todd Pearson who set a record at 54.6--impressive. Back in 2nd Place was Brian Felty of the Dalhart Wolves with a toss of 43-10; and finally it was Phillip Newcomb of Phillips with a toss of 43-6 1/4.

7th Boys Track Team Look Impressive

The Spearman 7th grade Lynx Tracksters went to Gruver to participate in their first Track Meet of their young career. They are coached by Dan Shaver.

Coach Shaver said they didn't do too bad--being 6th overall with 32 points--that's pretty good. The 7th SPRINT RELAY TEAM won 2nd Place--Mark

Garnett, Allen Mires, Mike Pearson and Dusty Hill make up the Sprint Relay. In the LONG JUMP, Mark Garnett won 5th Place. Allen Mires placed 2nd in the HIGH JUMP by jumping 5'2. Allen also placed in the 60 METER HURDLES--placing 5th. That was the main spots for the Spearman 7th graders.

Coach Shaver said that the

next Track Meet will be in a couple of weeks--it will be the Spearman Lynx and Lynxettes Relays. There will be lots of teams competing in the Lynx Relays--to be held March 26 and 27. The 7th grade guys have 7 more days to practice for the big event!! So the 7th Lynx will have this weekend off, and will be getting ready for the "big one".

Donahue/Pearson Win 3rd

The Spearman Lynx Tennis Team, also coached by Robin Travis, showed alot of desire to win. There were two Freshmen that were very impressive in the tournament. The Tournament was the Stratford Invitational. Some of the teams that competed were Gruver, Dalhart, Spearman, Sanford-Fritch, Stratford, Sunray.

On Friday, only a few qualified to the finals. The SINGLES

CHAMPIONSHIP was between Kip Gentry of Dalhart and Mike Martin of Gruver. Kip won the match with a 6-1 6-0--two set win. In the 3rd Place Championship, Scott Duncan of Gruver defeated Jeff Munger of Sanford-Fritch with a two set win--6-3 and 6-0.

In the DOUBLES' CHAMPIONSHIP, Ricky Finley teamed up with Gregg Ammons of Gruver and defeated Greg Field

and Kenny Welch of Dalhart--7-6 and 6-2. In the 3rd Place Championship, it was ROSS DONAHUE and MARK PEARSON, both FRESHMEN, defeating Derrick King and Wilson of Gruver in a very impressive 6-4 and 6-2 victory. Now, there is no doubt in too man peoples' minds that the Spearman Tennis Teams have a very good future.

8th Boys Track Team Look Good

The 8th grade Lynx--Track team--"moized" on over to Gruver to participate in the Gruver Greyhounds Relays this past Saturday, March 13. Their coach is Tom May. Coach May said his fellows did a fine job.

Michael Lopez placed 3rd in the 1200 METERS and 4th in the 800 METERS. The 8th grade boys Sprint Relay won 4th. The Sprint Relay team consists of Dean Greene, Jeff Vanlandingham, Martin Lopez and Damon Goodheart. Jeff Vanlandingham placed 4th in the 400 METERS. In the HIGH JUMP, Damon Goodheart was 6th. Chad Guthrie tied for 3rd in the POLE VAULT. Chad, also placed in the 60 INTERMEDIATE HURDLES--5th. And finally, Dean Greene placed 5th in the 200 METERS.

The 8th grade boys track team will have the weekend off, and will be practicing and working on their main events to be ready and all fired up for the "Main Event"--the Spearman Lynx and Lynxette Relays to be held March 26 and 27. Try and make it out to Lynx Stadium, and cheer on the 8th Lynx to victory. The finals will be on Saturday, the field events will be completed on Friday.

ATTENTION LIVESTOCK PRODUCERS
CATTLEMAN'S LIVESTOCK COMMISSION CO.

Box 50, Dalhart, TX 79022
 Phone (806) 249-5505

4 miles West of Dalhart on HWY 54. Brand new facilities.

We will have two sales a week beginning March 24.

Hog sales will begin at 10 a.m. every Wednesday and Cattle sales will be every Friday at 11:30 a.m.

Nite Phone - James McCarty - (806) 249-6297
 Larry Wing-Manager-Residence (806) 249-2402

WE SALUTE YOU

4-H AND FFA EXHIBITORS

CALF RULES

1. Steers must weigh at least 900 and not more than 1300 pounds on the date of the show.
2. All Angus, Hereford, British Crosses and other crosses will be shown together and divided as equally as possible into four classes according to their weight.
3. Any steer showing more than normal fill on show day as determined by show officials at weighing time will not be allowed to show.
4. All steers must have been owned by the exhibitor prior to the summer weigh-in.
5. No exhibitor may enter more than one steer in the show. Exhibitor will weigh steers June 29, 1981. Steers may be weighed in as family groups and if so tagged will be eligible to be shown by any family member. Steers will be tagged with Texas Steer Validation Tags. If tag is lost out of the ear, exhibitor must notify their adult supervisor in order to obtain replacement tag. Steers may be purebred, grade, or crossbred, but only steer calves may be entered.
6. All steers will be weighed on June 29, 1981 between 7:00 a.m. and 10:00 a.m.
7. A trophy will be awarded to the steer with the highest daily gain. Gain will be computed from the date of weigh-in until the date of the show.
8. Only individual ribbon winners will sell in the steer auction.
9. 75% of steers will sell--maximum of 40 steers.
10. Any steer found to be unruly by the board on the date of the show will not be allowed to show. Steers will be sifted for this.
11. The number of each class to sell will be determined on percentage basis.
12. One Showmanship Trophy will be awarded.
13. There will be an entry fee of \$3.00 per head.
14. No change of the major color pattern of the animal by painting or dyeing will be allowed. Any grooming material that allows color to come off from any animal will not be allowed at the show.

Your local used cow dealer is
SPEARMAN BI-PRODUCTS
 1 800 692-4043

farmers **CALL COLLECT 659-3544**
 HWY. 15 - SPEARMAN



TEDDY VELA Exhibiting a Hog



JOANNE ODEGAARD Exhibiting a Lamb and a Steer

FRESH COOKED, CRISPY
ALLSUP'S BURRITOS
3 FOR \$1

ASSORTED FLAVORED
DORITOS
 REG. \$1.99
\$1.49 ONLY

BORDEN'S HI-PRO MILK 1/2 GAL. CTN. **\$1.09**

ALLSUP'S ICE CREAM 1/2 GAL. RD. CTN. **\$1.59**

BORDEN'S ORANGE JUICE QT. BTL. **99c**

SUNSHINE KRISPY CRACKERS 1 LB. BOX **79c**

FOLGERS ALL GRINDS COFFEE 16 OZ. CAN **\$2.19**

CLOVER CLUB CRINKLE POTATO CHIPS BUY ONE GET 8OZ. BBQ CHIPS \$1.59 \$1.29 VALUE FREE! 10 OZ.

DETERGENT KING TIDE BOX **\$1.99**

SCHILLING BLACK PEPPER 4OZ. CAN **\$1.39**

ALLSUP'S CONVENIENCE STORES
 "THERE'S ONE NEAR YOU"

PRICES EFFECTIVE MARCH 18-20, 1982

ATTENTION LANDOWNERS FREE

Oil & Gas Leasing Workshop
 Saturday, March 20
 From 2 to 8 p.m.
 La Casita Room
 GRUVER STATE BANK

GET TOP \$\$\$ FOR YOUR OIL & GAS LEASE

Oil & Gas Lease Auction
 Pampa, Tx. The Coronado Inn
 Quivira Room, Monday,
 March 21, at 7 p.m.

PABCO ENERGY, INC. of TULSA
 P.O. Box 51317 Tulsa, Okla. 74150 918-582-1012

Davis/Mires Win 3rd At Tennis Tourney

The Spearman Tennis-Girls' team-coached by Robin Travis traveled to Stratford on Friday and Saturday, March 12 and 13 to compete in the Stratford Invitational Tournament. Coach Travis is really excited about his girls tennis team. He feels that they have a great chance of being the District representatives.

On Friday, March 12, 3 rounds were played.

The 1st round in the girls action showed that Green of Phillips defeated Sharolyn Barkley in a tough battle-6-3 and 7-5. In another singles' SET Kelly Castor of Gruver was defeated by Tania Wilson of Stratford in an easy game-6-0 and 6-0. In the Double's competition, STEPHANIE FRIEMEL and JOANNE ODEGAARD--both FRESHMAN at SHS were defeated by Cappi Cooper and Shelly Logsdon of Gruver--but not before Stephanie and JoAnne put up a fight, by winning the second set-6-3, 3-6 and finally 6-2 in favor of Cooper and Logsdon. In another Girls' Doubles, Kathy Nelson and Jana Spivey of Gruver were defeated--soundly--by Keri Wilson and Childers of Sunray--6-0 and 6-2.

In the 2nd round--Throne and Carl of Dalhart were defeated by Cappi Cooper and Shelly Logsdon of Gruver in a tough match-6-4, 6-2 and 6-3. This was a tough game.

In the 3rd and final round in Friday's action, showed that Cooper and Logsdon of Gruver were defeated by Johnson and Wiley of Stratford--6-1 and 6-4. Wilson and Childers of Sunray defeated SUSAN DAVIS--a Junior--and ANDREA MIRES--a Sophomore. The 3rd Place was set for Saturday's action--Susan and Andrea would take on Cooper and

Logsdon for 3rd place, while Childers and Wilson would fight against Johnson and Wiley for the Championship.

In Saturday's action--the Championship match in the Singles' was between Tania Wilson of Stratford and Jeri West of Dalhart. It was a tough match, but Wilson of Stratford came out on top to take 1st Place home--6-1 and 6-1. In the 3rd Place of the Singles' Competition--it was Leslie Brown of Sanford-Fritch defeating Nanette Boardman of Stratford in a very close match--7-6 and 6-4.

In the Double's Championship, the match was between Childers and Wilson of Sunray going up against Johnson and Wiley of Stratford. Childers and Wilson won the game in three sets-6-3, 7-6--this going to Stratford, and 6-3--Sunray winning. In the Third Place Championship--Jr. SUSAN DAVIS and Soph. ANDREA MIRES beat the "tar" out of Cappi Cooper and Shelly Logsdon of Gruver. Susan and Andrea won the game in two sets 6-3 and 6-4--brining home 3rd Place.

As a team, the Spearman

Lynettes Tennis team was tied for 3rd Place with the Dalhart Wolverines by scoring 10 points, 1st Place went to Stratford with 30 points, Sunray took home 2nd with 20 points, and Fritch was 5th with 5 points.

Tumbling Classes will begin on Monday, March 22 at the old Chamber of Commerce Building--303 Main Street. Each class will meet once a week for six weeks. Boys and girls from ages 3 on up can join. For the 3 year olds to 3rd graders, there will be a 45 minute class; for the more advanced or from 4th grade on up, it will be an hour long. The cost will be \$15, and \$20 for the 6th weeks. MOLLIE HOLTON will teach ALL classes. For more information or to sign up, call 689-3973.

Election Called

Hansford County Commissioners Court has authorized an election to legalize Bingo in Hansford County for charitable purposes, pursuant to a Petition presented to the Court. The election will be held April 3.

All voting places will be open. Absentee voting will begin March 15, 1982 and continue through March 30, 1982.

MARKETS

Wheat	\$3.61
Milo	4.10
Corn	2.76

The Spearman High School Band will be going to participate in a Contest on Thursday, March 18 at Panhandle High School. Be sure to attend and support the band.

HORSE RACING

Thoroughbred and Quarter Horses

3 Big Weekends

March 20-21-27-28, April 3-4

ROUNDUP PARK TRINIDAD, COLO.

Post time 1:00 P.M.

Pati - mutuel wagering

Daily Double, Quinella, Win, Place, Show

Registered HERFORD Sale

80-BULLS

14-Hd. Polled 20-FEMALES

SAT...MARCH 27, 1982

TEXHOMA, OK. 1:00 p.m. CST.

Great Plains Hereford Assoc. 38th Annual Sale Texhoma Livestock Comm. Co. Yards

For Catalogs: Call or write...

M.W. England
Box 186 Goodwell, Ok. 73939
Phone: 405-2611-Ext. 228
or Res. 349-2512

THERE'S A LOT OF
NEWS
IN OLDS TODAY



Award for Energy Efficiency

There's one kind of home that can save energy and money.

When you see the Energy Checked Efficiency Home sign in the yard of a home you know that the house has been carefully checked to be sure it uses energy efficiently. Taken into consideration are important energy saving features such as high "R" values in wall and ceiling insulation, storm windows, attic ventilation, caulking and weatherstripping as well as the efficiency rating of heating/cooling systems and water heaters. Before you build, buy or remodel ask for our free booklet that explains the benefits of owning an Energy Checked Efficiency Home.



#E11-82

INTRODUCING CUTLASS CIERA!

Here's a car the likes of which you've never seen before. It's called Ciera and it's a Cutlass. A whole new kind of Cutlass up with the latest in automotive technology. Cutlass Ciera...the first Cutlass with front-wheel drive. A 2.5-liter

4-cylinder with electronic fuel injection is standard. A 3.0-liter V6 with an on-board computer that helps fine-tune your engine as you drive is available. Also available, the brand-new 4.3-liter diesel V6. And look what else comes

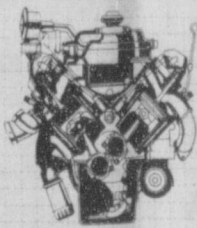
standard on Cutlass Ciera: power steering and brakes, automatic transmission, side window defoggers, full-wheel covers and...a lot of style. Cutlass Ciera. Even today, there's still room to do it with style.

ANNOUNCING FIRENZA!



This is what a small car can be...when it's an Oldsmobile! This newest, smallest Oldsmobile shows impressive quality throughout. Front-wheel drive, MacPherson strut front suspension. The fun-to-drive Firenza is ready for your test drive.

INTRODUCING NEW DIESEL V6!



A brand-new 4.3-liter diesel V6 joins America's best-selling diesel family. Available on all Cutlass Supreme and Cutlass Ciera coupes and sedans.

PRESENTING OMEGA ES!



That smart, sophisticated ES package that gave Omega sedans the grand-touring look inside and out is now available on Olds Omega coupes!

Some Oldsmobiles are equipped with engines produced by other GM divisions, subsidiaries or affiliated companies worldwide. See your dealer for details.

NO. 1 SELLER CUTLASS SUPREME!



Over the past seven years, more new car buyers chose Cutlass than any other car. Total value is why. The ride. The room. The comfort. The fine Olds quality. The traditionally high resale value. The 1982 Oldsmobile Cutlass Supremes offer all of this--plus the added value of popular standard features like power steering, power front disc brakes, automatic transmission and extensive anti-corrosion measures...and a lot of style. Engines? A 4.3-liter diesel V6, popular 5.7-liter diesel V8 and a new 5.0-liter gasoline V8 are now available. Isn't it time you traded for the solid value of a stylish Cutlass Supreme? Drive one today at your Olds dealers.

SEE YOUR
SILVER

West Texas Olds Dealers

THURSDAY

THURSDAY 3/18/82

CABLE	[3]	[4]	[5]	[7]	[8]	[9]	[10]	[11]	[12]
PM	OETA	KAMR	TMC	KVII	CBN	WGN	KFDA	WTBS	CNN
	Oklahoma City	CH.4 Amarillo	Movie Channel	CH.7 Amarillo	Christian Network	CH.9 Chicago	CH.10 Amarillo	CH.17 Atlanta	Cable News Ntwrk
6:00	MacNeil-Lehrer Report	News	Prog Cont'd	News	Weekend Gardener	Barney Miller	News	Carol Burnett and Friends	Moneyline
6:30	Oklahoma Report	M*A*S*H		You Asked For It	Another Life	Movie: 'Little Big'	Entertainment Tonight	NBA Basketball	Sports Tonight
7:00	All Creatures Great and Small	Fame	Movie: '1 Sent A Letter to My Love'	Police Squad! Bosom Buddies	National Geographic Special	Man'	Magnum, P.I.	Houston at Atlanta	Primenevs/120
8:00	Light Camera! Action!	Diff'rent Strokes	Gimme a Break	Barney Miller	700 Club		People's Choice Awards		
8:30								TBS Evening	
9:00	Speaking of Love: Lec Buscaglia	Hill Street Blues	Movie: 'Caveman'	20/20		News		News	Freeman Reports
9:30					Sing out America				
10:00	Festival '82	News		News	Nashville RFD	Barney Miller	News	All in the Family	Sports Tonight
10:30		Tonight Show	Movie: 'Any Which Way'	Nightline	Another Life	Saturday Night	NCAA Basketball	Movie: 'Beyond'	Newsdesk
11:00			You Can'	Vegas	Burns & Allen		Championship Game	Mombosa'	
11:30		Late Night with David			Jack Benny Show	Movie: 'The'			West Coast Report
12:00		Letterman		Sign Off	Married Joan My Little Margie	Barefoot Contessa'			People Tonight
12:30		Sign Off	Movie: 'Thief'				Sign Off	Movie:	

FRIDAY

FRIDAY 3/19/82

CABLE	[3]	[4]	[5]	[7]	[8]	[9]	[10]	[11]	[12]
PM	OETA	KAMR	TMC	KVII	CBN	WGN	KFDA	WTBS	CNN
	Oklahoma City	CH.4 Amarillo	Movie Channel	CH.7 Amarillo	Christian Network	CH.9 Chicago	CH.10 Amarillo	CH.17 Atlanta	Cable News Ntwrk
6:00	MacNeil-Lehrer Report	News	Movie: 'American Pop'	News	Good News	Barney Miller	News	Winners	Moneyline
6:30	Oklahoma Report	M*A*S*H		You Asked For It	Another Life	Laverne and Shirley	Entertainment Tonight	Sanford and Son	Sports
7:00	Washington Week/Review	NBC Magazine		Benson	National Geographic Special	Movie: 'Savage 5'	Dukes of Hazzard	Movie: 'Ring of Bright Water'	Primenevs/120
7:30	Wall Street Week			Movie: 'Phoenix'					
8:00	Movie: 'Oklahoma'	Movie: 'The Car'	Movie: 'Final Conflict'		700 Club		Dallas		
8:30									
9:00				Strike Force		News	Falcon Crest	TBS Evening News	Freeman Reports
9:30					Sing out America				
10:00		News	Movie: 'A Fistful of Dynamite'	News	Nashville RFD	Barney Miller	News	All in the Family	Sports Tonight
10:30		Tonight Show		Virginian	Another Life	Saturday Night	NCAA Basketball	Movie: 'Ten Tall Men'	Newsdesk
11:00					Burns & Allen		Championship Game		
11:30		SCTV Comedy Network		Nightline	Jack Benny Show	Movie: 'The Organi-			West Coast Report
12:00	Sign Off			Fridays	Married Joan My Little Margie	zation'			People Tonight
12:30			Movie:				Sign Off	Movie:	

SATURDAY

SATURDAY 3/20/82

CABLE	[3]	[4]	[5]	[7]	[8]	[9]	[10]	[11]	[12]
AM	OETA	KAMR	TMC	KVII	CBN	WGN	KFDA	WTBS	CNN
	Oklahoma City	CH.4 Amarillo	Movie Channel	CH.7 Amarillo	Christian Network	CH.9 Chicago	CH.10 Amarillo	CH.17 Atlanta	Cable News Ntwrk
7:00	Flintstones	Movie: 'Bustin' Loose'	Super Friends	Contact	U.S. Farm Report	Popeye/Olive	Baseball Bunch	News/Sports/Weather	Inside Business
7:30	Comedy Show		Thunder/Goldie Gold'	Lesson	World Tomorrow	Comedy Show	3 Stooges/Rascals		
8:00	Once Upon a Classic	Kid Super Power Hour	Movie: 'North Avenue'	Action Jack	Financial Inquiry	Rex Humbard	Adventure Hour	Against the Wind	Money Week
8:30				Laverne & Shirley	Weekend Gardener	Issues Unlimited	Bugs Bunny Road Runner		Style
9:00	Light Camera! Action!	with Shazam	Irregulars'	Richie Rich/Scooby & Scrappy Doo Show	Jimmy Houston	Charlando	Show	Movie: 'All Quiet on the Western Front'	Special Report
9:30		Space Stars			This Week on Wall Street	Car Care Central			News
10:00	Movie: 'Oklahoma'			Fonz/Happy Days	Fresh Idea	Superman			Special Report
10:30		Spiderman & His Friends		Healthcliff/Marmaduke	Rodale's Home Dynamics	Gentle Ben	Blackstar		
11:00		Duffy/Speedy Show	Movie: 'The Outsider'	ABC Weekend Specials	Westerners	High School Basketball	Troilkins	Movie: 'Band of Angels'	Sports Week
11:30				American Bandstand	Wild Bill Hickcock	NCAA Basketball	NCAA Basketball		News/Sports/Weather
12:00		Movie: 'Moving Violation'			Movie: 'Ramrod'	ball	Championship Game		
12:30			Pop! Goes the Country						News/Sports/Weather
1:00	Kingston Trio and Friends			That Nashville Music					People Now
1:30	Reunion		Movie: 'Ode to'	Wild, Wild West			NCAA Basketball	Movie: 'Fahrenheit'	
2:00		NBC Sports: Ringside	Billy Joe'		Movie: 'Daring Danger'		Championship Game	45'	News/Sports/Weather
2:30				Pro Bowler's Tour		America's Top Ten			Style
3:00	Movie: 'Becket'				Wyatt Earp	Soul Train			Best of Take Two
3:30			Movie: 'The Big Red One'			Wagon Train			
4:00				Wide World of Sports		7th Annual Junior Stars	Tournament Players	Last of the Wild	News/Sports/Weather
4:30		Wild Kingdom				Bowling Championship	Golf	Motorweek	
5:00		Shopping Smart			Lively Country	Solid Gold	Championship Wrestling	Championship Wrestling	Week in Review
5:30		News	Movie: 'The Hand'	News	Stan Hitchcock				Press Box

SATURDAY CONT.

SATURDAY 3/20/82

CABLE	[3]	[4]	[5]	[7]	[8]	[9]	[10]	[11]	[12]
PM	OETA	KAMR	TMC	KVII	CBN	WGN	KFDA	WTBS	CNN
	Oklahoma City	CH.4 Amarillo	Movie Channel	CH.7 Amarillo	Christian Network	CH.9 Chicago	CH.10 Amarillo	CH.17 Atlanta	Cable News Ntwrk
6:00	Dream Called Television	Lawrence Welk	Prog Cont'd	Hee Haw	Judy Lynn Show	High School Basketball	Amarillo Observer	Prog Cont'd	Sports Saturday
6:30					Blackwood Brothers	IHSA Class 'AA' Basket-	Look at Us		
7:00	All-Time American Songbook	One of the Boys	Chicago Story	T. J. Hooker	Movie: 'Meet John Doe'	ball Championships	Walt Disney	NBA Basketball: Atlanta at New York	News/Sports/Weather
7:30			Movie: 'Bustin'						
8:00			Loose'	Love Boat					News/Sports/Weather
8:30							CBS News Special		
9:00		McClain's Law	Movie: 'Ode to Billy Joe'	Fantasy Island				TBS Evening News	News/Sports/Weather
9:30				Rock Church					
10:00	Kingston Trio and Friends: Reunion	News		ABC News		News	News	World at War	Sports
10:30		Dance Fever		News Movie:	Heritage Singers		Blue Ribbon Futurity		Press Box
11:00		Solid Gold	Movie: 'The Outsider'	'Soylent Green'	American Trail	Movie: 'Green Berets'		Movie: 'Death Wish'	Freeman Reports
11:30					Weekend Gardener		Entertainment This Week		
12:00	Sign Off	Sign Off			Lesson				News/Sports/Weather
12:30				Sign Off	Westbrook Hospital		Sign Off		Best of Fred Saxon

Francois Mitterrand, President of France, in speech to Israeli Parliament: "The Palestinians should determine their fate but on condition that they respect the right of others..."

Edward P. Boland, (D-Mass), chairman, House Intelligence Committee: "Convincing intelligence supported a finding that the Salvadoran insurgents were well-trained, well equipped with modern weapons and supplies."

Alexander Haig, Secretary of State: "President Reagan's intention is to explore every avenue that could lead to a peaceful resolution of the situation in Central America."



Kerry Henton and Judge R.L. McClellan are shown being served cookies by Frances Loftin at the C and C membership orientation Tuesday.

WILL YOU STILL BE WORKING LIKE YOU ARE TODAY WHEN YOU'RE 80 YEARS OLD?



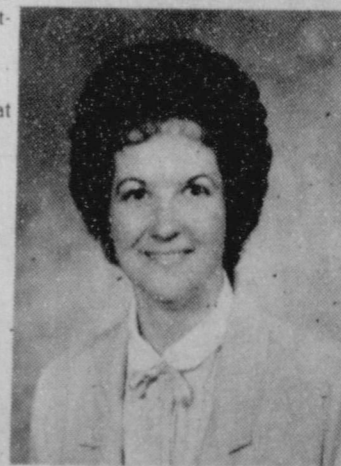
If you farm, work in the oil field, if you're self-employed, or if you work for someone else, you may not have a choice!

You see, for years, we've all thought that Uncle Sam or our company or someone would take care of us after we retired. That's not so likely anymore. Besides, inflation soon eats up those retirement plans... don't forget the dollar you had just 7 years ago is only worth 50¢ today.

Beginning January 1, 1982, you can set up your own tax-deferred retirement plan... even if you participate in a company plan, too. You can put up to \$4,000 in it annually if you and your spouse both work, and it's fully insured just like the rest of our accounts. Remember, a \$2,000 annual contribution, assuming it earned 12% interest, would amount to 1 million dollars in just 35 years. You may even be able to set up an IRA today for last year, contribute \$1,500 and deduct it from last year's taxable income, providing you do it soon.

Don't put yourself in a position where you're still working for your money after you should have retired. Have your money already working for you so you can retire by starting today, with an IRA at Homestead. Lots of financial institutions will offer them, but look out for unnecessary fees and lack of experience. We charge no fees and we've been setting up IRAs for years.

Talk to your tax accountant or call any of our experts at Homestead.



Deloris Montgomery
Guymon
Branch Manager

Guymon
Northridge Shopping Center
(405) 338-8461



Hansford-Hutchison County Farmers Union To Meet

The Hansford-Hutchison County Farmers Union will hold a county meeting Thursday, March 25 at the Home Demonstration Building in Spearman, local president Burton Schubert announced. The meeting will begin at 7:30 P.M. Keynote speaker for the evening will be Charles Mote, Crop Insurance Adjustor, Mineral Wells. Mote will be speak-

ing on Multi-Peril Crop Insurance (Federal Crop All Risk), on grain sorghum.

All farmers and ranchers in Hansford and Hutchison counties are encouraged to attend the March 25 meeting.

Members are asked to bring their listings for the upcoming Farmers Union Auction Sale.

Refreshments will be served and the meeting is OPEN TO THE PUBLIC.

NEWS VIEWS

Jean Kirkpatrick, U.N. Ambassador, on Salvadoran blockade: "The use of various kinds of technological power to assist in choking off the flow of arms to the military insurgents... is a feasible thing to do."

Alan Greenspan, economic adviser: "Thus, while the evidence the rate of decline is slowing and, in fact, we may have hit bottom, indications of an upturn are scant at best."

Governor To Visit In Panhandle Friday

AUSTIN--Governor Bill Clements will participate in Motor Carriers Appreciation Day at the Swift Independent Packing Co. in Dumas and be honored at a public reception at the First State Bank of Dumas Friday, March 19.

Governor and Mrs. Clements will begin the day at 8:45 a.m. at the Swift plant where the annual meeting of company personnel with owners and managers of the various trucking companies will be underway. Governor Clements will speak briefly to the trucking representatives and the Clements also will tour the plant facility where 1,100 persons are employed. Jim Ostrander is general manager of the Swift plant in Dumas where Mayor Mike Salim has declared March 19 "Motor Carriers Day."

A public reception for Governor and Mrs. Clements will be held from 9:30 - 10:45 a.m. at the First State Bank. Coordinating arrangements is Weston Futrell, president of the First State Bank of Dumas.

Residents of a five county area--Moore, Hartley, Dallam, Sherman and Hansford--are expected to attend. Campaign leaders for governor Clements re-election bid from counties are Glenn Deen of Texas Beef Producers of Dumas, Moore County; Bob Langhorne, Priesly-Langhorne Insurance Co. of Dalhart, Hartley County; E. R. Bell of Sherman Implement Co., Sherman County; and Kenneth Irwin of Graver State Bank, Hansford County.

T. Boone Pickens of Amarillo is statewide campaign chairman for Governor Clements' campaign. Wales Madden III of Amarillo is spearheading re-election efforts for Governor Clements in the 26 county region of the Panhandle.

The Clements will be in Dumas as part of a two-day Panhandle trip which also will take them to Pampa, Borger, Shamrock and Amarillo.

Governor Clements, who is seeking reelection to a second term, recently became Chairman of the High Plains Study Council and will lead the work during the next year to formulate national legislation to address the problems of declining water supplies in a six state area, including Texas. The High

Plains Study Council is composed of representatives including governors from Texas, Oklahoma, New Mexico, Nebraska, Colorado and Kansas. The High Plains Study Council will recommend legislation to the United States Congress and the Department of Commerce. Governor Clements is now Vice Chairman of the Committee on Energy and Environment for the National Governor's Association and Vice Chairman of the Southern Governors' Association and Republican Governors' Association. Elected in 1978, Governor Clements is the first Republican governor of Texas since Reconstruction. During his term, the first Texas wiretap law was passed for use in narcotics cases and successful War on Drugs legislation stiffened penalties for drug traffickers. Governor Clements pushed for the achieved laws to return education to basic subjects and to require teachers to pass competency tests.

With a business-like approach to government, Governor Clements has introduced more effective management practices, reduced the number of state employees and decreased the percentages of growth in the state budget.

Governor Clements organized the first meeting in history of the border governors from both the United States and Mexico and is now chairman of the Southwest Border Regional Conference composed of governors of the border states. Last fall he was host governor and coordinator of the second International conference of those governors in El Paso. He is a strong advocate of programs to improve relations in Mexico and the border states.

Governor Clements served as Deputy Secretary of Defense from 1973-77 and was awarded the Department of Defense Medal for Distinguished Public Service.

Married to the former Rita Crocker, Governor Clements was born and raised in Dallas. He began work in 1937 in the oil fields working on drilling rigs as a roughneck and driller. He founded a drilling company, SEDCO, Inc. in 1947. As governor, he was chairman in 1980 of the Interstate Oil Compact Commission.

C of C Membership Drive Completed

The membership drive for the Spearman Chamber of Commerce is completed. Frances Loftin, Chairman of the Membership Committee and Claudine Laxton have done an excellent job. We welcome the following new members into the Chamber to help us work to make Spearman a better place to live: Lenis Simpson, Moose Lodge, Buzzard Farms, Inc., Panhandle Wireline Services, The Hansford Agency, Earl Spencer, Pat Underwood, B & J Supply, Charles Laxton, Johny P. Vernon, R. L. McClellan, R. L. Farrell, Jim Murray, Midco Drilling, Callaway's House of Flowers, Shear Action, Bob

Pearson Oil & Gas, Tucker Water Well, AGCO of Spearman, Inc., Shufeldt Rig Service, Inc., Mason & Henton, Buster's Aerial Dusters, Jim Mercer, A & L Printing, Clara Wise, Hansford Co. Compost, Terry Graves, Boyd's Family Shoes, The General Store, James Brown and Ronald Robinson. A coffee was held for the new members in the Chamber of Commerce office, Tuesday, March 16. This was an orientation and get acquainted coffee, for new and old members, so that they can learn how a chamber operates and works. Again we welcome these new members.

ORIENTATION FOR NEW CHAMBER OF COMMERCE MEMBERS--Shown above are new member Jim Mercer, and members Frances Loftin and Ray Ingle at the orientation held Tuesday morning in the newly remodeled offices of the Chamber of Commerce.



Best Of Press

Always
No wonder the average American must use his head. He is always up to his neck in something.
-Herald, Miami.

Pinwheel Profession

If the nation's economists were laid end to end, they would still point in all directions.
-Press, Oskaloosa, Ia.

PRICES GOOD THRU MARCH 21ST

PLAY CASINO BINGO

AT UNITED....

UNITED Supermarkets Perryton, Texas

QUANTITY RIGHTS RESERVED

KEEP THE

WITH THESE ST. PATRICK'S DAY

HEINZ KETCHUP 44 OZ. \$1.39

CRISCO OIL 32 OZ. \$1.39

ORE IDA GOLDEN FRIES OR CRINKLE CUT POTATOES 2 LB. BAG 98¢

ENCYCLOPEDIA of the ANIMAL WORLD VOL. 5 \$1.99

6 PK. V-8 JUICE 6 OZ. CANS 98¢

LIQUID DETERGENT JOY 22 OZ. \$1.09

GENERIC REG. & MENTHOL CIGARETTES 10 PK. CARTON \$4.98

SUNUPS GRADE A EGGS JUMBO SIZE 20 CT. OVERWRAP \$1.29

PEPSI-COLA 6 PK. 32 OZ. \$1.89 + DEPOSIT

LEGG'S REGULAR PANTYHOSE \$1.79

DOUBLE STAMPS SAT.

BUY ONE CLOVER CLUB 10 OZ. CRINKLE POTATO CHIPS GET ONE 8 OZ. BARBEQUE POTATO CHIPS FREE!

DEL MONTE SWEET PICKLE RELISH 12 OZ. 89¢

4 PACK CARTON TOMATOES 49¢

CALIFORNIA FUERTE AVOCADOES 3 FOR 99¢

TEXAS RUBY RED LARGE SIZE GRAPEFRUIT EACH 29¢

6 PACK BAG LEMONS EACH 49¢

NO. 1 RUSSET POTATOES 5 LB. BAG 79¢

Great Plains Hereford Association Sale

The Great Plains Hereford Association is holding its 38th annual sale of registered herefords on Saturday, March 27, 1982 at the Texoma Livestock Commission Yards in Texoma, Okla. with the sale starting promptly at 1:00 p.m.

Consigned this year are 66 Hereford bulls and 14 Polled Hereford bulls. Also in this year's sale are 20 females; with a few cows and pairs plus some open yearling heifers.

These cattle are being consigned by leading breeders of the three-state area. Consigned by Kansas breeders are: BDJ Polled Herefords, Rolla; Floyd Coen, Elkhart; and Smith Polled Herefords of Richfield. Consignors from Oklahoma are:

Fred & Paul Barby, Knowles; Barth Ranch, Laverne; Les Campbell & Son, Elmwood; Don Depew, Beaver; Albert Littau, Balko; Panhandle State University, Goodwell; VR Herefords, Balko; and Joe Al Warner of Boise City, Texas consignors this year are: Virby & Benny Conley, Perryton; Richard James, Kerrick; Kenner Herefords, Stratford; Wayne Maddox, Miami; Pronger Brothers, Stratford; and Summerour Ranch of Dalhart.

For more information or catalogs write or call: M.W. England, Box 186, Goodwell, OK. 73939. Phone numbers are: Office - (405) 349-3611 EXT. 228; Residence (405) 349-2512.



99.9 REGULAR GAS--UNLEADED is \$1.03--Just about every gas station or a store that sells gas has 99 cent Regular Gas and \$1.03 for those that have to have Unleaded. It beats having to pay \$1.50 any day!! Don't miss your turn in line for the gas.

SUNDAY

CABLE	[3]	[4]	[5]	[7]	[8]	[9]	[10]	[11]	[12]
PM	OETA Oklahoma City	KAMR CH.4 Amarillo	TMC Movie Channel	KVII CH.7 Amarillo	CBN Christian Network	WGN CH.9 Chicago	KFDA CH.10 Amarillo	WTBS CH.17 Atlanta	CNN Cable News Netw

12:00	Washington Week/Review Wall Street Week	NBC Sports: Ringside		Brinkley News	Dr. James Kennedy Religion	Movie: 'Sherlock Holmes and the Scarlet Claw'	To Be Announced	Last of the Wild Exhibition Baseball	Money Week News/Sports/Weather
1:30	Movie: 'Auntie Mame'		Movie: 'Any Which Way You Can'	SportsBeat Superstars	Words of Hope Faith 20	Movie: 'Mask Of Dimitrios'	NCAA Basketball Championship Game: Teams	Atlanta vs. Montreal	Little Miseries
2:30		John Denver Celebrity Ski Race		Olympic Sports: USA	Chris Panos Zola Levitt		To Be Announced		News/Sports/Weather Best of Fred Saxon
3:00		SportsWorld	Movie: 'Toby and the Koala Bear'	vs. the World Wide World of Sports	Special	Movie: 'Moby Dick'	Tournament Players Association	Mission Impossible	Freeman Reports
4:30	All-Time American Songbook	Shophsmith	Movie: 'Shock'		Messianic Jewish Voice Jimmy Houston			Championship Wrestling	News/Sports/Weather
5:00		News NBC News	Waves	ABC News News	American Trail George	Little House on the	CBS News	Nice People	Week in Review Inside Business

6:00	Prog Cont'd	Father Murphy	Movie: 'Any Which Way You Can'	Code Red	Judy Lynn Show Larry Jones Ministry	Prog Cont'd	60 Minutes	Movie: 'Ballad of Josie'	Sports Sunday
7:00	Gala Of Stars 1982	CHiPs		Today's F.B.I.	In Touch	In Search of... People to People	Archie's Place One Day at a Time		News/Sports/Weather
8:00		Movie: 'The Towering Inferno' Part 1	Movie: 'Honeysuckle Rose'	I Love Liberty	American Trail Graduation Ball	Lawrence Welk	Alice Jeffersons	Week in Review	News/Sports/Weather
9:00					C'mon Along John Ankerberg	News	Trapper John, M.D.	TBS Evening News	News/Sports/Weather
10:00	Dream Called Public Television	News	Movie: 'The Blues Brothers' Part 1	News	The King Is Coming Contact	Kung Fu	News	Caribbean Nights Open Up	Sports Inside Business
11:00	Sign Off	Part 2		'Topkap'	Bread For Jonas Sign Off	Movie: 'The Oklahoma Kid'		Movie: '1 Married a Woman'	Best of Take Two
12:00		Sign Off	Movie: 'Death in Venice'	Sign Off					News/Sports/Weather Special Report

WHO KNOWS?

1. What does the foreign phrase "Nil Admirari" mean?
2. Where is the Mojave Desert located?
3. When did Alaska become one of the United States?
4. What is the state flower of Alaska?
5. *The Miracle Worker* was a film about what famous lady?
6. When it's fall in the Northern Hemisphere, what is it in the Southern Hemisphere?
7. What is an addax?
8. What is the ancestry of our domestic cats?
9. Define Seismology.
10. By what other name is the state of Idaho known?

Answers To Who Knows

1. To be astonished at nothing.
2. 15,000 square miles in southern California.
3. January 3, 1959.
4. The forget-me-not.
5. Helen Keller.
6. Spring.
7. An antelope which lives in the deserts of North Africa.
8. The lion and tiger families.
9. The science which studies earthquakes.
10. The Gem State.

Times and customs change and the views of men vary with the acquisition of wisdom.

Young love is just as serious to the young as mature love is to adults--or can't you remember?

Driving carefully may not get you anywhere as fast as possible, but it will probably get you there safely.

Correction
Pastor to new usher: "Please, Mr. Doe, we refer to the contribution as the collection--not the take."
-W.O.W. Magazine.

Near
Election year is when the nearest thing to the jawbone of an ass may be a microphone.
-Wall Street Journal.

Defined
Marriage: A committee of two on ways and means. One has her way, the other provides the means.
-Free Press, Detroit.

**Now available
100% Financing
on Homes**

If your adjusted income is less than \$20,500.00 You could qualify

**\$800.00 total
move-in cost**



**Hoover & Hoover
REALTY**

601 S. Main • Perryton — 435-6873

**THREE-DAY SPECIALS from
M & M GROCERY AND DELI....**

HOMER McNEIL
GARDEN-FRESH
TOMATOES LB. 29¢

10 LBS.
ALL-PURPOSE RUSSET
POTATOES EACH \$1.19

5 LBS. SHURFINE
SUGAR \$1.19

CENTRAL AMERICAN
BANANAS 3 LBS. \$1

2 LITER
**Dr. PEPPER
OR 7-UP EACH 99¢**

BAG FRESH
**CELERY
HEARTS EACH 69¢**

SPECIALS from the Deli....

**CORN DOGS
OR BURRITOS 3 FOR \$1**

B-B-Q
RIBS & SAUCE LB. \$2.29

POTATO SALAD PINT 99¢

COLE SLAW PINT 99¢

**BROCCOLI
SALAD PINT \$1.89**

MORTON'S Regular - Sour Cream - BBQ
**POTATO
CHIPS REG. 99¢ 49¢ EACH**

AVOCADOS 6 FOR \$1

MRS. BAIRD'S
WHOLE WHEAT
SPLIT TOP OR REGULAR
BREAD 1 1/2 LB. LOAF 69¢

**MARKET
SPECIALS...**

WHOLE LONGHORN
HAMS LB. \$1.09

2-LB. PKG. GROUND
CHUCK LB. \$1.49

PRICES GOOD MARCH 18 - 19 - 20

M & M GROCERY