



The Spearman Reporter

VOL. 72, NO. 35

THE SPEARMAN REPORTER, SPEARMAN, TEXAS 79081

THURSDAY, JULY 9, 1981

Apparent Twister Strikes White Farm Here



GONE WITH THE WIND...ALMOST! -- Looking more like a giant game of jackstraws, these pick-up-sticks were once a 60 by 80 foot barn on the Tommie White place but now a apt of 10 acres of kindling. Damage was done by tornadic winds about seven miles southwest of Spearman, shortly after 5 p.m., Saturday.

There were no injuries but considerable damage when an apparent "twister" came the closest to Spearman in the history of official weather bureau records, about 5 p.m., Saturday.

Hansford County Commissioner Garland Head; his brother-in-law, Tommie White; a neighbor, Waymon Edwards, Curtis Harbour and Justice of the Peace, Pete Vernon seemed to have suffered the brunt of the storm and the greatest damage from it but reports were still coming in at press time.

All locations are some seven miles southwest of the city of Spearman. White said their electricity went off just moments after 5 p.m., Saturday, amid heavy winds, rain and hail. Inside their home, he and his wife said

it took strong physical force to keep the prevailing wind from blowing an outside door open.

That wind took off part of the roof and a room at the back of the house and left the entire house, in White's words, "sort of bent out of shape but still more or less solid."

While White and his wife were fighting for safety inside their home, the storm scattered a 60 by 80-foot barn over 10 acres and destroyed a part of their corral.

At the Head place, the wind lifted the roof up and settled it back down. Resulting structural damage will take some time to assess.

It was essentially the same story at the Waymon Edwards and the Curtis Harbour homes. A windmill belonging to Judge Vernon was blown down

and aluminum pipe stacked in the area was widely scattered.

Hansford County Sheriff R.L. McFarlin said he had been unable to find an eye-witness to a funnel dipping down but the sheriff said the type and amount of damage would certainly indicate it was a tornadic storm.

The lack of any witnesses was not holiday neglect. Hansford County was NOT in the tornado watch area designated by the National Severe Storms Forecast Center at Kansas City, Mo. That advisory included Bailey, Crosby, Floyd, Hale, Hockley, Lamb and Parmer counties.

Neither did it include Gray, Hemphill and Roberts counties where Pampa, Canadian and Miami reported high winds and thunderstorms.

Measured against a 1980 study by Rorer National

Weather Observer Bill Morgan that said that city of Spearman not its immediate environs had never been struck by a tornado in the history of weather recording...the strike Saturday was the closes ever.

In addition to structural property damage, there was severe crop loss in the area where the cyclonic-force wind crossed HW 207 and cut the swath of damage already mentioned.

Nor was it possible to gauge the amount of rainfall which was considerable before, during and following the damaging wind strike. One resident in the storm center said it was blowing horizontally and pointing saie:

"I reckon that, during he windstorm, 'bout three and a half inches of rain wnet that away!"

Hospital news

Patients at Hansford Hospital are Stella Martinez, Louis Mathuala, and Margie Barkley.

Dismissed from Hansford Hospital were Bill Etling, Willy Harris, Melton Brown, Dolly Hobbs, Ray Cornet, Irma De La Rosa, Eddie Babbs, and Gwen Underwood.



Spearman High School Students of 1920 and 1930. They are in the Top Row. Earlene Chambers, Merl Thompson, Diemer Reeves, Warner Davis, Paul Thompson, Mary Hazelwood, and Rhoda Overton. In the Bac Row, Buster Mitts, Alda Mitts, Juanita Logan, Agnes

Windom, Lowell Denman, Virginia Sparks, Raymond Sparks, Ella Breeze Short, Freeman Barkley, Paul Maulsby, Emma Reaves Atteberry, Marvin Haun, Cleo Denman, Mathilde Entrekin, Flonnie Mae Handcock, Raymond Kirk, Grace Kirk, Lucille Allen and J.C. Harris.

Exes Have Great Reunion

Some 1200 people attended the first all school reunion held in Spearman High School, July 4.

Registration began at 9:30 and the assembly was held at 10:30 in the high school auditorium which was filled, with some people standing out in the hall.

Mayor Ralph Blodgett, a graduate of Spearman High School, welcomed the ex-students to the reunion in behalf of the City of Spearman.

Supt. James Cunningham gave the welcome from the Spearman Independent School System.

Worley Smith, in his own inimitable style, introduced the students of honored class years 1921-1931 who were seated on the stage. He also presented the awards. Beatrice Gibner Hiler was given an award for being a member of the first class of

1921. Darlene Howell received the award for three generations attending Spearman schools. Miss Ethel Deakin, longtime teacher in Spearman schools was present and was given a standing ovation. She is now 91 and living in the home of her

niece, Colleen Kelly Yearly in Perryton.

Wesley Weston conducted the memorial service for those students of SHS who are no longer living.

Jim McLain, president of the 1981 ex-students association, introduced the other association officers: vice-president, Adalyn Barnes; secretary, Helen Etter; treasurer, Noreen Sutton; and committee chairpersons Mary Lou Wysong and Pat Dear.

Joel Lackey, newly elected president of the ex-students association, remarked that this reunion would be a hard act to follow, but that the new officers would do their best to put on a great reunion in 1985.

Rev. Aln Reed of the class of 1931 gave the benediction. After the assembly a barbecue meal was served in the school cafeteria, followed by more visiting. A tour of the old high school building was conducted from 2 p.m. to 4 p.m. by junior high principal G.W. Robinson.

Most of the classes had reunions of their own in various locations and around town. The classes of 1921-1931 met

in the Hansford Library on Friday and then on Saturday afternoon.

You will find pictures of some of the classes in this paper.

Winding up the festivities a reception was held in the B&B Farm Industries building. The reception was followed by a dance.

Everyone thoroughly enjoyed the all class reunion and voted to have another one in 1985.

Kudos go to all those on the different committees, to the Spearman School system and to everyone who helped in anyway to make this a memorable occasion for all ex-students of Spearman High School.

Committee Chairmen other than those mentioned above included Book of Attendance, Helen Etter; Assembly, Hester Sue Crawford; Hospitality Rooms, Dorothy Buzzard; Noon Barbeque, Mary Schumann and Doris Beck; Registration, Adalyn Barnes; reception before dance, Lois Shieldknight; Dance, Joel Lee Lackey; Baby Sitting & Dance Decorations, Cindy Schneider; Housing, Nell

Patterson; Corsages & stage Decoration, Bill Turner; Book Cover Design, A&L Printing and Publicity, Frances Pipkin.

Perry Dies

In Nebraska

Charles Dellin Perry died July 19 in Oxford, Nebraska.

Mr. Perry, a Spearman resident, was in Nebraska on vacation.

He is survived by his wife Betty Joe, two stepsons, Paul Comegys, Alaska; Jay Comegys, Wichita; two stepdaughters, JoNell Comegys, Abilene, and Alicia Langson Spearman; a brother, Carcin Perry of Nebraska, a sister, Margaret Shaffer, Omaha, Nebraska, two nieces and two nephews.

MARKETS

MARKETS	
Barley	\$2.50
Corn	3.32
Wheat	3.62
Milo	5.20

YMCA Fun Run



Dave Warren of Borger on the left, was one of the runners in the Fun run, and Mike Schnell, Dana Schnell and Larry Trosper were officials of the race.

The YMCA Fun Run was held at 8:00 a.m. July 4th. 40 runners participated in it.

Winners in the Men's 3.3 Mile Run were: in the 0-20 age group; Chuck Eaton, won 1st Place, of Spearman, with a time of 24:24. This was a very close match indeed. In 2nd Place was Eric Kear of Perryton with a time of 24:25, and in 3rd Place was Chad Guthrie of Spearman with a time of 24:26.

In the Men's 21-30 Age Group; Kim Brock won 1st Place with a time of 21:46--Kim is from Spearman; Roger Meadows came in 2nd with a time of 21:58--Roger is of Borger, and Clyde Scent of Borger placed 3rd with a time of 22:10.

In the Men's 31-40 Age

Group; Mike Lopez of Borger was 1st with a time of 20:26; Glenn Blodgett of Spearman was 2nd in a time of 22:45; and in 3rd Place was Tom Latta, also of Spearman, with a time of 26:53.

Jerry McClure won 1st in the Men's 41-50 Age Group with a time of 28:17.

Dave Warren, of Borger, won 1st in a time of 25:55 and Johnny White, from Spearman, won 2nd with a time of 28:31.

Winners in the Men's 6 Mile Run were:

In the Men's 0 - 20 Age Group, three Albuquerque fellows won the top 3 places--John Rodolph won 1st with a time of 30:55; Ben Rodolph won 2nd with a time of 37:11; and Abe

Rodolph won 3rd Place with a time of 37:18.

In the Men's 21-30 Age Group, the winner was Raymie Porter, from Spearman, with a time of 36:57; David Stauffer, of nearby Waka, won 2nd Place with a time of 43:26; and Jim Jenkins, of Denver City, placed 3rd with a time of 44:33.

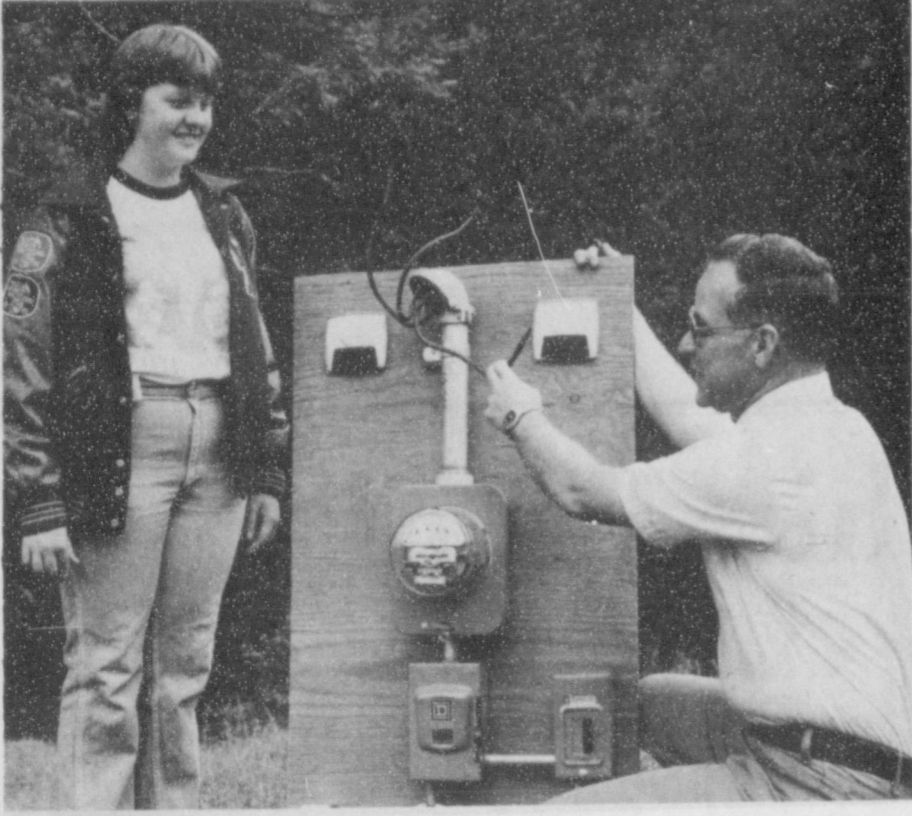
In the Men's 31-40 Age Group, the winner was Olo Crum of Amarillo with a time of 37:22; Terry Thomas, of Borger, with a time of 40:016 beat Darrel Phillips for 2nd Place; and Darrel Phillips won 3rd by a time of 40:019--Darrel is from Lubbock.

Isabel Martinez, again won



Congressman Hightower meets with members of the National Cattlemen's Association in his Washington office and with the Outstanding Young Cattleman of 1981, Mr. Byron Gossett of Folett, Texas.

Left to Right: Mr. John Birdwell, NCA, Byron Gossett, Congressman Hightower and Mr. Rob Brown, NCA. Mr. Gossett met with Congressman Hightower on June 25th, 1981.



Stacey Poole attended the 4-H Electric Camp at the Sacramento Mountains. The Camp was sponsored by Southwestern Public Service Company. The Camp is located 28 miles southeast of Cloudford, N.M. Stacey represented the Hansford County 4-H. The SPS instructor is Bob Skinner of Amarillo.

Important ASA Rules

There are a few rules that are confusing, mainly the "Infield Fly Rule". This is very confusing and the Homeplate Umpire will usually tell both teams about it, if she doesn't then the Team Coaches should go and ask about it. If there is a person at First, Second and/or Third Base--this means that there has to be a person at First and Second Base, but not at Third, for the Infield Fly to be in effect--the rule is only in effect if there are 1 or 0 outs with persons at First, Second and/or Third Base. One of the three Umpires, 1st and 2nd; 3rd and Homeplate, will holler "Infield Fly, the Batter is OUT!!"--no questions asked.

Another confusing rule is the one about the ball and the player getting on base at the same time. Now, if the ball and the player get to First Base at the same time, the Baserunner is OUT, that is an ASA Rule, that confuses everyone. The First Base Umpire will be reminded about the rule, so that the coaches will not try and say that the baserunner is suppose to get the "greenlight", at First Base the Base-person gets the "greenlight" and the Baserunner gets the "redlight". Don't think that if the ball and the runner get to Second or Third Base at the same time, that the runner is OUT, no sir, if the ball and the runner get to Second or

Third base at the same time the Runner is SAFE!! These are very important rules that every Player and Coach must know, if you didn't know about these rules, now you do, ask the Homeplate Umpire about these rules if she doesn't explain them to ya first.

One of the most important rules in ASA play is, the Pitcher MUST have both feet on the rubber or the Pitch thrown will be a Ball to the Batter! The Homeplate will tell the Pitchers to put both feet on the RUBBER!!

Some of the Players believe that if they touch Third Base by running their hardest and can't stop, they can walk casually back, but the rule states specifically, that when the runner runs to 2nd or 3rd Base, she must stay on the Base at all times. If she overruns the base, she must hurry and get back on the base, or she will be tagged out. Only in First Base can a person run thru First Base and be safe by walking casually back.

These are not all of the ASA RULES, but are the most important, confusing rules that must be known before a game could even begin. So if you, Players, get confused by reading in the Spearman Reporter or the Gruver Statesman about these rules, ask your Coaches, they will make them more CLEARER!!

What a way to spend a Monday evening--this was when the Monday Night Baseball Game was played, and those that went to go and see these two games--Bears/Cuties and Stars/Pink Panthers, figured that the Monday Night Baseball Games wouldn't be missed that much with this kind of action on Monday nights!! These two teams, the Stars and the Pink Panthers will have another "showdown", this Friday, July 10, at the Spearman Little League Park, beginning time will be 7:45 or immediately following the Girls Tee Ball game.

Texas Reports New Oil

AUSTIN, Tex., July 1--Texas operators reported 110 gas and 184 oil discoveries in June 1981, the Railroad Commission's Oil and Gas Division announced today.

In the year-earlier month, 110 gas and 51 oil discoveries were filed with the state's energy regulatory agency.

Gas Discoveries in the sixth month of the year included 24 in deep South Texas, 23 in Southeast Texas, 20 in the Refugio area, 17 in West Central Texas, six in the San Antonio area, five in North Texas, four in East Texas, three each in the San Angelo and Midland areas, two each in the Panhandle and Lubbock areas, and one in East Central Texas.

Oil Discoveries included 140 in Southeast Texas, 11 in the San Angelo area, eight in North Texas, six each in the Midland and Lubbock areas, five each in the Refugio area and West Central Texas, and three in the Panhandle area.

In June, operators reported 321 exploratory and field tests wound up as dry holes. New applications for permits to drill oil and gas tests totaled 3,704 in June, compared with 2,572 in the same period of 1980.

Applications to drill, deepen, plug back and for service wells in June amounted to 4,014 against 2,839 a year earlier.

Operators filed 833 amended applications to drill. A year earlier they submitted 636 amended requests.

YMCA FUN RUN Cont. from Pg 1

the Men's 41-50 Race, with a time of 38:24--by the way, Isabel is from Spearman. Hans Wendel, of Borger, won 2nd with a time of 41:52; and Larry Peterson won 3rd--Larry is from Ft. Walton Beach, Florida.

The Women had fabulous times in their age groups.

First of all, Christy Collier won the 0-20 Women's Crown with a time of 26:17. Christy is from Spearman.

In the Women's 21-30 Age

Group, Stephanie Brock, of Spearman, won 1st Place with a time of 22:27, and Linda Slaughter, of Perryton, won 3rd with a time of 25:40.

Lois Wendell, of Borger, won the 31-40 Race with a time of 32:02.8

The last event was the Women's 41-50 Age Bracket; Nan Warren was the "sole survivor" winning in a time of 33:29.

Lusby Cats Undeclared

The other two exciting games were played at the field east of the Y, in Women's Softball. The first game was between the Speartex Bottoms Up and the Busters Dusters. Bottoms Up was doing a FANTASTIC job against the Busters. In the 5th Inning the game was tied. Busters didn't have any subs., but Bottoms Up had plenty and put some in. After that, it was downhill for the Bottoms Up. Busters Dusters won the game. The Speartex Bottoms Up will be playing this coming Monday, July 13, against the tough A&L Printing team at 8:30 or after the first game. The Busters Dusters, on the other hand, will be playing against the "unde-

clared" Jr. Lusby Cats at 7:00 p.m. The second game of the night was between the First State Bank Red Hots and the Jr. Lusby Cats. As everyone knows by now, the Jr. Lusby Cats are the most winningest team in the League--winning all the games they have played. Last night, Monday--July 6, the Cats had a couple of women hurt--one got hurt running to first and the other got hurt catching the ball. The one that missed the ball and got hit in the head, Kathy Beck, came right back and played the rest of the game. She couldn't go to the same position that she was playing in--Pitcher, for that is against

Base in a hurry!! After all this switching around, the Cats settled down and just "brezzed" right thru the Red Hots. The Cats, coached by Charles Elliott and Eugene Yarbrough, will be in action this Monday, July 13, against the Busters Dusters team. The Red Hots will have the day off and will probably check out their competitors, A&L Printing, for the following Monday.

Tee Ball - Softball Action

There are a few games being played tonight, Tuesday--July 7, in Men's Softball Action. The games being played will be: at 7:00 Tico will meet Spearman Auto at the Babe Ruth Field. John Deere, the toughest team in the League, will be facing their rivals, Hi Plains team, at 7:00 p.m. at the east of the Y Field. Then later on at 8:30 or whenever the first game is over, North Plains will take on Crawford Implement at the Babe Ruth Field. Super Service will meet the Agco team at the East of the Y Field at 8:30 or whenever the first game is over.

Then the Men will go back into action Thursday night, July 9. John Deere will have the day off. (By the way, the Union Church team had Tuesday, July 7, off). Super Service will meet Hi Plains at the Babe Ruth Field starting time is 7:00 p.m. The other 7:00 game will have Agco going up against Crawford Implement--this game will be

played at the field East of the Y. The 8:30 game that will be played at the Babe Ruth Field, will be between North Plains and Spearman Auto--this game will be played at the East of the Y Field. The other 8:30 game will be between the Union Church and Tico at the Babe Ruth field.

There will be some Girls Tee Ball and Girls Softball for Friday, July 10.

The Bunkhouse Babes, coached by Cindy Schneider, will meet the Gruver Orioles at the Spearman field, at 6:30 p.m. The other Tee Ball game will have the Berry Cleaner Bears traveling to Gruver to meet up with the Gruver Angels--this game will also begin at 6:30 p.m. The Bears are coached by Linda Butt.

In Girls Softball Action, the Anthony Electric Stars, coached by Kathy Beck and Sharon Swan, will meet up with their arch-rivals, the Wy-Tex Pink

Panthers, coached by Donna Yarbrough. This game will begin at 7:45 or whenever the Tee Ball game is completed. The other Softball game will have Ray Thomas' team up against the Gruver Angels--this game will also begin at 7:45 or after the Tee Ball game is completed.

As far as the Women's Softball, for July 13, the Jr. Lusby Cats, undefeated, will go up against the Busters Dusters at 7:00 p.m. The 8:30 game will be between the Speartex Bottoms Up and A&L Printing. These games will be very exciting so go out and watch as many games as possible.

Well!

Sue--I refused Harry two months ago, and he has been drinking hard ever since.

Kate--Well, I say that's carrying a celebration a little too far.

Girls Play Fabulous Games

There were four exciting games played last night, Monday--July 6.

First of all, in the Girls Tee Ball, the Berry Cleaner Bears--who had barely enough to go around--played against the Cinderella Cuties. The Bears are coached by Linda Butt, and the Cuties are coached by Judy Tindell. The game was very exciting and close all the way. At the end of the game, the Bears came up short by 1, making the final score--Bears, 20 and Cuties, 21. The Bears will play again this Friday, July 10, at Gruver, against the Gruver Angels. This, again, will be a very close and exciting game. The game will begin at 6:30, cheer on the locals.

In the Girls Softball, it was a game that everyone wants to

watch over and over. The game was between the Anthony Electric Stars, coached by Kathy Beck and Sharon Swan, and the Wy-Tex Pink Panthers, coached by Donna Yarbrough. This was a very tight game, because the Stars have SUPER GREAT fielders--in and out--and SUPER GREAT batters. Well, the Pink Panthers are just the same. Well, it so happens that this game was played to the very last out. The Pink Panthers finally won by 1 point ONLY--the final score was the Stars, 12 and the Pink Panthers, 13.

**When You're Ready
To Invest \$100,000.
Call Us First.
We'll Pay 18.525% ****

When you're ready to invest \$100,000, call us. Tell us what you think your money is worth. We're confident we can offer the high rate your \$100,000 deserves with a Large Certificate of Deposit.

Look at the chart of dates and rates. By compounding your interest daily, we can give you a very attractive annual yield. Maybe the highest in the region.

We realize you don't ordinarily expect to see offers like this from a bank. But it's this kind of willingness to respond that makes us one of the strongest and fastest growing banks in the Texas-Oklahoma area.

If this offer sounds good, see John Cluck, our President, or Larry Orman, Senior Vice President. Or call (806) 435-3676 and ask for our Money Market Advisor. We'll talk by phone, or we can come to visit you. We think we're the only bankers around who will give you what your money is worth.

Term	Rate	Annual**
90 days	17.00%	18.525%
120 days	17.00%	18.525%
180 days	16.50%	17.934%
1 year	15.00%	16.179%

* Minimum deposit \$100,000. Limited offer. Rates subject to change without notice.
** Annual yield based on daily compounding. As required by law, all certificates are subject to substantial interest penalty for early withdrawal. All deposits are insured to \$100,000.

We're the bank you call First.


First National Bank
Perryton, Texas
806/435-3676
Member FDIC

Summer Clearance Sale

at
Kids' Stuff
in
Spearman

All Spring &
Summer Merchandise

Reduced up to 40%

Sale started

Tuesday, July 7th

WANTED ADS

CAPROCK MONUMENT CO.

Dealers of Georgia Granite, Georgia Marble, Colored Granite, & Bronze.

represented by

BOXWELL BROS. FUNERAL HOME

519 S. EVANS
659-3802

Hansford County Planned Parenthood
26 S. Haney
659-2483
Spearman Mon.-Fri.
Call for an appointment.
30S-rtm

NOTICE
Wallace Monument Co.
Monuments, Curbing, Grave Covers
Local Representative
LEONARD JAMESON
Spearman, Texas
20-rtm

STEAM RINSE & VAC
Steam Rinse-and-Vac Shampooers; \$8.95 for up to 24 hrs. available at Gordon's Drug; also at Freddie Largent's 716 Cotter Dr. after 4 p.m. and Saturdays and Sundays.

MONUMENTS
Save 20% to 30%
Agents and Undertakers
Commission
ALVA MONUMENT CO.
Alva, Okla.
51-rtm tonly

Town & Country
all Steel Bldg.
70'x80'x14'
Colored Walls; Galv. Roof
2-20'x14' Framed Openings
1-30'x6'8" Steel Walk Door
\$13,680.00
1-806-435-3107
35-rtm

Pee Wee's Plumbing Service
Roto-rooter, Acoustical Ceilings, Blown Insulation in walls and ceilings. Appliance Service, used appliances for sale. 659-2811 or 659-3781.
20-rtm

SERVICES

Will decorate cakes all occasions. Also cookies and cupcakes. Call Nelda 659-3984.
51-rtm

Carpet & upholstery cleaning
Rogers Steam Way, Guymon, 405-338-7926
5s-rtm

KIRBY SALES & SERVICE.
New & reconditioned vacuum cleaners. Claude Newell, 912 S. Bernice.
8-rtm

SERVICE: Pits cleaned, wet or dry. Dragline or loader. Also, dozer, grader, carry-all service. Lee Roy Mitchell, 806-733-2384, Gruver, Texas 79040.

Will do yard mowing and edging. Call Earl Goodheart at 659-2081 or 659-2121.
29-rtm

SNOOPY'S DAY SCHOOL
Open from 7 a.m. to 6 p.m., we have Hot Lunches and Snacks Morning and Afternoon. Our van takes kids to and from Track-Swimming Lessons, etc. Call 659-3328 or come by 620 1/2 Bernice and ask about our Swimming Program on Monday, Wednesday and Friday.
Receive Western gift stamps for your bill--and double on Friday. Licensed for ages 18 months to 12 years.
32-rtm

CALL S&H REMODELING for your painting or papering needs--659-3328.
32-rtm

WILL SERVICE appliances in Hansford County. Call Bob Nobles, 733-2413 after 5 p.m.
33s-5tc

Miscellaneous For Sale

FOR SALE: 2 horse in-line trailer. Call 659-2096.
34s-2tc

FOR SALE: Butane Set-up for pickup or truck \$250. Call 9-2514.
33-rtm

FOR SALE: New ovation guitar with new case and amplifier. \$500. Call 733-2783
33-4tc

FOR SALE: Kenmore gas range, good condition, \$30, 659-9260.
34-2tc

FOR SALE BY ESTATE: 1976 Chevrolet pickup, under 18,000 miles, 350 engine, power, air, automatic transmission. Submit sealed bids c/o John Hutchison, Box 506, Spearman, Texas 79081 until August 1.
33-rtm

SAVE! Free Delivery--HEAVY SHAKES, 65.00 per square. Light medium Shakes \$57.00 per square. All other Cedar roofing--Cedar Beams--Plywood, Rough Cedar, Cedar Fencing materials or turn-key fencing--Composition Shingles, and felt. **LAKESIDE FENCE MFG. AND WHOLESALE INC. DRAWER L FRITCH, TEX. 79036** Phone 806-857-2411.

STEEL BUILDINGS!!!
Need a steel building NOW!!
Quality at lowest price!
Our Buildings will be suited to your individual needs.
JUST A SAMPLE:
30'x50'x12 with 16'x11' door \$4,343.00
60'x100'x16' Straightwall \$15,695.00
AS LOW AS \$2.61 per Square foot
FAST DELIVERY
CALL TOLL FREE TODAY
800-525-7849
(ask for Win)
GREAT WESTERN BUILDINGS by Farm Building Brokers, Inc.
34-5tp

FOR SALE: 1974 Dodge Pickup. 659-3992.
35-2tc

SURPLUS, JEEPS, CARS, TRUCKS. Car inv. valued \$2,143.00, sold for \$100.00. Similar bargains available. Call for information 602-941-8014, ext. 518. Phone call refundable. 35-4tc Tonly

TAM 105 certified seed wheat for sale \$5 per bushel out of the bind. Contact Jack Scarth at 806 362-4566 or Ken Scarth at 806 753-4442.
35-24tc

FOR SALE: Plymouth GTX 383 motor and trans. East A Ave and Hazelwood.
35-6tp

FOR SALE: Kenmore gas range, good condition, \$30. Call 659-2960.
34-2tc

FOR SALE: Plymouth GTX 383 motor and trans. East A Ave and Hazelwood.
35-6tp

FOR SALE: Kenmore gas range, good condition, \$30. Call 659-2960.
34-2tc

Real Estate For Sale

320 acres with 2 center pivot
FOR SALE: 320 acres 8" well grain storage, well head gas 5 mile S. Spearman. Call 659-3664.
32-rtm
33s-4tc

FOR SALE: 3 bedroom, garage, good location. Blankenship Real Estate, 9-3052.
27s-rtm

OLDER 3 BEDROOM rock house for sale, partially remodeled. Small equity and take up payments. Call 806-733-2339, 304 Cluck, Gruver.
33-4tc

FOR SALE: Brick, 3 bedroom, 2 bath, basement, 2 car garage, fireplace, automatic sprinkling. Near High School. 1010 Blodgett 659-3323.
32-rtm

FOR SALE: 2 Bedroom frame house newly painted, clean and carpeted. Located at 908 S. Haney St. Call 659-2335 after 5 o'clock.
35-1tp

Help Wanted

DIRECTOR OF NURSES position available. Please call or apply in person between 9 and 5 at the Senior Village Nursing Home, HWY 83 S. Perryton--435-5403.
32s-8tc

The Hansford County Appraisal District will receive applications for a secretary until July 15, 1981. Applicants should send resume listing experience, qualifications and education to Alice Paddy, Chief Appraiser, Box 514, Gruver, Texas.
35-2tc

HELP WANTED: Snoopy's Day School, apply at 620 1/2 Bernice. Phone 659-3328.
35-rtm

Women's Softball Schedule

HANSFORD COUNTY YMCA
WOMEN'S SOFTBALL SCHEDULE 1981

July 13	7:00	Lusby Cats vs Busters Dusters
	8:30	Bottoms Up vs A&L Printing
July 20	7:00	Bottoms Up vs Red Hots
	8:30	Busters Dusters vs A&L Printing
July 27	7:00	A&L Printing vs Red Hots
	8:30	Lusby Cats vs Bottoms Up
August 3	7:00 p.m.	A&L Printing vs Lusby Cats
	8:30	Red Hots vs Busters Dusters

This schedule is the OFFICIAL SOFTBALL SCHEDULE FOR THE WOMEN FOR 1981.

NOTICE
The Dumas Open that was set for July 16 thru 19 has been cancelled and reset for August 13 thru 16. If you need any more information write:
Jerrie Schuman
Box 1301
Dumas, TX 79029

Information on Alaskan and overseas employment, great income. Call 602-541-8014, Dept. 518. Phone call refundable.
35-4tc Tonly

The Hansford County Appraisal District will receive applications for a bookkeeper until July 14, 1981. Applicants should send resume listing experience, qualifications and education to Alice Paddy, Chief Appraiser, Box 514, Gruver, Texas.
35-2tc

There is nothing wrong with gambling, if you stay away from it.

Business Conservation When Watering Opportunity Lawns Saves \$\$\$

Own your own Jean Shop. Offering all the nationally known brands such as Jordache, Vanderbilt, Clavin Klein, Sedgefield, Levi and over 70 other brands. \$13,500.00 includes beginning inventory, airfare for 1 to the apparel center, training, fixtures and Grand Opening Promotions. Call Mr. Loughlin at Mademoiselle Fashions 612-835-1304.
35-1tp

COLLEGE STATION--Don't just turn on your lawn sprinkler when hot, dry weather arrives and gripe about your high water bill. By watering, fertilizing and mowing your lawn properly, you can reduce your water bill as much as 40 percent during the summer months.

"Conservation by the homeowner provides the only solution to high water bills and excessive water demands during our hot and usually dry Texas summers," points out Dr. Richard Duple, turfgrass specialist with the Texas Agricultural Extension Service, Texas A&M University System.

In small cities where industrial demand for water is low, lawn watering may account for as much as half of all the water used during summer months. Even in larger cities, lawns get 30 to 40 percent of all the water supplied by municipalities, notes Duple.

He adds that most Texas lawns need about 2 inches of water per week during the summer and that most of this usually comes from irrigation.

Exactly what can a homeowner do to reduce his summer water bill?

"The first thing is to water your lawn only when grass starts to show signs of drought stress," explains the specialist. "Look for discoloration and wilting. If leaves roll up in the late afternoon and footprints remain after walking across the lawn, then water within 24 hours."

"Once you've decided that your lawn needs watering, do it right," emphasizes Duple. "Most homeowners don't water their lawns properly. They either water too often, causing grass to develop shallow roots

FOUND
A Masterlock Key, number on it is 3638. Is on a number "1" keychain that has, "You're Number 1 with us." Jacks Casing Crew Inc. Woodward, OK. 405-256-5336. If lost call 659-3434. Was found at Womble Park. Key is at Spearman Reporter Office--512 Main.
35-NC

Too Late To Classify
GARAGE SALE: At 213 North Bernice. July 10th and 11th. Starting at 9:00.
35-1tp

NOTICE
To all those that brought pictures for the All-School Reunion section in the paper, can come by and pick up all the pictures that are at the Spearman Reporter Office, 512 Main. The pictures seem to be from the 1920s to the 1950s or around there.
35-NC

As far as we can see, the bathing beauties this year are the best yet.

CCC Corn Sales Subject Of Regional Meetings

High Plains grain farmers and interested businessmen are preparing to take their case to court. Believing that the Commodity Credit Corporation's sale of imported grain in the High Plains is unjust, damaging and illegal, the farmers, elevator managers and bankers are raising the necessary legal fund to block any further sales and collect damages from CCC.

Grain Sorghum Producers Association (GSPA), with headquarters in Abernathy, is ready to file a lawsuit in behalf of area grain farmers and others in the grain-related industry if sufficient funds can be raised. GSPA Executive Director Elbert Harp stated, "We have worked with USDA and our High Plains congressmen for months, seeking a solution to this problem. All political avenues have been exhausted." Harp reports that GSPA has been joined by Texas Corn Growers Association, Texas WIFE Texas Farmers Union, and members of all area farm organizations.

Grain farmers and concerned businessmen have scheduled regional meetings throughout the High Plains to discuss the grain sales and consider the proposed legal action. A spontaneous "kickoff" meeting in Muleshoe on June 29 drew a large audience.

Northwestern Texas-Eastern New Mexico farmers and businessmen have scheduled a meeting in Friona on Monday, July 6. The meeting will begin at 8 P.M. in the Friona Community Center.

North Plains elevators are sponsoring a luncheon in Dumas on Wednesday, July 8. Scheduled for 12 noon, the free luncheon will be served in the Community Building in Dumas.

Farmers in the Eastern High Plains area will meet in Plainview on Thursday, July 9, at 8 P.M. in the Hale County State Bank Meeting Room.

July 10 has been set as the deadline for raising the legal fund. It is estimated that the CCC sales will cost a million-pound producer at least \$5000.00 in lost market prices. Farmers are being asked to invest at a rate of \$250.00 per million pounds of production to support the legal action. Harp said, "I am now convinced that we will raise the money if the farmers and elevators continue their interest."

Checks are being mailed to GSPA Legal Fund, Box R, Abernathy, Texas, 79311. Harp encourages farmers to call 806 298-2543 or any of the organizations listed above for additional information.

TEXAS PRESS ASSOCIATION
MEMBER 1981

The Spearman Reporter

PUBLICATION (USPS 509-660)
SPEARMAN, TEXAS 79081
213 Main Box 458 659-3434
Published Weekly at 213 Main Street
Spearman, Texas 79081
Owner-Publisher.....William M. Miller
Editor.....Faye Lynch
Second Class postage paid at Spearman, Texas 79081

Any erroneous reflection upon the character of any person or firm appearing in these columns will be gladly and promptly corrected upon being brought to the attention of the management.

SUBSCRIPTION RATE: Hansford, adjoining counties, combination with the Hansford Plainsman \$15.00.
Other points, \$20.00.

In Fashion

People are dying every day on the highways, trying to find out how fast they can make a trip.

Mankind will do almost anything to make money just so long as mankind worships wealth.

Canvas shoes come in many colors and styles to suit all occasions. Cool, soft canvas shoes are equally at ease with pants or skirts.

STORM DOORS

Custom Built, Designed, And In Colors To Fit Your Home....
Contact Howard Moyer at
Only Aluminum Industries
Guymon, Okla. 405-338-6966
73942 114 W. 1st or 338-6170

VIRGINIA WHITE
Realtor 806-659-3841

Spacious & Lovely--4 bedrooms, 2 1/2 baths, large closets. Call. Will show to qualified buyers.

JAMES ST.--3 bedroom home with fireplace, gameroom & much more. Call for appointment.

ASSUME LOW INTEREST loan or get new loan with reduced rate on this IMMACULATE 4 bedroom, 3 bath home with over 2000 sq. ft. in living area. Huge isolated master bdrm with big bath & walk-in closet is NEW 16 X 32 addition to this home. Family room with NEW FIREPLACE. ALL NEW KITCHEN APPLIANCE. Dbl. car garage. Fenced.

FOR SALE--100 X 120 corner lot on Wilmeth.

Century 21 Presenting

This beautiful home at 715 S Steele Drive in Spearman.

Century 21
JERRY GEE 659-3664 ALLEN ALFORD 659-3034
LARRY TROSPER 659-3491

GOLDEN SPREAD REALTY Daryl Wynn, Broker 658-4528

We'll give our word to you.

Registered Trademark of Century 21 Real Estate Corporation.
1980 Century 21 Real Estate Coporate
Printed in U.S.A. Each office is independently owned and operated Equal Housing Opportunity.

1106 Wilmeth

FOR SALE -- 2285 square feet, ranch style home, 3 bedrooms, 2 1/2 baths, double car garage. Exceptionally nice home, in the nicest part of town.

Call **MAYFIELD**
Real Estate - 435-6528
Perryton,
for appointment.

B SPEARMAN
659-2514

**BROCK
AGENCY**

H's
**INSURANCE
HAIL TIME**

YMCA NEWS

SWIM LESSON REGISTRATION

Registration for the second session of swim lessons will be Sunday, July 12th, from 3:00-4:30 p.m. in the Swimming Pool Park. Jackie Pearson will again coordinate the program. Cost is \$8.00 for the lessons.

Time change for the lessons and age groups are: Lessons will begin at 5:30 p.m. each day, Monday through Friday. There will be special classes for those 3 & 4 years old in this session. Classes will be at 5:30 p.m., 6:00 and 6:30 p.m. There will be no morning classes. Lessons begin Monday, July 13 at 5:30 p.m.

JUNIOR BABE RUTH ALL-STAR PICKED

Five boys from Spearman were chosen to be represented on the Junior Babe Ruth All-Star Teams. Mark Guthrie, Pat Tucker and Greg Meek were chosen to play on the 14-15 year old All-Star Team. Tim Willis and Bob Cook were chosen to represent Spearman on the 13 year old All-Star Team. CONGRATULATIONS!!

LITTLE LEAGUE, TEE BALL AND SOFTBALL END THIS WEEK

Boys in the 9-12 year age group will end the baseball season this week and 15 boys will be chosen as All-Stars to represent Spearman in the Guyton Boys Incorporated All Star Tournament, beginning Monday, July 13, with a 5:30 p.m. game. The boys and girls Tee Ball program ends regular competition as do the girls Softball program. There were 12 teams with boys and girls aged 6-12 competing this year in the YMCA program. Awards and ribbons will be given to the players who competed on Thursday and Friday nights. The boys' All-Star team will be picked and announced on Thursday evening following the boys' baseball game.

RESULTS OF FOURTH OF JULY ACTIVITIES

A gala time was experienced by 100 or more children who participated with adults in the Old Fashioned Fourth of July races, relays and swim for coins and watermelon relay.

In the 8 & Under category of the Sack Races, Regina Biggers won 1st Place, Stuart Riggins won 2nd and Summer Riggins won 3rd. In the same category, Carla Green won 1st Place, in 2nd was Fowler Palmer and in 3rd Place was Amy Wilson.

In the 9-12 group of the Sack Races, Timmy Yarbrough won 1st Place, Alan Beeson won 2nd, and Lester Sullivan won 3rd Place, right behind Alan. In the same age category as well as race, Carrie Ann Guthrie won 1st Place, Crista Urban came up with a close 2nd Place win, and Donda Pool won 3rd.

In the 13-17 age group of the Sack Races, Dean Green won 1st Place, John Kelly went home in 2nd and Timmy Yarbrough won 3rd Place.

Clyde Scent won the 18-Over in the Sack Race, with Ricky Riggins coming up in 2nd Place. There was a tie with Jerry McClure and Dick Elbert for 3rd Place.

Two age groups competed in the Skillet Toss: 13-17 and 18-Over. The winner in the Girls Skillet Toss ages 13-17 was Tammy Thomas, Lisa Wheeler won 2nd. There was a tie for 3rd Place between Jennifer Yarbrough and Carla Latta. In the Boys 13-17 Division of the Skillet Toss, Ernie Bowen and John Kelly tied for 1st Place, Tony Wilson won 2nd Place and Lester Sullivan placed 3rd.

In the 18 & Over Skillet Toss Competition, in the Women's Division, Donna Yarbrough won 1st Place, Judy Speck placed 2nd and Pat Anders won 3rd Place. In the Men's 18 & Over Skillet Toss, Larry Trospen won 1st Place, Richard Melton won 2nd and Butch Baker won 3rd Place.

In the Three-Legged Race there were 4 age groups--8 & Under, 9-12, 13-17 and 18 & Older.

In the 8 & Under the winners of the first heat were Fowler Palmer and Jay Kemper, Dallas Trospen and Thomas Andres were 2nd and Carrie Pearson and Carla Green were 3rd. In

the 2nd Heat, Mark and Matt Eakin won the event, with Kyla and Cindy Elliott winning 2nd Place and Melissa Thomas and Summer Riggins winning 3rd.

In the 9-12 age group of the Three-Legged Race, the winners of the first heat were Cayla Eaton and Donda Pool, Sharon Thomas and Brenda Wilson won 2nd place, and Jan Allen and Kellie McWhirter won 3rd Place. In the 2nd Heat Kellie McWhirter and Julie Latta, coming in 2nd were Brenda Wilson and Andi Speck, and Tammy Thomas and Crista Urban won 3rd Place.

In the 13-17 age group, Lester Sullivan and Dean Green won 1st Place, John Kelly and Tony Wilson won 2nd Place. In the 2nd Heat, Cayla Eaton and Donda Pool teamed up to take home 1st Place, Julie Latta and Jennifer Yarbrough won 2nd Place, and James Kendal and Lester Sullivan won 3rd Place.

In the 18 & Older division, Sherry Green and Charlotte Elliott won 1st Place, Ray Thomas and Ricky Riggins won 2nd Place and Clyde Scent and Patty Scent won 3rd Place.

In the 8 & Under Water Balloon Toss, Cindy Elliott and Kyla Nelson won 1st Place, while Chad Riggins and Mark Eakin won 2nd Place.

In the 9-12 age group, Sharon Thomas and Brenda Wilson won 1st Place, Timmy Yarbrough and Alan Beeson won 2nd Place and Jan Allen and Crista Urban won 3rd Place.

In the 13-17 age group, Larry Hagerman teamed up with Shawn English to win the event, Pat Tucker and Carrie Ann Guthrie won 2nd Place.

Lisa and Jerry McClure won the 18 & Over age group in the Water Balloon Toss, John Anders and Shirley McClure won 2nd Place and Judy Speck and Carmen Laird won 3rd Place.

The final event of the day was the Box Relay. There were two age groups that competed--8 & Under and 9-12. There was a tie for 1st Place between the team consisted of Chad Riggins, Carla Green, Matt Eakin, Fowler Palmer, and Niki Powell, and the team consisted of Mark Eakin, Dallas Trospen, Joy Kemper, Sonya Tindell, and Summer Riggins.

In the 9-12 age group of the Box Relay the team consisted of Jennifer Yarbrough, Donna Pool, Sharon Thomas, Julie Latta, Kevin Nelson, Kay Beeson, Brenda Wilson and Alan Beeson. The team consisted of Timmy Yarbrough, Tammy Thomas, Tim Woolley, Donnie Hamilton, Ginger Pearson, Sherri Vernon, Vicci Elbert, Jamie Kendal and Nancy Ivey, won 2nd Place.

Newlyweds To Receive Wedding Bibles

The service is performed by C.F. Bartlett & Assoc., Inc. of Farmers Branch and we are pleased to be able to serve this area to see that new brides and grooms receive this appropriate gift on behalf of the sponsoring firms.

Firms in the area who are sponsoring the program are B & J. Supply, Speartex Grain Co., Kaleidoscope, Golden Spread Sales Co., Hi Plains Auto Supply, Inc., the Hansford Agency, and Cinderella Beauty Salon.

Newlyweds who will be residing in the Gruver, Spearman areas will be honored with an expensively bound white family bible which they will receive free of charge.

Several firms in the area have banded together to make this gift to newlyweds possible. The Bible is valued at approximately \$60 and carries inside an abundance of appropriate forms for listing the family tree and other necessary information of births, marriages and family records.

Crackdown On Illegal Aliens In County

"Yes, we are conducting a crackdown on illegal aliens in Hansford County," Sheriff R.L. McFarlin confirmed this week. "And we will continue to do so with the help of Texas Department of Public Safety officers." "This is not a prejudiced vendetta," Sheriff McFarlin emphasized. "It marks the end of the patience of long-time Hansford County citizens with illegal aliens driving without drivers licenses--many of them

intoxicated and unable to pay damages in accidents they cause--as well as a range of violations that include public intoxication, criminal mischief, theft by appropriation and lewd remarks to anglo females on public streets.

"When a citizen duly files a complaint, we act on it," McFarlin said.

During the weekend, members of the sheriff's department and DPS officers arrested 19

illegal aliens. Seventeen of them are on their way back to the Republic of Mexico in the custody of Border Patrol officers following their "day in court."

"That day in court is important," the sheriff warned. "In the past when accidents or other violations netted us illegal aliens, we simply sent them back across the border."

"That day is gone. When there has been a violation of our laws, the illegal alien commit-

ting it will be taken to court and if found guilty, will pay the full penalty before he or she is returned to the Republic of Mexico."

All 19 illegal aliens arrests were on citizen complaints, the sheriff said.

"We are not going out beating the bushes for these people," the sheriff pointed out. "We will be making drivers license checks along with the DPS and we will be arresting violators."

In other arrests, a Mexican National here on a legal visit arrested and arraigned for criminal mischief. His case will go before the next session of the grand jury.

James Finley Canada, 32, was taken in custody for contempt of court in a delinquent child support case.

Contentment is really just a matter of reducing your wants and desires.

Good Advice
Overheard on the rifle range:

"This ball ammunition will penetrate 2 inches of solid pine, men, so remember to keep your heads down."

The person who is popular with everyone usually has no spine and few principles.

Government of the people seems to be for the people represented by pressure groups.



HERCULON CASUAL TOTES

NOW YOU CAN OWN A COMPLETE SET OF FASHIONABLE HERCULON CASUAL TOTES... FOR EASY TRAVELING COLLECT A DIFFERENT PIECE EACH WEEK UNTIL YOU HAVE THE COMPLETE SET.

THIS WEEKS COUPON ITEM

THIS COUPON WORTH \$1.00 TOWARD THE PURCHASE OF ONE

21" Carry On

WITH COUPON **\$12.49** REG. \$13.49

COUPON GOOD JULY 8 THRU JULY 15, 1981

CENTER SLICES

Round Steaks

U.S.D.A. CHOICE BUTCHER BLOCK BEEF

\$1.98

LB.

BLADE CUTS

Chuck Roast

U.S.D.A. CHOICE BUTCHER BLOCK BEEF

\$1.08

LB.

Meat Makes The Meal AND IDEAL HAS THE MEAT...

Winsday FOOD GIVEAWAY

DRAWINGS EVERY WED. AT 2:00 P.M.

3 CERTIFICATE AWARDS

1. \$1.00 IN MERCHANDISE

2. \$50 IN MERCHANDISE

3. \$25 IN MERCHANDISE

CERTIFICATES MUST BE REDEEMED WITHIN 3 DAYS

1. YOU MUST BE 18 OR OLDER

2. NEED NOT BE PRESENT TO WIN

3. REGISTER BLANKS AT CHECK STANDS



Chunk Light Tuna

IN OIL OR WATER CHICKEN OF THE SEA

78¢

6 1/2-OZ. CAN LIMIT 3



Crisco Shortening

PURE VEGETABLE

\$1.88

3-LB. CAN LIMIT 1



Yellow Cling Peaches

DEL MONTE HALVES OR SLICED

68¢

29-OZ. CAN LIMIT 2



Facial Tissue

WHITE AND ASSORTED KLEENEX

61¢

200-CT. PKG. LIMIT 3

ALL BRANDS BEET OR CANE

Sugar

\$1.28

5-LB. BAG LIMIT 1 WITH \$10 PURCHASE

KEHLER - CLUB

Crackers

84¢

16-OZ. BOX

KELLOGGS

Corn Flakes

99¢

16-OZ. BOX

A-1

Steak Sauce

73¢

5-OZ. BTL

PHASE III

Bar Soap

2 \$1.09

BATH BARS

FROZEN FOODS



MEADOWDALE Orange Juice

LIMIT 3

36¢

9-OZ. CAN

COUNTRY TIME Lemonade

12-OZ. CAN

71¢

MRS. SMITH'S NATURAL JUICE Apple Pie

37-OZ. PIE

\$2.59

DAIRY FOODS



VELVEETA OR Jalapeno Loaf

LIMIT 2

\$1.49

16-OZ. PKG.

PARKAY Light Spread

7-1/2 LB. TUB

\$1.33

CAMELOT AMERICAN Singles

16-OZ. PKG.

\$1.78

HEALTH and BEAUTY AIDS

SMALL, MEDIUM, LARGE



Luv's Diapers

\$2.66

BOX LIMIT 2

AIM Toothpaste

2.7-OZ. TUBE

76¢

IN FOIL

Alka-Seltzer

\$1.88

36-CT. PKG.

DRAWINGS EVERY WED. AT 2:00 P.M.

Winsday FOOD GIVEAWAY

IDEALS GREAT INFLATION FIGHTER WINDSAY GIVEAWAY

3 CERTIFICATE AWARDS

1. \$1.00 IN MERCHANDISE

2. \$50 IN MERCHANDISE

3. \$25 IN MERCHANDISE

CERTIFICATES MUST BE REDEEMED WITHIN 3 DAYS

1. YOU MUST BE 18 OR OLDER

2. NEED NOT BE PRESENT TO WIN

3. REGISTER BLANKS AT CHECK STANDS

Class of '79 Has A Blast

Since most of the Class of 1979 have just recently graduated from High School, and most of them are going to College, and Summer School, not very many showed up. Those that did show up had a blast at Roy Flowers' Home.

Those that did attend were Todd Brock, Christy Collier, Stinson Gibner, Danny Ray Dear, Billy Snider, Paul Welch, Pam Largent, Zane Newton, Chuck Eaton, David Ortega, Criselda Vela, Jo Nell Comegys who brought along her friend Judy, Debbie Greene and of course, the hostess--Beth Ann Flowers.

There was all different kinds of conversation, where some were working, what school most people were going to, the latest Movies and if they were any good, commercials, who all had gotten married, was going to get married, who all was at Summer School, etc. It was very exciting in many ways.

All those that missed the reunion, which was held July 3rd, were all missed by those that attended.

Before the next reunion comes along, all of the Class of 1979 will attend, because by that time, everyone will be wondering just how everyone is and so on and so forth.

Fall Festival of Arts & Crafts

Wesley United Methodist Church of Hereford, Texas is hosting "Wesley's Fall Festival of Arts and Crafts" on Saturday, September 12. The show will be held in the Hereford Community Center from 9 am until 8 pm. Only a limited number of booths are available with applications being screened. All area artists are invited to apply. For further information write Mrs. Gail Blain, Box 164, Hereford, Texas 79045.

Our Heritage of Faith...

Notes from Faith Lutheran Church

Greetings in the Lord's Name from Faith Lutheran Church! It is great to live together and lean on each other in daily life in order to be strong. The sermon will dwell on the subject of adversity that comes to us who believe in God. Jesus speaks to that in Matthew 10:24-33. The sermon theme is: GOD: BUT WHEN IT IS PAINFUL...

Sunday School begins at 9:45 a.m. Worship begins at 10:45 a.m. Holy Communion is celebrated this Sunday.

A hearty welcome awaits each visitor.
Bruno Gaskamp, Pastor

And Cheaper

The modern girl usually gets along with her mother-in-law because she can't afford to pay a baby-sitter.

-Dispatch, Norfolk.

True

The United States is the only country where it takes more brains to make out the income tax return than it does to make the income.

-Post, St. Louis.

Question In The Night

Why is it that a person who snores never has insomnia?

-Tribune, Chicago, Ill.

Will Be Hard

One of the hardest jobs of reconversion is making a school pupil out of a vacationer.

-Erhald, Boston.

Honey-Holt Vows Exchanged



In the quiet of a late spring afternoon, Miss Ronda Honey and Kevin Holt were united in marriage in a double ring ceremony. The service was officiated by the Reverend John Hammons on May 29 at the First Christian Church in LaJunta, Colorado.

The marriage ceremony united the daughter of Mr. and Mrs. Ronald Honey of LaJunta, Colorado, and the son of Mr. and Mrs. Pat Holt of Gruver.

The simple altar setting was emphasized by two spiral candelabra, which were complemented by yellow and mint carnations enhanced with baby's breath. Completing the setting were baskets of spring flowers.

Musical selections were provided by the organist, Mrs. Lane Brown. Mrs. Brown accompanied Miss Ginny Mason as she sang "Whither Thou Goest" and "Theme from Ice Castles." At the close of the ceremony, she sang "The Lord's Prayer."

Presiding at the guest register in the foyer of the church was Miss VeAnn Allsworth. Candelighters were Renee Honey, sister of the bride, and Cassie Honey, cousin of the bride. They wore floor length dresses of mint green chiffon with an off-the-shoulder ruffle and wrist corsages of yellow roses.

The radiant bride, who was escorted to the altar and given in marriage by her father, chose her mother's wedding gown of antique white lace. The dress was fashioned with a dropped waist, and the lace skirt fell to the floor over a layered underskirt. The dress had long fitted lace sleeves closed with tiny lace covered buttons. The bride's veil of silk illusion was capped with a half crown of coordinating antique white lace. The bridal bouquet featured yellow roses and white forget-me-nots accented with yellow satin ribbons.

Miss Eva Holt served as maid of honor, and bridesmaids included Beth Holt and Kristi Holt. The bride attendants were all sisters of the groom. The maid of honor and bridesmaids wore floor length gowns of yellow chiffon, designed with a high waisted underbodice covered by a sheer, long-sleeved short jacket, gathered at the cuff with tiny yellow buttons. Each carried a yellow and mint bouquet of tiger lilies, lilies-of-the valley, and daisies with yellow streamers and bows.

Attending the groom was Paul Stavlo, who served as best man. Garlan Dahl and Daniel Boyd served as groomsmen, ushers included Rick Honey and Jace Honey, brother and cousin of the bride, respectively. The groom's attendants wore yellow tuxedos with yellow pleated shirts, complemented by yellow satin ties. The groom was attired in a dark green tuxedo with a white pleated shirt and dark green tie.

Flower girls were Miss Ashly Shieldknight and Miss Kelly Shieldknight of Spearman, cousins of the groom. The girls wore identical mint green dresses with ruffled skirts and capped sleeves. They carried white baskets filled with yellow roses. Ring bearer was Heath Grantham of Lamar, Colorado, cousin of the bride. He wore a mint green tuxedo.

For her daughter's wedding, Mrs. Honey chose a green street-length dress. Mrs. Holt, the groom's mother, wore a

pastel green street-length dress. Each wore a corsage of white roses.

Following the nuptials, a reception was held at the church. The table was covered in white lace, highlighted by a three-tiered white wedding cake. The cake featured yellow daisies with accents of mint green. Atop the cake were yellow satin wedding bells.

Mrs. Nick Holt, Miss Elizabeth Holt, Mrs. Melvin Grantham, Mrs. Clyde Grantham, and Mrs. Jack Walter were included in the house party.

A special guest at the ceremony was the grandfather of the bride, Mr. Claude Holderman.

For traveling, the new bride chose a navy floral print skirt and a white organza blouse. Following a wedding trip to Hawaii, the couple is at home west of Gruver.

Ronda, a LaJunta High School graduate, will be a senior business administration major at Panhandle State University in the fall. Kevin is a graduate of Gruver High School and Panhandle State University. He is engaged in farming and ranching.

A rehearsal dinner was held Thursday evening at the Hickory House restaurant in LaJunta. Other pre-nuptial courtesies included a miscellaneous shower in LaJunta; a miscellaneous shower in Gruver at the home of Mrs. Archie Nelson; and a wedding day brunch at the home of Mrs. Jack Lowe of LaJunta.

Golden Spread Center News

A delightful evening was enjoyed by 38 members Tuesday, June 30, 1981. The Gladiola Flower Club furnished home made ice cream (8 freezers) and there is no taste like home made ice cream it was delicious and again thanks Gladiola members for furnishing food for the month of June. You are wonderful. Several members brought cakes and cookies which were served by the Center hostess Adalyn Barnes and Maylynn Schubert.

We at the Center are experimenting with the Bingo games on Wednesdays from 2:00 to 3:30 p.m. If you like Bingo and really who doesn't; won't you come by an enjoying the fellowship of the Center. There were 15 members and one guest present and the black out game was won by Lois Gibner (a free pizza donated by Pizza Hut-207 S. Hwy., Spearman, Tx.) Two young ladies have been hired by Ceta for this summer and they are: Tammy Jordon and Norma Martinez, to keep the Center clean and various odd jobs. They are doing a great job. Why not come by and meet the young girls? While talking about personnel I must name our Director--Pearl Pierce who is doing an outstanding job of management.

Modern Scouting

Boy Scout leader to troop: "Remember men, if you're lost in the woods at night, get your bearings from the sky. A glow will indicate the shipping center."

-Courier, Ottomwa, Ia.

LARGE END BEEF RIB

Rib Steaks

\$1.98

LB.

FRESH

Ground Beef

\$1.08

FAMILY PACK 3 TO 5 LB. AVERAGE

LB.

FRESH FROZEN

Turkey Hind-Quarters

49¢

RANDOM WEIGHTS

LB.

SLICED

Slab Bacon

\$1.18

RANDOM WEIGHTS

LB.

DOUBLE

GUNN BROS. STAMPS EVERY WED.

Mac & Cheese Dinner

25¢

7 1/2-OZ. CAN LIMIT 3

Farm Fresh Produce

BONELESS Round Steaks.....	\$2.19	CENTER CUTS 7-Bone Roast.....	\$1.48
ARM Pot Roast.....	\$1.78	BONELESS EXTRA LEAN Beef Stew.....	\$1.88
BAR-S-SKINLESS Meat Franks... 12-OZ. Pkg.	98¢	BAR-S Sliced Bacon.....	\$1.39

MIX CRYSTALS

Lemonade

\$2.69

8-OZ. CAN

CAMELOT OR BROWN BEAUTY

Pinto Beans

98¢

2-LB. BAG

SWEET & JUICY

Seedless Grapes...LB.

89¢

TREE RIPE

California Peaches

29¢

LB.

WINE RIPE

Watermelon.....

12¢

LB.

JUICY SWEET

Valencia Oranges.....

39¢

LB.

Ideal Food Stores

Food Stamps Buy More At Ideal...

DOUBLE

GUNN BROS. STAMPS EVERY WED.

Dumas Art Center Celebrates 1st Birthday

The Moore County Arts Association will hold an open house and reception to commemorate the first birthday of the Dumas Art Center on July 12, 1981. Original country, western, and wildlife paintings by Roseylee K. Palmer, a well known professional artist from the Panhandle of Texas, will be featured on exhibit and sale. The reception will be held from 1:30 to 5:00 p.m.

Come meet the artist and receive a free 8 x 10 reproduction of an original ink drawing with a person autograph from the artist. The painting exhibit will be on display at the Center until August 15, 1981.

The featured artist is originally from Henryetta, Oklahoma, but is now living in Borger, Texas, where she is the chairman of the Fine Arts Division of Frank Phillips College. She has lived in Texas for thirty years and now feels that she is a true Texan.

Her art works reveal her deep love of the western landscape, the working cowboys and their horses, the cattle on the range, rodeo events, windmills, ranch homes, and other contemporary western scenes that surround her in the Panhandle of Texas. She also like the past and has completed many historical paintings and murals about the West. Roseylee's portraits of horses are beautiful examples of her knowledge of the anatomy of the horse and her skill in the application of paint and color.

Indians became a part of her life in early childhood in Oklahoma. She grew up with a love for the Indian and the Indian culture. This feeling is revealed in her Indian portraits and numerous paintings of the Indians. She contends that the artist must know matter and relate to it in order to produce a painting that conveys those feelings to the viewer.

Roseylee's artistic talent has been a part of her life since childhood but she never feels that talent alone is enough. Education, training, practice,

and lifelong learning are important to her.

She is a graduate of Henryetta High School of Henryetta, Oklahoma. She attended Odessa College and received a degree of Associate in Arts from Frank Phillips College. She has a Bachelor of Science degree in Art Education and a Master of Arts degree from West Texas State University of Canyon, Texas. She has had postgraduate study at North Texas State University, Denton, Texas and also postgraduate classes at West Texas State University. She also had training in Commercial Art for two years from Art Instructions, Inc., Minneapolis, Minnesota. She worked for many years as a Commercial Artist, a Free Lance Fine Artist, and now as a college instructor.

Roseylee has had training in almost all art media so the media and the techniques used by the artist are varied. They include encaustic, collage, water color, acrylics, gouaches, tempera, oils, copper enameling, glazing, texturing, pastels, pottery, and sculpture. Her paintings are realistic with an Impressionistic flair. Her works are found in collections throughout the Southwest.

ONE MINUTE SPORTS QUIZ

1. Who won the Danny Thomas-Memphis Golf Classic?
2. Bob Griese recently announced retirement from what pro football club?
3. Who won the LPGA Sarah Coventry golf tournament?
4. Who is the junior welterweight champion?
5. Who won the Leonard Kalule bout?

Answers To Sport Quiz

1. Jerry Pate.
2. Miami Dolphins.
3. Nancy Lopez-Melton.
4. Aaron Pryor.
5. Sugar Ray Leonard.

It is far worse to send untrained men into battle than to train them and not need them.

Notice of Tax Increase To Be Published

AUSTIN--Kenneth E. Graeber, executive director of the State Property Tax Board (SPTB), today said a number of local taxing units throughout Texas will be publishing advertisements titled "Notice of Tax Increase" within the next two months.

Graeber said the notices, which include the percentage of proposed tax increase, are required under the state's "Truth-in-Taxation" statute. The notices, he added, are intended to insure that taxpayers have notice that a jurisdiction's tax revenue is likely to increase, and that the taxpayer has a right to appear at a public hearing to speak either for or against the increase.

The notice is required whenever a jurisdiction proposes to adopt a tax rate which is three per cent or more above a maximum tax rate calculated by the jurisdiction's assessor. This maximum tax rate is a rate which would provide sufficient revenue for the current year's debt service and provide operating revenues equal to those of the prior year.

"It is important that taxpayers be aware that the percentage of increase shown in the notice relates to the jurisdiction as a whole. A specific individual's taxes may increase at a greater rate, may remain the same or may decrease," Graeber said.

"The tax bill on an individual piece of property will depend upon the value of the property less any exemptions, multiplied by the jurisdiction's tax rate," he added.

In jurisdictions throughout the state, compliance with truth-in-taxation follows this sequence:

--After the Board of Equalization certifies the jurisdiction's total assessed valuation, the tax assessor will calculate the maximum tax rate and publicize it by publication in a newspaper of general circulation in the jurisdiction;

--If the governing body chooses to adopt a tax rate which does not exceed the calculated rate, it may do so at any meeting. Other items of business may be on the agenda; but the tax rate should be

adopted as a separate item from the jurisdiction's budget;

--If the governing body determines that a rate which exceeds the three percent limit must be adopted, the members must give notice of a public hearing on the intent to adopt a higher rate. The jurisdiction must publish a notice no smaller than one-quarter page of a standard-size or tabloid newspaper, and must set the date of the public hearing at least seven days from the date the notice is published.

The date, time and location of the public hearing must be stated in the notice. The date must be on a weekday and not a public holiday. The hearing must begin after 5 p.m. and before 9 p.m. The location must be in a public building in the jurisdiction's boundaries.

Names of all members of the governing body, showing how each voted on the proposal to raise the tax rate and indicating those absent, must appear in the notice.

As an option, the jurisdiction may mail the notice by first-class mail to each registered voter. If published in a newspaper, the notice cannot be in the section with legal notices and classified ads.

--At the public hearing, the discussion of the tax rate should be the only item on the agenda. Taxpayers should be given ample opportunity to express their opinions and discuss the issue with members of the governing body.

At the conclusion of the hearing, another record vote must be taken for the purpose of a second public notice. In addition, the officials must orally give the date, time and place of the meeting to adopt the tax rate. The second notice will be identical in form to the first except it will include a statement that "a public meeting to vote on the proposed increase will be held on (date), (time) at (meeting place)."

The second notice must specify a date which is not sooner than the third day after the public hearing and not later than the 14th day. If the meeting to adopt the higher tax rate is not held within 14 days after the public hearing, then a new public hearing must be

held and notice properly given.

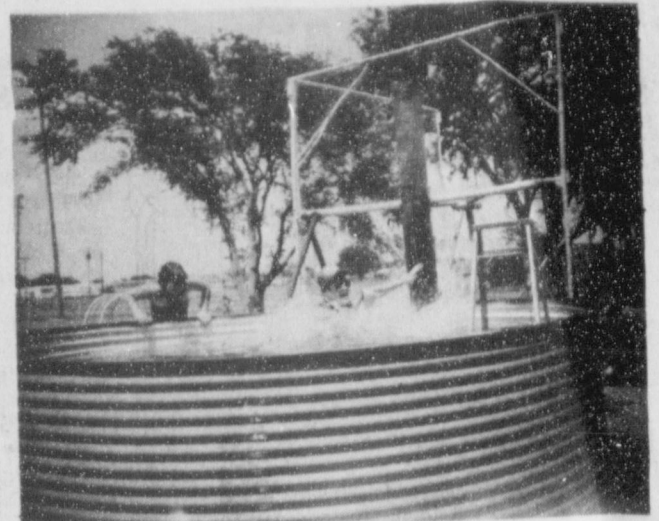
--At the final meeting, at which the vote to actually adopt the tax rate is taken, other items of business may be on the agenda. Again, however, the vote on the tax rate must be separate from the vote on the jurisdiction's budget.

A series of 13, one-day seminars will be conducted across Texas this month to help local governments comply with the state's "truth-in-taxation" statute. Each seminar will be conducted by a three-member instructor team from the SPTB's Education and Standards Division.

The seminars will also provide local tax officials with an overview of the laws and proposed constitutional amendments affecting property taxation which were enacted by the 67th Legislature during its recent regular session.

The regional seminars will be conducted in Amarillo, July 8; Lubbock, July 9; Abilene, July 10; Edinburg, July 13; Corpus Christi, July 14; San Antonio, July 15;

Also, El Paso, July 16; Midland, July 17; Huntsville, July 20; Beaumont, July 21; Longview, July 22; Fort Worth, July 23; and Waco, July 24.



Bobby Snider gets a dunking at the Lions Club booth at the YMCA July 4th activities.

Cattle Raisers Praise Demos In Budget Battle

FORT WORTH, Texas, June 31, 1981--The nine Texas Democrats who "put country ahead of party" in the recent budget battle in Washington got a personal thanks in the form of a resolution passed by members of the Texas and Southwestern Cattle Raisers Association board of directors at their meeting in San Angelo, Texas, June 26-27. TSCRA telegraphed its members' thanks only hours after the lawmakers helped Republicans defeat an attempt by the Democratic leadership to derail President Reagan's budget and tax proposals.

TSCRA is a non-profit livestock producer group with more than 14,000 members in Texas, Oklahoma and surrounding states.

John S. Cargile, TSCRA president from San Angelo, said, "TSCRA feels that President Reagan's budget and tax proposals will result in lower inflation, lower interest rates, lower deficits and in accelerated economic growth. The defeat of his budget proposal would have been a blow to the working people and ranchers of the country who have been forgotten in the rush to big government and higher taxes."

The nine Texas Democrats recognized were Congressmen Jack Hightower of Vernon, Charles Wilson of Lufkin, Marvin Leath of Waco, Charles Stenholm of Stamford, Phil Gramm of Bryan, Sam Hall of Marshall, Ralph Hall of Rockwall, Kent Hance of Lubbock and Richard White of El Paso.

livestock would serve notice that entry was forbidden. Another law would allow county courts in addition to justice courts to hear game law violations. Landowners were advised to report trespassers to the local game warden or sheriff.

Cattlemen were warned that the next 60 to 90 days will have a very critical effect on the market outcome for the rest of the year by Topper Thorpe, general manager of the marketing arm of the National Cattlemen's Association. Weather will be the big factor and could force non-fed slaughter and increase grain production costs. Under the best conditions, he said cattle feeders must have 75 cents to 85 cents per pound for cattle going to the packer if the rest of the cattle industry is to survive in the long term.

The future is bright, he added, for those cattlemen who recognize that change is upon them and devote time to planning, managing and marketing. Cattlemen must learn that beef production is a business and not a way of life, Thorpe said.

Other speakers were Dr. Lauro Cavazos, president of Texas Tech University; Mrs. Nancy Birdwell with the Nation-

al Golden Spur Awards Program and Cargile. More than 350 TSCRA members and their families attended the summer meeting. TSCRA set its fall meeting for Oct. 30-31 in Kerrville, Texas.

John M. Yancey

SPEARMAN -- John M. Yancey, 57, died Monday. Services will be at 2 p.m. today in the First Christian Church with the Rev. Don Wirsdorfer, pastor, officiating. Burial will be in Hansford Cemetery by Boxwell Brothers Funeral Home.

Mr. Yancey was born in Katie, Okla., and had lived in Spearman the past six years, moving here from Flagstaff, Ariz. He was a welder and a veteran of World War II.

Survivors include three brothers, Jim Yancey of Flagstaff, Ariz., George Yancey of Hennepin, Okla., and Frank Yancey of Spearman; four sisters, Mrs. Pherblea Carter of Fort Worth, Mrs. Bess Lucas of Oklahoma City, Mrs. Alice Cooper of Barcelona, Spain, and Mrs. Ruth Tucey of Sand Spring, Okla.

MR. FARMER . . .

DO IT IN ONE OPERATION WITH A PENGU 6 ROW 40 PLOW!

Prepare your maize, or wheat ground in one operation--conserve moisture-increase yield & apply fertilizer or herbicides!

This plow available on lease only!

\$12.00 per acre

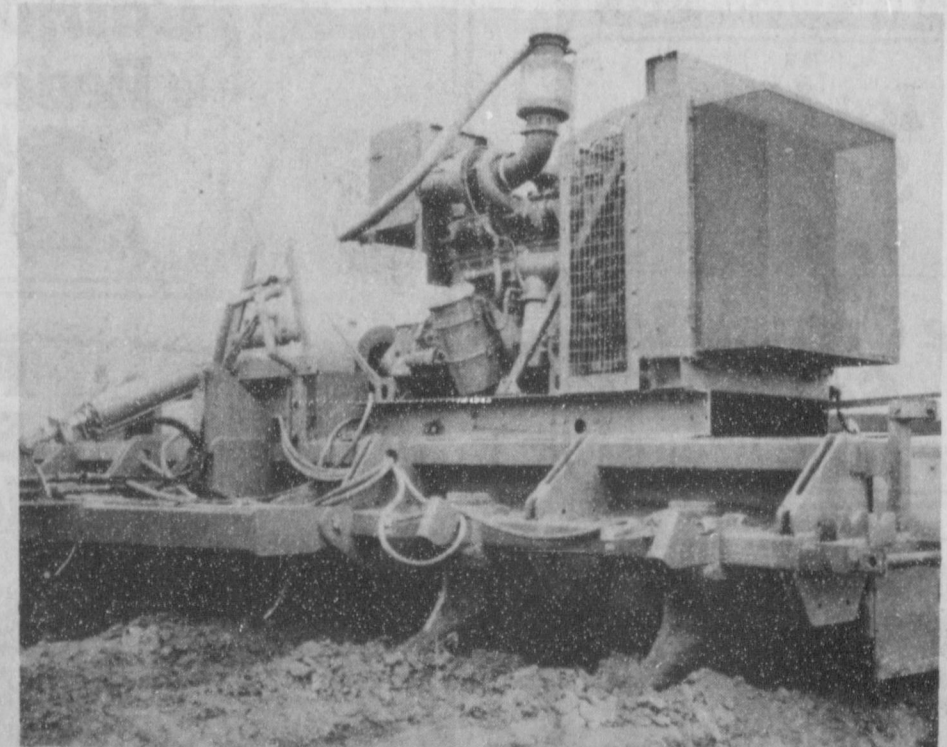
From shred to bed in one operation.



Watering every other row.



The 6 row 40 in action-Makes a perfect seed bed.



Applying fertilizer or herbicide.

Contact Bobby Thompson--

Phone 733-2583
Gruver, Texas

Oma Kiser Exhibits At Booker Bank



WESTERN ART YOU CAN FEEL--That is the verdict of art lover and critic alike once they have viewed the work of Oma Leo Kiser. Both the western art and the oil landscapes from the brush of this talented artist will be on display, Friday, in the Lipscomb Room of First Bank and Trust Co., Booker. The artist credits her talent to her youth spent on a ranch in the Big Bend Country. Now she shares it on canvas and in art classes. First Bank and Trust Co., shares it, Friday.

Perryton artist Oma Kiser will display her oil landscapes and Western art Friday, July 10, in the Lipscomb Room of the First Bank & Trust Co. at Booker. The show will be open to public from 9 a.m. to 3 p.m. Oma Kiser grew up on a ranch in the Great Bend country where she watched her mother and grandmother paint the scenic beauty. Painting came naturally to Oma and she learned to paint those same scenes. Later she created landscapes of the Texas Panhandle where she has lived for the past 20 years. In addition to oil painting, Oma also spends part of here time as an art instructor in Perryton.

Class of '46 Enjoy Fellowship

The Class of 1946 enjoyed a time of Fellowship Saturday, July 4, from 2:00 to 4:00 at the Shieldknight Building. Those in attendance were: Mr. and Mrs. L.W. Rosenbaum Jr., Karnack, Texas; Bodil Blackburn Stockhouse, Alameda, New Mexico; Mr. and Mrs. Ross Errington (Marjorie Riggs) Amarillo, Texas; Mrs. Doris Hester Beck, Amarillo, Texas; Jack McKay, La Mirada, California; Mrs. Geneva Ford Longley, Sunray, Texas; Mr. and Mrs. Billie Bob Lee, Colorado Springs, Colorado; Mr. and Mrs. Benny Bushman, Stinnett, Texas; Mr. and Mrs. Gene Sparks, Amarillo, Texas; From Spearman were Jimmy Shieldknight, Mr. and Mrs. Hershel Jones, Mr. and Mrs. Worley Smith, Mr. and Mrs. Irvin Davis (Betty Clement), Mrs. Bette Lee Davis Hazelwood, Wayne Ellsworth, Mr. and Mrs. S.B. Sheets, Mr. and Mrs. Wilson McClellan, Ray Robertson. Those that were unable to make it, called--Arlan Womble, Lubbock, Kay Kizziar Ferguson, Balko, Oklahoma; Billy Lynch, Lubbock, Texas and Craig Hutchison, Spearman.

Reunion Fun, Age No Kin

"You don't look a day older!" "You husband is the handsomest thing!" "I have five of the cutest grandchildren and are they smart!" --And when the likeable little lies were over, so were the get-reacquainted sessions at a hundred points and the Spearman High School All-Class Reunion settled into the comfortable friendships of days gone by and every conversation began with: "Hey! Do you remember the time..."

At that point the well-planned affair hardly needed any further direction. There more than 1,100 in attendance by unofficial tally and every one of them apparently "touched base" at every programmed part, every interest point created by those who staged the highly successful reunion.

There was one part of the reunion--a part of every union anywhere--that cannot be planned for beyond hope and a little prayer:

--That's the way exes at any given occasion will react to husbands and wives of other exes who did not grow up in the old home town and go to the old school.

One ex-faculty member said she thought there was always an air of graciousness permeating the halls of SHS along with all the fun and hi-jinks and that it had been absorbed and retained by the exes these many years later for they were the very soul of warmth to non-ex spouses in attendance.

One such probably summed it up for all of them when he said: "I have been treated so

unlike a stranger, I feel like an ex already--and when I hear all those tales of student days, I wish I had been here then!"

--And then there was the dance! Age couldn't be told by style for some of the "most mature" of the exes were right in there with the latest editions of the light fantastic and they stayed until the last note sounded.

Of course, Monday morning was a different story. One ex in his late heavies who had been dubbed "twinkle-toes" at the dance, showed up at the Monday morning coffee conference wearing houseshoes and a cane. Asked by some non-attenders how it was at the dance, he broke into a fatigue-laden smile and said:

"If they had just spiked the punch with Geritol and closed out with the Arthritis Waltz, it would have been perfect!"

Classes 48-52 Enjoy Picnic At Lackey Ranch

The Classes of '48, '49, '50, '51 and '52 met for a picnic July 3 at 7:00 p.m. at the picnic area at Joyce & Joel Lackey Ranch. Over one hundred ex-classmates, wives, husbands and guests enjoyed visiting and reminiscing. Everyone thought the class reunions and all school reunion were a huge success and plan to attend the next one in 1985.

Special guests were from the classes of '44, '53, '54 and '55. Those present were: J.M. & Deanna Kenney, J.L. & Mary McLain Brock, Eddie & Betty Blackburn, Albert & Joyce Scroggs Leach, Sam & Mary Lou Davis Wysong, Don &

Mary Allen, James & Ruby Tarbox Lair, J.W. & Doris Jean Scroggs Pipkin, Ed & Pat Howell Dear, Jack & Doris Birdwell McKay, Carmen Martin George, Kiff and Nella Beth Nollner White, Tommy & Mona Beth Hester Windom, Narrell & Jeanene Graves Wilson, Tom & Deloris Taylor, Harry & Betty Faus, Bill & Ruth Pool Issacs, Dorothy Bruce Benjamin, S.B. & Donna Lackey Sheets, Wallie & Jane Cayton, Billie & Martha Cayton Haden, Doyle & June Jackson, Cecil & Margaret Reed Ralston, Don & Nancy Lee Robertson, Louis & Jo Nell Sheets, Glen & June Pool Buck, Carol Hull Ratliff, Bob & Peggy Pierce Ferguson, Bob & Wanda Stewart, Kenneth & Margarette Wilbanks Evans, Al & Juanita Beck Tucker, Avo Jones Tope, Milton & Louise Walker Tyson, Harrison Dyer, Carl & Dolores Rosenbaum Rodolph, John, Pat and Brenda Patterson, Wayman & June Scroggs Edwards, Harry & LaVeta Crawford Campfield, Monty & Marie Harbour, Glen & Norma Jean Hutton Mackie, Joel Lee & Joyce Lackey, Mary Jane Cayton DeArmond, Troy & Frankie White Sloan, Max Church, Leslie D. & Billie J. Greever Reynolds, Ray & Judith Meek Martin, Gene Reynolds, Don Cates, Bob & Ruth Jones Crawford, Wilbur Hull, Elma Pipkin Miller, Thane & Sue Gillispie McCloy, Frank Buzard, Gail & Elma Poole Bruce, A.L. & Bobbie Lackey Wilson, Floyd & Helen Bentley Dry, Donald & LaVeta Buchner, and Glen & June Pool Buck.

Public Notice

Southwestern Bell, in accordance with the rules of the Public Utility Commission of Texas, hereby gives notice of the company's intent to implement a new schedule of telephone rates in Texas effective July 21, 1981, unless otherwise determined by the Commission.

It is expected that the requested rate schedule will furnish a 15.8 percent increase in the company's intrastate revenues.

A complete copy of the new rate schedule is on file with the Public Utility Commission at Austin, Texas, and with each affected municipality served by Southwestern Bell, and is available for inspection in each of the company's public business offices in Texas.

Notice to Customers of Other Telephone Companies

The filing includes, but is not limited to, proposals to increase rates for interexchange private line and foreign exchange (FX) service. Changes in such rates would also affect customers of other telephone companies because such companies provide interexchange private line and foreign exchange service in accordance with rates specified in Southwestern Bell's tariffs.

Aviso Público

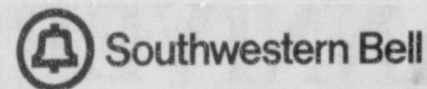
Southwestern Bell, en conformidad a las reglas del Public Utility Commission (Comisión de Servicios Públicos) de Texas, por la presente hace saber su intención de establecer un nuevo arancel para servicio de teléfono en Texas con vigencia a partir del 21 de Julio de 1981, a menos que la Comisión haga otra determinación.

Se espera que el nuevo arancel que se ha solicitado rendirá un aumento de 15.8 por ciento en los ingresos intrastatales de la compañía.

Una copia completa del nuevo arancel se ha archivado en las oficinas del Public Utility Commission en Austin, Texas, al igual que en cada municipalidad afectada y servida por Southwestern Bell, y cada una de las oficinas de la compañía para negocios con el público en Texas tiene una copia para lectura pública.

Aviso a los Clientes de Otras Compañías de Teléfono

El registro incluye, pero no se limita a, propuestas para aumentar las tarifas para servicio de línea privada entre centrales telefónicas (interexchange private line) y servicio de central telefónica extranjera (foreign exchange FX). Cambios en dichas tarifas de servicio también afectarían a clientes de otras compañías de teléfono porque dichas compañías proveen los servicios ya mencionados en conformidad a tarifas especificadas por Southwestern Bell.



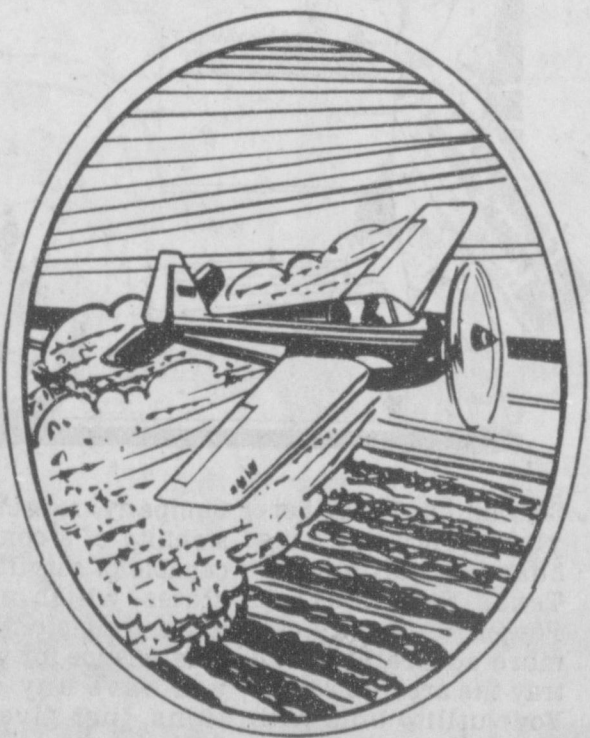
Army Needs Four

"We need young people from the Spearman area in the Army," says SSG Richard Sellers, Army recruiter at the local Dumas recruiting station. Sellers has been assigned to find four people from this area to fill vacancies in various career fields, such as communications, administration, aviation, and combat arms. "There are many other fields available," says Sellers, "the Army offers skill training in over 200 jobs with duty stations all over the world."

In the Army you can receive the career training you choose and receive active duty pay while learning. Also, you can choose your first duty station. "What better way to learn a skill and travel at the same time?" asks Sellers.

Young people interested in being on of the four from Spearman to take advantage of Army opportunities should visit SSG Sellers at 806 Dumas Avenue in Dumas or call him at 935-7931.

Buster's Aerial Dusters



For Your Weed Control

(806) 659-3648

SPEARMAN, TEXAS

THE MONEY MAKERS

Money Market Certificates

RATE
14.300%

\$10,000
Minimum Deposit
182 DAY MATURITY

Effective July 7, 1981
Through July 13, 1981
Regulation Prohibits
Compounding of Earnings

Jumbo Certificates

TERM	RATE	ANNUAL YIELD (Compounded Daily)
30 DAY	17.25%	18.82%
90 DAY	17.00%	18.53%
180 DAY	16.50%	17.94%
1 YEAR	15.25%	16.47%

\$100,000
Minimum Deposit
Rates Subject to
Change Without Notice

30 Month Certificates

RATE
11.75%
ANNUAL YIELD*
12.47%
\$1,000

Minimum Deposit
Rates Change Bi-Weekly
* Compounded Daily

NOTICE: As Required By Law, All Certificates Are Subject To Substantial Penalty For Early Withdrawal.



... more than just a bank
First Bank & Trust Co. Booker, Texas (806) 658-4551



ALL DEPOSITS INSURED
UP TO \$100,000 by F.D.I.C.

Another Step Taken Against Oilfield Theft

817-723-1114. That is a collect hot line that went into use July 1 as the latest "shot" in the war against oil field thefts in Texas that are taking a \$200-million annual toll in the Lone Star State. While it is the home base of one of the largest drilling companies in the state—Baker & Taylor—Hansford County has not suffered the high theft loss of oil field tools and equipment that neighboring Hutchinson County has experienced. However, limited drilling and production operations is no guarantee against the thefts. Upshur County in East Texas

and its county seat of Gilmer is similar in size and operation in the energy search-and-production operation to Hansford County and one operator there. Gene Wright, estimates his losses last year to oil field thieves at \$60-thousand. Here on the High Plains of the Texas Panhandle, the very nature of such operations are a handicap in the discovery and recovery of such thefts. Hutchinson County is a prime example of this. While the loss toll runs high there, Sheriff Lon Blackmon's department has an equally high record of arrests and recoveries.

"The complication up here," Sheriff Blackmon said, "is that many locations just bristling with tempting loot for oil field thieves are not visited regularly creating a span of 48 hours or more before a theft might be discovered." Blackmon went on to point out that discovery, even arrest of strong suspects did not wrap up the case in most instances. "One of the most difficult phases of such a case is the identification of stolen equipment," he said. The legislature has contributed its effort in the form of laws demanding more detailed

records in the sale or exchange of used oil field equipment and higher penalties for those convicted of oil field thefts. The Lone Star State's most prestigious law enforcement agency, the Texas Rangers, is devoting 20 percent of its overall law enforcement efforts to oil field thefts. A high Ranger official said this was not a top priority ratio but is ranked high. As it stood to July 1, time seemed to be on the side of the thieves. The head of the Texas Independent Producers and Royalty Owners Association's task force on oil field thefts said thieves could completely make

off with a well head in 15 minutes or drain off 40 barrels of crude oil in ten minutes or less. Hence the new hot line number. The phone that answers it is located at centrally locate it in relation to the greatest oil field activity and the highest incident of thefts. A collect call to 817-723-1114 will circulate news of a theft, a list of equipment or materials lost—and any suspect information that might be at hand. There have always been oil field thefts. In the days of less

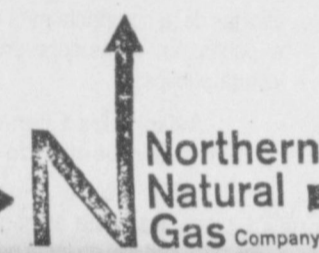
focus on the energy crisis, tools and lesser production equipment made up the greatest loss. In fact, in days gone by, thieves would settle more quickly for a heavy haul of copper than of tools and equipment. Now, the story is different. Well heads are a high loss risk. They cost up to \$60-thousand. Valves, engines and drilling tools follow in that order. "The sad part is," said the TIPROA theft task force head, "if you have oil field equipment to sell, there is always a buyer. Identification of lost property comes later—if at all—in a tedious process of identification and judicial action." In the meantime, as in the case of merchants' losses to shoplifters, the bill is added on to the ultimate selling price and it is the consumer who pays for it.

The Difference
Miss Green: "I know he's rich, but isn't he too old to be considered eligible?"
Mrs. Brown: "My dear, he's too eligible to be considered old!"

Become a
LICENSED VOCATIONAL NURSE
and at the same time,
meet all first year requirements to become a
REGISTERED NURSE
Applications are now being accepted for this innovative
CAREER NURSING PROGRAM
CLINICAL EXPERIENCE AT
HANSFORD HOSPITAL
For complete details and admission information, call
Frank Phillips College
Department of Nursing
273-5311, extension 55 or
Leona Fay at HANSFORD HOSPITAL 659-2535

MAINTENANCE PERSON
REGULAR FULL TIME EMPLOYEE

Northern Natural Gas Company will take applications on Friday, July 17, 1981, between the hours of 9 A.M. and 3 P.M. for regular full time Maintenance Person to work at the Canadian Plant. Apply at the Canadian Office on Highway 83 & 60 south of Canadian, Texas. Typical job duties are: facility clean up, assisting with overhauls of large internal combustion gas compressor engines, maintenance of vessels and towers, all phases of pipeline repair and relieving regular operating crew during vacation or illness, etc. Pre-employment test will be given for the Maintenance Person job on Saturday, July 18, 1981 at 9:00 A.M. at the Canadian Office for all persons that have completed an application. Northern Natural Gas Company is a major diversified energy company offering an attractive salary, and has an excellent benefit program. Equal Opportunity Employer.



Porkarama Planned

Plan refreshing summer meals economically with pork. A special free program is scheduled for Tuesday, July 14 at 2:00 p.m. in the Spearman Homemaker's Clubroom to better inform you of the nutritional benefits, economical value and storing of pork. Sewing with pigskin will be an additional highlight.

The 2-hour program is sponsored by the Texas Pork Producers Association, Texas Agricultural Products and the Hansford County Extension Agent.

Frank Brooks of Texas Agricultural Products will demonstrate economy cuts from a pork loin and the cooking of ground pork. Taste samples will be served to participants.

Nutritional benefits and storing pork will be discussed by Jennifer Dry and Mitchell Benzer from Dallam County.

Sewing with pigskin will be demonstrated by Donna Peters and Deann Dooley from Moore County. Examples of garments made from pigskin will be shown.

Recipe booklets will be available to participants. Plan now to attend the "Porkarama" July 14 at 2:00 p.m. in the Spearman Homemaker's Clubroom.

Auto Theft Suspect Walks Away

Jackie Wayne Armstrong, 18, Amarillo, held by Hansford County as an auto theft suspect, walked away from a work detail in front of the courthouse Monday.

"It was not an escape as such," Hansford County Sheriff R.L. McFarlin said, "But he will have to be prosecuted as an escapee."

The sheriff explained that Armstrong was out on bond from an Amarillo arraignment and that a relative was on the way to Spearman to post bond when he walked away from the trusty assignment.

"This young man has no record of violence and not much of a record at all," the sheriff said. "I see no reason for alarm because he is at large either from his nature or his record."

The sheriff extended his assurance further: "In my 13 years of experience with this department," he said, "This is the second time a trusty has left custody. I do not intend to scrap a program that has been highly successful both for the prisoners and the county because one boy strolls off."

School Board Considers Bids

With two members absent, the Spearman Independent School District (SISD) still had a quorum and proceeded with the business at hand: payment of bills, filling staff positions and considering bids for work to be done on various structures.

Russell Hughes, Plainview, was approved for the position of assistant band director; Miss Tina Farris was employed as an elementary teacher at the first grade level and Mrs. McMullen, recently resigned, was re-employed as a Spanish-English teacher.

The board considered and approved the bid of Roof Maintenance of Amarillo to repair the roofs of both the high school structure and the varsity gym.

A second bid was approved and accepted...that of West Texas Heating and Air Conditioning Co. to change central heating and air-conditioning systems at both junior high and high school. Also approved was installation of new lighting at the varsity and junior high gyms.

The remainder of the meeting was occupied with the routine matters of school district administration.

June Crude Oil Production

AUSTIN, Tex., June 29--Texas crude oil production totaled 74,062,276 barrels in April, according to a preliminary report released today by the Railroad Commission's Oil and Gas Division.

The figure compares with final compilations of reported March 1981 production totaling 77,400,736 barrels and April 1980 production of 77,376,009 barrels.

Texas oil production averaged 2,468,742 barrels daily in April 1981, down from 2,496,798 barrels daily in March 1981 and down from 2,579,200 barrels daily in April 1980.

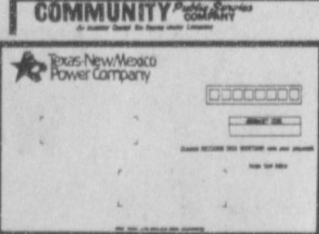
The April 1981 allowable totaled 107,326,199 barrels. The preliminary April summary indicated Texas oil production was 30.99 percent under the allowable for the month.

The name has changed but you get the same dependable service.



Community Public Service Company has changed its name to Texas-New Mexico Power Company, to more accurately portray the area we serve. Your utility bills will soon have the new name, but you'll still get the same dependable service you can count on. You can still mail your electric payments to the same address, or bring payments to the same office. The name, Texas-New Mexico Power

Company, reflects the stability of a company capable of serving two states, which means more consistent, reliable service for you. If you have any questions, just give us a call.



Texas-New Mexico Power Company

At The MAIN STREET Store in Gruver.....

MORE ANNIVERSARY VALUES!

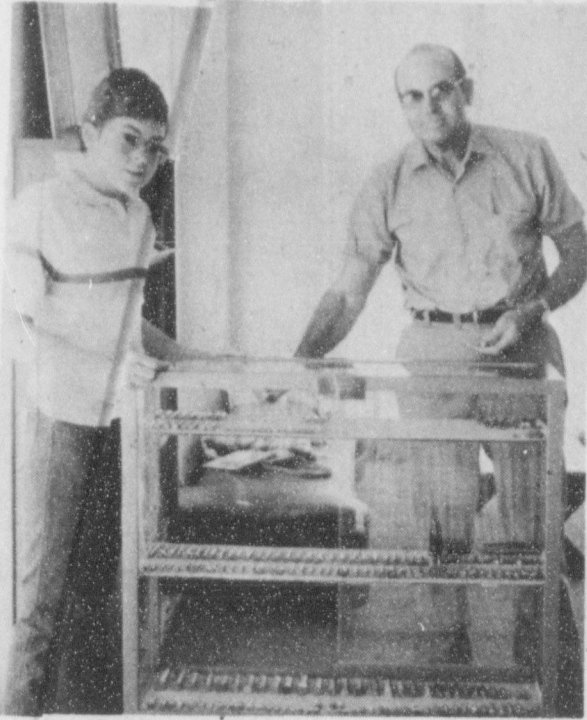
All Women's Summer Apparel **50% Off!** All Children's Summer Wear

Tops & Shorts
Tops & Bottoms
Tulip-Luv'it-Wrangler

40% OFF.... Select MEN'S WEAR

The Main Street Store
Gruver, Texas

Display of the Month



Pictured above is the Display of the Month for July—Cartridges—with the owner, Robert Novak, and his grandson, Kyle Gabriel of Fort Collins, Colorado. The Display will be at the Hansford County Library during the month of July.

The Hansford County Library's Display of the month is Robert Novak's Cartridge Collection. Robert, who has farmed in Hansford County for many years, has been collecting cartridges since he was 14 years old. His father found an old cartridge among his belongings, gave it to Robert, and the collection was started.

Robert has purchased cartridges in antique shops, has found some, and has had others given to him. He has rifle, pistol, and shotgun shells on display at the library.

This display should be of special interest to men in our area. Be sure and come to see it through July.

Had A System

Dodd: "I notice that in telling about that fish you caught you vary the size for different listeners"

Rodd: "Yes, I never tell a man more than I think he'll believe."

Regular exercise is the secret of old age.

Farmers Cut Down On Most Crops

AUSTIN--The latest estimates on planted acreage for Texas' major crops indicate farmers cut back on most crops, Agriculture Commissioner Reagan V. Brown has reported.

Wheat was the only crop with a significant acreage increase, Brown noted.

According to the June report from the Texas Crop and Livestock Reporting Service, Upland cotton acreage is forecast at 7.4 million acres, a 6 percent decrease from last year.

"Although we have had adequate moisture statewide, we've had too much rain in some spots," Brown said. "So much in fact, that several harvest and seeding operations were delayed or stopped altogether."

Sorghum acreage is forecast at 4.8 million acres, virtually unchanged from 1980, although 8 percent up from preliminary estimates in January.

Corn planted for all purposes is forecast at 1.3 million acres, a 13 percent decrease from last year. Brown attributed the decline to 1980's prolonged

drought and increased irrigation costs. "Most of Texas' corn is grown in the Northern High Plains," Brown noted, "and that area reported a 24 percent decrease in corn acreage."

Wheat harvested acreage reflected the only significant increase at 6.4 million acres, 23 percent up from 1980, Brown continued. "Around the Northern High Plains some dryland wheat fields did not develop properly and some fields were either grazed out or abandoned," Brown said.

Wheat producers reported a record number of acreage planted at 7.8 million. Latest estimates forecast wheat production at a record 172.9 million bushels for 1981, Brown noted.

Rice, soybean and peanut acreage remained unchanged from last year at 590,000, 700,000, and 290,000 acres respectively. Oat acreage was up slightly at 1.5 million acres and sunflower acreage is estimated at 60,000 acres, down 8 percent from last year.

Pretty faces and figures activate a lot of dormant foolishness.

Read a good book regularly, even at the risk of straining your mind.

CONSOLIDATED REPORT OF CONDITION (Including Domestic Subsidiaries)

LEGAL TITLE OF BANK		COUNTY		STATE		ZIP CODE	
First State Bank		Hansford		Texas		79081	
CITY		FEDERAL RESERVE DIST. NO.		CLOSE OF BUSINESS DATE			
Spearman		11		June 30, 1981			
STATE BANK NO.							
1107							
ASSETS							
1	Cash and due from banks					5	230
2	Due from other depositories and all cash items in the process of collection					NONE	2
3	U.S. Treasury securities					2	532
4	Obligations of other U.S. Government agencies and corporations					4	698
5	Obligations of States and political subdivisions in the United States					0	205
6	All other securities					NONE	6
7	Federal funds sold and securities purchased under agreements to resell					19	400
8	Total loans including overdrafts totaling \$ 23,669,000 (From Schedule A, Item B)					19	192
9	Lease financing receivables					NONE	9
10	Bank premises, furniture and fixtures, and other assets representing bank premises						213
11	Real estate owned of more than bank premises					NONE	11
12	Letters of credit and customers' liability on acceptances outstanding					NONE	12
13	All other assets					1	427
14	TOTAL ASSETS (sum of items 1 thru 13)					41	917
LIABILITIES							
15	Demand deposits of individuals, partnerships, and corporations					13	938
16	Time and savings deposits of individuals, partnerships, and corporations						142
17	Deposits of United States Government						014
18	Deposits of States and political subdivisions in the United States					3	339
19	Due to banks					NONE	19
20	All other deposits Includes 1,688,591.33 in NOW Accounts					1	589
21	Certified and officers' checks						178
22	Total Deposits (sum of items 15 thru 21)					35	096
a	Total demand deposits					14	363
b	Total time and savings deposits						142
23	Federal funds purchased and securities sold under agreements to repurchase					20	733
24	Interest-bearing demand notes issued to the U.S. Treasury and other liabilities for borrowed money						042
25	Mortgage indebtedness for which the bank is directly liable					NONE	25
26	Unearned discount on loans						231
27	Letters of credit and acceptances outstanding					NONE	27
28	All other liabilities						154
29	TOTAL LIABILITIES (excluding subordinated notes and debentures) (sum of items 22 thru 28)					36	523
30	Subordinated notes and debentures						NONE
31	Allowance for possible loan and investment losses						216
EQUITY CAPITAL							
32	Common stock (No. of shares outstanding 200,000)					1	000
33	Certified surplus					1	000
34	Undivided profits					2	170
35	Uncertified surplus, reserve for contingencies, and other capital reserves					1	000
36	TOTAL EQUITY CAPITAL (sum of items 32 thru 35)					5	170
37	TOTAL LIABILITIES AND EQUITY CAPITAL (sum of items 29, 30, 31 and 36)					41	917

NOTE: This report must be signed by an authorized officer and attested by not less than three directors other than the officer signing the report.

I, the undersigned officer, do hereby declare that this Report of Condition (including the supporting schedules) has been prepared in conformance with the instructions and is true to the best of my knowledge and belief.

SIGNATURE OF OFFICER AUTHORIZED TO SIGN REPORT: Felma J. Evans, AREA CODE/TELEPHONE NO.: 806-659-2526, DATE SIGNED: July 7, 1981

NAME AND TITLE OF OFFICER AUTHORIZED TO SIGN REPORT: Felma B. Evans, Cashier

We the undersigned directors, attest the correctness of this Report of Condition (including the supporting schedules) and declare that it has been examined by us and to the best of our knowledge and belief has been prepared in conformance with the instructions and is true and correct.

SIGNATURE OF DIRECTOR: R.E. Sanders, SIGNATURE OF DIRECTOR: Lynn Hart, SIGNATURE OF DIRECTOR: C.A. Gibner

State of Texas, County of Hansford, 1981

Sworn to and subscribed before me this 7th day of July, 1981. My commission expires 7-28-84. Notary Public

CALL FOR BIDS

The Board of Directors, Hansford County Appraisal District, will receive bids to furnish furniture and equipment for the District.

Bid sheet and specifications are available in the Gruver Independent School Tax Office; 600 Garrett; Gruver, Texas.

Deadline for submitting bids is Thursday, July 9, 1981, at 4:30 p.m. Bids will be opened and read aloud at the regular meeting July 10, 1981, at 3:00 p.m.

The Board reserves the right to accept or reject any or all bids, and to waive all technicalities.

Board of Directors
Hansford County Appraisal District

INVENTORY CLEARANCE

ASSORTED FLAVORS
ALLSUP'S ICE CREAM
\$1.49
1/2 GAL. EQL.

SHURFINE
Margarine Quarters
49c 1 lb.

BORDEN'S
BUTTER MILK
\$1.19
1/2 GAL.

SHURFINE
MIX OR MATCH
Green Beans
English Peas
or Black eyed Peas
4 for \$1.99

SHURFINE
Evaporated
Milk
13 oz. can
4 for \$1

SHURFINE
Barbecue Sauce
18oz. btl. **59c**

Ruffles
POTATO CHIPS
FRITO-LAY RUFFLES
REG. \$2.99 PER. **\$1.79**

SHURFINE
Peach or Strawberry Preserves
18oz. Jar **79c**

SHURFINE
Shortening
3 lb. can **\$1.29**

PRICES EFFECTIVE
JULY 9-11, 1981
WHILE SUPPLY LASTS
SHOP NOW AND SAVE!

ALLSUP'S
CONVENIENCE STORES

OPEN 24 HOURS A DAY
365 DAYS A YEAR
WE RESERVE THE
RIGHT TO LIMIT

"THERE'S ONE NEAR YOU"

WASH WAY
Car Sponge
99c EACH

PAPER
Plates & Cups
ASSORTMENT
25 Ct. pack **59c**

REG. \$1.99
CLOVER CLUB
POTATO CHIPS
10 OZ. PKG. **\$1.09**

SHURFINE
Tuna
3 for \$1

SHURFINE
Tomato Sauce
5 for \$1

FRESH
TEXAS WATERMELON
\$2.99 EACH

SHURFINE
Peaches
24 oz. can **79c**

RATH
Franks
12 oz. pkg. **99c**

29c EACH
12 OZ. CANS
REFRESHING COCA-COLA
\$1.79
8 PACK



Members of the Class of 1961 at the all school reunion pictured above are: Seated, Gail Crum Walston, Sandy Underwood Russell, Sheryl Driscoll Meek, Joyce Ray Sparks Hanes, Lou Clark Howk. Second row, Bryan Jones, Omar

Sutton, Kay Moore Doyle, Marva Delk, Thelma Groves, Sharon Simmons Brewer, Glenda Butt Guthrie; Back row, Bill Devers, Malcolm Kirkland, Burton Schubert, Mattie Archer Peterson and Joe Mike Bryan.



Members of the SHS Class of 1969 at the reunion Friday night at the County Barn are l to r, Carl Kunselman, P.A. Lyon, Bonnie Pracher, Monte Lusby, Latherine Lyon Lusby, Cathy Mackie, Mansel Bryan, Lynn Kemper, Gary and Sue

Woolley, Vernon Pipkin, Marsha Schuman, Randy Watson, Gary Farris, Danny Womble, Ken Schneider, Jim Brown, Debra Brock Brown, Tony Villines, "Wild" Bill Skinner and Kurt Shedeck.



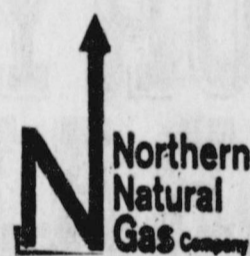
Members of the Class of 1940 of Spearman High School present at the all school reunion pictured above are: Front row, l to r, Verna Gail Keim,

R.L. Uptergrove; Back row, l to r, A.L. Jackson, Buena Lyon, Peggy Archer, Estella Garnett Morris, Idros Maize Shields, Virginia Head and Allison Unruh.

MAINTENANCE PERSON

REGULAR FULL TIME EMPLOYEE

Northern Natural Gas Company will take applications on Wednesday, July 8, 1981, between the hours of 9 A.M. and 3 P.M. for regular full time Maintenance Person to work at the Spearman Plant. Apply at the Spearman District Office, 8 miles south and 7 miles east of Spearman, Texas on Highway 281. Typical job duties are: facility clean up, assisting with overhauls of large internal combustion gas compressor engines, maintenance of vessels and towers, all phases of pipeline repair, and some rotating shift work relieving regular operating crew during vacations or illness, etc. Pre-employment test will be given for the Maintenance Person job on Friday, July 10, 1981 at 7 P.M. and Saturday, July 11, 1981 at 9 A.M. at the Spearman High School in Spearman, Texas for all persons that have completed an application. Northern Natural Gas Company is a major diversified energy company offering an attractive salary, and has an excellent benefit program. Equal Opportunity Employer.



GEBO'S

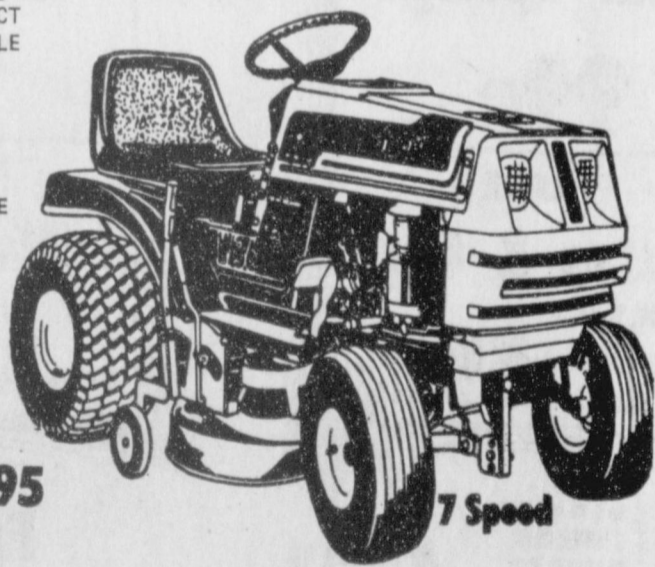
DUMAS
501 N. Dumas 935-7403
8:00-6:00—Monday-Friday
8:00-1:00—Saturday

**DYNAMARK RIDER
11 HP FULL ELECTRIC START MOWER**

- * Key ignition starting
- * Heavy Duty DIRECT DRIVE TRANSAXLE with disc brake and automotive differential section
- * 6 forward speeds, 1 reverse
- * REAR DISCHARGE cutting deck
- * Twin blades for full 36" cut
- * Synchro-balanced engine

REG. \$999⁹⁵
SAVE \$70⁰⁰

\$929⁹⁵



**MURRAY 1981 LAWN TRACTOR
A New Dynamic Design**

- 36" cut with Synchro-balanced 11 HP engine, 3 speed transaxle, Electric start with alternator, Spring mounted comfort formed seat. Sealed beam headlights. Adjustable height steering column. Variable height adjustment.

REG. \$924⁹⁵
SAVE \$75⁰⁰

\$849⁹⁵



PRICES GOOD THROUGH JULY 11

GEBO'S

DUMAS
501 N. Dumas 935-7403
8:00-6:00—Monday-Friday
8:00-1:00—Saturday

**DUREX
YEAR-ROUND
ANTI-FREEZE
& COOLANT**



\$2⁰⁰

CASH REBATE
BY MAIL

SALE PRICE
PER GALLON.....\$3⁶⁹

BUY 2 GALLONS FOR.....\$7³⁸

LESS REBATE BY MAIL
FROM DUREX.....\$2⁰⁰

YOUR FINAL COST
PER GALLON WHEN
YOU BUY 2 GALLONS.....\$2⁶⁹

COUPON AVAILABLE IN STORE

No Dealers Please at This Price — We Have the Right to Limit Quantities