

THE SPEARMAN REPORTER

TWENTY-FIRST YEAR

Spearman, Hansford County, Texas, Thursday, January 17, 1929

NUMBER 6

FREE ADMISSION TO ALL LECTURES

No Charge of Any Kind to Be Made at Short Course—All Invited, and Urged to Attend

"Equal to any ever given on the hantauqua platform." That is the expressed opinion of many people who have heard the lectures that are to be given at the agricultural short course to be held in the Spearman High School auditorium on February 4 and 5.

Despite the high standard of the lectures, demonstrations and motion pictures, no admission charge of any kind will be made at any of the meetings. The short course is to be held for no other purpose than to help the people solve their many problems of the farm, the home and the community—to not only interest them, but to encourage and inspire them as well—and everybody, men, women, boys and girls, from town and from country, will be cordially welcomed at every session.

New thoughts, new ideas based both upon scientific experiments and investigations conducted by many agricultural colleges, and upon practical experiences of "dirt farmers" everywhere, will be presented in the belief that they will be of help to us in meeting the difficulties that we are constantly encountering.

And these facts, important to all of us, will be presented by men and women who are numbered among the best agricultural lecturers and demonstrators in the country in a manner that is interesting, fascinating, gripping.

Local committees are preparing a program that will include discussions of the farm and home problems that are most common in this community, and the Agricultural Extension Department of the International Harvester Company, which is co-operating with our local people in conducting the short course, is doing, and will continue to do everything possible to make it of great and lasting benefit to all who attend.

The schools have been especially invited to co-operate in the meeting. Farmers and business men are urged to make this their short course. They will be benefited much more than they may now realize. All women—housewives, club women, teachers, the woman on the farm, the woman in town—will be greatly interested and greatly helped if they will attend as many of the meetings as possible.

They will be particularly benefited by hearing the talks of Miss Grace Marian Smith—farm girl, farm woman, rural teacher, city teacher, extension worker for the U. S. Department of Agriculture during the war, and able lecturer and writer on household and other subjects relating to women's work.

H. S. Mobley and G. L. Smith will have prominent places on the program. Mr. Mobley is a practical farmer and a nationally recognized leader in agricultural progress. His talks on "The Educational Use of Knowledge" and "Communities Are Made of Folks" linger long in the memories of those who hear them.

Mr. Smith is widely known as a horticulturist and fruit grower whose talks are always helpful.

GAIN SHOWN IN POST OFFICE RECEIPTS

The 1928 postal receipts for Spearman closely approach the \$8,000.00 mark and set a new record for this city according to the statement made by Mrs. C. A. Gibner, postmistress, the first of the week. This was done in spite of the reduction in postal rates which took effect during the year closed.

The figures show that more than \$1,000 increase was experienced this year over the total receipts of 1927. The exact figures are \$6,074.40 for 1927 and \$7,126.86 for 1928.

By taking the postal receipts for the past few years as an index of the growth of the city you will find that Spearman has enjoyed a steady and substantial growth.

H. G. Hastings drove to Amarillo Friday and returned Saturday with Mrs. Hastings who has been in Amarillo the past two weeks recovering from an attack of the flu.

THE LYNX WIN FROM WHEELER

Came on Friday of Last Week Terminates in Victory for Home Cagers—Perryton Friday Night, Jan. 18

The jinx is routed and the Lynx are winning. Spearman's high school basketball team is beginning to show real form these days. In a good game on the local court the high school cagers defeated the fast Wheeler quintette on Friday night of last week by a score of 14 to 11. Classy playing was displayed by both teams, but the Lynx stayed far in the lead until the third quarter, when the Wheeler team staged a rally and ran their score up to 11. Parks was the high score man of the locals, scoring five of the fourteen points.

Perryton Next
On Friday night of this week the local cagers, both boys and girls will take on the teams from the Perryton high school. The games with Perryton are always interesting, and those of Friday night will be particularly so, as Perryton always sends out fast teams, both boys and girls, and the Lynx have winning in their system now, and will be hard to down. These games will be played at Spearman.

And then comes Booker. On Wednesday night, January 23, the local fans will have an opportunity to witness two more fast games when the teams from Booker schools come here for a tussle with the Lynx. These will be interesting games. Booker had a good team last year and are said to be going strong this year.

And Borger, Also
Next comes Borger at Borger, on Friday night, January 25. This will be the first out of town game for the Lynx this year, and will be one of the most important. The way the cards are cut, the Lynx must defeat the Borger team in this game to enter the interscholastic meet to be held at Canyon on February 21 to 23. In fact, Borger has a fast team, as was proven conclusively on last Saturday night when it defeated the team from Amarillo High by a wide margin. Many fans will go from here to Borger to see this very important game, and to root for the Lynx.

MCCORMICK-DEERING TRACTOR SCHOOL

The Spearman Hardware is this week advertising a McCormick-Deering Tractor school, to be held at their store in Spearman on January 28. Quite extensive arrangements are being made by the Spearman Hardware bunch for the entertainment of their guests on this day. A big free lunch will be served at noon, and in the afternoon everyone will be entertained at the Lyric theatre with a free moving picture show. The school will be in the charge of George B. Buckman, who is well known to many tractor and combine men of this section. Mr. Buckman will have with him a corps of well-informed mechanics, who will explain in detail the entire "works" of a McCormick-Deering tractor, a McCormick-Deering harvester-thresher and other leaders of the I. H. C. line. This tractor school will be well worth the time and attention of anyone and especially users of farm machinery.

COMBINED NIGHT WATCHMAN AND CITY MARSHAL JOBS

At a recent meeting of the Spearman city council it was decided by that body to combine the jobs of city marshal and night watchman, and to employ only one man for these duties in the future. The council will now receive bids on this work. W. R. Massey has served as city marshal for the past several years and Ollie Beck is serving as night watchman.

Mr. and Mrs. Uel McCain, Russell Baker and Herman Meadows returned last week from a visit with relatives and friends at Oklahoma City and Edmund.

MOST OF THEM DO

Can a girl do anything about an unattractive knee?
Nothing but grin and bare it.

Carbon paper at Reporter office.

MASS PRODUCTION OF FORD MOTOR PARTS

A million axle shafts, each one exactly like the other 999,999 within one thousandth of an inch—four million pistons fitting four million cylinders with a degree of exactness that all but staggers the imagination—many more millions of drilled and threaded holes, all placed with an accuracy of location that it is incomprehensible to any but the mechanically or mathematically minded—and all these factors combined with other millions of parts manufactured in widely separated units of a gigantic plant, meeting on an assembly line to fashion a million automobiles! This is the miracle that is modern mass production, the miracle that was conjured up by Mr. Henry Ford when he started his first automobile assembly line.

The story of how it is possible to make a million—or ten million, or twenty million, for that matter—of any machine part, each one identical with all its fellows, is a story of measurements. Just as that story of measurements explains the ability of the Ford Motor Company to produce fifteen million Model T automobiles, it also explains Mr. Ford's ability to produce the Model A in the same plants and by the same methods that made possible the pioneer Ford car—yet at limits that are from 1/4 to 1/2 what they were on the Model T.

Today, in the Detroit plants, mechanics who have never looked through the eye-piece of a microscope are measuring within limits too fine for an unaided eye to see. Model A parts machined to within one ten-thousandth part of an inch accuracy are all in the day's work. Back of this precision are something like a million gages that must be kept in correct adjustment at all times, and many thousands of these gages are in constant use throughout the Ford plants. There is no time for hand-fitting of inaccurate parts on the assembly line. They must either fit the first time or they are valueless. Therefore, the parts must leave the various machines which fashion them with every specified dimension correct. The result is that when put together, the car moves off the assembly line under its own power, a complete means of transportation requiring no special adjustments.

There are inspection and working gages to measure outside and inside diameters, lengths, widths, heights, angles, pitch diameter and lead of screw threads, which are in the hands of workmen throughout each day, testing and checking each part as it passes from machine to machine through the plant. But these gages will wear or get slightly out of adjustment under constant use therefore, they must be constantly watched. So behind them must be master gages, of greater accuracy, for use as standards. These master gages, the product of the C. E. Johanson Division of the Ford Motor Company are accurate within a millionth part of an inch!

Throughout the Ford plants inspectors are moving constantly, each with special hardened, ground and lapped rectangular steel blocks—Johanson Gages. These gage blocks are in special sizes to meet requirements of the workman's scrutiny; making it unnecessary for inspectors to make up combinations to measure different dimensions of length. A set of 81 gage blocks, such as is used in the tool rooms, can be combined to measure 120,000 different size lengths, from three sixteenths of an inch to over twelve inches, and each of the 120,000 combination gages represents a variation of one ten-thousandth part of an inch.

On some operations where limits are close, the gages are changed every two to four hours to correct a wear of one ten thousandths part of an inch which occurs in that time. Others are adjusted or changed at less frequent intervals, as use and amount of wear dictate.

In addition to their use in the production of Ford cars, trucks, airplanes and Lincoln automobiles, the Johanson gage blocks are the standard of the world for industrial precision measurement of length.

BABY BOY DIES OF PNEUMONIA

Wallace C., the four months old baby boy of Mr. and Mrs. Don S. Rawlings of this city, died in Amarillo, where he was taken for treatment, on Friday, January 11, 1929, at 4:45 a. m. The little fellow was sick only a few days, of influenza and pneumonia, and in the beginning of his illness was hastened to Amarillo and placed under the care of a baby specialist. The body was prepared for burial by the Griggs Undertaking establishment and brought to Spearman Saturday morning. Funeral services were held at the Methodist church, conducted by Rev. O. M. Addison. Interment was had in Hansford cemetery.

TOWN TEAM WINS FROM BORGER TUESDAY

The Spearman basketball town team played the Panhandle Power and Light team of Borger at Borger Tuesday night and won easily with a score of 26 to 8. Last Friday night they played the Borger Outlaw team at that place and were defeated by a decisive score.

SALE OF FARM LAND ON EASY TERMS URGED

The sale of Panhandle lands on easy terms to encourage tillers of the soil to buy and cultivate them, is urged by Col. C. T. Herring of Amarillo. By this plan, he said he was enabled to bring 200 new families to the Panhandle since 1925 and they are making excellent farmers and substantial citizens. He spoke at a luncheon of the American Business Club of Amarillo and said that if other land owners would do as he had done greater and faster development could be expected in this section. He said:

"A few years ago I began looking about in an effort to realize on my Flagg ranch in Castro county and at the same time do my part in the development of this country. I finally hit upon the plan of offering the land to farmers on such reasonable terms that its development and success would be assured.

"In 1925 we put the Flagg ranch lands on sale at from \$25 to \$40 an acre. We required a small payment down, \$3 an acre, which barely covers the selling costs. We then gave the farmer 15 years to pay for the land at 6 per cent interest requiring no payments except the interest for the next four years and then the balance in small annual payments. We required our purchasers to put a fence around the land and break out two thirds of it within twelve months.

"It has now been three years and virtually all of the 60 sections has been sold. Recently I signed ten deeds to new tracts. I have provided funds for each of the purchasers to buy good cows, hogs and chickens to put on their farms and through my agent, J. A. Johnson, have encouraged each farmer to grow his living about the house.

"We have had no foreclosures and have not lost in handling any transaction, either from failure of the owners to make payments or to repay money advanced for live-stock. In a few cases where persons have given up contracts we find the land has increased in value enough to protect us from any loss."

"We would have a thickly settled community in a little while if owners of large tracts of land would see the opportunity they have of doing a big thing for themselves and this city and country. The possibilities for the future with the fundamental industry, agriculture, properly developed and the outlying sections settled are greater."

DRIVERLESS CAR GOES CAREERING ACROSS PRAIRIE

J. B. Tharp, Sherman county farmer living about ten miles from Stratford off the Stratford-Dumas highway, was driving home Saturday afternoon when he ran into a muddy place in the road and his car stuck fast. Leaving the motor running in low, Mr. Tharp got out of the car and pushed it from behind. He succeeded too well, for the car not only got out of the mud but kept right on going. Before Mr. Tharp could extricate himself from the mud, the car had gained quite a start on him and was going fast. He ran to catch it, but the car went faster.

Leaving the road after a short spurt along the highway, the car struck out across the prairie. Enlisting the aid of another car and driver, Mr. Tharp pursued it, but the car proved as difficult to catch as a runaway mule. I did not stop at fences, but went through them. It circled about some, but for the most part selected a straight course and avoided bad places in the field.

Finally a house hove into sight and the car headed straight for it. Mr. Tharp calculated that the car had gone between four and five miles by that time. The house, which happened to be the home of J. W. Garrou, seemed to attract the car, for after the car sighted the house it made a bee-line for it. Nor did it stop in the front yard or seek to locate the road into the barnyard. Nothing interested the car but the house. Perhaps it mistook the house for a palace garage and sought to enter it. Whatever its reason, the car went straight toward it and bumped hard against the wall. Then it stopped, not because it was out of gas but because the jolt damaged the machinery.

The family of Mr. Garrou, who were in the house at the time, were apprehensive for a few moments that a tornado had struck the place and they waited breathlessly for the roof to fall in. But nothing of the kind happened so they went out to join Mr. Tharp, who had arrived by that time, in estimating the damage. They found the house had not been seriously harmed, but the car, a new Ford, sadly in need of repair. The house of refuge it had thought to find—supposing a car should think, had proved its undoing.

When that car is repaired and again takes the road, it may know better than to run off and leave its driver in the mud.—Stratford Star.

WHEAT DESTROYED BY FIRE

Over two thousand bushels of wheat belonging to Roy Nollner of the Kimball community was destroyed by fire on Wednesday night. The fire occurred between 1:00 o'clock and 2:00 o'clock a. m., origin unknown.

P. T. A. TO SPONSOR PIE SUPPER SAT. NIGHT

The local Parent-Teachers Association will sponsor a pie supper at the school auditorium Saturday night, January 19, at 7:30 o'clock. A miscellaneous program will be offered which everyone is sure to enjoy. Everyone is urged to attend this pie supper and bring a pie or buy one, or both.

The proceeds obtained will be used to buy playground equipment and supplies for the library. Tell everyone you see of this pie supper, and be sure you come yourself. Help the P. T. A. help the Spearman schools.

MODERN SHAKESPEARS

A New York minister complains that America is sadly deficient in men of genius.

We are very prosperous, he said, but we have no one to lead us in the realms of art.

"Show me," he says, "an American Caruso or a Michael Angelo. America's art has become the stage; her music, jazz; her literature, the Sunday supplement."

This is, perhaps, the most common criticism made of our modern civilization. Any man who is in any way connected with any of the arts or learned professions feel qualified to occupy a lofty seat and look down, patronizingly, on our leaders in industry and commerce. The age-old snobbery of Europe, which holds that there is something essentially ignoble in being "in trade," is still with us.

Men have been a long time in the process of rising from darkness to light, and they have had various kinds of leaders to help them. They have had great poets and artists to convince them of their own nobility and inspire them to higher intellectual levels; and they have also had more material-minded men, to take the material obstacles out of their way and give them the leisure and the means to respond to the spiritual leaders. And the mere fact that America produces more of the second kind of leaders than the first is no indictment of American culture.

Michael Angelo, and the other great ones of the Italian renaissance, helped move the world in a new and better civilization. So did Shakespeare and his confreres of Elizabeth England. That is what all great men, of whatever calling, always do; and it is precisely what our own great men are doing today.

We have quite a galaxy of great names in this year 1929. We have Ford, Edison, Milliken, Wright, Rockefeller and a host of other—all of them touched with the indelible mark of genius. They tower above the rest of us precisely as Michael Angelo towered above the ignorant Italian masses of his day. They have had the vision to see a new kind of world lying ahead of us; a marvelous new world, in which matter can become the servant of mind, and in which every soul can be free of the shackles of poverty and drudgery that have been man's lot since the dawn of time.

They are working to bring that world into existence. It is as fine a work as men have ever undertaken. It is bringing into our modern age as strong, heady optimism—a confidence in man's ability to solve all of his problems and raise himself to the full height that his God-given powers make possible.

It is foolish to complain because we have no great poets, painters and musicians. We have another kind of work to do—work that is equally important, and if understood properly, equally spiritual. We have great men just as the bygone ages had. And in the future, when our present day leaders have prepared the way it is safe to predict that we shall have the poets and artists as well.

LIBERAL-MINDED STENO.

A new clerk, dictating a few days ago, was in doubt as to the use of a certain phrase, so he said to the stenographer:

"Do you retire a loan?" and the wistful eyed one replied rather sleepily:

"I sleep with mama."

IN THE PRELIMS

"Are you the groom?" asked the bewildered old gentleman, at a very elaborate wedding.

"No sir," was the reply of the embarrassed young man, "I was eliminated in the preliminary try-out."

SILENT NIGHT

I crept upstairs, my shoes in hand, Just as the night took wing— And I saw my wife four feet above, Doing the same darn thing.

Mr. and Mrs. C. A. Robinson and children visited with friends in Gruver Sunday.

Commissioner C. C. Beck was in from the north flats Tuesday trading and attending to business matters.

Miss Grace Main and Bud Benson visited with friends in Guymon Sunday.

"Smile, Rodney, smile," at high school auditorium Thursday night, January 31. (Senior class.)

Carbon paper at Reporter office.

CREATION OF TWO DISTRICT COURTS

Judges Willis and Ewing to Divide Territory in Proposed Law—Hansford Put in 84th

Legislation designed to create two judicial districts out of the present nine county districts known as the eighty-fourth, and thirty-first district, in the Texas Panhandle, has been prepared by Judges Newton P. Willis of the eighty-fourth and W. Reese Ewing of the thirty-first district, for submission to the forty-first state legislature, now in session.

Sen. C. C. Small, it is understood, is sponsoring the bill in the senate. John Herron White, state representative from this district, may sponsor the bill in the lower house.

The eighty-fourth district was created by the fortieth legislature and will expire late this month. Sponsors of the bill hope to have it enacted before the district goes out of existence so that the court work may continue.

Judges Ewing and Willis are agreed upon the provisions of the measure, which divides the two districts as follows: thirty-first, Roberts, Wheeler, Carson and Gray Counties; eighty-fourth, Hutchinson, Lipscomb, Ochiltree, Hansford and Hemphill counties.

Provides for Current Year
Judge Ewing resides at Miami, Roberts county and Judge Willis at Canadian, Hemphill. John A. Holmes, Borger attorney, was elected last November as district attorney for the eighty-fourth district, under Judge Willis, while Judge Clifford Braly of Panhandle, Carson county, occupied a similar position for the thirty-first.

The bill provides for the current year, 1929 and also the next year, 1930 and subsequent years. Court terms for the eighty-fourth district will be as follows, under the bill:

In 1929, Lipscomb county, February 18 and July 22, two weeks term each; Ochiltree county, March 4 and August 5, two weeks term each; Hansford county, March 18 and August 19, two weeks term each; Hutchinson county, April 1 and September 2, twelve weeks term each; Hemphill county June 3, three weeks and November 18, four weeks.

If this bill becomes a law, which is very likely, Hansford county will be in the 84th district, with Newton P. Willis as district judge and Johnny Holmes as district attorney.

FIRST CLASS HATCHERY READY BY FEBRUARY 15

W. L. Davis is arranging to open a first class hatchery in Spearman. He is at work on the buildings and other equipment at the present time and hopes to be ready to accept eggs for hatching by February 15. He has purchased one of the finest incubators that money will buy, is building a brooder house 20 feet by 40 feet and an incubator house of the very latest type, with the latest improvements in these plants. Mr. Davis is an experienced chicken man, and undoubtedly will make a success of this venture. His chickens have won prizes over all this country, wherever they have been shown. He knows the chicken business from a to fizzard, and from feet to fizzard, and in establishing this chicken factory here, is doing a fine thing for the town and community. Every year large sums of money are sent away to pay for baby chicks. Why not buy them at home at a lesser price, and also get healthier, more robust and acclimated chicks? Poultry raisers will do well to confer with Mr. Davis in regard to this year's crop of baby chicks.

MAKING DELIVERIES OF CHEVROLET "SIX"

That brand new product of General Motors, the Chevrolet Six, began to arrive in Spearman the first of the week, and is creating quite a stir in automod. Wm. E. McClellan, manager of the McClellan Chevrolet Company, states that his company received a car load of the new cars on Monday, and would receive two more car load shipments during the week. He states that immediate delivery may now be made on any model desired. That new six is a mighty snappy looking boat.

IMPORTANT MEETING OF P. T. A. TONIGHT

The district officials of the Parent-Teachers Association will speak at the high school auditorium tonight, Thursday, at 7:30, as previously announced. The District President, Mrs. J. M. Gagn, will speak on the subject "Why a Parent-Teachers Association." Mrs. T. J. Page, "Publicity." Mrs. Westover, "Sacred Obligation of Parenthood." Mrs. Williams, "Study Circles." These talks will be instructive and worthwhile. Let every parent be present to hear them. Refreshments will be served after the meeting.

It is the cause and not the death that makes the martyr.—Napoleon.

MARY IS NEAT

Mary has a little skirt, So neat, so bright, so airy; It never surely a speck of dirt, But it surely does show Mary.

—New York World.

Another Building and Loan Association Organized and Doing Business Here

The Western Building and Loan Association of Pampa is a new business concern for Spearman. This concern is incorporated under the laws of Texas, with an authorized capital of \$5,000.00. R. Earle O'Keefe is president. Officers and directors include some of the most prominent business and professional men of Pampa and Panhandle. Mr. O'Keefe, with P. E. Carlson and W. H. Grimm, were in Spearman several days this week. They organized a local board here and are making loans. This company promises to put the money on the barrel head in quick time, on all approved loans. They specialize in residence loans, but make commercial loans, also. W. H. Grimm will be the sales manager for this district and McLean & McLain are local representatives, with a local board of nine men who will serve as appraisers.

NEW TAILOR SHOP FOR SPEARMAN

Frank Day, owner and operator of the Palace Cafe of this city, is opening up a tailor shop in the building formerly occupied by the Faus Meat Market. Mr. Day knows this line of business thoroughly and states that he has new, modern machinery and equipment for the cleaning and pressing department and can do the work in the best way. He will also have a jewelry repair department and do all kinds of repair work on jewelry.

P. R. Walker of Stinnett has accepted a position with the Womble Hardware Company and he and his family will make Spearman their future home.

HOGS WANTED
I want to buy shoats or pigs.
VAN & COMPANY,
Box 44, Farnsworth, Texas.

WANTED—Sod to plow. Have plenty of tractors and plows. Inquire at Dittrich Machine Shop Co., Spearman

FACTORY METHODS ARE EFFECTIVE IN LIVESTOCK GROWING

Assistant Secretary of Agriculture Discusses Problems of Farmers

Economic pressure is forcing farmer and livestock growers to follow more closely the principles which have proven effective in the industrial field according to Assistant Secretary of Agriculture, R. W. Dunlap.

In industry, uniformity, high quality, a rapid turnover, a regular and non-seasonable market and sale methods specially adapted to the products, Mr. Dunlap added, are essential to profitable and efficient operation.

Conditions in agriculture, he pointed out, are more difficult to control than in most industries, but we are making progress. A good steer will yield on the average 58 per cent of dressed meat. A common steer will dress about 52 per cent. The difference of 6 per cent is something like compound interest, for the benefits are cumulative. The well bred stock which produced the good steer will also produce desirable heifers to augment the herd, or for market. We find that the good animal which is 6 per cent better in dressing yield will usually have from 30 to 50 per cent greater gross value by reason of better quality.

Rapid turnover is particularly noticeable in livestock production where the seasonal influence is not quite so marked as in cropping, it is stated. It has been learned that, as a rule, a given quantity of feed will produce more pounds of meat—and meat of superior quality—if fed with protein supplements than it would if fed alone. A good quick finish can be secured on baby beef if the calf is started on 4 quarts ground corn, 2 parts ground oats, and 1 part linseed meal at four weeks and continued to weaning time.

Besides finishing cattle at younger ages, breeding sows for two litters a year is another example of the trend. We market about 90 per cent of mature sheep. In all these cases, some protein supplement like linseed meal must be fed to insure speedy weight gains and quick finish.

SEWING

I will do sewing by the day. Phone No. 114. MRS. W. C. NOLLNER.

Watch for the date of "Smile, Rodney, Smile." You can't miss this one. It's a wow.

WHAT DOES SPEARMAN NEED MOST?

"What does Spearman need most?" Propound this question to any group and you will probably receive ten answers to every ten people assembled. One wants some new paving, another feels that the system of street lighting could be bettered, still another may point out improvements that could be made in our schools.

These may be all important, but the editor of the Reporter feels that greater loyalty toward our fellow citizen is the greatest need of our city.

We should not look upon our bankers as men solely interested in making a profit out of handling our money. We should strive to understand some of their problems and show more appreciation for their efforts to build up the community.

We should not regard our local professional men, particularly our doctors, as individuals engaged merely in the business of making a living. We should appreciate what they do for all of us, how their own time, even their sleeping hours, belong to the service of the citizens of the community.

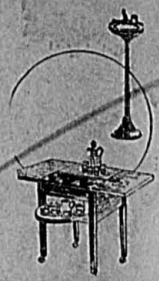
We should not think of our merchants as men interested solely in trying to accumulate profits out of their work to supply us with necessities and luxuries. We should think of them as fellow citizens, working hard to supply our demands, to keep the business life of the community in a prosperous condition, to deal with us in a friendly personal way, and incidentally to make a living for themselves.

What Spearman needs most is a highly developed spirit of loyalty toward the business people of the community. Our merchants should show a more friendly spirit toward their fellow-merchants, and should support each other in a business way. And our citizens in general should appreciate what the business men of the city are doing to make the community a more prosperous and more pleasant place in which to live.

THE WONDERFUL FROG
The Chicago Board of Education has caused a classic essay to be immortalized in type. It's about frogs and was written by a young Norwegian. The essay: "What a wonderful bird the frog are! When he stands he sit almost. When he hop he fly, almost. He ain't got no sense hardly. He ain't got no tail hardly, either. When he sit, he sit on what he aint got, almost."

Reduced Prices on Many Items of FURNITURE

If you have been planning for some time to buy some furniture right now is the time to Take action. Less than regular prices on our entire stock provides an ample array of bargains.



Victor Talking Machines And Records

Harbison Furniture Company

South Main—East Side

SPEARMAN

START NOW!

Planning For Poultry Profits

WE SELL—

- Chicks full of vitality
- Chicks that are easy to make live.
- Chicks from high producing flocks
- Chicks hatched by the Petersine Electric
- Chicks that will MAKE MONEY FOR YOU.

Guymon Poultry Farm and Hatchery
Guymon, Oklahoma

Phones:—Farm. L-151; Hatchery 379. Box 15

Win With Real Estate

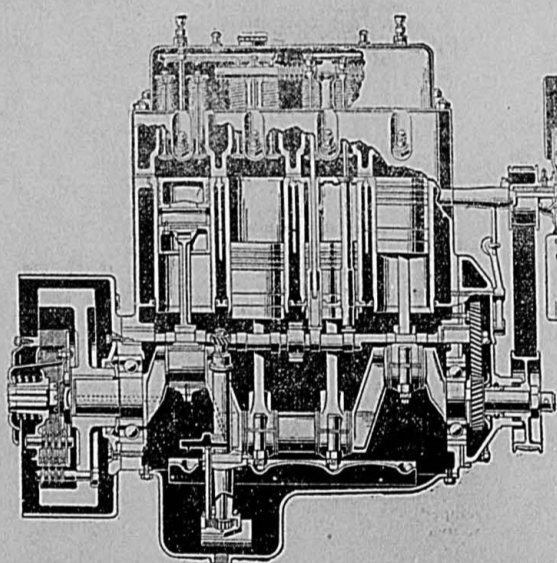
The best, the safest, and surest of all long term investments.

Real estate purchased here now is bound to increase in value in the years to come, for we all agree that Spearman is a community with a future.

Furthermore your investment is right here where you can watch it all the time and can liquidate when necessary without loss.

J. R. COLLARD
Real Estate—Loans—Insurance

McCormick-Deering TRACTOR and HARVESTER THRESHER SCHOOL



Our Annual Tractor and Harvester School will be held this year at our store

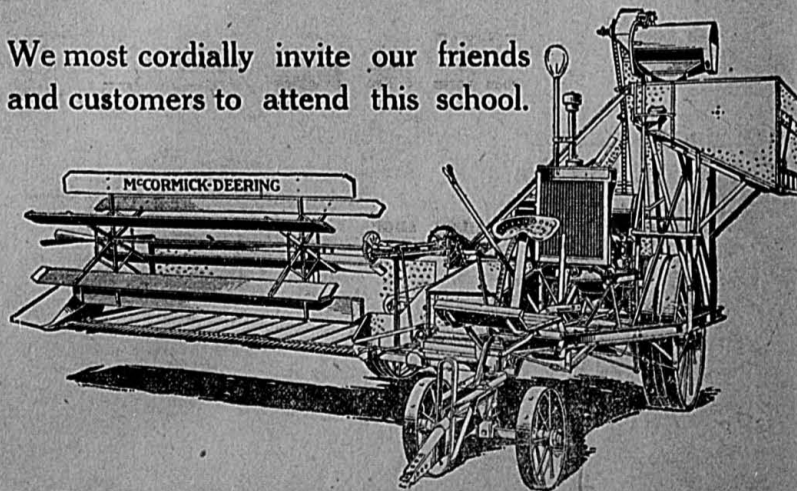
Spearman, Monday, Jan. 28th

The school will be in charge of Mr. Geo. Buchanah, a leading authority on tractors and tractor-drawn implements.

The object is to explain in detail the mechanism of the McCormick-Deering Tractor and Harvester-Thresher, and the entire I. H. C. Line.

The school will be held at our store in Spearman. A Free Lunch will be served at noon, followed by a free picture show at the Lyric.

We most cordially invite our friends and customers to attend this school.



Good Equipment Properly Handled, Makes a Good Farmer a Better Farmer

SPEARMAN HARDWARE Free Lunch at Noon. Free Show at Lyric Theater in Afternoon.

SHORT COURSE PLANS WELL UNDER WAY

Committees Are Organizing And Making Ready For Big Free School—Lecturers Secured

February 4 and 5 have been selected by the local committee as the dates for holding the twoday farmers' and housewives chautauqua, which will be conducted with the co-operation of the Agricultural Extension Department of the International Harvester Company. The meetings will be held in the High School Auditorium.

The program committee is engaged



—AND THEN THE DELUGE

Not only water and smoke, but **BILLS, EXPENSES, FINANCIAL LOSS**—unless you have adequate fire insurance that **PROTECTS**. See us.

A. F. BARKLEY
Spearman, Texas

—MILK—

Pure, rich, sanitary milk, delivered at your door at

8 Cents Per Quart

Nice, Rich Cream, also **PHONE D-7**

KERN'S DAIRY

One-Half Mile West of Town

JOS. H. AYNESWORTH
Attorney

General Practice—Civil and Criminal
16452p. Phone 24. Stannett, Texas.

G. F. GIBNER, B. S. M. D.
County Health Officer. Local Surgeon Santa Fe R. R. Only doctor in Hansford county who is a graduate from a Class A Medical College. Office in rear of Hastings Drug Store. Phone 39. Spearman, Texas

T. O. JAMES

Surveyor and Engineer

Office with McNabb Land Co.

Spearman, Texas

C. D. WORKS
LAWYER

County Attorney, Stannett, Texas
ABSTRACTS
Experienced in abstracts and Hutchinson County land titles
Special attention to Probate and Estate Matters

JOT HORTON
LAWYER

Spearman, Texas

ALLEN & ALLEN
Attorneys-at-Law

Walter Allen Jack Allen
Stannett, Texas Perryton, Texas
Hutchinson Co. Ochiltree Co.

DR. F. J. DAILY
DENTIST

Offices on Second Floor Reporter Building, Phone 156
SPEARMAN TEXAS



Dr. Ravell, Eye, Ear, Nose and Throat Specialist. Will be in Spearman, at offices of Dr. Gower, on Wednesday, Feb. 6, 1929. Glasses fitted and tonsils and adenoids removed.

R. T. CORRELL
LAWYER

Perryton, Texas

J. E. GOWER, M. D.
Physician and Surgeon
PHONES

Residence 98
Office 33

X-Ray Service
OFFICE IN REPORTER BUILDING SPEARMAN, TEXAS

in preparing a program which will include musical numbers by some of our best local talent, and educational lectures and demonstrations by members of the short course crew furnished by the Harvester Company. These lectures will deal with the many problems of the farm, the orchard, the home and the community, and will be given by nationally known speakers.

The lecturers will include Mr. H. S. Mobley, Mr. G. L. Smith and Miss Grace Marian Smith. Mr. Mobley is one of the most prominent lecturers on agricultural and community subjects in the country. He has been a member of the extension department for many years, and is superintendent of the Harvester Company's demonstration farms near Montgomery, Ala., and Deering, Mo., where so much is being done to show the value of diversified farming, crop rotation and dairying.



H. S. MOBLEY

Mr. Mobley long was active in farmers' organizations, of the legislative committee of which he was chairman at Washington during the time such bills as the Farm Loan Bank, Parcel Post and Smith-Lever bill were discussed and enacted. For many years he has been a practical and successful farmer and, looking at things from the farmer's viewpoint, he is able to talk to farmers as few other lecturers can. As a result of his success as a live stock and alfalfa grower, and as a community builder, he has a fund of information, based upon experiences, which makes his lectures on those subjects most interesting and helpful.



G. L. SMITH

Mr. Smith is not only a real dirt farmer, but is a practical and highly successful fruit grower and horticulturist, combining the technical knowledge gained as a graduate of the College of Agriculture at the University of Illinois with the practical experience of operating a 35-acre fruit farm of his own as well as sev-

eral leased apple and peach orchards. He is an expert in the control of diseases and insect pests, planting and care of young orchards and the renovation of old orchards. He is an authority on vegetable gardens and potatoes, and his wide experience in extension work in many states enables him to give exceedingly helpful and interesting talks.



GRACE MARIAN SMITH

Miss Smith grew to womanhood on a farm, taught in both rural schools and city schools and for a number of years has been an extension worker for the Harvester Company and for the U. S. Department of Agriculture. Her talks are always full of helpfulness and inspiration.

Large charts, lantern slides and motion pictures will be used to illustrate the lectures, and questions relating to matters discussed will be invited and will be conscientiously answered so far as possible. Make a note of the date and let nothing prevent your attending every meeting.

MR. NEFF AND THE BAPTISTS

Hon. Pat M. Neff, twice governor of Texas, and prominent as a lawyer and as an outstanding layman of the Baptist faith in Texas, is having considerable difficulty in being confirmed by the United States Senate as a member of the United States Board of Mediation. Senator Earle B. Mayfield objects to Mr. Neff's being on the board and this objection is concurred in by all the railroad brotherhoods in the State of Texas.

It was due largely to the efforts of Senator Mayfield that Mr. Neff received his initial appointment several years ago. In the recent senatorial race, in which Congressman Tom Connally defeated Senator Mayfield for re-election, Mr. Neff was a staunch Connally supporter, so it is only natural that the Senator has no particular affection for the esteemed Baptist.

Newspaper stories relate that certain Baptist churches in Texas have swung into line, seeking to have Mr. Neff re-appointed to a position that pays \$12,000 a year, with a generous allowance for traveling expenses. Telegrams have been sent to members of Congress by Baptist ministers in this state urging that Mr. Neff be confirmed.

It is rather unfortunate, as we see it, that churches and churchmen, continue to dabble in politics. The prejudices of the moment are anything but lasting. They rise and fall with eras and administrations and are not to be considered too seriously. It has been said repeatedly that Governor Neff was a Baptist governor and that should he ever decide to run for public office again in this state, that the Baptist vote would be handed to him in a parcel.

We may be wrong, but it seems to us that that is stretching things a little too far. We can conceive of no greater injustice than for churches to attempt to dabble in politics. Church people have a right to their convictions and personal opinions, but the church is no place for anything of a

political nature, and those who persist in exercising their authority too far, usually are brought back to earth with a rude jerk.

Mr. Neff may be competent to fill a position on the United States Board of Mediation, or he may not. Frankly, we are not qualified to pass upon his fitness. But if the Baptist church of Texas tries to have a favorite son balstered into a job where he is evidently not wanted, the results may be anything but pleasant. Churchmen out of politics are entitled to the respect due their station in life—in politics, they must take potluck with their fellows.—Memphis Democrat.

AUTO HEADLIGHT TEST LAW IS CALLED "JOKE"

Austin, Texas, Jan. 10.—Highway bills have been conspicuously absent from the list of nearly 100 measures offered in the Senate, but at least one measure affecting motor traffic will be introduced, probably Friday. Senator Pink L. Parrish was busy Thursday drafting a law providing for repeal of the present automobile headlight testing act.

"It's a joke" Senator Parrish said, "and should be taken off the statute books as quickly as possible. Under its operation once each year the owner of an automobile pays his quarter and gets his lights tested. Then he can knock his headlights around in any fashion within 100 yards of the testing station for twelve months without doing anything further to them."

Carbon paper at Reporter office.



DELON KIRK'S
ELECTRICAL SHOP

Spearman—Phone 141

Storage Batteries—Radio Bat-

teries and Tubes

Bring your Batteries Troubles

to me

Our Biggest Debt

Every man owes something to his community besides the payment of his taxes. He owes loyal support to local business institutions and enthusiastic backing to every worthy community enterprise.

This debt to the community we regard as of paramount importance. And we seek to discharge our obligation by supporting local enterprises initiated for the purpose of making Spearman a finer and more prosperous community.

FIRST NATIONAL BANK

of Spearman

ATTENTION! Real Estate Bargain

653 acres four miles from Gruver, all fenced and cross-fenced, with new four-room house, granary, chicken-house, shed, corral, windmill, 500 acres in wheat, 153 acres pasture. one-fourth wheat goes to purchaser, at \$30 per acre.

5 acres located in Spearman, 4 room house, garage, hen-house, cow barn, four water hydrants, electric lights, 36 fruit trees, nine shade trees, rose bushes, all fenced, with good posts, \$1350.

640 acres 8 miles west of new railroad, with new well and windmill, chicken house, cow barn, woven wire corral, with small lake, price \$22.50 per acre.

640 acres 10 miles west of new railroad, without lake or break, with 60 acres broke. This is a perfect section, price \$22.50 per acre.

All the above described lands and property can be purchased on good terms. Please call and let us show them to you.

640 acres, eight miles from Spearman, 320 acres in cultivation, fenced, 4 wires, 320 acres in pasture, all tillable except 40 acres. One-fourth of crop to purchaser. At \$16.00 per acre.

See **G. KELLEY STOUT, Spearman**

WITH McLAIN & McLAIN.

Carbon Paper and Typewriter Ribbons at Reporter Office.



The Outstanding Chevrolet of Chevrolet History

—a Six in the price range of the four!

represents **4** years of Development
and **over a Million** miles of Testing

Years ago, the Chevrolet Motor Company designed and built its first experimental six-cylinder motor. This far-sighted step was taken because Chevrolet engineers knew that the six-cylinder motor is inherently the most perfectly balanced motor—the ideal power plant to meet the growing public demand for greater reserve power, faster get-away and, above all—smooth, quiet performance.

During the last four years, over a hundred six-cylinder motors were built by Chevrolet engineers and tested on the General Motors Proving Ground.

Day and night, through winter's cold and summer's heat, the incessant testing went on—until the present motor was developed and finally pronounced correct.

At the same time other Chevrolet engineers were perfecting other parts of the chassis. And another great automotive organization—the Fisher Body Corporation—was devoting its gigantic resources to the creation of the finest, sturdiest and most beautiful bodies ever offered on a low-priced automobile.

As a result, the Outstanding Chevrolet offers an

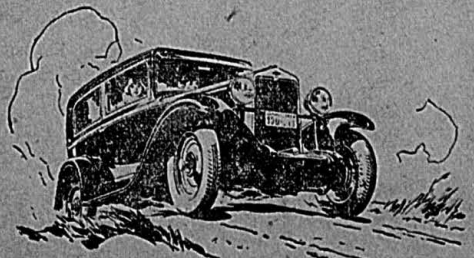
order of well-balanced excellence—a combination of performance, comfort, beauty and handling ease that is truly remarkable—with a fuel-economy of better than 20 miles to the gallon of gasoline.

You owe it to yourself to see and inspect this remarkable car. Come in today!

The **COACH** \$595

The Roadster	\$525
The Phaeton	\$525
The Coupe	\$595
The Sedan	\$675
The Sport Cabriolet	\$695
The Convertible Landau	\$725
Sedan Delivery	\$595
Light Delivery	\$400
1 1/2 Ton	\$545
1 1/2 Ton Chassis with Cab	\$650

All prices f.o.b. Flint, Michigan



McCLELLAN
CHEVROLET
SPEARMAN, TEXAS

Shop Made

Boots

—Just ask the men

who wear them.

MADE IN SPEARMAN

by

J. RAY HOLLEN

At A. L. Haas Old Stand

**Place Your Order Now
for Spring Boots**

The SPEARMAN REPORTER

Successor to the Hansford Headlight
Nunn-Warren Publishing Co., Inc.
Publishers

PUBLISHED EVERY THURSDAY

ORAN KELLY
Editor and Manager
Telephone No. 10

\$2.00 PER YEAR IN ADVANCE
In Texas and Panhandle Strip of
Oklahoma; \$2.50 per year elsewhere.

Entered as second class matter
November 21, 1919, at the post office
at Spearman, Texas, under the act
of March 3, 1879.

PAY YOUR POLL TAX

Don't fail to pay your poll tax, and remember that this little duty must be attended to on or before midnight, Thursday, January 31, if you vote in any election held during the year. This is an off year politically, but something may come up in which you will want to have a voice. Everyone is entitled to a vote and everyone should vote at every election, but the little matter of paying your poll tax must be attended to, or, the law says, you cannot vote. There are those, possibly, who will not pay their property tax before January 31, preferring to pay the small penalty attached after that date to digging up the cash at this time. However, this will not prevent the payment of the poll tax, which is essential if you wish to vote in the county during the year.

Pay your poll tax. Pay it today. Spearman has a few—a very few—citizens who are here merely to make money. They have no interest in the community affairs; take no interest in the chamber of commerce or other civic organizations. To wring every dollar possible out of the community and give nothing in return, seems to be the purpose and intention of these few citizens. This is not as it should be. Every man owes a little of his money, a little of his time, a little of his very best effort to the town and community in which he lives. If these few citizens think and believe that there is no future for Spearman; that any effort to build a bigger and better town and a more progressive community here, is time and energy wasted, then they should move away from here at once. To reside in a community in which one has no faith, no pride or interest, is indeed a display of a peculiar state of mentality—something difficult to understand.

It is just a little late, but why not resolve now that this year you will be a loyal, active consistent member of the Spearman chamber of commerce. This will be a good resolution to put in the place of some you have already broken.

"Flights started at any hour," reads an advertisement for an air transport company. "Return trips not guaranteed."

Ignorance of the law is no excuse, the courts rule. Of course, anyone should be able to remember the two million laws.

Paper has been invented that will not burn. We hope it is used for the new paper currency.

SOME EVENTS OF 1928 TO BE REMEMBERED

JANUARY
11—Thomas Hardy, famous British author, died.
21—Col. Geo. W. Goethals, builder of the Panama Canal, died.

FEBRUARY
8—Colonel Charles A. Lindbergh completes his 7,860 mile good will flight over Mexico and Central America.

MARCH
6—First non-stop flight from New York to Havana accomplished by Charles Levine.
30—New endurance flight record of 58 hours, 30 minutes set by George Haldeman and Eddie Stinson at Jacksonville, Fla.

APRIL
5—Chauncey Depew dies.
14—Koehl, Von Huenfeld and Fitzmaurice complete the first successful east-west flight across the Atlantic. Secretary of State Kellogg begins negotiations for a treaty to outlaw war.

MAY
24—Dirigible Italia, with General Umberto Nobile as commander, flies over the North Pole.

JUNE
18—Miss Sarahart completes trip in plane Friendship, being the first woman to fly across the Atlantic.

JULY
1—General Obregon elected President of Mexico.
4—Captain Alfred Lowenstein falls or leaps to death from private airplane over English Channel.

AUGUST
25—Commander Byrd's flagship, the City of New York, in preparation for his South Pole flight, sails over New Zealand.

SEPTEMBER
13—250 die, 700,000 made homeless in Porto Rico hurricane.

OCTOBER
6—U. S. polo team wins international match with the Argentines.
9—New York Yankees win world series from St. Louis Cardinals.

NOVEMBER
15—Graf Zeppelin reaches Lakehurst, N. J., after perilous flight from Germany.
23—George Barr McCutcheon, novelist, dies.

DECEMBER
3—King George V critically ill with pleurisy; oxygen is administered.

28—Figures show 43,000,000 citizens registered to vote in Presidential election.

13—Disaster of Steamer Vestris off Virginia Capes results in loss of 110 lives.

31—Graf Zeppelin concludes successful return flight.
6—Herbert Hoover elected president of United States with record vote breaking up the "solid South."

13—Disaster of Steamer Vestris off Virginia Capes results in loss of 110 lives.

31—Graf Zeppelin concludes successful return flight.
6—Herbert Hoover elected president of United States with record vote breaking up the "solid South."

13—Disaster of Steamer Vestris off Virginia Capes results in loss of 110 lives.

31—Graf Zeppelin concludes successful return flight.
6—Herbert Hoover elected president of United States with record vote breaking up the "solid South."

13—Disaster of Steamer Vestris off Virginia Capes results in loss of 110 lives.

31—Graf Zeppelin concludes successful return flight.
6—Herbert Hoover elected president of United States with record vote breaking up the "solid South."

13—Disaster of Steamer Vestris off Virginia Capes results in loss of 110 lives.

31—Graf Zeppelin concludes successful return flight.
6—Herbert Hoover elected president of United States with record vote breaking up the "solid South."

13—Disaster of Steamer Vestris off Virginia Capes results in loss of 110 lives.

31—Graf Zeppelin concludes successful return flight.
6—Herbert Hoover elected president of United States with record vote breaking up the "solid South."

13—Disaster of Steamer Vestris off Virginia Capes results in loss of 110 lives.

31—Graf Zeppelin concludes successful return flight.
6—Herbert Hoover elected president of United States with record vote breaking up the "solid South."

13—Disaster of Steamer Vestris off Virginia Capes results in loss of 110 lives.

31—Graf Zeppelin concludes successful return flight.
6—Herbert Hoover elected president of United States with record vote breaking up the "solid South."

13—Disaster of Steamer Vestris off Virginia Capes results in loss of 110 lives.

31—Graf Zeppelin concludes successful return flight.
6—Herbert Hoover elected president of United States with record vote breaking up the "solid South."

13—Disaster of Steamer Vestris off Virginia Capes results in loss of 110 lives.

31—Graf Zeppelin concludes successful return flight.
6—Herbert Hoover elected president of United States with record vote breaking up the "solid South."

13—Disaster of Steamer Vestris off Virginia Capes results in loss of 110 lives.

31—Graf Zeppelin concludes successful return flight.
6—Herbert Hoover elected president of United States with record vote breaking up the "solid South."

13—Disaster of Steamer Vestris off Virginia Capes results in loss of 110 lives.

31—Graf Zeppelin concludes successful return flight.
6—Herbert Hoover elected president of United States with record vote breaking up the "solid South."

13—Disaster of Steamer Vestris off Virginia Capes results in loss of 110 lives.

31—Graf Zeppelin concludes successful return flight.
6—Herbert Hoover elected president of United States with record vote breaking up the "solid South."

13—Disaster of Steamer Vestris off Virginia Capes results in loss of 110 lives.

CITY PLANNING

Gangsters, armed with machine guns, hiding through the streets in high powered cars shooting down their rivals. Booze runners seemingly as powerful as the local government. Death threats for jurors and witnesses in criminal trials. Graft, corruption, and bribery rampant. This is the picture that the average citizen calls to mind when the name of Chicago is mentioned.

But a visit to the great metropolis of the Great Lakes will show one that it is not all bad. While there you can drive along a beautiful park skirting the lake, a water front that is destined soon to become the world's finest. You will visit beautiful museums devoted to the arts and sciences. You will wonder at the remarkable boulevard system, that connects an almost continuous chain of parks around the city.

"How can these fine public works be developed in a city that has so long been the victim of bad government?" you ask. The well informed citizen of the meat packing center will answer: "The Chicago Plan Commission."

This body has no official character. It came into existence at about the time of the world's fair of 1893, largely through the efforts of one thinking individual, D. H. Burnham. He looked into the future, saw that a city like a fine building should be built according to plan, and immediately established the necessary machinery. This unofficial body has had the public opinion on its side, and using this authority has exerted a marked influence upon the physical development of the city.

In other words much that is good about Chicago is the product of careful scientific planning. Isn't there a lesson in this for us here in Spearman. We're all engaged in the task of transforming our fine community into an even better city. Couldn't we accomplish much more if we were working along the lines of carefully developed plans.

WHAT MAKES PEOPLE BUSY

What draws people to a modern American store, anyway? Low prices, courteous service, good materials—what?

A writer in the current issue of the American Druggist recently made a survey of drug store customers to get the answer to that question. Here is what he learned about why people trade at certain stores in preference to others:

Cleanliness and attractiveness of appearance ranked as the chief reasons. Next came promptness of service and quickness of delivery of ordered goods. Pleasant employees and courteous service were linked in third place, size of assortment of goods ranked fourth, and low prices came last. A clerk who approaches a customer and says, "Whada' Want" or "Whatcha say now," should be fired bodily.

VALUE OF CIVIC PRIDE

Is the work of countless commercial organizations, Lions, Kiwanis and Rotary clubs, and thousands of similar institutions throughout the country of broad economic and social significance? We have heard this question answered in the negative by certain skeptics whom it is our hard lot to endure.

"Bunk, noise, meaningless generalities," they characterize all evidences of community pride and "booster" talk. "Purely an American characteristic," they say in an attempt to appear cultured by looking down upon American culture.

But what, then, we should like to

ask, makes America so different from other parts of the world? A prominent English journalist, George Armstrong, attributes it largely to community pride. He says: "The foundation of your great prosperity as a nation is the great civic pride of each of your cities."

We agree with him entirely. We feel that the keystone in the arch of American national achievement is community loyalty and community pride. It is this pride that has erected fine schools, beautiful public buildings, excellent roads and streets, attractive and comfortable homes, and enterprising and aggressive business institutions.

Community pride has given us a goal toward which to advance. It has given us a national standard to which we all strive to elevate our cities and towns. With millions of citizens all proclaiming the excellence of "my home town" we have a great force making for the social and economic improvement of the nation.

By results only may the American system and spirit be judged, and the results are on the whole quite satisfactory.

When you boast Spearman, therefore, you may well feel that you are not only serving your own interests, that you are not merely helping to develop your own community and your own business but that you are engaged in a great nation-wide patriotic movement.

The only reliable tip on the future of the stock market is this: "Stocks are going up. Stocks are coming down."

NOTICE IN PROBATE

The State of Texas,
To the Sheriff or any Constable of
Hansford County, Texas, Greeting:

You are hereby commanded to cause to be published once each week for ten days, exclusive of the day of first publication, before the return day hereof, in some newspaper of general circulation published in Hansford County, Texas, which has been continuously and regularly published in said county for a period of not less than one year, the following notice:

The State of Texas,
To all persons interested in the estate of James H. Cator, deceased:

Edith Cator, on the 9th day of November A. D. 1928, filed in the County Court of Hansford County, Texas, an application for the probating of the last will and testament of James H. Cator, deceased, which said will was filed with said application, praying for an order of said Court admitting said will to probate and for letters testamentary upon the estate of the said James H. Cator, deceased, which said application will be heard at the next term of said Court to be held at the court house thereof in Hansford, Hansford County, Texas, commencing on the first Monday in March A. D. 1929, the same being the 4th day of March, 1929, at which time all persons interested in said estate may appear and contest said application should they desire to do so, and they are hereby summoned to appear at said time and place and contest said application if they desire so to do.

Herein fail not, but have you before said Court on the first day of the next term thereof this writ with your return thereon showing how you have executed the same.

Given under my hand and the seal of said Court at my office in Hansford, Texas, this 9th day of January A. D. 1929.

(Seal) J. E. WOMBLE,
613. County Clerk of Hansford
County, Texas.

SPRING---

Coats, Dresses and Hats
Arriving Weekly

Hand embroidered negligee printed and plain smocks,
to \$3.50; also Gold Medal Dresses, Friday and Saturday.

\$1.95

Spearman Dry Goods Co.
The Store of Greater Value

Carbon Paper and Typewriter Ribbons at Reporter Office.

**"Smile Rodney,
Smile"**

A Laugh-Comedy in Three Acts

High School Auditorium

Spearman

THURSDAY NIGHT, JANUARY 31

The Senior Class

WATCH FOR FURTHER ANNOUNCEMENTS

**W. A. Sutton's
Dispersion Sale**



Registered
DUROC JERSEYS

To Be Held at Spearman, Texas

**Tuesday
Feb. 12, 1929**

SALE WILL ALSO INCLUDE:

15 head of High-Grade and Registered Milk Cows
Household Goods—Farming Implements

**Here
Next Week
Jitney-Jungle
Groceries**

"Save a Nickel on a Quarter"

Home Owned
Home Operated

Watch this Newspaper
for Announcement
Next Week!

**Well Built Barns Save
Dollars Every Day**

Good farm improvements are money making investments. More than that, a well improved farm is an investment in satisfaction, in comfort and convenience. Necessary buildings help to cut down farm losses, lighten the labor, add to the comfort of the owner.

I recently obtained a new book of Barn Plans, the most practical I have ever seen. It gives every detail of construction and every piece of lumber used. No longer is it necessary to guess at the cost of your barn. If you are interested in barns, I want to show you this book. Ask for it any time you are in.

Pickering Lumber Co.

H. L. DUMAS, Manager
Spearman :—: Texas



GIRLS DON'T WANT THE IDLE MAN

Two hundred and twenty college girls in the East were asked some mighty important questions in a special questionnaire regarding the types of men they seek as husbands.

Of the two hundred and twenty, only twelve insisted on college graduates. Only two demanded good looks. One wanted an athlete. Fifty were opposed to drinkers. More than 100 stipulated honesty, sincerity, education and culture.

Wealth and fame were entirely ignored. But the one quality most in demand—guess—was a sense of humor!

Evidently the girls agree with the poet that "the man worth while is the man who can smile."

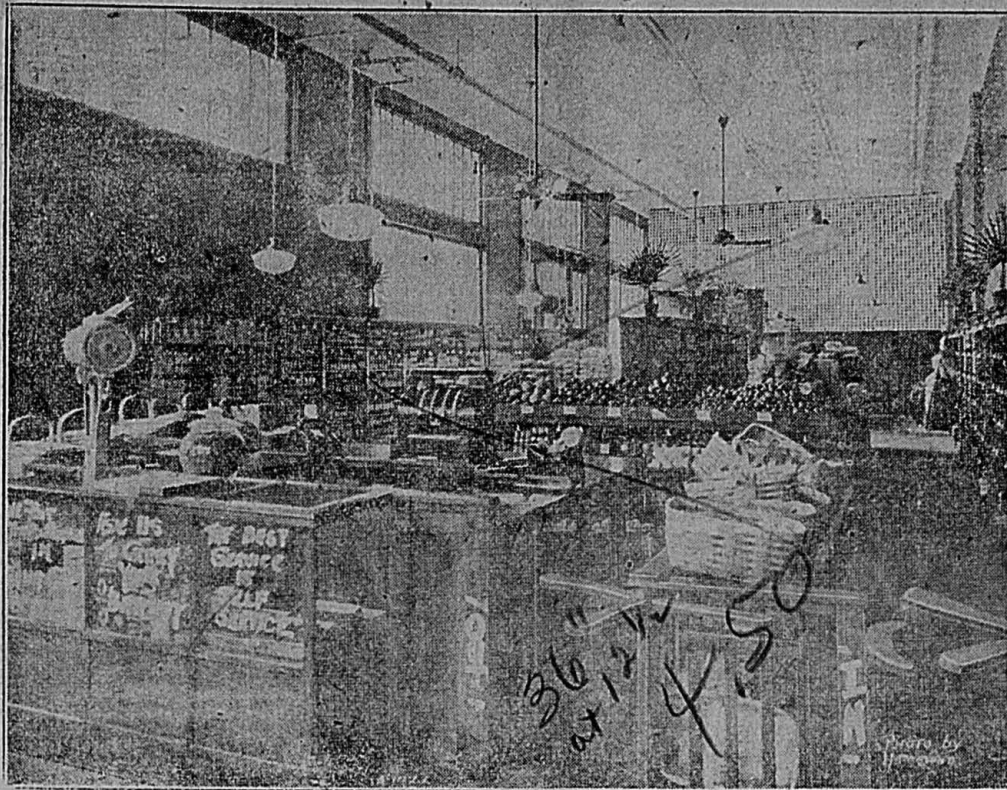
If this questionnaire is indeed representative of the state of women's minds the country over, it behooves all young men to learn to laugh and laugh heartily.

Men who are not handsome, wealthy or famous may now console themselves. As long as they have a sense of humor, some girl will fall in love with them.

But what man does not think he has a sense of humor? All men seem to be eligible for affection, to judge them by their own opinions.

We are inclined to think that the girl practiced a little subtlety, as they often do. We can't believe they want to pass up wealth and fame—these things have always lured girls. But being feminine, they mention these things indirectly—asking that a man be possessed of a sense of humor in the conviction that wealth and fame come most easily to the man whose sense of humor is most keenly developed. Think of the men you know, and see if this belief does not carry some weight.

Spearman's Model Jitney-Jungle Store



LYRIC THEATRE

FRIADY AND SATURDAY
January 18 and 19

"Moran of the Marines"

Love, action, fun. Dix makes love to Ruth Elder, the Trans-Atlantic girl flyer. Dix gets into more fixes in a second than he can get out of in an hour.

MONDAY AND TUESDAY
January 21 and 22

"Celebrity"

An unusual story of boxing, portraying comedy and drama in life of a professional boxer.

WEDNESDAY and THURSDAY
January 23 and 24

"Honeymoon"

If you ever went on a honeymoon or intended doing so, don't fail to see this hilariously funny comedy with an all star cast including Flash, the wonder dog.

The Star Meat Market of this city, under the management of Dick Kiker, handling fresh and cured meats and a stock of groceries, announces that it will soon step out of the old rut and way of doing things and will in the future be run as a model self-service grocery and meat market, giving to Hansford county one of the most up-to-date services in this line known to modern merchandising.

This store will be known in the future as one of the fast growing

A TIP TO FARMERS

Here's a tip to farmers: Be a big executive. Put your farm on a business basis and run it that way. Form a company and sell shares. Let the wife remain as manager inside. Make the hired man outside superintendent. Appoint the hired girl your stenographer. You'll be able to dictate to her just as successfully as you now.

Learn to confer frequently with

chains of the Jitney Jungle system. The Jitney-Jungle System of self-service grocery stores is not new. It is eight years old and claims to have revolutionized the retail grocery business, and with their slogan of "Save a Nickel on a Quarter" to have rubberized the pocket-books of a half-million families it is now serving in 14 southern states. The principal of Jitney-Jungle operation, is no secret. The franchise privileges provides who is said to be the most convenient and personal shopping fixture equip-

ment in the world, which by its accessibility saves the expense of an army of clerks. The enormous buying power of the chain is passed to the consumer. The rapid turnover, as compared to the old style grocery store insures fresh merchandise every day. The open door policy of Jitney-Jungle by continuous newspaper advertising keeps the public always informed on the market trend of all food products. In short, the general public becomes partners and co-operators and receives their dividends

with every purchase. For the past ten days carpenters and workmen have been busy installing the equipment for this new store in the Tice building, next door to Joe's Cafe, on lower Main street. Painters have done their bit towards making the interior of the store building attractive, and with the brand new stock which has begun to arrive, the "Jungle" will present a neat appearance on opening day.

The date of opening will be announced in next week's Reporter.

Is this not just a practical advice as you get from many outsiders who know nothing of the difficulties of farming.

stock. You and the scarecrow do that now and then at director's meetings. At the end of several years, retire rich.

CHURCH AND SOCIETY

PRESBYTERIAN

Rev. F. T. Charlton will be here from Canyon Sunday, January 20, to hold services for us at the Presbyterian church. Everyone is invited to attend and hear Rev. Charlton preach. Your time will be wisely spent.

CHRISTIAN

Rev. Jasper Bogue will preach at the Christian church in Spearman on Sunday morning at 11:00; in the afternoon at 3:00 and in the evening at 7:30. A noonday lunch will be served at the church. Everyone, and especially members of the Christian church, is especially invited to attend all of these services.

MISSIONARY SOCIETY

The Ladies Missionary Society met at the home of Mrs. Paul Higgs Wednesday afternoon in regular meeting. A good number of members were present and the regular lesson was had. After a business and social hour the ladies adjourned until next Wednesday when they will meet with Mrs. O. M. Addison.

Twentieth Century Club

The Ladies Twentieth Century Club met at the home of Mrs. Delon Kirk Tuesday afternoon, January 15. On account of so much recent illness this is the first meeting that has been held since the holidays. A good number were present and the regular lesson was had. Several important business matters were discussed, one of which was the ways and means of civic improvement. The club is expecting to do some real work in this line later on. The next meeting will be with Mrs. C. A. Hitt on Tuesday, January 23.

Miss Hays Entertains With Bridge

Miss Alta Hays delightfully entertained a number of friends at the home of her parents, Mr. and Mrs. John L. Hays, in south Spearman on Saturday evening, January 12. Six tables of bridge furnished the amusement for the evening, until 12:30 when, after the presentation of high score prize to Mr. J. Max Lackey and consolation to Mr. Johnnie King, an appetizing midnight supper was served. Following this repast Mrs. Duncan and Mr. Lackey favored the crowd with several musical selections which were greatly enjoyed. After some time was spent at various other games the guests took their departure. The guest list included: Mr. and Mrs. J. Max Lackey, Mr. and Mrs. John D. Duncan, Mr. and Mrs. W. L. Russell, Mr. and Mrs. C. A. Gibner, Mr. and Mrs. Hobart Dick, Mr. and Mrs. Johnnie King, Mr. and Mrs. Pope Gibner, Mr. and Mrs. P. H. Westerfield, Mr. and Mrs. John L. Hays, Misses Glendia Tutwiler, Kuba Norman, Velma Hays, and Ruth Prutsman, Ralph Bort, Dawson Richards and Omar Hays.

T. E. L.

The T. E. L. class of the Baptist church was entertained at the home of Mrs. Harry New in south Spearman Wednesday afternoon. Mrs. New, Mrs. C. O. Collard and Mrs. W. E. Gault were joint hostesses for the meeting. After a short business session the afternoon was spent playing various games. Refreshments of sandwiches, potato chips, wafers and hot chocolate were served. The W. M. U. met in connection with the T. E. L. class for a business session. We were very sorry that a number of members were unable to attend. Those present were: Mrs. Walter Jackson, Mrs. Dwight Holland, Mrs. Lucille Wilbanks, Miss L. F. Noe, Mrs. L. C. Wiggins, Mrs. G. W. Williams, Mrs. C. A. Hitt, Mrs. W. A. Gillispie, Mrs. H. I. Gay, Mrs. N. L. Beck.

FARM ACCOUNTING

A manufacturer was producing an article used both in residential and commercial construction. His volume increased year after year, but his profits kept steadily shrinking.

Finally he turned to his accounting department for the answer, and his bookkeepers put a new system into effect which disclosed many interesting facts.

It showed for one thing that he was spending too much money to market to the skyscraper and industrial construction market, while his real, profitable business was coming from the small home builder.

Complete changes were then made in his business methods. As a result the gross volume dropped a little, but net profit climbed sharply upward. Better service was given to the customers whose business was found to be of greatest importance, and a brilliant future for the company was inaugurated.

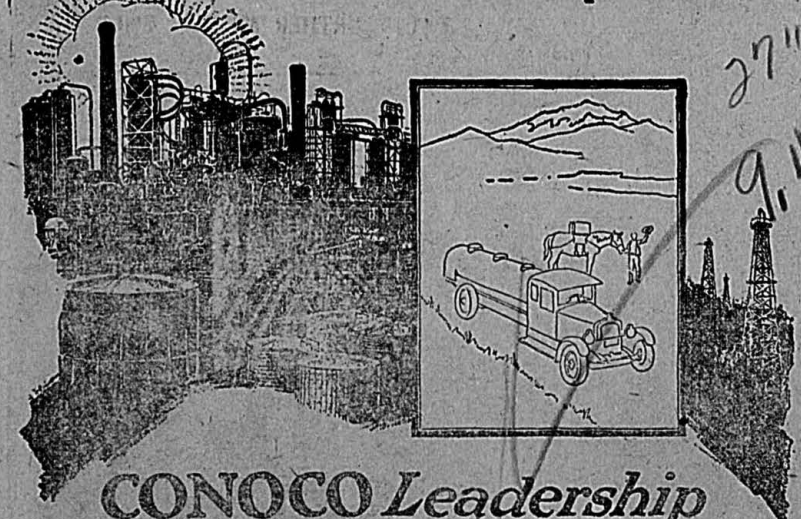
We cite this to emphasize the importance of accounting in any business. In big industries cost accounting is essential. In farming the need, we feel, is equally pronounced.

Every farmer should have a set of books which tell him readily the production cost of every item produced for market. With such a system the average farmer could look over his records for the year past and make his plans for the coming season with some probability of increasing his net income for the future.

There is no guide to the future like the experience of the past, and no book that gives in cold, undisputable facts, the experiences of the past like a carefully kept account book.

Mr. and Mrs. Lester Howell, and Mr. and Mrs. Overton McLeod spent Sunday in Berger.

"There is no Substitute for Experience"



CONOCO Leadership

covers almost half a century

Such leadership must be earned. It comes from the proper co-ordination of resources, engineering skill and marketing facilities plus that willingness to serve for which the Conoco name has always stood.

Today, as always, Conoco stands for highest quality and unsurpassed service.

THE triple test
MOTOR FUEL.
1 Starting
2 Acceleration
3 Power and Mileage

A Remington Portable

—The Best Typewriter on the Market for the Money

For Sale By

Spearman Reporter

Wax and Polish

All Your

Floors and Linoleum

IN ONE DAY—EASILY—QUICKLY

RENT

"The Old English Improved Electric Polisher"

Ask Us

Panhandle Lumber Co.

Phone 2

Spearman

International Sunday School

Lesson BY DR. J. E. NUNN

FOR JANUARY 20, 1929

General Topic:—Christ the Saviour.
Scripture Lesson:—Luke 15:3-7;
Rom. 5:8-10.

Luke 15:3. And he spake unto them this parable, saying,

4. What man of you, having a hundred sheep, and having lost one of them, doth not leave the ninety and nine in the wilderness, and go after that which is lost, until he find it?

5. And when he hath found it, he layeth it on his shoulders, rejoicing.

6. And when he cometh home, he calleth together his friends and his neighbors, saying unto them, Rejoice with me, for I have found my sheep which was lost.

7. I say unto you, that even so there shall be joy in heaven over one sinner that repenteth, more than over ninety and nine righteous persons, who need no repentance.

Rom. 5:8. For while we were yet weak, in that season Christ died for the ungodly.

7. For scarcely for a righteous man will one die; for peradventure for the good man some one would even dare to die.

8. But God commendeth his own love toward us, in that, while we

were yet sinners, Christ died for us.

9. Much more then, being now justified by his blood, shall we be saved from the wrath of God through him.

10. For if, while we were enemies, we were reconciled to God through the death of his Son, much more, being reconciled, shall we be saved by his life.

Time:—Jesus spoke the parable of the lost sheep in A. D. 30, in the last three months of his life. Paul wrote the Epistle to the Romans in A. D. 57, in the course of his third missionary journey.

Place:—The parable was spoken in Peraea. Romans was written in Corinth.

Golden Text:—And thou shalt call his name Jesus; for it is he that shall save his people from their sins.—Matt. 1:21.

Introduction

The sequence of our topics is appropriate; after considering God the heavenly Father in the first lesson of this quarter, and sin in the second lesson, it is natural that we should turn to the Christ in whom the Father fully reveals himself as such, and who is sin's Saviour.

Last week's lesson on sin would have been too depressing if we had studied only the origin of sin and its terrible results; the Lesson Committee did well to give us relief from the sad picture, a glorious glimpse of the work of Jesus Christ in providing a remedy for sin. This salvation we are now to consider more fully, and we shall find it to be the most inspiring, as it is certainly by far the most important, of all these lessons on the Great Christian Teachings.

"A Saviour is Born." Luke 2:11

The essential fact of the angel's proclamation is, not that the Christ had at length come to Israel, but that a Saviour had been born. Before his birth Joseph and Mary had both been instructed that his name was to be Jesus, meaning Saviour. The Jews had associated many things with the advent of the Messiah—Isaiah, indeed described it in terms of salvation. "The Lord hath made bare his holy arm in the eyes of all the nations; and all the ends of the earth shall see the salvation of our God."—52:10. And when he came those who recognized him thought instinctively, salvation! So Simeon here (ep. Luke 3:6). No matter by what other names we call our Lord, "Saviour" added gives that name a fuller, more satisfying meaning.

Two Kinds of Helpers

"There are two kinds of benefactors: the one is largely concerned

with general principles, or with helpfulness and betterment on a big scale, touching the whole world, perhaps; say, some famous social reformer or multi-millionaire philanthropist; the other carries a bouquet of flowers to a sick child! There is the Christian who preaches to crowded audiences or to an infinite host by radio; and the other who spends an evening trying to persuade his neighbor to accept Christ. Jesus may be said to represent both these types. The sweep of his salvation is universal and timeless; but also the one lost sheep, the one man, the one soul, the one little child, the one poor blind beggar, is certain of his particular loving, saving attention! His salvation is specific as well as general. I rejoice in the fact that he is saving the lost world on the cross, but, too, I am happy in knowing that he is saving me there.

The Christ of Prophecy, Acts 3:18

Our Saviour is not rightly seen at all unless he is seen against the background of prophecy. His life on earth cannot be comprehended except as part of the Plan of Salvation. In our last session we found a foregleam of Christ in the story of the first man. All down through the history of the Chosen People this gleam is growing brighter. It shines with increasing splendor in the writings of Isaiah and the later prophets. The Jewish expectation of the Messiah waxed ever more insistent till the days of John the Baptist, the Herald of the Christ. Peter said at Pentecost that Christ fulfilled prophecy. "But those things, which God before had showed by the mouth of all his prophets, that Christ should suffer, he hath so fulfilled." Acts 3:18.

The Christ of Bethlehem, Luke 2:11, 30-32.

At length, in the fullness of times, the Son of God was incarnated in the Babe of Bethlehem, forever consecrating childhood and humanity. The marvelous record is: "There is born to you this day in the city of David a Saviour, who is Christ the Lord."

The line of prophecy was continued in Anna and Simeon, Luke 2:25-38, the latter speaking of Christ's salvation as "prepared before the face of all peoples," and as not only the glory of Israel but "a light for revelation to the Gentiles," thus anticipating, even in those days of Jewish exclusiveness, the progress of Christianity over all the world.

The Christ of the Future, Phil 2:5-11

This is one of the noblest passages in all Paul's writings, in all literature. It portrays the pre-existence of Christ "in the form of God," his incarnation "in likeness of men," his obedience "unto death," and finally his supreme exaltation, God having given him "the name which is above every name," that is the name of Jesus every knee should bow, of things in heaven and things on earth, and things under the earth, and that every tongue should confess that Jesus Christ is the Lord, to the glory of God the Father." This is a picture of the triumph of missions, the ultimate glory of the church.

Why the Saviour Came, Luke 16:3-7

"And he spake unto them this parable." One of the most gracious and blessed chapters of the entire Bible gives Christ's threefold answer to the scribes and Pharisees when they criticised our Lord for associating with publicans—the hated tax-collectors—and sinners. Christ's reply was in three closely related parables, those of the lost sheep, the lost coin, and the lost boy (the prodigal son). The answer of all these was, in brief, this: the Messiah has come to earth to seek and save the lost.

The Saviour of the Lost, v. 4.

"And go after that which is lost, until he find it?" The loving care and pity of the Good Shepherd, Christ's picture of God, is in the strongest possible contrast to the cold indifference of the gods of heathen mythology. Their attitude is well

expressed in the Arab saying that God has divided pity into a hundred parts and kept ninety-nine for himself—the exact antithesis of this parable. "Until he find it" is a wonderfully comforting hint of the divine persistence in the pursuit of sinners.

The Certain Salvation, v. 10

"For if while we were enemies, we were reconciled to God through the death of his Son." God has now become reconciled to us, and no longer holds us as enemies, since His Son has died for us. "Much more, being reconciled, shall we be saved by his life." Paul does not mean that the sinner needs to be saved twice, once by Christ's death and again by Christ's life; but after he has been saved from the past he needs to be kept in the present, and what Christ's death accomplished once for all is an earnest of the blessed things his life with the redeemed sinner will do in and for him, through ages of ages.

"Leave the keeping with him, and fall into line with the inspired logic: If, when I was an enemy, I was reconciled by his blood, how much more, now that I am a friend, shall I be kept saved by his life?"—Rev. Archibald G. Brown.

Seeking the Saviour

"Lord, thou hast here thy ninety and nine:

Are they not enough for thee?"

But the Shepherd made answer, "This of mine

Has wandered away from me.

And, although the road be rough and steep,

I go to the desert to find my sheep!"

—Elizabeth C. Clephane.

Mr. and Mrs. M. D. Jackson visited with Mr. and Mrs. T. C. Roper in Perryton Sunday.

CHRIST IN THE TEMPLE

(Mrs. H. C. Hull.)

A long, long time ago, over the hilly roads leading from Nazareth to Jerusalem, came a great company of people, riding on donkeys and camels and on foot. Although it is only about seventy-five miles distant, it took them several days to make a journey of that length, with their slow mode of travel.

Children laughed and women chatted, for they were going to a great celebration (something like our fourth of July). Everyone was happy. Perhaps many pretty bouquets were picked from the base of the mountains by those strong-legged children, who had no fear of being left behind, as they ran from the road, that wound lazily among the hills, covered with the first new grass of spring.

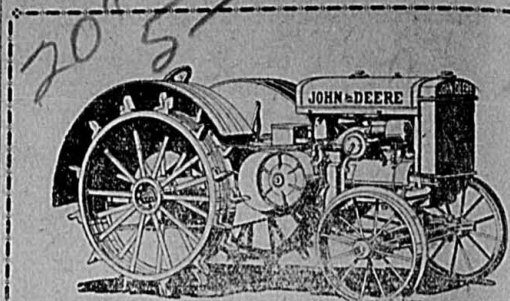
Each year this same band of people came over this same road, and each year the trip was made in the first month of spring. They are going up to the city of Jerusalem to keep the "Feast of the Passover," in memory of the children of Israel gaining freedom from Egyptian bondage. But of course, they did not celebrate this day like we do our fourth of July. Each man took his family to Jerusalem and there, before the altar of the great temple, he prepared his sacrifice, and all members of the family ate of it.

Only Joseph and Mary knew that the little boy, "Jesus," who played and romped with the other children, was the son of God.

They reached the city; the great feast was prepared, and soon was over. All were preparing to return to their homes when the child went into the temple to again look at the beautiful carvings and wonders to be found there.

He found men talking of things of which he wished to know, so He asked them many questions. He also told them things that made them marvel to find a child possessed of such great knowledge, for he was only twelve years old.

The company moved on—the children laughed as before, while those who were grown were sober with the



Ask Your Neighbor What He Thinks of a John Deere

TRACTOR

The remarkable performance of the John Deere Tractor is responsible for the multitude of enthusiastic recommendations we receive from John Deere owners. Now this famous John Deere Tractor has been further improved to give you still greater value.

You get more power—power to do even work without sacrificing light weight; the parts are made of better materials to insure longer life; a more effective method of utilizing low-priced fuel resulting in exceptionally low operating cost.

The simple, sturdy construction, characteristic of the John Deere Tractor—plays no small part in its sensational success on farms.

A New John Deere Tractor Is Ready For You

Womble Hardware Company

John Deere Tractors—Implements
Stores at Spearman and Morse

memories of the stories of God's miracles. These stories were handed down by many generations.

When they camped for the night Joseph and Mary could not find the child Jesus. He was not among the children, as they had supposed. They returned to the city and, for three days sought him. With heavy hearts they came again to the temple, and there they found Him, talking with the wise men.

When Mary scolded her son, He answered, "How is it that ye sought me; knowest ye not that I must be about my Father's business?"

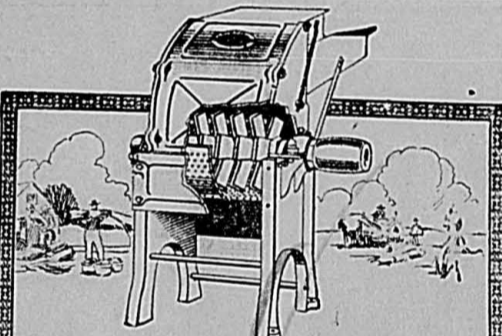
So often we wander away from that same Jesus and spend many days searching for his peace and quietude of His presence. But when we find Him, He is always just where we left Him, and doing exactly as he

should do. The mother of ten children has been sentenced to prison for life, in Michigan, for selling liquor. Unless pardoned or paroled she probably will enjoy her first real rest in a decade.—Topeka State Journal.

Albert B. Fall will go on trial in Washington again in January, the Government apparently having dug up something Mr. Fall has not been acquitted of.—San Diego Union.

BULLS FOR SALE

About thirty head of good Hereford bulls, coming yearlings and two-year-olds for sale. See WALTER WILMETH, at Spearman Hardware.



Feed Everything From the Ground Up!

MORE than one third of the feeding value of a feed crop is in the stover. When you leave the leaves, husks and stalks behind, you are leaving real money on the ground.

A W-W Feed Grinder enables you to feed the whole plant. Your W-W grinds and mixes everything from the ground up, with lightning speed—separately or together. Turns fodder, alfalfa, maize heads, snapped or ear corn, oats, bundle feed, etc., into valuable mixed, balanced feed that goes a third further.

Fourteen years of successful service on thousands of farms everywhere has proved the W-W to be the world's greatest feed grinder. Powerful hammers do the work! No burrs, gears or knives to break or work loose. Built for a lifetime!

There is a W-W for every grinding purpose. Six sizes—blower, elevator, or self-feeder which handles any grain or roughage.

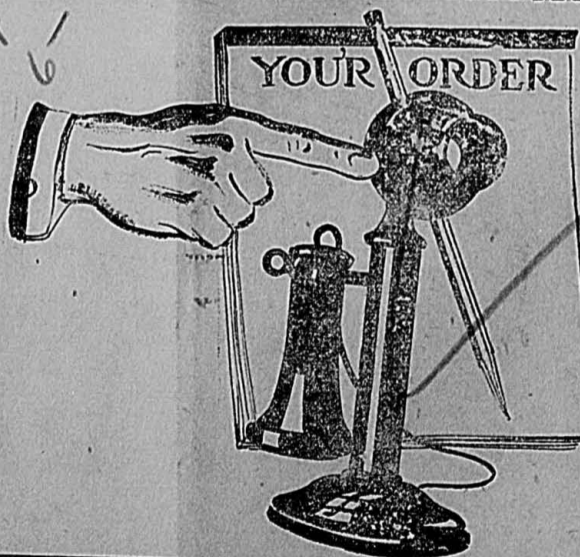
All equipped with Timken Tapered Bearings—Alemite-Zerklubrication—Rockwood pulleys.



Let us demonstrate the W-W for you—here or right on your farm.

SPEARMAN HARDWARE
Spearman, Texas

THE W-W FEED GRINDER CO., Mfgs., Wichita, Kansas



Phone 27 for Groceries This Year!

A splendid plan to start this year is phoning us each day your order for groceries. It will assure you the finest quality groceries at the least possible cost. Our entire force awaits the opportunity to serve you promptly and carefully.

Spearman Equity Exchange

The Better You Know Us

The Better You'll Like Us

On Elevator Row
Spearman

Quality With a Capital

Q 8" 2-

Quality in every item, groceries that are standard and nationally known—this is the foundation upon which our business is built.

You can shop with us by phone, for you may know that our shelves are always stocked with the groceries that you have learned by test to be the best.

BURRAN BROTHERS

Phone 71

For

High Quality Pianos, Player Pianos, Radios, and Talking Machines, see

B. F. Garst Music Company

before you make your purchase.

Ask Us About



A. S. P. Service

—AND TIRES BUILT FOR SAFETY

Our A. S. P. plan gives you assurance of uninterrupted service from Hood Tires—12 months protection.

—and He was Late Home

He didn't have a spare so he drove home on the "flat" and to make a long story short—he ruined a tire. Let us vulcanize and repair those extra tires that you may be prepared for emergencies. Of course, if you want a new tire—we have them.

Jackson Tire Shop

On Elevator Row

Spearman

3 Eggs Per Day or 10"
64 Eggs Per Day 2.50

A prominent farmer living near Spearman, was getting three eggs per day from his flock of hens.

He began feeding them on

"SNIDER'S LAYING MASH"

and increased their production to sixty-four eggs per day. If your hens are not "working" as they should, come in and let's talk it over.

SNIDER PRODUCE

Phone 115

West Spearman

INCORPORATION NOTICE

The State of Texas, County of Hansford.

To all whom this may concern:

Notice is hereby given by R. L. McClellan and Wm. E. McClellan, both residents of Hansford County, Texas, with our post office address at Spearman, Texas, who have been conducting a business under the firm name of McClellan Chevrolet Company, an assumed name, at Spearman, Hansford County, Texas, engaged in conducting a retail sales agency for the sale of Chevrolet automobiles and the maintenance of a garage and repair department incident to such business, that the firm now existing will be dissolved within a period of forty-five (45) days next succeeding the date of this notice, for the purpose of incorporating the business heretofore conducted as a partnership by R. L. McClellan and Wm. E. McClellan under the assumed name of McClellan Chevrolet Company, such incorporation to be accomplished under the laws of the State of Texas, and when incorporated the name of such corporation will be McClellan Chevrolet Company, Inc., State of Texas, and when incorporated the name of such corporation will be McClellan Chevrolet Company, Inc. (In the event such name is available in the office of the Secretary of State of the State of Texas) the corporation so to be formed to have a capitalization of Twenty Five Thousand (\$25,000.00) Dollars.

This notice is given by publication for four (4) consecutive weeks in the Spearman Reporter, published at Spearman, Hansford County, Texas, and printed as well in the Austin American, a newspaper published at Austin, Travis County, Texas, which is the seat of the State government.

This notice is given in compliance with Article 1307 of the Revised Statutes of the State of Texas, codification in the year A. D. 1925.

Witness our hands at Spearman, Texas, this the 31st day of December, A. D. 1928.

McCLELLAN CHEVROLET CO.,
By R. L. McCLELLAN,
and Wm. E. McCLELLAN,
Sole and Present Owners.

INCORPORATION NOTICE

The State of Texas, County of Hansford.

To all whom this may concern:

Notice is hereby given by R. L. McClellan of Spearman, Hansford County, Texas, that the business heretofore conducted under the assumed name of R. L. McClellan Grain Company, with R. L. McClellan as owner thereof, heretofore and now engaged in conducting a grain and elevator business, together with the sale of goods, wares and merchandise and agricultural and farm products at Spearman, Texas, will be incorporated, in accordance with his intention, within a period of forty-five (45) days next succeeding the date of this notice, under the name of R. L. McClellan Grain Company (in the event such name is available in the office of the Secretary of State of the State of Texas) with a capitalization of Twenty-five Thousand (\$25,000.00) Dollars.

This notice is given by publication for four (4) consecutive weeks in the Spearman Reporter, a newspaper published at Spearman, Hansford County, Texas, and printed as well in the Austin American, a newspaper published at Austin, Travis County, Texas, which is the seat of the State government.

This notice is given in compliance with Article Number 1307 of the Revised Statutes of the State of Texas, codification of the year A. D. 1925.

Witness my hand at Spearman, Texas, this the 31st day of December, A. D. 1928.

R. L. McClellan Grain Company,
By R. L. McCLELLAN,
Present Owner.

54.

Carbon paper at Reporter office.

NOTICE OF SALE OF REAL ESTATE

State of Texas, County of Hansford.

J. C. Sangster, Plaintiff, vs. Edith M. Murphy, Et Al, Defendants, No. 22 in the 84th Judicial District Court of Hansford County, Texas.

Whereas, by virtue of an order of sale issued out of the 84th District Court of Hansford County, Texas, on a judgment rendered in said court on the 9th day of October, A. D. 1928, in favor of the said J. C. Sangster, and against the said Edith M. Murphy, Buck Tipson Murphy, Charles Allen Smith, James Louis Smith, William Bennett Smith, Edith Olive Smith, Robert Edward Smith and Harry Smith and the unknown heirs and legal representatives of Willard A. Smith, deceased, No. 22 on the docket of said court, I did, on the 9th day of January, A. D. 1929, at 3:30 o'clock p. m., levy upon the following described tracts and parcels of land situated in the County of Hansford, State of Texas, and belonging to the said defendants, to-wit:

All that certain lot, tract and parcel of land lying and being situated in Hansford County, Texas, and more particularly described as the North one hundred and twenty acres of land out of the North one-half of Section No. 1, in Block No. 46, Original Grantee, P. W. Henderson, and on the 5th day of February, A. D. 1929, being the first Tuesday of said month, between the hours of 10 o'clock a. m. and 4 o'clock p. m., on said day, at the court house door of said county. I will offer for sale and sell at public auction, for cash, all the right, title and interest of the said Edith M. Murphy, Buck Tipson Murphy, Charles Allen Smith, James Louis Smith, William Bennett Smith, Edith Olive Smith, Robert Edward Smith, Harry Smith and the unknown heirs and legal representatives of Willard A. Smith, deceased, in and to said property.

Dated at Hansford Texas, this 10th day of January, A. D. 1929.
54
H. L. WILBANKS,
Sheriff, Hansford County, Texas.

TRUE, TOO TRUE

Under the heading, "It's the Same Today," I recently read this gem of the poetic art:

King Solomon and King David led merry, merry lives,

With many, many lady friends and many, many wives.

But when old age came on them, with its many, many qualms,

King Solomon wrote the Proverbs and King David wrote the Psalms.

That is funny, yet there is more than a little truth in what it implies.

The young dip into the pleasures of the world, then when they grow old

lecture and write down rules of conduct, supposing that succeeding generations will hear and heed and so

avoid their follies. Vain supposition! Youth pays small heed to the admonitions of its elders. The young learn only through experience.—

Shamrock Texas.

GIRLS AND THEIR MOTHERS

A terrible thing happened in the mill town of Dover, N. J. a few days ago. Three respectable business men were arrested and indicted; accused of causing the delinquency of more than 20 young school girls.

It is hard, from distance to see how such a condition could develop. But you can understand it a little bit better when you read what the mother of one of the girls—a child of 13 said to a newspaper reporter.

"She has a good home and good cats," protested the mother. "Does a girl want anything else? No, I don't know what grade she's in in school. I haven't asked her for a long time."

Given many mothers with an attitude like that, and you'll inevitably have some rather ugly conditions among the children.

Is Your House Well Dressed?

Paint Is the Clothing of Your House

Yes, Paint is to your home what clothes are to you. It protects and beautifies your house just as your clothes do for you.

White House Lumber Co.

Spearman, Texas



Car Load On Track

We have a car load of Sunshine Maitland Labeled

Lump Coal

on the track. Buy it and save on your fuel bill.

You can find no better coal than Sunshine Maitland.

McClellan Grain Company

Elevator Row

Phone 109

Spearman

Carbon Paper and Typewriter Ribbons at Reporter Office.

Exact Weight



Meat purchased here is weighed upon scales that assure your receiving full weight, all the time. This fact, plus the knowledge that the meat we sell is the finest procurable, makes this the place where you should buy your meats.

We are beginning the year 1929 with a most complete line of staple and Fancy Groceries; Fresh and Cured Meats—Come to see us.

HILL BROTHERS Grocery and Market

Phone 103—We Deliver

Lower Main

Spearman

Carbon Paper and Typewriter Ribbons at Reporter Office.

THE LOCAL PARENT-TEACHERS ASSOCIATION

Will Sponsor a

PIE SUPPER

at the

High School Auditorium

Saturday Night at 7:30

January 19th

Everybody Come!

Program will be given

Carbon Paper and Typewriter Ribbons at Reporter Office.

SPECIAL

For Jan. 18 to 31

- | | |
|--|---|
| 12 Yards Lace . . . 50c | 1 Gallon pure Honey
\$1.80 |
| 3 pounds Quilting Cotton
Only 98c | 3 lbs. Gold Plume Coffee
\$1.49 |
| 3 Yards 26 1/2c
Percale for 65c | Peaches, No. 10 . . 49c |
| 2 1/2 yards 9-4
Bleached Sheeting 83c | Raisins, 4 lbs . . . 29c |
| 6 yards 36-inch Lonsdale
Bleached Domestic
for \$1.00 | Salmon, Fancy Pink
6 cans \$1.00 |
| 1 Lot Ladies and Misses
coats, some as high as
\$25, your choice . . \$3 | Red Star Flour and
Cream Meal. Try our
flour—it's the best. |
| 1 Lot Men's heavy winter
pants, \$3.25 value, at
only \$2.45 | Pure Home Made Sor-
ghum, 1 gallon \$1.00 |

P. M. Maize and Company
Quality and Lowest Prices
It Pays to Pay Cash

LOCALS

Mr. and Mrs. W. E. Maupin of Gruber were shoppers and visitors to Spearman Tuesday.

Mr. and Mrs. D. K. Hall and children of the Grand Plains community were in town Tuesday.

"Smile, Rodney, Smile" at high School auditorium Thursday night, January 31. Senior class.

J. W. Winder, county commissioner, was in Spearman from his farm home Tuesday.

Mr. and Mrs. Dave McClellan and children were in from their home northwest of town Tuesday looking after business affairs.

Mr. and Mrs. Kenneth Wilmeth were in from the Grand Plains community Tuesday, trading and attending to business.

Dawson Richards left the first of the week for Borger where he has accepted a position in the refining laboratory of the Standard Oil Company.

Mr. and Mrs. Milo Blodgett, Mrs. Ralph Blodgett and children Ralph Jr. and Pauline, Mrs. John Kenny and little daughter, and Miss Bessie Russell were in from the Blodgett community Saturday, shopping and attending to business matters.

Mr. and Mrs. H. E. Campfield and the children left Wednesday afternoon for Amarillo where Mr. Campfield will attend to business matters. Mrs. Campfield and the children will visit with her mother, Mrs. Edna Moore, in Canyon until Friday.

Superintendent A. H. Wilcox of the Spearman schools, went to Austin to confer with the state superintendent and others on educational matters, the latter part of last week, returning Tuesday.

Mrs. J. H. Cooper was in from Gruber Tuesday attending to business matters and was a pleasant caller at this shop. Mrs. Cooper informed us that she and her sons Fred and Darrell intended to leave the following day for Corpus Christi, Brownsville and other points south for an extended visit. She is leaving her son Guy to look after the home and farm while she is away.

Mr. and Mrs. Sid Clark spent Sunday visiting in the city of Borger.

Stenographer-bookkeeper desires position. Inquire at Reporter office.

Mr. and Mrs. C. W. Smith and the children visited with relatives and friends at Hooker Sunday.

Mr. and Mrs. Oran Kelly and children and Miss Ethel Deakin were Berger visitors Sunday.

"Smile, Rodney, Smile" at high School auditorium Thursday night, January 31. Senior class.

Residence lot in southwest Spearman, for sale at a bargain. Ask at City Cafe.

Mr. and Mrs. P. H. Jameson were in from the Holt community Wednesday, attending to business matters.

J. B. Cooke, who has been seriously ill with pneumonia the past two weeks, is on the road to recovery. He is able to sit up now.

Mr. and Mrs. D. W. Holland and Mr. and Mrs. J. M. Thompson and little daughter Doris, were Sunday visitors to Borger.

Miss Janey and Hugh West of Zybach visited over the week end in the home of their sister, Mrs. G. W. Williams.

Carl Donovan, prominent farmer of the Waka community was attending to business matters in town Tuesday.

Commissioners court of Hansford county met on Monday morning of this week, to attend to routine matters.

Mr. and Mrs. J. P. Richards moved to Borger the first of the week where Mr. Richards has accepted employment with the White Drug Store.

Leonard Lynch is here from Cisco, Texas, visiting with his sisters, Mrs. Virgil Wilbanks and Mrs. P. H. Westerfield.

E. C. Womble of the Womble Hardware Company, Spearman and Morse, is attending the hardware and implement dealers' association row in session at Kansas City.

Willis Castner and Aaron Gill, employees of the McClellan Chevrolet Company, returned Sunday from a business trip to Altus and Delhi, Oklahoma. On the return trip between Canadian and Spearman they had a race with a coyote and being a little careless about driving, they ran it down on the highway and killed it.

Tiff Thomason and Frank A. Sewell came from Texhoma on Friday afternoon of last week, for a short visit here. Mr. Thomason is owner of Thomason Brothers stores at Texhoma, Boise City and Spearman, and Mr. Sewell is president of the First National bank of Texhoma.

Mrs. B. G. Yarborough came from Shamrock the first of the week for a visit with her son, A. B. C. Riddle, of Clovis, New Mexico, who has been visiting here the past week, and with her little grandson, Master Howard Riddle, with Mr. Yarborough and with other relatives.

Mr. and Mrs. P. M. Maize drove to Groom Friday night in response to a message stating that their daughter Miss Lucille, was very ill following the accidental breathing of escaping natural gas. She was rushed to Amarillo to the hospital and began at once to improve. Mr. and Mrs. Maize returned home Sunday. Miss Lucille is back at Groom now getting along nicely.

Mr. and Mrs. Leonard Jameson were in from their home in the Holt community Wednesday, shopping and visiting.

W. A. Jordan was in town Monday attending to business matters and trading. He said that his son Leonard was improving nicely at this time, and it is hoped by their friends here that he will soon be fully recovered. Leonard has been very ill with pneumonia.

Mrs. Clyde Hazelwood is spending the week with her sister, Mrs. Moody Womble, in the Lieb community. Mrs. Womble has been seriously ill with pneumonia and has just returned from the hospital at Borger. Her condition is greatly improved and she is rapidly regaining her health.

FOR SALE OR TRADE

Chrysler sedan in good condition, 1926 model. Also tent for sale. Inquire at Laundry, 2 blocks east of post office. 6t2p.

MILK COWS FOR SALE

Three fresh milk cows, first class; also others that will be fresh soon. These cows consist of Holsteins, Reds and Jerseys. Holsteins are of the J. H. Deakin stock. Will deliver cattle a reasonable distance.

FOR RENT

House with modern conveniences. Spearman Dry Goods Company.

CARD OF THANKS

Words cannot express our appreciation for the valuable assistance rendered us by our many friends during the sickness and death of our little baby, who passed away from influenza and pneumonia on Friday of last week. We wish to thank our friends and the organizations who sent the many beautiful floral offerings.

Mr. and Mrs. Don S. Rawlings.

LOST CASING

An almost new casing, in rim, size 30x1.50, slightly worn McClellan Chevrolet Co. cover, was lost near Spearman on Perryton road or in Spearman. Finder please leave at Reporter shop. Reward.

FARM LAND WANTED

I want a good north of river grain farm, either improved or unimproved; must be good tillable soil. Will trade up to \$30,000 worth of property. Property, and might put some cash. I am not a broker; you deal with me you will pay in compassion, as I am offering my property. Write full description and also full details of mortgage, if any.

J. G. CHRISTY,
P. O. Box 774,
Fampa, Texas
5t4.

With Spring Housecleaning
or for the New Home--
New Draperies
and
16" 4" Curtains
—They have just arrived—See them

New Spring Goods Arriving every day.
Big line of White Goods coming soon.

PETERS SHOES
For the Whole Family

W. L. Russell
Dry Goods—Clothing—Shoes—Groceries
Phone 78 Spearman

JIMNEY JUNGLE

"SAVE A NICKEL ON A QUARTER"

Watch For Opening Announcement in the Reporter Next Week.

SALE

42" 10.50

\$5.00 Worth

for \$4.00

SILK HOSE
Iron Clads are unsurpassed for beauty and wear. This opportunity enables you to take on a few pairs and save 20 per cent. Service and chiffon weights in the newest shades. Priced regular at \$1.00, \$1.50 and \$1.95. Our special silk and rayon from top to toe, peccot edge, to

Close out, Pair . . 49c

WHEELER OVERALLS
Extra special, men's standard Wheeler overalls, sizes 36 to 50, regular \$1.90 value.

Sale, per pair . \$1.65

SUITS
Men's fine suits, Carleton's guaranteed quality, all values at \$19.50 to \$25.00, choice of stock

Only \$15.00

LADIES COATS
Prices have been cut to the bottom on our remaining stock of Ladies and children's coats. They must move out. Children's coats at \$4.90 to \$7.45.

Choice \$3.95
Ladies coats up to \$18.75
Choice \$6.90

SHEEPSKIN COATS
Men's and Boy's Sheepskin lined coats, \$8.50 to \$11.50 values.

Sale Price, Choice . \$5

UNDERWEAR
Men's Storm King, extra fine cotton, fleeced lined union suits, size 36 to 54, regular \$1.95 values.

Close out, Suit \$1.48

SWEATERS
Bradley Sweaters for Men, Women and children, coat or pullover styles. Splendid wool sweaters in various colors, priced regular \$1.95 to \$7.90. All going at cut prices, \$2.50 to \$3.25 value . . \$1.95

SILK DRESSES
Charming new styles of printed and plain silk crepes recently received but they go in this sale as we reserve nothing. Lovely \$10.75 dresses, which will cost you only

\$8.75
Other pretty \$11.50 dresses closing out at \$6.90

SAVE \$1.00 ON EACH \$5.00 PURCHASE

Premiums
SEE OUR NEW LINE OF PREMIUMS
Save Your Sales Tickets

Thomason Brothers
THE QUALITY STORE
EST. 1904
SPEARMAN, TEXAS

Think Of It
A saving of \$1.00 on each \$5.00 purchase. Lay in a supply of Dry Goods now and SAVE 20 PER CENT.