

The Bull Circle Turns Every Modest Dairyman Into a Purebred Farmer

(By Arthur L. Carnahan)
(Concluded from last week)

Galaxy of Stars

The galaxy of stars at Tullia included six sons of Masterman of Oaklands, who was imported from the Island of Jersey; and the mothers of these six were all imported registered cows. There were also two sons of Combination's Premier, sire of Masterman of Oaklands and one of the greatest sires of all time. The remaining 2 bulls in the circle were by The Cid's Handsome Raleigh, and all were from Register of Merit mothers.

Combination's Premier was later imported to America and long afterward was bought at auction when 14 years old for \$13,500 by the Santa Gertrudas Jersey Farm at Kingsville, Texas, and died there a few years ago.

Masterman of Oaklands was bought and imported while quite young by B. H. Bull & Son of Ontario, Canada, and later was sold by them to S. A. Guy of Crosbyton, Texas, for \$25,000. He is now the property of the Taft Ranch at Taft, Texas, and in 1927 went on an exhibition circuit for the first time, showing at Tullia with his six sons after he had been exhibited at the Tri-State Fair at Amarillo.

Some Great Pedigrees

The Cid's Handsome Raleigh came from a sire who brought the highest price ever paid for a bull on the Island of Jersey when he was bought and taken to England; and later he fetched the top price ever paid for a Jersey bull in England when he was bought by T. S. Cooper & Sons of Pennsylvania.

The Cid's Handsome Raleigh was born on the Island of Jersey. His half sister, the Cid's Darling, at two years old brought \$3,600; five other half sisters brought within a fraction of \$2,000 each, and twenty-one more daughters of The Cid when only young things brought an average of more than \$1,000 each at auction.

This high quality for bull circle sires is common. In Western Texas alone over 200 Jersey bulls of the highest registered class, many of them bred in the purple, out of internationally famous families, have been placed in circles during the last four years. A striking example is the bull circle at Spur, Dickens county, containing four sons of The Cid. Other breeders are feeling the influence, and the first departure from Jerseys in the region where the bull circle originated took place in December, 1927, when a circle for Holsteins was founded in Potter and Randall Counties.

The old-form bull association, which met a great need for a very long time and held an honored place in cattle breeding, is gradually giving way to the bull circle, first devised to meet the conditions of a more sparsely settled country. This is because of superior economies and breeding results, and for that reason its ascendancy is permanent.

Old Bull Association

The bull association, in its traditional and established form, usually consists of four or five members living within a radius of two or three miles, who jointly own a bull for their community use.

In Texas, however, where a few years ago one could "see farther and see less than anywhere else on the earth" the distance between neighbors made this impractical. The conditions taxed too heavily on time and energy. It was all but impossible to move dairy cows so far.

The owner of a milking herd, in Texas and elsewhere, still often owns a cheap scrub bull to meet the needs of general use; and if he has any notion of improving the quality he may take two or three of his better cows, on foot or in a truck to a registered bull. Thus only the tops are bred up; and where these offsprings gain, others from the scrub sire degenerate, giving little perceptible average advance in quality. Too often a bull is just a bull. Propagation is the only reason for keeping him.

Pondering this situation, the bull circle idea sprouted in the mind of Mr. P. C. Bennett, then county agent at Tullia, and its details were worked out and put into practice. Four years of experience has modified its first weakness, until it has grown into a system never before paralleled for universally advancing the quality of dairy cattle at a cost within the means of any community.

By its operation the members of the circle breed up their entire herds, and the tops of their neighbor's herds, to the highest grade; while under the older system only the tops of all herds in a community were bred up. Therefore, since five cross breedings from a purebred sire will produce a 31-32 purebred offspring, the improvement of the breed in a community where a circle operates is rapid and thorough.

Contract Iron Bound
A standard form of bull circle contract has been worked out for use by members, as the result of experience and with the advice of high legal counsel. It is iron-clad, steel-riveted, oak-ribbed, brass-bound, and the lawyers say it will hold water at every joint.

This contract regulates the rotation of the circle, care of the animals, unsexing of undesirable male calves, insurance, replacement, fees for service, frequency of service, and generally stipulates what may or may not be done in any circumstance. For this reason the selection of members, their integrity and congenial relations, are as important as the selection of the royal guests they are to entertain.

Especially safeguards are thrown

around the care and health of the bulls. They are not allowed to leave the farm where the executive has placed them; are not allowed to run with the herds; must be provided with fresh well water at all times; have continuous access to dry shelter; have periodical tubercular inspection; have accurate record of all breedings; shall be rotated according to the routings of the executive committee; and an intractable member may be expelled upon repayment of his investment minus the services he has received.

It is an interesting coincidence that the grading-up of dairy cattle by the bull circle system started in the same Texas community where, 40 years ago, the grading-up of Hereford beef cattle was introduced by Col. Charles L. Goodnight and Judge Q. H. Nelson. These two men, both still living at a ripe old age near the scene of their pioneer venture, have seen the White Faces grow into the greatest fancy beef producers on the continent.

Native Cows Bred Up
Common native cows were used exclusively as the foundation, and

(Continued from Page 8)
cal College. They are fed, cared for, trained and developed according to strict regulations laid down by the notable achievement was reached by bringing in purebred Hereford bulls to these millions of range cattle.

Today history is repeating itself. But the bull circle is carrying forward the grading up of dairy herds far more rapidly than beef herds were improved in former days. This is partly because the volume of cows is less; partly because many registered cows are joining the herds; but mainly because of the strict rules under which bull circles operate, bringing order, system and disciplined routine where otherwise they are all too often lacking.

BUILT-IN FEATURES ADD TO CONVENIENCE OF KITCHEN

There is hardly anything which adds so much to the attractiveness and convenience of a kitchen as plenty of built-in features. These may be installed easily at little cost in practically any kitchen, old or new.

The various cupboards, cabinets, shelves, and bins can be constructed readily by the carpenter or contractor or built up at the millwork house and installed by the carpenter. The built-in fixtures may be designed by the housewife to fit her particular needs, which is not the case when a

FRED M. WOODS' TRIBUTE TO THE COW

Opening Remarks Made at a Sale When Col. Woods Was an Active Auctioneer

Grand and noble brute, of all man's animal friends she is the greatest. To her we owe the most. Examine into all the channels of trade into which she enters, and note the result. Should she be blotted out a Sunday stillness would pervade the great stockyards of our large cities, and grass would grow in the streets. One-half the freight trains that ploy the continent from ocean to ocean would sidetrack, for there would be nothing for them to do. Fifty per cent of the employees would draw no pay on Saturday night, and our tables would be bare of the greatest luxuries with which they are now loaded. The great plains of the West that the cow has made to blossom like the rose would revert to the Indians, whence they came, and millions of prosperous homes would be destroyed.

No other beast is like the cow. There is not a thing from nose to tail but is utilized for the use of man. We use her horns to comb our hair, her skin is on our feet and horses' backs. Her hair keeps the plaster on our walls, her hoof makes glue, and her tail makes soap. She gives us our cream, our milk, our butter and cheese, and her flesh is the great meat of all nations. Her blood is used to make our sugar valuable fertilizer, and even the contents of her paunch she has herself put

ready-made piece of kitchen furniture is bought.

Cupboards, containing shelves, drawers, and bins, come first. Douglas fir and West Coast hemlock are preferred woods for these. Doors and drawer bottoms of Douglas fir plywood are strong, light, durable, and will not warp. Both these species are easy to machine to give true, square corners and well fitting joints.

It will pay the housewife to study her cupboard requirements before ordering. It is just as easy and costs no more to have enough shelves for all her food supply rather than having to few shelves and too many drawers. Similarly, if she finds bins heavy and inconvenient to clean, the builder can as readily give her wood drawers lined with metal, to hold flour, sugar, and cereals. These drawers, if made to pull out on small rollers, will respond to a touch and no tugging will be necessary.

Remington Portable Typewriter for sale at the Reporter office.

through the first chemical process for the manufacture of the best quality of white board paper. Oh, you who would abuse the cow. I wish I could for once take from your table as you are about to sit down to the evening meal all that the cow has placed thereon. I'd take the cup of milk, setting by the baby's chair; I'd take the cream biscuit, the custard pie, the cream for coffee, the butter, the cheese, the smoking roast of beef or steak or the sweet corned plate of juicy meat. In fact, I'd leave you to make your meal upon Irish potatoes, beet pickles and tooth-picks.

No other animal works for man both day and night; by day she gathers food, and when we are asleep at night she brings it back to rechev and manufacture into all the things of which I speak. She has gone with man from Plymouth Rock to the setting sun. It was her sons that drew the prairie schooner for the sturdy pioneer, as inch by inch they sought to prove that "Westward the star of empire takes its way." The old cow grazed along behind, and when the day's march was done, she came and gave the milk to fill the mother's breast to feed the suckling babe that was perchance to become the future ruler of his country.

Who says that what we are to a great extent do not owe to man's best friend, the cow? Treat her kindly, gently, for without her—words fail me to describe.

It was the cow that made it possible for man to change the great American desert into a land of happy and prosperous home. When she came the buffalo disappeared, the Indian tepee gave way to the church, school house and home, and where once the wild wolves howled, today children prattle, grass grows, flowers bloom and birds sing.

SAVING THE CARPENTER'S TIME



Good lumber and good mill work saves the carpenter's time and the same time gives you a much better finished job. That is one of the several reasons why we give such careful attention to the quality of our products.

Tulsa Rig, Reel and Mfg. Co.

HARRY BOWEN, Local Manager

Phone 89

West Spearman

USED CARS

with an OK that counts

Look for the Red Tag!



Special Values This Week

This week we are offering some exceptional bargains in a number of reconditioned used cars.

The cars in this group all bear the famous red "OK" tag—which is your guarantee that all units have

been inspected, worn parts replaced by new parts and that the car's condition is honestly represented. Come in today. You are sure to find the car you have been looking for—properly reconditioned and properly priced.

QUALITY AT LOW COST

McClellan Chevrolet Co.

On Main

SPEARMAN

This Car has been carefully checked as shown by marks below

Serial No. Stock No.

- Motor
- Radiator
- Rear Axle
- Transmission
- Starting
- Lighting
- Ignition
- Battery
- Tires
- Upholstery
- Top
- Fenders
- Finish

OK by

Buy Real Estate NOW

The best market for real estate, for investment, is NOW. Take advantage of it before the spring building season opens. Property values are now at figures presenting an unusual opportunity for both investor and home builders.

Consult Us for Prices and Terms

Oil Leases

Royalties

J. R. COLLARD

Insurance of All Kinds

Real Estate

Mortgages

Loans

Insurance



No. 4391
Price 45c

This smart frock would be charming in wash silk or linen.

PICTORIAL PRINTED PATTERNS

The Sheer Print Frock

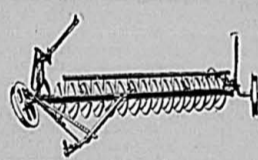


No. 4392
Price 45c

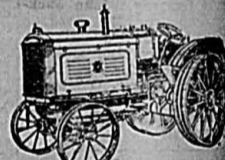
You can't have too many such dresses in summer. Be sure to see our fine stock of sheer printed fabrics.

PICTORIAL PRINTED PATTERNS

Thomason Brothers
THE QUALITY STORE
EST. 1904



Equip Your Farm with



ROCK ISLAND

Farm Machinery, Implements and Tools

—We can furnish you anything you need from a Claw Hammer to a Tractor.

TRACTORS

Model FA, 25-40, pulls a ten disc, sod plow, or a 12-foot 20-disc one-way.

Model F, 18-35. See this tractor pull seven disc plows.

Model B, 15-25. Specially made for the small farmer. Will pull a 15-foot combine.

These three models are now being successfully used in Hansford county

PLOWS

Sanders Cylinder Disc Plows; special shaped plow-discs, grued gear beam—a big improvement on all models.

No. 810, with ten discs, cuts 6 1/2 feet.

No. 815, with 15 discs, cuts 9 feet.

No. 820, 20 discs, cuts 12 feet.

A car load of Rock Island Lister Drills will be received within the next few weeks.

McNabb Land Co.

Spearman

Gruver

Interesting Old Curios Are On Exhibition in Dalhart Office

Mr. C. E. Williams brought to the Dalhart office some old photographs, tins and papers which he left at her house several years ago. By Judge W. B. Slaughter, banker and ranchman of Sherman county years ago, and later president of the First National Bank of Dalhart. Among the pictures are scenes on his Coldwater ranch, the oldest in Sherman county, and one of the best in the state. It was established by George Rawlings, first settler in Sherman county, in 1883, and he sold it in 1897. A number of pictures show Judge and Mrs. Slaughter and their only son, Coney, who is now serving a term in Leavenworth penitentiary in connection with the failure of a large banking institution in Pueblo, of which he was cashier.

A copy of the Stratford Star, published September 19, 1902—a special issue in magazine form—was also among the papers. Geo. M. Slaughter was editor and publisher. The pictures in the paper were taken at the homes of C. F. Rudolph, J. M. Turner, D. W. Turner, O. S. Fowler, H. A. Knight, A. Turner and O. F. Loomis, and a new court house at Coldwater.

Advertisements carried by local estate dealers priced land "at 50 cents to \$3 per acre."—Dalhart, Texas.

MAKING GOOD PROFIT FEEDING CATTLE

That a farmer can realize \$30 per head out of home grown feed by feeding calves during the winter months has been demonstrated by H. I. Grammar, who shipped 120 head to market about six weeks ago. These calves would none of them have been a year old until May, and notwithstanding that \$45 per ton was paid for cotton seed meal, which is higher than is usually paid, Mr. Grammar made an average profit of \$12 per head, allowing himself \$20 per ton for all the feed grown by himself.

All the feed used in preparing these calves for the market was home grown with the exception of cotton seed meal and salt, and they were according to a formula sent out by the state agricultural college. They were on feed but 153 days, when, according to the best authorities, 180 days is the most profitable period.

Mr. Grammar had a small mill in which he ground all the feed, and he estimates that it required about four hours per day in caring for the 120 head. He states that had he been better equipped the time could have been reduced as low as an hour per day for this number. He states that the time spent he made a much greater profit on them than on his cotton crop, and his crop this year was above the average, making over half a bale to the acre. Had he had an ideal equipment and could have reduced the time to one hour per day, he would have received \$1,440 considerably less than two weeks ago.

Of course in feeding operations there is a chance to take against disease, low markets, etc., but not much as in general farming where rainfall and insects make the operation hazardous.

Conditions on the South Plains are ideal for winter feeding. Feed is one

of our surest crops and the weather seldom gets very cold and when it does is dry and not disagreeable. The days are sunny, contributing to the health of the animals, and a wind-break is all that is ever desired.

Maize and kaffir heads sold on the market here during the early part of the season at from \$13 to \$18 per ton and if by feeding it the farmer can realize double the price, besides paying a profit on the time, is it not worthy of becoming one of our leading industries? Had all the feed sold in Hockley county during the past two years been utilized in this way there would have been large sums of money available for purposes that are now having to await another crop.

Hockley county has the natural resources to become a populous and prosperous section, but it will never reach its full development until the progressive handling of live stock becomes the major industry on our farms. Dairying, feeding of beef cattle, hogs, poultry and the utilization of all our resources will make this a wealthy country. Cotton will not do it, as you will see by looking at any cotton country. Even where conditions for it are more ideal than on the Plains section, the nearer it is a one-crop country, the greater the impoverishment of the people.

Mr. Grammar states that next year he will feed his cotton seed instead of selling the seed at buying cotton seed meal. The farmer usually pays more for the meal than he obtains for the seed. Until we get a cotton seed oil mill, we should make arrangements to use our seed to good advantage in feeding market and dairy cattle.—Levelland Herald.

HOW WE LOVE TO "HOLLER"

It was holiday time and bitter cold. He had just closed a big deal and his heart expanded to unusual proportions. As he turned a windy corner he came upon a tiny newsboy shivering in the icy blast but was calling his papers lustily. Instinct-

ively his hand went to his pocket, and as he felt for a roll of bills he inquired, "Where do you buy your papers, son?"

"I buy 'em from that guy on the next corner," replied the urchin, who could boast no more than six winters.

"How much do you pay for them?" asked the interrogator.

"Two cents."

"What do you sell them for?"

"Two cents."

"Don't make much money on that, do you?"

"Nope, but I get a dandy chance to holler."

"This love of 'hollering' for the fun of it is by no means confined to small boys. Many business men can be found today who seek volume of production or sales, without profit, merely so that the roar of their factories, the crowds in their stores will 'holler' of their seeming yet empty success.

In business it is well-served customer combined with fair profits which make real success, and such success is often attained by the smaller concern with a lack of shouting. Volume production or volume sales is a factor of economic advantage in certain industries, but of late there has been a wild scramble for volume at the sacrifice of reasonable profit. In sacrificing profit for volume there is failure to realize that zero multiple of a million times is still zero.

The successful business must have profits, preferably well distributed over all transactions, in order that none may be unduly loaded. The loss of consistent profits can not be replaced by any amount of 'hollering' which may make the 'holler' feel his importance, impress the uninformed public, but cannot build up a surplus which is essential to healthy business.

RESIDENCE FOR SALE

Four room residence and three lots, in south Spearman, for sale. This is a real good residence, in a good locality, and will sell worth the money.

J. A. BALENTINE,
Spearman, Texas.

26t3p. Scratch pads at Reporter office.

"PEN SENTENCES FOR POULTRY THIEVES"

At the last session of the Texas Legislature an attempt was made by Senator P. B. Ward of Johnson County to make chicken and turkey theft a felony as well as a misdemeanor. In other words, it was left to the discretion of the jury whether the thief was to be convicted for a misdemeanor and sent to jail or whether he was to be given a penitentiary sentence on a felony charge. The idea was that in particularly heinous cases it would be possible to inflict the penitentiary sentence. Such a bill was passed by the 39th Legislature and has been in effect two years.

In a number of states, notably Illinois, where chicken-theft is punishable with a penitentiary sentence, it has been made possible to curb considerably the activities of poultry thieves. The Texas law had the same purpose in mind, but the court of criminal appeals recently found

it unconstitutional because under the Constitution a bill cannot provide penalties for both a felony and a misdemeanor.

The court reversed and dismissed two chicken-theft cases against Dick Redding from Franklin County. In one case Redding had been fined \$100 and sentenced to ten days in jail and in the other fined \$50 and given ten days.

If we are to have a bill to protect farmers from the poultry thieves it must make such a theft either a misdemeanor or a felony. It can't be both. In order to put the fear of the law into these thieves, a penitentiary sentence seems necessary, and therefore, chicken-theft should be made a felony.

Enjoy golden hours of restful, refreshing sleep. Each summer night may be calm, peaceful undisturbed. Everyone may have them. Just by using FLY-TOX. Spraying the sleeping rooms. Killing the mosquitoes. Everyone knows mosquitoes are disease carriers. They must be killed. Health authorities advocate FLY-TOX. It is the scientific insecticide developed at Mellon Institute of Industrial Research by Rex Fellowship. Simple instructions on each bottle (blue label) for killing ALL household insects. INSIST on FLY-TOX. It is safe, stainless, fragrant, sure.—Adv.

It is unconstitutional because under the Constitution a bill cannot provide penalties for both a felony and a misdemeanor.

The court reversed and dismissed two chicken-theft cases against Dick Redding from Franklin County. In one case Redding had been fined \$100 and sentenced to ten days in jail and in the other fined \$50 and given ten days.

If we are to have a bill to protect farmers from the poultry thieves it must make such a theft either a misdemeanor or a felony. It can't be both. In order to put the fear of the law into these thieves, a penitentiary sentence seems necessary, and therefore, chicken-theft should be made a felony.

This is a problem that should have the attention of our lawmakers next January. In a number of Texas counties farmers have organized anti-theft associations for the purpose of presenting an united front against poultry thieves. However, the efforts of these associations will be pretty largely set at naught unless they are backed by the law that makes it possible to inflict a heavy sentence on the thief after the anti-theft association captures and convicts him.—The Progressive Farmer.

How Is Your Magneto?

Better have it cleaned and put in first class condition before going into harvest. We now have the official BOSCH Service Station, carrying a complete line of magnetos, parts and special equipment. Also parts for the Dixie and other magnetos. The magneto is the heart of your motor. Better be sure it's right.



DELON KIRK ELECTRICAL CO.

Shop Phone 141

Residence Phone 85



There's New Beauty in PAINT

"RIP"

The PAINTER

Interior Decorating
House Painting
Flat Work

Careful, painstaking work that will stand the test of time.

E. C. Van Winkle
Spearman

Put it Safely Away

When you get your pay, put it safely away until you reach this bank. Then you can put it away in safety until you need it. This bank welcomes new accounts. Come in and get acquainted.

FIRST NATIONAL BANK, Spearman

"SECURITY—RELIABILITY—COURTESY"

ALL KINDS OF

DISHES for HARVEST

SPECIAL PRICES:

PLATES, Per Set 75c
CUPS and SAUCERS, per set 75c
(6 cups and 6 saucers)

WATER GLASSES, 3 for 10c
MANY OTHER THINGS YOU WILL NEED

How About a Gasoline Pressure Stove for the long hot days

Harbison Furniture Company

The Home of Gas Pressure Stoves

Build for the Future



When you build, build for the years to come—not for the day only.

Use materials that will last—good clear lumber, tile, brick and cement, wall boards and wall finishes that will last for years and continue to look as good as new in the future.

Let us talk over your building material problems with you—we can show you how a few more dollars spent in getting good materials may mean many more years in the life of the building you plan to erect.

HURRY UP WITH YOUR GRANARIES

White House Lumber Company

C. E. GILCHRIST, Mgr.

Phone 22

Cast Your Vote for

W. R. Goodwin

for

COUNTY JUDGE

Re-Election

Hutchinson County

Texas

Subject to the Action of the Democratic Primary, July 28, 1928



The Panhandle's Largest Furniture Store

20 MONTHS TO PAY
Green Bros Co
Amarillo, Texas

THE BATTERY

is the heart of your car.
FORD BATTERY
\$11.00 INSTALLED

Expert Battery Repair Work

CHARGING:—
Battery 50c
Battery, \$1.00 to \$1.50

W. MORTON
Ford Sales and Service
SPEARMAN

The SPEARMAN REPORTER

Successor to the Hansford Headlight
 PUBLISHED EVERY THURSDAY
 NUNN-WARREN PUBLISHING CO.
 INC., Publishers

ORAN KELLY
 Editor and Manager

Telephone No. 10

\$2.00 PER YEAR IN ADVANCE

Entered as second class matter
 November 21, 1919, at the post office
 at Spearman, Texas, under the act
 of March 3, 1879.

ADVERTISING RATES: — Flat
 rate for plates, 35 cents per inch.
 If composition is required, 5 cents
 per inch additional.
 Reading notices, 10 cents per line.
 Want ads, 2 cents per word per in-
 sertion; three times, 5 cents per
 word.



ANNOUNCEMENTS

For District Attorney, 84th District:
 J. A. HOLMES
 CURTIS DOUGLASS

For District Attorney, 31st Judicial
 District:
 WALTER ALLEN

For Representative 124th District:
 S. B. HALE

HANSFORD COUNTY

For County Judge
 C. W. KING
 S. A. FOWLER
 W. L. DAVIS

For County and District Clerk
 MRS. R. L. PORTER
 J. E. WOMBLE

For Sheriff and Tax Collector:
 H. L. WILBANKS
 ALVINO RICHARDSON

For Tax Assessor
 MRS. BESSIE GATOR
 MRS. J. H. BUCHANAN

For Treasurer
 BARNEY SPARKS

For Commissioner Precinct No. 1:
 J. G. B. SPARKS

For Commissioner Precinct No. 2:
 A. F. GARNER

HUTCHINSON COUNTY

For County Judge
 W. R. GOODWIN

For Sheriff and Tax Collector:
 JOE OWNBEY
 J. W. JONES

For County Attorney:
 C. D. WORKS
 J. O. COOKE

For Commissioner Precinct 3:
 W. C. WOMBLE

For Commissioner Precinct No. 4
 C. T. RODGERS
 R. W. HUFFSTUTTER
 J. R. KIRK
 JOE CLOSE

'TIS ALL TOO TRUE

The Standard Oil Company in its
 huge organ has this to say about the
 price-cutter:

"The price-cutter is worse than a
 criminal. He is a fool. He not only
 pulls down the standard of his own
 goods; he not only pulls down his
 competitors; he pulls himself down
 and his whole trade. He scuttles the
 ship in which he himself is afloat.
 Nothing is so easy as to cut prices;
 and nothing is so hard as to get
 prices back, when once they have
 been pulled down. No manufacturer
 can permanently keep up the stand-
 ard of his goods if the price on them
 is specifically cut. Pretty soon he is
 compelled to use cheaper materials
 and to cut down the wages of his
 workers. The price-cutter admits
 he cannot win by fighting fairly. He
 brands himself as a hitter below the
 belt. If the business world was domi-
 nated by price-cutters, there would
 be no business at all."—Brass World.

Spearman and the entire country
 —the north plains wheat belt, in fact
 —is overrun with men and women
 who have something or other to sell.
 Opportunities for investment are
 more numerous, it seems, than ever
 before. And why? Simply because
 the news has spread throughout the
 country that the north plains will
 produce another bumper wheat crop
 this year. The information brings the
 grafters in droves every year a
 big wheat crop is raised. But when
 the crop is short these parasites are
 scarce. The better plan is to trade
 with your home merchant during the
 good years, as you will have to trade
 with him during the bad years. And
 as to making investments, by all
 means consult your banker before
 buying into a get-rich-quick scheme.
 Hansford county has a wonderful
 wheat crop, but it is not yet harvest-
 ed and sold. Don't count the chick-
 ens before they hatch; don't buy
 from peddlers and don't make in-
 vestments without consulting your
 banker.

To our friends "down south" who

know very little about how a wheat
 crop is handled, we extend an invita-
 tion to come to Spearman about July
 4 and remain twenty days. You'll
 learn something of the "world's
 greatest commodity," and also will
 have an opportunity to see the great-
 est wheat country on earth with its
 Sunday clothes on.

Another evidence of the fact that
 Spearman is fast assuming the prop-
 erties of a city is the "stop" sig-
 nals recently installed by the city
 council at busy street intersections.
 Two or more "No U Turn" signals
 are needed, also.

The surplus cash realized from
 this year's wheat crop should be in-
 vested in good milk cows, brood
 sows and chickens. A new barn,
 chicken house, hog lots, etc., will
 bring satisfactory results.

Chevrolet trucks are going fast.
 Place your order now. McClellan
 Chevrolet Co.

Marcelling for 75c, with one free
 retrace. Also shampooing and finger
 waving. Phone 114.

MRS. E. B. DODSON.

Geo. L. Roland came from Norman
 Oklahoma, the latter part of last
 week and is looking after his farm-
 ing and business interests here.

Gorden Fuller returned Saturday
 for a visit with his parents Mr. and
 Mrs. R. A. Fuller of the Black com-
 munity. Mr. Fuller has been attend-
 ing the University of Michigan and
 received his masters degree from
 there this spring. He will teach in
 the University this coming year.

Mr. and Mrs. W. T. Coble of Ama-
 rillo were Spearman visitors last
 Saturday.

Miss Darlene McLeod visited with
 relatives at Granite, Oklahoma the
 first of the week.

Bill Taylor, brother of Bob Taylor
 of this city, arrived here from
 Claude, Texas last Wednesday and
 has been added to the force at the
 Marland station.

Burgher Pirtle and Bill Wilson
 came from Oklahoma City the latter
 part of last week and expect to
 spend the greater part of the sum-
 mer in and near Spearman.

Mrs. W. H. Douglas and daughters
 Misses Louise and Margaret, were
 here from Texhoma Tuesday and
 Wednesday visiting with relatives
 and attending the Legion picnic west
 of town.

Mrs. H. P. Bailey returned from
 Denton Monday, where she has been
 since last Thursday attending to
 business matters. Mrs. Bailey is
 planning on sending her daughter,
 Miss Lois to Denton the coming
 year as a student in C. I. A. Miss
 Lois was a member of the graduating
 class here this year.

Mr. and Mrs. L. S. McClellan and
 daughter Miss Opal, and Miss Flora
 Goforth came from Lubbock Satur-
 day and spent the week end here
 visiting with their sons. They re-
 turned to Lubbock Monday. Miss
 Orene McClellan, who came up last
 week, did not return home with
 them. She will spend the summer at
 Liberal working in the office of Dr.
 Pellette. Miss Opal will attend the
 summer session at Texas Tech at
 Lubbock.

Mr. and Mrs. C. T. Rodgers and
 son Tiny were attending to business
 in town Monday.

Mr. and Mrs. Durwood Cluck and
 little son were in from the Record
 community Monday, attending to
 business matters and shopping.

Mr. and Mrs. Milo Blodgett and
 Mrs. Ralph Blodgett and children
 were in from their home in the Blod-
 gett community Monday, attending
 to business matters and shopping.

Louis Reodus returned the latter
 part of last week from Columbia,
 Mo., where he has been attending the
 University of Missouri. Mr. Reodus
 received his degree in journalism
 there this spring after spending
 a few days here he is going to San
 Angelo to take a position on the San
 Angelo Standard.

Mr. and Mrs. E. H. Barbour and
 son Clark, were visitors to Guymon
 last Friday.

Mr. and Mrs. Ewing Williams and
 little daughter Margie, were in from
 their home near Waka last Friday
 attending to business matters and
 shopping.

Dr. Powell, eye, ear, nose and
 throat specialist, will be at the offices
 of Dr. Gower on Wednesday, June 20.
 Glasses fitted, tonsils and adenoids
 removed.

Pheobe Fox returned from Temple,
 Texas, Monday and said that their
 little daughter Madelon, who was
 taken there last week for an opera-
 tion, was getting along nicely but
 would not be able to return home for
 several weeks. Mrs. Fox is still at
 Temple with the baby.

Miss Nellie Cox is visiting
 her sister at Englewood, Kansas.
 S. E. Harrison made a trip
 to Wicher the first of the week, to
 a car load of supplies for his fu-
 ture store here.

Miss Wilma Woodward and
 Targart of Meade, Kansas, visit
 with friends in Spearman
 week. Joe Allabaugh came
 from Liberal Saturday night
 they all returned to their homes
 day.

Mr. and Mrs. W. M. Pittman
 sons Hall and Alfred, of
 Arizona, were here last Thurs-
 day and Friday visiting in the home
 of their son Earl Pittman. They
 Saturday for Tyrone for a few
 visit with a son there.

Equity Service Means Quality Service---

—Providing the best of everything at a price
 as low as efficient management and quality
 buying can make it.

Your harvest needs have been anticipated at
 this store. Our stocks are complete.

You can look without buying. Why buy with-
 out looking?

The Equity is the best market place for produc-
 er and consumer alike. To make it so "The
 Equity" was organized.

If you are interested in real economy you will
 appreciate trading with us.



The Better You Know Us, the Better You'll Like Us

Spearman Equity Exchange

On Elevator Row
 Phones 27 and 40

Groceries, Grain, Feed
 Work Clothing

SAVE MONEY ON TIRE MILEAGE

Every day in the week, we feature values in tires.
 Our values mean more mileage—at economical cost.
 Here you get Silvertowns—just packed full of miles—
 Silvertowns at prices that cut their cost per mile the
 lowest it has ever been.



More deliveries for the commercial car

Delivery car owners can tell you the
 facts about tire costs. They figure the
 cost of their tires by the number of de-
 liveries one set of tires will give. More
 miles mean more deliveries—at lower
 cost. That's why commercial car
 owners use Silvertowns.

Name your price; we have the tire to match it!
 In our stock of Silvertowns, Goodrich Radio Cords and
 Balloons, and Signal Cords—we can offer you anything
 you want, in low price savings or long run economy.

JIMMY DAVIS

CHAMPLIN SERVICE STATION

West Spearman

The Handy Place



SEIBERLING ALL-TREADS.

Ready For You Now—

HART PARR TRACTOR
 AVERY ONE-WAY PLOW

Spearman Motor Company

COOKE-MATHEWS

PHONE 6

SPEARMAN

Speedy
 on concrete
 Powerful
 in Mud or
 Gumbo



You'll Need This New "SIX-SPEED Special" Truck

If your hauling calls for speed—if your hauling
 calls for reserve pulling power—the new Six-Speed
 Special just announced by International Harvester
 will surely interest you.

The Six-Speed Special is a fine-looking 1-ton
 truck with a two speed axle that gives you six
 speeds forward and two reverse—35 easy, smooth
 miles per hour in "high-high" and 3½ fighting
 miles per hour for tough, hard going. It is the
 truck that gets you there and back in the fastest
 time whether the going is good or bad, and in all
 weather. The Six-Speed Special is reasonable in
 price, economical to operate, trim and flexible, a
 pleasure to steer and to drive. It has a long, sturdy
 frame, a good-looking, comfortable, enclosed cab,
 heavy-duty springs, and an economical, powerful,
 long-lived, 4-cylinder engine. Bodies are available
 for every kind of load—commercial or farm—for
 every phase of rural hauling.

You need this new Six-Speed Special because you
 want time-saving speed on the high road and plenty

of reserve speed on the hard going. Come in and
 inspect this latest International and see for your-
 self that here at last is a truck that will meet all
 your requirements.

Demonstration on Request

We want you to really know what a splendid
 truck the new Six-Speed Special is and we
 want to acquaint you with its fine perform-
 ance by letting you drive it yourself. Write,
 phone or call for a demonstration. We will
 put the Six-Speed Special through its paces
 for you any time you say—without obliga-
 tion.

FOR THE FARM—

The Six-Speed Special has a handy combin-
 ing grain and stock body.

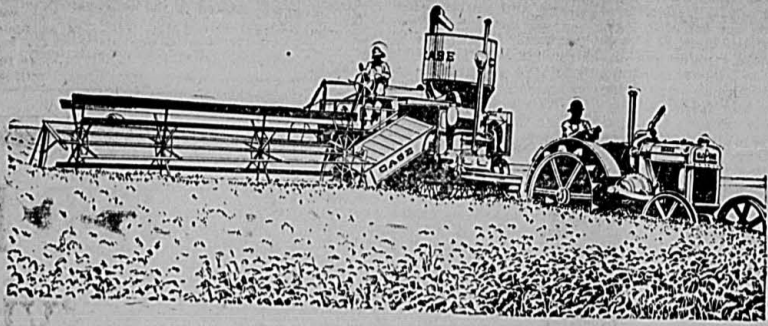
Spearman Hardware

THE INTERNATIONAL LINES

PHONE 35—MAIN STREET

SPEARMAN

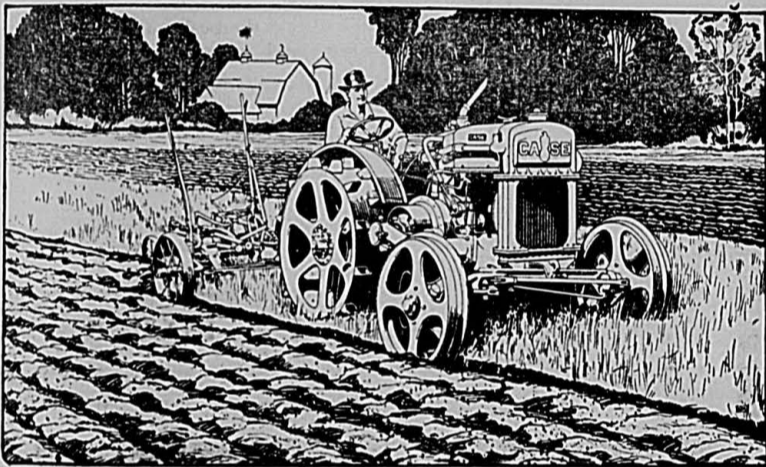
Case Combines



The Cheapest Known Method of Harvesting

The Case Company, as always, anticipating the Big Harvest, has plenty of combines for delivery to the late buyers. If you have not placed your order, do so today and it will be taken care of promptly. Case Combines represent the Standard of Value and are backed up with years of experience gained in all parts of the world, under almost every known field condition.

There Are Thousands of Satisfied Users of Case Combines in All Parts of the World

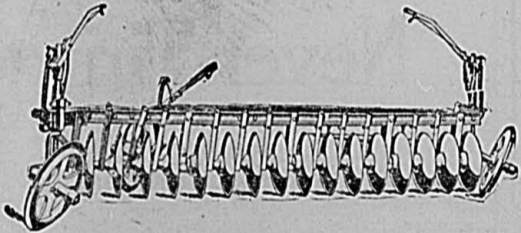


The NEW CASE TRACTOR

There are several new improvements in the new Case Tractor and as is the CASE policy they may be applied to the older models. The owner of a CASE TRACTOR need never operate an obsolete CASE TRACTOR as all of these improvements are interchangeable. You owe it to yourself to investigate this NEW CASE TRACTOR and get the most for your dollar. Years of faithful service in every one of them. CASE TRACTORS are used in all kinds of work, under all conditions, in nearly every country in the world and are delivering years of satisfactory service. Can you ask more?

CASE TRACTORS MADE IN THE FOLLOWING SIZES:

12-20 ————— 18-32 ————— 25-45



Better Yields at Lower Costs GRAND DETOUR Wheatland Plows

Never has an implement made for the farmer met with the instant approval that the Grand Detour Wheatland plow has. Ask your neighbor who has one what he thinks of it. Ten foot reduceable to seven and one-half, eight foot to five and one-half, six foot to four and one-half.

Seven New Improvements in This Years Plow

Come in and let us show you this new Grand Detour Wheatland Plow. In justice to your farming business, place your order now so you will be sure to have it for plowing season.

You Can't Go
Wrong With

GRAND DETOUR
Tractor and Horse-Drawn
TILLAGE IMPLEMENTS

Make sure you get the public to know that our plows and harrows are not the Case plows and harrows made by J. I. Case Plow Works Co.

A New Line of Grain Drills by CASE

The NEW CASE DRILL was designed by the foremost authority on grain drills, who has made a study of the needs and demands throughout the country and has had 35 years experience.

- Case Fluted Force Feed
- Case Double-Run Feed
- Single or Double-Disc Furrow Opener.
- One-piece Frame and Under-slung Construction
- Extra Large Capacity Hopper
- Oats Agitator.
- And several other Exclusive Case Features.



The Sign of
Outstanding
Quality

We have both Case Fluted Force Feed and Double Run Types in 16 and 20 sizes, with 8 inch spacing. Inspect this New Case Drill—You'll Buy!

R. L. McClellan Grain Company

The Case Line

On Elevator Row

Phone 109

Spearman, Texas

TEXAS AND TEXANS

BY WILL H. MAYES

Beautiful Highway

The Federal highway act has been amended to provide that hereafter specifications for Federal aid projects may include planting and maintenance of shade trees. The policy has heretofore been to provide only for the roadbed and construction operations. While many years will be required to beautify public highways as they should be, this action of the Federal government will stimulate State and local authorities to take greater interest in road beautification.

A number of Texas roads that penetrate forests are much admired by all motorists, but in many cases the road builders apparently have had no regard whatever for beautification and have destroyed ruthlessly many beautiful shade trees and damaged others beyond measure. Much can be done by local authorities to save the trees along our highways and to encourage the planting of trees where none are already growing. In a few places the local women's clubs have taken up the work of local highway beautification.

Pictured Roadways

If something isn't done to keep the Sunday papers and the magazines from printing such enticing pictures of Texas roadways, Texas lakes and rivers, Texas camping places, Texas mountains and hills, Texas seaside resorts, Texas flowers—Isn't it a shame that a fellow has to stay at home and work a day longer when the Texas outdoors is calling so loudly and there is so much to be seen and enjoyed.

Speed Maniacs

A Houston druggist boasts in the papers that he has defiantly violated the speed laws of Texas by making a trip of 819 miles from Houston to El Paso in 17 hours and 30 minutes, with a running speed average of 47 miles an hour, climbing from sea level to 5,010 feet above, running over desert and mountain roads and fording rivers, endangering lives along the route and ignoring all speed laws and traffic rights. Such speed maniacs, even if they are testing out certain makes of cars for advertising purposes, should be fined in every justice's precinct through which they pass. Here is some work for vigilant officers.

Road Accommodations

The Marfa Sentinel states a condition that exists yet in a number of places in Texas, though these have been wonderful improvements in accommodations for travellers in the last few years in most Texas towns. That paper says it knows people who have been forced to pass through Marfa without stopping because they could not find a place to spend the night in that town.

Marfa is ideally located to get a large tourist business, but tourists are not going to stop where they are not wanted, if they hear of a neighboring town where they will be made comfortable.

Texas Tourist Camps

While Marfa and some other places may be backward in providing for tourists, Texas stands first in the entire United States in number and beauty of auto tourist camps, according to the secretary of the Texas Camp and Park Owners' Association, who is in position to know.

He names a number of the large city camps that are among the best equipped in the whole country, and says that there are many others just about as good. Texas has 350 tourists camps now, with about 50 more under construction and being hurried for the summer trade.



WE DO PLUMBING REPAIRS

Leaky faucets, clogged drains—we repair all such promptly, thoroughly and at moderate cost.

LET US ESTIMATE ON THE NEW JOB

We shall be glad to submit bids on any new work you may require.

ALL WORK GUARANTEED

MAIN PLUMBING CO.
Phone 128

C. V. MAIN, Manager
P. B. SPRADLING, Plumber
West Side Main Spearman

Polo Interest Increases

A glance at the papers shows that the interest in polo is increasing in Texas. Especially is this true in the Western part of the State, where the climatic conditions are so favorable to the development of the strong lungs necessary for the best polo ponies.

The increased interest in polo is in keeping with the growing interest in good horses. Awhile back statements were freely made that the auto was putting the horse out of business, but as long as people like the outdoors and outdoor pastimes the horse will be in popular demand.

Graduates Wear Cotton

To show their interest in the cotton industry the graduates of the Carthage High School were dressed in cotton when they appeared on the platform to receive their diplomas, and they looked as well as any class that has graduated in Texas this year.

Only one objection could be urged to their clothing—it wasn't made in a Carthage cotton factory.

Cotton-Wrapped Cotton

A Shreveport manufacturer makes the sensible suggestion that spinners pay half a cent a pound more for cotton wrapped in cotton bagging than for the bale in jute, and he gives the figures to show that at present prices of cotton the spinner could pay the \$2.50 a bale and be 89 cents ahead on every bale of cotton.

The figures are based on a tare of 21 pounds of jute bagging and ties. If the tare is greater than 21 pounds, as it is on cotton shipped to Liverpool, the saving to the Liverpool spinner would be \$2.69 a bale.

There is now a regular air passenger service from Dallas to San Antonio and from Dallas to Houston and Galveston. The planes stop at Fort Worth, Waco and Austin to unload and receive passengers. The transportation charges are high enough to correspond with the height of the service, and the initial business has not been large.

MAGNETOS

WE REPAIR ANY MAKE

The largest stock of Repair Parts carried by one House in Oklahoma. Send them by Parcel Post, we send them back the Same Day.

ALL WORK GUARANTEED

We rewind and repair any motor, generator or magneto, Radio, or other Electrical Apparatus.

SILVER'S

216-222 So. Indep.

Phone 2160 ENID, OKLA.
2514.

It was found necessary to reduce air mail postage from 10 cents to 5 cents to make it popular and a like reduction will likely be necessary in air passenger rates before there is much air travelling. An air plane can be operated about as cheaply as an automobile.

Bank Installs Canning Plant

The bank at Mansfield believes in encouraging its patrons in habits of thrift, and that a bank's relations to the public should not end with loans and deposits. It has installed a modern steam pressure canning and preserving plant in the rear of the bank, to which farmers may bring their vegetables and fruits and process them without charge for the service. The bank will also install a sweet potato curing plant to care for the 1928 crop.

LET'S LOOK ON THE OTHER SIDE OCCASIONALLY

Life in the country isn't all good but it isn't all bad, either. All too frequently critics of American agriculture compare the poorest conditions on the farm with the best conditions in the city. This is so obviously wrong that it needs no comment.

If the better of conditions in the

country are worse than the poorest conditions in the city, its time we were giving real attention to the problem. But, is it true? I think not. Therefore, it won't do too compare the best of the city with the worst of the country. Neither will the reverse get us anywhere. Average city against average country might get us somewhere, the city's average to include the conditions in slums, on railroad streets in the mill village and the exclusive residential sections, the farm average to include the Master Farmers, the average farmer, the tenant and the laborer.

Now if we haven't a yard stick to measure all these conditions and if we cannot assign to all these their proper index number, perhaps it would pay us to look at the bright side of farm life for a little while.

How many real farm homes are there in the South from Virginia to Texas? What proportion of our farm homes have modern conveniences? What is the difference between the net cash income of the average farm family and the average city family. Sure, the farmer works hard for his, but the average man in the city gets up to the tune of a whistle, goes to work, to dinner and quits work all to the same tune.—Z. P. Metcalfe, in The Progressive Farmer.

PERRY C. BRITE SLAIN SUNDAY IN ARIZONA

Holbrook, Ariz., June 4.—Perry C. Brite, 50, a filling station operator at Goodwater, 15 miles east of here, was killed last night by an unidentified man who robbed the station of \$25 and headed east in Brite's roadster. Brite was shot six times with an automatic.

The above Associated Press Dispatch, printed in the daily papers on Monday, was corroborated by a dispatch received by John McDonald, secretary of the local Masonic lodge,

Monday. Mr. Brite, who is a son-in-law of J. J. Burnett of this city, is one of the former well known citizens of the Panhandle and was at one time deputy sheriff of Texas county. Later, he was a resident of Point Rock in Cimarron county and it will be remembered by many that he lost two children there at the time of the big flood of the Cimarron river a number of years ago.

Mrs. Brite and her children were in Las Vegas at the time of the hold-up.—Guyton Herald.

Scratch pads at Reporter office.

Wheat Lands FOR SALE

WHY RENT?

Buy Good Wheat Land in the Dalhart Country

\$15.00 to \$20.00 per acre on good terms. See us. We take pleasure in showing you. Write

W. H. LATHEM
Dalhart, Texas

Your Financial Integrity

"Yes, your note is good; we are pleased to make you this loan."

There are few sentences in all the English language that can bring to any man greater satisfaction, or that can more quickly open the door of opportunity.

And such is the answer that any prudent banker will give to the man who has proved that he knows how to save—that he can spend less than he earns.

The surest way to secure financial standing is to open a bank account today, save a little out of each month's salary.

The FIDELITY BANK OF COMMERCE

SPEARMAN, TEXAS RELIABILITY: COURTESY

The Never-Tiring Servant

You would not think of doing your neighbors washing for 3 cents an hour—an electric washer will do your washing for this small cost.

Neither would you beat your neighbors rugs for 3 cents an hour—yet an electric cleaner will clean your rugs for this amount.

The money you spend for electricity in your home brings you more enjoyment than any other household expense, yet it is your smallest expense.

There is nothing you can buy that will give you the service that a few cents for electricity will.

Visit our store and let us show you the many labor saving devices that can be operated at such a small cost.

CONVENIENT TERMS

THE INLAND Utilities Co.

PRESCRIPTION SPECIALISTS

We Fill Any Doctor's Prescription

HASTINGS DRUG

H. G. HASTINGS, Prop.
PHONE 46

SPEARMAN, TEXAS

Hurry Back—Some Time



Build Right—the first time with dependable materials

Every home owner knows it pays to build with good materials. The slight extra cost is more than over-come by the greatly reduced repair upkeep bills.

If you are intending to build or remodel, be guided by the experience of others. Select materials intelligently—and carefully. Test and compare. Make each product prove its superiority. It is our business to know dependable materials and make recommendations for their use. Let our experience help you plan your work. There is no obligation, of course.

WOODMANSE WINDMILLS

TRUE TAG PAINT IS BEST—100 PER CENT PURE

Pickering Lumber Co.

Plan Books at Your Disposal H. L. DUMAS, Mgr. Spearman

An Investment with an EXTRA DIVIDEND

THERE'S a big difference between an investment and a speculation. You can speculate in any old gasoline and hope it will deliver a satisfactory number of miles per gallon. You can invest in Summer Conoco and be sure of an extra dividend—a bonus of extra miles.

Your purchases of gasoline during the touring season represent a substantial investment. Make sure that the returns from that investment are the highest you can get.

Fill at the Conoco pump.

CONTINENTAL OIL COMPANY

Producers, Refiners and Marketers of high-grade Petroleum products in Arkansas, Colorado, Idaho, Kansas, Missouri, Montana, Nebraska, New Mexico, Oklahoma, Oregon, South Dakota, Texas, Utah, Washington and Wyoming



packed with extra miles!

Name It

By David M. Warren

**Spearman Reporter
Dimmitt Grows
Oil Progress**

Since this column was written two weeks ago the Nunn-Warren Publishing Co. has become owner of the Spearman Reporter, one of the best weekly newspapers in the Panhandle Plains. This paper has been owned by Oran Kelly for more than 11 years and has served satisfactorily the people of Hansford county. Mr. Kelly has just served a year as president of the Panhandle Press Association and his election to that office is an indication of his popularity with his fellow editors. Hansford county is one of the largest producers of wheat in the Panhandle Plains and it is predicted that the seven elevators of Spearman will be unusually busy the next three months.

The Castro County News reports that six business houses and twelve residences have been built in Dimmitt this year. This inland city, which will be the terminal of the Ft. Worth and South Plains Railway to the northwest, will soon have transportation and it is predicted that the growth will be rapid during the next few years. Progressive citizens are now talking of incorporation, declaring that no community can obtain the improvements to which it is entitled unless the city has an organized form of government.

A joint celebration in honor of the opening of the Fort Worth and South Plains Railway will be held at Sterley within a short time. Many communities will participate in this celebration which is expected to be one of the greatest ever held in the South Plains. This organization has newspapers at Quitaque, Silverton and Dimmitt and pledges its cooperation in making a success of the celebration.

Hutchinson county has graded a road from Stinnett west to the Moore county line and Moore county plans to connect with the highway so that there will be a good road all the way to Dumas. This highway will enable farmers to haul their wheat to Stinnett this summer and will give considerable benefit to scores of farmers in addition to tourist traffic. This city should become unusually substantial on account of having good farming territory tributary along with dozens of oil wells to the south.

Gray county has been in the oil spotlight for the past few days on account of the gusher brought in at LeFors about 14 miles southeast of Tampa. LeFors was the county seat of Gray county for many years. Fate, it seems, is enabling LeFors to grow more without the county seat than it did during the several decades it was the Gray county seat.

Talk in oil circles is to the effect that there should be an unusually big growth between Skellytown and Berger during the next few months. It is understood that efforts are being made to induce the Santa Fe to extend its line eight or nine miles north of Skellytown to Badger,

which is across the line in Hutchinson county. This extension of eight or nine miles, it is declared, would be worth while on account of the possibilities of casinghead gas-line and carbon black. Some oil men say that this region would support 9 gasoline plants on every section and a carbon black plant on every four sections.

This is an era of consolidation of the newspaper fraternity. Consolidations are taking place all of the communities may be better served and the business made profitable. No small city has had as many newspapers established and as many consolidations as Sayre, Okla. The Sayre Headlight carries this line in its masthead: "The Sayre Headlight consolidated with the Sayre Journal and successor to the Sayre Citizen, Social Democrat, The Advocate, Mounts Musing, Sayre Standard, Sayre Democrat and Sayre Star."

CAR INSPECTION SHOULD PRECEDE LONG AUTO TOUR

A service station inspection of the car before starting off on a vacation tour constitutes the best assurance of a pleasant and untroubled trip, it is pointed out by R. A. Armstrong, service manager of the Oakland Motor Company.

"Of course it is very probable that any Oakland or Pontiac Six or any other car for that matter, which has received fairly regular attention will serve perfectly during the vaca-

tion journey," said Mr. Armstrong. "Cars are built today so that they give more consistent service with less attention than formerly was necessary."

"But, just as a matter of precaution, it is well to visit your service station before a prolonged tour. If nothing else have the car tightened up thoroughly oiled and greased. Fill the crank case with fresh oil, check the lubricant in the transmission and differential. Sustained driving during warm weather is the most severe test of lubrication and this detail above all should not be neglected."

"If the motorist has not already done so, he should have the generator charging rate reduced lest the preponderance of day driving over-charge and damage the battery. It is well, too, to have the battery tested occasionally enroute."

Another good tour precaution is to have the valves ground and carbon cleaned. This will assure maximum performance.

"And above all, be sure of your tires. Don't start away merely HOPING that your tires will stand up during the tour. The growing practice of carrying two spares is most excellent insurance. Then, if one tire fails the second spare enables the tourist to continue on with a margin of safety until such time as he conveniently can have the flat repaired."

LET'S HOPE NONE LIKE THIS HERE

The editor of a weekly newspaper in a distant part of the state draws

a very accurate picture of a type of citizen found in every community, both little and big. Here is the description: "There is a certain type of man in every community who poses as a good citizen. He breaks no laws, lives morally, pays his honest debts and is never tangled up with the law in any manner. But he lives of himself and for himself exclusively. When the call is issued for volunteers to put across a community movement and give a boost, he never answers. When calamity has befallen people in certain localities and charity flies to their rescue, he is never one of their number. When money is needed for a public enterprise his name is never on the list. When he sees some neighbor stuck in the mud he detours to avoid him. In fact, if he stood on the shore and saw the ship sinking, he would never offer to throw out a line. And, if all mankind was fashioned from this same kind of chap, what would happen? There would be no churches, no hospitals for the sick, no institutions for the unfortu-

nate, no progress. If you are about to become a useless 'good citizen' read this editorial again."—Grand Junction, (Col.) Daily Sentinel.

BUILT-IN FEATURES ADD TO CONVENIENCE OF KITCHEN

A broom closet with places for brooms, dustless mops, dust cloths, and cleaning fluids should be included in the cupboard plan. The housewife should also be certain that moulding, bread and cutting boards have been included in her cupboard.

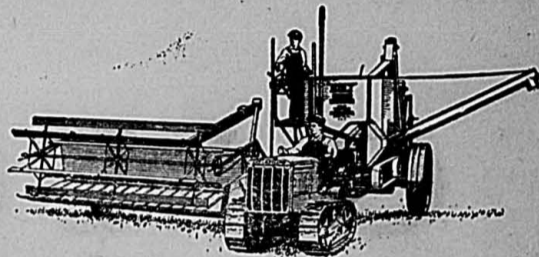
Excellent woods for these purposes are vertical grain Sitka spruce and Douglas fir.

The ironing board is placed in the kitchen also, unless the housewife has a complete basement room, equipped for washing and ironing. The board iron holder, and wood case, set in the wall, may be built satisfactorily either of Douglas fir or West Coast hemlock. Care should be taken to make the height of the board adjustable if different people are to use it.

We Are Still Able to Deliver

HOLT

REG. U.S. PAT. OFF.



10 FT. CUT—15 FT. CUT—20 FT. CUT

The harvest season is almost on you; can you afford to risk depending on hiring a machine to cut that bumper wheat crop?

You must harvest that tall wheat in a hurry before it is blown down.

You will save by ordering a new Holt to help save that crop. See us today for terms and prices.

McClellan Chevrolet Co.

Wm. E. McCLELLAN, Manager

Reduced Prices

ON AWNINGS and ACCESSORIES

Equip your car for hot weather at a saving cost.

Don't be troubled with blowouts during the harvest rush or on your vacation. Buy a new set of Goodyear tires now.

ALADDIN FIELD JUGS

McCLELLAN CHEVROLET COMPANY

NORTH MAIN

SPEARMAN

SHORTAGE OF

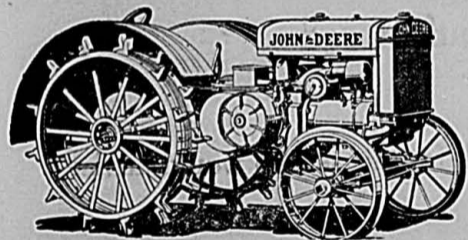
IOWA SEPARATORS

The factory is working day and night but cannot keep up with sales, being about six weeks behind at this time. We have a few machines on hand that we can deliver at once, with very convenient terms, or you may place your order for a demonstration at a future date and we will order and have the machine here for you. Don't be bothered with your old separator through harvest—let us show you how much time you can save with an IOWA.

Take care of your cows these few weeks through harvest, and they will care for you the year or years till the next harvest.

SNIDER PRODUCE

Cream, Eggs, Poultry, Hides and Furs



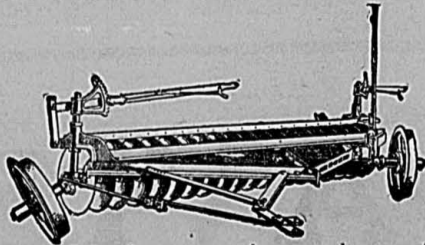
Does Better Work
Saves you Fuel
—You will appreciate the advantages of the

John FARM TRACTOR Deere

—for farm work. You can hardly believe your eyes when you see the work done by this sturdy, compact tractor. It out-performs tractors hundreds of pounds heavier and handles your work faster, better and more economical.

The ANGELL

One-Way Disc Plow



—an entirely new principle in soil tillage. It has been proven by several years of practical tests on many western farms.

Womble Hardware Company

The John Deere Lines

SOUTH MAIN

SPEARMAN

GO TO THE POLLS AND VOTE FOR

J. W. JONES

"Johnny"



Candidate for

SHERIFF and TAX COLLECTOR
Hutchinson County, Texas

Subject to action of Democratic Primary, July 28, 1928.

If you Want Honesty and Fair Play to all VOTE FOR HIM!

Motor Trucks!

WE ARE pleased to announce that General Motors Truck Company has enlarged our territory so that we now have Sales and Service for the famous

G. M. C. LINE OF TRUCKS

In Spearman, Texas
Hooker and Guymon, Okla.

Wheat growers should see our One Ton Model, which is the lowest priced 6-cylinder truck made.

Four Forward Speeds

Six Cylinder Motor

Four-Wheel Brakes

Spoke Steel Wheels

32x6 Heavy Duty Oversize Tires

A value without comparison in the truck world; manufactured by General Motors

While we can make immediate deliveries at this time, if you are figuring on a truck for this season would advise that you see us at once

G. M. C.

"The Cadillac of
Motor Trucks"

DAN DAVIS

Guymon

SPEARMAN
CHAMBERLAIN BLDG.
1st Door West of Beck Garage

Hooker

Save More of Your Crop THIS YEAR

The profit in your ripening crop lies in the last few bushels. Getting them is what makes it a big wheat year for you. With the Nichols & Shepard Combine—the greatest grain-saving Combine built—you can do it—this year.

Saves More Grain

There's one big reason why you should harvest your crop with this Combine. It saves more grain. Field tests prove that it sends a higher percentage of grain to the wagon box than any other combine built.

Threshes Like the Red River Special Thresher

For this is the Combine that threshes like the Red River Special Thresher. The famous Big Cylinder, the biggest found in any combine, and the Man Behind the Gun—an exclusive Nichols & Shepard feature—represent the most effective way to get the grain from the straw.

This combination, the greatest threshing combination ever devised, is found only in the quality-built Nichols & Shepard Combine.

Saves Its Cost

The additional grain that the Nichols & Shepard Combine will get from the straw has often amounted to as much as 2 to 3 bushels per acre in a moderate crop. You can harvest thin stands profitably, and will quickly save the entire cost of the Combine by the profit it rolls up on big acreages. *Read what owners say.*

Power for All Conditions—All Day Long

The Nichols & Shepard Combine with a 40 horse power engine on the 15 foot cut, a 50 horse power engine on the 20 foot cut, has power to get the grain under all conditions. It saves the grain better, no matter whether it's down and full of weeds, or whether it is thick, upstanding grain that goes over the 50 bushel-an-acre mark. The Nichols & Shepard has the power to get it, and to thresh it clean while cutting a full swath—all day long. *Read what owners say.*

Low Repair Bills

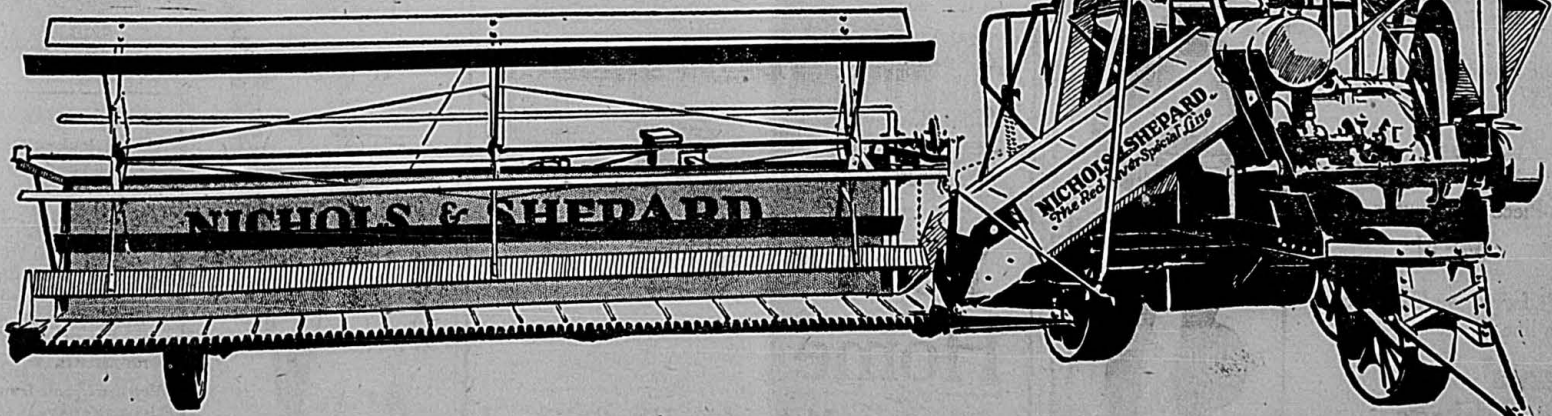
Low Repair Cost means more than the money involved. It also means that this Combine is ready to run every day, that no harvesting time is lost in tinkering and repairing. *Read what owners say:*

The Nichols & Shepard Combine is ready to run and to keep on running season after season. It is ready to run for you this year, and to pay for itself in your grain that it saves.

This is the Combine that you need for your crop this year. It is sold and serviced in your community. See your dealer today.

This is the Combine that saves more grain

(See your dealer today)



NICHOLS & SHEPARD COMBINE

SOLD BY

McNabb Land Company

SPEARMAN, TEXAS

The Greatest Grain Saving Combine Built

Something I Never Had Happen Before
Sawyer, Kansas, Sept. 26, 1927.
I harvested 500 acres of wheat and pulled my 15 ft. Nichols & Shepard Combine satisfactorily with a John Deere tractor. The motor on the Combine furnished power enough to cut heavy straw, and I had some awfully hard work. But one thing I want to tell you and that is, I never owned or saw any Combine like the Nichols & Shepard. My total cost for repairs this season was \$11.00 and that was my own fault. While the average cost for repairs on the Combine I formerly owned was \$38.00 per year. Although I never needed a service man, yet he came around frequently to see how I was getting along, and that was something I never had happen before.
Claude Young.

Saved Twice as Much
Pond Creek, Oklahoma, Nov. 24, 1927.
I am writing in regard to our Nichols & Shepard Combine, 15 foot cut, which we purchased last spring and can surely say it is one of the best on the market. We cut about 520 acres with it this season and can say it was the cheapest harvest we ever had. We cut for a neighbor who had had two different machines cutting before us, where they only got 3 bushels per acre we got nearly six bushels. As for the cleaning of the grain there are none better. On account of dew every morning we couldn't begin work until 9:30 or 10 o'clock, and on account of long straw which was down and tangled we had to go slow but at that we averaged about 25 to 30 acres per day.
R. C. Hamilton.

In the Long Run
Canadian, Texas, Oct. 19, 1927.
We have run our twenty foot Nichols & Shepard Combine one season now, wheat, some of it very weedy, and had but one stop. The sickle bar was picking up dirt lots of the time. Threshing and cleaning was extra good considering the condition of grain. It pulled over half the fuel it did in '26 pulling another make. The first cost of a Nichols & Shepard Combine is not cheap, but ours looks like it would take years to tell how really cheap they are in the long run.
Chas. G. Robbins.

The Red River Special Line for 1928

Combine	15' cut
	20' cut
	Prairie Type
Tractors	N & S
Lauson Built	20-35
	20-40
Threshers	22x36
	28x46
	30x52
	32x56
	36x60
Nichols & Shepard Corn Picker	Husker
Nichols & Shepard Steam Engines	

*We Sell for Less Because
We Sell For CASH*

- No. 2 English Peas 15c
- 1 Gallon Fancy Peaches ... 49c
- 1 Gallon Pickles 73c
- 1 Gallon Catsup 73c
- No. 2 Pork & Beans 10c

In Work Clothing we have all kinds at a price that will please you.
Men's Work Shoes, \$1.95 to \$5
Men's Straw hats of all kinds for Harvest at 50c to \$1.00

Special Work Shoes
\$1.95

Get our prices on your Harvest bill. Bacon, Sugar, Flour, Potatoes, Canned Goods of all kinds—we Sell For LESS.

P. M. Maize and Company
Phone 3 Spearman

Bud Cox of Waka was in the city early Wednesday morning.

New line children's leghorn hats. Full line bathing suits. Spearman Dry Goods Company.

Ermin Hollis was here from Texoma visiting with school friends and in the D. W. Hazelwood home Sunday.

Mr. and Mrs. Geo. Ellison visited friends and attended to business matters in Amarillo the latter part of last week.

Mr. and Mrs. W. A. Simmons and little granddaughter Ruby Jo Simmons, were shopping and visiting in town last Saturday.

Hugo Hazelwood has accepted employment in the Star Meat Market, and very likely, will be known as "Butch" in the future.

Wilburn and Marvin Wheeler came from their home at Turkey, Texas, the first of the week and are visiting with relatives and old friends.

New line of brassiers and girdles specially priced. Our leading \$2.50 corselets Friday and Saturday for \$1.98. Spearman Dry Goods Co.

Mrs. J. T. Robinett came from Columbia, Missouri, the first of the week and is visiting in the home of her daughter, Mrs. John D. Duncan.

Mr. and Mrs. H. C. Eberhart and Mr. and Mrs. E. N. Nickens came from Oklahoma last week and will again make their home in Spearman.

John R. Collard has arrived from Amarillo, where he attended school the past term, and has accepted employment for the summer with the McClellan Grain Company.

Mrs. G. W. Wilson and Mrs. A. Hudson, mother and sister of Mrs. J. A. Ward, came from their homes in Amarillo Tuesday and visited until Wednesday in the Ward home west of town.

Mrs. Roscoe Jerill was a guest in the home of her brother John L. Beck in Spearman on Saturday of last week. Mrs. Jerill came from her home in Melbourne, Iowa, to visit her sister, Mrs. W. C. Nollner, who is a patient in a Shattuck hospital, and to visit other relatives. She will be remembered by many who knew her in Guymon when she was a little girl, as Lela Beck.

Mr. and Mrs. Bob Archer and the children are here from Amarillo this week visiting and attending to business matters.

Mrs. Margaret Lynch and little granddaughters Glenell and Cyvillia Garst, of Startford arrived yesterday for an extended visit with her daughters, Mrs. P. H. Westerfield and Mrs. Virgil Wilbanks.

J. E. Gerber returned from Hutchinson county the first of the week and has accepted employment with the Womble Hardware Company. Mr. Gerber has been employed in road work in Hutchinson for the past several months.

The Reporter family visited Sunday with Mr. and Mrs. Dillard Easterwood, at their ranch home 12 miles northwest of Guymon. Oran Ross Kelly returned home that day, and is again on the job in the popcorn department at the Hale Drug store.

WANTED

To buy 100 weaned pigs. See me at my farm ten miles south and two miles west of Spearman.
TOM ROSSON.
2712p.

SAND AND GRAVEL

See me for the best building sand and gravel.
FRED LYNN.
2713p.

CHICKEN AND HAM DINNER

On Saturday, June 16, the ladies of the Rebekah lodge, Spearman, will serve dinner in the Morton building, lower Main street, from 11:30 to 2:00. All you can eat for 50 cents. Come one; come all.

GRAHAM TRUCKS and DODGE BROTHERS PASSENGER CARS

Trucks will arrive in Spearman Monday; Cars may be seen now at Beck Motor Company, Spearman
E. E. DAMRON,
Local Agent
2711.

**STYLE
COMFORT
DURABILITY**

—that is what you get in the NEW

Allen A

Two-Piece Underwear for MEN

Don't forget we have a complete line of

Gents' Furnishings

—Gloves, Whitney Shirts, Keystone Trousers Bostonian Shoes.



C & L Clothiers

Everything Men Wear

Phone 144



Spearman

NO FISHING OR HUNTING

Fishermen and hunters especially, and all trespassers in general, are hereby warned that fishing and hunting will not be allowed in the J. I. Steele pastures, on the Palo Duro north of Spearman. These lands will be posted and trespassers will be prosecuted. Do not fish or hunt on these lands.
J. A. WHITTENBERG JR., Lessee.
J. I. STEELE, Owner.

NOTICE TO TRESPASSERS

Positively no hunting, fishing or camping will be allowed on any of the Jos. W. Jones pastures on the Palo Duro west of town. These lands will be posted and no trespassing of any kind will be allowed. So, trespassers will please take notice and avoid trouble, as all offenders will be prosecuted.
MRS. JOS. W. JONES, Owner.

TEAMS FOR SALE

Several good work teams, both horses and mules, for sale. This is good heavy work stock, well broke and ready to go. If you need good teams see
SPEARMAN HARDWARE.

SURE CURE FOR RHEUMATISM

Buy a Maytag Washer, a sure cure for Rheumatism.
The best time to correct mistakes is before you make them.
Let us demonstrate the "Maytag" in your own home, on your own clothes.
If it don't sell itself, don't keep it.

Fifty-Four Per Cent of all washing machines sold are Maytags. See the "Balloon Wringer," the very latest out. Guaranteed to break no buttons. Let us demonstrate.
No Obligations.
V. L. NICHOLS,
Spearman.
2514p.

NO HUNTING OR FISHING

Hunting and fishing are positively forbidden on my lands on the Palo Duro west of Spearman. Trespassing of any kind will not be allowed. These lands are posted and trespassers will be prosecuted to the full extent of the law.
C. E. DEANER,
Spearman, Texas.
24112p.



FRESH VEGETABLES EVERY DAY

We have a car load of can goods in transit. Just received a supply of sugar and 2 cars flour—much cheaper than market price.

We are in position to make attractive prices on your Harvest Groceries.

FIGURE WITH US BEFORE YOU BUY

FRIDAY AND SATURDAY ONLY—A large assortment of Ladies' Hats at 1/2 Price.

W. L. Russell

Dry Goods and Groceries
PHONES: Dry Goods, 3r 78 Groceries, 2r 78
On Main Spearman



Your Own Home

Makes Life Worth Living!

Too many people are missing half of life's pleasures by denying themselves the benefits and blessings of true home life. They seem content to envy "him who hath" without striving to possess that home which is the birthright of every child and the dearest material possession of happy men and women.

Panhandle Lumber Co.

MODERN HOMES

Courtesy—Quality Service

Graver—Morse SPEARMAN

JEWELER

I am now located in Spearman, in the offices of Judge Fowler, next door to the postoffice building, and am ready to do all kinds of jewelry work. Thirty years experience; all work guaranteed. I also repair Victrolas, sewing machines, etc. 261f.
N. M. BALDWIN, Jeweler.

REGISTERED HEREFORD BULLS

We offer for sale one hundred head of yearling bulls, some eighteen months old now. Will sell any number to suit the buyer. They are in good condition for immediate service.
PRONGER BROTHERS,
Stratford, Texas.
2612.

Scratch pads at Reporter office.

Scratch pads at Reporter office.

HERE!

The NEW ORTHOPHONIC VICTROLA

We carry a complete line of New Orthophonic Victrolas, Portables, Victor, Columbia and Brunswick records.

Anyone wishing the weekly releases of the latest jazz and sentimental records, please notify us, and we will gladly place you on our mailing list.

May we have the pleasure of demonstrating this wonderful machine in your home, without obligation.

Stokes Music Co.

Box 536—529 N. Main

BORGER, TEXAS



Our SPECIALTY

PHONE

Prompt and accurate handling of all orders for groceries phoned to us has enabled us to build up an exceptionally large phone order business. It will save you both time and money to adopt this convenient method. We also make a specialty of big bills for our rural trade. We are stocking now for the harvest business. Let us figure that harvest bill.

7
1

BURRAN BROTHERS

YUKON FLOUR : CANNED GOODS : FEED : SALT



TAILORED ON FIFTH AVENUE

Smithson
NAVAL SERGE SUITS
IN THE MODERN MANNER

GUARANTEED TO WEAR



Are You the Man?

If you look well in a Blue Suit, then you're the man for whom we choose these Smithsons. They're made of fine Naval Serge and tailored on Fifth Avenue. Those stylish lines are moulded by skilled handwork, and we're so sure the suit will wear that we guarantee it.

You can choose from more than twenty single and double-breasted models. Made for us by an organization whose entire business is Serge Suits—Blue, and Gray and Brown, too.

Modern specialization brings you custom quality at an economical price...

\$39.50
Sizes 33 to 50

Thomason Brothers
THE QUALITY STORE
EST. 1904
Main St.—Spearman