

# THE SPEARMAN REPORTER

NINETEENTH YEAR

Spearman, Hansford County, Texas, February 24, 1927

NUMBER 11

## A Vote for Spearman Is a Vote for Decency and Good Government

### A BATHING POOL NOW A CERTAINTY

Lamond and Nickens Behind Move to Furnish Spearman and Vicinity a High Class Bathing Place

Spearman will have a place to "cool off" during the summer months. Messrs. Lamond and Nickens this week begun the construction of a bathing pool, located in east Spearman. These gentlemen have been working on this proposition for several months, and have at last secured the location, and actual construction of the pool was begun on Wednesday morning. Mr. Nickens made a trip to Oklahoma City last week to gather information in regard to conducting such a business; how the water may be kept clean and fresh at all times, etc. The place will be electrically lighted and will be conducted in a high class manner. It will afford the people of these parts much wholesome amusement.

#### P. T. A.

The last meeting of the P. T. A. was well attended by parents and teachers. The subjects under discussion were good and indeed very interesting. There were several short talks made of the subject "The Love of Good Books," and how children may acquire it. Miss Lazlier and Mrs. W. D. Cooke discussed the movie subject. Miss Lazlier gave a talk from the view point of the advantages of the movie educationally. Mrs. Cooke presented the disadvantages of the movies. Both of these were good, and the disadvantages presented by Mrs. Cooke were splendid. It is indeed a great misfortune that all the parents of the town and community were not present to hear this excellent talk.

Everyone is invited to come out to these meetings and take a part. The next meeting day is Friday, February 25 at 3:30. The program is as follows:

- Song
- Association
- Invocation
- Special Music
- Business
- Theme—Our Library; what we have and what we need—Miss Rouse.
- The Value of a Good Library—Earl Smith.
- Adjournment.

### VALENTINE SOCIAL AT LIEB

A goodly number of residents of Lieb and young people from surrounding communities assembled at the school house about eight o'clock and had an enjoyable occasion celebrating St. Valentine's Day.

The entire evening of the entertainment was under the management of Miss Ruth Wiggins, teacher of the school. The pupils rendered a well arranged program, which showed that they are diligently applying themselves in their work. Many readings were given featuring a reading given by Miss Wiggins. Then the closing number was a reading by Allen Womble.

Immediately after the closing of the program there was much excitement over the sale of a jar of sour pickles to be voted for the most love-sick man. Marshall Chisum and Ralph Forester were the candidates and ran a very close race. After great enthusiasm and much electioneering had been demonstrated, Marshall won and was awarded the pickles on behalf of his honor of being the most love sick man. The money for this will be used for track-meet needs.

The evening was then turned to more merriment by playing lively games that were specially arranged for the occasion. Mainly featuring St. Valentine's fortune telling and the running of sack races of which Willie Ray Gay was the winner and received a box of candy hearts as a prize. Delicious popcorn balls and apples were served, then the happy crowd adjourned expressing their "good times" to Miss Wiggins.

Mrs. Willis Lackey and children, of the Lieb community, were shopping in Spearman, Saturday.

ON and Mrs. S. Walsh Franklin and son, were here from Goodwell today, visiting with old friend.

### PROPAGANDA

The county seat election in Hansford county is near at hand. It is but natural to suppose that during the last few days of the campaign, all sorts of stories will be put in circulation by the powerful outside interests that seek to locate the county seat of Hansford county on a section of raw land. The supposition is that later this land will be sold out as town lots. The people of Hansford county—in every nook and corner of the county—are anxious to see the county develop. They are equally anxious to see it develop along correct lines. Better far a slow, steady, substantial growth, than the mushroom, speak-easy, dance hall, "whoop-em-up Bill" sort, is the opinion of the farmer-stockmen who have developed this section. The voters of Hansford county should be slow in being influenced by the last-minute campaign propaganda. Promises are easily made, but not always so easily fulfilled. Self-styled community builders should be judged by their true worth. A town, community or country is much better off without than with many institutions, if such they could be called. Beware of the individual, firm or concern that comes to you at the last minute with tempting promises and glittering outlines of future greatness.

### CAPON DAY

Tomorrow, Friday, February 25, is Capon Day in Spearman. Capon raisers will bring their birds to town that day and sell the same all in one bunch. This will insure the capon raiser the very highest price for his birds, and will result in much good to this particular branch of the poultry raising industry. Friday will be a busy day in Spearman.

### TOBACCO AND COLLEGES

There is a direct association between smoking in colleges and low scholarship, declares President Arthur Morgan of Antioch College in the Woman's Home Companion. "Antioch's men students last year," he says, "were about equally divided between smokers and non-smokers, but of the 23 men who dropped from college for low scholarship 20 were smokers. Among men students having the lowest grades at college there were five times as many smokers as non-smokers, while among men with the highest grades there were four times as many non-smokers as smokers."

### WILL MEET TO DISCUSS DAIRY CATTLE DEAL

County Agent Will Meet With All Interested in Bringing Good Dairy Cattle to This Section

County Agent Sam W. Martin is asking that all farmers, dairymen and others interested in the project of shipping several car loads of good dairy cows into this section, meet with him at the chamber of commerce offices, Spearman, on Saturday afternoon, February 26, at 3 o'clock. This meeting will be an important one, as the details of the proposition of bringing these good cows here will be thrashed out. The C. of C. is behind this move, which will involve the expenditure of something in the neighborhood of \$25,000. It will afford the farmers of this section an opportunity to own one or more good milk cows and to pay for the same with milk and butter. The C. of C. does not anticipate making a profit on the cows. They will be sold to the farmer at exactly cost. The object is merely to help those who need it, to get a start in the milk cow business and to see that they are started right—with the right kind of cows. The C. of C. is working for the good of all. The great development coming to this section has created a market for dairy products at our very door, and it is to the interest of every farmer to own a few good milk cows.

## Think Well Before Voting!

By GEO. M. WHITSON

On the 5th of March, 1927, the citizenship of Hansford county will again be called upon to exercise their rights of franchise in a matter of vital importance not only to the people residing within her borders today, but to her people during the generations to come—of vital importance to her welfare because the selection made at this coming election will in all probability definitely and finally decide the future location of the county seat of Hansford county. Were it left alone to our people to make this selection we could without difficulty get together in a spirit of friendship and readily solve the problem, but unfortunately at this time there are other interests injected into this controversy.

We conceive it to be the right and duty of every qualified voter in this county in the coming election, not in general elections, to carefully consider the question of individual interest in casting his or her vote in settlement of the question at issue. Manifestly the location of a county seat as to public conveniences, its railroads and other transportation facilities, are matters of much concern. We have no word of censure for the citizen who resides on either side of the Palo Duro canyon, it makes no difference whether his home is in Spearman and vicinity, in the Grand Plains territory or elsewhere. Let us forget past grievance and with an eye single to our own welfare and the families we represent, calmly and deliberately consider and cast our votes accordingly. Surely we can not find fault with one another for exercising this God given right of self preservation, and then after an honest election and a square count of the ballots cast, we will have a consensus of opinion reflecting the will of the majority—an election with a LEGAL majority clearly indicating the greatest good to the greatest number. With such an election all should be satisfied and no one would have just cause to complain.

If we have qualified voters who have no interests at stake either affecting themselves or the families they represent, then before you cast a vote that will definitely fix the county seat of this county for years to come, we would respectfully invite your consideration to the proposed location of your county seat at Spearman, a city of homes, churches, schools, actually constructed railroad and other transportation facilities, streets in the process of paving, water, electric lights and other public conveniences, built by her people and the pioneers of Hansford county. She clearly has the call. Why not reward the fruits of honest toil by casting your vote to locate the county seat of Hansford county in Spearman and thus assist in the building of at least one city on these plains, rather than tear down by casting that vote to let your county seat remain without public conveniences in Palo Duro canyon or on the plains beyond where certain promoters tell you they are going to build a railroad.

The bell sheep of that bunch will soon be in your midst to tell you what they propose to do. Likewise he promised the people of Spearman and vicinity that as soon as the right of way for the Rock Island railroad from Amarillo to the Canadian river was located, the grade stakes set, cross sections and the necessary figures made for contracting purposes, Mr. Adams, in charge of the surveying party in this section, would run survey from the Antelope creek crossing of the Canadian river, northeast through Spearman and upon a more direct route to Liberal, Kansas. Since that promise was made preliminary survey No. 1 from Stinnett north to Liberal, Kansas, through the proposed townsite, has been made, upon which you will be asked to locate the permanent county seat of Hansford county. Later newspaper reports in a measure confirming the authority quoted above are to the effect that the next preliminary survey made by the company will be from Meade, Kansas, through Beaver City, Oklahoma, and Spearman, Texas, to Stinnett, Texas. Upon the authority of dependable Rock Island officials it may safely be stated that the final location and eventual construction of this line of railway will depend on directness, grades, maintenance, and available tonnage, and that these essential factors in the construction of this line of railway have not yet been fully determined. Incidentally it may be said that these outside promoters who, with a blare of trumpets and much oratory will soon appear to disturb the peace and quietude of Hansford County citizenship, will not remind you that "promises, like pie crust, are easy broken." That all over this country there are surveys and even grades constructed upon which no steel is laid; that bonds have been voted, sold to innocent parties and eventually paid without construction of the line of railway for which they were voted. Will intelligent voters of Hansford County cast their votes to locate a county seat where the only safe conclusion to be drawn is that it will enable its chief promoters to rake in a few hundred thousand dollars from the sale of townsite lots and services rendered?

You will recall that the same promoters who recently pulled off the county seat election in Hutchinson county were interested in moving the court house in Plemons to an improvised court house in Stinnett the night of the election and now have a contest on their hands, are the chief promoters of the plan proposed to locate the county seat of Hansford county at Gruver. What steps will our peace officers and election officials take to forestall a similarly contested election in this county? Surely regardless of faction they will take every legal precautionary measure to insure an honest election and a fair count of ballots. We can spend more time and money on a uselessly contested election than it will take in this generation to pay interest on court house bonds and into the sinking fund to retire them.

Wherever the county seat is located the progressive and patriotic citizenship of Hansford county will demand a court-house, but it should be remembered that it is the voters of the county and not the voters of the particular town in which the county seat is located who will decide the cost of construction. So why not cut out the subject of taxation at present. Vote for your own interests in determining its location.

In conclusion let us appeal to our friends and neighbors and to voters of Hansford county "to set steady in the boat" and not be disturbed by the vote getting propaganda to be put forward before election. We have pioneered together; have endured hardships together incident to frontier life in the settlement of a new country. Let us not be deceived by outsiders who would coin fortunes at the expense of this people, but with an eye single to our own personal welfare, vote for the continued growth and development of Hansford County.

### RAILROAD TALK IS CAMPAIGN THUNDER

Perhaps never in the history of the country has there been so much high-powered propaganda put out regarding railroad building as is being fed to the people now, concerning the proposed new Rock Island Railway from south of the river to Liberal, Kansas. As the situation is now: The road is graded to the location of a new town called Fritch, about three miles south of the river, located on a high bluff opposite a point about halfway between the mouths of Blue and Big Creeks, and the steel laying is just beyond the town of Deal, at Antelope Peak. No permanent survey has been made north of the river, neither has a right of way been secured, save perhaps a mile through the town of Stinnett. The permit from the I. C. C. calls for a line along the route of Kit Carson, or Big Creek, and the Santa Fe will probably protest any divergence from that line. A new permit will be necessary before anything can be done toward changing that line. No work on a temporary bridge has been started and no material is on the ground, neither has any right-of-way been secured at the site of the crossing. Promises were solemnly made last summer that the road would be in Stinnett by the middle of January or the first of February at the outside. It is that time now and no move has been made to secure a permit, get the right of way or even make a permanent survey. June the 1st is now their new date, but as people have been fooled once by smooth liars, they are perfectly justified in refusing to swallow any further statements unless some facts can be shown to warrant it. We need the Rock Island road, but we can certainly get along without all this crap interested men are putting out. A newspaper that permits its columns to be used for the purpose of spreading false statements that will cause its readers to be taken in by clever schemers, and despoiled of their money, is unworthy of the confidence of the public and should be closed for what it is. The News will be glad to keep its readers informed on the progress of the Rock Island and when a definite move is made toward crossing the river our readers will hear of it—Hutchinson County News.

### IMPROVING SLOWLY

F. C. Wilmeth, who was stricken with paralysis on Tuesday night of last week, is slightly improved today, but is still in a serious condition. He is at the Spearman hospital, under the care of Dr. Gibner. Mrs. Wilmeth came from their home in Colorado Springs immediately after being notified of Mr. Wilmeth's illness. The family believe that Mr. Wilmeth is improving slowly, and that he will eventually recover.

### BASEBALL CLUB IS ORGANIZED

Enthusiastic Meeting Held on Friday Night of Last Week; Another Will Be Held Tomorrow Night

Baseball fans are looking forward to an interesting season for the Spearman club this year. An organization was perfected on Friday night of last week, and steps toward the building up of a winning team for this town are being taken. At the meeting on Friday night of last week, the general management of the club was placed in the hands of C. P. Ellis and Berlin Barbour. These gentlemen are beating the brush for players, and are also looking into the matter of moving the ball park from the east side to the north side of town. Whether this change will be made will likely be decided at tomorrow night's meeting. Interest in baseball was never better in this town than at present. Prominent business men have promised assistance in every way, provided a real club is built up, and first class baseball is played. It is the intention of the managers and those interested to deliver the goods along the e lines. If you are a fan, don't miss the meeting Friday night, at the Chamber of Commerce offices.

Don't overlook the Dollar Day bargains at Thomason Bros., Saturday, February 26.

### BIG SALE IS NOW ON AT P. M. MAIZE & CO.

One of the Most Spectacular Events in History of Merchandising in Spearman, Opened Wednesday

There is something doing every minute around the big store of P. M. Maize & Company, Spearman, these days. This firm has placed on sale their entire stock of dry goods, clothing and shoes. The sale will continue for ten days, and judging from the crowds attending, it will amount to almost a complete clean-up. The Daugherty Sales Company of Chicago, have the sale in charge. Goods are marked in plain figures, and there are no misunderstandings or deviations. It seems to be a real sale from every angle, and is bringing results.

### BASKET BALL TEAMS AT TEXHOMA TUESDAY

The Lynx boys' and girl's basket ball teams of the Spearman high school, visited Texhoma Tuesday night of this week, and played two good games with the school teams of that town. The games were interesting, and greatly enjoyed by a large crowd of fans. Several car loads of Spearman fans went to Texhoma with the Lynx. The girls game resulted in a victory for the Lynx by a score of 15 to 11, but the Spearman Hi boys lost to Texhoma by a score of 16 to 35. The Lynx teams will go to Goodwell today, Thursday, to participate in the big tournament being held at the Panhandle Agricultural and Mechanical College.

### ANOTHER EXPLOSION AT BORGER

Borger, Hutchinson county's largest oil town, has had two disastrous explosions within the last two weeks. The first was a dynamite explosion which rocked the oil town and surrounding country; killed one man outright, injured others and damaged property over all the city. The second occurred Monday of this week, when 2,000 quarts of nitroglycerine in the Independent Torpedo Company's magazine, two miles south of Borger, exploded. One man was blown to bits and another is missing, following the latter explosion.

### CALLAWAY SELLS THE VARIETY STORE

A deal was completed this week by which Earl Callaway sells the Callaway Variety store to C. W. Smith, formerly of Mountair, New Mexico. The stock is being invoiced this week and the new proprietor will take immediate charge. Mr. Callaway has not announced his plans for the future. Mr. Smith will continue the business, and will possibly add new lines to the stock. The new proprietor is an experienced merchant, in both wholesale and retail, and will doubtless continue to make the Variety a very successful enterprise, as has Mr. Callaway. Mrs. Smith and their little daughter have arrived in Spearman also, and the family will make their home here.

Enormous shipment of new spring goods just arrived at Thomason Bros.

Mrs. L. F. Noe and Mrs. J. M. Hart and little son were Spearman visitors, the first of the week.

Mr. and Mrs. Moody Womble were shopping and attending business matters in town, the early part of the week.

Mrs. Chas. McCarter and daughter are here from Amarillo this week, on a visit to Mr. McCarter, who is employed at the Floyd Hays barber shop.

Mrs. Durwood Cluck, and her sister, Mrs. Earl Reynolds, were Spearman visitors, on Tuesday of this week. Mr. and Mrs. Reynolds have just recently returned from California to make their home here.

We will ship a car of hogs from Spearman Saturday, March 5. Those having hogs to sell should arrange to get them here the day before. Will pay within \$1.25 of Wichita, Kansas, market.

SPEARMAN HOG COMPANY.

## Profitable Acres

are acres used for profit-paying purposes

There is only one sane way to assure safety, and that is through Intelligent Diversification.

If this community is to prosper this year, and in the years to come, it will be because of safe plans and wise planting.

CAPON DAY, FEBRUARY 25

## First National Bank

SPEARMAN,

TEXAS

### ORDERS X-RAY

Dr. J. E. Gower placed an order for an X-ray machine this week. It will be the first machine of its kind in Spearman, and will not only be of great value to the owner, but the entire community will be benefited by it. Those who desire it may have their complaints diagnosed by X-ray. This will eliminate having to go to Amarillo or other neighboring towns when in need of diagnosis by this wonderful process. The machine will be installed complete, about the 15th of March.

See the new coats and dresses at Thomason Bros.

S. B. Hale and R. W. Morton were Amarillo visitors the first of the week.

### MISTLETOE CREAMERIES HAVE STATION HERE

R. W. Wilson, representing the Mistletoe Creameries, Amarillo, was in Spearman on Wednesday. While here Mr. Wilson made arrangements with J. M. Cates, of the Cates Grocery Store, located on North Main street, Spearman, to buy cream for his concern. The Mistletoe Creameries is a fast growing institution, and is proving to be a great help and benefit to the dairy business of this section. The cream station at Spearman will be of much benefit to the town and encouragement to dairymen of this community. It insures a certain market and a fair price for dairy products.

Don't overlook the Dollar Day bargains at Thomason Bros., Saturday, February 26.

## The FIDELITY BANK OF COMMERCE

Spearman, Texas

Successor to the Guaranty State Bank

HERE TO SERVE

Capital, \$25,000.00

Bond, \$25,000.00

It SAVES the FARMER'S THRESH BILL

# A Combine that threshes like the Red River Special Separator



Follow a Red River Special Combine in the field and you will see that it does the same thorough job of saving the grain that the Red River Special Separator has done for so many years.

It is built along the same lines that have made Red River Special Separators famous for their ability to get the grain from the straw.

The Red River Special Combines offer the first real improvements in combines since the early days of the combined harvester-thresher.

The Big Cylinder, the Man Behind the Gun, the Steel Winged Beater of the Red River Special Line are there.

More than all that—the Red River Special Combine operates more economically and will last.

Antifriction Bearings, 36 of them, at every main bearing point, make it light running. They are all Alemite-Zerk Lubricated. The fact that Nichols & Shepard put more roller bearings into the machine means that you will not need to put as much gasoline in the engines.

Also—the Red River Special Combine is built with Armeo Ingot Iron—the great rust resisting metal, in the sides, deck and all other sheet metal parts. That makes it still more long lasting. It will stand years of hauling about over rough fields and rough roads.

### A Real One-Man Combine

This Red River Special is also the first combine that can really be properly operated by one man. One man operates it easily and efficiently, from his station on top of the machine. Header Tilting Wheel, Motor, Separator and all other controls are at his finger tips. He can observe all the working parts of the machine, also the condition of the grain as it comes in on the header and when it goes into the tank as clean grain. He works in the coolest and cleanest place about the machine, in full control of his Combine, with everything in sight. As convenient as an automobile and a worth-while saving in labor expense.

**NICHOLS & SHEPARD**

In continuous business since 1845

## Womble Hardware

Spearman, Texas

The RED RIVER SPECIAL Line

### THE POWER OF PUBLICITY

No more striking illustration of the power of advertising and publicity can be cited than the telephone company. Here is a business which the individual who boasts about his "conservative business judgment" would say had nothing to advertise. "If anybody wants telephone service, they know where to get it."

The telephone company has demonstrated the fallacy of such an opinion. Largely as the result of consistently advertising in the American press over a long period of years, it has popularized telephone service in the United States as in no other nation in the world. The people would never use the telephone like they do today, if they had not been continuously "sold" to the telephone idea.

There are narrow-minded individuals who claim that the cost of publicity is not a legitimate expense of public service corporations. Publicity which encourages the widest use of an article is the most potent influence to reduce the expense of that article to the consuming public.

Without publicity, the demand for an article is small and the cost of production is high. With proper publicity, the demand for an article becomes universal and the cost of production drops to a minimum.

That is why Americans enjoy the best public utility service in the world—such companies are consistent users of advertising space. The telephone has proved this fact beyond the question of a doubt.—The Manufacturer.

### NOT ENOUGH WATER

Teacher asked her class if they could compose a rhyme using the word "Nellie." Johnny Jones, being called upon, rose, much embarrassed.

"There was a pretty little girl named Nellie,  
Who fell in the water and wet her little feet."

"Why Johnny, that doesn't rhyme!"

"I know it don't. The water wasn't deep enough."—Taos Valley News.

## NORTH SIDE GARAGE

and FILLING STATION

(Formerly the S. L. Beck Filling Station)

Automobile Repair Work by Expert Mechanics

Only the Best in Oils—Magnolia Gasoline

**McCLELLAN & KENT**

North Main

Proprietors

Spearman



## You buy your coal . . .

for the heat you get out of it. The fact that DIAVOLO coals are not only hotter but last longer, gives you greatest value for your money.

Don't waste dollars on inferior coal. Ask your neighbor who has been using DIAVOLO, all about it.

**SCOTT BROTHERS**

C. H. Ging, Mgr. Elevator Row, Spearman

### CHAMPION AIR VOYAGER

Everybody is interested in world's champions of any sort, yet up to this time no Olympic medal has been hung on the soft gray breast of the Arctic Tern, the bird that executes the longest migration flight achieved by any of the myriads of winged nests.

It is called "arctic" because it chooses the very far north as its nesting ground; indeed, it has been found nesting as far north as land has been discovered. Its tiny chicks are reared amid latent icebergs, bizzards and every other condition that would seem adverse to the rearing of young. One nest of this extraordinary bird has been found within a few degrees of the north Pole.

As soon as the young are fully fledged the tern begins his epic overseas journey, nimbly passing lordly New York, flouting the romantic and alluring shores of Virginia, even passing the Florida River and the aromatic West Indies, following the immense length of the South American seaboard down to the distant Falklands and the Antarctic Circle, where it delights to spend out winter, tirelessly skirting the frigid edges of that lone and disastrous region. This Odyssey of migration represents a flight of 11,000 miles.

Of this remarkable air voyage no man speaks with more authority than Wells W. Cooke, expert on bird migrations of the Biological Survey. "The arctic terns," he says in the American Magazine, "arrive in the far north about June 15 and leave about August 25, thus staying fourteen weeks at the nesting site. They probably spend a few weeks longer in the winter than in the summer home, and this would leave them scarcely 20 weeks for the round trip of 22,000 miles. Not less than 150 miles in a straight line must be their daily task, and this is undoubtedly multiplied many times by their zig-zag twistings and turnings in search of food."

"The tern has more hours of sunlight and daylight than any other creature on the globe. At its most northern nesting site the midnight sun has already appeared before the bird's arrival, and it never sets during their entire stay in the breeding grounds. During two months of their sojourn in the Antarctic the birds do not see a sunset, and for the rest of the time the sun dips a little below the horizon and daylight is continuous."

### THE TROUBLERS ARE THE TROUBLED

(By Dr. Frank Crane)

A sentence worth pasting in the proverbial hat and remembering is: The troublers are also the troubled. Those six words explain a lot in life. They help give perspective to the irritations of the day.

In the schoolroom the children are hard to manage who cause most of the trouble are the ones who are troubled themselves—who are in some sort of ill health, who have poor home environment, who are unhappy.

In large families where one child occasions most worry than other children, it is usually due to poorer health or more highly strung nerves.

Ill health of some sort is the secret of most of the cantankerousness of childhood.

Among grown-ups the trouble makers are also the troubled.

The criminal class is, almost without exception, composed of those who are physically or mentally sick.

The jealous husband or wife is a trouble maker who is troubled. He lives in constant torment himself, tortured by his doubts and suspicions.

The cruel are often those who themselves are tormented by fear.

The sarcastic, cutting tongue often indicate inward wounds that have never healed.

Dyspepsia and constipation are responsible for a large share of ill humor in the world.

The braggart is troubled with a secret of being inferior, the surly person hides behind the mask of his sensitive timidity, the irritable person has nerves stretched to the breaking point. The nagging woman is usually worried, nervous, overworked.

Socrates' famous sentence: "The men and women who are gentle and good are also happy and the unjust and evil miserable," derives much of its truth from the obvious fact that the happy are usually gentle and good, the miserable unjust and evil.

Dr. Morris Fishbein: "When a woman discovers a lump in the breast she should go at once to the best possible physician and should follow his decision. At present there is no treatment for tumor of the breast except early diagnosis and prompt surgical removal."

Chinese women of Hong Kong have organized a women's rights society.

### WHAT'S NEW

Several large passenger ships carry a telephone exchange connecting every part of the vessel.

A new electrically-driven life-bouy enables a rescuer to reach a drowning person quickly.

It is planned to build in England a vessel 1,000 feet long, the longest now being the Majestic, 915 feet.

A new automobile rear stop light flashes rapidly when the brakes are applied.

Patents have been issued for a new German process for photographing in natural colors on paper.

Silk worm cocoons are now killed by gas, instead of heating or steaming.

Experiment in the production of a smokeless fuel from soft coal are being made in Virginia.

### CURING AWKWARDNESS

(Ethel G. Peterson)

Johnny was a bit shy, and more than a bit self-conscious. As a consequence, he was awkward as a puppy at almost everything he tried to do. If he passed a dish at table, he inevitably spilled some of its contents. If he wiped dishes he nearly always dropped one before he was through. He could not be trusted to hand sandwiches around at a party, for sooner or later they would land on the floor.

Mother—quick, efficient, capable was mortified that a boy five years old should do such senseless things. So she scolded: "Why don't you watch where you are going?" "Do be careful now, you're going to spill that!" She did not realize how sharp her voice was, nor how her rebuke hurt the boy's sensitive soul.

Johnny grew more and more awkward. He dreaded the thought of doing things when Mother was around—if she wasn't there, things somehow seemed to go better. He would start and drop whatever he was holding if Mother entered the room.

The Cousin Kate came to visit. She and Johnny were pals from the start, for she understood and loved boys. She saw that Johnny acted nervous when his mother came in where he was playing, and that he seemed reluctant to do small services for her. Yet he was a loving little chap, and flew to obey her own bequests.

Quietly, she studied the situation. One day Johnny himself gave her a clue by saying, "Cousin Kate, I try so hard to do it right for Mother, but she always says, 'Now be careful,' and then I spill things."

The next morning Cousin Kate had a heart-to-heart talk with Johnny's mother, in the course of which she persuaded her that she had unconsciously been instilling fear into her small son's heart. He wanted so much to please her, and that very fact made him nervous. Then her constant warning before he did anything, and her fretful comment on an accident: "There, I just knew you'd do that. You are the most careless boy!" completed his discomfiture.

Cousin Kate induced Mother first

to change her thought about her little son, to feel that he was going to do the right thing. Then she was to pay less attention to him. She would walk away, or turn and look out of the window after she had asked some favor of Johnny, anything to make him feel as though he were doing it "on his own." If sometimes there was a break or spill, she was to treat it in a matter-of-fact way and say, "Oh well, it isn't anything very dreadful; next time you'll do it right." And when things did go right Mother was to overpraise a little.

So it happened that within a few months Johnny had very nearly lost that nervous dread—that expectancy that nervous dread—and had acquired a new ease of action and confidence in his own ability. In other words he had lost his "inferiority complex."

### SUCH IS LIFE

As I walked among the paths one morning plucking flowers, I found, in the yellow heart of a lady-slipper,

a little brown bee. My first impulse was to take him out of his honeyed alchove, but as I looked at his velvety body and sunlit rainbow wings, a feeling of foolish tenderness surged over me. Perhaps there were baby bees at home that would starve if papa bee did not bring back honey, and how useful the little creature was, carrying the pollen from flower to flower—so I moved on, leaving him unmolested. But even as I turned away, thinking these pure sweet thoughts, the darned thing stung me.

### A SLIGHT MISUNDERSTANDING

"Now that you've seen my son and heir," said the proud young father, "which side of the house do you think he resembles?"

"Well," said the astonished bachelor friend, "his full beauty isn't developed yet, but surely you don't suggest that he—er—looks like the side of a house, do you?"

Send The Reporter to a friend.

## Barred Rocks BABY CHICKS

PURE SILK IN THE SHOW ROOM  
PURE GOLD IN THE EGG BASKET

For a number of years they have proven themselves to the public, in some of the best show rooms in Texas and Oklahoma, that they are "Pure Silk," as the name implies. If you are from Missouri, and must be shown come to my roosts and they will show you that they are pure gold in the egg basket.

You may buy a suit of clothes made of inferior cotton for \$10. When worn a few times, what does it look like? No, you wouldn't buy it. You would pay from \$30 to \$50 for a suit made of some good material that would give you service as well as looks. There is just that much difference in a "Pure Silk" chick and the common 10c ones.

Beginning in March I will sell a few "Pure Silk" baby chicks each week, at 25 cents each. These chicks will be hatched right here at home by an expert. Twenty five per cent cash will book your order. Only a limited number will be for sale. There will be "blue ribbon" chicks in these hatchings.

**W. L. DAVIS**

BARRED ROCKS

SPEARMAN

TEXAS

# Look for the Marland Red Triangle



YOU see it everywhere . . . in the cities . . . towns . . . on the roads . . . The Marland Red Triangle. Have you ever stopped to think that this simple yet effective messenger was a part of the complete Marland Service to you?

stands as our pledge to you that those products and that service are all we claim for them.

It says to you in effect that Marland Super Motor Oil is the product of the Marland Refining Company; that it is a dependable, quality product; that we stand back of it to give you the best of service and that you can use it in your motor with every assurance of satisfactory service.

Not only does it mark the points where you get Marland Products and Marland Service but its also marks the way to find them. Then too, it

**MARLAND SUPER OILS**  
MARLAND REFINED UNDER EXCLUSIVE PATENTS

Heinz "57" Pickles and Relishes

Del Monte Canned Fruits

Idaho Potatoes \$3.50 per 100 lbs.

# Groceries

"Quality Without High Price"

Fresh, high-grade groceries attractively displayed. Let us help you plan your daily menu. We are here to serve you in any way possible with eating problems.

## The Economy Grocery

Next Door to P. O.

We Appreciate Your Patronage

Spearman, Texas

### CAPON DINNER

A Capon dinner will be served on Capon Day, February 25.

### CITY AFE

Everything Good to Eat—A Place Where You Feel at Home  
GEO. N. REED EAST SIDE MAIN—SPEARMAN

### See us for Bargains

Be brave and tell your father  
If you hack his cherry tree  
But our advice to you is  
You better let it be;  
That boy George was lucky  
That his father was not sore.  
If you would be as lucky  
Trade at Burran Bros. Store.  
(Copr. 1925 Adam Brown Busters)

### BURRAN BROTHERS

WE DELIVER

PHONE 71

#### THE PROBLEM SOLVED

When cotton's low and cats are high,  
it appear to me to diversify  
Would be a sane and easy way  
To bring about a better day.  
With butter at fifty cents a pound,  
And cream at forty the whole year  
round;  
With turkeys high and going higher,  
is enough to kindle a great desire  
To raise more birds and a little less  
hell  
In a land where opportunities dwell.

If we'd give more time to the dairy  
cow,  
And a better feed to the old brood  
sow,  
We'd not worry about the price of  
meat,  
For we'd have plenty ourselves to eat.  
With fifty-cent eggs and a six-bit  
hen,  
Why, oh why, will the children of  
men  
Ruin their fingers and break their  
back  
Picking eleven-cent cotton and drag-  
ging a sack.

With corn in the crib and chickens  
in the yard,  
With meat in the smoke-house and  
tubfuls of lard,  
With cream in the pitcher and honey  
in the mug,  
With butter on the table and 'lasses  
in the jug,  
Things to you won't seem so high,  
For you'll be selling—won't have to  
buy.

Now stop that grumbling, for the  
fault's your own.  
You expect to reap where you have-  
n't sown.  
If you stay at home and help your  
mate,  
Others then you won't berate  
And you'll live in Paradise,  
This to you is my advice.  
—W. E. Lewis, Celeste, Texas.

Brownfield—A second centrifical  
pump has been installed in the big well  
here, located within about ten feet of  
the water. Each pump has a 250  
gallon per minute capacity. The  
water system is now adequately pre-  
pared to equal any emergency.

Robert Lee—C. C. Holder of  
Bronte has purchased the Robert Lee  
Ice Plant. He will erect a 25 x40  
foot stucco building with drive-in  
front for the conduction of business.

Start those baby chicks right. We  
have Purina Startena in 25, 50 and  
100 pound bags.  
R. L. McCLELLAN GRAIN CO.

was locked in high gear. The diffi-  
culty of driving may also be gleaned  
from the fact that there were actu-  
ally 76 hours of driving in darkness  
to 44 hours in the daylight.

The car was driven by C. Pritchett,  
with W. T. Dooscher acting as relief  
pilot as well as official observer rep-  
resenting the A.A.A.

#### PONTIAC MAKES MOUNTAIN RUN IN HIGH GEAR

Sealed in high gear, with motor  
running continuously, a stock Pontiac  
Six two door sedan recently com-  
pleted a continuous 120 hour economy  
and endurance mountain run in the  
northwest Pacific coast section. Dur-  
ing this run, it averaged 26.2 miles  
to the gallon of gasoline.

The car was sent out by the R.  
Knox Roberts Motors, Portland, with  
Salt Lake City, Utah, as its objective,  
the round trip distance being 1,948  
miles. Of the 120 hours non-stop  
trip, 34 hours and 20 minutes were  
occupied by the car standing with  
motor idling, while the actual driving  
time was 85 hours and 40 minutes.  
Of the 91 gallons of fuel used on the  
run, 17 were required during the  
time the motor was idling and 74  
were used in propelling the car. Ac-  
curate measurements were taken be-  
fore and after, as well as during the  
trip, so that the actual average of  
26.2 miles to the gallon was gauged  
most accurately.

Approximately 900 miles of the  
trip were made over ice-covered  
roads, while rough roads of sticky  
mud prevented anything but slow  
progress in Idaho and Utah. In the  
Blue Mountain of Oregon, the Ponti-  
ac reached an elevation of 4,330 feet  
and in the Utah range, 5,700. Grades  
in these ranges were from 5 to 15  
per cent.

When snow and ice were encoun-  
tered in the mountains the car had  
to be handled with utmost caution, as  
the assistance ordinarily derived  
from second or low gear was denied  
the drivers because the transmission

# PRICE LIST for Chicks

TERMS:—twenty-five per cent cash with order; bal-  
ance when you get the chicks.

Leghorns	13 Cents
R. I. Reds or Whites	14 Cents
Orphingtons, Rocks, Wyandottes and Langshangs	15 Cents
Mixed	10 Cents
Custom Hatching, per egg	04 Cents

We buy our eggs from the best range flocks in the country.

We can get you chicks from some of the best penned flocks in the country for a little more money.

We are also agents for the "Sol Hot" brooder. Let us show you why it is the best brooder money will buy.

## THE SPEARMAN HATCHERY

J. N. GALES, Manager

### MAMMOTH BUCKEYE INCUBATOR

El Dorado—Eight miles of road  
south of here, the only bad stretch  
remaining in State Highway No. 30  
between San Angelo and Sonora, will  
be regarded, raised and its worst  
spots filled with caliche, this month.  
The work on the road will require  
about two weeks.

### Big Healthy Chicks

From my big, electric incubator are bringing a great demand. I am now forced to double my capacity. I will have a custom Hatch capacity of about 5,000 eggs per week, or a full capacity of 10,000 per week. "Big Helthy Chicks and Plenty of Them" is my motto. My customers must be satisfied.

### The Guymon Hatchery

L. VANDERHOOVEN, Manager  
Guymon, Okla. Phone No. 74

## CHOPS

Lamb Chops of your choice make such an appetizing dish for breakfast, dinner or or supper. Easy to prepare in a number of different ways.

Everything in Fresh and Cured Meats.

## The STAR MARKET

Phone No. 38 KIKER & FAUS, Prop's.

### BULK GARDEN SEED

We have just received our shipment of FRESH BULK GARDEN SEED

You should come in at once and buy your seed before we get sold out of some kinds you need. If you bought your seed from us last year, you need not be told of the QUALITY which we have. If you ordered your seed, we can save you some money and sell you better seed this year. We have also ordered our first shipment of

BERMUDA AND CRYSTAL WAX ONION PLANTS which will be in at once. We sell these also, cheaper than you can order them. Get our price.

## SNIDER PRODUCE

SPEARMAN, TEXAS  
Bulk Oats for Chicks—Tannage for Hogs and Hens  
IOWA SEPARATORS FOR BUTTERFAT

# Stop-Look-Listen!

American railroads are the safest in the world to ride on. They are safer than any other kind of transportation. But you can make them even safer by being more careful. The welfare of yourself and family may be involved.

The railroads are making a vigorous effort to reduce accidents.

Won't you help?

You can help in many ways and especially by observing these ten don'ts.

~ ~ ~ ~

**DON'T** cross railroad tracks, either walking or driving, until you stop and look in both directions, whether view is obstructed or not.

Stop—look—listen!

**DON'T** try to cross tracks in front of an approaching train. It pays to wait.

**DON'T** cross a track after a train has passed, until you have made sure no train is coming from the opposite direction.

**DON'T** walk or stand on railroad tracks. If compelled to walk in railroad yards, avoid walking between the rails of any one track. There is usually room between the tracks.

**DON'T** let your children play around rail-

road tracks or trains. Teach them to play elsewhere.

**DON'T** get on or off a non-passenger freight train, or crawl under it.

**DON'T** attempt to get on or off a moving passenger train. Wait until it stops.

**DON'T** be careless when stepping on or off a standing passenger train. Watch your step.

**DON'T** stand on platforms of passenger cars. It is safer inside.

**DON'T** place hand or arm in an open window. The window may close unexpectedly.

**Two-thirds of all railroad accidents** are incurred by persons going on railroad tracks without stopping, looking and listening.

You share in the responsibility for these accidents.

Your co-operation means greater safety.

W. B. STOREY, President  
The Atchison, Topeka and Santa Fe  
Railway System

## Buy Real Estate NOW

The best market for real estate, for investment, is NOW. Take advantage of it before the spring building season opens. Property values are now at figures presenting an unusual opportunity for both investor and home builders.

Consult Us for Prices and Terms

Oil Leases

:-:

Royalties

**J. R. COLLARD**

Insurance of All Kinds

Real Estate

Mortgages

Loans

Insurance

### The SPEARMAN REPORTER BY ORAN KELLY

\$1.50 PER YEAR IN ADVANCE

Entered as second class matter November 21, 1919, at the post office at Spearman, Texas, under the act of March 9, 1879.

**ADVERTISING RATES:** — Flat rate for plates, 25 cents per inch. If composition is required, 5 cents per inch additional.

Reading notices, 10 cents per line. Recognized agent's commission, 15 per cent; cash discount, 2 per cent.



One of the lessons which history inculcates with strongest and most reiterated emphasis is this: that by no conceivable ingenuity of legislation or vehemence of proclamation can you ever make a sound society out of unsound individuals.—John Fiske.

#### RADIO AND THE BIBLE

"One thing the radio is doing is to get a lot of people better acquainted with the Bible," declares John S. Daggett, broadcasting pioneer and director of Station KHJ, Los Angeles, in an interview published by the American Magazine.

The favorite Scripture reading with radio audiences, he says, is the Twenty-third Psalm. Not long ago a man wrote to Mr. Daggett asking him to have someone read this passage.

"I've heard a lot about it," wrote the fan, "but have never actually heard or read the Psalm itself."

That evening Mr. Daggett had the Psalm read, and almost before the reader had concluded the man who had made the request called in on the station telephone:

"I'm the guy that asked to have the Twenty-third Psalm read," he said. "Say, I wonder if it'd be asking too much to ask you to have it read again? I think it's the prettiest thing I ever heard in my life."

#### ROOSEVELT ON LABOR

"Surely the willfully idle need arouse in the breast of the healthy man no emotion stronger than contempt, at the outside, no emotion stronger than angry contempt."

"Besides each one of us working individually, all of us have got to work together. We cannot possibly do our best work as a nation unless all of us know how to act in combination, as well as how to act each for himself."

"In the long run, it is not in the power of any outside force to lower

the standard of living of the American working man, unless the American working man does it himself. If the wage workers show farsighted prudence in their combinations, industrial and political, their ultimate welfare is assured.

"Let us strive to make the conditions of life such that as nearly as possible each man shall receive the share to which he is honestly entitled and no more."—From public speeches of Theodore Roosevelt.

#### WHY RED FOR DANGER SIGNAL

People have sometimes wondered why danger signals on railroads are red. Why do they put up a red light on a switch stand instead of some other color to indicate that the switch is open? Many explanations have been given, such as the common one that red, being the color of blood, is the natural danger signal. But the real reason, as given by Harry A. Stewart in the American Magazine, is quite commonplace.

White lights were barred, of course, because the engineer might mistake the light in a window or a street light for a signal. Red was chosen because the red rays are less easily obscured by fog or smoke than any other color (except white) and can, therefore, be seen farther under adverse conditions. The red beam has 40 per cent the intensity of white light; green has 25 per cent, and violet is still lower.

As it is important that the danger signal be visible at the greatest possible distance and as the red beam has the greatest intensity of any of the colors, it was chosen for the danger light. Green on the railroad is the safety light.

#### DOWN WITH THE TWO-THIRDS RULE!

The strong demand from the ranks of the Democratic party for the abrogation of the two-thirds rule may lead some to wonder just how the trouble-making rule came into existence and just how the party can proceed to get rid of it.

Contrary to the belief of many, the two-thirds rule was not wished on the party by the National Committee. It was adopted by majority action in the National Convention of 1832. It can be abrogated by majority action now, and in no other way.

But while the convention has full authority over the two-thirds rule, there is grave doubt whether the national convention could abrogate the unit rule.

However, there is now under consideration a proposition that will virtually do away with the unit rule. This can be brought about by an agreement that after ten ballots have been taken without results the low man shall be dropped on each succeeding ballot.

A bill before the Wyoming legislature would authorize the use of public funds for advertising the state.

#### MOVING THE CAPITAL

Since poor old Hansford was left off of the itinerary of the Santa Fe when it built its North Plains line, the town has shared the fate of many similarly situated. A railroad company is not influenced by romance or historic sentiment and, where it is possible to do so finds it much more profitable to lay out a townsite of its own rather than to run its lines through towns already established. So, when the Santa Fe decided to miss old Hansford and start the town of Spearman, almost the entire population moved houses and all across the few miles intervening. There is now very little left except the courthouse and such being the case it became necessary to move the seat of county government to a more convenient location. With that end in view the people of Hansford county have called an election to be held next Saturday, March 5, when they will vote on the proposition.

Without doubt, the logical location for the county seat is the splendid little town of Spearman. It is now well established and has made a strong and substantial growth. It has behind it an agricultural country of wonderful potentialities, and that, after all, constitutes the only solid foundation upon which to build a city. It has a citizenship composed largely of the sturdy pioneers who faced the hard and hazardous frontier life on the plains and who have surrounded themselves with good homes and schools and churches in their chosen place of residence.

Spearman is the largest town in the county and is located in the most thickly populated section in addition to being on a railroad, making it the most convenient location and altogether the most logical candidate for the honor to which it aspires. Its people are settled, law abiding citizens, with a strong civic pride and a firm abiding faith in their town and country—such qualities as assure a new-comer protection and security as well as a pleasant environment and congenial business and social relations.—The Southwest Plainsman.

#### THE WEEK'S BEST STORY

Although we regret that the identity of the parties cannot be revealed at this time, the following story is too good to keep. One evening recently when a prominent member of the school board, who enjoys nothing more than a good joke, arrived at his home in the northeast part of the city, and saw the bottle of milk which the milkman had left on the front porch, he looked so good he decided to have a drink. So he helped himself to a generous glass, but not wishing to cause his good wife to have to skimp the rest of the family the next morning he quietly filled the bottle to the top again with water and set it back on the porch.

Presently the son, a stalwart athlete and the leading member of the high school basketball team, came home. Unaware of what had happened before his arrival, he also had a glass, filled the bottle to the top again with water and returned it to the porch.

Next morning when the good housewife exclaimed as to the poor quality of the milk, both dad and son agreed that the proper thing for her to do was to speak to the milkman about it. Now that the story has leaked out, they are trying to conceal their identity until the family cow is fresh again.—Liberal News.

#### NOTICE

All consumers of electric current will please call at the Company's office, located in plant building, and settle their accounts on or before the 10th of each month.

THE INLAND UTILITIES CO.

Read the Reporter.

# SPRING FOOTWEAR

SHOES--for every member of the family

You will find a shoe your feet will like in our spring line. Our footwear is both sensible and smart—full cut from the best leather, they combine both style and comfort. Treat your feet to a pair.

LADIES HATS, HOSIERY and GLOVES—three very important items, in styles and quality that will please you.

Car of Kansas Expansion Flour Just Received. Try a Sack and You Will Be a Regular Customer.

Peters Shoes for the ENTIRE FAMILY

**W. L. Russell**

Dry Goods and Groceries

Phone 78

SPEARMAN

The Famous Phoenix Hosiery \$1.50 up

# Stinnett

THE COUNTY SEAT OF HUTCHINSON COUNTY

We are extending every effort to make STINNET the leading town of the North Panhandle, and want every one to co-operate with us in building a city here.

Stinnett is a substantial town, founded by substantial people and backed by substantial men.

This is the first officially designated town on the Rock Island, now under construction between Amarillo and Liberal, Kansas.

Lot Sales Now Amount to Over \$300,000.00

The industrial offices of the Rock Island now have on file over 60 applications for industrial sites in Stinnett such as supply houses and machine shops. Among other leading firms, Ely-Hesse Co. have bought three lots for a wholesale grocery.

The main highway from the bridge goes directly to Stinnett and passes through the main street.

The Gibson Oil company is digging two water wells, assuring the town an unlimited supply of excellent soft water. Gas mains are also being rapidly extended into the residential district. Stinnett offers the greatest opportunity to both the business man and the investor and is destined to become one of the leading factors in the commercial life of the Panhandle.

## Stinnett Townsite Co.

INCORPORATED

A. P. BORGER, General Manager.

## Useful Gifts

--for Every Occasion

Almost every month in the year brings forth one or more occasions when remembering a friend with a gift is not only a social duty, but a pleasure.

LET US SUGGEST SOMETHING

**Miller Drug Store**

SPEARMAN, TEXAS

Try a Hot Kistwitch--They're Toasted

# Star Six COMPOUND FLEETRUCK

The Latest, Greatest Ton Truck

CHASSIS ONLY takes any standard ton truck body **\$975.00** f. o. b. Lansing Mich.

Carrying standard commercial cab an dopen express body. Six Cylinder, 40-brake horsepower motor; twin high transmission (four speeds forward and one reverse.)

MORE POWER IN LOW—MORE SPEED IN HIGH—MORE ECONOMY IN ALL SPEEDS

**Spearman Motor Company** Spearman, Texas

# Own Your Home

-it's the finest move you can make

From a financial standpoint, and for the welfare of your family there is nothing finer than a home of your own. The turning of the expense, rent, into installments toward the purchase of a home is sound business. And the influence of your own home is conducive to the best family life. We shall be glad to furnish detail information as to costs and terms.

## PANHANDLE Lumber Co.

D. W. HOLLAND, Manager

Courtesy Quality Service

### NOTICE IN PROBATE—WRIT

The State of Texas, To the Sheriff or any Constable of Hansford County—Greeting: You are hereby commanded to cause the following notice to be published in a newspaper of general circulation which has been continuously and regularly published for a period of not less than one year preceding the date of the notice in the County of Hansford, State of Texas, and you shall cause said notice to be printed at least once each week for the period of four weeks exclusive of the first day of publication before the return day hereof:

Notice  
The State of Texas, To all persons interested in the estate of D. C. Gamble, insane—Mrs. C. Pearl Nollner has filed in the County Court of Hansford county, an application for Letter of Guardianship of estate of D. C. Gamble, insane, which will be heard at the Court House thereof, in the town of Hansford at which time all persons interested in said D. C. Gamble, insane, may appear and contest said application, if they see proper.

Herein fail not, under penalty of the law, and of this Writ make due return.  
Given under my hand and seal of office, in the town of Hansford the 1st day of February, A. D. 1927.  
Attest: J. E. WOMBLE, Clerk County Court, Hansford County, Texas

### CITATION BY PUBLICATION

The State of Texas: To the Sheriff or any Constable of Hansford County, Greeting: You are hereby commanded to summon unknown heirs of William T. Latta and Vanch Latta, deceased, to appear at the next regular term of the County Court of Hansford

## FOR SALE

Bermuda Onion, Sweet Potato, Cabbage, Tomato and Pepper plants. Write for prices delivered.

T. JONES & COMPANY  
Clarendon, Texas

## SAFE FOR ALL

It used to be that the only fellow who could safely buy used cars was the expert who could tell what he was getting and the junk dealer who didn't care. Personally, we have found it profitable to make the world safe for used car buyers—amateurs as well as experts.

G. P. GIBNER & SON  
Spearman, Texas

A USED CAR IS ONLY AS DEPENDABLE AS THE DEALER WHO SELLS IT

### CALL FOR ELECTION

The State of Texas, County of Hansford, WHEREAS, on the 18th day of January, A. D. 1927, a sufficient petition was presented to me for an election to determine whether or not the requisite majority of the legally qualified voters of Hansford county, Texas, desire the removal of the county seat from the town of Hansford, Texas, where the same is now located to some other place in said county and state, and whereas, it appears that there were cast in the last general election for state and county officers less than 100 votes as determined from the returns of said election and as shown of record in the record of election for said Hansford county, from the files and returns of said election in the custody of the Clerk of the County Court of said county, and whereas, it appears that said petition for election has the requisite number of names of qualified voters and freeholders of Hansford county, Texas, who are resident citizens of said county, signed thereto, and is in all things sufficient and in form as required by law:

NOW, THEREFORE, I C. W. King, in my capacity as County Judge of Hansford County, Texas, do hereby order that an election be held on the 5 day of March, A. D. 1927, in each of the several voting precincts of said county to determine whether or not the county seat of said county shall be removed from the town of Hansford to some other point or place in said county.

Said election shall be held at the following places in the respective election precincts at which the polls shall be opened, and the following named persons are hereby appointed presiding judges of said election who shall select an assistant judge and two clerks for their respective precincts:

For Precinct No. 1: A. H. Wilcox, presiding judge, said election to be held at the brick public school building at Spearman, Texas.  
For Precinct No. 2: Mrs. W. G. Nollner, presiding judge, said election to be held at Kimball school House.

For Precinct No. 3: L. S. McClellan, presiding judge, said election to be held at Grand Plains School House.

For Precinct No. 4: J. A. Ward, presiding judge, said election to be held at Pleasant Hill School House.

For Precinct No. 5: W. G. Spivey, presiding judge, said election to be held at Woodrow School House.

For Precinct No. 6: C. C. Newcomb, presiding judge, said election to be held at New Hope School House.

For Precinct No. 7: Robert Alexander, presiding judge, said election to be held at Oslo School House.  
For Precinct No. 8: R. E. Brooks, presiding judge, said election to be held at McBride School House.

All persons who are legally qualified voters of Hansford County, Texas, shall vote in said election. The ballots for said election shall have written or printed thereon the following:

"For remaining at \_\_\_\_\_"  
"For removal to \_\_\_\_\_"  
The sheriff of Hansford county shall give notice of said election in the manner prescribed by law for giving notice for general elections for state and county officers. In all respects not specially provided for, said election shall be held in accordance with the laws of the state and county regulating general elections for state and county officers. It is further ordered that this order be spread upon the minutes of the Commissioners' Court of Hansford county, Texas.

Signed and dated January 18, 1927.  
C. W. KING,  
County Judge of Hansford County, Texas.

### CITATION BY PUBLICATION

The State of Texas, To the Sheriff or any Constable of Hutchinson County, Greeting: You are hereby commanded to summon Harold Agnew, by making publication of this Citation once in each week for four successive weeks previous to the return day hereof, in some newspaper published in your County, if there be a newspaper published therein, but if not, then in the nearest County where a newspaper is published, to appear at the next regular term of the District Court of Hutchinson County, to be holden at the Court House thereof, in Stinnett, Texas, on the second Monday in March, A. D. 1927, the same being the 14th day of March A. D. 1927, then and there to answer a petition filed in said Court on the 31st day of August A. D. 1926, in a suit, numbered on the docket of said Court as No. 697, wherein Marie Agnew is plaintiff, and Harold Agnew is defendant, and said petition alleging that plaintiff, and defendant were legally married Feb. 12th, 1922. That defendant was wholly worthless and forced plaintiff to earn all the support. That defendant abandoned plaintiff about March 6th., 1924, and has not since lived with her.

Herein fail not, and have you before said Court, at aforesaid next regular term, this writ with your return thereon, showing how you have executed the same.  
Given under my hand and the Seal of said Court, at office in Stinnett, Texas, this 10th day of February, A. D. 1927.  
(Seal) ONA BRYAN,  
Clerk, District Court,  
1014. Hutchinson County.

### CITATION BY PUBLICATION

The State of Texas, County of Hansford. To those indebted to, or holding claims against the estate of James H. Cooper, deceased: The undersigned having been duly appointed executor of the estate of

James H. Cooper, deceased, late of Hansford County, Texas, by the County Judge of said Hansford county on the 14th day of December 1926, during the regular term thereof, hereby notifies all persons indebted to said estate to come forward and make settlement, and those having claims against said estate to present them to her within the time prescribed by law at her residence three (3) miles north and six (6) miles west in Hansford County, Texas, where she receives her mail. Postoffice address being Spearman, Texas, this the 14th day of December A. D. 1926. 1014. MARY E. COOPER,  
Executrix of the estate of James H. Cooper, deceased.

### NOTICE IN PROBATE

The State of Texas, To the Sheriff or any Constable of Hansford County—Greeting: You are hereby commanded to cause the following notice to be published in a newspaper of general circulation which has been continuously and regularly published for a period of not less than one year preceding the date of the notice in the County of Hansford, State of Texas, and you shall cause said notice to be printed at least once each week for the period of ten days exclusive of the first day of publication before the return day hereof:

Notice  
The State of Texas, To all Persons interested in the estate of Stanley Cushing Tyler, deceased:

Whereas, Mary Ayers Tyler, has filed in the County Court of Hansford County, an application for the probate of the last will and testament of the said Stanley Cushing Tyler, deceased, filed with said application, and for letters testamentary, without bond, as provided in said will wherein she is appointed as executrix, which will be heard at the next term of said Court, commencing on the 1st Monday in March, A. D. 1927, same being the 7th day of March, 1927, at the courthouse thereof, in Hansford, Texas, at which time all persons interested in said estate may appear and contest said application, should they desire to do so.

Herein fail not, under penalty of the law, and of this Writ make due return, on the first day of the next term of said court, showing how you have executed the same.  
Given under my hand and seal of office, in the town of Hansford, Texas, the 17th day of February, A. D. 1927.  
Attest: J. E. WOMBLE,  
Clerk County Court,  
Hansford County.

### CITATION BY PUBLICATION

The State of Texas, To the Sheriff or any Constable of Hansford County—Greeting: You are hereby commanded to summon Seth Barrett by making publication of this citation once in each week for four successive weeks previous to the return day hereof, in some newspaper published in your County, if there be a newspaper published therein, but if not, then in any newspaper published in the 31st Judicial District; but if there be no newspaper published in said Judicial District, then in a newspaper published in the nearest District to said 31st

Judicial District, to appear at the next regular term of the County Court of Hansford County, to be holden at the Court House thereof, in town of Hansford, on the first Monday in June A. D. 1927, the same being the 6th day of June A. D. 1927, then and there to answer a petition filed in said Court on the 18th day of February A. D. 1927 in a suit, numbered on the docket of said Court No. 91, wherein N. L. Beck and Walter Beck are plaintiffs, and Seth Barrett is Defendant, and said petition alleging that the said defendant is indebted to plaintiffs in the sum of \$450.83 with interest thereon at 6 per cent per annum from October 10th, 1926, for goods, wares and merchandise sold by plaintiffs and by them delivered to defendant at his special instance and request for which he agreed to pay said sum but has refused and failed to do so; that the said defendant is further indebted to plaintiffs in the sum of \$42.23 for goods wares and merchandise sold by N. L. Beck and F. W. Maize to defendant and by them delivered to him for which he agreed to pay said sum but which he has failed and refused to do and which account has been duly assigned to plaintiffs who are the present owners and holders of said account and the persons entitled to collect and receive the same also claiming interest on said sum of \$42.23 at 6 per cent per annum from October 19th, 1926, together with costs and disbursements of suit and such other full and complete relief special or general in law or in equity as plaintiffs may be found justly entitled to receive.

Herein fail not but have before said Court, at its aforesaid regular term, this writ with your return thereon, showing how you have executed the same.  
Given under my hand and the Seal of said Court, at office in town of Hansford this the 18th day of February, 1927 A. D.  
(Seal) J. E. WOMBLE,  
Clerk County Court,  
Hansford County.

### NOTICE

The State of Texas, To the Sheriff or any Constable of Hansford County, Greeting: You are hereby commanded to cause the following notice to be published in a newspaper of general circulation which has been continuously and regularly published for a period of not less than one year preceding the date of the Notice, in the County of Hansford, State of Texas, and you shall cause said notice to be printed at least once each week for the period of ten days, exclusive of the first day of publication before the return day hereof:

Notice  
The State of Texas, To all persons interested in the welfare of John D. Cotter, Omar Cotter and Austin Cotter, minors: Whereas, Carrie Cotter has filed in the County Court of Hansford County, Texas an Application for letters of Guardianship on the persons and estates of John D. Cotter, Omar Cotter and Austin Cotter, Minors, which will be heard at the next Term of said court, commencing on the first Monday in March, 1927, the same being the 7th day of March 1927, at the court house thereof in Hansford, Texas, at which

time all persons interested in the welfare of said Minors may appear and contest said Application, should they desire to do so.  
Herein fail not, but have you before said Court on the first day of the next Term thereof, this Writ with your return thereon showing how you have executed the same.  
Given under my hand and seal of office in the town of Hansford, Texas, the 17th day of February, 1927.  
(Seal) J. E. WOMBLE,  
Clerk, County Court,  
Hansford County, Texas.

Walter C. Crawford, banker, Judged by the standards of 200 years ago, ordinary people are rich now.

### USED CARS!

See us before you buy. We have it. McCLELLAN CHEVROLET Co.

Dr. Powell, Eye, Ear, Nose and Throat Specialist. Will be in Spearman, at office of Dr. Gowar, on Wednesday, March 16th. Glasses fitted and tonsils and adenoids removed.

G. P. GIBNER, B. S. M. D. County Health Officer. Local Surgeon Santa Fe R. R. Only doctor in Hansford county who is a graduate from a Class A Medical College. Office in rear of Miller Drug Store. Phone 39, Spearman, Texas.

J. E. GOWER, M. D. Physician and Surgeon PHONES  
Residence 98  
Office 33

OFFICE IN REPORTER BUILDING SPEARMAN, TEXAS

RUPERT C. ALLEN LICENSED STATE LAND SURVEYOR  
Surveying done anywhere in the Panhandle. Perryton, Texas. 9152p.

DR. JARVIS DENTIST  
Perryton, Texas

WILLIAM F. NIX ATTORNEY-AT-LAW ROOM 17 SMITH BUILDING TELEPHONE 2974 AMARILLO, TEXAS

WALLACE G. HUGHES LAWYER  
Suites 3 and 4 First National Bank Building, Guyton, Oklahoma.

R. T. CORRELL LAWYER  
Perryton, Texas

C. D. WORKS LAWYER  
County Attorney, Stinnett, Texas. ABSTRACTS  
Experienced in abstracts and Hutchinson County land titles. Special attention to Probate and Estate Matters



"... because the Oakland Six is built to a degree of precision previously unknown in cars of its price"

You need not make any extended comparisons to understand why the Greater Oakland Six is so emphatically preferred by those who demand of their cars unusually long life and reliability.  
The answer lies in the fundamental principle of Oakland construction—because the Oakland Six is built to a degree of precision previously unknown in cars of its price!  
True, Oakland provides unexampled beauty and style by the use of Fisher Bodies; and an extraordinary agility, smoothness and silence by employing such advanced features as the exclusive Rubber Silenced Chassis and the Harmonic Balancer.  
But by working to limits that once typified the hand-built car, Oakland achieves a resistance to wear and road shock that borders on the unbelievable!  
You need only to talk to veteran Oakland owners to understand why the trend of fine car buying is swinging so strongly to the Greater Oakland Six.  
Oakland Six, \$1025 to \$1295. Bodies by Fisher. All prices at factory. Easy to pay on the General Motors Time Payment Plan.

BECK-MAIZE MOTOR COMPANY  
Spearman, Texas

The Greater OAKLAND SIX  
PRODUCT OF GENERAL MOTORS WINNING AND HOLDING GOOD WILL

# J. H. M. Bennett

## JEWELER

To the people of Spearman and adjacent trade territory: I am firmly established at Miller Drug Store, and will serve the people honorably at a moderate price, in high quality, up-to-date merchandise, Watches, clocks, jewelry and allied articles—Everything new. No bankrupt stocks, and there will be no auction sales of merchandise.

Special attention given to repairing. Bring your sewing machine heads and phonograph motors.

Whatever I repair and all merchandise from my business, guaranteed as represented.

Will spend the greater portion of 1st and 3rd weeks in each month at Spearman, beginning on next Tuesday. See Fred Miller when jeweler is not present.

# J. H. M. BENNETT

## JEWELER

At MILLER  
DRUG STORE

Spearman  
Texas

### LACK OF ORGANIC MATTER KILLS SOILS

In many sections of the Southwest, more than fifty per cent of the original soil organic matter has already been lost, says H. M. Bainer, Director, The Southwestern Improvement Association. Continuing he says, "The life of a soil depends to a large extent on the amount of organic matter or humus it contains. New soils are always well supplied with organic matter and unless provision is made to maintain this supply, it will gradually decrease and the crop yield will become poorer and poorer. A soil deficient in organic matter lacks fertility, it has nothing to hold it together, it bakes and blows and is very hard to handle. "A soil that is well supplied with organic matter will retain more moisture than one having low supply, thus helping to carry crops thru periods of drouth. Organic matter improves the physical condition of the soil and makes all tillage operations easier. It also reduces baking, cracking, washing and blowing. Organic matter furnishes food for the necessary bacteria of the soil, such as those that change nitrogen into the available nitrate form. Organic matter and nitrogen go hand in hand and when one is deficient, the same thing is usually true of the other. A soil is known for its fertility in proportion to the amount of organic matter and nitrogen it contains. Low wheat yields and poor quality of wheat are, therefore, largely due to a lack of these two elements. "Too much of the one-crop system, such as producing wheat year after year on the same land, is responsible for the loss of much of this organic matter. Much can be done towards restoring this fertility thru crop rotation systems that include some one of the legumes, such as alfalfa, clover, sweet clover, cowpeas and soybeans, and occasionally it is an excellent practice to plow under such crops, while they are still green. All crop residues, such as straw, stubble and stalks should be plowed under, rather than burned."

Saturday, February 26th is Dollar Day at Thomason Bros. See their ad on the back page. It Pays to Advertise in The Reporter.

### WHAT'S DOING IN WEST TEXAS

(By West Texas C. of C.)  
Stamford—A few farmers have responded to the offer of the West Texas Chamber to mail them eight pounds of Black Hull Kafir with postage the only charge. The regional chamber has 125 sacks to distribute. They will be mailed to those writing the Stamford headquarters.

Marfa—Camp Marfa, located within the corporate limits of Marfa, is to be a permanent army post now, according to a national bill recently passed. The camp is military headquarters for the Big Bend.

Presidio—Piles are now being driven for the international bridge across the Rio Grande from Presidio to Ojinaga. It will connect State Highway No. 118 which goes to Marfa and points north with the main highway to Chihuahua and points south.

Anson—Jones County is smiling over prospects for a bumper grain crop this year. Much terracing is being done and more is expected in the section as soon as farmers can get back into the field.

Borger—This big oil town will celebrate its first birthday on March 8 in a big fete planned by the local chamber of commerce. Every city in the Panhandle country is invited to have delegations on hand.

### NOT ENOUGH WATER

Teacher asked her class if they could compose a rhyme using the word "Nellie." Johnny Jones, being called upon, rose, much embarrassed.

"There was a pretty little girl named Nellie,  
Who fell in the water and wet her little feet."

"Why Johnny, that doesn't rhyme!"  
"I know it don't. The water wasn't deep enough."—Taos Valley News.

Red hot specials at Thomason Bros. Dollar Day, Saturday, February 26th.

Read the Reporter.

### THE SPEAKING VOICE

It was a beautiful violin, the proportions were right, the curve of the neck and head was just what it should be, the color was dark and rich, and the polish such as only time and loving care can give.

"It looks like a genuine old Cremona," said the connoisseur, "but give me the bow."  
He drew it once or twice across the strings, then laid it down, and the violin with it. "No," he said, "its only an ordinary fiddle. A real old Cremona always speaks with the voice of a gentleman. This talks like an auctioneer."

In how many business offices, how many social gatherings, is that experience repeated! A boy comes in to apply for a job. He has a good face, is clean and well-dressed, and looks intelligent; but when he speaks, his loud, harsh tones dominate the room, or he talks with the hoarse croak of a frog. A young guest meets for the first time a new hostess, the center of a delightful group, whose society may mean much to her. The girl, too, is charming and highly cultivated, but her voice has all the soothing melody of a slate pencil rasped across the edge of a mustard box. She will not do.

There is probably no other thing to which young people pay so little attention as to their speaking voices—nor any to which they could profitably devote so much. It is a matter that cannot be learned from books, but comes only by taking thought, by self training. The screaming habit, formed in early games and too often confirmed on the larger playgrounds of school and college, sets a pitch that often lasts through life; and the crowds and hurry and competition of modern city life help to maintain it.

In contrast, how arresting is a low, well-modulated voice! Amid the harsh and strident din of ordinary speech it finds its way instantly to the grateful ear and commands the attention it deserves.

"When I find the interest of an audience waning," said a public speaker, "I lower my voice instead of raising it. That always brings them back."

The Harvard award for the best retail advertisements in the United States was won last year by R. H. Mack & Company of New York. That concern owed its success to the simple plan of using small advertisements, in quiet, modest type, on pages where almost every other voice was screaming. It was like the song of a hermit thrush in a chorus of crows. People caught the note and paused to listen, and remembered.—The Youth's Companion

### GIVING REDHEADS THEIR DUE

The girl with red hair, once target for every derisive small boy, has come into her own. Science and art have at last rendered their verdict that red hair is quite the dazzling thing, and a literary critic has discovered that more poems have been written to red hair in the past decade than to all the hundred and one shades of brown.

All of which brings new responsibilities and duties to the fortunate ladies who own red hair. No longer need they ignore it or studiously tone it down in their costume. It is their bountiful duty now, say the scientists to make it as luminous and glorious as they can.

"Some shades of red hair are much lovelier than other, but all of them have great decorative possibilities," says Hazel Rawson Cades in a chapter of advice to redheads published by the Woman's Home Companion. In the past, she remarks, redheads have had the notion that they must "tone down" their hair. This is all wrong nowadays. Red hair should be made to shine for every nickle's worth of its possible brilliance.

Development of its uttermost possibilities is largely a color proposition, it seems. It would be considering the amount of color the young lady has on hand to work with. But it's not as old-fashioned people believe, a problem of contrasts. The most successful systems are worked out along the lines of matching and harmonizing colors.

If her eyes are brown, there's no doubt at all about it in the minds of the artists and scientists. Brown, henna, rust, gold, warm beige, tan, nasturtium, maize, peach and even flesh are lovely backgrounds for the brown and rusty red of hair and eyes. Soft medium greens and a certain shade of dark green are also good.

### VIRGIN ISLANDS PROSPER

Under American rule the Virgin Islands seem likely to become as prosperous as the well-governed island of Porto Rico, declares Frederick L. Collins in the Woman's Home Companion. "I was there," he says, "in the old days under Danish rule when the soldiers of that chilly northern country lounged about the sun-baked square and warships of the Kingdom of Denmark rode at anchor in the harbor of the old town of Charlotte Amalie."  
"But in 1917 the United States purchased St. Thomas from the Danes for \$25,000,000 and our garrison is now at the water's edge. To the woman tourists the most interesting thing in St. Thomas is not the old Danish church, the anti-aircraft guns or the American marks of progress—golf links, soda fountains, schools and public library—but the fact that a good cook can be hired for only \$15 a month, and on that she feeds and lodges herself."

### COLORADO'S RANCHER GOVERNOR DECLINES TO WEAR DRESS SUIT

Denver, Feb. 5.—"Billy" Adams Colorado's new governor, is a rancher. For years he has been the captain of the annual roundup held in the San Luis Valley, where he runs his ranch. And for 40 of those

# ADVANCE-RUMELY

## Oil Pull Tractors

# 20 per cent Off

We are discontinuing our agency of Rumley Tractors and are offering a 20% discount on our present stock including all sizes. Now is your chance to save, Mr. Farmer, by buying at once. This price effective only on our present stock. Get yours before they are all gone.

# Panhandle Lbr. Co.

Spearman

Perryton

Booker

years he has been coming to Denver to attend the general assembly as senator from Alamosa.

"Billy" is a democrat, and has been the minority party leader longer than most legislators can remember. Last fall "Billy" ran for governor, a proceeding much against his will, but in spite of everything Colorado voted him more than 50,000 plurality over the republican candidate, although ever other state office went to candidates of the G. O. P. landslide.

As the time for "Billy's" inauguration drew near, rumors began to circulate about the state house that he was going to ride into office on a cow pony and mount a saddle in the executive chambers for the new seat of government, but these were newspaper fantasies. "Billy" is a cowman at home, but a governor in Denver.

"Billy" cinched one rumor as soon as he hit town, however, three days before the inauguration. No dress suit for him. No sir, he had a good suit, plain blue serge, bought in Alamosa and that was going to be the executive garb during the inaugural ceremony and after.

Well, the idea of a governor without swallowtails was too good to keep around Denver, so the news spread. People in Kankakee, Ill., and Tallahassee, Fla., chuckled over the governor who wouldn't be governed by collar buttons and boiled shirts.

Out in Tacoma, Wash., one William Bosch, one-time merchant of Alamosa, Colo., read about "Billy" Adams sartorial whim, and remarked to his wife, "Ain't that just like Uncle Billy?" or words to that effect, and decided to see if the governor was in earnest. So Bosch packed up his own dress suit, and sent it off to "Billy."

"Billy" got a big kick out of the proffered glad rags, for he said Bosch was a big fellow about 6 feet 2 or whereabouts, and his clothes would leave plenty of spare in the scant gubernatorial frame. The inaugural went off as per schedule, with "Billy" clothed in comfort.

But the sequel came later. Officials in the county court at Silverton, Colo., happened to read about Bosch's gift to the governor. Now for 20 years ever since Bosch left Alamosa, the court had been holding \$600 for him and were unable to locate him.

Off went a letter to Bosch, announcing that he had fallen heir to \$600, 20 year ago, and would he kindly accept the money now? Bosch accepted; and is 600 bucks richer, as the result of Gov. "Bill" Adams' refusal to go in for formal finery.

### FAVORITE CHILD GAME IN RENO IS "DIVORCE"

The most popular children's game in Reno is "playing at having divorces," according to President Arthur Morgan of Antioch College, who re-

cently visited the famous Nevada city where the divorcees come from.

President Morgan, having discovered this startling fact about the Reno children, pondered on its exact meaning in relation to education, and found that it proved the need of emphasizing "a sense of proportion" as the main aim of school and college. He pleads his case in the columns of the Woman's Home Companion.

"Colleges often assume," he writes, "that education consists in getting knowledge out of books and laboratories. But life has never entirely got into books. Real life has lessons to teach that can be learned nowhere else—lessons of common sense of judging men and things, of checking theories by facts. It can teach young men and women to measure their strength, to be responsible.

"The interests of students as they come to college are largely accidental, acquired from the interests of their community, from the newspapers or from some prevailing vogue. Visiting at Reno, I found the children playing, at having divorces. It is the business of the college to replace these accidental, local and temporary interest with those that are fundamental and universal, and properly to proportion them in the student's life plan.

"One's life cannot be just a matter of rules; it must be a spirit and an attitude. There must be continued efforts to keep life in proportion.

"I called on a friend in a tuberculosis sanitarium in the West, and when I mentioned to his doctor that he was an outstanding athlete of his college, the doctor said: 'Yes, this town is full of tubercular athletes. Overstrenuous athletics is one of the commonest records here.' College men dying from lack of sense of proportion!"

### DEEPER QUEST FOR OIL

America's first commercial oil well drilled near Titusville, Pa., in 1859, was only 69 feet deep. Recently there was reported an oil well in California which had reached a depth of 8,046 feet and was being drilled still deeper.

The invention of methods whereby oil is taken from a depth of more than a mile and a half under ground, with even deeper drilling in prospect, is responsible for greatly increasing the world's petroleum reserves. Many of the largest producing wells today recover their oil from a depth of 3,500 to 5,000 feet.

According to a writer in the Standard Oil Bulletin, there is no telling how deep oil operators will in the future be able to drill, and it is not unreasonable to suppose that depths of 10,000 to 15,000 feet may eventually be reached.

Canton, China, is sharing the limelight with its Ohio namesake.

What's in a name? Ask the editor who spelled the bride's wrong.

### WHEN BATHS WERE FEW

If certain data we have run across lately are authentic, the joke about the Saturday night bath is not as old as we had imagined. It is recorded that the first bath tub put in commission in the United States was christened on Christmas Day, 1841. Looking up the day of the week in a perpetual calendar, we find that this was Sunday, but it is possible that the first bath was really taken on Christmas eve, thus establishing the Saturday night tradition.

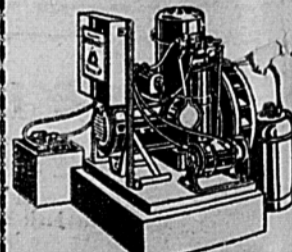
Upon its introduction the bath was looked upon with much suspicion as it is by small boys until this day. In Boston an ordinance was passed prohibiting baths, except upon the advice of a physician. About 1840 the Philadelphia city council came within two votes of passing an ordinance prohibiting bath altogether between November 1 and March 15.

Bath tubs were heavily taxed in those early days, even as the modern automobile. Shortly after they were introduced in Virginia a state tax of \$36 was imposed on each installed.

Still, Americans of those times were more given to bathing than the old Russians. We have read somewhere that Peter the Great bathed only once a year. But there were extenuating circumstances. Russia is a very cold country.

Silk worm cocoons are now killed by gas, instead of heating or steaming.

## See the Delco Automatic



Before You Buy \$368 Installed with complete wiring for farm home of seven rooms.

J. C. PERRY  
Morton Garage, Spearman

### "COMBINE" YOUR WHEAT TO GET THE BIGGEST PROFITS

# HOW? The Holt Way

Two new Holt Models due to arrive today. Come in and look them over.

McClellan Chevrolet Company  
Dealer

## A Royal Treat in Store for You!



Royal suits and topcoats are made to satisfy the man who wants better clothes. Let us take your measure today. That is the first step in making sure of wearing the best clothes you ever owned, and priced reasonably.



### J & L CLOTHIERS

GENT'S FURNISHINGS

Morton Building Spearman, Texas

#### CHEVROLET PREPARING GREAT BUSINESS

The Chevrolet Motor Company, world's largest producer of gear-shift cars, is preparing for the greatest year in its history, according to Bill McClellan, local Chevrolet Dealer, who has returned from Dallas where he attended convention of more than 100 Chevrolet dealers. The meeting was the eighth of a series of 21 meetings that are to be held this winter from coast to coast.

Enthusiasm over the Chevrolet outlook for the year and the widespread popularity of cars was evident everywhere. Dealers from all quarters joined in the opinion that the current year will surpass 1926 when Chevrolet established a record in this territory.

R. H. Grant, Vice President and General Sales Manager, of the Chevrolet Motor Company, presided at the business session in the Pantages Theater in the afternoon and served as toastmaster at the banquet in the Adolphus Hotel in the evening of February 14th.

Under Mr. Grant's direction, Chevrolet's tremendous sales plans for 1927 were outlined to the dealers and illustrated in the form of playlets. Assisting Mr. Grant in the conduct of the meeting were: H. J. Klinger, Assistant General Sales Manager, D. E. Ralston, Regional Sales Manager, Felix Doran, Jr., Dallas Zone Sales Manager, C. E. O'Meara, Houston Zone Sales Manager, and W. F. Doyle, Oklahoma City Zone Sales Manager; and the following officials from the main office in Detroit: R. K. White, D. G. Frazier, Sidney Corbett, W. G. Lewellen, C. R. Sudmann, Wm. A. Bleser, E. A. Nimnicht, and Wm. Holler.

Mr. McClellan declared that the Chevrolet Motor Company is providing its dealer organization with the highest type of merchandising aid and cooperation.

#### RENTER WANTED

I want oats or barley sown on my farm, two miles east and eight miles south of Spearman. SAM W. MARTIN. 11tr.

#### NOTICE TO FEDERAL INCOME TAXPAYERS

For the convenience of those who are required by law to file Federal Income Tax Returns, a deputy collector of internal revenue will be at the First National Bank of Spearman on March 8th and 9th, 1927 to assist taxpayers in preparing their returns. No charge will be made for this service. The matter of filing your income tax return should be given immediate attention, in order to avoid penalty and interest.

Form 1040 should be used if the income is derived chiefly from salaries and wages and does not exceed \$5,000.

Form 1040 should be used if the income is more than \$5,000, or is derived from a trade or business, including farming.

Your return for the calendar year 1926 shall be filed not later than March 15, 1927, with the collector of internal revenue for the district in which you reside or have your principal place of business.

A penalty of not more than \$10,000 or imprisonment for not more than one year, or both, and in addition 25 per cent of the amount of the tax, is imposed by the statute for willful failure to make a return on time.

#### NOTICE

Notice is hereby given that the City Council of the City of Spearman, Texas, will receive bids for the drilling of water well to a depth of 400 feet or more. Bids to be for well with 10 inch casing, also for well with 8 inch casing. Want water guaranteed. All bids must be in by 7:30 p. m., March 1st, 1927. R. L. McCLELLAN, Mayor.

Read the Reporter. It was brought out in his separation suit that "Bud" Fisher earns \$250,000 a year from his famous comic feature, "Mutt and Jeff."

See our new Grand Detour Wheat land plow before buying. Have a sample on the ground. R. L. McCLELLAN GRAIN CO.

#### CITATION BY PUBLICATION

The State of Texas, To the Sheriff or any Constable of Hansford County, Greeting:

You are hereby commanded to summon the White Truck Line, Inc., a corporation, by making publication of this Citation once in each week for four successive weeks previous to the return day hereof, in some newspaper published in your County, if there be a newspaper published therein, but if not, then in the nearest county where a newspaper is published, to appear at the next regular term of the District Court of Hansford County, to be holden at the court house thereof, in Hansford, Texas, on the 3rd Monday in March A. D. 1927, the same being the 21st day of March A. D. 1927, then and there to answer a petition filed in said Court on the 23rd day of February A. D. 1927, in a suit, numbered on the docket of said Court as No. 434, wherein the Spearman Motor Company, a partnership composed of W. D. Cooke and L. W. Mathews, is plaintiff and The White Truck Line, Inc., a corporation, is defendant, and said petition alleging that heretofore beginning about Oct. 1st 1926, and up to about Nov. 20th, 1926, plaintiff sold and delivered various items of automobile supplies and accessories, and did various items of repair work for defendant to a total amount of \$145.97. That at said above dates, L. R. Chamberlain, R. D. Chamberlain and W. E. Callaway, doing business at Spearman and at Signal Hill under name of Snappy Service Station, sold and delivered to defendant various items of automobile supplies and accessories, and did various items of work, to a total amount of \$421.08. That on or about the 18th day of Nov. 1926, said L. R. and R. D. Chamberlain and W. E. Callaway for a valuable consideration sold and transferred said last account to plaintiff, who now sues on same. That said amounts in a total of \$567.05, is past due and unpaid, and plaintiff sues for said amount and all costs of suit.

Herein fail not, and have you before said Court, at its aforesaid next regular term, with your return thereon, showing how you have executed the same. Given under my hand and Seal of said Court, at office in Hansford Texas, this the 23rd day of February A. D. 1927. J. E. WOMBLE, Clerk, District Court, Hansford County. 11tr.

#### CITATION BY PUBLICATION

The State of Texas, To the Sheriff or any Constable of Hansford County—Greeting:

You are hereby commanded to summon J. F. Hart, J. E. Wise, S. H. Robinson and M. A. Nickell by making publication of this Citation once in each week for four successive weeks previous to the return day hereof, in some newspaper published in your county, if there be a newspaper published therein, but if not, then in any newspaper published in the 31st Judicial District; but if there be no newspaper published in said Judicial District, then in a newspaper published in the nearest District to said 31st Judicial District, to appear at the next regular term of

the District Court of Hansford County, to be holden at the Court House thereof, in Hansford, on the 3rd Monday in March A. D. 1927, the same being the 21st day of March A. D. 1927, then and there to answer a petition filed in said court on the 23rd day of February A. D. 1927 in a suit, numbered on the docket of said court No. 444, wherein W. F. McRee and wife, Mrs. W. F. McRee are plaintiffs, and J. F. Hart, J. E. Wise, S. H. Robinson and M. A. Nickell are defendants, and said petition alleging: Plaintiffs sue to cancel an oil, gas and mineral lease dated March 17, 1926, wherein the Plaintiffs were lessors and defendants, J. F. Hart, lessee:

Plaintiffs charge that said lease was procured through fraud and deceit practiced upon them by the said J. F. Hart in that said Hart agreed to erect a derrick for the purpose of drilling a well 3800 feet deep on said land within 70 days, and to spud in a well not later than September 1st, 1926; that plaintiffs relying upon such statement executed a lease in blank which was filled in by the said J. F. Hart, embodying the terms above mentioned and said lease when so filled in to be escrowed until said derrick was erected, well spudded in and a valid drilling contract secured to drill a well to a depth of 3800 feet unless oil or gas was discovered in commercial quantities at a lesser depth.

Plaintiffs further charge that no well was ever spudded in on said land or any portion thereof, that no valid drilling contract was ever secured, and that said project has been fully abandoned. Plaintiffs further allege that said lease in so far as the same applies to the plaintiff, Mrs. W. F. McRee is improperly acknowledged in that said acknowledgment was taken by E. E. Coons a Notary Public of Sherman county, Texas, at their home in Hansford county, by reason of which said lease is void as to her and that she has not since ratified the same, and further charge that the lands covered in said lease, to-wit: Section 82, in Block 2, G. H. & H. Ry Co., situated in Hansford County, Texas, was at said time their homestead.

Plaintiffs charge that while said lease recited consideration of \$100 paid that in truth and fact the same was never paid and that they received no consideration for the execution of said lease. Further that the real consideration for the execution of said lease was the procuring of the drilling of a discovery well for oil, gas and other mineral on plaintiffs' property, or property constituting said block of leases, and since said project has been abandoned and no well has been commenced and Plaintiffs have surrendered their leases or practically the entire block that the consideration for said lease has failed, if and there ever was by reason of which the same is void. That the Defendant Hart procured the signing of said contract with the understanding that the terms of said contract would be filled in as above set out, but in violation of said agreement he did fill out said blank contract but on the contrary left all said provisions out which was done for the purpose of depriving plaintiffs of the value of said lease to the end that the Defendant Hart might sell, peddle and dispose of the same to his own use and

benefit. Plaintiffs charge that all the Defendants have full knowledge of the facts above alleged and had at the time of making the assignments held by them by reason of which their rights in said lease are subject to cancellation.

Plaintiffs pray for the cancellation of said lease and all assignments thereof of record, that the cloud be removed from the title to their land and for relief general and special.

Herein fail not but have before said Court, at its aforesaid regular term, this writ with your return thereon, showing how you have executed the same.

Given under my hand and the seal of said Court, at office in Hansford, Texas, on this the 23rd day of February A. D. 1927.

(Seal) J. E. WOMBLE, Clerk, District Court, Hansford Co., Texas. 11tr.

#### SHAMROCK VOTES AGAINST LIGHT PLANT SALE

Shamrock voted down the proposition to sell their municipal light plant last week, 242 to 214.

According to the Shamrock Texan the city had been offered \$100,000 more than the plant was worth, but the voters turned it down.

#### FOR SALE

Seed barley, both white and blue, at my farm 12 miles west of Spearman. HENRY RALSTON. 11tr.

#### STRAYED

Red cow, dehorned, don't know whether branded, is at my home 4 1/2 miles east of Spearman. Owner please call and get same. 11tr. C. F. MAHAN.

The Ridin' Fightin' Smilin' Son of the West! Hoot Gibson in "Texas Streak," at Lyric Theatre, Friday and Saturday, February 25 and 26.

## PILES or Hemorrhoids

Cured by Absorption . . . No Sloughing

Have now successfully treated five hundred and eighty cases of blind, bleeding and protruding piles by my method.

NO DETENTION FROM BUSINESS—NO CHARGE FOR CONSULTATION OR EXAMINATION

NOW AT SPEARMAN

If you are afflicted with piles, calls and see me and let us talk over the treatment of your case. As to my reliability, I can give you references among citizens of Spearman.

Cases taken for treatment before March 1st will be finished at Spearman unless unusually prolonged.

AT BERGE ROOMS, SPEARMAN, TEXAS

HOURS: 10 to 12 a.m. and 2 to 5 p.m., or by appointment.

M. A. COOPER, M. D.

RECTAL SPECIALIST

CHILDRESS, TEXAS

## Mistletoe Creameries

—Now buying Cream in Spearman. Station at Cates Grocery, North Main Street.

Highest Market Price is Guaranteed This week 44 cents

J. M. Cates, Manager

NORTH MAIN

SPEARMAN

## Notice!

To all real estate firms and individuals: All listings and prices are hereby at this time withdrawn on the west one-half of section 87, block 4T, adjoining the townsite of Spearman on the east.

W. B. LaMaster' Owner

Perryton, Texas

# INVEST FOR PROFIT IN GEWITT!

The fastest growing town in the oil fields. When the town was only slightly over a week old, original lots were reselling for a bonus of 100 to 200 per cent. The largest mercantile firms in the panhandle have bought locations and some of them have their buildings completed and stock arriving. There is a reason. GEWITT will have the largest payroll of any town north of the river and will get the benefit of all the coming developments. Hundreds of producing and drilling oil wells turn loose thousands of dollars for wages and supplies in Gewitt.

The Phillips plant is now under construction and is giving employment to over three hundred men. This plant is within a half mile of Gewitt, and it will get the benefit of all the business.

### Gas, Water and Electricity

Is right here on the ground. These conveniences should not be overlooked when selecting a location. They add to your comfort and happiness as well as being a profitable ally in your business.

### Don't Forget

We are in the heart of production, with producing oil wells on every side and hundreds more to drill. Lots in other oil towns have sold as high as \$10,000, and may do that here. Buy now while they are cheap.

LOTS FROM \$300 TO \$500. ONE THIRD CASH

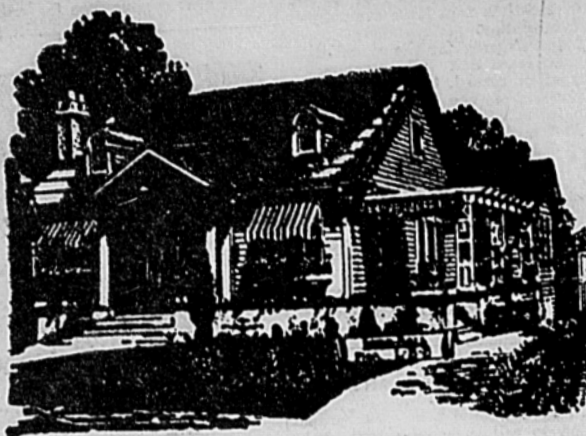
# HOGAN & KING

DEVELOPERS

BOX 200

BORGER, TEXAS.

CAPON DAY, FEBRUARY 25



# White House LUMBER COMPANY

## Building Material Coal Builders' Hardware

Lumber	Fence Posts
Shingles	Well Goods
Lath	Windmills
Sash	Paints
Doors	Varnishes
Moulding	Brick
Fencing	

J. ALBERT BURRAN, Manager

SPEARMAN

TEXAS

### Mammoth Buckeye Incubator

Custom Hatching  
\$4.00 per 100

Baby Chicks, 10c to 15c  
Hatches to come off the first week in March.  
Write for list to

The Spearman Hatchery  
J. N. GALES, Mgr.  
Spearman, Texas

### Singer Sewing Machines

I have the agency for the old, reliable Singer Sewing Machine.

When in the market for a machine, don't fail to let me know. I will take your old machine in trade.

I also have supplies and will do repair work on Singer Machines.

VIRGIL WILBANKS  
Phone 9 Spearman

WAKEMAN & SWEARINGEN  
Lawyers  
Offices in Fidelity Bank of Commerce Building  
Spearman, Texas

DR. F. J. DAILY  
DENTIST

Offices in Hays Building in rear of Miller Drug Store.  
SPEARMAN, TEXAS

ALLEN & ALLEN  
Attorneys-at-Law  
Walter Allen Jack Allen  
Plemons, Texas Perryton, Texas  
Hutchinson Co. Ochiltree Co.

B. F. GARST  
Dealer in Pianos, Player Pianos  
and all Musical Instruments  
Panhandle's Oldest Music Dealer  
ASK ANYBODY

C. K. WILMETH & SON  
Auctioneers  
Make dates at Reporter Office

ARCHER BROS.  
and HEDGECOKE

OIL PROPERTIES  
Leases and Royalties

Rooms 726-727-732  
Amarillo Building  
Telephones 3584-4689

Amarillo, Texas

STAPLE and FANCY

## Groceries

New, Fresh Goods . . . at all times

Call at our store, just North of school building, Spearman, we will greatly appreciate a share of your business.

Free delivery service to any part of city

JESSIE E. HAYS  
Phone 148 Spearman, Texas

### TEXAS TOWN CLAIMS MANY DISTINCTIONS

Lefors, Texas.—This quaint town in Northwest Texas has so many distinctions that they must be enumerated in some kind of sequence. Among these are the following:

Lefors is the smallest county seat in Texas.

Lefors boasts that it is the only county seat without a jail. The jail has been leased to a neighboring town.

Though located on an otherwise treeless plain, the town is hard by a forest of giant cottonwoods.

This fact leads to another distinction. The town has the only sawmill in a territory larger than half a dozen Northern or Eastern states. There are no other sawmills out on the Plains because there is no wood to saw.

The water wells are only nine feet deep in Lefors.

But perhaps the most interesting facts are these: The cottonwoods bear grape and virtually all the residents drink grape juice the year round and altho fifty years old this town's cemetery contains only four graves.

Near the town is the Valley of Lefors, formed by a branch of the Red river, which separates Texas from Oklahoma. This valley gives the impression that it is a corner of Japan or an imaginary kingdom in a dream. While the plains may be swept by cold winds, and the frost may sweep down from the north, the Valley of Lefors is warm and cozy behind its rock wall shelter.

The towering cottonwoods do not actually bear grapes, but they support the grape vines that entwine them and hang down dolls fruits of all kinds, and the cherry blossoms enhance the Nipponese picture.

From the wild grape vines a great crop of grapes is harvested every year. The juice of the grape is found in every home thereabouts.

When a man wants a well here he procures a post hole digger, bores down about nine feet and obtains clear, sparkling water.

For a generation Lefors has gone on drinking its grape juice and sawing its wood, and now oil is beginning to touch it with the magic of life. The oil boom in the Panhandle is reaching into Gray county, of which Lefors is the exact geographical center.

The town with its dreamy valley is perking up. The cottonwoods are being transformed into new homes.

### ELEVEN CENT COTTON AND FORTY CENT MEAT

Eleven-cent cotton and forty-cent meat. How in the world can a poor man eat?

Flour up high—cotton down low—How in the world can we raise the dough?

Our clothes worn out, shoes run down, Old slouch hat with a hole in the crown,

Backs nearly broken, fingers all sore, Cotton going down to rise no more.

Eleven-cent cotton and ten-dollar pants,

Who in the world has got a chance? We can't buy clothes—we can't buy meat, Got too much cotton and nothing to eat.

We've got no home, got no wealth; Losing our credit, ruining our health; Can't help each other. What shall we do?

I can't solve the problem, so it's up to you.

Eleven-cent cotton and a carload of tax;

The load's too heavy for our poor backs;

We're a good set of farmers—we all know well;

But there's something wrong as sure as—well,

We all worked hard, we groaned and sweat;

Now we are ruined—we are a blowed-up set;

No use talking—any man's beat With eleven-cent cotton and forty-cent meat.

Mr. C. S. Ford, Frisco, Texas.

### GOOD BUSINESS

If I possessed a shop or store,

I'd run the grouches off my floor; I'd never let some gloomy guy

Offend the folks who came to buy; I'd never keep a boy or clerk

With mental toothache at his work Nor let a man who draws my pay

Drive customers of mine away. I'd treat the man who takes my time

And spends a nickle or a dime With courtesy and make him feel

That I was pleased to close the deal, Because tomorrow—who can tell?

He may want stuff I have to sell, And in that case then glad he'll be

To spend his dollars all with me. The reason people pass one door

To patronize another store Is not because the busier place

By lower prices leads the race, But I have always found it lies

In pleasant words and smiling eyes; The only difference, I believe,

Is in the treatment folks receive. It is good business to be fair,

To keep a bright and cheerful air About the place and not show

Your customers how much you know; Whatever patron did,

I'd try to keep my temper hid, And never let him spread along

The word that I had done him wrong. Edgar A. Guest in "Carnation News."

Misses Nobuko and Chiko Masuda, granddaughters of Japan's richest baron, are touring the United States studying social service methods.

Edward L. Parsons, Episcopal bishop of California: "One of the most distressing ways of intolerance is shown in the attempt to control by legislation the freedom of scientific thought."

Mrs. M. K. Metcalf of Washington, wife of a naval officer, owns a cat which once belonged to the palace of the sultan of Turkey.

Mrs. Anna I. Carter, telephone manager at Social Circle, Ga., was presented a ten-star gold service emblem recently after her completion of 50 years of continuous service.

Mrs. A. J. Lowe, Mrs. Julia Smith, Mrs. H. S. Tanned and Mrs. Achsa Tanner are the four women members of the Utah legislature.

Miss Annette Ashberry owns a foundry plant at Brixton, Eng., which is manned entirely by women workers.

Senator Wm. E. Borah: "We are building up a condition under which every conceivable human activity is being given over to regulation by bureaus administered from Washington."

## RAWLEIGH'S

Good Health Products

Medicines - Extracts - Spices

W. P. JONES

The Rawleigh Man

Spearman, Texas

CITY LIGHT

and

POWER

For

COUNTRY FOLKS

KOHLER AUTOMATIC

Power and Light

ROBERT SHAPLEY

Dealer

Spearman, Texas

## A special Gasoline



for special Requirements

DOES your motor knock when going up a slight grade? Has it a slow pick-up in traffic? Is it sluggish and generally out of key?

Most motors act that way when choked with carbon or after long, hard service.

But let it alone! Just get a tankful of Conoco Ethyl Gasoline and "step on it."

Conoco Ethyl Gasoline stops the harmful knocks that carbon causes and turns the carbon itself into power.

Get it at the sign of the Continental Soldier—then note the fast pick-up, the smooth, sustained power on the pistons and the absence of all knocking.



CONTINENTAL OIL COMPANY  
Producers, Refiners and Marketers

of high-grade petroleum products in Arkansas, Colorado, Idaho, Kansas, Missouri, Montana, Nebraska, New Mexico, Oklahoma, Oregon, South Dakota, Texas, Utah, Washington and Wyoming

# extra knockless! miles

The Largest Furniture Store in the Panhandle

CASH CREDIT

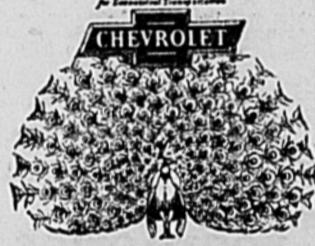
## Green Bros Co

INSTALLMENT HOUSE FURNISHERS

Amarillo, Texas

Let us furnish you Home, Cash or Credit. Our easy terms are open to all Panhandle people.

We Pay the Freight to all Panhandle Points



## The Most Beautiful Chevrolet in Chevrolet History!

-a host of improvements

amazingly reduced prices!

Not only does this most beautiful of all low-priced cars offer new paneled and beaded Fisher bodies but also many new fine car features and mechanical refinements such as:

Full-Crown Fenders

New full crown one-piece fenders add a note of smartness to the new and beautiful bodies.

Bullet-type Lamps

Modish new bullet-type head and cow lamp add a pleasing touch of beauty and style.

AC Oil Filter

A new AC oil filter removes all dirt from the oil supply—assuring greater oil mileage and a minimum of motor wear.

AC Air Cleaner

A new AC air cleaner safeguards motor parts from excessive wear by removing all dust and grit from air passing through the carburetor.

New Tire Carrier

A new tire carrier of improved design is mounted on frame—entirely free from body.

New Door Handles

New remote control door handles—located in center of door—provide a beauty and convenience feature new to the low-price field.

The Touring or Roadster . . . \$525

The Coach . . . \$595

The Coupe . . . \$625

The Sedan . . . \$695

The Sport Cabriolet . . . \$715

The Landau . . . \$745

1-Ton Truck (Chassis Only) . . . \$495

1/2-Ton Truck (Chassis Only) . . . \$395

Balloon Tires now standard on all models. All prices f.o.b. Flint, Mich.

Come in and see these strikingly beautiful models!

## McClellan Chevrolet Co.

Spearman, Texas

### QUALITY AT LOW COST



**OUR GREAT NATIONAL PASTIME IS NOT BASEBALL—DANCING**

The great national pastime of America is not baseball, as many would carelessly suggest, but dancing, according to Anna Steese Richardson of the Woman's Home Companion.

Once dancing was only a social accomplishment. That was twenty years ago. The world has changed a good deal since then. Now, says Mrs. Richardson, dancing has become "the great national recreation."

There is no longer any excuse for people not knowing how to dance, she declares. If there are any old fogies left who don't know how, they need not bother to hunt up a private teacher, for they can get adequate instruction, she assures them, from the radio or from phonograph records. Let them just roll up the rugs, turn on a new dance record and start in at once.

The rules of the game have changed enormously in the last decade. When dancing was merely a social accomplishment, it was surrounded by conventions and tricky etiquette. Mrs. Richardson points out that now, when it has become the great national sport, it has cast aside all unnecessary baggage. She gives four examples of the society folk of fifteen years ago:

"The chaperone is obsolete. The modern girl starts dancing at the hour her grandmother was leaving for home. The word 'ball' has disappeared from society's vocabulary. Gloves and swallowtail coats have vanished from the dance rooms."

**SHIFTING TIDE OF POPULATION TURNS FROM CITY TO COUNTRY**

A redistribution of the population of the United States, away from the cities, is now definitely in progress throughout the United States according to the architectural editor of the Woman's Home Companion in his annual summary of home building conditions. People are shifting to the rural districts, this movement being largely brought about and facilitated by automobile transportation.

"The small incorporated villages that have sprung up show how rapidly the redistribution is taking place," says the writer, "and it is obvious that the movement will soon have a powerful effect on real estate values. The effect will be beneficial in a way, because it will reduce the too high prices of some sections and increase land values in other sections that are relatively too low."

"The shifting has created a demand for the cutting up of woodland and farmland in many places for sale as small farms and suburban home sites. In many cases these home sites are already worth far more than sites in thickly congested sections."

Local building and loan associations report nearly 500,000 new members last year. This means that through this one source more people than

ever before are taking first steps toward becoming home owners. Probably all of them will not carry out their intentions, but the figures show that a very large proportion of people want to own their own homes.

**MARRIED LIFE: THE THIRD YEAR IS THE HARDEST**

The presiding judge of the domestic relations court in New York recently summed up his experiences in an epigram to the effect that "the first year of married life is the hardest."

His conclusion is challenged by Eleanor Blake writing in the Woman's Home Companion, who declares that "the dreadful third year" is the crucial test of married life.

"I see nothing in all this talk about the trials of the first year of marriage," she says, "save a conspiracy on the part of the brides to call attention to themselves. In general, this first year is a year of delicious adventure."

"With the beginning of the second year a milestone has been passed. Somehow she and John are really married, and she has settled down into a happy routine of getting meals, of keeping the house bright and fresh, and perhaps of preparing for another small life that is coming."

"Then the third year creeps on her almost before she knows it. The baby is there, a baby who is healthy and happy as only the most sensible of mothers, following a wise routine, can make him. He is the nicest sort of baby to have around the house, but that is just one of the reasons why his mother is apt to wake up some morning with the dreadful realization that another scheduled day of activity is before her—a day of meal planning and meal preparation, baths, naps, and airing with Junior, another meal, marketing, rest and another meal."

It is the "hated round of routine" which Miss Blake finds the most serious crisis in married life, and for which she proposes as remedy an experiment with schedules designed to simplify routine.

The wise old judge, it appears, reached his conclusions mainly from experiments with marital shipwrecks, while Miss Blake is discussing the much more important classification of normal marriages.

**STRAY HORSES**

One four year old bay horse, small white spot in forehead, branded L on left shoulder; one three year old bay horse, a neat, trim small horse, unbranded. These horses strayed away about one month ago. I will pay \$2.50 reward for information leading to their recovery.

OLIN SHEETS,  
Spearman, Texas.

Get a good looking marcel that lasts. Marcelling, 75c; retrace, 25c.

MRS. E. B. DODSON.

**COUNTY AGENT'S NOTES**

Ted Rosenbaum had the county agent to weigh 161 calves Tuesday. These calves are a feeding project, and are doing well. They were weighed on the first of February, and Tuesday's weights show that the average weight was 511 pounds, and that each calf had gained 2.7 pounds per day during the last fifteen days. From the 15th of January to the first of February these calves gained 3 pounds per day. This cattle feeding project is being watched with interest by cattle men. Mr. Rosenbaum is feeding about 16 pounds of grain each day.

Three hundred hens were culled for Mrs. Davis and Miss McGinty Wednesday by the County Agent. Ray Mudget also asked the County Agent to cull his flock Friday. One hundred twenty-five hens were culled for R. P. Kern who lives west of Spearman.

J. H. Spivey ask the county agent to prune his grape vines this week. Mr. Spivey tells the Agent that his two year old vines bore one-half bushel of grapes last summer.

A number of children in the seventh grade, who are under the supervision of Mrs. Anglin, have planted the new Chinese Elm tree that was secured by the county agent from the Lubbock Experiment Station. The Chinese Elm is supposed to be the best tree growing for this county.

The Willing Workers Agricultural Club reorganized their club Friday. They have nine members this year. Gene Cluck was elected President and Ray Mudget was elected secretary. Members of the club will have poultry and pigs as a project. This club is composed of the Woodrow and Grand Plains schools.

Twenty one visitors came to see the county agent Saturday in regard to agricultural subjects.

The Plainview and Medlin schools joined together this week to form an agricultural club, and the first regular meeting was held at Plainview school house Friday afternoon.

T. H. Taylor ordered trees for a small orchard through the County Agent last week. Mr. Taylor will have grapes, cherries and peaches in his orchard.

Mrs. Henry C. Yeiser of Cincinnati recently has been issued a life insurance policy for \$3,250,000, making her the most heavily insured woman in the world.

Nathaniel Peffer: "No great state has ever heard the call to civilize any backward land which did not have valuable natural resources."

**NOTICE**

All consumers of electric current will please call at the Company's office, located in plant building, and settle their accounts on or before the 10th of each month.

THE INLAND UTILITIES CO.

**STRAYED**

One big-boned Poland China male hog, thoroughbred. Will pay liberal reward for information leading to his recovery. Notify

SID LACKEY,  
1042p.  
10 miles west of Spearman.

**FOR SALE**

Single Comb Rhode Island Red eggs, four and one-half (4½) cents each. Seven miles south-east of Spearman.

844p.  
MRS ROBT. E. MEEK

**FOR SALE**

A fat hog; will weigh about 300 pounds. Come to my home, 20 miles southwest of Spearman, and get him.

1042p.  
W. B. HART.

**EXCURSIONS**

Round trip tickets and all expenses paid to Winter Garden Farms, Catrina, Texas, for \$25. Train leaves Dalhart every Sunday. Write or phone Nield Realty Company at once, as they are limited as to numbers.

104f.  
NIELD REALTY CO.,  
Texhoma, Oklahoma.

Red Hot neckties. J. & L. Clothiers.

Enormous shipment of new spring goods just arrived at Thomason Bros.

For expert marcelling call or phone 114.

MRS. E. B. DODSON.

GOLDEN LACED Wyandotte eggs for sale; \$1.00 per setting of 15.

LULA NEWCOMB,  
Range, Okla.,  
846p.

Mrs. Mary Bell of Glasgow has been appointed chief magistrate and lord provost of that city, and is the first woman to hold the dual office.

FOR SALE: Two choice Duroc-Jersey boars; were farrowed in October; weight about 140 pounds. Your choice for \$30, this month.

94f.  
W. A. SUTTON.

Order your Baby Chicks from DODD. 10c to 15c each. Write for prices.

DODD'S HATCHERY  
Pampa, Texas, Woodward, Okla.

Seed oats and bundle feed, maize, kafir and cane, for sale. See N. L. Beck at the Beck-Maize Motor Company or H. O. Kelly on the Seymoure old place, about fifteen miles south of Spearman.

94f.

**Money Back!**

**Stamp Saver**

1 STAMP GIVEN WITH EACH 10c PURCHASE

500 STAMPS will fill a folder. A folder, when filled with our Trading Stamps, will be redeemed at our Store for 2% Discount for Cash

Our own Trading Stamps have a greater value than any others. SAVE THEM.

Banks pay you interest on the money you save. Trade here and get interest on the money you spend.

THAT we sell only reliable merchandise.  
THAT our stocks are new and thoroughly up-to-date.  
THAT you will save time and money by trading here.  
THAT our stamps cost you nothing and have a cash value.

**WOMBLE Hardware Co'y**

Implements, Hardware, Furniture  
Phone 44  
SPEARMAN

**REAL ESTATE, OIL and GAS LEASES**

**F**OR SALE within the Block and in the vicinity of Whitson number 1; fine agricultural lands with Mineral Rights at Prices from \$25 to \$55 per acre. Liberal terms to purchaser. Oil and Gas Leases from \$4 to \$10 dependent upon cash payment, distance and direction from well.

The owners of these properties have delayed placing them upon the market until they felt satisfied there was really a play in sight for careful conservative investors. The bull dog determination of the drillers of this well at all times, and especially when confronted by adverse conditions; the readiness of the contractors to comply with their contract and their promptness in repairing the damage caused by the recent disastrous fire at the well, have convinced us that they are men of character, financial standing and ability to drill the well to the depth the contract calls for, 3,500 feet, or deeper, if in their judgment the structure, which so far is reported good, justifies drilling further in order to insure pro-

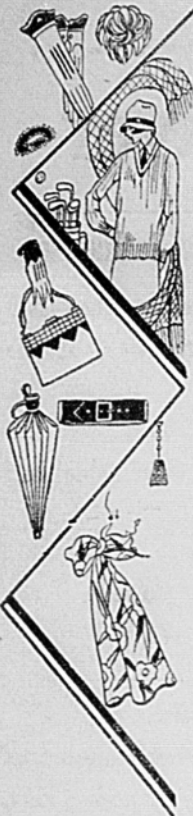
duction. After all their regrettable misfortunes they are cheerfully pounding away at a depth of 2,000 feet, with splendid prospects of striking the lime in the near future.

We have hesitated to make this statement until we were satisfied it would stand the most critical investigation. We have no gold bricks for sale—no stocks to place on the market; simply acreage in the vicinity of the well and adjoining the block. You make your selection. Your contract covers your own individual selection—no other. You know as much about the story that the next 1,000 feet will tell as we do. All that we do guarantee to you is a clear, clean-cut,

honest to goodness leasehold contract covering the acreage selected; which does not insure but entitles you to share with us in prospective fortune. If you prefer to pay \$2.50 or \$3.50 down, dependent upon location, we will accept it with the assurance in your contract that you will pay the remainder if oil or gas in commercial quantities is produced from well or wells drilled within the association block during the life of your lease. We agree that \$3.50 is enough for you to pay for a dry hole while \$11 per acre is a minimum price that should be paid with assured production. For further information write, phone or call at the home of the undersigned in well block, eight and one-half miles southwest of Spearman.

**George M. Whitson**  
Spearman, Texas

# Attractive Prices on New Spring Goods



Ladies and children's hats, coats and silk dresses specially priced.	Men's Dress Shirts— <b>\$1.00 to \$3.00</b>
Ladies \$1.50 bedroom slippers— <b>\$1.00</b>	Men's and Boys khaki unionalls— <b>\$1.25 to \$3.75</b>
Boudoir taffeta pillows, regular \$1.69 value for— <b>\$1.00</b>	Men's overall gloves, rubber wrist— <b>50c</b>
27-inch sanitary birds eye, 10 yards for— <b>\$1.50</b>	Men's spring weight flannel shirts— <b>\$3.25</b>
Waldorf sheets, 81x90 inches, each— <b>\$1.19</b>	Boy's three piece suits— <b>\$7.50 to \$9.50</b>
Silver seal pillow cases, 42x36 inches per pair — <b>65c</b>	Boy's four piece suits <b>\$15 to \$18</b>
Fancy Towel Sets— <b>\$1.25</b>	Men's Four-Piece Suits— <b>\$21.50</b>
Men's standard work shirts— <b>75c and \$1.00</b>	Men's Lion Brand adjustable caps, short and long back— <b>\$1.50 to \$1.75</b>

Premiums Every Saturday With a \$5 Purchase; Only one to a Customer

## Spearman Dry Goods Co.

### Build Then Insure!

The wise man builds his home, then he sees right away that it's properly "covered" by insurance.

It's the first step the new home owner should take. Cover the house with insurance against fire, then cover the contents against destruction and theft.

The Happy Home is the Protected home

### Hansford Abstract Co.

A. F. BARKLEY, Manager

Established 1905

Insurance

Spearman

#### BLIND GIRL IS EDITOR OF WORLD'S BIGGEST MAGAZINE

Miss Helen Day of New York, who has been blind since she was ten years old, is now the editor of "The Searchlight," a magazine for the blind written in Braille. Her magazine is perhaps the most bulky periodical in the world, the average issue being over three inches thick, although it contains fewer words than any other quarterly in circulation. This is because of the size of the lettering. Each number contains only about 2000 words in all, but the book is so large that it is inconvenient to hold.

Miss Day's story is told this month in the American Magazine. As a little girl she was brought up by a great-aunt who was blind and who was morbidly sensitive about her affliction. Any allusion which folks made to her loss of sight was keenly resented, and she shrank from the most casual contacts. Later on, as a climax to a series of illnesses, Helen herself became blind, and she readily fell into her aunt's mental attitude.

Today, however, all that is changed. For eight years Miss Day though sightless and almost totally deaf, has been one of the busiest editors in New York. Seated each day before a Braille typewriter in her office in her mother's home in Harlem, she edits copy, reads proof and selects manuscripts for her magazine, which is sent all over the United States to readers who cannot see.

Canyon—The West Texas State Teachers College will give a scholarship, carrying exemption from all matriculation fees, to all successful contestants in the Home-town Contest of the West Texas Chamber of Commerce. The contest, open to high school students, will be held in connection with the annual convention at Wichita Falls next May.

#### YARMASTER IN NEW YORK HAS STRANGEST RAILROAD JOB

No taxicab can ever run down George S. Sailsbury and his family, who live happily in a comfortable four-room apartment on a scow in the middle of New York harbor. He is a railroad man, living and working on the water, far away from the roar of railroad terminals and freight yards, although his position is classed as "yardmaster." It is the only job of its kind. Day and night he must be on hand, for the Scow-Ox, on which he lives, is never closed.

"No, sir," said Sailsbury to the correspondent of the American Magazine, as they sat in his living room on the scow, while the craft rocked with the waves, "a fellow doesn't have to work near the tracks to be a railroad man. The Scow-Ox is the same as a distribution yard on the railroad. When coal arrives at the New Jersey docks, it is loaded on the barges that will carry it to various piers in the New York district. Some place must be provided to tie up these boats in the harbor while tugs transport them, a few at a time, to their destination. Here is where I come in.

"My family consists of myself, my wife and my daughter Catherine. The Scow-Ox has been an idea, a line for me for five years. When I saw that the job might become monotonous, I built a chicken coop on one end of the scow, installed a radio and got a dog. Lately I have been raising carrier pigeons.

"We are happy here. When we want to bathe, we just sip on a bathing suit and jump off our front porch. In summer, while New York sweaters, we have to sleep beneath blankets. In winter, we are as snug and comfortable as any city apartment house."

#### SNAKE BITE CURE BY RADIO

The most dramatic incident of five years as a broadcasting director is described by John S. Daggett of Station KHJ, Los Angeles, in the current American Magazine.

"We got a frantic long distance call one night from a man out in the Nevada desert," he says. "The man had ridden from a desert camp to the nearest ranch where there was a telephone, to ask us if we wouldn't try to find a doctor for him. A friend of his had been bitten by a rattlesnake. They had been able to hold off the spread of the poison by means of a tourniquet, but there wasn't much chance that they could hold it in check much longer. Moving the man would stimulate his circulation, making the danger even greater. So he was left alone in camp while his friend went after help.

The friend gave us an exact description of the place where their camp was and how to get there. We immediately sent out a distress call, but with little hope that anyone could reach the man in time. It was miles to a town of any size, and even if we were heard in the nearest town there was little chance that a doctor could reach the camp before the poison did its work.

"The man who had telephoned us went back to camp to wait with his friend. When he rode up on his horse, he saw that someone had preceded him.

"Was it you that telephoned the radio station this afternoon?" the stranger asked, coming out of the tent.

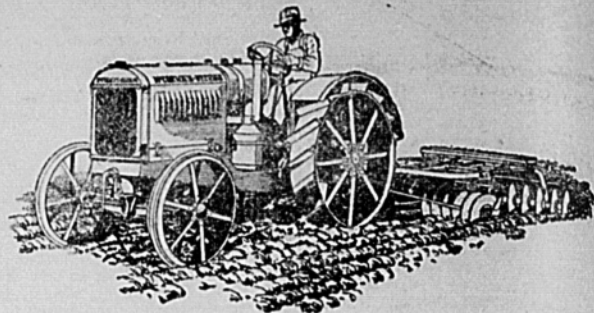
"Yes," said the man on horseback. "Well," said the other man, "I'm an old desert rat. I've camped over here about a mile from you. I heard about the fix you was in and come right over. I've got an anti-snake-bite outfit, and I brought that too. Your pardner is all fixed up and is going to be all right. Them radios is a great thing, ain't they?"

#### RHEUMATISM

While in France with the American Army I obtained a noted French prescription for the treatment of Rheumatism and Neuritis. I have given this to thousands with wonderful results. The prescription cost me nothing. I ask nothing for it. I will mail it if you will send me your address. A postal will bring it. Write today. PAUL CASE, Dept. 0-573, Brocton, Mass.

It Pays to Advertise in The Reporter.

CAPON DAY, FEBRUARY 25



## Four Carloads .. of .. Machinery and Implements ..

---Just Received in Spearman

Consisting principally of

TRACTORS, DRILLS, PLOWS, DISC HARROWS, ONE, TWO AND THREE ROW LISTERS.

### The Number 3 Combine

Is now on display at our store. See the new features on this wonderful machine.

CAR OF NEW FURNITURE IN TRANSIT

## Spearman Hardware Co.

Mattress Sale  
Is Still On

Maytag Washing  
Machines

Alamogordo, N. M.—Bids are now being received for the installation of a sewerage system and disposal tank for Alamogordo. A sewer district has been made, and expenses are to be borne by certificates of indebtedness against the property.

Petersburg—A new residential section has been opened up here.

Ruidosa—A candelilla wax factory is being opened here by two Alpin men. Actual manufacturing will begin this month. The plant is to be known as the River Wax Company.

Levelland—A street lighting service system is being installed here according to contract recently made. Eighteen lights are to be put in.

## Spearman Plumbing Company

PHONE 125

For Sanitary Plumbing and Pipe Fitting

All Work Guaranteed

W. A. BURR

# Nut Coal

# \$11<sup>00</sup>

Per Ton



ALL SIZE ATHLETIC & GOLF SHOES, ALSO BRIGHT HIGH PRICED LUMP COAL AND BRICKS IT UP INTO BUT COAL-DUST AND SLACK. HE SAID HE MADE THE EXPENSE.

Screened to just the right size for stoves, Ranges and Heaters—costs less than lump and contains just as much Heat. We must move this nut coal, hence the exceptionally low price quoted above.

## R. L. McClellan Grain Co.

Purina Chows in checkerboard bags for Poultry, Cows, and Pigs  
Elevator Row

Phone 109; Spearman

## The Spearman Equity Exchange

... a Good Place to Buy

### Groceries - Flour - Feed - Coal

### Work Clothing

This Store is operated for the benefit of producers and consumers alike. We pay the producer more and sell to the consumer for less.

BIG BILLS ARE OUR SPECIALTY

Farm, Ranch and Oil Field trade is solicited and appreciated.

## WE BUY IN CARLOAD LOTS

**OUR MOST PRECIOUS POSSESSION**

Just came across a little contribution sent in by a reader who signed no name, but his quotation, which follows, expresses a great truth: "Time is one thing that can never be retrieved. One may lose and regain money; opportunity once spurned may come again; but hours that are lost in idleness can never be brought back to be used in gainful pursuits."

We wish we knew to whom to give credit for this well recognized truth so aptly worded, but will have to let it go as anonymous along with that other proverb, "Time is money."

That time not given to gainful pursuits is lost, we would not concede. Dollars are only dollars, and wealth, happiness or wealth and achievement, are by no means synonymous. Rather do we feel that Roosevelt expressed the right thought when he said: "When you play, play hard; when you work, don't play at all."

But coming back to the matter of time in its relation to work—that proportion of our time which we pretend to give to making a living and accumulating a competence for old age—the waste is tremendous. From the time-killing conference in the executive offices, to the aimless, resultless conversing salesman, on to the chatter of factory or office workers, verbosity is without doubt the greatest time-killer on record.

Some men are paid for what they know rather than for what they do; yet it takes time to think, to decide, to direct. Even these men are paid for their time. Among the lesser lights of business time is often all they have to sell their employers. They waste this time because they do not think clearly, act promptly, complete their task readily and concisely. The greatest loss of time is due to an unorganized mind rather than to any desire to loaf. When a man rambles mentally, he is likely to wander verbally and in the performance of his duties.

yet few of them see it. They lack application; the willingness to keep eternally at it; to make minutes count; to know when they are through calling on a customer and move on to the next; to avoid wasted minutes in conversing with acquaintances who can not add to their sales. Salesmen must talk to sell; but if they would cover the ground and make sales, they must talk only to the right people, even then remembering that many a man talks himself into and out of a sale and never realizes it. Talking is most effective when mixed with a large portion of listening, both well seasoned with alert, intelligent thinking.

The greatest waste in all industry is the waste of time. Ford has done much to eliminate it and has increased his profits by untold millions. On a relatively smaller scale, the same thing is possible in every business. If employers could but make every employee realize that time is in fact money, and that it is their money if they but earn it; if employers themselves would take this motto for their own and set a good example, the wheels of industry would spin as never before.—Southwestern Ambassador.

**NEW OIL DISCOVERIES PREDICTED FOR 1927 IN TEXAS PANHANDLE**

The Panhandle is due for extensive development and the discovery of new oil fields this year in the opinion of Charles D. Lockwood, correspondent of the Oil and Gas Journal. The discovery and development of the numerous pools of the Panhandle in 1926 is certain to be followed by other discoveries in 1927, Lockwood says.

The Panhandle started the year 1926 with less than 5,000 barrels a day output, and the five counties reached a peak of 165,710 barrels the week of November 20, and during 1926 produced some 25,545,197 barrels of crude oil. It had just 40 operations in five counties at the beginning of 1926 and ended the year with more than 550. The peak in operations was 727 for the week of August 28, and this took in 20 counties.

There were 689 completed wells during 1926, with but 26 failures and only 23 wells completed as gasers.

**AN EYE FOR "BLINDNESS"**

The new stenographer was very, very beautiful. The two partners of the firm were holding a meeting.

Senior Partner: "How about you going out and getting some orders?" Junior Partner: "How would it be if you went?"

Prof. G. R. Potter, University of California: "Grammar is not scientific and it is natural that it changes with the times. Many colloquialisms and slang phrases are more vivid than those grammatically expressed."

**OPINIONS ARE LIKE RIPPLES**

(By Dr. Frank Crane)  
Opinions are like ripples. How long they last depends upon the surface on which they appear.

The mind of the individual who holds the opinion is the surface whose character determines its lasting quality. Think over your friends. Some change their opinions continuously, others with great infrequency. You have seen many kinds of ripples—ripples on water, ripples on sand, ripples on ice, and ripple marks in solid limestone.

All are duplicated in the minds of men. On water, ripples alter with each succeeding breath; in stone they change only with the erosion of years.

One type of mind is fluid; another concrete. The first is plastic but unretentive; the second is retentive but unchanging and indurate.

One changes its opinions too frequently; the other not frequently enough.

In a general way these two characteristics of mind represent two stages of life.

In youth the tendency is to change our opinions too often. In old age the tendency is to change them too seldom.

Youth is a time for ripples on water. It is a time for alternating, changing open-mindedness, for a sort of sparrow-like hopping from one idea to another.

Opinions are formed, destroyed and re-formed with little effort. Old age is a time when the ripples of opinion seem marked in stone.

They are fixed. They alter only after long erosion by contrary evidence.

Both attitudes are off balance. One leans too far forward, the other too far back. Between the two extremes is the happy mean.

Of the two attitudes the one that can be most controlled is that of solidity. Little can be done to change the attitude of the mind of youth, and it has time to steady down anyway.

But open-mindedness is a habit that can be cultivated. "A new truth is a truth and an old error is an error; is a good motto for advancing years."

**MOONSHINE**

Most moonshine stills are seized before they have operated more than two or three weeks. Nine out of ten of them are very small affairs.

What will the women say to the proposal that they go back to the hardships of the saloon years? In 1914, when we were wasting billions of dollars for liquor, our women used about a million dollars' worth of electric washing machines. In 1924, the amount invested was \$8 million. In 1914 vacuum cleaners were in about 4000 homes and in 1925 they were in 1,250,000 homes.



**Many Vital New Improvements Since January 1st**

Dodge Brothers announce still further improvements of a far-reaching and vital nature in their product.

A new clutch—silent, simple, prompt and sure.

Softer pedal action, easier gear shifting, freedom from wear and absolute SILENCE OF ACTION are the major advantages of this superior design.

Vital betterments in the universal joint, propeller shaft, differential and axle shafts materially increase the car's long life and sturdiness—exceptional as these qualities have always been.

A steering wheel that now responds to the lightest touch, a striking array of smart new color effects for all types and many other new features definitely mark a new era in the history of Dodge Brothers Motor Car.

Touring Car	\$ 795
Roadster	795
Coupe	845
Standard Sedan	895
Special Sedan	945
Deluxe Sedan	1075

**G. P. GIBNER & SON**  
Spearman, Texas

*We Also Sell Dependable Used Cars*

**DODGE BROTHERS MOTOR CARS**

**You Are! CORDIALLY INVITED ... TO THE BIG FREE Power Farming Meet**

**March 16 and 17, Lyric Theatre, 10 a. m. to 4 p. m.**

All interested in modern power farming and in greater returns from the farming business are invited to join with us in this big, educational power farming meeting.

The J. I. Case Threshing Machine Company is sending trained men to give illustrated talks and practical demonstrations. Moving pictures slides, charts, engine parts and models are part of the equipment which will be used to make this the best meeting of its kind

ever held in Spearman. No matter what make of machinery you use, you will find this meeting worth attending at every session.

The meeting will be highly practical and sufficiently comprehensive to be of real value to the experienced operator as well as to the farmer who as yet has had little experience with this class of labor-saving, income-producing machinery.

You will not be solicited to buy during the lecture hours.

**R. L. McClellan, DEALER SPEARMAN, TEXAS**

# HAVE YOU... BEEN? THERE?

if You Haven't... Go Now  
You Can't Afford to Miss

THIS  
**Mighty Price Slaughter**

... it's the talk of the town

WHAT?

P. M. Maize & Comp'y

# SALE

GOING FAST GOING STRONG These Bargains won't last long. So come in and buy or you'll be sorry bye and bye.

A real Old-Fashioned Sale, so come expecting Bargains. You won't be disappointed.

**HURRY HURRY HURRY**

### WHITSON NO. 1 SHOWING GOOD

Overcoming What Looked Like Unsurmountable Difficulties And Are Pounding Away Around 2,000 Ft.

Whitson No. 1, seven miles southwest of Spearman, is showing good. This test is logging with the great wells of the north Hutchinson county field, and the drillers and everyone interested in the venture are mighty well pleased with the showing of the past few days. The drillers on this job have encountered every sort of hard luck, almost, known to the game. They have had f-hing jobs and other minor troubles world without end, and to cap the climax, the rig burned down. But these trials and tribulations are nothing in the life of the real, dyed-in-the-wool deep well driller. When something goes wrong they simply make it right and keep pounding away. Whitson No. 1 is now around 2,000 feet deep, and will be pushed on down to the 3,500 foot mark without oil or gas is found in paying quantities at a lesser depth. In fact, it may require a 4,000 foot hole to convince this bunch of pioneers that oil can not be found at this location. Everything is working smoothly at Whitson No. 1 at the present time, and the next few weeks will mean much to those interested in this venture. The drill is now in a blue clay, which, when dry, closely resembles soapstone. The head driller and those in close touch with north plains drilling operations, claim that indications for a rich strike are really good.

### DEATH OF MRS. C. O. COOK

Mrs. C. O. Cook, aged 64 years, died at the family home in west Spearman on Tuesday, February 22, at noon. Mrs. Cook had been a sufferer for several years from dropsy and complications. The family moved to Spearman in December, and are highly respected people. Mrs. Cook had been a sincere Christian and a member of the Methodist church for thirty-five years. She leaves the sorrowing husband and six children, four daughters and two sons, to mourn their loss. The children are all grown, and five are married. Mrs. Arthur Robertson is a daughter of deceased. The remains were laid to rest in the cemetery at old Hansford on Wednesday afternoon.

W. L. Russell made a business trip to the oil fields, the first of the week.

Red hot specials at Thomason Bros. Dollar Day, Saturday, February 26th.

Dr. M. A. Cooper came from Childress Wednesday to take a look at Spearman and the great north plains in general. Dr. Cooper is an old friend and acquaintance of Earl Callaway, and an uncle of Mrs. W. A. Sutton.

### WHY NOT SIDEWALKS

Much sidewalk talk is heard these days. The agitation seems to be to build a sidewalk from near the downtown district to the school house. This matter has been neglected in the past but now that the pavement program has set the wheels in motion in the right direction, it is hoped that sidewalk building will be included in the general scheme. We have had very little mud to contend with this winter, but everyone knows that the muddy season will come and that our fine school building will be besmeared and that teachers and students will suffer much inconvenience. The sidewalks are needed badly and this matter should be agitated until something is accomplished.

### CINDERS

Each year with the first north wind I's husbands' habit to begin A cinder walk from door to gate, And that's one thing all women hate.

For they soil the hose, and scar the shoes, The one tip over them on P's and Q's And every hole in all the yard Is filled up with a cinder guard!

But the very worst is that cinder walk Of which some men love to talk, And which all wives know despise, Regardless of age, or shape, or size.

But if women knew how to manage men, I wonder if there wasn't one time when They could have broke them from the craze That aggravates in so many ways!

But women are just women, And men were always men! And cinders were a nuisance in the beginning And they'll be that in the end!

—Margaret Locke Kirk.

See Thomason Bros advertisement on back page. Specials.

Good nut coal, \$11.00 per ton. R. L. McCLELLAN GRAIN CO.

Mr. and Mrs. Dave Wilburn are the proud parents of a 12 pound girl, born Wednesday night, February 23.

Mrs. W. A. Jordan was in from their ranch home near Plemons, Monday shopping and attending to business matters.

Mr. and Mrs. Berlin Barbour are rejoicing over the arrival of twin girls, weighing 8 lbs. and 7 1/2 lbs, born on Wednesday night, February 23.

A volley of excitement! A broadside of mirth! Suspense without end! Action galore! Stunts! Fights! Laughs With a surprise climax never seen on any screen to date! See "Texas Streak" at Lyric Theater, Friday and Saturday, February 25 and 26.

### LIEB ITEMS

(Too Late For Last Week) Argus Parks went to Stinnett Sunday.

Miss Ruth Wiggins visited in Texhoma Sunday.

Mr. and Mrs. Roscoe Parks went to Amarillo Saturday.

Miss Edna Wade made a business trip to Spearman Saturday.

Mr. and Mrs. W. T. Womble shopped in Spearman Saturday.

Miss Edna Wade and Ruth Wiggins went to Stinnett Tuesday afternoon.

Mr. and Mrs. Willis Lackey spent Sunday with Mr. and Mrs. Lex Board.

Miss Obera Gay spent the week end with Miss Iris Lieb and Evelyn Watters.

W. L. Watters and T. I. Harbour made a business trip to Amarillo, Saturday.

Ross Chisum and Cecil Webb attended to business matters in Spearman Friday.

Mr. and Mrs. Rain Tompkins visited Sunday with Rain's sister, Mrs. Vernie Caldwell, near Dumas.

Mrs. G. P. Gibner and daughter, Beatrice, of Spearman, called on Mrs. Carson Womble Sunday afternoon.

Mrs. C. E. Lieb and Miss Ruth Wiggins made a business trip to Stinnett Friday.

Mrs. W. H. Forester and sons Woodrow and Fred, of Plemons, spent the latter part of the week visiting with Ralph Forester.

Mr. and Mrs. C. E. Lieb and Mrs. W. L. Watters went to Texhoma to see their parents, Mr. and Mrs. W. F. Forester. Mr. Forester being ill Mrs. Watters remained for a few days.

A number of people met at Lieb Saturday night to enjoy a Valentine social given by Miss Ruth Wiggins and her pupils. All report a very enjoyable time.

"The Texas Streak" has been captured at the Lyric where he can be seen in the greatest Western picture of the year! See Hoot Gibson Friday and Saturday, February 25 and 26.

Mr. and Mrs. Joe Combs and their little daughter arrived in Spearman Wednesday and will again make this their home. Mr. Combs will be remembered as the proprietor of the D. C. D. Cafe, during the first few months of Spearman's oil play. He informs us that he will again open the D. C. D. and that the building is now being repaired for that purpose. Mr. Combs is a good restaurant man and will make a popular place of the D. C. D.

### .. At the Churches ..

#### METHODIST CHURCH

Preaching both morning and evening, Sunday. Sunday school at 10 o'clock. Be there on time. First Lesson in "Yet Another Day in Methodist Missions" at 4 o'clock Sunday afternoon. All who have parts please be present; also, all others are invited.

Woman's Missionary Society will meet Thursday eve at three, in the home of Mrs. G. P. Gibner. Business and Voice program. On the 2nd of March, we meet with Mrs. Dave Hester, at three p. m. Our Society is improving in interest and attendance, and our slogan is, "Let's Make It Better."

REPORTER.

#### FIRST CHRISTIAN CHURCH

Services in Odd Fellow hall, Sunday, February 27. Preaching both morning and evening. Come. Remember Sunday school.

JASPER BOGUE.

#### PLEASE TAKE NOTICE

As I am buying new and expensive equipment for my offices in Spearman, I take this means of notifying all those indebted to me that a settlement will be expected by March 1. I have a large number of small bills on my books. These little bills will not amount to much to those owing them, but will be of great help to me at this time. I have given sufficient time, and will expect a satisfactory settlement by March 1. Help me by paying promptly.


J. E. GOWER, M. D.  
Spearman, Texas.

#### BOX SUPPER AT LIEB

On Saturday night, February 26, there will be a box supper given at the Lieb school house. Those who enjoyed the Valentine party may well remember what a wonderful time they had under the leadership of Miss Wiggins, the teacher of that school. The box supper will be under her direction also. A large crowd is expected, and arrangements are being made for plenty of eats and a well directed entertainment. If you are hungry and wish to have the best time you ever had in your life; go and enjoy the evening with them. There are no promises made, but another jar of pickles might be given to the most love sick young man.

See the new coats and dresses at Thomason Bros.

Misses Margarete (Peggy) Holton, Mildred Ward and Lillie Hazelwood, and Messrs. Eugene Richardson, Phelix Tackitt and Autra Ward made a pleasure trip to Perryton, Sunday.



**THE UNIVERSAL CAR**

Have you seen the new Ford in colors?  
Do you insist on genuine Ford parts for your Ford?  
Do you have your car equipped with MICHELIN OR FISK TIRES?

**Genuine Ford \$12 Batteries Now \$12**

See our line of Tires and Tubes and get our prices before buying

**R. W. Morton**  
"YOU CAN'T MISS IT"  
FORD FORDSON LINCOLN  
Spearman, Texas

See Thomason Bros advertisement on back page. Specials. Saturday, February 26th is Dollar Day at Thomason Bros. See their ad on the back page.  
Mrs. J. D. Gentner came from St. Louis last week, to visit with her mother, Mrs. Ira Buckley, and her sister, Mrs. Berlin Barbour.  
Mr. and Mrs. Floyd Hays and daughter visited friends in Amarillo the first of the week.

# \$-DOLLAR DAY-\$

AT

## Thomason Bros.

### Saturday, Feb. 26

<h4>QUEEN PERCALE</h4> <p>Lovely new spring patterns of this fine, fast color, cambric finish percale. 36-inch widths, regular 32c value. You save 28c on dollar day.</p> <p>4 yards, \$1.00</p>	<h4>SHOES</h4> <p>New Spring Styles just arrived. Many styles from which to choose. With your purchase of any Ladies' shoes priced at \$5.00 and up, you receive one pair of Iron Clad Silk hose FREE. Pick your free hose from our \$1.00 line.</p>	<h4>APRONS</h4> <p>Nelly Don's Handy Dandy aprons, in new spring patterns. \$1.25 values, all sizes, Dollar Day</p> <p>Choice \$1.00</p>
<h4>HOPE MUSLIN</h4> <p>Fine strong weave, pure white, 36-inch. For gowns, underwear, sheets, pillow cases, etc., dollar day—</p> <p>8 yards, \$1.00</p>	<h4>KOTEX</h4> <p>The Safe, Sanitary way. All regular 60c size Kotex, Dollar day special,</p> <p>2 Boxes, \$1.00</p>	<h4>SUITCASES</h4> <p>24-inch fiber suitcase, brass lock and catches, regular \$1.25 case. Dollar Day</p> <p>Each \$1.00</p>
<h4>DRESS GINGHAM</h4> <p>Fine Amoskeag, 32-inch dress gingham, bright, clear patterns, and durable. Our finest sheeting, regular price per yard 55c. Dollar Day Special</p> <p>4 yards, \$1.00</p>	<h4>BOY'S OVERALLS</h4> <p>Genuine Wheeler Overalls, made like Dad's. \$1.15 value, in sizes 4 to 11, each, Dollar Day</p> <p>Per Pair \$1.00</p>	<h4>TOWELING</h4> <p>16-inch union crash, good weight, brown, absorbent, ready for use. Our 13c Special. Dollar Day</p> <p>10 Yards, \$1.00</p>
<h4>OUTING FLANNEL</h4> <p>Standard grade of dark figured patterns. 27-inch width, 18 cent grade. You save 35c on dollar day. 7 1/2 yards makes a quilt lining.</p> <p>7 1/2 yards, \$1.00</p>	<h4>SHEETING</h4> <p>Genuine Queen of the Home full 81-inches wide, extra strong and durable. Our finest sheeting, regular price per yard 55c. Dollar Day Special</p> <p>2 1/2 yards, \$1.00</p>	<h4>LINEN CRASH</h4> <p>Stevens pure linen crash toweling. Extra heavy, 18-inch, unbleached, regular 30c per yard. You save 20c. Dollar Day</p> <p>4 yards, \$1.00</p>
		<h4>CURTAIN SCRIM</h4> <p>36-inch curtain scrim in ecru color, or ecru with small rose figure or blue figure. Only 100 yards in 10 to 20 yard length. Our 20c special. Dollar Day Special.</p> <p>6 Yards, \$1.00</p>

All the above items priced for Saturday, February 26th, only. No limit on how much you buy of these items. Check the items you wish to purchase and ask to see them at Thomason Bros. Every item listed is priced below market values. SATURDAY, FEBRUARY 26TH, ONLY. COME!