

# THE SPEARMAN REPORTER

SIXTEENTH YEAR

Spearman, Hansford County, Texas, Friday, July 18, 1924.

NUMBER 31.

## DIVERSIFIED FARMING

When you Diversify in your Farming operations you are giving Hostages to Fortune.

If you have some good milk cows, hogs and chickens and raise some wheat, cotton, barley, oats and maize; you are CERTAIN of making a living and REASONABLY SURE of making some money.

FIRST NATIONAL BANK  
SPEARMAN, TEXAS

### TOO MODEST

Inasmuch as Oran Kelly, editor of the Spearman Reporter, will likely be too modest to ever mention the fact that he is playing good Eb bass with the Spearman Brass Band, we hereby write this news item and hand it to the printer in the Reporter office, with his promise that it will be smuggled thru the columns of the paper this week in order that Kelly does not discover it and kill it before it goes to press. We certainly appreciate Mr. Kelly's assistance in our band work here. Also, we wish to mention that Messrs. Barkley and Lyon, two old hand men have enlisted their services in the Spearman Band, and George Roland, a dandy clarinet player, promises to unite with our band if he can ever find the time to attend rehearsals. I will be in Spearman at the Reporter office next Wednesday at 5.30 p. m. to assist any of the band boys in private rehearsal if they care to attend.

FRED. R. KREIGER,  
Band Director.

An Arizona chicken was hatched with four wings. But what the average Spearman boy is waiting for is one with six drumsticks.



—because it was once a custom in Northern Europe that newly wedded couples should drink mead (wine made from honey) for a "moon," or 27 days. In the new home, or any home.

Puretest IODINE

is one of the first requirements for wounds, burns and sprains.

When ever you suffer a cut or scratch, paint it with Puretest Iodine to prevent infection and quicken healing. Excellent also for taking the soreness out of insect bites and inflammation.

One of 200 Puretest preparations for health and hygiene. Every item the best that skill and care can produce.

Hale Drug Co.

The Rexall Drug Store

## BURGLARS AT WORK IN SPEARMAN

Two Business Houses Burglarized Last Saturday Night—Clothing Traveling Bags, Etc., Taken.

Burglars entered the store building of P. M. Maize & Company and the tailor shop of Sid Clark on Saturday night of last week, and clothing, traveling bags, and other goods were taken in the amount of several hundred dollars. Both Mr. Maize and Mr. Clark report that it is impossible to tell the extent of their losses. Sheriff Richardson was immediately notified and he at once wired officers of all sections of the country, to be on the watch for the goods. Mr. Richardson, Mr. Maize and Mr. Clark went to Amarillo Sunday and assisted the officers there in every possible way to make a thorough investigation in that city. Several arrests have been made, and it is hoped that the guilty parties may be located. Mr. Richardson says a gang of burglars working out of Oklahoma City, Wichita Falls, Wichita, Kansas, and Denver, have been causing much trouble over a large scope of country, and as they can dispose of the stolen goods so conveniently, it is difficult for the officers to get any trace of them. They believe, however, that they have several members of the gang in jail at Amarillo at present.

### GUN CLUB SHOOT WELL

The following score was made by members of the Spearman Gun Club at the regular weekly shoot held last Sunday afternoon:

|                 | sa. | h. |
|-----------------|-----|----|
| Jim Goad        | 25  | 16 |
| M. L. Cline     | 25  | 19 |
| H. E. Campfield | 50  | 38 |
| Fred W. Brandt  | 50  | 49 |
| C. E. McCarter  | 50  | 48 |
| C. A. Gibner    | 50  | 38 |
| Dennis Jones    | 25  | 20 |

### NEW MEMBERS

W. E. Phillips, H. Elmer Seward and the Nighswonger Grain Company are new members of the F. & C. Commercial Club. There are others who should join at once and help along with the work. This is a very important time in the life of Spearman and surrounding country. Everyone should help.

### FAIR CATALOGUES

The Reporter is now working on the Hansford County Fair Catalogues and they will be ready for distribution by the latter part of next week. Dates of the Fair, Oct. 1 and 2, are late enough to insure a great agricultural display, and the weather will be cool enough at that time to make the moving of hogs and cattle much easier than it was last year.

### BUCKLEY-BARBOUR

On Saturday, July 12, at 9.30 a. m. occurred the marriage of Miss Gladys Buckley to Mr. Berlin Barbour. The wedding ceremony was performed by Judge Grigsby at his home at Perryton. Immediately after the ceremony the happy couple motored to Canadian for a short visit, returning to Spearman on Monday. They will continue to make their home in Spearman where the groom is associated with his father in the oil business. These are two of the community's most popular young people and their many friends join in wishing for them a long and happy life.

### PUBLIC NOTICE

On all crossings of Public Highways, or public laid out roads in Hansford county, the Commissioners Court will, at the expense of the County, construct and maintain proper crossings over the graded ditches. All private crossings must be made and maintained by private individuals.

Under the statutes, the filling up of any drainage ditches along the highways or graded roads, is considered an obstruction of the public highways, and persons guilty of obstruction of public highways are subject to a heavy fine. It is therefore ordered by the Commissioners Court, that the county judge see to it, that the law prohibiting the filling up of the ditches along any graded roads of Hansford county be enforced.

It is further ordered by the Commissioners court, that the general public be notified the driving over the graded roads and bridges of Hansford county, with heavy Tractors or Engines with lugs on the wheels, is a great detriment to the highways, and that a continuance of this practice is positively forbidden. By order of the Commissioners Court, at its regular session on the 14th day of July, 1924.

A. E. TOWNSEND,  
County Judge.

Boost for Spearman.

Advertise your business in the Reporter.

No matter how much a wife may love her husband, she doesn't want him hanging around when a bunch of females meet at her house.

## REDPATH-HORNER CHAUTAUQUA HERE

First Number Will be Given on Afternoon of August 29—Will Continue Five Days.

Spearman is to have a real chautauqua this year, beginning on August 29 and continuing five days. It will be put on by the Redpath-Horner Lyceum and Chautauqua Company, which is perhaps the strongest chautauqua company in the United States. The entire program will be printed in an early issue of the Reporter. The dates set, August 29 and 30 and September 1, 2 and 3, are as convenient as could be chosen, as it is just before school will open. No one need have any fear of being "stung" on this chautauqua, as it is absolutely good.

### NEFF IS WINNER

Governor Neff is now the whip politician of Texas. That is the consensus of opinion following the nomination of John W. Davis by the Democrats last week.

It required courage for Governor Neff to take the stump and to oppose the other leading politicians for an uninstructed delegation last May.

But the New York convention has vindicated the governor. Democrats from all over the nation voted for John W. Davis of West Virginia for the nominee.

When it comes to handing out political "pie," should Davis be elected president, Governor Neff will stand at the head of the list from Texas. He mentioned Davis as one of the available candidates.

Those persons who declared that Neff had crucified himself by opposing Tom Love, Cato Selis, Marshall Hicks and others are wrong. Neff today is a greater man than the was three months ago when he came out against the instructed delegation.

The long fight at New York has more than ever shown the foolishness of instructing the delegates for a candidate. The instructed delegation largely made it impossible to agree on a nominee.—Amarillo News.

Rev. and Mrs. S. W. Franklin are rejoicing over the arrival at their home at Goodwell on July 8, of a fine son.

What has become of the old-fashioned Spearman woman who couldn't get her skirt to "hang" when she dressed up?

When you see a \$1,600 car parked in front of an \$800 home you commence to get some idea of what is the matter with America.

Wonder why it is that the fellow who doesn't smoke, drink or chew is just as hard up as the fellow who has all three of those habits?

Roy C. Archer and family came from their home in Austin the first of the week and visited until Thursday with relatives in Spearman and vicinity.

W. J. Murray and family of Beloit, Kansas, and J. P. Murray of Springfield, Mo., were guests in the home of their sister Mrs. L. F. Noe, of the Medlin community, the first of the week.

J. T. Craven came from his home at Morgan the first of the week, to look after farming interests in the Holt community and to visit with friends and relatives. Mr. Craven is an old time friend of County Agent Martin.

C. B. McCrory, brother of Red, the ice man, came from their old home at Mangum the first of the week and will make Spearman his home. Red is threatening to turn the ice business over to his younger brother.

A decided improvement has been made in the interior of the post office building this week. The change will make more room for both the post office and the cold drink and confectionery business of Leon Thomas. Mr. Thomas is enjoying a splendid trade and is constantly adding new lines. His business has grown in a year from a very small beginning to considerable proportions, and is growing every day.

W. A. Pitts, a painter who was in Spearman three years ago, and done considerable painting here and in the community, is back again. Mr. Pitts says his wife passed away last February. She was in poor health when they were here. Mr. Pitts is a fine workman, especially on interior decorating, and if you have work in this line you will make no mistake in trying him out. He will remain here permanently if the work in his line justifies it.

The cold drink and confectionery business of Seward-Hays, in the John L. Hays old building on Main street, is opening up with a splendid trade, and the manager, Mr. Seward, reports that he is more than satisfied with the outlook. The interior of the building has been fixed up in splendid shape and everything about the place looks clean, sanitary and inviting. We predict for this new business a goodly measure of success.

## SUCCESSFUL FARMING

The future of our country depends upon the success of the farmer and stockman.

The experience of other localities situated similar to ours is, that diversification along these lines brings in a greater net revenue than the following of a one crop system.

The farmers and stockmen in those localities are making a success of diversified farming and stock raising. With a few hogs, chickens and milk cows an energetic farmer can pay his living expenses.

A diversified crop system will surely prove to be a success in this country as it has in others. Let us give this a fair test this year and prove its merits.

## GUARANTY STATE BANK

Spearman, Texas

## THE DEMOCRATIC PLATFORM AS ADOPTED AT NEW YORK CONVENTION

The following is a synopsis of the platform adopted by the Democrats in National Convention at New York last Saturday:

The Democratic party reaffirms its adherence and devotion to those cardinal principles contained in the constitution and the precepts upon which our government is founded; that congress shall make no laws respecting the establishment of religion, or prohibiting the free exercise thereof, or abridging the freedom of speech or of the press, or of the right of the people peaceably to assemble and to petition the government for a redress of grievances; that the church and the state shall be and remain separate, and that no religious test shall ever be required as a qualification to any office of public trust under the United States.

These principles we pledge ourselves ever to defend and maintain. We insist at all times upon obedience to the orderly processes of law and deplore and condemn any effort to arouse religious or radical dissension. Stands for a further tax reduction and revision of the tariff. Enactment of legislation designed "to restore the farmer again to economic equality with other industrialists."

Readjustment of freight rates and revision of the transportation act with a view of eliminating the rate making section, abolishing the railroad labor board and restoring to states control over intra-state rates.

Operation of Muscle Shoals for maximum production of fertilizers. Strict public control and conservation of the nation's resources, recovery of oil reserves "fraudulently" leased and vigorous prosecution of any guilty of wrong doing in leasing transactions.

Government control of anthracite industry and "all other corporations controlling the necessities of life where public welfare has been subordinated to private interests."

Operation of a government-owned merchant marine "so long as it may be necessary without obstructing the development of a privately owned American flag shipping."

Faithful compliance with the spirit of civil service, and its extension of internal revenue officers. "Adequate" salaries for postal employees.

Adoption of the so-called "lame-duck" constitutional amendment which would prevent members of congress from participation in a session after their defeat for reelection.

Revision of the "corrupt practice act to prevent excessive campaign contribution and expenditures."

Enforcement of the constitution and all laws with an assertion that "the Republican administration has failed to enforce the prohibition law."

Maintenance of Asiatic immigration exclusion by legislation.

Immediate independence of the Philippines.

Establishment of a full territorial form of government for Alaska.

Protection of American rights in Turkey and the "fulfillment of President Wilson's arbitral award respecting Arceania."

Promotion of deep waterways from the Great Lakes to the gulf and the Atlantic ocean, and im-

provement of inland waterways generally.

Drafting of all resources in time of war.

Sweeping reduction of sea and land armaments.

Enacting of legislation dealing with fraudulent stock sales.

Vigorous enforcement of laws against monopolies and illegal combinations and enactment of additional measures if necessary.

The platform denounces the Mellon tax plan, declares that under the republican administration the economic condition of the American farmers has "changed from comfort to bankruptcy," charges that "never before in our history has the government been so tainted by corruption," and pledges the democratic party to drive all wrongdoers from public office and mete out prompt punishment.

At the outset there is a tribute to Woodrow Wilson whose ideals it is declared, "will serve as an example and inspiration for this and future generations."

An old scratching hen running at large in the spring can undo the work of forty evangelists in the winter.

It has been our observation that when some men get wrapped up in themselves they make a mighty small package.

J. C. Sangster and J. C. Secord were in the city Tuesday from the west part of the county. These gentlemen were displaying a stalk of Indian corn which grew on the J. H. Cator ranch, but looks as though it came from little Egypt, up in the southern part of Indiana. The stalk is fully ten feet high and is just beginning to tassel. The gentlemen say there is about 400 acres of this kind of corn on the Cator ranch.

### NOTICE FOR BIDS

The Commissioners Court of Hansford county, Texas will receive bids at Hansford, Texas on Monday August 11th 1924 for the purchase of one more track layer Type Tractor.

By order of Commissioners Court at Hansford, Texas this 14th day of July 1924.

A. E. TOWNSEND,  
County Judge.



One strike per out  
**INSURE**  
against Lightning

Every fire insurance policy of The Home of New York also protects against the lightning hazard  
**INSURE TODAY**

A. F. BARKLEY  
Spearman, Texas

## PLENTY OF MONEY

To loan on Farms and Ranches in any county north of the Canadian river. Big values, low rate of interest and good settlement options. Also buy and extend vendors lien notes.

### THE BEST

That money will buy in Farms and ranches and on terms never offered before in this section of the country. Business and residence lots and acreage. We have just what you want.

J. R. COLLARD

REAL ESTATE, LOANS, INSURANCE.

Write for Information.

SPEARMAN, TEXAS

- A—Good Clothes
- B—Made To Measure
- C—Moderate Prices

A combination every man desires Tailored-to-measure Clothes are good Clothes—and they cost you about half the ordinary price.

We also sell tailored-to-measure Shirts.

Spearman Tailor Shop

SID CLARK, Proprietor  
Cleaning—Pressing—Repairing



# Mrs.

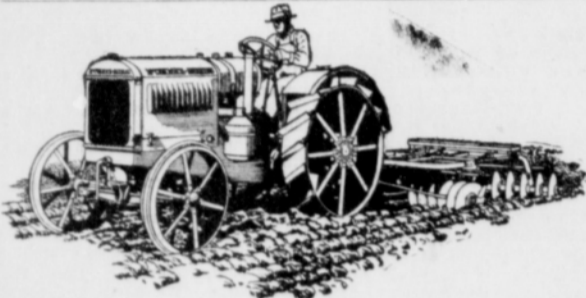
You are invited to call at our store and see the many labor-saving devices we have in stock. And they are things you can afford to buy, too. Among the new arrivals is the



This stove burns gasoline, kerosene or distillate, and the burners are guaranteed for ten years.

The electric irons, electric washers and many other articles which cost so little and make your house-work a real pleasure, are worthy of your consideration.

## WEBER WAGONS NOW IN STOCK



**TRACTORS—worth the money**

Car load of tractors coming.

Buy one now and be ready to prepare your ground for the next wheat crop.

The Tractor way is the modern way. See us at once if you want a tractor.

# Andrews Hdw. Co.

Undertaking—Licensed Embalmer  
Phone 35, Spearman.

Hardware, Implements, Furniture  
Queensware, Graniteware.

### NOTICE TO LAND OWNERS

To Jno. M. VanCleave, Groom, Texas; Nelson W. Willard, 1015 Railway Exchange, Chicago, Illinois; James T. Whitson, Gower, Missouri; Maria McVey Sumner, Seattle, Washington; W. L. Maddox, Hazelton, Kansas; Estate of C. C. Patten, Nannie S. Patten Survivor of Community Estate who has duly qualified as such, and individually, of Whittier, California: You are hereby notified that the undersigned jury of Freeholders, acting under and by virtue of an order of the Commissioners' Court of Hansford county, Texas, will on the 4th day of August, a. d. 1924, proceed to lay out a road commencing at the Southwest Corner of Section No. 27, in Block R Grantee Brooks & Burleson, in said county, and running thence west on the North line of sections No. 43, 42, 41, Grantee A. B. & M., and Sections No. 40, 39, 38, 37 and 36, Block R, Brooks & Burleson, and continuing west on the North line of Sections Nos. 15 and 14, Block 3, Grantee S. A. & M. G. Ry. Co., to the Southeast Corner of Section No. 12, Block 3, S. A. & M. G. Ry. Co., in said county, and which may run through certain lands owned by you, and will at the same time assess the damages incidental to the opening of said road, when you may present to us a statement in writing of the damages, if any, claimed by you.

Witness our hands this the 1st day of July, a. d. 1924.

R. F. DENNIS,  
GEO. L. ROLAND,  
T. B. Windom,  
Jury of view.

30 14  
Mary Jane Syrup, \$4.00 per case, at the Spearman Equity Exchange.

### CITATION BY PUBLICATION

The State of Texas, To the Sheriff or any Constable of Hutchinson county, greeting:

You are hereby commanded to summon Annie Stephens, Perry M. Stephens, J. D. Wright, S. E. Wright, J. E. Wright Rachel L. Frazier, J. U. Frazier, W. A. Chisum, Birdie Chisum, W. A. Jordan, Fannie Jordan, R. F. Cannon, Maggie Cannon, Daws Wright, T. F. Wright, Tom Wright, D. B. Wright, Dave Wright, Annie West, Pink P. West, J. Y. Wright, Willie Wright, D. W. Wright, and the unknown heirs and legal representatives of each and all of such named persons, by making publication of this citation once in each week for four consecutive weeks, previous to the return date hereof, in some newspaper, published in your county, if there be a newspaper published therein, but if not then in the nearest county where a newspaper is published, to appear at the next regular term of the District Court of Hutchinson county, Texas, to be holden at the court-house thereof in the town of Plemons, on the 1st Monday in October, a. d. 1924, and the same being the 6th day of October, a. d. 1924, then and there to answer a petition filed in said Court on the 26th day of June, a. d. 1924, in a suit numbered on the docket of said Court number 563, wherein J. M. Sanford is plaintiff and Annie Stephens, Perry M. Stephens, J. D. Wright, S. E. Wright, J. E. Wright, Rachel L. Frazier, J. U. Frazier, W. A. Chisum, Birdie Chisum, W. A. Jordan, Fannie Jordan, R. F. Cannon, Maggie Cannon, Daws Wright, T. F. Wright, Tom Wright, D. B. Wright, Dave Wright, Annie West, Pink P. West, J. Y. Wright, Willie Wright, D. W. Wright, and the unknown heirs and legal representatives of each and all of such named defendants; said petition alleging that on June 1, 1924, plaintiff was lawfully seized and possessed of Survey Number 76 in Block Number 46, H. & T. C. Ry. Co. Original Grantee, located in Hutchinson county, Texas; that on said date, defendants and each of them entered upon said land and ejected plaintiff there from and withhold the possession thereof. Plaintiff further alleges a chain of title from the State of Texas to himself, through various deeds and that they are the owners and entitled to the possession of said land.

Plaintiff further pleads specifically that he has had and held possession of said tract of land, under color of title from the State of Texas, with peaceable and continuous and adverse possession for the period of more than three years, and that he has likewise held such possession for a period of more than five years, paying taxes thereon and that he has likewise had such peaceable, and adverse possession for more than ten years, enjoying and using the same so as to mature title under the three years, five years, and ten years statutes of limitation. Plaintiff prays for title and possession of said land and that his title be quieted and that any and all claims interest or estate in said lands had or claimed by defendants, be divested out of them and invested in plaintiff.

Herein fail not, but have you then

and there before said court, this writ with your return thereon showing how you have executed the same.

Witness M. E. McCormick, Clerk of the District Court of Hutchinson county, Texas.

Given under my hand and seal of said court in the town of Plemons this 26th day of June, 1924.

(Seal) M. E. McCORMICK,  
Clerk of the District Court, Hutchinson county, Texas. 2914

### PROPOSED AMENDMENT TO CONSTITUTION

Relating to Granting of Confederate Pensions.

Proposing an amendment to Section Senate Joint Resolution No. 10

51 of Article 3 of the Constitution of the State of Texas to provide that the Legislature may grant pensions to Confederate soldiers, sailors and their widows, who have been citizens of Texas since prior to January 1, 1910, providing that all soldiers, sailors, and their widows eligible under the provisions hereof shall be entitled to be placed upon the rolls and participate in the pension fund created hereunder; levying a tax of seven (\$0.07) cents on the one hundred (\$100.00) dollar valuation of property in this State for the payment of such pension, providing that the Legislature may reduce the rate of pension for such purposes, fixing a time for the election to be held on such amendment and making an appropriation to pay the expenses thereof.

Be it resolved by the Legislature of the State of Texas:

Section 1. Section 51 of Article 3 of the Constitution of the State of Texas shall be amended so as to hereafter read as follows:

Section 51. The Legislature shall have no power to make any grant or authorize the making of any grant of public money to any individual, association of individuals, municipal or other corporations whatsoever, provided, however, the Legislature may grant aid to indigent or disabled Confederate soldiers and sailors, who came to Texas prior to January 1, 1910, and to their widows, in indigent circumstances and who have been bona fide residents of this State since January 1, 1910, and who were married to such soldiers or sailors prior to January 1, 1910, and to indigent and disabled soldiers who under the special laws of the State of Texas during the war between the States served in organizations for the protection of the frontier against Indian raiders or Mexican marauders and to indigent and disabled soldiers of the militia of the State of Texas who were in active service during the war between the States and to the widows of such soldiers who are in indigent circumstances and who were married to such soldiers prior to January 1, 1910, provided that the word "widow" in the preceding lines of this Section shall not apply to women born since the year 1861, and all soldiers and sailors and widows of soldiers and sailors eligible under the above conditions shall be entitled to be placed upon the pension rolls and participate in the distribution of the pension fund of this State under any existing law or laws hereafter passed by the Legis-

lature, and also to grant aid for the establishment and maintenance of a home for said soldiers and sailors, their wives and widows and women who aided in the Confederacy under such regulations and limitations as may be provided by law, provided the Legislature may provide for husband and wife to remain together, in the home. There is hereby levied in addition to all other taxes heretofore permitted by the Constitution of Texas a State ad valorem tax on property of seven (\$0.07) cents on the one hundred (\$100) dollars valuation for the purpose of creating a special fund for the payment of pensions for service in the Confederate army and navy, frontier organizations and the militia of the State of Texas, and for the widows of such soldiers serving in said armies, navies, organizations or militia; provided that the Legislature may reduce the tax rate herein levied, and provided further that the provision of this Section shall not be construed so as to prevent the grant of aid in cases of public calamity.

Sec. 2. The foregoing Constitutional Amendment shall be submitted to a vote of the qualified voters of this State at an election to be held on the first Tuesday after the first Monday in November, 1924, at which all voters shall have printed or written on their ballots: "For amendment of Section 51 of Article 3 of the Constitution authorizing the Legislature to grant aid to Confederate soldiers, sailors and their widows who have been a resident of this State since January 1, 1910," and "Against amendment to Section 51 of article 3, of the Constitution, authorizing the Legislature to grant aid to Confederate soldiers and their widows."

Section 3 The Governor is hereby directed to issue the proclamation for said election and have the same published as required by the Constitution and laws of this State, and the sum of five thousand (\$5,000.00) dollars or so much thereof as may be necessary is hereby appropriated out of the general funds of this State not otherwise appropriated for expenses of publications and elections thereunder.

Approved, March 20, 1923.  
S. L. STAPLES,  
Secretary of State.

Plenty pipe, pipe fittings, building hardware and a complete stock of bolts at the WHITE HOUSE LUMBER CO. 25tf.

### LOST

A diamond sunburst bin, containing fifteen diamonds. This pin was lost at Canadian, Texas, on July 4th. Finder return to First National Bank, or Record office at Canadian, Texas, and received \$50 reward.  
3014 MRS. JOHN H. JONES.

### STORAGE TANK FOR SALE

The large wooden storage tank, used by the town of Spearman prior to the installation of the new one, is for sale. The capacity of this tank is 30,000 gallons, and it is in first class condition. It would make a fine tank for a ranch or farm. If interested call at the Spearman Electric Light and Water plant for information.

### DELICIOUS STEAKS

YES! you can buy them here every day—fresh, tender and tasty—always hit the right spot with most folks. Try one of our T-Bone, Sirloin, Porterhouse or Round steaks some time. You'll relish it.

The CITY CAFE  
T. P. TACKITT

### COL. ED LITTLETON

AUCTIONEER

FARM AND STOCK SALES  
A SPECIALTY

If you are planning a sale, call me on long distance, or make dates at Reporter office. Phone No. 11

PERRYTON, TEXAS

K PALO DURO KLAN No. 244  
Meets Every First and Third Saturday Nights at Odd Fellows Hall. All Klansmen are Urged to Attend.  
I. T. S. U. B.  
K

C. D. WORKS  
Lawyer  
Abstracts, Loans, Insurance, Spearman, Texas.

R. T. CORRELL  
Lawyer  
Perryton Texas

DR. JARVIS  
Dentist  
Perryton Texas

Walter R. Allen Jack Allen  
ALLEN & ALLEN  
Lawyers  
Perryton Texas

WALLACE G. HUGHES  
Lawyer  
Suits 3 and 4 First National Bank Building, Guymon, Oklahoma.

\$37.50 will put a new casing on every wheel of your Ford. They are good ones too. EQUITY FILLING STATION. 29tf.

### FOR OVER 40 YEARS

HALL'S CATARRH MEDICINE has been used successfully in the treatment of Catarrh.  
HALL'S CATARRH MEDICINE consists of an Ointment which Quickly Relieves by local application, and the Internal Medicine, a Tonic, which acts through the Blood on the Mucous Surfaces, thus reducing the inflammation. Sold by all druggists.  
F. J. Cheney & Co., Toledo, Ohio.



## Danger!

When your heart flutters, and palpitates, when you're short of breath and dizzy, when you have smothering spells and faint spells, look out for your heart!

DR. MILES'

### Heart Treatment

has been used with marked success for all functional heart troubles since 1884.

Your druggist sells it at pre-war prices — \$1.00 a bottle.

Fresh fruits and vegetables at Burran Brothers.

## CANDIES! - FRESH FRUITS!

Tobaccoes - Cigars

ALL KINDS OF KODAK FILMS.

Soft Drinks Made Right. My goods are Fresh and Clean. Leading Daily Newspapers and Magazines

POSTOFFICE BUILDING  
SPEARMAN

C. L. THOMAS

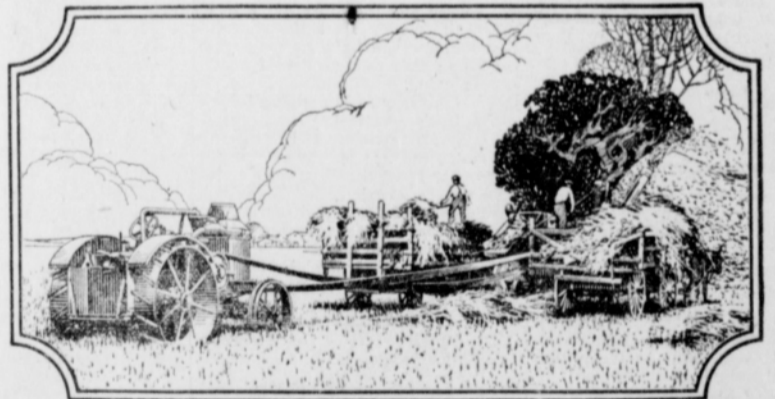
## Farm Loans

I make Farm and Ranch Loans, and will give you prompt service. I also buy Texas Vendor's Lien Notes. When you need anything in this line, call me on the telephone or write me, and I will give you immediate service.

WILL CROW  
Attorney-at-Law

CANADIAN, TEXAS.

## RUMELY IDEAL SEPARATOR



Don't waste your grain at threshing time

One way for farmers to increase profits is by avoiding waste at threshing time. The Rumely Ideal Thresher saves 99 9/10% of the grain. Some of the reasons for its remarkable grain saving, big capacity, thorough, fast, clean work and long life are:

- (1) Its large-surface revolving grate and flat winged beater insure maximum separation.
- (2) Its famous lifting fingers beat, pitch, toss, turn and shake the last kernel from the straw.
- (3) Its chaffer in the cleaning shoe, plus an unusual method of wind control, guarantee clean grain.
- (4) Its traveling rake, etc., mean big capacity and even straw flow without bunching, winding or clogging.

The Rumely Ideal Separator is light running, free from undue vibration and easy to operate. Bearings, oilers and adjustments are on the outside. Made in sizes from 900 to 3000 bushels capacity per 10-hour day. Thousands in successful use. Over 80 years of experience back of it. We will gladly give you full details.

V. H. ANDERSON

# Harvest Groceries

We have bought only the best of canned goods and at car load prices.

Let us figure your harvest bill. I am sure we can save you money and give you the best of merchandise.

We are headquarters for work clothing, shoes, suit cases, gloves, straw hats, etc.

## W. L. RUSSELL

### CITATION BY PUBLICATION

The State of Texas, To the Sheriff of any Constable of Hansford county—Greeting: You are hereby commanded to summon J. R. Hines, who is a non-resident of the State, to appear at the next regular term of the District Court of Hansford county, Texas, to be held at the court house thereof in Hansford, on the fourth Monday in November 1924 being November 24th, 1924, then and there to answer a petition filed in said court on July 9th, 1924, in a suit number 292 on the docket thereof, wherein Nora Hines is plaintiff and J. A. Hines is defendant; the cause of action being as follows:

Plaintiff alleges that she has been an actual, bona fide inhabitant of Texas for twelve months and has resided in Hansford county for six months next preceding the filing of this suit, and defendant is a non-resident of Texas. That on or about December 24th, 1916, plaintiff and defendant were legally married at Gentry, Arkansas. That soon thereafter defendant begin a course of unkind, harsh and cruel treatment toward plaintiff, which continued until they separated, about July 9th, 1920. That in May of 1917, defendant got mad and used rough and abusive language toward plaintiff. That in about January 1918, he cursed plaintiff and her children, and called her and them names, such as bitch and other opprobrious names, and threatened plaintiff with a razor. That defendant would not work and forced plaintiff to make the living. She had to pick berries and apples, and take in sewing and washing and do other kinds of work to support herself and defendant. This plaintiff had some children by a former marriage and defendant would curse and abuse them and whip them. That defendant quarreled at plaintiff at many other times. That plaintiff has at all times treated defendant with kindness and forbearance and gave him no cause to mistreat her.

You are further commanded to so summon such defendant by making publication of this citation once in each week for four consecutive weeks previous to the return day hereof, in some newspaper published in your county; but if there be no newspaper published therein, then in the nearest county wherein a newspaper is published.

Herein fail not, but have you before said court, on the first day of the next term thereof, this writ, with your return thereon, showing how you have executed the same.

Witness, Keesee C. Richardson, Clerk of the District Court of Hansford county, Texas. Given under my hand and seal of said court in Hansford, Texas this 9th day of July 1924.

**KEESE C. RICHARDSON,**  
Clerk of the District Court of Hansford county, Texas. (Seal.)  
Issued this 9th day of July, 1924.

### COAL! COAL!

We are headquarters for anything you need in coal. We now have a nice clean car of Colorado nut, fine for cooking purposes. We also have plenty of good Smico blacksmith coal. WHITE HOUSE LUMBER COMPANY. 25tf.

We are Prepared to Furnish the Proper Weight of

100 Per Cent. Pure Pennsylvania

### AMALIE MOTOR OIL

For every Automobile, Truck, and Tractor operated in the Spearman country.

AMALIE Oils are made from pure paraffine base Pennsylvania Crude and each and every package delivered to us in plainly marked "100 per cent Pure Pennsylvania."

High Grade motor oil cannot be made from low grade crude.

**EQUITY FILLING STATION**  
At Equity Grain Office, Spearman.



### WORMS AND LICE

Worms and lice cost Texas farmers millions of dollars each year. These parasites not only sap the blood from your pigs but make them restless and hard feeders. Why feed your crops to lice and worms!

Crude oil is abundant in Texas, and easily applied by spray pumps or with an old broom. If you have a dipping tank a film of oil on the water will do the work. Hog wallows which so often carry infection from pig crop to pig crop are undesirable. But if you have wallows, by all means keep a film of oil on them. Gunny sacks wrapped around posts and kept saturated with crude oil in the hog lot will be used by the hogs and will help clean up. Sleeping quarters and bedding should be sprayed with oil. A pit with stand saturated with oil will be used as a wallow by hogs in the winter time.

The following mixture aids in preventing worms and should be kept under shelter before pigs at all times:  
Glauber's salts or sodium sulphate, 3 parts.

Salsoda\* or sodium carbonate 3 parts  
Copperas or iron sulphate 3 parts  
Common salt 1 part

In the preventive worm formula the copperas should be taken out if given to pregnant sows.

For hogs infected with worms use the following mixtures as a dose for a 50 pound pig:

Santonin, 2 1/2 Grains  
Calomel, 2 1/2 grains  
Arecia Nut 1 Dram  
Sodium Bicarbonate, 1/2 Dram

For a 100 pound pig double the dose; for a 200 pound pig three times the dose, and for a 300 pound pig five times. Withhold feed twenty-four hours before giving mixture; repeat does in ten days. Worms do the most damage when the pigs are young.

The above dose should not be given pregnant sows, as any severe purgative may cause abortion.

A good mineral mixture to keep hogs is as follows:

10 pounds of hard wood ashes  
4 pounds of common salt  
2 pounds of copperas  
1 1/2 bushel of charcoal  
4 pounds of air slacked lime.

### ALFALFA HAY WORTH \$10 OR \$30?

Method and speed make a lot of difference in the value of the alfalfa hay being harvested. If it is put up right, it is the most valuable feed there is, the leaves being equal in feeding value to bran, but if not handled right the leaves shatter off and the color fades and bleaches, it is worth comparatively little. Bale your alfalfa and send it to market and you quickly get the rating that means a difference of as much as \$20 a ton in alfalfa hay from the method of harvesting you employ. The market wants that green color that denotes just enough wilting without bleaching before the hay went into the mow or the bale. It also wants all the leaves on it, which means a concentration of well managed machinery methods that permits the proper and timely handling of every operation. The side delivery rake and the hayloader usually follow the mower, the climate being the deciding factor as to length of time between each operation. Big areas are speeded up by hooking two hayloaders behind each tractor and hooking up flocks of side delivery rakes and mowers behind single tractors. When one realizes that the difference between right methods at harvesting and careless out-of-date methods means the difference of \$400 to \$1600 on a 20-acre field of alfalfa, more attention will be given alfalfa hay harvest. Get all the leaves and get them bright green.

### POTATO 300-BUSHEL GROWERS SPRAY

Many Michigan potato growers have achieved big results by organizing spray rings and buying big efficient spraying outfits and spraying materials according to the Michigan Farmer. Growers of certified seed, are obliged to spray at least five times with Bordeaux, using a machine that can maintain a pressure of at least 180 pounds. The 26 members of Michigan's 300-Bushel Potato Club obtained yields averaging 353 bushels last year, spraying according to the schedule of the Michigan Agricultural College. Growers of certified seed in that state also produced an average of 101.6 bushels on nearly 2500 acres by spraying five times. When dry weather brings leaf hoppers, spraying should be done every seven days, every ten days or two weeks being sufficient otherwise unless late blight threatens the crop. All 100 gallons of material per acre is needed when the plants are large. Small growers with only three or four acres get the benefit of the big outfits where spraying rings are formed.

### CREAM SEPARATOR PAYS 80 PER CENT

Few farmers attempting to sell cream continue with the method of hand skimming known to our grandmothers. It is too costly, a daily profit of 800 per cent for the cream separator compared with hand-skimming figured for a small herd of 8 cows. The invention of the centrifugal cream separator by a Swiss scientist in 1879, with Prof. Babcock's invention of the Babcock test for fat content of milk soon afterwards, put the dairy industry on a business basis for the first time. These two discoveries plus the use of the spring balance scales to weigh up the milkings of each cow for the weeding out process are responsible for the rise of the dairy business largely.

Konota seed oats for sale fifty cents per bushel, also feed oats and barley at market price when we thresh. See J. R. Roberts or C. E. Kiker for further particulars, eight miles south of Spearman. 30tf.

Subscribe to The Reporter.

### TRY A REFRESHING

# COLD DRINK

AT OUR FOUNTAIN

The Seward-Hays Confectionery will be open at 7.00 o'clock,

SATURDAY, JULY 12, 1924

We are going to give the public most anything in the Confectionery line, and will appreciate your coming in and letting us serve you. We can seat 30 people at our tables and booths.

You are welcome at any time to come in and rest at our place. We have plenty of room.

H. ELMER SEWARD,  
Manager

### DRILL COSTS 15 CENTS AN ACRE

A profit of almost 3,000 per cent for the grain drill over out-of-date methods of seeding grain is reported by the Research Department of the National Association of Farm Equipment Manufacturers. This profit is arrived at by taking the Government figures for the life of the grain drill, the price asked by your dealer, and figuring out an acre expense of 15 cent for the drill, a bushel of seed and an increase of 2 bushels of grain used. Of course, on red clover, sweet clover and some of those fine seed crops for which the price of seed is high, the gains are much greater. The best wheat growers of all sections of the wheat exporting world use the grain drill, Canada and the U. S. using it almost exclusively. For the other crops, many of our farmers have failed to see the value of this seed saving and crop gain. The experiment stations have proved it however.

Boost for Spearman.

Golden Rule Flour, at the Perryton mill, \$2.80 per hundred. 9tf. S. H. COX, Miller.

If you need a team of mules to cultivate your cotton—easy terms—see Bob Archer. 231tp

Another thing we never could understand is why football is called "play" and shoveling coal "hard work."

The oil investigation brought out the fact that many took money from the rich oil barons. But there was no evidence to show that any of them gave it back.

Dr. Powell, the eye, ear, nose and throat specialist, will be at Hale Drug store in Spearman on Wednesday afternoon and evening, July 23. Glasses fitted; tonsils and adenoids removed. I will be here every two weeks. 142t.



### THE BEST FIRE PROTECTION

With Delco-Light you will be protected from the dangers of lamps and lanterns. You will have safe electric lights. The constant fear of fire will be off your mind. Your family, your home and your property will be constantly protected by Delco-Light. See us for prices and easy terms.



J. B. PERRY,  
Morton's  
Garage  
SPEARMAN

See

DOC HAAS

for

Satis - Factory - Fit - to -

Measure

SHOES



MOST EVERYWHERE

Santa Fe Summer Tourist Excursions

ARIZONA  
CALIFORNIA  
NEW MEXICO

And the National Parks

For rates, reservation, and schedule, call on Santa Fe local agent, or address

T. B. GALLAHER,

AMARILLO, TEXAS.

## HOLSTEIN MILK STOCK



50 head of high grade Holsteins from calves to six-year-old cows. The best milk stock in Texas county. This stock will be offered at private sale at my Dairy Farm 8 miles straight south of Guymon. Reason for selling is that I am overstocked. All T-B tested cattle.

J. H. DEAKIN,  
Guymon, Oklahoma



# STETSON HATS

Styled for Young Men

## P. M. Maize & Co.

Everything to Eat and Wear—One Price to all.

**SPEARMAN**

THE SPEARMAN REPORTER  
BY ORAN KELLY.

\$1.50 PER YEAR IN ADVANCE

Entered as second class matter November 21, 1919, at the post office at Spearman, Texas, under the act of March 9, 1879.

ADVERTISING RATES: — Flat rate for plates, 25 cents per inch. If composition is required, 5 cents per inch additional.

Reading notices, 10 cents per line. Recognized agent's commission, 15 per cent; cash discount, 2 per cent.



### POLITICAL ANNOUNCEMENTS

The Reporter is authorized to announce the following candidates, subject to the action of the Democratic Primary election to be held on July 26, 1924:

For State Senator, 31st District,  
J. W. REID  
of Canyon

For Representative, 124th District  
C. H. WALKER  
of Dalhart, Texas

JUDGE E. C. GRAY  
of Higgins, Texas

HANSFORD COUNTY  
For County Judge  
A. E. TOWNSEND  
C. W. KING

For Sheriff and Tax Collector,  
GEORGE T. PIERCE  
ALVINO RICHARDSON  
H. L. WILBANKS  
RUTLEDGE HENDERSON

For County and District Clerk,  
S. F. POWERS  
MRS. PEARL S. HAYS  
JESSE E. WOMBLE  
M. E. WALKER

For Tax Assessor,  
J. E. SLAVIN  
R. W. THOMPSON  
VERNON COMPTON  
MRS. L. S. CATOR

For County Treasurer  
MARY SPARKS  
MRS. J. H. BUCHANAN  
For Commissioner Precinct No. 3.  
FRED McREE  
PAUL HIGGS

HUTCHINSON COUNTY  
(Subject to the will of the voters of Hutchinson county at the November, 1924, election.)

For County Judge  
W. R. GOODWIN  
For County and District Clerk  
M. E. McCORMICK  
MISS LILLIE WHITTENBURG  
For Sheriff and Tax Collector,  
JOE OWNBEY  
For Tax Assessor  
S. B. LASATER

C. VOLLMERT  
DRAYMAN

Phone 55, all kinds of Dray Work and Hauling.

### County Agent Column

The Flea Beetle has made its appearance in gardens, and in flower beds of Spearman. The County Agent has advised using one eighth of pound lead arsenate to five quarts of water. Repeat the spray in about ten days.

The Committee that had charge of making up the Hansford County Fair Catalogue has completed its work. The County Agent assisted the Secretary of the Fair in this work. A large number of Premiums have been offered, and the premiums are in larger value than ever before. Ask the Vice President about them, or the County Agent. Work for Hansford's Largest Fair.

Do not forget to save your sheaves of grain for the Fair.

A. L. Bridenstine, with the U. S. Bureau of Biological Survey visited the County Agent this week. Several batches of rabbit poison were put out. Poison will be put out later in the fall at a more suitable time for rabbits and prairie dogs.

The Texas Champion Milk and Butter producer finished a test of one year May 5th with a record of 26,794.4 pounds of milk, and 922.66 pounds of butter fat. This cow is a Holstein and named Utility Segis Hengerveld. Stop and think about how many pounds of milk a day this will amount to. How many pounds of milk does your cow give each day? One good cow is equal to forty poor cows. Weigh and test your milk. Do not waste your time on a cow that does not make you a good profit. Many a cow is a poor milk producer because she gets improper care, and not enough to eat. Produce your own feed for your milk cows. Soy Beans and Sweet Clover do well in this county and are excellent protein feeds. A balanced ration is necessary for profitable milk production. Good cows with proper care are profitable. Why not have good cows? There are two ways to get good cows: First, buy them, and if you are to buy a cow, you should avoid buying a cow with the following qualities: The Old Cow, the cow that aborted, the tubercular cow, the kicker, the hard milker, irregular breeder, and a poor producer. The second way to get a good cow and the best is to raise them. If you have only a scrub cow to start with and use a bull with a high milk production record showing in his pedigree, the calf if a heifer should give twice as much milk as its mother. There have been experiments made in using good bulls on scrub cows, and the third crop of calves produced over four times as much milk as the original mother. An ideal method of farming is to have the cow, hen, sow, and garden make your living, and your farm crops will be your profits for the year.

### WARNING

There are signs of a grasshopper plague beginning to show in this county and in Hutchinson county. There is one field of oats in this county that grasshoppers have cut off one half of the oat heads. One crop of cotton has been eaten up in Hutchinson county by grasshoppers. When wheat and oats are cut the hoppers will move on the row crops and early wheat. If there are any grasshoppers on your place, start now, using the following.

Bran ..... 25 pounds  
White arsenic ..... 1 pound  
Oranges or Lemons ..... 6 fruits  
Mollasses ..... 2 quarts  
Water ..... 2 to 3 gallons  
Mix bran and poison in a wash tub. Add mollasses and the finely ground fruits and stir well. Pour on

water enough to dampen without making it sloppy. While fresh the mixture is very attractive to the grasshopper, but when dry or stale is not eaten. Very early in the morning is the time preferred for applying. The above amount should show six acres, at an average cost of about 25 to 35 cents per acre.

### TRACTORS GAINING ON FARMS RAPIDLY

Whether California, Texas, Iowa, Illinois, Ohio, Kansas, Minnesota or Pennsylvania is now ahead in farm tractor ownership is a hard question to settle, though Iowa's "Iron horse" population increased 3,678 last year according to the assessors' reports just published. This makes 30,554 for the Hawkeye state, an increase of 13.7 per cent over the previous year. Two counties added over 700 tractors each. Iowa uses her tractors in time and labor saving for corn-hog production. California uses hers most in orcharding, grain production and belt work. The live stock states find a year-round use in grinding feed, filling silos, threshing, shredding, plowing, seedbed preparation, haying, grain cutting and hauling. The next few years will show which state is to take the lead agriculturally by the general introduction of the farm tractor into its farming to cut down the overhead and increase profits.

### PURE WATER AND FRESH AIR FOR LIVE STOCK

The first essential to live stock farming is an ample supply of pure water. The second is the feed supply of the right kind in sufficient amounts. Government experts now declare that the easiest way to fight disease in hogs and cattle in particular is in giving them a clean pure water and air supply throughout the year. The easiest cure for tuberculosis in swine and cattle, for example, is in starting with healthy herds and keeping them healthy by sanitary surroundings. Drinking cups on metal stalls for the dairy cows, ventilators of approved type for their barns and stalls, and litter and feed carriers that cannot be contaminated easily all help. Water piped to the various lots and barns for the hogs and available so that they will not have to drink dirty water or go without will keep hogs free from worms and resultant diseases.

### FARMERS MEETING AT AMARILLO

Amarillo, Texas, July 10. August 21 has been set as the date of the mass meeting here of West Texas farmers, at which formation of a permanent West Texas Farmers' Educational Conference will be discussed. The meeting will be held under auspices of the Texas Wheat Growers' Association, the Grain Sorghum Growers' Association and the Cotton Growers' Association. Every farmer in the Panhandle region is invited to the meeting, which will be addressed by agricultural authorities from all parts of the nation.

The proposed educational conference will have as its object the study of farm problems and the dissemination of information on them. It will be modeled along the lines of the Texas Farmers' Congress, which for a score of years met annually at Texas A. & M. College. At the last meeting, held in 1920, this congress decided that the farm bureau and the college extension work would do away with any need for the conference, but local officials of the farm organizations declare that such has not proved the case, and there is a vital need for a conference which will aid the farmer in solving his problems.



### FALL FRESHENING OF DAIRY COWS

(By J. L. Thomas, Dairy Husbandman, Extension Service A. and M. College.)

It is a very noticeable fact that a very large percent of the dairy cows of Texas are bred during the summer and early fall, which throws the time of freshening during the spring and early summer months of the next year. Cows bred in August freshen in May, cows bred in September freshen in June; cows bred in October freshen in July; cows bred in November freshen in August while cows bred in December freshen in September.

It is not the best practice to breed cows to freshen during the above named months, except where a dairyman is supplying some special trade and only to insure an even milk supply. There is almost annually recurring periods of surplus and shortage of dairy products, both milk and butter. The surplus and shortage occurs in the early spring and lasts well into the summer. This surplus is caused by two factors, spring pastures and a large percentage of fresh cows in most herds. The late summer shortage is caused not for the reason that most of the cows are far advanced in the period of lactation, but because of scant pasturages, hot weather, flies and often more or less neglect due to pressing farm work.

It is a well known fact that the price paid for dairy products is much lower when there is a surplus on the market than when the supply is deficient. The man who keeps dairy cows should take advantage of this fact and breed his cows to freshen in the late fall that he may have the largest production when the market price for the products is the highest.

There are several other reasons than the price of the produce why it is advisable to have cows freshen in the late fall. First, the climate is mild and fall freshening cows produce well all winter and continue to produce well through the grass season. Spring freshening cows go into the hot summer almost immediately and soon fall off in milk production, which cannot be brought back until another lactation period. Fall freshening should produce at least 20 per cent more milk than spring freshening. Second, other farm work is not so pressing during the winter months and cows can be given more attention. Third, fall calves are more easily raised and are ready to make good use of spring pastures. Fourth, cool weather makes it easier to deliver the product in good condition. Those who have cows and heifers ready to breed now, will do well to put off the breeding date to the latter part of December or the first part of January.

### VOCATIONAL AGRICULTURAE IN OUR HIGH SCHOOLS

In this day of specialists it is very necessary for the man who expects to go into any form of industry to be educated in that line of business. Formerly only the boys and girls who expected to enter one of the professions were expected to need any education; the boys and girls who were to remain on the farm needed no education above the three R's. In other words, those who were not capable of doing anything else were considered capable of making good farmers. "Book Farmers" were considered rather queer and were expected to make a failure of the venture.

Then too if the land was poor about all one had to do was to move the farming operation to some less worn land and begin anew. In the older states the land was farmed in this manner for many years or until the land became more valuable and moving could not be done so easily. It was this scarcity of new land that began the improvement of farming conditions. Some experimenter found that by applying scientific methods to his farming methods he received greater yields. Now much of the land in the older states that was considered worn out a few years ago is producing good crops, because of the newer methods of cultivation.

Our agricultural colleges have played an important part in the changed ideas concerning the value of an education for the boy who staid on the farm. Men of business experience have come to realize that to make a success of farming it is as necessary to have some education as it is for one in any other profession.

Another reason for this change is to be found in the change in our educational ideas. School men have come to realize that it is better to train boys and girls to the thing they are best adapted to. In other words, to find out what the boys want to do and then give him training along that line. That was the idea when the vocational bill known as the Smith Hughes bill was passed in the U. S. Congress. Realizing that only a small percent of the pupils who go through high school ever go to college, it was deemed advisable to bring the training necessary for them to be able to go out from the high school and be able to compete with those who had had wider experience. It was a working out of the idea of giving the student training in the vocation he had chosen for a life work.

When we stop to consider the fact that the lawyer, doctor, teacher or minister has to spend at least four or sometimes more years, in preparing himself to practice his profession before he is allowed to go out and compete with his fellows and on other hand the farmer goes out to compete with not only other farmers, but pests, poor land and the elements. Small wonder that we frequently hear discouraging reports. Most of us would never think of calling in a doctor who had never had any training, yet we expect the boy to go out on a farm and make a success of farming without any training whatever. He is expected to work out his own salvation. How much easier it would be if he had the training even of the high school course in agriculture. The high school course is worked out to cover the needs of the community. He gets instruction in the

### C. O. Collard Produce Co.

Successor to Shearer Produce Co.

Poultry, Eggs, Cream and Hides.

We pay highest market price for country produce.

WE HANDLE PURINA CHICKEN FEED AND OYSTER SHELL.

Spearman, Texas

GEO. L. EGBERT  
AUCTIONEER

Sales Cried in Any Part of the Surrounding Country. Make Dates at Reporter office or phone Guymon Tribune, or write Box 543, Guymon, Oklahoma.

best proven methods of care of live stock and the care and cultivation of the soil.

Not only these but he will be given a course in shop work that is likely to be needed on the farm. Spearman High School is offering such a course to the boys of the community and many of them are taking advantage of it. And they are not only learning to be better farmers but they are making money off their projects. Each boy is required to have a project and to carry it on under the direction of the teacher. Boys who study plant production are required to grow a crop of some kind and the boys who study Animal Production are required to produce an animal. Several have chickens this year and have made money on the project right along.

Give the boy a fighting chance for success. Send him to school and have him take a course in vocational agriculture, if he expects to make a farmer.

### SMALL TALK

Nature is wise. She fixed a man's arms so he can't pat himself on the back.

They say steam laundries do not kill germs. But the way some shirts look when they come back the germs must have a narrow escape.

Scientists say the jaw of human beings has dropped an inch in the last 6,000 years. Well, look at all the taxes they've had to pay.

What Japan will have to learn is that as long as the fishing season is on over here we haven't time to talk war.

The good Lord made the country but the car ahead of you makes you eat the most of it that turns to dust.

Too many fellows know how to make hay while the sun shines but haven't got sense enough to put it in the barn.

The summer time is a good time to hope. So while you're at it just hope the next congress won't be any worse than the last one.

Business all over the country is better and prosperity is said to have turned the corner. Let's hope it's headed direct for Spearman.

Every woman who isn't invited to a party got up to spite her knows about how Japan feels.

A New York man who speaks six languages has married a woman who speaks three. Well, that ratio makes them just about even.

# THE STAR CAR

## The STAR

"Worth the Money"

STAR PRICES DELIVERED SPEARMAN

|                |          |
|----------------|----------|
| Touring .....  | \$640.00 |
| Roadster ..... | \$640.00 |
| Coupe .....    | \$820.00 |
| Sport .....    | \$755.00 |
| Sedan .....    | \$925.00 |

"Worth the Money"

## The STAR

THE MONEY

## COOKE-SUMRALL MOTOR CO.

SPEARMAN, TEXAS

Service, Accessories, Parts

U. S. Tires and Tubes

# Coal - Groceries - Work Clothing

We have took particular pains to select for our customers a stock of Groceries that would meet their requirements during the Harvest Season. We have the goods you need, and at prices that will make you glad.

Also, our stock of Work Clothing is complete. Shirts, Jumpers, Gloves, Overalls, Unionalls—just what you want

for the Harvest Season. Come in and look them over.

A Car Load of Great West Flour—Made in Amarillo and extra good. Car load of sugar—the price will interest you. Two car loads of Chandler Coal. Better take out your winter Coal while hauling in your wheat. Load both ways.

## The Spearman Equity Exchange.

A GOOD PLACE TO TRADE

### ...Poultry Hints...

Poultry Husbandman, Extension Service, A. & M. College of Texas

**Winter Eggs**—The first requisite for winter egg production is good stock. Careful experiments prove that stock bred for many years for egg production lay mere eggs than mongrel stock. Some hens, instead of converting surplus feed into eggs, turn it into fat which makes them lazy. Others have too small a capacity to lay much. Still others are constitutionally weak and break down under the strain of heavy egg production. Get a heavy laying strain of hens if you want heavy egg production, especially during fall and winter.

**What Breeds are Best**—The small breeds generally are considered most economical year-round egg producers, but it has been found that the medium weight breeds, like the Rocks, Reds, Wyandottes and Orpingtons are good winter layers. They are not so easily upset by cold winds and rains.

**Rations for Egg Production**—An egg is composed of 65 per cent water, 11.4 per cent protein, 12 per cent ash and 8.9 per cent fat. The composition of an egg is the same in California, Texas and New York. The hen cannot adulterate her product. She cannot change the composition of her product and she cannot make something out of nothing. Before she can lay an egg she must have the proper amounts of the various ingredients of an egg. If she has not enough of the right kinds of food to make an egg she waits until she gets it before laying. If your hens are not laying, make up your



mind that they are waiting for something you forgot to provide.

**Protein For Hens**—Our common grains are deficient in protein and it must be supplied in the form of pure beef scraps, meat scraps, milk green cut bone, blood meal or cooked jack rabbits. All of these feeds should be fresh and pure, otherwise they will cause trouble. Do not feed tannage.

**Succulent Feed**—Nature provides grasses and tender shoots to supply succulency to laying hens. In winter, when these shoots are not available, feed sprouted oats, cabbage, mangels, beets and the like.

**Mineral Matter**—Nature provides gravel and coarse sand to supply fowls with something with which to grind their feed and supply the ash. When these are not available, feed commercial grit, oyster shell and granulated bone.

**A Balanced Ration**—To make hens lay, either give them a chance to get what nature requires or provide them with something that will take its place.

Boost for Spearman.

#### MOULTING

This is the time of the year when all feathers are shed and new ones grown. Therefore, the farm poultry flock should be properly and regularly fed with foods rich in feather forming material. Milk in any form, beef scraps, cottonseed meal, cooked and ground jack rabbits, bone meal, millet, sunflower seed, Spanish peanuts, and peas are all good, although some should be fed in limited quantities. It is not advisable to practice the so-called "forced-moulting" of hens, because it tends to reduce vitality.

#### "CULL YOUR FLOCK"

Dispose of all individual chickens older than three years, unless they are exceptionally promising. Sell all those showing some weakness or signs of disease while passing through the moult.

#### CLEAN UP AND DISINFECT

Thoroughly clean up the poultry house and range. The range should be prepared for the coming wet weather by doing some drainage work. Texas farmers can better afford to yard their lawns and gardens than their chickens. Poultry properly fed will do but little, if any, harm to the farm crops. Allow them free range and an opportunity to kill the injurious bugs and insects. Fowls require protection during severe weather as well as any other kind of live stock and will not do well unless protected from strong, cold winds and rains. The chicken house should be cleaned and disinfected regularly. Every particle of undesirable dirt should be removed. The house should be carefully repaired, especially on the west and north sides. In other words, the house or coop should be in such condition that you would not hesitate to spend a night in it, even in the most severe weather. The old litter should be removed and renewed with fresh and clean material. If an earth floor is used several inches should be taken off the top and replaced with new earth slightly moistened and tamped. Red clay is good for this. The fixtures should be replaced and cleaned. Often a few hours, a few nails and a hammer will do wonders in this respect.

#### GREEN FOOD

Make some provision for green food by sowing anything that will grow and remain green at this time of the year in your section of the State.

#### VERMIN

Remember that lice, mites, blue bugs, and chickens will not do well together. See a previous circular from this office for best methods for killing these insects.

#### PURE BRED STOCK

This is an excellent time to purchase new or standard-bred stock. Poultry breeders at this season are often over-crowded and will sell at a low price. If possible, buy from Texas poultry breeders. There is as good stock in Texas as in any other State.

#### MORE MONEY FOR EGGS

Do you want more money for your eggs? Of course you do, but how can you get it? Read this letter, think it over carefully and act on the suggestions. The supply of eggs this year promises to be larger than ever before. On January 1, there were over 10 per cent more hens on farms than on the same date last year. With this increase of hens the price of eggs or ordinary quality undoubtedly will be low in 1924. But, there will not be an over-supply of high quality eggs. These facts indicate that to get

more money for your eggs you must produce a quality product and market it to buyers who appreciate and pay for quality.

Quality eggs are those which are good size, clean, sound and strictly fresh; ordinarily not more than two or three days old. They are easily produced from good stock with good management. If you need advice in producing quality eggs, get in touch with your county agent or your State Agricultural College.

With a quality product you should get a better price. If your buyer does not pay you more for your good eggs than he pays other producers for ordinary eggs, he is hardly treating you fairly. If you don't have a buyer now who will buy your eggs on a quality basis, seek one who will. Consult your county agent; he may be able to help you find a market for your eggs on a quality basis because he knows that it is a good thing for you and for the community.

Your State Agricultural College and the United States Department of Agriculture are interested in this problem. They want to see you get a price for your eggs which is closely related to their quality. To this end simple Buying Grades have been prepared for use by buyers in buying eggs on the basis of their quality. The buyer who uses these grades of sound shell eggs and one grade of cracks and checks. He should pay you a higher price for your best eggs.

The present practices of egg producers and buyers in many communities need to be improved. It is up to you and other egg producers to bring the needed improvements about by insisting that buyers buy eggs on a quality basis.

Consult your county agent. Let him know that you are interested in this for he can assist you greatly. Discuss it also with your egg buyer and be determined to get more money for your good eggs in 1924 by marketing them to a buyer who appreciates and pays for quality. U. S. Department of Agriculture Bureau of Agricultural Economics.

#### FATTENING BROILERS

The surplus cockrels should be fattened 8 to 10 days and sold. A broiler weighing 1½ or 2 pounds in May will net as much profit as a four or five pound cockrel in the fall.

There are two reasons for fattening broilers: First, to add additional weight; second to improve quality of flesh. Fattening is especially desirable and profitable for young cockrels that have had free range on the farm. They have good frame and constitution, and when put on forced feeding put on flesh rapidly.

#### METHOD OF FATTENING

There are two methods of fattening broilers; pen fattening and crate fattening. With the crate method they usually fatten more rapidly and more economically. A very good fattening crate may be made out of scrap lumber and old wire. A good size is 10 feet long, 18 inches wide and 24 inches high, divided into four compartments. The floor may be made of ordinary plaster lath running lengthwise. The frame should be slatted horizontally allowing 2 inches between each lath in order that the birds can be fed from a "V" shaped trough at the front of the crate. They should be started on feed gradually and at the end of the second day have them on full feed. The following is a very good fattening ration:

100 pounds finely ground corn, 100 pounds finely ground oats, 30 pounds shorts, 35 pounds meat scraps, 5 pounds brand.

Enough sour skim milk, butter milk semi-solid or powdered milk should be added to make the mixture thick enough that it will pour easily from

a bucket. They should be fed as much as they will eat for 20 or 30 minutes 3 times daily. Surplus feed should be removed from trough after each feeding.

Hens should be provided with plenty of shade, clean water, oyster shell, grit and green feed.

Dry mash should be kept before hens at all times. Formula for Dry mash.

20 pounds ground oats  
20 pounds wheat bran  
20 pounds shorts or middlings  
20 pounds corn meal  
20 pounds dried meat scraps  
15 pounds of meat scraps is enough if you are feeding in abundance.)

A dry mash containing the necessary amount of protein will help to make the moult later.

#### WINDMILLS POPULAR FARM POWER

More than \$6,000,000 worth of windmills were turned out by the 16 manufacturers making this popular farm power for pumping last year, according to the U. S. Department of Commerce. Sales everywhere indicate that the farmer was taking advantage of nature in doing the pumping of his water more than ever before. The great improvements that have practically eliminated tower climbing and caught the gentle breeze for turning of the wheel have also been added with practically no increase in cost. The self oiling and ball bearing features have undoubtedly added many days work in each year to the possibilities of the windmill.

The piping of running water to the farm kitchen and its storage for live stock and fire insurance risks have also been gaining tremendous in recent years. The hookup of the farm home with the windmill for a water supply for kitchen, bath and laundry is comparatively easy and cheap. Augmented by a gas engine, it can be made a combination that

### Sideache Backache

"I have been taking Cardui," says Mrs. Lillie Bolton, of Lake Providence, La. "I got down in bad health and lost in weight until I only weighed 120 pounds. I had had pains in my sides and back and my legs hurt me until I couldn't walk. I stayed in bed half the time. I tried all kinds of medicine, but it did me no good. Finally I tried

## CARDUI

### The Woman's Tonic

"It seems like it did me good from the very first. After I had taken half a bottle I noticed an improvement. I continued its use and I got better and better. The pains in my legs and sides disappeared and I began to gain in weight until now I weigh 155 pounds and feel better than I ever did in my life. I am perfectly well and strong. I have given it to my girls, too."

Cardui has relieved many kinds of pains and distressing symptoms caused by female trouble. It should help you, too, in the same way. Why not give it a fair trial?

can be depended upon for unlimited supply of water at any and all emergencies.

Amarillys Flour sold by the Spearman Equity Exchange. 191f.

## USE

## MORE ELECTRICITY

Are you taking advantage of the many convenient and labor-saving devices electricity affords? Electricity is about the only thing that is cheaper now than before the war. This is caused by the practical application of service and economical operation.

Both power and light rates will be lowered when enough electricity is used to justify it.

Let Electricity Do Your Work.

SPEARMAN MUNICIPAL

## Water, Light and Ice Plant

COURTESY AND SERVICE

## Spearman Business Property for Sale

Owing to ill health, I have decided to sell my business property, live stock, etc., and am offering at a bargain the following:

#### ONE FEED STORE:

Six h. p. Gasoline Engine  
Feed Grinder  
Stone Burr Mill  
Store building, 20x68, 10-foot wall, with basement 18x24  
Set wagon scales, weigh up to 12,000 pounds  
Warehouse scales  
Scale room office  
Lot, 50x150 feet.

The D. C. D. FILLING STATION, on Main street.

RESIDENCE LOTS—170-foot front; 160-foot deep. Located one block north of school building.

Sixteen head of horses, mares, colts, etc., all good, gentle-raised stuff.

If interested in any of the above listed property, see me at once.

M. C. HEAD

at D. C. D. Filling Station

# Voters of Hansford County, Texas!

The Candidates whose advertisements appear on this page, ask you to carefully consider their claims at the

## PRIMARY ELECTION, SATURDAY, JULY 26

|   |   |   |
|---|---|---|
| <p>Vote For<br/><b>HICKS L. WILBANKS</b><br/>Candidate for<br/><b>SHERIFF AND TAX COLLECTOR</b><br/>of Hansford County<br/>I Earnestly Solicit Your Support</p> | <p><b>A. E. TOWNSEND</b><br/>Candidate for County Judge, Ex-Officio County Superintendent<br/>of Hansford County, Texas<br/>I Will Appreciate your Support. Good Government, Good Schools, Good Roads</p> | <p><b>J. RUTLEDGE HENDERSON</b><br/>Wants to be SHERIFF and TAX COLLECTOR, Hansford County,<br/>—for all the people, all the time, during the next term. With a wholesome respect for every man's religion—if he has any, regardless of all secret societies or lodges; with malice toward none; with charity for all, I solicit the support of the voters of Hansford county. Individually, my religious belief, based on that of my ancestors, is Methodist. My secret societies are none. I have no relatives in this or adjoining counties to favor. If, after considering the above statements, you can support me, I will certainly appreciate it. If you cannot support me, let's be friends in the future as in the past. I remain a candidate for Sheriff and Tax Collector.<br/><b>J. RUTLEDGE HENDERSON.</b></p> |
|---|---|---|

**JESSE E. WOMBLE**  
Candidate for COUNTY AND DISTRICT CLERK, Hansford County.  
I will appreciate your support and influence. Dont forget me on July 26. I have been too busy to canvass the county closely, but will appreciate your support just the same.

**C. W. KING**  
Candidate for COUNTY JUDGE, Hansford County.  
I believe in a judicious expenditure of county funds, and invite a careful investigation as to my qualifications for this office. 17 years a resident of the North Panhandle—4 years in Hansford county. I will appreciate your support.

Please Vote for  
**E. C. GRAY**  
Democratic Candidate for Representative State Legislature, 124th District, at Primary Election, July 26, 1924.  
**WILL APPRECIATE YOUR SUPPORT**  
I have lived in Lipscomb county, Texas nearly thirty-eight years. I am a prohibitionist and in favor of the enforcement of all the laws. I believe women should have the right to vote and the right of franchise. I am in favor of a reduction of expense, where it possibly can be done, and maintain our State Institutions and our Schools in a proficient manner, and thereby reduce the taxes.  
Mr. Gray will address the voters of Hansford county on the streets of Spearman tonight.

**Lynch Davidson**  
Candidate for  
**GOVERNOR of TEXAS**  
For More Business in Government and Less Government in Business. More Efficiency and Economy, Less Taxes and Fewer State Jobs. Save Ten Million Dollars Waste Biennially in State Government Operation, and Place the State on a Cash Basis. Less Law-Making and Quicker Justice. Better Educational Facilities. Promote the Farmer's and Producer's Welfare.  
**A CLEAN PROHIBITION RECORD. A FRIEND TO WEST TEXAS.**  
I Earnestly Solicit Your Support  
**MRS PEARL S. HAYS**  
Candidate for  
**COUNTY AND DISTRICT CLERK**  
I will Appreciate Your Support and Influence.

**C. HERBERT WALKER**  
of Dalhart  
Candidate for Representative  
124th District  
A home man, who has clear-cut ideas and the ability to put them over.  
If elected he will be the representative of all the people, with no railroad or other corporate connection. He will owe allegiance to no man or set of men.  
Vote for Him.  
All his life a Democrat  
Mr. Walker will address the voters of Hansford county on the streets of Spearman tonight.

**MRS. BESSIE CATOR**  
Candidate for TAX ASSESSOR, Hansford county.  
I have endeavored to make a thorough canvass of the county, but it has been impossible to see every voter. To those whom I have not seen personally, I wish to state that I will certainly appreciate your support. I have resided in Hansford county practically my entire lifetime, and those who know me best know that I am qualified to fill the office. I need the office and will appreciate your support. I also wish to thank my many friends over the county for the kindnesses shown me during my tour of the county.  
**MRS. BESSIE CATOR.**

**MRS. J. H. BUCHANAN**  
CANDIDATE FOR TREASURER OF HANSFORD COUNTY.  
To the Voters of Hansford County:—  
Owing to unavoidable circumstances, I have been unable to make a canvas of the county during the past two weeks, as I had intended doing. However, I will see every voter possible before the primary election, July 26. I have resided in Hansford county the past fourteen years and have, at one time or another, met practically every voter in the county. I have endeavored to fill the office of county treasurer to the very best of my ability, since my election, and will continue to render the same service if I am again honored with the position. I sincerely thank you for your support in the past, and will appreciate your help in the coming primary election.

I Earnestly Solicit a Careful Consideration of my Character, Qualifications and ability to handle the finances of the county.  
**MARY SPARKS**  
Candidate for COUNTY TREASURER  
Hansford County  
GIVE ME A TRIAL.

I Will Appreciate your Support  
**M. E. WALKER**  
Candidate for  
COUNTY AND DISTRICT CLERK  
Hansford County  
Remember Me on July 26.

In the Race to the Finish.  
**GEO. T. PIERCE**  
Candidate for  
SHERIFF and TAX COLLECTOR  
Hansford County  
I Will Appreciate Your Support.

**R. W. THOMPSON**  
Candidate for Re-Election  
TAX ASSESSOR, HANSFORD COUNTY  
**J. E. SLAVIN**  
I will appreciate your vote and influence for TAX ASSESSOR of Hansford County

**ALVINO RICHARDSON**  
CANDIDATE FOR SHERIFF AND TAX COLLECTOR, HANSFORD COUNTY.  
Re-election  
Primary Election, July 26, 1924. Will Appreciate Your Support.

**SID F. POWERS**  
Candidate for COUNTY AND DISTRICT CLERK, Hansford County.  
I have been busy in the harvest and could not make a complete canvass of the county. However, I intend to get around as much as possible next week. Remember I want your vote, whether I see you or not.

GO TO THE POLLS ON SATURDAY, JULY 26, AND VOTE ACCORDING TO YOUR CONVICTIONS

# To Our Friends and Customers

We have opened the Liske elevator at Spearman and are ready to buy grain of all kinds. Will contract grain for future delivery.

Write, wire or phone in when we can serve you.

**McCLELLAN GRAIN CO.**

Phone 109

SPEARMAN

## JAMISON & SAULSBURY

### AUCTIONEERS

We have had twelve years of successful experience with Land, Live Stock and Farm Sales.

If you contemplate having a sale, write or phone us for particulars. We will give you the very best of service, and at a reasonable price. Write or phone us for dates at our expense, or make dates at the office of the Spearman Reporter.

Offices over First National Bank

PAMPA, TEXAS

## LOANS LOANS

I represent good companies with plenty of money. Can give the lowest interest rates and best settlement options. Also represent The First Texas Joint Stock Land Bank of Houston.

C. D. WORKS

Phone No. 37

Spearman, Texas

## NEW MILLINERY

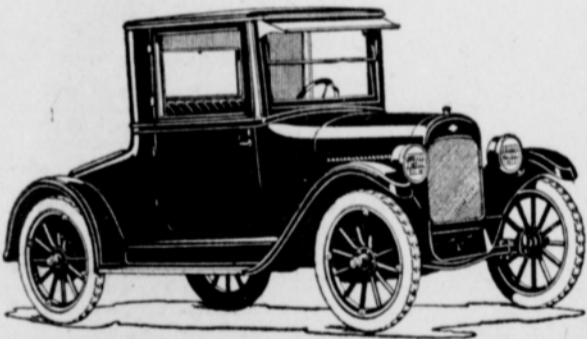
Always Something New.  
Ready-to-Wear  
Novelties

**MRS. R. K. STANHOPE**

First Door West of JOHN L. HAYS Bldg.

Spearman

## The Modern Woman's Favorite Car



Chevrolet Coupe appeals strongly to the women. Its graceful lines, fine finish, extra wide doors, big cheerful windows, and deep upholstery meet her requirements. Its sturdy construction, economy, ease of operation, and roomy package compartment convince her of its practical value. More and more women are becoming owners and drivers of their own transportation units. For business, social, or marketing purposes, Chevrolet saves an immense amount of valuable time and conserves the energy of today's busy woman.

Prices F. O. B. Flint, Mich.

|                               |          |
|-------------------------------|----------|
| Superior Roadster             | \$490.00 |
| Superior Touring              | \$495.00 |
| Superior Utility Coupe        | \$640.00 |
| Superior 4-Passenger Coupe    | \$725.00 |
| Superior Sedan                | \$795.00 |
| Superior Commercial Chassis   | \$395.00 |
| Utility Express Truck Chassis | \$550.00 |

Fisher Bodies on all Closed Models

**Mizar Chevrolet Co.**  
SPEARMAN

The Largest Furniture Store in the Panhandle

**CASH CREDIT**  
**Green Bros Co**  
INSTALLMENT HOUSE FURNISHERS

Amarillo, Texas

Let us furnish you Home, Cash or Credit. Our easy terms are open to all Panhandle people.

We Pay the Freight to all Panhandle Points

## ELECTRIC WASH DAY ON THE FARM

Washday on the farm has always been one of the hardest for the farm wife.

Washday meant the worst sort of drudgery for the farm wife. But within the last few years a new washday has dawned for farm women.

Electricity has come to the aid of farm women as well as to their city sisters.

Lights of course, are the first thing thought of and the first thing installed.

With light the independent electric plant has brought power, too, and perhaps its most valuable use is found on washday. Now an electric pumping system draws water from the well or cistern, puts it under pressure in a tank, and so delivers it to faucets in the kitchen. Then a little electric motor turns the washing machine and the wringer. An electric iron, always at the right temperature does the ironing quickly and well. There's still work on washday, but it's much easier. The drudgery is gone.

Boost for Spearman.

Experienced waitress wanted at the D. C. D. Cafe.

Corduroy Cords—a mighty good casing at a low price. EQUITY FILLING STATION 29tf.

Ford Coupe for sale. In good condition. See Dr. G. P. Gibner, Spearman. 27tf.

Our groceries are freshest; our prices are lowest. Burran Brothers, Spearman. 21tf.

W. S. Bradford of the Independent Telephone Company, was a business visitor to Amarillo the first of the week.

J. L. Arnold, who owns a fine farm in the Grand Plains country was here from his home in Oklahoma City the first of the week.

Remember Frank Soles? Well, the Reporter received a card from him the other day, stating that he was leaving Gray River, Washington, bound for Spearman.

CHICKENS—Frying size, weigh about two pounds each, for sale. Phone F3, or call at residence two miles east of Spearman. 27tf. MRS R. G. WINSWORTH.

W. M. Glover and wife are here this week from Holiday, Texas, visiting in the home of his parents Mr. and Mrs. J. M. Glover. The younger Glover owns a fine tract of farm land near Spearman.

Mrs. W. E. Chaffin, a sister of Geo. N. Reed of the D. C. D. Cafe, and daughter Catherine, are visiting at the Reed home in Spearman. Mr. Reed met them at Amarillo Tuesday.

Wanted, job of pulling a combine through the harvest. I have two tractors and both are in good condition. See FRED WILBANKS. 30tf.

Spearman

We have a complete stock of all kinds building material and if you contemplate building we will appreciate a chance to figure on your bill whether large or small. WHITEHOUSE LUMBER CO. 25tf.

Miss Kitty Crosby of Alamogordo, New Mexico, is a guest of Miss Blanche Jones, at the latter's ranch home on the Palo Duro west of Spearman. The young ladies were shopping in Spearman Thursday afternoon and were pleasant callers at the Reporter office.

Bob Thom came from his home at Raton, New Mexico, and spent the week-end with friends in Spearman. Mr. Thom went from here to Medicine Lodge, Kansas, where he will visit with his parents a few days before returning to his duties as assistant cashier of the Raton National bank.

Mr. and Mrs. Jim Davis and children came from their home in Oklahoma City the first of the week and visited several days in the home of his brother, W. L. Davis, in Spearman. Miss Cornelia Davis returned with them to Oklahoma City on Thursday, and will again accept employment in the city.

Mr. and Mrs. C. B. Montgomery and little daughter arrived from Richey, Missouri, the first of the week to look after their farming interests out southwest of Spearman. They went to Panhandle Thursday for a visit with Mrs. Montgomery's parents, Mr. and Mrs. Tom Broadway.

Miss Exol Taylor, Miss Mattie Taylor, Felix Tackitt and Jack Taylor motored to Canadian Wednesday, on a visit to friends. Miss Mattie and the boys returned to Spearman Thursday, but Miss Exol remained at Canadian, where she will visit with friends a short time after which she will return to her home at McGregor.

## WATER TANK FOR SALE

A wagon water tank—a good one—for sale at a bargain. See me at once if you need a water tank. It is a fine thrasher tank. FINIS MAIZE. 30tf.

## FOR SALE AT A BARGAIN

Essex four Sedan. Driven only on pavement and is in excellent condition. Ask to see it. Priced right and terms reasonable. Inquire at Spearman Motor Company, Spearman. 30tf.

## BOB SPEER IS ALL RIGHT

When the Reporter editor was a bare-foot boy, running around Roby, one of the most prominent families of the town was that of Prof. D. Speer. His son, Robert E., formerly postmaster at Fort Worth, is now a candidate for State Railroad Commissioner. We know that he is a good man, and is capable of making a good railroad commissioner, therefore we take pleasure in printing the following biographical sketch, that our readers may know whom they are voting for, should they wish to cast their ballot for our good friend of boyhood days.

### Biographical

I was born at Mansfield, Tarrant county, Texas June 2, 1871; son of Prof. D. Speer, a Confederate veteran. My father and mother now living in Wise county; also four brothers and a sister now living. Judge Ocie Speer, Fort Worth; Judge John Speer, Denton; Oran Speer, Alvord; Dr. D. M. Speer, Sagerton, Haskell county, and Mrs. Earnest W. Walker, Jones county. My father moved to Wood county in 1879, where he taught county schools; and with his family of boys raised four cent cotton between terms. Moving to West Texas in 1889, where he continued to teach, at Roby, Fisher county, and later at Merkel, Taylor county.

In 1891 I secured a teacher's certificate and taught school one year at White Flat, Fisher county (now Rotan.) I then purchased an interest in the Fisher County Call and engaged in the newspaper and printing business, which I followed at Roby, Alvord and Bowie until moving to Fort Worth in 1898, engaging in the exclusive commercial printing business.

### Record as Postmaster

Was appointed postmaster at Fort Worth in 1914 by President Wilson, and handled one of the largest postal departments in Texas and the entire Southwest, organizing and directing over three hundred and fifty employes and handling more than forty-three million dollars during the last three years service.

With the highest grade of all applicants twice headed the Civil Service List of eligibles for re-appointment at Fort Worth, while the Republicans appointed the lowest man on the list to the position, as they have done in so many other places.

### Efficiency and Economy

While postmaster I made nine hundred and eighty appointments to the Federal Service. All were made under Classified Civil Service rules, without regard to the applicant's religion or politics.

Am a firm believer in the Merit System of employment as represented by the Classified Civil Service, as against the "Spoils System," and know from practical experience with the postoffice department that if our state, counties and municipalities had effective Civil Service laws and elected to office men who believed in the same efficiency in public office as required in private business, not only would we have a better public service, but at a great saving to the tax payers.

### Law Enforcement

I am in favor of not only fully maintaining, but increasing the educational institution, including our public free schools.

I favor a strict enforcement of all laws, and especially laws and regulations governing the State Railroad Commission, and using its power as far as possible in developing the state's commercial and natural resources, without prejudice or favoritism to either corporation, individuals or locality.

If elected as a member of the Board of State Railroad Commission will do all that is in my power coupled with my experience in private and public service, to give you a fair, impartial and beneficial administration.

Respectfully yours,  
ROBERT E. SPEER.

## ALMOST A PREDICAMENT

A young lady from Sweetwater visiting recently in Corpus Christi, had a narrow escape from nation wide publicity when an experience she had in that city slipped unnoticed through the hands of the gentlemen of the press. As she tells the story on herself there is no harm in passing it along.

Going to see an uncle she had never seen, the young lady arrived in Corpus Christi, alighted from the train and looked around for her male relative. The only unattached man in sight advanced to meet her, indulged in the customary family affection and the two started for his home.

Perhaps Uncle was a bit enthusiastic in his greeting, for it was obvious that he was extremely glad to see her. He remarked that she was not as big as he expected her to be, but her answer, "I am big enough," settled that question.

When they arrived at Uncle's residence, the young lady asked a question that brought the situation to a sudden climax: "Where are aunts and the children?" she queried.

Uncle, slightly embarrassed, explained that there was no aunt and positively no children. Then silence thickened rapidly. When it broke the crash shook the neighborhood.

When the young lady had gotten out of the house, the truth of the situation dawned on her. She didn't stop to ask "Uncle" if he had seen the light. She had mistaken him for her uncle, while he had believed her to be his bride whom he had never seen.—Sweetwater Reporter.

# Massey-Harris

## COMBINES, HEADERS and BINDERS

### John Deere Kerosene Tractors and Tractor Plows.

We are receiving Harvesing and Farm Machinery by the car load, and are equipped to attend to your wants in this line.

## Car Load of Pennsylvania Oils

## Womble Hardware Company

Fone Four-Four

Spearman

### FOR SALE

Poland China Boar pigs. Outpost strain. The dams of these pigs took first and second in their class at both Spearman and Guymon fairs last year. The sire took first in his class at Guymon. He was a year old May 7, and weighs between five and six hundred pounds. Any one interested write or call A. F. Shapley, Spearman, Texas.

### FORDSON TRACTOR

I have a 1923-model Fordson tractor which I will sell for \$225. This tractor is in good condition. Also, have a brand new Fordson block for sale. 28tf. GILBERT WILBANKS.

### TO THE FARMERS OF NORTH PANHANDLE

When you want good help on your farm or ranch, phone, wire or write the Amarillo Employment Agency. Our service is free. Day phone, 85; night phone, 2213. J. D. HEAD, Manager. Amarillo, Texas. 28tf.

### NOTICE

I will buy butcher cattle and hides, and will pay the highest price. See me before you sell. KARL RANEY, Spearman, Texas. 52tf-c.

### WHEN HUNGRY

Don't fail to stop at the D. C. D. Cafe, where a good meal or short order is waiting for you.

We will continue to serve the best

Short Orders and Regular Meals

**The D. C. D. CAFE**  
GEO. N. REED, Proprietor

### WILLIAM F. NIX

ATTORNEY-AT-LAW  
ROOM 47 SMITH BUILDING  
TELEPHONE 2974  
AMARILLO, TEXAS

J. E. GOWER, M. D.  
Physician and Surgeon

CALLS ANSWERED PROMPTLY  
DAY or NIGHT

Phone 98 Spearman

# Felix D. Robertson

The Common Sense Candidate for Governor



The "Common Sense Candidate."

That is the title by which Felix D. Robertson, candidate for Governor, is known throughout the State. It came to him through his record as judge of the City Court of Dallas and later of Criminal District Court No. 1 of Dallas and was earned through his native Texas ability to see through the tangled problems of law to the common sense and the human justice in these problems as they were presented to him.

As a common sense candidate Felix D. Robertson is opposed to the army of boards, bureaus and commissions that give a few men fat salaries and fine titles, but increase the burdens of the taxpayers. He believes there are too many idle public employes with their feet on mahogany desks spending their time doing nothing but waiting for their swollen salaries.

"We have too much government; too many boards, bureaus and commissions; too much back-sassing; too much theory; too many idle employes," he says.

When elected Governor Judge Robertson promises to sweep all this useless expense out of the state house at Austin.

Judge Robertson is an elder in the First Baptist church of Dallas. His reputation as a Sunday School lecturer extends throughout the State and he is regarded as one of the most inspired of speakers on religious subjects and the Protestant faith.

When he was City Judge the newspaper men of Dallas called him in all reverence of spirit, "the Praying Judge." This was because when often some erring youth or some slip of a girl confronted with ruin, was brought before him, he was not the unfeeling magistrate, but showed himself kindly in heart and ready with Christian advice. Often he would adjourn court and on his knees pray that such a one might be turned to the better life.

Himself a man who has made his way up by hard work, Judge Robertson sympathizes with the worker, whether in the field or in the shop.

He is a lifelong Democrat. He was born in McLennan county, his grandfather being General Jerome P. Robertson, commander in Hoods Brigade of the Confederate army. His father is Gen. Felix H. Robertson, who was a Brigadier General in Joe Wheeler's corps in the Confederate army. During the world war Judge Robertson was a major in the 132nd field artillery of the Thirty-Sixth Division.

Judge Robertson has been a lifelong prohibitionist, having been active in his fight against the liquor interests for more than twenty years, and an advocate of woman suffrage.

He believes in and stands on the following planks:

- Better schools.
- Free textbooks.
- Strict law enforcement.
- Prison system reform.
- Better public roads.
- Help for ex-service men.
- Organized labor.
- Homes for tenant farmers.

The Commonsense Candidate is a firm believer in rural schools, declaring there should be an apportionment of at least \$15.00 per capita for pupils of the same.

The motto to which he has always adhered is: "In a democracy like Texas the children of the poor must have their chance."

Vote for Felix D. Robertson for Governor  
The Common Sense Candidate

(This ad is paid for by Felix D. Robertson's friends)

# Dodge Brothers

## MOTOR VEHICLES

Prices F. O. B. Detroit

|                  |           |
|------------------|-----------|
| Touring          | \$895.00  |
| Roadster         | \$865.00  |
| A Sedan          | \$1385.00 |
| B Sedan          | \$1250.00 |
| A Coupe          | \$1375.00 |
| B Coupe          | \$1035.00 |
| Special Touring  | \$1055.00 |
| Special Roadster | \$1025.00 |

See  
**G. P. Gibner & Son**  
DEALERS  
Spearman, Texas

### THE RELATION OF MOISTURE TO YIELD OF WINTER WHEAT

As an average of four years, late-fall-plowed ground contained 2.7 per cent a valuable moisture at seeding time, early-fall-plowed ground 4.2 per cent, and summer-fallowed ground 8.8 per cent.

The late-fall-plowed ground with an average of 2.7 per cent of available moisture produced an average of 5.9 bushels of wheat, early-fall-plowed ground with 4.2 per cent of available moisture produced 11.1 bushels of grain, and summer-fallowed ground with 8.8 per cent of available moisture produced an average of 21.2 bushels of grain.

As an average of four years, the yield of grain secured was in direct proportion to the supply of available

moisture in the soil at seeding time. In seasons with severe climatic conditions, such as prolonged drouths and hot winds, it is impossible to store in the soil sufficient water to insure a crop of wheat, but with normal weather the crop will be in proportion to water stored in the soil at seeding time.

As an average of six years, ground subsoiled once in three years and prepared each season for wheat by plowing early in the fall has produced an average yield of 18.1 bushels an acre, which is 3.9 bushels more than ground plowed at the same date but not subsoiled.

Alternate cropping and summer-fallowing have produced an average yield of 21.3 bushels of wheat an acre, but as a crop is grown but once in two years on the fallowed

ground, the average annual yield was 10.6 bushels an acre.

Summer fallowing is of value in enabling the farmer to distribute his work more evenly and to provide an opportunity for deep plowing. A system in which the ground is summer-fallowed once in three or four years will prove profitable.

Summer-fallowing is of greatest value in a rotation of crops in central and western Kansas. By means of the fallow it is possible to grow kafir or some of the other sorghum crops in rotation with wheat. In such a rotation the ground should be fallowed after the sorghum crop, and the fallowed ground planted to wheat.

There is little danger that fallowed ground will blow if properly handled. The fallow should be cultivated with tools like the spring-tooth harrow and shovel corn cultivator, that work the lumps to the surface, that leave the ground ridged, and do not pulverize the soil.

### KEY REGIONS AT A GLANCE

**The East**—Planting season was three weeks behind, resulting in congestion of work and some crop shifts. Dairy situation still difficult though shows some better signs. Pastures were very slow in starting. Haying begun; crops fair. Fruit crop prospect fairly good but growers are none too optimistic over price situation. General conditions of East does not change greatly.

**The South**—Crops growing rapidly in past three weeks. Tillage work being caught up. Cotton coming into bloom. Plenty of weevils but little damage reported so far. Crops roughly 10 days late. In general, South seems to be looking for fairly good season.

**Corn Belt**—Corn finally growing after many set-backs but stands are spotted. Conditions of corn has been rated very poor so far the worst in years. Still time to catch up, however, barring early fall frost. Other crops looking fair. Underlying situation in hogs growing stronger. Whole position of Belt this season largely turns on crop of corn.

**Wheat Belt**—Winter wheat harvest working north from Texas and Oklahoma. Crop so far shows up well. Recent price improvement is stimulating movement to market. Spring wheat growing fairly well. General situation promises a slightly more prosperous season than last year, though harvest labor is high and farmers are none too optimistic.

**Range Country**—Conditions of ranges and stock splendid, on the whole. Hot and dry in the south, however. Lambing and shearing practically over. Stock moved to high ranges. Wool moving more slowly than last year. Many lambs have been contracted for fall delivery at around 11 cents. Alfalfa yields fair; sugar beets, potatoes and other irrigated crops looking good as a rule.

**Pacific Coast**—Not in very good shape. Severe drought continues in Oregon and California. Wheat and most grains very disappointing. Fruit also hurt in the north by frosts and drought. Citrus crops good in south. Foot-and-mouth epidemic seriously handicapped market movement of feed and livestock, but has now subsided.

## W. E. POPE

### Candidate for Governor



Having served the state as a member of your state legislature for the last four regular sessions and four special sessions, I have become familiar with your state affairs and know the demands on and needs of the state government. The constitutional tax rate has been reached and valuations on property, when revenues and income therefrom are considered, have been passed. Relief is demanded. By September 1, 1925, the state will owe about \$5,000,000 more than its total revenue will pay.

Candidates for office must show that they know what to do and that they have the ability and courage to do and will do what ought to be done to reduce taxes on the overburdened tax-paying public and at the same time enforce our laws, keep our schools open, make our penitentiary self-sustaining and give us a highway system of standard and permanent roads; consolidate the markets and warehouse departments, weight and measure department, live stock sanitary commission and game, fish, and oyster commission with the agricultural department; consolidate the mining board with the labor department; consolidate the board of water engineers with the reclamation department; consolidate the department of insurance with the state fire insurance commission; repeal the law creating the book commission and vest the duties thereof on the board of education; repeal the board of control law; repeal the law increasing automobile licenses and fees; repeal the law vesting the control of our state highways in the highway commission; modify the textbook law so as to prevent the unnecessary purchase of change in school books; stop lobbying by textbook companies or their agents; take the government off of wheels by the elimination of about nine-tenths of the travelling expenses and corresponding salary to the traveler; eliminate about nine-tenths of the state printing; print Texas school books in Texas; place paid state rangers on the Mexican border and impeach local officers who refuse to enforce the law; eliminate the military as a substitute for civil authority and for the settlement of civil controversies; purchase more railroad tickets back home out of Austin by unnecessary job-holders than was ever known in Texas; establish a positive, simplified, classified, practical course of study in all grades of our schools, with scholastic intelligence tests, elimination of electives and combinations not prescribed and easier work for the teachers with a more equitable division of pay; teach the fundamentals first and improve the standing of Texas in the scale of education with the other states; restore hope to and reward for willing working convicts and make proper rules for enforced work for the sulky, hell-raising slacker convicts; take up the slack, remove lost motion and incompetence in the penitentiary farm management and go to work in the fields instead of in the newspapers.

I sincerely solicit your support on this promise:

**"NO MORE TAXES—NO TIME, NO PLACE, AGAINST NOBODY NOR NOTHING."**

**W. E. POPE,**  
Candidate for Governor.

Hail Insurance. Write or Phone Us!

## Equipped to Render Genuine Service

REAL ESTATE, LOANS and INSURANCE

The best in Real Estate to sell or trade.  
Money to loan on Farms, Ranches and Homesteads.  
At home in the Insurance business.

## McLAIN & McLAIN

Phone or Write  
Phone 43 SPEARMAN

### WALKER'S CLAIMS FOR REPRESENTATIVE

Has Clear-Cut Ideas and Ability to Put Them Over.

If C. Herbert Walker of Dalhart is elected Representative in this district there will be no more militant member of the legislature in Texas, and the 124th district will have as its representative a man of intelligence, integrity and ability who will be on the job from start to finish.

His candidacy is based upon the following:

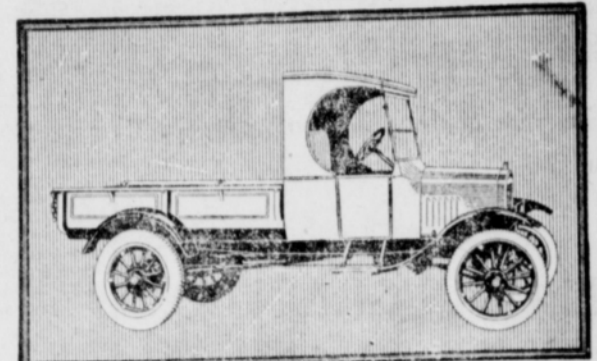
1. His extensive acquaintance throughout the state and his record during the regular term of the legislature in 1913, which gives him an enviable prestige from the start.
2. As a director of the West Texas Chamber of Commerce and vice president of the Texas Highway Association, he has already

**ONE TON TRUCK**

**Ford**

**\$490**

A complete Ford Truck with all-steel body and cab  
Chassis only, \$370.00  
Prices f. o. b. Detroit



The new Ford all-steel body and weather-proof cab on the Ford worm-drive chassis makes world's lowest priced complete one-ton truck

## A New Ford Steel Truck Body

The Ford Motor Company announces the production of a new all-steel body and steel weather-proof cab, mounted on the famous Ford one-ton worm-drive chassis, forming a complete haulage unit at the remarkably low price of \$490.

Steel flare-boards and end gate with sockets permit the use of side boards or the mounting of a canopy top.

The weather-proof cab is fitted with removable, door-opening curtains.

This new body, built of heavy sheet steel strongly reinforced and riveted, is designed to stand up under the most severe usage. Loading space is four feet by seven feet two inches.

making the body readily adaptable for general use. Screen sides and end doors may easily be installed.

This car can be obtained through the Ford Weekly Purchase Plan

Authorized Ford Dealers



CARS · TRUCKS · TRACTORS

demonstrated his belief in the North-west Panhandle and secured recognition for this section throughout the state.

3. His standing in his own community as evidenced by the demand upon him in every movement for the good of the community. He was selected as president of the chamber of commerce, president of the Lions Club, postmaster for eight years, county chairman of all Liberty Loan campaigns, county chairman American Red Cross during the war, county chairman prohibition forces in pre-Volstead days, etc., and he delivered the goods.
4. He is a progressive Democrat and has always taken an active part in state and national politics for clean government and a democratic rule.
5. He is a man of splendid personality, a forceful public speaker, a close student who knows the needs of the people of this district. He is not a lawyer and believes that too many laws in Texas have been made by lawyers. But he knows how to write bills and has the force to put them across.
6. He is for all the relief possible for the farmer and stockman, and believes that the country child is entitled to as good an education as the child of the city.
7. He believes that the liquor prescription system in Texas should be abolished or placed under strict medical requirements.
8. He hopes to tighten up on the "cold check" artist.
9. He believes in constitutional provisions and statutes that will make 25 per cent of all wages garnishable for just debts.
10. He believes in constitutional provisions and statutes that will enable the State and Federal Government to construct and maintain a magnificent state and national highway across this country. He believes the people of this section are entitled to a bridge across the Canadian river, and will assist in getting it.

He is opposed to so many bureaus and extravagant allowances for traveling expenses and other expensive and unnecessary profligacy in administering the affairs of the state.

He will be a representative of all the people of this district, with no railroad or other corporate connection, and will owe allegiance to no man or set of men. Vote for him. (This space contributed by those who know him.)

Just because you've failed is no sign you're a failure. Did you ever pause to think that maybe you just happened to try the wrong thing?

Our idea of an optimist is the Spearman man who carries an umbrella with him to church when he goes to pray for rain.

This is the time of year when the college graduate starts to worry over how much money bricklayers are making.

We overheard a Spearman citizen say yesterday that it's hard to tell which will wreck a town quickest—an ambitious widow or a jilted old maid.

Dr. Powell, the eye, ear, nose and throat specialist, will be at Hale Drug store in Spearman on Wednesday afternoon and evening, July 23. Glasses fitted; tonsils and adenoids removed. I will be here every two weeks.

## Let's Get Down to Brass Tacks

How many farm implements have you, Mr. Farmer? When new, how much did they cost you? If we told you that we could save you half their cost, would you be interested?

It has been proved beyond a doubt that implements which are left in the open last half as long as those which are protected. And, so, by lasting twice as long, the implement which has been sheltered from the elements costs only half as much in the long run as the implement which has been left in the open.

Again, what is your total investment? Would it be worth while to make a small investment that would save you half that amount?

You have money in your harvest Implements, are you going to save them?

If you are interested, we will be glad to give you free estimates and to furnish plans for an implement shed that will meet your requirements. A phone call will bring you a man who can give you real facts.

**PANHANDLE LUMBER CO.**  
OUR AIM—COURTESY, QUALITY, SERVICE.

Phone 2  
Spearman

**Home Builders**

R. T. WESTERFIELD,  
Manager.