



The Spearman Reporter

VOLUME 68, NO. 19

THE SPEARMAN REPORTER, SPEARMAN, TEXAS 79081

THURSDAY, MARCH 24, 1977

Stock show sale sets new record



Gene Cudd buys Grand Champion Steer, Richard Holton buys Grand Champion Lamb, and Mayor Blodgett buys Grand Champion pig!

Approximately 165 minutes after the bidding was opened Saturday night, March 19, in the Hansford County Show Barn on East Avenue D in Spearman a record \$79,600 had been paid for all the animals which had been put through their paces Friday and Saturday to determine the order of their standing in the competition.

Top price in the auction was paid for a lamb weighing 92 pounds which had placed seventh in the light weight medium wool judging.

It was a fast-paced auction with the auctioneer at one time having equal bids on the same animal. Bidders finally decided to share the animal after bidding had reached 90 cents per pound.

The record \$79,600 is \$6,898 more than the \$72,702 which the 1976 show brought in. The 1977 final tally was \$12,855.15 more than the \$66,744.85 obtained in the 1975 auction and this year's show brought \$6,265.04 more than the 1974 figure of \$73,334.96.

The grand champions brought good prices, as can be seen by the accompanying tabulation, but the \$6 per pound paid for Kirby Hargis' seventh place light weight medium wool lamb topped 'em all.

Such a high price was not unusual for a lamb. Earlier in the auction, Bobby Dale Hicks' fourth place light weight medium wool lamb went for \$5.25 and Shelly Logsdon's fourth place medium heavy medium wool lamb brought \$4.75.

The Grand Champion Lamb was shown by Joe Fuller, weighed 120 pounds, sold for \$5 per lb., total price \$600.00, purchased by H and H Water Well Service.

Grand Champion Swine was shown by Chuck Eaton, weighed 246 lbs., sold for \$3.30 per lb., total price \$811.80, purchased by B and B Farm Industries.

Grand Champion Steer was shown by Scot Martin, weighed 1165 lbs., sold for \$2.40 per lb., total price \$2796.00, purchased by Hansford Implement Co.

The Reserve Champion Lamb was shown by Mendy Gammon, weighed 116 lbs., sold for \$5.25 per lb., total price \$609.00, purchased by North Plains International.

The Reserve Champion Swine was shown by Ty Williams, weighed 240 lbs., sold for \$3.00 per lb., total price \$720.00 and was purchased by Boots Williams.

The Reserve Champion Steer was shown by Sam Boone, weighed 1205 lbs., sold for

\$1.10 per lb., total price \$1325.50, was purchased by H and H Water Well Service.

The Dorset Lamb Breed Champion was shown by Mike Barber, weighed 107 lbs., sold at \$2.00 per lb., total price \$214.00, and was purchased by Grayco Builders.

The Yorkshire Swine Breed Champion was shown by Sue Close, weighed 247 lbs., sold for \$3.80 per lb., total price \$938.60, purchased by Baker and Taylor.

The First Place Light Weight Steer was shown by Roy Womack, weighed 980 lbs., sold for 75 cents per lb., total price \$735.00, purchased by Caprock Industries.

The Dorset Lamb Reserve Breed Champion was shown by Brenda Dahl, weighed 112 lbs., sold for \$2.25 per lb., total price \$252.00, purchased by Jerry Logsdon.

The Breed Champion Chester Swine was shown by Jody Bradford, weighed 250 lbs., sold for \$1.10 per lb., total price \$275.00, purchased by Gruver State Bank.

The First Place medium weight Steer was shown by Mary Anne Martin, weighed 1060 lbs., sold for \$1.20 per lb., total price \$1272.00, purchased by Adobe Walls Cattle Co.

The First Place Dorset Lamb was shown by Wade Dahl, weighed 94 pounds, sold for \$2.75 per lb., total price \$258.50, purchased by Palo Duro Grain Co.

The Breed Champion Spot Swine was shown by Lori White, weighed 224 lbs., sold for \$2.75 per lb., total price \$616.00, purchased by 4-Tex Grain.

The 2nd Place Light Weight Steer was shown by Chris Cooper, weighed 965 lbs., sold for 75 cents per lb., total \$723.75, purchased by John Hart.

The 1st Place Light Weight Medium Wool Lamb shown by Pat Steele, weighed 89 lbs., sold for \$2.25 per lb., total price \$200.25, purchased by Britt Jarvis.

The Breed Champion Duroc Swine was shown by Mark Back, weighed 249 lbs., sold for \$1.50 per lb., total price \$373.50, purchased by Baker & Taylor.

The 2nd Place Medium Weight Steer was shown by Scott Strawn, weighed 1055 lbs., sold for 95 cents per lb., total price \$1002.25, purchased by Hansford Implement Co.

The 1st Place Medium Weight Medium Wool Lamb was shown by Chad Logsdon, weighed 100 lbs., sold for \$3.75 per lb., total price \$375.00, purchased by Bill

Logsdon.

The Breed Champion Cross Hog was shown by Eva Holt, weighed 247 lbs., sold for \$2.25 per lb., total price \$555.75, purchased by Hansford County Parts and Supply.

The 2nd Place Medium Weight Steer was shown by Darin Winger, weighed 1160 lbs., sold for 70 cents per lb., total price \$812.00, purchased by Pat Holt.

The First Place Medium Heavy Medium Wool Lamb was shown by Debbie Burton, weighed 108 lbs., sold for \$4.00 per lb., total price \$432.00, purchased by Melvin Bradley.

The Reserve Champion Yorkshire Swine was shown by Terry Gammon, weighed 225 lbs., sold for \$1.75 per lb., total price \$393.75, purchased by Gruver Farm Supply.

The 2nd Place Heavy Weight Steer was shown by Eva Holt, weighed 1260 lbs., sold for \$1.55 per lb., total price \$1953.00, purchased by Mrs. George Buzzard.

The 2nd Place Light Weight Dorset Lamb was shown by Pat Harris, weighed 83 lbs., sold for \$3.00 per lb., total price \$249.00, purchased by Bill Logsdon.

The Reserve Champion Chester Hog was shown by Dana Bradford, weighed 245 lbs., sold for \$1.50 per lb., total price \$367.50, purchased by Jerry Williams.

The 3rd Place Light Weight Steer was shown by Richard Montgomery, weighed 910 lbs., sold for 65 cents per lb., total price \$591.50, purchased by Gruver State Bank.

The 2nd Place Light Weight Medium Wool Lamb was shown by Tom Gamblin, weighed 91 lbs., sold for \$2.00 per lb., total price \$182.00, purchased by First National Bank of Perryton.

The Reserve Champion Spot Hog was shown by Tommy Limbocker, weighed 245 lbs., sold for \$2.15 per lb., total price \$526.75, purchased by Interstate Savings and Loan.

The 3rd Place Medium Weight Steer was shown by Scott Henderson, weighed 1025 lbs., sold for 90 cents per lb., total price \$922.50, purchased by Continental Grain.

The 2nd Place Medium Weight Medium Wool Lamb was shown by Charles Zschiesche, weighed 105 lbs., sold for \$3.75 per lb., total price \$393.75, purchased by Bery Grain Co., Waka.

The Reserve Champion Duroc Hog was shown by

Ricky Thompson, weighed 240 lbs., sold for \$1.40 per lb., total price \$336.00, purchased by Farmers Ag.

The 3rd Place Medium Heavy Steer was shown by Kyle Nollner, weighed 1105 lbs., sold for 90 cents per lb., total price \$994.50, purchased by B and B Farm Industries.

The 2nd Place Medium Heavy Medium Wool Lamb was shown by Lucia Vela, weighed 115 lbs., sold at \$3.00 per lb., total price \$345.00, purchased by Phillip Renner.

The Reserve Cross Hog was shown by Delinda Scroggs, weighed 249 lbs., sold for \$1.45 per lb., total price \$361.05, purchased by MediIn Patterson.

The 3rd Place Heavy Weight Steer was shown by Quentin Hart, weighed 1267 lbs., sold for 1.05 per lb., total price \$1330.35, purchased by Palo Duro Grain.

The 3rd Place Light Weight Dorset Lamb was shown by David Scroggs, weighed 83 lbs., sold for \$3.00 per lb., total price \$249.00, purchased by Equity Elevators.

The 1st Place Light Weight Chester Hog was shown by Andy Frances, weighed 225 lbs., sold for 1.90 per lb., total price \$427.50, purchased by B and B Sales.

The 4th Place Light Weight Steer was shown by Ricky Thompson, weighed 930 lbs., sold at 70 cents per lb., total price \$651.00, purchased by Palo Duro Feeders.

The 3rd Place Heavy Weight Dorset Lamb was shown by Scott Dahl, weighed 100 lbs., sold at \$3.00 per lb., total price \$300.00, purchased by Bill Logsdon.

The 1st Place Light Weight Duroc Hog was shown by Suzy Steele, weighed 230 lbs., sold for \$1.30 per lb., total price \$299.00, purchased by H&H Water Well Service.

The 7th Place Medium Weight Steer was shown by Eldon Allen, weighed 1080 lbs., sold for \$2.50 per lb., total price \$2700.00, purchased by Janet Allen.

The 3rd Place Light Weight Medium Wool Lamb was shown by Cole Umphress, weighed 92 lbs., sold for \$3.50 per lb., total price \$322.00, purchased by Martin's Steak Garden.

The 1st Place Light Weight Cross Hog was shown by Barry Barkley, weighed 228 lbs., sold at \$2.50 per lb., total price \$570.00, purchased by Continental Grain.

The 4th Place Medium Heavy Steer was shown by

Scott Sherwood, weighed 1145 lbs., sold for 80 cents per lb., total price \$916.00, purchased by Hergert Pontiac-Buick.

The 3rd Place Medium Weight Medium Wool Lamb was shown by Brad Guthrie, weighed 96 lbs., sold at \$3.75 per lb., total price \$360.00, purchased by Panhandle Bank and Trust.

The 2nd Place Light Weight Chester Hog was shown by Jeff Hohertz,

weighed 203 lbs., sold \$2.25 per lb., total price \$456.75, purchased by Anthony Electric.

The 4th Place Heavy Weight Steer was shown by Todd Williams, weighed 1215 lbs., sold at 90 cents per lb., total price \$1093.50, purchased by Boots Williams.

The 3rd Place Medium Heavy Medium Wool Lamb was shown by Jeff Gatlin, weighed 109 lbs., sold at

\$2.50 per lb., total price \$272.50, purchased by Crawford Implement Co.

The 2nd Place Heavy Weight Spot Swine was shown by Mike Slater, weighed 248 lbs., sold for \$2.25 per lb., total price \$558.00, purchased by Martin's Steak Garden.

The 5th Place Light Weight Steer was shown by Brenda Dahl, weighed 945 lbs., sold at 75 cents lb., total price \$708.75, purchased by

First State Bank.

The 3rd Place Heavy Weight Medium Wool Lamb was shown by Terry Gammon, weighed 120 lbs., sold for \$2.25 per lb., total price \$270.00, purchased by Tommy Joe Bergen.

The 2nd Place Light Weight Duroc Hog was shown by Rhonda Jo Boone, weighed 235 lbs., sold at \$1.40 per lb., total price \$329.00, purchased by Golden Spread Sales.

NOTICE OF THE 49TH ANNUAL STOCKHOLDERS MEETING OF CONSUMERS SALES COMPANY

In accordance with the provisions of the by-laws of CONSUMERS SALES COMPANY OF Spearman, Texas you are hereby notified that the 49th ANNUAL STOCKHOLDERS MEETING of the Consumers Sales Company will be held at the County Ag. Barn in Spearman on March 24, 1977 at 7:30 P.M. The meal will be catered by Sutphens of Borger. Meeting will be held after the meal.

MEMBERS AND WIVES ARE URGED TO ATTEND.

Purpose of the meeting is to hear the report of business to date; and to elect two members to the Board of Directors for a 3 year term. Terms will expire for Mike Garnett and John Trindle.

Present Board members are: Mike Garnett, Ray Phelps, John Trindle, Larry Holt, and C.J. Renner.

Dated this 17th Day of February 1977.

Mike Garnett, President
John Trindle, Secretary

North Plains International, Inc.
cordially invites your entire family to its
OPEN HOUSE
Thursday, March 24, 1977
from 7 a.m. to 5 p.m.
Come in & get acquainted with Dick Elbert & the new organization
Highway 207 South
Spearman, Texas
Pancake & Sausage Meal served
Many Special Guests & Items of Interest

Chan Foster Rites Held



Robert Foster

Panhandle Chapter of the American Heart Association and Goodwill Industries.

Mr. Foster was a member of St. Andrews Episcopal Church, the WTSU Alumni Association, T-Bone Club, Amarillo Chamber of Commerce, Amarillo Country Club and the Amarillo Club.

He had served on the school board for the Happy Independent School District while in that area and was formerly the president for the Junior Chamber of Commerce in Canyon, Texas.

Mr. Foster was a patron supporter of the Amarillo Symphony and the Santa Fe Opera.

Survivors included his widow, Anne Riley; his mother, Mrs. Robert W. Foster; his children, Tab, Tim, Jamie Anne Smith, all of the home, 3203 S. Hayden, Amarillo and Jodi, Becky and Bo Foster of Graham, Texas. Chan was the son-in-law of Mr. and Mrs. Earl Riley of Spearman.

The family requests that memorials in his honor go to the American Cancer Society, the Amarillo Symphony, St. Andrews Episcopal Church or a favorite charity.

Funeral services for Robert Chandler Foster, 42, of Amarillo, Texas were conducted Tuesday morning March 15, 1977 at St. Andrews Episcopal Church in Amarillo.

The Right Reverend George Quarterman, former Bishop of Northwest Texas Diocese, was officiant at the service with Dr. Merrill Winsett, M.D., and The Reverend Robert Kinney, rector of St. Andrews assisting. Burial was in the family plot in Llano Cemetery by Boxwell Brothers Funeral Directors.

Mr. Foster died Sunday morning March 13, 1977 at George Hermann Hospital, Texas Medical Center, Houston, Texas.

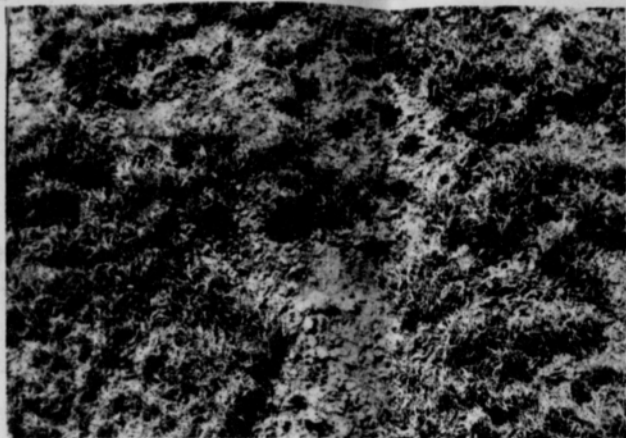
He was the owner of CF Cattle Company and was engaged in farming and ranching in Randall County.

He was a Chartered Life Underwriter and president and owner of Foster and Company, a pension and profit-sharing consulting firm in the Vaughn Building, Amarillo, Texas.

A native of Amarillo, Chan Foster graduated in 1952 from Amarillo High School and received the Bachelor of Arts Degree from West Texas State University. He was a member of Sigma Nu fraternity at WTSU.

He was a member of the Texas Cattle Feeders Association and served on the insurance committee of that organization.

He was recently appointed by Governor Dolph Briscoe to the board of directors for the Fine Arts Council of the State of Texas. He served on the board of directors for the



Drought conditions affecting grass growth on rangeland. This represents a full season's growth of grass.

Severe Drought Affects Rangeland

The severe drought we are in is having a tremendous adverse affect on rangeland. Because of lack of moisture some grass plants that should be turning green at this time of the year are dead.

Very little growth was

made by grass plants during the season and if plants were over grazed during the year the vigor of the plants was reduced greatly. Root systems of plants were reduced both in size and depth because enough plant food was

not produced to allow some to be stored in the root system.

With the small leaf structure produced the plant strived for survival and used all of its plant food to produce seed heads thus robbing the root system of extra growth.

If plants were overgrazed as was the case on many ranges the size of the grass plants were so reduced that some plants died.

These problems can be overcome by resting pastures so that when rain does come the grass plants can regain vigor and young plants can fill in vacant spots from existing seed source. If these ranges are grazed heavily soon after rain the small young plants will be eaten out or pulled up and weeds will infest the rangeland reducing the carrying capacity.

Rangeland should be rested completely until after we have spring rains and the grass has a chance to recover. The rest period should be at least three months after rain.

We, at the Soil Conservation Office here in Spearman are willing to help you with any range problems you might have. Our phone number is 659-2330.

January Savings Bond Sale

January sales of Series E and H United States Savings Bonds in Hansford County were reported today by County Bond Chairman G. A. Gibner. Sales for the first month period totaled \$7,753 for 9% of the 1977 sales goal of \$90,000.00.

Texas sales during the month amounted to \$21,030,227, while sales for the first month of 1977 totaled \$21,030,227 with 8% of the yearly sales goal of \$276.9 million achieved.

Wheat Grazing Date Extended

The grazing date for wheat for Hansford County has been extended from April 1 to April 11, according to Elizey Vanderburg, of the ASCS office.

Vanderburg stated that farmers should use their own judgement as to whether or not to graze their wheat for the extra ten days.

Accident Kills Gruver Man

Charles Seider of Gruver was crushed to death Saturday when he was pinned between a tractor and an ammonia tank 20 miles northeast of here.

Seider, a 39-year-old farmworker, was pronounced dead at the Rex Williams Farm at about 1:45 p.m. by Hansford County Justice of the Peace J. P. Vernon of Spearman.

Hansford County Sheriff R. L. McFarlin said Seider's tractor was parked in a bar ditch on Farm Road 1261 and apparently started rolling as the farmworker was filling its tank from the larger bulk ammonia tank.

The farmworker, who had been employed about 2 1/2 months by the farm near the Kimbell community, was discovered by the farm's owner and another man who called authorities.

Memorial services for Charles Seider, 39, were held at 10:30 a.m. Monday at the Oslo Lutheran Church with

the Rev. Victor Andersen, pastor, officiating. Burial was Tuesday at St. Paul's Lutheran Cemetery at Aleman by Rawley Funeral Home of Hamilton, Boxwell Brothers Funeral Directors of Spearman.

Mr. Seider died Saturday after he was pinned between a tractor and an ammonia tank. He was a native of Hamilton, and had lived in Gruver for 13 years. He was a member of Oslo Lutheran Church and a farm worker. He married Margie Wenzel in 1963.

Survivors include his widow; two daughters; parents, two sisters; and a grandmother.

If your blankets are badly worn, you can cut out the bad spots and combine what's left to make one big blanket, which can now be used for the warm interlining of a quilt cover.

12 Picked For Grand Jury

How is the Grand Jury picked for Hansford County? This question is often asked and Sheriff McFarlin relayed this information to us this week. Judge Countiss picks 5 people from the county to serve on a jury commission and they in turn name 20 jurors to serve. This week, out of the 20 jurors named, the following were picked to serve: Ray J. Martin, Ruth DeCamp, E. L. Garner, Bob Gillispie, E. J. Copeland, Leslie Barkley, Robert Ewing, Diane Doty, Joel Lee Lackey, Allen Leach, Bill Duncan, and K. E. Evans.

The following indictments were returned by the Grand Jury: Buddy Lynn James, theft; Teddy James Teakell, theft; Terry Michael Templeton, aggravated assault with serious bodily injury; Jose L. Gutierrez, aggravated as-

sault with serious bodily injury; Annie Rugh Blanton, obtaining a controlled substance by fraud; Terry Glynn Cook, burglary; Dwayne Leo Flowers, theft of property of the value of over \$200.00; Juan Alberto Renteria, theft by exercising control; Charles Kent Romines, burglary with intent to commit theft; Jeffery Dean Crawford and Dean Albin Smith, burglary with intent to commit theft.

Morse Baptists Set Revival

The First Baptist Church of Morse will be having a revival March 25 thru March 27. Rev. Walter Goodnight, pastor of the First Baptist Church of Phillips will be the

visiting evangelist. Travis Angel of Spearman will be the music director.

The services on Friday and Saturday will be at 7:30 p.m., and the Sunday services will be at 10:45 a.m. and 8 p.m.

Rev. Winfred Walker, pastor of the Morse church, and the congregation extend a cordial invitation to all to attend the services.

LVN Course Possible

If enough interest is shown in a class for certification as a licensed vocational nurse, such a class will be conducted in Spearman, it has been announced.

Interested persons should contact either Nell Cummings or Martha Boyd at the business office at Hansford Hospital and leave an address and telephone number.

Such an LVN course would be part of adult education activities in Spearman and Hansford County, it was noted.

HELP WANTED

We are presently taking applications for a fulltime clerical position. We require good typing skills and offer good benefits and excellent salary. Please inquire in person at the Baker & Taylor Office on the Gruver Highway

BAKER & TAYLOR

SPEARMAN, TEXAS 79081 PHONE 806-659-2503

When A Simple Garage Mechanic Suddenly Inherits A Billion Dollars, He Gets More Action, Excitement, Romance And Riotous Adventure Than Money Can Buy!



MR. BILLION

(Where The Nice Guys Finish First For A Change)

TERENCE HILL · VALERIE PERRINE "MR. BILLION"

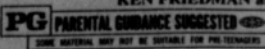
SLIM PICKENS · WILLIAM REDFIELD · CHILL WILLS and JACKIE GLEASON as Cutler

Executive Producer Produced by Co-Producer Directed by

GABRIEL KATZKA · STEVEN BACH and KEN FRIEDMAN · SHELDON SCHRAGER · JONATHAN KAPLAN

Written by Music

KEN FRIEDMAN and JONATHAN KAPLAN · DAVE GRUSIN · COLOR BY DE LUXE®



© 1977 Twentieth Century-Fox

LYRIC THEATRE

SPEARMAN

NOW SHOWING THRU MARCH 29th

Notice of the 49th Annual Stockholders Meeting of Consumers Sales Company

NOTICE OF THE 49TH ANNUAL STOCKHOLDERS MEETING OF CONSUMERS SALES COMPANY

In accordance with the provisions of the by-laws of CONSUMERS SALES COMPANY OF Spearman, Texas you are hereby notified that the 49th ANNUAL STOCKHOLDERS MEETING of the Consumers Sales Company will be held at the County Ag. Barn in Spearman on March 24, 1977 at 7:30 P.M. The meal will be catered by Sutphens of Borger. MEETINGS AND WIVES ARE URGED TO ATTEND.

Purpose of the meeting is to hear the report of business to date; and to elect two members to the Board of Directors for a 3 year term. Terms will expire for Mike Garnett and John Trindle. Present Board members are: Mike Garnett, Ray Phelps, John Trindle, Larry Holt, and C.J. Renner.

Dated this 17th Day of February 1977.

Mike Garnett, President
John Trindle, Secretary

WANT ADS

Boxwell Bros.
Funeral Home and Flower Shop
 FUNERAL HOME--659-3802
 FLOWER SHOP--659-2212

SERVICE: Pits cleaned, wet or dry. Dragline or loader. Also, dozer, grader, carry-all service. LeeRoy Mitchell, 806-733-2384, Gruver, Texas, 79040.
 9-rtm

KIRBY SALES & SERVICE
 of Spearman, 912 S. Bernice. 659-2797.
 30-rtm

TRICHEM LIQUID Embroidery sales, service, classes. Diana Wattier, 101 W. 12th. 659-2084.
 175-8tp

Miscellaneous FOR SALE

FOR SALE: AKC Registered St. Bernard Puppies. Call 878-2187, Stinnett, after 5:00.
 175-4tc

FOR SALE: 1968 Chrysler Newport, 4-door, air, power. \$695.00, 604 S. Evans after 4:00 P.M.
 18-rtm

FOR SALE: Story & Clark Piano. 10 years old, good condition. 659-2446
 185-2tc

FOR SALE: AKC Irish Setter, male. 1 year old. Call after 5:00, 659-2440.
 19-2tc

FOR RENT

FOR RENT: Nice 2 bedroom, bath and 1/2 Mobile Home. Washer and dryer/Dishwasher/Furnished. \$135 per month. Phone 659-2491.
 185-4tp

FOR RENT: VA approved trailer space. 659-3000 after 5:00.
 39S-rtm

FOR RENT: Furnished apartment. Call 659-2811.
 17-6tc

LBL Trailer Spaces: \$40 monthly. 50' x 150' lots. Trailers also for rent. Call Manager, 659-3551, 206 S. Bernice.
 40-rtm-T only

Real Estate For Sale

FOR SALE: Nice 3 bedroom, 2 bath brick home, den with fireplace, electric kitchen with disposal, central heat and air, carpets and drapes, fenced yard. Shown by appointment only. Emmett R. Sanders, Realtor, 659-2516, nights 659-2601.
 11S-rtm

PRICE REDUCED: Story and half brick home; 5 bedrooms, 2 baths, central heat and air, Nice kitchen with dishwasher, fenced yard, located on nice quiet street. By appointment only, Emmett R. Sanders, Realtor, 659-2516, nights 659-2601.
 17-rtm

FOR SALE: 4 bedrooms, 3 baths, recreation room, stormproof basement. Large corner lot. 733-2136 in Gruver. Near school.
 17-rtm

FOR SALE BY OWNER: 3 bedroom, bath & 1/2, central heat, refrigerated air, built-in kitchen with dishwasher, attached garage, patio, Morgan storage building, fenced backyard. Priced for quick sale. Call 659-3525.
 18-rtm

FOR SALE Reduced Again: 3 bedroom brick home 1 1/2 bath, carpet throughout, built-in kitchen, central heat, extra lot 55x153 adjoining, plumbed for house trailer, \$22,000. 213 N. Brandt, 659-3667 days, 659-3633 after 7 p.m.
 16S-rtm

FOR SALE: 210 acres, irrigated land, 3 miles SE of Spearman. Good rich Pullman soil, 8 inch well, very little waste land. Terms, cash; purchaser arrange own loan. Emmett R. Sanders, Realtor, 806/659-2516, nights 806/659-2601, Spearman, Tx. 16S-rtm

FOR SALE: Delightful 3 bedroom brick home with central heat and air, utility room, carpets and drapes, large living area with beautiful paneling. This home is in excellent condition. For appointment call Emmett R. Sanders, Realtor, 659-2516, nights 659-2601.
 18S-rtm

YOUR LOCAL USED COW DEALER: SPEARMAN BI-PRODUCTS.
 Seven days a week dead stock removal. Please call as soon as possible. 659-3544.
 8-rtm

Hansford Lodge
 1040
 A.F.&A.M.
 W.M. George Young
 Sec. Cecil Biggers
 2nd & 4th Mondays

SERVICES

Hansford County Planned Parenthood
 26 S. Haney
 659-2483
 Spearman
 Mon.-Fri.
 8 a.m. to 12 noon
 30S-rtm

PORTABLE DISC ROLLING
 call
 DAVID McINTYRE
 659-3782
 118 1/2 N. James
 Spearman, Texas 79081
 14S-rtm

TREE SURGEON: Winter spray-Dormant Oils, for healthier trees and shrubs. Free-estimates. Bob Welsh. Farnsworth, Texas.
 9S-rtm

STEAM RINSE & VAC: \$11.00 per day. Shampoo or defoamer, \$2.98. For reservation call 2141, after 7 p.m. 3437.
 12S-rtm

NEED MARY KAY COSMETICS. Call 2751 after 5:00 p.m.
 30S-rtm

SEXTON IRRIGATION REPAIR
 Underground Pipe Sales
 Leak Repair
 Backhoe & Ditching
 In Farnsworth
 call Bill Sexton
 435-5542
 14-rtm

FOR ALOE VERA Cosmetics: JoAnn Kell, 659-2211.
 16-8tc

STUD SERVICE AVAILABLE--Two year old apricot miniature poodle at stud. Call 659-3038 after 5 p.m.

Insulation Blown & Spray-On
 Call Floyd Sheets, 405-338-6418 or Claude Sheets, Jr., 806-659-2085.
 175-8tp

LEON'S GARAGE: Auto & Truck Repairs, 106 E. Broadway (in alley behind El Vaquero Restaurant), Gruver, Texas. Phone 733-2436 after 6 p.m. 733-2924. Operated by Delbert "Leon" Wilson.
 18-rtm

CARMON LAIRD ALL BREED GROOMING & BOARDING
 118 N. James - 659-2105
 13S-rtm

FOR SALE: 2 bedroom house, \$3500. 659-2927 after 6:00 P.M.

FOR SALE: 800 acres, excellent irrigated land, 8 miles east of Spearman, has 3 ten inch wells, over one mile underground pipe, natural gas irrigation deal available; this farm is on the pavement, has good rich Pullman soil, no waste land. 29 percent down, balance over 4 years. Emmett R. Sanders, Realtor, 806/659-2516, nights 806/659-2601, Spearman, Tx. 16S-rtm

ED WHEELER REAL ESTATE
 Homes - Farms
 Commercial

659-2613	Days
659-2951	Nights

Large lot with nice two bedroom home in front, nice one bedroom house in the back. Double garage with efficiency in the rear. One year rental on one bedroom house paid at time of sale.

3 bedroom corner lot large fenced yard. 911 Haney.

3 bedroom, 2 bath, brick den fireplace, living room carpeted, electric range/oven, dishwasher, central air/heat, storage shed.

3 bedroom, brick house, attached single garage, 1 bath. 309 W. 12th.

FOR SALE: Choice Glover Place residential building site. Emmett R. Sanders Realtors. 659-2516, nights, 659-2601.
 14-rtm

John Mayfield - Broker
 435-6528
Ruby Lahr - Salesperson
 659-2188

3 bedroom, 1 3/4 baths, completely renovated inside and out, nice yard in Glover Terrace Addition.

2, two bedroom, 1 bath, fully carpeted homes on one lot. Good location.

125x180 feet lots for sale in Crawford addition.

Acres for sale east of Waka.

Good Commercial site on Hiway 15, with 2,190 sq. ft. metal building, office space, 2 baths and metal shed. Lot size 186x295 ft.

FOR SALE: Wright's Steakhouse, downtown Spearman. 659-9988.
 19-rtm

OFFERED BY:
Emmett R. Sanders
 Realtor

Price cut 10% for 3 bedroom, 2 bath home, den & office, nice carpets, paneling, E. Kenneth St.

Older 3 bedroom house with basement on 2 lots.

100 ft. Crawford Add. lot, Gruver highway, includes small building.

Nice 3 bedroom, 2 bath brick home, den, fireplace, electric kitchen, disposal, central heat, ref. air, carpets, drapes, fenced yard. Appointment only.

Price reduced on story & half brick home, 5 bedrooms, 2 baths, central heat, ref. air, oven and cooktop, dishwasher, fenced yard, on quiet street. Appointment only.

Choice Glover Place home building site.

EMMETT R. SANDERS REALTOR
 659-2516
 659-2601 (nights)

FOR SALE: Trailer Spaces. Call 659-3529.
 19-4tc

WANTED

WANTED: Sewing for the public. Call 3805, 219 N. Hoskins.

17S-4tc
WANTED: Housekeeper, with care of small child some of the time. Call 733-2129 or 733-2002, Gruver.
 17-rtm

Card of Thanks

I wish to take this means of expressing my sincere appreciation to the nurses, doctors and the entire staff of Hansford Hospital for their wonderful care during my recent illness.

Also, many thanks to all those who sent cards and flowers, and to those whose visits meant so much, especially members of the 20th Century Club, The Sacred Heart Ladies Guild, the Hospital Auxiliary, the Spearman Music Club and the Spearman Council #5552, Knights of Columbus.

A special "Thank You" to Rev. & Mrs. Pogue for their cheering visits.

Mrs. C. A. Kleeberger

We would like to express our sincere appreciation for the money, clothing, and many other acts of kindness shown to us when our trailer home burned.

A special thanks goes to the Spearman Volunteer Fire Department for their help.

The Johnny Ring Family

Too Late To Classify

FOR SALE: '69 Plymouth, 4-door, \$300.00. 659-2822.
 19-4tc

FOR SALE: 7-piece Broyhill living room suite; Kenmore washer and dryer, both in excellent condition. Call 659-2782 before 10:00 or after 1:00.
 19-1tc

AUSTIN--While total cash receipts increased to \$6.4 billion for Texas agriculture, dollar figures alone do not tell the whole story when talking about 1976, Agriculture Commissioner John C. White said in his review of the year.

"The credit side of the ledger may look healthy, but when you consider that costs have also steadily increased during the year, profits begin to look very slim for most farmers," White explained.

Total farm parity for 1976 wound up at 66 per cent, the lowest for the ratio in 43 years. "In fact, with few exceptions," White said, "prices for farm products remained under parity during the entire year."

Hope for marginal profit farms this year lies in the possibility of Federal measures to bolster supports for several commodities, especially grain. Farm groups across the state are pressing for changes in agricultural policy that will give some stability for their operations.

"While no one wants to return to the days when the Federal Government was in the business of buying agricultural surpluses, a realistic, flexible support system must be made available when needed," White emphasized.

Cotton was one bright exception for farmers this year, with the three million bales produced in the state commanding some of the highest prices ever paid for the natural fiber. With average year-end prices at 65 cents statewide, cotton also appears to be one of the best profit-positioned commodities for 1977.

The story is glum, however, for livestock, which account for two-thirds of the state's agricultural income. Calf and fat cattle prices remained a third to a half under parity while cattle feeders reported losses of \$50 to \$100 a head during the year.

Poultry and hog prices have also been reduced throughout 1976.

Milk prices, on the other hand, have been holding up and dairymen reported a good year.

Prices averaging \$3.40 per hundredweight in Texas were down for the sorghum crop, which totaled 318 million bushels in 1976.

FOR THE ULTIMATE IN **STORM DOORS**.
 CUSTOM BUILT, DESIGNED, AND IN COLORS TO FIT YOUR HOME.....
 CONTACT **HOWARD MOYER AT ONLY ALUMINUM INDUSTRIES**
 405-338-6966 or 338-6170
 P. O. BOX 471
 GUYMON, OKLAHOMA 73942

WANT ADS A WORLD OF RESULTS

MOOSE LODGE 2212
 meets 2nd and 4th Tuesdays each month, 8:00 P.M. Members only. East End, Community Building.
BINGO
 Every Thursday night Everyone invited 7:30 p.m. East end of Community Building 18S-rtm

TEXAS PRESS
 MEMBER 1977 ASSOCIATION

SPEARMAN, TEXAS 79081
 213 Main Box 458 659-3434
 Published Weekly at 213 Main Street Spearman, Texas 79081
 Owner-Publisher.....William M. Miller
 Second Class Postage Paid at Spearman, Texas

ANY ERRONEOUS REFLECTION UPON THE CHARACTER OF ANY PERSON OR FIRM APPEARING ON THESE COLUMNS WILL BE GLADLY AND PROMPTLY CORRECTED UPON BEING BROUGHT TO THE ATTENTION OF THE MANAGEMENT. SUBSCRIPTION RATE--Hansford, adjoining counties, combination with the Hansford Plainsman, \$10.92 Tax included. Other points \$15.12 Tax included.

Help Wanted- Good Typist.
Apply at
Spearman Reporter In Person
 To Work The Hours From 1:00 to 5:00 Monday Through Friday

A COMPLETE **PRINTING** SERVICE

Top Quality Work on Every Job

Sharp, hard-selling mailing pieces, exquisitely printed wedding invitations and social stationery... whatever you need, we can print it expertly.

Expert Printing at Your Disposal

- INVOICES • LABELS & TAGS • LETTERHEADS • OFFICE FORMS • ANNOUNCEMENTS • BOOKLETS • BUSINESS CARDS • CATALOGS • DISPLAYS • BUSINESS CARDS

Printers Sandy Bowler, Brenda Davis, and Billy Miller would like your printing orders.

Spearman Reporter

We print everything but stamps and money, and if it don't rain, we may start doing that...

Tri-City Community Concert Sunday

The Tri-City Community Concert Association has just completed an annual membership drive assuring its members of a 1977-78 season of the highest quality entertainment. Most people realize this and memberships are eagerly sought. Year after year the very best in opera, ballet, light opera, as well as some of the finest vocalists and musicians have been brought here under the auspices of the Community Concert Association.

It is a tribute to those persons who for years have continued their dedication to the difficult assignment of enhancing the cultural climate of the community that they have been successful both in attracting people to take out memberships as well as providing for them, such an outstanding concert season year after year. Only those persons holding membership tickets will see the attractions to be presented during the season as there are no ticket sales at the door on the night any one of the concerts is offered.

Members are reminded that on Sunday afternoon, March 27, at 2:30 p.m. at the Borger High School Auditorium they are in store for a treat when Columbia Artists presents Danzas Venezuela starring Yolando Moreno. Returning to the United States for the third tour, Danzas Venezuela is a musical and choreographic festival featuring 42 singers, dancers, and musicians. Accompanied by a novel combination of instruments such as harp, mandolin, maracas, typical Venezuelan guitars, drums, various percussion instruments, contrabass and tambourine, the exuberance and expertise of the dancers and singers ignite stantly whirling forms, a riot of colors and hypnotic music.

The company's star and artistic director is the beautiful and exotic Yolanda Moreno. Affectionately called "the dancer of the Venezuelan people" by her countrymen, she is the dancing embodiment of Venezuelan folklore, having dedicated herself to arranging, interpreting and performing her country's native dances.

Due to this special kind of choreography, Yolanda Moreno has exercised considerable influence in Latin America and has had frequent invitations from various countries to give courses in this special technique, including ones at the University of Utah. This valuable cultural work has brought her many awards. Recently the President of Venezuela bestowed upon her another decoration, the order of Andres Bello, reserved only for great cultural accomplishments. In her performance in Danzas Venezuela, she is the true queen of this fairytale Carnival.

The George Shearing Quintet appearing in concert on Monday, April 11, at 8:00 PM, at the Borger High School Auditorium, will be a bonus attraction for new members of Tri-City Community Concert Association. Receipt stubs should be shown at the door for admittance.

Association members who plan to attend Canyon concerts will need to make the following changes: the concert on Wednesday, March 23 featuring Susann McDonald, Harpist, has been cancelled due to an arm injury. She will be replaced by Douglas Midt, classical guitarist, who will perform in Canyon at the Canyon High School Auditorium at 8:00 PM on Thursday, March 24. The date on Lenus Carlson, Baritone, has been changed to Thursday, May 5, instead of Friday, May 6 at the Canyon High School Auditorium at 8:00 PM.

YOU CAN GET A PART-TIME JOB WITH YOUR FULL-TIME SKILL.

If you're working full-time right now, your skill may qualify you for a good extra income. The people at your local Army Reserve unit can tell you what skills they're looking for. Call them for details.



progress in treating childhood cancer, including leukemia," Hansford Unit ACS Chairman Johnny Lee said. "Mike was treated with highly experimental drugs, and his survival as the years went by was considered sensational by the medical world. Today, 95% of children with Mike's form of leukemia achieve remission for one year, which means there is no detectable sign of disease. And, at last half of these are living beyond five years free from any symptoms."

While leukemia, cancer of the blood and blood-forming tissues, is the best known, perhaps, of childhood cancers, it is not the only form of cancer to strike the young. According to the ACS, cancer is responsible for more deaths in the 3-4 age group than any other disease. Nevertheless, childhood cancer is a rare disease.

A cancer of the kidney, called Wilms' tumor, cancer of the bone, brain and eye

are some forms of malignant disease that strike the young. Since 1950, deaths from childhood cancer have been declining largely because of cancer drugs, new ways of administering them, and aggressive ways of combining them with other forms of therapy including surgery and radiation. Children with cancer should only be treated where this kind of treatment is available.

For example, combination treatment such as radiation combined with drugs to treat advanced Wilms' tumor are extending young lives to the point of cure. The survival rate for children under 15 years of age with thyroid cancer has been raised to 98%.

"As with adult cancer, alertness to changes in physical well-being or activity, and a visit to a physician when something seems different is essential. Children should be under the regular care of a physician, and while it is important for parents to

Palo Acre Farms Show Grand Champion

The Five State Shorthorn Show and Sale was held in Guymon, Oklahoma, this past weekend, March 18th and 19th with consignors coming from Guymon; Clarendon, Tulsa, Groom; Claver in Texas; Sweetwater, Oklahoma; Greensburg, Kansas; Cheyenne, Oklahoma; and Elbert, Colorado.

The Grand Champion Female was also shown by the Palo Acre Farms with Packard Cattle Company also having the Reserve Grand Champion Female.

The Champion pair were shown by Palo Acre Farms in

the group classes. Judges for the Show are F. A. Heckendorf of Castle Rock, Colorado who is the president of the National Polled Shorthorn Association.

The Grand Champion Bull, an 11-month old animal, weighing 900 pounds, was purchased by Leslie Gloden, Jr., of Guymon for \$3,000.00. The Grand Champion Female, 9 months old animal, was purchased by Bobby Gloden for \$850.00. These calves were sired by "Spiro", herd sire at Palo Acre Farms. The Reserve Grand Champion female was also sired by Spiro.



Our President's Flag, with the President's Seal in bronze upon a blue background and a large white star in each corner, was adopted May 29, 1916 by President Woodrow Wilson.

Lynxettes place first, Lynx second at Perryton!

The Spearman boys and girls tennis teams had their eyes set on victory at Perryton Friday and Saturday in the area's biggest tennis meet. The Spearman teams almost swept the tourney. The Division I girls won first place, the division II girls won first place, and the division boys won 2nd place, and the division II boys won 2nd place (Spearman boys). The Lynx boys and girls teams combined to win 3 first place medals, and 7 2nd place medals.

Playing with strings of "Steele" Glenda Cook beat Bryan (Panhandle) 7-6, 6-4 to win the first place girls singles. Doubles 2nd place was won by Lori McAdams, Cindy Gressett; the Spearman girls lost to Vincent-Vin-

cent of Hartley in a thriller, 5-7, 4-6.

In the Division II girls singles, 2nd place went to Pam Largent, who lost to Hunt (Stratford); in a grueling match 5-7, 5-7. In the doubles, Tina Cochran, Beth Flowers beat Waterfield-Rogers of Canadian, 6-4, 6-4.

Division I boys singles 2nd place went to Mark Cunningham who lost to Hall (Perryton) 2-6, 4-6. The doubles second place went to Terry Latham, Raymie Porter, who lost to Winters, Manshall (Sanford-Fritch) 1-6, 3-6. Division II boys, singles 2nd place went to Jimmy Vernon, who lost to Wilson (Perryton) 1-6, 6-8. Doubles semi-finalists saw Kyle Beedi and Todd Brock lose a heartbreaker to Riggs, Robertson

of Perryton, 4-6, 6-3, 4-6. The combined boys and girls wins gave Spearman the highest scores in the Perryton tennis meet! Coach Steele and his "Steele Strings" are doing great! Stay in there Lynx and Lynxettes, and let's all go to state in tennis!

Kindergarten Day Set

The Waka School District will have another Kindergarten Day Monday, March 28, 1977. School begins at 8:15 and dismisses at 11:25.

If your child wishes to stay for lunch, you may pick him up at 12:00. Lunch is 50 cents and our milk break is 10 cents.

WE'RE HAVING A SPRING FURNITURE SALE

STARTS MARCH 28th BRING YOUR PICKUP & SAVE

ONE WEEK ONLY
FIRST COME -
FIRST SERVED

BEDROOM SUITE
REG. \$899 NOW \$799
Thomasville

DINING ROOM SET REG. \$899 NOW \$799

CHINA REG. \$899 NOW \$799
ALSO HAVE CHINAS AT \$399 & \$299

ALL SOFAS MARKED DOWN TO \$369 EVERY SLEEPER \$399 - REGARDLESS OF ORIGINAL PRICE - THESE ARE IN NYLON, VELVETS, OR HERCULON.

COME IN AND SEE US FOR LOW LOW PRICES.
LOGAN, OKLA. 73849
405-837-5325

SPECIAL! QUALITY LIVING ROOM FURNITURE

So elegant! So outstanding! These are the Sofas and Chairs you've promised yourself for years. Come in now and find them in our Galleries at delightfully affordable prices.

Choice of La-Z-Boy Chairs Any Color Velvet

Also in Sleeper

La-Z-Boy \$149⁹⁵ Maddox \$299

Sleeper \$149⁹⁵ Choice of Sofas \$299⁹⁵ & \$399⁹⁵

Hickory Lane \$399⁰⁰ La-Z-Boy \$149⁹⁵

\$100⁰⁰ OFF ON ALL SLEEPERS

COME AND SEE

We're La-Z-Boy Headquarters

Pictured are only a few of the La-Z-Boys on Display. We've got Rocker-Recliners, La-Z-Loungers, Sofettes, Wall-Recliners and La-Z-Rockers of every kind... Choose Now... SAVE and Enjoy great La-Z-Boy Comfort.

ALSO OPEN SUNDAY AFTERNOON

ONDRACEK FURNITURE

DIRECTIONS: 7 MILES NORTH OF DARROUZETT 3 MILES EAST THEN 1/2 MILE BACK NORTH



OUTSTANDING STUDENT-Rex McCloy, is congratulated by William Bennett, associate dean, upon being recognized at the 49th Annual Pig Roast and Honors Banquet of the Texas Tech University College of Agricultural Sciences, McCloy, senior agricultural economics major from Morse, was honored as being the outstanding student in the Department of Agricultural Economics and the outstanding student in the college as a whole this year. McCloy was also recognized as recipient of a \$1100 Dupre Scholarship.

County Ping Pong Tournament Slated

K.I.D.S. is planning a Hansford County Ping Pong Tournament to be held in April. Registration for the tournament will begin immediately. Fill out the form in this paper or get forms at Earl's T.V. There will be three events, singles, doubles, and mixed doubles. Entry fee will be at \$5.00 per event. The tournament will be held at the Community Building, with the date to be set later.

REGISTRATION FORM

NAME.....
AGE.....
PHONE NO.

EVENTS

Check ones you wish to enter.
SINGLES.....
DOUBLES.....
MIXED DOUBLES.....

Girl Scout News

Junior Troop #65 met Thursday, March 17 with Mrs. Harold Groves serving refreshments of cookies and Girl Scout Cookies. The troop discussed the work they had done toward their badges. Those present were Ann Barnes, Lee Barnes, Jeanne Laird, Christie Black, Stephanie Hayes, Kelly Groves, Joanna Jarvis; leader, Mrs. Tom Jarvis. The next meeting will be March 24.

Troop Needs Leader

A troop leader is needed for Junior Troop #76 6th Grade Girls due to the reluctant moving of Mrs. King. The girls meet on Monday afternoons from 3:45 to 5:00. The leader will help them with their outdoor badges and all other aspects of the troop. If interested call: Mrs. Tim Welch, 659-2334; Mrs. Larry Evans, 659-3696; or Mrs. Kenneth Evans, 659-2165.

K.I.D.S. Bake Sale Saturday

A BAKE SALE WILL BE HELD SATURDAY, APRIL 26 AT GORDON'S DRUG BEGINNING AT 7:30 A.M. ALL PROCEEDS WILL GO TO K.I.D.S.

Stock Reduction Sale

25% TO 50% OFF

ON ALL MARKERS & MONUMENTS
Lettering & Installation



BUY NOW FOR SAVINGS
BEFORE MEMORIAL DAY

JONES MONUMENT

810 N. KANSAS BOX 699
LIBERAL, KANSAS 67901

ALL WORK GUARANTEED
316/624-4711 or 624-4504

SHS Honor Roll Listed

Students making the honor roll for the second quarter at Spearman High School include seniors, Pam Archer, Denise Cope, Raymie Porter; juniors, Carrie Clark, David Evans, Jim Jones, Chris McClellan, Elaine Reimer; Sophomores, Tina Cochran, Christy Collier, Beth Flowers, Stinson Gibner, Kirby Hargis, Mike Ladd, Pam Largent, Scot Martin, Debra Owens; and freshmen, Kyle Beedy, Brenda Boyd, Sabra McCoy, James Pierce, Kelly Rylant, Connie Shields, Lynn Vernon and Brent Ware. Students must have no grades under 90 to make the honor roll.

Students making the honorable mention, a quarter average of all grades over 90 included seniors, Philip Archer, Brent Biles, Rebecca Brown, Carolyn Byers, Kevin Bynum, Glenda Cook, Mark Cunningham, Twila Davis, Lonita Greene, Jeffery Hertz, Mark Kopke, Toby Kuehl, Verla Kunselman, David Lesly, Kay McBroom, David Oakes, Vicki Owens, Tammy Rook, John Schaffer, Colleen Smith, Karen Tope, Gwenna Wilson and Donna Wirsdorfer.

Juniors making the honorable mention list were Donna Brogdon, Crystal Carson, Robin Denham, Karen Dennis, Cindy Gressett, LaVon Kunselman, Gerri Maize, Lori McAdams, Louisa Ochoa, Randy Reid, Tammy Robertson, Alan Shields, Kathy Volden and Denise Ware.

Sophomores making honorable mention were Chuck Ball, Jana Buchanan, Tammy Bynum, JoNell Comegys, Susan Cope, Kelly Davis, Mark Franklin, Alonzo Garza, Debbie Greene, Sherry Johnson, Virgil Jones, Tracie Keetch, Paige Mitchell, Barbara Oltman, Beth Sheppard, Scott Sherwood, Lori Short, Tony Truelove, Criselda Vela and Paul Welch.

Freshmen honorable mention students were Albert Avila, Alfred Avila, Deanne Baker, Jamie Butler, D'Anda Close, Melinda Cook, Beth English, Connie Etheredge, Valerie Hagerman, Greg Hazelwood, Kindra Ivey, Vicki Kyler, Ray Ortega, Halee Reed, Margie Schubert, Kelly Shaver, and Patti Short.

Lynxette Champs Shirts

Trails of Texas' 1977 State Basketball champions shirts are being sold by mail order at the present time. The shirts are 100% cotton, orange colored with white imprinting. The design shows the state of Texas with a basketball net around the base and a ball in flight toward the basket. It reads: 1977 State Basketball Champion, SPEARMAN Girls Class AA.

There is an ad in this newspaper giving the details for obtaining the shirts if you are interested.

Invitational Volleyball Tournament Set

An Invitational Volleyball Tournament will be held May 5, 6, and 7, sponsored by The Fellowship of Christian Athletes. All local teams are urged to call your team name in as soon as possible as there will be a limited number invited. Entry fee of \$10.00 per team will be charged.

Brackets will be mailed at a later date. For more information call 3973, 2178, or 2839 or you may pick up entries at the Chamber of Commerce office.

SPORTS SCHEDULE

March 25-26, Canadian tennis tourney all day at Canadian
GIRLS GOLF - March 26th at Canadian
BOYS GOLF - March 29th at Dalhart
VARSITY BOYS TRACK at Gruver March 25-26
GIRLS VARSITY TRACK at Guver March 25-26
7th and 8th TRACK
BOYS AND GIRLS March 25, Sunray, 7th, 8th, 9th boys

Community Building Open For Play

The Community Building will be open after school from 4 to 8 p.m. for children to play in and from 9 to 12, and 1 to 8 on Saturdays. K.I.D.S. are sponsoring these play sessions.

Girl Scout Cookies Still Available

The Girl Scouts have some cookies left from their recent sale. If anyone wants any of these cookies they may call leaders, Mrs. Evans, 3696; Mrs. King, 2440; or Girl Scouts Teri Thomas, 2427; Penny Cummings, 2073. The cookies are \$1.25 per box and there are only two varieties left, the assorted sandwiches and peanut butter cookies.

Pork to be Plentiful

Pork is expected to be plentiful in supermarkets throughout the state according to Agriculture Commissioner John C. White. Production rates during the first month of 1977 are likely to continue seasonally large and average about 22-24 per cent above the unusually low level of a year ago.

Federal Tax Load \$8,345,000

New York, March 19 - Taxes are in the spotlight once again in Hansford County, what with the day of reckoning, April 15th, just around the bend. The big question among local residents, as they prepare their reports, is how big a bite Uncle Sam will be taking this time. Last April he collected approximately \$7,145,000 in personal and employment taxes in the area, based upon the prior year's earnings. That is the amount of money turned in locally, as estimated from a breakdown of the taxes received from the State of Texas as a whole. The statewide total was \$11,908,000,000, according to figures released by the Treasury Department.

Thus, payments by local residents constituted close to 0.06 percent of the personal taxes collected throughout the state. The Government expects that its haul this year will be substantially bigger than it was last April, notwithstanding the fact that unemployment was at a high level in 1976 in most parts of the country. Despite that, there were more people who were at work, earning more than in 1975. And bigger incomes

produce bigger taxes. Nationally, according to a projection by the U.S. Office of Management and Budget, personal income tax collections, including employment taxes, will be about \$37 billion greater than they were last year. The Government's budget, now before Congress, counts on \$254.9 billion coming in from this source, as against \$218.1 billion in 1976. Taxpayers in the local area will be bearing their proportionate share of the total. Their payment next month will be approximately \$8,345,000, it is estimated. Just how long the rates will remain at their present level depends upon the President and Congress. Both

favor a cut of sizeable proportions. As it stands, however, personal taxes of \$296 billion are called for in the budget for the next fiscal year, \$41

billion more than at present. If Hansford County residents are to carry their share of this increase, overall income in the area will have to rise considerably.

CROSSWALK

PATROL SCHEDULE

MONDAY
Afternoon-Betty Morrison
TUESDAY
Afternoon-Marilyn Groves
WEDNESDAY
Afternoon-Ony Moyer
THURSDAY
Afternoon-Frances Garrison
FRIDAY
Vicky Bullard

5514 cuts the greenbug down to size

P-A-G 5514 is a medium late greenbug resistant*, high-yielding hybrid. 5514 significantly cuts down the number of greenbugs per plant, thus minimizing their injurious effects. 5514 has very good standability with genetic characteristics to adjust to your growing conditions.

*Greenbug resistance (Biotype C)

FOR MORE INFORMATION, CONTACT YOUR LOCAL P-A-G DEALER.

Ask your P-A-G Dealer about the 1977 REBATE PROGRAM. It will save you money on your P-A-G purchases.

P-A-G SEEDS, BOX 10303, LUBBOCK, TEXAS 79408

Performance of this seed may be adversely affected by environmental conditions, mutant strains of insects or diseases, or other factors beyond the control of P-A-G.

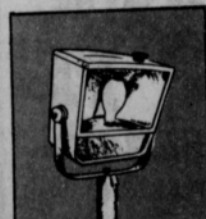
3 Good Reasons to Lease a Light!

ECONOMY . . . for just pennies a night you can have leased floodlighting directed wherever it is needed on your business property. Either mercury vapor or Metal Halide floodlighting is available, and the monthly rate is very reasonable. They're automatic . . . on at dusk, off at dawn.

SAFETY . . . the chance of an accident occurring on your business property after dark will be less if your property is well lighted. Good outdoor lighting can benefit both your employees and your customers after dark.

SECURITY . . . vandals and burglars are less likely to hit lighted property. Help keep unwanted intruders away from your business with adequate floodlighting.

For complete information on the leased floodlighting program, give us a call soon.



COMMUNITY PUBLIC SERVICE
Your Electric Light & Power Company





Ike Vernon and Pat doin' some horse tradin'

Pat Schlecht on way to Canada

Shades of the old days! Pat Schlecht, 21 years old, of Broken Arrow, Oklahoma, came through Spearman at noon Tuesday, riding old paint and leading old Dan, heading for Canada! Well, that isn't exactly true, as he was riding his bay horse, Thunderbold, and leading old paint, whose name is April. He and his two horses were accompanied by his white dog, Mack!

son and Nolan counties. The 32 outbreaks reported this February compare with 18 reported last month, and 16 in February a year ago. Scabies is caused by tiny parasitic mites that puncture the skin of cattle and feed on body fluids released from the wounds. Heavy infestations result in the formation of large, crusty scabs, hence the name scabies. The mites spread through contact between animals. USDA's Animal and Plant Health Inspection Service (APHIS) and the states quarantines on all affected and exposed herds. The quarantines are not lifted until all cattle are either slaughtered or treated and found free of scabies mites. Treatment for scabies consists of dipping infested cattle in USDA-permitted pesticides under state or federal supervision. The disease causes irritation and intense itching in cattle resulting in the animals' preoccupation with rubbing and scratching

and subsequent poor eating and weight loss. If not treated, heavily infested animals may even die from the disease. APHIS officials warn cattlemen to keep careful watch on their cattle to locate scabies and thus help prevent the spread of the disease. Signs of infection include constant tail switching and rubbing against objects to relieve the intense itching that results from the bite of the tiny mites. Cattlemen should contact their local veterinarian or animal health officials if they suspect cattle scabies.

and subsequent poor eating and weight loss. If not treated, heavily infested animals may even die from the disease. APHIS officials warn cattlemen to keep careful watch on their cattle to locate scabies and thus help prevent the spread of the disease. Signs of infection include constant tail switching and rubbing against objects to relieve the intense itching that results from the bite of the tiny mites. Cattlemen should contact their local veterinarian or animal health officials if they suspect cattle scabies.

Peggy's Potpourri

Clothing sewed at home can fit better than ready-to-wear, when the homemaker knows several techniques. This because ready-to-wear must be flexible enough to fit so many different sizes and shapes.

Choosing the correct size pattern is basic to achieving perfect fit. Before purchasing a pattern, carefully take accurate body measurements. Be truthful about size, and don't deliberately subtract a few inches thinking you will lose five pounds.

Take measurements at least every six months. Our bodies do not remain the same from year to year even though we think they do. Compare your measurements with those on the chart on the back of pattern books. Choose the size that most closely matches your measurements.

Purchase blouse, jacket and dress patterns according to the bust measurement. Use the hip measurement when buying pants or skirt patterns.

In preparing to sew, carefully measure the actual pattern pieces at those strategic points. Making the necessary adjustments before cutting into the fabric can save time and needless headaches later.

Lengthening and shortening adjustments are relatively simple to make. All pattern guide sheets give

instructions for this.

To determine what major alterations may be needed, observe a similar garment on your body. Wrinkles in the garment generally point to an area needing alteration. At this point you may want to consult an alteration book to determine the real problem and how to solve it.

Once you learn to make the necessary alterations for a good fit, learn to transfer the same alteration automatically to other garments. However, measure the pattern pieces to be certain that the alteration is necessary. Some garment designs such as kimono sleeves may eliminate the need for some alterations.

Sewing takes valuable time, and if that time is spent on a garment that doesn't fit, it only hangs in the closet. Such costly mistakes can be avoided if these careful steps are followed: 1) take accurate measurements; 2) choose the correct size; 3) make necessary alterations before cutting into the fabric.

ALTERATIONS MADE EASY -- Simple alterations can turn a poorly fitted garment into a "good fit", making it more attractive and comfortable to wear.

Fit is one of the most frequently listed reasons for buying (good fit) or not buying (poor fit) a garment. Influencing need for fitting alterations are weight gain, or loss, changing fashion trends such as hem lengths, individual preferences and fabric shrinkage.

The following can make fitting alterations easier and more attractive: --Fit garments on the body right side out to get an idea of how the garment should look and because right and left sides of the body may differ.

Before fitting, all zippers, buttons, snaps, belts and hooks and eyes should be completely fastened. Also, wear undergarments and shoe heel heights similar to ones planned to go with the garment. --Analyze the garment's fit from the top down. Pin fitting adjustments and make alterations one at a time also from the top down. Adjustments made in the upper part of a garment affect the fit of the remainder of the garment and may correct other problems. Always make hem length adjustments last. --Study the construction techniques used by the manufacturer before removing the original stitches. When restitching the same area, try to use the same or similar techniques. --Know the limitations before you start. Garments more than one size too large or too small are difficult to alter successfully through existing seams and design lines.

Watch for punched holes used by the manufacturer in marking and trimmed and clipped seams that cannot be let out. Also, the original stitching or fold lines on some fabrics cannot be let out without showing.

Information on fitting and altering patterns is available free of charge in the Extension office. Call me at 659-2030 or 733-2901, or write to Box 997, Spearman and ask for publication MP-1037 "Personalizing Patterns."

TRACK MEET AT GRUVER FRIDAY AND SAT!



PRICES EFFECTIVE THRU SATURDAY, MARCH 26, 1977. NONE SOLD TO DEALERS. LIMIT RIGHTS RESERVED.

MON.-SAT. 8:00 a.m.-9:00 p.m. SUN. 10:00 a.m.-7:00 p.m.

Summer Sun Collection STONEWARE

Featured this Week: BREAD & BUTTER Dish REG. 99¢

59¢ NOW WITH EACH \$3.00 PURCH.



U.S.D.A. CHOICE BUTCHER BLOCK BEEF

Boneless Roast BEEF CHUCK 79¢ LB.

Boneless Steaks U.S.D.A. CHOICE BUTCHER BLOCK BEEF ... BEEF CHUCK 89¢ LB.

BAR-S ... MEAT OR BEEF Skinless Franks 12-OZ. PKG. 49¢

- ROOFS ... ASSORTED VARIETIES Luncheon Meats 12-OZ. PKG. 99¢ BLUE MORROW ... PRE-COOKED Beef Fritters 1-LB. PKG. \$1.09 RIVERSIDE BRAND Hen Turkeys 10 TO 12-LB. AVG. 59¢

- WILSON'S ... CHUNK Braunschweiger 1-LB. 79¢ WINCHESTER ... IMITATION Chunk Bologna 1-LB. 69¢ WILSON'S VARIETY PACK Luncheon Meats 12-OZ. PKG. \$1.39

VALUABLE COUPON \$1.86 TIDE LAUNDRY DETERGENT KING SIZE 34-OZ. BOX

Cattle Scabies Record High

The worst winter for psoroptic cattle scabies in over a quarter of a century continues with a record high of 32 reported outbreaks in February, the U.S. Department of Agriculture (USDA) reports. The previous highest monthly total of reported cases was 25 in January, 1972. During the past five months (October through February) 82 cases of cattle scabies were reported in the U.S. The previous high number of cases in winter occurred last year when 58 cases were reported.

During February, scabies was reported in six states: Colorado, Kansas, Nebraska, New Mexico, Oklahoma and Texas. Oklahoma had five cases, one each in Pueblo, Otero, Prowers, Bent and Elbert counties. One case was reported in Kansas in Sherman County. Nebraska had a total of nine cases with four reported in Dawson, two in Custer, and one each in Sioux, Nance and Dodge counties. New Mexico's one case was reported in Dona Ana County. Oklahoma had one case reported in Texas County. Fifteen cases were reported in Texas last month, with three in Sherman, two each in Deaf Smith, Dallam and Bailey counties, and one each in Hansford, Swisher, Potter, Ochiltree, Hutchin-

EAT IN & BANK IT! HUNT'S PRIMA SALSA Spaghetti Sauce ALL FLAVORS 1 1/2-OZ. JAR 56¢ AMERICAN BEAUTY Long Spaghetti 34-OZ. PKG. 64¢ RHODES White Bread 2-16-OZ. LOAF PKGS. 49¢ KRAFT GRATED Parmesan Cheese 3-OZ. PKG. 63¢ SERVES 4 OR MORE ... AVG. COST PER SERVING ... 58¢

VEGETABLE SHORTENING Crisco 3-LB. CAN \$1.48

ENRICHED GOLD MEDAL Flour 10-LB. BAG \$1.36

HILLS BROS. ... ALL GRINDS Coffee 1-LB. CAN \$3.09 DEL MONTE ... LIGHT MEAT Chunk Tuna 6 1/2-OZ. CANS 48¢

DOUBLE LUCK ... SHORT CUT Green Beans 6 16-OZ. CANS \$1 STOKELY WHOLE OR CREAM Golden Fruit 2 16-OZ. CANS 69¢ Corn 4 16-OZ. CANS \$1 Tomato Paste 5 6-OZ. CANS \$1 HI-C Drinks 46-OZ. CAN 45¢ Camelot Fruit Cocktail 2 16-OZ. CANS 69¢ Pear Halves 2 28-OZ. CANS 96¢ Sliced Pineapple 2 12-OZ. CANS 96¢ Vienna Sausage 3 5-OZ. CANS 95¢ Duncan Hines ... MOST AND EASY Snack ALL FLAVORS 1 1/2-OZ. BOX 68¢ Cat Food 6 15-OZ. CANS \$1

WE GIVE GUNN BROS. STAMPS TO HELP SAVE



"BOOKER BANK NOTES"

Booker Bank Notes To Entertain

Reserve the night of March 26 for a very special occasion—the annual Spearman Chamber of Commerce banquet beginning at 7:30 p.m. during which the State AA Girls Basketball Cham-

ption Lynxettes will be honored. Additional activities for the evening include entertainment by the Booker Bank Notes, a 42-voiced mixed ensemble sponsored by the

First Bank & Trust Co. of Booker. This is the second time the Bank Notes have provided entertainment for the banquet.

It was noted in the announcement of the banquet

date that, in compliance with University Interscholastic League regulations, the Lynxettes will purchase their own tickets to the annual function.

Tickets are now on sale at

the Chamber of Commerce Office or they are available from a Board of Director of the Chamber for \$6.50 each. The banquet will be held at Spearman High School.

Cancer

The year was 1965 and for the parents of Mike Finamore, it was a bleak year indeed—their 13-year-old son was stricken with acute childhood leukemia and was given just weeks to live.

The year is 1977 and for Mike, his parents, and his wife, Ann, it is a very good year for Mike is now almost 26! He leads a normal, active life, free of disease, as he has been for so many years—thanks to the progress of cancer research. "Mike is a dynamic sym-

bol of the hopeful side of cancer and there is much to be alert, it is important for them to realize that childhood cancer is infrequent," he said.

"We want a world free of cancer for ourselves and our children," Judge Lee said, "that is why we are asking

everyone in the Hansford County area to help by practicing cancer safeguards, including checkups, and by supporting cancer research."

The American Cancer Society Hot Line Service (toll free number) is 1-800-392-2040. Anyone needing a

question answered about cancer should call this number.

Know that April is Cancer Crusade Month and the "hot line" conquering cancer is through giving so that each of us might live without fear of this dread disease.

REMEMBERING...

By BILL D. BROOKS

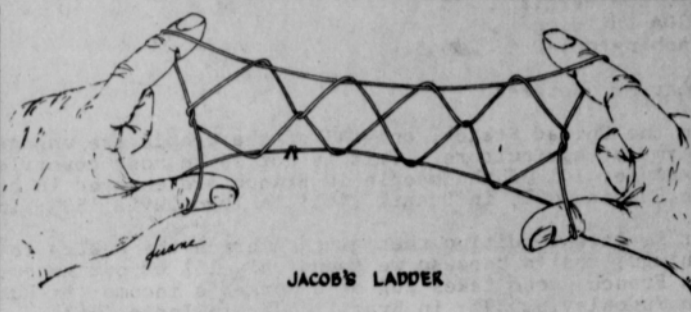
STRING GAMES

Idle hours can be passed enjoyably with a simple piece of string. There were many string games we used to play but I can't remember the steps to most of them. The names of some I used to do are: Cup and Saucer, Crow's Foot, Jacob's Ladder, Seesaw, Baskets and Cradle. The string we used was strong twine about 36 inches long with the ends tied together to form a big loop. Different games were started in different ways but usually the string was looped over both hands, then threaded back and forth over the fingers picking up loops from one hand with the fingers of the other, dropping them off some fingers and picking them up with others. The finished configuration resembled, remotely, what the name of the particular game implied.

For some of the more complicated games another person had to help you with some of the loops and sometimes you had to reverse your hands and turn them through the string. Simple string games like Cup and Saucer had only five or six steps while harder ones sometimes had fifteen to twenty but once you learned the steps your fingers could fly through the game so fast it would amaze anyone watching. There was another game I remember in which you looped the string around your neck. With some practice you could appear to slice the string right through your neck. People watching you would demand to see how you did it but you could usually go through it several times before they caught on to the secret. Slicing a string through your neck was one game that had to be prac-

ticed carefully and mastered before you demonstrated it. A string game somewhat different to those mentioned was played by threading a large coat button onto a looped string. With the button in the center and the string looped over both thumbs you could twirl the button around a few times then start pulling in and out on the ends of the string to make the button go wild. The faster you pulled, the faster the button would go until it would finally start humming. It sure would tangle up in your sister's long hair if you got too close though... String games were such a fun part of our past, I believe it would be worthwhile to teach them to our children.

If you make butter the first ingredient on sandwiches, it will add to the moisture and flavor and help keep the filling from soaking into the bread.



JACOB'S LADDER

1977 Easter Seals

The first sheet of the 1977 Easter Seals has been presented to Governor Dolph Briscoe in Austin by the 1977 Texas Easter Seal Child, Jason Daniels of Houston.

Jason, son of Mr. and Mrs. Darrell Daniels of Houston, is 7 years old. A victim of spina bifida, Jason has been served by the Easter Seal program in Houston since he was 2 years old. He is a first grader in the local Society's special education program.

Presenting the seals on behalf of the 10,768 handicapped children and adults served statewide by Easter Seals, Jason represents the needs of the year-round program of direct patient services; information, referral and follow-up; community and professional education; and, transportation.

The campaign, which began March 1 will continue through Easter Sunday, April 10, is led by Dr. Willis Tate of Dallas, President Emeritus of Southern Methodist University and 1977 Texas Easter Seal Appeal Chairman, who joins 234 local Easter Seal volunteer Presidents, Chairmen, and Representatives in leading 32,000 volunteers statewide. The services of the Society, offered in Texas since 1929, are available to the handicapped regardless of disability.

In addition to medically authorized orthopedic equipment purchase, including wheelchairs, braces and crutches, the campaign permits the Society and its affiliates to provide appropriate therapies, medical, psychological and audiological evaluations, and transportation.

The campaign also helps fund the "Easter Seal Action Line", the toll-free number 1-800-492-5555 which permits patients or their families, or handicapped persons in need of information about the appropriate agency for their needs to call 24-hours per day to receive assistance and/or information.

Dalhart

KIT RELAYS RESULTS in Dalhart

TEAM TOTALS: 1. Spearman, 41; 2. Sunray, 17; 3. Boys Ranch, 17; 4. Stinson, 16; 5. Goodwell, Okla., 15; 6. Dalhart, 14; 7. Gruver, 11; 8. Beecher, 10; 9. Tucuman, H.M., 9; 10. Stratted, 6; above teams failed to score.

HIGH JUMP: 1. Aubrey Tucher, Boys Ranch, 6-2; 2. (Ho) McRon Sunray, Roger Stinson, and Everett Stratted, 5-10; 3. Cadenhead, Dalhart 5-10; 4. Priem, Spearman, 5-10. SHOT PUT: 1. Moustrey, Beecher, 40-11; 2. DeArmond, Spearman, 40-2; 3. Saville, Gruver, 40-0; 4. Fike, Dalhart, 40-11; 5. Bret Goodwell, 40-7; 6. Masoy, Boys Ranch, 40-4. DISCUS: 1. Rusty Shedd, Sunray, 130-4; 2. Rider, Goodwell, 129-7; 3. Whittecker, Dalhart, 127-11; 4. Saville, Gruver, 126-11; 5. Watson, Stinson, 126-5; 6. Langley, Sunray, 126-11.

LONG JUMP: 1. Priem, Spearman, 19-0; 2. Gerald Tucuman, 19-11; 3. Tucher, Boys Ranch, 19-0; 4. Raymon, Goodwell, 19-0; 5. Victor, Dalhart, 19-4; 6. Wellman, Boys Ranch, 19-0. POLE VAULT: 1. Holman, Spearman, 13-6 (most record, previous mark 13-6 by Trudell, Sunray, 1975); 2. James Spearman, 12-4; 3. Sandoz, Stinson, 12-0; 4. Trout, Spearman, 11-0; 5. Wilson, Stinson, 11-4; 6. Hardesty, Gruver, 10-4.

PRESMAN RESULTS TEAM TOTALS: Tucuman, 21; Stinson, 20; Boys Ranch, 21; Guyman, 10; Stratted, 10; Gruver, 10; Dalhart, 10; River Road, 10.

FRESH ... EXTRA LEAN

Ground Beef..... LB. **66¢**

IN 3-LB. PKG. OR MORE.

FRESH, EXTRA LEAN **Ground Chuck**..... LB. **79¢**

3-LB. PKGS. OR MORE.

FRESH **Pork Spare Ribs**..... LB. **99¢**

Pork Chops..... **99¢**

ASSORTED PORK LOIN

Sliced Bacon..... **\$1.09**

1-LB. PKG.

Ham-dingers..... **99¢**

8-HAM PATTIES 1-LB. CAN

Fish Sticks..... **3 \$1**

8-OZ. PKGS.



PLAY CASH KING

CONGRATULATIONS TO THESE \$1,000 WINNERS:



PHENIA MCGEE BEAVER OKLAHOMA



MRS. ADRAIN THOMPSON SPEARMAN TEXAS



BERNICE WILSON LIBERAL KANSAS



MARTI CALVERT DUMAS TEXAS



ONETA HAYMES PAMPA TEXAS



FRANCES AGUILAR BOISE CITY OKLAHOMA



JACK M. SIDES DALHART TEXAS



JOE OLIVER HOOKER OKLAHOMA

MORE \$1,000 WINNERS: W. C. LEONARD ... BORGER, TEXAS; MANUELA MANZANO ... GARDEN CITY, KS.; PAT HIGGINS ... PLAINS, KANSAS; VIRGINIA SHARPE ... SCOTT CITY, KANSAS; LARRY CRAMER ... WOODWARD, OKLA.

TEAM	SCORE
SP	41
SR	17
BR	17
SI	16
GD	15
DL	14
GR	11
BC	10
TK	9
ST	6

FRESH DAIRY FOODS...

MEADOWDALE **MARGARINE** **3 \$1.00**

1-LB. PACKAGES QUARTERED

HUNGRY JACK FLAKY OR **Buttermilk Biscuits**..... **3 \$1**

10-OZ. CANS

KRAFT CRACKER BARREL SHARP OR SMOKE **Cheese Spread**..... **79¢**

8-OZ. PKG.

KRAFT **Colby Round Cheese**..... **\$1.57**

16-OZ. PKG.

FROZEN FOODS

MEADOW GOLD **Ice Cream**..... **89¢**

ALL FLAVORS 1/2-GAL. CTN.

BAQUET ... ALL VARIETIES **Man Pleaser Dinners**..... **89¢**

19-OZ. PKG.

BAQUET ... **Buffet Suppers**..... **\$1.28**

12-OZ. PKG.

WELCH'S **Grape Juice**..... **56¢**

12-OZ. CAN

Jeno's **PIZZA**..... **75¢**

12 oz. pkg.



COLORADO **Russet Potatoes**..... **10 -LB. 89¢**

BAG

SUNKIST **Tangelos**..... **4 \$1.00**

4 LBS.

CANADIAN, RED **Delicious Apples**..... **3 LBS. \$1.00**

ARIZONA... MILD, TENDER

Green Onions..... **2 BUNCHES 29¢**

TEXAS, RUBY RED **Grapefruit**..... **5 \$1.00**

5 LBS.

TEXAS **CARROTS**..... **2 -LB. BAG 47¢**

POPSRITE POPCORN

WHITE OR YELLOW 2-LB. BAG **69¢**

YOU MORE!

the home of THRE-T. Prices

IDEAL FOOD STORES

SHOP IDEAL FOR SUPERLATIVE SAVINGS, 7-DAYS A WEEK ... WE WELCOME FOOD STAMP CUSTOMERS.



Mr. Bob Bergland
USDA Building
Washington, D.C. 20045

Dear Mr. Bergland:

In the United States, only 4% of the people are engaged in all forms of agriculture. This is not so in most countries, for example, 14% of the people in France are engaged in agriculture; in Russia, 32%; in Brazil, 44%; in Yugoslavia, 53%; in India, 68%.

It is this condition that gives America the wealth to do greater things, that's because we spend only 15% of our income on food. In France, food takes 26% of a worker's income; in Russia, 40%; in Yugoslavia, 39%; in Brazil, 47%; in India, 64%.

How are these few people that produce 66% of the world's soybeans; 46% of the world's corn; and 40% of the world's wheat rewarded? The rancher was rewarded by boycotts of beef by housewives when meat for the first time in many years rose above production costs. The rancher was further rewarded by the Federal Government clamping on a price freeze to appease the same angry housewife. The farmer was also rewarded by a federal embargo placed on grain because Union Workers felt grain was getting too costly. At this time grain was still well below 100% of parity.

The biggest reward came this year when farmers spent just over \$4.00 per bushel producing the 1976 wheat crop. Today's price was \$2.40 per bushel. Wheat is selling for about 40% of parity. Any man on the street can tell this will never work.

The average farmer in Oklahoma last year netted less than \$3,000.00 profit--barely above the welfare level. This same farm had an average investment in excess of \$300,000.00 in land, machinery and livestock. The farmer could sell everything, put the money out on interest, go fishing and the interest would triple his income.

Mr. Bergland, we must have every segment of agriculture in balance and we must be getting our fair share of the food and fiber dollar (100% of parity). Until this goal is a reality, perhaps we should ease up, produce less, and fish more.

For W. I. F. E. and Agriculture,
E. E. Novak, D.D.S. and Farmer

Endorsed By

Representatives From WIFE To Speak Here

"Hell Hath No Fury Like A Woman's Scorn"

There will be a meeting on March 25, 1977, at 8 p.m. in the County Barn to see if there is enough interest in this community to organize a WIFE group here. WIFE stands for Women Involved in Farm Economics. There will be representatives here that have formed organizations of this kind in their communities and states, to speak about the organization.

The movement began in Sidney, Nebraska when nine farm wives met in early December protesting low farm prices and escalating costs sprouting up in the Great Plains. Drought and poor prices for nearly all farm commodities are forcing them off the farm and they are asking for government help.

At a Jan. 6 meeting at Goodland, Kan., organized by farm wives from five northwest Kansas and northeast Colorado counties, a spokesman took the floor, according to an article in the Farm Journal. She said that farmers can't wait for an organization, that the problem is much more acute. Farmers need to know what to do so they can decide whether or not they can plant this spring, or whether they are going under. A crowd of

250 farmers and farm wives cheered in agreement. When they met again Jan. 14 about 1,400 showed up. Bankers and other businessmen came. Colorado Senator Gary Hart and Third District Congressman Frank Evans were on hand along with representatives of other Kansas and Colorado officials. Many state legislators skipped session in Topeka to attend. At this meeting, a Kit Carson County farmer's wife told the group, "We are not here in response to any farm organization. We are not here because of any production specialty. We are here because of one unified problem: depressed prices on all agricultural commodities. The cog in the wheel squeaking the loudest is the one that gets the grease. We're not squeaking. We're Screaming? And we will be heard."

Five proposals have been made by a committee that they want implemented in the next 30 to 60 days. They included 100 commodity loans; immediate investigation and enforcement of the beef import act; re-enactment of the Sugar Act; emergency loans administered by local banks for farmers who had to sell below break-even prices, and an investi-

gation into commodity markets and large grain exporters.

The plight of the farmer today is a direct result of the government's urgent request to plant from fence to fence, then an embargo that shut off markets; the roll-back in beef prices; the loss of the Sugar Act; and Consumers boycotts and lobbying for low prices.

Bedford Forrest, of KVIL-TV in Amarillo, will be here for the meeting and four ladies from Sidney, Nebraska.

The plan is to get as many as thirteen counties in the Panhandle area to form an organization. Men are urged to accompany their wives to the meeting. They must be present to express their opinions on what needs to be done to keep the farmer in business.

The motto of the group here is "Hell Hath No Fury Like A Woman's Scorn".

The following letter is being circulated and sent to Bob Bergland, Secretary of Agriculture. If you wish to send a copy simply sign your name to the bottom of the form and mail it in.

United Presbyterian Church News

Presbyterian Men will have a men's prayer breakfast on Thursday, March 24, at 6:30 a.m.

There is a Sunday Church School class for every age group every Sunday at 9:45 a.m. with a well prepared, interesting Bible lesson.

"Spring Fever" will be the subject of Pastor Ed Freeman's children's sermon and "Until the Kingdom of God Comes" will be the subject of his adult sermon at the service for the public worship of God on Sunday, March 27 at 11:00 a.m.

Presbyterian Women will have an arts and crafts work day at the church on Wednesday, March 30 at 9:30.

"The New Light" will be the subject of the Bible study at the Lenten Service on Wednesday, March 30 at 7:30 p.m. based on Isaiah 43:16-21; Philippians 3:8-14; and John 8:1-11.

All who try any of these services and activities of the First Presbyterian Church will find a warm, Christian welcome.

Hansford Unit of ACS Meets

Members of the Hansford Unit of the American Cancer Society met at 7:00 P.M., Thursday, March 17, at the Hospitality Room of the Gruver Library with vice president Mrs. Ted McClellan presiding in the absence of the president Johnnie Lee.

Following the reading and approval of the minutes, reports of various chairpersons were given including that of Mrs. Elmo McClellan, Jr., Public Education Chairman and Freeman Barkley, treasurer, who reported a total of \$467.00 in Memorials.

Larry Phillips, Field Representative from Amarillo, led a discussion entitled "Doorside Education" for those involved in the upcoming Cancer Crusade, emphasizing the importance of making each individual more aware of the danger signals of cancer and the response to such signs.

Following the business meeting, one of the latest of the ACS films entitled "Unreasonable People" depicting cases of young people for whom successful chemotherapy had not only lengthened their lives but brightened many more. April will be Cancer Crusade month.

St. Patrick's Day cake and coffee were served at the conclusion of the meeting to Dr. R. L. Kleeburger and Freeman Barkley of Spearman; Mrs. Jean Dixon and Mrs. Martha Davis, both of Morse; Dr. Thu Le, Mrs. Elmo McClellan, Jr., Mrs. A. R. Bort, Mrs. Ted McClellan, and Mrs. W. L. Maupin, all of Gruver.

Bowling News PIN BENDERS 3-18-77

Won Lost

Brock Insurance	72	24
Cinderella	69	27
Spear. Super Service	58	38
Farm Bureau	46	50
Bowl Mor Lanes	45	51
McClellan Grain	44	52
Sandy's Beauty Shop	28	68
Vernon's	22	74

HIGH TEAM SERIES

Farm Bureau	1512
Spearman Super Service	1450
Brock Insurance	1425

HIGH TEAM GAME

Farm Bureau	549
Spearman Super Service	535
Brock Insurance	529

HIGH IND. SERIES

Peggy Shelton	533
Debbie Crouch	505
Helen Boyd	502

HIGH IND. GAME

Peggy Shelton	214
Debbie Crouch	189
June Lee	188

Speaker Gives Personal Testimony About Christ

A basic faith in God and trust in Jesus is all-important.

If you don't believe that, don't let Dr. Larry Hammond of Dallas, Texas, hear you say so because he is living proof that those words are true.

He was the principal speaker Monday at the Spearman Rotary Club on a program which included a solo by Sharon Daughtery who, with her husband, Billy Joe, is conducting a revival at Union Church in Spearman through tonight, March 24.

As he phrases it, he has a gift brought to him by the Spirit of God through a vision at a mine near Deming, N.M. Stating that he was perfectly sober, Hammond tells of hearing the Lord speak, of seeing a lake of fire and then a view of heavenly places.

It was a time of decision in his life and he made it in favor of the Lord.

Referring to his recently published book "Beyond Love", which entails his life story as a spiritual biography, Hammond relates how, through his faith, he survived a tragedy in Iowa which left him more dead than alive.

He was virtually severed in half by an airplane propeller. His left arm and leg were attached to his body by skin, his left hip joint was destroyed and he was bleeding profusely.

His faith sustained him through the immediate emergency treatment and the resulting lengthy 23 operations and post-operation recovery periods.

Referring to the story of Nicodemus and being born

again, Hammond feels that the offer of salvation must be accepted, it is only an effort until it is accepted.

As a result of his faith, he states that Jesus is the great physician. And there is a great lesson to be found in the passage that it is greater to give than to receive.

Drawing attention to his present ambulatory status, Hammond opens his presentation by noting that he can move his left arm and left leg after the lengthy surgery and faith to undergo such surgery with the firm belief that he would survive.

During one of his initial operations, Hammond relates how the doctor advised about the outcome of such surgery, referring to the healing process as time, remission, healing, a miracle. At that point, Hammond says he stopped the doctor and said to get on with it.

Hammond has had successful careers in mining, government and the radio-television industry. A former assistant to Gov. Nelson Rockefeller, Dr. Hammond also held an executive position with Bendix Radio and was listed in Who's Who in the East. He produced the radio series, Mr. District Attorney, and We the People and more recently was host-producer of the CBN TV series, Acts 29 and the radio series, Dove of Love.

Markets

WHEAT	\$2.43
MILO	\$3.45
CORN	\$2.31

In ancient Egypt the cat was considered to be a symbol of the moon because it was more active after sunset!

Gladiola Flower Club Luncheon Held

The Gladiola Flower Club met in the home of Mrs. Irvin Davis Thursday, March 17, for a spring luncheon and the first meeting of the year. Tables were decorated in green and white; representing St. Patrick's Day.

After the meal, President Mrs. Ray Martin called the meeting to order. Mrs. Doyle Jackson won first place with her homegrown specimen of jonquil.

Those present at the luncheon and meeting were Mesdames: Clois Baker, Wallace Berner, John Brown, Lloyd Buzzard, Gordon Cummings, Irvin Davis, Kenneth Evans, Garland Head, Bill Jackson, Doyle Jackson, Don Kunselman, Ray Martin, Claude Newell, Coy Palmer and Tommy Reiger. The next meeting will be April 7 at 9:30 a.m. in the home of Mrs. Claude Newell.

Arts & Crafts Guild News

Arts & Crafts Guild met Friday, March 18 in the home of Mrs. Nolan Holt.

Members present were Mesdames: F. J. Daily, Clay Gibner, Pope Gibner, Nolan Holt, Sada Hoskins, Joe Traylor, Garrett Allen, Guy Fuller, and P. A. Lyon, Sr. Mrs. Joe Traylor will host the next meeting on March 25.

XL-81

**Field After Field,
Year After Year**

Consistent performance. You want it. DEKALB XL-81 has it. It's the kind of corn hybrid that comes through with impressive yields field after field, year after year. Order your seed today.

DEKALB
DEPEND ON DEKALB
MILFORD LAMBRIGHT
Pringle 878-2765

The Baker's Dept. Store

SPRING BUDGET SALE

A BUDGET IS
A DEVICE FOR
GOING INTO
DEBT IN AN
ORDERLY
MANNER.

This Sale Will Fit Your Budget!

MEN'S, LADIES', CHILDREN'S, BOYS' & GIRLS'

Nocona Boots On Sale

"The Family Store"

BAKER'S

Department Store
SPEARMAN

HD Club News

The Happy Homes Home Demonstration Club met at the home of Mrs. Gwen Younger Thursday, March 17 with the meeting called to order by President Fontella McKee.

Mrs. Gwen Younger gave the devotional on the 3rd Psalm. Roll Call was answered to "How I Found Out About The Easter Bunny".

Final plans were made for their enchilada supper.

The booth at the 'Sew Fair' was discussed. And, also, the Bloodmobile to be held March 23 at the Sacred Heart Parish Hall.

They voted to donate to the Johnny Ring fund.

Mrs. Joyce Byers gave the program on "Managing Our Time".

Those present were members, Mesdames: Fontella McKee, Bennie Byers, Nan Nicholson, and Jerry Younger.

Mrs. Joyce Byers will host the next meeting on April 7.

April Fool's Dance Planned

The Spearman Fire-Ettes will be sponsoring an April Fool's Dance on March 26 in the Community Building from 9 p.m. to 1 a.m.

The Country Rock Addition will be performing. The group is a four-piece band from Beaver, Oklahoma.

They play a combination of country and rock and have a record out. They have played back-up music for Doty West, T. G. Sheppard, George Kent, Genes St. John, Joel Sonnett, Gene Watson and Mike Lunsford.

The group has been playing in our area for some time.

Tickets will be sold at the door for \$6.00 a couple and \$4.00 stag. No one under 18 will be admitted.

Everyone is invited to come out and have a good time and dance to Country Rock Addition.

Vows Exchanged In Abilene

At a beautiful Saturday afternoon ceremony performed at the Crescent Heights Baptist Church of Abilene wedding vows were exchanged by Cynthia Ann Goen of Austin and Tommy Henson of Gruver. The Reverend Harold Scarbrough presided at the March 12, 1977 service.

The bride is the daughter of Mr. and Mrs. Devon Goen of Abilene and the groom's parents are Mr. and Mrs. Jack Henson of Gruver.

The lovely brunette bride, who was escorted to the altar and given in marriage by her father, chose a gown of candlelight silk satin, an original design imported from Europe featuring seed pearls lavishly embroidered on a deep Bertha collar and on the deep cuffs of the long tapered sleeves and hemline. The Princess style dress was further enhanced by fullness which flowed from a pearl studded bow into a regal court train bordered in lace and seed pearls.

Her silk illusion veil was edged with Alencon lace and cascaded from a high head piece fashioned of pea de sole embroidered with pearls. Her bridal bouquet was a cascade of gardenias and satin ribbons.

Attending the bride was her maid of honor, Denis Gill, of Corpus Christi and her bridesmaid, Vicki Briley of Dallas. Serving as flower girl was Clancy Hudson of Abilene. The attendant were gownned alike in peach crepe low-backed dresses designed with flowing over blouses of flowered chiffon They each carried nosegay of peach carnations.

Serving his brother as best man was Danny Henson of Gruver. Michael Chadwick of San Antonio served as groomsman and Walter Murel of Gruver as usher. Lance Halgren and Mark Hudson both of Abilene, served as candlelighters for the ceremony.

Following the service a reception honoring the newlyweds was held at the home of Mr. and Mrs. Roy Judson in Abilene after which Mr. and Mrs. Henson departed for a wedding trip to Cozumel, Mexico. Upon their return they will be at home near Gruver where Mr. Henson is a farmer-rancher.

Mrs. Henson, a 1970 graduate of Abilene High School attended the University of Texas at Arlington for two years and also the University of Texas at Austin for two years. Mr. Henson, a 1969



Mrs. Tommy Henson, graduate of Gruver High School, attended Midwestern University. A rehearsal dinner was hosted by the groom's parents at Old Abilene Town



United Methodist Women enjoying a St. Patrick's Day Luncheon at the Sub-District North Day Apart last Tuesday at the Follett United Methodist Church with several from Spearman and Gruver attending.

Area Women Attend Follett Meet

Area women from Booker, served a delightful buffet Perryton, Higgins, Darrou-luncheon by the women of zett, Spearman, and Gruver the Follett UMW before the attended a United Methodist meeting was adjourned. Sub-District North Day Apart Among the more than fifty at Follett March 15th with area women attending the the inspirational program be Sub-District North Day Apart presented by the women were Mrs. Orvetta Black and from Higgins. Mrs. Evelyn Kerby from Perryton; Mesdames Roy

A business meeting followed the morning program conducted by Ila Pool, George Buzzard, J. B. Buchanan, Sid Beck, Patty Sheppard, Ray District UMW president from Pampa, at which time Martin, Dennis Sheppard, Gary Woolley, and Dick Countiss, coming events including all from Spearman; Mrs. A. April 22nd and 23rd for the W. Evans and Mrs. W. L. Fourth Annual Meeting of Maupin, from Gruver.

The Spearman Spinners Meet Square Dance Club had a regular dance on March 17 Sub-District meeting for 1978 with 4 to 5 squares dancing to be held in Gruver March at the Community Building 8th, 1978, with the UMW with Paul Lopez calling. The next dance will be April 7 at the County Barn.

Following the morning dance on April 7.

The Elegant World of Weddings
by Mary and Martha

Invites you to let us design, coordinate, and cater your wedding.

Gowns by Mary

Floral creations by Martha.

Receptions with a personal touch.

For appointment

Call: 948-5217

948-5218

Mary Spaullock Martha Ellison
Route 1, Stratford, Texas

frey, Jack Lasater, Mack McCormack, Clark Mires, Monty Blackman, Wayne Garrett, Joe T. Venneman, Lynn Cook, Brad Beedy and guest, Mrs. Leslie Barkley. Mrs. Roy Flowers will host the April 21 meeting.

Meeting March 18 in the home of Mr. and Mrs. Rue Sanders was the Saturday Night Bridge Club.

Troy Sloan won high for the men, Sybil Miller for the women.

Members attending were Mr. and Mrs. Rue Sanders, Mr. and Mrs. Troy Sloan, Mr. and Mrs. Billy Miller, Mr. and Mrs. Chalmers Porter, Mr. and Mrs. Garland Head and guests, Mr. and Mrs. J. L. Brock.

Mr. and Mrs. Troy Sloan will host the next meeting.

The Friday Night Bridge Club met Friday, March 18 in the home of Mr. and Mrs. Jimmy Greene.

Mr. and Mrs. Edwin Percy won high; Mr. and Mrs. Cliff McGarraugh, second high; and Mr. and Mrs. Albert Clark, traveling prize.

Those attending were Mr. and Mrs. Cliff McGarraugh, Mr. and Mrs. Albert Clark, Mr. and Mrs. Ted Gouffrey, Mr. and Mrs. Edwin Percy, Mr. and Mrs. Roy Flowers. Mr. and Mrs. Cliff McGarraugh will host the next meeting on April 8.

Pheleo Circle Has Meeting

Pheleo Circle met Wednesday, March 16 in the Fellowship Hall at the First Christian Church with Vice President Jean West presiding.

The minutes and treasurer's report was read and approved.

It was mentioned that an error was made; and Beverly Trimmel, study chairman for the current year, was to choose which books to consider for study. After discussion, it was decided that they would wait until next month to decide which book to use for study.

Mrs. Janie Henton reported that it would take about 20 books of buccaneer stamps to purchase two high chairs. After discussion, it was decided that two high chairs would be sufficient. Toys and other needs for the nursery will be purchased with the remaining books.

A motion was made by Mrs. Betty Davis and seconded by Mrs. Lorene Kunselman that they take the month of September to sponsor the meetings of the Senior Citizens. The motion carried.

Mrs. Janie Henton gave the lesson on Chapter 13 entitled "Stepping Stone? or Stumbling Block?"

Mrs. Betty Davis gave the worship on "What Kind of a Christian Are You?"

The next meeting will be April 20 with Mrs. Sandy Russell giving the study; Beverly Trimmel, worship; and Dorothy Haner, hostess.

Mrs. Lorene Kunselman served refreshments to members. Mesdames: Irvin Da-

You Are Invited.....

Monday, March 28, 7:00 has been chosen as the next meeting time for The Spearman Junior Women's Club. It is an organizational gathering and an invitation is extended to all women interested. This meeting will be held at The First State Bank.

If there are not enough women present at this meeting who would like to take part, all plans will be abandoned until August. Included in the meeting will be discussions on what can be done to stimulate additional interest in a new service club for women in Spearman. Anyone who would like more information may call Candi Delozier 659-3649. Please attend if you can. If you are interested but unable to attend Monday night, you can call and let your interest be known.

Hospital News

Patients in Hansford Hospital are Randy Johnson, Ernestine Hale, William Martin, Anita Falter, Donna Thomas, Hettie Davis and W. V. Bentley. Dismissed were Felipe Guzman, Dewey Ball, Todd Loftis, Bob Skinner and Betty Barnes.

vis, Tommy Russell, Kenneth Evans, Ed Haner, Charles West, Carl Kunselman and John Trimmel.

Hansford Shrine Club Met

The Hansford Shrine Club met Thursday, March 17 with a very nice crowd attending.

The main topic of discussion was the 'Open House' for Public Schools Week held March 10 with the Club serving 900 doughnuts and 500 cups of coffee. Open House was a tremendous success.

They will meet at 7:30 P.M. at the Martin's Steak Garden on April 21.

Easter Bake Sale Planned

Ladies of the Sacred Heart Church will be having an Easter Bake Sale Wednesday, April 6 at Cut Rate Thriftway at the Plains Shopping Center.

The sale will begin at 8:30 a.m. and will remain open till everything is sold. For information about the sale you may call Faye Schmehr at 659-2858.

Miss Christy Gressett was hostess at the home of her parents, Mr. and Mrs. Ray Gressett, for a birthday party.

Birthday honorees Cathy Garner and Terry Latham were honored by Linda Hamilton, Virginio Ortega and Roger Brown.

The party was held Thursday night, March 17 with supper being served and games were played afterwards.

"Bob Wills" Author To Address Meet



Charles Townsend

Canyon - Dr. Charles R. Townsend, author of the best selling biography, **San Antonio Rose: The Life and Music of Bob Wills**, is keynote speaker for an annual district 1 Texas Home Demonstration Association meeting Thursday, March 31 in Canyon.

The event, which is open to the public without charge, is at West Texas State University, in the Activities Building. Registration begins at 9:00 a.m., with the program to start at 9:45 a.m. Townsend's address is at 1:30 p.m.

Some 500 home demonstration club members from 19 counties across the Panhandle are expected to attend, according to Sue Farris, district agent for the Texas Agricultural Extension Service.

Randall County home demonstration are serving as hostesses for the one-day program. District THDA Director Mary Barnett of Perryton is presiding.

First printing editions of the Wills biography will be on sale at the meeting, Mrs. Farris adds. Townsend will be on hand to autograph the book.

Dr. Charles Smallwood, dean of agriculture at WTSU, will address the gathering that morning. Smallwood,

who is helping to coordinate the meeting, will explain functions of the WTSU school of agriculture and will conduct a tour of campus facilities.

Townsend is professor of history at WTSU. His book, **San Antonio Rose**, was published as a part of "Music in American Life" series by the University of Illinois Press. In its first printing, 10,000 copies were sold in one month. The biography is now in its second printing.

For his work, the history professor received a Grammy award by the National Academy of Recording Arts and Sciences and a Western Heritage award by the National Cowboy Hall of Fame.

UMW MEETS

The Mary Martha Circle of the U.M.W. met Wednesday, March 16 in the church parlor with Mrs. J. B. Buchanan presiding.

Mrs. Claude Smith, hostess, gave the devotional "How To Read The Bible" and led in prayer.

Ten ladies from the Methodist Church went to Higgins to attend the 'Day Apart'.

Mrs. George Buzzard presented the program from the Book of Leviticus, Chapters 23 & 24.

Refreshments were served to members. Mesdames: T. D. Sansing, Roy Jones, Russell Townsend, Sid Beck, Jr., Margaret Shedeck, Claude Smith, J. B. Buchanan, George Buzzard, P. A. Lyon, Sr., Freeman Barkley, Fendorf Schubert, and R. E. Lee.

The general meeting will be March 23.

Bridge Club

The Grand Slam Bridge Club met Thursday, March 17 in the home of Mrs. Wayne Garrett of Gruver.

Mrs. Monty Blackman won high; Mrs. Clark Mires, low; and Mrs. Mack McCormack, traveling prize.

Those present were members, Mesdames: Roy Flowers, Albert Baker, Ted God-

OPEN 24 HOURS

ALLSUP'S

CONVENIENCE STORES

SHOP THE FRIENDLY, CONVENIENT ALLSUP'S STORE NEAR YOU!

PRICES GOOD THURSDAY THRU SATURDAY, MARCH 24-26, 1977

<p>ShurFine 5 lb. bag SUGAR 69¢</p> <p>Shur Fine 18 oz. PEANUT BUTTER 59¢</p> <p> Chocolate Milk 89¢ 2 BORDEN'S QT. CTNS.</p>	<p>BACON 99¢ SHURFRESH 1 LB. VAC PAC</p> <p>Shur Fine TOMATO SAUCE 6/1.</p> <p> BOLOGNA 59¢ SHURFRESH 12 OZ. PKG.</p>
<p>Maryland Club COFFEE 2.99</p> <p> SHERBET 99¢ BORDEN'S ASST. FLAVORS 1/2 GAL. CTN.</p>	<p>Gold Medal 5 Lb. FLOUR 69¢</p> <p> FRANKS 59¢ SHURFRESH 12 OZ. PKG.</p>
<p>4-Roll Pac Bathroom TISSUE 99¢</p> <p>Kozy Kitten 15 oz. CAT FOOD 25¢</p> <p>Shur fresh Cream CHEESE 29¢</p> <p>Bounty TOWELS 79¢</p> <p>King Size TIDE 2.09</p>	<p>Rath Lb. Pkg. SAUSAGE 59¢</p> <p>305 W. KENNETH</p>



Congratulations

TO EVERY HANSFORD COUNTY FOR A JOB



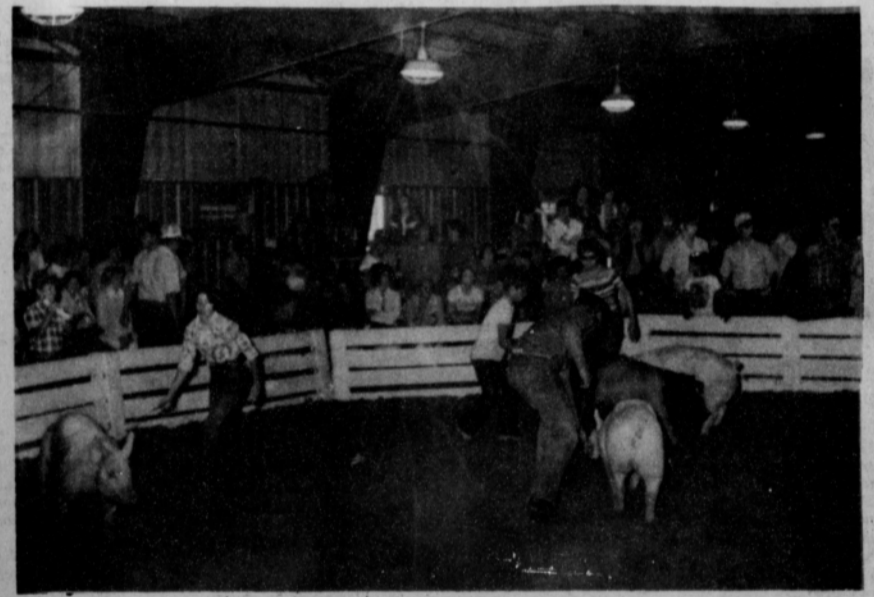
They came and waited. . . .



Then Unloaded



And exercising . . .



Until finally. . .

<p>Cates Men & Boys Wear 221 Main 659-3426 Spearman, Texas</p>	<p>Martin's Steak Garden Hwy. 207 659-2664 Spearman, Texas</p>	<p>Consumer Sales Co. 421 W. Kenneth Ave. Spearman, Texas</p>	<p>Hansford Implement Co. Hwy. 207 659-2712 Spearman, Texas</p>
<p>Western Ag. Sales Co., Inc. Home Phone-AC 806/659-3927 Office Phone-AC 806/659-2596 Spearman, Texas</p>	<p>STATEMENT The  BROWN Supply Co. PHONE 659-3781 102 WEST KENNETH SPEARMAN, TEXAS 79081</p>	<p>Hi-Plains Conoco Complete Tire Service-Auto Truck- Tractor Gas-Oil-Grease Wholesale-Retail 659-3555 Spearman, Texas</p>	<p>Jr. Lusby "Cats" 659-3766 W. Gruver Hwy. Spearman, Texas</p>

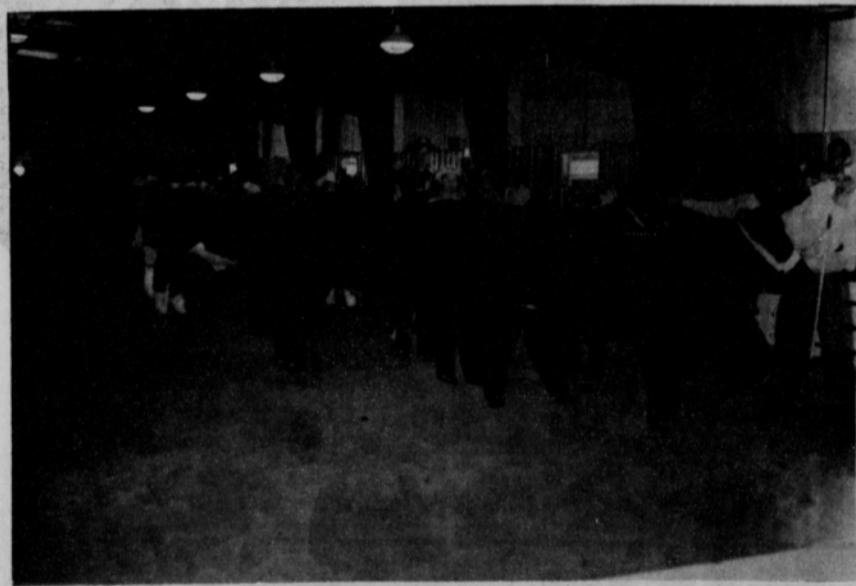
EXHIBITOR IN THE JUNIOR STOCK SHOW WELL DONE!



Then Weighed In.



More Grooming...



THE SHOW RING



But it was worth it.

<p>North Plains International, Inc. Hwy. 207 659-2421 Spearman, Texas</p>	<p>Equity Elevators 659-2420 104 Collard</p>	<p>DRILLING BAKER & TAYLOR COMPANY</p>	<p>Speartex Grain Co. 659-3711 514 Collard</p>
<p>Bakers Dept. Store 216 S. Main 659-3213</p>	<p>Gruver State Bank 733-5061 Gruver, Texas</p>	<p>Kentucky Fried Chicken 122 S. Main - Perryton</p>	<p>Boxwell Bros. 519 Evans Phone 659-2212</p>

CALF SHOW AND SALE CONTINUED FROM FRONT PAGE

The 5th Place Medium Weight Steer was shown by Suzanne Hart, weighed 1060 lbs., sold at \$1.25 per lb., total price \$1325.00, purchased by Palo Duro Grain.

The 4th Place Light Weight Medium Wool Lamb was shown by Bobby Dale Hicks, weighed 91 lbs., sold at \$5.25 per lb., total price \$477.75, purchased by Shelton's Gulf of Gruver.

The 2nd Place Light Weight Hampshire Hog was shown by Allan Uptergrove, weighed 238 lbs., sold for \$1.90 per lb., total price \$452.20, purchased by Equity Elevators.

The 5th Place Medium Heavy Steer was shown by Ron Clark, weighed 1165 lbs., sold for 85 cents per lb., total price \$990.25, purchased by Spearman Super Service.

The 4th Place Medium Weight Medium Wool Lamb was shown by Suzy Steele, weighed 104 lbs., sold for \$3.25 per lb., total price \$338.00, purchased by Equity Elevators.

The 2nd Place Heavy Weight Hampshire Hog was shown by Florencio Martinez, weighed 247 lbs., sold at \$1.40 per lb., total price \$345.80, purchased by Spearman Bi-Products.

The 5th Place Heavy Weight Steer was shown by Trevor Williams, weighed 1200 lbs., sold at 90 cents per lb., total price \$1080.00, purchased by Equity Elevators and Palo Duro Grain Co.

The 4th Place Medium Heavy Medium Wool Lamb was shown by Shelly Logsdon, weighed 111 lbs., sold for \$4.75 per lb., total price \$527.25, purchased by Gordon's Drug.

The 2nd Place Light Weight Cross Hog was shown by Davin Winger, weighed 232 lbs., sold at \$3.25 per lb., total price \$754.00, purchased by H and H Water Well Service.

The 6th Place Light Weight Steer was shown by Steve Wheeler, weighed 990 lbs., sold at 85 cents per lb., total price \$841.50, purchased by Wy-Tex Livestock.

The 4th Place Heavy Weight Medium Wool Lamb was shown by Ricky Thompson, weighed 117 lbs., sold at \$3.50 per lb., total price \$409.50, purchased by Hansford County Parks.

The 3rd Place Yorkshire Hog was shown by Roy Don Gammon, weighed 249 lbs., sold at \$2.00 per lb., total price \$498.00, purchased by Lynn Hart.

The 6th Place Medium Weight Steer was shown by Danny Dry, weighed 1075 lbs., sold at 1.50 per lb., total price \$1612.50, purchased by B & B Farm Industries.

The 5th Place Light Weight Medium Wool Lamb was shown by Karla Latta, weighed 80 lbs., sold at \$3.75 per lb., total price \$300.00, purchased by Beedy Furniture.

The 3rd Place Light Weight Spotted Hog was shown by Carrie Clark, weighed 220 lbs., sold at \$2.00 per lb., total price \$440.00, purchased by Dayton Barkley.

The 6th Place Medium Heavy Steer was shown by Marsha Fairbanks, weighed 1135 lbs., sold at 65 cents per lb., total price \$937.75, purchased by Pittman & Sons.

The 5th Place Medium Weight Medium Wool Lamb was shown by Doug Steele, weighed 95 lbs., sold at \$3.25 per lb., total price \$308.75, purchased by Beedy Furniture.

The 3rd Place Heavy Weight Spotted Hog was shown by Ron Clark, weighed 243 lbs., sold at \$2.50 per lb., total price \$607.50, purchased by Gruver State Bank.

6th Place Heavy Weight Steer was shown by Phil Orman, weighing 1240 lbs., sold for \$1.15 per lb., for a total price of \$1426.00, purchased by Dutch Clawson.

The 5th Place Medium Heavy Medium Wool Lamb was shown by Roy Washburn, weighed 111 lbs., sold for \$3.50, total price \$388.50, purchased by Jones Pipeline.

The 3rd Place Light Weight Duroc was shown by Ricky Alexander, weighed 232 lbs., sold for \$3.00 per lb., for a total price of \$696.00, purchased by Anthony Electric.

The 7th Place Light Weight Steer was shown by Carrie Clark, weighed 935 lbs., sold for 95 cents per lb., total price \$888.25, purchased by Van Roach Cattle Co.

The 5th Place Heavy Weight Medium Wool Lamb was shown by Roy Don Gammon, weighed 120 lbs., sold for \$2.75 per lb., total price \$330.00, purchased by Caprock Industries.

The 3rd Place Heavy Weight Duroc Hog was shown by Alvin Byers, weighed 241 lbs., sold at \$1.70 per lb., total price of \$409.70, and was purchased by Spearman Super Service.

The 7th Place Medium Weight Steer was shown by Doug Hohertz, weighed 1015, sold at 70 cents per lb., total price \$710.50, purchased by Baker and Taylor.

The 6th Place Light Weight Medium Wool Lamb was shown by Greg Thiele, weighed 90 lbs., sold for \$3.00 per lb., total price \$270.00, purchased by Golden Spread Sales Co.

The 3rd Place Light Weight Hampshire Swine was shown by Darin Winger, weighed 240 lbs., sold for

\$2.25 per lb., total price \$540.00, purchased by Palo Duro Grain.

The 7th Place Medium Heavy Steer was shown by Jeff Hohertz, weighed 1135 lbs., sold for 80 cents per lb., total price \$908.00, purchased by Sanders Farms.

The 6th Place Medium Weight Medium Wool Lamb was shown by Jerry Apple, weighed 102 lbs., sold for \$2.25 per lb., total price \$229.50, purchased by The Bunkhouse.

The 3rd Place Heavy Weight Hampshire Hog was shown by Scott Martin, weighed 247 lbs., sold for \$3.75 per lb., total price \$926.25, purchased by Jane Meek.

The 7th Place Heavy Weight Steer was shown by Roy Don Gammon, weighed 1295 lbs., sold for 60 cents per lb., total price \$770.00, purchased by Gruver Farm Supply.

The 6th Place Medium

Heavy Medium Wool Lamb was shown by Edward Beck, weighed 108 lbs., sold for \$4.50 per lb., total price \$486.00, purchased by A. D. Reed.

The 3rd Place Light Weight Cross Hog was shown by Edie Clemmons, weighed 227 lbs., sold for \$2.00 per lb., total price \$454.00, purchased by Dan Ralston.

The 8th Place Light Weight Steer was shown by Shonna Thompson, weighed 925 lbs., sold for 70 cents per lb., total price \$647.50, purchased by Golden Spread Sales.

The 6th Place Heavy Weight Medium Wool Lamb was shown by Kenny Gammon, weighed 119 lbs., sold at \$2.00 per lb., total price \$238.00, purchased by Cooper Feed Store.

The 3rd Place Heavy Weight Cross Hog was shown by Jimmy Kenney, weighed 247 lbs., sold for

\$3.40 per lb., total price \$839.80, purchased by 4-Tex Grain.

The 8th Place Medium Weight Steer was shown by Darren Goodheart, weighed 1055 lbs., sold for 75 cents per lb., total price \$791.25, purchased by Roscoe Nelson.

The 7th Place Light Weight Medium Wool Lamb was shown by Kirby Hargis, weighed 92 lbs., sold for \$6.00 per lb., total price \$552.00, purchased by Baker & Taylor.

The 4th Place Light Weight Spotted Hog was shown by Jimmy Nicholson, weighed 227 lbs., sold for \$1.75 per lb., total price of \$397.25, purchased by Pat Patterson.

The 8th Place Medium Heavy Steer, shown by Tracy Vernon, weighed 1115 lbs., sold for 65 cents per lb., total price \$724.75, purchased by The Outhouse, Waka.

The 7th Place Medium Weight Medium Wool Lamb

was shown by Shelly Strawn, weighed 97 lbs., sold for \$4.50 per lb., total price \$436.50, purchased by Spearman Auto Supply.

The 4th Place Light Weight Duroc Hog was shown by Marshall Cator, weighed 227 lbs., sold at \$2.00 per lb., total price \$454.00, purchased by Farmers Ag Supply.

The 8th Place Heavy Weight Steer was shown by Chad Clawson, weighed 1210 lbs., sold for \$1.10 per lb., total price \$1331.00, purchased by H & H Water Well Service.

The 7th Place Medium Heavy Medium Wool Lamb was shown by Eric Brown, weighed 107 lbs., sold for \$4.00 per lb., total price \$428.00, purchased by B & B Farm Industries.

The 4th Place Heavy Weight Duroc was shown by David Grotgert weighed 250 lbs., sold for \$2.30 per lb., total price, \$575.00, pur-

chased by George Warner Sand Co.

The 9th Place Light Weight Steer was shown by Craig Cooper, weighed 970 lbs., sold for 90 cents per lb., total price \$873.00, purchased by Double D Ag Center.

The 7th Place Heavy Weight Medium Wool Lamb was shown by David Armes, weighed 119 lbs., sold for \$4.25 per lb., total price \$505.75, purchased by Sparks Bros. Spraying Service.

The 4th Place Light Weight Hampshire Hog was shown by Mary Ann Martin, weighed 241 lbs., sold for \$3.50 per lb., total price \$843.50, purchased by Jane Meek.

The 9th Place Medium Weight Steer was shown by Jon Garnett, weighed 1080 lbs., sold for 95 cents per lb., total price \$1026.00, purchased by Berry Grain Co., Waka.

The 8th Place Light

Weight Medium Wool Lamb was shown by Jodie Zschiesche, weighed 91 lbs., sold at \$4.40 per lb., total price \$400.40, purchased by Sparks Bros. Spraying Service.

The 4th Place Heavy Weight Hampshire Hog was shown by Jackie Sparks, weighed 249 lbs., sold for \$2.80 per lb., total price \$697.20, purchased by Palo Duro Grain.

The 9th Place Medium Heavy Steer was shown by Lonnie Clemmons, weighed 1120 lbs., sold for 80 cents per lb., total price \$896.00, purchased by J & D Industrial.

The 8th Place Medium Weight Medium Wool Lamb was shown by Kyle Williams, weighed 101 lbs., sold for \$4.00 per lb., total price \$404.00, purchased by Double D Ag Center.

The 4th Place Heavy Weight Cross Hog was shown by Chris Dorman,

QUANTITY RIGHTS RESERVED **PRICES GOOD THRU MARCH 26TH**

\$ SAVINGS

UNITED SUPER MARKETS
PERRYTON, TEXAS



GRADE "A" EXTRA LARGE EGGS
UNITED CAGED DOZ. **69¢**

ATKIN'S HAMBURG. SLICED DILL PICKLES
32 OZ. JAR **69¢**

ARM & HAMMER DETERGENT
70 OZ. BOX **99¢**

WHOLE KERNEL GOLDEN CORN..... **4** 12 OZ. CANS

MEDIUM SWEET PEAS..... **4** 12 OZ. CANS

TOMATO SAUCE..... **6** 8 OZ. CANS

DOG FOOD..... **8** 15 OZ. CANS

NEW PEPSI COLA
2 LITER **79¢** PLUS DEPOSIT

LIQUID DAWN
13¢ OFF LABEL
22 OZ. BTL **69¢**

SWIFT'S PREM LUNCHEON MEAT
12 OZ. CAN **69¢**



KEEKLER COOKIES
• CHOC. CHIP
• RICH 'N CHIP
14 OZ. BAG **79¢**

"DAIRY CASE SPECIALS!"

FINE FARE SWEETMILK OR BUTTERMILK BISCUITS..... **10¢** 8 OZ. CANS

KRAFT DIPS..... **3 \$ 1** ASSORTED FLAVORS 8 OZ. CARTON

UNITED CORN CHIPS..... **49¢** OR CHEESE TWISTERS 6 OZ. PKG.

SWIFT'S POTTED MEAT..... **6 \$ 1** 3 OZ. CANS

NO. 2 ALL PURPOSE RUSSET POTATOES
10 LB. BAG **88¢**

WASH. GOLD DELICIOUS APPLES..... **11 FOR 88¢**

SUNKIST ORANGES..... **11 FOR 88¢**

GREEN ONIONS OR RADISHES.... **2 BAGS OR BUNCHES 29¢**

CALIF. CELERY STALK **39¢**

weighed 240 lbs., sold for \$2.00 per lb., total price \$480.00, purchased by Gruver State Bank.

The 8th Medium Heavy Medium Wool Lamb shown by Ken Prachar weighed 107 lbs., sold at \$3.75 per lb., total price \$401.25, purchased by Spearman Super Service.

The 4th Place Heavy Weight Cross Hog shown by Dayton Edwards, weighed 250 lbs., sold at \$2.00 per lb., total price \$500.00, purchased by Sonny Nollner.

The 8th Place Heavy Weight Medium Wool Lamb shown by Holly Holt weighed 120 lbs., sold at \$3.50 per lb., total price \$420.00, purchased by Dr. Tom Latta and Baker's Dry Goods.

The 5th Place Light Weight Duroc was shown by Gary Thompson, weighed 220 lbs., sold for \$1.60 per lb., total price \$352.00, purchased by H & H Water Well Service.

The 9th Place Light Weight Medium Wool Lamb was shown by Scott Strawn, weighed 89 lbs., sold at \$4.70 per lb., total price \$418.30, purchased by First State Bank.

5th Place Heavy Weight Duroc shown by Johnnie Eaton, weighed 245 lbs., sold for \$4.00 per lb., total price \$980.00, purchased by Earl's TV.

The 9th Place Heavy Weight Medium Wool Lamb was shown by Suzanne Hart, weighed 117 lbs., sold at \$4.25 per lb., total price \$497.25, purchased by Mrs. J. M. Hart.

The 5th Place Heavy Weight Hamp was shown by Larry Lackey, weighed at 242 lbs., sold at \$2.80 per lb., total price \$677.60, purchased by Caprock Industries.

The 5th Place Light Weight Cross Hog was shown by Clay Reid, weighed 240 lbs., sold at \$3.20 per lb., total price \$768.00, purchased by Hansford Implement.

The 5th Place Heavy Weight Cross Hog was shown by Lonnie Clemmons, weighed 246 lbs., sold at \$2.45 per lb., total price \$602.70, purchased by H & H Water Well Service.

The 6th Place Light Weight Duroc was shown by Mike Grotegut, weighed 230 lbs., sold for \$2.00 per lb., total price \$460.00, purchased by Gruver Farm Supply.

The 6th Place Heavy Weight Duroc was shown by Doug Steele, weighed 239 lbs., sold for \$1.75 per lb., total price \$418.25, purchased by Bob Hohertz.

The 6th Place Light Weight Cross Hog was shown by Ricky Morris, weighed 230 lbs., sold for \$2.35 per lb., total price \$540.50, purchased by Herb Butts.

The 6th Place Heavy Weight Cross Hog was shown by David Armes, weighed 245 lbs., sold at \$2.45 per lb., total price \$600.25, purchased by Palo Duro Grain Co.

The 7th Place Light Weight Duroc shown by Chris Cooper, weighed 230 lbs., sold for \$2.50 per lb., total price \$575.00, purchased by Palo Duro Grain.

The 7th Place Heavy Weight Duroc was shown by Steve Wheeler, weighed 243 lbs., sold for \$2.35 per lb., total price \$571.05, purchased by Hergert Pontiac-Buick.

The 7th Place Light Weight Cross Hog was shown by Buster Davis, weighed 216 lbs., sold at \$3.00 per lb., total price \$648.00, purchased by Caprock Feeders.

Not to be forgotten and very much appreciated is the group of people who are contributing toward a sum of monies to be divided among those young stockmen whose animals were sifted. A list will be published as soon as completed and all returns are

in but, in the meantime, from all of us to each of you, a big 'thank you'!

A superb job of organization for the 1977 show was turned in by the Directors of the Hansford County Junior Show with Carl Cooper of Gruver the Major Domo for the hard-working group who included D. A. Cator, John Armes, J. C. Harris, Buddy Murrell, Raymond Walker, Jerry Williams, all of Gruver; from Morse, Frank Pittman, Lynn Davis, Charles Reid; from Spearman, Dr. Tom Latta, Ed Dear, Mike Garnett, Jimmy Greene, Monty Harbour, Sonny Patterson, Glen Ray Mackie, and Troy Sloan. Advisors to the Stock Board include the Vocational Ag teachers in the County including Herman Boone and Burt Williams of Spearman and Oran Burton of Gruver along with the Hansford County Agent Jim Kuykendall.

every detail were furnished for the 1977 Show by Carl Cooper of the Gruver Cooper Feed Company handling Loomix and Del Roy Gammon and D. A. Cator of D G C Feeders also of Gruver.

The success of an auction is marked in hard dollars and cents and Hansford County Stock Show Auctioneers Carol Bostick and Ed Zschiesche really made the "going, going, gones" count up for every animal in the sale.

Receiving the Farm Bureau Animal Husbandry Awards were Phil Orman,

Gruver 4-H; Ricky Thompson, Gruver FFA; and Herby Hargis, Spearman FFA. These awards were presented by Delbert McCloy of Morse for the Farm Bureau.

Tremendously successful was the sale of goodies provided by 4-H Club members and the Hansford County Home Demonstration Clubs will all proceeds going to the Hansford County 4-H Clubs, the only means of fund-raising during the year.

To each of the buyers, to each who attended and cheered for these young stockmen, to those behind the scenes and in front, a big, big 'thank you' for a job well done--a most successful 1977 Hansford County Junior Livestock Show and Sale.



COMMUNITY HEALTH AIDE Diane Zapp makes home visits in Coachella Valley (Ca.). Ms Zapp divides her time between home calls and clinic work with mothers and infants. She was trained by health professionals at the Coachella Valley Prenatal Care Clinic, which is assisted by the March of Dimes.

Breakeven Costs Key To Farm Profits

College Station -- Texas farmers don't have a lot of room to waver when it comes to production costs. So determining the breakeven costs of the commodities they plan to produce can be the key for a profitable production program.

"Although cost of production for a particular commodity is often difficult to determine due to the variability of production inputs, it is a starting point for a producer to organize his productive resources to obtain optimum net income," points out Cecil Parker, economist in management with the Texas Agricultural Extension Service.

Parker estimated breakeven variable and total production costs for irrigated and dryland cotton, sorghum, corn and wheat for five resource areas of Texas. He used 1977 projected costs of production inputs and a weighted average yield for 1973-75 for the crops.

For dryland cotton, the economist's breakeven costs for variable expenses were 28 cents per pound of lint in the High Plains, 12 cents in the Rolling Plains, 43 cents in the Blacklands, 23 cents in the Coastal Bend and 25 cents in the Rio Grande Valley. Irrigated costs were 32 cents in the High Plains, 20 cents in the Rolling Plains and 44 cents in the Valley.

Dryland sorghum costs (variable costs per hundred pounds) were \$1 in the High Plains, \$1.83 in the Rolling Plains, \$2.47 in the Blacklands, \$2.09 in the Coastal Bend and \$1.94 in the Valley. Irrigated costs were \$2.68 in the High Plains, \$2.08 in the Rolling Plains and \$3.04 in the Valley.

Dryland wheat variable costs were estimated at \$1.42 per bushel in the High Plains, \$1.77 in the Rolling Plains and 99 cents in the Blacklands. Irrigated costs were estimated for the High Plains only at \$2.46 per bushel.

Parker figured the variable costs on corn production under irrigation in the High Plains at \$1.62 per bushel.

Lumping the variable production costs together to obtain a statewide average, Parker came up with these figures: 28 cents a pound for cotton, \$2.21 per 100 pounds of sorghum, \$1.88 per bushel of wheat and \$1.62 per bushel of corn.

When looking at total production costs on a state average, the figures showed the following: 47 cents per pound of cotton, \$3.89 per 100 pounds of sorghum, \$3.37 per bushel of wheat and \$2.62 per bushel of corn.

Parker's production costs were based on weighted average yields of 350 pounds for cotton, 3,932 pounds per sorghum, 25 bushels of wheat and 122 bushels of corn.

"These figures are simply intended to be a planning guide for producers," explains Parker. "Certainly, the estimated breakeven variable and total production costs can be influenced by a change in production input costs and crop yields. Each producer should view these data in relationship to his particular situation."

"By comparing income above variable costs per acre for each crop, a producer can select a combination of crops for optimum income above variable costs, assuming land to be the only limiting production factor. Of course, if other production factors becomes more difficult," points out Parker. "The level of risk a producer is willing to take will determine the level of profit maximization."

BY THE CARTFUL

USDA CHOICE OR UNITED'S TRU-TENDR BEEF

	SWISS ROUND BONE ARM CUT LB. 98¢
	RANCH 7-BONE CHUCK CENTER CUT LB. 89¢
	CUBED WASTE FREE BEEF LB. \$1.69
	GROUND BEEF FRESH FAMILY PACK LB. 68¢

FINE FARE MEAT OR BEEF

BOLOGNA OR COOKED SALAMI
QUALITY 12 OZ. PKG. **79¢**



WILSON'S CERTIFIED SMOKED PICNICS
6 TO 8 LB. CRYOVAC WHOLE **68¢** LB.



BABY BEEF LIVER SLICED SKINNED AND DEVEINED
49¢ LB.

ECKRICH SMOKED SAUSAGE MEAT OR BEEF
\$1.38 LB.

USDA CHOICE OR UNITED TRU-TENDR CHUCK ROAST BLADE CUT
58¢ LB.

FRESH FROZEN TURKEY DRUMSTICKS
33¢ LB.

CORONET DELTA BATHROOM TISSUE 6 ROLL PACK
98¢

"HEALTH & BEAUTY AIDS!" MISS BRECK HAIR SPRAY REG. \$1.29 11 OZ. **89¢**

GLEEM REG. 73¢ 3 OZ. **59¢**

CONTAC 20 CT. REG. \$2.18 **\$1.79**

TRAC II BLADES REG. \$2.08 9 COUNT **\$1.77**

ELLIS BEEF STEW 24 OZ. CAN **79¢**

"FROZEN FOODS" PATIO MEXICAN OR COMBINATION DINNERS **49¢**

DOWNY FLAKE DONUTS GLAZED OR JELLY 9 OZ. PKG. **49¢**

QUANTITY RIGHTS RESERVED **U** PRICES GOOD THRU MARCH 26TH

UNITED SUPER MARKETS
PERRYTON, TEXAS
WE GIVE 3% GREEN STAMPS

North Plains International, Inc.

Highway 207 South

Spearman, Texas



Cordially Invites Your Entire Family To It's

GRAND OPENING & OPEN HOUSE

THURSDAY, MARCH 24

7 a.m. TO 5 p.m.

Come in and get acquainted with Dick Elbert and the new organization


● PANCAKE & SAUSAGE MEAL SERVED FOR BREAKFAST & LUNCH

● Donuts & Refreshments also Served all day

● DOOR PRIZES EVERY HOUR

● SPECIAL GIFTS FOR ALL PRESENT

We are very proud of the special customer service features of our dealership and invite you in to see all of our modern systems to better serve the farmers of this trade area. Displays and information will include:



The "XL Dealer" appointment is the highest honor bestowed on an International Harvester Dealer.

It symbolizes a commitment to the highest Dealer standards.

It means adopting such advanced systems as data processing to assure faster special parts delivery; a full line of standard parts and exceptional service facilities; knowledge and availability of the latest finance plans and systems to help customers get the equipment they need, when they need it; and, above all, a desire to change and adapt to best fulfill the changing needs of you, the customer. Presentation of XL Award to be made at Open House.



...this decal means a lot to us - and it means a lot to you, too! Basically, it says that top-notch service is available to you at our place.

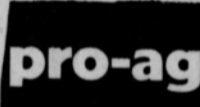
How did we get this Certified Service award? It's a direct result of a program the International Harvester Company has developed with its dealers to make sure they're fully capable of giving the type of service their customers expect and deserve.

We're proud of our certification; it means that we've measured up to IH's highest standards. We had to pass a tough Service Center Performance Review, which measured our capabilities.




AN AUTOMATIC PARTS STOCKING SYSTEM!

It stands for "Service Parts Inventory Management." It records our parts sales activity daily, helps keep fast-moving items in our bins so they're on hand when you need them. (Participating IH dealers only.) It's just one of many major improvements and innovations developed by International Harvester to help serve you better!

The ultimate in customer service. A computerized planning system for farmers allowing input of variables [equipment purchases, livestock purchases, crop mix, fertilizer applications, other capital investments, etc.] & analyzing projected results based on reliable information supplied by expert sources. A demonstration of this system will be conducted by IH personnel.




Just ask yourself. How much does a day of downtime cost you when the weather's just right to plant, or it's the last good day for harvesting? Avoid downtime by taking advantage of the proven service method that keeps your equipment in top operating condition. International Harvester's Uptime Service...the economical method of performance control for profitable farm operation.



FINDS THE PARTS YOU NEED. LIGHTNING-FAST!

A nationwide computer network forms the backbone of this sophisticated method of ordering and locating seldom-needed parts. Our phone calls go to an operator at our Parts Distribution Center. She has direct access to the computer, which instantly locates the parts you need. It's the fastest order-processing service in the world!

The DADS System - a computerized accounting system designed to serve customers as well as International dealers. By the use of computer accuracy, customer records are generated and the entire business process is benefitted. The dealership's records are stored in memory banks for permanent safekeeping in the event of a catastrophe, and, through various computer programs, parts expediting and service is at a maximum. A computer demonstration will be held during Open House.



Stand by 7

EMERGENCY WEEKEND SERVICE DESIGNED TO KEEP YOUR EQUIPMENT GOING!

IH dealers are fully aware you frequently keep rolling 7 days a week during the planting and harvesting seasons. That's why International Harvester created "Stand by 7" - a helpful customer support program that provides weekend and after-hours emergency parts and service availability, when you may need it most! (Participating IH dealers only.)



OUR JET-AGE APPROACH TO PARTS DELIVERY!

Once SPEED zeroes in on a critical part at one of our national or regional parts distribution centers, COMPUTAIR takes over to ship it to us fast - sometimes within a matter of hours. We know that unnecessary delay could cost you money!



Farm Equipment displays of interest also will be available for your inspection including the all new "86 Series" Tractors, Combines and revolutionary 500 cycle air planter.

MANY SPECIAL GUESTS

will be present to visit with our customers, including: Royce Bodford, KGNC Radio Noon Farm Show to be broadcast from North Plains International, Inc. Special guests from International Harvester Co., include: Regional Manager, Manager of Marketing, Regional and District Sales Manager, District Parts Manager, District Service Representative and 3 product specialists and marketing managers for tractors, planters and plows. Representatives from other major suppliers also will be present.

EVENING ACTIVITIES

beginning at 7:30 p.m. Product Service Clinic on 500 Cycle Planters. Don't miss this fact-packed clinic. Get the latest tips and techniques on operation and maintenance of these new "cycle" air planters. Clinic will be presented by our own personnel with assistance from the IH experts. Plan to attend.



HIGHWAY 207 SOUTH

NORTH PLAINS INTERNATIONAL, INC.

SPEARMAN, TEXAS