



Spearman Reporter

VOLUME 68, NO. 9

THE SPEARMAN REPORTER, SPEARMAN, TEXAS 79081

THURSDAY, JANUARY 13, 1977

Sub zero weather in county



City crews in Spearman and Gruver used front end loaders to load up the snow, and haul it off of the streets in the two cities!

It's hot chill weather in Hansford County this week as the temperature dropped to -3 at times and approximately 3 to 4 inches of snow blanketed the area. The bright spot of the weather situation, besides the moisture, is the fact that city manager Mark Neff and mayor Blodgett have done their home work on the gas system for Spearman, and so far, despite the sub-zero weather, we have had ample gas to supply the city. This in itself is a miracle and these two and all of the city employees should be given a big vote of thanks for their efforts. Also, not only have city crews kept the gas

going, but they have also kept the streets free of snow where traffic never was really slowed, except for the icy intersections! Also the state boys have done a great job on the state highways! There are so many to thank that we will surely miss some of them; but once again, thanks to the city council and all city employees for doing such a fine job.

In the meantime, Perryton has had to shut down their school and over the weekend the pipes in the band room froze and ruined all of the band uniforms and everything that was in the band room! Supt. James Cunningham and his crew at the

school have kept a close watch over the extreme cold week-end and so far Spearman has weathered the storm in "grand style"! Most everyone stayed home Sunday and watched the Super Bowl, cooked dinner as usual, and enjoyed a nice warm stay in the house!

The church attendance was down quite a bit Sunday, as expected, with a few of the "saints" braving the weather and making it to church on schedule!

Saturday night the snow began to fall with the hardest snowfall from about 5:30 to 12 p.m. and it snowed all night Saturday, ending Sunday.

The blizzard did not hamper the basketball games at Fritch as the Spearman B team boys and girls won their way to the finals, and finally won the championship!

Farmers have been watching this first snowfall of the year, thinking that drought that has plagued the area for so many years, may be changing for the better although the moisture content was only about .25, it is a change for the better and it certainly will not hurt the wheat!

REMEMBER THE LIONS CLUB PANCAKE SUPPER - FEB. 4TH

GO LYNX-LYNKETTETS
BEAT DALHART HERE
FRIDAY NIGHT -WIN
DISTRICT 1-AA

Commission meeting

The Hansford County Commissioners met in regular session Monday, Jan. 10. All commissioners and the county judge were present for the meeting.

They approved the minutes of the last meeting, and authorized payment of bills.

The commissioners appointed the Historical Survey Committee for the next two years. They are Nelle Evans, Fred Groves, Elizabeth Holt, John Hutchison, Gwenfred Lackey, Mrs. P. A. Lyon, Sr., Mrs. N. F. Renner, Mrs. Harold Shaver, Gordon Stedje, Mary Lou Woyson, Gid Nobles, Gertie Archer, Olin Sheets, and Helen Boyd.

P. A. Lyon, III was appointed assistant county attorney.

Approval was given to deputies in county offices.

Purchase of a CB was authorized by the commissioners for the Spearman Fire Department Rescue Vehicle in the amount of \$75.00.

They set up a grievance board of 1977 consisting of four members of the grand jury, and all elected county officials.

They passed an order to pay county officials on a salary basis instead of a fee basis.

They also renewed a one year contract with Purdue & Blair for collection of delinquent taxes.

election is Jan. 15th

Of interest to everyone in the county is the coming election called for January 15th. This election was called in response to a petition filed last May to permit us to decide on whether we want to elect the members of the County Hospital Board or to continue to have the Commissioners appoint them.

There have been several pros and cons on the subject! It seems that the argument rests on two points. "Although an elected board would work for a while, in a few years people would lose interest in it and no one could be found to run for this position." The second point is that there is a good possibility that someone who is angry with the hospital or with a doctor would sign up just before the deadline to run for a position on the board and be elected with just a few votes, due to the apathy mentioned in point 1.

Of course, if there is any apathy in this type of election, it would be because the local paper had not been on the job and reminded folks of the election!

There is also an argument put forth that if you get

someone "unsatisfactory" on the board, you are stuck with that person for two years, whereas, if an appointed member is a "bad egg", the Commissioners Court can remove him.

According to the legislative act that created this hospital district, it provides for the appointment of the board members by the Commissioners Court, but it does not provide for their removal by the Court. The Court could only try to persuade such a one to resign.

In answer to the many questions, we have all watched local elections for quite a while and have noticed that, of all areas of this state, this area turns out to vote better than anywhere else.

In fairness to both sides, your newspaper simply wants the people to decide on the matter. If you feel that the Commissioners Court can do a better job by appointing board members, vote accordingly. If you want the people to elect the hospital board, vote for the change.

THE FUTURE OF OUR HOSPITAL MAY DEPEND ON YOUR VOTE!

Locations of polling places for the Saturday election according to Hansford County Clerk Marie Gould include Precinct 1, Hansford County Courthouse; Precinct 2, Renner Ranch; Precinct 3, Continental Grain Elevator (Gruver Elevator, Gruver); Precinct 4, Gruver County Agriculture Barn; Precinct 5, Spearman County Agriculture Barn; Precinct 6, Spearman High School; Precinct 7, Oslo Church; Precinct 9, Moser Community Building. (Precinct or Box number 8 is for absentee balloting.)

DALHART WOLVES WILL BE HERE FRIDAY NIGHT...

Hospital News

Patients in Hansford Hospital are Betty Crawford, Ned Davis, Tim Woodington, Mary Howard, Ramona Garcia, and Ella Cypert.

Discharged were Frances Cearley, Dennis Harnden, Lucy Pittman, Carmen Arjona & son, Cora Smith, Lee McClellan, Ray Prachar, and Faye Hickerson.

Wilbanks Elected Prexy



J. D. and Rubyjo Wilbanks of Spearman were elected President of the Panhandle Square Dance Association at a District 3 Business Meeting in Bonavista, Saturday, January 8, 1977. J. D. and Rubyjo have been square dancing for several years, and J. D. is a caller for three Panhandle Clubs. He also calls several out of state dates each year.

The Panhandle Association is one of seventeen districts in the Texas Federation and is comprised of 48 clubs and approximately 1600 couples of square dancers.

Other offices elected to serve with J. D. and Rubyjo are as follows: Secretary, Chuck and Florine Fletcher of Spearman; Treasurer, Glen and Verla Gilmore of

Spearman team takes 2nd in wrestling here

The Spearman Kids wrestling team won 2nd place in the Spearman Wrestling Tournament, held at the Community Building Saturday. The Maverick Club of Amarillo won 1st with 140 points, followed by Spearman with 75, Pampa 3rd with 45, and River Road won 4th with 22 points.

A total of 97 kids wrestled in the tournament. It was the biggest wrestling tournament ever held North of the Canadian River and was enjoyed by all of the fans and participants of the tournament. Tournament director for the event was Captain Littlejohn, assisted by all of the kids' mothers and fathers.

The ladies who ran the concession stand for the tournament made \$215.00, which will be used in the KIDS Program according to Capt. Littlejohn.

Johnny Lira, of Spearman, who wrestles in the 106 pound Jr. High Division, was sent to Denton to wrestle over the week-end because there were no Jr. High Wrestling in the Spearman Tournament and Johnny won first out of 14 wrestlers in the Denton-Dallas-Ft. Worth triangle.

There were 19 weight brackets. In the 44 pound wt. division Carl Urban of Spearman won first, defeating Brett Britton of the Maverick Club. Spearman wrestlers in the 44 pound

division included Shaun Cook.

In the 47 pound division Todd Griffin, Maverick Club, defeated Lance Swann of Spearman for 1st place.

In the 50 pound division Tony Griffith of the Maverick Club defeated Kevin Vinson of the Maverick Club. Third in this division was Tarren Kingsley, of Spearman.

In the 53 pound division, first went to John Johnson of the Maverick Club, who defeated Robbie Jennings of River Road.

In the 56 pound division Kyle Dodson of the Maverick Club defeated Mike Mitchell also of the Maverick Club. Spearman wrestlers in this division included Terry Phillips who placed 3rd and Scott Swann, 4th.

The 59 pound division was won by Bob Cook of Spearman, who defeated Bruce Norris of Pampa. Other Spearman entrants in this division included Charlie West of Spearman.

The 62 pound division was won by Brad Jennings of Maverick Club, who defeated James Cridor of the Mavericks. Third in this division went to Mark Johnson of Spearman; 4th, Jeff Lira of Spearman.

The 65 pound division was won by Darrin Halford, who defeated Trey Britton, also of the Maverick Club. Cole Ivey of Spearman won third place.

The 68 pound division was

won by Mack McLain of Spearman, who defeated Damon Goodheart of Spearman. Third place went to Frankie Cline of the Maverick Club.

The 71 pound division was won by Brian Grordzelet of Pampa, who defeated Mark Pearson of Spearman.

The 74 pound division went to Bryan Cody of the Maverick Club, defeating Russell Owens of Pampa.

The 77 pound division went to Jeff Franks of Pampa, who defeated Brent Dobbler of the Maverick Club.

In the 80 pound division, Gregg Founts of the Maverick Club won, defeated John Williams of River Road; and third went to Gregg Meeks of Spearman.

Ricky Borcharett of Pampa defeated Mark Stovall of the Maverick Club in the 84 pound division. Toby Phillips of Spearman was third.

The 89 pound division was won by Kenny Glasco, Maverick Club, who defeated Daren Goodheart of Spearman.

The 94 pound division was won by Dee Venable of the Maverick Club, who defeated Ronnie Hutchens of the Maverick Club.

The 100 pound division was won by Randy Barkley of Pampa, who defeated Vic Daugherty of the Maverick Club.

Heavy weight division was won by Danny Perkins of the Maverick, who defeated Steve Cranor of the Maverick.

Pancake Supper

The Lions Club is planning a pancake supper for Feb. 4 in the Junior High School cafeteria from 5 til 7 p.m.

The supper will be before the basketball games scheduled that night. Spearman and Gruver girls will be playing and Spearman and Boys Ranch will also play.

Cost of the supper is \$2.00 for adults and \$1.00 for students. Tickets may be purchased from any Lions Club member.

Crime Down In 1976

Sheriff R. L. McFarlin has released the following statistics.

The following arrests were made by the Hansford County Sheriff's Office during the year 1976.

Drunk and Disturbance - 12; Forgery - 6; Public Intoxication - 45; Obtaining a Controlled Substance through Fraud - 2; Burglary - 8; Theft - 7; Evading a Peace Officer - 1; Investigation - 4; Resisting Arrest - 1; Possession of Marijuana - 19; Minor in Possession - 2; Criminal Mischief - 1; Mental Cases - 2; Fugitives - 11; Sleeper - 4; Contribute to delinquency of Minor - 5; Illegal Alien - 30; Runaway - 8; Contempt of Court - 1; Driving Under the Influence of Drugs - 1; Sale

Porter Infant Services Held

Services for Christy Renee Porter, 1 day old daughter of Mr. and Mrs. Bill Porter, were held at 2 p.m. Monday in the Union Church with the Rev. Archie Burrell, pastor, officiating. Burial was in Hansford Cemetery by Boxwell Brothers Funeral Directors.

The infant died Friday in Perryton.

Survivors, in addition to her parents, include grandparents, Mr. and Mrs. Louis Miesner of Spearman and Mr. and Mrs. Howard Porter of Spearfish, S. D.; great-grandfather, Charlie Madden of Spearman; and a great-great-grandmother, Mrs. Margaret Lahmiller of Perryton.

AC Spring Registration Set

Amarillo College will be involved in spring registration starting Jan. 10 and 11. AC offers well-rounded programs in five general areas—arts and sciences, biomedical, technology, vocational, and non-credit community courses.

AC plans four separate registration dates for four programs of the college. On Jan. 10 and 11, students will register for classes in arts and sciences, biomedical, and technology. Adult Vocational Education will be Jan. 17. Community Service will be Feb. 7, and vocational registration will be on Feb. 21.

Spring semester enrollment for pre-advised day students will begin Jan. 10 with surnames M through N at 1 p.m., O through S at 2:30 p.m., and T through Z at 4 p.m. Jan. 11 schedule is A through B at 9 a.m., C through F at 10:30 a.m., G through I at 1 p.m., and J

through L at 2:30 p.m., and late registrants at 4 p.m.

Students who were not pre-advised during advance registration, report to their academic adviser according to the above schedule.

New students that were pre-advised during advance registration but did not complete registration should report to the College Union Building at the same times listed above.

New students with a registration permit should report for registration at the following schedule: Jan. 10 beginning with M through N at 9 a.m., O through S at 10:30 a.m., T through Z at 1 p.m., A through B at 2:30 p.m., and C through D at 4 p.m., H through I at 1 p.m., J through L at 2:30 p.m. and late registrants at 4 p.m.

Students who have not received a registration permit should report to the registrar's office for admission clearance according to

this schedule also.

Evening college registration will be conducted in the College Union Building also from 1 to 9 p.m. on Jan. 10 and from 9 a.m. to 9 p.m. on Jan. 11.

Late registrants for day students will be conducted Jan. 13 from 9 a.m. until noon. Late registration for evening students will be Jan. 13 from 7 to 9 p.m.

A late registration fee of \$5 will be charged after Jan. 11.

Schedule changes can be made from 1 to 4 p.m. Jan. 13 for day students and from 7 to 9 p.m. for evening students.

Jan. 19 is the last day for registration or to add a class.



The population of the United States in the year 1900 was 75,994,575!

Tax Rep Here Jan. 18

AUSTIN—State Comptroller Bob Bullock announced he is sending a representative from his Amarillo office to Spearman on Tuesday, January 18, 1977, to assist local taxpayers and answer questions about state taxes.

Bullock said Enforcement Officer John Lindsey will meet with local taxpayers at the Hansford County Courthouse, County Judge's office, Spearman, Texas, from 9:00 a.m. to 12:00 p.m.

"If Spearman-area merchants, or anyone else for that matter, have any questions about state taxes or need help in preparing tax forms, Mr. Lindsey will be there to assist them," Bullock said.

"We're trying to cut the red tape in this office and we believe these face-to-face sessions with taxpayers help do just that," Bullock added. Bullock reminded those taxpayers who are unable to meet with his representative on January 18, 1977 that they can still get their questions answered quickly by calling his TOLL-FREE tax informa-

tion number in Austin. That number is 1-800-252-5555.

The Amarillo office, headed by Claudia Stravato, serves Hansford and Sherman counties.

Kindergarten Day At Waka

Children in the Waka School District who are eligible for kindergarten next fall are invited to attend a special kindergarten day, Monday, January 31, 1977. Texas law requires that a child be five on or before September 1, in order to attend kindergarten. There will be a milk break, which will be 10 cents. If you wish your child to stay for lunch, he may; lunches are 50 cents. School begins at 8:15 and ends at 11:25. If your child stays for lunch, he will be ready to leave at 12:00.

This is being offered so as to give the children a clearer conception of what they will be doing in kindergarten.

and for them to get better acquainted with the teacher, Judy Anderson. If you have any questions, please feel free to call the Waka School at 435-4308.

Thank you, Judy Anderson Kindergarten Teacher Waka ISD

GROW YOUR OWN POINSETTIA—With some tender loving care, that poinsettia plant you received for Christmas can be brought into flower again next Christmas season. Once the plant loses its color, reduce watering and store it in a cool place. Cut the stems back about mid-April, replot the plant, water it thoroughly, and place it in a sunny window. As new growth begins, fertilize the plant

every two weeks. When danger of frost is past, move the plant outdoors and pinch back new shoots as they develop. Move the plant back indoors before frost in the fall and put it in a sunny location. Starting the first week in October and continuing through Thanksgiving, keep the plant in complete darkness from 5 p.m. to 8 a.m. In the daytime, keep it near a sunny window.

PLANT TREES ON ARBOR DAY—Arbor Day coming up Jan. 21 signals the time for Texans to beautify home landscapes and communities by planting trees. Trees provide permanent beauty and increasing value to each coming generation, says a landscape horticultur-

FIRE CALL TUESDAY
The Spearman fire dept., answered a fire call after-noon on Tues., to the Jackson location, just North of the golf course. The dept., was called back, however, just as they started to the location, as the fire was put out by hand fire extinguishers.

ist with the Texas Agricultural Extension Service. Trees should be selected for the climate and area. Planting at this time of the year allows trees to become established before beginning top growth in the spring.

IT'S HERE
KBMF RADIO GIFT BOOK
with over **\$300**
IN GIFTS, SERVICES, FOOD, MERCHANDISE & ENTERTAINMENT
Look through today's paper for more details or call me at **1-435-5626**
LISTEN FOR YOUR PHONE TO RING

Now Showing - Thru January 18th
IT'LL KEEP YOU ON THE EDGE OF YOUR SADDLE.
JUST KEEP GOING LIKE NOTHING WAS WRONG
CHARLES BRONSON
JILL IRELAND
"FROM NOON TILL THREE"
Lyric Theatre Spearman United Artists

The Greatest Discovery of Our Time
In search of Noah's Ark
High atop a mountain in Eastern Turkey is a giant 5,000 year old wooden ship containing hundreds of stalls and cages.
IS IT NOAH'S ARK?
Coming Next Week - Two Days Only
Wednesday and Thursday - Jan. 19 & 20
Lyric Theatre Spearman

Smart housewives bag these

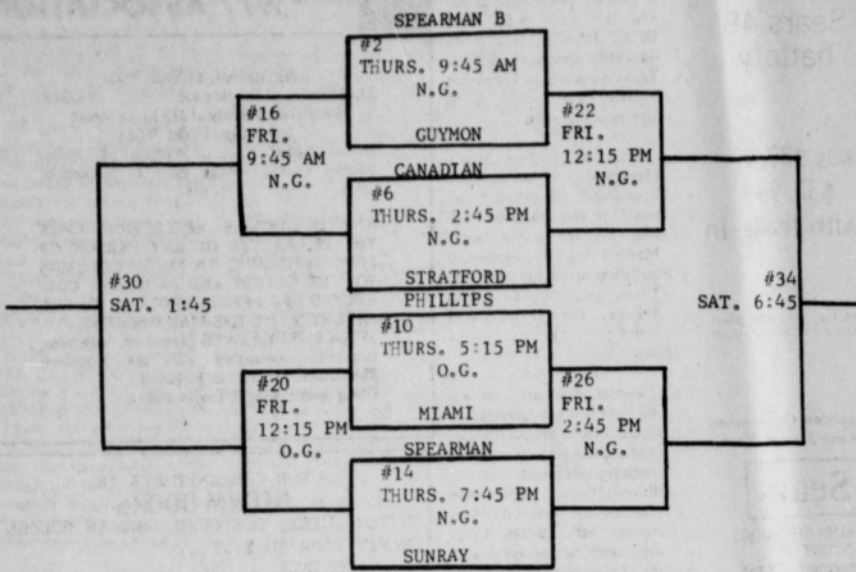
FOOD BARGAINS

MARGARINE SHURFINE 3 1 lb. pkgs. \$1	KEEBLER VANILLA WAFERS 59¢	SHURFINE TOMATO SOUP 6 CANS FOR \$1	BORDEN'S ICE CREAM ASSORTED FLAVORS ½ GAL. \$1.19
BANANAS 17¢ LB.	LYSOL SPRAY REG. \$1.91 DISINFECTANT \$1.75	ZESTA SALTINE CRACKERS LB. BOX 59¢	BORDEN'S 16 SINGLE SLICES AMERICAN CHEESE 12 OZ. PKG. 89¢
3LB. BAG OF APPLES 63¢	SWEET RASHER BACON LB. \$1.09	BORDEN'S COFFEE CREAMER CREMORA 11 OZ. 89¢	PRICES GOOD THRU SAT. JAN. 15th
DELI' DELIGHTS WHOLE FRIED CHICKEN \$2.69 FRESH COOKED BEANS QT. 98¢	GROUND CHUCK 2LB. \$1.58	PORK STEAK LB. 99¢ BEEF LIVER LB. 39¢	

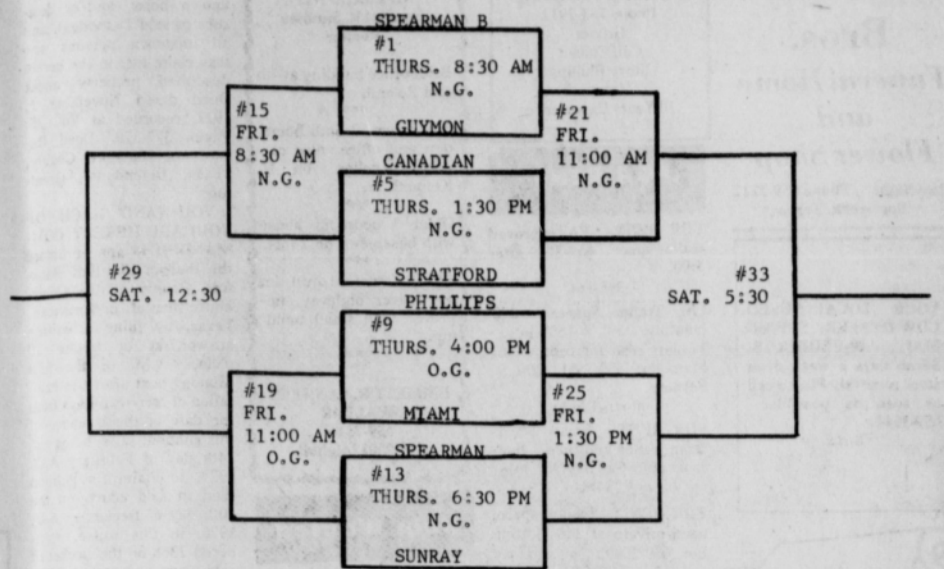
WE GIVE BLUE WESTERN STAMPS
M & M Grocery
No. 1
202 N. Bernice Spearman, Texas
659-3234
STORE HOURS 8 a.m. - 9 p.m.

8th Grade Boys

SPEARMAN JUNIOR HIGH TOURNAMENT---JANUARY 13, 14 & 15



8th Grade Girls



Vehicle Registration Begins Feb. 1

AUSTIN--Texans will begin registering their motor vehicles for fiscal 1977 February 1. Registration renewal notices will be in the mail soon.

Some vehicle registration renewal notices will arrive a little later this year. Usually they are mailed immediately after Christmas to facilitate postal distribution. However, this year, inmates at the State Department of Corrections prison facilities at Huntsville are sorting by zip code all of the approximately 10 million renewal notices.

The State Department of Highways and Public Transportation will save approximately \$50,000 in postage discounts for performing this service, which is contracted by the prison system.

The 1977 stickers will have a solid red background with white year figures and state name. The sticker serial number will be printed in blue in the upper right-hand corner. Fiscal 1976 stickers had a blue background, white figures and red serial numbers in furtherance of the Bicentennial theme which will be continued in 1977.

Robert W. (Bob) Townsley, director of DHT's Motor Vehicle Division, said he anticipates less motorist confusion in affixing 1977 stickers to the metal license plates.

DHT first issued multi-year metal license plates in fiscal 1975. Last year was the first for attaching annual stickers to the metal plates.

"Although most motorists followed instructions and experienced no problems, others failed to read the instructions for affixing the stickers--sometimes--laughable results," Townsley commented.

The 1977 stickers will be applied to the depressed area in the upper right-hand corner of the REAR metal license plate, Townsley explained. The 1976 sticker should remain in its present location--the upper left-hand corner of the rear license plate.

Inmates of the Wynne Unit industrial plant at Huntsville make license plates, print stickers and prepare record-keeping materials for DHT and county tax assessors-collectors who are responsible for actual registration processes.

As previously, mail registrations will be accepted from vehicle owners for an additional fee between February 1 and March 1. Motorists who wish to register their vehicles in person can save time, energy and frustration by visiting county tax offices as soon as possible after February 1. Dead-

line for having stickers affixed is midnight April 1.

Above all, avoid lengthy registration lines by not waiting until the last minute to obtain 1977 stickers. Said Townsley: "Motorists can ease the pain by heeding the Christmas warnings--shop early!"

Beginning in 1978 the State Department of High-

ways and Public Transportation will initiate a year-round licensing system with some registrations expiring each month thereafter. This will mark demise of the half-century-old, 60-day registration periods and one-date deadlines for acquiring and affixing new stickers without penalty.

Happy Anniversary

Anniversary wishes go to Mr. and Mrs. Jim Fox, Alton and Peggy Ellsworth, Mr. and Mrs. Steve George, Mr. and Mrs. Don Floyd, Sonny and Jeannie Nollner, Mr. and Mrs. Archie Smith, Gayle and Archie Smith, Darrell & Shirley McCoy, and Mom and Dad Anderson.

IRS News

Many people who do not have enough taxes withheld are required to pay their final installment of 1976 estimated Federal income tax no later than Monday, January 17. Also due the same day are amended estimates from those whose 1976 income

changed substantially during the last quarter.

Many taxpayers first met the requirements for filing a tax declaration during the last three months of 1976, according to the Internal Revenue Service. Taxpayers are generally required to file an estimate if they owe the IRS more than \$100 not

covered by withholding. The estimates in this case are due January 17.

There is one exception to this rule, the IRS said, and that's when taxpayers file their returns and pay all taxes due by January 31. In that case the final 1976 installment is not required,

the amended declarations is not required nor is an original January 17 declaration required.

IRS Publication 505, "Tax Withholding and Declaration of Estimated Tax," provides additional information and may be obtained free from local IRS offices.



U.S.D.A. CHOICE BUTCHER BLOCK BEEF
Round Steak.....**\$1.19**
 CENTER SLICES, BEEF ROUND LB.

U.S.D.A. CHOICE BUTCHER BLOCK BEEF
 Boneless Round Steaks.....**\$1.39**
 BEEF ROUND LB.

FRESH...EXTRA LEAN
GROUND CHUCK
 IN 3-LB. PKG. OR MORE
89¢
 LB.

GOODS CHART EFFECTIVE JAN. 3, 1977

PRIZE VALUE	NUMBER OF PRIZES	GOODS FOR ONE GAME PRIZE	GOODS FOR 25 GAMES PRIZES TO SAVE TO CHOICE
\$1,000	20	1 in 143,800	1 in 3,595
100	200	1 in 17,800	1 in 489
10	400	1 in 8,900	1 in 245
5	1,000	1 in 3,200	1 in 98
2	3,000	1 in 1,176	1 in 33
1	20,000	1 in 176	1 in 5
TOTAL NO. OF PRIZES	24,620	1 in 143	1 in 4

\$80,000 ALL NEW GAME... ALL NEW IN CASH PRIZES!

the home of THIRTY-ONE Prices

PRICES EFFECTIVE THRU SATURDAY, JAN. 15, 1977. NONE SOLD TO DEALERS. LIMIT RIGHTS RESERVED.

MON.-SAT. 8:00 A.M.-9:00 P.M.
 SUN. 10:00 A.M.-7:00 P.M.

IDEAL'S SHARE AND SAVE ...
Coupon Exchange

Help your neighbor... yourself to greater coupon savings. Bring any manufacturer's coupons you may not wish to use to Ideal and drop them in our Coupon Exchange Box... then help yourself to the coupons you can use that other people have brought in. Take as many as you like to save as much as you can. Share and Save! It's a whole new way to help each other get the benefit of all the savings offered by manufacturers... At the same time, you're getting the benefit of Ideal's low prices. So tell your friends. Help one another and save money!

VALUABLE COUPON

ADMIRATION
GROUND COFFEE.....**\$1.74**
 1-LB. CAN
 LIMIT -1 WITH COUPON...OFFER EXPIRES SAT., JAN. 15, 1977.

VALUABLE COUPON

TIDE.....**\$1.09**
 LAUNDRY DETERGENT..... 4-OZ. BOX
 LIMIT-1 WITH COUPON...OFFER EXPIRES SAT., JAN. 15, 1977.

VALUABLE COUPON

DAWN.....**\$1.16**
 LIQUID DISH DETERGENT..... 32-OZ. BTL.
 LIMIT-1 WITH COUPON... OFFER EXPIRES SAT., JAN. 15, 1977

NORTHERN...ASSORTED COLORS
Bath Tissue.....**72¢**
 4-ROLL PACKAGE

NORTHERN ASSORTED
Napkins.....**61¢**
 PKG. OF 140

BRAWNY
Paper Towels.....**52¢**
 JUMBO PACKAGE

KEEBLER
ZESTA SALTINES.....**52¢**
 LIMIT-1 WITH \$5.00 OR MORE PURCHASE. 1-LB. BOX

BETTY CROCKER LAYER
CAKE MIXES.....**47¢**
 ALL FLAVORS 18 1/2-OZ. BOX

CAMELOT...HALVES OR SLICED YELLOW
CLING PEACHES.....**47¢**
 29-OZ. CAN

CAMELOT
Tomato Sauce.....**89¢**
 6 8-OZ. CANS

CAMELOT
Fruit Cocktail.....**37¢**
 18-OZ. CAN

HEINZ
Tomato Ketchup.....**68¢**
 36-OZ. BTL.

CAMELOT CHUNK, OR
Sliced Pineapple.....**\$1.00**
 IN HEAVY SYRUP 21-OZ. CANS

RAGU
Spaghetti Sauce.....**\$1.19**
 WITH MEAT 32-OZ. JAR

MEADOWDALE CUT
Green Beans.....**51¢**
 16-OZ. CANS

CAMELOT CREAM OR KERNEL
Golden Corn.....**22¢**
 16-OZ. CAN

MEADOWDALE WHITE OR
Golden Hominy.....**25¢**
 CAMELOT WHOLE OR SLICED

New Potatoes.....**29¢**

JIF...CREAMY OR CRUNCHY
Peanut Butter.....**88¢**
 18-OZ. JAR

PURINA...VARIETY MENU
Cat Food.....**\$1.00**
 5 6 1/2-OZ. CANS

CHUN KING...DIVIDER PACK
Chow Mein.....**\$1.39**
 ALL FLAVORS 43-OZ. PKG.

CHUN KING
Skillet Dinners.....**\$1.35**
 CHUN KING 1-LOZ. CAN

CHUN KING
Chow Mein Noodles.....**43¢**
 CHUN KING 14-OZ. CAN

CHUN KING
Bean Sprouts.....**43¢**
 14-OZ. CAN

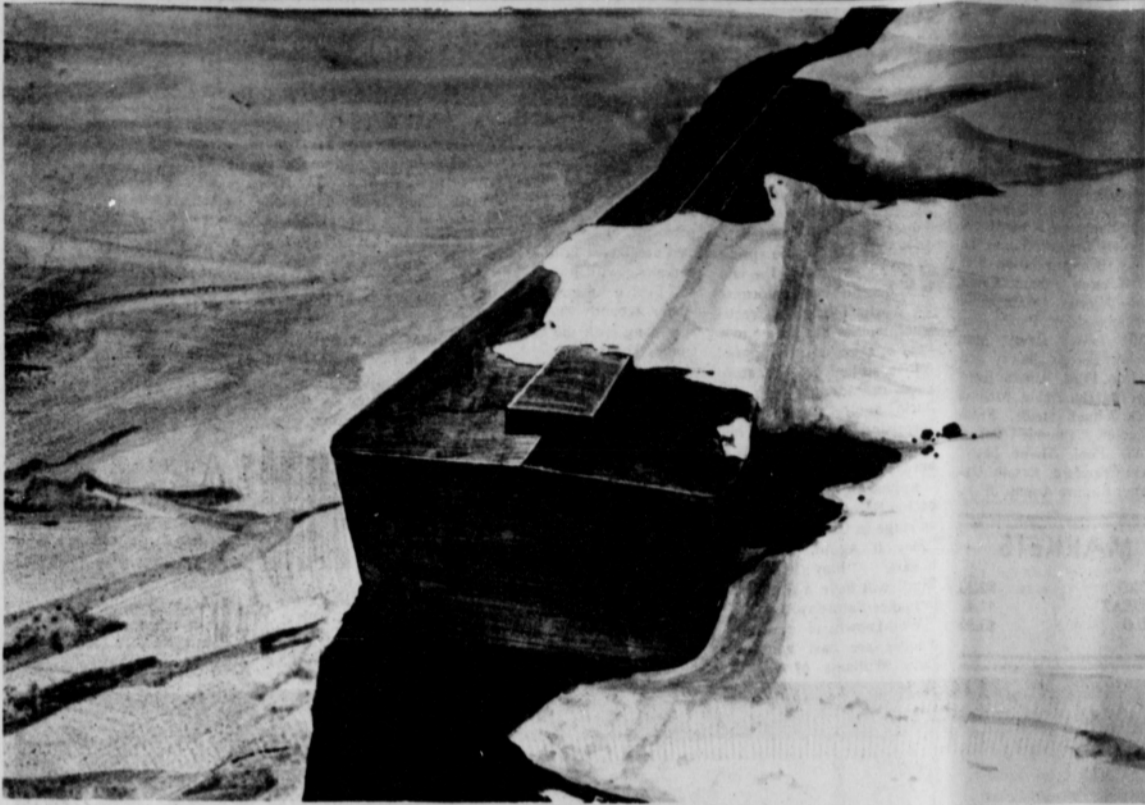
FRESH FROM NATURE

We have the gift you need to give:

- Food Supplements
- Beauty Aids
- Cleaning Products

THINK GOOD HEALTH see or call

Dorothymae Groves
 14 So. Haney
 Spearman, Texas
 806-659-3027
 Wholesale or Retail



This drawing by Elfred Lee is based on eyewitness sightings of Noah's Ark on Mt. Ararat. The drawing is believed to be an accurate depiction of what Noah's Ark really looked like.

In Search Of Noah's Ark" Will Show Here

Sun Classic Pictures' "In Search of Noah's Ark" starts at the Lyric Theatre in Spearman on January 19-20. The feature film explores the ancient legend of Noah

and examines evidence supporting the Ark's existence today atop Mt. Ararat in Eastern Turkey. The film, produced by Charles E. Sellier, Jr., directed by James L. Conway is another in a series of

motion pictures designed to explore unresolved mysteries of the world.

Previous films in the series have been "Chariots of the Gods", "The Outer Space Connection" and "The Mysterious Monsters". The screenplay which was written by producer Sellier and director Conway features the recently filmed rediscovery of the Ark by an expedition.

The picture is based on the book "In Search of Noah's Ark" which was co-authored by Ark scholar David Balsiger and producer Sellier.

News For Veterans

More than half of the 1.2 million annual income questionnaires mailed with Veterans Administration pension checks November 1 have been returned. Jack Coker, VA Regional Director, said today. The remaining 500,000 should have been received by the VA before January 1, if pension benefits are to be continued.

The questionnaires are required each year to determine continued eligibility for VA pensions, which are based on financial need. More than 2.7 million veterans and survivors are on the VA pension rolls.

Those who failed to return the questionnaire by January 1, will, in lieu of receiving their January check on February 1, receive a letter from the VA explaining why their pension payments have been suspended.

Pensions are paid to veterans and widows of veterans with non-service-connected disabilities. Amount of the monthly stipend is based on the annual income of the recipient, according to law.

Annual income limitations are govern amounts of dependency and indemnity compensation payments to certain parents of veterans who died of service-connected causes.

Pensioners 72 years of age or older, who have been on the VA rolls for two successive years, are exempt from

filing the annual questionnaire. These persons are required to report income changes as they occur, Coker explained.

Some beneficiaries who ordinarily are exempt from filing will receive questionnaires because of cost-of-living increases in annuities, Coker added.

Complete information on the VA pension program is available from any VA office, veterans county service officer, or veterans organization service officer.

More Insurance In Force Locally

Residents of Hansford County are more heavily insured today than they have ever been, the latest figures indicate.

Although, thanks to Social Security and private pension plans, they have better financial safeguards than they once had, they have been increasing their overall insurance protection, especially life insurance, in the last few years.

The trend is attributed, in part, to the fact that people are more concerned than usual about the economy and about their future and want to bolster their financial security.

For the same reason, they have been reducing their debt load and have been putting more money aside as

savings. As for life insurance coverage, it has reached an all-time high in Hansford County. The total amount in force is now approximately \$65,050,000.

The basic statistics, for the nation as a whole and for each of the states, come from the Department of Commerce and the American Council of Life Insurance.

They show that the bulk of Americans have built for themselves in the form of life insurance has grown to an enormous \$2,140 billion.

Of this amount, some \$120.1 billion is on the lives of State of Texas residents. In 1970, by way of comparison, it was \$72.8 billion.

And this, it is noted, is exclusive of some insurance provided by the Federal government for veterans and others.

Just how much does this boil down to at the individual family level? The findings are that the average family in the state carries an amount of insurance that is equal to 24.2 months of its net earnings, after taxes.

In Hansford County, based upon this yardstick and upon the average net income per family locally, the amount of life insurance in force in the area is close to \$31,340 per family.

This tops the \$28,100 per family elsewhere in the United States and the \$28,200 in the State of Texas. Currently, the reports show, more than two out of every three people in the country have some form of insurance. Ordinary life insurance is the type most widely held. Group insurance, which is usually job-connected, is in second place.

Arbor Day

Coming Up

COLLEGE STATION - Arbor Day coming up Jan. 21 signals the time for Texans to beautify home landscapes and communities by planting trees.

"Trees have long been appreciated for their beauty and by-products such as lumber and cooling shade. But trees have proved they are worth much more," says Everett Janne, a landscape horticulturist for the Texas Agricultural Extension Service. "Majestic oaks, pecans, cedars, pines and elms are being used to combat noise and air pollution and as protection from erosion."

"Our ancestors realized the permanent beauty of trees and their value to each coming generation. Such a thought should be kept in mind when planting a tree this Arbor Day," says the Texas A&M University System specialist.

The tree to be planted should be selected for the climate and soil of the area, emphasizes Janne.

"Arbor Day comes at prime planting time for trees, when cool, moist soil allows roots to become established before top growth begins. This enhances the chances of successful permanent plantings of oak, cedar, bald cypress, Deodar cedar and similar species," adds the horticulturist.

Ninety percent of the 20 million Americans with arthritis will fall victims to the peddlers of quack "cures" at one time or another in their lives, according to The Arthritis Foundation. Arthritis sufferers spend more than \$485 million a year on worthless "remedies" and "treatments."

FARM-FRESH BOX-O CHICKEN
CONTAINS: 1-BREAST QUARTERS, 1-LEG QUARTERS, 2-WINGS, 2-GIBLETS...
3 TO 4-LB. AVG.
39¢ LB.

RIBS ATTACHED Fryer Breasts... **79¢ LB.**
FRESH FRYER DRUMSTICKS OR Fryer Thighs... **69¢ LB.**
GORTON'S Fish n' Fries... **\$1.99 3-LB. PKG.**
GORTON'S Fish Cakes... **\$1.29 2-DOZ. PKG.**

SHANK PORTION...FULLY COOKED SMOKED HAMS
7 TO 9-LB. AVERAGE
68¢ LB.

RUMP PORTION...FULLY COOKED 3 TO 4-LB. AVG. Smoked Hams... **78¢ LB.**
BAR-S Canned Hams... FULLY COOKED... **5-LB. CAN**

MEADOWDALE SLICED BACON
HICKORY SMOKED
99¢ 1-LB. PKG.

MEADOWDALE HICKORY SMOKED Sliced Bacon... **\$1.99 3-LB. PKG.**
BAR-S Canned Hams... FULLY COOKED... **5-LB. CAN**

FRESH ... ARM SHOULDER PORK PORK ROAST
WHOLE... 6 TO 8-LB. AVERAGE
65¢ LB.

FRESH... PORK SHOULDER ARM Pork Roast... **79¢ LB.**
FULLY COOKED... **5-LB. CAN**

PRIZES UP TO \$1,000!
IDEAL FOOD STORES

FAIRMONT COUNTRY SIDE VANILLA **ICE CREAM**... **\$1.71 GAL.**

FAIRMONT TWIN POP, FUDGE BAR OR **Ice Milk Bars**... **87¢ PKG. OF 12**

FAIRMONT LO-FAT **Cottage Cheese**... **91¢ 24-OZ. CTN.**

THRIFT DAIRY FOODS **Medium Eggs**... **83¢ DOZEN**

KRAFT **Miracle Bowl Margarine**... **54¢ 1-LB. TUB**

CAMELOT GRADE A **Large Eggs**... **89¢ DOZEN**

FAIRMONT **Yogurt**... **65¢ 2 4-OZ. CTNS.**

CAMELOT **Large Eggs**... **89¢ DOZEN**

CAMELOT **Buttermilk**... **33¢ QUART CARTON**

KRAFT... ALL FLAVORS **Cheese Spread**... **97¢ 2 4-OZ. JARS**

KRAFT SLICED HALF MOON **Cheddar Cheese**... **99¢ 16-OZ. PKG.**

PATIO **Mexican Dinners**... **46¢ 12-OZ. PKG.**

THRIFT FROZEN FOODS **Orange Juice**... **48¢ 16-OZ. CAN**

BANQUET...ALL VARIETIES **Buffet Suppers**... **\$1.28 5-LB. PKG.**

BANQUET...APPLE OR PEACH **Fruit Pies**... **58¢ 16-OZ. PKG.**

MEADOWDALE FROZEN FLORIDA **Orange Juice**... **48¢ 16-OZ. CAN**

THRIFT HEALTH & BEAUTY **Baby Shampoo**... **69¢ 16-OZ. BTL.**

REGULAR OR MINT **Crest Toothpaste**... **79¢ 3-OZ. TUBE**
SPRAY **Secret Deodorant**... **79¢ 4-OZ. CAN**

FLORIDA **Orange Juice**... **59¢ QT. BTL.**
HARDIN'S **Cider**... **\$1.49 1/2-GAL. JUG**

WE GLADLY ACCEPT U.S.D.A. FOOD STAMPS
SHOP IDEAL FOR SUPERLATIVE SAVINGS, 7-DAYS A WEEK ... WE WELCOME FOOD STAMP CUSTOMERS.

The Ideal Place to save on Picture-Perfect Fresh Produce!

VINE-RIPENED Tomatoes... **39¢ LB.**

RUBY RED Grapefruit... **4 FOR \$1 LARGE SIZE**

TEXAS Juice Oranges... **5 1-LB. BAG 69¢**

RED, EMPEROR Grapes... **49¢ LB.**

ROASTED Peanuts... **69¢ LB. BAG**

FLORIDA Orange Juice... **59¢ QT. BTL.**

HARDIN'S Cider... **\$1.49 1/2-GAL. JUG**



Care Of Poinsettias

COLLEGE STATION - That poinsettia plant you received for Christmas can be brought into flower next Christmas season with a little luck and plant of tender loving care.

"If you enjoy working with plants and can be satisfied with a poinsettia plant of somewhat less quality than the one you received, then the attempt to produce an attractive poinsettia for next Christmas can be rewarding," says Everett Janne.

The landscape horticulturist with the Texas Agricultural Extension Service suggests that once the colorful bracts are no longer attracting watering should be gradually reduced until the soil is dry. Supply just enough water to prevent the stems from shriveling. Then store the dormant plant in a cool, well ventilated place at 60 degrees F. or above.

About mid-April, cut the stems back to 6 inches above the ground and repot the plant into a container that is 1 to 2 inches larger in diameter than the original pot. A good potting mix has two parts soil, one part peat moss, and one part perlite, by volume.

Janne advises watering the plant thoroughly and placing it in a sunny window where the temperature ranges between 70 to 75 degrees F. When new growth begins, fertilize the poinsettia every two weeks with a water soluble, complete fertilizer. Use the rate recommended for pot plants as shown on the fertilizer label.

"After the danger of frost is past, move the plant outdoors where it will receive moderate shade in mid-afternoon. As growth develops, cut or pinch back the top, leaving three or four leaves on each shoot. Repeat the pinching each time the plant sends out new shoots until mid-August," explains Janne.

"Bring the plant indoors before any danger of frost and once again place it near a sunny window where the temperature will remain between 65 to 70 degrees F. Continue watering and fertilizing but take care not to overwater," cautions the horticulturist. "As the plant puts on new growth, it will require additional water."

To have the plant in full bloom by Christmas, it must be kept in complete darkness

from 5 p.m. to 8 a.m. starting the first week in October and continuing until Thanksgiving. Flowering will be delayed if the plant receives any light during these hours. This is because the poinsettia will set flower buds about 10 weeks after daylight time drops to 11 hours or less per day.

However, in the daytime the plant must be near a sunny window for maximum growth and development of bracts and flowers. Fertilizer applications should continue until mid-December, then the amount should be reduced one-half.

"The greatest mistake most people make in caring for poinsettias is not providing enough sunlight at the right time, watering incorrectly and not cutting back the stems at the proper time," notes Janne.

Square Dance Lessons Set

Spearman Square Dance Club will start a new series of lessons beginning Wednesday, January 19, at 8 p.m. in the County Barn.

Anyone interested in taking lessons or needs information may call Jerry Hayes, 3643 or Jerry Holton, 3573.

United Presbyterian Church News

There is a Sunday Church School class for every age group every Sunday at 9:45 a.m. with a fascinating Bible lesson.

"Adjusting My Schedule" will be the subject of Pastor Ed Freeman's children's sermon and "The Glory of Jesus" will be the subject of his adult sermon at the service for the public worship of God at 11:00 a.m. on Sunday, January 16.

Presbyterian Women will meet at the church Wednesday, January 19, at 9:30 a.m. Mid-week Bible study is Wednesday, January 19 at 7:30 p.m.

Choir practice is Wednesday, January 19 at 8:30 p.m. A warm Christian welcome awaits anyone who attends any of these services or activities of the First Presbyterian Church.

Happy Birthday

Happy Birthday wishes go to Andy Francis, Alberto Rosalez, Carolyn Cummings, S. B. Sheets, Silvia Holgin, Josh Zschiesche, Alta Fisher, Lois Shieldknight, Emma Lou Collins, Denise Ware, Bob Driscoll, Allen Mires, Wilma Snow, Alvaro Perez, Ronnie Antalek, Teresa Valines, Alicia Mahanay, Michael Rodriguez, Rev. Archie Burress, Tina Brodgon, Haley Shieldknight, Todd Kuykendall.

Extended congratulations also go to Steve George, Eric Brown, Melissa Robertson, Doug Steele, Jerry Pat Davis, Toni Archer, Dori Anderson, Francis Biles, Mr. Thomas Etter, Jana Buchanan, Kim Vera, Becky Madison, Esperansa Espinoza, Shari Vernon, Nancy Ivey, Kimberly Jenkins, Kelli Sue Crawford, Daphne Fisher, Felix Sandeval, Steve Reed, Fred Van Buskirk, Howard

H. Goodrich, Clifton W. Morrison, Irvin Davis, Mike Pierce, Jeff Spencer, Bob Short, Rosa Casas, Candy Thoreson, Nancy Rodriguez, Larry Evans, Curtiss Davis, Zane Newton.

Best wishes also go to Donna Thomas, Barbara Collier, Rosalinda Reyes, Louis Rodriguez, Terry Schneider, Lupe Espinoza, Steve Moore, Carolyn Gilbert, James Lemons, Brandon Sutton, Jimmy Kenney, Johnnie Eaton, Stan Freriks, Willa Faye Creamer, J. W. Pipkin, Teri Witt, Travis Davis, Matt Archer, Leroy Callaway, Jerry Don Ford, Anissa Jerverson, Marsha Pipkin, Melissa Beck Chuck Steele, Brent Wheeler, Tammie Baker, Lenny Pool, Monte Lesly, Vicki Crawford, Rosalie Osborne, Ramiro Arjona, Jr..

MARKETS

Table with 2 columns: Commodity and Price. Includes CORN, WHEAT, and MILO.

Dinner Theater To Open

Opening night is set to start the laughter rolling on Tuesday, Jan. 18. "A Thousand Clowns" will continue to play on Country Squire stage through mid-February.

The Gardner comedy had its first premiere at the Eugene O'Neill Theatre in New York City in the spring of 1962. Since then the tale of a cheerful, non-conformist uncle who inherits a precocious nephew has played to a bevy of cross-country appreciative audiences. Theatergoers can identify with the uncle as he bumps into surprising perplexities on his road to "living the life he's always wanted".

Appearing in the cast will be Joe Barone who has been on stage in Country Squire's "Play It Again, Sam" as Bogart. "Play It Again, Sam" will have a final performance Saturday, Jan. 15. Well-known to area audiences are cast members Jerry Williams of Canyon

who for many years has played the comedy role of Tucker Yeldell in "Texas"; and Bill Sexton, regularly heard on KGNC Radio and who is a frequent guest on area programs. Outstanding performers who complete the cast are David Pitts of Canyon along with Rich Roberts and Evelyn Andrews both of whom recently have been appearing with the Gaslight Dinner Theatres.

Buffet food service is available 6:30 - 8 p.m., followed by pre-show music by Country Rogues. Show time for "A Thousand Clowns" is 8:30 p.m. Prices are \$8.50 Tuesday through Thursday; \$9.50 Friday and Saturday. Special price for the Tuesday Amarillo premiere is \$7.50 with that price in effect for the following Wednesday and Thursday, Jan. 19-20. Country Squire reservations are advised since seating is limited.

Senior Citizens Activities

All Hansford County Senior Citizens who are Ninety years or older will be specially honored at a "Gay Nineties Club" Party on Sunday, January 16, from 3:00 to 4:30 p.m. at the LaCasita Room at the Gruver State Bank in Gruver.

Golden Spread Center will have a game evening on Tuesday, January 18 at 7:00 p.m. at the Home Demonstration Clubroom. Golden Spread Center is for all citizens of Hansford County 55 years of age or older without discrimination as to race, creed, sex, economic condition, or ethnic background.

Arts & Crafts Guild News

The Arts & Craft Guild met Friday January 7 in the home of Jewel Turner.

Attending and enjoying delicious refreshments were Mmes. Georgia Holt, Athalee Traylor, Lemmie Russell, Grace Lyon, Deta Blodgett, Annie Allen and Margaret Gibner.

The next meeting will be January 14 in the home of Annie Allen.

Shower To Honor Cooks

You are cordially invited to attend a wedding shower honoring Mr. and Mrs. Terry Cook (nee Kay Rex) on Friday, January 14, at the Home Demonstration Club Room, at 7:30 p.m. Hostessing the shower will be Mesdames: Pat Randall, Judy Gordon, Rita Reed, Jean Byrd, Fern Porter, Gladys Dunaway, Avo Tope, Louise Hunt, Jody Robertson, Peggy Robinson, Joyce Byers, Brenda Russell, Joan Gaither and Dorothy Welch.

Form 44 (State) (3-74) Consolidated Report of Condition of First State Bank of Spearman, Hansford, Texas 79081 at the close of business on December 31, 1976. State Bank No. 1107 Federal Reserve District No. 11

Balance Sheet table with columns for Assets, Liabilities, and Equity Capital. Includes items like Cash, U.S. Treasury securities, Demand deposits, and Total Assets/Equity Capital.

Memoranda table with 2 columns: Item and Amount. Includes items like Average for 15 or 30 calendar days ending with call date, Cash and due from banks, Federal funds sold, etc.

Freeman Barkley, Vice President & Cashier of the above-named bank do solemnly [SWEAR] [AFFIRM] that this report of condition (including the information on the reverse side hereof) is true and correct, to the best of my knowledge and belief.

Correct-Attest: Freeman Barkley, C. A. Gibner, Lynn Hart, Gene Cudd. State of Texas, County of Hansford, Sworn to and subscribed before me this 6th day of January, 1977. Felma B. Evans, Notary Public.

Advertisement for P-A-G SEED. Includes 'SAVE UP TO 10%!', '5% CASH REBATE', '5% CASH DISCOUNT', and contact information for Bobby Faver in Dalhart, Texas.



A kiss for the queen, as Steele kisses queen Carla Harper.

Spearman B teams win tourney

The Spearman Lynxettes "B" basketball team brought home the first-place trophy from the Sanford-Fritch "B" Team Tournament this past weekend, by defeating Panhandle 44 to 36.

The girls started the tournament by meeting Phillips and defeating them 60 to 53. Leading the Lynxettes in scoring was Connie Vernon with 25 points and Connie Shields came up with 19 points in this first game. The Lynxettes "B's" then played Sanford-Fritch, winning this game by a score of 48 to 42. Connie Vernon was again high scorer in this game with 17 points, followed with Tammy Ford with 12 points and Connie Shields with 11. Valerie Hagerman did a fine job by scoring 8 points in this game.

These first two wins advanced the Lynxettes "B's" to the finals with Panhandle, where Connie Shields did a great job in scoring 22 points, aided by Connie Vernon with 10 points and Tammy Ford with 7. The final score was 44 to 36 and

another big win for the Spearman Lynxettes "B" team.

Our congratulations to all the girls and to Coach Hamilton on their wins in the Sanford-Fritch tourney.

The Spearman Lynx "B" Boys Basketball team won the Sanford-Fritch Basketball Tournament this past weekend, by beating Stinnett 68 to 47. Stinnett had beaten the Lynx "B" team earlier in the season by 14 points, so this victory was doubly sweet.

The first game for the Lynx in the tournament was against Phillips, with Spearman winning it by 56 to 46. Tommy Barber scored 16 points and Pete Garcia scored 14 points. Also outstanding was the rebounding of James Whitaker and Hector Garcia came off the bench late in the game to score 8 points.

The second game of the tourney for the Lynx found them defeating Sanford-Fritch 53 to 50. Again Tommy Barber has high

scorer with 17 points and Pete Garcia scored 10. David Ortega and Billy Snider were outstanding on defense.

In the championship game which the Lynx won handily by 21 points, Tommy Barber scored 16 points and Allan Shields scored 15. Coach Tomlin also highly praised the passing and defensive play of Mark Franklin and the rebounding of Allan Shields and Brent Connelly.

Our congratulations to Coach Tomlin and the entire Lynx "B" Boys for their outstanding play during this tournament.

Consumer

Market Report

COLLEGE STATION - After-holiday grocery buying reflects several "specials" in meat and produce departments of most stores across Texas.

Meat features are spotlighting fryer chickens and turkey, according to Mrs. Gwendolyn Clyatt, consumer marketing information specialist with the Texas Agricultural Extension Service. The Texas A&M University System.

"As economical pork cuts, consider Boston butt roast, end chops, shoulder steaks and liver."

"For beef economy, look for specials on chuck roasts and steaks, round steaks, ground beef and liver," she advised.

Along grocery store aisles, consumers can find specials on canned vegetables, which are in heavy supply—including lima beans, green peas,

sweet corn, carrots and beets.

Also, in frozen food sections, look for lower prices on orange juice and a variety of vegetables.

Fresh fruit and vegetables in best supply at the most economical prices include apples-by-the-bag, bananas,

oranges, grapefruit, tangerines and tangelos—along with cabbage, carrots and potatoes, as well as dry yellow onions, turnips, rutabagas, and hard-shell squash.

CONSUMER WATCH-WORDS: In buying fryers, it's more economical to buy the whole bird and cut it up

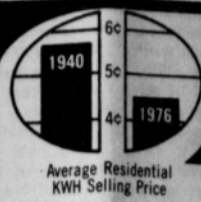
at home—if all parts are used.

Farmers Tax Deadline

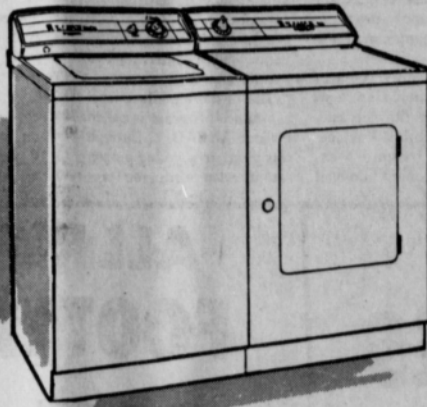
Farmers who have not filed their 1976 declaration of estimated Federal income tax must file and pay that tax

by Monday, January 17. The sole exception to this rule is if they file their income tax return and pay the total tax due by March 1, the Internal Revenue Service said today. Farmers are defined as those persons who earned at

least two-thirds of their 1976 gross income from farming. IRS Publications 225, "Farmer's Tax Guide", and 505, "Tax Withholding and Declaration of Estimated Tax", provide additional information and are available free at local IRS offices.



Honestly... CAN YOU FIND A BETTER BUY?



Washer/Dryer
LESS THAN 14¢ Per Day
18% LESS than the same amount of electricity would have cost in 1940!

It costs approximately 14¢ per day for the electricity to wash and dry your clothes. That's less than most of you spend on a newspaper! Considering the fact that with washers and dryers you can get your clothes clean in any weather with relative ease and efficiency, 14¢ per day is a real bargain! Electricity affords many comforts and conveniences each day . . . and if you'll add them all up, you'll quickly see that electricity is still one of the best buys around!

COMMUNITY PUBLIC SERVICE
Your Electric Light & Power Company



CROSSWALK PATROL SCHEDULE

MONDAY
Morn.-Linda Beeson - After.-Betty Morrison
TUESDAY
Morn.-Coy Kingsley - After.-Vickie Hargrove
Wednesday
Morn.-Helen Martin - After.-Shirley Messer
THURSDAY
Morn.-Deb Gilbreath - After.-Frances Garrison
FRIDAY
Morn.-Sharon Swan - After.-Charlotte Jackson

CASH

If you don't have the LONG GREEN to pay for your plumbing service jobs, Don't call us

We have had our phone cut-off and we wanted to buy a new Cadillac, and move into one of those new \$40,000 homes. But we can't even afford to pay the phone company. Come see us if you have the cash to pay for your work!

Jerry Bowlings
HANDY MAN SERVICE
NO PHONE, SO COME BY THE HOUSE
129 N. Hoskins Spearman, Tex.

OPEN 24 HOURS

ALLSUP'S CONVENIENCE STORES

OPEN 24 HOURS

WE'VE GOT ROUND-THE-CLOCK BARGAINS FOR YOU!



PRICES GOOD THURSDAY THRU SATURDAY, JANUARY 13-15, 1977

HOT COOKED FOODS

- BBQ CHICKEN
- HOT LINKS
- BURRITOS
- GERMAN SAUSAGE
- BBQ RIBS
- MILD LINKS
- CORN DOGS
- BULK BBQ BEEF
- BBQ BEEF SANDWICHES



RATH PURE PORK SAUSAGE

16-OZ. ROLL **39¢**

BORDEN'S ICE CREAM

1/2 GAL. ROUND CARTON **99¢**



BORDEN'S CHOCOLATE MILK QT. **49¢**

WILSON'S BACON 12oz. **89¢**

KRAFT WRAPPLES **79¢**

GRANDMA'S COOKIES 5 Pkgs. **\$1**

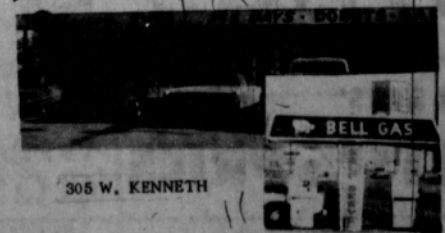
SUNSHINE VANILLA WAFERS 11oz. **59¢**

POTATO CHIPS PRINGLES Pkg. **39¢**



SHURFRESH SLICED BOLOGNA 12 OZ. PKG. **59¢**

SHOP THE FRIENDLY, CONVENIENT ALLSUP'S STORE NEAR YOU!



305 W. KENNETH

305 W. KENNETH

Best Chance Now For Screwworm Eradication

If everyone does his part this winter, stockmen will have the best chance ever to eliminate screwworms from Texas ranges, says Dr. M. E. (Cotton) Meadows, Jr., director of the Southwest Screwworm Eradication Program.

"Cooler than normal weather in November and December aided the Eradication effort. Mexico produced sterile flies are being released in that country south of the Texas border," says the Animal and Plant Health Inspection Service (APHIS) veterinarian.

Meadows says the 171 laboratory confirmed December cases from Texas ranges brought the year's case total to 29,241. This is exceeded only by 90,980 cases in 1972, and 49,484 in 1962--year the program started.

Only 20 cases were tallied

the last half of December. Armando Cantu collected the Starr County case on E. W. Schader's Cenizo Ranch northwest of Roma. Mrs. Frank Smith of Pearsall submitted a screwworm case from Frio County. The last case identified in 1976 was collected by Dan Butler on the H. Yturria Ranch in Willacy Co.

The other 17 cases came from the Cage Ranch in Brooks County. They were submitted by F. Trevino, A. Trevino, A. Garza, P. Almenarez, and Pres. Cage.

Screwworm are larvae of the screwworm fly. Adult females of this species deposit eggs on wounds in warm blooded animals. As eggs hatch, the tiny maggots enter the wound to feed on living flesh.

The APHIS Program is based on the fact female screwworm flies mate only

once in their lifetimes. Millions of artificially reared and sexually sterilized screwworm flies are released among known wild populations.

A fertile female fly will produce eggs after mating with a sterile male, but the eggs won't hatch. When enough sterile to fertile matings occur eradication is achieved.

Army Educational Assistance

So, you didn't enter the Army in time to be eligible for the educational benefits under the G.I. Bill. The Army still has two educational assistance programs for its young men and women.

"Today's Army recognizes that young people are now more aware of the necessity to obtain additional education or skill training," explained Lieutenant Colonel

Charles Bell, Commander of the U.S. Army Dallas District Recruiting Command.

A total of 2.8 million persons trained under the G. I. Bill during the fiscal year ending June 30, 1976. And more than 6.5 million veterans and service personnel have received educational benefits during the 10-year life of the G. I. Bill, which expired December 31, 1976.

This means that 63.4 percent of the Vietnam-era veterans participated in the program compared to 43.4 percent of the Korean War vets and 50.5 percent of the World War II vets.

"The Army still has available two important educational programs which provide financial assistance," continued LTC Bell. "One program is designed for utilization while in the Army and one for after."

The in-service educational assistance program is called Project AHEAD. Through this program a young person can develop a degree pro-

gram with a college or vocational-technical school and enlist in the Army at the same time. Today more than 1400 colleges and universities are voluntarily participating in this cooperative education program, tying Army education opportunities with degree requirements at the participating colleges.

Through this program a soldier can earn college or vocational-technical credits with the Army paying up to 75 percent of the tuition.

It's a great way to get a winning start on a degree program," explained LTC Bell. "Last year more than 90,000 Army men and women completed college or vocational-technical courses under the 75 percent tuition assistance program."

"And, under the new Educational Assistance Program," he continued, "the young man or woman also can accumulate a substantial nest-egg to use for educational purposes if he decides to leave the Army."

The individual can elect to save from \$50 to \$75 a month during active Army service for an educational future--and the contribution will be matched by the VA two dollars for every one.

"This means the young person saving the maximum can come out of the Army with as much as \$8,100 in an educational fund," said LTC Bell.

For more information on the Army's educational programs, young men and women are invited to call their local Army representatives. They are listed in the yellow pages under Recruiting.

"OUTLOOK" TALKS AT BANKERS SCHOOL--The outlook for various agricultural commodities will be a key part of discussions during the 25th Texas Farm and Ranch Credit School for Commercial Bankers, Feb. 7-9, at Texas A&M University. "Outlook" information will be presented on live-

stock, grain, cotton and the money market, says an economist with the Texas Agricultural Extension Service. Other sessions will deal with various types of agricultural loans and banker-customer relationships. An in-depth Agricultural Credit Analysis Workshop and a Commodity Hedging Session will be held concurrently the two days after the school.

ENJOYING ELECTRONICS Tips To Help You

The Electronic Industries Association recommends that you unplug your TV set and disconnect the antenna if you plan on going off and leaving it for any length of time.



Before you buy a calculator for yourself or as a gift, consider what it will be used for. You won't need logarithms in the supermarket. Also, see if the read-out and push buttons are the right size for your fingers and eyes.

Make certain that outdoor TV antennas and lead-in wires are kept well away from power lines. The antenna mast should be permanently grounded and a lightning arrester installed in the lead-in circuit.

When you're sitting down to tea alone, why not steep yourself in elegance?

Consider making an individual serving of your favorite tea in a tempting little teapot to enrich moments spent alone. The cup turned upside down becomes an unusual lid in this compact tea serving created by famous British designer Martin Hunt for Bing and Grondahl, the Danish porcelain makers.

It's something different brewing on the tea scene. "A good spectator also creates." Swiss Proverb

<p>ALL ELECTRICAL APPLIANCES 25% OFF</p>	<p>ALL RUBBER FOOTWEAR 25% OFF</p>	<p>Everything Goes STORE FIXTURES FOR SALE! ALL OTHER ITEMS IN THE STORE, TOO NUMEROUS TO MENTION REDUCED AT LEAST 10%</p>
<p>FISHING REELS REDUCED 25% ALL OTHER FISHING LURES & TACKLE 50% OFF</p>	<p>Rings, Necklaces, Earrings and Cuff Links 60% OFF</p>	
<p>ZEREX or PRESTONE ANTI-FREEZE GALLON \$3.39</p>	<p>All Radios, Stereos, 8-Track Players & Record Players REDUCED 25%</p>	<p>GLASSWARE 50% OFF</p>
<p>ALL OIL BUY 4 QUARTS GET ONE FREE</p>	<p>ALL TOYS & GAMES 50% OFF</p>	<p>LP'S REG. \$6⁹⁸ \$3⁹⁹</p> <p>8-TRACK TAPES REG. \$7⁹⁸ \$4⁹⁹</p> <p>ALL other LP'S and TAPES REDUCED ACCORDINGLY</p>
<p>BIG G DOG FOOD 10¢ CAN WHILE IT LAST</p>	<p>SLIPPER SOX REG. \$2¹⁹ 97¢</p>	
<p>ALL LADIES BRAS EACH 47¢</p>	<p>LADIES HEAD SCARFS 4 FOR 97¢</p>	

Tuffies Trash Bags REG. 99¢ **59¢** REG. \$1¹⁹ **73¢** REG. \$4⁹⁹ **\$2⁹⁹**

<p>MEN' & BOYS' BELTS 1/2 PRICE</p>	<p>TOWELS & WASH CLOTHS 1/3 OFF</p>	<p>ALL WATCHES 20% OFF</p>
<p>SPEIDEL ID BRACELETS 20% OFF</p>	<p>Playing Cards 19¢</p>	<p>FURNACE FILTERS 39¢</p>

WHERE YOU ALWAYS BUY THE BEST FOR...

GIBSON'S DISCOUNT CENTER

317 Main Spearman Open Weekdays 9 A.M. - 6 P.M.

Medicaid Program To Be Evaluated

W. Marvin Watson, former Postmaster General and Special Assistant to President Lyndon B. Johnson, will head a state-wide task force to evaluate the Medicaid program in Texas.

Watson, who lives in Daingerfield, will be chairman of the study group that will include representatives of the medical community, business and industry, education, the clergy and government. Governor Dolph Briscoe, a strong advocate of the study, has named his wife, Janey, as a working member of the committee. Lt. Gov. Bill Hobby and House Speaker Bill Clayton will each have a representative on the group.

The study group, officially termed the Task Force for the Evaluation of Medicaid in Texas, was created at the request of the State Board of

Public Welfare. Jamie Clements of Temple, chairman of the Welfare Board, said that a dilemma of grave proportions exists within Medicaid, in that health care costs, like other costs, have more than doubled since 1974. He said the task force will study the program and make recommendations to the Welfare Board as to whether the program can continue to operate at the present elevated cost levels and also remain within the constraints of recently-lowered federal financial participation and apparent Legislative intent to hold the line on State expenditures.

The Medicaid program makes the Texas State Department of Public Welfare the largest provider of health services in the state. The Department has budgeted

\$734 million for medical services for the current fiscal year. The program is funded under a federal-state arrangement.

There are 680,000 Texans eligible for the Medicaid program. They represent the state's aged, blind, and disabled who are needy and low-income, and some are children who are without the support of one parent for whatever reason, and who live under a pre-determined level of income.

Watson, the chairman of the task force, was Johnson's Postmaster General in 1968-69. He is a former petroleum company executive and a graduate of Baylor University where he later taught.

He is a director of the Billy Graham Evangelistic Assn., and a member of the development councils of both Baylor University and Hardin-Simmons University. He is a member of the advisory council of Southwestern Baptist Theological Seminary and chairman of its program to raise \$8 million in development funds by 1980.

Watson is a trustee of Scott and White Memorial Hospital and its Scott, Sherwood and Brindley Foundation. He formerly was executive assistant to the chairman and president of Lone Star Steel.

Born in San Jacinto County, Texas, and a graduate of Huntsville public schools, Watson was granted the honorary degree of Doctor of Humane Letters from Quachita University at Arkadelphia, Ark. in 1968, and an honorary law degree in 1972 from Hardin-Simmons.

He is a Baptist deacon and Sunday School teacher. He served in the U.S. Marines from 1943 to 1946.

Clements said the first meeting of the task force will be held on January 13-14 in Austin.

up last fall's facts and figures.

"Taking the pulse of the Texas tourist industry every three months," said a departmental tourist-watcher, "you'd think we'd spot trends and get a handle on why tourists behave like they do. Like the 'travel thrifty' trend," he explained.

The penny-watching trend was duly noted every quarter since the fall of 1975. Tourists still came, by the droves, but spent less per day. Supporting evidence checked out. In posh hotel rooms, trash baskets were reported stuffed with burger wrappers.

"We had a reasonable theory going," said a state statistician. "Travel dollars just don't go as far as they once did, so travelers were spreading 'em thinner. Then came the fall of '76, and they blew our theory to smithereens. These tourists wheeled into Texas spending money 23 percent faster than they had just three months earlier...bless 'em!"

The typical fall tourist

spent \$21.13 a day in Texas, and he and his traveling companions left \$323.97 in the state during their stay.

"On the other hand," pointed out another tabulator, "fall tourists always seem to spend rather freely. They did in 1975, too."

Sure enough, the tourist watchers' quarterly comparisons show that fall-season visitors to Texas are indeed more generous than those who come in other seasons.

The report just issued by the State Department of Highways and Public Transportation will delight analysts whose joy is reducing even the vagaries of human nature to neat columns of figures. It says that last fall's average auto party from out of state consisted of 2.4 persons who stayed 6.39 days in Texas and drove 1,098 miles. Being only one mile less than the average trip of the previous fall, it gives rise to speculation that fall visitors may always go to the same places.

Other figures have generated some droll speculations

among tourist watchers. For instance, questionnaires give tourists the opportunity to check all usual types of accommodations: hotels, motels, camping, travel trailers or private homes. But consistently, some four to five percent (among thousands) list "other". Where else can one spend the night?

The fact is, tourist watchers don't really know where a big chunk of out-of-staters go in Texas, much less what they do at night. They know that 10 percent went to Dallas last fall, eight percent paid a visit to Houston, three percent headed down to the Valley, etc. But 28 percent reported no single destination, thus being catalogued in the "touring" category.

That makes the tourist watchers beam. "Just think of all those people spending all that money all over Texas," they say. They point out that the tourists' money is earned down in Florida, over in California and up in Illinois. "They bring it to Texas," says the

polsters. "leave it here fresh and green, and then go back home. Isn't that wonderful!"

Economists agree. Tourism is the state's major industry without smokestacks. Its annual receipts rank above those from livestock or farm products and amounted to \$3.5 billion in 1975 from out-of-staters alone. Just what the totals will be for 1976 awaits year-end analysis of data still being received.

In the meantime, the fall-quarter report provides a comprehensive yardstick about seasonal travel habits. It is available from the State Department of Highways and Public Transportation, Travel & Information Division, Austin 78701.



Matthew Brady, the famous Civil War photographer, took over 7,000 photos while traveling with the Union army.

Survey Noted

AUSTIN--Tourists--you just can't figure 'em. So say the professional tourist watchers at the State Department of Highways and Public Transportation after toting

WHERE YOU ALWAYS BUY THE BEST FOR LESS

GIBSON'S

GIBSON'S

DISCOUNT CENTER

317 Main Spearman Open Weekdays 9 A.M. - 6 P.M.

CIGARETTES

ALL BRANDS \$4.79 CTN.

PAMPERS

DAYTIME 30'S

\$1.88

QUITTING BUSINESS

SALE

CANDLES

ENTIRE STOCK 75% OFF

ALL PICTURE FRAMES & PICTURES

1/2 PRICE

Begins

THURSDAY AT 9 A.M.

HEALTH & BEAUTY AIDS

ENTIRE STOCK

REDUCED 20%

HAIR CARE ITEMS

REDUCED 50%

ALL SHIRTS

MEN'S & BOYS'

REDUCED 25%

WALL CLOCKS

ENTIRE STOCK 1/2 PRICE

ALL SHOES & BOOTS

25% OFF

ALL PAINT

25% OFF

ALL TABLE & HANGING LAMPS

75% OFF

BEDSPREADS

ENTIRE STOCK 1/3 OFF

ALL PAPER BACK BOOKS

25% OFF

WHERE YOU ALWAYS BUY THE BEST FOR LESS

GIBSON'S

GIBSON'S

DISCOUNT CENTER

317 Main Spearman Open Weekdays 9 A.M. - 6 P.M.

ALL LADIES' HAND BAGS

REDUCED 75%

NYLONS STOCKING & PANTY HOSE

BUY ONE PAIR AND GET ONE PAIR

FREE

SHEETS AND PILLOW CASES

25% OFF



Crown bearers, Cammy Brown, and Josh Zschiesche, lead Queen Carla Harper, and King Doug Steele, in the Homecoming crowning event held at Spearman high school last week. Queen Carle, and King Steele, will reign over the basketball royalty for 1977.

A REMINDER
The High School Speech Club will meet tonight at the High School at 8:15.

William Porter On Dean's List

WHEATON, Illinois - William C. Porter, a student at Wheaton College has been named to the dean's list for the first quarter of the 1976-77 academic year. He is the son of Mr. and Mrs. R. C. Porter, Route 2, Spearman, Texas. Dean's list honors are earned by students who carry 12 or more hours and average 3.4 grade points (4 is perfect) per quarter. Wheaton college is coeducational Christian liberal arts college located 25 miles west of Chicago.

New 4-H Club Planned

Plans to organize a 4-H project group in arts and crafts are presently being made by Extension Agents Jim Kuykendall and Peggy Marrs.

The first meeting is scheduled for Saturday, January 15, at 2:00 p.m., in the Spearman Show Barn.

Mrs. Nell Patterson will serve as project leader for leather crafts. She will instruct the group on use of tools, materials, and actual completion of a leather project.

Dates, times, and places for future meetings will be established and necessary items for individual purchase will be discussed at the January 15 meeting.

Anyone between the ages 9 and 19 wishing to participate in this activity without regard to race, sex, color, religion, socio-economic level or national origin is encouraged to attend. Mrs. Patterson requests that if you have tools, kits, books, or items you have made previously to please put an identifying mark on them and bring them to this meeting. For more information, contact the County Extension Office at 659-2136, 2030, or 733-2901.

Enroll Your Kindergarten Age Child

The Spearman Elementary School is starting the 1977-78 kindergarten students list. It is important that next years' students be known now in order that they may be given information on the immunizations and other planning which is necessary.

If you have a child or know of any child whose birthdate was prior to September 1, 1972, and who will be 5 years old before or as of Sept. 1, 1977, please complete the form and return it to the Spearman Elementary School, 511 S. Townsend. This should be done before January 20, 1977.

REGISTRATION FORM FOR 1977-78 KINDERGARTEN

Full Name of Child	Parent's names	Address & Phone	Birthdate	Sex

Please check whether the child will be a town student or a bus student. () ()
Town Bus

Please list other younger children below:

Wayland Queens To Meet Delta State

PLAINVIEW, TX. - The five young ladies which made Cleveland, Miss., the capitol of women's basketball, will be in Plainview in less than two weeks.

When they arrive, Saturday, Jan. 22, cage fans will be blessed with the opportunity of viewing what could be one of the biggest collegiate women's basketball encounters in 1977--the battle of the "biggies".

The site--Hutcherson Physical Education Center on the Wayland College campus. The time--8 p.m. The match-up--Delta State's two-time defending national champion Lady Statesmen and Wayland's number-one ranked Flying Queens.

The game sends the Lady Statesmen, winners of 64 of their last 67 games, against the Flying Queens, a long-time women's basketball power but somehow never a national AIAW collegiate champion. The Queens have however captured NWIT and AAU titles. Not only does the game bring together two of the finest teams anywhere, it also carries with it a strong note of reprisal.

Still fresh in the minds of players and fans alike is that last confrontation between the two schools in March, 1976, when the Lucy Harris Company came from behind to take a thrilling 61-60 victory in the semifinals of the AIAW National Tournament in University Park, Pa. A day later, the victors had successfully defended their national title while the Queens settled for third.

But that's all history now; all that remains is the me-

emory that lingers--and the fact that the trophy sits in Cleveland, Miss., and not Plainview, Texas.

The team that visits Hutcherson Center one week from Saturday will be the same one that put together back-to-back national titles and compiled a won-loss record of 61-1 in the process. Leading the Delta charge is Miss Harris, who also answers to the name of "Miss Everything".

The 6-3 Mississippi star was not only the leader for both national title holders, she was also the top scorer and leading rebounder for the U.S. women's basketball team which brought home the silver medal from the Montreal Olympics last summer.

But the young lady which did more damage to the Flying Queens in that semifinal match just happened to be the smallest girl on the court--and in the entire tournament for that matter. She's 4-11 Debbie Brock, and she saved a total of four games last year with her clutch play.

It was the 85-pound Miss Brock who calmly sank a pair of free throws with just five seconds remaining in the contest to seal the Lady Statesmen's one-point victory. She compounded that with five steals, including two late in the game, and sank a total of three charity tosses in the final 24 seconds. She finished with 17 points, 12 above her season average.

While Delta State will send the same team against the Queens as it did almost 10

months ago, they will face a Wayland crew which superficially appears similar in nature to last year's third place finishers. But close followers say that the teams are as different as night and day.

Leading the Wayland charge against the Lady Statesmen is another pair of All-Americans, senior Leann Shieldknight and junior Brenea Caldwell. Miss Shieldknight is averaging better than eight points per game while shooting 50 per cent from the field, and Miss Caldwell is the team's leading scorer with a 13-point average. Brenea, whom Coach Dean Weese calls the best forward in the country, led the Queens in the semifinal match with 18 points last year and finished the season with 610. With two similar seasons, she could become the team's all-time scoring leader.

Doug Porter On Dean's List

Wheaton, Illinois - Douglas C. Porter, a student at Wheaton College, has been named to the dean's list for the first quarter of the 1976-77 academic year.

He is the son of Mr. and Mrs. R. C. Porter, Route 2, Spearman, Texas.

Dean's list honors are earned by students who carry 12 or more hours and average 3.4 grade points (4 is perfect) per quarter.

Wheaton College is coeducational Christian liberal arts college located 25 miles west of Chicago.

School Cafeteria Menu

THURSDAY, JAN. 13
Cubed Beef & Gravy
Buttered Rice
Green Beans
Carrot Sticks
Strawberry Gelatin
Hot Rolls-Butter Milk
HIGH SCHOOL CHOICE
Chicken & Noodles

FRIDAY, JAN. 14
Hot Dog-Chili Sauce or Pimento Cheese Sandwich
Tater Tots-Catsup
Buttered Corn
Dill Pickle Spears
Birthday Cake
Milk

Texas Tech Registration Set

Registration for the Spring Semester at Texas Tech University will be reduced to two days, 8 a.m. to 5 p.m., Thursday, Jan. 13, and 8 a.m. to 6 p.m., Friday, January 14.

It will be conducted in the Lubbock Municipal Coliseum. D. N. Peterson, interim director of Admissions and Records and Registrar, has asked all academic departments to increase the number of faculty sectionizers necessary to handle the work load, which was previously spread over three days.

Late registration will be conducted the following week from departmental offices and the office of the Registrar, Peterson said. There still is student housing available in most of the residence halls, said Bill Haynes, manager of Residence Halls Operation.

Enrollment for the 1976 Spring Semester was 20,785, up 384 from 1975.

FPC Registration Set

Registration date for all academic classes at Frank Phillips College will be January 13. This includes both day and evening students.

Students interested in the new four-day week schedule which is being offered at the college for the first time should inquire at the registrar's office. The four-day week is available to all freshmen students, including those who wish to transfer from another college.

The new schedule is expected to be a boon to those students who wish to work part-time, or who would like longer weekends.

Classes will begin at 8 a.m. on January 17.

Choir Members Send Out S.O.S.

Members of the high school choir are sending out a S.O.S. for anyone who has white sheets or large cardboard boxes that they may use to take them to the school or call 2584 or 2585 and someone will pick them up.

These items will be used in the high school musical "Once Upon A Mattress" which will be presented on February 19.

October Bond Sales Noted

October sales of Series E and H United States Savings Bonds in Hansford County were reported today by County Bond Chairman C. A. Gibner. Sales for the nine-month period totaled \$65,056 for 72 percent of the 1976 sales goal of \$90,000.

Texas sales during the month amounted to \$21,175,451, while sales for the first nine months of 1976 totaled \$232,326,820 with 85 percent of the yearly sales goal of \$272.4 million achieved.

KBMF RADIO GIFT BOOK

WITH OVER \$300.00

IN GIFTS, SERVICES, FOOD, MERCHANDISE AND ENTERTAINMENT

FOR ONLY \$24.95

LISTEN FOR YOUR PHONE TO RING

"I'll Be Calling You Soon"



OR CALL US FOR FREE HOME DELIVERY

435-5626

WHEN THE KBMF RADIO GIFT BOOK TELEPHONE OPERATORS CALL YOU, YOU WILL BE ENTITLED TO BUY YOUR GIFT BOOK WORTH OVER \$300.00 FOR ONLY \$24.95.

Your KBMF Radio Gift Book has many things for everyone in your family. There are two sections in your gift book. The first section is filled with \$250.00 in merchandise, food and services from participating merchants on a no charge basis. The second section contains \$75.00 food and dinners on a buy-one-get-one basis. The KBMF Radio Gift Book is made possible by the following progressive merchants.

PLAINS RESTAURANT
WRIGHT'S DINER
EVELYN'S BEAUTY SALON
CONSUMERS SALES COMPANY - COOP

SILVER SPUR STEAK HOUSE
C & T AUTOMOTIVE
WOLF CREEK GOLF COURSE
NORTHSIDE "66"

RANGER CERAMIC SHOP
SIMPSON'S SERVICE STATION
SHIRLEY'S CURIO
LEO SHULER PHOTOGRAPHIC STUDIO

J & O CLOTHING
SAIED'S LADIES WEAR
SELECT CARPET COMPANY
KIRBY COMPANY OF PERRYTON

LOUISE'S HY-STYLE
EIGHTH AVENUE DRY CLEANER
HOME TROPICAL FISH
VAN HOESEN SHAMROCK

WE ACCEPT THESE CREDIT CARDS



Accidents Mounting

COLLEGE STATION - A move is under way to put a halt to the mounting farm and ranch accidents that occur in Texas every year--accidents that claim more than 200 lives and cause more than 4,000 disabling injuries.

The effort involves a survey in 42 Texas counties that will be conducted throughout 1977 to determine the causes of farm and ranch accidents. From the information provided, safety education programs will be launched.

Coordinating the Texas Farm and Ranch Accident Study is Dr. Gary S. Nelson, agricultural safety engineer with the Texas Agricultural Extension Service. Providing yeomen service during the year will be some 700 neighbor volunteers who will be interviewing almost 7,000 of the state's 205,000 farm and ranch families.

"We are really concerned about doing something in Texas to reduce the high cost of farm accidents, both in terms of human suffering and property damage as well as associated production losses," points out Nelson. "To set up a firm base from which to operate and reach out with safety programs, we need to know just what is happening in farm and ranch accidents. That's why the survey is so important. It will provide the best information on the nature and extent of accidents--what is happening to whom and why."

Volunteers involved in the study will be contacting farm and ranch families in early January to obtain "base data", such as size and type of operation and equipment used, explains Nelson. These same families will then be contacted every three months to determine if accidents have occurred and to gather all available information on such accidents.

All survey information will be sent to county Extension agents who will in turn send it to Texas A&M University for analysis. Nelson hastens to point out that the information will be completely confidential since only code numbers will be used on the questionnaires. Only the neighbor interview will know which farm and ranch families are participating.

"Due to the seriousness of the accident situation and the fact that the individual information will be kept confidential, we hope that the farm and ranch families contacted will all cooperate to the best of their ability," notes Nelson.

The study is endorsed by the Texas Farm Bureau, Texas Home Demonstration Association, Young Farmers and other groups. Local Farm Bureaus are supplying a significant portion of the volunteer interviewers.

In addition to providing guidelines for farm and ranch accident prevention education, the study may help equipment manufacturers identify and eliminate machine hazards, improve 4-H safety education programs, and reduce insurance costs through reductions in accidents and accident costs. The study may also help prevent bad farm legislation and limit legislation to what is realistic and practical, contends Nelson. The ensuing study has nothing to do with the Occupational Safety and Health Act (OSHA), adds the engineer.

"This study is a project by Texans for Texans", emphasizes Nelson. "It has the potential of saving the lives, limbs and productive talents of Texas farm and ranch families as well as preventing the loss of millions of dollars through equipment damage and production losses."

To Speak At Water Meet

LUBBOCK - U.S. Rep. Jack Hightower will be one of the featured speakers at the 10th Annual Membership Meeting of Water, Inc. The meeting has been set for Saturday, Feb. 19, in Lubbock with more than 300 Water, Inc., members and guests expected for the yearly gathering. Hightower will headline a program that addresses the unique water

problems of the High Plains as Water, Inc., completes a decade of work toward meeting the area's future water needs.

Water, Inc., President J. W. Buchanan of Dumas said the non-profit organization has served the High Plains well during its 10-year life. "Through the efforts of Water, Inc., residents of the High Plains are acutely aware of our problem and are better educated about water needs than most people in other sections of the state."

Water, Inc., is a non-profit organization which seeks alternative water resources for the High Plains area. The organization's public education efforts are supported by donations from more than 2,200 members.

Buchanan said of the annual meeting, "This is the one opportunity for all of our members to gather and show their support for the Water, Inc., cause. With the legislature in session and a revision of the Texas Water Plan likely, it is important for residents of the High Plains to steadfastly exhibit their solid support and unity so that Austin can't help but look favorably upon our needs."

Social Security News

Farmers and crew leaders who hire farm workers have until January 31 to send 1976 wage reports and social security contributions to the Internal Revenue Service, according to Howard L. Weatherly, Branch Manager, Pampa Social Security Office.

A farm worker paid \$150 or more in cash wages by an employer in 1976 is covered by social security according to Weatherly. A worker who did farm work for an employer on 20 or more days during the year--figured on a time basis rather than a piece-meal basis--is also covered even if he is paid less than \$150 during the year.

Employers send in annual wage reports for farm employees on a form available at Internal Revenue Service offices. The form is mailed to farmers and crew leaders who have IRS employer identification numbers.

A farm crew leader is generally considered to be the employer of his crew members if he supplies the workers to the farm, pays them, and is not an employee of the farmer by written agreement.

If none of these requirements is met, either the farmer or the crew leader may be the employer. The person with final control over the crew leader may be the employer.

The social security contribution is 5.85 percent of the employee's covered wages plus a matching amount paid by the employer. The maximum earnings amount that counts for social security--and on which contributions are paid--is \$15,300 for 1976.

An employer must keep a record of farm employees' wages if it's expected they'll be covered by social security. The record must show the workers' names, their correct social security numbers, cash wages paid to them, and social security deductions from their pay.

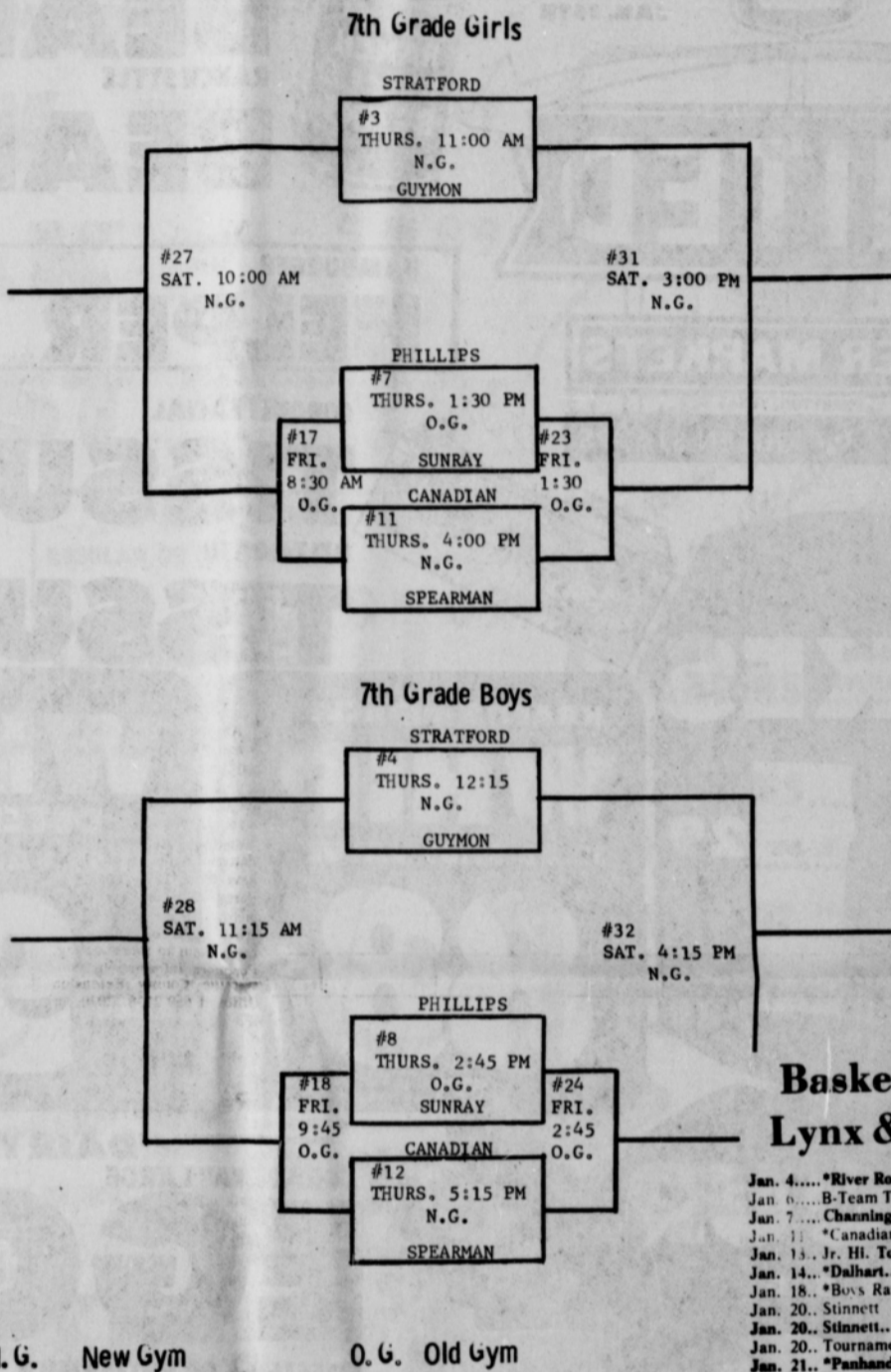
Some farm employers have deposited their employees' social security contributions in banks and other approved depositories in 1976. Those employers have until February to file the annual wage report with the Internal Revenue Service.

A free leaflet, "Social Security Information for Crew Leaders and Farmers," is available at any social security office, according to Weatherly. The Pampa Social Security Office is located at 1541 North Hobart, phone 669-3381.

TRAP SHOOT SUNDAY The Morse Lions Club will sponsor a Trap Shoot Sunday, January 16 beginning at 1 p.m. They invite everyone out to the shoot.

The Spearman girls defeated Channing Friday night, 68-26. The Spearman boys won 68-62. Doug Steele and Carla Harper were crowned King and Queen at the basketball homecoming. The Gruver girl are in the finals at Stratford tonite, they defeated Hartley 26-25. The boys lost to Sunray 69-67.

SPEARMAN JUNIOR HIGH TOURNAMENT --- JANUARY 13, 14 & 15



Teams on bottom of bracket will be the home team and wear dark jerseys.

Basketball 1977 Lynx & Lynxettes

Jan. 4....*River Road.....H.....4:00
Jan. 6....B-Team Tournament.....T.....Fritch
Jan. 7....Channing [Homecoming] H.....6:30
Jan. 11...*Canadian.....T.....4:00
Jan. 13...Jr. Hi. Tournament.....H...Spearman
Jan. 14...*Dalhart.....H.....4:00
Jan. 18...*Boys Ranch.....T.....6:30
Jan. 20...Stinnett 7th, 8th & 9th.....T.....5:00
Jan. 20...Stinnett.....H.....5:00
Jan. 20...Tournament.....T.....Waka
Jan. 21...*Panhandle.....H.....4:00
Jan. 24...Perryton 7th, 8th & 9th.....T.....4:00
Jan. 24...Boys Ranch.....H.....4:30
Jan. 25...*River Road.....T.....4:00
Jan. 27...B-Team Tournament.....H...Spearman
Jan. 28...*Canadian.....H.....6:30
Feb. 1....*Dalhart.....T.....4:00
Feb. 4....*Boys Ranch.....H.....7:00
Feb. 4....Gruver.....T.....4:00
Feb. 7....Boys Ranch 7th, 8th & 9th.....T.....5:00
Feb. 7....Perryton.....H.....5:00
Feb. 8....*Panhandle.....T.....4:00

<p>White House Lumber Co. 306 Davis 659-2818</p>	<p>Hansford Implement Co. Hwy. 207 659-2712 Spearman, Texas</p>	<p>Consumer Sales Co. 421 W. Kenneth Ave. Spearman, Texas 659-2012</p>
<p>Jr. Lusby "Cats" W. Gruver Hwy. Spearman, Texas 659-3766</p>		<p>Equity Elevators 104 Collard Spearman, Texas 659-2420</p>
<p>Speartex Grain Co. 514 Collard 659-3711</p>		<p>Lil' Lynx Shoppe 312 Main 659-2608 Spearman, Texas</p>

HAVE SAVINGS

WE RESERVE THE RIGHT TO LIMIT QUANTITIES



PRICES GOOD THRU' JAN. 15TH



PORK 'N
BEANS
RANCH STYLE
BEANS

4 ^{\$} **1**
300 CANS

UNITED
SUPER MARKETS
PERRYTON, TEXAS
WE GIVE *S&H* GREEN STAMPS

HAMBURGER
HELPER ALL VARIETIES 69¢ VALUE **59¢**

CORONET FACIAL
TISSUE 53¢ VALUE 200 CT. BOX **39¢**

DELTA BATH
TISSUE 69¢ VALUE 4 ROLL PACK **59¢**

COKES
PLUS DEPOSIT
6 ^{\$} **1** ²⁹
32 OZ. BTLS.
LIMIT 2 PLEASE

KRAFT'S MIRACLE
WHIP
32 OZ \$1.09 VALUE
88¢

WISK
DETERGENT
\$1.29 VALUE 32 OZ.
10c OFF LABEL **98¢**

FINE FARE INSTANT
MILK
NON-FAT
90¢ PER GALLON!
8 QT. BOX **\$1.79**


FINE FARE
FLOUR
5 LB. BAG
48¢



"DAIRY CASE SPECIALS!"
GRADE "A" LARGE
EGGS UNITED CAGED DOZ. **79¢**

SWEETMILK OR BUTTERMILK
BISCUITS FINE FARE 8 ^{\$} **1**
8 OZ. CANS

GOLDEN MIST SOLID
OLEO 1 LB. **28¢**

LOW PRICES • **DEPENDABLE SERVICE** PLUS  **S&H GREEN STAMPS TOO!**

RUSSET ALL PURPOSE
POTATOES
10 LB. BAG **79¢**

VINE RIPE
TOMATOES 4 PACK CELLO **39¢**

LEAF
LETTUCE BUNCH **25¢**

YELLOW
ONIONS MEDIUMS 2 LBS. **29¢**

TEXAS RUBY RED
GRAPEFRUIT **5 FOR \$1**

WILL CARRY OUT!

"UNITED'S TRU-TENDR BEEF"



BONELESS **STEW** "EXTRA LEAN" CUBES OF BEEFLB. \$ **1.09**

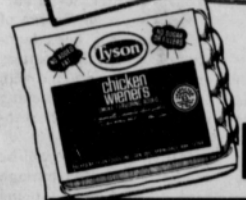
CUBED **STEAK** WASTE FREE BEEFLB. \$ **1.89**

WASTE FREE **ROAST** BONELESS SHOULDERLB. **98c**

TRUCK LOAD

FREEZER BEEF SALE

Cut and wrapped to your specification!



TYSON'S CHICKEN 12 OZ. PKG. **FRANKS 39c**

EL-JEFE SHUCK WRAPPED REGULAR OR JALAPENO 18-OZ. **TAMALES \$1.09**

HORMEL'S MIDGET LINK **SAUSAGE**

FRESH PORK \$ **1.39** LB.

FRESH PORK **SPARE RIBS**

LEAN & MEATY **79c** LB.

FINE FARE **BOLOGNA**

MEAT OR BEEF **79c** 12 OZ. PKG.

FRONT QUARTERS 160-LB. AVERAGELB. **65c**

HIND QUARTERS 140-LB. AVERAGELB. **85c**

SIDES 285-LB. AVERAGELB. **75c**

BEEF LOIN 70-LB. AVERAGELB. **\$1.19**

BEEF ROUNDS 80-LB. AVERAGELB. **\$1.09**



KELLOGG'S SUGAR FROSTED **FLAKES** 20 OZ. BOX **98c**

GLADIOLA • CORNBREAD • BISCUITS • PANCAKES

POUCH MIXES 6 for \$1



CHUCK ROAST

UNITED'S TRU-TENDR

BLADE CUT **58c** LB.



THANKS

for your business from market manager **Frank Lee**

VISINE CLEAR EYES \$ **1.88** EACH

\$2.29 1 OZ. EACH

SCOPE \$ **1.39** EACH

\$1.69 VALUE 18 OZ. EACH

SHOP 'N SAVE!

"UNITED FROZEN FOODS"

FINE FARE **CORN** **FANCY!** ALSO MIX VEG. CUT BROCCOLI PEAS-OKRA BABY LIMAS 2 16 OZ. PKGS. **\$1.18c**

SPARETIME **POT PIES** • BEEF • CHICKEN • TURKEY • MAC. & CHEESE EA. **79c**

JENO'S **PIZZA** • CHEESE • PEPPERONI 13 OZ. SIZE • SAUSAGE • HAMBURGER **79c**

GORTON'S STICKS **FISH ENTREES** **QUALITY!** \$1.39 VALUE 15 OZ. **\$1.18**

FREEZER QUEEN 2 LB.

WE RESERVE THE RIGHT TO LIMIT QUANTITIES

U

PRICES GOOD THRU' JAN. 15TH

UNITED SUPER MARKETS

PERRYTON, TEXAS

WE GIVE *Mr.* GREEN STAMPS

