

### WEATHER

April 2	84	35	.00
April 3	82	40	.00
April 4	82	37	.00
April 5	66	34	.00
April 6	71	35	.00

# BAILEY COUNTY JOURNAL

*'The Community Of Opportunity-Where Water Makes The Difference'*



Vol. 28, No. 15

16 PAGES TODAY

Published Every Sunday At Muleshoe, Bailey County, Texas 79347

20¢

Sunday, April 9, 1989

## This Is Library Week In Muleshoe

around  
Muleshoe

\*\*\*  
Bailey County Judge Jim Watson said the Bailey County Commissioners Court will meet in regular session in the courthouse, Monday, April 10 at 10 a.m.

Following routine opening of the meeting and payment of county bills, the following items will be considered:

Review departmental reports

Cont. Page 6, Col. 4

### Jennyslippers

### Send Mule Shoes

### To President Bush

Last week, the Muleshoe Jennyslippers decided to issue a 'challenge' to the President of the United States.

It has been well-publicized that President George Bush enjoys tossing horse shoes -- so the Jennyslippers decided to challenge him to a mule shoe pitching contest -- in Muleshoe -- when the World Championship mule shoe pitching contest is held on July 4.

And, so he can learn that mule shoe pitching is more intricate than horse shoe pitching -- the shoes are smaller, etc., they sent President Bush his very own set of mule shoes.

The set is identical to mule shoe sets that the Jennyslippers sell for only \$15.

This price includes a denim holding bag, personalized with the name of Muleshoe, Texas and a mule shoe on the bag; two sets of mule shoes; the posts to drive into the ground to receive the shoes; and a set of rules.

In visiting with the Jennyslippers, they said the mule shoe sets have, indeed, gone on sale through their organization, and they are receiving a very good response, as people are snapping them up for birthday gifts, Christmas gifts, etc.

Who knows, if you obtain your own set -- could you be challenging the President of the United States for the World Championship title in July?



**MULESHOE JENNYSLIPPERS ISSU! CHALLENGE TO PRESIDENT BUSH**--Since it has been publicized that President George Bush likes to pitch horseshoes, the Muleshoe Jennyslippers have decided to issue the President a challenge. During the past week, they mailed complete set of mule shoes to the President, included in its own denim bag, identical to the set shown here. They have challenged him to participate in the World Mule Shoe Pitching here on July 4. Pictured from left are Bobbie Harrison, Ellen Ladd, Norma Bruce and Vivian White, all Jennyslippers. (Journal Photo)

## Old-Fashioned Melodrama, Dinner, Comedy, Variety Acts

An old-fashioned melodrama, "He Done Her Wrong-or-Wedded, But No Wife" was adopted by the Muleshoe Production Company for presentation to the public late in June.

The decision was made Thursday night during a meeting of the Muleshoe Production Company held at the Bailey County courthouse.

"Cotton Patch Gospel" the original suggested play, was deemed to be unacceptable for production here.

As director, Kerry Moore, was working with his students prior to the One-Act Play contest on Saturday, Pat Prater was moderator.

Mrs. Prater suggested the idea of a dinner theater, featuring the melodrama. This would be preceded by a buffet meal, interspersed with comedy and variety acts, including local song and dance routines, along with a

few surprises, perhaps reminiscent of just plain 'old-fashioned fun.'

Any proceeds from this two-night production will be used to produce a musical history of Bailey County -- which is the ultimate goal of the Muleshoe Production Company.

Try-outs for the initial production will be April 28, 7-9:30 p.m. and again on April 29, 2-4 p.m. in the high school auditorium.

Mrs. Prater said that anyone who would like to be in the melodrama, or in any of the comedy acts, variety acts, sing or work in any other capacity, is encouraged to be at the try-outs.

She reminded that your 'talent' is needed -- regardless of what it may be.

Overall director is Kerry Moore, with Cindy Purdy as his assistant.

Kay Graves, Sue Holt and

Becky Conklin will be in charge of tickets and sales.

Variety acts will be in charge of Nancy Barnhill, Sherri Shipman, Paula Braddock and Phyllis Angeley.

Lighting and sound will be Tim Miller and Dawn Pederson.

Set design, props and stage set-up will be Arlene Phelps, Sue Holt, Betty Jo Beaty, Becky Conklin, Ann Williams, Marsha Williams and Catfish Williams.

Costumes will be Sandi Robinson and Regena Clarkson.

Programs are Khristi Phelps and Billie Joann Smith.

Decorations and table seating are Nelda Hunt, Tim Miller, Dawn Pederson, Amanda Ashford and Stacy Baldwin.

Food will be Arlene Phelps, Linda Elder, Patsy Chance, Gladys Black and Stacy Baldwin.

Make-up will be Elinor Yerby, Kay Swint and Louvenia Gar-

"Got A Question? -- Call Your Library!" is the theme of National Library Week.

The special annual week will be observed at the Muleshoe Area Public Library April 9-15 with several activities planned.

Anne Camp, librarian, said the

### New Units

### To Be Built

### At Complex

It's been a long time coming, but finally, the government has given approval for additions to the Farm Labor Housing Complex located on East Sixth Street.

Jim Hartline, executive director of the Farm Labor Housing Complex, as well as the Harmon Elliott Senior Citizen Complex, said the new additions will help, but still will not be enough needed housing.

The addition will be six two-bedroom quadrplexes, and that will mean 24 new housing units.

Hartline said he has always kept a waiting list since the complex opened in December, 1978.

Also to be added will be a maintenance building, and the remodeling and adding the existing administration/laundry facility.

The new addition will be to the east side of the existing complex where the Muleshoe Housing Authority already own several acres of land. Construction is currently expected to get underway in May.

In the ten and a half years the complex has been open, the vacancy rate has never been above two percent.

He is still waiting for a 'go-ahead' to add to the Harmon Elliott Senior Citizen Complex on West Avenue K.

He also keeps a waiting list for that housing complex.

The first phase was opened in September, 1981; and Phase Two opened in November, 1983.

With rigid rules, strictly understood before anyone moves into the Housing Complex units, Hartline says he has had a very minimum of problems, and in fact, the Farm Labor Housing is not government subsidized, and still makes money.

This year, the complex will get a brighter face as it is scheduled to be painted.

theme will be carried out in posters, bookmarkers, and displays, as provided by the Friends of the Library.

"Everyone is cordially invited to visit the library during this week," said Mrs. Camp.

Special displays will be junior high school history projects which have won awards in county and regional shows.

According to the librarian, also on display all week will be three sets of encyclopedias which will be awarded to the highest bidder.

Two are the 'Britannica' and one set of 'Students Encyclopedia.' Also will be a world atlas, two sets of large dictionaries; a 15-volume set of 'Tru-Value Tales,' a set of 'Lands and People' with seven volumes; and an 8-volume set of 'Treasury' books with various subjects.

"We need to get some good bids on this large assortment of books for all the family," said Mrs. Camp. "All used, but in excellent condition!"

Monday through Wednesday, the library will show videos after school on request. Wednesday morning, storyhour will be held at 10 a.m. for pre-school age children from the Daycare center and the Early-learning classes from school.

Thursday morning Study Club members will meet to put out hundreds of books for the annual sale.

Friday, 10 a.m.-6 p.m. and Saturday, 9 a.m.-2 p.m., the Study Club will conduct the book sale with book bargains for everyone.

"They would like to have used books of all kinds donated for this sale," reminded Mrs. Camp. "Children's books and adult western paperbacks are especially needed. If you have books you would like to donate, call the library, and then bring them to the back door where they can be easily unloaded."

"Last, but certainly not least -- Friday afternoon at 5 p.m., the 1989 'Library Family of the Year' will be named and honored by the Muleshoe Study Club, and will be presented a large family dictionary. This award and recognition is made to a family who have all used the library throughout the past year, and who have a good library record."

"This is your invitation to come and visit your library during this special week,"

Cont. Page 6, Col. 3

### In Profile

## He's Working To Stabilize The Hospital

(Editor's note: The following story was written by Linda Rabb, journalism student in the Texas Tech University School of Mass Communications. This exclusive story was made possible through a grant from the Readers Digest Foundation.)

John A. Chisholm, a newcomer to Muleshoe, brings a solid education, invaluable experience and a fresh perspective to his new position as chief executive officer at West Plains Medical Center.

Chisholm assumed his new duties Feb. 1, after the directors of the medical center announced their selection of him.

Throughout his career, Chisholm said one idea, "the changing face of health care delivery," has remained a central focus for him.

Initially, Chisholm said he was not sure what he wanted to do. Instead, he was interested in sports. He said, "I had a good career in high school and college sports," so he thought he wanted a job in which he would deal with coaches.

Chisholm began by receiving a

solid education. He attended Kilgore Junior College for two years before moving on to Stephen F. Austin University where he received a general business degree. Chisholm continued to pursue a higher education and later graduated from Trinity University's Graduate Health Care (Hospital) Administrative Program.

Furthermore, Chisholm was thrust deeper into his medical career while in the Army Reserves by being commissioned in the Army Medical Service Corps, and received his discharge with the rank of Major.

Ironically, Chisholm received his start with an athletic trainer supply company out of Chicago. He said he did not realize that the sales training program consisted of different divisions in which the company sold its products. The company assigned Chisholm to its hospital division, and thus he got his initial knowledge and start in the hospital field.

Still early on, Chisholm recognized that he was not qualified yet to be a hospital administrator. To receive added technical training, he went to work for a

large intravenous solutions manufacturing company, and received detailed training about Artificial Human Organs. (Heart pump, Kidney machine, Lung machine, and defibrillator).

Later, Chisholm returned to school to further his education and graduated from Trinity. To learn the Hospital Healthcare business first-hand, he served his residency in a large Catholic hospital with multi-hospital operations (18 hospitals). He said he was in a rotating residency and learned the internal details and operations of each department of hospitals.

Since then, Chisholm has gained administrative experience in metropolitan hospitals, multi-hospital systems and small rural hospitals.

In his last hospital-related job, Chisholm said he went to Amarillo's Medical Center, as its first Executive Director to develop its 400 acre campus into a more closely structured medical center complex.

Chisholm said this was difficult because the down turn in the area's economy changed the scope and scale of the develop-

ment work. Chisholm remarked that "hospitals usually grow or decline, they hardly stand still."

In his present position, Chisholm said he sees a challenge in identifying and meeting the needs of Muleshoe area residents. "The key to a successful hospital is to listen to the people," he said, adding, "Finding out what people will support, what do they want?"

Chisholm said he has three goals for West Plains Medical Center. First, he would like the hospital to receive Emergency Room Medicare Certification. (Editor's note: This certification was granted shortly after the reporter interviewed the hospital administrator.) His second goal is to bring the center's standards up in order to receive total hospital Medicare Certification; and third, he wants to define and identify a strategic plan for the future services of the medical center.

Chisholm is determined to make the medical center a success. "I want to have a favorable impact on the delivery of health care, where ever I am," he said.



WEST PLAINS  
MEDICAL CENTER

JOHN CHISHOLM  
WPMC ADMINISTRATOR

## Muleshoe Menu

**APRIL 10-14  
MONDAY  
BREAKFAST**  
Cheese Toast, Fruit and Milk  
**LUNCH**  
Pizza, Mixed Vegetables, Pickles, Fruit and Milk  
**COMBO**  
Pizza, Mixed Vegetables, Pickles, Fruit and Milk

**TUESDAY  
BREAKFAST**  
Pancakes, Syrup, Sausage, Fruit and Milk  
**LUNCH**  
Hamburgers, Lettuce & Tomato, Pickles & Onions, Tater Tots, Cookies and Milk  
**COMBO**  
Hamburgers, Lettuce & Tomato, Pickles & Onions, Tater Tots, Cookies and Milk  
**WEDNESDAY  
BREAKFAST**

Toast, Jelly, Fruit and Milk  
**LUNCH**  
Taco's, Beans, Cheese, Salad, Crackers, Fruit and Milk  
**COMBO**  
Frito Pie, Beans, Cheese, Salad, Crackers, Fruit and Milk

**THURSDAY  
BREAKFAST**  
Cooked Cereal, Toast, Fruit and Milk  
**LUNCH**  
Corn Dogs, Veg. Beef Soup, Crackers, Cinnamon Rolls, Fruit and Milk  
**COMBO**  
Corn Dogs, Veg. Beef Soup, Crackers, Cinnamon Rolls, Fruit and Milk

**FRIDAY  
BREAKFAST**  
Biscuits, Scrambled Eggs, Sausage, Fruit and Milk  
**LUNCH**  
Fish, Macaroni & Cheese, Eng. Peas, Hot Rolls, Fruit and Milk  
**COMBO**  
Chicken Nuggets, Gravy, Creamed Potatoes, Eng. Peas, Hot Rolls, Fruit and Milk

## Wendi Bland MHS Student All-American Scholar

In an announcement by the United States Achievement Academy, Wendi Bland was named an All-American Scholar. The USAA has established the All-American Scholar Award Program in order to offer deserved recognition to superior students who excel in the Academic disciplines. The "All-

American Scholars must earn a 3.3 or over grade point average. Only Scholars selected by a secondary school instructor, counselor, or other qualified sponsor are accepted. These scholars are also eligible for other awards given by the USAA. A student at Muleshoe High School, Wendi was nominated for this National Award by Mrs. Linda Marr, and her name will appear in the All-American Scholar Directory, which is published nationally. "Recognizing and supporting our youth is more important than ever before in American history"

said Dr. George Stevens, Executive Director of the United States Achievement Academy. "Certainly, winners of the All-American Scholar Awards should be congratulated and appreciated for their dedication to excellence and achievement." The Academy selects All-American Scholars upon the exclusive recommendations of teachers, coaches, counselors, and other qualified sponsors. Once awarded, the students may be recognized by the USAA for other honors. Wendi is the daughter of Cleve and Frances Bland of Muleshoe and the granddaughter of Harvey Toten, also of Muleshoe.



WENDI BLAND

## Three Way Menu

**APRIL 10-14  
MONDAY  
BREAKFAST**  
Waffles/Syrup, Juice and Milk  
**LUNCH**  
Pizza, Salad/Mixed Veg., Ice Cream and Milk  
**TUESDAY  
BREAKFAST**  
Cereal, Apple Slices/Juice and Milk  
**LUNCH**  
Tune/Noodles, Peas/Celery & Carrot Stix, Rolls, Brownies and Milk

**WEDNESDAY  
BREAKFAST**  
Pop Tarts, Juice and Milk  
**LUNCH**  
Meat Loaf, Au Gratin Potatoes, Greenbeans, Rolls, Honey & Butter and Milk  
**THURSDAY  
BREAKFAST**  
Biscuit, Gravy, Sausage, Jelly, Juice and Milk  
**LUNCH**  
Hot Ham Cheese, Fries/Salad, Jello and Milk  
**FRIDAY  
BREAKFAST**  
Scrambled Eggs, Hash Browns, Juice and Milk  
**LUNCH**  
Nacho Supreme, Salad/Spanish Rice, Blueberry Cobbler and Milk

**Pity the Teacher**  
As the class had been told to write an essay on Lincoln—one of the pupils wrote: "Abraham Lincoln was born on a bright summer day, the 12th of February, 1909. He was born in a log cabin that he had helped his father to build."



**Creston Jade Standard**  
Cecil and Michelle Standard of Sudan are the proud parents of a son, Creston Jade, who was born at 5:38 p.m. Tuesday, April 4 in West Plains Medical Center. Creston Jade weighed seven pounds and two ounces. He is the first child for the couple. Grandparents are Jack and Anna B' Lane of Sudan and Marsha Standard of Paso Robles, California. Great grandparents are Laura Standard, Nettie Quesenberry and V.A. and Ruby Lane. **Angel Dale Wayne Knowles**  
Mr. and Mrs. Lanny Knowles are the proud parents of a daughter who was born at 2:35 a.m. Tuesday, April 4 in West Plains Medical Center. The young lady weighed six pounds and ten ounces and has been named Angel Dale Wayne Knowles. Angel has two older brothers, Clint and Clifton. Grandparents are Lou Knowles and Jack Knowles, both of Muleshoe, and Al and Jo Ann Miller of Hawley, TX. Great grandparents are Dovie Lee Miller of Hawley and Claude and Mae Pruitt of Morton.

## The tax deadline is almost here.



Our experienced preparers are working extra hours through April 17. It's not too late to help you get the maximum refund you're entitled to. 224 W. 2nd Muleshoe, TX 272-3332

**H&R BLOCK DON'T SETTLE FOR LESS!**

## John David Hamblen, D.D.S., Inc.

### General Dentistry

Announces the relocation of his office to

**4501 - 50th Street  
Lubbock, Texas  
79414  
806-795-7173**

Office Hours  
Monday thru Saturday  
By Appointment



## REVIVAL MEETING

FIRST BAPTIST CHURCH  
220 WEST AVENUE E  
MULESHOE, TEXAS

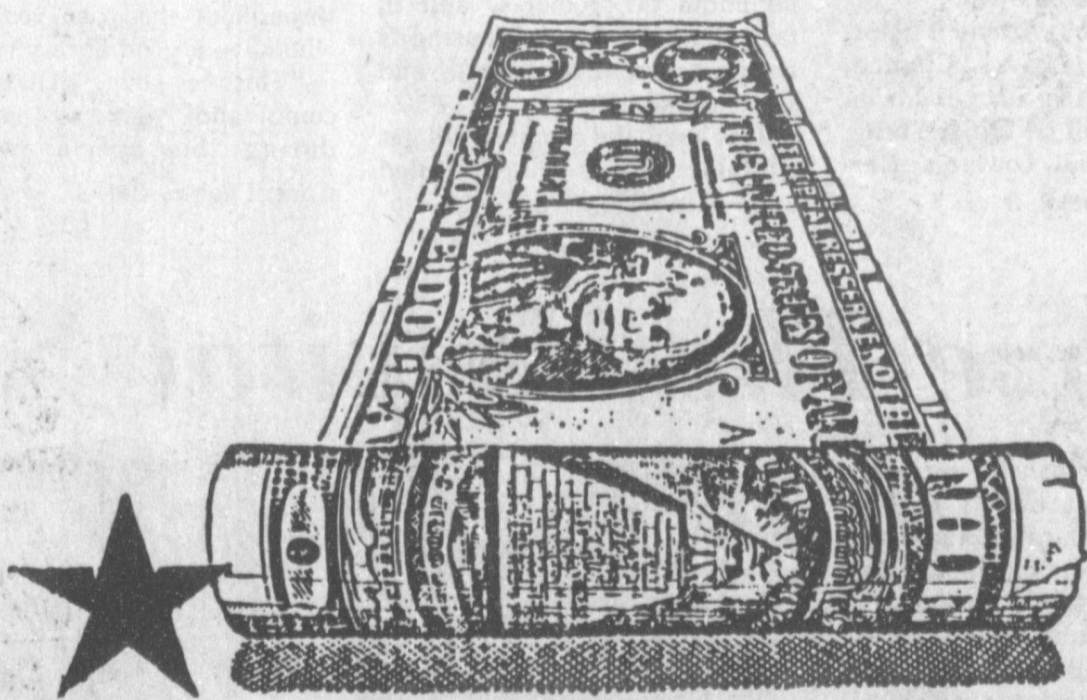
APRIL 9 - 14, 1989

CLAUDE CONE, PREACHER  
JOHN GLOVER, MUSIC

SUNDAY SERVICES  
7:00 P.M.

MON.-FRI.  
NOON  
7:30 P.M.

## UNFORTUNATELY, IT DOESN'T COME WITH INSTRUCTIONS



It seems harder and harder to save money these days... and to manage it. But don't feel alone, we all have that problem.

At First Bank, we can offer you a better savings plan or even advise you in money management problems. Let us help...that's why we're here.

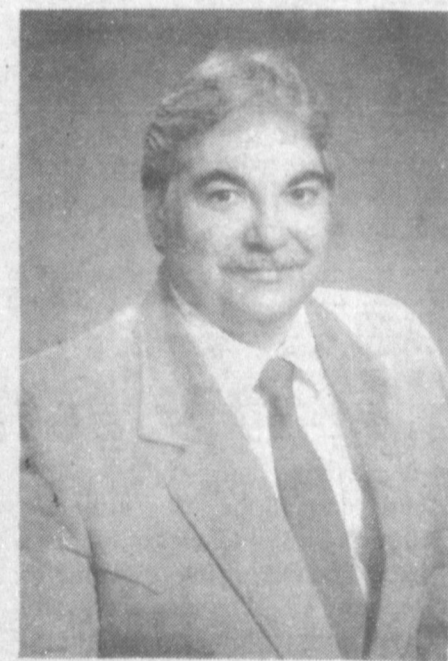


202 S. 1st

Member FDIC

272-4515

## Roosevelt General Hospital Welcomes



## Dr. Lee J. Friend, M.D.

Family Practice With Emphasis On OB/GYN - Pediatrics

1614 W. 17th  
356-4451



1989-90 ALPHA ZETA PI OFFICERS--(From Left) Leslie Denney, Corresponding Secretary; Leslie Dale, Extension Officer; Mary Stegemoeller, Recording Secretary; Stephanie Barrett, Treasurer; and Pam Atwood, President; were installed Tuesday night as the 1989-90 officers of Alpha Zeta Pi Sorority. Officers not pictured include Shelli Carpenter, Vice President; and Brenda Hawkins, Extension Officer. (Journal Photo)

### Alpha Zeta Pi Members Hold Ritual Service

The April 4 meeting of Alpha Zeta Pi was held at 7 p.m. at Cindy Barrett's home. The Membership Committee served a meal of Hawaiian Stacks, Hot Hawaiian Bread, Banana Split Pie and Iced Tea.

Ritual of Jewels was given to pledges Leslie Dale, Leslie Denney, Debbie Eblen, Connie James, Mary Stegemoeller, Sandy Watson and Lisa Whalin for membership into Beta Sigma Phi. Pledges Richelle Watkins and Brenda Hawkins were unable to attend and will take the Rituals at a later date.

A White Elephant sale was held within the Chapter to raise extra funds for Crime Line. President Rhonda Myers announced a work night for all members of Beta Sigma Phi on April 6 from 7-9 at West Plains Hospital and a thank you note from Starla Ellis was read by the members.

Those attending were Pam Atwood, Cindy Barrett, Stephanie Barrett, Shelly Carver, Lori Davison, Rhonda Myers, Lyn Vandiver, Leslie Dale, Leslie Denney, Debbie Eblen, Connie James, Mary Stegemoeller, Sandy Watson and Lisa Whalin.

### Sudan News

By: Evelyn Ruchie

Word was received last week that the mother of Mary Lou Barns was killed in an auto accident and funeral services were held Friday. The Barns address is P.O. Box 46 Kenna, N.M. 88122.

Visiting last week with Wnona Dudgeon was her cousin, Winona Gleason of Abilene, whom she had not seen in 42 years.

Visiting this week with Mr. and Mrs. B.A. Beauchamp and Derwin and Sherry Capers and girls have been their daughter, Mr. and Mrs. Gene Vickers and girls of Mansfield, Ohio, and their son, Danny Beauchamp and Todd of Astoria, Oregon. This is the first time that all four of their children have been together for the past six years.

Jackelyn Ford was honored Sunday on her fourth birthday with a pizza party held at Pete's Parlor in Lubbock. Attending were Annette Capers and Lea Jones as well as her mother, Jon Ann, and grandparents, Mr. and Mrs. John Williams, Mrs. Estelle Lowe and also Frances Gardner.



ALPHA ZETA PI PLEDGES--Tuesday night, Alpha Zeta Pi Sorority pledges received Rituals of Jewels. Pledges (L-R) Sandy Watson, Leslie Denney, Leslie Dale, Mary Stegemoeller, Connie James, Lisa Whalin, Debbie Eblen. Not pictured--Richelle Watkins and Brenda Hawkins. (Journal Photo)

### Up \$21,500!

A press release recently noted that the price of a Rolls Royce Corniche convertible had increased twelve percent in the last year. This rate of inflation is three times the 1988 average.

Full length mink coats, for example, increased in price only about three percent in 1988.

The average employee's wages increased by three percent or more, in many cases, in 1988. Thus they wouldn't be stopped from buying a

mink coat by the increase.

They might be stopped by the price, which averages \$17,000. The same can't be said about the Rolls. The increase alone would stop most Americans from ordering one. It is \$21,500.

# TIRES

By: **CORDOVAN** Steel Belted Radial Polyester/Steel Whitewall

STOCK NO.	SIZE	REG.	SALE
48C-15	P185/75SR13	60.39	51.33
48C-39	P195/75SR14	64.79	55.07
48C-47	P205/75SR14	68.99	58.64
48C-34	P205/75SR15	70.69	60.09
48C-45	P215/75SR15	74.69	63.49
48C-49	P225/75SR15	77.59	65.95
48C-64	P235/75SR15	81.89	69.61

Constructed with belts of steel cord and tough body plies of Polyester Cord. Good traction on both wet and dry pavement. In many cases it eliminates winter tire changeover.

## Polyester/Steel Whitewall

SIZE	STOCK NO.	Reg.	SALE
P195/70SR13	10C14	57.89	49.21
P195/70SR14	10C38	60.99	51.85
P205/70SR14	10C39	65.09	55.33
P215/70SR14	10C47	69.39	58.99
P225/70SR14	10C60	73.19	62.22
P215/70SR15	10C33	70.99	60.35
P225/70SR15	10C45	75.79	64.43
P235/70SR15	10C49	77.79	66.13
P255/70SR15	10C64	84.39	71.74

## CUSTOM WHEELS

WHITE EIGHT-SPOKE  
CHROME EIGHT-SPOKE  
BLACK MOD  
PULSAR  
MOD-V  
TALON  
CTL

## Radial GT 70 Series

And Lots More To Choose From All Wheels Now

# 10% off

Stock No.	Size	Reg. Price	Sale Price
34C13	P205/60SR13	60.39	51.34
34C38	P215/60SR14	65.99	56.10
34C47	P235/60SR14	74.09	62.98
34C60	P245/60SR14	76.39	64.94
34C45	P235/60SR15	75.09	63.83
34C49	P255/60SR15	83.69	71.14
34C51	P245/60SR15	79.69	67.74
34C64	P275/60SR15	89.79	76.33

## A&M FARM & RANCH SUPPLY

2600 Mabry Dr. Clovis, N.M. 1-505-762-7717  
1601 S. Ave. D. Portales, N.M. 1-505-356-8543  
1302 W. American Blvd., Muleshoe, Texas 1-806-272-5571

All Stores Open Monday-Saturday 7:30 A.M. - 6:00 P.M.  
Sundays 12:30 - 5:00 P.M.

## How Does Your LAWN & GARDEN Grow?

Beautifully...with **A&M**

Hurry IN!

Choose from:  
Dianthus, Marigolds, Petunias, Snapdragons, Pansy, Cabbage, Broccoli, Pepper (Hot), Pepper (Sweet) and Lots More in Stock

**"Plants For Sale"**

3 Plants For \$1.00

**EarthWay Precision Garden Seeder**

For: **\$49.99**

#1001B Reg. \$61.99

**RADIAL Garden Hose**

5/8" X 75' Re-Inforced Only: **\$12.99**

Reg. \$14.99

**NELSON non-puddling Oscillating Sprinkler**

RAINSHOWER™ 40

Now **\$4.99**

#1015 Reg. \$6.99

**Garden Hose**

For Only: **\$19.99**

Great Buy!

**RADIAL** 3/4" X 100'

Teknor Apex Co. #Un-labeled

Reg. \$24.99

**Poly Sprayer**

Only: **\$19.99**

No. 2503 Just Right

Reg. \$24.99

**Super Lawn Food**

At: **\$6.99**

MADE FROM PURE LIME  
SIZE 48 LBS.

**Structural Broadcast Spreader**

Only: **\$24.99**

SB-50

Covers: 3,000 Sq. Ft.

Reg. \$29.95

**Cow Manure Topsoil or Peat**

45 Lb. Bag At a 40 Lb. Price

Now: Your Choice **\$2.49**

**Vinyl Cornet Hose**

5/8" X 50'

**\$6.99**

Reg. \$8.49

**HYPONEX**

All Are Welcomed

**A&M Farm & Ranch Supply**

All Stores Open Monday-Saturday 7:30 A.M. - 6:00 P.M.  
Sundays 12:30 - 5:00 P.M.

2600 Mabry Dr. Clovis, N.M. 1-505-762-7717  
1601 S. Ave. D. Portales, N.M. 1-505-356-8543  
1302 W. American Blvd., Muleshoe, Texas 1-806-272-5571



**JULY DATE SET**—Mr. and Mrs. Jimmie E. Burgess announce the engagement and approaching marriage of their daughter, Lauri Elaine, to the Rev. Kelton Frazier Hinton. Vows will be exchanged July 8 at Westmont Christian Church at Lubbock. Ms. Burgess is a graduate of West Texas State University and attended Southwestern Baptist Theological Seminary in Fort Worth. She is presently employed as a kindergarten teacher for Pathway Learning Center in Sanford, North Carolina. Hinton is a graduate of the University of North Carolina at Chapel Hill and is presently attending Southeastern Baptist Theological Seminary in Wake Forest, North Carolina. Following the wedding, the couple plan to reside in Sanford, North Carolina, where Hinton is pastor of the Hispanic Mission of the First Baptist Church. (Guest Photo)

**Richardson Named All-American Scholar**

Michael Richardson, son of Mr. and Mrs. Mike Richardson, has been named an All-American Scholar by the United States Achievement Academy. The USAA established the All-American Scholar Award Program in order to offer deserved recognition to superior students who excel in the Academic disciplines. The All-American Scholars must earn a 3.3 or better grade point average. Only Scholars selected by a secondary school instructor, counselor, or other qualified sponsor are accepted. These scholars are also eligible for other awards given by the USAA. A student at Muleshoe High School, Michael was nominated for this National Award by Linda Marr. His name will appear in the All-American Scholar Directory, which is published nationally. "Recognizing and supporting our youth is more important than ever before in American history," said Dr. George Stevens, Executive Director of the United States Achievement Academy. "Certainly, winners of the All-American Scholar Awards should be congratulated and appreciated for their dedication to excellence and achievement."

teachers, coaches, counselors, and other qualified sponsors. Once awarded, the students may be recognized by the USAA for other honors. Michael is the grandson of Mr. and Mrs. Ashel Richardson of Bula and Mrs. Mearl Davis of Littlefield.

**Hobby Club**

Muleshoe Hobby Club met at 2 p.m. Thursday, April 6 in the Housing Complex. Ten members and three visitors were present. Members present were: Jane Williams, Hazel Reeder, Edith Fox, Sammie Ethridge, Mabel Caldwell, Glenda Morris, Polly Clark, Laura Mae Stansell, Blanche Aubrey, Mattie Benton and Frances Bruns. Visitors present were: Mary Archer, Allie Cox and Wenona Spears.

Ms. Ethridge was in charge of the business meeting. Minutes of the previous meeting were read and approved.

Allie Cox drew the hostess gift which was a pillow.

Jane Williams took a pillow top to show. Others taking items were Sammie Ethridge, a painting, and Mabel Caldwell a necklace.

Ms. Ethridge will be the hostess for the Thursday, April 20 meeting.

The hostess for the day, Jane Williams served chips and dips, cookies, cherry nut cake, Cokes and coffee.

**Best of Press**

**Adamant**  
Some minds are like concrete— all mixed up and permanently set. —U.S. Coast Guard News.

**Mr And Mrs Head Celebrate 60 Years**

Mr. and Mrs. D.B. Head celebrated their 60th wedding anniversary Sunday, March 26, with a reception at the First United Methodist Church of Muleshoe.

Hosting the reception were the couple's children, Mr. and Mrs. Marshal Head and Mr. and Mrs. Norman Head, all of Muleshoe; Mrs. Irene Sudduth of Dry Prong, Louisiana; Dr. and Mrs. Glenn Head of Brownsville. Also assisting with the reception were the couple's grandchildren, Mr. and Mrs. Mike Widener, Susan Head, David Head, Kelley Head, Karen Treider, Brad Sudduth,

Brenda Barrett, Scott Head, and Brian Head, also great grandchildren, Doug, Monica and Katy Widener, Courtney Free and Rusty Treider.

After attending church together, a noon meal was served to 62 family members by Mae Wilterding, Lona Embry, Elaine Pruitt, Kathy Embry, Joy Wilterding, Maurine Hooten, Gayia Gear, and Holly Hooten. The tables were decorated in the Easter theme.

In the afternoon, cake, punch and coffee were served to guests.

A silk floral arrangement of spring flowers, given to the couple by their grandchildren, centered the serving table. The hall was decorated in a spring color theme.

**Tops Club**

TOPS CLUB Chapter No. 34 met at 6 p.m. Thursday, April 6 at the Heritage Thrift Shop. Laverne James, leader, called the meeting to order. The TOPS pledge was recited and the fellowship song sung. Mrs. James led the group in prayer.

Evelene Harris called the roll with 16 members present. Aurora Mata, secretary, read the minutes of the previous meeting and they were approved as read.

It was reported that due to the time change, the club will begin at 6:30 p.m. instead of 6. Members will weigh between 6 and 6:30 p.m. beginning next week.

It was also reported that Dr. McClanahan will be guest speaker at next week's meeting.

Mollie Davis drew a gift from the white elephant box for being best loser last week and losing again this week.

Charms were awarded to Alene Bryant, Mollie Davis, Betty Jo Davis, Jewel White, Lucille Harp and Alma Robertson for eight weeks consecutive weeks attendance.

Best loser for the week was Lucille Harp. First runner-up was Jewel Peeler and second runner-up was Mollie Davis.

Monthly best loser was Rama Smalling. First runner-up was Mary Edmiston and second runner-up was Evelene Harris.

Some of the members put on a skit about fast foods, which was reported to be fun and very informative and enjoyed by everyone.

A new Money contest began this week with members receiving money for weight loss as well as attendance.

The meeting adjourned with the singing of the goodnight song.

**Rebekah Lodge News**

Muleshoe Rebekah Lodge No. 114 met in regular session Tuesday, April 4 with Audrey Langfitt presiding. Pat Langfitt and Ruby Garner presented the flags. Ruby Green gave the opening prayer and June Green, secretary, called the roll and read the minutes of the previous meeting. The minutes were approved as read.

Ruby Green's commission as District Deputy President of District 5, consisting of Friona, Dimmitt, Hereford, and Muleshoe, was read and honors given to her. She reported that the State President Rosie McMillian would visit in Muleshoe on June 12.

Pat Langfitt's commission as Lodge Deputy was read. "We are looking forward to her schools of instructions" said Fern Davis.

Ona Berry was elected as the third member of the board of trustees.

Linda Tosh led the candle service and Ruby Green gave the closing prayer.

Refreshments were served to 17 members by Pat and Audrey Langfitt.

**NEWS VIEWS**

**Richard K. Reilly, EPA chairman:**  
"We intend to reaffirm the strong position of the United States about chlorofluorocarbon manufacture and use."

**Strom Thurmond, Senator (R-SC), on alcohol label change:**  
"Alcohol is a drug. It's misuse if perhaps the most costly of all substance abuses..."

A family tree quilt was presented to the couple and was on display at the reception. Quilt blocks were made by family members and was put together and quilted by a niece, Marianne Juneau of Boyce, Louisiana. Out of town guest, other than the immediate family members were: Helen Teague, Mr. and Mrs. Dwayne Teague and Loren of Arkansas, Betty Head and Sadie Willett of Zapata, TX, J.P. May of Washington D. C., Mr. and Mrs. Elmer Barnhill of Nebraska, Mr. and Mrs. Reece Wilterding of Tulia, Mr. and Mrs. Harold Puritt of New Mexico, Ethel Buchanan of Morton, Aliene Embry and Julie Pruitt of Lubbock, Mr. and Mrs. Russell Harmon of New Mexico, Lucy Robison and Earl Robison of Littlefield.



MR. AND MRS. D.B. HEAD

**Dr. Mark McClanahan**

Announces the relocation of his Family Medicine practice to the hospital clinic at 708 S. 1st, Muleshoe, as of April 1st. No appointment required.

272-7544 or 272-4524

**Kristy's Plants Is Now Open!**

- Full Selections Of Flowers & Vegetables, Garden Seed, Premium Lawn Food, Clay Pots, Whiskey Barrels, 4' x 8' Lattice, Baccto Potting Soil, Back To Earth Pro Blend Fertilizer, Weed Killer, Hummingbird Feeders.

**Watch Our Sign For New Arrivals!!**

Open 8 - 6 Mon. - Sat. Closed Sunday

**Kristy's Plants**

1516 W. Amer. Blvd.

272-3536

**New Low Price!!**

Our new shirt-waist dresses from American Shirt Dress® have made such a hit that we've reordered. We were able to get quality discount and we are now passing that savings on to you. American made quantity in a cool poly/cotton blend! Popular Spring pastels and brights in sizes 7/8 to 15/16, all constructed with neat details and accented with coordinated belt.



Val. to 36<sup>00</sup> Now 19<sup>99</sup>

**Bentley's** SMART FASHION

**Bailey County Journal** USPS 040-200  
Established March 31, 1963. Published by Muleshoe Publishing Co. Inc. Every Sunday at 304 W. Second, Box 449, Muleshoe, TX 79347. Second Class Postage paid at Muleshoe, TX 79347.  
L. R. Hall President & Publisher  
Sammye Hall Vice-President & Controller  
Crisa Williams News  
Evelene Harris Society  
SUBSCRIPTIONS  
Muleshoe Journal and Bailey County Journal  
Bailey County & Surrounding Areas \$14.75  
Muleshoe Journal and Bailey County Journal  
Elsewhere \$16.50  
Muleshoe Journal and Bailey County Journal  
Yearly By Carrier \$12.50  
Yearly By Local Mail \$14.75  
Advertising rate card on application

**Thank You**

A note of thank you to our community for all the prayers, calls, cards, and visits during Frank's recent emergency. A special Thank You to Dr. Purdy and his staff, to Jerry Hutto, to the local hospital staff, and to all the people responding to the call. We are so appreciative to live in a community who have the desire and willingness to provide health care in our local hospital facilities.

May God bless each and all.

Frank & Betty Wierfflen

## Local Girl Scouts Attend

### Girl Scout Fair

On Saturday morning, April 1 the Girl Scouts made an exciting trip to Lubbock for the Girl Scout Fair.

They left from the Muleshoe State Bank parking lot at 10 a.m. on a big yellow bus driven by Charlie Villarreal.

Those attending were Daisey Troop No. 300, Leader, Cherry Estep and all three assistant leaders, Linda Flores, Mary Ann Ramirez and Linda Tosh. Daiseys were Kinsee Estep, Melissa Flores, Jamie Prather, Lisa Marie Ramirez, Karen Wimberly, Elizabeth Torres, Diana Gable, Casey Tosh and Misty Garcia.

Brownie Troop No. 228, Leader Lela Villarreal and her assistant, Linda Tosh attended along with their Brownies Torie Tosh, Cynthia Villarreal, Lisa Phares, Angela Castorena, Jennifer Castorena and DeeDee Morris. Lisa Gable also attended from another Brownie Troop.

Junior Troop No. 152 with their leader Aurelia Morris and assistant, Terry Radford also attended. Juniors riding the bus were Lacy Morris, Margaret Quintana, Tiffany Bond, Kimberlee Vaughn and Leslie Radford.

The group stopped at a roadside park and enjoyed a picnic lunch before their arrival at Lubbock.

At another brief stop, the bus refused to start, but a hefty shove from the undaunted troop leaders

and assistants started it right up, and with a cheer the group continued their journey.

It was the first time to attend a Girl Scout Fair for most of the Scouts and their leaders, so it was a very exciting and informative day for all, from the Welcome and Opening Flag Ceremony to the playing of "Taps" at 5 p.m.

Caprock Girl Scout Council was celebrating its fiftieth year and a long line of Scouts held lighted candles during the singing of Happy Birthday. Alarah Russell, Director of Membership Services was the 50th Birthday speaker.

Approximately 60 troops had booths at the Fair in which they helped their guest make crafts, put on puppet shows, gave small gifts, and showed exhibits.

On the way home, the bus stopped at a Dairy Queen for refreshments and everyone had a great time.

One would think the little girls would be ready for a nap, but not so—They were still talking a mile a minute when their bus arrived back in Muleshoe, tired but a very happy group of Girl Scouts.

Also making the trip was Nelda Merriott, Chairman of Muleshoe Girl Scout Service Unit and three boys, Gage and Jeremy Tosh and Charles Villarreal.

The Girl Scouts have planned other events for the coming days. April 22, is Leader Appreciation Day and the Scouts and their parents will be honoring the Leaders and Assistants in some way on that day.

An Awards banquet is planned for May 27.




**JUNIOR GIRL SCOUTS**—(Not in order) Lacy Morris, Margaret Quintana, Tiffany Bond, Kimberlee Vaughn and Leslie Radford, all members of Junior Girl Scout Troop No. 152, along with their leader, Aurelia Morris and assistant, Terry Radford, attended the Girl Scout Fair Saturday in Lubbock.



**DAISY SCOUT TROOP NO. 300**—Saturday morning, Daisy Girl Scout Troop No. 300, along with their leaders and other Girl Scouts from Muleshoe attended a Scout Fair in Lubbock. Daiseys going included Kinsee Estep, Melissa Flores, Jamie Prather, Lisa Marie Ramirez, Karen Wimberly, Elizabeth Torres, Diana Gable, Casey Tosh, and Misty Garcia. Leaders attending were Linda Flores, Mary Ann Ramirez and Cherry Estep. (Guest Photo)



**BROWNIE TROOP 228**—Members of Brownie Girl Scout Troop No. 228, along with their leader, joined other Muleshoe Girl Scouts Saturday morning on a bus ride to Lubbock and attended a Girl Scout Fair. (Not in order) Torie Tosh, Cynthia Villarreal, Lisa Phares, Angela Castorena, Jennifer Castorena and Dee Dee Morris. Lisa Gable also attended from another troop. Leaders going along were Lela Villarreal and her assistant, Linda Tosh. (Guest Photo)



**15% Off**

**Tuxedo Rental**


From:

**Friday, April 7 -**

**Friday, April 21st**

**Lambert Cleaners**

123 Main 272-4726



### Jennyslipper

#### Membership

#### Meeting Set

"The Muleshoe Jennyslippers extend an invitation to all area women to come out on Tuesday night, April 11 at 7:30 p.m. to the Old Depot to attend a Membership meeting" said Nelda Merriott.

"There'll be refreshments, entertainment and a short business meeting and we'll try to answer all your questions about the Jennyslippers and our role in the Community. Dues are \$1.00 per month.

Many have said, "I just can't do it all—choose the area in which your interests lie and be a part of that committee. You may choose to work on just one project or on many projects, but the Jennyslippers will guarantee you that you will have fun doing it.

The Theme is the '50's' so roll up your blue jeans, put on a big floppy shirt and come out on Tuesday night for an evening of fun and fellowship with the Jennyslippers, Mrs. Merriott continued.

### Patients In West Plains Medical Center

APRIL 4-6  
TUESDAY

Ashley Williams, Dovie Knowles, Baby Girl Knowles, Susan Salazar, Vera Engelking, Linda Tucker, and Ronda Tennison

WEDNESDAY

Michelle Standard, Baby Boy Standard, Dovie Knowles, Baby Girl Knowles, Marnita Martinez, Vera Engelking, Linda Tucker, and Ronda Tennison

THURSDAY

Marnita Martinez and Vela Engelking

Perspective

A tall, stately girl is merely a long skinny girl with money.  
—Observer, Vail, Ia.

## Ben Franklin

*Better quality for less*

2104 W. Amer. Blvd. Mon.-Sat. Sun.  
272-3855 8 a.m. - 8 p.m. 12-5 p.m.

<p>Pepsi Diet Pepsi Mountain Dew 6 pack 12 oz. cans</p>  <p style="text-align: right; font-size: 24pt;"><b>\$1.59</b></p>	<p>10" Hanging Baskets</p> <p>Purple Jew Begonia Swedish Jew Asparagus Fern</p> <p style="text-align: right; font-size: 24pt;"><b>\$6.99</b></p>
<p>Vinyl Tubing Lounge Chair</p> <p style="text-align: right; font-size: 24pt;"><b>\$7.99</b></p>	<p>Huggies Disposable Diapers Super Trim Sm 66 ct. Med. 48 ct. Lg. 32 ct.</p>  <p style="text-align: right; font-size: 24pt;"><b>\$9.97</b></p>
<p>Delsey 4 roll pack Bathroom Tissue</p>  <p style="text-align: right; font-size: 24pt;"><b>99¢</b></p>	<p>Thermos 34 qt. Cooler plus Special Offer 34 qt. cooler 7 qt. cooler w/tray plus 1/2 gal. jug</p> <p style="text-align: right; font-size: 24pt;"><b>\$17.97</b></p>

**TAKE-OFF**

# FAST

**WITH WEIGHT WATCHERS® NEW QUICK SUCCESS® PROGRAM**

**TAKE OFF \$15.00 JOIN NOW FOR ONLY... \$10**

**Lose weight faster than ever.**

- You'll have so much to look forward to this summer if you start losing weight right now!
- With our new easy-to-follow food plan you can keep right on enjoying your favorite foods... never feel hungry... and still lose weight FAST.
- Our weekly meetings are more exciting than ever.
- You'll actually enjoy our simplified optional exercise plan.
- Make the move to Weight Watchers right now... think of how much more fun the "NEW YOU" will have this Spring and Summer.



Registration Fee ..... \$17.00  
First Meeting Fee ..... \$ 8.00  
Regular Price ..... \$25.00

**YOU SAVE \$15.00**  
Offer Ends April 29, 1989

Sheila Falk  
Area Director

**Come to the Weight Watchers meeting nearest you.**

**SUDAN**  
First National Bank  
Community Room  
1st and Main  
Thur: 6:30 pm

**JOIN WEIGHT WATCHERS NOW!**

CALL TOLL FREE **1-800-359-3131**

Offer valid April 9 through April 29, 1989. Offer valid at locations listed (Areas 37, 96, 107) only. Offer valid for new and renewing members only. Weight Watchers and Quick Success are trademarks of WEIGHT WATCHERS INTERNATIONAL, INC. ©WEIGHT WATCHERS INTERNATIONAL, INC. 1589

# Rip's

Spring Savings

SPECIALS OF THE WEEK

<b>Ginnie Johansen Accessories</b> .....	<b>40% OFF</b>
<b>One Group Of Personal and Cambridge</b> .....	<b>50% OFF</b>

**Style Show April 22nd**  
Watch For More Details

- OPEN -  
8:AM - 6:30 PM CDT

COMPLIMENTARY  
GIFT WRAPPING

LAYAWAYS WELCOME

**New! New! New!**  
Dresses, Pant Suits, Skirts  
Tops And Shorts  
From Personal - Alexander Campbell  
- Cambridge - Tobaei - Hamilton -  
Rocky Mtn. - J'ans Sweats & More.



**FARM BUREAU SPEAKS TO ROTARY** - Today at noon, David Tipps, left, manager of the Bailey County Farm Bureau, introduced Bob Law, right, a Farm Bureau Field Representative from Canyon. Law showed a video about agriculture that Texas Farm Bureaus provide to all schools. They are shown with one of the resource books which accompanies the video. (Journal Photo)

**Library...**

Cont. From Page 1  
concluded Mrs. Camp.  
"During the month of April, the large display case will show a collection of armadillos, courtesy of Tim Miller of KMUL, and the small display case will have some of the prizes for the 'Walkathon.'  
"Got A Question? -- Call The Library -- 272-4707!"

**Melodrama...**

Cont. From Page 1  
lington.  
Publicity will include Darla Rhodes, Nelda Merriott, Tim Miller, Sammie Hall, Kay Graves, Cleta Williams, Judy Watson, Magann Rennels and Donna Kirk.  
Music for the melodrama will be Lanell Skaggs and Rhonda Buie.

Music - country/western - will be Cliff Allen and Conrad Cotter.  
Merchant giveaway will be Harvey Bass, Irvin St. Clair and possibly MAC.  
Muleshoe Production Company will be approaching the city to approve banners for the highway under the tourism fund and Linda Elder donated \$125 to reserve the Bailey County Coliseum for June 29 and 30, the nights scheduled for the production.

May 11, at 7:30 p.m., the next meeting of the Muleshoe Production Company will be held in the meeting room at the Muleshoe State Bank.  
Attending the Thursday night meeting were Nelda Merriott, Amanda Ashford, Patsy Chance, Nancy Barnhill, Paula Braddock, Khristi Phelps, Betty Jo Beaty, Darla Rhodes, Regena Clarkson, Linda Elder, Eric Allison, Dawn Pederson, Kay Graves, Kay Swint and Pat Prater.

Also, Roger Clarkson, Billie Joann Smith, Marsha Williams, Beckye Conklin, Phyllis Angeley, Sammie Hall, Arlene Phelps, Rhonda Buie, Sherri Shipman, Tim Miller, Sue Holt, Elinor Yerby, Ted Barnhill and Jay K. McKay.

Make your plans to attend the meeting May 11 -- you are needed as this is a community-wide effort.  
**Think On It**  
A conceited person has one good point. He doesn't talk about other people.  
-Grit-

**Around Muleshoe**

Cont. From Page 1

and county treasurer report for March; consider budget amendment to FY1989 budget; appoint election judge; discuss building purchase and other miscellaneous items.  
\*\*\*

Robert Hooten was honored by Ford Motor Company at the regular meeting of the South Plains Ford Dealers in Lubbock on Tuesday evening, April 4.  
He was honored for twenty-five years as a Ford dealer.

Jack Morris, Plainview Ford dealer, introduced Hooten.  
George Conner, from the Dallas district office presented Hooten with a plaque and a twenty-five year pin.  
\*\*\*

Students for the Month at Watson Junior High School for March included Stephanie Perez, sixth grade; Randy Singleberry, seventh grade and Staci Langfitt, eighth grade.  
\*\*\*

**Chapter One Elects New Directors**

Roy Anzaldue acted as Master of Ceremonies for the annual Chapter 1 Spring Program for parents held Thursday, April 6 in the Muleshoe High School cafeteria.  
Approximately 175 people attended the program and enjoyed an evening of visiting and games.

Anzaldue said the program is conducted to promote parental involvement in the education of their youngsters.  
Chapter 1 school personnel from Dillman Elementary, DeShazo Elementary and Watson Junior High plan and prepare the program.  
Six new members were elected to the Chapter 1 Parent Advisory Council. Elected were Maggie Ruiz Martinez, Luis Florez, Sylvia Guzman, Doroteo Barron and Juan Antonio Serrano, while Concha Barron was re-elected.

These six members will serve in an advisory capacity for the federally funded Chapter 1 Programs on the four Muleshoe campuses and volunteer their time and talent toward coordinating the educational efforts of the home and schools.  
Those members whose two-year terms expire June 1 include Maria Garcia (moved); Cornelius Loewen, Johnny Cisneros, Maria Cisneros, Concha Barron and Aurora Martinez.

Barbara Finney, principal of Dillman Elementary said next Tuesday through Friday the first grade will be taking the TEAMS tests.  
Mrs. Finney urges parents to have their children at school and see that they are well rested.  
\*\*\*

At Watson Junior High School, the principal awards for this week were Eilely Bomer, sixth grade; Mark Garcia, seventh grade and Arturo Estrada, eighth grade.  
Teacher of the Week is Mrs. Alice Arguello, teacher assistant.  
\*\*\*

Students for the Month at Watson Junior High School for March included Stephanie Perez, sixth grade; Randy Singleberry, seventh grade and Staci Langfitt, eighth grade.  
\*\*\*

Muleshoe ISD, along with other area schools, is now accepting applications for the transfer of students into the

district. The Texas Education Agency requires that all students who live outside the district apply for a transfer prior to May 1, 1989.

Those wishing to transfer into the Muleshoe School District must complete a form in the Superintendent's office no later than 4 p.m., April 28, 1989.

Questions concerning the transfer of students may be directed to Jean Richardson, 514 W. Avenue G, Muleshoe, Tx. 79347. Telephone number is 806-272-3389.  
\*\*\*

Come one, come all who are interested in forming a Round Dance Club in Muleshoe.

A meeting will be held Wednesday, April 12, at 8 p.m. at the American Legion Hall.

Jack Orio from Clovis has consented to give lessons and help get a local club going. He explained that Round Dance is a cued or prompted form of dance using many different dance steps.

If you have questions, call 925-6434 or 925-6656.  
\*\*\*

**BOATS 'n' STUFF Is Now Open!!**

We feature boats of all kinds, some new, some used, but in great condition, RV's, pickups, travel trailers, and YOU NAME IT...We might have it! We will trade for anything of value!

SAVE BIG DOLLARS. BUY USED!!

OVER 30 TO CHOOSE FROM!!!

Summer is almost here! Come in today and be ready for fun in the sun!

FINANCING AVAILABLE WITH APPROVED CREDIT

**BOATS 'n' STUFF**  
5100 E. Mabry 762-1674  
"Your Pleasure Is Our Business"

**It's Time To Look At Crop Insurance**

**Call Today Ronnie Holt**

Office 272-3614 Night 965-2842

**Multiple Peril Crop Insurance Has Sale Closing Date Soon! Talk To Us About Your Coverage Today!**

**Call Ronnie Holt For Information About Your Own Protection.**

**Call Or Come By Western 66!!**

**Earth Hwy. & Talk To Ronnie Holt**

**IRA Individual Retirement Account**

**IRS Internal Revenue Service**

**THE CHOICE IS YOURS**

Don't Pay Unnecessary Taxes.  
Put Your Money To Work For You.  
Last Chance To Save On 1987 Taxes.  
See Us By April 15th.

**MULESHOE STATE BANK**  
MEMBER FDIC  
101 West American Blvd. Phone 806/272-4561  
MULESHOE, TEXAS 79347

**"A Special Thanks"**

The Bailey County History Book Committee wants to thank all of the people who helped make the history book, "Tales and Trails Of Bailey County" possible.

To each of you who contributed and participated in the pie supper and helped raise funds to get us started.

The many volunteers that spent numerous hours calling, contacting personally, asking and persuading others to submit their stories, memories, and experiences in Bailey County.

The volunteers that spent many hours of composing, editing, typing, proofreading, and re-typing to make this book an enjoyment to all.

Those that purchased special pages making it possible to publish the book and all who had faith in us to order the book months in advance.

Bob Stovall for special printing, The City of Muleshoe for allowing us the use of the library, The Muleshoe Publishing Company for the use of their files, Radio Station KMUL, Channel "6" TV, West Texas Ranger, Muleshoe Publishing Company for all the media coverage afforded us to inform the public of all phases of this publication and others who helped with publicity and mailing. For all we learned about the first 70 years in Bailey County.

## Texas Unemployment Figures Down

Although there were approximately 594,000 unemployed Texans last month, the state is definitely seeing a decline in the overall unemployment rate, according to Commissioner Mary Scott Nabers of the Texas Employment Commission.

"The month of February shows a 7.3 percent rate and that is down from 7.6 percent in January," Commissioner Nabers reported. "Even better, though, is the comparison to this time last year when the Texas unemployment rate was 8.7 percent. There is no doubt that the state's economic situation is definitely improved but that fact is sometimes hard to believe if you are one of the ones in the jobless category," Nabers said.

"Interestingly enough, total employment in the state is down," Nabers said, "but so is unemployment. However, the Texas Employment Commission does not consider this unusual for the month of February. Many factors affect the unemployment rate. Often workers hired for Christmas are kept on to help

with inventory taking in January, then released in February. Additionally, some workers voluntarily leave the labor force when their seasonal jobs expire. "Most of the 27 major metropolitan areas for which data is currently available followed the statewide pattern in February, with declining unemployment rates. Every MSA's rate was either unchanged or down over the month, and all areas' current rates were below their year-ago rates - in several cases, by as much as two full percentage points.

"Areas with the lowest unemployment rates in February were: Bryan-College Station, at 4.9 percent; Lubbock, with a rate of 5.4 percent; Austin and Dallas, each with a 5.6 percent rate; and San Angelo and Waco, both of which had a February rate of 5.9 percent.

"The highest unemployment rates recorded in January were in the four border MSA's, which continued to have higher-than-normal rates due to migrant workers remaining at home for

the winter months. MSA's with the highest rates included: McAllen-Edinburg-Mission, at 18.2 percent; Laredo, with 14.3 percent; Brownsville-Harlingen, with 12.5 percent and El Paso, with a rate of 10.8 percent. Rounding out the highest five areas was Beaumont-Port Arthur, with a February rate of 10.0 percent. These were the only MSA's with rates above 10 percent in February.

**The Best**  
Coed—What do you think of men?  
Roommate—The best opposite sex we've got.

**Unselfish**  
"Oh, Lord," prayed Sally, "I'm not asking anything for myself, but please send mother a son-in-law."

**True**  
He—Why does the average girl prefer beauty to brains?

She—Because the men that can see outnumber those who can think.

## Best Over-60 Speller Will Be Known Soon

All over Texas, hundreds of senior citizens are studying into the wee hours, striving to memorize the spellings of esoteric words like 'logaedic,' 'valleculate' and 'conatus.'

For one of these seniors, this long mano-a-mano duel with the dictionary will end in glory when he or she is named champion of the 1989 Texas Senior Citizens Spelling Bee April 25 in Austin.

The winner of this event, which is sponsored by the Texas Department on Aging, will win a check for \$100 and bragging rights as the top 60-plus speller in the state.

The runner-up will earn \$75 and third place will be good for \$50. This is decent pocket change, but according to spelling bee organizer Allen Baca, the money is hardly the point.

"I like to call this event 'serious fun,'" says Baca, a new program developer for the Department on Aging. "That's not a contradiction in terms. Older people enter this contest for fun, certainly, but it's also a way to show themselves and

others that they're still on the ball mentally.

"Trying to remember the spellings of all these four-dollar words is quite an intellectual feat, and the competition has gotten tougher in each of the three years we've sponsored this event. These people are here to prove a point."

The finalists who will compete in the State Senior Citizen Spelling Bee are winners and

runners-up from regional contests held in senior centers around the state. All contestants

must be at least 60 years of age. Wylma Reed of Austin prevailed in last year's contest.

The competition is open to the public and will be held from 3 to 6 p.m. in the Big Bend Room of the Hyatt Regency Hotel. No admission will be charged.

### Get Your History Book Now!

Only

15 left

\$75<sup>00</sup>

each

Call: Vivian White  
272-3370

Thursie Reid  
272-3611

Public Library  
or the 272-4707

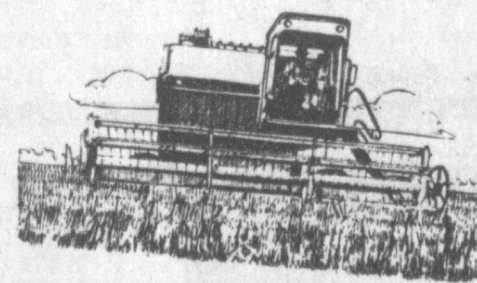
# IT IS BETTER THAN IT USED TO BE!

## But You Will Never

## Know If You

## Don't Sign Up

## By April 15th



### Call Ronnie Holt For Your Crop Insurance Details

### Sales Closing Date Is Thru April 15th



**RONNIE HOLT  
INSURANCE  
AGENCY**

P.O. BOX 304  
WESTERN 66 OFFICE BUILDING  
MULESHOE, TX 79347  
OFFICE (806) 272-3614  
RES. (806) 965-2842

SPECIALIZING IN CROP, LIFE AND HEALTH INSURANCE



**PART OF THE CONTEST PLAY**--In the background, the Court Jester follows closely behind one of the characters in "Elizabeth, The Queen." This picture was taken during the annual Dinner Theater last week. (Journal Photo)

## Track Team Shows Well At San Angelo Meet

On the weekend of March 31 and April 1, the Muleshoe Boys Track Squad competed at the prestigious Angelo Relays. In a 20-team field with the likes of Breckenridge, Graham, Dalhart, Abilene, Wylie, the Mules raced to a ninth place finish. Seniors Michael Dunham and Richard Ring rang points up on the scoreboard. (Michael 52'7" and a second place finish in the

shot put and Richard 10:36.23 and a third place finish in the 3200 meter run). "Overall," said Coach Tom Duncan, "I believe we accomplished what we needed to do. "That is -- improve our times and distances while competing against probably the most com-

petitive teams in the West Texas area. Besides the award winning performances of Dunham and Ring, we had some great competitive performances from the other athletes on our squad."

He continued, "In the shot put both Jaime Olivarez and Mike Friend improved on previous distances with both going well over the 40' line. In the 800 meters, seniors Jeff Hicks and Juan Pacheco both ran good times and exhibited good solid improvement."

"Sophomore hurdler Sergio Garcia continued to run improved times in the hurdle prelims. Quarter milers Clay Van Sandt (53:34), Hector Sanchez (65.00) and Johnny Noble (56.72) ran well in a traditionally tough event at the "Relays" which included current record holder Charlie Tiggs from Dalhart.

"Seniors Daniel Olivas and Chris Young and junior Chad Griswold competed well in the

sprint (100 meter) event. Daniel ran 11.0 in the finals Saturday with an extremely tough finish which saw the distance from first to eighth being no more than three yards in width.

"Our mile relay quartet of Clay Van Sandt, Charlie Reyna, Hector Sanchez and Richard Ring had tremendous improvement with a 3:39.12, some five to six full seconds."

The coach concluded, "Our times and distances noticeably improved and that was our major goal. It was paramount to compete with the intent to realize improvement. The competition was rough, tough and hard to bluff.

"In our way of thinking, the only way to improve is to run with the best, and we did just that. These athletes will be competing at Dimmitt April 8th in the Bobcat relays and then will go into district competition at Dimmitt on April 14-15."

### Eighth Grade Parent Night Planned Monday

MHS Principal Wayland Ethridge and MHS Counselor Linda Marr have announced that Monday, tomorrow, at 6:30 p.m., eighth grade parent night will be held in the Muleshoe High School cafeteria.

They said all parents of eighth grade students are encouraged to plan to attend an informative program designed to help them assist their child in planning his/her high school graduation program.

They explained that the program will be conducted by Ethridge and Marr. They will provide information concerning course offerings, 4-year planning, TASP (a recently state mandated test), and other areas of concern for in-coming students to Muleshoe High School.

"On Tuesday morning, we will begin the registration process with the eighth grade students," said the duo. "They will be required to turn in a registration form immediately following this meeting."

"A major goal at Muleshoe High School is to make the transition from junior high as smooth as possible. It is vital that you become a part of this process," they added. "Please make plans to attend this informative session."

### Who Knows?

1. Define pyromania.
2. What does the phrase "Requiescat in Pace" mean?
3. Who received the first message from the Atlantic cable?
4. What is the motto of Ohio?

### Answers to Who Knows

1. A persistent compulsion to start destructive fires.
2. Rest in peace.
3. Queen Victoria talked to President Buchanan, Aug. 16, 1858.
4. With God, all things are possible.



**HELPING A SCHOLARSHIP FUND**--Some lucky person will become the owner of this colorful and adorable clown. Donations of \$1 are being accepted for each ticket. All funds from the clown will go to the Lisa Triana Memorial Scholarship Fund. The clown is on display at Ana's House of Beauty. (Journal Photo)

### Enochs News

by: Mrs. J.D. Bayless

Mrs. Bill Key and son, Sid, and Vonna Hamilton were in Littlefield Tuesday afternoon and visited in the home of the Homer Howards'.

Mr. and Mrs. E.N. McCall visited her 95 year old uncle and aunt, Mr. and Mrs. J.E. Mise, and Johnny Morgan in Portales, N.M. last Saturday.

Mr. and Mrs. Roger Jones and children of Luders spent part of the Easter holidays with his mother, Mrs. Lorella Jones and brother, Wendell.

Mr. and Mrs. Travis Lambert

of Muleshoe were supper guests Sunday evening in the home of Mr. and Mrs. Goldman Stroud.

Guests in the home of Mr. and Mrs. Bill Key Sunday afternoon were Mr. and Mrs. Marion Walker of Mt. Vernon, and Mrs. Geneva Mitchel of Dimmitt.

Every one is wishing for rain, the farmers are busy getting their land ready for planting when its time. Mrs. Ellen Bayless had a letter from her daughter, Wanda Doak, and she said they had three and half inches of rain that week and it was raining again, at Wylie, TX.

Mrs. Ima Roberts visited the Bill Keys', Mrs. Roberts and Mrs. Key drove to Farwell and visited Mrs. Elsie Tarr.

## Congratulations

to **Mark McClanahan D.O.**

and your employees on the occasion of the opening of your new office for the practice

of **Family Medicine**

at **708 South 1st Street Muleshoe, Texas 79347**

(West Plains Medical Center Clinics)

April 1, 1989

(806-272-7544 or 806-272-4524)

West Plains Medical Center, Inc. Muleshoe, Texas



# True Value HARDWARE STORES

## Savings In Bloom

<p><b>1.99</b> Your Choice Food &amp; Fertilizer for flowers, vegetables, trees, evergreens. 2 1/2 lb.</p>	<p><b>24.88</b> 2-Gal. Polyethylene Sprayer features a lightweight tank, 36-in. hose. 52276</p>	<p><b>32.88</b> Garden Weasel has rotary cutters that loosen soil, uproot stubborn weeds. 90100</p>	<p>Now In Stock</p> <p>Complete Line Of Pop-up Sprinklers &amp; Accessories</p> <p>Full Circle Center Strip 1/3 Circle Square 2/3 Circle your choice 3/4 Circle 1/2 Circle <b>2<sup>25</sup></b></p>		
<p><b>6.49</b> Lawn Food for 5,000 sq. ft. Slow-release nitrogen for deep-green growth. 26-4-8</p>	<p><b>7.88</b> Lawn Food With Weed Control lets grass become greener. 5,000 sq. ft. 26-3-3</p>	<p><b>5.99</b> Dial-A-Spray<sup>™</sup> Lawn &amp; Garden Sprayer mixes as it sprays food, etc. 28837</p>	<p><b>15.99</b> 90-Ft. Circle Impact Sprinkler with brass head, water-saver arm. 40796</p>	<p><b>6.99</b> Quart Weed &amp; Feed kills tough weeds including dandelions, and covers 5,000 sq. ft. 071149/20008</p>	<p><b>8.99</b> 60-Ft. Vinyl Hose with 5/8-in. x 1/2-in. vinyl stays flexible in any weather. 05629</p>
<p><b>3.99</b> Solid-Brass Twist Nozzle for no-drip shut-off. Adjusts from mist to heavy rinse. 12244</p>	<p>Sale Ends May 13, 1989</p> <h1>Fry &amp; Cox, Inc.</h1> <p>401 S. 1st 272-4511</p>		<p><b>6.99</b> GearStream<sup>™</sup> Whirler Sprinkler waters 4 to 40-ft. circle. Wheel base. 1950</p>		







**JUST STRUTTIN' HIS STUFF**--Willard Norman caught the eye and the attention of everyone as he modeled tuxedos from Lambert Cleaners during the annual Fine Arts Boosters Dinner Show Monday night. (Journal Photo)

### First Baptist Revival Starts Today

All during the week of April 9-14, the First Baptist Church of Muleshoe will be in revival. Sunday services will be at 11 a.m. and 7 p.m.

A noon meal will be served each day during the week, Monday through Friday, beginning at 11:45 a.m. and ending at 12:45 p.m. The evening services will begin at 7:30 p.m.

Dr. Claude Cone will be leading the revival as preacher. He is a native of West Texas and lived part of his youth in New Mexico, graduating from Melrose (N.M.) High School in 1953.

He received his B.A. from Wayland Baptist University in 1959 and graduated from Southwestern Baptist Theological Seminary with a Doctor of Ministry degree in 1984.

Dr. Cone has pastored church-

es in Slide, Crandall, Howe, Denison, Lubbock and Pampa, Texas. He now serves as executive director of the Baptist Convention of New Mexico where he has been since March 1, 1985. John Slover will be leading the music at each service. He has been serving as Minister of Music at First Baptist Church, Pampa, since 1973.

Barry Bradley, pastor of the First Baptist Church said he and his congregation would like to issue a special invitation to each person in the community to attend any or all of the services during this revival week.

The man of true greatness never loses his child's heart.  
—Mencius.

There would be no great ones if there were no little ones.

## Unpaid Taxes Cause Problem For Local Man

Too often, people either forget, or maybe in some cases, deliberately ignore tax notices--even though they are a fact of life.

This was brought home brutally and definitely to one local man this past Monday, when one of his vehicles was seized for non-payment of taxes.

Acting on an order from 287th District Court, the vehicle was seized and was locked up on the parking lot in front of the Bailey County Law Enforcement Center.

Bailey County Appraisal District had made application for a Tax Warrant authorizing the seizure and sale of the personal property (in this case, a vehicle) as provided by Subsection B of Section 33.21 of the Texas State Property Tax Code.

According to the Tax Warrant: "NOW, THEREFORE, YOU ARE HEREBY COMMANDED to seize, levy upon and advertise for sale as under execution so much of the personal property of the taxpayer as is reasonably necessary to satisfy the taxes, penalties, and interest of the

forementioned taxing units, and all costs of seizure and sale.

"The taxpayer named herein or his agent in whose control the personal property is found is hereby directed to disclose to the officer executing this warrant, the name and address if known of any and all persons having an interest in the property seized. Said taxpayer or other person having possession of the personal property of the taxpayer against whom this warrant is issued shall surrender said property pending its sale."

Such seizures occur periodically in Bailey County according to Gilbreath, and people need to be aware that if they don't pay their taxes, this just could happen to anyone.

Taxes keep our local governments, both city and county, and our schools functioning. Without taxes, some vital services may have to be cut back or eliminated.

It's just a reminder -- if your taxes are paid, your personal property will not be seized under court order and sold to pay the taxes.

## Black's Magic Show Slated Here Thursday

George Nieman, president of the Muleshoe Rotary Club said they would like to encourage and invite the entire community to attend Black's Magic and Illusion Show next Thursday, April 13, at 7 p.m. in the Muleshoe High School auditorium.

Tickets for the Rotary-sponsored show are available from any Muleshoe Rotarian and are \$3 for children, age 12 and under, and \$4 for adults.

Jan Black, or 'Nick' as he is more commonly known to his many friends and family, has been practicing many long hours to provide an exciting and intriguing show of magic and illusion.

Jan Black has been a resident of Muleshoe for over 30 years and is employed by General Telephone Company of the Southwest.

His wife is the former Jaton Scheller and they have two sons, Patrick, seven and a first grade student at Dillman Elementary; and Thomas, five, of the home.

Nick and his family strive to

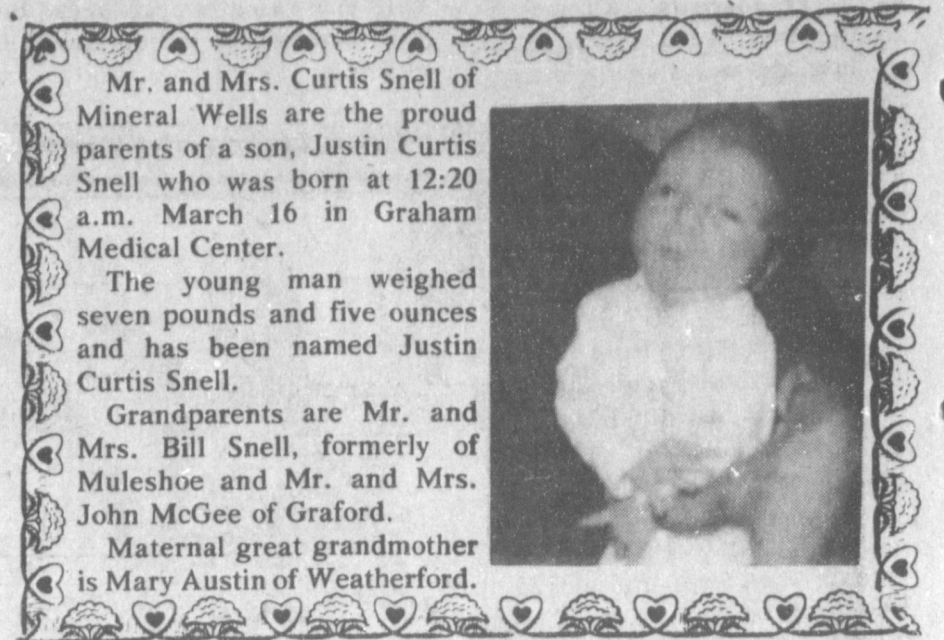
make their show a family affair as Jaton, Patrick and Thomas are also involved in the performances. For some time now, they have been presenting private performances for banquets, etc.

"So, for an exciting evening of good, wholesome family entertainment," said Nieman, "mark your calendar for Thursday, April 13, 7 p.m., Muleshoe High School auditorium."

Muleshoe Rotary Club profits from the show will be spent on various activities such as: Girl Scouts, Boy Scouts, Bailey County Stock Show, Bailey County Crime Line, Diabetic Camp, sending students to the Rotary Youth Leadership Camp each summer, the Polio Plus program, and various other projects the club approves, concluded President Nieman.

**Exactitude**  
Another applicant, a young lady, sought work as a stenographer.  
"How," she was asked, "do you spell Mississippi?"  
Undaunted, she asked: "The river or the state?"

**Too True!**  
Doctor: "You've been working too hard."  
Patient: "I know, but that's the only way I can keep up the easy payments."



Mr. and Mrs. Curtis Snell of Mineral Wells are the proud parents of a son, Justin Curtis Snell who was born at 12:20 a.m. March 16 in Graham Medical Center.

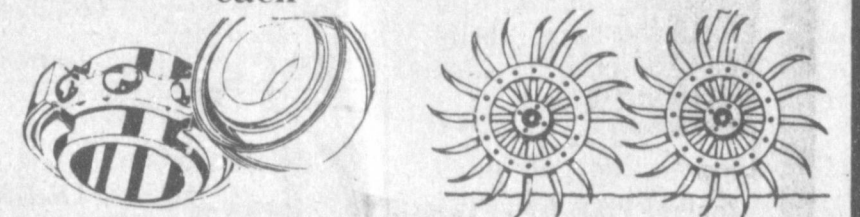
The young man weighed seven pounds and five ounces and has been named Justin Curtis Snell.

Grandparents are Mr. and Mrs. Bill Snell, formerly of Muleshoe and Mr. and Mrs. John McGee of Graford.

Maternal great grandmother is Mary Austin of Weatherford.

**Your Bearing Headquarters**  
For  
**Rotary Hoes or Chicken Picker Wheels.**  
Fits  
**John Deere - IHC - Case Lilliston Yetter - WFE - & M&W Gear.**

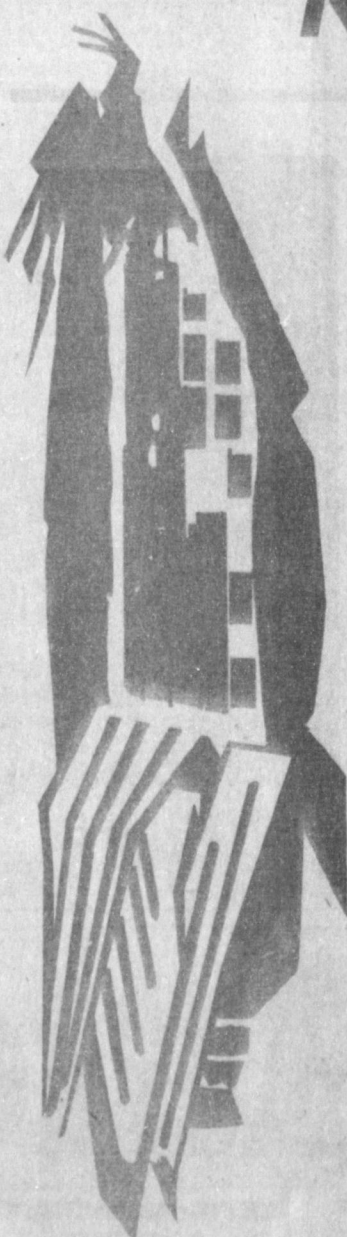
**\$333** each



Sale Ends April 22nd

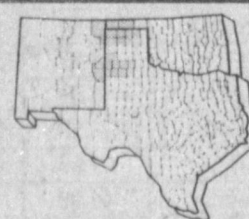
**Fry & Cox, Inc.**  
401 S. 1st Muleshoe, Texas 272-4511

For a hybrid that doesn't compromise good agronomic traits for outstanding yield potential, plant **NEW 3168!**



- 3168 is a high-yielding hybrid that responds with "performance plus" under higher plant populations.
- Excellent grain quality and high test weight give 3168 the potential to be a real "favorite" among food corn processors.
- Plant Pioneer™ brand hybrid 3343 as a companion to increase your odds for a better corn crop.

**PIONEER® hybrid 3168 vs. COMPETITIVES**



TEXAS AND OKLAHOMA PANHANDLES AND EASTERN NEW MEXICO

HYBRID	1988		3-YR. AVG.	
	BU/AC	% WINS COMPARISONS	BU/AC	% WINS COMPARISONS
3168	190.8	74	166	198.6 81 252
Competitives	179.9		183.9	

So for top-performing hybrids like 3168 and 3343 and a 2% Early Pay Savings before April 25, 1989, contact your local Pioneer sales representatives.

**Gene Paul Jarman**

801 W. Amer. Blvd. 272-5985

Muleshoe

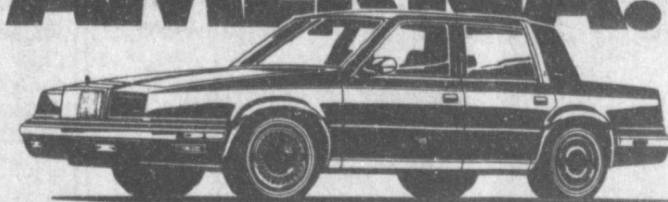


**PIONEER®**  
BRAND SEED CORN

All sales are subject to the terms of labeling and sale documents.  
Registered trademark of Pioneer Hi-Bred International, Inc., Des Moines, Iowa, U.S.A.



CHRYSLER-PLYMOUTH SAYS  
**"HERE'S TO YOU, AMERICA!"**

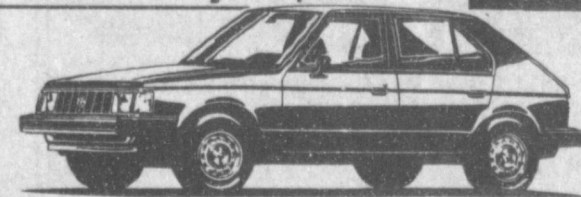


**1989 CHRYSLER NEW YORKER LANDAU TOTAL SAVINGS**

Save \$1200 when you combine option package discount and factory cash back on the elegant Chrysler New Yorker Landau.

BASE M.S.R.P.	YOUR SAVINGS	M.S.R.P. WITH OPTION PACKAGE LESS DISCOUNT AND CASH BACK
\$20,014*	OPTION PACKAGE DISCOUNT -\$2,101 FACTORY CASH BACK -\$1000†	\$20,915

**\$1200**



**1989 PLYMOUTH HORIZON AMERICA TOTAL SAVINGS**

Save \$500 factory cash back on the Plymouth Horizon America.

BASE M.S.R.P.	YOUR SAVINGS	M.S.R.P. LESS CASH BACK
\$6,943*	FACTORY CASH BACK -\$500†	\$6,443

**\$500**



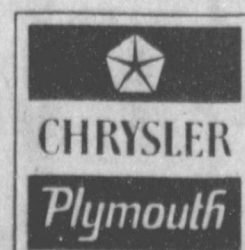
**1989 PLYMOUTH SUNDANCE TOTAL SAVINGS**

Save \$725 when you combine option package discount and factory cash back on the sporty Plymouth Sundance.

BASE M.S.R.P.	YOUR SAVINGS	M.S.R.P. WITH OPTION PACKAGES LESS DISCOUNT AND CASH BACK
\$8,820*	OPTION PACKAGE DISCOUNT -\$791 FACTORY CASH BACK -\$500†	\$8,886

**\$725**

**\$300-2,000 FACTORY CASH BACK ON EVERY CAR!**



**Muleshoe Motor Co.**

1225 W. Amer. Blvd.

272-1251

\*Manufacturer's suggested retail prices. Title, taxes, and options extra. \*\*Based on sticker prices of options if purchased separately. †Factory cash back on new 1988 and 1989 models. Excludes 1990 Laser.

**MHS Students Have Opportunity For Scholarship**

Two Muleshoe High School seniors have an opportunity to win a \$500 college scholarship, it was announced this week by L. B. Hall, publisher of the Muleshoe Journal and Bailey County Journal.

The Journals are members of the West Texas Press Association, the world's largest regional

press group, and that organization is seeking out two future community journalists to receive stipends of \$500 each.

Through the "Bob Craig Memorial Scholarship" program, named in honor of long-time Hamlin Herald publisher Bob Craig who died in 1981, the West Texas Press Association is

sponsoring an essay contest based on the theme "My Future and Career Plans in Community Journalism." High school seniors interested in pursuing a career in community journalism may submit their essays to WTPA Scholarship Committee, Stephen Henry, Chairman, P. O. Drawer 1628, Levelland, Texas

79336-1628.

The essay must be postmarked no later than April 21, 1989.

The essay is limited to a maximum of 400 words and no letters of reference will be accepted for consideration in the contest.

In addition to being a senior in high school, they must maintain

a 'B' average or better and plan to continue studies at a school of journalism. Once the winners are selected they must be enrolled in at least three hours of journalism each semester he or she receives assistance.

The scholarships will be divided into payments of \$250 per semester for two semesters

for two students. The essays will be judged by the Texas Press Association.

A great man will not trample upon a woman, nor speak to an emperor. —Thomas Fuller.

All great men come out of the middle class.

—R. W. Emerson.

# ATTENTION!

CLOSED TILL  
11 AM  
SATURDAY

## BARGAIN BARN FURNITURE

# RETIREMENT SALE!!

Open Sunday



**SHELBY AND RUBY BISHOP TO RETIRE**

Since 1976 it has been our privilege and pleasure to have served as owners of Bargain Barn Furniture in Downtown Clovis. But now it is time for us to go fishing and visiting or otherwise do whatever you do when you don't open the store everyday. But before we can do this we must get our things in order and liquidate all of all name brand furniture stock to the bare walls. Thanks for all the good years.

Shelby & Ruby Bishop

MUST SELL ALL OUR FAMOUS BRANDS. TOTAL LIQUIDATION PRICES WILL PREVAIL. Styleline - King Koil - Broyhill - Vaughn - Action - Sidex - Astro - Lehigh - Custom - 3 Star - Standard 20th Century - Ashley - etc.

**DELUXE QUEEN SIZE EARLY AMERICAN SLEEPER**  
Opens with Queen Mattress-Antron Nylon Cover  
REG. \$499.95  
SALE \$297

**SOFA SLEEPER**  
Opens with Twin Size Mattress-Nice Cover.  
REG. \$279.95  
SALE \$167

**WHITE AND BRASS METAL DAY BED**  
Includes Sides-Back-Rails and Mattress.  
REG. \$179.95  
SALE \$97

**5 PC. BRASS AND GLASS DINETTE**  
Stop Sign Style-With 4 Padded Chairs. Priced in the Box.  
REG. \$199.95  
SALE \$127

**4 DRAWER CHEST OF DRAWERS**  
Nice Wood Grain Finish-Nice Storage Space.  
REG. \$49.95  
SALE \$24<sup>77</sup>

**SET OF 3 OCCASIONAL TABLES**  
2 End Tables and Coffee Table.  
REG. \$89.95  
SALE \$47

**MATTRESS SETS**  
Famous Name Smooth Top Construction. Sold in Sets Only.  
REG. \$129.95  
SALE \$67 set

**ALL SALES FINAL! No Layaways - No Special Orders. Everything Must Be Sold In A Few Days.**

**PUBLIC NOTICE**  
The Bargain Barn is not quitting business. At the end of this sale, new management will take over with a face lift, new stock, and great new bargains.

**NO DOWN NO INTEREST TIL JULY NO PAYMENT TIL JULY**

# ... RETIREMENT LIQUIDATION!! THIS BUILDING MUST BE EMPTIED IMMEDIATELY

SALE STARTS **SATURDAY** 10 Hours 11 A.M. to 9 P.M.



**TERMS OF SALE**

- Time Payment Plan
- No Down Payment Til July
- Visa or Mastercard
- Cash or Check
- 90 Days Same as Cash
- On The Spot Financing

All items priced U-haul-But delivery is available. All items must be removed from bldg.

SPACE IN THIS AD PERMITS LISTING JUST A FEW ITEMS!

**3 PC. LIVING ROOM SETS**  
Contemporary-Traditional or Early American-Includes Sofa-Love Seat & Chair. Your Choice  
Values to \$699.95 Sale **\$397**

**3 SHELF-GOOD SIZE OAK FINISH BOOKCASE**  
Nice Finish and Shelf Room.  
Reg. \$49.95 Sale **\$27**

**4 PC. BEDROOM SUITE**  
Includes Double Dresser-Mirror-Full or Queen Headboard and Nite Stand-Nice Oak Finish.  
Reg. \$249.95 Sale **\$137**

**WALL TO WALL**  
3 PC. BEAUTIFUL CONTEMPORARY LIVING ROOM SUITE IN RICH MULTI-TONE VELVET COVER. Includes Sofa-Love Seat and Chair.  
Reg. \$749.95 Sale **\$487**

**3 ONLY ODD CHINA. CHOICE OF STYLES AND FINISHES** - These Are Real Values-That Can't Be Duplicated.  
Values to \$499.95 Sale **\$247**

**7 PC. ALL WOOD DINING TABLE AND CHAIRS.** Includes Large Table with Trestle Base and Formica Top-6 All Wood Padded Seat Chairs.  
Reg. \$369.95 Sale **\$227**

**RETIREMENT**  
**FAMOUS KING KOIL MATTRESS SETS AT TRUCKLOAD PRICES**  
5 YEAR WARRANTY SETS

	REG.	SALE
Twin Size Set	\$179.95	\$97
Full Size Set	\$249.95	\$137
Queen Size Set	\$299.95	\$167

**DELUXE 10 YR WARRANTY SET**

Twin Size Set	\$229.95	\$127
Full Size Set	\$299.95	\$167
Queen Size Set	\$399.95	\$237
King Size Set	\$499.95	\$297

**TOP OF LINE 15 YEAR WARRANTY SETS**

Full Size Sets	\$399.95	\$247
Queen Size Set	\$499.95	\$297
King Size Set	\$599.95	\$397

**LIQUIDATION**  
3 PC. CORNER SECTIONAL IN BEAUTIFUL SOFT BLUE VELVET COVER. Wood Accent-Lots of Comfort.  
Reg. \$899.95 Sale **\$597**

**DELUXE 6 PC. FAMILY ROOM GROUP** - Rich Blue Tone Antron Nylon Cover-Country Style. Includes Sofa-Chair-Rocker-3 All Wood Tables-Pine Finish.  
Reg. \$999.95 Sale **\$647**

**BROYHILL 9 PC. FORMAL DINING ROOM SUITE.** Includes Buffet-Lighted Hutch-Large Extension Table-2 Arm and 4 Side Chairs-Rich Pine Finish.  
Reg. \$1499.95 Sale **\$977**

**DELUXE 7 PC. DINETTE SETS.** Large Extension Table with Leaf and 6 Deluxe Chairs-Several to Choose From.  
Values to \$329.95 Sale **\$197**

**BEAUTIFUL VELVET SWIVEL ROCKERS**  
All Hardwood Construction-Choice of Velvet Covers.  
Reg. \$149.95 Sale **\$97**

**EXTRA CREDIT HELP**  
**HEAVY DUTY 2x6 ALL WOOD BUNK BED**  
Makes Into Twin Beds. Includes Mattress, Nice Pine Finish.  
Reg. \$289.95 Sale **\$187**

**EXTRA DELIVERY HELP**  
**EXCELLENT SELECTION OF BRASS PLANTERS-HALL TREES-BAKER RACKS-TABLES-STANDS AND MANY MORE ITEMS TO NUMEROUS TO MENTION.**  
UP TO **1/2 OFF**

**BARGAIN BARN**  
201 W. Grand, Clovis 762-2304

Reg. \$39.95  
**FREE**  
Decorator Mantle Clock  
Quartz Movement FREE  
with \$199 Purchase or  
more While They Last.





**SHOWING THE LATEST IN CASUAL WEAR--Modeling for Latrell's Monday night, Becky Castorena is shown at the annual Fine Arts Booster Club Dinner Theater, Style and Art Show. A good crowd was on hand for the event. (Journal Photo)**

**Vocational Nursing Exam Given**

A pre-entrance exam required for admission to the vocational nursing program at South Plains College will be April 12. The exam is scheduled at 9 a.m. in the SPC Student Assistance Center, located on the third floor of the library. Fee is \$10. SPC's 12-month vocational nursing program provides clinical experiences in several area health care facilities affiliated with the program, explained Marla Cottenoir, R. N., chairperson of SPC's nursing department. Areas of study include anatomy and physiology, disease control and prevention, geriat-

rics, maternity, medical-surgical nursing, nutrition, pediatrics and others. Graduates of the program receive a certificate of proficiency and are eligible to take the state board exam for licensure to practice as a licensed vocational nurse in Texas, Mrs. Cottenoir noted. Additional pre-entrance exams will be given May 10, June 7 and June 21. For more information, contact SPC's vocational nursing program or counseling office at (806) 894-9611, ext. 387. The nearer we come to great men the more clearly we see that they are only men.

**Nursing Home News**  
By: Joy Stancell

Happy April Birthday to Robert Lee Kimbrough, April 7, 1907; Juanita Snow, April 15, 1904; Julia Hawkins, April 20, 1903; Guy Kendall, April 14, 1919; and our H.E.C.E. Student Dustie Moynihan, April 22.

The Needmore Community Club will host our monthly birthday party Thursday, April 27th at 3 p.m. We invite our families and friends to attend.

We wish to express our thanks and a word of praise to Irvin St. Clair for trimming and cleaning our patio Thursday. Also his co-worker, Clara Lou Jones. Also to those of you that helped move and clean Saturday. We appreciate all that you did.

Friday afternoon we had a delightful visit from the J.O.Y. Choir of the First Baptist Church. They lead us in gospel songs, served refreshments of finger sandwiches and fruit punch. We enjoyed the music, refreshments and fellowship.

We are so pleased to have Marlene Harper back with us after a lengthy stay in the hospital in Lubbock.

Please help us welcome our two new residents they are Robert Lee Kimbrough, he was born April 7, 1907, also Agnes Moyer, 9-26-1903. We feel sure they would enjoy a visit or card from you.

The "Sunshine Lady" Barbara Blackman visited and served the residents juice Wednesday. Clifton Finley visited and went shopping for the residents Wednesday.

Tennie McCormick visited Effie Smith and Mamie Eskew Wednesday afternoon.

Saturday morning J.C. Shanks came to cut the men's hair and give them shaves.

Tuesday afternoon Betty Jo Davis, Lula Mae Shanks, Laverne James and Olive Cox came to shampoo and set the ladies hair. Lula Mae Shanks showed us her video tape on the Cathedral Gospel Quartet after beauty shop.

Rhonda from the Honey Comb shampooed and set Cora Duncan's hair Wednesday. Tammy from the Honey Comb gave Mrs. Coffey a nice hair cut.

Ernest Kerr had out of town relatives visiting him last week.

Mr. and Mrs. Pete Jenkins visited John Seid, Allie Barbour, Oneita Wagnon and Edith Bruns last Friday.

Among those visiting the nursing home this week were Allie Sebring, Winnie Berry, J.E. Embry and Lena Hawkins.

**J&L Fashions Receive Award During Contest**

Leon and Judy Logsdon of J & L Fashions attended a seminar March 5-7 in Atlanta, GA sponsored by Rag News and the consulting firm they used when they opened their business in Muleshoe.

Customer service was the topic of the seminar. Prior to attending the seminar the Logsdons were asked to submit a letter outlining customer service ideas.

The Logsdons were asked to write what they were doing or planning to do for their customers in the near future.

Leon and Judy Logsdon won second place in the contest and were presented a plaque they are now displaying in their store.

J & L Fashions opened for business on March 18, 1988. Leon Logsdon has been a resident of Muleshoe for 16 years and had past experience in the retail clothing business. Judy Logsdon has been a local resident for 11 years, and although she had no prior retail clothing experience, says she has learned a lot in the past year.

(Editor's note: A photo of the Logsdons with their plaque received with the new release was unsuitable for reproduction, so in order to avoid any embarrassment to the Logsdons, *The Journal* will take their own picture for next week's issue of *The Journal*.)

**Not So Funny**  
"You say your sister makes up jokes, then she's a humorist isn't she?"  
"No, she works in a beauty parlor."

**Dad Knows.**  
Son: "What is executive ability, Father?"  
Father: "Executive ability, my son, is the art of getting credit for all the hard work somebody else does."

**Hospital Seeks Five New Trees For Landscape**

Have you ever thought about donating a young tree to West Plains Medical Center as a memorial to a loved one, living or deceased?

Recently, a large tree behind WPMC had to be cut down for safety reasons.

It was the only 'real' tree on the hospital complex grounds -- but, because it was in direct line with the take-off path for the helicopters that land on the parking lot behind the hospital, it had to be removed.

John Chisholm, administrator of the hospital, said they would like to have at least five very young trees, all of the same type, to replace the removed elm tree.

If you would like to donate a tree, or trees, please contact the hospital administrator.

Also, the southwest corner of the Muleshoe Nursing Home would look much better with some type of landscaping.

If you're out and about, drive by the front of the hospital and take a look at all the work being done outside there.

As work progresses, it could be that WPMC will be one of the beauty spots of Muleshoe -- as well as fulfilling a vitally necessary function as an emergency and lifesaving operation.

**YES, YOU CAN GO TO COLLEGE IF YOU WANT TO**

At least a million high school graduates won't go to college next year for lack of money.

Yet more than \$6 billions are available-- for which no one will apply!

Did you know there are 22,000 foundations and other private sources of scholarship funds waiting to help you pay for your education?

Wherever you live, whatever you want to study, whether your high school is very small or very large, scholarship funds are available for you.

Many of these sources have only one or two million dollars to give. They are not staffed to search for you. They wait for you to find them.

**It Winks**

"Mother, I just can't thread this needle."  
"Why, son?"  
"Well, every time I get the thread near the eye, it blinks."

**Dent & Co.**  
W. Hwy. 84  
272-4296

**EXENCIONES DE RESIDENCIA**

**PUEDEN REDUCIR LOS IMPUESTOS QUE PAGA POR SU CASA**

Una exencion de residencia le ayuda a reducir los impuestos sobre la propiedad que tiene que pagar por su residencia reduciendo el valor que se utiliza como base para calcular sus impuestos. Por ejemplo, si su casa esta valorada eb \$50,000 y usted recibe una exencion de residencia de \$5,000, usted va a pagar impuestos de residencia como si su valor fuese de \$45,000.

Usted puede recibir una exencion de residencia si usted era el dueño de su casa el primero de enero y la usaba como su residencia principal en la misma fecha. No importa si su residencia es una casa, un condominio o una casa remolque.

Hay exenciones que cualquier persona que es dueño(a) de su residencia puede usar para rebajar sus impuestos escolares. Exenciones adicionales se ofrecen a duenos de residencia que estan incapacitados o tienen 65 años o mas. Otras exenciones pueden ofrecerse a propietarios por distritos escolares, condados, ciudades y distritos escolares.

**Bailey County Appraisal District**  
104 E. Ave. C 272-5501

Solicite todas las exenciones que usted puede recibir en la oficina local del distrito de valoracion en la direccion que se cita abajo.

Si usted recibio una exencion para su residencia actual en 1988, usted no necesita solicitar para 1989 a menos que el jefe de valoracion pida que haga una nueva solicitud.

Sin embargo, si usted cumple 65 años o quedo incapacitado antes del primero de enero haga una nueva solicitud para recibir exenciones adicionales.

Si usted no ha recibido una exencion para su residencia actual o si se cambio de casa haga una nueva solicitud para 1988.

Usted tiene que hacer su solicitud antes del 1 de mayo de 1989. Comuniquese con su distrito de valoracion antes de esa fecha si necesita mas tiempo para hacerla.

Para tener mas informacion usted puede recibir una copia gratis del folleto *Los Derechos, Remedios y Responsabilidades del Contribuyente de Impuestos* en la oficina del distrito de valoracion o puede pedirla del Consejo Estatal de Impuestos sobre la Propiedad (State Property Tax Board) en Austin.

Goodyear Dyna Torque Radials. When we set out to produce a farm tire that would provide even more traction than our best bias ply tires, we knew we'd have to break some new ground in tire technology.

Our Dyna Torque Radial tractor tire has a unique triple lug per pitch tread design that gives you more pulling power with up to 10% less slippage than bias ply tires. Dyna Torque Radials were designed for high efficiency for less time in the field and major savings in fuel.

The natural shape casing improves tire body life and minimizes hinging action in the bead and shoulder areas, virtually eliminating stress failure at these points. In addition, the Dyna Torque Radial's high vibration resistance results in a more comfortable ride and better roadability. When you want a tire that's rarin' to go in the morning and still going strong at night, see your Goodyear farm tire retailer for Dyna Torque Radial tractor tires.

**There's one thing in farming you can count on... Goodyear!**

**Get These Value-Priced Farm Tires at Your Goodyear Retailer Now.**

<p><b>DYNA TORQUE II</b> The Hard-Working, Hard-Pulling Tractor Rear</p> <ul style="list-style-type: none"> <li>Excellent drawbar pull with long-bar, short-bar lugs for improved traction.</li> <li>Designed for improved stability and roadability, plus reduced vibration.</li> <li>Strong angle-braced lugs have self-cleaning design.</li> <li>High-strength polyester cord body and heavy duty rim shield help protect tire from damage.</li> </ul> <p><b>18.4-38</b> <b>6 ply</b> <b>435.00</b></p>	<p><b>DYNA TORQUE RADIAL</b> With Revolutionary High Traction Tread Design</p> <ul style="list-style-type: none"> <li>Revolutionary 3-lug per pitch design improves traction and ride.</li> <li>Computer designed "natural" shape casing improves tire body life.</li> <li>Radial construction provides better traction, lower fuel and overall costs.</li> </ul> <p><b>18.4-R38</b> <b>1 Star</b> <b>625.00</b></p>	<p><b>DYNA RIB</b> Premium Four-Rib Front Tractor Tire</p> <ul style="list-style-type: none"> <li>Designed for higher horsepower 2-wheel drive tractors.</li> <li>Better mobility and more uniform pressure distribution than three-rib design.</li> <li>Bead area protected by thick rubber shield.</li> <li>Excellent flotation and mobility, smooth ride, uniform wear.</li> </ul> <p><b>10.00x16</b> <b>8 Ply Tubeless</b> <b>125.00</b></p>
--	--	--

**DYNA TORQUE RADIAL NO RISK OFFER**  
Buy a pair of Dyna Torque radials now. If, after 90 days from day of mounting, you are not completely satisfied with the performance of these tires, we will move them and replace them with new Goodyear Dyna Torque bias ply tires of like size and ply rating and will credit you for the difference. Offer expires 12/31/89.

**GOODYEAR GOLD STAR PIT STOP ON-FARM TIRE SERVICE**  
We'll fix it in the field! Just give us a call for tire repair or replacement.

**Irrigation Batteries \$25.00** | **Shocks Installed \$21.00 each**

**James Crane Tire Co.**  
322 N. 1st 272-4594

**Madell Simmons**

**Services Held At Earth**

Funeral services for Madell Simmons, 78, of Dallas were held at 2 p.m. Saturday, April 8 in the First Baptist Church of Earth with the Rev. Joe Vernon, pastor, officiating.

Burial was in Earth Memorial Cemetery under the direction of Ellis Funeral Home. Mrs. Simmons died at 9:45 a.m. Wednesday in Syline Nursing Home at DeSoto.

Born May 22, 1910, in Frederick, Okla., she moved to Dallas one and half years ago from Earth. She was a homemaker and a member of the First Baptist Church of Earth, the Order of Eastern Star, Earth chapter and served as Past Worthy Matron.

Survivors include a daughter, Bill and Jammie McRight of Dallas; a sister Mrs. Angie Riemer of Amarillo; a brother, L.C. Walker of Lubbock; two grandchildren; and three great grandchildren.

**Clyde J. Howell**

**Services Held**

**At Morton**

Funeral services for Clyde J. Howell, 66, of Longview were held at 3 p.m. Friday in Ellis Funeral Home Chapel with the Rev. John Culwell, minister of the First Baptist Church, officiating.

Burial was in Morton Memorial Cemetery under the direction of Ellis Funeral Home. He died Tuesday.

Born June 15, 1922, in Childress County, he had been a resident of Longview 15 years, moving there from Morton. He was a retired carpenter.

Survivors include a son, Dale Howell of Lakewood, Colo.; two sisters, Eula Ruth of Phoenix,

Survivors include a son, Dale Howell of Lakewood, Colo.; a sister, Eula Ruth of Phoenix, Ariz.; a step sister, Faye Lyle of Bakersfield, Calif.; a step brother, Gene Thompson of Tahoka; and several grandchildren.

**Lillian Holland**

**Funeral Services Held Saturday**

Services for Lillian Holland, 57, of Earth were held at 4 p.m. Saturday, April 8 in the Earth United Methodist Church with the Rev. Brad Reeves, minister, officiating, assisted by the Rev. Douglas Gossett of Lubbock.

Burial was in Earth Memorial Cemetery under the direction of Ellis Funeral Home. Mrs. Holland died at 8:10 a.m. Thursday in South Plains Hospital in Amherst.

She was born Sept. 14, 1931, in Hart and moved to Earth 17 years ago from Amherst. She was a housewife, had been a member of the Earth Methodist Church 17 years, and a member of the United Methodist Women.

She married William Holland on Dec. 9, 1951, in Hart.

Survivors include her husband, William P. Holland, Jr.; one son, Allan Craig and wife, Linda Holland of Arlington; two daughters, Pam Holland of Bedford and Debbie and Howard Rife of Roanoke; a sister Marie Coffey of Littlefield; a sister-in-law, Evelyn Warren of Dallas; a brother, Cecil and Sara Hamm of Amarillo; two grandchildren, Nathan and Jordan Rife of Roanoke.

The family request memorials be made to the Earth United Methodist Church or the American Cancer Society.

**Courthouse News**

**MARRIAGE LICENSE**  
Michael Ross Precure, Muleshoe and Laura Michelle Osburn, Hereford  
Clyde Vernon, Clovis and Curtisteene Granger, Clovis, N.M.

**WARRANTY DEEDS**  
Merlyn L. Neel and wife, JoDean Neel to Alton L. Burton and wife, Alma L. Burton--The Northwesterly 216 feet out of Block (9), Warren Second Addition to the City of Muleshoe, Bailey County, Texas.

Fern Gilbreath to Gilbert Vela and wife, Rosalinda Vela--All of Lot Number (20), in Block Number (10), Lenau Subdivision to the City of Muleshoe, Bailey County, Texas.

Paula J. Clements, Dennis Lynn Clements, Douglas Lowell Clements, Deon Lee Clements, Darin Lamont Clements and Damon Lloyd Clements to Margarito L. Garcia and Elva L. Gonzales--All of Lots (19) and (20), Block (23), Original Town of Muleshoe, Bailey County, Texas.

Milton C. Butler, Jr. and wife, Wanda Butler Sams to William S. Sowder and wife, Peggy J. Sowder, Panze Buttler Kimmel: TRACT ONE: All of Labor (4), in League (197), Lubbock County School Lands, Bailey County, Texas.

TRACT TWO: All of Labor (8), in League (197), Lubbock County School Lands.

TRACT THREE: All of Labor (25), in League (198), Lubbock County School Lands.

TRACT FOUR: All of the (W/2) of Section (25), Block "B" Melvin, Blum and Blum Survey, Bailey County, Texas.

**COUNTY COURT**

Daniel Garcia, Jr., Resisting Arrest, \$350 Fine  
Matthew L. Simpson, Motion To Dismiss  
Delia Snyder Roth, DWI Second Offence, \$400 Fine, 15 Days Jail  
Delia Snyder Roth, Work Release  
Gergio G. Rodriguez, DWI, \$250 Fine, 3 Days Jail  
Gergio G. Rodriguez, Work Release

**BRIEFS**

East-West ministers seek arms limits.

Tax filing is ahead of 1988.

Personal income is up 1.8 percent.

Government lawsuits face a new standard.

**Cash Reward Up To \$1,000 For Information!**  
Call Bailey County Crime Line 272-HELP

**RONNIE HOLT INSURANCE AGENCY**

**BRIEFS**

Lawmakers want Washington out of world tobacco trade.

James D. Watkins unanimously confirmed as energy secretary.

CIA director, William Webster warns of a Libyan threat.

McFarlane gets fine and suspended sentence.

EPA asks for speed in getting pesticides off market.

**SPECIALIZING IN CROP, LIFE & HEALTH INSURANCE**

**Ronnie Holt**

P.O. Box 304  
Western 66 Office Building  
Muleshoe, Texas 79347  
Office: (806) 272-3614  
Residence: (806) 965-2842

**Immaculate Conception Catholic Church**

Father Patrick Maher  
Northeast of City

**First Baptist Church**

220 West Ave. E.  
Barry Bradley, Pastor

**Emmanuel Baptist Church**

Iglesia Bautista Emmanuel  
107 East Third  
Isaias Cardenas, Pastor

**Trinity Baptist Church**

314 E. Ave. B.  
Rev. Dale Berry

**Circle Back Baptist Church**

INTERSECTION FM 3397 & FM 298  
Pastor Glen Price  
946-3676

**Calvary Baptist Church**

1733 W. Ave. C.  
Rev. Rick Michael

**Muleshoe Baptist Church**

8th and Ave. G.  
Bob Dodd, Pastor

**Progress Baptist Church**

Charles Fisk, Pastor  
Progress, Texas

**Richland Hills Baptist Church**

17th and West Ave. D  
Allen Petersen, Pastor

**St. Matthews Baptist Church**

Corner of West Boston & West Birch  
M.S. Brown, Pastor

**Progress Second Baptist Church**

1st and 3rd Sunday  
Rev. Arthur Hayes

**The Community Church**

Morton Hwy.  
Mort Cross, Interim Pastor  
272-5992

**1st Baptist Church**

Lazbuddie, Tx. 965-2126  
Gary Wilcox, Pastor

*The True Light*

The true light that is intended for every man has come into the world. This light shines perpetually into the darkness in which man lives and the darkness cannot overcome it. It radiates from the manger stall at Bethlehem; it gleams from Calvary's hill; on Easter morn it broke the bonds of time and is eternally present in our world. Joy to the world indeed! Praise God from whom all blessings flow!

The light is here; we need not even ask it, but only open our eyes. Then why do so many walk yet in darkness? There is only one answer, they love darkness better than light. For those who stumble blindly about life and yearn for respite, there stands an eternal invitation—"Come unto me all ye who labor and are heavy laden and I will give you rest." For those whose hearts ache with emptiness—"Behold I stand at the door and knock. If any man will hear my voice and open the door I will come in to him."

Is something wrong with your life--an inner restless dissatisfaction? The answer to every human problem comes only from God our Maker. He alone can forgive and restore. Through the church God has committed the provision and proclamation of His forgiveness and redeeming love. Without a church relation no one is securely related to God. Everyone should be in the Church and the Church in everyone!

**EVERYONE IN THE CHURCH THE CHURCH IN EVERYONE**

**Longview Baptist Church**

965-3413  
B.C. Stonechiper, Pastor

**Primera Iglesia Bautista**

223 E. Ave. B.  
Roy Martinez, Pastor

**Lariat Church Of Christ**

Sunday School 10:00 a.m.  
Worship 11:00 & 6:00 p.m.  
Wednesday Services 7:00 p.m.  
Sam Billingsley, Minister

**Muleshoe Church Of Christ**

Clovis Hwy.  
Bret McCasland, Minister

**16th & Ave. D. Church Of Christ**

Sunday 10:30 a.m.  
Evening 6:00 p.m.  
Wednesday 8:00 p.m.

**First Assembly Of God**

Rev. David C. McCune  
9:45 Sunday School  
11:00 Morning Worship  
6:30 Evening Services  
7:30 Mid-week Services  
272-3984

**Primitive Baptist Church**

621 South First  
Elder Cleveland Bass, Pastor

**Spanish Assembly Of God**

East 6th and Ave. F.  
Mike Doyle, Pastor

**First United Methodist Church**

507 W. 2nd Street  
Richard Edwards, Pastor

**El Divino Salvador Methodist Church**

5th and Ave. D.  
Jose M. Fernandez, Pastor

**Lazbuddie Church of Christ**

965-2932

**United Pentacostal Lighthouse Church**

207 East Ave. G.  
Rev. Norman Thompson  
272-3258

**St. John Lutheran**

Sunday School and Bible Classes 9:30 a.m.  
Church Services 10:30 a.m.  
Rev. Mac Bears, Pastor

**Templo Calvario**

507 South Main  
Sunday 10:00 a.m.  
Sunday Evening 7:00 p.m.  
Evangelistic Services  
J.L. Soto, Pastor  
Jehovah Witness  
Friona Hwy.  
Boyd Lowery, Pastor

**New Covenant Church**

Plainview Hwy.  
Sunday 10:00 a.m.  
Wednesday 7:00 p.m.  
Jimmy Lowe, Pastor  
Church Of The Nazarene  
9th and Ave. C.  
Dennis Hayes, Pastor

**Lazbuddie Methodist Church**

965-2121  
Larry Reid Farris, Pastor  
Truth Tabernacle Pentecostal Church

**Western Drug**

114 Main 272-3106

**Dairy Queen**

1204 W. Amer. Blvd. 272-3412

**Little Gulf**

202 W. Amer. Blvd. 272-4918

**Serv-All Thriftway**

401 W. Amer. Blvd. 272-4739

**American Valley, Inc.**

W. Hwy. 84 272-4266

**Superior Med-Equip**

623 W. 2nd 272-3757 or 965-2622

**Bob Stovall Printing**

221 E. Ave. B. 272-3373

**KC Mufflers Inc.**

201 North First 272-3620

**Farmers Co-Op Elevators**

Muleshoe 272-3988

**Bobo Insurance**

108 E. Ave. C. 272-4264

**Main Street Beauty Salon**

115 Main 272-3448

**Lenau Lumber**

202 E. Ash 272-4222

**Bratcher Motor Supply**

107 E. Ave. D. 272-4288

**Five Area Telephone Cooperative, Inc.**

302 Uvalde 272-5533

**Irrigation Pumps & Power**

West Hwy. 84 272-4483

**Wes-Tex Feed Yards**

272-7555

**Frank's Southside Gulf**

502 South 1st 272-5659

**Richland Hills Texaco**

1914 W. Amer. Blvd. 272-4875

**GRAIN PRICES**  
FEED CORN.... 4.77 cwt  
WCY.... 5.25 cwt  
RCY.... 4.80 cwt  
WHITE FOOD CORN. 6.00 cwt  
MILO.... 3.96 cwt  
SOYBEANS.... 6.36 cwt  
NEW WHEAT.... 3.40 cwt  
98%  
Prices Effective April 7, 1989  
MARKETS COURTESY OF  
FARMERS CO-OP  
ELEVATORS  
Muleshoe, Texas  
272-4335

# Soil Fertility Determines Cotton Lint Yield Factor

Cotton lint yield declines which averaged about 10 pounds per acre per year have been reversed due to improved fertilization and better water management by High Plains producers.

Cotton yields nosedived from the 10-year average of 460 pounds per harvested acre in 1960-69 to an average of 357 pounds in the 1970's. Cotton yields averaged 335 pounds per acre during the first half of the 1980s.

In 1985, Texas Tech University Agricultural Economist Don E. Ethridge conducted a study of fertilizer sales through time on the Texas High Plains. His research showed that fertilizer sales had declined significantly during the 20-year period from 1965 to 1985 and that the cotton lint yield decline probably was directly related to the decreased fertilizer use in the region.

The High Plains Water Conservation District No. 1 and the USDA-Soil Conservation Service (USDA-SCS) conducted a regional soil fertility study in 1987 to determine if in fact fertility was limiting the crop yields.

"The results of this study revealed that the available nutrients in the soil, principally nitrogen and phosphorus, were adequate only in amounts to support the average yields being produced. Producers were notified by every means possible that they would have to improve their soil fertility to increase their crop yields," says Mike Risinger, Soil Scientist with the USDA-SCS.

Area cotton producers responded by improving their soil fertility programs. In 1987, a near-record yield of 493 pounds per harvested acre was produced. The regional soil fertility survey was conducted again in 1988, and it revealed that most of the applied nutrients were consumed by the 1987 bumper crop. Producers again worked to improve their soil fertility, and another near-record yield of about 480 pounds per harvested acre was produced in 1988.

The 1989 regional soil fertility study has just been completed with the collection of 186 soil samples from the plow layer of the soil at selected sites within the 15-county High Plains Water District service area. Again, nitrogen and phosphorus were found to be in such a short supply that yields will be limited to 300

to 350 pounds of lint if supplemental fertilizer is not added to the soil.

Soil fertility testing indicated that 80 percent, or 149 samples, showed low or very low nitrate nitrogen readings. The average available nitrate-nitrogen content for these samples was 23 pounds per acre. Risinger adds that this nitrogen level is far below the amount needed to support minimum acceptable yields for any major crop grown on the Texas High Plains.

Area soils require about 90 pounds of available nitrogen per acre to produce 80 bushels of corn, about 40 pounds of nitrogen per acre to produce 1,500 pounds of grain sorghum and about 50 pounds per acre to produce 20 bushels of wheat. Higher yield goals require even more nutrients.

Unless leaching occurs, most nitrogen applications are available to plants during that application year. Nitrogen is very soluble and moves with soil moisture. Large pre-plant nitrogen applications can be leached below the active plant root zone profile when heavy precipitation or a large irrigation follows the application.

"The most efficient nitrogen application can be achieved when producers begin with a pre-plant application based upon soil testing and then sidedress an additional five pounds of nitrogen per acre for each inch of water the plant receives through irrigation or rainfall. This will

ensure the proper water-nutrient balance and will greatly improve the plant's water-use efficiency," says Risinger.

Approximately 62 percent, or 115 of the samples, indicated low or very low soil phosphorus levels. Soil fertility test results show the average P2O5 content in these samples to be 25 pounds per acre. This is considerably lower than the nutrient amounts required for minimum acceptable yields for the major crops grown in this region.

An 80 bushel corn crop yield requires about 60 pounds of available phosphorus, P2O5. About 30 pounds are required to produce 300 pounds of cotton lint and 28 pounds are needed to produce 1,500 pounds of grain sorghum. A 30 bushel wheat crop yield would require about 28 pounds of P2O5.

Samples were analyzed for the presence of nitrate nitrogen, phosphorus, potassium, calcium, magnesium, zinc, iron, manganese, copper and sodium. Soil pH and salinity were also measured.

"Maintaining phosphorus levels is important since only about two percent of the total soil phosphorus amount is available at a given time. Over a period of time, the insoluble phosphorus breaks down and becomes available to replenish any available phosphorus depleted by the crop yield. This is a slow process, and when the available phosphorus is depleted, the crop will suffer from the lack of fertility,"

says Risinger.

Only 10 to 30 percent of the phosphorus amounts applied are available for plant use during that application year. Phosphorus is rapidly absorbed into the soil where it is converted to relatively insoluble forms. This is especially true when phosphorus is broadcast and thoroughly

mixed into high pH soils, like those on the Texas High Plains.

"The most efficient practice is to inject phosphate in bands about one and a half inches below and one and half inches to the side of the seed. This will reduce phosphorus fixation and ensure a high concentration of soluble phosphorus for young plants,"

he says.

With more than half of the sampled fields showing inadequate nitrogen and phosphorus levels for adequate crop yields during the 1989 growing season, Risinger urges producers to collect soil samples from each of their fields, have the soil samples analyzed by a laboratory and follow the recommendation for the proper fertilizer amounts for the type of crop to be grown.

## REDUCE RISK WITH . . .

### Hail/Fire Protection

- Protection to ACTUAL CASH VALUE
- Acre-by-acre coverage (spot loss protection)
- Increased protection for big yields
- Reduced MPCl premiums with substitute Hail/Fire coverage
- Duplicate coverage with MPCl for highly leveraged farmers
- Protects for INVESTMENTS & PROFITS

### Multiple Peril Protection

- Protection against most unavoidable crop losses (most crops)
- Protection based on YOUR YIELD HISTORY at 50%; 65%; or 75%
- Optional prevented planting protection
- Cost protection for replanting
- Reduced premiums through government participation

## CROP INSURANCE BENEFITS

### For FARM/FAMILY

- Income stability
- Improved financial planning
- Backstops forward pricing
- Security
- Peace of mind

### At the BANK

- Loan repayments on schedule
- Reduced loan risk
- Foundation for cash-flow projections
- Lender is the loss payee
- Liquid collateral
- Security

## Crop Insurance Works!

Insurance Deadline Is April 15th

Henry Insurance Agency

111 W. Ave. B

272-4581

# Clovis Livestock Auction

Don't Forget -  
The Catalog  
Closes  
April 20  
For The  
May Horse  
Sale!!!



## SALE DATES:

Fri., May 19 - Grade & Non Cataloged Horses  
Sat., May 20 - The Clovis Classic Featuring Performance, Performance Prospects. Also Race Prospects and Breeding Stock. This Is The Cream Of The Crop.  
Sun., May 21 - Regular Catalog Sale

For More Information  
Or To Catalog Horses  
CALL

Joe or Rustin Rowley  
762-4422 Or 356-5943

Remember - Your papers must be in order and in our possession by April 20th!

Also For Sale At Private Treaty  
1500 Cow & Calf Pairs  
& Springer Cows

FOR MORE INFORMATION OR TO  
LOOK AT THESE COWS CALL:  
RUSTIN ROWLEY - 762-4422

Complete Dispersal Of  
T. C. Rogers  
Registered Brangus Cow  
Herd  
Sat., April 22 - 1:00 PM MST  
Clovis Livestock Auction  
Clovis, New Mexico  
SELLING

- 140 - 3 to 8 year old mature cows. About 100 calves on the ground.
- 70 - 2 year old springer heifers, 30 calves on the ground.
- 50 - Open heifers weighing from 600-800 Lbs.
- 5 - 3 to 6 year old herd bulls.
- 20 - 2 year old bulls.

This is an exceptionally high quality herd of cows with most cows weighing from 1200-1400 Lbs. Some examples of the fine genetics selling are:

Granada Of Brinks	Brinks Tiny
Express Of Brinks	Rocky Joe
Brinks Mac Titan	Pecos Lad
Brinks Cloud	King

For many years Mr. Rogers has purchased herd bulls from Diamond A Cattle Company in Roswell, New Mexico.

THIS HERD OF CATTLE WILL HAVE LOTS OF DIAMOND A BREEDING IN THEM.

## REASON FOR SALE

Mr. Rogers has reached an age when most people have been retired for many years. He has continued raising top quality Brangus cows and farming over 2,000 acres. His family has finally convinced him to slow down some, and he has decided to sell his registered Brangus herd. This is a rare opportunity for you to buy some really nice registered Brangus cattle.

All cows will be Bruc. tested, T.B. tested, and everything required to export to Mexico. - All cows will have registration papers.

FOR MORE INFORMATION CALL:  
CHARLIE ROGERS (505) 762-4422  
(505) 762-1070  
AUCTIONEERS:  
Larry Wooten Dick Moore

## Board Will Accept Resignation

Tomorrow night, Monday, the board of trustees of the Muleshoe Independent School District will meet in regular session at 7:30 p.m.

Following routine opening of the session, the following business items will be considered:

Approval of flu shots for all faculty members; approve ESC XVII Media Services Contract; Approve 1989-90 school calendar; consider and approve Strategic Planning; and appoint trustees to distribute diplomas for graduation on May 30, 1989.

Under Personnel Matters will be to accept resignation(s) and approve new personnel contracts (if any).

Bank balances, fund balances and payment of current bills will all be handled under financial reports.

Following the tax collection report, special reports will be given by the superintendent on: New Special Education TEA approval; school trustee candidates; facilities improvements and/or additions; and the April 27, 1989 South Plains School Board meeting.

A bus report will be given by the assistant superintendent; while the assistant superintendent for instruction will report on In-Service training for 1989-90; student assistance program; career ladder and summer school.

## Missed!

The railroad station agent heard a crash and dashed outside to see a train disappear around the bend. On the platform lay an unconscious man surrounded by the contents of his opened suitcase.

"Was he trying to catch the train?" the agent asked a small boy.

"He did catch it," the boy answered, "but it got away from him again."

# Shop The Classifieds

272-4536



**CLASSIFIED RATES**  
Minimum Charge \$2.30

Consecutive Insertions Minimum Charge \$2.00

**CLASSIFIED DISPLAY RATES**  
\$1.75 Per Column/Inch

**DEADLINES**  
12 noon Tuesday For Thursday Paper  
12 noon Friday For Sunday Paper  
We reserve the right to classify, revise, or reject any ad. Not responsible for any error after ad has run once.

**1. Personals**

**WILL DO** Horseshoeing. Call Bob Clark, 272-3266. G1-14s-4tp

Call your local used cow dealer for 7 day a week dead stock removal. 965-2903 or 1-800-697-4043. G1-14s-4tp

**CONCERNED** About Someone's Drinking? **HELPS AVAILABLE** through Al-Anon. Call 272-2350 or 965-2870 or come to visit Tuesday nights, 8:00 p.m. or Saturday mornings at 10:30 a.m. and through AA call 965-2870 or come visit Tuesday nights, 8:00 at 620 W. Second, Muleshoe.

**Mary Kay Cosmetics**  
**Josie Flowers**  
272-2365  
Call 8-12 a.m. and after 6 p.m.

**3. Help Wanted**

**HOME WORK SPARE TIME**  
Paint miniature toys. Earn \$20 set. No experience necessary. Amazing recorded message reveals details. Call anytime (212) 415-6027, Ext. 6454. R3-13s-1tp

**HELP WANTED:** Mechanic wanted for Feed Yard, diesel and heavy equipment. Experience preferred. Apply in person ONLY. Wes-Tex Feed Yard, 1 mile west of Muleshoe, Texas. W3-15s-1tc

**HELP WANTED:** We are now accepting applications for Lineman (Trainee). Excellent Fringe Benefits. An Equal Opportunity Employer. Apply at Bailey County Electric Cooperative Association in Muleshoe, Texas. Closing Date, April 24, 1989. B3-15s-3tsc

**PART-TIME** Truck Driver. Must have commercial license & references. Contact Bamert Seed Co., 272-5506. B3-14t-3tc

**3. Help Wanted**

**SOUTH PLAINS HEALTH PROVIDER ORGANIZATION, Inc.**  
A non-profit medical organization in Muleshoe, Texas, is seeking an LVN to work as a nutritionist asst. in WIC (women, infants and children supplemental food program) dept. Applicant must be a graduate of an accredited school of nursing, licensed to practice in the State of Texas. Nutrition related experience helpful but not required. Hours 8:00-5:00 p.m. Monday through Friday. Excellent fringe benefits package. For more information, Call (806) 293-8561. Equal Opportunity Employer. B3-15s-3tsc

**HELP WANTED** - General Office Clerk for Bailey County Electric Cooperative. Apply at 305 E. Ave. B, Muleshoe, Texas. Closing Date April 24, 1989. An Equal Opportunity Employer. B3-15s-3tsc

**HELP WANTED** Waitresses, Waiters, Delivery Drivers. Must be 18 years old. Must have good driving record. Must have insurance. Use own car. Apply in Person. Pizza Hut. P3-14t-2tc

**4. Houses For Rent**

**THREE MILES EAST** of Muleshoe, Hwy. 70; 1-mile north on YL Road; 200 yds. east. 3 Bedroom, 2 full baths, central H.A., 2 acres of land. Good well and storm cellar. For Rent with option to buy. Call anytime (806) 352-1715 B4-13v-1tc

**FOR RENT:** Nice 2-bedroom apartment. Water paid. Deposit required. 272-7575. P11-11t-TFC

**9. Automobiles For Sale**

**BUY GOVERNMENT** Seized and Surplus Vehicles from \$100. Fords, Chevys, Corvettes, etc., in your area. For info call (602) 842-1051 ext. 2841. A9-13t-4tp

1979 Red Chevy Big 10 Pick-up. One owner. \$2,750. Call before 6 at 272-4266, ask for Rex. After 6, Call 272-5183. H9-15s-1tc

**8. Real Estate**

**ATTENTION:** First Home Buyers. 2&3 Bedroom Mobile Homes. Credit Experience needed. We deliver. (806) 894-7212. B8-14s-8tc

**REPRO'S** 2&3 Bedroom Mobile Homes. No Credit Experience Needed. We deliver. (806) 894-8187. B8-14s-8tc

**FOR SALE:** Lot 8, Parkridge Addition. \$2,000. (806) 794-6329. 8-14s-9tp

**8. Real Estate**

Gil, Owner Bailey Co. pasture land. Contact Smitty - 1106 Ross, Vernon, TX 76384. Call (817) 552-2140. S8-14t-4tc

**11. For Sale or Trade**

**FOR SALE OR RENT:** 3-2 House. Fenced back yard. Call Norma Head, 946-3661. H11-15s-1tc

1 Kingsize Brass Headboard. Excellent Condition. \$150.00. 1 Pair Roller Skates. Size 2. Call 965-2761 anytime. G11-14s-2tc

32 Ft. Holiday Rambler Travel Trailer. Call 946-3628. H1-14t-4tp

**REGISTERED** Beef Master Bulls For Sale. Call M.D. Gunstream, (806) 272-5035 or 272-4515. G11-13t-1tc

**8. Real Estate**

**Smallwood Real Estate**  
232 Main 272-4838

3 Bedroom Stucco, 2 Bath, Living Room & den. Large kitchen, fenced back yard, Storage building. Priced to sell, good interest rate. This one is nice.

**Muleshoe**

**Whitt Reid Real Estate**  
201 Main Street Muleshoe, Tx. 272-3611

**LAMB COUNTY, IRRIGATED LAND AND RANCH LAND.** It's worth a second look.....

6390 A. in cultivation and irrigated by twenty-five (25) Center Pivot Sprinklers. \$130 Acres of native grass, excellent West Texas Ranch. 34 irrigation wells. There are 8 houses, and several barns and cattle pens. 5 domestic wells and 37 drinking water tubs. One fourth of the minerals go with the sale.

**SOME BIG MONEY CAN BE MADE WITHIN THE NEXT TEN YEARS.....**  
**PRICED FOR QUICK SALE.....**  
CALL: GEORGE POTBET (806) 272-4047 (Home)

**8. Real Estate**

**James F. Hayes & Co.**  
**Agricultural Real Estate**  
**Vic Coker, Agent**  
310 Main Street, Suite 103

1297 Acres In Dilton Area...16 wells with electric motors and panels, 8 sprinklers, Excel... wheat & corn allotments, will divide.

220 Acres...Downtown Baileyboro. Irrigation wells & underground pipe. Fully allotted.

1159 Acres North of Muleshoe...on Highway 214. Lays perfect. 2 wells, Valley electric sprinkler with drops. Allotted. **NICE!**

2-160 Acre Tracts...North of Lanib County, good water, 2 wells on each farm, good, immediate possession.

413 Acres...North of Baileyboro Gin. Some grass with windmill. Balance is good cultivated land.

11-210 Acre Farm...Lanib County; steel barn and other improvements, 2 wells, lots of underground pipe, good soil and lays good. Immediate possession.

1120 Acres West of Muleshoe...Will accommodate sprinkler. Good opportunity for... buyer.

1160 Acres Northwest of... Excellent soils, Excellent Water, Excellent allotments.

1177 Acres Southwest of Muleshoe...all cultivated and allotted.

**ELEPHANTS**  
**TIGERS**  
**GORILLAS**  
**LIONS**

**BEWARE OF APRIL 15**

**Buy Sell or Trade Check Classifieds**

**Bingham & Nieman Realty**

**116 E. Ave. C.** 272-5285 or 5286

**RICHLAND HILLS**  
**IMMACULATE** 3-2-2 Brick, corner lot, Cent. A&H, built-ins, FP, loads of storage & closet space, much more!

**PRICE REDUCED** 3-1-1 Brick, Cent. Heat, Evap. air, built-ins, fenced yard....

**VERY NICE** 3-2-3 Home, Cent. A&H, built-ins, FP, fans, spktr. sys., fenced. **PRICED TO SELL!!!!**

156.58' x 140' corner residential lot or lots - \$7,500.00!!!!

**JUST LISTED** 3-2-1 carport Brick, Cent. A&H, built-ins, FP, den or 4th bdrm., storage bldg., Fenced yd.

**HIGHLAND AREA**  
**JUST LISTED** - Nice Large 2-2-2 Brick, Cent. A&H, utility, cov. patio, fenced yard & more!!!!

**VERY NICE** 3-2-2 Brick, Cent. A&H newly remodeled kitchen with built-ins, storm windows, fenced yard, storage bldg. and much more!!!!

**NICE** 3-2-2 Brick home (2 story), on corner lot, Cent. A&H, built-ins, and much more. **LET'S LOOK TODAY!!!!** \$160's

**NICE** 3-1/4-1 Brick Home Cent. A&H, built-ins, large den w/Fireplace, fenced yard, storage bldg. \$50's!!!!

**HIGH SCHOOL**  
**NICE** 2-1/4-1 Home, corner lot, built-ins, nice carpet, heat pump, fenced yard, storage bldg. & more!!!!

**PRICE REDUCED FOR QUICK SALE!** Nice 2-1-1 Home, Cent. Heat, carpets, work-storage area, and much more. \$19,950.00!!!

FmHA Financed. 3-1-1, Cent. heat, nice carpets, \$50,000 with approx. \$600.00 tot... in to qualified Buyer!!!!

3-2-1 + 2carport Brick, Cent. A&H, built-ins, fence... apt - storage area!!!!

**IMMACULATE** 3-2 3 .....brick Home, Cent. A&H, built-ins, nice finished basement with fireplace, spktr. sys., & much more!!!!

**DIANNE NIEMAN, BROKER**

**8. Real Estate**

**COUNTRY CLUB-VERY NICE** 3-2-2 brick, Cent. A&H, built-ins, FP, Earthtone carpet, large fenced yd., storage-workshop, corner lot. \$50's!!!!

**COUNTRY CLUB** - Very well-kept 2-1-1 Home on corner lot, nice earthtone carpets, workshop, & more. \$20's!!!!

**LENAU ADDITION**  
**COZY** 3-1/2-1 home, Cent. heat, nice earthtone carpets, fenced yard, storage bldg., & more!!!!

3-1-1 home, Cent. A&H, utility, storage bldg., cellar, gas grill & more. \$20's!!!!

**COUNTRY HOMES**  
**NICE** 3-2-2 Brick on 1 acre on pavement, close to town, DW, WB stove, utility, storm windows & doors. \$50's!!!!

**NICE** 4-2/4-1 Brick on 1.2667 ac. on pavement at edge of town, built-ins, loads of storage, & much more. **PRICED FOR QUICK SALE!!!!**

**VERY NICE** 3-2-1 Home on 1 acre, close to town, Cent. Heat, Evap. air, nice carpets, nicely remodeled. \$30's!!!!

**HOME TO BE MOVED.** Nice 4-3-2 Home. Cent. A&H, built-ins, fireplace, loads of storage & closet area, 2150 sq. ft. of living area, much more. \$40's!!!!

2-1 home, 20 acres, sub. pump, sprinkler, barns & corrals. \$40's!!!!

**JUST LISTED - NICE COMMERCIAL BLDG. ON MAIN HIGHWAY.** Approx. 2800 feet of area, suitable for various types of business. Possible Owner Financing to qualified Buyer. \$20's!!!!

**APPROX.** 3,000 sq. ft. bldg. Railroad frontage. **CASH PRICE \$15,000.00.**

69+ acres, improved pasture, 8" well, undgrd. line, fenced, plus nice 3-2-2 home, Cent. A&H, built-ins, utility, storm cellar, nice shop. & much more, close to town!!!!

**JUST LISTED** 3-2-2 Brick on 1 acre on pavement close to town, Cent. A&H, built-ins, FP, etc. \$40's!!!!

**GEORGE NIEMAN, BROKER**

Call Vic when you need farm & ranch appraisal work done.  
Phone 272-3100  
Home 965-2468  
Muleshoe, Texas



**Don't Forget The Tax Man Think Classifieds 272-4536**

**18. Legals**

**ADVERTISEMENT FOR BIDS**

Separate sealed BIDS for the construction of Six two-bedroom quadrplexes, Maintenance Bldg. and the remodel and addition to the existing Administration / Laundry Facility. All construction is concrete block, wood trusses, with minor wood stud interior partitions. Bids will be received by Mr. Jim Hartline, Executive Director at the office of The Housing Authority, 301 E. 6th, Muleshoe, TX until 2:00 PM, Tuesday, May 2, 1989, and then at Harmon Elliott Complex Community Room, 901 W. Ave. K, Muleshoe, TX publicly opened and read aloud.

The **CONTRACT DOCUMENTS** may be examined at the following locations:

Owner's Office, 301 East 6th Street, Muleshoe, TX; Architect's Office, 1340 98th Street, Lubbock, TX; Dodge Plan Room, Lubbock, TX; AGC Plan Room, Lubbock, TX.

Copies of the **CONTRACT DOCUMENTS** may be obtained at the office of The Architect located at 1340 98th Street, Lubbock, TX (P. O. Box 3513) 77452, 806-745-6004, upon payment of \$50.00 for each set.

Any **BIDDER**, upon returning the **CONTRACT DOCUMENTS** promptly and in good condition, will be refunded the payment, and any non-bidder upon so returning the **CONTRACT DOCUMENTS** will be refunded \$50.00.

April 3, 1989  
/s/ Yancey L. Jones  
Yancey L. Jones AIA  
F-18-15s-1tc