

# THE SPEARMAN REPORTER

THIRTEENTH YEAR

Successor to  
HANSFORD HEADLIGHT

Spearman, Hansford County, Texas, January 28, 1921

Number 7

## Know Where You Stand

January first is the time for the merchant to take inventory of stock. Do you make a reckoning the first of each year?

Know just where you stand financially. Make a list of the amounts you owe. Set down in detail the money owed you, and make a list of what you own.

DO THIS, ALSO. Make an inventory of your opportunities. At The First National Bank you can build a cash capital; keep your funds in a safe place, always ready for immediate use. You can build a credit for yourself here. All through the year you can regulate your money matters safely and conveniently through a personal checking account. Keep in mind that we are here to serve your personal, business and financial interests.

## First National Bank of SPEARMAN

### FOR STARVING CHILDREN OF EUROPE

At 3:30 o'clock next Saturday, January 29, a program will be rendered at the Arcade Theatre building in Spearman, the proceeds to be given to the starving children of Central Europe. It is not necessary to attempt to tell here of the terrible condition of a poor children across the waters. Every cent of the proceeds of Saturday's program will be sent direct to Herbert Hoover who will send it where it will do the most good. You have an opportunity of attending a good show; seeing something new and instructive in moving pictures, as well as donating to a very worthy cause. Remember the date, Saturday afternoon, at 3.30 and don't fail to attend.

Want to buy a second-hand book? Apply at the Reporter office.

Chickens plus cheap feed will help to cut the high cost of living. The Old Trusty Incubator will supply the chickens. Andrews Hardware Co.

## A. F. BARKLEY'S Insurance Agency

In our agency will be found the strongest Insurance Companies in the world. We write fire, lightning, tornado and wind-storm insurance in town and in the country. We write hail insurance in the old, permanent, established Companies that we know and that you know. We write all kinds of surety bonds in companies that are acceptable to the U. S. Government, to the State and to the County or any of the courts thereof.

**BARKLEY**  
SPEARMAN  
Phone 37

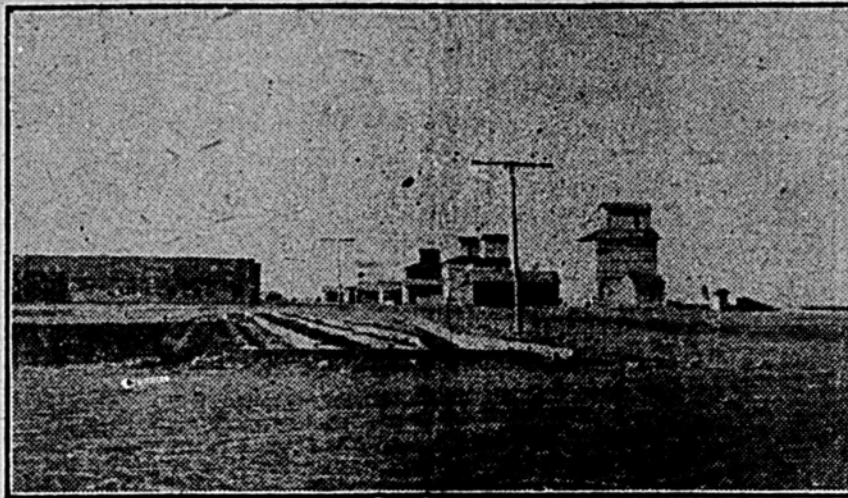
### CURBSTONE REAL ESTATE DEALERS

Spearman has a number of reliable real estate dealers. They maintain offices, advertise and conduct a legitimate business along legitimate lines. Also, there are reliable real estate men located at distant points who bring prospective purchasers to this country and at great expense are endeavoring to settle up the country with progressive, worth-while farmers and stockmen. In this town, as in most, other places, there has developed a type of curb stone land man who considers it his especial duty to butt into every stranger who comes to town and inform the said stranger as to where he can buy the real bargains in land. Of course the bargains of the curb-stoner are like a mirage. They disappear when the sun comes up, but it confuses a buyer and causes a real dealer much annoyance. Men should be as particular with whom they do business in the purchase of land as they are about their merchant or banker. Let a few curb-stoners get hold of a man and he usually goes back home without buying anything, while if he had been let alone, he would have made purchases that he and the seller would always be proud of. There seems to be no way to organize against the curb-stoner. He is a pest—similar to the itch—which causes much annoyance and does no little harm. Buyers should avoid him and dealers should treat him with contempt.

There exists a certain business courtesy among reliable land men everywhere but this courtesy is an unknown quantity to the curb-stoner. He thinks he knows everything but he doesn't know anything and the land buyers should let him alone.

Mr. and Mrs. W. F. Gilliam and their daughter and Mrs. M. B. Gilliam left Tuesday morning for Altus, Oklahoma, where they will visit a week or ten days with relatives and friends.

C. C. Beck was in from his farm on the North Flats Monday looking after business matters. Mr. Beck had just heard from his wife and daughter, Eleanor, who are receiving treatment at a Liberal hospital. They are doing nicely but do not yet know when they will return. Mrs. Elmo McClellan is out at the Beck home keeping house for her father and the children while her mother is away.



Grain Row, Spearman. Six Big Elevators.

### LAND BUYERS HERE

C. R. Clift of Bluff City, Kansas and John Young of Anthony, Kansas, with seven other prospective buyers visited Spearman and vicinity during the past week. The entire party are delighted with their visit and speak in very complimentary terms of the future prospects of the Spearman country. Mr. Clift recently bought four sections of land out west of town and intends to buy three sections more. Mr. Young and several other members of the party were guests at the R. B. Archer home out south of town. Mr. Archer took the party through the country that they may see for themselves that this is the finest land to be found anywhere and that what they had been told was absolutely true. Also, that the half has never yet been told. While the gentlemen were at the Archer home the great rains came and they could not run the car back to town so Mr. Archer loaded them into a four-horse wagon early Monday morning and brought them in the old-fashioned way. These gentlemen report having found the finest people here they ever met away from home with the exception of a very few curb-stone land men, who sought to misdirect them.

### THE GLORIOUS RAINS

The Spearman county is wet again—wet from center to circumference. A slow, steady rain began falling here on Friday night of last week and continued until Sunday night. The government rain gauge kept by Fred W. Brandt shows that 1.78 inches of rain fell. This is not such a great down-pour but it fell so slowly that every drop soaked into mother earth and the ground is wet, very wet. The top of the ground was beginning to dry out and blow a little but this great rain came in good time. Wheat is in a fine condition now and will stand up in good shape without more rain until March when we are reasonably sure to have snow and more rain in February. As soon as the weather will permit, farmers will begin breaking land. A well-informed farmer told the Reporter recently that there would be more sod broken in the Spearman country this coming spring than in any two years of the past.

The Spearman country is coming into its own.

Watch Spearman grow.

### THE A. JAY AUTOMATIC GATE

A. J. Wilbanks will leave for Kansas City within the next few days on business connected with the manufacture of a gate which he has invented and patented. This gate, the product of the inventive genius of our fellow citizen Mr. Wilbanks, is regarded by conservative business men wherever it has been shown, as an article of the greatest utility and economy. Without going into detail as to construction it is so arranged that a motorist may drive through without even stopping his car. The gate opens and closes automatically, and it is by far the best thing in the way of a gate that we have ever seen. There is no damage to the finest car. It may also be used as a wagon gate, by opening in the ordinary manner. The time, mileage, gasoline, patience and religion lost in opening and closing the old-style gate is almost entirely eliminated, and more important still, the gate will always be closed. It is the present intention of Mr. Wilbanks to manufacture this gate here in Spearman, and should he decide finally to do so, it will mean a big thing for the town. The probabilities are that this gate will be in use on every farm and road in the country within five years. It surely looks like a winner. It is fully protected by patents in the United States and Canada.

Read the Reporter.

### CAN'T KILL SPEARMAN

The knockers, thank the Lord they are few in number cannot kill Spearman now, because it has too good a start for them, but they can hinder the work of men who are spending their time and money in trying to make this a better place in which to live, by observing the following rules:

Never attend a meeting of the Chamber of Commerce or a Citizen's Mass meeting.

If you do attend, find fault with everything that is done.

If you are put on a committee, do not attend the committee meetings.

If you are not put on a committee, bellyache about it and claim the town is run by a gang or clique.

And tell about the land of milk and honey that you know of and that you are going there as soon as you can get loose.

An Old Trusty Incubator will increase the hatch. Andrews Hardware Co.

R. J. McCaslin returned Tuesday from a business trip to Wichita, Kansas.

Chip Martin and Mutt Dacus were Santa Fe passengers east Tuesday morning.

Found—Several weeks ago, a neck-lace. Owner may recover same by calling at the Reporter office.

C. H. Jasper and son J. T. Jasper of Hutchinson county, shipped two cars of fine steers from Spearman to Kansas City Monday morning.

L. L. Hughes arrived from Hereford where the family is spending the winter and will look after farming interests on the north flats for several days.

E. C. Barnes and W. A. Shapley were in from the Grand Plains community Monday morning looking after business matters. These boys report a fine rain and glorious prospects for a fine crop out their way.

H. D. Sullivan, representing the General Auto Supply company of Amarillo was in the city Monday and Tuesday. Mr. Sullivan reports a good business over all of the Amarillo territory and particularly in the Spearman country where he says he hears less about tight money and hard times than in any other part of his territory.

Leo Dacus and Ralph Freeby returned Tuesday from an extended visit down in south Texas and southern New Mexico. The boys say they visited a great number of towns during their absence and that there is more doing, more pep and go-ahead feeling among the people of Spearman and the Spearman country than in any place they visited. They returned home well satisfied with the old home town.

For sometime I have been alarmed at the possible end of woman's dress. On the stage and in the halls of fashion she has taken a little more off each year and it seemed for awhile that she might stand in Edenic nudity without a quail. But it appears that the law of diminishing returns asserts itself even in this matter. We can now see that only a certain amount of undress adds to the witchery of woman. Beyond that certain amount she loses her lure. I had no idea that most women are as ugly as they are under their petticoats. I have seen more bow-legged, knock-kneed, rusty-shinned females in the past six months than I thought were in the world. The tendency must be toward more clothes if woman is to preserve her traditional charm. From a standpoint of pure art, there is only about six or eight inches of a woman's shank that's worth rubbering at.—Pitchfork.

## The Difference

between the man who has learned to save and bank his money and the man who has not learned, is the difference, ten years hence, between the man flourishing in business and man looking for a job.

Form the habit of saving  
and bank with

## Guaranty State Bank SPEARMAN, TEX.

### HEAD OF FAMILY GETS \$2,000 EXEMPTION

Two Hundred Dollar Exemption Allowed for Dependents Under 18, or Incapable of Self-Support.

Single persons, though required to file a return if their net income for 1920 was \$1,000 or more are, if they are the heads of families, granted a special exemption under the revenue laws. Such a person is defined by Treasury regulations as "a person who actually supports and maintains in one household one or more individuals who are closely connected with him by blood relationship, relationship by marriage or by adoption and whose right to exercise family control and provide for these dependent individuals is based upon some moral or legal obligation." Such persons are allowed the exemption of \$2,000 granted a married person. In addition they are allowed the credit of \$200 for each dependent under 18 years of age or incapable of self-support because of mental or physical defect.

### Husband and Wife

A married person living with husband and wife can not claim an additional \$2,000 exemption as the head of a family. His or her exemption is based upon the marital status irrespective of the support of others living in the same household. The additional \$200 credit for dependents does not apply to the husband or wife of a tax payer. For example, if a married man supports a father who is incapable of self-support he is entitled to the \$200 credit for such person. If through force of circumstances he supports his wife away from home he is entitled to the \$2,000 exemption allowed a married person but not to a \$200 credit for a dependent.

A son who has left home but who sends his mother more than one half the sum required for her support is entitled to the \$200 credit, provided the mother can not support herself. Otherwise the amount must be considered as a gift, and therefore the credit is not allowed. A son living at home and supporting his father, mother, or other relative may claim the \$2,000 exemption allowed the head of the family, but not the \$200 credit unless such relative is under 18 years of age, or incapable of self-support.

C. W. King made a business trip to Perryton Tuesday.

### SURPRISE STORE PUTTING ON A BIG SALE

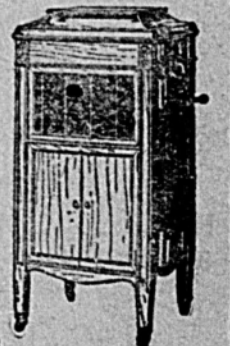
R. H. Solsbery, representing the Hastings Sales Company of Kansas City was in Spearman Monday and while here completed the arrangements for the big sale now going on at the Surprise store.

This is a real, genuine bargain sale and is attracting considerable attention. A feature which particularly appeals to the country folks is the "chicken and egg carnival." The firm is paying two cents per pound above the regular market price for all the chickens and two cents per dozen for all eggs brought to them during the sale. The Surprise Store is reserving nothing; have put their entire stock in the sale and advertise that they are putting money in the bank for their customers. Read their advertising in this issue of the Reporter.

Sell your eggs at the Spearman Equity Exchange. Highest market price.

C. D. Grubbs of the Santa Fe force was on the sick list the latter part of last week, but is up and about his business again at the present.

To  
Make a  
Good  
Record  
Great,  
Play it on  
A Columbia



Let us show you this machine as well as several other models now in stock. Get one for your home.

## HILLHOUSE DRUG CO.

The People With the  
Goods  
SPEARMAN, - TEXAS

## BATTLEMEN

Vaccinate your calves against  
Blackleg. Do it now.

We have secured  
the agency for

## "CONTINENTAL SERUM"

Calves insured against loss—with  
tag in ear—at a saving of almost  
half the old price.

## Drug Company SPEARMAN

Store with the Up-Town Service

## Farm and Ranch

### LANDS

Any size tracts and at prices and terms to suit.  
Spearman town lots and acreage—desirable locations

### Oil Leases

I am in the market for Oil Leases.

### Money

Unlimited amount of money to loan on Farms and  
ranches in Hansford, Hutchinson and Ochiltree coun-  
ties. Interest rate and settlement options very at-  
tractive.

## J. R. COLLARD

Write for information

SPEARMAN, TEXAS



# Another Big REDUCTION IN PRICES

## Dry Goods

Percalé, 36 inches wide, all colors . . . 25c per yd  
Percalé, 24 inches wide, all colors . . . 15c per yd  
Toile Du Nord gingham . . . 30c per yd  
Fancy Dress Gingham . . . 25c per yd  
Apron gingham . . . 20c per yd  
Cheviot shirting, book fold, all colors 20c per yd  
Bleached muslin . . . 13 1-2 to 22 1-2c per yd  
Hope bleached muslin, the old reliable 25c per yd  
Pepperat 9x4 sheeting . . . 80c per yd  
Outings, white, fancy and dark colors 20c per yd

## Dresses

Ladies' gingham dresses, \$5.00 value, only . . . \$2.50  
Ladies' gingham dresses, \$2.75 value, only . . . 1.40  
Ladies' gingham dresses, \$5.40 value, only . . . 2.70  
Ladies' gingham dresses, \$6.00 value, only . . . 3.00

**All Other Ladies' and Children's  
Dresses at One-Half Price**

## Children's and Misses Hose

Children's and Misses' hose, 45c value now . . . 30c  
Children's and Misses' hose, 50c value now . . . 35c  
Children's and Misses' hose, 55 to 85c value . . . 40c  
Children's and Misses' hose, 70 to 80c value . . . 50c  
Children's high grade black hose . . . 25c  
Ladies' Burson black hose . . . 50c  
Ladies' hose, black, brown and white . . . 45c  
Ladies' silk hose, white and black . . . \$1.00  
Ladies' silk-drop stitch hose . . . 1.00  
Ladies' silk hose, brown and black \$2.65 value 1.50

## Men's and Boy's Clothing

Men's best work shirts . . . \$1.00  
Men's best overalls and jumpers, each . . . 1.85  
Men's unionalls, regular sizes . . . 3.50  
Boy's unionalls, sizes 6 to 18, \$2.00 to . . . 2.65  
Boy's overalls, sizes 3 to 16, 75c to . . . 1.40  
Men's shirts, \$4.10 values now only . . . 2.25  
Men's shirts, \$3.50 values now only . . . 2.00  
Men's shirts, \$2.50 values now only . . . 1.70  
Men's Leather Vests, \$16.00 values, now . . . 8.25  
Men's Leather Vests, \$19.00 values, now . . . 9.50  
Men's Leather Vests, \$12.75 values, now . . . 6.40  
Men's Mackinaw coats, \$18.00 value . . . 9.00  
Men's Mackinaw coats, \$15.00 values . . . 7.50  
Men's Mackinaw coats, \$12.50 values . . . 6.25  
Boy's Mackinaw coats, \$8.00 value . . . 4.00  
Boy's Mackinaw coats, \$5.50 value . . . 4.25  
Boy's Mackinaw coats, \$12.50 value . . . 6.25  
Boy's Mackinaw coats, \$13.50 value . . . 6.75  
Men's Duck coats, \$6.00 value . . . 3.00  
Men's Duck coats, \$12.00 value . . . 6.00  
Men's wool hose, 75c value . . . .50  
Men's black cotton hose, 50c value . . . .35  
Men's hose, black, white and brown, 40c value, now . . . .30  
Men's Rockford hose, 3 pair for . . . .50  
Men's Corduroy pants, \$7.50 values at . . . 5.65  
Men's Moleskin pants, \$6.50 values at . . . 4.25  
Men's Kahki pants, \$4.00 values at . . . 3.00

**You Will Also Find Some Very  
Attractive Prices in Our  
Grocery Department**

SALE NOW ON

January 28, 1921.

# P. M. MAIZE & CO.

ONE PRICE  
TO ALL.

## SPEARMAN

The new bank at Texhoma, the Farmers State Bank, are now representing the Panoma Farm Mortgage Co. over all this territory, having direct charge of seven counties in the Panhandle. If you need a farm loan quick, see us.

SEE

### C. W. KING

If you wish to buy  
or sell

### Farm and Ranch Lands

In Hansford, Hutch-  
inson, Ochiltree and  
Wheeler counties,  
Texas.

Terms to suit. Any  
size tracts.

Spearman, - Texas

### Auto Service Company

Successors to Larkin & Son

Automobile repair work  
of the very best. Satis-  
faction or no pay.

Automobile Accessories  
Gas and Oils

We sell Chevrolet and  
Dodge cars and the Nash  
Truck.

Mansfield, Hartford and  
"K.-K." Tires and Wil-  
lard Batteries.

### Mizar & Paul

Near the Equity Exchange

## THE SPEARMAN HIGH SCHOOL

Those enrolled this week in the Grammar school are Ross Oldham and Eugene Sinclair. The number in regular attendance in both departments now totals 186. There has been almost 200 enrolled during the term.

Mr. Hillhouse donated two very useful books to the library several days ago. If there be others about town who may have usable books that they would like to donate, we shall be glad to have them telephone us and we will send for them.

"A Daughter of the Desert" a comedy drama of the Arizona plains, in four acts, which is the play that is soon to be presented by the faculty assisted by several capable characters about town, is well under way.

There is to be a teachers' examination for all grades of Certificates at the Spearman high school building Friday and Saturday, February 4 and 5. These examinations will be held the first Friday and Saturday in each month until July.

Mr. G. Y. Phillips kindly consented yesterday to donate some needed work about the building.

All goes to indicate that the Spearman school will experience no difficulty in winning out in both the Junior and Senior spelling contests as well as in others during the County Interscholastic Meet to be held here sometime during the month of February.

All the schools that expect to enter the County Interscholastic Meet in any way, should send their dollar to Prof. E. D. Shurter University Station, at Austin, Texas, at once and get your material.

Signed:

W. A. CLARK, Jr.

Director General Hansford County,  
Interscholastic League

The Sixth and Sixth Grades had a very interesting lesson on the Panama Canal last week. Real photographs taken all along the canal and in the cities of Balboa and Ancon had been provided.

Among the visitors to the school last week we might mention Mrs. Howard, Mrs. Sellers, Mrs. Lucille Wilbanks, Mrs. B. V. Andrews, Mrs.

P. M. Maize and Mrs. H. P. Bailey.

Judge Storrs donated his time to the school for a few days last week in the matter of helping Prof. Clark in moving and adjusting some doors and making other needed improvements about the building. Each week reveals some change for the betterment of the school.

We have made arrangements with a public spirited citizen to drag our grounds and we request that the practice of driving across the grounds cease. The school plant and equipment is the common property of all the people of the district and if it is damaged in any way it is an indirect damage to each individual.

Visual Instruction is being given more prominence now than heretofore. We have a stereopticon, which we will probably purchase, which we have been using for illustrations in classroom work and for occasional side lectures. We have had a very interesting lesson in good roads in the High School Agriculture class this week. Material is on hand for quite extensive work in Descriptive Geography and Sanitation.

A great number have expressed themselves to members of the faculty as being well pleased with the "Womanless Wedding" at the Arcade Theatre Friday, January 14. Over \$50 net, was realized for the equipment fund.

Miss Ethel Deakin, our mathematics teacher in the High School Department, made a liberal donation to the equipment fund last week. All such favors are highly appreciated and each dollar buys 100 cents worth.

Fay Massey was admitted to the High School Department this week, and was classified as a conditioned Freshman.

## NOTICE TO AUTO OWNERS

I have instructions to add a penalty of 25 per cent on each auto tax remaining unpaid on January 31, 1921.  
HICKS L. WILBANKS,  
Tax Collector.

List your ranch, farm or raw prairie land with me. Or if you want to buy, see or write me. GEO. M. TOCKEY,  
Booker, Texas.

## THE SAILOR'S STAR.

While other watchers of the night  
Are roving round the sky  
In Lyra's scintillating group  
It keeps its station high.  
A lighthouse in the firmament  
For ships both near and far,  
Serene and steady all the year,  
The sailor's special star.

On lonely seas where tall white sails  
In stately beauty go,  
And ocean lanes where liners race  
With roaring wakes of snow,  
A thousand quadrants mirror back  
The pure celestial light  
That never fails from port to port  
To lead the sailor right.

It shone above the viking ships  
That westward boldly bore,  
It led the little Mayflower safe  
To Plymouth's rocky shore.  
And long as men in sail or steam  
The trackless billows roam,  
Vega will guide the outward bound,  
And bring the sailor home.  
—Minna Irving, in New York Sun.

## SAFETY FOR RADIUM CARRIER

How the Precious But Perilous Material  
Is Transported Without  
Danger to the Bearer.

Radium is transported in a specially  
devised case, as shown by the diagram,  
which is reproduced by courtesy of  
Popular Science Monthly.

The radium is placed in a hole in  
the center of a thick lead crucible.



Construction of Container.

Why lead? Because lead does not permit the passage of the radium rays, and in this way the person in charge of the transportation of the substance is protected from injury.

Certain of the rays from radium produce a peculiar and dangerous burn, resembling an X-ray burn, which is practically incurable.

## SPECIAL BLANKS FOR FARMER'S TAX

Internal Revenue Bureau Makes It  
Easier to Fill Out Forms

Thousands of farmers whose net income for 1920 equaled or exceeded the exemptions for \$1,000 for single persons and \$2,000 for married persons, will be required to file on or before March 15, 1921 income tax returns for the year 1920.

As an aid to farmers the Bureau of Internal Revenue has prepared a special form 1040F for recording the sales of live stock, produce, and a summary of income and expenses. This form should be attached to the taxpayer's individual return on Form 1040 or 1040A. Full instructions for making out the forms are contained in each.

Under gross income a farmer is required to include all proceeds derived from the sale of farm products whether produced on a farm or purchased for resale. When he exchanges his products for groceries, clothing or other merchandise, he must include in his income the value of the articles received and exchanged. Profit received from the sale of farm land or rent received for the use thereof must also be included.

## Net Income

In determining his net income, upon which the tax is assessed, the farmer may deduct all necessary expense incurred in the operation of his farm during the year. These include cost of cultivation, harvesting and marketing of his crops, the cost of seed and fertilizer used, amount spent in repair to farm buildings other than the dwelling, and to fences and machinery. The cost of farm tools used up in the course of the year, wages paid to employees other than domestic servants and rent paid for farm land and buildings (other than dwelling) are deductible items.

Farmers who keep no records or only records of cash receipts and disbursements should make their returns on the basis of actual receipts, but farmers who keep complete accounts and who take inventories at the beginning and end of the year to determine their profits should report on the accrual basis. Both methods are fully explained on Form 1040F, copies of which may be obtained from the Office of collectors of internal revenue.

For the home-baked bread, crackers, pies, cakes of all kinds, dough nuts and mixed candies, see Mrs. Mizer, first residence east of school house, Spearman. 42

## Pains Were Terrific

Read how Mrs. Albert Gregory, of R. F. D. No. 1, Blufford, Ill., got rid of her ills. "During . . . I was awfully weak . . . My pains were terrific. I thought I would die. The bearing-down pains were actually so severe I could not stand the pressure of my hands on the lower part of my stomach . . . I simply felt as if life was for but a short time. My husband was worried . . . One evening, while reading the Birthday Almanac, he came across a case similar to mine, and went straight for some Cardui for me to try.

TAKE

# CARDUI

## The Woman's Tonic

"I took it faithfully and the results were immediate," adds Mrs. Gregory. "I continued to get better, all my ills left me, and I went through . . . with no further trouble. My baby was fat and strong, and myself—thank God—am once more hale and hearty, can walk miles, do my work, though 44 years old, feel like a new person. All I owe to Cardui." For many years Cardui has been found helpful in building up the system when run down by disorders peculiar to women.

## Take Cardui

# COAL

We received four cars of Colorado  
Coal last week, and the price is  
right. Lump and Nut---take your  
choice.

## Feed - Cottonseed Meal - Cake

Let us supply your needs in this line. We  
have what you need—come and see.

Sugar, 100 pounds  
for  
**\$10.50**

Car Load of  
**STOCK SALT**  
Just Received

## We Need You and You Need Us

Potatoes, 100 lbs.  
**\$3.25**

Extra Grade Coff  
per lb.  
**20 cts.**

Light's Best Flour, PER HUNDRED . **\$5.10.**

Groceries are still going down. Come and  
see.

## The Spearman Equity Exchange

R. L. McCLELLAN, Manager



# Spearman Tailor Shop

Orders taken for Tailor Made Clothing.  
Cleaning and Pressing for Ladies and Gentlemen.

## BARBER SHOP IN CONNECTION

Clean, sanitary shop and good barbers.  
We guarantee satisfaction.

LAUNDRY AGENCY. Basket is closed Monday.

West Side  
Main

**SID CLARK, Manager**



Brands: Diamond C on left side  
slash on left hip.  
Ear Marks: Crop on left & under  
halftop on right.  
Range on headwaters of the Palo  
Duro.

J. H. Cator & Son, Spearman

### STORAGE ROOM

I have storage room for anything.  
Will unload your cake and store the  
same until you need it.

H. A. RAY, the Drayman.

### NOTICE FOR BIDS

Bids will be received by the commis-  
sioners court of Hansford county for  
County Depository of said court, at  
the next regular term of said court,  
which convenes at Hansford on the  
18th day of February, 1921.

A. H. STORRS, County Judge.

**R. T. CORRELL**  
**Lawyer**  
Perryton, Texas

**DR. JARVIS**  
**DENTIST**  
Perryton, - - Texas

**FRED HILL**  
**Attorney-at-Law**  
Spearman, - Texas

WALTER R. ALLEN JACK ALLEN  
**ALLEN & ALLEN**  
**LAWYERS**  
Perryton, - - Texas

FRANK M. TATUM W. C. STRONG  
**Tatum & Strong**  
**ATTORNEYS - AT - LAW**  
Dalhart, - - - - Texas

**WALLACE G. HUGHES**  
**Lawyer**  
Suites 3 and 4 First National Bank  
Building  
Guymon, Oklahoma

### STORE YOUR WHEAT

We will advance you 45 cents per  
bushel on your wheat, store the same  
and you may sell when you like. Will  
take 10,000 bushels now and more as  
we ship it out.

BOLIN-HALL GRAIN CO.

Registered Poland China hogs—the  
kind that are ready for the market at  
any age. Young stock for sale.—L. O.  
BONEY, Ideal, Sherman County, Tex-  
as. 51-4f.

LLOYD

There is no more fitting expression of your love to those  
honored dead—Mothers, Sisters, Fathers, Brothers,  
Cousins—than a monument of eternal stone of rare beauty.  
I am direct representative of one of the largest monument  
manufacturers in America, whose marbles, quality of workmanship,  
and general service are unexcelled.

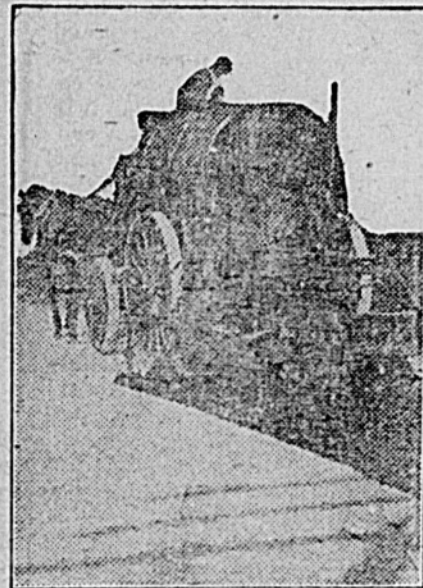
ORAN KELLY, Spearman.

## BETTER HIGHWAYS

### FEDERAL ROAD BUILDING AID

Highway Construction Hampered by  
Transportation Difficulties and  
Lack of Material.

In addition to \$19,000,000 for forest  
road construction, congress has made  
available to July 1, 1920, the sum of  
\$275,000,000 for federal aid roads. Of  
this sum \$175,000,000 was available up  
to and including June 30, 1920. Of  
this amount the states had made appli-  
cation covering \$152,193,040 as of  
April 30. This federal aid is to apply



Surface treatment of Macadam Road  
With Bituminous Material and Stone  
Chips.

on 27,796 miles of road estimated to  
cost \$355,754,790. As of May 1st 13-  
540 miles of federal aid road were un-  
der construction, involving over \$80-  
000,000 in federal aid. The total  
mileage of completed road built under  
the federal aid law since it became  
operative in 1916 is 4,301.15 miles, as  
of May 1, 1920, an average rate of con-  
struction of over 1,000 miles a year.

The difficulties of transportation,  
the lack of materials, the insufficient  
number of contracting organizations,  
the scarcity of adequate equipment  
and the general shortage of engineer-  
ing personnel in connection with high-  
way construction during the past two  
years have reduced road building ac-  
tivities to about 3-7 of the full pro-  
gram. The bureau of public roads,  
United States department of agricul-  
ture is ready, the states are ready,  
the funds are available to push high-  
way construction on a 100 per cent  
program as soon as the national eco-  
nomic conditions will warrant.

### MAINTENANCE OF DIRT ROAD

Essential That No Water Be Permitted  
to Remain on Surface—Repair  
Ruts Quickly.

To maintain an earth road so that  
it will adequately take care of heavy  
traffic it is essential first that no wa-  
ter be allowed to stand on the road  
surface or in the ditches, and second-  
ly that defects occurring in the sur-  
face be repaired immediately and in  
a manner that will form a crust suffi-  
cient to maintain the loads and resist  
the wear caused by traffic.

The first can be accomplished only  
by grading and draining the road in a  
manner that will permit water to drain  
quickly from the surface after every  
rain, and the second by adding clay  
and sand in the proper proportions as  
required, shaping up the surface with  
a light grader, and keeping the trav-  
eled surface smooth and even with the  
road planer, after which the earth sur-  
face eventually becomes smooth and  
impervious to water. The result is an  
extremely satisfactory road at a very  
low cost to the public.

### SAVE KANSAS MANY DOLLARS

Engineering Experiment Station Tests  
All Materials to Be Used in  
Road Building.

The road materials laboratory of the  
Kansas engineering experiment sta-  
tion is in charge of the testing of all  
materials for use on federal aid roads  
in the state of Kansas. More than 75  
car loads of defective cement and  
bricks submitted for test in the past  
year have been rejected, thus saving  
the state many thousands of dollars.

### FINANCING SYSTEM OF ROADS

Proper Procedure of County or Dis-  
trict is Matter Open for Much  
Discussion.

Just how a county or district should  
proceed to finance a system of roads  
is a matter open for discussion. It  
depends upon how rapidly they need  
them and upon how well they are able  
to pay, in other words on their val-  
uation and the cost of the work con-  
templated.

**Crown for Earth Roads.**  
Well maintained earth roads need  
very little crown. The wider and flat-  
ter the earth road, the better, if it has  
good drainage and is kept constantly  
smooth.

**To Control Weevils.**  
Clean grain bins carefully before  
putting grain into them, to control  
grain-weevils.

**Provide Plenty of Water.**  
Provide plenty of water for your  
stock and the birds.

## GROCERIES

of the  
**Better Kind**

Our goods are the Freshest and Prices  
the lowest. You are always welcome;  
come to see us.

**The John L. Hays Store**  
**SPEARMAN**

## VAN C. WHITTET

**AUCTIONEER**

Will cry sales anywhere at any time. Make dates at the Reporter  
office, Spearman.

**LIVE STOCK SALES A SPECIALTY**

## M. C. HEAD

**FRESH CORN MEAL—Ground on an old-  
fashioned stone burr mill—the best meal  
in the world.**

Re-cleaned seeds, mixed and ground feed, block  
or crushed salt. I will buy your cream.

West Side

**SPEARMAN**

## C. D. WORKS

**Attorney-at-Law**

Will practice in all courts. Special attention given to Land Practice  
and Probate matter. Abstracts prepared. Titles examined and per-  
fected.

**Real Estate. Farm and Ranch Loans.**

Notary Public

**HANSFORD**

## MAJOR & RANEY

**COMMERCIAL AND LIVE STOCK  
AUCTIONEERS**

**MAKE DATES AT REPORTER OFFICE**

E. L. BYRD

BUSTER CATOR

## MONROE GARAGE

BIRD & CATOR

The Famous Goodyear Tires and Tubes  
High grade Gas  
Oils and Greases.

Good mechanics always on the job to look  
after your car troubles.

Usually have a bargain in a second  
hand car. Come to see us when in need  
of anything in the automobile line.

New Home of

## The "Monroe"

The Latest and best in a  
Moderate Priced Car

**BYRD & CATOR, Props.**  
**SPEARMAN**

**Ford**

THE UNIVERSAL CAR

Most of the Gas Companies throughout the country use fleets of  
Ford Runabouts. The same is true of other big corporations. The  
reasons are very practical. The Ford Runabout is the most econom-  
ical solution of quick transportation from manufacturer to retailer.  
For soliciting business, for the Collector, for the Doctor, Contractor,  
Builder, and almost every other line of business activity, the Ford  
Runabout is really a necessity. We solicit your motor accessory  
business. We can serve you, we believe, to your best advantage. And  
bring your Ford cars to us for replacements and repairs because you  
will get the skilled workman and the genuine Ford parts.

R. W. MORTON  
FORD SALES AND SERVICE  
SPEARMAN AND DUMAS



There is no more fitting expression of your love to those  
honored dead—Mothers, Sisters, Fathers, Brothers,  
Cousins—than a monument of eternal stone of rare beauty.  
I am direct representative of one of the largest monument  
manufacturers in America, whose marbles, quality of workmanship,  
and general service are unexcelled.

ORAN KELLY, Spearman.



**Kelly's Famous Flour  
Going Strong at ..  
\$5.50 Per Hundred**

<b>BRAN PER HUNDRED \$2.15</b>	<b>SHORTS PER HUNDRED \$2.35</b>
--	--

We will beat the above prices on large quantities.

We want your business. Come to see us.

**Bolin-Hall Grain Co.**

JACK THOMAS, Mgr.

Spearman

**THE BIG TYPE  
POLAND CHINA**



I have the registered Poland China Hogs, with absolutely as good blood lines as can be found. They are the real Big Type Poland Chinas. Have both sex for sale.

Also, 18 head of bred sows.

Come and make your selections now. Papers furnished with every animal.

Located 20 miles northwest of Spearman, on Lura Spivey place, Lakeside community.

**E. C. SPIVEY,**

ADDRESS, TEXHOMA, OKLAHOMA

**Spearman  
Rooming  
House**

Nice, comfortable  
Rooms.

Clean Beds.

Rates reasonable.

West Side Main  
Spearman

T. H. Taylor  
Proprietor

**TO THE PUBLIC**

Having posted my ranch, lying in the northeast corner of Hansford county, along the Palo Duro creek, as required by the law of Texas, this is to specially call attention to any one fishing, hunting or trespassing in any way therein that they will be prosecuted to the full extent of the law.

GUS B. COOTS,  
36152\* Owner of Palo Duro Ranch

**Notice to the Public**

I will sell wood for \$5.00 per four horse load. It will be necessary to either phone or come to headquarters before getting the wood, otherwise you will be treated as trespassers. Positively no hunting allowed.

W. T. COBLE,  
Owner of the Turkey Track ranch.

**Notice**

No hunting or fishing will be allowed in the Diamond C pastures, on the headwaters of the Palo Duro. These lands are posted and trespassers will be prosecuted.

JAMES H. CATOR & SON.  
Rulers for school children. Call at the Ford garage and get a ruler before you go to school Monday.

**Last Night's Dreams  
—What They Mean**

DID YOU DREAM OF DOGS?

TO DREAM of dogs is, as a rule, accounted a lucky omen. If the dog is vicious and attempts to bite you, and you succeed in keeping him off or driving him off, it means that you will get the better of your enemies—if you have any. Even if the dog bites you it is not so bad, for it indicates only temporary annoyances. If the dog barks at you, or you see two dogs fighting, you are in for a quarrel with some one, or some people are jealous of you—very likely both. At any rate if the dog snarls and barks at you pay closer attention to your business. If you see a dog sleeping, be assured that everything will come out all right for you in the end. If you see a female dog with her puppies the oracles are united in saying that it signifies that something over which you are now worried, or disappointed, or angry, and which you regard as unfortunate will, in the long run, turn out greatly to your advantage. If you dream that you are playing with a dog it is supposed to signify that you are too free with your money; don't spend so much on mere trivialities and pleasures. To see a dog in a dream under any circumstances means that you have faithful friends who will stand by you.

(Copyright.)

**THE ROMANCE OF WORDS**

"BOGUS," originally the American slang equivalent of counterfeit or spurious, slipped into the language through a corruption of the name of a man named Borghese, reputed to have been a very corrupt individual who, around 1825, flooded the west and southwest with vast amounts of counterfeit bills. Borghese, it is interesting to note, turned out his currency so rapidly that he didn't even stop to find out if the banks on which the bills were drawn were even in existence. As a result, much of his money was counterfeit in a double sense—I stimulated currency and it bore the name of a fictitious financial institution. The Westerners, being rather rapid in their speech, shortened the Italian name of Borghese first to "Borges" and then to "Bogus," applying the term to counterfeits of all descriptions. The earliest use of the word yet reported is recorded in the "New English Dictionary" as occurring in the Painesville, Ohio, Telegraph of July 6, 1827. Then, of course, it was spelled with a capital "B" and it was not until nearly half a century later that it took its place in language as generally used.

(Copyright.)

**ROAD  
BUILDING**

**PUBLIC ROADS BUREAU WORK**

Plans, Specifications and Estimates Are Examined and Approved in Short Period.

Over 50 per cent of all applications for federal aid are handled in the district offices of the bureau of public roads, United States department of agriculture in an average of five days; 99 per cent of them pass the chief engineer's office in Washington to final

**A Better Time  
to Build**



Than the present affords will be hard to find. Lumber has declined in price until you can no longer be without those buildings you need, such as

**A Home, a Barn, Grainary, Sheds, Etc.**

**We want to figure on your 1921 Lumber Bills.**

**SPEARMAN LUMBER CO.**

Everything Needed for Farm Building.  
Helpful Service, too.

L. D. COATE, Manager

SPEARMAN

approval in four days. The plans, specifications and estimates which the states furnish and which have to be reviewed, sometimes checked, and always reported on in detail with specific recommendations, pass the district engineer's office at about the same rate as the applications and 90 per cent of them pass the district engineer's office in three and a half days. There are at present over 3,000 active federal aid projects in the United States.

The federal aid act is administered with three per cent of the appropriations and this fund is carefully controlled each month on the basis of actual performance under the law. As an illustration of efficient administration, district No. 8, with offices located in Montgomery, Alabama, cost the government \$78,547 from December, 1916, to April, 1920, inclusive. This is an average of \$1,916 per month. Reports from the district engineer for that district show that the bureau's engineering review and technical advice in connection with state projects submitted have resulted in large savings in road construction. A single case in one state was revised by the district engineer's office at a saving

The indications are that the following year will exceed this record by a large margin, as the available funds for road expenditure by the bureau for 1920 amount to \$633,000,000.

**Money for Good Roads.**

Thirty-seven states in this country have authorized the expenditure of \$635,641,720 for good roads in the next five years.

**Cash for Lincoln Highway.**

An allotment of \$12,080,000 has been made for improvements to the Lincoln highway.

**Highways Destroyed by War.**

More than 25,000 miles of highways were destroyed in France during the world war.

**Praying for Rain in Korea.**

Korean daily newspapers do not announce "fair and warmer" indications for the next day, as the natives believe the gods are in charge of the weather, and that if properly approached their climatic decisions may be registered. Dr. A. Garfield Anderson of Wonsu, Korea, describes the various ways by which the people try to induce rain. They write prayers for rain and hang them up on the hillside. Two dragons lie between the market stalls, each about 100 feet long and two feet high at the head, tapering off gradually to the tail. A sorceress in time of dry weather will come out and dance before these dragons to bring rain.

**Married in Batches.**

In the crowded towns of the north of England, certain churches are, among the working class population, held in great popularity for the ceremony of marriage. This popularity

entails, in the case of the parish churches of certain of the northern towns, an immense number of marriages on a given day, and on these occasions the only practical course is to arrange the various couples in batches of twenty at a time; and it is a positive fact that at certain periods the clergy have much difficulty in "sorting" out the right couples, so to speak.

**Cat's Long and Painful Journey.**

Red, New Jersey's champion tom-cat pedestrian, has just completed a hike of sixty-seven miles from a farm which its owner, Lawrence Blamey, sold a year ago. Thinking his pet cat would prefer field mice to those of the domestic variety, he left Red on the farm. The exhausted feline finally succeeded in finding the new home of his master. Red's claws were worn down to the quick.

**Odd Place for Corkscrew.**

Mr. A. H. Ball, deputy minister of education for Saskatchewan, while digging potatoes in his field near Regina, turned up one which had a corkscrew firmly imbedded in it. Why does not appear, for there were no bottles thereabouts. The sustainer has been handed over provincial librarian, who will place it in the museum.

**Prehistoric Remains.**

Fossilized blood corpuscles have been discovered in the remains of an-delluvial monsters in Canada. The brains of tiny fishes have also been found petrified in coal mines.

Your Ford will crank easier by attaching a HOT SHOT battery. Andrews Hardware Co.



Granite Blocks Laid and Ramped — Maintenance Cost of This Kind of Pavement is Less Than That of Any Other Kind.

of \$13,638.26. Another project was redesigned to cost \$10,000 less at the time the plans were reviewed by the bureau.

**EMPLOY CONVICTS ON ROADS**

Satisfactory Results Reported From Twelve States Where Experiment Has Been Tried.

Twelve states have tried the employment of convict labor for road building thoroughly, and report that the results have been satisfactory. They are Arizona, Oklahoma, Florida, Maryland, Illinois, Louisiana, Rhode Island, New Jersey, Wyoming, Utah, Idaho and Nebraska.

Since the United States government has made its great appropriations for good roads, which the states are duplicating as the federal law requires as fast as their legislatures meet, the department of agriculture has been making a complete survey of the methods of road building in the states. Concerning the use of convict labor the conclusion from these reports is that where the convicts are well fed and housed they work well, save the state in construction costs, and themselves profit physically and mentally. —Syracuse Post Standard.

**CASH FOR IMPROVING ROADS**

Total Amount for 1919 Placed at \$138,000,000 in Report by Bureau of Public Roads.

An important report, which possesses peculiar interest for all motorists, regarding good road progress during the present year, made by the bureau of public roads of the United States department of agriculture, shows that for 1919 the expenditure for hard-surfaced highways establishes a new record, in so far as the department's road program is concerned, the total amount being \$138,000,000.

**Get Your "Titan"  
Tractor NOW ..**



We give you a year to pay and positively protect you against loss in case of a decline in price.

Come in at once and let us explain our new plan.

The Titan 10-20 has led the three-plow tractor field for the past five years. Farmers have bought over \$70,000,000 worth of Titans.

**Andrews Hwd. Co.**

Implements - Furniture - Queensware

East Side Main

-:-

**SPEARMAN**

**1909—1921  
A Remarkable Record of  
OilPull Performance**

Twelve years ago at the start of the tractor industry the first OilPull tractors were built and during this time these pioneer machines, such as Number 1, No. 8, No. 9, No. 11 and others, built up a record of dependability, economy and long life that is unequalled in the tractor industry.

And it should be remembered that this record based on not a few years' performance of one tractor but upon the work of hundreds of OilPulls over a period of many years.

In these twelve years, OilPull tractors have not only proved their remarkable ability to work steadily and constantly hour after hour, day after day, but they have also established the OilPull unbeatable record of economy. Economy of operation—being real kerosene burners and the only tractors guaranteed in writing by the makers to burn kerosene under all conditions. Economy of upkeep—being hundreds of cases like that of the first OilPull built, and still in use, whose owners vouch for the fact that in twelve years their repair bills have not exceeded five cents per day.

This is your kind of a tractor—one that will many years of dependable, constant service.

Four sizes—12-20, 16-30, 20-40 and 30-60 give a wide range of selection.

**WILL A. JOHNSON  
AGENT  
SPEARMAN OR TEXHOMA**





# Ford

THE UNIVERSAL CAR

## Attention Ford Owners

When you have your Ford repaired insist on getting  
.. **Genuine Ford Parts** ..

When you go out on the road you require of your car good, hard, faithful service. Your car cannot deliver the service required unless it is equipped with the best. Our stock of Ford parts is complete and we are at your service either to repair your car, or sell you the genuine Ford parts. Don't merely insist on this but be sure you get the genuine parts.

.. **R. W. MORTON** ..

Authorized Ford Sales and Service  
**SPEARMAN, TEXAS**

## 1120 Acre Stock Farm

**OWNER WISHES TO TRADE  
for PANHANDLE LAND**

800 acres in fall wheat. Last year's wheat crop made 27,000 bushels.  
62 acres in alfalfa, hog tight fence.  
Two sets of fine improvements.  
Fine Orchard  
2 good wells and wind mills; only 16 feet to water  
2 fine barns, 2 granaries, 8000 bushel capacity each.  
Other out buildings  
Cash price \$15 per acre. Owner will trade for Panhandle land near Spearman.  
This stock-farm is located 65 miles south of Wichita, Kansas near good markets.

See or write

**C. R. CLIFT, Bluff City, Kansas, or  
JOHN YOUNG, Box 482, Anthony, Kansas**

## Our Prices

## Before You Buy

Trucks, Tractors, Jumbo Engines, Wagons,  
Drill Planters, Cultivators, Disc Plows,  
Listers, Ridge Busters, Disc Harrows,  
Binders, Automobiles, Trailers, Tires,  
Tubes, Accessories, Paints, Oils, Razors,  
Rifles, Shot Guns, Bicycles, Perfection,  
Stoves and Heaters, Denatured Alcohol,  
Hose, Harmographs, Coaster Wagons.

**Jordan Motor and Oil Co.  
GUYMON**

## Do You Know

.. We should be a  
**Columbia** in every home ..

.. the kind you want in ..

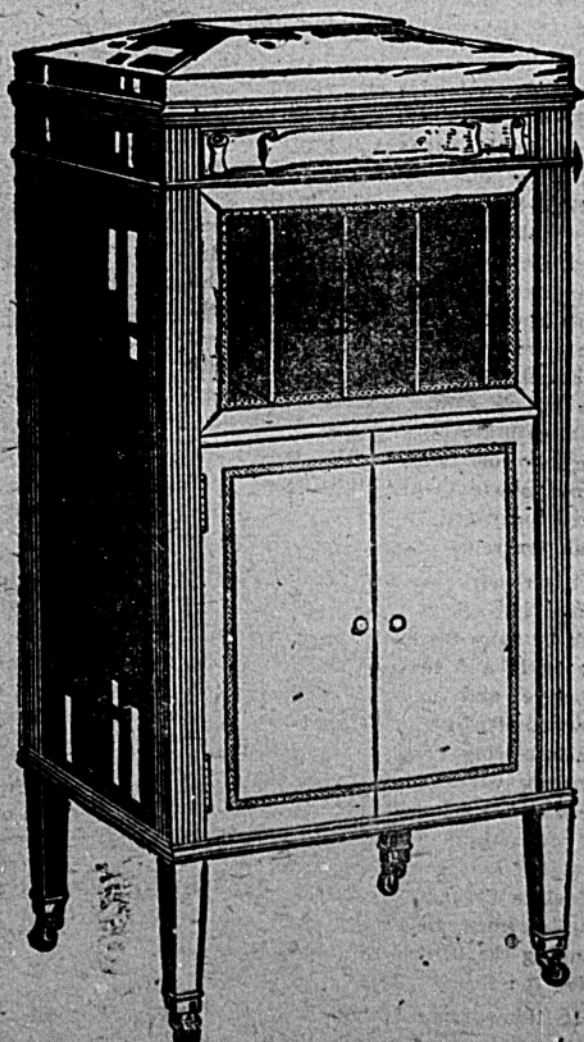
.. man owes to his children a  
good time at home. Why make  
them go elsewhere for a good ..

.. them a **COLUMBIA** and let  
.. entertain their friends at  
**COLUMBIA** ..

.. those who own a machine, do you know that  
.. largest stock of Records in the Panhandle  
.. arriving every few days.  
.. hear them. We are always glad to play  
.. for you, whether you buy or not.

**Hillhouse Drug  
Company  
SPEARMAN**

.. there is no more .. expression of ..  
.. more dead .. Mothers, Sisters, Father ..  
.. of eternal stone of rare ..  
.. narrative of one of the largest mon ..  
.. marbles, quality of workman ..  
.. called ..



## Save! Save! Save!

time, trouble and ex-  
pense by buying your  
**GAS and OILS**  
from us. Not because  
our prices are so much  
lower, but because we  
handle the best to be  
had.

You will not be disap-  
pointed when you give  
our goods a trial.

## Goodwill Oil Co.

Spearman, Texas  
Floyd Hays, Mgr.

## Registered Hereford Calves

About twenty head of registered Hereford heifer calves for sale. These calves are not only registered, but are extra good individual calves; will weigh 450 to 500 pounds now. Will sell one or more and the price is very reasonable. If you want to raise good stock buy these calves.

WALTER W. WILMETH,  
21 miles northwest of Spearman, on the mail line.

## We Take Subscriptions, for

Saturday Evening Post,  
Ladies' Home Journal,  
Country Gentleman,  
Wichita Beacon,  
Dallas News.

Bring us your new subscriptions as well as renewals.

HILLHOUSE DRUG CO.

## NOTICE

Dr. R. S. Tanner, D. V. S., has a preventative as well as a guaranteed cure for distemper. See or call him at the Taylor rooming house or the Reporter office. 501f

## JERSEY COW

for sale. Fresh now and a splendid milker. See George W. McMurry, Spearman, Texas. 6t4

FARM WANTED—I want to hear from party having farm for sale. Give price and description.

B. B. HOWARD,  
Champaign, Illinois.

## NOTICE FOR BIDS

The State of Texas,  
County of Hutchinson.

Notice is hereby given that the Commissioner's Court of Hutchinson County, Texas, will receive bids from any banking corporation, association, or individual banker of any of the adjoining counties who may desire to bid for the privilege of acting as County Depository for said county for the ensuing two years; such bids to be made not later than Feb. 14th, A. D., 1921, at 10:00 A. M., and in the manner provided by law. The Court reserves the right to reject any and all bids.

Witness my hand at Plemons, Texas, this the 16th day of Jan., A. D., 1921.  
M. G. MATHIS, County Judge.  
6t4 Hutchinson County, Texas.

## CHURCH DIRECTORY

Baptist Church  
Sunday school every Sunday at 10 a. m. O. C. Raney, Supt.  
M. E. Church, South  
Sunday school every Sunday at 10 a. m. R. L. McClellan, Supt.  
Preaching every Sunday night at 6:30 and the second and fourth Sunday mornings at 11.  
Junior League Sunday at 3 p. m. Juanita Haney, President.  
Epworth League Sunday at 4 p. m. W. A. Clark, President.  
Choir Practice Wednesday at 6 p. m.  
Rural Appointments  
Lieb—The first Sunday at 11 a. m.  
Alpha—The first Sunday, 2:30 p. m.  
Lackey—The second Sunday at 2:30 p. m.  
Grand Plains—The third Sunday at 11 a. m. and 2:30 p. m.  
ZORO B. PIRTLE, Pastor.



## TEST GOOD ROAD MATERIALS

Much Detailed Technical Information Secured in Experiments By Public Roads Bureau.

It is believed that the bureau of public roads, United States department of agriculture, through its testing division has done more than any other single agency in developing the intelligent use of bitumens in road construction. For example, experiments conducted under service conditions by this bureau decided whether a soft stone could be used in bituminous macadam and bituminous concrete; whether rocks having a marked cleavage could be used to advantage in such construction; what quantities of bitumen give the best results when used as surface treatments on water-bound macadam and what kind of covering material and what quantities should be used in any case. A large amount of detailed technical information valuable to highway engineers generally has been secured by the bureau in the course of its research and experimental work. The ability of the highway engineer to construct roads which would accommodate automobile traffic has, in no small degree, been the underlying reason that the automobile industry has developed to its present enormous proportions.

In 1916 the passage of the federal aid road act marked a new epoch in highway construction in the United States. The war then in progress emphasized the need of further developments in road building. The bureau



Bituminous Macadam Mixing Method. has sought to keep well to the front in the solution of the new problems presented and is today conducting experiments and investigations of a fundamental character.

## Beauty Chats

By EDNA KENT FORBES

## EARLY WRINKLES

THE first wrinkle is usually regarded as the milestone that points the way to middle age. And the first wrinkle is something a woman discovers suddenly one day, when she glances into the mirror. How many tragedies of past youth are fought out over the discovery—well, only those who have watched these lines appear can tell.

Yet—wrinkles are seldom a sign of age, at least upon their first showing. Indeed, their sudden appearance shows this; the skin that was unlined a week ago has a few lines in it today. This is not age—it's temporary ill health. Because I claim that the first wrinkles are the result of poor health, does not mean that I want you to neglect



Early Wrinkles May Mean Nothing More Than Temporary Ill Health.

them. But, before you go for the cold cream jar, get yourself some health building tonic, and take it regularly. If you are thin, get something with olive oil in it, if you are stout, something that will tone up the blood. Then, while you are getting all the fresh air and sleep you can, and while you are exercising perfectly to keep the system running smoothly—then, start massage with cold cream, use complexion brushes, if you wish, and ice rubs to freshen the skin. Anything that brings blood to the face is to be recommended. New blood means new tissues, and a prettier skin.

Above all, don't worry over the appearance of the wrinkle. Worry is responsible for more wrinkles than old age ever could be.



Let Us Help You  
**PLAN**

## Your Trip to California

You may stop over  
at the Grand Canyon  
of Arizona on your  
way.

For particulars as to train service, fares, etc., see the local agent or write

**T. B. GALLAHER  
General Passenger  
Agent**

**AMARILLO, - TEX.**

## THE Palo Duro Hotel

I. F. DACUS, Prop.

Good meals; clean, comfortable rooms and beds.

Reasonable Rates.

Headquarters for Traveling Salesmen.

Try Our  
Sunday  
Dinners

## Royal CAFE

## Home Made Pies

Everything in the  
Short Order Line  
at

ALL HOURS

## Prices Right

Good Eats for Folks  
who have Good  
Taste.

JOE DAVIS, Manager  
Spearman

## The T-Bone Cafe

JESSE E. HAYS, Prop.

The very best  
the market affords  
to eat.

Cooked like you  
want it.

Popular  
Prices

When in Perryton and need any thing in diamonds, watches or jewelry see W. H. DUNLAVY.

## For the HOME

the barn, the implement shed, the garage; for any and every place where lumber and material that has greatest building strength is needed, and will give greatest resistance to the assaults of wear and weather, we strongly recommend the kind we sell.

We still have a few towel hangers to give away and a small house for sale.

## WHITE HOUSE LUMBER CO. Spearman

EARL CALLAWAY, Mgr.

Phone 22



# QUITTING BUSINESS NOW

Read everything listed in the big sale bill inside. They are merely samples of how low everything is marked. Get your share early.

Store Fixtures  
for Sale

**SURPRISE STORE,** Spearman  
Texas

## TIRES! TIRES!

We have on hand a complete line of tires and tubes. Prices are in line with any make of tires that will be compelled to deliver the goods. I will make all adjustments on any tire I sell that shows any defect. There is not and never was a guarantee on any casing, but there has always been an adjustment clause. I will adjust these tires on a 7,000 mile basis. You and I can tell whether a tire is defective or has been injured on the road. If in need of a new casing or tube call around and let's talk it over.

I have just been notified of a \$125 drop in the price of Fordson tractors. The price for Detroit now is \$625. Have several on hand now.

R. W. MORTON,  
Authorized Ford Sales and Service

## CAN EXTEND CREDIT

See Jordan's proposition for 1921 on Wallis Tractors and Tractor drawn implements and Trucks. Have a proposition that will interest you.

JORDAN MOTOR & OIL CO.,  
Guyton, Oklahoma.

## BAPTIST PREACHER COMING

Rev. I. W. Rogers, pastor of the Baptist church of Perryton, will be in Spearman on Sunday, January 30, and will preach at 11 a. m. and at night. Rev. Rogers is an able minister. You are invited to hear him.

## PLEASE RETURN THE GUN

Will the party who took the 25-20 Winchester from the Lackey school building, some two weeks ago, please return the same to the undersigned. The gun was left there by hunters, accidentally.

A. E. TANDY, Spearman.

## NOTICE

A white-face Hereford heifer, with horns, marked crop on left and underbit in right ear, about one year old, is at the J. G. Schaub farm, on Spearman-Guyton mail route. If the owner does not call and take this animal away, I will stray it in the way and manner prescribed by law.

W. A. SHAPLEY,  
Spearman, Texas.



We have a nice assortment of machines as well as records. Come in and let us show you. "Be Sure It Is a Columbo."

Hillhouse Drug Co.

## HIDES TANNED

I represent the Globe Tanning Company. Can have hides tanned and made into coats, robes, muffs, etc., at reasonable prices. See me when you want work of this kind, or will furnish tags free of charge and you may send hides yourself.

HENRY RALSTON,  
Spearman, Texas.

Good heating stove for sale. See Sid Clark at the Spearman Tailor Shop. 41f

We have several cases of the celebrated Barstow honey for sale. SPEARMAN EQUITY EXCHANGE.

Send me your watch and jewelry repair work by mail. All work guaranteed. W. E. DUNLAVY,  
Perryton, Texas.

## THE SILKWORM

The history of silk starts in 1700 B. C., when Hoang Ti, third Emperor of China, charged his wife to examine the silkworm and test the practicability of using the thread from the cocoons. She discovered how to reel the silk and to make it into garments and for her discovery, she has ever since been known as the "Goddess of Silkworms." The Chinese gave the silk to the Persians who carried it to the western nations for one thousand years without knowing how or from what it was made.

The Chinese kept their method of obtaining silk a secret for nearly two thousand years. Silk became in great demand and Roman Emperors arrayed themselves in costly silken garments, but soon laws were passed restricting its use to the nobility and to women. In the sixth century, A. D., all the raw silk was still being imported from China. No one was allowed to take the silkworm eggs from China, but Justinian bribed two Nestorian monks to return to that country and in 555 they came back, bringing with them a large quantity of silkworm eggs concealed in their clothing. The industry now spread rapidly. Silk culture began in America in 1622, when James I sent silkworm eggs, mulberry trees, and printed instructions to Virginia, but the attempt was unsuccessful. In 1735 8 pounds of silk were exported from Georgia; seven hundred pounds in 1758 and ten thousand pounds in 1759.

Connecticut, Pennsylvania, New Jersey, New York, Rhode Island and Massachusetts have since begun to rear silkworms.

The silkworm is classed with scaly winged insects, family of spinners. It exists in four stages, eggs, larva, chrysalis and adult. The egg is nearly round, slightly flattened and closely resembles a turnip seed. It is scarcely an eighth of an inch long, but when full grown reaches the length of three inches. They breathe through spiracles or small holes which look like black spots, one row of nine down each side of the body. They have no eyes but are quite sensitive to jar. They are velvety, smooth, cold to the touch, and the flesh is firm, almost hard. The pulsation of the blood may be traced on the back of the worm, running towards the head.

It feeds on tender and young leaves of the white mulberry tree. The young worm simply sucks the sap, but as they grow older they eat the tender portions between the veins of the leaf. They hold the leaves by the six forward feet, and then cut off semi-circular slices from the leaf's edge by the sharp upper portion of the mouth. The jaws move sidewise, and several thousand worms eating make a noise like falling rain. If they are jarred while eating they stop and throw their heads to one side. The leaves are placed above them and those that crawl away are retained, while the weak are removed with the old leaves.

It is remarkable how many different things that silk may be used for. It is used by surgeons to tie together cuts in the flesh, and to cover silk cloth for adhesive and non-poisonous plasters for wounds; by electricians, who use it for insulating wires and otherwise; by dentists, who use it in cleaning the teeth and in tying the pellicle in filling; by bookmakers, who use it to tie fancy booklets and cards; by surveyors, to calculate the curve of the earth, and by fishermen, to stiffen their rods by winding the hook with which they deceive the fish.

It takes from twenty-five hundred to three thousand cocoons to make one pound of reeled silk and it is no won-

der that three centuries ago silk was valued at its weight in gold.

GRAYCE PIRTLE.

# GOOD ROADS

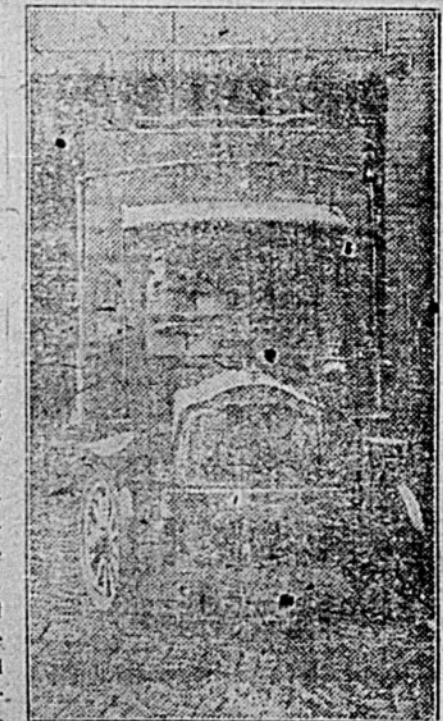
## GOOD ROADS ARE NECESSARY

Problems Involved in Railway Operation Again Bring Improved Highways to Front.

While it is admitted that the railways must necessarily form the nation's long-distance transportation lines, the auxiliary power of the public road, through the development of the gasoline engine and the motor vehicle, is receiving thoughtful attention in official circles.

Public discussion of high cost problems and the railway situation ran into the country road at two points recently. The first point touched was that the public highway is a potential short-haul freight and express line, and that with a national system of improved roads intersecting each state north, south east and west there will thus be constructed the basis of a comprehensive nation-wide system of traffic arteries, with which state and county systems may connect. With such a system provided the development of freight and express transportation is anticipated far beyond comprehension, says Chicago Tribune. Its advocates assert that the motortruck as it appears on the public highways today is but an infant to what it will be once the public roads are built to permit its enlarged use.

Those who doubt the possibilities of the highway freight and express as factors in the reduction and stabilizing of food costs are told to look back over the development of the railway and note that the beginning was upon



Motortruck is Big Factor in Reducing and Stabilizing Costs.

a basis far less promising as a practical proposition than the basis upon which the gasoline driven vehicle stands today.

Dropping back to the point of short-haul delivery, attention is being called to the fact that the radius of highway shipping is being gradually extended as modern roads are being built. Advocates of a national highway system, the creation of which is provided for in the Townsend bill now pending in congress, have encountered the argument that approximately 50 miles is the maximum of motor delivery. Their answer is that while this may be true, it is true only at the present time because of the illogical connections and the general condition of the roads.

The same economic conditions which forced railway develop-

State of Ohio, City of Toledo, Lucas County, ss. Frank J. Cheney makes oath that he is senior partner of the firm of F. J. Cheney & Co., doing business in the City of Toledo, County and State aforesaid, and that said firm will pay the sum of ONE HUNDRED DOLLARS for each and every case of Catarrh that cannot be cured by the use of HALL'S CATARRH MEDICINE. FRANK J. CHENEY. Sworn to before me and subscribed in my presence, this 6th day of December, A. D. 1920. A. W. OLEASON, (Seal) Notary Public. Hall's Catarrh Medicine is taken internally and acts through the Blood on the Mucous Surfaces of the System. Send for testimonials, free. F. J. CHENEY & CO., Toledo, O. Sold by all druggists, etc. Hall's Family Pills for constipation.

a national development of the public highway, and the advocates of a national highway system assert that each day's discussion of the present economic situation produces additional reasons why the federal government must get down to highway building on a nationwide scale and in dead earnest.

In a sense the legislative mind at Washington seems to be approaching the present phase of economic problems somewhat in a spirit of weariness. "Will we ever get anything really finished?" is a question which seems to express their feelings. So many problems, like the cat, keep coming back.

But one fact seems to itself very clear, and that is the public highway is the logical place to begin cutting down living costs is by eliminating permanent time-consuming and fuel-wasting roads. To accomplish this purpose the construction of a national highway system as a necessary and logical connection with state and county systems is being looked upon with increased favor.

**Bond Issues Pending.**  
Legislation to authorize good road bond issues amounting to \$301,253,800 are pending with excellent chances being passed.

**Hard Surfaced Roads.**  
There will be a big development in hard surfaced roads in Kansas in next five years.

**Good Roads in Uruguay.**  
In Uruguay, one per cent of taxes paid on real estate is devoted to the building of roads and bridges.

**Poland's Longest Pipe**  
The longest pipe line for the transmission of oil was laid on September 6, 1920. This line runs from Jaslo to Gorlitz, constructed of 10-inch piping and 100 kilometers (17.35 miles) in length. It is connected with another line that runs from Jaslo to Mezinek. Both these lines were constructed by the Polish government and are used for the transmission of oil from the wells in Mezinek to numerous refineries and factories. Since the construction of the new pipe line, a great number of factories have been able to use oil as fuel instead of coal, resulting in the saving of 6,000 carloads of coal a year.—Scientific American

# THE CALL

.. of the ..

## "COZY LITTLE HOME"

HAVE you already responded to the call, and now on winter nights enjoy the comforts of your own fireside; surrounded by all the conveniences of home?

Those who now own their own homes could not be induced to part with them and go back to the many discomforts and uncertainties of renting.

Whether you own a home or not, you have heard the call of the "Cozy Little Home." Nature itself implanted that longing in every human heart, and life never attains its real fullness until you

## OWN YOUR OWN HOME

The first step in the direction of owning your own home is the resolve ---"I WILL!"

"HOME," if it was to be obtained without effort, would never be appreciated fully. The zest of life comes from contrast, and it is human nature to never fully appreciate anything until we have first sacrificed and strived to attain an end.

## LUMBER PRICES ARE DOWN

to such a low point that to either hope or wait for a lower price would be unreasonable. Right now there exists a real opportunity to save by buying, as prices are bound to advance when spring building activities make their demand felt.

Home building costs are not anything like as high as you think. Lumber is cheaper than we ever expected to see it, or ever expect to see it again.

Let us tell you of "ways and means" and show you many pictures and plans of modern homes that we have gathered together for your benefit.

If you don't own your own home, you really owe it to yourself to talk the matter of building and building costs over with experienced authorities. We have made a close study of all practical and economical uses to which the material we sell can be put. We can be real helpful in showing you how to "cut according to your cloth," and our best advice and assistance is yours for the asking, and we don't expect you to feel under any obligations to us either.

# THE PANHANDLE LUMBER CO.

R. J. McCASLIN, Mgr.  
Phone 17

Spearman  
Texas.

Uncle Jimmie, Little Bobbie, A tea, Oh say, Uncle, tell me you tried to tell at the and see if he'll laugh.

For quick service jewelry for repair. W. E. DUNLAVY

Ke Ang