

THE SPEARMAN REPORTER

Successor to the HANSFORD HEADLIGHT

TWELVTH YEAR

Spearman, Hansford County, Texas, July 16, 1920

Number 31

CREDIT

Some day you may need credit. A man looks for credit where he keeps his money. If you hide your money in the cellar you cannot go to the cellar for credit. That is common sense.

If you keep your money in this National Bank and need credit, come to us. Let us see what we can do for you.

Credit is based upon our knowledge of a man—his honesty—integrity—ability to keep his word. A man should not overdraw his account.

In other words, credit is largely a matter of acquaintanceship.

Why not get acquainted with us now?

THE
First National Bank
of SPEARMAN

IMPROVEMENT AT CITY WELL

Pal A. Lyon, secretary of the Hansford County Chamber of Commerce, recently received the information that F. W. Wilsey, acting for his company, had agreed to make a further contribution, the amount not to exceed \$2,000, toward the installation of storage facilities in connection with the Spearman water supply. Spearman is doing fine compared with some of our neighboring towns in the matter of a water supply, but we do need storage facilities. A break-down would mean a very dry town under the present system, and this condition can be guarded against only by keeping a large supply on hand. Spearman is a well watered town and the water is the best to be found in the great southwest. All we need is a large stand-pipe and water mains running to all parts of the city. These improvements are coming later, and for the present this very generous offer of assistance from Mr. Wilsey will prove of inestimable benefit to the town. Now, let the well committee of the Hansford County Chamber of Commerce see that a storage tank of considerable proportions is erected at the public well, that Spearman may never be without water.

A good oil stove for sale, 3-burner. See the Reporter.

Mr. and Mrs. Arthur Jordan were in from the Steele ranch on the Palo Duro Wednesday.

Clark Snively is spending the week in Perryton, where he is having dental work done by Dr. Jarvis.

We know that Wednesday was a hot day, because 29 good, substantial citizens reminded us of the fact.

Will Crow, a hustling young farm loan man, of Canadian, was looking after business matters here Tuesday.

List your farm and ranch lands with C. W. King, Spearman, Texas. He will sell it for you at the highest price.

We present Judge William Pierson of Hunt County for Associate Justice of the Supreme Court. adv-21-p

A. Løke and Ben Tepe of the Liske Grain Company were looking after business matters in the city Monday.

W. H. Douglas and family were here from Texhoma the first of the week visiting with relatives and old time friends.

Mr. and Mrs. J. W. Givens and three children came from Tehoka the latter part of last week to visit his brother, T. C. Givens, and family at the Turkey Track ranch.

Burt Standard, from Okarche, Oklahoma, was a visitor to the Spearman country the first of this week. Mr. Standard is a threshing machine man and was thinking of bringing his machine to this country.

Robert E. Meek and John Grubbs came from Wellington, Kansas, the latter part of last week, to look after business matters and visit with relatives. Mr. Meek owns a fine farm out southwest of town which produced a splendid crop of wheat this year.

Ross Hays, Virgil Wadley and Fred Winters went over to Rolla, Kansas, Sunday, where Ross assisted the Texhoma Reds in a fast ball game against the Kansas town. The boys were caught in the great rain storm and arrived home several hours late.

E. H. Barbour and C. C. Beck are among the stock farmers of the Spearman country who anticipate building nice residences in the near future. This year's bountiful wheat crop will bring some wonderful changes for the better to the Spearman country.

F. F. Ogle and wife came from Chickasha, Oklahoma, the latter part of last week and are the guests of their relatives, the Tomlinsons, on the north flats. Mr. and Mrs. Ogle, Mr. and Mrs. Bum Tomlinson and Miss Ela Tomlinson were Spearman visitors Monday.

O. J. Schliecker of Fargo, Oklahoma, who owns a fine farm ten miles southwest of Spearman, was in the city Wednesday. Mr. Schliecker divides his time between Fargo and Spearman, and says he does not know which is the best place in which to live, but is leaning some toward Spearman.

The big elevator of the Spearman Equity Exchange is nearing completion and they will soon be ready to begin receiving the 1920 wheat. Spearman has six elevators and every one is anxious to pay the farmer the top of the market for his grain. Bring your wheat to Spearman; you can not find a better market.

TRUSTEE ELECTION

Considerable interest was shown in the trustee election held in Spearman last Saturday, at which five trustees were elected for the Spearman Independent School District. Twenty-four candidates were voted for and over fifty votes were polled. Farmers are so busy with harvesting and threshing they could not spare the time to come to town to vote, but everyone seems to be well pleased with the board as elected, which is as follows: A. F. Barkley, J. H. Buchanan, D. W. Hazelwood, H. E. James and W. L. Wilbanks. Spearman will have a school—that is the slogan of those who are taking the greatest interest in our educational affairs, and as the entire population of the town and surrounding country seems to be united on this great movement, and as perfect harmony prevails, there is no hindrance in the way. The newly elected trustees met Tuesday night and organized by electing A. F. Barkley, president; H. E. James, secretary; H. L. Wilbanks, assessor and collector. Spearman and vicinity will stand back of the board in every move toward the building of a school of the first class at Spearman. On with the good work.

Ford touring car, 1919 model, for sale at the Monroe garage.

Use shingle stain. Save that roof. PANHANDLE LUMBER CO.

Big reduction in prices on lumber and building material. Let us figure your bill. Spearman Lumber Co.

Best grade paints, oils, varnishes and shingle stain. PANHANDLE LUMBER CO.

List your farm and ranch lands with C. W. King, Spearman, Texas. He will sell it for you at the highest price.

List your farm, ranch or other property you have for sale with McLain & McLain, Spearman, Texas.

The two little houses at the White House Lumber Company are for sale. If interested see W. E. Callaway, at the yard.

Judge and Mrs. Morton G. Mathis and their two fine boys and Sheriff Billy Christian were up from Plemmons Thursday.

Wm. W. Trigg of Booneville, Mo., was here the first of the week, looking after business matters. Mr. Trigg owns a farm near Spearman.

Bob Stone and George Coleman of the White House Lumber Company, came from Canadian Wednesday to look after company business at this point.

Mr. and Mrs. G. E. James, father and mother of H. E. James of the Guaranty State bank, and Mr. and Mrs. Murry F. Broadus came from their home at Caldwell, Texas, Saturday and are guests at the James home in Spearman. Mrs. Broadus is a sister of our genial bank cashier.

The church building at Hansford will be moved to Spearman early next week. Tandy & Son, who have been hindered considerably of late by the great rains, are back on the job and intend to finish the job of moving Hansford within the next few weeks. Very little of the old town remains, but strange as it may seem, the school house, the church house and the court house still remain to tell the story of the good old town which passed away when the railroad came.

A Spearman young man recently visited a local clothing store and asked to be shown the line of silk underwear for men, stating that he wished to purchase three suits, white, pink and blue. Holy angels guide and keep us! That guy has the Reporter editor beat in more ways than a farmer can whip a mule. A "change" of B. V. D's. is our supply in this line. The young gentleman failed to find garments sufficiently snappy to please his fastidious taste.

R. B. Price, the cement block man, returned Monday from Jamez Springs, N. M., where he spent the past ten days. Mr. Price is troubled with rheumatism and went out there with the hope of receiving benefit from the water and baths given at that resort. He returned much improved; says he is feeling as keen as a lizard's tail and is anxious to resume his building operations here. D. E. Dillow is also back from the New Mexico health resorts and reports a great improvement in his health.

Good Threshing Coal \$11.00 per ton. Panhandle Lumber Co.

Surprise Yourself

Keep an accurate account of all the money you spend in a month and what you spend it for. It will surprise you.

Then resolve to bank the amount you have heretofore been spending unwisely.

You will never regret the resolution if you act.

Guaranty State Bank
SPEARMAN, TEX.

Auto Worked Change.

He used to be a pretty easy-going fellow before he bought his machine. Some days his name would decorate the spare board at the car barn and some days it wouldn't, for he and work were not firm friends.

But now how different. He contracted the automobile fever. The machine was the result. Now, buying an auto is easy. But keeping it running and taking your girl out is another thing. That requires coin of the realm.

He has developed into a terrible shark. His face is now a familiar figure on the North Easton line and if there are any spare trips laying around loose he is right up to the window leaning on both elbows.

We should have made an exception as to Sunday. Ah, that is the day he shines. The little machine rolls merrily along.

"It's worth it at that, to be a millionaire one day a week," he remarked as he unlimbered his portly form after 11 hours' labor the other night on a North Easton hack.—Brockton Enterprise.

Nut Butter is Wholesome.

Cocoa butter, as nut butter is called in England, was not accepted with enthusiasm by the British public when natural butter became scarce during the war, so the food committee of the Royal society made some elaborate tests of its effects on human beings. The New York Medical Journal summarizes the results, which show that slightly less of the fat of cocoa butter than of that of real butter is utilized by the body; it causes no digestive troubles; when consumed in large quantities it has a slightly laxative effect, and in general it is a safe and wholesome food.

Bugs That Birds Eat.

According to a paper on behalf of bird protection published by the State Horticultural society of Kansas the bird population of that state is 256,000,000, which every year eat enough insects to fill 480 trains of 50 box cars each—24,000 cars of a minimum weight of 24,000 pounds to the car. These insect trains would be long enough to reach from Oklahoma to Nebraska. Reduced to pounds, Blair figures that the birds of Kansas every year eat 576,000,000 pounds of insects. It is hard to conceive the dollars and cents value of the insect-eating birds to the Kansas farmer.

Want to sell your farm and ranch lands? Then list it with C. W. King, Spearman, Texas. He gets the highest price. 30tf

Short Term Fire Insurance

Covering grain and seeds of all kind, whether cut or uncut, threshed or unthreshed, shelled or unshelled, in shocks, stacks or ricks. Also, on cultivated land, dwelling house, bins, barns, tanks, granaries and cribs.

Notice the following rates:
One month, per \$100 . . . \$.38
Two months, per \$10057
Three months, per \$10076
Four months, per \$10095
Six months, per \$100 . . . 1.23
Eight months, per \$100 . . 1.52
Ten months, per \$100 . . . 1.71
Twelve months, per \$100 . . 1.90
McLAIN & McLAIN.

Saturday Night
at the
ARCADE

Fatty Arbuckle Comedy
and a splendid Bryant-Washburn special.

YOU

need something for the
Kidneys,
Liver
and Blood.

Nature's Remedy
25c, 50c, \$1

Take one tonight. You will feel better in the morning.

HILLHOUSE DRUG CO.

The People With the Goods
SPEARMAN, - TEXAS

A. F. BARKLEY'S Insurance Agency

Grain burns occasionally before or while being cut. Let us write you a policy on your grain while standing. Then, the same policy will cover in the shock or stack and in the granary when threshed. Let us explain it to you.

Our business is conducted on principles of honesty, fair dealing and dependable service. If you are not already a customer, we invite you to become one, with the confidence that you will find the above to be true.

BARKLEY SPEARMAN
Phone 37

Sherwin-Williams Paint

The Kind You Have always Used

IN A CLASS BY ITSELF

Complete line of House Paint, Floor Paint, Stains and Varnishes.

Tanlac Tanlac Tanlac

Hale Drug Company
SPEARMAN

The Store with the Up-Town Service

Farm and Ranch

LOANS

Any size tracts and at prices and terms to suit. Spearman town lots and acreage—desirable locations.

Oil Leases

I am in the market for Oil Leases.

Money

Unlimited amount of money to loan on Farms and Ranches in Hansford, Hutchinson and Ochiltree counties. Interest rate and settlement options very attractive.

J. R. COLLARD
Write for information
SPEARMAN, TEXAS



YOU are fancy free when you select a *Born Tailored* suit—size or price doesn't limit your choice.

Several hundred dependable *Born* woolens are offered in every conceivable weave and coloring—to be made to your measure, in the style you like best.

At a price of \$35 or \$40 we offer very unusual values.

P. M. Maize & Co.
.. & Co. ..
DRY GOODS GROCERIES

Now at SPEARMAN

The Spearman Reporter

PUBLISHED EVERY FRIDAY

ORAN KELLY . . . EDITOR-MANAGER

Entered as second-class matter November 21, 1919, at the postoffice at Spearman, Texas, under the act of March 3, 1879.

\$1.50 Per Year in Advance

ANNOUNCEMENTS

(Subject to the action of the Democratic primary election, to be held July 24, 1920.)

For County Judge

C. D. WORKS
A. E. TOWNSEND
A. H. STORRS

For Sheriff and Tax Collector
HICKS L. WILBANKS

For County and District Clerk
KEESE C. NESBITT

For County Treasurer
MRS J. H. BUCHANAN

For Tax Assessor
H. R. WALDROP

Fading Shrines of Oriental Splendor.

To me, after revisiting the East after an absence of ten years, it seems as if all its splendid past and all its present discontent were recorded and symbolized in the imperial palaces of Peking, Seoul and Tokyo. Ten years ago all three were the habitations of emperors, sacred spots from whose mysterious depths issued the edicts whereat men trembled and obeyed. Today the Son of Heaven and the Lord of the Morning Calm have gone their ways, to join the mournful company of kings in exile. Only his majesty of Tokyo remains, a dim, mysterious figure in the medieval seclusion of Chiyoda, a picturesque survival of old Japan, like an idol in a shrine, a sort of living Buddha in the great new city throbbing with machinery.—J. O. P. Bland in Asia.

Unconscious Cerebration.

Appropos of the popular interest in the ouija board, a correspondent says: "An experiment in unconscious cerebration may be made in this way. Take a 5-cent piece and to it attach a fine silk thread with a bit of sealing wax. Then take an empty tumbler and suspend the nickel in the center of the glass, holding the thread tightly between the thumb and finger and resting the elbow on the 'funny bone.' Then, without conscious volition of the muscles, think of its movement east, west, north or south, or returning to the center. You will find that the coin will obey the thought, although you give consciously no direction for the movement."—From the Outlook.

Short-Sighted Mortals.

The golden moments in the stream of life rush past us, and we see nothing but sand; the angel came to visit us, and we only know them when they are gone.—George Elliot.

Mr. Farmers: You market in Texhoma, what about your banking? Texhoma has now a new bank, a service institution, the Farmers State. The present owners also own the Oklahoma Farm Mortgage company, Oklahoma City, and twenty-five more of the oldest banks of the state. Your account is solicited with the assurance we are fully able to take care of your needs both in banking and farm loans. 29tf

Want to sell your farm and ranch lands? Then list it with C. W. King, Spearman, Texas. He gets the highest price. 30tf

If you want to know if you are going to be a success or a failure in life, you can easily find out. The test is simple and infallible!

Are you able to save money?

If not, drop out! You will fail as sure as you live! You may not think so but you will! The seed of success is not in you!

—James H. Hill.

Have you bought that War Savings Stamp this month?

IS THE SAVAGE AHEAD OF YOU?

The Savage lives within his income. Do you? But he lives only for today. Do you live only for today?

The Savage doesn't look ahead and he doesn't get ahead. Are you in the Savage's class or are you looking ahead and getting ahead?

The Savage is no better off today than he was yesterday. Are you? The Savage will be no better off next year than he was last year. Will you?

War Savings and Thrift Stamps will put you in the Look Ahead and the Get Ahead Class. Save! Buy W. S. S. regularly.

War Savings Stamps and Thrift Stamps will make you better off tomorrow than you were today—better off next year than you were last year. Save! Buy W. S. S. regularly.

War Savings Stamps are food when crops fail; a pleasure trip when you want it; the first payment on a home; the beginning of a college education; a start in life; a rainy day fund.

Buy them regularly from your bank—your Postmaster.

War Savings Stamps pay you interest at the rate of 4%, compounded every 3 months. Your W. S. S. are redeemable at your Postoffice with accrued interest on ten days' notice to your postmaster, if you need your money. The longer you hold W. S. S. the more money they make for you.

SAVING WITH U. S. SAVINGS STAMPS

The men and women of the Eleventh Federal Reserve District (Texas and parts of Oklahoma, New Mexico and Louisiana) have saved more than \$100,000,000.00 by investing in \$5.00 War Savings Stamps which bear 4% interest, compounded quarterly.

By saving their nickels and dimes and exchanging them at the bank or postoffice for Thrift Stamps and War Savings Stamps, the school children of the Eleventh District have saved more than \$16,000,000.00. The school children of Texas alone have saved \$13,000,000.00 this way.

War Savings Stamps help men, women and children to save and get ahead. They pay a good rate of compound interest, are issued in large and small amounts. For building up a personal safety savings fund they are ideal. Buy one or more W. S. S. every pay day and see your savings grow. They can be had at the post-office or bank.

HOW FAYETTE COUNTY PEOPLE ARE SAVING

Fayette County, Texas, is a community of homes and large families. It's inhabitants are proving that it is also a community of thrift, saving and safe investment and disproving the theory that large families are an obstacle to saving. These facts are clearly shown by reports to the Savings Division of the Treasury from residents of foreign birth and extraction who have pledged themselves to save systematically a certain sum before the end of this year and invest it in government securities.

John Baca, with 12 members in his family, heads the list with a pledge of \$500 between now and Dec. 31. Josef Stryk and J. Smolik, each responsible for the support and happiness of 7 citizens and F. L. Herzik with 4 in his family have each pledged themselves to buy \$100 worth of War Savings Stamps before the new year. Josef Stasny has a household of 10, but he declared himself both able and willing to save and invest a like amount.

In the \$50 column are Frank Buzek, John Michal and John Mikulik Sr., all with families, while John J. Novak with 8 and J. Horelica with 11 dependent upon them are going to save \$10 each. What are you going to save?

Subscribe for the Reporter.

Bought the New Car, Did You?

That means you want a dandy new garage to house it in, something convenient, yet attractive enough to be a real addition to your property.

Come in and see the attractive designs we have on file in our office, or if you already have a design that pleases you, bring it in and let us quote you on the cost.

A double garage may prove an excellent investment. The cost is only a little more than for a single garage, and the extra rent will soon pay for the entire building.

Come in and talk it over today, without obligation, of course.

White House Lumber Co.

W. E. CALLAWAY, Mgr.

SPEARMAN

MAJOR & RANEY

Commercial and Live Stock Auctioneers
Make dates at Reporter Office

The White House Transfer Wagon Yard . DRAY . Water Wagon

I have leased the Simson wagon yard, and will conduct the same in the future. Will deliver fresh water to your residence or place of business every day.

Always Ready

C. E. SESSIONS.

Hobbs Auto Co.

Dealers In

DODGE BROTHERS MOTOR CARS

Place Your Order With Us for Cars.

Remember we carry a complete line of "Willard" Storage Batteries.

Perryton, - - Texas

LARKIN & SON

Guaranteed

Automobile Repair Work

Acetyline Welding
Battery Repairing

We Sell the

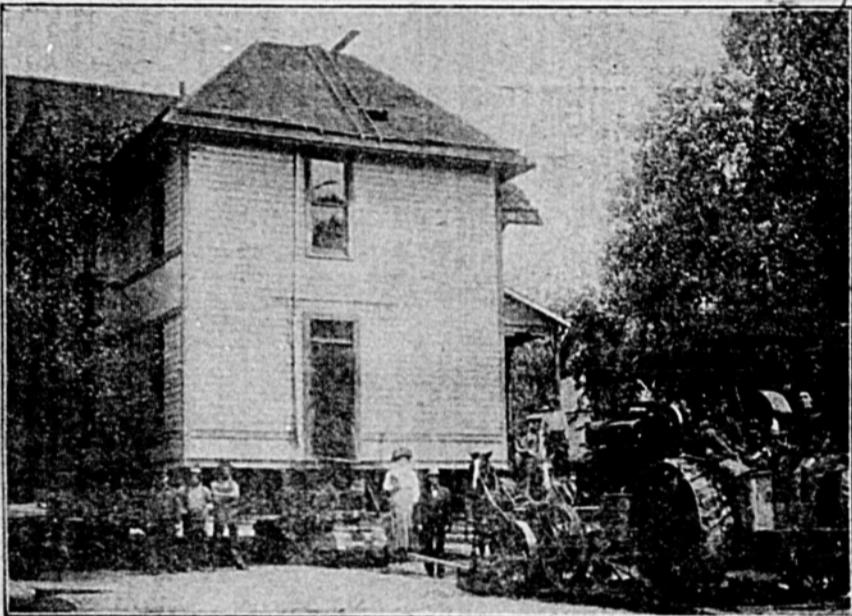
"Chevrolet"

AUTO and TRUCK

Can fit you out with any kind of a Chevrolet you want. Also a complete line of Chevrolet parts, accessories and supplies.

Call at our new garage in West Spearman and let us explain the merits of this wonderful car.

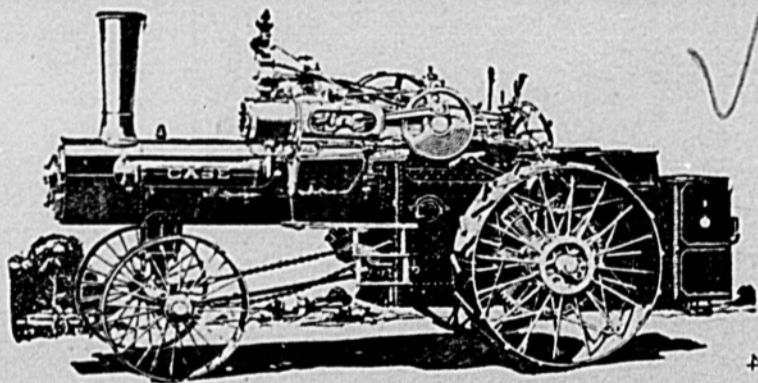
WILLARD STORAGE BATTERY SERVICE



J. E. Tandy & Son HOUSE - MOVERS

Have almost finished the job of moving Hansford to Spearman, and now ready to contract other work.

Ask any business man in Spearman about our work.



NO BETTER STEAM TRACTOR BUILT

CASE STEAM TRACTORS have the reputation of being leaders and serving farmers satisfactorily for over forty years. They can be found in great numbers in every quarter of the globe, always supplying dependable power. These steam tractors are made in eight sizes—30, 40, 50, 60, 65, 75, 80 and 110 H. P.

All Case engines are geared on both sides. They are spring mounted, and easy to operate.

For plowing and other drawbar work, for driving a thresher or other belt work, these powerful engines are always dependable. They are noted for their economy, durability, simplicity, and power.

All Case boilers are made in the Case shops. They meet the rigid requirements of boiler laws everywhere. Their

actual strength is five times as great as the allowable working pressure.

All parts are built to take care of strains while traveling over roads or rough fields. You can find no engine that will compare with the Case for long life.

In order to properly judge before buying a steamer, you must know the Case line, so that you can compare. We have complete details and specifications. Can't we talk the matter over with you?

ANDREWS HARDWARE CO.
Implements - Furniture - Queensware



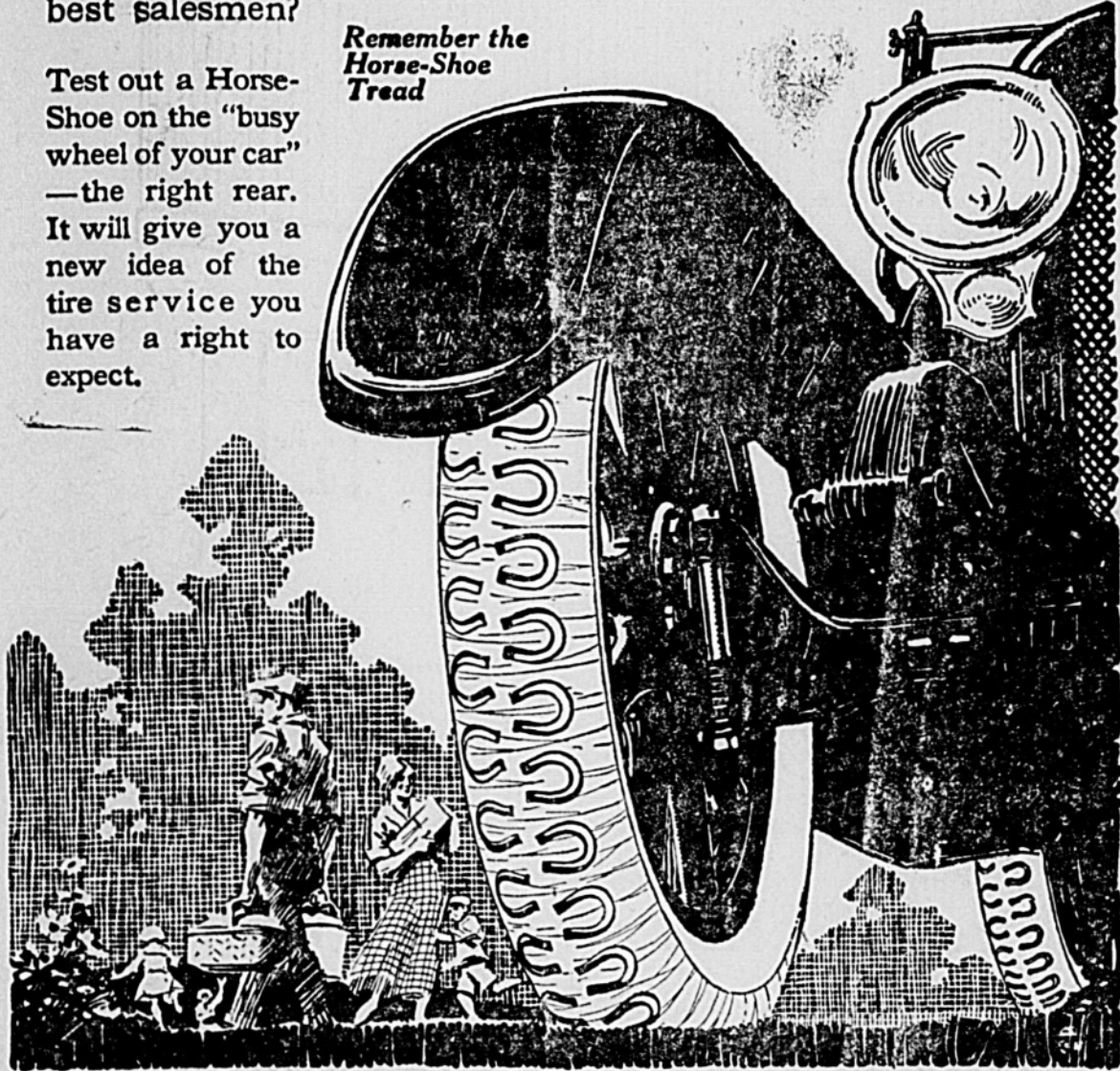
RACINE HORSE-SHOE TIRES

prove the extra cost put into their construction in their freedom from trouble during ordinary mileage, but it is AFTER that mileage when they show the real stuff that is in them.

Local users are getting 10,000 miles frequently—some of them 15,000. Is it any wonder that these motorists are our best salesmen?

Test out a Horse-Shoe on the "busy wheel of your car"—the right rear. It will give you a new idea of the tire service you have a right to expect.

Remember the Horse-Shoe Tread



John L. Hays, Dealer, Spearman

RACINE HORSE-SHOE TIRE ASS'N.
 JOHN HOENY, PRESIDENT
 F. B. HOENY, VICE-PRESIDENT
 R. O. BELL, SECRETARY AND TREASURER
 CORNER BRYAN AND MASTEN STREET DALLAS, TEXAS

Surprise Store No. 2

Opened in Spearman last week with a fine new line of

CLOTHING and SHOES

Shirts, Collars, Ties---everything in gent's furnishings---Boy's Play Suits and Pants, Tennis Shoes, all sizes, Children's Sandals, Men's Pants, Unionalls and Overalls.

PETERS' DIAMOND BRAND SHOES

A. ISENBERG
SPEARMAN

BEATRIZ MICHELENA



"This popular movie favorite became an operatic prima donna at the age of sixteen and toured the country in a winning production. She is the daughter of Fernando Michelena, the greatest grand opera tenor of his day in America. Her success in motion pictures is well known to all who visit the screen houses.

CROSBY'S KIDS



Another Use for the Airplane. Eclipse observation by airplane is declared by Paul W. Merrill to be not chimerical. A modern plane could readily surmount any ordinary fog or cumulus cloud, though cirrus is usually too high, and, aside from cirrus clouds, the observer would have a wonderfully clear dark sky. And photographic observations are not out of the question. A DeHavilland plane with a Liberty motor, at 10,000 feet altitude, rides more smoothly than a train, and should permit direct photographs on a small scale, especially if the plane were equipped with a gyroscopic stabilizer.

The new bank at Texhoma, the Farmers State, under new management, has grown to about three times its size of a year ago. Your account will be appreciated and your business handled to suit you.

L. S. CATOR, President BUSTER CATOR, Manager

Monroe Garage

L. S. CATOR & SON

We have bought the City Garage of Dug Gatlin and will continue the business at the old stand.

Good mechanics will be on the job at all times to look after your car troubles.

We carry in stock a large line of automobile accessories and supplies. Come to the City Garage when in need of Tires and Tubes.

New Home of

The "Monroe"

The Latest and best in a Moderate Priced Car

L. S. CATOR & SON
SPEARMAN

C. R. UPPER

Contractor and Builder. Estimates Given

Repair work promptly attended to. No job too large or too small. Residence one block west of Moving picture show building, Spearman, Texas.

TAKE NOTICE

Parties who are hauling wood from my pasture on the Palo Duro must discontinue the practice at once or prosecutions will follow. Trespassers will be prosecuted to the full extent of the law.

Hunting and fishing on my premises is also positively forbidden.

MRS. JOS. W. JONES,
Spearman, Texas.

2314*

.. SEE ME BEFORE YOU DIE ..

TOO LATE

One of the saddest sayings in all the world is: "too late."

After the "soft music" and "beautiful flowers" it is "too late" to get life insurance.

There is only one time—TODAY.

State Life Insurance Company
Indianapolis

MISS EVA ALEXANDER

Spearman

.. C. D. WORKS ..

Attorney-at-Law

Will practice in all courts. Special attention given to Land Practice and Probate matter. Abstracts prepared. Titles examined and perfected.

Real Estate. Farm and Ranch Loans.

Notary Public

HANSFORD

JOE'S CAFE

Regular Meals at Noon
Short Orders at all Hours.
Popular Prices.

DON'T LEAVE SPEARMAN HUNGRY

A Business Man Says:

"I have just had my residence painted by the Tower Painting Company and altho I could have gotten the work done much cheaper, am glad I paid them their price, as I have a first-class job from roof to foundation. I consider them trustworthy workmen and their prices are reasonable."
R. B. ARCHER.

Your Furniture

ATTRACTIVE DISPLAY
for SPRING and SUMMER

We want every lady in this community to see our attractive display of Summer Furniture. It consists of the standard articles required in every home and many of the newest creations of the furniture maker's art.

Perhaps you need one or more pieces of furniture to complete your household scheme. We have them, or will get them for you on short notice.

J. M. FORSHEE
HARDWARE and IMPLEMENTS

REMAINED SLAVE OF CUSTOM

Augusta Housewife was "Set" in Her Ways, and Nothing Was Going to Change Her.

A man in an Augusta car seat talking to another man who appears to be his friend:

"Persistent! Say, my wife is that and some more. She is the most tenacious to habit of any person I ever saw. Once that woman has become addicted to a habit there's no breaking her. Honest, I think that if my wife should ever by accident start sweeping with the wrong end of a broom she'd never sweep any other way, and no law of heaven and earth could change her habit."

"Some persistent, I'll say," agreed the other.

"You bet," said the first speaker. "Why, here last summer I put a bay window on the front room of our house. There was a week while we were doing it that the whole end of the house was open as a hay field in August; there wasn't a single thing to prevent man or animal entering our house at any hour of daylight or darkness. Fact! But what do you think; I couldn't make my wife understand that it was, under those conditions, a waste of time to lock the doors. Every night and every time she went down-street she made a complete circuit of the house, carefully locking doors and windows, so's to keep the wicked folks out."—Kennebec Journal.

ETHEL'S MEMORY WAS GOOD

Sweet Child Remembered Only Too Well Remark That Her Mother Had Let Drop.

Cousin Robert from the country, had come to dinner, and little Ethel had been allowed to sit up as a great treat.

Now, Ethel is one of those children one meets nowadays who hear a great deal too much for their years, and moreover, who don't believe in the saying about children not being heard. You can't stay near dear little Ethel without hearing quite a lot.

Which all gets on with the story of the night when Cousin Robert came to supper.

"Do have another helping of the pot, Robert!" said Ethel's mother, after Robert had already caused two platefuls to disappear.

"Well, Cousin Mary, I think I will, since you are so pressing," replied the guest.

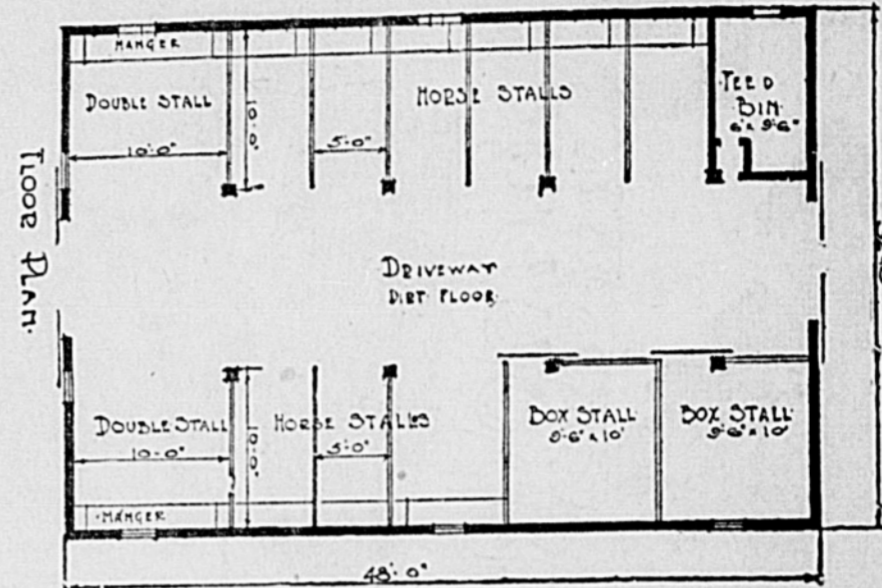
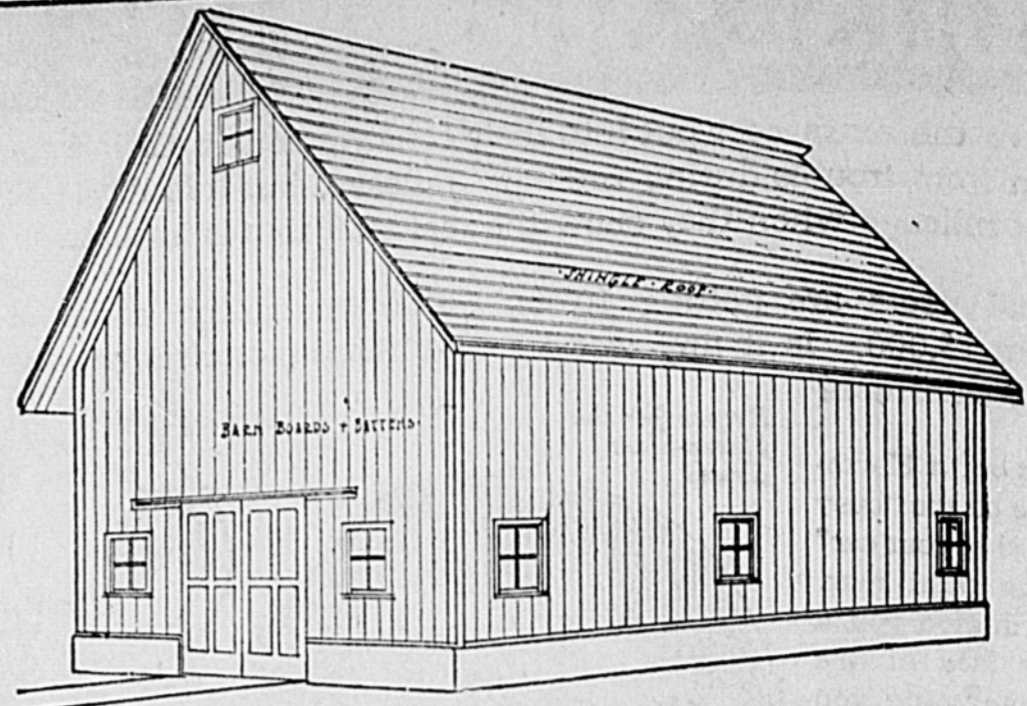
"You win, mother!" exclaimed Ethel suddenly; and mother, caught napping, turned to her with a smile and asked:

"Win, dear?"

"Yes, I heard you say to father this morning that you bet a dollar that Cousin Robert behaved like a pig!"

Join the Chamber of Commerce.

Better Build a Barn and Be Safe this Winter



Wire, Fence Posts, Builder's Hardware

We Recommend Cook's Paint—the best for wear and weather.

We are making special prices on all kinds of Building material at our yard. Come to see us.

SPEARMAN LUMBER CO.

L. D. COATE, Manager

SPEARMAN

SEE C. W. KING

If you wish to buy or sell

Farm and Ranch Lands

In Hansford, Ochiltree, Hemphill and Wheeler counties, Texas.

Terms to suit. Any size tracts.

Spearman, - Texas

U need - A LUNCH

Home Made Pies

Everything in the Short Order Line

at ALL HOURS

Prices Right

Good Eats for Folks who have Good Taste.

Spearman

STOP! LISTEN! LOOK! READ!

Harvest and Threshing

GROCERIES

THE time is at hand when the groceries for the harvest season must be purchased, and every farmer is anxious to save every penny he can on this big bill. All we ask is a chance to figure your bill. We have the goods and if given a chance will make you prices that can not be duplicated. We have been selling groceries to the farmers of this section since nineteen-thirteen, and every harvest that has rolled around since that time has found us ready and willing to accommodate the farmers to the very limit of our means. We are better prepared than ever before to take care of your wants.

Give Us a Chance

A SQUARE DEAL
Is All We Ask

Remember there is a vast difference in the grade of groceries. We handle the better grades and you will find that our prices are right. We make a small profit on every sale. You do not buy one article cheap and pay two prices for another at our store.

JNO. L. HAYS

MERCANTILE COMPANY

Where Your Trade is Appreciated

SPEARMAN

Notice!! Notice!!

Parties needing headers or binders should anticipate their wants. Machinery is going to be hard to get and unless our orders are in early we may not be able to supply you. Place your order now with
ANDREWS HARDWARE CO.,
Agents for McCormick and Deering Machinery. 2312.

Notice

No hunting or fishing will be allowed in the Diamond C pastures, on the headwaters of the Palo Duro. These lands are posted and trespassers will be prosecuted.

JAMES H. CATOR & SON.

No Fishing or Hunting

Fishing and hunting is positively forbidden on the lands controlled by the undersigned, located in Hansford and Ochiltree counties, and known as the O'Loughlin ranch, the Simmons ranch and the Lindsay ranch. Trespassers will be dealt with as the law directs.

HUDSON & SNYDER.

Notice to the Public

I will sell wood for \$5.00 per four-horse load. It will be necessary to either phone or come to headquarters before getting the wood, otherwise you will be treated as trespassers.

Positively no hunting allowed.
W. T. COBLE,
Owner of the Turkey Track ranch.



Brands: Diamond C. on left side slash \ on left hip.

Ear Marks: Crop on left & under half crop on right.

Range on head-waters of the Palo Duro.

J. H. Cator & Son, Hansford

Catarrhal Deafness Cannot Be Cured

by local applications, as they cannot reach the diseased portion of the ear. There is only one way to cure catarrhal deafness, and that is by a constitutional remedy, and that is by a constitutional remedy, Catarrhal Deafness is caused by an inflamed condition of the mucous lining of the Eustachian Tube. When this tube is inflamed you have a rumbling sound or imperfect hearing, and when it is entirely closed, Deafness is the result. Unless the inflammation can be reduced and this tube restored to its normal condition, hearing will be destroyed forever. Many cases of deafness are caused by catarrh, which is an inflamed condition of the mucous surfaces. Hall's Catarrh Medicine acts thru the blood on the mucous surfaces of the system.

We will give One Hundred Dollars for any case of Catarrhal Deafness that cannot be cured by Hall's Catarrh Medicine. Circulars free. All Druggists. 75c.
F. J. CHENEY & CO., Toledo, O.

REPORT OF THE CONDITION OF

The First National Bank of Spearman,

at Spearman, in the State of Texas, at the close of business on June 30, 1920:

RESOURCES	
Loans and discounts (including rediscounts)	\$280,222 20
Total loans	280,222 20
Notes and bills rediscounted with Federal Reserve bank	28,172 00—\$252,050 00
Overdrafts, unsecured	29 00
U. S. Government securities owned:	
Pledged as collateral for State or other deposits or bills payable	24,000 00
Owned and unpledged	3,450 00
War Savings Certificates and Thrift Stamps actually owned	186 86
Total U. S. Government securities	27,636 86
Stock of Federal Reserve Bank (50 per cent of subscription)	900 00
Value of banking house owned and unincumbered	4,450 00
Furniture and fixtures	2,385 96
Real Estate owned other than banking house	920 00
Lawful reserve with Federal Reserve Bank	20,802 83
Cash in vault and net amounts due from National Banks	93,094 81
Checks on banks located outside of city or town of reporting bank and other cash items	682 63
TOTAL	\$401,801 65

LIABILITIES	
Capital stock paid in	\$ 25,000 00
Surplus fund	5,000 00
Undivided profits	3,994 86
Interest and discount collected or credited in advance of maturity and not earned (approximate)	1,000 00
Cashier's checks on own bank outstanding	8,100 70
Individual deposits subject to check	241,772 89
Total of demand deposits (other than bank deposits) subject to reserve	241,772 89
Certificates of deposit other than for money borrowed	37,448 28
State, county, or other municipal deposits secured by pledge of assets of this bank	20,000 00
Other time deposits	34,887 92
Total of time deposits subject to reserve	91,933 20
U. S. Government Securities borrowed without furnishing collateral security for same	25,000 00— 25,000 00
TOTAL	\$401,801 65

Total contingent liabilities 28,172 00

Of the total loans and discounts shown above, the amount on which interest and discount was charged at rates in excess of those permitted by law exclusive of notes upon which total charge not to exceed 50 cents was made, was, none. The number of such loans was, none.

State of Texas, county of Hansford, ss:
I, C. W. CARSON Jr., cashier of the above-named bank, do solemnly swear that the above statement is true to the best of my knowledge and belief.

C. W. CARSON Jr., Cashier.

Subscribed and sworn to before me this 10th day of July, 1920.

(SEAL) A. F. BARKLEY, Notary Public.

Correct—Attest:
JAMES H. CATOR, F. W. BRANDY, E. V. ANDREWS, Directors.

The new bank at Texhoma, the Farmers State, are now representing the Oklahoma Farm Mortgage Co. over all this territory, having direct charge of seven counties in the Panhandle. If you need a farm loan quick, see us.

Subscribe for the Reporter.

NOW READY

to buy your **WHEAT**
and willing to pay the
top price for same.

COAL

Rockvale Nut, per ton . . . \$12.00
Best Lump coal at the same price.

Our coal is stored in a good building, protected from the wind and rain, and no better coal can be found.

SALT

Block, Sack, Sulphurized and Medicated. See us for Salt.

Cozart Grain Co.

JIM SLAVIN, Mgr.

SPEARMAN

Farm and Ranch LOANS

I make Farm and Ranch loans at a rate of interest to meet competition at all times.

I make a specialty of buying and taking up and extending Texas vendor's lien notes.

No loan too large or too small for us. We guarantee satisfaction.

WILL CROW

Canadian - - Texas

J. H. SHARER PRODUCE COMPANY

We Buy

Cream
Chickens
Eggs
Hides

and pay the highest cash price.

H. A. RAY

Manager

Phone 40 Spearman

NOTICE OF ELECTION

State of Texas,
County of Hansford, ss.

Whereas, on the 26th day of June, 1920, a petition was presented to me for an election in Common School District Number Thirteen of this county, on the question of authorizing a tax of and at the rate of not exceeding Fifty Cents on the \$100 valuation of taxable property in said district, for the purpose of supplementing the State School fund apportioned to said district, said petition bearing the requisite number of signatures of property tax paying voters of said district, and being in every respect in conformity with law:

Now, therefore, I, A. E. Townsend, in my capacity as county judge of Hansford county, Texas, do hereby order that an election be held on the 24th day of July, 1920, at the house of E. Terborg, in said common school district No. 13, of this county, as established by order of the Board of County School Trustees of this county of the date of the 10th day of May, 1920, which is recorded in Book one, pages 11, 12 and 13 of the minutes of said County Board of School Trustees, to determine whether a majority of the legal qualified property tax paying voters of that district desire to tax themselves for the purpose of supplementing the state school fund apportioned to said district, and to deter-

mine whether the commissioners' court of this county shall be authorized to levy, assess and collect annually a tax of and at the rate of not to exceed Fifty Cents on the \$100 valuation of taxable property of said district for said purpose.

L. F. Noe is hereby appointed presiding officer for said election and he shall select two judges and two clerks to assist him in holding the same, and he shall within five days after said election has been held, make due return thereof to the commissioners' court of this county, as is required by law for holding a general election.

The ballots for said election shall have written or printed thereon the following:

For School Tax.
Against School Tax.

All persons who are legally qualified voters of this State and of this county, and who are resident property taxpayers in said district, shall be entitled to vote at said election.

The sheriff of this county shall give notice of said election by posting three notices at three public places in the said district for three weeks before the election.

Dated the 25th day of June, 1920.
A. E. TOWNSEND,
County Judge of Hansford Co., Texas.

NOTICE OF ELECTION

State of Texas,
County of Hansford, ss.

Whereas, on the 15th day of June, 1920, a petition was presented to me for an election in Common School District Number Twelve of this county, on the question of authorizing a tax of and at the rate of not exceeding Fifty Cents on the \$100 valuation of taxable property in said district, for the purpose of supplementing the State School Fund apportioned to said district, said petition bearing the requisite number of signatures of property tax paying voters of said district, and being in every respect in conformity with law:

Now, therefore, I, A. E. Townsend, in my capacity as county judge of Hansford county, Texas, do hereby order that an election be held on the 24th day of July, 1920, at the school house in said common school district No. 12 of this county as established by order of the Board of County School Trustees of this county, of date the 10th day of May, 1920, which is recorded in Book one, pages 11, 12 and 13 of the minutes of said County Board of School Trustees, to determine whether a majority of the legal qualified property tax paying voters of that district desire to tax themselves for the purpose of supplementing the State School fund apportioned to said district, and to determine whether the commissioners' court of this county shall be authorized to levy, assess and collect annually a tax of and at the rate of not to exceed Fifty Cents on

the \$100 valuation of taxable property in said district for said purpose.

W. A. Smith is hereby appointed presiding officer for said election, and he shall select two judges and two clerks to assist him in holding the same, and he shall within five days after said election has been held, make due return thereof to the commissioners' court of this county as is required by law for holding a general election.

The ballots for said election shall have written or printed thereon the following:

For School Tax.
Against School Tax.

All persons who are legally qualified voters of this state and of this county, and who are resident property tax payers in said district shall be entitled to vote at said election.

The sheriff of this county shall give notice of said election by posting three notices at three public places in the said district for three weeks before the election.

Dated the 24th day of June, 1920.
A. E. TOWNSEND,
County Judge of Hansford Co., Texas.

THE STATE OF TEXAS

To the Sheriff or any Constable of Hansford County, Greeting:

You are hereby commanded to summon J. W. Griggs by making publication of this citation in a newspaper published in Hansford county, if there be a newspaper published therein, but if not, then in the nearest county where a newspaper is published, once in each week for four consecutive weeks previous to the return day hereof, to be and appear before the Justice Court in and for Precinct No. one, Hansford county, Texas, at the next regular term thereof, to be begun and holden in the office of A. J. Wilbanks, Justice of the Peace at Spearman, Texas, on the 2nd day of August, A. D., 1920, at 10 o'clock a. m., then and there to answer to the suit of B. V. Andrews, composing the firm of Andrews Hardware Company, a sole partnership, plaintiff, against J. W. Griggs, defendant, for the sum of forty-six and 15-100 Dollars (\$46.15), and all costs of suit, filed on the 8th day of July, A. D., 1920, and numbered on Docket No. —. The nature of plaintiff's demand being in substance as follows:

Suit on open account and on failure to perform rental contract.

Plaintiff alleges that heretofore, on various dates beginning from about March 13th, 1920, and ending about May 29th, 1920, plaintiff sold and delivered to defendant at defendant's special instance and request various articles of goods and merchandise to an amount aggregating fifty-nine and 50-100 Dollars, with credits by defendant of thirty-three and 35-100 Dollars, leaving a balance now due and unpaid on said account of Twenty-six and 15-100 Dollars.

That on March 12th, 1920, plaintiff and defendant entered into a rental agreement by which plaintiff rented to defendant Lot No. 10, in Block No. 10, town of Spearman, Texas, to be used for the purpose of erecting a building by defendant for a cleaning and pressing establishment. Said defendant was to have the privilege of removing said building at the expiration of said contract, and said contract could be terminated after the expiration of four months by either party by giving thirty days written notice to the other party. The consideration for said rental was \$15.00 per month, originally, but was reduced later by agreement to \$10.00 per month. That there is a total due on said account of fifty-seven and 50-100 Dollars, with credits by defendant of Thirty-seven and 50-100 Dollars, leaving a balance on said account now due on said account of twenty dollars, defendant having failed to pay rent due June 12th and July 12th, has breached his contract to plaintiff's damage twenty dollars.

Wherefore, plaintiff prays that defendant be cited to appear and answer this suit, and that upon a hearing hereof he have judgment against said defendant for the sum of forty-six and 15-100 Dollars and all costs of suit,

M. C. HEAD

SEEDS—All re-cleaned.
FEEDS—Mixed and Ground.
SALT—Blocks or crushed blocks.

I will buy your cream.

ICE!! ICE!! ICE!!

West Side

SPEARMAN

Spearman Rooming House

Nice, comfortable
Rooms.

Clean Beds.

Rates reasonable.

West Side Main
Spearman

T. H. Taylor
Proprietor

Mr. Tractor Man

We are now ready to supply your needs. See us before buying your OIL, GAS or KEROSENE Delivery made to the country in Truck Load lots.

Just Phone Us Your Order. Phone 41.

Goodwill Oil Co.

Spearman, Texas
H. G. Smith
Manager

Bargains

Three 1918-19 Ford touring cars. Prices right. Can give terms. BOBBS AUTO CO., Perryton, Texas.

YOUR HARVEST

GROCERIES

The problem of buying the harvest groceries is again facing the farmers of this section. We are here this year to help you solve that problem. Do not buy until you see our stock and get our prices.

Meat, Lard, Canned Goods—anything you need.
Coal, Machine and Cylinder Oils.

Light's Best Flour, per cwt. . . . \$7.25
When taken in lots of 500 pounds or more.

Spearman Equity Exchange

CARSON WOMBLE, Manager

Ford

THE UNIVERSAL CAR

Here's the Ford Coupe, deservedly a very popular motor car because of its all-round serviceability. Equipped with electric starting and lighting system and demountable rims with 3½-inch tires front and rear. Large plate glass windows. Generous sized doors—roomy seat, upholstery deep and substantial. Dust-proof and water-proof. Breezy and cheery in fine weather, cozy and dry in bad weather. All the established Ford merits of dependability, with small cost for operation and upkeep. For business and professional men who drive it is ideal and for touring and other pleasure driving it is the one car that delivers all expectations. The demand is large so orders should be left with us without delay.

R. W. MORTON, the Ford Man

Remember I am the authorized Ford dealer for this territory and you can buy the genuine Ford parts only at my garages. All repair work guaranteed first class.



Have You Finished Harvesting Yet?

If you have, then come out to the Endicott section, that joins the Spearman townsite on the east, and see the

BIGGEST LITTLE, WHEAT FARMING

Tractor in the world at real work.

The two "CLETRAC" Tank Type Tractors purchased by Bud Bennett will be at work every day this week.

See JIMMIE CALDWELL, now in Spearman, for prices on the "CLETRAC."

KHIVA BECOMES A REPUBLIC

Famous Khanate of Central Asia Has Definitely Rejected the Chalice of Despotism.

So Khiva, the khanate in Central Asia through which Col. Fred Burnaby once rode on horseback to the capital, has declared itself an independent republic! That prodigious English soldier and traveler who won military glory fighting outside the endangered square at Abu Klea, in the Sudan, would smile hugely, no doubt, were he able to read the news. For the semi-barbaric city of Khiva as he found it on that famous ride in the seventies, or rather as the Russians found it just two or three years before, to be exact, was filled with slaves captured from the Persians by Turkoman raiders. Its whitewashed houses, scattered amid the oases and poplars, produced a welcome effect, however, after the boneless miles of arid steppes which had to be negotiated before it could be reached. Its citizens were those weirdly named "cousins" of the Turks, the Uzbeks, Kirghiz, Sarts, Tajiks and the Kara-Kalpaks, or Black Bonnets of the Turid tribe whom the caliph would fain gather into the family fold. The khanate is but the relic of the once great kingdom of Chorasnia, over which King Darius ruled by means of his satraps.—Christian Science Monitor.

PLAN SCHOOL ON SHIPBOARD

Socialistic Council of Bradford, England, is considering the Adoption of Remarkable Scheme.

When it became necessary to erect a new secondary school in Bradford, the rich wool textile center of England, the usual estimates were asked for, and reported, in the total sum of \$360,000.

Socialists, who have a considerable majority on the Bradford education committee, at once decided to break free from tradition, and adopted the idea of buying a suitable seagoing ship for that amount, one big enough for a couple of hundred children. These children will be sent to sea for a six-months or 12-months period, if a subsequent suggestion is adopted.

It is still to be settled whether the ship schoolhouse will remain moored in Bradford canal docks, only going to sea as a freighter during vacation periods, or whether it would not be in the interests of a general education to let the scholars see glimpses of foreign ports, learning their languages among natives, the ship at the same time being loaded with cargoes that would pay full maintenance expenses, probably even of the boarding of the children.

Subscribe for the Reporter.

The following ballot will be used in the Primary Election to be held in Hansford county on Saturday, July 24, 1920:

OFFICIAL DEMOCRATIC BALLOT

I am a Democrat, and pledge myself to support all the nominees of the Democratic Party at the November Election, both State and National.

For submitting an amendment to the Constitution providing for home ownership.
Against submitting an amendment to the Constitution providing for home ownership.

FOR GOVERNOR:

Jos. W. Bailey, of Cook County, Texas.
Pat M. Neff, of McLennan County, Texas.
Robert E. Thomason, of El Paso County, Texas.
B. F. Looney, of Hunt County, Texas.

FOR LIEUTENANT GOVERNOR:

W. A. Johnson, of Hall County, Texas.
Lynch Davidson, of Harris County, Texas.
W. T. Pace, of Dallas County, Texas.
J. C. McNeal, of Dallas County, Texas.
B. B. Humphrey, of Dallas County, Texas.
J. W. Camp, of Bell County, Texas.

FOR ATTORNEY GENERAL:

C. M. Curceton, of Bosque County, Texas.

FOR STATE TREASURER:

John W. Baker, of Crosby County, Texas.

FOR COURT OF CRIMINAL APPEALS:

W. L. Davidson, of Travis County, Texas.
F. B. Martin, of Gregg County, Texas.

FOR SUPREME COURT:

William Pierson, of Hunt County, Texas.
William E. Hawkins, of Travis County, Texas.
William M. Key, of Travis County, Texas.

FOR COMMISSIONER OF AGRICULTURE:

Geo. B. Terrell, of Cherokee County, Texas.
Sam H. Dixon, of Harris County, Texas.

FOR RAILROAD COMMISSIONER:

John L. Andrews, of Dallas County, Texas.
Earle B. Mayfield, of Bosque County, Texas.

FOR SUPT. OF PUBLIC INSTRUCTION:

Annie Webb Blanton, of Denton County, Texas.

FOR LAND COMMISSIONER:

J. T. Robison, of Morris County, Texas.

FOR COMPTROLLER OF PUBLIC ACCOUNTS:

Mark L. Wiginton, of Hill County, Texas.

FOR ASSOCIATE JUSTICE OF THE COURT CIVIL APPEALS, SEVENTH DISTRICT:

R. W. Hall, of Potter County, Texas.

FOR REPRESENTATIVE 18TH CONGRESSIONAL DISTRICT:

Marvin Jones, of Potter County, Texas.

FOR REPRESENTATIVE 125TH DISTRICT:

Lee Satterwhite, of Carson County.

FOR DISTRICT ATTORNEY 31ST JUDICIAL DIST.

E. J. Pickens, of Hemphill County, Texas.

FOR COUNTY JUDGE:

A. E. Townsend.

C. D. Works.

A. H. Storrs.

FOR COUNTY AND DISTRICT CLERK:

Keesee C. Nesbitt.

FOR SHERIFF AND TAX COLLECTOR:

H. L. Wilbanks.

FOR TAX ASSESSOR:

H. R. Waldrop.

FOR COUNTY TREASURER:

Mrs. J. H. Buchanan.

FOR COUNTY ATTORNEY:

FOR COUNTY SURVEYOR:

FOR COMMISSIONER PRECINCT NO. 1:

FOR COUNTY CHAIRMAN:

FOR PRECINCT CHAIRMAN:

FOR DELEGATES TO COUNTY CONVENTION:

FOR COMMISSIONER PRECINCT NO. 1:

Chas. I. Endicott.

FRED HILL

Attorney-at-Law

Spearman, - Texas

DR. JARVIS

DENTIST

Perryton, - - Texas

CAFE FOR SALE—Joe's Cafe in Spearman is for sale. This eating house is doing a good business, is well located and is a paying proposition for someone. Will sell the building and fixtures and retain the lot. If you want a bargain in a restaurant business, see me at once.—J. B. EDENS.

LOST MULE—A liberal reward will be paid for information leading to the recovery of one bay, 4-year-old mule, branded V on shoulder, weight 750 pounds. This mule has a real short head and exceptionally crooked hind legs. Notify Hicks L. Wilbanks, Spearman.

R. T. CORRELL

Lawyer

Perryton, Texas

WALTER B. ALLEN, JAMES ALLEN

ALLEN & ALLEN
LAWYERS

Perryton, . . . Texas

FRANK M. EMMETT, W. C. STRONG

FRANK M. EMMETT
W. C. STRONG
ATTORNEYS - AT - LAW

Dahart, . . . Texas

WALLACE G. HUGHES

Lawyer

Suites 3 and 4, National Bank Building

Gaynor, Oklahoma

REBUCKS

Shipment of Buicks just received. Better come quick if you want one of these best of all automobiles. L. W. Booth, Gaynor, Oklahoma.

SID CLARK

BARBER

First class barbers and a clean, sanitary shop. Three chairs; you seldom have to wait.

East Side Main - - - - - SPEARMAN

Official Statement of the Financial Condition of

The Guaranty State Bank

at Spearman, State of Texas, at the close of business on the 30th day of June, 1920, published in the Spearman Reporter a newspaper printed and published at Spearman, State of Texas, on the 16th day of July, 1920.

RESOURCES

Loans and Discounts, personal or collateral	\$ 77,393 38
Loans, real estate	3,520 00
Overdrafts	381 81
Bonds and Stocks	11,501 00
Real estate, banking house	1,746 98
Expense	257 58
Furniture and Fixtures	1,841 25
Due from other banks and bankers, subject to check, net	26,794 95
Cash items	287 90
Currency	1,455 00
Specie	1,087 42
Interest and assessment Depositors' Guaranty Fund	607 75
Other resources: Stock in Federal Reserve Bank of Dallas	850 00
TOTAL	\$127,725 02

LIABILITIES

Capital Stock paid in	\$ 25,000 00
Surplus fund	3,000 00
Due to banks and bankers, subject to check, net	10,177 61
Individual Deposits, subject to check	59,941 11
Time Certificates of Deposit	2,108 28
Cashier's checks	2,090 46
Bills payable and Rediscunts	20,574 45
Other liabilities, collection account	4,833 13
TOTAL	\$127,725 02

State of Texas, County of Hansford:

We, I. E. Cameron, as president, and H. E. James, as cashier of said bank, each of us do solemnly swear that the above statement is true to the best of our knowledge and belief.

I. E. CAMERON, President.
H. E. JAMES, Cashier.

Subscribed and sworn to before me, this 15th day of July, A. D., 1920.
(Seal) P. A. LYON,
Notary Public, Hansford County, Texas.

Correct—Attest

A. H. STORRS, J. C. SCRUGGS, A. E. CAMERON, Directors.

The Original
Ilex
FRANKLIN
DOUBLE SPECTACLES

The Next
Improvement
OLD FASHIONED BIFOCALS

The Final
Refinement
CRYSTAL GLASSES

WHAT DO
"Glasses"
Mean to You?

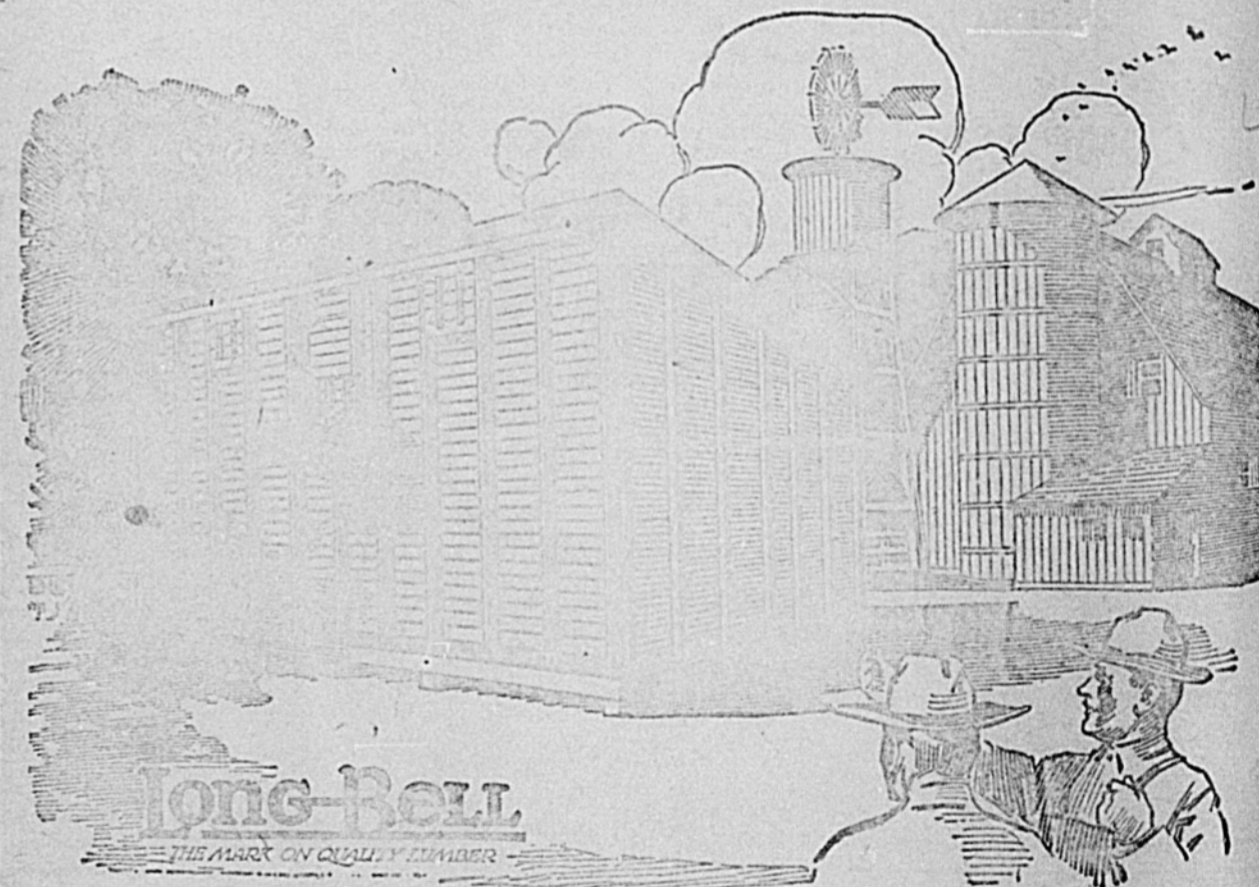
Do Glasses mean to you just so much merchandise, to be bought with no more care than in buying a pound of coffee or a can of beans?

Perfectly fitted glasses are constantly performing marvelous work to the relief of eye-strain, defective vision and headaches.

They represent a high degree of professional skill in prescribing and almost as much mechanical skill in their making. Beware of the "Bargain Counter" glasses. Don't take any such risk with your eyes. Call and let us fit them accurately and scientifically.

CLELL L. BASKETT
OPTOMETRIST

PERRYTON, . . . TEXAS



A Better Price for Wheat

"That granary makes me money on every bushel of grain I put in it. It is built of wood because wood keeps grain in better condition than any other material. It's easy to build with lumber and my granary was built in a hurry. The ship-lap was nailed on the inside of the studding, and I'll have the siding on next month."

Every good farm building is a money-saver or a money-maker. A granary keeps your wheat in good condition until you are ready to sell it. That means a better price for your wheat.

Experience has taught us what kind of storage buildings are best for your needs. It has also taught us what kind of lumber is best for each particular purpose. This service is yours for the asking.

Panhandle Lumber Company

ROY McCASLIN, Manager

SPEARMAN