

THE SPEARMAN REPORTER

Successor to the HANSFORD HEADLIGHT

TWELVTH YEAR

Spearman, Hansford County, Texas, July 31, 1920

Number 32

CREDIT

Some day you may need credit. A man looks for credit where he keeps his money. If you hide your money in the cellar you cannot go to the cellar for credit. That is common sense.

If you keep your money in this National Bank and need credit, come to us. Let us see what we can do for you.

Credit is based upon our knowledge of a man—his honesty—integrity—ability to keep his word. A man should not overdraw his account.

In other words, credit is largely a matter of acquaintanceship.

Why not get acquainted with us now?

THE
First National Bank
of SPEARMAN

THE SPEARMAN HIGH SCHOOL

The Spearman Independent School district is now a settled fact. A splendid board of trustees has been elected and every member is "up in the collar" and shows a determination to have a good school at Spearman, which will very likely open about September 1. Preparations are now being made to move the school building from Hansford to Spearman in the next few days, the building to be remodeled and put in condition with first class equipment. This, please understand, is only temporary. The board finds it impossible to raise sufficient funds to erect a permanent building in time to open school at the beginning of the school year and has determined upon this plan in order that our children may have the advantage of a good school at once. While this building is not what is desired for permanent use, yet it can be transformed so as to answer the purpose very nicely for the first school year, by which time it is hoped the enterprising citizens by a united effort, will see to it that an up-to-date building will take its place.

The board of trustees is already at work in an effort to secure the best teachers possible, and special attention is being given to the High school department. The citizens of Hansford county can now rest assured that we are to have an up-to-date High school at Spearman the coming year, and

there is no need of sending pupils out of the county to secure these advantages. The trustees inform me that the High school department, as well as that of the lower grades, will be open to any resident pupils of Hansford county, free of charge. If any residents of the county living outside the Independent School District of Spearman, desire to send their children and young people to the Spearman school, let me suggest that you make application for a transfer before August 1. The law provides that all transfers must be made before August 1. This applies to any and all the school districts in the county. If it is your intention to move into some other district, or wish to send your children to school in some other district than that in which the enumeration was taken, it is necessary that you make application for such transfer at once in order that the district in which your pupils attend may have the benefit of the State Apportionment fund.

Let us give to the school trustees of the various school districts of this county, as well as those of the Spearman Independent School district, our hearty co-operation, to the end that we may have the best schools possible during the coming year.

Cordially Yours,
A. E. TOWNSEND,
Ex-Officio County Supt.

Surprise Yourself

Keep an accurate account of all the money you spend in a month and what you spend it for. It will surprise you.

Then resolve to bank the amount you have heretofore been spending unwisely.

You will never regret the resolution if you act.

Guaranty State Bank
SPEARMAN, TEX.

Meeting of Chamber of Commerce

The Spearman Chamber of Commerce met Friday evening to discuss ways and means for getting a school here this winter. It was generally conceded that owing to the short time before school time, the only chance to have a school here at all was to move the school house from Hansford. It was also decided that the only way in which the money could be raised in so short a time was by subscription. The Chamber of Commerce came to the rescue of the Board of Trustees by offering to use their influence to raise the necessary money to get the school house moved to Spearman and build one in Hansford sufficient for the needs of the place. The President of the Chamber of Commerce appointed a committee to take care of this work, but as this is the most important move before the people at this time, it should lend a helping hand as well as financial assistance, to the end that we get a school here this winter. The proposition of a good school in the county is the one thing that every man, woman and child in the county should be interested in, so don't let us confine the work of obtaining a school

to the Chamber of Commerce. Let's all get behind the movement and see that it goes over right now.

REVIVAL MEETINGS

Rev. L. R. Byrd, pastor of the First Baptist church of Nixon, Texas, and Rev. W. H. Younger, Associational Missionary, will begin a series of revival meetings at the Methodist church in Spearman on Sunday, July 25. Everyone is invited to attend these services. While it is not the custom for Baptist ministers to hold revival services in Methodist churches, it is thought that no possible harm, and perchance much good can come of it. The difficulty, of course, will be in the determining by the new converts of the brand of religion which they embrace. A man may get a thorough and most complete dose or inoculation of saving grace in his system and at the time may not be able to tell exactly the source from which it came, whether Baptist, Methodist, Presbyterian, or what-not. This little inconvenience should not stand in the way of any who wish to seek the way of the straight and narrow, as most any experienced layman can easily place the newly elected brother. If the brother, immediately after the inoculation, asks the distance to the nearest waterhole and hollers hurrah for Pat Neff, he is a Baptist; if he attempts to embrace everyone in the audience, he is a Methodist, and if he stiffens his neck and passes his friends up as though they were "po white trash," he is a Presbyterian. At any rate, let everyone attend the meetings. A little religion now and then is a mighty good thing, even though it be of a maverick origin.

Want to sell your farm and ranch lands? Then list it with C. W. King, Spearman, Texas. He gets the highest price. 30tf

A. M. Wilbanks Jr., Perryton banker, spent Wednesday night in the city the guest of his brother, Sheriff H. L. Wilbanks.

Rev. S. J. McMurry came from Weatherford last week and is the guest of his brother, George W. McMurry of the Mulock community.

The Misses May, Lucy and Zula Smith, accompanied by their uncle, Dick Smith, came from San Angelo the first of the week and are guests of John Spivey of the Woodrow community.

A. F. BARKLEY'S Insurance Agency

Grain burns occasionally before or while being cut. Let us write you a policy on your grain while standing. Then the same policy will cover in the shock or stack and in the granary when threshed. Let us explain it to you.

Our business is conducted on principles of honesty, fair dealing and dependable service. If you are not already a customer, we invite you to become one, with the confidence that you will find the above to be true.

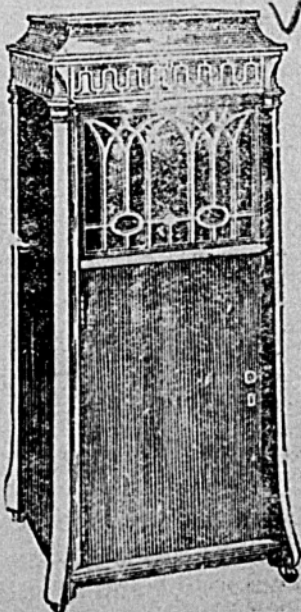
BARKLEY
SPEARMAN
Phone 37

Edison Phonographs

The master-piece of a master mind.

Hear it.

It speaks for itself.



Hale Drug Company
SPEARMAN
The Store with the Up-Town Service

TIRED OF THE BAD CHECK BUSINESS

The business men of Spearman are up in arms against the evil of writing checks on banks in which the writer has no funds to take care of the check. They are sick and tired of this pernicious habit, and are taking steps to stop it, insofar as is within their power. It seems that the bad check artist is working over time in this vicinity and men, especially young men, who should not do such a silly thing, are palming off their checks on business men, without first building up a little account at the bank to check against. This makes work and worry for the banker, and makes a business man mad as a hornet. Two of our most enterprising and accommodating business men called on the Reporter Wednesday and wanted to purchase a certain space on the front page of the paper. On inquiry we ascertained that they intended to use this space in advertising the bad checks they had taken, and that they intended to go about town, gather up all such souvenirs they could find and advertise them in this space. This action was taken in mutual protection, they said. We are

CARS FOR SPEARMAN BRANCH ARE ORDERED

Congressman Marvin Jones, who has been one of the prime factors in gaining relief in the Panhandle in the matter of grain car shortage, yesterday received a telegram from Washington officials saying that 28 cars had been ordered to the Spearman branch of the Santa Fe, and that other cars were moving in that direction.

Mr. Jones said that while news of the success of the Panhandle in getting relief from the car shortage might cause other sections to make similar demands, and thereby slightly retard the movement of cars here, he did not think it would seriously interfere, because of the impression made on the Washington officials of the peculiar need of the Amarillo section.—Amarillo Daily Tribune.

Cole W. Carson is in Wichita this week.

Don't fail to boost for the Spearman High school.

Primary election Saturday, July 24. Everyone should vote.

FOR SALE—Joe's cafe in Spearman is for sale. This eating house is doing a good business, is well located and is a paying proposition for someone. Will sell the building, the furniture, and the business. The price, \$1,000.00. The owner, J. E. Surber, Spearman's new clothing store, went to Amarillo Monday.

Big reduction in prices on lumber and building material. Let us quote your bill. Spearman Lumber Co.

List your farm and ranch lands with C. W. King, Spearman, Texas. He will sell it for you at the highest price.

WATCH LOST—A lady's wrist watch was lost in Spearman. Finder will please leave at the Reporter office and receive reward. *

A Junior B. Y. P. U. was organized at the Baptist church in Spearman last Sunday evening, and we cordially invite all the junior boys and girls to meet with us each Sunday at 5:00 p. m.

Spearman's second ball team and the Blodgett team played an interesting game at the Spearman ball park last Sunday afternoon. The Blodgett boys trimmed the local aggregation to the tune of 9 to 10.

The new bank at Texhoma, the Farmers State, are now representing the Oklahoma Farm Mortgage Co. over all this territory, having direct charge of seven counties in the Panhandle. If you need a farm loan quick, see us.

The monster elevator of the Spearman Equity Exchange is nearing completion and will soon be ready to receive the golden grain. This is one of the very largest elevators in the entire country and the Equity buyers intend to fill it several times over during the next few months.

Mr. and Mrs. J. F. Bainum and daughter, Miss Minnie, arrived from Blackwell, Oklahoma, last week and are guests at the home of their daughter and sister, Mrs. Chas. Endicott. Mr. and Mrs. Bainum will return to their Oklahoma home the latter part of the week, but Miss Minnie will remain here and go out to California with the Endicott family next month.

J. R. Collard and family are home from a visit with his parents at Ogelsby, Texas. They report a very pleasant visit.

Tandy & Son moved the Methodist church from Hansford the first of the week, and Spearman now has a real church house.

Mr. and Mrs. J. M. Glover and son, Luther, returned Wednesday from a visit of several months at Conway and Little Rock, Arkansas.

Organ for Sale—One Epworth organ, in good condition, for sale at a bargain. See Keese C. Nesbit, at the court house, Hansford.

A. C. Whitson and family of Mexico, Missouri, are the guests of his brother, Geo. M. Whitson, at the Whitson ranch, southwest of Spearman.

LOST—A small combination knife and cigar cutter; is used as watch fob. Under please leave at the Reporter office and receive liberal reward.

The new bank at Texhoma, the Farmers State, under new management, has grown to about three times its size of a year ago. Your account will be appreciated and your business handled to suit you. 29tf

Miss Grace Richardson, the efficient assistant cashier of the First National bank, is quite ill and unable to be at her post this week. The Reporter joins with her many friends in wishing for Miss Grace a speedy recovery.

Mr. and Mrs. Roy Womble and Mrs. Madison Womble last week made a trip to Rule, Colorado, to visit the Paddy Doyle family. They returned Monday and say the Doyles are getting shaped up in their new home very comfortably and like the country fine.

Start Your Children in Music Now

If you haven't a piano you can purchase a strictly standard used piano that we have in town. It is in first class mechanical condition; oak case. Terms to suit you. Mr. Buyer.

B. F. GARST MUSIC CO.,
Guyton, Oklahoma.

If interested inquire for Garst, at Spearman Rooming House.

Good Threshing Coal
\$11.00
per ton.

Panhandle Lumber Co.

MAIL ON THE SANTA FE

The most welcome news received at this port for several days came last Wednesday, when Mrs. P. M. Maize, postmistress, received word that on August 1 we would begin receiving our mail over the Santa Fe railway. Arrangements for transporting the mail from and to the trains are yet to be made but Mrs. Maize has taken the matter up with the postmaster general and hopes to have everything in readiness by August 1. It will be remembered that Congressman Marvin Jones, who was in Spearman two weeks ago, promised to do something for Spearman in the way of improving our mail service, and it seems that his efforts have met with success.

Ford touring car, 1919 model, for sale at the Monroe garage.

List your farm, ranch or other property you have for sale with McLain & McLain, Spearman, Texas.

R. E. Blok, Santa Fe Commissioner of Safety, came over the N. T. & S. F. Tuesday to make a few observations and take a look at the best country on earth. We understand Mr. Blok was very favorably impressed with the company's improvements at Spearman.

YOU

need something for the Kidneys, Liver and Blood.

Nature's Remedy
25c, 50c, \$1

Take one tonight. You will feel better in the morning.

HILLHOUSE DRUG CO.
The People With the Goods
SPEARMAN, - TEXAS

Farm and Ranch LOANS

Any size tracts and at prices and terms to suit. Spearman town lots and acreage—desirable locations.

Oil Leases

I am in the market for Oil Leases.

Money

Unlimited amount of money to loan on Farms and Ranches in Hansford, Hutchinson and Ochiltree counties. Interest rate and settlement options very attractive.

.. **J. R. COLLARD** ..
Write for information **SPEARMAN, TEXAS**



YOU are fancy free when you select a *Born Tailored* suit—size or price doesn't limit your choice.

Several hundred dependable *Born* woolens are offered in every conceivable weave and coloring—to be made to your measure, in the style you like best.

At a price of \$35 or \$40 we offer very unusual values.

P. M. Maize & Co.
.. ..
DRY GOODS GROCERIES

Now at SPEARMAN

The Spearman Reporter

PUBLISHED EVERY FRIDAY

ORAN KELLY - EDITOR-MANAGER

Entered as second-class matter November 21, 1919, at the postoffice at Spearman, Texas, under the act of March 3, 1879.

\$1.50 Per Year in Advance

ANNOUNCEMENTS

(Subject to the action of the Democratic primary election, to be held July 24, 1920)

For County Judge

C. D. WORKS
A. E. TOWNSEND
A. H. STORRS

For Sheriff and Tax Collector
HICKS L. WILBANKS

For County and District Clerk
KEESE C. NESBITT

For County Treasurer
MRS. J. H. BUCHANAN

For Tax Assessor
H. R. WALDROP

Less than one year ago Spearman was only a name, and the only excuse it had for even being blessed with a name was the fact that it was the point or spot on the plains which the officers of the North Texas branch of the Santa Fe had selected to be the terminus of the railroad then being constructed across one of the great plains of the Panhandle. In seven months since the track layers reached the spot called Spearman, the town has grown to have a population of some 700 people,—not many people you say, but when you consider the fact that in 1910 the entire county had a population of less than 1,000 people, you will have to admit that 700 in seven months is a pretty good growth. Such a growth, while not phenomenal, is a record which any new town may well be proud of, especially when taken into consideration that last winter and spring were among the most disagreeable which had been experienced in this country for years.

True, we had the old town of Hansford to draw from, but we now have a considerably larger population than Hansford had.

The situation of Spearman is ideal, being in the heart of a vast prairie of the very finest soil, which only awaits the plow to develop into one of the greatest wheat fields in the world. Grain farming in the Panhandle has passed the experimental stage, it having already been demonstrated that by proper tillage we are as sure of a crop as older and more settled parts of the United States, and this section of the country has long been noted for its production of live-stock.

Before the coming of the railroad the farmers were compelled to haul their grain fifty to sixty miles to market and were forced to go the same distance to secure fuel and supplies for use on the farms and ranches. But with the coming of the railroad all this has been changed. We have a market right at home where the farmer can deliver two or more loads of

WALLACE G. HUGHES

... National Bank
drawbacks... develop...
caused many a good citizen to pass

the country, as it was only necessary to do a little problem in mathematics to show one that under normal conditions with only average crops a man would consume much valuable time on the road and in the present days of labor shortage and high wages, farming so far from the market was all but prohibitive.

It is a matter of record that history repeats itself and it is safe to predict that it is only a matter of a short time until the plains around us will be contributing their quota of agricultural products just as the plains south of us on the main line of the Santa Fe are now doing.

Now that we have the advantage of a railroad, which is now beginning to give fair transportation service, let us all get our shoulders to the wheel and boost for a good town in a good country.

VOTE FOR R. E. THOMASON OF EL PASO FOR GOVERNOR

It is your first opportunity to elect a West Texas man Governor of this State. He is running strong in North, Central, South and East Texas and if the Panhandle and West Texas voters do their part, Mr. Thomason is certain to be elected Governor.

He is a man of whom all may feel proud. He has a vision and a personal knowledge of the condition and needs of the Panhandle and West Texas that no other candidate has. He was reared on a farm in Cooke county, Texas, in which county he now owns splendid farming property. Nine years ago, with his wife and two children, he moved to El Paso, since which time he has made that city his home. Four years ago he was elected to represent the El Paso district in the Texas Legislature; re-elected two years ago and elected Speaker of the House of Representatives without opposition and has made a record equaled by few who have ever served the Texas Legislature as Speaker. He is a close student of State affairs and if elected Governor will make this State one of its most able executives, serving without fear or favor, and will give to each and every citizen of the State, from the highest to the lowest, a square deal.

Mr. Thomason is 41 years old; educated in the rural schools of Cooke county, finishing his college course at the Southwestern University at Georgetown and the State University at Austin. A clean, moral man; an unimpeachable character and one of the most lovable men in Texas.

Let the men and women voters of this section of the State back up one of their own men when they go to the polls on July 24th, by casting their ballots for Robert Ewing Thomason of El Paso.—(Political Adv.)

WHAT DOES THE FUTURE HAVE IN STORE FOR YOU?

What does the future hold for you? Good things or bad? Look ahead! Ten, fifteen, twenty years from now, where and what will you be then? Many men and women, more than half of them, think they will be on the up-grade—getting somewhere, successful, prospering. Most of them are not, though. Many of them are on the down-grade twenty years from now. Where will you be? On the up-grade, getting along on easy street? Or on the down-grade, worrying where the next dollar is coming from?

Easy Street or Poverty?

To be on easy street, to have a home, to be prosperous and successful one must save now. A great deal can be done if one has a hundred dollars safely put away. Five hundred dollars saved up will enable one to take hold of a hundred opportunities. Soon there will be a thousand saved and one's prosperity fund will keep on growing. How, though, are you going to save that hundred or five hundred? Look around you. How many opportunities have you to make your money grow while you are saving it? How can you know it will be absolutely safe?

Building for the Future.

For this very purpose, the United States Government is issuing Thrift Stamps and War Savings Stamps. By purchasing them, one can save in any amount from twenty-five cents on up. Money invested in War Savings Stamps is absolutely safe and all of the time it is earning interest at the rate of 4 per cent, compounded every three months. Even a quarter saved a week will soon become a considerable sum. As much as a War Savings Stamp bought every payday will soon have that hundred saved. All of the time, the money will be absolutely safe; it can be gotten any time and it is earning good compound interest. The postmaster or the banker have them. They can be gotten at all banks and postoffices.

List your farm and ranch lands with C. W. King, Spearman, Texas. He will sell it for you at the highest price.

Bought the New Car, Did You?

That means you want a dandy new garage to house it in, something convenient, yet attractive enough to be a real addition to your property.

Come in and see the attractive designs we have on file in our office, or if you already have a design that pleases you, bring it in and let us quote you on the cost.

A double garage may prove an excellent investment. The cost is only a little more than for a single garage, and the extra rent will soon pay for the entire building.

Come in and talk it over today, without obligation, of course.

White House Lumber Co.

W. E. CALLAWAY, Mgr.

SPEARMAN

MAJOR & RANEY

Commercial and Live Stock Auctioneers
Make dates at Reporter Office

The White House Transfer Wagon Yard . DRAY . Water Wagon

I have leased the Simson wagon yard, and will conduct the same in the future. Will deliver fresh water to your residence or place of business every day.

Always Ready

C. E. SESSIONS.

Hobbs Auto Co.

Dealers In

DODGE BROTHERS MOTOR CARS

Place Your Order With Us for Cars.

Remember we carry a complete line of "Willard" Storage Batteries.

Perryton, - - Texas

LARKIN & SON

Guaranteed

Automobile Repair Work

Acetylene Welding
Battery Repairing

We Sell the

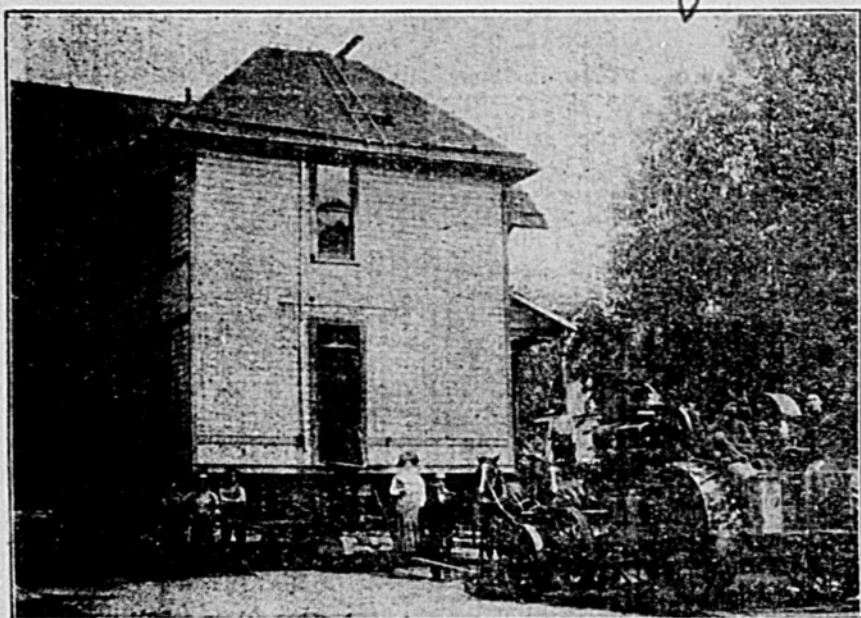
"Chevrolet"

AUTO and TRUCK

Can fit you out with any kind of a Chevrolet you want. Also a complete line of Chevrolet parts, accessories and supplies.

Call at our new garage in West Spearman and let us explain the merits of this wonderful car.

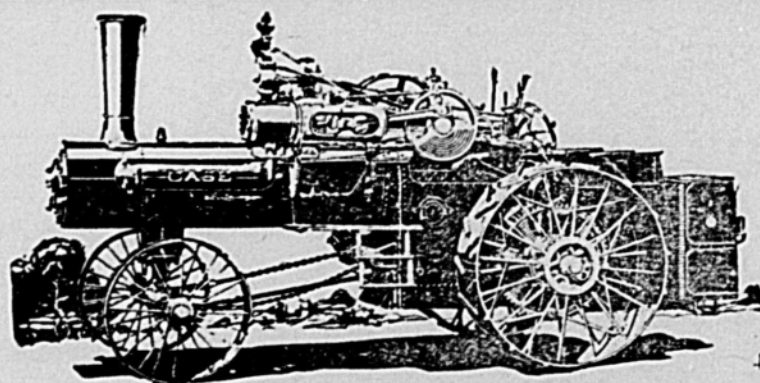
WILLARD STORAGE BATTERY SERVICE



J. E. Tandy & Son
HOUSE - MOVERS

Have almost finished the job of moving Hansford to Spearman, and now ready to contract other work.

Ask any business man in Spearman about our work.



NO BETTER STEAM TRACTOR BUILT

CASE STEAM TRACTORS have the reputation of being leaders and serving farmers satisfactorily for over forty years. They can be found in great numbers in every quarter of the globe, always supplying dependable power. These steam tractors are made in eight sizes:— 30, 40, 50, 60, 65, 75, 80 and 110 H. P.

All Case engines are geared on both sides. They are spring mounted, and easy to operate.

For plowing and other drawbar work, for driving a thresher or other belt work, these powerful engines are always dependable. They are noted for their economy, durability, simplicity, and power.

All Case boilers are made in the Case shops. They meet the rigid requirements of boiler laws everywhere. Their

actual strength is five times as great as the allowable working pressure.

All parts are built to take care of strains while traveling over roads or rough fields. You can find no engine that will compare with the Case for long life.

In order to properly judge before buying a steamer, you must know the Case line, so that you can compare. We have complete details and specifications. Can't we talk the matter over with you?

ANDREWS HARDWARE CO.
Implements - Furniture - Queensware



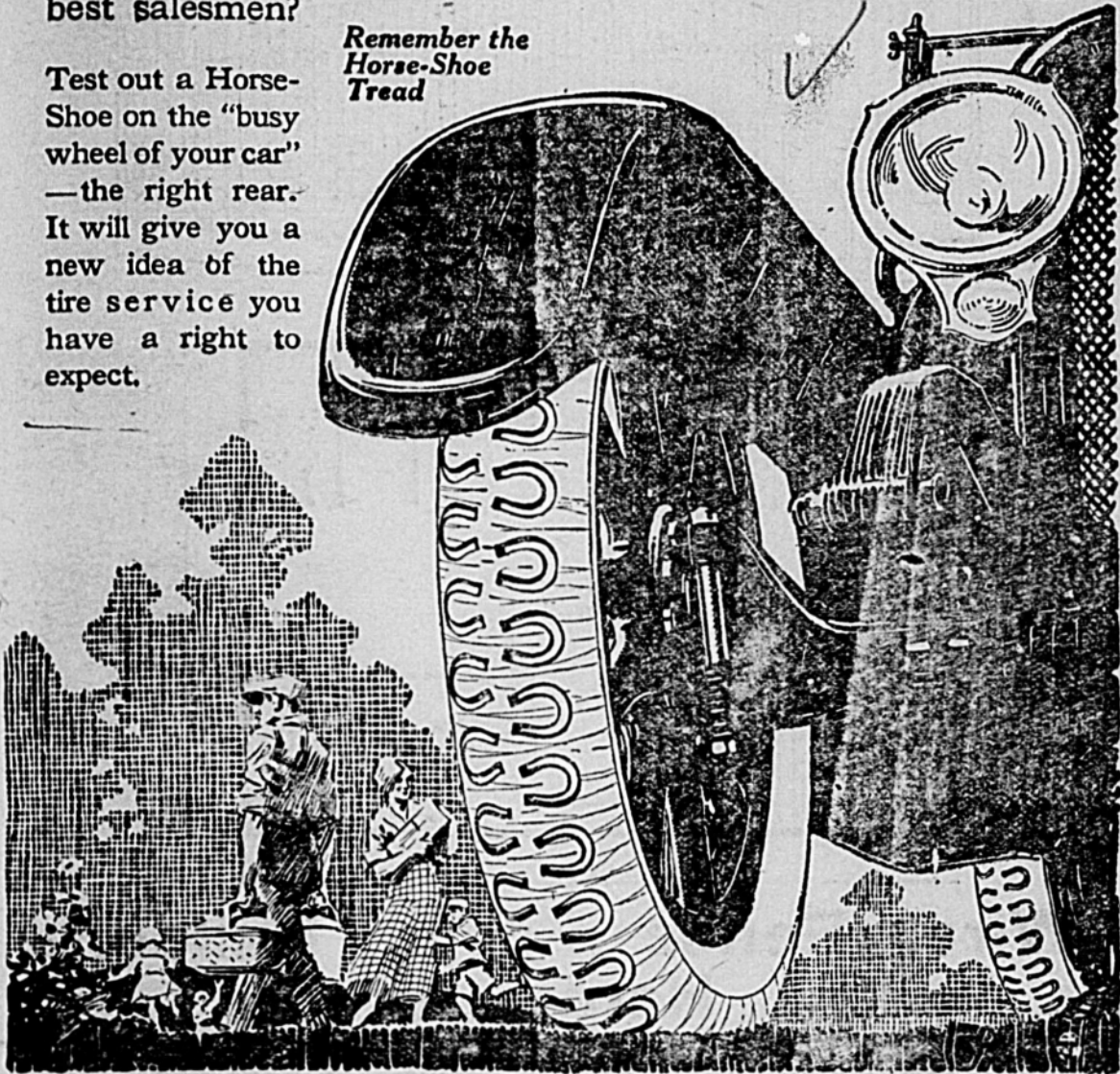
RACINE HORSE-SHOE TIRES

prove the extra cost put into their construction in their freedom from trouble during ordinary mileage, but it is AFTER that mileage when they show the real stuff that is in them.

Local users are getting 10,000 miles frequently—some of them 15,000. Is it any wonder that these motorists are our best salesmen?

Test out a Horse-Shoe on the "busy wheel of your car"—the right rear. It will give you a new idea of the tire service you have a right to expect.

Remember the Horse-Shoe Tread



John L. Hays, Dealer, Spearman

RACINE HORSE-SHOE TIRE ASS'N.
 JOHN HOENY, PRESIDENT
 F. B. HOENY, VICE-PRESIDENT
 R. O. BELL, SECRETARY AND TREASURER
 CORNER BRYAN AND MASTEN STREET DALLAS, TEXAS

Surprise Store No. 2

Opened in Spearman last week with a fine new line of

CLOTHING and SHOES

Shirts, Collars, Ties---everything in gent's furnishings---Boy's Play Suits and Pants, Tennis Shoes, all sizes, Children's Sandals, Men's Pants, Unionalls and Overalls.

PETERS' DIAMOND BRAND SHOES

A. ISENBERG
SPEARMAN

L. S. CATOR, President BUSTER CATOR, Manager

Monroe Garage

L. S. CATOR & SON

We have bought the City Garage of Dug Gatlin and will continue the business at the old stand.

Good mechanics will be on the job at all times to look after your car troubles.

We carry in stock a large line of automobile accessories and supplies. Come to the City Garage when in need of Tires and Tubes.

New Home of

The "Monroe"

The Latest and best in a Moderate Priced Car

L. S. CATOR & SON
SPEARMAN

The Original Idea FRANKLIN'S DOUBLE SPECTACLES

The Next Improvement THE OLD FASHIONED BIFOCALS

The Final Perfection KRYPTON GLASSES

Do You Know ✓

that poor vision makes dull children ?

CLELL L. BASKETT
OPTOMETRIST
PERRYTON, TEXAS
Glasses that give satisfaction.

CAFE FOR SALE—Joe's Cafe in Spearman is for sale. This eating house is doing a good business, is well located and is a paying proposition for someone. Will sell the building and fixtures and retain the lot. If you want a bargain in a restaurant business, see me at once.—J. B. EDENS.

C. D. WORKS ✓

Attorney-at-Law

Will practice in all courts. Special attention given to Land Practice and Probate matter. Abstracts prepared. Titles examined and perfected.

Real Estate. Farm and Ranch Loans.

Notary Public

HANSFORD

FRED HILL
Attorney-at-Law

Spearman, - Texas

DR. JARVIS
DENTIST

Perryton, - - Texas

JOE'S CAFE ✓

Regular Meals at Noon
Short Orders at all Hours.
Popular Prices.

DON'T LEAVE SPEARMAN HUNGRY

A Business Man Says: ✓

"I have just had my residence painted by the Tower Painting Company and altho I could have gotten the work done much cheaper, am glad I paid them their price, as I have a first-class job from roof to foundation. I consider them trustworthy workmen and their prices are reasonable."
R. B. ARCHER.

SID CLARK
BARBER ✓

First class barbers and a clean, sanitary shop. Three chairs; you seldom have to wait.

East Side Main

SPEARMAN

SEE ✓

C. W. KING

If you wish to buy or sell

Farm and Ranch Lands

In Hansford, Ochiltree, Hemphill and Wheeler counties, Texas.

Terms to suit. Any size tracts.

Spearman, - Texas

LOST MULE—A liberal reward will be paid for information leading to the recovery of one bay, 4-year-old mule, branded V on shoulder, weight 750 pounds. This mule has a real short head and exceptionally crooked hind legs. Notify Hicks L. Wilbanks, Spearman.

NEW BUICKS ✓

Shipment of Buicks just received. Better come quick if you want one of these best of all automobiles. L. W. Booth, Guyton, Oklahoma.

.. SEE ME BEFORE YOU DIE ..

TOO LATE

One of the saddest sayings in all the world is: "too late."

After the "soft music" and "beautiful flowers" it is "too late" to get life insurance.

There is only one time—TODAY.

State Life Insurance Company
Indianapolis

MISS EVA ALEXANDER

Spearman

Your House Furniture

ATTRACTIVE DISPLAY
for SPRING and SUMMER

We want every lady in this community to see our attractive display of Summer Furniture. It consists of the standard articles required in every home and many of the newest creations of the furniture maker's art.

Perhaps you need one or more pieces of furniture to complete your household scheme. We have them, or will get them for you on short notice.

J. M. FORSHEE
HARDWARE and IMPLEMENTS

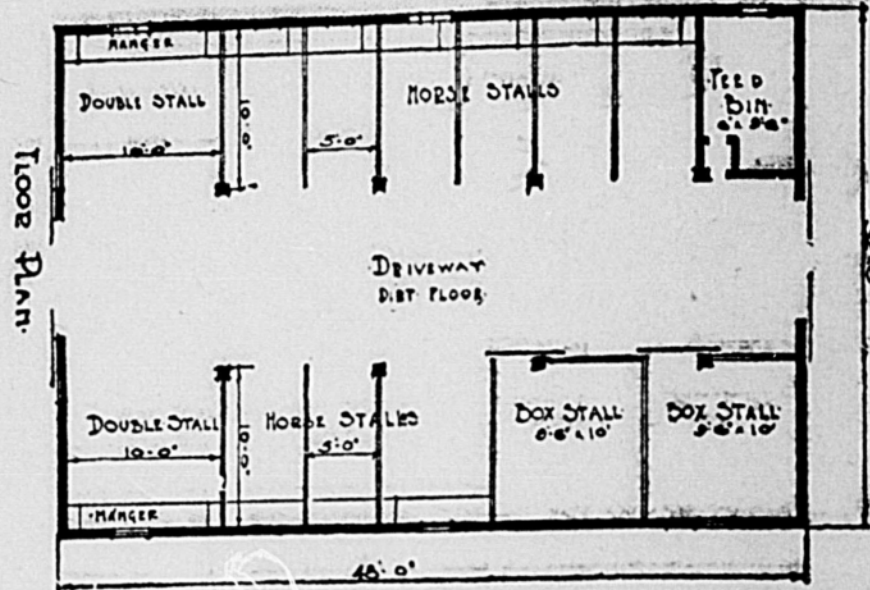
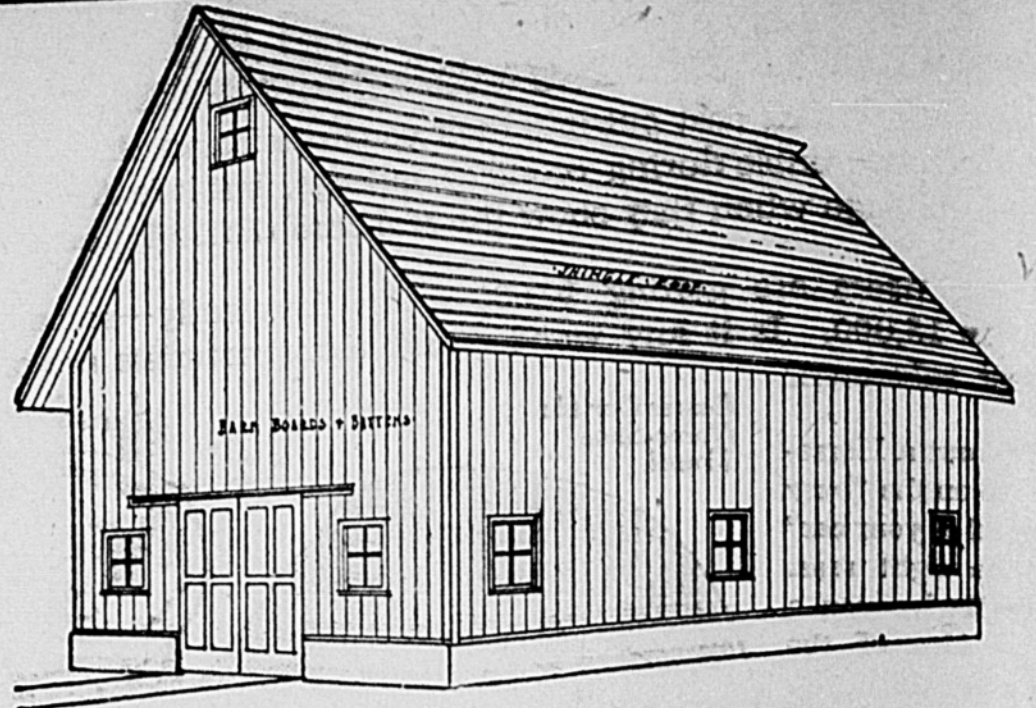
3015-620-400
AUTHORIZING ONE AND ONE-HALF PER CENT AD VALOREM TAX BY CITIES AND TOWNS OF FIVE THOUSAND OR LESS POPULATION
Senate Joint Resolution No. 12
Proposing an amendment to Section 4 of Article XI of the Constitution of the State of Texas, by increasing the total tax rate that may be levied by cities and towns having a population of five thousand or less than one-fourth of one per cent to not exceeding one and one-half per cent, and making appropriation therefor.
Be it resolved by the Legislature of the State of Texas:
Section 1. That Section 4, Article XI of the Constitution be so amended as hereafter to read as follows:
Section 4. Cities and towns having a population of five thousand or less may be chartered alone by general law. They may levy, assess and collect such taxes as may be authorized by law, but no tax for any purpose

shall ever be lawful for any one year which shall exceed one and one-half per cent of the taxable property of such city; and all taxes shall be collectible only in current money, and all licenses and occupation taxes levied, and all fines, forfeitures and penalties accruing to said cities and towns shall be collectible only in current money.
Sec. 2. The foregoing constitutional amendment shall be submitted to a vote of the qualified electors of the State at an election to be held throughout the state on the first Tuesday after the first Monday in November, 1920, at which election all voters favoring said proposed amendment shall write or have printed on their ballots the words, "For the amendment of Section 4, Article XI of the Constitution increasing the total tax rate that may be levied by towns and cities having a population of five thousand or less from one-fourth of one per cent to not exceeding one and one-half per cent of any one year," and

all voters opposed to said amendment shall write or have printed on their ballots the words, "Against the amendment of Section 4, Article XI of the Constitution increasing the total tax rate that may be levied by towns and cities having a population of five thousand or less from one-fourth of one per cent to not exceeding one and one-half per cent of any one year."
Sec. 3. The Governor of the State is hereby directed to issue the necessary proclamation for said election, and to have the same published as required by the Constitution and existing laws of the State.
Sec. 4. That the sum of Five Thousand Dollars, or so much thereof as may be necessary, is hereby appropriated out of any funds in the Treasury of the State of Texas not otherwise appropriated to pay the expenses of such publication and election.
C. D. MIMS,
Secretary of State.
(Attest—A True Copy.)

3015-620-400
RELATING TO TAXATION BY SCHOOL DISTRICTS
Senate Joint Resolution No. 17
Proposing an amendment to Section 3 of Article VII of the Constitution of the State of Texas by exempting independent and common school districts from the limitation of a total tax of one dollar on the one hundred dollars valuation for any one year, and making an appropriation therefor. Be it resolved by the Legislature of the State of Texas:
Section 1. That Section 3 of Article VII of the Constitution be so amended as hereafter to read as follows: (Creating a new Section 3.)
Section 3. One-fourth of the revenue derived from the State occupation taxes and a poll tax of one (\$1.00) dollar on every inhabitant of this state, between the ages of twenty-one and sixty years, shall be set apart annually for the benefit of the public free schools; and in addition thereto, there shall be levied and collected an annual ad valorem state tax of such an amount not to exceed thirty-five cents on the one hundred (\$100.00) dollars valuation, as with the available school fund arising from all other sources, will be sufficient to maintain and support the public schools of this State for a period of not less than six months in each year, and it shall be the duty of the State Board of Education to set aside a sufficient amount out of the said tax to provide free text books for the use of children attending the public free schools of this State; provided, however, that should the limit of taxation herein named be insufficient the deficit may be met by appropriation from the general funds of the state and the legislature may also provide for the formation of school dis-

Better Build a Barn and Be Safe this Winter



Wire, Fence Posts, Builder's Hardware

We Recommend Cook's Paint—the best for wear and weather.

We are making special prices on all kinds of Building material at our yard. Come to see us.

SPEARMAN LUMBER CO.

L. D. COATE, Manager

SPEARMAN

AUCTION SALE

WE WILL SELL FOR

TYSON BLACK

10 Miles East and One Mile South of Spearman; One-half Mile South of Black School House, on

Monday, July 26

Beginning at 2:00 O'Clock P. M., the following property.

Hogs

- 1 Red Duroc Jersey sow, with six pigs.
- 1 Black Poland China sow, with three pigs.
- 1 Black Poland China shoat.

Miscellaneous

- 1 pony and saddle; 1 set of leather harness; 4 sets chain harness.

One Ford Touring Car

Don't Miss this Sale

Mares and Mules

- 2 black mares, six years old, with colt.
- 1 bay mare, smooth mouth.
- 1 gray mare, six years old.
- 1 black mare, smooth mouth.
- 1 three-year-old filley.
- 3 good mules, smooth mouth.

Cattle

- 2 White Durham milk cows, three years old.
- 1 red cow three years old, dry.
- 1 Jersey cow five years old, fresh soon.
- 1 yearling heifer.
- 1 yearling steer.

TERMS--- On amounts under \$10 cash. On amounts of more than \$10 a credit of six months' time will be given; purchaser to give note with approved security and notes to draw ten per cent interest from date; five per cent discount for cash. All property must be settled for before being removed from the premises.

Take a half day off and attend this big sale You will find something you need.

Major & Raney
AUCTIONEERS
First National Bank of Spearman, Clerk

Make Sale Dates and have Sale Bills printed at the Spearman Reporter office

tricts by general or special law without the local notice required in other cases of special legislation; and all such school districts, whether created by general or special law may embrace parts of two or more counties. And the legislature shall be authorized to pass laws for the assessment and collection of taxes in all said districts and for the management and control of the public school or schools of such districts, whether such districts are composed of territory wholly within a county or in parts of two or more counties. And the legislature may authorize an additional ad valorem tax to be levied and collected within all school districts heretofore formed or hereafter formed, for the further maintenance of public free schools, and the erection and equipment of school buildings therein; provided, that a majority of the qualified property tax-paying voters of the district voting at an election to be held for that purpose, shall vote such tax not to exceed in any one year one dollar on the one hundred dollars valuation of the property subject to taxation in such district, but the limitation upon the amount of school district tax herein authorized shall not apply to incorporated cities or towns constituting separate and independent school districts, nor to independent or common school districts created by general or special law.

Sec. 2. The foregoing constitutional amendment shall be submitted to a vote of the qualified electors of the State at an election to be held throughout the state on the first Tuesday after the first Monday in November, 1920, at which election all voters favoring said proposed amendment shall write or have printed on their ballots the words, "For the Amendment of Section 3 of Article VII of the Constitution of the State of Texas, providing that the limitation upon the amount of school district tax of one dollar on the one hundred dollars valuation shall not apply to independent or common school districts created by general or special law," and all those opposed to said amendment shall write or have printed on their ballots "Against the amendment to Section 3 of Article VII of the Constitution of the State of Texas, providing that the limitation upon the amount of school district tax of one dollar on the one hundred dollars valuation shall not apply to independent or common school districts created by general or special law."

Sec. 3. The Governor of the State is hereby directed to issue the necessary proclamation for said election and to have the same published as required by the Constitution and existing laws of the State.
Sec. 4. That the sum of Five Thousand Dollars, or so much thereof as may be necessary, is hereby appropriated out of any funds in the Treasury of the State of Texas, not otherwise appropriated, to pay the expenses of such publication and election.
C. D. MIMS,
Secretary of State.
(Attest—A True Copy.)

Subscribe for the Reporter.

3015-620-400
RELATING TO THE MANNER OF COMPENSATION OF PUBLIC OFFICIALS

House Joint Resolution No. 7
A joint resolution of the Legislature of the State of Texas, proposing an amendment to the constitution of the State by adding to Article 16 thereof a new Section, to be known as Section 60; providing for the compensation of public officials.

Be it resolved by the Legislature of the State of Texas:
Section 1. That there is hereby added to Article XVI of the Constitution of the State of Texas, a new section to be known as Section 60 of Article XVI of the Constitution of the State of Texas, which shall read as follows:

Section 60. Compensation of Public Officials: All State, district, county and precinct officers within this State shall receive as compensation for their services a salary, the amount of which, the terms and methods of payment and the fund out of which such payments shall be made, shall be ascertained, declared and fixed by the Legislature from time to time; provided that the Legislature may make such exceptions as it may deem advisable.

This section shall supersede all other provisions of this constitution fixing and declaring the compensation of officers by salary, fees or otherwise and all provisions for salaries or other compensation for public officials, executive, legislative or judicial.

Sec. 2. The Governor of the State is hereby directed to cause to be issued his necessary proclamation for an election to be held on the first Tuesday after the first Monday in November, 1920, at which election this amendment shall be submitted to the qualified electors of this State for adoption or rejection and shall make the publication required by the constitution and laws of the State. Said election shall be held under and in accordance with the General Election Laws of the State, and the ballots for said election shall have printed or written thereon in plain letters, the following words:

"Official Ballot" "For the amendment to Article XVI of the Constitution of the State of Texas, adding thereto Section 60, providing for compensation of public officials." "Against the amendment to Article XVI of the Constitution of the State of Texas, adding thereto Section 60, providing for compensation of public officials."

Those voters who favor such amendment shall erase by marking a line through the words "Against the amendment to Article XVI of the Constitution of the State of Texas, providing compensation for public officials." Those who oppose such amendment shall erase by marking a line through them, the words "For the amendment to Article XVI of the Constitution of the State of Texas, providing compensation for public officials." And the result of the election shall be published and declared according to the majority of the votes cast in such election.
Sec. 3. The sum of Five Thousand

Dollars or so much thereof as may be necessary, is hereby appropriated out of any funds in the treasury, not otherwise appropriated for the purpose of paying the necessary expenses of the proclamation and publication of this amendment and the election to be held hereunder.
C. D. MIMS,
Secretary of State.
(Attest—A True Copy.)

Mr. Farmers: You market in Texoma, what about your banking? Texoma has now a new bank, a service institution, the Farmers State. The present owners also own the Oklahoma Farm Mortgage company, Oklahoma City, and twenty-five more of the oldest banks of the state. Your account is solicited with the assurance we are fully able to take care of your needs both in banking and farm loans.



Brands; Diamond C on left side, slash on top hip.
Ear Marks; Crop on left & under half crop on right.
Range on head-waters of the Pure Duro.

J. H. Cator & Son, Hansford

Unneed - A LUNCH

Home Made Pies

Everything in the Short Order Line

at ALL HOURS

Prices Right

Good Eats for Folks who have Good Taste.

Spearman

NOW READY

to buy your **WHEAT** and willing to pay the top price for same.

COAL

Rockvale Nut, per ton . . \$12.00
Best Lump coal at the same price.

Our coal is stored in a good building, protected from the wind and rain, and no better coal can be found.

SALT

Block, Sack, Sulphurized and Medicated. See us for Salt.

Cozart Grain Co.

JIM SLAVIN, Mgr.

SPEARMAN

Farm and Ranch LOANS



I make Farm and Ranch loans at a rate of interest to meet competition at all times.

I make a specialty of buying and taking up and extending Texas vendor's lien notes.

No loan too large or too small for us. We guarantee satisfaction.

WILL CROW

Canadian - - Texas

the \$100 valuation of taxable property in said district for said purpose.

W. A. Smith is hereby appointed presiding officer for said election, and he shall select two judges and two clerks to assist him in holding the same, and he shall within five days after said election has been held, make due return thereof to the commissioners' court of this county as is required by law for holding a general election.

The ballots for said election shall have written or printed thereon the following:

For School Tax.
Against School Tax.

All persons who are legally qualified voters of this state and of this county, and who are resident property tax payers in said district shall be entitled to vote at said election.

The sheriff of this county shall give notice of said election by posting three notices at three public places in the said district for three weeks before the election.

Dated the 24th day of June, 1920.
A. E. TOWNSEND,
County Judge of Hansford Co., Texas.

THE STATE OF TEXAS

To the Sheriff or any Constable of Hansford County, Greeting:

You are hereby commanded to summon J. W. Griggs by making publication of this citation in a newspaper published in Hansford county, if there be a newspaper published therein, but if not, then in the nearest county where a newspaper is published, once in each week for four consecutive weeks previous to the return day hereof, to be and appear before the Justice Court in and for Precinct No. one, Hansford county, Texas, at the next regular term thereof, to be begun and holden in the office of A. J. Wilbanks, Justice of the Peace at Spearman, Texas, on the 2nd day of August, A. D., 1920, at 10 o'clock a. m., and there to answer to the suit of B. V. Andrews, composing the firm of Andrews Hardware Company, a sole partnership, plaintiff, against J. W. Griggs, defendant, for the sum of forty-six and 15-100 Dollars (\$46.15), and all costs of suit, filed on the 8th day of July, A. D., 1920, and numbered on Docket No. —. The nature of plaintiff's demand being in substance as follows:

Suit on open account and on failure to perform rental contract.

Plaintiff alleges that heretofore, on various dates beginning from about March 13th, 1920, and ending about May 29th, 1920, plaintiff sold and delivered to defendant at defendant's special instance and request various articles of goods and merchandise to an amount aggregating fifty-nine and 50-100 Dollars, with credits by defendant of thirty-three and 35-100 Dollars, leaving a balance now due and unpaid on said account of Twenty-six and 15-100 Dollars.

That on March 12th, 1920, plaintiff and defendant entered into a rental agreement by which plaintiff rented to defendant Lot No. 10, in Block No. 10, town of Spearman, Texas, to be used for the purpose of erecting a building by defendant for a cleaning and pressing establishment. Said defendant was to have the privilege of removing said building at the expiration of said contract, and said contract could be terminated after the expiration of four months by either party by giving thirty days written notice to the other party. The consideration for said rental was \$15.00 per month, originally, but was reduced later by agreement to \$10.00 per month. That there is a total due on said account of fifty-seven and 50-100 Dollars, with credits by defendant of thirty-seven and 50-100 Dollars, leaving a balance on said account now due on said account of twenty dollars, defendant having failed to pay rent due June 12th and July 12th, has breached his contract to plaintiff's damage twenty dollars.

Wherefore, plaintiff prays that defendant be cited to appear and answer this suit, and that upon a hearing hereof he have judgment against said defendant for the sum of forty-six and 15-100 Dollars and all costs of suit,

mine whether the commissioners' court of this county shall be authorized to levy, assess and collect annually a tax of and at the rate of not to exceed Fifty Cents on the \$100 valuation of taxable property of said district for said purpose.

L. F. Noe is hereby appointed presiding officer for said election and he shall select two judges and two clerks to assist him in holding the same, and he shall within five days after said election has been held, make due return thereof to the commissioners' court of this county, as is required by law for holding a general election.

The ballots for said election shall have written or printed thereon the following:

For School Tax.
Against School Tax.

All persons who are legally qualified voters of this State and of this county, and who are resident property taxpayers in said district, shall be entitled to vote at said election.

The sheriff of this county shall give notice of said election by posting three notices at three public places in the said district for three weeks before the election.

Dated the 25th day of June, 1920.
A. E. TOWNSEND,
County Judge of Hansford Co., Texas.

NOTICE OF ELECTION

State of Texas,
County of Hansford, ss.

Whereas, on the 15th day of June, 1920, a petition was presented to me for an election in Common School District Number Twelve of this county, on the question of authorizing a tax of and at the rate of not exceeding Fifty Cents on the \$100 valuation of taxable property in said district, for the purpose of supplementing the State School Fund apportioned to said district, said petition bearing the requisite number of signatures of property tax paying voters of said district, and being in every respect in conformity with law:

Now, therefore, I, A. E. Townsend, in my capacity as county judge of Hansford county, Texas, do hereby order that an election be held on the 24th day of July, 1920, at the school house in said common school district No. 12 of this county as established by order of the Board of County School Trustees of this county, of date the 10th day of May, 1920, which is recorded in book one, pages 11, 12 and 13 of the minutes of said County Board of School Trustees, to determine whether a majority of the legally qualified property tax paying voters of that district desire to tax themselves for the purpose of supplementing the State School fund apportioned to said district, and to determine whether the commissioners' court of this county shall be authorized to levy, assess and collect annually a tax of and at the rate of not to exceed Fifty Cents on

M. C. HEAD

SEEDS—All re-cleaned.
FEEDS—Mixed and Ground.
SALT—Blocks or crushed blocks.

I will buy your cream.

ICE!! ICE!! ICE!!

West Side - SPEARMAN

Spearman Rooming House

Nice, comfortable Rooms.
Clean Beds.
Rates reasonable.

West Side Main Spearman

T. H. Taylor Proprietor

Mr. Tractor Man

We are now ready to supply your needs. See us before buying your OIL, GAS or KEROSENE Delivery made to the country in Truck Load lots.

Just Phone Us Your Order. Phone 41.

Goodwill Oil Co.

Spearman, Texas
H. G. Smith Manager

Bargains
Three 1918-19 Ford touring cars. Prices right. Can give terms. HOBBS AUTO CO., Perryton, Texas.

J. H. SHARER PRODUCE COMPANY

We Buy

Cream
Chickens
Eggs
Hides

and pay the highest cash price.

H. A. RAY
Manager
Phone 40 Spearman

NOTICE OF ELECTION

State of Texas,
County of Hansford, ss.

Whereas, on the 26th day of June, 1920, a petition was presented to me for an election in Common School District Number Thirteen of this county, on the question of authorizing a tax of and at the rate of not exceeding Fifty Cents on the \$100 valuation of taxable property in said district, for the purpose of supplementing the State School Fund apportioned to said district, said petition bearing the requisite number of signatures of property tax paying voters of said district, and being in every respect in conformity with law:

Now, therefore, I, A. E. Townsend, in my capacity as county judge of Hansford county, Texas, do hereby order that an election be held on the 24th day of July, 1920, at the house of E. Terborg, in said common school district No. 13, of this county, as established by order of the Board of County School Trustees of this county of the date of the 10th day of May, 1920, which is recorded in Book one, pages 11, 12 and 13 of the minutes of said County Board of School Trustees, to determine whether a majority of the legally qualified property tax paying voters of that district desire to tax themselves for the purpose of supplementing the state school fund apportioned to said district, and to deter-

and for such other relief, general and special in law and in equity to which he may be entitled.

Herein fail not, but make due return of this writ to the August term 1920 of said court, showing how you have executed the same.

Given under my hand officially, this 8th day of July, A. D., 1920.
A. J. WILBANKS,
Justice of the Peace, Precinct No. 1, Hansford County, Texas.
Issued July 8th, 1920.
A. J. WILBANKS,
Justice of the Peace, Precinct No. 1, Hansford County, Texas.

NOTICE TO LAND OWNERS

To Jane L. Sumner, Thos. C. Spearman, C. C. Patten, F. H. Secord, Andrew J. Martin, James O'Donnell, W. H. Houghtlin, Vera Lackey, Montie Dodson and husband Lynch Dodson, A. T. Parton and W. N. Durham, J. Y. Grubbs, John M. Whitson, James T. Whitson, L. C. Kooztz, Geo. N. Grimes, Maxon W. Pierce and Fred A. Smith, non-residents of the county of Hansford and state of Texas, you are hereby notified that the undersigned jury of Freeholders, acting under and by virtue of an order of the Commissioners' Court of Hansford county, Texas, will, on the 2nd day of August A. D., 1920, proceed to lay out a First Class Public Road sixty feet in width, being thirty feet on each side of the section line, commencing at the northwest corner of section No. 92, in Block No. 4T, Grantee T. & N. O. R. R. Co., in said Hansford county, and running thence due south on the section lines to the northeast corner of section No. 10, in Block No. 3, Grantee S. A. & M. G. R. R. Co., thence due west on the section lines to the northeast corner of section No. 198, in Block No. 45, Grantee H. & T. C. Ry Co., thence south one mile to the southeast corner of said section No. 198; thence west one mile to the southwest corner of said section No. 198; thence south to the northeast corner of section No. 5, Block 4, Grantee P. F. S.; thence west on section line between sections No. 4 and 5 of Block 4, P. F. S., to the northwest corner of said section 5; thence north to the northeast corner of section No. 28, Block No. 5T, Grantee T. & N. O. R. R. Co.; thence west to the northwest corner of said section No. 28; thence south to the intersection of said road may run counties line; which certain lands along the section line of section 5 owned by you, and will at the said time assess the damages incidental to the opening of said road, when you may present to us a statement in writing of the damages, if any, claimed by you.

Witness our hands this 1st day of July A. D., 1920.
E. P. CLOSE,
J. C. HANCOCK,
D. W. HAZELWOOD,
FRANK DRESSEN,
A. F. BARKLEY.

Want to sell your farm and ranch lands? Then list it with C. W. King, Spearman, Texas. He gets the highest price. 30tf

YOUR HARVEST

GROCERIES

The problem of buying the harvest groceries, again facing the farmers of this section. We are here this year to help you solve that problem. Do not buy until you see our stock and get our prices.

Meat, Lard, Canned Goods--anything you need.
Coal, Machine and Cylinder Oils.

Light's Best Flour, per cwt. . . . \$7.25
When taken in lots of 500 pounds or more.

Spearman Equity Exchange

CARSON WOMBLE, Mgr.

Ford

THE UNIVERSAL CAR

Here's the Ford Coupe, deservedly a very popular motor car because of its all-round serviceability. Equipped with electric starting and lighting system and demountable rims with 3 1/2-inch tires front and rear. Large plate glass windows. Generous sized doors--roomy seat, upholstery deep and substantial. Dust-proof and water-proof. Breezy and cheery in fine weather, cozy and dry in bad weather. All the established Ford merits of dependability, with small cost for operation and upkeep. For business and professional men who drive it is ideal and for touring and other pleasure driving it is the one car that delivers all expectations. The demand is large so orders should be left with us without delay.

R. W. MORTON, the Ford Man

Remember I am the authorized Ford dealer for this territory and you can buy the genuine Ford parts only at my garages. All repair work guaranteed first class.

Finished

Harvesting Yet?

If you have, then come out to the Endicott section, that joins the Spearman townsite on the east, and see the

BIGGEST LITTLE, WHEAT

FARMING

Tractor in the world at real work.

The two "CLETRAC" Tank Type Tractors purchased by Bud Bennett will be at work every day this week.

See JIMMIE CALDWELL, now in Spearman, for prices on the "CLETRAC."

AUCTION SALE

I WILL SELL FOR

F. C. WILMETH

At his ranch 16 miles northwest of Spearman; 30 miles south of Guymon, one mile west of Spearman-Guymon road, on

Sat., July 31, 1920

Beginning at 10:00 O'Clock A. M., the following property.

60 Head of Horses, Mares and Mules

12 good work horses, two span of mules; thirty good mares bred to jack, young mares and geldings and several Shetland "kid" ponies.

20 Head of Hogs

1 fine full-blood Poland-China boar; Sows, Pigs, Shoats.

Farm Implements

1 McCormick row binder; 1 2-disc plow; 1 2-disc Sanders plow; 1 cultivator; 3 farm wagons, 1 low-wheel feed wagon; 2 barges; 1 lister; 1 2-row planter; 1 drag harrow, Scoops, Pitchforks; 5 sets of harness.

50 Chickens—Cornish Game

Articles too numerous to mention will be in this big sale.

100 Head of High Grade Cattle

30 head of steers, yearlings and twos. About seventy head of cows, yearlings and calves. Three good milk cows.

Several Registered Hereford Bulls.

Household Goods

1 Duofold and two chairs to match; 4 rocking chairs; 1 fine rug, 13x15, 2 small rugs and 1 cow-hide rug; 1 New Majestic range; 1 kitchen cabinet; 1 safe; 6 dining chairs; 110-ft. oak dining table; 3 bedsteads and springs; 3 mattresses; 3 feather beds; 1 set dishes, 36-piece; 1 dresser; 1 chifferobe; 2 center tables; 1 White Rotary sewing machine; 1 gas lamp; 1 hanging lamp; 4 small lamps; 1 large mirror; 1 4-burner Perfection oil stove; 1 wash kettle; 4 wash tubs.

Barbecue—We will barbecue a beef and give a big dinner, free to all, on the day of the sale.

TERMS—On accounts under \$10 cash. On amounts of more than \$10 a credit of six months' time will be given; purchaser to give note with approved security and notes to draw ten per cent interest from date; five per cent discount for cash. All property must be settled for before being removed from the premises.

C. K. WILMETH

AUCTIONEER

First National Bank of Texhoma, Clerk

Make Sale Dates and have Sale Bills printed at the Spearman Reporter office.

Mrs. Kelly Bennett and her fine son, John Franklin, have returned to their home at Tascosa, after a pleasant visit with Grandpa and Grandma J. P. Winder.

Many tourists pass through Spearman each day, en route to the mountains in Colorado. They usually have cooking outfits and bedding and spend the nights at the camping places along the well-beaten paths. Few people go from this country to the mountains. The nights are always cool here and there is not the need for it as there is in the lower altitudes.

Frank and Rufus Garst, piano dealers, of Guymon, were visitors to Spearman the front end of the week. During the war the Garsts found it difficult to get pianos from the factory as fast as they could sell them, but say now that conditions are improving and they can get a car load most any time, which allows them to branch out into new fields.

The race for governor of Texas has simmered down to a contest between Pat Neff and Thomason. Looney is making a poor showing and Bailey is almost forgotten. If they had a little more time, Thomason and Neff would make it real snappy. Thomason says Neff rides on a pass, and Neff says Thomason was at one time an anti. Either of these gentlemen will make a good governor, and one of them is sure to pull the plum.

J. H. Mitchell and Lee Westerfeld, representatives of the J. I. Case Plow Works Co., were in Spearman Wednesday morning. These gentlemen were demonstrating the Wallis tractor, which, by the way, seems to have the goods. Tractors are growing very popular through this section and the Wallis will eventually be one of the most popular makes in use. Messrs. Mitchell and Westerfeld did not stay with us long this time, but promise to return in the near future and give a more thorough demonstration of the merits of this splendid tractor.

Short Term Fire Insurance

Covering grain and seeds of all kind, whether cut or uncut, threshed or unthreshed, shelled or unshelled, in shocks, stacks or ricks. Also, on cultivated land, dwelling house, barns, barns, tanks, granaries and cribs.

Notice the following rates:
One month, per \$100 . . . \$.38
Two months, per \$10057
Three months, per \$10076
Four months, per \$10095
Six months, per \$100 . . . 1.33
Eight months, per \$100 . . 1.52
Ten months, per \$100 . . . 1.71
Twelve months, per \$100 . . 1.90
McLAIN & McLAIN.

WHEAT

☐ We are ready to buy your wheat. Do not sell until you have given us a chance to bid on what you have to offer.

Spearman should be made one of the best wheat markets in the Southwest, and we will do our part.

Come to see us.

Bolin-Hall Grain Co.

JACK THOMAS, Manager

Grain Row - - - - Spearman

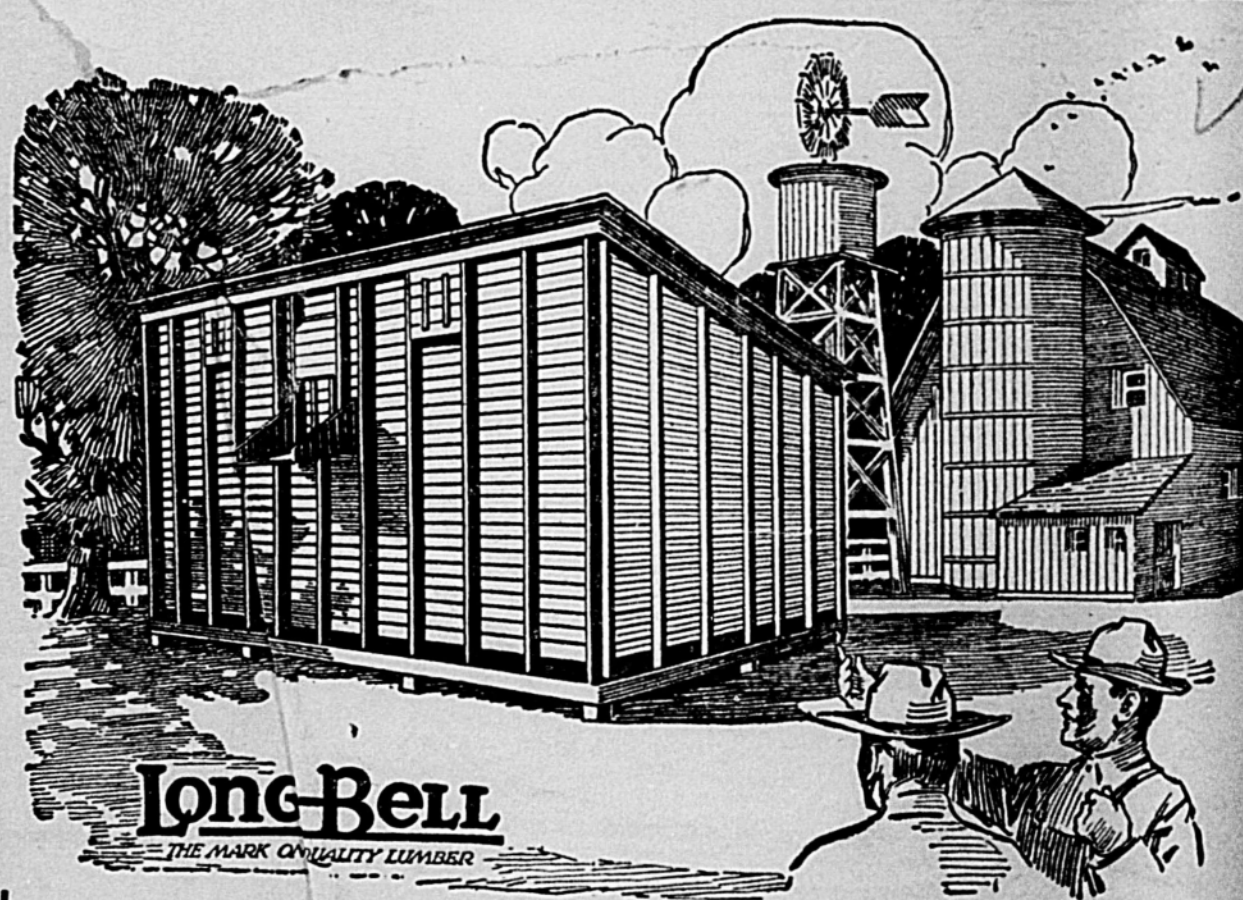
Groceries!

What to eat is a puzzling question these hot days.

We keep only the freshest and best groceries and our store is clean and sanitary.

Come in and let us help you solve the problem of what to fix for that big dinner.

Jno. L. Hays Mercantile Co.
Spearman



A Better Price for Wheat

"That granary makes me money on every bushel of grain I put in it. It is built of wood because wood keeps grain in better condition than any other material. It's easy to build with lumber and my granary was built in a hurry. The ship-lap was nailed on the inside of the studding, and I'll have the siding on next month."

Every good farm building is a money-saver or a money-maker. A granary keeps your wheat in good condition until you are ready to sell it. That means a better price for your wheat.

Experience has taught us what kind of storage buildings are best for your needs. It has taught us what kind of lumber is best for each particular purpose. This advice is yours for the asking.

Panhandle Lumber Company

ROY McCASLIN, Manager

SPEARMAN