

THE SPEARMAN REPORTER

Successor to the HANSFORD HEADLIGHT

TWELVTH YEAR

Spearman, Hansford County, Texas, July 9, 1920

Number 30

CREDIT

Some day you may need credit. A man looks for credit where he keeps his money. If you hide your money in the cellar you cannot go to the cellar for credit. That is common sense.

If you keep your money in this National Bank and need credit, come to us. Let us see what we can do for you.

Credit is based upon our knowledge of a man—his honesty—integrity—ability to keep his word. A man should not overdraw his account.

In other words, credit is largely a matter of acquaintanceship.

Why not get acquainted with us now?

THE
First National Bank
of SPEARMAN

Cox and Roosevelt

James M. Cox, governor of Ohio, was nominated for president and Franklin D. Roosevelt, assistant secretary of the navy and relative of the president who bore that name, was nominated for vice president by the democratic national convention at San Francisco. Roosevelt is from New York.

Ford touring car, 1919 model, for sale at the Monroe garage.

Big reduction in prices on lumber and building material. Let us figure your bill. Spearman Lumber Co.

Mrs. W. C. Sexton and baby are here from Gate, Oklahoma, the guests of her parents, Mr. and Mrs. J. E. Freely.

List your farm and ranch lands with C. W. King, Spearman, Texas. He will sell it for you at the highest price.

Fred Hill, Spearman's new lawyer, has opened offices in the King building, next door to the First National bank. Mr. Hill informs the Reporter that he will move his family here early in the fall.

A. F. BARKLEY'S Insurance Agency

Grain burns occasionally before or while being cut. Let us write you a policy on your grain while standing. Then, the same policy will cover in the shock or stack and in the grainary when threshed. Let us explain it to you.

Our business is conducted on principles of honesty, fair dealing and dependable service. If you are not already a customer, we invite you to become one, with the confidence that you will find the above to be true.

BARKLEY
SPEARMAN
Phone 37

Sherwin-Williams Paint

The Kind You Have
always Used

IN A CLASS BY ITSELF

Complete line of House Paint,
Floor Paint, Stains and Var-
nishes.

Tanlac Tanlac Tanlac

Hale Drug Company
SPEARMAN

The Store with the Up-Town Service

CONGRESSMAN JONES HERE

Congressman Marvin Jones, accompanied by J. E. Hill, manager of the Panhandle Lumber company, came from Amarillo Saturday and spent several hours in Spearman. Congressman Jones is enjoying a stay at home at present, but nevertheless is busy looking after the interests of his constituents. Both he and Mr. Hill are now greatly interested in the car shortage and are doing all in their power to assist other men and organizations in getting relief for the Panhandle farmers. In regard to his trip to this section, Mr. Jones had the following little story in Monday's Amarillo Tribune: "The towns of Spearman, Perryton, Follett, Booker, Darouzett and other towns on the line of the North Texas and Santa Fe railroad recently built across the Panhandle of Texas, may expect railroad mail service within a few days, according to announcement made by Congressman Marvin Jones, who arrived from those places Sunday afternoon. He took the matter of the mail service up with Postmaster General Bursleson by wire this morning. The towns along the line of the North Texas and Santa Fe are still getting their mail from other railroad points by road conveyance. All mail for Booker, Follett and Darouzett is sent from Glazier, while Perryton and Spearman are served from Oklahoma points. Congressman Jones visited Perryton addressing the people of that town in the interest of Democracy, and made short talks at other points. He said this morning that the towns along the new line of railroad had all been established since he was sent to congress. The people of that section of the country are vitally interested in the car shortage situation and are raising a large wheat crop."

TIME AND LABOR SAVERS

The combined harvester-thresher is beginning to take the place of the old-fashioned header and threshing machine in this part of the country. The Andrews Hardware company, local dealers, have sold four in this immediate vicinity and they are expected to be a great saving commissioner's court of this county shall be authorized to levy, assess and collect annually a tax of and at the rate of not to exceed

Prominent Men in Bad

T. M. Latham of Tucumcari, New Mexico, a former sheriff of Texas county, and Judge V. H. Grinstead of Liberal, Kansas, are in Guymon, in connection with the case of the State of Oklahoma vs. W. L. Wanser and P. J. Breslin, the defendants being charged with embezzlement of funds of the Turkey Island Oil company, the preliminary hearing of which is being held in the County court.—Guymon Herald. Wanser is a prominent druggist of Guymon and Breslin is an attorney. The Turkey Island Oil company was organized by T. M. Latham about three years ago and many Guymon citizens are interested in it. We understand that the trial of this case has been postponed for ten days, at the request of the defendants. Owing to the prominence of the principals, the outcome of the case will be watched with considerable interest.

C. W. Carson, the genial cashier of the First National Bank, spent the 4th with relatives and friends at Ashland, Kansas.

Tom Haralson, candidate for tax assessor of Hutchinson county, was looking after business matters in Spearman Wednesday.

Want to sell your farm and ranch lands? Then list it with C. W. King, Spearman, Texas. He gets the highest price.

Miss Cecile Dowdy, daughter of Commissioner Dowdy of the southwest part of the county, returned Sunday from Georgetown, where she has been attending Georgetown University.

The Missionary society met on Wednesday afternoon with Mrs. H. P. Bailey, and will meet on Wednesday afternoon, July 21, with Mrs. B. V. Andrews.

Miss Gwenfred Jones, accompanied by her cousins, the Misses Bena and Anna Jones of Canadian, left Wednesday for the Great Lakes, where they will spend the greater part of the summer. They intend to visit the Thousand Islands, Niagara Falls and other places of note, and will also visit with Dr. J. C. Jones, at his home in Milwaukee.

1920 CHAUTAUQUA DATES

Program Starts September 5th With a Big Array of Talent

The local Chautauqua committee has announced the above opening date for the big community entertainment week this year. The committee is making extensive preparations to secure the crowd merited by the quality of the program and present indications are for a record breaking attendance.

The Chautauqua movement received a great impetus during the war when it was highly commended by President Wilson, Secretary McAdoo, Secretary Baker, Ex-president Roosevelt, Judge Lindsay and others. It fills a need for clean entertainment, free discussion of public affairs and united community effort not available elsewhere for rural communities and cities of moderate size.

The Cadmean Chautauqua management of Topeka, Kansas, which furnishes the talent, announce a program brimming over with interesting attractions. It will include Uncle Sam's Nieces, four singing, banjo playing girls; Thomas J. Keilam, eminent southern song writer; George A. Barker, lecturer on inspirational topics; Ricketts' Jazz Band, just what the name signifies, and including Kenneth Ricketts, accordion soloist; Edgar S. Kindley, well-known humorist; The Chicago Entertainers, two lively girls in readings and songs; Samuel Justin Sparks, powerful mountaineer college president from Kentucky; and the famous Kenilworth Players. The real feature of the week will be a full evening play by this theatrical company. It is the biggest stunt ever attempted on a small town circuit, but both the management and the local committee believe the public will justify the expense of this program.

Before the Chautauqua starts there will be a drive for the sale of season tickets. A number of progressive local citizens have agreed to sell a block of season tickets in order to bring the Chautauqua here. The season ticket offers many advantages as it admits some member of a family to each of the ten programs at a fraction of the cost. Now, the entire in my capacity as a citizen of Hansford county, Texas, do hereby order that an election be held on the 10th day of July, 1920, at the office of a season ticket is about the same as the price of admission to the best three programs. Full details of the plans will be announced later.

NEW WHEAT

The first loads of the 1920 wheat crop arrived in Spearman the first of the week. The grade is much better than last year and will test from 60 to 62 pounds per bushel. A. M. Wilbanks sold 1400 bushels of this year's wheat to the Cozart Grain company at \$2.40 per bushel. He is storing the remainder of his crop at the Cozart elevator. Bolin-Hall Grain company bought a car of 1919 wheat Wednesday at \$2.40 per bushel. With six elevators and several transient buyers Spearman should have a wheat market that is a wheat market this year, and that is what the town needs.

Old Man Making Good

Dear Editor: Every day we see instances of the inequality of things in general on this old earth, and become more and more convinced of the heartlessness and injustice of the average man's judgment of his fellows. The other day (last Sunday, to be exact), a strange sign writer came to town. He was rather seedy and apparently in stringent circumstances. He slept down at the stock yards and was trying to hustle work on an empty stomach. Monday morning several were heard to classify him as "that old tramp," "bum sign writer," etc.

So much for snap judgment. This old man is 78 years old and was sent to Spearman by some practical joker (?) under the misinformation that there was no sign painter here. He had money order receipts and letters to prove that he has sent over \$100 in the last sixty days to his little great grandchildren, who were left destitute of father, mother or financial resources and whom he (at 78) is trying to support and educate.

Think of it, friends, shouldering this burden with a smile at his age and called a tramp! Give us more like him. No, Joe, he did not leave Spearman hungry or without the stink of a little jack in the pockets of his jeans. "Man's inhumanity to man makes countless thousands mourn."

Yours for graded streets in Spearman,

PANHANDLE SLIM

Best grade paints, oils, varnishes and shingles. IDELE LUMBER CO.

Surprise Yourself

Keep an accurate account of all the money you spend in a month and what you spend it for. It will surprise you.

Then resolve to bank the amount you have heretofore been spending unwisely.

You will never regret the resolution if you act.

Guaranty State Bank

SPEARMAN, TEX.

ANOTHER HIGHWAY

Pal A. Lyon, secretary of the Hansford County Chamber of Commerce, recently received the information that the State Highway Commission had granted a State Inter-County Highway over the proposed route from Clarendon to Pampa, crossing the Canadian river at the mouth of White Deer creek, thence north to Spearman, west to old Hansford and north to Guymon, connecting with the state road in Oklahoma. This highway has not been given a number but will be later. The counties through which it passes will be given the proper rating, so they can use the maintenance fund on this particular highway. The proposition of bridging the Canadian river will be taken up in the near future. This highway will be known as the Doby Walls Highway.

A. L. McClure of Macksville, Kansas, came Wednesday to take charge of the Liske Grain company's interests in Spearman. Mr. McClure is an Attorney-at-Law

experienced grain man and will buy wheat here during the fall and winter. He will move his family here as soon as a residence can be secured.

The Reporter editor and sister, Mrs. J. S. Harris of Guymon, Oklahoma, went last Friday to their old home at Roby, Fisher county, on a visit to their parents, Mr. and Mrs. A. P. Kelly, who we found enjoying fairly good health. The old home town has not changed much in twenty years, but the population of Fisher county has increased fully 100 per cent. The folks are thick down that way now, and at a Fourth of July celebration held at Roby Monday, we surely missed the cool, invigorating breezes of the north plains. We had the pleasure of hearing Hon. Pat Neff, candidate for governor, speak at Roby. Mr. Neff made a splendid talk and his audience seemed to be about solid for him when he had finished. His opponents are misconstruing Mr. Neff's land plank and he is not pleased with their explanation of it.

Good Threshing Coal

\$1.00

per ton.

Panhandle Lumber Co.

Coming Along

The foundation is laid on the lot north of the Hillhouse Drug Company on which will be placed the building erected by the Bolin-Hall Lumber Company for office rooms, and the same will be occupied by a grocery store and meat market. A. Isenberg will throw open the doors of his clothing store Saturday. Joe Ruffin and wife are here from Texhoma looking for a location for a grocery. All of which goes to show that Spearman is coming along, boy, coming along.

Don't Fail to Vote

Don't fail to vote at the school trustee election Saturday, July 10. The polling place is in the Reporter office.

SATURDAY NIGHT

at the Arcade Theater—7 reels—"Marguerite Clark in a high class comedy country in Truck Load lots.

You will miss the time of your life if you miss these two splendid pictures. Highest priced pictures ever shown in Spearman. The Arcade.

YOU

need something for
the
Kidneys,
Liver
and Blood.

**Nature's
Remedy**

25c, 50c, \$1

Take one tonight. You
will feel better in the
morning.

**HILLHOUSE
DRUG CO.**

The People With the
Goods
SPEARMAN, - TEXAS

Farm and Ranch

LOANS

Any size tracts and at prices and terms to suit.
Spearman town lots and acreage—desirable locations.

Oil Leases

I am in the market for Oil Leases.

Money

Unlimited amount of money to loan on Farms and
Ranches in Hansford, Hutchinson and Ochiltree coun-
ties. Interest rate and settlement options
attractive.



YOU are fancy free when you select a *Born Tailored* suit—size or price doesn't limit your choice.

Several hundred dependable *Born* woolens are offered in every conceivable weave and coloring—to be made to your measure, in the style you like best.

At a price of \$35 or \$40 we offer very unusual values.
P. M. Maize & Co.
 .. & Co. ..
DRY GOODS GROCERIES

Now at SPEARMAN

The Spearman Reporter

Published every Friday
ORAN KELLY Editor-Manager
 Entered as second class matter November 21, 1919, at the postoffice at Spearman, Texas, under the act of March 3, 1879.
 \$1.50 Per Year in Advance
ANNOUNCEMENTS
 (Subject to the action of the Democratic primary election, to be held July 24, 1920)
 For County Judge
 C. D. WORKS
 A. E. TOWNSEND
 A. H. STORRS
 For Sheriff and Tax Collector
 HICKS L. WILBANKS
 For County and District Clerk
 KEESSE C. NESBITT
 For County Treasurer
 MRS. J. H. BUCHANAN
 For Tax Assessor
 H. R. WALDROP

comparison, its value in normal times before the great war being about \$3,000,000 yearly; and the shad fishery, the prospects of which each spring call forth much comment in the public press, produces not one-tenth as much food. The most valuable fishery is that which furnishes us with oysters. The bureau of fisheries has more than once called attention to this vast food resource and the possibilities for increasing it and using it to better advantage.

CHINESE TURNING TO SPORTS

Necessity for Physical Culture is Beginning to Be Recognized in the New Republic.
 Physical culture and all types of athletics were, until very recently, held in contempt by the Chinese, and consequently the Shanghai boys did not know what the joy of indulging in baseball and other sports meant, says Boys' Life. Ages ago chariot driving, archery and the other classic sports played an important part in Chinese

Pioneers

By GEORGE MATTHEW ADAMS
WHAT you are and what you have you owe largely to the blood-sweating efforts of Pioneers. Every notable name in History, since Time started, represents Pioneering of some sort. Not all were Finishers, but all were Starters. If you want to be a Pioneer—

Start Something.
 Watt was a Pioneer in revealing the powers of Steam. He got his first ideas from his Mother's stove kettle. Sir Isaac Newton evolved the Idea of Gravitation from throwing an Apple into the air. Today he is recognized as one of the world's greatest Pioneers in the field of Science. Thus it has always been. By Thinking, even YOU may—
Start Something.
 Woolworth, the Pioneer in Five and Ten cent stores, received his idea from a conversation in a small New York country store where he was at the time a Clerk. The idea was free to everyone—but Woolworth had the Nerve and Initiative to—
Start Something.
 Remember this: If an Idea comes to you that you consider valuable and you don't work it out, some one somewhere at some time is almost sure to do so—and receive the Glory for it! So, day by day, keep the Pioneering instinct alive. Be known as one not afraid to—
Start Something.

First Jap Woman Journalist.
 The first Japanese woman to edit a woman's page in her country, Miyo Kohashi, is studying journalism at Columbia university in preparation for teaching journalism in the Tokyo Union college next year. A decade ago women journalists were unheard of and unthought of in Japan. Now many women are growing interested in the profession, but very few of them have had special training for the work. That is why Miss Kohashi is preparing to teach the subject. "Women in Japan are liking the newspaper profession," says Miss Kohashi, "and already in Tokyo we have a club of twenty women journalists." Miss Kohashi is the Japanese representative of an interesting group of women students of 33 nationalities who form the International Foyer of the Y. W. C. A. at Columbia university.

Simple Logic.
 The earl of Portarlington, who was one of the first to volunteer for service during the

A GOOD BARN

A good barn is a money-saver every time. It keeps the cattle in good condition, thus saving waste from loss in weight, and death due to exposure. Besides, it takes less feed to give more weight when cattle are properly sheltered. Invest in a good barn. Don't rush in and build it "just any old way," for you will surely regret it. Plan for the future. Build so you can enlarge or add to your buildings as you need more room. Whenever you find it convenient, come in and talk it over with us. Also, see our plans and blueprints.

BUILD A HOME

COAL! Better buy that storage coal now, while it can be gotten at a low price. **COAL!**

White House Lumber Company

W. E. CALLAWAY, Manager.

SPEARMAN, .. Phone 16 .. TEXAS

SEA FURNISHES MUCH FOOD

United States Has Perhaps the Most Valuable Fishery in Which All Coast States Share.
 The United States has what is said to be the most valuable fishery in the world, but probably not one person in ten can name it. It is conducted in every seacoast state from Cape Cod to the Rio Grande, and from Puget sound up to San Francisco, and it yields annually about 115,000 tons of food as prepared for consumption, an equivalent of 400,000 dressed steers. It employs about 67,000 persons, and its annual product, as it comes from the water, is valued at over \$15,000,000. There are other fisheries that possibly exceed it in the ultimate value of their products, but in such cases much labor and material and a heavy investment of capital have been concerned in manufacturing operations to prepare the product for the consumer; as, for example, the canned-salmon industry of the Pacific coast. The American fishery for codfish on the Atlantic coast, which has been the cause of much diplomatic discussion and of grave international negotiations, appears almost insignificant in

education. With the dawn of China's literary golden age, however, the scholars could not see how mental perfection could be attained if there was any thought of athletic prowess. Muscles and brawn, they said, belonged to the peasant, and the gentleman of culture should show his good breeding by a scholarly pallor, stooped shoulders and a general unhealthy appearance.
 This attitude toward physical development persisted for centuries, and it has been only within the last few decades that interest has been vouchsafed in sports. With the introduction of new educational methods and the entrance of occidental theories into the orient, athletics once more came into their own and the Chinese student tucked up his cue and his dignity and went in for pole vaulting and hurdling.
 China has now the idea that a nation's economic progress depends largely on the healthy bodies and minds of its citizens, and missionaries find little difficulty in winning subscriptions for athletic fields for the schools.
 List your farm, ranch or other property you have for sale with McLain & McLain, Spearman, Texas.

land, relates these incidents of a boy scout on duty at one of the London termini, feeling the pangs of hunger about eleven o'clock one morning, began a vigorous attack on a substantial luncheon he had brought with him. A gentleman passing by was moved to remark: "My boy, if you eat much now you won't have any appetite for your dinner." To which the smart little fellow replied: "Well, I guess if I haven't any appetite I shan't want any dinner." The gentleman had no more to say.

Season of Peril.
 At this season of the year it is folly to enter your bedroom without turning on the light. Also do not attempt to sit on the edge of the bed unless you are sure the bed is there, for this is house-cleaning time and the women folks may have decided to put the bed on the other side of the room this year, so it is well to be careful, for you never can tell.—Knox Messenger.

That Dose Should Be Effective.
 "What are you treating me for, doctor?"
 "Loss of memory. You have owed me a bill of \$60 for two years."—Boston Transcript.

PICNIC AT POWERS RANCH

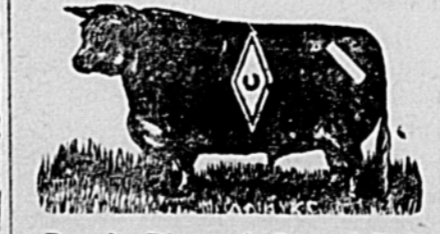
On the A. H. Sigler place, near Powers Ranch, in both labor and

Notice!
 Parties needing headers or binders should anticipate their wants. Machinery is going to be hard to get and unless our orders are in early we may not be able to supply you. Place your order now with
ANDREWS HARDWARE CO.
 Agents for McCormick and Deering Machinery. 2312.

Notice
 No hunting or fishing will be allowed in the Diamond C pastures, on the headwaters of the Palo Duro. These lands are posted and trespassers will be prosecuted.
JAMES H. CATOR & SON.

No Fishing or Hunting
 Fishing and hunting is positively forbidden on the lands controlled by the undersigned, located in Hansford and Ochiltree counties, and known as the O'Loughlin ranch, the Simmons ranch and the Lindsay ranch. Trespassers will be dealt with as the law directs.
HUDSON & SNYDER.

Notice to the Public
 I will sell wood for \$5.00 per four-horse load. It will be necessary to either phone or come to headquarters before getting the wood, otherwise you will be treated as trespassers. Positively no hunting allowed.
 W. T. COBLE,
 Owner of the Turkey Track ranch.



Brands; Diamond C on left side slash \ on left hip.
 Ear Marks; Crop on left & under half crop on right.
 Range on head-waters of the Palo Duro.
J. H. Cator & Son, Hansford

There is more Catarrh in this section of the country than all other diseases put together, and for years it was supposed to be incurable. Doctors prescribed local remedies, and by constantly failing to cure with local treatment, pronounced it incurable. Catarrh is a local disease, greatly influenced by constitutional conditions and therefore requires constitutional treatment. Hall's Catarrh Medicine, manufactured by F. J. Cheney & Co., Toledo, Ohio, is a constitutional remedy, is taken internally and acts thru the Blood on the Mucous Surfaces of the System. One Hundred Dollars reward is offered for any case that Hall's Catarrh Medicine fails to cure. Send for circulars and testimonials.
F. J. CHENEY & CO., Toledo, Ohio.
 Sold by Druggists, 75c.
 Hall's Family Pills for constipation.

Hobbs Auto Co.

Dealers In
DODGE BROTHERS MOTOR CARS
 Place Your Order With Us for Cars.
 Remember we carry a complete line of "Willard" Storage Batteries.
Perryton, - - Texas

LARKIN & SON

Guaranteed
Automobile Repair Work
 Acetylene Welding
 Battery Repairing

"Chevrolet"

AUTO and TRUCK
 Can fit you out with any kind of a Chevrolet you want. Also a complete line of Chevrolet parts, accessories and supplies.
 Call at our new garage in West Spearman and let us explain the merits of this wonderful car.
WILLARD STORAGE BATTERY SERVICE

LUMBER

NOW IS THE TIME TO BUILD

We will save you money on building material of all kind.
 We have recently made some good buys and are figuring a closer profit than when prices were lower than at present.
 Everything for the Builder. Let us figure on your bill.

Commercial and Live Stock **Lumber Co.**
 Make dates at Reporter Office
SPEARMAN

Special Prices on GAS and OILS

Gasoline . . . 32 cents per gallon
Kerosene . . . 21 cents per gallon

WE are wholesaling gas and oils but you, Mr. Consumer, are entitled to this price. We sell gas and oils in large or small quantities, just a little cheaper than competitors. Bring your car to our station to be filled and save money.

We are here to stay and intend to have our share of the business if square business dealings and fair prices will get it.

.. The Spearman Oil Company ..

H. B. HACKETT, Owner and General Manager

Also manager of the Alva Roller Mills, dealers in all kinds of Grain

Farm and Ranch LOANS

I make Farm and Ranch loans at a rate of interest to meet competition at all times.

I make a specialty of buying and taking up and extending Texas vendor's lien notes.

No loan too large or too small for us. We guarantee satisfaction.

WILL CROW

Canadian - - Texas

J. H. SHARER PRODUCE COMPANY

We Buy
Cream
Chickens
Eggs
Hides
and pay the highest cash price.

H. A. RAY
Manager
Phone 40 Spearman

Spearman Rooming House

Nice, comfortable
Rooms.

Clean Beds.

Rates reasonable.

West Side Main
Spearman

T. H. Taylor
Proprietor

NOTICE OF ELECTION

State of Texas,
County of Hansford, ss.

Whereas, on the 26th day of June, 1920, a petition was presented to me for an election in Common School District Number Thirteen of this county, on the question of authorizing a tax of and at the rate of not exceeding Fifty Cents on the \$100 valuation of taxable property in said district, for the purpose of supplementing the State School fund apportioned to said district, said petition bearing the requisite number of signatures of property tax paying voters of said district, and being in every respect in conformity with law:

Now, therefore, I, A. E. Townsend, in my capacity as county judge of Hansford county, Texas, do hereby order that an election be held on the 24th day of July, 1920, at the house of E. Terborg, in said common school district No. 13, of this county, as established by order of the Board of County School Trustees of this county of the date of the 10th day of May, 1920, which is recorded in Book one, pages 11, 12 and 13 of the minutes of said County Board of School Trustees, to determine whether a majority of the legal qualified property tax paying voters of that district desire to tax themselves for the purpose of supplementing the state school fund apportioned to said district, and to determine whether the commissioners' court of this county shall be authorized to levy, assess and collect annually a tax of and at the rate of not to exceed Fifty Cents on the \$100 valuation of taxable property of said district for said purpose.

L. F. Noe is hereby appointed presiding officer for said election and he shall select two judges and two clerks to assist him in holding the same, and he shall within five days after said election has been held, make due return thereof to the commissioners' court of this county, as is required by law for holding a general election.

The ballots for said election shall have written or printed thereon the following:

For School Tax.
Against School Tax.
All persons who are legally qualified voters of this State and of this county, and who are resident property taxpayers in said district, shall be entitled to vote at said election.

The sheriff of this county shall give notice of said election by posting three notices at three public places in the said district for three weeks before the election.

Dated the 25th day of June, 1920.
A. E. TOWNSEND,
County Judge of Hansford Co., Texas.

A coat of paint would help. We sell only the best grade.
PANHANDLE LUMBER CO.

NOTICE OF ELECTION

State of Texas,
County of Hansford, ss.

Whereas, on the 15th day of June, 1920, a petition was presented to me for an election in Common School District Number Twelve of this county, on the question of authorizing a tax of and at the rate of not exceeding Fifty Cents on the \$100 valuation of taxable property in said district, for the purpose of supplementing the State School fund apportioned to said district, said petition bearing the requisite number of signatures of property tax paying voters of said district, and being in every respect in conformity with law:

Now, therefore, I, A. E. Townsend, in my capacity as county judge of Hansford county, Texas, do hereby order that an election be held on the 24th day of July, 1920, at the school house in said common school district No. 12 of this county as established by order of the Board of County School Trustees of this county, of date the 10th day of May, 1920, which is recorded in Book one, pages 11, 12 and 13 of the minutes of said County Board of School Trustees, to determine whether a majority of the legally qualified property tax paying voters of that district desire to tax themselves for the purpose of supplementing the State School fund apportioned to said district, and to determine whether the commissioners' court of this county shall be authorized to levy, assess and collect annually a tax of and at the rate of not to exceed Fifty Cents on the \$100 valuation of taxable property in said district for said purpose.

W. A. Smith is hereby appointed presiding officer for said election, and he shall select two judges and two clerks to assist him in holding the same, and he shall within five days after said election has been held, make due return thereof to the commissioners' court of this county as is required by law for holding a general election.

The ballots for said election shall have written or printed thereon the following:

For School Tax.
Against School Tax.

All persons who are legally qualified voters of this state and of this county, and who are resident property tax payers in said district shall be entitled to vote at said election.

The sheriff of this county shall give notice of said election by posting three notices at three public places in the said district for three weeks before the election.

Dated the 24th day of June, 1920.
A. E. TOWNSEND,
County Judge of Hansford Co., Texas.

Notice of Trustee Election

State of Texas,
County of Hansford.

Whereas, by an act of a special session of the legislature of the state of Texas, which convened on the 20th day of May, 1920, and adjourned on the 18th day of June, 1920, creating the Spearman Independent School District of Hansford county, Texas, consisting of the territory therein described:

Now, therefore, I, A. E. Townsend, in my capacity as county judge of Hansford county, Texas, do hereby order that an election be held on the 10th day of July, 1920, at the office of the Spearman Reporter, in Spearman, in said Independent School District of this county, for the purpose of electing five trustees for said independent school district.

And I do hereby appoint Oran Kelly, J. H. Buchanan and Charles Endicott to hold said election, and they shall within five days after said election is held, make due returns thereof to the county judge of Hansford county, as required by law.

All persons who are legally qualified voters of this state and county, and who reside in said district, shall be entitled to vote at said election.

Dated the 25th day of June, 1920.
A. E. TOWNSEND,
County Judge of Hansford Co., Texas.

M. C. HEAD

SEEDS—All re-cleaned.
FEEDS—Mixed and Ground.
SALT—Blocks or crushed blocks.

I will buy your cream.

ICE!! ICE!! ICE!!

West Side - SPEARMAN

NEW BUICKS

Shipment of Buicks just received. Better come quick if you want one of these best of all automobiles. L. W. Booth, Guyton, Oklahoma.

LOST MULE—One red or sorrel mare mule, 10 years old, will weigh 1000 or 1100 pounds, slit in left ear, and had on black leather halter when last seen. Last seen at the Bud Smith ranch, about 15 miles northeast of Spearman, and was headed toward Spearman. I will pay a liberal reward for information leading to her recovery. Notify
G. E. SCHROEDER,
2812
Gray, Oklahoma.

LOST MULE—A liberal reward will be paid for information leading to the recovery of one bay, 4-year-old mule, branded V on shoulder, weight 750 pounds. This mule has a real short head and exceptionally crooked hind legs. Notify Hicks L. Wilbanks, Spearman.

CAFE FOR SALE—Joe's Cafe in Spearman is for sale. This eating house is doing a good business, is well located and is a paying proposition for someone. Will sell the building and fixtures and retain the lot. If you want a bargain in a restaurant business, see me at once.—J. B. EDENS.

Mr. Farmers: You market in Texhoma, what about your banking? Texhoma has now a new bank, a service institution, the Farmers State. The present owners also own the Oklahoma Farm Mortgage company, Oklahoma City, and twenty-five more of the oldest banks of the state. Your account is solicited with the assurance we are fully able to take care of your needs both in banking and farm loans. 291f

FRED HILL

Attorney-at-Law

Spearman, - Texas

DR. JARVIS

DENTIST

Perryton, - - Texas

WALTER R. ALLEN JACK ALLEN

ALLEN & ALLEN LAWYERS

Perryton, . . . Texas

FRANK M. TATUM W. C. STRONG
Tatum & Strong
ATTORNEYS - AT - LAW

Dalhart, . . . Texas

WALLACE G. HUGHES .. Lawyer ..

Suites 3 and 4 First National Bank Building

Guyton, Oklahoma

R. T. CORRELL

Lawyer

Perryton, Texas

Bargains

Three 1918-19 Ford touring cars. Prices right. Can give terms. HOBBS AUTO CO., Perryton, Texas.

Mr. Tractor Man

We are now ready to supply your needs. See us before buying your OIL, GAS or KEROSENE Delivery made to the country in Truck Load lots.

Just Phone Us Your Order. Phone 41.

Goodwill Oil Co.

Spearman, Texas
H. G. Smith
Manager

YOUR HARVEST

GROCERIES

The problem of buying the harvest groceries is again facing the farmers of this section. We are here this year to help you solve that problem. Do not buy until you see our stock and get our prices.

Meat, Lard, Canned Goods--anything you need.
Coal, Machine and Cylinder Oils.

Light's Best Flour, per cwt. . . . \$7.25
When taken in lots of 500 pounds or more.

Spearman Equity Exchange

CARSON WOMBLE, Manager

Ford

THE UNIVERSAL CAR

Here's the Ford Coupe, deservedly a very popular motor car because of its all-round serviceability. Equipped with electric starting and lighting system and demountable rims with 3½-inch tires front and rear. Large plate glass windows. Generous sized doors—roomy seat, upholstery deep and substantial. Dust-proof and water-proof. Breezy and cheery in fine weather, cozy and dry in bad weather. All the established Ford merits of dependability, with small cost for operation and upkeep. For business and professional men who drive it is ideal and for touring and other pleasure driving it is the one car that delivers all expectations. The demand is large so orders should be left with us without delay.

R. W. MORTON, the Ford Man

Remember I am the authorized Ford dealer for this territory and you can buy the genuine Ford parts only at my garages. All repair work guaranteed first class.



NOW READY

to buy your **WHEAT**
and willing to pay the
top price for same.

COAL

Rockvale Nut, per ton . . \$12.00
Best Lump coal at the same price.

Our coal is stored in a good building, protected from the wind and rain, and no better coal can be found.

SALT

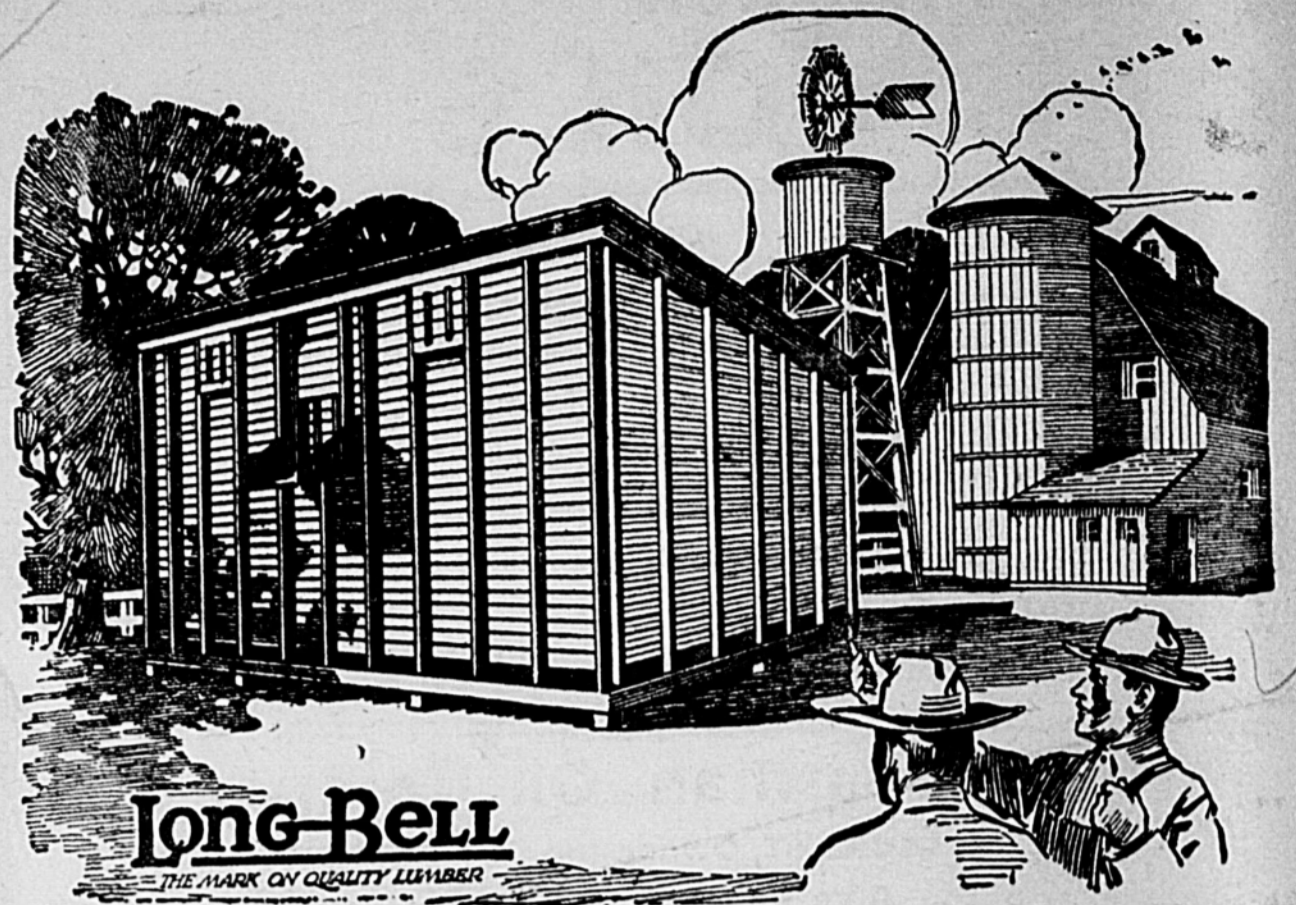
Block, Sack, Sulphurized and Medicated. See us for Salt.

We are here to serve you. Come to see us.

Cozart Grain Co.

J. E. SLAVIN, Mgr.

SPEARMAN



A Better Price for Wheat

"That grainary makes me money on every bushel of grain I put in it. It is built of wood because wood keeps grain in better condition than any other material. It's easy to build with lumber and my grainary was built in a hurry. The ship-lap was nailed on the inside of the studding, and I'll have the siding on next month."

Every good farm building is a money-saver or a money-maker. A grainary keeps your wheat in good condition until you are ready to sell it. That means a better price for your wheat.

Experience has taught us what kind of storage buildings are best for your needs. It has also taught us what kind of lumber is best for each particular purpose. This service is yours for the asking.

Panhandle Lumber Company

ROY McCASLIN, Manager

SPEARMAN

NOTICE TO CANDIDATES

All candidates have been advised of the amount assessed against each by the executive committee of the county in order to have name printed on official ballot. Some have not paid in this amount and you are advised that the primary committee will meet on Monday, July 12, for the purpose of making up official ballot for the printer, and under the law this committee has no authority to place the name of any candidate on this ballot who has not prior to said date paid the above mentioned assessment. Should your name be left off the ballot it will not be the fault of the committee.

A. F. BARKLEY, Chairman.

FOR RENT—Nicely furnished room in private home. See W. E. Callaway, at the White House Lumber Company.

NOTICE TO LAND OWNERS

To Jane L. Sumner, Thos. C. Spearman, C. C. Patten, F. H. Secord, Andrew J. Martin, James O'Donnell, W. H. Houghtlin, Vera Lackey, Montie Dodson and husband Lynch Dodson, A. T. Parton and W. N. Durham, J. Y. Grubbs, John M. Whitson, James T. Whitson, L. C. Koontz, Geo. N. Grimes, Maxon W. Pierce and Fred A. Smith, non-residents of the county of Hansford and state of Texas, you are hereby notified that the undersigned jury of Freeholders, acting under and by virtue of an order of the Commissioners' Court of Hansford county, Texas, will, on the 2nd day of August A. D. 1920, proceed to lay out a First Class Public Road sixty feet in width, being thirty feet on each side of the section line, commencing at the northwest corner of section No. 92, in Block No. 4T, Grantee T. & N. O. R. Co., in said Hansford county, and running thence due south on the section lines to the northeast corner of section No. 10, in Block No. 3, Grantee S. A. & M. G. R. Co., thence due west on the section lines to the northeast corner of section No. 198, in Block No. 45, Grantee H. & T. C. Ry Co., thence south one mile to the southeast corner of said section No. 198; thence west one mile to the southwest corner of said section No. 198; thence south to the northeast corner of section No. 5, Block 4, Grantee P. E. S.; thence west on section line between sections No. 4 and 5 of Block 4, P. E. S. to the northwest corner of said section 5; thence north to the northeast corner of section No. 28, Block No. 4T, Grantee T. & N. O. R. Co.; thence west to the northwest corner of said section No. 28; thence south to the Hansford and Hutchinson counties line; which said road may run along the section line of certain lands owned by you, and will at the same time assess the damages incidental to the opening of said road, when you may present to us a statement in writing of the damages, if any, claimed by you.

Witness our hands this 1st day of July A. D., 1920.

E. P. CLOSE,
J. C. HANCOCK,
D. W. HAZELWOOD,
FRANK DRESSEN,
A. F. BARKLEY.

THE STATE OF TEXAS

To the Sheriff or any Constable of Hansford County, Greeting: You are hereby commanded to summon J. W. Griggs by making publication of this citation in a newspaper published in Hansford county, if there be a newspaper published therein, but if not, then in the nearest county where a newspaper is published, once in each week for four consecutive weeks previous to the return day hereof, to be and appear before the Justice Court in and for Precinct No. one, Hansford county, Texas, at the next regular term thereof, to be begun and holden in the office of A. J. Wilbanks, Justice of the Peace at Spearman, Texas, on the 2nd day of August, A.

D., 1920, at 10 o'clock a. m., then and there to answer to the suit of B. V. Andrews, composing the firm of Andrews Hardware Company, a sole partnership, plaintiff, against J. W. Griggs, defendant, for the sum of forty-six and 15-100 Dollars (\$46.15), and all costs of suit, filed on the 8th day of July, A. D., 1920, and numbered on Docket No. —. The nature of plaintiff's demand being in substance as follows: Suit on open account and on failure to perform rental contract.

Plaintiff alleges that heretofore, on various dates beginning from about March 13th, 1920, and ending about May 29th, 1920, plaintiff sold and delivered to defendant at defendant's special instance and request various articles of goods and merchandise to an amount aggregating fifty-nine and 50-100 Dollars, with credits by defendant of thirty-three and 35-100 Dollars, leaving a balance now due and unpaid on said account of Twenty-six and 15-100 Dollars.

That on March 12th, 1920, plaintiff and defendant entered into a rental agreement by which plaintiff rented to defendant Lot No. 10, in Block No. 10, town of Spearman, Texas, to be used for the purpose of erecting a building by defendant for a cleaning and pressing establishment. Said defendant was to have the privilege of removing said building at the expiration of said contract, and said contract could be terminated after the expiration of four months by either party by giving thirty days written notice to the other party. The consideration for said rental was \$15.00 per month, originally, but was reduced later by agreement to \$10.00 per month. That there is a total due on said account of fifty-seven and 50-100 Dollars, with credits by defendant of Thirty-seven and 50-100 Dollars, leaving a balance on said account now due on said account of twenty dollars, defendant having failed to pay rent due June 12th and July 12th, has breached his contract to plaintiff's damage twenty dollars.

Wherefore, plaintiff prays that defendant be cited to appear and answer this suit, and that upon a hearing hereof he have judgment against said defendant for the sum of forty-six and 15-100 Dollars and all costs of suit, and for such other relief, general and special in law and in equity to which he may be entitled.

Herein fail not, but make due return of this writ to the August term 1920 of said court, showing how you have executed the same.

Given under my hand officially, this 8th day of July, A. D., 1920.
A. J. WILBANKS,
Justice of the Peace, Precinct No. 1, Hansford County, Texas.
Issued July 8th, 1920.

A. J. WILBANKS,
Justice of the Peace, Precinct No. 1, Hansford County, Texas.

List your farm and ranch lands with C. W. King, Spearman, Texas. He will sell it for you at the highest price.

30tf

J. P. Winder was in from the upper Palo Duro country Wednesday.

G. K. Wilmett of the north flats made a business trip to Amarillo Sunday, returning Monday.

Want to sell your farm and ranch lands? Then list it with C. W. King, Spearman, Texas. He gets the highest price.

A severe hail storm in the north part of Hutchinson county last week did considerable damage to the wheat crop, tho no serious losses are reported.

George T. Merriwether of Pasadena, California, was looking after business matters here last week. Mr. Merriwether owns a fine farm on the flats north of Spearman.

H. A. Koontz of Medlin, returned Saturday from a visit to his brother, L. C. Koontz, at Erick, Oklahoma. He reports threshing in full swing in the Erick country and that wheat is making from 15 to 25 bushels per acre. L. C. Koontz owns the home section of the Medlin old ranch.

The picnics at the Powers and Hart ranches on the Palo Duro last Sunday were highly enjoyed by all those who were so fortunate as to attend either of them. A number of "family" picnics were held also, but Spearman was a very quiet place. This town's first Fourth of July was indeed a safe and sane one.

Buddy McLeod met with a quite serious accident on last Monday afternoon. While driving home the milk cows his pony feel and Buddy was thrown violently to the ground. When found he was unconscious. He was brought home and given medical attention at once and at present is doing nicely. No bones were broken, but Buddy received a quite serious shaking up.

WHERE CHRIS MISSED IT

If War Savings Stamps, which can be gotten at all postoffices and banks now, had been on sale back in 1492 and Christopher Columbus had bought just \$100 worth the day he discovered America, his heirs today would have a fortune of more than \$2,000,000,000—more than the entire amount of the first Liberty Loan. That's what the little old compound interest earned by War Savings Stamps will do.

A FOOL AND HIS BOND SOON PART

—Modern Proverb.

A discontented scowl clouded Joe Peterson's brow as he crumpled up the afternoon paper. "Liberty Bonds are down again," he grumbled to Bill Coleman who sat beside him. "And they are the stuff the silver-tongued orators that sold 'em said were good as gold. I think I'll sell mine before they go lower."

"What right have you got to think," answered Coleman. "The way you talk is enough to show that from the shoulders up you are mostly solid ivory."

"I don't take much thinking for me to know that I paid \$100 for every one of my bonds and that now I can only get \$85 or \$90 for 'em. That don't look like they were as good as money, does it?"

"It's just what it looks like," continued Bill confidently. "The reason the price of Liberty Bonds is down is because a lot of people have been using them for money, like a \$5 bill that was so hot they are afraid it'll take fire if they wait a minute to spend it. The bonds are as good as gold, all right, but they never were meant to buy chips in a Saturday night poker game or to spend for a bright blue suit of clothes with a red necktie, a green shirt, and yellow shoes, like I saw young Klopsy wearin' last night. When the people who bought 'em sell 'em and spend 'em like they were something they found in an old vest, it's bound to knock the price down and keep it down till they quit spending that way."

"I don't see it," said Joe stubbornly. "They're Government obligations and the Government ought to keep them good at their face value."

"I told you you were as thick as a concrete engine bed," said Bill. "You loaned your money to the United States and the United States promised to pay you back in full with interest. The United States will pay you back 100 cents on the dollar but not until it is due. Remember though, you are getting a nice slice of interest on your bonds every six months. Suppose you come to me as a friend

and say, 'Bill, I got \$186.67 coming to me in the old pay envelope the 30th of next month, but I need a piece of coin now. Lend me \$100.'

"I know you're good for it and that you'll pay and you know you'll pay and so I lend you the hundred until the 30th of next month. But suppose I come around to you day after tomorrow and say, 'Joe, gimme the hundred bucks you owe me.' You tell me right away to go take a long jump in the lake but not to make no splash because it'll disturb the fish. You know you are going to pay me, but it ain't due."

"Then suppose I go around to Izzy Kaplan, the demon loan shark, and say, 'Izzy, Joe Peterson owes me a hundred bucks that he's goin' to pay the 30th of next month, but I want the coin now. I don't need it, but I want to wear out the pockets of my pants carryin' it around. You take the debt and gimme the money.' Izzy right away says, 'Me and my money ain't on earth for our health. I'll give you \$85 for what Joe owes you.' And I take it."

"I'm a plain sucker, ain't I? I lose \$15 I am sure to get just because I want to jingle something against my keys. And you'd think I was a fine kind of a friend actin' that way, wouldn't you? Well, this country's been a pretty good friend to you, Joe. You got no license actin' rough with this Government."

"I guess you're right," said Joe. "I never looked at it in that way. I don't need the money now, anyhow."

"Not now," answered Bill. "But in 1932 when the bonds fall due you or young Joe, who will be growing up then, may be mighty glad of a nice little nest egg tucked away. Moreover, if you not only hold what bonds you have but buy more, you let the other fellows be the suckers while you take a sure profit. Think that over and you'll realize you have something on your shoulders beside your suspenders. And in the meantime, take it from me, about the best thing you can do for yourself is to salt away a \$5 or \$10 bill in War Savings Stamps at the postoffice every pay day."

Reckless Reggie.

Nephew—That was a pretty good dinner we had; shall we have a drink now?

Uncle—Man, ye ken A'm teetotal.

Nephew—A cigar, then.

Uncle—A dinna smoke.

Nephew—Oh, do something reckless—remember my firm is paying all the expenses!

Uncle—Weel, A think A'll ha'e my boots cleaned here then!—The By-stander.



WHAT DO "Glasses" Mean to You?

Do Glasses mean to you just so much merchandise, to be bought with no more care than in buying a pound of coffee or a can of beans?

Perfectly fitted glasses are constantly performing marvelous work in the relief of eye-strain, defective vision and headaches. They represent a high degree of professional skill in prescribing and almost as much mechanical skill in their making. Beware of the "Bargain Counter" glasses. Don't take any such risk with your eyes. Call and let us fit them accurately and scientifically.

CLELL L. BASKETT
OPTOMETRIST
PERRYTON, TEXAS