

THE SPEARMAN REPORTER

Successor to the HANSFORD HEADLIGHT

TWELVTH YEAR

Spearman, Hansford County, Texas, July 2, 1920

Number 29

**Monday, July 5 is a
Legal Holiday**

This Bank Will be Closed

THE
First National Bank
of SPEARMAN

School Trustee Election July 10

On Saturday, July 10 will occur one of the most important elections ever held in Hansford county. It means more to Spearman and vicinity than who will be the next president of these United States. This last statement may seem a little strong to some but it is the literal truth. The five men who we elect to look after our school are indeed more vital to our town's welfare than who we send to the White House or to congress. Let every loyal citizen be in Spearman on Saturday, July 10, and cast their vote for who they think best fitted for school trustee. These men must be public spirited and absolutely able to look at things from an unselfish point of view. They have not only to run a school, or to hire capable teachers to do so, but they have the big job of organizing the first school Spearman ever has, the Spearman Independent school district.

Cedar posts; good size and good quality
WHITEHOUSE LUMBER CO.

A. F. BARKLEY'S Insurance Agency

Grain burns occasionally before or while being cut. Let us write you a policy on your grain while standing. Then, the same policy will cover in the shock or stack and in the grainary when threshed. Let us explain it to you.

Our business is conducted on principles of honesty, fair dealing and dependable service. If you are not already a customer, we invite you to become one, with the confidence that you will find the above to be true.

BARKLEY
SPEARMAN
Phone 37

Sherwin-Williams Paint

The Kind You Have
always Used

IN A CLASS BY ITSELF

Complete line of House Paint,
Floor Paint, Stains and Var-
nishes.

Tanlac Tanlac Tanlac

Hale Drug Company
SPEARMAN

The Store with the Up-Town Service

WHAT A VISITOR FOUND HERE

A. M. Hove, publicity man of the Santa Fe western lines and assistant editor of "Earth," was in Spearman last week and sent the following story about our town to the daily papers of Amarillo and elsewhere:

"The wheat harvest in this section will be under way in a few days. The outlook for a crop is promising though weather conditions have not been so favorable as last year and the yield of wheat is not likely to be so heavy as in 1919.

"The district tributary to Spearman produced around 600,000 bushels of wheat in 1919, 150,000 bushels of oats, 150,000 bushels of barley, and fully 200,000 bushels of kafir, milo, Indian corn and other forage grains, a total of 1,100,000 bushels.

"Considerable development is in progress both in the country and in town. Spearman is in reality only a few months old. The railroad reached here just before the first of the year and the town has been built since then. Nearly every business house in Hansford, six miles away, was moved to Spearman during the winter and spring months. Much building has also been done, until the town is taking on real city airs.

"A city well has been sunk and an abundance of good water developed. But a water system remains to be put in. The town is also looking forward to getting an electric light plant. The matter of incorporating is being discussed as there are at least 700 people here, permitting organizing under the law.

Every line of business is well represented. There are two banks, five elevators and another ready to be built, three lumber yards, four garages and a machine shop, four wholesale oil stations, a newspaper, picture show, churches, and a long line of stores and other business concerns."

Mr. Farmers: You market in Texhoma, what about your banking? Texhoma has now a new bank, a service institution, the Farmers State. The present owners also own the Oklahoma Farm Mortgage company, Oklahoma City, and twenty-five more of the oldest banks of the state. Your account is solicited with the assurance we are fully able to take care of your needs both in banking and farm loans. 291f

Cars are Scarce and Money Tight —Better Build a Granary

The crop of wheat and other small grain which was drilled in territory tributary to Spearman last fall and this spring, is now being placed in the stack. As rapidly as the machines can get to it, it will be threshed. When threshed, this grain must be disposed of in one of three ways: It must be placed in the local elevators and sold; it must be scooped into granaries and bins belonging to the man who owns the grain, or it must be piled on the ground.

Last year the country in what is known as the wheat belt, started the threshing season with the elevators empty, and with some fifteen thousand empty cars spotted on the different lines. Even with that initial advantage the shortage of cars to move the 1919 crop has been so serious that many farmers have not yet marketed their grain, and the elevators of the wheat belt are starting into the threshing season for the 1920 crop all ready 60 per cent full. In addition to that, there are no empty cars available. It is true that a recent order was issued directing that some 14,400 cars be allotted to the different roads in the wheat growing section of the country, but this order was supplemented with another, directing that an almost equal number be turned over from the coal mining regions west of the Mississippi river, to regions east of the Mississippi. According to press dispatches, the Santa Fe railroad is to turn these cars over at the rate of 400 per day for the next twenty days. We are being given cars with one hand while they are being taken away with the other. An adequate supply of freight cars simply does not exist in this country to properly handle the crops which we have produced. Spearman has five elevators, completed, the storage capacity of which are available. One

more is under construction. It is probably safe to say that the elevators at this point can store 75,000 bushels of grain. We know from our experience last year that that amount is simply a weak beginning, and that we will be obliged to handle about ten times that amount. Consequently, to place it in the local elevator and sell it is an impossibility.

The only way to handle the present grain crop that you have planted, harvested, and threshed, and be sure that it is not to grow less valuable each day it remains off the market, and much of it must remain off the market indefinitely, is to put it in a granary which will protect it from the weather, and then insure it against fire. In addition to the loss on the actual grain itself, which the man who has it piled on the ground will suffer; he is going to have trouble with the man who lends him money. The banks all over this section of the country are going to be taxed to the limit of their resources to carry their customers until they can market their grain crops. They are going to be obliged to borrow a lot of money in order to do it. They can borrow money on wheat that is in a dry bin and insured against loss or damage, but they can not borrow money on wheat that is piled on the ground.

The money you invest in a grain bin is not a straight loss against this year's crop. It is an investment which you will have use for as long as you raise wheat. It is a matter of necessity for yourself, your community, and society generally, that you play safe, and that you do not risk your year's earnings and your financial credit, by hoping blindly that you will be one of the lucky ones, and that you can get your crop to market before the elevators lock their doors.

A coat of paint would help. We sell only the best grade.

PANHANDLE LUMBER CO.
List your farm, ranch or other property you have for sale with McLain & McLain, Spearman, Texas.

The young folks of Spearman and vicinity were royally entertained on Friday night of last week at the home of Mr. and Mrs. H. P. Bailey by Messrs. James and Black.

L. T. Wilson came from his Polk street, Amarillo, home last week to see about the harvest on his fine farm in the Grand Plains community. To see about it is right. Mr. Wilson is not doing any of the heavy heaving.

The new bank at Texhoma, the Farmers State, under new management, has grown to about three times its size of a year ago. Your account will be appreciated and your business handled to suit you. 291f

Bill Christian came from Plemons Tuesday to look after business matters and talk a little oil lease dope. Billy is enthusiastic about the oil business and if the pay sand is ever found in Hutchinson county he will be in the swim.

Mr. and Mrs. John R. Collard and the children left Wednesday morning for Oglesby, Texas, where they will visit at the home of his parents, Mr. and Mrs. James Collard. They expect to be away several weeks and anticipate an enjoyable vacation.

Red McCrory, well known in this section as a little-better-than-average farm hand, dropped off the train from the east Monday and immediately began doing his bit toward harvesting the wheat crop. Harvest hands are coming from every direction, and as the straw is light the crop will be handled very rapidly this season.

LOST MULE—One red or sorrel mare mule, 10 years old, will weigh 1000 or 1100 pounds, slit in left ear, and had on black leather halter when last seen. Last seen at the Bud Smith ranch, about 15 miles northeast of Spearman, and was headed toward Spearman. I will pay a liberal reward for information leading to her recovery. Notify

G. E. SCHROEDER,
Gray, Oklahoma.

2812
Chas. Endicott shipped a car of hogs from Spearman last Saturday morning and Tuesday afternoon received the following from his commission firm in Wichita: "Market twenty higher. Top \$15.60. Your shipment, \$15.55. Net, \$2774." C. A. Stewart Commission Company, Wichita. These hogs brot Mr. Endicott \$39.60 per head, which is a pretty fair price, and Mr. Endicott is well pleased with the transaction.

TWO SPLENDID WELLS

A. A. Riggs, well driller for the Santa Fe, informs the Reporter that he will this week finish another splendid well for the company in Spearman, making two good ones at this place. They believe that these wells will furnish sufficient water for their needs at this place for some time to come. One of these wells is 450 and the other 436 feet deep. With proper equipment either of these wells will furnish 4,000 gallons of water per minute. Thirteen-inch casing was used to a depth of about 300 feet and the remainder is eight inch casing. It is not necessary to go this deep for water here. The town well is only about 335 feet, and furnishes a seemingly inexhaustible supply of water, but the railroad company puts their wells down to where there is no room for argument about the water supply. Driller Riggs says at 340 feet the water is found in abundance, and that chemical analysis shows it to be fine for boiler use. The Santa Fe people are proud of their wells at this place, and claim that if the time ever comes when they will want to put in large shops at this place the work will not be delayed on account of water. Plenty of water is a necessary adjunct to the building of a city and Spearman is fortunately located in this respect.

ANOTHER ELEVATOR

The work of excavating for the Equity Exchange elevator in Spearman is about completed and the contractors have begun the construction work. This elevator will be an exceptionally large one, and will be ready to handle this year's crop. When it is completed Spearman will have five elevators, which ought to hold us for a while.

ANOTHER HIGHWAY

Mayor F. P. Reid departed Monday for Austin in the interest of good roads. A telegram was received from him since arriving at the capital stating that he had succeeded in getting the north and south road, through Pampa, coming from Clarendon and going north to Spearman, designated as a state highway.—The Pampa Weekly News.

TO THE VOTERS OF HANSFORD COUNTY

It would be a pleasure to me to visit each of you and solicit your vote for Tax Assessor, but in these busy days, when time is worth so much, I deem it unnecessary to take up your time, and my time, in a personal campaign. I will take advantage of the press, and in this way will ask each of you, individually, to consider me when you vote in the primary election, assuring you your vote will be highly appreciated. I am,

Respectfully,
H. R. WALDROP.

**Monday, July 5, being
a Legal Holiday**

Bank Will Be Closed

Guaranty State Bank
SPEARMAN, TEX.

BOX CAR SITUATION

"The box car situation shows only slight improvement," said R. J. Parker, general manager of Western Lines of the Santa Fe railway, when asked about the car situation recently. Mr. Parker considers conditions grave and they can only be met by co-operation of all interests.

"The car shortage is nation-wide," continued Mr. Parker. "The Interstate Commerce Commission estimates that the minimum and immediate needs are 100,000 additional freight cars. The country has advanced and produces much more freight. The railroads on the other hand have not been able to add much equipment since before the war.

"The shortage of cars has been intensified by labor troubles at ports and terminals and the lack of shipping. Long strings of cars under load choke terminals or lie idle for weeks at the principal ports. United effort is now in progress to break the blockades under the supervision of the Interstate Commerce Commission and the car service commission of the American Railroad Association. Open top cars are moving east and box cars coming west, being distributed to where they are most needed.

"Another feature adds seriously to the shortage," said Mr. Parker. "Many thousand cars are out of service undergoing repairs. Every repair track is crowded with bad order cars. Only about ten per cent of the box cars on hand out here are fit for loading grain. The Santa Fe has only a small percentage of its box cars at home. Every day a car remains on the repair track adds to the car shortage."

"The wheat crop can not all be moved at harvest time and Mr. Parker considers the suggestions to provide farm storage or stacking grain practical. The Santa Fe has no box cars stored this year to move the crops when ready for market, because cars are not available.

New equipment has been ordered and Mr. Parker states that additional orders will be placed. In the meantime it is necessary to make the best possible use of cars at hand by loading heavy and loading and unloading cars promptly.

Ford touring car, 1919 model, for sale at the Monroe garage.

A Clothing Store for Spearman

A Isenberg came from Amarillo Tuesday to take a look at Spearman with a view of establishing a clothing store here. He was so well pleased with the business outlook that he lost no time in making the arrangements to come here immediately with a large stock. A building could not be found so Mr. Isenberg bought the stock and leased the building of Holly & Wilbanks, and will take charge of that business next week, adding to it a large line of clothing, boots, shoes, hats, gent's furnishings, etc. He will also carry a large line of ladies' suits, skirts, hose, waists, etc. Mr. Isenberg is a business man of long experience, knows the clothing business in all of its minute details, and his coming to Spearman means much for the town. Spearman needs more good stores. Messrs. Holly & Wilbanks will continue their cleaning and pressing business.

Best grade paints, oils, varnishes and shingle stain.
PANHANDLE LUMBER CO.

YOU

need something for
the
Kidneys,
Liver
and Blood.

**Nature's
Remedy**
25c, 50c, \$1

Take one tonight. You
will feel better in the
morning.

**HILLHOUSE
DRUG CO.**

The People With the
Goods
SPEARMAN, - TEXAS

Farm and Ranch

LOANS

Any size tracts and at prices and terms to suit.
Spearman town lots and acreage—desirable locations.

Oil Leases

I am in the market for Oil Leases.

Money

Unlimited amount of money to loan on Farms and Ranches in Hansford, Hutchinson and Ochiltree counties. Interest rate and settlement options very attractive.

J. R. COLLARD

Write for information
SPEARMAN, TEXAS



YOU are fancy free when you select a **Born Tailored** suit—size or price doesn't limit your choice.

Several hundred dependable **Born** woolens are offered in every conceivable weave and coloring—to be made to your measure, in the style you like best.

At a price of \$35 or \$40 we offer very unusual values.

P. M. Maize & Co.
.. & Co. ..
DRY GOODS
GROCERIES

Now at **SPEARMAN**

The Spearman Reporter

PUBLISHED EVERY FRIDAY

ORAN KELLY EDITOR-MANAGER

Entered as second-class matter November 21, 1919, at the postoffice at Spearman, Texas, under the act of March 3, 1879.

\$1.50 Per Year in Advance

ANNOUNCEMENTS

(Subject to the action of the Democratic primary election, to be held July 24, 1920.)

For County Judge

C. D. WORKS

A. E. TOWNSEND

For Sheriff and Tax Collector

HICKS L. WILBANKS

For County and District Clerk

KEESEEE C. NESBITT

For County Treasurer

MRS. J. H. BUCHANAN

For Tax Assessor

H. R. WALDROP

"They might call me an ultra-progressive Democrat if they choose to do so, but I will never be satisfied until conditions are such that the mind and heart of every child in this country can grow up and fill an honorable place in life. I am for anything to better our school facilities both in the rural districts and cities. It means safety for the republic and a square deal to the boys and girls."—I. W. Culp, candidate for Lieutenant Governor.

Messrs. D. R. Gaskins, Malcolm M. Travis, Richard E. Eckers and G. W. Wolf, college chums of Geo. Whitson, Jr., arrived Tuesday, and will try their luck as harvest hands on the Whitson farm during the next few weeks. Mr. Gaskins is from Vanderbilt University at Nashville, Tennessee, and the others are Washington University boys from St. Louis. They are enthusiastic over the prospects of soon connecting with a pitchfork. The Reporter hopes their enthusiasm does not wain until the season is finished.

Subscribe for the Reporter.

**WILL POWER
MAKES SAVING
MONEY EASY**

After all, saving is will power and determination to get ahead, expressed in the little things we do each day, according to Dinsmore W. Hume, Federal District Director of Savings.

Despite the high cost of things and with even the most moderate of small salaries, the man or woman who really wants to build up a sum of money, where it will be safely growing for him and ready when needed, can do so if he has the courage to try. It is chiefly a matter of honest trying—"toting" fair with ourselves in spending our nickels and dimes and dollars.

The first thing and the necessary thing for one to do is to say to himself: "I am going to save and I shall honestly try to live up to this promise to myself." That's half the battle. Anyone can save if he makes up his mind to do so.

No matter how small their pay may be, people should make it a rigid rule to take something out of each and every pay envelope or salary check received and salt it away. Five per cent is a good figure. Figure it out for yourself and see. Can you save five per cent of your salary every month? Certainly you can. That's only \$5 for every \$100. What is it in your case? Well, you know you can save that. Where can this saving out of every pay day's pay be safely put to the best advantage? One of the best and safest places is in War Savings Stamps. They yield compound interest at the rate of 4 per cent and they have the advantage of saying "stop! look! listen! do you have to spend it?" when one's spending fingers commence to itch. Of course the money and the good interest it is earning can be easily had if one needs it. It is only necessary to speak a word to Uncle Sam's postmaster and the money is ready in a jiffy. Regularly and religiously made, this five per cent saving salted away

every pay day will be a considerable sum at the end of six months or a year.

New coins help many people to save. They have the habit of putting away every new Lincoln penny, Buffalo nickel or new quarter or dime received in change. A surprisingly large number of War Savings Stamps can be bought in this way.

"Save a quarter when you spend a quarter" is helping other people to save. They live up to the rule of saving a quarter and putting it in a Thrift Stamp every time they spend a quarter for something that is not quite necessary. They "fine" themselves for extravagance.

Household records help the housewife to save. Best of these is the budget which shows just how and where every dollar goes. Budgets are easy and no trouble to keep. Persons wanting money-saving budget forms may get them free of charge by writing the Government Savings Division at Dallas, Texas.

It is better to be ahead of the game, if it is only at the rate of a dollar saved a month, than it is to be a penny behind the game and in the hole. War Savings Stamps fill the bill.

**WHAT ARE YOUR
DOLLARS WORTH?**

What are your dollars worth to you? Are you getting one hundred cents back on every dollar you spend? Unless you are very careful you are not. Most of the dollars being spent today are going for things that could have been bought for about sixty cents before the war and which can be bought for sixty cents again within the next three or four years.

Saved Dollar vs. Spent Dollar

Dollars that are spent now, if spent for things other than the essentials of life, like groceries, rent, etc., are not doing their full duty. They are only putting forth sixty cents of their strength when they should be hitting the line one hundred cents strong.

But dollars that are saved today will be worth almost two dollars within a few short years—three or four years, perhaps. Ask your banker if that is not so. Every dollar that can be saved should be saved today—safely put away. Within a short time it will buy almost twice or three times as much as it will now.

A Good Way to Save

One of the very best ways in which to save money and save it so that it will be absolutely safe is to put so much in War Savings Stamps every month. They can be gotten from the postoffice or bank and they yield their owners interest at the rate of four per cent, compounded every ninety days. They make the saved money stay saved, but they can always be cashed at the postoffice at purchase price plus accrued interest. Not only will dollars which have been invested in War Savings Stamps yield good interest but they will have a two-for-one buying power within a few years. Save now for real pleasures later.

Notice!! Notice!!

Parties needing headers or binders should anticipate their wants. Machinery is going to be hard to get and unless our orders are in early we may not be able to supply you. Place your order now with
ANDREWS HARDWARE CO.
Agents for McCormick and Deering Machinery. 2312.

Separator for Sale

One 22x36 Avery separator, in good condition, for sale worth the money. See Cap Bernstein, on Spearman-Guymon road, or address him Guymon, Oklahoma. 2614*

Use shingle stain. Save that roof.
PANHANDLE LUMBER CO.

**A "MODEL"
BUNGALOW**

YOU have seen somewhere about town what, in your mind is the model bungalow. You want one like it. Wouldn't that home look charming on a lot of your own in your favorite neighborhood? I am sure that in our books of numerous plans and illustrations you will find that very bungalow or one which you will like better. And say—it costs less than you would imagine, too.

You will find our prices just as low as Mr. Anybody's. Call at our offices for plans and costs.

BUILD A HOME

COAL! Better buy that storage coal now, while it can be gotten at a low price. **COAL!**

**White House Lumber
Company**

W. E. CALLAWAY, Manager.

SPEARMAN, .. Phone 16 .. TEXAS

Notice

No hunting or fishing will be allowed in the Diamond C pastures, on the headwaters of the Palo Duro. These lands are posted and trespassers will be prosecuted.

JAMES H. CATOR & SON.

No Fishing or Hunting

Fishing and hunting is positively forbidden on the lands controlled by the undersigned, located in Hansford and Ochiltree counties, and known as the O'Loughlin ranch, the Simmons ranch and the Lindsay ranch. Trespassers will be dealt with as the law directs.

HUDSON & SNYDER.

Notice to the Public

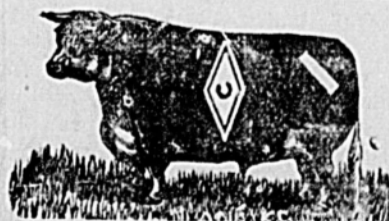
I will sell wood for \$5.00 per four-horse load. It will be necessary to either phone or come to headquarters before getting the wood, otherwise you will be treated as trespassers. Positively no hunting allowed.

W. T. COBLE,
Owner of the Turkey Track ranch.

DR. JARVIS

DENTIST

Perryton, - - Texas



Brands: Diamond C on left side slash \ on left hip.

Ear Marks: Crop on left & under half crop on right.

Range on head-waters of the Palo Duro.

J. H. Cator & Son, Hansford

There is more Catarrh in this section of the country than all other diseases put together, and for years it was supposed to be incurable. Doctors prescribed local remedies, and by constantly falling to cure with local treatment, pronounced it incurable. Catarrh is a local disease, greatly influenced by constitutional conditions and therefore requires constitutional treatment. Hall's Catarrh Medicine, manufactured by F. J. Cheney & Co., Toledo, Ohio, is a constitutional remedy, is taken internally and acts thru the Blood on the Mucous Surfaces of the System. One Hundred Dollars reward is offered for any case that Hall's Catarrh Medicine fails to cure. Send for circulars and testimonials.
F. J. CHENEY & CO., Toledo, Ohio.
Sold by Druggists, etc.
Hall's Family Pills for constipation.

Hobbs Auto Co.

Dealers In

**DODGE BROTHERS
MOTOR CARS**

Place Your Order With Us for Cars.

Remember we carry a complete line of "Willard" Storage Batteries.

Perryton, - - Texas

LARKIN & SON

Guaranteed

Automobile Repair Work

Acetylene Welding
Battery Repairing

We Sell the

"Chevrolet"

AUTO and TRUCK

Can fit you out with any kind of a Chevrolet you want. Also a complete line of Chevrolet parts, accessories and supplies.

Call at our new garage in West Spearman and let us explain the merits of this wonderful car.

WILLARD STORAGE BATTERY SERVICE

LUMBER

NOW IS THE TIME TO BUILD

We will save you money on building material of all kind.

We have recently made some good buys and are figuring a closer profit than when prices were lower than at present.

Everything for the Builder. Let us figure on your bill.

Spearman Lumber Co.

L. D. COATE, Manager

SPEARMAN

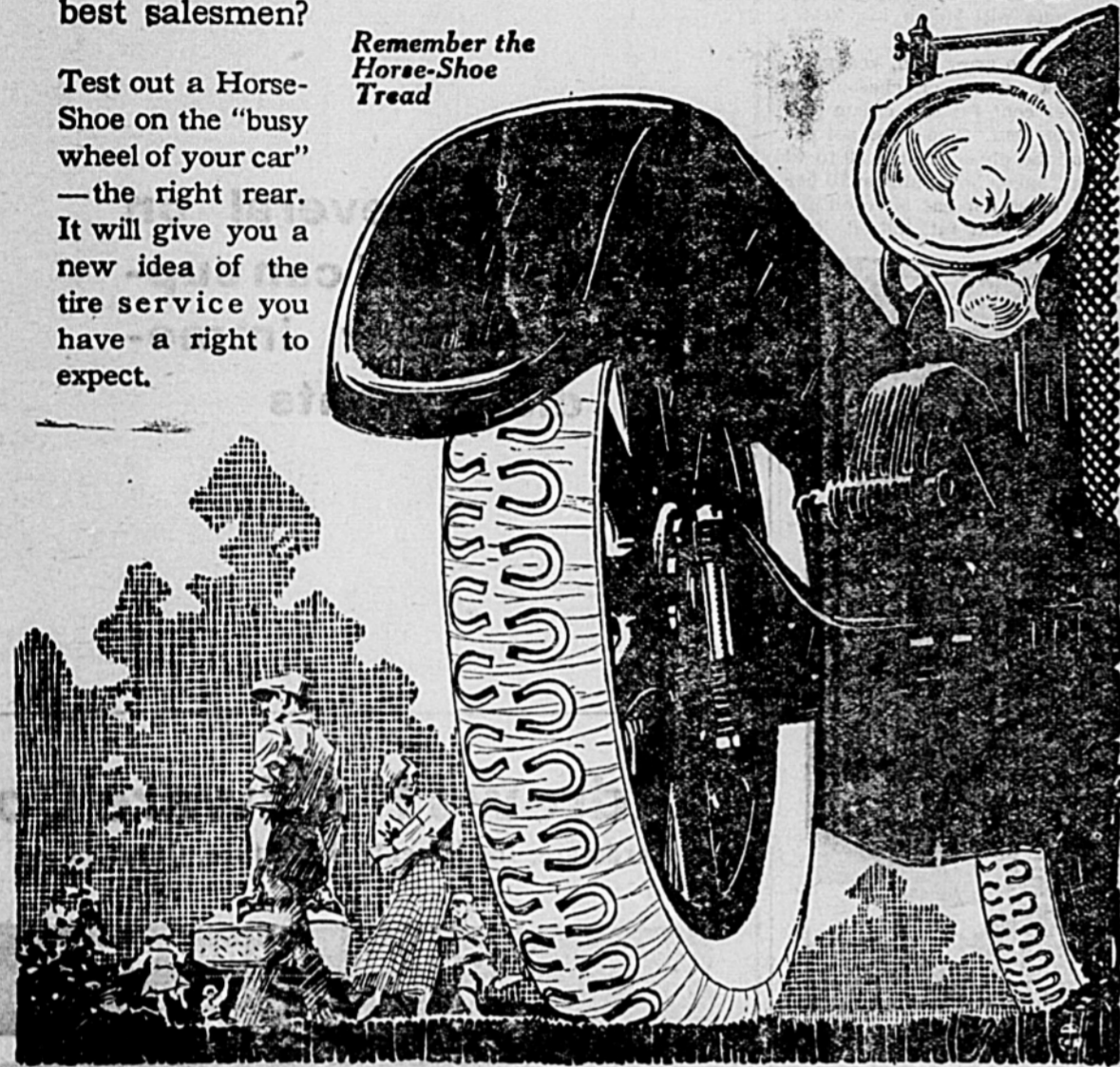
RACINE HORSE-SHOE TIRES

prove the extra cost put into their construction in their freedom from trouble during ordinary mileage, but it is AFTER that mileage when they show the real stuff that is in them.

Local users are getting 10,000 miles frequently—some of them 15,000. Is it any wonder that these motorists are our best salesmen?

Test out a Horse-Shoe on the "busy wheel of your car"—the right rear. It will give you a new idea of the tire service you have a right to expect.

Remember the Horse-Shoe Tread



John L. Hays, Dealer, Spearman

RACINE HORSE-SHOE TIRE ASS'N.
JOHN HOENY, PRESIDENT
F. B. HOENY, VICE-PRESIDENT
R. O. BELL, SECRETARY AND TREASURER
CORNER BRYAN AND MASTEN STREET DALLAS, TEXAS

Rann-dom Reels

By HOWARD L. RANN

THE COLD SORE

THE cold sore is a small, pink growth on the human lip which is more painful to a sensitive, shrinking nature than upsetting the consommé at a six o'clock dinner. It is one of nature's efforts to humble pride, and is sometimes so successful that the victim will not appear at the moving picture show for a week.

All medical authorities agree that the cause of the cold sore is harder to locate than the relation of the average sermon to the text. Some investigators declare it is caused by the same germ which brings on the hot-riveted hay fever, while others say that it is due to eating the self-rising pancake. This latter theory seems to be disproven by the fact that thousands of people eat layer after layer of pancakes every morning in the year without incurring a solitary blemish, while others who live an abstemious life on oatmeal crackers and last night's milk are oftentimes stricken with a cold sore which resembles a blushing young onion.

The cold sore chooses its own time for budding. It is very particular to put in an appearance the day before some voluptuous social event, and when worn with a décolleté gown and pink carnations makes a captivating color scheme. Every once in a while we read in the newspapers of some high society wedding having to be postponed on account of the groom's absence, but in nearly all of these cases it will be found that the bride-elect has come down with a luminous cold sore which cannot be hidden behind a tulle velle with any degree of success. It requires great fortitude and will power for an enraptured groom to stand up at the altar and run his neck through the yoke, under such circumstances, but it has been done.

There is no known cure for the cold sore except patience and hope. Some victims carry a camphor bottle and



Authorities agree that the cause of the cold sore is harder to locate than the relation of the average sermon to the text.

apply the contents in a stealthy manner, while others go forth defiantly into the world wearing a quarter section of black court-plaster. When a cold sore settles on the upper lip of man he can always circumvent it by growing a thick, branching mustache, but woman is denied this precious privilege and is obliged to suffer in silence.

The cold sore is probably given so that we will not become too proud of our looks. The man who can show pride with a bulbous cold sore on his lower lip has reached the point where any further inflation would result in a blow-out.

(Copyright.)

How Earth "Falls Away."

The surface of the earth in one geographical mile "falls away" or departs from a straight line 8.04 inches.

Bachelors, Stay Out of India

In India, if a man is not married at the latest by his twenty-fifth year, his reputation suffers.

L. S. CATOR, President BUSTER CATOR, Manager

Monroe Garage

L. S. CATOR & SON

We have bought the City Garage of Dug Gatlin and will continue the business at the old stand.

Good mechanics will be on the job at all times to look after your car troubles.

We carry in stock a large line of automobile accessories and supplies. Come to the City Garage when in need of Tires and Tubes.

New Home of

The "Monroe"

The Latest and best in a Moderate Priced Car

L. S. CATOR & SON
SPEARMAN

C. D. WORKS

Attorney-at-Law

Will practice in all courts. Special attention given to Land Practice and Probate matter. Abstracts prepared. Titles examined and perfected.

Real Estate. Farm and Ranch Loans.

Notary Public

HANSFORD

JOE'S CAFE

Regular Meals at Noon
Short Orders at all Hours.
Popular Prices.

DON'T LEAVE SPEARMAN HUNGRY

A Business Man Says:

"I have just had my residence painted by the Tower Painting Company and altho I could have gotten the work done much cheaper, am glad I paid them their price, as I have a first-class job from roof to foundation. I consider them trustworthy workmen and their prices are reasonable."
R. B. ARCHER.

Remember the School Trustees Election, July 10

SEE ME BEFORE YOU DIE

TOO LATE

One of the saddest sayings in all the world is: "too late."

After the "soft music" and "beautiful flowers" it is "too late" to get life insurance.

There is only one time—TODAY.

State Life Insurance Company
Indianapolis

MISS EVA ALEXANDER

Spearman

New Clothing Store

I have bought the Holly & Wilbanks stock of goods and next week will add to it a complete line of

CLOTHING, BOOTS, SHOES and HATS
GENTS' FURNISHINGS
Ladies' Ready-to-Wear

A. Isenberg

House Furniture

ATTRACTIVE DISPLAY
for SPRING and SUMMER

We want every lady in this community to see our attractive display of Summer Furniture. It consists of the standard articles required in every home and many of the newest creations of the furniture maker's art.

Perhaps you need one or more pieces of furniture to complete your household scheme. We have them, or will get them for you on short notice.

J. M. FORSHEE
HARDWARE and IMPLEMENTS

Shaving Close These Days

The News has mentioned in times past something of the desperateness of the news print paper situation, but the past week has brought the matter to our attention most forcibly. Saturday we received the grand hailing sign of distress from the Guymon Herald and relieved that pressing demand for a week or two with a small supply. Thursday we got an urgent appeal from the Spearman Reporter run by a former employee of ours, Oran Kelly, who says he has enough paper for eight issues and unless he gets relief from some source in the meantime will have to suspend publication after that and run a job plant. In remembrance of years of faithful assistance the News is going to help keep Kelly going as long as it can for he will come first of all in the sacrifice we make in letting go of paper to help others.

The News, following the plan laid down by the old Scriptural parable of the wise virgins who filled their lamps with oil to await the coming of the bridegroom, happens to have a fair stock of paper on hand, but as a matter of self preservation and protection of a big investment, cannot help other papers very much for it has three outside papers dependent upon it each week for their life.

The only hope for a newspaper these days is to follow the advice of Mr. Welter of the W. N. U. to order again as much stock as you need from every house in the country and if you get it all, thank the Lord that you have it for you will be playing in luck.—Liberal News.

We are truly grateful to our good friend Zimmerman for his kind offer of assistance in the matter of securing print paper, but we are more than pleased to announce that for the present we will not be compelled to borrow. We received one big shipment, have two others on the road, which we are expecting every day, and when they come we will be supplied for over a year. We have eight months' supply in our shop now. When Mr. Welter was here with the Boosters, he told us to buy print from every house in the land and as much as they would sell us. We did that very thing, and had we gotten all the paper we ordered, we would have some for sale. As it is, we are fairly well supplied and the Reporter will continue without further worry along this line. Since the above was written we have received another big shipment and are now sitting pretty. We are ready now to devote a little more thought to big league baseball and the presidential nominees.

Beauty Chats

By EDNA KENT FORBES
ABOUT REDUCTION

Did you ever eat baked celery? Stewed celery? Celery and oyster broth? Celery is not just a relish to go with a large dinner, it is a splendid food in itself—and it will not add weight. If the woman who wants to reduce quickly, comfortably, and without looking old after she is thin, will substitute celery for soup or fatty vegetables, she will lessen her avoirdupois.

If you want to grow thin, you must not eat milk, cream or cheese, for milk is 4 per cent fat and cream and cheese 18 per cent. You must not eat the meat of the pig—which is 30 to 40 per cent fat, bacon being almost 70 per cent. You must not eat olive oil for that is 100 per cent fat. Indeed, it is



Eat of Foods That Will Not Add Flesh Yet Will Nourish You.

the fattest form of nourishment. You must not eat wheat, buckwheat, rice, oats, potatoes, macaroni or corn, for these contain from 1 to 4 per cent of fat. Neither must you eat sugar or candy, figs, bananas, grapes, chestnuts or walnuts, for these contain either fats or carbo-hydrates, which are fattening.

This sounds like a long list, but in reality it is a very little one. All other meats you can have, and fish and oysters, green vegetables and salads, eggs, fruits. I have given the above list of the foods most necessary to avoid, since it is easy to memorize. The woman going in for reduction will know then what foods not to order for her table. Avoid drinking with meals, as this increases flesh.

The worst things to give up are sugar and butter and cream. But tea taken weak with lemon is more delicate than tea with cream and in place of sugar one can purchase saccharine. (Copyright.)

Off Agin, On Agin
STRICKLAND W. GILLILAN
(Copyright.)

The Car Nut.
That every village has one, is a thing you can't dispute. He is a sort of genius—a mechanical galoot. Back in the old bicycle days he rode a racing wheel—He'd tell how many centuries he'd done right off the reel! And when he wasn't riding one, he had a pedal of men over golf. He was as loony over "bikes" as some men over golf. But now he's in the seventh heaven; there's gear-grease on his mug. And he can tinker all he likes—the village auto bug!

The keenest joy his soul can know is taking one apart. To grind the carbon from a valve plumb satisfies his heart. To wear a set of jumpers and a greasy cap, why, say! Upon a sea of glory he just simply floats away! And when he has one out to test, its viscera all showing Without the hood, he listening close to hear how it is going: Mmmm-hmmmm! There isn't anything could ever, ever put Another drop of bliss into the being of that nut!

Folks pay him for the work, but shucks! It's such a waste of money. He'd do the same thing for his board, because to him it's funny. He'd use a monkey wrench at meals if anyone would let him: He'd tie his tie with a stiffener—sure! That stunt would never fret him. He hooks up wifey with the pliers, with skilful twist and tug. He eats, drinks, dreams machinery—this village auto-bug.

Company.
Fight, and the world fights with you. Neutral, and you neut alone.

Isn't It Odd?
The longer a paved road has been down, the better we know it has been kept up.

Newly Defined.
"What is your idea of being really intoxicated?"
"A condition in which the intoxicated cannot explain how he opened to."

HEADERS

Have several on hand and can supply your immediate wants

Andrews Hardware Co.
Hardware, Implements, Furniture, Queensware

INTERNATIONAL HARVESTER
FARM MACHINES
SALES SERVICE

Farm Machinery FOR SALE

- Fordson Tractor and four-disc Sanders plow.
- 2-disc Moline plow.
- Mold board gang plow.
- Tandem cut-away disc.
- Two-row sod Planter.
- Good wagon.
- Three-burner Oil Stove.

This machinery is in first-class condition and will be sold worth the money.

Ed Wilbanks
SPEARMAN

The White House Transfer
Wagon Yard . DRAY . Water Wagon

I have leased the Simson wagon yard, and will conduct the same in the future. Will deliver fresh water to your residence or place of business every day.

Always Ready

C. E. SESSIONS.

SID CLARK
BARBER

First class barbers and a clean, sanitary shop. Three chairs; you seldom have to wait.

East Side Main

SPEARMAN

STOP! LISTEN! LOOK! READ!

HARVEST GROCERIES

THE time is at hand when the groceries for the harvest season must be purchased, and every farmer is anxious to save every penny he can on this big bill. All we ask is a chance to figure your bill. We have the goods and if given a chance will make you prices that can not be duplicated. We have been selling groceries to the farmers of this section since nineteen-thirteen, and every harvest that has rolled around since that time has found us ready and willing to accommodate the farmers to the very limit of our means. We are better prepared than ever before to take care of your wants.

GIVE US A CHANCE

A SQUARE DEAL
Is All We Ask

Remember there is a vast difference in the grade of groceries. We handle the better grades and you will find that our prices are right. We make a small profit on every sale. You do not buy one article cheap and pay two prices for another at our store.

JNO. L. HAYS

MERCANTILE COMPANY

Where Your Trade is Appreciated

SPEARMAN

Special Prices on GAS and OILS

Gasoline . . . 32 cents per gallon
Kerosene . . . 21 cents per gallon

WE are wholesaling gas and oils but you, Mr. Consumer, are entitled to this price. We sell gas and oils in large or small quantities, just a little cheaper than competitors. Bring your car to our station to be filled and save money.

We are here to stay and intend to have our share of the business if square business dealings and fair prices will get it.

.. The Spearman Oil Company ..

H. B. HACKETT, Owner and General Manager

Also manager of the Alva Roller Mills, dealers in all kinds of Grain

Farm and Ranch LOANS

I make Farm and Ranch loans at a rate of interest to meet competition at all times.

I make a specialty of buying and taking up and extending Texas vendor's lien notes.

No loan too large or too small for us. We guarantee satisfaction.

WILL CROW

Canadian - - Texas

J. H. SHARER PRODUCE COMPANY

We Buy

Cream
Chickens
Eggs
Hides

and pay the highest cash price.

H. A. RAY
Manager
Phone 40 Spearman

Spearman Rooming House

Nice, comfortable
Rooms.

Clean Beds.

Rates reasonable.

West Side Main
Spearman

T. H. Taylor
Proprietor

Just Folks

By EDGAR A. GUEST

SINCE JESSIE DIED.

We understand a lot of things we never did before. And it seems that to each other Ma and I are meaning more. I don't know how to say it, but since little Jessie died. We have learned that to be happy we must travel side by side. You can share your joys and pleasures, but you never come to know. Just the real depth of loving till you've got a common woe.

We're past the hurt of fretting—we can talk about it now. She slipped away so gently and the fever left her brow. So softly that we didn't know we lost her, but instead. We thought her only sleeping as we watched beside her bed. Then the doctor, I remember, raised his head, as if to say. What his eyes had told already, and Ma fainted dead away.

Up to then I thought that money was the thing I ought to get. And I fancied, once I had it, I should never have a fret. But I saw that I had wasted precious hours in seeking wealth. I had made a tidy fortune, but I couldn't buy her health. And I saw this truth much clearer than I'd ever seen before: That the rich man and the poor man have to let death through the door.

We're not half so keen for money as one time we used to be. I am thinking more of mother and Ma's thinking more of me. Now we spend more time together, and I know we're meaning more to each other on life's journey, than we've ever meant before. It was hard to understand it! Oh, the dreary nights we've cried! But we've found the depth of loving, since the day that Jessie died. (Copyright by Edgar A. Guest.)

HEADACHE ARGES

Built at our yard in Spearman. Any size; attractive prices.

WHITEHOUSE LUMBER CO.

Remember the trustee election.

Last Night's Dreams

—What They Mean

QUARRELING.

DOCTOR CORIAT says "Everybody dreams and ridiculous it may appear." But with regard to the prophetic quality of dreams he says: "From a strictly scientific standpoint such an interpretation would be very superficial in that it did not take into full cognizance all the complex facts which may produce a dream." For instance it must be proved what the event "foretold" in the future never existed as a wish in either the conscious or unconscious thought of the dreamer. In my experience I have yet failed to find one genuinely prophetic dream.

Yet all the scientists agree that the study of dreams from a scientific standpoint is still in its infancy and one scientist goes so far as to suggest that as our waking thoughts frequently contain the germs of our future actions so our dream thoughts may have in them similar germs.

Dr. Charles Mackay, in his well-known book, "Extraordinary Delusions," scoffs at the belief in the prophetic quality of dreams but remarks: "It has subsisted through all the changes that normal or physical revolutions have operated in the world and the record of five thousand years bears testimony to the universal diffusion of the belief."

The scientists would explain a dream of quarrelling with a friend as the springing to life of some dormant idea regarding that friend lurking in the subconsciousness. Given the whole dream Freud would, doubtless, see it tinged with neurosis.

What say the mystics? They say that to dream of quarrelling with your sweetheart means that you are going to love each other better than ever. To quarrel with a friend means that your friendship is secure and that you will shortly enjoy yourself in his company, though some of the mystics are unkind enough to add that it also means loss of money. If you quarrel with a stranger it is an omen that you will soon make the acquaintance of an undesirable person. Any dream of quarrelling signifies the reconciliation of estrangements and constancy in friendship. So quarrel all you want to in dreamland and keep the peace in the waking world. (Copyright.)

Mother's Cook Book

Emerald earth and azure sky,
Busy bee and dragon fly,
Bobolinks singing in the grass,
Daisies nodding in a mass.

Seasonable Dishes.

A change for the always good strawberry shortcake will be found in the following:

Strawberry Dumpling.

Put one pint of flour into a bowl; add to it half a teaspoonful of salt and a teaspoonful of baking powder; rub in carefully a tablespoonful of butter and add sufficient milk to moisten. Knead lightly, and roll out into a sheet about a sixteenth of an inch in thickness. Cut with a large round cutter, put three large berries in the center of each round; fold over the dough, rolling it carefully so that the opening is closed, stand in a greased baking pan, brush the top with milk and bake in a quick oven for 15 minutes. Serve

M. C. HEAD

SEEDS—All re-cleaned.
FEEDS—Mixed and Ground.
SALT—Blocks or crushed blocks.

I will buy your cream.

ICE!! ICE!! ICE!!

West Side - SPEARMAN

with strawberry butter, made by beating to a cream two tablespoonfuls of butter and adding one cupful of powdered sugar gradually. Add one mashed berry, beat well; add another until four good-sized berries are added. Dish and stand aside to harden.

Fruit Cake Baked in Fireless Cooker. Use any preferred fruit cake; place in round pans or use the shallow cooker kettle. Bake for two hours between two soapstone radiators, heated 20 minutes over an ordinary gas flame. Open the cooker the first 15 minutes to allow the first heat and steam to escape. Fruit cake thus baked has something of the old brick-oven flavor. This method can be used for wedding cakes or for any dough mixture which requires long slow cooking.

Nellie Maxwell
(Copyright, 1920, Western Newspaper Union.)

To Clean Old Paintings.

Wash the surface of the painting with clean, warm water, using a soft cloth or fine sponge. Let the painting dry and then rub gently with a soft flannel cloth moistened with pure oil. The water softens the accumulated smoke, dust and dirt, and the oil removes them.



Revenge.

Sucking a stick of candy, the small brother of the village belle eyed the visitor. The belle aforesaid had seen fit to administer severe punishment, and the small boy was seeking vengeance.

"I know why Gwendoline wears her hair bunched down over her ears," he breathed between the sucks and grins maliciously.

"Do you?" asked the young man, to whom any news concerning his adored one was welcome. "Won't you tell me?"

"No," he replied; "I daren't tell anyone. But if my ears were as big as Gwendoline's are I'd do it, too."—Houston Post.

Join the Chamber of Commerce.

WALTER R. ALLEN JACK ALLEN

ALLEN & ALLEN
LAWYERS

Perryton, Texas

FRANK M. TATUM W. C. STRONG
Tatum & Strong
ATTORNEYS - AT - LAW

Dalhart, Texas

WALLACE G. HUGHES
Lawyer

Suites 3 and 4 First National Bank Building

Guymon, Oklahoma

R. T. CORRELL

Lawyer

Perryton, Texas

Bargains

Three 1918-19 Ford touring cars.
Prices right. Can give terms.
HOBB'S AUTO CO.,
Perryton, Texas.

Mr. Tractor Man

We are now ready to supply your needs. See us before buying your OIL, GAS or KEROSENE. Delivery made to the country in Truck Load lots.

Just Phone Us Your Order. Phone 41.

Goodwill Oil Co.

Spearman, Texas
H. G. Smith
Manager

YOUR
HARVEST

GROCERIES

The problem of buying the harvest groceries is again facing the farmers of this section. We are here this year to help you solve that problem. Do not buy until you see our stock and get our prices.

Meat, Lard, Canned Goods—anything you need.
Coal, Machine and Cylinder Oils.

Light's Best Flour, per cwt. . . . \$7.25
When taken in lots of 500 pounds or more.

Spearman Equity Exchange

CARSON WOMBLE, Manager

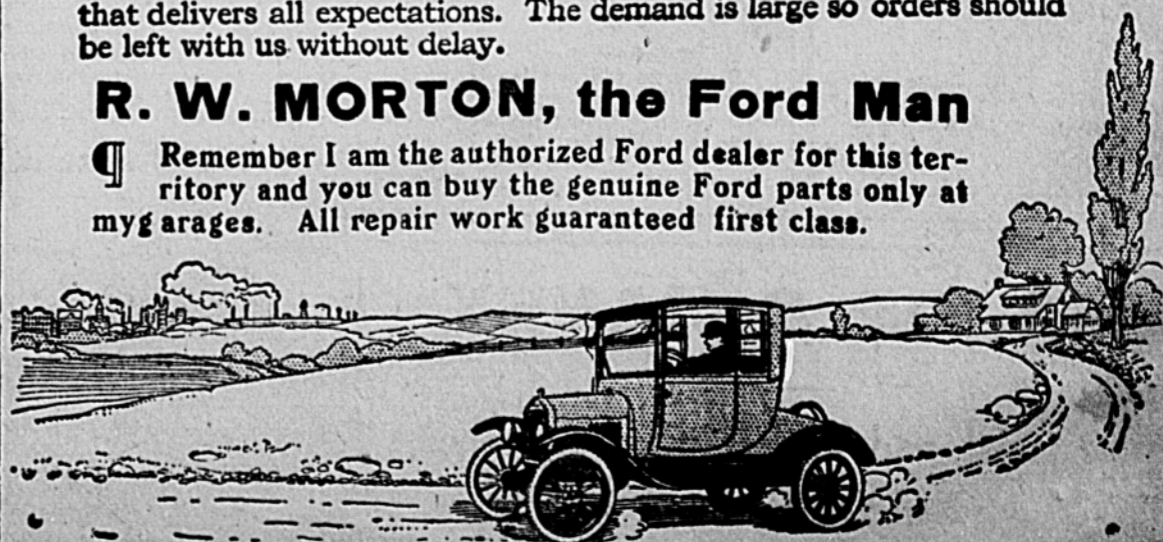
Ford

THE UNIVERSAL CAR

Here's the Ford Coupe, deservedly a very popular motor car because of its all-round serviceability. Equipped with electric starting and lighting system and demountable rims with 3½-inch tires front and rear. Large plate glass windows. Generous sized doors—roomy seat; upholstery deep and substantial. Dust-proof and water-proof. Breezy and cheery in fine weather, cozy and dry in bad weather. All the established Ford merits of dependability, with small cost for operation and upkeep. For business and professional men who drive it is ideal and for touring and other pleasure driving it is the one car that delivers all expectations. The demand is large so orders should be left with us without delay.

R. W. MORTON, the Ford Man

Remember I am the authorized Ford dealer for this territory and you can buy the genuine Ford parts only at my garages. All repair work guaranteed first class.



20 PER CENT DISCOUNT

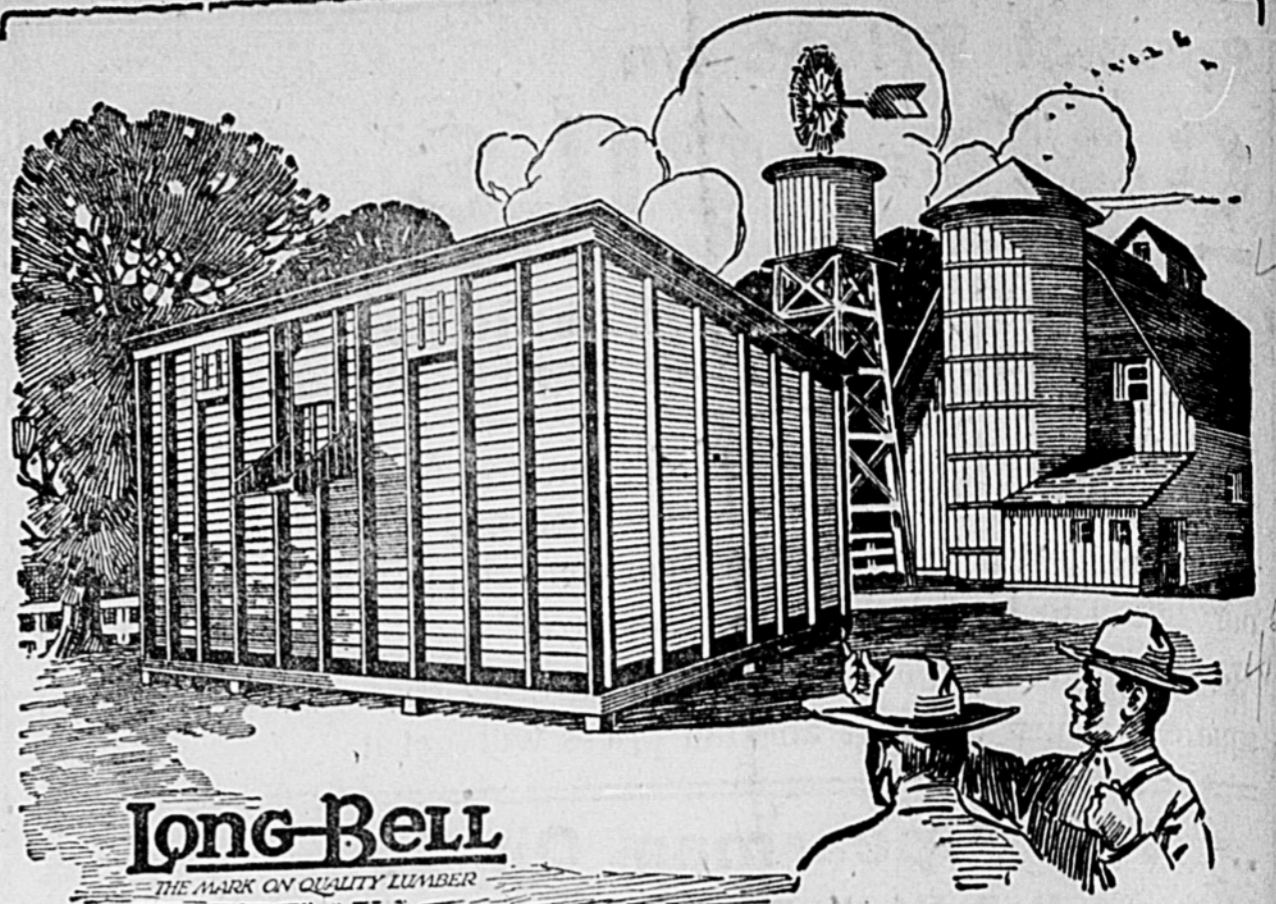
on
Men's and Young Men's Suits

Here is the thing you have been looking for—a chance to save one-fifth of the price of your suit. Wholesale prices are still as high as ever and will continue to be so for the coming season. But this has been a backward season and we must reduce our stock. Make an effort to attend this sale. It will pay you.

15-
30
4.50
18.00

All our Silk Shirts are included in this big sale at 20 per cent discount.

BRIGGS & BRIGGS
Texhoma



A Better Price for Wheat

"That grainary makes me money on every bushel of grain I put in it. It is built of wood because wood keeps grain in better condition than any other material. It's easy to build with lumber and my grainary was built in a hurry. The ship-lap was nailed on the inside of the studding, and I'll have the siding on next month."

Every good farm building is a money-saver or a money-maker. A grainary keeps your wheat in good condition until you are ready to sell it, That means a better price for your wheat.

Experience has taught us what kind of storage buildings are best for your needs. It has also taught us what kind of lumber is best for each particular purpose. This service is yours for the asking.

Panhandle Lumber Company

ROY McCASLIN, Manager

SPEARMAN

Coal!! Coal!!

Summer storage coal. A car of good lump and nut now on hand with more arriving each month.

PRICES
Lump in yard, \$14.00; off car, \$13.00
Nut in yard, 12.00; off car, 12.00
WHITE HOUSE LUMBER CO.

Subscribe for the Reporter.

NOTICE OF ELECTION

State of Texas,
County of Hansford, ss.

Whereas, on the 26th day of June, 1920, a petition was presented to me for an election in Common School District Number Thirteen of this county, on the question of authorizing a tax of and at the rate of not exceeding Fifty Cents on the \$100 valuation of taxable property in said district, for the purpose of supplementing the State School fund apportioned to said district, said petition bearing the requisite number of signatures of property tax paying voters of said district, and being in every respect in conformity with law:

Now, therefore, I, A. E. Townsend, in my capacity as county judge of Hansford county, Texas, do hereby order that an election be held on the 24th day of July, 1920, at the house of E. Terborg, in said common school district No. 13, of this county, as established by order of the Board of County School Trustees of this county of the date of the 10th day of May, 1920, which is recorded in Book one, pages 11, 12 and 13 of the minutes of said County Board of School Trustees, to determine whether a majority of the legal qualified property tax paying voters of that district desire to tax themselves for the purpose of supplementing the state school fund apportioned to said district, and to determine whether the commissioners' court of this county shall be authorized to levy, assess and collect annually a tax of and at the rate of not to exceed Fifty Cents on the \$100 valuation of taxable property of said district for said purpose.

L. F. Noe is hereby appointed presiding officer for said election and he shall select two judges and two clerks to assist him in holding the same, and he shall within five days after said election has been held, make due return thereof to the commissioners' court of this county, as is required by law for holding a general election.

The ballots for said election shall have written or printed thereon the following:

For School Tax.

Against School Tax.

All persons who are legally qualified voters of this State and of this county, and who are resident property taxpayers in said district, shall be entitled to vote at said election.

The sheriff of this county shall give

notice of said election by posting three notices at three public places in the said district for three weeks before the election.

Dated the 25th day of June, 1920.
A. E. TOWNSEND,
County Judge of Hansford Co., Texas.

NOTICE OF ELECTION

State of Texas,
County of Hansford, ss.

Whereas, on the 15th day of June, 1920, a petition was presented to me for an election in Common School District Number Twelve of this county, on the question of authorizing a tax of and at the rate of not exceeding Fifty Cents on the \$100 valuation of taxable property in said district, for the purpose of supplementing the State School Fund apportioned to said district, said petition bearing the requisite number of signatures of property tax paying voters of said district, and being in every respect in conformity with law:

Now, therefore, I, A. E. Townsend, in my capacity as county judge of Hansford county, Texas, do hereby order that an election be held on the 24th day of July, 1920, at the school house in said common school district No. 12 of this county as established by order of the Board of County School Trustees of this county, of date the 10th day of May, 1920, which is recorded in Book one, pages 11, 12 and 13 of the minutes of said County Board of School Trustees, to determine whether a majority of the legally qualified property tax paying voters of that district desire to tax themselves for the purpose of supplementing the State School fund apportioned to said district, and to determine whether the commissioners' court of this county shall be authorized to levy, assess and collect annually a tax of and at the rate of not to exceed Fifty Cents on the \$100 valuation of taxable property in said district for said purpose.

W. A. Smith is hereby appointed presiding officer for said election, and he shall select two judges and two clerks to assist him in holding the same, and he shall within five days after said election has been held, make due return thereof to the commissioners' court of this county as is required by law for holding a general election.

The ballots for said election shall have written or printed thereon the following:

For School Tax.

Against School Tax.

All persons who are legally qualified voters of this state and of this county, and who are resident property tax payers in said district shall be entitled to vote at said election.

The sheriff of this county shall give notice of said election by posting three notices at three public places in the said district for three weeks before the election.

Dated the 24th day of June, 1920.
A. E. TOWNSEND,
County Judge of Hansford Co., Texas.

Remember the trustee election.

PICNIC AT POWERS RANCH

A picnic will be held at the Powers old ranch on the Palo Duro, seven miles north of Spearman, on Sunday, July 4, to which every one is invited. Fill your dinner basket and go to the picnic. Arrangements will be made for all to have a good time. Celebrate the Fourth at the Powers ranch.

Big reduction in prices on lumber and building material. Let us figure your bill. Spearman Lumber Co.

Mrs. Fred Winters and children are spending the week with her parents and other relatives at Gardner, Kans.

A fine baby girl was born Tuesday morning, June 29, to Mr. and Mrs. Roy E. Holten, residing ten miles south of Spearman.

W. M. McLeod, father of Oscar McLeod and Mrs. M. C. Head, came from Granite, Oklahoma, Tuesday to visit with his children and other relatives in Spearman.

Hansford county is in the Second Collection District of Internal Revenue and the collector's office is now at Dallas. Remittances should be made to the Collector of Internal Revenue, Dallas, Texas.

Geo. H. Hays came from Hazelton, Kansas, Tuesday to see about that wheat crop he has on the Phil Weaver old farm near Hansford. He reports a pretty fair crop, and will begin harvesting at once.

The new bank at Texhoma, the Farmers State, are now representing the Oklahoma Farm Mortgage Co. over all this territory, having direct charge of seven counties in the Panhandle. If you need a farm loan quick, see us.

LOST MULE—A liberal reward will be paid for information leading to the recovery of one bay, 4-year-old mule, branded V on shoulder, weight 750. pounds. This mule has a real short head and exceptionally crooked hind legs. Notify Hicks L. Wilbanks, Spearman.

NEW BUICKS

Shipment of Buicks just received. Better come quick if you want one of these best of all automobiles. L. W. Booth, Guymon, Oklahoma.

CAFE FOR SALE—Joe's Cafe in Spearman is for sale. This eating house is doing a good business, is well located and is a paying proposition for someone. Will sell the building and fixtures and retain the lot. If you want a bargain in a restaurant business, see me at once.—J. B. EDENS.

THIS "SKINS" US

Scott Secord says he has a curiosity at his home up the Palo Duro in the way of a turkey gobbler. This old Tom recently drove a setting hen from the nest and is setting on the eggs himself. Scott put the old boy in a pen for a few days and returned the hen to her rightful duties, but when the old Tom was released he went immediately to the nest, drove the hen away and took her place. While women are taking the places of men in all walks of life, is it possible that with the feathered tribe the male is trying to usurp the place of the female?

DR. JARVIS

DENTIST

Perryton, - - Texas

Notice of Trustee Election

State of Texas,
County of Hansford.

Whereas, by an act of a special session of the legislature of the state of Texas, which convened on the 20th day of May, 1920, and adjourned on the 18th day of June, 1920, creating the Spearman Independent School District of Hansford county, Texas, consisting of the territory therein described:

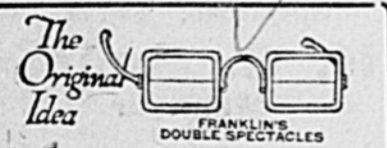
Now, therefore, I, A. E. Townsend, in my capacity as county judge of Hansford county, Texas, do hereby order that an election be held on the 10th day of July, 1920, at the office of the Spearman Reporter, in Spearman, in said Independent School District of this county, for the purpose of electing five trustees for said independent school district.

And I do hereby appoint Oran Kelly, J. H. Buchanan and Charles Endicott to hold said election, and they shall within five days after said election is held, make due returns thereof to the county judge of Hansford county, as required by law.

All persons who are legally qualified voters of this state and county, and who reside in said district, shall be entitled to vote at said election.

Dated the 25th day of June, 1920.
A. E. TOWNSEND,
County Judge of Hansford Co., Texas.

SCHOOL DAYS



WHAT DO "Glasses" Mean to You?

Do Glasses mean to you just so much merchandise, to be bought with no more care than in buying a pound of coffee or a can of beans?

Perfectly fitted glasses are constantly performing marvelous work in the relief of eye-strain, defective vision and headaches. They represent a high degree of professional skill in prescribing and almost as much mechanical skill in their making. Beware of the 'Bargain Counter' glasses. Don't take any such risk with your eyes. Call and let us fit them accurately and scientifically.

CLELL L. BASKETT
OPTOMETRIST
PETRYTON, TEXAS

MAJOR & RANEY

Commercial and Live Stock Auctioneers
Make dates at Reporter Office