

HANSFORD COUNTY LIBRARY  
120 MAIN  
SPEARMAN, TEXAS 79081

# Up with people is February 9th

See Page 5

# The Spearman Reporter

24 hr. prayer  
service  
659-2911

Volume 77, Number 13

The Spearman Reporter, Spearman, Texas 79081

Thursday, January 31, 1985

## Fritch here Friday night

Spearman basketball fans will get to see two of the finest teams in the state, in action, here Friday night when the Lynx play Ed Cunningham and the Fritch Eagles. In fact, there are four games scheduled Friday night and all of them should be barn burners. It has been many years since this much talent will be displayed on a basketball court in the state of Texas.

The Lynx managed to get Cunningham in foul trouble at Fritch in their first district game this year. However, like the Lynx, fans learned that Fritch is not a one man team. The Eagles went ahead to blast the Lynx by some 30 points to win the first district encounter.

At Panhandle Friday night, Ross "The Hoss" Donahue fouled out for the first time in his high school career. Coach Crofford was faced with a real problem at Panhandle, but "Bullet" Bob Cook, who replaced Donahue, made two quick baskets to give the Lynx a 13 point lead in the fourth quarter. Cook and Willis and

the entire bench of the Lynx went ahead to defeat Panhandle by 7 points. This Friday night will be a scouters delight as these two teams play in this fantastic AA match up. Many fans think that the Lynx could defeat the high-flying Eagles Friday night.

The JV Lynx and Lynxettes will play at the same time in separate gyms, beginning at 5:00 p.m. Friday. The Varsity Lynxettes game will begin at 6:30 p.m. To put frosting on the cake, there is a possibility Rhonda Gibson may play for the Lynxettes Friday night. In a talk with her father at 4:00 p.m. Monday, he informed the Spearman Reporter that the doctor might release Rhonda to play against Fritch Friday night. So, fans will get to see another potential All-State player in action if Rhonda can play Friday night.

Come early, get a seat and watch this biggest district game of the year for the Spearman teams. See ya at Lynx gym Friday night.

## Area Pioneer Celebrates Birthday



Miss Maud Stump

Maud is pictured above with the cake which was presented to her by the Waka Home Demonstration

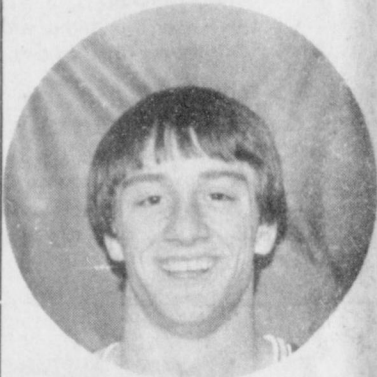
Club on her birthday, January 21, 1985.

True Pioneer Spirit lives in Waka, Texas. This mere "wisp" of a girl, as she was often called, may be small in stature, but she represents the pioneer spirit still alive in America today. Maud Stump is our "oldest" citizen. She was born on January 21, 1895 in or near Waynesville, Missouri,

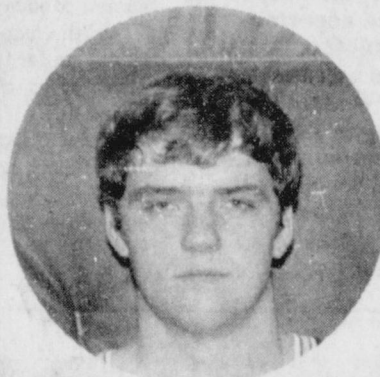
to David Bird and Elizabeth Stump. Maud was one of 6 children, her brother being Oliver Stump, and her sisters, Nora Dennison, Bertha Leicht, Viola Burger and Ruth Hoover. Maud's uncle John Stump and his wife

[See Area Pioneer, Page 2]

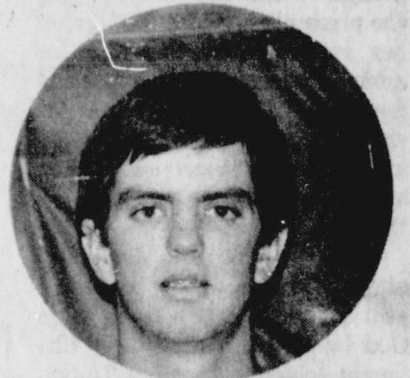
## 1984-85 LYNX SENIORS



Bob Cook



Steve Burke



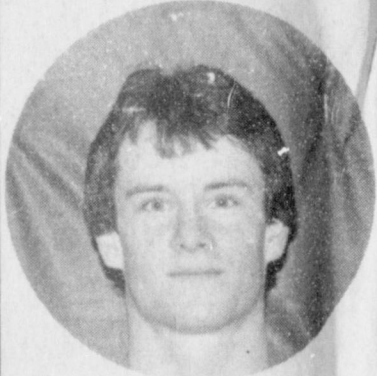
Mark Pearson



Mack McLain



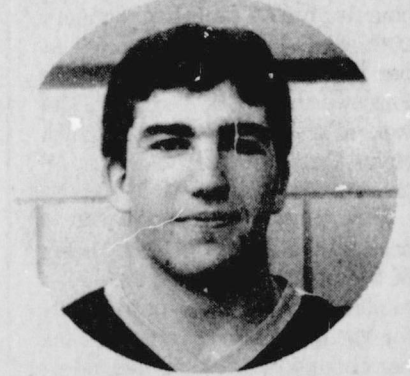
Jerry Garcia



Jeff Graves



COACH F. G. CROFFORD



Ross Donahue

## Three inch snow in Hansford County

Hansford County awoke with a soft 3-inch blanket of snow Sunday morning, but residents managed to get through Sunday with very little problems. The highways melted off and church attendance was not affected to much by the cold, wet weather.

Precipitation in the form of rain began to fall at 7:00 p.m. Saturday and by midnight the rain had turned to snow. The snow continued to fall until daylight Sunday morning with an accumulation of about 3 inches in Spearman. Total melt out on snow was .25 inches.

National weather service officials in Amarillo said the snow was part of a system which originated in Canada or in the Artic. Snow talleys in the area included 3 inch accumulation in Bushland and Dumas, 3 inches at Borger, 2-3 inches in Gruver and Morse and .5 inch at Perryton. Several bad accidents were caused over the week end, possibly as a result of the inclement weather. One man was killed in Perryton on Friday evening at about 5:00 p.m. at about 3 blocks west of K-Bobs intersection. Sunday morning two men were killed in Guymon in another wreck.

More snow is predicted this week for the Hansford County area. Use extreme caution when driving this time of the year, because of the icy conditions.

## Opal Beck Services

Mrs. Opal Beck, 90, a longtime resident of Spearman, died Sunday, January 27, 1985.

Services were held at 11 a.m. Tuesday in the First Baptist Church with the Rev. Russ Gibbs, pastor, officiating. Burial was in the Hansford Cemetery by Boxwell Brothers Funeral Directors.

Mrs. Beck was born in Pleasant Grove, Texas. She was married in 1929 to Mearl Beck at Sulphur

Spring; and they then moved to Spearman. Mearl died in 1980.

Opal was a baptist and a member of a Spearman Home Demonstration Club.

Survivors include two sisters-in-law, Velma Beck of Spearman and Faye Beck of Sulphur Springs, and numerous nieces and nephews.

## By Moore voters . . .

## PDRA annexation approved

Palo Duro River Authority officials expect a new and larger water district will be formed in March or early April, after Moore county and City of Stinnett voters approved annexation by the water authority in Saturday elections.

In a light election turnout in Moore county, unofficial returns list 518 votes for annexation by the PDRA to 112 votes against.

Annexation was the first proposition on the ballot. The second was to give the PDRA the authority to levy a property tax up to six cents per \$100 of value for operations and maintenance of future facilities.

The second proposition

passed by 465 votes for to 142 votes against.

In Stinnett, the unofficial returns listed 326 votes for annexation to 22 against while the taxation provision carried by 298 votes for to 32 against, reports Johnnie Lee of Spearman, PDRA manager.

"I am very pleased with the way the elections went in Moore county and Stinnett," he declares. "We found out Saturday who our water customers will be. Now we can go to work and design a system to take care of them."

The Palo Duro authority proposes to build a \$56 million reservoir and water treatment-supply system which will serve Dumas, Cactus and Sunray in Moore

county; the City of Stinnett, and its present member cities, Gruver and Spearman, in Hansford county.

The reservoir would be impounded by a dam, northwest of Spearman, at the junction of the Palo Duro and Horse creeks. The lake created would store some 69,000 acre feet of water.

Included in the supply system is a central water treatment plant, near the dam, and pipelines to transmit the water to customer cities.

The project would be financed by revenue bonds. An election to approve the issue will be called later this year by the PDRA.

Lee explains that organization of the new Palo Duro

[See P.D.R.A., Page 2]

**[Area Pioneer, from Page 1]**

Nannie had moved to the area and originally had named it Wawaka. Maud's family moved to Miami, Texas from Missouri by railroad train and then by covered wagon to the Waka area. The "home-place" is approximately 2 miles east and 2 miles south of Waka, where Bertha still resides.

Maud can remember visiting with a traveling band of Indians and helping with all the farm work. Just having one brother, the girls had to do their share of outdoor work along with indoor work, often rising before sunup and retiring eagerly before sunset.

After regular school, Maud went to Chicago, Illinois, where she studied at Bethany Theological Seminary. She became a Lay Minister of the Church of the Brethren and served churches in Missouri. She is Church Librarian of the Waka Church and in on everything else. Whenever there's work to be done, Maud is right there. She has led and attended many Bible Study groups, which includes the one she presently attends. This group has met together, weekly, for around 23 years. Maud intends to read the Bible again this year, as she has before. She feels you always pick up new information and insights each time you go through it.

While in Chicago, Maud also attended nursing school but after a year decided that she could serve God better as a minister. She taught school in both the Dunning and Waka Schools for about 9 years.

Maud is always making something. She can be found sewing, quilting, gardening or cooking. Her large vegetable garden flourishes with her farm girl touch and she often gives away her fresh and canned produce. Her lovely flowers, some taller than she, are a standard nature walk for neighborhood school children and their teachers.

Those who have been fortunate enough to know "Maud" have the deepest respect and admiration for her and can feel lucky to have known such a lively, "little" person.

Along with a "Card Shower" at church Sunday morning, January 20th, and a family celebration at her nephew and niece's home in Farnsworth on Monday night, she was also honored at the Waka Home Demonstration Club's meeting on January 21, 1985.

Bev Burger had decorated a cake representing different facets of Maud's life. They included a miniature of the State of Missouri for her birthplace; prairie girl for her childhood, Bible for her ministry, nurse's cap for nursing, an apple for her teaching, sewing basket for her stitchery, vegetable basket for gardening, flower basket for her lovely flowers, flour sack for hospitality to all, a bell for her bell collection, candy bar (because she loves chocolate), and finally a rainbow for her faith in God, love for children, and concern for her fellowman.

**[P.D.R.A., from Page 1]**

authority will be delayed until March or early April because of a 30-day period, required by Texas law, to allow for any election contests.

Palo Duro authority directors will canvass the votes from the two elections on Thursday and declare the returns official.

"After the period elapses, Moore commissioners can appoint four representatives to the board," the PDRA manager says. "Two of them will be appointed for 2-year terms and the other two for 4-year terms."

Stinnett will have one director on the new board, he adds.

The new board will consist of nine members, including the four which currently represent Hansford county.

"The present board is waiting on the formation of the new Palo Duro River Authority before calling any additional annexation elections," Lee reports.

Currently two other North Plains counties -- Sherman and Ochiltree -- are being considered as prospective members. However, the size of the water project and the capacity of the delivery system may limit membership to one additional county.

## J.V. Lynxettes win at Panhandle

The Junior Varsity Lynxettes took a two point lead against Panhandle there Friday night with a first quarter score of 6-4. The Lynxettes increased their lead in the second quarter with a score of 14 to 9. The Lynxettes extended their lead to 29 to 17 in the third quarter and won the game with a final score of Spearman 41 - Panhandle 35.

Individual scoring (F.G., F.T., F.T.P.): Donda Pool (5-6-3-16); Jennifer Yarbrough (2-3-5-7); Mary Lou Baker (3-1-5-7); Shari Vernon (1-2-2-4); Amy Runyan (1-1-3-3); Tammy Nollner (1-0-4-2); Cindy Womble (1-0-0-2); Lynnette Dial (0-0-1-0); and Crista Urban (0-0-0-0).

## 7th Grade Lynx lose at final buzzer

The 7th grade Lynx traveled to Stinnett Monday.

The 7th grade Lynx lost at Stinnett put one up for two points as the final buzzer went off. Final score was Spearman 20 - Stinnett 22.

Individual scoring (F.G., F.T., F.T.P.): Danny Lopez (3-1-5-7); Frank Baca (3-0-3-6); Chris Porter (2-0-2-4); Scott Wilkerson (1-1-3-3); Edward Mayfield (0-0-1-0); and Reid Campbell (0-0-2-0).

## J.V. Lynx lose to Panhandle

The Junior Varsity Lynx traveled to Panhandle Friday.

Spearman trailed by one point, 9 to 10, at the end of the first quarter. At half time the score was Spearman 14 - Panhandle 17. The Lynx hustled the third quarter and was behind two points, 20 to 22. Final score for the game was Spearman 33 - Panhandle 39.

Individual scoring (F.G., F.T., F.T.P.): Dean Greene (8-0-5-16); Dusty Hill (3-0-5-6); Michael Lopez (2-0-5-4); Monte Morris (0-3-5-3); Mike Pearson (1-0-2-2); Trevor Pool (0-1-1-1); Terry Phillips (0-1-0-1); Cris York (0-0-0-0); Mark Garnett (0-0-0-0); and Jeff Vanlandingham.

## 8th Grade Lynx win big at Stinnett

The 8th grade Lynx played Stinnett there Monday evening.

The Lynx won the game with a score of Spearman 43 - Stinnett 29.

Individual scoring (F.G., F.T., F.T.P.): Stan Brandt (6-3-3-15); Keith Slaten (3-4-2-10); Keith Clark (2-1-1-5); J Garnett (2-1-5-5); Shawn Cook (1-2-3-4); Mark Garcia (2-0-0-4); Larry Dupont (0-0-1-0); and Clint Patterson (0-0-1-0).

## Spearman Reporter

PUBLICATIONS (USPS 5096-6000)  
SPEARMAN, TEXAS 79081  
213 Main Box 458 659-3434  
Published Weekly at 213 Main Street  
Spearman, Texas 79081  
Owner-Publisher.....William M. Miller  
Editor ..... Faye Lynch  
Second Class postage paid at Spearman, Texas 79081

Any erroneous reflection upon the character of any person or firm appearing in these columns will be gladly and promptly corrected upon being brought to the attention of the management.

POSTMASTER: Send address changes to Spearman Reporter, Box 458, Spearman, Tx. 79081.

SUBSCRIPTION RATE: Hansford, adjoining counties, combination with the Hansford Plainsman \$26.28  
Other points, \$31.54

MEMBER  
TEXAS PRESS ASSOCIATION

New Zealand extended the vote to women in 1893, 27 years before women were allowed to vote in the United States.

At the 1908 Olympics, Forrest Smithson ran the 110 meter hurdles while carrying a bible in his left hand and won.

# STRATEGIES

A financial game plan for retirement.



## DEVELOPING A PLAN

There is an important way you can help your financial strategy now and at retirement time.

It's with an IRA. Individual Retirement Account from First National Bank in Perryton.

You can help now because it's the biggest tax break ever. Every wage earner can subtract up to \$2,000 yearly from your gross annual income with an IRA. Married couples with a non-working spouse may deduct up to \$2,250 or when both work up to \$4,000.

## PROTECT YOUR INVESTMENT

Of course, at the First National Bank in Perryton your IRA is protected up to \$100,000 by the FDIC. And, we charge no maintenance fee.

## REACH YOUR GOAL

Then an IRA helps you later because your money draws interest at the highest rates available until you start making withdrawals at retirement. It is remarkable how much momentum an IRA can gather as you head towards retirement. If you start before 30 it can accumulate more than a million dollars.

**First National Bank**  
Perryton, Texas  
201 S. Main  
P.O. Box 929  
Perryton, Texas 79070  
806 / 435-3676

If you have a business, ask us about Keogh and SEP.

UNITED METHODIST WOMEN'S

ANNUAL GROUND HOG DINNER

Saturday, February 2nd  
11:30-2:00 P.M.  
METHODIST CHURCH FELLOWSHIP HALL

Prices:

Adults \$5.00  
Children 6-12 \$3.00  
Children under 6 FREE

Tickets available in advance or at the door

## NOTICE

An error in the advertised amount of a manufacturer's rebate was made in this week's sale circular. Havoline Supreme Motor Oil offers a 1.25 mail-in rebate on 5 quarts of oil purchased. We apologize for any inconvenience this may have caused.

**TGI/Y**  
family centers



SPEARMAN CHAMBER OF COMMERCE CITIZEN OF THE YEAR

award

NOMINATION BLANK:

1. Name \_\_\_\_\_
2. Address \_\_\_\_\_
3. Individuals nominated for Citizen of the Year should be cited for activities OUTSIDE THOSE DUTIES CONNECTED with HIS OR HER EMPLOYMENT.
4. Friend of those in need.
5. Citizen of the Spearman School District.
6. Above all must be of outstanding character, dependability and reliability.
7. Achievements and nature of service: (LIST and EXPLAIN in detail the achievements, nature of service, nature of participation and leadership; bearing in mind the following basis for judging.)
  - A. Contribution to community welfare
  - B. Participation in community affairs
  - C. Evidence of lasting contribution
  - D. Exhibition of leadership ability
  - E. Evidence of personal and business progress

Nominations must be submitted by letter or form only- No petition or phone calls will be accepted. Use the form from the newspaper or stop by the Chamber of Commerce 211 Main, and pick one up.

Please return your entry to the Chamber of Commerce office by February 1, 1985. The decision of the judges will be final. The award will be presented at the Annual Banquet, Saturday, February 23, 1985.

SPEARMAN CHAMBER OF COMMERCE  
CITIZEN OVER THE YEARS AWARD

NOMINATION BLANK:

1. Name \_\_\_\_\_
2. Address \_\_\_\_\_
3. Individuals nominated for Citizen over the Years should be cited for activities OUTSIDE THOSE DUTIES CONNECTED with HIS OR HER EMPLOYMENT.
4. Friend of those in need.
5. Citizen of the Spearman School District.
6. Above all must be of outstanding character, dependability and reliability.
7. Achievements and nature of service: (LIST and EXPLAIN in detail the achievements, nature of service, nature of participation and leadership; bearing in mind the following basis for judging.)
  - A. Contribution to community welfare
  - B. Participation in community affairs
  - C. Evidence of lasting contribution
  - D. Exhibition of leadership ability
  - E. Evidence of personal and business progress

Nominations must be submitted by letter or form only- No petition or phone calls will be accepted. Use the form from the newspaper or stop by the Chamber of Commerce 211 Main, and pick one up.

Please return your entry to the Chamber of Commerce office by February 1, 1985. The decision of the judges will be final. The award will be presented at the Annual Banquet, Saturday, February 23, 1985.

**MARKETS**

WHEAT	\$3.17
MILO	4.25
CORN	2.95
BARLEY	2.04

When Marco Polo was captured and jailed during a war between Venice and Genoa in 1298, he wrote "The Travels of Marco Polo," dictating it to a fellow prisoner.

**Four area students  
make PSU  
Dean's Honor Roll**

Students from the Texas Panhandle named to the Academic Honor Rolls at Panhandle State University in Goodwell, Oklahoma include: Don Dillow, Marva Burnam, and B. Wayne Olsen of Gruver and Dawn Bridges of Spearman; all named to the Dean's Honor Roll.

There were 175 students named to the Dean's Honor Roll. The Dean's List each semester contains the names of those students who have carried 12 hours or more and have a 3.3 grade point average based on a 4.0 scale and no I's or F's.

**Shannon Jenkins  
scores 20 points**

The Varsity Lynxettes played Panhandle Friday night at Panhandle.

Scores by quarters was: (1st) Spearman 4 - Panhandle 25; (2nd) Spearman 25 - Panhandle 44; (3rd) Spearman 31 - Panhandle 60; and (Final) Spearman 48 - Panhandle 70.

Individual scoring (F.G., F.T., F., T.P.): Shannon Jenkins (8-4-4-20); Jill McLain (4-7-5-15); Carrie Guthrie (3-3-3-9); Michelle Savage (0-2-3-2); Cayla Eaton (0-2-4-2); Tiki Jackson (0-0-5-0); Julie Jones (0-0-1-0); and Ceria Vela (0-0-1-0).

**Lynxette  
7th Grade lose  
heartbreaker**

The 7th Grade Lynxettes played here Monday against Stinnett.

The Lynxettes led 8 to 2 at the end of the first quarter and 12 to 6 at half time. During the third quarter the Rattlers came back to tie the score 17-17. The Lynxettes were behind one point, and as the final buzzer went off, Stinnett put up a field goal to beat the Lynxettes 22 to 25.

Individual scoring included (F.G., F.T., F., T.P.): Tiffany Womble (4-1-2-9); Michelle Cook (2-0-1-4); Nora Garcia (2-0-1-4); Laci Laater (0-2-2-2); April Graham (2-0-1-2); Tina Villereal (0-1-0-1); Mitzie Pearson (0-0-2-0); Tricia Shedeck (0-0-0-0); Sunshine Smith (0-0-0-0); Nancy Ivey (0-0-0-0); Cacy McGill (0-0-0-0); Jamie Maize (0-0-0-0); Beckie Rosales (0-0-0-0); and Anna Pacheco (0-0-0-0).

**Interested in  
Learning Crochet**

If you are interested in learning to crochet a rag vest or jacket, please contact Claudine Clark at 9-3419, Susan Daniel at 9-5006 or the Spearman High School at 9-2584.

Enrollment is limited to 15 people and the fee is \$15.00. Classes will begin soon at the High School in the home economics department.

Dorothy Hale from Stratford will be teaching the classes.

**Hansford County  
receives  
mixed drink  
tax rebate**

AUSTIN, TX--State Comptroller Bob Bullock, Friday, sent checks totaling \$13.4 million to 220 counties and 427 cities as their share of the state's mixed drink tax collected at the new rate of 12 percent during the fourth quarter of 1984.

The Texas Legislature raised the tax from 10 percent to 12 percent, effective October 2, 1984.

Bullock said the state collected \$46.5 million in mixed drink taxes during the quarter, up 22 percent over fourth quarter in 1983.

Texas cities and counties are receiving a 15 percent rebate of the tax collected on mixed drinks sold within their boundaries under the law that legalized the sale of mixed drinks in the state. The state's general revenue fund received the balance--\$33 million--of the tax money collected. The Legislature reduced the city and county share of the tax to 12.5 percent, effective with first quarter collections in 1985, and the state will then get the entire gain from the tax increase.

The mixed drink tax is collected by the Alcoholic Beverage Commission and city-county rebates are sent out quarterly by the Comptroller's Office.

Bullock said the mixed drink tax brought a total of \$167 million to state and local coffers during 1984.

Spearman was the only city in Hansford County receiving tax remittances for Oct., Nov., and Dec., 1984. The amounts were as follows: Total County Tax Revenue was \$3,411.81, County's 15% remittance was \$511.77, Total City Tax Revenue was \$3,411.81 and the City's 15% remittance was \$511.77.

**8th Grade  
Lynxettes strike  
the Rattlers**

The 8th grade Lynxettes played Stinnett here Monday night.

The Lynxettes took an early lead with a first quarter score of 11 to 7, and continued to lead at half time with a score of 22 to 15. During the third quarter, Spearman scored 8 pts to Stinnett's 4 pts. to lead 30 to 19. The Lynxettes won the game with a final score of 32 to 24.

Individual scoring (F.G., F.T., F., T.P.): Ginger Pearson (3-3-3-9); Heather Murrell (2-4-1-8); Melissa Beck (1-2-0-4); Margie Evans (2-0-0-4); Jennifer Turner (1-0-2-2); Kristin Dunnihoo (1-0-1-2); Jan Crawford (0-1-2-1); Michelle Graham (0-1-2-1); Carly Shieldknight (0-0-1-0); Kathy Vanlandingham (0-0-1-0); Robbie McFarlin (0-0-2-0); Meli Floyd (0-0-4-0); Crista Sims (0-0-1-0); Lori Umphress (0-0-1-0); and Patty Younger (0-0-0-0).

**Up With People**

**"Energetic!"  
"Powerful!"  
"Alive!"**

**A World of Entertainment for the Entire Family**

Two unforgettable hours of non-stop entertainment performed by an international cast of 100 young people. Featuring dazzling choreography, spectacular costumes, and a contagious energy that will leave you feeling great. Find yourself on a musical journey around the world, back in time and into the future. From Bach to Rock, there's something for everyone. Up With People! A world of entertainment for the entire family.

ENJOY THE UP WITH PEOPLE SHOW  
SATURDAY, FEBRUARY 9 AT 7 P.M.  
PERRYTON HIGH SCHOOL AUDITORIUM

TICKETS ON SALE AT FIRST NATIONAL BANK IN PERRYTON  
RESERVED SEATS FOR \$5.50  
GENERAL ADMISSION SEATS FOR \$5.00  
DISCOUNTS TO STUDENTS AND SENIOR CITIZENS

Sponsored by **First National Bank**

## LYNX IN 2ND PLACE

The Varsity Lynx played Panhandle Friday night at Panhandle.

The Lynx trailed the first quarter by one point with a score of 17 to 18 and the second quarter also, with a score of 34-35. During the third quarter, the Lynx came alive to lead the Panthers eleven point with a score of 57 to 46. The final quarter, the Lynx continued to lead throughout the period and finished the game with a final score of Spearman 70 - Panhandle 63.

Individual points (F.G., F.T., F.P.): Ross Donahue (9-3-5-21); Mark Pearson (6-8-3-20); Steve Burke (7-0-4-14); Damon Goodheart (2-3-4-7); Thad Reid (1-2-4-4); Bob Cook (2-0-0-4); Tim Willis (0-0-2-0); Allen Mires (0-0-0-0); Jeff Graves (0-0-0-0); Mack McLain (0-0-0-0); and Jerry Garcia (0-0-0-0).

## Connie Shields receives degree

ABILENE, TEXAS -- Connie Gayle Shields, daughter of Mr. and Mrs. Jimmie Shields of Route 1, Box 15 in Stinnett, Texas, is a recent graduate of Abilene Christian University.

Connie received a bachelor's degree in Accounting.

Abilene Christian University is the fourth largest private university in the Southwest and the largest of those nationwide affiliated with the Churches of Christ. It enrolls more than 4,600 students annually in one of its four undergraduate colleges or the graduate school.

## A Centerpiece

Well, this has been a rather busy week at the center--however, the weather was so cold on Monday no one showed up to work on the quilt designing. By Tuesday evening, although it was still cold, we had a good crowd for games and goodies. Everyone seemed to have a good time.

By Thursday, everyone was ready to come for crafts and the covered dish luncheon at the noon hour. There must have been a dozen volunteer ladies and we accomplished a lot of work on projects for the Spring Bazaar. If you haven't been down for a while do bring your covered dish and join us for a day of work and fellowship, or just stop a while when downtown. We always have coffee, tea and possibly some cookies. We're never too busy to enjoy visitors.

Our Health Fair turned out real fine with some 134 coming for blood pressure tests, blood sugar tests, pulmonary function exams, hearing tests, glaucoma tests and visual dental exams.

This is just another case of the way our community turns out for a project like this and we here at the center feel so proud and thankful to each and everyone who in any way gave of their time and service for this project.

Also in closing let us remind you again that those who came for blood sugar tests and were too late, Mrs. McClellan will be here at the center on Feb. 4th, which is Monday--to do the tests again. This is very important so try to be here on that date starting at 10 am.

This "Health Fair" was a real success and we will be having more at a later date. Thank you so much for coming in.

Alma

## Deadline draws near

The deadline for nominations for the "Citizen of the Year" and "Citizen Over The Years" for Spearman is nearing. Nominations must be submitted by letter or form only. No petitions or phone calls will be accepted. Use the form from the Spearman newspaper of stop by the Chamber of Commerce offices, 211 S. Main and pick one up. Please return your entry to the Chamber of Commerce offices by February 1, 1985.

The decision of the judge's will be final. The awards are to be presented at the Annual Banquet on February 23, 1985.

# Up With People show premiers in Perryton

The energy, the excitement, and the entertainment of the new Up With People Show is coming to Perryton on Saturday, February 9 at 7:00 p.m. in the Perryton High School Auditorium.

The Perryton First National Bank is sponsoring this highly acclaimed two hour musical experience performed by a cast of 130 young men and women from 17 countries.

Tickets are \$5.50 for reserved seats and \$5.00 for general admission seats. There is a discount for senior citizens 62 and over and students 16 and under. The tickets are now on sale at the Perryton First National Bank.

Five international casts from 22 countries are participating in the Up With People program this year. These young men and women are performing in famous concert halls, village squares and school gymnasiums.

One of the most valuable and rewarding experiences during a cast member's year is living as a guest in homes of the local residents. This cultural exchange is a unique opportunity for host families. Local residents can enjoy the cultural diversity of Up With People cast members as ideas and experiences are shared.

Up With People's music is a dynamic combination of popular medleys and original composi-



UP WITH PEOPLE A World of Entertainment for the Entire Family. On Saturday, February 9

at 7:00 p.m. in the Perryton High School Auditorium the UP WITH PEOPLE entertainment extravaganza will be held. It is sponsored by the First National Bank of Perryton.

take the audience on a musical journey of the world. From Yugoslavian folk dancing to a Belgian beer garden then back to the states where the colorful costumes and talented dancers

tions, energetically performed by the talented cast and band. The choreography is non-stop and finds its way from the stage into the aisles.

Throughout the show, the cast

takes the audience on a musical journey of the world. From Yugoslavian folk dancing to a Belgian beer garden then back to the states where the colorful costumes and talented dancers

take the audience back to the 1800's to experience the "Cake Walk". The Up With People Show offers all the excitement of a global tour without the jet lag.

There's music for almost every

taste and age, from Renaissance and Modern Classic to Michael Jackson and Kool and the Gang.

In a medley from the 1950's, the stage is transformed into a huge high school gymnasium for the junior/senior prom when girls in their ball gowns and guys in their tuxes hop and swing to the music of Tony Bennett, the Cordettes, and Bill Haley and the Comets.

Some of the old Up With People favorites are there too, including the group's theme song, "Up With People!" and the poignant ballad of a little boy's curiosity about equality, "What Color is God's Skin?"

High-tech society meets its musical future when "Robbie Robot" and his back-up trio, the Transisters, make their escape from a factory assembly line to the Up With People stage.

Up With People has been seen live in concert by over 8 million people in 47 countries. They have performed at three Super Bowl halftimes, with the Boston Pops and 10 other symphonies, at the 1982 World's Fair and in world settings from Peking, China to Warsaw, Poland.

"Up With People smother the cares and frets of the day with a shower of light and color and music," wrote one reviewer. It's an evening of entertainment little short of sheer magic.

## Karen's Kozy Korner

The combination of unusually cold weather and traditional winter sales have made this an excellent time to buy wool clothes.

Often when you buy wool items on sale, you can look forward to months of storing them in a closet until winter sets in again. But this year looks like it will provide a longer wearing season.

Wool fashions are an investment in quality and long life. When buying wool clothes--even on sale--consider the cost per wearing. Simply divide the total cost by the number of times you estimate you will wear the garment.

Because wool clothing is durable, resists tearing and often doesn't show wear, it can generally be worn for several seasons. So the per wearing cost of buying "Investment" clothing such as a wool suit may be lower than the cost of less expensive clothing worn over a shorter period of time.

When shopping for wool clothes, look for the woolmark, which may be on the label or a hang tag. In addition, certain descriptive terms on the label may indicate wool quality origin or quality:

"Virgin" wool has never been used before. The term indicates use only and not quality. "Reprocessed" wool has never

been worn but is remanufactured from fabric scraps and is usually of lower quality than virgin wool.

"Reused" wool has been remanufactured from items used before and is usually of lower quality than reprocessed wool. It is often used in blends.

Wool is often blended with other fibers to produce fabrics which cost less than pure wool or to enhance care, appearance or wearability features for a particular type of clothing. But if a garment contains at least 50 percent wool fiber, it will behave much like pure wool.

While consumers are out looking for a bargain at the winter sales, they could be contributing to the Texas wool industry. Texas is the number one wool producing state and it provides almost 50 percent of the nation's fine grade wool.

The \$120 million dollar industry also employs about 10,000 Texans in fiber production, warehousing and processing.

EDUCATIONAL PROGRAMS CONDUCTED BY THE TEXAS AGRICULTURAL EXTENSION SERVICE SERVE PEOPLE OF ALL AGES REGARDLESS OF SOCIO-ECONOMIC LEVEL, RACE, COLOR, SEX, RELIGION, HANDICAP, OR NATIONAL ORIGIN.

## Trailways program for runaways

DALLAS, TX, January 24, 1985: More than 2,000 runaway teens chose to return to their homes via Trailways Operation: Home Free during the first seven months of the program. Since the program was initiated on June 7, 1984, an average of ten runaways have utilized Operation: Home Free each day. The program offers free rides to runaway or missing children.

During the month of June, 1984, 207 young Americans took advantage of the program. The figures for the remainder of 1984 were: July, 336; August, 306; September, 314; October, 321; November, 352; and December, 322, for a seven-month total of 2,158. Trailway officials believe the numbers will rise as more and more runaways become aware of the program.

The program works as follows. A youth, 18 years of age or younger, who has runaway from home and wishes to be reunited with his or her family must report to the police in the town in which he finds himself. The police will

call the child's home town and verify their status as a runaway or missing person. An officer of the court will then call Trailways to obtain schedule information to the specific destination. The officer will escort the child to the Trailways terminal or agency one half hour prior to the scheduled departure and will fill out a form which asks for the officer's name, department, the child's name, the point of origin of the trip and the destination. The Trailways ticket agent will then issue a free ticket to the child. The officer will then call ahead to the home town to alert the child's family and the local police of the scheduled arrival time. No arrest is made. No fine is applied. No further information is requested and the child is treated during the trip as if he were a full-fare-paying passenger.


The program is corporate policy at Trailways, and according to Trailways Chairman and Chief Executive Officer, James L. Kerrigan, the program will be offered to runaways "as long as there is a need."

## Sacred Heart Church bake sale

The ladies of the Sacred Heart Church is sponsoring a bake sale on Wednesday, February 13th, at Gordon's Drug and Thriftway Grocery from 8:00 am until sold

out.

There will be cakes, pies and bread--and just in time to buy for Valentine's day.

<b>TAYLOR</b> 501 West Kenneth Friendliest place in Spearman		<b>PETROLEUM</b> Spearman, Texas Fast, Friendly Courteous Service
Prices effective Wednesday thru Wednesday		

<b>Owens Sausage &amp; Biscuit</b> 79¢ PKG. of two	<b>Gonoco Antifreeze</b> Reg. \$3 <sup>59</sup> a gal. <b>\$3<sup>25</sup> a gal.</b>
---	--

<b>Steffen's Milk</b> Homo. or Chocolate pt. 39¢	<b>Chili and Cheese Dogs</b> 2 For \$1 <sup>00</sup>
--	---

<b>Men or Women's LCD Quartz Watches</b> \$3 <sup>99</sup> each	 <b>Delicious COKE, 7-UP, or DR. PEPPER</b> \$1 <sup>69</sup> 6 pack
---	--

<b>Mr. Treat Donuts</b> Fresh Daily 4/1 <sup>00</sup>	<b>Delicious NICKBURGER</b> on a bun with lettuce, tomato and pickle. \$1 <sup>39</sup>
--	--

Anything goes. Any item in this store can now be purchased on your Diamond Shamrock Credit Card up to \$25.00 per sale on items in addition to your fuel and oil purchases.

**When in a rush call us! Call-in-Food orders Call 659-3417 For all of your fast food needs. We have air for your convenience to serve you better!**

**We also now have fresh rolls and donuts. Delicious fresh sandwiches made to order. Ice provided at no charge for Churches, Civic Organizations, and Charity Benefits.**

## Coffee Memorial Blood Bank will be in Spearman Feb. 4

The Coffee Memorial Blood Bank will be in Spearman, Feb. 4th from 4 to 7 p.m. for its semi-annual Blood Drive. The Drive will be held in the Sacred Heart Catholic Church Parish Hall.

Each donor will receive a free coke mug.

Coffee Memorial Blood Center in Amarillo, a non-profit organization, is the only source of blood for 23 area hospitals encompassed in a 26-county, 100-mile radius.

In addition to providing the "Fluid of Life", the center provides specific blood components such as plasma, platelets and clotting agents which are needed by many patients to save or prolong their lives.

Because less than 5% of the eligible donor population are attempting to meet the needs of these 23 area hospitals, the Coffee center's primary goal is to encourage more physically healthy persons to become volunteer donors.

Blood donations may be given to partially pay processing charges incurred by any member of a blood club or anyone designated by the chairman of the blood donor club. Each donation or credit to the blood donor club is valued at \$10.

Donors may also request personal credit, which will be kept on record and may be used at the donor's discretion any time during the next 12 months, to be transferred to a specific donor club or import over 300,000 units of blood from Europe annually to meet the blood needs due to the annual shortage and the inability of Americans to keep abreast of our own blood usage. The state of Texas has not yet been the recipient of this "Euro" blood. Donations in Spearman Feb. 4 will help to keep this record intact.

used as a replacement credit.

This year the Blood Center faces a greater challenge because of the new school regulations concerning participation of high school students in extra-curricular activities. The new rules do not allow flexibility for continuation of high school blood drives during school hours, but having the local drive at the high school location will make it possible for some students to donate blood immediately after school hours.

High school blood drives ordinarily account for 10.8% of the blood donations or 2,000 to 2,500

## Nellie Sluder Services held

Mrs. Nellie Sluder, 80, died Sunday, January 27, 1985, at the Methodist Hospital in Lubbock.

Services were at 2 p.m., Tuesday, January 29, at the Union Church of Spearman with the Rev. Steve Rogers, pastor, officiating. Burial was in the Hansford Cemetery by Boxwell Brothers Funeral Directors of Spearman.

Mrs. Sluder was born in Oklahoma and was married to Ernest Sluder in 1929. She was a member of the Union Church of Spearman.

Survivors include her husband, Ernest; a daughter, Nell Banks of Hardesty, Okla.; a brother, Walter Fullbright of Houston; two sisters, Ruthie Bradford of Pampa and Vera Dillow of Walla Walla, Wash.; three grandchildren; and one great-grandchild.

Thomas Jefferson's identity as the writer of the Declaration of Independence was not generally known until it was published in a newspaper in 1784.

## Collins named Vice President & Cashier

In a recent Board Meeting held at the Farmers State Bank, Groesbeck, Texas, Chairman James L. Bradley and President David Mc Leland, announced the promotion of Danny Collins to Vice-President & Cashier. Collins has been serving as cashier of the bank for the past two years. His duties include all operations & data processing for the bank.

Prior to his move to Groesbeck, he had been employed in Amarillo banks for the past 16 years. Collins is a graduate of Spearman High School, attended Amarillo Jr. College, Amarillo, Texas, West

## History book may be republished

Volume I of Hansford County History, published under the auspices of the Hansford County Historical Commission in 1979-80, is being considered for reprint in a small number, if there is enough response. Cost per book will be \$60.00, and must be ordered and paid in advance by Feb. 15, 1985, no later. Date of delivery will be about 60 days following that deadline, probably in May.

Those reading this who may know of anyone interested in Hansford County History are urged to relay the message of the reprint of Volume I Hansford History.

Books may be ordered by sending checks/money orders to: Hansford County Historical Commission 30 S. Townsend, Spearman, TX 79081. (If there is not enough response, money will be returned to those ordering.)

## Our Heritage of Faith

God Initiates: It is important to remember that Baptism is a sacrament complete in itself. Lutherans believe that Baptism is a once for all time experience. Even if a person afterwards walks away from God, rejects him, but later returns, that individual is not baptized again. Like the biblical prodigal, the backslided person upon repentance reenters the covenant relationship which God not only initiated but which he also never cancelled.

The Lutheran Church accepts any baptism in the name of the Holy Trinity. A person would be re-baptized if that person was a member of sect or religion who does not baptize in the name of the Trinity (Father, Son, and Holy Spirit).

But Lutherans do not re-baptize a member of a church who was baptized in the name of the Trinity in order to seek membership in the Lutheran Church. I had a friend at seminary (a Lutheran) was baptized five different times in his life! He was about 26 at that time. He told me he was tired of being baptized so many times. I agree.

NEXT TOPIC: How Much Water?

Bill Schardin, Pastor  
Faith Lutheran Church  
Spearman, Texas

## On the go with Joy

It has been kind of hard to keep track of, but I think I have begun my fifth year with the newspaper. Sometimes we have a real good paper, and sometimes I might just as well have stayed home and cleaned house. But in my opinion, it has improved some lately with bolder print (that means blacker, not that I am getting bolder).

Anyhow, the other day, I met a new employee at Spearman and we both agreed how the paper was getting better and better with the older (us) generation, but then, we have to give a lot of credit to the younger generation who manage to get 3 issues a week set up and sent to the printers. Oh yeah, let's not forget to mention "The Boss".

Well, since I'm over here at Gruver and the rest of them are at Spearman, I don't usually know what is going on, and I keep away from the squabbles most of the time. But I do admit, there is room for improvement on my part.

I will mention once again, the schedule for us, so it will help you people get your stories to me before the deadline. I need the stories, pictures, etc. on a Monday or Tuesday morning by 9-10 am.

One of the "Younger" generation girls comes over to Gruver to pick it up. Now, sometimes we are able to accept a news item on Wednesday morning and most of the time we can accept news items on Tuesday afternoons if you don't wait until closing time to do them. Since I don't make special trips to Spearman just to take an item that

could have been sent in sooner, that means you will need to notify me on Mondays or Tuesday mornings.

Another explanation of pictures needs to be made and that is where I could use some big improvement. Most of you know when I have taken pictures of school events, etc., but you never see them in the paper. Sometimes, they don't get developed in time for that week's issue to go with the story, or most of the time, the pictures don't turn out good enough for the paper. Seems like I can take a real good color picture, but as you know, they have to be sent off for developing.

Anyhow, just keep on turning in the stories and calling me if you need any help in writing them. If you can't get ahold of me, leave your stories at City Hall for pick-up. This usually works pretty good except on days we have holidays and then ANYTHING GOES.

## HOSPITAL

Patients in Hansford Hospital are: Gwenfred Lackey, Mike Tucker, Mark Pearson, Grace Bennett, Lemmie Russell, Johnny Gaither and Pete Bayless.

Dismissed were: Jimmy Bonham, Anna Armarea, Salvador Luciano, Angie Pugh, Sandra Ortega, Maude Alexander.

### NOTICE OF INTENTION TO CONDUCT WEATHER MODIFICATION OPERATIONS IN THE STATE OF TEXAS

Date of the first of three weekly publications of this Notice: 1/17/85

1. Notice is hereby given that Irving P. Krick, Inc. of Texas, 748 Vella Road, Palm Springs, California 92264, has filed an application with the Texas Department of Water Resources for a State permit to conduct weather modification operations to change or attempt to change the natural development of clouds for the purpose, objective, period, and by the method summarized hereinbelow.
2. Irving P. Krick, Inc. of Texas has a valid Texas weather modification license that was issued in 1972 and renewed each subsequent year, most recently on October 9, 1984.
3. The purpose of the weather operation is to increase rainfall to affect and benefit rangeland and agricultural interests of the client. The period of the permit is for one year from about March 1, 1985, with options for continuation of the program during similar periods beginning March 1, of 1986, 1987 and 1988.
4. The proposed weather modification operation is to be conducted for and on behalf of the Hitch Agri-Business, Inc., P.O. Box 1308, Guyton, Oklahoma 73942, for the Hitch Ranch area in Texas County, Oklahoma.
5. The proposed weather modification operation is to be carried out in both an "operational area" and a "target area" to cause the intended effects to occur only in the target area. The operational area is that area described by the Texas counties of Dallam, Hansford, Moore, Ochiltree and Sherman, and the Oklahoma counties of Cimarron and Texas.
6. The area to be affected by the proposed weather modification operation is the target area. The target area is that area described as that portion of Texas County, Oklahoma that is within the rectangular area bounded on the east by a 12 mile north-south line which extends from the State line through Hitchland, Oklahoma to State Highway No. 3, then to a point 7 miles west along the highway, then 12 miles due south to the State line, then 7 miles east along the State line to the origin.
7. The methods and materials to be used in conducting this operation are summarized herein: a licensed cloud-seeding meteorologist/technologist will use standard meteorological analyses, forecast techniques, observations, and plume dispersion models to initiate the release of the seeding particles, silver iodide crystals, from a network of ground-based generators at a time calculated to affect the formation of cumulonimbus clouds.
8. The Texas Water Commission shall, if requested by at least 25 persons, hold a public hearing in the area where the operation is to be conducted prior to the issuance of a permit. No public hearing will be held on this application unless a request for a hearing is made within 30 days of the date of the first publication of this Notice. Requests for a hearing should be made in writing to the Office of General Counsel, Texas Department of Water Resources, P.O. Box 13087, Capitol Station, Austin, Texas 78711. Telephone (512) 475-7836.
9. Requests for further information about the proposed weather modification operation should be made to the Weather and Climate Section, Texas Department of Water Resources, same mailing address as above. Telephone (512) 475-6318.

## NUTRITION CONSULTATIONS

Registered, licensed dietitians, are the nutrition experts.

Check with us about behavior modification and motivation for permanent weight loss. Stucky point system is a proven way to lose weight and maintain the loss while practicing good nutrition. Call for an appointment.

715 N. Main  
Borger, Texas  
806-274-5515

Texas State University, Canyon, Texas, and the American Institute of Banking, Amarillo Chapter. He also holds a diploma in Religious Education from the Southwestern Theological Seminary, Amarillo extension division.

Danny is the son of Mr. & Mrs. E.L. Collins, of Spearman and married to the former Linda Ainsworth, daughter of Mr. and Mrs. Cy Ainsworth, Groesbeck, Texas, former residents of Spearman. Danny & Linda have two children, Curtis 14 and Cindy 11. They are now making their home at 1103 Joel, Groesbeck, Texas.

## Take care of your health

If you are pregnant, you can give your baby the healthiest possible start in life by taking care of your health and your baby's through planned prenatal care. You should start now, by calling your doctor or local health department for details about prenatal care. They can help you through your pregnancy to prevent problems which can last a lifetime for you or your child. The Texas Department of Health urges you to take care of yourself--for the two of you.

In 1920, for the first time in U.S. history, the farm population stood at below 50 percent of the total.

**Regional Chiropractic Center**  
Dr. Darrell D. Duke  
Complete Chiropractic and nutritional services.  
Open Mon.-Fr. 9:00-4:30  
221 Sanders 659-5585

**K. Dale Johnson, D.D.S., Inc.**  
3102 Garrett Drive  
Perryton, Texas 79070

**CHICKEN STRIPS BASKET 99¢**  
REG. \$1.50

**BORDEN'S ORANGE JUICE \$1.19**  
QT. CTN.

**BORDEN'S NOVELTY ASST. FLAVORS SQUEEZE-UPS 99¢**  
6 PACK

**KRAFT THICK 'N SPICY BARBEQUE SAUCE 8 \$1**  
TRIAL SIZE REG. 39¢ EACH

**EGG, OWEN'S SAUSAGE ON THICK TEXAS TOAST \$1.49**  
PERFECT FOR BREAKFAST OR ANYTIME! REG. \$1.09 EACH

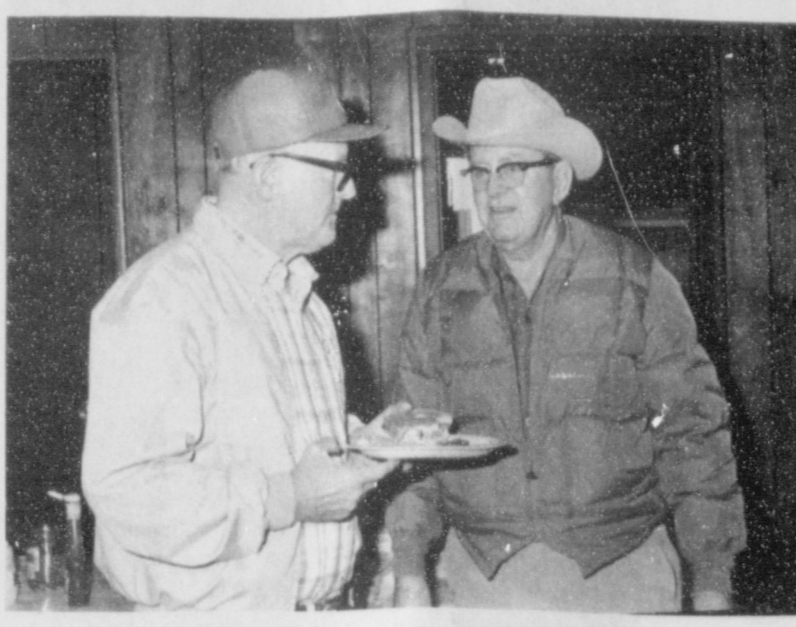
**NEW PEPSI COLA \$1.69**  
3 LITER PLASTIC BOTTLE NEW TO OUR STORE

**ALLSUP'S CONVENIENCE STORES**  
PRICES EFFECTIVE JAN. 31-FEB. 2, 1985  
MONEY ORDERS- GROCERIES ICE- MILK- CHIPS & DIPS- SOFT DRINKS- SNACKS- HOT COOKED FOODS SELF SERVE GAS WHILE SUPPLIES LAST  
**COLD WEATHER SPECIALS**



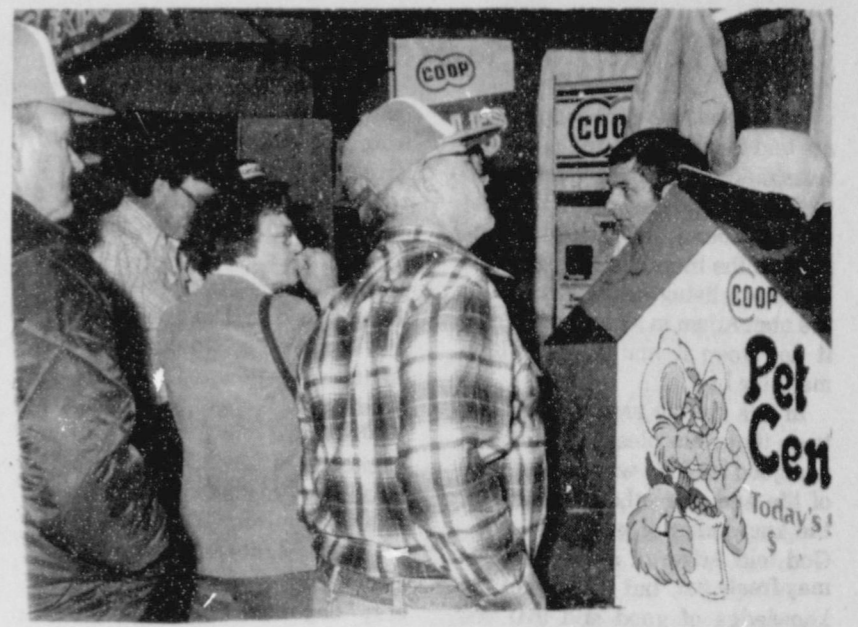
**EQUITY EXPO**

Looking over the Agrichemical Display was Larry Turner, Richard Sasser, Earl Novak and Mrs. Billie Smith [of the Perryton office].



**EQUITY EXPO**

Talking over the food situation [both farmwise and barbecue wise] were Don Allen and Jim Strawn.



**EQUITY EXPO**

"You don't say?" Harold Crooks seems to be asking Norman Uley, a Farm Land Livestock Specialist out of Perryton, as Bob Pearson and Mary Schumann look on.

**Mary Ann Kenney receives scholarship**



The Texas Tech Ex-Students Association annually provides scholarships to high school valedictorians and salutatorians who enroll as freshman students at Texas Tech. Mary Ann Kenney, valedictorian from Spearman High

School, receives her check from Dr. Bill Dean, executive director of the Ex-Students Association. Mary Ann is the daughter of Mr. and Mrs. Byron Kenney of Rt. 1, Spearman, Texas.

**Fugitive of the Week**



**TEXAS MOST WANTED Fugitive #3**  
COAHOMA, Texas -- The people around the West Texas town of Coahoma say Anthony Ginnetti was a super salesman.

Investigators from the FBI, the Texas Department of Public Safety, and the Swisher and Howard County Sheriff's Departments say the same thing. The only problem, they say, is that all Ginnetti sold was a "Bill of Goods".

Ginnetti, who also goes by the names of Terry Lee Ginnetti, Terry Lee Prero, Anthony Culpert, and Tony Argus, is wanted by the state and federal law enforcement officials on charges of defrauding the Coahoma State Bank out of \$280,000 and a private individual out of some \$150,000.

The dapper-looking 37-year-old fugitive began negotiating with the Coahoma State Bank in October, 1982, to secure an automobile "floor plan" for his Car City Auto Sales and Service business. The original agreement, say investigators, was for \$38,000 worth of automobile purchases. A total of \$20,000 was to be secured by a Certificate of Deposit held by the bank and the rest of the loan was to be secured by automobile titles held by the bank as collateral.

But detectives say that between October, 1982, and April, 1984, Ginnetti was able to get the "floor plan" raised to \$80,000, with \$30,000 in CD's and the remainder in automobile titles.

During the same period of time, say investigators, Ginnetti was able to defraud the bank in the following manner:

- replacing all good automobile titles held by the bank with illegally acquired titles, thereby effectively reducing a portion of the collateral held by the bank.
- passing insufficient fund checks, which were honored by the bank.
- having the bank release liens on automobiles by telling them he had the vehicles sold and would return with the money. He would never deposit the money in the bank.
- by writing checks on collected funds which subsequently had

"Stop Payment" placed on them.  
--by purchasing a large number of automobiles or customer drafts which were honored by the bank, despite the fact there was not sufficient funds on deposit at the bank.

--forging signatures on vehicles held by the bank.  
--forging his partner's signature to checks and drafts which were honored by the bank.

Investigators caution that while Ginnetti might have left the state, there is a possibility that he might still be somewhere in Texas operating in the same manner.

Ginnetti is described as white male, 5-9, 175 pounds, with blue eyes and blonde hair.

This week Texas Most Wanted is offering a \$1,000 reward for information leading to Ginnetti's capture. To be eligible for the reward citizens are asked to call Texas Crime Stoppers Advisory Council toll-free at 1-800-252-8477 or their local Crime Stoppers program. Callers do not have to reveal their identities.

Texas Most Wanted is a weekly cooperative effort between Crime Stoppers and the Department of Public Safety and is designed to enlist the support of citizens in capturing dangerous fugitives.

As of January 16, 1985, the Department of Public Safety reported that Ginnetti is wanted on the following warrants: Swisher County #1796, dated 4-18-84; Howard County #3948 & #3949, dated 4-27-84; and FBI warrant dated 5-14-84, Unlawful Flight to Avoid Prosecution.

**Save Time & Money**

BY ANN FRANCIS DOLAN

**CHARITY BEGINS WITH . . .** Did you remember that postponing charity contributions until January can save you money? Remember it for next year if you forgot -- the maximum deduction for 1985 is 50 per cent of contributions. Example: if you waited until after New Years to give, say, \$500 to charity, your deduction will be \$250 instead of last year's \$75.

**PAD LIKE MAD** -- Give winter weary clothes a new look with shoulder pads. Square off those coats, jackets, even sweaters to be fashionable. Buy several sizes and shapes in the notions department of a large store; sew Velcro fasteners to the pads and your garments and snap them together. One or two sets handled thus will take care of your wardrobe. Some "padders" sew the fasteners to the undersides and slip pads over straps.

**BOARD ROOM** -- If you angle your bed, the space in the corner and around it can be a decorating problem. Keep it simple -- frame a large print and hang on one wall; leave the other bare. Create a garden atmosphere by placing a tree behind the headboard. Use small bedside lamps that can be angled to highlight the greenery. Area behind bed can also be used for storage, and hidden by an ornate screen.

**FLUFF STUFF** -- Wash angora and mohair sweaters in cold water wash and wring dry. Place them in the freezer for a day or so. Thawed, they'll be softer and fluffier than ever. For extra softness, add a capful of creme hair rinse to the sweaters' rinse water.

**FAT FREE** -- "A Compendium of Fats" is a free, government-prepared booklet to help clear up confusion about fats in the diet. Learn which to eat and what to avoid by sending for the guide, \$16M, to: Consumer Information Center, Pueblo, CO 81009.

© 1985 Suburban Features



**EQUITY EXPO**

"Your horse likes what?" says Bobby Hicks at the Oro Tack display.

**Sky Soldier Assoc. reactivating**

Former soliders of the 173rd Airborne Brigade are reactivating the Sky Soldier Association.

The organization is asking all 173rd troopers -- officers and enlisted men alike -- to get in contact with the association which plans several projects, including a book on the brigade's activities to be written by Eck Spahich of Borger, Texas, who served as a combat correspondent with 173rd. Personal wartime accounts of

brigade personnel will also be included in the planned book. 173rd Airborne was the first Army combat unit to be deployed to Vietnam in May 1965. The brigade rendered six years of distinguished service in Vietnam.

All correspondence should be addressed to Roy Tinker, General Secretary, Sky Soldier Association, 1003 Thrans, Borger, Texas 79007, phone 806-273-3986.

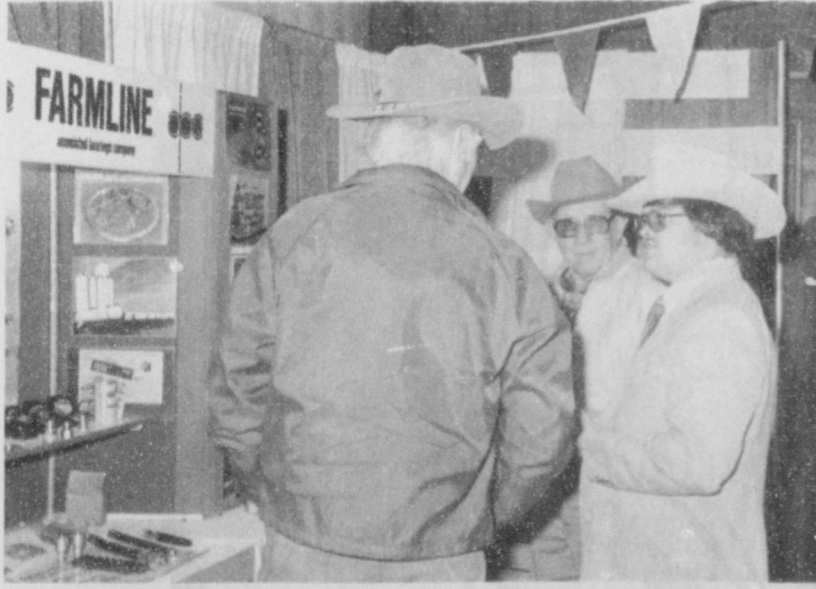
**LEGAL NOTICE**

Texas-New Mexico Power Company has filed a Notice of Intent for a Certificate of Convenience and Necessity for a Proposed Generating Station/Unit (Coal-Fired). The Certificate will be requested in either Lubbock or Robertson County, Texas. The estimated cost of the project is between \$1.6 billion and \$2.2 billion, dependent on location, fuel type, and unit size.

Persons who wish to intervene in the proceeding or comment upon action sought, should contact the Public Utility Commission of Texas, at 7800 Shoal Creek Boulevard, Suite 400N, Austin, Texas, 78757, or call the Public Utility Commission Consumer Affairs Division at (512)459-0223, or (512)458-0227, or (512)458-0221 for teletypewriter for the deaf within 15 days of this notice.

Texas-New Mexico Power Company

TxL-1b/85



**EQUITY EXPO**

No one in the office dares to suggest to the boss that he should see an ophthalmologist, but the feeling is the Our Leader is cloyceyed.

The fellow who thought up daylight time never had a two-acre yard and a hand mower to come home to after work.

When you were 20, you didn't think anything of staying up all night; after 40, your opinion of such insanity is unthinkable.

Turning over a new leaf is fine if

"I really do think they are the best!" says Larry Meyer, of ABC Bearings, to two gentlemen at the Farmlines Display.

Our favorite bus driver says he's been taking on weight since he got the run that goes past the reducing mecca.

People who don't believe in hell have never tried to get all of one serving a packaged hot chocolate mix to dissolve.

The tiny country of Bhutan, north of India, issued a postage stamp that is actually a tiny phonograph record. It plays the Bhutanese national anthem.

**EDWARDS HD 912 HOE DRILL**

Edwards Drills are engineered with extra **STRENGTH and CLEARANCE** for the toughest conditions. They are manufactured in 7 ft. (2.134 m) widths providing **MAXIMUM FLEXIBILITY** over the roughest terrain. **HITCHES** for 2-7 Drills are available. They are also **DESIGNED TO hitch with NOBLE DK5 DRILLS** to enlarge your present units.

**Morse Implement and Auto Supply**  
Morse, Texas  
Tom Dortch (806) 733-2668

### To God "A note of thanks"

In Genesis, the first chapter, we are told that God created male and female and in chapter two we are told He formed man out of the dust of the ground and placed in his nostrils the breath of life and man became a living soul. He placed the man Adam in a garden to dress it and keep it and made a help meet for him.

In this garden among the many trees that were pleasant to look at and good for food was one the tree of life and one other, the tree of the knowledge of good and evil. God told Adam of every tree you may freely eat, but the tree of the knowledge of good and evil you shall not eat for in the day you eat thereof, you shall surely die. He disobeyed and the Lord drove out the man and made a way to keep the tree of life.

The Bible declares one day with the Lord is as a thousand years and a thousand years as one day. Adams time on earth was 930 years.

He brought a curse upon all of us who go back to dust at death. Our time on earth we read in the Bible is compared to a shadow that declineth, a vapour, a breath, and as a flower of the grass, but Thank You, God, I rejoice as one of our earlier poets who wrote "Life is real, life is earnest and the grave is not the goal. Dust thou art, to dust returneth, was not spoken of the soul."

In time the created race, the sons of God looked upon the daughters of men, formed races who were fair to look upon and took to themselves wives, as many as they chose. This and because the earth was made corrupt by man was so displeasing to God it repented him he had ever made man.

Noah he found perfect in his generation and told him to build an ark for the saving of him and his family. That He was going to destroy with a flood everything

living on the earth, so when he, his wife, the three sons and their wives, and all beasts, fowls and etc., that were to replenish the earth entered the ark the Lord shut them in. Another time obedience gave life. In a newspaper we are told of good and evil happenings and so God's word from the beginning to the end speaks of good and evil, yes life or death.

The choice is left up to we creatures of dust. One man's disobedience made us sinners= Adam= One man's obedience will make us righteous= Jesus= Thank you, God, for Jesus, your only begotten Son who is our righteousness and Your word tells us no flesh should glory in His presence but of Him are ye in Christ Jesus, who of God is made unto us wisdom and righteousness and sanctification and redemption.

By Mrs. E.A. Greever (Elma Alicia)

The first construction undertaken by the Texas Highway Department was a 20-mile section of 16-foot wide highway between Falfurrias and Encino in Brooks County. Work began in October 1918 and was completed in June 1920.



### EQUITY EXPO

Larry Goule of Funk Seed discusses hybrids with two customers.

The average time between high tide and low tide is six hours.



### EQUITY EXPO

Caziantep, Turkey, is reported to be the world's oldest city.

Checking out the barbeque was Robert Christianson, Farnsworth manager, Ann Turner, Jim Turner and Bobby Cook.

The official name of India is Bharat.

### NIGHTLIFE by George Son



### MUSIC SALE

### MUSIC SALE

Guitars- Amplifiers-Drums-P.A.'s

**10%-50% off**

Everything in the store-New & Used

Fender

Dean

Peavey

Gibson

Crate

Robin

electronic drums

Acoustic and Electric Guitars

strings-effects-cords-cables- mics.

Sale starts Feb. 1

**K & E Audio**

733-2021

419 Main in Gruver

Also, come in and see our new 8 track recording studio.

### VAN'S PRIME SEAFOOD

Fresh Shrimp

Seafood---By Air! From Boston.

Portland, Seattle, New Orleans, Texas

Coast and elsewhere!

Spearman Super Service

Hwy. 207 Friday, Feb. 1

1:00 - 6:30 p.m.

Plus over 70 fresh-

frozen items clean,

inspected mobile unit.

Amarillo market:

1709 West 6th (806) 375 376-5777

Don't Forget

as low as

**1/2 off**

throughout both stores

### Annual Half Price Sale

for Lady Fair & Kid's Stuff

719 W. 7th

Spearman, Texas

Don't Forget

the 1/2 PRICE  
**Shoe SALE**



**FOOTPRINTS**

116 S. Main

— Perryton —

435-2080



Wawaka Talk

By Mary-Ann Hooper

I can hardly believe it, today is the last day of the first month of 1985.

I thought this might be a good time to let you in on the deadline for our papers.

Another thing to mention is that at the present there is a fund going for paying the firestation utility bill's.

School News

Thursday, January 24, 1985. Waka met the team from Pringle-Morse there at 6:30 pm.

The Waka boys lost with a score of 19 to 47. Jerold Blam made 14 points, Corey Ramsey with 4 points, and Scott Thornton with 1 point.

Monday, January 28, we played Darrouzett there at 6:00 pm. In the girl's game our team lost in the last 25 seconds with Darrouzett having 26 points to our 22.

The Micah Mission also has charge of the development of new churches in the Americas, from Cuba to the inner city churches in Chicago, and the training of lay ministers and others to help pass on the word.

1981 from Nigeria, where they served as Church of the Brethren Missionaries for 35 years.

In addition to the Eikenberry's, 20 persons attended the supper and program. They included church pastor Milton Robinson, Georgia Robinson, church moderator David Burger, Billie Burger, Chairman of the Nature Commission, Marilyn Wilson, David Wilson, Dean and Audrey Leighnor, Mary-Ann, Lori and Payne Hooper, Maud Stump, Chris Adams, Victor Ochoa, Jean Scroggs, Bob Schooling, Dave and Mary Hummer of Booker, and Milo and Ruth Horner of Carleton, Nebraska.

When the Eikenberry's were in Nigeria we found it "quite" interesting that their village was called Waka, Nigeria.

On Friday night, February 1, we go to the Garrett Tournament. The Cubs will play Garret in their first game.

Our last game of the season will be Waka vs. Plemmons, here, at 6:00. It will be a district game and will possibly be the last time 3 Cub players will play for our team.

Jerold Blam and Corey Ramsey will be graduating in May and Scotty Thornton will be moving. Come out and support all of our kids.

Waka PTA sponsored a Visual Arts and Literary Contest in the Elementary School last week, using the theme "What Sparks My Imagination".

Music for the Waka Church of the Brethren morning worship service were: "Praise, My Soul, the King of Heaven", "There is a Place of Quiet Rest", and "Great is Thy Faithfulness".

Church News

Church Calendar: Wednesday, Jan. 30 9:30 am-Bible Study 7:30 pm-Deacon's Meeting Saturday, Feb. 2

At 6:30 pm the Waka Church was host to the "Micah Mission" team of Ivan and Mary Eikenberry. The Eikenberry's retired in

McClellan votes against acquisition

The City Council of the City of Spearman, Texas, met in regular session in council chambers of City Hall, 30 S.W. Court, on January 22, 1985, Mayor C. Ralph Blodgett presiding.

At 7:30 p.m. Mayor Blodgett declared a quorum present and called the meeting to order.

Consideration of the minutes of regular city council meeting held on January 8, 1985.

Motion was made by Garner to approve the minutes of regular city council meeting held on January 8, 1985, as written.

Discussion of engineering services for the City of Spearman and presentation by McMorries and Glover.

Kevin Glover, a partner in McMorries and Glover, was present at the meeting and gave a presentation to the Mayor and City Council regarding engineering services for the City of Spearman.

Consideration of a contract with the Golden Spread Senior Citizens, Inc. in the amount of \$3,500.00 to be paid out of Revenue Sharing Funds.

Motion was made by Garner to approve the contract with the Golden Spread Senior Citizens, Inc. in the amount of \$3,500.00 to be paid out of Revenue Sharing Funds.

Consideration of a contract with the Station Master's House Museum in the amount of \$3,500.00 to be paid out of Revenue Sharing Funds.

Motion was made by Garner to approve the contract with the Station Master's House Museum in the amount of \$3,500.00 to be paid out of Revenue Sharing Funds.

Consideration of donating a 1970 Chevrolet Suburban to the Spearman Volunteer Fire Department.

Motion was made by Pearson to donate a 1970 Chevrolet Suburban to the Spearman Volunteer Fire Department.

Consideration of authorizing the City Manager to proceed with the acquisition of 5.41 acres of Mr. James Martin's property and 27.03 acres of clear zone easement for airport improvements required by the Federal Aviation Administration.

Motion was made by Garner to authorize the City Manager to proceed with the acquisition of 5.41 acres of Mr. James Martin's property and 27.03 acres of clear zone easement for airport improvements required by the Federal Aviation Administration.

Consideration of sending a delegate to the National League of Cities Congressional City conference to be held March 23-26, 1985, in Washington, D.C.

Motion was made by Pearson not to send a delegate to the National League of Cities Congressional City conference to be held March 23-26, 1985, in Washington, D.C.

Consideration of Resolution #1-85. A resolution to support legislation brought to the 1985 Texas Legislature to extend annexation privileges to general law cities.

Motion was made by Pearson to adopt Resolution #1-85. A resolution to support legislation brought to the 1985 Texas Legislature to extend annexation privileges to general law cities.

Consideration of appointing Mayor C. Ralph Blodgett as the city's representative for the Panhandle

Regional Planning Commission.

Motion was made by Garner to appoint Mayor C. Ralph Blodgett as the City's representative for the Panhandle Regional Planning Commission.

Motion was made by Garner to adjourn. Mayor Blodgett declared the meeting adjourned at 8:10 p.m.

Meeting dates for the month of February were set for the 12th and the 26th.

Motion was made by Garner to adjourn. Mayor Blodgett declared the meeting adjourned at 8:10 p.m.

Mayor C. Ralph Blodgett

Community Action Job Training Program

Persons may apply for the Texas Panhandle Community Action Job Training Program at the Hansford County Court House, February 1, 9:30 AM-12 noon.

The program is designed to help prepare youth and unskilled adults for entry into the labor force as well as provide job training to economically disadvantaged people.

A copy of each applicant's birth certificate or document showing place and date of birth is required.

Contact A. Elnora Davenport, Eligibility Evaluator, Telephone: 806-273-5177. Community Action, 322 So. Cuyler, Pampa, Texas 79065.

"FILING SHORT FORM NOT SIMPLE," SAYS H & R BLOCK

Two different short forms and new deductions make short form filing more complicated this year.

You may not be eligible or it may not be to your advantage to file one of the two short forms. The short forms, including the new 1040EZ, can only be used by taxpayers meeting certain strict requirements.

You will have peace of mind in

knowing H & R Block's personal, courteous, and competent service is yours... at a very reasonable price. One Day Service is also available for your convenience at any H & R Block office.

H & R Block's tax preparers are trained to know which of the forms - 1040EZ, 1040A, 1040 - gives you the maximum tax advantage for your individual requirements.

See your telephone directory for the office nearest you or call

Phone Number 806-659-2310

Affix the address label in this space. Call No. 150 34 12-31-84 Cert: 01218 13 48-7480 First State Bank P.O. Box 247 Spearman, Texas 79081

Consolidated Report of Condition for All Insured Commercial Banks for December 31, 1984

All schedules are to be reported in thousands of dollars. Unless otherwise indicated, report the amount outstanding as of the last business day of the quarter.

Schedule RC—Balance Sheet

Table with columns: Dollar Amounts in Thousands, C100, Mil, Thou. Rows include ASSETS (Cash, Securities, Loans, etc.) and LIABILITIES (Deposits, Federal funds, etc.).

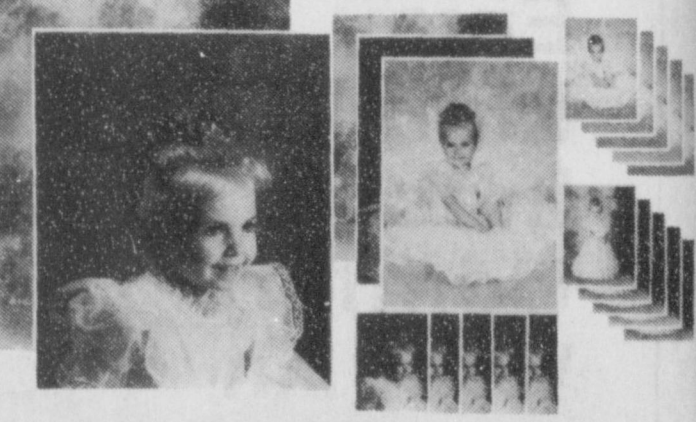
Note: The Reports of Condition and Income must be signed by an authorized officer and the Report of Condition must be attested to by not less than two directors for State member banks and three directors for State member and National banks.

Lynnae Maize, Cashier... Signature of Lynnae Maize

We, the undersigned directors, attest to the correctness of this Report of Condition (including the supporting schedules) and declare that it has been examined by us and to the best of our knowledge and belief has been prepared in accordance with the instructions issued by the appropriate Federal regulatory authority and is true and correct.

Signatures of directors: [Illegible]

YOUR CHILD WILL ALWAYS BE SPECIAL... CAPTURE THOSE PRECIOUS MOMENTS NOW! PORTRAIT SPECIAL!



NOW 25% OFF! 20 STUDIO QUALITY COLOR PORTRAITS 9.70 Our Reg. 12.95 TWO 8x10 • THREE 5x7 • 15 WALLET SIZE

BABIES, CHILDREN, ADULTS and FAMILY GROUPS 95¢ Deposit - Balance \$8.75. Poses our selection. Special effects poses extra. Limit: One package per subject. \$1.00 each additional subject in portrait.

TG&Y Family Centers. Ask about our NIMSLO 3-Dimensional Portraits.

4 DAYS ONLY! Wed., Thur., Fri., Sat., Jan. 30, 31, Feb. 1, 2 Daily 10-8 Spearman 521 S. Highway 207 659-3741

ASK YOURSELF WHY THE LOCAL CABLE COMPANY IS TRYING TO MAKE YOU FORGET ABOUT OWNING AN EARTH STATION

Home Earth Stations v. Cable - More Channels - More Diversity - Better Pictures -

Here are some facts your local cable TV company may not have told you.

- Home earth stations can provide many more channels of programming (over 50 channels are available) than most cable television systems.
Home earth stations often deliver better picture quality than cable television.

Home Earth Station Use Is Legal

It is now legal for a home earth station owner to view all unscrambled satellite cable programming without payment of any fees. In the future, marketing systems or electronic scrambling may be employed by some satellite programmers.

Buying a Dish v. Renting the Cable Company's Equipment

Through purchase of a home earth station, the consumer is making an equity investment in his or her future ability to receive communications services.

Table with columns for Cable, ESPN, OETA, KAMR, TMC, KVH, CBN, WGN, KFDA, WTBS, CNN and rows for time slots from 6:00 PM to 12:00 AM.

Table with columns for Cable, ESPN, OETA, KAMR, TMC, KVH, CBN, WGN, KFDA, WTBS, CNN and rows for time slots from 6:00 PM to 12:00 AM.

investment in their own equipment, rather than to be totally dependent upon subscription to the local cable company for satellite programming.

Satellite Dishes Provide a Check Against Unreasonable Cable Rates

Recent legislation removes the authority of local communities to regulate the rates which cable subscribers pay for cable service.

Reduced Satellite Spacing Will Not Interfere With Home Earth Station Reception

The Federal Communications Commission (FCC) has announced that it will reduce the spacing between satellites to two degrees.

Smaller DBS Antennas May Never Develop

Virtually all television programming is currently transmitted in the C-Band (4-6 GHz) on frequencies requiring a 7- to 12-foot dish for high quality reception.

Several years ago, many companies including CBS, COMSAT, Western Union and RCA announced plans to develop very high power Direct Broadcast Satellites operating at higher power and higher frequencies which would require 3-foot dishes for reception.

It is uncertain when or if any "DBS" services will be available. It is certain that 7- to 12-foot diameter satellite dishes enable the home viewing of scores of channels today!

Scrambling Will Not Hinder the Use of Home Earth Stations

Some cable operators are warning against the purchase of a home earth station because, according to them, some satellite television programs may soon be scrambled.

Satellite technology was developed at taxpayers' expense, and home earth stations are here to stay.

A few satellite services, such as Home Box Office, have indicated that they will scramble "in the near future." We have heard this for the past four years.

In short, even if some of the satellite subscription services do scramble their signal, it will not harm the home satellite industry.

Informed Consumers Can Insure the Purchase of Reliable Earth Station Systems

Some cable companies are warning consumers to steer clear of satellite dishes claiming that the retailers are unreliable.

Earth stations, like other new technological home consumer products (such as VCRs, personal computers, etc.), require a significant investment.

Conclusion

Satellite earth stations are synonymous with greater consumer choice. Satellite earth stations are now filling a gap in the delivery of multiple services of information and entertainment.

A large number of dishes are installed in areas which are currently unserved by cable and for economic reasons, may never be served.



Don't Get Stuck Without Home Satellite TV

Forget your winter blues—bring summer into your living room all day and all night with Caribbean mysteries, Amazon murders, Hollywood spoofs, and over 650 other free movies each and every month with affordable home satellite TV.

TEXAS GOLD ANTENNA

Bob's Antennas

Specializing in Sales & Service of TVRO Equipment

Bobby Brown 806/659-3863 (Work) 806/659-2287 (Home) 1/4 Mile North On Airport Road P.O. Box 244 Spearman, Texas 79081

Complete 8' fiberglass or Texas Gold Antennas beginning at \$1,375.00. 8' systems to go out on lease purchase plan available now! Come out and check these out!

Amplica CSR-300 complete remote stereo system with 10' Texas Gold. Today's most popular system going out at \$2,995.00 plus tax and installation.

The first 2 Amplicas bought with this ad will be worth \$200.00 on installation. Thanks, Bob

CLIP THIS COUPON

Students need help

Debbie Clement called from the school Friday morning to let us in on the news, both good and bad. The Bad News is that the students have only 3,438 proof of purchase UPC Symbols towards their computer and they need 7,500.

If you have any questions, call one of these members of the PTA. Jolinda Hutchinson 9-2285, Debbie Clement 9-2191, and Karen Schnell 9-3620.



The highly flavored spice known as mace is actually the covering of the nutmeg. It is usually sold ground and is often used to flavor fruit pies.

Keeping Texas roadsides free of trash and litter cost taxpayers some \$22 million last year. Litter pickup costs have risen an average of 17 percent per year during the past five years.

The first motion picture to win an Academy Award was "Wings" in 1928.

ATTENTION LIVESTOCK PRODUCERS CATTLEMAN'S LIVESTOCK COMMISSION CO.

Box 50, Dalhart, Tx. 79022 Phone (806) 249-5505

4 Miles West of Dalhart on Hwy. 54

\*Hog Buying Station starts at 9:00 a.m. and is held on the 1st and 3rd Wednesday of each month. \*Cattle sale starts at 11:00 a.m. every Friday.

WEDNESDAY, JAN. 16, 1985 Sold 163 Hogs

Top Hogs \$46 Sows \$37-\$38 Boars \$30

FRIDAY, January 25, 1985 Sold 3140 Cattle

Table listing livestock prices: Butcher Cows \$35-\$45, Stocker Cows None Offered, Butcher Bulls \$45.50-\$52.50, Heiferettes \$45-\$53, Cutting Bulls \$57.70-\$63, Feeder Steers 500-600 \$70-\$76.75, 600-700 \$70-\$73.75, 700-800 \$69.80-\$72.70, 800-900 \$67-\$68.40, Feeder Heifers 500-700 \$62-\$66, Steer Calves 300-400 \$80-\$88.50, 400-500 \$73.50-\$81.50, Heifer Calves 300-400 \$63-\$67.50, 400-500 \$62.25-\$65.75

Effective July 1, 1984, all hogs from out of state must now have health permit numbers to enter The State of Texas.

ALL COWS AND BULLS MUST COMPLY WITH FEDERAL REGULATIONS FOR BLOOD TESTING. THE STATE OF TEXAS PAYS FOR THESE TESTS.

WE ARE THE DEALERS FOR THE NECK OVER TRAILERS.

WE ARE NOW OFFERING A SALE AND BUY-BACK PLAN FOR SPRING CATTLE.

NEW TEXAS WATTS NUMBER 1-800-692-4453 NEW TOLL FREE NUMBER 1-800-858-4013 LARRY WING, MANAGER, RES. 806-249-2402 CRAIG LAWRENCE, YD. FOREMAN 806-384-2153

FIELD REPRESENTATIVE

BOB PAYNE, DALHART, TX 806-249-5884

Watch each week for a new power resolution.

Enjoy More Indoor Comfort With An Energy Checked Efficiency Home

Everyone wants to enjoy the most benefit possible from their electric service, and you can too, when you make your house an Energy Checked Efficiency Home!

An Energy Checked Efficiency Home has been inspected to have adequate insulation of the recommended "R" value, energy efficient heating and cooling equipment as well as many other features that work together for your year 'round comfort and energy efficiency.

Any home can be an Energy Checked Efficiency Home if it meets the requirements. Make it a resolution this year to get the most benefit possible from your electric service by making your house an Energy Checked Efficiency Home. Call our office for all the details.

Helping you enjoy the most comfort in your home from your electric service is just one more way we are ...

Neighborly Professionals Offering You the Best Choice

EL 4-85



1985 New Year's Resolutions list: 1) Plan Monthly budget with Average Billing Plan, 2) Request Home Energy Audit, 3) Get Nile-Liter for home safety, 4) Make house an Energy Checked Efficiency Home, 5) ...

SATURDAY 2/2/85

Table with 12 columns (CABLE AM, ESPN, OETA, KAMR, TMC, KVII, CBN, WGN, KFDA, WTBS, CNN) and 12 rows of program listings.

THE CUPBOARD
502 DAVIS
SPEARMAN, TEXAS
659-2767

For the WEEK OF Jan. 31-Feb. 2

THURSDAY
Chicken Breast & Wild Rice
Mixed Vegetables
Peach Spice Cake
FRIDAY
Chili
Cumbread
Chocolate Delight
SATURDAY
Quiche
Fruit Salad with
Poppy Seed Drsg.
Dessert

SPECIAL - Sloppy Joe's

For the week of Feb. 4-8

SUNDAY 2/3/85

Table with 12 columns (CABLE PM, ESPN, OETA, KAMR, TMC, KVII, CBN, WGN, KFDA, WTBS, CNN) and 12 rows of program listings.

MONDAY
Spaghetti & Meatballs
French Bread
Hot Fudge Cheesecake
TUESDAY
Stuffed Potatoes
Blackberry Cobbler
WEDNESDAY
Buxo
Mixed Vegetables
Almond Amaretta Mousse
THURSDAY
Ham & Beans
Cumbread
Pineapple Upside Down Cake
FRIDAY
Chicken Fried Steak
Mashed Potatoes/Cream Gravy
Hot Rolls
Cherry Cheese Cake

Our meals include salad bar, coffee or tea for \$4.95. We also offer sandwiches and homemade soups daily.
'The Cupboard' menu will only be printed once every two weeks. Clip and save!

Tee Vee Lauffs



'EVERYTHING'S OK AT HOME! BUT TELL ME, WHERE DO YOU STICK THIS BOBBY PIN TO MAKE THE TV WORK?' 8-9

Honey is one of the earth's purest foods, since disease causing bacteria cannot exist in it.

The rustle of spring is probably the worm lining slipping out of last season's topcoat.

Saving for a rainy day in these times won't even get you the price of an umbrella.

SUNDAY 2/3/85

Table with 12 columns (CABLE AM, ESPN, OETA, KAMR, TMC, KVII, CBN, WGN, KFDA, WTBS, CNN) and 12 rows of program listings.

SUNDAY 2/3/85

Table with 12 columns (CABLE PM, ESPN, OETA, KAMR, TMC, KVII, CBN, WGN, KFDA, WTBS, CNN) and 12 rows of program listings.

WEDNESDAY 2/6/85

Table with 12 columns (CABLE PM, ESPN, OETA, KAMR, TMC, KVII, CBN, WGN, KFDA, WTBS, CNN) and 12 rows of program listings.

MONDAY - FRIDAY

Table with 12 columns (CABLE AM, ESPN, OETA, KAMR, TMC, KVII, CBN, WGN, KFDA, WTBS, CNN) and 12 rows of program listings.

MONDAY 2/4/85

Table with 12 columns (CABLE PM, ESPN, OETA, KAMR, TMC, KVII, CBN, WGN, KFDA, WTBS, CNN) and 12 rows of program listings.

TUESDAY 2/5/85

Table with 12 columns (CABLE PM, ESPN, OETA, KAMR, TMC, KVII, CBN, WGN, KFDA, WTBS, CNN) and 12 rows of program listings.

Museum Making Progress

Mrs. Harley Alexander of Gruver gave Stationmaster's Museum a 'shot in the arm' recently when she presented an old oil lamp and a sizeable donation. The Alexanders are old-timers, known well in this area. Museum Auxillary workers are making some head-way in furnishing the bedroom and parlor. A few more pieces of furniture have been moved in this week: a table from the E.J. Callaways; a book case and a secretary-all from the 'golden oak' period which dates before the turn of the century. The book case belonged to the late Jess and Lula Womble and the secretary to the late Caleb and Mary

Pettitt family. Other items of interest are being brought in. Progress is slow, but people are beginning to respond. A museum such as the one at Canyon, this will never be! However, with the help of interested individuals, this little museum could house much area history and memorabilia of bye-gone days-preserved for others to enjoy. Pictures needed for the wall include the one of wolves howling at the moon, and the tired horse and rider called 'end of the trail'. (look in your attic.) MUSEUM NEEDS: Pitcher and bowl set Chair with rope bottom Mannequins Old hats of the 1920-1930's

Ricky G. Lewis completes training

Navy Airman Recruit Ricky G. Lewis, grandson of Raymond and Mildred Lewis of 711 William, Stinnett, TX, has completed recruit training at Navy Recruit Training Command, San Diego. During Lewis's eight-week training cycle, he studied general military subjects designed to prepare him for further academic and on-the-job training in one of the Navy's 85 basic fields. Lewis's studies included seamanship, close order drill, Naval history and first aid. Personnel who complete this course of instruction are eligible for three hours of college credit in Physical Education and Hygiene. A 1983 graduate of Phillips High School, Phillips, he joined the Navy in October, 1984.

# NATIONAL BRANDS SALE!

## Sirloin Steak



TENDER  
VALUE  
TRIMMED

LB.

# 1.98

PRICES EFFECTIVE THROUGH  
TUESDAY, FEB. 5, 1985  
QUANTITY RIGHTS RESERVED

Pilgrim's Pride ... Fresh

## Fryer Breast

**\$1.28**

LB.

- LEAN BOSTON BUTT CUT  
**Pork Steak**.....**1.48**
- CRY-O-VAC BONELESS  
**Beef Brisket**.....**1.38**
- BUCKBOARD . . . WHOLE                      HALVES  
**Boneless Hams**.....**1.69**
- RANCH 'N' RAIL THICK OR THIN  
**Sliced Bacon**.....**2.99**

## DOUBLE MANUFACTURERS COUPONS

7-DAYS A WEEK

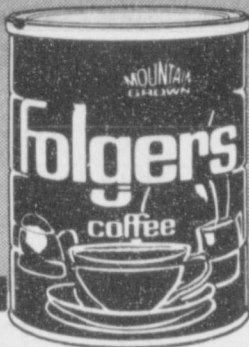
HUNT'S  
**Tomato Ketchup**  
32 OZ. BTL.  
**96¢**

FACIAL OR BOUTIQUE  
**Kleenex Tissue**  
175 FACIAL 100-CT. BOUTIQUE BOX  
**79¢**

KELLOGG'S 40%  
**Bran Flakes**  
16 OZ. BOX  
**1.29**

RANCH STYLE  
**Chili Beans**  
WITH  
15 OZ. CAN  
**69¢**

ASSORTED DECORATOR  
**Scott Towels**  
JUMBO ROLL  
**76¢**



NATIONAL BRANDS SALE

SAVE 80¢



NATIONAL BRANDS SALE

SAVE 30¢



NATIONAL BRANDS SALE

SAVE 40¢



NATIONAL BRANDS SALE

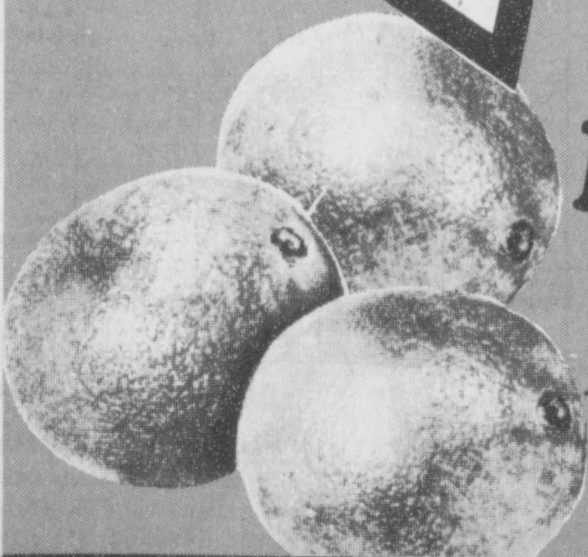
SAVE 16¢

All Grinds  
**Folger's Coffee**  
1 LB. CAN  
**1.99**  
LIMIT 1 PLEASE

All Purpose  
**Gold Medal Flour**  
5 LB. BAG  
**79¢**  
LIMIT 1 PLEASE

**Ajax Laundry Detergent**  
147 OZ. BOX  
**3.59**

**Green Beans, Golden Corn, or Sweet Peas**  
17 OZ. CANS  
**3.19**  
LIMIT 6 CANS PLEASE.



SWEET ... JUICY ... CALIFORNIA  
**Navel Oranges**  
3 LBS. FOR  
**\$1**



**Parkay Light Spread**  
SUPER BOWL 3 1/2 lb.  
**\$1.69**



NIGHTTIME COLDS MEDICINE  
**Vick's Nyquil**.....**2.49**

EXCELLENT FOR COOKING OR SALADS  
**Cauliflower**.....**89¢**

FANCY CALIFORNIA  
**Large Avocados**.....**4 for 1.00**

**Vick's Vap-O-Rub**  
1.5-OZ. BTL.  
**1.29**

**Excedrin Tabs**  
100-CT. BTL.  
**3.49**

**GREAT COKE SALE**  
COKE  
DIET COKE  
CAFFEINE FREE  
DIET CAFFEINE FREE  
12 oz. 6 pk. CANS **\$1.89**  
LIMIT 4

**Frozen Foods**  
MEADOWDALE  
**Orange Juice**  
12-OZ. CAN **86¢**  
STILLWELL WHOLE KERNEL  
**Golden Corn**.....**79¢**  
FARMER SELECT  
**French Fries**.....**1.86**

**Dairy Foods**  
MEADOWDALE CHEDDAR OR COLBY 1/2 MOON  
**Longhorn Cheese**  
10 OZ. PKG. **1.39**  
KRAFT ...  
**PLAIN CHEEZ WHIZ**.....**8 oz. \$1.09**  
PARKAY ... MAXI CUP  
**Soft Margarine**.....**16-OZ. CTN. 89¢**

YOU'LL LOVE SHOPPING  
**Humpty & Ideal**  
Supermarkets and Drug Centers  
REPUBLIC MONEY ORDERS AVAILABLE HERE