

The Spearman Reporter

24 hr. prayer
service 659-2911

Volume 77, Number 24

The Spearman Reporter, Spearman, Texas 79081

Thursday, April 25, 1985

First National Bank open for business

The Directors of the First National Bank of Spearman have announced final approval from the Office of the Comptroller of the Currency for opening of the new bank. The First National Bank opened for business at 7:30 a.m. Wednesday, April 24, 1985.

The opening is the culmination of almost two years planning and work for the organizing directors. They met for the first time on May 17, 1983 to organize and begin working toward the establishment of a new financial institution for the community.

The organizers include Bill Pittman, Felma Evans, J. L. Brock, Max Baggerly, Ralph Blodgett, Gene Cudd, Lloyd Buzzard, Jack Hart, Britt Jarvis, Richard Holton, Jimmy Shieldknight, Ila Jo Hart, Bob Pearson, Joe Venneman and Kent Guthrie. They made application for a national bank charter and received preliminary approval February 1, 1984. In December, 1984 the directors chose Don Townsen as President and he was approved by the Comptroller's office. The new bank building was completed and approximately \$400,000 in stock was sold to 75 community investors in February 1985. Capital of \$2,000,000 was raised from the organizers and local investors as initial capital for the new bank.

The First National Bank will open each morning of the week at 7:30 a.m. for full service and will close at 3:00 p.m. On Thursdays, the bank will re-open from 4:00 to 6:00 p.m. Don Townsen, President, commented about the extended hours, "we are attempting to provide, with our early opening time and late hours on Thursday, full service banking hours that will be outside of normal working hours so our customers won't have to take time off from work to do their banking. We also want to accommodate farmers and other independent business men and women who may prefer to handle their banking business early instead of having to interrupt their business day."

The bank will open with three officers and five employees: Don Townsen, President and CEO; Bill Pittman, Chairman of the Board of Directors and Loan Officer; Felma

Evans, Vice President and Cashier; Tindle Ramon, data processing; Brenda O'Brien, secretary; Beverly Jenkins, teller; Wilma Francis, teller; Christy Brock, teller and operations. The officers and employees have 67 years combined banking experience, making it a very experienced new bank.

Located at the corner of 7th Street and highway 15, across the street from the TG&Y parking lot, the new banking facility is a modern one story building with easy accessibility and plenty of parking area. Chairman Pittman explains that "our new building was actually built for temporary use. We expect to build a new, larger facility within a few years as our business expands. Land has been optioned for the larger facility and will be available when needed."

President Don Townsen talked about the new bank and opening day:

Many citizens of Spearman and Hansford County have been anxiously awaiting this event. Community leaders who had the foresight and confidence in the future of Hansford County pooled their financial and business resources to make a major investment in and contribution to the economic growth and stability of this area. It is not easy to open a new financial institution, it takes commitment and hard work and the support of the community. The organizers had plenty of opportunity to get discouraged but they were constantly encouraged by the people of the community who supported their efforts.

The First National Bank is truly a community bank with 90 stockholders from the immediate area. It was organized and built by community leaders for the benefit of the Hansford County Community.

We ask that the people of Spearman and Hansford County take the time to come by and meet our people. Visit with us about the services we will provide and give us the opportunity to be the financial alternative that sparks the future economic growth of our community.



Trindle Ramon visits with Bill Pittman.



Felma Evans, Brenda O'Brien, and bank president Don Townsen invite you to stop by the new First National Bank in Spearman.

Tri-State Rodeo here this week

Spearman will host the Tri-State Rodeo Friday, April 26 at 7 p.m. and Saturday, April 27 at 1 and 7 p.m.

The All Around 1985 Cowgirl saddle has been donated by Colbert Feeders, and the All Around 1985 Cowboy saddle was donated by Frontier Feeders.

Sunday, at 1:00 p.m. there will be a qualifying rodeo to qualify cowboys and cowgirls to go to the state rodeo in Seguin, Tex. Those who win at Seguin will be able to go on to the National Rodeo.

Donating trophy buckles are Spearman Super Service, Clark Aerial Spraying, Inc. Maudine Patterson, Mr. and Mrs. Rex Sanders, C. & S Inc., Mr. and Mrs. Cloyd Windom, Mr. and Mrs. Dennis Cline, B & B Farm Industries, Speartex Grain Co., Mr. and Mrs. Philip Renner, Brock Insurance Agency, Sparks Bros. Spraying, North Plains International, Inc., James F. Greens, and Bunkhouse.

Others donating cash are Cattleman's Restaurant, H & H Water Well, Sacks Third Avenue, Nurse-nickel Motel, Ellsworth Oil Co., Perry Dixon, Prairie Chalet, Hickerson Jewelers, Hi-Plains Conoco, J.G.'s, Beedy Furniture, Cochran's Fabrics, Anthony Electric, Tom Sutton, Donahue Ditching, Hansford Implement, Hansford Agency, Co-op, Hi Plains Auto.

Bob Cluck is donating roping calves.

Red Hamilton is trucking the animals, Pete Fisher is donating concession supplies, Terri Butt and Boyd Rice will be pick-up men.

MARKETS

WHEAT	\$3.10
MILO	4.55
CORN	3.00

YMCA FUND DRIVE MAY 7

Workers are being recruited and enthusiasm is building as the Hansford County board of directors prepares for the 1985 "Partners with Youth" campaign. This year's campaign chairman, Jackie Pearson, says that everything is going along great at this time. The board of directors has set this year's goal at \$25,500.00.

The money raised during this fund raising drive goes to support the operation of the YMCA and insures that we will continue to have a YMCA that provides many activities for the youth of our community. It is the policy of our YMCA that no child will be denied membership or program participation on the grounds of financial condition. During the past year our YMCA has provided the following programs for children of all ages: soccer, boxing, softball, T-Ball, swim team, flag football, basketball, swim lessons, and day camp.

Jackie has recruited three district leaders. They are Todd Brock, Brice McRee, and Richey Thompson. These district leaders have recruited three team captains who will then each recruit four team workers. The team captains are Wanda Archer, Cindy Schneider, and Lynn Archer for Todd Brock's district; Mary Dixon, Kerry Henton and Mona Beth Windom for Brice McRee's district; and Charles Shieldknight, Stephanie Brock, and Betty Elbert of Richey Thompson's district. The workforce will consist of 49 people who are committed to sustaining the presence of our YMCA in Hansford County.

If anyone is interested in participating in this effort to support and sustain our YMCA, please call the YMCA at 9-2591. Janice Mayfield is the program director at the Y and she will see that the district leaders are notified. The drive will kick-off at a dinner on May 7 and conclude with a Victory Dinner on May 20.

Hitt services held

Graveside services for Lewis Everett Hitt, 58, were held at 2 p.m. Tuesday in Memory Gardens Cemetery with the Rev. Austin Sutton of Apostolic Faith Church officiating. Arrangements were by Carmichael - Whatley Funeral Directors.

Mr. Hitt died Sunday. He was born in Mississippi. He moved to Pampa nine years ago from Clarksdale, Miss. He was an Army and Navy veteran of World War II.

Survivors include five brothers, including Cleburne of Waka, and six sisters.

HOSPITAL

Patients in Hansford Hospital are J.H. Martin, Lena Bell, Joy Hodges, Kelly Morgan and daughter, Marilyn Groves, Dorothy McElroy, Martha Kauffman, Ella Hull and Chon Bernal.

Dismissed were Charla Roberts, Johnny Revere, Ora Vanlaningham, Irwin Harris, Kayla Eaton, Frank Yancy, Wanda Reed, Marguerite Nelson, Rae Butler, Barbara Cook and Margaret Bell.

DAYLIGHT SAVINGS TIME BEGINS

Turn your clocks up one hour Saturday night before you go to bed as daylight savings time begins Sunday, April 28 at 2 a.m.

Commissioners allow 30% exemption

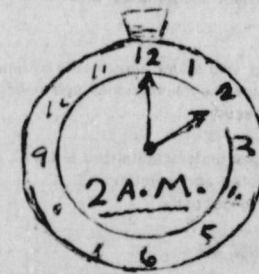
Hansford County Commissioners met in regular session, April 22 at the courthouse. Routine business was taken care of.

Commissioners approved a pipeline easement of Phillips Petroleum in Precinct 3 in the north part of the county.

They also approved a General Telephone line on county roadway near Colbert's Feedlot.

They passed a resolution to allow a 30% exemption on the appraised value on homes during 1985, 1986, 1987.

District Attorney Gene Compton was present to discuss his budget and needs for the coming year.



First Baptist Revival

The First Baptist Church will begin a revival in Spearman April 21 and will continue through April 26. Jim Hancock will be the evangelist and Dan Tracy will minister the music for the revival. The public is invited to attend.

Raymond C. Nichols rites held

Raymond C. Nichols, 63, died Saturday.

Services were at 11 a.m. Tuesday in First United Methodist Church of Stinnett with the Rev. David Brown, pastor of Christian Center in Amarillo, the Rev. Steve Rogers, pastor of Union Church of Spearman, and the Rev. John Dowden, pastor, officiating. Burial was in Stinnett Cemetery by Alexander Funeral Home of Borger.

Mr. Nichols retired in 1979 after working 31 years as teacher, coach and administrator in the Texas school system. He received a bachelor of arts degree from Lindfield College at McMinnville, Ore.,

and a master's degree from Baylor University.

He was associated with Cal Farley's Boys Ranch before moving to Hansford County six years ago. He was caretaker at the headquarters of Turkey Track Ranch of Spearman.

Mr. Nichols was a veteran of World War II. He married Ruth Rice in 1944 at Centralia, Wash. He was a Methodist.

Survivors include his wife; three daughters, Suzy Burns of Clarendon, Peggy Nichols of Plano and Patty Nichols of Amarillo; a son, David Nichols of Amarillo; and two grandchildren.

Lions Club 10 K & Fun Run June 1, 1985

Lions Club sweetheart in finals at district contest



Kelli McWhirter

Judge Johnny Lee was guest speaker at Rotary and Lions Club this week. Judge Lee gave a complete report on the progress of the Palo Duro dam project.

Frosty Hickerson and Lions Club Sweetheart Kelli McWhirter gave a report on District 2-T1 convention they attended this past weekend.

Kelli placed in the finals of the District 2-T1 beauty contest.

Farm and Ranch Seminar for women landowners

A farm and ranch business management seminar for women landowners will be held in Amarillo May 7-9 at the Holiday Inn, 1911 I-40 East, phone 806-372-8741.

Over two-thirds of farm/ranch land is owned by women, but many of them are not "on the farm". Most of the women landowners are in smaller towns—they are widows of farmers. Others are women who have inherited land from a farmer/rancher and they are probably located all across the state.

These women face the same questions of all who own property—how to manage it for fair return, and how to plan income taxes and estate taxes recognizing the investment. But, for farm and ranch investment, tax planning is more complicated. A farm or ranch is often a huge asset with a variable

cash income. Thus, special tax and estate planning problems exist. Also, many farm/ranch owners want to pass the property to their children, and, if estate taxes are due, the farm/ranch may have to be sold or mortgaged to pay the taxes.

The seminar will explore income generating and tax saving opportunities for their farms and ranches.

Registration is limited to allow discussion about your problems and opportunities.

The registration fee of \$80.00 per person includes all seminar materials for all three days.

Mail your check and registration form to Wayne A. Hayenga, Agricultural Economics Department, Texas A&M University, College Station, Tx. 77843.

JOB FAIR set for April 30

Good jobs in the teaching field are frequently hard to find. But West Texas State University's placement service is trying to make it a little easier through their Teacher Job Fair on Tuesday, April 30.

According to placement director Gene Parker, approximately 75 school districts will have representatives set

up at tables in the Henson Activities Center ballroom from 2-6 p.m. Interested students or interested individuals from the outside community may bring copies of their resumes to the Job Fair. They may visit with the various representatives and pick up applications. There is no charge for this service.

FmHA reports 90% loans processed

The Texas State Director of Farmers Home Administration (FmHA), J. Lynn Futch, announced today that approximately 90% of the Farm Loan applications received from farmers to finance their '85 crops have been processed. Field personnel are using all the tools available such as the Debt Set-Aside Program, Limited Resource loans, subordinations, rescheduling, and reamortization to assist farmers in developing a workable farm plan. The State Director estimates that more than 95% of the Texas farmers who farmed in 1984, were able to get financing if they chose to continue to farm in

1985. Futch said that FmHA has made more than 4,300 farm loans in the State for about \$286 million this year. Applications continue to be processed. The fiscal year ends September 30, 1985.

Farmers Home Administration is a Rural Credit Agency of the United States Department of Agriculture serving the needs of Farmers unable to obtain credit through their regular lenders. FmHA programs operate as a supplement to credit made available by other lenders, not in competition with them.

Host families sought for students

Host families are being sought for high school students from Sweden, Norway, Denmark, Finland, Spain, Germany, France, Italy and Japan for the school year 1985-86, in a program sponsored by the American Intercultural Student Exchange.

The students, age 15 through 17, will arrive in the United States in August 1985, attend the local high school, and return to their home country in late June 1986. The students, all fluent in English, have been screened by their school representatives in their home countries and have spending money and medical insurance.

Host families may deduct \$50.00

per month for Income Tax purposes.

A.I.S.E. is also seeking American high school students, age 15 through 17, who would like to spend a high school year in Australia (an English speaking country). We also offer a semester program to Australia. These students will leave in late January '86 attend the first semester of the Australian school which starts in February and return in mid-July '86.

Families interested in this program should contact the person named above immediately, letters should contain the prospective Host Family's telephone number.

To God: A note of thanks

by Mrs. E.A. Greever

Friends, I am very thankful unto God for his holy word that instructs us of the life that will be pleasing to him. Last week we studied some of the scriptures that tell us that they who live bodily in Christ Jesus shall suffer persecution, and this week, we want to know under such a condition, what our action must be to please him.

First, let us hear what we are told in I Peter 2:20-23. For what glory is it when we are buffeted for our faults, ye shall take it patiently, but if, when ye do well and suffer for it, ye take it patiently, this is acceptable with God.

For even here unto, were ye called because Christ also suffered for us, leaving us an example that ye should follow his steps who did no sin, neither was guile found in his mouth. Who, when he was reviled, reviled not again when he suffered. He threatened not, but committed himself to Him that judgeth righteously. From the sermon of Jesus on the mount, Matt 5:10-12, blessed are they which are persecuted for righteousness sake, for theirs is the kingdom of heaven. Blessed are ye, when men shall revile you and persecute you and shall say all manner of evil against you falsely for my sake.

Rejoice and be exceedingly glad, for great is your reward in heaven.

Love your enemies. Bless them that curse you. Do good to them that hate you and pray for them which despitefully use you and persecute you, that ye may be the children of your Father, which is in heaven. Matt. 5:44-45. Jesus closes his sermon by saying, Therefore, whosoever heareth these sayings of mine and doeth them, I will liken him unto a wise man which built his house upon a rock (and we will not fall, it declares). Now our Rock is Christ. The Bible tells us he is the foundation, a tried stone, a precious corner stone, a sure foundation. Isa. 28:16, also I Peter 2:6. We find in reading Gods word that all the Apostles he chose suffered in various ways to the giving of their life by most of them, and of Paul, who was warned of being bound and delivered to the Gentiles and besought not to go to Jerusalem replied, What mean ye to weep and break mine heart? For I am ready not to be bound only, but also to die at Jerusalem for the name of the Lord Jesus. Acts 21:11-13. Paul speaking to the Corinthians in Chapter 4: verses 12 and 13 said, Being reviled, we bless being persecuted. We suffer it being defamed, we intreat. We are made as the filth of the world and are the offscouring of all things unto this day. I write these things to warn you.

So to all we followers of Christ, by God's grace, can say, when he has tried me, I shall come forth as pure gold. In Psalms 139: 23-24 we read. Search me O God and know my heart, try me and know my thoughts and see if there be any wicked way in me and lead me in the way everlasting. From this scripture inspiration given for this song.

SEARCH AND TRY ME LORD
Search me dear Lord, I humbly pray
Try thou my heart, I would not stray
The narrow road that leads the way
O search and try me Lord.

CHORUS
Search me, O search me Lord
Look down deep into my heart
May there be no evil thought
O search and try me Lord.

Give an assurance of the way
I journey here day after day
When tried, may I trust, worthy be
O try me faithful guide.

I'm seeking for eternal life
Where I'll be free from sin and strife
May I prove faithful to the end
O search and try me Lord.

GSPA sponsoring sorghum yield contest

The National Grain Sorghum Producers Association (GSPA) will sponsor the first nationwide sorghum yield contest this year, with top winners receiving a trip abroad. The contest will focus on yield and management," said Elbert Harp, executive director of the National GSPA, "and will help us gather information on the most efficient and cost-effective ways to grow sorghum.

"We feel this is important because of a trend indicated by recent USDA figures. The cost of sorghum production is up as much as 50 cents a bushel over production costs for corn. If this trend continues, sorghum farmers will find it harder to remain competitive. By sponsoring the contest, the National GSPA will be able to study production techniques and find improvements," said Harp.

"In addition, the information farmers will provide during the contest, such as type of fertilizer used, will help us establish other regional, state and national trends that might affect the market for sorghum."

Contest awards will be made on three levels—county, state and national. The top winners in each class on the national level will receive a trophy and a trip to a foreign market country. On the state level, plaques will be awarded to the top three winners in each class. The first place


winner in each class on the county level will receive a certificate.

The contest entry deadline is 30 days prior to harvest of the contest plot and harvest reports are due by December 1. Applications and rule books are available through the National GSPA, members of the state Grain Sorghum Producers Associations, and supporting seed and agricultural chemical companies.

"Some of the manufacturers supporting the contest, such as Stauffer Seeds, are offering cash awards," said Harp. "These awards vary with each company and are designed to stimulate interest in this very first National Grain Sorghum Yield and Management Contest."

All contest entrants will be scored in relation to their county's established average yield. According to Harp, all calculations will be done by computer in the National GSPA office in Abernathy, Tx. The National GSPA will also keep all records on the contest and provide computer print-outs of production data to contestants, county agents, university researchers and others.

"We want to promote the profitable production and the consumption of sorghum," said Harp. Through this contest, we believe we can increase interest in sorghum growing and use."



ARMADILLO UPHOLSTERY
FREE PICKUP AND DELIVERY

OWNER
FRANK DOMINQUEZ

23 S. ARCHER
P.O. BOX 291
SPEARMAN, TX 79081

Phone: 659-5077

MEDICARE

They pay.
You pay.

Medical and hospital bills. They can be overwhelming if you're not prepared.

Medicare will pay a part of the bill and generally you are left with the rest. That's where We come in.

Southland Life. We have a Medicare Supplement Insurance Plan to help cover those bills. We supplement your Medicare coverage. In other words:

They pay. You pay.
We pay.

With our Medicare Supplement policy, we help reduce the "You pay" portion. Call or write for details. There's no obligation.

Southland Life
INSURANCE COMPANY
Serving the people since 1908.

The Hansford Agency 16 S.W. Court
P.O. Box 608
Spearman, Texas 79081 659-3888

Spearman Body Works and Radiator Service

now open at
our new location
14 S. Dressen
Spearman, Texas
Ronald Dunaway
659-2366

PUBLICATION COPY		FDIC 9040 35 (9-85) (STATE)	
CONSOLIDATED REPORT OF CONDITION (Including Domestic and Foreign Subsidiaries)			
(Dollar Amounts in Thousands)			
LEGAL TITLE:	FIRST STATE BANK	STATE BANK NO.	1107
BOX:	117	FEDERAL RESERVE DISTRICT NO.	11
CITY:	SPEARMAN, TEXAS 79081	CLOSE OF BUSINESS DATE:	March 31, 1985
	LINE 1107-37		
	FRB 11 13 17844		
	HANSFORD COUNTY		
	TX 164.		
Dollar Amounts in Thousands			
ASSETS			
1. Cash and balances due from depository institutions			
a. Noninterest-bearing balances and currency and coin		3,151	1.a.
b. Interest-bearing balances		1,100	1.b.
2. Securities		20,748	2.
3. Federal funds sold and securities purchased under agreements to resell in domestic offices of the bank and of its Edge and Agreement subsidiaries, and in IBFs		5,550	3.
4. Loans and lease financing receivables			
a. Loans and leases, net of unearned income	28,571		4.a.
b. LESS: Allowance for loan and lease losses	217		4.b.
c. LESS: Allocated transfer risk reserve	NONE		4.c.
d. Loans and leases, net of unearned income, allowance, and reserve (item 4.a minus 4.b and 4.c)		28,354	4.d.
5. Assets held in trading accounts		NONE	5.
6. Premises and fixed assets (including capitalized leases)		1,661	6.
7. Other real estate owned		NONE	7.
8. Investments in unconsolidated subsidiaries and associated companies		NONE	8.
9. Customers' liability to this bank on acceptances outstanding		NONE	9.
10. Intangible assets		NONE	10.
11. Other assets		1,793	11.
12. Total assets (sum of items 1 through 11)		62,357	12.
LIABILITIES			
13. Deposits:			
a. In domestic offices:		52,404	13.a.
(1) Noninterest-bearing	10,746		13.a(1)
(2) Interest-bearing	41,658		13.a(2)
b. In foreign offices, Edge and Agreement subsidiaries, and IBFs		N/A	13.b.
(1) Noninterest-bearing	N/A		13.b(1)
(2) Interest-bearing	N/A		13.b(2)
14. Federal funds purchased and securities sold under agreements to repurchase in domestic offices of the bank and of its Edge and Agreement subsidiaries, and in IBFs		NONE	14.
15. Demand notes issued to the U.S. Treasury		058	15.
16. Other borrowed money		NONE	16.
17. Mortgage indebtedness and obligations under capitalized leases		NONE	17.
18. Bank's liability on acceptances executed and outstanding		NONE	18.
19. Notes and debentures subordinated to deposits		NONE	19.
20. Other liabilities		1,035	20.
21. Total liabilities (sum of items 13 through 20)		53,497	21.
22. Limited-life preferred stock		NONE	22.
EQUITY CAPITAL			
23. Perpetual preferred stock		NONE	23.
24. Common stock		1,000	24.
25. Surplus		2,000	25.
26. Undivided profits and capital reserves		5,860	26.
27. Cumulative foreign currency translation adjustments			27.
28. Total equity capital (sum of items 23 through 27)		8,860	28.
29. Total liabilities, limited-life preferred stock, and equity capital (sum of items 21, 22, and 28)		62,357	29.
NOTE: This report must be signed by an authorized officer(s) and attested by not less than three directors other than the officer(s) signing the report.			
I/We, the undersigned officer(s), do hereby declare that this Report of Condition has been prepared in conformance with official instructions and is true to the best of my knowledge and belief.			
SIGNATURE OF OFFICER(S) AUTHORIZED TO SIGN REPORT		DATE SIGNED	
Lynne Matze, Cashier		4-22-85	
NAME AND TITLE OF OFFICER(S) AUTHORIZED TO SIGN REPORT		AREA CODE / PHONE NO.	
Lynne Matze, Cashier		806-659-5565	
We, the undersigned directors, attest the correctness of this Report of Condition and declare that it has been examined by us and to the best of our knowledge and belief has been prepared in conformance with official instructions and is true and correct.			
SIGNATURE OF DIRECTOR		SIGNATURE OF DIRECTOR	
Cubeta Nobles		J. Lynn Futch	
State of Texas		County of Hansford	
Sworn to and subscribed before me this 22nd day of April, 1985		Notary Public	
My commission expires January 31, 1989			

BUY, SELL, TRADE OR RENT THROUGH THE CLASSIFIED ADS

**Call
659-3434**

SERVICES

MONUMENTS
Save Agents and Undertakers Profits
If it is inconvenient for you to visit our large display, please phone collect (405) 327-0626 or write and we will call on you.
ALVA MONUMENT WORKS, INC.
Alva, OK 73717

New to area?
Give us a try
Call your local USED COW DEALER
As soon as Possible
659-3544
659-3545
1-800-692-4043
17S-rtm

NOTICE
Wallace Monument Co.
Monuments, Curbing, Grave Covers
Local Representative
LEONARD JAMESON
Spearman, Texas
35S-RTN

OSGOOD MONUMENT CO.
Amarillo, Texas
Dealers of Rock of Ages Granite as well as all colored granites, marble and bronze memorials.
represented by
BOXWELL BROS. FUNERAL HOME
519 S. EVANS
659-3802

ODD JOBS around your house, don't know who to call? Call C.W. Handy Man Services, Charles West 659-3833.
17s-rtm

Hansford County
Planned Parenthood
412 Davis
659-2483
Spearman, TX
Monday-Friday
8:30-12:30

STEAM RINSE & VAC
Rinse and Vac Shampooer for rent at Gordons Drug. \$10.95 up to 24 hours.

SEARS BLOWN-IN ATTIC INSULATION. Completely installed. For FREE Estimate at your convenience dial 659-2573. Sears, Roebuck and Co., 517 S. Hwy. 207. 45S-rtm

APPLIANCE REPAIR: Call Jim Nobles, 659-3528.
20-rtm

Tree Trimming, Handy Man.
Phone 659-3115.
Bill Hopper

Need to oil your wood shake or shingle roof? Give it extra life and beauty.
Whatever your painting needs may be - from taping and textures to custom finishes with any coating on any surface. We also feature energywave insulating paints. Call today for a free estimate.
BEASLEY PAINTING
ALLAN 733-2858 JIM 733-2012
15-rtm

SERVICES

How Does Your Lawn Look?
Dandelion Problems?
Crab Grass?
Hen bit?
Any Weeds?
Call
B J's
TREE & LAWN SERVICE
659-3847
21s-rtm

PANHANDLE CRISIS CENTER
101 S.W. Fourth, Perryton, Texas 79070, 806-435-5008, 806-435-5013.
Help is available at no charge. This is for rape, sexual abuse of children. Call Panhandle Crisis Center, receive support during a difficult time. Counselors on call 24 hours a day. Call for help.
19-rtm-nc

Jack Kemper Custom Farming.
659-3475.
24-4tc

REAL ESTATE

FOR SALE: 3 bdrm. house on 2 lots with detached garage, 1 bath on corner lot. 322 S. Hazelwood \$40,000. Call 659-3873 or 5046.
15s-21tc

OFFICE BUILDING FOR LEASE OR SALE: 11 W. Kenneth, Spearman. Owner will finance. Phone 659-2766 or, after 5 p.m. 659-2719.
16s-rtm

FOR SALE: Several lots and tracts of land within the city of Spearman, belonging to the Mearl Beck Trust and Opal Beck Estate.
T. D. Sansing
Johny P. Vernon
Independent Executors and Trustees

19-rtm
TO MOVE: Lubbock Home 16 miles SW of Spearman. 3 bdrm., 2 bath, large kitchen and dining area, large living room. About 1700 sq. ft. 659-2794.
23-rtm

FOR SALE: 3 bedroom, 1 1/2 bath, central heat, ceiling fans, attached garage, fenced. Excellent condition. Reasonably priced. 659-2336; after 5 p.m. - 659-3048.
23s-4tc

FOR SALE: Farm home, 25 miles SE of Spearman. 3 bdrm. 1/2 basement, on 6 acres. Swimming pool, out buildings. Phone Perryton - 435-3722.
14s-rtm

FOR SALE: Attractive brick home, 3 bedroom, 1 1/2 baths, dishwasher, garage with electric opener. Emmett R. Sanders, Realtor, 659-2516, nights 659-2601.
23-rtm T-only

FOR RENT

RENT REDUCED: Nicely furnished 1 and 2 bedroom apartments for rent. 418 W. 2nd. Call 659-3471 afternoons or evenings. No pets.
10-rtm

FOR RENT: 2 bdrm. trailer house. Furnished. Call 659-3017 or 659-2770.
17s-rtm

FOR RENT: furnished 2 bedroom house at 217 S. Endicott. Call 659-2404.
17-rtm

FOR RENT: Nice 3 bedroom house. Good location. Call 659-5297.
18s-rtm

HELP WANTED

DIESEL MECHANIC, B. J. Titan, 322 S. Industrial Rd., Perryton. Contact James Burleson.
25-2tc

FULL TIME HELP NEEDED. Apply White House Lumber Co.
25-2tc

TO GIVE AWAY

TWO BLACK LABS to give away. 659-2787 in the evenings.
25-2tc

MISCELLANEOUS

FOR SALE

MOVING SALE: 1 Baldwin Organ Fun Machine - \$1000.00; 2 Blue Rocking Chairs with Hassoek - \$75.00 set; 1 RCA Console Stereo - \$400.00; 1 Small Miniature Hutch - \$200.00; 1 4 burner Electric Apt. Size Stove - \$250.00; 1 Sound Design Stereo Console - \$200.00; 2 Formica and Chrome Dining Tables - \$10.00; 1 Antique Dresser with Mirror - \$300.00; 1 Large Water Cooler Air Conditioner - \$300.00; 1 Small White Wooden Kitchen Table - \$10.00; 2 Large Piles of Lumber - \$50.00 ea.; 1 Artificial X-Mas Tree - \$10.00; 1 Electric Adding Machine - \$25.00; 1 Snow Tire - \$25.00; 1 Natural Mink Coat - \$750.00; 1 Black Wrought Iron Couch - \$40.00; Assorted Clothes, size 18; 1 Long End Table - \$15.00; 1 Yellow Deck Chair - \$10.00; 1 Marble Vanity Sink (Bathroom) - \$150.00; 1 Pine Bathroom Vanity - \$150.00; 1 Single Bed Frame - \$25.00; 1 Wrought Iron Patio Table - \$10.00; 1 Avacado Green Hot Point - 36" Gas Stove - \$250.00; 1 Kenmore White Gas 36" Stove - \$75.00; 1 Small Water Cooler Air Conditioner - \$95.00; 1 Maytag Washer - \$100.00; 1 Chrome Table w/4 Chairs - \$40.00. CALL: 659-3873 or 659-5046.
16s-19tc

FOR SALE: Sears Kenmore refrigerated air conditioner, 14,000 cooling B.T.U., \$300.00. Over the stove microwave stand-30" width \$50.00. Call 9-5216 anytime.
23S-rtm

FOR SALE: 16'x5' metal horse trailer. 1/4 covered metal top. New paint, new floor. 733-2815.
24-rtm

FOR SALE: UHF antenna with boosters, exercise bicycle.
659-3676.
25-2tc

AUTOMOBILES

FOR SALE

FOR SALE: Cabover Camper. 45 HP Chrysler Motor. 16 ft. Lone Star Boat. 806-659-2325.
17-rtm-nc

FOR SALE: 1978 Buick Electra 4-door, loaded, nice car. \$2850.00 659-2794.
23-rtm

FOR SALE: '81 Chevy Citation, 4-door, automatic, power steering, air. Call 659-3629.
25-4tc

FOR SALE: 1979 XLT Bronco Good Times. Good condition. 54,000 miles (Reduced) \$5500.00. 659-3642. See at 1102 Linn.
23-rtm

Gov't surplus car \$200, Trucks \$100. Now available in your area. Call 1-619-569-0242. 24 hrs.
24-6tp

FOR SALE: 1984 extended van with raised top. Electric lift for handicapped. Custom made. Front and rear air. CB, Tilt and Power. Call 659-3605 or 659-3566.
24-rtm

NOTICE

ATTENTION FARMERS
If you would like future contract on your 1985 wheat or if you have any farm-stored grain to sell, contract Oles Grain Co., Perryton, Texas. 806-435-5449.
19s-rtm

Guymon Elks Supper Club is open to the public. Our hours are Wednesday-Thursday 6-10 p.m. Friday-Saturday 6-10:30 p.m. We have a Prime Rib Special every Friday.
46s-rtm

GARAGES SALES

3 Family Yard Sale: Saturday April 27, 9 - 4 220 E. D Avenue.
25-1tc

GARAGE SALE: Saturday, April 27, 9:00 a.m. til 7, 907 S. Archer. Furniture, Clothes, etc.
25-1tc

2 FAMILY GARAGE SALE: Saturday, April 27, 9 a.m. til 5 p.m. 807 Archer, Spearman. Lots of things for everyone.
25-1tp

WANTED

Tractor-hand work wanted. Please call 659-2754.
24s-rtm nc

HELP WANTED: store clerk, male, contact Jim at Equity 659-2420.
24-rtm

I BUY producing and non producing minerals 806-374-9414, P.O. Box 9312, Amarillo, Tx. 79105.
21-rtm

Janitorial Service for ASCS office. Pick up specifications at office between 8 to 5 Monday-Friday, 659-3036.
24-8tc

Help Wanted: Service station attendant. 733-2463 or 733-2792.
24-rtm

BABYSITTING WANTED. Any age. 659-2021.
24s-2tp

BUSINESS OPPORTUNITIES

Excellent income for home assembly work. For information, call 504-646-0315. Ext. B-1633.
24-4tp

Own your own jean-sportswear, ladies apparel, childrens, large size, combination store, accessories. Jordache, Chic, Lee, Levi, Easy Street, Izod, Esprit, Tomboy, Calvin Klein, Sergio Valente, Evan Picone, Liz Claiborne, Members Only, Organically Grown, Gasoline, Healthtex, over 1000 others. \$7,900 to \$24,900 inventory, training, fixtures, grand opening, etc. Can open 15 days. Mr. Loughlin (612) 888-6555.
25-1tp

PUBLIC NOTICE

The COWBOY SUB-CHAPTER of the F.C.A. meets the fourth Saturday of every month at 7:30 p.m. at the Home Demonstration Building, Spearman, Texas.

CHESS CLUB

Meets at Marlene's Cafe at 7:00 p.m. Mondays. Beginners to advanced, 12 years and up. Bring a board is possible.

WEIGHT WATCHERS meets each Monday at 6:00 p.m. at the Home Demonstration Building, Spearman, Texas.

MOBILE HOMES FOR SALE

FOR SALE: 14X70 mobile home, 2 bedrooms, 2 full baths, large living area. Lots of cabinets and closet space. New carpet. Very nice. Priced to sell. Call 659-3964 after 5 p.m.

TO MOVE: 1983 Redman 14x80 Mobile Home. 3 bdrm, 2 bath, under skirting, large front porch. 659-2794
23-rtm

FOR SALE: 1973 Mobile Traveler, 19 1/2 ft. minihome on 360 Dodge, clean with air, sleeps 6. Call Gruver 733-2087 after 5:00 p.m.
24S-2tc

FOR SALE TODAY: Nice late model mobilehome. Call Harland, 376-4698.
24S-4tc

NICE MOBILEHOME for the lake or mountains. Call Harland, 376-4698.
24S-4tc



GOLDEN SPREAD REALTY

720 S. Barkley - Sprinkler system adds to the convenience of this 3 bedroom home. It has a large garage plus a storage shed.

610 S. Haney - Remodeled 3 bedrooms, 1 1/2 bath home. It is well insulated and has thermo windows. Call today!

416 Haney - Four Bedrooms, 2 baths and a good location. Fruit trees galore.

603 Roland - Affordable describes this 2 bedroom, 1 bath brick home. It has a detached double car garage.

1014 S. Dressen - Kids can walk to school from this 3 bedroom home. It has central heat and air and a single car garage.

1106 S. Haney - Reduced for quick sale. A 3 bedroom 1 bath home with central heat and a single car garage. It will qualify for 11.6% bond money for 1st time buyers!

217 N. Brandt - See this 2 bedroom, 1 bath home. It has a single car garage and a good fence.

Want to Live in the Country? Call us about this 3 bedroom home. **Price Reduced**

322 Hazelwood - Attention Investors this 3 bedroom home has an extra lot which is plumbed for a trailer.

605 S. Archer - Good place for children - This 3 bedroom home is set on 5 1/2 acres. It is all fenced and has a storage building. The property can be divided.

202 N. Bernice - Four bedroom home with 2 baths and new carpet and wallpaper. This sale includes a 14 x 80 mobile home which can be rented for extra income.

19 S. Dressen - 100 x 140 foot lot. Price includes a trailer house and a building. It is zoned for commercial property.

VIRGINIA WHITE
Realtor
Your Business is Appreciated
Virginia White, Broker
659-3841

Beautiful, clean home with 3 bedrooms, 1 1/2 baths, fireplace. Two living areas, excellent location.

Storage building for sale on Hoskins St., 1200 sq. ft.

Residential lot for sale on Dressen St. in block next to grade school.

Charm and comfort is what this home offers. 3 bedrooms, 2 baths. Clean as can be and in good location. Call!

Offered by
EMMETT R. SANDERS
REALTOR

Nearly new 3 bedroom brick home, loan assumption.

3 bedroom home, attached garage.

Elegant 3 bedroom, 3 bath home, large landscaped lot.

Crawford Addition lot on pavement.

3 bedroom home, extra storage.

6 room house on 2 lots, large detached double garage.

3 bedroom, 1 1/2 bath brick, good south location.

EMMETT R. SANDERS
REALTOR
659-2516 nights 659-2601
14-rtm T only

Janye Helton, Broker, Owner
435-5444

Allen Alford
659-3034

Larry Trospen
659-3491

T. O. Lesly
659-2028

5th & Endicott - Corner lot, double-wide trailer house and rear apartment. Property is in good shape with good fences.

Acreage For Sale: 640 acres in Sherman County. 577 acres in wheat, 63 acres of grass. Owners will consider trading for irrigated land.

Irrigated Farmland for sale in Ochiltree County. Paved road leads to this 320 acres. Barns and granaries included. Call for details!

Southeast of Spearman - 400 acres in Ochiltree County - approximately 300 acres of irrigated farmland plus 100 acres of grassland. A large 3 bedroom, 2 1/2 bath home, a 3 car garage and a 40 x 80 barn are included in this sale.

Hangar 60 x 75 ft. - Extra nice building with heat, hydraulic door and cement floor. The lot is 130 x 300 ft.

202 N. Bernice - New Owner Needed for mini supermarket. Full line groceries, meat, deli, gas and ice. Established location.

3 Choice Lots on Archer Street. These lots will be auctioned May 11, 1985.

Lots - 415 Endicott - Owner will clean!

House To Be Moved - reasonably priced!

Investors - 1114 S. Haney deserves a look. It has 3 bedrooms, 1 bath and an attached garage. Affordable!

© 1985 Century 21 Real Estate Corporation.
Equal Housing Opportunity
INDEPENDENTLY OWNED AND OPERATED

Priority II
REAL ESTATE
806/659-3440

718 Cotter--3 bedrooms, 1 bath, single car garage, brick, fenced. Ceiling fans.

426 S. Haney--3 bedrooms, 2 baths, carpeted, built-ins, carport, storage building, fenced, corner lot. Nice.

732 Cotter--3 bedrooms, 2 baths, den, wet bar, fireplace, approximately 2,000 sq. ft., patio, storage building and child's playhouse in back. Fenced.

Nelson Addition - room brick, 2 bedrooms, utility, carport, fans, nearly new. Reasonable.

1115 S. Bernice--exceptional 3 bedroom brick with all the extras and built-ins. Circle drive, eucalyptus yard, fenced, shown by appointment only to qualified buyers.

205 Lonita--attractive 3 bedroom, 1 bath, garage, fenced yard. Carpeted. Reasonable. Appointment only.

1017 Wilmet Dr.--Spacious 4 bedroom, 2 1/2 baths, with basement, fireplace. Two bathrooms and 2 large storage buildings.

715 W. 7th--Retail store.

1018 EVANS - 3 bdrm., 1 1/2 baths, detached garage, living and dining room, fenced yard, storm windows. Lots of storage space.

603 S. EVANS 2 bdrm., fenced yard.

715 DRESSEN. New construction. 3 bdr., 2 bath, double garage. Owner will finish or you finish.

We want your listings
Leo K. Meyer Bob Hardy
Broker Sales

12 eligible to go to Regional

Spearman Varsity Lynxettes came in 3rd place at the District Track Meet held last weekend at Stinnett.

Girls qualifying to go to the Regional Track Meet at Big Springs the first weekend of May are Jill McLain, Shannon Jenkins, Kim Jenkins, Crista Urban and Stacy Nitschke.

To qualify for Regional, competitors must come in 1st of 2nd place in their event.

Track results are:
TRIPLE JUMP: 1. Jill McLain, Spearman, 5-8.
SHOT: 1. Shannon Jenkins, Spearman, 32-7/8.
LONG JUMP: 2. Crista Urban, Spearman, 15-3/4.
DISCUS: 2. Shannon Jenkins, Spearman, 93-1.

400 RELAY: 2. Spearman (Kim Jenkins, Jill McLain, Stacy Nitschke and Crista Urban) 51.90.

100 H: 1. Jill McLain, Spearman, 15.27.
100: 2. Crista Urban, Spearman, 12.91.

800 RELAY: 2. Spearman (McLain, Urban, Jenkins, and Nitschke) 1:51.91.

Spearman's Varsity Lynx placed 1st in Team Totals with 111.

Those qualifying to go to Regional are Damon Goodheart, Allen Mires, Steve Burke, Mack McLain, Brian Davis, Monte Morris and Richard Espinosa.

Track results were:
HIGH JUMP: 1. Damon Goodheart, Spearman, 6-2; 2. Allen Mires,

Spearman, 6-2.

SHOT: 2. Steve Burke, Spearman, 50-6.

DISCUS: 1. Steve Burke, Spearman, 160-10 (new record).

3200: 2. Richard Espinosa, Spearman, 11:34.87.

400 RELAY: 3. Spearman (Mack McLain, Bob Cook, Brian Davis, and Monte Morris) 44.92.

110 H: 1. Monte Morris, Spearman, 15.41.

100: 2. Brian Davis, Spearman, 11.2.

200: 2. Mack McLain, Spearman, 22.56.

The JV Lynx placed 1st with team totals of 156.

Students Attend Claude Rodeo

Spearman students attended the Tri-State rodeo at Claude last weekend.

In the team roping division, 2nd place went to Travis Patterson, Spearman and Drew Thomas, Wheeler, 9.805 and 3rd to Drew Thomas, Wheeler, and Travis Patterson, Spearman, 10.246.

In the goat tying competition, Andrea Archer, Spearman placed 6th with 13.174.

Umphress wins 3rd championship

Jennifer Umphress has won her third Texas Plains Divisional Fencing Championship. Miss Umphress took the golden Senior Women's foil, Open Women's EPEE and Mixed Sabre. The Texas Plains Divisional Fencing Championship Tournament was held Saturday, April 13 at the Texas Tech Recreation Center in Lubbock.

With these wins, Jennifer remains undefeated in divisional competition and earns her fourth qualification in all three weapons

for the National Championship tournament to be held May 31 through June 7 at the Millcreek Racquet Club in Cleveland, Ohio. Jennifer is the daughter of Mr. James E. Umphress and the coach of the Hansford County YMCA Fencing Club and a member of the Church of Jesus Christ of Latter Day Saints.

Jennifer placed first in Senior Women's Foil, Open EPEE and Mixed Sabre.



Pictured above is Jill McLain high jumping. Jill qualified to go to Regional in the Triple Jump, High Jump, 400 Relay, 100 Hurdles, and 800 Relay competitions.



Steve Burke is pictured above as he receives his medal at the Spearman Track Meet. He qualified to go to Regional in Discus and Shot.



Mack McLain runs final leg of 1600 relay to take 2nd place during Spearman's track meet last weekend. Photo by E. Newcomb

Letter to the Editor

Dear Editor,

We have formed an organization in Floydada, "Texans for Children's Rights." We are people who are opposed to the six week suspension period, being imposed on our young people, who participate in extra-curricular activities and fail one course. We are considering a class action suit, but we need the support of the people in the Panhandle and South Plains areas. We have the lawyers who are willing to take the case, but, we must have a \$20,000 retainer fee. This would be 500 people willing to give \$40 each or 1000 giving \$20 each.

Anyone interested, please contact Jimmy McGaugh, Chairman, 806-983-2603 or Lynn Marler 806-983-3990, or write Box 128, Floydada, Texas 79235.

Thank you,
Lynn Marler

Sarpalius mobile office schedule

Senator Bill Sarpalius mobile office schedule will be May 2 in Spearman from 9:30 to 10:30 at the Courthouse and the June visit will be June 6 from 9:30 to 10 at Gruver State Bank and from 10:30 to 11:30 at Spearman Courthouse.

We are winning.

Please support the AMERICAN CANCER SOCIETY®

This space contributed as a public service.

Spearman Reporter

PUBLICATIONS (USPS 5096-6000)
 SPEARMAN, TEXAS 79081
 213 Main Box 458 659-3434
 Published Weekly at 213 Main Street
 Spearman, Texas 79081
 Owner-Publisher.....William M. Miller
 EditorFaye Lynch
 Second Class postage paid at Spearman, Texas 79081

Any erroneous reflection upon the character of any person or firm appearing in these columns will be gladly and promptly corrected upon being brought to the attention of the management.

POSTMASTER: Send address changes to Spearman Reporter, Box 458, Spearman, Tx. 79081.

SUBSCRIPTION RATE: Hansford, adjoining counties, combination with the Hansford Plainsman \$26.28
 Other points, \$31.54

MEMBER TEXAS PRESS ASSOCIATION

Anne Marie Jarvis Elected VP of FFA

Several members of the Spearman FFA chapter attended an important Top O' Texas district FFA meeting in Pampa on April 18. Attending from Spearman were Danny Close, 1984-85 district treasurer; Anne Marie Jarvis, district officer candidate; and voting delegates Mark Garnett, Matt Jones, and Kevin Nelson.

Anne Marie Jarvis campaigned for a district office and was elected Vice President for the 1985-86 school year. She had to make a short speech on her FFA livestock

projects and her FFA activities over the past two school years. She then had to answer some parliamentary procedure questions before the voting began. Anne Marie did an excellent job of representing the Spearman FFA chapter and the entire community of Spearman, and she is to be commended on her newly elected position.

KRDF-FM was also nominated for a radio service award. FFA members were accompanied by FFA advisors David Scott and Gary York.

START LOSING WEIGHT FAST & EASY!

Weight Watchers® Special Offer...

JOIN NOW, ONLY...

\$10 POPULAR DEMAND! REPEATED BY

Discover Weight Watchers® New, Improved Quick Start Plan...

Now you can start losing weight and save money, too!

If you missed out on our special ten dollar offer last month...don't worry. Here's another opportunity!

We've agreed to repeat the offer for a limited time. If you have weight to lose and appreciate a real value, head for your nearest Weight Watchers meeting FAST!

Thousands of people just like you have lost thousands of pounds in the last few months. Join Weight Watchers now and you can be one of them!



Lena Aron, Area Director

For only ten dollars you'll find that Weight Watchers new, improved QUICK START plan makes losing weight FAST and EASY!

DO IT NOW AND SAVE!
OFFER ENDS MAY 5, 1985.

Registration Fee \$13.00
 Weekly Meeting Fee \$ 7.00
 TOTAL \$20.00
YOU PAY ONLY \$10.00
YOU SAVE \$10.00

SPEARMAN HOME EXTENSION CLUB
 309 N. Bernice
 Mon. 6:00 pm

JOIN WEIGHT WATCHERS, NOW!

1-800-692-4329

Offer valid April 14, 1985 thru May 5, 1985. Offer valid in locations listed (areas 17, 67, 96 only). Offer valid for new and rejoining members only. Offer not valid with any other offer or special rate. ©1985 Weight Watchers International, Inc. owner of the WEIGHT WATCHERS and QUICK START trademarks.

REGULAR OR NACHO CHEESE TOSTITOS

TORTILLA CHIPS

REG. \$1.49 SIZE

\$1.19

COOKED FOOD SPECIAL AS FEATURED ON TV. ALLSUP'S FRESH COOKED

CORN DOGS

2 HOT & READY TO GO FOR

89¢

FILLED WITH YOUR FAVORITE FOUNTAIN DRINK

32 OZ. CUP

49¢

ALL STYLES MENS & WOMENS

FASHION SUNGLASSES

1/2 PRICE

BORDEN'S

HI-PRO MILK

1/2 GAL. CTN.

\$1.09

SAFE AND CONVENIENT ALLSUP'S

MONEY ORDERS

19¢

EACH UP TO \$299.99

Come Home for Good

KRAFT ORANGE JUICE

1/2 GAL. BTL.

\$1.88

ALL MEAT

DECKER FRANKS

12 OZ. PKG.

89¢

SHURFINE VAC PAC ALL GRINDS

COFFEE

1 LB. CAN

\$1.99

FROZEN NOVELTIES

BORDEN'S CHIPWICH

EACH

49¢

LAWN AND LEAF BAGS

HEFTY

10 CT. BOX

\$1.98

MOUNTAIN DEW, OR REGULAR PEPSI, DIET PEPSI

12 OZ. CANS 12 PK.

\$2.79

PRICES EFFECTIVE APRIL 25-27, 1985

MOVIE & VCR RENTALS

The Very Best in Home Video Entertainment!

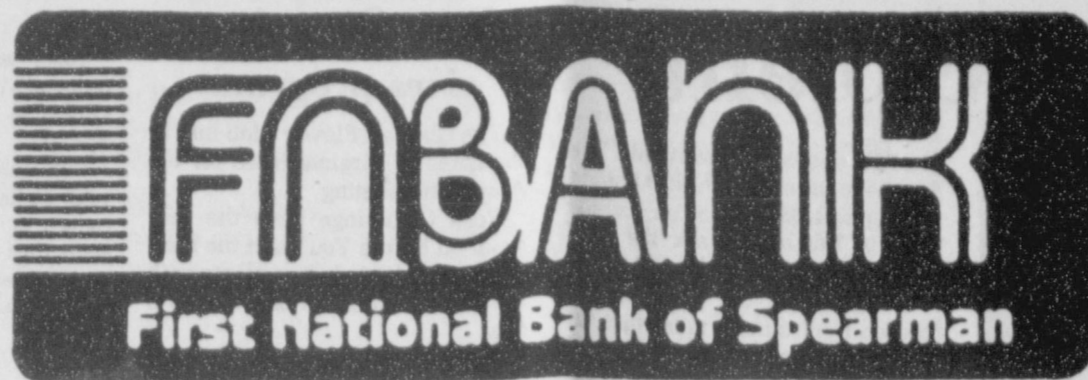
ALL YOU NEED IS YOUR TV!

OPEN 24 HOURS A DAY

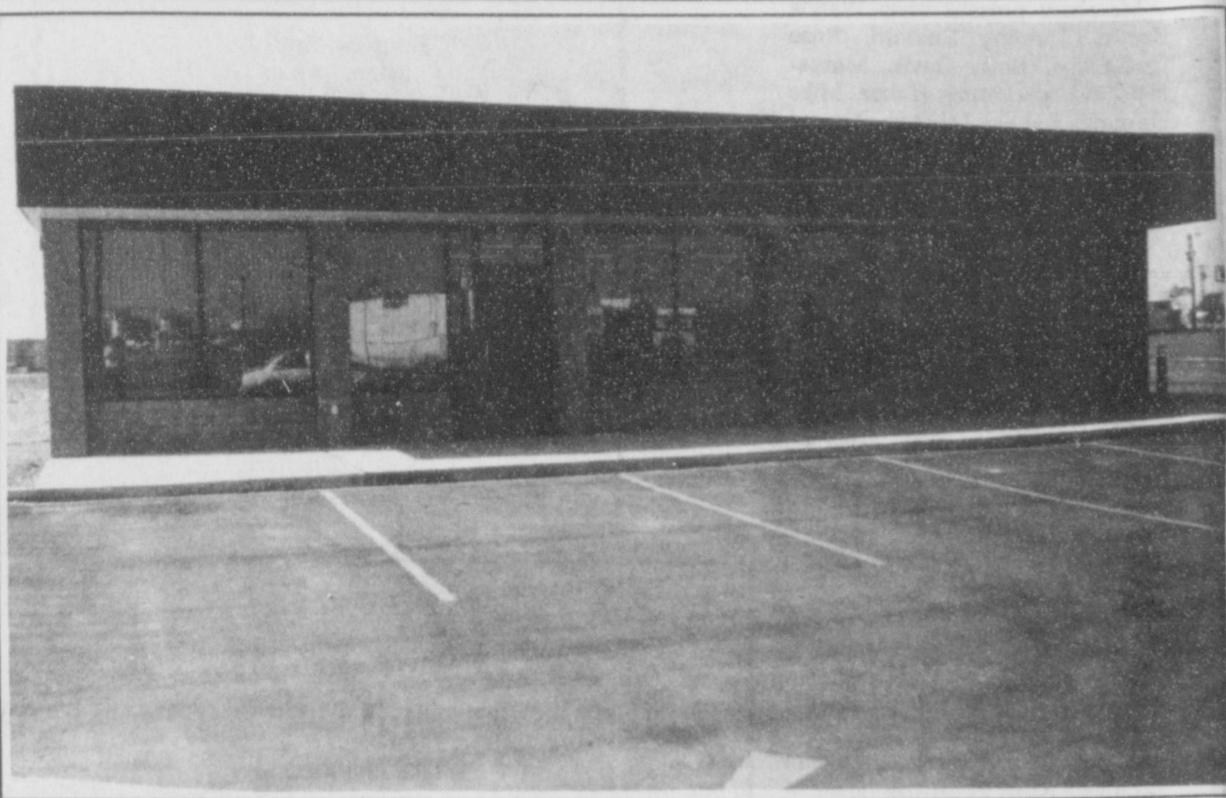
GROCERIES, SOFT DRINKS, SNACKS- HOT COOKED FOODS- SELF SERVE GAS-MONEY ORDERS- WHILE SUPPLIES LAST

ALLSUP'S

CONVENIENCE STORES



Phone 659-5544 729 W. 7th St.



Felma Evans Wilma Francis Brenda O'Brien Beverly Jenkins Christy Brock



Bill Pittman Don Townsen Felma Evans Tindle Ramon

First National Bank, Spearman, open for business Wednesday,

APRIL 24, 1985



First National will offer a full range of checking and interest bearing accounts.

Your deposits are insured by Federal Deposit Insurance Corporation up to the amount permitted by law.

We will offer loans of all types.

Together we'll grow.

BUSINESS HOURS

7:30 a.m. to 3:00 p.m. Mon., Tues., Wed., Fri.
7:30 a.m. to 3:00 p.m.-and-
4:00 p.m. to 6:00 p.m. Thurs.

EMPLOYEES

Don Townsen--President
Felma Evans--Cashier
Bill Pittman--Chairman

Tindle Ramon	Wilma Francis
Brenda O'Brien	Beverly Jenkins
Christy Brock	

DIRECTORS

Max Baggerly	Ralph Blodgett
J. L. Brock	Lloyd Buzzard
Gene Cudd	Kent Guthrie
Ila Jo Hart	Jock Hart
Richard Holton	Britt Jarvis
Bob Pearson	Bill Pittman
Jimmy Shieldknight	Joe Venneman

Don Townsen

Mary Lou is recipient



Mary Lou Wysong

Mary Lou Wysong of Spearman was one of ten area women who joined the ranks of Distinguished Service Award winners Saturday at

West Texas University. The awards luncheon recognized outstanding achievements of Panhandle women in conjunction with

Among The Neighbors

The State of Texas County Treasurers Seminar was held at College Station, Texas from April 15 thru April 18.

Hansford County Treasurer, Verna Gail Keim, attended the seminar. She was accompanied by Louise Mings, Treasurer of Lipscomb County.

Attendance by the County Treasurers is required, at least bi-annually. The work load of Texas County Treasurers is getting more and more demanding, due to the constant increase in State and Federal reporting.

At this seminar, the attendance included 150 Treasurers and 40 deputies. The sessions were strenuous - with two days of 8 hours and one of 4 and one-half. Mrs. Keim felt that the maximum benefit was derived from the instruction as those treasurers from the less populated counties were in separate work shops for some of the sessions.

Especially helpful was the address and instruction given by Max Wilson, from the Texas Comptroller's department. Reporting procedure, bonds obligations and many other subjects were discussed.

According to Mrs. Keim, the Blue Bonnets were in full bloom and were beautiful beyond description.

House guests of the Garland Heads are his brother, L. J. Head, and niece, Diane Long. Both are from Arroua, Colorado. They came on Saturday and plan to be here thru Tuesday. Mr. Head has been a frequent visitor, but Mrs. Long has not been here in many years.

Delinda McLaughlin and boys were also guests of the Heads on Sunday.

Roy Lee and Charlene Jones visited in the home of his father, Roy Jones, from Friday to Sunday morning. They are from Ruidoso, New Mexico. Roy is planning to go visit them later this spring.

Mr. and Mrs. Bobby Sparks of Fairfield, California, visited relatives and friends this past week. Mr. and Mrs. Kiff White, and Fannie and Johnny Venneman, as well as the John Bishops were among those visited. The Sparks went to Amarillo from Spearman to visit other relatives.

Bobby has a very responsible position with a giant aircraft company in California and had been east on business. They were in Washington, D. C. During the Cherry Blossom festival, and returned thru Arkansas where they visited Bobby's boyhood home. The Sparks are former residents of Spearman.

Bobby is the son of the late Roy Sparks, and Mrs. Sparks, the daughter of Brother Atkinson, former minister of the Spearman

the 75th anniversary of WTSU. The luncheon also was host to eight women who were inducted into the Hall of Fame to mark the 10th anniversary of the awards.

Recipients of the 1985 awards, chosen from among more than 60 nominees from 23 Panhandle and South Plains communities, represent a variety of careers and activities.

Mary Lou began her career as a secretary in 1964 at the Spearman Chamber of Commerce, and became manager of the Chamber in 1973.

She has been active in the Hansford Roundup, played a major role in the first county fair and the downtown revitalization project, helped to establish the YMCA and the Golden Spread Center for Senior Citizens.

She is a member of the Women's Division of the Chamber of Commerce, president of the Business and Professional Women's Club, Hansford County Historical Commission and the board of directors of the Station Master's House Museum.

She was the 1979 Manager of the Year in the Chamber of Commerce Executive Association of West Texas, Beta Sigma Phi Woman of the Year in 1976 and Citizen Over the Years and Member of the Year in 1985 Women's Division of the Chamber of Commerce.

Congratulations, Mary Lou, we are proud of you.

Students play in recital

Church of Christ.

Mrs. Carline Hughes Ladigo, Phoenix, Arizona, returned home after a few days visit in the home of her mother, Mrs. Ina Mae Ferrell. While she was here, Mr. and Mrs. Eldon Ferrell accompanied her to Fritch, where they visited in the home of the LeRoy Hughes family in Fritch. Terris and Vickie Hughes of Amarillo, drove over to Fritch to join them.

On Tuesday of this week, Mr. and Mrs. Eldon Ferrell went to Pampa and called on his sister and family, the George Detrixhe family.

Mrs. Raymond Sparks attended the 50th Wedding Anniversary reception of Mr. and Mrs. J. W. Baird Sunday at Pampa.

Mr. Baird was a childhood friend of Mrs. Sparks. The Bairds and Patterson had been family friends since they both lived at Quail, Texas many years ago. Mrs. Sparks was especially pleased to see a brother of Mr. Baird, whom she had not seen for several decades.

Mr. and Mrs. Howard Long, Bartlesville, Oklahoma, have been visiting in the home of Mrs. Sada Hoskins since Saturday morning. The Longs had spent several days in Friona, prior to coming to Spearman visiting relatives.

Mrs. Long is the former Sada Ruth Hoskins, and her many friends, who have lost track of her, will be interested in knowing that Howard has retired from Phillips, and after many homes in many countries, they have settled in Bartlesville. However, Howard has found no idle time in his retirement as he has been occupied in practically remodeling their home. Returning after Christmas, they found the home flooded from frozen water pipes. The Longs have two sons, both of whom live and work in Bartlesville, and one is married. Their only daughter is married and lives at Nowata, Oklahoma.

Mrs. J. D. Wilbanks, treasurer of the Stationmaster's House Museum, advises that the best address for donations and memorials is: 30 S. Townsend, where she will process them.

Mr. and Mrs. E.J. Copeland returned Tuesday from a visit of several days in the home of their daughter and family in Broomfield, Colorado. Jo Lynn reports that she is planning to attend the Spearman High School reunion in July.

The Copelands enjoyed pleasant weather in the Denver area during their visit.

Mr. Stan Anderson, of Kimberly City, Missouri, a representative of Argentina Fiaca Company, manufacturer of windmills, spent several hours at the windmill collection of J.B. Buchanan, on Tuesday of this week.

Rose Cummings gives program

The Gladiola Flower Club met in the home of Virginia Head for the April 18th meeting.

Rose Cummings gave the program on Before You Plant the First Seed, and planted some plants with a new method called Growing in a Bag.

The Home Grown Arrangement was won by Dorothy Buzzard. Virginia Head won potted plant and borrowed arrangement.

The meeting was closed with Fay Palmer reading a poem, The Hearts Garden.

Members present were Wanda Brown, Dorothy Buzzard, Rose Cummings, Betty Davis, Marguerite Evans, Dorothy Haner, Mike Hergert, Estelle Jackson, Lorene Kunselman, Jo Larson, Judy Martin, Fay Palmer, Gwen Smith, Kathleen Sutton, and hostess Virginia Head.

Karla Kunselman will play in finals

Karla Kunselman, daughter of Mr. and Mrs. Carl Kunselman, rated a Superior at the Oklahoma Music Teachers Achievement Audition held in Guymon March 30th. Karla will play a solo in the state finals on April 27th at Central State University. Karla studies with Billie Godley.

Dahlia Flower Club meets

The Dahlia Flower Club met Monday, April 22 in the home of Cleo Denman. Vice President Sammie Bishop called the meeting to order with the Pledge to the Flag. Secretary Sada Hoskins read the minutes of the last meeting. Nellie Albrecht gave the treasurer's report. The roll call was answered by "An Old Fashioned Remedy", and the program was given by Sammie Bishop, "The Legend of the Peace Rose."

Louise Archer won first place with her arrangement of dark purple iris, and Ruth Mary Whitson won first with her purple iris specimen.

Delightful refreshments were served by the hostess Cleo Denman to members Nellie Albrecht, Sammie Bishop, Louise Archer, Ruth Mary Whitson, Myrna Biggers, Sada Hoskins, Ora Sanders, Marjorie Curtis, Margaret Shedeck, Mable Edwards, Deta Blodgett, Jewel Turner and Hollie Riley.

The next meeting will be May 6 at the Cattleman's Restaurant with Sammie Bishop as hostess.

Calendar of Events

May 2 - Music Booster Meeting - Next year's officers elected. Please Come.

May 2-3-4 - Band & Choir Contest at Canyon.

May 11 - Junior High Music Festival

May 13 - Flag girl try-outs for High School Band.

May 14 - Band Spring Concert.

May 16 - Choir Spring Concert - Admission - \$2.00.

May 17 - Music Banquet - entertainment provided by newly formed Junior High choir group and Celebrate. Mexican food will be served. Admission - \$4.00.

Student Council

Student Council cannot release names of persons going to Boys State and Girls State at this time but they are still in need of money for these students. If you can help, please contact a council member.

Students sing in recital

There was a high school voice recital at Victory Memorial Methodist Church in Guymon, Ok. Thursday, April 11.

High school students presented a voice recital prior to the state vocal contest at Stillwater April 17. Students from Spearman who participated were Jeff Gressett, Connie Woolley and JoAnne Odegaard. Gruver

students participating were Carrie Hart, Andrea Whitaker, Tye Seagler, Pam Doty, Dee Dee Womack. Students from Guymon were: Rene Wilmeth, Leandra Bookout, Lisa Nossaman, Kim Munson, Tiffany Jamieson and a girls' trio. All students were from the Billie Godley studio.

You are invited to a Bridal Shower honoring

SONYA OOLEY
bride-elect of
BYRON SUTTERFIELD

Saturday, April 27
2 p.m. - 4 p.m.

in the
Fellowship Hall
of the
First Baptist Church
Spearman, Texas

HOSTESSES

Dolores Rylant	Loretto Cook
Mary Alice Gibner	Bobbie Novak
Nikki Lozano	Rita Reed
LaRue Whitefield	Nancy Graves
Nikki Swenn	Laurie Ross
Tina Lozano	Beth Baker

Sandra Gumfory

Gift selections at Sacks, Gift Box and ChaLor's

AUCTION

Personal Goods Belonging To Harold Simpson & Items From Simpson Petroleum

SATURDAY, APRIL 27

10:30 A.M.

CORNER OF LOOP HWY. 143 & 15TH STREET - WEST SIDE OF PERRYTON, TEXAS

CENTRIFUGAL PUMPS: 2" w/WISCONSIN 5 Hp., 2" w/B&S 3 hp., 1 1/2" w/B&S. **OTHER PUMPS:** 2" ROPER PTO truck pump, VIKING PTO LPG Truck Pump, BLACKMER Barrel Pump, Chloride Pump w/B&S (Some Parts Missing), Evap. A/C Water Pump. **WATER WELL COMPONENTS:** 2-JACUZZI Submersible Pump Motors, 5 hp. and 7 1/2 hp., 1-JACUZZI Submersible Pump, 5 hp., 1-JACUZZI Pressure Pump w/Tank & Several Motors, 1-DEMPSTER Pressure Pump (New), 5-Bundles 275'-350' Submersible Pump Wire. **SHOP EQUIPMENT:** 3/8" WEN Power Drill, Pipe Threader, Sockets - 5/8" & 3/4" Drive, Creeper, 1-20 Battery Slow Charger, Small 4 Cyl. Compressor, 2 Cyl. Compressor, Portable Compressor w/B&S Kickstart, GE Slow Speed Capacitor Motor, WAGNER 1 hp. 110/220 V. Motor, CUTLER HAMMER Electric Motor Starter - 5 w, 2-3 Phase, 2-Shop Stands (From Model-T Axle), Pull Cart for 100 Lb. LPG Bottle, Tube Vulcanizer, Hammer Handles, GOLDENROD Oil Can, Solvent Sprayer Can, 8-Miscellaneous Funnels. **AUTOMOTIVE:** 4-Wheel Dress Rims for '47 and '48 CHRYSLER, DESOTO & HUDSON, 4-Wheel Dress Rims for '49 FORD, 1-Lot Spark Plugs (Never Used), INTERNATIONAL Clutch Plates, Miscellaneous Hubcaps, 2-DELCO-REMY Truck Generators, 3-8" Hole Wheels, 2-6V Stoplights, 2-24" Carports (Still in Boxes), 68-GATES 1/2"-3 Braid Hi-Pressure Car Wash Hose, Gas Tank for '59 STUDEBAKER Truck, Gas Tank for FORD Tilt Cab Truck (W/Pump). **LAWN & GARDEN EQUIPMENT:** GARDENMARK Garden Tractor w/6 hp. B&S. Attachments include Roto Tiller, 48"-3 Blade Mower and 10" Moldboard (Well Maintained), Fertilizer Applicator, POWERKRAFT 35 hp. Vertical Shaft Lawnmower Engine, Hand Grass Shears & Clippers, Electric Grass Shears, 2 Sp. WIZARD Trimmer-Edger w/New Spool. **ANTIQUES:** 3-DELCO Windcharger Jars, Buck Saw, Cow Yoke, Pipe Threader (Wood Handle), Miscellaneous MODEL T Parts, Wrenches, Lace-Up Ski Boots, 10 Gal. MAGNOLIA Gas Can, 16-P.O. Boxes from the Original Farnsworth Post Office, 40-P.O. Boxes from the Old Perryton Post Office, 2 Clothes Hand Plungers, 2 Cases-6 1/2 Oz. Raised Letter Coca-Cola Bottles (No Duplicate Cities). **NON-CLASSIFIED:** 2-Wheel Trailer, Dolly Wheel For Trailer Jack, Adjustable Trailer Hitch, 2-Washtubs w/Stands, Electric Hot Plate, Electric Bug Catcher, Minnow Bucket, Check Protector, Hard Rubber Wheelbarrow Tire, Regulation Horseshoes w/Stakes, 2" Brass Swing Check Valve, HOMELITE Chain Saw, Pig Warmer Light, 3 Gal. White House Paint, 12 Cases Epoxy Paint (Quarts), 4 Cases Epoxy Paint (Gallons), 50 Lbs. Fire Ext. Chemical, 8 Large Light Fixtures, 3 Outside Light Fixtures, 2-Wood Bunk Bed Frames, Miscellaneous Pipe Fittings, Gas Fireplace Heater, More.

TERMS: Cash, Check with Proper I.D.

DENZEL TEVIS

A U C T I O N E E R
R E A L E S T A T E B R O K E R

TxS-055-0649

P. O. BOX 1760
PAMPA, TEXAS 79066
(806) 665-7424

7 year Anniversary Sale & Pre-Pioneer Sale

Hours 9 a.m. - 5:30 Monday - Saturday. Thursday till 8 p.m. Large savings store wide. A town wide sidewalk sale will be Friday and Saturday

BYSTERS YOUNG FASHIONS

417 N. Main

Guymon, Oklahoma

405-338-6160

The horses we bet on must all be in prime condition - they never run fast enough to exert themselves a little bit.

© 1985 Suburban Features

Emphasis on early detection

"Up until now, if you're like most people, you probably haven't spent a lot of time thinking about colorectal cancer," said Mrs. Dwayne TeBeest, Vice President of the Hansford Unit of the American Cancer Society. "But with recent national attention on the findings of President Reagan's physical examination, there is more public interest in cancer of the colon and rectum than ever before."

The White House announced on March 11th that doctors had discovered a second small polyp in the President's intestinal tract and that signs of blood in the President's stool had also been detected.

The President's physicians had used standard diagnostic techniques for early detection of colorectal cancer, which are:

(1) Digital Rectal Examination, by which 12 to 15 percent of all colorectal cancers can be found. The American Cancer Society suggests that this examination be given annually to people age 40 and over.

(2) Testing for hidden blood in the stool, which can be helpful in identifying cancer or pre-cancerous conditions in the colon or rectum. This test should be given annually from age 50.

(3) Proctosigmoidoscopy, with which a flexible lighted tube enables a doctor to inspect the rectum and lower colon. More than 60 percent of all colorectal cancers can be detected this way. The "procto" should be given every three to five years after two initial negative exams one year apart from age 50.

"Because some medical conditions -- like a history of polyps in the colon or rectum or a history of ulcerative colitis -- may put a person at higher risk for colorectal cancer, the Society urges such people to develop a personal check-up schedule with their family physician," said Mrs. TeBeest.

Studies have demonstrated that it is possible to detect asymptomatic cancers at an early, curable stage at the time of the stool blood test. A positive test indicates that presence of hidden blood in the gastrointestinal tract. Diets, however, must be modified 48 hours before the test has begun to avoid red meat and aspirin, which can lead to false positive results. High doses of Vitamin C can produce a false negative reaction. A positive test should be followed by a second test to confirm the earlier finding. Other dietary recommendations prior to a stool blood test include consumption of food high in fiber in order to increase quantity and stimulate the polyp to bleed. These foods should include vegetables and fruits and bran cereals.

"Colorectal cancer is one of the most curable forms of cancer," continued Mrs. TeBeest. "But unfortunately most people don't realize this and don't make the standard examinations for its detection a regular part of their physical examinations. Colorectal cancer is second only to lung cancer incidence, and this year it will claim the lives of 59,900 Americans, 2,600 from Texas alone! With early detection and prompt treatment, the lives of three-fourths of the patients can be saved". For 1985, the educational focus of Crusade Days is cancer of the colon and rectum. Trained volunteers will distribute a folder "Your Colorectal Health Check" during C-Days, 1985--read this important pamphlet and give so that you and others can live!

"The breakdown of how American Cancer Society funds are spent in Texas represents

one of the best returns on the dollar that I know", said Mrs. Pat Holt, Chairman of the 1985 Educational and Fund-raising Crusades in Hansford County.

In preparing for the 1985 Crusade, Mrs. Holt feels it is important for the community to realize ACS expenditures. "It is one part of the ACS we're most proud of and I think our friends and neighbors will be more than willing to give to cancer control if they know how well their money is being spent," she said.

The following represents the breakdown of how each dollar raised last year by the ACS is being spent this fiscal year (September 1, 1984-August 31, 1985) in Texas:

Cancer Research	.49
Professional Education	.11
Public Education	.28
Service/Rehabilitation	.15
Program Development and Administration	.06
Crusade	.12

\$1.11

This 111 percent expenditure reflects increased research allocations to Texas by the National Society.

"The ACS is currently sponsoring research investigations in 12 major Texas hospitals, medical schools, and universities totaling over \$6 million," said Mrs. Holt. "Because Texas has so many research institutions, the National Society allocates additional funds here."

"In spite of severe inflationary trends, we were able to keep tight control over our administrative costs and keep them within acceptable limits as this breakdown indicates," she commented.

ACS programs such as patient service, and rehabilitation (Reach-to-Recovery, esophageal speech lessons, etc.) public education (films, pamphlets, exhibits, the Great American Smokeout) and professional education for the medical community are mainly administered through the Society's volunteer system. "Volunteer manpower helps maintain these impressive figures," said Mrs. Holt.

Give when your neighbor calls during the 1985 Crusade -- your money is being well spent for your well being!

"The facts are mounting to show that we are winning the battle with cancer!" said Mrs. Elmo McClellan, Jr., President of the American Cancer Society's Hansford Unit. The statement was made during the meeting of the Unit preparing for the annual Cancer Crusade, the Society's educational and fund-raising campaign which is in full swing in Hansford County right now.

"In the 1930s, less than one in five cancer patients was alive five years after treatment", continued President McClellan. "In 1985, the figure has improved to almost one in two, according to recent government statistics. Here in Texas, that means that many more lives will be saved due to improvements in prevention and to methods of diagnosis and treatment of cancer".

Mrs. McClellan offered as examples the following:

* A simple test such as a Pap test, a microscopic examination of cells from the uterus, is associated with the overall decrease of more than 70 percent deaths from uterine cancer over the past 40 years.

* Routine self-examination of the breasts and tests can detect cancer in these areas at

an early, highly curable stage.

*The American Cancer Society estimates that cigarette smoking is responsible for 85 percent of lung cancer cases among men and 73 percent among women. Statistics from recent surveys show that the overall percentage of smokers in the population dropped from 33.7 to 32.6 percent between 1978 and 1980. By 1983, the percentage had dropped even further, to 30 percent.

*A possible link between diet and cancer of the breast, colon, and prostate has been suggested by recent studies. Evidence points to a lessening of chances of getting cancer by increasing the amount of fiber in the diet and lowering the intake of fatty foods.

*Early detection and prompt treatment of cancer of the colon and rectum can result in the survival of three out of four colorectal cancer patients.

Go for it this year of 1985 and give so that you and others stand a better chance of living a cancer-free life!

"More than 60 volunteers are going door-to-door throughout Hansford County during C-Days 1985" said Mrs. Pat (Georgia) Holt, Chairman of the Drive of the American Cancer Society's 1985 Crusade.

"April is Cancer Control Month", explained Mrs. Holt, "and C-Days are the door-to-door aspect of this month-long educational and fund-raising effort of the American Cancer Society. Volunteers call on their neighbors and friends to give them life-saving information about cancer. Last year many pieces of educational literature were distributed in Hansford County and about \$8,000 including memorials, legacies, and Crusade, was raised during the 1984 Drive!"

For 1985, the educational focus of C-Days is cancer of the colon and rectum. According to the American Cancer Society, colorectal cancer is one of the most curable forms of cancer, and also one of the most misunderstood. Most people believe that is an uncommon type of cancer, when in fact, about 134,000 cases will be diagnosed in the U.S.A. this year, resulting in 60,000 deaths. In the state of Texas, the estimated number of new colon rectum cancer cases for 1985 is 6,100 with 2,600 resulting deaths! The American Cancer Society reports that almost three out of four colorectal patients can be saved if the disease is found early and treated properly.

Trained volunteers are giving of their time so that you can be better informed about colorectal cancers -- when they call at your door, read the valuable folder "Your Colorectal Health Check" and then give so that you and others may live. C-Days, April 15 through May 1 in Hansford County, USA.

Adela's Gift & Ceramics

We have Fresh Flowers for Prom Corsages and Boutonnieres and all other occasions.

FREE DELIVERY
Plains Shopping Center
659-5180


Say goodnight to sleepless nights. And earn tax-free interest.

Will be in Spearman each Tuesday.

Call for an appointment.

Tax-free Municipal Bonds offer a solid rate of return on which you will pay no federal income taxes. None. For all the details, call me today.

Brian Diedrich
7 S.W. 3rd Perryton, TX
435-7173

 Edward D. Jones & Co.

Member New York Stock Exchange Member Securities Investor Protection Corporation

Rodgers completes recruit training

Navy Seaman Recruit Johnny V. Rodgers, son of Tommy P. and Elaine Rodgers of 406 Fifth St., Morse, Tx., has completed recruit training at Navy Recruit Training Command, Naval Training Center, San Diego.

During Rodgers' eight-week training cycle, he studied general military subjects designed to prepare him for further academic and on-the-job training in one of the Navy's 85 basic fields.

Rodgers' studies included seamanship, close order drill, Naval history and first aid. Personnel who complete this course of instruction are eligible for three hours of college credit in Physical Education and Hygiene.

Horse riding sessions planned

NOTICE

To all youth who have a horse and want to ride.

The Hansford County 4-H Club is having riding sessions every Monday afternoon from 4 p.m. to 6 p.m.

Also, if you plan to ride in the Pride of the Panhandle Shows, you need to sign up at the County Agent's office before May 1, 1985. The first show will be May 11th at Canadian, Texas.

Recall when we searched for the Loch Ness Monster in springtime! Now it's the new-season football monster that rises from the primeval ooze.

Aren't you glad you stopped by...

BROCK

BROCK INSURANCE AGENCY

when all



RATES
Hansford
*12⁰⁰ less 15%

breaks loose

Q: Why can't something be done to stop increases in electric rates? What can I do about my total bill?

A: The company is doing everything possible to stop increases. However, in this age of constant inflation, everything purchased to deliver dependable electric service to you is increasing in cost. Everything from utility poles, wire, taxes, and fuel to generate electric power has increased every year for the past decade.

While we cannot control this external inflation to completely stop rate increases, we have been successful in keeping increases to a minimum through diligent efforts of our personnel.

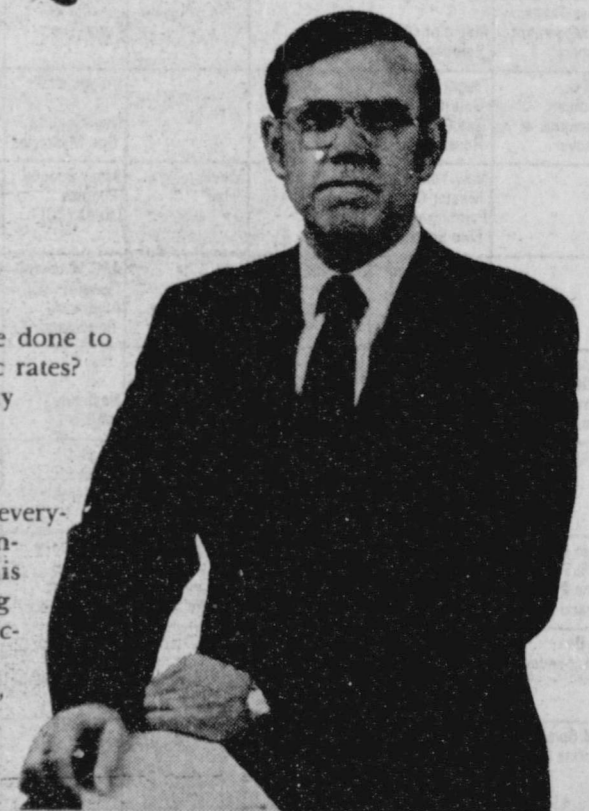
The reason utility bills are higher today is not just rate increases, but increased usage. Because of more and more labor saving appliances, most homes are simply using more electricity from year to year. Heating and air conditioning are two of the high users of electricity. You can help control your electric bill by using electricity wisely and insulating your home properly.

For more information on how to get the most from your electric dollar, call our office.

Neighborly Professionals
Offering You the Best Choice

 Texas-New Mexico Power Company.

EL 16-85



Don Barnard, TNP's vice president and treasurer, keeps a close eye on company expenditures to get the most for the money. You, as a consumer, can get the most benefit from your energy dollars by using energy wisely.

New Location For Body Shop

Ronald Dunaway, owner of Spearman Body Works and Radiator Service announced this week that he has moved to a new location. He will be located at 14 S. Dressen. He is still working on his new building and hopes to have the

building completed in the near future.

Ronald and his family welcome you to stop by and visit him in his new location. Let us estimate your body works needs. Remember, the coffee pot is always on.

Grimmer family in revival

The people of the Apostolic Faith Church are looking forward to May 5th when the Savoy Grimmer family will begin a revival in their church. Savoy and Karen are currently pastoring in Dickenson, Texas. Savoy received his schooling for the ministry in the Apostolic Faith Bible College located in Baxter Springs, Kansas. Savoy traveled two summers with the promotional group advertising for the Bible College. Then he excepted the pastorate of the Dickenson

Apostolic Church where he still labors when not in revivals. Karen also is a talented singer and will bless your heart with her music.

The revival will start Sunday, May 5th and extend thru May 12th (Mother's Day) at least. Night services will start at 7:30 p.m.

You, the people of the Spearman community, are invited to attend each and every service. Please come and worship with us.

Lealand Grimmer
Pastor

Dr. Coats here for Bible Conference



Dr. George W. Coats, Jr.
Guest Lecturer

First United Methodist Church, 407 South Haney in Spearman, announces that Dr. George W. Coats, Jr., will be leading services connected with the church's Bible Conference Sunday, April 28th through Tuesday, April 30th.

Dr. Coats received his Bachelor of Arts degree from McMurry College in Abilene and his Bachelor of Divinity degree from Southern Methodist University in Dallas. In addition, he earned both his Masters and PhD from Yale University. First Methodist Church feels that Dr. Coats is uniquely qualified to share at the Bible Conference. His academic honors are lengthy and varied as are his professional teaching experiences.

The general title for the series is "Old Testament Roots for New

Testament Faith." The Bible Conference will begin on Sunday, April 28th with Dr. Coats bringing the message at the 11:00 a.m. services. "Who is the Servant" is the title of his sermon. Those not able to attend in person may hear Dr. Coats' morning message on KRDF-FM at 11:00 a.m.

Following the Sunday morning services, there will be a covered-dish luncheon in the Fellowship Hall for Dr. Coats, church members and guests. Everyone is invited back at 7:07 p.m. for the evening lesson entitled "Moses, Heroic Man and Man of God."

The Bible Conference continues on the following Monday and Tuesday with a lunch and lesson during the lunch hour at 12:00 noon to 12:50 p.m. (Donations will be accepted to cover the cost of the meal). Also available are evening lessons at 7:07 p.m. on Monday and Tuesday nights.

"David, the Son of God" is the subject of the Monday noon lesson; and the Monday evening lesson is entitled "Isaiah and the Messiah". Tuesday noon's lesson is "Second Isaiah and the Suffering Servant". Dr. Coats will conclude his series with the lesson "Jesus, the Unique" on Tuesday evening.

Rev. Lane Boyd, Pastor of First United Methodist Church, invites all the community to join in the Bible Conference as Dr. Coats shares of the fascinating connections between the Old and New Testaments. Remember, Dr. Coats' Sunday morning message can also be heard during First United Methodist's regular 11:00 a.m. broadcast on KRDF-FM 98.

And don't forget to set your clocks AHEAD one hour when you go to bed Saturday night so that you're not late for church Sunday morning!



LIONS CLUB 10 K & FUN RUN

JUNE 1, 1985

THE RACE BEGINS FROM THE
SPEARMAN SHOPPING MALL

AT 8:30 A. M.

FUN RUN ENTRY FEE: \$ 5.00

10 K ENTRY FEE: \$ 8.00

REGISTRATION BEGINS AT 7:30 A.M.

AGES:

MEN 0-14/15-19/20-24/25-29/30-34/35-39/50 +

WOMEN 0-19/20-29/30-39/4 +

FUN RUN:

MEN & WOMEN 0-8/9-10/11-12/13-14/15-19/20 +

AWARDS WILL BE GIVEN FOR

10 K 1st OVER ALL

10 K 1st & 2nd ALL DEVISIONS

FUN RUN 1stMAN/1st WOMAN

HANSFORD COUNTY ROUND-UP,

They were a family
torn apart by
temptation...
kept apart by
pride...
but brought
together
by a miracle!

THE PRODIGAL

A WORLD WIDE PICTURES RELEASE
April 26-30-Lyric Theatre,
Spearman. For advance dis-
count coupons see your church.

"The Prodigal" to run at Lyric

"The Prodigal", a fast-paced contemporary drama from World Wide Pictures, concerning the dilemma of a modern day family, will open Friday, April 26 at the Lyric Theatre in Spearman.

John Hammond, Hope Lange and John Cullum head the first-rate cast of this feature which was filmed entirely on location in Seattle and other outstanding sites throughout the state of Washington.

Hammond, who portrays the title role of the wayward son in "The Prodigal", made his motion picture debut co-starring with Mary Steen-bergen, in Universal's "Cross Creek", and recently starred in the hit television mini-series, "The Blue and the Gray".

Hope Lange, an Oscar nominee for her outstanding performance in the hit film, "Peyton Place", a two-time Emmy Award winner for her title-role in the popular television series, "The Ghost and Mrs. Muir", and a nominee for her emotional portrayal of the wife in the film-for-television, "That Cer-

tain Summer", stars in "The Prodigal" in the taut role of a confused and bewildered wife and mother.

Noted Broadway actor John Cullum, a two-time Tony Award winner for his roles in the musical "Shenandoah" and the dramatic hit "On the Twentieth Century", stars as a workaholic husband and father, prone to the personal neglect of his family.

World Wide Pictures is the film organization of the Billy Graham Association, and the renowned evangelist makes a cameo appearance in the film.

"The Prodigal", a World Wide Pictures presentation, stars John Hammond, Hope Lange and John Cullum in the screenplay written and directed by James F. Collier. Morxan Brittany, Ian Bannen, Joey

Travolta, Sarah Rush, Gerry Gibson and Arliss Howard also star in the film produced by Ken Wales with William F. Brown as executive producer.

A special invitation from the heart of NO MAN'S LAND

49th Annual PIONEER DAYS RODEO

May 3rd & 4th

The Only P.R.C.A. Rodeo in the Panhandle

8 BIG EVENTS —

• Team Roping	• Bull Riding
• Steer Roping	• Barback
• Saddle Bronc	• Calf Roping
• Steer Wrestling	• Barrel Racing

GUYMON, OKLAHOMA

Rodeo Performances:
Friday, May 3 - 7:30 pm
Saturday, May 4 - 2:00 pm & 7:30 pm

PLUS — Join us for all the other Pioneer Day Activities.

Parade — 11 am Saturday
Old Timers Rounin
Western Dances - Talent
Carnival - Bar-B-Que
MORE...

RED CARPET COUNTRY



Complete

Janitorial Service of Spearman
Floor and Carpet Care
P.O. Box 305
Farnsworth, Texas 79033
Phone 435-3043 or 659-5014

WATER WELL DRILLING

Criswell Drilling Co. is anxious to solve your water problems. We provide quality drilling at reasonable prices. Included, is drilling the well, setting the casing, gravel packing and bailing. When we finish, the well is ready for the windmill or pump. Call Cris, Rod or Larry at 806-435-5655.

STINNETT'S SHOWPLACE FURNITURE & APPLIANCE

Spring Electronics Sale
NEW R.C.A. DEALERSHIP

ALL R.C.A.-QUASAR-SYLVANIA T.V.'s-VCR's & STEREO'S ARE CLEARANCE PRICED

NEW FINANCING TERMS AVAILABLE
CHECK THESE PRICES

- VCR's with REMOTE starting at \$399⁹⁵
- 13' COLOR TV's starting at \$299⁹⁵
- 19' COLOR PORTABLE starting at \$319⁹⁵
- 19' COLOR CONSOLE starting at \$539⁹⁵
- STEREO STACK UNITS starting at \$259⁹⁵

CATTLEMEN

"Horn flies - Face flies - Ticks - Stable flies - Lice"

Are these guys stealing your profits on your summer cattle?

Insecticide tags can ease the problem of unwanted parasites keeping your cattle from gaining to their best potential. Fly tags release their fly repelling chemicals for a period of up to five months. Enabling your cattle to get and grow instead of fighting flies.

Insect tags may also be personalized with your name and phone number for identification.

Brawley Cattle Supply
Dumas, Texas
806-935-5677

Frank Watson
935-3668

Mike O'Hair
935-9086

Terry Tull
935-7473



HOURS:
 Lobby: 9:00 - 3:00 Monday - Friday
 Drive-up: 7:30 - 4:30 Monday - Friday

Banker's Hours

24 hours a day, 7 days a week

**GET CASH
 MAKE DEPOSITS
 TRANSFER BETWEEN ACCOUNTS
 CHECK BALANCES**



Beauty is more than skin deep

Come bank with us, and we'll show you a bank designed
 for convenience and service...a bank with a positive attitude
 that works for you

**We care about our customers and
 we're proud of our quality services**

Safe Deposit Boxes
 Retirement Accounts
 Trust Services
 Safekeeping
 Wire Transfer Services
 Pulse - ATM

Certificates of Deposit
 Home Improvement Loans
 Personal Loans
 Business Loans
 Agricultural/Livestock Loans
 Visa/Mastercard Services

Checking Accounts
 Savings Accounts
 Money Market Accounts
 Cashier's Checks
 Money Orders
 Travelers Checks

Offering you today what others may offer you tomorrow.



1 NW Court 659-5565

Spearman, TX 79081

