



PTA projectMcGruff
meets Lurky page Page 11

Sample Ballots....City
and School Page 10

Truck Pick-up fatality
pictures.... Page 6

The Spearman Reporter

24 hr. prayer
service
659-2911

Volume 77, Number 20

The Spearman Reporter Spearman, Texas 79081

Thursday, March 21, 1985

Livestock show and sale is big success

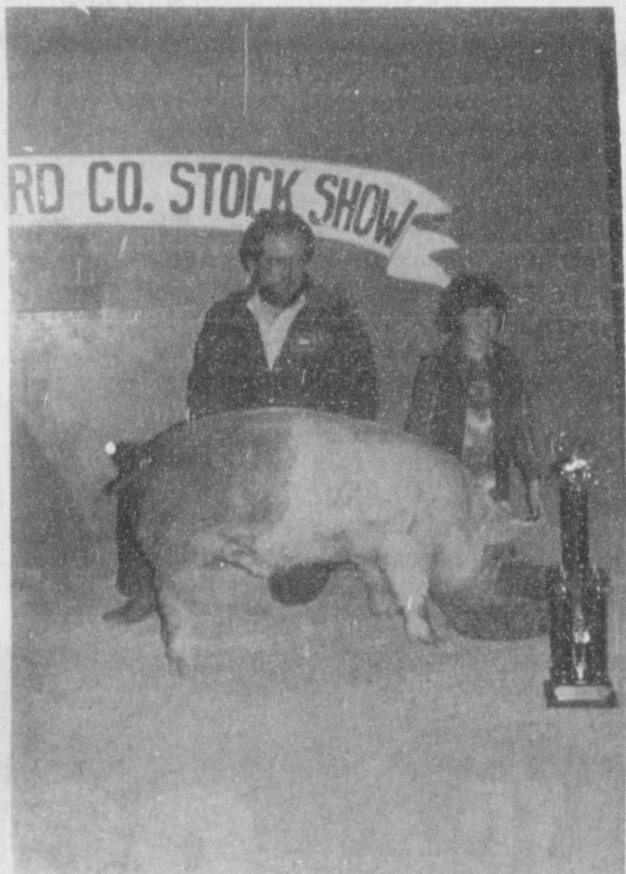


Trevor Williams of Gruver showed the grand champion steer. Richard Holton of H & H Water Well Service purchased the animal.

Record crowds attend show both days



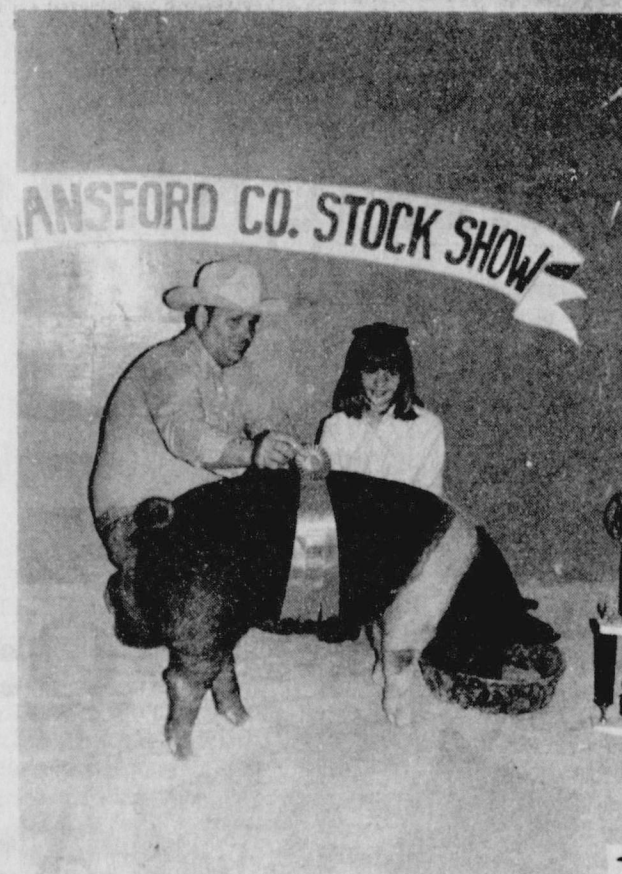
Lee Bob Harper with the Gruver 4-H showed the Reserve Grand Champion steer at the Hansford County Livestock Show. The steer was purchased by Bob Cluck of Gruver.



The grand champion barrow was shown by Randie Renner. Mike Cudd, representing Hansford Implement, bought the barrow.



Heather McRee showed the grand champion lamb. Jim Shirley, representing the First State Bank of Spearman, purchased the lamb.



Kim Boone is shown with reserve grand champion barrow.



The reserve grand champion lamb was shown by Karla Latta.

The lamb was purchased by Melvin Bradley.

The 1985 Hansford County Livestock Show brought in a total of \$89,239.70 for 4-H and FFA exhibitors. The show was held in Spearman last weekend.

Caprock Feeders set the steer floor price at \$59.25. Davis Livestock of Canyon set the swine floor price at \$41.50 and Estacado Feeders of Dimmitt set the lamb floor price at \$67.50.

The Grand Champion Lamb was shown by Heather McRee. It weighed 128 lbs. and sold for \$5.50 per lb., for a total of \$704.00 to 1st State Bank of Spearman.

Randie Renner showed the Grand Champion Barrow. It weighed 219 lbs. and sold for \$5.50 per lb. Hansford Implement purchased it for \$1,204.50.

Trevor Williams showed the Grand Champion Steer. It weighed 1,270 lbs. and sold for \$2.25 per lb. for a total of \$2857.50 to H & H Water Well.

The Reserve Grand Champion Lamb was shown by Karla Latta. It

weighed 130 lbs. and sold for \$4.00 per lb. for a total of \$520.00. It was purchased by Melvin Bradley.

Reserve Grand Barrow was shown by Kim Boone. It weighed 224 lbs. and was purchased at \$3.25 per lb. for a total of \$728 by H & M Hot Oil Service.

Lee Bob Harper showed the Reserve Grand Champion Steer. It weighed 1,295 lbs. and was purchased for \$4.00 per lb. for a total of \$5180.00 by Bob Cluck, who donated it to the Childrens Home.

Showmanship awards in the steer category were awarded to: 1st Place - Stephanie Friemel; 2nd Place - Trevor Williams; and 3rd Place - Edward Beck.

Showmanship Awards in barrow category were awarded to: 1st Place - Karla Latta; 2nd Place - Chris Brooks; and 3rd Place - Laneida Burnham.

Lamb Showmanship Awards went to: 1st Place - Lynnette Williams, 2nd Place - Davonna Cator; and 3rd Place

- Loyd Cator.

The Farm Bureau Animal Husbandry Award was presented to Joe Lopez, Tim Woolley and Stephanie Friemel.

Breed Champion Dorset was shown by Davonna Cator. It weighed 103 lbs. and was sold for \$5.00 per lb. for a

total of \$515.00. It was purchased by Preston Smith.

Reserve Breed Dorset was shown by Tina Cator. It weighed 91 lbs. and was purchased for \$3.00 per lb. for a total of \$273.00 by Dutch Clawson.

Breed Champ Duroc was shown by Justin Ooley. It weighed 238 lbs

and was purchased for \$1.75 for a total of \$416.50 by Spearman Super Service.

Breed Champ York was shown by Karla Latta. It weighed 218 lbs. and was purchased for \$2.25 per lb. for a total of \$490.50 by Gene Cudd.

Reserve Breed Duroc was shown by Monty Ross. It weighed 244 lbs. and was purchased at \$2.25 per lb. for a total of \$549.00 by Sparks Brothers Drilling.

Shawn Bratton showed the Reserve Breed Hamp. It weighed 242 lbs. and was purchased by Dutch Clawson for \$2.75 per lb. for a total of \$665.50.

Reserve Breed OPB was shown by Stacy Gardiner. It weighed 240 lbs. and was purchased for \$1.90 per lb. for a total of \$456.00 by Ralph McCune.

Reserve Breed York was shown by Brandon White. It weighed 247 lbs. It was purchased for \$2.25 per lb. for a total of \$555.75 by G & S Drilling.

Chris Brooks showed the Reserve Breed Cross. It weighed 234 lbs. and was purchased for \$1.75 per lb. for a total of \$409.50 by Monte Cluck.

1st Lt. Wt. Steer was shown by Marlon Mitchell. It weighed 970 lbs. and was purchased for \$1.10 per lb. for a total of \$1,067 by Continental Grain.

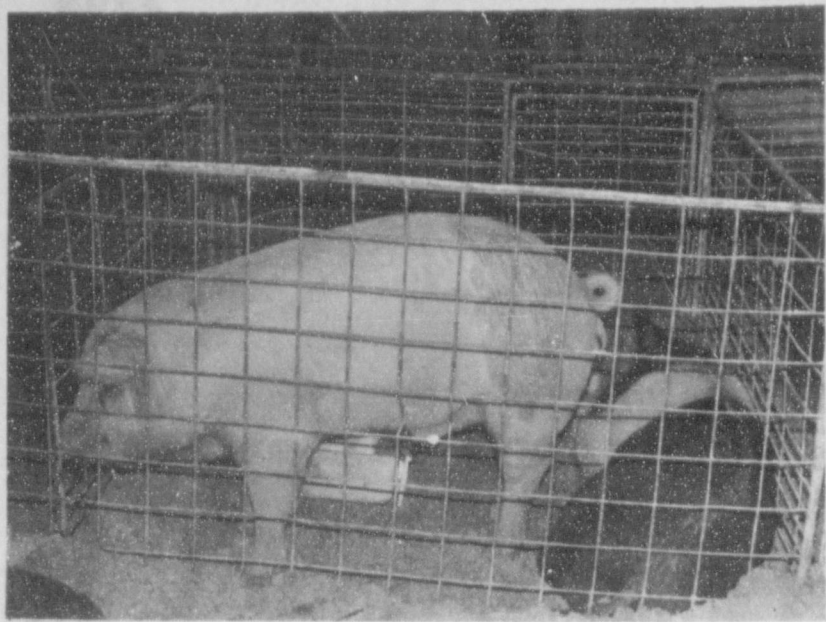
Breed Champ Other Pure Breeds was shown by Carl Urban. It weighed 226 lbs. and was purchased for \$1.25 per lb. for a total of \$282.50 by Hansford Implement.

1st Med. Wt. Steer was shown by Deana Turner. It weighed 1,116 lbs. and was purchased for \$1.40 per lb. for a total of \$1,562.40 by Berry Grain.

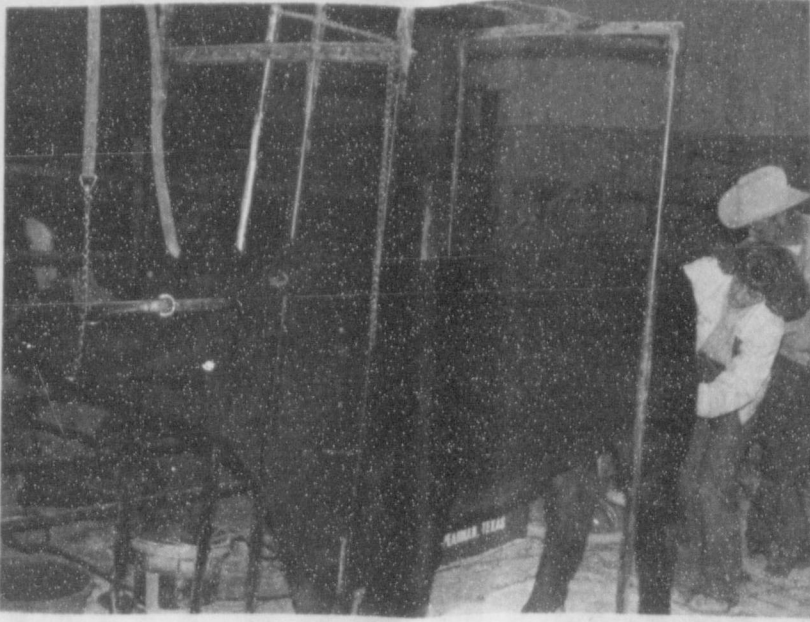
Christie Burton showed 1st MW - I Lamb. It weighed 95 lbs. and was purchased for \$3.50 per lb. for a total of \$332.50 by Gruver State Bank.

See Livestock Show
Page 5

A BIG THANKS TO ALL WHO PURCHASED LIVESTOCK AT THE SHOW LAST WEEKEND



These two pigs await their turn in the showing. The swine floor price was \$41.60 and was set by Davis Livestock of Canyon.



Tiki Jackson prepares her steer for the Hansford County Livestock Show held March 15 & 16 in Spearman.



Chris Brooks placed 2nd in barrow showmanship.

Karla Latta took 1st in barrow showmanship.

Spearman Reporter

PUBLICATIONS (USPS 5096-6000)
SPEARMAN, TEXAS 79081
213 Main Box 458 659-3434
Published Weekly at 213 Main Street
Spearman, Texas 79081
Owner-Publisher.....William M. Miller
Editor Faye Lynch
Second Class postage paid at Spearman, Texas
79081

Any erroneous reflection upon the character of any person or firm appearing in these columns will be gladly and promptly corrected upon being brought to the attention of the management.

POSTMASTER: Send address changes to Spearman Reporter, Box 458, Spearman, Tx. 79081.

SUBSCRIPTION RATE: Hansford, adjoining counties, combination with the Hansford Plainsman \$26.28
Other points, \$31.54

MEMBER
TEXAS PRESS ASSOCIATION

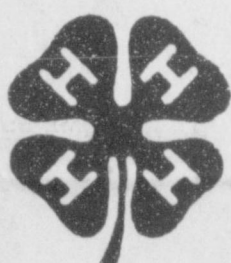
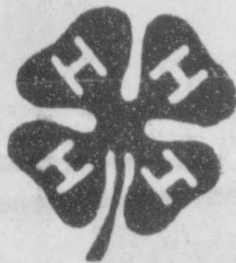
JEAN E. SHOTTS ROBERT E. HOLLMANN

The Law firm of
SHOTTS & HOLLMANN
Attorneys & Counselors

wishes to announce
the opening of a new office
at 410 Davis Street
Spearman, Texas 79081

Office Hours:
9:00 a.m. to 5:00 p.m.

Telephone
(806) 659-2939



Straight Answers to Your Questions



TNP Vice President Owen Ringness is Chief Engineer for the company. He is responsible for all TNP powerline construction.

law enforcement officials. Keep all antennas and ladders away from powerlines. Instruct your children to fly kites and model airplanes away from powerlines.

Electricity provides many of the conveniences in our homes, but it is most important to use electricity safely.

Q: Why is Texas-New Mexico Power Company so concerned about powerline safety?

A: The powerlines you see almost everyday perform the important job of providing adequate electric service to you and your neighbors. These lines carry high voltages and are constructed with the best of care by fully trained professionals not only to do the job intended, but also to be as safe as possible.

It is most important that you avoid any contact with any powerline because of the possibility of severe electrical shock. Even if you find a downed powerline, stay away from it and report it immediately to our office or to local

Neighboring Professionals
Offering You The Best Choice



EL 11-85

ALLSUP'S
CONVENIENCE STORES

PRICES EFFECTIVE
MARCH 21-23, 1985

GROCERIES-ICE- MILK- CHIPS & DIPS-
SOFT DRINKS- SNACKS- HOT COOKED
FOODS- SELF SERVE GAS-MONEY ORDERS-
WHILE SUPPLIES LAST

Spring Opening

ALLSUP'S
MONEY
ORDERS

WE HAVE MONEY ORDERS
SAFE & CONVENIENT
UP TO \$299.99

19¢

POTATO
CHIPS

BARBEQUE, SOUR CREAM & ONION,
BACON & SOUR CREAM OR REG.

POTATO
CHIPS

REG. \$1.39
SIZE BAG

99¢

BORDEN'S
CHOC. MILK

QT.
CTN.

69¢

BORDEN'S ASST. FLAVORS
ICE CREAM

1/2 GAL.
RND. CTN.

\$1.69

COOKED FOOD SPECIAL AS FEATURED
ON TV FRESH

COOKED
BURRITOS

2.99¢

PEPSI FREE, PEPSI LIGHT, DIET OR REG.

PEPSI-
COLA

\$1.79

6 PACK CANS

CON
and
Eiso:
7902

H.
orde
Schc
bake
call
your

R.
for
\$10.

SE/
INS
inst
at y
659-
Co.,
45S-

WILL
Reason
18s-4tj

Net
shing
beaut
Wh
may b
to cust
on an
energ
today
BEA
ALLA
15-rt

BUY, SELL, TRADE OR RENT THROUGH THE CLASSIFIED ADS

Call 659-3434

SERVICES

MONUMENTS
Save Agents and Undertakers Profits
If it is inconvenient for you to visit our large display, please phone collect (405) 327-0626 or write and we will call on you.
ALVA MONUMENT WORKS, INC.
Alva, OK 73717

New to area?
Give us a try
Call your local **USED COW DEALER**
As soon as Possible
659-3544
659-3545
1-800-692-4043
17S-rtm

NOTICE
Wallace Monument Co.
Monuments, Curbing, Grave Covers
Local Representative
LEONARD JAMESON
Spearman, Texas
35S-RTN

OSGOOD MONUMENT CO.
Amarillo, Texas
Dealers of Rock of Ages Granite as well as all colored granites, marble and bronze memorials.
represented by
BOXWELL BROS. FUNERAL HOME
519 S. EVANS
659-3802

CONCERT QUALITY piano tuning and repair. Free estimates. Write Elson Clark, Box 1016, Dalhart, TX 79022 or call collect 806-249-2783.
2-8tp-rtm

Hansford County Planned Parenthood
412 Davis
659-2483
Spearman, TX
Monday-Friday
8:30-12:30

Home Baked Goods!!! Baked to order by the Spearman High School Cheerleaders. We will bake anything! To place an order call 659-2807. We will appreciate your support.

STEAM RINSE & VAC
Rinse and Vac Shampooer for rent at Gordons Drug. \$10.95 up to 24 hours.

SEARS' BLOWN-IN ATTIC INSULATION. Completely installed. For FREE Estimate at your convenience dial 659-2373. Sears, Roebuck and Co., 517 S. Hwy. 207. 45S-rtm

WILL CLEAN TAILWATER PITS. Reasonable rates. 733-2628. 18s-4tp

Need to oil your wood shake or shingle roof? Give it extra life and beauty.

Whatever your painting needs may be - from taping and textures to custom finishes with any coating on any surface. We also feature energywave insulating paints. Call today for a free estimate.

BEASLEY PAINTING
ALLAN 733-2858 JIM 733-2012
16-rtm

SERVICES

Tree Trimming. Handy Man.
Phone 659-3115.
Bill Hopper

ODD JOBS around your house, don't know who to call? Call C.W. Handy Man Services, Charles West 659-3833. 17s-rtm

APPLIANCE REPAIR: Call Jim Nobles, 659-3528. 20-rtm

PANHANDLE CRISIS CENTER
101 S.W. Fourth, Perryton, Texas 79070, 806-435-5008, 806-435-5013. Help is available at no charge. This is for rape, sexual abuse of children. Call Panhandle Crisis Center, receive support during a difficult time. Counselors on call 24 hours a day. Call for help. 19-rtm-nc

WANTED

NEED GRAZE OUT wheat pasture. By the gain or pound. 9-3800 or 9-3248. 19-rtm

MOBILE HOMES FOR SALE

FOR SALE: 14 x 70 Mobile home, 2 bedrooms, 2 full baths. Large living area. Lots of cabinets and closet space. New carpet. Very nice. Priced to sell. Call 659-3964. 19s-5tc

REAL ESTATE

FOR SALE: Farm home, 25 miles SE of Spearman. 3 bdrm. 1/2 basement, on 6 acres. Swimming pool, out buildings. Phone Perryton - 435-3722. 14s-rtm

FOR SALE: 3 bdrm. house on 2 lots with detached garage, 1 bath on corner lot. 322 S. Hazelwood \$40,000. Call 659-3873 or 5046. 15s-21tc

HOUSE FOR SALE: Spacious, 3 bedroom, 3 bath home, approximately 2,800 square feet. 619 Haney. Recently remodeled throughout. Attached 2 car garage with two large storage rooms. New fence. Two blocks from elementary school. Call 659-3835. 16-rtm

NEW LISTING: 3 bdrm. home, redecorated, new carpet, new central air and heating, sunken den, fireplace, utility room, new 6 ft fence, storage, quiet street. Priced to sell. 659-5243. 1p-rtm

OFFICE BUILDING FOR LEASE OR SALE: 11 W. Kenneth, Spearman. Owner will finance. Phone 659-2766 or, after 5 p.m. 659-2719. 16s-rtm

HOUSE FOR SALE-3 bedroom, 1 bath, 1 car garage, fenced backyard. 659-5101. 9-rtm

FOR SALE: Big 3 bedroom home in good neighborhood near High School. Large family room with beautiful rock fireplace. New paneling, remodeled kitchen, remodeled bedroom closets. Utility room. 1 and 3/4 baths. Formal dining room. Large covered patio with large yard and two storage buildings. Nice price. Call days 9-5174, after 6:00 p.m. 9-2189 18s-4tc

FOR SALE: Several lots and tracts of land within the city of Spearman, belonging to the Mearl Beck Trust and Opal Beck Estate.

T. D. Sansing
Johnny P. Vernon
Independent Executors
and Trustees

19-rtm

MISCELLANEOUS

FOR SALE

Decorated or just plain ole cakes, cookies, cupcakes, etc. Call Debbie at 659-3328. Remember Birthdays, Bridge Parties, Sororities or Any time. 18s-4t? s-only

MOVING SALE: 1 Baldwin Organ Fun Machine - \$1000.00; 2 Blue Rocking Chairs with Hassock - \$75.00 set; 1 RCA Console Stereo - \$400.00; 1 Small Miniature Hutch - \$200.00; 1 4-Burner Gas Apt. Size Stove - \$250.00; 1 Refrigerator 18.6 CUF - \$500.00; 1 Sound Design Stereo Console - \$200.00; 1 White Plastic Bookcase - \$25.00; 3 Formica and Chrome Dining Tables - \$10.00; 1 Antique Dresser with Mirror - \$300.00; 1 Large Water Cooler Air Conditioner - \$300.00; 1 Small White Wooden Kitchen Table - \$10.00; 1 Large Pile of Wood - \$100.00; 1 Artificial X-Mas Tree - \$15.00; 1 Electric Adding Machine - \$45.00; Various Children's Games - \$2.00 ea.; 1 Iron Bicycle Stand (4) - \$20.00; 1 Snow Tire - \$25.00; 1 Natural Mink Coat - \$750.00; 1 Black Wrought Iron Couch - \$40.00; 1 New Rattan Trunk - \$75.00; Assorted Clothes & Household Things; 1 Long End Table - \$15.00; 1 Yellow Deck Chair - \$15.00; 1 Marble Vanity Sink (Bathroom) - \$150.00; 1 Pine Bathroom Vanity - \$150.00 CALL: 659-3873 or 659-5046. 16s-19tc

AUTOS FOR SALE

FOR SALE: Cabover Camper. 45 HP Chrysler Motor. 16 ft. Lone Star Boar. 806-659-2325. 17-rtm-nc

FOR SALE: 1981 Honda XI 185S. Very low mileage. 659-3440 after 4 p.m. 18s-4tp

LEGALS

CONTRACTORS' NOTICE OF TEXAS HIGHWAY CONSTRUCTION

Sealed proposals for roadside mowing on State Department of Highways and Public Transportation Right-of-Way on various Highways in Hansford County, will be received at the State Department of Highways and Public Transportation District Office at 5715 Canyon Drive, P.O. Box 2708, Amarillo, Texas 79105, until 9:00 a.m., March 29, 1985, and then publicly opened and read.

A Pre-bidder's Conference will be held in the District Office in Amarillo, Texas, at 10:00 a.m., March 28, 1985.

Proposals, plans and specifications are available at the office of Donald J. Shipman, Senior Maintenance Engineer, 5715 Canyon Drive, Amarillo, Texas, and at the Maintenance Warehouse Office of Quentin E. Sadler, Maintenance Construction Supervisor, located on State Highway 15 in Gruver, Texas.

Usual rights reserved. 19-2tc T-only

NOTICE

ATTENTION FARMERS

If you would like future contract on your 1985 wheat or if you have any farm-stored grain to sell, contact Oles Grain Co., Perryton, Texas. 806-435-5449. 19s-rtm

I will not be responsible for any debts other than my own. Clark Dunaway. 18s-rtm

FOR RENT

RENT REDUCED: Nicely furnished 2 bedroom apartment for rent. Call 659-3471 afternoons or evenings. No pets. 10-rtm

FOR RENT: 2 bdrm. trailer house. Furnished. Call 659-3017 or 659-2770. 17s-rtm

FOR RENT

FOR RENT: furnished 2 bedroom house at 217 S. Endicott. Call 659-2404. 17-rtm

FOR RENT: Nice 3 bedroom house. Good location. Call 659-5297. 18s-rtm

BUSINESS OPPORTUNITIES

Own your own jean-sportswear, ladies apparel, childrens, large size, combination, western store, accessories. Jordache, Chic, Lee, Levi, Easy Street, Izod, Esprit, Tomboy, Calvin Klein, Sergio Valente, Evan Picone, Liz Claiborne, Members Only, Organically Crown, Healthtex, Over 1000 Others. \$7900 to \$24,900 inventory, training, fixtures, grand opening etc. Can Open 15 days. Mr. Kaiser (612) 888-6555. 19-4tc

VIRGINIA WHITE
Realtor
Your Business is Appreciated
Virginia White, Broker
659-3841

3 bedrooms, 1 1/2 baths, beautiful large area with cathedral ceiling and fireplace. Big fireplace area. New carpet. Over 1800 sq. ft.

Beautiful clean home with 3 bedrooms, 1 1/4 baths, fireplace. Two living areas, excellent location.

Storage Building for sale on Hoskins St., 1200 sq. ft.

Residential lot for sale on Dressen St. in block next to grade school.

CHARM & COMFORT is what this home offers. 3 bedrooms, 2 baths. Clean as can be and in good location. Call!

Priority II REAL ESTATE
806/659-3440

732 COTTER - For a limited time only. The Buy of a Lifetime. Owners must sell soon or house will be taken off the market. Unheard of low price for a 3 bdrm., 2 bath, den and fireplace. Approx. 2000 sq. ft. living area. Patio and child's playhouse in back plus storage bldg.

Nelson Addition-3 bedroom brick, 2 baths, den, utility, carpeted, ceiling fans, nearly new. Reasonable.

1115 S. Bernice-exceptional 3 bedroom brick with all the extras and built-ins. Circle drive, established yard, fenced, shown by appointment only to qualified buyers.

205 Lonita-attractive 3 bedroom, 1 bath, garage, fenced yard. Carpeted. Reasonable. Appointment only.

1017 Wilmeth Dr.-Spacious 4 bedroom, 2 story home with basement and fireplace. Two baths, fenced yard and 2 large storage buildings.

715 W. 7th-Retail store.

1018 EVANS - 3 bdrm., 1 1/4 baths, detached garage, living and dining room, fenced yard, storm windows. Lots of storage space.

603 S. EVANS 2 bdrm., fenced yard.

We want your listings
Leo K. Meyer Bob Hardy
Broker Sales

PUBLIC NOTICE

CHESS CLUB
Meets at Marlene's Cafe at 7:00 p.m. Mondays. Beginners to advanced, 12 years and up. Bring a board is possible.

WEIGHT WATCHERS meets each Monday at 6:00 p.m. at the Home Demonstration Building, Spearman, Texas.

Guyton Elks Supper Club is open to the public. Our hours are Wednesday-Thursday 6-10 p.m. Friday-Saturday 6-10:30 p.m. We have a Prime Rib Special every Friday. 46s-rtm

The **COWBOY SUB-CHAPTER** of the F.C.A. meets the fourth Saturday of every month at 7:30 p.m. at the Home Demonstration Building, Spearman, Texas.

Offered by
EMMETT R. SANDERS REALTY
Nearby new 3 bedroom brick home; loan assumption.
3 bedroom home, attached garage.
Elegant 3 bedroom, 3 bath home, large landscaped lot.
Crawford Addition lot on pavement.
3 bedroom home, extra storage.
6 room house on 2 lots, large detached double garage.
3 bedroom, 1 1/4 bath, brick, good south location.
EMMETT R. SANDERS REALTOR
659-2516 nights 659-2601
14-rtm T only

Daryl Wynn, Broker
Allen Alford 658-4258 Larry Troesper 659-3491
T. O. Lesly 659-2028

We'll give our word to you

GOLDEN SPREAD REALTY

Corporated registered trademark of Century 21 Real Estate Corporation. Printed U.S.A. Each office is independently owned and operated.

WE WANT YOUR LISTINGS!!! CALL TODAY!!!

BOND FINANCING NOW AVAILABLE FOR 1ST TIME HOME BUYERS 11.6%. Ask us about our builder, for we can build you a home. Will take F.H.A. and V.A. application on the spot.

ACREAGE: For Sale \$176,000. Section 318, Blk. 1 and 2 in Sherman County. 640 acres - 550 in Wheat, 90 in grass land. Owner will consider trading in equal value in irrigated Farm Land.

COUNTRY LOVERS: Lovely 3 bedroom home with a double detached garage. Large den with fireplace, central heat and air, storm windows and double doors at entryway. Two full baths with large walk-in closets. Large kitchen with dishwasher, double oven, intercom system and cook top stove. This lovely home is about four miles south on highway 207. Approximately 11 acres and many trees of all kinds. Shown by appointment to qualified buyers only. This is a real buy.

610 S. HANEY - 3 bedrooms and 1 1/2 baths. Central heat and air. It has been remodeled. It has thermo windows and is insulated well. Call us today for an appointment to see this beautiful home. This is a real buy. Has many ammenties.

1106 S. HANEY - 3 bedroom, kitchen, living. Has one bath, central heat and single car garage. This is a well kept home. Call today for an appointment. This home will qualify for bond money.

19 S. DRESSEN - 100 x 140 foot lot and Trailer House. This is also zoned for Commercial property. It has a building for auto repair or whatever. Priced to sell.

5 1/2 Lots, all fenced with 3 bdrm. home and has a new 16 x 30 bldg. Will sell all together or split property.

60 x 75 Ft. Hangar. Extra good bldg. - with heat, hydraulic door on 130 x 300 ft. lot. 8 inch cement floor.

GROCERY STORE in Spearman at 202 N. Bernice.

217 N. BRANDT - 2 bdrms., 1 bath. Extra good fence.

415 ENDICOTT - lot 27. 65 x 175 ft. Owner will clear lot.

PRICED TO SELL: 4 bedrooms, 2 baths, large master bedroom. Ceiling fans, upstairs room, fenced-in back yard, with lots of fruit trees. Good location, 416 S. Haney.

1010 HANEY - Three bedroom home, single garage. This home has just been redecoreated in the past year. New six foot fence and landscaping is excellent, air conditioning to enjoy on the sunny days that will be coming our way. Has central heat and air. Insulated well. Let us show you this home today. Shown by appointment only. Qualifies for bond money.

WANT TO LIVE IN THE COUNTRY? How about this one? 3 bedroom, large kitchen, central heat, family room, fenced back yard, storage shed, and a lean-to for your horse! 200 ft. lot on Industrial Road.

603 ROLAND-FIRST HOME FEVER? Here's the remedy! This 2 bedroom, 1 bath, kitchen, dining room and living room is ready to move into. Double detached garage, all brick. It is affordable.

202 N. BERNICE - New listing. 4 bdrm, 2 bath. New carpet and wall paper. 84 x 14 Trailer house in good condition and lot can be bought with the house. All property has a good fence.

320 Acres 10 miles S.E. of Perryton, irrigated, lots of grain storage. Lays good.

322 S. HAZELWOOD - 3 bdrm. House. Has extra lot that is plumbed for trailer house.

1014 S. DRESSEN: 3 bedroom, single car garage, central heat/air. Nice quiet neighborhood, close to school.

HOUSE TO BE MOVED - reasonably priced.

Homestead Exemptions can reduce the amount of your tax bill

Taxpayers can reduce the burden of property taxes for 1985 in Hansford County Appraisal District if they take advantage of various partial exemptions available on Texas homes.

According to Alice Peddy, chief appraiser for the district, Texas property tax laws now allow a homeowner to apply only once, instead of annually, for residence homestead exemptions.

However, taxpayers who have never received a residence homestead exemption on the homes they were living in on January 1, and those who became 65 years old or disabled during 1984, must apply this year in order to receive exemptions for 1985.

A residence homestead is the structure, together with land up to 20 acres and any improvements like a swimming pool or greenhouse, used as the owner's principal residence. Mrs. Peddy said that, to qualify as a homestead, a property must meet four tests.

It must be owned by the person or persons claiming the exemption; it must be designed or adapted for human residence; it must actually

be used as a residence, and it must be occupied as the principal residence of an owner who qualifies for the exemption.

A mobile home, if it meets the tests, can be claimed as a homestead, even if it is on leased land. Mrs. Peddy noted. She added, "A taxpayer can still qualify for the homestead exemptions if part of his residence is used for other purposes, such as a business in the home. And the home will not lose the exemption if the owner moves away temporarily, provided he intends to return and doesn't claim a homestead anywhere else."

Among the various types of homestead exemptions provided by Texas tax law are two which a school district must give to taxpayers who apply and qualify. School districts offer a \$5,000 general homestead exemption to all homeowners and an additional \$10,000 exemption to those who are 65 years of age or older who are disabled.

An advantage of the over-65 school exemption is that, along with it, elderly homeowners obtain a "ceiling" on their school taxes.

Although the appraised value of these homesteads may fluctuate with the market, taxes due the school district will not increase.

The ceiling would be raised, however, in the instance of adding an improvement other than repairs and general maintenance. In that case, the value of the new improvement is taxed at current market value and tax rate, and the taxes due are added to the previous tax ceiling to create a new ceiling.

Mrs. Peddy stressed, though, that the elderly homeowner has to apply for the over-65 school tax exemption in order to get the ceiling. The homeowner must be 65 years old or more on January 1, 1985, to qualify for the elderly exemption and tax ceiling.

Counties must offer a \$3,000 general homestead exemption to all taxpayers, given only on the portion of the county tax levied for farm-to-market roads and/or flood control.

Any taxing unit's governing body may vote to offer an exemption for a minimum of \$3,000 on the homesteads of disabled and/or elderly residents. Only in school

districts, however, is the ceiling established for taxes on over-65 homesteads.

In addition, taxing units may decide to offer a local-option homestead exemption based on a percentage of a home's appraised value. This year, any taxing unit may exempt up to 30 percent of the value of all homesteads in the unit. No matter what the percentage, the dollar amount exempted on any homestead must be at least \$5,000. The taxing unit's governing body has to take official action to offer this exemption.

Percentage exemptions are granted by City of Spearman at 30 percent; Gruver I.S.D., 30 percent; Spearman I.S.D., 30 percent, Hansford County, 30 percent, North Plains Water District 30 percent, and Palo Duro River Authority 30 percent.

For more information about any of the homestead exemptions, homeowners may contact the Hansford County Appraisal District at 709 West 7th, 659-5575 and 733-5139.

Miss Hansford County Contest May 4

This year's Miss Hansford Contest will be held on Saturday, May 4, in the Spearman High School Auditorium. Any girls who will be sixteen by that date, but who has not yet turned twenty-one is eligible to compete. There will be a Coke Party held for all those interested in participating, and the date will be announced shortly.

The Miss Hansford Escort Contest will again be held in conjunction with this year's pageant. This contest is open to any girls and boys, but will be limited to ten couples. The first ten couples to

have their entry blanks turned in to Jackie Pearson at Kid's Stuff will be accepted. These entry blanks may be picked up from Kid's Stuff anytime during business hours beginning Monday, March 25. The age limits on the contest are that the children be at least four by the date of the contest, but not yet six.

Anyone interested in participating in either of these contests should contact either Jackie Pearson at 659-2608 or Judy Nelson at 659-3424 or 659-3608 for more information.

Eaton's nephew succumbs to MD

Kevin Garvin, 14, great-nephew of Mr. and Mrs. Charles Eaton of Spearman, died Saturday. He was a victim of muscular dystrophy.

If desired, memorials may be sent to Muscular Dystrophy Association of America, 1713 Avondale Dr., Amarillo, Texas 79106. Lee Banks president.

Collins services pending

Eva Mae Collins, 87, died Saturday.

Services are pending with Carmichael-Whately Funeral Directors.

Mrs. Collins was born in Grayson County. She had been a resident of Carson County since 1917, she was a Presbyterian. She married Collins in 1921. He died in 1961.

Survivors include three sons, Robert of Dumas, Gordon of Spearman and Billy of Des Moines, Iowa. Two sisters, Jewell Overstreet of White Deer and Rayma Christopher of Denver; 12 grandchildren; 21 great-grandchildren; and a great-great-grandchild.

Family Counselor here on Tuesdays

Paula Sinise, Family Counselor, will be at the Home Extension Building Tuesdays from 9-5.

Call 659-2030 for individual and marriage counseling.

Charges are on a sliding scale. If you can't reach Paula at the above number here you can get in touch with her in Perryton at 435-3671.

Sluder Rites Held Tuesday

Ernest Sluder, 89, died Friday. Services were held at 2 p.m. Tuesday in Union Church in Spearman with the Rev. Steve Rogers, pastor, officiating. Burial was in Hansford Cemetery by Boxwell Brothers Funeral home.

Mr. Sluder, born in Floydada, had lived around Gruver most of his life. He was a U. S. Army veteran of World War I, a retired Phillips Petroleum wholesaler jobber and a member of Union Church. He married Nellie Fullbright in 1929. She died in January of this year.

Survivors include a daughter, Janelle Banks of Hardesty, Okla.; a brother, Tom of Olton; two sisters, Winnie Flynt and Nettie Mae Jester, both of Lubbock; three grandchildren; and three great-grandchildren.

Absentee voting underway

School absentee and city voting is now underway.

Absentee voting for Spearman and Gruver school trustees will be in the business offices of Spearman, Gruver schools and at the superintendent's office in Pringle-Morse.

The Gruver and Spearman school business offices close at 4:30 and the city halls are open until 5 each week day.

Absentee voting ends April 2 by personal appearance.

Absentee voting for city offices

will be at Spearman and Gruver city hall.

The elections will be held April 6 at Spearman High School, Gruver High School and Pringle Morse School.

MARKETS	
WHEAT	\$ 3.08
MILK	\$ 4.25
CORN	\$ 2.95

HOSPITAL

Patients in Hansford Hospital are Caroline Murphy, Alice Fry, Reba Bennett, Ruth Garrard, Kelly Crawford, Kelley Trout, Willard Davis, Ruby Lair, Virginia Sparks, Anita Sumner, Dorothy McElroy, Ora Vanlaningham, Dee Haskins, Ruby Lieb, Kate Gidley, Leo Cummings, Vernon Morris, Michael Cook and James Cummings.

Patients dismissed were Florence Kruse, Anthony Peters, Mitzi Medley and daughter, Donna Sheets, Jesus Borunda, and Terry Hall.

Our Heritage of Faith

How do Lutherans connect bread and wine with Christ's body and blood? Faithfully. That is, in faithfulness to Jesus' own words as recorded in the Gospel. And in faith, since we do not believe that human reason can fully grasp what God does and how He does it in the Lord's Supper. Faith comes from hearing the Scriptures; from the Holy Spirit.

NEXT TOPIC: More about the elements with Christ.

Bill Schardin, Pastor
Faith Lutheran Church
Spearman, Texas

WHAT ARE HOMESTEAD EXEMPTIONS?

A homestead exemption reduces the taxable value of your residence homestead. Various types of homestead exemptions are available in Texas and, if you qualify, they can lower your total property tax bill. Read on for details.

What Exemptions Are Available?

School districts offer a residence homestead exemption to all homeowners and additional exemptions to people who are disabled or over 65.

Counties offer homestead exemptions on their farm-to-market or flood control tax rates and may offer exemptions to the disabled and elderly.

Cities and other taxing units may offer exemptions for the disabled and elderly.

All taxing units offer an exemption for certain disabled veterans on one designated property.

Some taxing units offer an additional local-option percentage homestead exemption to resident homeowners.

How Do I Apply?

If you received a residence homestead exemption on your present home in 1984, you will not need to apply again for 1985, unless the chief appraiser requires you to file.

If you were 65 or disabled on January 1 and have not previously applied for the over-65 or disability homestead exemption, you will need to apply this year.

Or, if you have never had a homestead exemption on your present home, you should file your original application in 1985.

Apply for all exemptions to the county appraisal district at the address below. Forms are available from the appraisal office.

Is There a Deadline?

You should apply before May 1 for 1985 exemptions. While late applications for exemptions may be accepted in certain instances, you can fully protect your rights by applying before May 1.

The State Property Tax Board has a pamphlet, *Taxpayers' Rights, Remedies, Responsibilities*, to help you understand your local property taxes. Get a free copy at the appraisal district office or contact the State Property Tax Board in Austin.

HANSFORD COUNTY
APPRAISAL DISTRICT

Alice Peddy

709 WEST 7th Street

Phone 659-5575

733-5139



State Property Tax Board
Box 15900
Austin 78761-5900

¿QUE SON LAS EXENCIONES DE RESIDENCIA?

La exención de residencia es una reducción en el valor sujeta a los impuestos de su residencia hogar. Varios tipos de exenciones de residencia se encuentran disponibles en Texas y, si usted califica, pueden reducir su cuenta de impuestos sobre la propiedad. Los detalles incluyen los siguientes.

¿Cuáles exenciones están disponibles?

Los distritos escolares ofrecen una exención de residencia a todos los dueños de hogar y exenciones adicionales para personas incapacitadas o personas de 65 años de edad o más.

Los condados ofrecen exenciones de residencia de los impuestos dedicados a las carreteras de granja a mercado y al control de inundaciones. Algunos condados también ofrecen exenciones adicionales a ancianos y personas incapacitadas.

Las ciudades y otros gobiernos locales pueden ofrecer exenciones adicionales a ancianos y personas incapacitadas.

Todos los gobiernos locales ofrecen una exención a veteranos incapacitados que cumplan con los requisitos a cierta propiedad designada.

Además, los gobiernos locales pueden conceder un tanto por ciento en las exenciones de residencia a los dueños de residencias hogares.

¿Cómo puede solicitarse?

Si usted recibió una exención de residencia para su residencia actual en 1984, no es necesario hacer una solicitud nueva para 1985 en este distrito de valuación.

Si usted tenía 65 años de edad o

fue incapacitado el 1º de enero y no había solicitado previamente para exenciones de incapacidad o de 65 años, necesita llenar un formulario nuevo este año.

O, si usted nunca ha recibido exención de residencia en su hogar actual, necesita hacer una solicitud original en 1985.

Solicitudes para estas exenciones deberían hacerse en la oficina del distrito de valuación de su condado, la cual se ubica en la dirección escrita abajo. También, formularios de exenciones en español se encuentran disponibles en la oficina del distrito de valuación.

¿Hay un límite de tiempo?

Para el año 1985, debería solicitarse antes del 1º de mayo. Aunque se aceptan solicitudes tardes en ciertas instancias, al solicitarlas antes del 1º de mayo usted podrá proteger sus derechos.

La Oficina Estatal de Impuestos sobre la Propiedad (State Property Tax Board) ahora tiene un folleto en español, *Los Derechos, los Remedios y las Responsabilidades del Contribuyente a los Impuestos*, que puede ayudarle a comprender sus impuestos locales sobre la propiedad. Puede obtenerse una copia gratuita en la oficina de su distrito de valuación o por medio de la Oficina Estatal de Impuestos sobre la Propiedad en Austin.

HANSFORD COUNTY
APPRAISAL DISTRICT

Alice Peddy

709 West 7th Street

Phone 659-5575

733-5139



State Property Tax Board
P.O. Box 15900
Austin 78761-5900

W
wa
tot
of
He
wa
tot
Wt
wa
tot
I
Lar
pur
Spe
J
MW
pur
\$1.
G
IV
pur
of \$
2n
Nels
pur
a tot
by I
K
Lam
pur
per
Cl
Ste
pur
\$1.2
2n
Kevi
was
total
Ba
Ste
purc
\$1.10
2n
Mich
and
Co. f
\$640.
Ma
Ham
was p
total o
donat
Hol
MH S
purc
Perry
\$1,764
2nd
Rex R
was p
total o
Dav
Heavy
purch
lb. for
Greg
Heavy
was p
Supply
\$1,808.1
it to th
Shan
MW - I
was pur
total of
who dor
Cod
Wt. Dur
purchas
of \$662.
donated
Brand
Wt. Stee
purchas
of \$1,137
donated
Jason I
- III Lam
Feeders p
per lb. fo
\$480.25.
Lance E
Duroc, w
purchas
of \$558.00
ing.
Lynette
MW Steer
Latta Purc
a total of
2nd MW
Brian Payn
was purch
total of \$38
The 2nd
by Lance S
and was pu
for \$3.00 pe
4th MH S
Sasser. It w
purchased
\$1.10 per lb
Chris Mo
V Lamb, w
Feedlot pur
for a total o
Rod Karl
Hamp, wei
purchased b
\$3.50 per lb
Chris Stra
Steer, weig
purchased b
per lb. for a
Lance Ha
Dorsett, wei
purchased fo

LIVESTOCK SHOW

(From Page 1)

Stephanie Friemel showed 1st MH Wt. Steer. It weighed 1245 lbs. and was purchased for \$1.20 per lb. for a total of \$1,494.00 by First State Bank of Spearman.

1st MW - II Lamb was shown by Heidi McRee. It weighed 105 lbs. and was purchased for \$3.50 per lb. for a total of \$367.50 by Luke Pittman.

Tiki Jackson showed the 2nd L. Wt. Steer. It weighed 1027 lbs. and was purchased for \$1.30 per lb. for a total of \$1,335.10 by McCloy Feedlot.

Kris York showed the 1st MW - III Lamb, weighing 115 lbs. It was purchased by 1st National Bank of Spearman for \$2.75 per lb. for a total of \$316.25.

JoAnne Odegaard showed the 2nd MW Steer, weighing 1104 lbs. It was purchased by Spearman Equity for \$1.20 per lb. for a total of \$1,324.80.

Gary Murry showed the 1st MW - IV Lamb, weighing 118 lbs. It was purchased for \$4.00 per lb. for a total of \$472.00 by Dutch Clawson.

2nd MH Steer was shown by Kevin Nelson. It weighed 1225 lbs. It was purchased for 1.20 per lb. for a total of \$1,470.00. It was purchased by Hansford Implement.

Kalee D. Shook showed the MW - V Lamb. It weighed 126 lbs. and was purchased by Wayne Shook for \$5.25 per lb. for a total of \$661.50.

Clint Sasser showed the 3rd L. Wt. Steer, weighing 1030 lbs. It was purchased by Busters Dusters for \$1.20 per lb. for a total of \$1,236.00.

2nd Dorsett Lamb was shown by Kevin Spivey. It weighed 90 lbs. and was purchased for \$8.00 per lb. for a total of \$720.00 by Cluck Straying.

Barry Beck showed the 3rd MW Steer, weighing 1134 lbs. It was purchased by Hansford Implement for \$1.10 per lb. for a total of \$1,247.40.

2nd Dorsett Lamb was shown by Michelle Cook. It weighed 122 lbs. and was purchased by Berry Grain Co. for \$5.25 per lb. for a total of \$640.50.

Mark Brown showed the 1st L. Hamp Barrow, weighing 244 lbs. It was purchased for \$4.25 per lb. for a total of \$1,037.00 by John Brown, who donated it to Girlstown.

Holly Venneman showed the 3rd MH Steer, weighing 1260 lbs. It was purchased by 1st National Bank of Perryton for \$1.40 per lb. for a total of \$1,764.00.

2nd MW - I Lamb was shown by Rex Ralston. It weighed 102 lbs. and was purchased at \$8.00 per lb. for a total of \$816.00 by Rex Sanders.

Davonna Cator showed the 1st Heavy Cross, weighing 250 lbs. It was purchased by Caprock for \$2.25 per lb. for a total of \$562.50.

Gregg Haight showed the 3rd Heavy Steer, weighing 1292 lbs. It was purchased by Gruver Farm Supply for \$1.40 per lb. for a total of \$1,808.80. Gruver Farm then donated it to the Childrens Home.

Shane Harnish showed the 2nd MW - II Lamb, weighing 107 lbs. It was purchased for \$3.50 per lb. for a total of \$374.50 by Clark Spraying, who donated it to Girlstown.

Cody Pipkin showed the 2nd L. Wt. Duroc, weighing 241 lbs. It was purchased for \$2.75 per lb. for a total of \$662.75 by Beedy Furniture, who donated it to the Childrens Home.

Brandon White showed the 4th L. Wt. Steer, weighing 1034 lbs. It was purchased for \$1.10 per lb. for a total of \$1,137.40 by Jimmy Greene, who donated it to the Childrens Home.

Jason Haefner showed the 2nd MW - III Lamb, weighing 113 lbs. Frontier Feeders purchased the lamb for \$4.25 per lb. for a total purchase price of \$480.25.

Lance Harnish showed the 2nd HW Duroc, weighing 248 lbs. It was purchased for \$2.25 per lb. for a total of \$558.00 by Sparks Brothers Drilling.

Lynette Williams showed the 4th MW Steer, weighing 1070 lbs. Tom Latta Purchased it for \$1.20 per lb. for a total of \$1,284.00.

2nd MW - IV Lamb was shown by Brian Payne. It weighed 117 lbs. and was purchased for \$3.25 per lb. for a total of \$380.25 by Continental Grain.

The 2nd L. Wt. Hamp was shown by Lance Sparks. It weighed 214 lbs. and was purchased by Dutch Clawson for \$3.00 per lb. for a total of \$642.00.

4th MH Steer was shown by Ginger Sasser. It weighed 1261 lbs. and was purchased by Consumer Sales for \$1.10 per lb. for a total of \$1,387.10.

Chris Morris showed the 2nd MW - V Lamb, weighing 125 lbs. Morris Feedlot purchased it for \$6.25 per lb. for a total of \$781.25.

Rod Karlin showed the 2nd MW Hamp, weighing 241 lbs. It was purchased by Pittman and Sons for \$3.50 per lb. for a total of \$843.50.

Chris Strawn showed the 4th Heavy Steer, weighing 1278 lbs. It was purchased by Gene Cudd for \$1.10 per lb. for a total of \$1,406.80.

Lance Harnish showed the 3rd Dorsett, weighing 86 lbs. It was purchased for \$3.00 per lb. for a total

of \$258.00 by the Spearman Jaycees, who donated it to the Childrens Home.

2nd Heavy Hamp was shown by Heidi McRee. It weighed 246 lbs. and was purchased by Pittman & Sons for \$2.00 per lb. for a total of \$492.00.

Nikki Strawn showed the 5th L. Wt. Steer, weighing 940 lbs. It was purchased by the Spearman First State Bank for \$1.20 per lb. for a total of \$1,128.00.

Theron Park showed the 3rd Dorsett, weighing 103 lbs. It was purchased by Gruver Ford for \$3.50 per lb. for a total of \$360.50.

2nd Other Pure Breed was shown by Kevin Williams. It weighed 216 lbs. and was purchased by Spearman Bi-Products for \$1.50 per lb. for a total of \$324.00.

Kyla Nelson showed the 5th MW Steer, weighing 1145 lbs. It was purchased by Frontier Feedyards for \$1.10 per lb. for a total of \$1,259.50.

Debbie Burton showed the 3rd MW - I Lamb, weighing 92 lbs. It was purchased for \$4.50 per lb. for a total of \$414.00 by Cecil Ralston, who donated it to Girlstown.

Will Black showed the 2nd Other Pure Breeds, weighing 247 lbs. It was purchased by Berry Grain Co. for \$1.50 per lb. for a total of \$370.50.

Klint Venneman showed the 5th HW Steer, weighing 1290 lbs. It was purchased for \$1.40 per lb. for a total of \$1,806.00 by Bob Cluck.

3rd MW - II Lamb was shown by Krista Stedje. It weighed 106 lbs. and was purchased for \$5.50 per lb. for a total of \$583.00 by Cluck Feedlots, who then donated it to the Childrens Home.

Travis Patterson showed the 2nd L. Wt. York, weighing 220 lbs. It was purchased by First National Bank of Perryton for \$4.25 per lb. for a total of \$935.00.

Loyd Cator showed the 3rd MW - III Lamb, weighing 116 lbs. It was purchased by Bort Ins. for \$3.75 per lb. for a total of \$435.00.

2nd HW York was shown by Jay York. It weighed 231 lbs. and was purchased by Hergert GMC for \$1.75 per lb. for a total of \$404.25.

Joe Lopez showed the 3rd MW - IV Lamb, weighing 120 lbs. It was purchased by Cluck Feedlots for \$4.75 per lb. and a total of \$570.00.

Heather McRee showed the 2nd L. Wt. Cross, weighing 206 lbs. Pittman & Sons purchased it for \$4.00 per lb. for a total of \$824.00.

Julie Latta showed the 3rd MW - V Lamb, weighing 121 lbs. Frontier Feedyards purchased it for \$6.00 per lb. for a total of \$726.00.

Laneida Burnam showed the 2nd MW Cross, weighing 243 lbs. Mike Burnam purchased it for \$1.50 per lb. for a total of \$364.50.

Tommi Latta showed the 3rd MW - VI Lamb, weighing 130 lbs. It was purchased by Billy Logsdon for \$6.10 per lb. for a total of \$793.00.

Clint DeArmond showed the 2nd Heavy Cross, weighing 250 lbs. It was purchased by D.G.C. Feeders for \$2.00 per lb. for a total of \$500.00.

Mary Catherine Cook showed the 4th Dorsett, weighing 87 lbs. It was purchased by Bunkhouse for \$4.50 per lb. for a total of \$391.50.

Matt Jones showed the 3rd L. Duroc, weighing 228 lbs. It was purchased by Alan Shields for \$2.10 per lb. for a total of \$478.80.

4th Dorsett was shown by Jeff Vanlandingham. It weighed 104 lbs. and was purchased for \$3.25 per lb., for a total of \$338.00 by Mrs. Jimmy Greene, who donated it to the Childrens Home.

Bart Baker showed the 3rd Heavy Duroc, weighing 244 lbs. It was purchased by Spearman Super Service for \$2.40 per lb. for a total of \$585.60.

Martin Vela showed the 4th MW - I Lamb, weighing 101 lbs. It was purchased by Pat Patterson for \$2.25 per lb. for a total of \$227.25.

Alan Barnes showed the 3rd L. Wt. Hamp, weighing 217 lbs. It was purchased by James Cunningham for \$1.50 per lb. for a total of \$325.50.

The 4th MW - II Lamb was shown by Kevin Williams. It weighed 105 lbs. and was purchased for \$4.00 per lb. by First State Bank of Spearman for a total of \$420.00.

Temp Sheppard showed the 3rd MW Hamp, weighing 237 lbs. It was purchased by Rex Sanders for \$2.00 per lb. for a total of \$474.00.

4th MW - III Lamb was shown by Leslie Latta. It weighed 116 lbs. and was purchased for \$5.50 per lb. for a total of \$638.00 by Bob Cluck.

Slavin Sparks showed the 3rd HW Hamp, weighing 246 lbs. Gruver Farm Supply purchased it for \$2.90 per lb. for a total of \$665.80.

Brent Wagner showed the 4th MW - IV Lamb, weighing 119 lbs. It was purchased by Logsdon Cattle Co. for \$6.00 per lb. for a total of \$714.00.

Terry Phillips showed the 3rd L. Wt. York, weighing 213 lbs. It was purchased by Unusual Collections for \$1.70 per lb. for a total of \$362.10.

4th MW - V Lamb was shown by Danny Close. It was purchased by Spearman Auto for \$3.00 per lb. It weighed 121 lbs. and total purchase

price was \$363.00.

Scott Wilkerson showed the 3rd HW York, weighing 250 lbs. It was purchased by First State Bank of Spearman for \$1.70 per lb. for a total of \$425.00.

Brooks Beck showed the 4th MW - VI Lamb, weighing 130 lbs. It was purchased for \$2.50 per lb. for a total of \$325.00 by Spearman Seven.

3rd L. Wt. Cross was shown by Shane Harnish. It weighed 214 lbs. and was purchased by B & R Custom for \$1.70 per lb. for a total of \$363.80.

Tek Douglas Ferguson showed the 5th Dorsett. It weighed 102 lbs. and was purchased by George C. Lowe for \$4.75 per lb. for a total of \$484.50.

Crista Urban showed the 3rd MW Cross, weighing 236 lbs. It was purchased by White House Lumber for \$2.10 per lb. for a total of \$496.60.

Crystal French showed the 5th Dorsett weighing 121 lbs. It was purchased by Caprock for \$5.50 per lb. for a total of \$665.50.

3rd HW Cross was shown by Bryan Caison. It weighed 248 lbs. and was purchased by First National Bank of Perryton for \$1.80 per lb. for a total of \$446.40.

Chad Gardiner showed the 5th MW - I Lamb, weighing 101 lbs. It was purchased by Sparks Brothers Spraying for \$3.25 per lb. for a total of \$328.25.

4th L. Wt. Duroc was shown by Carrie Pearson. It weighed 241 lbs. and was purchased for \$2.10 per lb. for a total of \$506.10 by Lady Fair.

JoAnne Odegaard showed the 5th MW - II Lamb, weighing 109 lbs. It was purchased by Bob's Antennas for \$3.50 per lb. for a total of \$381.50.

Clint Patterson showed the 4th Heavy Duroc, weighing 242 lbs. It was purchased by Cluck Feedlot for \$2.00 per lb. for a total of \$484.00.

5th MW - III Lamb was shown by Carla Greene. It weighed 112 lbs. and was purchased by R. L. Uptergrove for \$3.00 per lb. for a total of \$336.00.

Clay Hobbs showed the 4th L. Wt. Hamp, weighing 221 lbs. It was purchased by Sparks Brothers for \$1.90 per lb. for a total of \$419.90.

Chris Kauffman showed the 5th MW - IV Lamb, weighing 120 lbs. It was purchased by Dutch Clawson for \$4.00 per lb. for a total of \$480.00.

4th MW Hamp was shown by Charlie Parrish. It weighed 238 lbs. and was purchased by Hergert's for \$1.90 per lb. for a total of \$452.20.

Kyla Nelson showed the 5th MW - V Lamb, weighing 121 lbs. It was purchased by Hitchland Grain Co. for \$3.75 per lb. for a total of \$453.75.

4th Heavy Hamp was shown by Dean Greene. It weighed 249 lbs. and was purchased for \$1.40 per lb. Spearman Equity purchased it for \$348.60.

Ryan Mathews showed the 5th MW - VI Lamb, weighing 128 lbs. It was purchased by Gruver State Bank for \$4.25 per lb. for a total of \$544.00.

Laura Pearson showed the 4th L. Wt. York, weighing 213 lbs. It was purchased by Bill Pittman for \$2.40 per lb. for a total of \$511.20.

Randie Renner showed the 6th MW - I Lamb, weighing 98 lbs. It was purchased by Joe T. Venneman for \$5.00 per lb. for a total of \$490.00.

4th Heavy York was shown by Christie Burton. It weighed 237 lbs. and was purchased for \$2.10 per lb. for a total of \$497.70 by Tim Weldon and Monty Cluck, who donated it to the Childrens Home.

Greg Reeves showed the 6th MW - II Lamb, weighing 104 lbs. It was

purchased by Caprock for \$3.25 per lb. for a total of \$338.00.

Dee Mayfield showed the 4th L. Wt. Cross, weighing 214 lbs. It was purchased by Harland Gerardy for \$2.00 per lb. for a total of \$428.00.

6th MW - III Lamb was shown by Barry Beck. It weighed 116 lbs. and was purchased by A. D. Reed for \$4.75 per lb. for a total of \$551.00.

Brandon Close showed the 4th MW Cross, weighing 243 lbs. It was purchased by Don Hergert Motors of Perryton for \$2.10 per lb. for a total of \$510.30.

6th MW - IV Lamb was shown by Chris Spivey. It weighed 117 lbs. and was purchased by Hix Spivey for \$5.25 per lb. for a total of \$614.25.

Jason Turner showed the 4th Heavy Cross, weighing 247 lbs. It was purchased by First State Bank of Spearman for \$1.80 per lb. for a total of \$444.60.

Kevin Nelson showed the 6th MW - V Lamb, weighing 121 lbs. It was purchased by Gruver State Bank for \$4.00 per lb. and a total of \$484.00.

Kris York showed the 5th L. Wt. Duroc, weighing 229 lbs. It was purchased by Gruver Redi Mix for \$2.10 per lb. for a total of \$480.90.

Raquel Mathews showed the 6th MW - VI Lamb, weighing 123 lbs. It was purchased by Stedje Brothers for \$4.25 per lb. for a total of \$514.00.

5th Heavy Duroc was shown by John Lieb. It weighed 246 lbs. and was purchased by Pringle-Morse National Bank for \$1.70 per lb. for a total of \$418.20.

Mark Allen showed the 7th MW - I Lamb, weighing 102 lbs. It was purchased by R. E. Sanders for \$3.75 per lb. for a total of \$382.50.

Tek Douglas Ferguson showed the 5th L. Wt. Hamp, weighing 215 lbs. It was purchased by George C. Lowe for \$2.30 per lb. for a total of \$494.50.

7th MW - II Lamb was shown by Allen Gardiner. It weighed 105 lbs. and was purchased for \$4.00 per lb. for a total of \$420.00 by Ralph McCune.

Tim Stedje showed the 5th MW Hamp, weighing 238 lbs. It was purchased by Jack Gillispie for \$2.20 per lb. for a total of \$523.60.

Joy Gafford showed the 7th MW - III Lamb weighing 114 lbs. It was purchased by Pat Patterson for \$3.00 per lb. for a total of \$342.00.

5th Heavy Hamp was shown by Joy Gafford. It weighed 243 lbs. and was purchased for \$2.30 per lb. for a total of \$558.90 by John Wilde, who donated it to Girlstown.

Brooke Roberts showed the 8th MW - II Lamb, weighing 104 lbs. It was purchased for \$3.75 per lb. for a total of \$390.00 by Security Insurance, Perryton.

Rhonda Ross showed the 5th L. Wt. Cross, weighing 214 lbs. It was purchased by Pittman and Sons for \$2.00 per lb. for a total of \$428.00.

Dean Greene showed the 8th MW - III Lamb, weighing 113 lbs. It was purchased by Seven Super Supporting Moms for \$3.75 per lb. for a total of \$423.75.

Brian DeCamp showed the 5th MW Cross, weighing 239 lbs. It was purchased for \$2.50 per lb. for a total of \$597.50 by Billy Logsdon.

Tammy Nollner showed the 5th Heavy Cross, weighing 244 lbs. It was purchased by Zay Gilbreath for \$2.10 per lb. for a total of \$512.40.

Tiki Jackson showed 6th L. Wt. Duroc, weighing 212 lbs. It was purchased by John Armes for \$1.80 per lb. for a total of \$381.60.

6th Heavy Duroc was shown by Holly Venneman. It weighed 248 lbs. It was purchased for \$3.10 per lb. for a total of \$768.80 by Lynna Renner.

Paul Trospen showed the 6th L. Wt. Hamp, weighing 223 lbs. It was purchased by First State Bank of Spearman for \$2.20 per lb. for a total of \$490.60.

Shanna DeArmond showed the 6th MW Hamp, weighing 236 lbs. It was purchased for \$2.00 per lb. for a total of \$472.00 by Charlie Ball.

Loyd Cator showed the 6th Heavy Hamp, weighing 249 lbs. It was purchased by Bort Insurance for \$2.10 per lb. for a total of \$522.90.

Monte Beck showed the 6th MW Cross, weighing 238 lbs. It was purchased by H & H Water Well Service for \$2.00 per lb. for a total of \$476.00. H & H then donated it to the Childrens Home.

6th Heavy Cross was shown by Trey Roberts. It weighed 244 lbs. and was purchased for \$1.70 per lb. for a total of \$414.80 by Gruver Farm Supply.

7th L. Wt. Hamp was shown by Chad Davis. It weighed 219 lbs. and was purchased for \$1.90 per lb. for a total of \$416.10. It was purchased by A & H Oil Well Service and donated to the Panhandle Childrens Home.

Allen Gardiner showed the 7th Heavy Hamp, weighing 243 lbs. It was purchased for \$2.10 per lb. for a total of \$510.30 by Ralph McCune.

Brandi Schneider showed the 8th L. Wt. Hamp, weighing 220 lbs. It was purchased by R.E. Sanders for \$2.30 per lb. for a total of \$506.00.

Donations were made to the Hansford County Stock Show by General Telephone Co., Texas Eastern and High Plains Federal Land Bank.

Words are inadequate to express our "Thanks" to each of you for all the kindness and generosity shown to us during Minnie's illness and since her passing.

We are indeed grateful for the visits, food, flowers, cards, memorials, prayers and words of endearment. God bless and keep each of you.

Roy Jones
Roy Lee and Charline Jones
Mike and Martha Jones
Jeff and Janet Sterba

We can never thank you enough and words can never express the love and concern you showed for us in Johnny's death but we really appreciate every act of kindness, all the food, flowers, memorials, cards, phone calls, prayers, visits to the house they all meant so much to us. Also a special thanks to Dr. McClellan and the nurses at the hospital and manor. May God's richest blessing be bestowed back to each and every one of you. God bless you.

Alice Lackey
Mr. and Mrs. S. B.
(Donna) Sheets
Mr. and Mrs. Wayne
(Karen) Woodward
Mr. and Mrs. Ken
(Sharon) McClellan
Mr. and Mrs. Randall
(Sue) Felder
and relatives

We want to take this means to thank our friends and neighbors for the barrage of cards, letters, flowers, good wishes and prayers during Jack's recent accident. It is at times like this that you learn just how many friends you are blessed with. May your souls be enriched for your kindnesses and deeds.

Jack and Peggy Carroll
The family of Gertie Archer

Storm Windows and doors Only Aluminum Industries Guymon, Ok. 73942 405-338-6966 or after 6 p.m. 338-6170

19 WALLET SIZE COLOR PHOTOS 99¢

WE USE KODAK PAPER
No limit on this offer

AT
Kids' Stuff
719 West 7th
Spearman, Texas
Friday March 22

HAVE YOUR EASTER PICTURES TAKEN NOW
Ask about our FREE 8 x 10 offer



Group charge 99¢ per person per 19 wallets

Kodak paper. For a Good Look at the Times of Your Life. TM

"FILING SHORT FORM NOT SIMPLE," SAYS H & R BLOCK

Two different short forms and new deductions make short form filing more complicated this year.

You may not be eligible or it may not be to your advantage to file one of the two short forms. The short forms, including the new 1040EZ, can only be used by taxpayers meeting certain strict requirements. You are limited in deductions on the short forms. Using the wrong form could cost you money, or even mean an audit.

You will have peace of mind knowing H & R Block's personal, courteous, and competent service is yours... at a very reasonable price. One Day Service is also available for your convenience at any H & R Block office.

H & R Block's tax preparers are trained to know which of the forms - 1040EZ, 1040A, 1040 - gives you the maximum tax advantage for your individual requirements.

See your telephone directory for the office nearest you or call

Phone Number 806-659-2310

STIHL... The Cutting Edge

The FS-61E Trimmer. Light, tough, durable. A powerhouse against weeds and brush. Special low prices on Stihl's accessory kits help give you the edge in the battle. And keep it.

Complete Small Engine Repair
5th St. and Drensen
Spearman, Tx.
[806] 659-3826



THE WORLD'S LARGEST SELLING CHAIN SAW

Services held for wreck victim

Services for Roberta Elaine Borunda, 27, were held at 2 p.m. Wednesday in Gruver First Baptist Church with the Rev. Larry Christy of Stratford officiating. Burial was in Gruver Cemetery by Boxwell Brothers Funeral Directors.

Mrs. Borunda was killed Saturday in an automobile collision on Highway 15.

She was born in San Francisco. She had lived in Gruver 3 1/2 years. She was employed at Caprock Feedlot #2. She married Jesse Borunda in 1984.

Survivors include her husband; a daughter, Bobbie of Gruver; her parents, Mr. and Mrs. Jim Hutchinson; five brothers; and two sisters, including Sharon Hutchinson of Gruver.

Anyone wishing to contribute to the memory of Bobbi may contact the First Baptist Church in Gruver any time.

National Honor Society Initiation Monday

There will be a National Honor Society initiation Monday, March 25 at 10 a.m. in the auditorium.

Eleven new members will be inducted making a total of 21 in the society.

The public is invited to attend the ceremony.

Deadline for phone directory changes

Robert J. Meyers, Operations Manager for GTE in Perryton said that anyone wishing to make a change in the white pages of the phone book must do it by April 19, 1985. "That is the last day we can accept any entries in order to meet the printing schedule for the new directory," stated Meyers.

Anyone who wants to change the way their name appears or would like to add another listing, should contact the GTE business office by calling 435-5431.

The new phone directories will be available for distribution in late June, with an effective date of July 1, 1985.

Ex-Student Association Meets Monday

An ex-student association meeting will be held Monday, March 25 in the high school library at 7 p.m.

The association is planning the all school reunion.

Everyone who can possibly attend is urged to be there.

Helen Fisher retires

Helen Fisher has retired after 25 years with the Hat-4 Cattle Co.

A dinner was given in her honor at the El Vaquero Thursday evening.

Truck-vehicle collision kills one

Gruver residents were stunned Friday night at 9:30 when Roberta Borunda was fatally injured in a pickup in front of Allsup's store.

Several head of cattle were killed when a truck turned over after hitting the Borunda pickup.

Pictures on this page illustrate as well as possible the results of Friday night's collision.

Two wreckers from Perryton were called to upright the cattle truck.

Mrs. Borunda was taken to Hansford Hospital and was en route to Amarillo in Hansford ambulance at the time of her death at 2:17 a.m. Saturday morning.

Her husband who was driving the pickup was slightly injured.

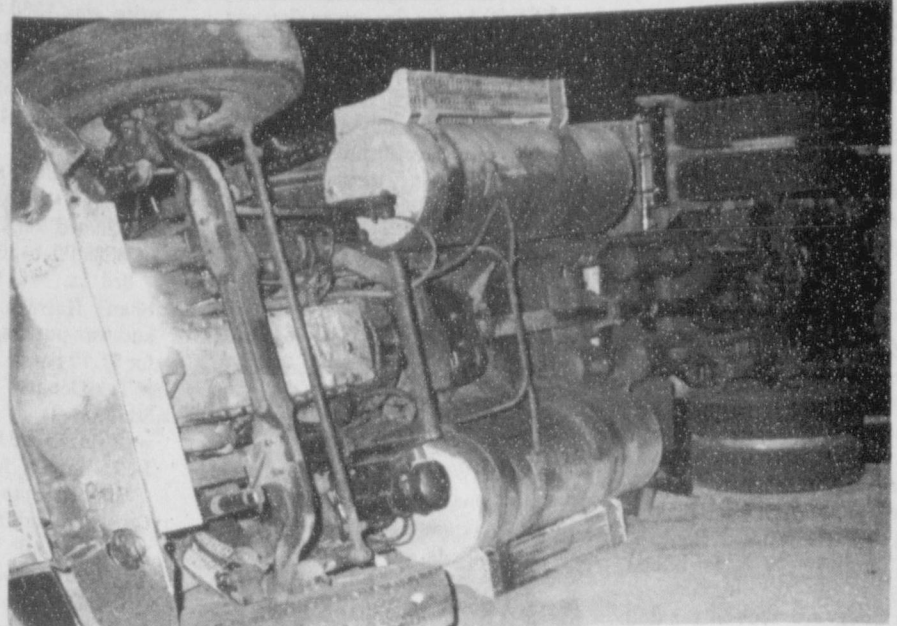
Small boy injured

A small boy, Micheal Cook, 7, was injured Monday afternoon at 4:30 at 4th & Brandt.

According to Police Chief D.J. Alberts, the boy swerved out on his bicycle in front of an upcoming car. He was taken to Hansford Hospital and kept overnight for observation, being released Tuesday.



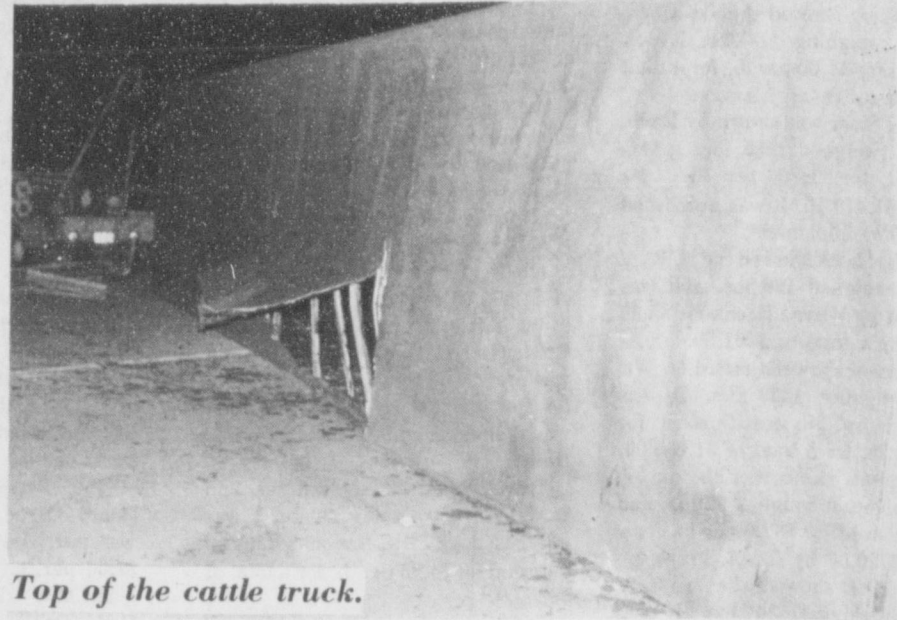
Scene of fatal accident.



Overtuned cattle truck.



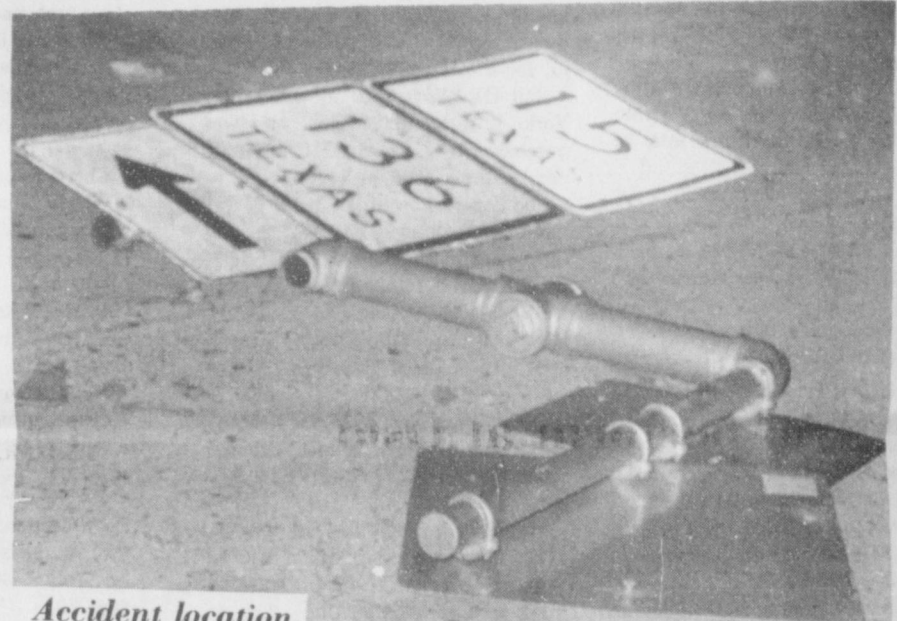
Deputy Hawkins inspects wreckage.



Top of the cattle truck.



Dead calf inside truck.



Accident location.



Rear view of pick-up.

Story Hour Canceled

Hansford Library has canceled their 4 year old story hour until next fall.

SALAD SOUP — Make too much salad? Convert it to soup. Begin with 2 cans of chicken broth in a pan; add a cut up, peeled potato. Simmer until potato is soft; add salad, dressing included. Stir and season. Next, add a cup or so of half and half, or milk, or canned milk. Remove from heat, cook, whirl in blender and reheat for delicious, "interesting" leftovers.
© 1985 Suburban Features

THURSDAY 3/21/85

CABLE	[2]	[3]	[4]	[5]	[7]	[8]	[9]	[10]	[11]
PM	ESPN	OETA	KAMR	TMC	KVII	CBN	WGN	KFDA	WTBS
	Sports Network	Oklahoma City	Amarillo	Movie Channel	Amarillo	Cbn Cable Netwr	Chicago	Amarillo	Atlanta
6:00	Prog Cont'd	Nightly Business Report	News	Prog Cont'd	News	Here Come the Brides	Barney Miller	News	Little House on the Prairie
6:30	"	Oklahoma Report	M*A*S*H	"	Wheel of Fortune	"	Benson	Three's Company	"
7:00	"	Novs (CC)	Cosby Show	Movie: 'Cujo'	Wildside (PREMIERE)	Circus	Movie: 'Bye, Bye Braverman'	Magnum, P.I.	World of Audubon II
7:30	USFL Football	"	Family Ties	"	"	"	"	"	"
8:00	Orlando vs. Jacksonville	Woody Herman's Big Band Celebration	Cheers	"	Eye to Eye (PREMIERE) (CC)	700 Club	"	NCAA Basketball Championship Regional	NBA Basketball: Portland at Phoenix
8:30	"	"	"	Movie: 'Ice Pirates'	"	"	"	"	"
9:00	"	Big Band Calvacade	Hill Street Blues	"	20/20 (CC)	"	News	Semifinals: East Region or Midwest Region	"
9:30	"	"	"	"	"	Superstar	"	"	"
10:00	"	News	Tonight Show	Movie: 'Chariots of Fire'	Hart to Hart	Bill Cosby Show Best of Groucho	WKRP in Cincinnati Love Boat	News	Movie: 'Magic'
10:30	SportsCenter	Dr. Who	"	"	"	"	NCAA Basketball	"	"
11:00	ESPN's Speedweek	New Literacy	"	"	"	Burns & Allen	"	Championship Regional Semifinals: East Region	"
11:30	ESPN's Horse Racing Weekly	Sign Off	Late Night with David	"	ABC News Nightline	Love That Bob	Movie: 'The Rains'	"	"
12:00	Fitness Magazine	"	Letterman	"	Charlie's Angels	I Married Joan Dobie Gillis	of Ranchipur	or Midwest Region	"
12:30	1985 NCAA Basketball	Muppet Show	"	Movie:	"	"	"	"	Movie: 'THX 1138'

FRIDAY 3/22/85

CABLE	[2]	[3]	[4]	[5]	[7]	[8]	[9]	[10]	[11]
PM	ESPN	OETA	KAMR	TMC	KVII	CBN	WGN	KFDA	WTBS
	Sports Network	Oklahoma City	Amarillo	Movie Channel	Amarillo	Cbn Cable Netwr	Chicago	Amarillo	Atlanta
6:00	SportsCenter	Nightly Business Report	News	Prog Cont'd	News	Here Come the Brides	Barney Miller	News	Little House on the Prairie
6:30	1985 NCAA Basketball	Oklahoma Report	M*A*S*H	"	Wheel of Fortune	"	Benson	Three's Company	"
7:00	Championship Regional Semifinal Game	Washington Week/Review	Codenname: Foxfire	Movie: 'The One and Only'	Webster (CC)	Lone Ranger	Movie: 'Time Machine'	Detective in the House	Movie: 'Apache'
7:30	"	Wall Street Week	"	"	Mr. Belvedere (CC)	Great Adventure	"	"	"
8:00	"	In Search of Excellence	V	"	Benson (CC)	700 Club	"	Knot's Landing (CC)	"
8:30	ESPN's Speedweek	"	"	"	Off the Rack (CC)	"	"	"	"
9:00	World Cup Skiing	"	Miami Vice	Movie: 'Dirty Knight's Work'	Matt Houston (CC)	"	News	NCAA Basketball Championship Regional	Movie: 'Fantastic Invasion of Planet'
9:30	Women's Slam from	"	"	"	"	Jack Benny Show	"	"	"
10:00	Waterville Valley, NH SportsCenter	Dr. Who	Tonight Show	Movie: 'Cheech and'	Hart to Hart	Bill Cosby Show Best of Groucho	WKRP in Cincinnati Love Boat	Semifinals: Southeast Region or West Region	Earth'
10:30	"	"	"	"	"	"	"	"	"
11:00	Top Rank Boxing from Atlantic City, NJ	New Literacy	"	Chong's Still Smokin'	"	Burns & Allen	"	News	Night Tracks
11:30	"	Sign Off	Friday Night Videos	"	ABC News Nightline	Love That Bob	Movie: 'Major Dundee'	NCAA Basketball	"
12:00	"	"	"	Movie: 'Videodrome'	Special	I Married Joan Dobie Gillis	"	Championship Regional Semifinals: Southeast	"
12:30	"	"	"	"	Charlie's Angels	"	"	"	"

To God: a note of thanks

By Mrs. E.A. Greever

Friends, truly I have found God's commandments are not grievous, I John 5:3. So perhaps before thanking God for his many precious promises that are given by keeping his commandments, this article should be water baptism, for by the words of Jesus, it seems this should next follow a life who has repented and has been pardoned.

First, we will speak of John's baptism in the wilderness of Judea. His preaching was, repent ye for the kingdom of heaven is at hand. I indeed baptise you with water unto repentance, but he that cometh after me is mightier than I, whose shoes I am not worthy to bear, (and the one of whom he was speaking was Jesus). Many were coming from Jerusalem and all Judea and all the region round about Jordan and were baptised of him in Jordan, confessing their sins, and some he called a generation of vipers, telling them to bring forth, therefore, fruits meet for repentance, (in other words, they had not repented of sins), and Jesus our great example, came from Galilee to Jordan unto John to be baptised of him. John, feeling so unworthy, saying, I have need to be baptised of thee, and Jesus answering said, It becometh us to fulfill all righteousness.

And Jesus, when he was baptised went up straight way out of the water (I'm sure by this statement, his entire body went under water (immersed)). Lo, the heavens were opened unto him and he saw the Spirit of God descending like a dove and lighting upon him. And lo, a voice from heaven saying, "This is my beloved Son, in whom I am well pleased." This recorded in Matt., the third chapter. Thank you God, our heavenly Father, for Jesus that your holy word tells us is the same yesterday and today and

forever, and the next line tells us not to be carried about with divers and strange doctrines. For it is a good thing that the heart be established with grace. Heb. 13: 8-9.

And God's word tells us the grace shown through Jesus will enable us to live a holy life, not just sins forgiven, but a sin nature cleansed to one of righteousness. Thank you God. Jesus died for our offenses and rose again for our justification. Now we go to the teaching of Jesus concerning baptism in water. Matt 28:18-20. Jesus spoke unto his disciples after his resurrection saying, All power is given unto me in heaven and in earth. Go ye therefore, and teach all nations, baptising them in the name of the Father, and of the Son, and of the Holy Ghost, teaching them to observe all things whatsoever I have commanded you, and lo, I am with you always, even to the end of the world. In Mark 16:15-16, we read, Go ye into all the world and preach the gospel to every creature. He that believeth and is baptised shall be saved, but he that believeth not shall be damned. Now let us be reminded here, the word says, with the heart, man believeth (not head knowledge) unto righteousness and with the mouth confession is made unto salvation. You will find this written in Rom. 10:10. Without the shedding of blood is no remission for sin. So, it is not the water that saves, but to be baptised following the answer of a good conscience toward God. In Acts, the Apostles baptised and an interesting story of the baptism of the Eunuch by Philip is found in Acts, chapter 8, beginning with the 26th verse. Thank you God, for happy are we if we believe and obey.

Texas Lutheran choir to perform at Oslo



Dr. Sigurd Christiansen directs the concert choir from Texas Lutheran College. The choir will perform at the Oslo Lutheran Church Tuesday, April 2 at 7:30 p.m. The public is invited.

The forty-seven voice concert choir from Texas Lutheran College, Seguin, Texas, under the direction of Dr. Sigurd Christiansen will appear in concert on Tuesday, April 2, at 7:30 p.m. at Oslo Lutheran Church.

The singers from Texas will present a program ranging from recent secular works to Renaissance motets. The choir will also perform folk songs, spirituals and hymn arrangements, including "Lift High the Cross" and others.

The choir has earned wide acclaim on tours since they began travel in 1929. Known as the oldest touring choir in the Southwest, the 1985 tour will take them into West Texas, Oklahoma, and the Rio Grande Valley.

Dr. Christiansen, director of the choir since 1972, has developed one of the region's leading choirs. His choral training was thoroughly instilled by both his formal education and the family tradition. His grandfather, who was founder of the St. Olaf choir, F. Melius Christiansen, immigrated to this country from Norway and brought

with him from there his education in Germany a thorough training in music and a sense of great European choral tradition. His father, Paul J. Christiansen, has maintained and enhanced this tradition at Concordia College, Moorhead, Minnesota.

The public is invited to hear the continuation of this tradition as manifested in the Texas Lutheran College Concert Choir when it appears Tuesday, April 2, 7:30 p.m. at the Oslo Lutheran Church, located 6 miles West and 12 Miles North of Gruver.

UIL One Act Play Contest

Spearman High School will present their one act play, at 2 p.m. at Stinnett High School March 20 at Stinnett High School Auditorium.

Gerri Maize is the drama coach and the play this year will be THE MIRACLE WORKER by William Gibson.

The cast includes Keller-Edward Beck; Kate-Andrea Archer; Annie Sullivan-Carlee Dixon; Helen-Kellie McWhirter; Doctor-Tina Breeden; Ms. Anagnos-Stacy Poole; Viney-Deanna Turner; James-Jeff Gressett.

Assistant Director-Jenny Bynum; Lights-Sound-Wanda Wagner.

Rodeo Results

Mark Pearson placed third at the Hereford Tri-State Rodeo with 61.4.

In the girls' competition, Andrea Archer had 17.687. She was 5th in poles with 23.201 and 6th in goat tying with 12.290.

A Centerpiece

Sunday was such a nice day it really made us believe spring was here but the chilly winds hit this morning and it is blowing quite a gale, so guess we'll just have to take it a day at a time and wait awhile.

The ladies came in Monday at one o'clock and are still designing and making the blocks for the Sesquicentennial quilt. Each week we see a new block or two and it is shaping up nicely.

We had a good crowd out on Tuesday evening of last week and hope to have more for the dinner this week. Senior citizens will be bringing the good meats, vegetables, sandwiches, desserts, pies and cakes or anything you desire. It is always a surprise how balanced these dinners turn out. Coffee and tea will be furnished by the Center--so come on down and enjoy a good dinner and games of your choice later.

Tickets will soon be ready for the quilt to be given away on the day of the Bazaar. They will be available at the Senior Citizens Center or from any senior citizen soon.

We'd be glad to have you drop in when down town. There is usually a pot of coffee so we'd enjoy having you anytime.

Alma

Track meet results

Spearman girls entered the Per-ryton track meet last weekend and were 7th with 38 points.

In the triple jump Jill McLain was third with 33-11 1/2. She was 2nd in high jump with 5-2; and 3rd in hurdles with 16.70.

The Spearman relay team placed 3rd with 53.14.

The Spearman boys entered the Canadian relays and placed 4th with 73 points.

Steve Burke was 2nd in the shot with 52-3/4 and broke the old record for discus with 155-5. The old record was 147-8 1/2.

Damon Goodheart placed 3rd in high jump with 5-10.

Espinosa placed 3rd in the 3,200 with 11:05.

Mack McLain placed 3rd in the 100 with 11.53 and 3rd in the 200 with 23.45.

Lopez of Spearman was 2 in the 1,600.

In the junior varsity Spearman placed 5th with 31 points.

Spearman 8th graders were 4th with 95 points; and 7th graders were 4th with 68.

SATURDAY 3/23/85

CABLE	[2]	[3]	[4]	[5]	[7]	[8]	[9]	[10]	[11]
AM	ESPN	OETA	KAMR	TMC	KVII	CBN	WGN	KFDA	WTBS
	Sports Network	Oklahoma Cty	CH.4	Movie Channel	CH.7	Cbn Cable Netw	CH.9	CH.10	CH.17
			Amarillo		Amarillo		Chicago	Amarillo	Atlanta
7:00	Prog Cont'd		Snorks	Movie: Timewalker	Superfriends	Robert Schuller's Hour of Power	U.S. Farm World Tomorrow	Shirt Tales	Cimarron Strip
7:30	SportsCenter		Pink Panther and Sons		Superfriends		Get Along Gang		
8:00	Business Times on ESPN	Lap Quilting	Smurfs		Mighty Orbits	James Robison Ed Young	Garner Ted Armstrong Issues Unlimited	Muppet Babies	Championship Wrestling
8:30		Magic of Bill Alexander		Movie: Purple	Turbo Teen			Dungeons and Dragons	
9:00	1985 NCAA Basketball Championship -Regional			Hearts	Dragon's Lair	Cisco Kid	Charlando	Bugs Bunny/Road Runner	from Georgia
9:30		This Old	Alvin & the Chipmunks		New Scooby Doo Mysteries	Movie: 1 Shot	People to People		Movie: Dive Bomber
10:00	Semifinal Game	House (CC)	Kidd Video		Scary Scooby Funnies Littles (CC)	Jesse James	AI Lindner's In Fisherman Special		
10:30		Movie: The Great Caruso	Mr. T	Movie: Max Dugan				Pryor's Place	
11:00	NCAA Division I Women's Basketball Championship		Amazing Spiderman Incredible Hulk	Returns	ABC Weekend Special (CC) American Bandstand	Laredo	High School Basketball: Class AA Semi-Finals	Saturday Supercade	
11:30									
12:00	East Regional Final from Norfolk, VA		Weekend Gardener It's Your Business			Movie: The Great Jessie James Raid		Pole Position	Exhibition Baseball
12:30				Movie: Ice Pirates	Nashville Music			NCAA Basketball	
1:00	Gymnastics: McDonald's International Mixed Pairs	Great Moments with National Geographic	Wild Kingdom Music City, U.S.A.		Classic Country	Call of the West		Championship Doubleheader Regional Semifinals	New York vs Atlanta
1:30									
2:00	From Chicago, IL		This Week in Country Music To Be Announced	Movie: The Spikes	PBA Tour: Lite Bear Championship	Movie: Rangeland	Wild Kingdom	East Region and Midwest Region	
2:30									
3:00	World Cup Skiing: Women's Slalom from	Woody Herman's Big Band Celebration	To Be Announced	Gang		Wyatt Earp	Soul Train		Movie: The Man from Utah
3:30					Wide World of Sports	Wagon Train			
4:00	Waterville Valley, NH		PGA Golf: Panasonic-Las Vegas Invitational				Little House on the Prairie		Fishin' w/Olando Wilson Motorweek Illustrated
4:30		Big Band Calvacade		Movie: Timewalker					
5:00	NCAA Division I Women's Basketball Championship	Glenn Miller: A Moonlight Serenade	News NBC News		ABC News (CC)	The Monroes	Puttin' on the Hits At The Movies	Vegas	World Championship NBA Basketball
5:30									

SATURDAY 3/23/85

CABLE	[2]	[3]	[4]	[5]	[7]	[8]	[9]	[10]	[11]
PM	ESPN	OETA	KAMR	TMC	KVII	CBN	WGN	KFDA	WTBS
	Sports Network	Oklahoma Cty	CH.4	Movie Channel	CH.7	Cbn Cable Netw	CH.9	CH.10	CH.17
			Amarillo		Amarillo		Chicago	Amarillo	Atlanta
6:00	Prog Cont'd	Prog Cont'd	Star Trek	Movie: Around the World in 80 Days	Hee Haw	Laramie	High School Basketball: Class AA Championships	Fame	Prog Cont'd
6:30									
7:00	SportsCenter	Movie: The Music Man	Diff'rent Strokes (CC) Double Trouble		T.J. Hooker (CC)	Movie: Flame of the Barbary Coast		Garfield in the Rough It's Magic, Charlie Brown	
7:30	Winterworld: Rivals								
8:00	USFL Football: Los Angeles at Arizona		Gimme a Break Under One Roof		Love Boat (CC)			Airwolf	High
8:30									
9:00			Hunter	Movie: One Flew Over the Cuckoo's Nest	Finder of Lost Loves (CC)			Cover Up	Chaparral
9:30									Night
10:00		Dr. Who	News		News	Success N'Life John Ankerberg	News	News	Tracks
10:30		Dr. Who	Saturday Night Live		ABC News (CC) Movie: Once			Movie: Who?	Night Tracks
11:00	SportsCenter	Monty Python Flying Circus Sign Off			Is Not Enough	To Calcutta with Love Int'l Prison Ministry	NBA Basketball: Chicago at Dallas		Chartbusters
11:30	NCAA Division II Men's			Movie: The Best Years					
12:00	Basketball Championship from Springfield, MA	Dance Fever Sign Off		of Our Lives		Specials Millionaire Maker		Sign Off	
12:30									

Helping you plan for your retirement is just another way we're standing by you.

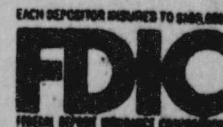
Come in for a
Personalized Computer Profile
of what a
First State Bank IRA
Can do for your future



SPEARMAN, TEXAS 79081

1 NE Court

MEMBER



Special Occasions

Bridal, formal, tuxedo service.

\$10.00 off all prom dresses with this ad.

715 N. Main

274-5515

Borger, Tx.

SUNDAY 3/24/85

CABLE	[2]	[3]	[4]	[5]	[7]	[8]	[9]	[10]	[11]
AM	ESPN	OETA	KAMR CH.4	TMC	KVII CH.7	CBN	WGN CH.9	KFDA CH.10	WTBS CH.17
	Sports Network	Oklahoma Cty	Amarillo	Movie Channel	Amarillo	Cbn Cable Netwr	Chicago	Amarillo	Atlanta
7:00	SportsCenter		James Robison Amazing Grace Bible Class	Prog Cont'd	Spiderman and Superheroes Voltron	Dr. D. James Kennedy	Dr. D. James Kennedy Robert Schuller	Dr. Robert Schuller	Alvin & the Chipmunks Sunday Funnies
7:30	NCAA Division I Women's	America: Second Century							
8:00	Basketball Championship-Best Regional Final Game	Write Course	Day of Discovery Larry Jones Ministry	Movie: 'Cimarron'	Kidsworld Kids, Inc.	Kenneth Copeland	Mass for Shut-Ins Chicagoland Church Hour	Herald of Truth First Baptist Church	Andy Griffith
8:30		Nature of Things							
9:00			World Tomorrow Oral Roberts		Daniel Boone	Lloyd Ogilvie	Cisco Kid		Good News
9:30	Fishin' Hole	Great Moments				Davey & Goliath	Lone Ranger	Sunday Morning	Movie: 'Zulu'
10:00	Business Times on ESPN	with National Geographic	Baptist Church		Tarzan	Superbook Club	Rawhide		
10:30				Movie: 'Gandhi'					
11:00	SportsCenter Plus		Jimmy Swaggart		This Week with David Brinkley	Honey, Honey Leo the Lion	Wild, Wild West	Movie: 'The Over-the-Hill Gang'	
11:30	NFL Superstars								
12:00	World Cup Skiing: Women's Slalom from	Washington Week/Review Wall Street Week	Movie: To Be Announced		News	Flipper	Movie: 'Charlie Chan in Shanghai'	NCAA Basketball	Exhibition Baseball:
12:30					Taking Advantage	Gentle Ben			
1:00	Waterville Valley, NH Top Rank Boxing from	Wall Street Week Special: An Investment Primer	PGA Golf: Panasonic-		Wild World of Animals USFL Football:	Movie: 'Old Los Angeles'	One Step Beyond	Championship Doubleheader: Southeast & West	Atlanta vs Los Angeles
1:30									
2:00	Atlantic City, NJ	In Search of Excellence	Las Vegas Open	Movie: 'Wings'	Teams To Be Announced		Exhibition Baseball: Chicago Cubs vs San Diego	Regional Finals	
2:30									
3:00		Movie: 'Music Man'				Wagon Train			
3:30			SportsWorld: Superstars						Cimarron Strip
4:00									
4:30	Action Sports of the 80's			Movie: 'Chariots of'					
5:00	Caesar's Tahoe Billiards Classic		News NBC News	Fire	ABC News (CC) News	Movie: 'The Great American Wilderness'	Movie: 'The Desert Fox'	All In the Family CBS News	World of Audubon II
5:30									
6:00	SportsCenter	Prog Cont'd	Silver Spoons	Prog Cont'd	Ripley's Believe It or Not (CC)		Prog Cont'd	60 Minutes	Best of World Championship Wrestling
6:30			Punky Brewster	Oscar Preview					
7:00	College Baseball: Maine at Miami	Gala of Stars 1985	Knight Rider	Movie: 'Terms of Endearment'	Life's Most Embarrassing Moments #3 (CC)	Journey Through the First Year of Life	Movie: 'Man Friday'	Murder, She Wrote	Movie: 'War Drums'
7:30									
8:00			Movie: 'Half Nelson' (CC)		Movie: 'California Girls' (CC)	In Touch		Crazy Like a Fox	
8:30									Coors Sports Page

SUNDAY 3/24/85

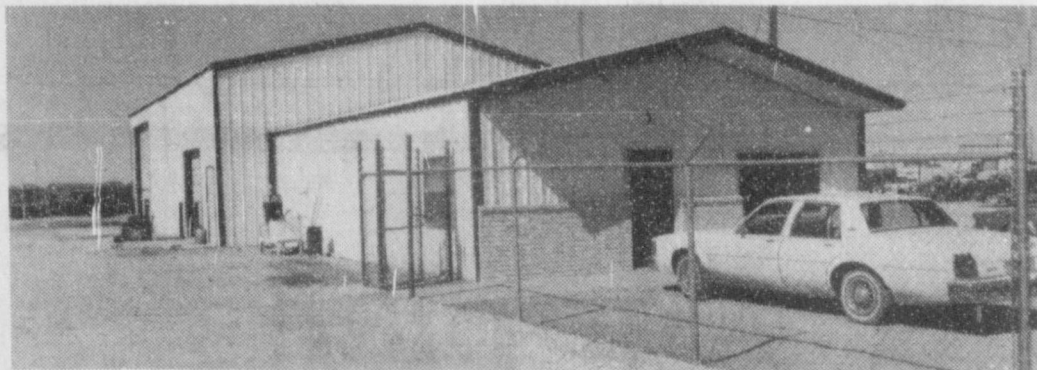
CABLE	[2]	[3]	[4]	[5]	[7]	[8]	[9]	[10]	[11]
PM	ESPN	OETA	KAMR CH.4	TMC	KVII CH.7	CBN	WGN CH.9	KFDA CH.10	WTBS CH.17
	Sports Network	Oklahoma Cty	Amarillo	Movie Channel	Amarillo	Cbn Cable Netwr	Chicago	Amarillo	Atlanta
9:00						Changed Lives	News	Trapper John, M.D.	NBA Basketball: Detroit at Los Angeles
9:30				Movie: 'Gandhi'		Rock Church Proclaims			
10:00	SportsCenter		News		News		Tales from the Darkside Lifestyles of the Rich and	News	Lakers
10:30			Movie: To Be Announced		ABC News (CC) Movie: 'Such'	Contact		CBS News Vegas	
11:00	World Cup Skiing: Women's Slalom from	Sign Off				Larry Jones Ministry John Osteen	Famous		Jerry Falwell
11:30					Good Friends		Movie: 'Soldier of'	At The	
12:00	Waterville Valley, NH Action Sports of the 80's					To Africa with Love	Fortune	Movie Sign Off	Movie: 'The Delphi Bureau'
12:30			Sunday Sports Page						

MONDAY 3/25/85

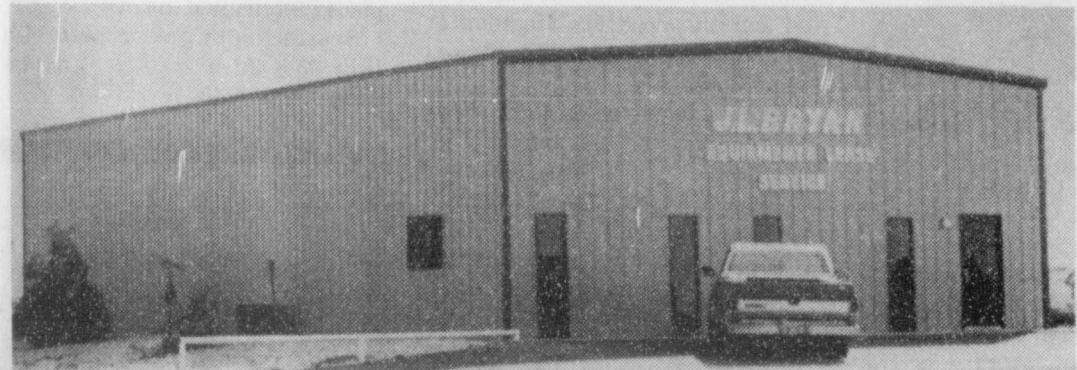
CABLE	[2]	[3]	[4]	[5]	[7]	[8]	[9]	[10]	[11]
PM	ESPN	OETA	KAMR CH.4	TMC	KVII CH.7	CBN	WGN CH.9	KFDA CH.10	WTBS CH.17
	Sports Network	Oklahoma Cty	Amarillo	Movie Channel	Amarillo	Cbn Cable Netwr	Chicago	Amarillo	Atlanta
6:00	SportsCenter	Nightly Business Report Oklahoma Report	News M*A*S*H	Prog Cont'd	News	Here Come the Brides	Barney Miller	News	Little House on the Prairie
6:30	College Basketball Report				Wheel of Fortune		Benson	Three's Company	
7:00	Caesar's Tahoe Billiards Classic from Lake Tahoe NV	Living Planet (CC)	Movie: 'Every Which Way But Loose' (CC)	Movie: 'Bill Cosby 'Himself''	Barbara Walters Special (CC)	Cisco Kid	Greatest American Hero	Scarecrow and Mrs. King	Movie: 'The Blue Knight'
7:30									
8:00	USFL Football: San Antonio at Denver	Wonderworks (CC)			57th Annual Academy Awards (CC)	700 Club	Lifestyles of the Rich and Famous	Kate & Allie	Newhart
8:30									
9:00		American Playhouse (CC)		Movie: 'The Octagon'			News	Cagney and Lacey	Movie: 'Lafayette Escadrille'
9:30			All Together Now			Together: Boones			
10:00			News			Bill Cosby Show Best of Groucho	WKRP in Cincinnati Love Boat	News	
10:30		Dr. Who	Best of Carson	Movie:				Barney Miller	
11:00	SportsCenter	Write Course		'Splash'	News	Burns & Allen		Simon & Simon	Portrait of America: Massachusetts
11:30	USFL Football:	Sign Off	Late Night with David		ABC News Nightline	Love That Bob	Movie: 'Three Coins in the'		
12:00	San Antonio at Denver		Letterman		Charlie's Angels	I Married Joan Dobie Gillis	Fountain'	McMillan & Wife	Movie: 'The Story of a Woman'
12:30			Muppet Show	Movie: 'Cujo'					

HERRING BUILDERS

"Tri-State Areas's COMPLETE Builder"

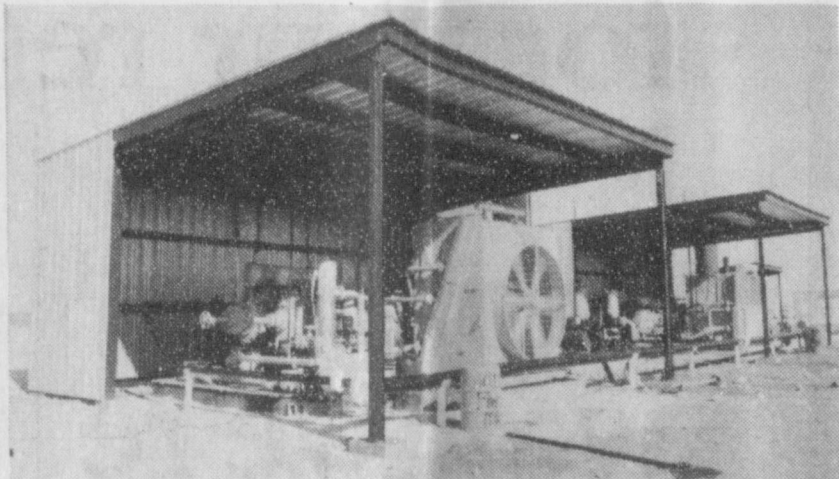


Add-Ons



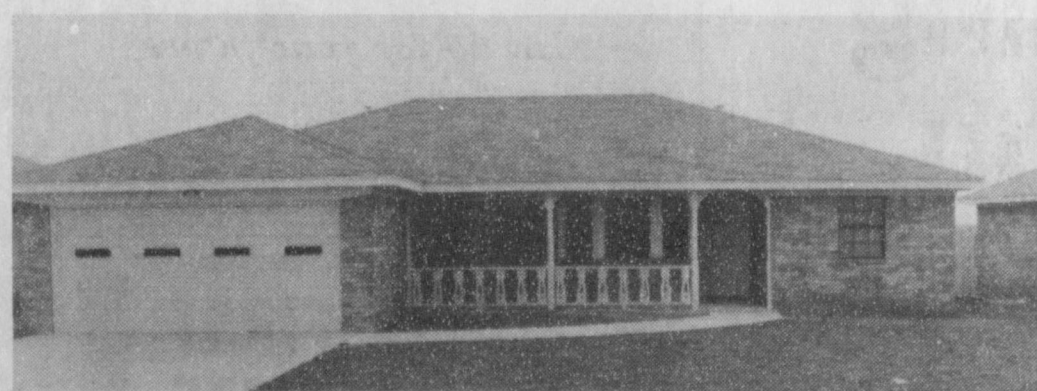
Commercial

Custom Plans and Designs

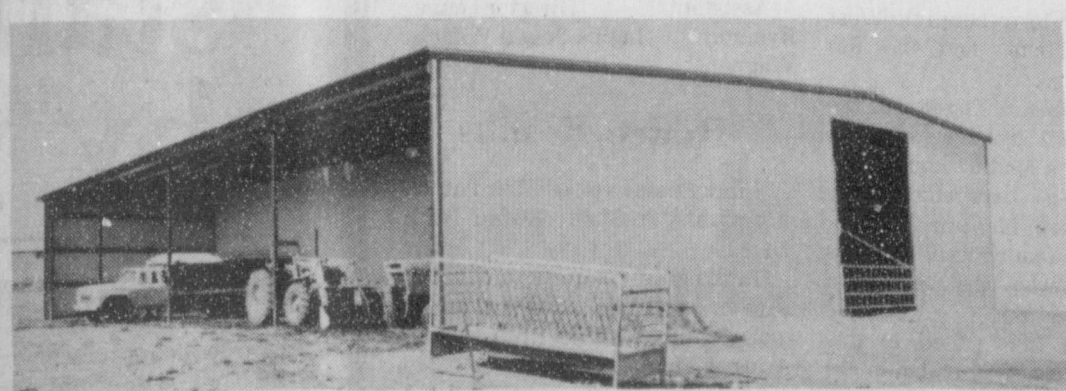


Oilfield Specialties

Residential or Commercial



Residential



Agricultural



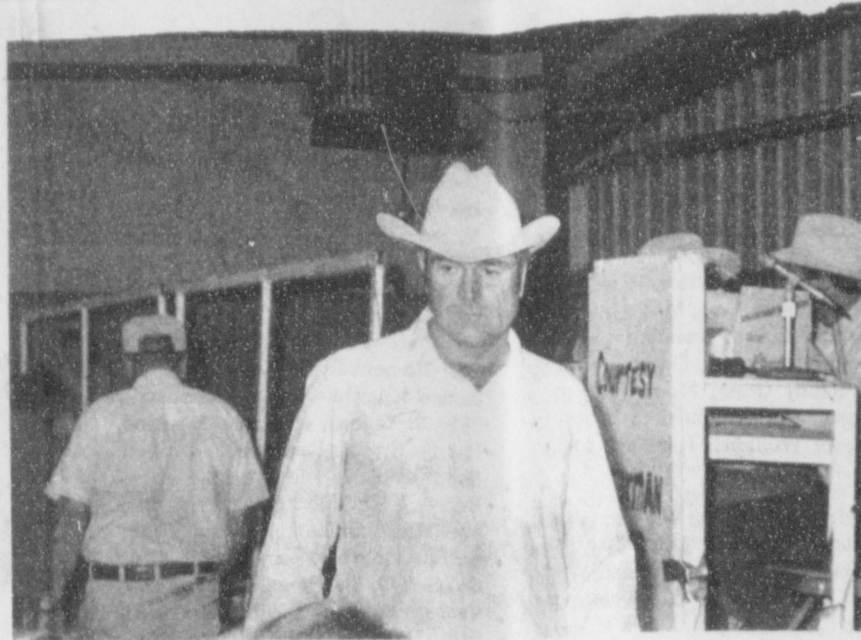
Loop 143 E. — Perryton

435-4004

Nº 0044



Loyd Cator is shown here receiving his showmanship award in lambs at the livestock show over the weekend.



Bill Strawn enjoys livestock show.

CITY ELECTION
CITY OF SPEARMAN, TEXAS
(ELECCION DE LA CUIDAD)
(CUIDAD DE SPEARMAN, TEXAS)

April 6, 1985
(6 de abril de 1985)

**OFFICIAL BALLOT
(BOLETA OFICIAL)**

INSTRUCTION NOTE: (Nota de instruccion): Vote for the candidate of your choice in each race by placing an "x" in the square beside the candidate's name. (Vote por el candidato de su preferencia en cada candidatura poniendo una "x" en el cuadro al lado del nombre del candidato).

For ALDERMAN - Vote for three (3):
(Para Concejal - Vote por tres (3):

SAMPLE

- Burl Bucharan
- Robert Queener, Jr.
- Mike Cudd
- Donald E. Reed
- Wilson McClellan

Nº 1

REGULAR ELECTION
(ELECCION REGULAR)
SPEARMAN INDEPENDENT SCHOOL DISTRICT,
SPEARMAN, TEXAS
(DISTRITO ESCOLAR INDEPENDIENTE DE
SPEARMAN, TEXAS)

April 6, 1985
(6 de abril de 1985)

**OFFICIAL BALLOT
BOLETA OFICIAL**

INSTRUCTION NOTE: (NOTA DE INSTRUCCION):

Vote for the candidate of your choice in each race by placing an "X" in the square beside the candidate's name. (Vote por el candidato de su preferencia para cada candidatura marcando con una "X" el cuadro al lado del nombre del candidato.)

Trustees: Vote for 2
(Regentes: Vote por 2)

- MIKE GARNETT
- KENT GUTHRIE
- JOE CLEMENT



Stephanie Friemel received 1st place in steer showmanship.

Complete

Janitorial Service of Spearman
Floor and Carpet Care
P.O. Box 305
Farnsworth, Texas 79033
Phone 435-3043 or 659-5014



Tommy Leathers, driver and Yolanda McAtee, center coordinator are shown with the vehicle assigned to Moore and Hansford counties.

Panhandle Transit, a rural transportation program providing door-to-door transportation to the 26 counties of the Texas Panhandle, is now in operation, according to Ms. Nancy Harvey, Special Projects Director for the Texas Panhandle Community Action Corporation. It is being contracted through the State Department of Highways and Public Transportation with funding through the Urban Mass Transit Administration, and will operate as a non-profit transit system through T.P.C.A.C.

Routine service will be open to the general public and especially suitable for senior citizens and handicapped persons, and will have flexible schedules in order to meet passenger needs.

Regular service will include trips for medical, shopping or essential business purposes, and to visit senior citizens centers and nutrition sites.

A Panhandle Transit vehicle will pick up and return passengers to their homes.

Various purchase-of-service contracts will make possible a cost free service to persons who are eligible for other programs such as: A.F.D.C., Food Stamps, S.S.I., Medic-aid, J.T.P.A., Head Start, housing and butter and cheese.

All other passengers will be charged 50¢ for a one-way, in-town service; and 25¢ per mile, one-way, outside of the city limits.

Drivers have been professionally trained in defensive driving, passenger assistance techniques, first-aid, and C.P.R. Drivers will assist passengers in and out of the vehicle, and with packages and groceries.

Scheduling for Moore and Hansford counties must be made 24-hours in advance through Moore County Community Action.

To request further information, or to schedule Panhandle Transit, please call 935-5551 or 935-2342.

Ambassador
INN

is proud to welcome our
NEW EXECUTIVE CHEF
BILL HICKS
to Perryton

Stop by & See Some of Our Changes!

Breakfast Buffet Daily	6-10 A.M.	\$1.99
<small>(Scrambled Eggs, Bacon, Hash Browns, French Toast, Biscuits & Gravy)</small>		
Monday — Western BBQ Buffet	11-2 P.M.	
	5-9 P.M.	
Tuesday — Mexican Buffet	11-2 P.M.	
	5-9 P.M.	
Wednesday — Italian Buffet	11-2 P.M.	\$4.95
	5-9 P.M.	
Thursday — German Buffet	11-2 P.M.	
	5-9 P.M.	
Friday — Breakfast & Lunch Buffet Only		
Saturday — Breakfast Buffet Only		
Sunday — Breakfast & Special Sunday Lunch Buffet		

March Special

Bring the top portion of this ad and receive 10% off any steak on the menu Friday, Saturday or Sunday night after 4 p.m.

Satisfaction Guaranteed!

PTA project is McGruff puppet for classrooms

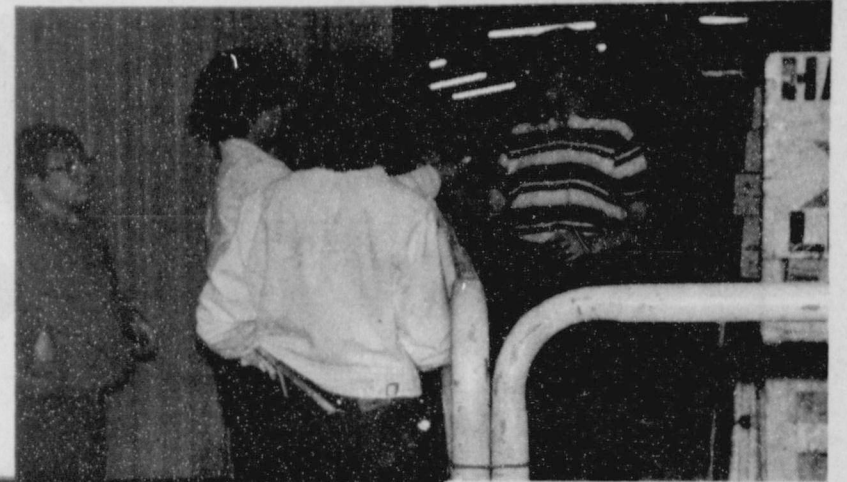


Candy Boxwell, McGruff, and Lurky

The local PTA is continuing with its elementary school puppet program by using McGruff puppets to take a bite out of crime. The PTA needs 19 McGruff puppets for grades K-6. There is a taped program for each grade for 12 weeks.

Their PTA goal is to get a puppet in every classroom. Teachers gave 100% favorable response to the videotape shown children on January 28. Cost of the puppet, tape and teachers guide is \$65. The McGruff program is design-

The program also teaches kids to say no to drugs, crime, abusers and how to protect themselves. If anyone is interested in having a program presented to their club or organization, or wants to make a contribution, they may contact Candy Boxwell at 8-3450 or Peggy Varnon 9-3993.



Laneida Burnham placed 3rd in barrow showmanship.



Trevor Williams is shown receiving his second place in steer showmanship by Gruver FFA Sweetheart Lori Fletcher, and Spearman FFA Sweetheart Tiki Jackson.

ed to be used once a week for 24 weeks.

The Land Bank

Your long-term farm credit specialists



High Plains Federal Land Bank Association, 508 S. Main, Perryton, Texas; 806-435-4319; serving Ochiltree, Lipscomb and Hansford Counties.

Farmers Union is taking consignments for their Annual Farm Sale April 2. Consignments must be in by March 18 to be on Sale Bill. Call: Joe Morris - 733-2132; Burton Schubert - 659-2667; Glen Lesly - 659-2928; or R. C. Porter - 659-2035.

We'll Help Keep Your Future Safe.



Bruce Julian, Thalia Garner and Debbie Smith Trust Officers at First National Bank

Protect What You Own

You spend most of your life working and putting together important assets. An estate includes your home, farm and ranch property, investments, life insurance and some cherished personal belongings. Have you prepared to pass on those hard-earned assets to people important to you?

How Does a Trust Protect Your Estate?

A Trust is a special legal way to protect your assets from certain taxes. It can help prevent your property from being tied up in court. It even guards your estate from being mishandled by well-meaning, but inexperienced friends or family members.

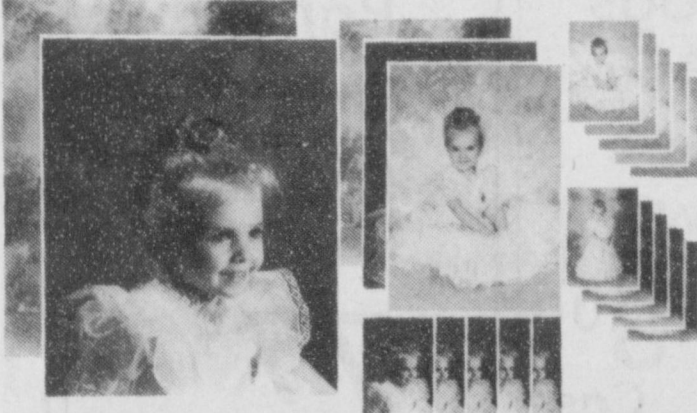
We Offer Twenty-Five Years of Experience To You

Our Trust Department has been helping people take hold of their future for twenty-five years. Bruce Julian, Thalia Garner, and Debbie Smith are Trust Officers who can meet with you at the bank or in your home. There's no cost to talk with them about your needs ... whether you're hard at work today, or ready to retire. Call us.

We'll Help You Take Hold of Your Financial Future



YOUR CHILD WILL ALWAYS BE SPECIAL... CAPTURE THOSE PRECIOUS MOMENTS NOW! PORTRAIT SPECIAL!



NOW \$3.00 OFF!
20 STUDIO QUALITY COLOR PORTRAITS **9.95**
Our Reg. 12.95

TWO 8x10 • THREE 5x7 • 15 WALLET SIZE
We Welcome Everyone...

BABIES, CHILDREN, ADULTS and FAMILY GROUPS
95c Deposit - Balance \$9.00. Poses our selection. Special effects poses extra. Limit: One package per subject. \$1.00 each additional subject in portrait. Minors must be accompanied by an adult. Satisfaction guaranteed. Satin-textured finish at no extra charge.

Ask about our NIMSLO 3-Dimensional Portraits

TGIY
Family Centers

A HOUSEHOLD

Copyright 1984, TG&Y Stores Co.

INTERNATIONAL COMPANY

IN TIME FOR MOTHER'S DAY GIVING!

4 Days Only!

Wed., Thur., Fri., Sat.

Mar. 20, 21, 22, 23

Daily 10-8

521 HWY. 207 South
Spearman, Texas

Sale Ends March 23

Items Available At
TG&Y Family Centers Only.

TG&Y

Family Centers

Copyright 1985, TG&Y Stores Co.

A HOUSEHOLD
INTERNATIONAL COMPANY

Sale of Sales



2 ROLLS .99

HI-Dri Paper Towels are 2-ply for extra absorbency. 75 total square feet per roll. Assorted colors. Limit 6 rolls.



.99 each

Refreshing Soft Drinks in thirst-quenching 2-liter bottles. Choose your favorite: Coke, Diet Coke, Tab or Sprite. Limit 4. Sprite not available in some markets.



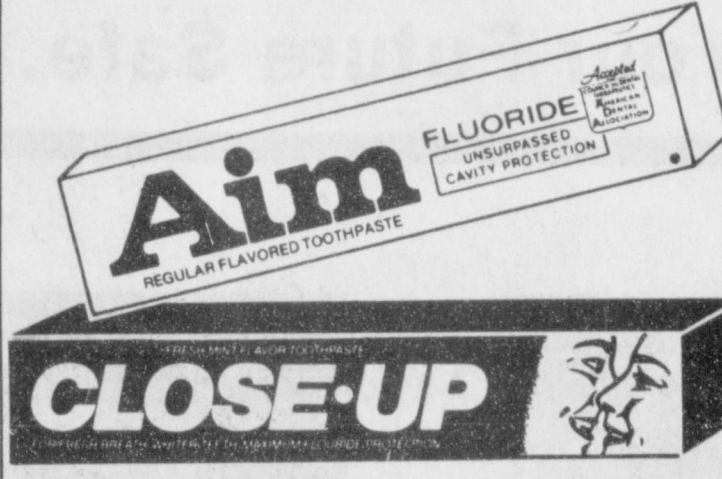
2.99 per gallon after rebate*

7.98 - **2.00** = **5.98**

TG&Y's Low Price on 2 gallons Less Mail-in Rebate*

Your Final Cost on 2 gallons

Prestone II Antifreeze protects your car year 'round. Silicone Silicate formula locks out rust and corrosion. *Rebate Coupon in Customer Service.



.88 6.4 ounces each

Aim or Close-Up Toothpaste for cleaner, whiter teeth. Both have fluoride to fight cavities. Price reflects 30¢ off label. Regular flavor.



.99 22 ounces

New Lemon Fresh Windex! That same great Windex shine now with a fresh lemon scent. Cleans and shines glass, chrome and appliances.



2.78 PKGS.

Wilkinson 5-Pack Twin Razors, twin blade disposable razors for closer, cleaner shaves. No rainchecks.

Ivory Liquid Dishwashing Detergent

22 oz.

Reg. \$1.55

\$1.00

Jumbo Storage Chest or Underbed Chest

Reg. \$1.99

77¢

E-Z Foil Cake Pans 8 Pack

Reg. \$2.11

2/\$3.00

DuroFlame Fire Logs

Reg. \$1.33 ea.

\$7.98 Case

Now **50¢** Ea. **\$3.00** Case

Maxi Thin Panty Shields

26 CT. Box

Reg. \$1.88

77¢

Large Assortment of Auto Cleaners and Chemicals

50% Off

All Comforters and Bed Skirts

75% Off Reg. Price

Large Assortment of Tennis Shoes Various Styles & Sizes

50% Off

Doubleknit Fabric Solids and Prints 60" Widths

Reg. \$1.88

\$1.33

Large Assortment of Flat Fold Fabric Fleece, Woven, Denim or Corduroy

2/\$1.00 Reg. 99¢

521 Hwy. 207 S., Spearman, Texas, 659-3741

TG&Y insists upon your satisfaction. If you are not happy with what you purchase, return it with your sales receipt. We will cheerfully exchange it or fully refund your money. If for unforeseen reasons advertised merchandise is not available, we will be glad to offer you a like item of comparable quality and value when possible. Most advertised items are reduced from our everyday low prices. Some merchandise is in limited quantities and available only while supply lasts. We reserve the right to limit quantities. We will be happy to accept your personal check, MasterCard, Visa or cash. We want you to be glad you shopped TG&Y.

