

# The Spearman Reporter

24 hr. prayer  
service  
659-2911

Volume 77, Number 21

The Spearman Reporter Spearman, Texas 79081

Thursday, March 28, 1985

And It Is ~~No~~ B.S.!

## Hansford County has energy to burn

By Jove! We Think They've Got It!

### Electrical Stimulation in Reverse

Story compliments of "CALF" News, and Carl Cooper of Gruver, Texas.

by Orville Howard  
Southwest Editor

Construction of two \$80 million generating plants - designed to turn feedlot manure into electricity - is scheduled to begin this year in the heart of the Texas Panhandle cattle feeding industry.

Valley View Corp., of Dallas, a diversified agricultural corporation, said initial groundwork and grading has been completed for one plant at a site 5 miles northeast of Hereford and land has been acquired for a second plant at a site just north of Gruver.

"We're ready to go once we have the transmission arrangements completed between Hereford and Austin," said B.R. Farris of Dallas, manager of operations for Valley View.

These manure-fired electrical plants will be the first such commercial units ever to be built in the world, and each will consume about 65 percent of animal waste from feedlots within a 25-mile radius of each plant, or about half of the large commercial feedlots in the Texas-Oklahoma Panhandle area.

Farris said it will take about two years to build a plant once construction has started, "with the one near Hereford scheduled to begin in mid-

summer and the one near Gruver about four months later."

In elaborate ceremonies last November, the City of Austin announced plans to purchase electricity from Valley View, with Texas Gov. Mark White on hand to praise the Austin officials for contracting the new source of energy.

"This contract will contribute substantially to creation of a competitive electric generating industry for Texas, a goal of the state and its leaders, resulting in lower costs for consumers in Austin and around the state," said White during ceremonies at the state capitol.

"Texas agriculture has energy to burn and that's no B.S.," said Texas Agriculture Commissioner Jim Hightower, who gave Gov. White a bag of manure from a cattle feedlot.

Austin Mayor Ron Mullen and Dallas businessman Ed Cox, owner of Valley View Corp., signed a contract for Austin to buy 100 megawatts of power annually produced by the biomass electric generating plant near Hereford.

Hightower said the energy contained in a 1-pound bag of manure more than equalled the energy in a bag of lignite (coal) of the same weight.

"There is certainly no end to the

See Electricity from manure Page 8

April 1 through Friday April 5

## Ministerial Alliance plans Holy Week services

The Spearman Ministerial Alliance announced that it will hold Holy Week services Monday, April 1st through Friday, April 5th. The services will be held in the Fellowship Hall at the First United Methodist Church, 407 South Haney in Spearman. So that all may attend, the meeting time is scheduled during the lunch hour from 12:00 noon to 12:50 p.m. each day.

A light lunch will be provided by the United Methodist Women (donations accepted), and dessert will be provided by the church represented by each day's preacher. Fellowship, singing, and

a devotional will follow the meal.

The noontime Holy Week services will begin with Rev. Bill Schardin of Faith Lutheran Church leading on Monday, April 1st. Tuesday's services will be led by Rev. Lealand Grimmer of the Apostolic Faith Church.

Rev. Martin Foster of the First Christian Church will lead the services on Wednesday, April 3rd, and Rev. Steve Rogers of the Spearman Union Church will lead the services on Thursday, April 4th. The First Baptist Church's Rev. Russ Gibbs will lead in the final services on Friday, April 5th.

Jerry Don Davis, of the First

Baptist Church, will coordinate the special music and direct the congregational singing. He will be accompanied at the piano by Sheryl Meek of First United Methodist Church.

For those with children, a nursery will be provided.

The Spearman Ministerial Alliance, sponsor of the Holy Week services, invites everyone out during their lunch hour this week. And plan to attend Easter services at your church on Sunday, April 7th. Let us celebrate the victory that the Easter season promises. HE IS RISEN!

## Baptist Choir to present Easter musical

The Sanctuary Choir of First Baptist Church will present the Easter musical "I Am" Sunday, March 31, 1985, at 7:00 P.M. "I Am" is a musical celebration highlighting the events leading to the crucifixion of Jesus and climaxing with His resurrection. The musical "I Am" is based on the concept of who Jesus really is to each life He touches: He is a bruised, hurting Son to Mary, a silent threat to Pilate, a changed heart to the lonely life of Mary Magdalene, a willing and obedient Son to His Father, and yet...still...the great I Am.

"I Am" was created by David Clydesdale, a talented composer and

arranger. Following the success of his two earlier Easter musicals, Clydesdale was apprehensive about creating a third Easter musical. He said "I strongly questioned whether I had anything 'valid' or 'new' to say. I began working with the classic song 'I Am' which in itself is an incredible statement of power. I soon realized that the great I Am was also a tender, kind, considerate, and compassionate man."

The musical "I Am" includes original compositions by Clydesdale as well as his arrangements of other, perhaps more familiar, songs. All of the songs are arranged to give a powerful and dramatic overview of

the events of the Easter season. "I Am" will be sung by the 38 voice choir of First Baptist Church with selected solos done by individuals. Mary Magdalene's song will be sung by Vicki Gibbs, Jesus' prayerful "Help This Shepherd Be a Lamb" will be sung by Jerry Don Davis, Pilate will be portrayed by Johnny Miller, and "Mary's Song" will be sung by Beckee Baker. The choir is under the direction of Carol Pack. Rehearsal accompanist is Anne Sanders and sound technician is Wesley Jarvis.

The public is cordially invited to join this musical celebration of the resurrection of Jesus. First Baptist Church is located at 123 Bernice.

KRDF-FM will broadcast April 4

## Radio-Thon will be broadcast

On April 4, 1985 the annual Radio-Thon to raise money for the Golden Spread Senior Citizen Center, will be held at 14 S. Haney at 10:00 a.m. - 4:30 p.m.

KRDF-FM radio Manager, Leo Meyers and Orvil Brummett will be the hosts for this worthwhile event.

Local talent will be presented throughout the day, and volunteers will be on hand to answer the telephones, and pick up pledges.

Cookies, baked by members of the Center, and coffee will be served. So come by visit with us, and see what the center has to offer Spearman's Senior Citizens what your donations have provided.

We thank you for your support in the past, and hope we can count on your support in the future.

Frances Loftin, Chairman  
Golden Spread Radio-Thon

Golden Spread Center  
Radio-Thon  
April 4, 1985

10:00 a.m. - 4:30 p.m.  
Phone: 659-3525 or 659-3866  
10:00 Orvil Brummett, Leo Meyers, Marsha Murphy, Pearl Pierce.  
10:15 Senior Citizen of the year award. Volunteer of the year award.  
10:30 Son Shine Singers (First Christian Church Children)  
10:45 Cathy Archer.  
11:00 Lisa Miesner.  
11:15 Reverend Steve Rogers and Mrs. Rogers.  
11:30 Sarah Blackburn.  
11:45 Jerry Don Davis.

12:00 News and weather.  
1:00 Robert Queener.  
1:15 Eulalia Blankenship and Allen Mires.  
1:30 James Sparks.  
1:45 Pearl Pierce and Marsha Murphy.  
2:00 Jessie Davis and his scrapbook.  
2:15 Jessie Davis.  
2:30 Lynanne Maize.  
2:45 Trudy Schnieder.  
3:00 Sue Woolley.  
3:15 Gloria Knox.  
3:30 Bonita Reimer.  
3:45 Candy Boxwell.  
4:00 Connie Woolley.  
4:15 Orvil Brummett, Leo Meyer, Marsha Murphy.  
4:30 sign off.

## HOSPITAL

Patients in Hansford Hospital are Opal Scroggs, Ruby Lieb, Thelma Tindell, Elwana Eaton, Kate Farris, and Ora Vanlaningham.

Patients dismissed were Dora Womble, Ruth Garrard, Vernon Morris, Anita Sumner, Clinton Sims, Cassandra Margrave, Herbert Miller, Mildred Daily, Cristina Castro and daughter, Tommie Dorman, Mammie Dry, Kayla Taylor, Edwina Saldivar, and Mark Hardick.

(continued on page 9)



## Local students in WTSU concert here

The public is invited to a free concert given by the West Texas State University Chorale this Friday evening at 8:00 p.m. at the Spearman High School Auditorium. This will be the first performance on their 6-day tour through Kansas, Oklahoma, Arkansas and Texas.

The W.T.S.U. Chorale is the premiere choir of four choral ensembles in the W.T.S.U. department of music. This choir includes

four Spearman students: Denise (Blackburn) Ivey, Greg Meek, Jay Pack and Bill Cope.

The Spearman Music Boosters urge you to come and hear this fine concert.

## Moose Lodge sponsors Easter Egg Hunt

The Moose Lodge will sponsor their 4th annual Easter Egg Hunt on Saturday, April 6th, at 10:00 a.m. In case of rain, it will be held Sunday at 2:00 p.m. There will be 3 prizes in each of two age groups, 6 and under, and 7 and over.

The Easter Egg Hunt will be held east of the High School in Spearman.

All children in Hansford County are welcome.

## Need dust bowl stories

April 14 is the 50th anniversary of "Black Sunday" - the beginning of Dust Bowl days.

We would appreciate any photographs or stories from area residents that pertain to "Black Sunday" or Dust Bowl days.

We hope to use them in the April 13 edition.



## To God: a note of thanks By Mrs. E.A. Greever

Dear friends, readers of the Spearman Reporter, we have found scriptures in God's holy word telling us to be baptised in water after repenting with a godly sorrow for sins we have committed, and when this is done, we rise to walk in newness of life and then to follow on with Jesus. We must consecrate spirit, soul and body that the blood he shed could make us pure hearted and from sin nature free, and by being made a new creature in Christ Jesus, we are promised a marvelous gift. "The Holy Ghost". The word teaches us He who has been with you shall be in you. When John the Baptist told the people he would baptise in water, he went farther by saying He that is coming after me will baptise you with the Holy Ghost. Jesus told his followers to tarry in Jerusalem until they be endued with power from on high and they were told at another time to tell all of us who have followed since that time to observe all things you told them. O the realities that are ours when we follow on to know the Lord in a greater way. Jesus told his followers it is expedient (better for them) that I go away. We can readily see why, when on earth he could only bless, comfort or teach ones who came to him, but by praying the Father to send us another comforter, He could be with people all over the world. Oh the wisdom of God. By the natural man, his thoughts and ways could never be known.

Friends, please read Acts, chapters one and two for I will skip here and there as you will find. When the ones saw Jesus ascend back to heaven, they then went to the upper room where all the Apostles he had chosen to carry on the good news, the Gospel, were assembled with others, the Bible says 120. They were continuing with one accord in prayer and supplication with the women and Mary, the mother of Jesus, and with the brethren so when the day of Pentecost was fully come, they were all with one accord in one place. There came a sound from heaven as of a rushing, mighty wind, and it filled all the house where they were sitting and there appeared unto them cloven tongues like as of fire and it sat upon each of them. And they were all filled with the Holy Ghost and began to speak with other tongues as the Spirit gave utterance.

This news went over Jerusalem, where there were Jews from all nations under heaven who came to see and hear them speak in their own tongue, where in they were born, and were amazed, saying, are not all of these Galileians? Some were in doubt, saying, What meaneth this? Others mocking said, They are full of new wine, and when Peter heard all of this, standing up with the Apostles, lifted up his voice and said, Harken to my words. This is that which was spoken by the prophet Joel. It shall come to pass in the last days, saith God, I will pour out my Spirit upon all flesh and your sons and your daughters shall prophesy and your young men shall see visions and your old men shall dream dreams. And on my servants and on my hand maidens, I will pour out in those days of my Spirit and they shall prophesy. Read Joel, chapter 2, verses 28-29.

Now they had received the power to be witnesses unto Jesus in Jerusalem, all Judea and Samaria and unto the uttermost parts of the world (Yes, in Spearman). Friends this same experience was given to a group in Topeka, Kansas at the very beginning of this century under the direction of Charles F. Parkam. This was a group who were hungry hearted, sanctified

and trusted the Lord to supply all their needs without collections. I was not there, but afterward met Bro. Parkam, heard him preach, also others from southwest Mo. and the adjoining Kansas state. They scattered from Topeka, known as the "Apostolic Faith Movement", and in 1921, I tarried for this gift in the home of Mr. and Mrs. Joe Davis in the Range, Okla. community south of Hardesty. When He, the Holy Ghost came in for two hours, I preached, praised and sang in another language. Its real, Thank God I know its real, and since I've been very careful not to grieve him out of my life. Jesus said when He, the Holy Ghost is come, He will not speak of himself but will testify of me. He will bring all things to your remembrance. Whatsoever I have told you. He will show you things to come. A comforter in whatever way needed. He seals a life unto the day of redemption. Redeemed from among men, the group we read about in Rev. 14th chapter. 144000.

When do we know He comes into our body? Answer: When He takes over our tongue and we speak in another language. And in searching the scriptures, we find no other evidence. The word says this promise is unto you and to your children and to all who are afar off and to as many as our Lord God shall call. We in Spearman, no doubt, are far away from where these words were uttered. Thank God we have been included.

THIS IS THAT - A song  
This is that O wonderful blessing  
That Joel the prophet told us

about  
The Holy Ghost sent down from heaven  
Gives joy and gladness and makes me shout

CHORUS  
Glorious Comforter Blest Holy Spirit  
Who comforts my life in a world of sin  
Gives me a zeal to work for the Master  
Who came to redeem a world lost in sin

Verse 2  
I have this gift in an earthen vessel  
God's excellency and power to me is shown  
From my innermost being flows living water  
This is that God's love is known

Verse 3  
Take my life Lord I'll toil in thy vineyard  
From morning till noon and to nightfall  
As the shadows deepen songs I'll be given  
As the Spirit gives utterance his praise I recall.

Verse 4  
He seals my life unto the day of redemption  
Redeemed from among men caught to God's throne  
When Christ returns I will come in his glory  
Ever with him I was bought with his blood.

Join the Spearman Chamber of Commerce.

**Storm Windows and doors  
Only Aluminum  
Industries**  
Guymon, Ok. 73942  
405-338-6966 or after 6 p.m. 338-6170

JEAN E. SHOTTS ROBERT E. HOLLMANN

The Law firm of  
**SHOTTS & HOLLMANN**  
Attorneys & Counselors

wishes to announce  
the opening of a new office  
at 410 Davis Street  
Spearman, Texas 79081

Office Hours: 9:00 a.m. to 5:00 p.m. Telephone: (806) 659-2939



**Do we have your name right?  
Now's the time to tell us.**

The new edition of your phone book goes to press soon. But before the presses roll, be sure you're listed correctly. Or tell us if you'd like more listings (the kids, a relative, your spouse, for example). After all, it's your phone book. When you see your name in print, it ought to be the way you want it. So, if you want changes or additions, let us tell you what the charges are. Just call our business office now.

General Telephone **GTE**

## Local people attend meet

A meeting of the Public Responsibility Committee of the Panhandle Mental Health/Mental Retardation Regional Center was held in Perryton on Tuesday, March 19th at the Perryton Family Service Center. This committee functions as a review board for all family service centers within the Panhandle Region. Any complaints or other input concerning services at a family service center is reviewed by this committee. This committee also serves as a public forum for new ideas and input from the public concerning local family service centers. Sharon Ellzey is the local appointed member serving on this committee held in Perryton, the local advisory board of the Perryton Family Service Center was also invited to attend and share ideas. Local advisory board members in attendance included Judge Roy McClellan from Hansford County and Judge Jim Shearer from Lipscomb County, Representatives from Hansford County included Mrs. Velma Sanders and Mrs. Myrt Bohannon. Jack Webster represented Lipscomb County and Ochiltree County representatives in attendance were Evelyn Close, Roy Lee and Mary Francis Ellzey.

Discouraged because fewer than half of the parking offenders bothered to pay their tickets, Japanese police began to use a ticket on a metal loop that locks on car doors or side mirrors. Since the system was instituted, most motorists tagged have come to the police stations

to pay their fines and have the tickets removed.

Keep your ear to the ground long enough, and you'll be the answer to a chiropractor's prayer.

You are cordially invited to  
a bridal shower honoring  
Patricia Villasenor  
Bride-elect of Marco Antonio Avila  
March 31, 1985 from 2 until 4 p.m.  
First State Bank, Spearman  
gift selections at Gift Box and Sacks  
Third Ave.  
205-2tp

Farmers Union is taking consignments for their Annual Farm Sale April 2. Consignments must be in by March 18 to be on Sale Bill. Call: Joe Morris - 733-2132; Burton Schubert - 659-2667; Glen Lesly - 659-2928; or R. C. Porter - 659-2035.

24 YEARS IN THE  
**TREES**  
Trees & Shrubs, Spraying, Feeding & Pruning.  
Many old time remedies. We only use the safest chemicals - Natural organic sprays on many types of pests. Environmentally safe for humans and animals.  
No Herbicide Spraying  
Roto-tilling - Yards & Gardens - New Lawns - Tractor Levelling - Ditching  
Free Estimates in Perryton & Spearman  
Call After 6 p.m.  
Licensed & Insured  
BOB WELSH - Farmersville, TX

**STIHL...**  
**The Cutting Edge**  
The FS-61E Trimmer. Light, tough, durable. A powerhouse against weeds and brush. Special low prices on Stihl's accessory kits help give you the edge in the battle. And keep it.  
Complete Small Engine Repair  
5th St. and Dressen  
Spearman, Tx.  
(806) 659-3826  
**STIHL**  
THE WORLD'S LARGEST SELLING CHAIN SAW

# "We can help you retire with a lot of money"

"If you're trying to build yourself a comfortable retirement fund, you should know that you don't have to play the stock market or risk your money on speculative investments anymore. Now, you can retire with a lot of money by betting on a sure thing...an I.R.A. at The First State Bank!

"We just can't give you enough encouragement when it comes to capitalizing on the tax-deferred benefits of this great retirement opportunity!"

"Call us or come see us, and we'll sit down and design an I.R.A. to fit your needs."

## IRA Personalized Computer Profile

CUSTOMER'S NAME:	JOHN D. DOE	AGE	60
CUSTOMER'S AGE:	30	VALUE	\$ 400,759.29
TAX BRACKET:	25%	INVESTMENT	60,000.00
INTEREST RATE: (<365)	10.2500%	REGULAR ACCOUNT	179,483.24
DEPOSITS PER YEAR:	1	TAX SAVINGS	221,276.05
COMPOUNDINGS-YEAR:	2	AGE 65	
FIRST DEPOSIT AMT:	\$ 2,000.00	VALUE	674,239.99
REGULAR DEPOSIT AMT:	\$ 2,000.00	INVESTMENT	70,000.00
		REGULAR ACCOUNT	271,784.40
		TAX SAVINGS	402,455.59
YEAR	VALUE	AGE 70	
1	2,210.25	VALUE	1,125,042.96
2	4,652.86	INVESTMENT	80,000.00
3	7,352.26	REGULAR ACCOUNT	406,681.39
4	10,335.43	TAX SAVINGS	718,361.57
5	13,632.21		
10	36,103.41	IF YOU BEGAN WITHDRAWALS AT AGE 65	
20	134,203.26	YOUR INCOME WOULD BE:	\$7,200.77
		PER MONTH FOR 15 YEARS	

**FIRST STATE BANK**  
SPEARMAN, TEXAS 79081

1 NE Court

MEMBER **FDIC**  
FEDERAL DEPOSIT INSURANCE CORPORATION

**NOTICE**  
On page 40 of this week's TG&Y Family Center catalog, the jewelry copy and price was inadvertently transposed. 40% off Entire Stock Gold filled, Sterling Silver or Cubic Zirconia refers to the bottom photo and 50% off Entire Stock 14k Gold refers to the top photo. We regret this error and any inconvenience caused.  
**TG&Y Family Centers**



# BUY, SELL, TRADE OR RENT THROUGH THE CLASSIFIED ADS

**Call  
659-3434**

**SERVICES**

**MONUMENTS**  
**Save Agents and Undertakers Profits**  
If it is inconvenient for you to visit our large display, please phone collect (405) 327-0626 or write and we will call on you.  
**ALVA MONUMENT WORKS, INC.**  
Alva, OK 73717

New to area?  
Give us a try  
Call your local  
**USED COW DEALER**  
As soon as Possible  
659-3544  
659-3545  
1-800-692-4043  
17S-rtm

**NOTICE**  
**Wallace Monument Co.**  
Monuments, Curbing, Grave Covers  
Local Representative  
**LEONARD JAMESON**  
Spearman, Texas  
35S-RTN

**OSGOOD MONUMENT CO.**  
Amarillo, Texas  
Dealers of Rock of Ages Granite as well as all colored granites, marble and brnze memorials.  
**represented by**  
**BOXWELL BROS. FUNERAL HOME**  
**519 S. EVANS**  
**659-3802**

**ODD JOBS** around your house, don't know who to call? Call C.W. Handy Man Services, Charles West 659-3833.  
17S-rtm

Hansford County  
Planned Parenthood  
412 Davis  
659-2483  
Spearman, TX  
Monday-Friday  
8:30-12:30

**STEAM RINSE & VAC**  
Rinse and Vac Shampooer for rent at Gordons Drug. \$10.95 up to 24 hours.

**SEARS BLOWN-IN ATTIC INSULATION.** Completely installed. For FREE Estimate at your convenience dial 659-2373. Sears, Roebuck and Co., 517 S. Hwy. 207. 45S-rtm

**APPLIANCE REPAIR:** Call Jim Nobles, 659-3528.  
20-rtm

**Tree Trimming, Handy Man.**  
Phone 659-3115.  
**Bill Hopper**

Need to oil your wood shake or shingle roof? Give it extra life and beauty.  
Whatever your painting needs may be - from taping and textures to custom finishes with any coating on any surface. We also feature energywave insulating paints. Call today for a free estimate.  
**BEASLEY PAINTING**  
ALLAN 733-2858 JIM 733-2012  
15-rtm

**SERVICES**

Does your lawn need attention?  
CALL:  
**BJ'S**  
**TREE & LAWN SERVICE**  
For all your needs. Thatching - Lawn Fertilizing - Deep Root Feeding - Fungus Control - Call  
**BJ'S**  
at  
**659-3817**  
16 years experience  
20s-rtm

**PANHANDLE CRISIS CENTER**  
101 S.W. Fourth, Perryton, Texas 79070, 806-435-5008, 806-435-5013.  
Help is available at no charge. This is for rape, sexual abuse of children. Call Panhandle Crisis Center, receive support during a difficult time. Counselors on call 24 hours a day. Call for help.  
19-rtm-nc

**WANTED**

**NEED GRAZE OUT** wheat pasture. By the gain or pound. 9-3800 or 9-3248.  
19-rtm

**GARAGE SALE**

**GARAGE SALE:** 619 Haney. Family moving - must sell some furniture, infant and children's clothes, toys, household items, dog house, fire wood and much more. March 30, 9:00 a.m. - 4:00 p.m. ONE DAY ONLY.  
20s-2tc

**REAL ESTATE**

**FOR SALE:** Farm home, 25 miles SE of Spearman. 3 bdrm. 1/2 basement, on 6 acres. Swimming pool, out buildings. Phone Perryton - 435-3722.  
14s-rtm

**FOR SALE:** 3 bdrm. house on 2 lots with detached garage, 1 bath on corner lot. 322 S. Hazelwood \$40,000. Call 659-3873 or 5046.  
15s-21tc

**HOUSE FOR SALE:** Spacious, 3 bedroom, 3 bath home, approximately 2,800 square feet. 619 Haney. Recently remodeled throughout. Attached 2 car garage with two large storage rooms. New fence. Two blocks from elementary school. Call 659-3835.  
16-rtm

**NEW LISTING:** 3 bdrm. home, redecorated, new carpet, new central air and heating, sunken den, fireplace, utility room, new 6 ft. fence, storage, quiet street. Priced to sell. 659-5243.  
18-rtm

**OFFICE BUILDING FOR LEASE OR SALE:** 11 W. Kenneth, Spearman. Owner will finance. Phone 659-2766 or, after 5 p.m. 659-2719.  
16s-rtm

**FOR SALE:** Several lots and tracts of land within the city of Spearman, belonging to the Mearl Beck Trust and Opal Beck Estate.  
T. D. Sansing  
Johny P. Vernon  
Independent Executors and Trustees

19-rtm

**NOTICE**

**ATTENTION FARMERS**  
If you would like future contract on your 1985 wheat or if you have any farm-stored grain to sell, contact Oles Grain Co., Perryton, Texas. 806-435-5449.  
19s-rtm

I will not be responsible for any debts other than my own. Clark Dunaway.  
18s-rtm

**TO GIVE AWAY**

Puppies to give away. 659-2434.  
20s-4tp

**MISCELLANEOUS**

**FOR SALE**

**MOVING SALE:** 1 Baldwin Organ Fun Machine - \$1000.00; 2 Blue Rocking Chairs with Hassock - \$75.00 set; 1 RCA Console Stereo - \$400.00; 1 Small Miniature Hutch - \$200.00; 1 4-Burner Gas Apt. Size Stove - \$250.00; 1 Refrigerator 18.6 CUF - \$500.00; 1 Sound Design Stereo Console - \$200.00; 1 White Plastic Bookcase - \$25.00; 3 Formica and Chrome Dining Tables - \$10.00; 1 Antique Dresser with Mirror - \$300.00; 1 Large Water Cooler Air Conditioner - \$300.00; 1 Small White Wooden Kitchen Table - \$10.00; 1 Large Pile of Wood - \$100.00; 1 Artificial X-Mas Tree - \$15.00; 1 Electric Adding Machine - \$45.00; Various Children's Games - \$2.00 ea.; 1 Iron Bicycle Stand (4) - \$20.00; 1 Snow Tire - \$25.00; 1 Natural Mink Coat - \$750.00; 1 Black Wrought Iron Couch - \$40.00; 1 New Ratten Trunk - \$75.00; Assorted Clothes & Household Things; 1 Long End Table - \$15.00; 1 Yellow Deck Chair - \$15.00; 1 Marble Vanity Sink (Bathroom) - \$150.00; 1 Pine Bathroom Vanity - \$150.00 CALL: 659-3873 or 659-5046.  
16s-19tc

Repossessed Baldwin Piano-medium brown finish-Will show locally-low monthly payments can be assumed with good credit. Ask for Piano Credit Manager-Ph. 316-624-8421 Brier & Hale Music Co. Liberal, Ks.  
20s-2tc

Decorated or just plain ole cakes, cookies, cupcakes, etc. Call Debbie at 659-3328. Remember Birthdays, Bridge Parties, Sororities or Any time.  
18s-4t? s-only

Slight paint damage. Flashing arrow lighted signs. New otherwise. \$249 complete, free letters. Bargain. Four left. Call immediately. 1-800-423-0163, anytime.  
21-1tp

**SATELLITE TV ANTENNAS \$499.** Complete. Coin Pay Phones. Dual Dealerships Available. 913-362-6040. **SATELLITE SAM**, Box 2541, Shaw, Msn, KS 66201  
21-2tp

**LEGALS**

Hansford County offers to sell to the highest bidder two (2) Model M59 Personell Carriers with gun mounts removed. One (1) Weasel full track snow vehicle. Bids for the above items will be received until 4:00 P.M. Friday, April 5, 1985. Bids will be opened during the regular meeting of the Commissioners' Court Monday, April 8, 1985 at 10:00 A.M. in the Courthouse, Spearman, Texas.

The above vehicles may be inspected at Spearman, Texas and Gruver, Texas. Contact the County Judge or County Auditor for any information needed. The vehicles are to be sold as is without any warranty other than good title.

The County reserves the right to reject any and all bids.  
Roy L. McClellan  
County Judge

21-2tc T-only

**PUBLIC NOTICE**

**CHESS CLUB**  
Meets at Marlene's Cafe at 7:00 p.m. Mondays. Beginners to advanced, 12 years and up. Bring a board is possible.

**WEIGHT WATCHERS** meets each Monday at 6:00 p.m. at the Home Demonstration Building, Spearman, Texas.

Guymon Elks Supper Club is open to the public. Our hours are Wednesday-Thursday 6-10 p.m. Friday-Saturday 6-10:30 p.m. We have a Prime Rib Special every Friday.  
46s-rtm

The COWBOY SUB-CHAPTER of the F.C.A. meets the fourth Saturday of every month at 7:30 p.m. at the Home Demonstration Building, Spearman, Texas.

**MOBILE HOMES**

**FOR SALE**

**DEALER REPO!**

3 bdrm. mobile home. 2 bath, wood siding, storm windows, garden tub, etc. Assume payments of \$287.66 with approved credit. Includes delivery and installation. WE TAKE TRADE - ANYTHING OF VALUE!! Quality Affordable Mobile Homes. Hwy 60 W., Pampa, 665-0714.  
20s-4tc

**FOR SALE:** 14 x 70 Mobile home, 2 bedrooms, 2 full baths. Large living area. Lots of cabinets and closet space. New carpet. Very nice. Priced to sell. Call 659-3964.  
19s-5tc

**TO GIVE AWAY**

**FREE:** Small dwelling located West of Moose Lodge Hall to be moved, or may be torn down for lumber. Contact T.D. Sansing or Johny P. Vernon.  
21-2tc

**VIRGINIA WHITE**  
Realtor  
Your Business Is Appreciated  
Virginia White, Broker  
659-3841

3 bedrooms, 1 1/2 baths, beautiful large area with cathedral and fireplace. Big area. New carpet. Over 1000 sq. ft.

Beautiful clean home with 3 bedrooms, 1 1/2 baths, fireplace. Two living areas, excellent location.

Storage Building for sale on Hoskins St., 1200 sq. ft.

Residential lot for sale on Dressen St. in block next to grade school.

CHARM & COMFORT is what this home offers. 3 bedrooms, 2 baths. Clean as can be and in good location. Call!

**Priority II**  
**REAL ESTATE**  
806/659-3440

**732 COTTER** - For a limited time only. The Buy of a Lifetime. Owners must sell soon or house will be taken off the market. Unheard of low price for a 3 bdrm., 2 bath, den and fireplace. Approx. 2000 sq. ft. living area. Patio and childs playhouse in back plus storage bldg.

**Nelson Addition**-3 bedroom brick, 2 baths, den, utility, carpeted, ceiling fans, nearly new. Reasonable.

**1115 S. Bernice**-exceptional 3 bedroom brick with all the extras and built-ins. Circle drive, established yard, fenced, shown by appointment only to qualified buyers.

**205 Lonito**-attractive 3 bedroom, 1 bath, garage, fenced yard. Carpeted. Reasonable. Appointment only.

**1017 Wilmeth Dr.**-Spacious 4 bedroom, 2 1/2 baths, finished basement, fireplace. Two baths, fenced yard and 2 large storage buildings.

**715 W. 7th**-Retail store.

**1018 EVANS** - 3 bdrm., 1 1/2 baths, detached garage, living and dining room, fenced yard, storm windows. Lots of storage space.

**603 S. EVANS** 2 bdrm., fenced yard.

We want your listings  
Leo K. Meyer Bob Hardy  
Broker Broker Sales

**MISC. FOR SALE**

**FOR SALE:** one ladies formal, size 5. Nice. Phone 9-2163.  
21-2tp

**FOR SALE:** 5 large round, extra heavy guage steel grain bins. Located West of Moose Lodge Hall. To be moved. Contact T.D. Sansing or Johny P. Vernon.  
21-2tc

**FOR SALE:** black labrador puppies. With shots, \$40.00. 9-2787 evenings.  
21-4tc

**FOR SALE:** Nomad travel trailer, pickup, 289 Ford motor. Behind Earl's TV.  
21-4tc

**WANTED**

**I BUY** producing and non producing minerals 806-374-9414, P.O. Box 9312, Amarillo, Tx. 79105.  
21-rtm

Offered by  
**EMMETT R. SANDERS**  
REALTY  
\*\*\*\*\*  
Nearly new 3 bedroom brick home; loan assumption.  
\*\*\*\*\*  
3 bedroom home, attached garage.  
\*\*\*\*\*  
Elegant 3 bedroom, 3 bath home, large landscaped lot.  
\*\*\*\*\*  
Crawford Addition lot on pavement.  
\*\*\*\*\*  
3 bedroom home, extra storage.  
\*\*\*\*\*  
6 room house on 2 lots, large detached double garage.  
\*\*\*\*\*  
3 bedroom, 1 1/2 bath, brick, good south location.  
\*\*\*\*\*  
**EMMETT R. SANDERS**  
REALTOR  
659-2516 nights 659-2601  
14-rtm Tonly

**Century 21**  
Daryl Wynn, Broker  
Allen Alford 658-4258 Larry Trosper 659-3491  
659-3034 T. O. Lesly 659-2028

**We'll give our word to you**  
**GOLDEN SPREAD REALTY**  
Corporated registered trademark of Century 21 Real Estate Corporation. Printed U.S.A. Each office is independently owned and operated.  
**WE WANT YOUR LISTINGS!!!**  
**CALL TODAY!!!**

**BOND FINANCING NOW AVAILABLE FOR 1ST TIME HOME BUYERS 11.6%.**

Ask us about our builder, for we can build you a home. Will take F.H.A. and V.A. application on the spot.

**ACREAGE:** For Sale \$176,000. Section 318, Blk. 1 and 2 in Sherman County. 640 acres - 550 in Wheat, 90 in grass land. Owner will consider trading in equal value in irrigated Farm Land.

**COUNTRY LOVERS:** Lovely 3 bedroom home with a double detached garage. Large den with fireplace, central heat and air, storm windows and double doors at entry. Two full baths with walk-in closets. Large kitchen with dishwasher, double oven, intercom system and cook top stove. This lovely home is about four miles south on highway 207. Approximately 11 acres and many trees of all kinds. Shown by appointment to qualified buyers only. This is a real buy.

**610 S. HANEY** - 3 bedrooms and 1 1/2 baths. Central heat and air. It has been remodeled. It has thermo windows and is insulated well. Call us today for an appointment to see this beautiful home. This is a real buy. Has many ammenties.

**1106 S. HANEY** - 3 bedroom, kitchen, living. Has one bath, central air and single car garage. This is a well kept home. Call today for an appointment. This home will qualify for bond money.

**19 S. DRESSEN** - 100 x 140 foot lot and Trailer House. This is also zoned for Commercial property. It has a building for auto repair or whatever. Priced to sell.

**5 1/2 Lots**, all fenced with 3 bdrm. home and has a new 16 x 30 bldg. Will sell all together or split property.

**60 x 75 Ft. Hangar.** Extra good bldg. - with heat, hydraulic door on 130 x 300 ft. lot. 8 inch cement floor.

**GROCERY STORE** in Spearman at 202 N. Bernice.

**217 N. BRANDT** - 2 bdrms., 1 bath. Extra good fence.

**415 ENDICOTT** - lot 27. 65 x 175 ft. Owner will clear lot.

**5TH & ENDICOTT** - Corner lot with 28 x 60 double wide, 3 bdrm., 2 bath. Rear apartment - 1 bdrm., 1 bath, kitchen - dinette. Property in good shape, good fences.

**PRICED TO SELL:** 4 bedrooms, 2 baths, large master bedroom. Ceiling fans, upstairs room, fenced-in back yard, with lots of fruit trees. Good location, 416 S. Haney.

**1010 HANEY** - Three bedroom home, single garage. This home has just been renovated in the past year. Six foot fence and landscaping is excellent, an fireplace to enjoy on the sunny days that will be our way. Has central air and air. Insulated well. Let us show you this home today. Shown by appointment only. Qualifies for bond money.

**WANT TO LIVE IN THE COUNTRY?** How about this one? 3 bedroom, large kitchen, central heat, family room, fenced back yard, storage shed, and a lean-to for your horse! 200 ft. lot on Industrial Road.

**603 ROLAND-FIRST HOME FEVER?** Here's the remedy! This 2 bedroom, 1 bath, kitchen, dining room and living room is ready to move into. Double detached garage, all brick. It is affordable.

**202 N. BERNICE** - New listing. 4 bdrm, 2 bath. New carpet and wall paper. 84 x 14 Trailer house in good condition and lot can be bought with the house. All property has a good fence.

**320 Acres** 10 miles S.E. of Perryton, irrigated, lots of grain storage. Lays good.

**322 S. HAZELWOOD** - 3 bdrm. House. Has extra lot that is plumbed for trailer house.

**1014 S. DRESSEN:** 3 bedroom, single car garage, central heat/air. Nice quiet neighborhood, close to school.

**HOUSE TO BE MOVED** - reasonably priced.



**CLASSIFIED ADS**

**BUSINESS OPPORTUNITIES**

OWN YOUR OWN JEAN-SPORTS-WEAR, LADIES APPAREL, CHILDRENS, LARGE SIZE, COMBINATION, WESTERN STORE, ACCESSORIES. JORDACHE, CHIC, LEE, LEVI, EASY STREET, IZOD, ESPRIT, TOMBOY, CALVIN KLEIN, SERGIO VALENTE, EVAN PICONE, LIZ CLAIBORNE, MEMBERS ONLY, ORGANICALLY GROWN, HEALTHTEX, OVER 1000 OTHERS. \$7,900 TO \$24,900 INVENTORY. TRAINING, FIXTURES, GRAND OPENING, ETC. CAN OPEN 15 DAYS. MR. LOUGHLIN (612) 888-6555. 21-1tp

**AUTOMOBILES FOR SALE**

FOR SALE: 1978 Ford Fairlane 4 door sedan. Reasonable. Contact T.D. Sansing or Johnny P. Vernon. 21-2tc

FOR SALE: 1974 1/2 ton Dodge pickup. 318 engine, 4 speed, with topper. \$800.00. Call 659-2638. 21-4tc

**AUTOS FOR SALE**

FOR SALE: Cabover Camper. 45 HP Chrysler Motor. 16 ft. Lone Star Boar. 806-659-2325. 17-rtn-nc

**FOR RENT**

RENT REDUCED: Nicely furnished 2 bedroom apartment for rent. Call 659-3471 afternoons or evenings. No pets. 10-rtn

FOR RENT: 2 bdrm. trailer house. Furnished. Call 659-3017 or 659-2770. 17s-rtn

FOR RENT: furnished 2 bedroom house at 217 S. Endicott. Call 659-2404. 17-rtn

FOR RENT: Nice 3 bedroom house. Good location. Call 659-5297. 18s-rtn

**GARAGES SALES**

GARAGE SALE: Saturday, 8:30-4:00. 20 Golden Circle. Patio chair, barstool, rocking chair, curtains, lamps, bedspreads, end table, bottles, clothes, lots of toys, kitchen stuff and knick knacks. 21-1tc

**CARD OF THANKS**

Our words again seem empty when trying to express our appreciation for all the kind and generous things you do for us each time we lose a loved one.

The food, cards, flowers and memorials have been overwhelming. Gwened would have felt as honored as we do to be remembered by so many of you.

The memorial services, your attendance and the newspaper articles were a lovely tribute to her life and memory.

Thank you so much. Joel Lee & Joyce and Jeff Lackey Janyth, Charles & Chandler Bowers

The family of A.L. Blankenship wishes to express their appreciation for all the cards, flowers, memorials, prayers, food and other expressions of sympathy shown during our recent loss.

A special thanks to those who prepared and served the noon meal for the family.

Pat Blankenship & family  
W.L. Blankenship Family  
Eschol Blankenship Family  
John Blankenship Family  
Tom Dortch Family  
Lynn Davis Family

To everyone who remembered the Stationmaster's House Museum by their recent memorials we say "Thank You". We appreciate it very much.

Museum Board Members

**CARD OF THANKS**

Lo a gradesemos que ustedes pience todos mis amigo Spearman and Gruver por las despensa que nos alludaron y flores y tarjetas y las visitas memorial y por todo lla se acavo por nosotros perdimos Bobbi Borunda.

Jesse Borunda & little Bobbi Jim Hutchinson & family

We would like to thank all our friends in Spearman and Gruver for the prayers, food, flowers, cards, visits, memorials and everything that was done for us at the loss of Bobbi Borunda, who was killed last week in an auto accident.

Jesse Borunda & Little Bobbi Jim Hutchinson and family

**Snippets**

The famed heather honey of Europe is so thick it will not flow out of a jar turned upside down. If the jar is shaken, however, the honey will pour out easily. The phenomenon has a name — thixotropy — and is common in certain jellylike substances.

Another nice thing about your newspaper: Where else can you find others' mistakes to comment on without getting your nose punched?

**Spearman Reporter**  
PUBLICATIONS (USPS 5096-6000)  
SPEARMAN, TEXAS 79081  
213 Main Box 458 659-3434  
Published Weekly at 213 Main Street  
Spearman, Texas 79081  
Owner-Publisher.....William M. Miller  
Editor ..... Faye Lynch  
Second Class postage paid at Spearman, Texas 79081  
Any erroneous reflection upon the character of any person or firm appearing in these columns will be gladly and promptly corrected upon being brought to the attention of the management.  
POSTMASTER: Send address changes to Spearman Reporter, Box 458, Spearman, Tx. 79081.  
SUBSCRIPTION RATE: Hansford, adjoining counties, combination with the Hansford Plainsman \$26.28  
Other points, \$31.54  
MEMBER  
TEXAS PRESS ASSOCIATION

Most of the benefits of a fad diet go to the sharpie selling the low-calorie come-on.

A colleague hit with a bad case of the inflations says that the closest he'll get to the mountains this year is the August view on the travel calendar.

**CARQUEST**  
The Right Place to buy auto parts:  
**AUTO PARTS STORES**  
TEXAS' largest chain of independently owned and operated auto parts stores is proud to announce America's newest full line of shock absorbers from **PROVEN VALU** manufactured by **MONROE** Auto Equipment Co.

**GOOD Heavy Duty XD**  
**\$7.99** ea.  
A 55% increase in ride control area over standard 1" bore shocks.

**BETTER Radial XD**  
**\$10.99** ea.  
For the drivers who want longer life and smoother operation out of their radial or bias-ply tires.

**BEST Gas Charged XD**  
**\$15.99** ea.  
Providing the ultimate in riding comfort and control, the "Gas Charged XD" is a low pressure gas charged shock absorber which adds a "cushion of air" feeling in your car.

**Air Adjustable XD**  
**\$59.95** ea.  
Inflates up to 150psi with vehicle loaded, and deflates to match normal driving conditions.

**PV Bruiser XD**  
**\$24.95** ea.  
The Bruiser XD is an extra-duty truck shock absorber that provides a smoother operation by automatically adjusting to road extremes for light trucks, vans, and 4-wheel drive vehicles.

**SPRAY ON A TUNE UP!**  
**GUMOUT**  
CARBURETOR AND CHOKE CLEANER  
**\$1.39** 13 OZ.  
Cleans the inside and outside of carburetors, fixes sticking automatic chokes, cleans carb linkage and PCV valves, frees stuck manifold heat controls. Works instantly.

**Quaker State Motor Oil**  
Heavy Duty 30wt.  
**88¢** quart  
**99¢** quart  
Limit 5 quarts  
**QSX Turbo Motor Oil**  
10W-30  
**99¢** quart

**ADD TO GAS... STOPS DIESELING**  
**FUEL MIX**  
GAS TREATMENT  
**99¢** 8 OZ.  
Treats your car as you drive. Works fast in dirty combustion chambers where dieseling is caused. For new and used cars. Disperses water in fuel system.

**ALLSUP'S**  
CONVENIENCE STORES  
**PRICES EFFECTIVE MARCH 28-30, 1985**  
GROCERIES, SOFT DRINKS, SNACKS, HOT COOKED FOODS, SELF SERVE GAS-MONEY ORDERS, WHILE SUPPLIES LAST

**EASTER BASKETS**  
LARGE SELECTION  
FILLED WITH EASTER CANDY AND TOYS  
SMALL SIZE **\$5.99**  
MED. SIZE **\$6.99**  
LARGE SIZE **\$7.99**  
EX. LARGE SIZE **\$9.99**

**BARBEQUE SANDWICH** ON A BUN EACH **99¢**  
COOKED FOOD SPECIAL AS FEATURED ON TV ALLSUP'S SOUTHWESTERN STYLE

**GRANDMA'S COOKIES** 10 1/2 OZ. BAG **\$1.69**  
ASSORTED STYLES

**TORTILLA CHIPS** REG. \$1.49 SIZE BAG **\$1.19**  
REGULAR OR ASST. FLAVORS DORITOS

**BACON** 1 LB. PKG. **\$1.79**  
SHURFINE

**DECKER HAM** 8 OZ. CHOPPED 4 OZ. COOKED PKG. **89¢**

**BORDEN'S HI-PRO MILK** 1/2 GAL. CTN. **\$1.09**

**BORDEN'S ICE CREAM SANDWICHES OR DRUMSTICKS** 6 PAK **\$1.09**

**MONEY ORDERS** UP TO \$299.99 EACH **19¢**  
ALLSUP'S FAST AND SAFE

**COCA-COLA** REG. SPRITE, TAB OR 6 PK. CANS **\$1.89**

**EASTER EGGS** 7 OZ. BAGS **99¢**  
CANDY

Check and compare special announcement pricing.  
Sale prices good thru Sunday, March 31st.  
**GRUVER FARM SUPPLY**  
733-2427 515 Main St. Gruver, Texas



Table with 11 columns (CABLE, PM, ESPN, OETA, KAMR, TMC, KVII, CBN, WGN, KFDA, WTBS) and 12 rows of program listings for Thursday, 3/28/85.

Table with 11 columns (CABLE, PM, ESPN, OETA, KAMR, TMC, KVII, CBN, WGN, KFDA, WTBS) and 12 rows of program listings for Friday, 3/29/85.

Table with 11 columns (CABLE, AM, ESPN, OETA, KAMR, TMC, KVII, CBN, WGN, KFDA, WTBS) and 12 rows of program listings for Saturday, 3/30/85.

Table with 11 columns (CABLE, AM, ESPN, OETA, KAMR, TMC, KVII, CBN, WGN, KFDA, WTBS) and 12 rows of program listings for Sunday, 3/31/85.

Pearson-Donahue win tourney

The undefeated doubles team of Mark Pearson and Ross Donahue led the Spearman boys to another team championship in the Spearman Invitational Tennis Tournament this past weekend.

The Hair Loft is offering a special on permanents \$25.00 April 1 thru April 6. Call 659-5161 for Betty, Cheryl, LeeAnn 310 Main Spearman, Texas

Karen's Kozy Korner

Join the Spearman Chamber of Commerce.

Hard-cooked eggs and ham are familiar foods that get special treatment at Easter. It's this "special treatment" of decorating and hiding Easter eggs or serving a fresh ham for a large family gathering that raises questions about food safety.

Consumers commonly have the following questions about food safety for these Easter treats:

Q: Is it safe to eat the hard-cooked eggs used in an Easter egg hunt?

A: Yes, but they must be handled properly. First, cook hard-cooked eggs in cold water immediately after cooking and then refrigerate until they cool all the way through.

Q: How long will hard-cooked eggs keep in the refrigerator?

A: Hard-cooked eggs in the shell should be used within one week. Use eggs with cracked shells or those with the shell removed within one day.

Q: Is there any danger of trichinosis from hams?

A: If you choose a fully cooked ham, there is no danger. They are specially processed according to USDA guidelines to kill trichinae organisms.

If you choose a fresh ham, take extra care in preparation. Cook the fresh ham until the center reaches a temperature of 170 degrees F. To make sure this temperature is reached, insert a meat thermometer in the thickest part of the cut, not touching the bone or fat.

Q: How long can ham be safely refrigerated?

A: Uncured ham will keep in the refrigerator from 3 to 5 days. It will keep in the freezer from 4 to 8 months.

Cured ham will keep in the refrigerator for one week. Leftover cooked ham that is tightly wrapped and refrigerated 1 to 2 hours after cooking will keep 4 to 6 days. Both uncooked and leftover ham can be kept in the freezer up to two months before losing flavor and texture.

Rho Rho Plans Easter Egg Hunt

Rho Rho Chapter of Beta Sigma Phi held its 490th meeting on Thursday, March 14, in the home of Linda Winegarner.

A picnic and Easter egg hunt for members' children will be held on Saturday, March 30th.

Linda Butt gave an interesting program which was enjoyed by everyone.

The next meeting will be on March 28th with Sue Woolley as hostess. New officers will be elected at this meeting.

Members present were Frances Pipkin, Linda Winegarner, Tami Janzen, Molly Holton, Joyce Vandenburg, Kitty Edwards, Martha Lanier, Sheila Watley, Peggy Winegarner, Sue Woolley, Terry Wombie, Tammy Benton, Christy Brock, Pam Cobb, Michelle Mahaney, Judith Schaefer, Leann Gillaspie, Donna Murray, and Peggy Varnon.

Take Advantage of Our Real Estate Loans, When You're Ready to Improve Your Home



See Roy Lynn Stollings or Roxie Stewart About Home Improvement Loans.



How long have you put that project on the back burner? You've been needing a work room for years. A place where you can work on home repairs and build things that you've always wanted to build.

At the First National Bank of Perryton, we know what it's like to make sacrifices. We have a solution: a home improvement loan. Not only will it increase the value of your home, but it will also improve the quality of your life.

Take advantage of home improvement loans at First Place.





## ELECTRICITY FROM MANURE

(Continued from page 17)

fuel supply," said Hightower. "We have over 2 million tons of manure coming from Texas feedlots every year."

In January, the Texas Cattle Feeders Assn. revealed that the Lone Star state was again the #1 cattle feeding state, finishing out 5.2 million head in 1984. The majority of this production is centralized in the Texas Panhandle.

Initial operation of the Hereford plant calls for a daily intake of 1,500 tons of livestock manure, 325 days a year - or an annual waste consumption of about a half million tons. It is projected to have an 80-person operational labor force, with an annual payroll of more than \$2.5 million to the Deaf Smith County area.

"This will mean several hundred thousand dollars going directly to the feedlots for the manure annually and an annual operating expenditure of between \$7 and \$9 million," Farris said.

Mike Carr, executive vice president of the Deaf Smith Chamber of Commerce, said the new plant would pump more than \$60 million a year into the South Plains economy.

In complying with all federal regulations, Farris said the generating plant would be very similar to the coal-fueled plants being built by Southwestern Public Service Co. (SPS) of Amarillo.

He pointed out that the environmental quality control of the new plant is in an intricate circulating fluid bed boiler that was first designed by the Alhstrom Corp. of Finland to handle waste material from forestry products.

There are now about 12 such commercial plants in operation across Europe, with similar technology being employed in an experimental plant under the jurisdiction of Texas A&M University.

The manure will be fed into the boiler in a way similar to that used to crush coal into local SPS generating plants.

"Because of advanced technology, our environmental control is in the unique combustion process rather than in emission controls," Farris said.

He said Valley View has already contracted enough waste from feedlots in a 25-mile radius of Hereford and Gruver to run the plants. They

will be designed to have an electrical output of 40 megawatts each or about 40,000 kilowatt hours per hour. Each plant will furnish enough electricity for about 35,000 residential homes.

"We will be able to produce electricity as economically as the new SPS

plants, and probably a little cheaper," Farris said.

Once under full operation, Valley View will operate a fleet of 20 to 25 trucks for each plant. These 18-wheelers will each have a 25-ton load capacity, with the dump-beds fully covered to eliminate any travel waste.

Farris said that the waste would be stockpiled adjacent to the plants in a tightly controlled manner similar to the way crushed coal is stockpiled by SPS.

"The material will be packed on a hard-surfaced area having positive drainage control in all directions," Farris said.

He said the stockpile will be compacted with steel-tracked dozers as the fuel is brought in. Moisture will be maintained at between 25 and 30 percent.

"At this moisture ratio, there will be no significant dust or odor," said Farris, who pointed out that manure loses most odor emissions at about 50 percent moisture content. Manure contains 88 to 90 percent moisture when it comes from an animal.

Carr called the proposed plant a "giant step" in putting livestock waste to use in energy production.

"We have already built an all-weather road into the Hereford site, fenced the area and completed the initial grading," Farris said. "The plant will be maintained at the highest levels of all environmental regulations."

Carr said there are 17 major feedyards in a 25-mile radius of Hereford feeding about a million head of cattle a year. He pointed out that there is one firm processing manure from the Hereford area for organic fertilizer for greenhouses and gardeners in a statewide distributorship. "But this doesn't even take care of one feedlot."

Farris said contracts with the local feedlots call for Valley View to take the waste material directly from the yards and to handle all loading and hauling.

Many feedlots now give away the livestock waste just for the taking, with some even paying to have it removed.

Charles Hoover, manager of the Southwest Feedyard near Hereford, said the new plant "would be the greatest thing that ever happened to

the Panhandle cattle feeders."

"We've been spending between \$80,000 and \$100,000 a year to get the manure removed, and now we're going to get about that much for the waste and have it cleaned out for us,"

said Hoover. "And, another thing, we haul our manure off in open trucks, but this new company will be hauling it in covered beds."

"This is what we've been looking for... this is the answer to one of our biggest problems."

Farris said the Deaf Smith County Industrial Development Board has already approved \$100 million in revenue bonds but that the plant would only cost about \$80 to \$85 million to build.

"The plant at Gruver will cost a little more than the one at Hereford," Farris said.

The Hansford County unit near Gruver will also take manure from feedlots in the central Oklahoma Panhandle area near Guymon. ▼

## Songwriter & singer to perform in Guymon

Victory Center Church, 5th & Quinn, Guymon, Ok. will be sponsoring two special meetings with Janny Grein and Dr. Hilton Sutton next week.

Contemporary Christian songwriter and singer, Janny Grein, will be holding a concert at Victory Center on Thursday, March 21, at 7:30 p.m. Janny has recorded several albums on the Sparrow Record label. Many of the songs she has written have been recorded by other artists, including Kenneth Copeland.

Dr. Hilton Sutton will be speaking at Victory Center on Sunday, March 24, at 10:30 a.m. Dr. Sutton is considered by many to be the nation's leading expert on the relation of current events to the prophetic Scriptures. He teaches a positive approach to the Scriptures

concerning end-time events. Hilton has written several books, among them "The Middle East Peace Puzzle", "World War III", "The Pre-Tribulation Rapture of the Church", and a recent study guide to the Book of Revelation.

Pastor Charles Mendenhall extends a welcome invitation to everyone to attend these two special meetings. For more information, you may contact Victory Center Church's office at (405) 338-5616.

## Annual golf meeting set

The annual meeting of Hansford Golf Club will be held Monday night, April 1 at the Spearman High School. Anyone needing more information should call Ray Gressett, 659-2823.

## Special day for ladies

### A SPECIAL DAY FOR LADIES

Luncheon, Style Show,  
Color Analysis  
March 30, 1985  
9 a.m. - 3 p.m.

UNION CHURCH  
FAMILY LIFE CENTER  
31 S. Endicott

Sherry Phillips will be the guest speaker at Spearman Union Church Saturday, March 30th. Jerry and Sherry Phillips are the pastors of Trinity Church in Tulia, Texas. Sherry will be speaking on the subject "Bloom Where You are Planted." There will be special music by Heidi Allen, former Miss Top of Texas. Heidi is the daughter of Rev. and Mrs. Gene Allen of

Lamar Full Gospel Assembly Inn, Pampa, Texas. Sherry will be speaking in the morning, followed by a style show by J.G.'s. There will be a noon luncheon and then a color analysis.

Nursery provided for pre-school age children.

The fact that marriage can survive the breakfast table is due either to true love or to not putting on one's glasses until later.

© 1985 Suburban Features

You are cordially invited

to a wedding shower

for

Jerry and Kim (nee Scroggs) Rex

Monday, April 1, 1985

from 7 until 8:30 p.m.

at the

First State Bank Hospitality Room

HOSTESSES:

Ruby Riley Helen Dixon

Cora Queener Judy Irlbeck

Kathleen Sutton Dixie Burch

Ethel Byers Jaunita Pierce

Myra Berner Joyce Byers

22-2tp

AGCO of Spearman, Inc. would like to congratulate once again, all the exhibitors who fed AGCO Feed for their stock show projects. Our "\$1.00 a Bag" rebate was just one way of showing our appreciation for your patronage.

## LAMBS

Heather McRee-Grand Champion Lamb  
Karla Latta-Reserve Champion Lamb  
Tina Cator-Reserve Breed Dorset  
Christie Burton-1st Place Lamb  
Heidi McRee-1st Place Lamb  
Kris York-1st Place Lamb  
Rex Ralston-2nd Place Lamb  
Shane Hamish-2nd Place Lamb  
Lance Hamish-3rd Place Lamb  
Debbie Burton-3rd Place Lamb  
Joe Lopez-3rd Place Lamb  
Julie Latta-3rd Place Lamb  
Tommie Latta-3rd Place Lamb  
Jeff Vanlandingham-4th Place Lamb  
Martin Vela-4th Place Lamb  
Kevin Williams-4th Place Lamb  
Leslie Latta-4th Place Lamb  
Brooks Beck-4th Place Lamb  
Brent Wagner-4th Place Lamb  
Chad Gardiner-5th Place Lamb  
Kyla Nelson-5th Place Lamb  
Carla Greene-5th Place Lamb  
Ryan Mathews-5th Place Lamb  
Randle Renner-6th Place Lamb  
Barry Beck-6th Place Lamb  
Kevin Nelson-6th Place Lamb  
Raquel Mathews-6th Place Lamb

Mark Allen-7th Place Lamb  
Joy Gafford-7th Place Lamb  
Allen Gardiner-7th Place Lamb  
Brooke Roberts-8th Place Lamb  
Dean Greene-8th Place Lamb  
Trey Roberts-Lamb Exhibitor  
Gina Hoel-Lamb Exhibitor  
Terry Phillips-Lamb Exhibitor  
Larry Dunn-Lamb Exhibitor  
Jay York-Lamb Exhibitor  
Lynette Williams-Lamb Exhibitor  
Norman Scroggs-Lamb Exhibitor  
Carl Urban-Lamb Exhibitor  
Stacy Gardiner-Lamb Exhibitor  
Christa Urban-Lamb Exhibitor  
Tammy Nollner-Lamb Exhibitor  
Misty Savage-Lamb Exhibitor  
Edward Beck-Lamb Exhibitor  
Marci Roberts-Lamb Exhibitor  
Brady Pool-Lamb Exhibitor  
Bart Baker-Lamb Exhibitor  
Jill Schell-Lamb Exhibitor  
Alan Barnes-Lamb Exhibitor  
Tim Woolley-Lamb Exhibitor  
Brian Hoel-Lamb Exhibitor  
Mathew Hoel-Lamb Exhibitor  
Michele Savage-Lamb Exhibitor

## STEERS

Deana Turner-1st Place Steer  
Tiki Jackson-2nd Place Steer  
Kevin Nelson-2nd Place Steer  
Barry Beck-3rd Place Steer  
Holly Venneman-3rd Place Steer  
Lynette Williams-4th Place Steer  
Chris Strawn-4th Place Steer  
Nikki Strawn-5th Place Steer  
Kyla Nelson-5th Place Steer  
Klint Venneman-5th Place Steer  
Brooks Beck-Exhibitor  
Ed Beck-Exhibitor  
Monte Beck-Exhibitor

## HOUSTON EXHIBITORS

Heather McRee-3rd Place Duroc  
June Hudson-(Dalhart) 3rd Place York  
Karla Latta-14th Place Spot  
Mark Allen-11th Place Spot  
Kris York-15th Place Hampshire  
Karla Latta-10th Place Steer

## SWINE

Randle Renner-Grand Champion Barrow  
Justin Ooley-Breed Champ Duroc  
Carl Urban-Breed Champ-Other P.B.  
Karla Latta-Breed Champion York  
Stacy Gardiner-Reserve Breed OPB  
Chris Brooks-Reserve Breed Cross  
Cody Pipkin-2nd Place Duroc  
Lance Hamish-2nd Place Duroc  
Lance Sparks-2nd Place Hampshire  
Heidi McRee-2nd Place Hampshire  
Kevin Williams-2nd Place OPB  
Jay York-2nd Place York  
Heather McRee-2nd Place Cross  
Clint DeArmond-2nd Place Cross  
Bart Baker-3rd Place Duroc  
Slavin Sparks-3rd Place Hampshire  
Terry Phillips-3rd Place York  
Shane Hamish-3rd Place Cross  
Alan Barnes-3rd Place Hampshire  
Christa Urban-3rd Place Cross  
Bryan Caison-3rd Place Cross  
Carrie Pearson-4th Place Duroc  
Dean Greene-4th Place Hampshire  
Laura Pearson-4th Place York  
Christie Burton-4th Place York  
Kris York-5th Place Duroc  
John Lieb-5th Place Duroc  
Tammy Nollner-5th Place Cross  
Tiki Jackson-6th Place Duroc  
Holly Venneman-6th Place Duroc  
Paul Trosper-6th Place Hampshire  
Shanna DeArmond-6th Place Hampshire  
Monte Beck-6th Place Cross

Trey Roberts-6th Place Cross  
Tina Cator-7th Place Hampshire  
Allen Gardiner-7th Place Hampshire  
Brandi Schneider-8th Place Hampshire  
Martin Lopez-Exhibitor  
Cinda Turner-Exhibitor  
Larry Dunn-Exhibitor  
Marci Roberts-Exhibitor  
Willie Vera-Exhibitor  
Kirby Taylor-Exhibitor  
Mark Pearson-Exhibitor  
Dallas Trosper-Exhibitor  
Brooke Roberts-Exhibitor  
Carla Greene-Exhibitor  
Brady Pool-Exhibitor  
Dusty Hill-Exhibitor  
Todd Martin-Exhibitor  
Mark Allen-Exhibitor  
August Vargas-Exhibitor  
Scott Swan-Exhibitor  
Gina Hoel-Exhibitor  
Carla Burton-Exhibitor  
Beverly Burton-Exhibitor  
Debbie Burton-Exhibitor  
Mike Pearson-Exhibitor  
Rex Ralston-Exhibitor  
Trey Roberts-Exhibitor  
Shannon Pool-Exhibitor  
Jeff Vanlandingham-exhibitor  
Trevor Williams-Exhibitor  
Tim Woolley-Exhibitor  
Ty Martin-Exhibitor

## CONGRATULATIONS

### ALL EXHIBITORS!!

Jimmy Shieldknight-President  
George Jackson-Secretary-Treasurer  
Randy Coombs-Manager Agco "Buzzard"  
Cecilia Hill-Office Manager

Lloyd Buzzard-Vice-President  
Bruce McRee-Vice-Pres. & Gen. Man.  
Bruce Eberhardt-Agco "A"  
Sharon Cook-Secretary

## OCHILTREE COUNTY EXHIBITORS

### SWINE

Adrian Garza-1st Place Hampshire  
Jenny Burger-1st Place Cross  
Teresa Blan-2nd Place Hampshire

Jenny Burger-3rd Place Cross  
John Rodgers-4th Place Cross  
Jerold Blan-6th Place Cross

### LAMBS

Wanda Burton-1st Place Lamb  
Ruby Ochoa-2nd Place Lamb  
Darrell Burton-3rd Place Lamb  
Victor Ochoa-4th Place Lamb

Cindy Burger-4th Place Lamb  
Amy Blan-5th Place Lamb  
John Rodgers-6th Place Lamb  
Scotty Thorton-7th Place Lamb



AGCO OF SPEARMAN, INC.

P. O. BOX 566 • 511 WEST ELEVENTH • 806-659-3751 • SPEARMAN, TEXAS 79081



Sale Ends March 30

# TG&Y Family Centers

Copyright 1985, TG&Y Stores Co.



Items Available At TG&Y Family Centers Only.

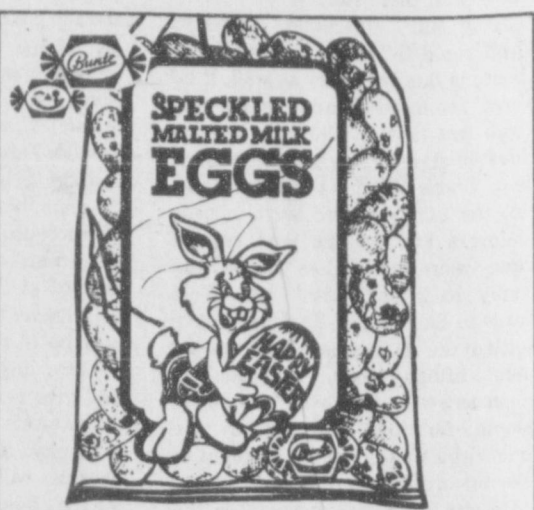
Hurry in today for super values during our Spring Sale!

A HOUSEHOLD INTERNATIONAL COMPANY

## Discover 22 more ways to start your spring right!



**1.44** 6 per package  
Reg. 1.66  
**Reese's Peanut Butter Eggs** are a treasure at any egg hunt. Peanut butter and milk chocolate individually wrapped in foil. 7.2 oz. pkg.



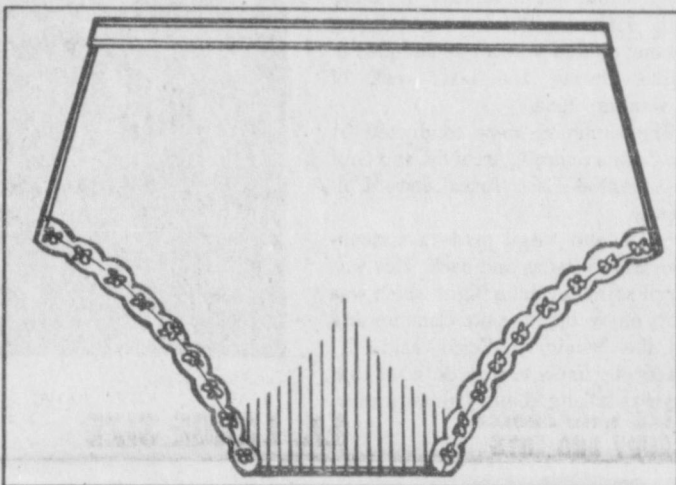
**.66** 8 ounce bag  
**Fill your Easter baskets with Bunte Malted Milk Speckled Eggs.** Delicious malted milk covered with a hard candy shell.



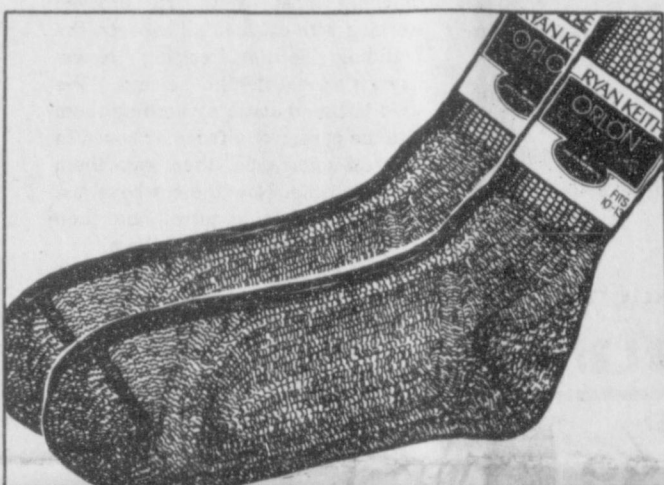
**9.44** Reg. 9.99  
**Peaches 'n Cream Barbie®** is as pretty as a peach blossom in her gown and change-around stole. Accessories included.



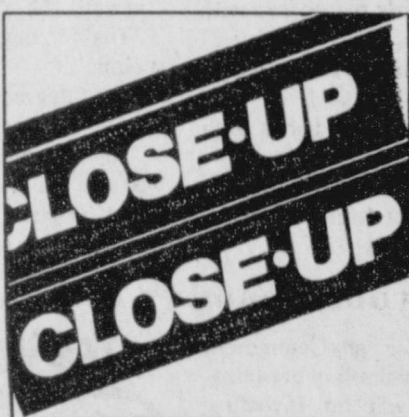
**.99**  
**Make a lovely centerpiece with polystyrene Easter Lilies.** Choose several clusters to enhance any room in your home.



**.99** each  
**Ladies' "Love Pat" Briefs** have DuPont Stretch Nylon with Lycra® spandex for 2-way stretch. Assorted colors. Fits sizes 4-7.



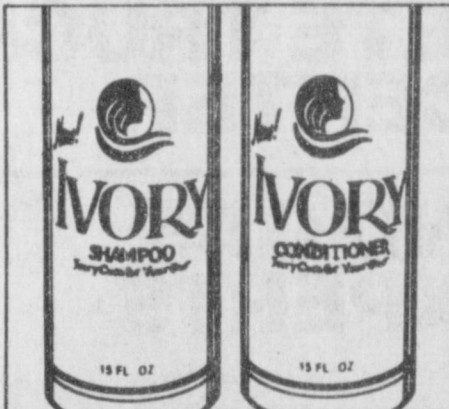
**.99** pair  
**Men's Crew Socks, hi-bulk Orlon®** and stretch nylon in navy, black or dark brown. Fits sizes 10-13. Reg. 1.57



**1.00** 8.2 ounces  
**Advanced Formula Close-Up** is a super-whitening fluoride toothpaste and mouthwash in one.



**2.29** 32 ounces  
**Listerine Dental Rinse with Fluoride** for cleaner, fresher breath. Fights cavities, too.



**1.77** Twin Pack 15 ounces each  
**Ivory Shampoo** is gentle on your hair. Buy now and get the Conditioner free! Oily, dry or normal formulas.



**2** PACKAGES **\$5** 9 per pkg.  
**Stock up on Schick Super II Cartridges** for a smooth, close shave. The slim design also fits Atra II razors.



**.99** 22 ounces  
**Niagara Spray Starch** for crisper, fresher clothes. No clogging, flaking or scorching.



**3.22** 4 ounces  
**Era Plus Laundry Detergent** is concentrated to tackle even the toughest stains.



**3** FOR **\$1** 32 ounces each  
**Bo Peep Cloudy Ammonia** is an all-purpose household cleaner to take on stubborn stains.



**4.99** Reg. 6.99  
**Save \$2 on a Disc Print Photo Album** designed for disc camera prints. Holds up to 104 photos.



**.99** each  
**Storage Containers** of corrugated fiberboard. 30x16 1/2 x 6" underbed box or 24x13x10 1/2" utility chest.

Large Assortment of Candles  
**50%** off  
Reg. Price

Mead Envelopes 100 ct. Letter or Legal Size  
**2/\$1.00**

Norelco Dial A Brew Coffee Maker  
**\$17.99**  
Reg. \$23.99

Westbend Free Style Cordless Iron  
**\$25.99**  
Reg. \$34.99

Dial Deodorant Soap  
**3/\$1.00**  
3.5 oz. Reg. 49¢

Hirsh Storage Tower  
**\$10.00**  
Reg. \$18.99

Emerson FM/AM Digital Clock Radio  
**\$13.99**  
Reg. \$19.99

521 Hwy. 207 S. Spearman, Texas 659-3741

TG&Y stands upon your satisfaction. If you are not happy with what you purchase, return it with your sales receipt. We will cheerfully exchange it or fully refund your money. For unforeseen reasons advertised merchandise is not available, we will be glad to offer you a like item of comparable quality and value when possible. Most advertised items are reduced from our everyday low prices. Some merchandise is in limited quantities and available only while supply lasts. We reserve the right to limit quantities. We will be happy to accept your personal check, MasterCard, Visa or cash. We want you to be glad you shopped TG&Y.





## Lutheran Choir to perform at Oslo



There will be an appearance of the Texas Lutheran College Concert Choir as Oslo Lutheran Church, Star Route 3, on Tuesday, April 2. The choir is scheduled to begin the performance at 7:30 p.m.

The 47-voice choir, under the direction of Dr. Sigurd O. Christensen, presents a concert of choral music from the great heritage of the Church.

Now in its 56th year, the TLC

Concert Choir has appeared in hundreds of cities in the United States and Mexico, and has presented concerts in seven European countries from Norway to Switzerland. It has earned an enviable reputation among both lay and professional musicians.

The famed choir will perform works from a variety of styles, covering several periods of music

ranging from contemporary works to Renaissance composers. Hymn arrangements, motets, spirituals and folk songs are also part of the repertoire. Membership in the choir includes students from seven states as well as overseas.

The public is cordially invited to hear this choir when it sings at Oslo Lutheran Church, (6 miles west and 12 miles north of Gruver.)

## Spearman takes 2nd at Stinnett meet

Spearman High School Lynx placed second in the Stinnett track meet last weekend with 101 points.

Burke, Spearman, was first with 51-10 1/2 in the shot and Bynum was 3rd with 47-6 1/2.

Burke was also first in discus with 157-7.

Mires was 2nd in high jump with 6-2.

Cook, was 2nd in pole vault with 10-6.

In the 3200, Espinosa was 2nd with 11:36.95, and Lopez was 3rd with 11:49.59.

York was 3rd in the 400 with 53.88.

In the 300 hurdles, Morris was 3rd with 42.97.

In the 1600 relay, Spearman was 3rd with 334.52.

The Varsity girls placed 2nd with 104 points.

In the shot, Jenkins was 2nd with 34-2 1/2.

She was 3rd in the discus with 91-11 1/2.

McLain was first in high jump with 5-4, and 1st in triple jump with 32-5.

Spearman was 2nd in the 400 relay 52.38.

Yarbrough was 3rd in the 800.

In the 100, Urban was 1st with 13.24 and Jenkins, 2nd with 13.93.

In the 800 relays, Spearman was 1st with 152.37.

The JV boys were 3rd with 71 points.

The 8th grade boys were 3rd with 90.

The 8th grade girls were 1st with 186 and the 7th grade girls were 1st with 157 pts.

### Letter to the Editor

Dear Editor,

I just wanted to take this opportunity to express my appreciation to our Spearman Cable Company for the broadcast to T.B.N. and C.B.N.. I believe it gives the citizens of Spearman excellent biblical teaching as well as wholesome christian entertainment. I've heard many good comments around town about how much people enjoy these fine christian networks. If any of the citizens of Spearman are not receiving T.B.N., you probably need to have your set fine-tuned to channel 13. I'm sure if they asked the cable company, they would be willing to help.

Sincerely,  
Steve Rogers  
Pastor

### New Arrival

David and Toni Pond of Perryton are proud to announce the arrival of their daughter, Shelby Rae on March 20. She weighed 8 lbs. 12 oz. and was 22 inches long.

Grandparents are J. T. Pond of Spearman and Buss and Lee Maxwell of Perryton. Great-grandmother is Rosa Ellis of Foster, Mo.

Welcoming her into the home is her year and half old brother Chad.

### Dahlia Flower Club

The Dahlia Flower Club met on March 25th in the home of Jewel Turner. The meeting was called to order by President Nelle Evans.

The program was given by Patty Sheppard on the three books by Kenneth Wyatt: "Splashes of Color", "Leap Frog and other things I remember" & Kenneth Wyatt's Western Art interpreted by Charles Allen.

The minutes of the previous meeting was read and approved and the treasurer's report given.

Roll call was "The First Thing I Notice About A Person" and was answered by the following members: Louise Archer, Nelle Albrecht, Myrna Biggers, Sammie Bishop, Deta Blodgett, Cleo Denman, Mable Edwards, Nelle Evans, Seda Hoskins, Hollie Riley, Ora Sanders, Ruth Mary Whitson and hostess Jewel Turner.

Refreshments were served to members and one guest, Patty Sheppard.

The next meeting will be April 8 at the Cattleman's Restaurant with hostess Hollie Riley.

### Join your Chamber of Commerce Tee Vee Laffs

Your Chamber of Commerce. What is it? Its a voluntary organization of citizens who are investing their time, money and talent in a community development program - working together to improve the economic and civic well-being of this community. Any citizen who is interested in helping to develop this area (which means more money - more business - more jobs and better living for all of us) is eligible to be a member of the Chamber of Commerce. It just takes two - your Chamber and you - to make Spearman an even better place to live and to rear our children. Join your Chamber of Commerce and you'll realize Spearman is Someplace Special.



"OKAY, OKAY, LADY! I'LL PULL HIM OUT AS SOON AS THIS INNING'S OVER."

### "FILING SHORT FORM NOT SIMPLE," SAYS H & R BLOCK

Two different short forms and new deductions make short form filing more complicated this year.

You may not be eligible or it may not be to your advantage to file one of the two short forms. The short forms, including the new 1040EZ, can only be used by taxpayers meeting certain strict requirements. You are limited in deductions on the short forms. Using the wrong form could cost you money, or even mean an audit.

You will have peace of mind in

knowing H & R Block's personal, courteous, and competent service is yours . . . at a very reasonable price. One Day Service is also available for your convenience at any H & R Block office.

H & R Block's tax preparers are trained to know which of the forms - 1040EZ, 1040A, 1040 - gives you the maximum tax advantage for your individual requirements.

See your telephone directory for the office nearest you or call

Phone Number 806-659-2310



### We put Freedom back in Agriculture...

by providing All Risk Crop Insurance protection you can count on!

- Provides crop investment protection.
- Assures family income and security.
- Allows maximum use of capital.
- Permits expansion.
- Increases borrowing and repayment power.
- Expands professional management capabilities.

- Backstops forward contracting and hedging.
- Promotes peace of mind.
- Helps manage risks.
- Produces cash flow during low crop yields.
- Protects your way of life.

Presented by:



Marketed and serviced by:



### THE HANSFORD AGENCY

16 S.W. COURT  
SPEARMAN, TX. 79081

P.O. BOX 608

[806] 659-3888

## Virgil Floyd recording family histories

For the last four months several of Spearman's citizens have been telling their family stories to Virgil Floyd who is recording these stories and keeping them in storage at the Stationmasters House Museum. What is Virgil up to and why? He is doing his job. The museum has started an oral history project of Hansford County in order to preserve the history of the county through the people's telling of their family stories from the beginning of the county until the present time. Virgil is one of those persons who has been in Spearman for so many years he knows just about everybody and so they don't mind telling him their stories.

Being an "old timer" himself, Virgil could tell quite a lengthy tale about his family history as well, if he weren't so modest and quiet-spoken. Virgil was born in 1901, the second oldest of eight children, near Dangerfield, Texas. When he was five years old, the family moved west to near Childress and for the next two or three years his father moved the family back and forth from West Texas to East Texas. Their last move settled the family at Shamrock for about fifteen years. The family's business was the same as most people, farming. However, by the time Virgil was grown, he decided to take up ranching.

He was hired as a cowhand on the Moody Ranch near Canadian where he worked for the next ten years. In 1929 Virgil met and married Mae Raney. They made their home in Spearman. They were married for almost fifty years and had three sons.

Reminiscing about the jobs he has held during his years, Virgil liked ranching most of all. He enjoyed working with cattle in all aspects—the branding, herding, cutting. Nowadays, it's too different, he says. "We used to brand cattle by herding them into the corner of a fence or boxed in gully of some type, then rope them one at a time. Now the cowboys just herd them into a corral and then through a chute to brand them."

Virgil owned and operated a meat locker plant here in Spearman for about twelve years. In 1960, the federal government imposed several regulations on meat locker businesses so that for Virgil they were too costly

to remain in business. Since then until three years ago, Virgil worked on farms in the community. When he had time he indulged in his favorite sport—fishing. His favorite fishing spot is somewhere in Oklahoma, but he's not telling any more secrets.

In 1975 the Hansford Historical Commission became interested in starting an oral history project. Not much was done, unfortunately, because the members did not have enough time to devote to the project and volunteers were scarce. During 1984, Texas Farmers Union became interested in contributing to the Texas Sesquicentennial. Since there is a tremendous amount of local history and the possibility that an entire past way of life could be lost forever to future generations and most people won't write about their experiences, the idea of an oral history project was formed. Farmers Union Green Thumb and the Senior Texas Employment Program, both older worker programs which help provide part-time work opportunities for low-income Texans aged 55 or older, are helping get the oral history project on the move. The purpose of the project is to preserve the local history or rural communities and give senior workers training as interviewers.

County historical museums and libraries will serve as host agencies for the endeavor. Helen Boyd, of the Station Master's House Museum, was contacted by Green Thumb about starting the project in Hansford County. The museum board was naturally interested and so began the search for a qualified worker. The board selected Virgil Floyd and he was hired by Green Thumb. Before Virgil could begin taping, he along with Helen, attended a training session on interviewing techniques in Dallas during the last week of November, 1984.

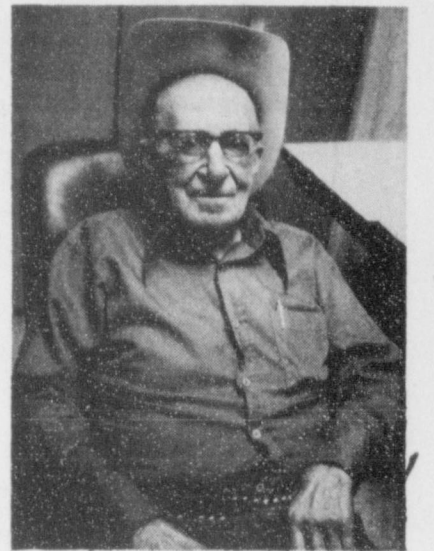
The seminars were conducted by Dr. James Conrad, Archivist and Oral Historian at East Texas State University.

Helen and Virgil made a sixteen-hour trip to Dallas and back. This was Virgil's first airplane flight which was fairly enjoyable, he said. Commenting on the seminar, Virgil said, "I practically knew how to do what that guy was talking about. I already knew

everybody I could and would be interviewing anyway. Since I've been in my own business I knew how to approach people. Besides we tape the whole session. He (Dr. Conrad) didn't have to keep repeating himself so often."

Virgil begins by calling or meeting a potential interviewee, explaining what the project is and then sets an appointment with them. Hardly anyone has turned him down. Most of the taping Virgil has done so far is with the "old timers" telling their family history, including the economy, social changes and education since the early days of Hansford County. Seventy people have talked to Virgil in the last three months.

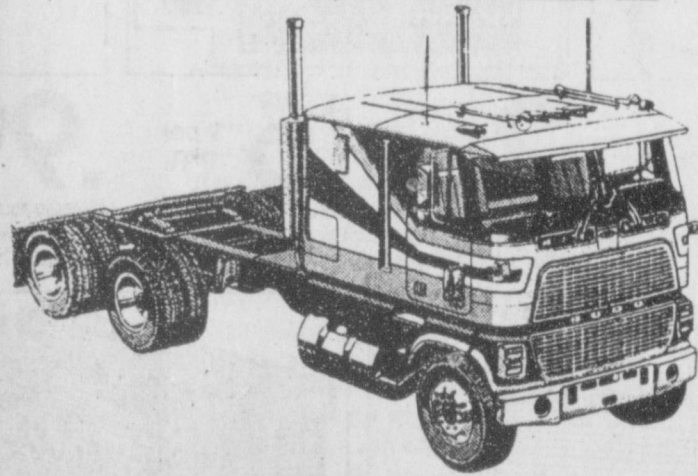
The tapes are kept on file in the museum, and the stories on the tapes will be written and then other tapes made so that the original tape will be kept. The reprints will be available to anyone interested in local and Texas history. The museum board is well pleased with the progress of the project and with Virgil. He does much of this on his own. Virgil feels the only problem he has is the cost of the tapes. The museum doesn't have enough funds to pay for too many more tapes. Virgil certainly doesn't have a problem with anyone telling their family stories. Anyone of any age who wishes to have their family history preserved can contact Virgil or Helen Boyd at the museum.



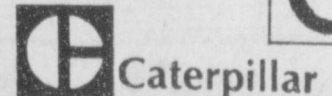
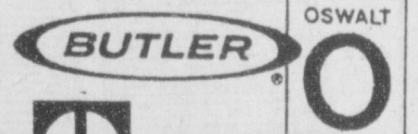
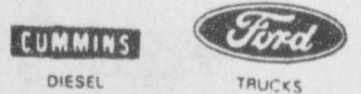
Virgil Floyd

## BOB JOHNSON MOTOR CO. YOUR COMPLETE TRUCK SERVICE CENTER

### DIESEL AND GAS ENGINE EXPERTS



- FACTORY-TRAINED MECHANICS
- CONVENIENT HOURS
- BIG PARTS STOCK
- LATEST DIAGNOSTIC EQUIPMENT
- EXCLUSIVE TRUCK BAYS



FOR EMERGENCY SERVICE CALL:  
RODNEY VAUGHN  
274-3106



Rodney Vaughn

Big trucks are our business.

## BOB JOHNSON MOTOR CO.

106 S. Main

Borger

273-7541



## Engagement Announced



Mr. and Mrs. Jerry Don Ford announce the engagement of their daughter, Kamala Ford to Darren Goodheart. Darren is the son of Mr. and Mrs.

Earl Goodheart. A May 11th wedding at First Baptist Church of Spearman is planned by the couple.

## Union Church presents "The Last Supper"

The Union Church Choir is sponsoring a living dramatization taken from the famous artist's, Leonardo Da Vinci, picture entitled "The Last Supper," the inner thoughts of the disciples the last night they were with Jesus before Jesus was crucified. The presentation involves thirteen men portraying Jesus and His twelve disciples. There are also numerous people

involved in special music. Full costume will be utilized and special lighting effects will enhance the production.

This special presentation will be at the Spearman Union Church at 31 S. Endicott on March 31st. Palm Sunday at 6:30 p.m.

Public is invited to attend. Nursery provided.

## Absentee voting

School absentee and city voting is now underway.

Absentee voting for Spearman and Gruver school trustees will be in the business offices of Spearman, Gruver schools and at the superintendent's office in Pringle-Morse.

The Gruver and Spearman school business offices close at 4:30 and the city halls are open until 5 each week day.

Absentee voting ends April 2 by personal appearance.

Absentee voting for city offices will be at Spearman and Gruver city hall.

The elections will be held April 6 at Spearman High School, Gruver High School and Pringle Morse School.

A cyclone is an atmospheric circulation of winds rotating counterclockwise in the southern hemisphere. Tornadoes, hurricanes and the lows shown on weather maps are all examples of cyclones, with various sizes and intensities. Cyclones are usually accompanied by precipitation or stormy weather.

This weekend weather has been just about perfect. Sunday was a beautiful day, very little wind and if you happened to be out driving, we hope you noticed that the tulips, jonquils, hyacinth, etc. were all in full bloom as well as apricot and peach trees. They may still be frozen, but for Sunday, all were beautiful.

The volunteer ladies met Monday for quilt designing and making blocks. It is always a pleasure to see what new ones we will see and each lady is doing a wonderfully great job getting it all together. If you don't know it yet, this community has a lot of great talent, not only on these projects but wait till you hear all of our local talent on Radio-thon day - it's coming up fast and will be held at the Center April 4th.

Of course, we won't have Coy this year and he will be greatly missed, as we could always depend on him to smooth out the rough

(continued from page 1)

sponsored by the Chamber of Commerce and Women's Division of the Chamber of Commerce.

In conjunction with this pageant, we will be sponsoring a "Miss Hansford County Escort" contest. This will be comprised of boy-girl couples ages 4 and 5. These couples will also have sponsors and the winning couple will serve as the escort for Miss Hansford County. The sponsor fee for the Miss Hansford County contestant and also the Miss Hansford County Escort contestants will be \$25.00.

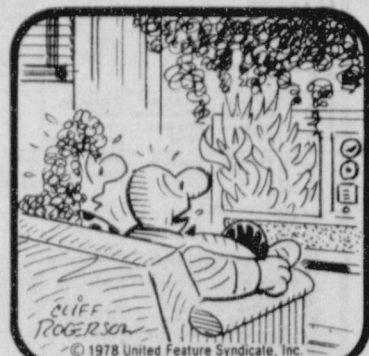
As in the past, if you do not wish to participate as a full sponsor, we will gladly accept donations which will be used for flowers and trophies. Printed acknowledgements of the donations will be made in our program.

If, at this time, you have a girl that you would be interested in sponsoring, you may contact Judy Nelson at 659-3608 or 659-3424 or contact Jackie Pearson at 659-3369

or 659-2608. Your response will be very helpful and greatly appreciated.

We thank you for the support that you have given to the pageant in the past and encourage your continued support in making this pageant a success.

## Tee Vee Laffs



"WOW! I DIDN'T THINK IT WOULD END LIKE THIS!"

## A Centerpiece

spots when things got slow or someone was late for a program. Coy has always been a great help to the Center and will be a difficult act to follow.

We are sure, however, that Francis Loftin has the talent well in hand and with all the cooperation of Spearman and the surrounding area this will be a great day for the Center. Without the help of KRDF, this could never be accomplished. So, a "Big Thanks" goes to our

Radio Station.

We will be having games and goodies on Tuesday evening as usual, so come on down and fellowship with all your good friends and neighbors. Thursday is Crafts Day and a covered dish dinner at noon. Do drop in and see what we are doing. See you then....

Alma

Join the Spearman Chamber of Commerce.

## Ban on haying and grazing to be lifted

WASHINGTON- Congressman Beau Boulter (R13) announced today that he has received word from the U.S. Department of Agriculture that farmers in areas where severe weather conditions have led to a critical lack of hay supplies will be permitted to hay and graze 1985 acreage conservation reserve (ACR) acres.

"This is a real break for farmers in the 13th," Boulter said. "A lot of our farmers have been hit with a drought, then a freeze, that ruined crops, and they just don't have the money to pay for feed. This exemption will let them hay and graze, and hopefully make it through next winter a little more

easily."

Boulter said that he had spoken with Secretary of Agriculture John Block about the possibility of such an exception, and as a result had several other conversations with USDA officials. "In those conversations," Boulter explained, "I have gotten a pretty strong indication that counties in the 13th District will be okayed for the needed permits."

State officials of the USDA's Agricultural Stabilization and Conservation Service will determine which counties are eligible to participate under the special ACR provision. Farmers in the eligible counties need to apply to their local

ASCS county office for permission to hay and graze their ACR acres.

In addition to haying and grazing their ACR acres for their own livestock, Boulter reported, today's ruling permits farmers to allow haying and grazing of their ACR acres by another producer. However, participants using the provision cannot charge for the value of the hay.

"This important decision, made at a time when farmers are in real trouble and need our help, will hopefully alleviate current hay shortages and let producers replenish stocks that are depleted," Boulter said.



Tiffany Womble, 7th grade 1600 meter competition to take first place at the Stinnett Track Meet.



Maria Ochoa, 8th grade, runs a leg of the race in the relay competition at Stinnett's Track Meet last weekend.

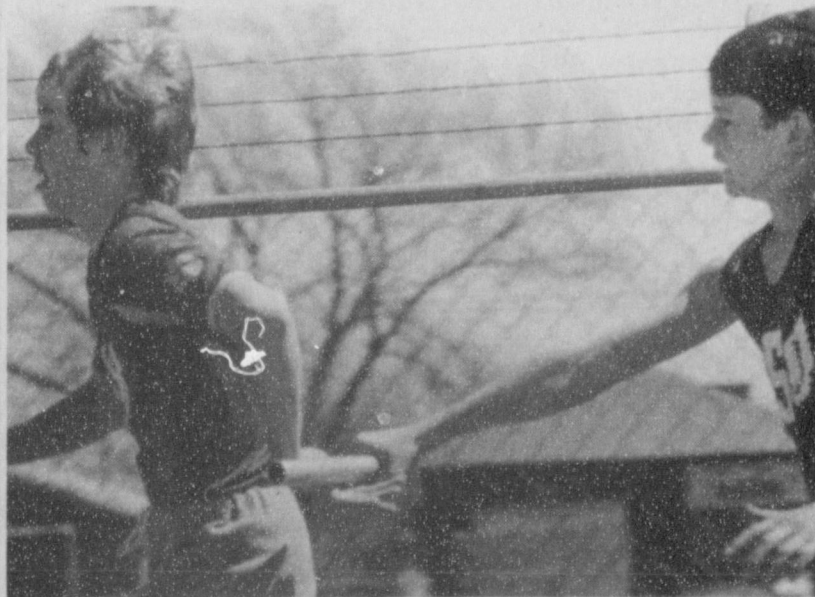
## Local man's mother dies

Ruth Coates, 82, of Shamrock, died Saturday. She was the mother of Walter D. Coates of Spearman.

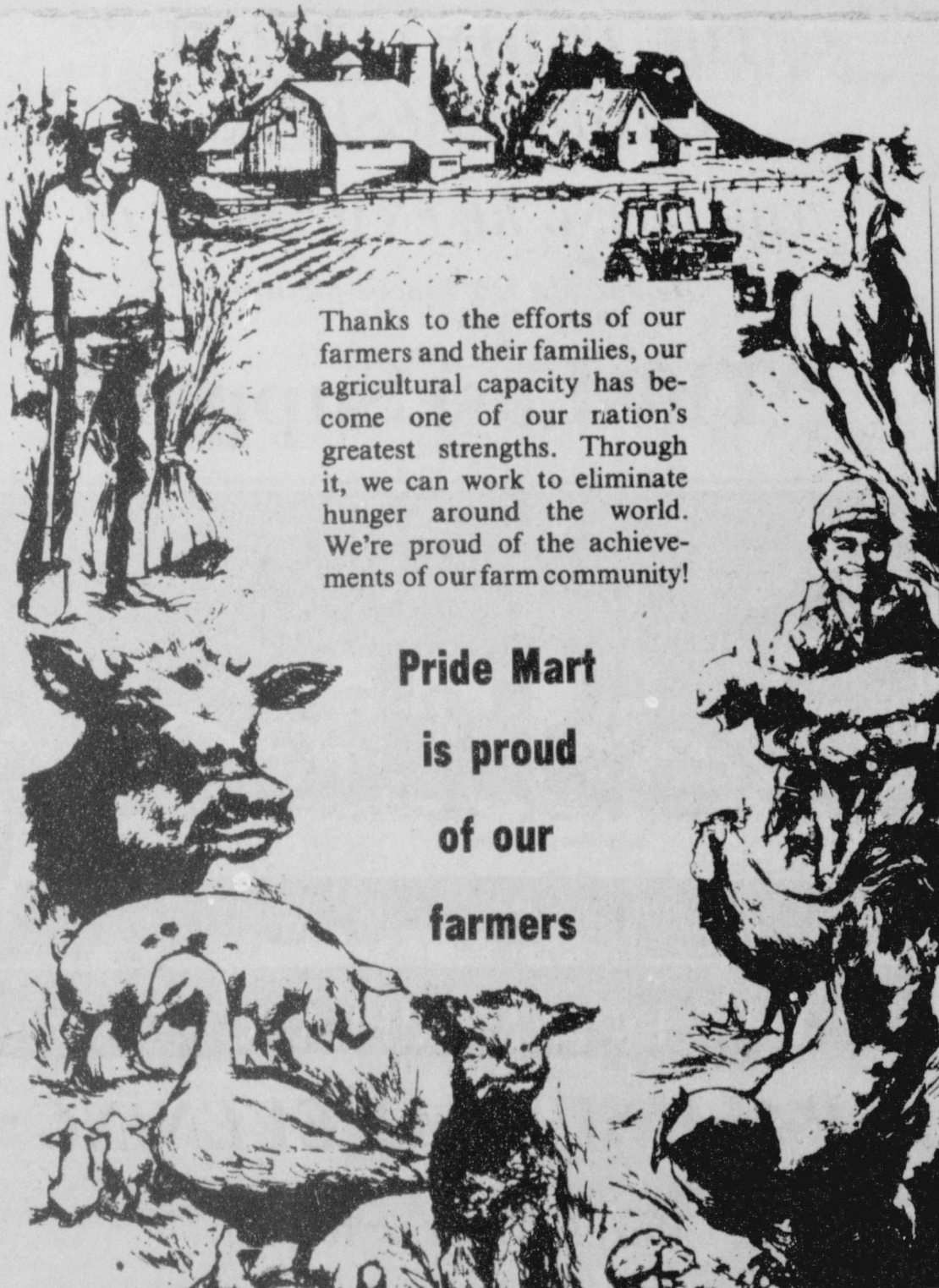
Services were held at 2 p.m. Monday in the 11th Street Baptist Church with the Rev. Joe Higgins, pastor of Landmark Baptist Church in Wheeler, and James D. Jones of Spearman officiating. Burial was in Quail Cemetery by Richerson Funeral Homes.

She married Alton Guy Coates in 1924 in Iowa. He died in 1948.

Other survivors include six daughters; another son; a sister; 35 grandchildren; and 65 great-grandchildren.



Edward Mayfield, left, hands off relay competition at the Stinnett Track Meet.



Thanks to the efforts of our farmers and their families, our agricultural capacity has become one of our nation's greatest strengths. Through it, we can work to eliminate hunger around the world. We're proud of the achievements of our farm community!

**Pride Mart**  
is proud  
of our  
farmers



**No. 3**

Phone 659-3552  
SPEARMAN, TEXAS 79081



CABLE	(12)	(13)	(14)	(15)	(16)	(17)	(18)	(19)	(20)	(21)
AM	ESPN	OETA	KAMR	TMG	KVII	CBN	WGN	KFDA	WTBS	
Sports Network	Oklahoma City	CH.4	Movie Channel	AMARILLO	CH.7	CH.9	CH.10	CH.17	AMARILLO	
7:00	Prog Conf'd	America: See and Century	James Robison: Amazing Grace Bible Class	Prog Conf'd	Superman and Superheroes: Vol. 1	Dr. S. James Kennedy	Teatime Conf'd	Prog Conf'd	Alive & the Champions: Boulder, Tennessee	
8:00	SportsCenter	Wipe Course	Day of Discovery: Larry Jones Ministry	Movie: The One and Only	Kidsworld: Kids, Inc.	Kenneth Copeland	Teatime Conf'd	Andy Griffith		
9:00	Branch Cup: Prolet Team, Fisher State	News of Things	World: Tompkins Oral Roberts		Daniel Boone	Lloyd Ogilvie		Good News		
10:00	Business Times on ESPN	To Be Announced	Staplin Church	Movie: Around the World in 80 Days	Texas	Superbook: Dad		Go! Great		
11:00	SportsCenter Plus: NFL: Superstars	News (CC)	Jimmy Swaggart		This Week with David Bonk	Honey, Honey: Leo the Lion				
12:00	Auto Racing: 88: NASCAR: Valvoline 500 from Phoenix, TN	Washington Week: Review: Wall Street	Palm Sunday at the University of Notre Dame		News: Taking Advantage	Flipper: Santa Ben	Teatime Conf'd	Wild World of Animals: Evolution: Basketball		
1:00	Brazil, TN	Firing Line	Movie: To Be Announced	Movie: Man, Woman and Child	Wild World of Animals: USA: Football	Movie: San Antonio		Baltimore vs Atlanta		
2:00		To Be Announced	Al McGuire's Championship		Teens To Be Announced		Teatime Conf'd			
3:00	Auto Racing: 88: NASCAR: 150 from Phoenix, AZ	Legislative Week in Review	Special: SportsWorld Superstars	Movie: It's a Wonderful Life	ABC News (CC): News	Wagon Train		High Chaparral		
4:00	AJ	Capital Journal				Movie: Robin Hood of the Hood		Best of World Championship		
5:00	Quest: Belton from Phoenix, AZ	Time: Boston's Journal: Central Campus	News: NBC News	Movie: Max Dugan Returns	ABC News (CC): News	Movie: Red Pony		Wrestling: Wild World of Animals		
6:00	SportsCenter	Austin City Limits	Punky Brewster	Prog Conf'd	Ruby's: Believe It or Not (CC)	Jim Baun: Special States: Movie: One More Train	60 Minutes	Mid-South Wrestling		
7:00	College Baseball: Oklahoma at Oklahoma	Nature (CC)	Movie: A.D.	Movie: Man, Woman and Child	Movie: The Only Live Twice (CC)	Movie: Yashuf Part 4	to Roll	Murder, She Wrote	Movie: The Man from the Asteroid	
8:00	State	Masterpiece Theatre (CC)				In Touch	In Search of...	Crazy Like a Fox	Coins Sports Page	
9:00		Great Performances		Movie: The One and Only	People On the Street	Changed Lives	Trapper John, M.D.	Baseball: Phoenix at Los Angeles	Letters	
10:00	SportsCenter	Legislative Week in Review	News: To Be Announced	Movie: To Be Announced	ABC News (CC): Movie: Six	Contact	Tales from the Darkside: Lou Grant	CSI News: Vegetal		
11:00	NCAA Division I Women's Swimming and Diving Championships	Sign Off		James	Stockings	Larry Jones: Ministry John Osteen	Movie: Deadline	Coins Sports: Jerry Falwell		

**What is 4-H?**

4-H is a unique youth development program, says Karen Harruff, county 4-H program coordinator with the Texas Agricultural Extension Service, The Texas A&M University System.

Here are a few reasons why: --4-H is real-life experiences: It is learning how to do jobs and make decisions that are important in life.

--4-H is a family affair: There is a place for all members in the family to participate. 4-H reaches and influences others (friends, parents, brothers and sisters) through the boys and girls that participate.

--4-H is flexible: Programs are adopted to fit any individual, any home, and any community. That is part of the fun.

--4-H is working with others: Learning to stand up for what you believe and learning to work with others are important to each person. Early practice in making both personal and group decisions builds for the future.

--4-H encourages members to explore and decide on possible steps which they will follow.

--4-H provides for ownership: Growing, making, caring for, buying and selling are included. Each project "belongs" to the 4-H members.

--4-H is based on science and fact: The resources of Texas A&M University, business, industry and your community are used in developing and carrying out projects and activities.

--4-H is a part of the community: 4-H groups become involved with improving economic and social conditions where members live. They learn how to be good citizens by carrying out community responsibilities.

--4-H is "learning by doing:" It is an action program. Participants watch others. They study and experiment, but they also practice and do things themselves. People remember 20 percent of what they are told, 30 percent of what they see, 50 percent of what they hear, 70 percent of what they say, and 90 percent of what they do and think. 4-H offers much thinking and doing.

For more information on 4-H, contact the County Extension office, says Harruff.

**Chamber membership drive**

Dear Friend: How much would it be worth to you to... Employ someone to help promote your business with the new residents of our city?

To compile information and statistics vital to your business?

To represent your interests with various government entities on the city, county, state and national levels?

To keep you informed on matters of vital concern to your business and to you as a citizen?

To assist you in the development of programs which would contribute to a profitable operation of your business?

To assist in finding the best-qualified employees for your particular task?

Would you hire this employee if you did not have to worry about paying his salary, his taxes, and other fringe benefits?

Then you need the Chamber of Commerce! It is dedicated to the purpose of attaining the best of growth and development for each

business and each citizen to enrich the life of people of Spearman.

Below you will find a list which explains our method of operation and a suggested fee schedule. We invite you to come and share with us in these endeavors by becoming a member of the Chamber of Commerce. There will be someone come by and visit with you, complete your membership card and collect your check the first of next week. If you have questions, please contact the Chamber office 659-5555 or ask the membership committee member when they come by to see you.

**MEMBERSHIP INVESTMENT SCHEDULE**

Total Employees and Management	Annual Dues Rate
1-2	\$108.00
3-5	\$180.00
6-9	\$252.00
10-13	\$324.00
14-17	\$396.00
18-20	\$468.00
21 +	\$540.00

**PAYMENT PLANS**  
Annual Payments

Semi-Annual Payments  
Quarterly Payments  
Monthly Payments  
Monthly Bank Draft

Sincerely,  
Bob Pearson  
President  
Spearman Chamber of Commerce

**Museum Needs**

**MUSEUM NEEDS**

1. Money
2. Pioneer dresses
3. Old children's clothes
4. Rope bottom chairs
5. Old pine table (small) for Kitchen. May be a home-made one.
6. Wall blackboard from old school.

Give an on-going memorial in memory of your loved one to Stationmaster's House Museum. Tax deductible. Card will be sent to the family.

**Class of '58 & '60 needs to make reunion plans**

Representatives of the class of 1958 and 1960 need to meet and make plans for their reunion. The all school reunion will be held July 5 and 6.

Representatives of all other classes are making plans for the reunion.

Any member of these classes may call Judy Martin, 659-2776 or write Box 503, Spearman.

**Our Heritage of Faith**

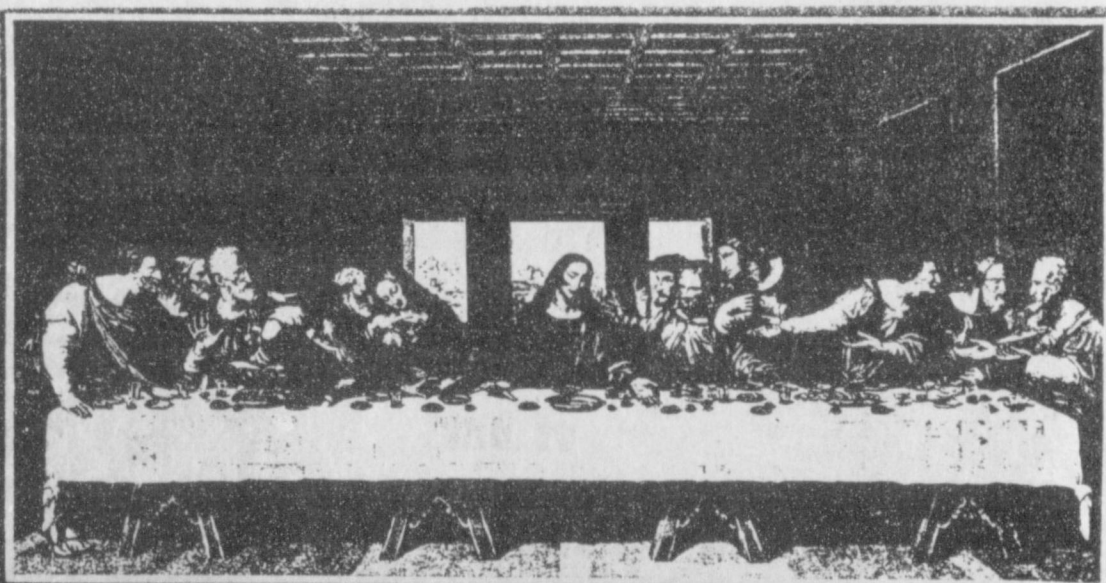
Before a Christian takes part in the Lord's Supper, the heart is searched so that one approaches the Lord's Table with a sense of repentance (a sorrow for sin, an eagerness to turn). When the celebrant comes to the communion rail, the bread and the wine are then distributed. In most cases, the people come forward to the communion rail or altar reverently but not necessarily somberly, since they are going to a banquet, a feast of new life.

NEXT TOPIC: The Elements.  
Bill Schardin, Pastor  
Faith Lutheran Church

**THE UNION CHURCH  
CHOIR PRESENTS**

**THE LIVING RE-ENACTMENT OF  
Leonardo Da Vinci's picture**

**"The Last Supper"**



**DO THIS IN REMEMBRANCE OF ME.**

**PALM SUNDAY EVENING**

**March 31 at 6:30 p.m.**

**UNION CHURCH**

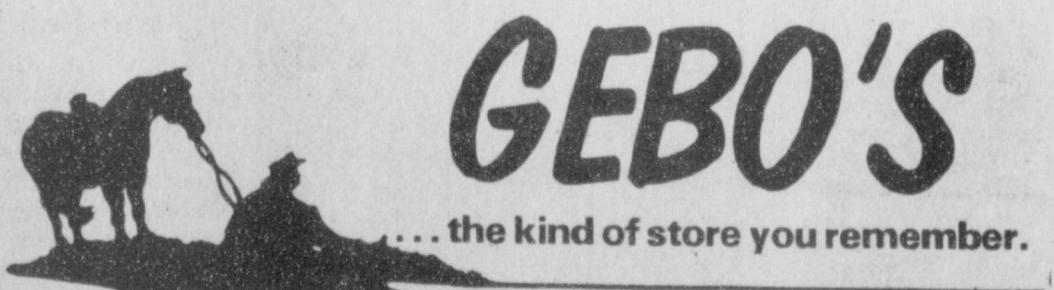
**31 S. Endicott**

**Public Invited**

**A Tribute  
to the  
American Farmer**

*"For the many long hours given  
to feed and clothe the people —  
For the dedication to Free Enterprise —  
For upholding the allegiance  
to this great nation —  
For preserving the American Way  
of Life — Freedom"*

**Our Hats are off to you,  
the Kind of People We Remember!**



**Home, Farm & Ranch Stores in**

- AMARILLO BROWNFIELD CLOVIS, N.M. DALHART DUMAS  
ENNIS HEREFORD HILLSBORO LAMESA LEVELLAND  
LITTLEFIELD LUBBOCK MCKINNEY PLAINVIEW



AGENDA FOR WATER INFORMATION MEETING

MONDAY, MARCH 25, 1985

PERRYTON HIGH SCHOOL AUDITORIUM

7:00 p.m.

The Water Information Meeting is hosted by the Water Information Group, a special committee of the Ochiltree County Chamber of Commerce

- 7:00 p.m. Welcome by Randy Brillhart, President, Chamber of Commerce
- 7:05 p.m. Explanation of the Presentations by moderator, Rev. Tracy Wilson, First Christian Church of Perryton
- 7:10 p.m. Dr. Herb Grubb, Texas Department of Water Resources, Austin "The Economics of Water in Texas, with special emphasis on the Panhandle and High Plains."
- 7:40 p.m. Orval Allen, Manager, North Plains Underground Water Conservation District "The Ogallala Formation on the Texas North Plains, and changes in underground water resources."
- 8:00 p.m. J.B. Whigham, Manager, City of Perryton "The City's Present water wells, average and peak water usage, current water reserves, and new wells being drilled in '85"
- 8:20 p.m. Ben Street, Partner, McMorries and Street, Engineers "Stories of future water reserves held by the City of Perryton; location of water rights and potential number of future wells."
- 8:40 p.m. Written questions will be submitted by the audience, with answers by the panel of speakers. Questions about Palo Duro Water Authority and the Palo Duro Reservoir will be held until the meeting on that topic. The meeting will be Tuesday, April 2, at 7:00 p.m. in the High School Auditorium.

This public meeting is being carried over KEYE Radio.

WATER FACTS FOR PERRYTON AND OCHILTREE COUNTY

Prepared by the Water Information Group, Ochiltree County Chamber of Commerce

1. What is the present water situation in Perryton?
 

The City of Perryton produces water from 9 underground water wells in Ochiltree County. Perryton uses an average of 1.4 million gallons a day. The peak water consumption is 5 million gallons daily, normally occurring in August. The City can produce 5.1 million gallons at present. The Ogallala Aquifer is the City's only fresh water source.
2. What is the current cost of water in Perryton?
 

The City charges \$5 for the first 4000 gallons and \$1.10 for each 1000 gallons after that per month. The average Perryton household water bill is \$19.40 (September, 1984) based on 17,000 gallons for the month.
3. How has the City of Perryton prepared for future water needs?
 

A long-range water plan was approved by voters in 1982 for \$1 million to purchase underground water rights from Ochiltree County landowners, to drill wells and install pumps, to lay underground pipe to Perryton, and to improve water storage.
 

Two new water wells are being drilled in April, 1985, on Rogers Brothers property. This will bring a total of 11 wells into operation, with a capacity of 6.4 million gallons daily. The City has purchased water rights for three more wells on Rogers land. It has purchased rights on five and a half sections of McLain land to drill up to 24 additional water wells.
4. How long will the underground water supply last?
 

Nobody knows for sure. The Ogallala Aquifer depletes faster than it recharges. McMorries and Street, the City's engineering consultants, estimates that Perryton has water reserves for about 93 years, until the year 2077. This is based on current usage and population.
 

Another estimate comes from the North Plains Underground Water Conservation District, a political subdivision that is tax-supported by Ochiltree County (along with Hansford, Lipscomb, Moore, Hutchinson, Sherman and Hartley Counties). The Water District calculates water reserves for Perryton to be about 70 years.
 

The future availability of water for Perryton depends on how much its population grows, how much water is used by industry, and how much agricultural use "draws down" the Aquifer.
5. Can underground water reserves be increased?
 

The City of Perryton can purchase additional water reserves if voters approve. Water rights can be purchased in Ochiltree County and other counties. The cost of drilling wells, pumping water, and storage will increase over time.

6. What is the Palo Duro River Authority?
 

Palo Duro River Authority is a group comprised of Hansford County, Moore County, and the City of Stinnett. Its purpose is to construct and operate a reservoir for municipal water supply and recreation.

Palo Duro River Authority was first created in the 1950's. At that time, a dam project was voted down by Ochiltree and Hansford Counties. Since the mid-1970's Hansford County has tax-supported the River Authority by itself, until January, 1985, when Moore County and Stinnett voted to be annexed and to pay a maintenance tax for the Authority's operation.

The River Authority has a board of directors with four persons from Hansford County, four from Moore, and one from Stinnett. Each member County is permitted four members.

Since Ochiltree County was a former member (until 1975), and since Perryton is located just 18 miles from the proposed reservoir, Ochiltree County has been invited by the River Authority board to join the Authority again. Ochiltree voters will decide whether or not to be annexed on April 6, 1985.

7. What is the Palo Duro Dam?

Officially, it's called Palo Duro Reservoir. The reservoir, or lake, would be created by a dam, 150 feet high, 4900 feet across, on the Palo Duro Creek, about 9 1/2 miles north of Spearman. The dam would be constructed over a three year schedule. The project includes a major water treatment facility, large pumps, and pipelines to deliver water to member cities.

Two groups of engineers have worked on the project. The U.S. Army Corps of Engineers proposed a large dam and treatment facility to be owned by the federal government and a local sponsor. It was estimated in 1984 to cost \$138 million. Optima Lake in Oklahoma is a Corps of Engineers project.

Freese and Nichols, engineers from Fort Worth, have also worked on the project on behalf of Palo Duro River Authority. They designed the project to be built and owned by member counties and cities. This project is considerably smaller in size, has less flood control, and has less provisions for wildlife refuge. It was estimated in December, 1984, to cost between \$47 million and \$55 million, including a 20% contingency. The exact cost would be known only after construction bids are taken.

8. When would the Palo Duro Reservoir provide municipal water?

Once the dam is constructed, the reservoir fills from rainwater and water run-off. The Palo Duro Creek is not a "live" stream. The process of filling may take from one day to seven years. Engineers Freese and Nichols cite twelve occasions from 1947 to present when major rain and/or flood waters would have filled the proposed dam. The River Authority believes delivery of water would begin no later than 1992.

9. How much water would the Reservoir provide?

Once the reservoir can distribute water, it could provide a dependable yield of 7.8 million gallons per day to all cities. The water allotment delivered to Perryton would average 1.12 million gallons daily, with peak delivery of

1.68 million gallons, delivered through a 16" pipeline. Even with the Palo Duro Reservoir water, Perryton would draw on its underground wells. To meet its daily needs, Perryton would jointly use underground water and surface (lake) water.

The water will be on a "pay or take basis," meaning the city will pay for its daily allotment of water even before the water is delivered to the city.

10. How much will Palo Duro water cost?

The Palo Duro project will be paid for in two ways: by ad valorem tax of the member counties and by sale of water to the cities.

The Palo Duro River Authority first estimates were \$2.14 per thousand gallons of water. At that water rate, the Palo Duro project would be paid for completely by water sales to the cities, plus the maintenance tax.

The River Authority has since decided to pay for the combination with a combination of water sales and ad valorem taxation. The Authority now estimates that water will cost \$1.14 per thousand gallons, based on water revenues, plus an ad valorem tax of 11¢ per \$100 valuation, plus a maintenance tax of 6¢ per \$100 valuation.

This new water rate will add about \$19.38 to the monthly water bill of Perryton residents.

11. What will the Palo Duro project cost Ochiltree County?

As already stated, it will be paid for by ad valorem tax and sale of water. The assessed property valuation for Ochiltree County in 1984 was \$738 million. Perryton residents' total tax rate is \$2.04 per \$100 assessed value. This includes county general and road funds, hospital district, water district, city funds, and school district. A city resident with \$50,000 valuation pays just over \$1000 a year in taxes.

If Ochiltree County is a member of Palo Duro River Authority, property-owners will pay up to 6¢ per \$100 valuation annually for maintenance and operation of the Authority. Based on a \$50,000 valuation, this would be \$30 per tax year.

When bonds are sold to construct Palo Duro Reservoir, Ochiltree County would pay 32% of the cost since Ochiltree County has 32% of the tax values of member counties. Moore County has 52%, Hansford County has 15%, and Stinnett has 1%. The total bond issue could be as much as \$55 million. Ochiltree County's portion (at 32% of the total) would be \$17.6 million, plus interest, paid over the length of the bonds, probably 20 years. The annual tax share

from Ochiltree would be approximately \$1.8 million. Part of this will be paid by ad valorem taxes and part will be paid by water costs to the City of Perryton. The tax rate for Palo Duro Reservoir would be 11¢ per \$100 valuation. Based on a \$50,000 property valuation, this would be about \$55 per year for a typical Perryton homeowner.

In summary, the Palo Duro project will cost Ochiltree taxpayers \$30 per year for the maintenance tax and \$55 per year for the

bond repayment. These are based on a \$50,000 property valuation. The Palo Duro project will cost city residents an additional \$19.38 per month (or \$233 per year) for water, based on a typical water bill.

12. What are Ochiltree County citizens voting on at the April 6 election?

The April 6 election is an annexation election. Voters will decide on two propositions. Proposition No. 1: "Shall all the territory constituting Ochiltree County be annexed to the Palo Duro River Authority?" Proposition No. 2 (in summary): "Shall Ochiltree County be assessed an annual ad valorem tax at a rate not to exceed 6¢ per \$100 assessed value of property to maintain and operate the Authority?"

One question determines whether or not to join the Authority. The other question decides whether or not to pay a maintenance tax. The County will become a member of the Authority only if it agrees to join and agree to pay the tax.

There will be a bond election later in 1985 to approve tax bonds for construction of the project. All counties will vote together at that time. A majority vote will determine the bond election. Each member county will be bound by the majority decision.

Before the 19th century, British soldiers saluted by tipping their hats. Hand raising as a formal greeting originated among cave dwellers to prove they carried no weapons. In feudal times, an armored knight raised his right arm to lift his helmet visor and to show his friendship by keeping his hand away from weapons. The gesture developed into the military salute.

Join the Spearman Chamber of Commerce.

PSU speaker at Rotary



Rotary President Albert Graves and Nancy Hall.

Nancy Hall, Admissions Co-ordinator for Panhandle State University at Goodwell, Okla., was the speaker at the Monday noon meeting of the Spearman Rotary Club.

Curriculum falls within 5 divisions: Agriculture, Business and Practical Arts, Education, Liberal Arts or Math and Science.

A high school student with a ACT score of 18 or higher, or in the top twenty five percent of their graduating class can get a scholarship.

During the summer they have cheerleading clinics and other summer school courses. Also, one credit hour can be obtained by taking one course all day for one week.

Also, an adult education courses are available during the evening between 7 and 9:50 p.m.

The metric system operates on a scale of 10, but you'll never convert some thirsty people from measuring everything by fifths.

Light travels two-and-a-half times as fast in the air as it does in a diamond. © 1985 Suburban Features

MARKETS

WHEAT	\$3.11
MILO	\$4.25
CORN	\$2.95

Gruver child succumbs to burns

A 9-year-old Gruver boy who apparently ignited his clothes while pouring gasoline on a trash fire died Sunday at Parkland Hospital's burn center in Dallas.

Billy Tobin Cantrell was taken by a Life Watch medical plane from Amarillo on March 15 after Gruver Ambulance Service responded to an 11:25 a.m. call from the boy's house about 14 miles southwest of town, according to Police Chief Stephen Gaines.

Gaines said the boy was transferred to a Spearman advanced life support ambulance en route to Spearman before he was flown to Dallas.

Services were held at 11 a.m. Wednesday in First Baptist Church with the Rev. Larry Miller, pastor, and the Rev. Ronnie Travis, pastor of Lee Street Baptist Church in Dimmitt, officiating. Graveside services were at 3:30 p.m. in Castro Memorial Cemetery in Dimmitt. Burial was by Boxwell Brothers Funeral Home in Spearman.

He was born in Hereford and had lived in Gruver 3 1/2 years. He was a member of the First Baptist Church and a third-grade student at Gruver Elementary School.

Survivors include his mother and stepfather, Andy and Kathy Lindsey of Gruver; his father, Ronnie Joe Cantrell of Springlake; a sister, Stacy Jo Cantrell of the home; a stepbrother, Andy Lindsey, Jr., of Sundan, N.M.; two stepsisters, Gay Lee Lindsey and Rainey Beth Lindsey, both of Sudan; grandparents, E. P. and Hazel Calhoun of Dimmitt and Claudie Cantrell of Earth; great-grandmother, Dovie Coleman of Humansville, Mo.; and great-grandfather Andy McAfee of Dimmitt.



Jeff Graves, Varsity Lynx, goes for distance in the long jump at Stinnett's Track Meet.



Allen Mires, Varsity Lynx took second place in the high jump at the Stinnett Track Meet last weekend.

Straight Answers to Your Questions

Q: Why are TNP employees trained in electrical safety?

A: Supplying you with dependable electric service is a task that requires a lot of trained personnel—especially when working on or near powerlines. In order to be as safe as possible, our linemen and construction crews are thoroughly trained to work with electricity safely.

Even though you and your family do not work with powerlines, you should make it a practice to use electricity safely every day. Here are a few guidelines: Always use tools and appliances which are properly grounded; never allow electrical appliances, such as hair dryers and radios, near the bathtub; replace worn or damaged electric cords.

When working outdoors, be aware of overhead powerlines and avoid contact with these lines. TV antennas, masts, tree pruners, ladders and other metal objects are extremely dangerous when used near powerlines. If you see a downed powerline, do not touch it.

With electricity, you cannot be too careful, so always handle electricity with care and respect.

Neighborly Professionals Offering You The Best Choice.







# CAR PRICES

## SPEARMAN USED CARS

### PERRYTON USED CARS

	WAS	SALE PRICE
'83 Buick LeSabre Limited Sedan. Lt. Brown/Dk. Brown. V-8, Auto Overdrive, Power Seats, Windows & Locks, Air, Cruise, Tilt, Passenger Recliner, AM-FM-Cassette	\$10,250	\$ 9,500
'83 Cadillac Eldorado Biarritz Coupe. Black (Red Leather), 4.1 V-8, Auto Overdrive, Leather Power Seat, Windows & Locks, Air, Cruise, Tilt, AM-FM-Cassette	\$18,750	\$17,500
'83 Olds Toronado Brougham Coupe. Lt. Blue/White. V-8, Automatic, Power Seat, Windows & Locks, Air, Tilt, Cruise, AM-FM-Cassette	\$14,500	\$13,500
'82 Cadillac Sedan DeVille. Brown Metallic. V-8, Auto Overdrive, Power Recliner, Both Seats, Windows & Locks, Air, Cruise, Tilt, AM-FM-Cassette	\$12,500	\$11,500
'82 Buick Electra Estate Wagon. Tan/Woodgrain. V-8, Auto Overdrive, Third Seat, Power Seats, Windows & Locks, Touch Air, Cruise, Tilt, Luggage Rack, AM-FM-8 Track	\$11,000	\$ 9,500
'82 Cadillac Eldorado Biarritz Coupe. Leather, Red/White. V-8, Automatic, Leather Power Seats, Windows & Locks, Air, Cruise, Tilt, AM-FM-Cassette	\$15,500	\$14,500
'82 Cadillac Fleetwood Brougham Sedan. Yellow. V-8, Auto Overdrive, Power Seat, Windows & Locks, Air, Cruise, Tilt, AM-FM-Cassette	\$13,750	\$12,800
'82 Cadillac Coupe DeVille D'Elegance. Lt. Blue/Dk. Blue. V-8, Auto Overdrive, Power Recliner, Seats, Windows & Locks, Air, Cruise, Tilt, AM-FM-Cassette	\$13,500	\$12,800
'81 Chev. Monte Carlo Coupe. Med. Brown. 265 V-8, Automatic, Landau Top, Rally Wheels, Air, Tilt, Cruise, Power Locks, Steering & Brakes, AM-FM	\$ 6,750	\$ 6,000
'81 Chev. Caprice Classic Sedan. Lt. Green/White. V-8, Auto Overdrive, Hardtop, Power Windows & Locks, Air, Cruise, Fabric Seat, AM Radio	\$ 6,250	\$ 5,500
'80 Cadillac Seville Sedan Desl. Beige. 350 Diesel, Automatic, Leather Power Seats, Windows & Locks, Air, Cruise, Tilt, AM-FM-8 Track-CB	\$11,000	\$ 9,000
'80 Olds Omega 4 Door. Lt. Blue. 4 Cyl., Automatic, Power Steering & Brakes, Air, Cruise, Fabric Bench Seat, AM Radio	\$ 4,500	\$ 4,000
'80 Chev. Corvette. Yellow. V-8, Automatic, T-Top, New Firestone White Letter Tires, Leather Buckets, Air, Cruise, Tilt, AM-FM-8 Track	\$11,500	\$10,500
'80 Chev. Citation 4 Door Hatchback. 2-Tone Tan/White. V-8, Automatic, Power Steering & Brakes, Air, AM Radio	\$ 3,750	\$ 3,000
'80 Ford LTD Sedan. Yellow/Tan. V-8, Automatic, Power Steering & Brakes, AM Radio	\$ 4,750	\$ 4,000
'80 Cadillac Sedan DeVille. Red/Dk. Red. V-8, Automatic, Wire Wheels, Power Seats, Windows & Locks, Air, Cruise, Tilt, AM-FM-8 Track	\$ 8,750	\$ 8,000
'80 Pontiac Phoenix 4 Door Hatchback. 2-Tone Gold. 4 Cyl., Automatic, Whitewall Tires, Fabric Seat, Power Steering & Brakes, Air, Tilt, AM-FM-Cassette	\$ 4,250	\$ 3,500

	WAS	SALE PRICE
'80 Buick Electra Limited Coupe. Dk. Blue. 350 V-8, Automatic, Power Seats, Windows & Locks, Air, Cruise, Tilt, AM-FM-8 Track	\$ 7,500	\$ 6,500
'79 Olds Delta 88 Royale Coupe. Lt. Blue. V-8, Automatic, Padded Landau Top, Wire Wheel Covers, Power Windows & Locks, Air, Cruise, Tilt, AM-FM Stereo	\$ 4,850	\$ 4,000
'79 Chev. Caprice Sedan. Medium Brown. V-8, Automatic, Vinyl Top, Vinyl Seats, Power Windows & Locks, Air, Cruise, Tilt, AM-FM Stereo	\$ 4,500	\$ 3,500
'78 Lincoln Continental Town Coupe. Dove Gray. V-8, Automatic, Recliner, Power Seats, Windows & Locks, Air, Cruise, Tilt, AM-FM-Cassette	\$ 4,750	\$ 3,500
'78 Olds 98 Regency Sedan. Lt. Russet/Tan. V-8, Automatic, Power Seats, Windows & Locks, Air, Tilt, Cruise, AM-FM-8 Track-CB	\$ 4,500	\$ 3,000
'77 Lincoln Continental Sedan. Blue. V-8, Automatic, Power Seats, Windows & Locks, Air, Tilt, Cruise, AM-FM-Cassette	\$ 4,500	\$ 3,500
'77 Pontiac Catalina Safari Wagon. Lt. Green (Tan). V-8, Automatic, White Sidewalls, Vinyl Seats, Cruise, Air, Tilt, AM-FM-8 Track	\$ 2,250	\$ 1,500
'77 Buick Electra Coupe. Pale Yellow. V-8, Automatic, Landau Top, Recliner, Power Driver Seat, Air, Cruise, Tilt, AM-8 Track	\$ 3,750	\$ 3,000
'77 Buick Electra Coupe. Red/White. V-8, Automatic, Landau Top, Wire Wheel Covers, Power Seat, Windows & Locks, Air, Cruise, Tilt, AM-FM-8 Track	\$ 4,250	\$ 3,500
'76 Chev. Vega Station Wagon. Tan (Maroon Int.), 4 Cyl., Automatic, Air, Luggage Rack, AM Radio	\$2,250	\$ 1,500
'75 Chev. Monte Carlo Coupe. Red/White. V-8, Automatic, White Vinyl Bench Seat, Landau Top, Air, Cruise, Tilt, AM-8 Track	\$ 2,500	\$ 2,000

	WAS	SALE PRICE
'84 Olds Cutlass Supreme Brougham Coupe. Lt. Blue/Dk. Blue. V-8, Auto Overdrive, Wire Wheel Covers, Power Seat, Windows & Locks, Air, Cruise, Tilt, Recliner, AM-FM-Cassette	\$10,950	\$ 9,900
'83 Ford LTD Crown Victoria Sedan. White. (Red Interior) V-8, Auto Overdrive, Self Sealing Power Seat, Windows & Locks, Air, Cruise, Tilt, AM-FM-Cassette	\$11,000	\$ 9,900
'82 Ford LTD Coupe. 2-Tone Tan/Burgundy. 302 V-8, Automatic, Fabric Seats, Power Seat, Air, Tilt, Cruise, AM-FM-Cassette	\$ 7,750	\$ 7,000
'81 Buick Skylark Sedan. Yellow/Tan. 2.8 V-6, Automatic, Steel Radials, Power Steering & Brakes, Air, Cruise, Tilt, AM-FM Stereo	\$ 5,250	\$ 4,500
'81 Olds Omega Brougham Sedan. Beige. 4 Cyl., Automatic, Fabric Seats, Power Steering & Brakes, Air, Cruise, Tilt, New Steel Radials, AM Radio	\$ 5,250	\$ 4,500
'80 Buick Skylark Sedan. Met. Brown. 4 Cyl., Automatic, Fabric Seat, Power Steering & Brakes, Air, Cruise, Tilt, Michelins, AM-FM Stereo	\$ 4,250	\$ 3,500
'79 Buick LeSabre Custom Sedan. Met. Brown/Tan. 350 V-8, Automatic, Michelins, Power Seat, Air, Cruise, Tilt, AM-8 Track	\$ 5,950	\$ 4,500
'79 Olds Delta 88 Roy. Brougham Sedan. Met. Brown. 350 Diesel, Automatic, Power Seat, Windows & Locks, Air, Cruise, Tilt, AM-FM Stereo	\$ 4,750	\$ 3,500
'79 Chev. Malibu Sedan. White. 200 V-6, Automatic, Air, AM-FM-8 Track	\$ 3,500	\$ 2,500
'78 Ford LTD 2 Door Hardtop. Red/White. V-8, Automatic, Cloth Seat, Air, Tilt, Cruise, AM-FM	\$ 3,250	\$ 2,500
'77 Mercury Marquis Wagon 4 Door. Yellow/Woodgrain. V-8, Automatic, Power Locks, Air, Cruise, AM-FM	\$ 2,500	\$ 2,000
'77 Cadillac Eldorado Coupe. White (Blue Leather). V-8, Automatic, New Steel Radials, Leather Power Seats, Windows & Locks, Air, Cruise, Tilt, AM-FM-8 Track	\$ 4,500	\$ 3,500
'76 Olds 98 Regency Sedan. Crema/White. 455 V-8, Automatic, Vinyl Top, Power Seats, Windows & Locks, Air, Cruise, Tilt, AM-FM-8 Track	\$ 2,500	\$ 1,800
'76 Chev. Impala Station Wagon. 2 Tone Blue. 350 V-8, Automatic, Steel Radials, Air, Cruise, Tilt, Luggage Rack, AM & CB Radio	\$ 1,800	\$ 1,400

### USED TRUCKS

'83 Chev. 1/2 Ton Scottsdale. Red/White. 305 V-8, Auto Overdrive, Styled Wheels, Power Windows & Locks, Air, Cruise, Tilt, Dual Tanks, AM-FM-Cassette	\$ 9,800	\$ 9,000
'82 Chev. 1/2 Ton Silverado. Med. Blue/White. 350 V-8, Automatic, White Letter Tires, Power Steering & Brakes, Air, Cruise, Tilt, AM-FM-Cassette	\$ 8,250	\$ 7,500
'82 Chev. 1/2 Ton Silverado. Black/Silver. 305 V-8, Automatic, Power Windows & Locks, Air, Cruise, Tilt, AM-FM-Cassette	\$ 8,250	\$ 7,500
'82 GMC 1/2 Ton Sierra Classic Diesel. Dk. Brown/White. 6.2 Diesel, Auto Overdrive, Power Windows & Locks, Air, Cruise, Tilt, Dual Tanks, AM-FM-Cassette	\$ 8,750	\$ 8,000
'82 Chev. 1/2 Ton Silverado Diesel. Silver/Dk. Blue. 6.2 Diesel, Auto Overdrive, Power Windows & Locks, Air, Cruise, Tilt, AM-FM-8 Track	\$ 8,750	\$ 8,000
'79 Jeep Wagoneer 4 Door 4X4. Dk. Brown/Woodgrain. 360 V-8, Automatic, Michelins, Fabric Seats, Air, Cruise, Tilt, Luggage Rack, AM-FM-8 Track	\$ 6,950	\$ 6,000
'79 Chev. 1/2 Ton Silverado Diesel. Gold/Tan. 350 V-8, Automatic, Fabric Seat, Power Steering, Brakes, Air	\$ 4,250	\$ 3,500
'77 Chev. Suburban 4X4. White (Blue Int.). 350 V-8, Automatic, Steel Radials, Vinyl Bench, Air	\$ 4,750	\$ 4,000
'73 Chev. 3/4 Ton. Blue/White. 350 V-8 (Butane System), Automatic, Vinyl Seat, Power Steering & Brakes, AM Radio	\$ 1,500	\$ 1,000

Spring into Spring with these great buys!

"We Appreciate Your Business!"

**DON HERGERT MOTORS INC**

BLUICK PONTIAC Cadillac OLDSMOBILE GMC TRUCKS

420 SOUTH MAIN (806) 435-3686 PERRYTON, TEXAS

**HERGERT**

PONTIAC BUICK GMC TRUCKS

"... where SERVICE is the KEY!"

SOUTH HWY 207 (806) 659-3721 SPEARMAN, TEXAS

**GM QUALITY SERVICE PARTS**

GENERAL MOTORS CORPORATION

Mr. Goodwrench