

ROSS DONAHUE IS MVP: (See page 7)

24 hr. prayer
service 659-2911

SPEARMAN DIMMITT
SPEARMAN: Buddy Pool, 4-2-10; Billy Ray Haden, 6-0-12; Ross Donahue, 6-3-15; Mark Pearson, 1-0-14; Steve Burke, 1-0-2; Thad Reid, 9-2-2; Byron Sutterfield, 0-2-2. TOTALS: 24-9-57.
DIMMITT: Dwight McDonald, 6-0-12; Richard Saucedo, 4-2-10; Brad Holcomb, 9-3-21; Robert Nelson, 1-0-2; Pat McDonald, 4-4-8; Nathan Nelson, 2-0-4; Nick Martinez, 1-0-2; Mike Love, 1-0-2. TOTALS: 38-4-49.
TOTAL FOULS: Spearman 14, Dimmitt 13.
ATT: 1:20.

The Spearman Reporter

Volume 76, Number 17

THE SPEARMAN REPORTER, SPEARMAN, TEXAS 79081

Thursday, March 1, 1984

Sheriff reports suspected arson at Collier home

Sheriff R.L. McFarlin reported Monday morning, that arson might have caused the damaging fire at the Collier home located some 20 miles North of Spearman. Both Gruver and Spearman fire departments answered the call at approximately 9 p.m. Saturday night. When firemen arrived at the fire they noted that the fire was burning in some 4 different places. Much damage was done to the interior of the house, including the dining room, living room and basement.

Russell Weaver was injured by flash fire at the residence when he checked on the house. He is now taking care of the pets.

Sheriff McFarlin commented that the fire departments from Gruver and Spearman did an excellent job in saving the beautiful Collier home. This home was built in 1949, and was one of the showplaces of the Panhandle.

In other activity at the Sheriff's Dept., Sheriff McFarlin reported that a pickup belonging to Bobby Hicks, of Gruver, was stolen off of main street in Gruver January 30th. It has been located. Alejandro Alvarez allegedly took the pickup, and abandoned it at the R.R. station in Juarez, Mexico.

The local sheriff's department returned the pickup to Mr. Hicks. The pickup was also involved in a saddle theft in Ochiltree county. Sheriff McFarlin reports that the Sheriff's Dept. returned the pickup on Feb. 17th, and several tools were reported missing from the pickup. The sheriff reports that they have

two witnesses to the incidents. Also, Sheriff McFarlin stated that they have a suspect in the gear-head stolen from John Jarvis and Danny Womble recently.

The Sheriff's dept. will present several cases for the Grand Jury, Friday, March 2nd. They include Denny Brewer, burglary of auto, and unauthorized use of a motor vehicle, plus burglary of a house. Juan Davila murder, and Rex Higley, sale of controlled substance.

The sheriff reports that Perry Richard Wilkerson of Dalhart has been arrested for possession of controlled substance and fined \$400, plus 10 days in jail. He is now serving time, in lieu of the fine money. He began serving Feb. 14th.

Winter Fair

Agco of Spearman is sponsoring a 'Winter Fair' March 8 at the County Barn in Spearman. Hours for the fair are 11 a.m. to 2 p.m.

There will be seed, chemical, fertilizer and feed representatives present to answer any questions farmers would have on their 1984 crops.

There will be a free fish fry by Punkin's Fish Trap.

The grand prize of a trip to Las Vegas for 2, for 3 days and 2 nights, under the direction of Pat Dear of Wheatheart Travel, Inc., will be given away at the drawing.

Brice McRee, manager of Agco, extends a cordial invitation to all to come to the 'Winter Fair.'

YMCA plans open house

Lynx lose to Bobcats

The Dimmitt Bobcats were too much for the Spearman Lynx Friday evening in the bi-district game in Canyon.

The Bobcats downed the Lynx 69-57 while some 1200 fans watched in the high school gymnasium.

Dimmitt's playoff experience helped them. They had a 54 percent field-goal average while the Lynx, could not seem to coax their shots to fall consistently.

The Lynx finished the game hitting only 36 percent and were an even colder 29 percent after three periods.

The Lynx, behind Billy Ray Haden, Ross Donahue and Mark Pearson, stayed within striking distance of the Bobcats.

They trailed 31-22, after the first half. Spearman had as many turnovers in the first 2 1/2 minutes of the third quarter as it did in the first half, and couldn't score until Steve Burke put one in at 4:49 mark.

The Lynx, led by Buddy Pool's 10 fourth-quarter points, scored 26 points in the final quarter but could not close the lead the Bobcats had from earlier in the game.

Congratulations to the Spearman Lynx for their fine season this year.

YMCA OPEN HOUSE AND SALE

Sunday, March 4 is YMCA Day in Hansford County. We will be having open house from 2-5 p.m. The open house will feature tours, demonstrations and refreshments.

That day will also feature our one time membership sale. All new memberships paid in full with cash or check that day will receive a discount. Spearman residents will receive 40% off and Gruver residents will receive 50% off. This is a one time offer and renewals will be full price when the discounted membership expires.

SCHEDULE FOR OPEN HOUSE - YMCA SUNDAY, MARCH 4

- 1:30 Opens for Visitors
- 2:00 - 2:15 Kids Basketball-Vic Schumann
- 2:15-2:30 Tuned Up Fitness-(Co-Ed Exercise) Christy Brock
- 2:30-3:00 Square Dance Exhibition-Rainbows and Wranglers-Spearman and Boots and Slippers-Gruver
- 3:00-3:15 Karate Exhibition
- 3:15-3:30 "Y" Indian Guides-Winn Crenshaw
- 3:30-3:45 Fitness Fantasia (Women's Dance Exercise)-Wanda Archer
- 3:45-4:00 Fencing Demonstration-Jennifer Umphress and Tim Kemp
- 4:00-4:15 Country and Western Dancing-Lynn Archer
- 4:15-4:30 Coed Fitness (Running)-Winn Crenshaw
- 4:30-4:45 Racquetball-Danny and Edgar Womble
- 4:45-5:00 Boxing-Eugene Yarbrough



R.L. McFarlin

Sheriff R.L. McFarlin gave the program at the Rotary Club Monday which included touring the communications system at the Hansford County Sheriff's Department. All of the Rotarians enjoyed the program and once again wish to thank everyone who helped contribute to the Hawaiian cruise.

County Stock show is March 16-17

The Hansford County Stock Show will be held in Gruver on March 16 and 17 at the County Barn. Deadline for entries is March 9. Showing will be 4-H members, Spearman and Gruver FFA members.

Revue coming

FRUITCAKE REVUE

March 9 and 10 Nashville has nothing on Spearman - "Our fruitcake is full of Corn." Bring Grandpa-Grandpa and all the kids and be prepared for some good laughs - (Please) We have "Haw-Haw" featuring Slim Pickens, Minnie Pearl and the "Good Ole Mountain Dew Bunch." Richard Rimmons and his ladies straight from the Spearman YMCA will entertain.

We have even found a spot for our "Little Ole Ladies" again. There will be a lot of musical numbers from our own local talent, and a good time is guaranteed.

This will benefit our local Chamber of Commerce so purchase your tickets now from cast members, chamber office or Larry Trosper--

"But most of ALL" Mark your calendar March 9 & 10. A full nite of entertainment at "The Fruitcake Revue."

Pine Wood Derby winners announced

Gentlemen, start your engines, was the call to begin the races at Spearman's Pack 578 annual Pine-wood Derby races. This year's entries were not only good looking cars but definitely fast cars. In a double elimination set up, many cars had to be raced more than once due to so many ties. Out of a total of twenty-five cars entered, the top five places for appearance went to: 1st-Chad Davis, 2nd-Dustin Loom-

is, 3rd-Jason Babitzke, 4th-Russell Shaver, 5th-Chris Turner.

In the race for the fastest car the top five places went to: 1st-Chris Brooks, 2nd-Troy Brown, 3rd-John Antalek, 4th-Braden Delozier and 5th-Mark Brown.

The boys and their dad's did a terrific job on the cars this year. As one spectator put it, "this was the best year yet." Other boys participating were Eddie Herrington, Mike

Hager, Landon Swan, Jeff Wagner, Kory Brown, Brandon Babitzke, Robert Needham, Ramon Lozano, Cody Pipkin, Donny McMahan, Chris Boyd, Kory Knudson, Dallas Trosper, Brandon Close and Ty Harbour. Judges for the Pinewood Derby on appearance were Burl Buchanan, Doug Steger, Don Hawkins, Verlan Winegarner, Rusty Tindell and Joey Woolley.

This year Spearman will again

host the District Pinewood Derby. It will be held March 25 at the Spearman Fire Station. Judging on appearance will be at 2:30 and

races start at 3:00. We invite the public to come and see what a fantastic job these boys and their dads do and have a good time doing it.

Near blizzard hits county Sunday

A winter storm blanketed the area Sunday, causing blizzard conditions, power outages and closing roads.

Evidently the snow was heavier in the Gruver and Morse area. Pringle-Morse schools opened an hour late Monday.

Spearman received .35 of moisture from the wet snow.

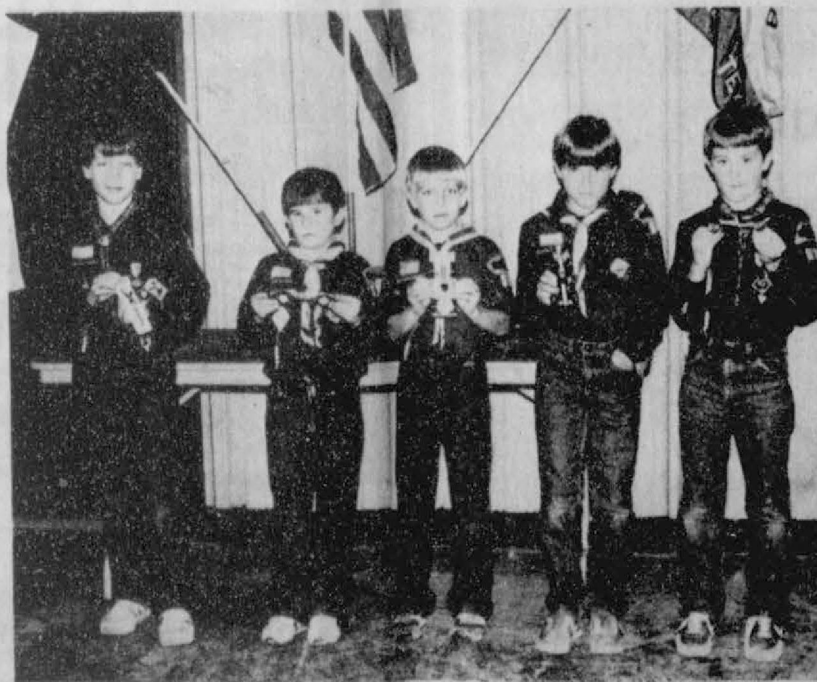
It is doubtful that the snow was very beneficial to farmers because of the high winds accompanying the storm and blowing all day Monday.

February has had a variety of weather as usual. There have been beautiful spring like conditions one day, followed by a blizzard the next.



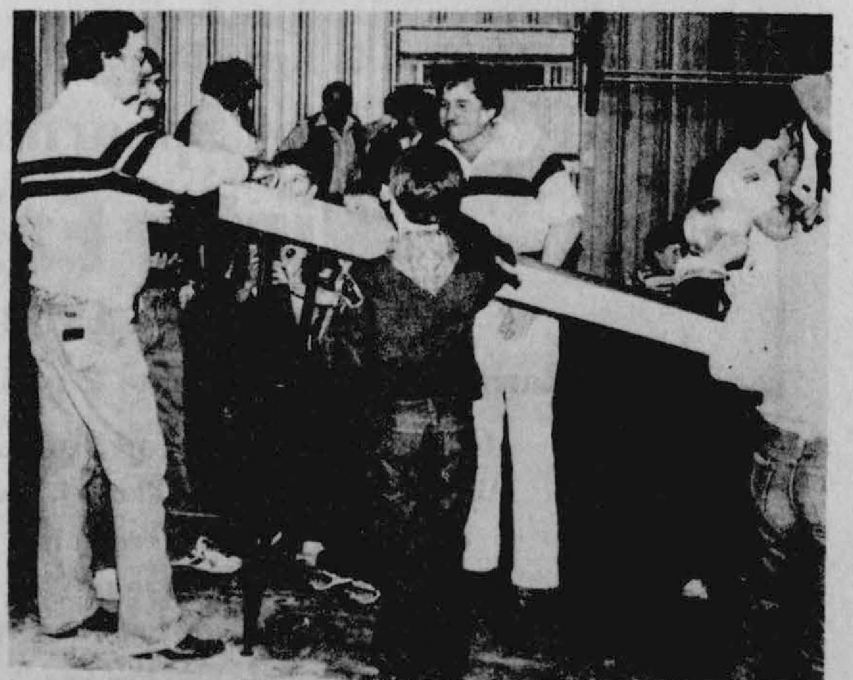
Winners of the Pine Wood Derby race are 1-r 1st Chris Brooks, 2nd Troy Brown, 3rd John Antalek, 4th

Braden Delozier and 5th Mark Brown.



Shown above in the Best of Appearance in the Pine wood derby held recently are 1-r 1st Chad Davis,

2nd Dustin Loomis, 3rd Jason Babitzke, 4th Russell Shaver and 5th Chris Turner.



The starting gate of the Pinewood Derby was very crowded until the

race began, then it was the finish line that was crowded.

Photo compliments of E. Newcomb.

Consignment AUCTION April 7th

for consignment
Gruver Fire Dept. We will sell anything Call 733-5037

STUDY FINDS BIAS
Women candidates still are severely handicapped by the "hidden minefield" of voter prejudices and sexual stereotypes as they seek a greater share of election victories, according to a study of women in politics released recently.

Lions Club spends record \$3,480.52

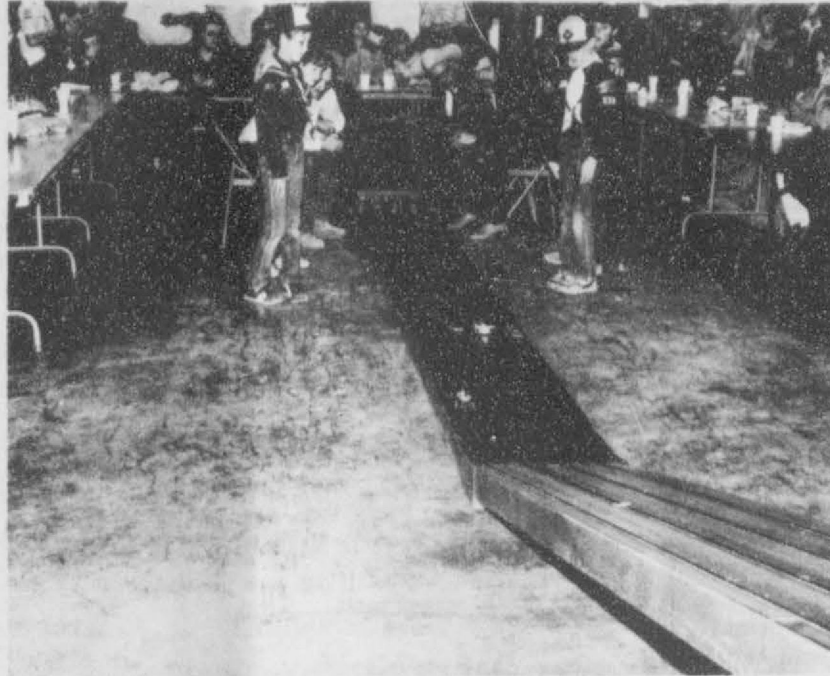
Secretary-Treasurer of the Spearman Lions Club Cecil Biggers, reported at the Tuesday noon meeting that the Spearman Lions Club had spent \$3,480.52 in Spearman in the past 12 months. The total outlay included Girlstown-\$780.00; Christmas fund for the needy-\$271.90; Little League-\$180.00; YMCA-\$300.00; Scholarship for Miss Hansford County \$125.00; Eyeglasses for the needy \$690.50; Girl Scouts \$250.00; Cub Scouts-\$100.00; Eyebank-\$100.00; Hansford Hospital-\$383.00.

Lion Cecil Biggers reported that the money for these projects was

earned from the broom sale which netted \$1213.25; the pancake supper held this year at the Spearman-Perryton basketball game netted a record \$500.00.

The local people of this area made this funding possible. The Lions Club especially want to thank everyone who purchased brooms or attended the pancake supper.

Lion Cecil Biggers brought the Tuesday noon program on the bankruptcy laws of Texas. It was a most interesting program enjoyed by all the Lions present. Remember next Tuesday noon an excellent program will be brought at the Lions Club.



Line judges were Norlan Winegarner, Jeff Hawkins, Verlan Winegarner and Rusty Tindell. They did an excellent job at the recent Pine Wood Derby held Saturday.

Commissioners buy truck for Prec. 3

Hansford County commissioners court met Monday in regular session.

They discussed roof repair for the barn but did not take any action.

They accepted Hergert Pontiac Buick & GMC offer for a truck for Precinct 3. The bid was for \$14,531.61.

Commissioners passed an order to pay county officials salary.

They ordered Judge McClellan to advertise for bids on a car for the sheriff's department.

Other items on the agenda were routine matters.

Jr. Lusby Memorial Tournament is Saturday

The first annual Jr. Lusby Memorial Boxing Tournament is set for Saturday evening at 7:30 p.m. at the local YMCA.

Admission for the tournament is \$2.50 for adults and \$1.00 for children.

There will be boxers participating from Plainview, Amarillo, Dodge City, Hugoton, Liberal and Hereford.

There will be a concession stand. Trophies will be given for 1st & 2nd places.

The Spearman Boxing Club is expecting to have about 30 bouts that evening.

At intermission a local boxer will be awarded the Jr. Lusby Memorial Trophy and a plaque will be presented to a Lusby representative.

Eugene Yarbrough, boxing club coach, encourages local people to come out and see the boys in action Saturday, March 3.

WEATHER

Following are temperatures for the past week.

	Hi	Lo	prec.
Feb. 21	66	19	-
Feb. 22	78	31	-
Feb. 23	50	32	-
Feb. 24	58	28	-
Feb. 25	70	31	-
Feb. 27	40	23	.35

HOSPITAL

Patients in Hansford Hospital are Clayton Wilkerson, Essie Burkhart, Joe Baca, Rhonda Christian and son, Tina Tucker and son, Harriett Wilmeth, Doris Meyers, Cecil Reynolds, Robert Eaton, David Arrington, Ida Shurbring, Ella Garnett, Josephine Gruver, James Cummings and Matt Lair.

Dismissed were Bonny Wilkerson, Bo Bevens, Billy Kelly, Worley Smith, Joyce Beckner, Irwin Harris, Thelma Wright, Tony Henry, Russell Weaver, Lisa Hart and Mary Murrell.

THE Know Weather

How can the stars be useful to you, in connection with the weather?

Perhaps today the stars have lost some of their importance as guides and direction indicators with radio direction-finding and radar.

In the old days, when sailors or hunters or explorers ran into foul weather, or fair, they could use the stars to give them a course away from the undesirable elements. In bad weather, glimpses of the stars are few and far between.



You must know that there are five constellations of stars in our hemisphere which never sink below the horizon-Big Dipper, Little Dipper, Draco, Cepheus and Cassiopeia. The lip of the cup of the Big Dipper always points to the North Star-also always visible.

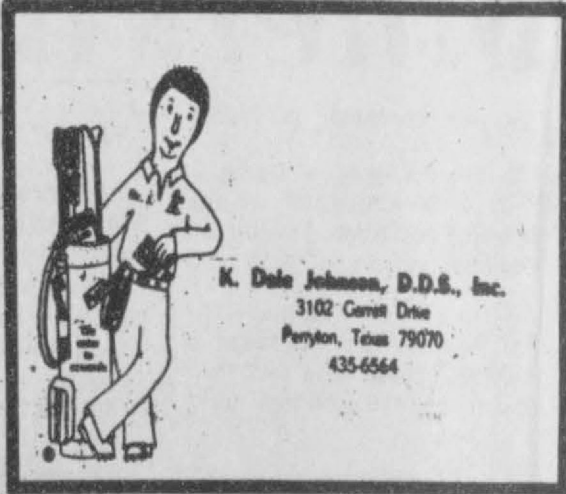
In this hemisphere weather moves west to east, and bad weather counter clockwise. A direction bearing from the stars can point the way to the warmer south, away from the center of a hurricane or storm, etc.

For The Ultimate In
STORM DOORS & WINDOWS
Custom Built, Designed And In
Colors To Fit Your Home

Contact Howard Moyer at

Only Aluminum Industries

Guymon, Okla. 114 W. 1st 405-338-6966 or
73942 405-338-6170
AFTER 6 P.M.



K. Dale Johnson, D.D.S., Inc.
3102 Carrot Drive
Perryton, Texas 79070
435-6564

NOTICE

Due to shipping difficulties the Girl's 7-14 Active Pant on page 1 of this week's TG&Y Family Center circular will not be available. However, we are substituting any Girl's 7-14 Pant regularly priced 9.99 and up for the 6.99 ad sell price. We regret any inconvenience caused.



If you are Involved In Agriculture, you are invited to attend!

Agco of Spearman's

Winter Fair

March 8, 1984

County Barn 11:00 a.m. to 2 p.m. Free Door prizes

Grand Prize Trip for 2 to Las Vegas

Air fair, room at Union Plaza, (3 days, 2 nights)

Wheatheart Travel Inc.

Pat Dear

Agent at the Bunkhouse downtown Spearman, TX

Free Fish Fry by

Punkins Fish Trap

Seed, chemical, fertilizer, & feed representatives will be there to answer any specific questions that the farmer would have about his 1984 crop.

ALLSUP'S
CONVENIENCE STORES

- WHILE SUPPLIES LAST
- SELF SERV GAS
- OPEN 24 HOURS FOR YOUR CONVENIENCE
- PRICES EFFECTIVE MARCH 1-3, 1984

\$1.49

REG., KING SIZE, NEW LIGHTS

FRITOS
CORN CHIPS

REGS 1.79 BAG

ALLSUP'S FAST CONVENIENT MONEY ORDERS EACH **29¢** UP TO \$250

NOW AVAILABLE AT ALLSUP'S
NO NONSENSE LARGE SELECTION ALL SIZES AND COLORS
HOSIERY

ALLSUP'S COOKED FOOD SPECIAL AS FEATURED ON TV.

CHOPPED B.B.Q. SANDWICH

ENJOY THE TASTE OF REAL SOUTHWESTERN B.B.Q. EACH

99¢

ALLSUP'S NEW **HOT CHOCOLATE** 8 OZ. CUP **30¢**

ASST. FLAVORS

BORDEN'S
ICE CREAM

1 1/2 GAL. CTN

\$1.79

BORDEN'S **COTTAGE CHEESE** 12 OZ. CTN **79¢**

BORDEN'S **HI-PRO MILK** 1/2 GAL. CTN **\$1.19**

DR. PEPPER 6 PACK CANS **\$1.69**

SHURFINE **TUNA** 6 1/2 OZ. CAN **49¢**

RATH WIENERS 12 OZ. PKG. **69¢**

Call
659-3434
SERVICES

BUY, SELL, TRADE OR RENT THROUGH THE CLASSIFIED ADS

MONUMENTS
Save Agents and Undertakers Profits
If it is inconvenient for you to visit our large display, please phone collect (405) 327-0626 or write and we will call on you.
ALVA MONUMENT WORKS, INC.
Alva, OK 73717

SPEARMAN ELECTRIC
Licensed and Bonded
New work and rework
Phone 659-2636
11-rtn

New to area?
Give us a try
Call your local
USED COW DEALER
As soon as Possible
659-3544
659-3545
1-800-692-4043
17S-rtn

STEAM RINSE & VAC
Steam Rinse-and-vac Shampooers; \$10.95 for up to 24 hrs. available at Gordon's Drug; also at Freddie Largent's, 716 Cotter Dr. after 4 p.m. and Saturdays and Sundays.

NOTICE
Wallace Monument Co.
Monuments, Curbing, Grave Covers
Local Representative
LEONARD JAMESON
Spearman, Texas
35S-RTN

SERVICE: Pits cleaned, wet or dry. Dragline or loader. Also, dozer, grader, carry-all service. Lee Roy Mitchell, 806-733-2384, Gruver, Texas 79040.
12-rtn

OSGOOD MONUMENT CO.
Amarillo, Texas
Dealers of Rock of Ages Granite as well as all colored granites, marble and bronze memorials.
represented by
BOXWELL BROS. FUNERAL HOME
519 S. EVANS
659-3802

PROFESSIONAL DOG GROOMING. Years of experience. Call 659-3210 for appt. Dogs done by Dolores.
11-rtn
Hansford County Planned Parenthood
412 Davis
659-2483
Spearman
Mon.-Fri.
8:30-12:30

FOR SALE
Behlen Curvets & Grain Tanks, 40% discount with grain storage financing available at 7.5%. Contact Master Craft Builders today. 405-338-8561, Guymon or 806-435-9970 Perryton.
13S-6tc

WANTED
When colon-rectum cancer is detected and treated in an early, localized stage, the 5 year survival rate is 76% for colon cancer.
17-1tc

FOR SALE: Girls new fur pile coat with hood. Rust color. Size 12. Machine washable. \$25.00. Call 659-2739 or come by 1118 S. Haney.
45S-rtn nc

FOR SALE: Barber Chair. 9-2009.
15S-4tc

NOTICE
To be sold at a Public Sale 3-21-84 at 3:00. 1 - completely rebuilt HD800A6A M9M Irrig. Engine. Sale will be held at Frank's Engine Service, 417 Hwy. 207 So. Phone 806-659-2257.
17-6tc

FOR SALE: All wool carpet. Beige in color. 659-3656.
17-2tc

FOR SALE: Chow pups. 659-2349.
17-1tp

REAL ESTATE FOR SALE

FOR SALE: 3 bedroom home near downtown, detached garage, wide fenced yard. Emmett Sanders, Realtor, 659-2516, nights 659-2601.
13-rtnTonly

FOR SALE: 3 bedroom, 1 bath home with new patio. Located at 205 Lonita. Is fenced and has underground utilities. **PRICE REDUCED.** Call 659-2369.
42-rtn

HOUSE FOR SALE OR RENT: 3 bedroom, 2 bath, 1750 square feet. Large rooms, huge kitchen and den. Built-ins. 708 Townsend. 659-2491.
49S-rtn

FOR SALE: Lot on North Hazelwood Street zoned for mobile home. Emmett R. Sanders, Realtor, 659-2516, nights 659-2601.
13-rtnTonly

MOBILE HOMES FOR SALE

FOR SALE: 14 x 52' 1973 2 bedroom mobilehome, 1 year old continuous cleaning Kenmore electric range, \$4,000 unfurnished. 659-2301.
16-2tc

FOR SALE: double wide, 3 bedrooms, 2 full baths, with fireplace, and dining room, bar and extra large living room. Phone 435-6434. Take over payments, low equity. Will take anything of value on trade for equity. Call Spearman 659-3721, ask for Dan.
13-6tp

DEALER REPO!
3 bedroom, name brand mobile home. 2 full baths, wood siding, storm windows, garden tub, dishwasher, etc. Assume FHA loan of \$273.70 with approved credit.
WE TAKE TRADES-ANYTHING OF VALUE!
QUALITY AFFORDABLE MOBILE HOMES
HWY 60 WEST
PAMPA, TX.
66S-0715
12S-8tc

WANTED
WANTED TO BUY: used twin size bed frame. 9-3871.
17-1tc

ODD JOBS around your house, don't know who to call? Call "The Handy Man" Charles West, 659-3833. Reasonable rates.
12-rtn

U.S. Marines begin withdrawal from Lebanon.

HELP WANTED

HELP WANTED: Bullfrogs & Butterflies Daycare Center. Now taking applications for full time and part time help. Call after 6 p.m. Teresa Madison 9-3959 or Marilyn Groves 9-2283.
16S-6tc

SERVICES

DOG GROOMING at prices you can afford. We also offer boarding by day or week. Call Jodie 659-3937.
16-rtn

PAINTING *Residential, Interior, and Exterior. Call Tony Villines 659-2742, Spearman.
16-4tp

CHIMNEY SWEEP
Contact The Rusty Hook & Chimney Shoppe
43S-7050
16-8tc

AUTOMOBILES FOR SALE

FOR SALE: 1977 Ford LTD station wagon. Local one owner car. Call 659-3802.
17-4tc

FOR RENT

FOR RENT: Furnished adult apartment. No pets. 659-3384.
17-2tc

FOR RENT: 2 bedroom trailer house. Call 733-2517.
17-rtn-nc

FOR RENT: small office building. Call 659-3434.
9s-rtn-nc

FOR RENT: 3 bedroom furnished home on corner lot. Call 3434.

BUSINESS OPPORTUNITIES

COIN-OP GAME ROUTE AVAILABLE
Less than \$13,000 buys this local coin-op game route with all of its income and tax benefits. Prime locations--excellent expansion possibilities. 3 to 4 hours per week. Maintenance provided. For more information call Mr. Dodson, 303-681-2193.
16-6tc

PUBLIC NOTICE

I WILL NOT be responsible for any debts other than my own.
David Slater
16S-3tc

The Cowboy Sub-Chapter of the F.C.A. meets the fourth Saturday of every month at 7:30 p.m. at the Home Demonstration Building, Spearman, Texas.

Weight Watchers meets each Monday at 6:00 p.m. at the Home Demonstration Building, Spearman, Texas.

CARD OF THANKS

Many, many thanks for your wonderful prayers and cards during Woody's illness. It is so wonderful to have friends that care. We will always be grateful.
God's Blessings,
Woody & Lois Gibner

We appreciate the many prayers, cards, flowers and visits on our behalf during Everett's recent surgery. Thank you for all the love and encouragement you expressed.
Everett & Louise Vanderburg

Spearman Reporter

PUBLICATION (USPS 5096-6000)
SPEARMAN, TEXAS 79081
213 Main Box 458 659-3434
Published Weekly at 213 Main Street
Spearman, Texas 79081
Owner-Publisher.....William M. Miller
Editor.....Faye Lynch
Second Class postage paid at Spearman, Texas
79081

Any erroneous reflection upon the character of any person or firm appearing in these columns will be gladly and promptly corrected upon being brought to the attention of the management.

POSTMASTER: Send address changes to Spearman Reporter, Box 458, Spearman, Tx. 79081.

SUBSCRIPTION RATE: Hansford, adjoining counties, combination with the Hansford Plainsman \$15.00
Other points, \$20.00

MEMBER TEXAS PRESS ASSOCIATION

POLITICAL ANNOUNCEMENTS
Democratic Primary
State Representative Texas
88th Legislative District
J.W. "Buck" Buchanan
State Senator, 31st District
Bill Sarpallas
Hansford County Sheriff
R.L. McFarlin
Republican Primary
U.S. Representative, 13th District
Bean Boulter

LEGAL NOTICE

LEGAL NOTICE
Hansford County will receive bids until 4:00 p.m., Friday, March 9, 1984 on one new, 1984 car for Sheriff's Department with and without trade-in. Bids will be opened March 12, 1984 at the regular meeting of the Commissioner's Court.
Specifications are available at the County Judge's office or the County Auditor's office in Hansford County Courthouse. The Court reserves the right to accept or reject any or all bids.
Roy L. McClellan,
County Judge
17-2tc T-only

Notice of Rate Change Request

General Telephone Company of the Southwest, in accordance with the Rules of the Public Utility Commission of Texas, hereby gives notice of the Company's intent to implement a new schedule of rates in Texas, effective March 28, 1984.
The proposed changes in rates will affect all the Company's 829,291 Texas customers who represent all customer classes, and are designed to increase the Company's gross intrastate revenues by \$84,777,000, or approximately 13.34 percent annually.
Persons who wish to intervene or otherwise participate in these proceedings should notify the Commission as soon as possible. A request to intervene, participate or for further information should be mailed to the Public Utility Commission of Texas, 7800 Shoal Creek Boulevard, Suite 400N, Austin, Texas 78757. Further information may also be obtained by calling the Public Utility Commission Consumer Affairs Division at (512) 458-0223, (512) 458-0227, or (512) 458-0221 teletypewriter for the deaf.

A complete set of revised rate schedules has been filed with the Public Utility Commission at Austin, Texas, and is available for public inspection in each of the Company's Business Offices in the State of Texas. A summary of the Company's rate filing has also been sent to the Mayor's office of each affected Municipality.

General Telephone
GTE

Retail sales jump 2.2 percent in January.

Marijuana as medicine backed by ABA.

Offered Exclusively By
EMMETT R. SANDERS, REALTOR



75 ft. by 225 ft. lot on paved county road in Crawford Addition.

Elegant home on 100 ft. corner lot, 3 bedrooms, 3 baths, formal living room, formal dining room, basement den, detached double garage with small apartment in rear, covered patio, established landscaping, yard sprinkler system, new shingle roof, quality construction throughout. Shown by appointment.

3 bedroom, 1 bath, home with attached garage, good location, built-in oven and cook top, carpets, curtains & drapes. Shown by appointment only.

NO CLOSING COSTS, qualified buyers move in for 5% down payment. New 3 bedroom, 2 bath brick home, carpets, central heat and air, dishwasher, extra insulation, attached garage, 75 ft. lot frontage.

NO CLOSING COSTS, qualified buyers move in for 5% down payment. Extra nice 3 bedroom home, 2 miles West of Spearman. Has 2 baths, den with wet bar, carpets, utility room, large kitchen with Jenn Air range. Shown by appointment only.

EMMETT R. SANDERS REALTOR
659-2516
659-2601 [nights]
52-rtn T only

Haircuts • Colors • Perms • Proting
Beards & Mustaches
Hair Loft 2100
for Men & Women
Betty West & Cheryl Freeman
Mon. - Sat. 8:30 a.m. to 6:00 p.m.
310 Main
Spearman, Texas 79081
Bus: (806) 659-5161

Century 21
Daryl Wynn, Broker
658-4258

"We'll Give Our Word To You"

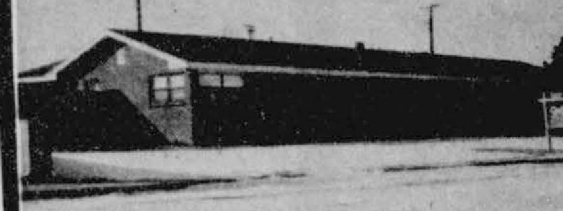
Allen Alford 659-3034
Larry Trooper 659-3491

GOLDEN SPREAD REALTY

Corporate Registered Trademark of Century 21 Real Estate Corporation. Printed U.S.A. Each office is independently owned and operated.
Equal Housing Opportunity.

WE WANT YOUR LISTINGS!!! CALL TODAY!!! Several Lots FOR SALE

WE ARE WILLING TO HELP YOU WITH V.A. OR F.H.A. FINANCING.



7 Glover Place-- This beautiful home has 3 bedrooms with matching wall paper and drapes, with 2 full baths. Has a fireplace and all the amenities. The garage is an oversized garage with alot of storage. Shown by appointment.



715 Steele Dr.--3 bedroom, immaculate. Probably one of the best buys of 1984.



12th and Archer.--3 bedroom, 2 bath, skylight, double car garage, underground storm shelter. 10.25% financing available. Excellent location.



This beautiful home at 207 S. James is now available.

Starter Home--421 S. Dressen. Corner lot, 2 bedroom, 1 large unfinished room. Fenced yard, small rent apartment in back of house, close to school. Ideal location. Sets on two lots. Priced to sell.

1010 Haney--Three bedroom home, single garage. This home has just been redecorated in the past year. New six foot fence and landscaping is excellent. Has a fireplace to enjoy on these snowy days that will be coming our way. Has central air and heat. Insulated well. Let us show you this home today. Shown by appointment only.

307 12th Street--Three bedroom, central heat and air. New fence. Has been freshly painted inside. Large den area. Let us show you this home today. Has many amenities.

714 Steele Dr.--Don't wait--look at this 3 bedroom, 1 bath home, central heat and air. Must see this home today, so hurry and give us a call today.

On Your Payroll

State Representative
J.W. (Buck) Buchanan
Dumas, Texas 79029
Phone: 835-5087
Austin Address:
House of Representatives
Austin, Texas 78711
Phone: 512-475-3127

State Senator
Bill Sarantis
10800 Canyon Drive
Amarillo, Texas 79118
Phone: 822-2502
Austin Phone:
512-475-3222

U.S. Senators
Senator John G. Tower
Washington Office
Russell Senate Office Bldg. #142
Washington, D.C. 20510
Phone: 202-224-2934

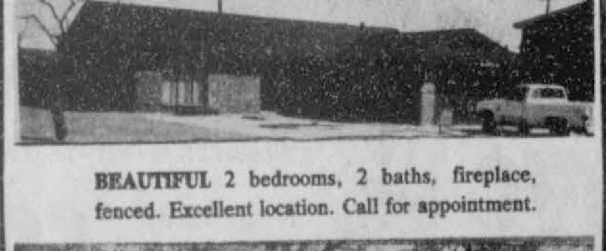
U.S. Congressmen
Congressman Jack Highower
U.S. Congress, 12th District
120 Cannon Building
Washington, D.C. 20515

Amarillo Office:
300 E. First
Amarillo, Texas 79101
Phone: 378-2881

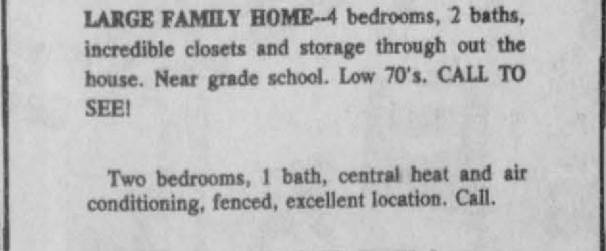
VIRGINIA WHITE Realtor
Your Business is Appreciated



SPACIOUS HOME--formal living room, large bedrooms, big family room in basement with fireplace. Fenced, sprinkler system. Near school. **WILL SHOW TO QUALIFIED BUYERS.**



BEAUTIFUL 2 bedrooms, 2 baths, fireplace, fenced. Excellent location. Call for appointment.



LARGE FAMILY HOME--4 bedrooms, 2 baths, incredible closets and storage through out the house. Near grade school. Low 70's. CALL TO SEE!

Two bedrooms, 1 bath, central heat and air conditioning, fenced, excellent location. Call.
CORNER LOT FOR SALE WITH 2 garages, storm cellar, chainlink fence. Priced \$20,000.
COMMERCIAL: 30X75 building (has 2 restrooms) with 50X100 warehouse in back on 7th St. across from Plains Shopping Center. Call.
Virginia White, Broker
659-3841

Avoid Cancer

The American Cancer Society has listed several precautions the average citizen can take to reduce the risk of several forms of cancer.

While the suggestions are good for all, they're most important for those considerably overweight. And they agree with precautionary steps suggested by the National Academy of Sciences eighteen months ago.

Avoid serious obesity. Avoid excessive fat. Eat more fruits, vegetables and whole-grain foods. See that high fiber foods and vitamins A and C are in your diet.

Avoid a heavy intake of smoked meat or fish and salt-cured and nitrite-cured meat or fish. Avoid a heavy alcoholic intake.

Exercise, also, is helpful. But experts warn that strenuous exercise should be achieved gradually for those who have not been physically active for some time.

Finally, the Society says there's not enough substantiated evidence as of now to recommend any of the current anti-cancer-diets, or specific foods. Nor does the society feel the case has been proven that vitamin E or selenium is a preventative.

EDITORIALS

Concorde

British Airways begins Concorde service to Miami March 27. That will make the Florida metropolis, and gateway to Latin America, the third U.S. Concorde city.

Concordes are the world's only supersonic airliners. They fly much faster than the speed of sound and can cross the Atlantic, from New York to London in three hours.

The new service by British Airways means supersonic airliners will be flying down the east coast of the U.S. for the first time—from Washington to Miami. (The Miami run includes a brief stop in Washington.)

The beauty of supersonics, like the Concorde, is that it offers eastbound daytime crossings. Travelers are not required to sit up all night as on most flights. Concordes depart Miami at 9:30 a.m. Wednesdays, Fridays, and Sundays and arrive in London at 8:45 p.m. (3:45 p.m. U.S. time).

They depart London (Tuesdays, Thursdays and Saturdays) at 1 p.m. and arrive in Miami at 2:35 p.m. Time marches on, faster.

Pennsylvania coal mine explosion kills three.

New Lebanon peace plan seems doomed.

Meese questionable about finances by Demos.

Terrorists kill U.S. diplomat Hunt in Rome.

In Fashion

Beaded necklaces are making a comeback. Several black beaded and pearl necklaces can be intertwined to make a sensational choker.

These same necklaces hanging loosely over a blouse add charm to a stunning white wool suit.

Matching earrings tend to be much larger.

GEBO'S FACTORY DAYS Sale

Lufkin

Mezurlok® Tapes



1" x 25'

The finest power tape available for the handyman or the professional.

218-333 Regular 13.95

\$895

MINI HAND POWER PULLER

LIFT UP TO 2-TONS

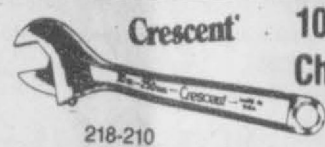
868-002

Regular 18.88 **\$1498**



No. MP 2T

- WEIGHS LESS THAN 10-LBS.
- PULLS UP TO 2-TONS EASILY
- HEAVY GAUGE DROP FORGED STEEL GALVANIZED AGAINST RUST AND HARDENED AT ALL STRESS POINTS



Crescent® 10" Adjustable Wrench Chrome Finish

218-210

Reg. 10.59

\$659

11-PC. "BIG FISTER" SCREWDRIVER SET

Heat treated blades, Rockwell hardness. Hot Forged Square blades of Chrome Alloy Steel. INDUSTRIAL STRENGTH EXTRA LARGE

Built for the Professional. For: Farm, Home, Auto

884-119

Reg. 4.89

\$399

Duracraft Power Tools

DRILL PRESS

SAVE 25.86

477-030

3-speed bench model with 1/2" Jacobs chuck. All ball bearing, 1/4 H.P. motor, 4" throat depth with 1/2" drilling cap.

Regular 115.85

\$8999

BELT & DISC SANDER

4" x 36" belt, 6" disc. All ball bearing 1/2 H.P. motor. Bevel sanding to 45°

477-036

Reg. 146.49

SAVE 36.50 **\$10999**

10 INCH TABLE SAW

Bench model with 1 1/2 H.P. high torque motor. 17" x 26 1/2" cast aluminum table. Rapid or fine angle settings 0°-45°.

447-010 Reg. 165.85

\$10999

SAVE 55.86

3 pc. Lock Plier Set

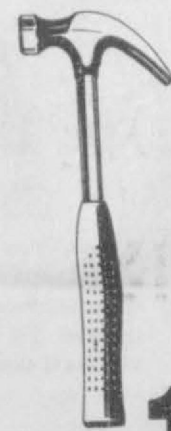
10", 7" and 5"

Dropped forged jaws, hardened tempered milled teeth with wire cutter.

884-181

Regular 7.79

\$599



ALL GO AT

10% OFF!



USE YOUR CHARGE CARD AT GEBO'S

STARTING FLUID

for a fast start on the coldest days

0874-012

Reg. 1.29

97¢



10 AMPERE ATEC BATTERY CHARGERS

• 6 and 12 volt Battery Charging • Solid State Circuitry • Recessed DC Ammeter • Automatic-Reset Circuit Breaker

Reg. 35.89

\$2988

SEALbest Flex-n-Fill Funnel

088-029

- Ideally suited for servicing hard-to-reach oil and fuel points. Vent ribs and flex design provide fast pouring and draining.
- Over one quart capacity; oil can fits in top while pouring. 18" long.

Reg. 1.98

\$149

LIQUID WRENCH

12 Oz.

Regular 1.39

\$118

718-001

NUMBER 1 The Super-Penetrant that frees rusted bolts, nuts, and corroded parts... fast!

WD-40

Makes Everything That Works Work Better

945-101

REG. 11.25 GAL

\$998

SPRAY CAN ONLY 1¢

with purchase of gallon can of WD-40



945-301

CHAMPION SPARK PLUGS

CHAMPION

88¢

Regular 1.08

RESISTOR PLUGS Regular 1.49

LIMITED TO STOCK ON HAND

FACTORY DAYS

LONG LASTING

ROUND BALE FEEDERS

LIVESTOCK HANDLING EQUIPMENT

Not Available In All Stores

Reg. 127.39

\$11995

Electric FENCE POST

928-048

Reg. 60¢ Each

49¢

Look Over Every Item
In This Sale
For Outstanding
Savings For Home,
Farm, Ranch At
GEBO'S

GEBO'S
FACTORY DAYS
Sale

GEBO'S
...the kind of store you remember.

DAVIS WALKER 256-001 PRE-SEASON SPECIAL
BALER WIRE Reg. 37.49 **\$34.99**

36" UTILITY FABRIC WELDED WIRE
50' Roll, 508-336
Regular 16.55 **\$14.55**

48" UTILITY FABRIC WELDED WIRE
50' Roll, 508-348
Regular 21.59 **\$19.59**

HILL JACK
Full 4 ton lifting capacity
Base plate 28 sq. inches,
holds on soft ground.
Steel handle. Handle
pins of hardened steel.
Lifting mechanism grade
A malleable for durability.
Large runner reinforced
for extra strength.
Cast Steel.
Reg. 39.99 **\$34.99**

LUBRIMATIC 3-WAY GREASE GUN
558-001
Reg. 6.25 **\$4.99**

GAUCHO BARBED WIRE MADE IN U.S.A.
• 80-rod reel weighs half of regular barbed wire — yet is as strong.
• Unique protective zinc coating is more than twice as thick as the coating on regular wire. Lasts twice as long.
• Safer because exclusive reverse twist of both strands under each barb greatly reduces recoil. Won't tangle when you unroll it.
• Won't sag from the impact of that ole hookin' bull. Stays taut in all kinds of weather.
• GAUCHO Barbed Wire is stronger, lighter, easier to handle, has handles for carrying safety and convenience, will last longer, won't sag — and will save you up to 32%... interested? Try a reel and make up your own mind.
4 Ft. Not Stocked in All Stores.

BEKAERT GAUCHO
2 Pt., 107-001 **\$19.89** 4 Pt., 107-002 **\$20.89**
Reg. 21.69 Reg. 22.85

LINCOLN AC 225 AMP WELDER
No. AC225S. Easy to install, easy to operate. Stable arc. On-off switch. Vermin resistant. Electrode selection guide. 225 amp welder output. Weatherproof. Protected connections. Portable. Low cost operation.
Reg. 545-001 165.45 **\$145.45**

ASK ABOUT OUR PORTABLE WELDER

These Prices Good
February 27
Through March 3



MEN'S DRESS WESTERN SHIRTS
Now **\$4.00 OFF**

STP OIL TREATMENT
ADD TO OIL
848-001

15 Oz. Can
Regular 1.79
\$1.47
GEBO'S FACTORY DAYS
BANK CARDS WELCOME



ADAMS TILLAGE TOOLS
All Wheatland Sweeps
and Chisel Points
Bakers' Dozen -
Buy 12 at Regular
Price GET ONE FREE
PLOWSHARES — 10% OFF

d-CON
America's fastest selling
rodenticide in pellet form. Used
as directed it rids farms, homes, shops,
stores and factories of rats and mice. Each package
contains 4 ready-to-use bait-filled trays. Nothing to measure
or pour. Easy to set out more stations and kill more rats.

1 Lb. Pellets
266-251
Regular 2.99

OR

1 Lb. Ready Mix
266-201
Regular 2.99

6 Lb. Economy Size
Ready Mix
266-271
Regular 11.88

Your Choice **\$2.44**
\$8.88

MANCO DUCT TAPE
0 568-007 2" x 60'
Regular 4.98 **\$3.88**

STP GAS TREATMENT
12 Oz.
848-005
Regular 1.75 **\$1.49**

MOON BOOTS
Men's — Women's — Boys'
\$15.99

• Tilling width adjustable from 14" to 26" • 3-step chain reduction drive • 16 self-sharpening, heat-treated lines • 13" diameter steel lines • 135 rpm forward line speed • Adjustable depth bar to 7" deep • 9.50" x 1.75" adjustable steel wheels • 1-1/4" steel handle • Handle-mounted clutch • 5 HP B&S engine, 12.57 cu. in. • Rewind start • Remote throttle

WORK 1 TIRE SAFETY SEAL FORMULA
• PREVENTS FLAT TIRES • KEEPS TIRES RUNNING COOLER • STOPS UNDER INFLATION

WORK-1 instantly seals punctures up to 1/4" in diameter in the tread surface of the tire.

WORK-1 keeps tires running cooler for extended tread life.

WORK-1 helps maintain correct pressure in the tire.

WORK-1 is non-flammable and water soluble.

16 Oz. Can
893-061 **\$2.88**
Reg. 3.95

PRE-MIX WINDSHIELD-WASHER ANTI-FREEZE
874-100
Regular 1.19 **88¢**

6-FOOT T-POSTS
821-160 **\$1.99**

NAGEL BARBED WIRE
12 1/2 Ga. - 2 Pt. MADE IN U.S.A.
Regular 33.45 **\$31.45**

EATING OUT

By Rose Hughes
WHEN in the national capital, take advantage of any invitation from a resident who is a member of one of the better private clubs.

IN these clubs you'll see interesting people and officials, and also enjoy good food and a better atmosphere than in most restaurants.

ONE private club which opened about twenty years ago and which is popular is the International Club. It boasts very good food and its members include those of many nationalities.

IT is the newest of the major clubs and some think it offers the best menu of all the private clubs.

ANOTHER good bet for most visitors is the Army-Navy Club, not far from the White House. Most officers of the services can eat here and can take guests here. This is an old and prestigious club, with a long history and some of the nation's most famous retired officers live here.

AN exclusive club is the Metropolitan, not far away, which has a separate dining room for members without guests and one for members bringing guests--on the fourth floor.

THIS club is the most impressive in decor and membership of all the private Washington clubs of any size. It has a limited menu, and ladies are admitted for lunch only to private dining parties and rooms.

THEY are welcome at night, with members. The elite of the capital will be found here.

BUSINESS OUTLOOK

By Edward Thorlund

The curious factor about the recent stock market decline is that the time-tested rule about consumer confidence was being ignored.

In the past, going back some time, consumer confidence in the future of the economy has been a more reliable guide to economic trends than any other measurement.

At present, and for some time, consumer confidence has been very high. This means consumers will buy goods, and they are doing that in a big way. This means producers must expand operations and produce more--and this means jobs.

That's where many of the jobs of late have come from, from greatly increased consumer buying--consumer confidence.

Yet the stock market has ignored this in 1984--and has exhibited a pronounced nervousness over the size of federal deficits. Some believe this would not have had the effect on the Dow Jones average it has had were it not for the impact of institutional investing.

The big funds, guided by astute experts, have reflected doubts about the future. The private investor in stocks, has apparently not been so concerned.

But big fund investing now comprises such a large chunk of the total market, the attitude of these relatively few money managers can affect the direction of that market considerably--and has.

When have you done something specific for the children, or a particular child, in your community?

Citizens who perform public service without compensation are entitled to the respect of their fellow citizens.

When you abandon the idea that your mission is to regulate other people you're in a position to improve yourself.

A sick man who pays no attention to what his doctor says should not blame the medical profession if he fails to get well.

You are invited to
a Baby Shower for Sara Shufeldt
Saturday, March 3rd
from 2:00 to 5:00 p.m.
at the First State Bank
Come & Go
Hostesses

Vicky Bullard
Sylvia Schaffer
Cathy Cook
Evelyn Kingsley
Peggy Ellsworth
Carla Woodington
Kari Schumann
Jodie Harnish
Sue Vardell

Jean Close
Helen Dry
JoAnn Hawkins
Roxie Evans
Georgia McCleod
Beth Raper
Mickie Alberts
Darlene Howell
Kay Loomis

17-1tp

Arts & Crafts

The Feb. 24th meeting of the Arts & Crafts Guild was held in the home of Jewel Turner. Members attending the china painting session were Mrs. Annie Allen, Mildred Daily, Blanche Fuller, Sada Hoskins, Athalie Traylor, Allene White, and the hostess, Jewel Turner.

The club will meet on March 2nd in the home of Blanche Fuller, hostess.

Senator Baker urges U.S.-Soviet summit talk.

Words cannot adequately express our appreciation for the prayers, visits, telephone calls, food, gifts, and financial support during the past few days. Thank you also for the continued support and prayers while Nan and Clint were in the hospital.

The family of Laci McCloy

Pvt. Roper completes course

Army Pvt. William R. Roper, son of Lovida A. Giblin and stepson of Jack R. Giblin of 35 Fourth St., Morse, Texas, has completed a wheeled-vehicle mechanic course at the U.S. Army Training Center, Fort Jackson, S.C.

During the course, students were trained to perform maintenance and assist in the repair of automotive vehicles and associated equipment.

He is a 1983 graduate of Stinnett High School, Texas.

SEARCH ON
The government is about to undertake a nationwide search for 30,000 veterans who are twins so it can compare the health of men who served in the Vietnam war with their brothers who did not.

Scott Hamilton wins gold in figure skating.

Tri-State Twosomes

Rita Wilkerson gave the Feb. 7 program for the Tristate Twosomes, Area Mothers of Twins Club in Guymon. The program was on 'Learning Disabilities' and was very interesting.

There were 12 members present and one guest Rita Wilkerson of Guymon, Okla. We now have 24 members in 11 different towns in the Tristate area. Tristate Twosomes are helping a new club get started in the Perryton, Texas area.

We now have the final plans made for the 'Twin Style Show! It will be held March 10, 7:00 p.m. in the Guymon Community Theatre on Main Street in Guymon, Ok. There will be 25 sets of twins modeling ranging in age from 5 months to 25 years. Their outfits will be furnished by Cinderella Shop, Liberal, Ks. and Main Street, Gruver, Tx., D&J, Brystr's, and Lads and Lassies all of Guymon, Ok. There will be an admission of \$1.50 for adults and \$.75 for students. 1/2 of proceeds will go to the Neonatal Care unit at the Memorial Hospital in Guymon, Ok.

20th Century Club meets

The 20th Century Club met Feb. 23 in the home of Mrs. Tom Sutton, with Mrs. Cecil Biggers presiding.

There will be a stew supper March 8 at the Hansford County Library for club members and their husbands.

Roll call was answered with "My favorite author or poet."

Mrs. Lorene Hutchison gave a very interesting book review on "Miss Emily Revisited."

Refreshments were served to Mmes. Woodville Jarvis, C.U. Pope, Cecil Biggers, Coy Palmer, John Bishop, Frank Hefner, J.R. Stump, Jane Meek, Lorene Hutchison, O.C. Holt, Lawrence Anthony, D.H. Hergert, John Trindle and hostess Tom Sutton.

Stinnett pageant is March 24

The 1st annual Stinnett Cinderella Girl Pageant will be held Saturday, March 24 at the Stinnett High School Auditorium. The Cinderella Baby Competition will begin at 11:30 a.m., to be judged and completed by 12:30. The baby girls are required to wear a dress. Girls may enter the pageant to be presented on stage or turn a picture in for photogenic entry. Age divisions are 0-12 months; 13-24 months; 25-36 months. Awards: winner of each age division will receive a crown, banner, and trophy; 1st and 2nd alternates receive trophies; photogenic girl receives a plaque and banner. Each contestant will receive a trophy.

Cinderella Girl age divisions are 3-6 years; 7-9 years; 10-12 years; and 13-17 years. The girls compete in party dress modeling (short for ages 3-13 and long for teens), sportswear modeling and close up appraisal. The tots may also enter tot personality, an interview on state, or photogenic. Ages 7-17 may compete in complete in talent (this is optional), or photogenic. Every girl in the competition will receive a Cinderella Trophy.

Entry deadline will be March 8, 1984.

To enter the competition contact the Director of the Pageant, Diana Tekell Simpson, 215 N. Hedgecoke, Borer, Tx. 79007. Phone: 274-3960, 857-3845, or 273-9963.

Girls within a 35 mile radius of Stinnett may enter.

DIET & CANCER
The American Cancer Society recently launched a campaign for an anti-cancer diet, saying that Americans who consume less fat, alcohol and smoked foods and eat more vitamins, fiber and vegetables might reduce their risk of cancer.

Ethel Merman, Broadway great, dies at age 75.

New Arrival

Mr. and Mrs. Clay Crites of Spearman are proud to announce the arrival of their son, Eric Wesley Crites, who was born February 18, 1984 at Hansford Hospital. Eric weighed 8 pounds 13 1/4 ounces and was 21 inches long at birth.

Maternal grandparents are Rex and Jean Burgess of Spearman. Paternal grandparents are Wesley Crites of Garland, Tx. and Jenny Coffey of Allison, Tx.

Maternal great-grandparents are Mr. and Mrs. Bob Burgess of Stratford, Tx. and Mrs. Evelyn Robertson of Robinson, Kansas. Paternal great-grandparents are Mr. and Mrs. Andy Christensen of Pampa, Tx. and Mr. and Mrs. Clifford Davenport of Pampa, Tx.

Eric is welcomed home by sister, Christina, who is 17 months old.

"A Centerpiece"

'Tis Friday and the wind is blowing hard for the 3rd day. We also have a storm predicted with more snow for the weekend. Of course we're all hoping for a good rain instead.

We here at the center have been with quilting and crafts. Much was accomplished on Thursday but we could use more volunteers, so if you've been putting it off, come on down to the center on Thursday. Lots of good fellowship and fun along with a covered dish dinner at noon. You'll enjoy being a part of it.

On Tuesday the leader of the Moose furnished meat and dessert. Senior Citizens brought vegetable dishes, salads etc. to fill out the menu. It was a good turnout and was certainly appreciated by the center and senior citizens. This is just another fine gesture by clubs and business people to help give our center a boost. So a big "Thank You" to anyone who gave of time and efforts to make it such a success.

Just in case you don't know, Spearman is a great place to call home. The people of Spearman are a caring people and are always supportive to the Golden Spread Center and our Senior Citizens. This is your center and you are wel-

come to drop in anytime to rest a while, have a cup of coffee and visit.

We miss you so let us be seeing you at the center soon. Hope you'll be here.

Alma

Dahlia Flower Club

The Dahlia Flower Club met Friday, February 27th with Ruth Mary Whitson in the home of Louise Archer. Nelle Evans called the meeting to order with the Pledge of Allegiance to the Flag.

The new year books were presented to all the members present. Year book chairman Ruth Mary Whitson gave a resume of the new year programs.

Nelle brought peach preserves and grape jelly for those who were present.

Delicious prune cake and coffee and cashew nuts were served the following members: Sammie Bishop, Myrna Biggers, Nelle Evans, Hollie Riley, Ora Sanders, Margaret Sheedeck, Jewel Turner, Karen Harruff, Nellie Albrecht, Louise Archer and the hostess, Ruth Mary Whitson.

The next meeting will be with Louise Archer, March 12th.

Karen's Rogy Corner
By Karen Harruff
Hansford County Extension Agent
Home Economics

CHECK OUT TAX PREPARERS

With the income tax deadline growing nearer, the idea of simply having a tax preparer do the job becomes more attractive each day. But, as with any service, it pays consumers to investigate before they select a tax preparer.

Here is the following guidelines for choosing an income tax preparer:

*Look for a tax preparation business that is open all year, rather than just the few weeks before income tax time.

You may need to contact the preparer later if you are audited.

*Beware if an income tax preparer offers a "guaranteed refund," suggest you under-report your income or create non-existent deductions. You are still liable for any misrepresentation on your tax forms.

*The preparer should be willing to explain how your return was prepared, both to you and the Internal Revenue Service. The preparer should also explain how your return will be checked for accuracy: will it be examined for problems in tax law interpretation or just for math errors?

Since taxpayers are responsible for the accuracy of their returns, it's important to choose a trustworthy tax preparer with training and experience.

"Enrolled agents" are certified by the IRS after having worked five years as a tax auditor or having passed a federal exam. Enrolled agents, certified public accountants and attorneys may represent

taxpayers before the IRS. The qualifications of other tax preparers may vary widely.

Whether you actually need a tax preparer or not may depend more on the complexity of your financial situation than your income level. Unless your financial situation is complex, you may be able to get along simply by calling or visiting an IRS office, using IRS publication 17, or purchasing one of the many income tax books on the market.

If you use the short form, the IRS will complete most of it and figure your taxes for free. In addition, you may qualify for other sources of help. Many senior citizen centers and public service organizations offer free help in tax preparation for the elderly, handicapped, non-English speaking and others.

EDUCATIONAL PROGRAMS CONDUCTED BY THE TEXAS AGRICULTURAL SERVICE SERVE PEOPLE OF ALL AGES, REGARDLESS OF SOCIO-ECONOMIC LEVEL, RACE, COLOR, SEX, RELIGION, HANDICAP OR NATIONAL ORIGIN.

Collector's show & sale

Keyes Lions Club are sponsoring a Collector's Show and Sale March 3 and 4, at the junior high auditorium at Keyes, Okla.

Reservations may be obtained by writing: Keyes Lions Club, Box 45, Keyes, Okla. 73947 or phone 405-546-2941 or 405-546-4681.

VOTER REGISTRATION APPLICATION
(SOLICITUD PARA REGISTRO DE VOTANTE)

PLEASE COMPLETE ALL OF THE INFORMATION BELOW. PRINT IN INK OR TYPE.
(POR FAVOR COMPLETE LA INFORMACION SIGUIENTE. ESCRIBA EN LETRA DE MOLDE CON TINTA O ESCRIBA A MAQUINA)

OFFICIAL USE ONLY (SOLAMENTE PARA USO OFICIAL)
CERTIFICATE NUMBER APPLICATION NUMBER
PCT EDR

LAST NAME (APELLIDO) FIRST NAME (NOT HUSBAND'S) (NOMBRE - NO DEL ESPOSO) MIDDLE NAME (SEGUNDO NOMBRE) MAIDEN NAME (APELLIDO DE SOLTERA)

SEX (SEXO) DATE OF BIRTH (FECHA DE NACIMIENTO) PLACE OF BIRTH (LUGAR DE NACIMIENTO) IF YOU ARE A NATURALIZED CITIZEN, INDICATE THE COURT OF NATURALIZATION OR ITS LOCATION. (SI ES CIUDADANO NATURALIZADO INDIQUE LA CORTE DE NATURALIZACION O SU LOCALIDAD)

PERMANENT RESIDENCE ADDRESS: STREET ADDRESS AND APARTMENT NUMBER, IF NONE, DESCRIBE LOCATION OF RESIDENCE. (DIRECCION DE RESIDENCIA PERMANENTE. Calle y numero de departamento, si no tiene, debe dar una descripción de la localidad)

CITY, STATE, and ZIP: (CIUDAD, ESTADO Y ZONA POSTAL)

IF YOU ARE NOW REGISTERED IN ANOTHER TEXAS COUNTY, COMPLETE THE FOLLOWING: (SI ESTAS REGISTRADO EN OTRO CONDADO DE TEXAS COMPLETE LO SIGUIENTE)
COUNTY OF FORMER RESIDENCE: (Condado de residencia previa)

IF YOU WERE REGISTERED BUT DID NOT RECEIVE A NEW CERTIFICATE, COMPLETE THE FOLLOWING: (SI ESTABA REGISTRADO PERO NO RECIBIÓ SU CERTIFICADO NUEVO COMPLETE LO SIGUIENTE)
COUNTY OF PREVIOUS REGISTRATION: (Condado de registro previo)

*SOCIAL SECURITY NUMBER (NUMERO DE SEGURO SOCIAL) TELEPHONE NUMBER (OPTIONAL) (TELEFONO OPCIONAL) CURRENT PRECINCT NUMBER OR NAME, IF KNOWN: (OPTIONAL) (NUMERO DE PRECINCTO O EL NOMBRE DEL SITIO OPCIONAL)

THE APPLICANT IS A CITIZEN OF THE UNITED STATES AND A RESIDENT OF THIS COUNTY. I CERTIFY THAT THE INFORMATION PROVIDED IS CORRECT. I UNDERSTAND THAT THE GIVING OF FALSE INFORMATION TO PROCURE THE REGISTRATION OF A VOTER IS A FELONY.
(El solicitante es ciudadano estadounidense y residente de este condado. Afirma que la información proporcionada es verdadera. Comprende que es un delito proporcionar información falsa para registrar a votante)

FOR AGENT: (PARA AGENTE)
Application may be by agent who must be a qualified voter of this county, and must be the applicant's husband, wife, father, mother, son, or daughter.
(La solicitud puede efectuarse con el ayuda de un votante calificado en el condado que sea uno de los siguientes: esposo, esposa, padre, madre, hijo o hija.)

SIGNATURE OF APPLICANT (OR AGENT) (FIRMA DE SOLICITANTE O AGENTE)

FOR WITNESS: (PARA TESTIGO)
I AM THE (Soy yo) OF THE APPLICANT. (del solicitante)

For Assistance Call
Si Necesita Asistencia
Secretary of State's
Llame Gratis Al:
Office Toll Free:
1-800-252-9602

NO POSTAGE NECESSARY IF MAILED IN THE UNITED STATES

BUSINESS REPLY CARD
FIRST CLASS PERMIT NO. 4511 AUSTIN, TX

POSTAGE WILL BE PAID BY ADDRESSEE

REGISTRAR OF VOTERS
COUNTY COURTHOUSE
TX
Zip Code

Be sure and register to vote.

This message compliments
of
Baker & Taylor Drilling Co. Spearman

DRILLING
BAKER & TAYLOR
COMPANY

WINTER CLEARANCE SALE!

Begins Thursday, March 1

up to

75% off

Cochran's Fabrics

715 W. 7th
Spearman, Texas



Six player basketball tourney this weekend

Spearman will be hosting a six-player basketball tournament for women this Thursday, Friday, and Saturday in the Varsity gym (Mar. 1, 2 & 3). The teams who will be participating are Spearman, Stratford, Guymon, and Higgins. Those teams are made up of women who have continued to play basketball since graduating from high school and choose to continue playing the six-player game.

Spearman's team is made up of players from Spearman and Gruver: Sheila Patterson Watley, Christy Collier Brock, Kenda Burke, Judy Davis, Karen Thompson, Brenda Shieldknight, Cindy Young Avila, Judith Logsdon Schaeffer, Jessie Smith Ryan, Lisa Mayo Crane, Lori Boyd, Janice Steele, Rhonda Lantelne, and Carla Tucker Beasley. They are sponsored by Hansford County Compost and coached by Andy Watley. Admission—adults 1.00 Students .50. Please come out and watch the fun. Proceeds go to the Hansford County YMCA.

Thursday - 6:15 - Spearman vs Stratford

Thursday - 7:30 - Guymon vs. Higgins

Friday - 6:30 - Spearman vs. Higgins

Friday - 7:45 - Guymon vs. Stratford

Saturday - 1:00 - Higgins vs. Stratford

Saturday - 2:15 - Guymon vs. Spearman.

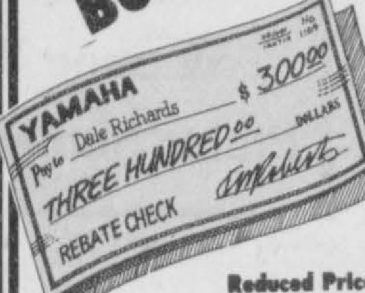
PILOTS OK PLAN

MIAMI -- Eastern Airlines' pilots ignored union leaders and approved a salary-for-stock swap plan that is the key to a \$367 million bailout plan for the financially troubled carrier.

Grin & Share It
It's not your position that determines your happiness or lack of it. It's your disposition.
-Journal, Washington, Ia.


Strange Isn't It?
One of the strangest things in this world is how many things they can charge to a sick man in a hospital.
-News, Dallas.

REBATE BONUS



YAMAHA
\$300.00
THREE HUNDRED.00
REBATE CHECK

Sale!



Vision 550J

Reduced Prices and a Fat Rebate!

Maxim 750J Rebate - 200.00 Actual Cost \$2559.00	Seca 750J Rebate - 200.00 Actual Cost \$2449.00	Maxim 650J Rebate - 300.00 Actual Cost \$1895.00
Maxim 550J Rebate - 300.00 Actual Cost \$1995.00	Vision 550J Rebate - 300.00 Actual Cost \$1995.00	XS400 SH Rebate - 200.00 Actual Cost \$1295.00

Or, for heavyweight fans, we have a different offer. Free goodies. Buy one of our larger Yamahas (Virago 750J, Virago 920J, Maxim 1100J, XS1100SH) and you get to load up on as much as \$300 worth of year. For yourself or the bike. No charge. Gratis. Obviously such a giveaway can't go on for long. So you'd better get with the program. And fast.

YAMAHA
Built for the fun of it.

EAGLE CYCLE SHOP

717 S. Main - Perryton - 806-435-3594

All-District Team

Sports Bulletin: Ross Donahue member of the Spearman Lynx varsity basketball team was named the most valuable player in district 1-AAA. Other members of the All-District team include Buddy Pool a Spearman Senior, Mark Pearson, Spearman Junior, and Billy Haden, honorable mention All-District.

Ross Donahue and Mark Pearson are juniors and will return for next year's varsity club. Buddy Pool and Billy Haden are seniors.

Other members of the All-District team are Donald Gaines of River Road; Chris Smith of Perryton; Jody Henderson of River Road; Dan Johnson, Dalhart; Ed Hedgecoke, Canadian; Lane Schollenbarger, Perryton; Benji Adams, Boys Ranch; and Kip Gentry of Dalhart.

This may be the first time in the district's history for a junior to be named the most valuable player.

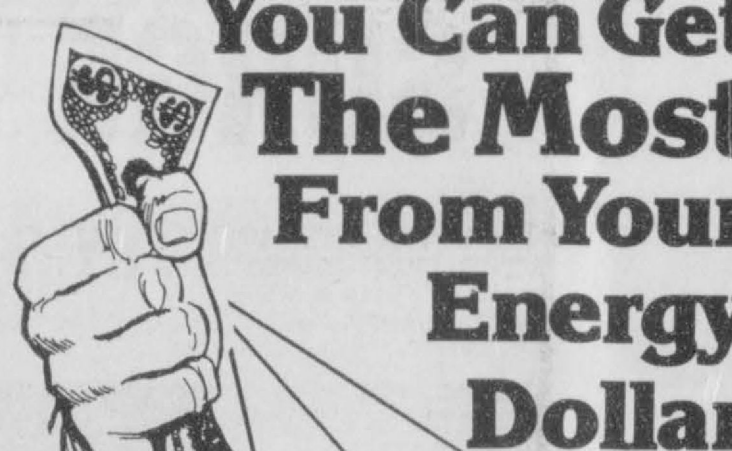
Texhoma Livestock Commission Co., Inc.
The Action Auction
Always An Abundance of Buying Power
Box 449 Phone 405-423-7511

Cattle sold 4326	
Packer Cows	#35.00-\$48.00
Packer Bulls	\$44.00-\$54.50
Stocker Cows	\$38.00-\$53.50
Pairs	-\$525.00
Steer Calves 300-400#	\$73.00-\$84.00
400-500#	\$70.00-\$81.00
Heifer Calves 300-400#	\$60.00-\$67.00
400-500#	\$58.00-\$65.00
Feeder Steers 525-600#	\$68.50-\$75.00
600-700#	\$66.50-\$71.50
700-800#	\$66.00-\$70.50
800-900#	\$64.00-\$69.00
Feeder Heifer 525-600#	\$58.00-\$64.50
600-750#	\$57.50-\$64.50

For next Thursday, March 1, we are expecting 4000 cattle of all classes. Starting time is 10:00 a.m.

Keith Lauer, Manager
Rob Lauer, yard Manager
Sorry Garratt, Asst. Yard Manager
Raymond Chcate, Cattle Dept.
Bobbie Adamsen, Office Manager
Jimmy Nichols, Field Rep.

You Can Get The Most From Your Energy Dollar



...With An Energy Checked Efficiency Home

Squeezing the most benefit from your electric service is a lot easier when you make your house an Energy Checked Efficiency Home. Energy Checked Efficiency Homes have been inspected to have many of the features that help you retain the indoor comfort that you're paying for. Adequate insulation of the recommended "R" value, energy efficient heating and cooling equipment, storm doors and windows are only some of the features of a home that is made to be comfortable year 'round and energy efficient at the same time. If you're building, buying or remodeling your home, find out all the details of making your house an Energy Checked Efficiency Home. Call our office today!



Texas-New Mexico Power Company

E-9-84

Fitness Fantasia class offered

Beginning Monday, March 5, the next quarter of the fitness fantasia exercise class will be offered at 3:45 p.m. on Mondays, Wednesdays and Fridays in the Little Junior High Gym. Note that it has been changed.

Fitness Fantasia (for women) is more than an aerobic dance exercise program. It is a complete choreographed fitness package combining the fun of dance and exercise to bring about cardiovascular fitness, increase flexibility, combine with diet for weight-loss, and give an abundance of energy. The simple, yet effective,

routines are fun and stimulating. Fitness Fantasia will help you achieve a lean shapely body, toned muscles, and that "Fun" feeling as you dance your way to better health. About 1/2 of the hour is for spot exercises specifically for trouble areas (hips, legs, waist, arms, etc.)

Fitness fantasia is offered through the Hansford County YMCA and costs just \$15 for "Y" members and \$25 for Non-"Y" members for 39 one-hour classes. The instructor is Wanda Archer, a nationally certified YMCA fitness in-

structor.

You may join up ahead of the time by registering at the "Y" or just show up at the Junior High Little Gym at 3:45 on Monday, March 5!!!

NEW MODEL

PITTSBURGH -- Hoping to appeal to more Americans by being more European, Volkswagen of America Inc. will try to get its U.S. car sales out of the slow lane in 1984 by abandoning the Rabbit for a new model.

Ford's earnings surpass 1977 record.

Princess Diana expecting second child.

FISH

Now is the time for Spring Stocking Hybrid Bluegill, Florida Hybrid Bass, Channel Catfish, Fathead Minnows, Grass Carp and Black Crappie.

The Hybrid Bluegill will REACH the weight of 2 1/2 to 3 lbs. We furnish your Hauling Containers. All fish are fully guaranteed.

Delivery will be Friday, March 2 at the times listed for the following towns and locations.

- Spearman-Perryton Equity Exchange 8-9 a.m. 806-659-2420.
- Canadian-Canadian Grain Coop 10-11 a.m. 806-323-6428.
- Briscoe-Briscoe Grain Co. 12-1 p.m. 806-375-2385.
- Shamrock-C-H Supply 2-3 p.m. 806-256-2124.
- Erick-Farmers Coop Assoc. 4-5 p.m. 405-426-3255.



Call your local Feed Store to place your order

or call collect: 405/777-2202

DUNN'S FISH FARM
P.O. Box 85
FITTSTOWN, OK 74842

8222

8493

8333

Let the new generation of hybrids do for your sorghum acres what Pioneer has done for Plains corn.

8222 Big yield potential under full irrigation. A widely adapted hybrid, 8222 has produced a superior record under many different environmental conditions. But it's especially adapted to full-season production in this area. Provides outstanding stress tolerance, plus excellent resistance to MDMV and head smut. It's an attractive, medium height hybrid with semi-open heads of bright red, hard-textured grain. Leaves that are above average in width help provide first-rate shading. And outstanding root and stalk strength keeps plants standing for maximum harvest.

8493 Especially adapted for dryland or very limited water conditions, this is a fast maturing hybrid with exceptional drought tolerance. It has the ability to take full advantage of normal early season rainfall; then it makes efficient use of available ground moisture to produce all that the season allows. Under tough growing conditions, the standability of many hybrids often suffers. But not 8493. Strong stalks and roots keep medium height plants standing straight for easy harvest of dark red, high test weight grain. It's the standard for resistance to greenbugs.

8333 Pioneer plant breeders developed this great new hybrid to make the most of what the growing season has to offer. This one has outstanding drought tolerance, too—but you should plant it on good dryland or under limited irrigation to take full advantage of its maturity and yield potential. In irrigation tests throughout the Plains, 8333 has produced exceptional yields. The field appearance of the bronze, hard-textured grain is most attractive. Harvesting is made easy, too, by excellent head exertion and very good standability. For late season plant health, 8333 is highly resistant to MDMV, head smut, and Biotype C greenbugs.

Choose the combination best suited to your land and your conditions — and get ready for a great sorghum crop.

See Your Nearest Pioneer Dealer.

Burl Buchanan
Spearman (659-3914)

PIONEER BRAND SEEDS

County has low unemployment

In a report issued by the Texas Employment Commission, Hansford County has one of the lowest unemployment in the county was listed at 2.2 percent.

The handful of counties which have less unemployment than here, King, Loving, Ochiltree, Shackelford, and Sherman counties. All of these counties except Loving county, with 82 persons in the work force has 100 percent employment.

The Panhandle area is strong employment-wise and the unemployment rates in selected counties include Hemphill, 5.4%, Gray, 6.2%; Hutchinson, 5.2%; Potter, 7%; Lipscomb, 3%; Randall, 3.7%.

Across the state, unemployment is running at 7.3%. The Texas Employment Commission reports that over 7 million persons are employed, while some 555,800 persons are unemployed.

The unemployment statistics are

subject to change not only by season but by month.

Some of the counties hard hit by unemployment include Hidalgo, 25%; Maverick, 36%; and Starr, 50.6%.

Among the heavily populated counties are these unemployment rates: Bexar county, 6.1%; Dallas county, 4.4%; Harris county, 8.1%; Tarrant county, 5.2%.

RECORD EARNINGS

DEARBORN, MICH. -- Ford Motor Co. said recently it earned a company record \$1.87 billion in 1983, bringing the year's profits of the recovered auto industry to a new summit which may reach \$6 billion.

Smiles

Smart salesmen have learned selling is easier when smiling. Public relations types know smiling disarms contacts.

Cute things use their smiles as come-ons. And some have learned one can sink a verbal dagger deeper while smiling. The cheerful smile is, thus, often abused.

That doesn't mean smiling isn't still an asset. It's pleasant and desirable--if genuine.

The trick these days is to know whether the smile is being used professionally or is genuine.

For the young, who see so much phony smiling (and laughter) on commercial television, the difference isn't easily discerned.

Copernicus

March 4 is generally accepted as the birthday anniversary of Nicholas Copernicus, the noted Polish astronomer and father of modern astronomy.

Born in 1473, his historic discovery was published in 1543--seventy years later.

The revolutionary principle in that discovery was that the sun, not the earth, is the center of our solar system.

Copernicus also concluded it was the center of the entire space system, which, of course, wasn't correct.

But he was the first to see that the earth revolved around the sun.

Copernicus' discovery showed the way for Johannes Kepler, two centuries later. He expanded on the theme and laid down the foundations on which modern astronomy is based.

Flu outbreak felt from coast to coast.

U.S. to sell Jordan anti-aircraft missiles.

Debbie Armstrong wins gold medal in Olympics.

Federal Trade Commission okays Getty takeover.

HUNGER CRISIS
BOSTON -- Hunger "has returned to America" because of unemployment and government policy, according to another study released recently that differs sharply with the recent conclusions of a White House task force.

CAUTION URGED
WASHINGTON -- A National Institutes of Health panel warned against routine use of ultrasound screening during pregnancy, saying the safety and effectiveness of the popular test is not proven.

SAVES BROTHERS
LAS VEGAS, NEV. -- William Holsclaw, a 12-year-old boy who ignored flames to save his two younger brothers from their burning bedroom suffered painful burns that cover his body.

We are closing shop here. Moving to 207 E. 6th st. Borger. Call for your purses, boots, & bean bag if you want them.

Manross Boot & Shoe Repair

Plains Shopping Center

THURSDAY

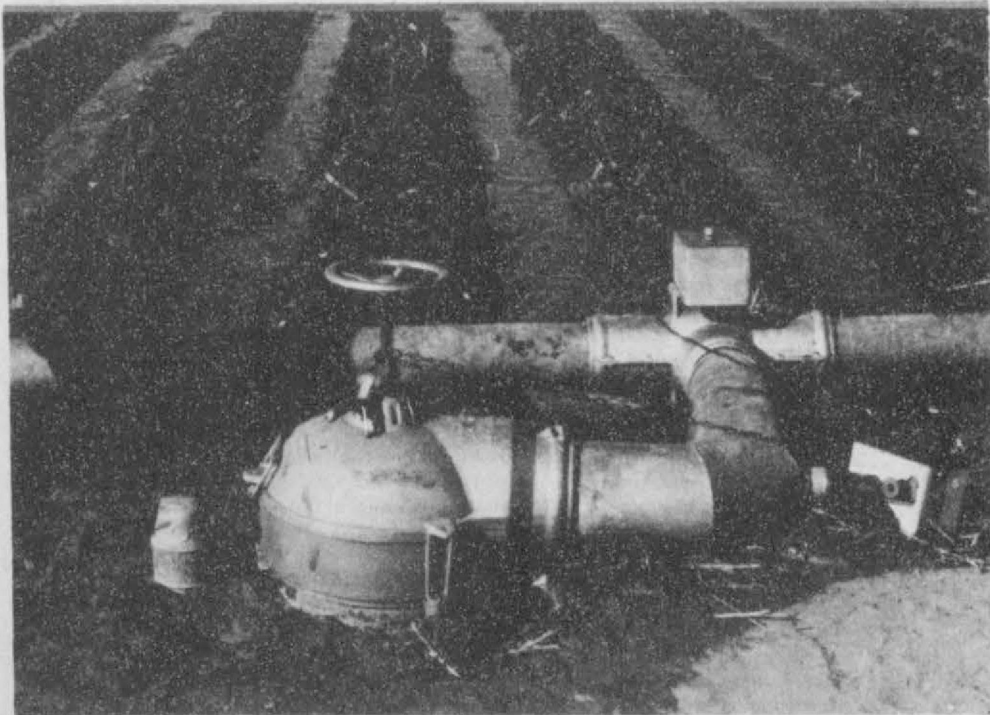
THURSDAY 3/1/84

CABLE	[2]	[3]	[4]	[5]	[7]	[8]	[9]	[10]	[11]	[12]
PM	ESPN	OETA	KAMR	TMC	KVII	CBN	WGN	KFDA	WTBS	CNN
	Sports Network	Oklahoma City	Amarillo	Movie Channel	Amarillo	Cbn Cable Netwr	Chicago	Amarillo	Atlanta	Cable News Ntwr
6:00	SportsCenter	Business Report Oklahoma Report	News M*A*S*H	Movie: 48 Hours	News Family Feud	Alias Smith and Jones	Barney Miller	News Three's Company	Hogan's Heroes Sanford and Son	Moneyline
6:30	NFL's Greatest									
7:00	Moments	Sneak Previews Victory at Sea	Gimme a Break Family Ties		All-Star Family Feud	Sombody Help Me	Lou Grant	Magnum P.I.	NCAA Basketball: Mississippi State at	Prime News
7:30	Top Rank Boxing from									
8:00	Atlantic City, NJ	Mystery! Cheers	Movie: "Without a Trace"	Lottery!	700 Club	NCAA Basketball: South Carolina at	Simon & Simon	Auburn		
8:30										
9:00		All Creatures Great and Small	Hill Street Blues	20/20		Blondie	DePaul	Knots Landing	TBS Evening News	Freeman Reports
9:30										
10:00	NCAA Basketball: Washington at UCLA	Dr. Who Austin City Limits	News Tonight Show	Movie: The Lincoln Conspiracy	News Barnaby Jones	Another Life Best of Groucho	News Trapper John, M.D.	All in the Family Catlins	Sports Tonight Crossfire	
10:30										
11:00		Business of Management Sign Off	Late Night with David		Eye on Hollywood	Burns & Allen Jack Benny Show	Love Boat	Movie: "To Find My Son"	Newsnight	
11:30										
12:00	NCAA Basketball: South Carolina at	Letterman	Movie: "48 Hours"		Woman to Woman	I Married Joan Love That Bob	Movie:			
12:30		Muppet Show								

FRIDAY 3/2/84

CABLE	[2]	[3]	[4]	[5]	[7]	[8]	[9]	[10]	[11]	[12]
PM	ESPN	OETA	KAMR	TMC	KVII	CBN	WGN	KFDA	WTBS	CNN
	Sports Network	Oklahoma City	Amarillo	Movie Channel	Amarillo	Cbn Cable Netwr	Chicago	Amarillo	Atlanta	Cable News Ntwr
6:00	SportsCenter	Business Report Oklahoma Report	News M*A*S*H	Prog Cont'd	News Family Feud	Alias Smith and Jones	Barney Miller	News Three's Company	Hogan's Heroes Sanford and Son	Moneyline
6:30	Col. Basketball Report									
7:00	USFL Football: New Jersey at	Washington Week/Review Wall Street Week	Legmen		Benson Webster	Timmy and Leslie Super Book	Chicago at Boston	Dukes of Hazzard	NBA Basketball: Los Angeles at Atlanta	Prime News
7:30										
8:00	Jacksonville	Oklahoma Wee in Review Lawmakers	Master	a Man Called Horse	Blue Thunder	700 Club		Dallas		
8:30										
9:00		Inside Story	New Show	Movie: "The Big Brawl"	Matt Houston		News	Emerald Point N.A.S.	TBS Evening News	Freeman Reports
9:30		Market to Market				Blondie				
10:00	SportsCenter ESPN's SportsLook USFL	Dr. Who Austin City Limits	News Tonight Show		News Barnaby Jones	Best of Groucho	Love Boat	Movie: "Patrick"	Catlins	Sports Tonight Crossfire
10:30										
11:00	Football: New Jersey at Jacksonville	Business of Management Sign Off	Friday Night Videos	Movie: "Spaceship"	Nightline	Burns & Allen Jack Benny Show	Movie: "None But the"		Night Tracks	Newsnight
11:30										
12:00						I Married Joan Love That Bob	Brav'			
12:30								Sign Off		

-- The P & R Surge System --
The Ultimate Surge Flow Unit



This compact light weight unit is combined with the most complete programmable controller yet devised. This rugged efficient unit diverts water flow with a very minimum of turbulence and negligible back pressure. The unit can be programmed for just one set of surge cycles on a set watering time, with the option to also program a second surge setting of a different watering time on an indefinite number of surge cycles. Any standard 12 volt car battery will give the P&R Surge Systems long life in the field. The controller's memory battery pack is recharged off the main power supply and the unit can store the program for over 1 year.

FEATURES

durable - all cast aluminum with stainless hardware
portable - 55 lbs., 24" wide
weatherproof - electronics sealed in control box
serviceable - valve body opens. Control box is detachable for storage and opens to actuator and rechargeable battery
user friendly - instructions for programming on face

Contact Panhandle Irrigation Equipment now to have one or more of these units in time for prewatering which incidentally is the most preferable time to have the Surge Flow unit. Orders received now will have the best chance of March delivery. Call today or come by.

SURGE VALVE

Improve your row water irrigation efficiency up to 50% with a SURGE CONTROL VALVE

BY **BOSS**



Aubrey Razor of Gruver and Paul Geeslein had a booth at the Equity Expo, Wednesday and Thursday showing the benefits of the new

surge irrigation system. This was one of some 60 displays at the Equity Expo.

Simple to operate dual control timer-easily set from 15 seconds to 10 Hrs. Portable 12 volt, 35 amp. battery mounted on valve. Compact unit, 35" between couplers so you can water 40" rows. Light weight aluminum construction. Flow assisted, dual internal valve.

Panhandle Irrigation Equipment

Box 1127, 410 Main

Gruver, Texas 79040 (806) 733-2415

Aubrey Razor 733-2238

Tom Razor 733-5286

Dorsey Schad 733-2109

SATURDAY

SUNDAY

SATURDAY 3/3/84

SUNDAY 3/4/84

CABLE	[2] ESPN	[3] OETA	[4] KAMR CH.4 Amarillo	[5] TMC Movie Channel	[7] KVII CH.7 Amarillo	[8] CBN Cbn Cable Netw	[9] WGN CH.9 Chicago	[10] KFDA CH.10 Amarillo	[11] WTBS CH.17 Atlanta	[12] CNN Cable News Ntwr
7:00	SportsCenter Instructional NCAA Division II Wrestling		Flintstone Funnies Shirt Tales	Movie: 'Going in Style'	Monchhichia/Little Rescala/Richie Rich	Super Book Mike Evans Presents	U.S. Farm Report World Tomorrow	Charlie Brown & Snoopy Saturday Supercade	Starcade Movie: 'Lafayette'	News/Sports/Weather Big Story
8:00	Championships from Baltimore, MD	Lap Quilting	Smurfs		New Scooby/Scrappy Doo Pac-Man/Rubik Cube Hour	James Robison Lesson	Rex Humbard Issues Unlimited	Escadrille Dungeons and Dragons		News Update Health Week Money Week
9:00	Play Your Best Golf	French Chef		Movie: 'Twilight Time'	Littles	Cisco Kid	Charlando Muppet Show	Tarzan: Lord of the Jungle Bugs Bunny/Road Runner	Movie: 'Barabas'	News Update Media Watch Style With E-Isa Klensch
10:00	USFL Football: New Jersey at	Real Thing	Mr. T		Puppy/Scooby Doo Show	Cimarron Pass	Wild Kingdom Kung Fu	Show		News Update Sports NCAA Preview Show
11:00	Jacksonville		Incredible Hulk Thundarr	Movie: 'Valuing Hours'	ABC Weekend Special American Bandstand	Westerners	Wild Bill Hickok	Biskitts Benji, Zax/Allen Prince		News/Sports/Weather CNN Special Report
12:00		Oklahoma Gardening Market to Market	NCAA Basketball: LSU at Kentucky			Movie: 'Man or Gun'		New Fat Albert Show NCAA Basketball	Movie: 'The Guns of'	News/Sports/Weather Newsmakers Saturday
1:00	NCAA Basketball: Notre Dame at Dayton	Country Music Jubilee		Movie: 'Hammett'			NCAA Basketball: Notre Dame at Dayton	Teams TBA	Navarone'	News Update Health Week Crossfire
2:00			NCAA Basketball: Nevada-Las Vegas at		Sportsbeat Professional Bowlers Tour	Movie: 'Across the Sierras'		Program JIP		News Update Washington Dialogue
3:00	NCAA Basketball: Minnesota at Michigan		Oklahoma	Movie: 'Twilight Time'		Wyatt Earp	NCAA Basketball: Minnesota at Michigan	CBS Sports Saturday		News Update Sports Big Story
4:00		Down Home Country Music	Honda Classic Golf		Wide World of Sports			Fishin' w/Olando Wilson Motorweek Illustrated		News/Sports/Weather Newsmakers Saturday
5:00	SportsCenter		News	Movie: 'Going in Style'		The Monroes	Welcome Back Kotter Little House on the	Observer CBS News	World Championship Wrestling	News/Sports/Weather Pinnacle
6:00	NCAA Basketball: Sun Belt Conference	Prog Cont'd	Star Trek	Prog Cont'd	News Hee Haw	Alias Smith and Jones	Prog Cont'd At The Movies	Newscope At The Movies	Prog Cont'd Atlanta Super Cross	News Update Sports Evans and Novak
7:00	Tournament from Birmingham, AL - Semifinals	Best of Live from the Grand Ole Opry	Diffrent Strokes Silver Spoons	Movie: 'Hammett'	T.J. Hooker	Movie: 'Young at Heart'	American Diary	Ringing Bros./Barnum & Bailey Circus Special	NBA Basketball	News/Sports/Weather
8:00	USFL Football: Pittsburgh at Michigan	Country Memories with Willie Nelson	We Got It Made Mama's Family		Love Boat		NCAA Basketball: Wisconsin at Michigan	Airwolf	Atlanta at Chicago	News Update Your Money CNN Investigator Report
9:00			Yellow Rose	Movie: 'The World According to Garp'	Fantasy Island		State	Mickey Spillane's Mike Hammer		News/Sports/Weather Unknown War
10:00		Dr. Who	News		News ABC News	Western Goals Endowment John Ankerberg	News	Christian Children's Fund	Night	Sports Tonight Pinnacle
11:00	SportsCenter	Monty Python Flying Circus Sign Off		Announced	Movie: 'Scavenger'	Ministry Special	Movie: 'Counterpoint'	Fame	Tracks	News/Sports/Weather Evans and Novak
12:00	Wisconsin at Michigan State	Dance Fever Sign Off	Hunt					Movie: To Be Announced		News/Sports/Weather Media Watch Election Watch

CABLE	[2] ESPN	[3] OETA	[4] KAMR CH.4 Amarillo	[5] TMC Movie Channel	[7] KVII CH.7 Amarillo	[8] CBN Cbn Cable Netw	[9] WGN CH.9 Chicago	[10] KFDA CH.10 Amarillo	[11] WTBS CH.17 Atlanta	[12] CNN Cable News Ntwr		
7:00	SportsCenter	Vic's Vacant Lot	Understanding Human Behav.	James Robison Amazing Grace Bible Class	Movie: 'Sherlock Holmes in Terror by'	Gospel Jubilee	Zola Levitt Fellowship of Excitement	Three Score Calendar Robert Schuller	Faith for Today Robert Schuller	Cartoon Carnival Starcade	News/Sports/Weather Crossfire	
8:00	ESPN's SportsWoman NCAA Basketball	New Literacy	Nature of Things	Day of Discovery Larry Jones Ministry	Night	To Be Announced	Kenneth Copeland	Mass for Shut-Ins Heritage of Faith	Herald of Truth First Baptist Church	Leave It to Beaver Andy Griffith	News/Sports/Weather Evans and Novak	
9:00	Notre Dame at Dayton			World Tomorrow Oral Roberts	Part II: The Return of Will Kane		Lloyd Ogilvie	Tarzan		Good News	News Update Cooking/Kerr Newsmaker Sunday	
10:00				Baptist Church			Jimmy Swaggart	Rawhide		World	News Update Your Money Sports Week	
11:00	SportsCenter Plus NFL's Greatest			Jimmy Swaggart		This Week with David Brinkley	Dr. James Kennedy Religion	Wild, Wild West	NBA Basketball: Los Angeles at Detroit		News/Sports/Weather Crossfire	
12:00	Moments	Washington Week/Review Wall Street Week		NCAA Basketball: Virginia at Maryland	Movie: 'The Outsiders'	News	Beyond the Horizon	Movie: 'Charlie Chan's Murder'			News/Sports/Weather Money Week	
1:00	NCAA Division II Wrestling Championships from	Best of Live from the Grand Ole Opry				American Sportsman USFL Football	Movie: 'Timberjack'	Cruise	Movie: 'The Burning'	NCAA Basketball	Week In Review	
2:00	Baltimore, MD			Honda Classic Golf	Movie: 'Sherlock Holmes in Terror by'	Teams to be Announced		Hills	Teams to be Announced		News Update Media Watch Big Story	
3:00				Willie Nelson				Wagon Train			News Update Health Week Pinnacle	
4:00	Sun Belt Conference Tournament from Birmingham	Woody Guthrie: Hard Travelin'		Lawrence Walk			Movie: 'Hands Across the Border'	Benji			News/Sports/Weather Newsmaker Sunday	
5:00	ham, AL - Championship SportsCenter NBA Tonight					News	Movie: 'Little Men'	Fantasy Island	To Be Announced CBS News		News/Sports/Weather Inside Business	
6:00	NBA Basketball: Philadelphia at San Diego	Austin City Limits		First Camera	Prog Cont'd	Ripley's Believe It or Not!	Prog Cont'd Flying House	Prog Cont'd Taking Advantage	60 Minutes	Best of World Championship Wrestling	News Update Sports Sunday	
7:00				Nature	Knight Rider	Movie: 'The Outsiders'	Hardcastle & McCormick	CBN Special of the Week	Democratic Senatorial Debate	Suzanne Pleshette Show Four Seasons	Movie: 'The Big Trees'	News/Sports/Weather
8:00				Masterpiece Theatre	Television Academy Hall of Fame	Movie: 'High Noon'	Movie: 'Streetcar Named Desire'	In Touch		Jeffersons		Week In Review
9:00	World Sportsman	Great Performances			Part II: The Return of Will Kane		Changed Lives	Rock Church Proclaims	News	Trapper John, M.D.	Sports Page	News/Sports/Weather
10:00	SportsCenter							Twilight Zone	News	Jerry Falwell	Sports Tonight Inside Business	
11:00	Top Rank Boxing from Atlantic City, NJ			Postcards		Movie: To Be Announced	Larry Jones Ministry John Osteen	Movie: 'Public'		Open Up	News/Sports/Weather Style With E-Isa Klensch	
12:00		Sign Off					Zola Levitt	Enemy	Waltons	Movie: 'The L-Shaped Room'	News/Sports/Weather Health Week Newsmaker Sunday	

***ANASTASIA' DIES**
CHARLOTTESVILLE.
 VA. -- Anna Manahan, who failed in her lifetime quest to prove she was Anastasia, youngest daughter of executed Russian Czar Nicholas II, died recently at age 82.

CREDIT FIGURES
 Consumer credit rose a record \$6.61 billion in December, the government reported recently, and economists said the increase showed that the surge in consumer spending was continuing.

Money Market Investor's Guide

Choose the Certificate of Deposit You Want	\$2,500	\$10,000	\$25,000	\$50,000	\$100,000	
					Rate	Yield**
32 DAYS	9.20%	9.30%	9.40%	9.55%	9.75%	10.24%
90 DAYS	9.40%	9.50%	9.60%	9.75%	9.95%	10.46%
180 DAYS	9.65%	9.75%	9.85%	10.00%	10.20%	10.74%
1 YEAR	9.85%	9.95%	10.05%	10.20%	10.40%	10.96%
18 MONTHS	9.95%	10.05%	10.15%	10.30%	10.50%	11.07%
7 DAY ACCT.	9.20%					

Rates Effective Thru March 5, 1984

*Available with \$500 Minimum Deposit
 **Annual Yield Based on Daily Compounding

All Deposits Insured to \$100,000.

Substantial Penalty for Early Withdrawal.



First National Bank
 Perryton, Texas
 806-435-3676
 Member FDIC

ATTENTION LIVESTOCK PRODUCERS:
CATTLEMAN'S LIVESTOCK COMMISSION CO.

Box 50, Dalhart, Tx. 79022
 Phone (806) 249-5505
 4 Miles West of Dalhart on Hwy. 54
 *Hog sale starts at 9:00 a.m.
 *Cattle sale starts Fridays at 12 noon.
HOG SALE WILL BE HELD ON 1ST AND 3RD WEDNESDAY OF EACH MONTH.

CATTLE MARKET
FRIDAY, FEBRUARY 24
 Sold 3238 cattle
 Butcher Cows \$3 to \$5 higher \$36 to \$48
 Butcher bulls \$46 to \$55
 Heiferettes \$45 to \$58
 Cutting bulls \$45 to \$61
 Feeder Steers \$1 to \$3 higher

500 to 600 lbs. \$68 to \$77
 600 to 700 lbs. \$68 to \$72
 700 to 800 lbs. \$67 to \$71
 800 to 900 lbs. \$65 to \$69
 Feeder Heifers 500 to 700 lbs. \$59 to \$65
 Steer calves 300 to 400 lbs. \$75 to \$85
 400 to 500 lbs. \$70 to \$80
 Heifer calves 300 to 400 lbs. \$59 to \$68
 400 to 500 lbs. \$57 to \$65

NOW CONTRACTING CATTLE FOR SPRING DELIVERY.
ALL COWS AND BULLS MUST COMPLY WITH STATE AND FEDERAL REGULATIONS FOR BLOOD TESTING. STATE OF TEXAS PAYS FOR THESE TESTS.

WE ARE THE DEALERS FOR THE NECKOVER TRAILERS.

NEW TEXAS WATTS NUMBER 1-800-692-4453.
NEW TOLL FREE NUMBER 1-800-858-4013.
LARRY WING, MANAGER, RES. 806-249-2402.
CRAIG LAWRENCE, Yd. Foreman 806-384-2153.
FIELD REPRESENTATIVES:
BOB PAYNE, DALHART, TX. 806-249-5894.
GREG WADE, CANYON, TX. 806-655-3318.

SPTB tells taxpayers how to get tax relief

AUSTIN—Ron Patterson, executive director of the State Property Tax Board (SPTB), today announced a statewide effort to inform Texas property owners of their rights, remedies, and responsibilities as taxpayers.

According to Patterson, SPTB will coordinate efforts with appraisal districts and all local news media to help make taxpayers aware of rendition and exemption filing deadlines and methods by which exemptions or other forms of tax relief may be obtained.

"The first priority for property owners is to file renditions and applications for tax relief May 1 this year," Patterson said.

Rendition is the method through which a property owner reports or lists the taxable property he owned or managed on January 1, 1984. It is also the means by which a taxpayer is allowed to record his own opinion of his property's value.

Patterson noted that taxpayers may file all exemption applications and property rendition forms with the central appraisal district office. State law also allows one-time applications for homestead exemptions, disabled veterans' exemptions and open-space land valuation.

However, he said, persons whose property is located in more than one county appraisal district have an additional responsibility. These property owners may be required to file for exemptions and productivity valuation in each appraisal district in which their property is located. Failure to do so could result in one or more taxing units taxing the property on its full market value.

An example would be where a city or school district is located in two counties and chooses to join only one appraisal district.

Property owners who last year received homestead exemptions, disabled veterans' exemptions and open-space land (1-d-1) valuation do not need to reapply in 1984. However, the chief appraiser may confirm a person's current qualifications by requesting a new application form be completed.

Applications must be filed in 1984, Patterson said, by property owners who have not previously received tax relief on their present homestead or land.

State law also requires that applications for agricultural (1-d) valuation be filed each year in all appraisal districts.

Agricultural (1-d) and open-space land (1-d-1) valuations are available to property owners using land for farming or ranching purposes. Such land may be taxed based on productivity rather than market value.

Certain property owners are required to render their property. "Any person who owns

or manages income-producing personal property on January 1 is required by state law to file a rendition statement with the appropriate appraisal district," Patterson said.

Special rendition procedures exist for property on which an exemption applicable on January 1 ends during the tax year. In such a case, the person who owns or acquires

the property when the exemption ends must render the property for taxation within 30 days.

And, the chief appraiser may require rendition of other taxable property upon notice to the property owner or manager. Transportation companies, banks and railroads must also file special rendition statements.

Patterson said rendition forms available from appraisal district offices. Transportation businesses may obtain property report forms from the SPTB.

Complete information on tax exemptions and rendition requirements is contained in "Taxpayers' Rights, Remedies, Responsibilities," a taxpayer pamphlet produced by the SPTB.

The pamphlet also reviews how to prepare and present an appeal to the appraisal review board. It is available at no charge from appraisal district offices or from the SPTB in Austin.

"The property tax is the primary source of local government revenue in Texas," Patterson noted. "It will generate about \$8 billion this year to help fund public schools, cities, counties and special districts."

"We urge all property owners to become familiar with the tax process, to file renditions and to apply for all exemptions or other tax relief to which they are entitled," Patterson concluded.

Children would probably be much better if they didn't have the example of adults to follow.

NOTES— COMMENTS

Too much hard work kills the desire to play.

The time to take care of your health is while you have it.

What you do not expect does not disappoint you.

Religion is a great help in time of trouble, but you must have the religion to receive the help.

There seems to be so many systems that about the only way to expedite anything is to leave 'em alone.

One reason why so many of us fail to get rich is that we run from hard work like it might be a plague.

Take Your Pulse



Randy Brillhart demonstrates the ACCESS/PULSE Card to Rita Colbert.

at the MiniBank Bonanza

The little bank that's always open is open March 1. Just for trying your new ACCESS/PULSE Card, you can win valuable prizes. It's the MiniBank Bonanza. Prizes include round-trip airfare for two to any major city in Texas or Louisiana. More prizes are his and hers watches, time-saving appliances and an elegant cut diamond.

Many First National Bank customers are receiving their ACCESS/PULSE Cards. To qualify for the MiniBank Bonanza, bank customers can come to the Mini Bank,

pick up their Personal Identification Numbers, and try their new cards at the PULSE MiniBank.

If you are not a First National customer, we'll be glad to demonstrate the PULSE MiniBank and give you a chance to win cash. Better yet, open a checking account and we can get you an ACCESS/PULSE Card soon.

Take advantage of another First Place Convenience. And win valuable prizes in the MiniBank Bonanza. Throughout the month of March at First National Bank.

**PROM
TIME**



All formal wear is not created equal

You'll be both comfortable and carefree thanks to Skeffington's fine tailoring and perfect fit.

Come in early and reserve the tux that's just right for you.

Available for rental at

The Bunkhouse
210 Main
Spearman, Texas

**Around the clock, Around the Southwest,
We're Where You Want Us.**



First National Bank
Perryton, Texas
806/435-3676
Member FDIC