

# Valuation zooms to \$401,000,000

## The Spearman Reporter

24 hr. prayer  
service  
659-2911

Volume 76, Number 41

The Spearman Reporter, Spearman, Texas 79081

Thursday, August 16, 1984

### Valuation zooms

It was good news for the commissioners at the regular Monday meeting in Spearman. Weldon Greene, County Auditor, informed the commissioners that the new tax rate will be 24.5 cents per hundred, as compared to 25 cents per hundred last year. Total valuation for the county will be four-hundred one million dollars for 1985. Dollar valuation for 1984 was three hundred seventy-eight million dollars.

In other action the commissioners read the minutes of the last meeting and paid the monthly bills. The commissioners also approved the fire contract with the city of Spearman. A pipeline easement was granted to Archie Nelson. An easement was also granted to General Telephone.



MAYOR RALPH BLODGETT

Mayor Ralph Blodgett underwent heart surgery in Amarillo, Monday of this week. The mayor is at St. Anthony's. He is still in intensive care as we go to press and we do not have a room number for him.

#### HANSFORD COUNTY APPRAISAL DISTRICT Board Meeting August 8, 1984

The Board of Directors of the Hansford County Appraisal District met in regular session Wednesday, August 8, 1984, at 9:00 a.m., in the conference room of the appraisal district offices located at 13 West Kenneth Avenue, Spearman, Texas. Members present were Lynn Hart, Thane McCloy, Gene Fletcher and Chief Appraiser Alice Peddy. Guest in attendance was Cleon Billington from Panhandle Steel Building, Amarillo, Texas.

Vice-Chairman Hart called the meeting to order and presented the Agenda for the meeting:

1. Call to order.
2. Approve Minutes.
- Regular Meeting July 10, 1984
- b. Special Meeting July 24, 1984
3. Open Bids on Forms Burster
4. Open Bids on Office Building
5. Public Hearing on 1985 Budget
6. Pay Bills
7. Chief Appraiser's Reports
- a. Financial
- b. Budgets

Minutes of the regular meeting held July 10, 1984, and the special meeting held July 24, 1984, were approved as read.

Bids from NCR and Uarco were opened and read aloud on the forms burster. Bids are on file in the District office. After reviewing the bids, motion was made by Thane McCloy and seconded by Gene Fletcher to award the bid for a model #1741C forms burster to

Uarco in the amount of \$6,136.00. Motion carried 3-0.

Roy Bulls joined the meeting at 9:30 a.m.

Bids from Jerry Haning and Panhandle Steel Building on the construction of a new office building were opened and read aloud. Bids are on file in the District office. Motion was made by Roy Bulls and seconded by Gene Fletcher to award the bid to Panhandle Steel Building in the amount of \$106,600.00 and to authorize Chief Appraiser Alice Peddy to choose color and work out details. Motion carried 4-0.

Motion was made by Roy Bulls and seconded by Thane McCloy to pay bills, exceeding Lee Architects, in the amount of \$106,600.00 and to authorize Chief Appraiser Alice Peddy to choose color in the amount of \$2,835.78 and to approve bills paid prior to regular meeting in the amount of \$412.66 as per attachment to the Minutes of this meeting.

Motion was made by Gene Fletcher and seconded by Roy Bulls to negotiate a final settlement with Lee Architects in the amount of \$1,562.98. Motion carried 4-0.

Motion was made by Thane McCloy and seconded by Roy Bulls to adopt the 1985 official appraisal budget in the amount of \$182,294.00 and the 1985 official collection budget in the amount of \$41,236.00 for a total budget of \$223,530.00. Motion carried 4-0.

Chief Appraiser Alice Peddy presented the attached budgets and financial reports.

There being no further business to bring before the Board, meeting was adjourned at 11:00 a.m.

### County Fair set

The Hansford County Fair will be held Friday, October 5, and Saturday, October 6 at the County Barn in Spearman and horse races will be held Sunday afternoon, October 7 at the horse training track at Old Hansford. Brice McRee, Chairman sponsored by Spearman Chamber of Commerce.

Food booths will \$25 each and the ones that already taken are:

Soft Drinks - Servitors, Candy Apples - Rebekas, Baked Goods - Golden Spread Center, Sno Cones - CYF, Ice Cream and Cookies - Xi Zeta, Hot Dogs - Extension Homemakers, Popcorn, Lemmons and Pickles - WDCC, Nachos - CWF, Sloppy Joes and Frito Pies - Hospital Auxiliary.

The JayCees will assist with chairs and tables.

Commercial Booths will be \$50 each.

AGCO is the first to request a booth.

Money for booths must be in by September 1, 1984. Make checks to Hansford County Fair and bring to the Chamber of Commerce office. If you are interested

Reserve seat season football tickets will go on sale on Monday, August 20th, at the school business office. Those persons holding tickets last year will have until September 1st to claim the same seats. All remaining tickets go on sale on September 1st. The first home game is on September 7th at 8:00 P.M. with the Lynx hosting the White Deer Bucks.

in a booth contact Brice or Mary Lou at the Chamber of Commerce office.

Exhibit superintendents will be clubs and/or individuals: Antiques--Lloyd Buzzard, Home Canned Goods--Karen Harruff, Ext., 4-H Bake Off--Karen Harruff, Ext., Vegetables--Rho Rho, Flowers--Gladia F C, Arts & Crafts--Neil Patterson and Mary Lou Wysong, Clothes--Karen Harruff and Ext.

First, second and third place ribbons will be given and judges will be from out of town.

Items may be brought to the show barn and checked in between 9:00 a.m. and 12:00 p.m. on Friday, October 5. The judging will be from 1:00 - 3:00 p.m. and the doors will open to the public at 4:00 p.m.

Activities in the Rodeo Arena on Saturday will be Lamb and Steer Jack pot at 11:00 a.m.

Play Day Activities - Wanda Eakin and Bobby Archer in charge.

A Petting Zoo will be available with N.J. Mackie and Gary York in charge of this event.

Congratulations to Spearman TG&Y who led all 93 TG&Y stores in their Oklahoma-Texas area in increased sales.

#### Markets

WHEAT	\$3.26
MILO	4.90
CORN	3.40

### Lions Club runners ready for Perryton

Defending champion issues challenge!



TIM GODFREY

Defending 10-K champion Tim Godfrey will be in top shape for the 10-K run in Perryton this Saturday morning at 8:30 a.m.

Godfrey issued a challenge to top Panhandle area runners, Cliff McCurdy of Canadian; George Chavez of Tucumcari, N.M.; and Greg McKinney of Perryton.

Al LaRochelle, hospital administrator of Hansford Hospital in Spearman will enter the 10-K, and this will be his first run. Al has been running for several months.

The '84 Wheatheart of the Nation Celebration, commemorating Perryton's 65th birthday began Sunday and runs through Saturday. From free watermelon and barbeque to special events, the Perryton celebration, sponsored by the Perryton Jaycees, has something to offer everyone.

Much of the '84 celebration continues the traditions and events which have made the birthday party such a success in years passed. And some new events have been added. It all adds up to fun and excitement and a great way to polish off the summer season.

Some of the events include a car show, which will be held Thursday at the Exposition Center. Antique, classic, and new cars will be on display from 5 to 9 p.m. Plaques will be awarded to the top finishers in the car show, courtesy of Perryton's auto dealers. The Jaycee Women will have a concession stand set up. Entries in the car show will be judged by the public. On Friday from 8 to midnight,



Lion Cecil Biggers and Lion Al LaRochelle will run in the Perryton 10K, Saturday for the Spearman Special Ed Class.

The Lions Club raised \$100 cash at the Tuesday noon meeting and challenged the Spearman Rotarians to either

enter some runners in the 10K event Saturday at Perryton or fork over a matching \$100 for the Spearman Special Ed Classroom.

Biggers is a local lawyer and LaRochelle is manager of the Hansford Hospital.

area teenagers will be meeting at the Exposition Center for the annual teen dance. Prices are \$3 per person or \$5 per couple. This is a supervised event, there will be no liquor or drinking on the grounds.

Celebration Saturday, offers activities from sun up to sun-down. It is the culmination of Jaycee work and community pride unsurpassed for smaller sites in the West Texas area.

The United Supermarket free breakfast kicks off the day, with an all-you-can-eat breakfast being served from 6 to 8 a.m. An estimated 4,000 persons attended last year's breakfast and Bob Crumpton and crew are hoping for that many or more this time around. Traditional breakfast staples are on the menu--so don't even as much as drink a cup of coffee before you head to United. Jaycee Randy Elkouri will be assisting.

Old-timers will be congregating at City Park at around 8 a.m., with the staff of assessor-collector's office issuing cards. Joey Smith of the Jaycees will be helping out.

Parade registration begins at about the same time under the direction of Bryan Pool, while the 10K run will begin at 8:30 a.m. Runners from throughout the Top of Texas area, as well as the Oklahoma Panhandle and southwest Kansas, are expected to be on hand. The race will start near City Park and the course will be around the loop road. First National Bank is the sponsor. There also will be a mile fun run. It's not too late to break out your jogging shoes and shorts and participate. Bill Goldsberry is the Jaycee in charge.

At 10 a.m., the Wheatheart of the Nation parade will begin. The parade route remains the same, from Eleventh and Main north to Brillhart. There will be various floats, exhibits, funny cars, wagon trains, and more. Pool is the parade chairman. Following the parade, the Jayees

will be serving their pit barbeque at the Expo Center. Some 1,700 pounds of beef will be cooked in a closed, pit barbeque, and the free lunch includes all the trimmings. Again, it is all-you-can-eat. Steve Busch returns to head up the barbeque for the second straight year.

After a short breather, the demolition derby will be held. The derby begins at 4 p.m. Prices are \$4, with kids under 12 being admitted free. Upwards to 30 drivers are expected to ride in this year's derby, with cash prizes and trophies being awarded to the top finishers. There also may be a powder puff derby for the women.

Gary Ellis heads up the demo derby, while Sabrina Griggs has the powder puff event.

Rounding out the celebration will be the adult dance, to be staged from 9 to 1 at the Exposition Center. Perryton's Country Thunder will provide the entertainment, with costs being \$6 for singles and \$10 for couples. James Arthur is the dance chairman.

Gathering the melon and wood are major projects in themselves. And, as usual, there are businesses and individuals in the community giving a helping hand. The Ellis and Luck boys left early Saturday morning to pick up the melon. They are using James Avant's truck and trailer. Duane Stamps donated the hay which will be used as a cover to protect from bruises. Brad Schultz will be providing the trailer Tuesday night for the melon to be served from.

His cattle trailer also will be used to pick up the wood in New Mexico. Jody Henson's trailer will be used to pull the trailer.

#### Hospital

Patients in Hansford Hospital are John Lackey, Myrtle Bernstein, Randy Klairn, Vida Townsend, Gid Nobles.

Dismissed were Sandy Kuriyama and son, Jean Close, Sara Vela and son, April Abston.

### Walls Heaving

The Spearman School Board though about calling on "Joshua" to stop the heaving of the Jr. High East wall. We're only kidding, as the board did vote to pursue the proposal of engineers to actually stop the heaving of the East wall.

In other business, the board approved the minutes of the last meeting and paid bills. The board agreed to pay the Spearman Schools portion of the cost of the new Appraisal District's building in one year.

The board accepted bids from Bordens, and Bairds Breads for lunch room items. The board set the public hearing on 84-85 budget for 8 p.m. Monday, August 27 at the high school building. Mrs. Bennie Jones was employed as a teachers aid for the school year 1984-85.

### Defensive Driving Course Set

A Defensive Driving Course will be held August 21 to August 22 from 6 to 10 p.m. each evening.

The cost of the course is \$20.00 and on completion of the course you get a 10% reduction on your automobile insurance.

John R. Collard, Jr. will be the instructor and the course is sponsored by the Hansford Association of Insurance Agents. This is the National Safety Council Defensive Driving Course.

## DPS officer discusses new law

At the noon meeting of the Spearman Rotary Club, Jerry Bergtoff, Texas Department of Public Safety, outlined the new law recently enacted by the Texas Legislature on child passenger safety seat systems.

Basically, the law states that a child must be secured during the operation of the vehicle in a child passenger safety seat system. A child riding in his mother's arms is not satisfactory. Also, children riding in the back of a pickup must be secured.

The law reads as follows:

**SECTION 1. Article XIII, Uniform Act Regulating Traffic on Highways, as amended (Article 6701d, Vernon's Texas Civil Statutes), is amended by adding Section 107B to read as follows:**

**"Section 107B. CHILD PASSENGER SAFETY SEAT SYSTEMS.** (a) In this section 'child passenger safety seat system' means an infant or child passenger restraint system that meets the federal standards for crash-tested restraint systems as set by the National Highway Traffic Safety Administration.

"(b) A person commits an offense if the person:

"(1) is a resident of this state;  
 "(2) transports a child younger than two years of age by operating a passenger car or light truck on a road, street, or highway of this state; and  
 "(3) does not keep the child secured during the operation of the vehicle in a child passenger safety seat system according to the instructions of the manufacturer of the safety seat system.

"(c) A person commits an offense if the person:

"(1) is a resident of this state;  
 "(2) transports a child who is

two years of age or older and under four years of age by operating a passenger car or light truck on a road, street, or highway of this state; and  
 "(3) does not keep the child secured during the operation of the vehicle in a child passenger safety seat system according to the instructions of the manufacturer of the safety seat system or by a safety belt.

"(d) An offense under this section is punishable by a fine of not less than \$25 nor more than \$50.

"(e) It is a defense to prosecution under Subsection (b) of this section that the person acquired a child passenger safety seat system within 10 days after the date of the offense. The court shall dismiss the charge if the person shows proof of acquisition by purchase, loan, or rental program.

"(f) Use or nonuse of a child passenger safety seat system is not admissible evidence in a civil trial.

"(g) This section does not apply to a person operating a vehicle transporting passengers for hire.

"(h) This section does not apply to a person transporting a

child in a vehicle in which all seating positions, equipped with child passenger safety seat systems or safety belts are occupied."

**SECTION 2. An offense under Section 107B, Uniform Act Regulating Traffic on Highways (Article 6701d, Vernon's Texas Civil Statutes), is not punishable unless it is committed on or after January 1, 1985. For purposes of this subsection, an offense is committed before that date if any element of the offense occurs before that date.**

Note that while the law takes effect October 31, 1984, troopers will not begin writing tickets until January 1, 1985.

The fine is, \$25 with a maximum of \$50.

Cypridina, bioluminescent crustaceans the size of tomato seeds, were carried by Japanese soldiers in World War II. By moistening his palm and rubbing the dried sea creature on it, a soldier could restore their luminescence and read battle maps by the light from this hand.

© 1984 Suburban Features

The recycling movement has gone hysterical — now they want to recycle old political campaign signs, says one political hopeful.

## US C of C

### endorses Gramm

The United States Chamber of Commerce has endorsed U.S. Rep Phil Gramm for the Senate, saying that his election will help bring about the improvements our country so desperately needs so that our nation may continue to realize the economic recovery that will benefit all Americans."

The endorsement represents the support of 14,772 member organizations in Texas and 200,000 nationwide, said Richard Leshner, president of the U.S. Chamber.

Chamber members, who were polled prior to the endorsement, believe the congressman's candidacy represents "an opportunity to increase support in Congress for curbing the growth of government and slowing the rate of federal spending."

"As a pro-free enterprise candidate, you have shown your understanding of and respect for American business and efficient government," Leshner told Gramm.

"I urge businessmen and women to support your candidacy. You are well deserving of the support, commitment and involvement of the business community," the Chamber president concluded.

## Spearman Reporter

PUBLICATION (USPS 5096-6000)  
 SPEARMAN, TEXAS 79081

213 Main Box 458 659-3434

Published Weekly at 213 Main Street  
 Spearman, Texas 79081

Owner-Publisher.....William M. Miller  
 Editor.....Faye Lynch  
 Second Class postage paid at Spearman, Texas  
 79081

Any erroneous reflection upon the character of any person or firm appearing in these columns will be gladly and promptly corrected upon being brought to the attention of the management.

POSTMASTER: Send address changes to  
 Spearman Reporter, Box 458, Spearman, Tx.  
 79081.

SUBSCRIPTION RATE: Hansford, adjoining  
 counties, combination with the Hansford  
 Plainsman \$25.00.  
 Other points, \$30.00.

MEMBER

TEXAS PRESS ASSOCIATION

## Hardesty senior citizens watermelon feed

Hardesty Senior Citizens welcome everyone to a free watermelon feed at the city park Aug. 16 at 7 p.m.

At that time a two year old registered mare will be auctioned off to the highest bidder. Proceeds from the mare will go to the

Senior Citizens building fund.

At this time there has been a new metal building erected and is completely paid for. Funds are now needed for plumbing and electrical wiring as well as paneling the walls.

Now Playing  
 At SoundTrax

Blame it on Rio  
 Christine  
 Tank  
 Mash  
 Terms of Endearment

## Attention: Joggers and Runners



### The Wheatheart 10,000 Meter Run

Enter the Wheatheart Country 10,000 Meter Run, set for Saturday, August 18, in Perryton. There'll be a 10,000 Meter Run (6 1/4 miles) or a One Mile Fun Run. The 10K starts at 8:30 a.m., and the Fun Run starts at 8:40. It happens at City Park.

Complete this registration and return it tomorrow. Pre-registration fee is \$6.00. Registration on the day of the race is \$8.00, if you wait til then. All registered entrants receive a special screened T-shirt.

Make it a fun experience, whether you're a serious runner or weekend jogger. Run with a friend. Bring your entire family. Enjoy the free breakfast, free barbeque at noon, the parade, and all-day Wheatheart events.

Certified by Road Runners Club of America, Amarillo YMCA Running Club.

Sponsored by



## REGISTRATION FORM

Complete the registration, Mail with check to P.O.Box 1085, Perryton, Tex. 79070

Name: \_\_\_\_\_ Age: \_\_\_\_\_ Sex: \_\_\_\_\_  
 Mailing Address: \_\_\_\_\_

Division (Circle One): 10-K Men: 0-14; 15-19; 20-24; 25-29; 30-34; 35-39;  
 40-44; 45-44; 45-49; 50 - and over.

10-K Women: 0-19; 20-29; 30-39; 40 and over.

Fun Run: 0-8; 9-10; 11-12; 13-14; 15-19; 20 and over.

T-Shirt Size: S — M — L — XL

I realize there are risks associated with competing in this event and I accept full responsibility for any and all injuries or accidents to myself. I also waive any and all claims for myself against the city of Perryton and all sponsors and officials of this event.

Runner's Signature \_\_\_\_\_  
 Parent or Guardian ( if under 18 ) \_\_\_\_\_

Date: \_\_\_\_\_

## Regional Chiropractic Center

**Dr. Darrell D. Duke**  
 complete Chiropractic  
 and nutritional services.

Open Mon.-Fri.  
 221 Sanders

9:00-4:30  
 659-5585

ATTENTION LIVESTOCK PRODUCERS

### CATTLEMAN'S LIVESTOCK COMMISSION CO.

Box 50, Dalhart, Tx. 79022  
 Phone [806] 249-5505

4 Miles West of Dalhart on Hwy. 54

\*Hog sale starts at 9:00 a.m. and is held on the 1st and 3rd Wednesday of each month.

Cattle sale starts Fridays at 11

Friday August 10  
 Cattle Sold 2736

Butcher cows	_____	\$36 to \$43.50
Butcher bulls	_____	\$43 to \$52
Heiferettes	_____	\$43 to \$52
Cutting bulls	_____	\$48 to \$60
Feeder Steers	500 to 600 lbs. _____	\$68 to \$70
	600 to 700 lbs. _____	\$62.50 to \$66
	700 to 800 lbs. _____	\$62 to \$64.80
	800 to 900 lbs. _____	\$59 to \$63
Feeder Heifers	500 to 700 lbs. _____	\$55 to \$59
Steer Calves	300 to 400 lbs. _____	\$70 to \$77
	400 to 500 lbs. _____	\$66 to \$74
Heifer Calves	300 to 400 lbs. _____	\$56.50 to \$61.50
	400 to 500 lbs. _____	\$55.50 to \$59

Effective July 1, 1984 all hogs from out of state must now have health papers and permits to enter the state of Texas.

ALL COWS AND BULLS MUST COMPLY WITH STATE AND FEDERAL REGULATIONS FOR BLOOD TESTING. STATE OF TEXAS PAYS FOR THESE TESTS.

WE ARE THE DEALERS FOR THE NECKOVER TRAILERS.

NEW TEXAS WATTS NUMBER 800-692-4453  
 NEW TOLL FREE NUMBER 1-800-858-4013  
 LARRY WING, MANAGER, RES. 806-249-2402  
 CRAIG LAWRENCE, YD. FOREMAN 806-384-2153

FIELD REPRESENTATIVES:  
 BOB PAYNE, DALHART, TX. 806-249-5894  
 GREG WADE, CANYON, TX. 806-655-3318



## Support sought for lake project

North Plains cities and counties - Dumas and Sunray included - are being lined up to support the Palo Duro Water Authority by manager Johnnie Lee of Spearman in an effort to build a municipal water reservoir, north of Spearman.

City councilmen at Sunray expressed an interest Thursday night in municipal water supply from the lake.

And Dumas city commissioners Monday night may meet with the former Hansford county judge to listen to Lee's outline of the water project.

His meeting with Dumas commissioners will follow up a session earlier in the day with the Ochiltree county commission at Perryton.

The Palo Duro project proposes construction of a \$50 million water reservoir and municipal water supply distribution system across the North Plains.

The lake would be formed behind a 2-mile long dam at the junction of the Palo Duro and Horse creeks, north of Spearman. It would impound 60,900 acre feet of water.

Also included is a central water treatment plant and a 90-mile pipeline to provide drinking water to the cities of Dumas, Sunray, Gruver, Stinnett, Spearman and Perryton.

"As soon as we get an idea of the support from cities and counties in the area, the water authority

will begin circulating membership petitions," says the PDWA executive.

Lee already has support of Moore county commissioners and the cities of Perryton and Stinnett.

Hansford county and the cities of Gruver and Spearman are members - the only members of the district.

Lee explains that once the prospective members are lined up, petitions will be circulated in the North Plains counties. These will request the PDWA board to call membership elections.

Elections are required in counties and cities seeking memberships because of taxes which will be levied by the Palo Duro district.

Currently the district rate is one cent per \$100 of value. Lee, however, anticipates a 2-cent rate for operation of the district.

The main source of income will be from water sales the district anticipates. Revenue from sales will be used to pay off a 20-year bond issue which will be necessary to finance the project.

"We've got a little time to start the petitions," the PDWA manager says. "Hopefully, they will be in circulation the first of September."

He continues noting that 50 signatures are required on each petition requesting a vote on the water district. When completed, each must be verified and

elections set.

Lee expects the PDWA board will call the elections in October at a regular board meeting. The earliest date would be Jan. 12, 1985.

"Texas election laws will not allow us to hold the election on Nov. 6 because this is a general election year," he points out. "Any other year, it could be held in November."

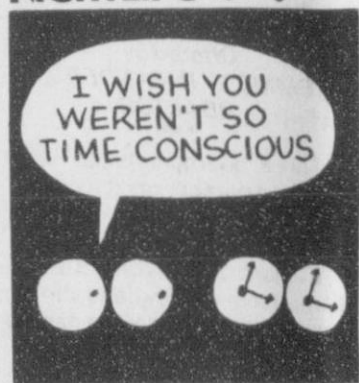
The project is being pushed since Lee believes private, rather than federal, financing "is the cheapest and quickest means" of developing the water supply project.

"The U.S. Army Corps of Engineers is very interested in the lake, but they are not ready to build it yet," Lee reports. "We can't afford to wait because inflation is costing \$2 million a year and we may not get help from state funds."

Some \$10 million to \$15 million may be allocated to the Palo Duro project from the Texas Water Development fund.

"This North Plains water project has one of the highest priorities of any in Texas," Lee declares. "We're getting ready to go."

NIGHTLIFE *by George Soren*



# GEBO'S

... the kind of store you remember.

501 N. Dumas 935-7403

## Wrangler

BRAND

Sale prices good through August 18

## Wrangler

Men's DENIM JEANS

<p>No-Fault® Slim Fit Boot Jean #935</p> <p>No-Fault® Regular Fit Boot Jean #945</p> <p>Cowboy Cut Boot Jean #13MVZ</p>	<p>Regular 15.99</p> <p>Regular 15.99</p> <p>Regular 16.99</p>
<p>14 1/2 oz. 100% Cotton Denims</p> <h1>\$14.88</h1>	

## Wrangler

BOYSWEAR

<p>No-Fault Boot Jean</p> <p>100% COTTON No. 400</p> <p>Boys 6-12 Reg. 6-14 Slim REG. \$12.99</p> <p>Students Waist 24-30 REG. \$15.99</p>	<p>Cowboy Cut</p> <p>100% COTTON No. 410</p> <p>Boys 8-16 Reg. 8-14 Slim REG. \$13.99</p> <p>Students Waist 25-32 REG. \$16.49</p>
<h1>\$10.88</h1>	<h1>\$10.88</h1>
<h1>\$12.88</h1>	<h1>\$12.88</h1>

BUY THREE GET ONE... FREE!

**1 BUY** three Wrangler jeans, including at least one pair of corduroy or 2 Wrangler jeans and 1 Wrangler shirt

**2 MAIL** this form, and proofs of purchase

**3 RECEIVE** Certificate for free Wrangler jeans.

**Wrangler Free Jean Mail-in Form**

**BUY 3, GET 1 FREE**

Name \_\_\_\_\_

Address \_\_\_\_\_

City \_\_\_\_\_ State \_\_\_\_\_

Zip \_\_\_\_\_ Phone \_\_\_\_\_ (Zip code must be included)

Enclose proof of purchase from three pairs of Wrangler Jeans (at least one of which must be corduroy) and your cash register receipt dated between 7/15/84 and 10/17/84. You must circle the Wrangler prices on the cash register receipt.

Within six weeks of receipt, Wrangler brand will send you a Wrangler gift certificate good through 12/31/84 for any pair of Wrangler jeans in stock at the store identified on this form.

**IMPORTANT:** You must pay any sales taxes. Look for this symbol on garment tags.

IMPORTANT: You must pay any sales taxes. Look for this symbol on garment tags.

form, four gift certificates per person, family, group or address. Offer void outside USA, and where prohibited by law. You assume the risk of lost or delayed mail.

OFFER EXPIRES OCTOBER 17, 1984

<h2>TAYLOR</h2> <p>501 West Kenneth</p> <p>Friendliest place in Spearman</p>	<p><b>Diamond Shamrock</b></p>	<h2>PETROLEUM</h2> <p>Spearman, Texas</p> <p>Fast, Friendly Courteous Service</p>
--	--------------------------------	---

WISE POTATO CHIPS

# 89¢

6 1/2 OZ BAG

<p>SENIOR BLUES BEEF &amp; BEAN OR GREEN CHILI</p> <h2>BURRITOS</h2> <p><b>3 FOR \$1.00</b></p>	<h2>CORN DOGS</h2> <p><b>5 FOR \$1.00</b></p>
---	---

SHURFRESH SLICED BACON

# \$1.39

1 LB. PKG.

COKE

# \$1.59

6 PACK

<p>FRESH GRADE A EXTRA LARGE</p> <h2>EGGS</h2> <h1>85¢</h1> <p>DOZ.</p>	<p>Delicious fresh sandwiches made to order.</p> <p>Ice provided at no charge for Churches, Civic Organizations, and Charity Benefits.</p>
---	--

## GEBO'S

## Home ceremony unites couple



Mrs. Lonnie Merle Burnam

The home of Mr. and Mrs. Val Winger provided the setting Saturday, August 11, for the wedding of their daughter, Marva May Winger to Lonnie Merle Burnam. Parents of the groom are Mr. and Mrs. Mike Burnam.

Conducting the double ring ceremony was Steve Sexson, minister of the Goodwell Church of Goodwell.

The couple pledged their vows before a brass archway entwined with greenery and baby breath.

Presiding at the guest book and greeting guests was Mrs. Davin Winger, sister-in-law of the bride. Also greeting the guests as they arrived were Davin Winger and Darin Winger, brother of the bride.

The pianist, Mrs. Lon Godley, of Hardesty presented the wedding music and sang "Sunrise

matching light lemon yellow derby hats adorned with satin streamers. They carried bouquets of white and yellow daisies arranged in crystal bells.

Serving the groom as best man was his brother, Mike Burnam Jr. His groomsman was Don Dilow.

Men of the wedding party were attired in grey tuxedos, grey cummerbunds, white pleated shirts and bowties. They each wore boutonnieres of white roses.

As the pianist played the traditional wedding march, the bride was escorted in on the arm of her father and given in marriage by her parents.

For their special day the radiant bride chose a formal gown designed by Alfred Angelo. The victorian-look gown featured a queen Ann neckline, beaded bodice and puff sleeves trimmed in satin ribbon bows. The skirt featured rows of paint D'Esprit Venice lace and wedgewood lace which formed a semi-cathedral train. The skirt was scattered with Venice lace and appliqued with seed pearls. She carried a cascading bouquet of white roses tied with white satin ribbons atop her father's white Bible. It was the same Bible her mother carried on her wedding day. The bouquet of white roses was a gift from the groom.

The derby-style wedding hat was adorned with beaded lace appliques. It was highlighted with a fingertip length veil of illusion edged with lace and attached with a pouf of illusion.

In carrying out the traditions she wore a new wedding gown, hat and veil. Her something borrowed was a pair of shoes belonging to her sister-in-law, Mrs. Davin Winger. The old and blue tradition were her mother's blue garter and pearl necklace. The necklace was a wedding gift from her father to her mother on their wedding day. She also wore a sapphire with her birthdate in her shoe, a gift from her grandmother Gruver.

For her daughter's wedding Mrs. Winger chose a grey crepe dress with matching accessories.

Mrs. Burnam, the groom's mother, chose a royal blue two piece suit with beige blouse and matching accessories. Each mother wore a white rose corsage.

Following the ceremony a reception was held in the game room of the home, which was decorated with floating balloons tied with white ribbon streamers.

Mrs. Jerry Williams served as reception hostess. Servers included Kathy Nelson, Gruver; Keri Brown, Booker; and Janna Smithson, Dalhart.

The serving table was covered with a draped white cloth trimmed in lace accented with bows of ribbon and lace at each corner. Silver punch bowl coffee service, and crystal appointments complimented the table.

The three tiered wedding cake topped with loving bells was designed and decorated by Mrs. Oliver Wallin. It was served along with mints, punch, assorted breads, tortilla wheels, cheese roll, an assorted fruit bowl, and poppy seed dressing. Smoked brisket was prepared by the bride's brother Darin Winger. Calf fries and chicken fried steak tidbits were also prepared by Darin Winger and Tadd Williams.

As a going away ensemble the bride traveled in a navy dress and navy derby hat with matching accessories. Her white rose corsage was lifted from her bridal bouquet.

The bride and groom are both graduates of Gruver High School, and following their honeymoon to Colorado the couple will make their home in Goodwell where they will resume their studies at Panhandle State University. The bride is majoring in elementary education and the groom is majoring in agriculture.

On the evening prior to the ceremony, the groom's parents, Mr. and Mrs. Mike Burnam hosted the rehearsal dinner honoring Lonnie and Marva in the fellowship hall of the Gruver Church of Christ.

On a lace covered table entering the fellowship hall was a Bible opened to Phil. 4:13. Behind the Bible was a picture of Lonnie and Marva and each side was accented with ivy vines.

The V-shaped dining table was laid with a white cloth centered with yellow roses and baby breath.

The members of the wedding party family members, and close

friends enjoyed the fellowship and food. The menu included barbeque, all the trimmings, and cake, strawberries and whipped cream for dessert.

Almost without exception the tributaries draining into the Amazon River are color-keyed. Streams from the north tend to flow black, darkened by the stain of rain-forest vegetation. Those from the south are filtered clear by the white sandy country and pick up the sky's deep blue. Streams from the west churn with the brown silt of the Andean highlands.

Friends enjoyed the fellowship and food. The menu included barbeque, all the trimmings, and cake, strawberries and whipped cream for dessert.

Friends enjoyed the fellowship and food. The menu included barbeque, all the trimmings, and cake, strawberries and whipped cream for dessert.

Friends enjoyed the fellowship and food. The menu included barbeque, all the trimmings, and cake, strawberries and whipped cream for dessert.

Friends enjoyed the fellowship and food. The menu included barbeque, all the trimmings, and cake, strawberries and whipped cream for dessert.

Friends enjoyed the fellowship and food. The menu included barbeque, all the trimmings, and cake, strawberries and whipped cream for dessert.

Friends enjoyed the fellowship and food. The menu included barbeque, all the trimmings, and cake, strawberries and whipped cream for dessert.

Friends enjoyed the fellowship and food. The menu included barbeque, all the trimmings, and cake, strawberries and whipped cream for dessert.

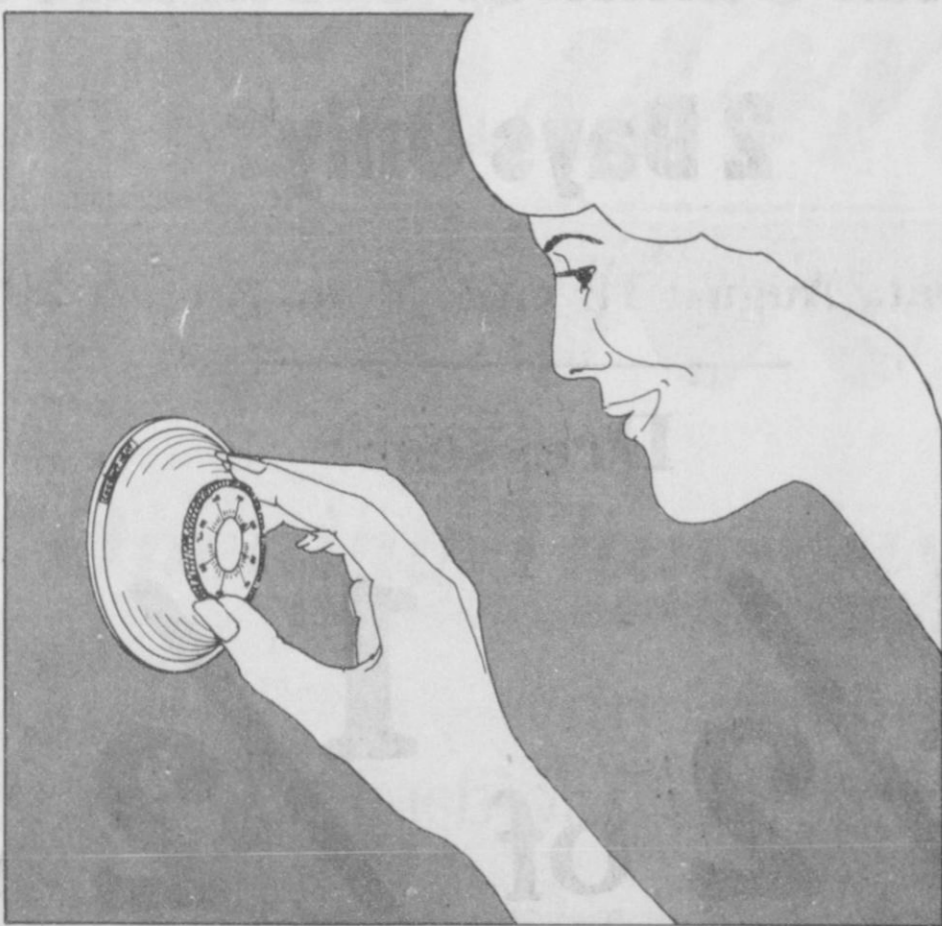
Friends enjoyed the fellowship and food. The menu included barbeque, all the trimmings, and cake, strawberries and whipped cream for dessert.

## Snippets

Tierra del Fuego, meaning "Land of Fire," owes its name to Ferdinand Magellan. When the navigator discovered the archipelago at South America's southern tip in 1520, he named it after Indian signal fires that dotted its coasts.

2 bits  
4 bits  
6 bits a dollar  
All for bargains,  
stand up and holler.  
Now through Aug. 25  
2 T-shirts for the price of one  
plus a dollar.  
**Sacks Third Ave.**  
203 Main Spearman, Texas 659-3350

**HAIR LOFT "2100"**  
Back To School Sale  
Shampoo & Cut \$6.00  
Blowdry & Curling Iron  
Slightly Higher  
Aug. 20 to 25  
Call now 659-5161  
LeeAnn Sheets Cheryl Freeman  
Betty West  
Monday thru Friday 8:30 to 6:00  
Saturday 9:00 till noon  
Hair Loft 2100  
For Men & Women



## Practice Energy Management With Your Thermostat Setting

Having your thermostat set on the proper setting is a good way to practice Energy Management. A Summertime Comfort Setting of 78 degrees will help keep your home cool and comfortable while you avoid energy waste. A thermostat setting that is too low causes your air conditioning equipment to work harder than it should to keep your home comfortable. Getting the most benefit from your electric service is what Energy Management is all about. Get all the details on how Energy Management can work for you by calling our office today!



Neighborly Professionals  
Offering You The Best Choice

EL 29-84

**STRONGPOINT** HIGH QUALITY 22% PROTEIN NEW! STRONGPOINT DOG FOOD 40 LB. BAG \$8.99 FREE SERVING BOWL \$4.00 VALUE FREE IN BAG

**TALLSUP** FILLED WITH YOUR FAVORITE SOFT DRINK NEW! 32 OZ. FOUNTAIN DRINK \$59¢ BIG ENOUGH TO QUENCH ANY THIRST

**CHICKEN NUGGETS** COOKED FOOD SPECIAL HOT & READY TO GO! TENDER BITS OF BATTERED CHICKEN 8 PIECES PER SERVING 99¢

**NUTTY BUDDIES** BORDEN'S ICE CREAM SANDWICHES OR \$1.09 6 PACK

**PEPSI** DIET PEPSI, PEPSI FREE, PEPSI LIGHT ALL FLAVORS \$1.69 6 PK CAN

**FAST HET SANDWICH** HAM & CHEESE 99¢ REG. \$1.69 EACH WHITE OR RYE BREAD

**FRUIT DRINKS** BORDEN'S ASSORTED FLAVORS 99¢ GAL.

**ALLSUP'S** CONVENIENCE STORES THERE'S ONE NEAR YOU

PRICES EFFECTIVE AUG. 16-18, 1984 WHILE SUPPLIES LAST OPEN 24 HOURS EVERYDAY HOT COOKED FOODS- GROCERIES ICE- MONEY ORDERS- PRODUCE

Ms. Gloria Goodson  
Cordially invites you  
to the wedding of  
her daughter  
Waynetta Sharen  
to  
Mike Gift  
son of Mr. and Mrs. Charles Gift  
of Perryton, Texas  
at the home of the bride's  
Grandparents  
Mr. and Mrs. Ira Tindell  
814 S. Dressen  
Spearman, Texas  
at 7:00 p.m.  
Saturday, August 18  
41-1tp

**In the News**



**FOUNDER OF BASKETBALL:** The modern game of basketball was invented in 1891 by Dr. James Naismith, an instructor at the Young Men's Christian Assoc. College in Springfield, Mass.

**FABRIC FINDS** — Clothes shopping? Look for loosely woven fabric for season spanning fashion. It permits air circulation and is wearable into winter. Hopsacking is one fabric turning up in suits and separates. Look for loose, easy fitting styles.

**Schnell family reunion held July 28 in Perryton**

The Schnell family reunion was held in the Willie Room of North Plains Electric in Perryton on July 28.

The noon meal was catered by Louis Andrews of the Dutch Inn Restaurant. The day was spent eating, visiting and taking pictures.

Those attending from Perryton were Mrs. Elsie Schnell; Arlene and Burel Bohannon; Garen and Terry Pattison, Kim, Teresa and Kevin; Betty and Kenneth Parker; Bobby and Janice Dear, Seth and Jason; and Daryla and Perry Allred and Emily.

Others attending were Kayleen and Howard Carter and Brent, Wilton, Conn.; Jerry and Cheryl Carter, Cristy, Katie and Julie, Hanover Park, Ill.; Steve and Martie Carter, Palatine, Ill.; Louis and Barbara Schell, James and Karen Schnell, Clint and Jennifer, Mike

and Patty Schnell, all of Spearman; Gene, Melvie and Jean Ann Schnell, Lewisville; Bob Schnell, Borger; Larry and Linda Hawkins, Misty and Amy, Edmond, Okla.; Freddie Bohannon, Abilene; Rusty and Jan Dear and Crystal Beth,

Chickasha, Okla.; Jim and DeAnn Dear, Cory and Cuyler, Amarillo.

Also attending were A.L. (Sonny) and Dannie Jean Schnell of Des Moines, Iowa, on their way moving to Houston; and Lee and Karen Schnell of Pensacola, Fla., on their way moving to Austin.

Mr. and Mrs. Pat Barnett stopped by that morning but were unable to stay for the day. Mrs. Barnett is a niece of Mrs. Schnell.

Our neighbor is so lazy that it takes outside help to so much as jog his imagination.

**THURSDAY 8/16/84**

CABLE PM	[2] ESPN	[3] OETA	[4] KAMR CH.4	[5] TMC	[7] KVII CH.7	[8] CBN	[9] WGN CH.9	[10] KFDA CH.10	[11] WTBS CH.17	[12] CNN
6:00	SportsCenter	Nightly Business Report	News	Prog Cont'd	News	Here Come the Brides	Alice	News	Sanford and Son	Moneyline
6:30	ESPN's Speedweek	Oklahoma Report	M*A*S*H		Family Feud		Carol Burnett	Three's Company	Major League Baseball	Crossfire
7:00	NFL's Greatest Moments	Universe	Gimme a Break	Movie: 'The Little Prince'	20/20	Circus	Movie: 'Shoot Out'	Magnum P.I.	Pittsburgh at Atlanta	Prime News
7:30	Top Rank Boxing from Merrillville, IN	Victory at Sea	Family Ties							
8:00		Mystery!	Cheers		NFL Pre-Season Football: Pittsburgh	700 Club		Simon & Simon		Freeman Reports
8:30			Night Court	Movie: 'Mr. Mom' [Closed]						
9:00		All Creatures Great and Small	Hill Street Blues	Captioned	at Dallas		News	Knots Landing	Movie: 'King Creole'	Evening News
9:30						Phantom Children				
10:00	SportsCenter Mazda SportsLook Top Rank	Dr. Who	News	Movie: 'The Deep'		Another Life	Twilight Zone	News		Moneyline
10:30		Austin City Limits	Tonight Show			Best of Groucho	Cannon	Hart to Hart		Sports Tonight
11:00	Boxing from Merrillville, IN	Sign Off			News	Burns & Allen				Newsnight
11:30			Late Night with David		Barney Miller	Jack Benny Show	Movie: 'A Raisin In'	Movie: 'The Omega Man'		
12:00			Letterman	Movie: 'Kiss My Grits'		I Married Joan	the Sun		Movie: 'Lady in a Cage'	Crossfire
12:30			Muppet Show		Nightline	Love That Bob				News Wrap-Up

**THURSDAY**

**FRIDAY 8/17/84**

CABLE PM	[2] ESPN	[3] OETA	[4] KAMR CH.4	[5] TMC	[7] KVII CH.7	[8] CBN	[9] WGN CH.9	[10] KFDA CH.10	[11] WTBS CH.17	[12] CNN
6:00	SportsCenter	Nightly Business Report	News	Prog Cont'd	News	Here Come the Brides	Alice	News	Sanford and Son	Moneyline
6:30	NFL's Greatest Moments	Oklahoma Report	M*A*S*H		Family Feud		Major League Baseball	Three's Company	All In the Family	Crossfire
7:00	3rd Annual Legendary Pocket Billiards Stars	Washington Week/Review	NFL Pre-Season Football: New England	Movie: 'Melvin and Howard' [Closed]	Benson	Swiss Family Robinson Super Book	Chicago at Cincinnati	Comedy Zone (PREMIERE)	All In the Family Major League Baseball	Prime News
7:30		Wall Street Week			Webster					
8:00	Auto Racing '84: NASCAR Champion Spark Plug	Evening at Pops	at Washington	Captioned	Blue Thunder	700 Club		Dallas	Atlanta at St. Louis	Freeman Reports
8:30										
9:00	400 from Brooklyn, MI	Oklahoma Wee in Review		Movie: 'I, the Jury'	Matt Houston			Falcon Crest		Evening News
9:30		Market to Market				Just One Child	News			
10:00	SportsCenter PKA Full Contact Karate	Dr. Who	News		News	Another Life		News		Moneyline
10:30		Country Express	Tonight Show		Barney Miller	Best of Groucho	Cannon	Movie: 'Butch and'	Merchants of War	Sports Tonight
11:00		Sign Off		Movie: 'Starstruck'	PGA Championship Nightline	Burns & Allen		Sundance: The Early Days		Newsnight
11:30	Mazda		Friday Night Videos			Jack Benny Show	Movie: 'The Unforgiven'		Night Tracks	
12:00	SportsLook NFL's Greatest Moments ESPN's				Woman to Woman	I Married Joan				Crossfire
12:30				Movie: 'Angels'	Charlie's Angels	Love That Bob		Sign Off		News Wrap-Up

**FRIDAY**

**VAN'S PRIME SEAFOOD FRESH**

Shrimp Oysters, Scallops, 17 kinds of fish and more!  
The finest selection ever of fresh seafood! By air from Texas, Louisiana, Oregon, Washington, Massachusetts and elsewhere!

Superior Quality      **Friday, Aug. 17 2:00-7:00 p.m. Super Service**      Limited Quantities

**The Land Bank**

Need a better balance between short and long-term debts?

See us about the long-term.

**Federal Land Bank Association**

High Plains Federal Land Bank Association  
406 Amberst, Perryton, Texas, 806-435-4319; serving Ochiltree, Lipscomb and Hansford Counties.

**Final Summer Clearance**

**2 Days Only**

Sat., August 18 and Mon., August 20

**Dresses**

**1/2 of 1/2**

**Sportswear 70% off**

**J.G.'s**

306 Hancock  
Spearman, Texas 79081

**LAND AUCTION**

**AUGUST 20, 1984 ... 10:00 A.M.**

320 ACRES OCHILTREE COUNTY LAND WITH FULL MINERALS

**DESCRIPTION:** SW 320 Acres, Warren J. Mitchell Survey, Ochiltree County Tex. Located 12 miles Northwest of Perryton. Native grass on 82 acres, with livestock water well; balance in cultivation.

**MINERALS:** 320 Acres of minerals will be offered separately, then together with the surface.

**POSSESSION:** Possession of the full acreage will be given upon closing.

**TERMS:** 20% of purchase price shall be paid by successful bidder at time of sale. Balance shall be paid at time of closing.

**CONTRACT OF SALE:** The sale of this property is subject to the buyers acceptance of the terms of the contract of sale. The contract may be inspected at, or a copy requested from the offices of Lemon, Close, Shearer, Ehrlich and Brown, Attorneys, Interstate Savings & Loan Building, 301 S. Main, Perryton, Texas.

Sellers guarantee a clear and merchantable title and will furnish an abstract of title certified to the date of sale. If there are requirements made on the title, sellers request a reasonable length of time to meet these requirements.

**SALE SITE:** The sale of this property shall begin promptly at 10:00 A.M. Monday, August 20, 1984 in the offices of Lemon, Close, Shearer, Ehrlich and Brown, Interstate Savings & Loan Bldg., 301 S. Main, Perryton, Texas

**FOR FURTHER INFORMATION, CONTACT DALE HOOVER, OWNER'S REPRESENTATIVE, RT. 3, BOX 93, PERRYTON, TEXAS 79070. 806/435-3972.**

### Year of the big sneeze

The more than 18 million hay fever sufferers in the United States will remember 1984 as the Year of the Big Sneeze. According to the American Lung Association of Texas--the Christmas Seal People--1984 will go down as one of the worst years in history for victims of hay fever. The heavy spring rains accelerated the pollen blooms which then were borne on the winds over the length and breadth of this continent.

**A Serious Disease**  
For the 1 in 20 Americans who suffer from this serious ailment, hay fever is no joke. It is an allergic disorder that can cause headache, irritability, insomnia and gastric disturbances. The chief symptoms are sneezing spasms; stuffed-up runny nose; red, swollen and itching eyes; and itchy throat and mouth. Also, hearing may be impaired and infections of ears or sinuses may result. An even more serious complication is the asthma that 30 percent of chronic hay fever sufferers develop.

Hay fever (sometimes called rose fever in the spring) has nothing to do with fever. It is caused by sensitivity to airborne pollens of trees, grasses and weeds that invade the air seasonally and vary according to regional climates, so hay fever can occur during spring, summer or fall.

At least 75 percent of people with hay fever are sensitive to ragweed, although an individual may react to more than one pollen so that his own "season" can last from early spring to the first frost. It must have been a truly satanic botanist who dreamed up Amrosia as the Latin name for ragweed, the most common offender among all the pollens. Among the many other villainous flora is the Russian thistle which, as one might imagine from its name, is particularly persistent and pes-

ky. Despite its biblical name, the burning bush is another offender--it primarily affects the Great Plains states.

**Important Advice**  
No matter how intensely you suffer, not matter how much you think you're going to die, hay fever won't kill you. But since it can result in troublesome and even severe complications, consult your doctor and follow his advice.

Though there is no cure yet for hay fever, there are up-to-date methods to ease the symptoms. If your doctor thinks desensitizing injections will help, you should start them before the hay fever season and stick to them without skipping. And stay alert for possible complications, including a real nose or throat infection, or the development of asthma.

If you are using an old prescription, consult your physician because improved remedies have been developed over the last few years. Relief for hay fever may be given as drops for eyes or nose, as sprays, or as pills or capsules.

#### How to Find Relief

For both city and country folk, air-conditioning can give some comfort. But if you really want to escape hay fever, get on a boat, sail 100 miles offshore--and stay there! While you're at it, pray for an early frost so you can return to land. If you can't go to sea, then go to the beach whenever possible. There is less pollen near a large body of water and salt air breezes are not only invigorating but good for the sinuses.

For more information on hay fever, contact the American Lung Association of Texas, 7701 N. Lamar, Suite 104, Austin, Texas 78752 or call toll-free 1-800-252-LUNG.

## HAPPY BIRTHDAY & ANNIVERSARY

Happy Birthday August 15  
Vanessa Ortega Dub Womble  
Sara Butt  
Happy Anniversary Mr. and Mrs. Clois L. Baker

Happy Birthday August 16  
Lilly Love Ron Womble  
Bob Collier Chuck Eaton

Happy Birthday August 17

Happy Anniversary August 17  
Frank and Kitty Edwards

Happy Birthday August 18  
Bob Cook Jeff Gressett  
Frank Lewis Kenneth Burke

Happy Birthday August 19  
John Schaffer Perry Dixon  
Jeff Gilbreath  
Happy Anniversary Teddie and Lynn Whitefield  
Frank and Sherry Shields

Happy Anniversary August 20  
Mr. and Mrs. J. T. McWhirter

**EARLY FARE** — Keep frozen pancakes and waffles on hand for good breakfasts on the run. Toast two of either variety; top one with a drained canned pineapple slice. Add a slice of grilled ham or Canadian bacon and a thin slice of American cheese. Grill a minute; top with second pancake or waffle and eat as a sandwich.

SATURDAY 8/18/84

CABLE	[2]	[3]	[4]	[5]	[7]	[8]	[9]	[10]	[11]	[12]
PM	ESPN	OETA	KAMR CH.4	TMC	KVII CH.7	CBN	WGN CH.9	KFDA CH.10	WTBS CH.17	CNN
	Sports Network	Oklahoma City	Amarillo	Movie Channel	Amarillo	Cbn Cable Netwr	Chicago	Amarillo	Atlanta	Cable News Ntwr
6:00	SportsCenter	Tulsa Week-Review(Ch 11)	Star Trek	Prog Cont'd	Hee Haw	Laramie	Major League Baseball: Chicago at Cincinnati	NewsScope	Prog Cont'd	News Update
6:30	"	"	"	"	"	"	"	At The Movies	Down to Earth	Sports Evans and Novak
7:00	Men's Canadian Open Tennis Championships	Austin City Limits	Diffrent Strokes Silver Spoons	Movie: 'They Call Me Bruce'	T.J. Hooker	Movie: 'I Dream of Jeannie'	"	Airwolf	Movie: 'The Last Valley'	News/Sports/Weather
7:30	"	"	"	"	"	"	"	"	"	"
8:00	Semifinals from Toronto	Movie: 'Lifeboat'	Bosom Buddies	"	"	"	"	NFL Pre-Season Football: San Francisco	"	News Update Your Money This Week in Japan
8:30	"	"	Mama's Family	Movie: 'Heart Like A Wheel'	Love Boat	"	"	"	"	"
9:00	"	"	Boone	[Closed Captioned]	"	Special	News	at San Diego	"	News/Sports/Weather
9:30	"	"	"	"	"	"	"	"	Night Tracks	"
10:00	SportsCenter	Dr. Who	News	"	News ABC News	Conversation w/Fred Lewis John Ankerberg	Twilight Zone	"	Chartbusters	Pinnacle
10:30	"	Dr. Who	Saturday Night Live	Movie: 'Class'	Movie:	"	Lifestyles of the Rich and Famous	"	Night	Sports Tonight
11:00	3rd Annual Legendary Pocket Billiards Stars	Monty Python Flying Circus Sign Off	"	"	'Limbo'	Ministry Special	Famous	News	Tracks	News/Sports/Weather Evans and Novak
11:30	"	"	"	"	"	"	Twilight Zone	Fame	"	"
12:00	Drag Racing: IHRA Summer Nationals	"	Dance Fever	Movie: 'Harold and Maude'	Movie:	Survival: An Expose	"	"	"	News Update Sports Update CNN Election Watch
12:30	"	"	Sign Off	"	"	"	Solid Gold	Movie: To Be Announced	"	"

SATURDAY CONT.

# Rumors

Opening Thursday, August 16

With Exciting Fall Fashions and Accessories



### - Shoes -

- Gloria Vanderbilt
- Garolina
- Nina
- J. Rene
- Bass



### Fashions by:

- Brenner
- N.R.I.
- Victorie
- Applause II
- Gregge
- Albert Nipon
- Herman Markus
- Taste of Honey
- Helen Fabrikant
- Miss Elaine Lingerie
- Oscar De La Renta
- Ribbon Sweaters by Estelle Gracer

## Rumors

216 S. Main

- Perryton -

435-2812

Open until 9:00 p.m. Thursday and Friday nights.

# Water development & conservation plan needed

## Hutchinson County Pioneer's day planned

Dear Fellow Texans:  
Over the years, our state and its citizens have prospered through an abundance of natural resources.

However, in recent years, population and industrial growth have been accompanied by increased demand on these resources and have resulted in their depletion.

Most noticeable and publicized has been our supply of oil and natural gas. Somewhat overlooked however, has been our most precious of these resources -- water.

Today this depletion has struck home as a result of drought compounded with increased demand. It has become most apparent in many of our major cities where rationing has become a fact of everyday life.

And, I'm sorry to report, the situation is not getting any better. In fact, it won't go away and is likely to grow worse.

Statistical information accumulated through the Texas Department of Water Resources -- the state agency responsible for the

conservation and development of our water resources -- indicated that groundwater (aquifers) is being depleted faster than it can be naturally recharged. Existing surface (reservoirs) water is not adequate for further growth. In fact, much of Texas' existing surface water reservoirs will barely be sufficient to meet water demands during critical droughts, a fact reflected in our current water rationing programs in many of our cities and shortages in our troubled agricultural areas.

As industrialization and population continue to increase, our water requirements and water protection needs will continue to multiply.

That is why I implore you, my fellow citizens, to become more aware of the severity and magnitude of this problem. It will take your efforts and the efforts of your Legislature combined to find a solution to the problem of our water conservation and development needs that will benefit all Texans.

In the months between now and the next session of the Legislature

in January, this office and other lawmakers will be working to devise water development and conservation plans for legislative consideration.

My staff is currently working with me in formulating a conceptual plan for water development and conservation. If you would like additional information on our efforts, please contact Ms. Marry Rinaldi, Research Department, Office of the Speaker, P.O. Box 2910, Austin, Texas 78769.

Your help is needed and I encourage your active participation in the process by contacting your elected representatives and transmitting your concerns and suggestions for addressing this critical issue.

You and future generations of Texans will be the major beneficiaries.

Thank you for your concern.  
Sincerely,  
Gibson D. "Gib" Lewis  
Speaker of the House  
Texas House of Representatives

Everyone is reminded to attend the 43rd annual Hutchinson County Pioneer's All day meeting, August 19, 1984. Beginning at 10 a.m. at the Stinnett High School Cafeteria, Stinnett, Texas. Bring a basket dinner and enjoy a free program and a day of visiting with friends.  
Bring your family pictures to

exhibit during the day, old ones as well as recent ones.  
Everyone who wishes to attend is welcome.  
Chairman of the Hutchinson County Pioneer Association is Hugo A. Riemer, Lex Board is vice-chairman and Mrs. J.C. Matney, secretary-treasurer.

Underlying 20 percent of the world's land, permafrost in some places extends only a short distance beneath the surface. But on Alaska's North Slope, it reaches depths of 2,000 feet.

### SATURDAY

CABLE	[2]	[3]	[4]	[5]	[7]	[8]	[9]	[10]	[11]	[12]
AM	ESPN	OETA	KAMR	TMC	KVII	CBN	WGN	KFDA	WTBS	CNN
	Sports Network	Oklahoma Cty	CH.4 Amarillo	Movie Channel	CH.7 Amarillo	Cbn Cable Netwr	CH.9 Chicago	CH.10 Amarillo	CH.17 Atlanta	Cable News Ntwr
7:00	SportsCenter		Flintstone Funnies	Prog Cont'd	Monchhichis/Little Rascals/Richie Rich	Robert Schuller's Hour of Power	U.S. Farm Report Tomorrow	Charlie Brown & Snoopy Saturday Supercade	Starcade	News/Sports/Weather Big Story
7:30	PKA Full Contact		Smurfs	Movie: Trail of the Pink Panther	New Scooby/Scrappy Doo Pac-Man/Rubik Cube Hour	James Robison Lesson	Rex Humbard			News Update Health Week Money Week
8:00	Karate	Quilt Fever					Issues Unlimited	Dungeons and Dragons		
8:30		Painting of Oil								
9:00	Drag Racing: IHRA Summer Nationals	Justin Wilson La. Cookin' This Old House					Charlando	Tarzan: Lord of the Jungle Bugs Bunny/Road Runner		News Update Media Watch Style With Elsa Klensch
9:30			Alvin & the Chipmunks				In the Mix			
10:00	SportsCenter		Mr. T	Movie: They Call Me Bruce?	Puppy/Scooby Doo Show	Desperados	Wild Kingdom	Show	Rangers	News Update Sports Update /Games of '84
10:30	ESPN's Speedweek	Mystery!	Amazing Spiderman &				Kung Fu			
11:00	NFL's Greatest Moments	Victory Garden	Incredible Hulk Thundarr	Movie: 'Class'	ABC Weekend Special American Bandstand	Laredo		Biskitts		CNN Election Watch
11:30							Movie: 'The Virginian'	Benji, Zak/-Alien Prince		
12:00	Men's Canadian Open Tennis Championships	Oklahoma Gardening Market to Market	Joy of Gardening Shopsmith				Movie: 'Seven Guns to Mesa'	New Fat Albert Show Jackson Five Show	Movie: 'Savage Wilderness'	News/Sports/Weather Newsmaker Saturday
12:30							Nashville Music			
1:00	Semifinals from Toronto	Movie: 'Laura'	Major League Baseball: California at	Movie: 'Raggedy'	Classic Country		Call of the West	Movie: 'A-Haunting We'	To Be Announced	News Update Health Week Style With Elsa Klensch
1:30										
2:00			Baltimore/or Atlanta at St. Louis	Man'	Wide World of Sports	Movie: 'Lawless Frontier'	Will Go'	Rock Rolls On	Movie: 'Gunpoint'	News Update Washington Dialogue w/Dan Schorr
2:30										
3:00	Drag Racing: IHRA Summer Nationals	Nova		Movie: 'Risky'	PGA Championship	Wyatt Earp	America's Top Ten Soul Train			News Update Sports Big Story
3:30										
4:00	Unlimited Hot Air Ballooning	Matinee at the Bijou	World Championship of Women's Golf	Business' [Closed Captioned]	Golf			CBS Sports Special: The Travers Stakes	Fishin' w/Oz/lando Wilson Motorweek Illustrated	News/Sports/Weather Newsmaker Saturday
4:30								Tony Randall		
5:00	Super Bouts of the 70's		News			The Monroes	Phyllis	Observer	World Championship Wrestling	News/Sports/Weather Pinnacle
5:30		Country Express	NBC News	Movie:			At The Movies	CBS News		

**VOTER REGISTRATION APPLICATION**  
(SOLICITUD PARA REGISTRO DE VOTANTE)

PLEASE COMPLETE ALL OF THE INFORMATION BELOW. PRINT IN INK OR TYPE.  
POR FAVOR COMPLETE LA INFORMACION ABAJO. IMPRIMA EN TINTA O ESCRIBE EN LETRA MAYUSCULA.

LAST NAME (APELLIDOS) FIRST NAME (NOT HUSBAND'S) (NOMBRE - NO DEL ESPOSO) MIDDLE NAME (NOMBRE MEDIO) MAIDEN NAME (NOMBRE DE SOLTERA)

SEX (SEXO) DATE OF BIRTH (FECHA DE NACIMIENTO) PLACE OF BIRTH (LUGAR DE NACIMIENTO)

PERMANENT RESIDENCE ADDRESS (STREET ADDRESS AND APARTMENT NUMBER, IF NONE, GIVE THE LOCATION OF RESIDENCE) (DIRECCION DE RESIDENCIA PERMANENTE)

CITY, STATE, AND ZIP (CUIDAD, ESTADO Y CODIGO POSTAL)

SIGNATURE OF APPLICANT (OR AGENT) (FIRMA DEL SOLICITANTE (O DEL AGENTE))

DATE OF SIGNATURE (FECHA DE FIRMA)

Welcome to the  
**WHEATHEART CELEBRATION**  
at Perryton this week.  
Feed your cattle now at  
**Colbert Cattle Feeders, Inc.**  
P.O. Box 1091  
Spearman, Texas

50,000 Head Capacity

Telephone  
**659-2577**

435-5920 - nights

**Boyd Colbert**  
Manager  
435-5920-home

**Dan Colbert**  
Assistant Manager  
435-6326 - home

2 miles East and 2 miles North of Spearman, Texas


# CLEARANCE

LAST CALL ON

WOODARD PATIO FURNITURE

60% off



Simmons  **40% to 50% off**  
BEDDING Reduced

La-Z-Boy & Lane Action **30% off**  
RECLINERS Reduced

New Items Arriving Daily —  
We Need The Space!

HOURS:  
8:30 - 5:30  
Mon. Thru Sat.

No Exchanges, Approvals or Returns



plains shopping center - spearman, texas

723 W. 7th



## Farmers Union District Banquet set

The annual Texas Farmers Union District 1 Banquet will be held Monday, August 27, District 1 Director Burton Schubert has announced.

The Texas Farmers Union official also announced the commitment of Commissioner of the General Land Office, Garry Mauro, to speak at the event, which is to be held at the Sunray Community Center in Sunray, TX, beginning at 8:00 p.m.

"Mauro, the Commissioner of the General Land Office since 1983, has done a tremendous job. He was Executive Director for the Texas Democratic party for 1979-

1980 and was named one of the 25 'Rising Stars of Texas' by Texas Business in 1980," says Schubert.

"Every year we try to have a guest speaker whom we think our members will find interesting - we feel that this year we have an exceptional guest," Schubert says.

Also speaking at the banquet will be Texas Farmers Union President Mike Moeller. Moeller, a Hays County resident, has been president of the State organization for four years, and also holds the position of Chairman of the Executive Board of the National Farmers Union.

The Texas Farmers Union is an organization of approximately 10,000 members across the state. The Farmers Union works on behalf of small farmers and ranchers in the state and national legislatures, and offers several different services for their membership. Part of the National Farmers Union (which was founded in Texas in 1902), the Texas Farmers Union is headquartered in Waco and is governed by a president and a board of directors all of whom are elected from the organization's membership.

### Tumbling classes

Boys and girls age three and older may register for the fall semester of tumbling classes now by calling Mollie Holton 659-3973. Deadline for signing up is Wednesday August 22. Classes start Tuesday August 28. Class size will be limited.

Each class will meet once a week for 45 minutes or 1 hour depending on the age of child. Ages three through third grade will meet for 45 minutes, while fourth grade and older will meet for one hour each week. Classes will be grouped according to age and ability. This year there will be morning classes for pre schoolers. These classes run September through April, ending with a tumbling demonstration of all classes at the end of April. Holidays will be taken at Thanksgiving and Christmas.

Classes consist of aerobic tricks those trick which can be done on mats without the use of any special equipment. Children begin with balance tricks and easy tumbling rolls and progress to running tricks and combination tricks and finally aerial tricks such as back flips and aerial cartwheels.

Mollie has taught tumbling since 1976 in Spearman. Four years in Spearman School system and eight years in private practice. She has a masters degree in Physical Education from Texas Tech.

All Classes will be held at 303 South Main Street.

### WTSU Course Available in Perryton

One course will be offered for Perryton area residents by West Texas State University for the fall semester.

Dr. T. Paige Carruth, associate professor of education, will teach Educational Research at 5 p.m. each Monday at Perryton High School.

The fall semester begins with registration on Wednesday, Aug. 29. A student enrolling only in one off-campus course may register during the first class period. Classes begin Thursday,

Aug. 30, and the first evening of the Perryton class on Monday, Sept. 10, because of the Labor Day holiday on Sept. 3.

Educational Research is available only for graduate credit.

Other off-campus courses for the fall semester will be taught at Pampa, Plainview and Amarillo.

During the 1985 spring semester, Perryton area residents may enroll in Educational Psychology, available for graduate credit at 5 p.m. each Monday.



© 1984 Suburban Features

"The trouble with being in the middle class is that the ends are getting further away."

"Tares" were a weed called "darnel." In the parable of the wheat and the tares in which the man's enemy sowed tares among his wheat and his servants asked whether they should pull up the tares, the man said not to do it until the harvest. Then the tares could be distinguished.

"But he said, Nay; lest while ye gather up the tares, ye root up also the wheat with them. Let both grow together until the harvest; and in the time of harvest I will say to the reapers, Gather ye together first the tares, and bind them in bundles to burn them, but gather the wheat into my barn." — Matt 13:29-30

© 1984 Suburban Features

Canada's 128-foot-high Kakabeka Falls flows only on Sundays. On weekdays, water from the "Niagara of the North" in western Ontario is diverted through a flume to generate hydro-electric power.

© 1984 Suburban Features

### O.L. Chisum

#### services held

Memorial services for O.L. "Veda" Chisum, 56, of Stinnett were held at 2 p.m. Tuesday in Stinnett Church of Christ with Gary Blakeney of Gruver officiating. Burial was in Lieb Cemetery by Minton-Chatwell Funeral Directors of Borger.

Mr. Chisum died Saturday. He was born May 19, 1928 in Pringle and had been a lifelong resident of Hutchinson County. He was a field supervisor for Diamond Shamrock.

Survivors include his wife, Flo, of the home; three daughters, Debbie of Gruver, Teresa of Amarillo; two brothers, Don and Eual, both of Stinnett; one sister, Mrs. Earlene Fowler of Bakerville, Calif.; and two grandchildren.

Donations may be made to Lieb Cemetery in care of A.A. Lieb.

Fairy tales for grownups: The something-for-everyone pitches we'll be hearing this election year.

For once, an interest-raising move by a bank gets our approval. The local money mine has a couple of new, classy-looking tellers.

The motto of the state of Idaho, "Esto Perpetua," means "Let It Be Forever." Like the life of a "temporary" tax, huh?

#### NOTICE

The Board of Trustees of the Spearman Independent School District will meet at 8:00 P.M. on Monday, August 27, 1984 at the High School Building, 403 East 11th St., Spearman, Texas, and among other business will be the adoption of an official budget for 1984-85.

**Big Cheese  
Pizza  
Back To School  
Offer!**

Come in and see us during the Wheatheart Celebration this week.....

**Get Your  
Back To School Box Today!**

Each School Box Contains:

- Three Pencils
- Large Eraser
- Memo From the Big Cheese Pad
- 6-Inch Plastic Ruler
- Big Cheese Stickers
- Two Coupons

It's a \$2.50 value for 95¢ when you purchase any large or medium-size pizza!

Dine-In — Carry-Out —  
Delivery While Supplies Last

**Big Cheese Pizza**

1501 S. Main

Perryton

435-7616

## WHEATHEART CELEBRATION...

On our 65th Anniversary we join in inviting

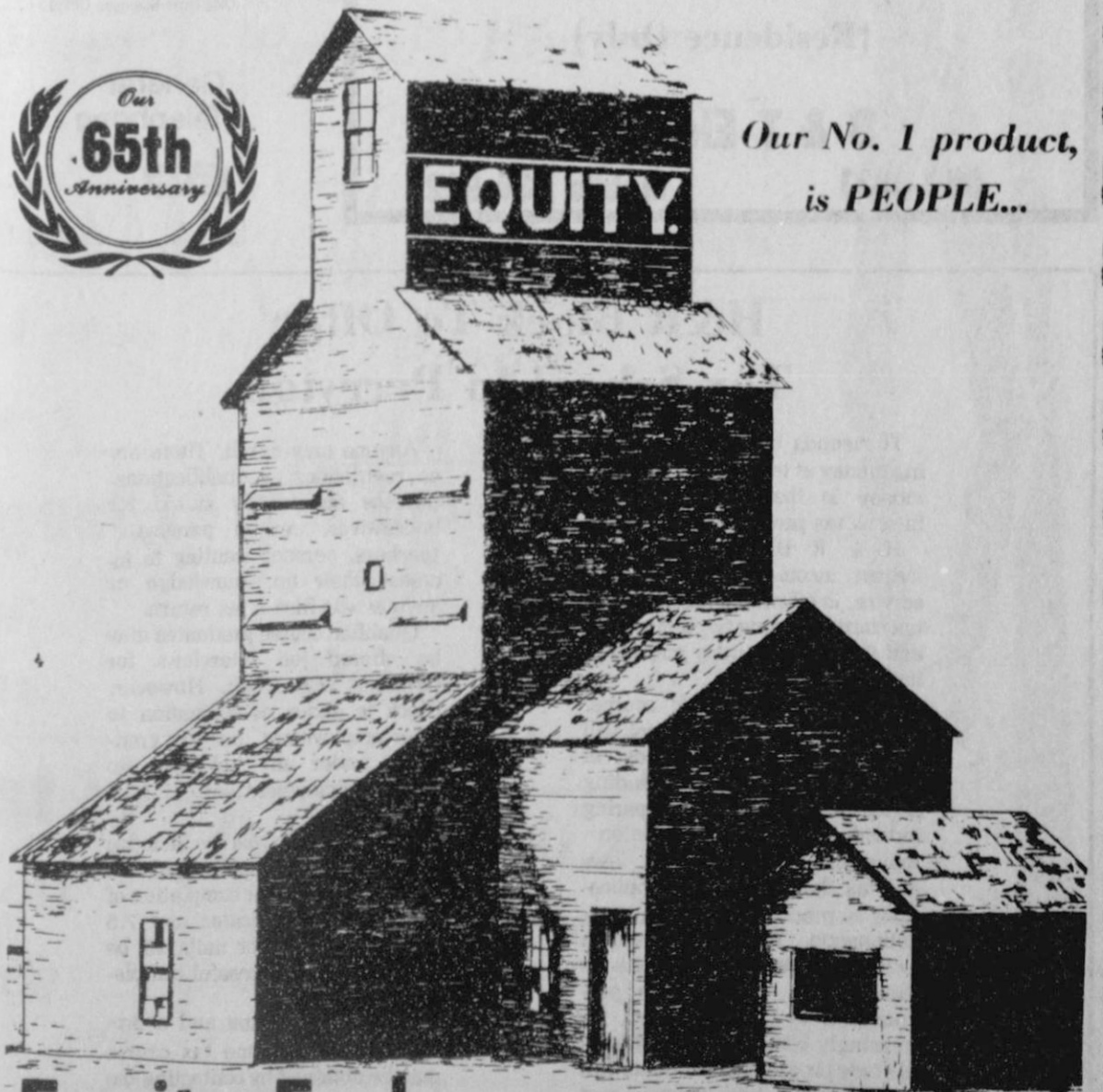
all of Hansford County to attend the

Wheatheart Celebration this week in Perryton.



**EQUITY**

Our No. 1 product,  
is PEOPLE...



**Equity Exchange**

SERVING THE  
HANSFORD COUNTY AREA



## Our Heritage of Faith...

### THE LUTHERAN HERITAGE

The Lutheran Church is a 'doctrinal church' which means we are a teaching church. We believe that Christian teaching is not to be taken lightly for the same reasons today as those sighted by Paul to the Ephesians (4:14) "So that we may no longer be children, tossed to and fro and carried about with ever

wind of doctrine, by the cunning and craftiness of men, by their craftiness and deceitful wiles."

The Bible is the ultimate norm and standard of teaching and preaching concerning the salvation of mankind. And the Bible has some specific things to say about what it means to be a Christian and what it means to show love to God and neighbor in

Christ. All are welcome to share with us the Worship and Fellowship of Christ, who came to die on a cross that sinful people might have eternal salvation.

NEXT TOPIC: Does Lutheranism Have Distinctive Teachings?  
Bill Schardin, Pastor  
Faith Lutheran Church  
Spearman, Texas

### Tee Vee Laffs



"OKAY! YOU HAVE EXACTLY TWO MINUTES, TEN SECONDS TO VACUUM THIS ROOM BEFORE THE GAME STARTS!"

### Two-Bit Sermons

by James D. Jones, Pastor  
Fellowship Baptist Church  
Baptism--Does It Save?

Baptism carries a controversy that is all its own. Very few doctrines have the questions or the arguments raised as does baptism. Today's question is, does baptism save? Traditionally as Baptist it is a definite no! Yet I do not like to base very much on what others teach from a traditional position. In my own studies I've found that Baptism does not save nor does it aid or help seal the salvation of an individual.

These are the scriptures most used in relation to baptismal-regeneration position.

1. Mark 16:15, in this verse of scripture you would be following the command given in verse 15 to

preach the gospel. Also when the word believeth is used it is in the same as found in Romas 1:16, Acts 2:38, Acts 2:31, Acts 8:37, and in John 5:24, in all of these baptism is a result of your salvation not a part of it. For Baptism is public profession of one's salvation experience. It is a picture of Christ and His work of regeneration.

Also, many of those who claim the salvation plus baptism believe in the loss of salvation. Peculiar also is the fact that for each time a person is saved there is only one baptism for all. The times a person is saved. I will also cover the scriptures such as Acts 2:38, Acts 8:26-39, and I Peter 3:18-22. All this so that we may obtain a better understanding of the word of our Lord.

### Strait to appear twice at fair

Because of the unexpected demand for advance tickets at the George Strait Concert on Friday, September 7th at the 1984 Tri State Fair. Fair officials announced today that George Strait has agreed to appear for a second performance at 5:30 p.m. on Friday, September 7th. Tickets for the second George Strait show will go on sale at the coliseum ticket office on the Tri State

Fairgrounds on Monday, August 13th at 10:00 a.m. The ticket office on the fairgrounds will be open Monday through Saturday throughout August for the sale of all fair concert tickets.

Those who advocate turning the other cheek have a point. It does prevent you getting walloped twice in the same place.

### Ceiling Fan Sale

42" Brass 3 speed, reversible ceiling fan installed for only \$115.00. Light kits extra.  
52" fan \$25.00 higher

### Installation includes:

- supporting & hanging fan
- adding switch on the wall

(Limited Quantity)  
(Residence Only)

**B & T Electric**  
659-3831 Mobile 435-9621

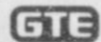
### NOTICE OF RATE CHANGE REQUEST

GENERAL TELEPHONE COMPANY OF THE SOUTHWEST hereby gives notice, in accordance with TEX. REV. CIV. STAT. ANN. art. 1446c, §43 (a), of its intent to implement a new schedule of rates for those customers residing in the State of Texas but who are served out of the Company's Guymon and Texhoma, Oklahoma exchanges.

The proposed changes will become effective November 9, 1984, and will affect all customer classes and are designed to increase the Company's revenue by \$5,467.98, less than one percent. The Oklahoma Corporation Commission's order allows GTSW to recover a revenue deficiency resulting from increased costs.

Persons who wish to intervene or otherwise participate in these proceedings should notify the Commission as soon as possible. A request to intervene, participate, or for further information should be mailed to the Public Utility Commission of Texas, 7800 Shoal Creek Boulevard, Suite 400N, Austin, Texas 78757. Further information may also be obtained by calling the Public Utility Commission Consumer Affairs Division at (512) 458-0223 or (512) 458-0227, or (512) 458-0221 teletypewriter for the deaf. A complete set of revised rate schedules has been filed with the Public Utility Commission of Austin, Texas, and is available for public inspection in the Company's Guymon, Oklahoma Business Office.

General Telephone



### H&R Block To Offer Tax School In Perryton

Thousands of people are saving money at tax time and earning money in their spare time as income tax preparers.

H & R Block, the world's largest income tax preparation service, is offering a basic income tax course starting September 6th and 8th with Saturday and evening classes available.

During the 14 week course, experienced Block personnel will teach students all phases of income tax preparation including actual experience in preparing individual returns. Instruction topics include current tax laws and tax theory and their applications as practiced in Block offices nationwide. There is classroom lecture and practice problems on each subject. Courses are programmed to teach students increasingly complex tax problems as study progresses. Students will find the course both practical and challenging and will also be able to use their new skills directly to save money on their own tax returns.

Anyone may enroll. There are no restrictions or qualifications. Courses are ideally suited for housewives, retired persons, teachers, persons wanting to increase their tax knowledge or anyone who files a tax return.

Qualified course graduates may be offered job interviews for positions with Block. However, Block is under no obligation to offer employment, nor are graduates under any obligation to accept employment with H & R Block.

The modest course fee includes all textbooks, supplies and tax forms necessary for completion of the school. Certificates and 7.5 continuing education units will be awarded upon successful completion of the course.

Registration forms and a brochure for the income tax course may be obtained by contacting the H & R Block office at 314 N. Industrial (P.O. Box 964), Perryton, TX., telephone 806-435-5616.

# CASH IN

## ON OUR END OF SUMMER BARGAINS ON NEW CARS, PICKUPS, & VANS!

We've still got a good selection to choose from but hurry in ... This is the last of the 84's!

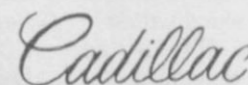
### AT SPEARMAN



### AT PERRYTON

- 1983 Buick Century Limited Coupe, Demo. Maroon.
- 1984 Buick Century Limited Sedan, Russet.
- Buick Electra Limited Sedan, Last. Lt. Blue/Dk. Blue.
- Buick LeSabre Limited Sedan, Lt. Blue/White.
- Buick LeSabre Limited Sedan V-6, Beige/Dk. Brown.
- Buick LeSabre Limited Sedan, Dk. Metallic Blue.
- Buick Regal Limited Coupe, Powder Blue/White.
- Buick Regal Limited Somerset, 2-Tone Brown.
- Buick Regal T-Type Designer's Pkg. T-Top, Black/Charcoal.

- 1984 Buick Century Limited Sedan Demo, Red/White.
- Buick LeSabre Limited Sedan, Dk. Brown/Sand.
- Buick LeSabre Limited Sedan, Red/White.
- Buick Regal Limited Coupe, Red/White.
- Buick Regal T-Type Coupe, White w/Maroon Accent.
- Buick Riviera Coupe Demo, Dk. Brown/Sand.
- 1985 Buick Park Avenue Sedan (fwd), Crimson Red.
- Buick Park Avenue Sedan Diesel (fwd), Silver (Red Leather).



- 1984 Cadillac Seville Sedan Demo, Red Firemist (White Leather.)
- Cadillac Seville Sedan, Sonora Saddle/Beech.

### GMC TRUCKS

- 1984 GMC 1/2 Ton S. Classic Diesel 4X4, Red/White.
- GMC 1/2 Ton S. Classic, Diesel, Dk. Blue/Silver.
- GMC 1/2 Ton S. Classic Short/Wide, Red/White.
- GMC 1/2 Ton S. Classic Short/Wide, Lt. Blue/White.
- GMC 1/2 Ton S. Classic Short/Wide, Lt. Blue/Dk. Blue.
- GMC 1/2 Ton S. Classic Short/Wide, Black/Silver.
- GMC 1/2 Ton S. Classic Short/Wide 4X4, Lt. Blue/Silver.
- GMC 1/2 Ton S. Classic Short/Wide, Red/White.
- GMC 1/2 Ton S. Classic Short/Wide, Dk. Bronze/Tan.
- GMC 1/2 Ton Sierra, Red.
- GMC 1/2 Ton Sierra, (4-Speed), 4X4, Tan.
- GMC 1/2 Ton Sierra Classic, Demo, Red/White.
- GMC 1/2 Ton Sierra Classic, Dk. Blue/Silver.
- GMC 1/2 Ton Suburban S. Classic, 4X4, Red/White.
- GMC 1/2 Ton Suburban S. Classic (2WD), White (Blue Interior).
- GMC 3/4 Ton Crew Cab S. Classic, Lt. Blue/Silver.
- GMC S-15 Club Cab S. Classic, Lt. Blue/White.
- GMC S-15 Club Cab S. Classic, Lt. Blue/White.
- GMC S-15 Club Cab S. Classic, Galaxy Blue/White.

- 1984 GMC 1/2 Ton High Sierra 4X4, Tan.
- GMC 1/2 Ton High Sierra, Dk. Bronze/Tan.
- GMC 1/2 Ton S. Classic, Diesel, Red/Tan.
- GMC 1/2 Ton S. Classic, Diesel, Lt. Blue/Dk. Blue.
- GMC 1/2 Ton S. Classic, Diesel, Dk. Bronze/Tan.
- GMC 1/2 Ton S. Classic, Diesel, Red/Tan.
- GMC 1/2 Ton S. Classic, Diesel, Red/White.
- GMC 1/2 Ton S. Classic Sht/Wide, Red/Black.
- GMC 1/2 Ton Sierra 4 Speed, Tan.
- GMC 1/2 Ton Sierra Classic, Red/White.
- GMC 1/2 Ton Sierra Classic, Silver/Dk. Blue.
- GMC 1/2 Ton Sierra Classic, Lt. Blue/White.
- GMC 1/2 Ton Sierra Classic, Silver/Dk. Blue.
- GMC 1/2 Ton Sierra Classic, Lt. Blue/White.
- GMC 1/2 Ton Suburban S. Classic 4X4, Dk. Bronze/Tan.
- GMC Roman Wheels Customized Van, Silver & White.
- GMC S-15 Club Cab Sierra Classic, Red/White.
- GMC S-15 Jimmy S. Classic 4X4, Lt. Blue.
- GMC Sherrod Custom Van, Tan w/Brown Accents.
- GMC Tra-Tech Custom Van Demo, Gold w/Dk. Gold.

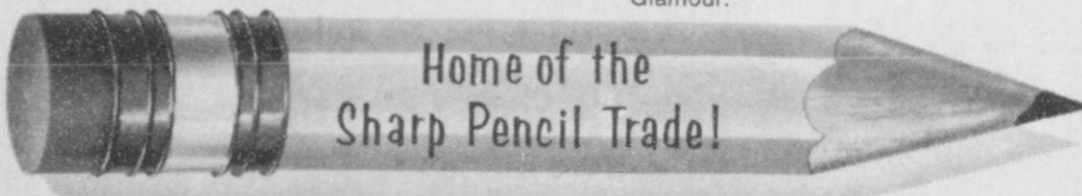
### PONTIAC

- 1983 Pontiac Firebird Coupe, Bright Red.
- 1984 Pontiac Parisienne Brougham Sedan, Lt. Brown/Maroon.
- Pontiac Parisienne Brougham Sedan, Two-Tone Blue.

- 1984 Pontiac Fiero Sport Coupe, Silver Metallic.
- Pontiac Firebird, Beige.
- Pontiac Parisienne Bro. Sedan, Demo, Lt. Brown/Dk. Brown.
- Pontiac Parisienne Bro. Sedan, Lt. Red/Dr. Red.

### Oldsmobile

- 1984 Olds Ciera Brougham Sedan, Demo, Dk. Maple Red/Sand.
- Olds Ciera Brougham Sedan, Lt. Red/White.
- Olds Cutlass Supreme Bro. Coupe, White/Dk. Blue.
- Olds Delta 88 LS Sedan, Charcoal (Sand Leather.)
- Olds Delta 88 Royale Bro. Sedan, Lt. Green.
- Olds Delta 88 Royale Bro. Sedan, Lt. Brown/Dk. Brown.
- Olds Toronado Brougham Coupe, Charcoal/Sand.
- Toronado Brougham Coupe, Demo, Dk. Blue/Sand Gray.
- 1985 Olds 98 Regency Bro. Sedan (fwd), Champagne Glamour.



Keep that Keep That Great GM Feeling With Genuine GM Parts.

GENERAL MOTORS CORPORATION

**Jolly Green Thumb**  
BY MARY FUREY CRYMES

Everybody's looking for a short cut to-day. And why not—there's never enough time, and gardeners from coast to coast, busy with harvesting and replanting, welcome anything that saves time and labor. Lots of 'em have delved into a small book called "A to Z Hints for the Vegetable Gardener," a treasure trove of fast and easy gardening help.

A publication of the Men's Garden Clubs of America, Des Moines, Iowa, the alphabetized book has plenty of harvesting and food storage help. Done in short takes, it takes the gardener, vegetable by vegetable, into savvy ways to store and keep the harvest for later use. Whether it's artichokes or zucchini, just knowing the correct stage of maturity at which to pick is a big leg up. Experience helps, but neophytes and long time gardeners both have to know what to look for in ripeness. Food storage essentials are proper temperature, correct humidity and good ventilation, and these are outlined in the "A to Z" book. City gardeners can learn the urban equivalents of old fashioned root cellars; hay and top of the ground mound storage. For all kinds, vegetables to be stored any way but freezing and canning should not be washed; a good brushing is sufficient to remove surface soil. Moisture in and around vegetable storage areas cuts down on shrinking and shriveling, but too much and you are promoting rot in your precious harvest. And, there's the "what goes with what" advice, or, conversely, what doesn't. Don't store fruits with vegetables like cabbage, potatoes or turnips. Gases released do not mingle with gases contained in the fruits.

Individual vegetables take special handling. The aforementioned artichokes, for instance; two kinds, one the globe artichoke served at gourmet dinners, and the other the knobby Jerusalem, which isn't an artichoke at all. Let's not get into that. You can freeze globe chokes whole, or keep them in the refrigerator for several weeks. And, as for zucchini — the book says use it any

way you can — breads, main dishes, pickles or whatever. For a copy, write to: Men's Garden Clubs of America, 5560 Merle Hay Road, Des Moines, Iowa 50323.  
© 1984 Suburban Features

**Mr. Fix**

**WEATHERSTRIP DOORS — METAL**

Spring-metal weatherstripping has been around a long time and works well. It is invisible when installed and lasts a long time. Its only disadvantage is that it may become bent and permits leaks — although it usually can be bent back into the proper shape when this happens.

**TOOLS AND MATERIALS**  
Spring-metal weatherstripping  
Hacksaw  
Hammer

**APPROXIMATE TIME: 30 MINUTES PER DOOR**

1. You buy the weatherstripping in long rolls, and it takes 18 or so feet to do a door. Measure the doorframe beforehand to see how much you need.
2. Apply the weatherstripping to the doorjamb at both sides and the top of the door.
3. Using a hacksaw or tinsnips, cut a length of the stripping to fit across the top of the door. Nail it into place, using 3/4-inch wire nails (usually supplied with the stripping), driving a nail every 12 in.
4. Repeat this procedure for both sides of the door. Place the weatherstripping on the door jamb. It should be placed so that after application, if you stand on the outside with the door closed, you cannot see the stripping. It is hidden by the closed door.
5. When all of the stripping has been nailed into place, insert a screwdriver under the spring lip (outer edge) of the stripping and lift the lip a little. This will help to make a better seal.

© 1984 Suburban Features



Junior Lusby Cats team members are back row: Coach Eugene Yarbrough, Donna Heddings, Jana Buchanan, Lori Altman, Pam Barber, and Janeen Baumgardner. Front row: Stacie Swan, Brenda Miller [Lusby Kitten-Bre]

Anne Miller], Donna Yarbrough, Ronda Witten, and Jennifer Yarbrough. Not pictured Kathy Beck and Ceria Vela. The Lusby team placed second in the Beaver Tournament held August 3 and 4.

**SUN STUFF** — The waning summer sun can produce painful sunburn. Treat with ice compresses for about the first ten hours; switch to heat and soothing emollients afterward. Make a cold compress by wetting and wringing out a small size towel and freezing it until thoroughly chilled.

Edison's "The Great Train Robbery," filmed in 1903, was one of the first motion pictures with a story line.

**CREDIT RESOURCE** — Problems that arise from unsatisfactory credit card purchases can be resolved under the Fair Credit Billing Act. Know its terms: you have a legal right to an accurate bill and can refuse defective or worthless merchandise. Bankcard Holders of America, a consumer organization, has a booklet: "Your Rights Under Federal Law," that explains. Send a self-addressed, stamped, business size envelope to: Bankcard Holders of America, 2025 Eye St. N.W., Washington, D.C. 20006.

**POLITICAL ANNOUNCEMENTS**

**REPUBLICAN**  
84th Judicial District Attorney  
**GENE COMPTON**

**DEMOCRATIC**  
84th Judicial District Attorney  
**PHIL BLACK**

On Indonesia's island of Java, the mythical goddess of the South Seas — Njai Loro Kidul — is so important that a room with a bath is always kept reserved for her in one of the island's best hotels.

**#1 UNIT**  
Lowest cut-in speed-in industry.  
1 KW at 5 m.p.h.  
8 KW at 32 m.p.h.  
tax credits  
**SPEARMAN ELECTRIC**  
659-2636

**Office Space for Rent**  
**Call 659-3133**  
at the  
**Farm Bureau Bldg.**

**LOST: Grey & White longhair male cat. Has been de-clawed. Contact Crawford's. 659-2503. Ext. 225. Reward if found.**

**AWNINGS-PATIO COVERS**  
**STORM WINDOWS AND DOORS**  
**Only Aluminum Industries**  
405-338-6966  
Guymon, Ok 73942 or after 6 p.m. 338-6170

**K. Dale Johnson, D.D.S., Inc.**  
3102 Garrett Drive  
Perryton, Texas 79070

**Texhoma Livestock Commission Co., Inc.**  
The Action Auction  
Always An Abundance Of Buying Power  
Box 449 Phone 405-423-7511  
STARTING TIME 10:00 a.m.

**Cattle Sold**  
2534 head

PACKER COWS		\$32 to \$42.50
PACKER BULLS		\$43 to \$48
STOCKER COWS		None offered
PAIRS		None offered
STEER CALVES	250 to 400 lbs.	\$68 to \$80
	400 to 500 lbs.	\$86 to \$75.75
HEIFER CALVES	250 to 400 lbs.	\$57 to \$70
	400 to 500 lbs.	\$56 to \$61.50
FEEDER STEERS	525 to 600 lbs.	\$63 to \$68
	600 to 700 lbs.	\$62 to \$66.50
	700 to 800 lbs.	\$61 to \$65.50
	800 to 900 lbs.	\$57 to \$64
FEEDER HEIFERS	525 to 600 lbs.	\$56 to \$60
	600 to 750 lbs.	\$55 to \$60

KEITH LAUER, MANAGER  
ROB LAUER, YARD MANAGER  
RAYMOND CHOATE, CATTLE DEPARTMENT  
BOBBIE ADAMSON, OFFICE MANAGER  
JIMMY NICHOLS, FIELD REPRESENTATIVE

**WHEATHEART CELEBRATION**  
PERRYTON, TEXAS

<b>Sunday, August 12</b> Motorcycle Rodeo 7:00 p.m.	<b>Saturday August 18</b> United Free Breakfast 6 a.m. Old-Timers Reunion 8 a.m. Parade Register 8:00 10-K Run 8:30 a.m. Parade 10 a.m. Bar-B-Que 12 Noon Demolition Derby 4:00 p.m.
<b>Monday, August 13</b> Merchants' Dinner 7:00 p.m.	<b>Friday, August 17</b> 8 to Midnight Teen Dance
<b>Tuesday, August 14</b> Watermelon Feast 7:00 p.m.	<b>Adult Dance</b> 9 p.m. to 1 a.m.
<b>Thursday, August 16</b> Car Show 5 to 9 p.m.	<b>Powder Puff Derby</b> 5:00 p.m.

**First National Bank**  
Perryton, Texas

# Double Coupons

## No Minimum Purchase Required

SEVEN DAYS A WEEK

U.S.D.A. VALUE TRIMMED

### Round **1.58** Steak LB.

U.S.D.A. VALUE TRIMMED CRY-O-VAC

### Boneless Brisket **1.38** LB.

PILGRIM'S PRIDE . . . FRESH

### Fryer Breast **1.29** LB.

RODEO'S . . . RANCH 'N' RAIL

### Sliced Bacon **2.98** 2-LB. PKG.

### Pilgrim's Pride

### Family Pak

### Fryers

### **53¢** LB.



### Chicken Fry **1.98** Steak LEAN BONELESS LB.



CAFFEINE FREE DIET - DIET COKE

### Coca-Cola or Tab

### **1.59** 6 PACK 12-OZ. CANS

SAVE 80¢



CHARMIN

### Bath Tissue

### **99¢** FOUR ROLL PKG.

SAVE 40¢



PURE CANE

### Imperial Sugar

### **1.49** 5-LB. BAG

SAVE 70¢



MEADOWDALE WHOLE KERNEL

### Golden Corn

### **3.89¢** 16-OZ. CANS

SAVE 45¢

### Folgers Coffee

### **2.49** 2 LB. CAN

### Bounty Towels

### **69¢** JUMBO ROLL

### Peanut Butter

### **1.49** 18-OZ. JAR

### Pineapple

### **49¢** 20-OZ. CAN



Del Monte Golden Ripe . . .

### Bananas **3 \$1** LBS.

### California Extra Fancy Peaches **49¢** LB.

**BACK TO SCHOOL SALE**

**Filler Paper** mead wide or narrow ruling 200-SHEETS 200-CT. PKG. **59¢**

**Theme Book** MEAD WIDE OR NARROW RULING 70-PG. BOOKS **3.99¢**

**Crayolas** 24 COLOR CRAYONS 24-CT. BOX **79¢**

### Fresh Dairy

### Medium Eggs **49¢** CAMELOT 'AA'

### Shedd's Spread **1.69** 3-LB. TUB

### Fresh Frozen

### Lemonade **69¢** LIMEADE FRUIT PUNCH REG. OR PINK FROM MINUTE MAID 12-OZ. CAN

### Strawberries **2.89¢** SUNVALE SLICED ASSORTED FLAVORS 2-LB. 10 OZ. CANS 24-CT. 1.69

### Fresh Bakery\*

### Chocolate Chip Cookies **3.19** DOZ. PER BOX

### Humpty & Ideal Supermarkets and Drug Centers



A•N•N•I•V•E•R•S•A•R•Y

Now. And For Generations To Come.

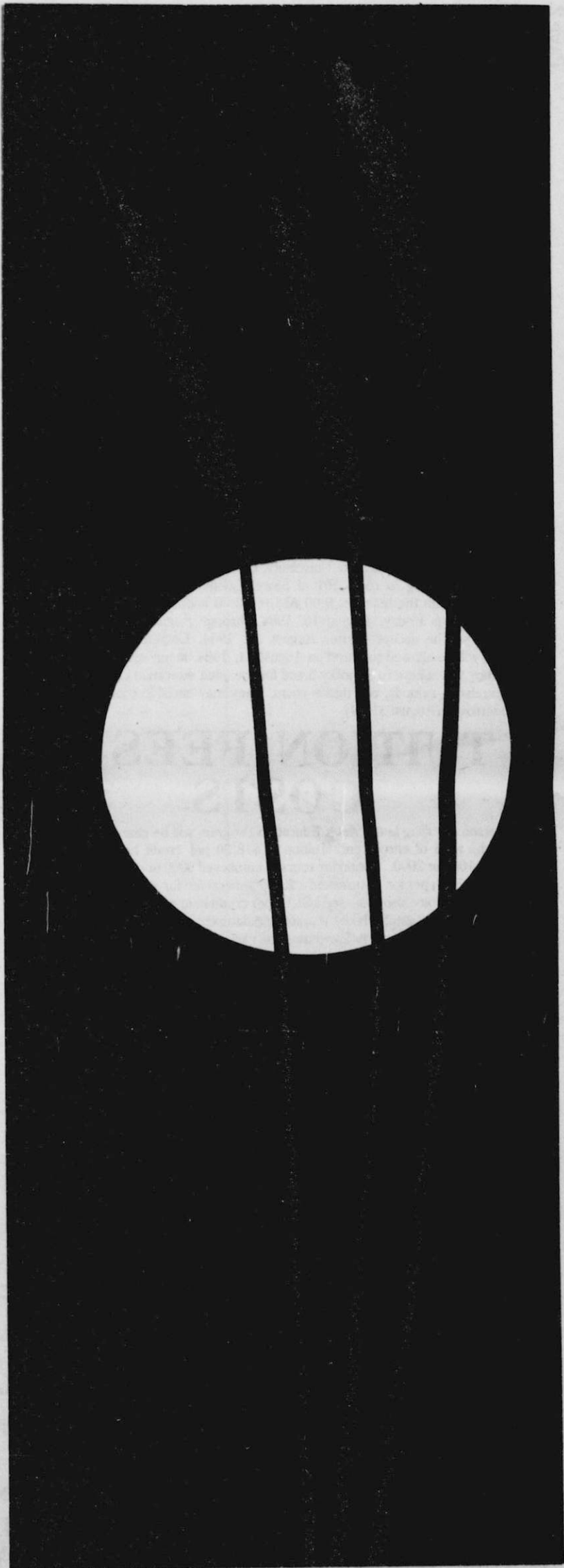
**PANHANDLE  
STATE  
UNIVERSITY**

Goodwell, Oklahoma

**ADULT  
EDUCATION  
SCHEDULE  
Fall 1984**

All Classes Meet From 7:00 to 9:50 PM

Office of Adult Education  
Panhandle State University  
P.O. Box 430  
Goodwell, OK 73939



## GENERAL INFORMATION

A concerted and organized effort to provide college level courses for adults of the area was begun during the spring semester of 1979. From that first offering, six subjects, the Adult Education Program has grown to this semester's offering of 22 courses. The tremendous response by the people of the area has made possible this expanded program. Some of the courses offered during this term will meet requirements for a degree. A survey of persons who had taken previous adult ed courses indicated that the interest did exist for a way to obtain a degree by taking evening courses. The persons responding indicated that the areas of business would be most popular. The fall of 1984 finds five classes from this division that will meet requirements, total hour requirement or upper level requirements to a maximum of four credit hours without advisor approval. It is the belief of Panhandle State University that many people of the area have enjoyed the stimulation of learning and doing and meeting new people. A challenge has been re-experienced and the results have been rewarding. For information concerning enrollment of classes, contact Bob Wise, Director of Adult Education, Panhandle State University, Goodwell, Oklahoma 73939. Call 405-349-2611 EXT 269.

## ENROLLMENT

Persons wishing to take courses in the Panhandle State University Adult Education Program may enroll two ways. The back cover of this brochure may be filled out and mailed with a check made out to Panhandle State University to the Director of Adult Education Panhandle State University, Goodwell, Oklahoma 73939. You may also enroll by going to room 101 of Sewell-Loofbourrow, (the administration building) between the hours of 9:00 AM to 12:00 noon, and 1:00 to 4:00 PM. Monday through Friday, August 16, 1984, through August 31, 1984. No enrollments will be accepted after August 31, 1984. Current Panhandle State students will be allowed to enroll on August 31, 1984, in any class not closed by limit. They will adhere to all policy listed for the adult education classes including book purchase, refunds, and tuition costs. They may enroll in room 101 Sewell-Loofbourrow on August 31 only.

## TUITION, FEES & COSTS

Each person enrolling in the Adult Education Program will be charged tuition and fees at the time of enrollment. Tuition is \$18.30 per credit hour for courses numbered 1000 or 2000. Tuition for courses numbered 3000 or 4000 is \$19.65 per credit hour. Each person is assessed a \$3.00 general fee for each course in which they enroll. They are also assessed a \$1.00 per credit hour student union fee. All of these charges are established by state legislature. Some courses require an additional fee to be paid sometime during the class. This is to help defray costs of materials or foods used during the class. In all cases, this fee will be mentioned in the descriptive information contained in this brochure. Some classes also require textbook, workbook or both. This information will also be contained in the course descriptions on pages 4, 5, 6 and 7 of this brochure. The textbooks are to be purchased at the university bookstore. They are not part of the book rental plan available to the traditional student attending regular university classes.

## INCLEMENT WEATHER

In the case of inclement weather, cancellation of class notices will be broadcast by KGYN Radio, 1210 on the AM dial and KKBS, 92.7 on the FM dial. They will air the announcements as soon as they receive them and will air them on the 5:00 PM central time local newscast. Please do not call the radio stations, call Panhandle State if you think you might have missed the announcement.

## CLASS LIMIT

All of the classes offered through the Adult Education Program have limits governing the maximum number who may enroll. These limits are established due to lab facilities, classroom size, or instructor abilities to provide necessary individual attention. These limits are stated in the descriptive information and in the appropriately titled column of the schedule on page 3. Additionally, the university has instituted minimum enrollment of 10 participants per class. This minimum number allows the university to adequately fund the instruction of the course. Any person who enrolls in a class that does not meet minimum enrollment will be given a full refund. All who are canceled out of a class will be informed by telephone on Friday, August 31, 1984, and will be given the opportunity to enroll in another course that has not attained a maximum limit. Any persons not wishing to enroll in another course will then be given a full refund.

## REFUNDS

It is the policy of Panhandle State University to make no refunds to persons enrolled in the Adult Education Program. The lone exception will be when PSU cancels a class because of minimum enrollment standards are not met. If and when that occurs, a full refund will be made.

## GRADES & CREDIT

Grades for the 22 courses offered through the Adult Education Program will be awarded on a "P" and "W" basis. Persons who satisfactorily complete the course will receive a "P" or "Passing." Those who do not complete the work or who have unsatisfactory attendance will be "Withdrawn" from the course and will receive a "W." Seven courses may be challenged for a letter grade by those enrolled, if they so desire. The courses that may be challenged are: Elements of Accounting I, Feeds & Feeding, Real Estate Principles, BASIC I, Introduction to Computer Information Systems, Elements of Economics, Fundamentals of Photography I, and Beginning Typewriting. Any persons enrolled in these course may submit, in writing, a request to the instructor expressing a desire to take the course for the traditional "A", "B", "C", "D", or "F" grades. Those who do not will receive the normal adult ed grade of "P" or "W." All courses carry either one, two, or three hours of university undergraduate credit. All credit will be recorded on a Panhandle State University transcript.

## ADULT EDUCATION ENROLLMENT

—By mail using the back of this brochure (fill out completely and attach check for tuition and fees). —In person, Room 101 Sewell-Loofbourrow from 8 a.m. to 12 noon and 1 p.m. to 4 p.m., Monday through Friday, August 16, 1984, through August 31, 1984. No enrollments will be accepted after August 31, 1984.

# ADULT/CONTINUING EDUCATION SCHEDULE FALL 1984

KEY NUMBER	DEPARTMENT NUMBER	COURSE TITLE	CREDIT HOURS	MEETING DAY	FIRST/LAST CLASS DATES	BLDG	ROOM NUMBER	INSTRUCTOR	MAX. ENROLL ALLOWED	TUITION
1701	ACCT 2103	ELEMENTS OF ACCOUNTING I	3	MON	9/10/84 - 12/17/84	HMH	309	DR. RUSSELL EDENBOROUGH	40	\$60.90*
1702	ANSC 2123	FEEDS & FEEDING	3	THUR	9/6/84 - 12/20/84	SL	201	DR. JERRY MARTIN	50	\$60.90*
1703	ART 4000	BREADDOUGH ART	1	MON	9/10/84 - 10/8/84	SL	206	KRISTY PATTERSON	20	\$23.65*
1704	ART 4000	COLOR WARDROBE	1	MON	10/15/84 - 11/12/84	SL	201	JO DUNHAM	30	\$23.65*
1705	ART 4000	WATERCOLOR PAINTING	2	TUE	9/4/84 - 11/6/84	CH	203	JO DUNHAM	20	\$44.30*
1706	BUAD 3403	REAL ESTATE PRINCIPLES	3	WED	9/5/84 - 12/19/84	HMH	110	RUSS SMITH	45	\$64.95*
1707	COSC 2123	BASIC I	3	WED	9/5/84 - 12/19/84	SL	108	DIANE MURPHEY	20	\$60.90*
1708	COSC 2113	INTRODUCTION TO COMPUTER INFORMATION SYSTEMS	3	MON	9/10/84 - 12/17/84	SL	207	PAM NELSON	24	\$60.90*
1709	COSC 2113	INTRODUCTION TO COMPUTER INFORMATION SYSTEMS	3	TUE	9/4/84 - 12/11/84	SL	207	JULIE EGGLESTON	24	\$60.90*
1711	COSC 2113	INTRODUCTION TO COMPUTER INFORMATION SYSTEMS	3	THUR	9/6/84 - 12/20/84	SL	207	KATHALEEN THRASHER	24	\$60.90*
1712	COSC 4000	PRACTICAL APPLICATIONS OF MICROCOMPUTERS	3	WED	9/5/84 - 12/19/84	SL	207	MEL YATES	24	\$64.95*
1713	ECON 2113	ELEMENTS OF ECONOMICS	3	THUR	9/6/84 - 12/20/84	HMH	222	SAM NELSON	25	\$60.90*
1714	EDUC 4000	LEARNING TO PLAY BRIDGE	1	WED	9/5/84 - 10/3/84	SU	CAF	RODNEY & BARBARA SEAWRIGHT	24	\$23.65*
1715	EDUC 4000	READING RATE IMPROVEMENT	2	TUE	9/4/84 - 11/6/84	HMH	127	DR. DAVID DRISKILL	20	\$44.30
1716	HPER 4000	FUNDAMENTALS OF BOWHUNTING	2	TUE	9/4/84 - 11/6/84	ML	108B	ED BRYAN	12	\$44.30*
1717	HOEC 4000	CHINESE COOKING	1	TUE	10/9/84 - 11/6/84	HSH	301	CLEO RAINEY	20	\$23.65*
1718	HOEC 4000	CONTEMPORARY TAILORING	2	TUE	9/4/84 - 11/6/84	HSH	316	PENNY SOMMERS	20	\$44.30*
1719	HOEC 4000	SEWING CRAFTS (DECORATOR PILLOWS)	1	THUR	9/6/84 - 10/4/84	HSH	316	CANDI KELLY	18	\$23.65*
1721	HUM 4000	BEGINNING GUITAR	1	MON	9/10/84 - 10/8/84	HS	115	DAN FAULKNER	25	\$23.65*
1722	HUM 4000	PANHANDLE CHORALE	1	THUR	9/6/84 - 12/20/84	HS	AUD	DR. JOHN SLAWSON	50	\$23.65
1723	JOUR 1123	FUNDAMENTALS OF PHOTOGRAPHY I	3	THUR	9/6/84 - 12/20/84	SL	203	BOB WISE	32	\$60.90*
1724	SESC 1103	BEGINNING TYPEWRITING	3	MON	9/10/84 - 12/17/84	HMH	308	DEBRA COLE	30	\$60.90*

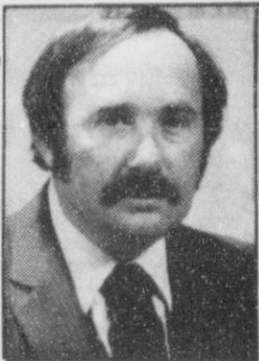
**ALL CLASSES MEET FROM 7:00 PM TO 9:50 PM**

**NO CLASSES WILL BE HELD  
ON THESE DATES:**

**THERE ARE NO REFUNDS MADE IN ADULT EDUCATION EXCEPT  
WHEN THE UNIVERSITY CANCELS A CLASS BECAUSE MINIMUM  
ENROLLMENT STANDARDS WERE NOT MET.**

**MONDAY, SEPTEMBER 3, 1984  
THURSDAY, OCTOBER 18, 1984  
WEDNESDAY, NOVEMBER 21, 1984  
THURSDAY, NOVEMBER 22, 1984**

\*Book, workbook, materials, or equipment charges will be made the first night of class. These are charges in addition to the PSU tuition and fees and are not included in this figure. The descriptions and the amounts of these costs can be found in the Fall 1984 Adult Education brochure under the course descriptions on pages 4, 5, 6, and 7.



**Russell  
Edenborough**



**Jerry Martin**



**Kristy Patterson**



**Jo Dunham**



**Russ Smith**



**Diane Murphey**

**1701 Acct 2103 ELEMENTS OF ACCOUNTING I 3 Hours Credit--Monday--Room 309  
Hamilton Hall--Class Limit 40 PSU Tuition & Fees \$60.90  
Instructor: Dr. Russell Edenborough**

This is the first year accounting course at the college level. It covers the fundamental concepts of accounting information, discusses how accounting data are accumulated, and the effective use of such data. A textbook and workbook will be required for this course. Elements of Accounting I will serve the educational needs of those persons who might use accounting in their career and those who will use accounting information in their personal affairs. This course will cover the

recording a transactions, adjusting entries, preparation of financial statements, use of a worksheet, and closing entries. The course will be taught by Dr. Russell Edenborough, Professor of Accounting and Chairman of the Division of Business and Applied Arts of Panhandle State University. Dr. Edenborough is a Certified Public Accountant.

**1702 ANSC 2123 FEEDS & FEEDING 3 Hours Credit--Thursday--Room 201 Sewell-  
Loofbourrow--Class Limit 50 PSU Tuition & Fees \$60.90  
Instructor: Dr. Jerry Martin**

Feeds and Feeding will be a study of physical and nutritive characteristics of feedstuffs and the use of these feeds in the formulation of rations for farm livestock and household pets. Objectives of the course are to study the function of feed nutrients, to study the physical and nutritive properties of commonly used feeds for livestock and household pets, and to study ration or diet formulation including computer usage. A textbook, "Feeds and Feeding," will be required for the course

and available at the Panhandle State University Bookstore. The course is to be taught by Dr. Jerry Martin. Dr. Martin, Chairman of the Division of Agriculture at PSU has twenty-three years of university teaching involving courses in basic nutrition and applied nutrition. Dr. Martin has a Ph.D from Oklahoma State University with a major in nutrition and a minor in physiology.

**1703 ART 4000 BREADDOUGH ART 1 Hour Credit--Monday--Room 206  
Sewell-Loufbourrow--Class Limit 20 PSU Tuition & Fees \$23.65  
Instructor: Kristy Patterson**

Breaddough Art will feature the techniques in making and sculpturing breaddough into Christmas ornaments, baskets, wall hangings, figurines, and the like. Tips will be given on mixing paint with dough and various recipes and baking techniques will be shared. All participants will be required to bring flour, salt, wire, food coloring paste, garlic press, shelac, aluminum foil, cookie sheet, acrylic paint, and brushes, liquid soap, lace and fabric scraps. The course will be team taught by Kristy

Patterson and Pam Wadley. Kristy has taught breaddough art at workshops to civic and extension homemaker groups. She has a degree in commercial art and design. Pam teaches breaddough art throughout the area to various groups, she exhibits and sells breaddough art as a freelance artist and has developed and specialized techniques in coloring and baking the dough.

**1704 ART 4000 COLOR WARDROBE 1 Hour Credit--Monday--Room 201 Sewell-  
Loufbourrow--Class Limit 30 PSU Tuition & Fees \$23.65  
Instructor: Jo Dunham**

Color Wardrobe-Dressing Thin, means looking great all the time no matter your size. Using a combination of one tenth optical illusion and nine tenths attitude, the result is a new you. It is for anyone who wishes to look up to 35 pounds thinner. Demonstration, models, clothes, and accessories, will be used, how to define and shape your wardrobe and how to put together looks with colors. Many extras will be taught to make dressing truly individual, creative, fun, and problem free.

Attention will be given to the following areas: line and design, style and detail, pattern and color, accessories, and wardrobe planning. The course will be taught by Jo Dunham who has extensive training in color and wardrobe with COLOR I Associates of Costa Mesa, California. A \$10.00 color type fee will be charged all participants taking Color Wardrobe.

**1705 ART 4000 WATERCOLOR PAINTING 2 Hours Credit--Tuesday--Room 203 Carter  
Hall--Class Limit 20 PSU Tuition & Fees \$44.30  
Instructor: Jo Dunham**

Watercolor Painting has been designed for both beginning and intermediate painters. This course is offered for two hours of credit and will meet for 10 weeks. At least one field trip will be included in this course. Transparant watercolor techniques will be emphasized through the use of basic washes: graded, flat, wet-in-wet, and dry brush. Variation in color technique, and design will be stressed through step-by-step demonstrations, paintings to be completed in the ten week

class include: Field of Daisies, Plowed Field, Country Road, Morning Light, Casual Water, and several others. Jo Dunham holds bachelor and master's degrees from Northeastern Oklahoma State University and has studied with Carl Schmaltz, Robert Loughead, Ben Knois, and Stefan Kramar. She is founder and past president of Artists' Studio Northwest. A supply list will be furnished and supplies may be ordered by calling Mrs. Dunham, in Guymon, at 338-3232.





Pam Nelson

Kathaleen  
Thrasher

Sam Nelson

Rodney &  
Barbara Seawright

David Driskill



Ed Bryan

**1706 BUAD 3403 REAL ESTATE PRINCIPLES 3 Hours Credit--Wednesday--Room 110  
Hamilton Hall--Class Limit 45 PSU Tuition & Fees \$64.95  
Instructor: Russ Smith**

The Real Estate Principles class is offered for three hours of university credit. It meets the requirement necessary for an individual to be able to sit for the Sales Associate Examination in the state of Oklahoma. Primary emphasis for the course will be placed upon contracts, home ownership, brokerage, deeds, and selling. The participants in the course will be required to purchase two textbooks. One will be

available in the PSU Bookstore, the other will be ordered the first night of class. This course is one which may be challenged for a letter grade. It then may be used toward a bachelor's degree in Business Administration. Real Estate Principles, the first course in Real Estate, will be taught by Russ Smith. Mr. Smith is a Broker and is the owner of Landmark Real Estate in Guymon.

**1707 COSC 2123 BASIC I 3 Hours Credit--Wednesday--Room 208 Sewell-Loufbourrow--  
Class Limit 20 PSU Tuition & Fees \$60.90  
Instructor: Diane Murphey**

BASIC I is the second course in the logical progression of learning computer science and programming. The course will serve as an introduction to the strategies of program design and techniques of programming using BASIC, a high level programming language. Structured programming techniques will be used to teach formatting, input, output data, error trapping, sequential file handling, tables, binary search and more. This course requires that all who enroll have successfully

completed Introduction to Computer Systems. BASIC I may be taken for a letter grade or it may be taken on a "P" for passing, "W" for withdrawn basis. The course will be taught by Diane Murphey. She teaches many of the computer courses at PSU and holds bachelor's and master's degrees in mathematics and is presently working towards a doctors degree with an emphasis in computer science.

**1708 COSC 2113 INTRODUCTION TO COMPUTER INFORMATION SYSTEMS 3 Hours  
Credit--Monday--Room 207 Sewell-Loufbourrow--Class Limit 24 PSU Tuition & Fees  
\$60.90  
Instructor: Pam Nelson**

**1709 COSC 2113 INTRODUCTION TO COMPUTER INFORMATION SYSTEMS 3 Hours  
Credit--Tuesday--Room 207 Sewell-Loufbourrow--Class Limit 24 PSU Tuition & Fees  
\$60.90  
Instructor: Julie Eggleston**

**1711 COSC 2113 INTRODUCTION TO COMPUTER INFORMATION SYSTEMS 3 Hours  
Credit--Thursday--Room 207 Sewell-Loufbourrow--Class Limit 24 PSU Tuition & Fees  
\$60.90  
Instructor: Kathaleen Thrasher**

These three introductory courses into Computer Information Systems will offer the same material. The popularity of this subject area has prompted Panhandle State to again offer three sections so that more area residents may be accommodated. The course key number 1708 will meet Monday evenings, the course with the key number 1709 will meet Tuesday evenings, and the course with key number 1711 will meet Thursday evenings. All three courses will provide an overview of computer information systems. There will be introduction to computer hardware, software, procedures and systems, along with an overview of human resources and computer applications in various segments of the society. Fundamentals of computer problem solving and programming will be discussed and applied. All participants will need a 5 1/4 inch floppy disk. It may be purchased at the University Bookstore the first night of class. A textbook will be required and will be

available at the PSU Bookstore. The Monday evening class will be taught by Pam Nelson, the Tuesday evening class by Buddy Brock, and the Thursday evening class by Kathaleen Thrasher. Pam Nelson has a degree in mathematics from Panhandle State University and a masters degree in computer science. She serves as a member of the PSU faculty, in math and computer science. Julie Eggleston is a recent PSU graduate in Accounting and Computer Science. She is now an accountant with Caprock Industries in Gruver, Tx. Kathaleen Thrasher holds a bachelors degree in Business Administration and a master's in Computer Information Systems Education from West Texas. She has previously taught in the Texhoma Public School System and is now employed at the First National Bank of Texhoma.

**1712 COSC 4000 PRACTICAL APPLICATIONS OF MICROCOMPUTERS 3 Hours Credit--  
Wednesday--Room 207 Sewell-Loufbourrow--Class Limit 24 PSU Tuition & Fees \$64.95  
Instructor: Mel Yates**

Practical Applications of Microcomputers will teach the use of three application programs: word processing, spread sheet, and data base file management. The programs used will be Superscript, Visicalc, and Profile III-Plus. Machines used will be the TRS-80 Model IV. Although no programming knowledge is necessary, students must be familiar with computer operation, have experience operating a computer, and have completed the course, Introduction to Computer Information

Systems. Some business and record keeping knowledge is assumed. The course will cover basic operation of the three programs and will stress hands on experience. The course will again be taught by Mel Yates, Superintendent of Schools at Texhoma. He has used these programs extensively. Participants will be required to purchase three 5 1/4 inch single sided double density floppy disks, costing approximately \$5.00 each.



Cleo Rainey



Penny Sommers



Candi Kelly



Dan Faulkner



Bob Wise



Debra Cole

**1713 ECON 2113 ELEMENTS OF ECONOMICS 3 Hours Credit--Thursday--Room 222  
Hamilton Hall--Class Limit 25 PSU Tuition & Fees \$60.90  
Instructor: Sam Nelson**

This course may be used to fulfill part of the general education requirements and partial corequisite requirements for a major in business. The course may be challenged for a letter grade or taken on a "P" "W" basis. The course will offer some insight and explanation to the questions: How does supply effect demand? How does governmental policy, savings, and inflation affect income? How does the banking system work and how does it affect you? The course will also cover

international trade and its effects. Different levels of unemployment and its effect on the economy will also be discussed. There will be a required textbook for this course. The course will be taught by Sam Nelson, Head of the Department of Social and Behavioral Sciences. Mr. Nelson received both his undergraduate and graduate degrees at the University of Texas in Austin and has taken additional work at Oklahoma City University.

**1714 EDUC 4000 LEARNING TO PLAY BRIDGE 1 Hour Credit--Wednesday--Student  
Union Cafeteria--Class Limit 24 PSU Tuition & Fees \$23.65  
Instructor: Rodney & Barbara Seawright**

Learning To Play Bridge will provide the participants of the course with the basic rules for bidding and play. This course will combine lecture and actual participation. Rules, conventions and methods of play will be of prime importance for the individuals taking this course. All will be explained and demonstrated and then will be put into practice by those taking the course. Bridge is one of the most socially

acceptable card games. Many persons hesitate to learn because they believe it to be difficult. Bridge is a game where the learning never ends. Some bridge players are more experienced than others but all are still students. This course, taught by Rodney & Barbara Seawright, will prepare the participants to begin playing bridge. There will be a textbook required for the course.

**1715 EDUC 4000 READING RATE IMPROVEMENT 2 Hours Credit--Tuesday--Room 127  
Hamilton Hall--Class Limit 20 PSU Tuition & Fees \$44.30  
Instructor: Dr. David Driskill**

This course is designed to develop reading rate and flexibility. This should improve not only the reading speed but also the comprehension. The course is to be taught by Dr. David Driskill, Professor of Education and Director of the Reading Clinic at Panhandle State University. Participants in this course will use teacher made materials and some self contained materials. The methods and materials necessary

for increasing both rate and comprehension will be discussed. Many speed reading courses do not emphasize the increased comprehension, only the increased speed. This course will help the participants achieve both. Dr. Driskill has a number of years experience as a reading specialist prior to joining the Panhandle State University faculty in the fall of 1976.

**1716 HPER 4000 FUNDAMENTALS OF BOWHUNTING 2 Hours Credit--Tuesday--Room  
108B McKee Library--Class Limit 12 PSU Tuition & Fees \$44.30  
Instructor: Ed Bryan**

Fundamentals of Bowhunting will include subjects of bowhunting safety and ethics, equipment selection and tuning, shooting techniques, bowhunting methods, game habits and habitats, and field care of game. Those who complete the course successfully will be officially registered as Certified Bowhunters with the National Field Archery Association's International Bowhunter Education Program. Participants in the course will learn through lecture, visual aids, and practical experi-

ence. Participants must provide their own archery equipment and accessories and a \$10.00 fee will be charged for incidental supplies and books for the course. This amount is payable at the first class meeting. The instructor for the course is Ed Bryan. He is a certified instructor in the International Bowhunting Education Program and a lifetime NRA hunter safety instructor. Mr. Bryan has numerous listings in Oklahoma's Bowhunting Record Book.

**1717 HOEC 4000 CHINESE COOKING 1 Hour Credit--Tuesday--Room 301 Hesper Hall--  
Class Limit 20 PSU Tuition & Fees \$23.65  
Instructor: Cleo Rainey**

Chinese Cooking will be taught by Cleo Rainey. She is a PSU graduate with a degree in Home Economics. Cleo is the wife of LTC Charles "Bud" Rainey, retired, who spent considerable time in Taiwan. During that time Cleo took lessons in Chinese cooking and also learned from their Chinese cook. Cleo will give a background on China and Chinese cooking during the course. There will be a variety of dishes prepared during each of the five sessions. The first session will be

held on October 9. It will be necessary to enroll prior to the August 31 final enrollment date. Chinese cooking will feature a variety of dishes that can be prepared with food products available in this area. Mrs. Rainey will be using a wok, a Chinese cooking vessel, to prepare the food. Dishes to be made include: Bso-Tse, Sweet and Sour pork, spring rolls and more. A \$15.00 food fee will be charged.

**1718 HOEC 4000 CONTEMPORARY TAILORING 2 Hours Credit--Tuesday--Room 316  
Hesper Hall--Class Limit 20 PSU Tuition & Fees \$44.30  
Instructor: Penny Sommers**

Contemporary Tailoring will enable participants to learn quick and easy tailoring techniques, to develop tailoring practices which produce a professional looking garment, to make proper pattern and fabric selections, and to construct an eight hour blazer. Participants must supply sewing equipment and supplies, fabrics and patterns to complete a garment. A textbook, "Easy, Easier, Easiest Tailoring,"

costing less than \$10.00 will be required for the course. Contemporary Tailoring will be taught by Penny Sommers, Head of the Home Economics Department at Panhandle State University. Ms. Sommers lacks all but dissertation on a doctorate in Home Economics Education with a support area of clothing and textiles.

**1719 HOEC 4000 SEWING CRAFTS (DECORATOR PILLOWS) 1 Hour Credit--Thursday--  
Room 316 Hesper Hall--Class Limit 18 PSU Tuition & Fees \$23.65  
Instructor: Candi Kelly**

Learn how to make one of today's most popular decorating accessories. This class will concentrate on the basics of making decorator pillows, how to figure fabric measurements, methods of dealing with ruffles, types of filling available and when to use a specific type of filling. Two projects will be completed during this course: a pillow utilizing a removable pillow form and one in which fiberfill is used. A basic knowledge of sewing and machine use is necessary. The course will be taught by

Candi Kelly. Candi graduated from Panhandle State University with a Bachelor of Science degree in business administration with a minor in fashion merchandising. She has previously taught a course in home decorating and in boutique crafts. A list of supplies and materials necessary will be given to those enrolled the first night of class.

**1721 HUM 4000 BEGINNING GUITAR 1 Hour Credit--Monday--Room 115 Hughes-Strong--  
Class Limit 25 PSU Tuition & Fees \$23.65  
Instructor: Dan Faulkner**

Beginning guitar is a course designed for the person who knows little or nothing about guitar but is interested in learning to play. This course will cover basic chord patterns, accompaniment styles, some playing by note, and reading tablature. Emphasis will be on acquiring skills which will enable participants to play for their own enjoyment and provide a basis for self instruction for continued learning after the course has been completed. The textbook "Comprehensive Guitar Method,"

will be supplied by the instructor and sold at the first meeting for \$5.95. An additional \$5.00 will be charged to cover the cost of duplicating materials that will be handed out by the instructor, Dan Faulkner. Mr. Faulkner is a graduate of Panhandle State University and has a master's degree from Fort Hays State University. He has been a music educator for fourteen years and currently serves as Instructor of Music and Director of Bands at PSU.

**1722 HUM 4000 PANHANDLE CHORALE 1 Hour Credit--Thursday--Hughes-Strong  
Auditorium--Class Limit 50 PSU Tuition & Fees \$23.65  
Instructor: Dr. John Slawson**

The Panhandle Chorale is a regional community chorus designed to give people of the area who enjoy singing an opportunity to participate in an organized chorale ensemble. The Chorale, established in the spring of 1981 as the Panhandle Master Chorale has presented the Vivaldi "Gloria" and a portion of the Mendelssohn's "Elijah" with the Southwest Symphony Orchestra. The chorale is open to all

singers without audition. Rehearsals will begin in Hughes-Strong Auditorium and continue each week culminating in a concert of Christmas music, mostly traditional as well as non-traditional carols in early December. Dr. John Slawson, conductor and director of Panhandle Chorale currently serves as Instructor of Music and Director of Choral Activities and Music Theater at Panhandle State.

**1723 JOUR 1123 FUNDAMENTALS OF PHOTOGRAPHY I 3 Hours Credit--Thursday--  
Room 203--Sewell-Loufbourrow--Class Limit 32 PSU Tuition & Fees \$60.90  
Instructor: Bob Wise**

Are you concerned with the basics in the operation of a modern 35mm single lens reflex camera, the developing of black and white film, and the enlargement process? This course will cover the operation of the camera, proper exposure, guidelines for good composition, using and controlling, artificial lighting, and correcting common photographic errors. These areas will be covered by lecture, filmstrips, visual aids and actual practice. All of the participants will take and

develop their own rolls of film. A textbook "Photography" is required and will be available in the PSU Bookstore. The photo materials: film, paper, chemical, etc. may be purchased through the PSU studio for \$28.50. This class will use the new photo lab facilities that have been added. It is possible for eight participants to use the enlarging and printing stations during a session. The course will be taught by Bob Wise.

**1724 SESC 1103 BEGINNING TYPEWRITING 3 Hours Credit--Monday--Room 308 Ham-  
ilton Hall--Class Limit 30 PSU Tuition & Fees \$60.90  
Instructor: Debra Cole**

The goals of Beginning Typewriting include: To type letter, figure, and symbol keys by touch, to develop proficiency in shifting for capitals, in tabulating, and in handling other operative parts of a typewriter. Also to be covered are: the basic rules regarding the arrangement of copy on the paper, skills and understanding of the typing of letters and reports, proofreading for accuracy, and evaluating the acceptability as a finished piece of work. This course is designed for those persons

who have no typewriting skills. The objective of the course will be to teach the participants to type sufficiently well, to meet the requirements of a job, and to type personal papers. A textbook, "Introductory Typewriting" is required. The course will be taught by Debra Cole, a PSU Business Education graduate and employee of the PSU Business Office.



# Application For Admission And Enrollment

## Panhandle State University Adult Education Program

Full Legal Name (Last, First, Middle) \_\_\_\_\_  
 Sex (M-F) \_\_\_\_\_ Date of Birth \_\_\_\_\_ Place of Birth (City, State) \_\_\_\_\_  
 Ethnic Code \_\_\_\_\_ (1. Non-Resident Alien 2. Black 3. American Indian or  
 Alaskan Native 4. Asian or Pacific Islander 5. Hispanic 6. White)  
 Social Security No. \_\_\_\_\_ First Time Student (Y-yes, N-no) \_\_\_\_\_  
 Major \_\_\_\_\_ Minor \_\_\_\_\_ Day Phone ( ) \_\_\_\_\_  
 Evening Phone ( ) \_\_\_\_\_ Street or Box \_\_\_\_\_ City \_\_\_\_\_  
 State \_\_\_\_\_ Zip Code \_\_\_\_\_ Martial Status \_\_\_\_\_ (S-single, M-  
 married, W-widowed, D-divorced) Spouse (First Name) \_\_\_\_\_  
 Maiden Name \_\_\_\_\_ Have you previously attended PSU?  
 (Y-yes, N-no) \_\_\_\_\_ From (Month and Year) \_\_\_\_\_ To (Month  
 and Year) \_\_\_\_\_ Bachelor or above degree earned (Y-yes,  
 N-no) \_\_\_\_\_ At Panhandle State (Y-yes, N-no) \_\_\_\_\_ Highest degree earned  
 (BS-MS-PHD) \_\_\_\_\_ Name of High School attended \_\_\_\_\_  
 Location (City, State) \_\_\_\_\_ Date of Graduation \_\_\_\_\_  
 Last College or University Attended \_\_\_\_\_  
 From (Month and Year) \_\_\_\_\_ To (Month and Year) \_\_\_\_\_  
 Eligible to Return (Y-yes, N-no) \_\_\_\_\_ Location of College (City, State) \_\_\_\_\_

Please fill out schedule from page 3 listing Fall 1984 Adult Education courses.

KEY NO.	DEPARTMENT NO.	COURSE NO.	CREDIT HOURS	TIME	M	T	W	T	H	F	BUILDING	ROOM NO.	INSTRUCTOR	TUITION
				7-9:50										\$
				7-9:50										\$
				7-9:50										\$
				7-9:50										\$
				7-9:50										\$

Fill out this application completely and mail with check for the proper amount to:

Director of Adult Education  
 Panhandle State University  
 Box 430  
 Goodwell, OK 73939