

Despite Enthusiastic Play . . .

Lynx Outclawed By Canadian Wildcats

The Lynx varsity football team traveled to Canadian last Thursday to take on the Wildcats on their home field. The Wildcats, on paper, were superior to the Lynx in record (2-0), size, ability, and number of players. The Lynx team, as predicted on paper lost to the Wildcats 8 to 28. (Despite being outmanned and scored on early). The Lynx, team, played a hard game and did not let the score distract them from playing the football game with apparent enthusiasm, giving the best they could.

The game started off good for the Lynx. They won the toss and selected to receive. The Lynx returner fielded the ball on the 13 yard line and returned it to the Lynx 24 yard line.

The Lynx failed to move the ball ten yards in three attempts and were forced to punt the ball. The Wildcat offense took the ball on their 30, and using a quick count snap, made a first down on two running plays. On the very next play, a Wildcat runner broke around the end of the Lynx defensive yardline. On the next play, the Wildcats covered the remaining six yards for the touch down. After a good PAT kick, the

score was 0-7 with 8:22 left in the first quarter.

For the rest of the quarter, the Lynx defense played with enthusiasm. Despite being scored on so early, the Lynx were able to keep the Wildcats quick offense out of the Lynx end zone. The defense took advantage of several procedure penalties levied against the Wildcats, and made several outstanding plays by sacking the quarterback once, breaking up several pass attempts, and forcing the Wildcats to turn the ball over on downs.

The Lynx offense was just not able to get on track through the rest of the quarter. Despite being given several opportunities by the Wildcat penalties, including an unsportsmanlike conduct against a coach on the Wildcat bench, the offense could not get on track. Missed blocks by the offensive line, allowing a quarterback sack, and a pass thrown behind a receiver, leading to an interception, put a stop to the two Lynx drives of the quarter.

In the second quarter the Wildcat team got it together and began to exert their superiority. Their defense would not allow the Lynx offense to cross the fifty yard line,

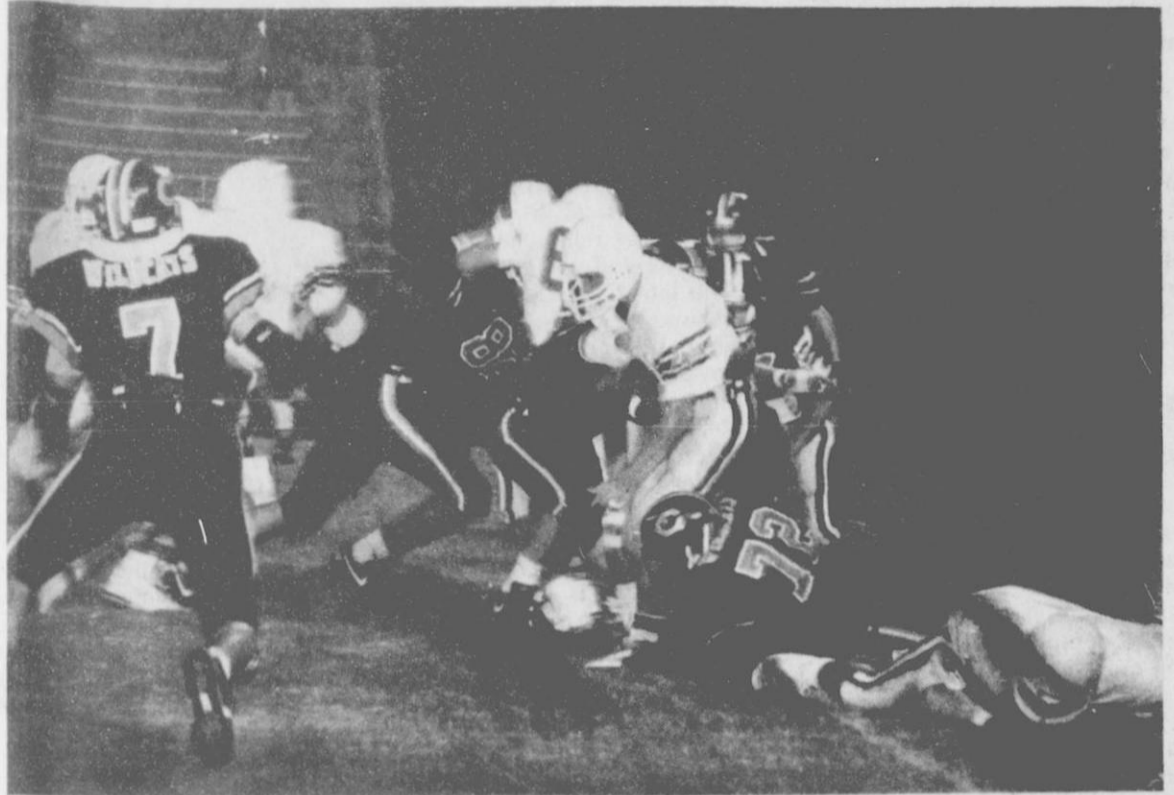
and allowed them only one first down in four possessions.

The Wildcat offense scored twice in the quarter. They went 55 yards in two plays the first time they got the ball. For their second touchdown, the Wildcats offense only had to go six yards after their defense forced the Lynx into a poor punt from the Lynx end zone. The half ended with a scoreboard showing the Wildcats ahead 21-0.

The second half started like the first half ended. The Wildcat offense took the ball 60 yards in three plays and scored a touchdown. With a successful PAT kick, the score stood at 28 to 0.

At this point, the Lynx players appeared to play harder. They were determined not to quit. At the end of the third quarter, Scott Wilkerson broke off tackle for a 45 yard run, putting the Lynx on the Wildcat's 33 yard line. This was the first time they had been across the fifty all night.

The drive was stalled there by a penalty. On the ensuing punt the Wildcat returner fumbled the ball into their end zone. He barely managed to recover the fumble before he was tackled. This gave the Lynx a two point safety and



Lynx ball carrier slides through a hole opened in the Wildcat defensive line.

See Football Page 6

HOMECOMING EVENTS

THURSDAY
8:30 p.m. - Snake Dance
Bonfire

FRIDAY
2:55 p.m. - Pep Rally
5:30 p.m. - Bar-B-Que Dinner
Hosted By FFA
SHS Cafeteria
Contact FFA Students
For Tickets

7:00 p.m. - Coronation
7:30 p.m. - Lynx vs. Bucks
After game - Dance

WEATHER

Day	High	Low	Precip.
Fri.	76	50	0
Sat.	59	38	0
Sun.	74	36	0
Mon.	79	42	0
Tue.	79	45	0
Wed.	45	0	0

The Spearman
Reporter
25¢ Per Copy
6 Pages

Volume 81, No. 48 YOUR HOMETOWN NEWSPAPER Thursday, September 28, 1989

Panhandle Events

"Ruin"-Amarillo College

A new play by Danell L. Wudarski. The dramatic struggle of three sisters caught in the same marriage. Oct. 3, 4, 6 and 7.

"The Pirates of Penzance"
Amarillo College

A musical by Gilbert and Sullivan, as presented by the New York Shakespeare Festival. Joseph Papp, producer, on Oct. 12, 13, and 14.

Modern Dance Superstar Amarillo

Choreographer David Parsons will bring his energetic modern dance company to the Amarillo Civic Center Auditorium on Friday, October 13, 1989 for an 8:00 p.m. performance.

OSAGE HILLS FESTIVAL PAWHUSKA* OKLA.

The Osage Hills Annual Festival in Pawhuska, Okla. presents the first annual Osage Hills Bob Wills Day and Former Texas Playboy Reunion, October 7, at the Osage County Fairgrounds.

The Osage Hills festival will be a three day event, October 6, 7 and 8. Those attending are invited to bring motor homes and trailers to enjoy events such as mountain man rendezvous, arts and crafts, worlds richest steer roping, a Saturday morning parade and the Bob Wills Day Celebration and Former Texas Playboy Reunion. Call Larry McWhorter at 918-287-4427 after 5:00 p.m. for more information.

FIELD DAY AT GOODWELL

Some new practices in irrigation technology will highlight a field day Oct. 10 at the Panhandle Research Station outside Goodwell.

The morning program will feature a new demonstration project involving a low energy precision application (LEPA) irrigation system on the station. Afternoon tours will include grain sorghum hybrid performance trials, a new herbicide demonstration and irrigation equipment, in addition to allowing a closer look at the new irrigation demonstration.

DINOSAUR DAYS AMARILLO

The Don Harrington Discovery Center announces the spectacular song and dance extravaganza, "Dinosaur Days."

Cross Country Team Ranked No. 1 In State

Spearman's Girls Cross Country team is ranked first in the state, according to recently released state rankings. Wall is ranked as number two, and ranked third is Little Elm.

In a recent cross country meet, the varsity team came in second just behind Canyon. A total of 19 teams competed.

Haley Shieldknight placed 17th., Michelle Cook took 18th and Jill Lusby placed 25th. Joy Gafford finished in 28th place. Nancy Ivey was just behind in 29th place, and in 60 place was Sonya Nitschke.

Others competing included Suzanne Sanders, Laci Lasater and Denise Arnold.

The junior varsity fared well, coming in third overall out of 15 teams. About 200 girls competed in the meet.

Gwen Benson finished in 11th place. Mary Cook took 19th place, Kimbre Townsen finished 22nd, Ashley Shieldknight was 28th and Amanda Nobles was 52nd.

Michelle Garnett finished in 67th place, and right behind was Holly Jarvis in 68th. Tracy Tigrett came in 133rd.

County Jobless Rate Compares Well

Hansford County's unemployment rate compares favorably with other counties in the state, according to figures released by the Texas Employment Commission.

The August jobless rate for Hansford County stood at 2.8 percent, as compared with a 6.1 percent rate in Hutchinson County. Ochiltree County's unemployment figure of 4.3 percent, and the 3.9 percent unemployment reported in Moore County.

Hansford County had a total labor force of 3,722 persons in August. Of that number 3,618 persons were employed and 104 did not have jobs.

TEC figures also showed that the Amarillo metropolitan area had the third lowest rate of unemployment in the state during August, with a total of only 5.9 percent of the work force unemployed.

Statewide, the unemployment rate in Texas obviously needs a swift kick, according to Commissioner Mary Scott Nabers of the TEC. "The rate declined just barely over the past month," Nabers said, "but we are still higher than this time last year. We cannot seem to get a good, consistent downward trend established."

The latest statistics place the August rate at 7.2 percent, down

from 7.3 percent in July, but above the 6.7 percent recorded in August of 1988.

"We watch carefully for any signs that indicate the state's economy is slowing," Nabers said, "and while these numbers are definitely disappointing we do not believe this year's higher rate is significant enough to be alarming."

The total number of unemployed Texans was 607,700 and approximately 7,842,700 people were working. The state lost over 5,000 nonfarm salaried jobs, primarily because of their nature.

Unemployment rates in most of the 27 major metropolitan areas for which data is currently available followed the statewide trend, with slightly lower rates in August. The areas with the lowest unemployment rates in August were: Bryan-College Station, with a 4.9 percent rate; Lubbock, at 5.6 percent; Amarillo and Sherman-Denison, each with rates of 5.8 percent; and Austin and San Angelo, each with a 6.0 percent rate in August.

Highest rates were recorded in McAllen-Edinburg-Mission, where the August rate was 17.7 percent; Brownsville-Harlingen, at 13.2 percent; Laredo, with 11.3 percent; El Paso, with 10.6 percent; and Beaumont-Port Arthur, at 9.3 percent.

4-H Council Meets

On September 4, 4-H officers met at the Pizza Hut. They planned several events to take place throughout the year and elected council officers.

Officers attending the meeting from Gruver were Ashley Wagner, Dawn McCullough and Holly Venneman. Officers from Spearman were Michelle Cook, Joy Gafford, Mary Cook, Randie Renner, Karla Kunselman and Kevin Williams.

The first priority of business was to elect council officers. The

newly elected officers are President, Ashley Wagner; Vice President, Michelle Cook; Secretary, Holly Venneman; and Reporter, Kevin Williams.

Other items of business were to plan programs for all 4-H meetings, plan a theme for the 4-H banquet, plan a dance for older high school students, and to plan a walk-a-thon for Cystic Fibrosis.

For further information contact Karen Babitzke at 659-2030 or Burt Williams at 659-2136. The Gruver number is 733-2901.

Health Screening Available

Hansford County chapter, American Heart Association will sponsor cholesterol screening and blood pressure screening Saturday, Sept. 30 at the Gruver Elementary School gym from 10:00 a.m. to 2:00 p.m.

No fasting is necessary for cholesterol screening, and results are available in two to three minutes. A fee will be charged for the service, provided by personnel from High Plains Baptist Hospital in Amarillo.

Blood pressure screening is being provided free of charge through the courtesy of Gruver EMS.

The public is invited to take advantage of one or both screening programs during the Hansford County Fair.

HANSFORD COUNTY FAIR PROGRAM OF ACTIVITIES SEPTEMBER 28, 29 30 and OCTOBER 1, 1989

3:00 PM Thursday, September 28
Building open to receive all non-perishable exhibits: Art, Needlework, Crafts-Hobbies, Tole Painting, China Painting, Antiques, Clothing, Photography, Canned Goods.

8:00 PM Fair Closes
Spearman Jr. Varsity Football
Gruver Jr. Varsity Football

9:00 - 11:00 AM Friday, September 29
Building open to receive perishable exhibits.

11:00 - 3:00 PM Exhibits Judged

4:00 PM Building open to Public Concession stands open

7:00 PM Fair Closes
Spearman Varsity Football
Gruver Varsity Football

8:00 AM Saturday, September 30
Fair Opens

8:30 - 9:00 AM Dog Show Registration

9:30 AM Dog Show Begins

11:00 AM Lamb & Steer Show-Gruver County Barn

6:00 PM Release of exhibits

6:30 PM Variety Show-Gruver High School Auditorium/Admission chg.

8:30 PM Fair Closes

9:00 PM-MIDNIGHT Dance - GARY P. NUNN & THE SCMS OF THE BUNKHOUSE Admission charge

2:00 PM Sunday, October 1
Roping-Gruver Roping Arena
Gruver 4-H Rodeo Club/Allen McCloy

Among The Neighbors

by Helen Fisher

Word has been received here of the passing of Charles Chambers of Lubbock. Services were held on the 23rd and several relatives from Gruver attended.

Charles, 87, lived in Spearman many years and was married to the former Priscilla Hancock. He is survived by two daughters, Phyllis Turner and Vickie Roberts and a son, J.C., all of Lubbock.

It was an interesting feature story regarding Ed Cunningham in the sports section of the Amarillo News Globe on Sunday. Eddie is a University of Texas senior tackle on the football team. He is also on the Athletic Director's Honor Roll, and is the son of Ed and Gladys Cunningham of Fritch.

Now, is it his athletic or academic achievement that is due to the influence of his uncle, Billie Haden, of Spearman?

Glenn and June Day spent an enjoyable week in the Ozarks last week. They were in Branson, Missouri and Eureka Springs, Ark. Scenic drives, shows, plays and shopping had the week passing quickly.

Patti Sheppard returned on Friday from another sad trip to Robert Lee, Texas. She attended the funeral of her sister, Bobbie Mahon, on Thursday. Mrs. Mahon lived at Weimar, Texas.

It is remembered that Patti lost a sister in January and another this past July.

Chalmers and Betty Porter have been gone several days recently on a trip to Little Rock, Ark.

Betty's mother, Mrs. Cleve Douglas, of near Rogers, who has been visiting the Porters returned with them.

Winners in the Tri State High School Rodeo held in Dumas last weekend include the following: Mark Eakin placed in calf roping, ribbon roping and in team roping with Clint DeArmond.

Clint DeArmond won a second with Rowdy Slavin, Canadian, and a fourth with Mark Eakin in team roping.

Leslie Morton, Gruver placed in break-away roping and poles. Kelly McCloy, Gruver, placed in barrels.

Mrs. Pauline McGee was met at the airport in Amarillo on Saturday by Paul and Betty Hazlewood as she returned from a two-week stay in Ohio.

She visited her daughter in Cincinnati, where it rained every day. They spent several days with her granddaughter at Nashville, Tenn. She is a student at Vanderbilt University.

Judge R.L. and Barbara McClellan returned Sunday from a two week vacation which they found most interesting. They flew to New York City and took a bus tour up the coast through New England into Canada and returned by a different route.

Their tour took them through Vermont and Maine to Quebec and Montreal and back through Massachusetts, Boston and Bar Harbour had so many and varied places of interest.

The scenery was beautiful and the foliage is just beginning to turn.

Notes from some of the ill in Amarillo hospitals:

Don Knox is expected to be dismissed within the next few days from High Plains Baptist hospital, where he has been for 10 days. He suffered a series of heart attacks and was in CCU, then ICU, but will not have to have surgery. Gloria, who had been staying in Amarillo, came home on Saturday with son David, of Hart, and early Sunday morning was stricken with an illness and had to be hospital-

ized in Hansford Hospital. She has since been able to return to Amarillo.

Delbert Allen, who has been seriously ill at St. Anthony's for weeks, is expected to be brought to Spearman. Ivan, who has been staying at Ronald McDonald's, slipped when leaving the hospital on Sunday night and received painful injuries. Though no bones were broken, she has an arm and a leg in splints.

Mrs. Annie Allen is rejoicing that she was able to return to her own home on Tuesday after more than a week at St. Anthony's. Much to her relief, her condition can be treated without surgery.

The latest on Cleo Denman is that surgery will be performed on Thursday morning at St. Anthony's. Her son, Tommy from Arkansas, and daughter, Dora Kate, of Indiana are enroute here.

There are others from Spearman hospitalized including Susie Slaten and Kamber Gift, but family members were unavailable.

Who decided, and why, that "Kay" would be a girl's name and "Jay" would be a boy's name?

Linda Andrew will be opening the new Merle Norman Studio in Spearman at 300 Main.

The studio will offer an exclusive collection of skin care products and cosmetics. Their unique policy of "Try Before You Buy" allows customers the opportunity to have personalized makeup and skin care lessons by a trained beauty advisor.

Linda Andrew has just returned from Los Angeles, Calif. where she completed two weeks of intensive training at the home office of Merle Norman Cosmetics. While there, Andrew learned the newest makeup artistry techniques, makeup color coordination, and the latest developments and products for effective skin care.

She now brings this expertise to Spearman where she will be opening a sparkling, fully-stocked cosmetic studio at 300 Main.

Club News

CWA OPEN MEETING

Concerned Women of America will hold an open meeting Sunday, Oct. 1 at 2:00 p.m. at the Ellsworth home, 1008 Linn Drive, in Spearman.

The meeting is open to those interested in learning more about CWA. Members say the purpose of CWA is to preserve, protect and promote traditional and Judeo-Christian values.

RAINBOWS & RANGLERS

Rainbows & Ranglers Square Dance Club held its monthly dance Saturday, Sept. 23 in the County Barn. Eight squares danced to the calls of Roy Johnson from Amarillo.

Visitors were Bob Kirby, Ulysses, Kan.; Lew Mathews and Lorena Koch, Springfield, Colo.; Bob Roberts, Keys, Okla.; Fred and Sue Tipton, Vera Davis, Sylvia Butts, Peggy Coffman, Fred and Jo Mahon, J.G. and Jean Nagelout, Bob and Zelona Philippe, Gerry Lickliter and Harold Heiers, Guymon, Okla.;

Bill and Sandra Penn, Amarillo; Gene and Betty Baskew, Claude and Georgie Sadler, and Harvey and Sly Bailey, Pampa; John and Frances Westman, Clyde and Jody Bechthold and Jack Clark, Booker; Wayne and Glenda Bryant, Ginie Pilcher, Steve Shultz, Myron and Jane McCarter, Ed and Lois Merydith, June Kindy, Janet Broxson, Jim Wright, Ray and Brenda Griffin, and James and Norma Burris, Perryton; and Harold and Jean Littau from Amarillo.

Members present were Danny and Debbie Herrington, Benny and Joyce Byers, Alvin Byers, Delbert and Louise Timmons, Johnny and Virginia White, Joe and Wanda Archer, Tommie Dickey, Gwen Shuler, Terry Horton, Worley Smith, Carol Short, Sonny and Marlane Nollner.

The next dance will be a Plus Dance on October 12, with Murry Beasley calling.



Jean Warner

FLAME FELLOWSHIP REGIONAL CONVENTION

The first annual Texas Panhandle Flame Fellowship Regional Convention will be held October 6-7 at the 5th Seasons Inn, located at 6801 I-40 W in Amarillo. The local chapters of Flame Fellowship in Amarillo, Dumas and Spearman are hosts. There will be afternoon and evening sessions on Friday and day sessions on Saturday.

The public--especially those involved in spiritual or ministry leadership are invited to attend any or all sessions. Registration for the entire convention is \$10.00. For additional information or reservations, call convention chairman, Ella Mae Starks at 359-1144 or co-chairman, Charlene Barrows at 355-3650.

On Saturday morning, the 9:00 a.m. session will feature Jean Warner of Dallas, Texas State Overseer of Flame Fellowship. Jean is a popular speaker who teaches the Word of God, flows in the gifts of the Holy Spirit and prays for the sick. Jean has a great desire to see all women walk in total victory in every area of their life.

1- 10x13 (Wall Photo) **30** Color Photos **99¢ Deposit \$10.00 Due at Pick up (plus tax)**

1- 8x10
2- 5x7
2- 3x5

16- King Size Wallets
8- Regular Size Wallets

\$10.99

WE USE KODAK PAPER

AT **Kid's Stuff** 719 West 7th

Wednesday, October 4

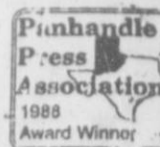
Shugart's inc.

Group charge 99¢ per person

We use **Kodak PAPER** for a Good Look

FOR CREATIVE COLOR PORTRAITS

The Spearman Reporter



Your Hometown Newspaper

USPS 509660

Spearman, Tx. 79081

213 Main, Box 458, 659-3434

Published Weekly at 213 Main, Spearman, Texas

Owned and Operated by: **Texas Independent Newspapers, Inc.** 19906 Encino Grove, San Antonio, Tx 78259
Second class postage paid at Spearman, Texas 79081.
Any erroneous reflection upon the character of any person or firm appearing in these pages will be gladly and promptly corrected upon being brought to the attention of the management.
PUBLISHER - Robert M. Hulett
Subscription Rate: Hansford, adjoining counties, combination with the **Hansford Plainsman** \$19.95; non-adjoining counties, \$24.95 annually.
Postmaster: Send address changes to **Spearman Reporter**, Box 458, Spearman, Tx. 79081.
The publisher reserves the right to revise or reject at its option any advertisement which it deems objectionable, either in subject or phraseology, or which it may deem detrimental to its business.

Club News

SPEARMAN STUDY CLUB

Antiques, collectables, arts and crafts will all be on display during the Spearman Study Club's ninth annual show and sale, scheduled for Saturday, Oct. 21 from 10:00 a.m. until 6:00 p.m. Dealers will be allowed early access to set up at 6:00 a.m. that morning.

Display/sale booths will be set up in the Spearman High School cafeteria, 403 E. 11th St.

Those attending can look forward to seeing glassware, primitives, coins, bottles, jars, clocks, dolls, jewelry, art and craft items and many more collectors items.

Refreshments will be available, and parking is free. The public is invited to attend.

20th CENTURY CLUB

Twentieth Century Club met Sept. 14 in the home of Verna Gail Keim.

President Marjorie Curtis called the meeting to order and conducted the business meeting. The upcoming county fair and the fall board meeting were brought to the club's attention. New year books were presented and discussed.

The next meeting will be a picnic at the home of Mr. and Mrs. Tom Sutton on Sept. 28 at 6:30 p.m.

Members present were Marjorie Curtis, Frances Stump, Anita Anthony, Wren Holt, Dorothy Woolley, Mac Wilmeth, Karen Babbitzke, and hostess Verna Gail Keim.

Your Chrysler-Plymouth dealers say:



"HERE'S TO YOU, AMERICA!"

FINANCING AS LOW AS **0%** OR

\$500-\$2,000 FACTORY CASH BACK*

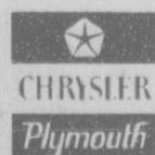
PLUS GREAT '89

CLEARANCE DEALS!

<p>ALL-NEW PLYMOUTH ACCLAIM: 2.9% FINANCING OR \$500 FACTORY CASH BACK: Over 30 standard features including: • 2.5-Liter Electronically Fuel Injected Engine • Power-Assisted Steering • Power-Assisted Brakes • Remote Control Trunk Release • Front and rear anti-sway bars with gas-charged struts and shocks</p>	<p>PLYMOUTH SUNDANCE: 2.9% FINANCING OR \$750 FACTORY CASH BACK: With 47 standard features including: • 2.2-Liter Overhead Cam Engine • Electronic Fuel-Injected Engine • Power-Assisted Steering • Power-Assisted Brakes • AM/FM Stereo</p>
<p>CHRYSLER NEW YORKER: \$500 FACTORY CASH BACK: New Yorker standard features include: • 3.0-Liter Electronically Fuel-Injected V-6 Engine • Fully Automatic Temperature Control • Air Conditioning • Tinted Glass, All Windows • Tuned Suspension System • Dual Power Remote Heated Mirrors</p>	<p>CHRYSLER NEW YORKER LANDAU: 0% FINANCING OR \$1,000 FACTORY CASH BACK: A few Landau standard features: • Crystal Key 5/50 • Bumper-to-Bumper Owner Care Program** • Automatic Temperature Control • Air Conditioning • Ultradrive Transmission • Power-Assisted Steering, Brakes, Power Windows and Door Locks • AM/FM Stereo</p>

SEE YOUR CHRYSLER-PLYMOUTH DEALER NOW!

*On selected new dealer stock. **Short term Annual Percentage Rate Financing for qualified buyers through Chrysler Credit. Longer term rates available. **See copy of 5 year or 50,000 mile limited warranty at dealer. A few restrictions apply. Excludes normal maintenance, adjustments and certain wear items.



GILLASPIE
AUTO & TRUCK CENTER, INC.
CHRYSLER, PLYMOUTH, JODGE
Highway 207 South P.O. Box 427 (806) 659-2541
SPEARMAN, TEXAS 79081

SHED NEW LIGHT on crime prevention at your business

Floodlighting from Texas-New Mexico Power Company can help make your business a less attractive target for criminals.

At the same time, it will help make your business more attractive to customers and employees, because they'll feel safer from crime and accidents.

For more information about floodlighting for your business, call or visit your local TNP office today.



Neighboring Professionals Offering You The Best Choice

9d180 10/90

Spearman 4-H Club Meets

On September 11 the first meeting of the Spearman 4-H Club was held. New officers for the 1989-90 year were introduced and are as follows: President, Michelle Cook; First Vice President, Leslie Latta; Second Vice President, Joy Gafford; Third Vice President, Mary Cook; Secretary, Barry Beck; Treasurer, Randie Renner; Council Delegate, Karla Kunselman; Parliamentarian, Tommi Latta; and Reporter, Kevin Williams. The Pledge of Allegiance, 4-H motto and pledge were given.

The first item of business was enrollment of members. Mary Cook explained how to fill out the forms. There were 48 members to enroll.

Those who had participated in any 4-H summer event told about

where they had gone and what they did. Burt Williams discussed animal projects such as steers, lambs, hogs and commercial steers. He stated commercial steers need to be on feed by October 10, pigs and lambs by December 1.

Karen Babitzke talked about the summer events that took place. She announced there were several members who still had checks in the office from the county livestock show. A completed record book is required to receive a check. She also stated that if time permitted, there would be recreation at all meetings.

For further information concerning 4-H programs, contact Karen Babitzke at 659-2030 or Burt Williams at 659-2136.

Ten Free Trees Offered To Encourage Planting

Ten free trees will be given to each person who joins The National Arbor Day Foundation during September, 1989.

The free trees are part of the nonprofit Foundation's efforts to encourage tree planting through-

out America.

The ten trees are the Sugar Maple, White Flowering Dogwood, Pin Oak, White Pine, Red Maple, Birch, American Redbud, Silver Maple, Red Oak, and Colorado Blue Spruce.

"These trees were selected to provide benefits every season of the year; lovely spring flowers, cool summer shade, spectacular autumn colors, and winter berries and nesting sites for songbirds," John Rosenow, the Foundation's executive director, said.

The trees will be shipped post-paid at the right time for planting between October 15 and December 10 with enclosed planting instructions. The six to twelve inch trees are guaranteed to grow or they will be replaced free of charge.

To become a member of the Foundation and to receive the free trees, send a \$10 membership contribution to TEN TREES, National Arbor Day Foundation, 100 Arbor Avenue, Nebraska City, NE 68410, by September 30, 1989.

Obituary



Jim Kate Garrett

Jim Kate Garrett, 88, of Gruver died August 30. Services were held at Gruver United Methodist Church at 11:00 a.m. September 1.

She was born July 13, 1901 in Upshur County, Texas. She married Kelly Garrett August 31, 1918. One son, Haskel Garrett, was born in 1920 and preceded her in death in 1932. In 1930 she moved to Gruver where Kelly opened a barber shop.

After the death of her son she opened the first beauty shop in Gruver. She retired from beauty work in 1947. She was preceded in death by her husband, Kelly, in 1985.

She is survived by three brothers, Clarence Bunt of Cuba, N.M.; Sherman Bunt of Ruidoso, N.M.; and Noble Bunt of Albuquerque, N.M.; and many nieces and nephews, including Peggy Archer of Spearman.

Other survivors include Mary Dixon of Spearman and Carla Gurfory of Gruver.

Ella Garnett Scholarship Applications Taken

The Hansford County Ella Garnett Scholarship Awards Program is designed to provide educational opportunities in the form of one scholarship to an outstanding homemaker each year.

To be eligible to receive the \$300.00 scholarship, an applicant must be a resident of Hansford County and a homemaker returning to college.

Applications may be obtained at the County Extension Office, located in the courthouse. Applications need to be returned to the Extension Office by the 15th of October.

All applications will be reviewed and a recipient chosen. A check will be presented to the recipient at the annual meeting.

All who are eligible are encouraged to apply.



Fifth grader Candice Pipkin (center) is presented with a certificate by Paula Butler, Librarian, and Eddie Gage, Principal, of the Elementary School. The certificate signifies that the name for the new library reading area was submitted by Pipkin and was chosen by the whole school. The "Winning name was Paw Power Pit."

Public Awareness Program Sponsored By PTA

"Occult and Ritualistic Crime in the Texas Panhandle," a public awareness program, will be held in Gruver on Oct. 9, at 7:00 p.m., in the Gruver High School Auditorium.

Sargeant Tom Porter and Corporal Travis Block, members of the Amarillo Police Department, will be the program speakers. Both have attended several trainings in ritualistic crime and offer this program as a way to educate and inform the public.

By its very nature ritualistic crime is secretive and it is natural

that many people are curious and have a fear about it. This program is designed to educate adults. A minor is not allowed to attend the program unless they are accompanied by their parent or legal guardian. It is stressed, this is not a program set up for children.

The program is sponsored by the Gruver and Spearman Parent Teacher Associations. For more information contact Gail Etheredge at 733-2920. There is no admission charge. The auditorium is located at the east end of Broadway.

Panhandle Crisis Center Report

by Mary Frances Elzey

You readers familiar with us may skip this paragraph, and start with the next one. The PCC offers services to men or women who are victims of domestic violence, whether verbal or physical. We give counseling, support, and information to these victims, plus a shelter to those who feel themselves to be in danger at home. These services are free of charge. We are available for help at any time, 24 hours a day. Our number is 435-5008. For information only, call during office hours, from 9:00 a.m. to 5:00 p.m.

Our first parenting classes are about to get into full swing. We were delighted to have received so many applications. The difficulty is that, since classes are limited to only 12 participants, we must choose who shall make up the first of the classes we shall offer during the year. We'll have to pull names out of a hat, after which a letter will come to you applicants announcing who will be the lucky dogs and who will have to wait until the next series meets.

The first series of sessions will begin on Friday, October 13, at the First United Methodist

Church, Perryton. The church agreed to let us use their baby-sitting facilities, then graciously offered to let us have the classes in a nearby room, so as to make it more convenient for the participants.

Many of you have probably seen the newscasts about the difficulty the Crisis Center is currently experiencing. Since the broad-casts the question frequently asked is, "Why didn't the Crisis Center investigate this woman before hiring her, especially since there is a charge pending in Illinois?" The answer is that there is no charge pending in Illinois, and that the PCC did investigate the woman, and that she came to us highly recommended.

I guess the moral to that is, "Don't believe everything you hear, or read in the newspapers, or see on TV!"

Oops! Did I say that?

Letter To The Editor

Dear Editor:
They say there's always two percent who don't get the word. That's certainly been the case on the new drug stamps. Obviously we failed to get the message across, so let us try again:

1. The drug tax stamp was not the Comptroller's idea. It is a new law passed by the Legislature. We are simply administering it just as we do all other laws they hand us. BUT, that is not as important as...

2. Of course, nobody expects criminal drug dealers to actually come in and buy the stamps. That's really not the point.

The point is that when a dealer is busted, his failure to have these stamps makes it quicker, easier and legally sound for lawmen to immediately seize every piece of property they can get their hands on.

That's the point: Give lawmen a tool to seize drug dealers' property -- their cars, their homes, their radios, their cash, their bank accounts, their storefront businesses...you name it.

This is not a great deal different than the perjury law. Of course a criminal isn't going to tell the truth. Of course a criminal isn't going to incriminate himself.

So what do you do when he lies? You hit him with the perjury law--a law against lying.

The drug stamp law has been called the Al Capone law. That's because Big Al was never convicted of running a protection racket. He was never convicted of promoting prostitution. But he was convicted and sent to the pen for evading taxes.

I'm sorry we obviously didn't get this message across in our original announcements about how we would administer this new law. If you have any questions, please don't hesitate to call us at 1-800-531-5441. The call is on our nickel.

Sincerely,
Tony Proffitt
Deputy Comptroller
Tax Information

Museum Board Sponsors Antique Show

The Stationmaster's House Museum Board of Spearman is sponsoring a show and sale of antiques, guns and coins on Saturday and Sunday, Oct. 7 and 8.

The show and sale will be held at the Hansford County barn, located at Ave. D and Hoskins St. in Spearman. Show hours on Saturday are 9:00 a.m. to 6:00 p.m. Hours for Sunday are 11:00 a.m. to 5:00 p.m.

There will be an admission charge of \$1 for adults and children over 12 years of age. Children under 12 will be admitted free if accompanied by an adult. Refreshments will be available.

Dealers from Plainview, Texas to Woodward, Okla. and from Colorado and Kansas have made reservations for the show and sale, which promises to be of great interest to collectors. The public is invited to attend.

Proceeds from the show and sale will be used to build a handicapped access ramp at the museum.

The Stationmaster's House Museum Board invites area residents to mark Oct. 7 and 8 on the calendar and remember to attend the show and sale.

THANK YOU

We would like to sincerely thank everyone for the prayers, food, flowers and kindness shown to us during the illness and passing of our loved one.

Thank You,
The Family of Marietta Huse

Protect Your
1990 Wheat Crop

Federal Crop Insurance

Bill Fairchild

623 Denrock Dalhart, Texas
249-2485

MEXICAN FOOD BUFFET

Friday, Sept. 29

5 - 10 p.m.

All You Can Eat

Meat & Cheese Enchiladas,
Tacos, Burritos, Chili, Beans,
Chili Rellenos, Rice, Chips, Dip,

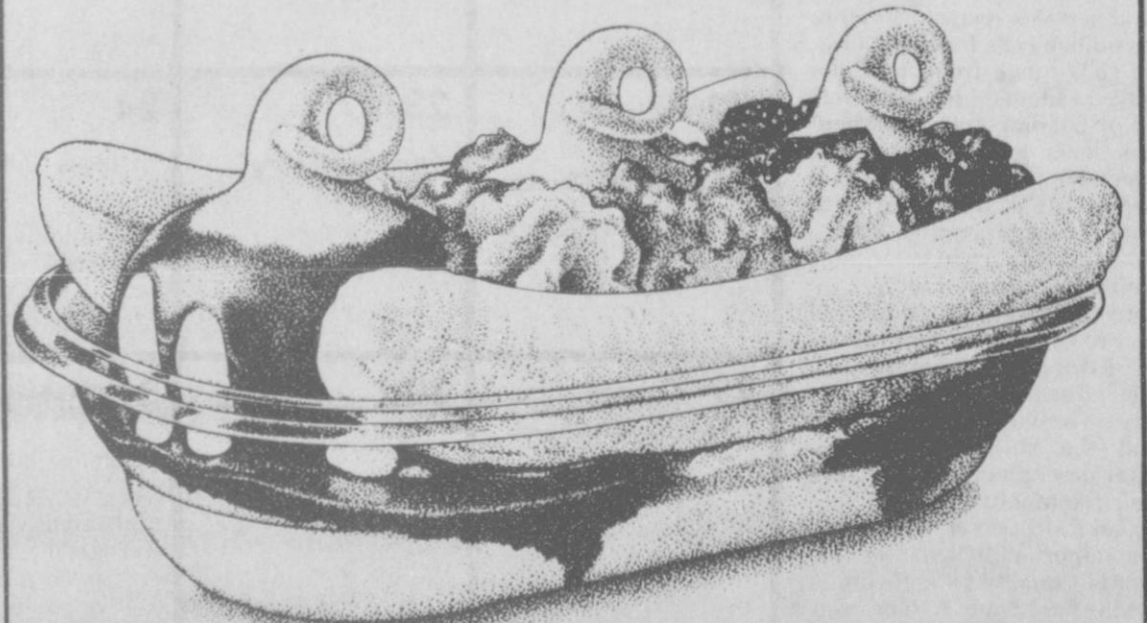
Guacamole Salad,
Sopaipillas

Child (Under 10)
\$3.50

Adult \$5.95

Kay's Cafe
210 Main

BANANA SPLIT!



\$1.19*
SALE PRICE
SEPT. 25-OCT. 1, 1989

DAIRY QUEEN soft serve, surrounded by fresh bananas. With your favorite toppings: strawberry, pineapple, and chocolate. And plenty of whipped topping, too!

ON SALE IN



*Reg. TM Am. D.Q. Corp. © 1989 Tex. D.Q. Op. Coun.
*At participating Dairy Queen stores

CHRISTMAS MAILING DATES 1989

Outbound

To ensure the timely arrival at overseas destinations for Christmas deliveries, post all mail in the continental United States (only) on or before the following dates in 1989:

INTERNATIONAL & MILITARY MAIL OUTBOUND AIRMAIL

Destination	Air parcels & priority	Air letters & cards	PAL	SAM
Africa	Nov. 20	Dec. 1	Nov. 10	Oct. 27
Alaska	Dec. 8	Dec. 8	Dec. 1	Nov. 24
Hawaii	Dec. 8	Dec. 8	Dec. 1	Nov. 24
Australia	Nov. 20	Nov. 24	Nov. 24	Nov. 6
Caribbean	Dec. 8	Dec. 8	Nov. 24	Nov. 20
Europe	Dec. 1	Dec. 1	Nov. 24	Nov. 13
Far East	Dec. 1	Dec. 1	Nov. 24	Nov. 13
Greenland	Dec. 1	Dec. 1	Nov. 24	Nov. 13
Middle East	Nov. 20	Nov. 24	Nov. 10	Nov. 5
Southwest Asia	Nov. 20	Nov. 20	Nov. 10	Nov. 5
Central & South America	Dec. 4	Dec. 4	Nov. 24	Nov. 15

Offices outside the continental United States, such as Puerto Rico, the Virgin Islands, Hawaii, Alaska, and the Trust Territories, should advise customers of actual posting dates to ensure that Christmas mail entrance to other countries is available in the continental United States by the dates listed above.

OUTBOUND SURFACE MAIL

Destination	International	Military
Africa	Oct. 2	Oct. 27
Alaska		Nov. 1
Hawaii		Oct. 15
Australia	Oct. 2	Nov. 22
Caribbean	Nov. 3	Nov. 6
Europe	Nov. 3	Oct. 15
Far East	Oct. 15	Oct. 15
Greenland	Oct. 15	Oct. 27
Middle East	Oct. 15	Oct. 27
Southwest Asia	Oct. 2	Oct. 15
Central & South America	Nov. 3	Nov. 3

Military Mail—Inbound

To ensure the timely arrival and delivery in the United States, the gateway points should receive all mail by the following dates:

Destination	PRI	LTRE	PAL	SAM
U.S. Gateway	Dec. 11	Dec. 11	Dec. 8	Dec. 1

Accident Totals Announced

Capt. Rusty Davis, district supervisor of the Amarillo Highway Patrol District comprised of 31 counties said, "For the month of August, our troopers investigated six fatal accidents, 83 personal injury accidents, and 110 property damage accidents. There were seven persons killed and 148 persons injured in these accidents."

Sgt. Robert Gribble of Berger stated, "In Hansford County, our troopers investigated no fatal accidents, one personal injury accident, and one property damage accident in the month of August. No person was killed and six persons were injured in these accidents."

Hansford Cowboys, Cowgirls Compete At Dumas Rodeo

Hansford County cowboys and cowgirls again displayed their winning ways at the recent Dumas Tri State High School Rodeo.

Mark Eakin of Spearman with a time of 13.976, was seventh in calf roping. In ribbon roping he was the fifth place finisher with a time of 11.056. Eakin teamed up with Clint DeArmond of Spearman in team roping to finish in fourth place with a time of 12.840. DeArmond, with teammate Rowdy Slavin of Canadian, took second place in the team roping event with a time of 9.248

seconds. Leslie Morton and Kelly McCloy two cowgirls from Gruver, had outstanding finishes at the Dumas Tri State rodeo. Morton placed eighth in breakaway roping, with a time of 5.087 seconds. A time of 21.575 seconds was good enough to put her in fifth place in pole bending competition. McCloy was the fifth place finisher in barrels, with a time of 17.862 seconds. Shanna DeArmond of Spearman finished in ninth place in goat tying, with a time of 13.01 seconds.

When In Doubt Call EMS

You're scared. Suddenly, without warning, you're in pain, or you can't breathe, or you feel so weak that you collapse. You think maybe it's not so bad. It'll go away. But it doesn't. You don't know what to do. "Call the Emergency Medical Services," says Michele Davis, director for the EMS Service in Spearman. "That's what we're here for—so you can get help when you need it. Just dial 911, and an ambulance staffed with trained personnel who know what to do will be there.

"Anytime there's a severe, sudden or unexpected change in how you feel or how you're able to function it can be considered an emergency," says Mrs. Davis, "and you should call EMS." Unexplained sleepiness, failure to hear or respond, confusion or change in behavior can also be emergency symptoms. "The rule of thumb is: When in doubt, call EMS," says Gene Wetherall, Chief of Texas Department of Health's Bureau of Emergency Management. "Don't hesitate because you think it's not serious enough. We'd rather give help to someone who could have waited a few minutes than not reach someone in time."

Heavy rains cause a crowded building to collapse in Brownsville. Near Bridgeport, an Army helicopter with several soldiers on board crashes and bursts into flames. The nation worries for three days about a little girl trapped in a West Texas well. Harlingen activates water rescue teams as another hurricane heads for the Texas coast.

Every year, Texas emergency medical services respond to more than a million calls for assistance. Those calls range from multiple-casualty incidents such as a bus wreck or building collapse where victims have to be triaged, or selected, for treatment according to the severity of their injuries to the more common cardiac arrest, motor vehicle accident, near drowning, or fractured leg.

More than 40,000 people in Texas are certified as Emergency Care Attendants, Emergency Medical Technicians, and Paramedics. Twelve hundred groups around the state provide pre-hospital emergency medical care to their communities.

Ask an EMS person today what is most important to them, and the answer is "quality patient care."

"EMS has come a long way since we started out," said Gene Weatherall, chief of the Texas Department of Health Bureau of Emergency Management. "The old ambulance law of 1943 required an 8-hour Red Cross certificate, a first aid kit, and a backboard. But since the seventies, all across Texas people voluntarily got training and certification at much higher levels so that they could provide quality prehospital medical care."

EMTs spend a minimum of 120 hours in class learning how to assess and stabilize a patient's condition before transporting

them to the emergency department. Twenty hours of clinical observation and three emergency ambulance runs must be completed before State certification as an EMT. Paramedics perform invasive emergency medical skills such as cardiac defibrillation, airway intubation, and intravenous drug administration. They must complete a minimum of an additional 400 hours of training beyond EMT.

Nearly half of the people who work in EMS are volunteers. "Emergency medical service in

Texas could not exist without volunteers," said Weatherall. In July, 541 of the 1,194 ambulance firms in Texas were volunteer organizations. Volunteers - individuals and organizations - must meet the same requirements as paid EMS.

"Of course, none of us wants anyone involved in an accident," said Weatherall. "But if they are, you may need emergency medical services to keep them alive. People should know how to call EMS and know what to do before EMS gets there."

AMARILLO LIVESTOCK AUCTION

Special Fall Calf Sale
Tuesday, October 3 at 1:00 p.m.

This Will Be Our First Sale In Our New Facility.

Sales Every Tuesday

For More Information Call Terry Jones, Manager
Business phone 806-373-7464 Home phone 806-379-7522

OCTOBER CALENDER OF EVENTS

To put dates on this calendar, please call the **Spearman Reporter** Phone 659-3434.

SUNDAY	MONDAY	TUESDAY	WEDNESDAY	THURSDAY	FRIDAY	SATURDAY
1 *Hansford County Fair Roping 2 p.m. Gruver Arena	2	3	4	5 *7th, 8th grades, JV meet Boys Ranch There 5 p.m.	6 *Lynx meet Sanford Fritch Here 8 p.m.	7 *Stationmaster's House Antique Show & Sale 9 a.m. - 6 p.m. County Barn
8 *Attend the Church of your choice *Stationmaster's House Antique Show & Sale 11 a.m. - 5 p.m. County Barn	9 *Columbus Day *Ritualistic Crime Program Gruver High School Auditorium 7:00 p.m. *Rotary Meeting	10 *Lions Club *Community Theater Auditions 6 - 10 p.m.	11 *Women's Division Exec. Board Chamber Office noon	12 *C of C Board JJ's Rest. Noon *7th, 8th grades, JV meet Stratford Here 5 p.m. *Social Security Rep. at courthouse 10 - 11:30 a.m.	13 *Lynx meet Stratford There 7:30 p.m.	14 *Fire Prevention Display Plains Shopping Center 2 p.m.
15 *Attend the Church of your choice	16 *Rotary Meeting	17 *Lion's Club *Community Theater Rehearsal	18 *Women's Division JJ's Rest. Noon	19 *7th, 8th grades, JV meet Panhandle There 5 p.m. *Community Theater Rehearsal	20 *Lynx meet Panhandle Here 7:30 p.m.	21 *Spearman Study Club Antique Show & Sale 10 a.m. - 6 p.m. SHS Cafeteria *PTA Carnival County Barn
22 *Attend the Church of your choice	23 *Rotary Meeting	24 *Lions Club *Community Theater Rehearsal	25	26 *7th, 8th grades, JV meet Highland Park Here 5 p.m. *Community Theater Rehearsal	27 *Lynx meet Highland Park There 7:30 p.m.	28
29 *Attend the Church of your choice	30 *Rotary Meeting	31 *Halloween *Lions Club *Community Theater Rehearsal				

THIS COMMUNITY CALENDER OF EVENTS IS BROUGHT TO YOU AS A PUBLIC SERVICE BY:



"Your Full Service Bank"
Member FDIC

729 W. 7th

659-5544

CLASSIFIEDS

For Sale

HOUSE FOR SALE: Reduced 3 Bdr. 1 1/4 bath setting on 3 lots. Has out buildings, cellar on corner lot room for trailer houses.
Call: 659-3425 after 5:00 or see at 217 N. Hoskins.
S44S-8tc

IRRIGATION MOTORS FOR SALE: 2 V-12 GMCs, 1 454 Chevrolet, and 1 413 Chrysler. For more information contact: Bill at B&D Industrial Automotive, 300 West 1st, Dumas, TX. 79029 or call: Daytime 806-935-3900 and Nightly 806-935-3121.
S44S-8tc

PIANO FOR SALE
WANTED: Responsible party to take on small monthly payments on piano.
See Locally.
Call: Manager at 800-635-7611 anytime
S-45-S-6tc

FOR SALE: Seed Wheat, Tam 101, Tam 105, Tam 108, Tam 200 and Russian Beardless. Call: V.B. Morris 806-733-2203
S38-RTN

FOR SALE: 3 bedroom, 2 bath home. Sunken living room, parquet floors, fireplace, covered patio, 2 car garage, sprinkler system, 2193 sq. ft. living space, excellent location. Call 659-3587 or 659-5022.
S33-RTN

HOUSE FOR SALE 4 Bedroom 1 1/4 bath 2 Car Garage, Fireplace Remodeled, New Carpet. 1119 Archer. Call: Sue Gerardy - 659-5196 or 733-5101.
S 37 - RTN 1tp

FOR SALE 3 bedroom, 2 bath home Fireplace, large living area, drapes, mini-blinds, completely remodeled and large deck patio. Nice neighborhood. 1110 S. Barkley. Call: 659-3800
S36rtn

FOR SALE: 1 Metal Building and Property 35' x 50' - 1 Large Cinder Block Building and Property 3000 sq ft. Contact: First State Bank, Box 247, Spearman 659-5565.
S29-RTN

USED AUTO PARTS FOR SALE: Located 4 miles west of Hooker, Ok. on highway 54. **Muss Cat Auto Salvage.** (405) 652-2400.
S10-rtn

SEED WHEAT - Chisholm, TAM 101, Century. Registered and certified. Don Oblander, Okeene, Okla. 405-822-4792. (except Saturdays.)
S46-5tc

FOR SALE: Sedan Grass Hay. Round or Square Bails. Call V.B. Morris at 733-2203.
S45-7tc

FOR SALE: '78 750 YAMAHA SPECIAL. First \$400. takes it.
S47S-2tp

PIANO FOR SALE
Wanted: Responsible party to assume small monthly payments on piano. See locally. Call credit manager 1-800-447-4266.
S48-7tp

FOR SALE: Round Bales of Sweep Cane Hay \$50/ton. Call Roy Garcia at 659-2245 in Spearman.
S48-1tc RTN

FOR SALE: 2 bedroom 1 bath with central air and heat. Double carport and storage building. Great condition. 109 S. Barkley. Call: 659-5213.
S48-1tp

320 ac. irrigated land located in Southwestern Ochiltree County. Two 8" irrigation wells. Fully allotted - wheat/milo bases. Call NEAL FLATHERS. 806-435-5444 days/658-4418 eves. CENTURY 21 - GOLDEN SPREAD REALTY. Janye Helton Pointer-Broker/Owner.
S47-7tc

For Sale

640 ac. dryland farm, fully allotted -wheat/milo bases. Located in Southwestern Ochiltree County. Call NEAL FLATHERS. 806-435-5444 days / 658-4418 eves. CENTURY 21-GOLDEN SPREAD REALTY. Janye Helton Pointer-Broker/Owner.
S47-7tc

320 ac. of irrig. land located in Eastern Hansford County. One 8" irrig. well, fully allotted w/ excellent yields. Call NEAL FLATHERS 806-435-5444 days/ 658-4418 eves. CENTURY 21 - GOLDEN SPREAD REALTY. Janye Helton Pointer - Broker/Owner.
S47-7tc

565 ac. irrigated land, 2 irrig. wells. Located in Southwestern Ochiltree County. Call NEAL FLATHERS. 806-435-5444 days/ 658-4418 eves. CENTURY 21 - GOLDEN SPREAD REALTY. Janye Helton Pointer - Broker/Owner.
S47-7tc

Help Wanted

ELECTRIC METER READER PERRYTON

Applications are being taken for the job of Electric Meter Reader to work in the Perryton area. High school diploma required. Applications will be accepted at 222 S. Amherst on Monday, October 2 from 8:00 a.m. until 12:00 noon only. A limited number of applications will be accepted. No phone calls, please.

Texas New Mexico Power Co. An Equal Opportunity Employer M/F/H/V
S48-1tc

STAR SEARCH 2000!
Children, teens and adults needed for commercials. Extras needed with or without experience. Call ICC 1-800-542-1027.
S48-9tc

Miscellaneous

WANTED: To buy older coke machines. Call collect with model number for my offer. 316-624-2431
S46S-4tp

LONELY? NEED A DATE?

Meet that special someone today!

Call **DATETIME** (405) 366-6335

S44S-8tc

I buy old quilts and quilt tops
Call 733-2129.
S46S-9tc



Allen Alford-Broker-659-3034
Hester Sue Crawford-Sales 659-2074
Dennis Nelson-Sales-659-3608
Larry Trosper-Sales-659-3491
THREE BEDROOM HOMES
902 Dressen
1016 Townsend
715 Steele - 1 1/2 Baths
522 E. **UNDER CONTRACT**
727 Wubanks - Office, 1 1/2 B.
1010 Dressen -
706 Steele - Fireplace
1116 Townsend - Dbl. garage,
727 Cotter Dr. - 1 1/4 Bath,
18 S. **UNDER CONTRACT**
729 Wilbanks - 1 1/4 Bath
729 Cotter - 1 1/4 B., Dbl. garage
TWO BEDROOM HOMES
811 Townsend - Dbl. garage.
COUNTRY HOMES
3 Br - 1 1/2 Baths 2 1/2 Acres
Hotel Royal - Owner will finance for sale or lease. Good business opportunity.
ACREAGE
15 Acres - Crawford Addition
Check for other listings.
WE WANT TO BE YOUR REALTOR

Offered by
EMMETT R. SANDERS
REALTOR
Owner's 2 bedroom home plus 2 rental units. Good investment package.
EMMETT R. SANDERS
REALTOR
659-2516, nights 659-2601

For Rent

FOR RENT: Nice, Private Trailer House Lot with Driveway. New gas, water and sewer lines. \$50.00 per month. Call 659-3657.
S47S-2tp

HOUSE FOR RENT: 307 12th. Brick, 3 bedroom, 1 bath. Available Sept. 1. Call 659-3809.
S44-1tc RTN

HOUSE FOR RENT: 3 Bd. 2 bath home fenced yard. Carpet. Applications being taken Call: Allen Alfred at 659-3034.
S434S-1tc RTN

TRAILER SPACE FOR RENT: in Spearman, \$50 a month Call: 435-5080
S43S-RTN

HOUSE FOR RENT in Spearman. Bedroom / 2 Bath. Fenced b ckyard. Central Heat and Air. (Call 878-2909).
S48-RTN

FOR RENT: 2 Bedroom Furnished Apartment. Call 659-3491.
S48 1tc RTN (THURS only)

Business Opportunity

CAREER OPPORTUNITY! Do you like working with people? Get the facts about becoming a professional hair stylist. Financial Aid is available! I bet you think you're not eligible for financial aid for cosmetology school. Maybe you're wrong! Check with us for the facts.

NEXT CLASSES START:

November 7, 1989

January 9, 1990

LIBERAL ACADEMY OF HAIR DESIGN

530 South Kansas

Liberal, Kansas 67901

(316) 624-3271

S47S-11tc

Services

INSULATE NOW! Save on Heating and Cooling Bills. Walls, Attics, New or Old Homes, Metal Buildings and Shops. Call **Forest** 806-659-2111 for appointment and FREE Estimate. Factory Trained Installer.
S46-27tp

OSGOOD MONUMENT CO.

Amarillo, Texas
Dealers of Rock of Ages Granite, as well as all colored granites, marble and bronze memorials.

represented by
BOXWELL BROS. FUNERAL HOME

519 S. Evans
659-3802

Century 21

GOLDEN SPRE AD REALTY

Janye Helton Pointer, Broker

Owner, 435-5444

Sales Associate

Jenniter Nollner 659-5243

515 S. Bernice-4/1 1/4, extra large lot & close to school!

712 ~~Cott~~ **UNDER CONTRACT** rell

\$2 **UNDER CONTRACT**

20 S. James-2/1 Well maintained!

611 S. Evans - 3/1 1/4, Affordable!

704 Steele - No ~~do~~ **UNDER CONTRACT** ent to qual ~~in~~ Home applicat.

322 Barkley-3/1 Corner lot adds to the appeal!

118 Townsend - 4/2, Apartment included!

1102 Haney - 3/1 - New listing! Owner says sell quickly!

220 ~~S~~ **UNDER CONTRACT** offer!

522 S. Haney Priced to sell quickly!

315 1/2 N. Bernice - Lot for sale!

315 Townsend - 2/1 Small price tag!

© 1989 F and M Century 21 Real Estate Corporation Equal Housing Opportunity

INDEPENDENTLY OWNED AND OPERATED

Legal Notices

NOTICE

Pringle-Morse CISD is taking bids to sell a 1972 GMC Pick-up. The vehicle is in fair condition and may be inspected at Pringle-Morse School in Morse, Texas. Bid information is available at the superintendent's office, 100 5th Street, Morse, TX. Bids must be in the superintendent's office by 4:00 p.m., October 10, 1989.

Bids will be accepted or rejected in the board room at the same address October 10, 1989 at 8:00 p.m. Box 109 Morse, Texas 79062. Phone 806-733-2507.

Work Wanted

WANTED: Corn Harvesting. Can harvest 30 in or 40 in rows. Call V.B. Morris 733-2203.
S48-1tc RTN



To get more juice from oranges, let the fruit soak in cold water for a while before squeezing.

BOB HARDY REALTY
803 Wilmeth Dr.
659-3440
NEW LISTINGS

713 Steele Dr. - 3 BR, 2 Bath Nice, Reasonable.

Colorado Property For sale.

Robert Hardy-broker

NOTICE

Wallace Monument Co. Monuments, Curbing, Grave Covers
Local Representative
LEONARD JAMESON
Spearman, Texas

358-rtn

CONGRESSMAN

Martin Frost
REPORTS

to the
24th Congressional District of Texas

by Congressman Martin Frost

With much attention being given to the issue of catastrophic health insurance costs, it is possible to overlook another issue that is of great interest to senior citizens in various age groups--the reduction of their Social Security benefits by a 2-1 ratio to their earnings.

Many senior citizens choose not to retire from their jobs, as many of them need additional income, above what Social Security would provide. The "earnings limit" is a provision in the law that reduces Social Security benefits by one dollar for every two dollars that recipients earn in outside income, beyond a certain threshold.

Currently the threshold is \$8,880 for those aged 65 to 69 and \$6,480 for those aged 62 to 64. Under this provision, a person aged 65, who earns \$10,000 a year, would lose \$560 in Social Security income.

This amounts to unfair taxation, because it saddles these senior citizens with a marginal tax rate of 50 percent on earnings that exceed the limit. And, that tax rate soars when the other taxes they must pay are included.

In my judgment, this provision is very outmoded. In effect, it tells these people they are no longer needed in the workforce; and, you and I know this is not the case.

The earnings limit dates back to the Great Depression when attempts were made to get older employees out of the work force to make room for younger workers. Today's economy is significantly different from those days, and I

think our laws should reflect those changes.

People are living longer and healthier lives, and many would like to remain productive members of the workforce. This policy, however, discourages people from working past age 65, which is still a very young age.

These rules do not apply to **unearned income**, such as pensions, dividends, interest and investments. Senior citizens who want to work should not be taxed simply because their income is from actual work rather than from stocks or bonds.

Many senior citizens participate in the volunteer programs and give a great deal of their free time to the communities. Their contributions are immeasurable, and I always enjoy visiting with senior citizens from throughout the 24th Congressional District at my regular Town Hall Meetings.

Their outspoken interest in this issue is certainly understandable.

Precision Sweep Airseeding
Can I Help? Tough Weeds Planting Behind Milo Out-of-way Locations
Need to get it done NOW
One Pass & You're Planted
Bob Williams 435-4835

Running stocker calves on wheat pasture?

Now, more than ever, **IVOMEC®** can build your profits.

(ivermectin)

At this year's beef prices, every pound you put on your calves is worth good money. And with IVOMEC® (ivermectin) you can put on plenty of extra pounds.

Whenever you have cattle on pasture, you're bound to have parasites. And if your calves have been sold and resold before shipping, you can't know what parasites they've picked up. And parasites steal weight.

But one shot of IVOMEC kills 31 different kinds of parasites—more than twice as many as TRAMISOL® and WARBEX® combined.

IVOMEC kills mature and immature worms, so you don't have to use it again in a couple of weeks. And IVOMEC gets external parasites, too. It does it all with just one simple shot under the skin. No wrestling. No Mess. No stress.

So go with your best shot.

Get IVOMEC.



MSD AGVET Division of Merck & Co., Inc., Rahway, NJ 07065-0912, USA. IVOMEC® is a registered trademark of Merck & Co., Inc., Rahway, NJ 07065, Copyright © 1989 Merck & Co., Inc., Rahway, NJ 07065, USA. All rights reserved. FIB-9-28/9-AJA, TRAMISOL® and WARBEX® are registered trademarks of American Cyanamid Co.



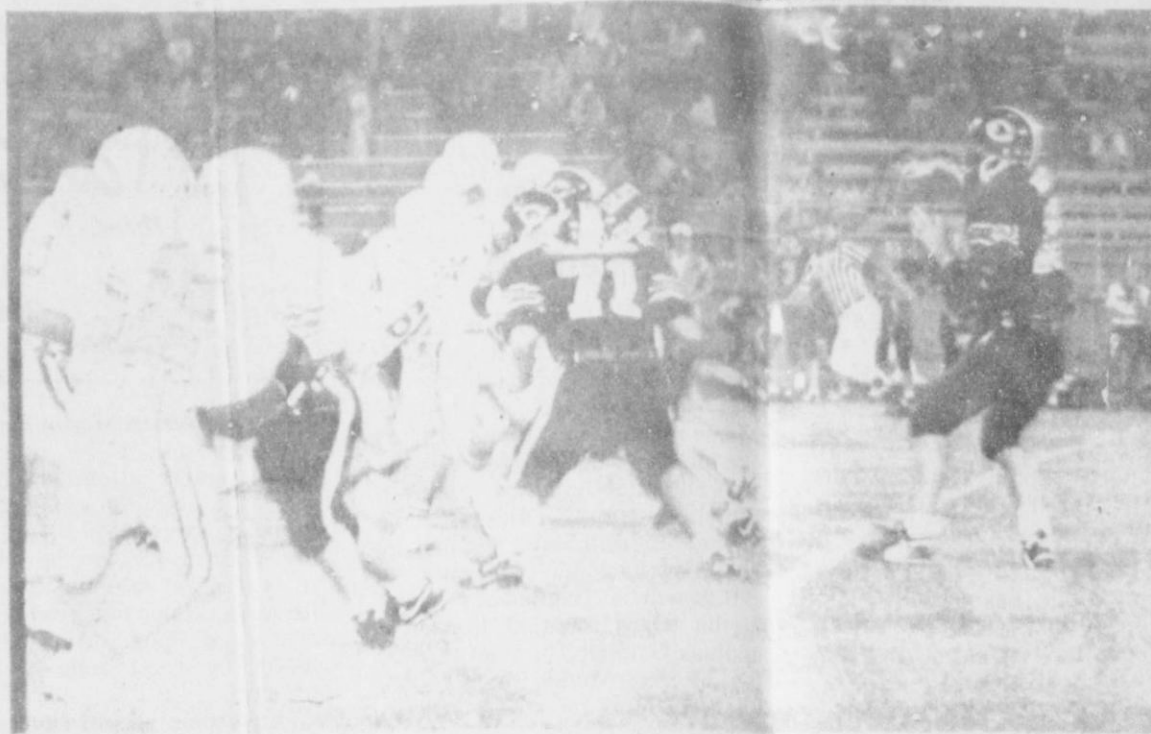
Don't just think of what it eliminates, but what it creates.

Football From Page 1

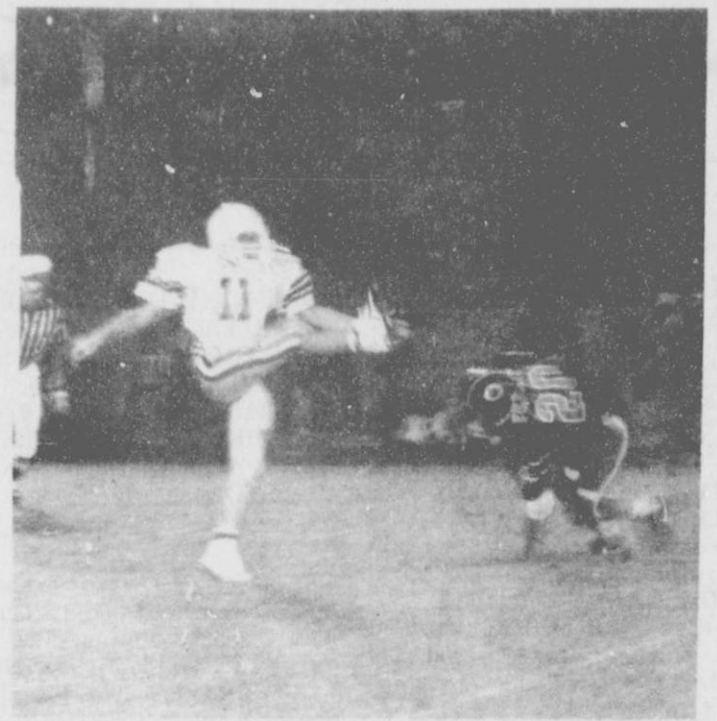
put them on the scoreboard.

The Lynx scoring did not stop there. At 5:19 in the fourth quarter Tim Dooley ran around the right end for a 55 yard touchdown. This brought the score up to 28 - 8 in favor of the Wildcats.

The Lynx have now put the Canadian game behind them and are looking forward to their Homecoming game against the White Deer Bucks, Friday night, at 7:30 p.m. The Bucks were impressive last year with a 16 - 0 record and a State Championship. This year they have not fared as well. Their record so far is 1 - 2. They will be coming off of their first win of the season, having defeated Clarendon 22 - 15 last week. "If we play with intensity, we can beat White Deer, and improve our record to 2 - 2," said Coach Mullins.



Tracy Thompson [52], Barry Beck [78] and the rest of the Lynx defensive line put pressure on Wildcat quarterback.



Edward Mayfield just gets a punt away as Wildcat rusher closes on him.

Go Lynx - Bar-B-Que The Bucks!



SPEARMAN LYNX
Football Schedule
1989

Date	Opponent	Place	Time
September 8	Shamrock	Home	8:00
September 15	Boys Ranch	Home	8:00
September 22	Canadian	There	8:00
September 29	White Deer [Homecoming]	Home	7:30
October 6	Sanford Fritch	Home	8:00
October 13	* Stratford	There	7:30
October 20	* Panhandle	Home	7:30
October 27	* Highland Park	There	7:30
November 3	* West Texas	Home	7:30
November 10	* Boys Ranch	There	7:30

* Denotes District 1-AA Games

*Proud Supporters Of The Pride Of Hansford County -
The SPEARMAN LYNX*

**HANSFORD COUNTY
FARM BUREAU**

307 West Davis
Spearman
659-3133

GORDON'S DRUG

314 Main Street
Spearman
659-2141

CHAROLETTE FORD TRUNKS

313 Main Street
Spearman
659-3027

THRIFTWAY

505 Plains Shopping Center
Spearman
659-2522

FIRST STATE BANK

1NE Court
Spearman

MEMBER FDIC

HANSFORD IMPLEMENT

Highway 207 South
Spearman
659-2568

CATES MEN & BOYS WEAR

221 Main
Spearman
659-3426

SACKS THIRD AVENUE

203 Main
Spearman
659-3350