

Panhandle Transit . . .

# Service Is For Everyone

by Jean Ann Behney

Panhandle Transit, a division of Panhandle Community Services, has come to Spearman. Pearl Pierce, Golden Spread Senior Citizen Center director, announced that Spearman residents can call 659-3866 to arrange for transportation within Spearman and to nearby towns.

"We have a new driver just hired by Bob Wharton of Panhandle Transit and a 1985 Chevrolet station wagon," Pierce said. "Anyone needing rides to the local doctors' offices, the grocery store or anywhere else can take advantage of this new service."

Spearman resident Linda Butt is the driver of the Panhandle Transit vehicle, and will be based at the Golden Spread Center. The transportation service will be available Monday through Friday, from 9 a.m. to 4 p.m. Rides will cost 50 cents each way per trip.

According to Pierce, who, incidentally, serves on the Board of Directors of Panhandle Community Services, this new service is available to everyone, not just the elderly and handicapped. "Before this, the only transportation we could offer people was the

Perryton-based transit that goes to Amarillo on Monday, Wednesday, and Friday," explained Pierce. The Perryton van was also used on Wednesdays in Spearman when she could get it.

She said the Amarillo service will continue to be available but added that it is specifically designated for the elderly, the handicapped and those on Medicaid who need transportation to medical facilities and social service appointments in Amarillo.

Pierce emphasized that Spearman's transit service is not limited to any groups or local destinations and added that transportation can also be arranged for trips to Gruver, Dumas, Perryton and Pampa for medical appointments. Out-of-town trips will cost seven cents per mile, with Medicaid patients riding for free. Driver Butt will keep odometer readings for each person riding out of town.

"What we can't do is transport Gruver people to Spearman or Spearman people to Gruver to shop at stores," commented Pierce. "We do not want to take business away from a town. That's why the out-of-town rides are

limited to medical appointments."

Any individual desiring transportation within Spearman or to a nearby town can make arrangements with Butt or Pierce by calling the Golden Spread (phone number given in first paragraph), preferably one day or more in advance. Arrangements to ride the Perryton-Amarillo Shuttle can also be made by calling these women. Pierce said she has 10-ticket booklets for transit rides to sell to local businesses. "This is for a business that might want to buy them to give away to customers," she commented.

Panhandle Transit is funded by the Department of Human Services, HUD and other government groups. This service branch of Panhandle Community Services will maintain Spearman's vehicle and pay for its gas. The Texas Highway Department recently gave Panhandle Community Services a quarter of a million dollars in grant monies. This enabled the Panhandle Transit to provide vehicles to other counties and to reduce its Perryton-to-Amarillo shuttle fee from 25 cents a mile to seven cents a mile.



Paul Trosper (12) blocks out two Stratford players to get ready for a possible rebound from the shot put up by a fellow Lynx 8th grade team member.

For more details and pictures turn to page 4.



Linda Butt proudly displays the new station wagon she has been hired to drive. Panhandle Transit is providing the service for the Senior Citizens of Spearman.

## First Grade Class Studies Indians

by Cindy Clyburn  
First Grade Teacher

My first grade class has been studying Indians. For an at-home project the students made model teepees and brought them to school. We have studied how Indians used buffalo, what painting their face meant, what feathers were given for, and what different cuts on the feathers stood for.

Mrs. Gable came to school and painted our faces. Mrs. Freeman came to school and helped the children make Indian Fry Bread, and Mr. Freeman came up and made a big teepee that the children sit inside to read.

All the students painted Indian designs on the teepee. We made headbands and have earned feathers for good deeds and

grades. Mr. and Mrs. Laughlin and Mrs. D. McCubbin came to school and read Indian and Thanksgiving stories to the children.

We talked about drying meat, and the children got to sample jerky.

On Nov. 21 we had our Thanksgiving Feast. All first graders ate a Thanksgiving meal in their room. All the children bring something to add to the meal. A menu is discussed ahead of time in the room.

In room 1 we had turkey, ham, deer roast, and many salads, vegetables, rolls, pie and cake.

We made Indian vests to wear on Nov. 21. Before we ate we all named one thing we are thankful for.



Four of Ms. Cindy Clyburn's little Indians pose in their handmade vests and their tee pee.

The Spearman

# Reporter

**25¢**  
Per Copy

6 Pages

Volume 82, No. 5

YOUR HOMETOWN NEWSPAPER

Thursday, November 30, 1989

## Computers Benefit Businesses, People

by Jean Ann Behney

With the recent computerization of the Spearman Post Office and the use of computers at the library, schools, law enforcement offices, pharmacies and many businesses, one may well ask "Who's next?"

According to Wesley Jarvis, high school computer science teacher, a business that does not computerize is missing out on potential savings in time and money. "Any business or service that has inventory and makes sales can benefit by getting a computer," he said.

It is unsurprising, therefore, that Jarvis predicts virtually all small businesses in this area, whether in sales or service, will change over to a computer-based accounting system in the next few years. Hansford County, he believes, is a microcosm of large metropolitan areas in its jump aboard the computer bandwagon. He expects those with agricultural interests in particular to start using computers soon if they haven't already done so.

Asked to describe exactly what a computer does for its user, Jarvis replied, "A computer has more accurate recall than the human brain and performs numerical operations more rapidly. Information retrieval is also faster."

Computers, he explained, are

designed to store a certain number of "bytes" of information in their memories.

"A 'byte' equals eight 'bits' of information and a 'bit' is a binary digit," Jarvis said. He explained that data is stored in computers as a combination of ones and zeros (binary digits). The new computers at the Spearman Post Office have 640K, or 640 bytes of memory.

The Spearman Independent School District offers three computer courses, including a junior high level computer literacy course taught by Karen Swink which covers word processing, spread sheet, data base and telecommunications. Jarvis' high school computer science courses teach programming and two computer languages, Basic and Pascal. Typing is a course prerequisite.

Jarvis believes that young people learn to work with computers more quickly than their parents and grandparents. "You could simply explain it by saying the circuitry in their brain imprints more easily and faster and they also retain information better," he said. He emphasized, however, that individuals of all ages can benefit from becoming computer literate and that older people usually find computer use unimposing after some exposure. **See Compute Page 6**

## Unemployment Continues Downward Trend

Unemployment in Hansford County continued its downward trend in October, according to the Texas Employment Commission.

Figures released by the TEC indicate that the jobless rate in Hansford County stood at 2.1 percent in October, as compared with September's rate of 2.2 percent and the 2.8 percent figure for August. TEC labor force estimates for October show that Hansford County had a total civilian labor force of 3,549 persons, of whom 3,475 had jobs and 74 were unemployed.

"We haven't had an October unemployment rate this good since 1984," Commissioner Mary Scott Nabers said. Newly released statistics from the Texas Employment Commission placed the State's jobless rate at 6.0 percent. "And making the economic picture even brighter is the fact that we had the largest gain in the number of non-farm salaried jobs thus far in 1989. Things are definitely looking up," Nabers concluded.

As proof that the economy is improving, Commissioner Nabers pointed to the decline from 7.2 percent in August to 6.3 percent in September and then down again to 6.0 percent in October. Compared to October 1988 when the rate was 6.8 percent, this current month's 6.0 percent is a welcome

sight but not all the news was good.

"Even though statewide we are seeing relief," Nabers said, "we have some areas of the state which continue to suffer from double digit unemployment rates and there are over 500,000 Texans still trying to find jobs."

There were 7,792,500 people in the state's labor force in October. That number is up by 47,900 from the previous month. Although the majority of the jobs added in October were due to completion of staffing at private and public schools and colleges, most other major industries also recorded moderate increases. Only Trade and Mining (Oil and Gas Extraction) exhibited decreases between September and October.

The majority of the 27 major metropolitan areas for which data are currently available mirrored the statewide unemployment trend, with lower rates between September and October. Only two MSA's had higher rates over the month, and those increases were small ones.

The areas with the lowest unemployment rates in October were: Bryan-College Station, at 3.9 percent; Lubbock, at 4.1 percent; Amarillo and Austin, each with rates of 4.9 percent; and Dallas, with a 5.0 percent rate.

## Sarpalius Visits Spearman

Congressman Bill Sarpalius will visit Spearman Friday to take part in a "Town Hall Meeting."

The meeting will be held in the District Court Room at Hansford County Courthouse from 4:00 p.m. to 5:00 p.m. Sarpalius will give residents a review of what Congress did or did not do in the last legislative session, then will open the floor for questions from Hansford County residents.

WEATHER			
Day	High	Low	Precip.
Thur.	62	22	
Fri.	74	32	
Sat.	52	41	
Sun.	71	26	
Mon.	55	44	
Tues.	44	20	
Wed.		21	



Senior Citizens at the Golden Spread Center enjoy a Thanksgiving feast prepared and hosted by the employees of the First National Bank of Spearman.



# Hansford Happenings

A holiday program entitled "Touch of the Southwest" will be presented by Texas-New Mexico Power Company Home Economist Pat Lucas on Tuesday, December 5 from 1:00 p.m. to 2:00 p.m. at the Golden Spread Senior Center.

Holiday foods and craft ideas with Southwest flavor and flare will be shared. Energy-saving hints and safety tips will also be presented. A recipe book will be distributed to those attending.

The Gruver Community Christmas tree lighting will be at the Gazebo in the City Park at 6:00 p.m. December 3. There will be a program of singing Christmas Carols. Those wishing to donate an ornament for the Christmas tree are asked to do so Sunday evening.

The S.H.S. pop group "Celebrate" is well known in the community for its entertaining style of singing. As the holiday season approaches "Celebrate" will be available to sing for clubs and civic organizations. To engage this group you may contact Vicki Gibbs, high school choir director, or Carol Pack, assistant director.

The Gruver Post Office is hosting a Customer Appreciation Open House on Wednesday, December 13th. Doris Pinkerton, post master, would like to invite all the people of Gruver to come by the Post Office on that Wednesday, starting at 10 am. till 12 am. There will be refreshments and door prizes.

The Hansford County Hospital Auxiliary will meet Dec. 4th, at 11:30 A.M. at the Union Church for a salad luncheon. Each member is to bring a salad. After the luncheon, the members will decorate the hospital and manor for Christmas.

Gruver's second annual Arts and Craft Festival will be held on Saturday, Dec. 2 in the Golden Age Center. The public will be able to browse and buy between the hours of 9:00 a.m. and 6:00 p.m. for handcrafted and other unusual items. Admission is free and door prizes donated by the exhibitors will be an added attraction of the festival. For more information contact Connie Burgoon at 733-5289 or Joy Henderson at 733-2517.

Boy Scout Christmas tree sales start Nov. 28. This is the major fund raising event for Troop 551. The tree sale is located at the old B&B building, 202 S. Main. They will be open weekdays from 3:30 p.m. to 6:30 p.m. Saturdays from 10:00 a.m. to 7:00 p.m. daytime residents can call Candi Delozier, 659-3649 or Harry Stumph, 659-2109. The Boy Scouts appreciate your continued support and wish all a Merry Christmas.

Door Prize Winners at the recent "Holidays-Spearman Style" Show sponsored by the Spearman Chamber of Commerce Women's Division included Tammy Benton, Rose Isen hower, June O'Loughlin, Barbara Townsen, Vickie Genn, Mary Dixon, Norma Jean Mackie and LaVaun Kraft.

An immunization Clinic will be held Thursday, Dec. 7 from 10:00 a.m. to 12:00 noon at the Texas Dept. of Health Office, located at 720 S. Archer in Spearman.



by Rita Curtis  
Librarian

## Library Book Notes

Hansford County Library  
Accredited as State System  
Member--

Hansford County Library was recently accredited as a member of the Texas Library System according to William D. Gooch, director and librarian of the Texas State Library.

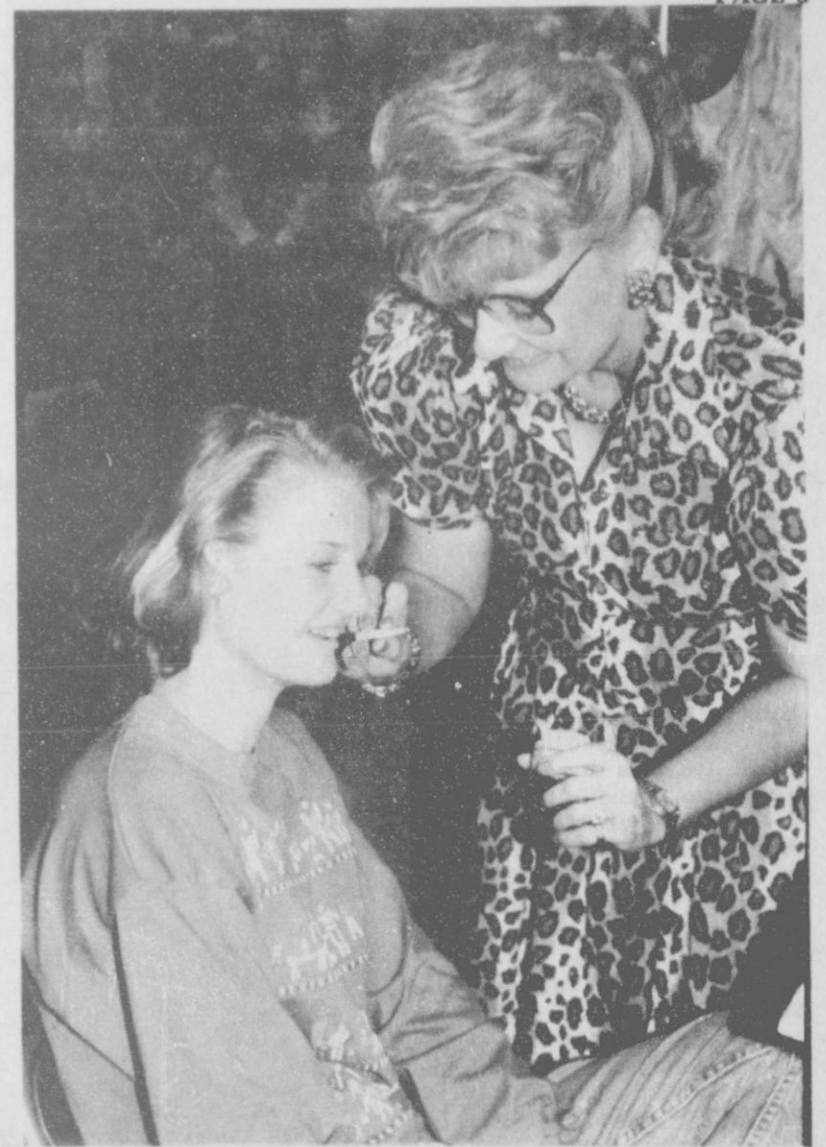
The Hansford County Library is a member of the Texas Panhandle Library System, one of the 10 library systems in the state. The local library, which serves citizens in Hansford and surrounding counties, had to meet strict criteria such as hours of access, professional staffing requirements, number of library materials, and local per capita support to become an accredited member. Public libraries must apply and qualify for system membership annually.

Some of the services provided for our library through Texas Panhandle Library System (TPLS) are rotating packets of Large Print books and Talking Books; continuing education workshops for librarians; book collection development funds each year; and

grants for automating our library. In 1990 our library will receive \$2,105 from TPLS to purchase books in addition to those purchased via the library's local book budget. The library was also the recipient of TPLS automation grants which placed computer terminals in our library and enabled us to become a member of the Harrington Library Consortium.

Authorized by the Library Systems Act of 1969, the Texas Library System was developed to improve library service in the state through cooperative efforts among the 10 library systems in the state. These cooperative efforts, which include resource sharing, are made possible through state and federal funds appropriated to the Library Development Program of the Texas State Library. This year the Texas State Library will distribute approximately \$8 million to the 10 library systems.

Hansford County Library has been a member of TPLS since 1972 and has reaped many benefits from this relationship during the past 17 years.



Linda Andrew, of LaKays, had a busy Saturday, Nov. 18. She had to do make up for the Women Merchants Style Show and again the make up for the "Life Along the Palo Duro" show. In this picture, she is working on Suzanne Sanders. Sanders was a model in the Style Show.

### NOTICE

Juan F. Viola, M.D., P.A.

Announces Relocation Of His Office  
to the

BORGER HOSPITAL CLINIC  
202 McGee Borger, TX Tel. 273-9979

Classes Forming Now For  
Precept Inductive Bible Study  
Enrollment Nov. 13 - Dec. 3  
1st Class Begins Jan. 10, 1990  
Meeting Place - First Baptist Church, Spearman  
Nursery Available  
For Information call 659-2215, Pam Cobb  
733-2729, Beth Dortch

### Panhandle Events

#### PERRYTON MESSIAH

Perryton - Saturday Dec. 2 at 7:00 p.m. will mark the 35th annual presentation of Handel's Christmas portion of The Messiah in Perryton.

Soloists for this year's performance are Debbie Blackshear, Jill Ellzey, John Ellzey, Sharon Ellzey, Keith Harris and Verna Wilson of Perryton; Roy and Beverly Wiebe of Waka; and Scott and Carolyn Taylor of Spearman.

#### ADOBE WALLS - BORGER

To help commemorate the upcoming 125th Anniversary of the Battle of Adobe Walls, the 4th Cavalry of Lubbock will be in military uniform, on horseback, and will be firing a 12 lb. mountain howitzer of the type Kit Carson's men had.

The events will begin Saturday, Dec. 2 at the Hutchinson County Historical Museum at 10:30 a.m. The events at the Adobe Wall site located 37 miles N.E. of Borger will begin at 2:30 p.m.

#### CHRISTMAS PAGEANT - GUYMON, OKLA.

First Baptist Church of Guymon, Okla. will present a Christmas pageant Monday, Dec. 11 and Tuesday, Dec. 12 at 7:00 p.m. nightly. Tickets are available by calling (405) 338-8595 or by writing First Baptist Church, Box 1129, Guymon, OK 73942.

#### NAMA MEETING - PLAINVIEW

Dr. Bonner Teeter, interim director for the Oklahoma Conference of Churches and Ag-Link will address the Caprock Chapter of the National Agri-Marketing Association December 5 in Plainview.

The meeting and dinner will begin at 6:00 p.m., preceded by a social period at 5:30 p.m. at the Holiday Inn, I-27 and U.S. Highway 70.

## DECEMBER CALENDER OF EVENTS

To put dates on this calendar, please call the Spearman Reporter Phone 659-3434.

SUNDAY	MONDAY	TUESDAY	WEDNESDAY	THURSDAY	FRIDAY	SATURDAY
					1 *SHS Basketball Canyon Tournament Varsity Girls Perryton Tournament Varsity Boys *Flame Fellowship 7:00 p.m.	2     **"The Sharks" 7:00 p.m. SHS Auditorium
3 * Attend the Church of your choice	4 * Rotary Meeting  *Jr. High Basketball Vs. Panhandle Boys There Girls Here	5 *Lions Club  *SHS Basketball Channing There JV Girls, Varsity Girls Varsity Boys	6	7 *Pearl Harbor Day	8 Gruver Tournament *Jr. High Basketball 7th and 8th Grade *SHS Basketball PSU Tournament Varsity Boys  JV and Varsity Girls Guymon There	9
10 * Attend the Church of your choice	11 *Jr. High Basketball Highland Park Boys There Girls Here  *Rotary Meeting *Spearman Christmas Promo Drawings Begin	12  *Lion's Club  *SHS Basketball Canadian Here JV & Varsity Girls & Boys	13  *Women's Division Exec. Board noon	14  *C of C Board *Jr. High Basketball Perryton 9th Grade Tournament	15 *SHS Basketball Perryton Here Varsity Girls & Boys *Perryton Tournament JV Girls & Boys *Chamber Membership Luncheon 11:30 - 1:30 Parish Hall	16
17 *Attend the Church of your choice	18 *Rotary Meeting	19  *SHS Basketball Nazareth There JV Girls, Varsity Girls & Boys	20  *Women's Division	21 *Winter Begins	22	23
24 *Attend the Church of your choice	25 *Christmas Day	26 *Lions Club	27	28	29 *SHS Basketball Canadian Tournament Varsity Girls  Sudan Tournament Varsity Boys	30
31	*Rotary Meeting					

THIS COMMUNITY CALENDER OF EVENTS IS BROUGHT TO YOU AS A PUBLIC SERVICE BY:

Good for You

**FNBANK**  
First National Bank of Spearman

"Your Full  
Service Bank"  
Member FDIC

729 W. 7th

659-5544

Complete Nursery &  
Landscaping Service  
**PERRYTON  
NURSERY**  
610 S.E. 1st Ave.  
Perryton, Texas  
435-2313

# Basketball Roundup

## LYNXETTE VARSITY

The Lynxette Varsity basketball team was defeated Nov. 21 by the Channing girls team. Final score was 35 - 46. Scoring for the Lynxettes were:

Joy Gafford	12
Michelle Cook	8
Vonda Benson	6
Tamri Townsen	6
Denise Arnold	2
Laci Lasater	1

## LYNXETTES PLAY IN FRENSHIP TOURNEY

The Varsity Lynxette basketball team took fifth place in the recent Frenship "Turkey Classic" Basketball Tournament, held Nov. 24 - 25. On their way to the fifth place finish, the girls won three games and lost only one.

Amarillo High School, El Paso Austin and Pecos all were victims of the Lynxette basket attack at Frenship. Lubbock Coronado was the only team lucky enough to defeat the Lynxettes.

The Varsity Lynxettes now stand at 4 - 3 for the season.

Game No. 1 at Frenship was against Lubbock Coronado, and ended with a final score of 47 - 55 in favor of the Lubbock team. Leading scorers for the Lynxettes were Laci Lasater with 11, Joy Gafford with 8 and Tamri Townsen with 7 points.

In Game No. 2, the Lynxettes defeated Amarillo High by a score of 38 - 36. Leading scorers for that game were Laci Lasater with 11, Joy Gafford with 9 and Tamri Townsen with 6 points.

Game 3 saw the Lynxettes taking a victory over El Paso Austin, with a final score of 28 - 18. Top scorers in that game were Vonda Benson with 7, Michelle Cook with 6 points and Laci Lasater and Tamri Townsen each with 4 points.

The fourth and final game of the tourney pitted the Lynxettes against Pecos. The Lynxettes pulled out the win by a score of 41 - 38. Leading the scoring effort were Mindy Lasater with 13, Laci Lasater with 7 and Vonda Benson with 6 points.

## 7th Grade Lynxettes

The Lynxette 7th grade basketball team defeated Stratford by a score of 19 - 17 on Monday. The 7th grade Lynxette team boasts a 2 - 1 season record. Scorers in the Stratford game were:

Ashley Shieldknight	13
Lyndee Cook	6

## 8th Grade Lynxettes

The Lynxette 8th grade basketball team was squeezed out by the Stratford 8th grade girls team on Monday. Final score was 21 - 23, bringing the 8th grade Lynxettes to a season record of 1 - 2. Scorers against Stratford were:

Telie O'Quin	6
Lisa Lillard	5
Trixie Pearson	2
Rainey Whittington	2
Carrie Pearson	2
Barbara Ring	2
Christie Taylor	2

## 9th Grade Lynxettes

The Lynxette 9th grade basketball team suffered a narrow defeat at the hands of the Stratford 9th grade girls team Monday. Final score was 20 - 23, bringing the 9th grade Lynxette team to a 2 - 1 season record. Scoring against Stratford were:

Gwen Benson	6
Laura Pearson	6
Mary Cook	4
Kimbre Townsen	2
Holly Jarvis	2

## LYNX VARSITY BOYS

The Lynx boys Varsity basketball team traveled to Fritch Friday

night, but came away with a loss. Final score was 30 - 73.

Scoring for the Lynx were:

Dallas Trosper	7
Joel Shields	5
Brian Beck	4
Chad Riggins	4
Alan Howell	4
Shawn Tanner	2

## LYNX JV

The JV Lynx basketball team fell to the Sanford-Fritch JV on Friday night, by a score of 55 - 65. Scoring for the JV Lynx were:

Cody Pipkin	18
Justin Boyd	14
Ross Jarvis	10
Mark Eakin	6
Darian Hawkins	4
Russell Shaver	2
Josh Nett	1

## 8th Grade Lynx

The Lynx 8th grade boys basketball team won big against the Stratford 8th grade team Monday. Final score was 35 - 16, which brought the 8th grade Lynx

to a 2 - 1 season. Leading scorers against Stratford were:

Paul Trosper	14
Toby Thompson	7
Dee Mayfield	4
Jason Varmon	5
Jason Swink	3

## 9th Grade Lynx

The Lynx 9th grade basketball team were defeated Monday by the Stratford 9th grade team, with a final score of 30 - 35. Their

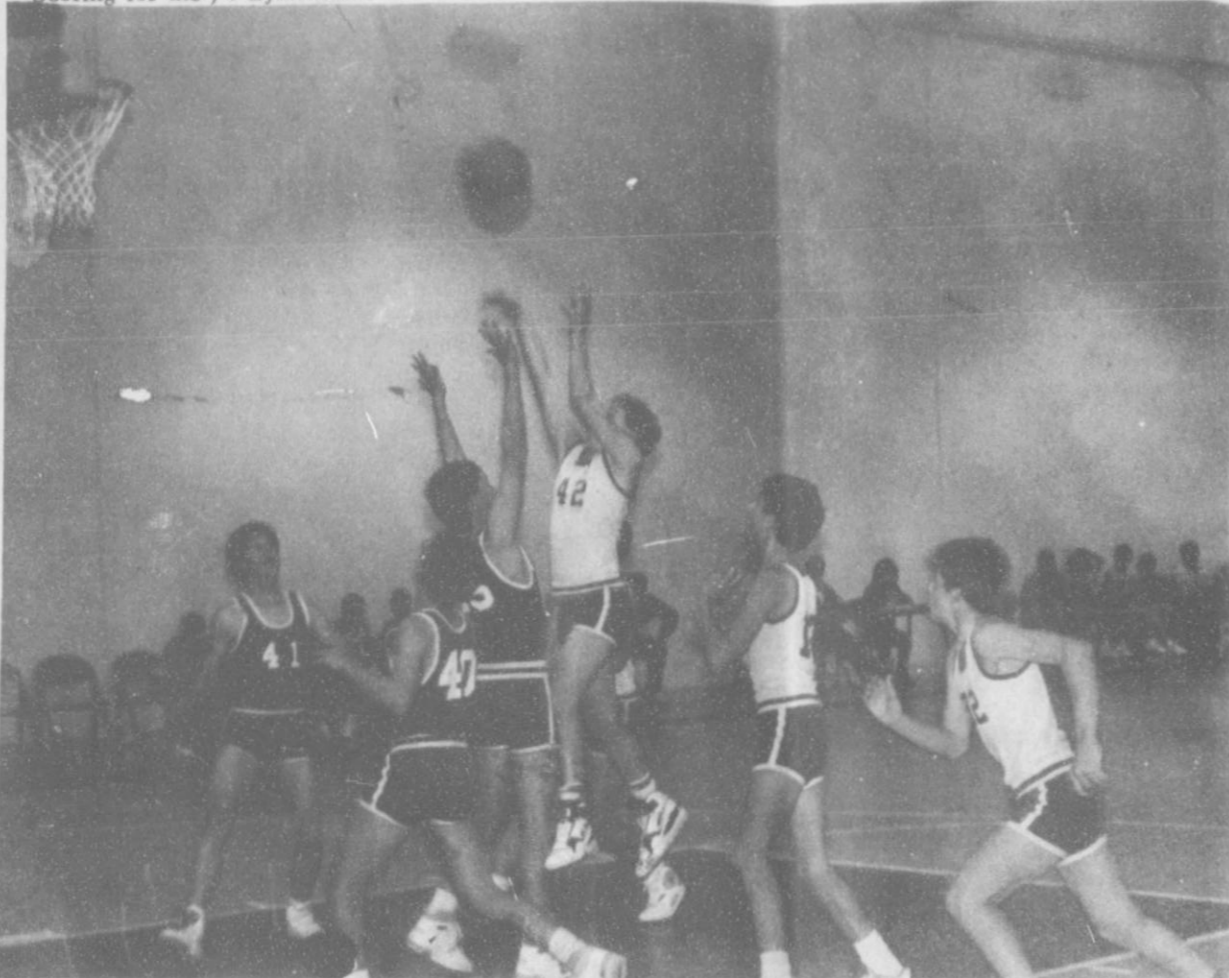
season now stands at 0 - 3. Scoring for the 9th grade Lynx were:

Roman Arnold	8
Mike Hager	7
Wesley Dyess	6
Sherman Jones	4
Kevin Williams	2
Curtis Pearson	2
Clint Townsen	1

## 7th Grade Lynx

The 7th grade Lynx basketball team lost to the Stratford 7th grade team Monday by a score of 19 - 29, bringing their season record to 2 - 1. Scoring for the Lynx 7th graders were:

Radar Garcia	10
Trey Porter	6
Schane Schneider	2
Chad Wilkerson	1



Dustin Loomis [42] shoots the ball as Sherman Jones[32] and Clint Townsen [12] move to cover the rebound.

DRINKING AND DRIVING CAN ADD UP.



PLEASE AVOID DWI DURING THE NEW YEAR TEXAS DEPARTMENT OF PUBLIC SAFETY

NOTICE To The Public Direct From SINGER

BRAND NEW 1989 MODEL

HEAVY DUTY SINGERS ordered for schools, laundries etc. now to the public. These HEAVY DUTY SINGERS sew: Silk, DENIM, Canvas, UPHOLSTERY, Nylon, Stretch Fabrics and LEATHER. Buttonholes, zig-zags, over-edging, MONOGRAMS, Twin Needle sewing, etc. Factory-sealed cartons with a 10-YEAR SINGER FACTORY WARRANTY.

YOUR PRICE WITH THIS AD \$188.00 Without Ad \$419.00 Limited Quantities

Visa MasterCard checks/Layaways Accepted

ONE DAY ONLY Sunday, Dec. 3rd

1301 S. Main Perryton, Texas

ALCO 1:00 - 6:00 ON DUTY

SINGER APPROVED DEALER

Pre-Christmas Customer Appreciation Sale

KIDS & LADY STUFF & FAIR

719 W. 7th Spearman

Buy any item from fall & winter sale merchandise and get a second sale item of equal value or less for

1/2 PRICE

Thursday, Friday & Saturday only

Nov. 30th, Dec. 1st & 2nd

A Christmas Gift For You

Gruver Bucks

Register at participating Gruver Merchants (No Purchase Necessary)

Drawings To Be Held At The Golden Age Center

- ★ Saturday Dec. 2nd at 3 pm. with an Arts & Crafts Show
- ★ Saturday Dec. 9th at 3 pm. with a Clown & Balloon Art
- ★ Thursday Dec. 14th 7pm. with Entertainment
- ★ Thursday Dec. 21st at 7 p.m. with a Roving Santa

Participating Merchants Open Till 9 p.m. on Dec. 14 & 21

★ Must Be Present To Win:

First 3 Drawings \$25 \$50 \$75

Dec. 21st Drawing - Double Bucks \$50 \$100 \$150

Making your Christmas Merrier - The Gruver Chamber Of Commerce and the Retail Merchants Committee

Gruver Insurance Agency ★ El Vaquero Restaurant

Gopher's ★ Gruver Lumber Co. ★ Bort Agency

Gruver Texaco Station ★ Sluder-Evans Oil Co.

Gruver Ford ★ Gruver Dairy Queen ★ Gruver Drug

Gruver Farm Supply ★ B.J.'s Petal Patch

G&G Foodliner ★ Hansford Supply ★ Little Tiffanies

The Gift Registry ★ Main Street Store

An early holiday present from TNP: electrical safety advice

Before you deck the halls, remember to use care around electricity.

- Don't use 120 volt lighting on a metal tree.
- Never place electric lights on a dry, brittle tree.
- When hanging outdoor lights and decorations, use care with ladders or anything else that can come into contact with a power line.

Texas-New Mexico Power Company.

Neighborhood Professionals Offering You The Best Choice



Compute From Page 1

ience. Another modern device that this computer science teacher sees being increasingly utilized in the Panhandle is the FAX machine. FAX, he said, is a shortened form of the word "facsimile," because these machines transmit printed pages as digital data over a telephone line.

A person with a FAX machine can send typed pages as well as pictures to another FAX machine. Jarvis said, because virtually all printed material can be digitized. As of this writing, this reporter knows of at least one FAX machine in Hansford County, and that one is used by Dr. Juan Viola. Jarvis reported that FAX machines can be as small as a portable typewriter now and he expects more and more of these devices to be used here in the near future.

# Crisis Center Reports

by Mary Frances Ellzey  
You readers familiar with us may skip this paragraph and start with the next one. The PCC offers services to men or women who are victims of domestic violence, whether verbal or physical. We give counseling, support, and information to these victims, plus a shelter to those who feel themselves to be in danger at home. These services are free of charge. If you want information only, call us at the office from 9:00 a.m. to 5:00 p.m. We are also available for help at any time, 24 hours a day. Our number is 435-5008.

The classes on Systematic Training For Effective Parenting are most gratifying. Though we treat a very serious subject, it is done with good will and even laughter. After only three ses-

sions, one set of parents said, "You've already helped our family a lot." Not only does each student feel encouraged to keep on trying, he/she can actually see progress in establishing new methods for relating to their children. Of course there are occasions on which they wish they could have done better, but they feel mighty good in having made the effort. And they improve.

The next series of classes will begin soon after Christmas, so tell us of your interest right now! The presenters will get in touch with you to find the most convenient time for you to attend the next session. You will be asked to be present at each of the eight once-a-week meetings. When you have your first class, you will readily see why. And you will enjoy them.



This picture is another "flashback" to the Women Merchant's style show. Pictured here are 7 of the youngest models in the show. Back row, left to right are: Bethany Cline [Country Stitches], Kristen

Beedy [Kids Stuff], Misha Davis [Kids's Stuff], Mandy Kenny [Hickerson's], and Michael Lusby [Kid's Stuff]. Front row, left to right are [ Christen Whitford and Kevin Beedy, both wearing Kids Stuff fashions.



Christmas decorations went up on Main Street and Highway 207 this week. The decorations are a joint effort between the City of Spearman, Retail Merchants, and Texas-New Mexico Power. The new decorations on Main Street were purchased by the

City. They will help replace the older ones purchased by the Retail Merchants in the past. The placing of the decorations is a joint effort of the City and Texas-New Mexico Power Co. Crews.

Coming In 2 Weeks . . .

## "CHANNEL CHOICES"

A complete list of television programming offered in Hansford County.

If you would like your business, product or service to become a 'viewer's choice,' contact the Spearman Reporter office at 659-3434 today!

## Singing The Praises Of Our All Region Choir Members



- Sammy Graham, freshman, Bass II - All-Region, All State
- Curtis Pearson, freshman, Tenor II - All Region, 1st Alternate All State
- Ted Miller, senior, Baritone - All Region
- Brad Butler, freshman, Tenor I - All Region
- Ross Jarvis, junior, Tenor II - All Region
- Michael Cummings, freshman, Tenor I - 1st Alternate, All Region

One NE Court  
659-5565



MEMBER FDIC

# The Christmas Gift That Keeps On Giving . . .

## The Spearman Reporter

### 20% Off Subscription Rates Through The Month Of December!

**\$15<sup>96</sup>** per year  
In Hansford County

**\$19<sup>96</sup>** per year Out-Of-County

Send coupon, along with check or money order, to:  
The Spearman Reporter, Box 458, Spearman, TX 79081

Yes, I would like to send a year's subscription to:

Name: \_\_\_\_\_  
Address: \_\_\_\_\_  
City: \_\_\_\_\_  
State: \_\_\_\_\_ Zip: \_\_\_\_\_

Yes, I would like a year's subscription for myself!

Name: \_\_\_\_\_  
Address: \_\_\_\_\_  
City: \_\_\_\_\_  
State: \_\_\_\_\_ Zip: \_\_\_\_\_